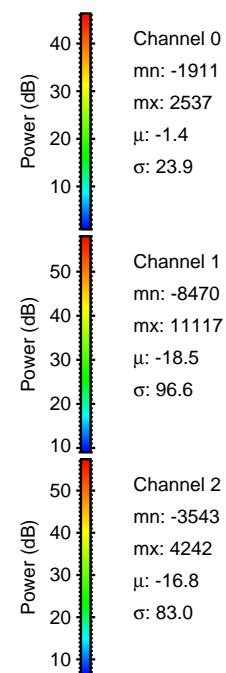
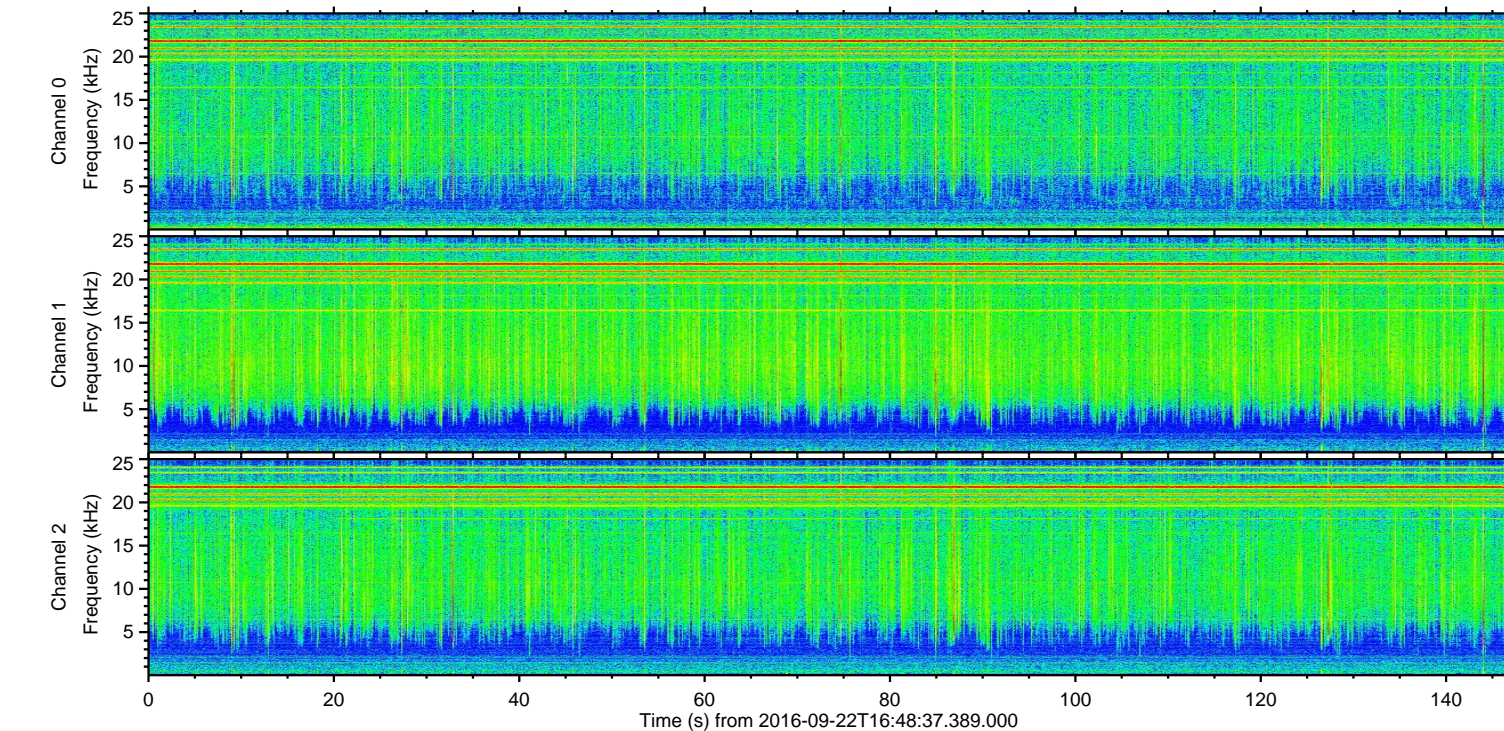
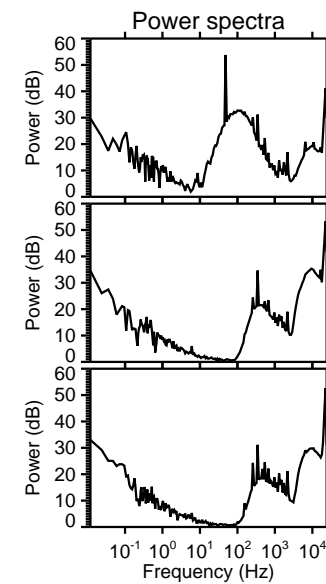
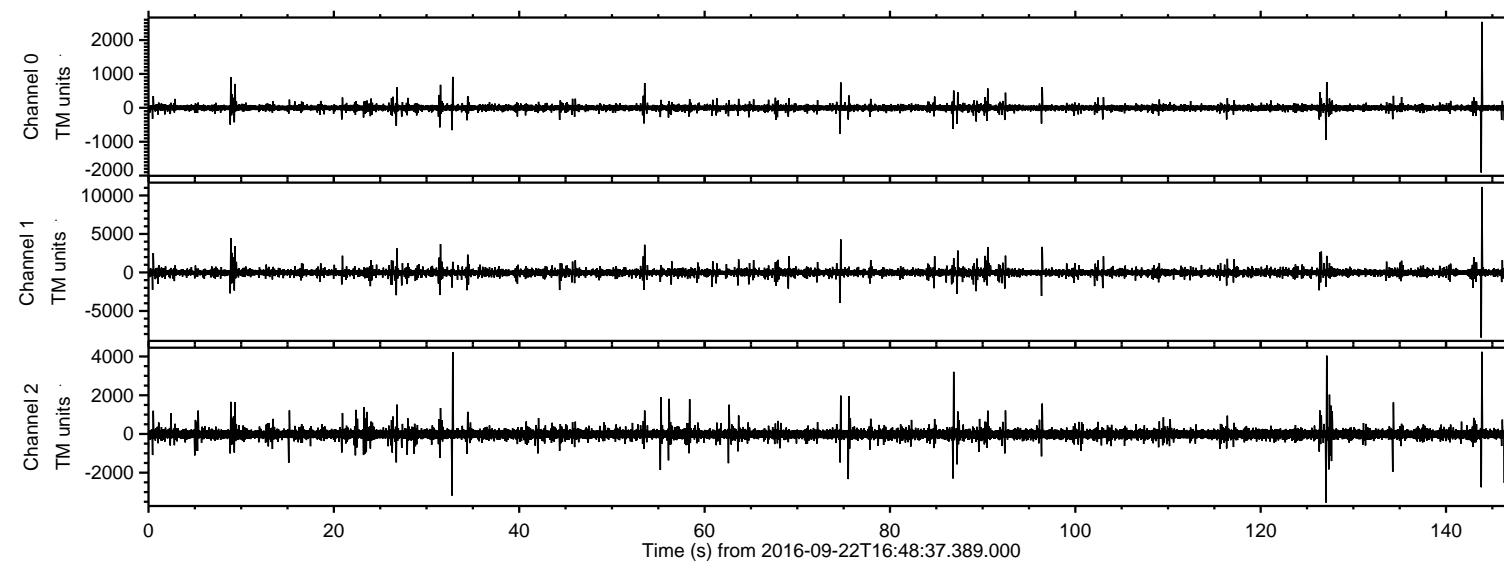


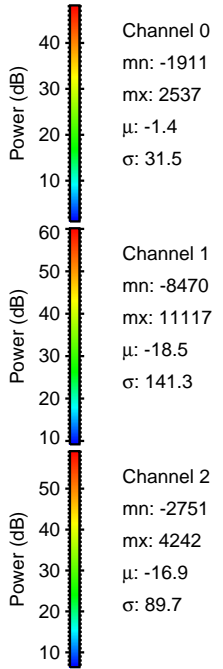
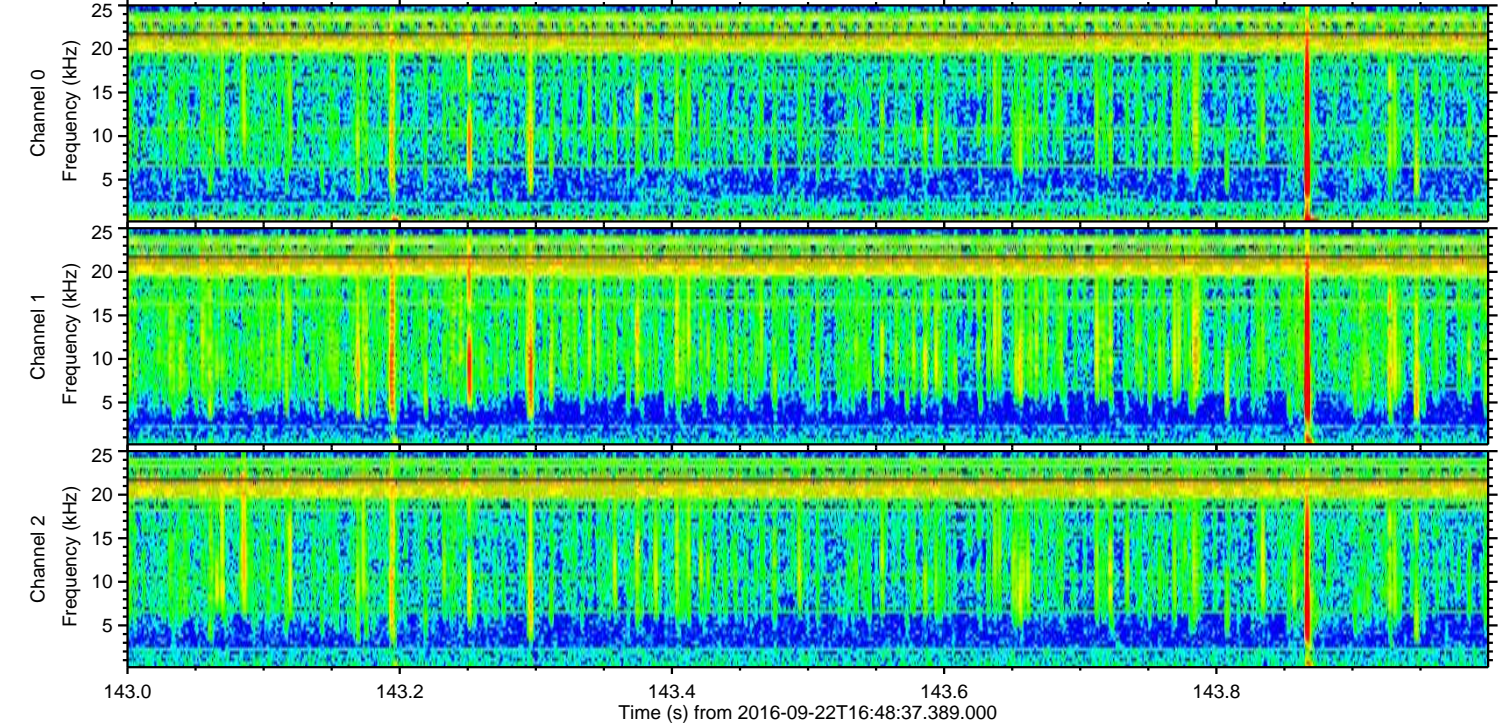
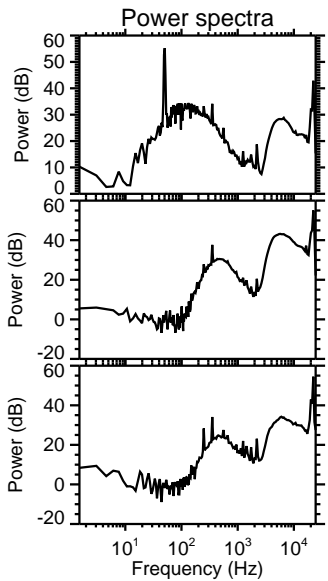
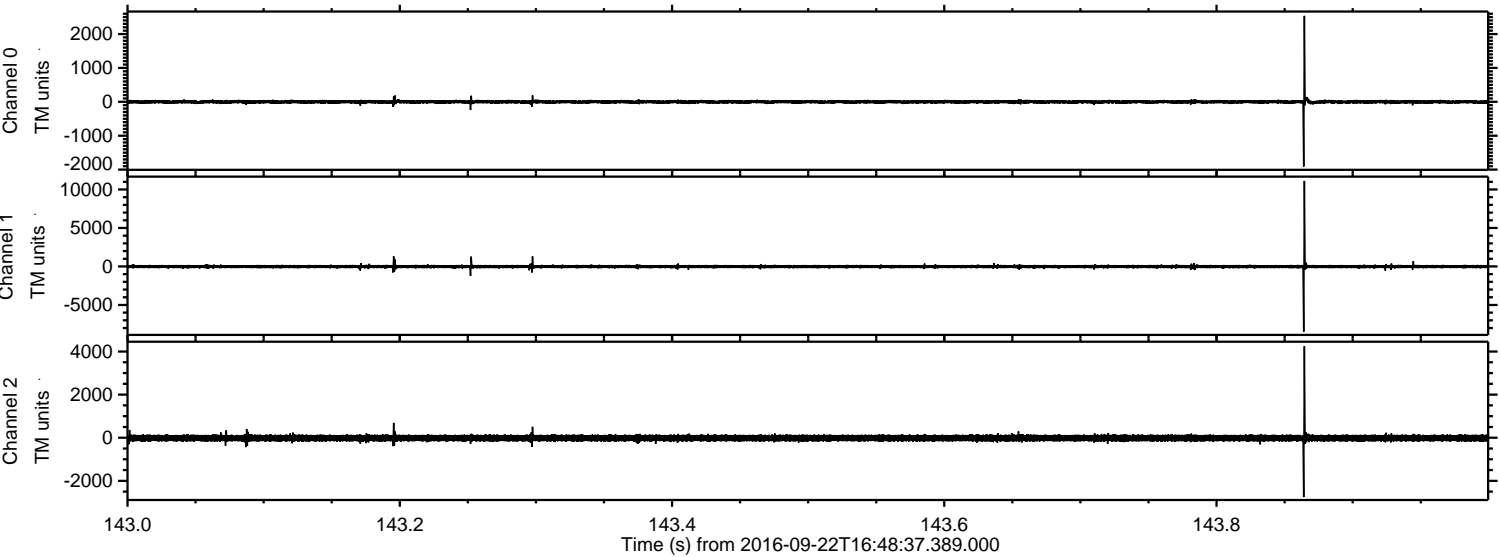
ELMAVAN 3D WAVEFORMS (Measured data sampled at 50 kHz) 51000 packets of 144 samples from 2016-09-22T16:48:37.389.000.

Processed Thu Sep 22 18:56:33 2016 by ELM ver.2012-10-06 from 001__elm20160922_164836__dat00.bin

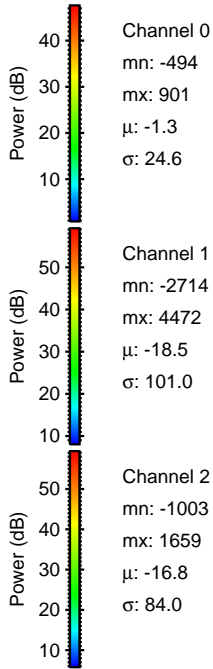
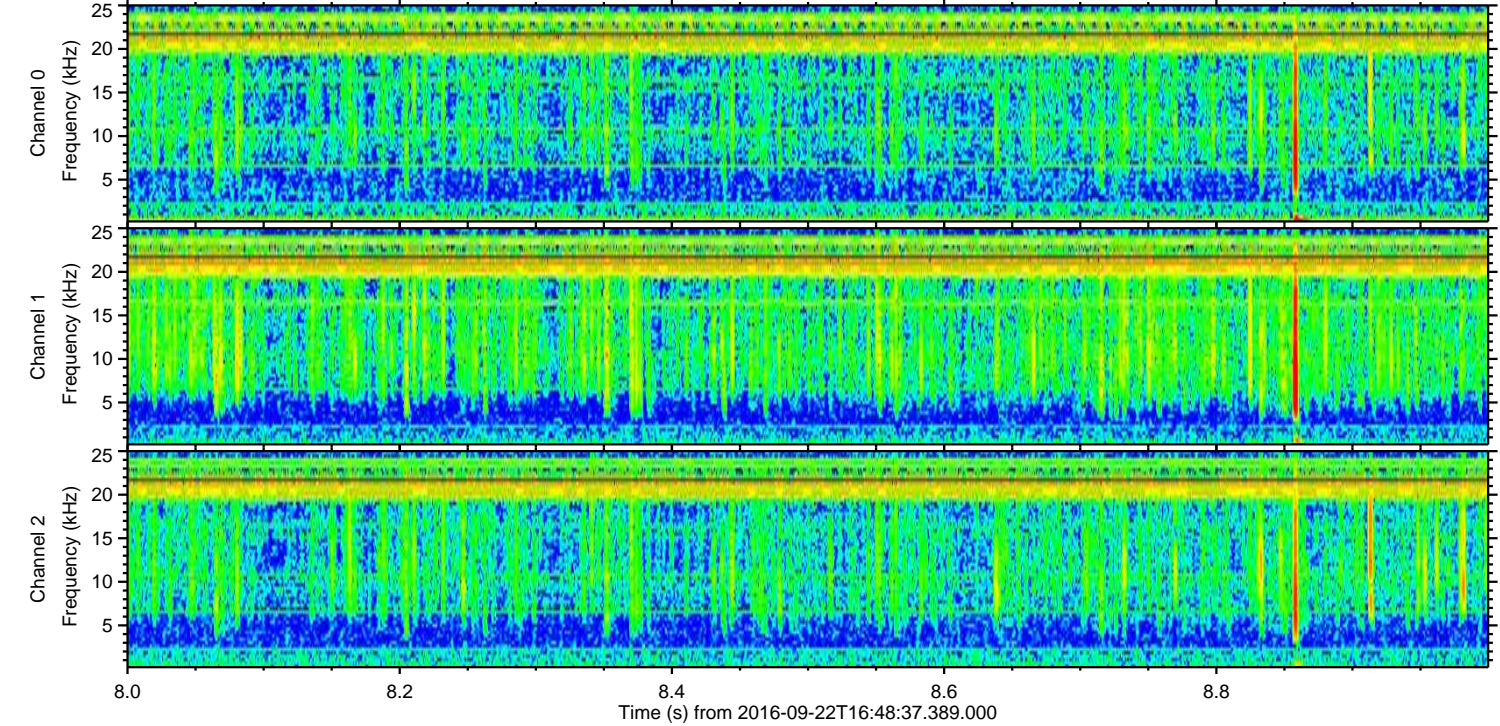
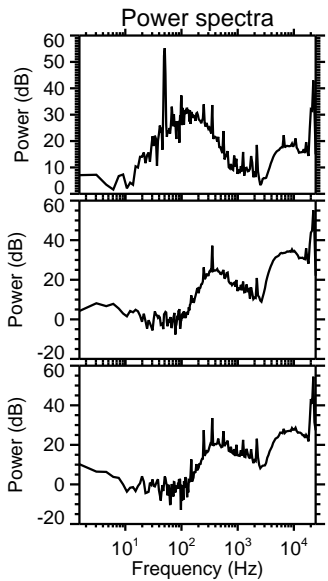
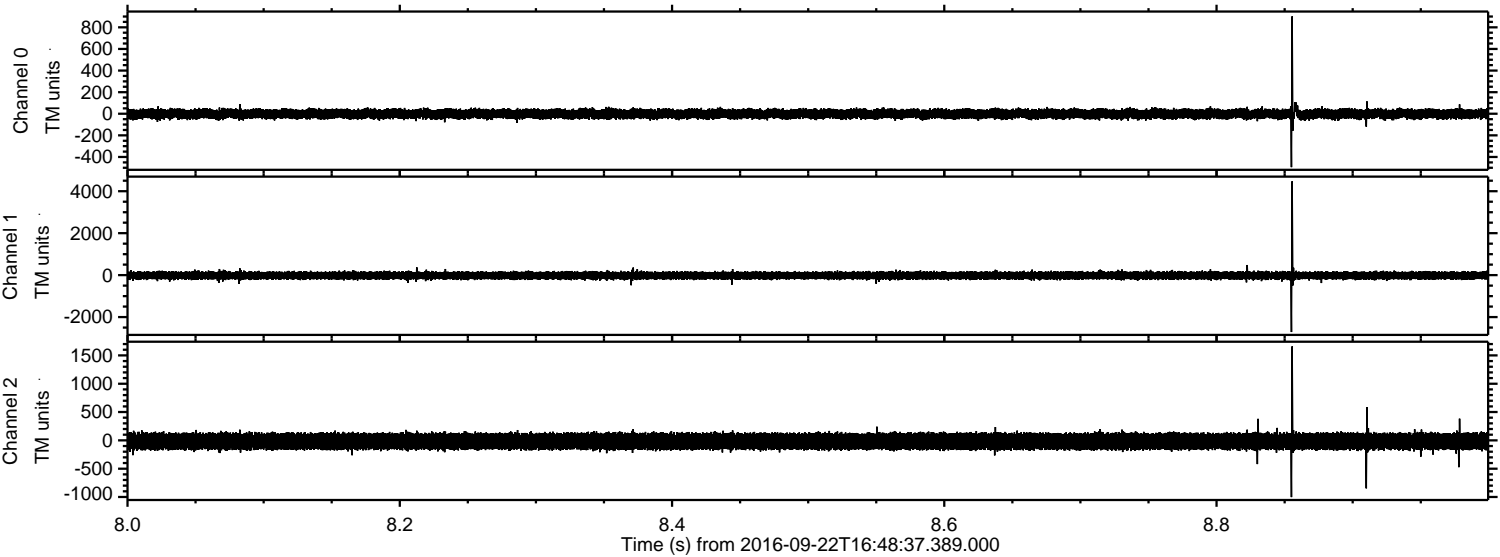


ELMAVAN 3D WAVEFORMS (Measured data sampled at 50 kHz) 51000 packets of 144 samples from 2016-09-22T16:48:37.389.000. Part 144/147

Processed Thu Sep 22 18:56:45 2016 by ELM ver.2012-10-06 from 001__elm20160922_164836__dat00.bin



Processed Thu Sep 22 18:56:46 2016 by ELM ver.2012-10-06 from 001__elm20160922_164836__dat00.bin

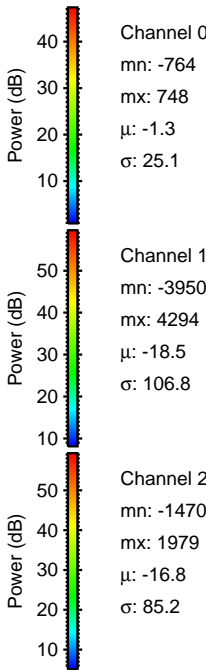
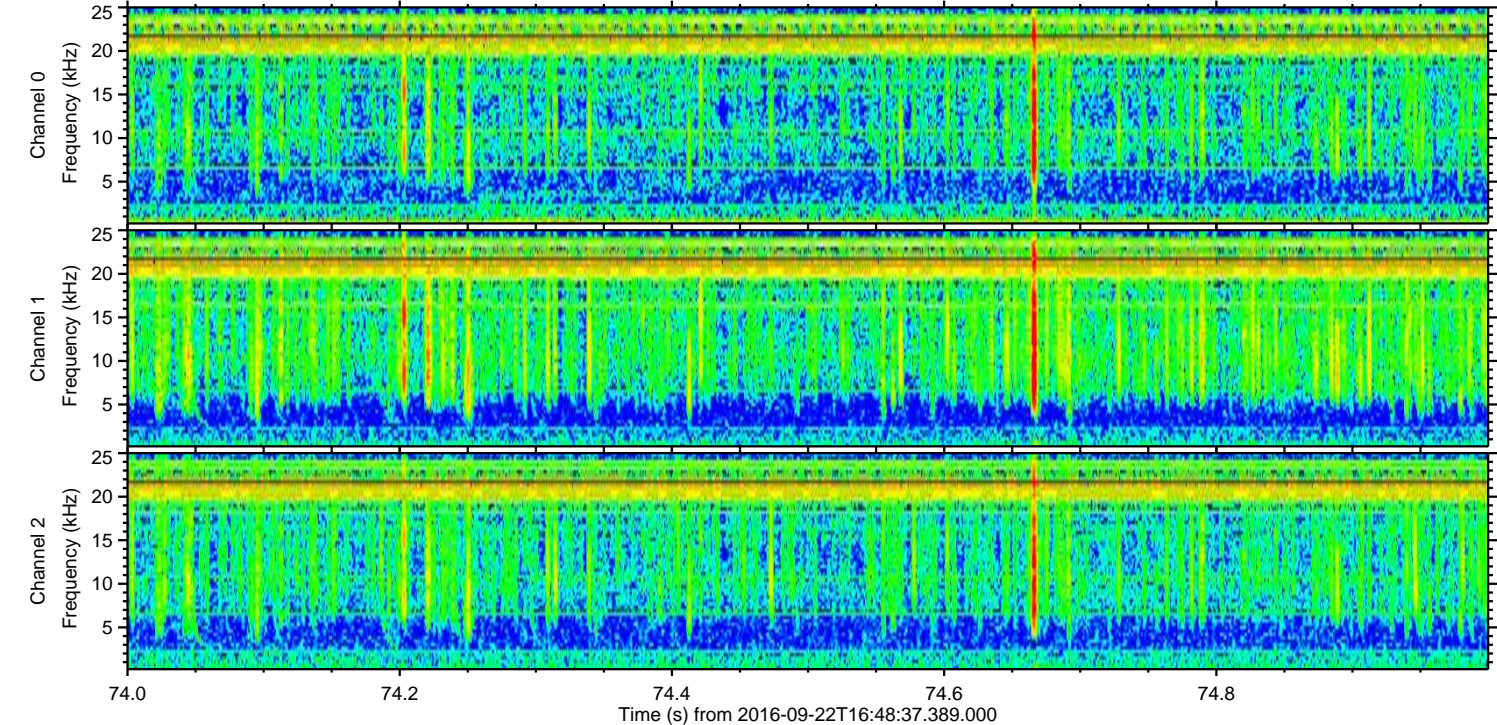
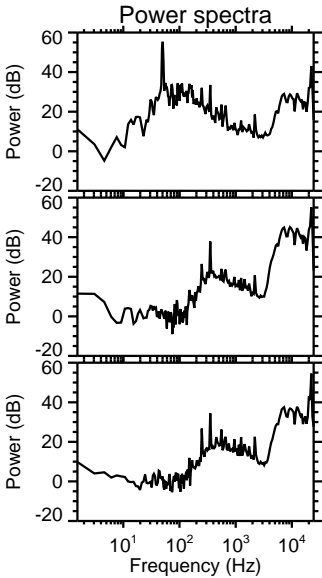
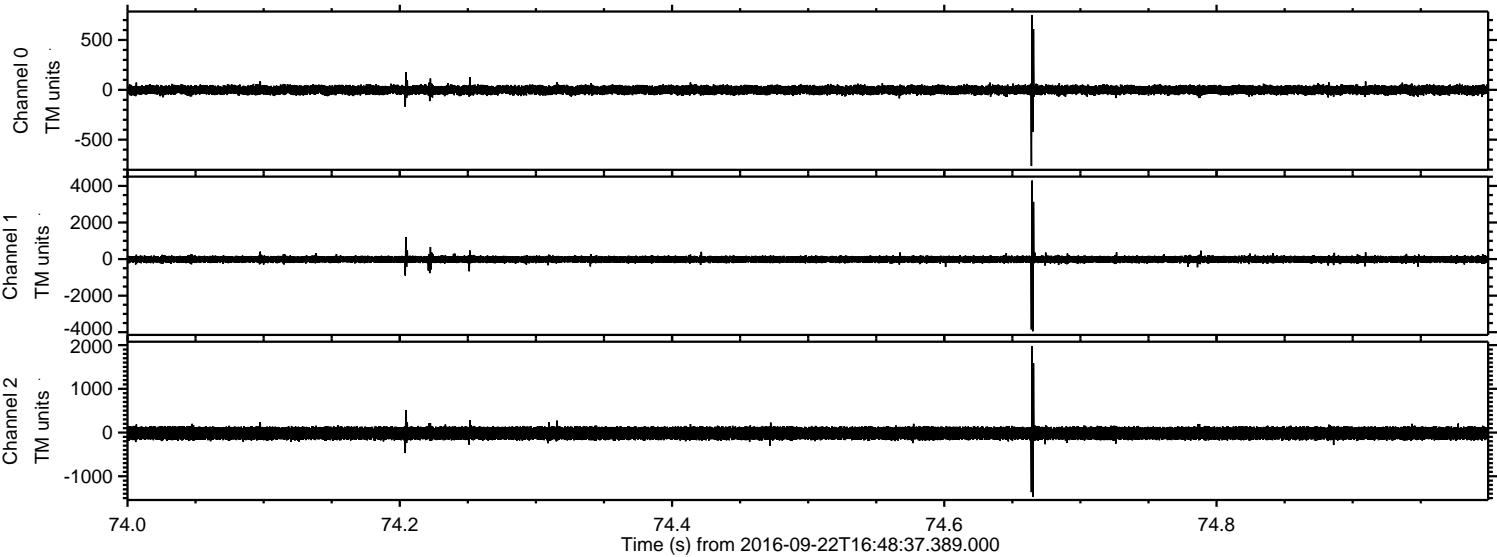


Channel 0
mn: -494
mx: 901
 μ : -1.3
 σ : 24.6

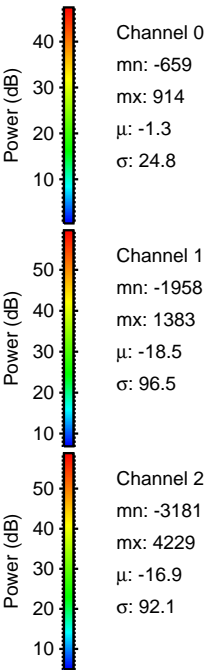
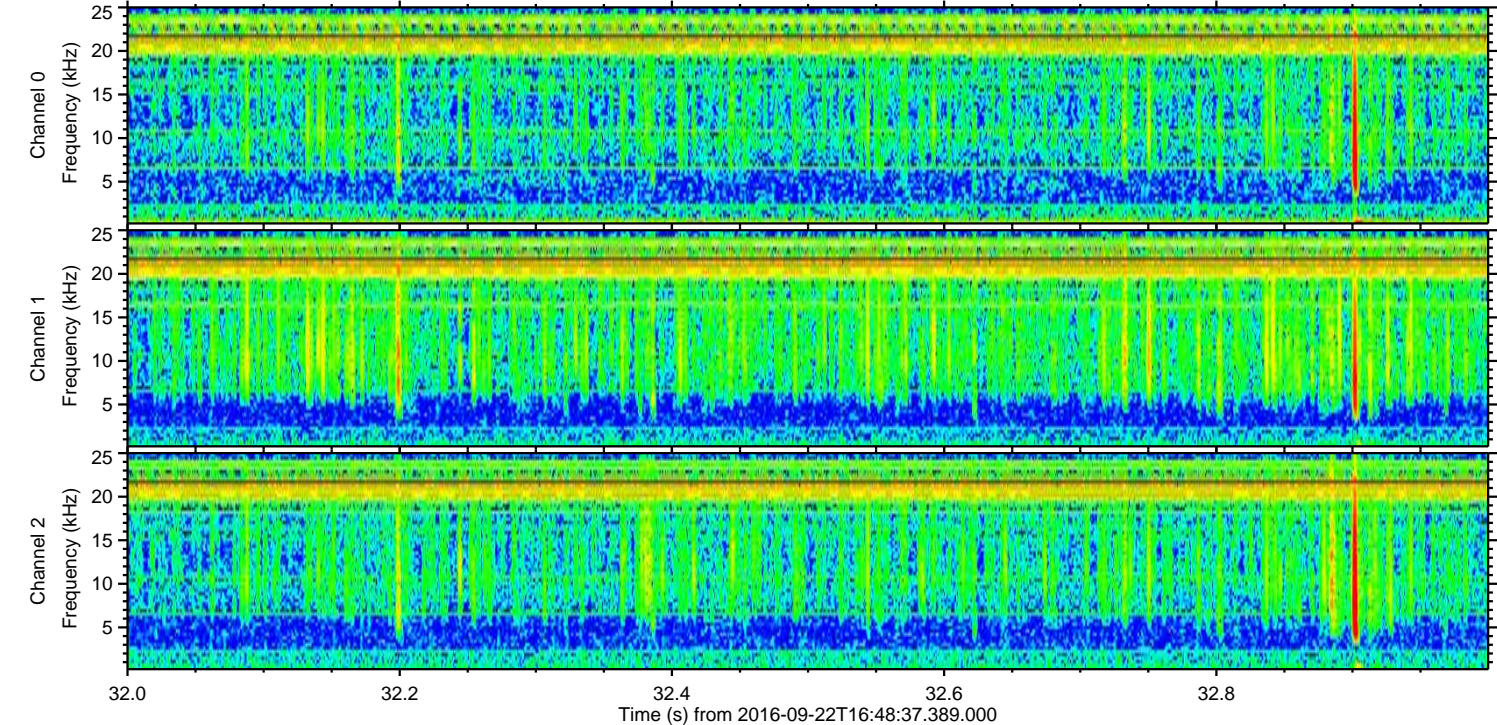
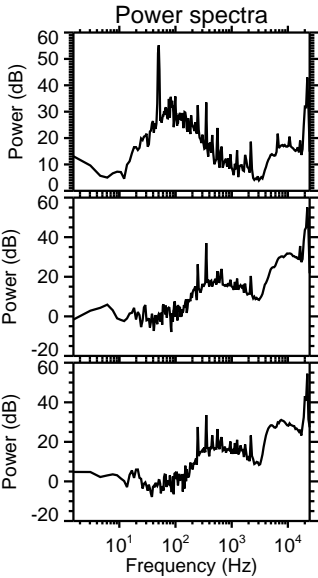
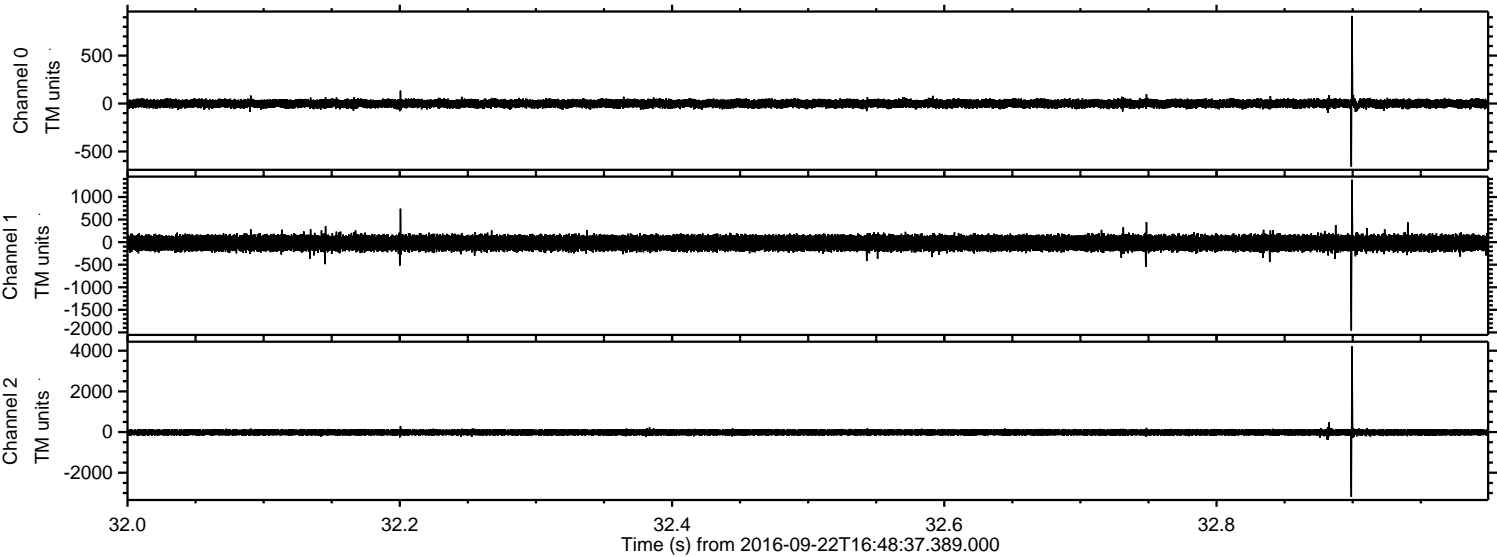
Channel 1
mn: -2714
mx: 4472
 μ : -18.5
 σ : 101.0

Channel 2
mn: -1003
mx: 1659
 μ : -16.8
 σ : 84.0

Processed Thu Sep 22 18:56:47 2016 by ELM ver.2012-10-06 from 001__elm20160922_164836__dat00.bin

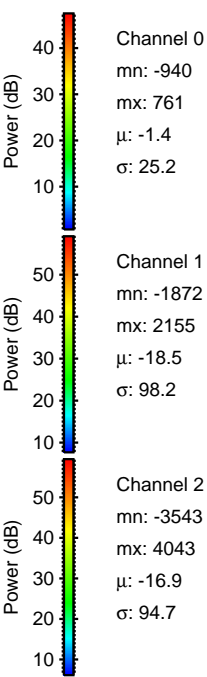
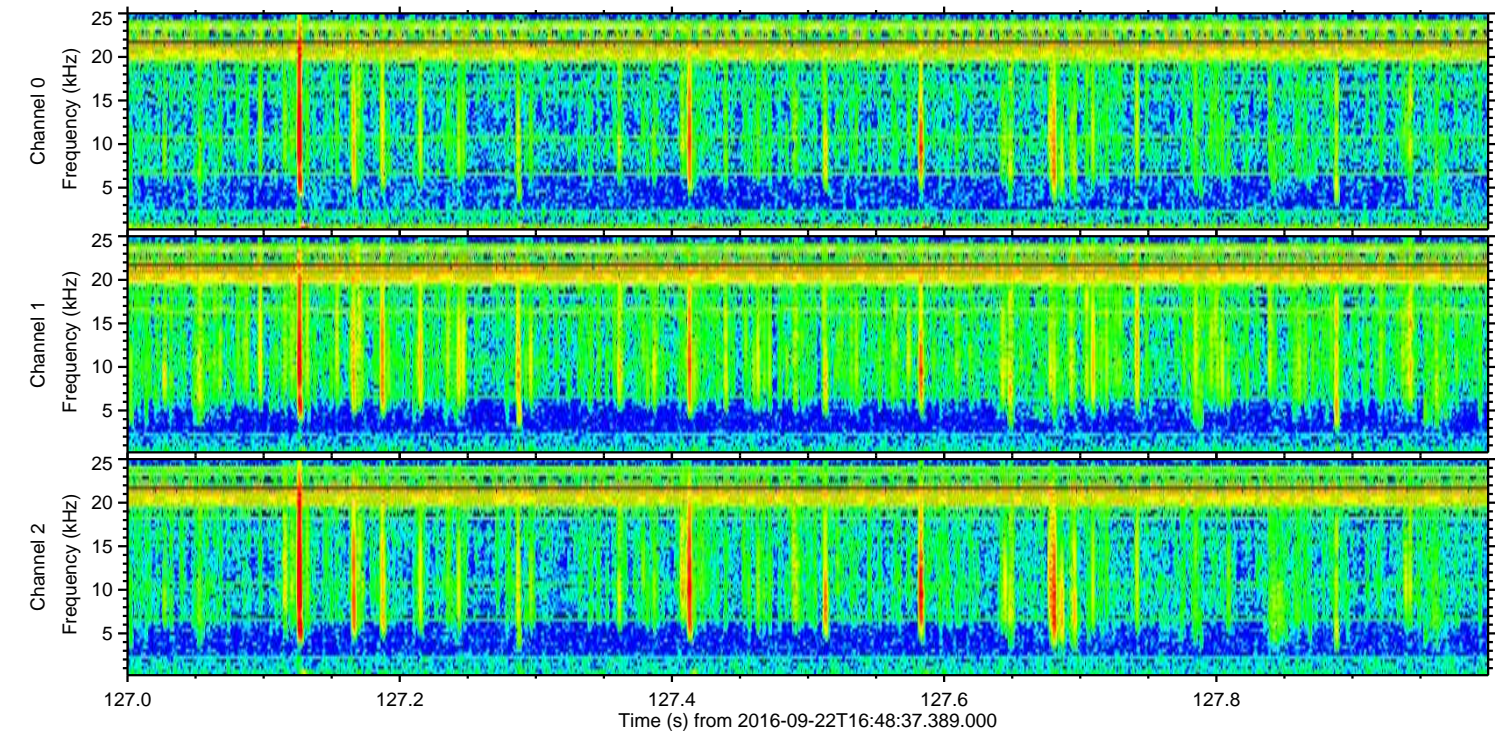
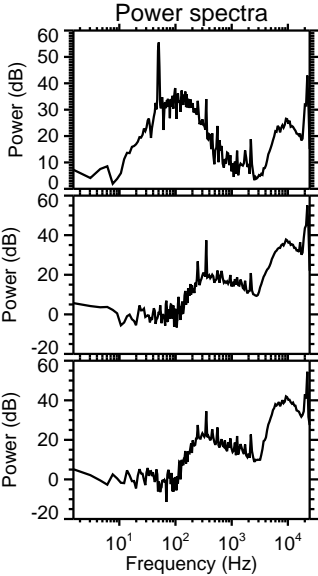
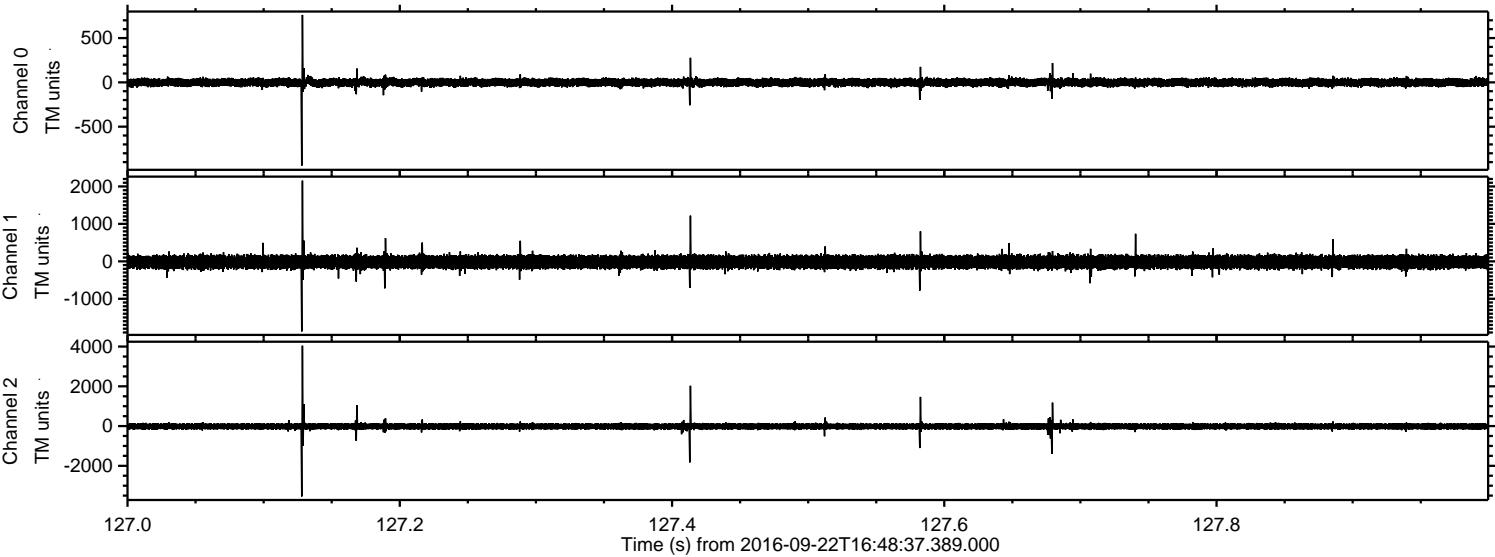


Processed Thu Sep 22 18:56:48 2016 by ELM ver.2012-10-06 from 001__elm20160922_164836__dat00.bin

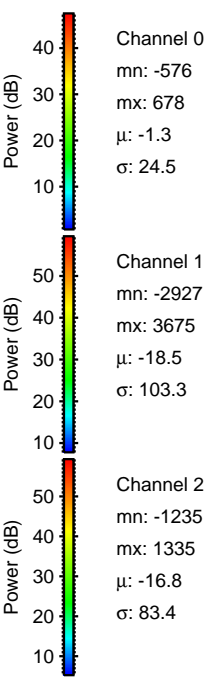
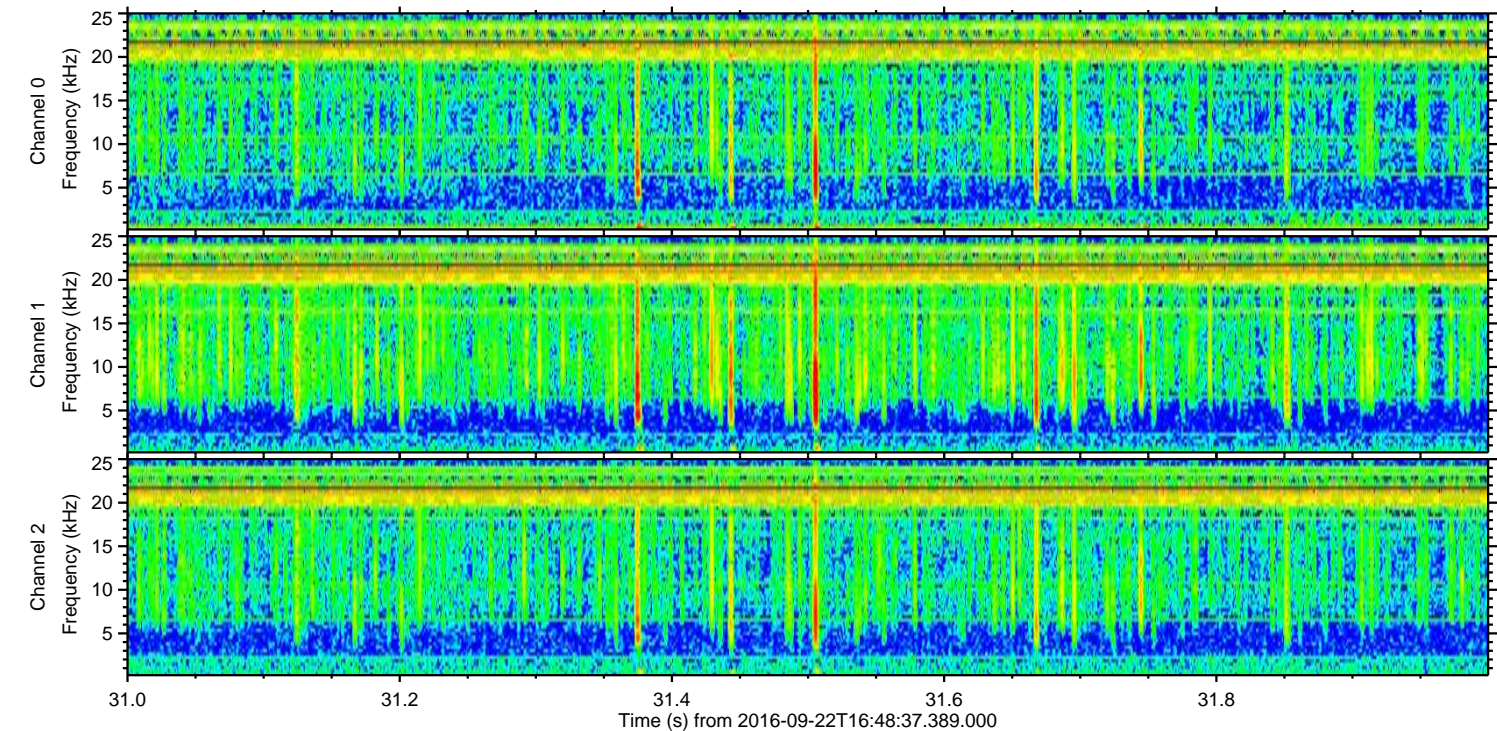
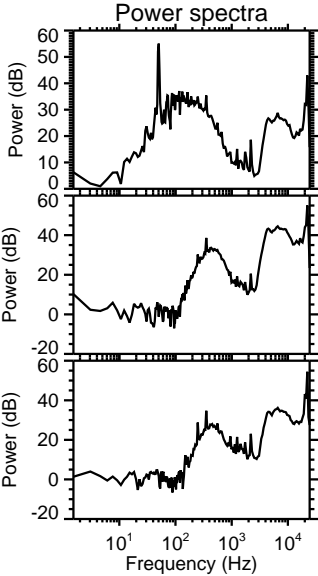
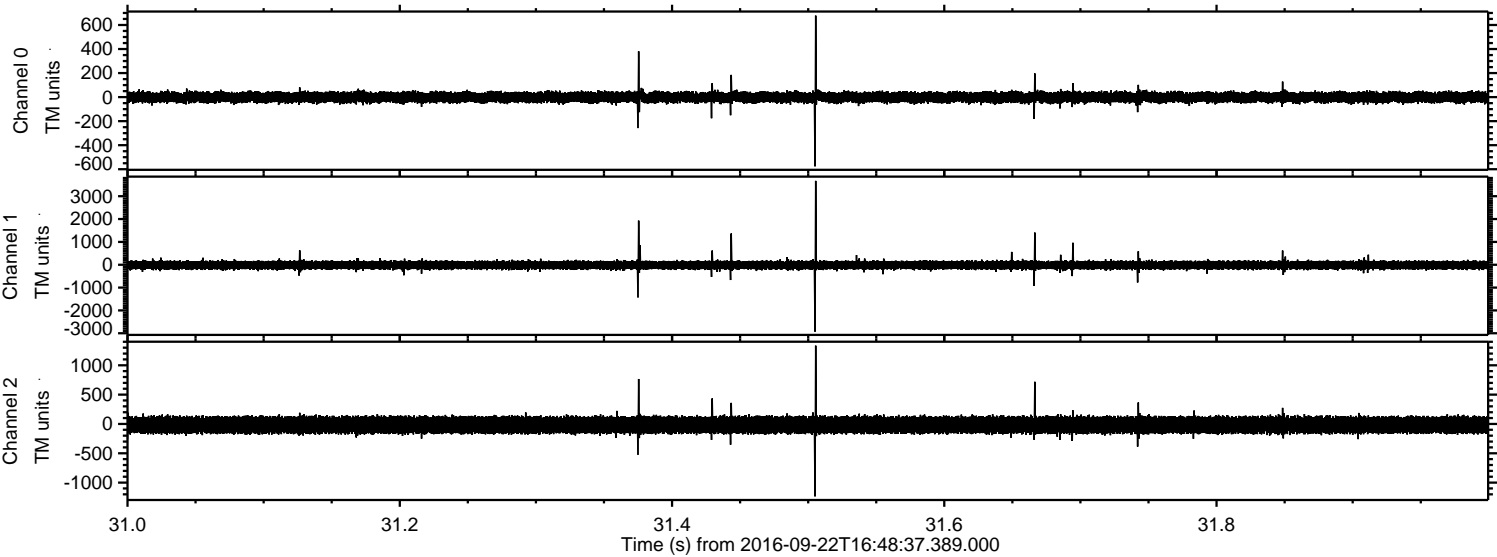


ELMAVAN 3D WAVEFORMS (Measured data sampled at 50 kHz) 51000 packets of 144 samples from 2016-09-22T16:48:37.389.000. Part 128/147

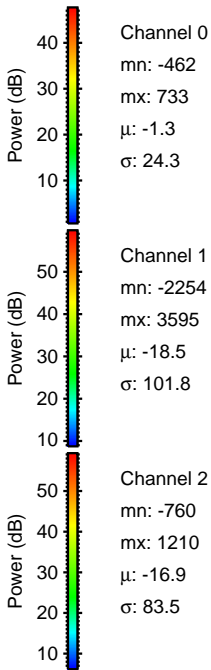
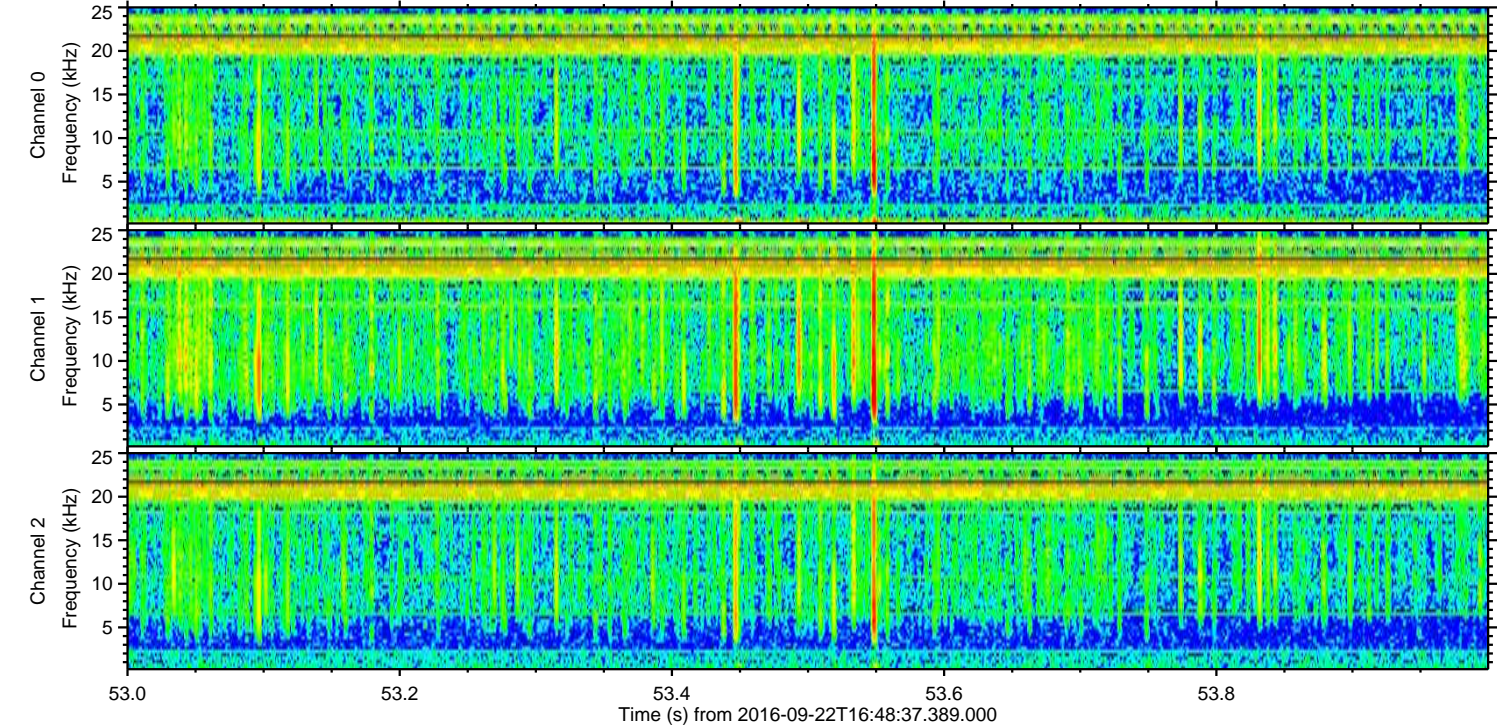
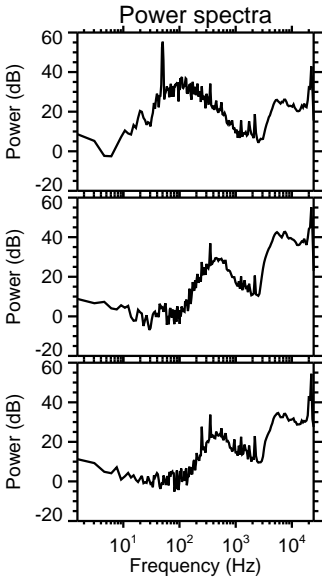
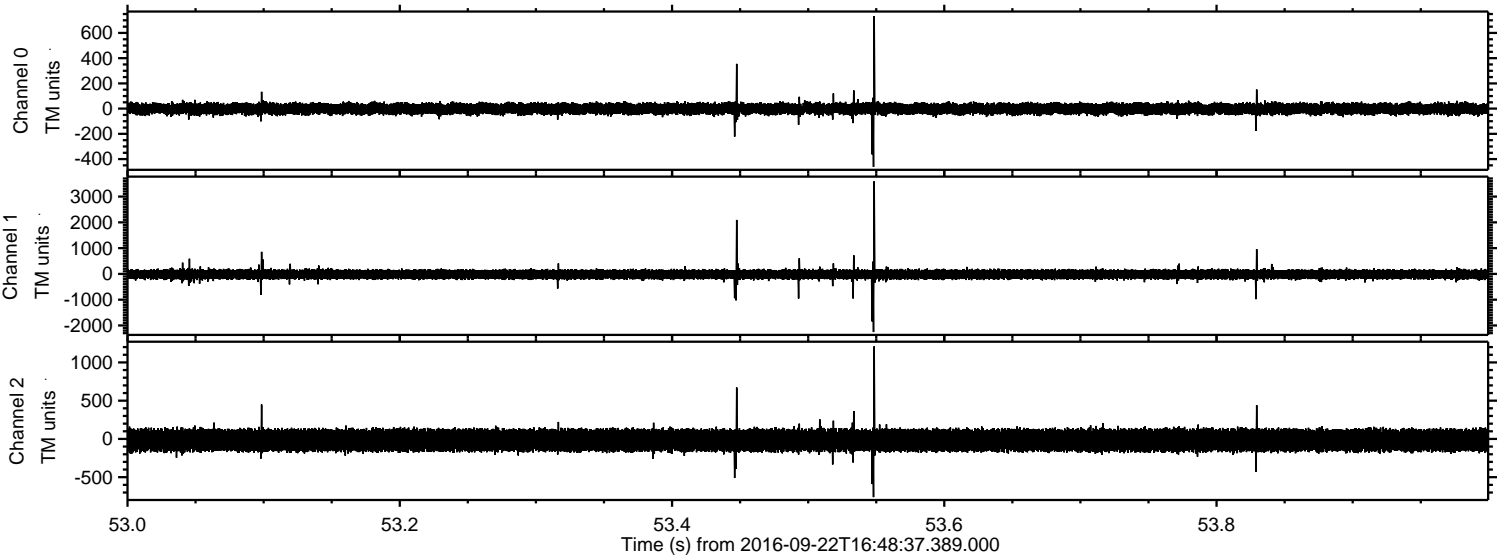
Processed Thu Sep 22 18:56:49 2016 by ELM ver.2012-10-06 from 001__elm20160922_164836__dat00.bin



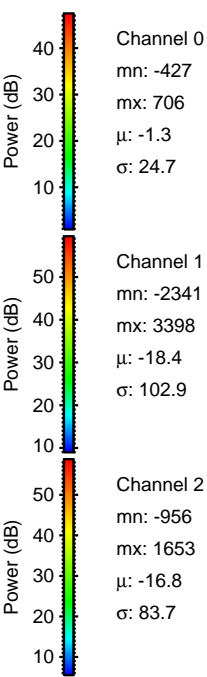
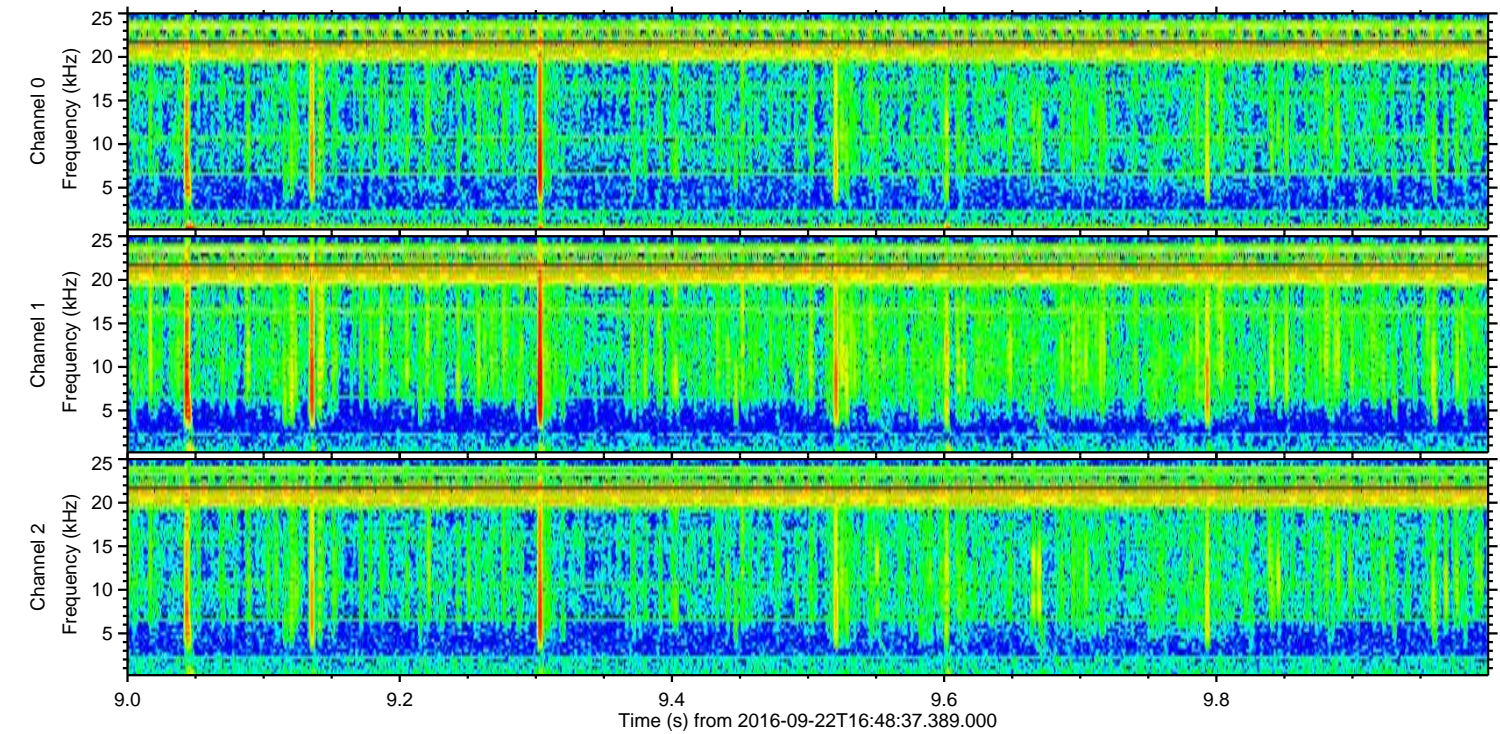
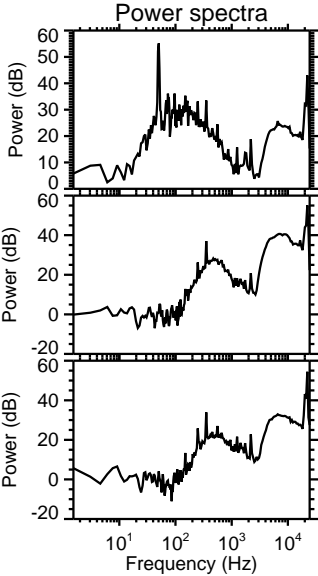
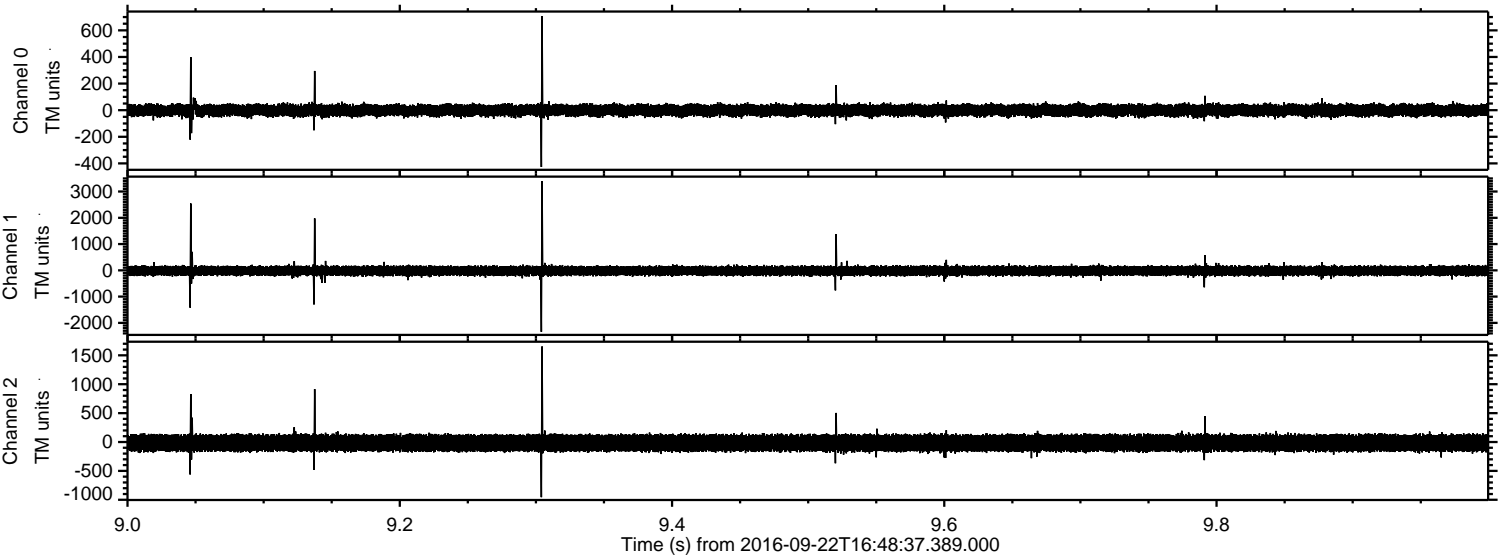
Processed Thu Sep 22 18:56:49 2016 by ELM ver.2012-10-06 from 001__elm20160922_164836__dat00.bin



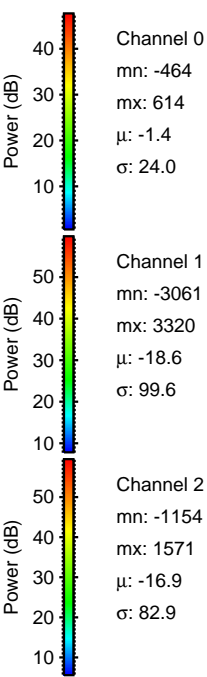
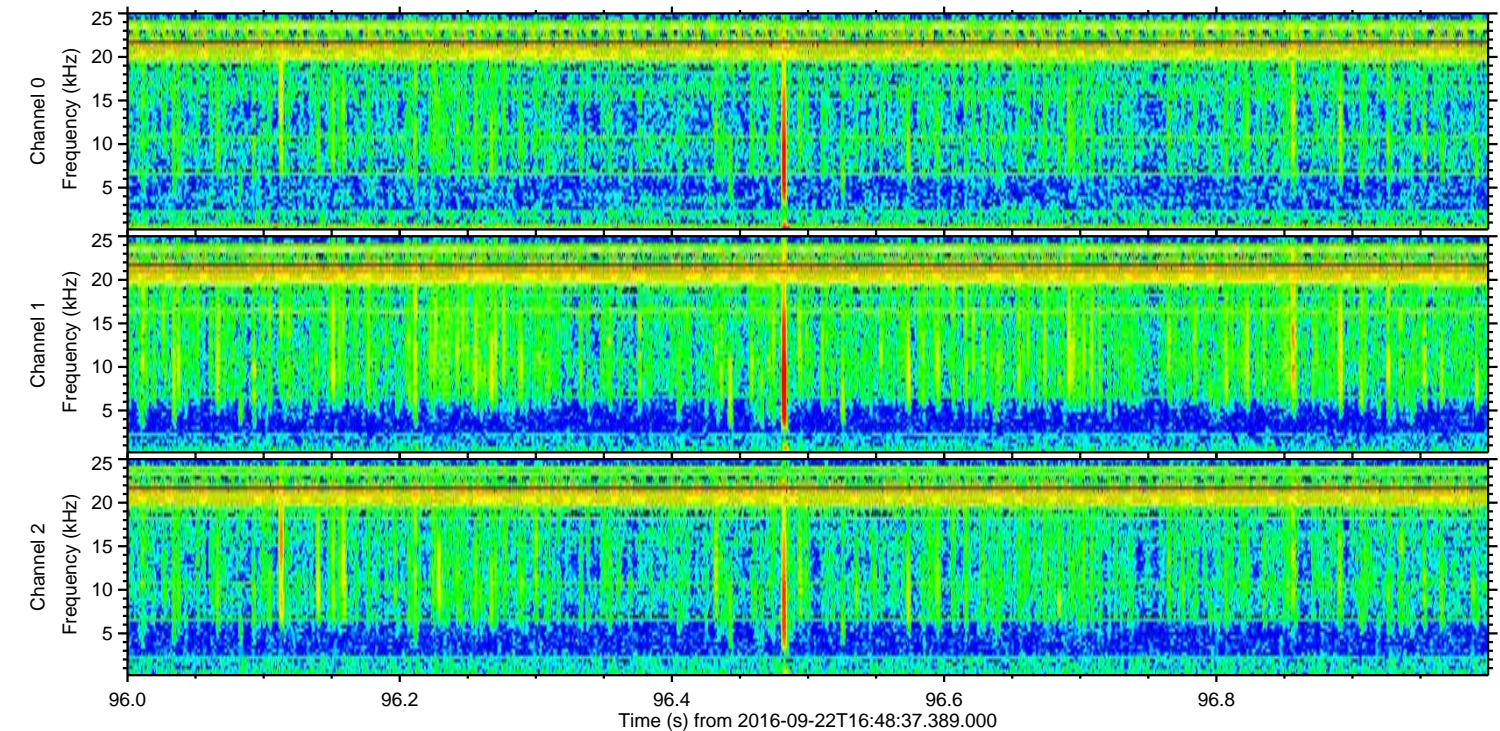
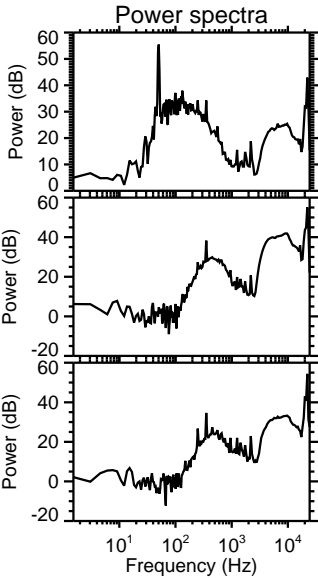
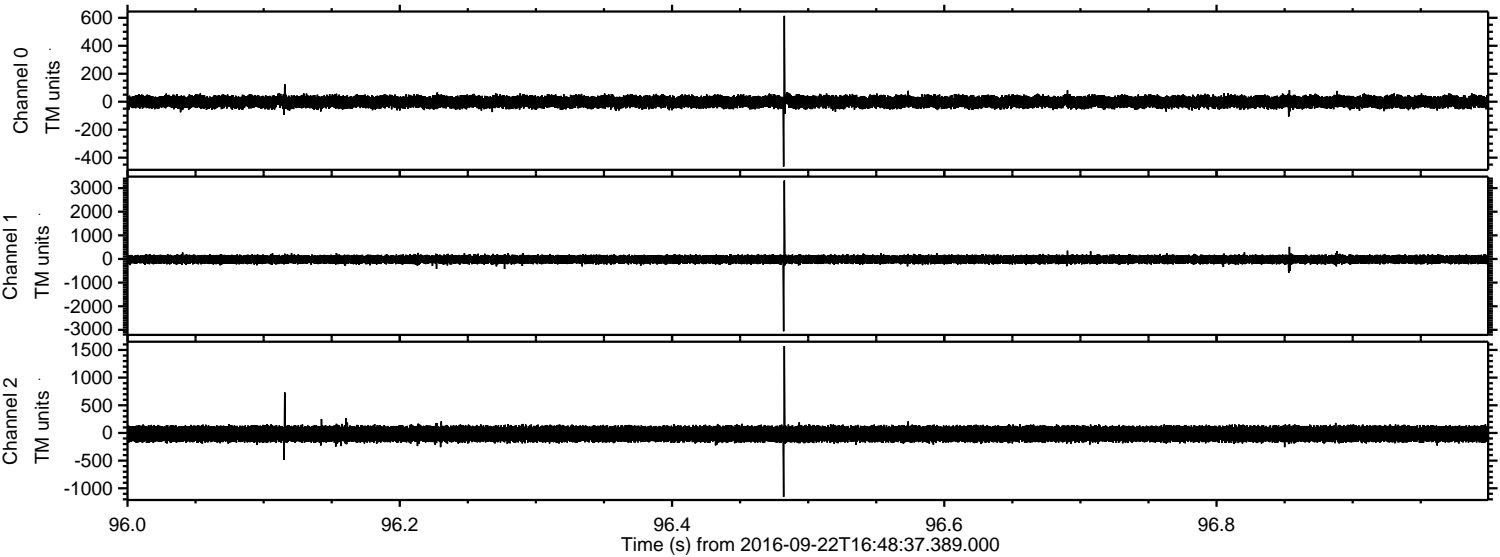
Processed Thu Sep 22 18:56:50 2016 by ELM ver.2012-10-06 from 001__elm20160922_164836__dat00.bin



Processed Thu Sep 22 18:56:51 2016 by ELM ver.2012-10-06 from 001__elm20160922_164836__dat00.bin



Processed Thu Sep 22 18:56:52 2016 by ELM ver.2012-10-06 from 001__elm20160922_164836__dat00.bin



Channel 0
mn: -464
mx: 614
 μ : -1.4
 σ : 24.0

Channel 1
mn: -3061
mx: 3320
 μ : -18.6
 σ : 99.6

Channel 2
mn: -1154
mx: 1571
 μ : -16.9
 σ : 82.9

Processed Thu Sep 22 18:56:53 2016 by ELM ver.2012-10-06 from 001__elm20160922_164836__dat00.bin

