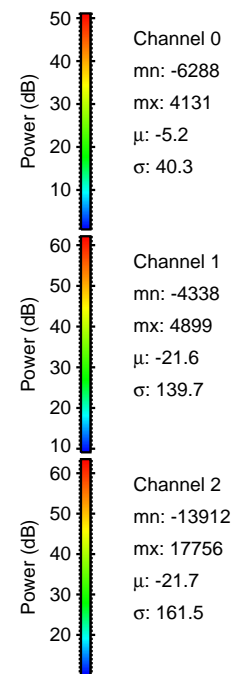
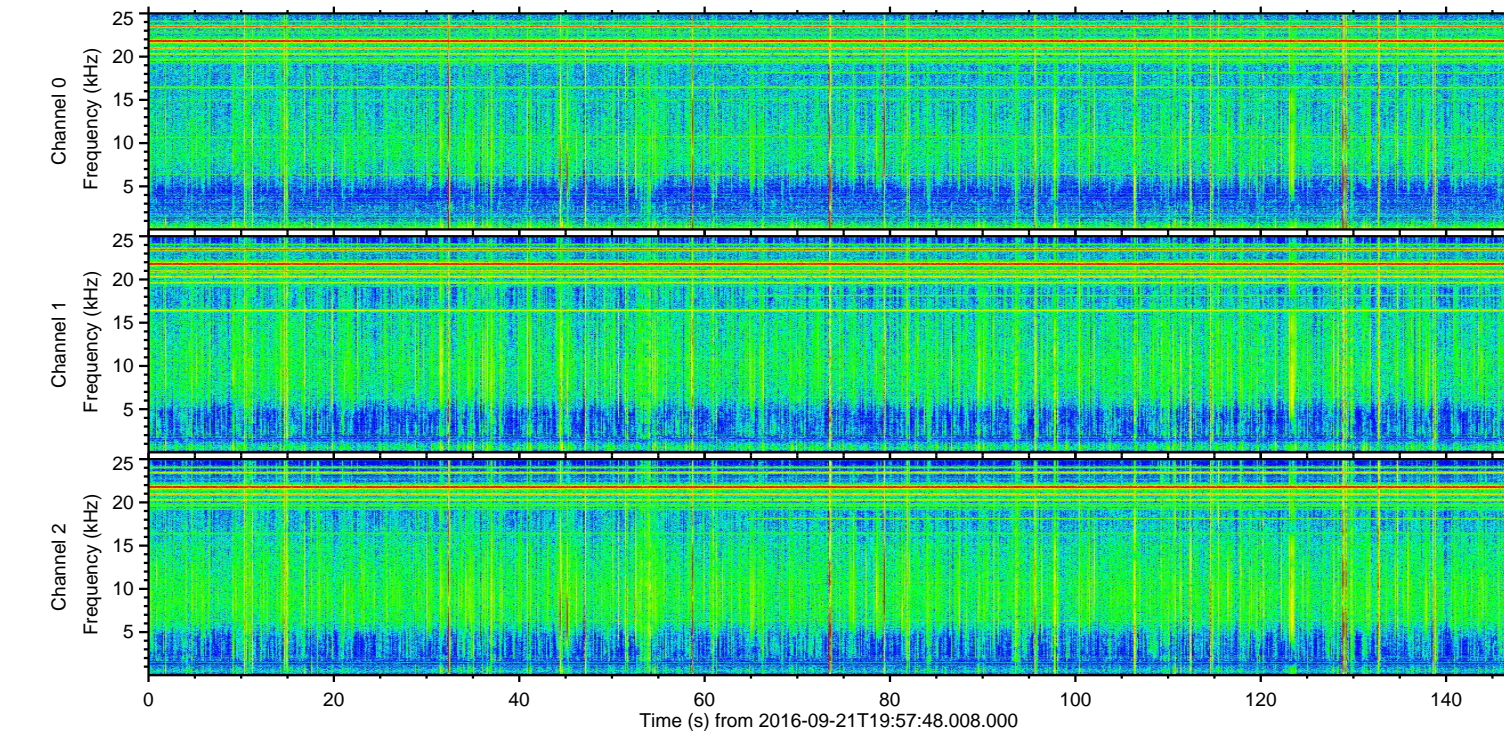
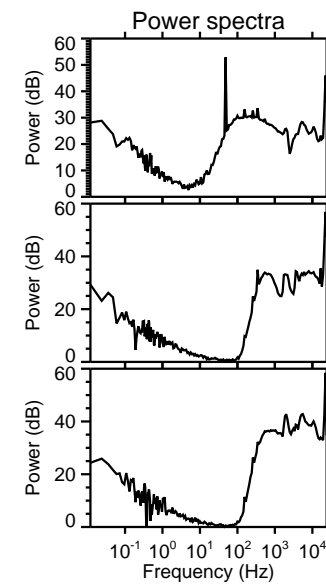
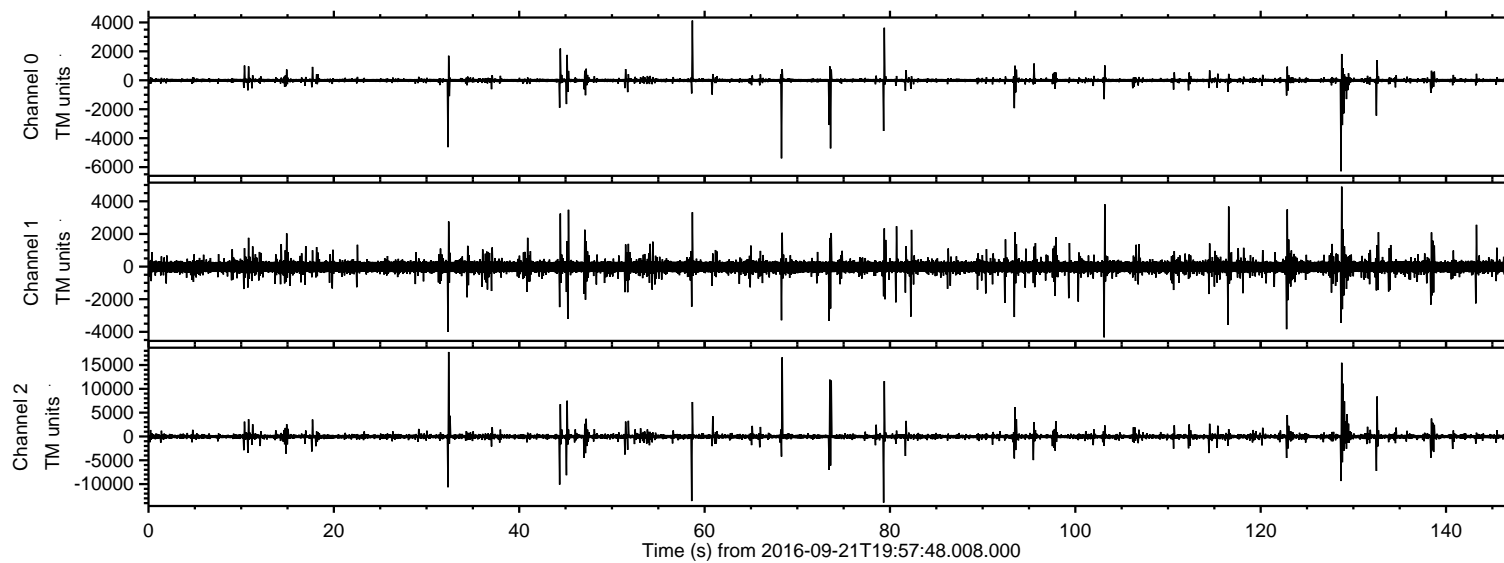


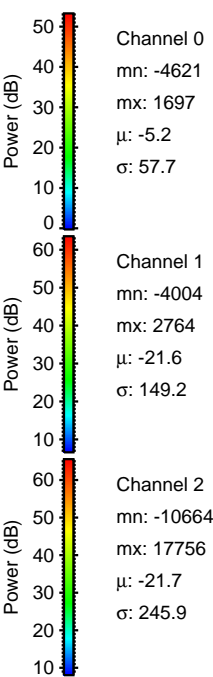
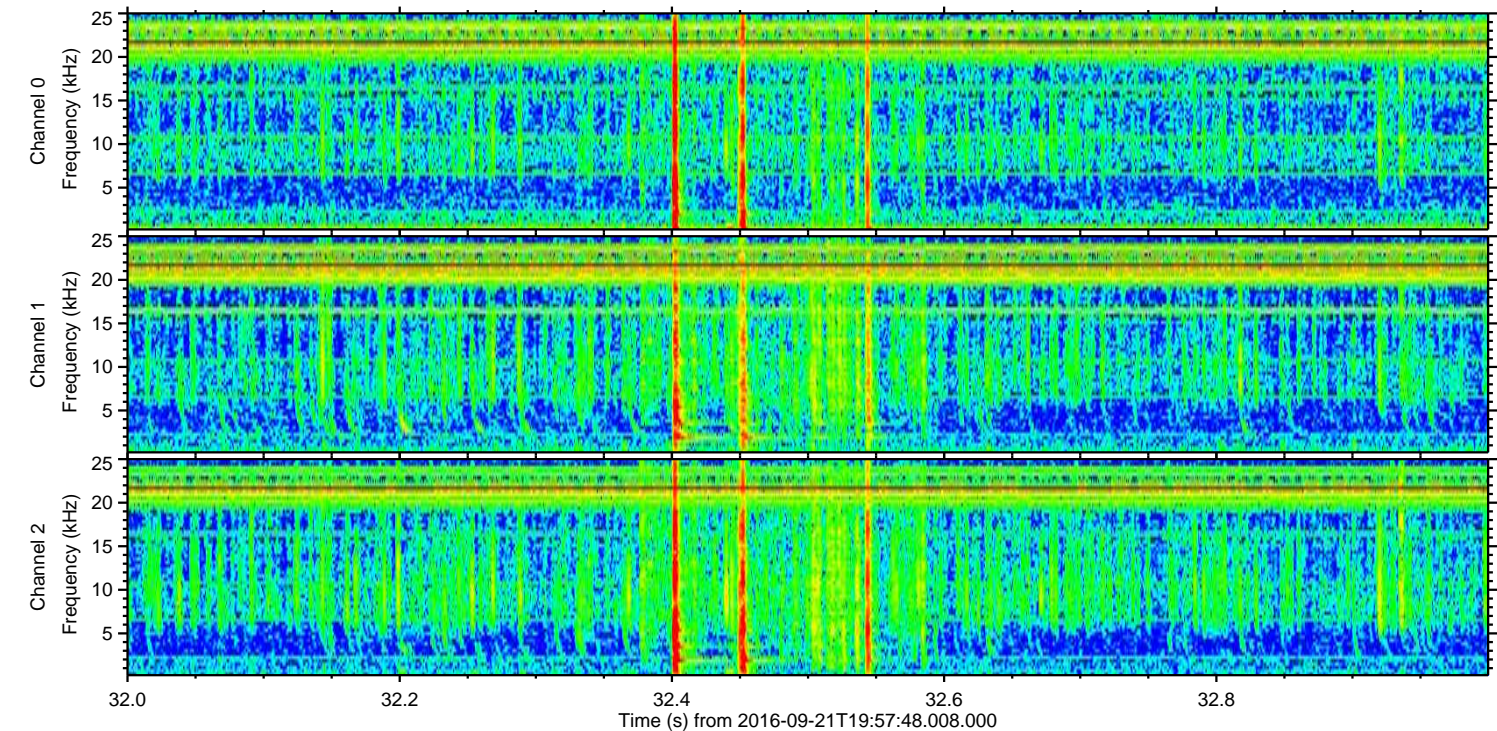
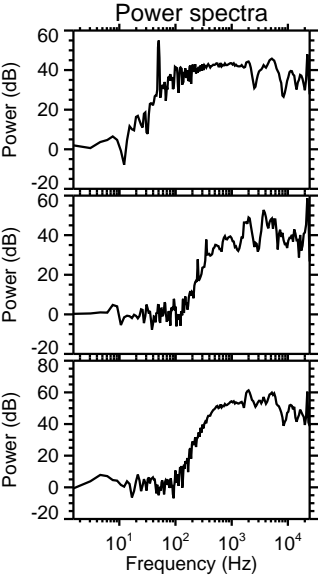
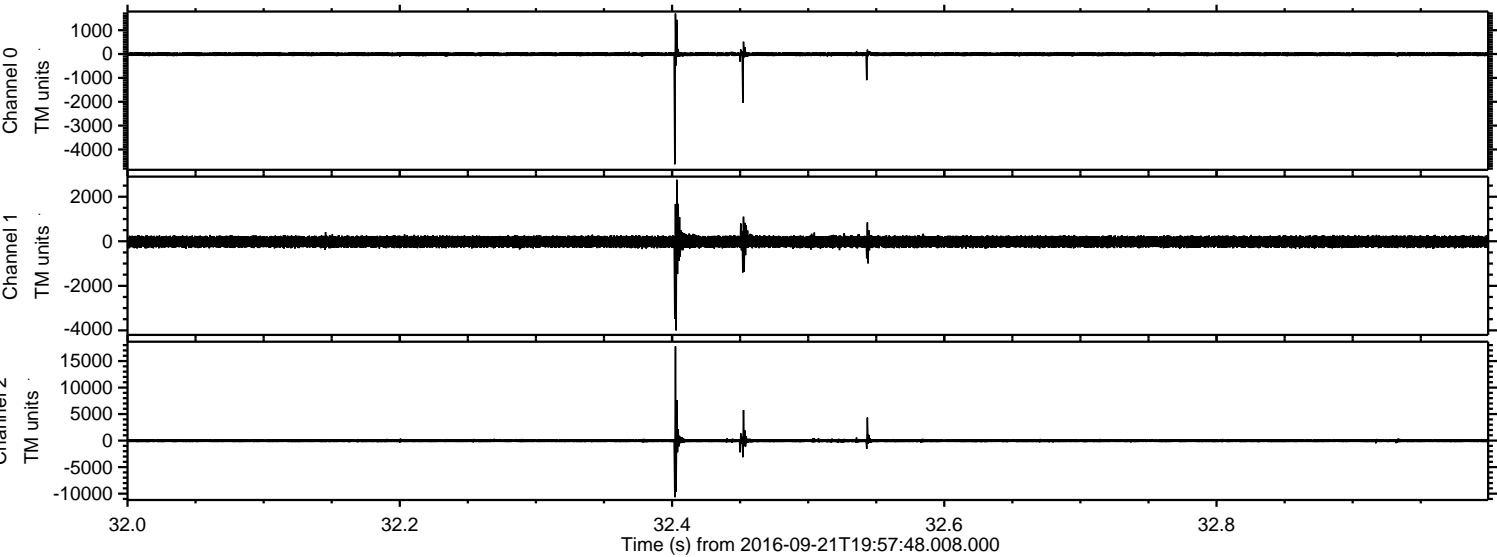
# ELMAVAN 3D WAVEFORMS (Measured data sampled at 50 kHz) 51000 packets of 144 samples from 2016-09-21T19:57:48.008.000.

Processed Wed Sep 21 22:05:20 2016 by ELM ver.2012-10-06 from 001\_\_elm20160921\_195747\_\_dat00.bin

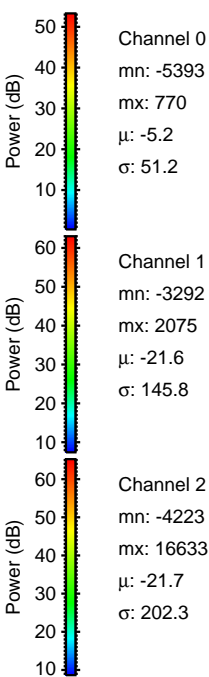
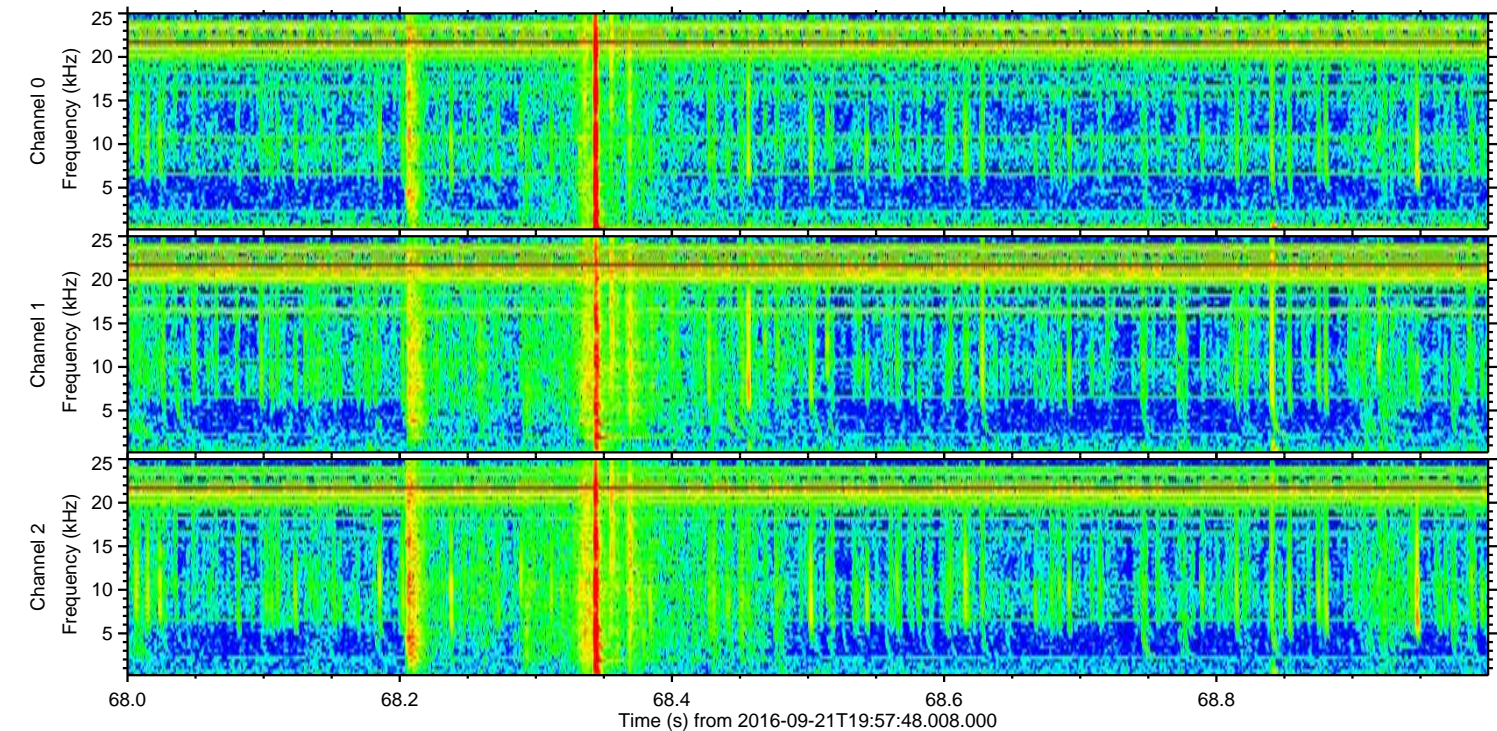
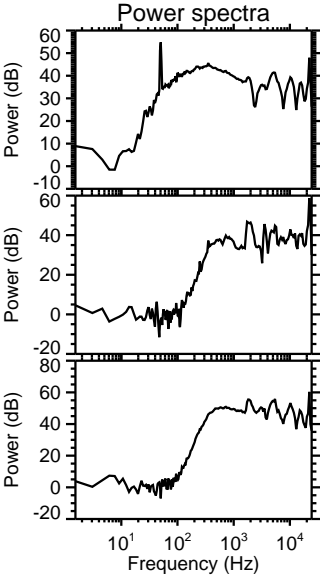
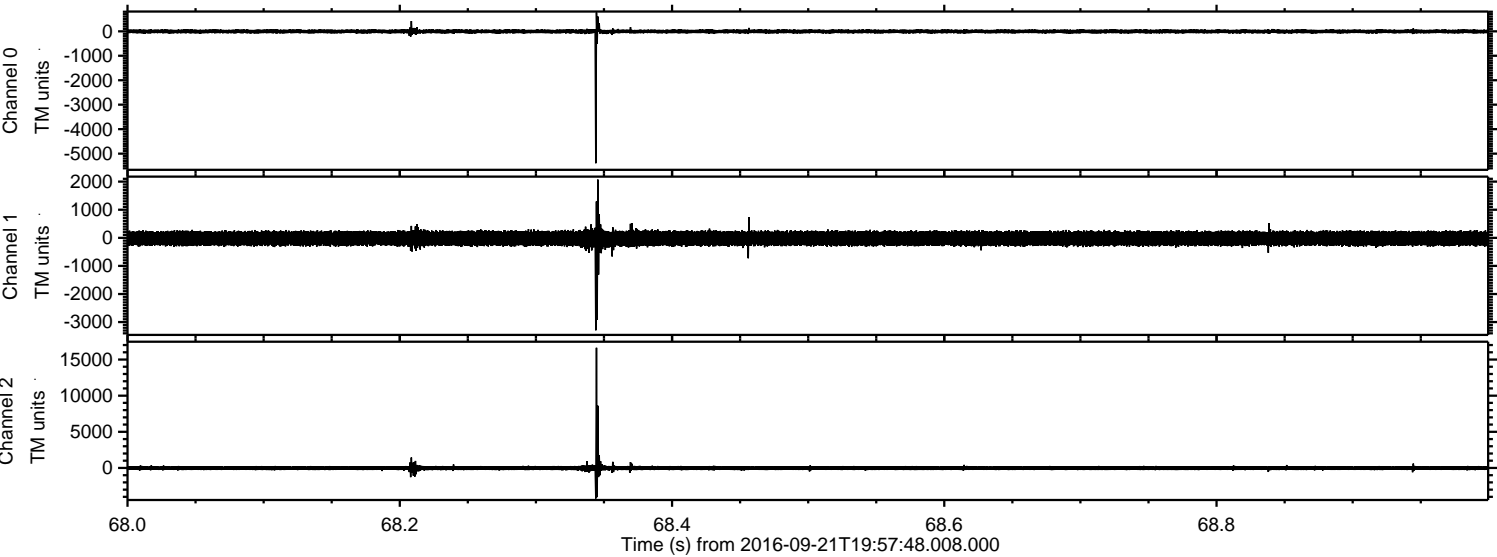




Processed Wed Sep 21 22:05:34 2016 by ELM ver.2012-10-06 from 001\_\_elm20160921\_195747\_\_dat00.bin



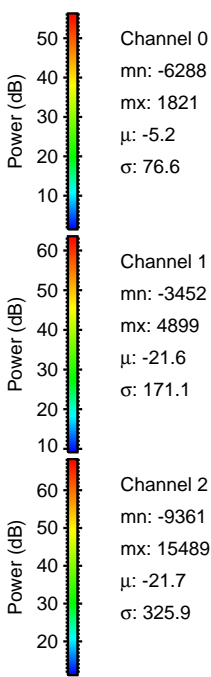
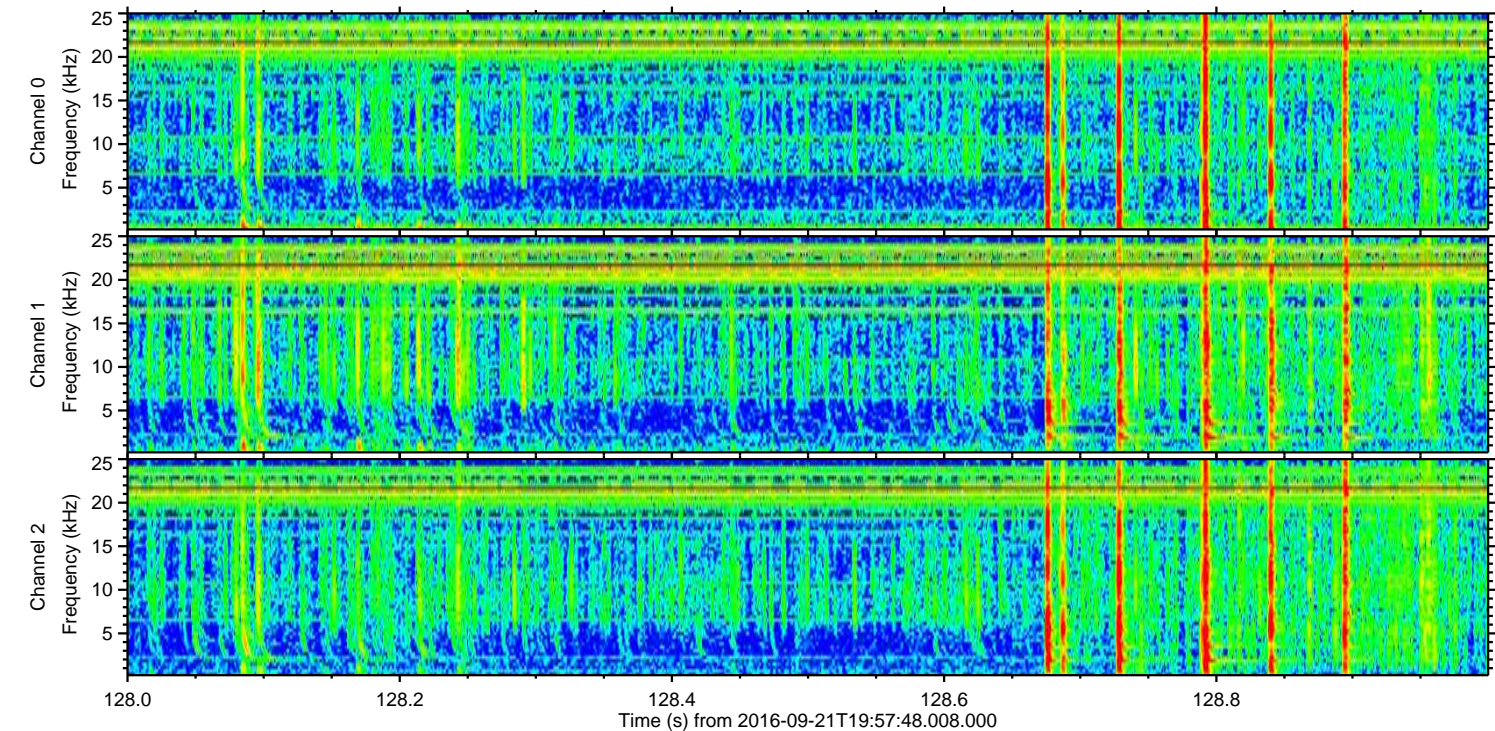
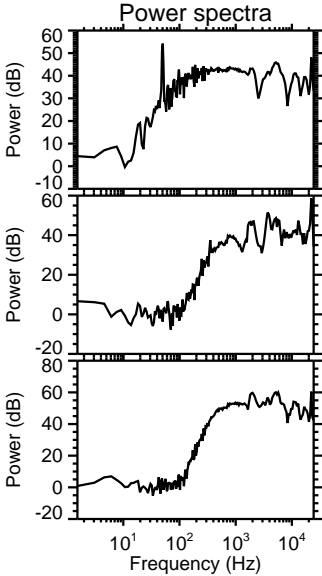
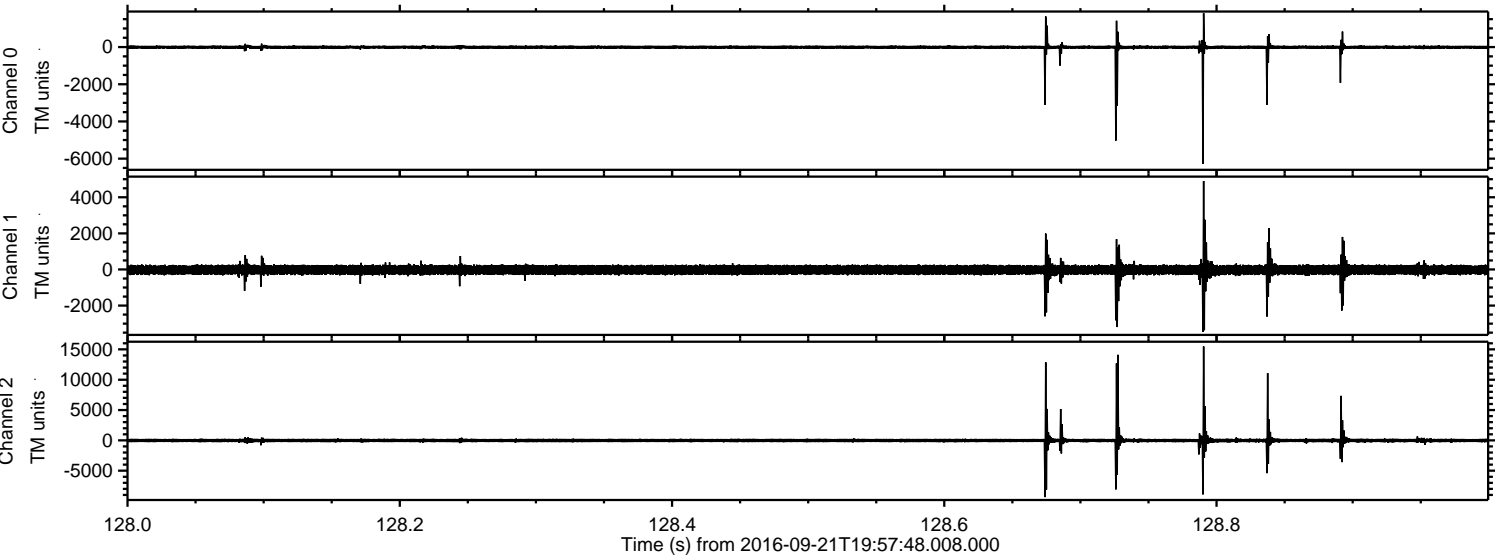
Processed Wed Sep 21 22:05:35 2016 by ELM ver.2012-10-06 from 001\_\_elm20160921\_195747\_\_dat00.bin





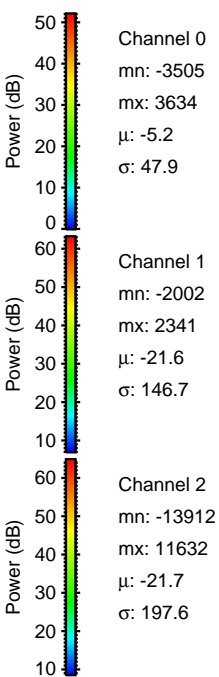
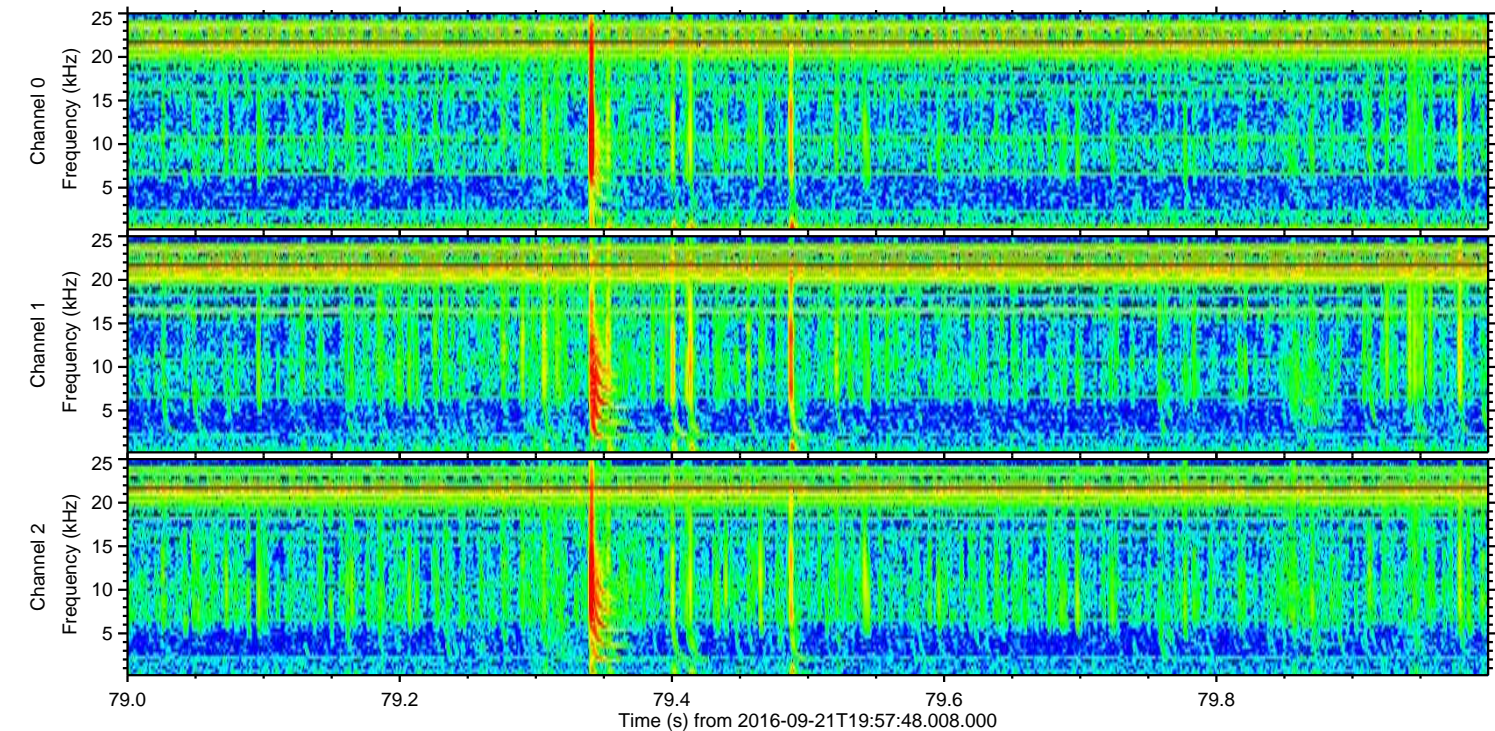
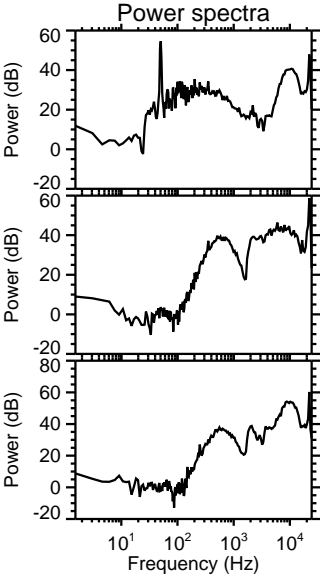
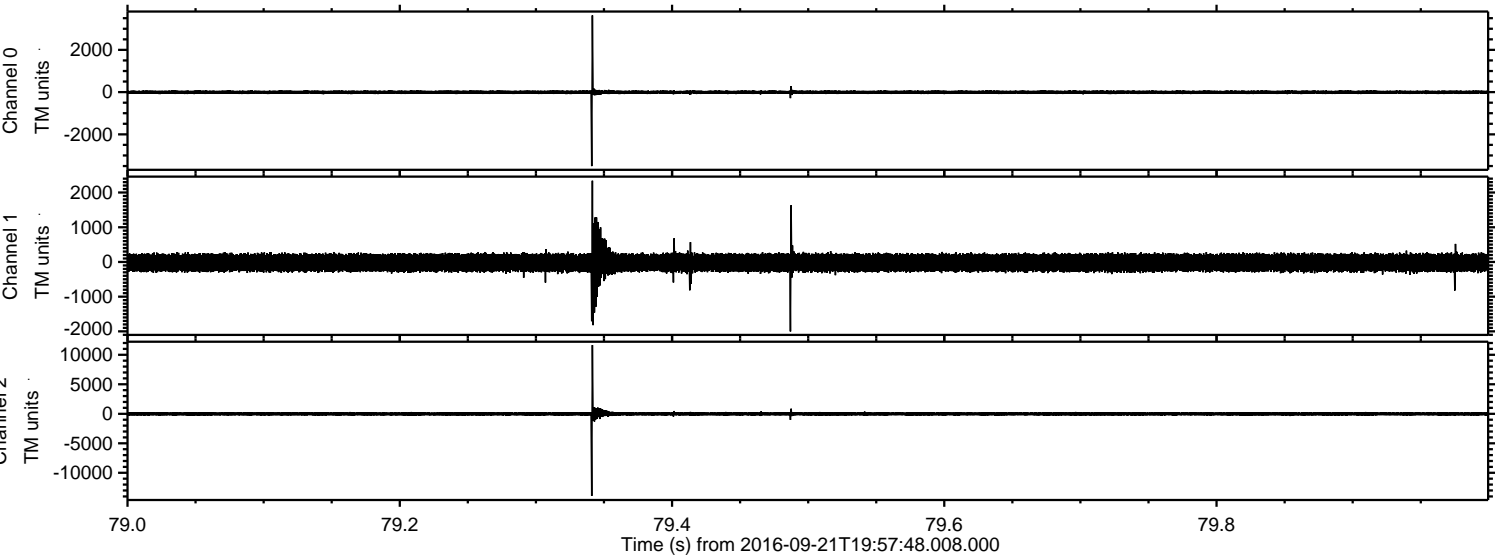
ELMAVAN 3D WAVEFORMS (Measured data sampled at 50 kHz) 51000 packets of 144 samples from 2016-09-21T19:57:48.008.000. Part 129/147

Processed Wed Sep 21 22:05:36 2016 by ELM ver.2012-10-06 from 001\_\_elm20160921\_195747\_\_dat00.bin



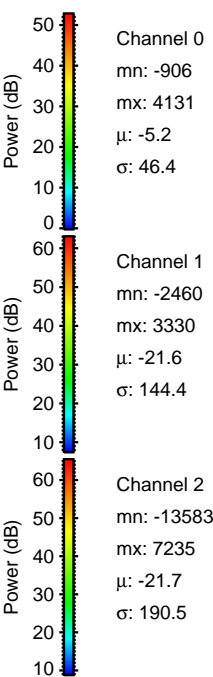
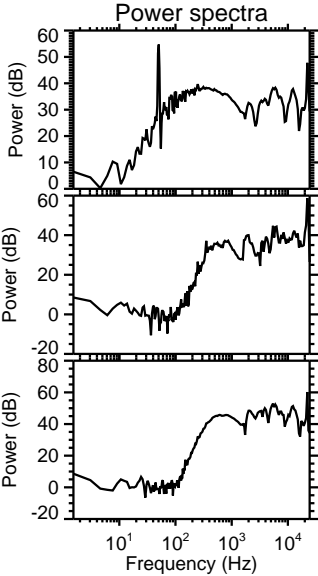
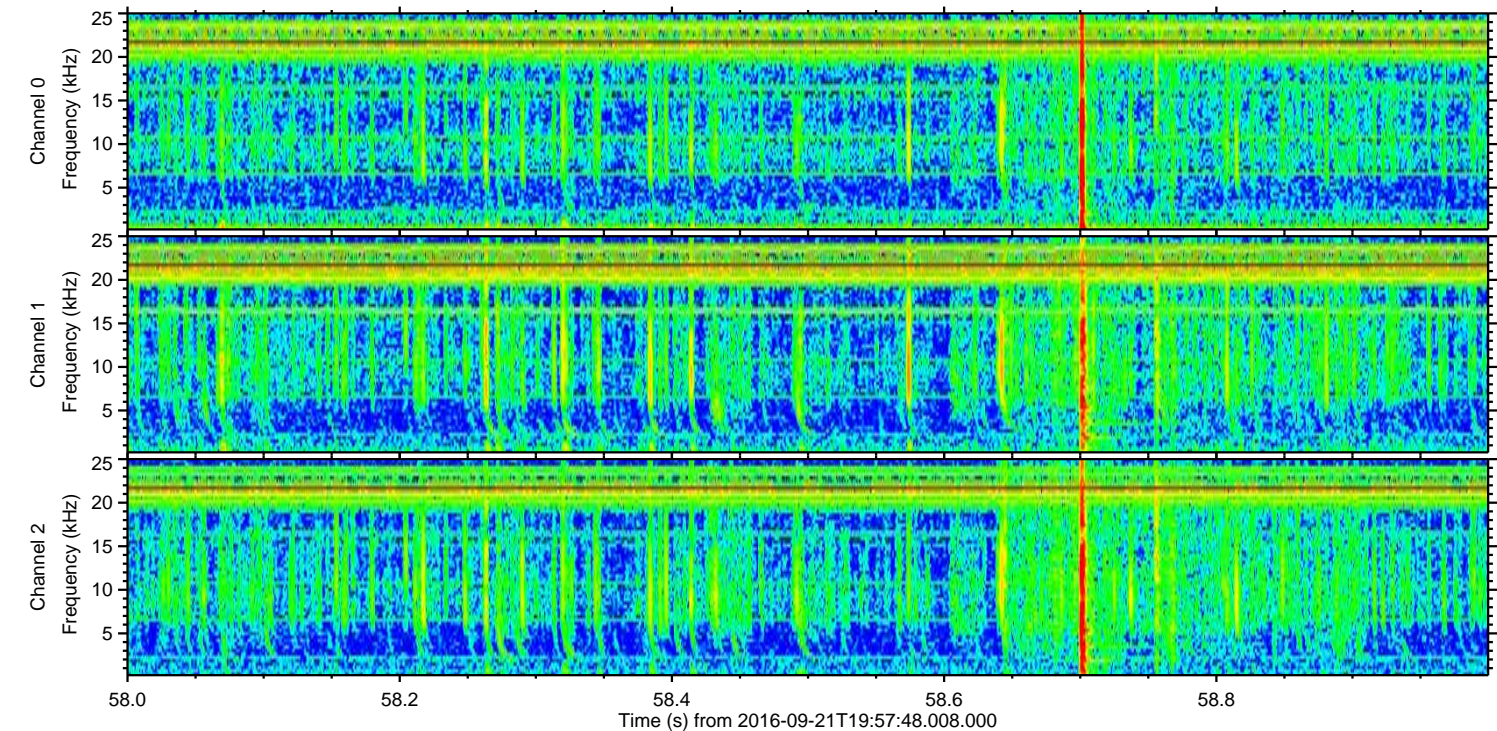
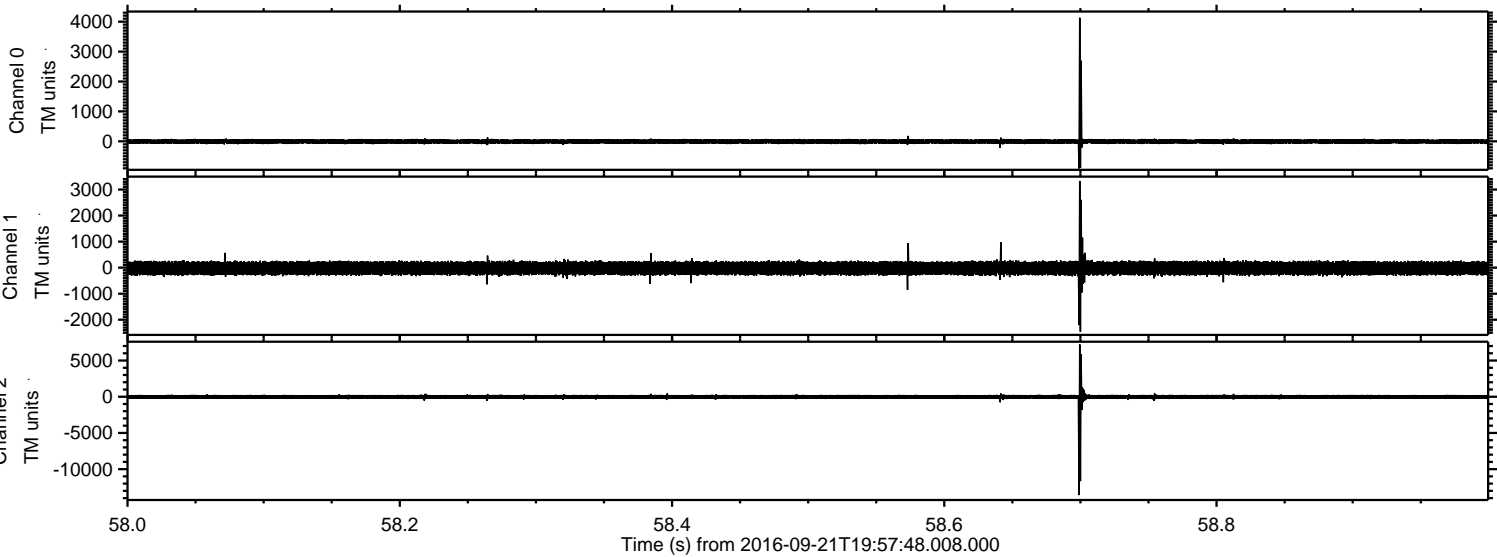


Processed Wed Sep 21 22:05:37 2016 by ELM ver.2012-10-06 from 001\_\_elm20160921\_195747\_\_dat00.bin



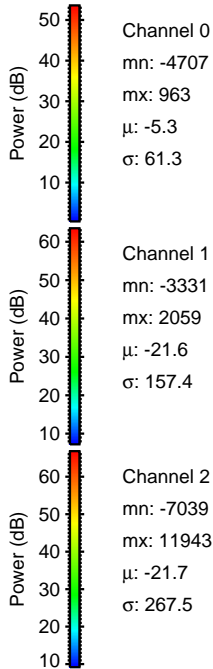
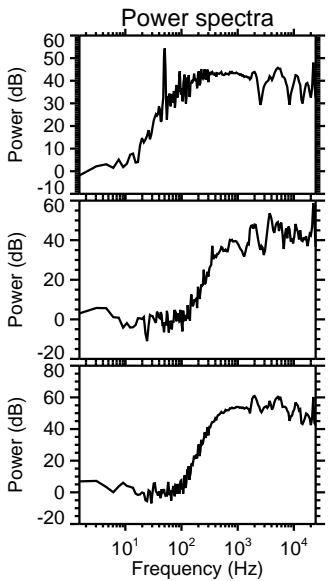
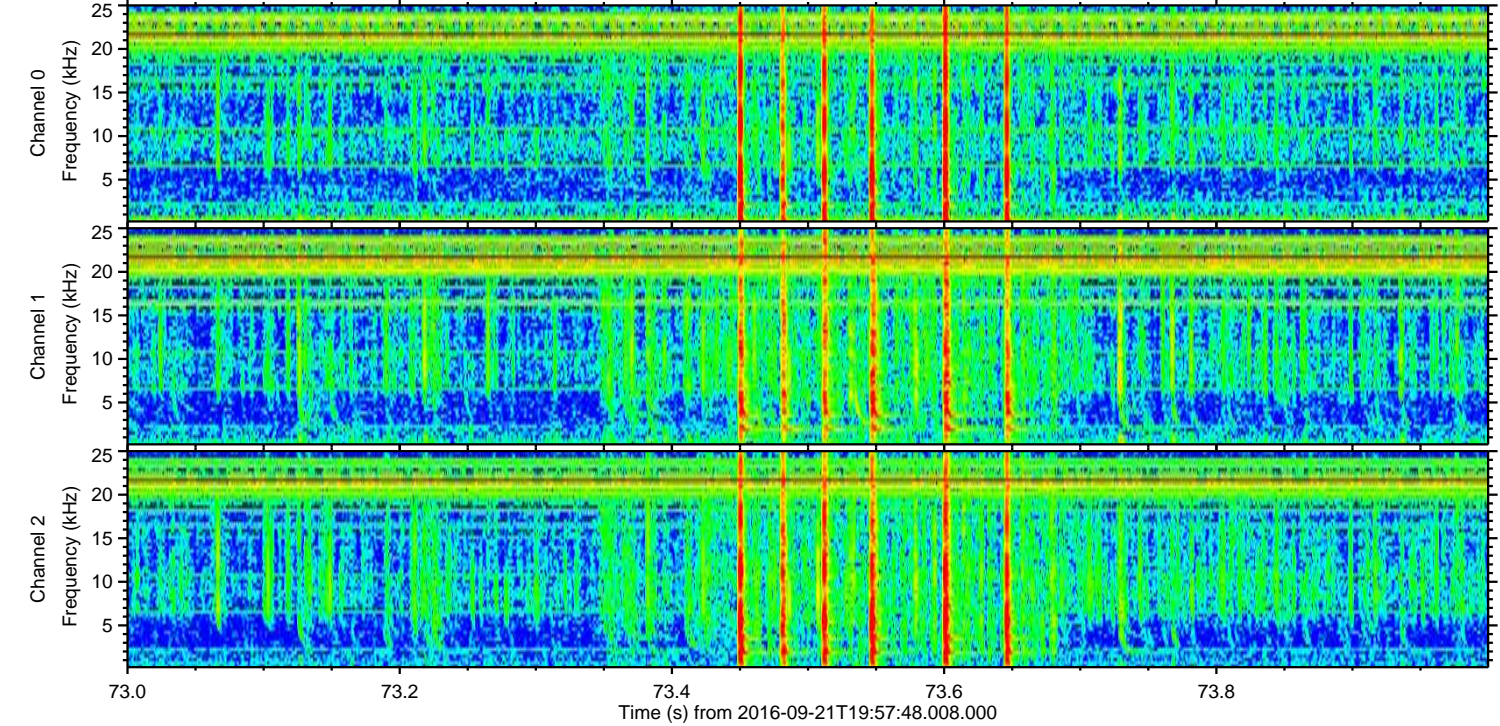
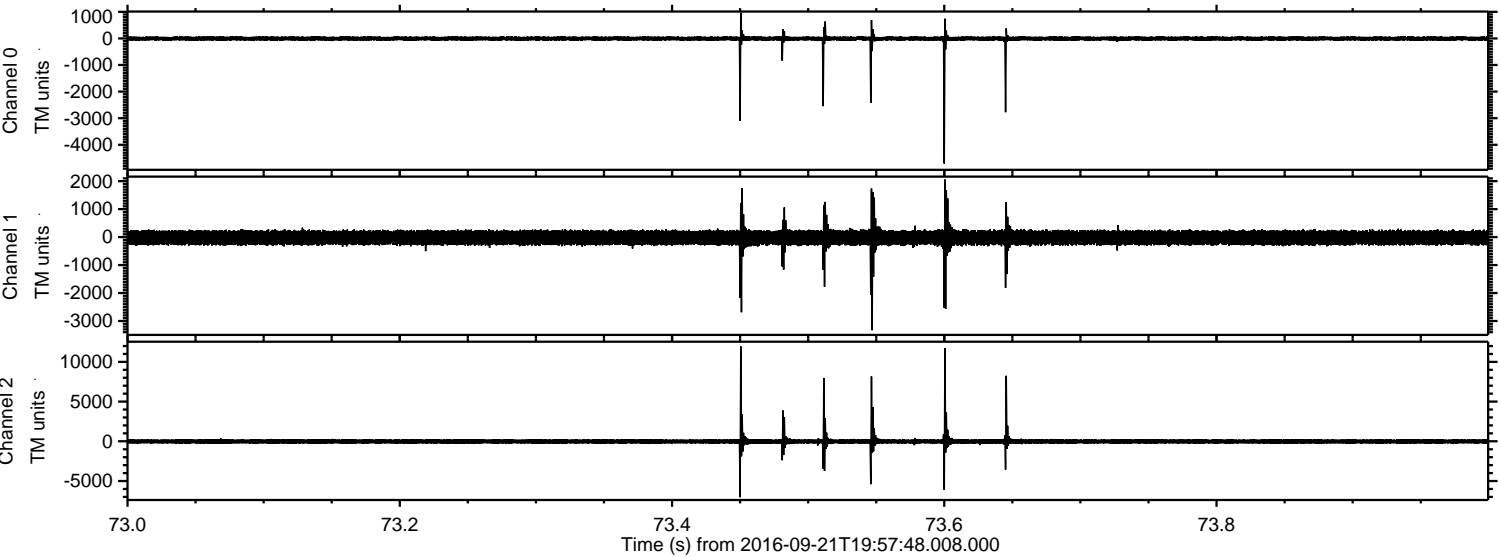


Processed Wed Sep 21 22:05:38 2016 by ELM ver.2012-10-06 from 001\_\_elm20160921\_195747\_\_dat00.bin



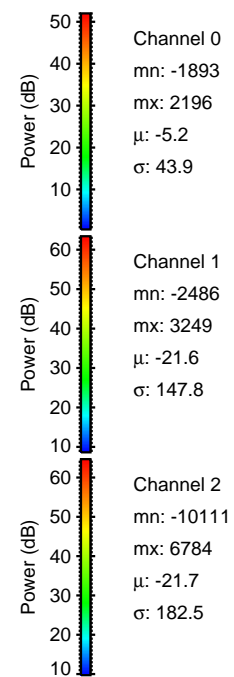
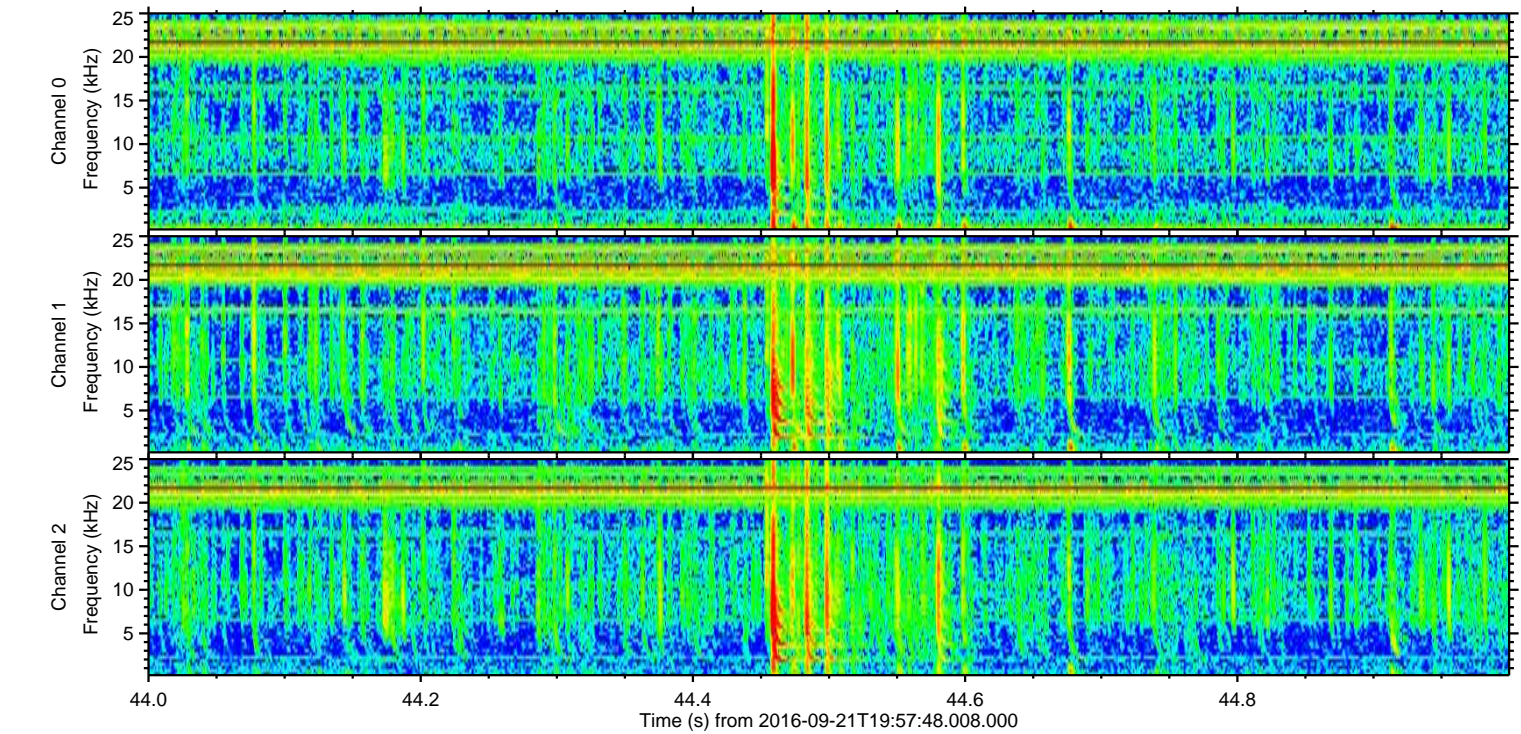
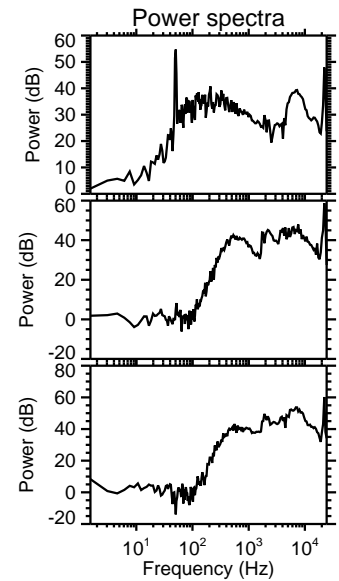
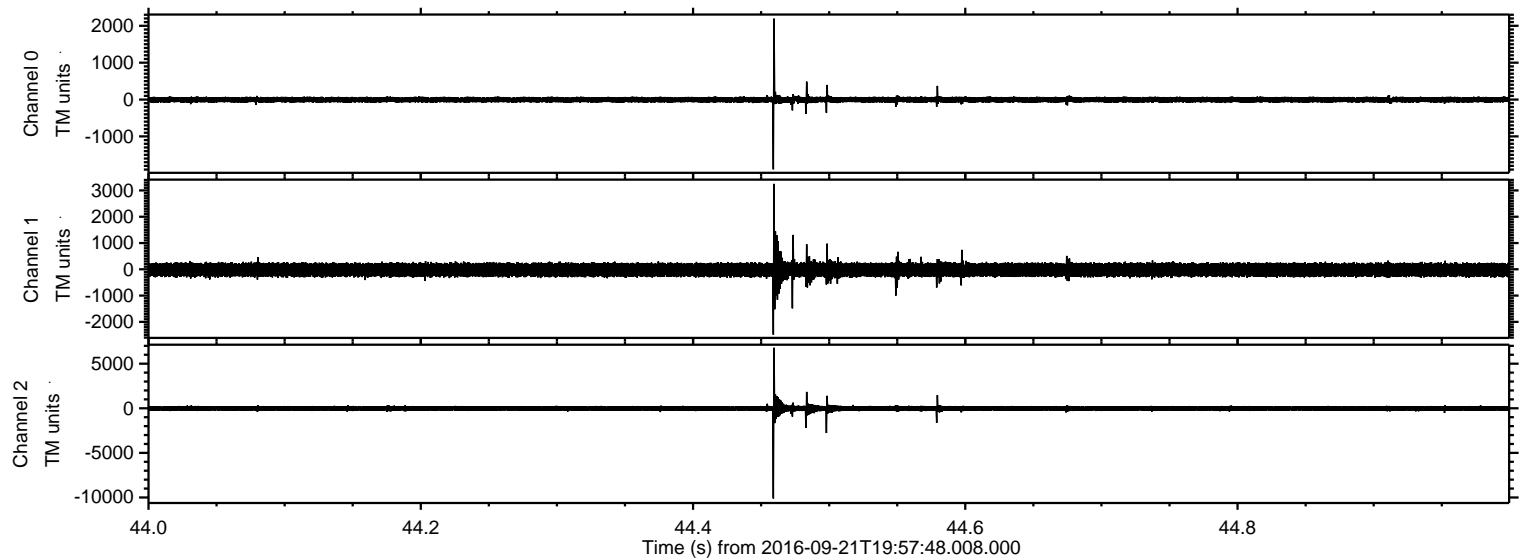


Processed Wed Sep 21 22:05:39 2016 by ELM ver.2012-10-06 from 001\_\_elm20160921\_195747\_\_dat00.bin





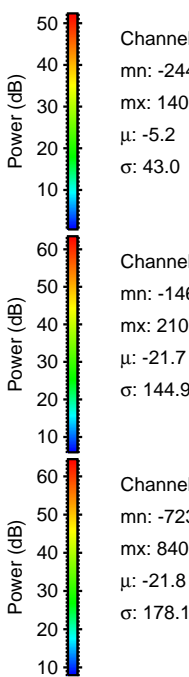
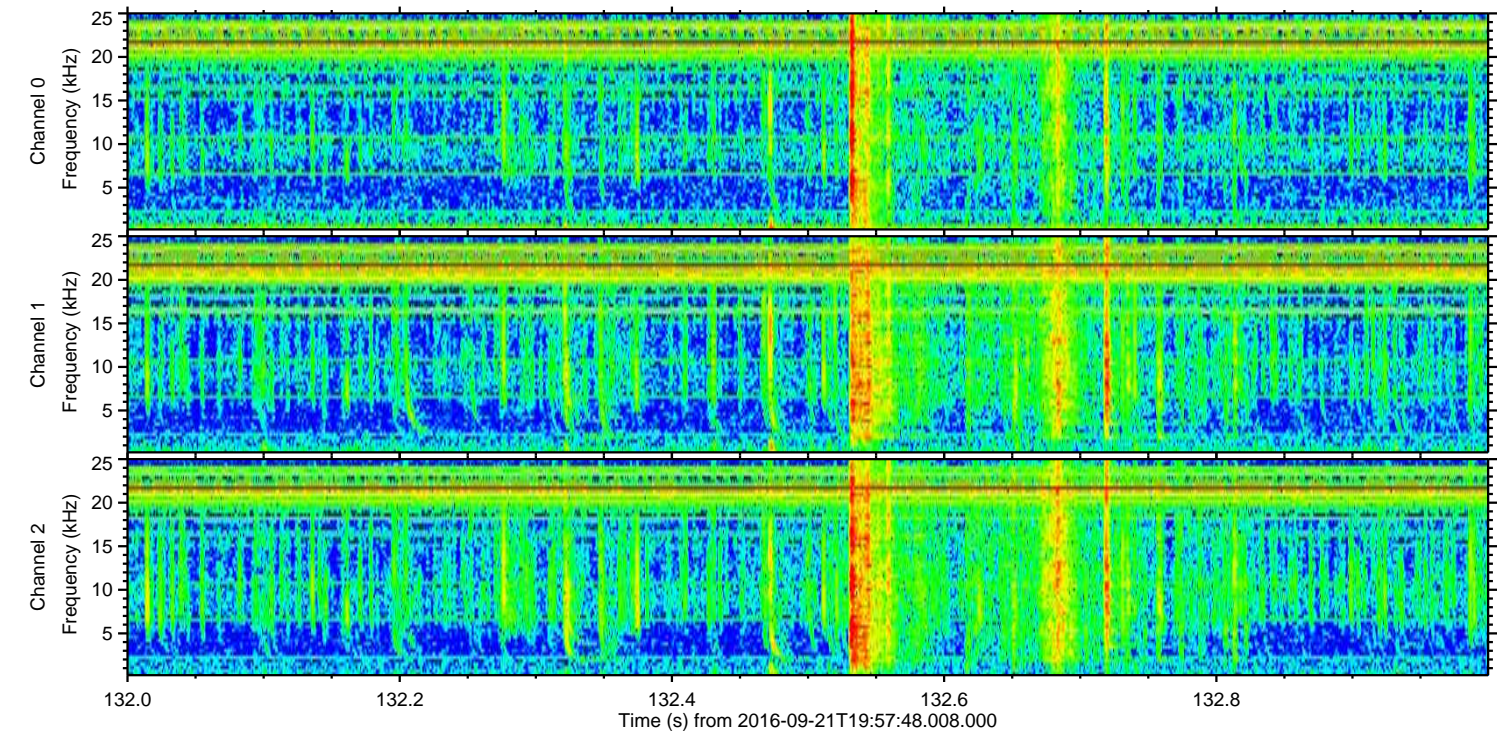
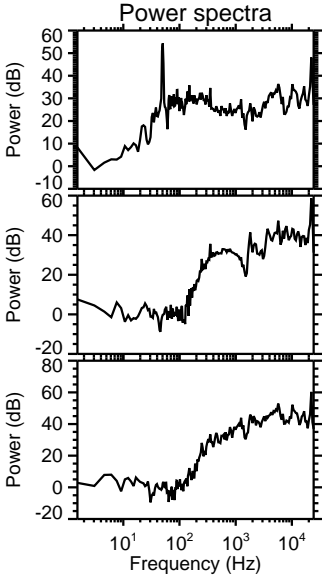
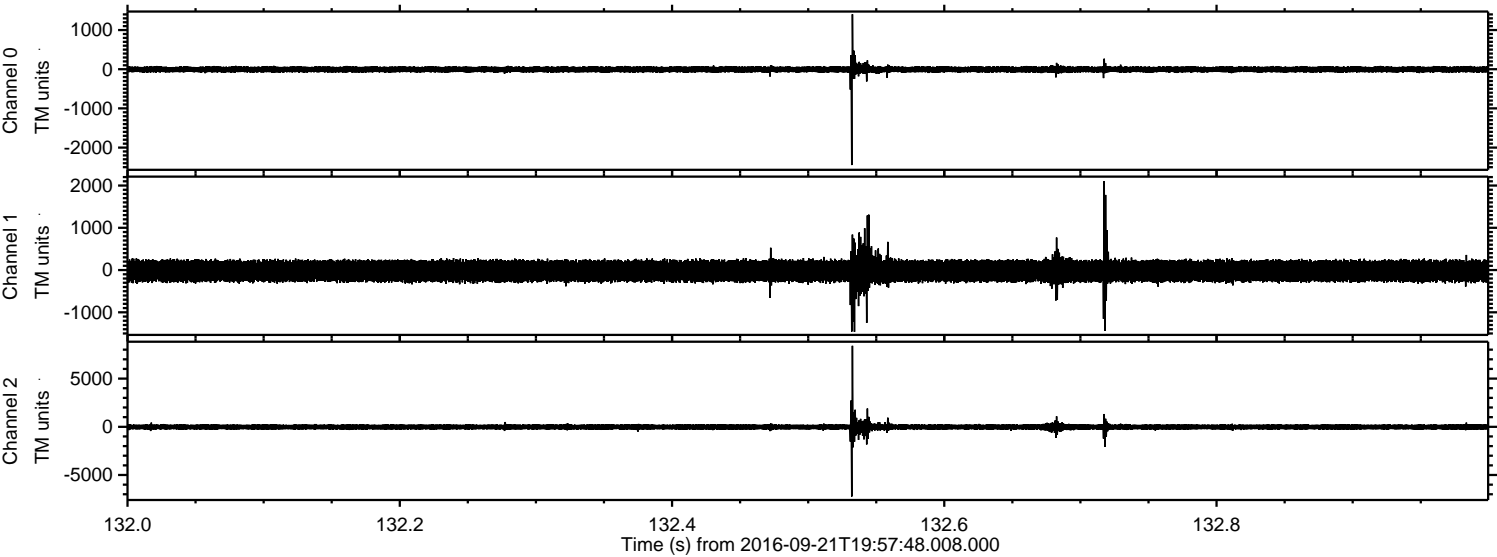
Processed Wed Sep 21 22:05:40 2016 by ELM ver.2012-10-06 from 001\_\_elm20160921\_195747\_\_dat00.bin





ELMAVAN 3D WAVEFORMS (Measured data sampled at 50 kHz) 51000 packets of 144 samples from 2016-09-21T19:57:48.008.000. Part 133/147

Processed Wed Sep 21 22:05:41 2016 by ELM ver.2012-10-06 from 001\_\_elm20160921\_195747\_\_dat00.bin



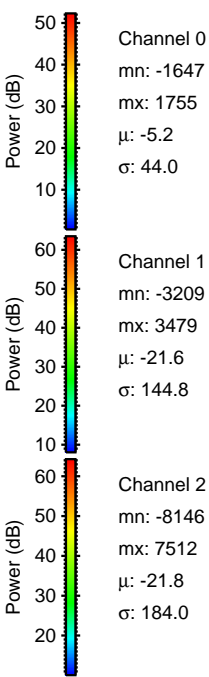
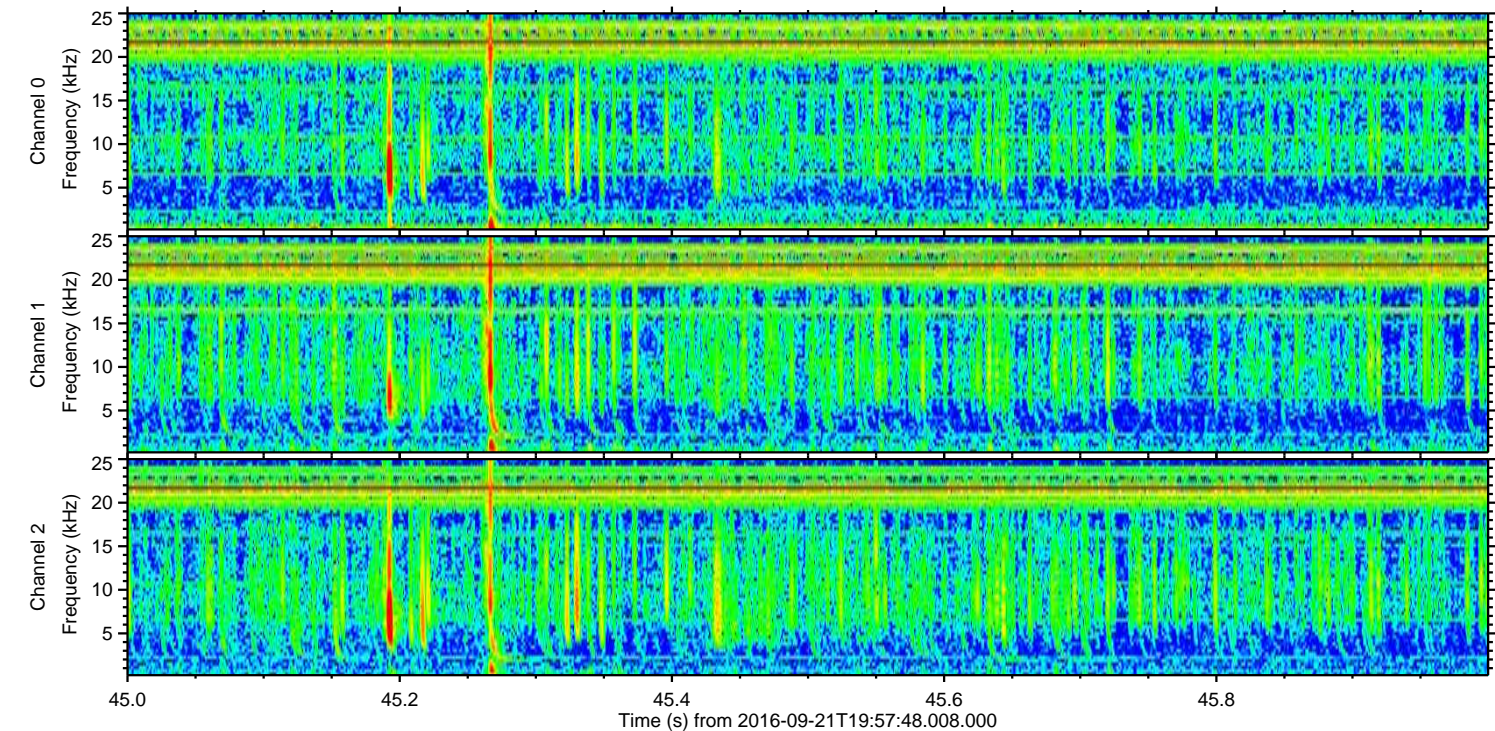
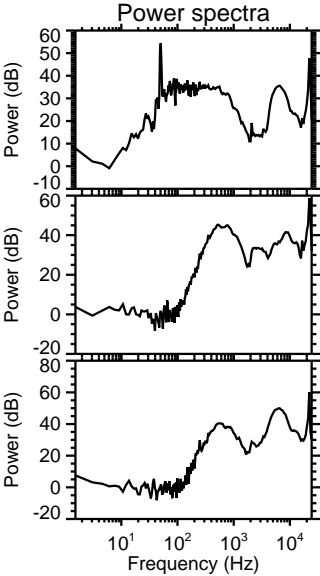
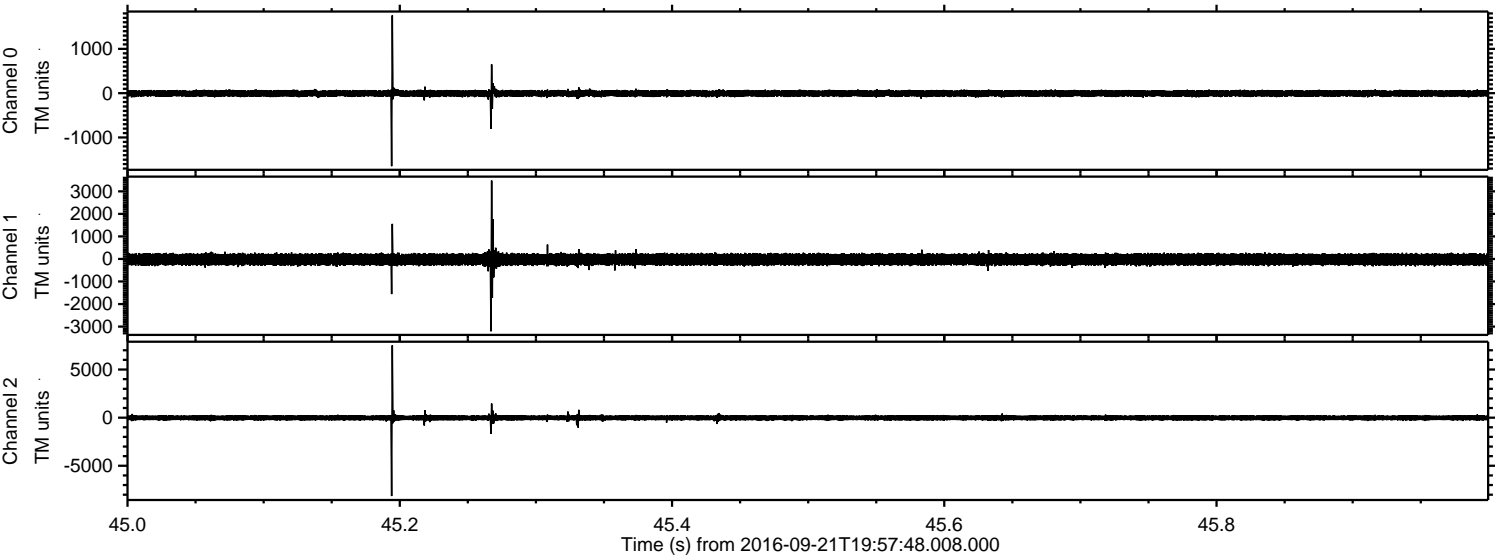
Channel 0  
mn: -2446  
mx: 1403  
 $\mu$ : -5.2  
 $\sigma$ : 43.0

Channel 1  
mn: -1461  
mx: 2105  
 $\mu$ : -21.7  
 $\sigma$ : 144.9

Channel 2  
mn: -7233  
mx: 8406  
 $\mu$ : -21.8  
 $\sigma$ : 178.1



Processed Wed Sep 21 22:05:42 2016 by ELM ver.2012-10-06 from 001\_\_elm20160921\_195747\_\_dat00.bin





Processed Wed Sep 21 22:05:43 2016 by ELM ver.2012-10-06 from 001\_\_elm20160921\_195747\_\_dat00.bin

