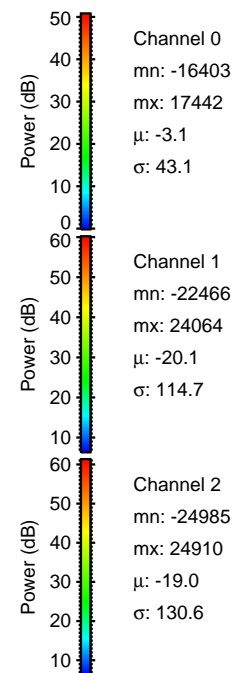
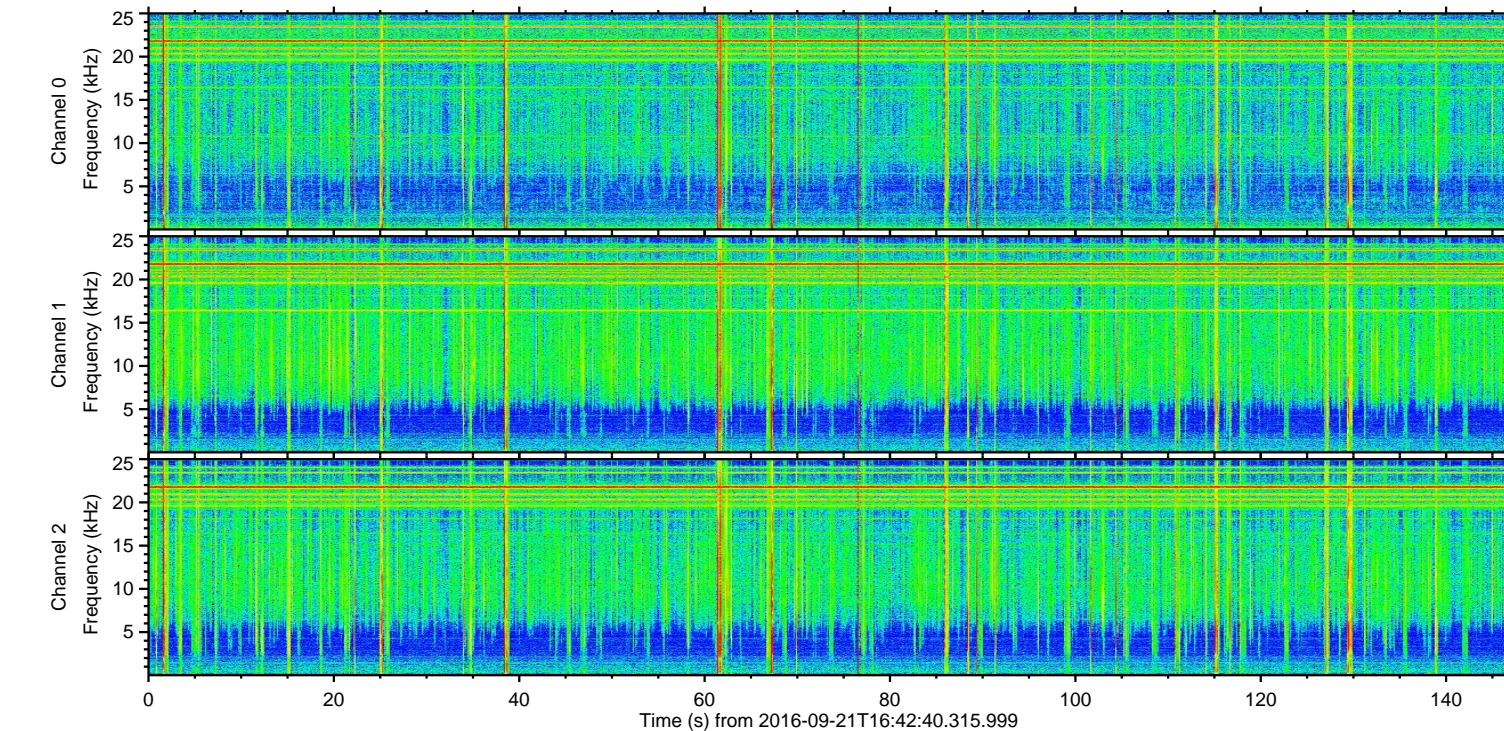
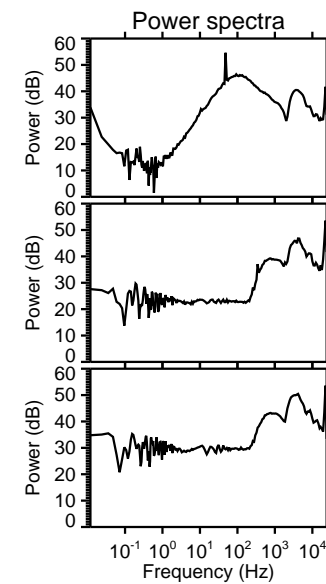
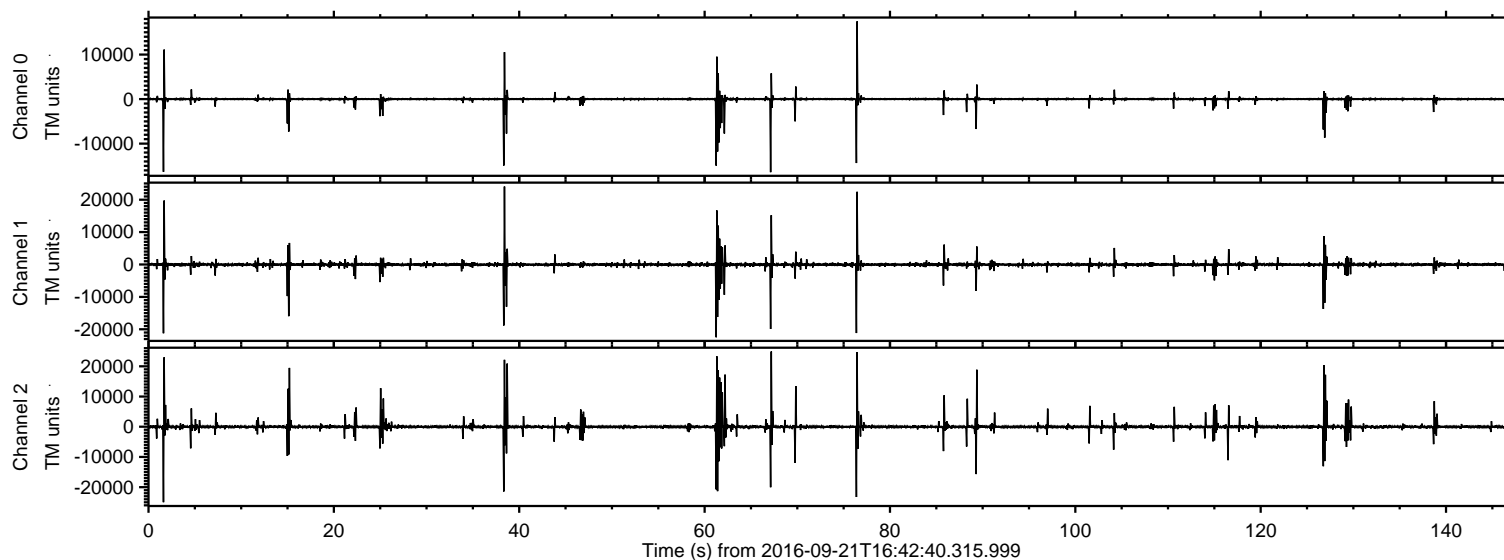


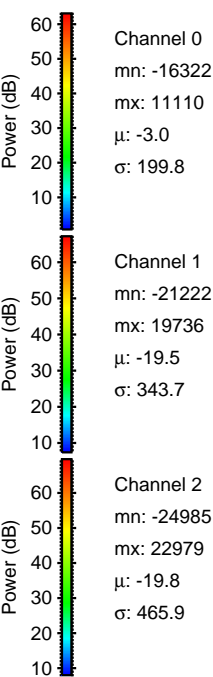
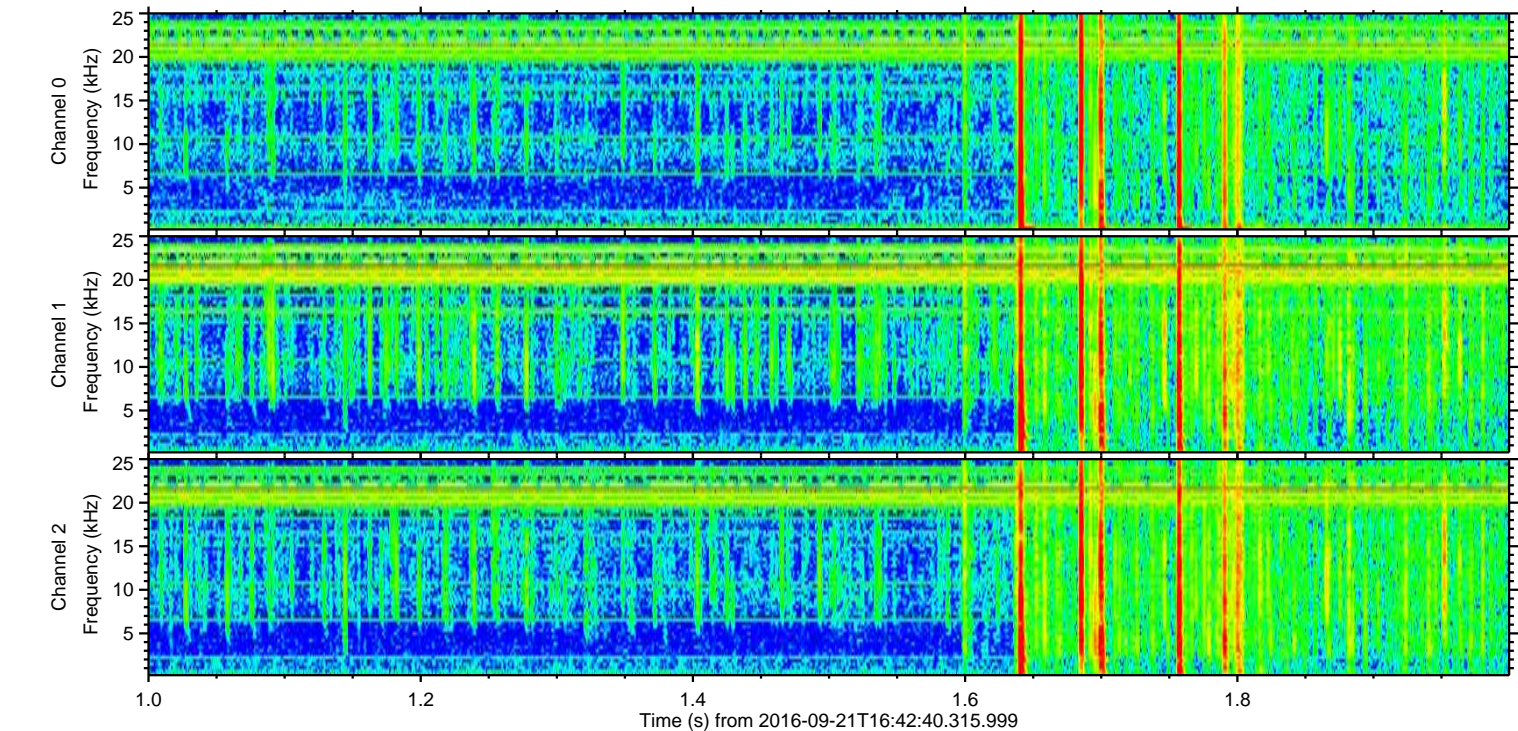
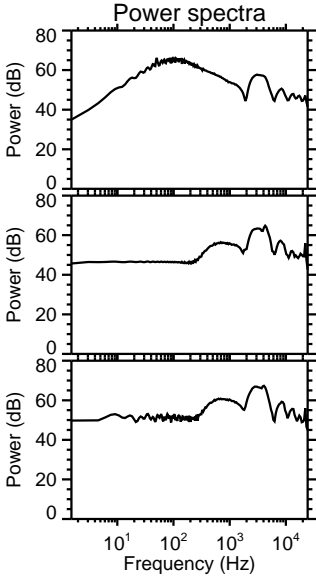
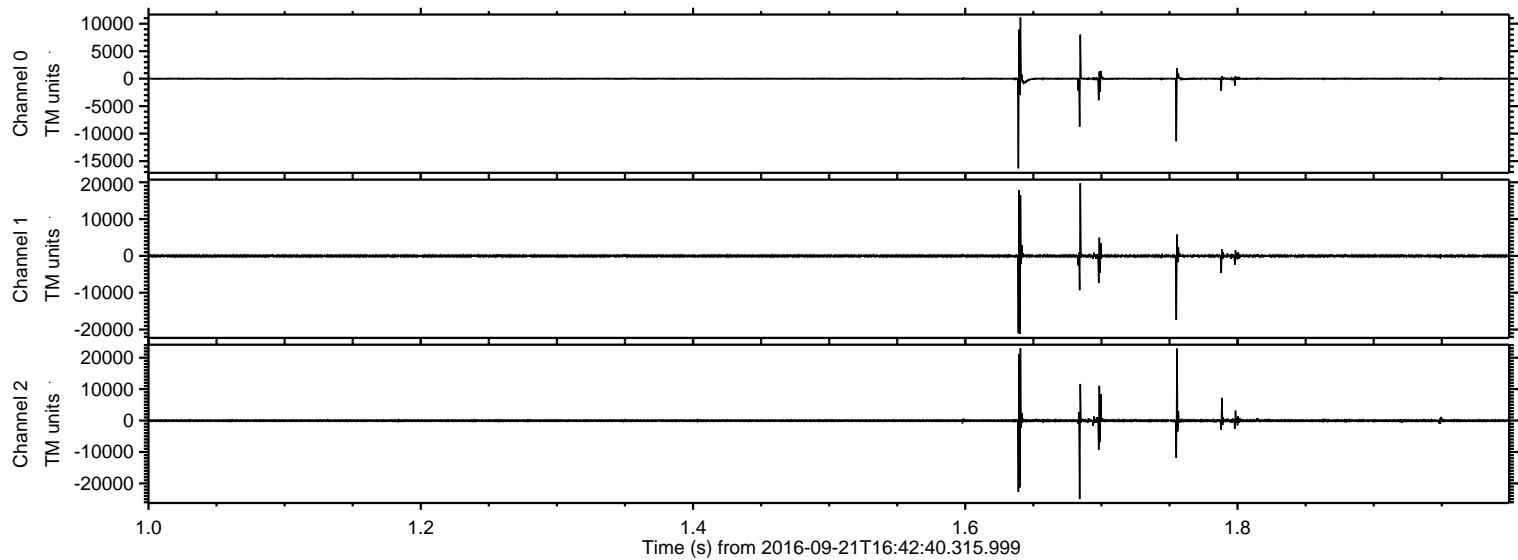
ELMAVAN 3D WAVEFORMS (Measured data sampled at 50 kHz) 51000 packets of 144 samples from 2016-09-21T16:42:40.315.999.

Processed Wed Sep 21 18:50:52 2016 by ELM ver.2012-10-06 from 001__elm20160921_164239__dat00.bin

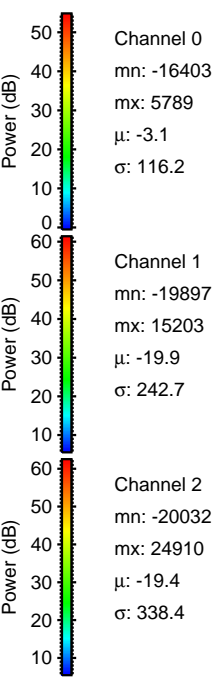
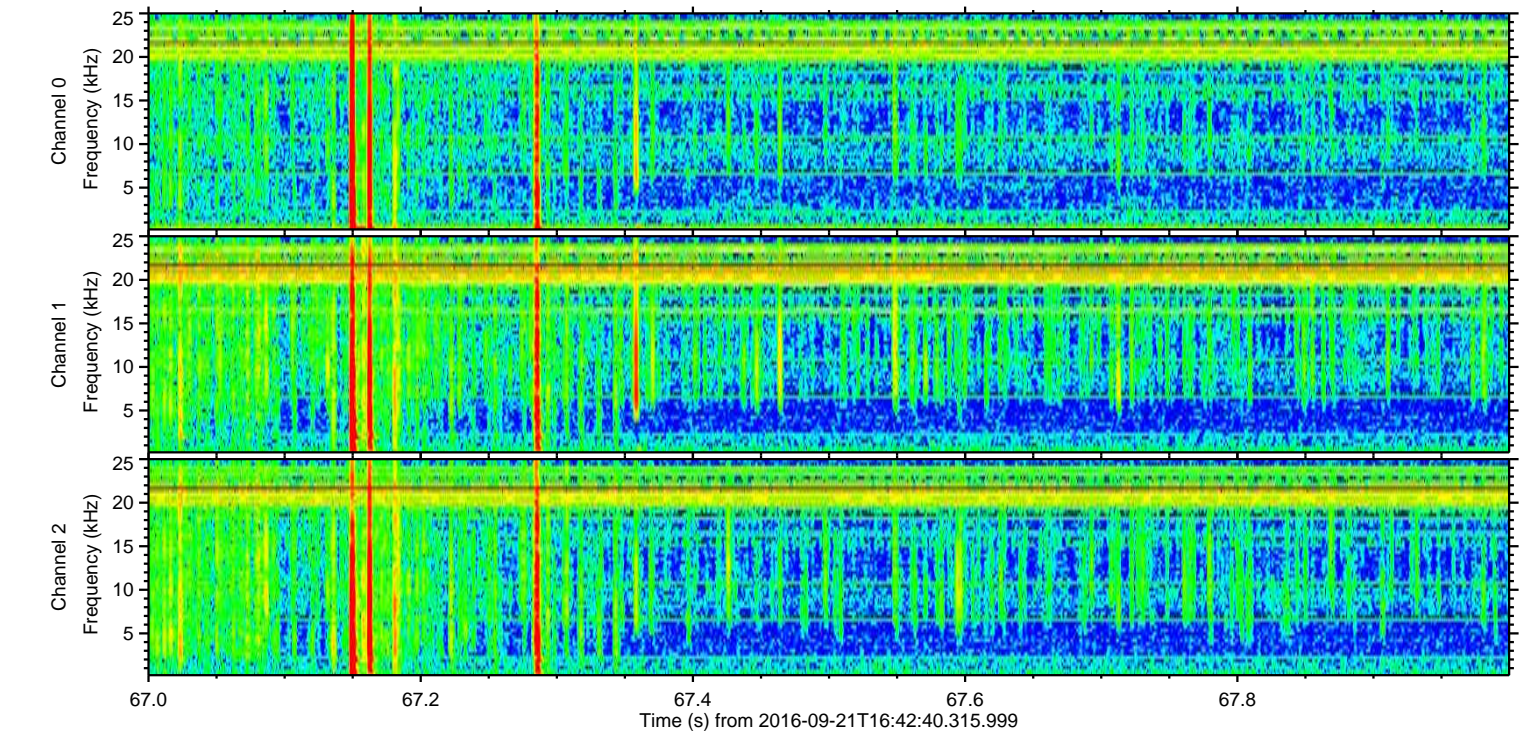
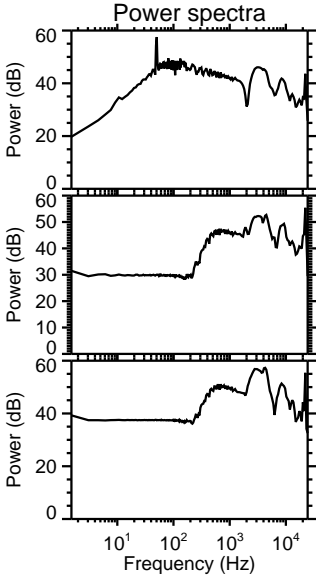
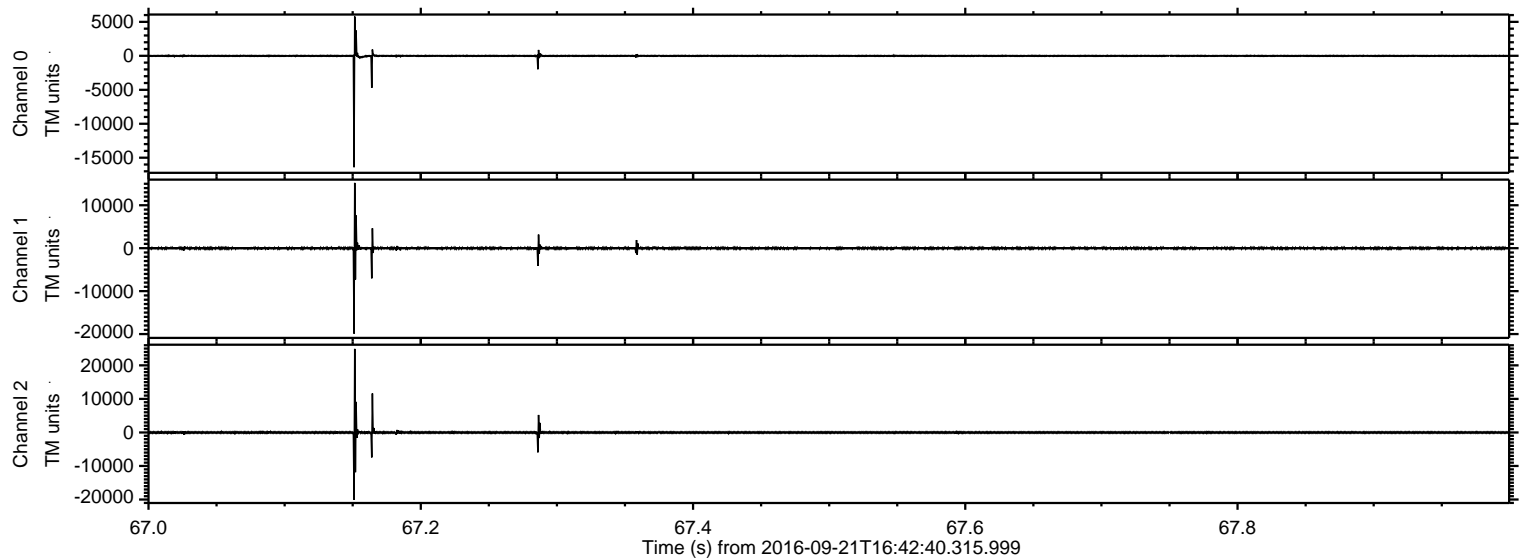


ELMAVAN 3D WAVEFORMS (Measured data sampled at 50 kHz) 51000 packets of 144 samples from 2016-09-21T16:42:40.315.999. Part 2/147

Processed Wed Sep 21 18:51:12 2016 by ELM ver.2012-10-06 from 001__elm20160921_164239__dat00.bin

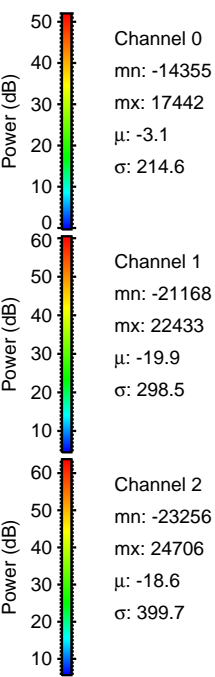
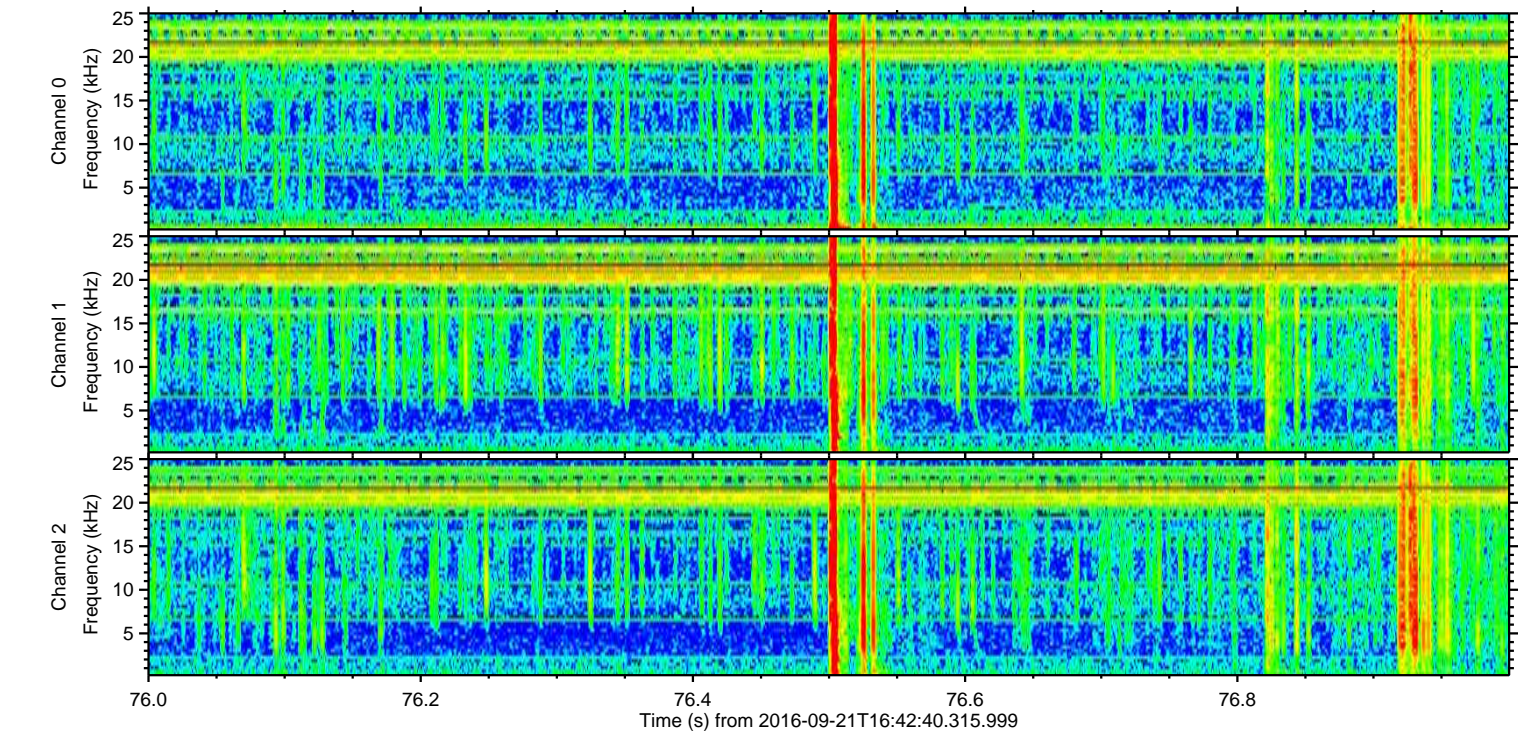
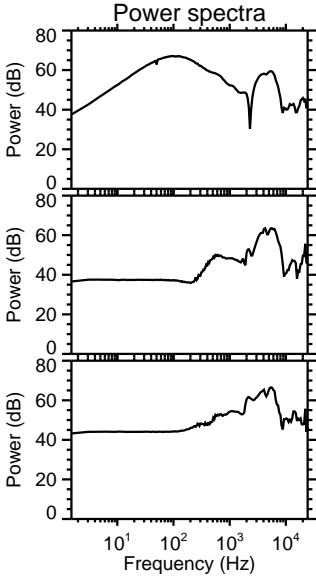
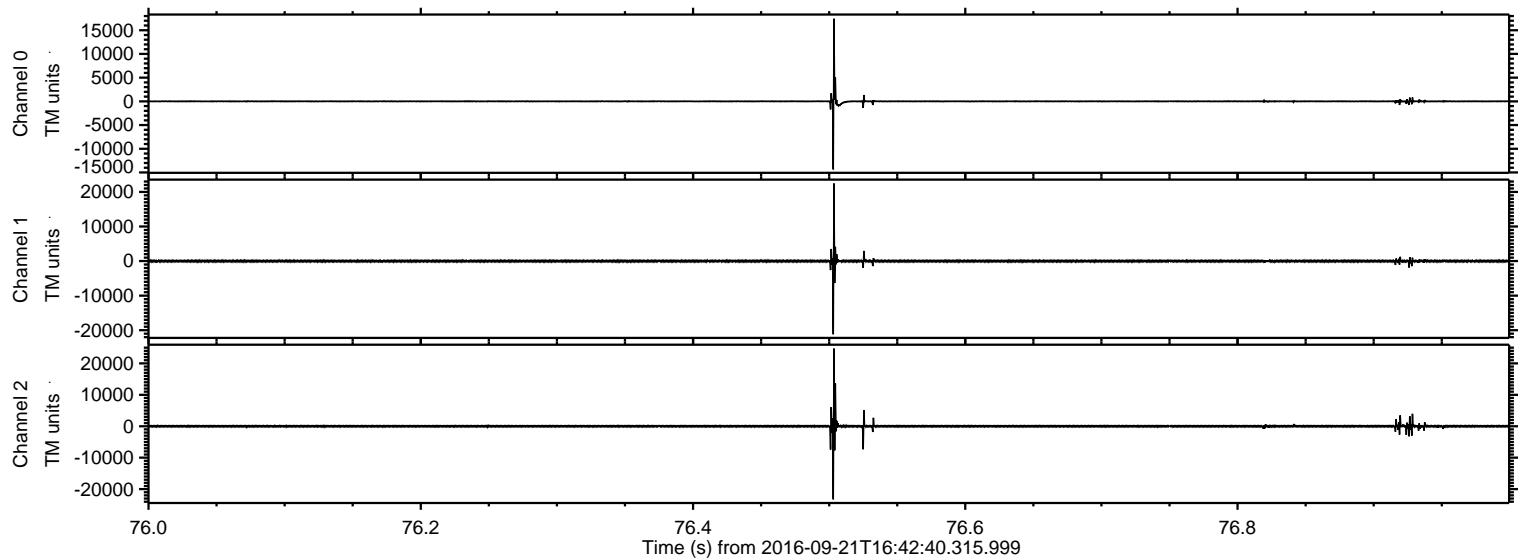


Processed Wed Sep 21 18:51:13 2016 by ELM ver.2012-10-06 from 001_elm20160921_164239__dat00.bin

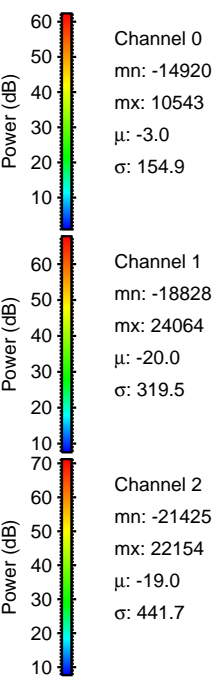
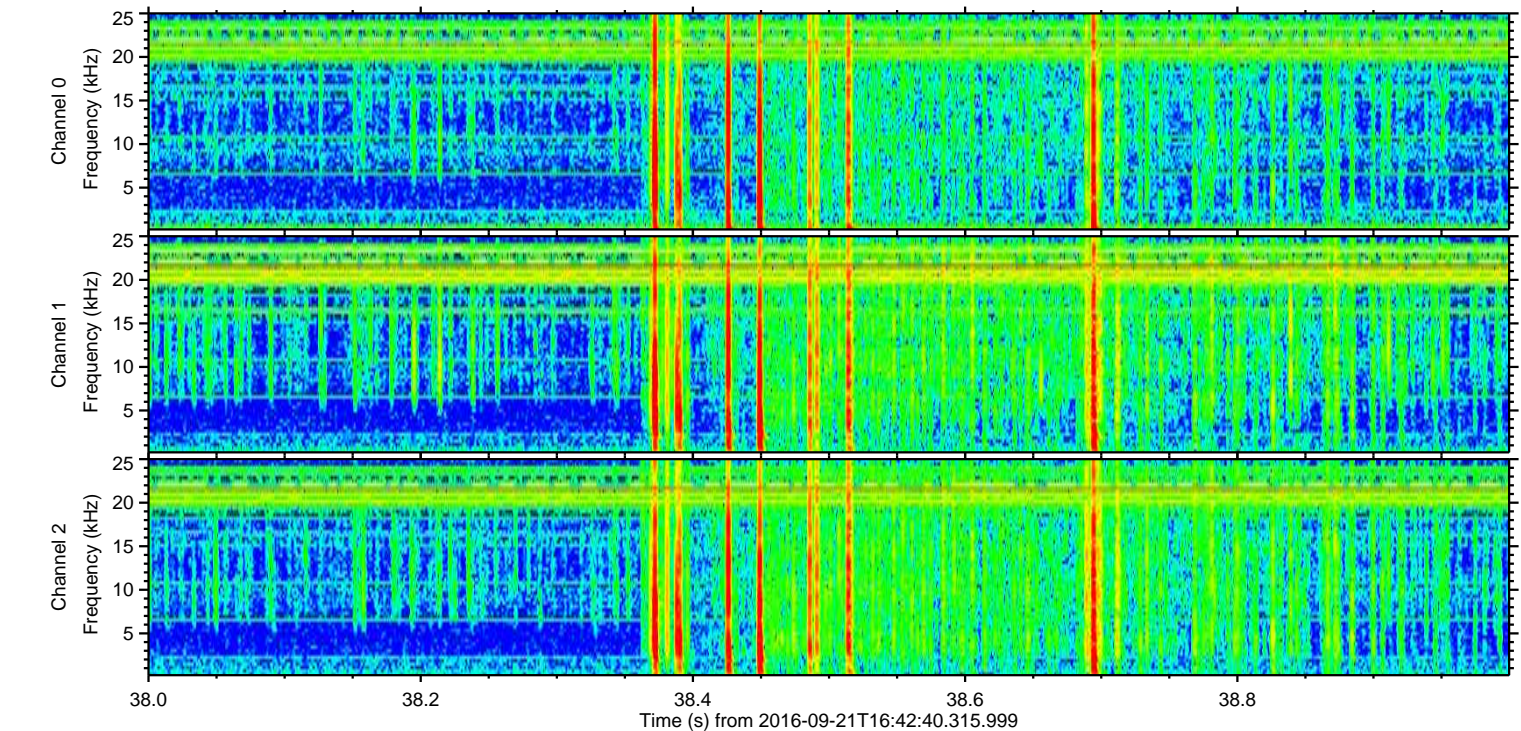
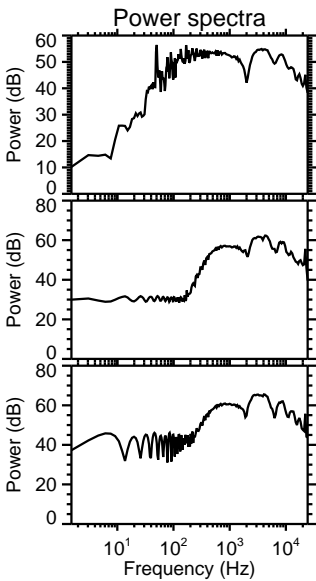
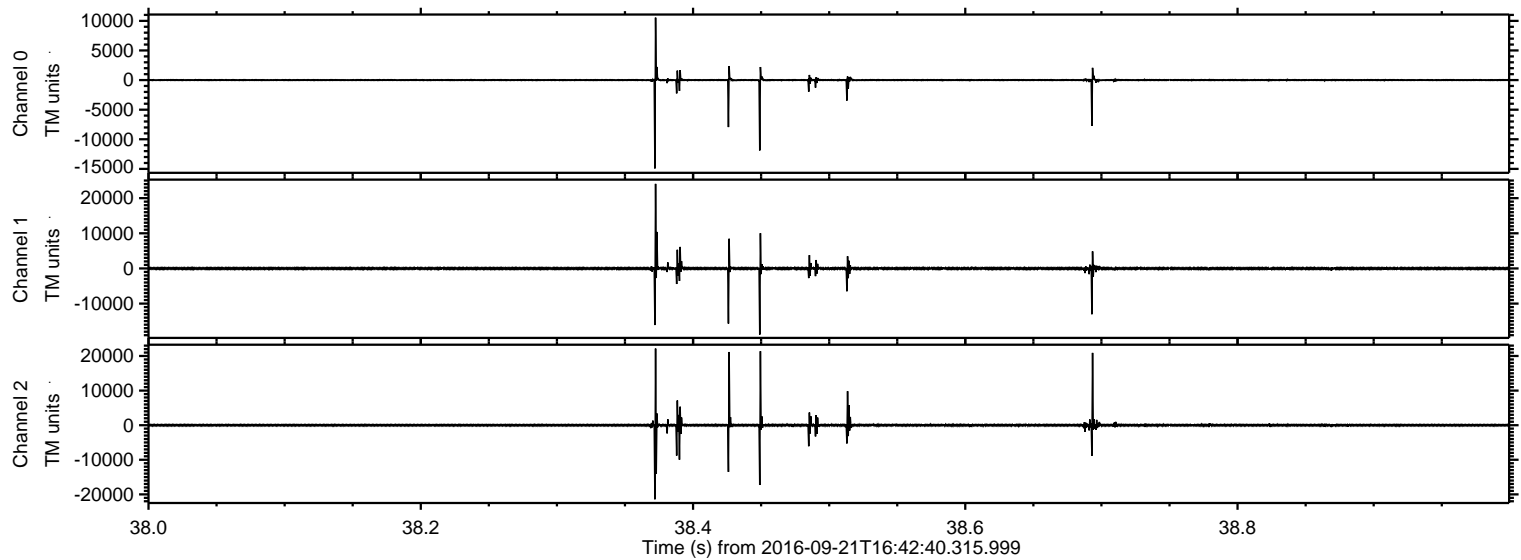


ELMAVAN 3D WAVEFORMS (Measured data sampled at 50 kHz) 51000 packets of 144 samples from 2016-09-21T16:42:40.315.999. Part 77/147

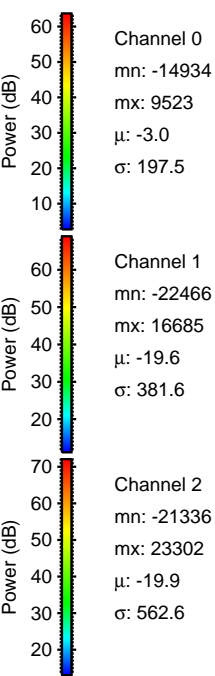
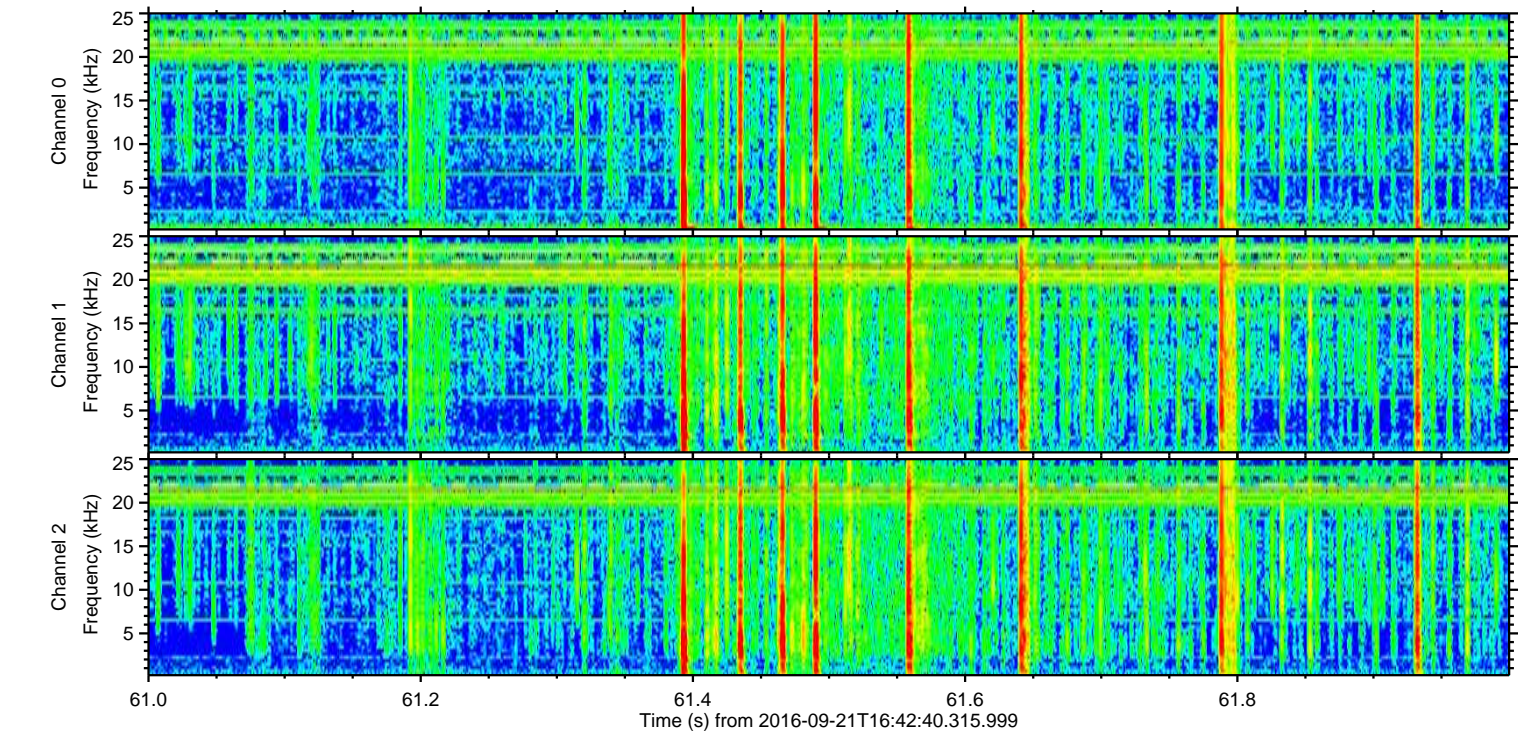
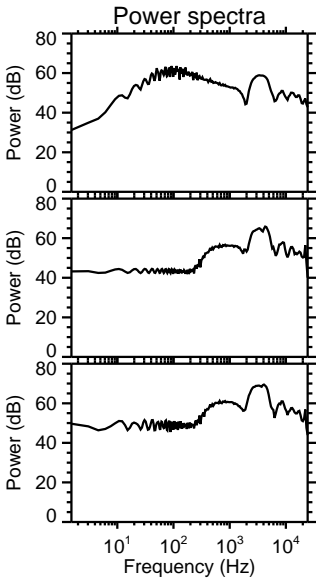
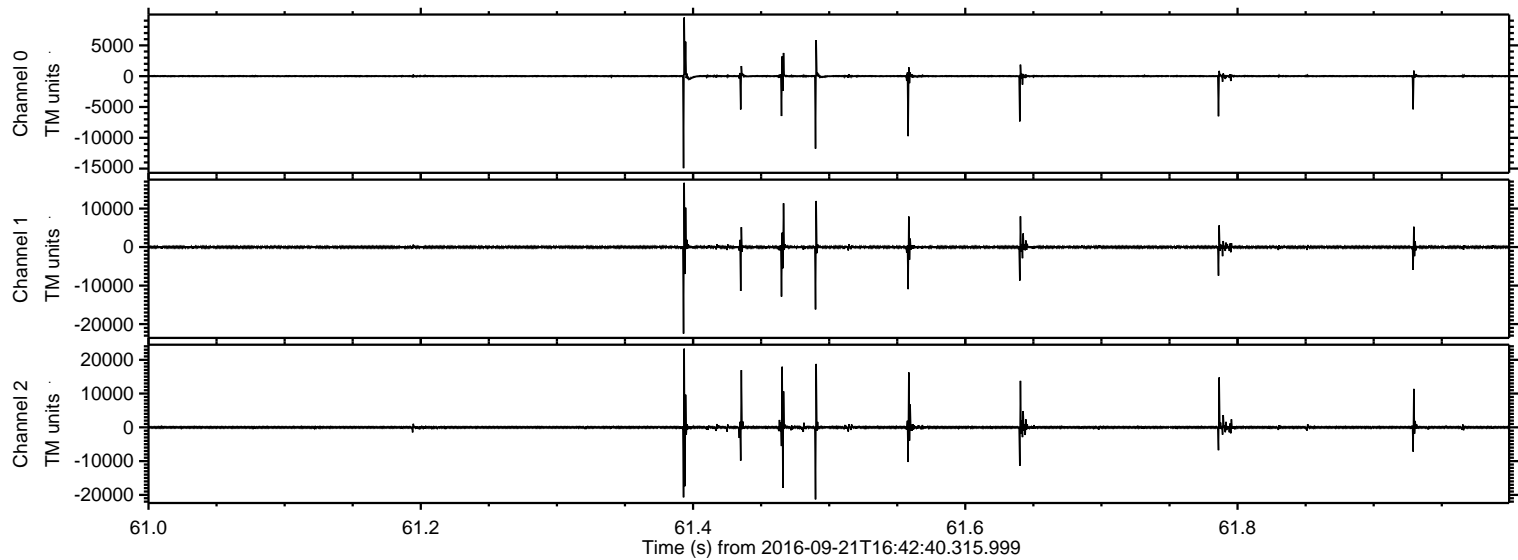
Processed Wed Sep 21 18:51:14 2016 by ELM ver.2012-10-06 from 001__elm20160921_164239__dat00.bin



Processed Wed Sep 21 18:51:15 2016 by ELM ver.2012-10-06 from 001__elm20160921_164239__dat00.bin

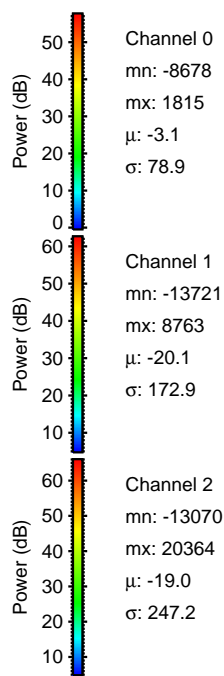
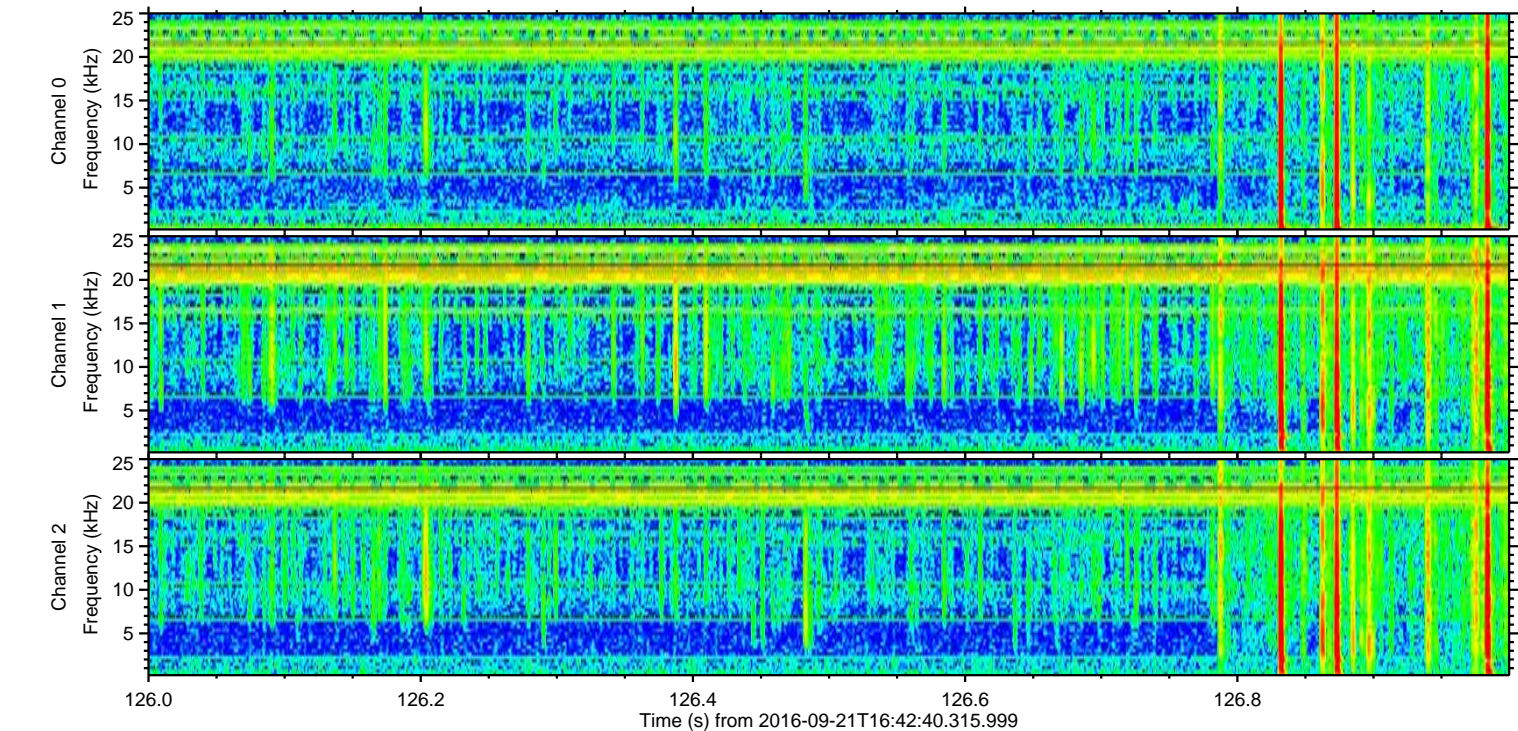
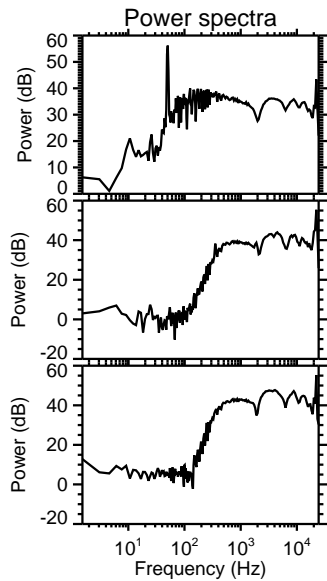
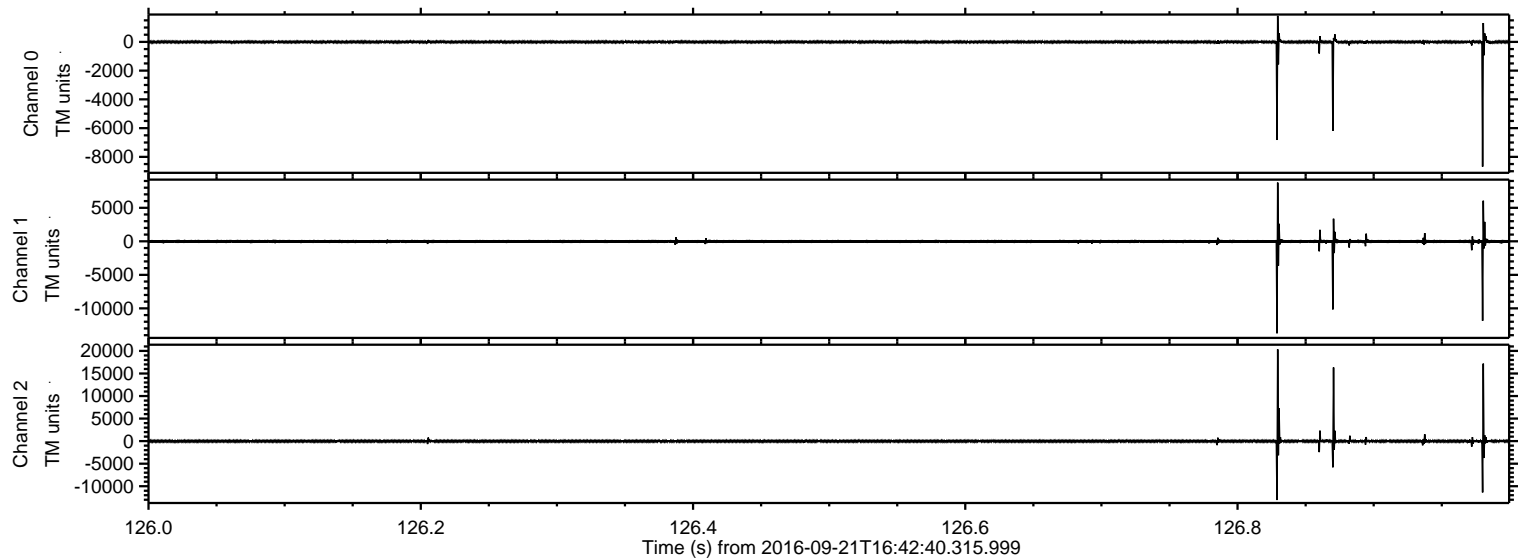


Processed Wed Sep 21 18:51:17 2016 by ELM ver.2012-10-06 from 001__elm20160921_164239__dat00.bin

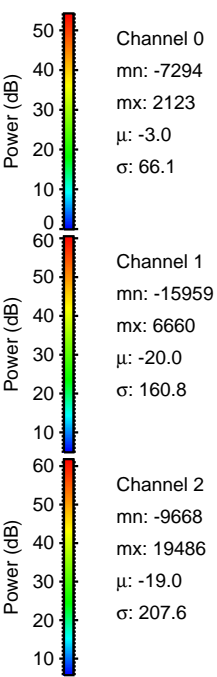
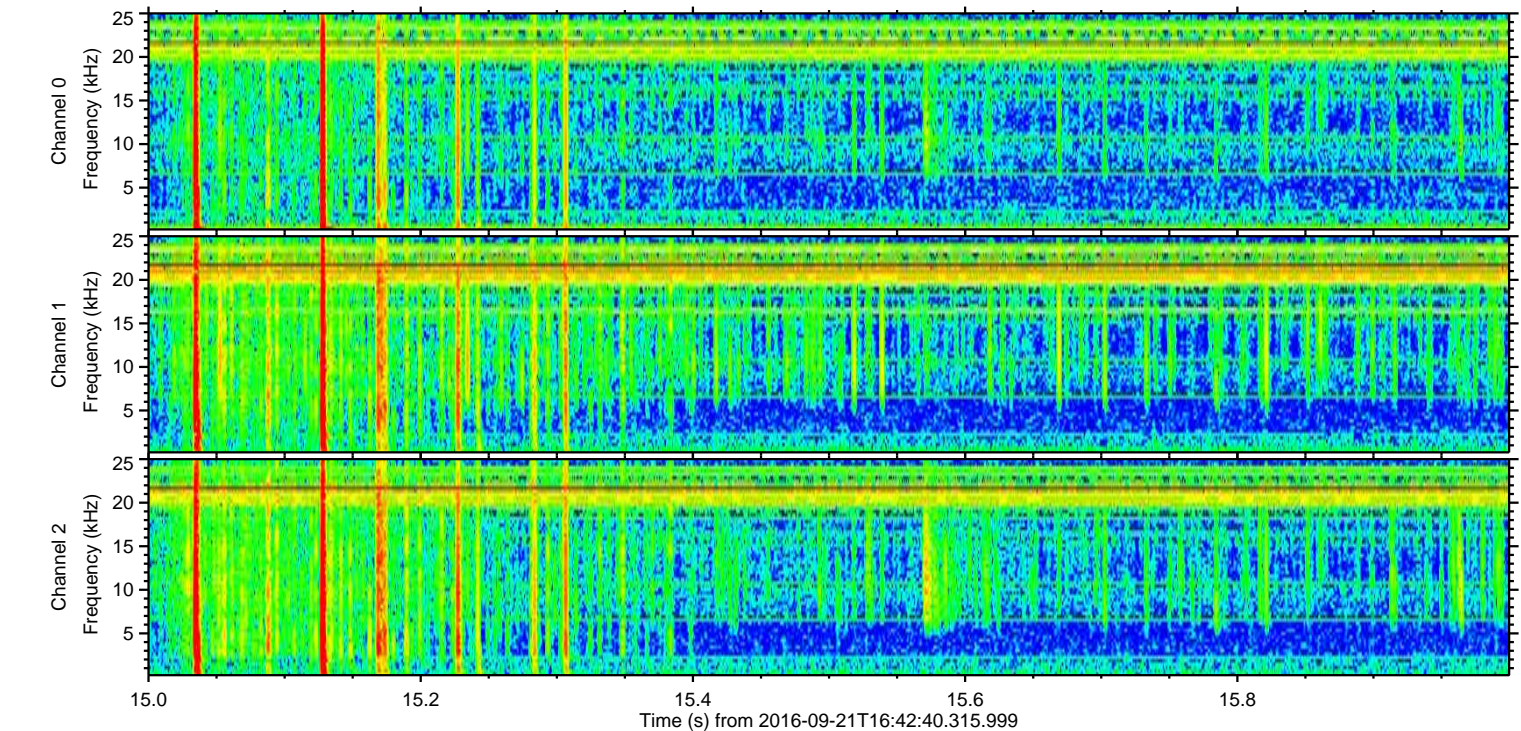
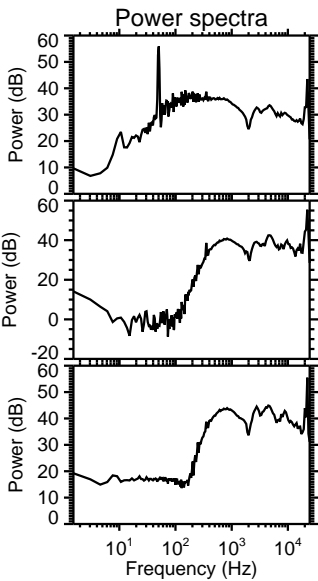
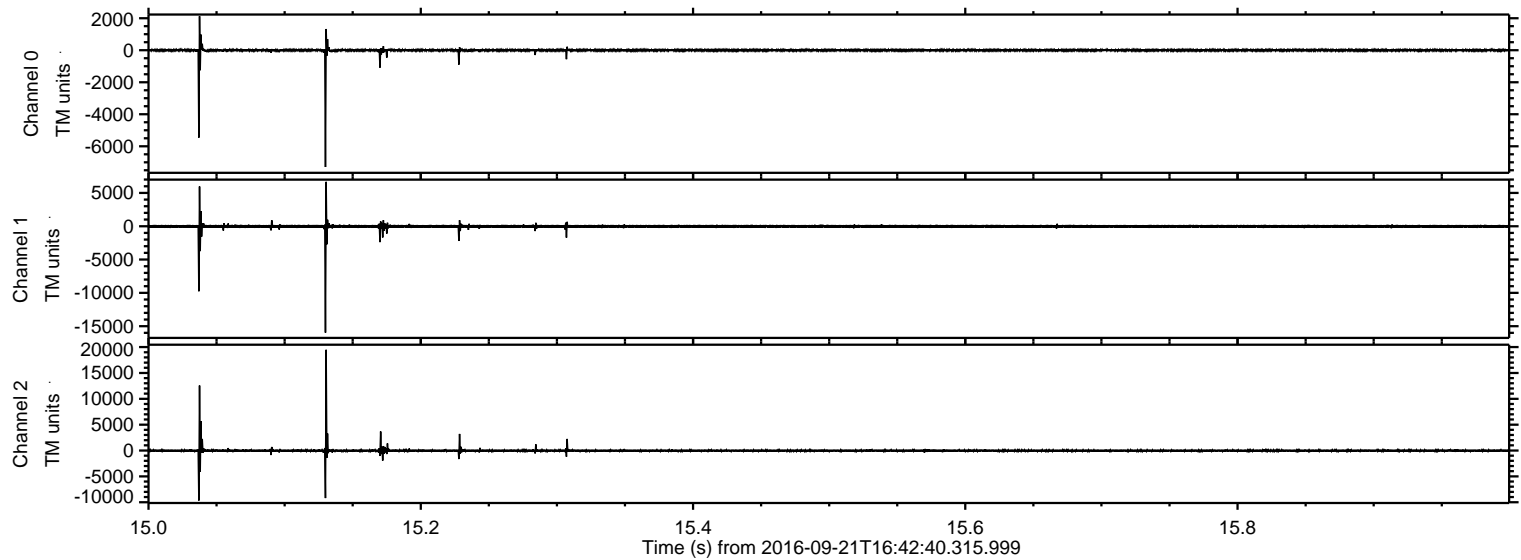


ELMAVAN 3D WAVEFORMS (Measured data sampled at 50 kHz) 51000 packets of 144 samples from 2016-09-21T16:42:40.315.999. Part 127/147

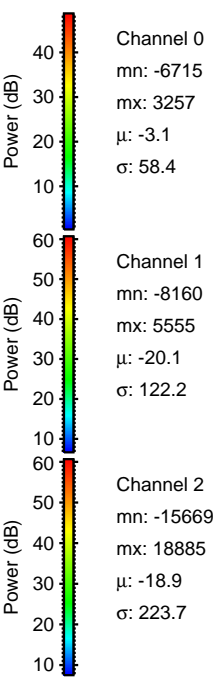
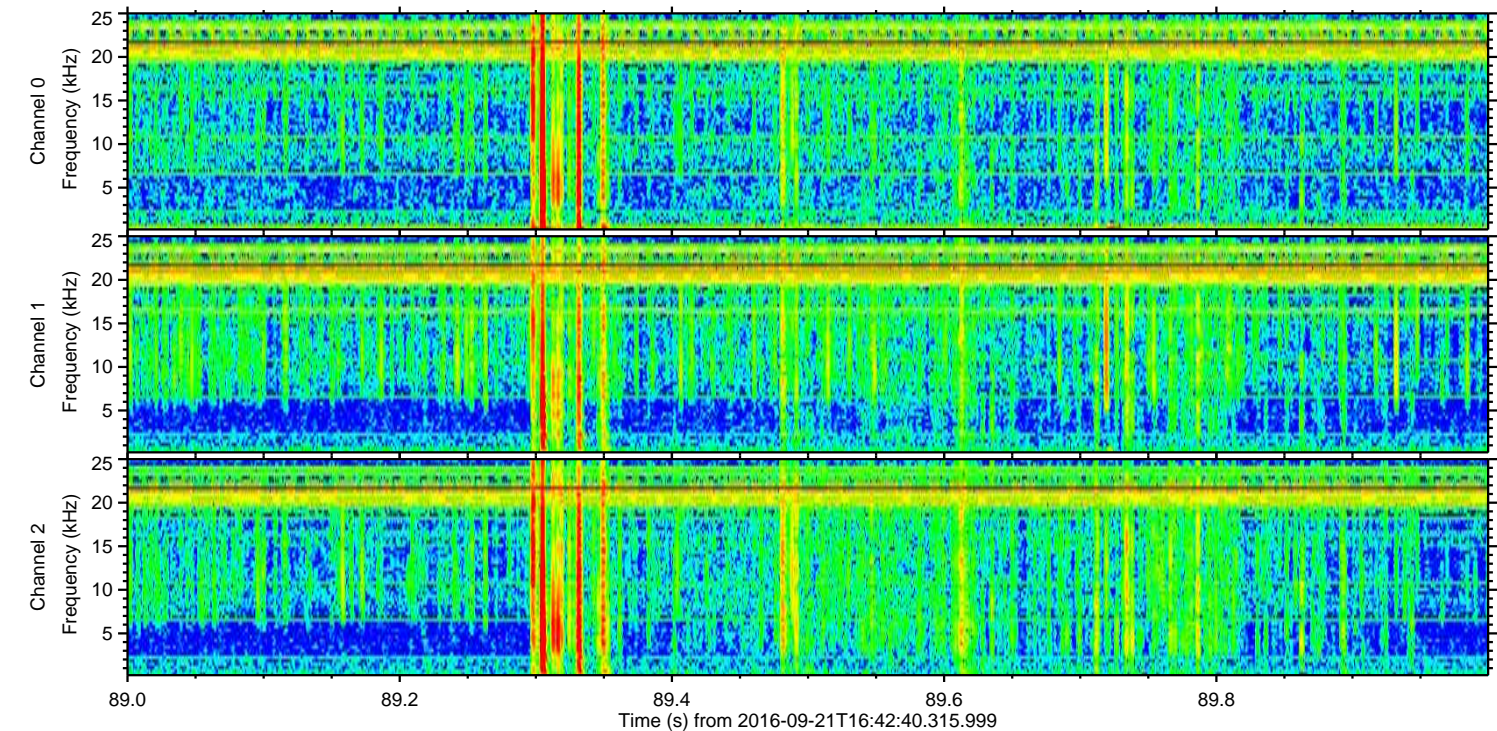
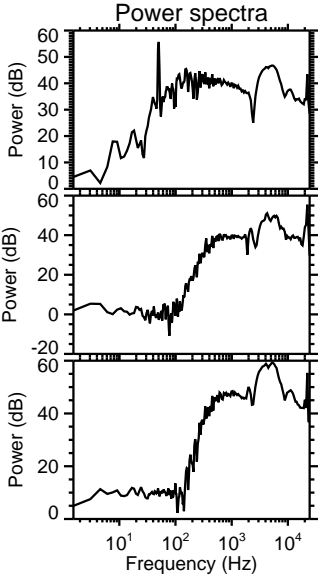
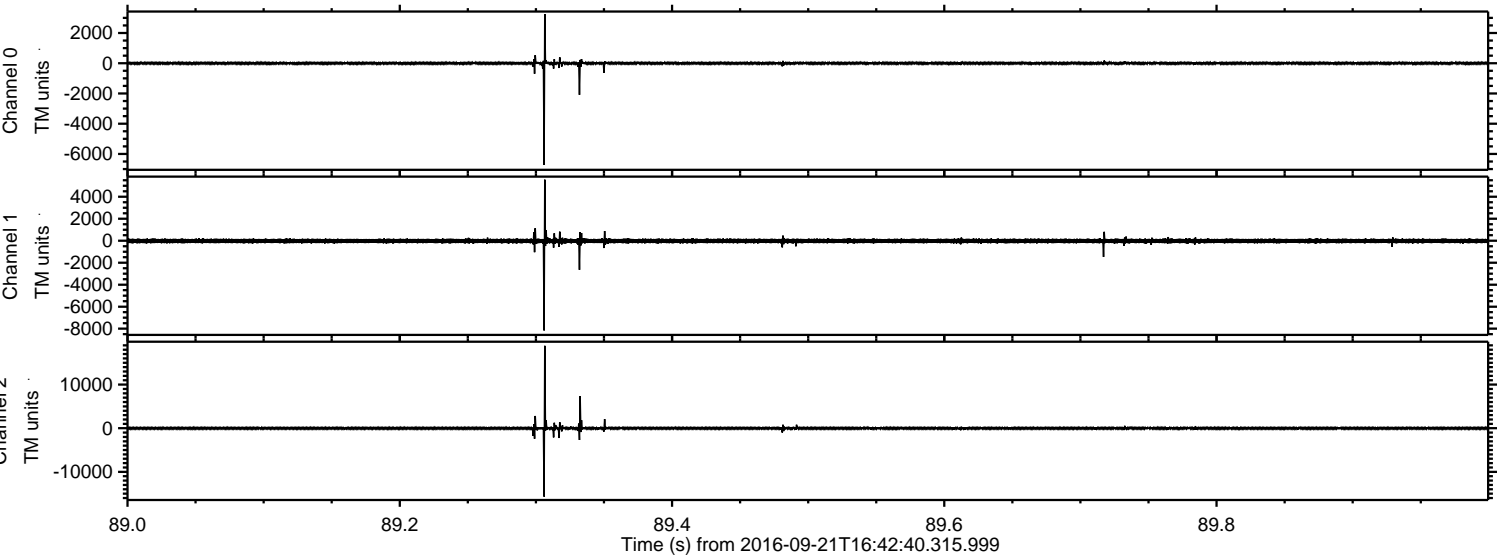
Processed Wed Sep 21 18:51:19 2016 by ELM ver.2012-10-06 from 001__elm20160921_164239__dat00.bin



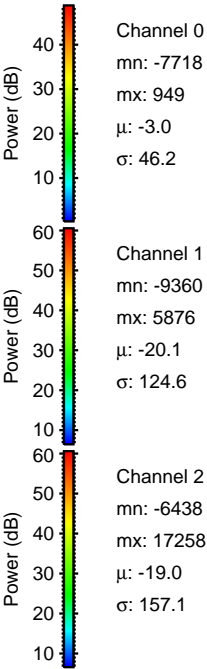
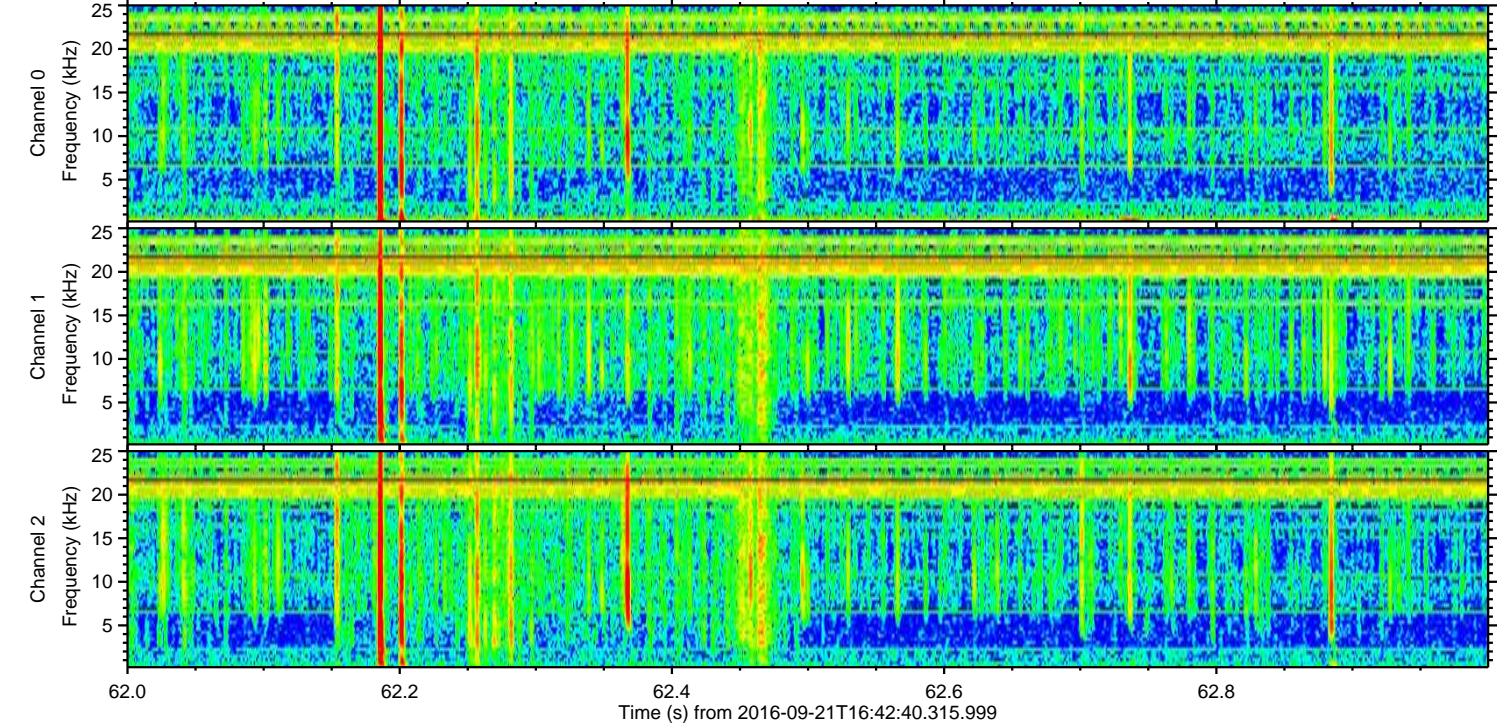
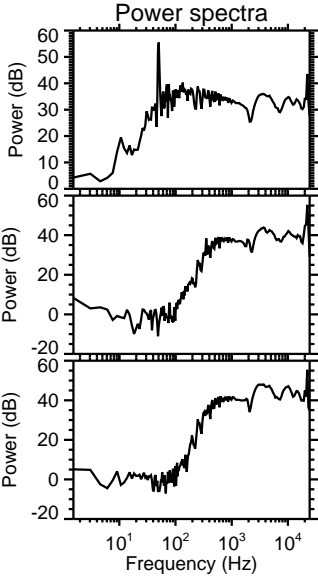
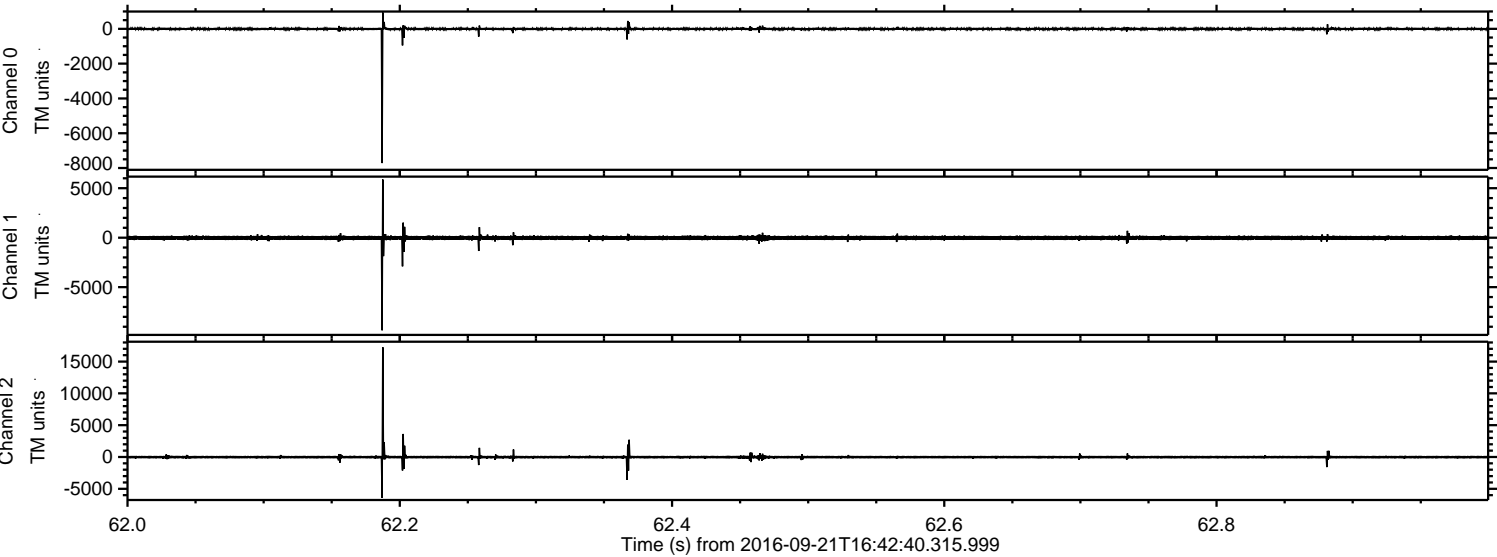
Processed Wed Sep 21 18:51:21 2016 by ELM ver.2012-10-06 from 001__elm20160921_164239__dat00.bin



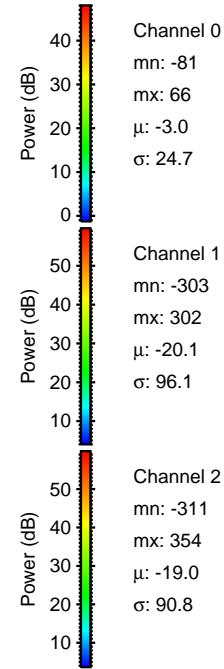
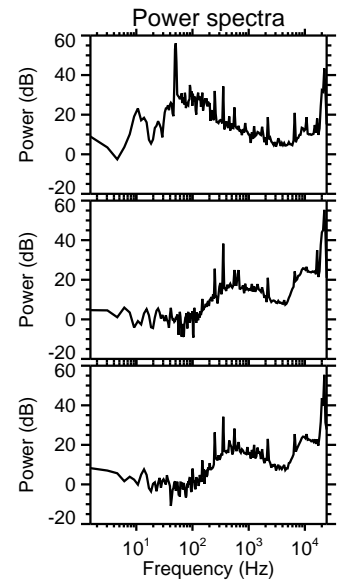
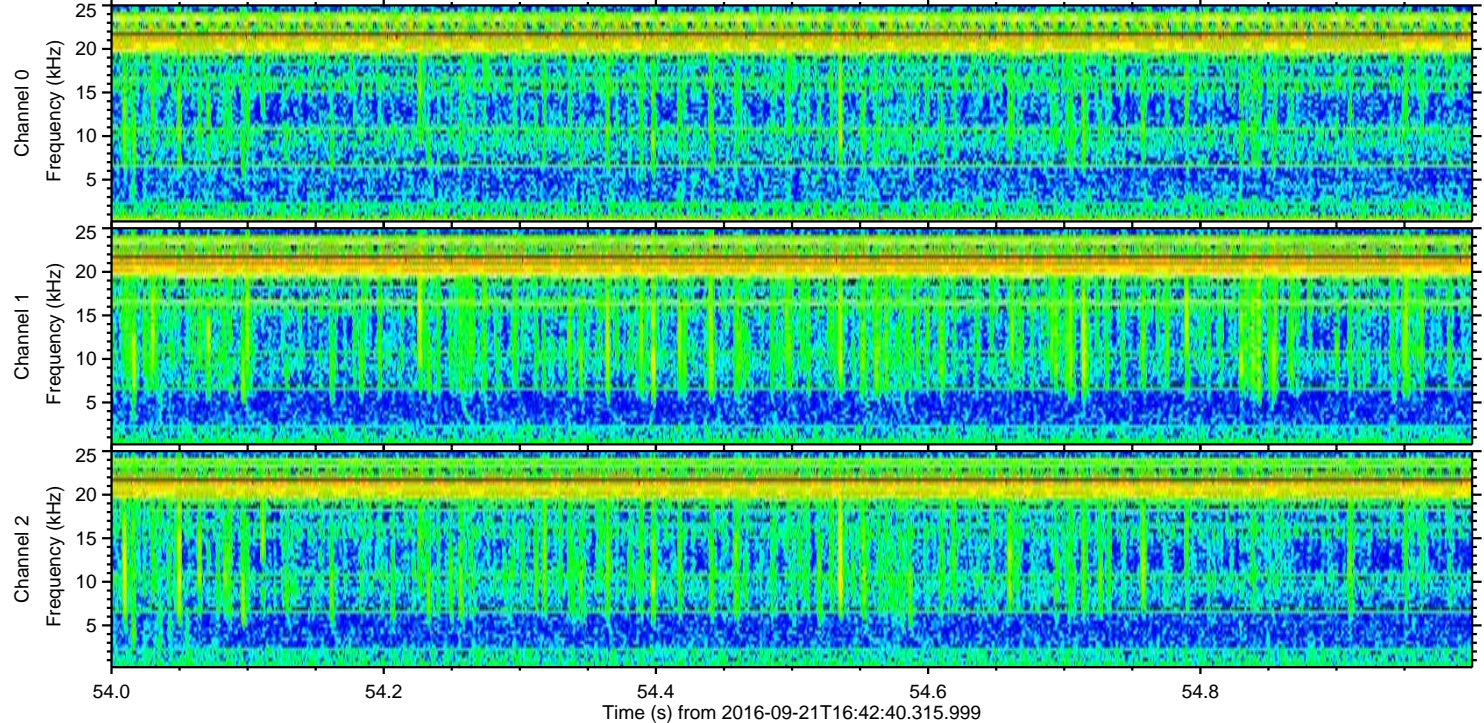
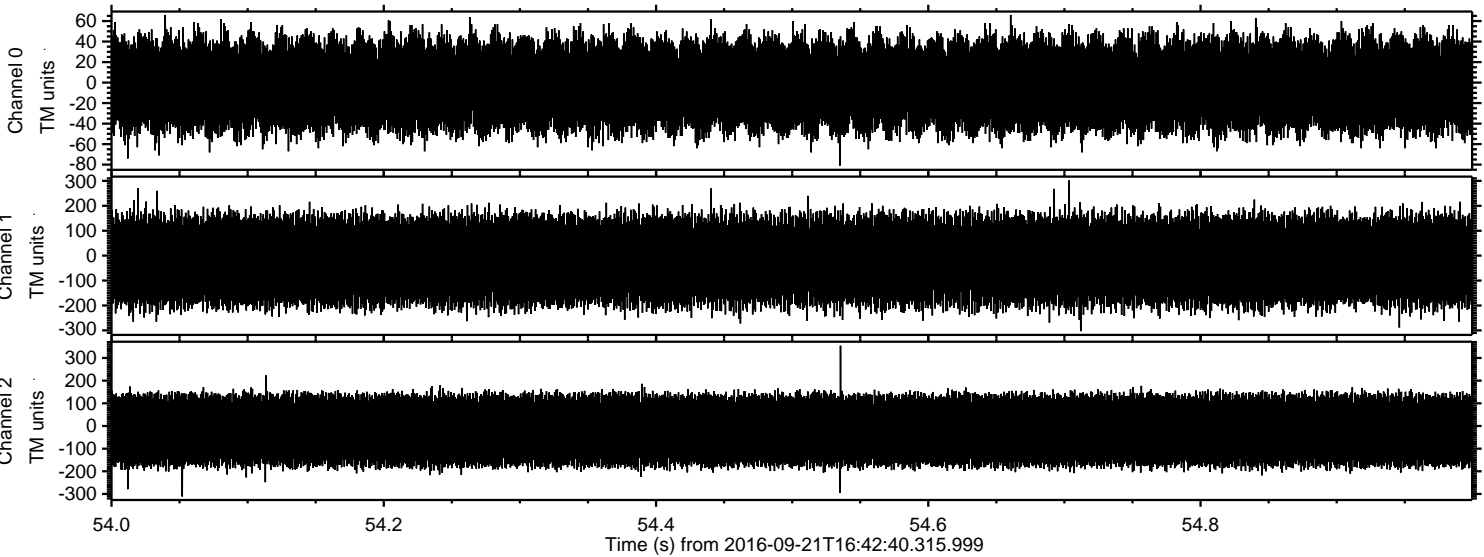
Processed Wed Sep 21 18:51:22 2016 by ELM ver.2012-10-06 from 001__elm20160921_164239__dat00.bin



Processed Wed Sep 21 18:51:23 2016 by ELM ver.2012-10-06 from 001__elm20160921_164239__dat00.bin



Processed Wed Sep 21 18:51:24 2016 by ELM ver.2012-10-06 from 001__elm20160921_164239__dat00.bin



Channel 0
mn: -81
mx: 66
 μ : -3.0
 σ : 24.7

Channel 1
mn: -303
mx: 302
 μ : -20.1
 σ : 96.1

Channel 2
mn: -311
mx: 354
 μ : -19.0
 σ : 90.8