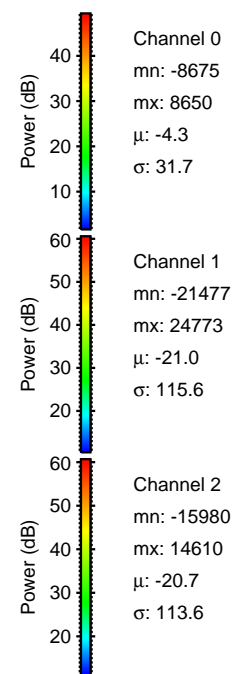
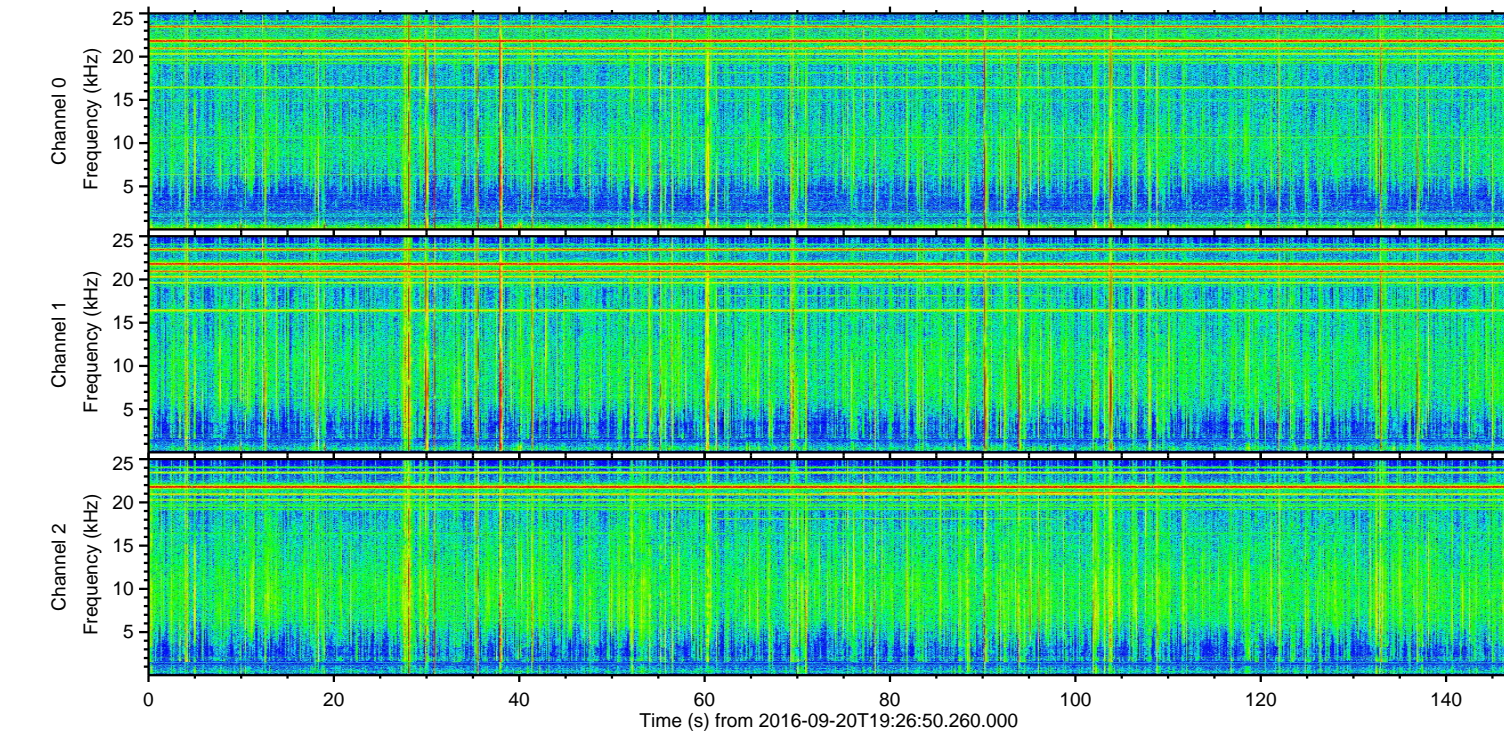
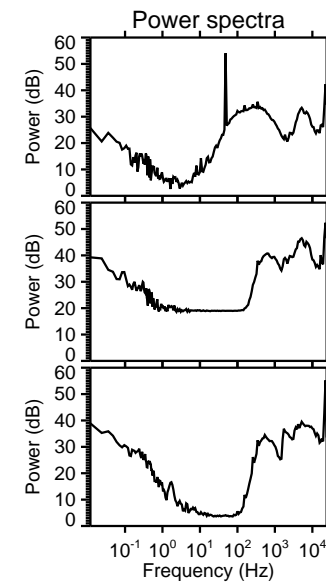
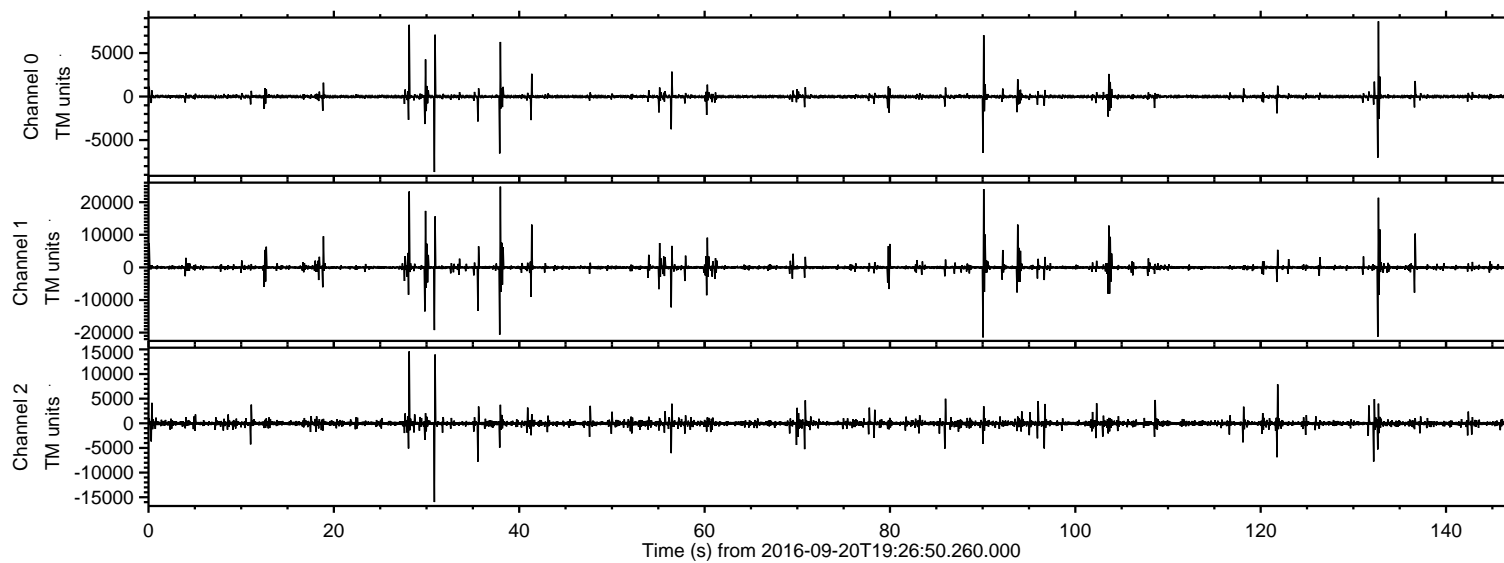


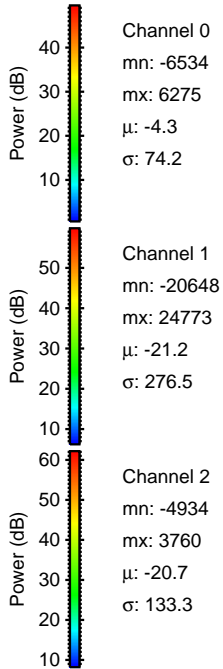
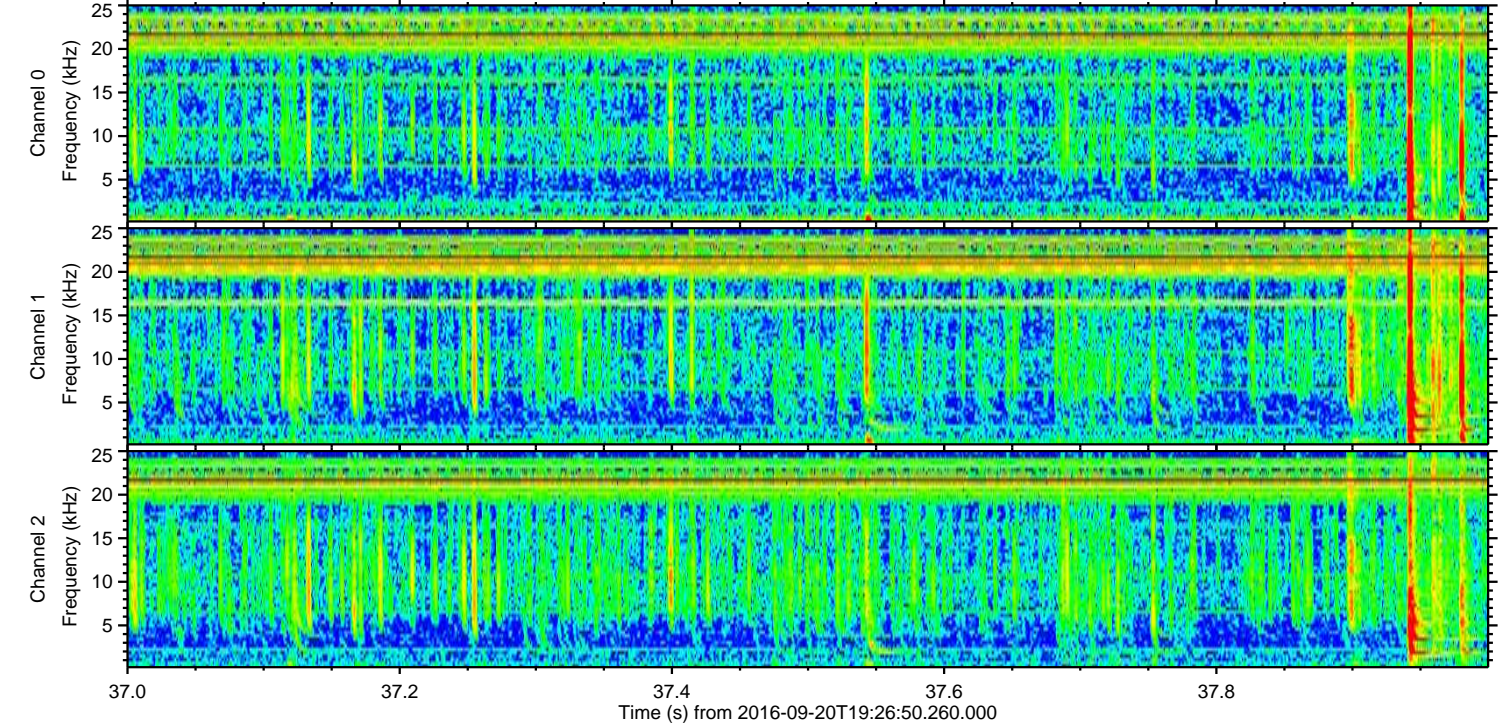
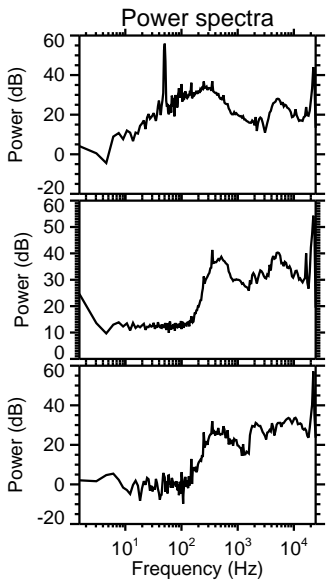
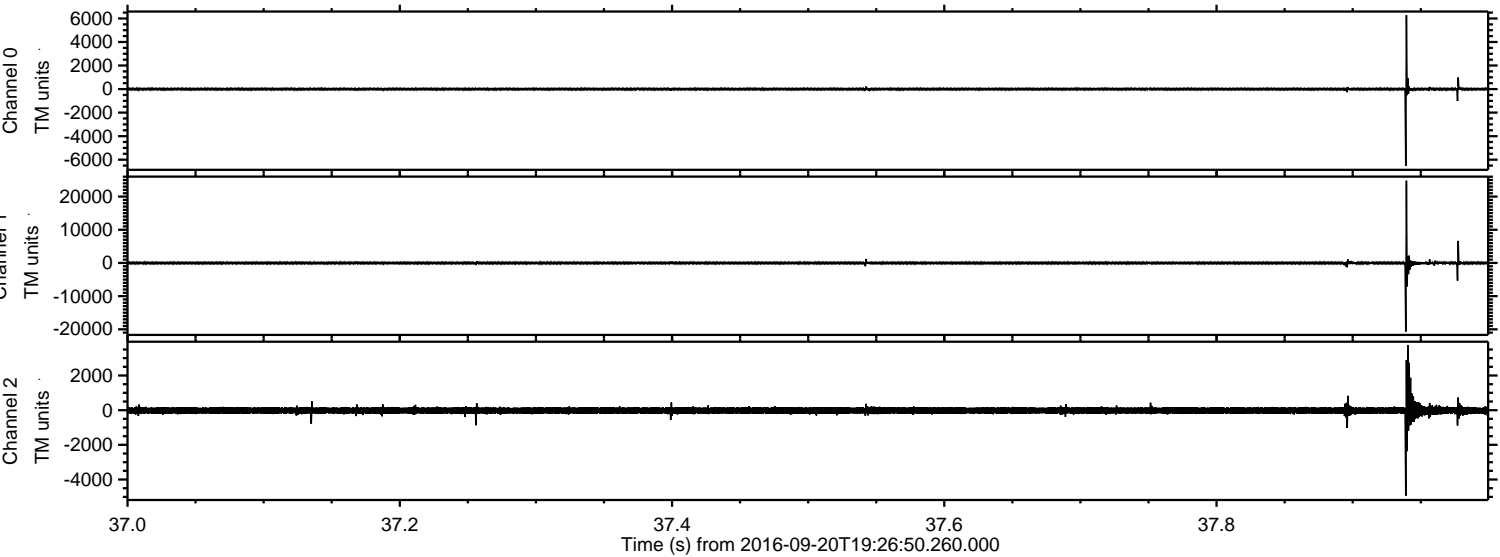
# ELMAVAN 3D WAVEFORMS (Measured data sampled at 50 kHz) 51000 packets of 144 samples from 2016-09-20T19:26:50.260.000.

Processed Tue Sep 20 21:34:26 2016 by ELM ver.2012-10-06 from 001\_\_elm20160920\_192649\_\_dat00.bin



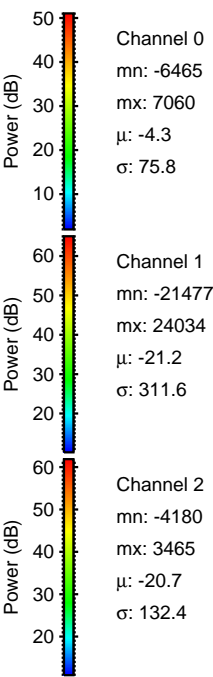
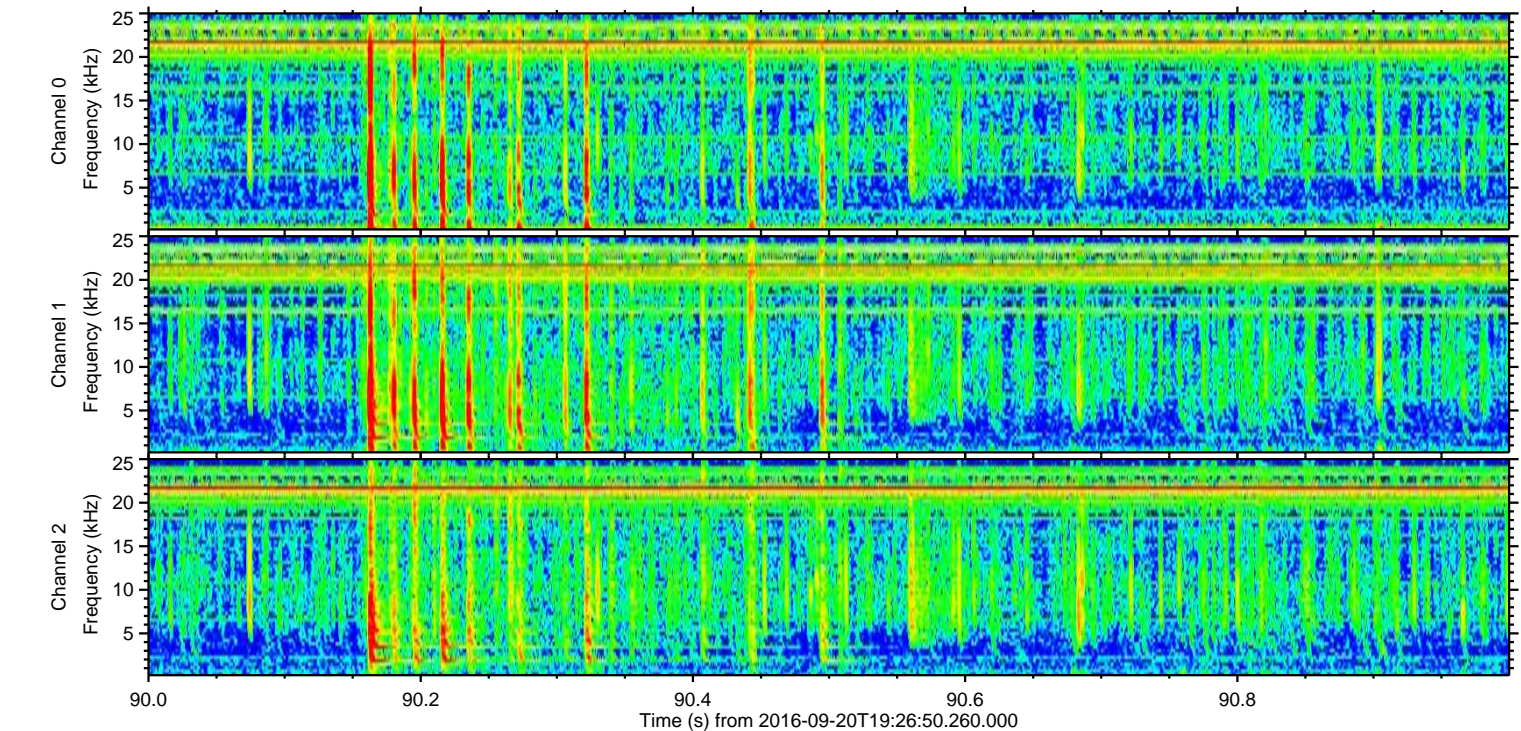
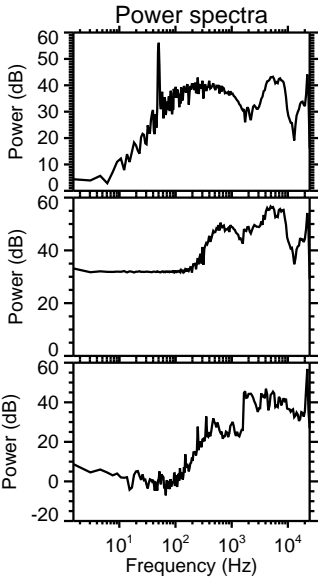
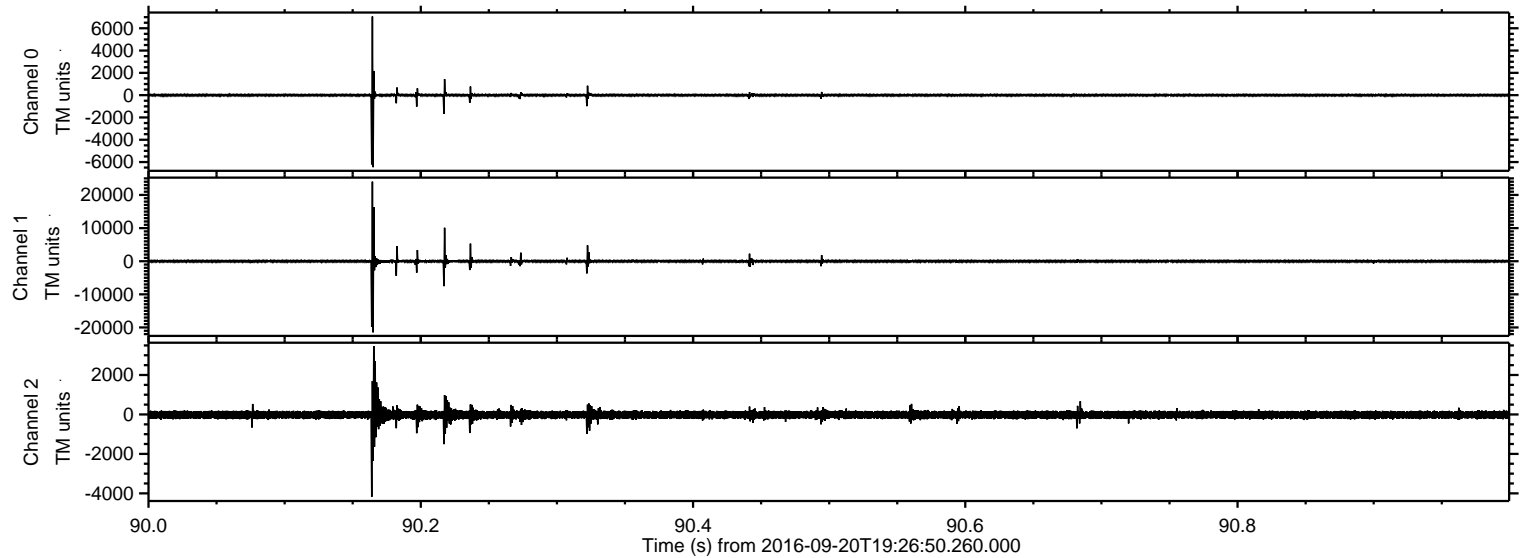


Processed Tue Sep 20 21:34:41 2016 by ELM ver.2012-10-06 from 001\_\_elm20160920\_192649\_\_dat00.bin



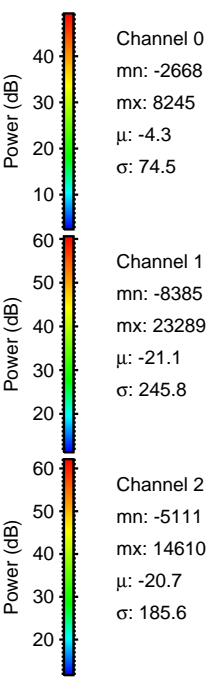
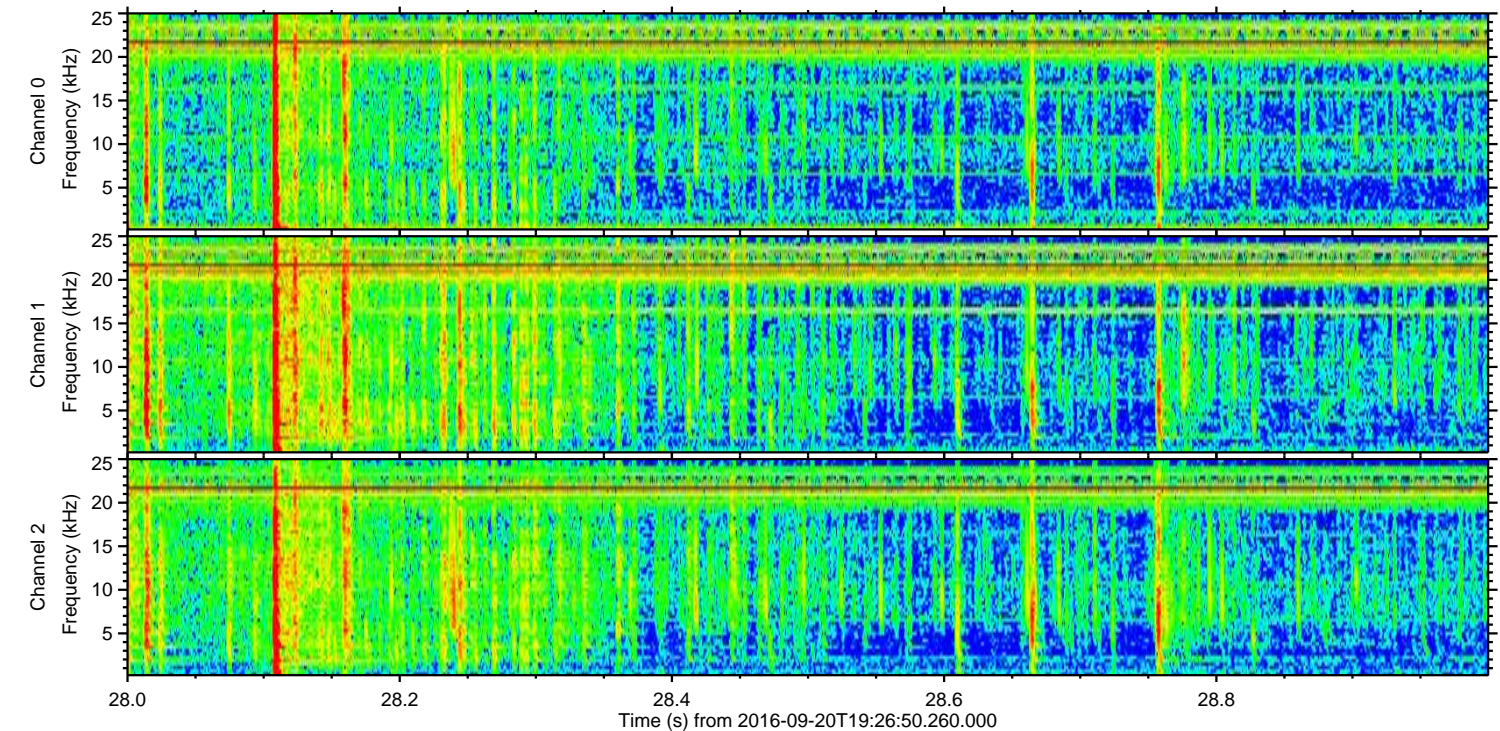
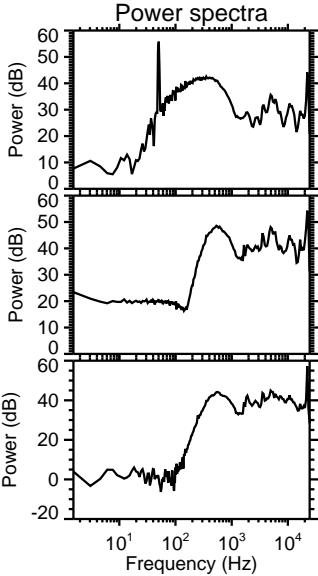
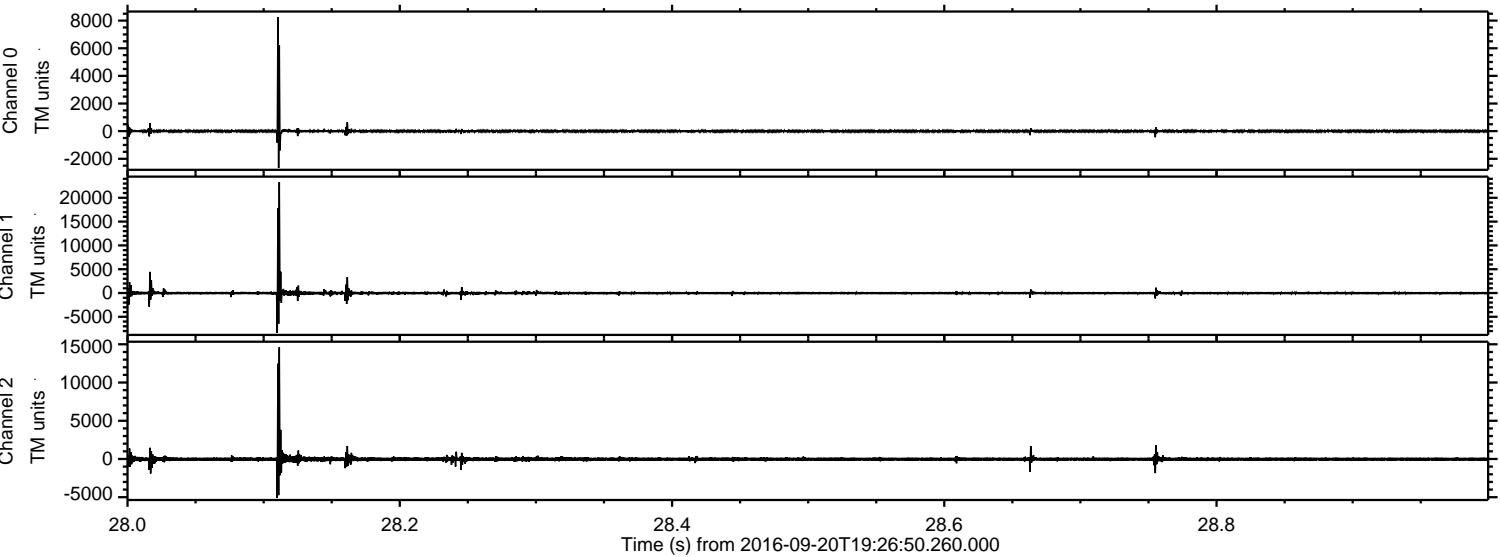


Processed Tue Sep 20 21:34:42 2016 by ELM ver.2012-10-06 from 001\_\_elm20160920\_192649\_\_dat00.bin



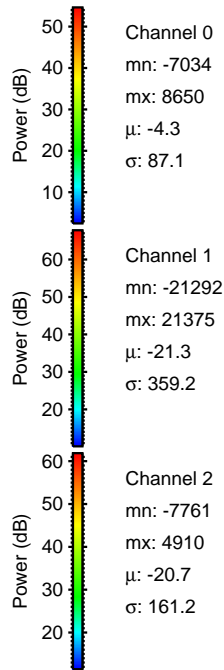
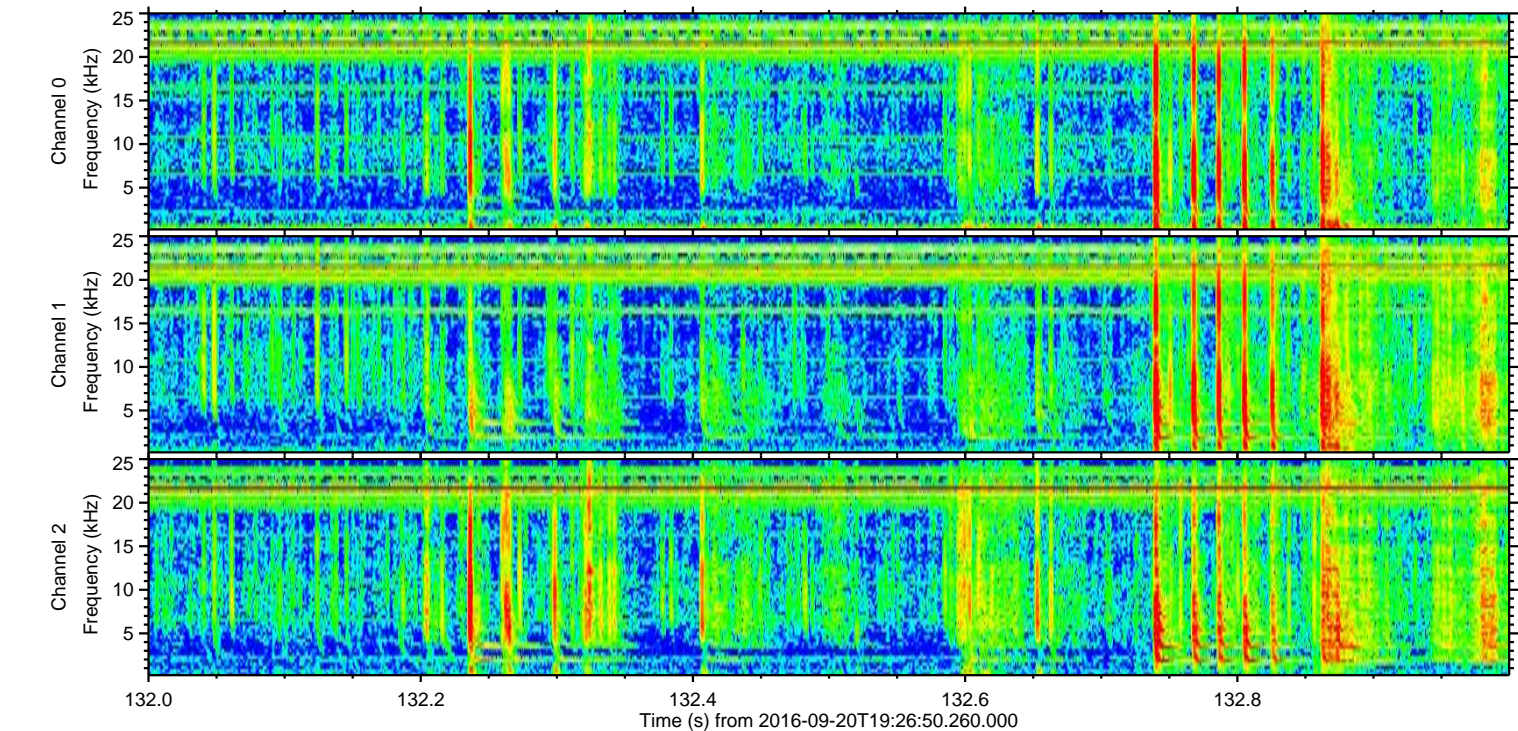
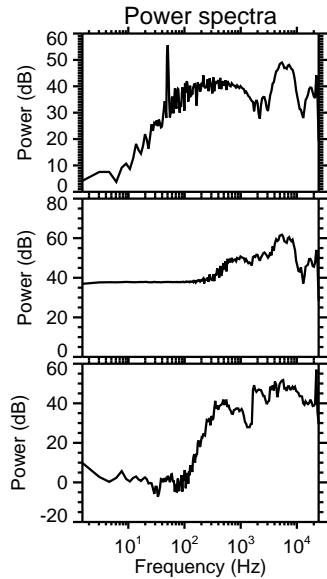
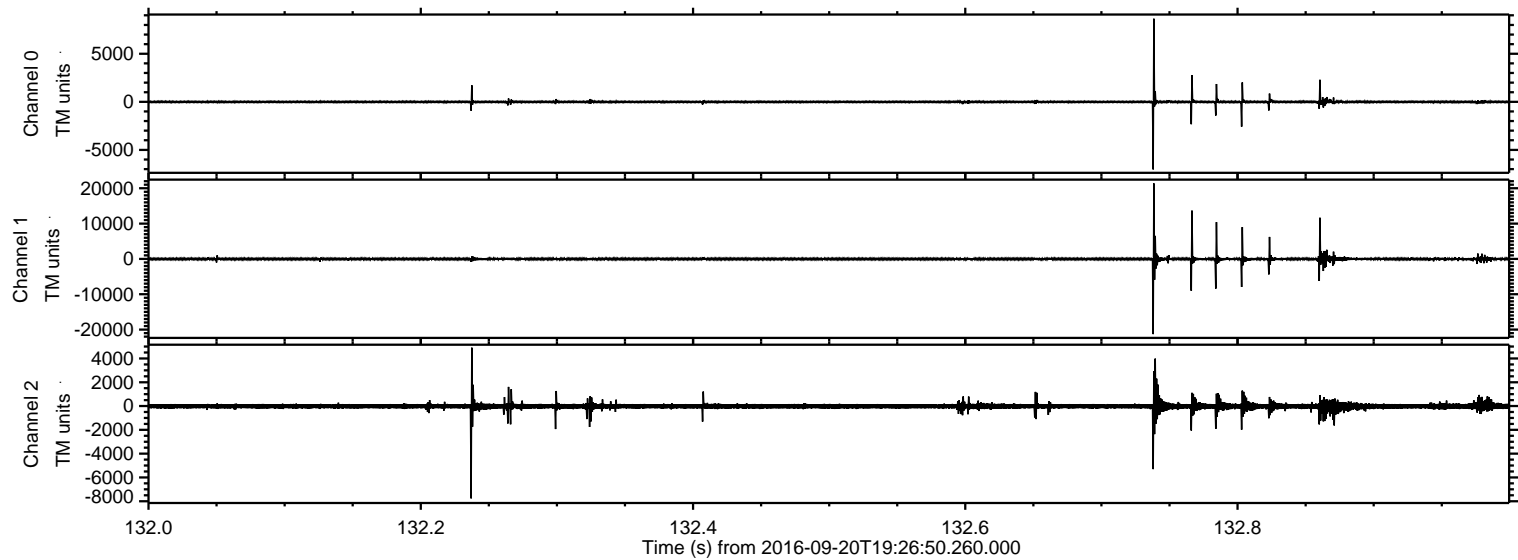


Processed Tue Sep 20 21:34:43 2016 by ELM ver.2012-10-06 from 001\_\_elm20160920\_192649\_\_dat00.bin



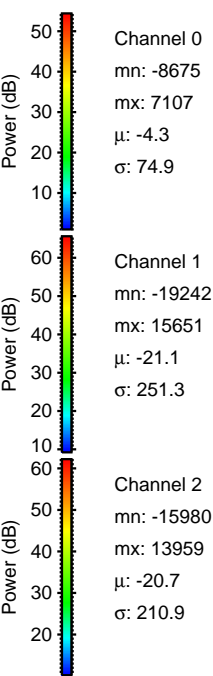
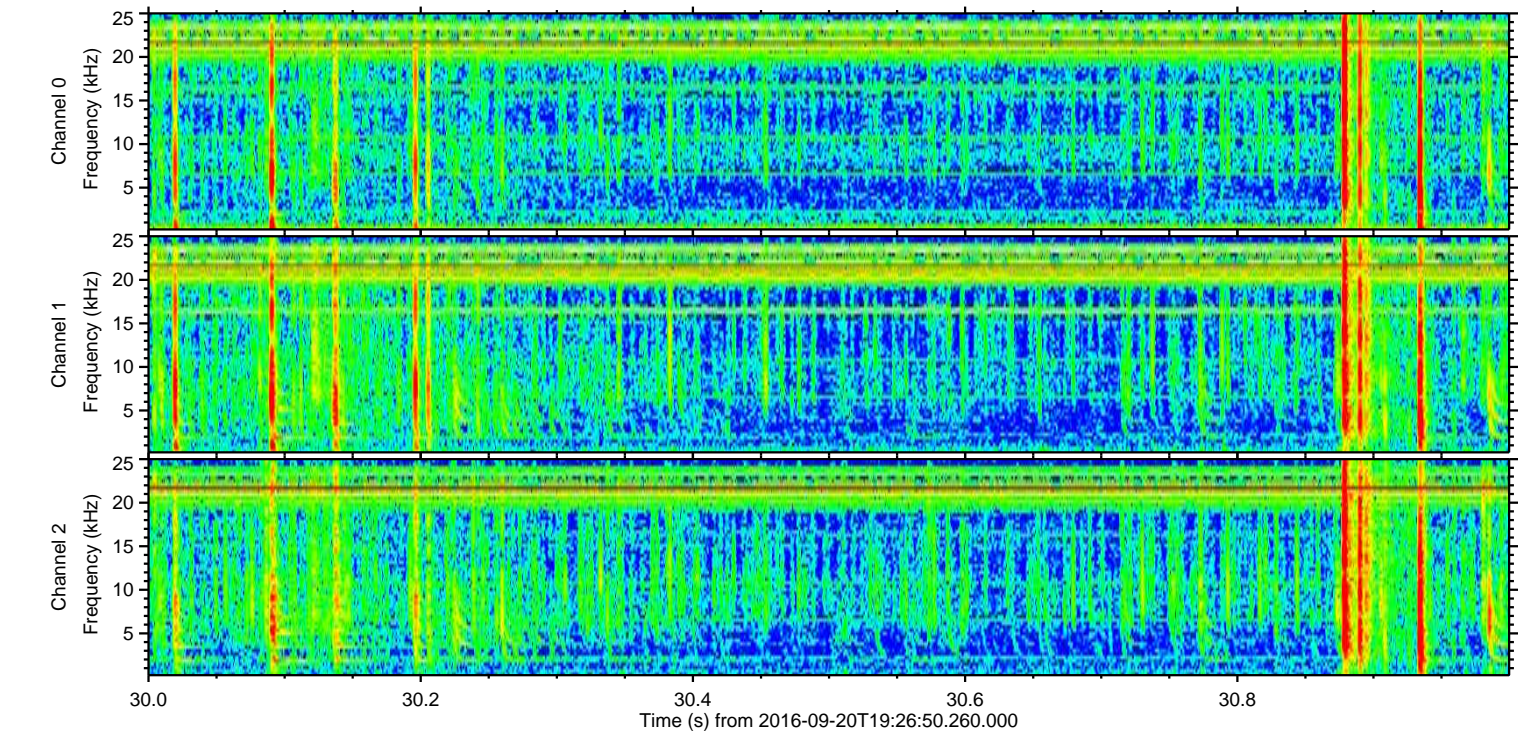
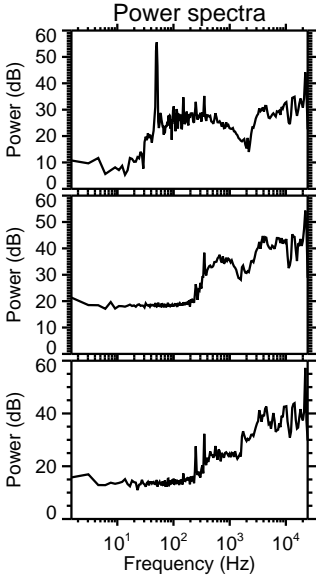
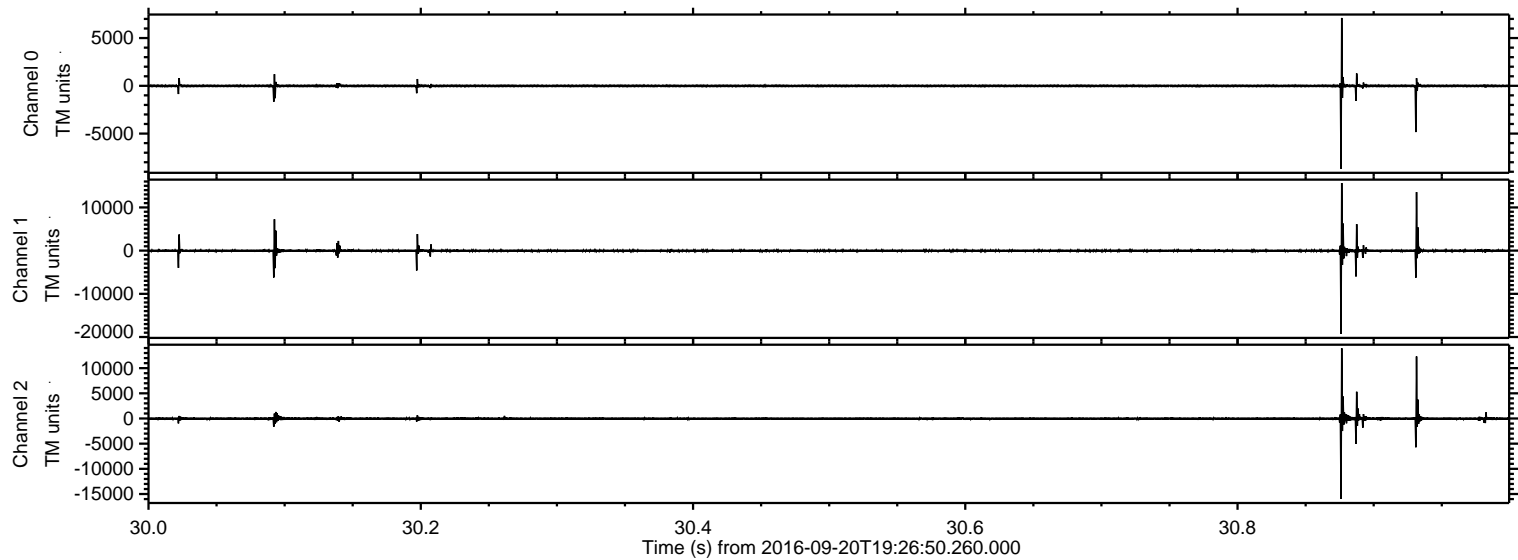
ELMAVAN 3D WAVEFORMS (Measured data sampled at 50 kHz) 51000 packets of 144 samples from 2016-09-20T19:26:50.260.000. Part 133/147

Processed Tue Sep 20 21:34:44 2016 by ELM ver.2012-10-06 from 001\_\_elm20160920\_192649\_\_dat00.bin



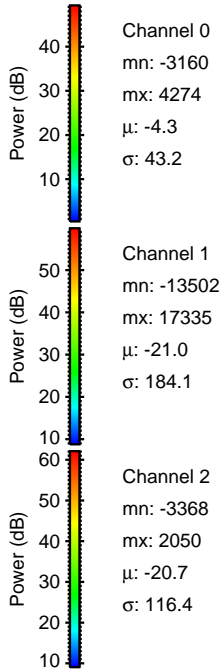
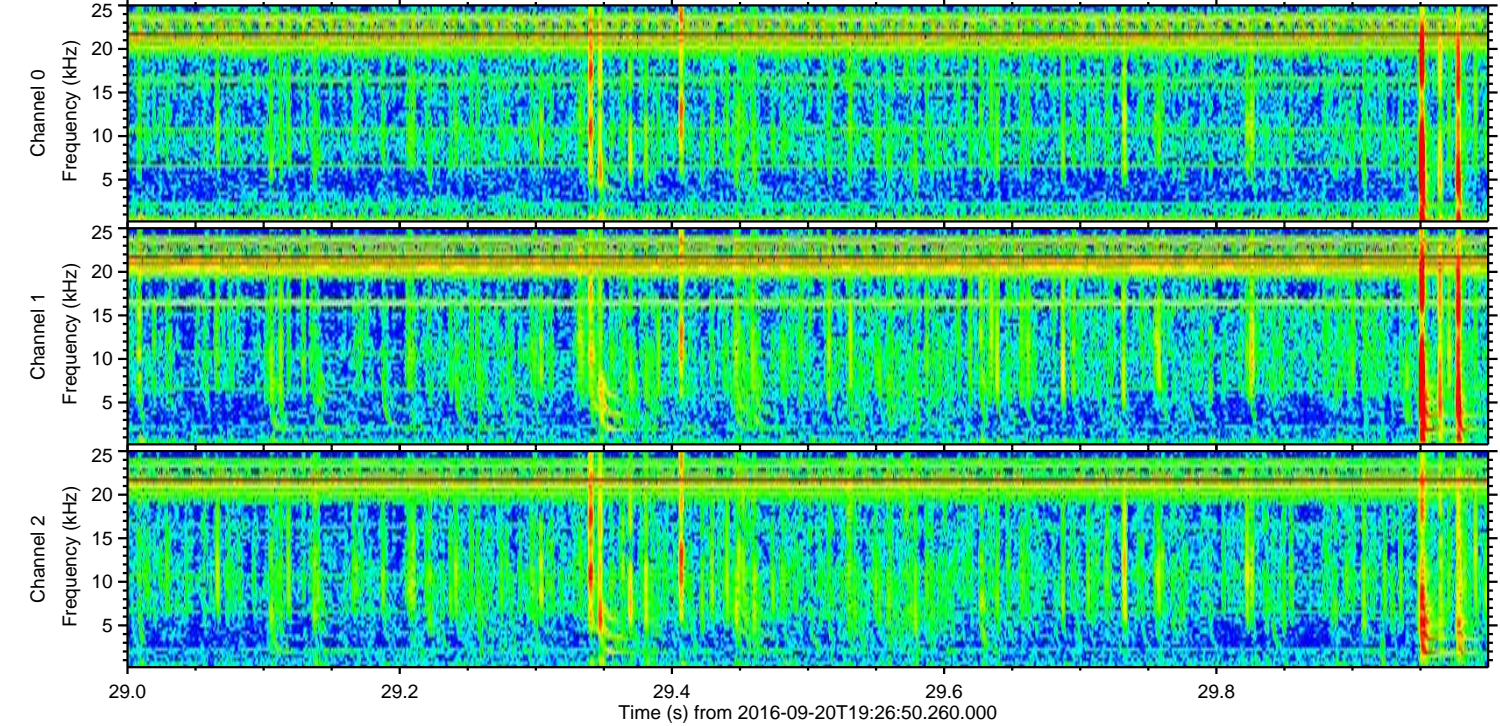
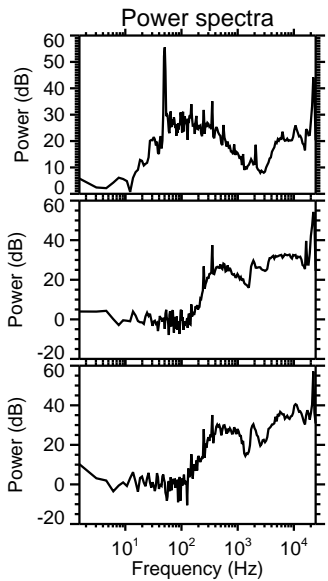
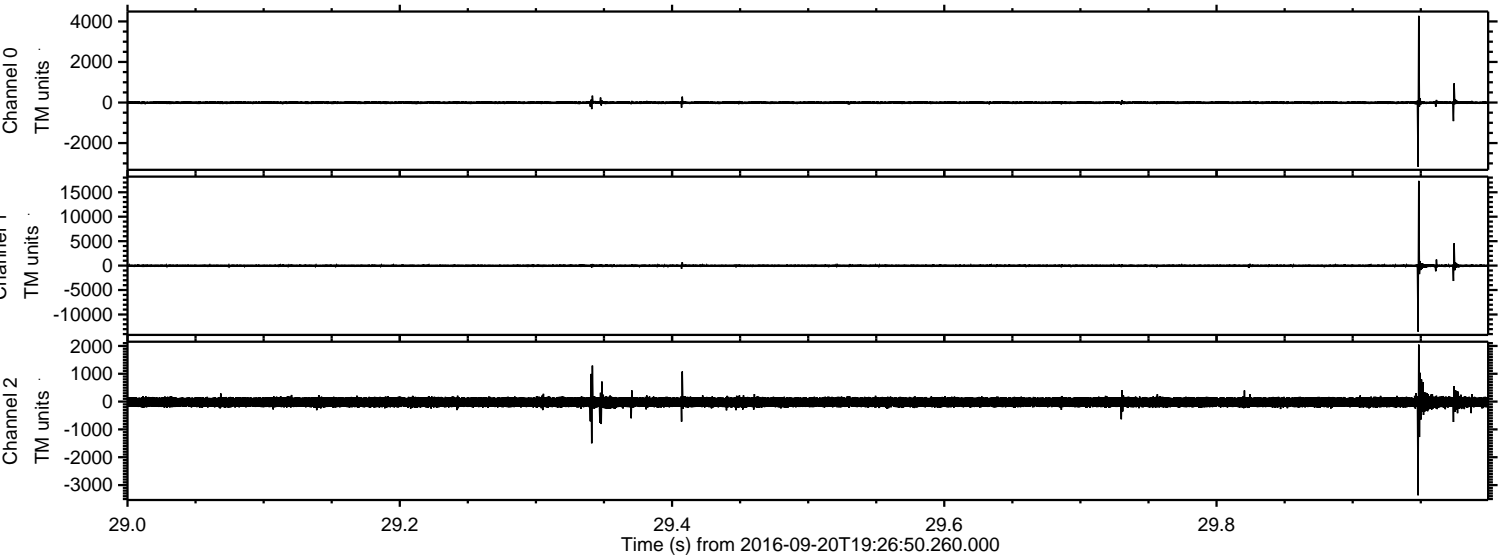


Processed Tue Sep 20 21:34:45 2016 by ELM ver.2012-10-06 from 001\_\_elm20160920\_192649\_\_dat00.bin



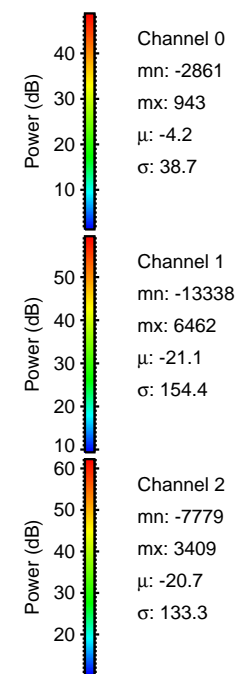
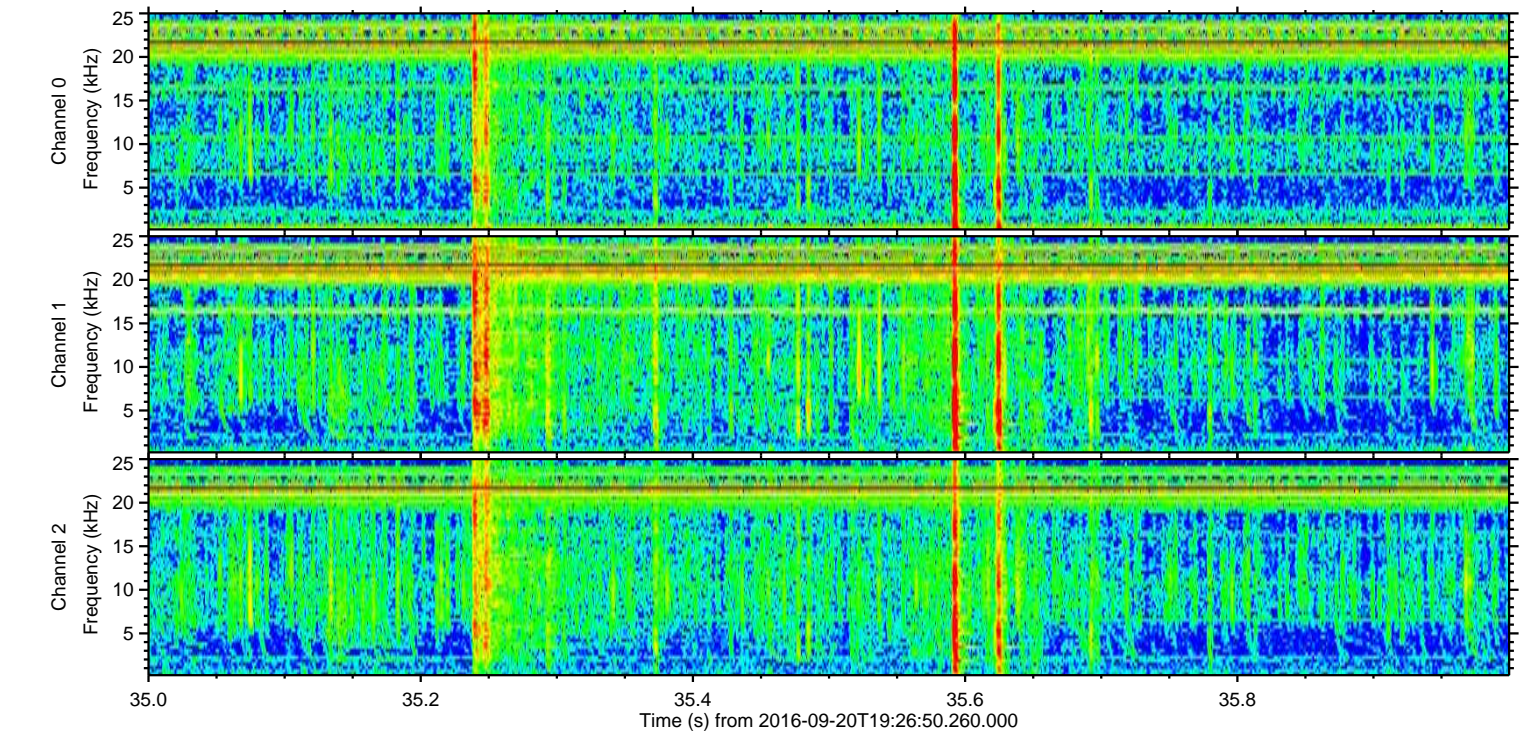
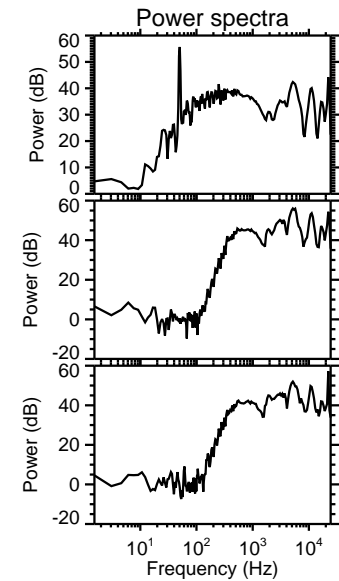
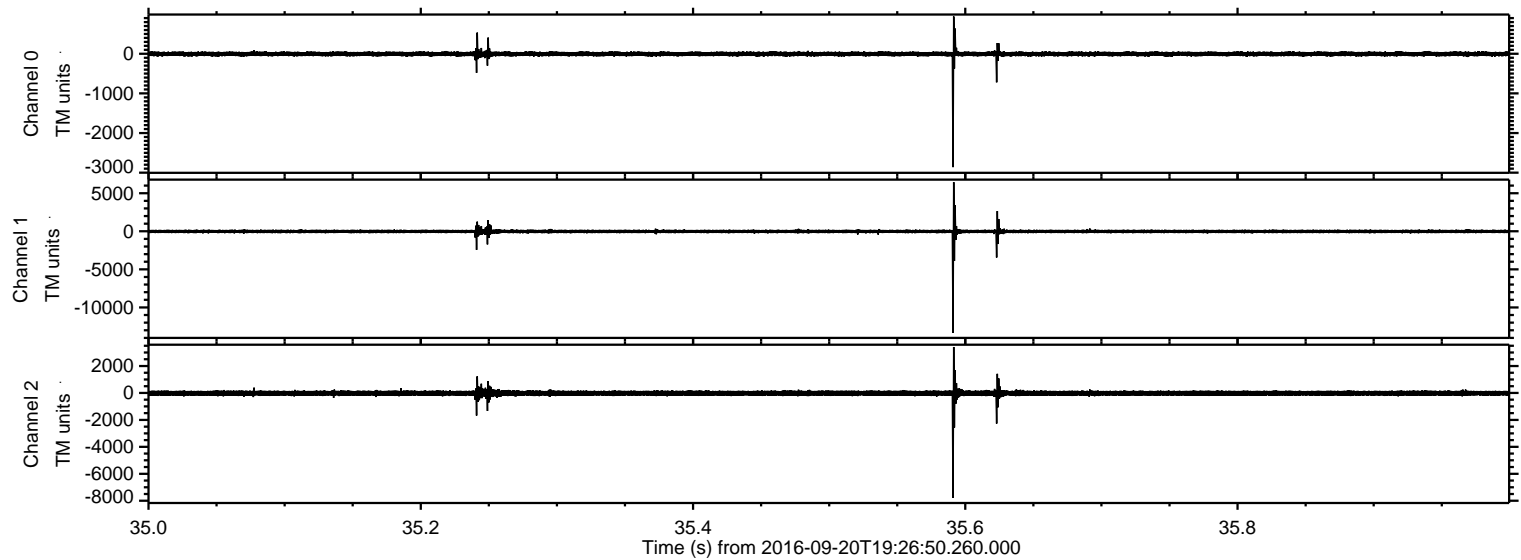


Processed Tue Sep 20 21:34:46 2016 by ELM ver.2012-10-06 from 001\_\_elm20160920\_192649\_\_dat00.bin



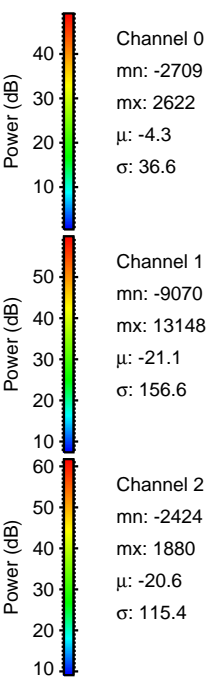
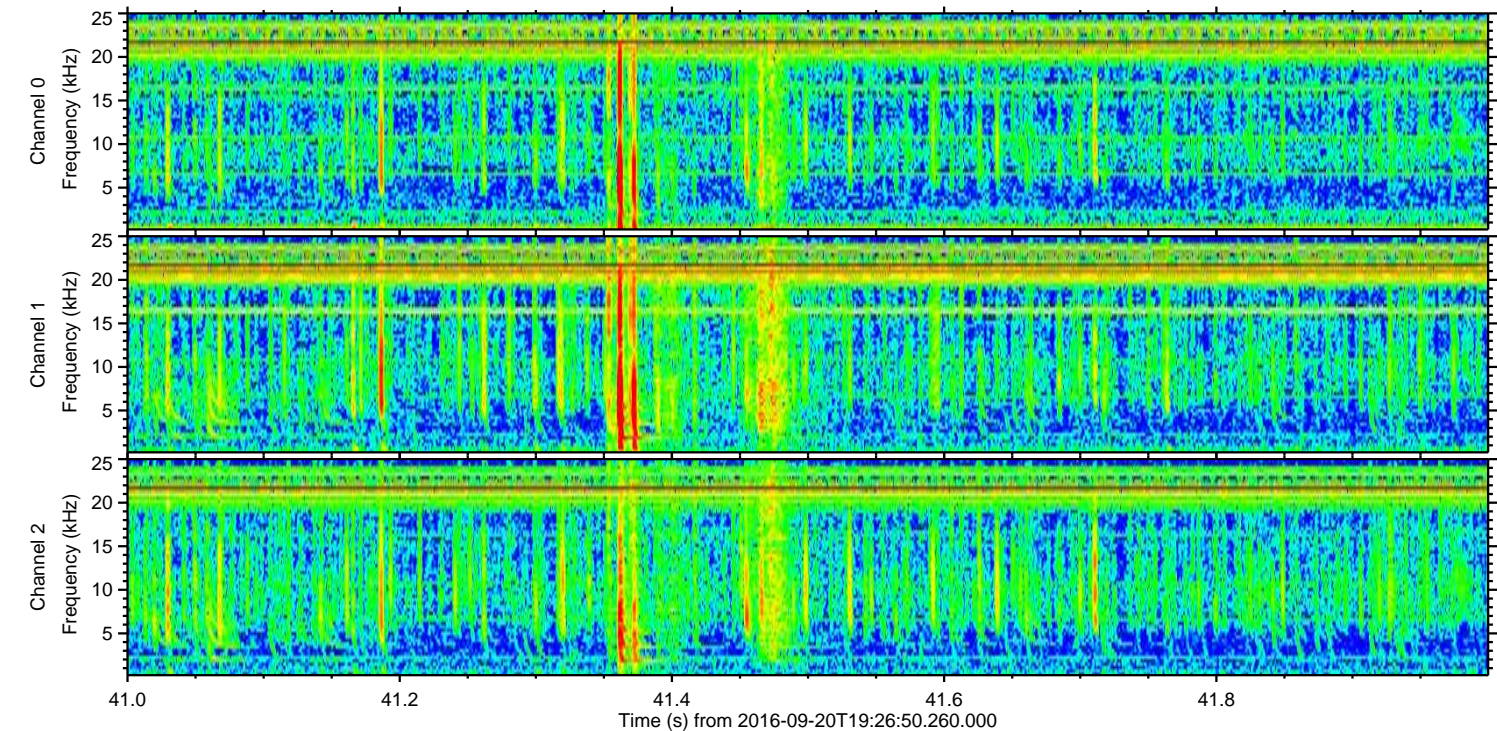
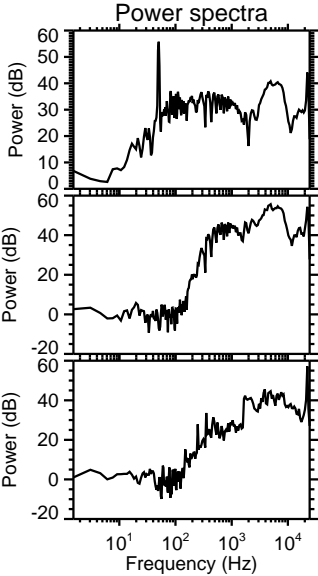
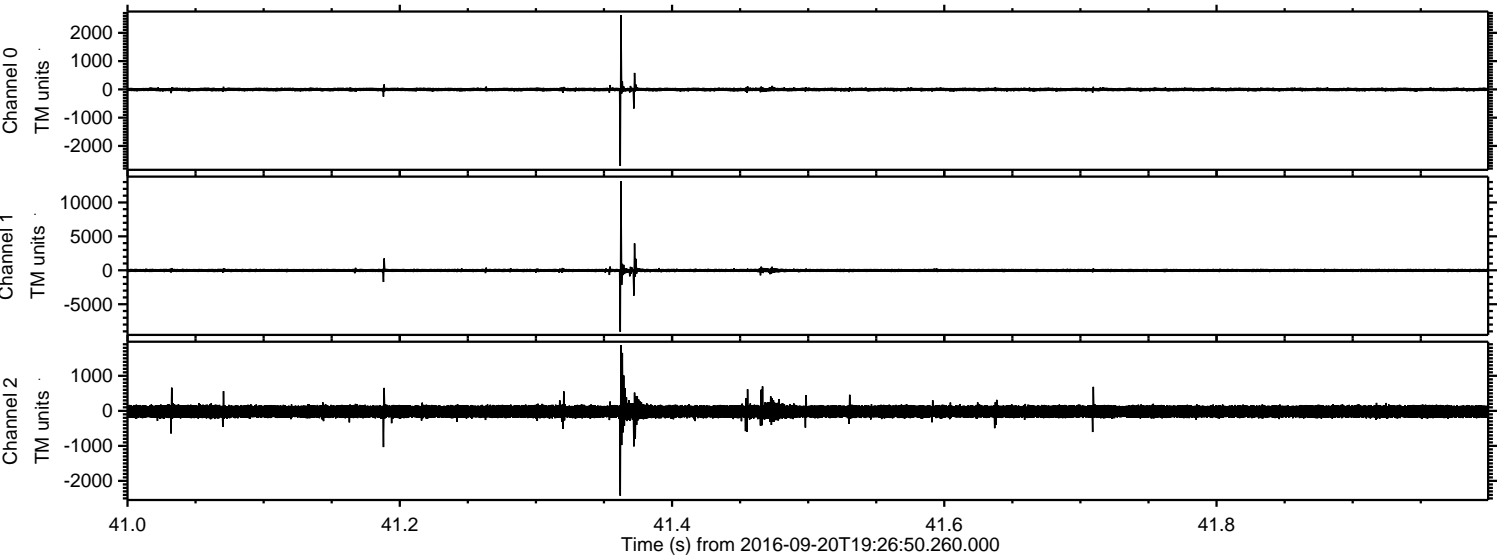


Processed Tue Sep 20 21:34:47 2016 by ELM ver.2012-10-06 from 001\_\_elm20160920\_192649\_\_dat00.bin





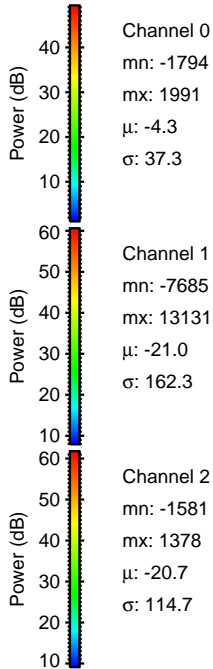
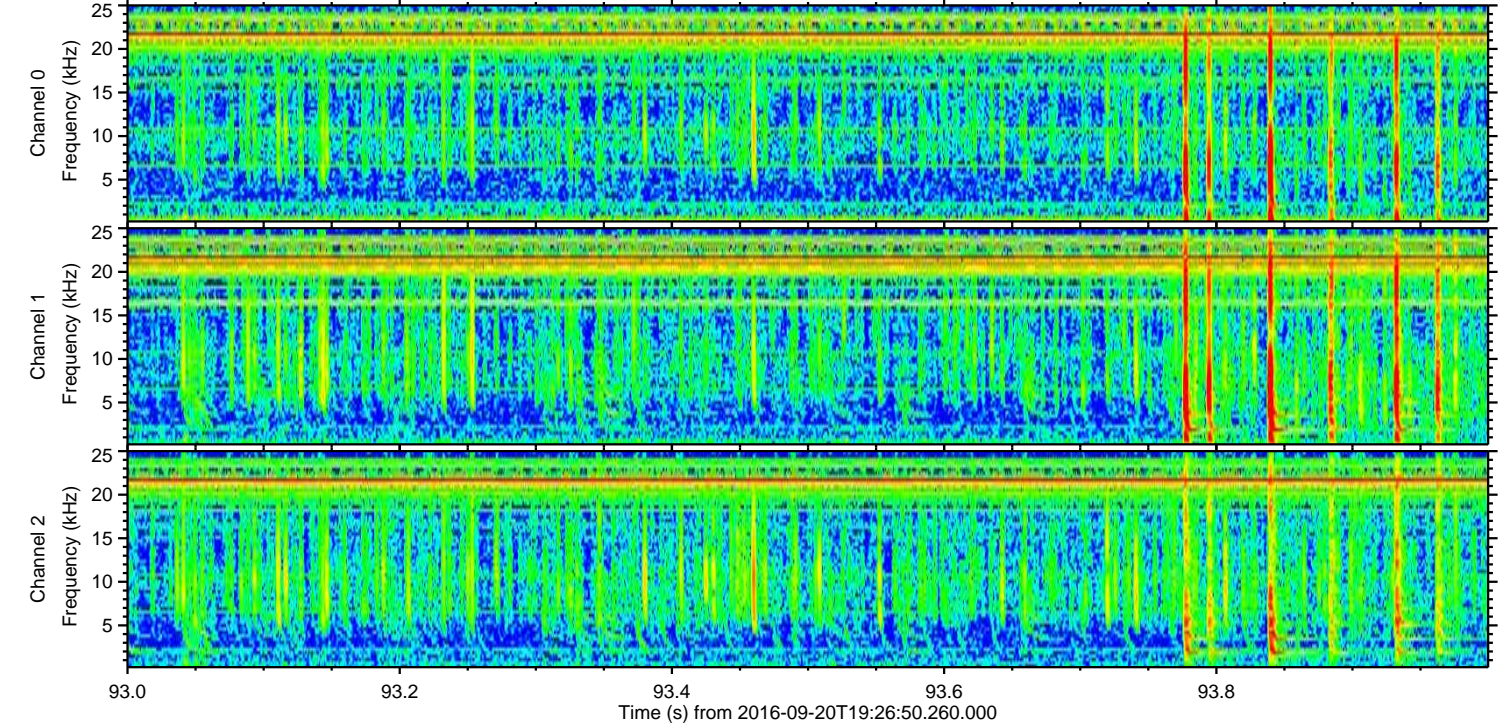
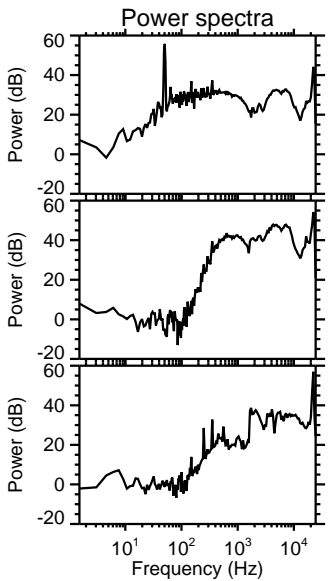
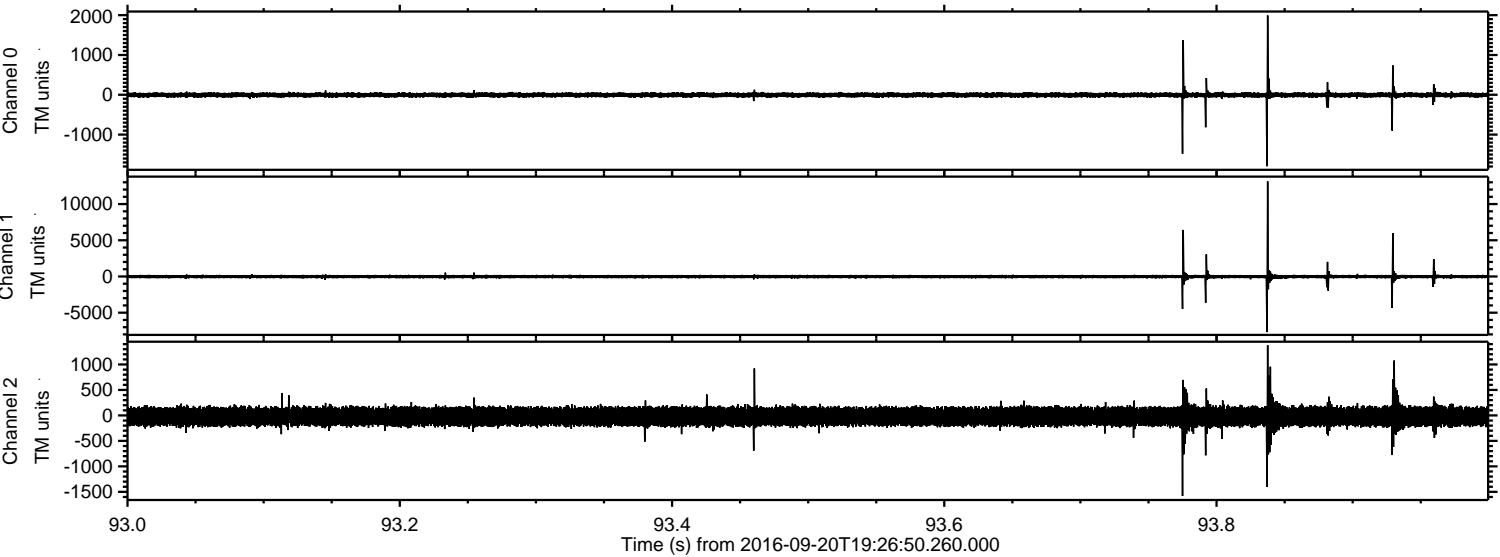
Processed Tue Sep 20 21:34:48 2016 by ELM ver.2012-10-06 from 001\_\_elm20160920\_192649\_\_dat00.bin





ELMAVAN 3D WAVEFORMS (Measured data sampled at 50 kHz) 51000 packets of 144 samples from 2016-09-20T19:26:50.260.000. Part 94/147

Processed Tue Sep 20 21:34:49 2016 by ELM ver.2012-10-06 from 001\_\_elm20160920\_192649\_\_dat00.bin



Channel 0  
mn: -1794  
mx: 1991  
 $\mu$ : -4.3  
 $\sigma$ : 37.3

Channel 1  
mn: -7685  
mx: 13131  
 $\mu$ : -21.0  
 $\sigma$ : 162.3

Channel 2  
mn: -1581  
mx: 1378  
 $\mu$ : -20.7  
 $\sigma$ : 114.7



