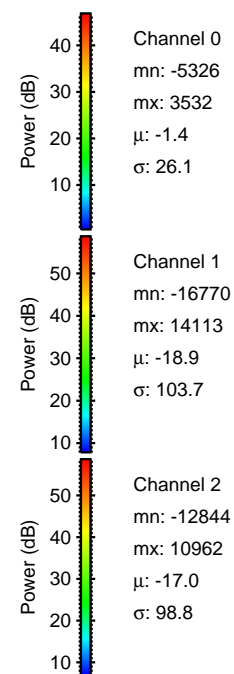
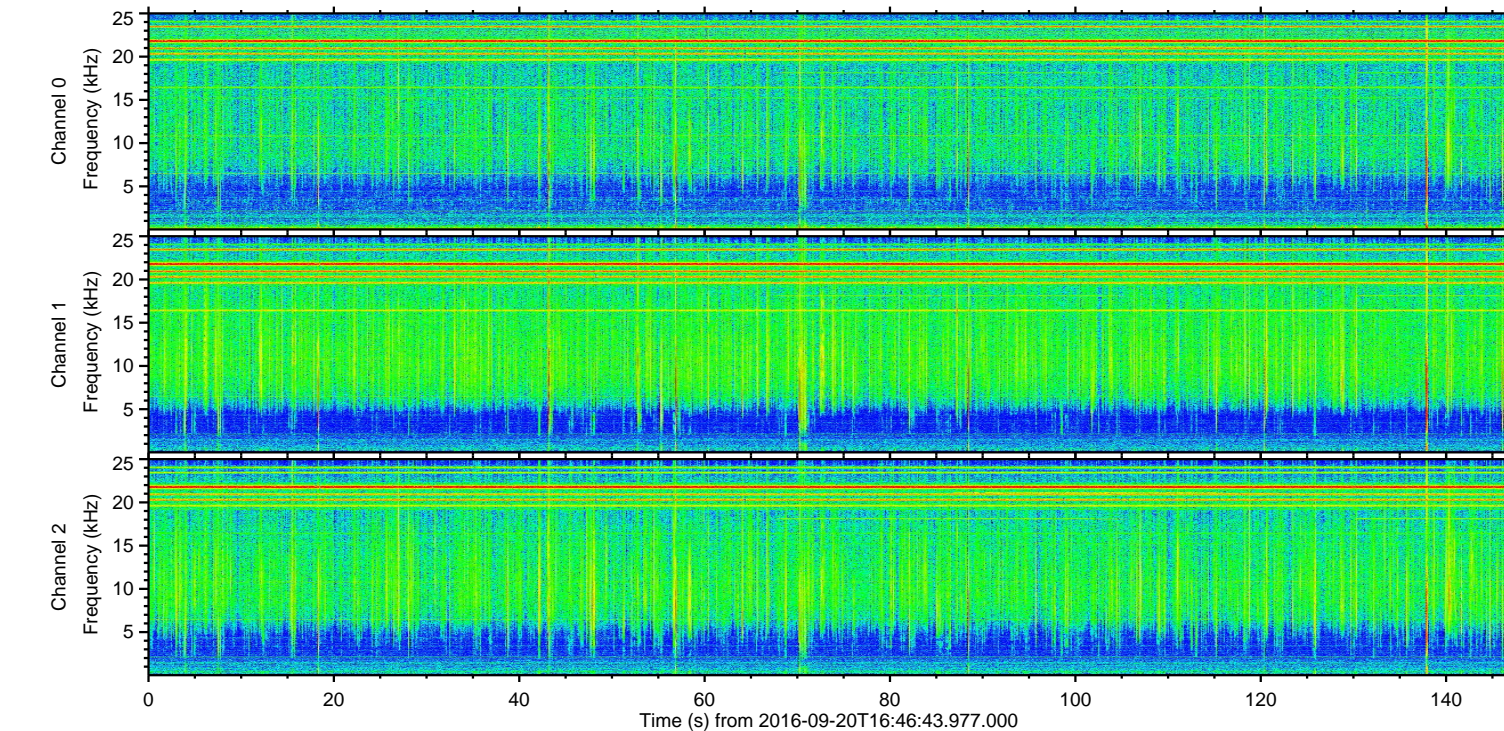
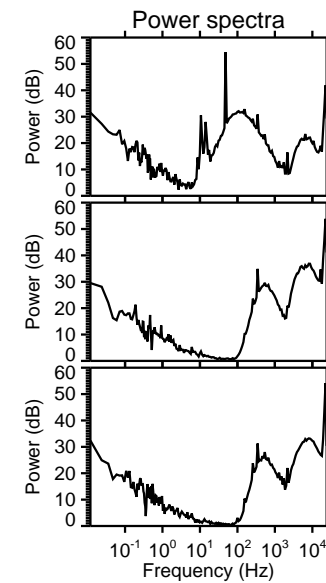
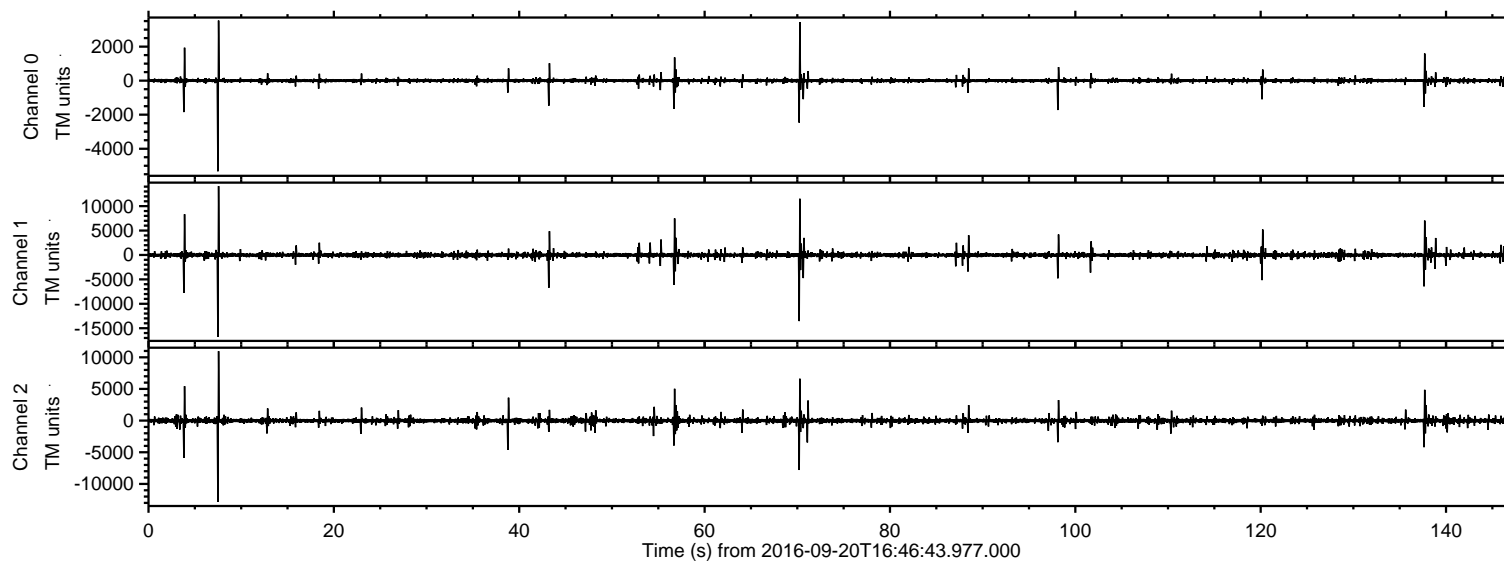
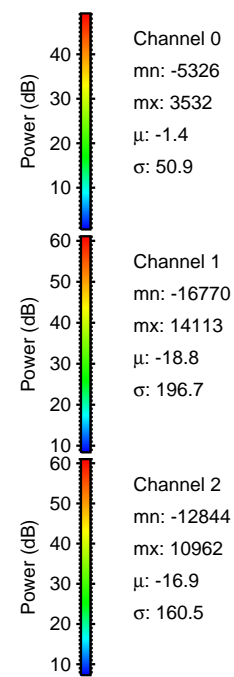
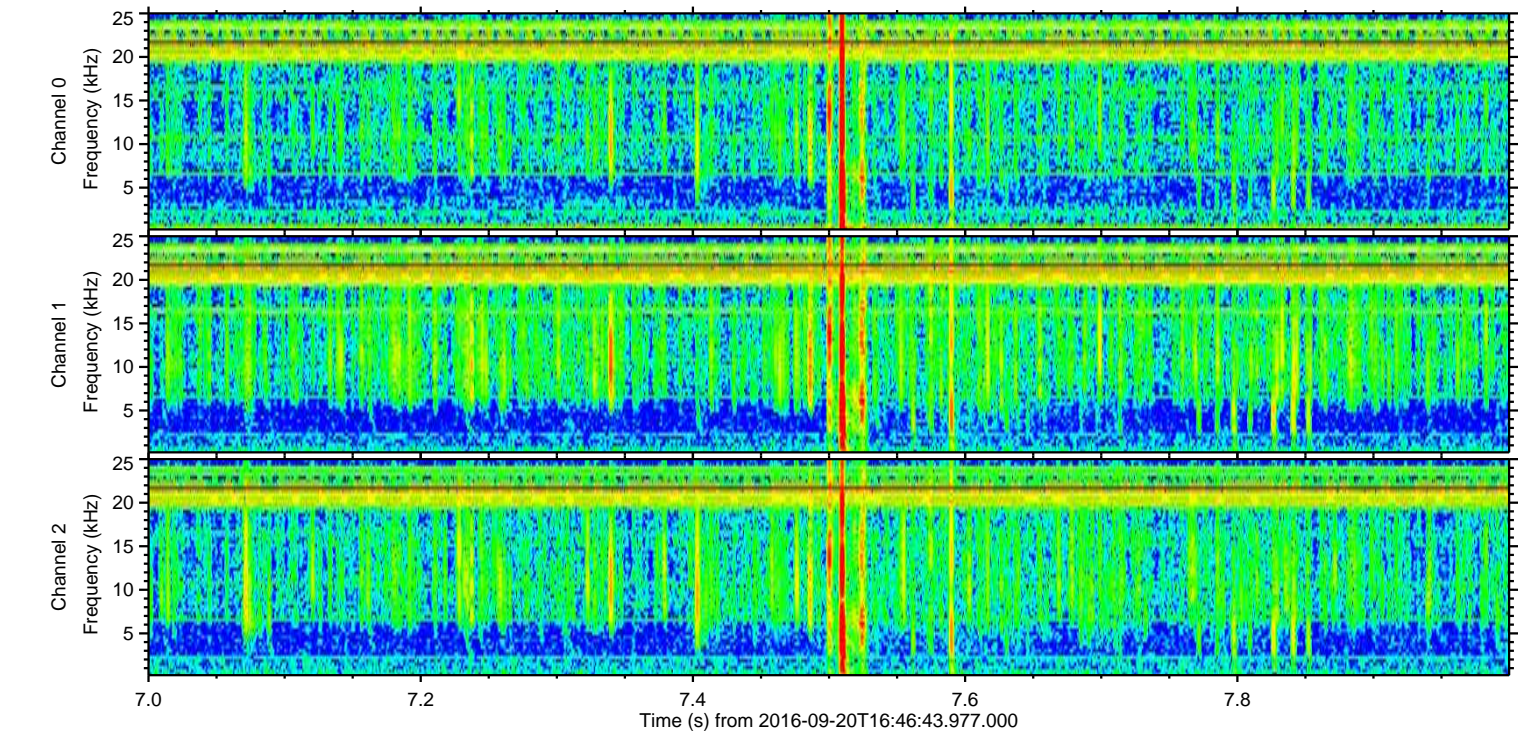
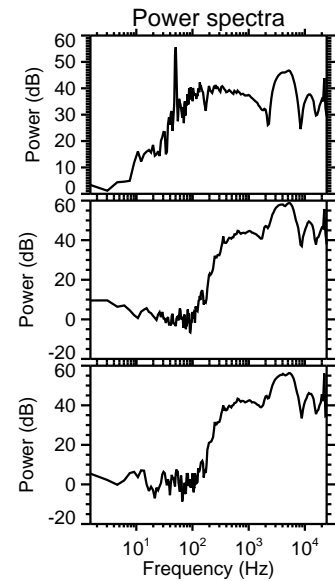
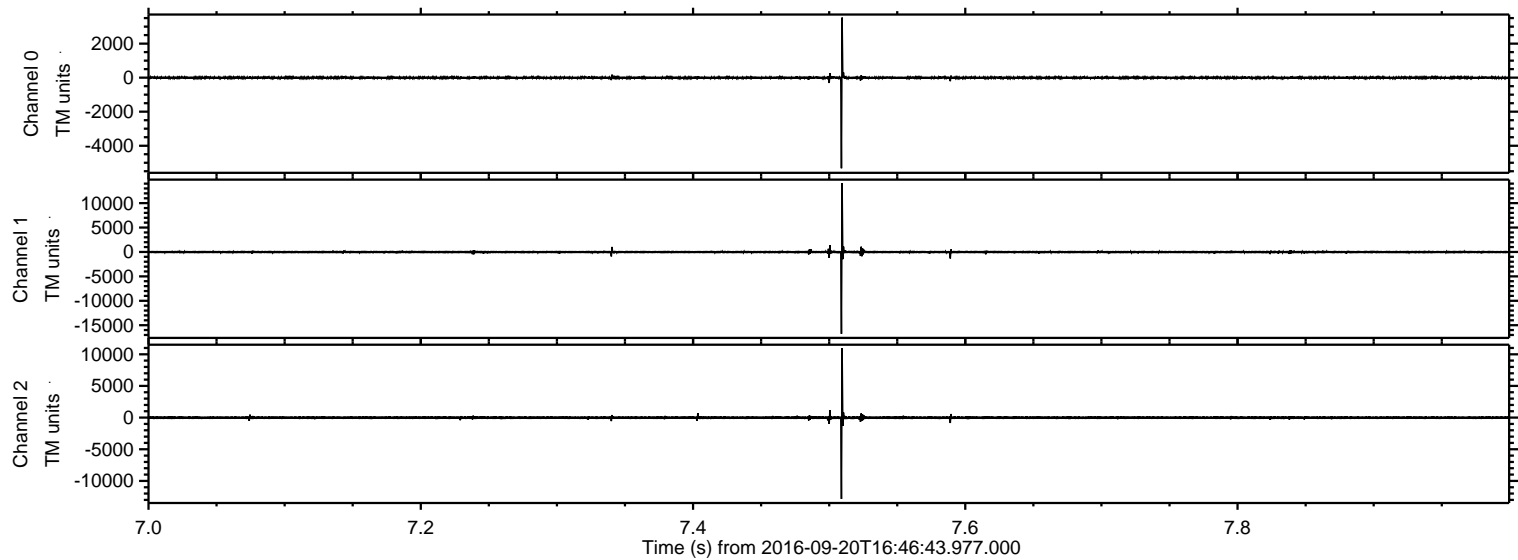


ELMAVAN 3D WAVEFORMS (Measured data sampled at 50 kHz) 51000 packets of 144 samples from 2016-09-20T16:46:43.977.000.

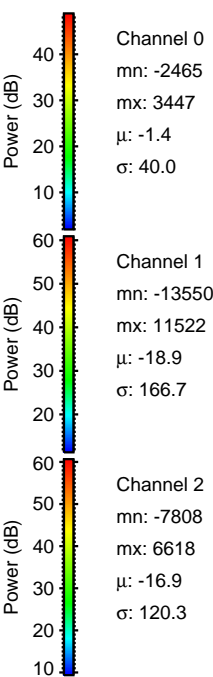
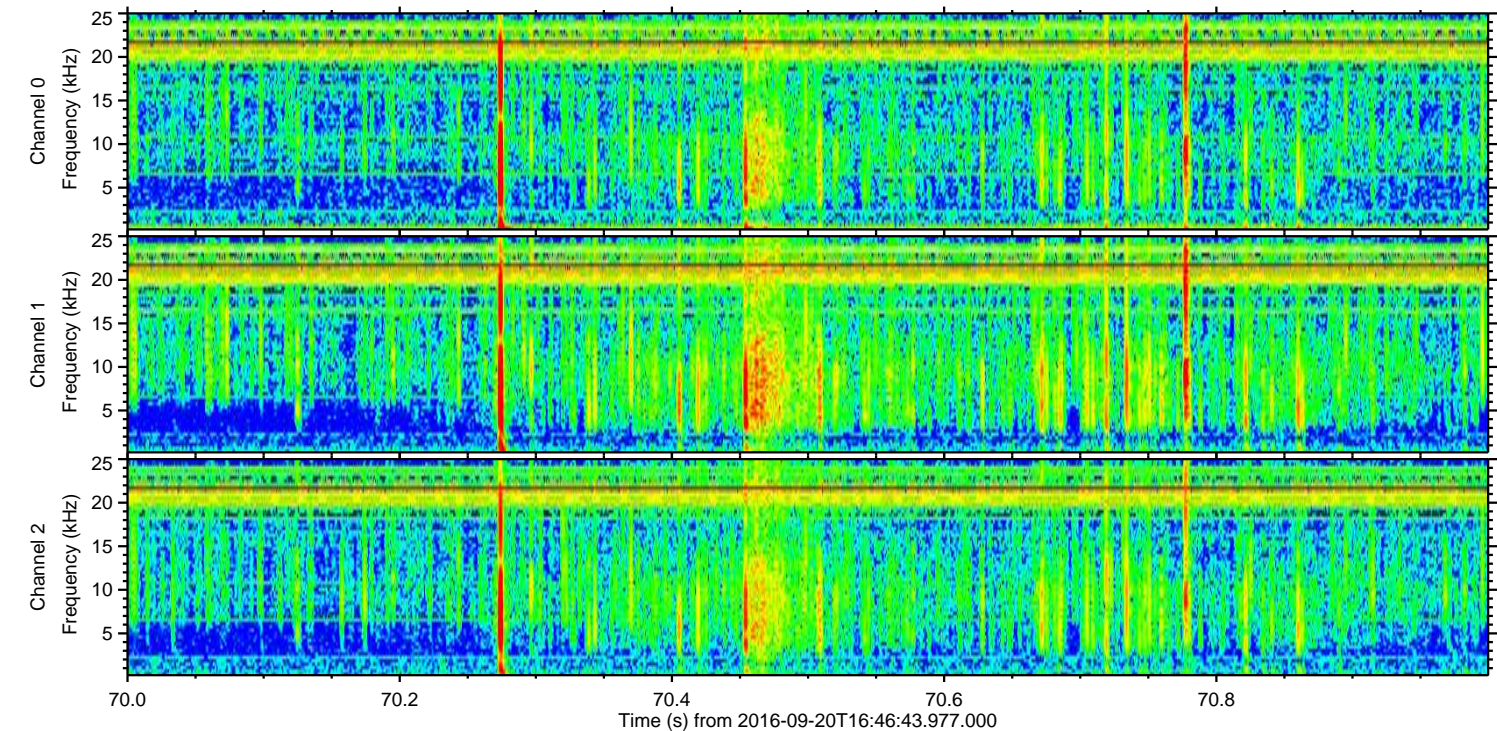
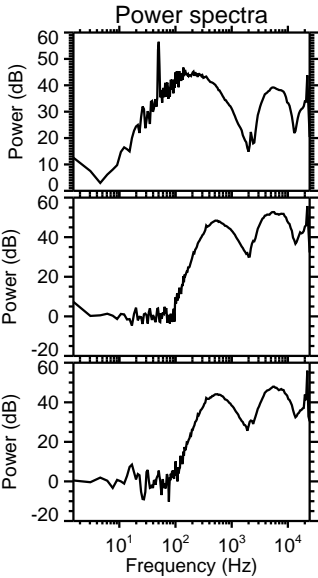
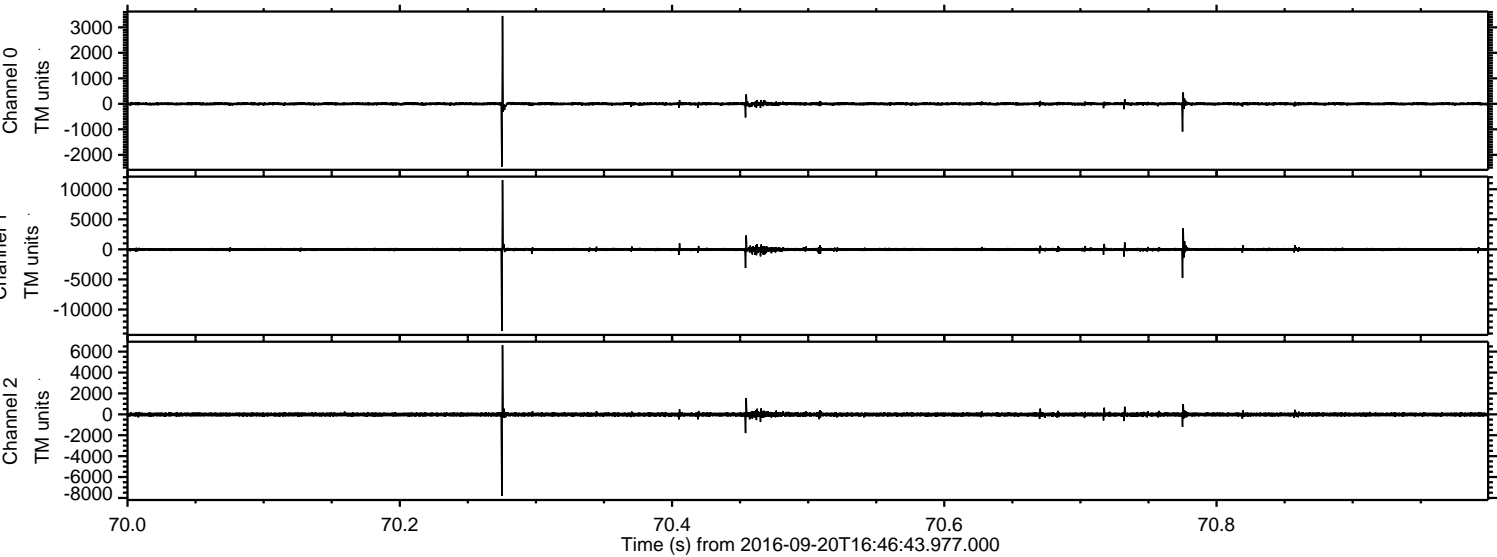
Processed Tue Sep 20 18:54:42 2016 by ELM ver.2012-10-06 from 001__elm20160920_164642__dat00.bin



Processed Tue Sep 20 18:54:58 2016 by ELM ver.2012-10-06 from 001__elm20160920_164642__dat00.bin

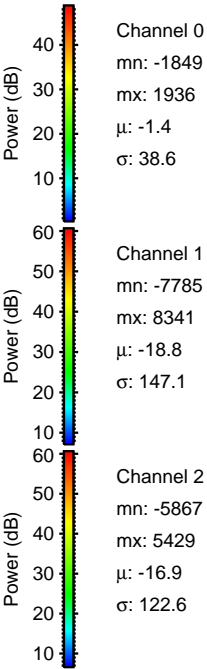
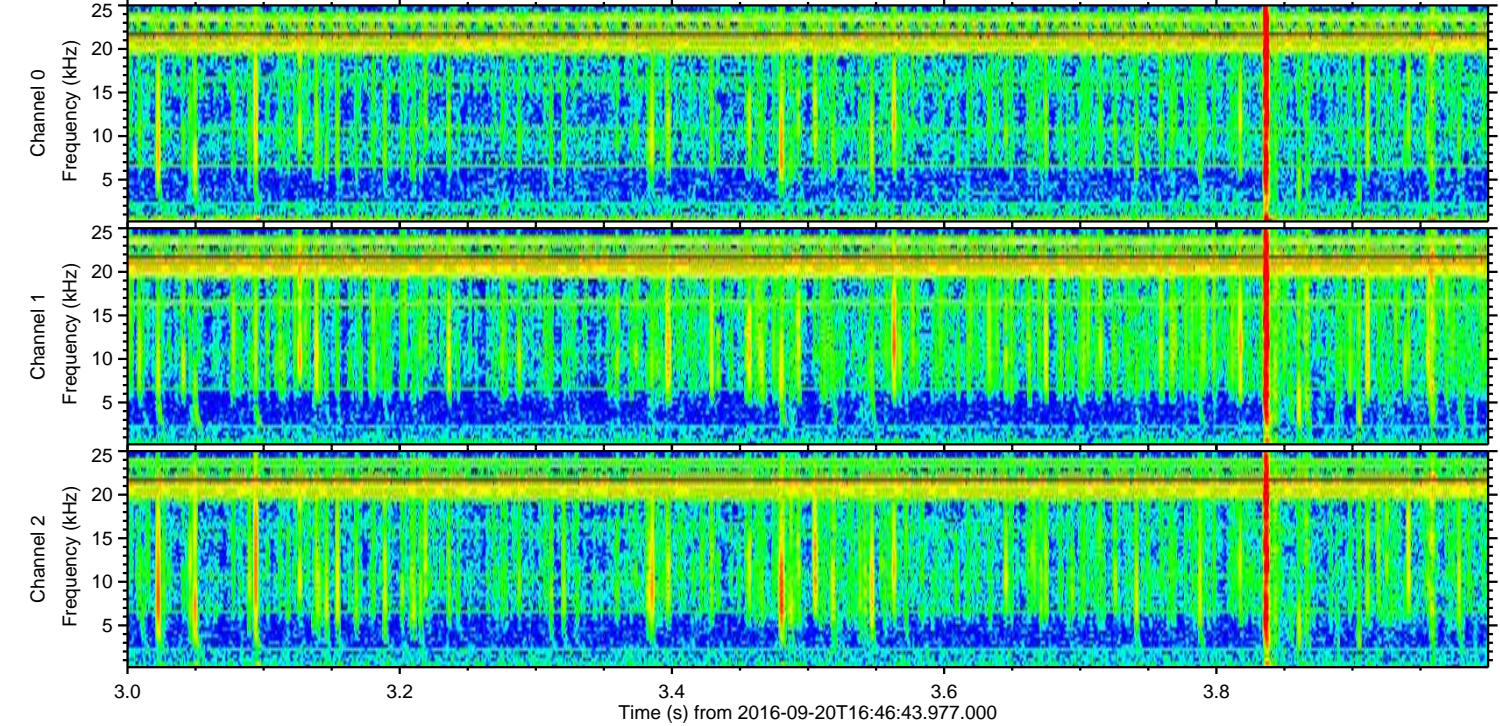
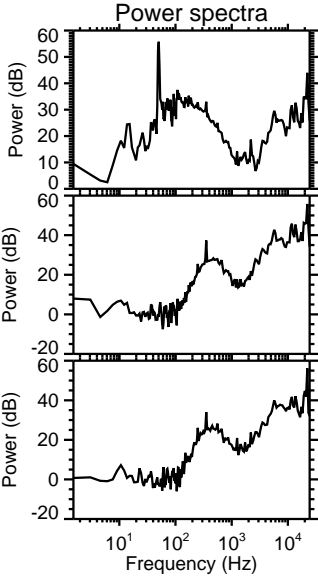
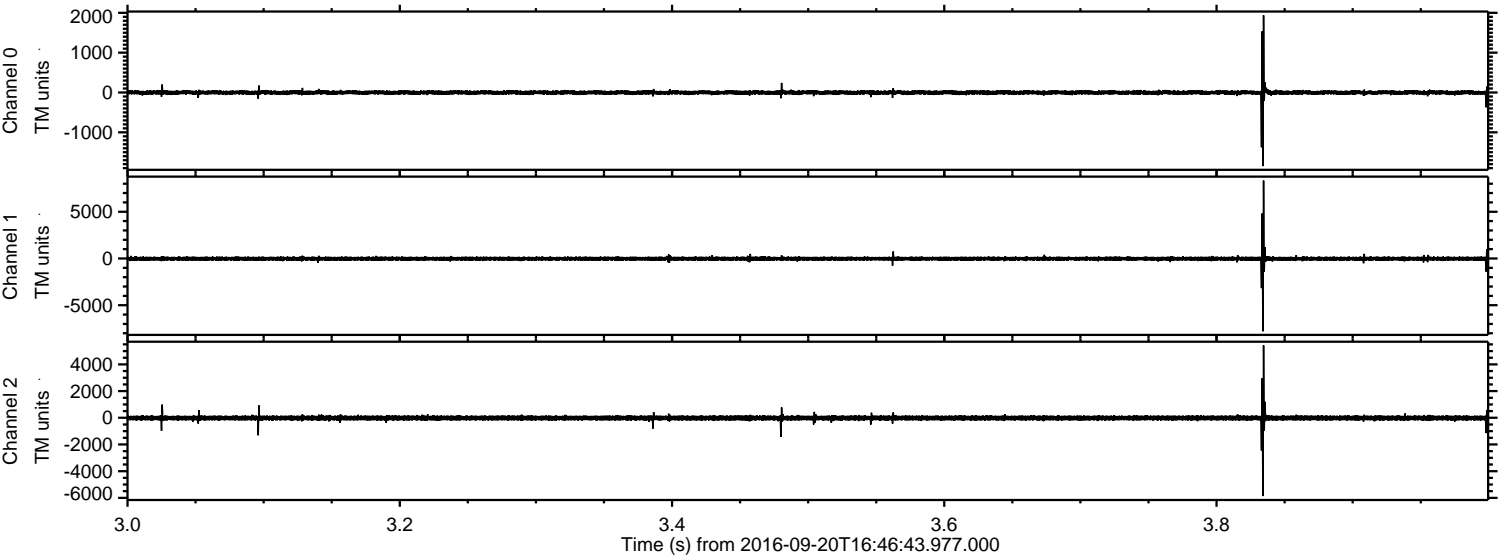


Processed Tue Sep 20 18:54:59 2016 by ELM ver.2012-10-06 from 001__elm20160920_164642__dat00.bin

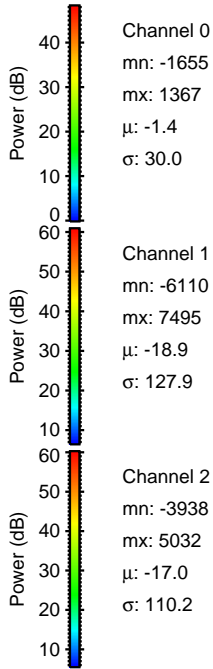
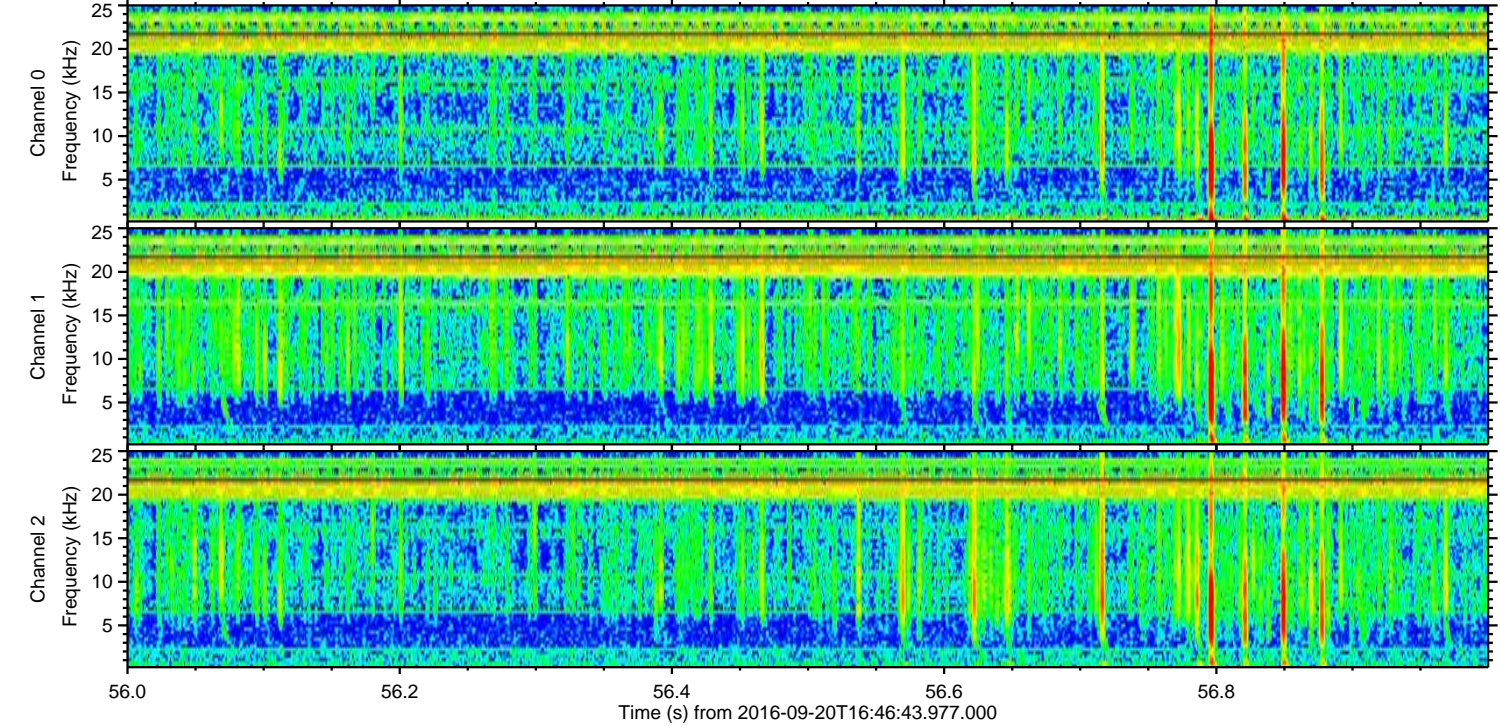
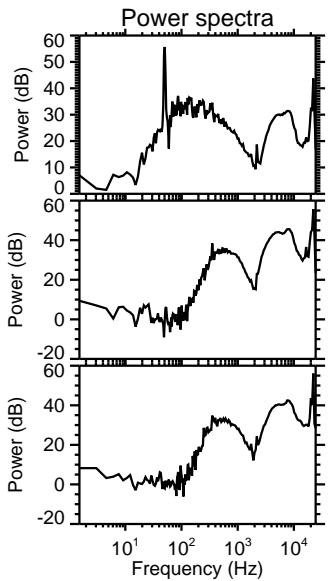
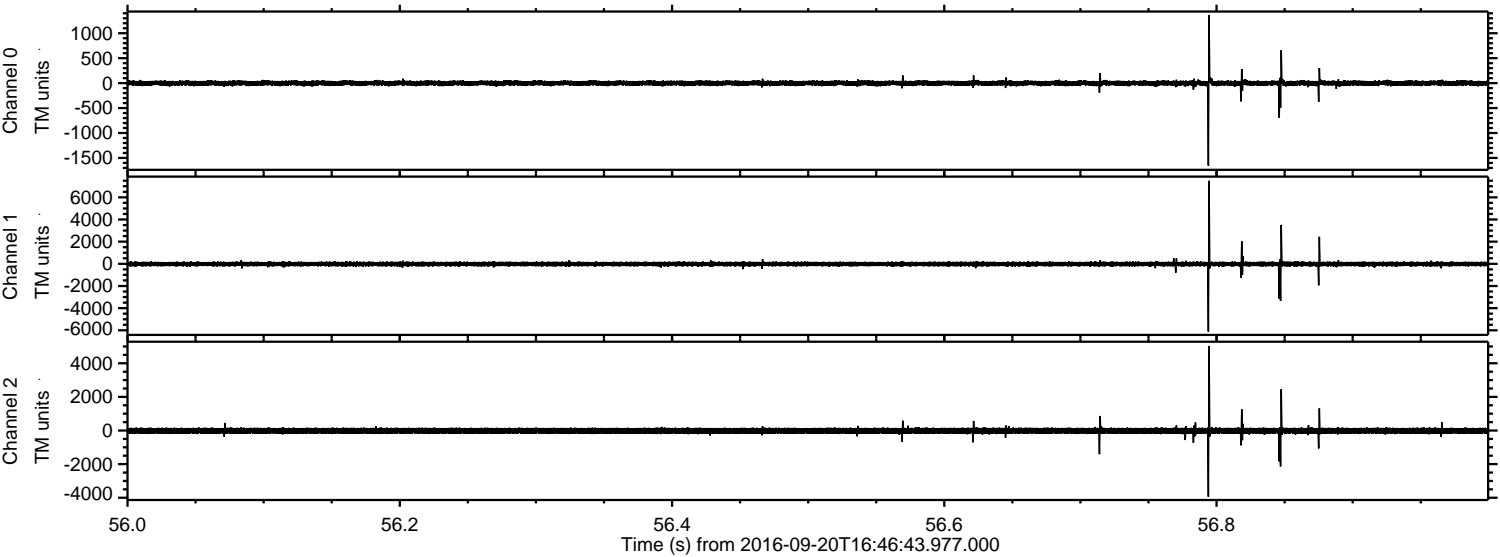


ELMAVAN 3D WAVEFORMS (Measured data sampled at 50 kHz) 51000 packets of 144 samples from 2016-09-20T16:46:43.977.000. Part 4/147

Processed Tue Sep 20 18:55:00 2016 by ELM ver.2012-10-06 from 001__elm20160920_164642__dat00.bin



Processed Tue Sep 20 18:55:01 2016 by ELM ver.2012-10-06 from 001__elm20160920_164642__dat00.bin



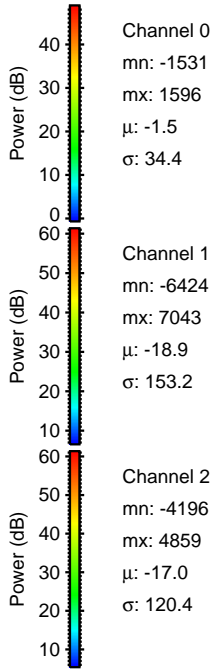
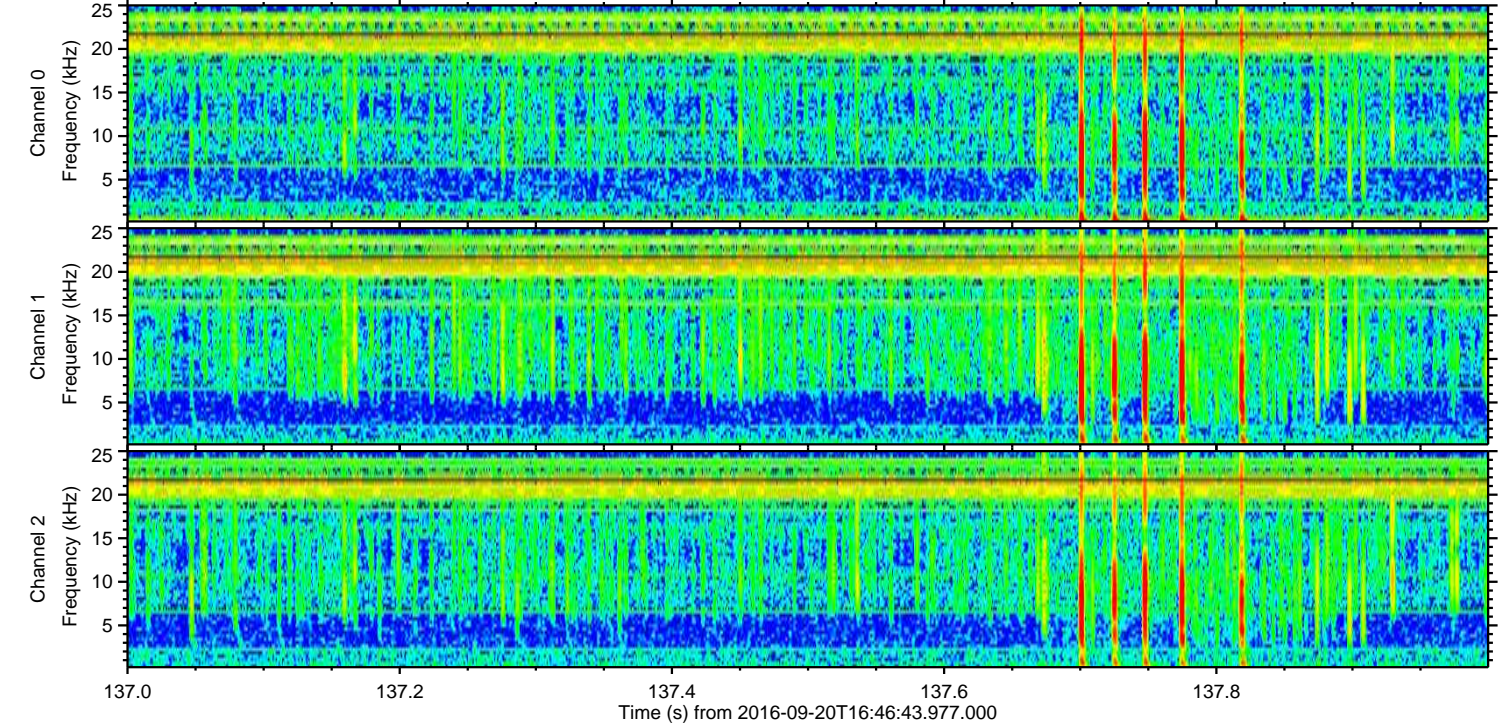
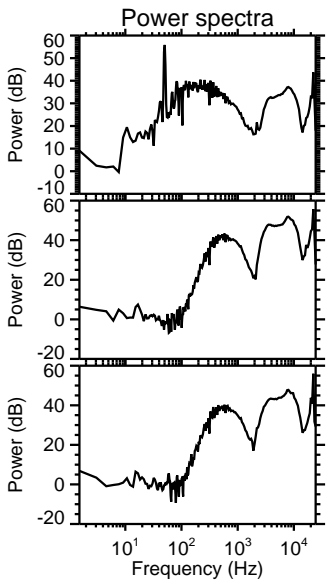
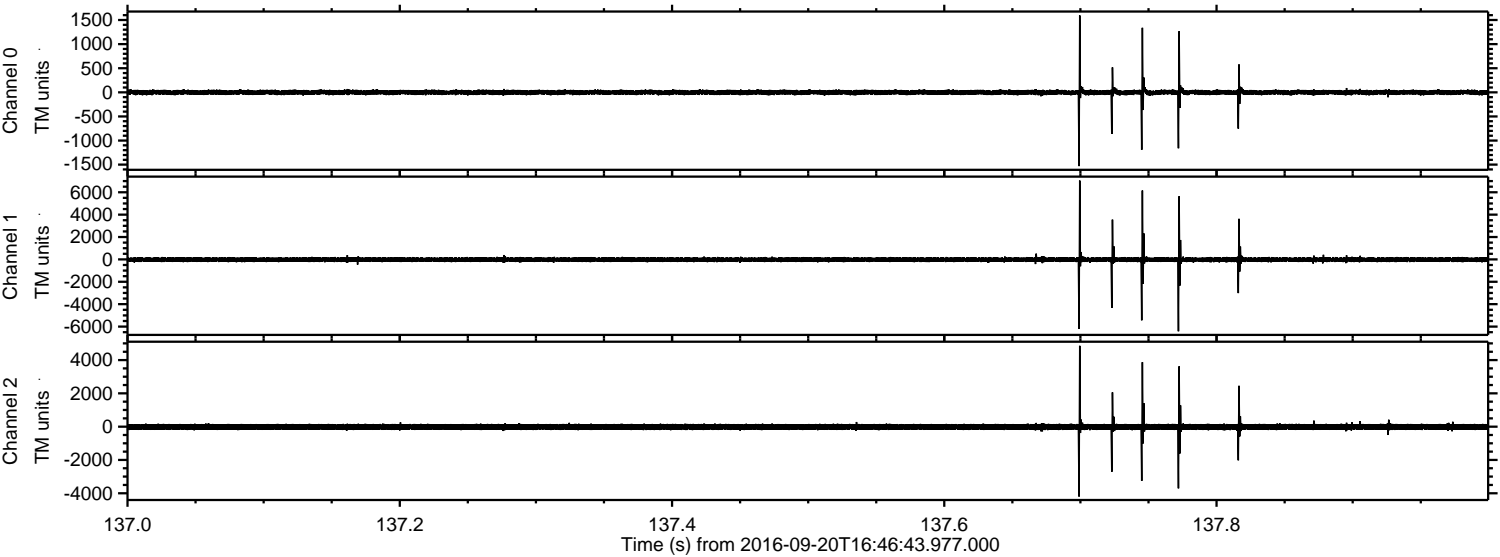
Channel 0
mn: -1655
mx: 1367
 μ : -1.4
 σ : 30.0

Channel 1
mn: -6110
mx: 7495
 μ : -18.9
 σ : 127.9

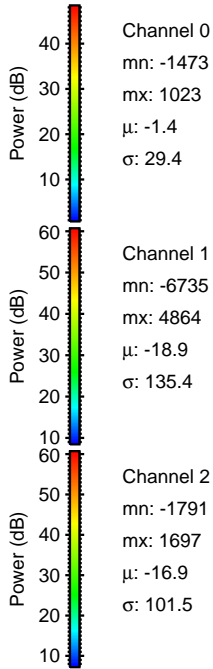
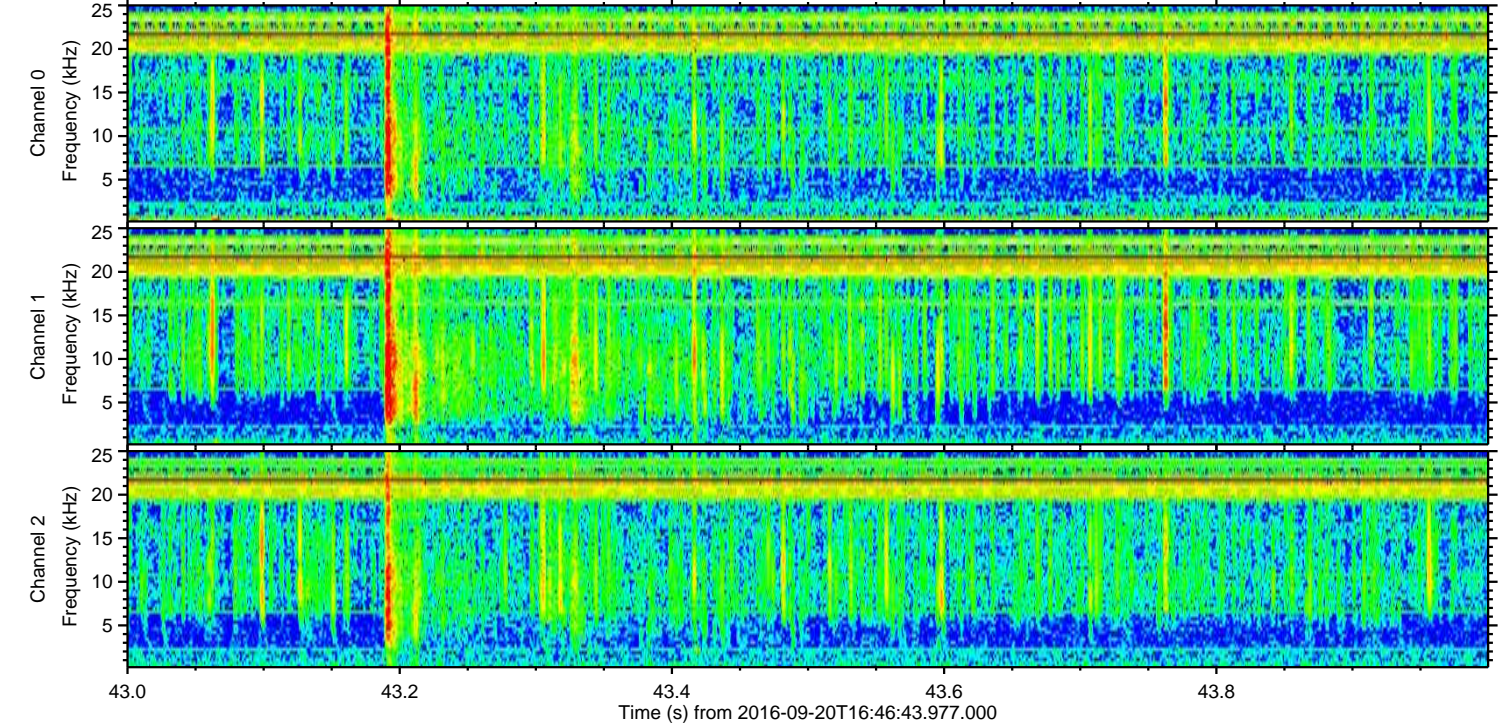
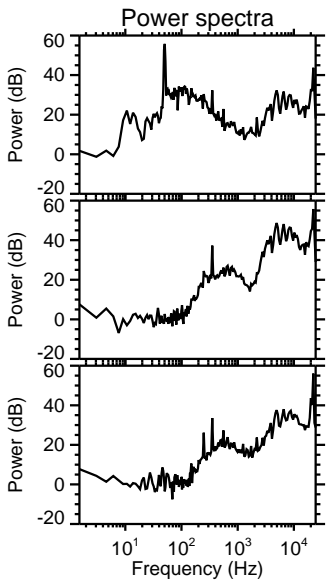
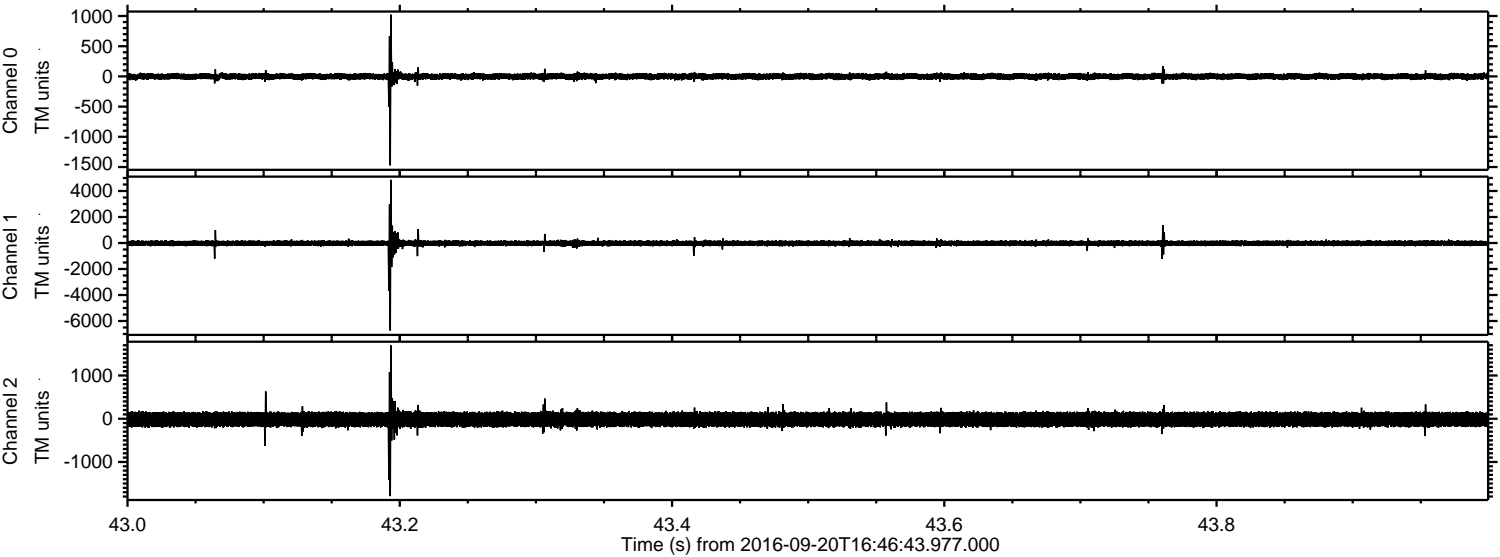
Channel 2
mn: -3938
mx: 5032
 μ : -17.0
 σ : 110.2

ELMAVAN 3D WAVEFORMS (Measured data sampled at 50 kHz) 51000 packets of 144 samples from 2016-09-20T16:46:43.977.000. Part 138/147

Processed Tue Sep 20 18:55:03 2016 by ELM ver.2012-10-06 from 001__elm20160920_164642__dat00.bin

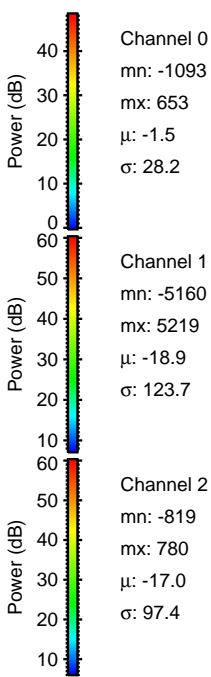
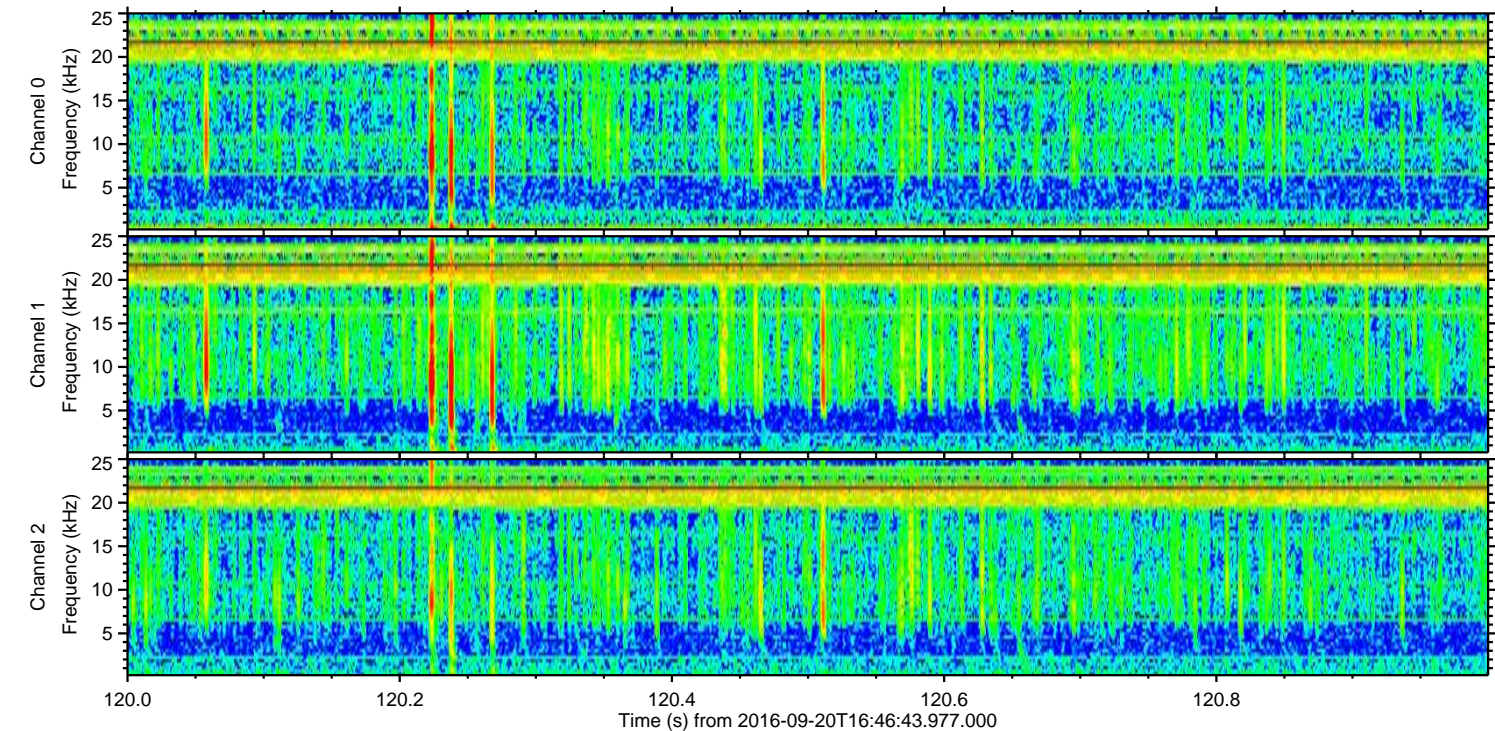
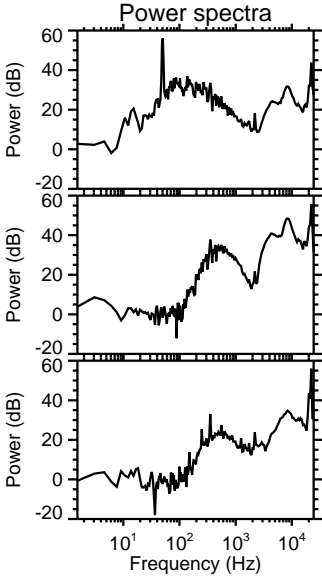
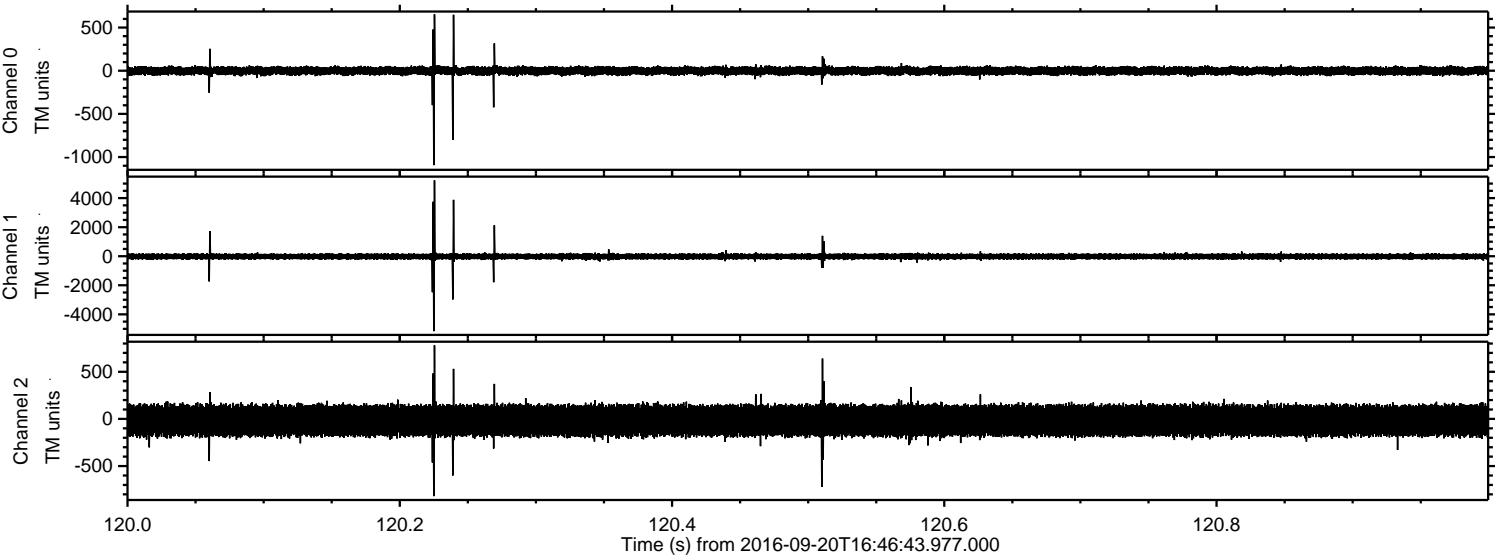


Processed Tue Sep 20 18:55:04 2016 by ELM ver.2012-10-06 from 001__elm20160920_164642__dat00.bin



ELMAVAN 3D WAVEFORMS (Measured data sampled at 50 kHz) 51000 packets of 144 samples from 2016-09-20T16:46:43.977.000. Part 121/147

Processed Tue Sep 20 18:55:06 2016 by ELM ver.2012-10-06 from 001__elm20160920_164642__dat00.bin

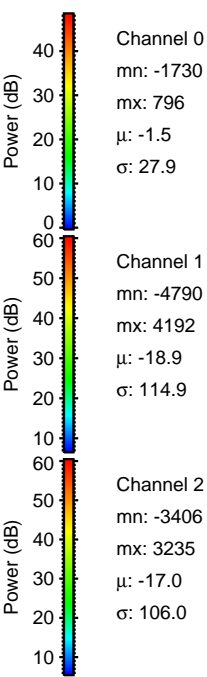
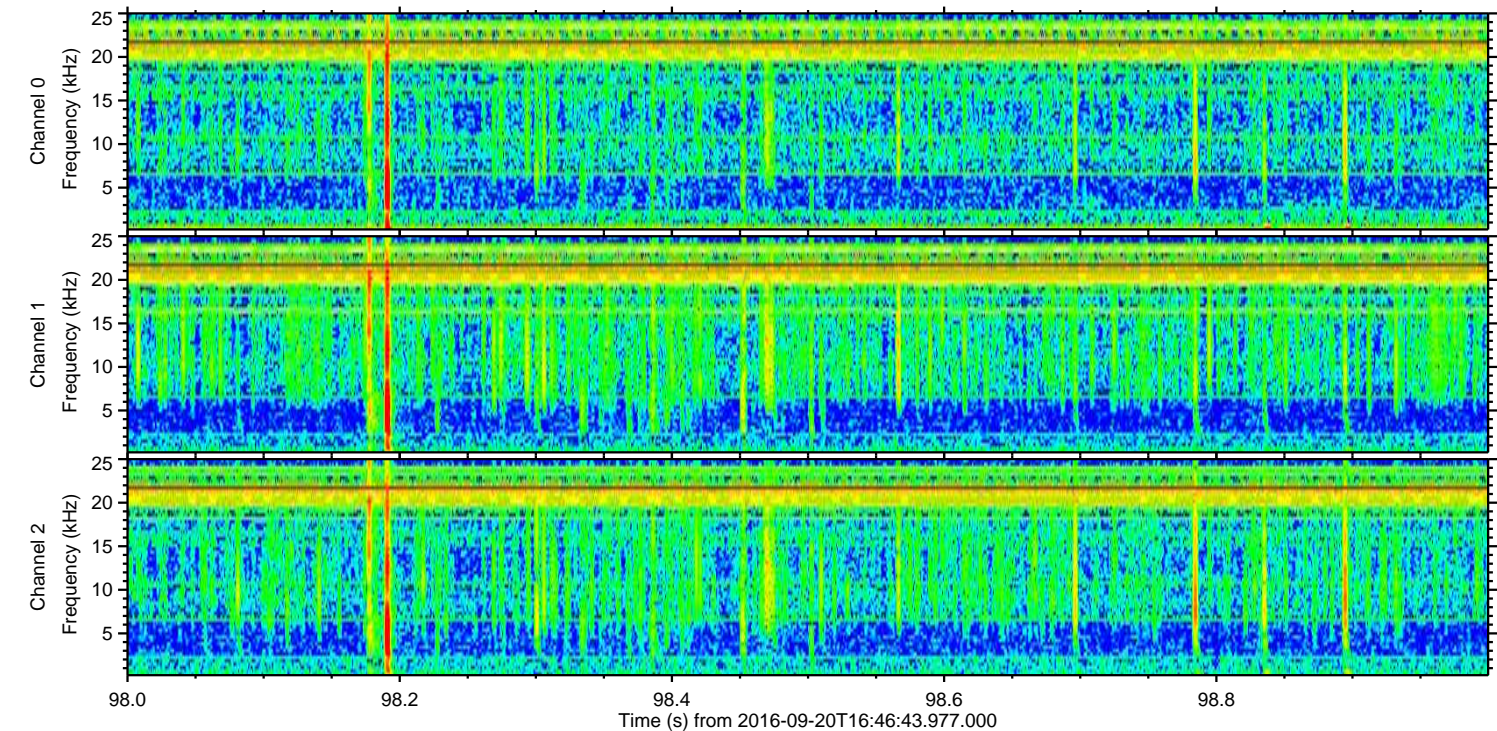
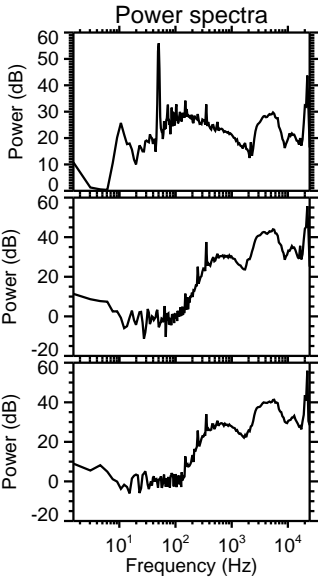
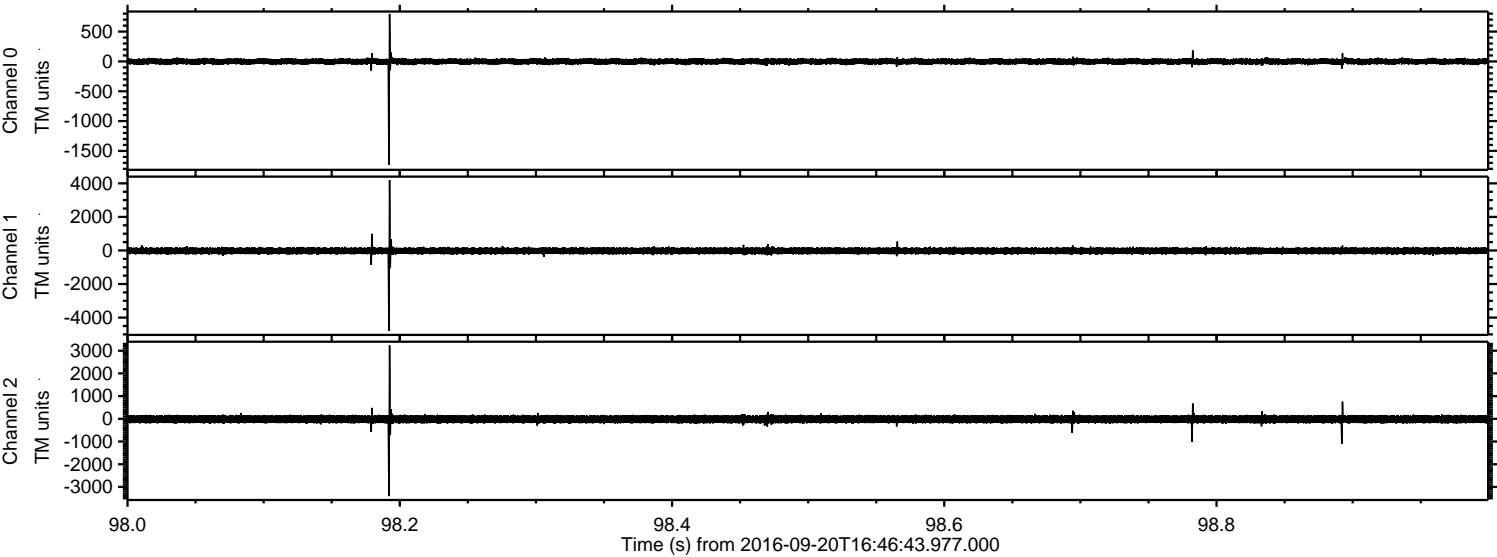


Channel 0
mn: -1093
mx: 653
 μ : -1.5
 σ : 28.2

Channel 1
mn: -5160
mx: 5219
 μ : -18.9
 σ : 123.7

Channel 2
mn: -819
mx: 780
 μ : -17.0
 σ : 97.4

Processed Tue Sep 20 18:55:07 2016 by ELM ver.2012-10-06 from 001__elm20160920_164642__dat00.bin



Processed Tue Sep 20 18:55:10 2016 by ELM ver.2012-10-06 from 001__elm20160920_164642__dat00.bin

