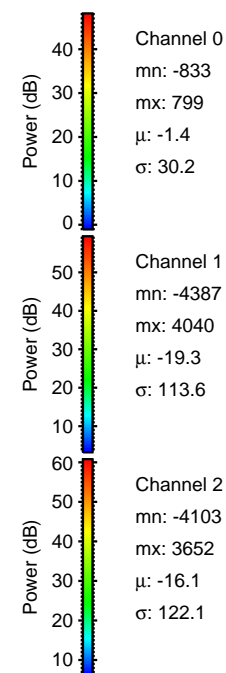
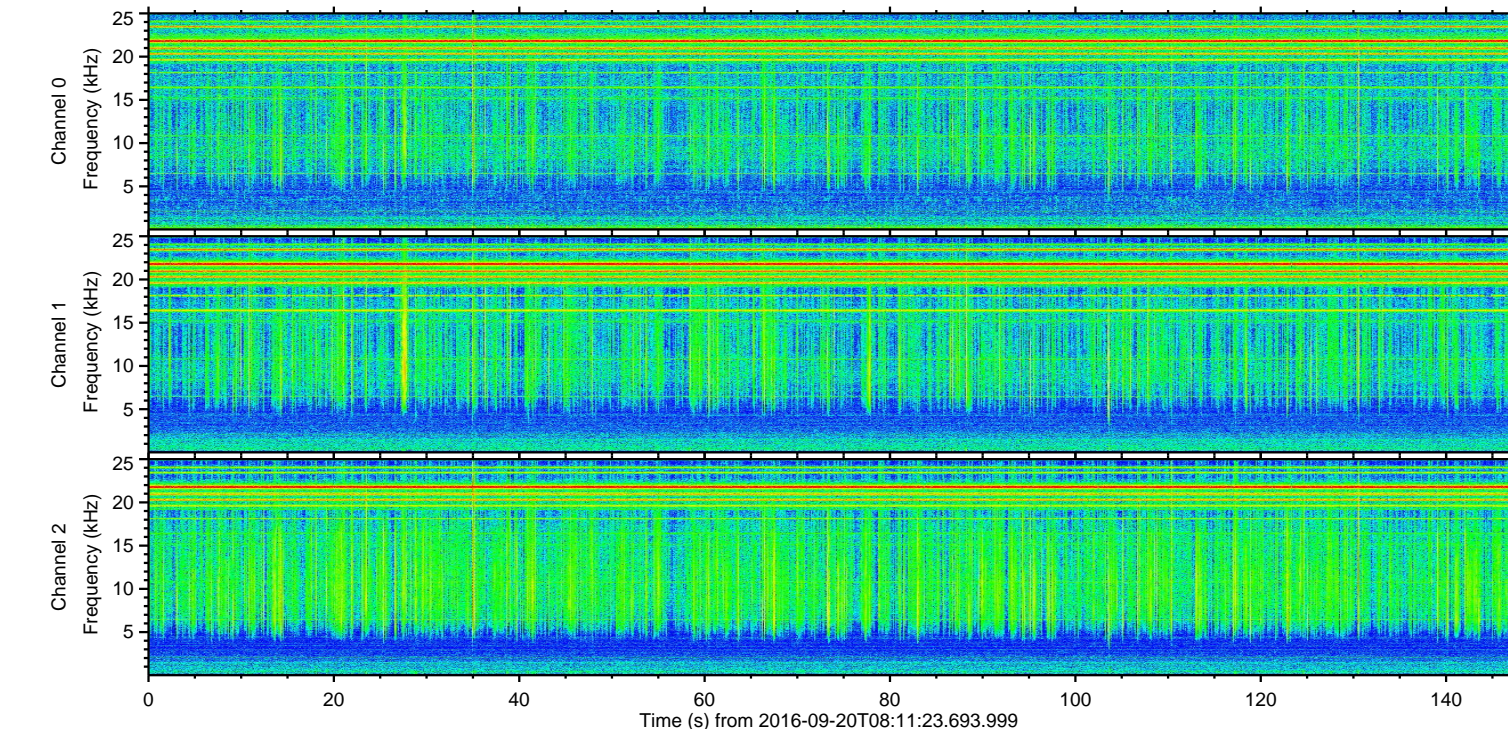
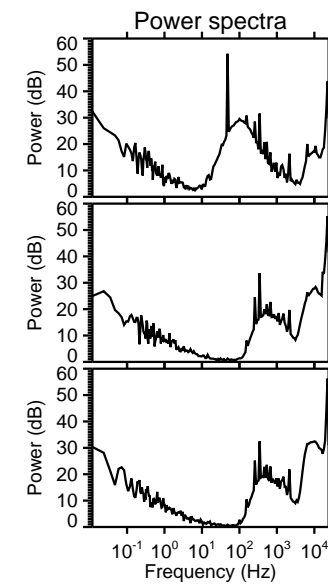
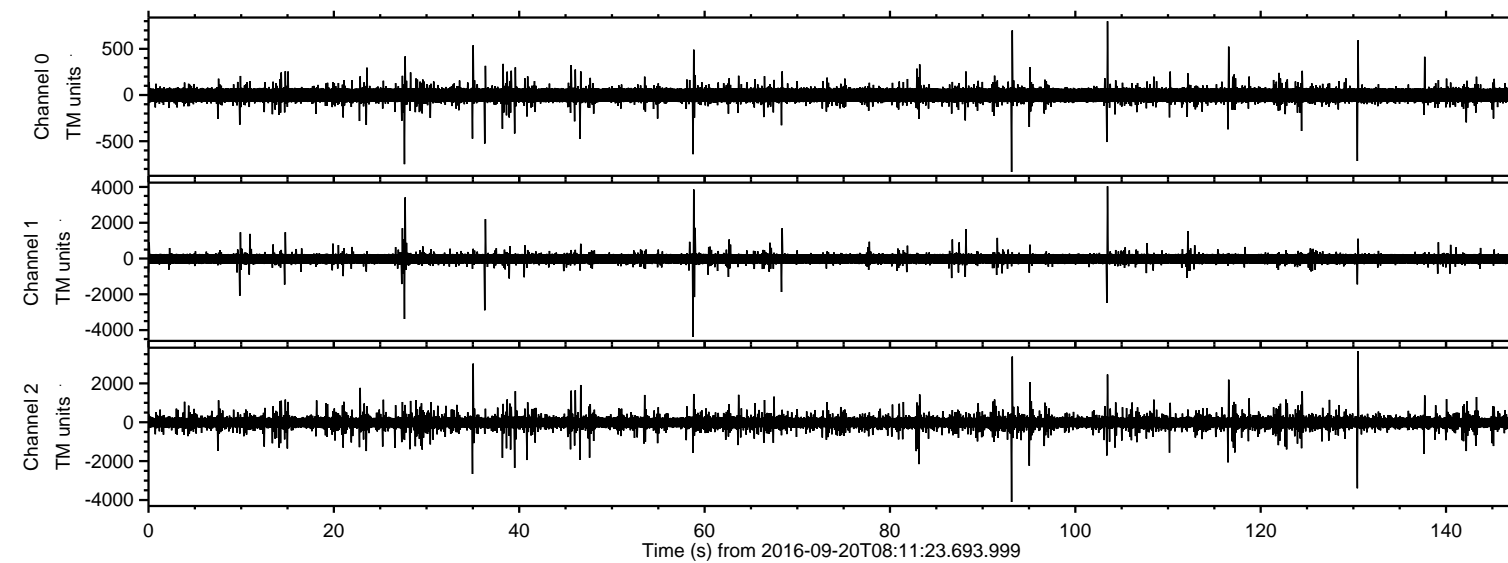


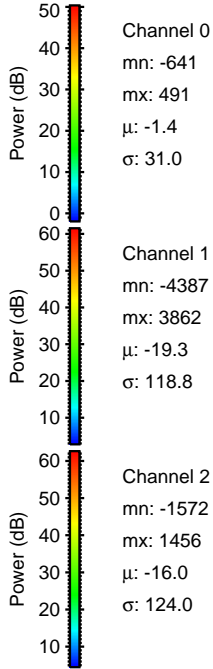
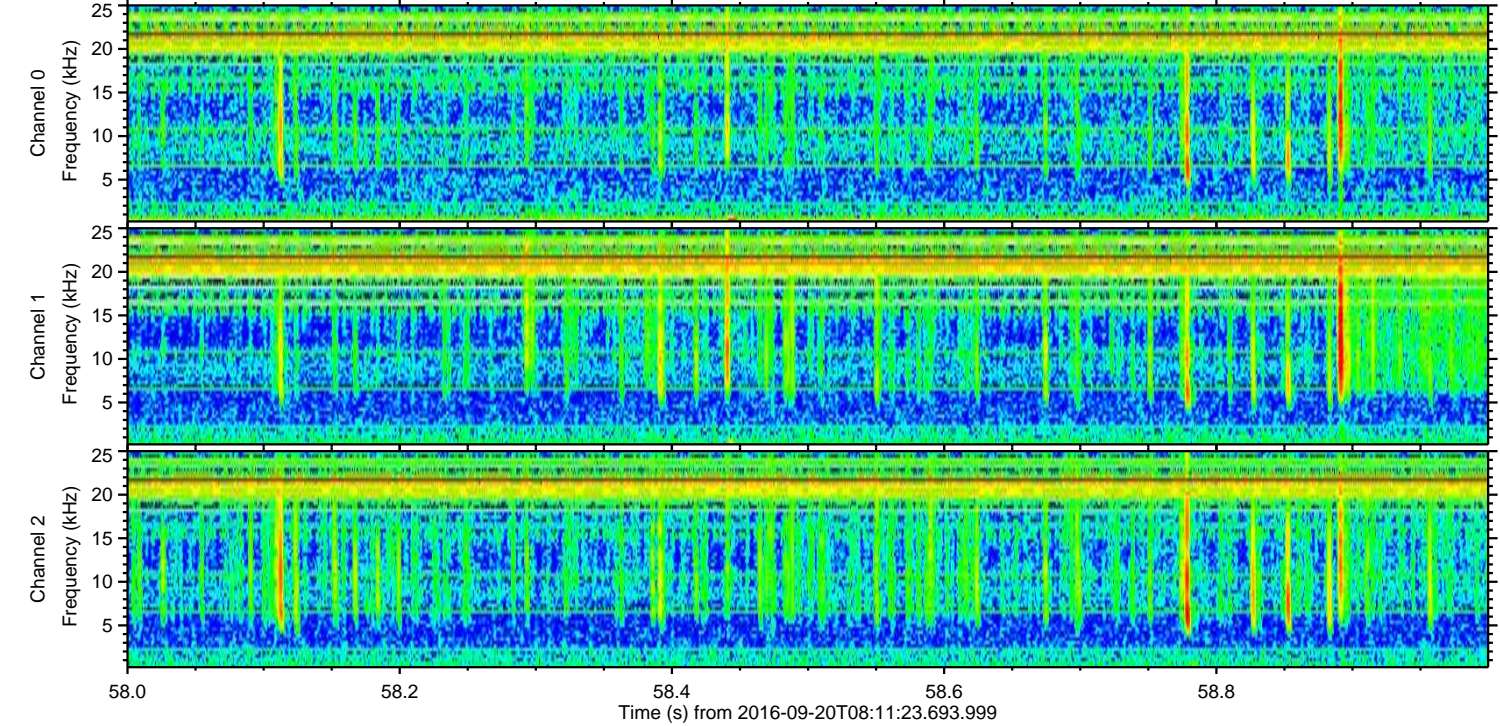
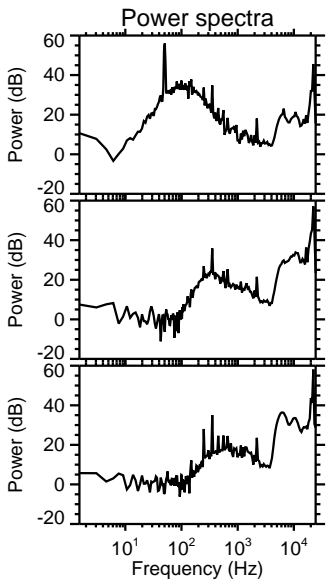
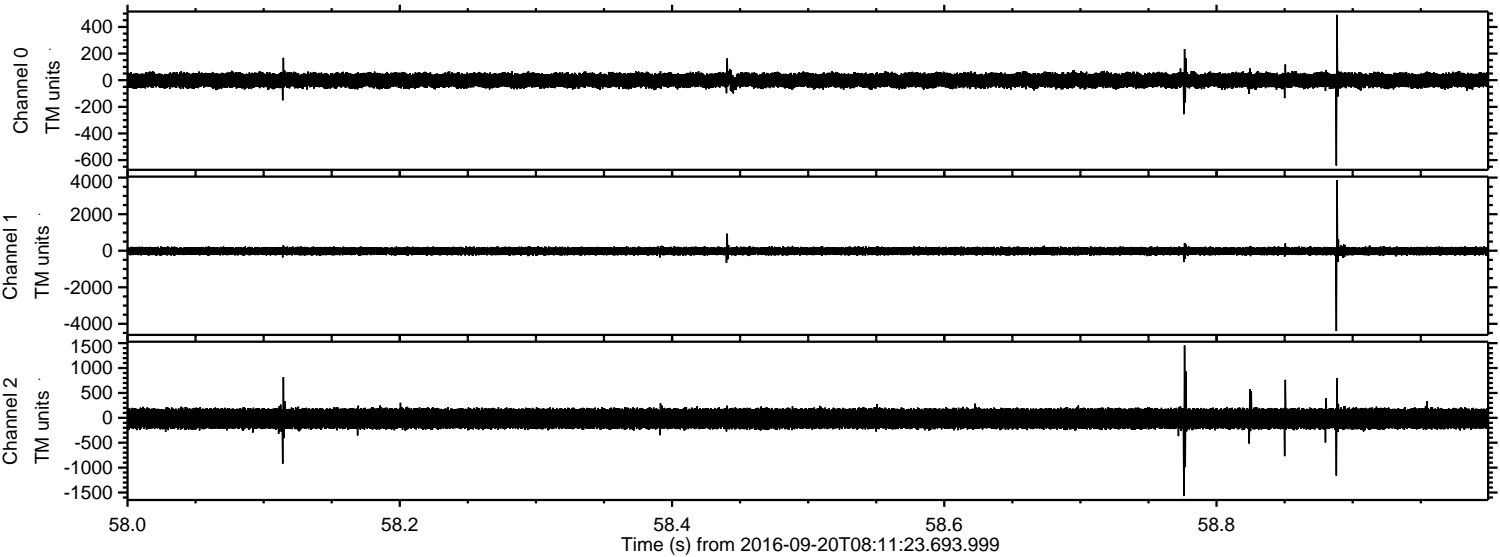
ELMAVAN 3D WAVEFORMS (Measured data sampled at 50 kHz) 51000 packets of 144 samples from 2016-09-20T08:11:23.693.999.

Processed Tue Sep 20 10:19:10 2016 by ELM ver.2012-10-06 from 001__elm20160920_081122__dat00.bin

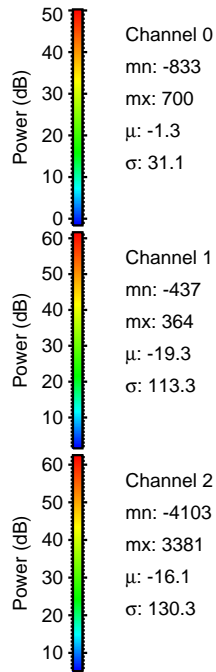
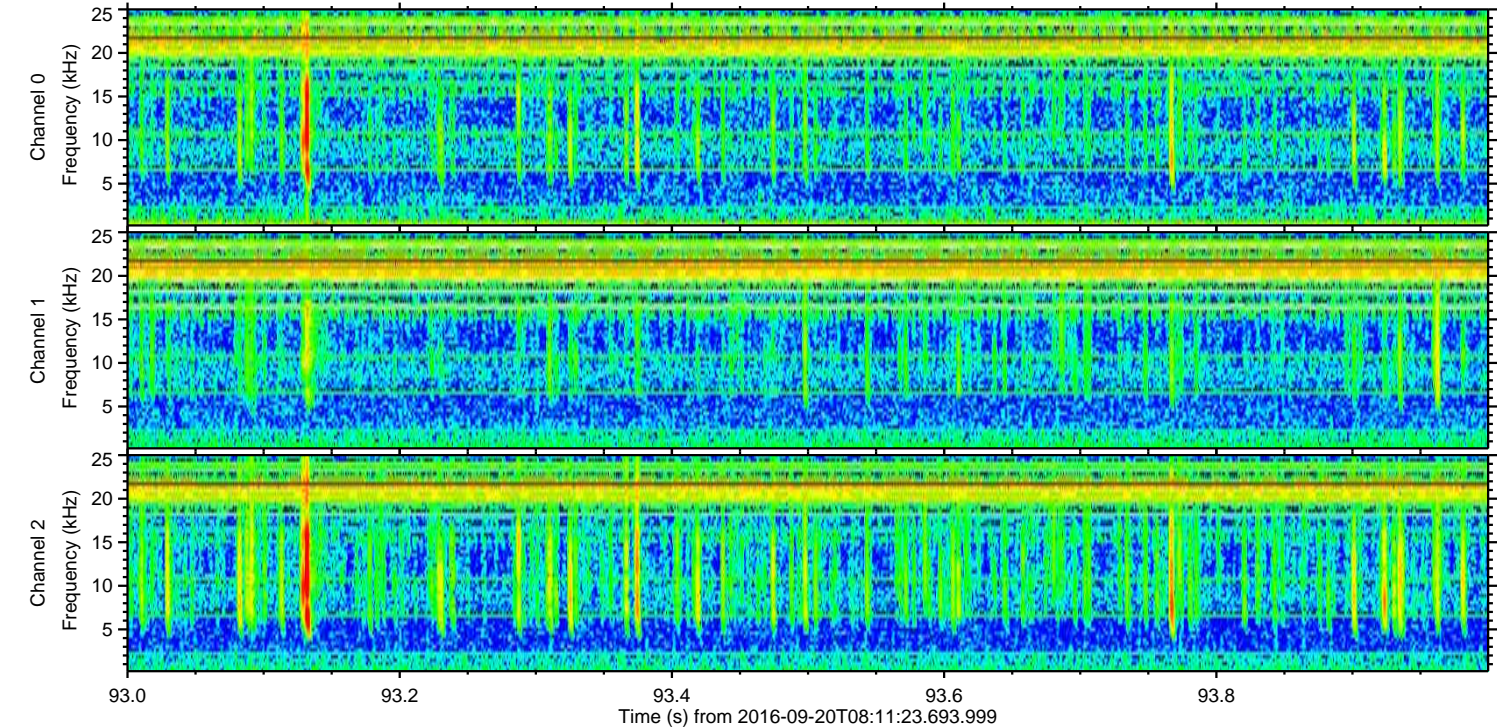
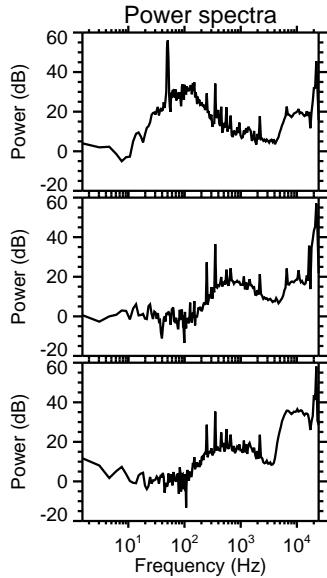
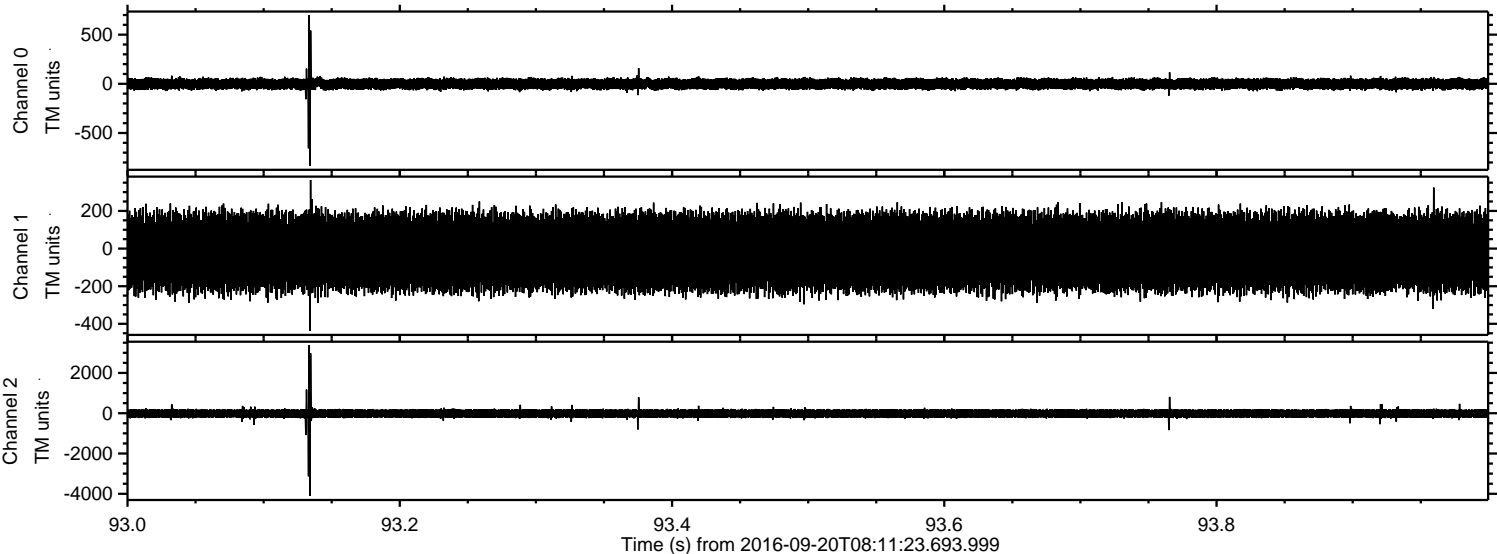


ELMAVAN 3D WAVEFORMS (Measured data sampled at 50 kHz) 51000 packets of 144 samples from 2016-09-20T08:11:23.693.999. Part 59/147

Processed Tue Sep 20 10:19:25 2016 by ELM ver.2012-10-06 from 001__elm20160920_081122__dat00.bin

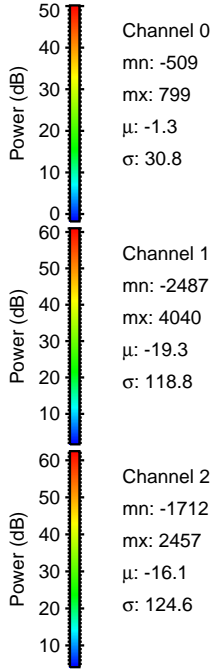
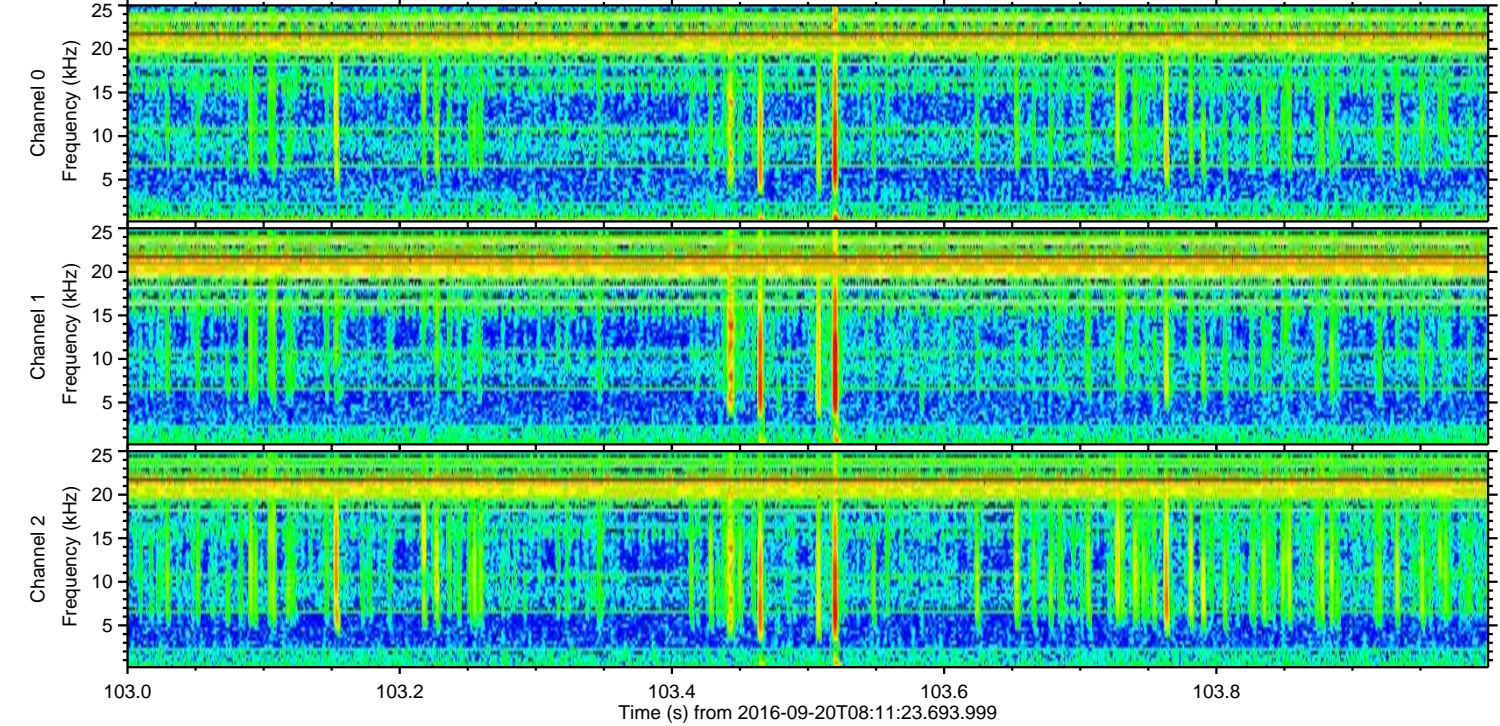
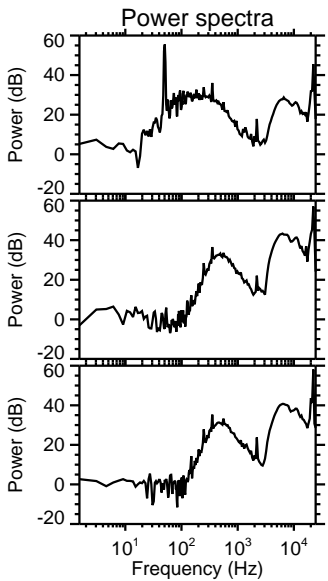
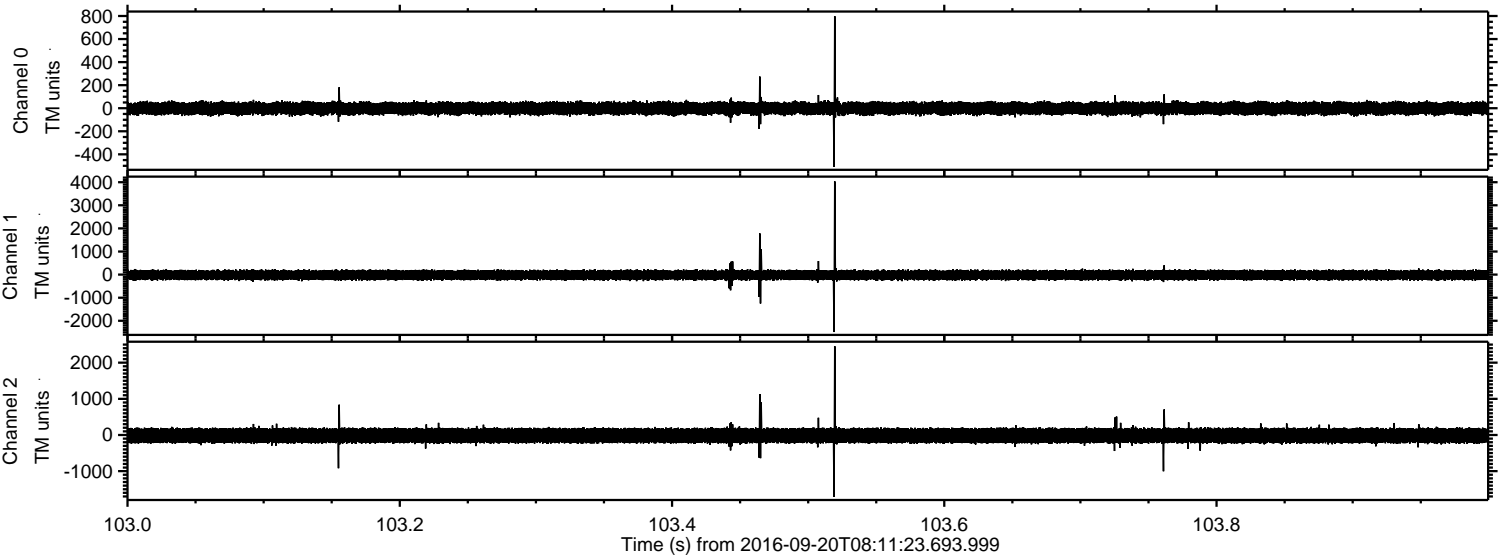


Processed Tue Sep 20 10:19:26 2016 by ELM ver.2012-10-06 from 001__elm20160920_081122__dat00.bin



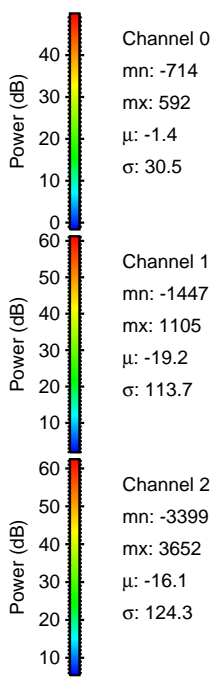
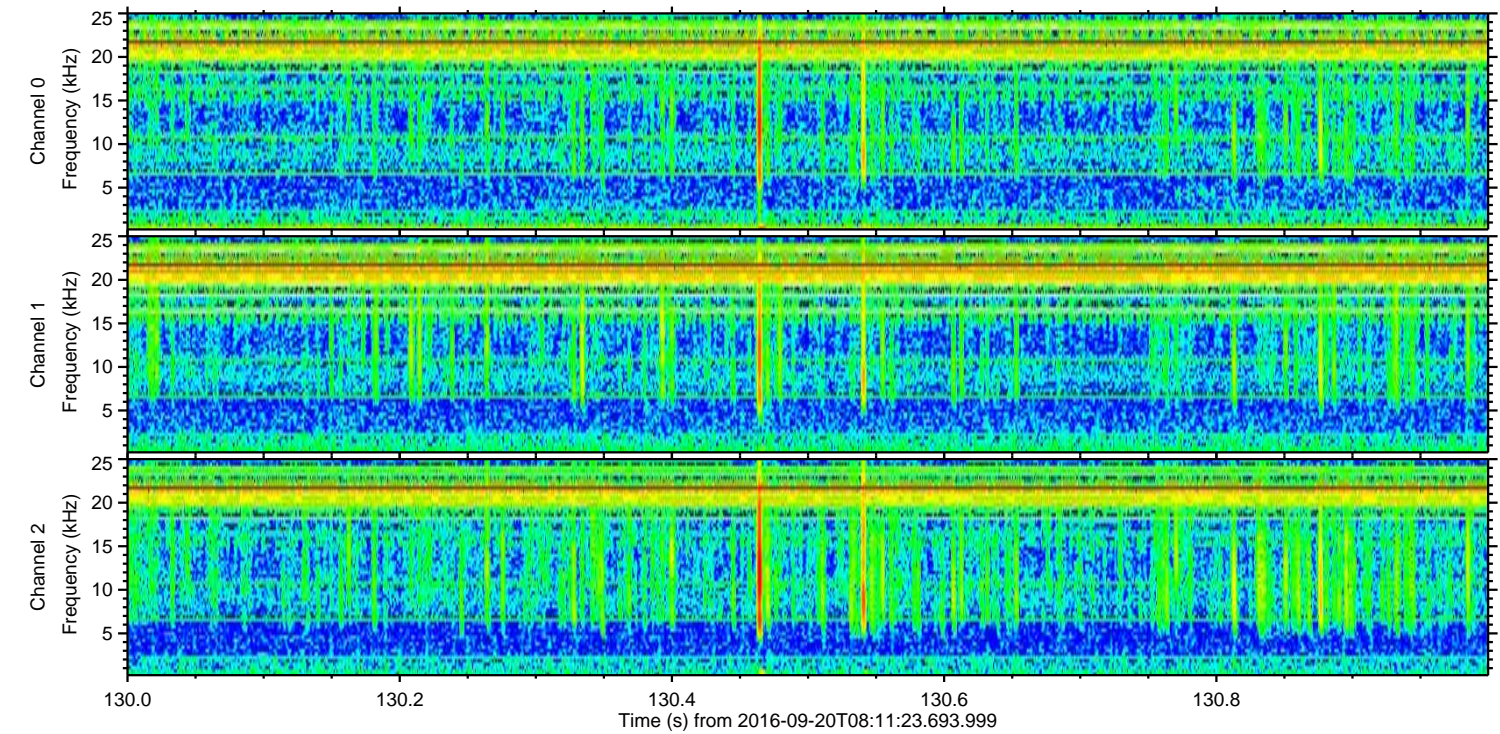
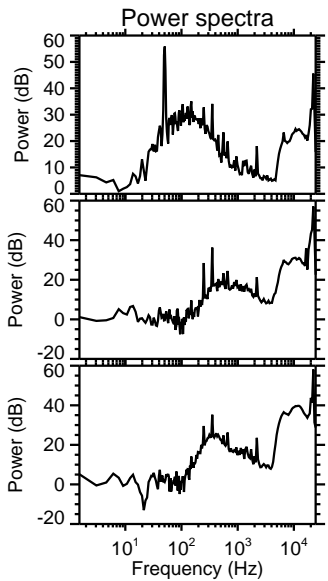
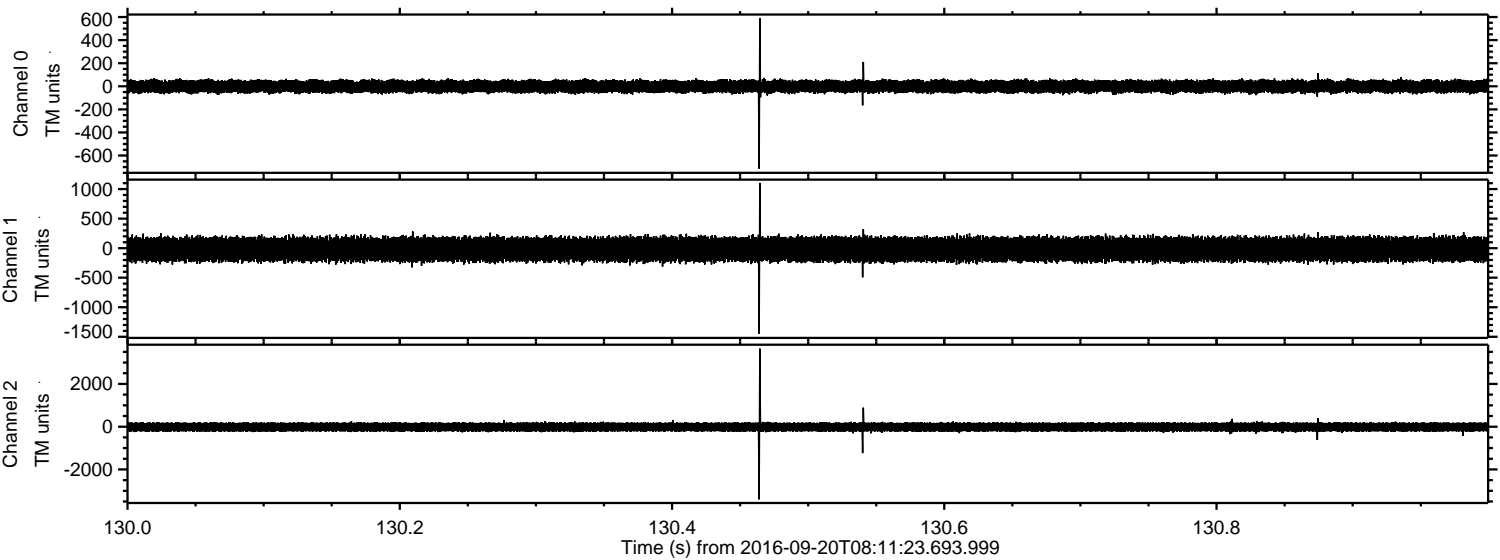
ELMAVAN 3D WAVEFORMS (Measured data sampled at 50 kHz) 51000 packets of 144 samples from 2016-09-20T08:11:23.693.999. Part 104/147

Processed Tue Sep 20 10:19:27 2016 by ELM ver.2012-10-06 from 001__elm20160920_081122__dat00.bin



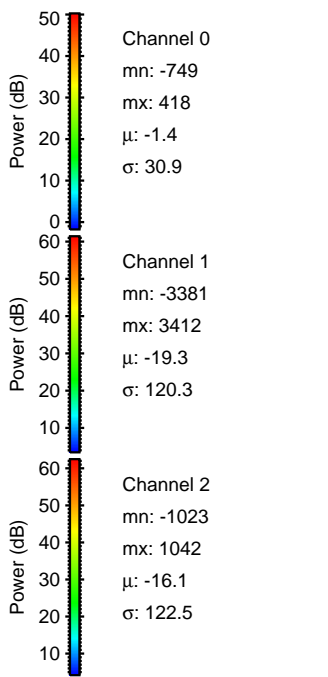
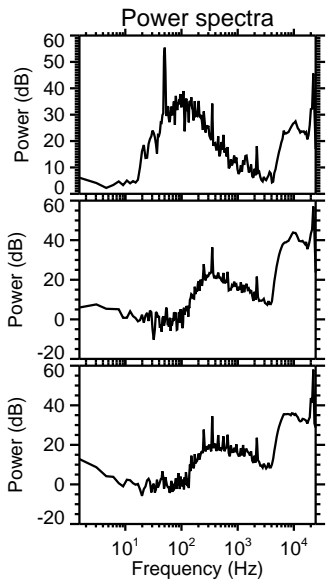
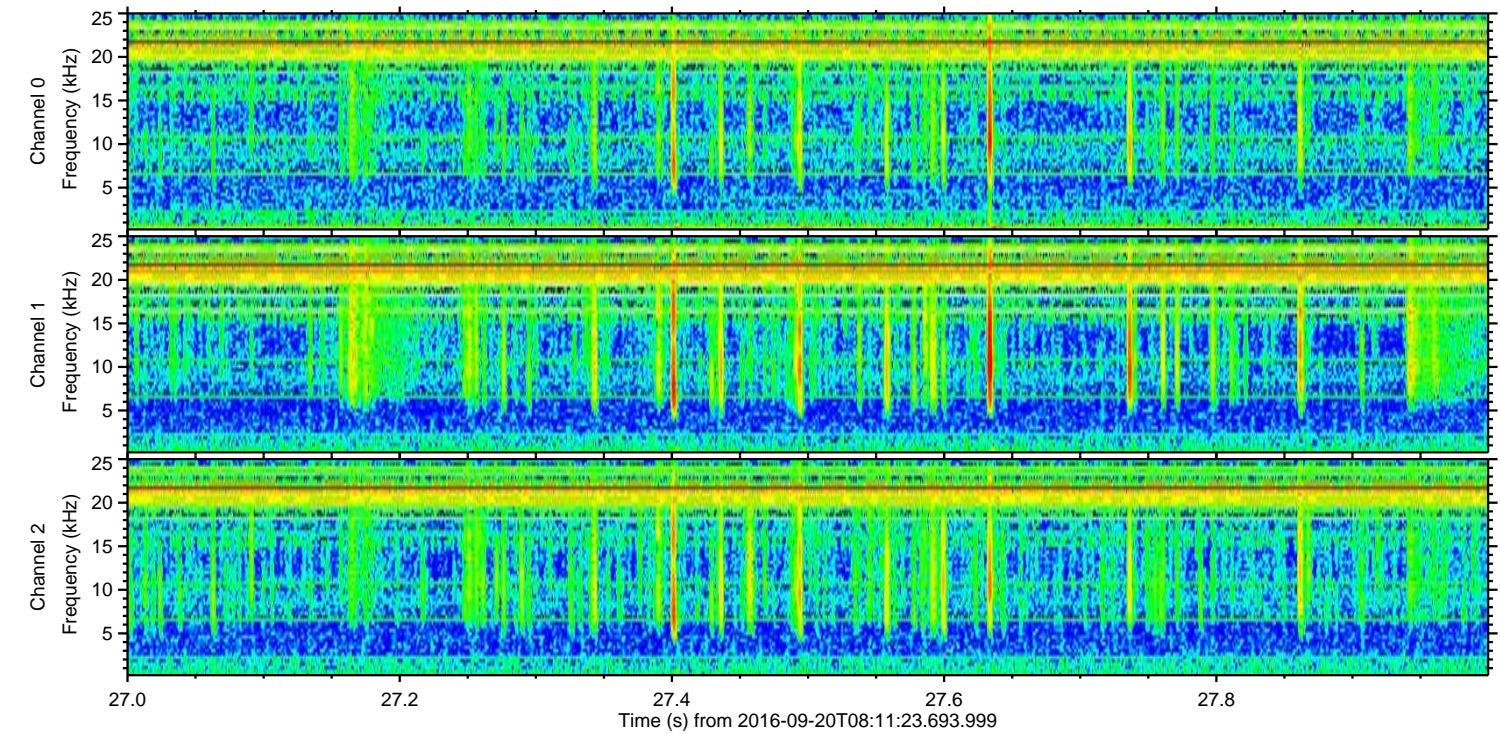
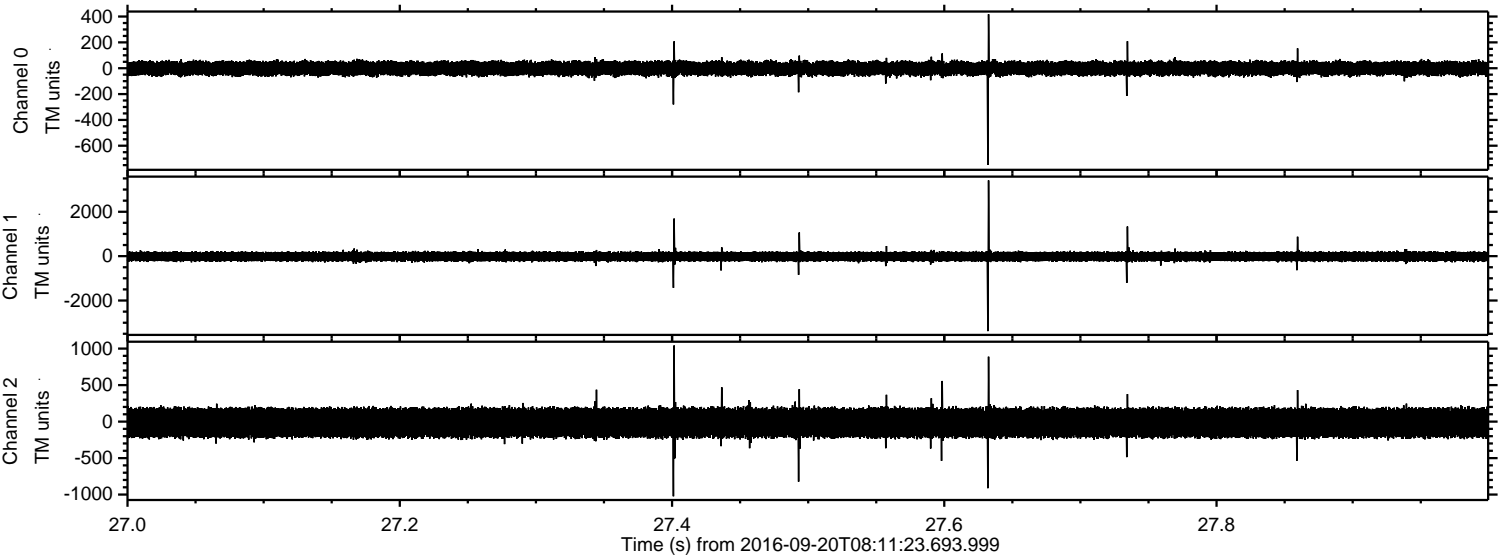
ELMAVAN 3D WAVEFORMS (Measured data sampled at 50 kHz) 51000 packets of 144 samples from 2016-09-20T08:11:23.693.999. Part 131/147

Processed Tue Sep 20 10:19:28 2016 by ELM ver.2012-10-06 from 001__elm20160920_081122__dat00.bin

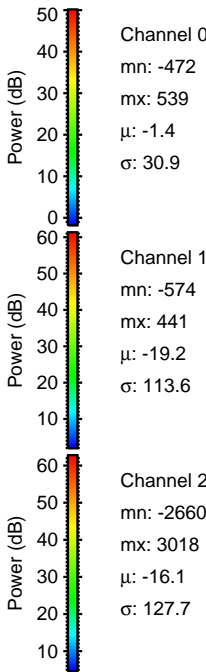
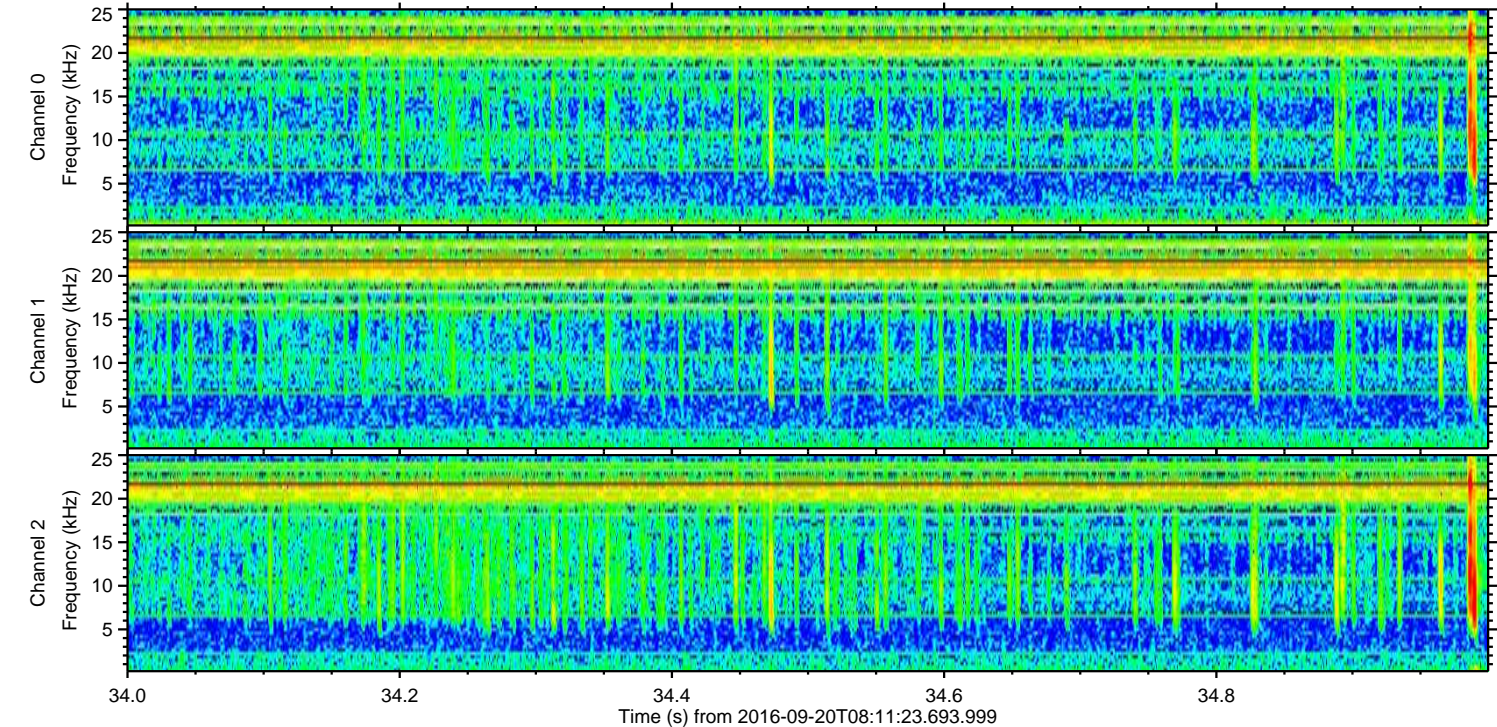
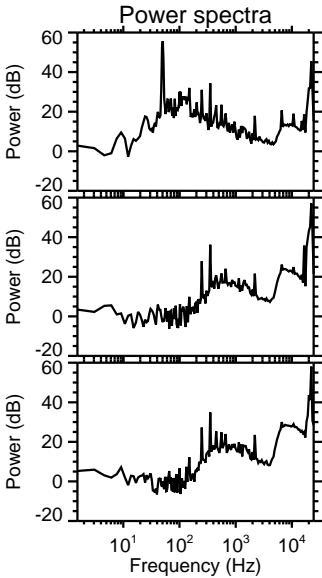
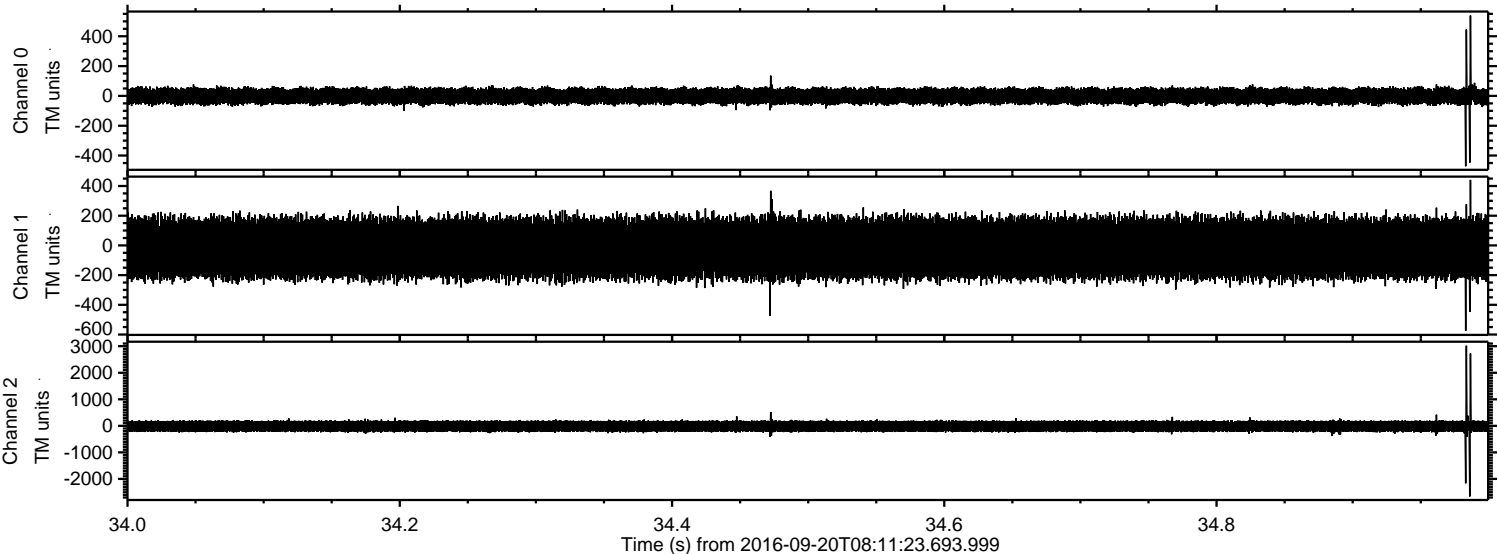


ELMAVAN 3D WAVEFORMS (Measured data sampled at 50 kHz) 51000 packets of 144 samples from 2016-09-20T08:11:23.693.999. Part 28/147

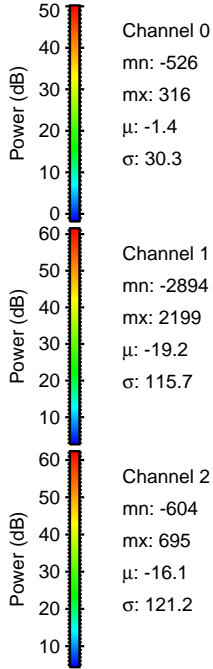
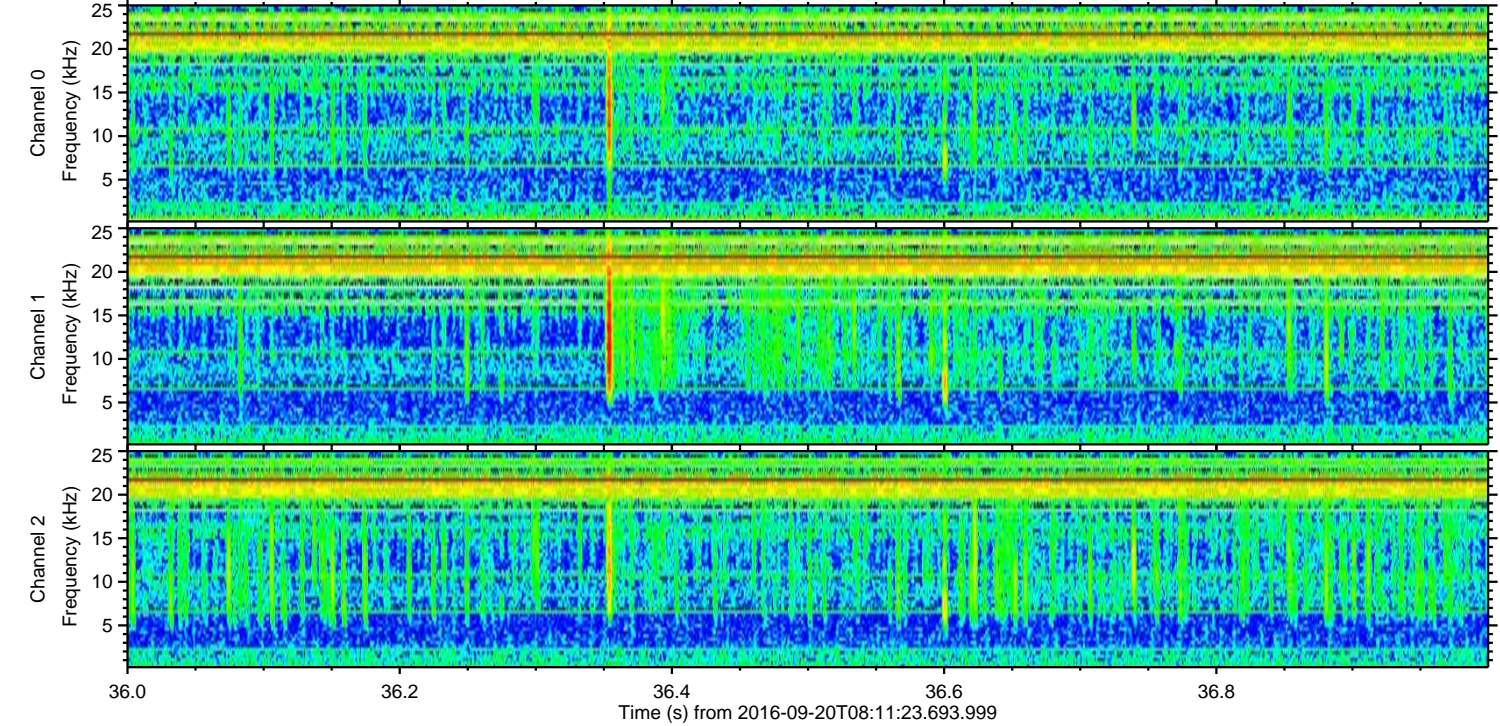
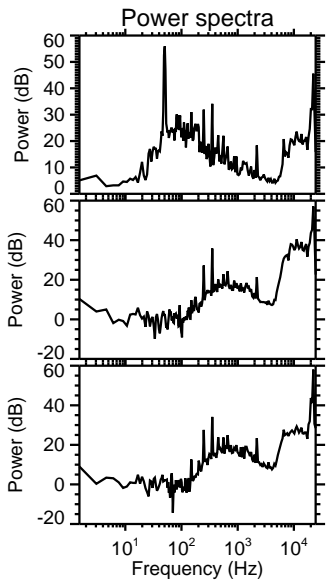
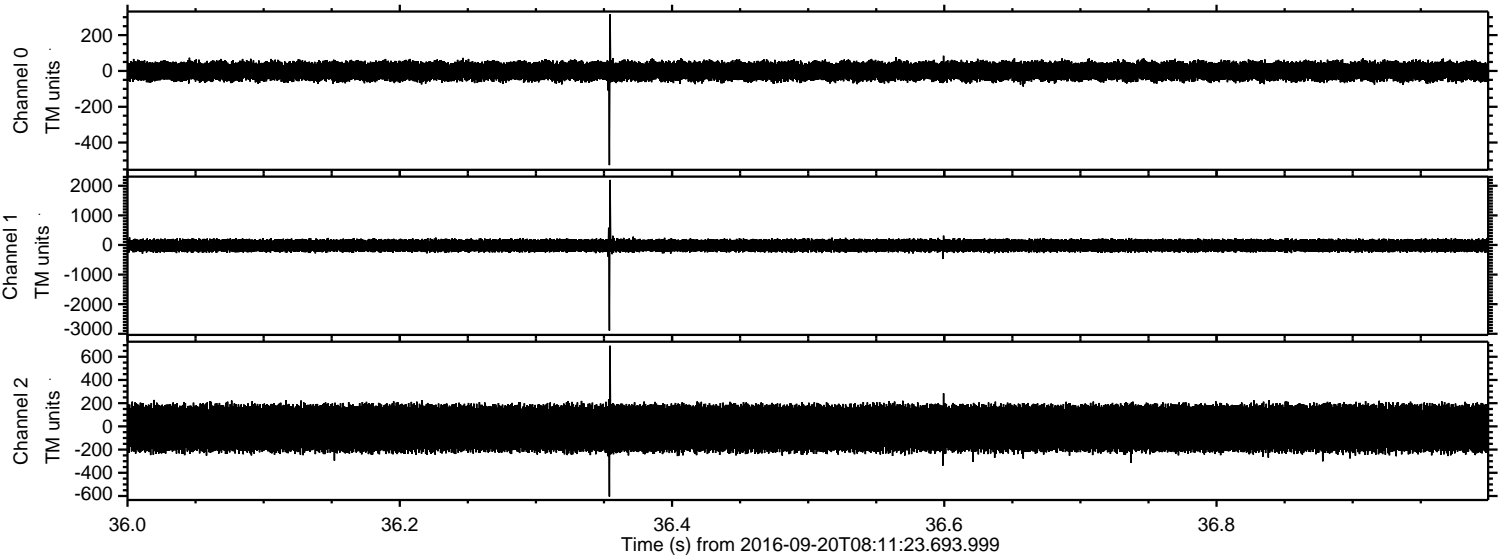
Processed Tue Sep 20 10:19:29 2016 by ELM ver.2012-10-06 from 001__elm20160920_081122__dat00.bin



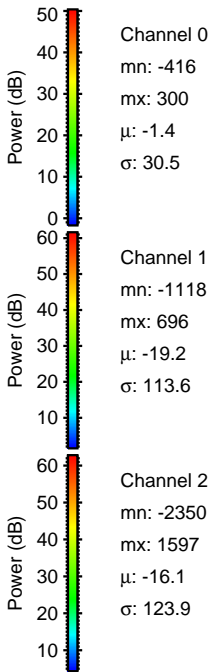
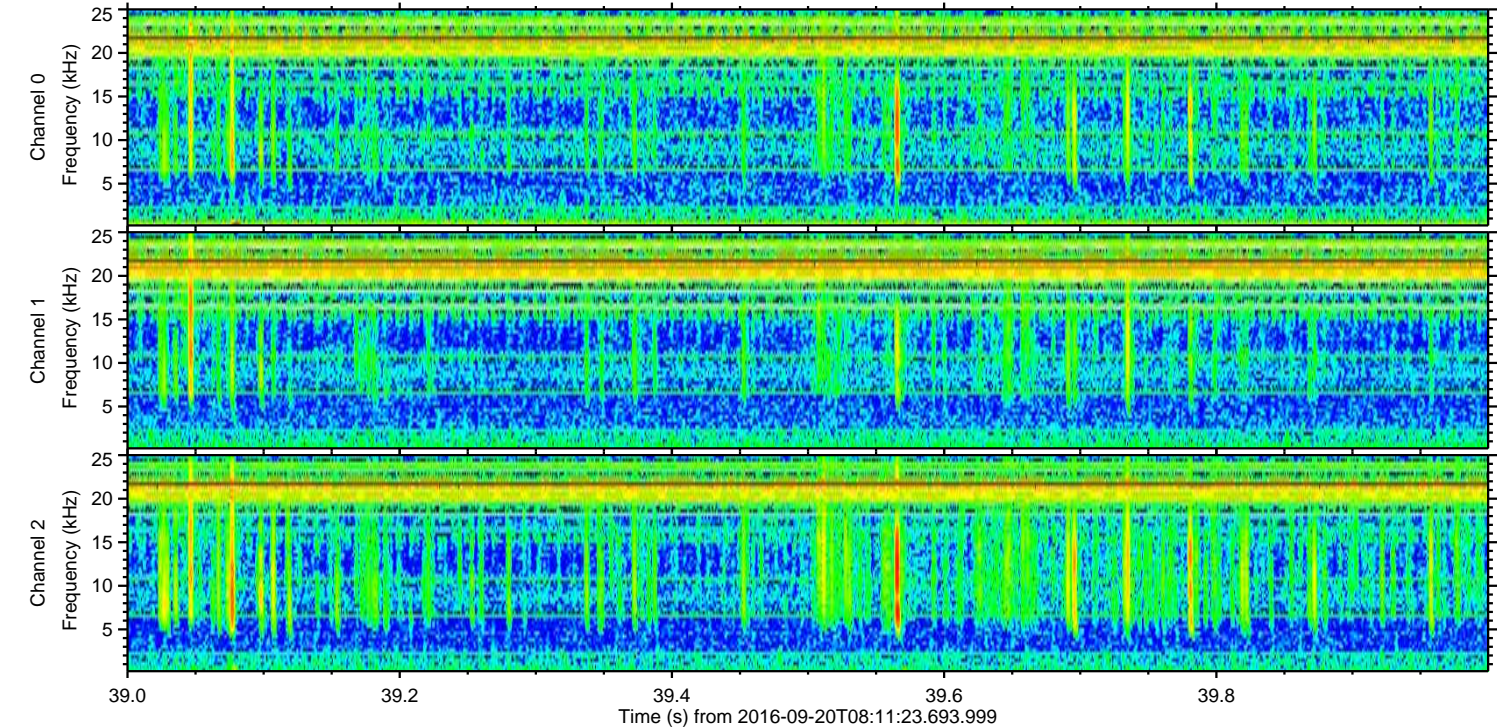
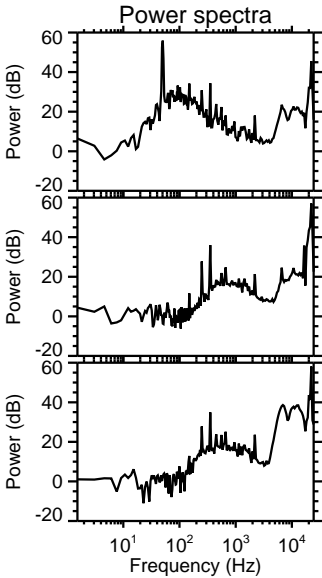
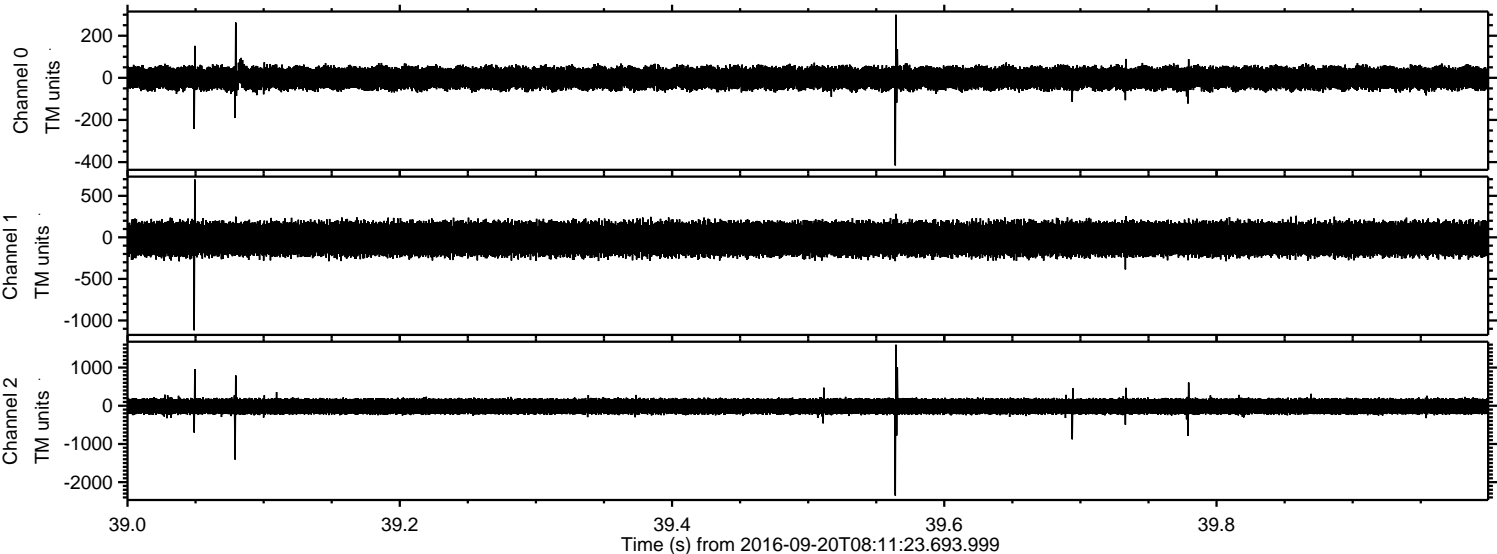
Processed Tue Sep 20 10:19:30 2016 by ELM ver.2012-10-06 from 001__elm20160920_081122__dat00.bin



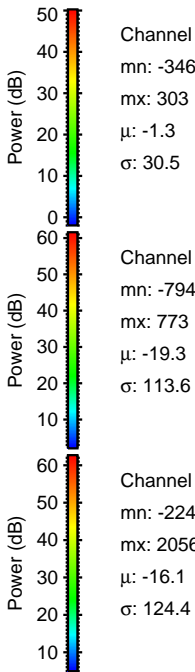
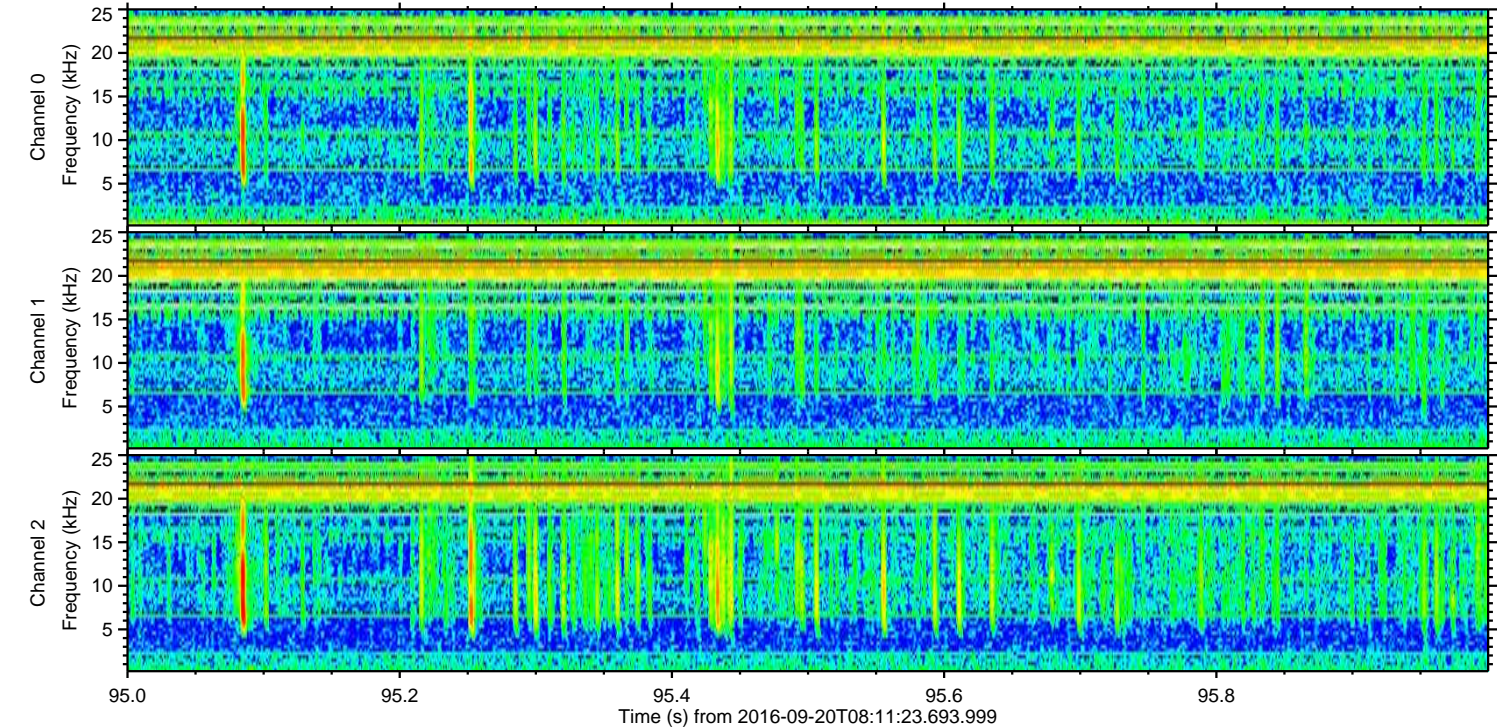
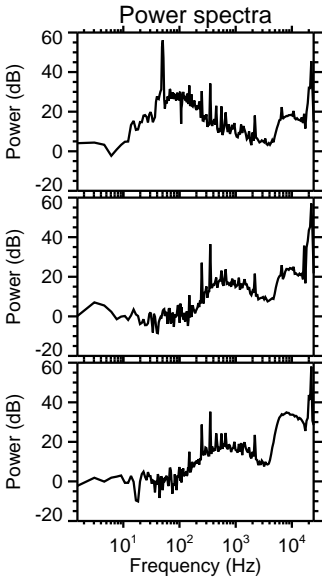
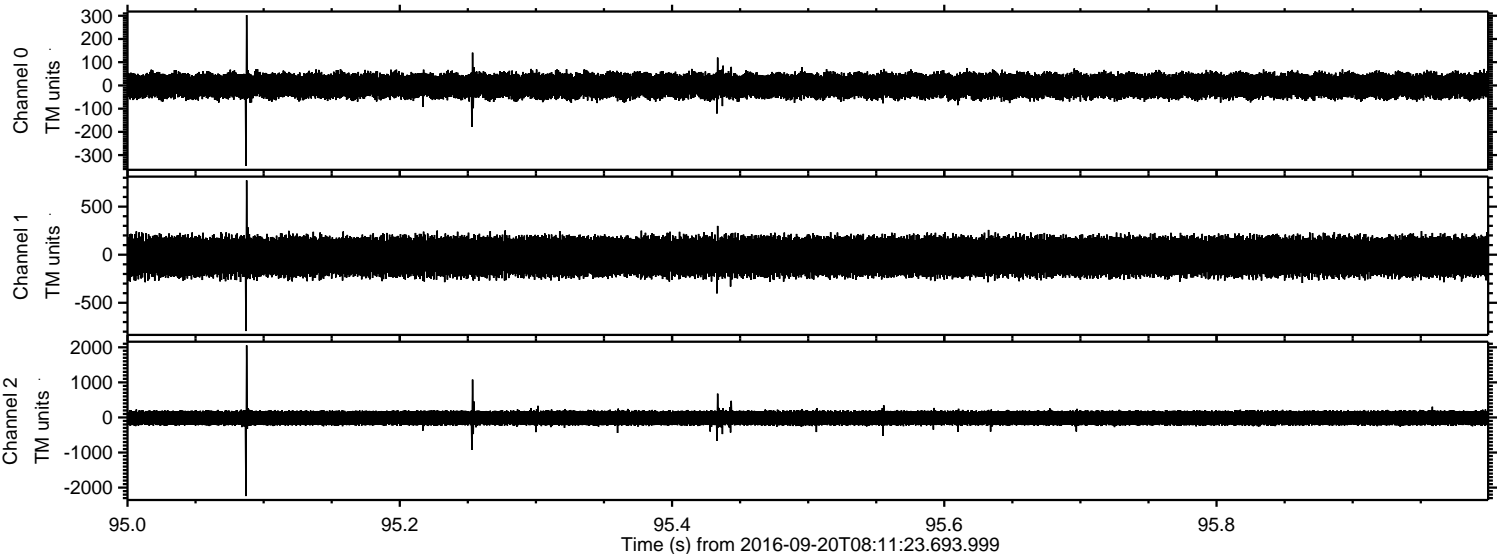
Processed Tue Sep 20 10:19:31 2016 by ELM ver.2012-10-06 from 001__elm20160920_081122__dat00.bin



Processed Tue Sep 20 10:19:32 2016 by ELM ver.2012-10-06 from 001__elm20160920_081122__dat00.bin



Processed Tue Sep 20 10:19:33 2016 by ELM ver.2012-10-06 from 001__elm20160920_081122__dat00.bin



Channel 0
mn: -346
mx: 303
 μ : -1.3
 σ : 30.5

Channel 1
mn: -794
mx: 773
 μ : -19.3
 σ : 113.6

Channel 2
mn: -2241
mx: 2056
 μ : -16.1
 σ : 124.4

Processed Tue Sep 20 10:19:35 2016 by ELM ver.2012-10-06 from 001__elm20160920_081122__dat00.bin

