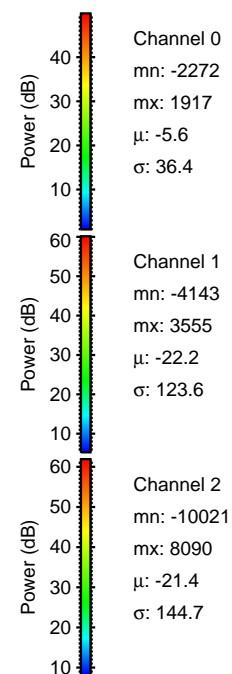
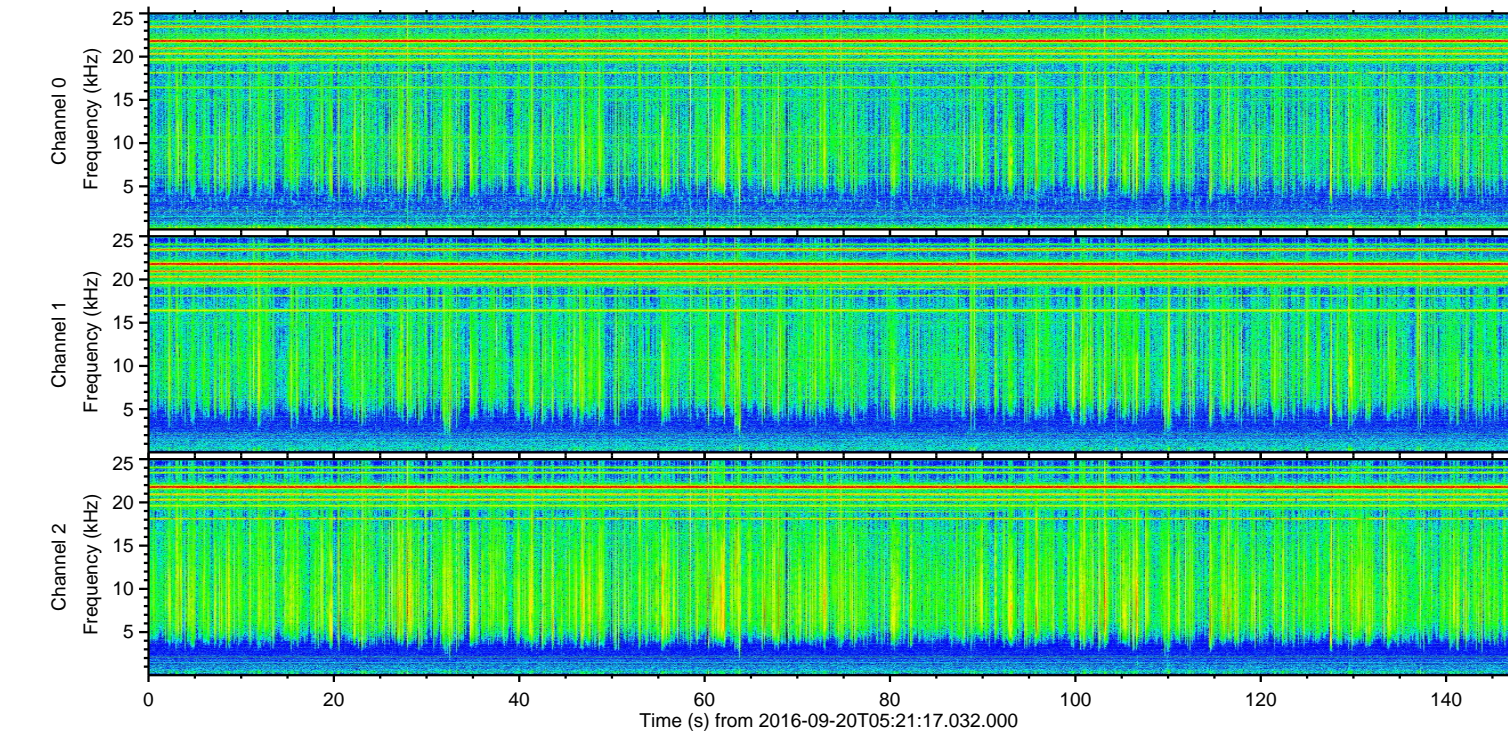
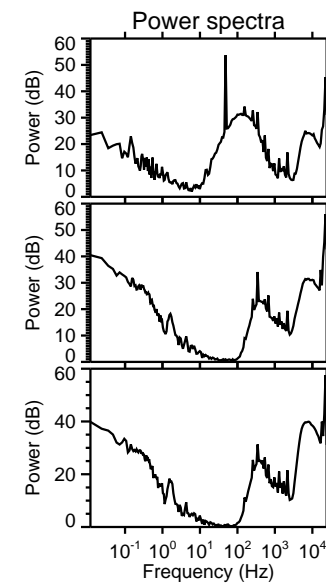
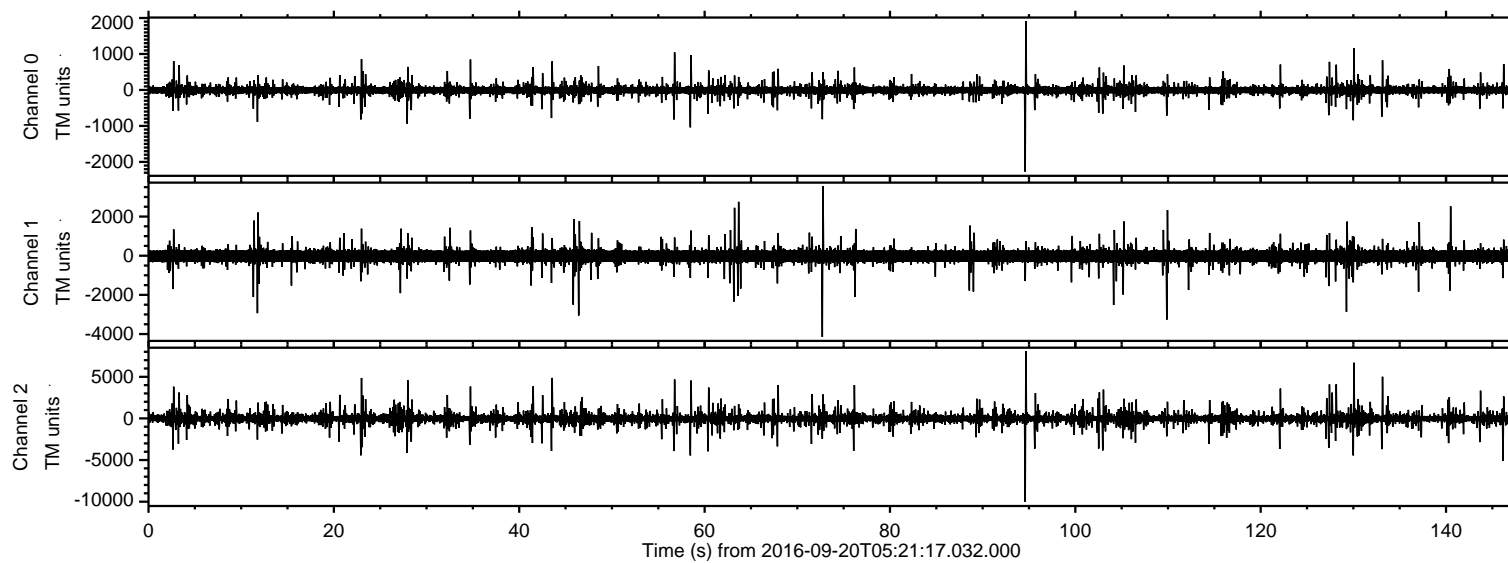
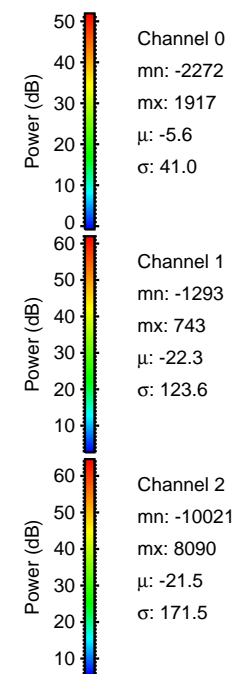
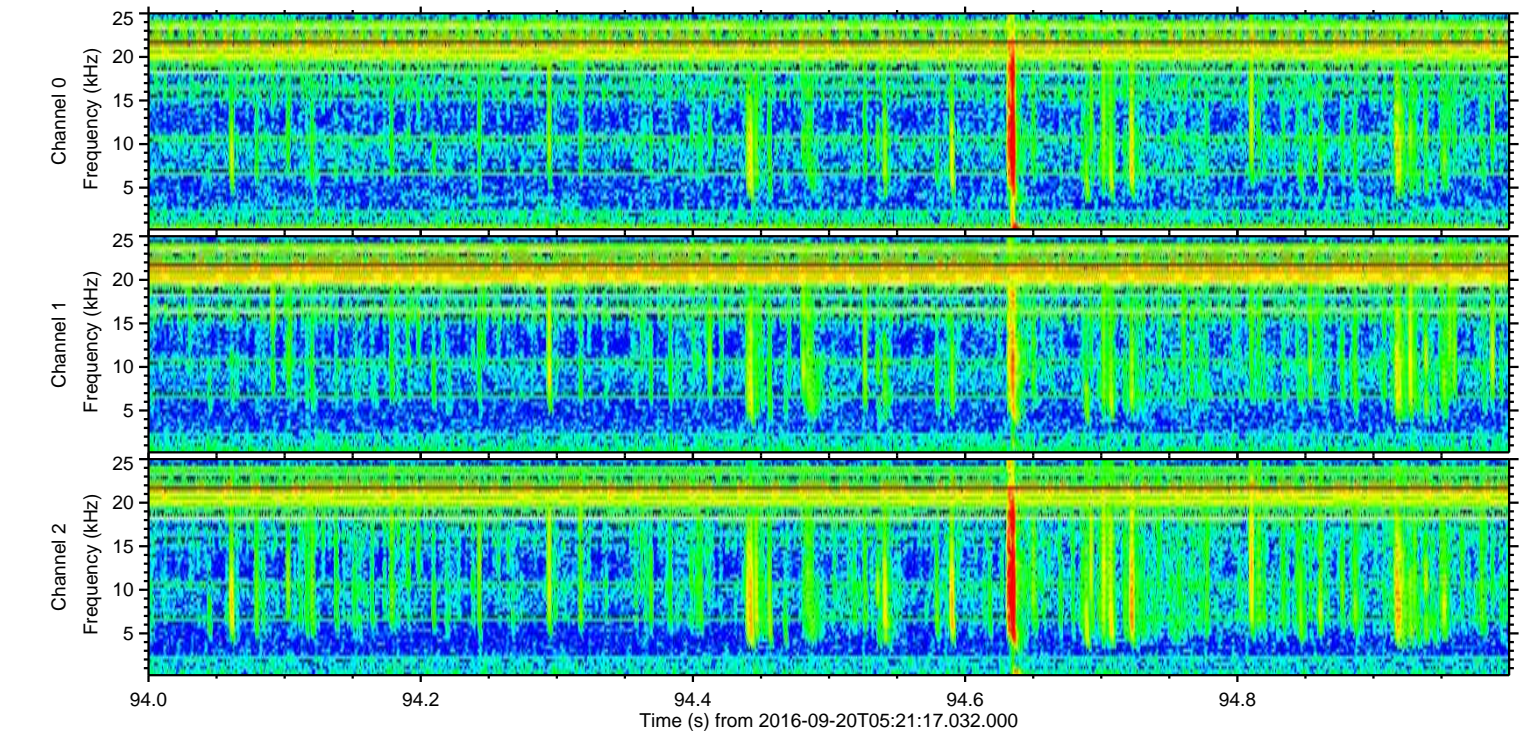
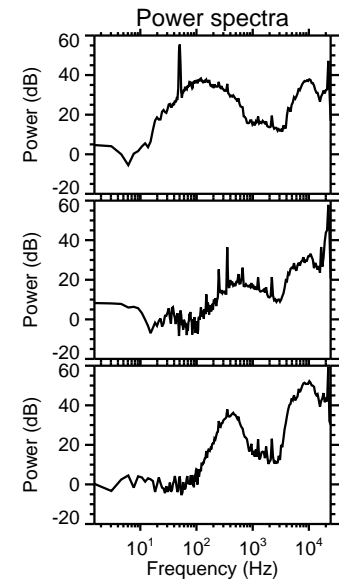
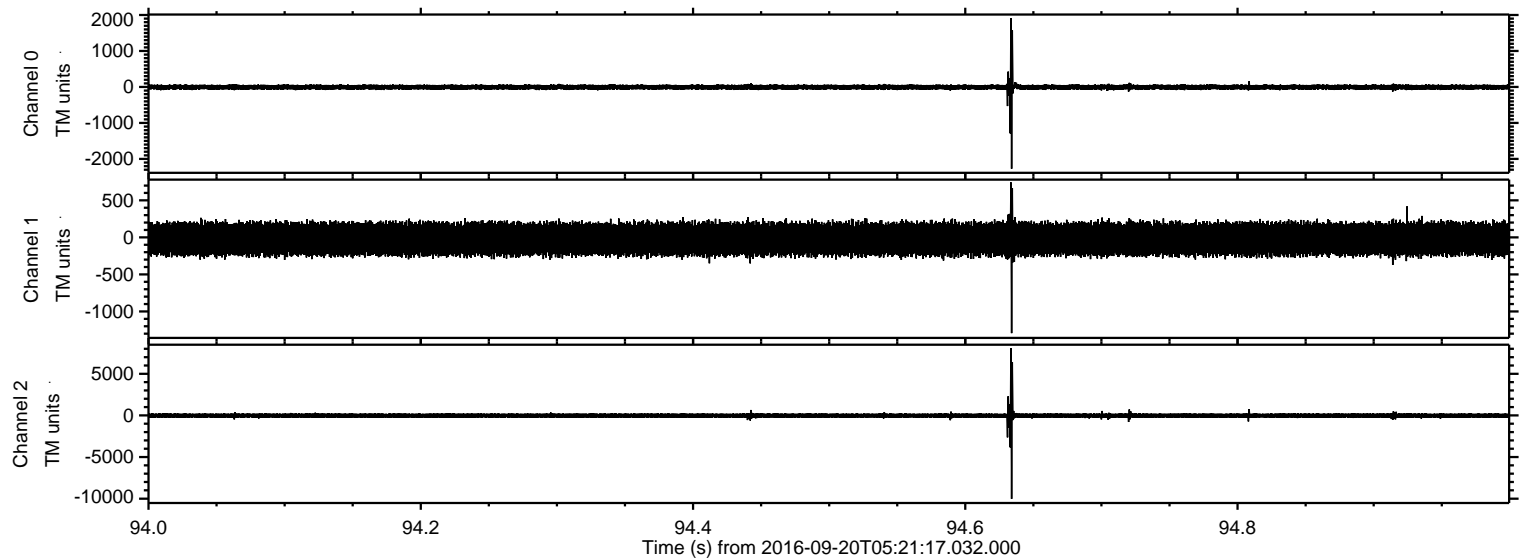


ELMAVAN 3D WAVEFORMS (Measured data sampled at 50 kHz) 51000 packets of 144 samples from 2016-09-20T05:21:17.032.000.

Processed Tue Sep 20 07:29:02 2016 by ELM ver.2012-10-06 from 001__elm20160920_052116__dat00.bin



Processed Tue Sep 20 07:29:16 2016 by ELM ver.2012-10-06 from 001__elm20160920_052116__dat00.bin



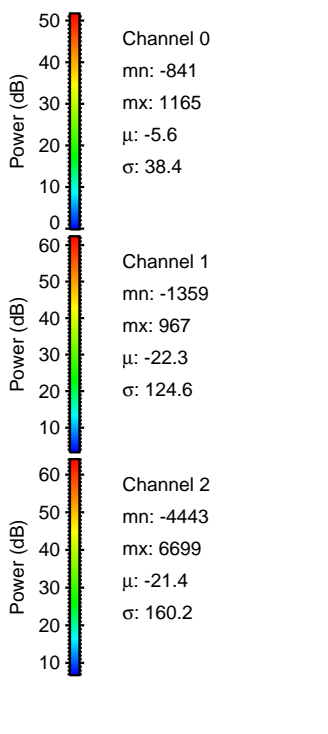
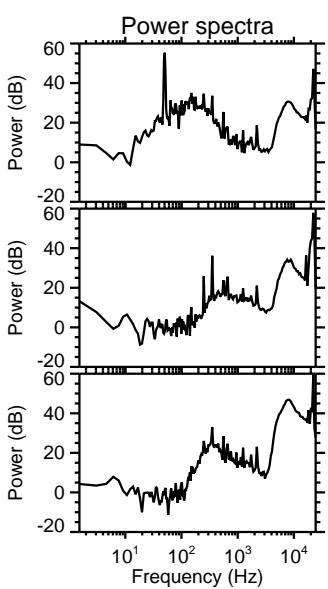
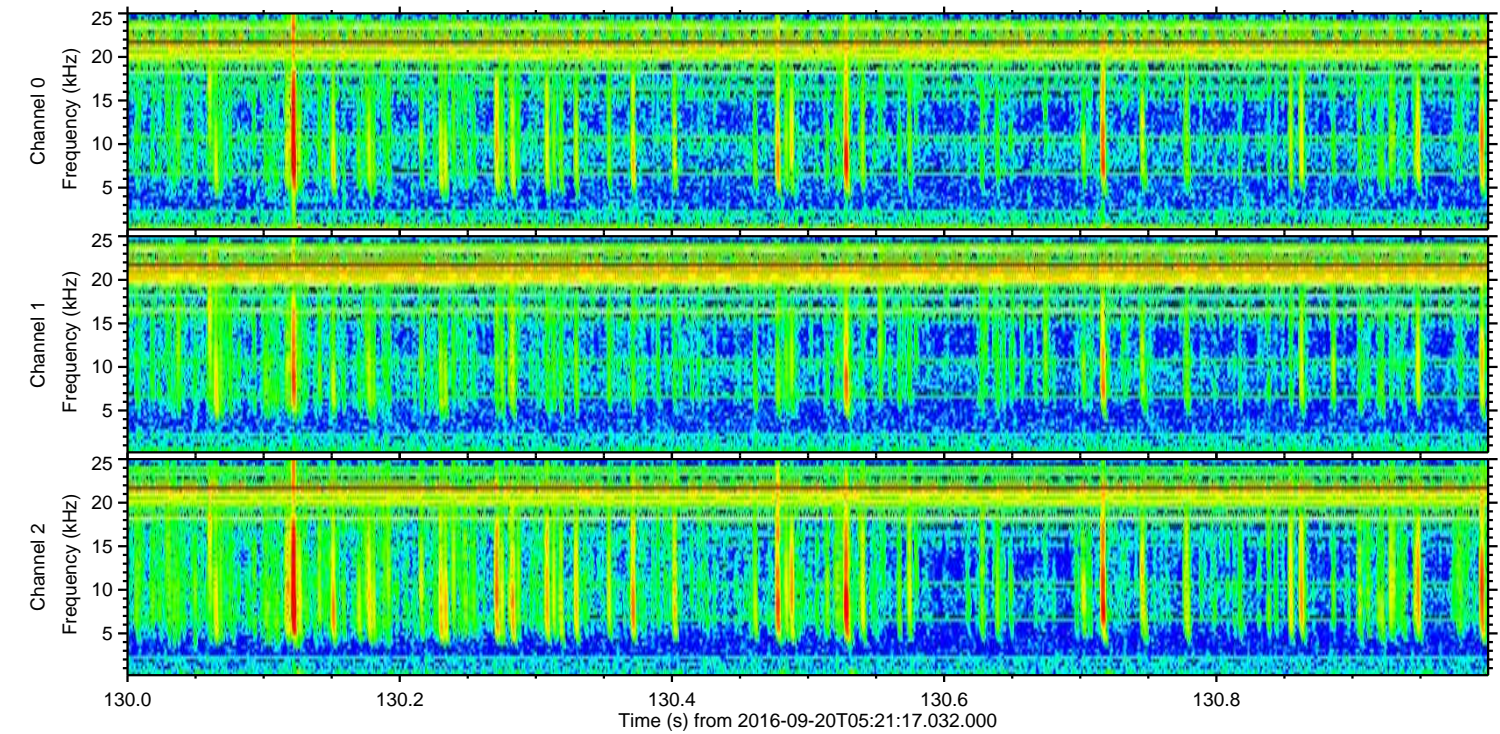
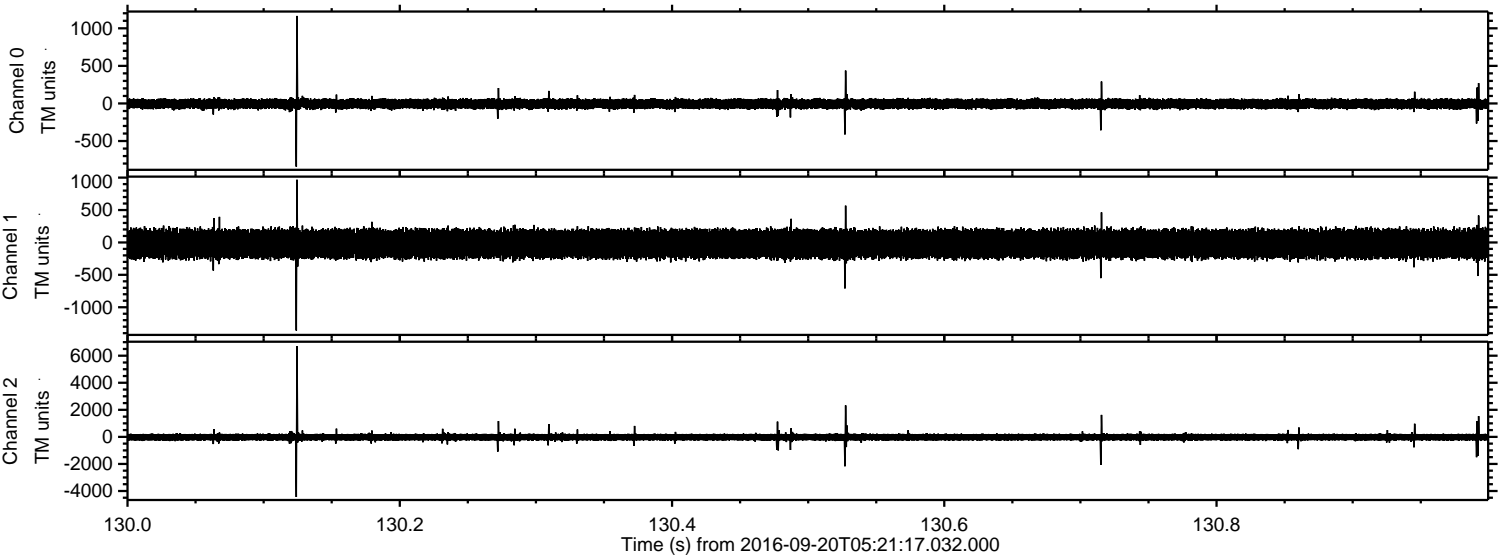
Channel 0
mn: -2272
mx: 1917
 μ : -5.6
 σ : 41.0

Channel 1
mn: -1293
mx: 743
 μ : -22.3
 σ : 123.6

Channel 2
mn: -10021
mx: 8090
 μ : -21.5
 σ : 171.5

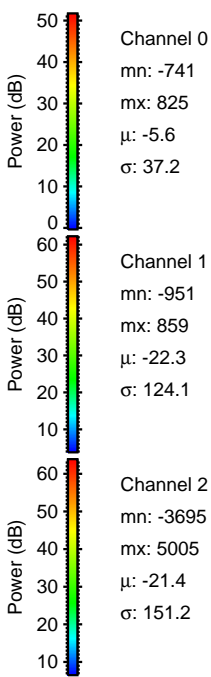
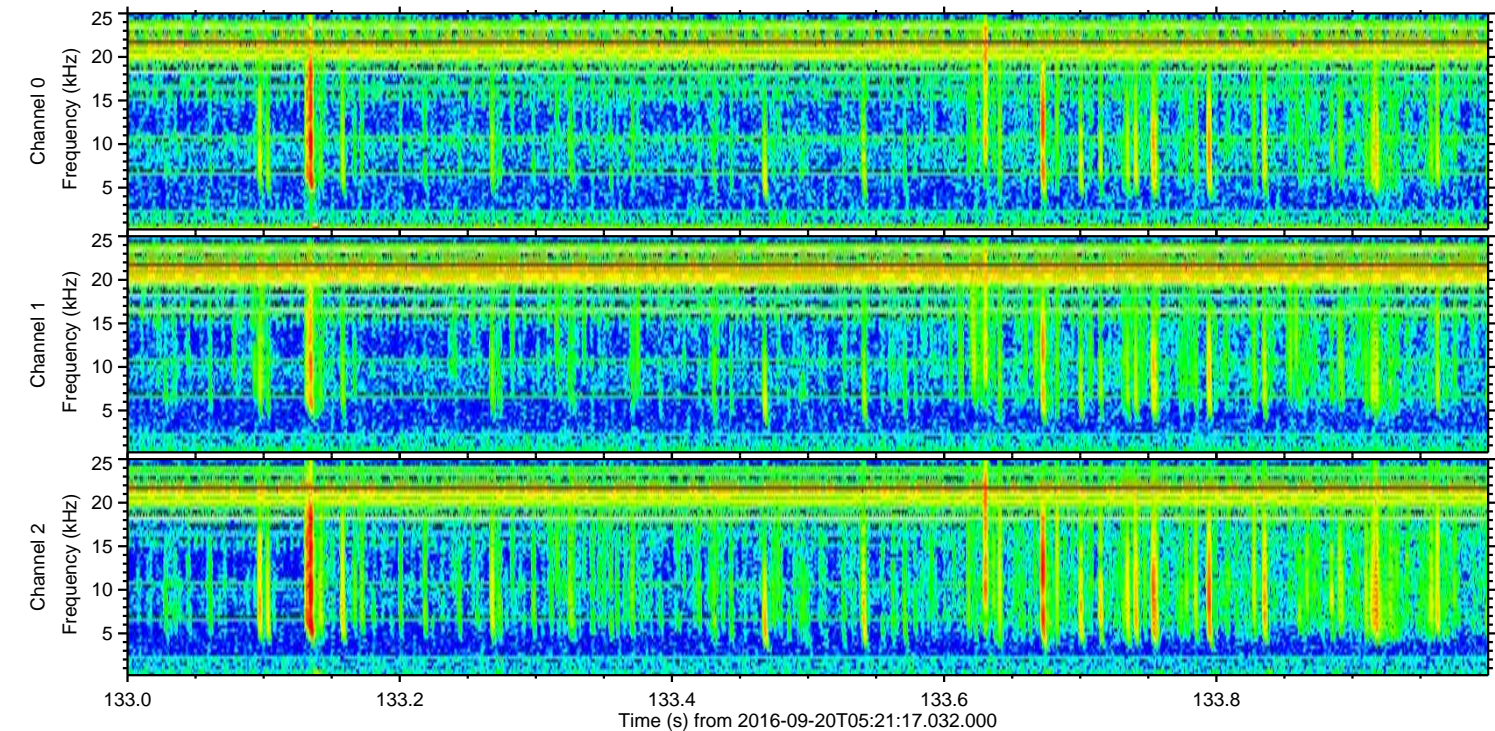
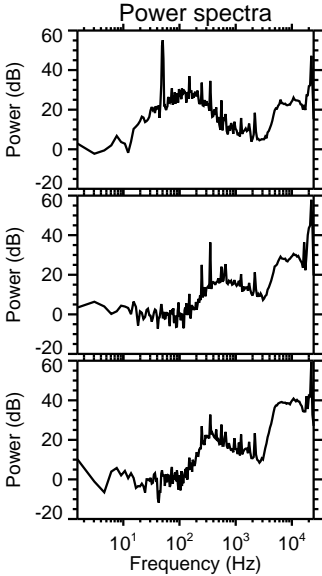
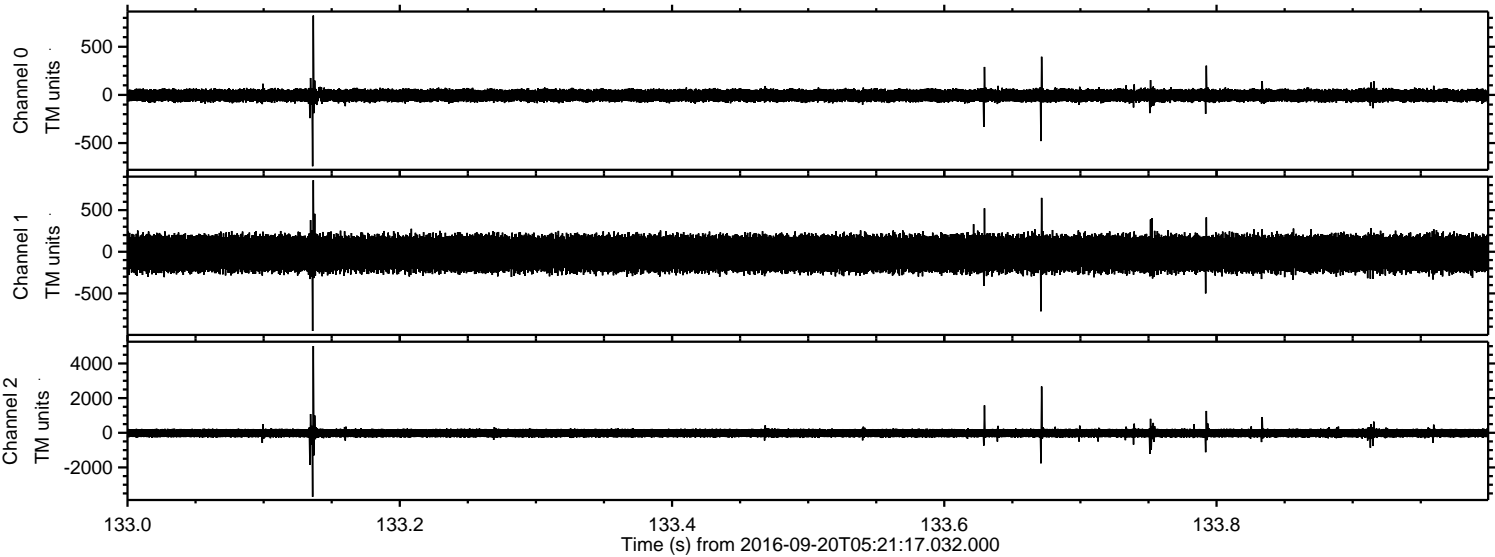
ELMAVAN 3D WAVEFORMS (Measured data sampled at 50 kHz) 51000 packets of 144 samples from 2016-09-20T05:21:17.032.000. Part 131/147

Processed Tue Sep 20 07:29:17 2016 by ELM ver.2012-10-06 from 001__elm20160920_052116__dat00.bin

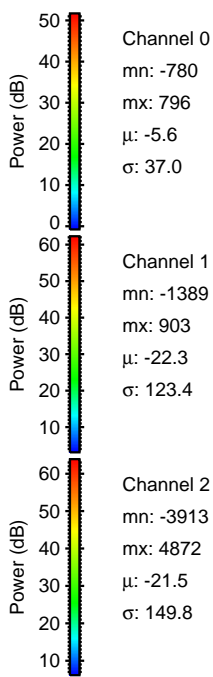
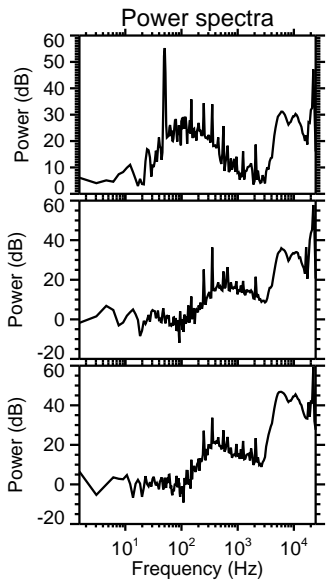
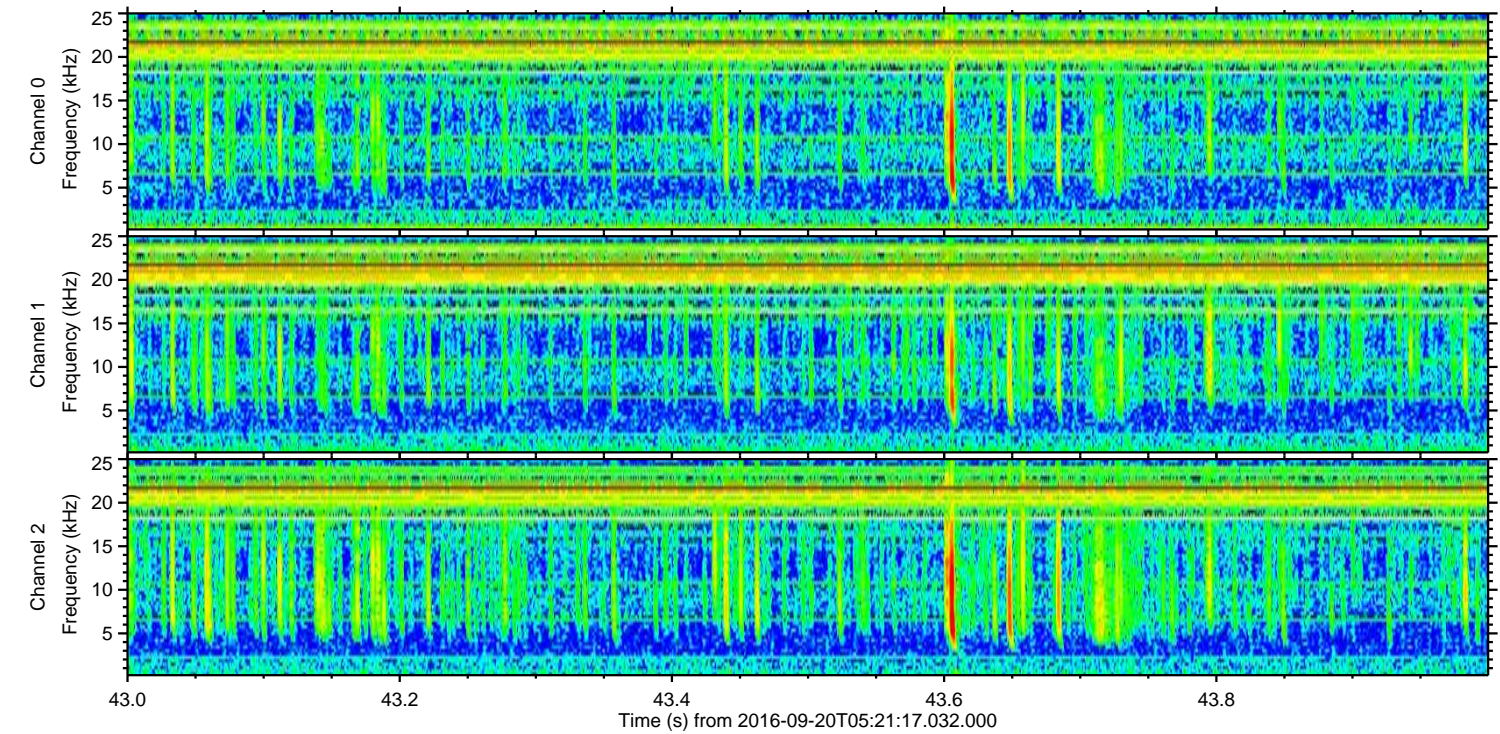
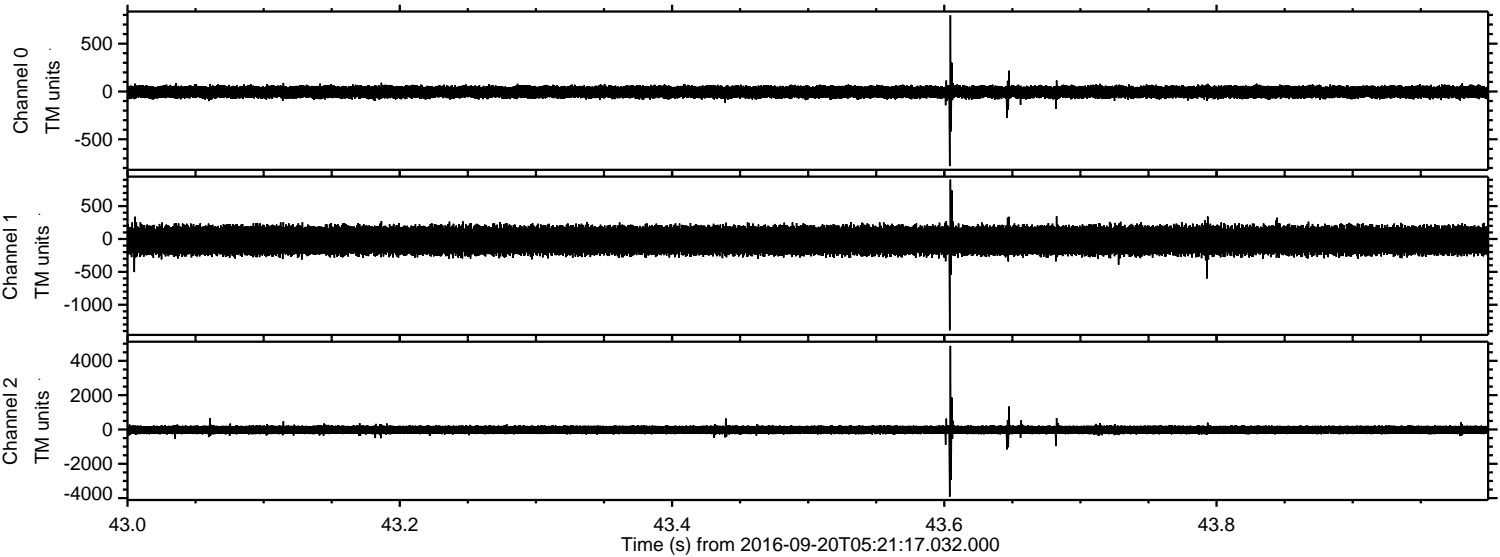


ELMAVAN 3D WAVEFORMS (Measured data sampled at 50 kHz) 51000 packets of 144 samples from 2016-09-20T05:21:17.032.000. Part 134/147

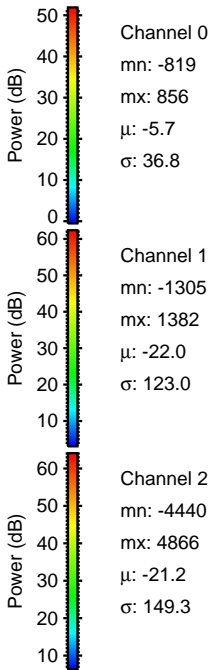
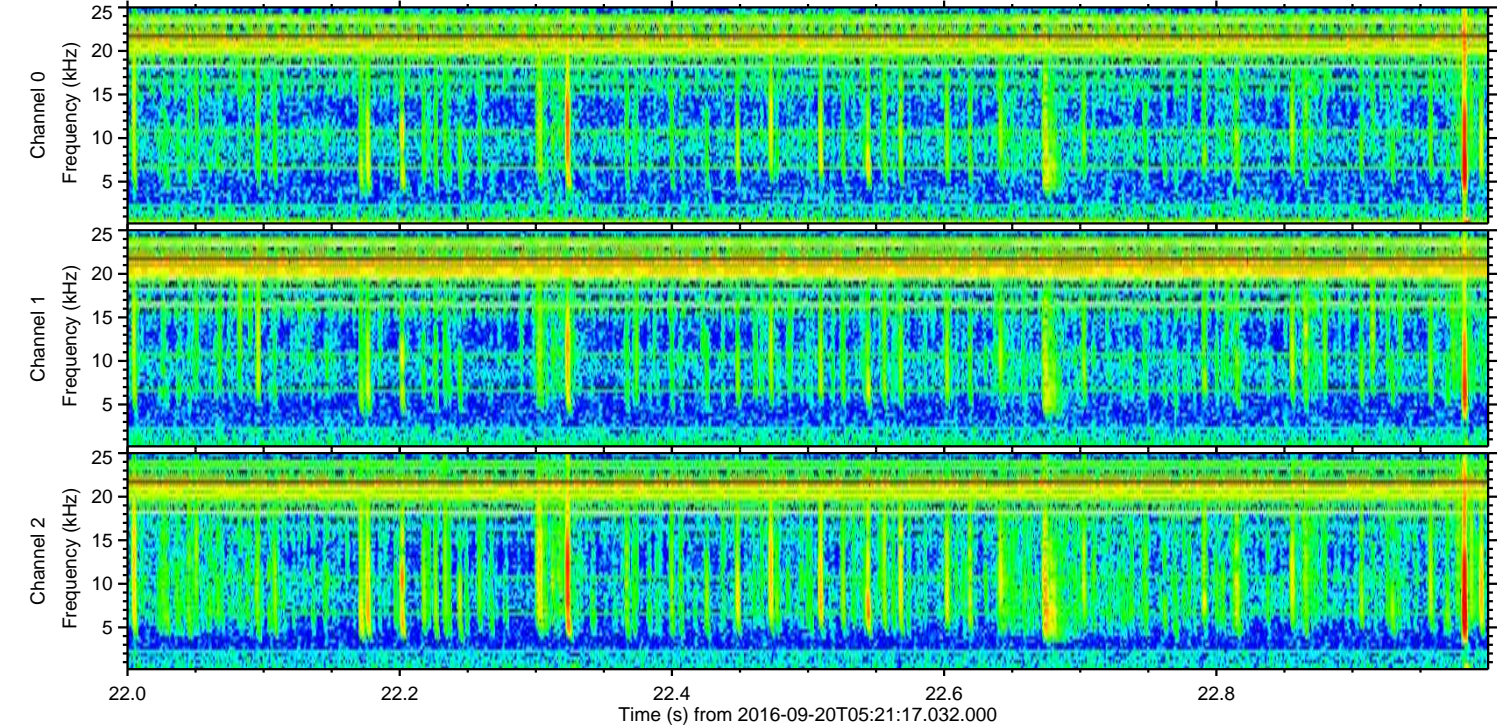
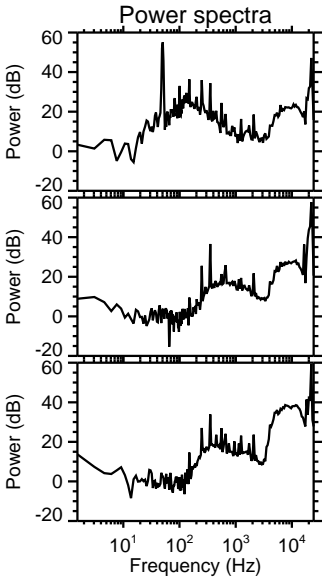
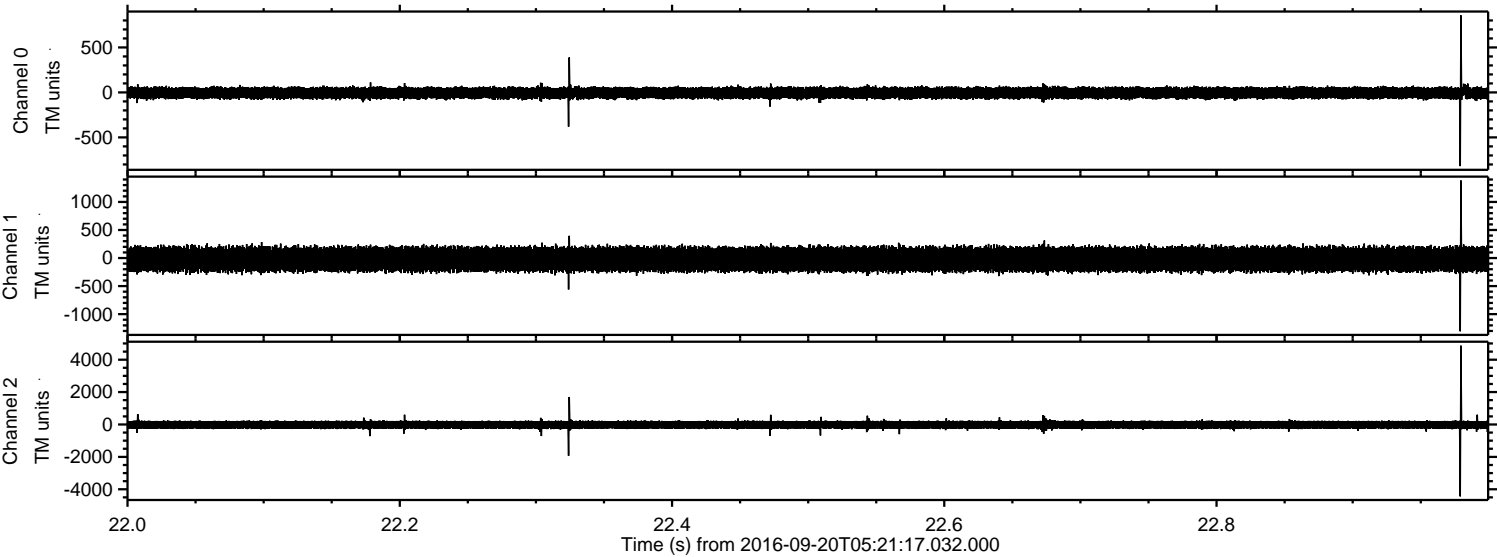
Processed Tue Sep 20 07:29:18 2016 by ELM ver.2012-10-06 from 001__elm20160920_052116__dat00.bin



Processed Tue Sep 20 07:29:19 2016 by ELM ver.2012-10-06 from 001__elm20160920_052116__dat00.bin

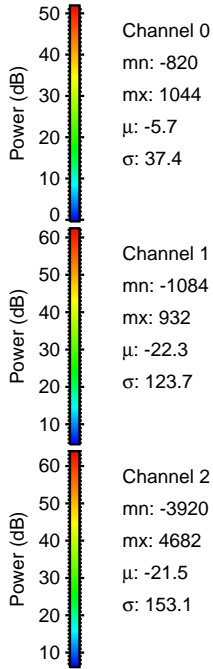
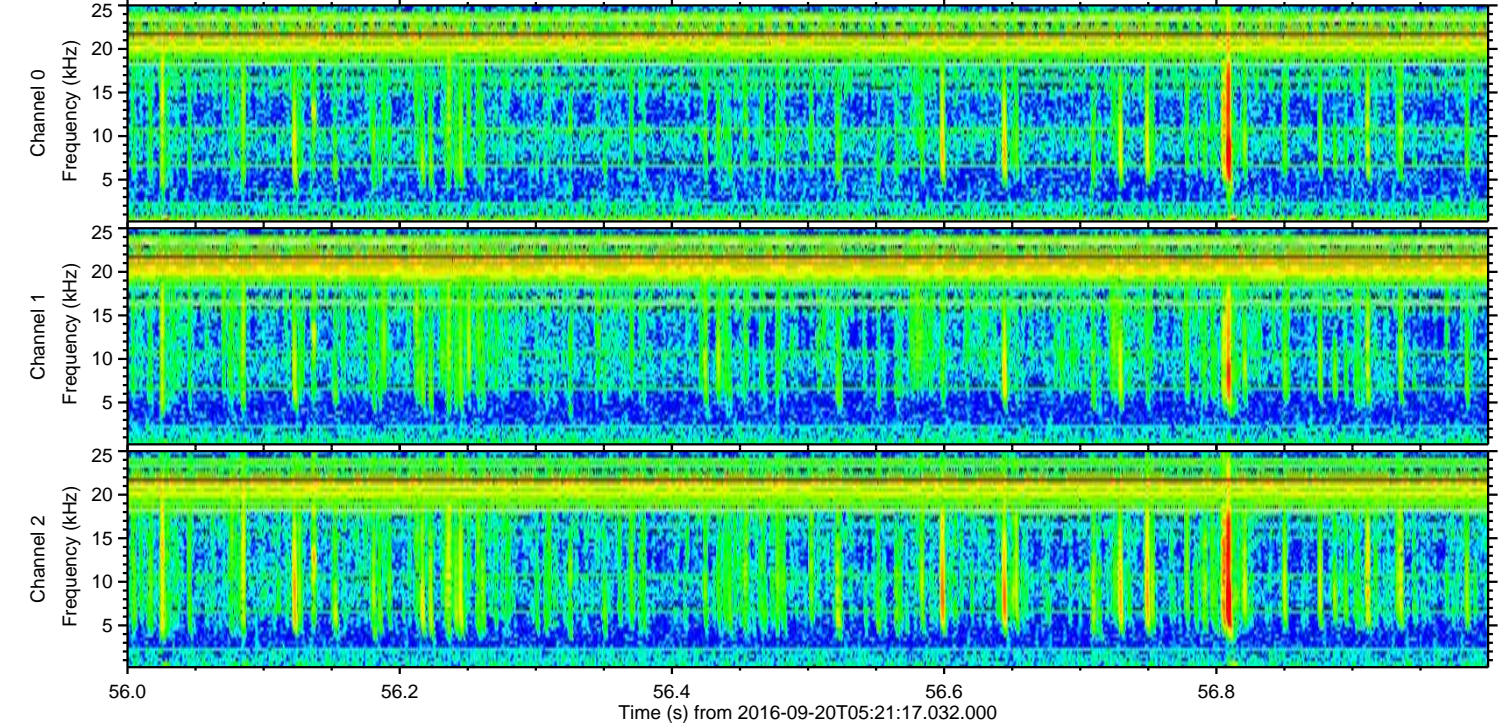
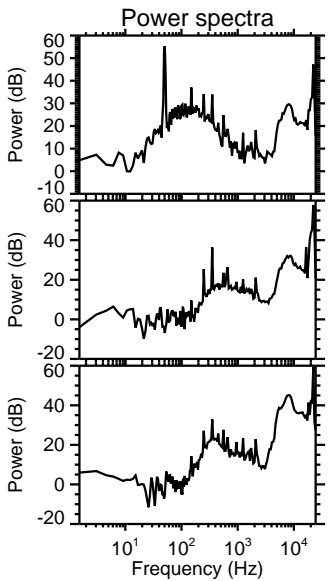
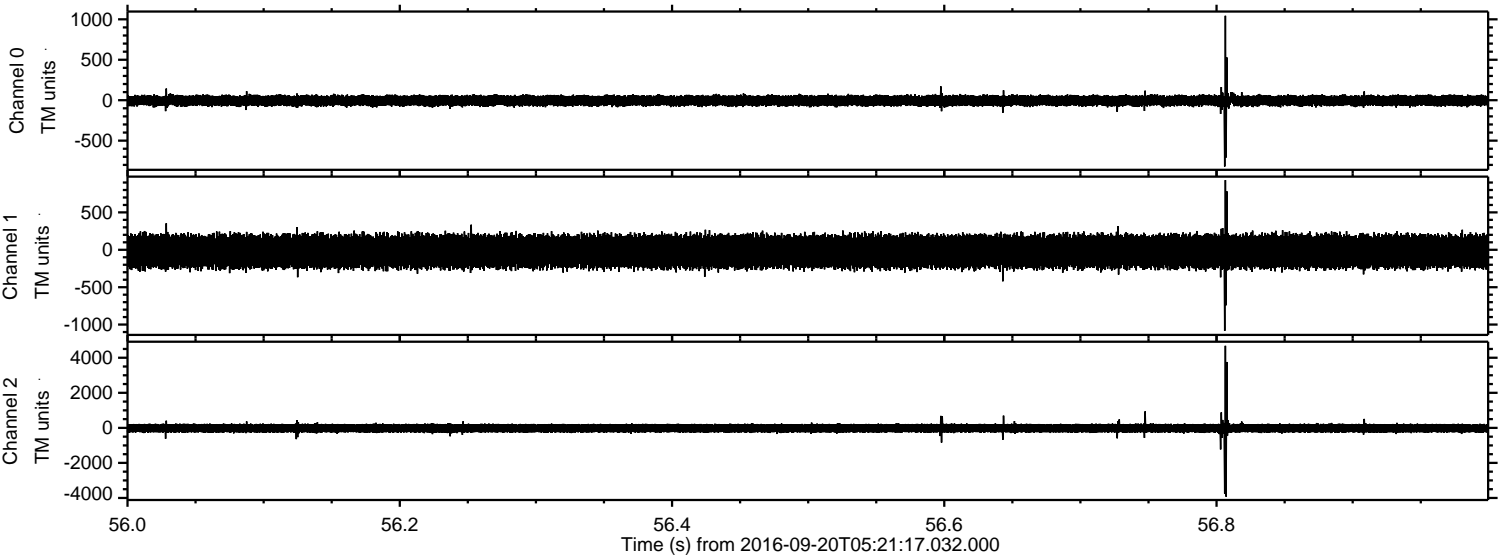


Processed Tue Sep 20 07:29:20 2016 by ELM ver.2012-10-06 from 001__elm20160920_052116__dat00.bin



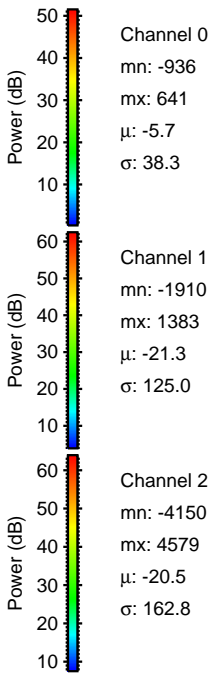
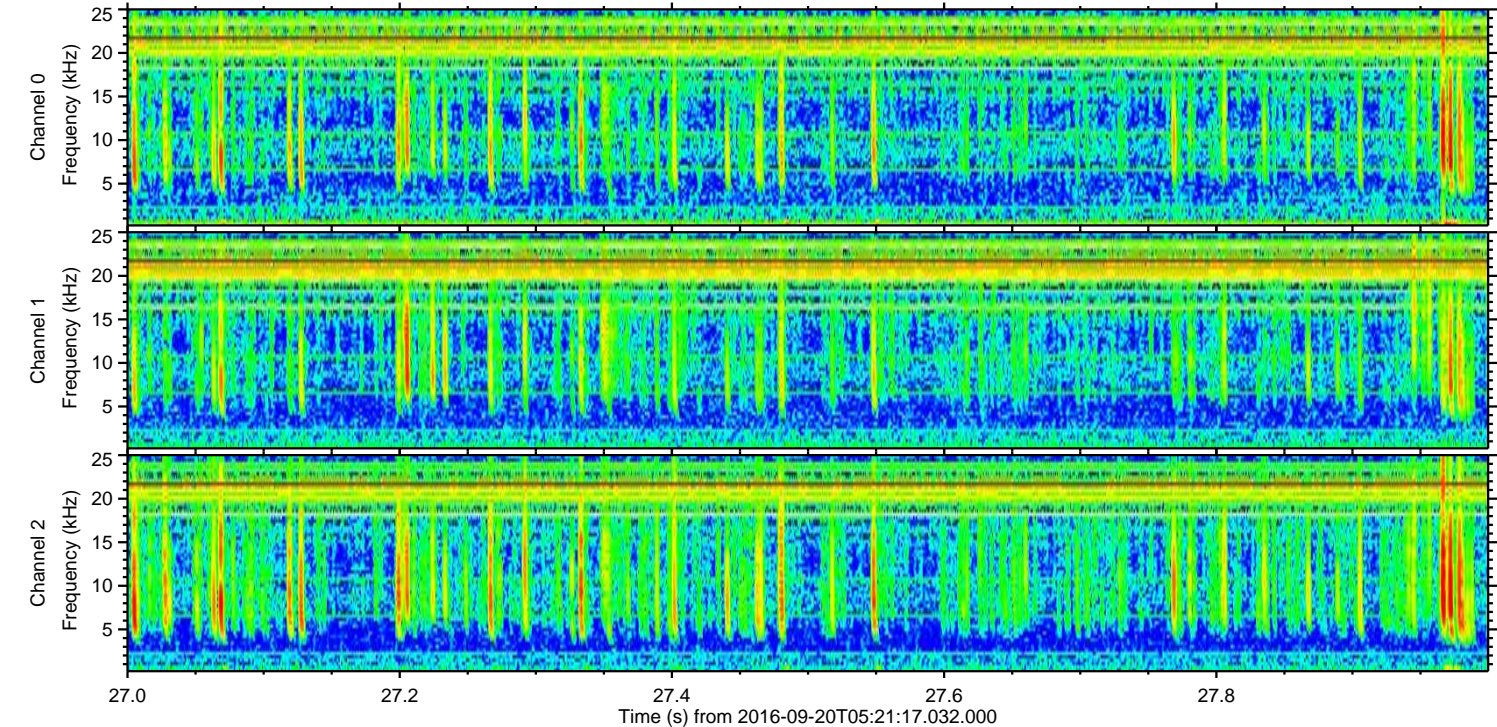
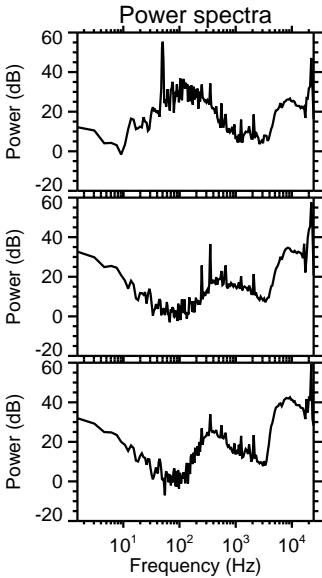
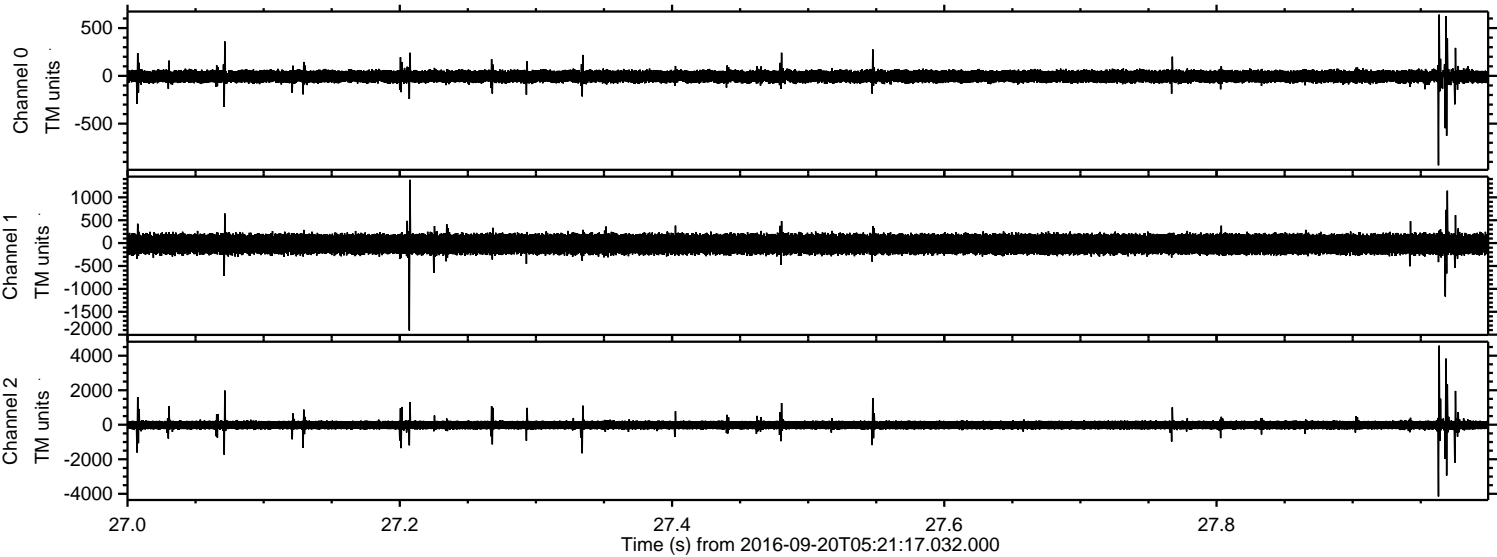
ELMAVAN 3D WAVEFORMS (Measured data sampled at 50 kHz) 51000 packets of 144 samples from 2016-09-20T05:21:17.032.000. Part 57/147

Processed Tue Sep 20 07:29:22 2016 by ELM ver.2012-10-06 from 001__elm20160920_052116__dat00.bin



ELMAVAN 3D WAVEFORMS (Measured data sampled at 50 kHz) 51000 packets of 144 samples from 2016-09-20T05:21:17.032.000. Part 28/147

Processed Tue Sep 20 07:29:23 2016 by ELM ver.2012-10-06 from 001__elm20160920_052116__dat00.bin



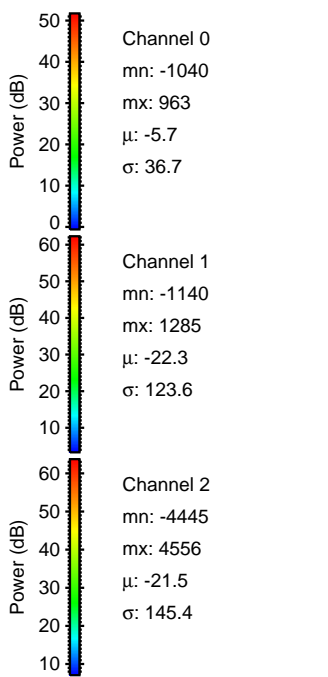
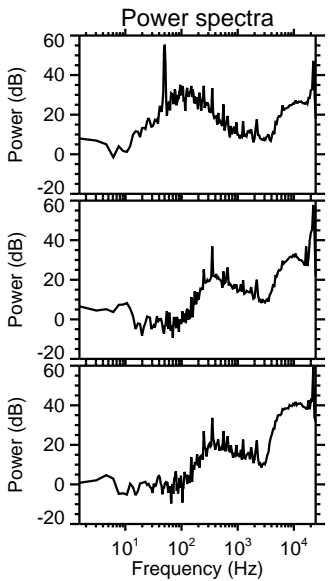
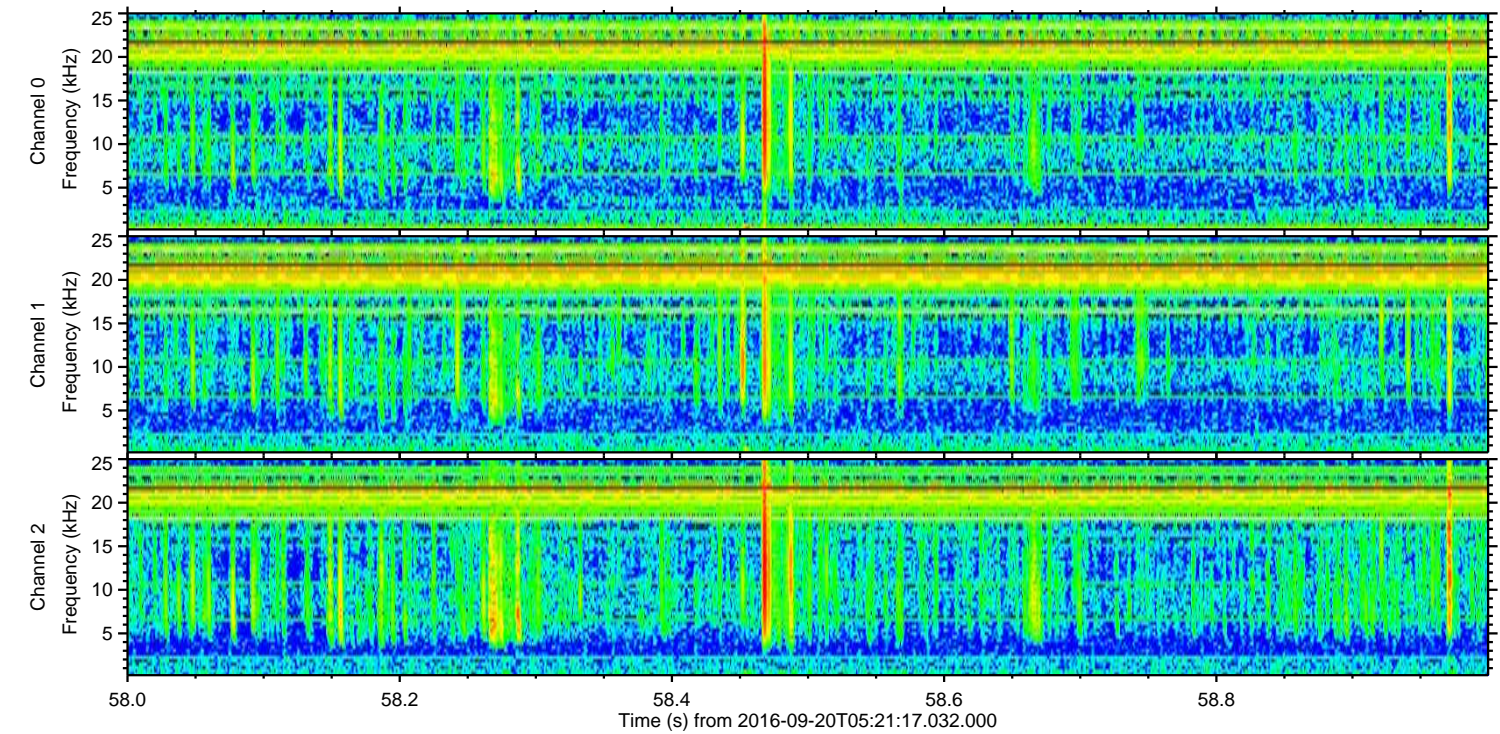
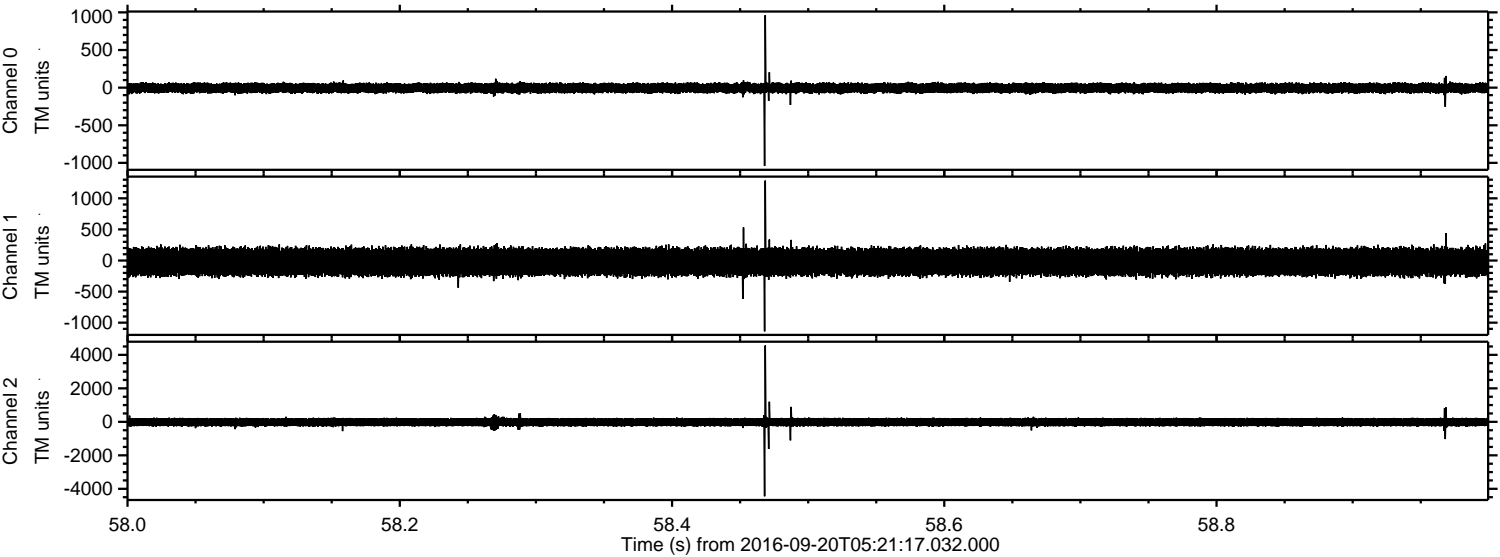
Channel 0
mn: -936
mx: 641
 μ : -5.7
 σ : 38.3

Channel 1
mn: -1910
mx: 1383
 μ : -21.3
 σ : 125.0

Channel 2
mn: -4150
mx: 4579
 μ : -20.5
 σ : 162.8

ELMAVAN 3D WAVEFORMS (Measured data sampled at 50 kHz) 51000 packets of 144 samples from 2016-09-20T05:21:17.032.000. Part 59/147

Processed Tue Sep 20 07:29:24 2016 by ELM ver.2012-10-06 from 001__elm20160920_052116__dat00.bin



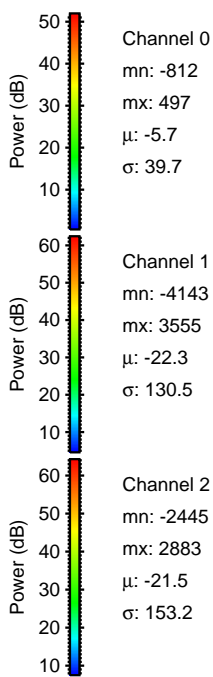
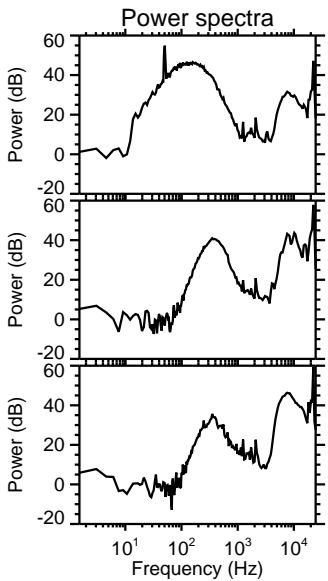
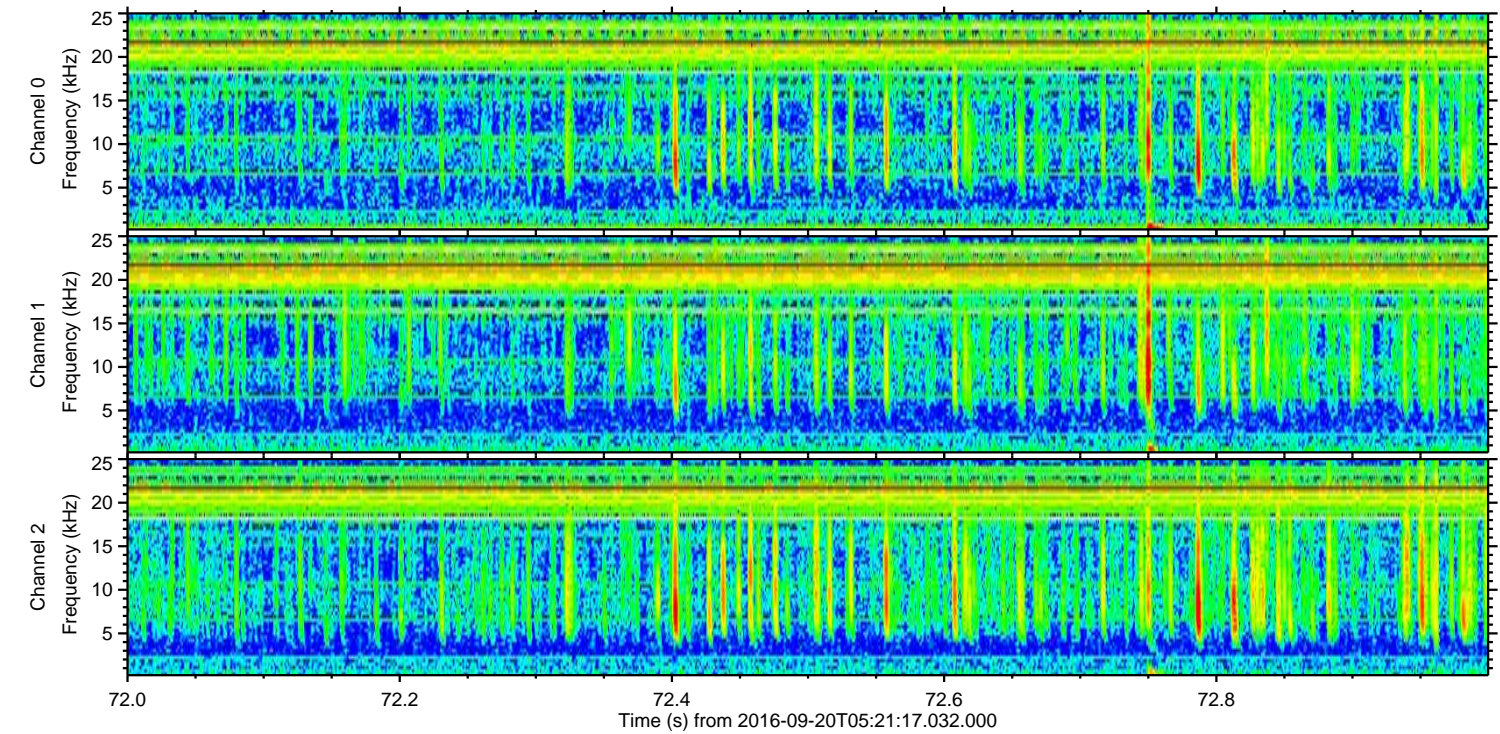
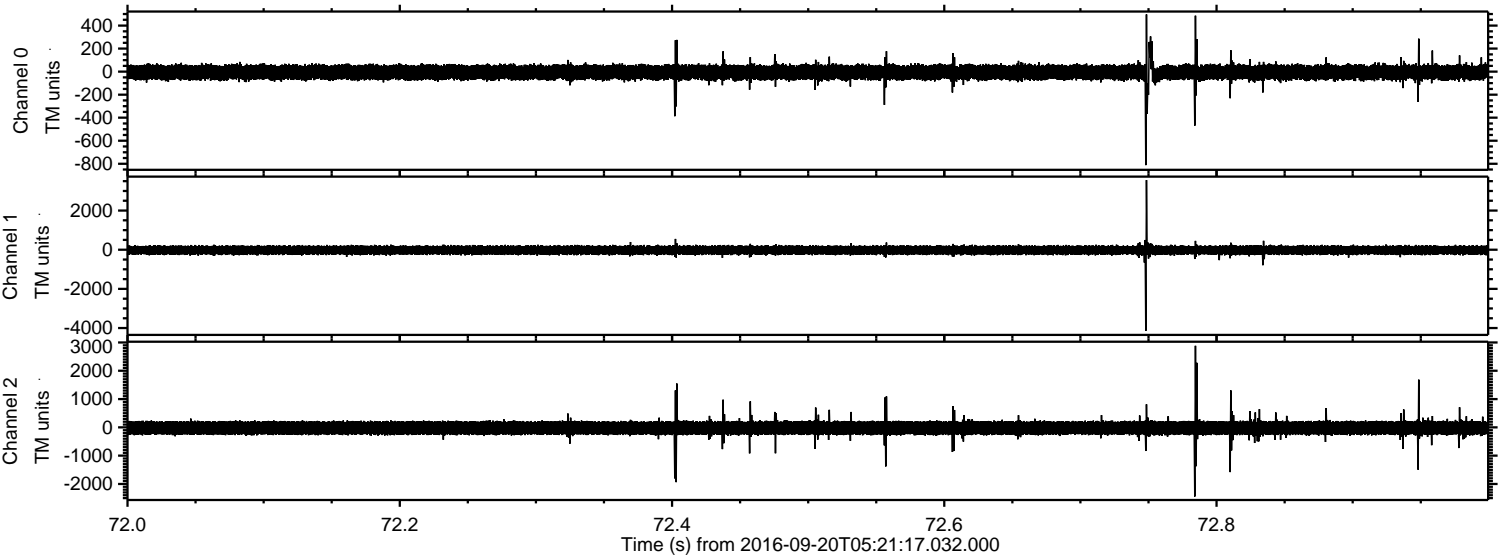
Channel 0
mn: -1040
mx: 963
 μ : -5.7
 σ : 36.7

Channel 1
mn: -1140
mx: 1285
 μ : -22.3
 σ : 123.6

Channel 2
mn: -4445
mx: 4556
 μ : -21.5
 σ : 145.4

ELMAVAN 3D WAVEFORMS (Measured data sampled at 50 kHz) 51000 packets of 144 samples from 2016-09-20T05:21:17.032.000. Part 73/147

Processed Tue Sep 20 07:29:25 2016 by ELM ver.2012-10-06 from 001__elm20160920_052116__dat00.bin



Channel 0
mn: -812
mx: 497
 μ : -5.7
 σ : 39.7

Channel 1
mn: -4143
mx: 3555
 μ : -22.3
 σ : 130.5

Channel 2
mn: -2445
mx: 2883
 μ : -21.5
 σ : 153.2

ELMAVAN 3D WAVEFORMS (Measured data sampled at 50 kHz) 51000 packets of 144 samples from 2016-09-20T05:21:17.032.000. Part 109/147

Processed Tue Sep 20 07:29:26 2016 by ELM ver.2012-10-06 from 001__elm20160920_052116__dat00.bin

