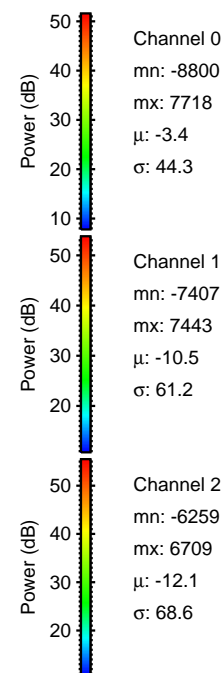
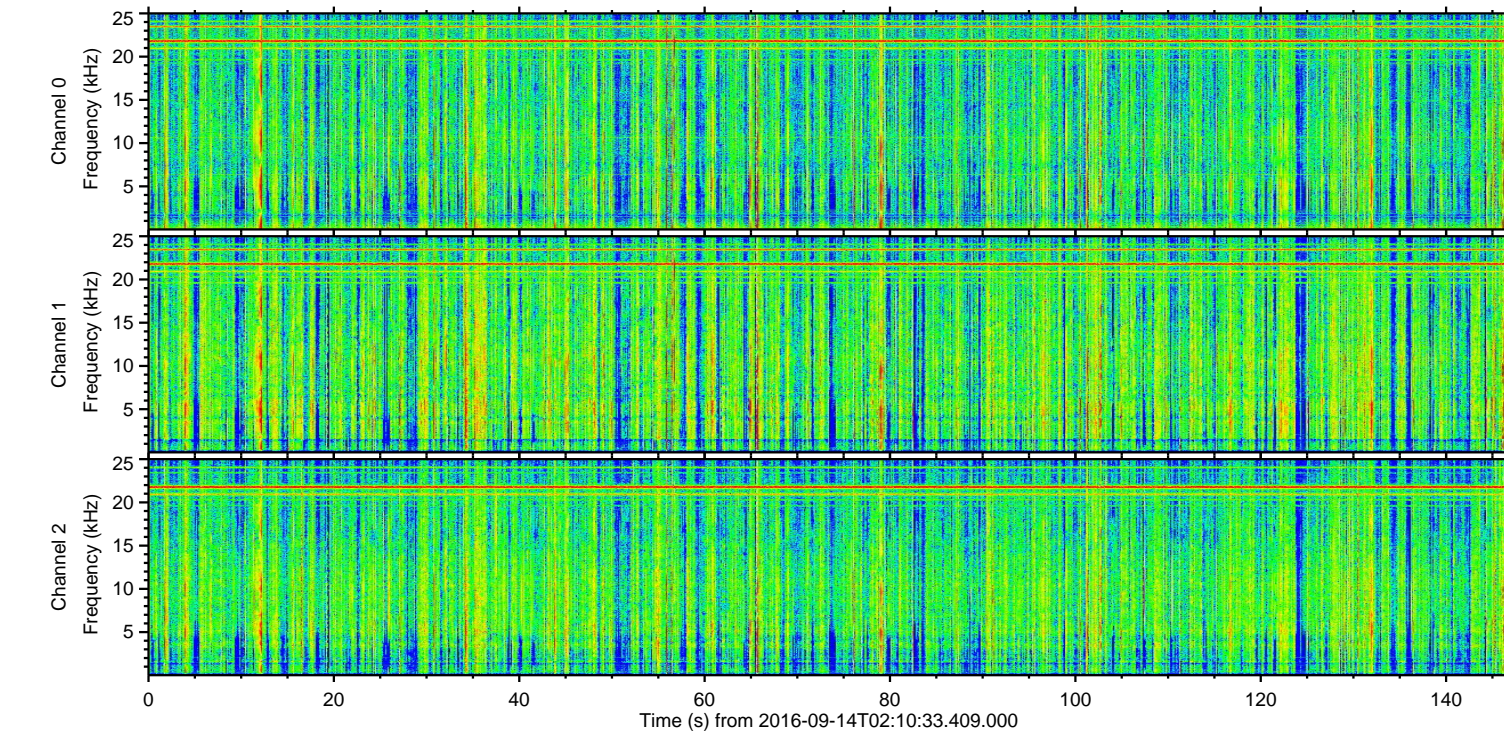
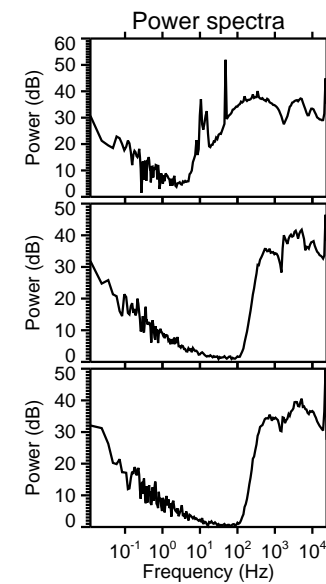
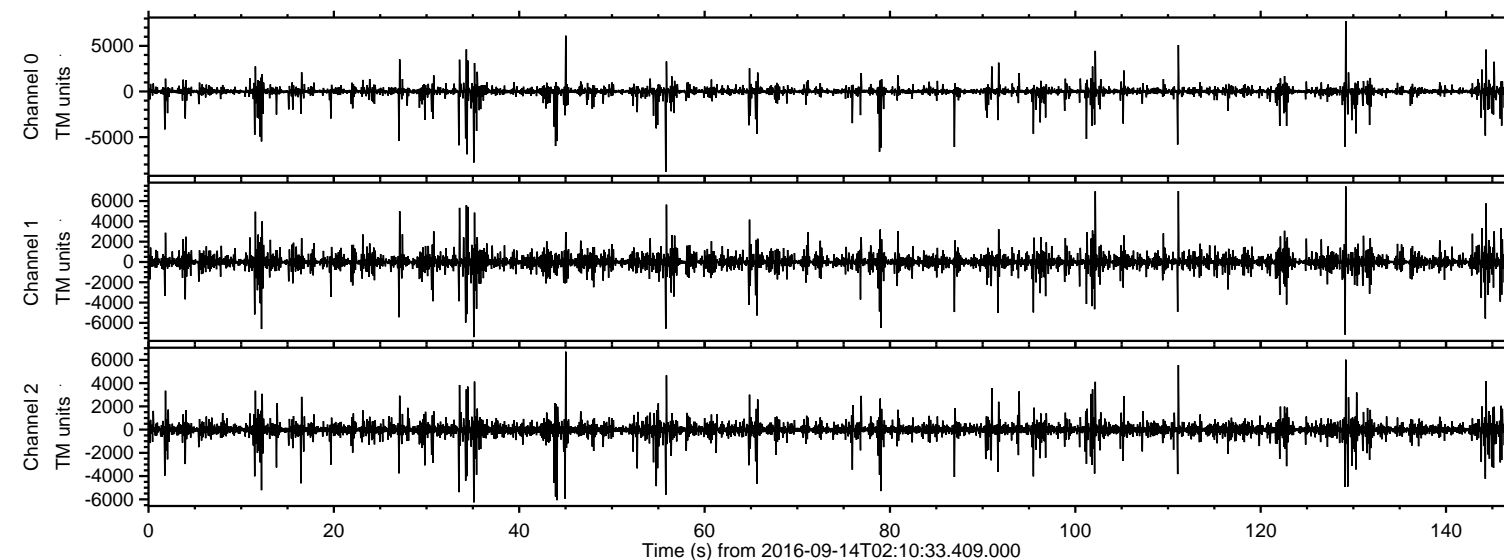
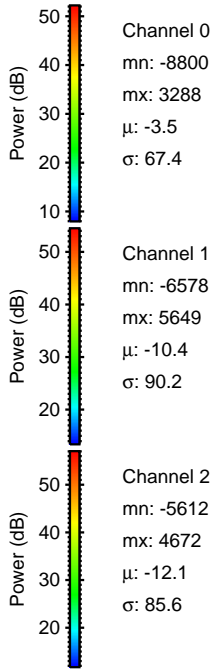
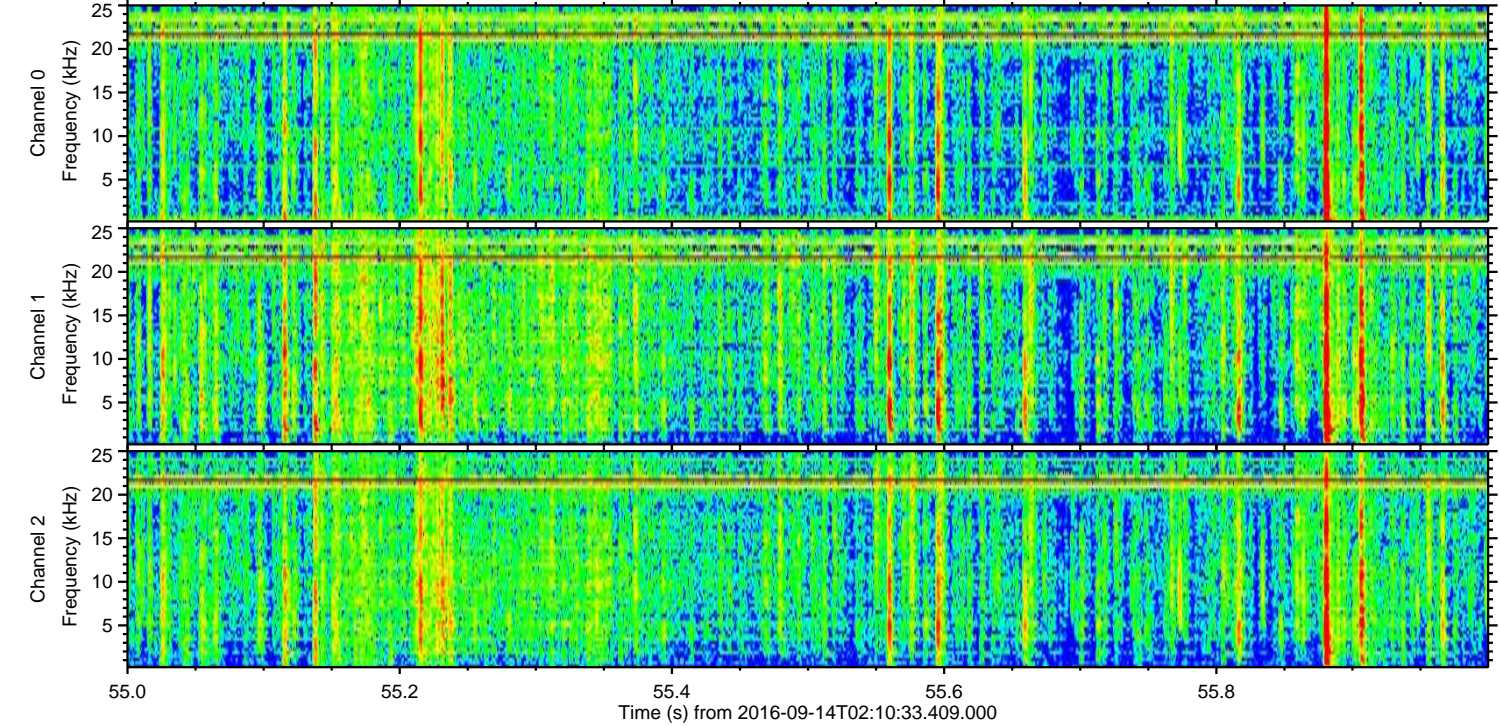
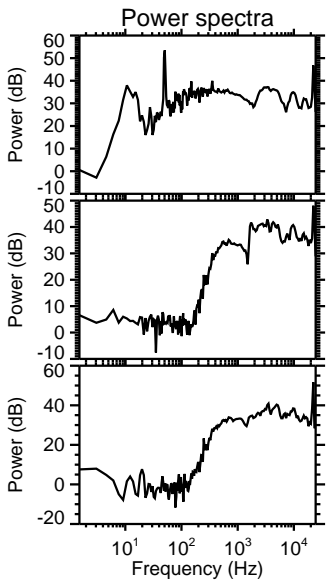
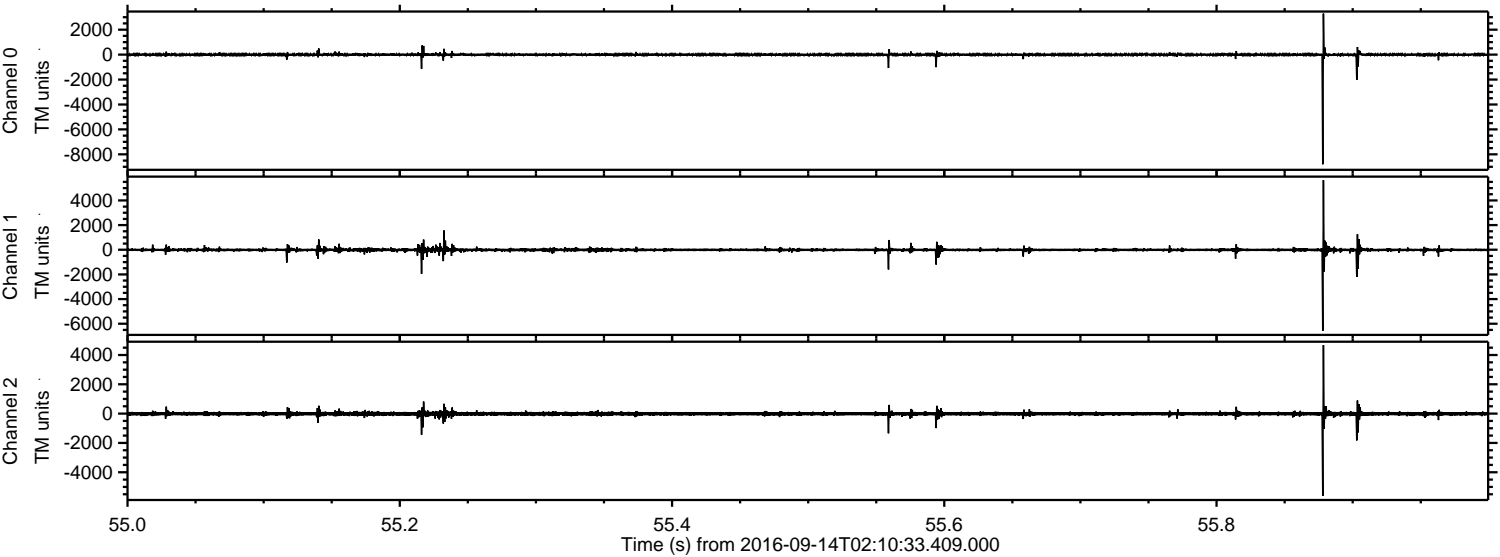


ELMAVAN 3D WAVEFORMS (Measured data sampled at 50 kHz) 51000 packets of 144 samples from 2016-09-14T02:10:33.409.000.

Processed Wed Sep 14 04:18:53 2016 by ELM ver.2012-10-06 from 001__elm20160914_021032__dat00.bin

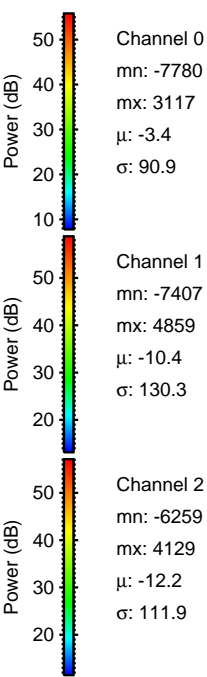
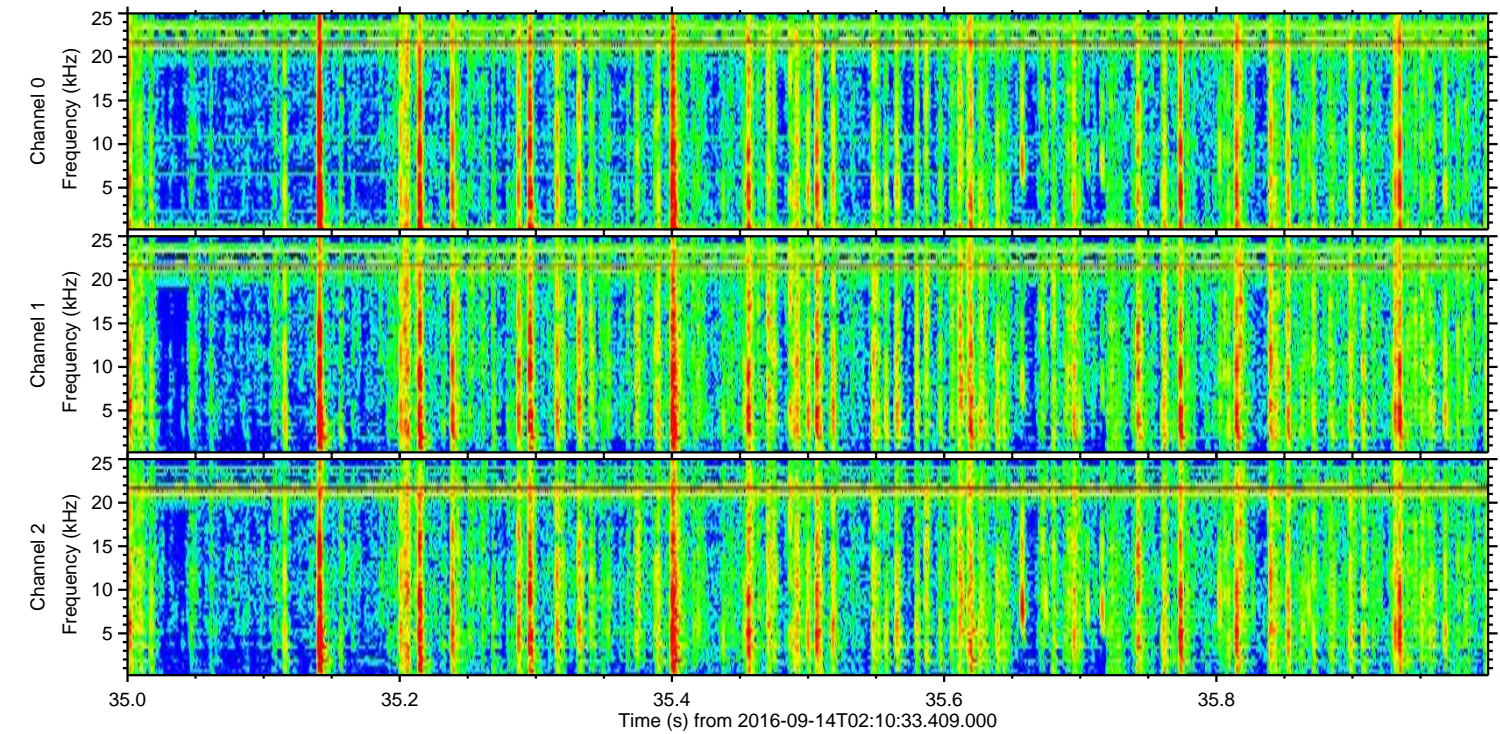
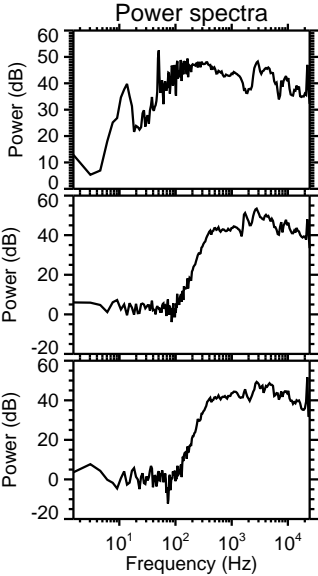
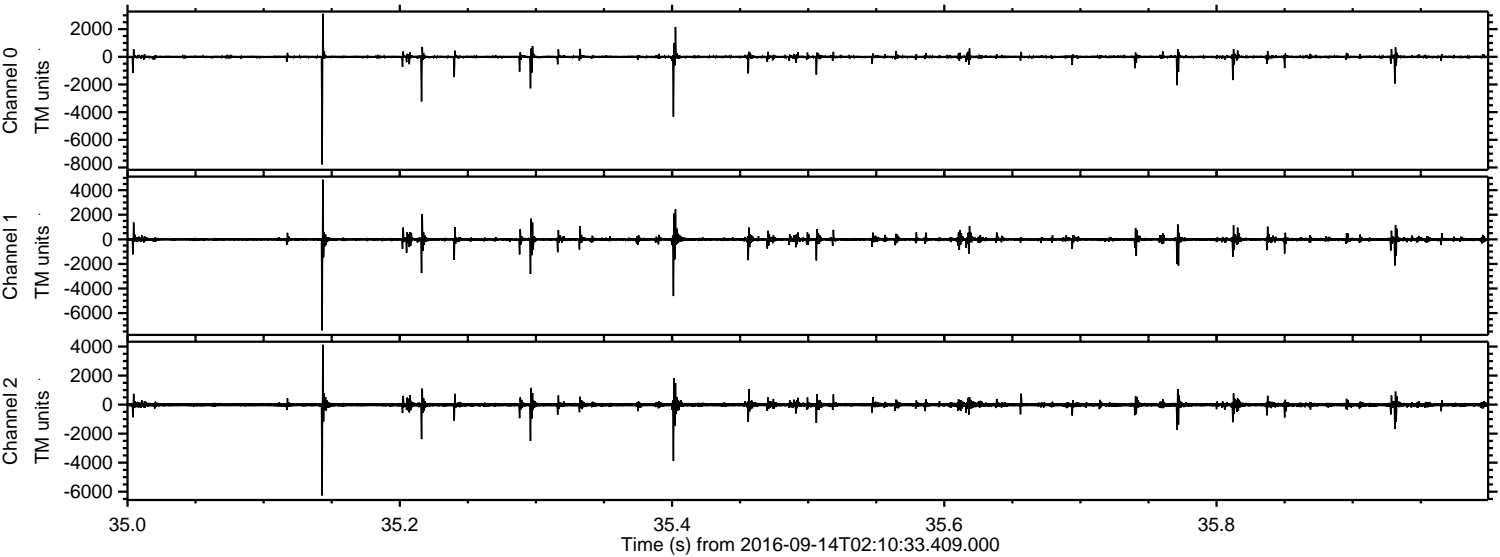


Processed Wed Sep 14 04:19:04 2016 by ELM ver.2012-10-06 from 001__elm20160914_021032__dat00.bin



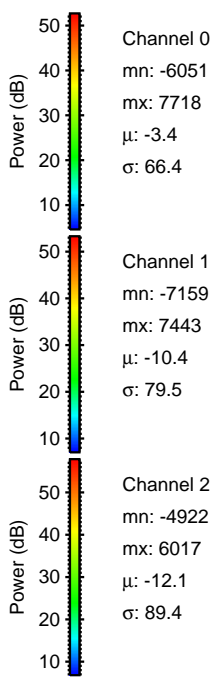
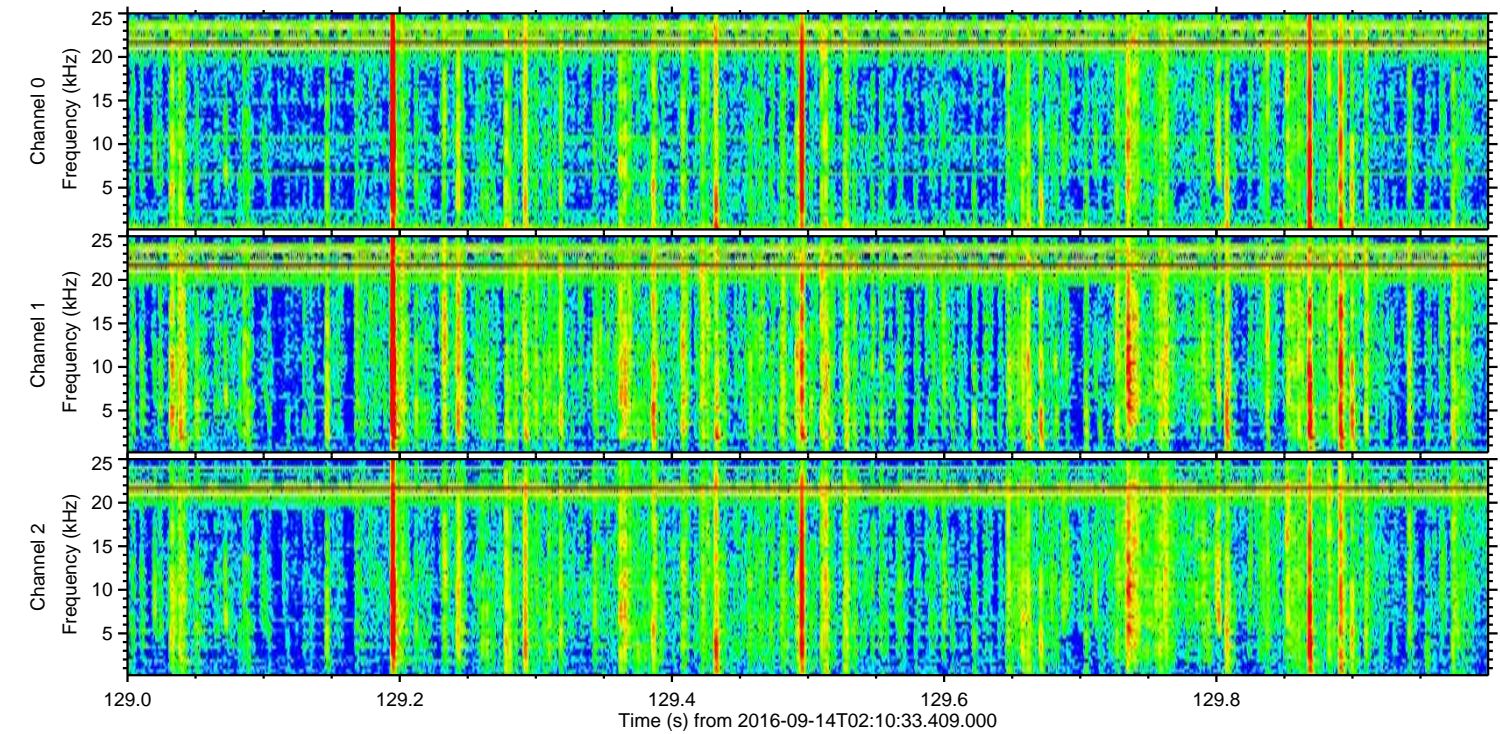
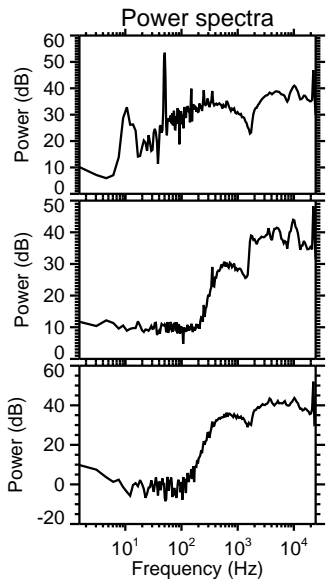
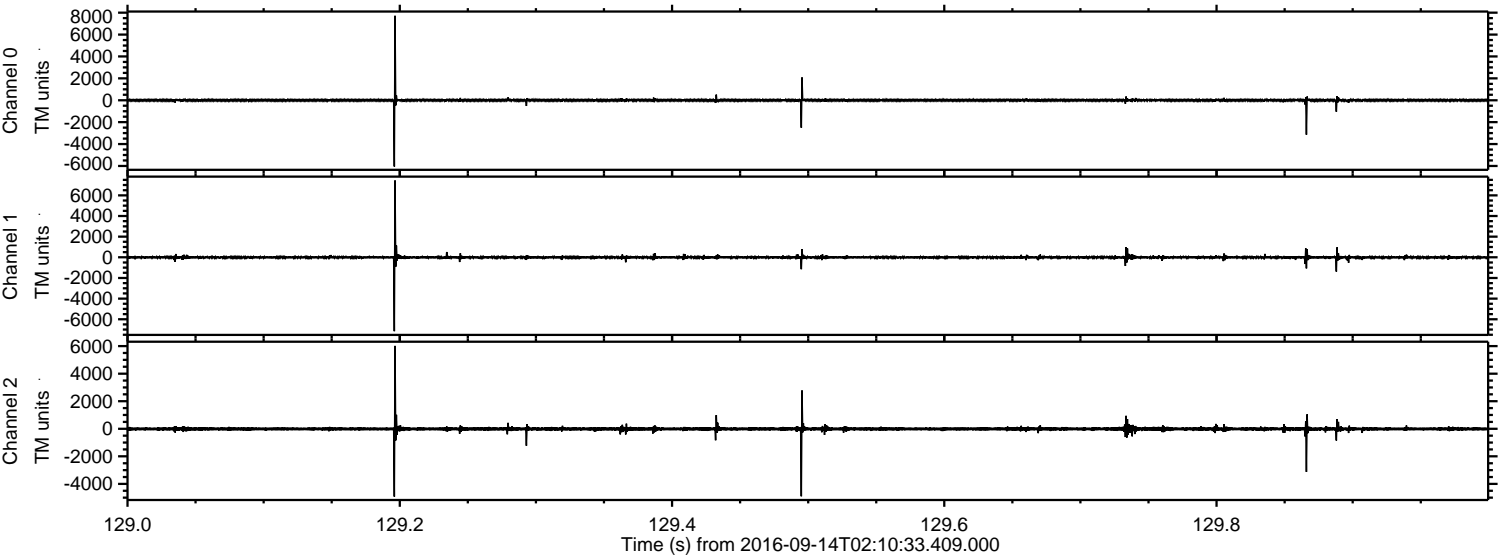
ELMAVAN 3D WAVEFORMS (Measured data sampled at 50 kHz) 51000 packets of 144 samples from 2016-09-14T02:10:33.409.000. Part 36/147

Processed Wed Sep 14 04:19:05 2016 by ELM ver.2012-10-06 from 001__elm20160914_021032__dat00.bin



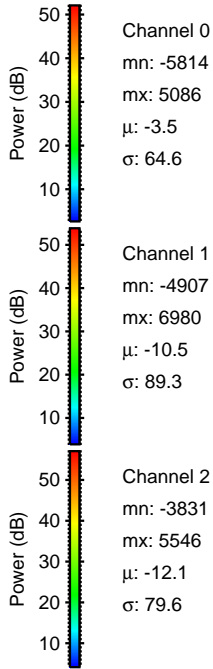
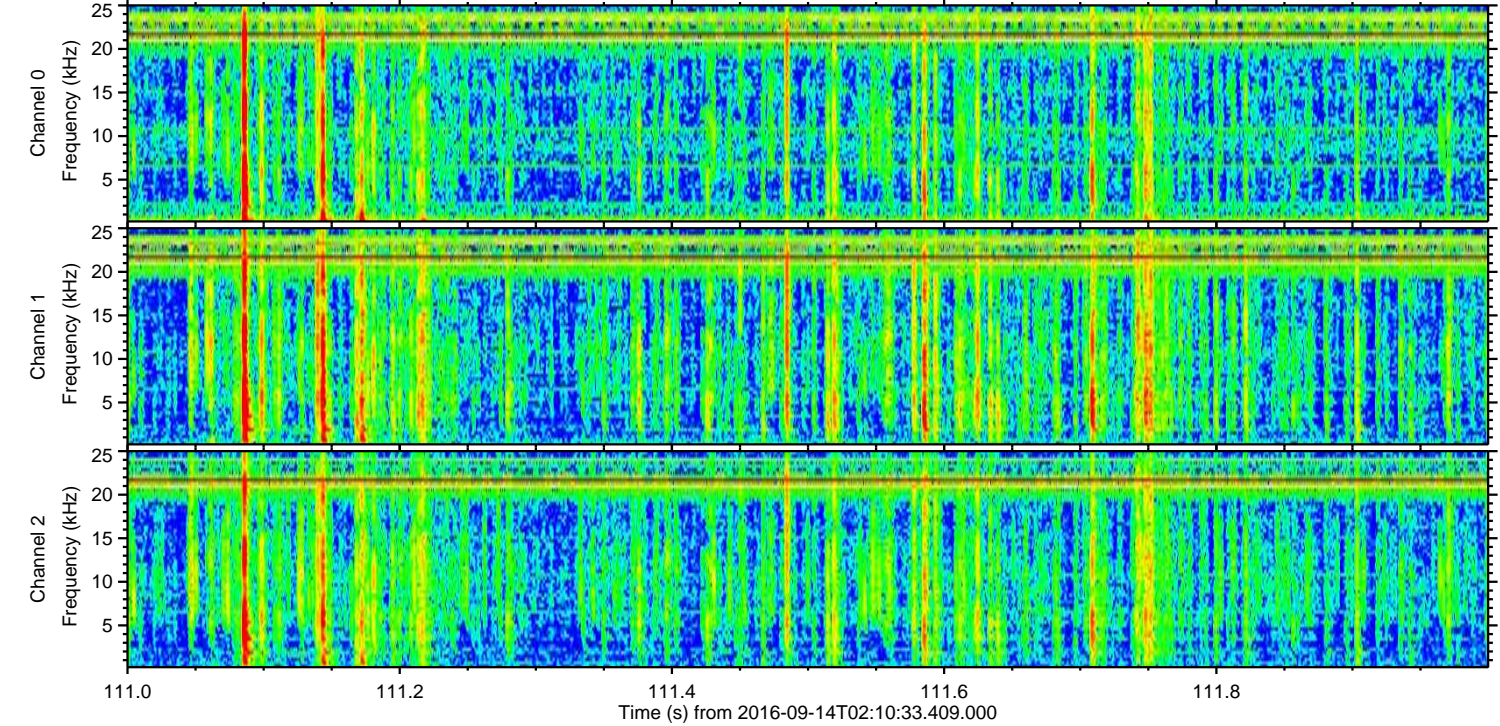
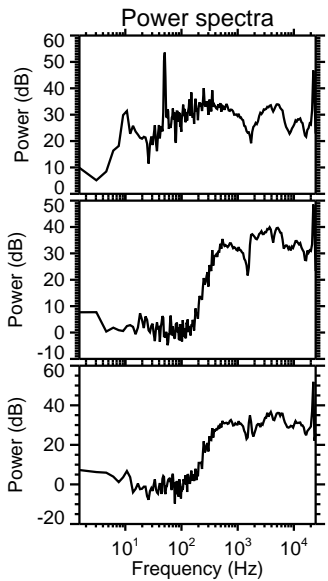
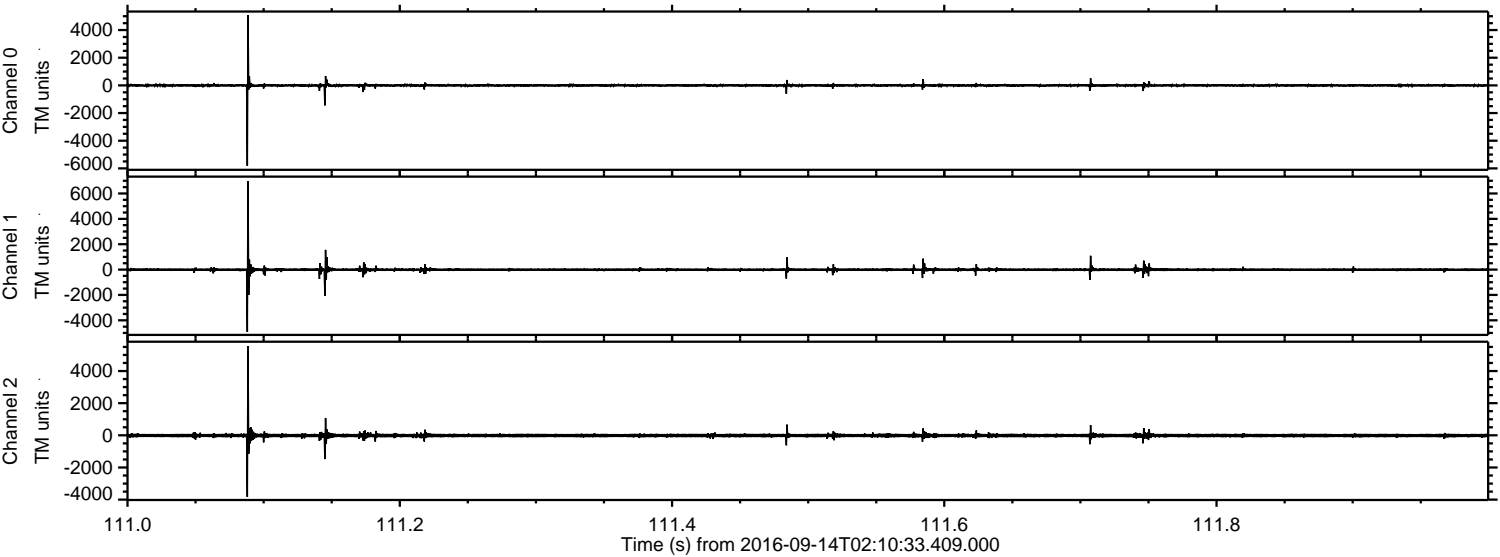
ELMAVAN 3D WAVEFORMS (Measured data sampled at 50 kHz) 51000 packets of 144 samples from 2016-09-14T02:10:33.409.000. Part 130/147

Processed Wed Sep 14 04:19:06 2016 by ELM ver.2012-10-06 from 001__elm20160914_021032__dat00.bin



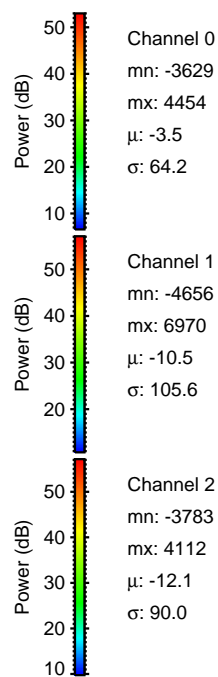
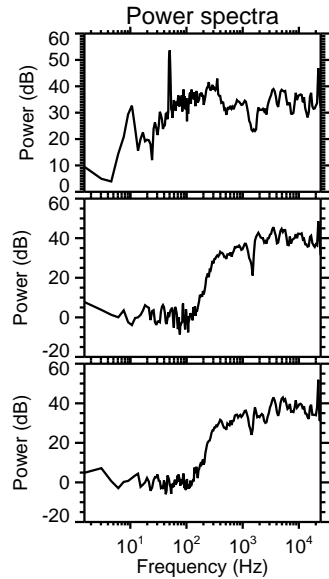
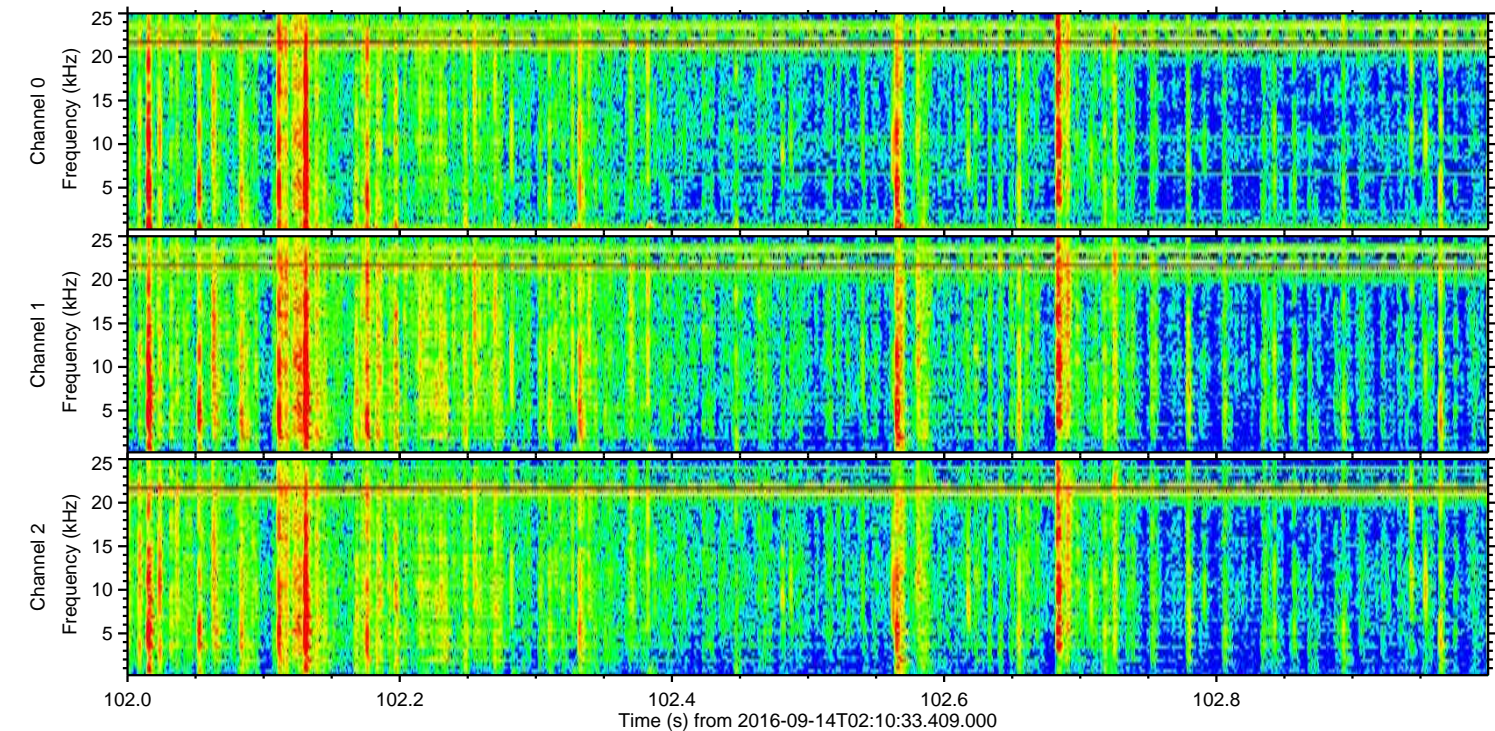
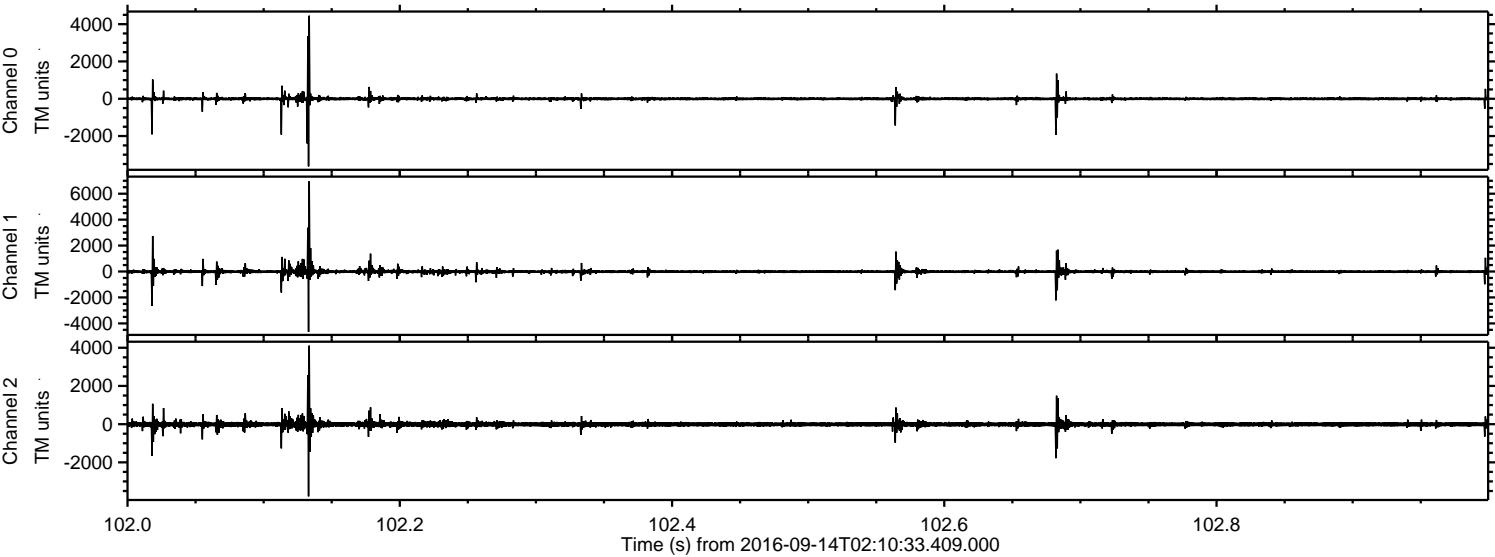
ELMAVAN 3D WAVEFORMS (Measured data sampled at 50 kHz) 51000 packets of 144 samples from 2016-09-14T02:10:33.409.000. Part 112/147

Processed Wed Sep 14 04:19:07 2016 by ELM ver.2012-10-06 from 001__elm20160914_021032__dat00.bin

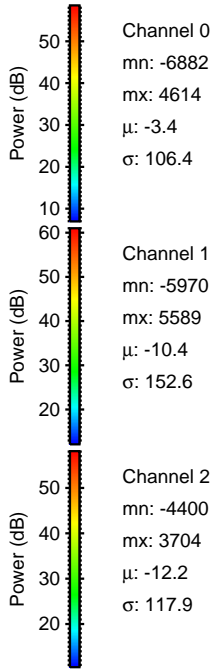
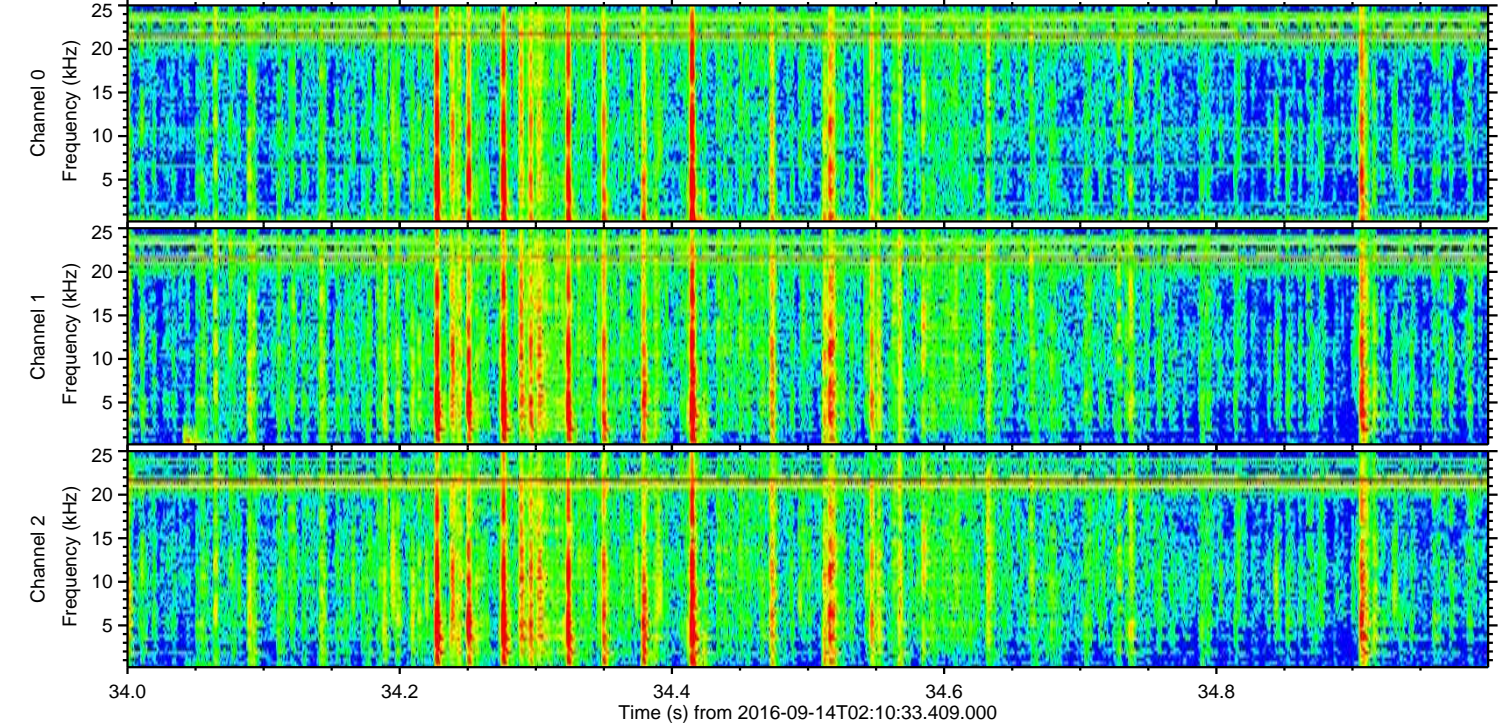
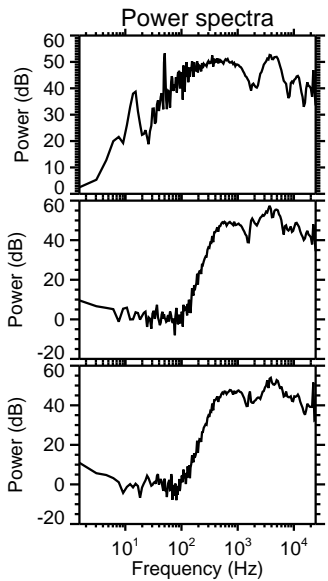
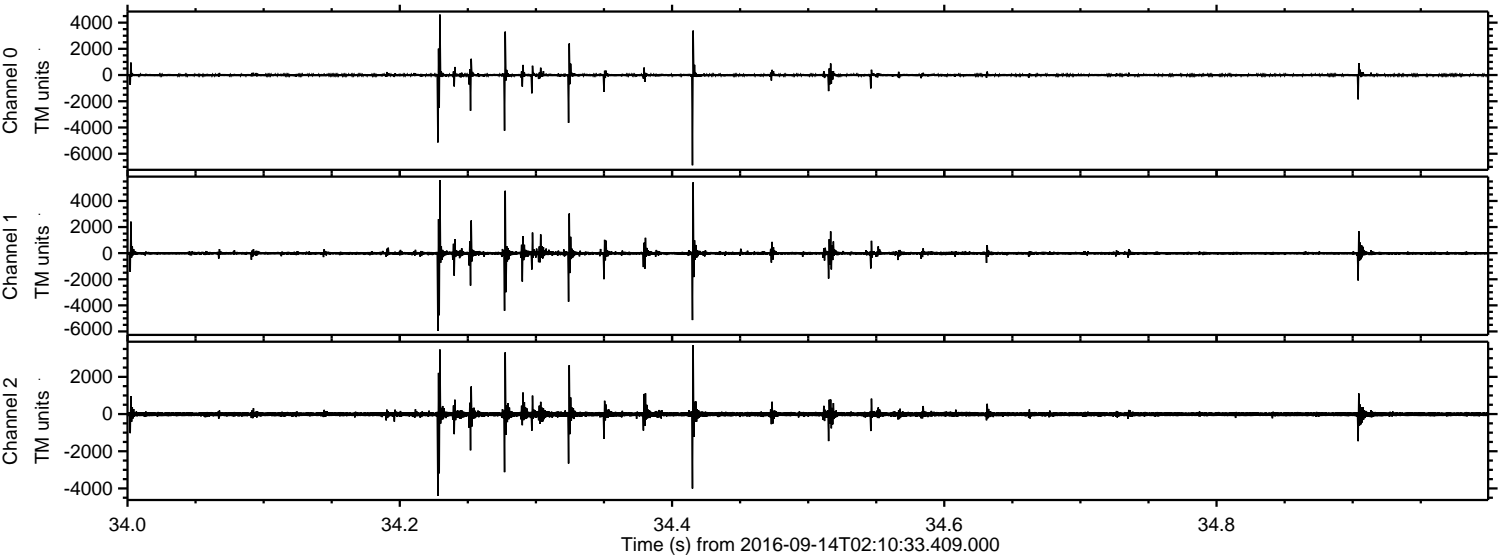


ELMAVAN 3D WAVEFORMS (Measured data sampled at 50 kHz) 51000 packets of 144 samples from 2016-09-14T02:10:33.409.000. Part 103/147

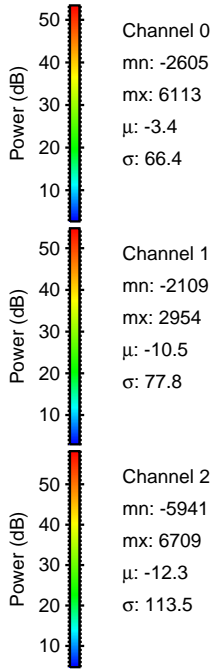
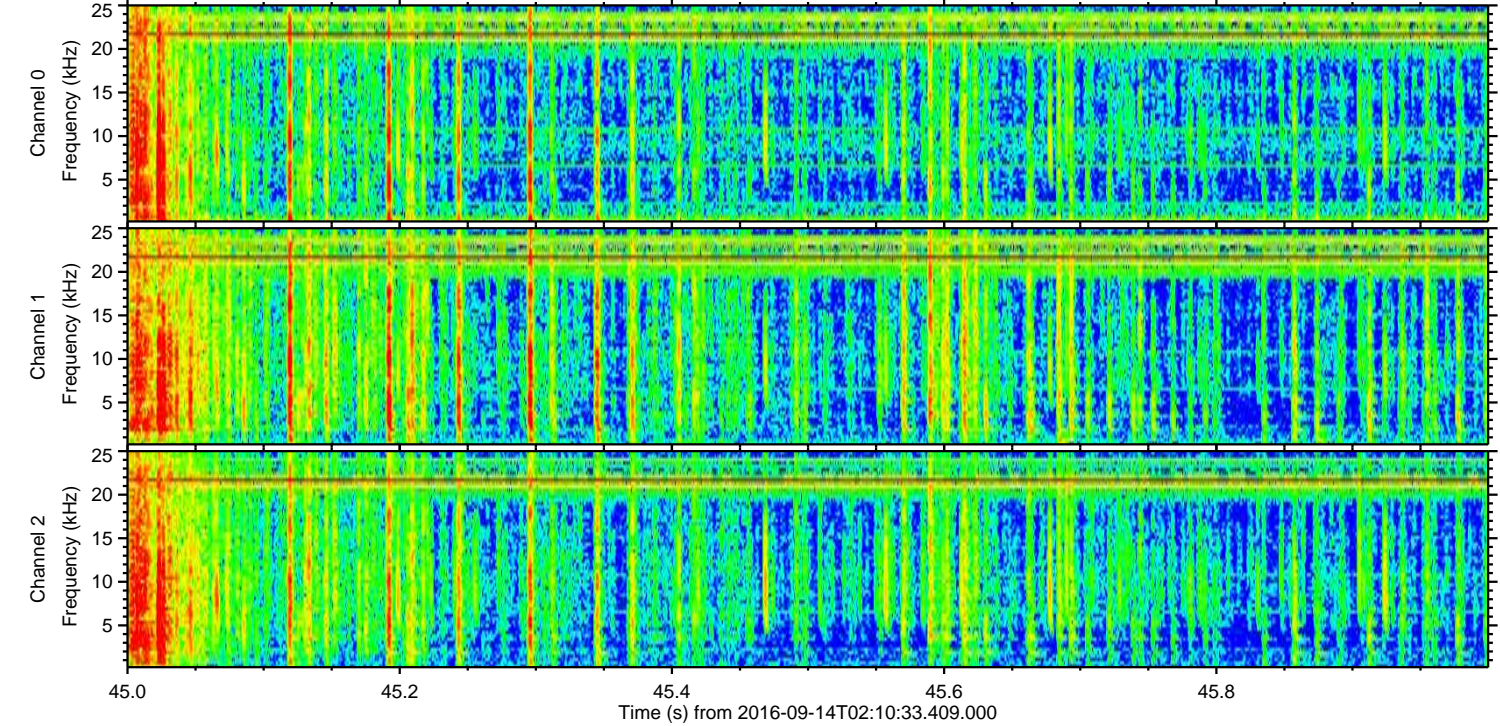
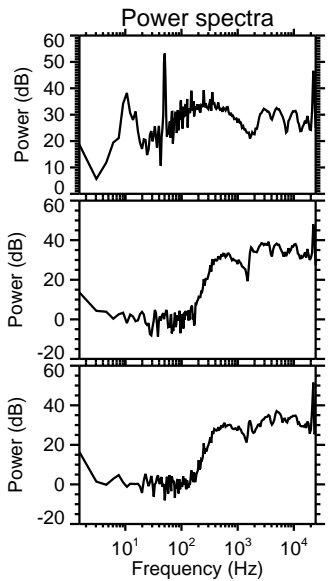
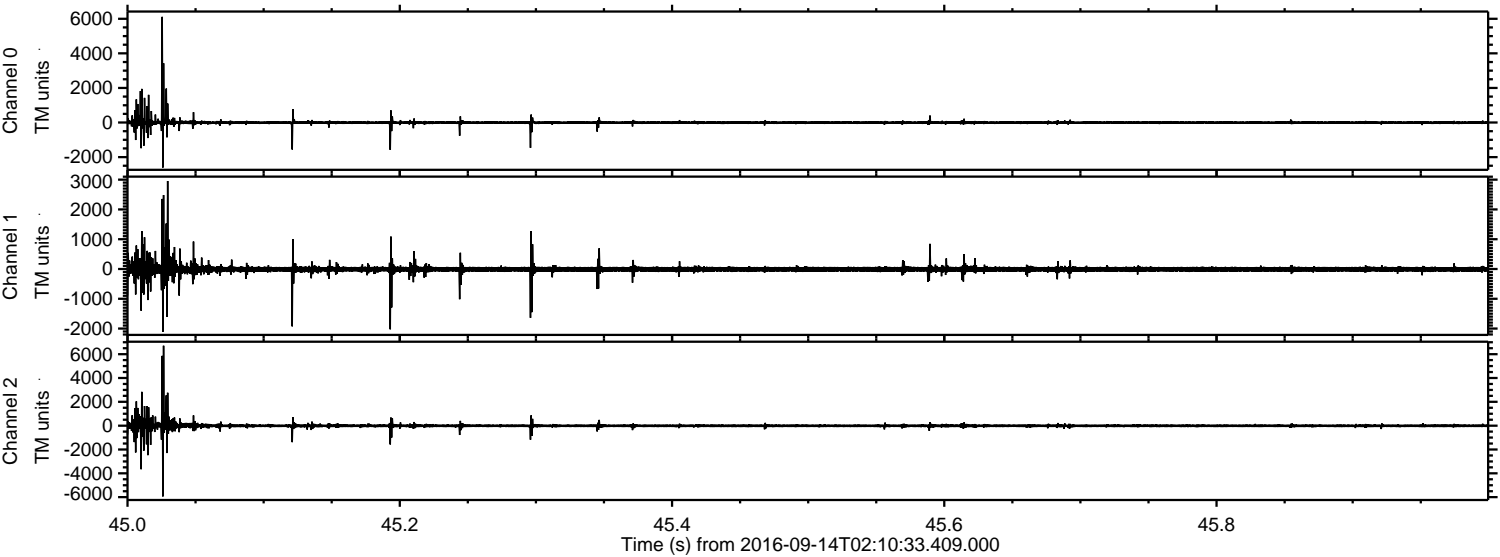
Processed Wed Sep 14 04:19:08 2016 by ELM ver.2012-10-06 from 001__elm20160914_021032__dat00.bin



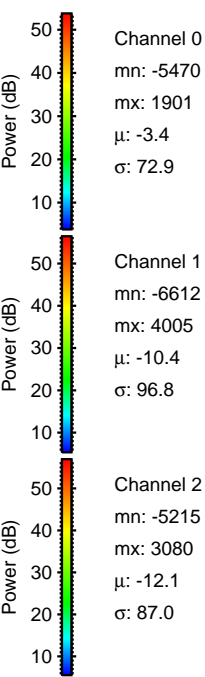
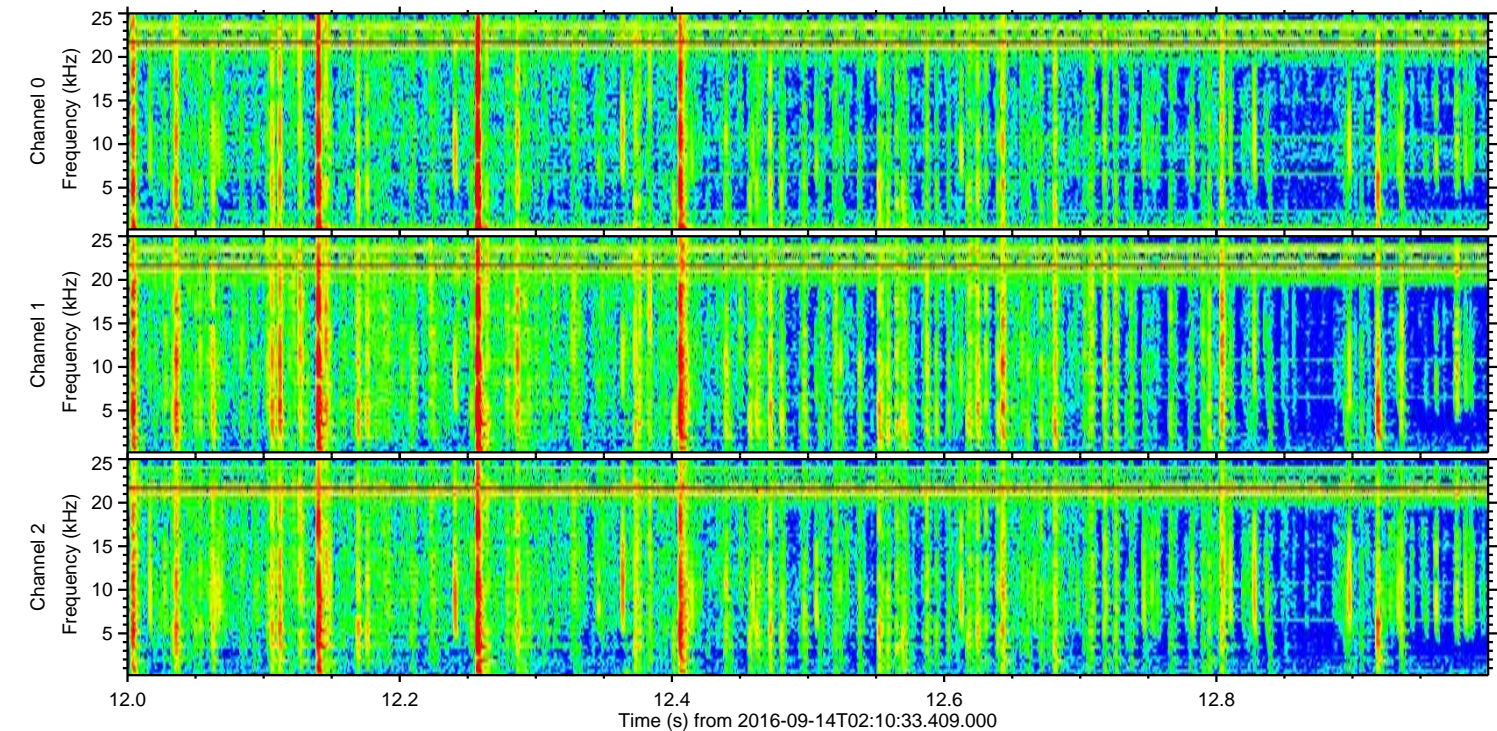
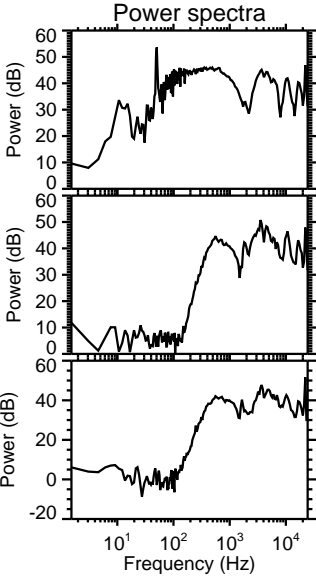
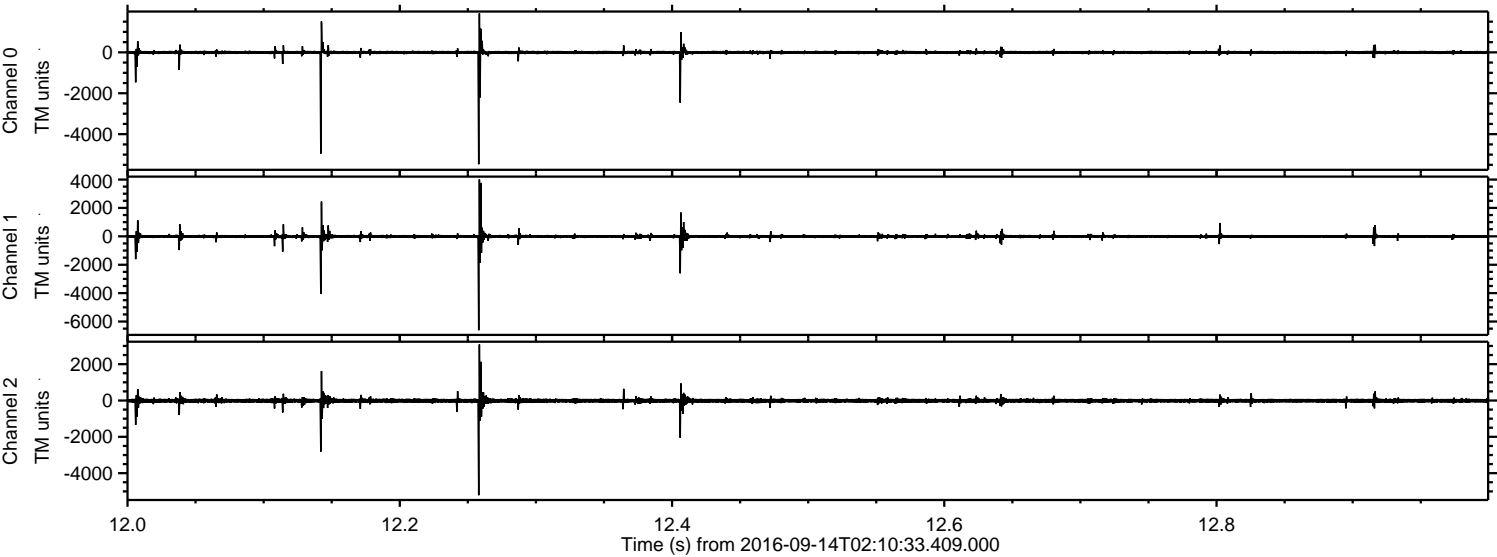
Processed Wed Sep 14 04:19:09 2016 by ELM ver.2012-10-06 from 001__elm20160914_021032__dat00.bin



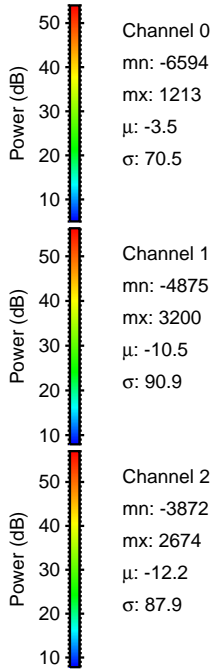
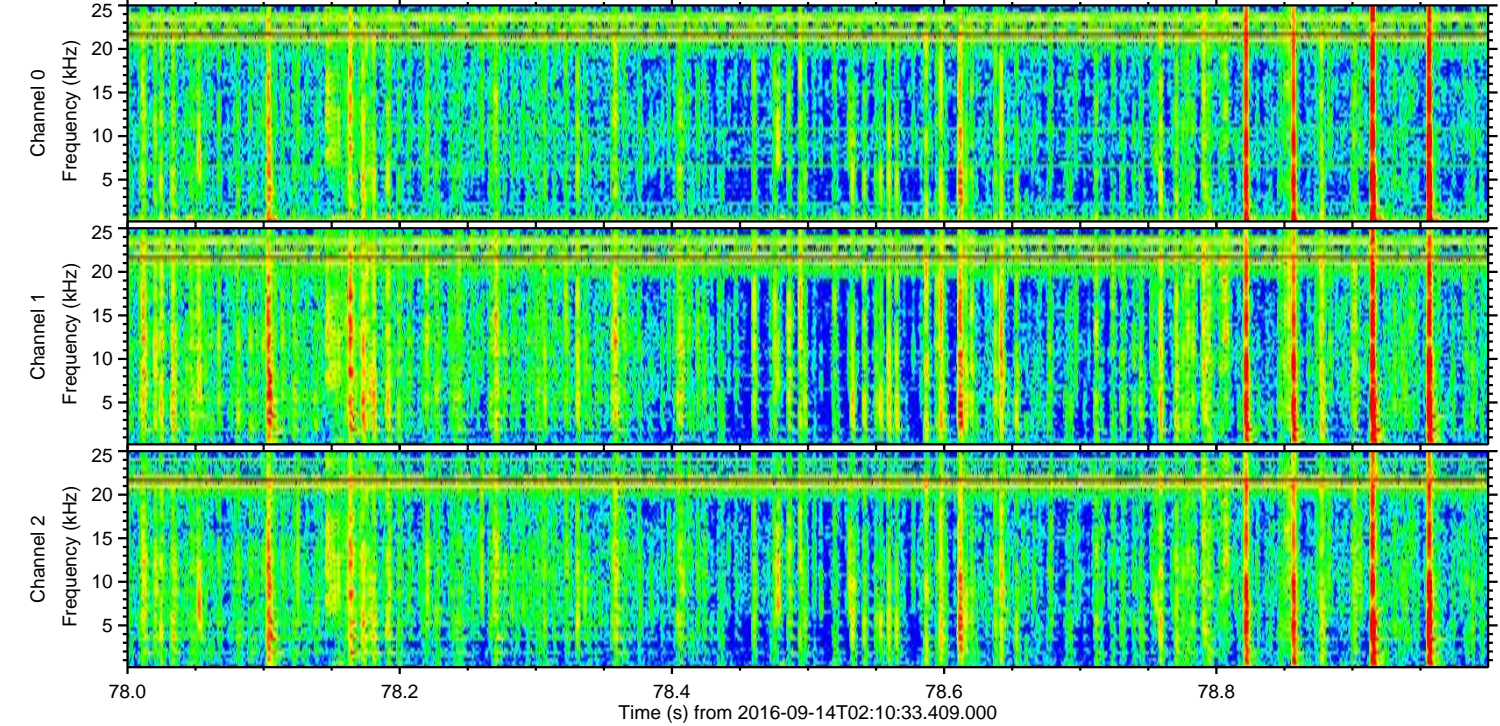
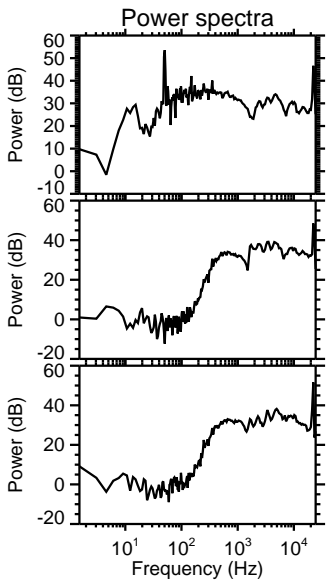
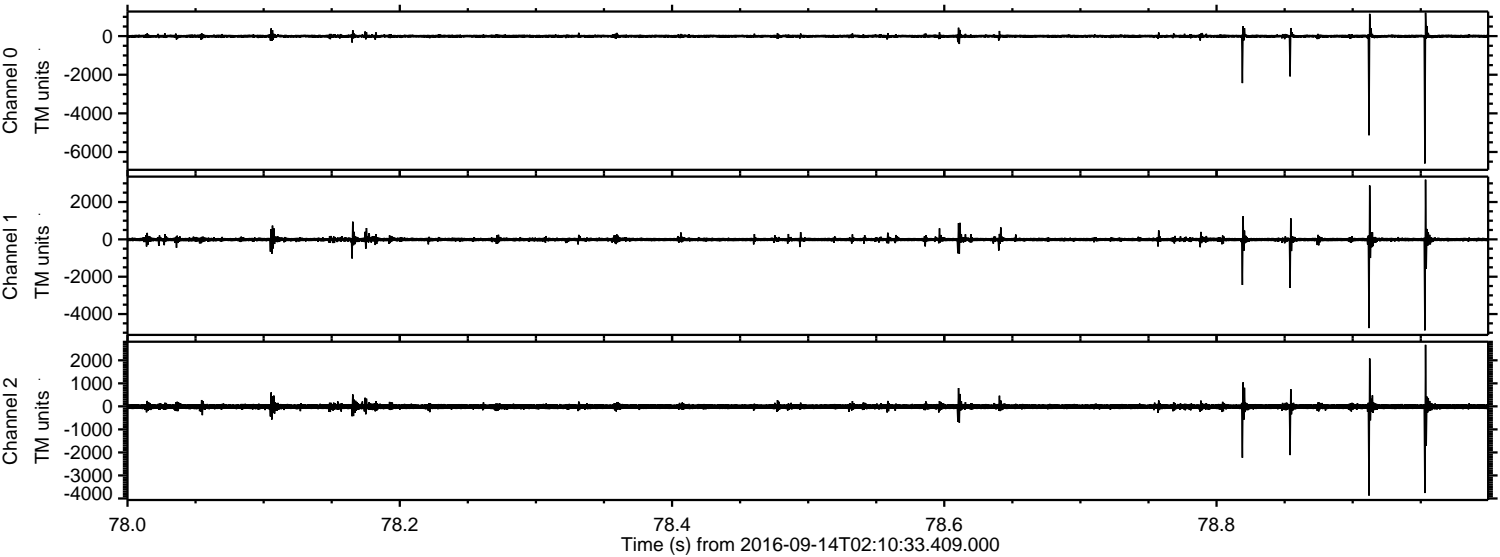
Processed Wed Sep 14 04:19:10 2016 by ELM ver.2012-10-06 from 001__elm20160914_021032__dat00.bin



Processed Wed Sep 14 04:19:11 2016 by ELM ver.2012-10-06 from 001__elm20160914_021032__dat00.bin



Processed Wed Sep 14 04:19:12 2016 by ELM ver.2012-10-06 from 001__elm20160914_021032__dat00.bin



Channel 0
mn: -6594
mx: 1213
 μ : -3.5
 σ : 70.5

Channel 1
mn: -4875
mx: 3200
 μ : -10.5
 σ : 90.9

Channel 2
mn: -3872
mx: 2674
 μ : -12.2
 σ : 87.9

Processed Wed Sep 14 04:19:13 2016 by ELM ver.2012-10-06 from 001__elm20160914_021032__dat00.bin

