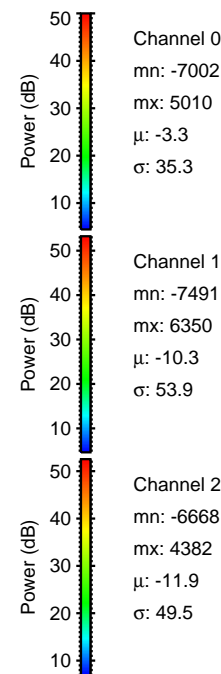
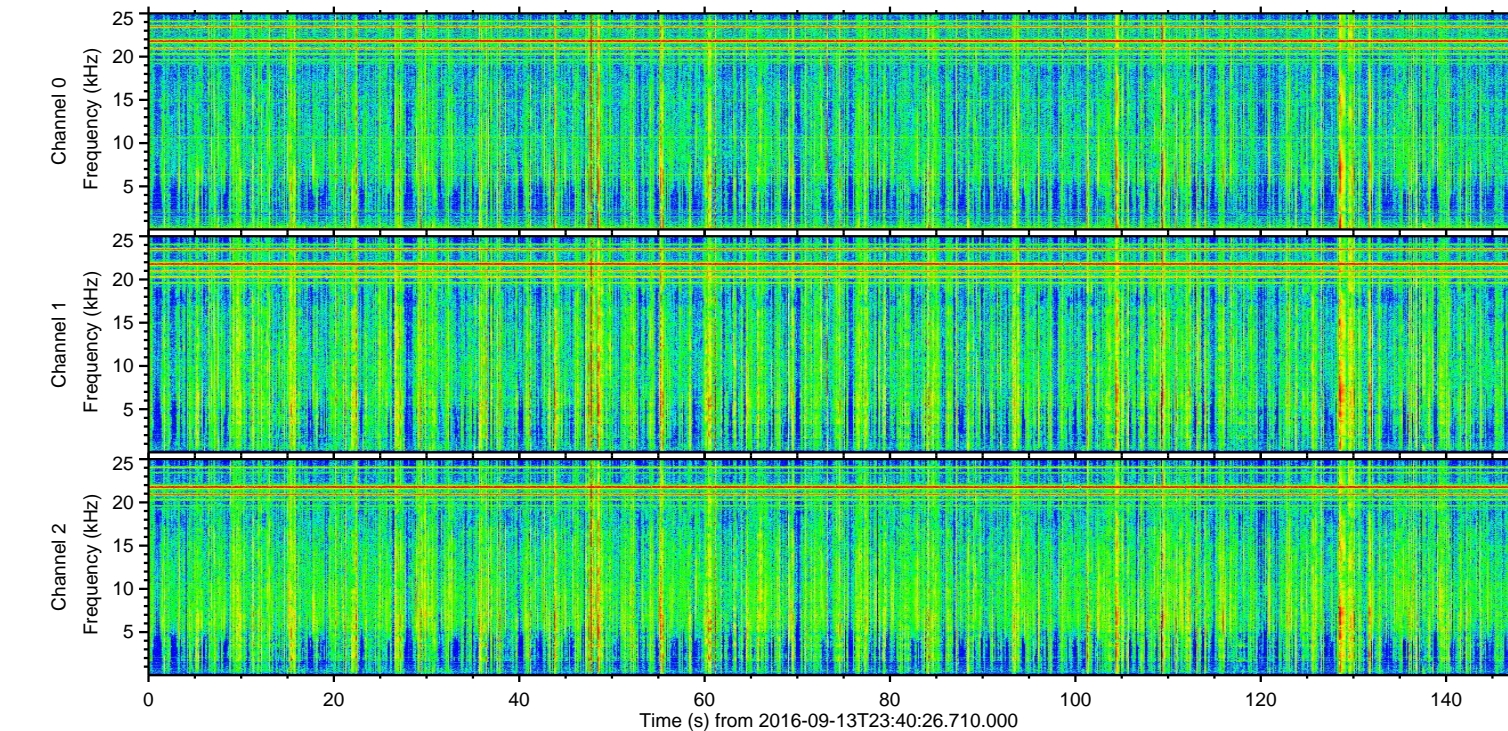
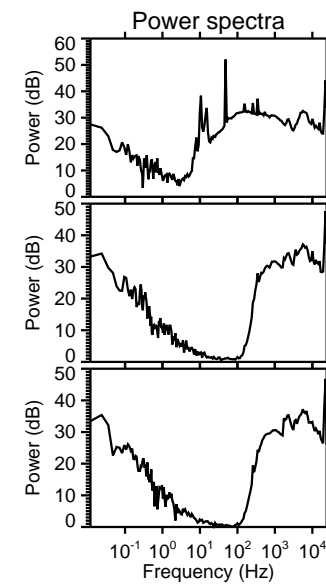
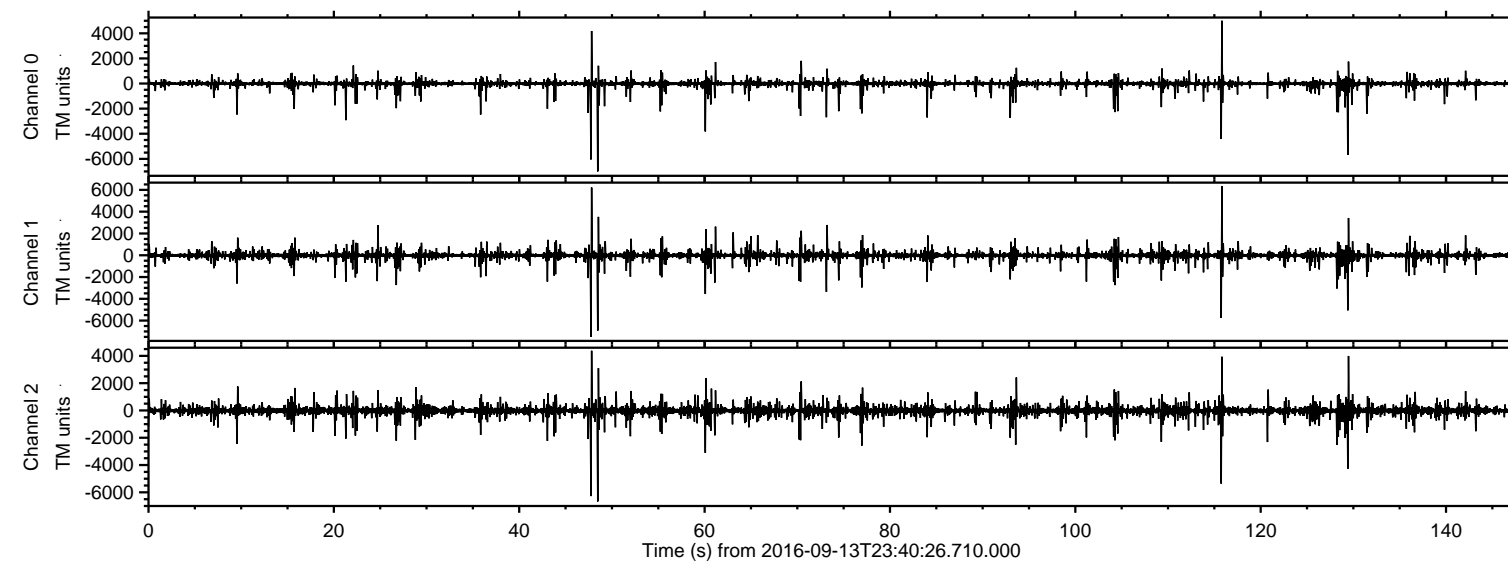


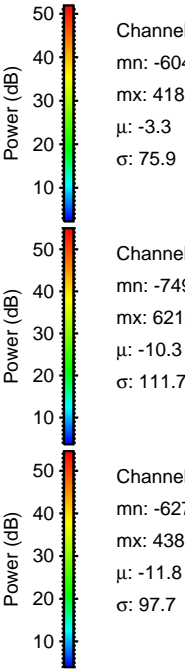
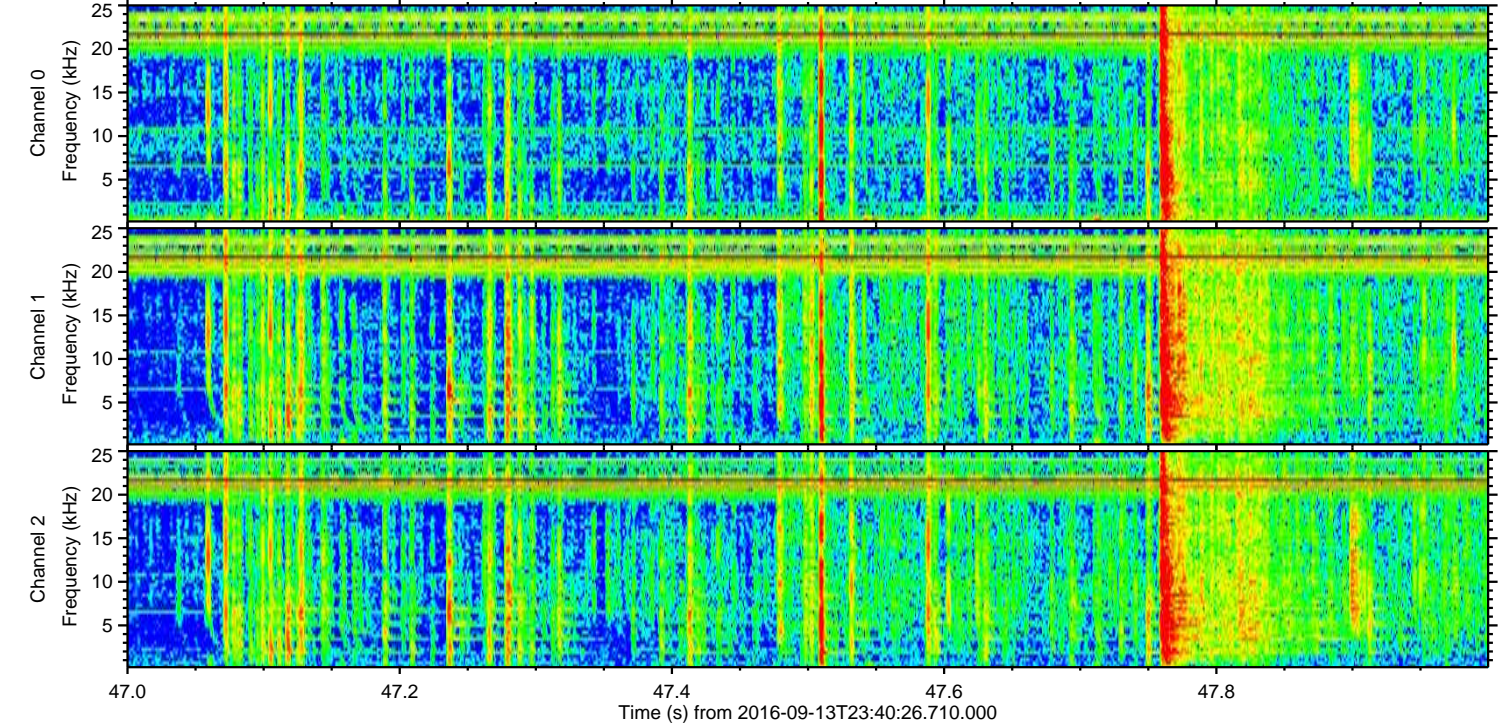
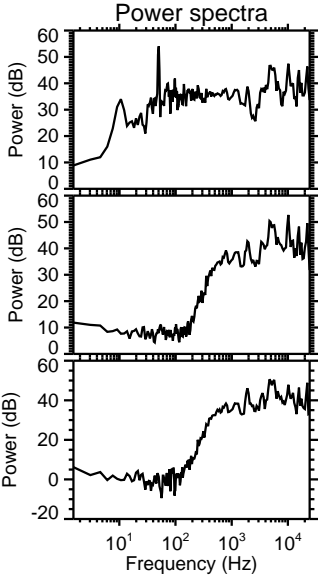
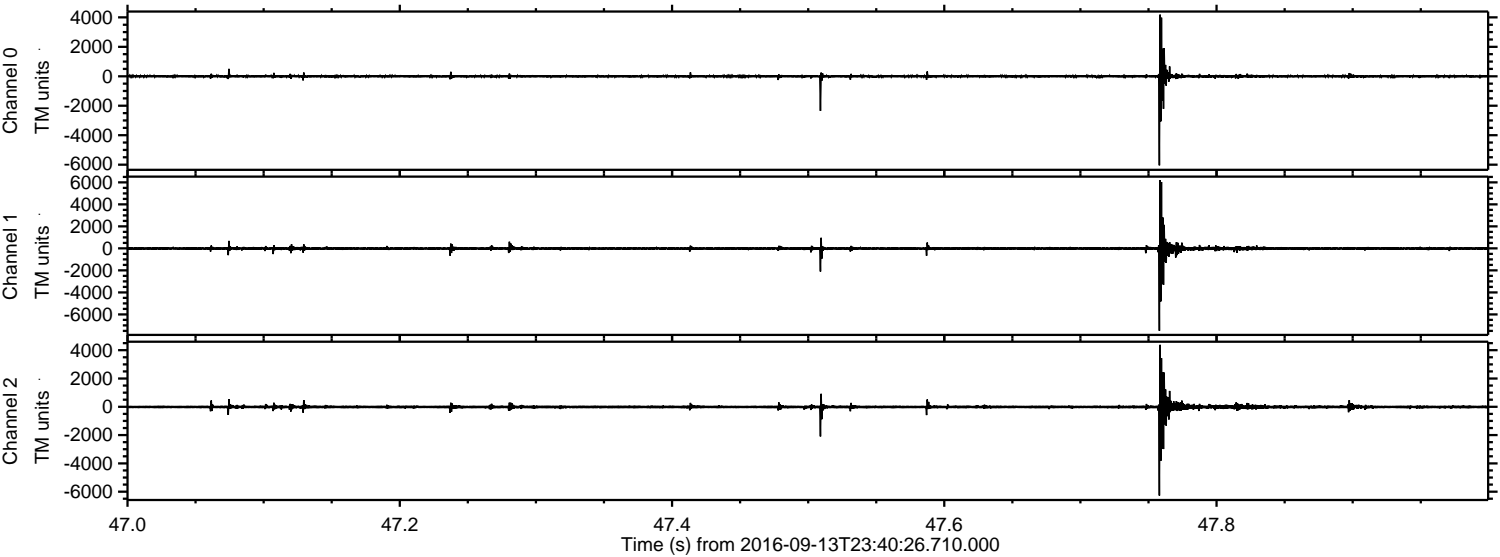
# ELMAVAN 3D WAVEFORMS (Measured data sampled at 50 kHz) 51000 packets of 144 samples from 2016-09-13T23:40:26.710.000.

Processed Wed Sep 14 01:48:21 2016 by ELM ver.2012-10-06 from 001\_\_elm20160913\_234025\_\_dat00.bin



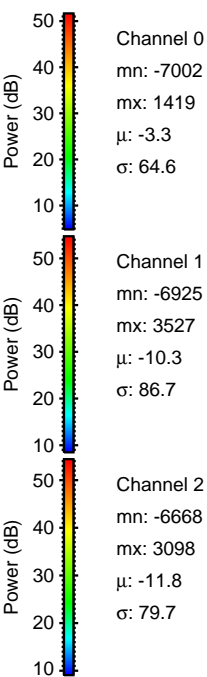
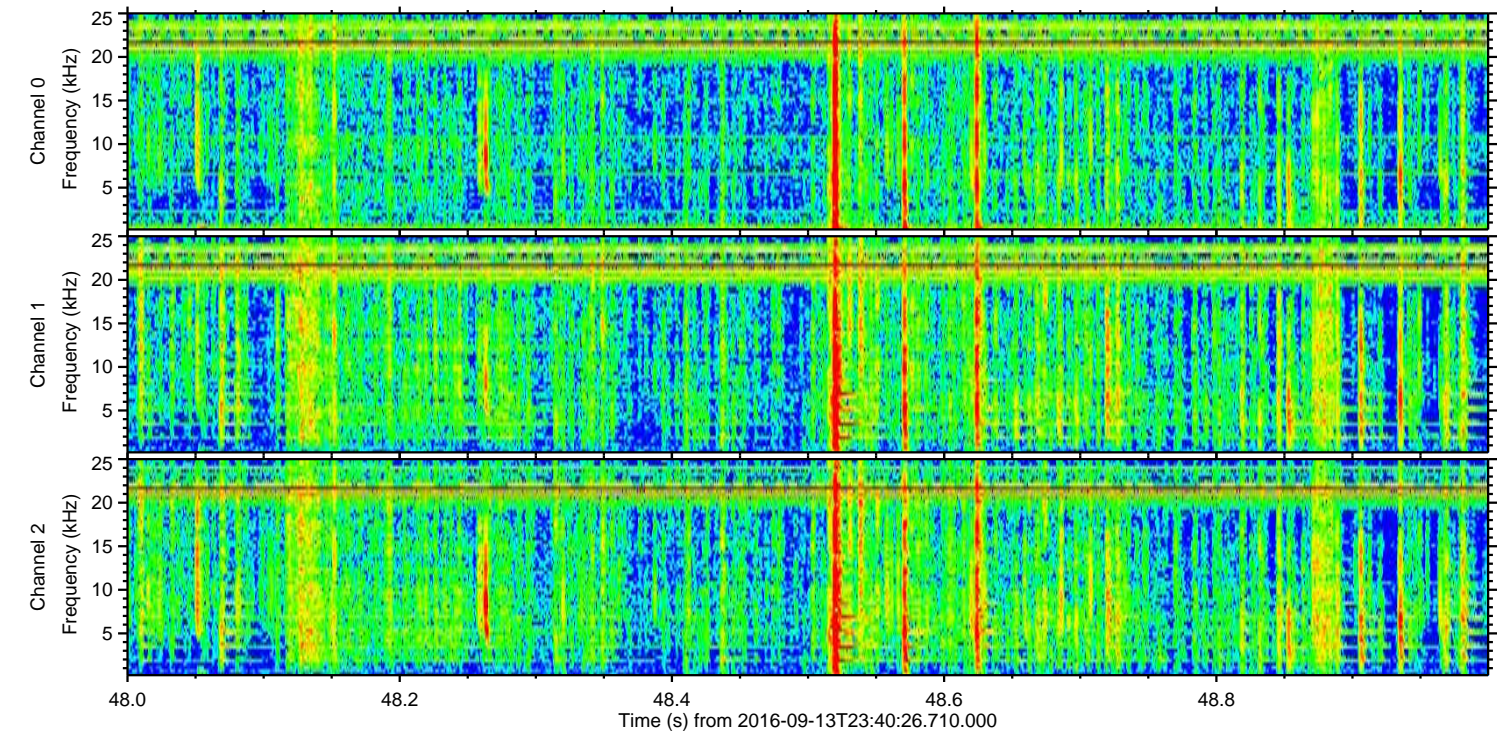
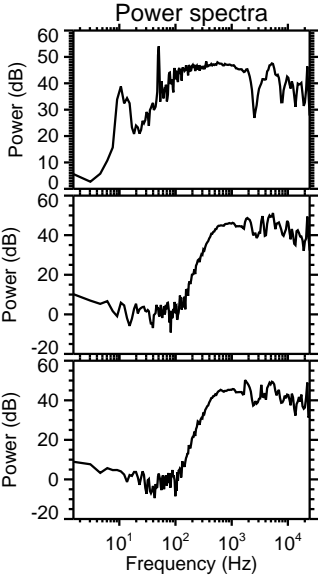
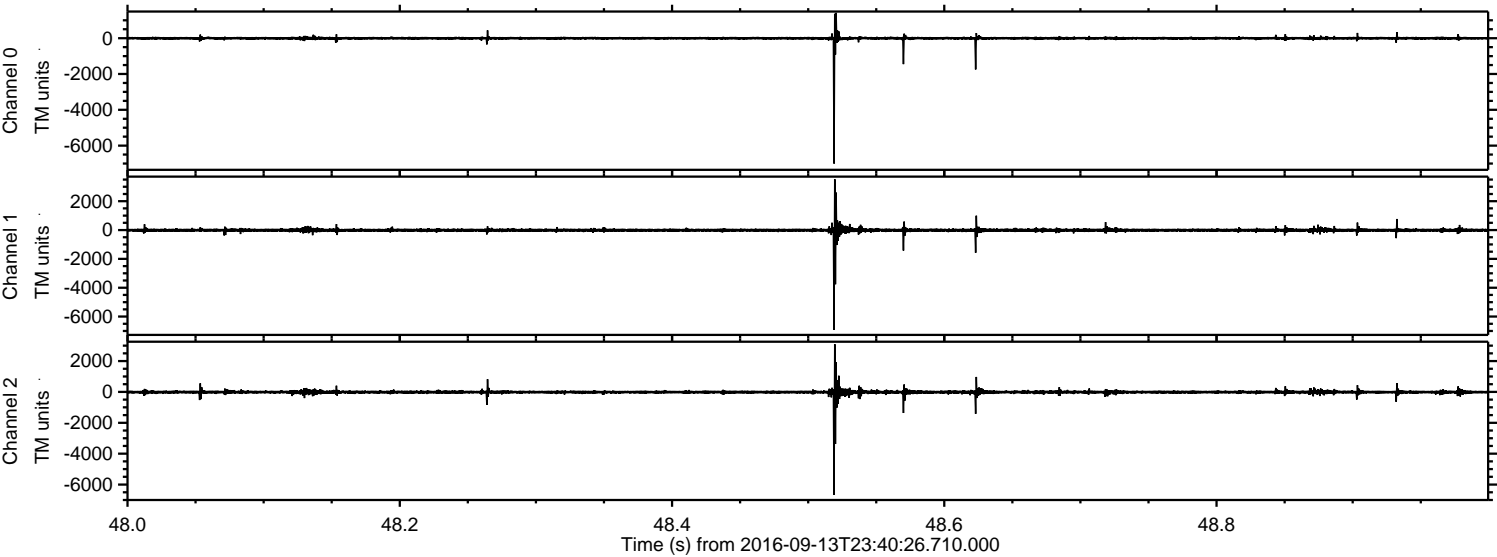


Processed Wed Sep 14 01:48:33 2016 by ELM ver.2012-10-06 from 001\_\_elm20160913\_234025\_\_dat00.bin





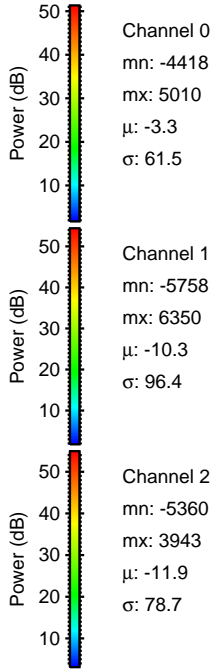
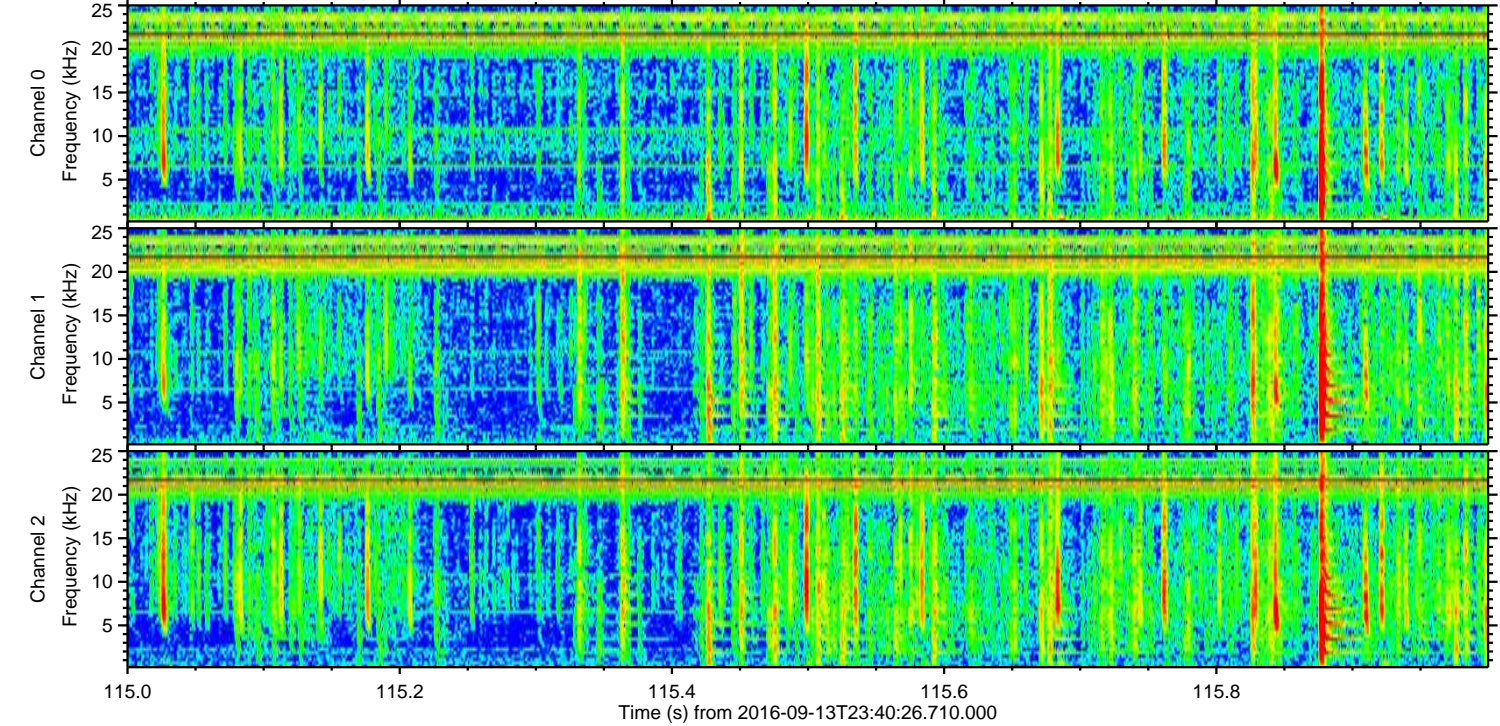
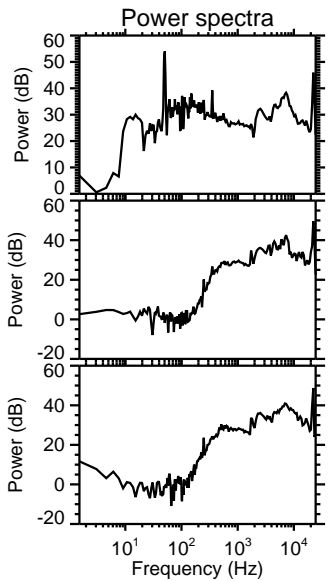
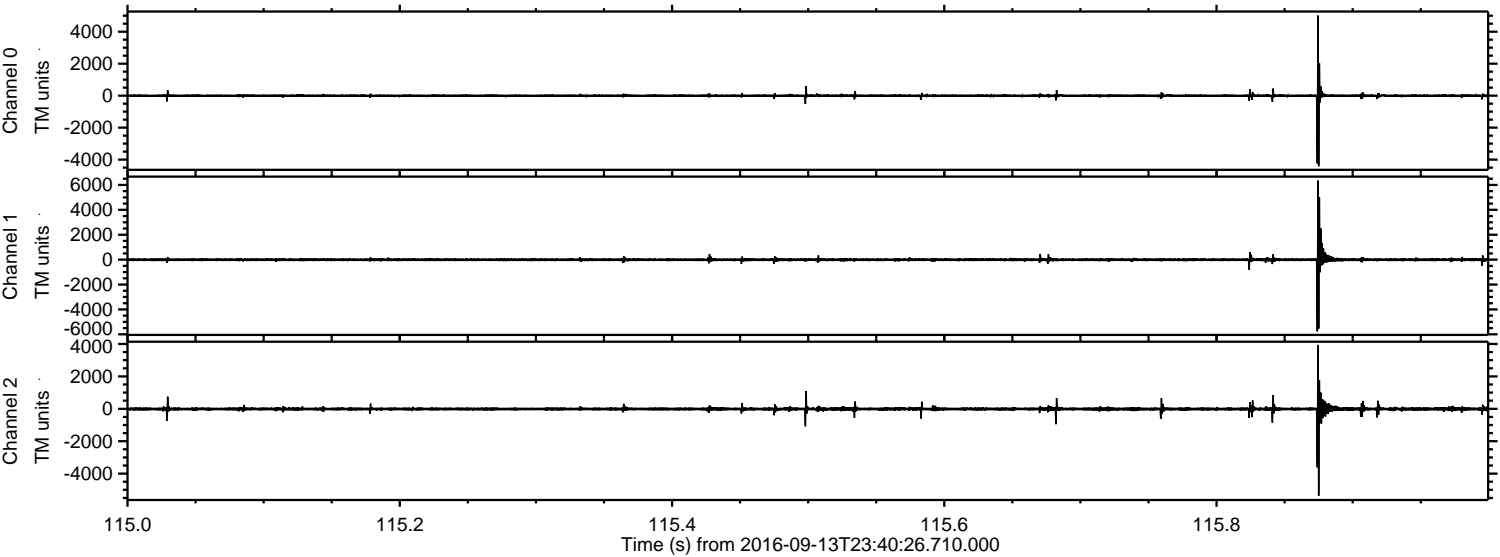
Processed Wed Sep 14 01:48:33 2016 by ELM ver.2012-10-06 from 001\_\_elm20160913\_234025\_\_dat00.bin





ELMAVAN 3D WAVEFORMS (Measured data sampled at 50 kHz) 51000 packets of 144 samples from 2016-09-13T23:40:26.710.000. Part 116/147

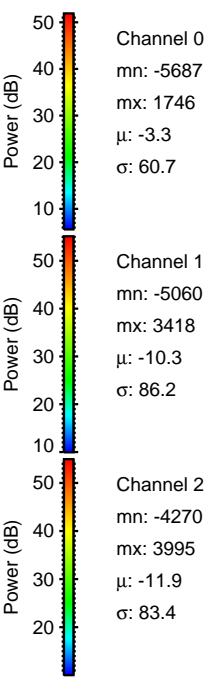
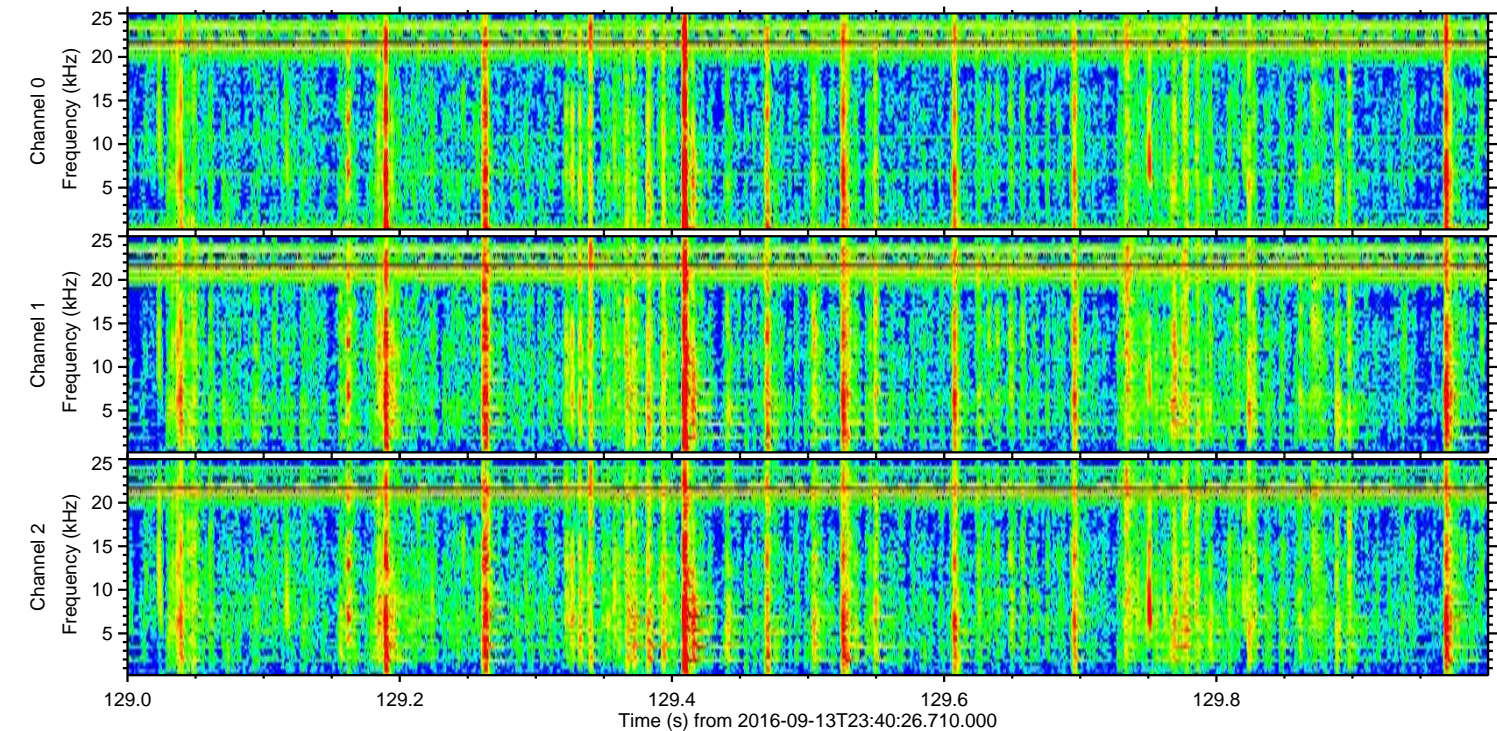
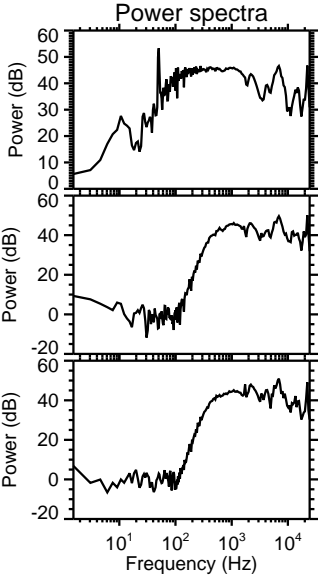
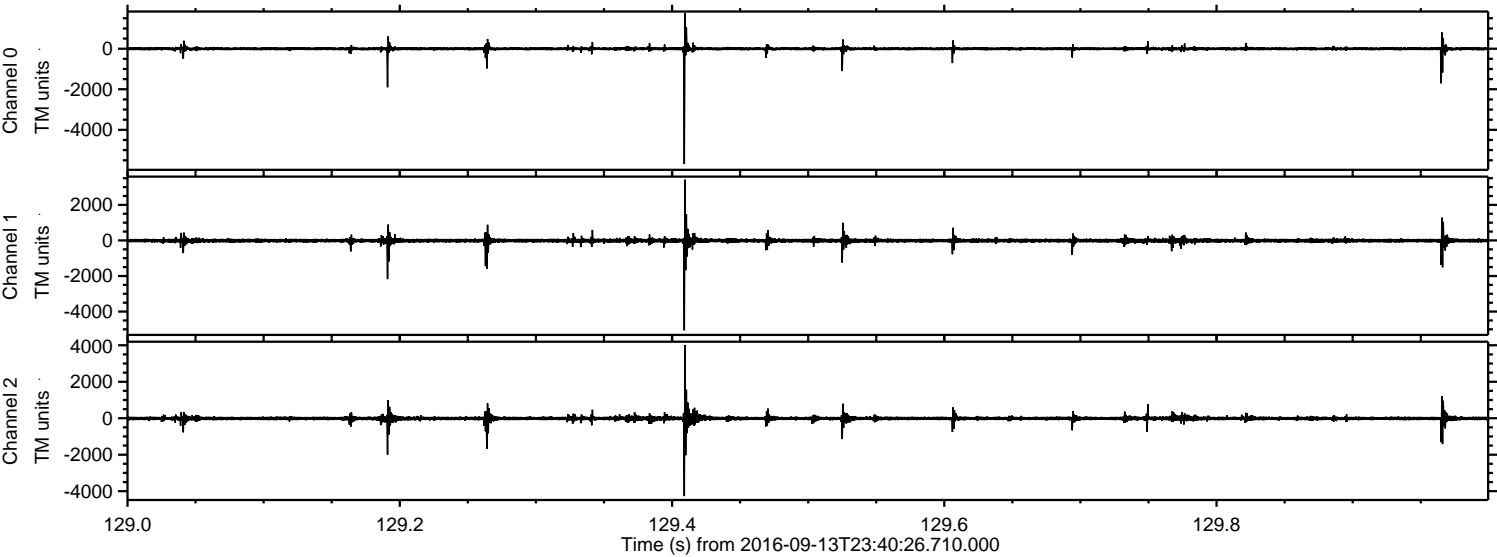
Processed Wed Sep 14 01:48:34 2016 by ELM ver.2012-10-06 from 001\_\_elm20160913\_234025\_\_dat00.bin





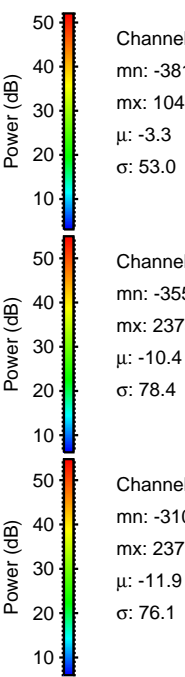
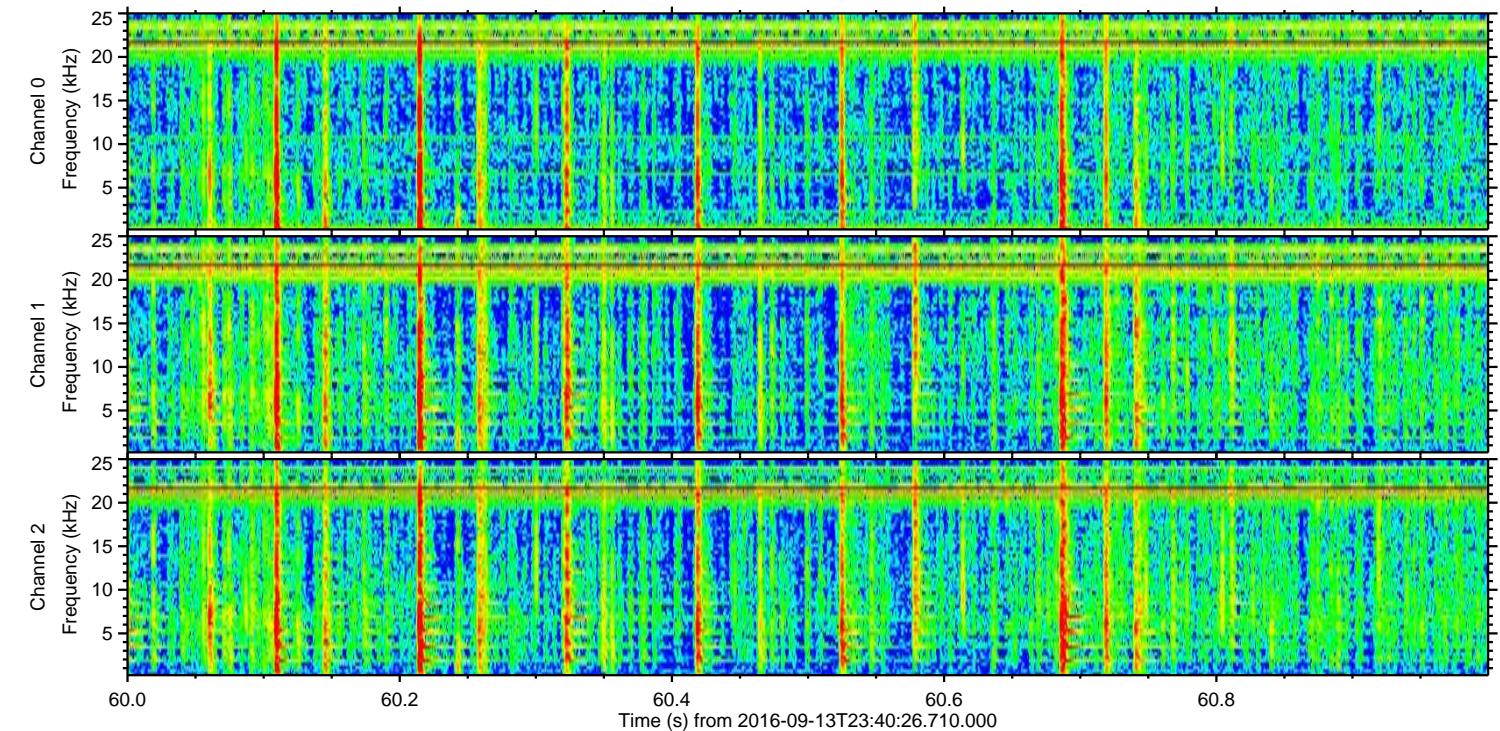
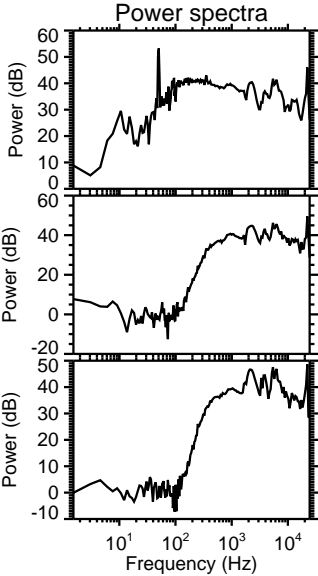
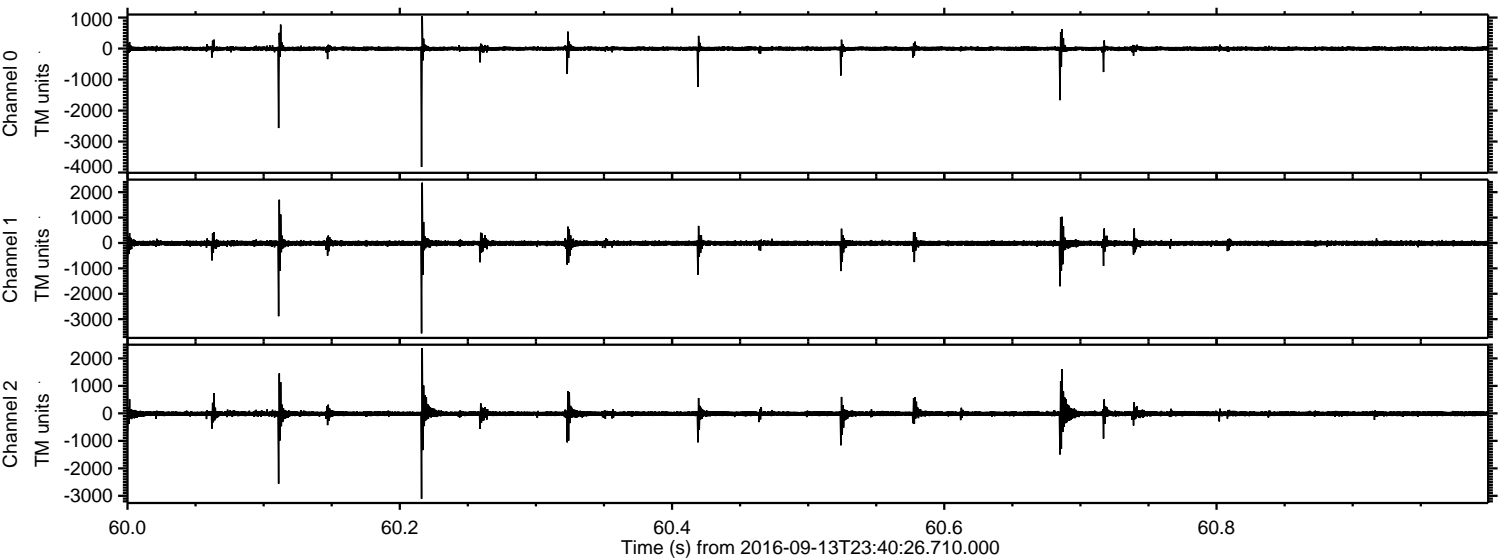
ELMAVAN 3D WAVEFORMS (Measured data sampled at 50 kHz) 51000 packets of 144 samples from 2016-09-13T23:40:26.710.000. Part 130/147

Processed Wed Sep 14 01:48:35 2016 by ELM ver.2012-10-06 from 001\_\_elm20160913\_234025\_\_dat00.bin





Processed Wed Sep 14 01:48:36 2016 by ELM ver.2012-10-06 from 001\_\_elm20160913\_234025\_\_dat00.bin



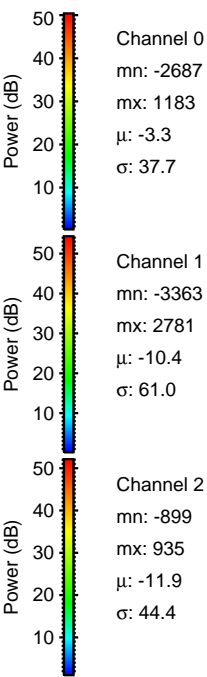
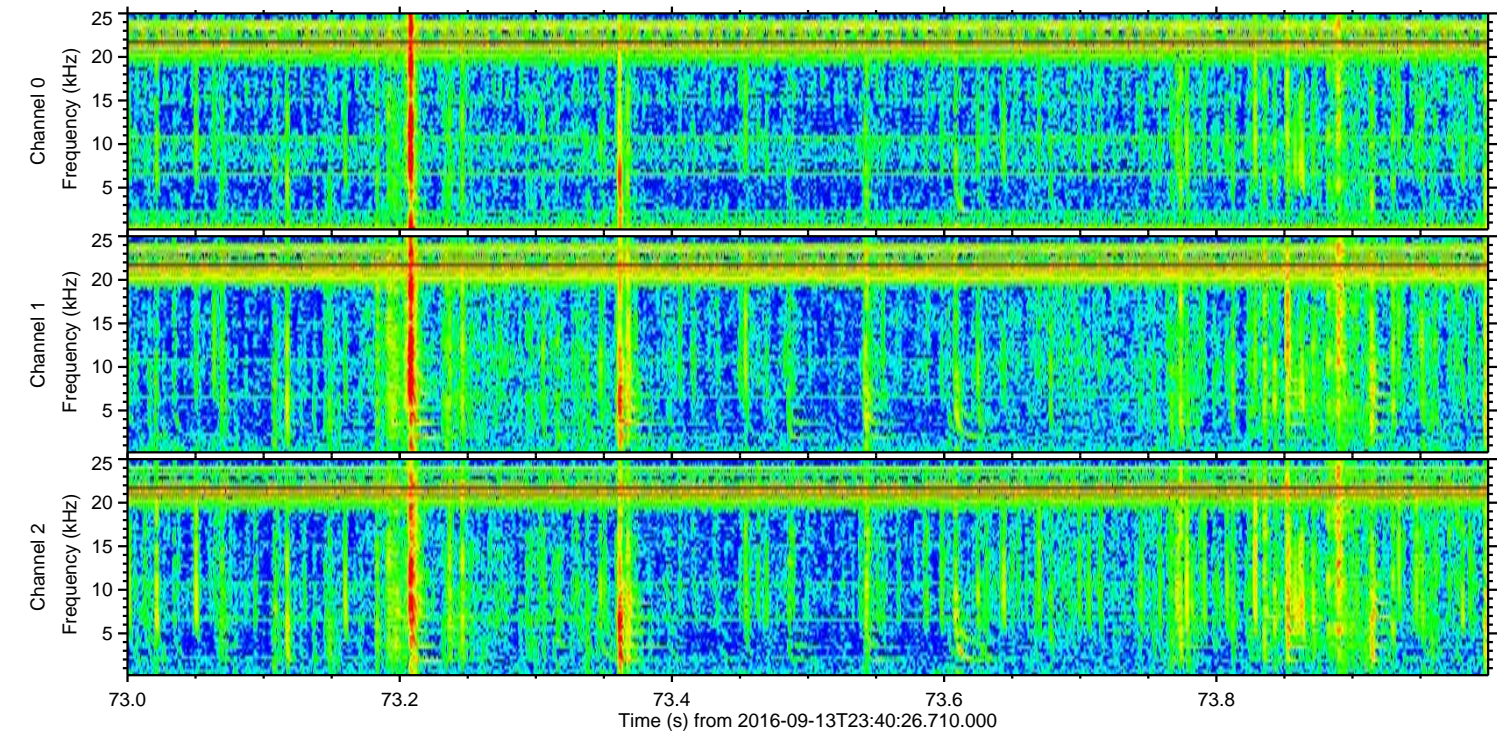
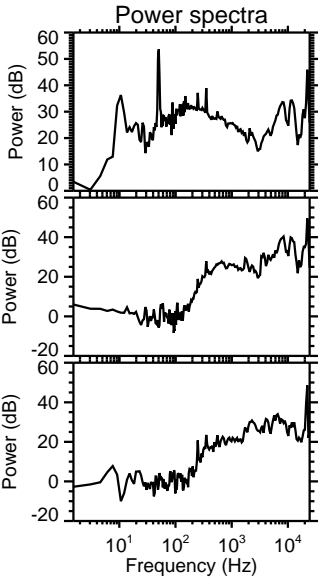
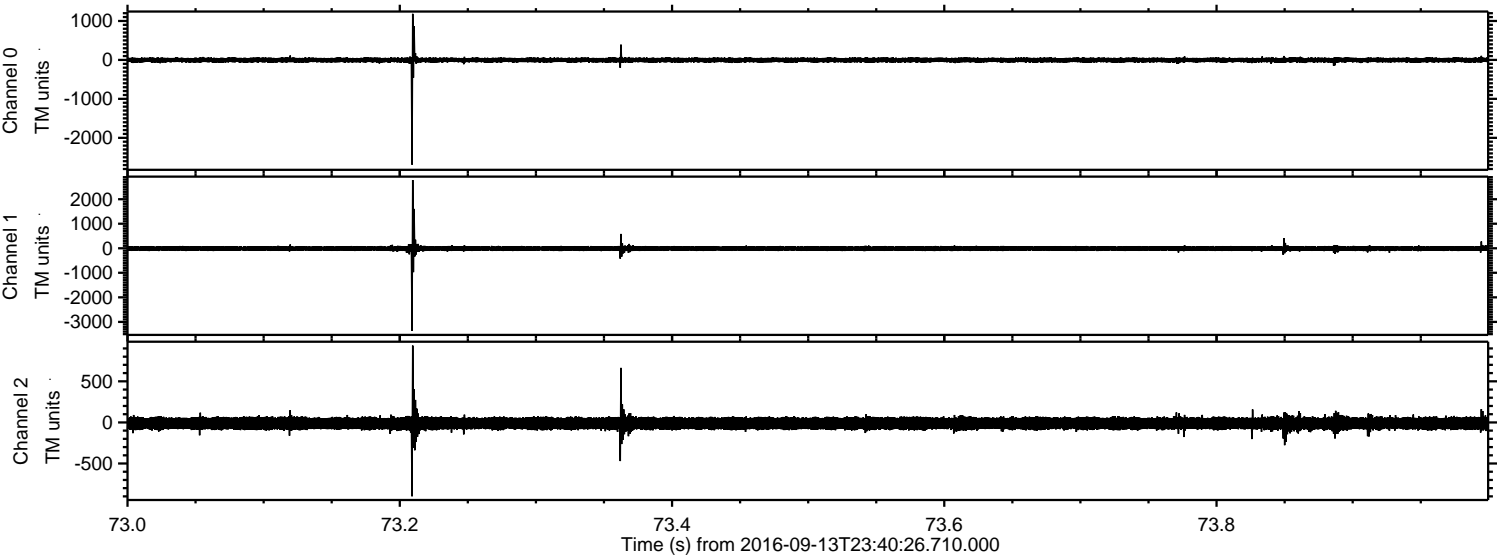
Channel 0  
mn: -3819  
mx: 1045  
 $\mu$ : -3.3  
 $\sigma$ : 53.0

Channel 1  
mn: -3559  
mx: 2375  
 $\mu$ : -10.4  
 $\sigma$ : 78.4

Channel 2  
mn: -3105  
mx: 2379  
 $\mu$ : -11.9  
 $\sigma$ : 76.1



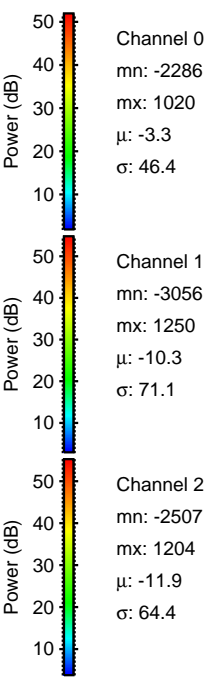
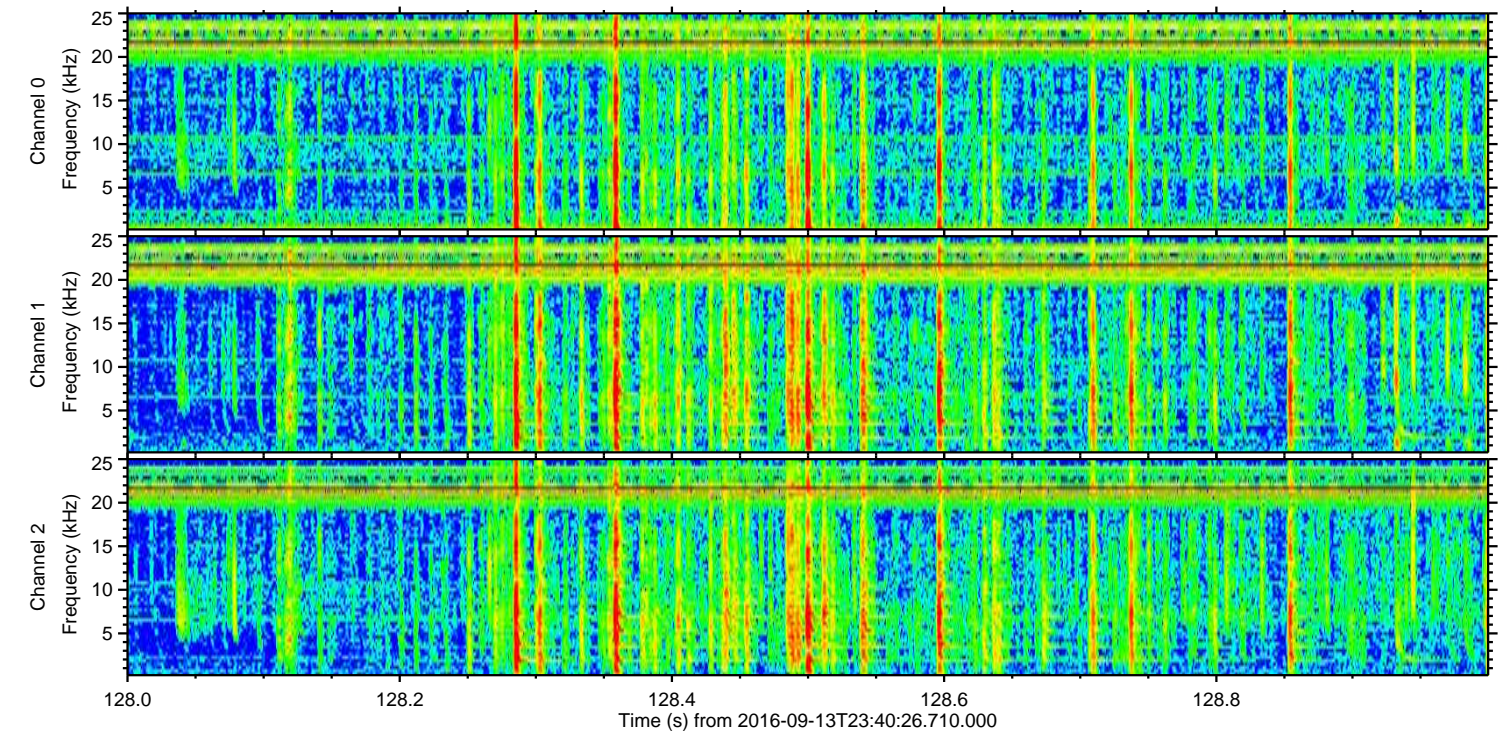
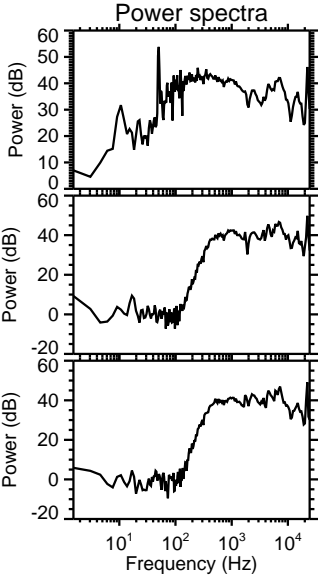
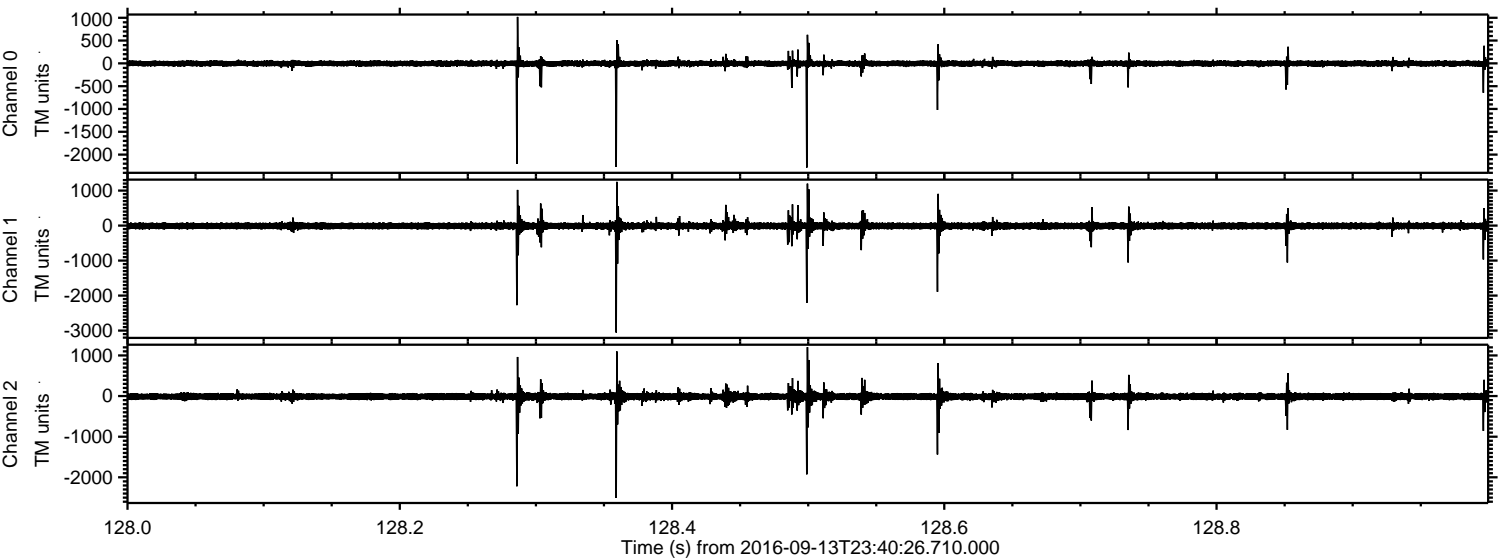
Processed Wed Sep 14 01:48:37 2016 by ELM ver.2012-10-06 from 001\_\_elm20160913\_234025\_\_dat00.bin





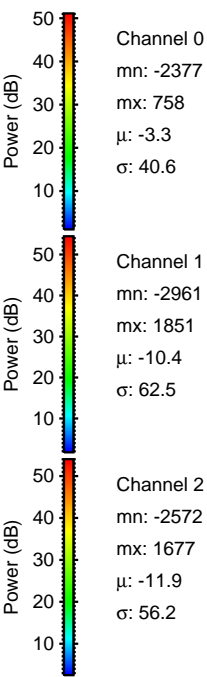
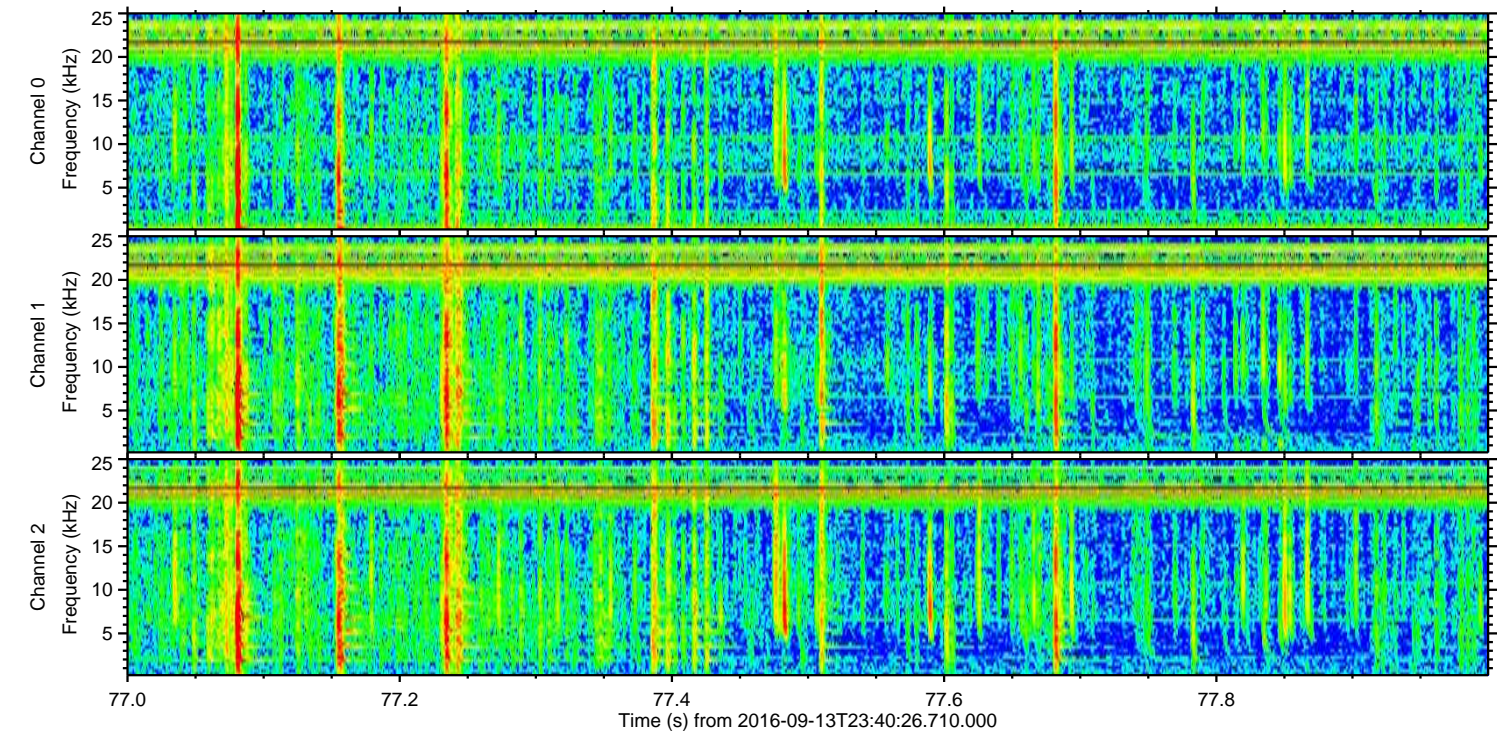
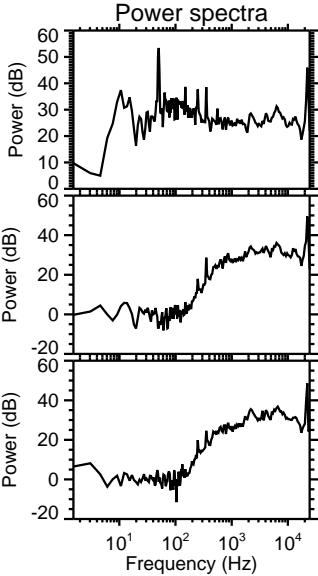
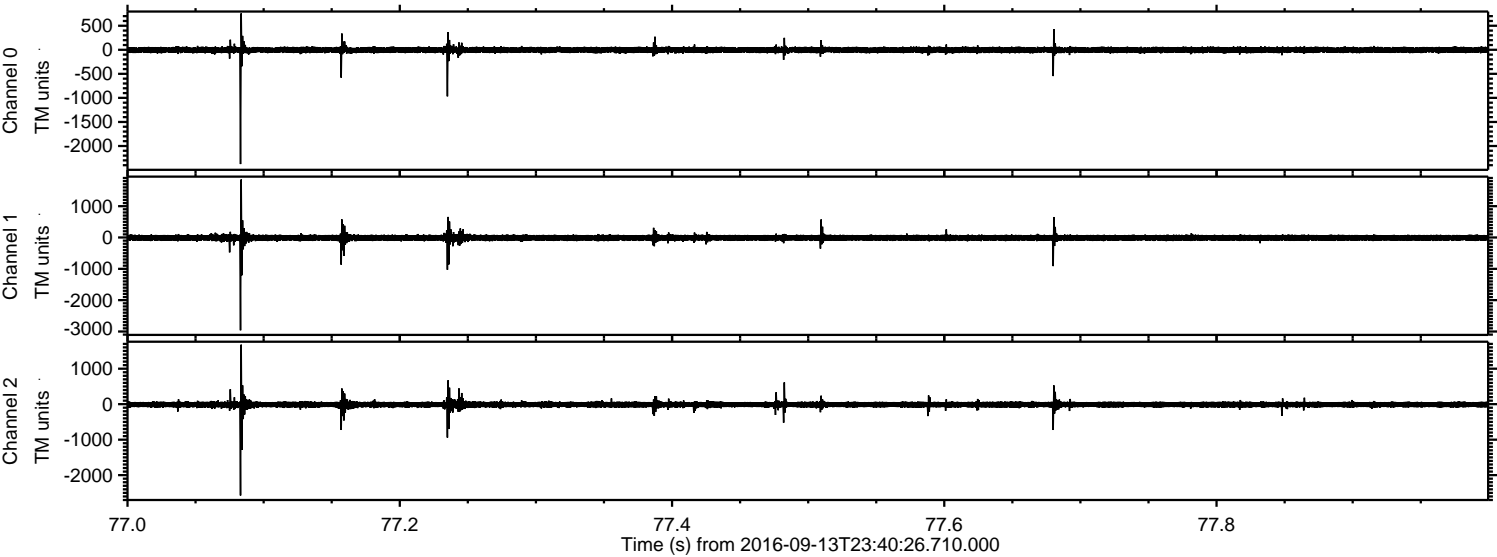
ELMAVAN 3D WAVEFORMS (Measured data sampled at 50 kHz) 51000 packets of 144 samples from 2016-09-13T23:40:26.710.000. Part 129/147

Processed Wed Sep 14 01:48:38 2016 by ELM ver.2012-10-06 from 001\_\_elm20160913\_234025\_\_dat00.bin



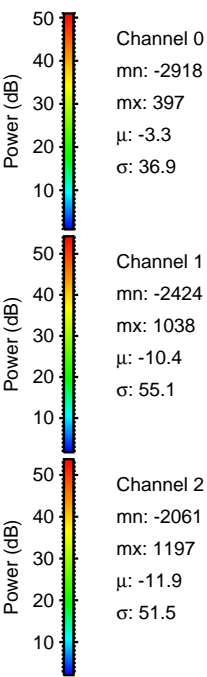
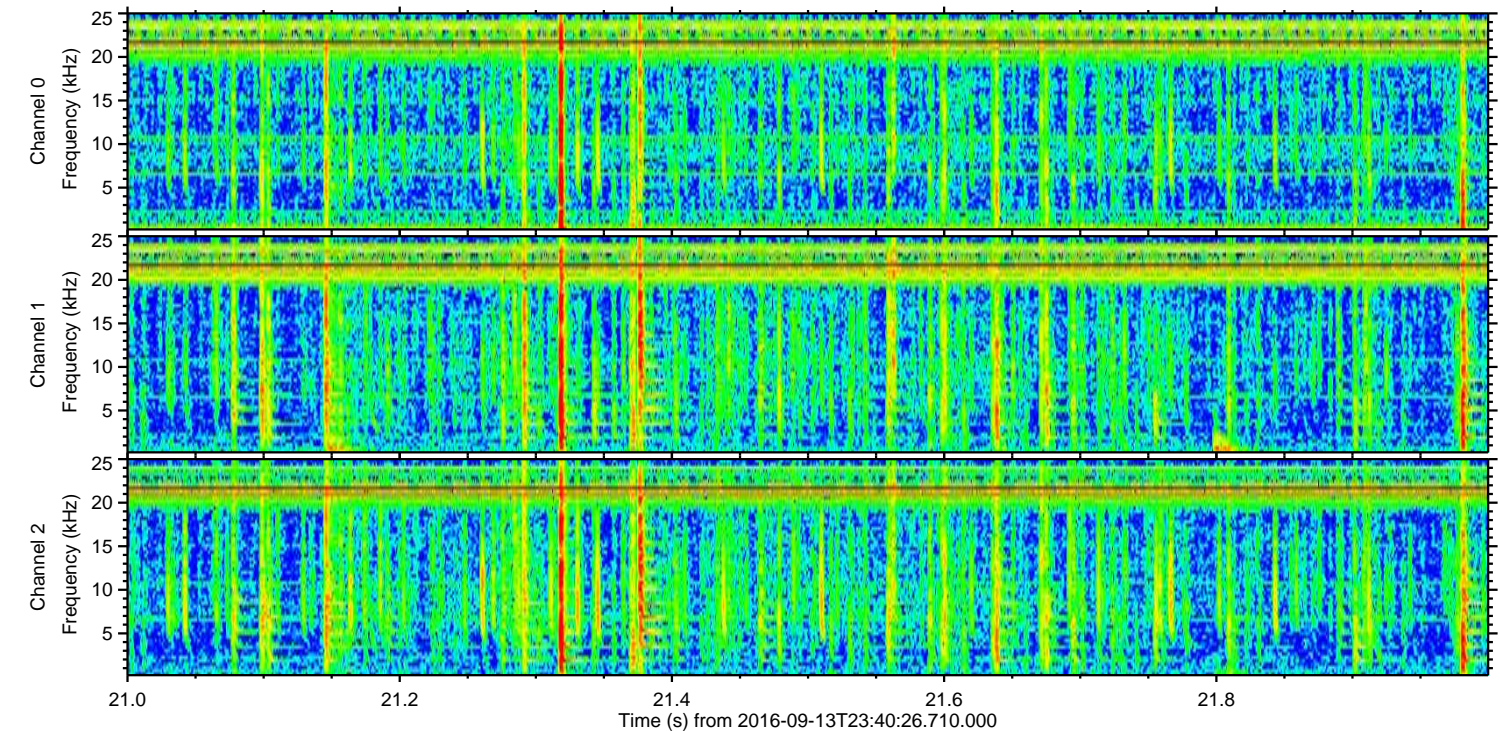
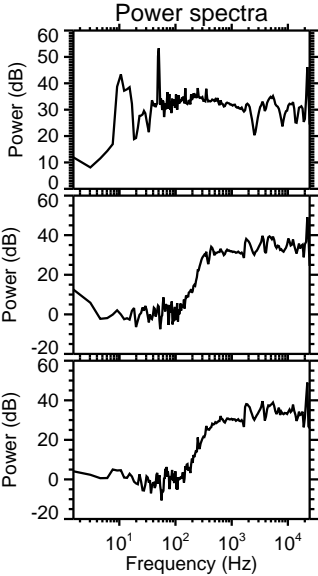
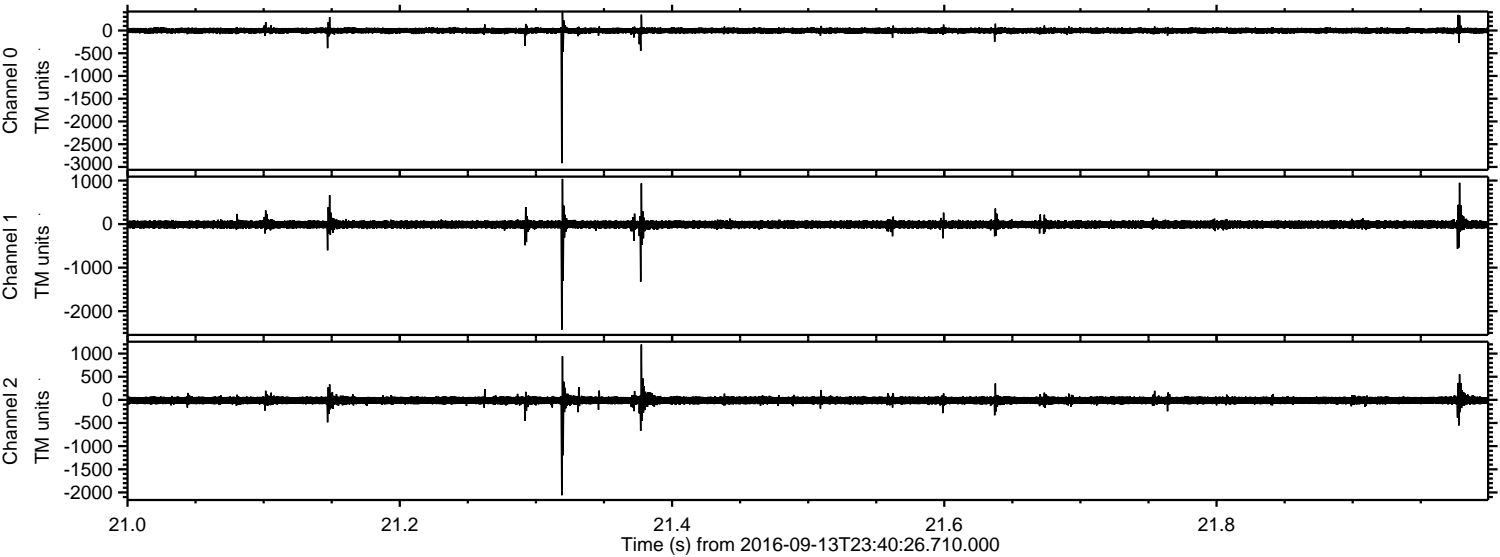


Processed Wed Sep 14 01:48:39 2016 by ELM ver.2012-10-06 from 001\_\_elm20160913\_234025\_\_dat00.bin





Processed Wed Sep 14 01:48:40 2016 by ELM ver.2012-10-06 from 001\_\_elm20160913\_234025\_\_dat00.bin



Channel 0  
mn: -2918  
mx: 397  
 $\mu$ : -3.3  
 $\sigma$ : 36.9

Channel 1  
mn: -2424  
mx: 1038  
 $\mu$ : -10.4  
 $\sigma$ : 55.1

Channel 2  
mn: -2061  
mx: 1197  
 $\mu$ : -11.9  
 $\sigma$ : 51.5



Processed Wed Sep 14 01:48:41 2016 by ELM ver.2012-10-06 from 001\_\_elm20160913\_234025\_\_dat00.bin

