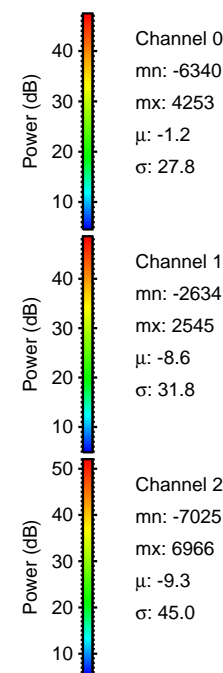
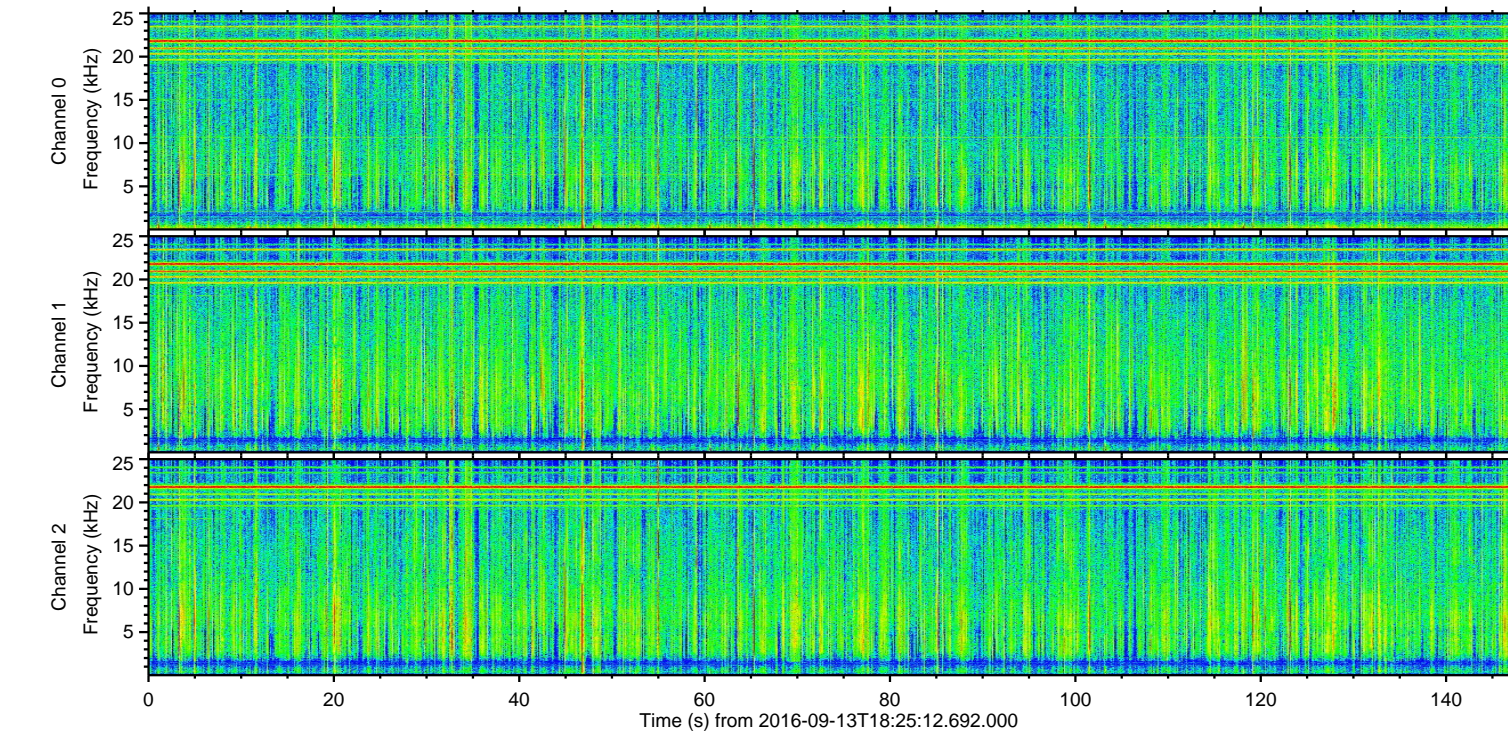
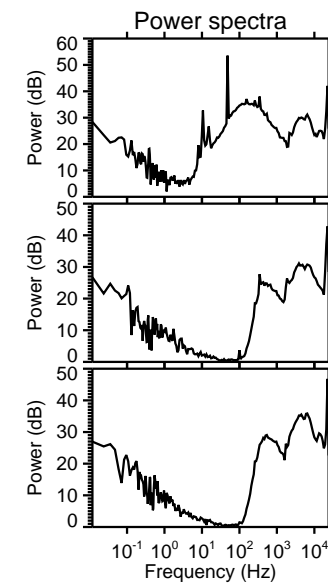
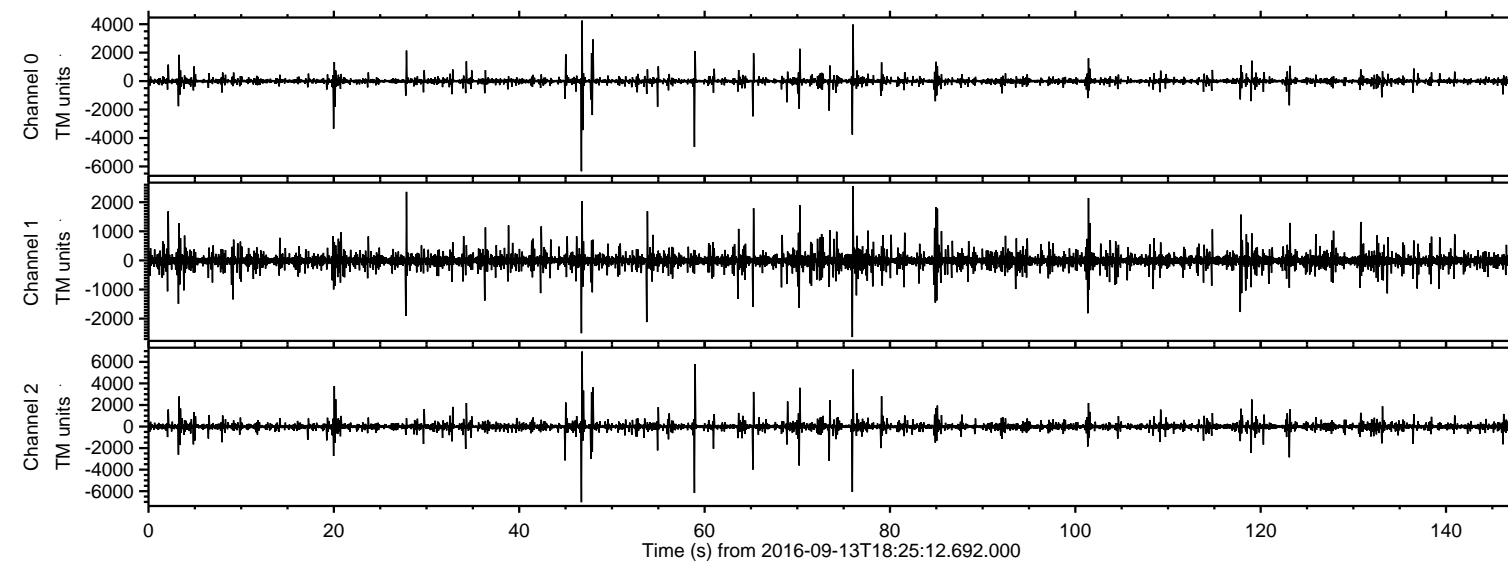


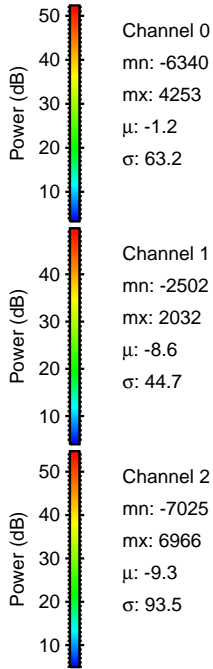
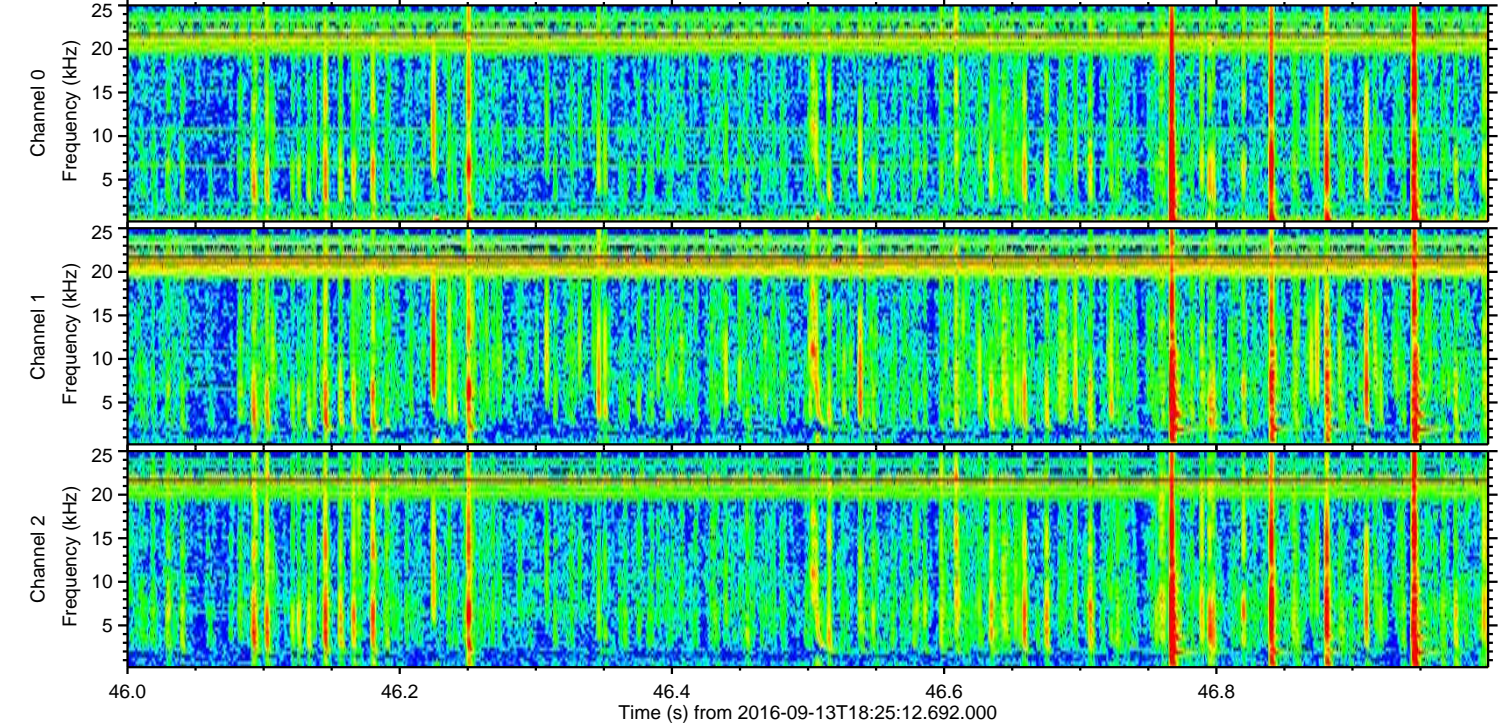
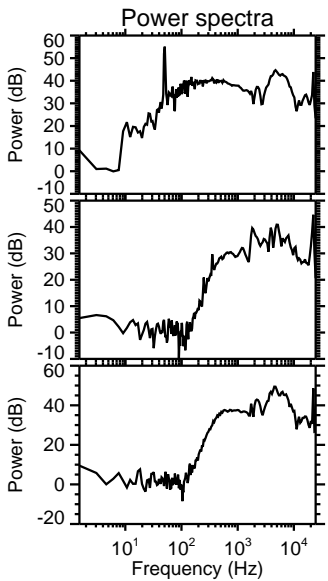
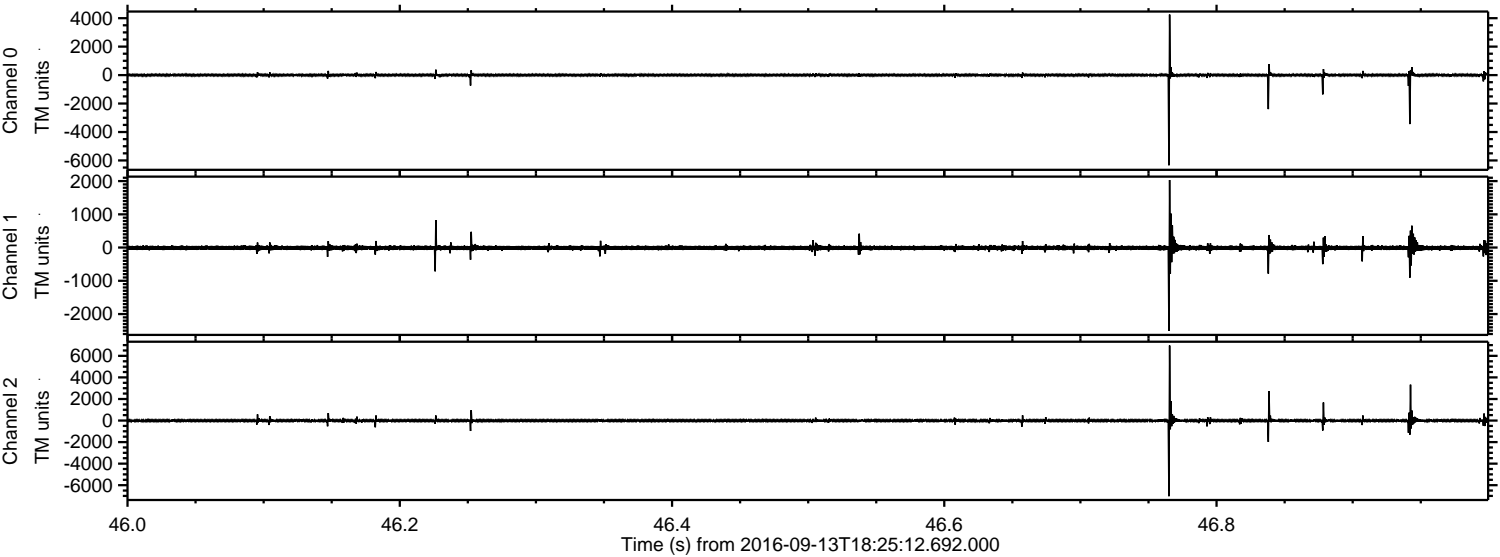
# ELMAVAN 3D WAVEFORMS (Measured data sampled at 50 kHz) 51000 packets of 144 samples from 2016-09-13T18:25:12.692.000.

Processed Tue Sep 13 20:33:11 2016 by ELM ver.2012-10-06 from 001\_\_elm20160913\_182511\_\_dat00.bin



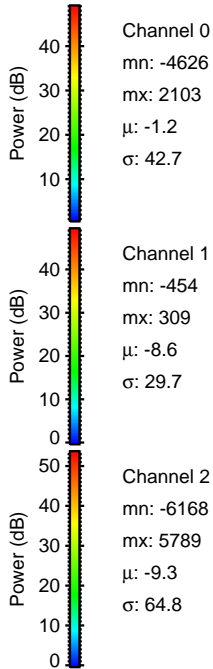
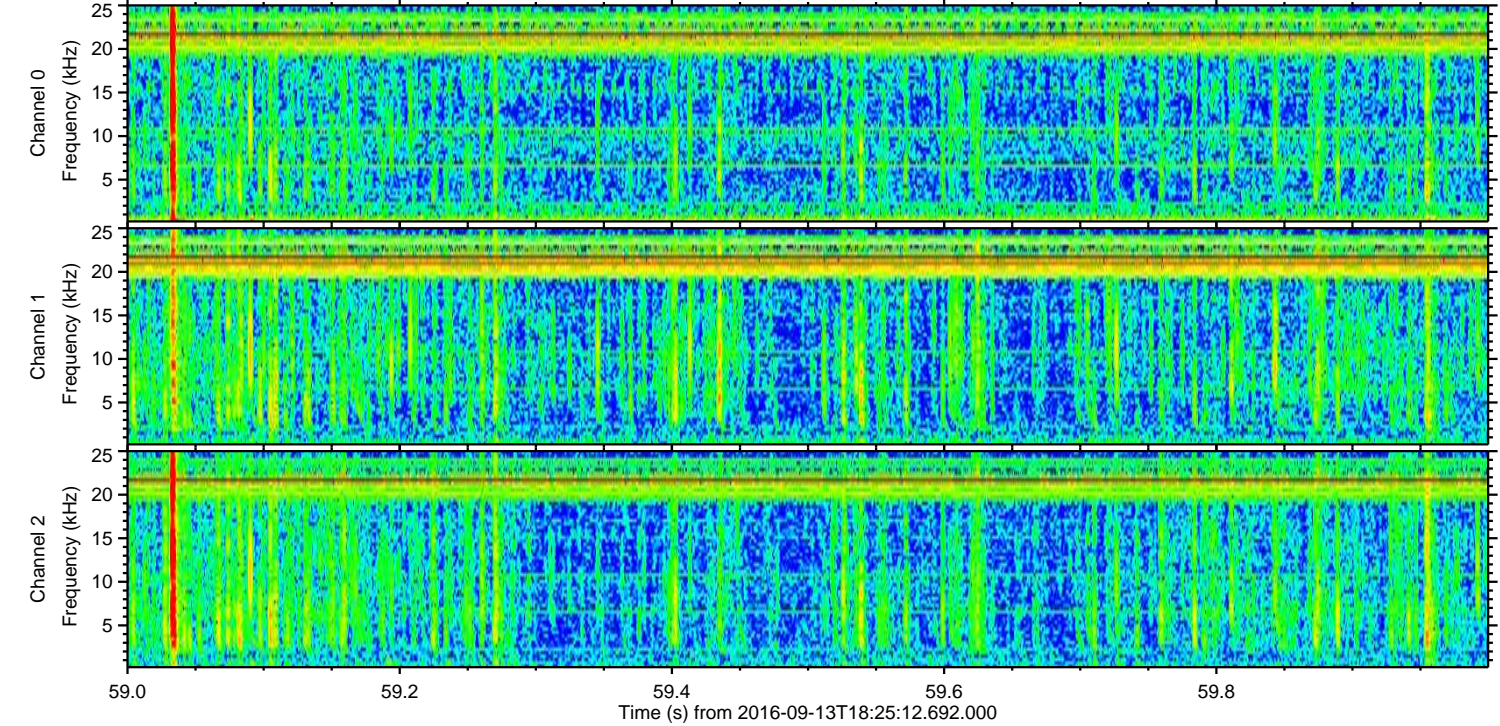
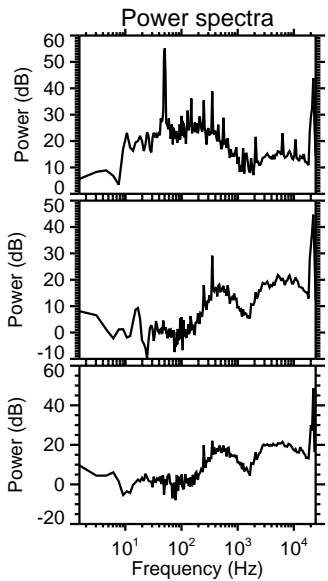
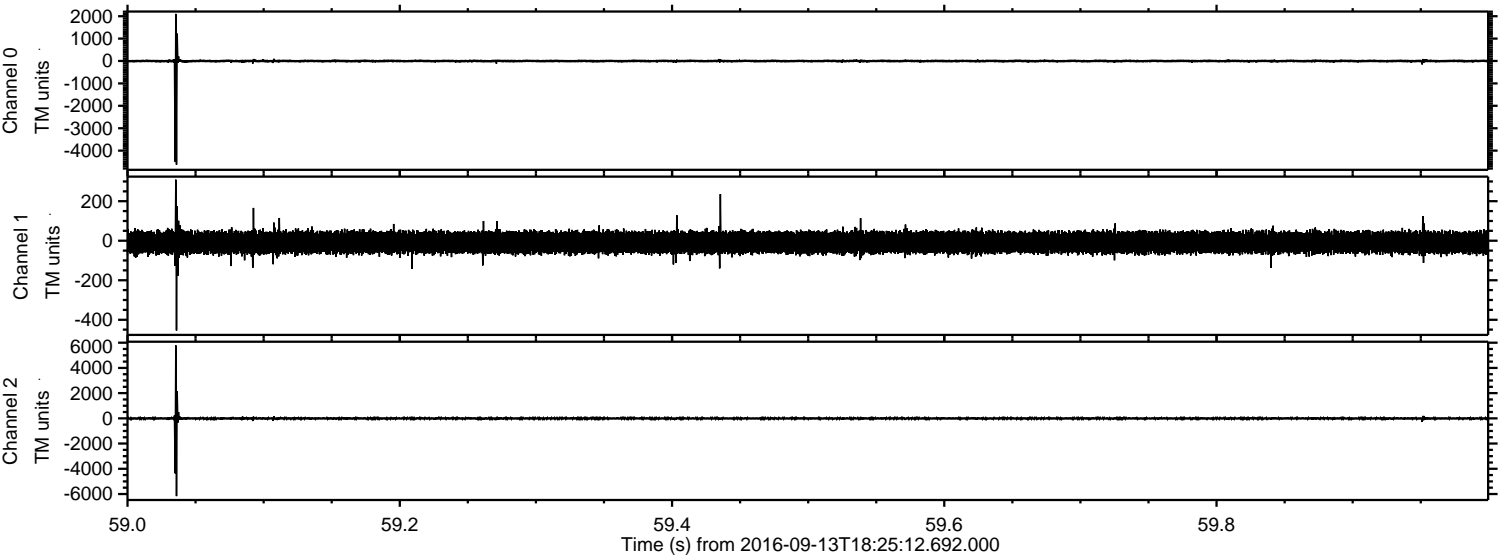


Processed Tue Sep 13 20:33:23 2016 by ELM ver.2012-10-06 from 001\_\_elm20160913\_182511\_\_dat00.bin





Processed Tue Sep 13 20:33:24 2016 by ELM ver.2012-10-06 from 001\_\_elm20160913\_182511\_\_dat00.bin



Channel 0  
mn: -4626  
mx: 2103  
 $\mu$ : -1.2  
 $\sigma$ : 42.7

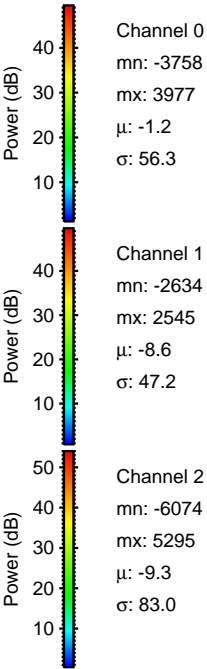
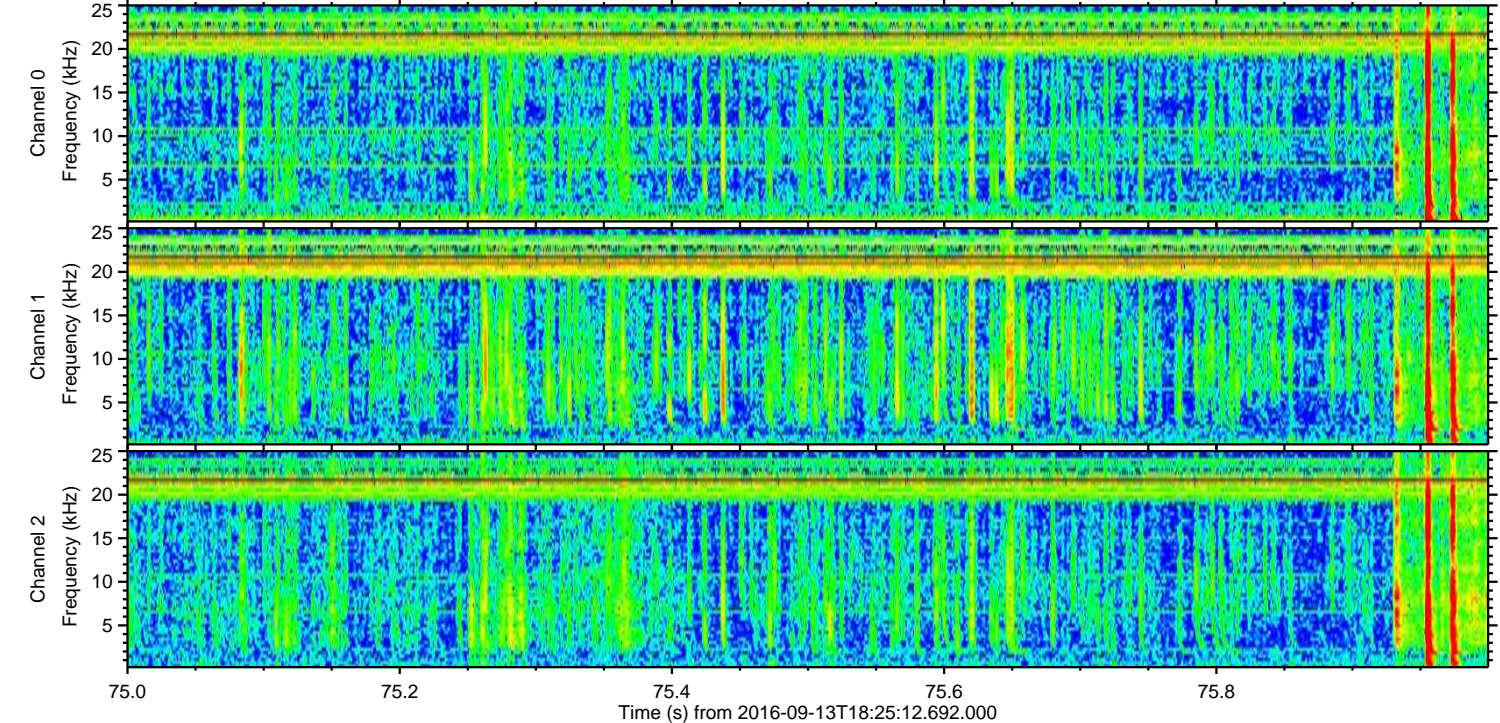
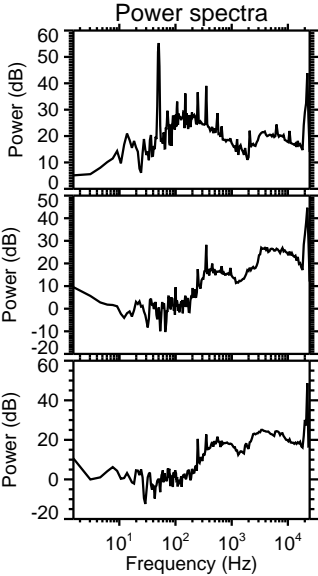
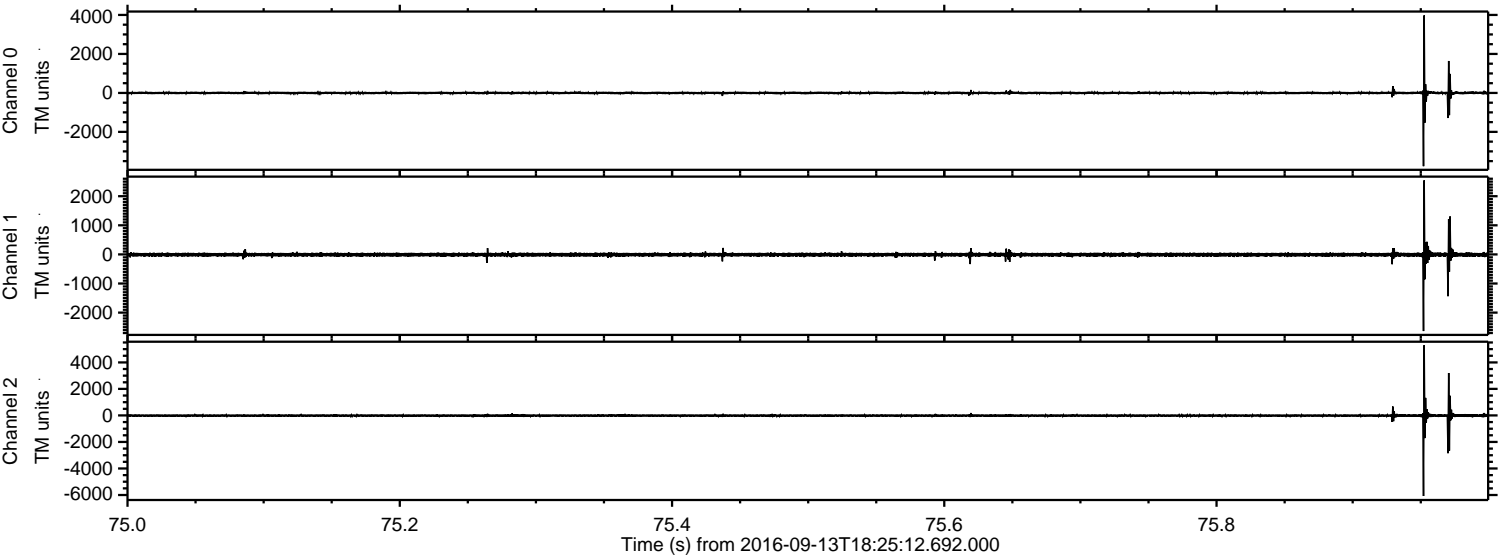
Channel 1  
mn: -454  
mx: 309  
 $\mu$ : -8.6  
 $\sigma$ : 29.7

Channel 2  
mn: -6168  
mx: 5789  
 $\mu$ : -9.3  
 $\sigma$ : 64.8



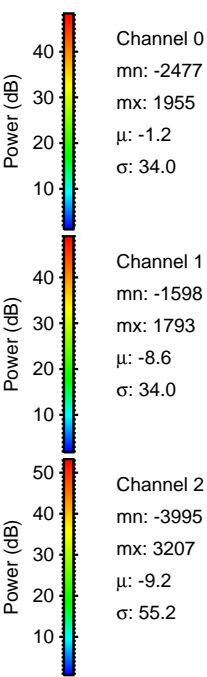
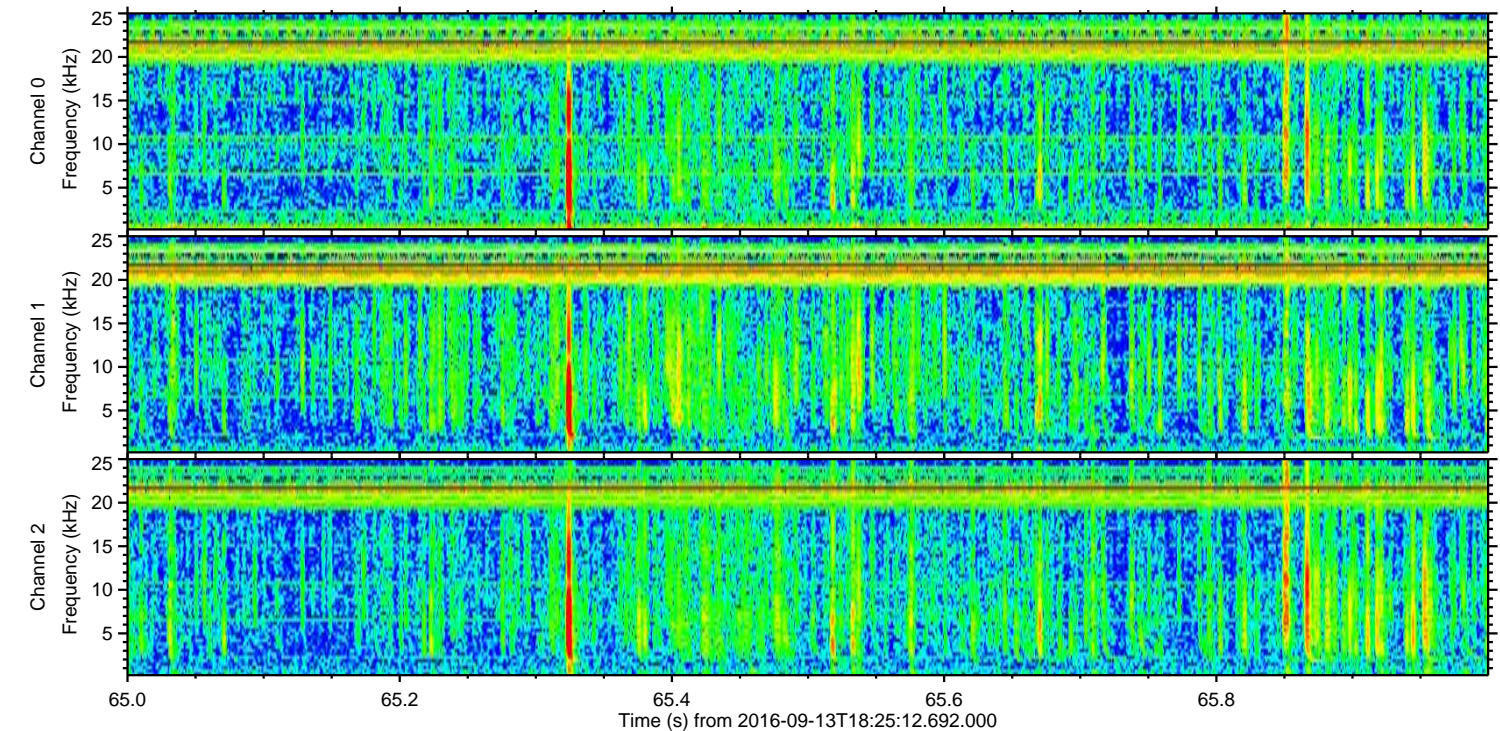
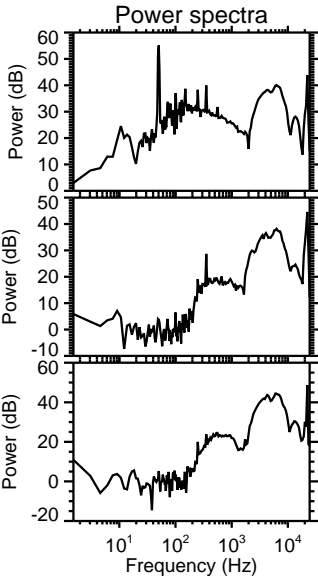
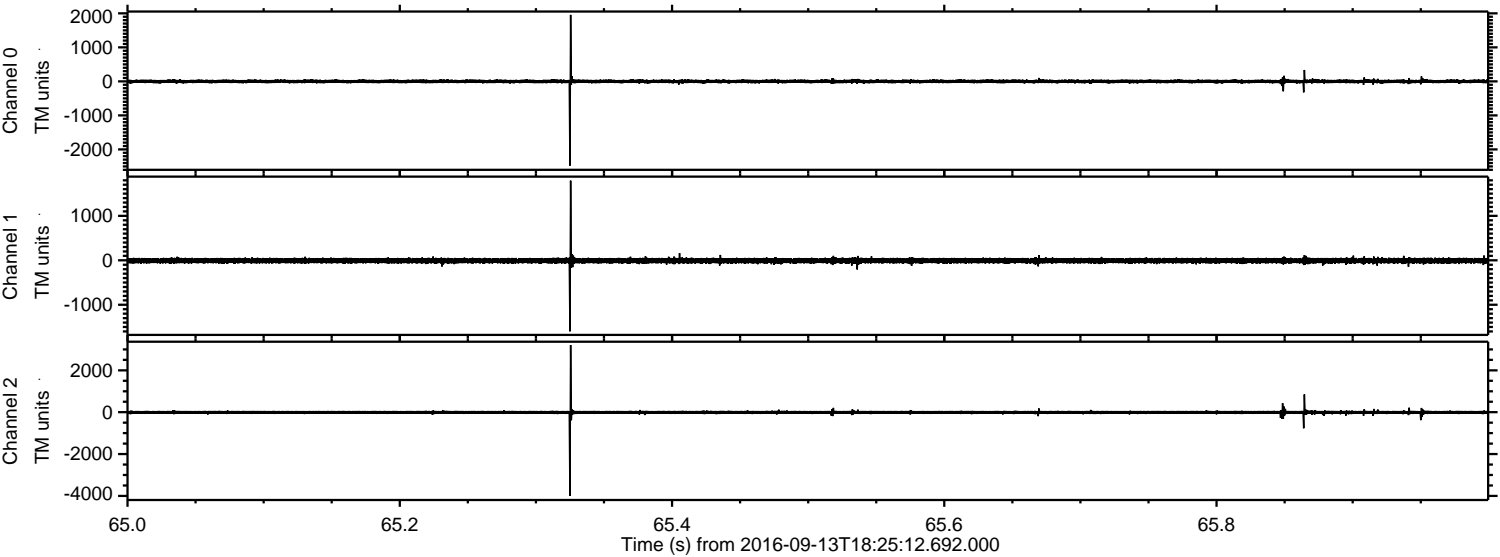
ELMAVAN 3D WAVEFORMS (Measured data sampled at 50 kHz) 51000 packets of 144 samples from 2016-09-13T18:25:12.692.000. Part 76/147

Processed Tue Sep 13 20:33:25 2016 by ELM ver.2012-10-06 from 001\_\_elm20160913\_182511\_\_dat00.bin





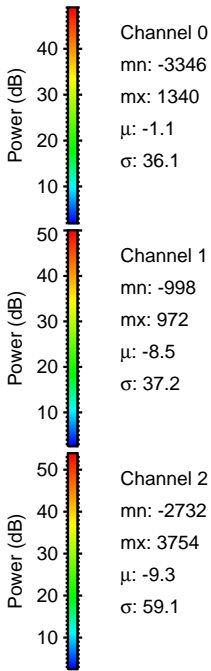
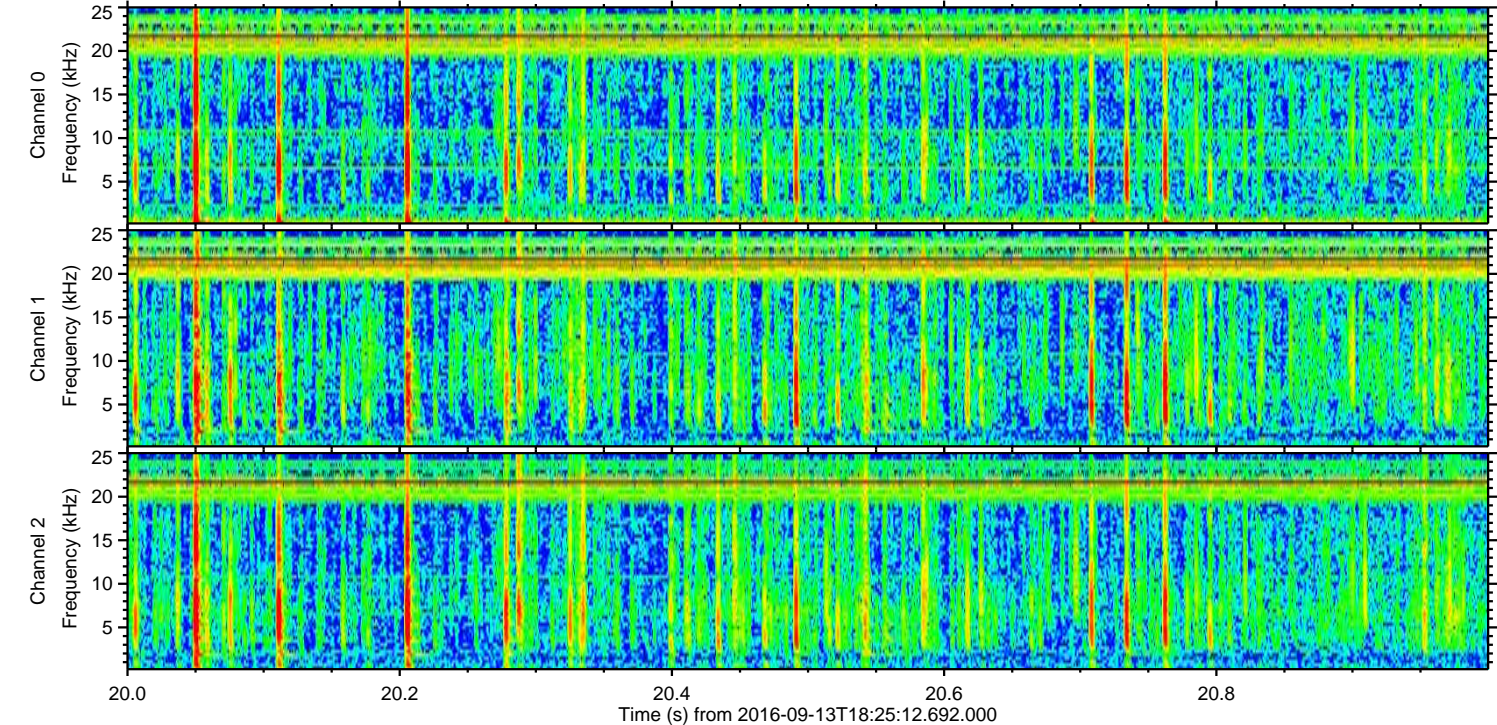
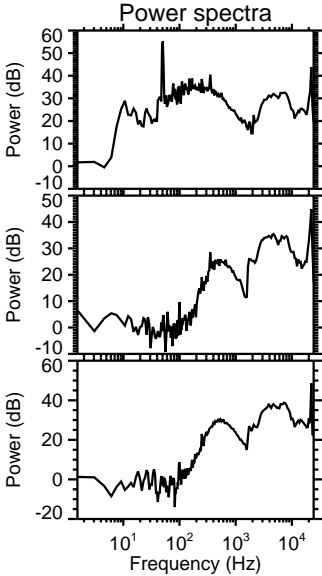
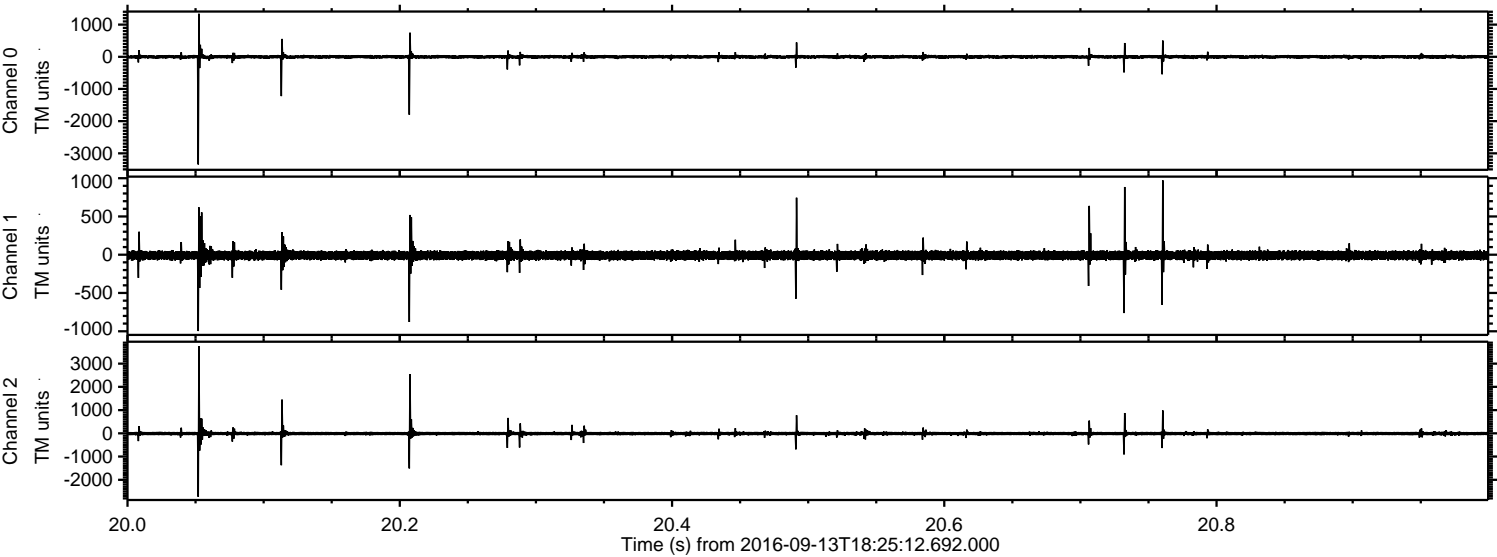
Processed Tue Sep 13 20:33:25 2016 by ELM ver.2012-10-06 from 001\_\_elm20160913\_182511\_\_dat00.bin





ELMAVAN 3D WAVEFORMS (Measured data sampled at 50 kHz) 51000 packets of 144 samples from 2016-09-13T18:25:12.692.000. Part 21/147

Processed Tue Sep 13 20:33:26 2016 by ELM ver.2012-10-06 from 001\_\_elm20160913\_182511\_\_dat00.bin



Channel 0  
mn: -3346  
mx: 1340  
 $\mu$ : -1.1  
 $\sigma$ : 36.1

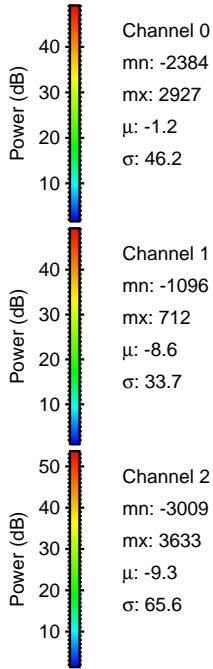
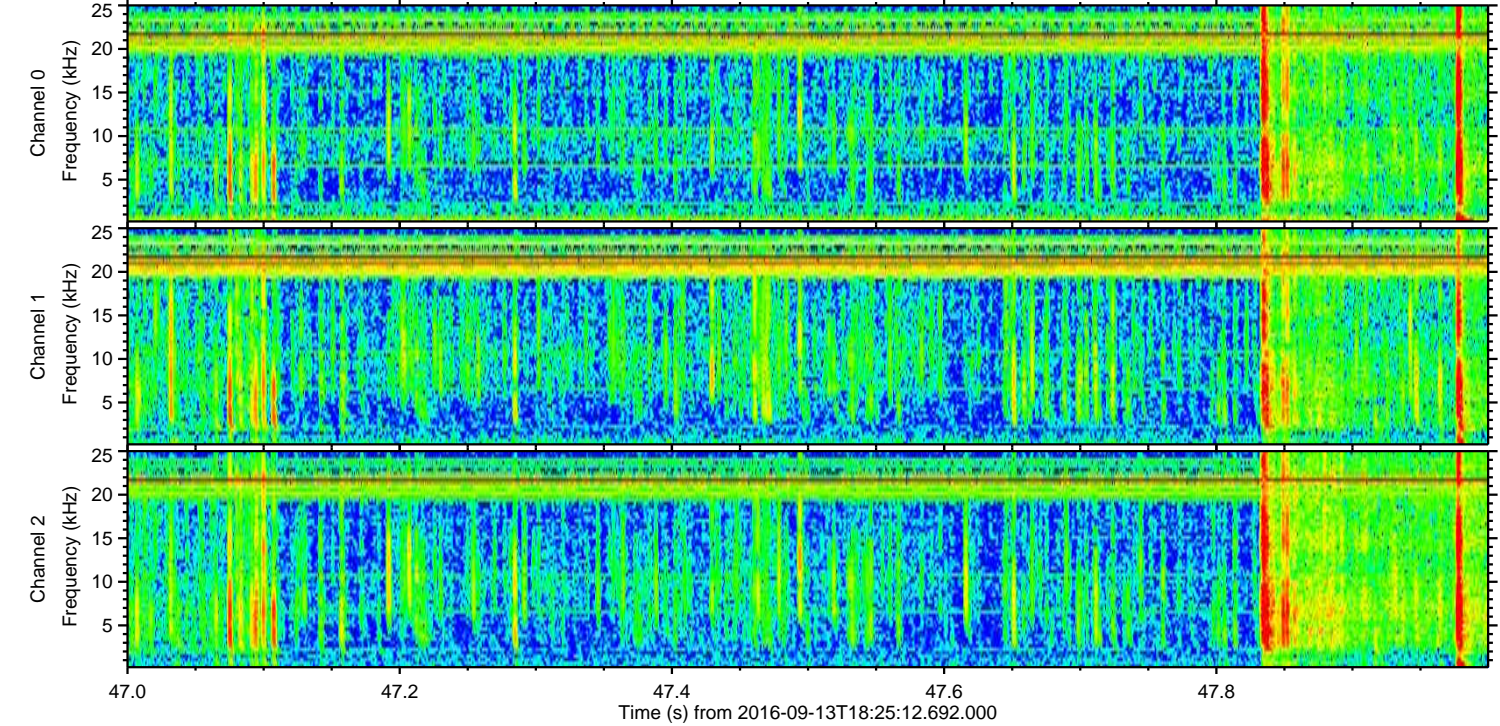
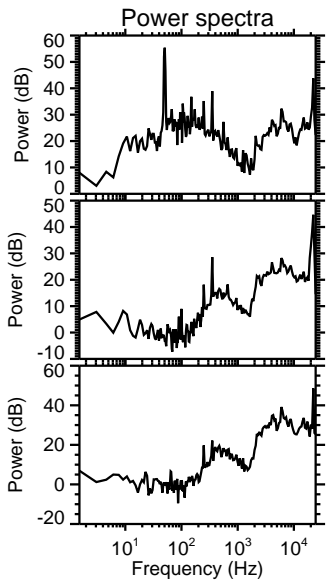
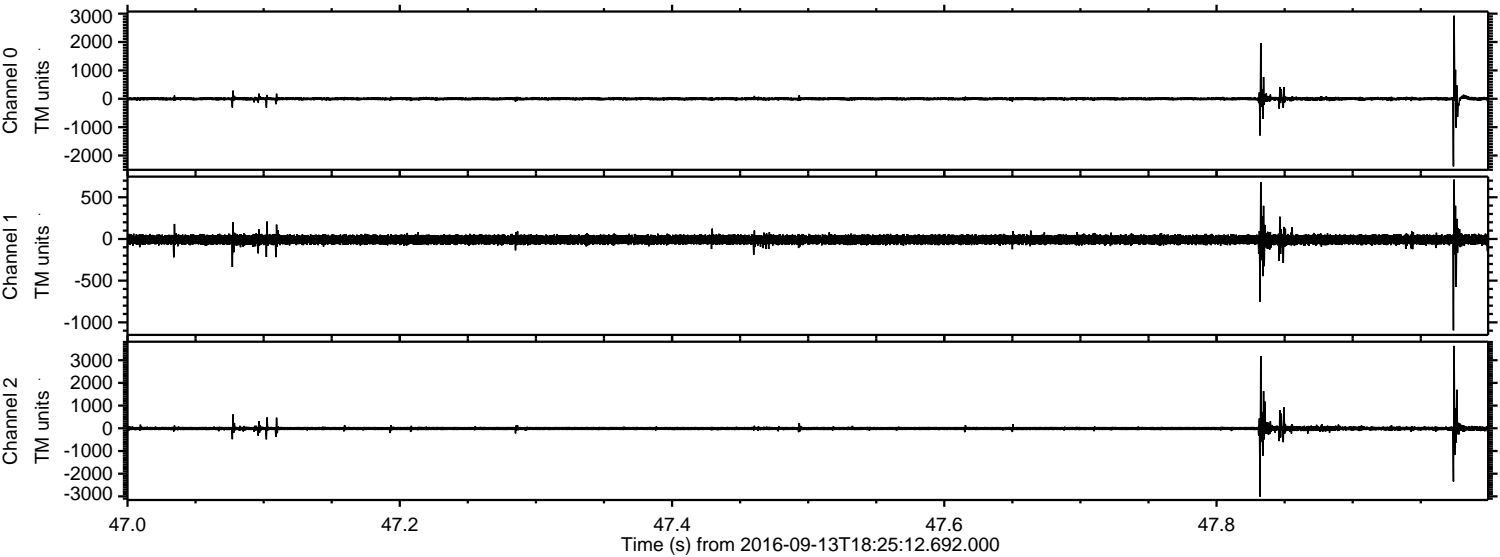
Channel 1  
mn: -998  
mx: 972  
 $\mu$ : -8.5  
 $\sigma$ : 37.2

Channel 2  
mn: -2732  
mx: 3754  
 $\mu$ : -9.3  
 $\sigma$ : 59.1



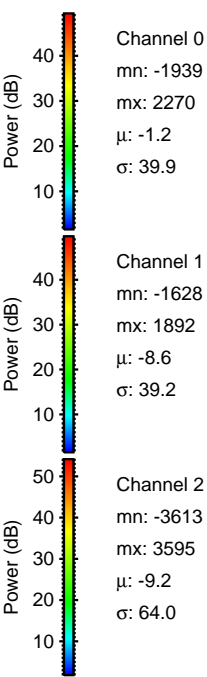
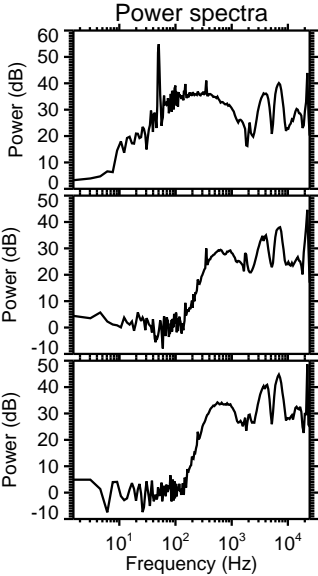
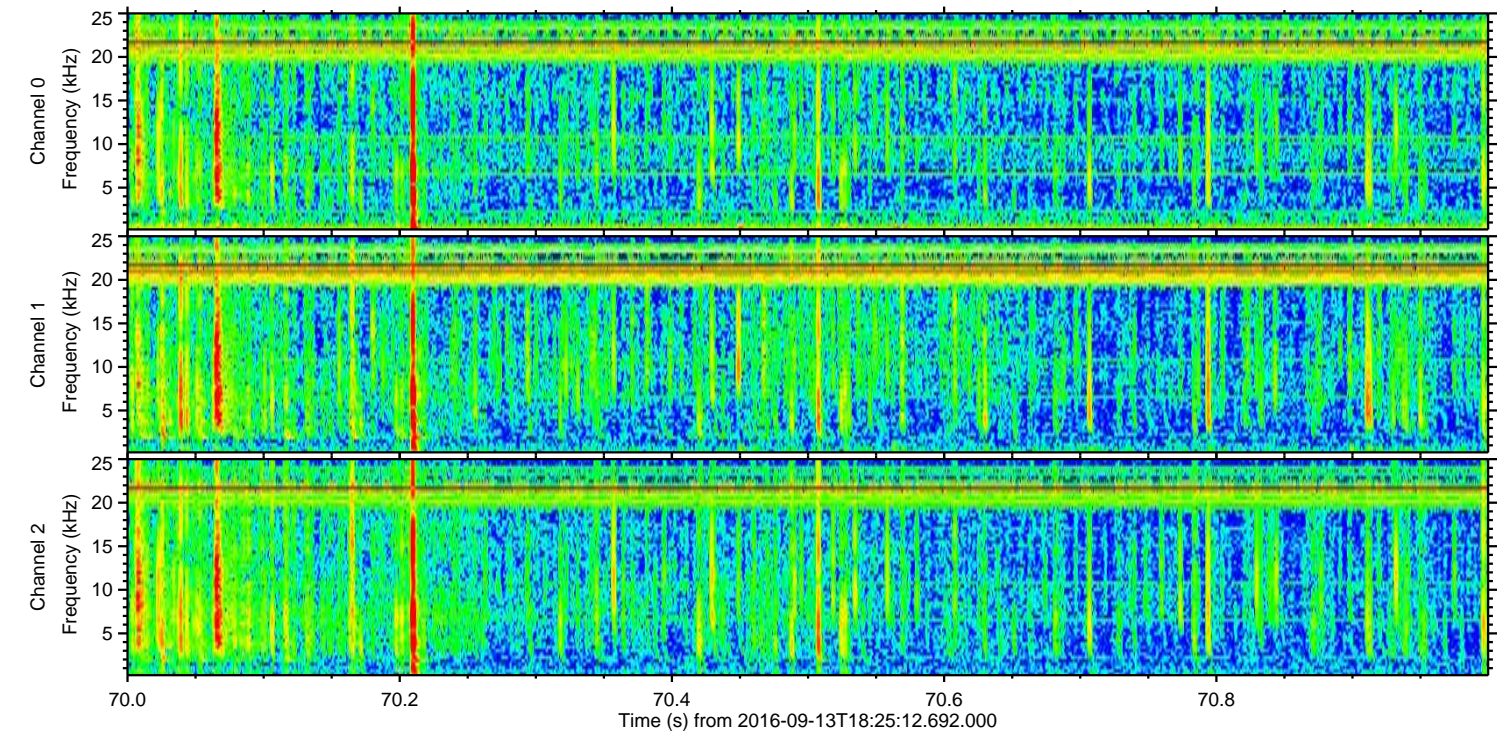
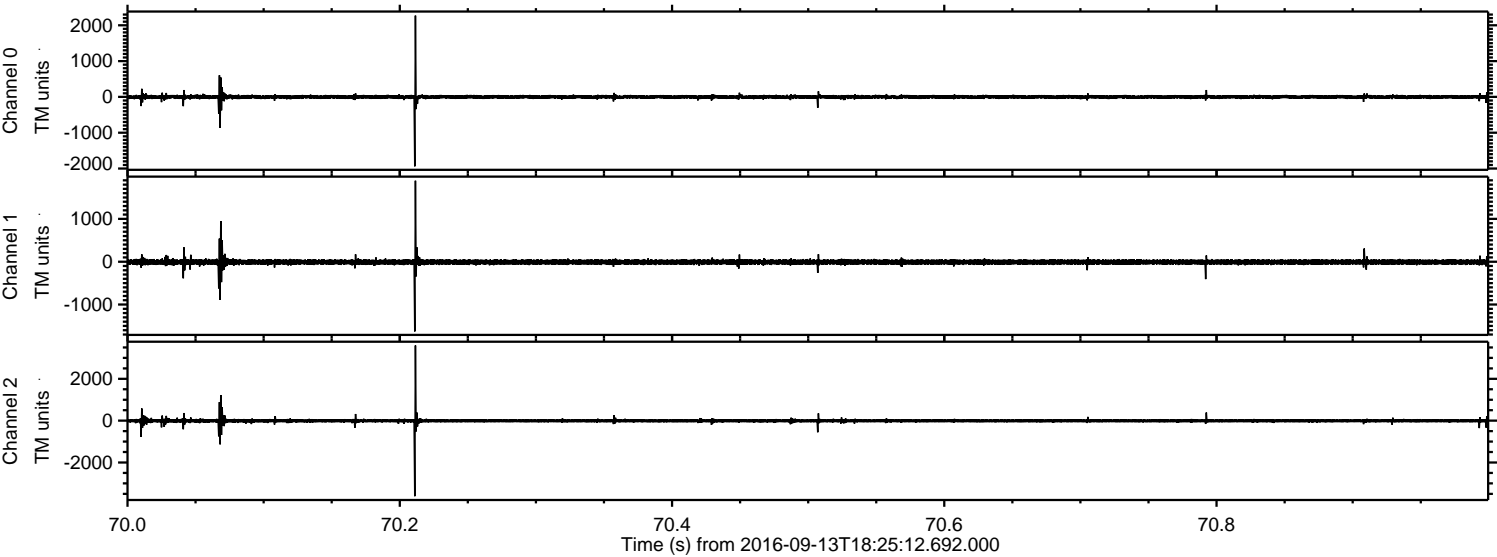
ELMAVAN 3D WAVEFORMS (Measured data sampled at 50 kHz) 51000 packets of 144 samples from 2016-09-13T18:25:12.692.000. Part 48/147

Processed Tue Sep 13 20:33:27 2016 by ELM ver.2012-10-06 from 001\_\_elm20160913\_182511\_\_dat00.bin



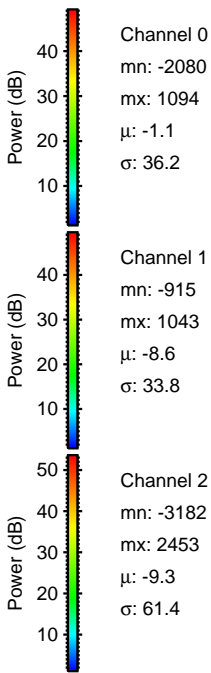
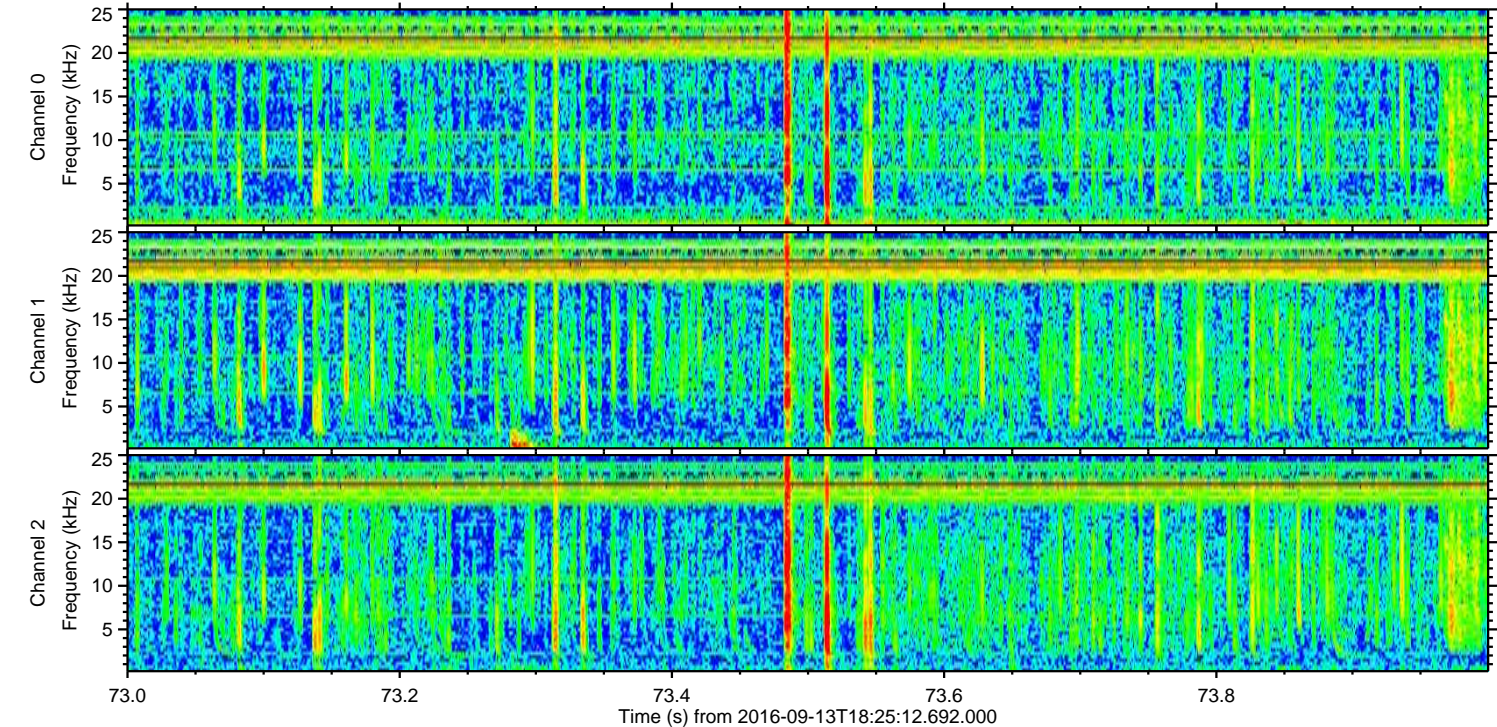
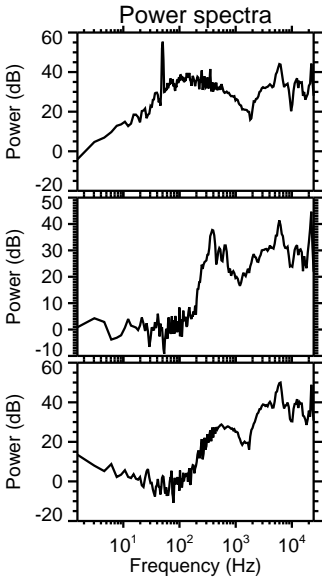
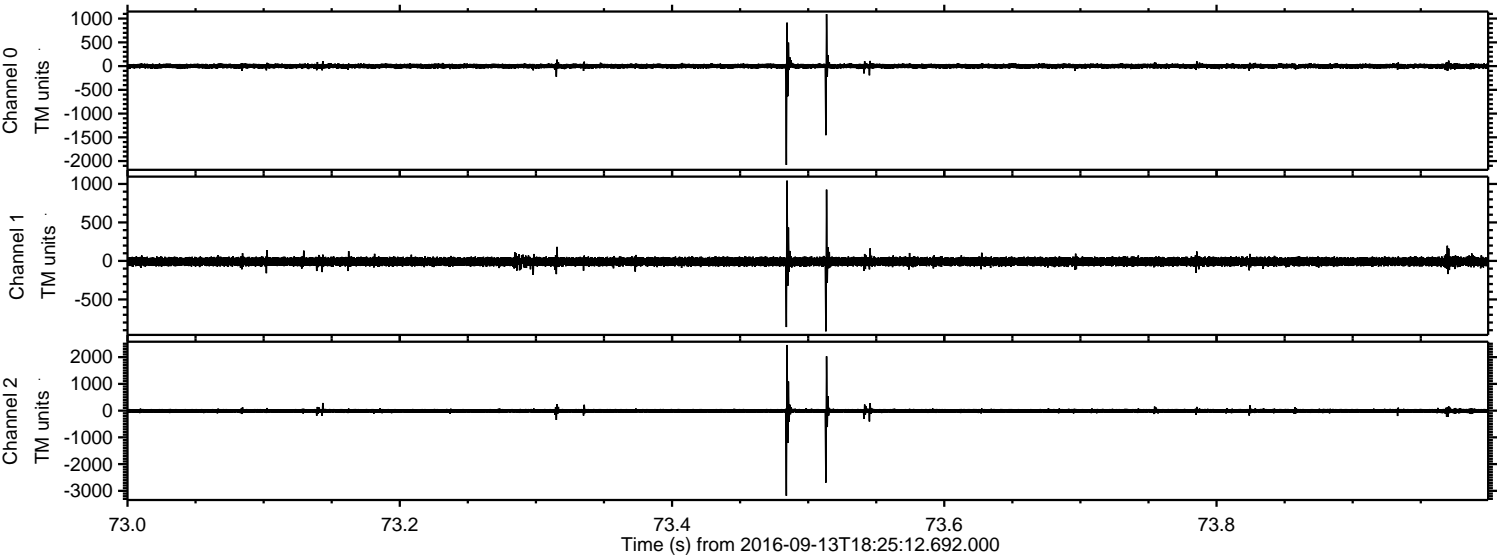


Processed Tue Sep 13 20:33:28 2016 by ELM ver.2012-10-06 from 001\_\_elm20160913\_182511\_\_dat00.bin



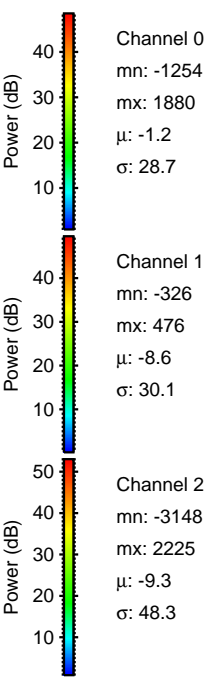
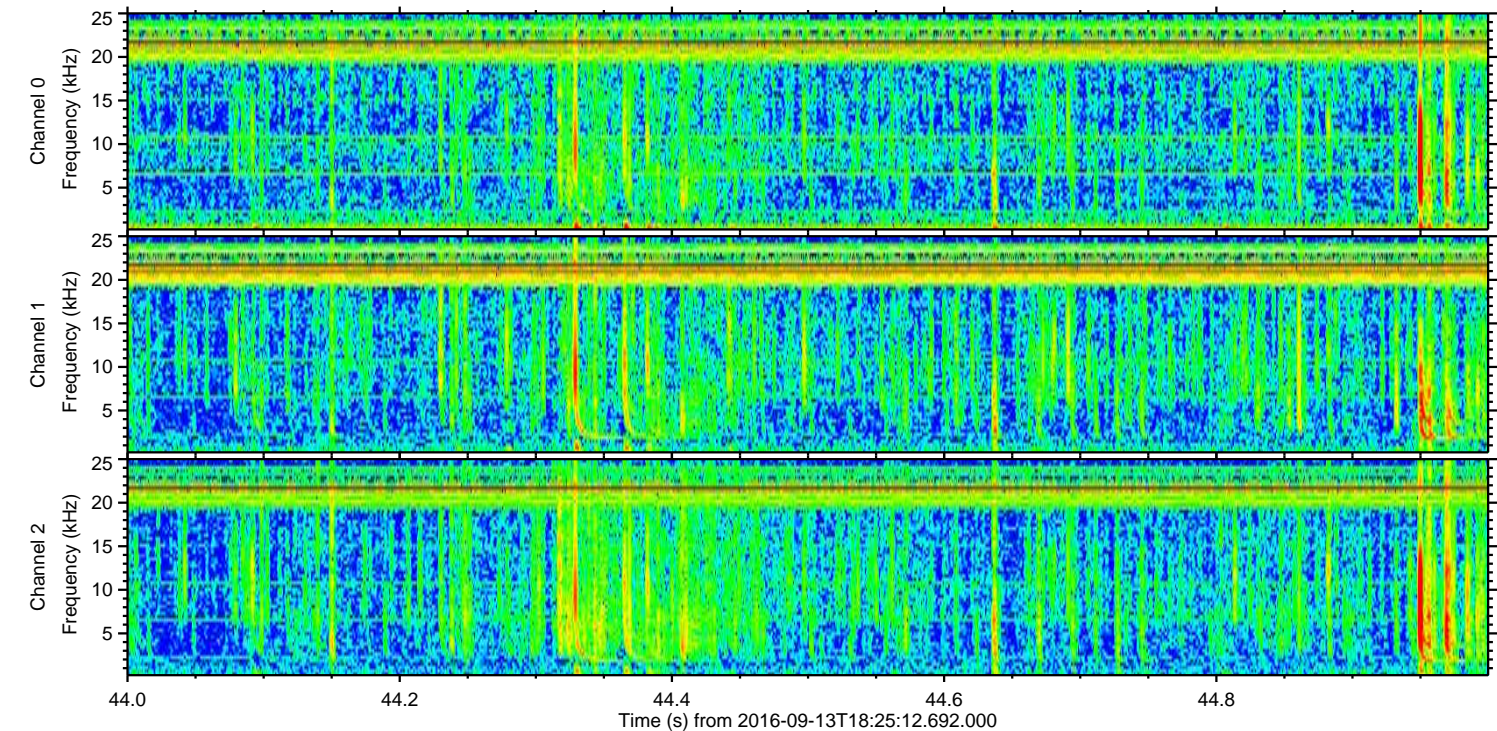
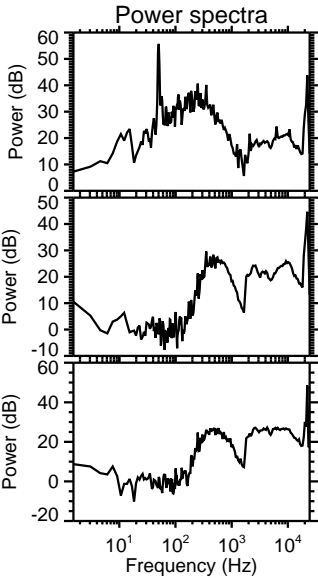
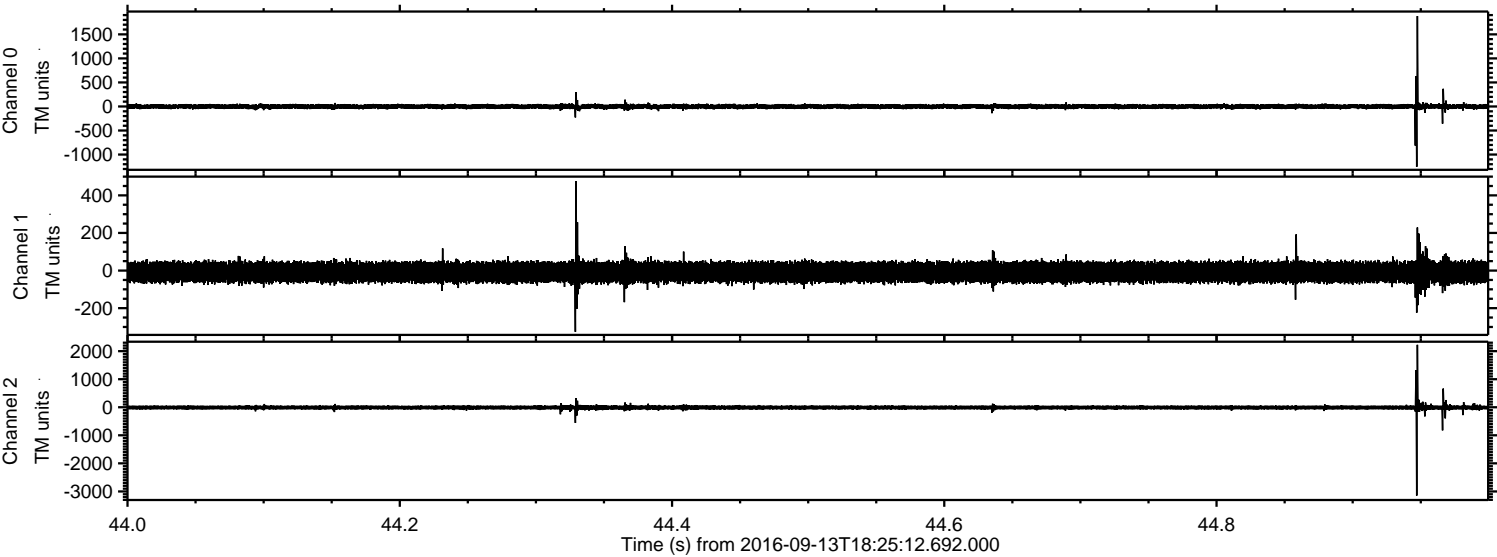


Processed Tue Sep 13 20:33:29 2016 by ELM ver.2012-10-06 from 001\_\_elm20160913\_182511\_\_dat00.bin





Processed Tue Sep 13 20:33:30 2016 by ELM ver.2012-10-06 from 001\_\_elm20160913\_182511\_\_dat00.bin





Processed Tue Sep 13 20:33:31 2016 by ELM ver.2012-10-06 from 001\_\_elm20160913\_182511\_\_dat00.bin

