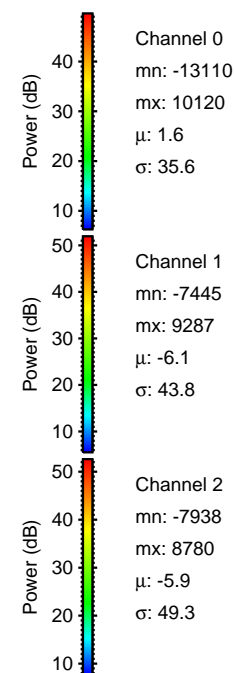
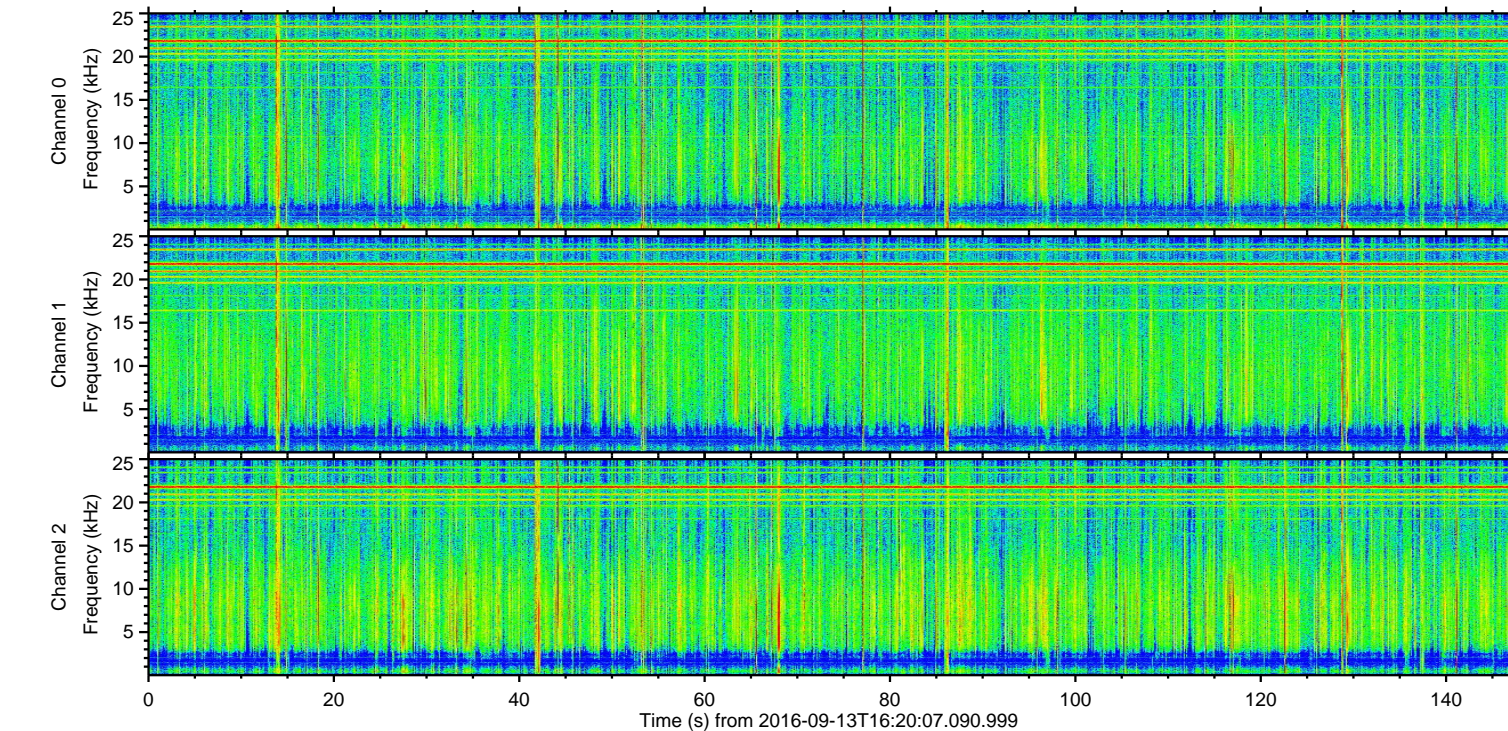
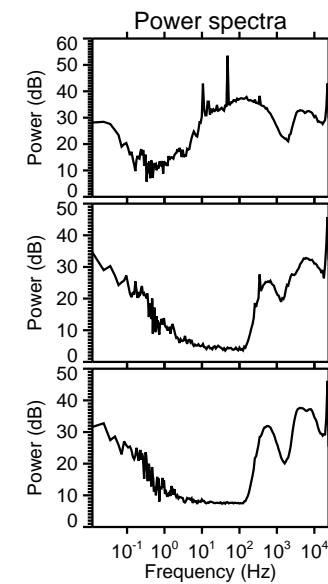
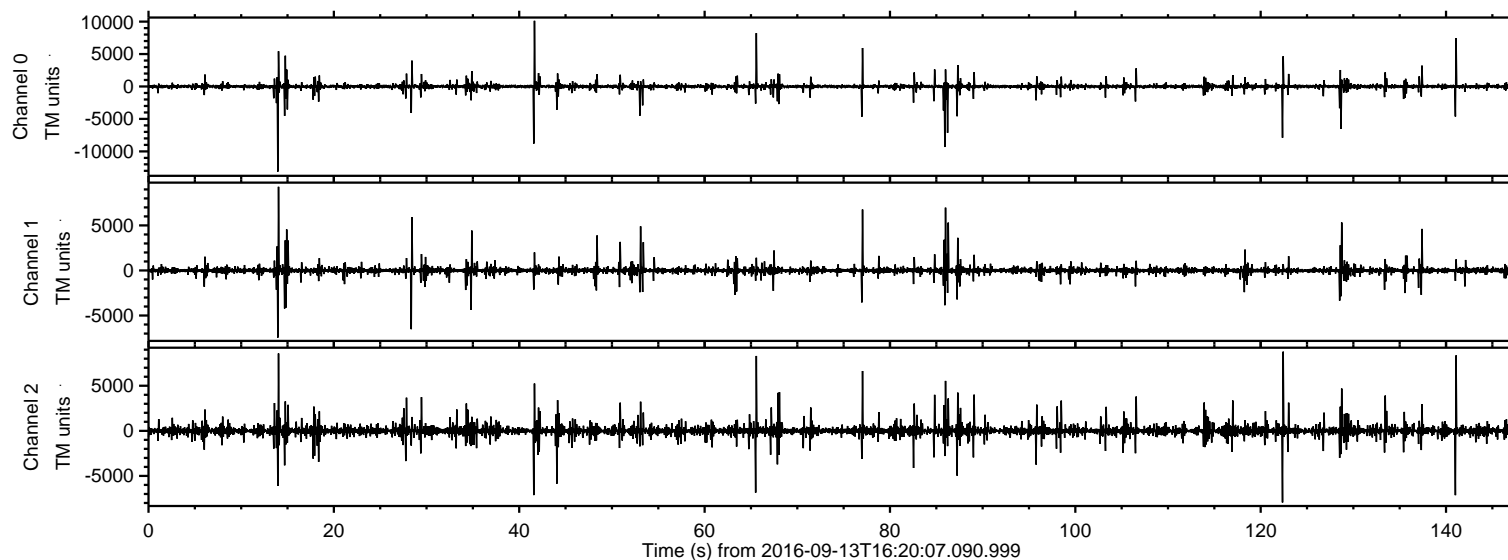


# ELMAVAN 3D WAVEFORMS (Measured data sampled at 50 kHz) 51000 packets of 144 samples from 2016-09-13T16:20:07.090.999.

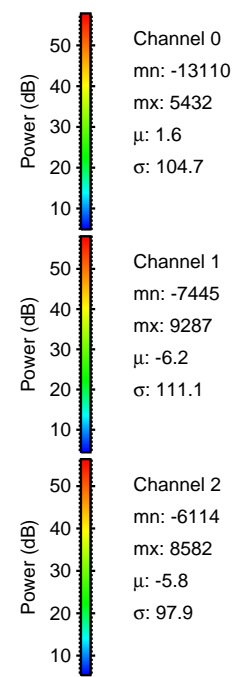
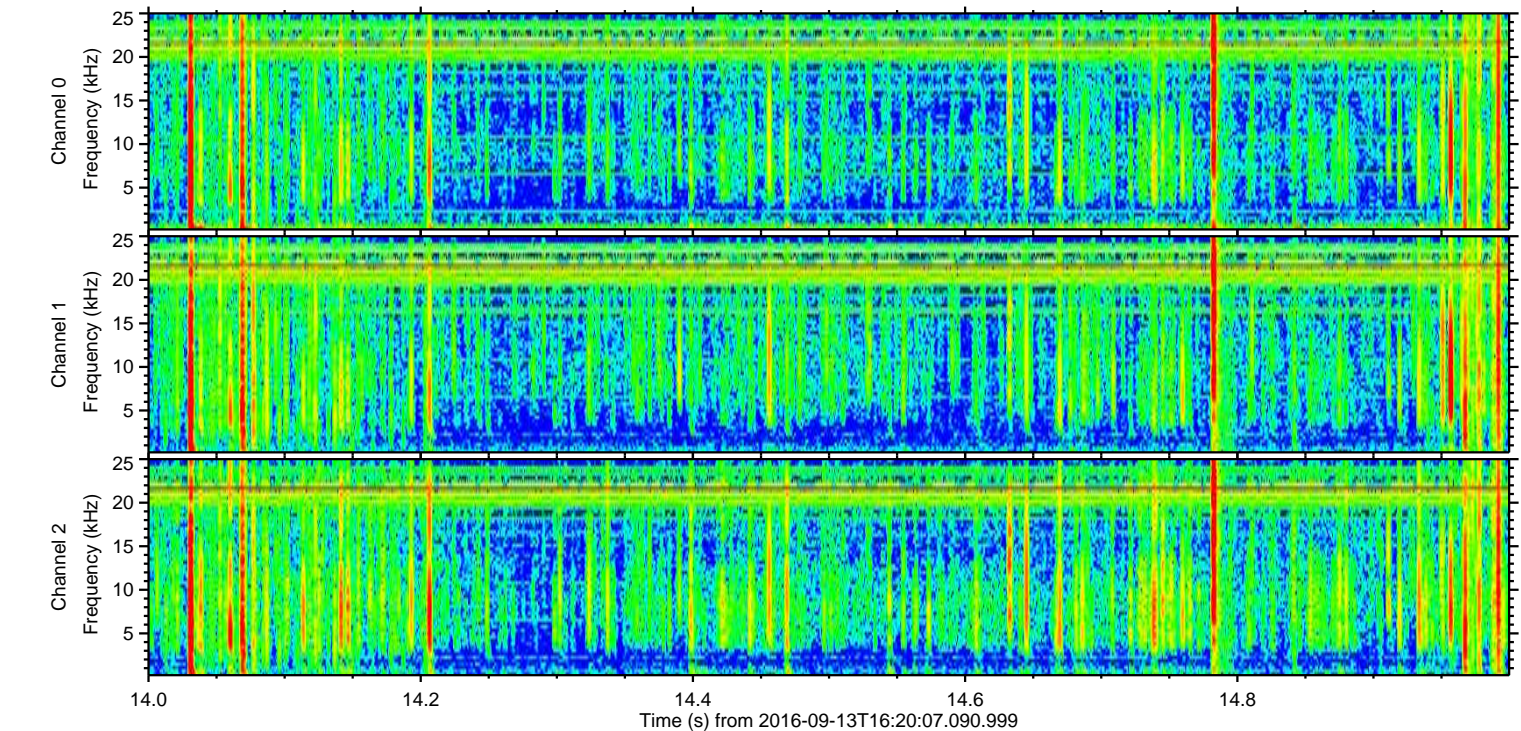
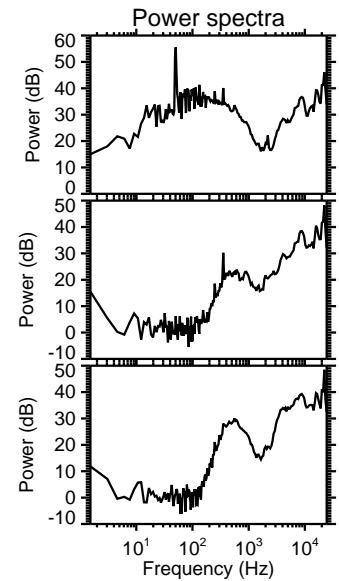
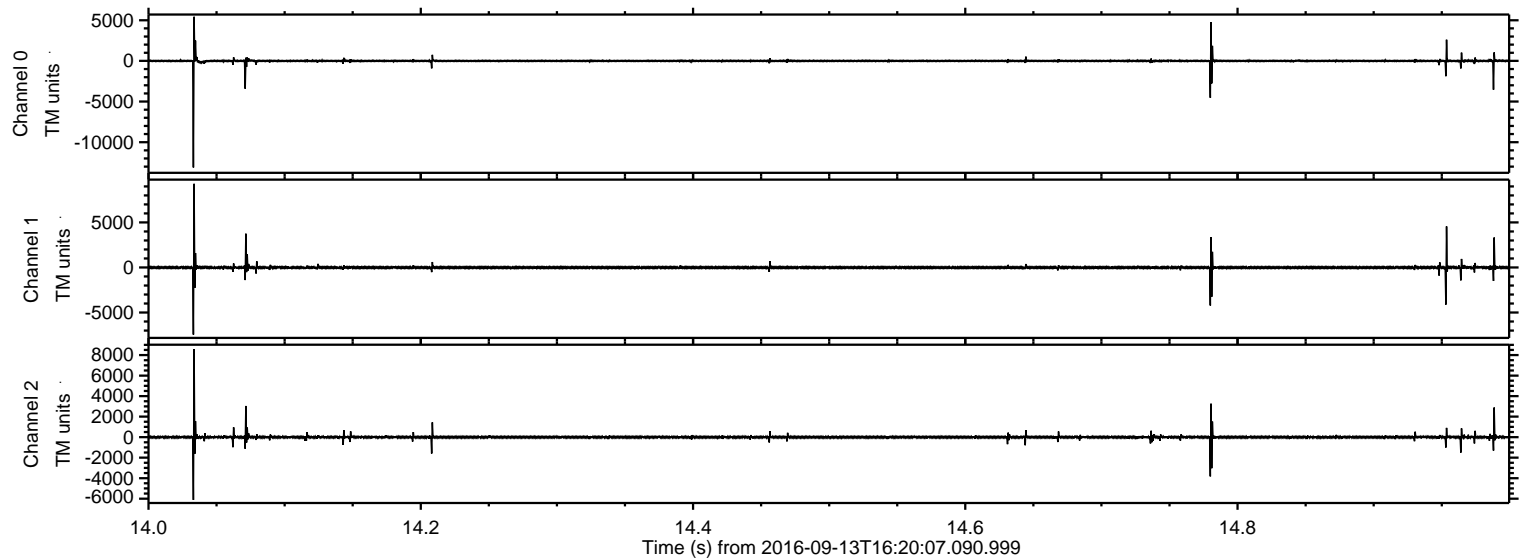
Processed Tue Sep 13 18:28:10 2016 by ELM ver.2012-10-06 from 001\_\_elm20160913\_162006\_\_dat00.bin





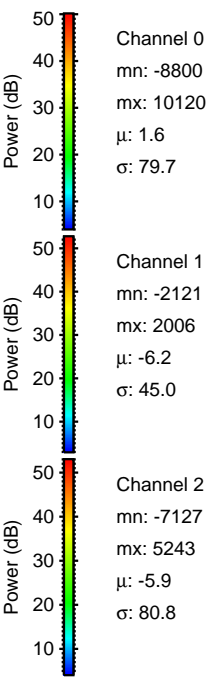
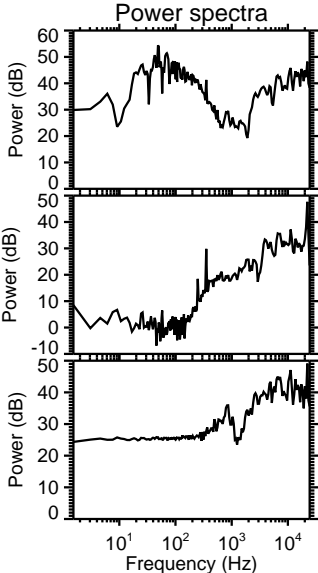
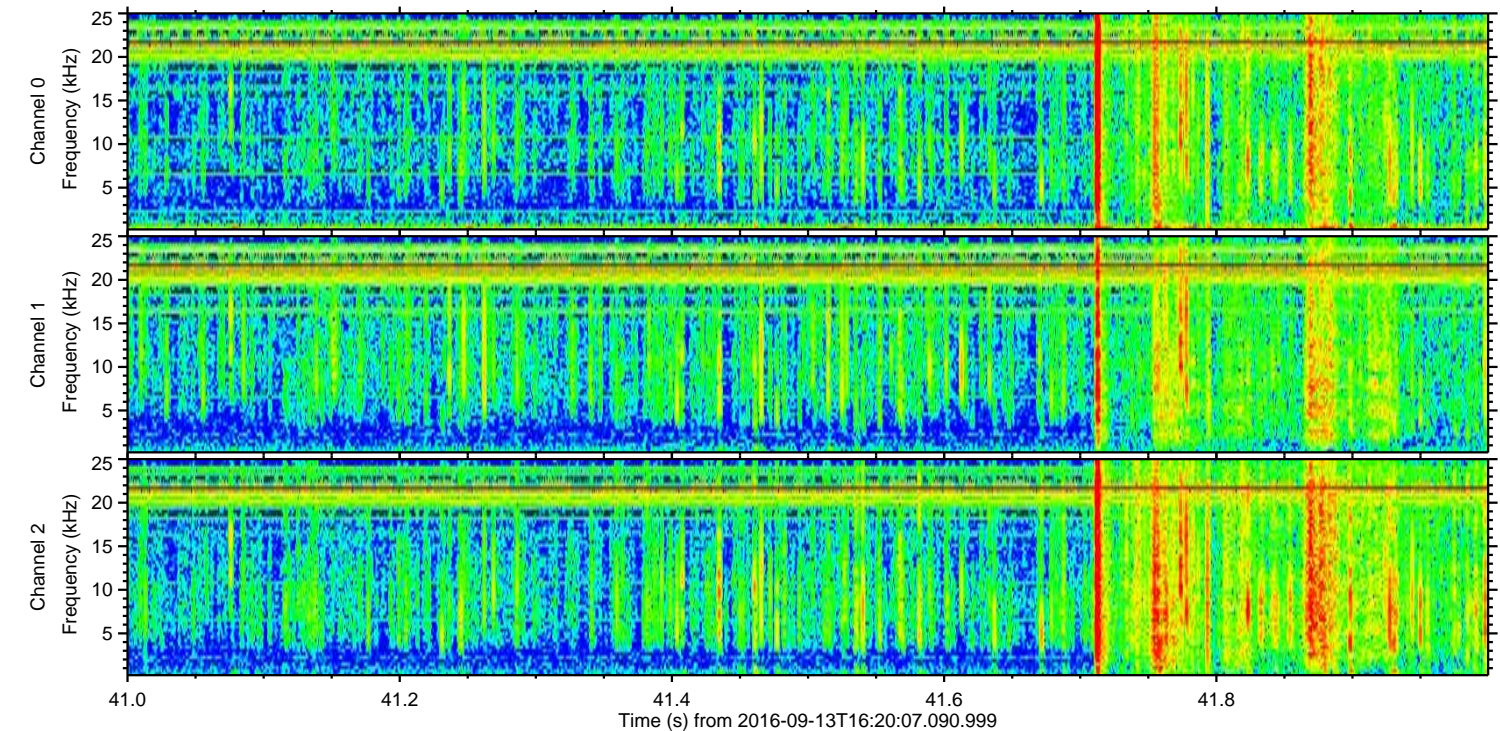
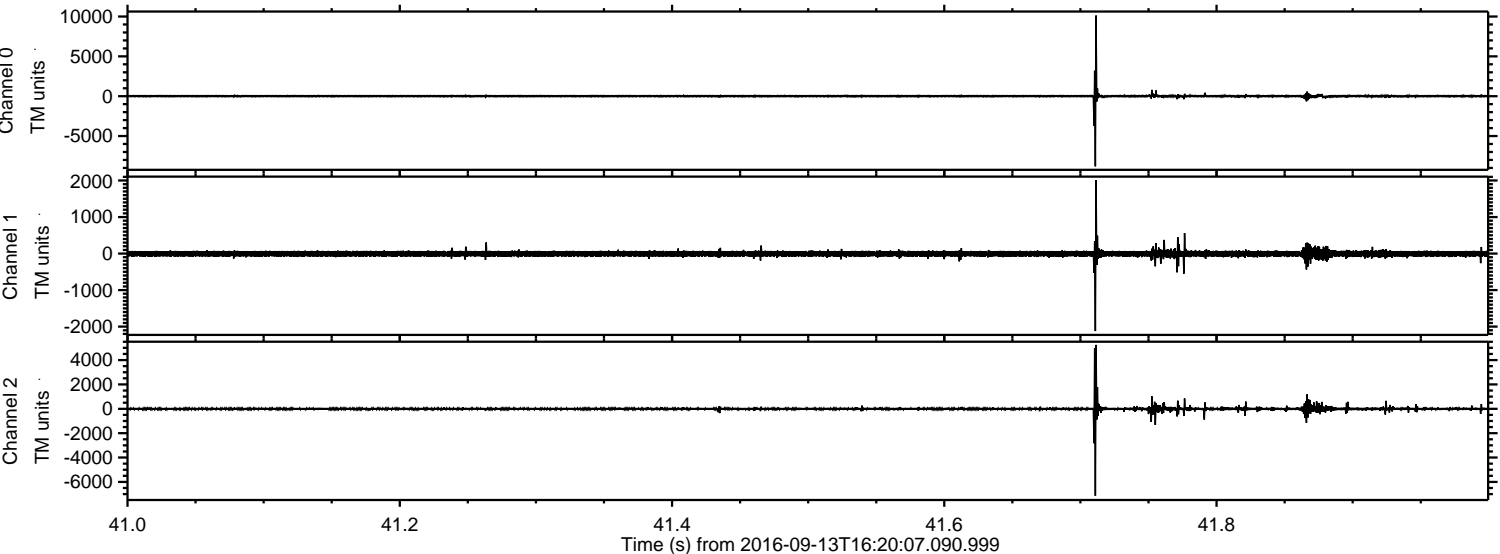
ELMAVAN 3D WAVEFORMS (Measured data sampled at 50 kHz) 51000 packets of 144 samples from 2016-09-13T16:20:07.090.999. Part 15/147

Processed Tue Sep 13 18:28:24 2016 by ELM ver.2012-10-06 from 001\_\_elm20160913\_162006\_\_dat00.bin



ELMAVAN 3D WAVEFORMS (Measured data sampled at 50 kHz) 51000 packets of 144 samples from 2016-09-13T16:20:07.090.999. Part 42/147

Processed Tue Sep 13 18:28:25 2016 by ELM ver.2012-10-06 from 001\_\_elm20160913\_162006\_\_dat00.bin



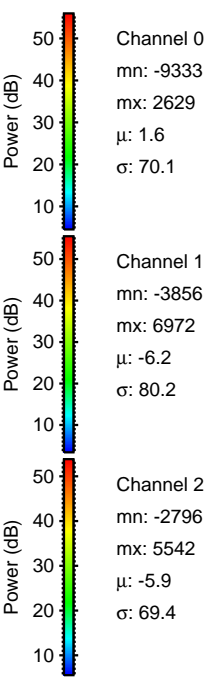
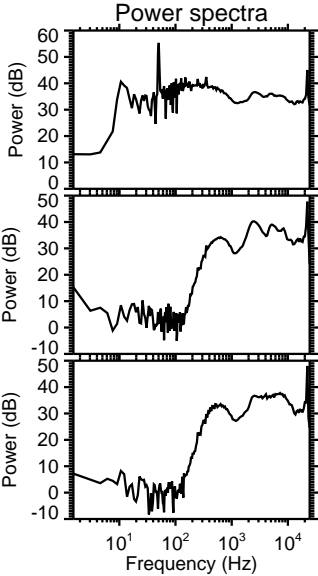
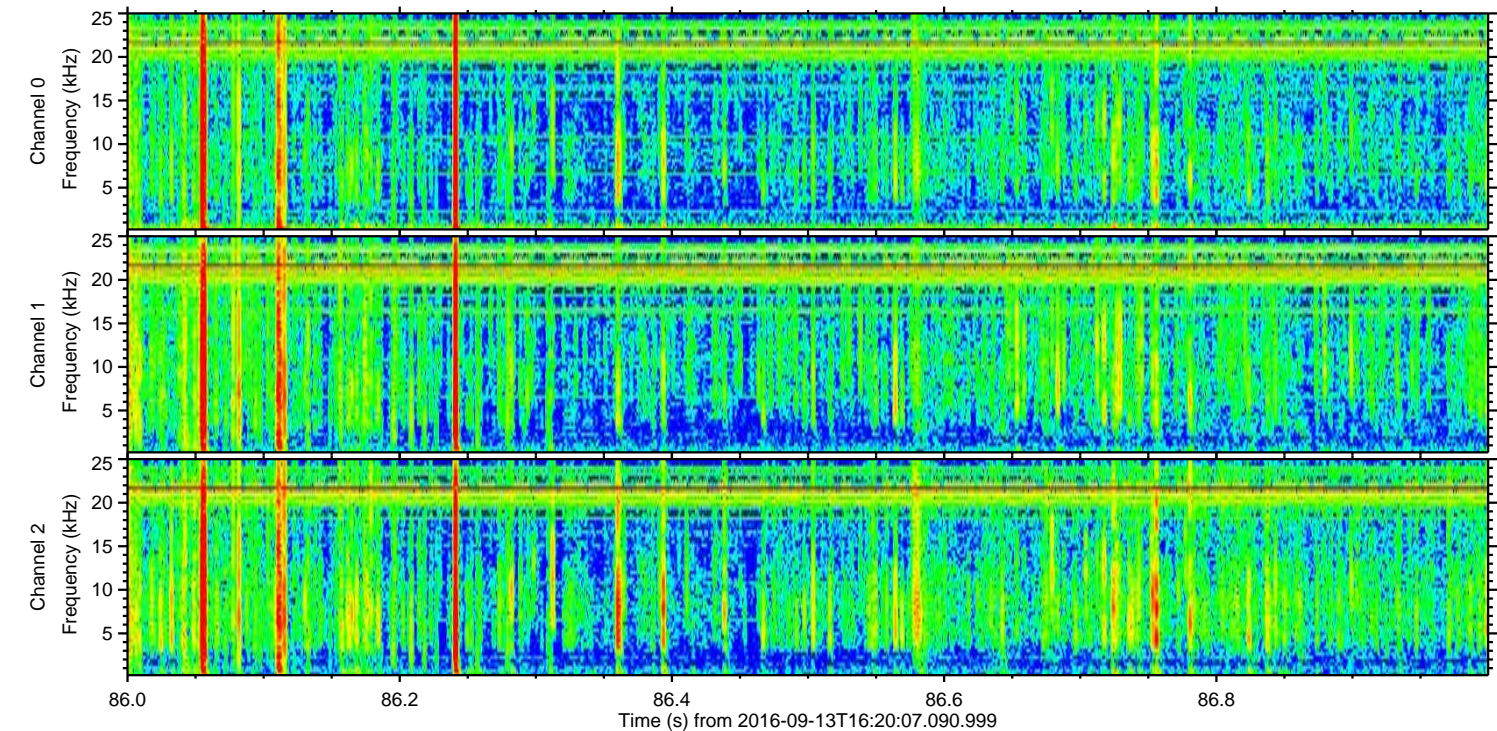
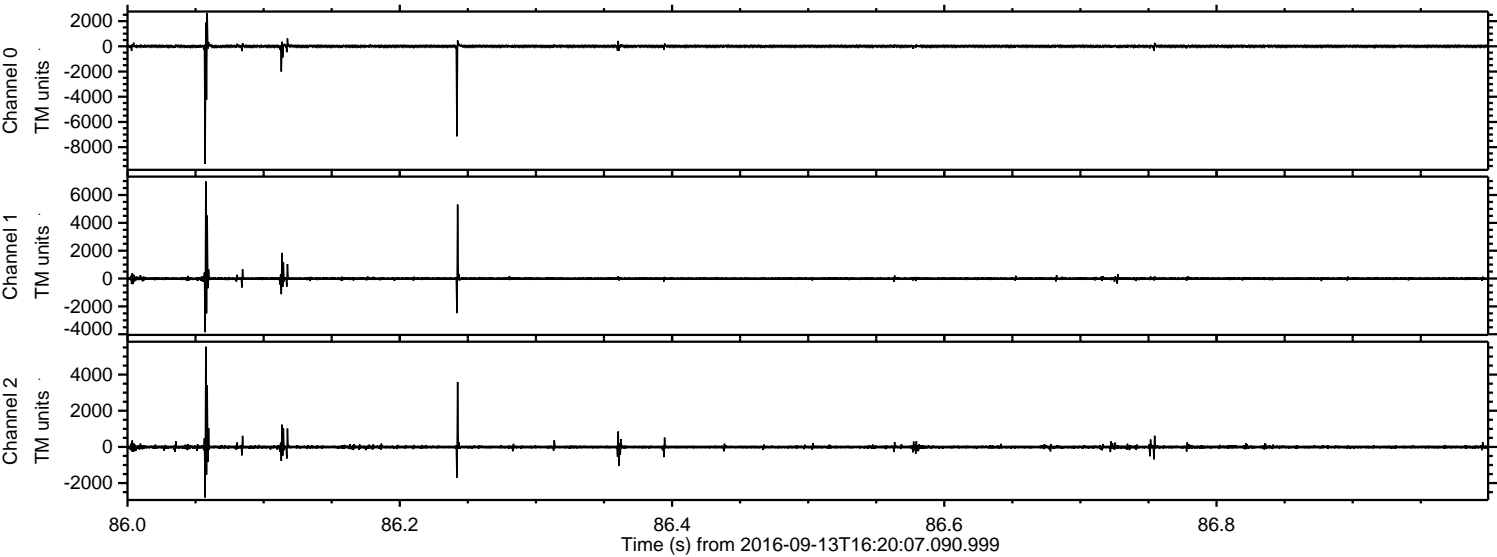
Channel 0  
mn: -8800  
mx: 10120  
 $\mu$ : 1.6  
 $\sigma$ : 79.7

Channel 1  
mn: -2121  
mx: 2006  
 $\mu$ : -6.2  
 $\sigma$ : 45.0

Channel 2  
mn: -7127  
mx: 5243  
 $\mu$ : -5.9  
 $\sigma$ : 80.8



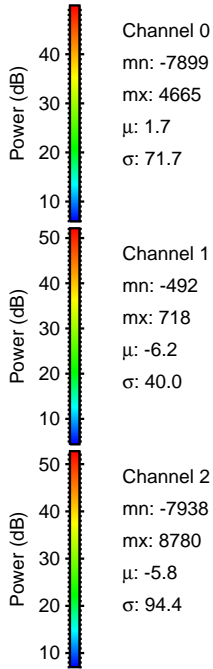
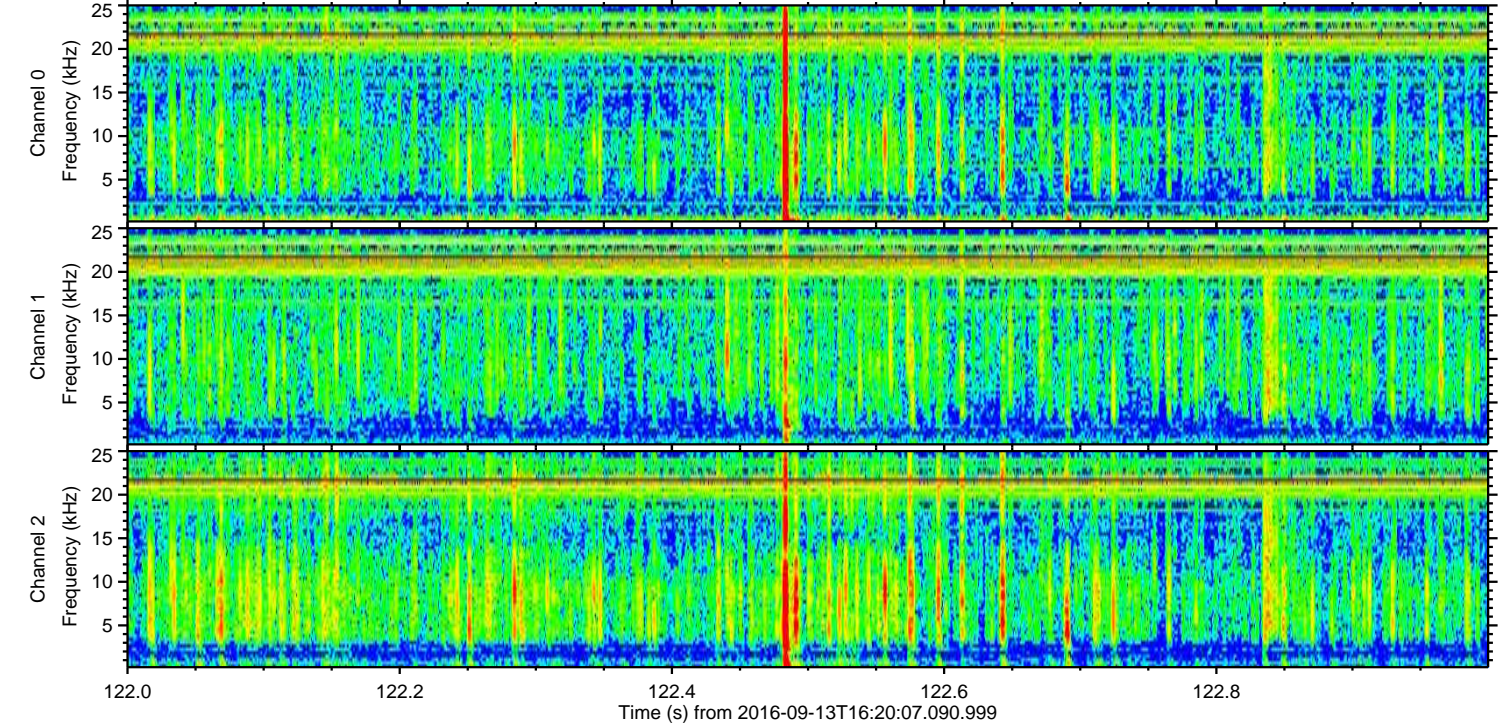
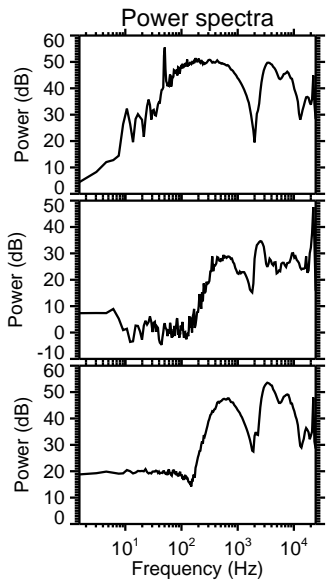
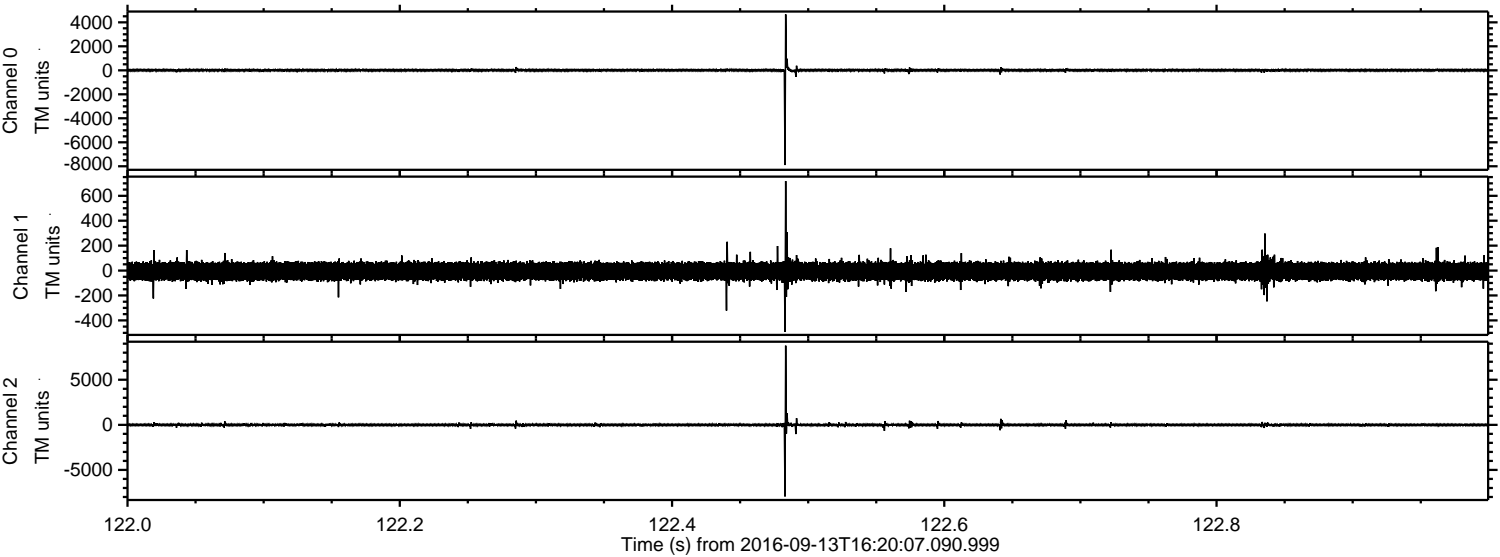
Processed Tue Sep 13 18:28:26 2016 by ELM ver.2012-10-06 from 001\_\_elm20160913\_162006\_\_dat00.bin





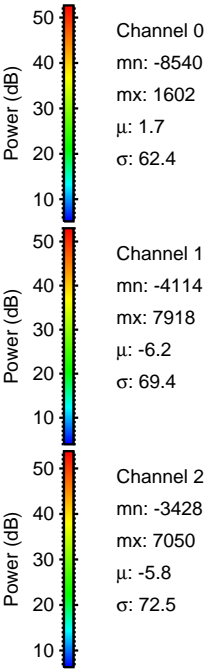
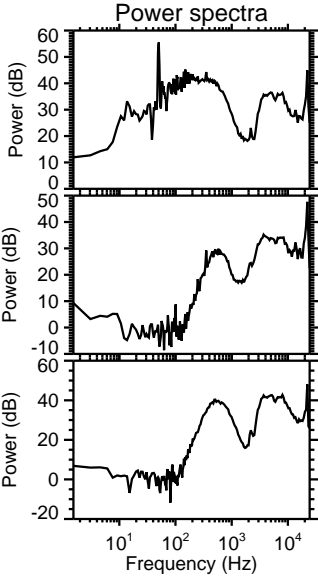
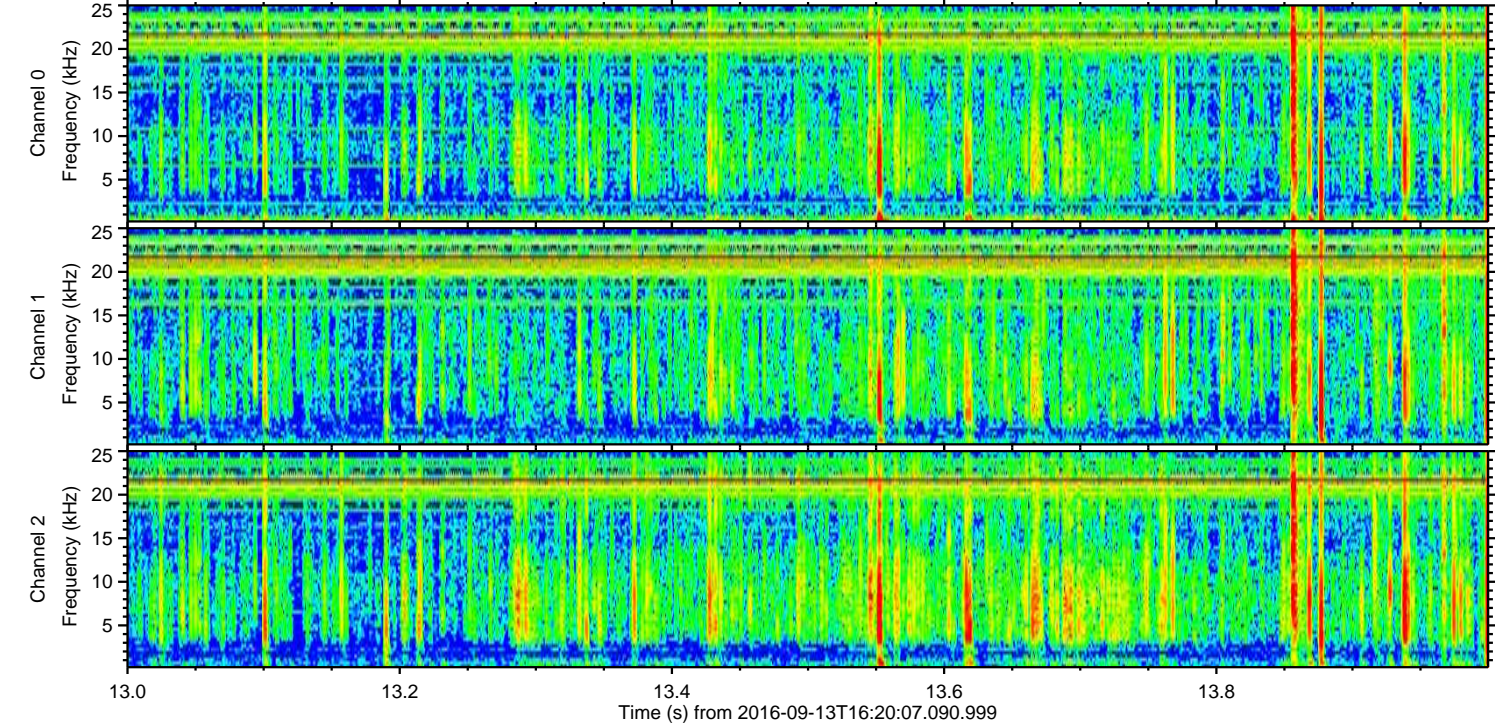
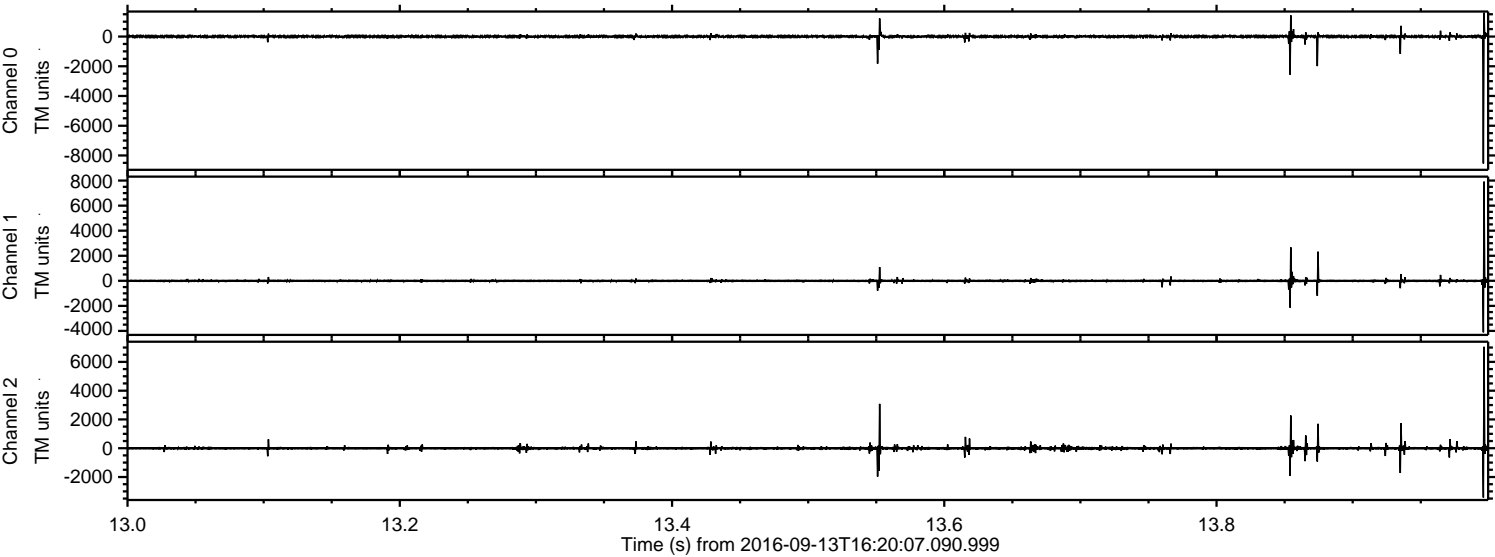
ELMAVAN 3D WAVEFORMS (Measured data sampled at 50 kHz) 51000 packets of 144 samples from 2016-09-13T16:20:07.090.999. Part 123/147

Processed Tue Sep 13 18:28:27 2016 by ELM ver.2012-10-06 from 001\_\_elm20160913\_162006\_\_dat00.bin





Processed Tue Sep 13 18:28:29 2016 by ELM ver.2012-10-06 from 001\_\_elm20160913\_162006\_\_dat00.bin



Channel 0  
mn: -8540  
mx: 1602  
 $\mu$ : 1.7  
 $\sigma$ : 62.4

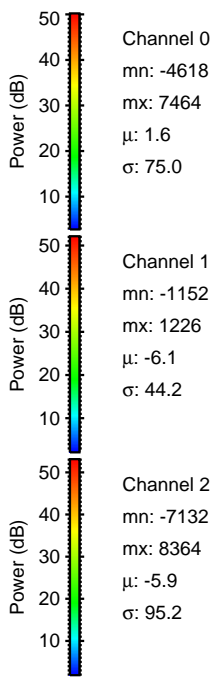
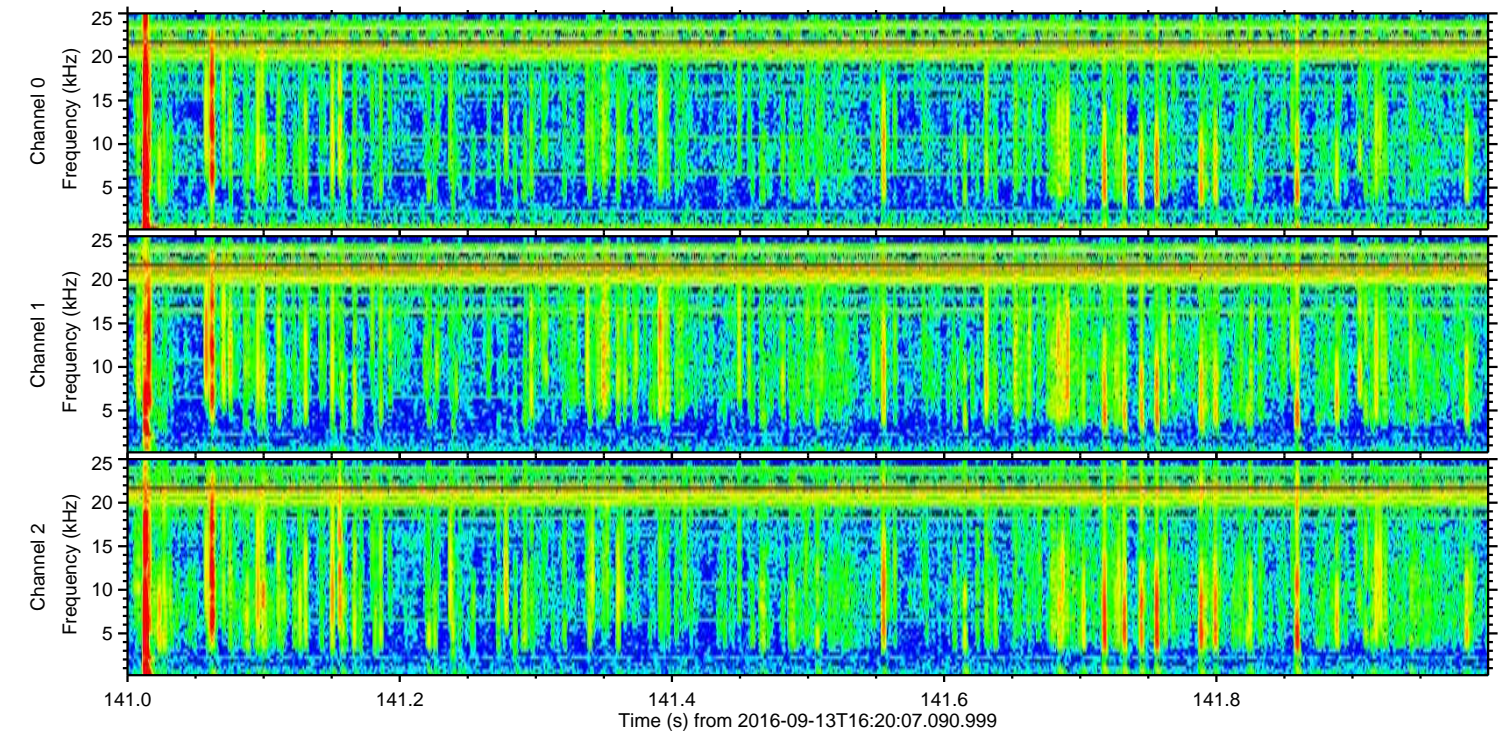
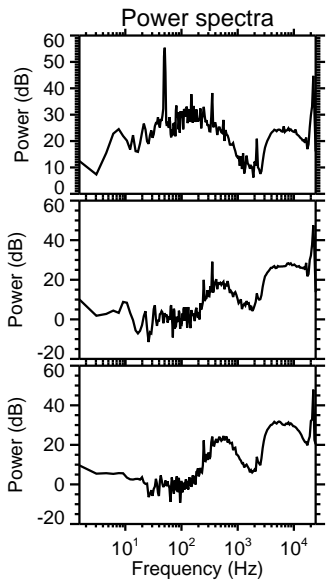
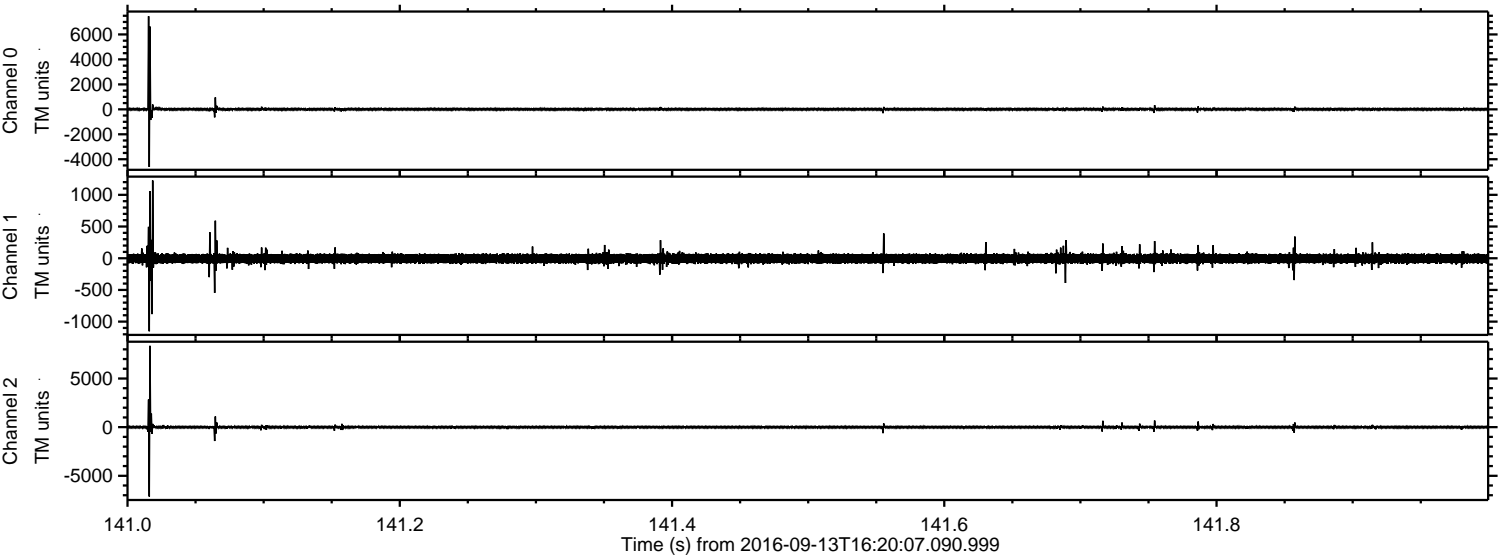
Channel 1  
mn: -4114  
mx: 7918  
 $\mu$ : -6.2  
 $\sigma$ : 69.4

Channel 2  
mn: -3428  
mx: 7050  
 $\mu$ : -5.8  
 $\sigma$ : 72.5



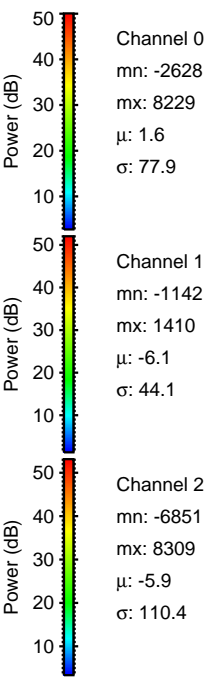
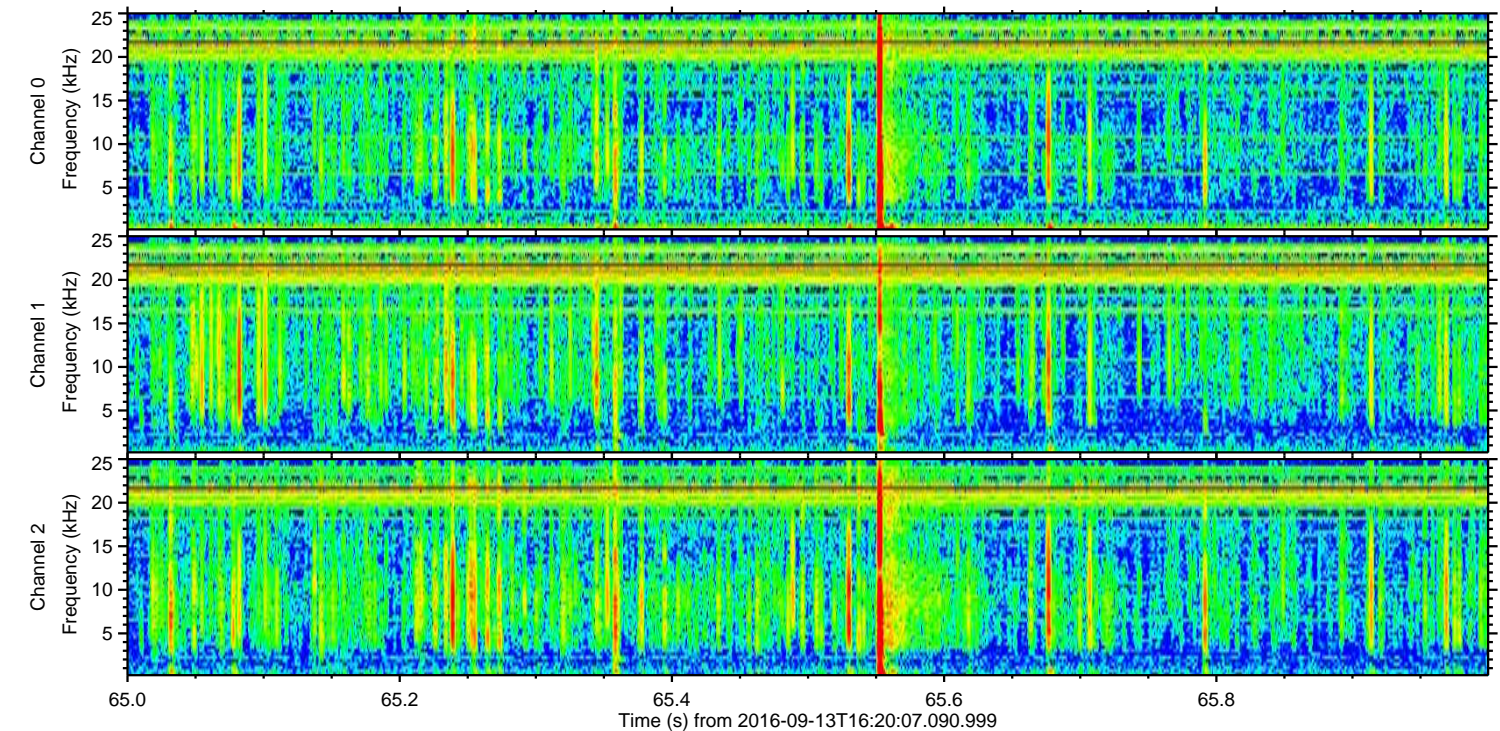
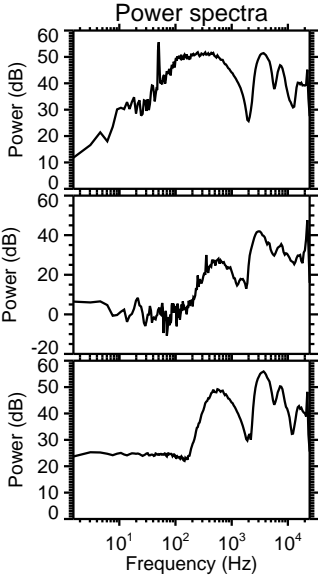
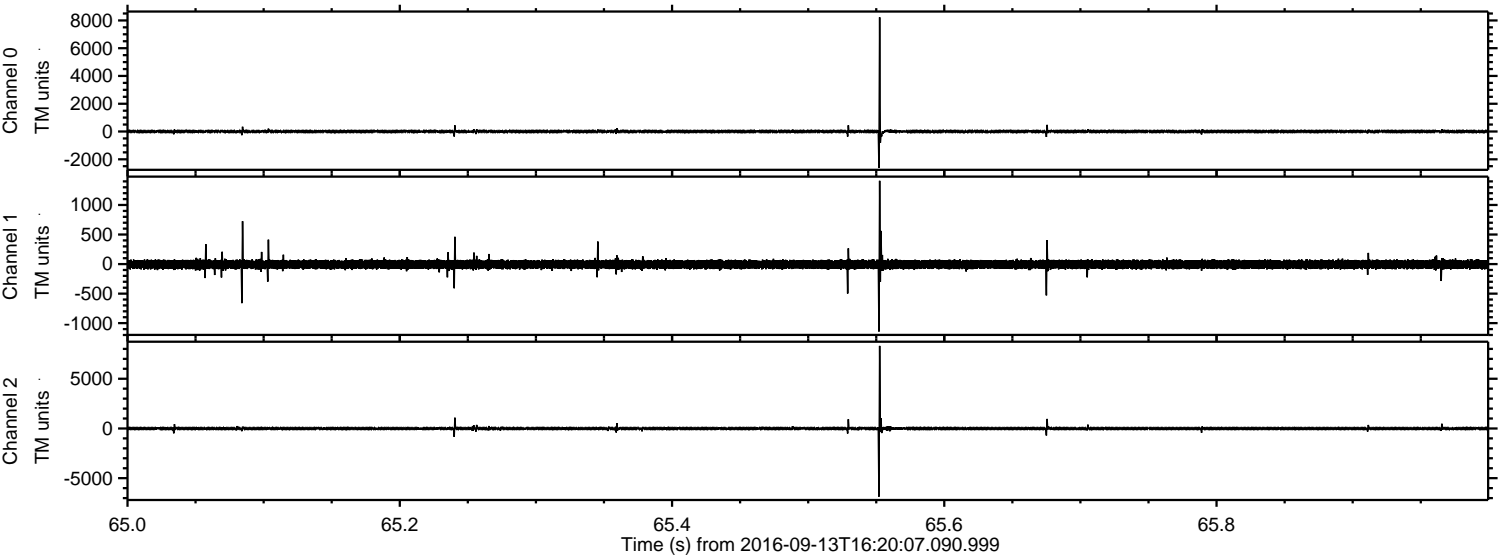
ELMAVAN 3D WAVEFORMS (Measured data sampled at 50 kHz) 51000 packets of 144 samples from 2016-09-13T16:20:07.090.999. Part 142/147

Processed Tue Sep 13 18:28:30 2016 by ELM ver.2012-10-06 from 001\_\_elm20160913\_162006\_\_dat00.bin





Processed Tue Sep 13 18:28:31 2016 by ELM ver.2012-10-06 from 001\_\_elm20160913\_162006\_\_dat00.bin



Channel 0  
mn: -2628  
mx: 8229  
 $\mu$ : 1.6  
 $\sigma$ : 77.9

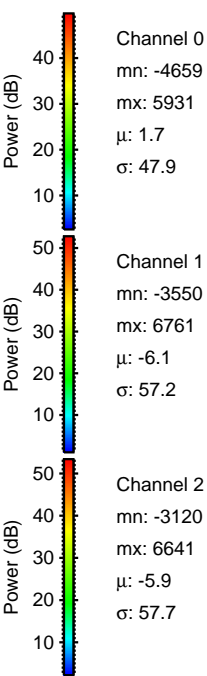
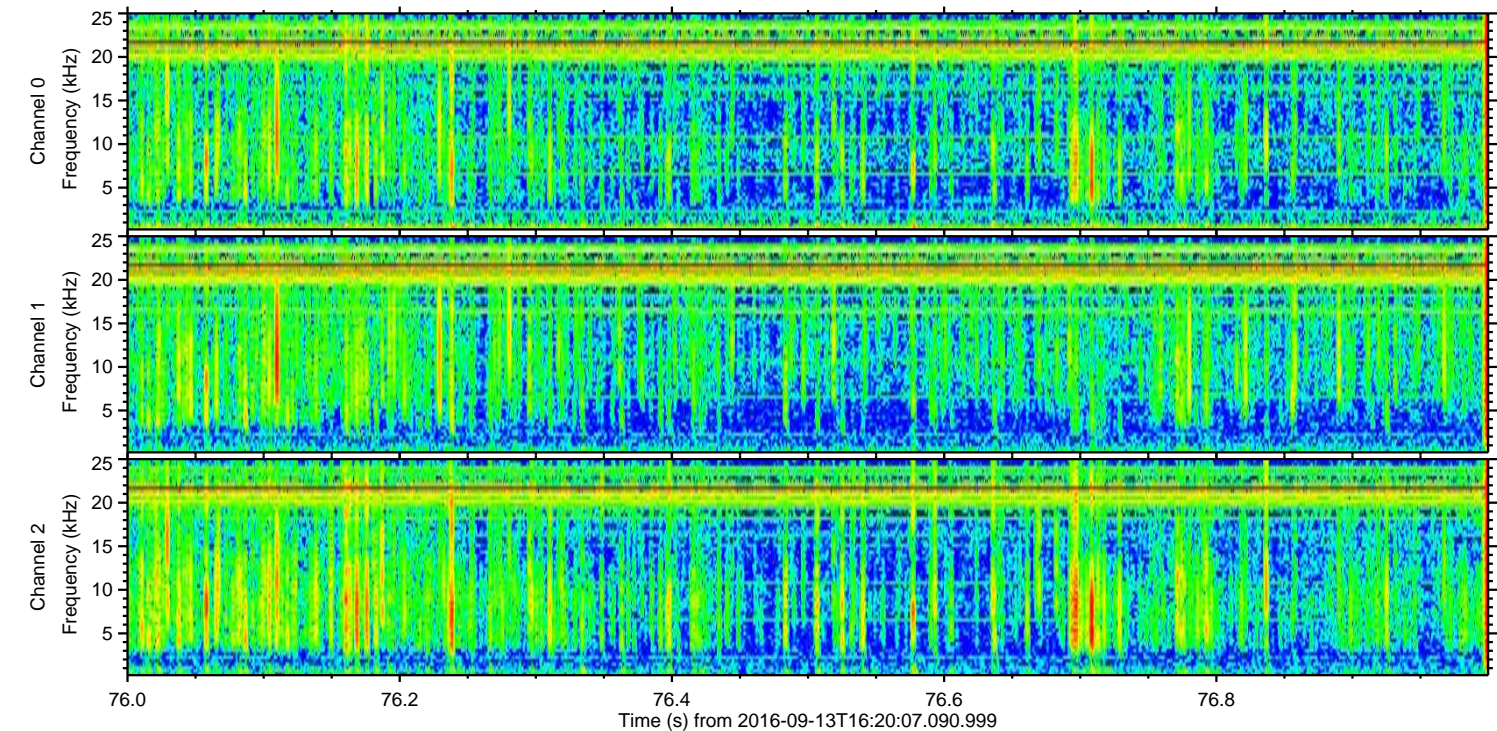
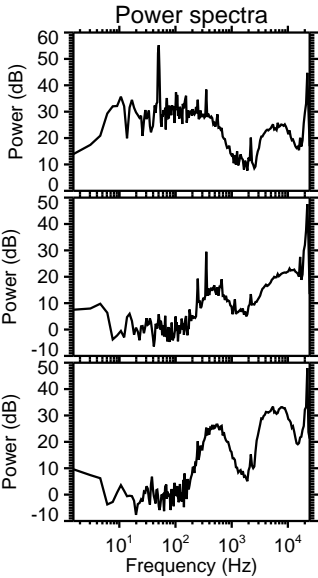
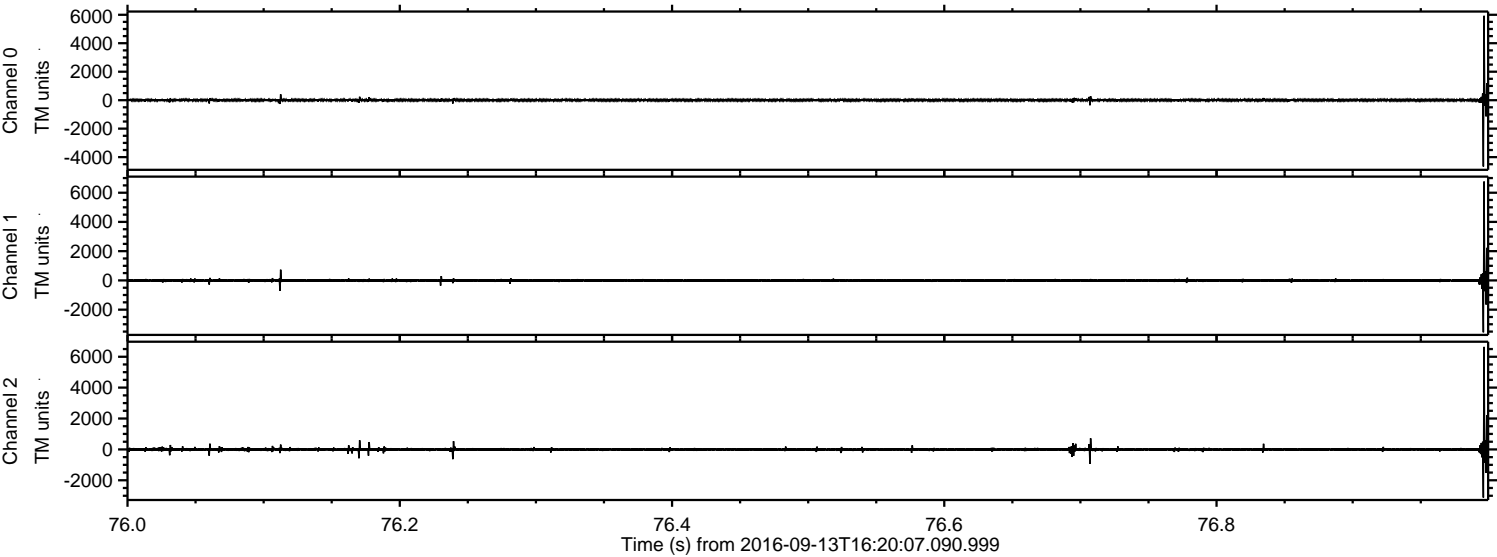
Channel 1  
mn: -1142  
mx: 1410  
 $\mu$ : -6.1  
 $\sigma$ : 44.1

Channel 2  
mn: -6851  
mx: 8309  
 $\mu$ : -5.9  
 $\sigma$ : 110.4



ELMAVAN 3D WAVEFORMS (Measured data sampled at 50 kHz) 51000 packets of 144 samples from 2016-09-13T16:20:07.090.999. Part 77/147

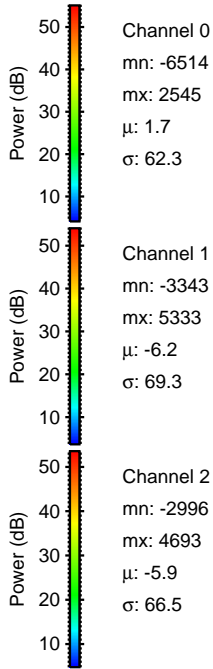
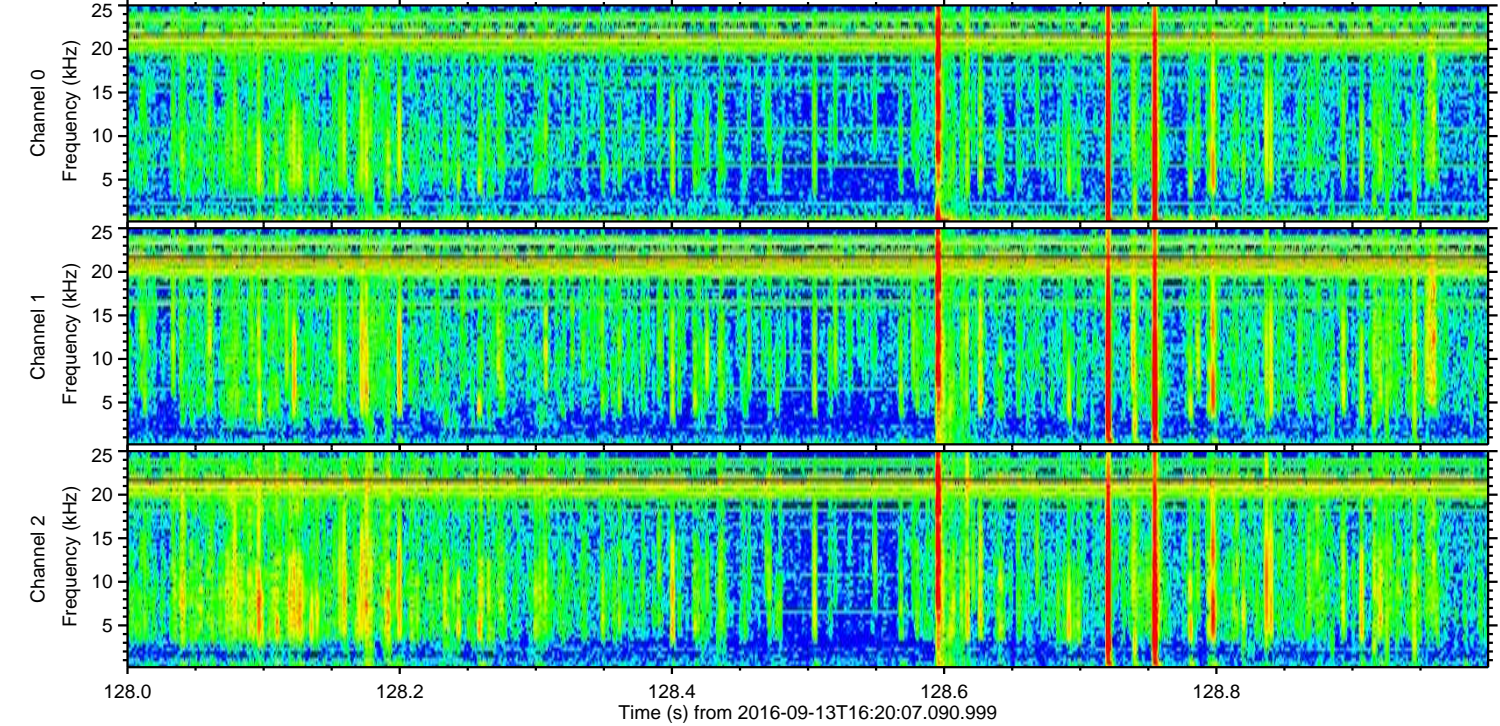
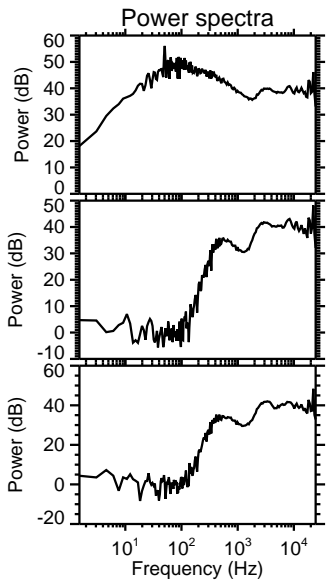
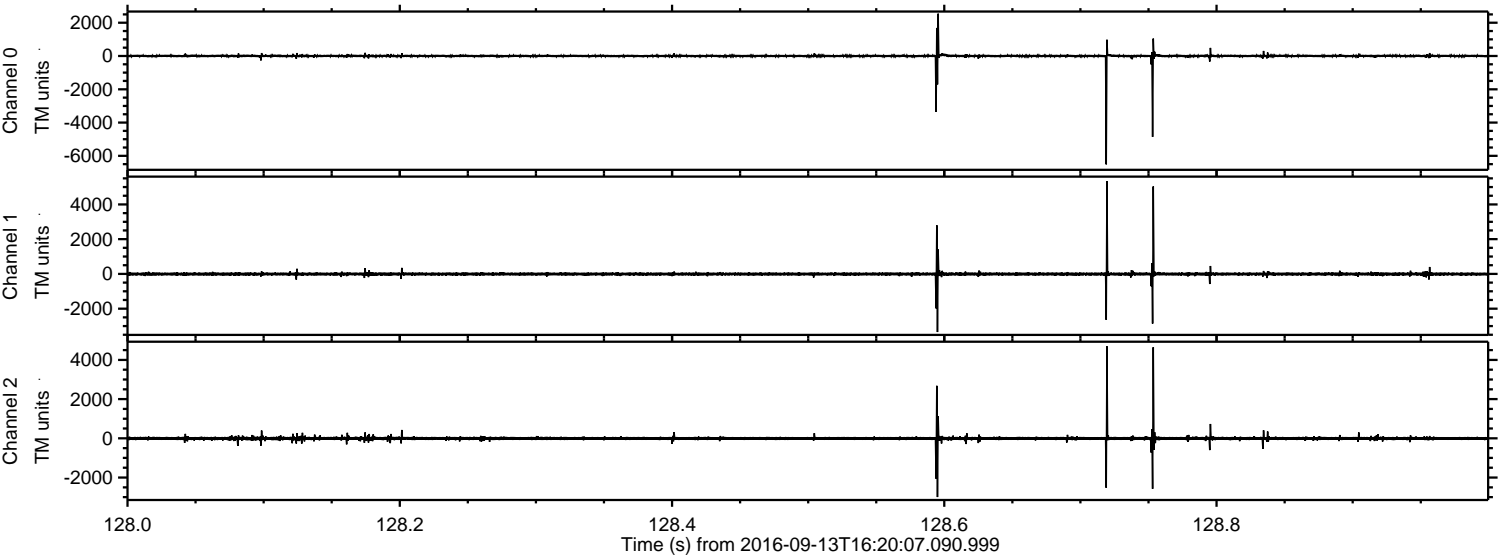
Processed Tue Sep 13 18:28:32 2016 by ELM ver.2012-10-06 from 001\_\_elm20160913\_162006\_\_dat00.bin





ELMAVAN 3D WAVEFORMS (Measured data sampled at 50 kHz) 51000 packets of 144 samples from 2016-09-13T16:20:07.090.999. Part 129/147

Processed Tue Sep 13 18:28:33 2016 by ELM ver.2012-10-06 from 001\_\_elm20160913\_162006\_\_dat00.bin



Channel 0  
mn: -6514  
mx: 2545  
 $\mu$ : 1.7  
 $\sigma$ : 62.3

Channel 1  
mn: -3343  
mx: 5333  
 $\mu$ : -6.2  
 $\sigma$ : 69.3

Channel 2  
mn: -2996  
mx: 4693  
 $\mu$ : -5.9  
 $\sigma$ : 66.5



Processed Tue Sep 13 18:28:34 2016 by ELM ver.2012-10-06 from 001\_\_elm20160913\_162006\_\_dat00.bin

