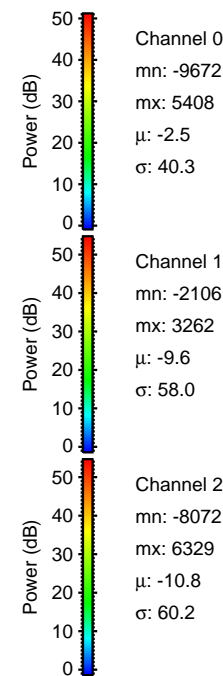
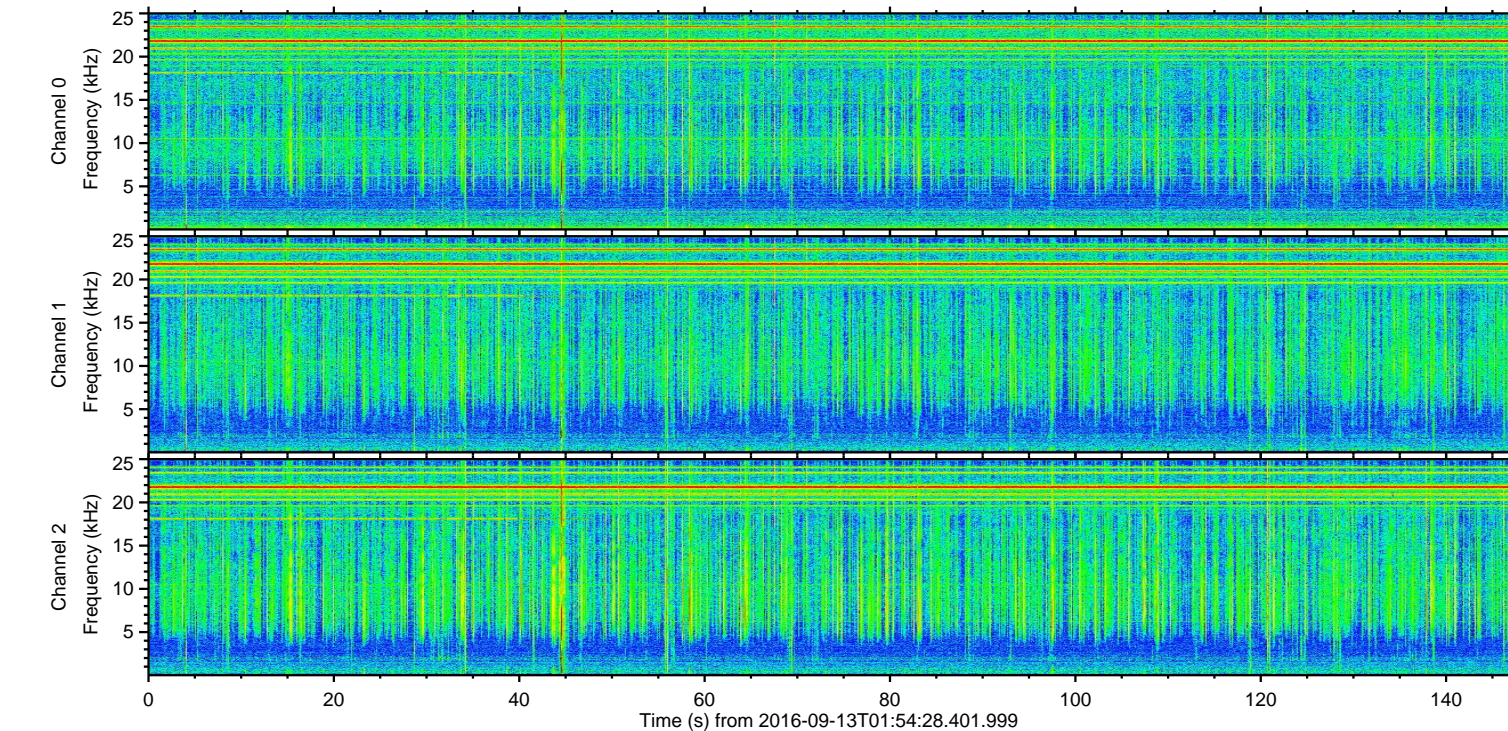
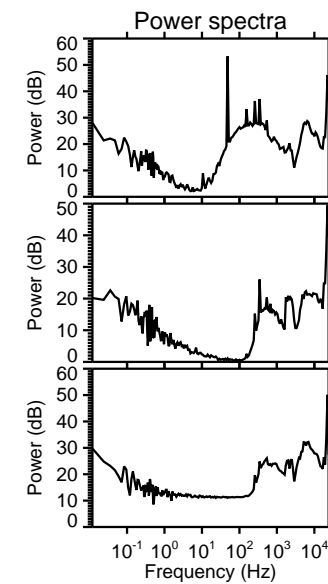
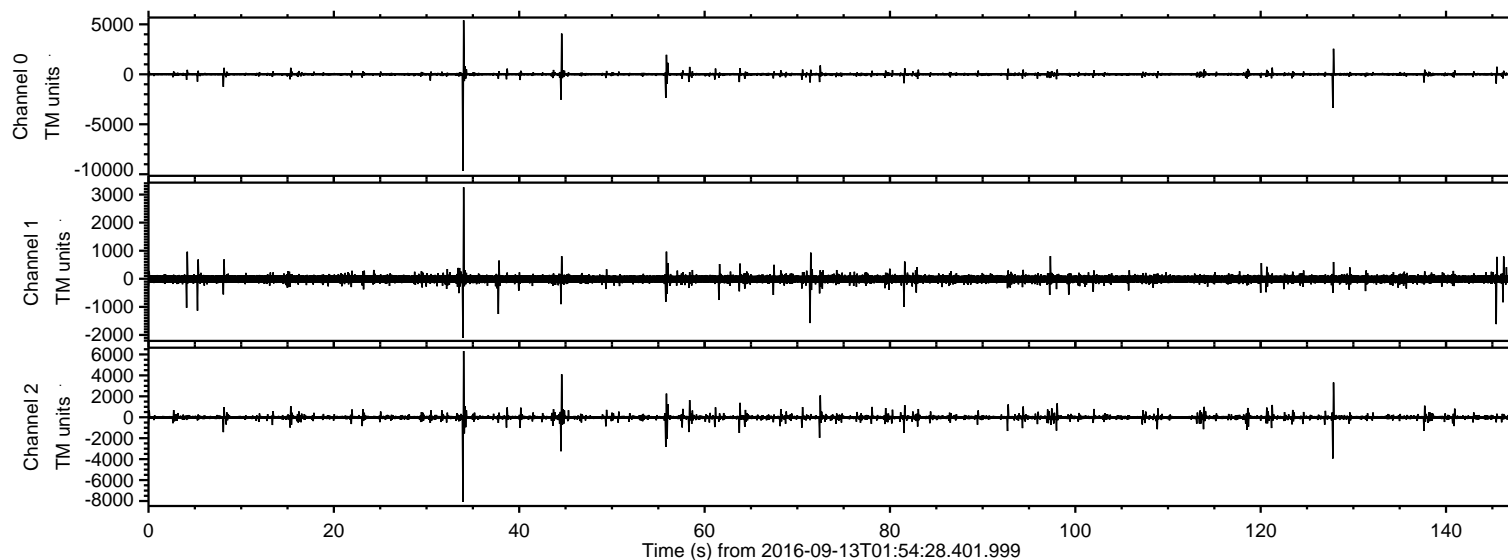
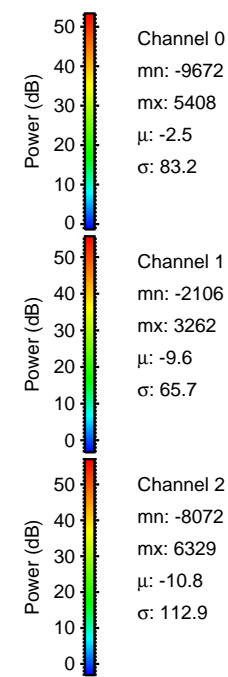
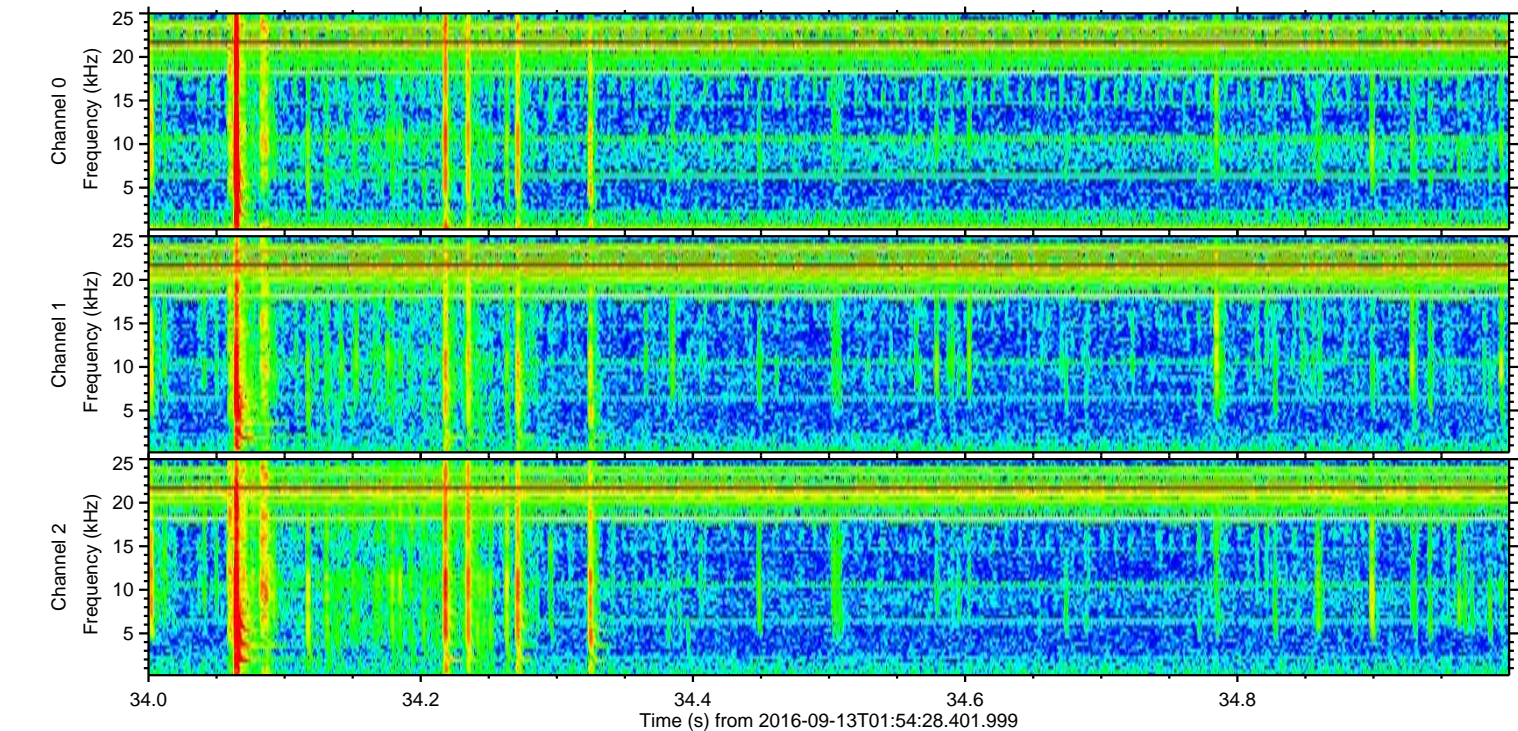
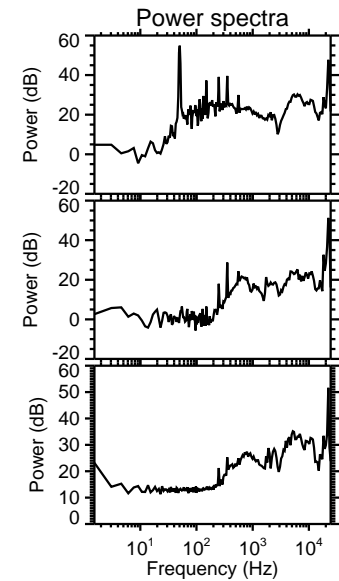
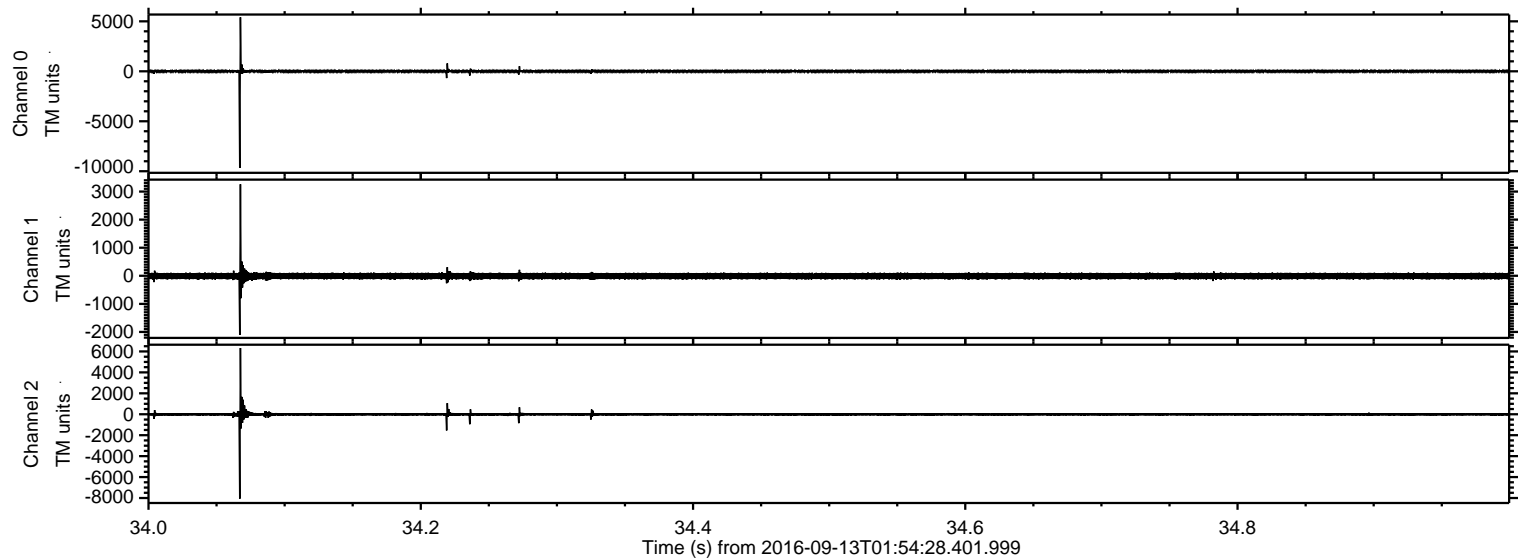


ELMAVAN 3D WAVEFORMS (Measured data sampled at 50 kHz) 51000 packets of 144 samples from 2016-09-13T01:54:28.401.999.

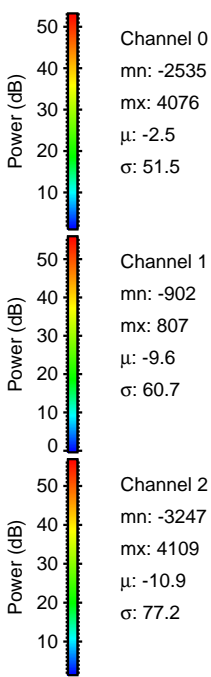
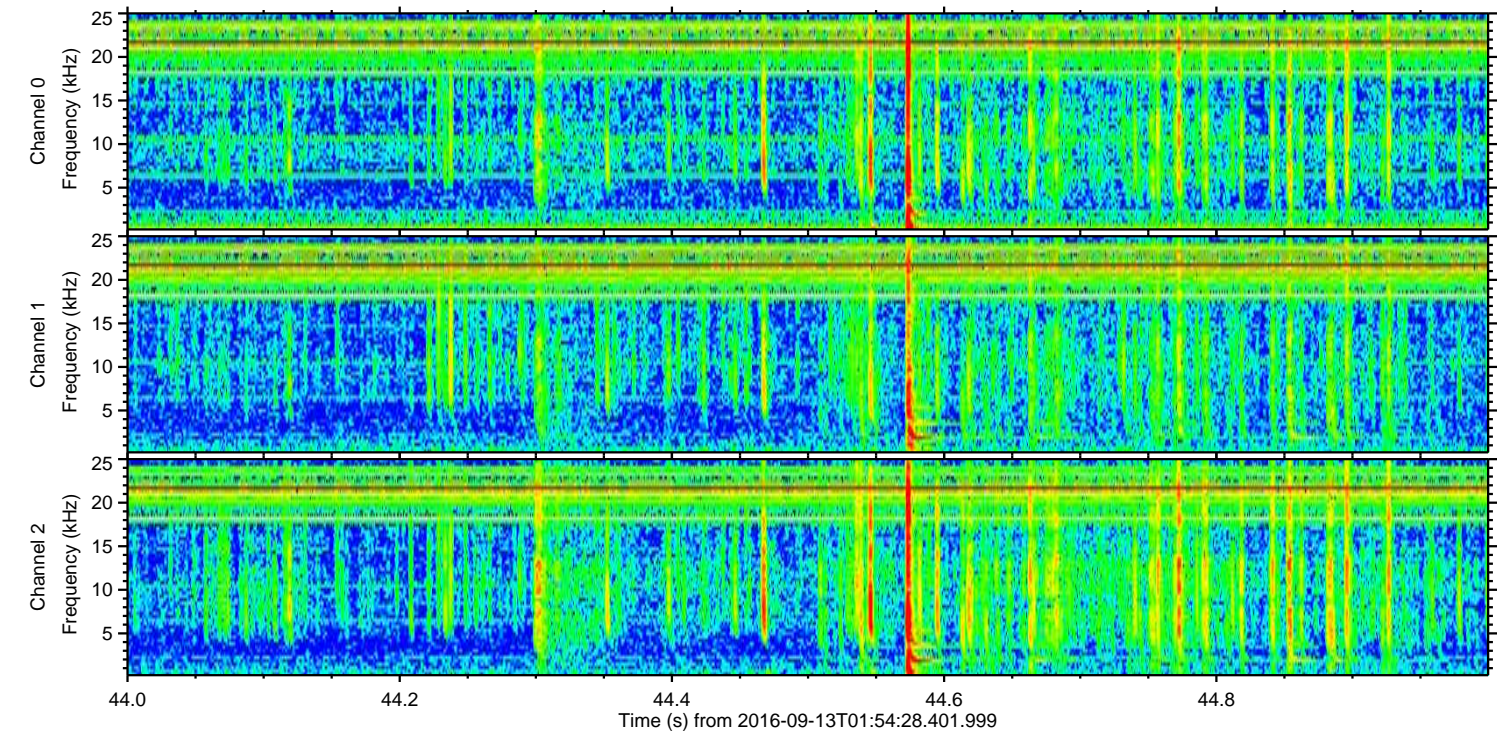
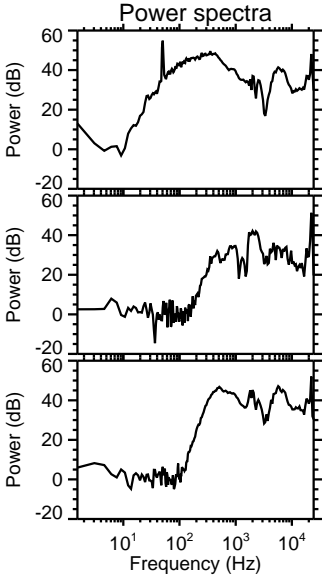
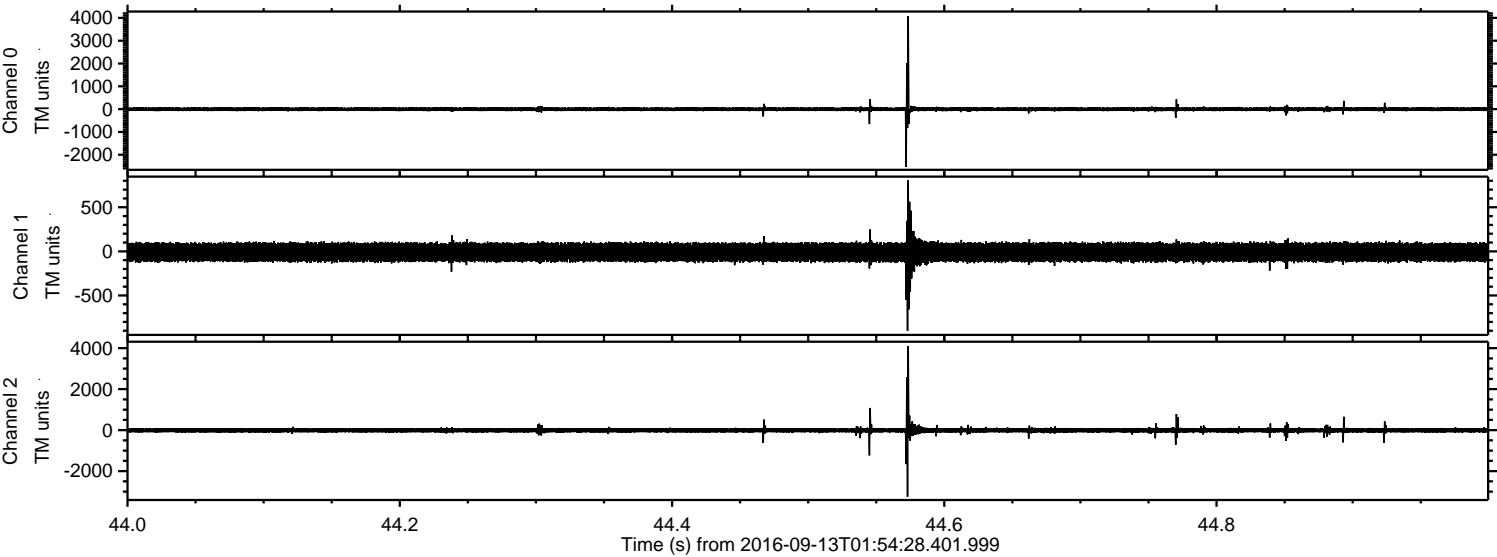
Processed Tue Sep 13 04:01:47 2016 by ELM ver.2012-10-06 from 001__elm20160913_015427__dat00.bin



Processed Tue Sep 13 04:01:58 2016 by ELM ver.2012-10-06 from 001__elm20160913_015427__dat00.bin

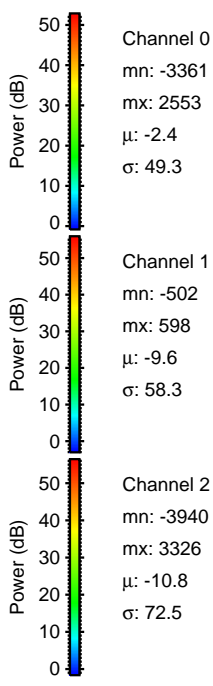
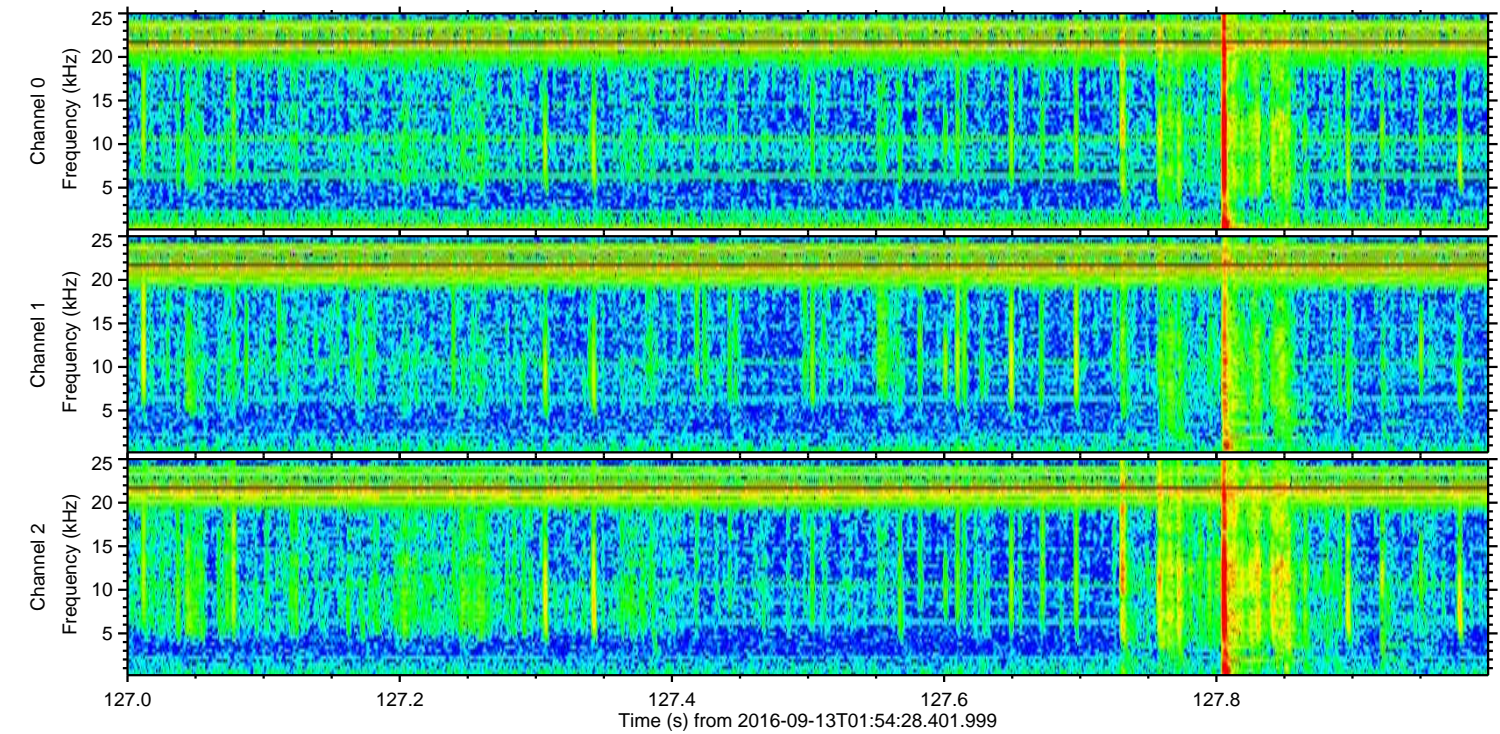
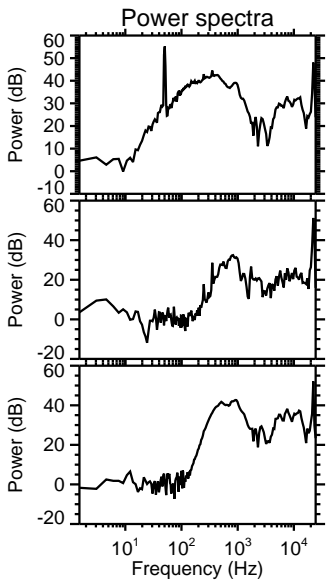
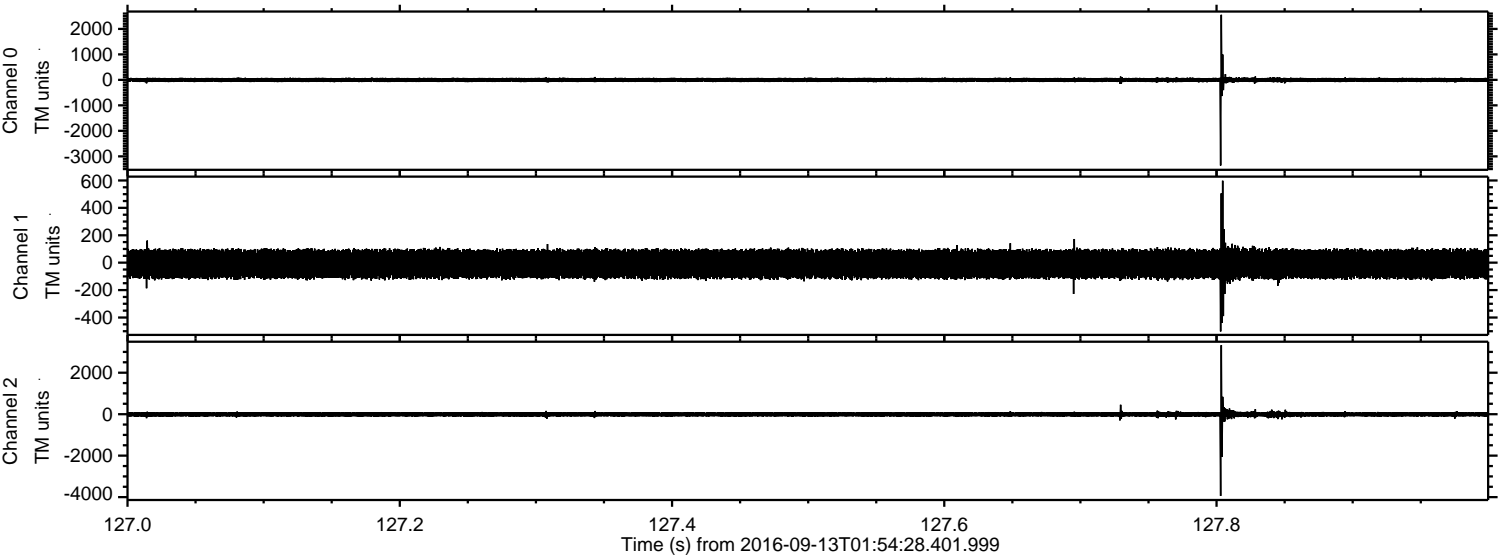


Processed Tue Sep 13 04:01:59 2016 by ELM ver.2012-10-06 from 001__elm20160913_015427__dat00.bin



ELMAVAN 3D WAVEFORMS (Measured data sampled at 50 kHz) 51000 packets of 144 samples from 2016-09-13T01:54:28.401.999. Part 128/147

Processed Tue Sep 13 04:02:00 2016 by ELM ver.2012-10-06 from 001__elm20160913_015427__dat00.bin

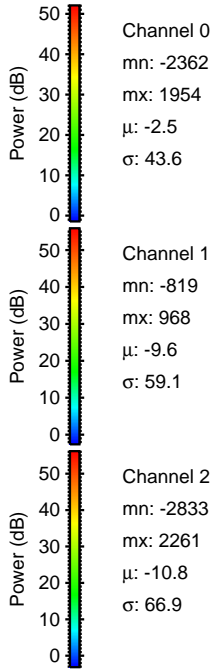
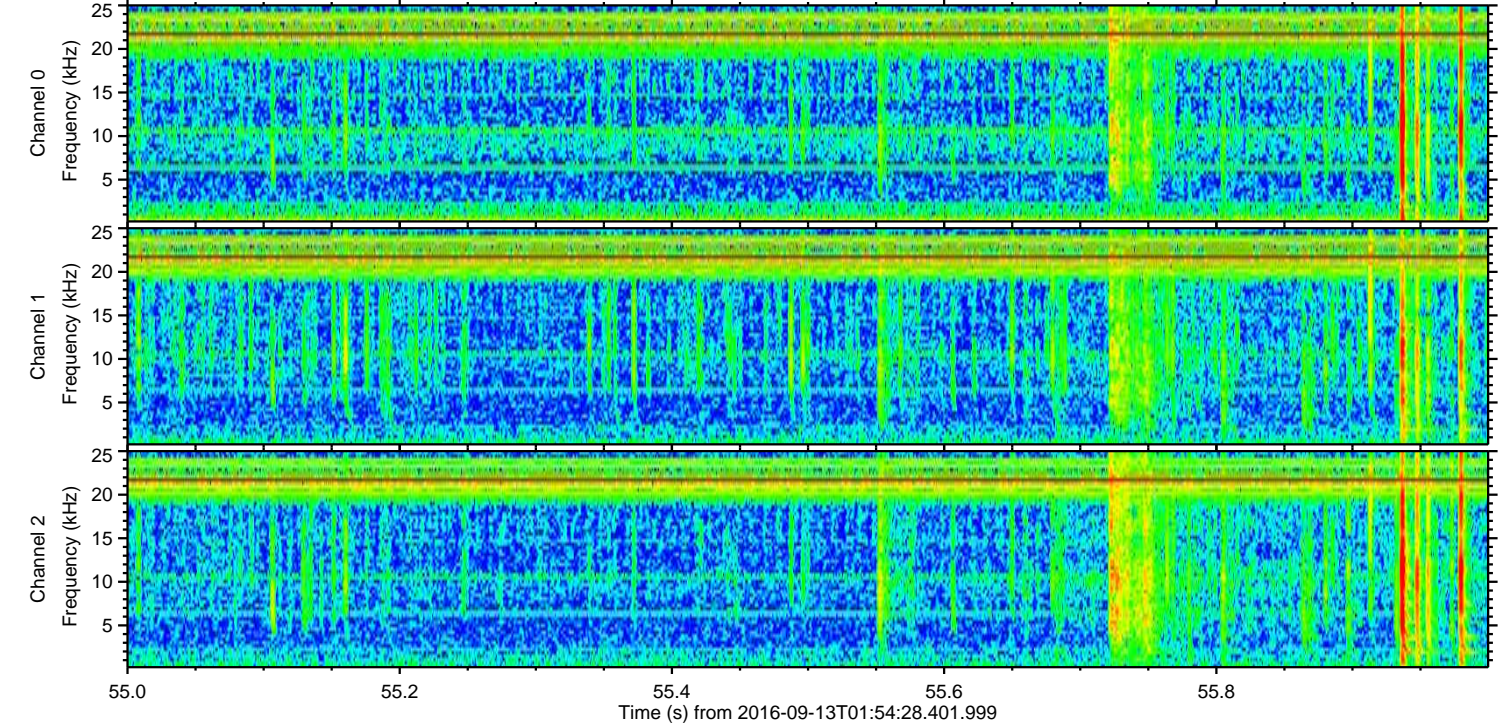
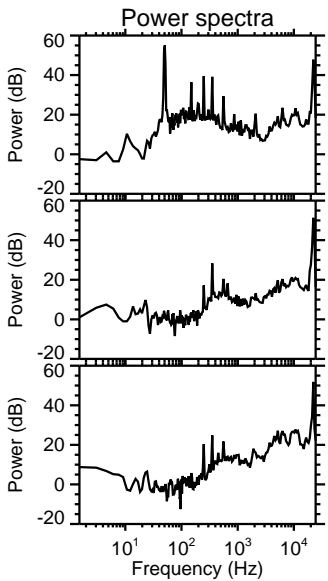
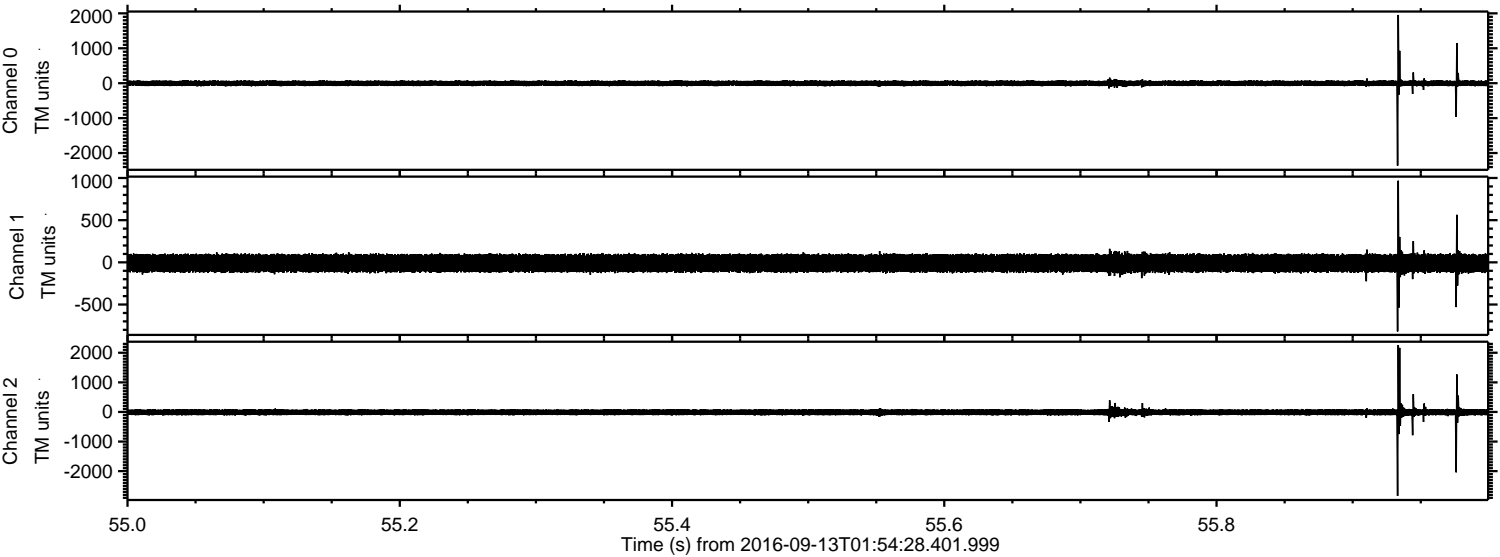


Channel 0
mn: -3361
mx: 2553
 μ : -2.4
 σ : 49.3

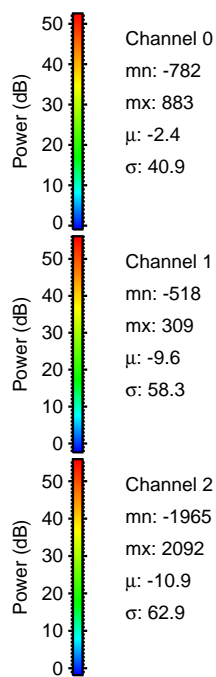
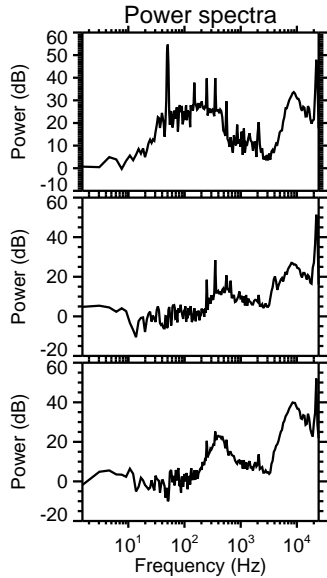
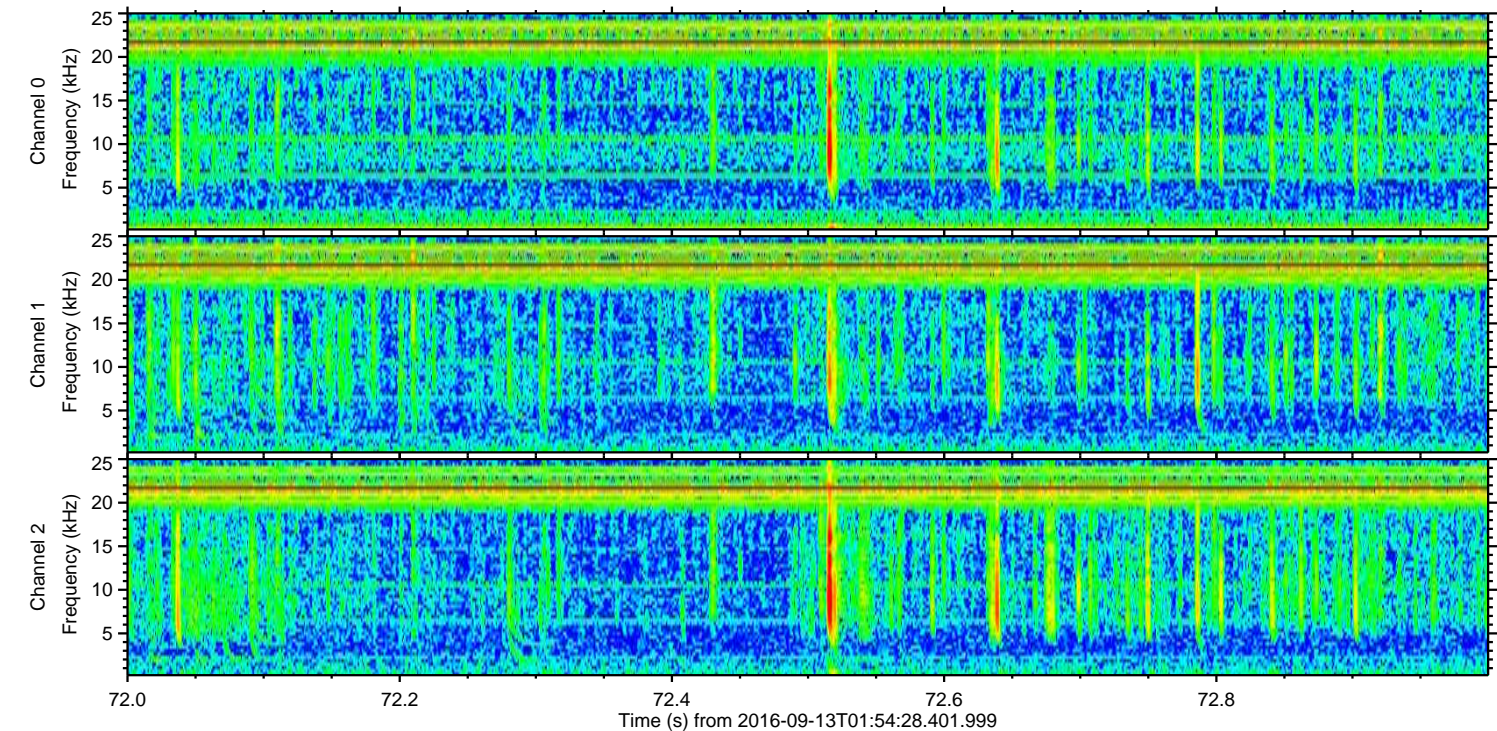
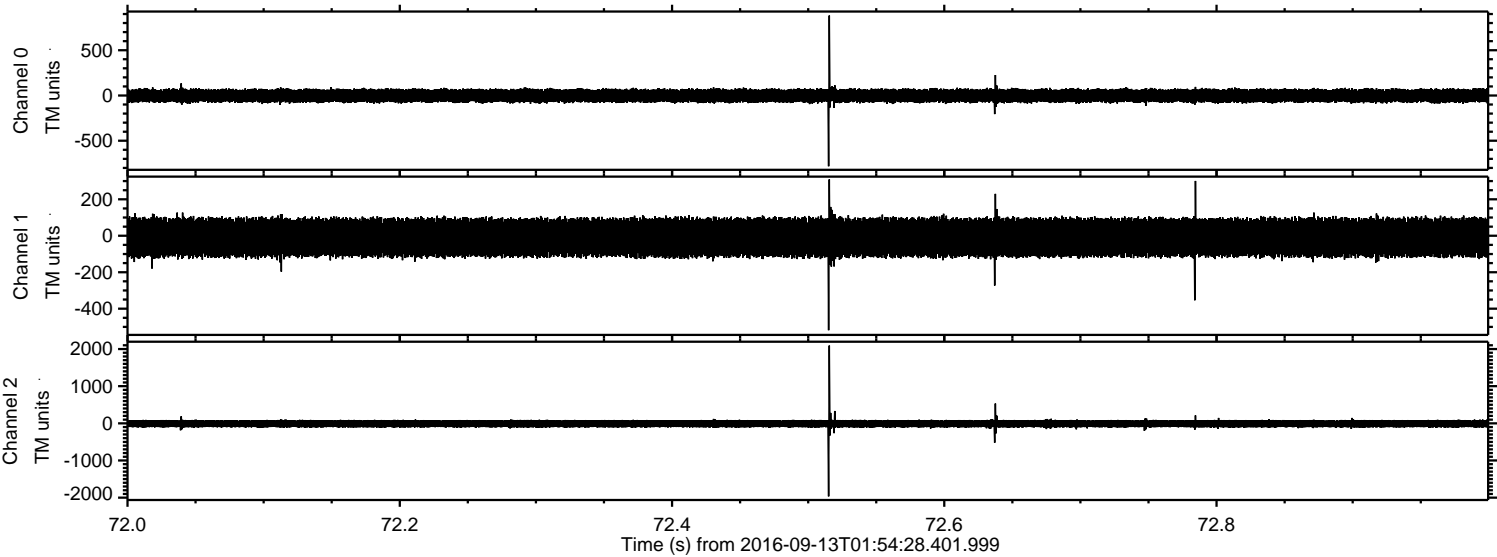
Channel 1
mn: -502
mx: 598
 μ : -9.6
 σ : 58.3

Channel 2
mn: -3940
mx: 3326
 μ : -10.8
 σ : 72.5

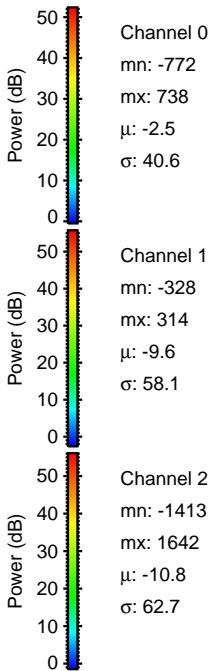
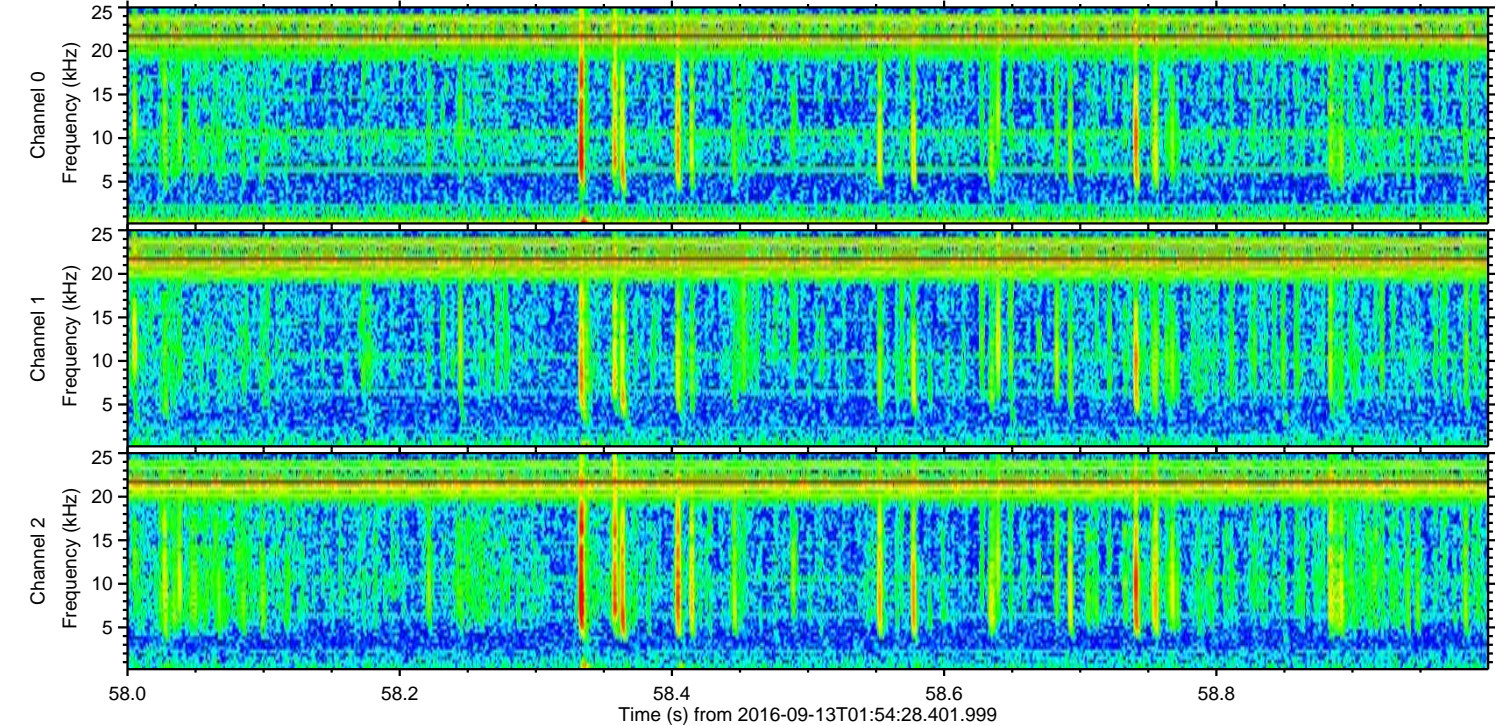
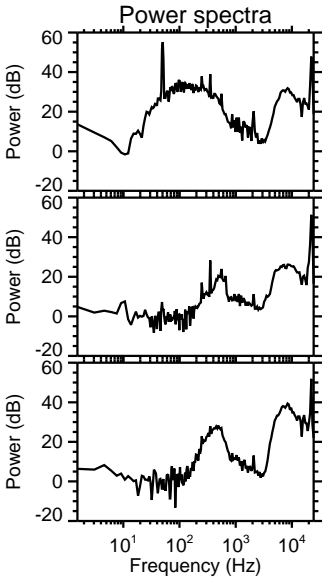
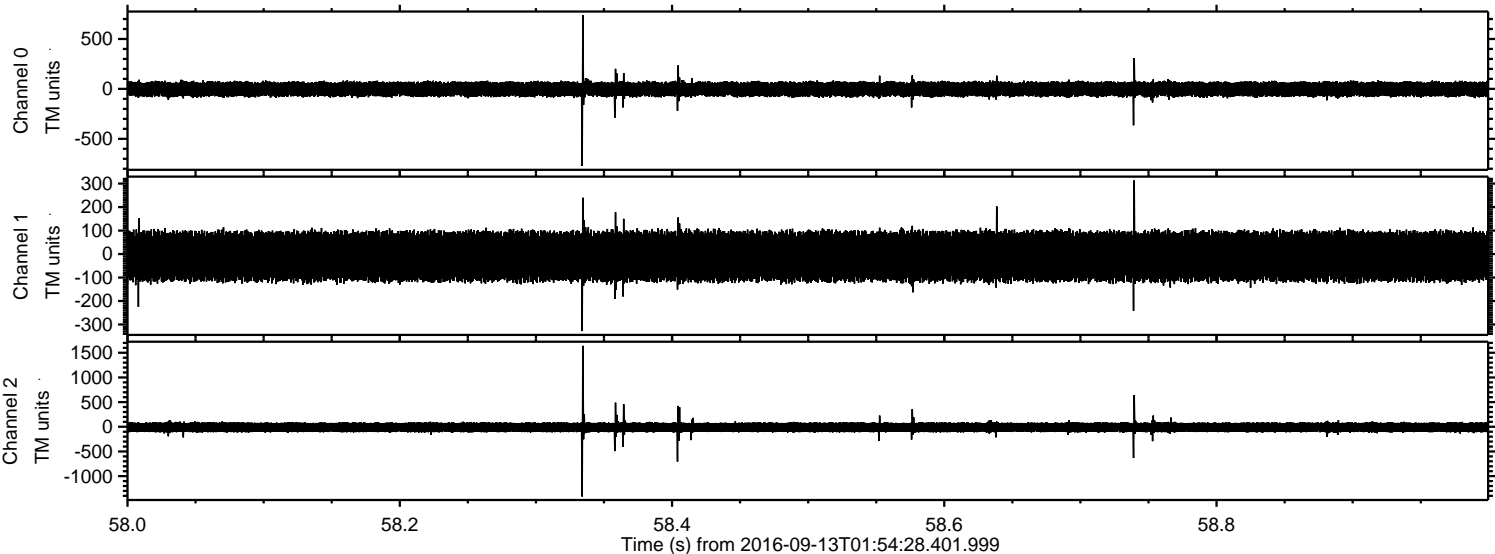
Processed Tue Sep 13 04:02:01 2016 by ELM ver.2012-10-06 from 001__elm20160913_015427__dat00.bin



Processed Tue Sep 13 04:02:02 2016 by ELM ver.2012-10-06 from 001__elm20160913_015427__dat00.bin

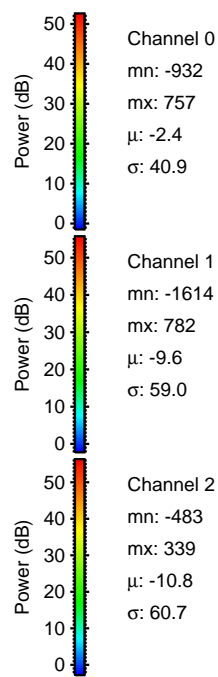
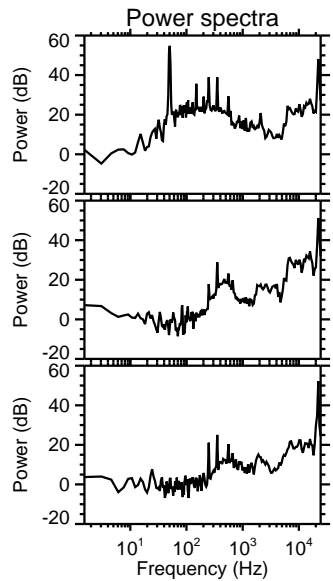
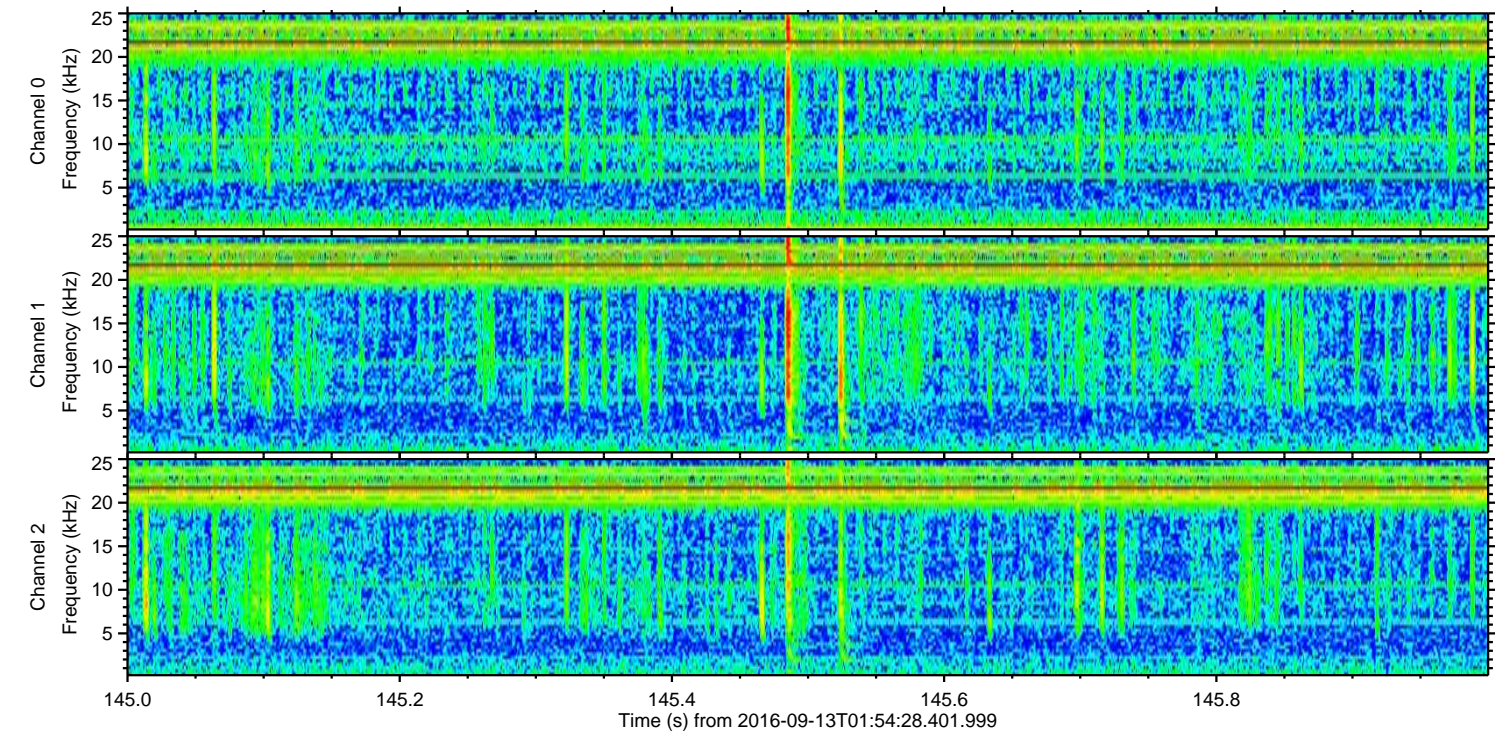
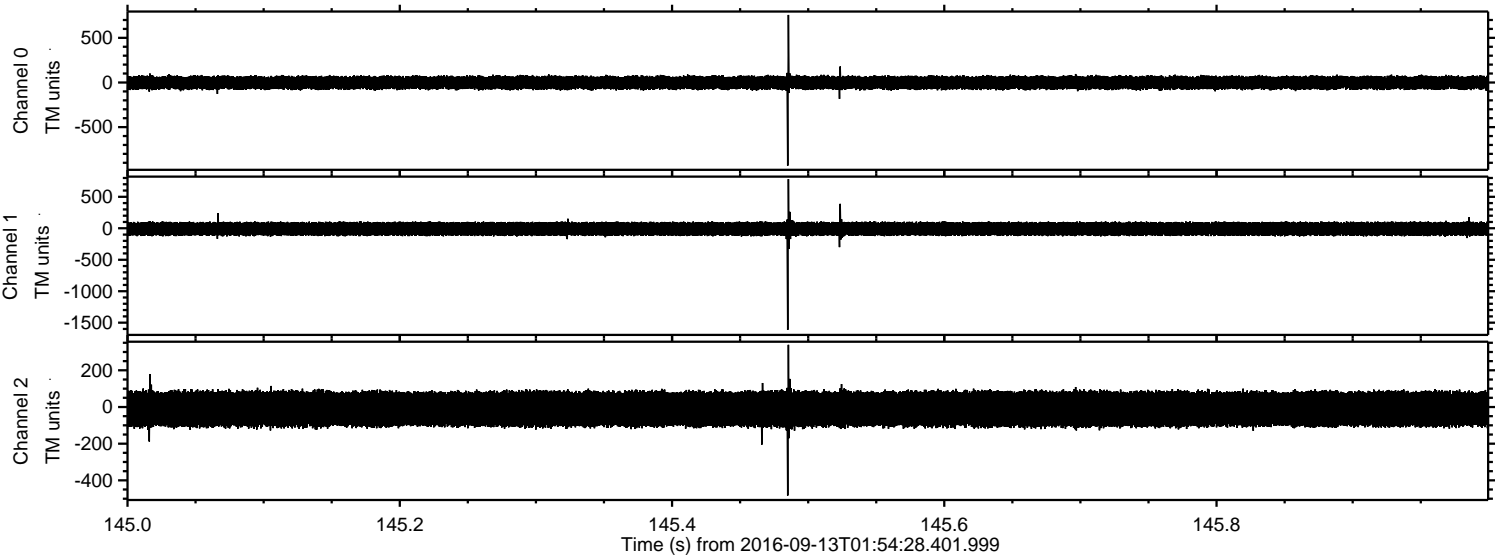


Processed Tue Sep 13 04:02:03 2016 by ELM ver.2012-10-06 from 001__elm20160913_015427__dat00.bin



ELMAVAN 3D WAVEFORMS (Measured data sampled at 50 kHz) 51000 packets of 144 samples from 2016-09-13T01:54:28.401.999. Part 146/147

Processed Tue Sep 13 04:02:04 2016 by ELM ver.2012-10-06 from 001__elm20160913_015427__dat00.bin

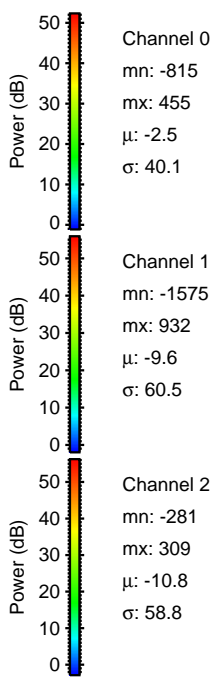
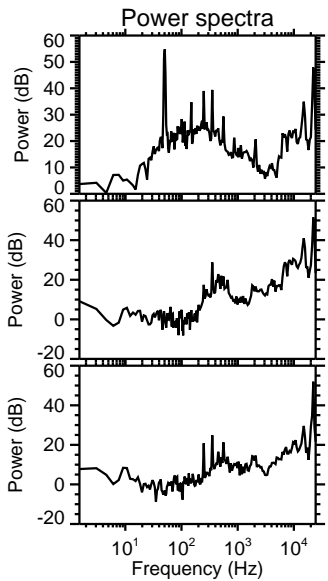
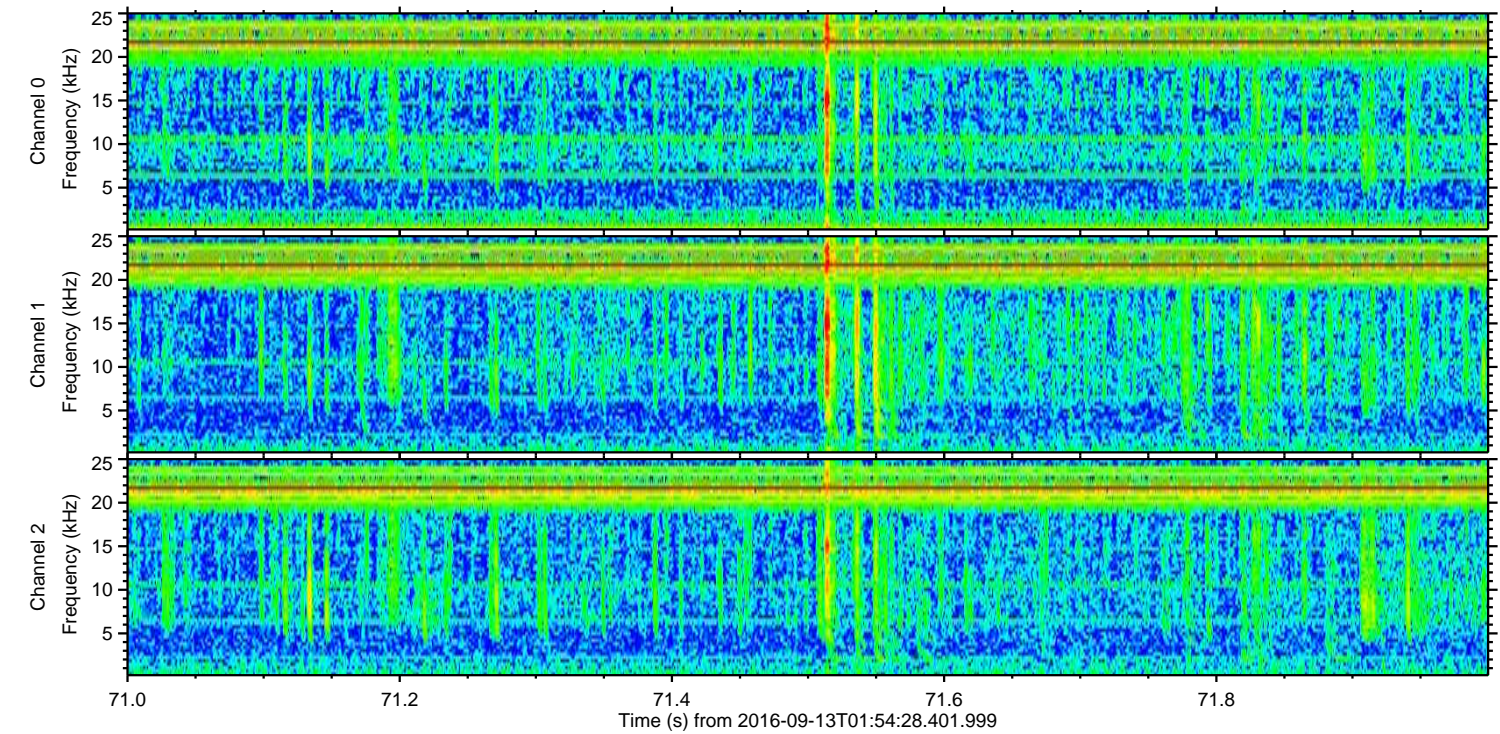
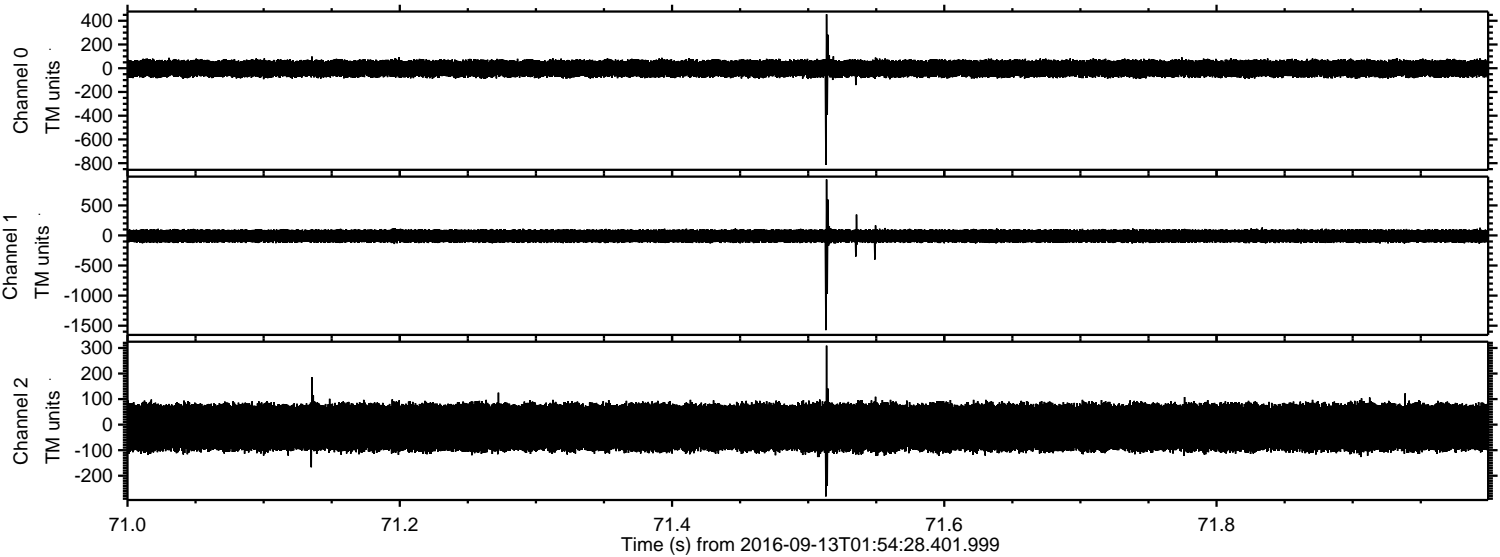


Channel 0
mn: -932
mx: 757
 μ : -2.4
 σ : 40.9

Channel 1
mn: -1614
mx: 782
 μ : -9.6
 σ : 59.0

Channel 2
mn: -483
mx: 339
 μ : -10.8
 σ : 60.7

Processed Tue Sep 13 04:02:05 2016 by ELM ver.2012-10-06 from 001__elm20160913_015427__dat00.bin



Processed Tue Sep 13 04:02:06 2016 by ELM ver.2012-10-06 from 001__elm20160913_015427__dat00.bin

