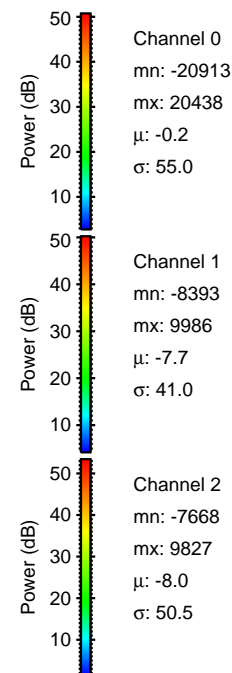
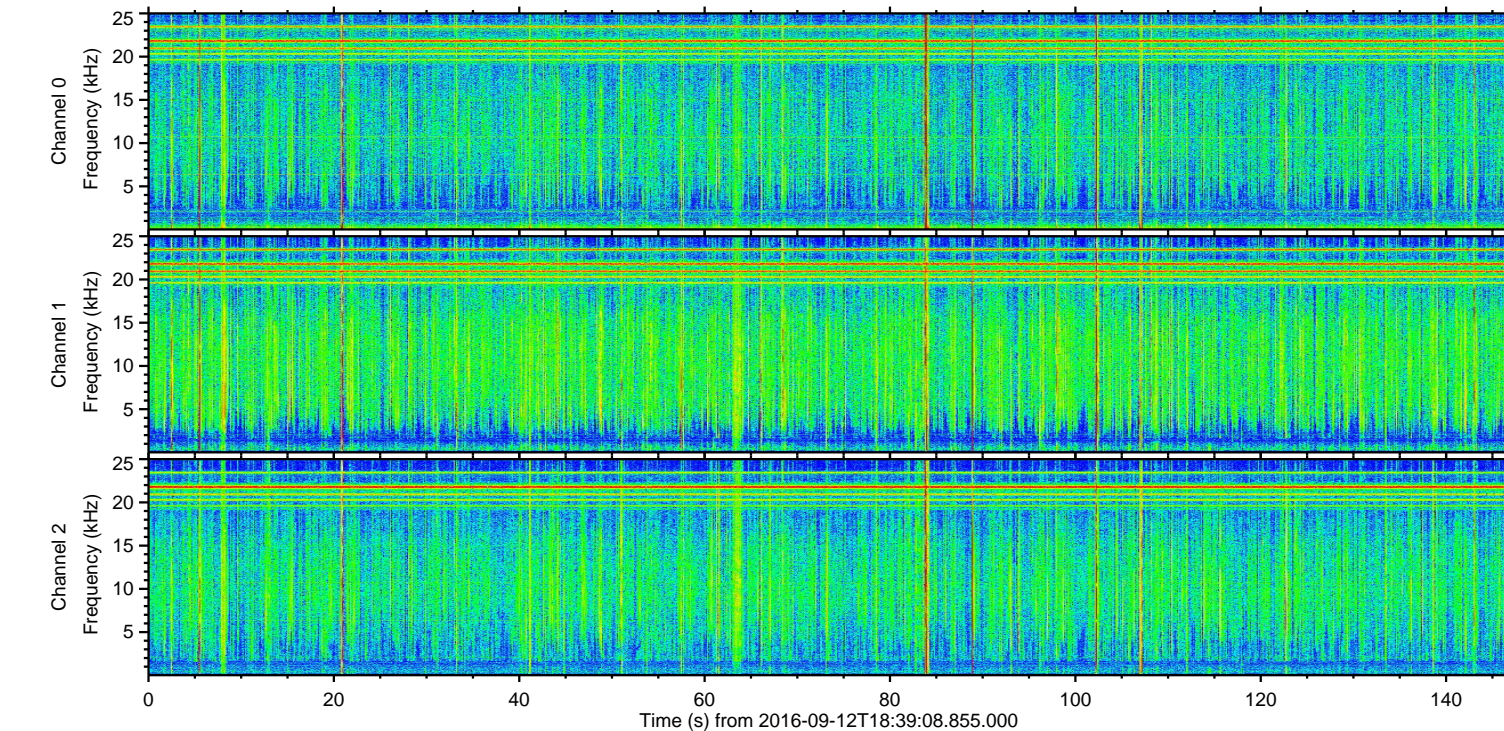
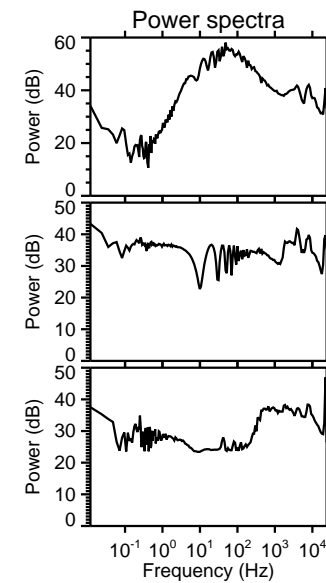
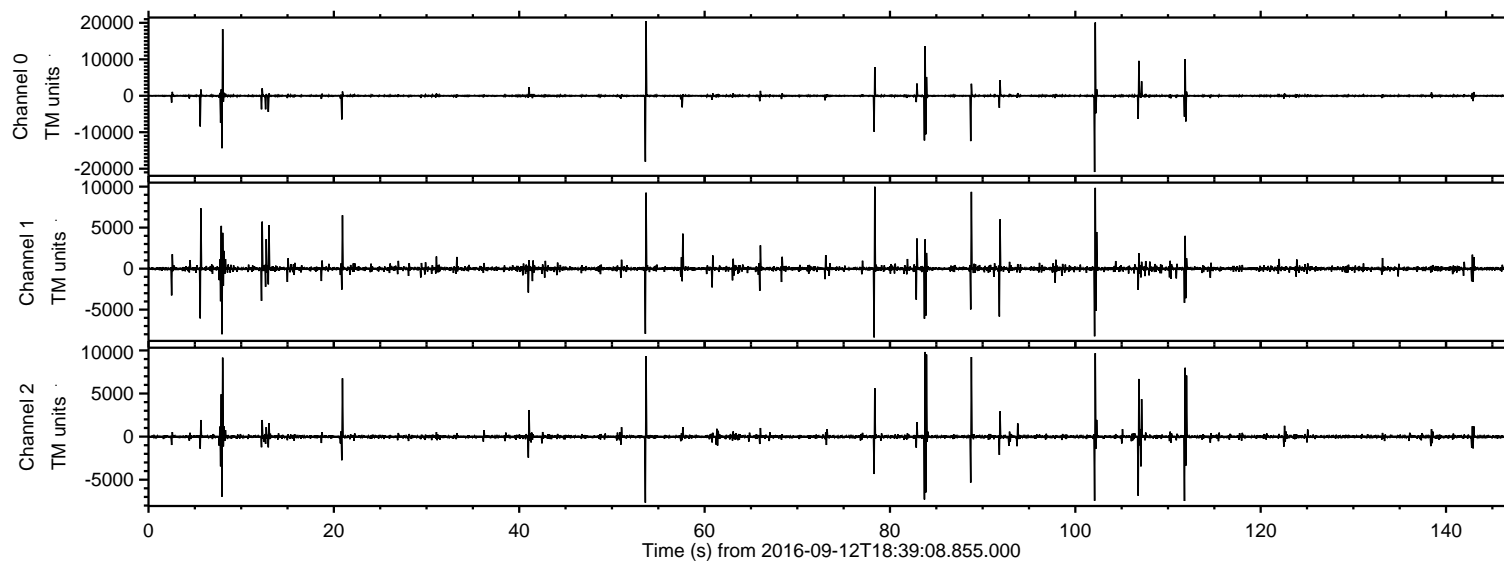


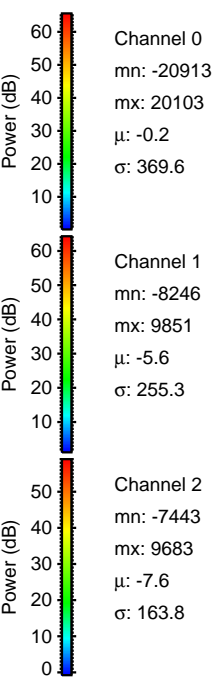
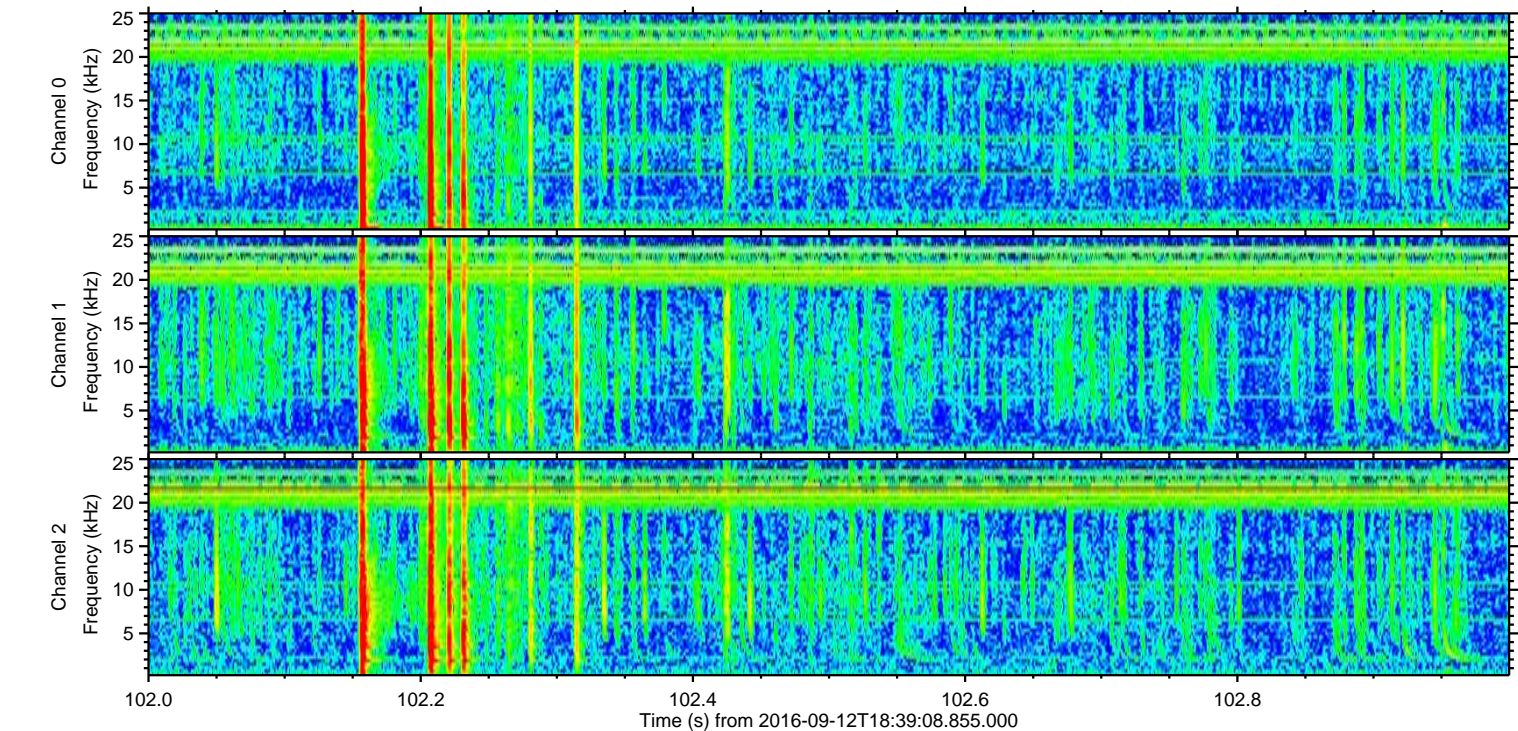
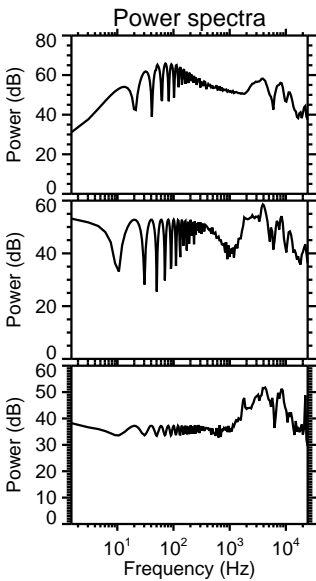
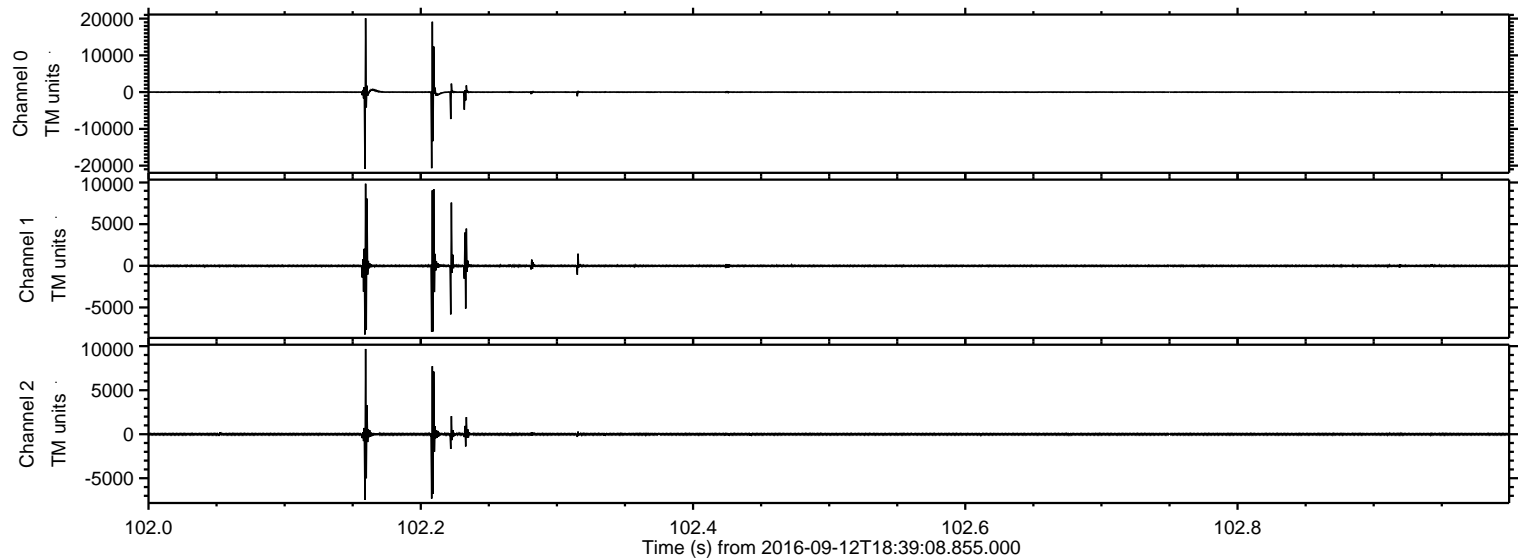
ELMAVAN 3D WAVEFORMS (Measured data sampled at 50 kHz) 51000 packets of 144 samples from 2016-09-12T18:39:08.855.000.

Processed Mon Sep 12 20:46:57 2016 by ELM ver.2012-10-06 from 001__elm20160912_183907__dat00.bin

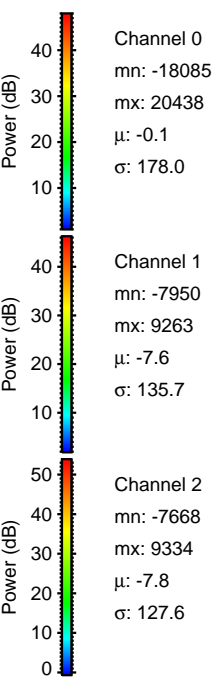
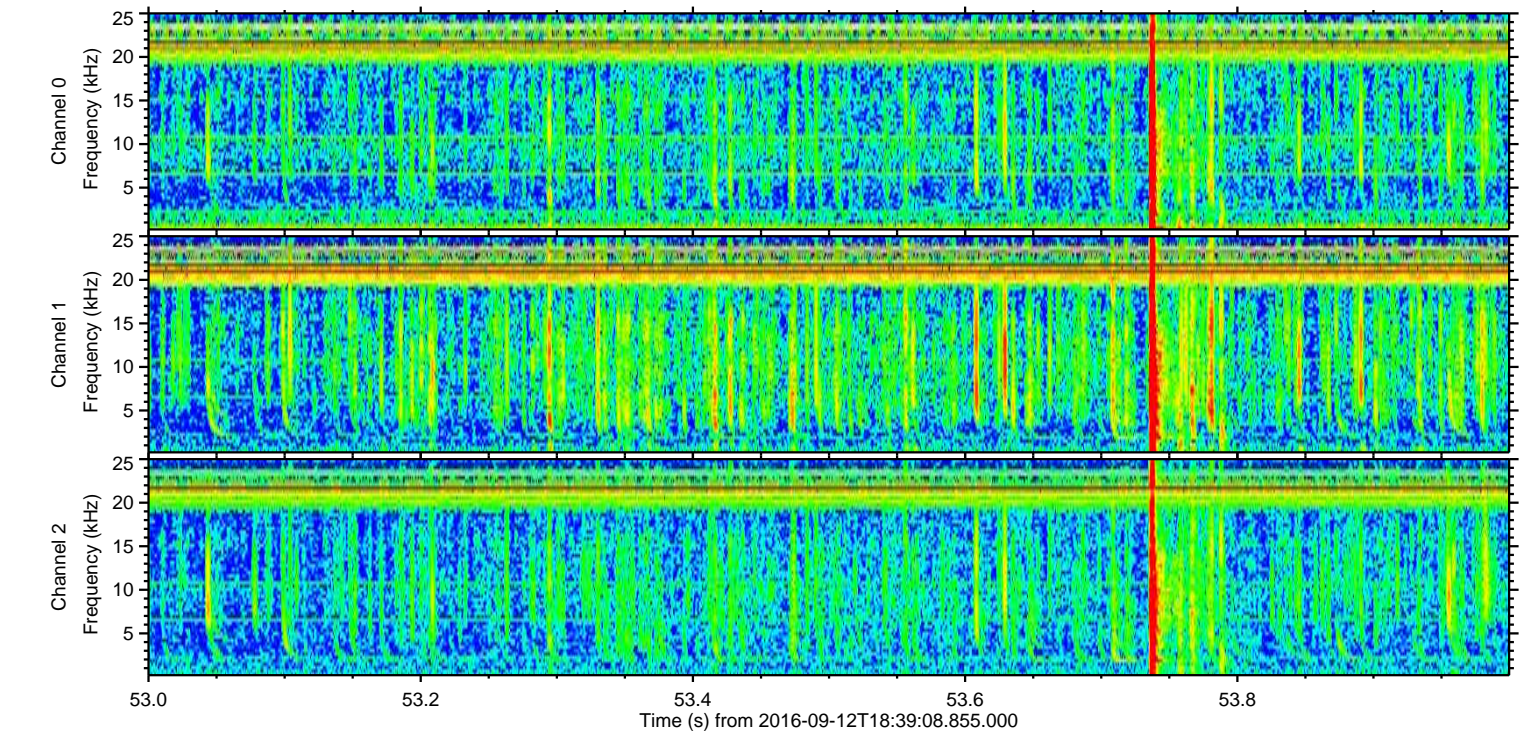
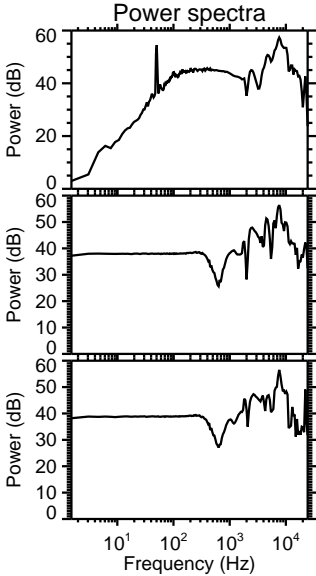
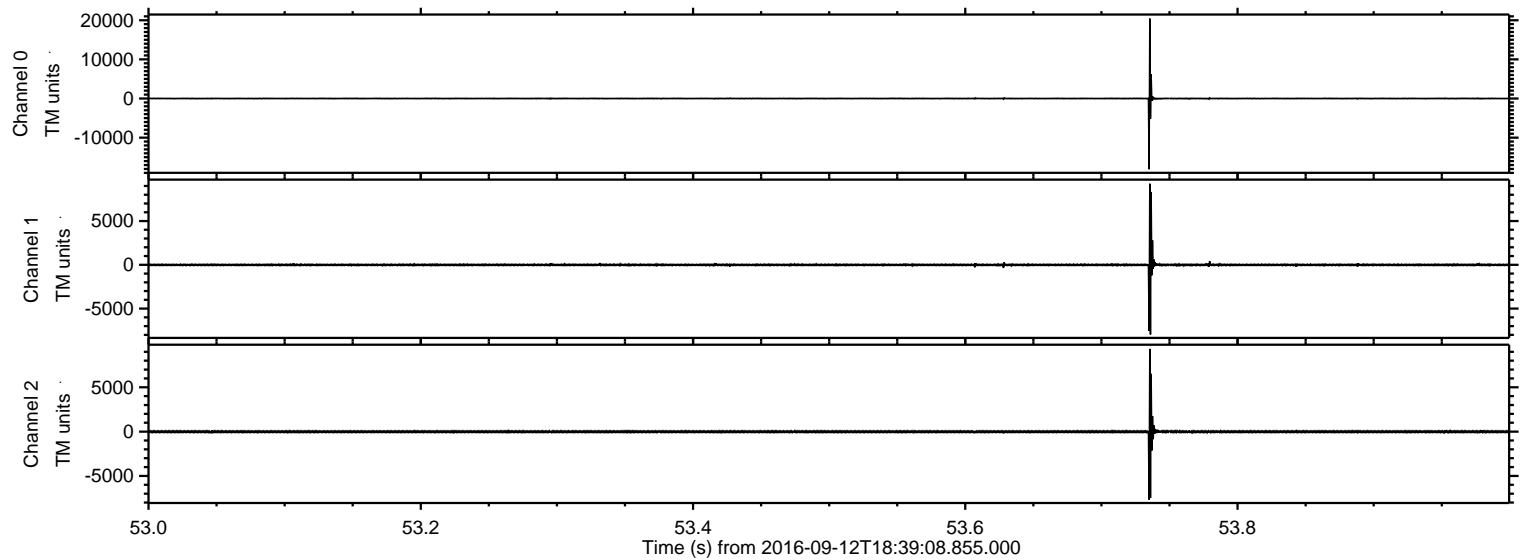


ELMAVAN 3D WAVEFORMS (Measured data sampled at 50 kHz) 51000 packets of 144 samples from 2016-09-12T18:39:08.855.000. Part 103/147

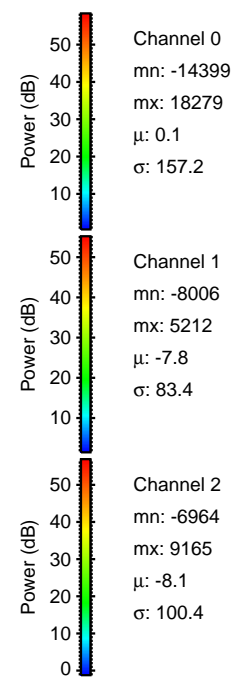
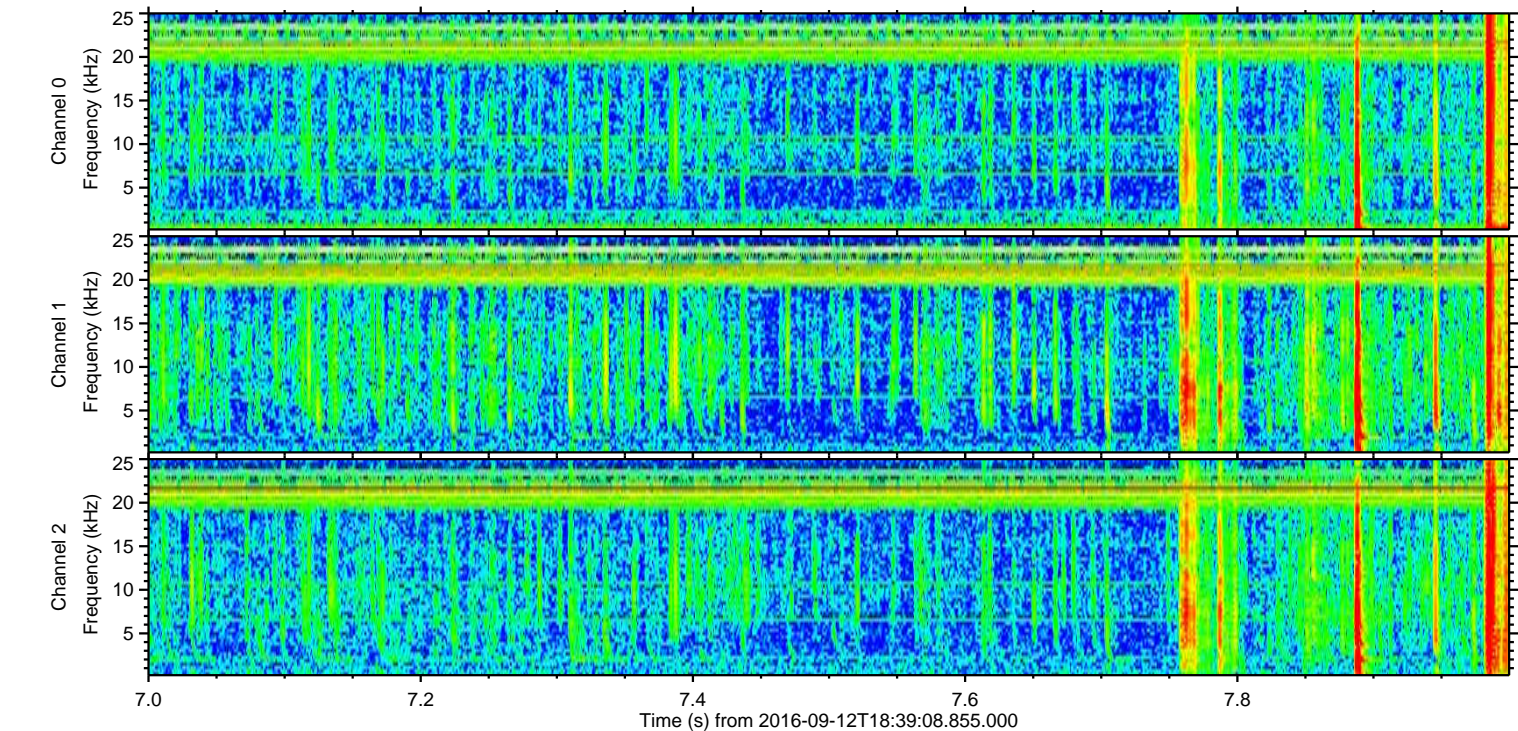
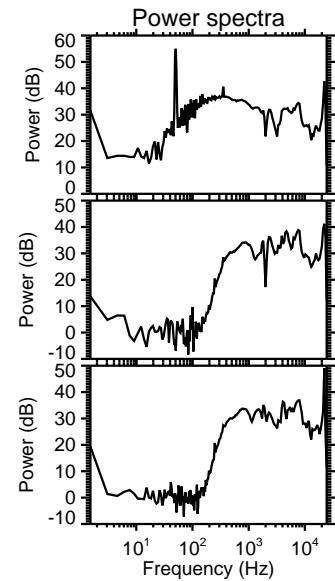
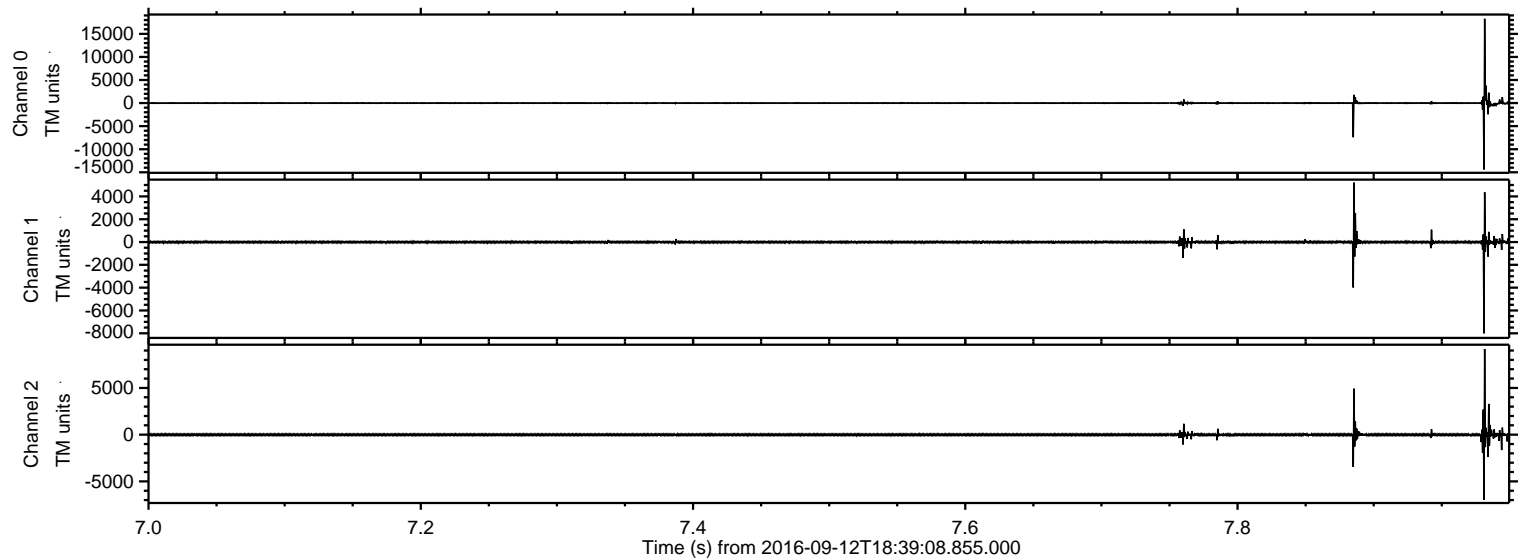
Processed Mon Sep 12 20:47:13 2016 by ELM ver.2012-10-06 from 001__elm20160912_183907__dat00.bin



Processed Mon Sep 12 20:47:14 2016 by ELM ver.2012-10-06 from 001__elm20160912_183907__dat00.bin

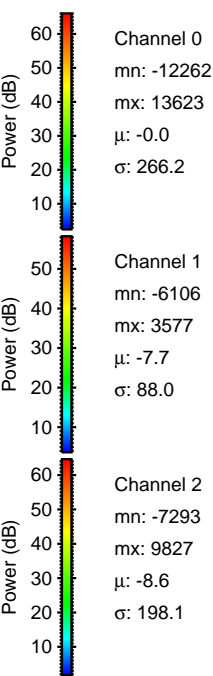
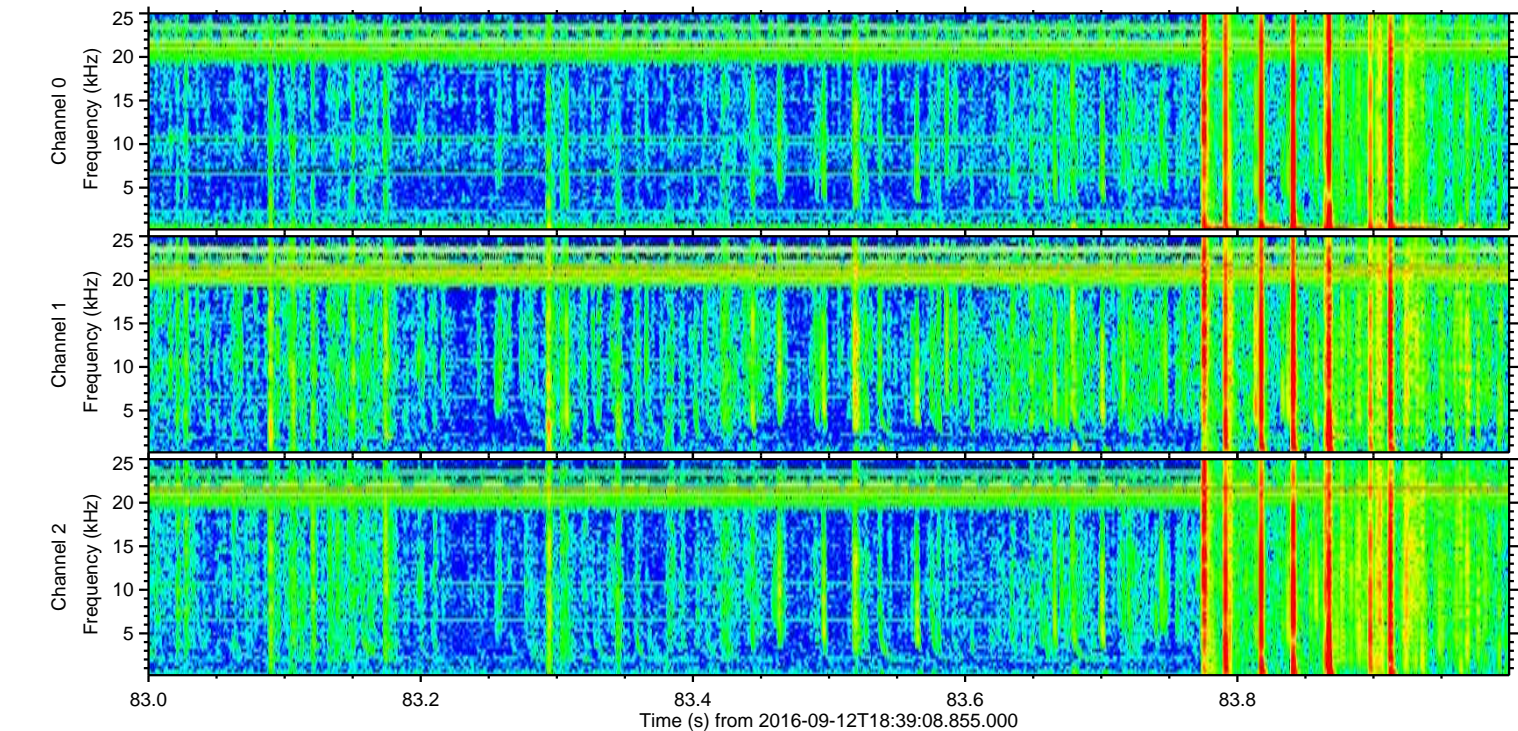
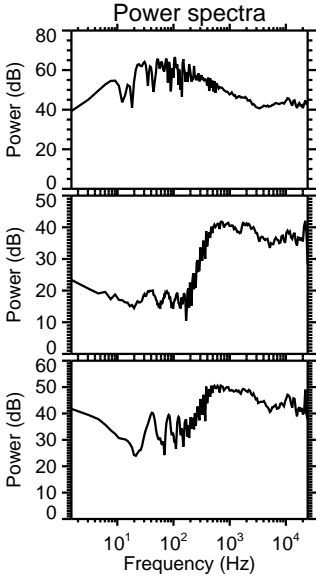
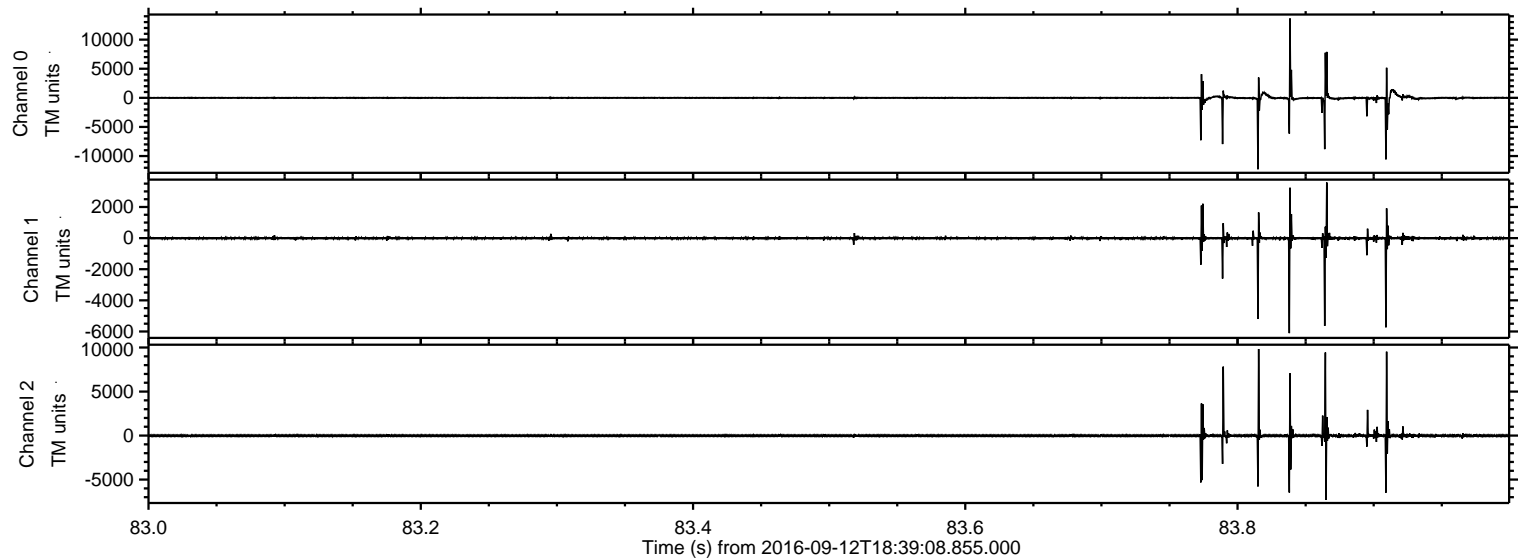


Processed Mon Sep 12 20:47:15 2016 by ELM ver.2012-10-06 from 001__elm20160912_183907__dat00.bin

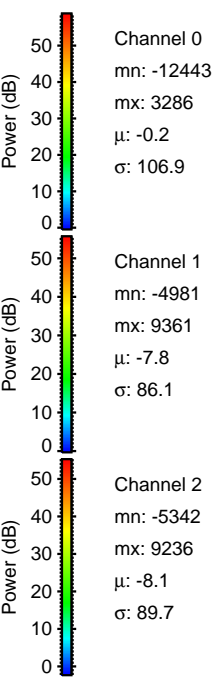
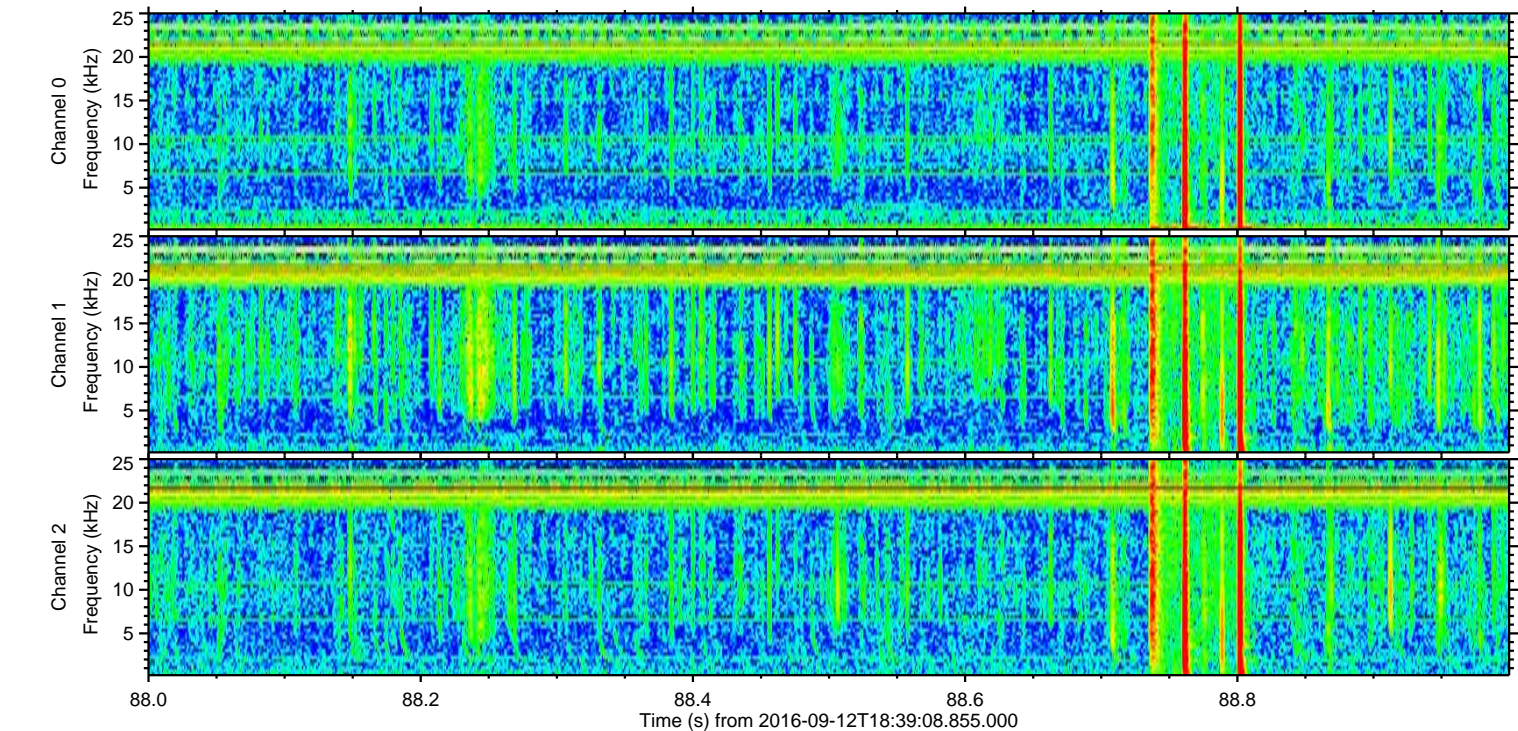
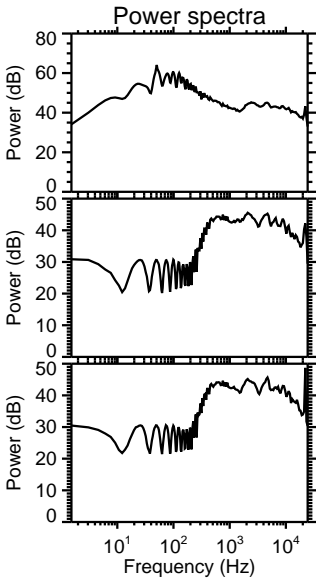
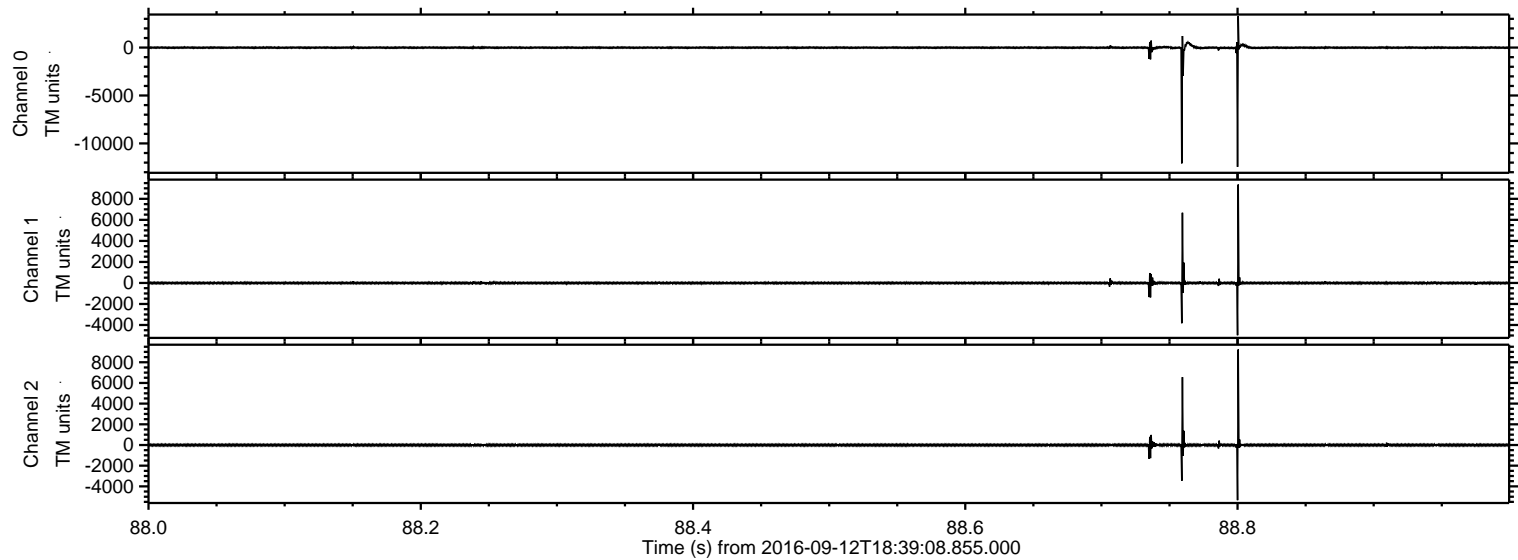


ELMAVAN 3D WAVEFORMS (Measured data sampled at 50 kHz) 51000 packets of 144 samples from 2016-09-12T18:39:08.855.000. Part 84/147

Processed Mon Sep 12 20:47:16 2016 by ELM ver.2012-10-06 from 001__elm20160912_183907__dat00.bin

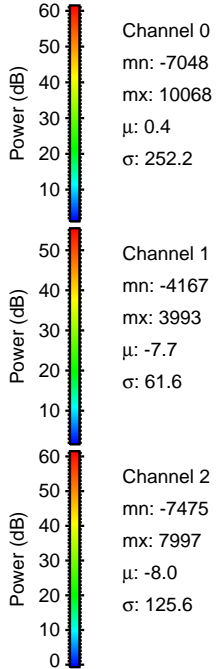
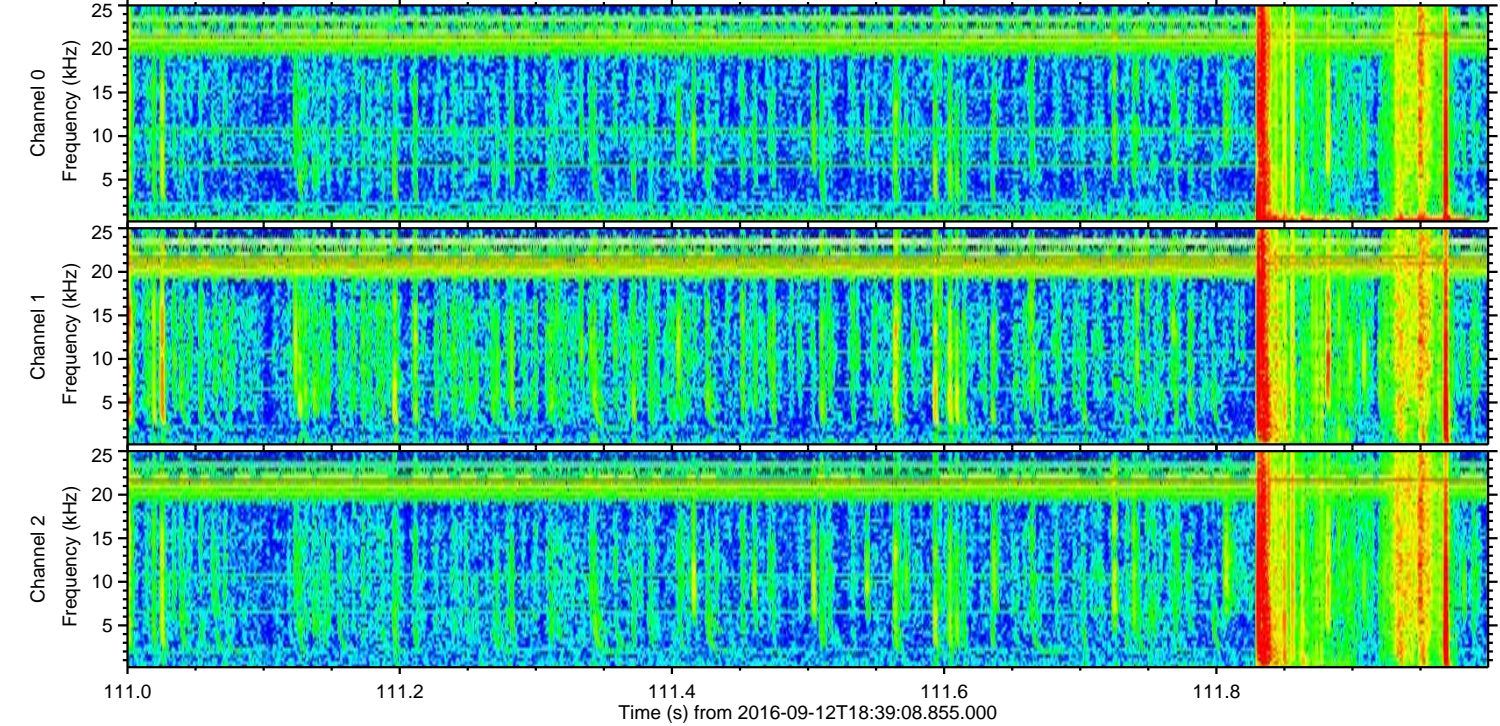
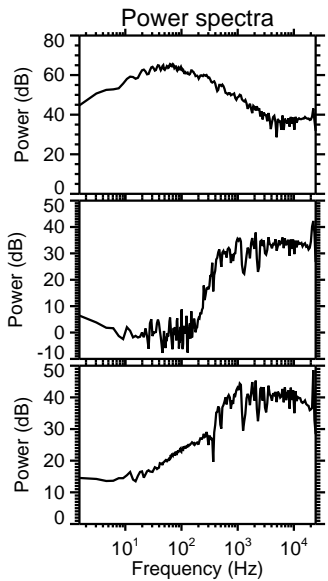
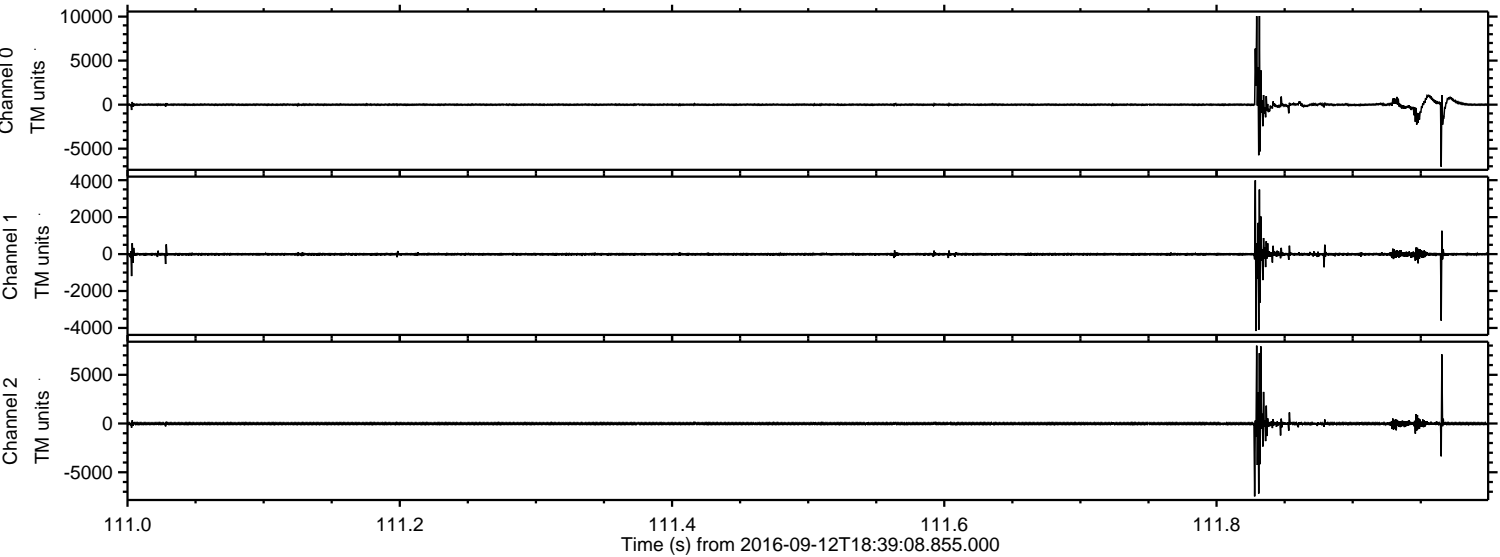


Processed Mon Sep 12 20:47:17 2016 by ELM ver.2012-10-06 from 001__elm20160912_183907__dat00.bin

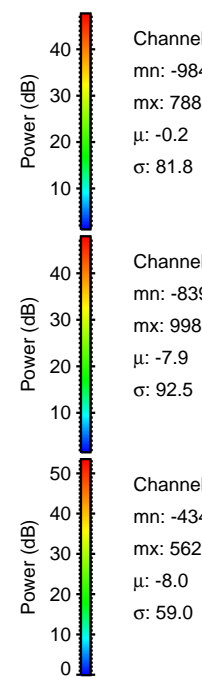
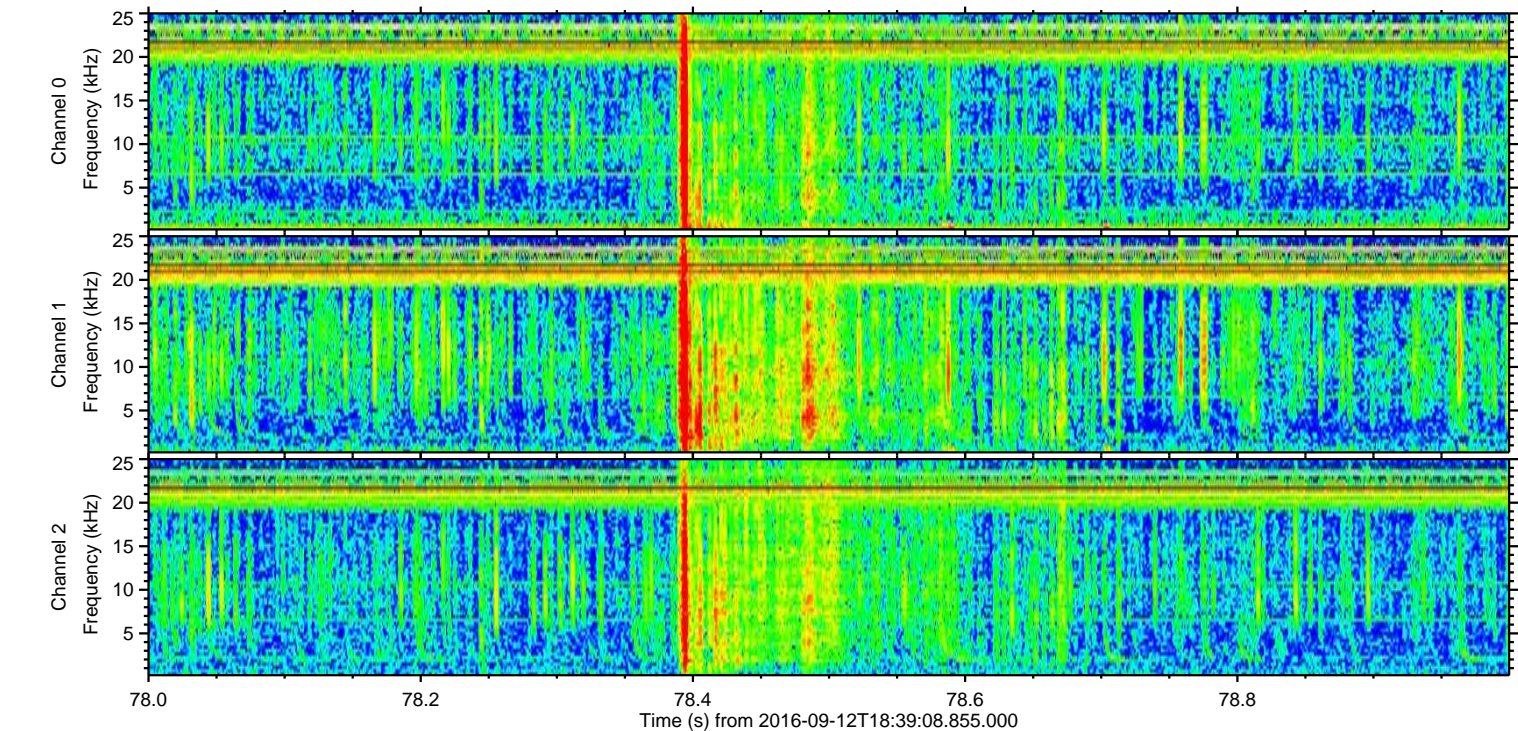
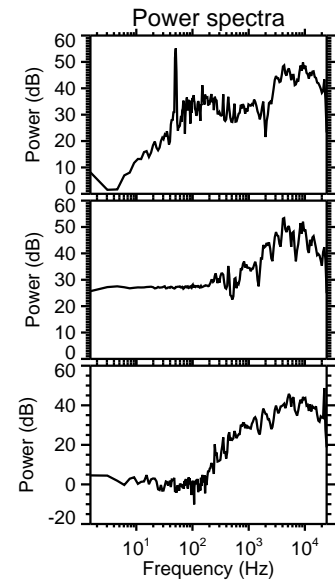
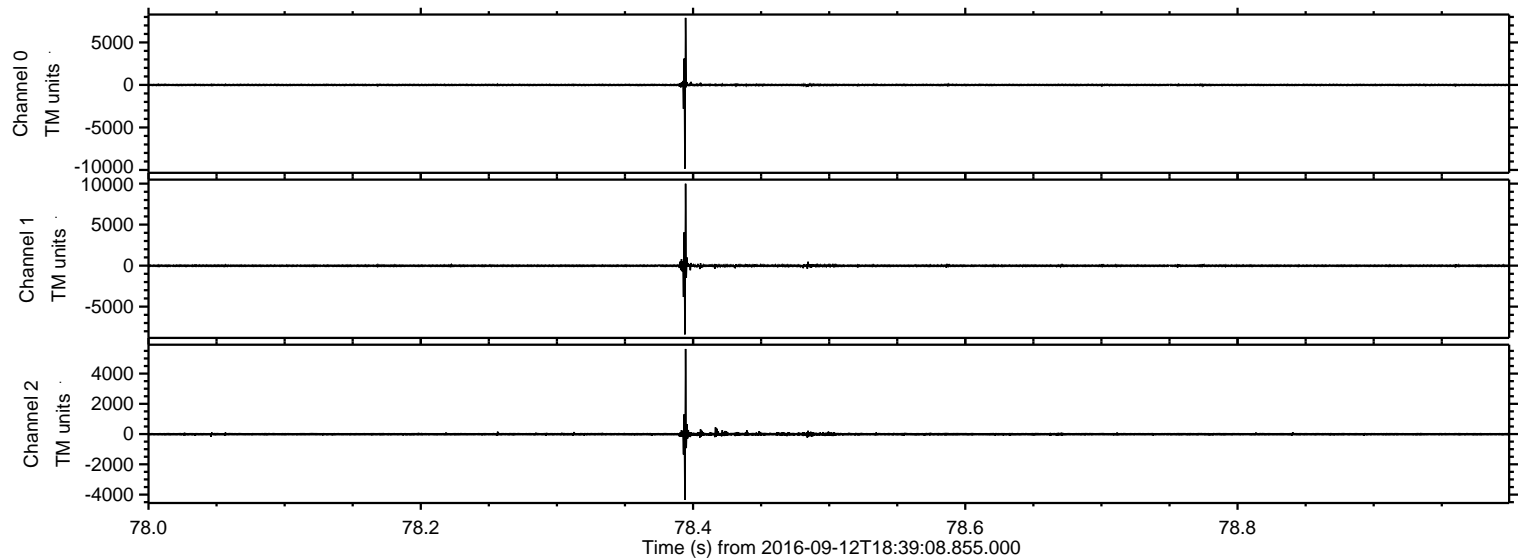


ELMAVAN 3D WAVEFORMS (Measured data sampled at 50 kHz) 51000 packets of 144 samples from 2016-09-12T18:39:08.855.000. Part 112/147

Processed Mon Sep 12 20:47:18 2016 by ELM ver.2012-10-06 from 001__elm20160912_183907__dat00.bin

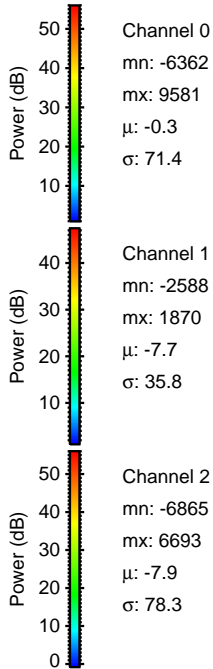
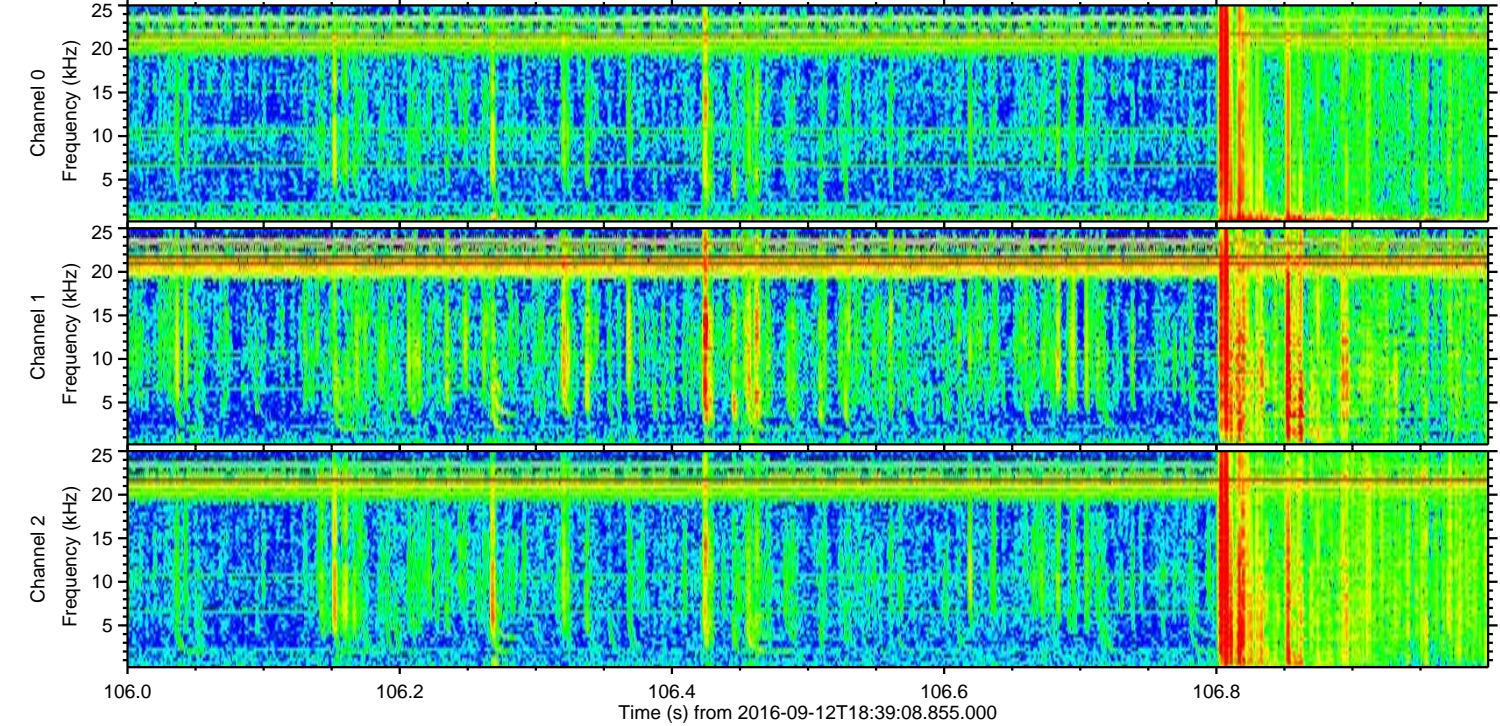
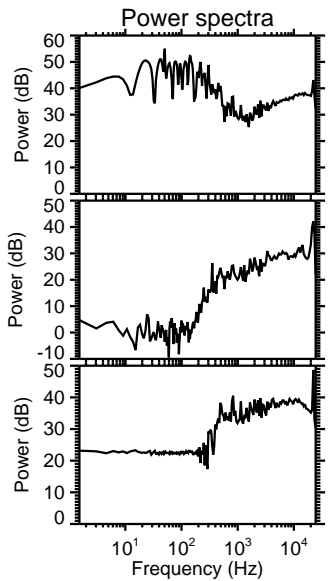
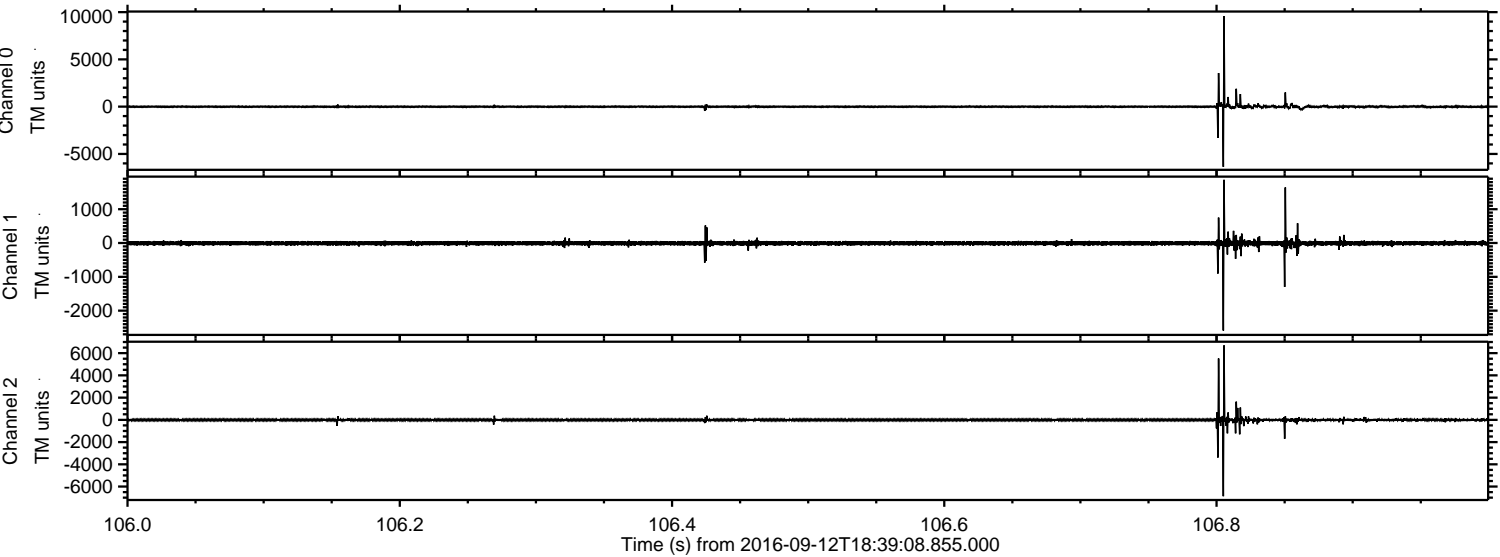


Processed Mon Sep 12 20:47:19 2016 by ELM ver.2012-10-06 from 001__elm20160912_183907__dat00.bin



ELMAVAN 3D WAVEFORMS (Measured data sampled at 50 kHz) 51000 packets of 144 samples from 2016-09-12T18:39:08.855.000. Part 107/147

Processed Mon Sep 12 20:47:20 2016 by ELM ver.2012-10-06 from 001__elm20160912_183907__dat00.bin



Channel 0
mn: -6362
mx: 9581
 μ : -0.3
 σ : 71.4

Channel 1
mn: -2588
mx: 1870
 μ : -7.7
 σ : 35.8

Channel 2
mn: -6865
mx: 6693
 μ : -7.9
 σ : 78.3

Processed Mon Sep 12 20:47:21 2016 by ELM ver.2012-10-06 from 001__elm20160912_183907__dat00.bin

