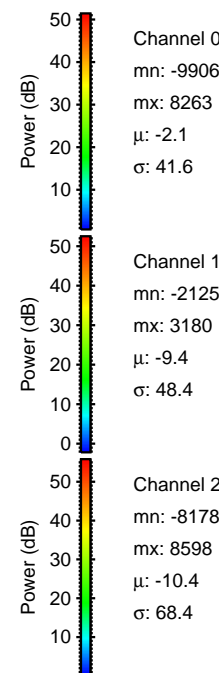
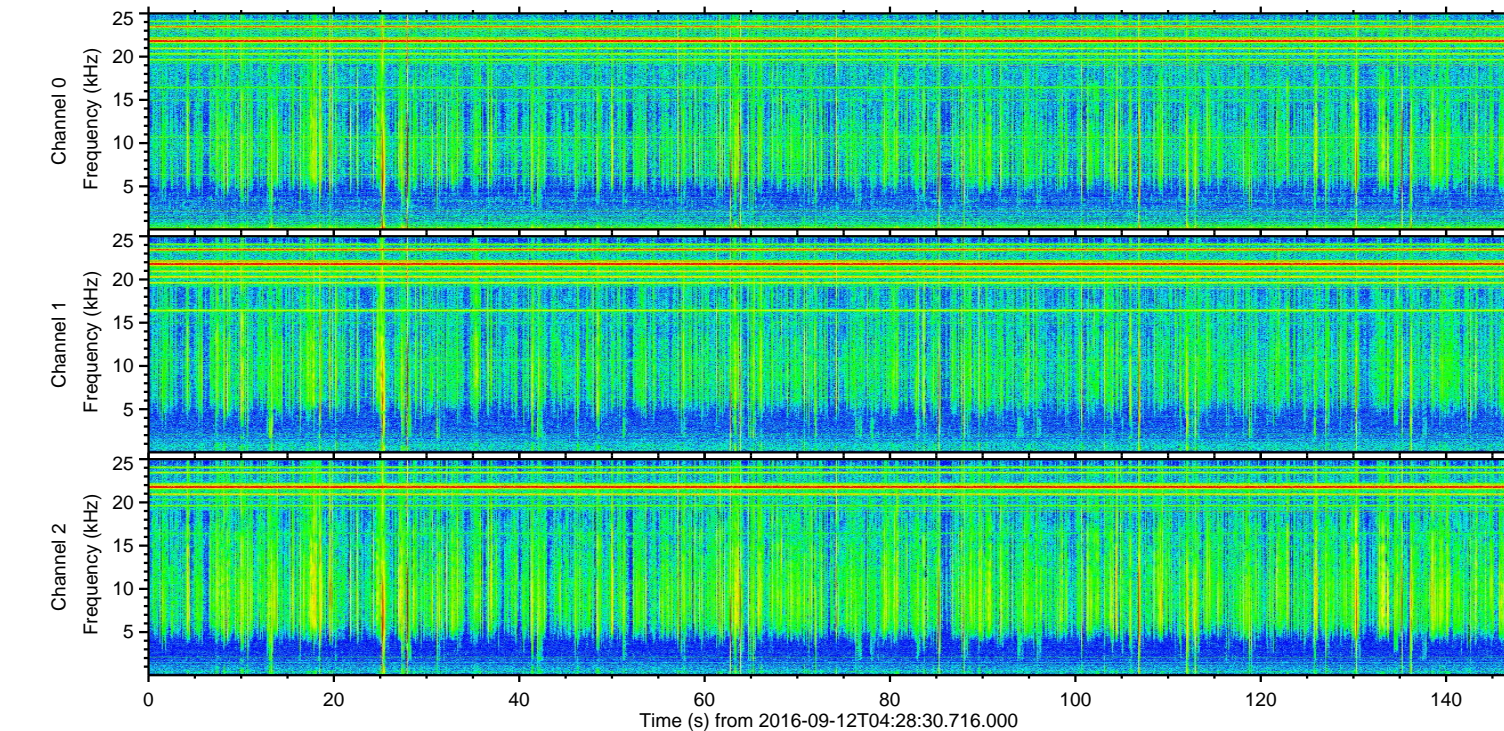
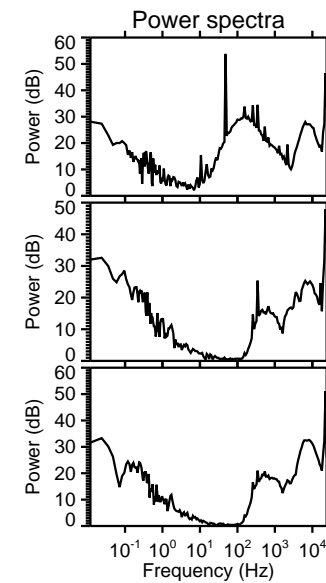
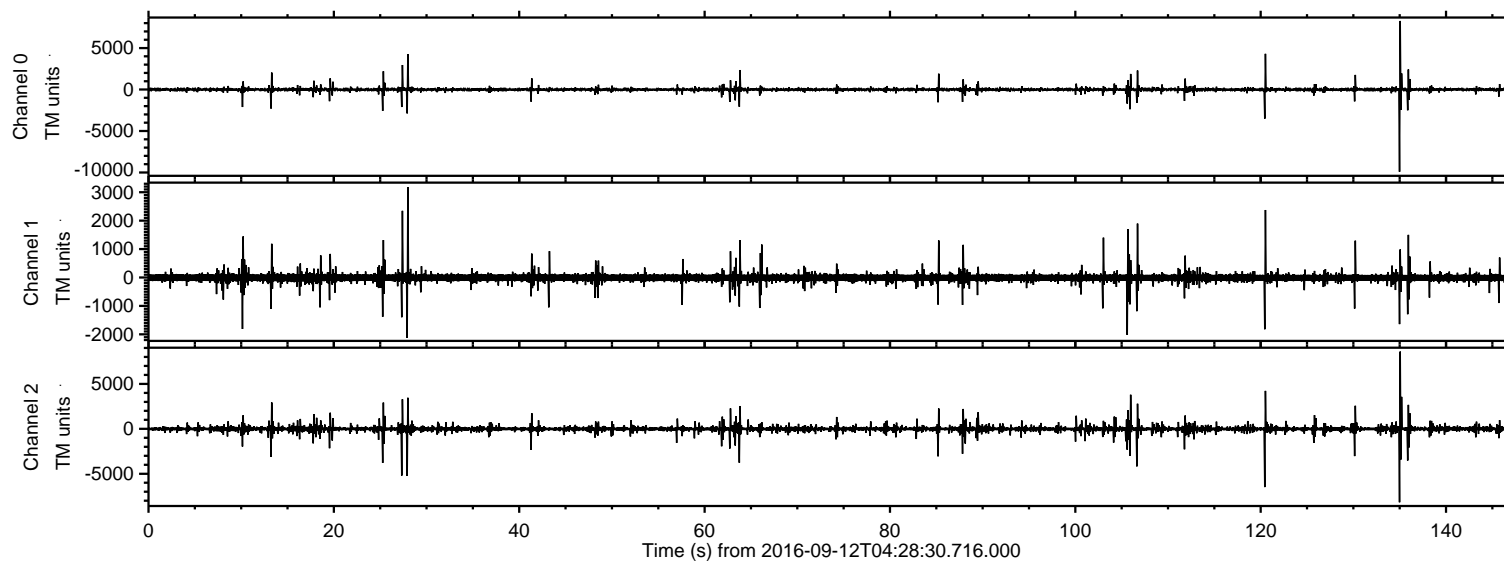


# ELMAVAN 3D WAVEFORMS (Measured data sampled at 50 kHz) 51000 packets of 144 samples from 2016-09-12T04:28:30.716.000.

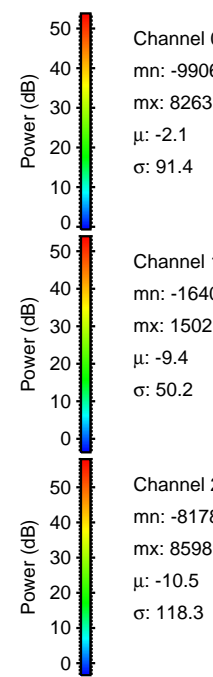
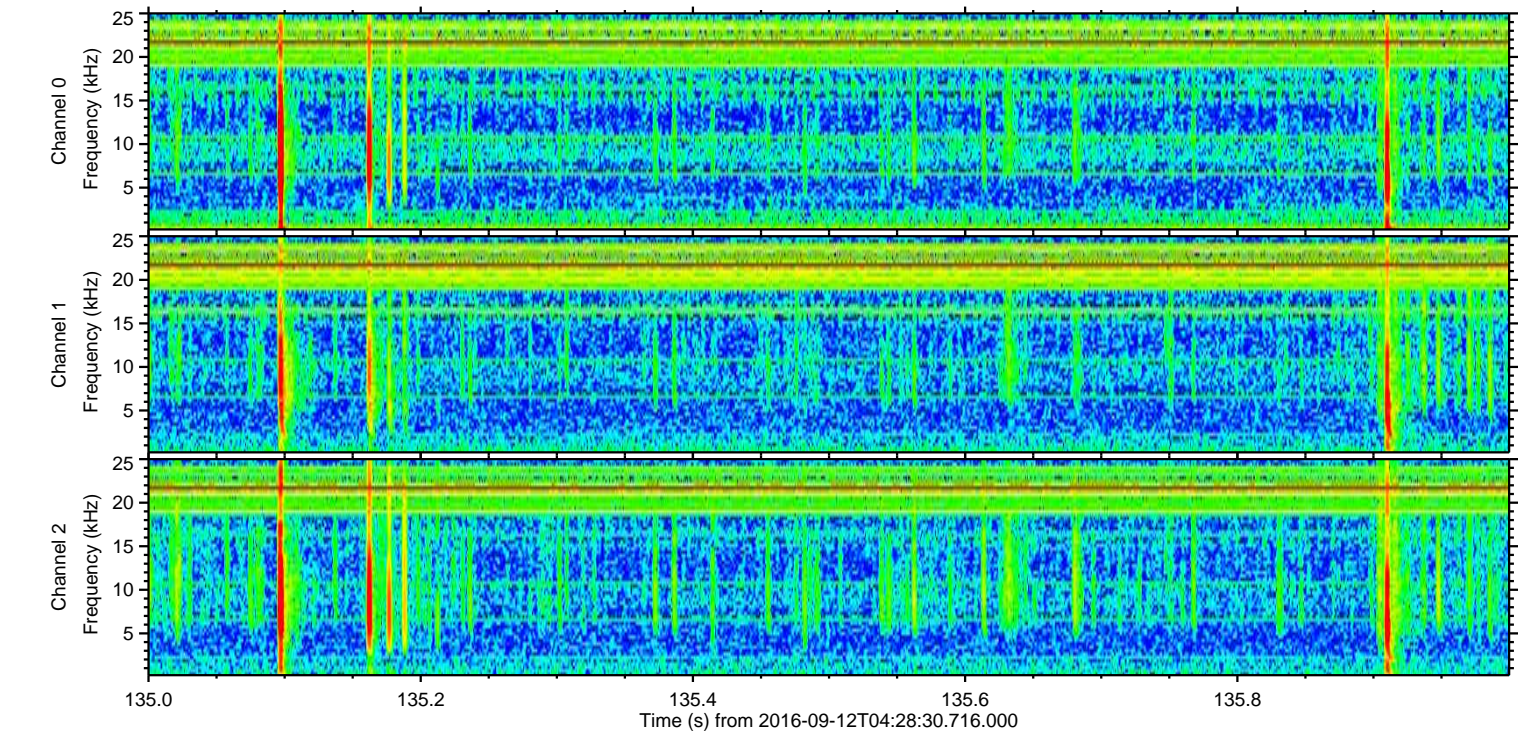
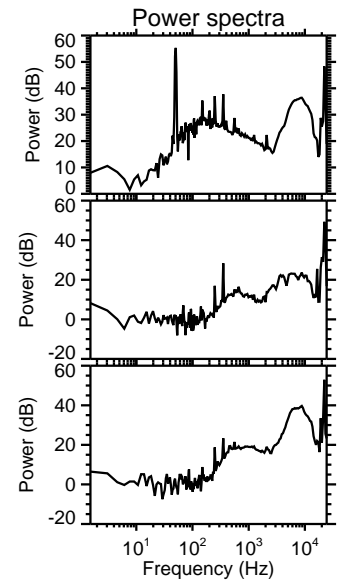
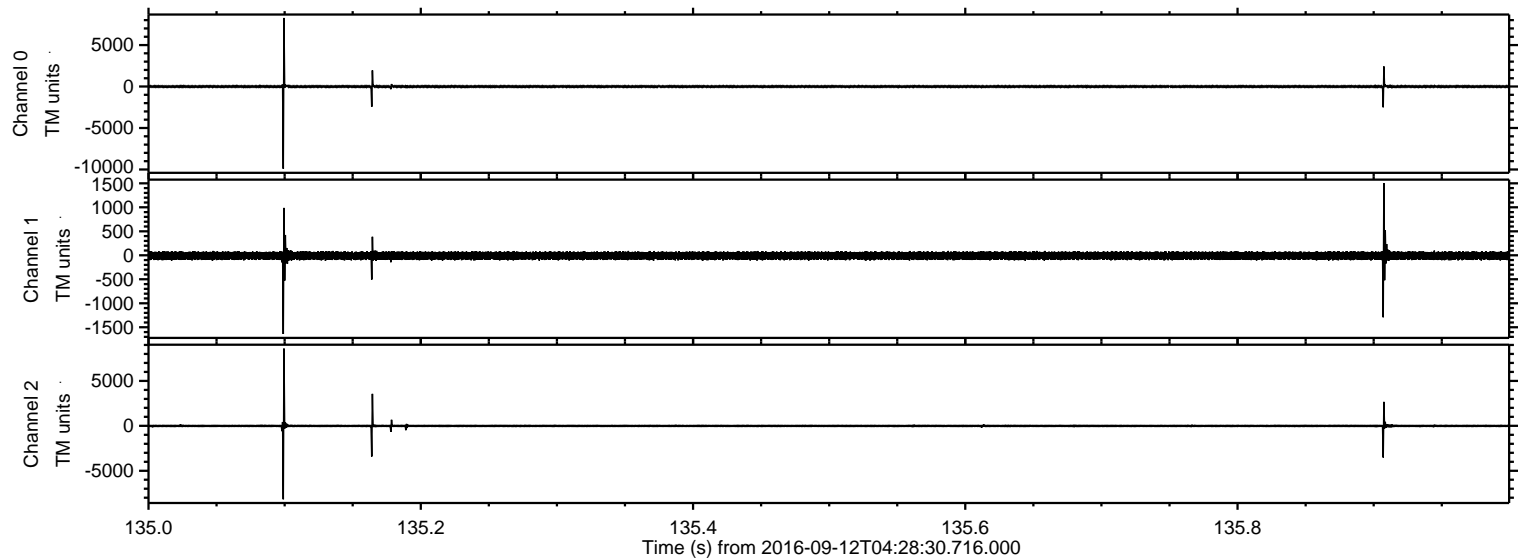
Processed Mon Sep 12 06:36:02 2016 by ELM ver.2012-10-06 from 001\_\_elm20160912\_042829\_\_dat00.bin





ELMAVAN 3D WAVEFORMS (Measured data sampled at 50 kHz) 51000 packets of 144 samples from 2016-09-12T04:28:30.716.000. Part 136/147

Processed Mon Sep 12 06:36:17 2016 by ELM ver.2012-10-06 from 001\_\_elm20160912\_042829\_\_dat00.bin



Channel 0  
mn: -9906  
mx: 8263  
 $\mu$ : -2.1  
 $\sigma$ : 91.4

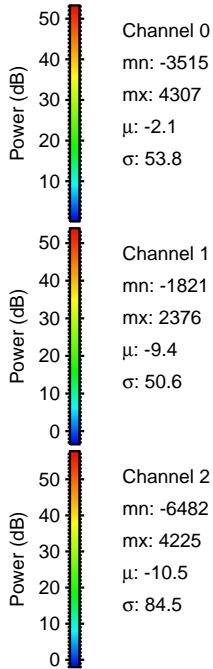
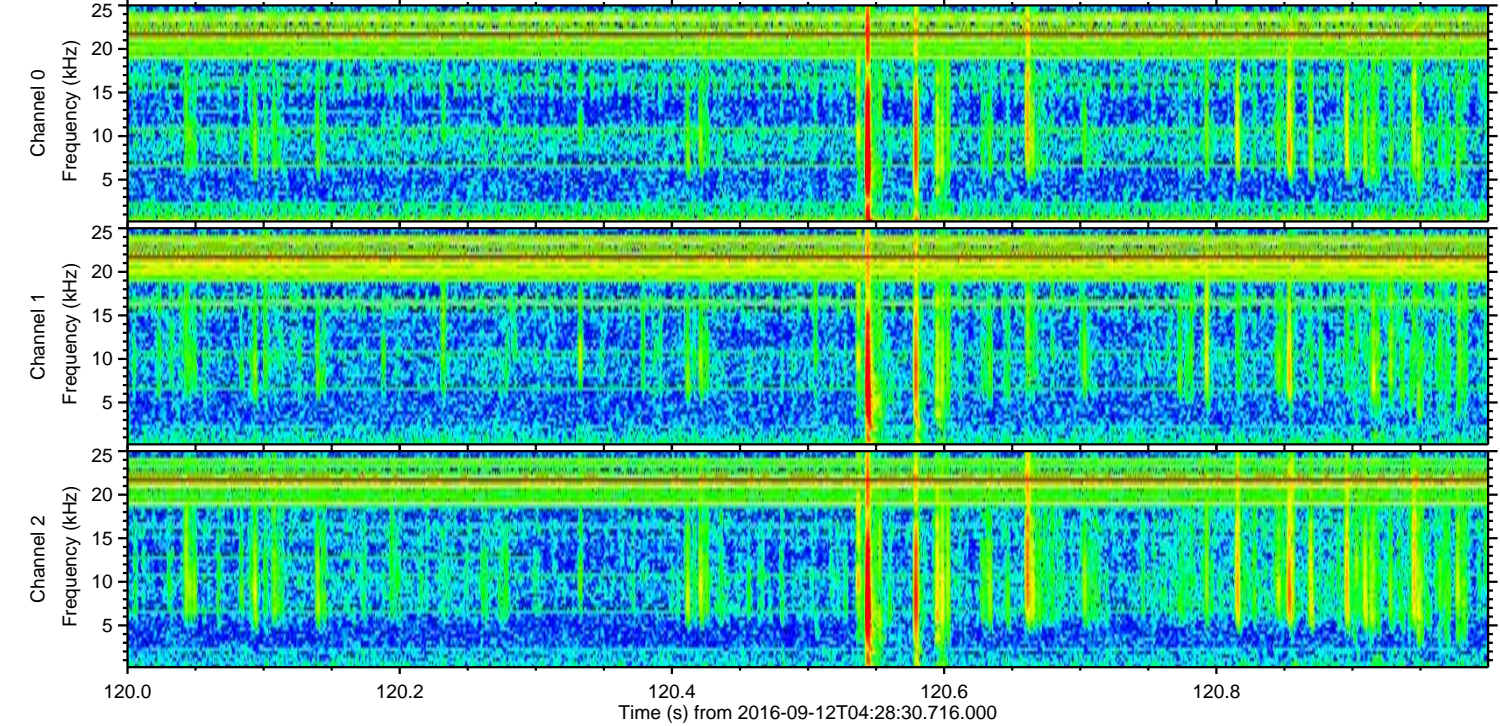
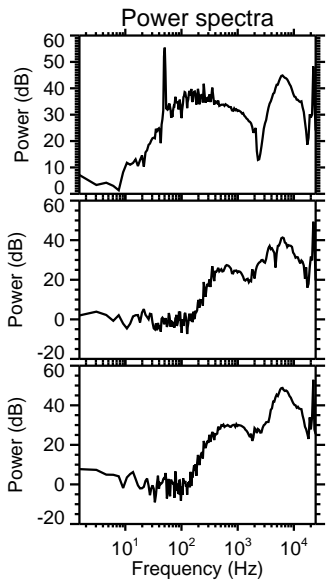
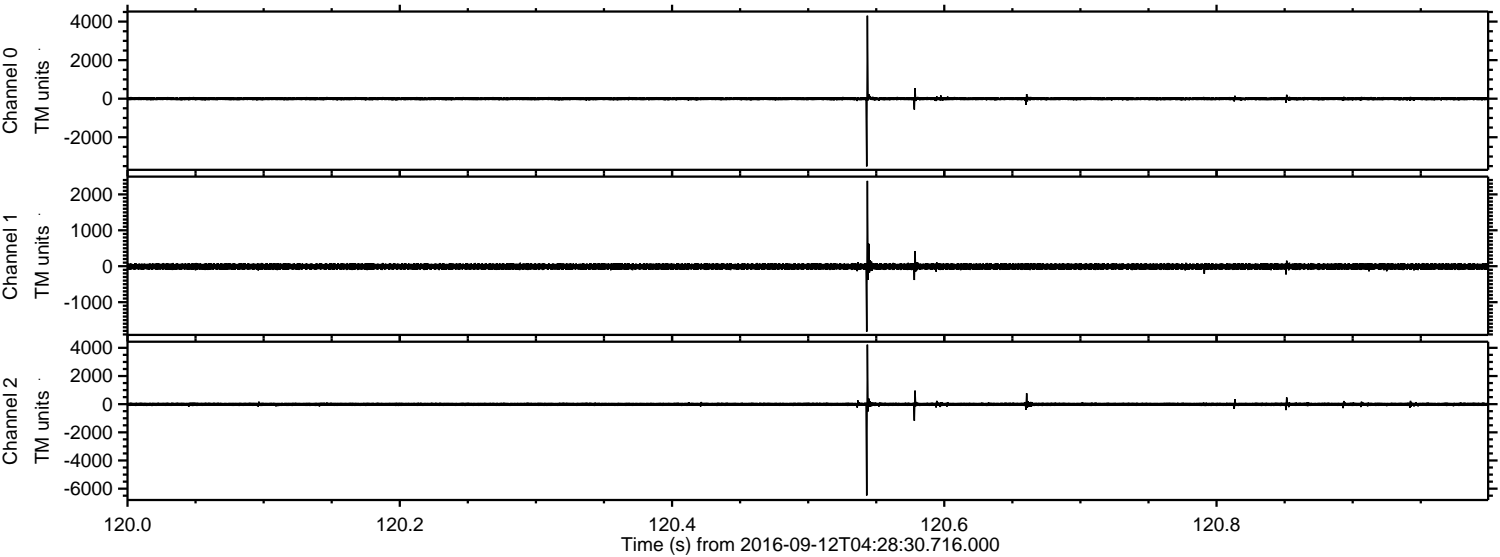
Channel 1  
mn: -1640  
mx: 1502  
 $\mu$ : -9.4  
 $\sigma$ : 50.2

Channel 2  
mn: -8178  
mx: 8598  
 $\mu$ : -10.5  
 $\sigma$ : 118.3



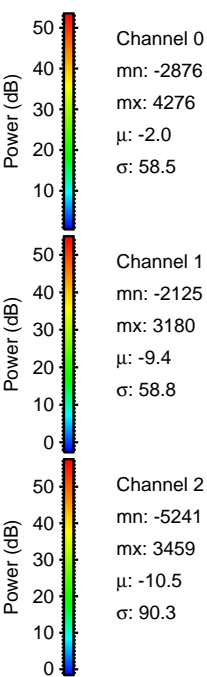
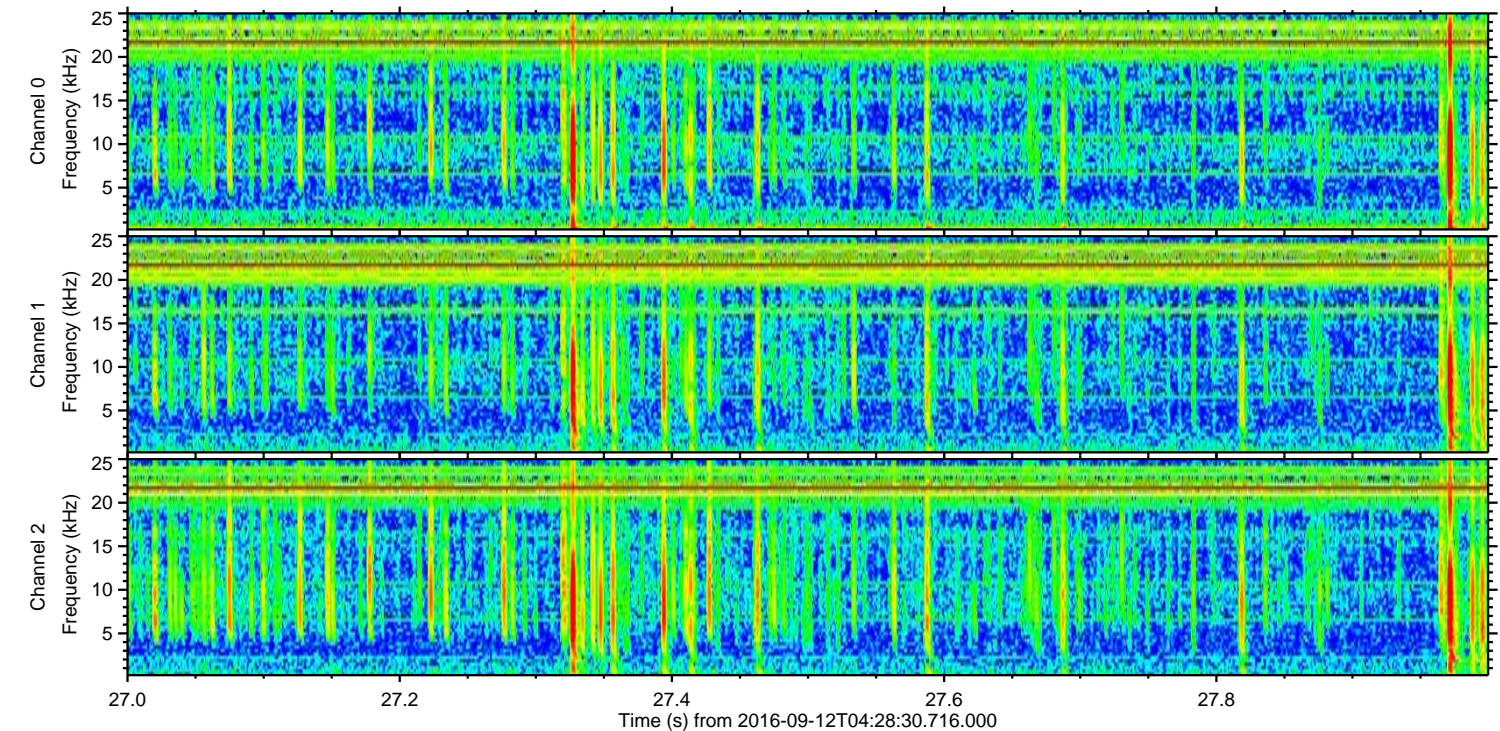
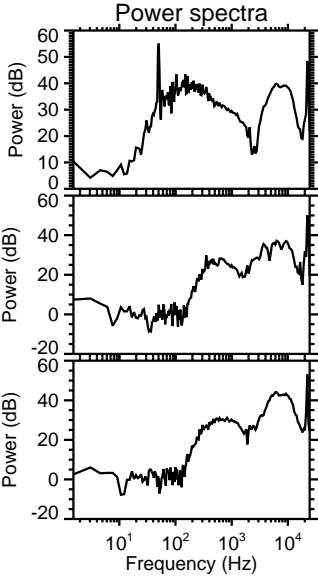
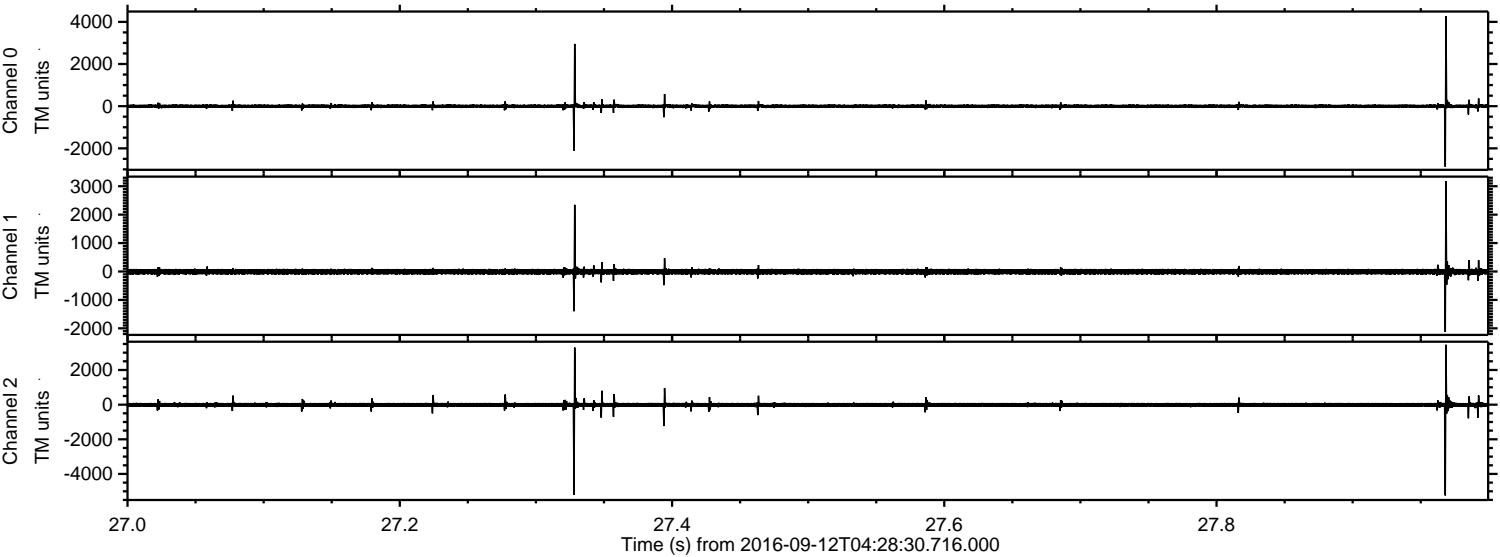
ELMAVAN 3D WAVEFORMS (Measured data sampled at 50 kHz) 51000 packets of 144 samples from 2016-09-12T04:28:30.716.000. Part 121/147

Processed Mon Sep 12 06:36:19 2016 by ELM ver.2012-10-06 from 001\_\_elm20160912\_042829\_\_dat00.bin





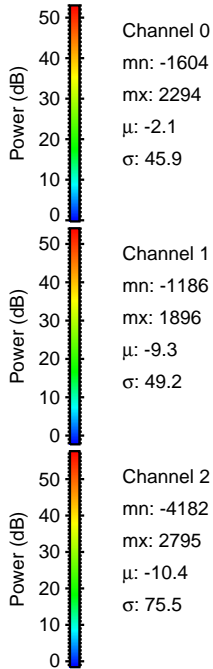
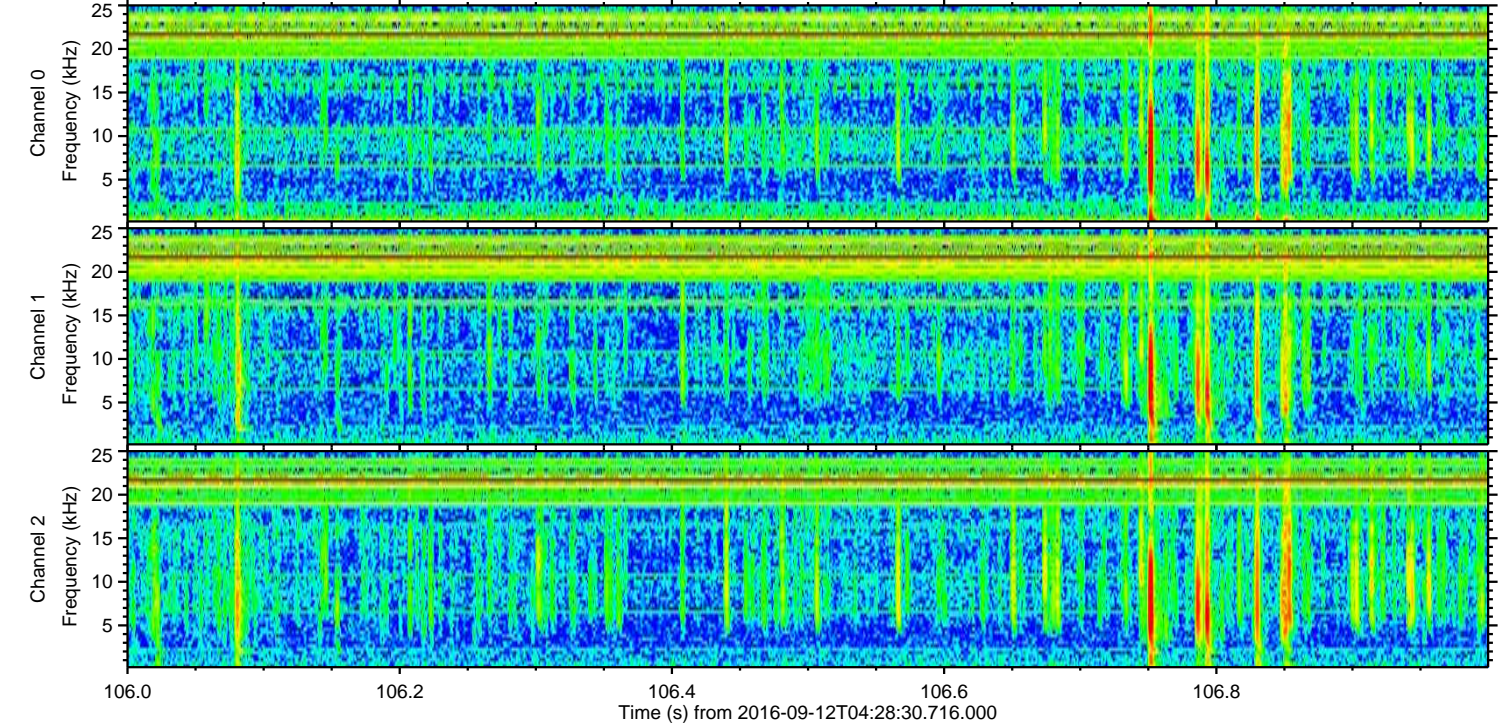
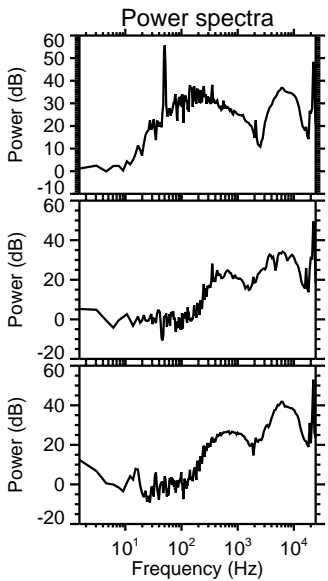
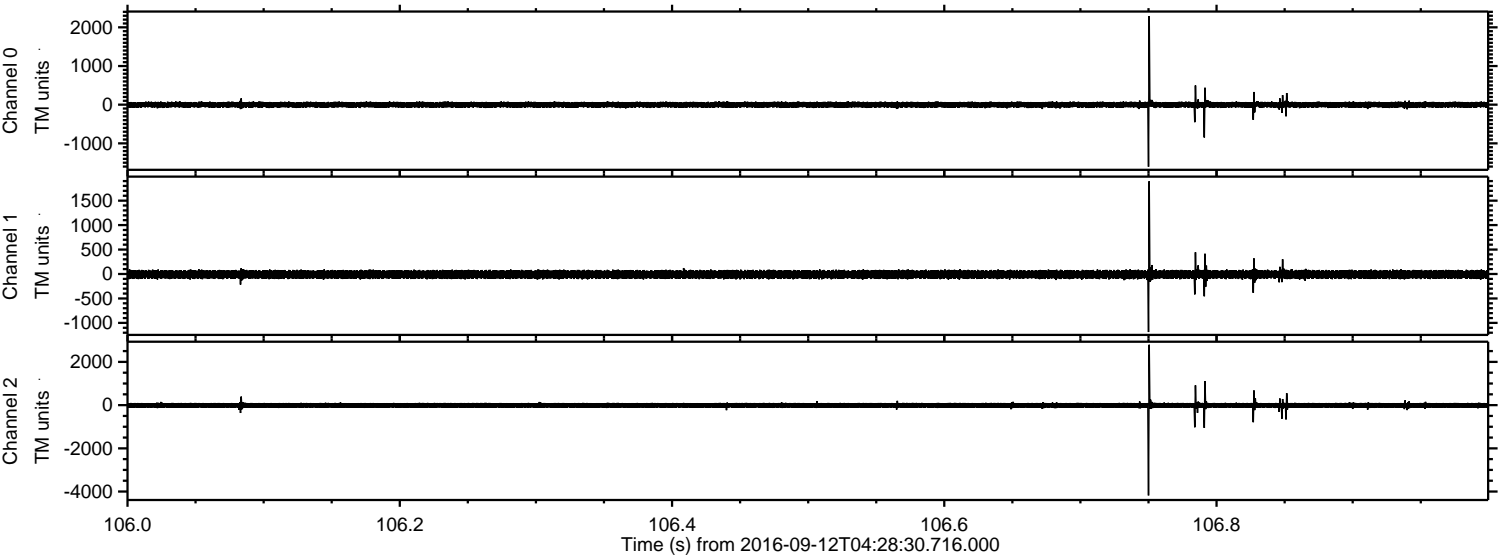
Processed Mon Sep 12 06:36:20 2016 by ELM ver.2012-10-06 from 001\_\_elm20160912\_042829\_\_dat00.bin





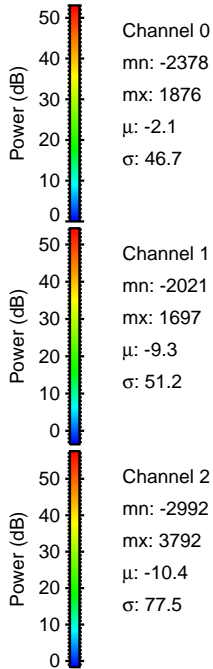
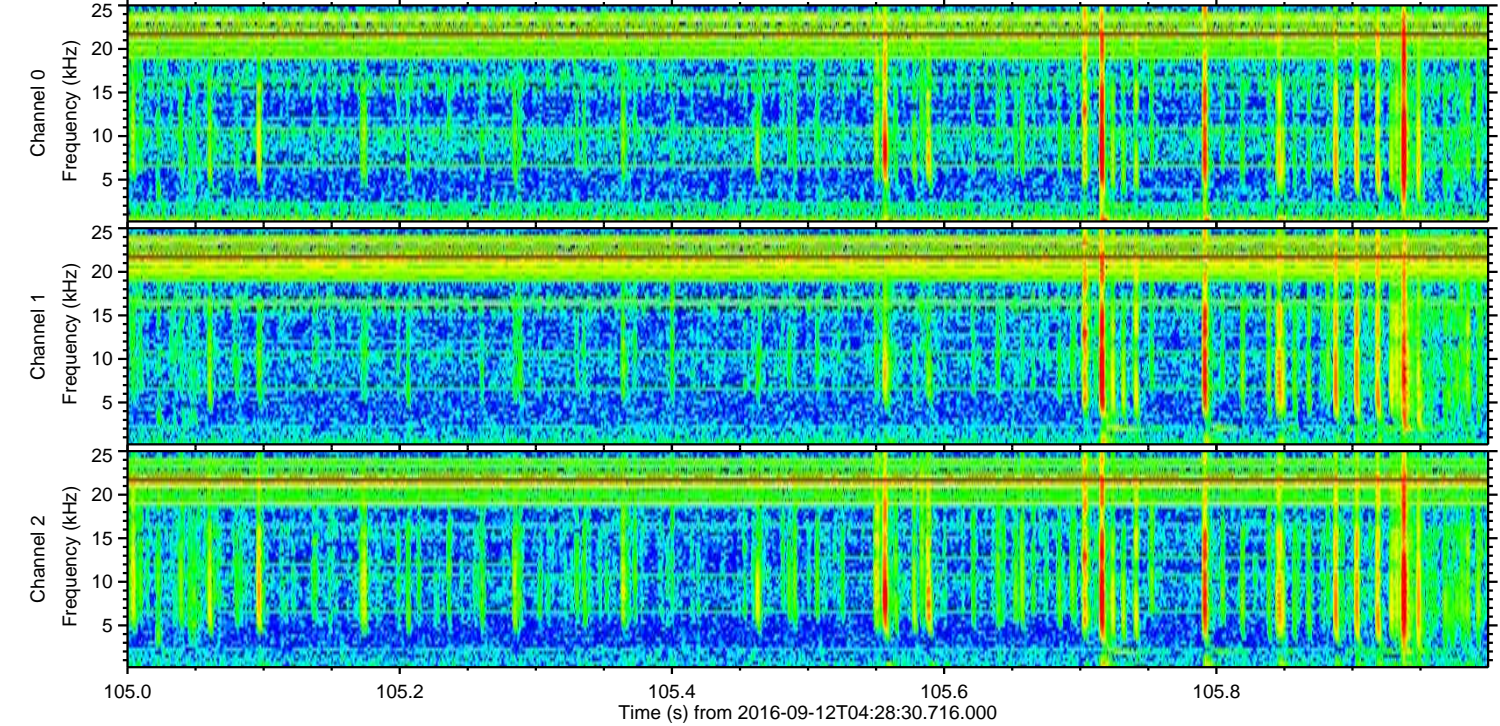
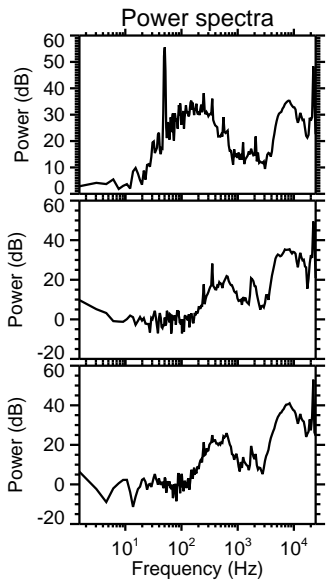
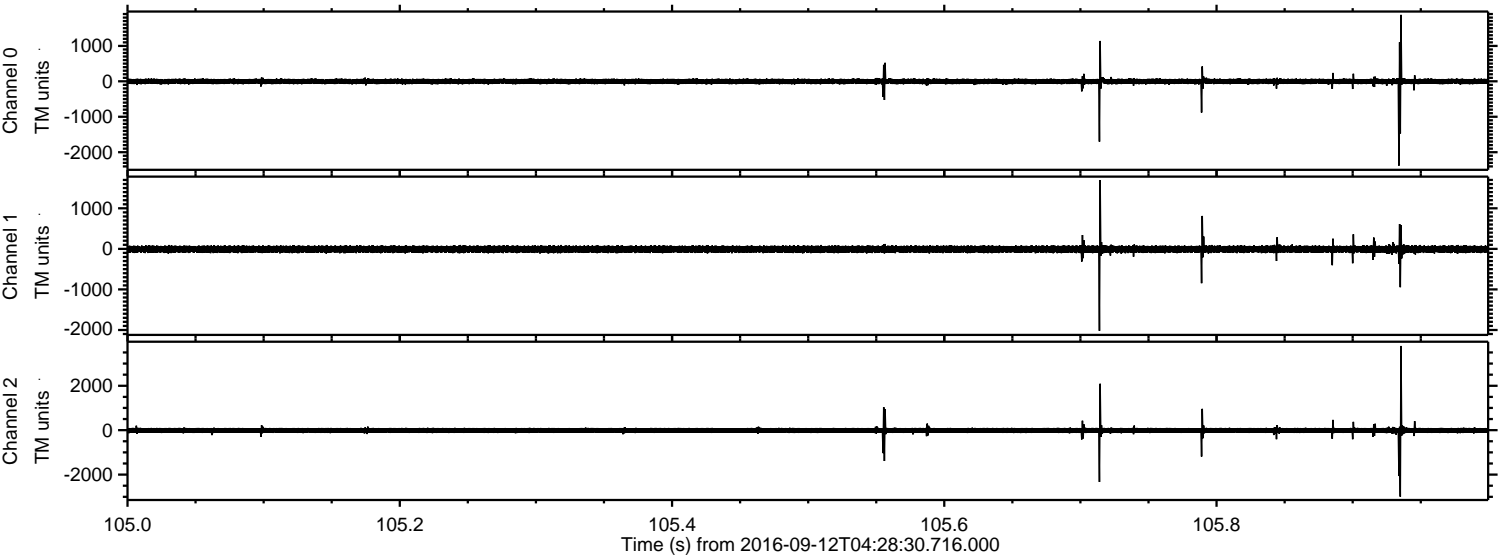
ELMAVAN 3D WAVEFORMS (Measured data sampled at 50 kHz) 51000 packets of 144 samples from 2016-09-12T04:28:30.716.000. Part 107/147

Processed Mon Sep 12 06:36:21 2016 by ELM ver.2012-10-06 from 001\_\_elm20160912\_042829\_\_dat00.bin



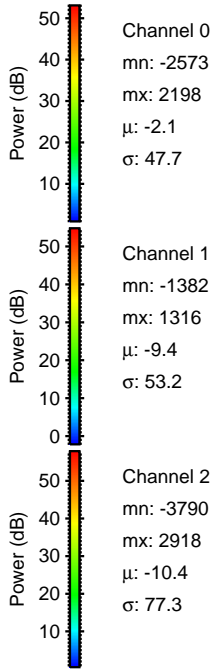
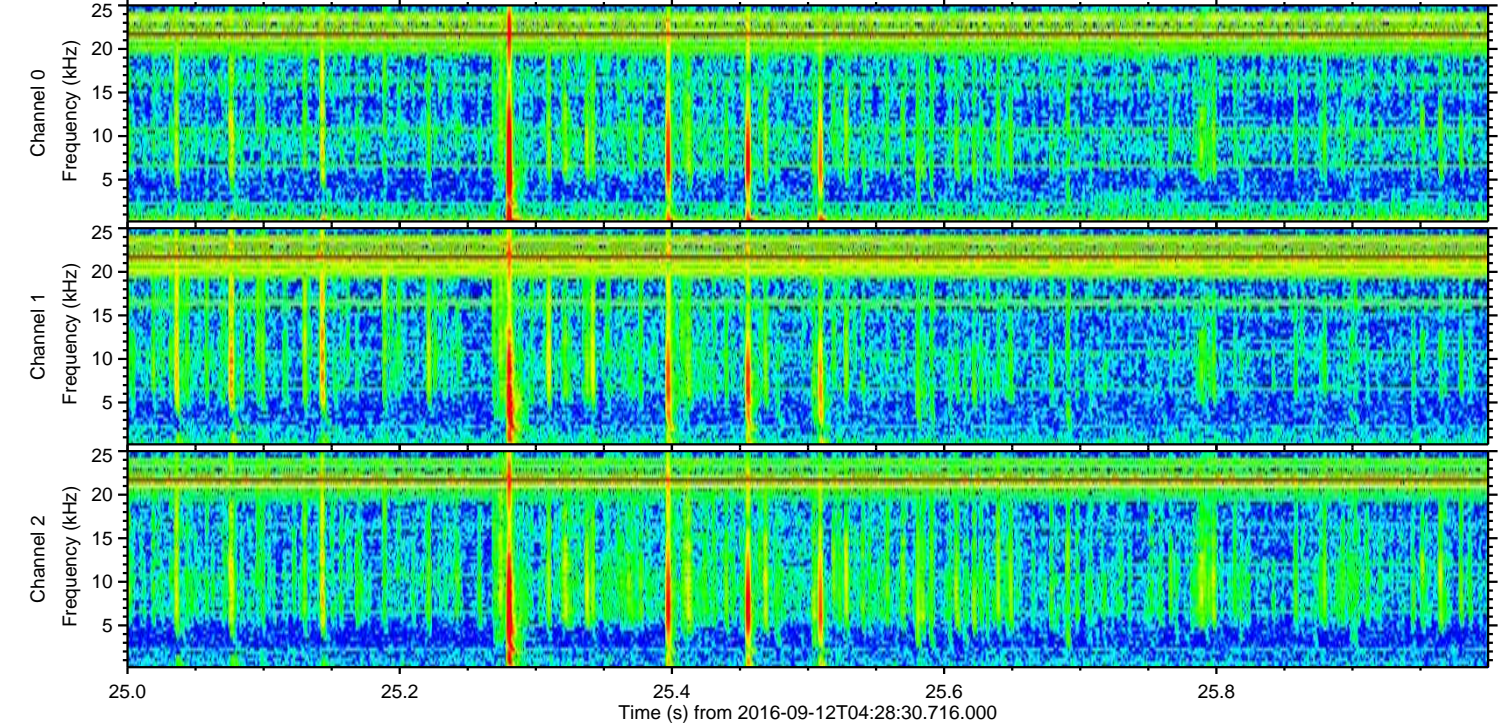
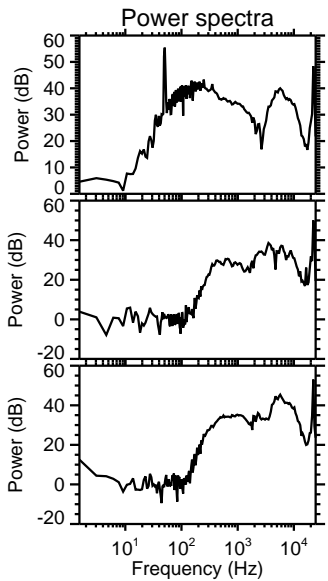
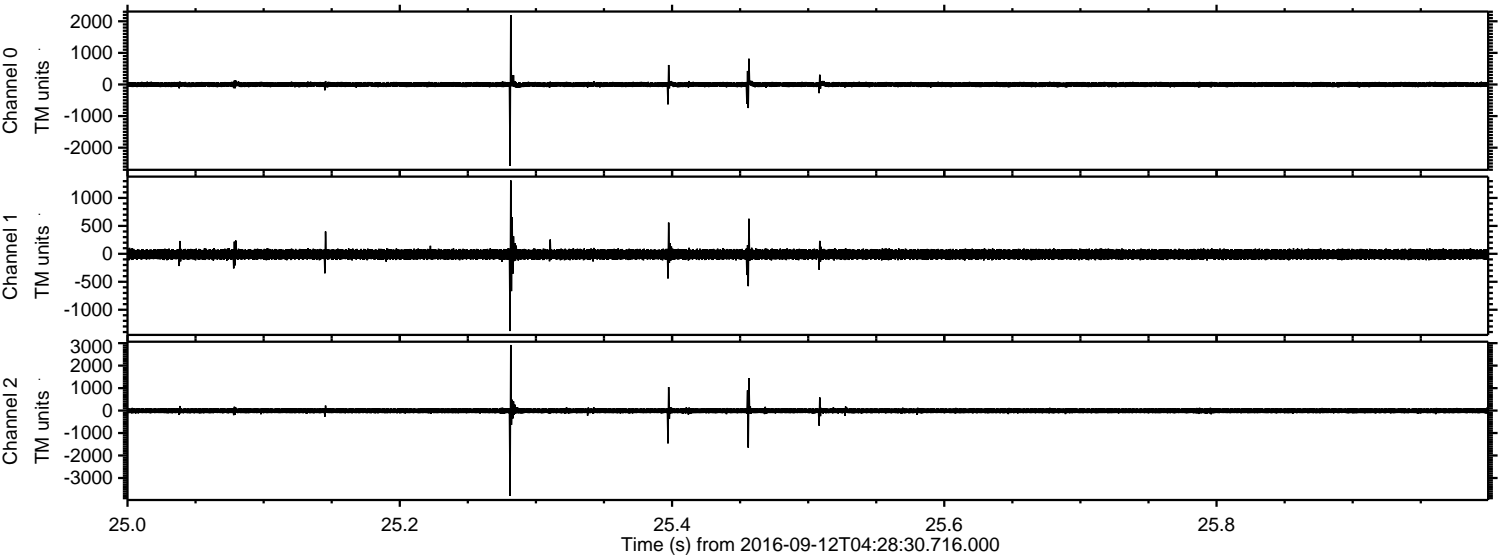
ELMAVAN 3D WAVEFORMS (Measured data sampled at 50 kHz) 51000 packets of 144 samples from 2016-09-12T04:28:30.716.000. Part 106/147

Processed Mon Sep 12 06:36:22 2016 by ELM ver.2012-10-06 from 001\_\_elm20160912\_042829\_\_dat00.bin





Processed Mon Sep 12 06:36:23 2016 by ELM ver.2012-10-06 from 001\_\_elm20160912\_042829\_\_dat00.bin



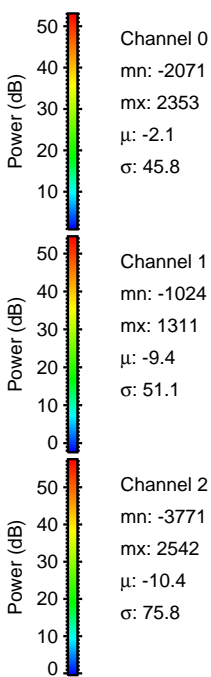
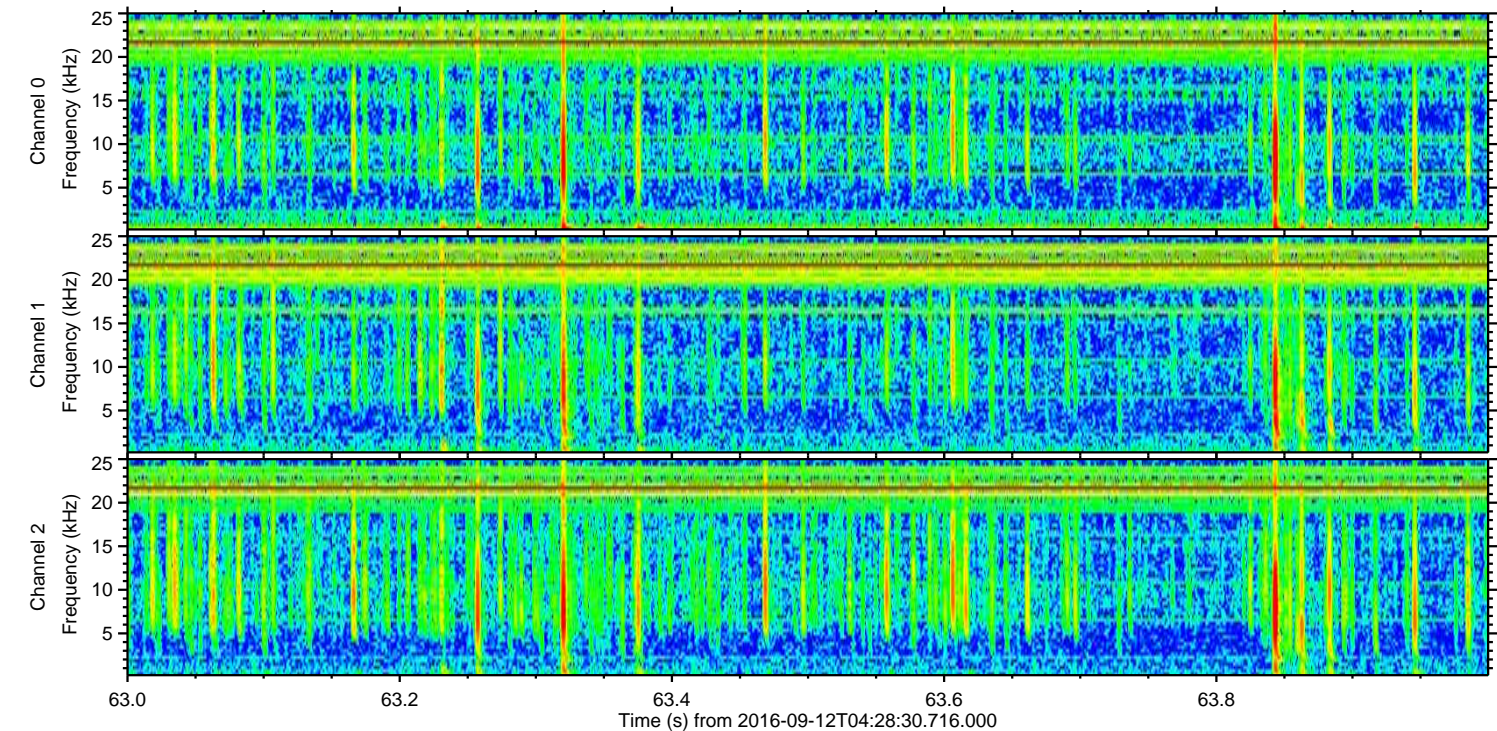
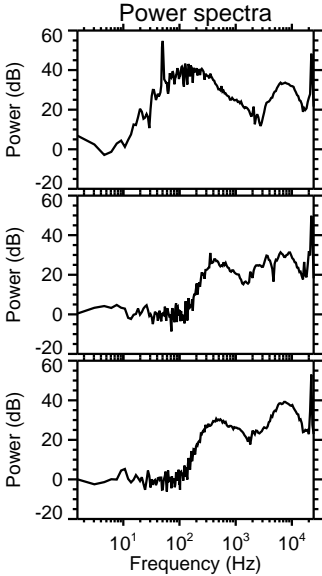
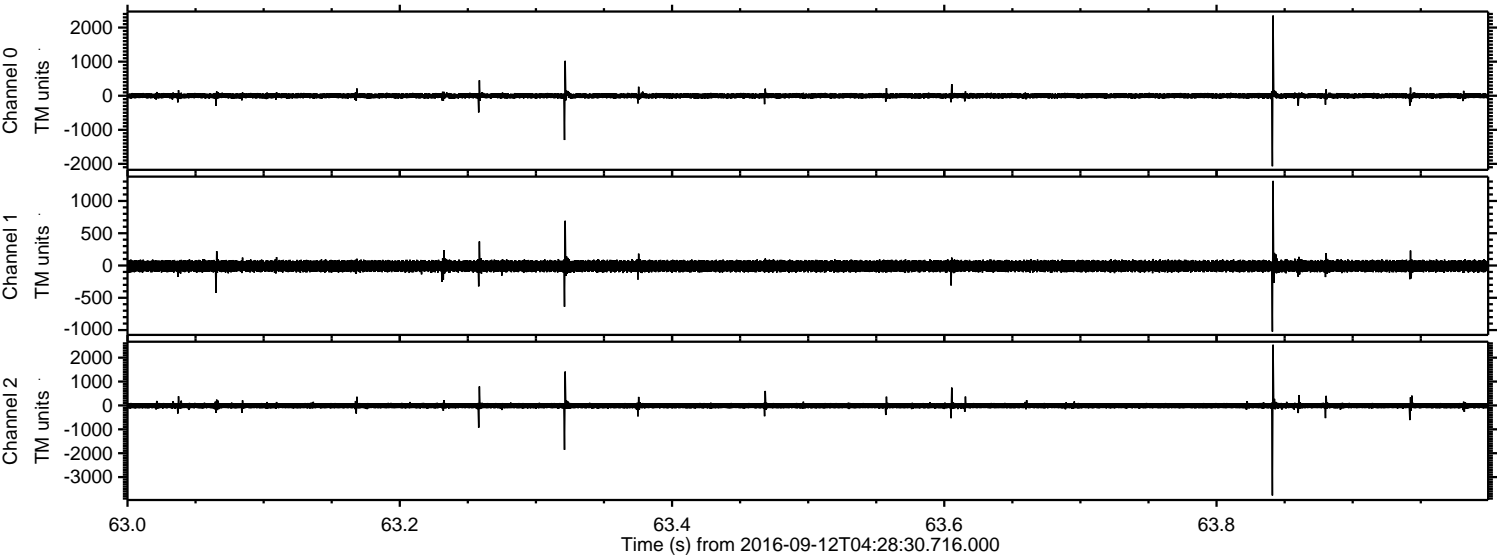
Channel 0  
mn: -2573  
mx: 2198  
 $\mu$ : -2.1  
 $\sigma$ : 47.7

Channel 1  
mn: -1382  
mx: 1316  
 $\mu$ : -9.4  
 $\sigma$ : 53.2

Channel 2  
mn: -3790  
mx: 2918  
 $\mu$ : -10.4  
 $\sigma$ : 77.3

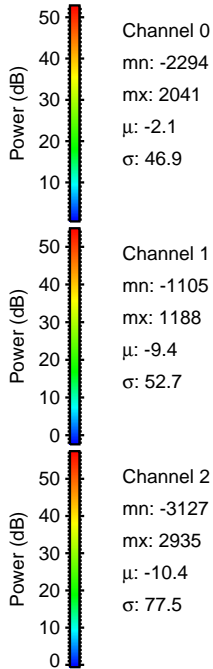
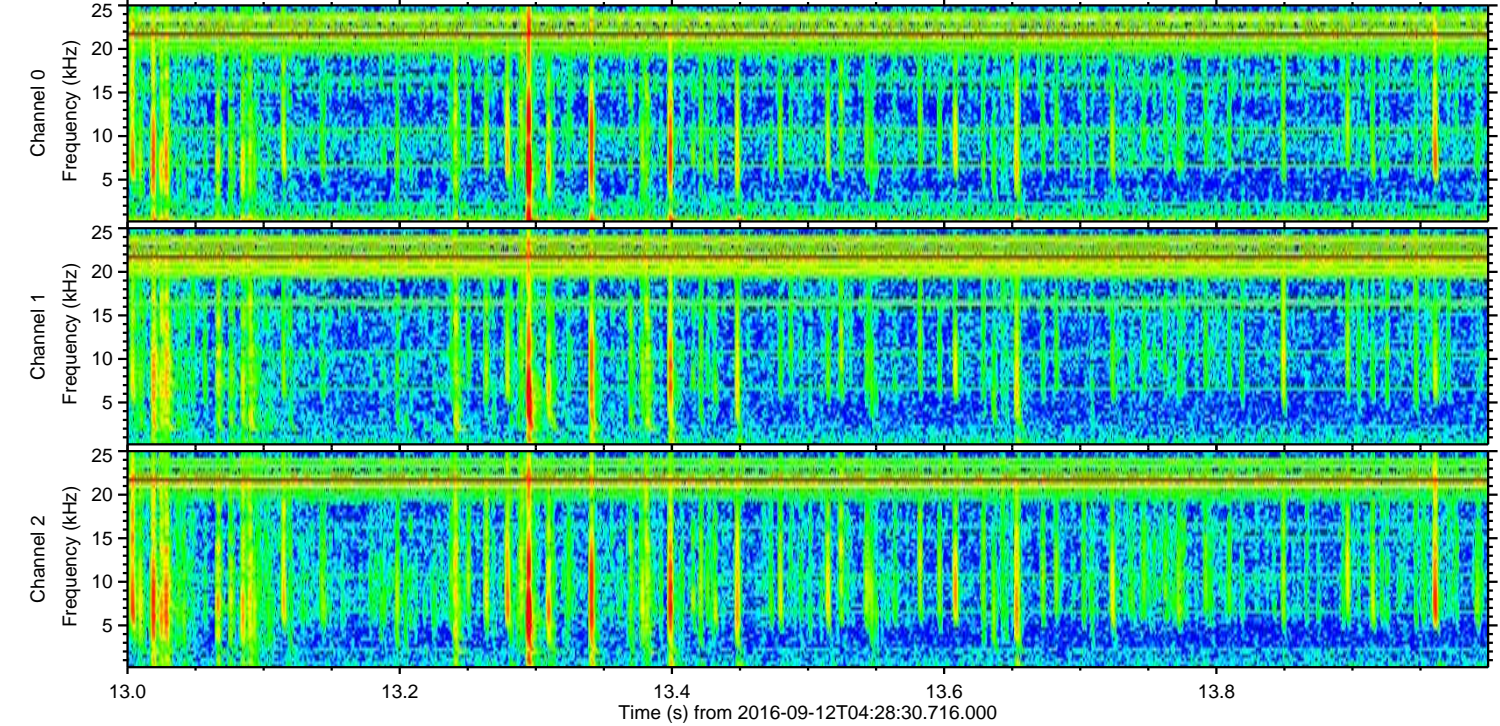
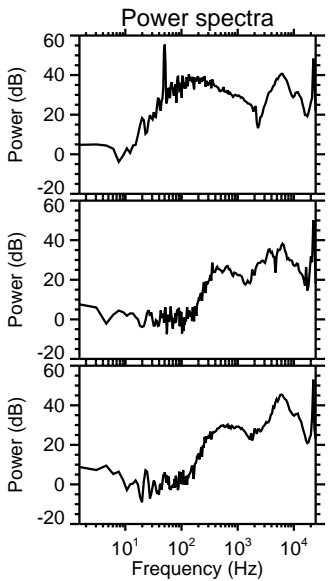
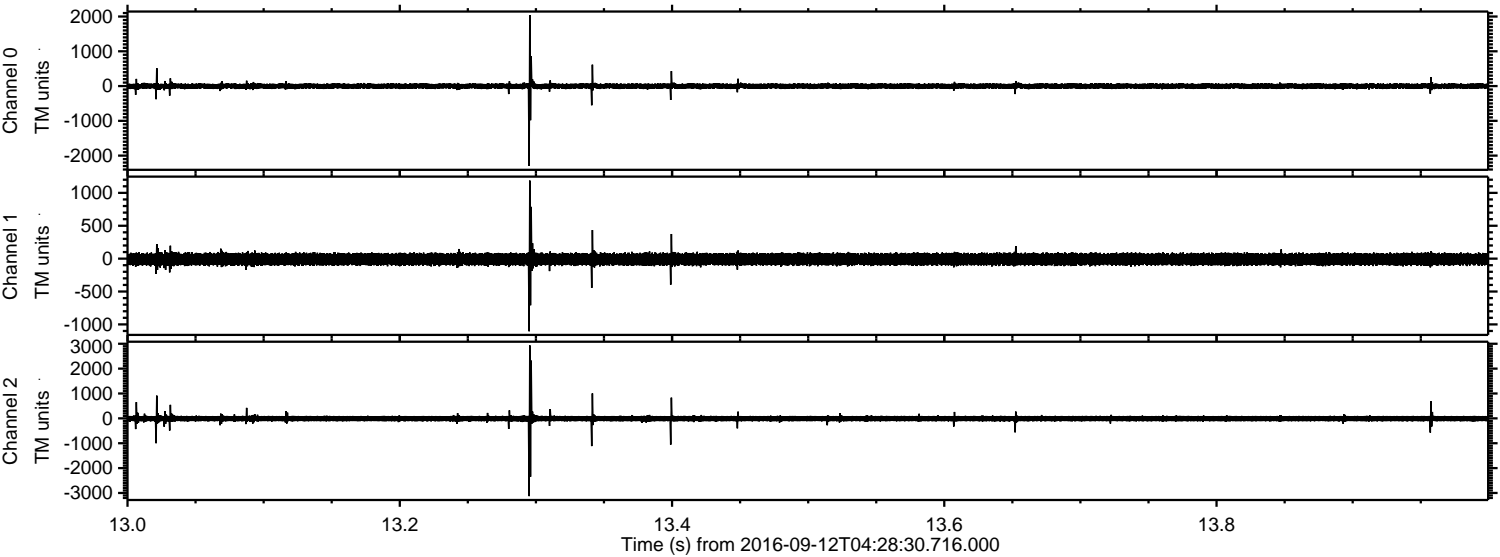


Processed Mon Sep 12 06:36:24 2016 by ELM ver.2012-10-06 from 001\_\_elm20160912\_042829\_\_dat00.bin





Processed Mon Sep 12 06:36:24 2016 by ELM ver.2012-10-06 from 001\_\_elm20160912\_042829\_\_dat00.bin



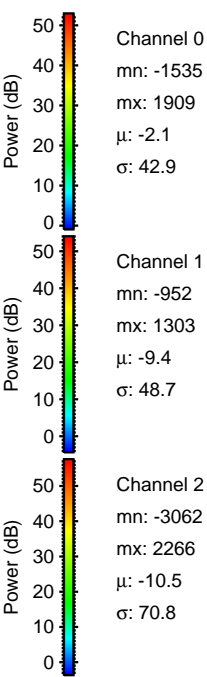
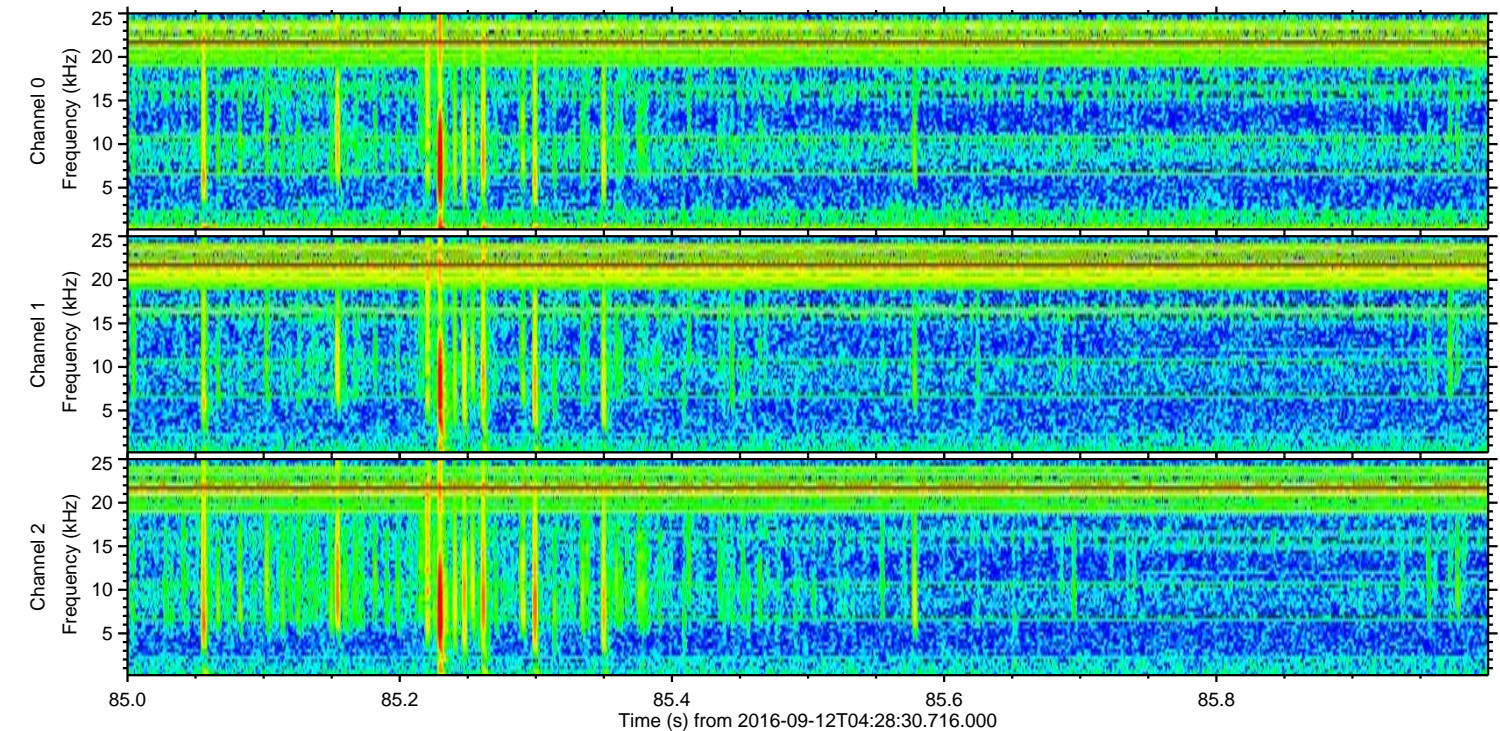
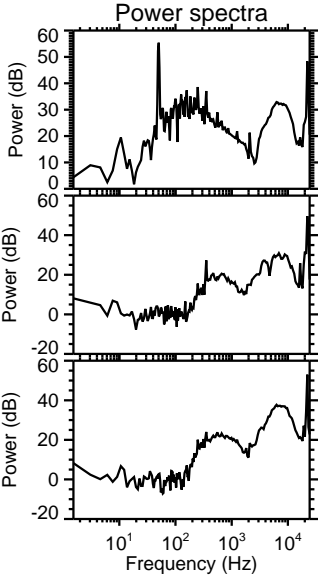
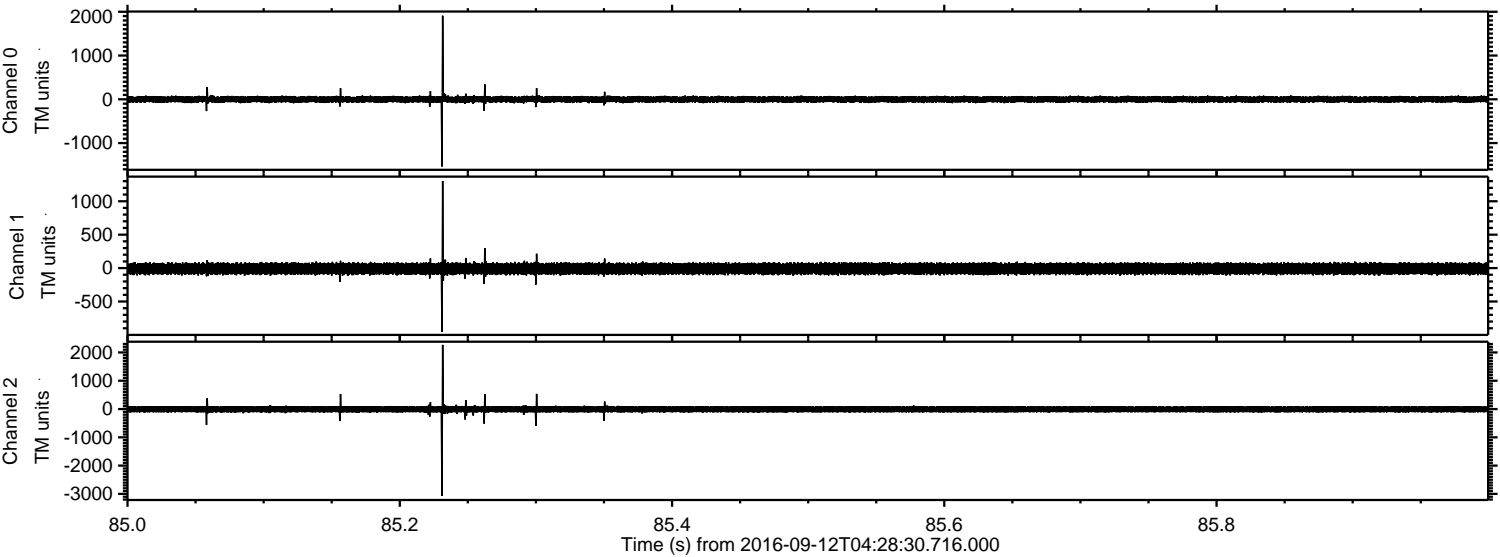
Channel 0  
mn: -2294  
mx: 2041  
 $\mu$ : -2.1  
 $\sigma$ : 46.9

Channel 1  
mn: -1105  
mx: 1188  
 $\mu$ : -9.4  
 $\sigma$ : 52.7

Channel 2  
mn: -3127  
mx: 2935  
 $\mu$ : -10.4  
 $\sigma$ : 77.5



Processed Mon Sep 12 06:36:25 2016 by ELM ver.2012-10-06 from 001\_\_elm20160912\_042829\_\_dat00.bin





Processed Mon Sep 12 06:36:26 2016 by ELM ver.2012-10-06 from 001\_\_elm20160912\_042829\_\_dat00.bin

