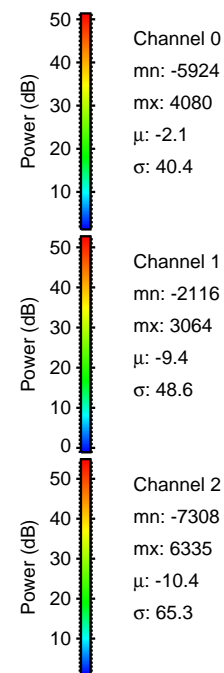
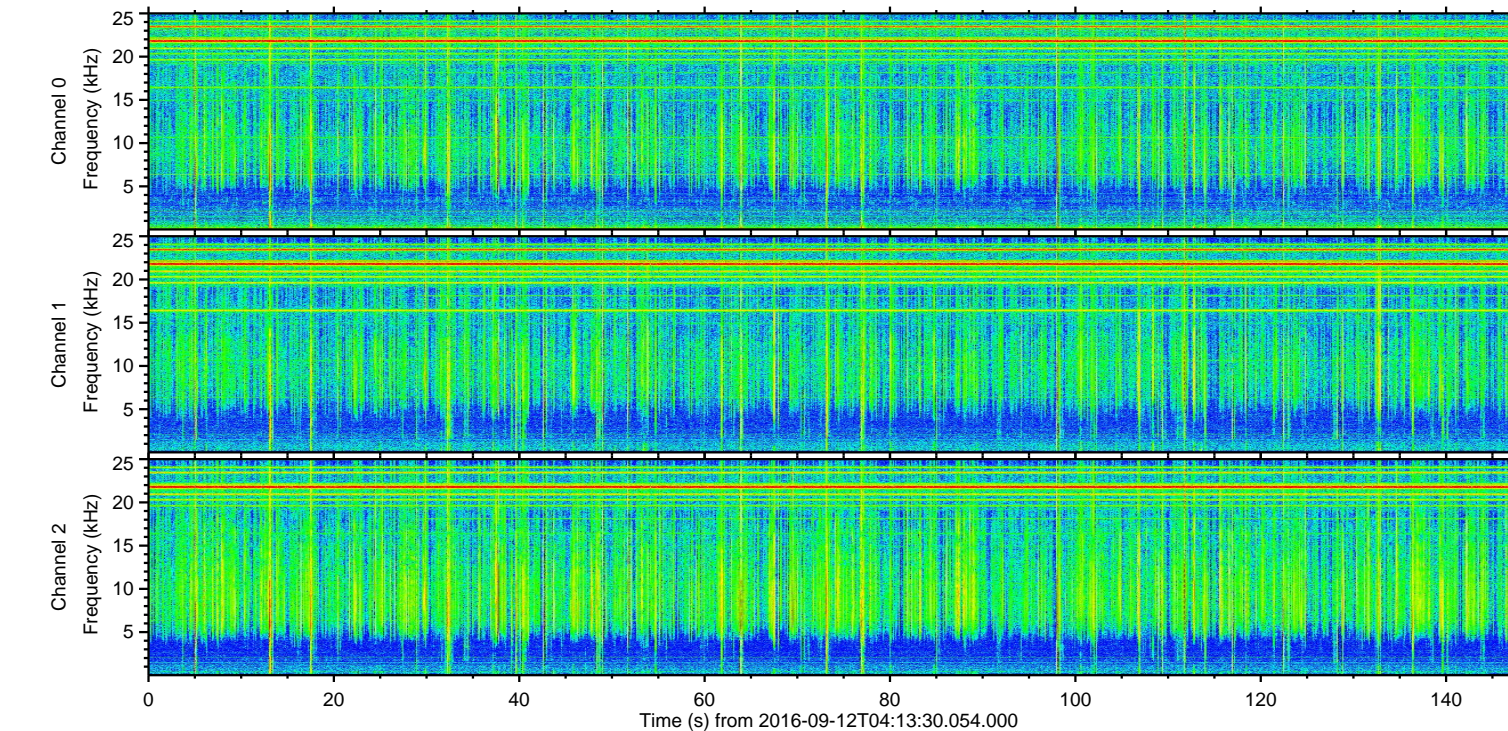
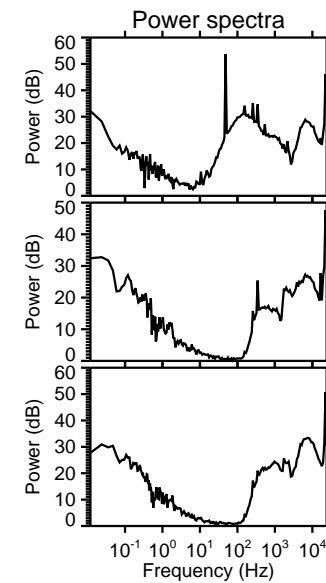
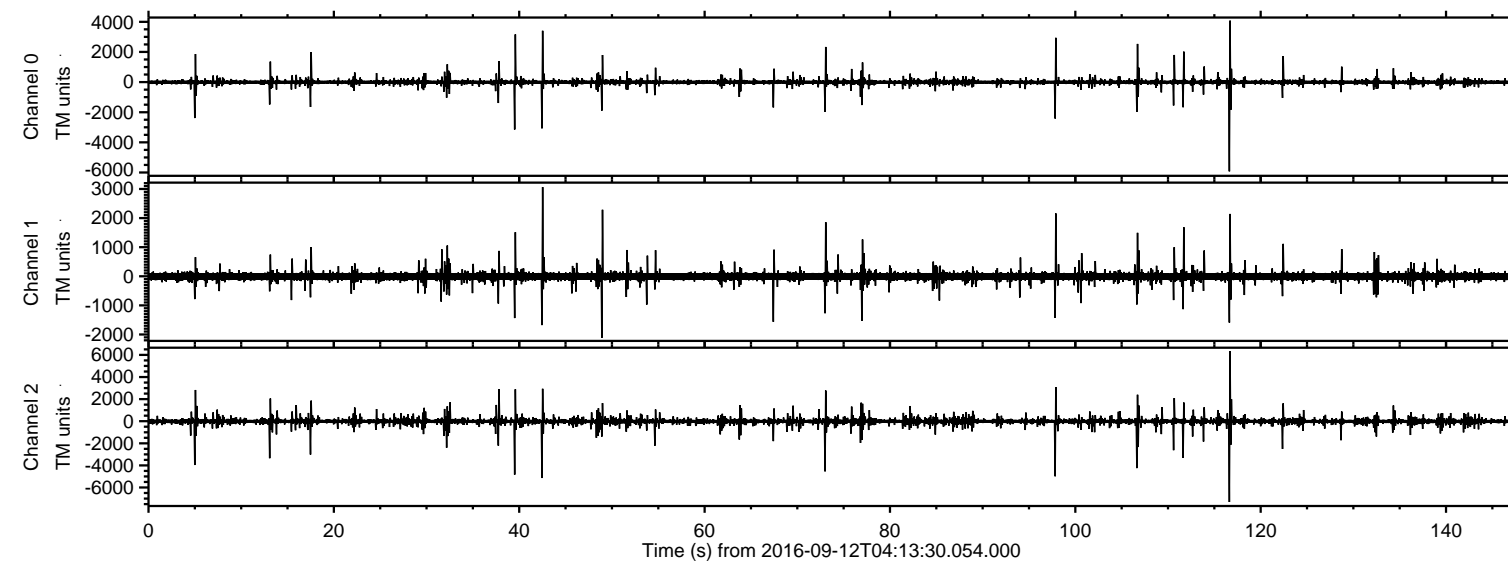


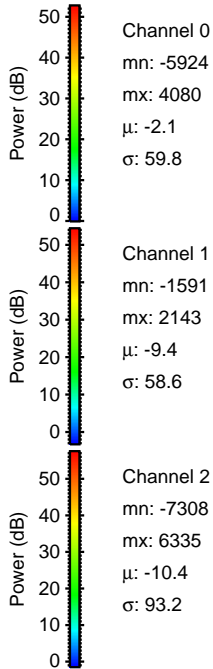
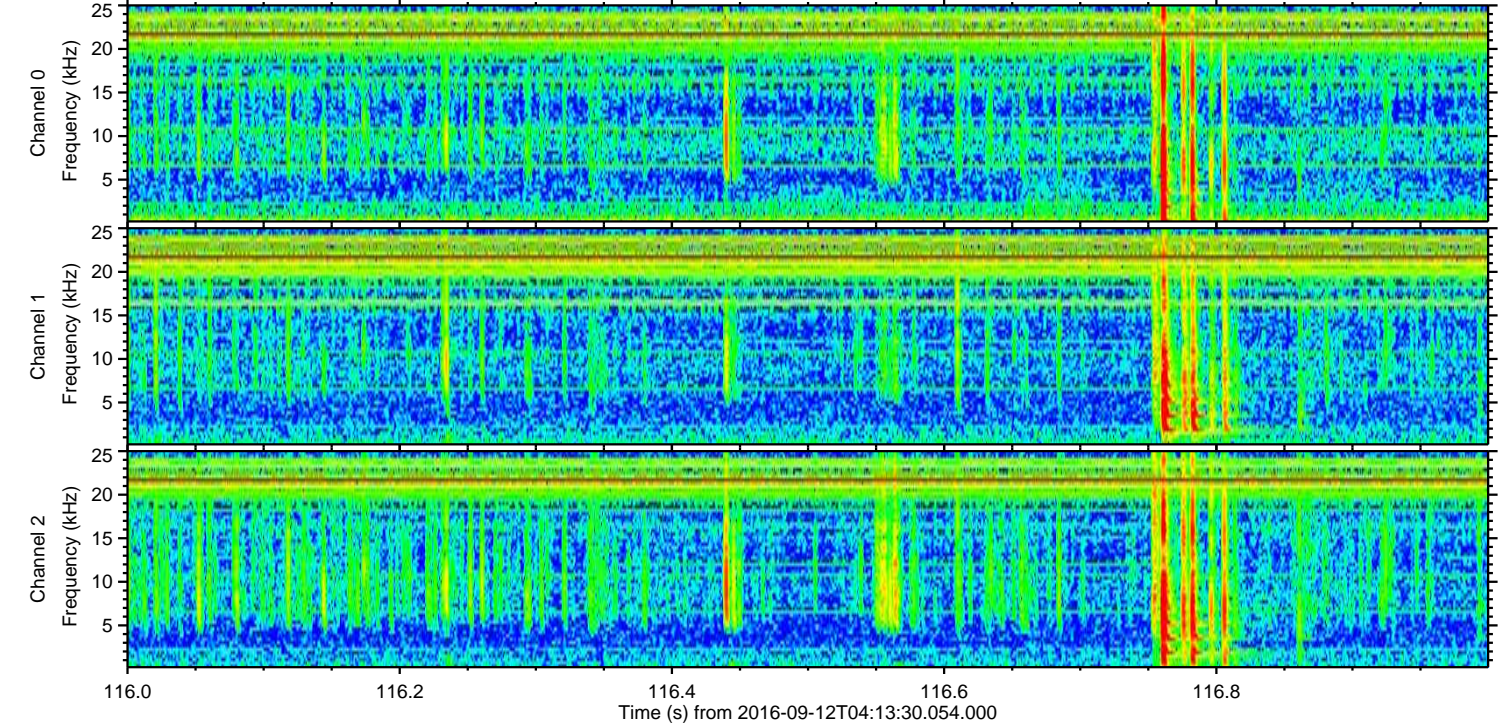
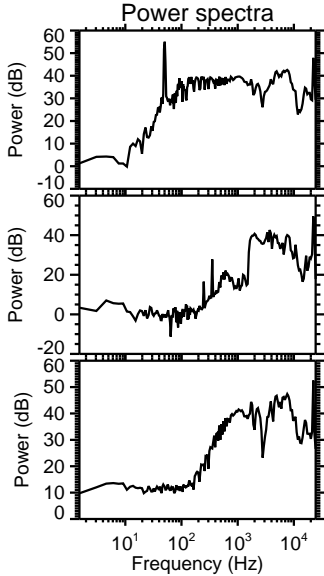
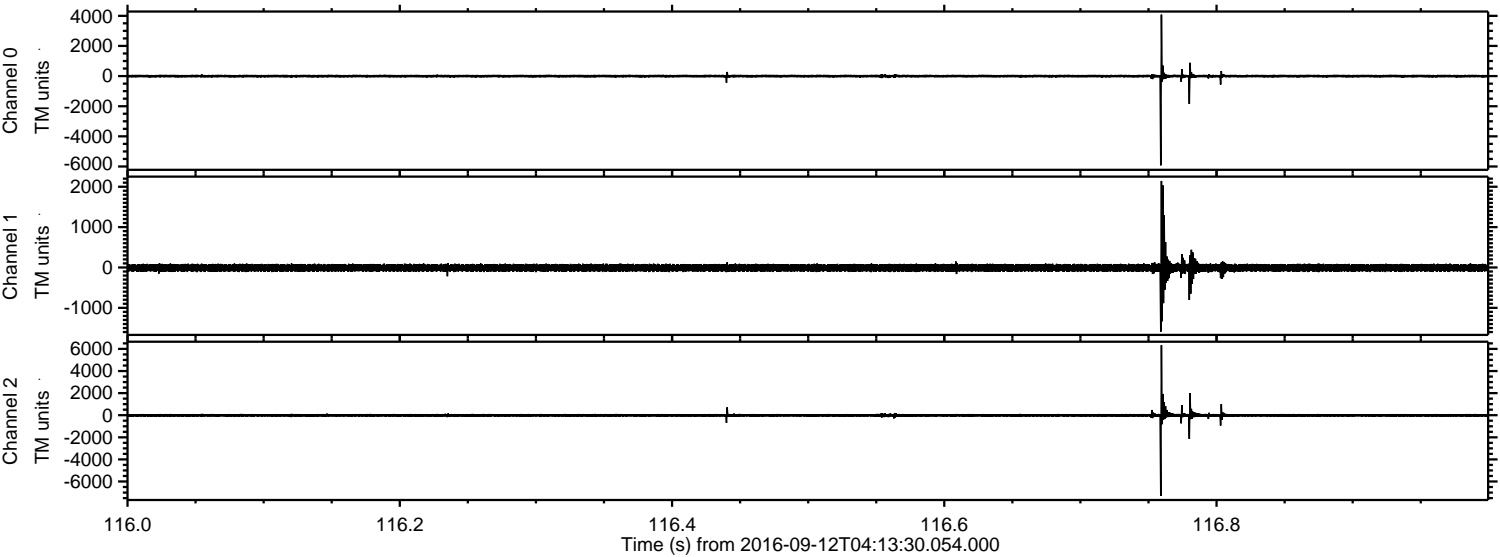
ELMAVAN 3D WAVEFORMS (Measured data sampled at 50 kHz) 51000 packets of 144 samples from 2016-09-12T04:13:30.054.000.

Processed Mon Sep 12 06:21:52 2016 by ELM ver.2012-10-06 from 001__elm20160912_041329__dat00.bin



ELMAVAN 3D WAVEFORMS (Measured data sampled at 50 kHz) 51000 packets of 144 samples from 2016-09-12T04:13:30.054.000. Part 117/147

Processed Mon Sep 12 06:22:04 2016 by ELM ver.2012-10-06 from 001__elm20160912_041329__dat00.bin

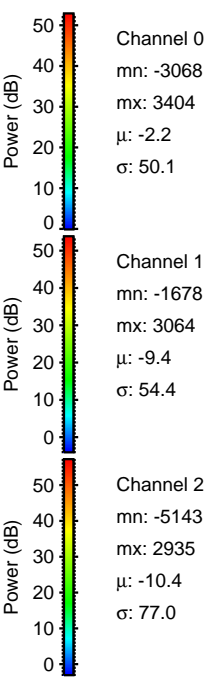
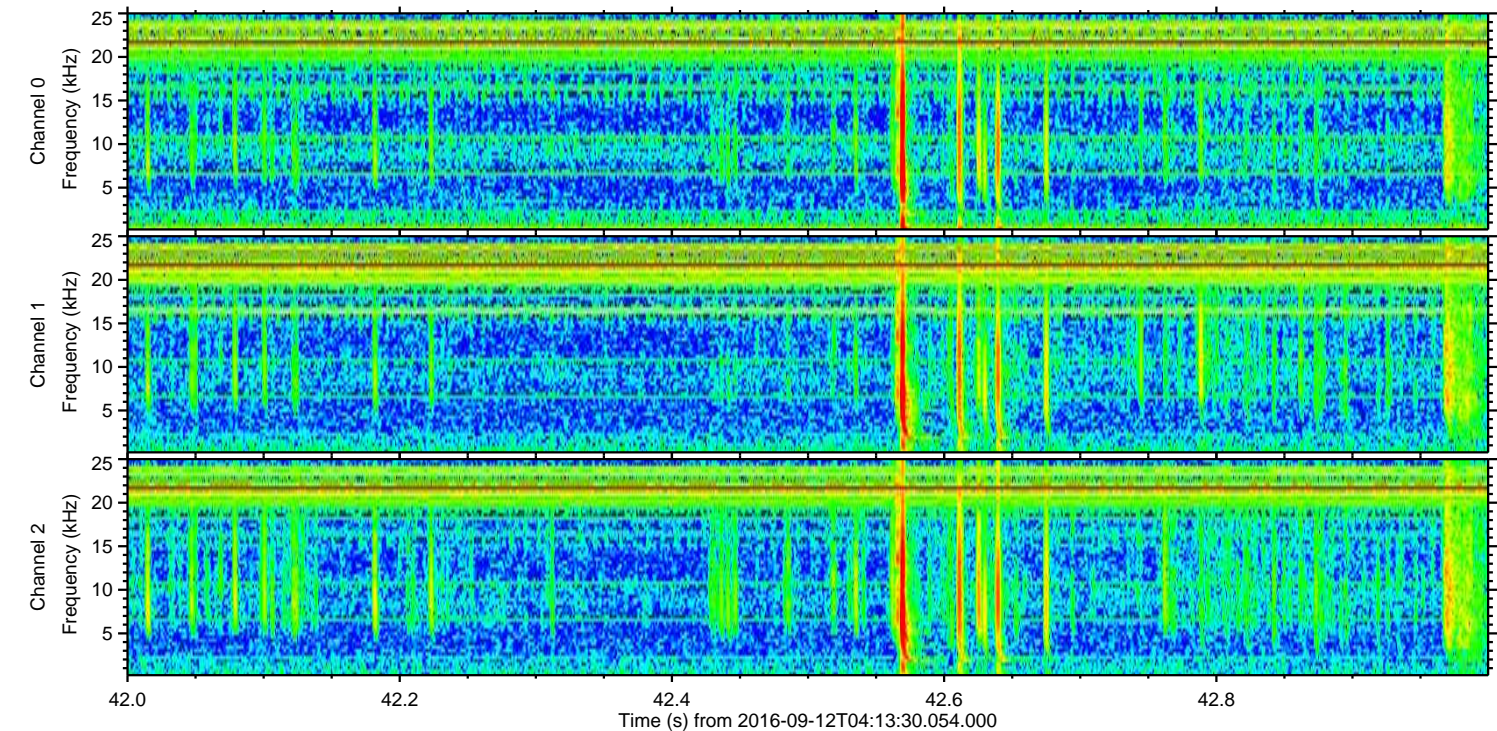
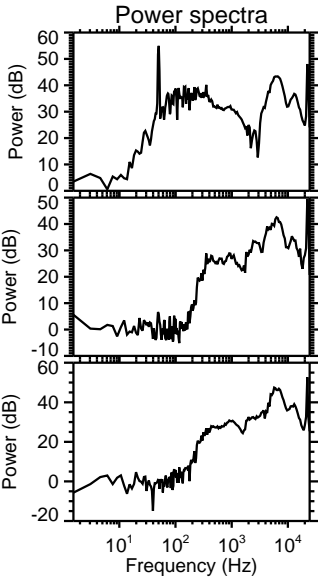
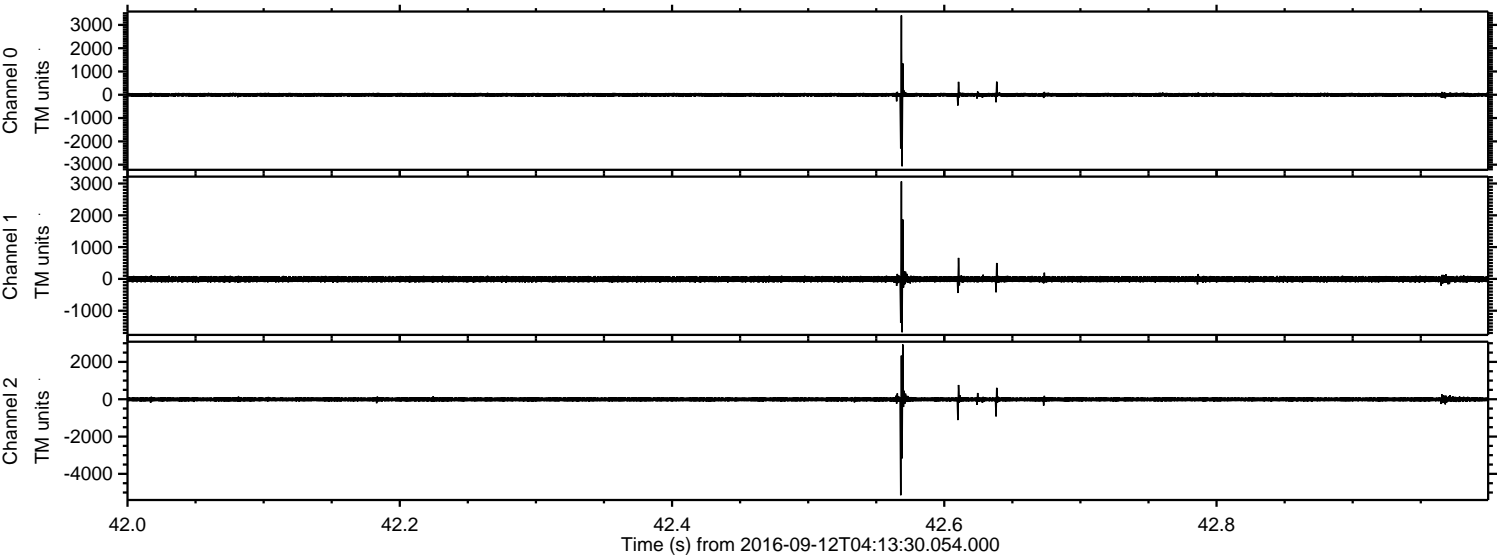


Channel 0
mn: -5924
mx: 4080
 μ : -2.1
 σ : 59.8

Channel 1
mn: -1591
mx: 2143
 μ : -9.4
 σ : 58.6

Channel 2
mn: -7308
mx: 6335
 μ : -10.4
 σ : 93.2

Processed Mon Sep 12 06:22:05 2016 by ELM ver.2012-10-06 from 001__elm20160912_041329__dat00.bin



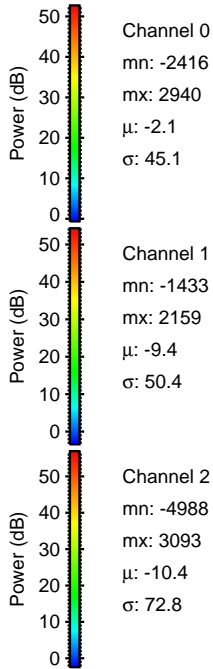
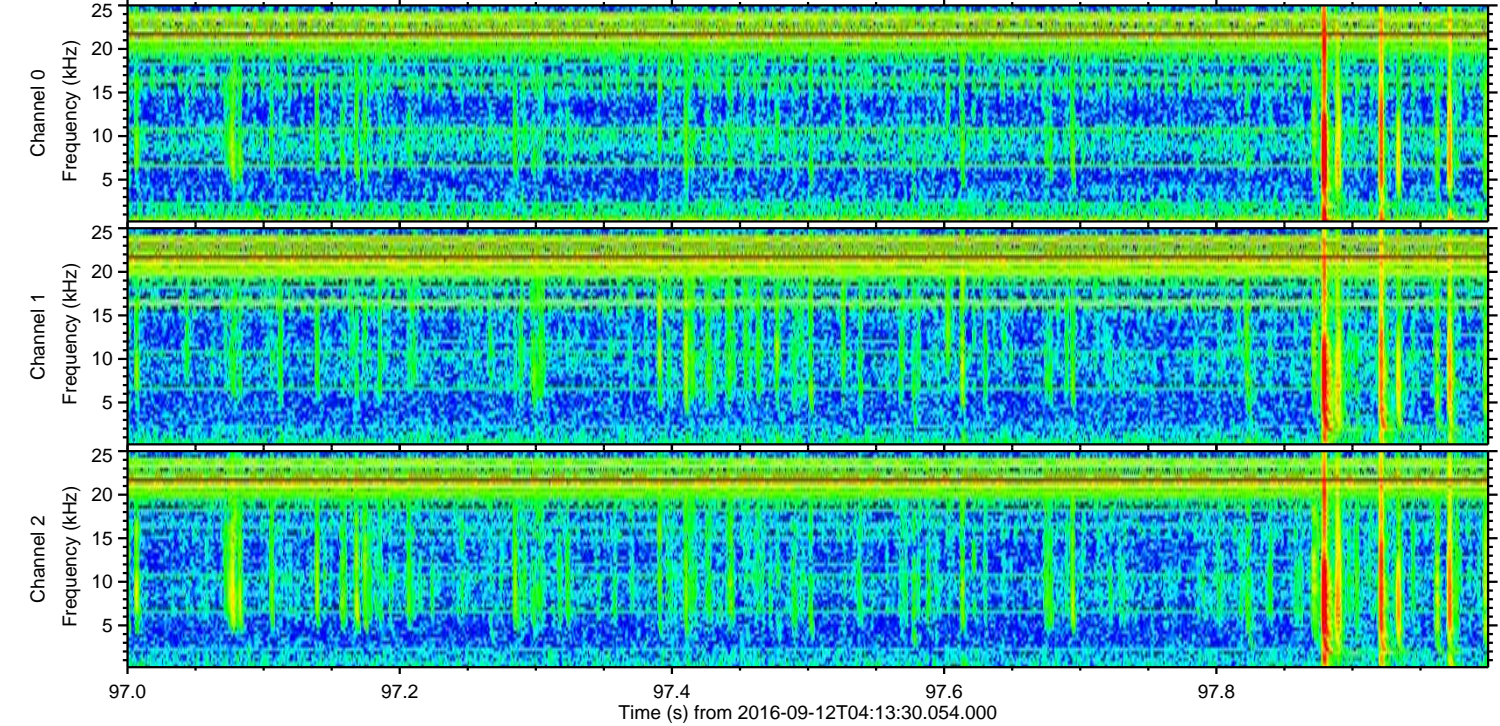
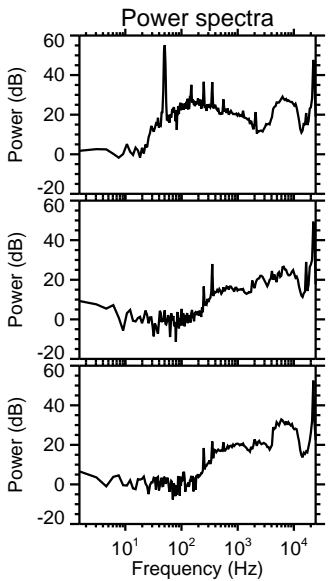
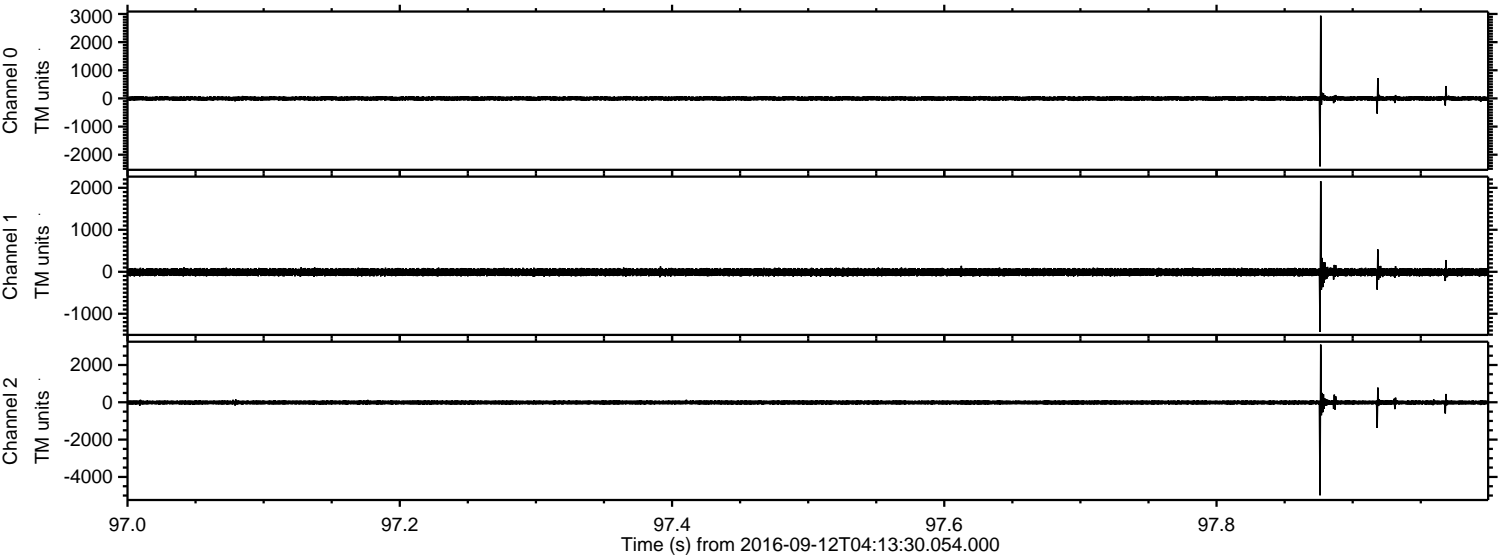
Channel 0
mn: -3068
mx: 3404
 μ : -2.2
 σ : 50.1

Channel 1
mn: -1678
mx: 3064
 μ : -9.4
 σ : 54.4

Channel 2
mn: -5143
mx: 2935
 μ : -10.4
 σ : 77.0

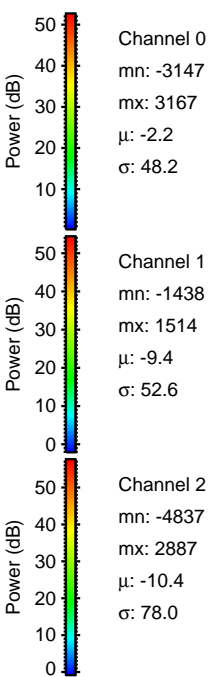
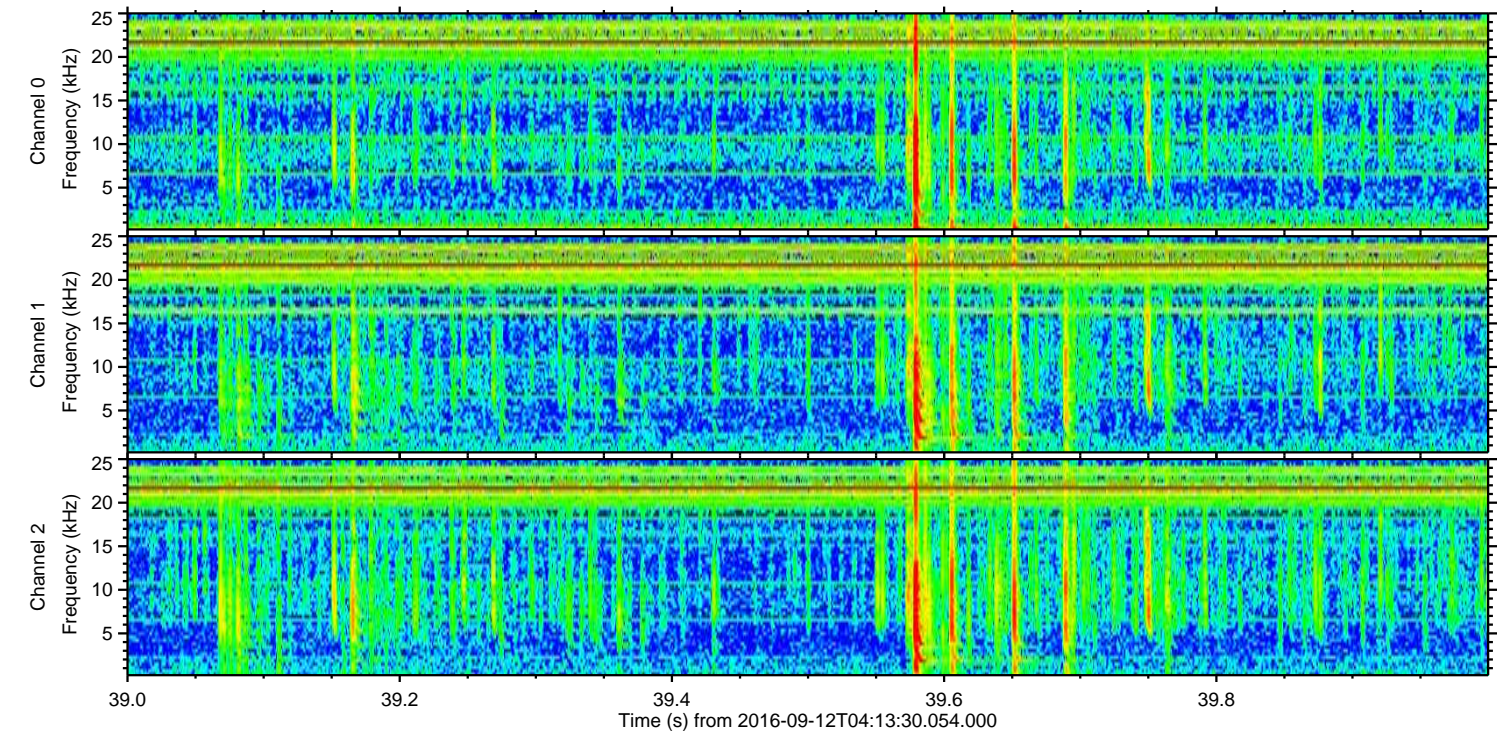
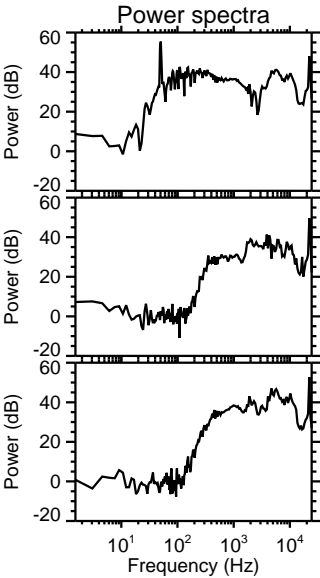
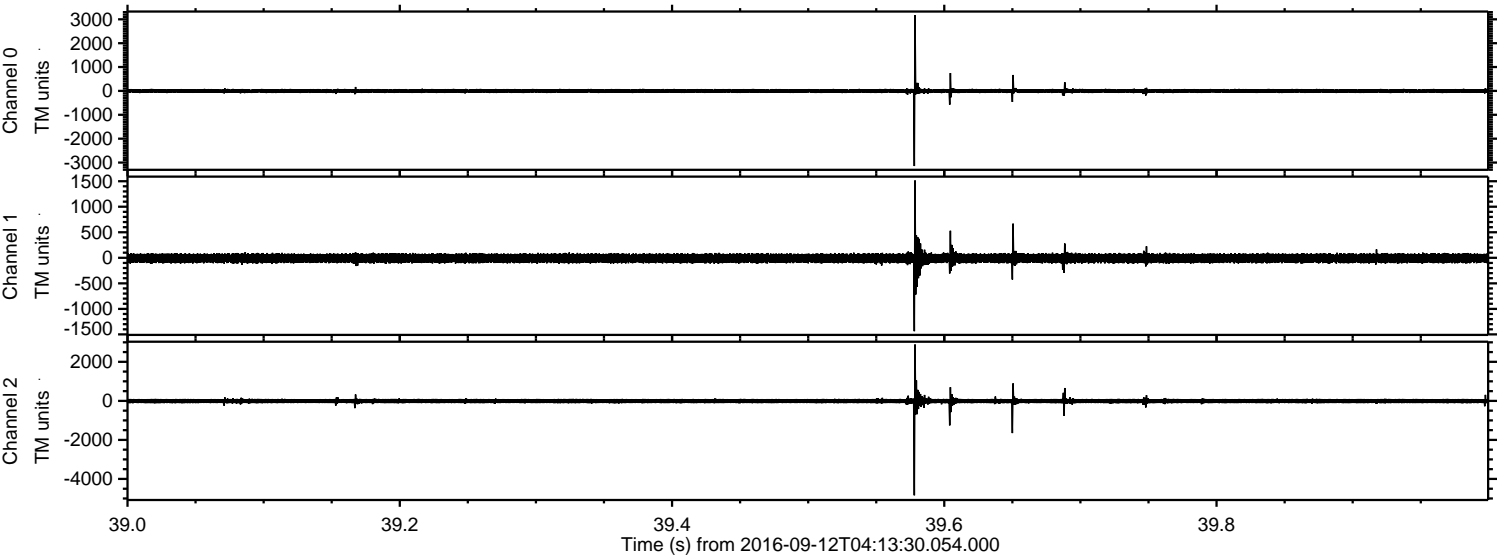
ELMAVAN 3D WAVEFORMS (Measured data sampled at 50 kHz) 51000 packets of 144 samples from 2016-09-12T04:13:30.054.000. Part 98/147

Processed Mon Sep 12 06:22:06 2016 by ELM ver.2012-10-06 from 001__elm20160912_041329__dat00.bin

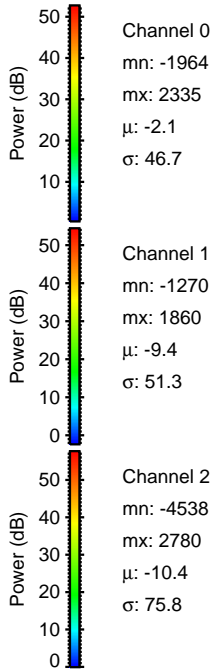
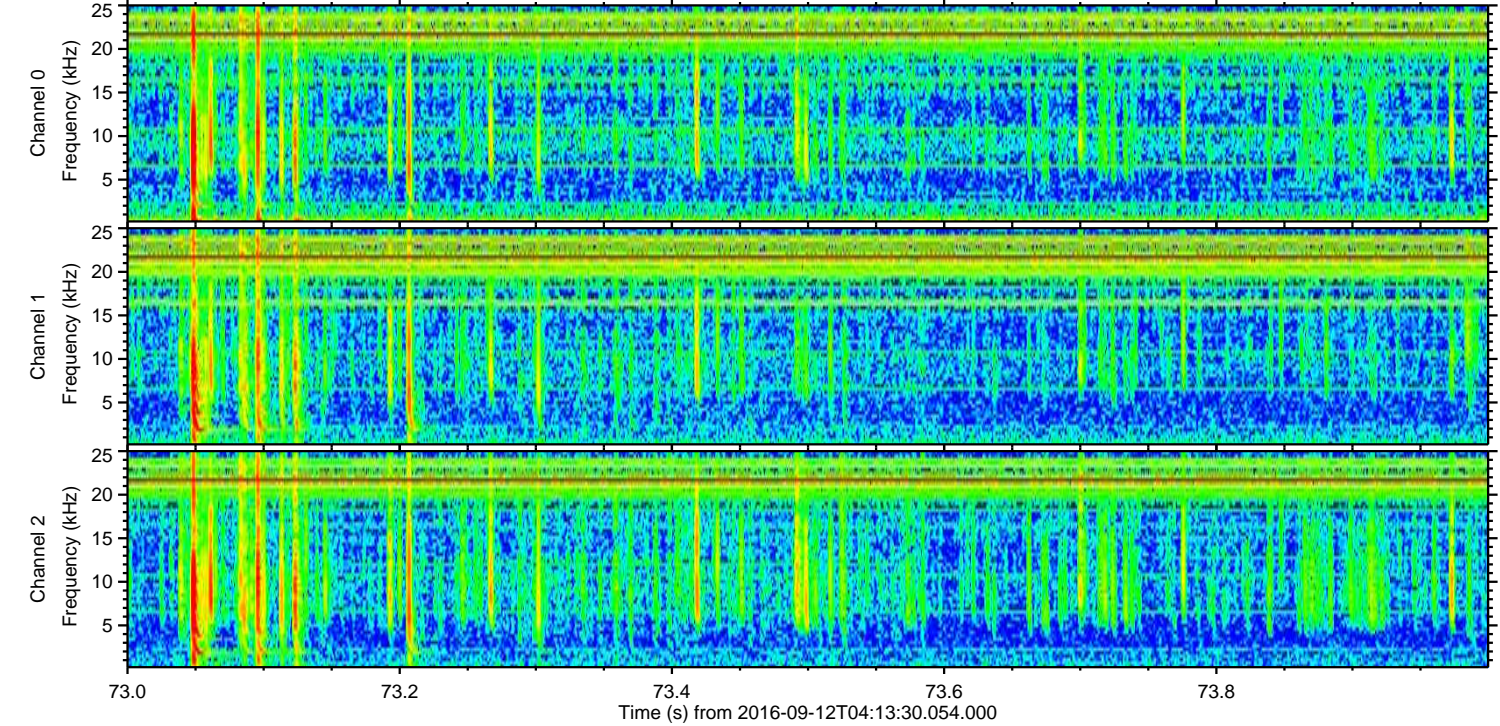
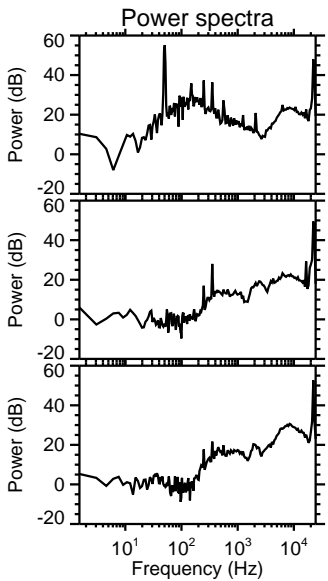
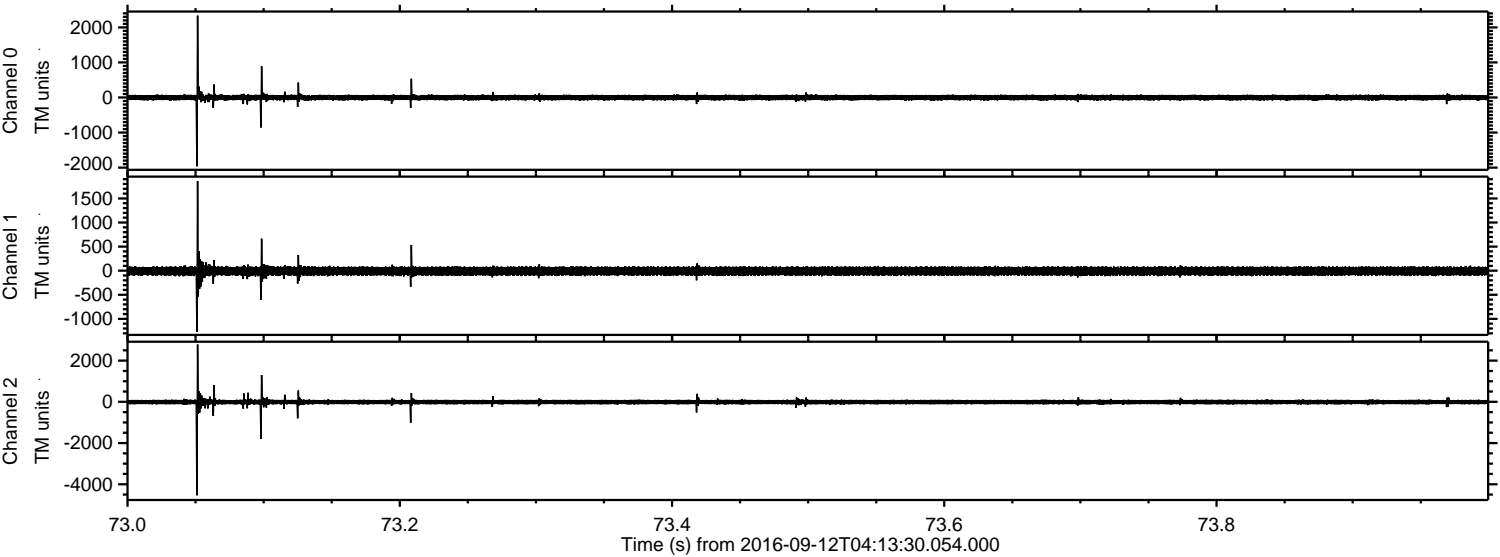


ELMAVAN 3D WAVEFORMS (Measured data sampled at 50 kHz) 51000 packets of 144 samples from 2016-09-12T04:13:30.054.000. Part 40/147

Processed Mon Sep 12 06:22:07 2016 by ELM ver.2012-10-06 from 001__elm20160912_041329__dat00.bin

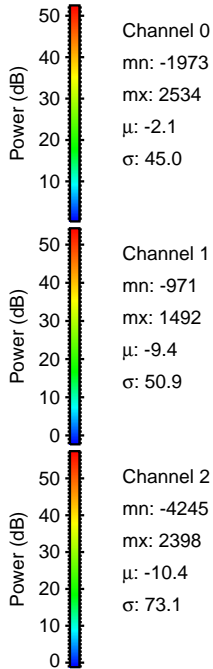
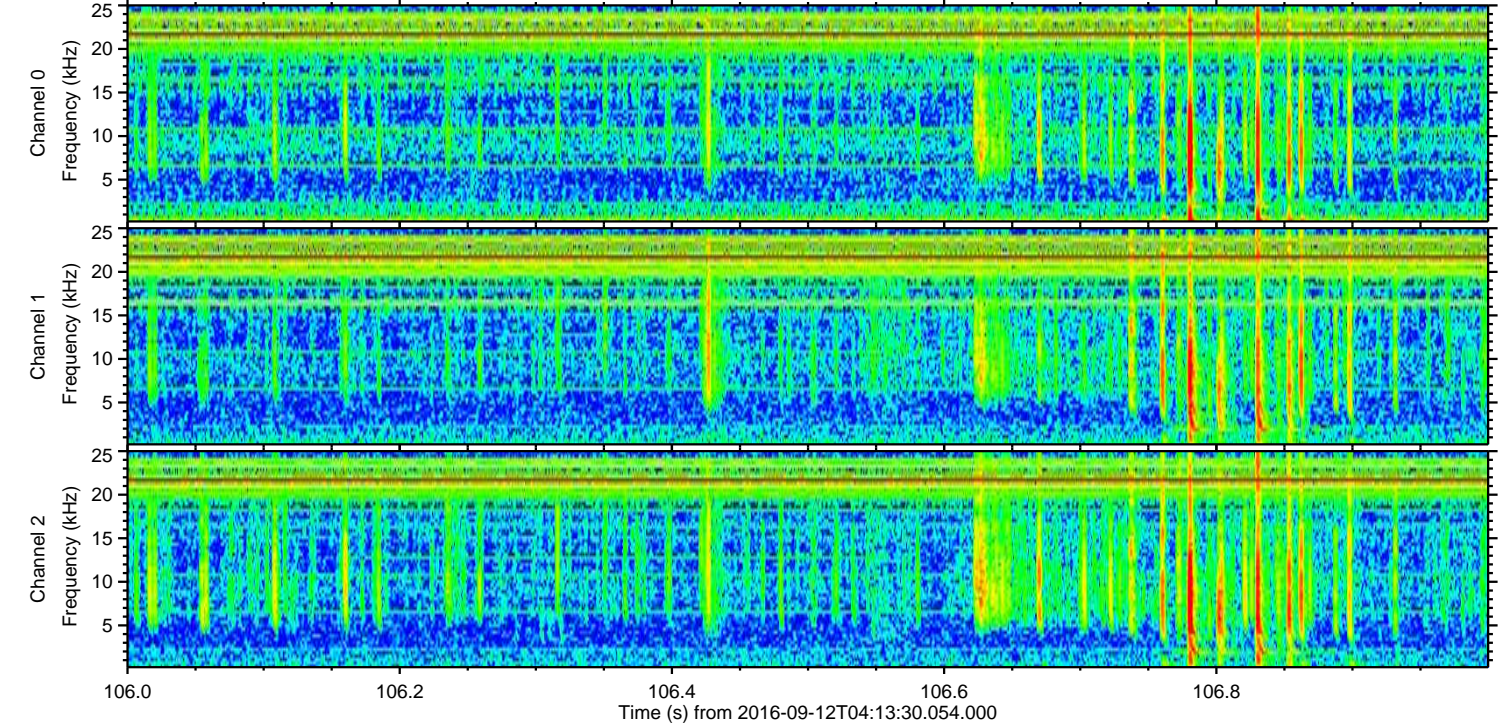
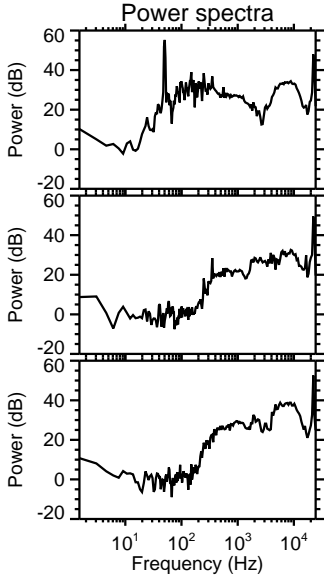
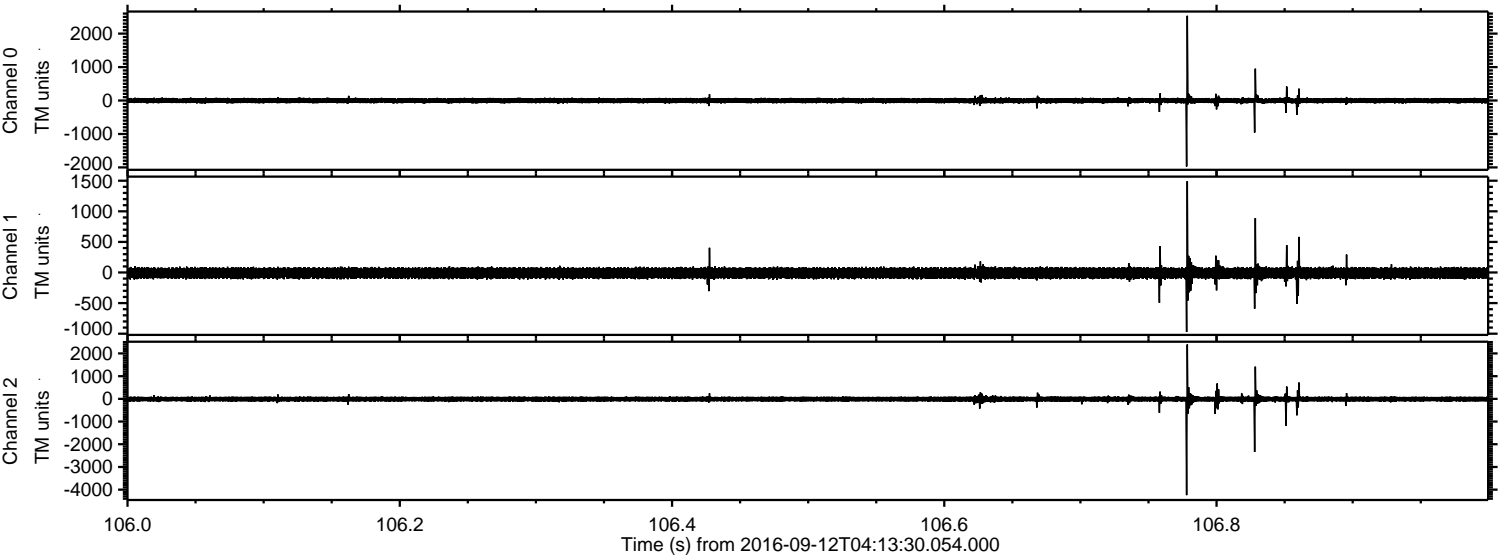


Processed Mon Sep 12 06:22:08 2016 by ELM ver.2012-10-06 from 001__elm20160912_041329__dat00.bin



ELMAVAN 3D WAVEFORMS (Measured data sampled at 50 kHz) 51000 packets of 144 samples from 2016-09-12T04:13:30.054.000. Part 107/147

Processed Mon Sep 12 06:22:09 2016 by ELM ver.2012-10-06 from 001__elm20160912_041329__dat00.bin

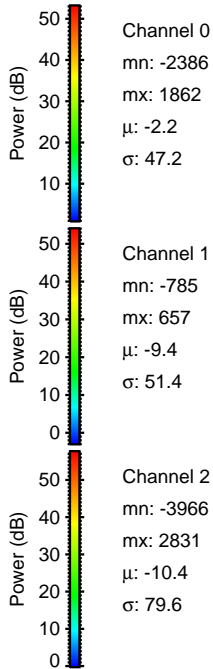
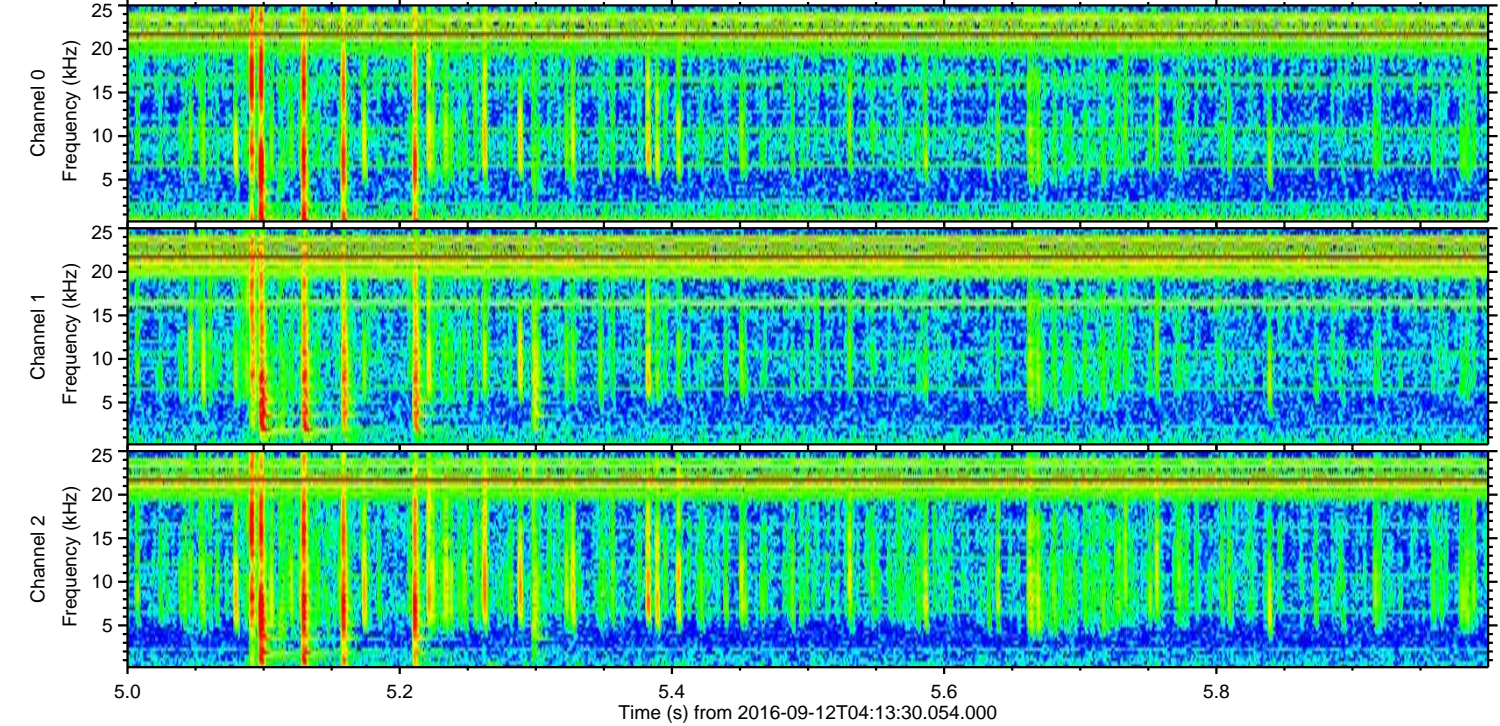
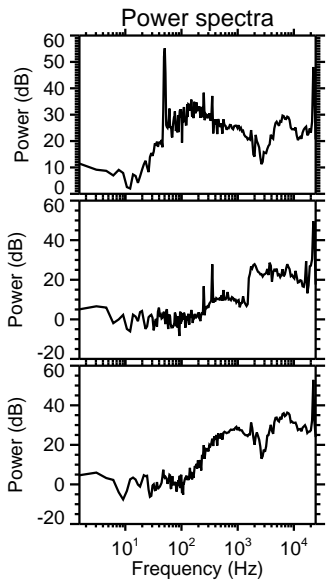
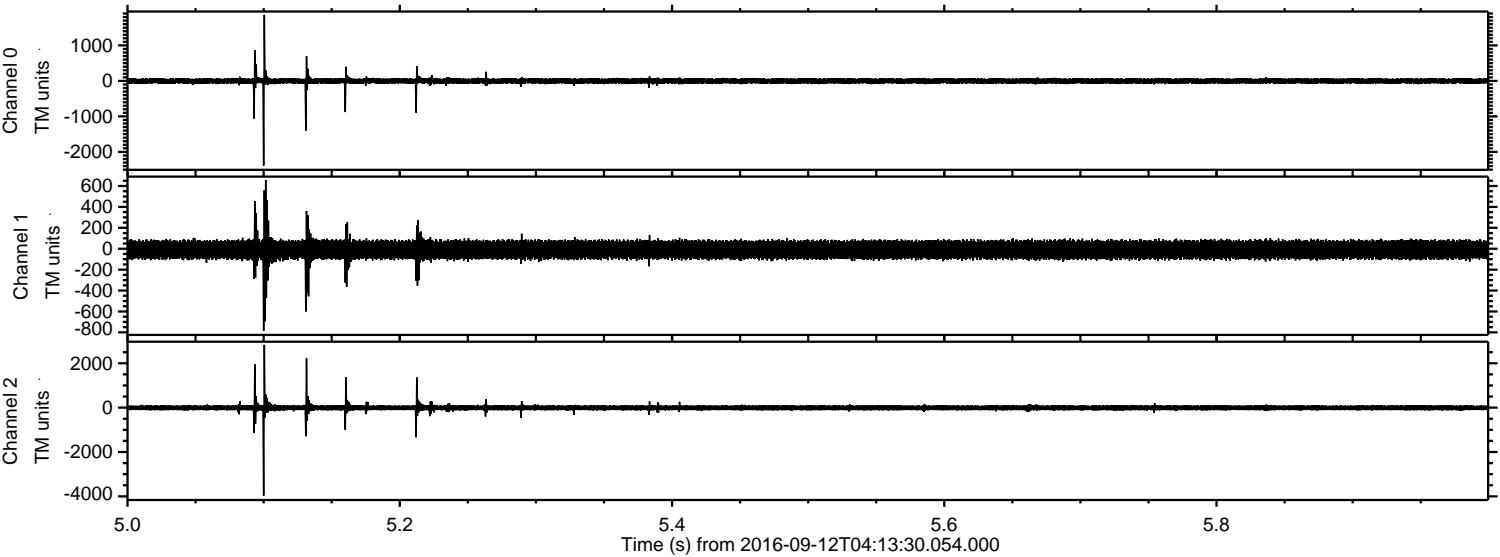


Channel 0
mn: -1973
mx: 2534
 μ : -2.1
 σ : 45.0

Channel 1
mn: -971
mx: 1492
 μ : -9.4
 σ : 50.9

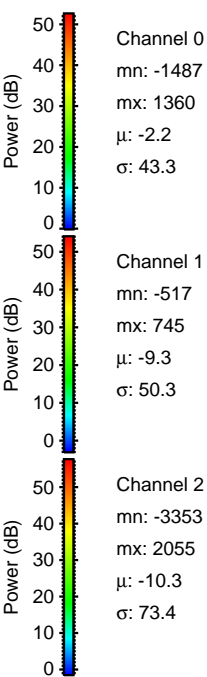
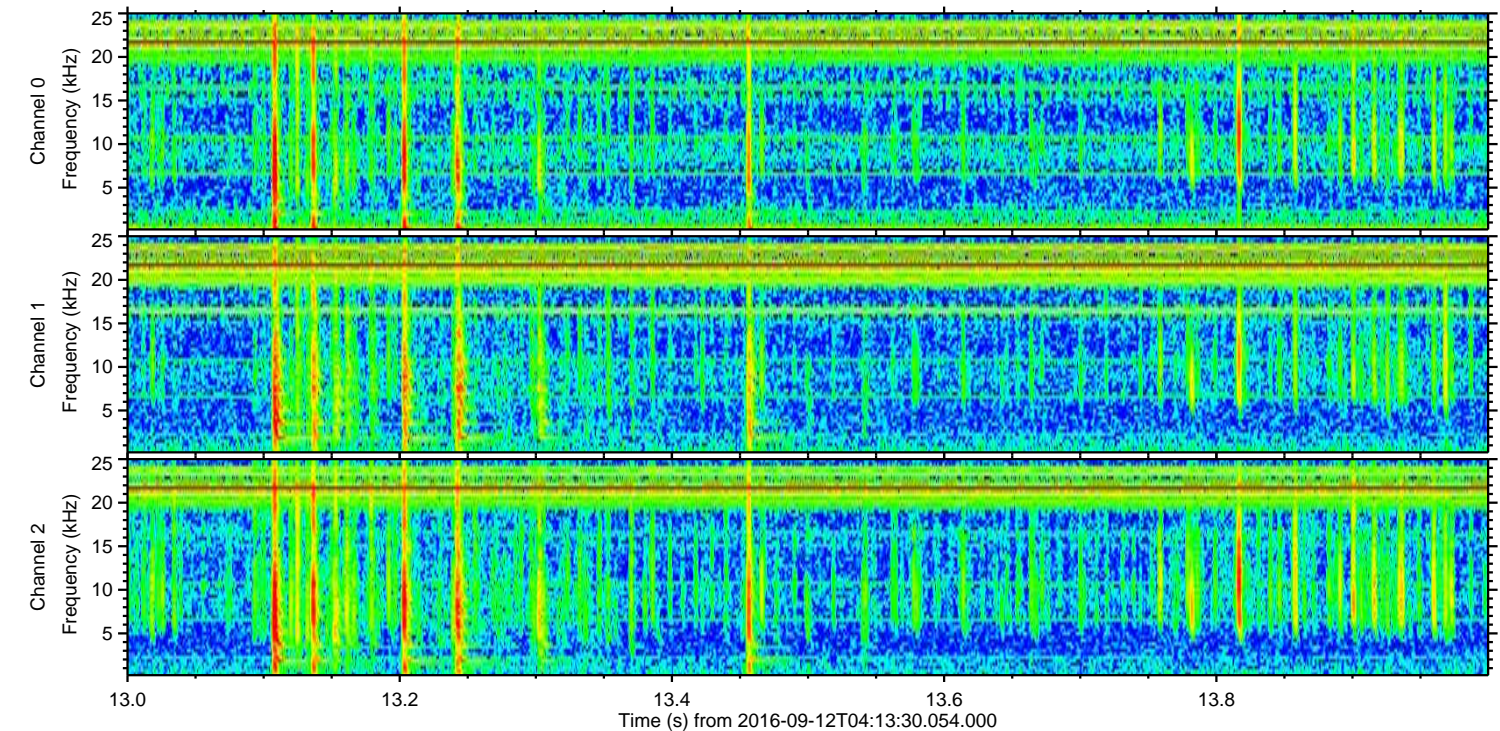
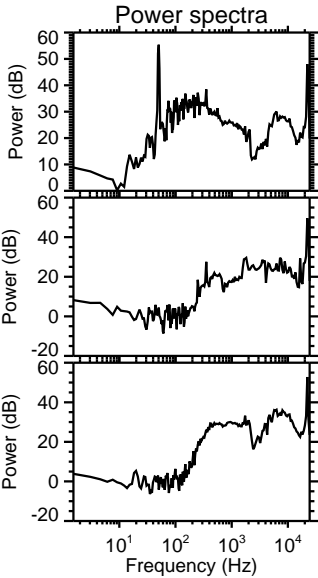
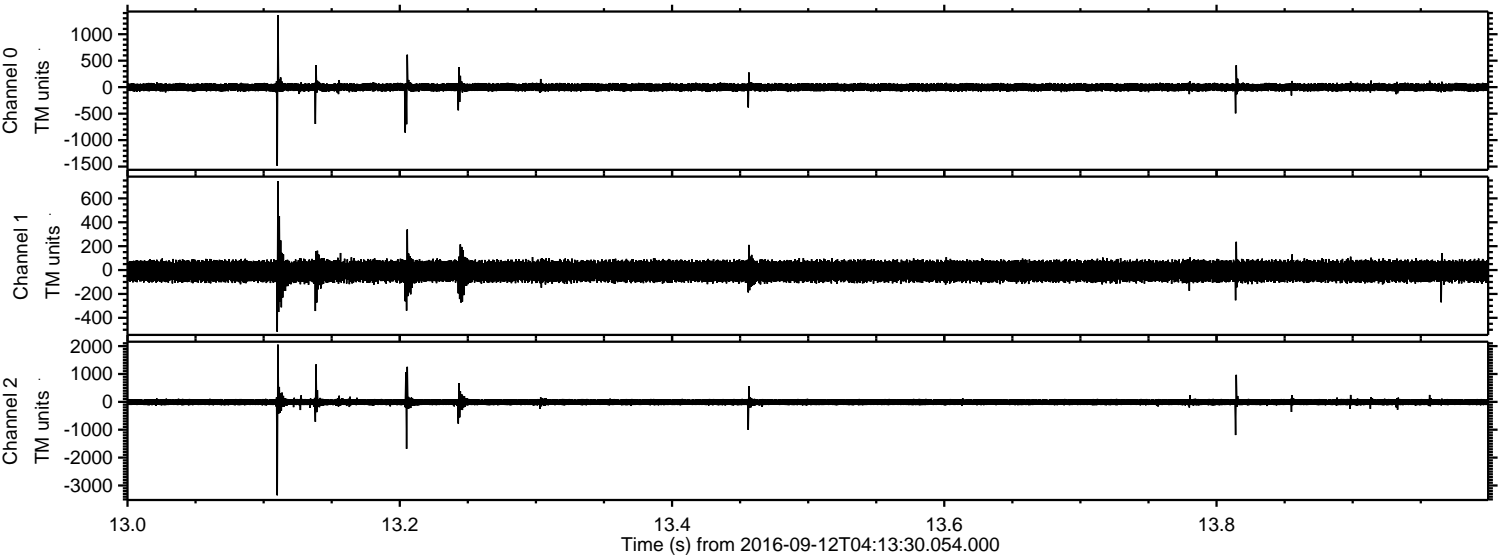
Channel 2
mn: -4245
mx: 2398
 μ : -10.4
 σ : 73.1

Processed Mon Sep 12 06:22:09 2016 by ELM ver.2012-10-06 from 001__elm20160912_041329__dat00.bin



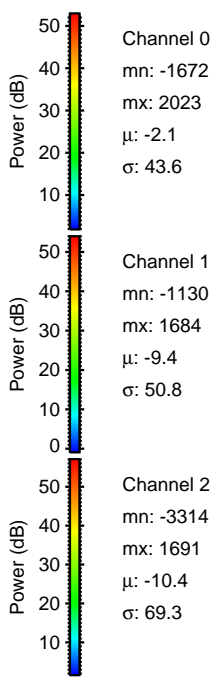
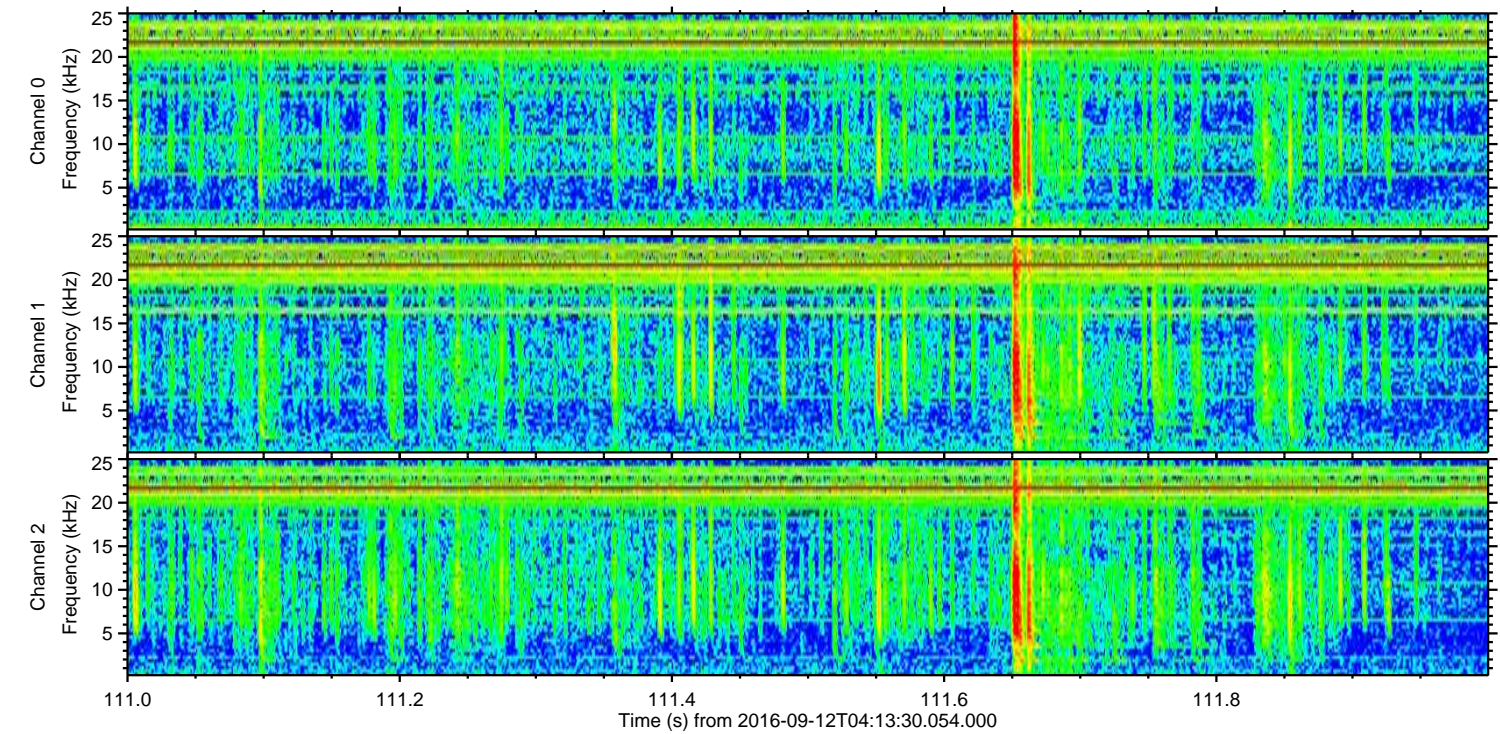
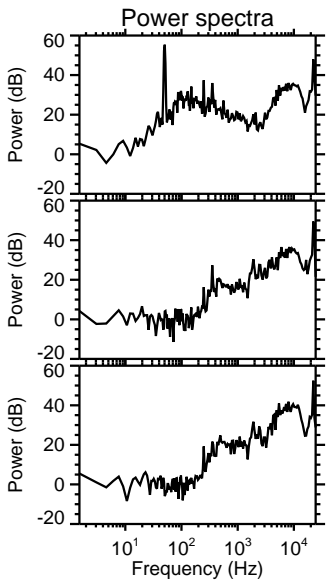
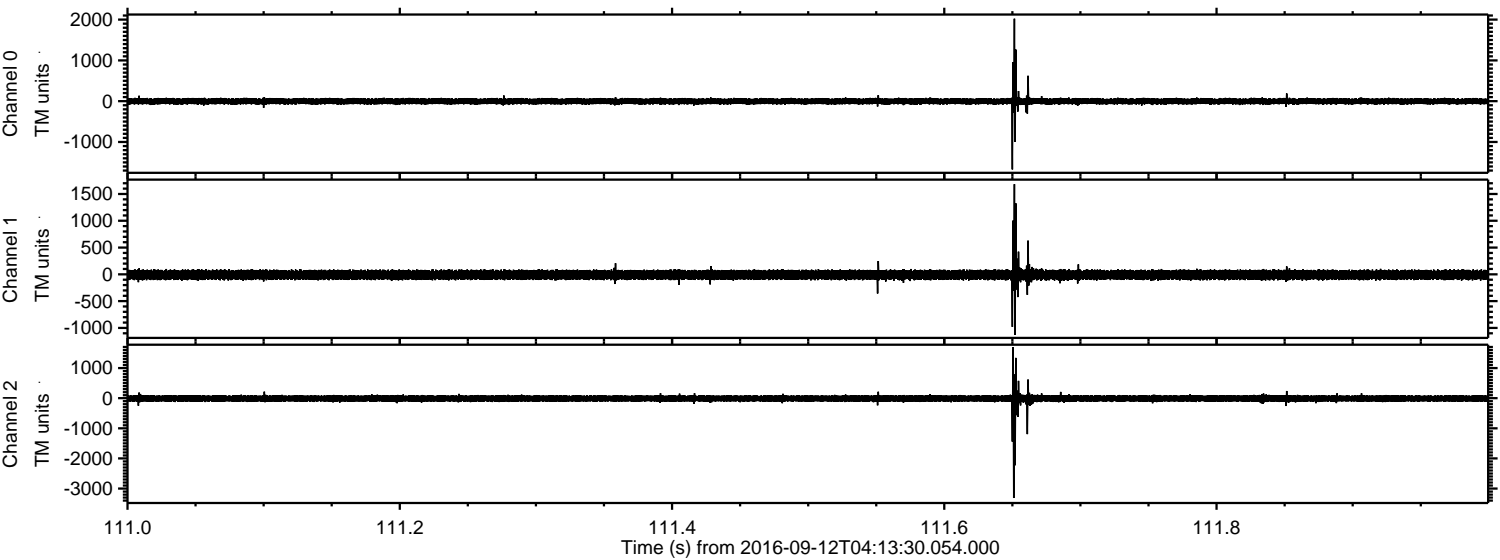
ELMAVAN 3D WAVEFORMS (Measured data sampled at 50 kHz) 51000 packets of 144 samples from 2016-09-12T04:13:30.054.000. Part 14/147

Processed Mon Sep 12 06:22:10 2016 by ELM ver.2012-10-06 from 001__elm20160912_041329__dat00.bin



ELMAVAN 3D WAVEFORMS (Measured data sampled at 50 kHz) 51000 packets of 144 samples from 2016-09-12T04:13:30.054.000. Part 112/147

Processed Mon Sep 12 06:22:11 2016 by ELM ver.2012-10-06 from 001__elm20160912_041329__dat00.bin



ELMAVAN 3D WAVEFORMS (Measured data sampled at 50 kHz) 51000 packets of 144 samples from 2016-09-12T04:13:30.054.000. Part 146/147

Processed Mon Sep 12 06:22:12 2016 by ELM ver.2012-10-06 from 001__elm20160912_041329__dat00.bin

