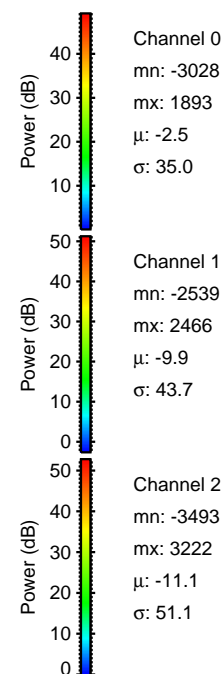
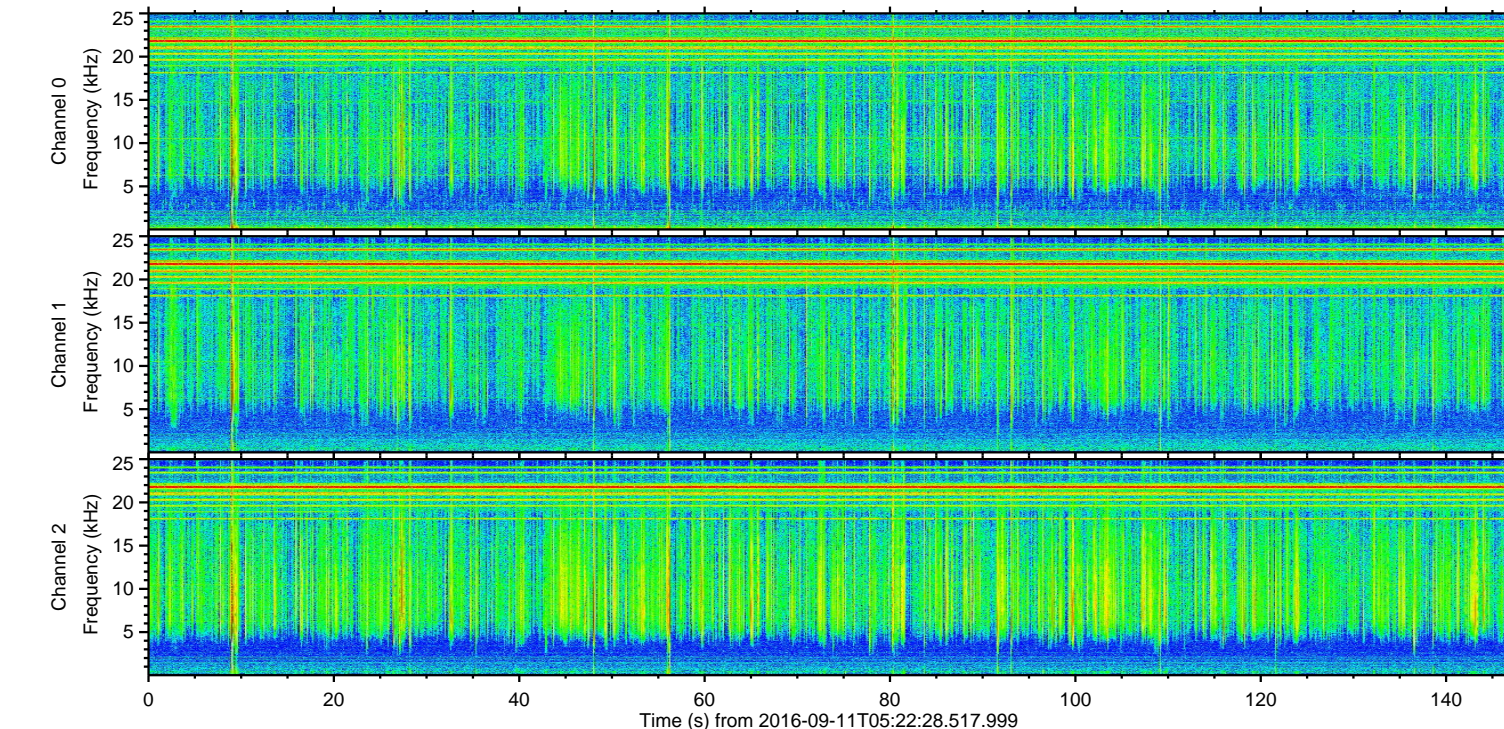
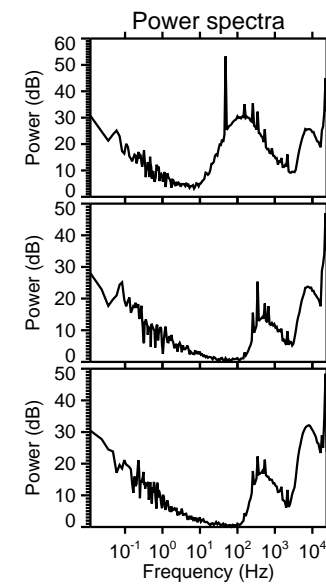
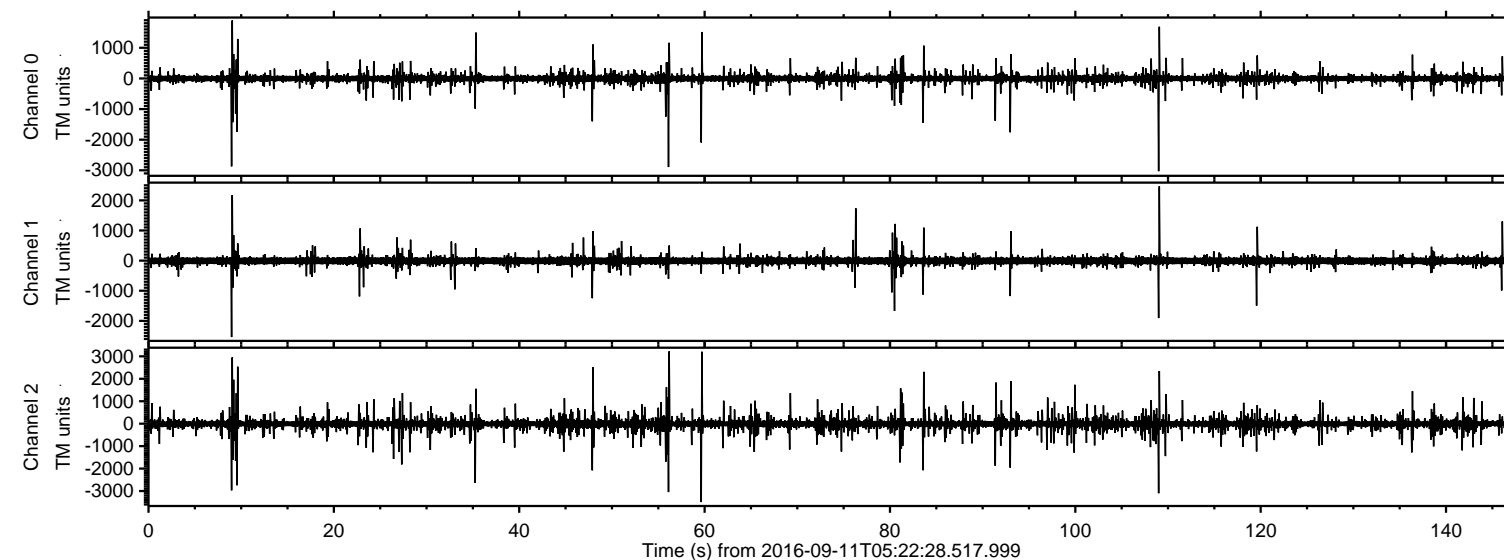


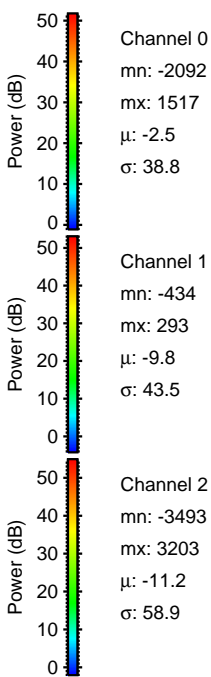
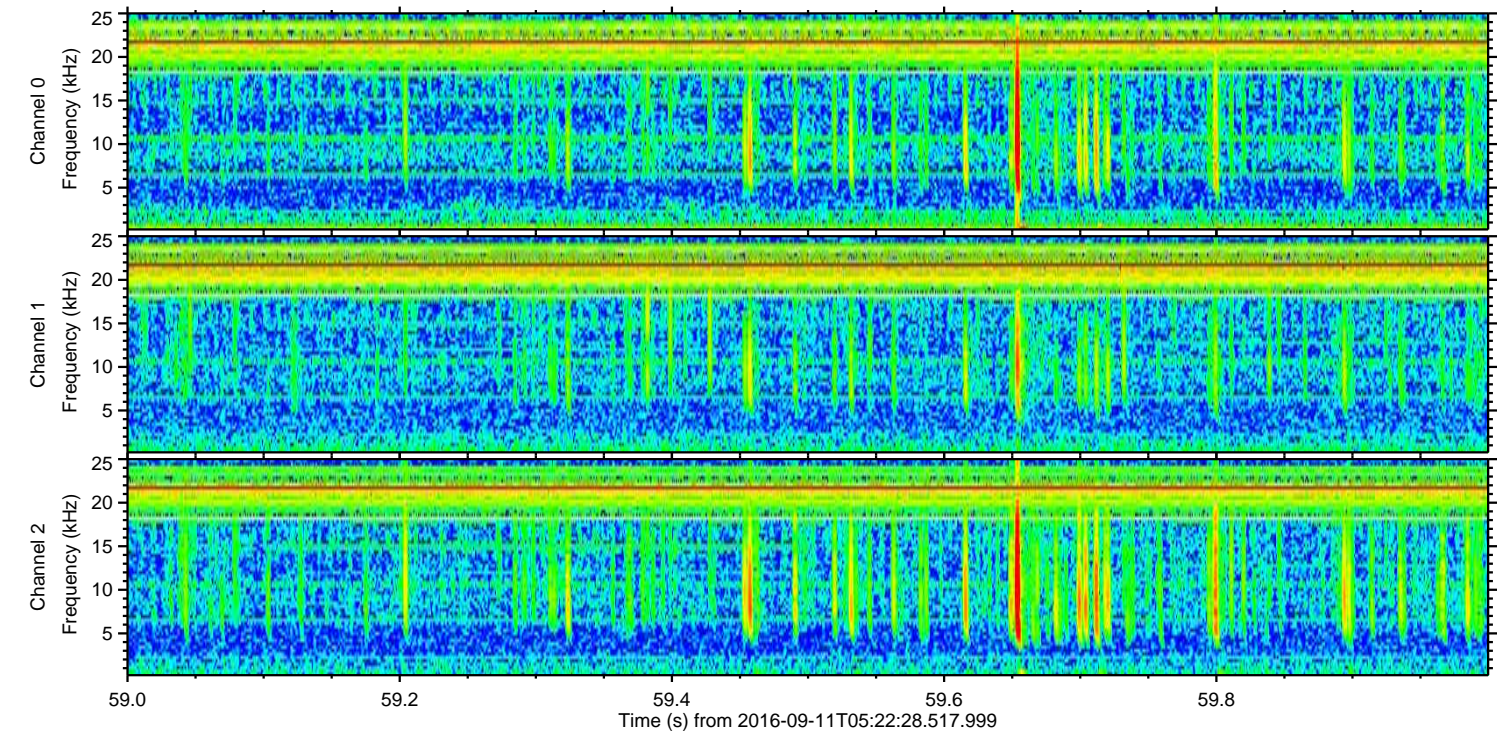
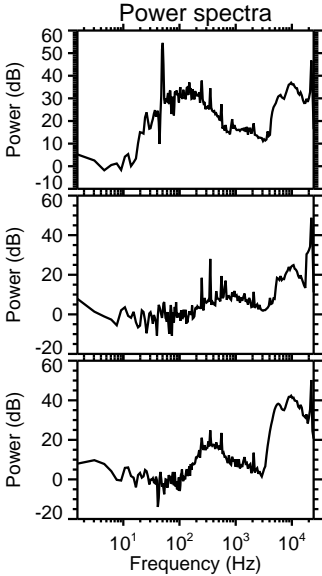
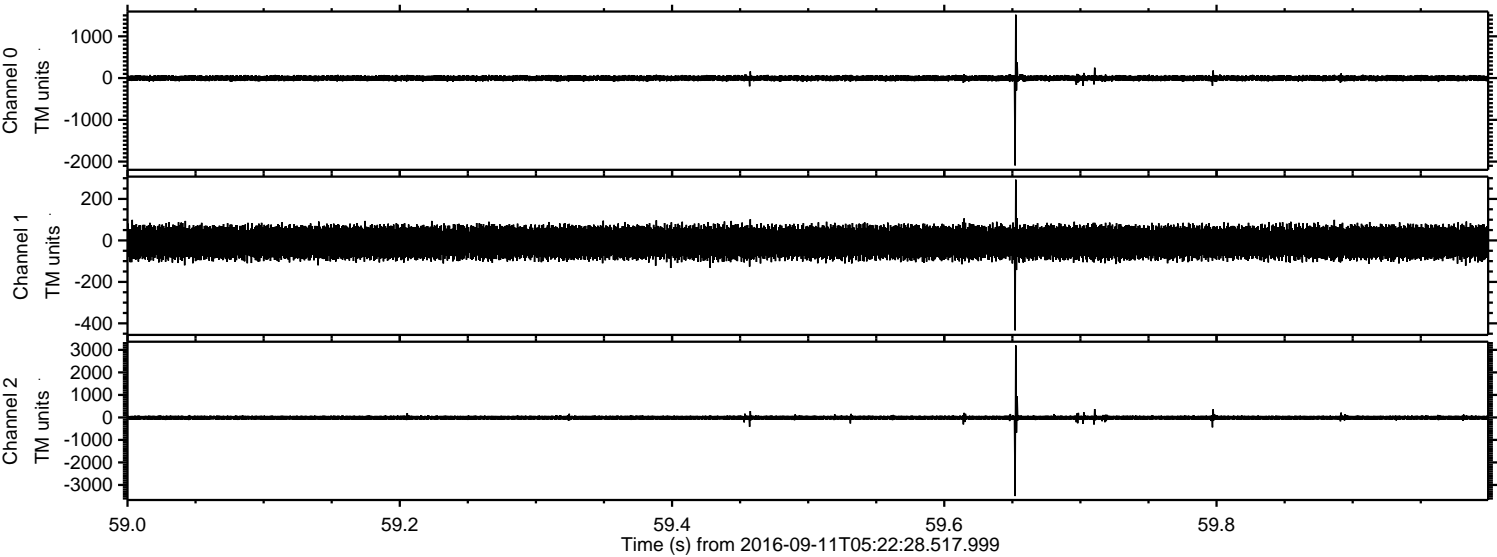
# ELMAVAN 3D WAVEFORMS (Measured data sampled at 50 kHz) 51000 packets of 144 samples from 2016-09-11T05:22:28.517.999.

Processed Sun Sep 11 07:30:24 2016 by ELM ver.2012-10-06 from 001\_\_elm20160911\_052227\_\_dat00.bin



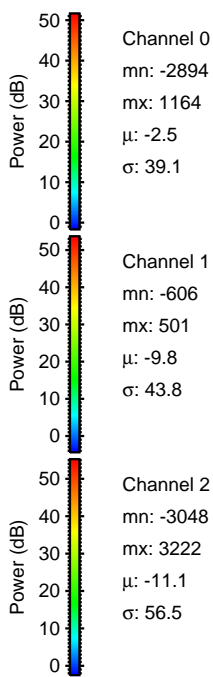
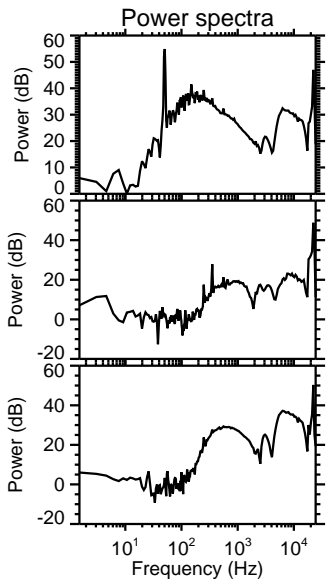
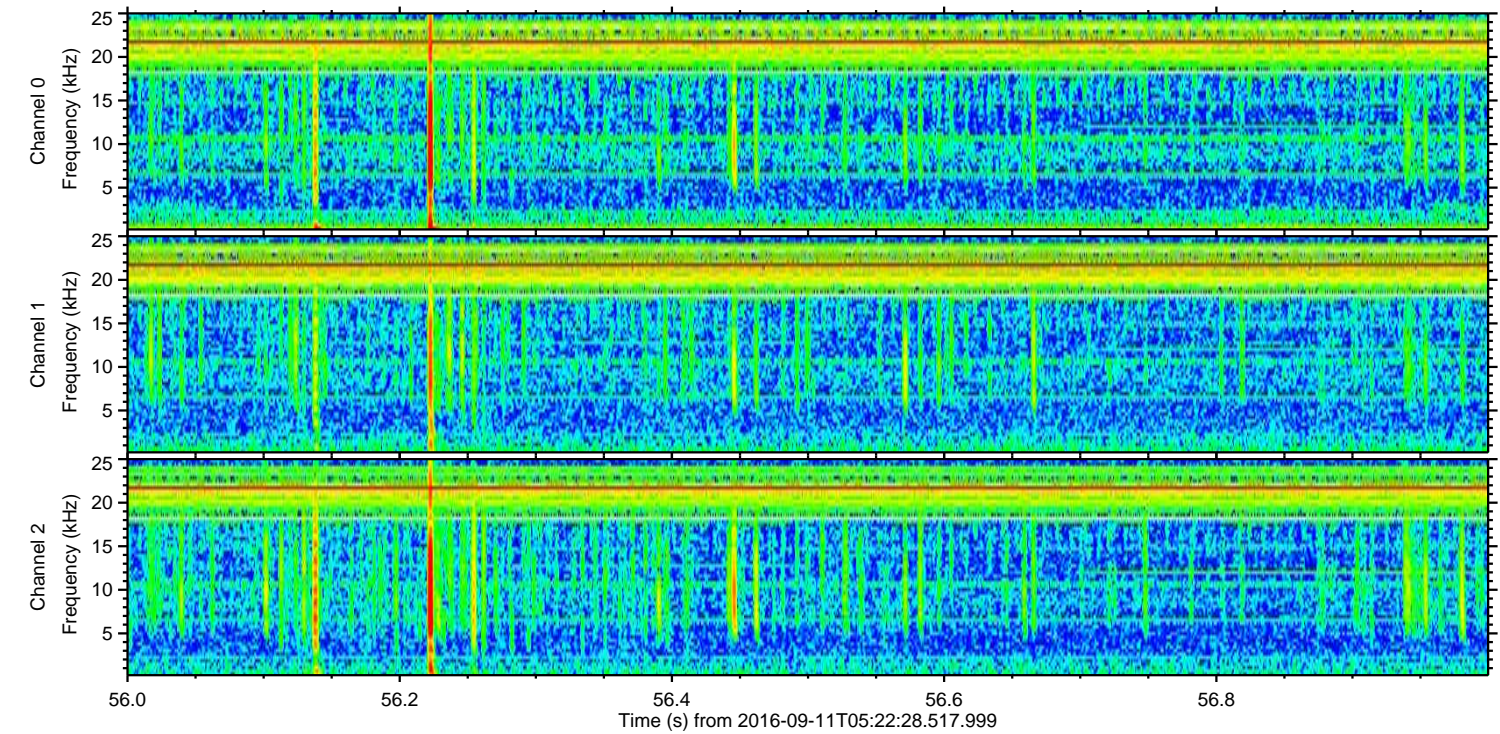
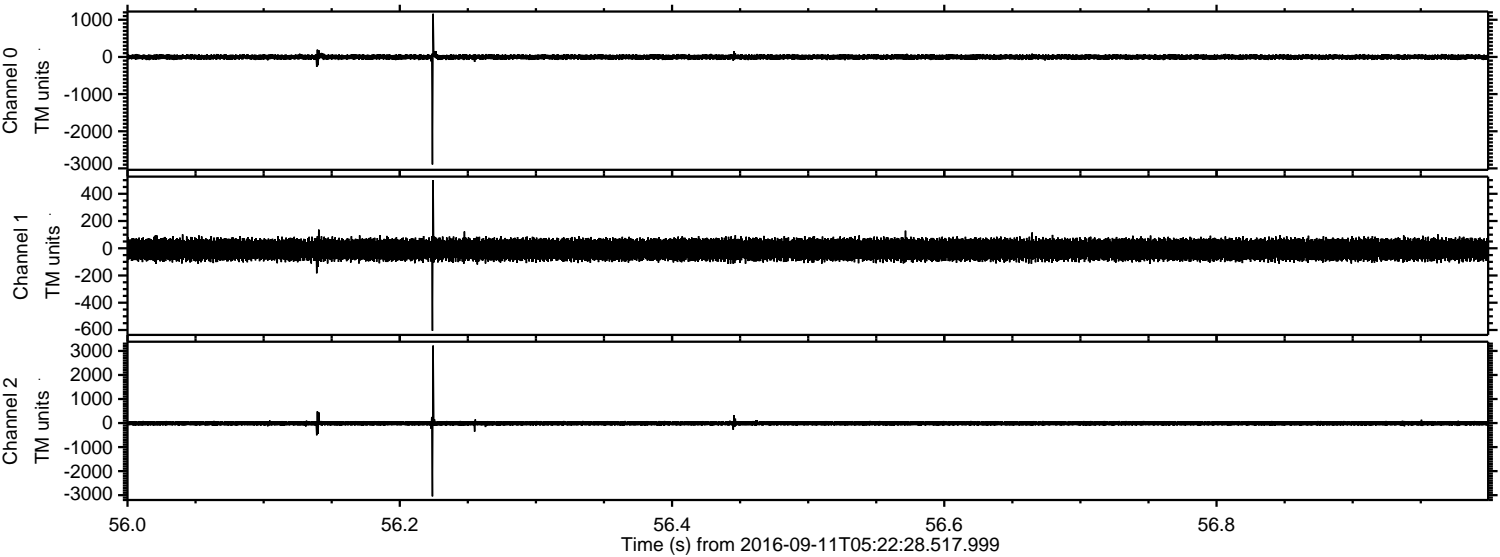


Processed Sun Sep 11 07:30:38 2016 by ELM ver.2012-10-06 from 001\_\_elm20160911\_052227\_\_dat00.bin





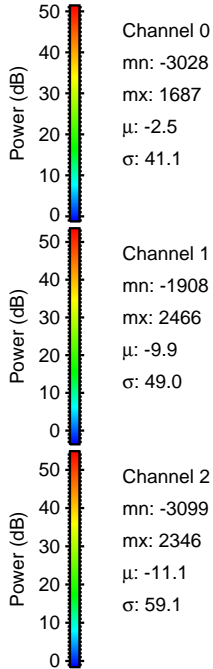
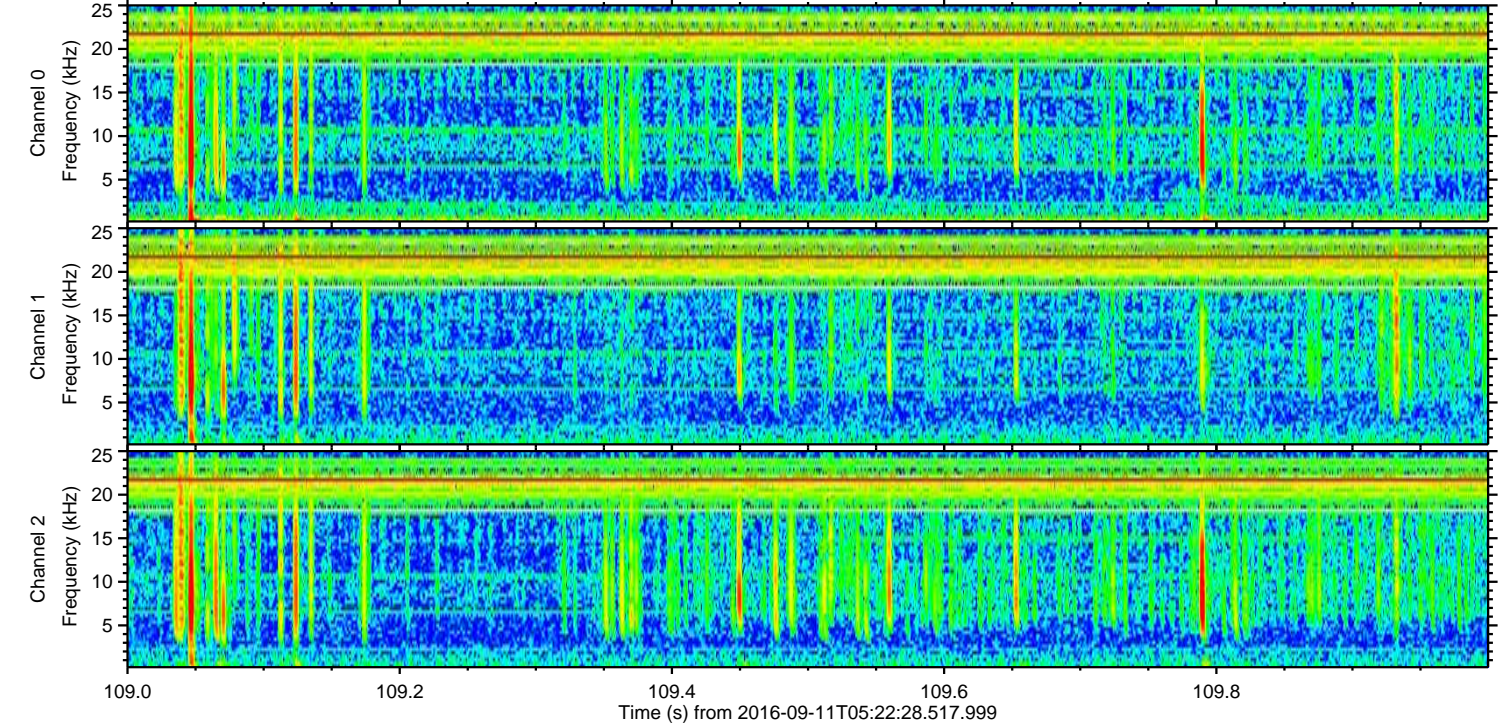
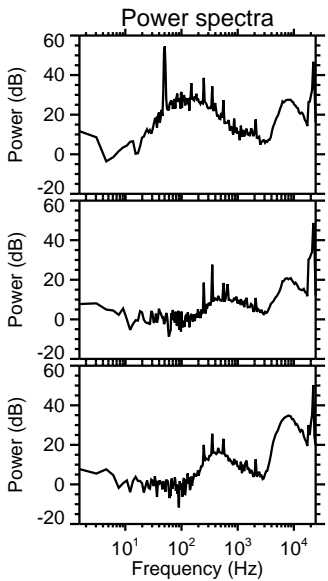
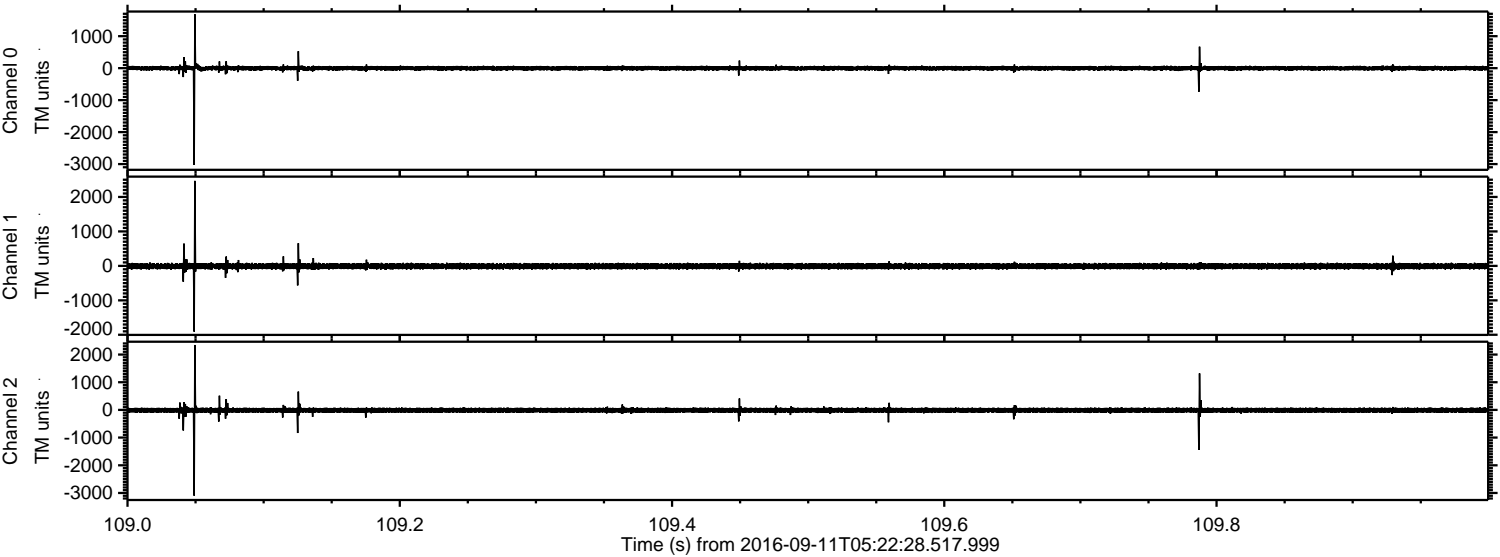
Processed Sun Sep 11 07:30:39 2016 by ELM ver.2012-10-06 from 001\_\_elm20160911\_052227\_\_dat00.bin





ELMAVAN 3D WAVEFORMS (Measured data sampled at 50 kHz) 51000 packets of 144 samples from 2016-09-11T05:22:28.517.999. Part 110/147

Processed Sun Sep 11 07:30:40 2016 by ELM ver.2012-10-06 from 001\_\_elm20160911\_052227\_\_dat00.bin



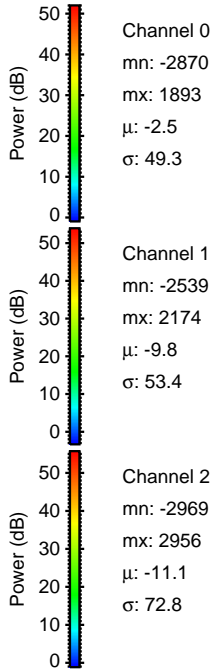
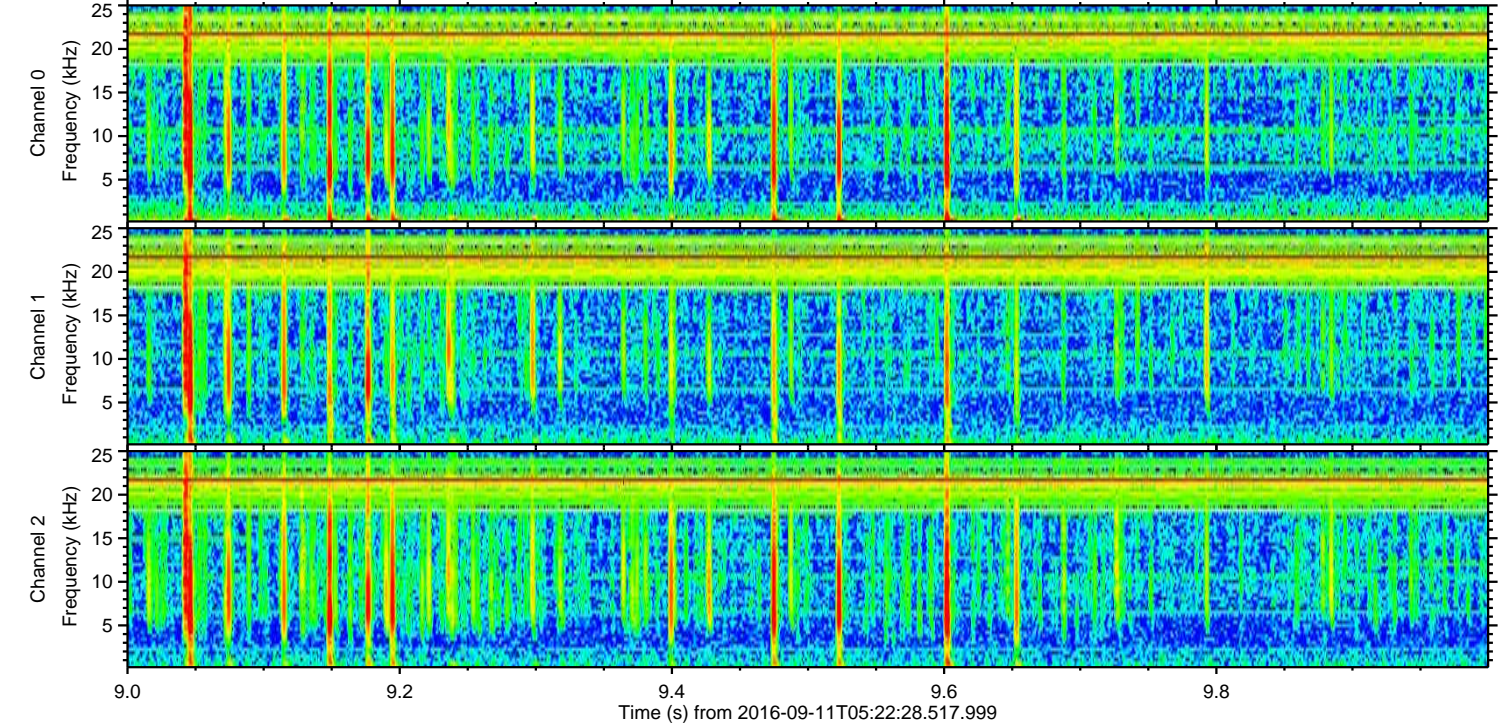
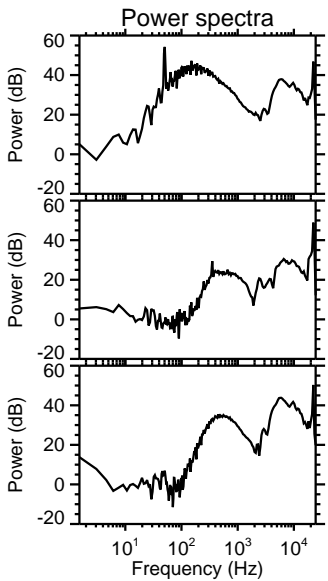
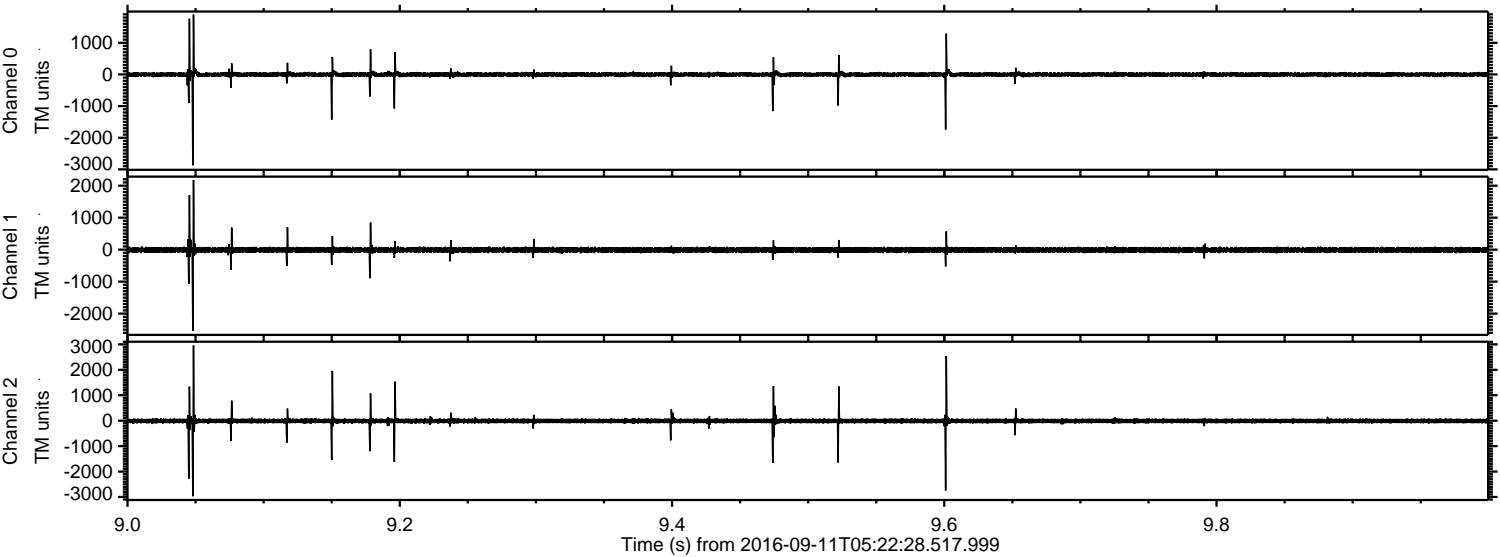
Channel 0  
mn: -3028  
mx: 1687  
 $\mu$ : -2.5  
 $\sigma$ : 41.1

Channel 1  
mn: -1908  
mx: 2466  
 $\mu$ : -9.9  
 $\sigma$ : 49.0

Channel 2  
mn: -3099  
mx: 2346  
 $\mu$ : -11.1  
 $\sigma$ : 59.1



Processed Sun Sep 11 07:30:41 2016 by ELM ver.2012-10-06 from 001\_\_elm20160911\_052227\_\_dat00.bin



Channel 0  
mn: -2870  
mx: 1893  
 $\mu$ : -2.5  
 $\sigma$ : 49.3

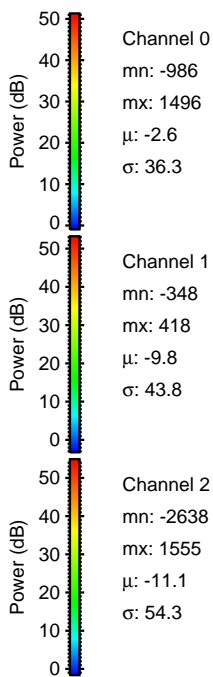
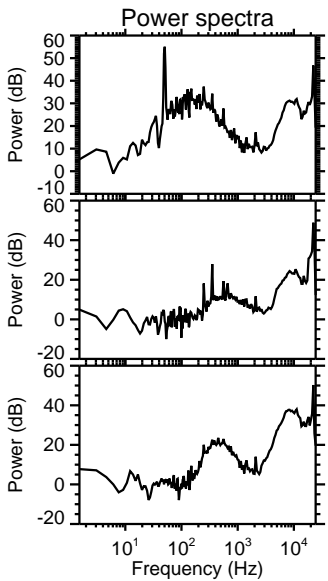
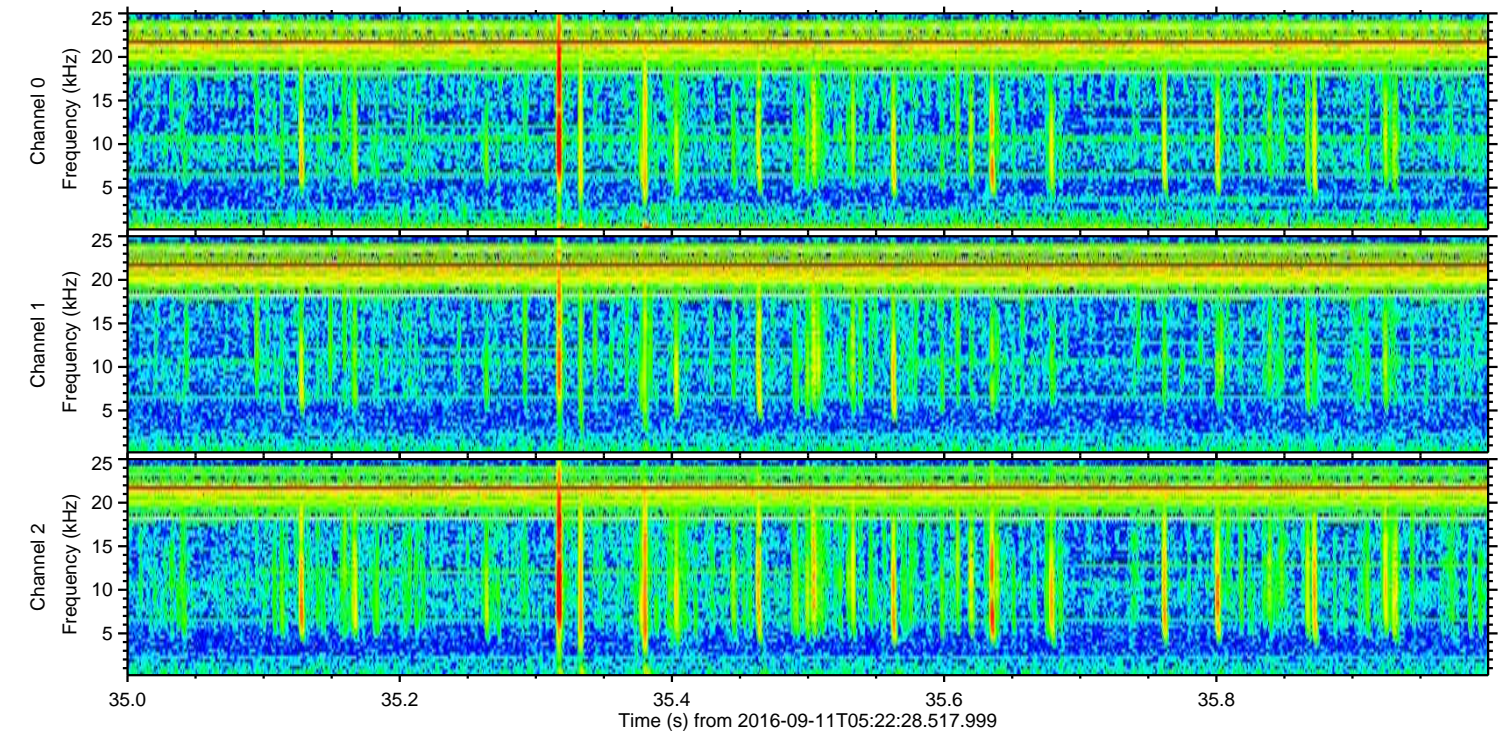
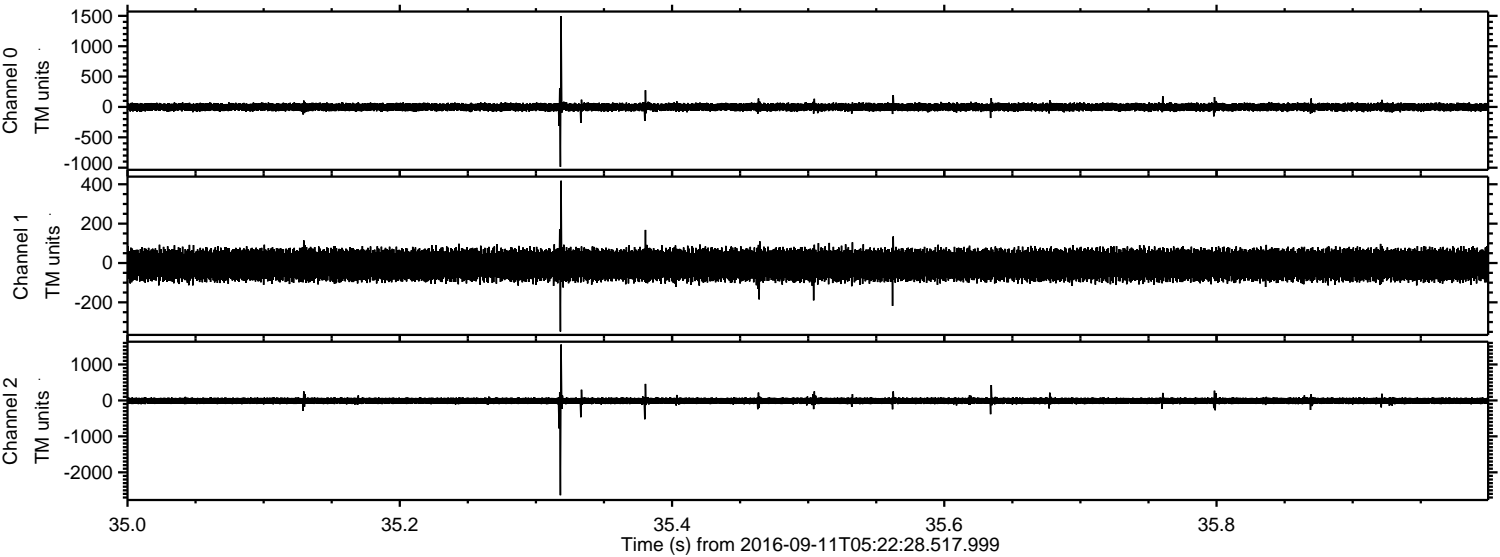
Channel 1  
mn: -2539  
mx: 2174  
 $\mu$ : -9.8  
 $\sigma$ : 53.4

Channel 2  
mn: -2969  
mx: 2956  
 $\mu$ : -11.1  
 $\sigma$ : 72.8



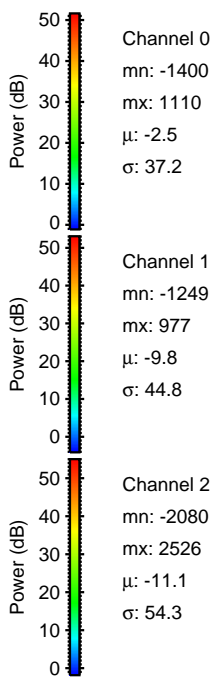
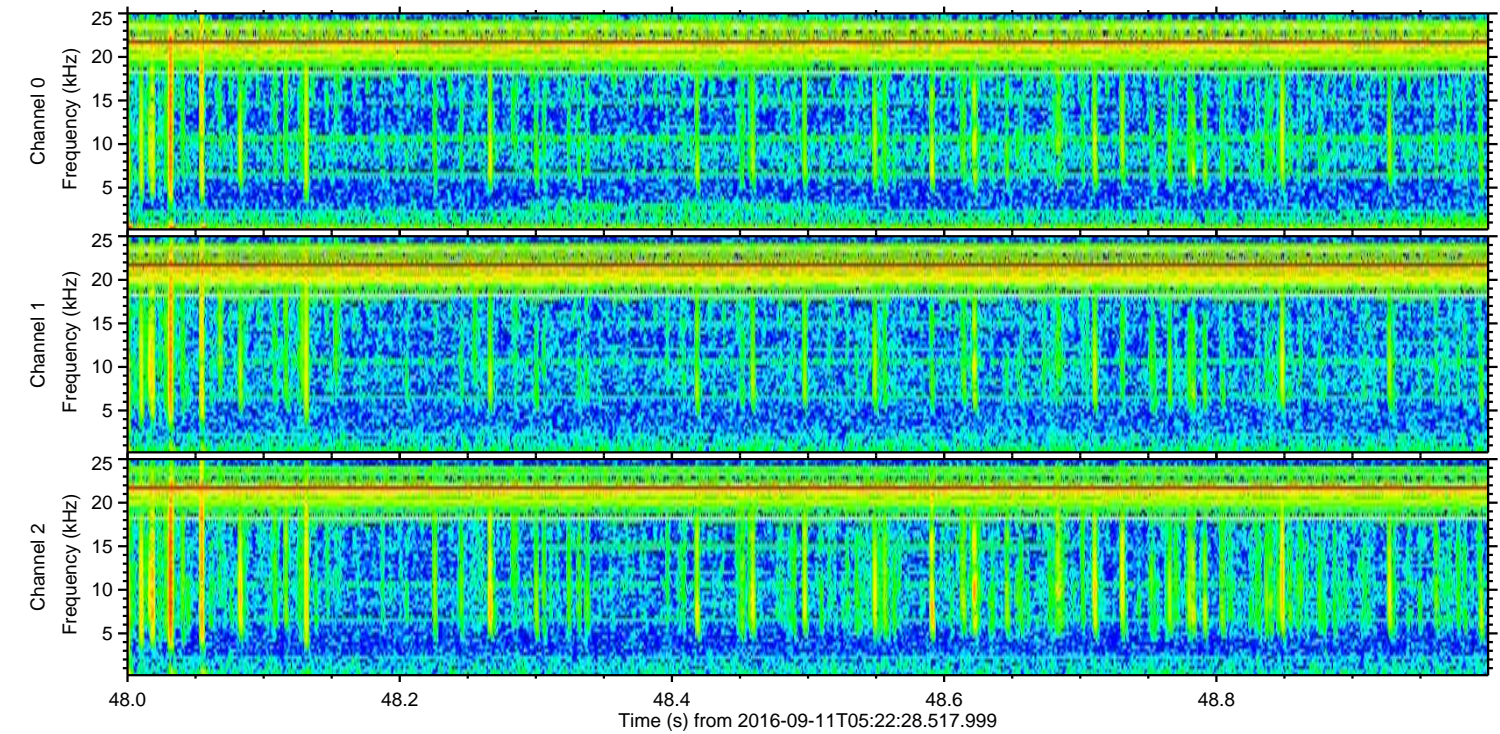
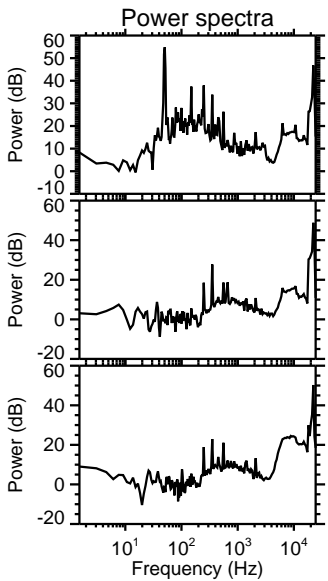
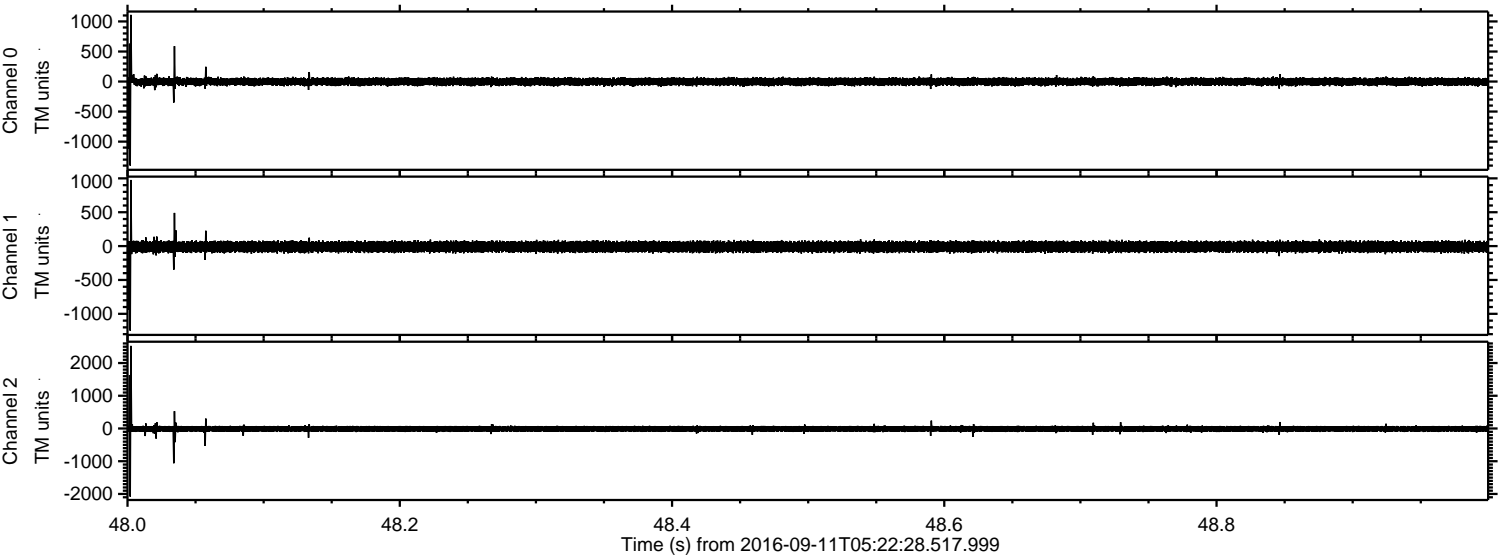
ELMAVAN 3D WAVEFORMS (Measured data sampled at 50 kHz) 51000 packets of 144 samples from 2016-09-11T05:22:28.517.999. Part 36/147

Processed Sun Sep 11 07:30:42 2016 by ELM ver.2012-10-06 from 001\_\_elm20160911\_052227\_\_dat00.bin





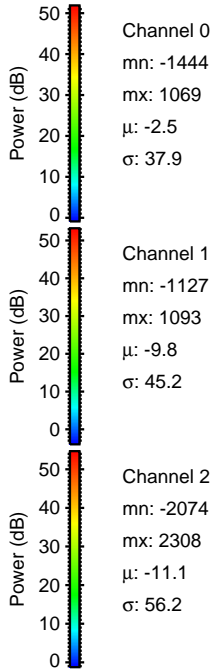
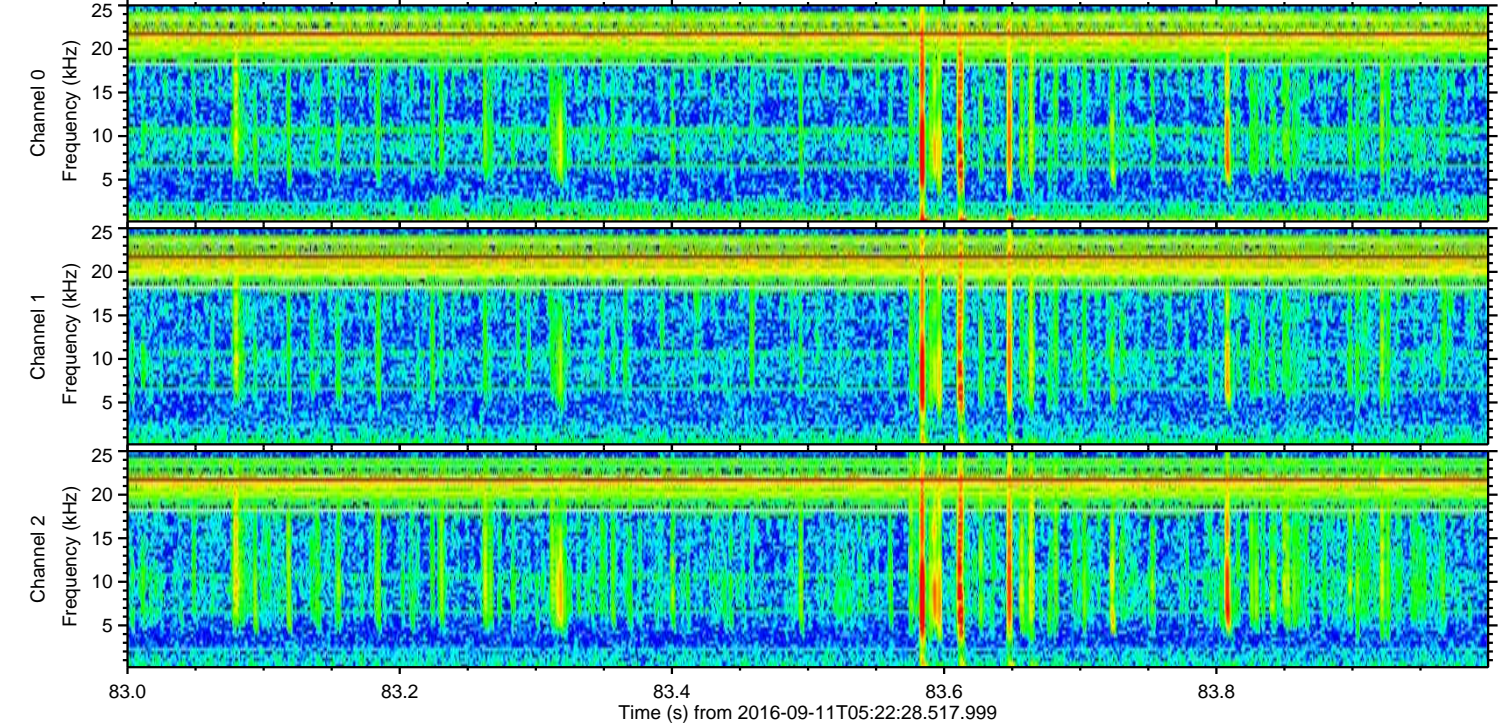
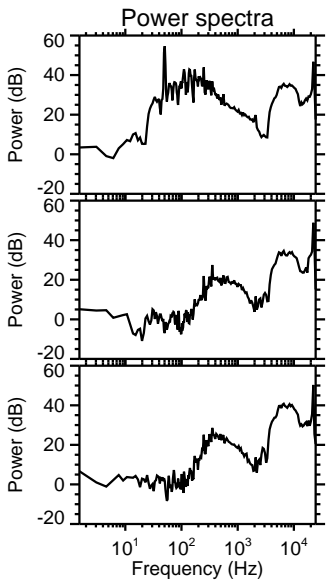
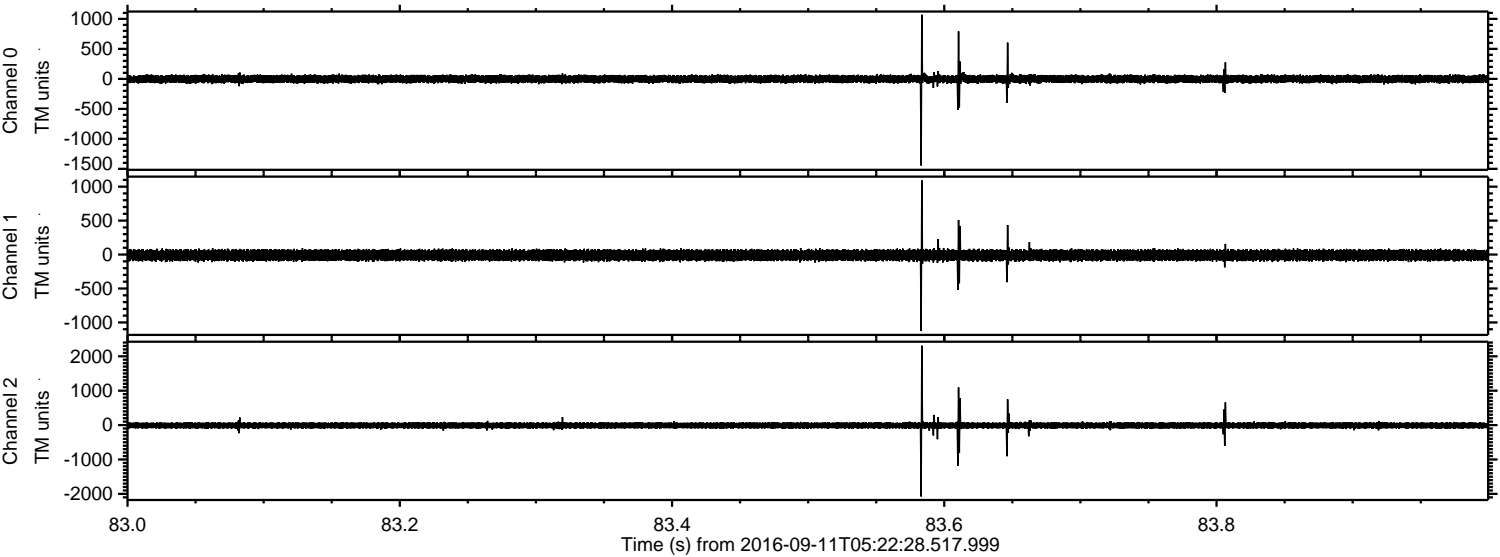
Processed Sun Sep 11 07:30:43 2016 by ELM ver.2012-10-06 from 001\_\_elm20160911\_052227\_\_dat00.bin





ELMAVAN 3D WAVEFORMS (Measured data sampled at 50 kHz) 51000 packets of 144 samples from 2016-09-11T05:22:28.517.999. Part 84/147

Processed Sun Sep 11 07:30:44 2016 by ELM ver.2012-10-06 from 001\_\_elm20160911\_052227\_\_dat00.bin



Channel 0  
mn: -1444  
mx: 1069  
 $\mu$ : -2.5  
 $\sigma$ : 37.9

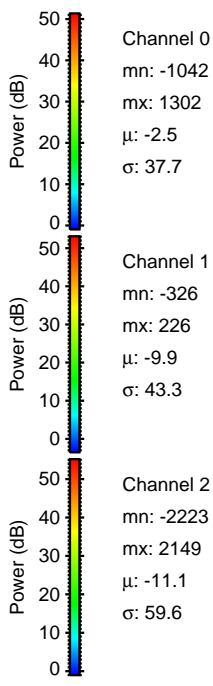
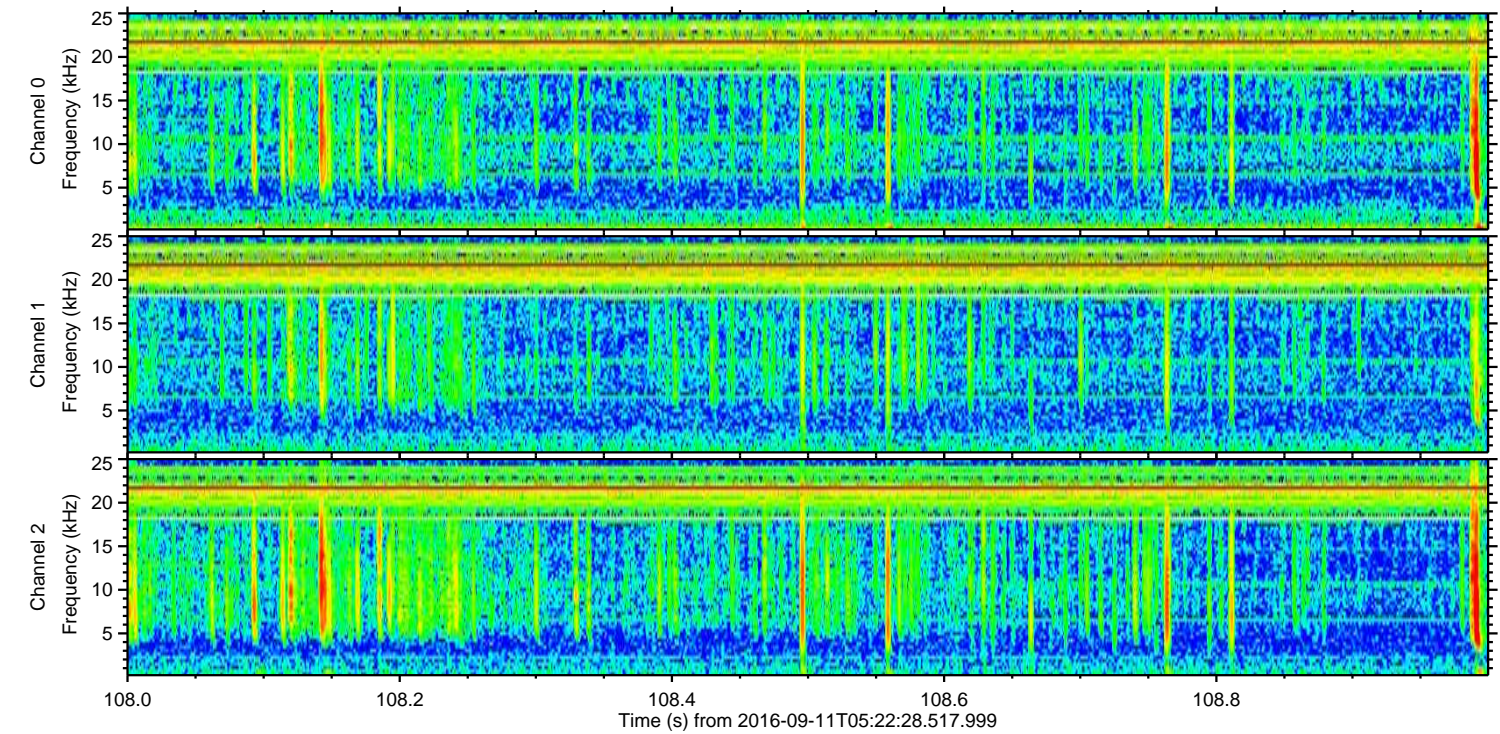
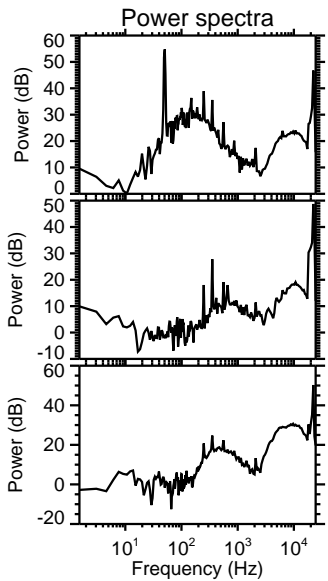
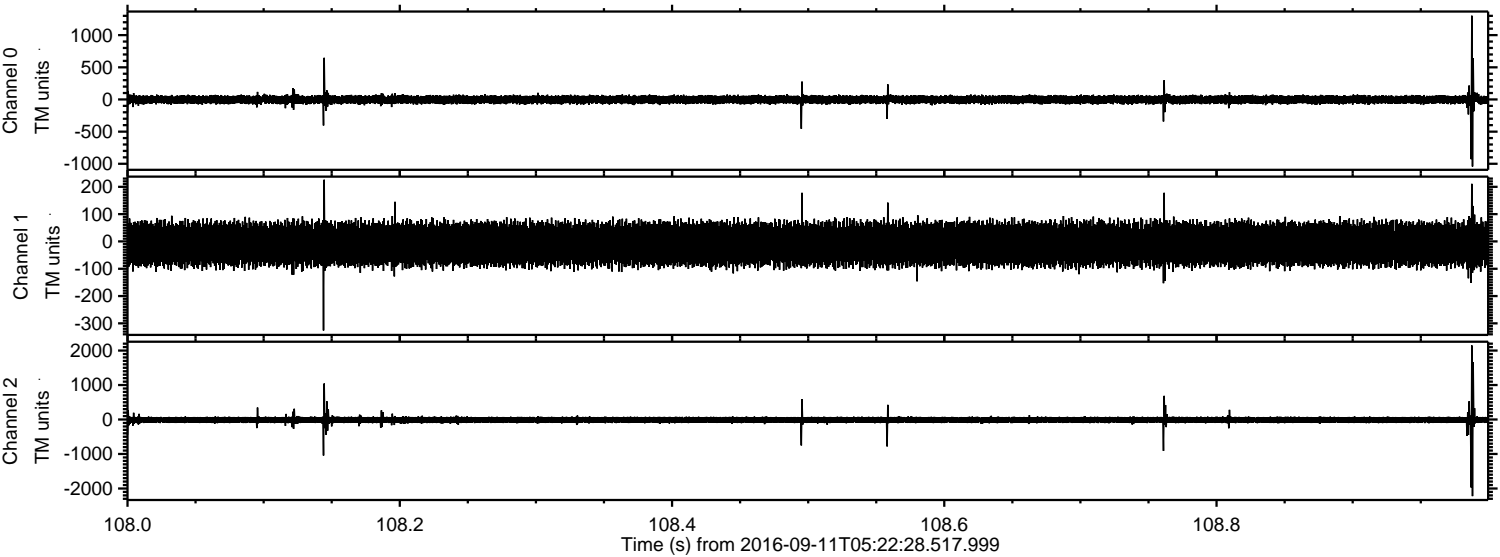
Channel 1  
mn: -1127  
mx: 1093  
 $\mu$ : -9.8  
 $\sigma$ : 45.2

Channel 2  
mn: -2074  
mx: 2308  
 $\mu$ : -11.1  
 $\sigma$ : 56.2



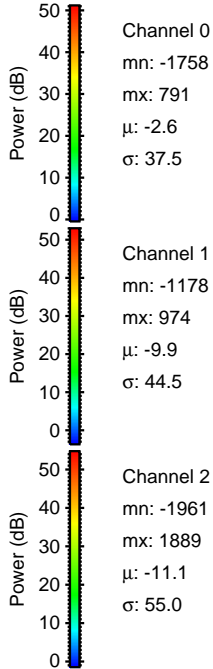
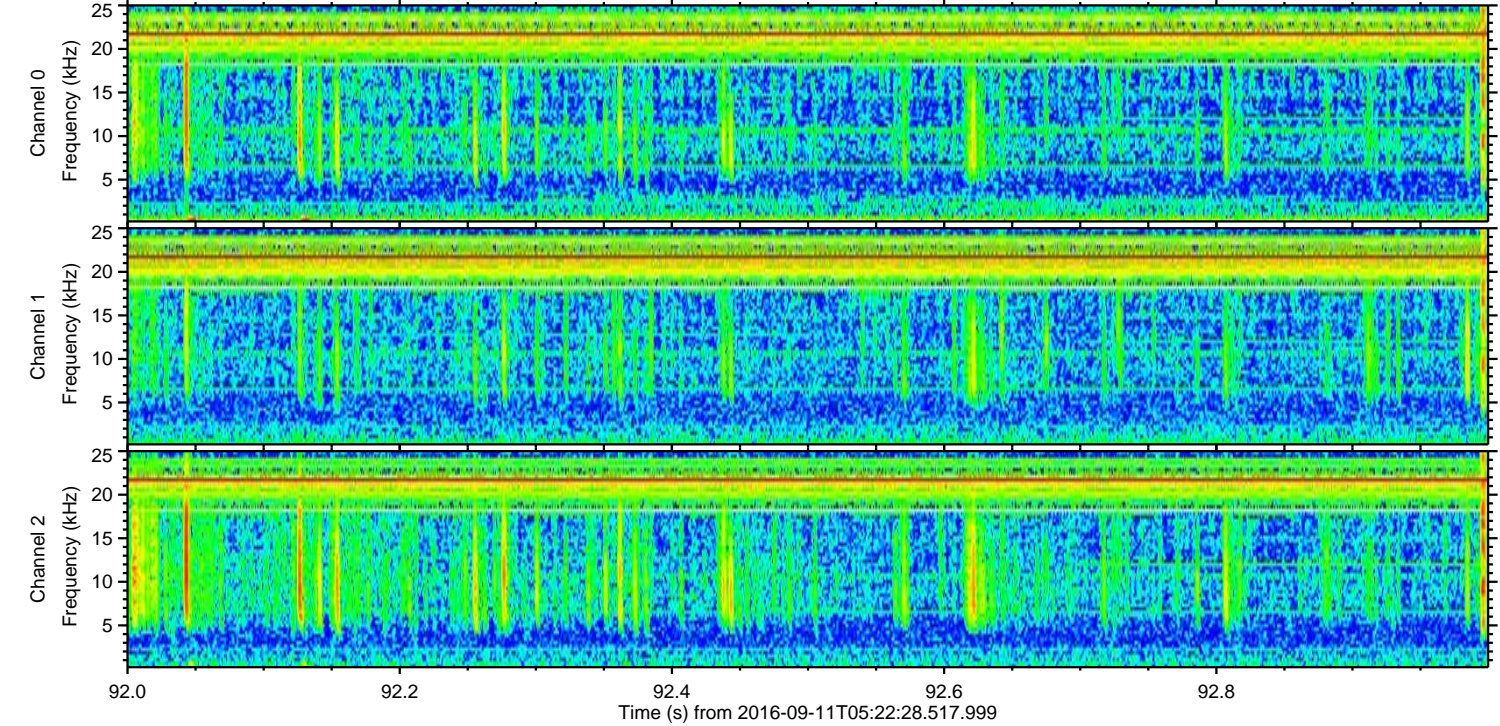
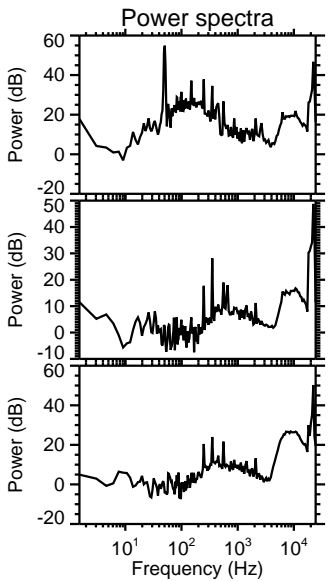
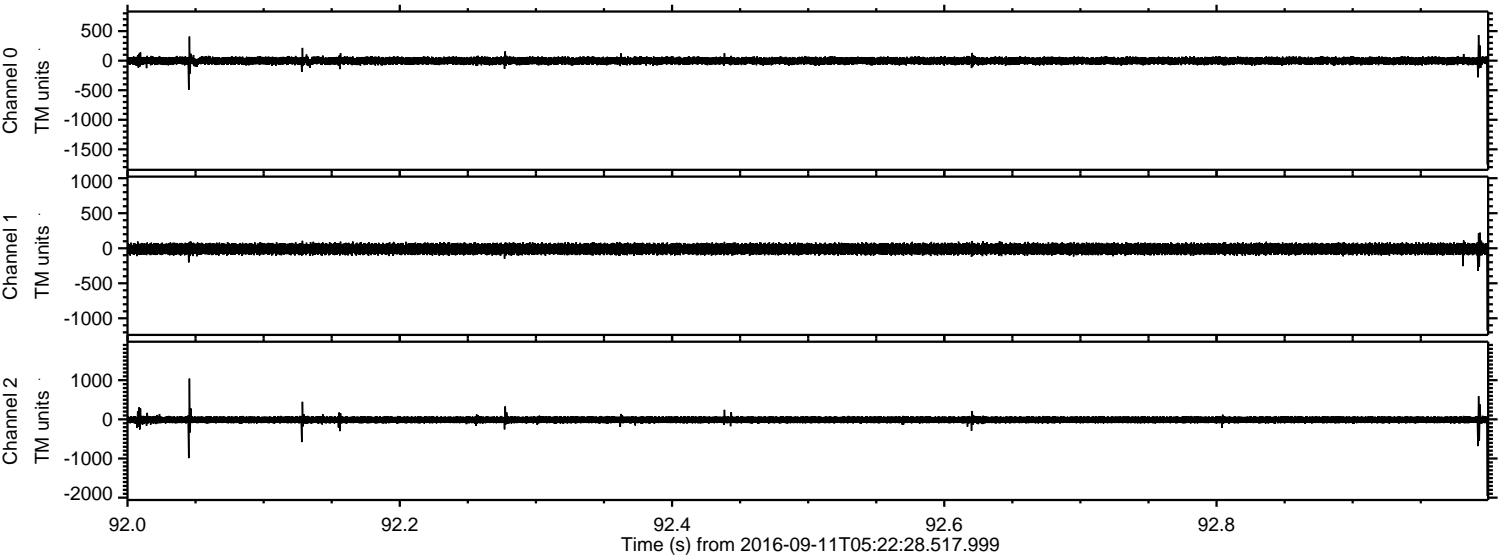
ELMAVAN 3D WAVEFORMS (Measured data sampled at 50 kHz) 51000 packets of 144 samples from 2016-09-11T05:22:28.517.999. Part 109/147

Processed Sun Sep 11 07:30:45 2016 by ELM ver.2012-10-06 from 001\_\_elm20160911\_052227\_\_dat00.bin





Processed Sun Sep 11 07:30:47 2016 by ELM ver.2012-10-06 from 001\_\_elm20160911\_052227\_\_dat00.bin



Channel 0  
mn: -1758  
mx: 791  
 $\mu$ : -2.6  
 $\sigma$ : 37.5

Channel 1  
mn: -1178  
mx: 974  
 $\mu$ : -9.9  
 $\sigma$ : 44.5

Channel 2  
mn: -1961  
mx: 1889  
 $\mu$ : -11.1  
 $\sigma$ : 55.0



ELMAVAN 3D WAVEFORMS (Measured data sampled at 50 kHz) 51000 packets of 144 samples from 2016-09-11T05:22:28.517.999. Part 91/147

Processed Sun Sep 11 07:30:48 2016 by ELM ver.2012-10-06 from 001\_\_elm20160911\_052227\_\_dat00.bin

