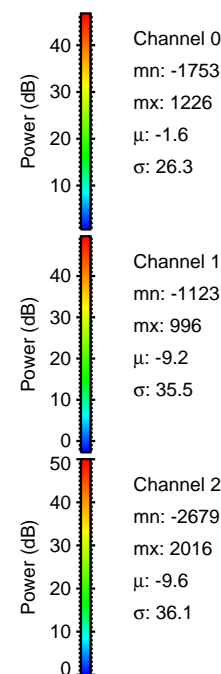
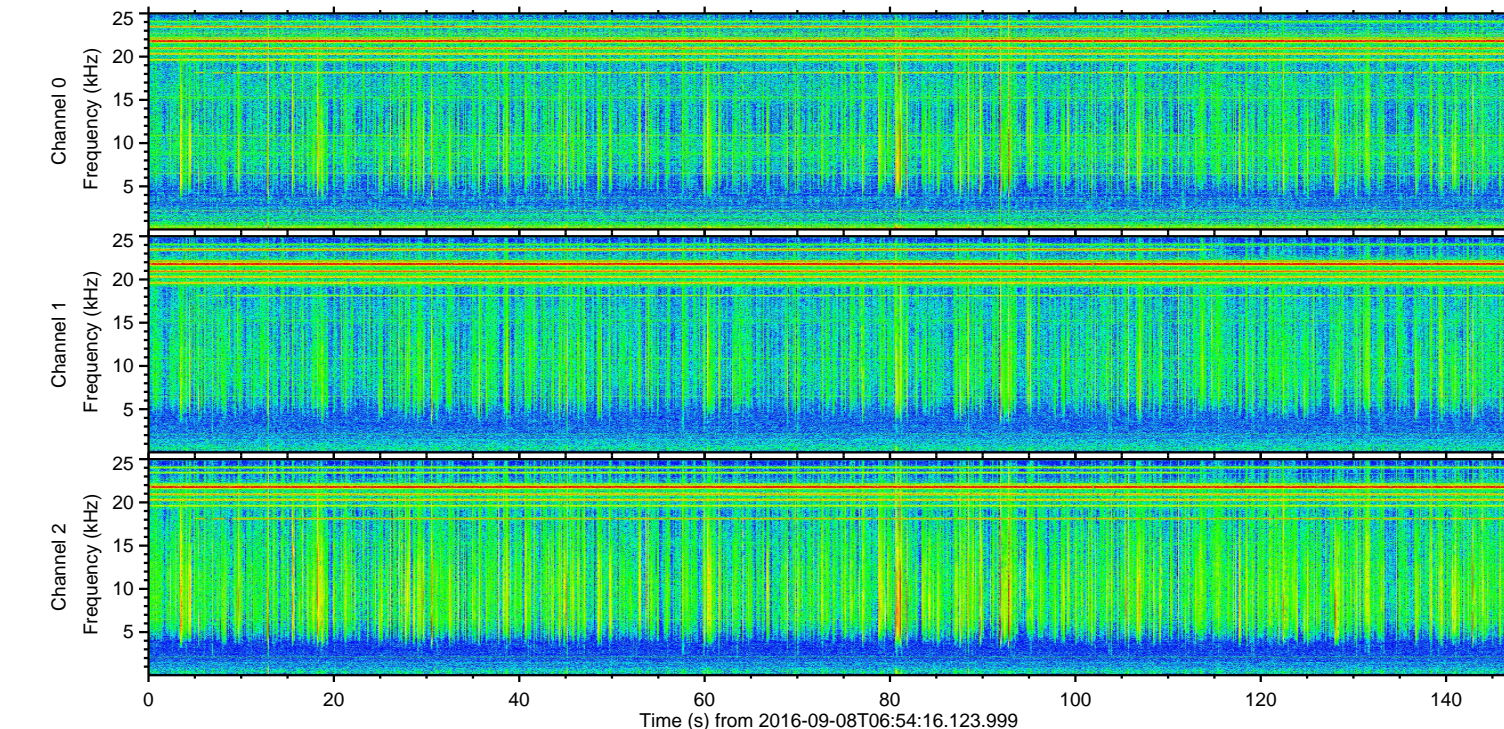
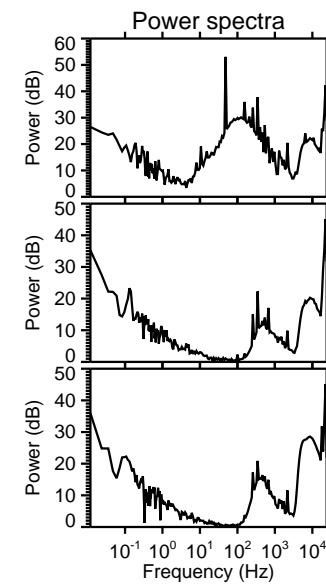
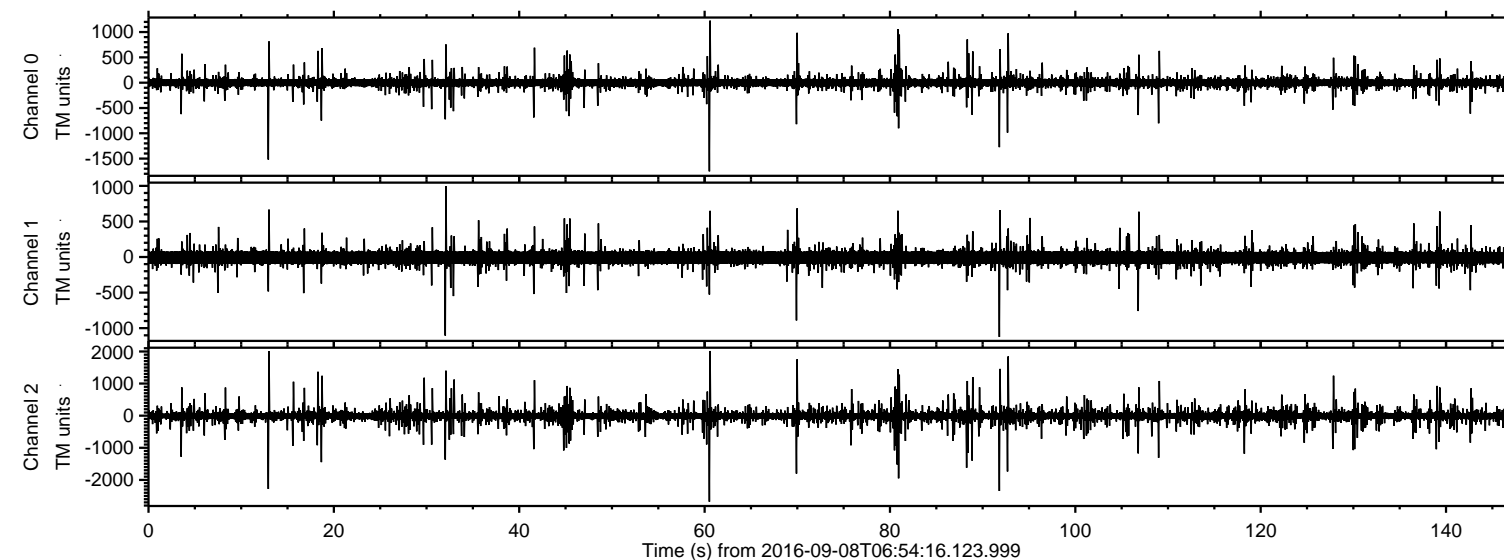


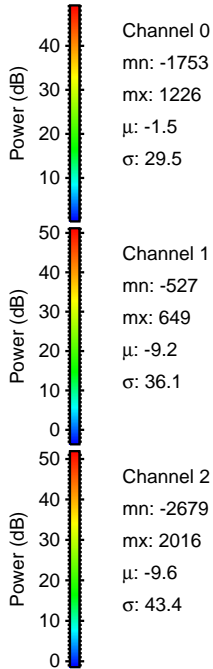
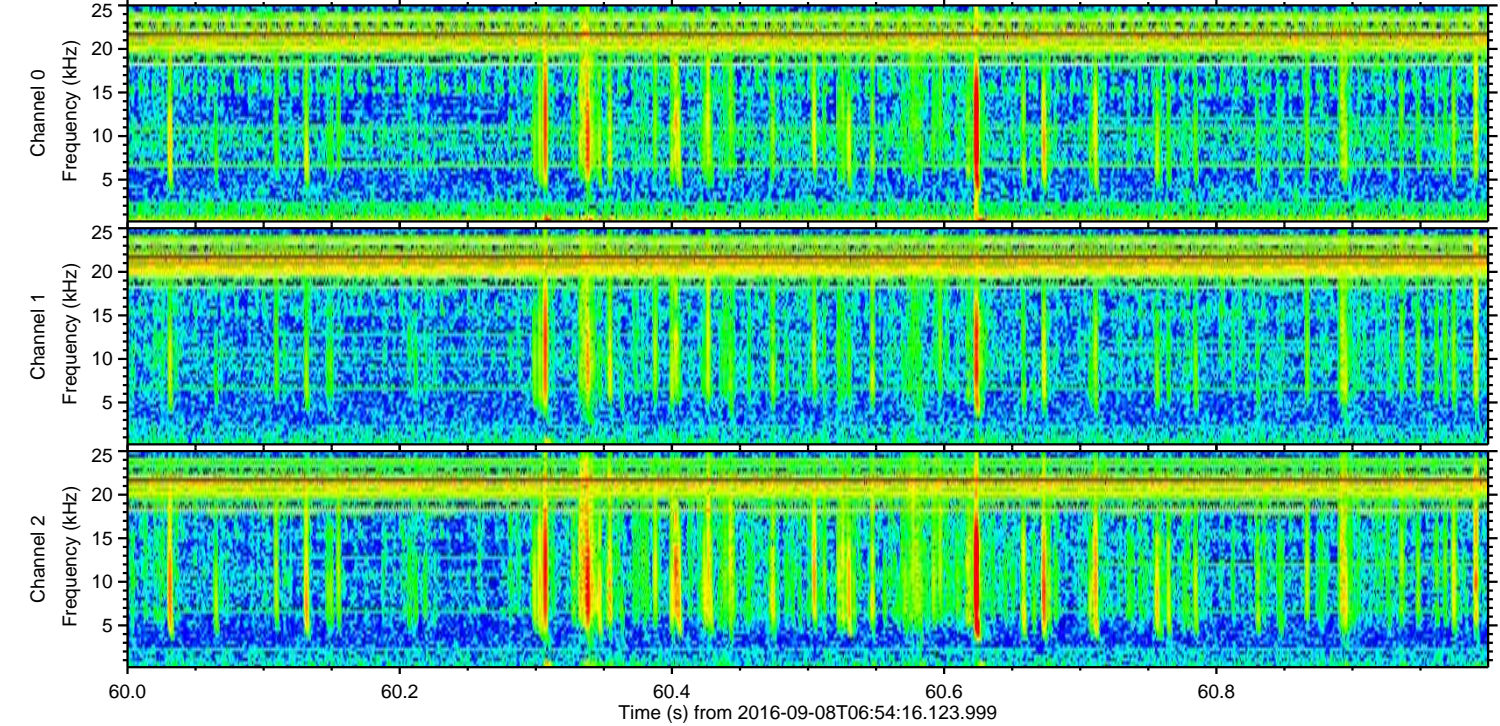
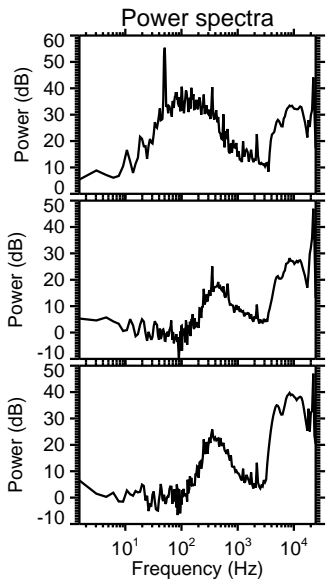
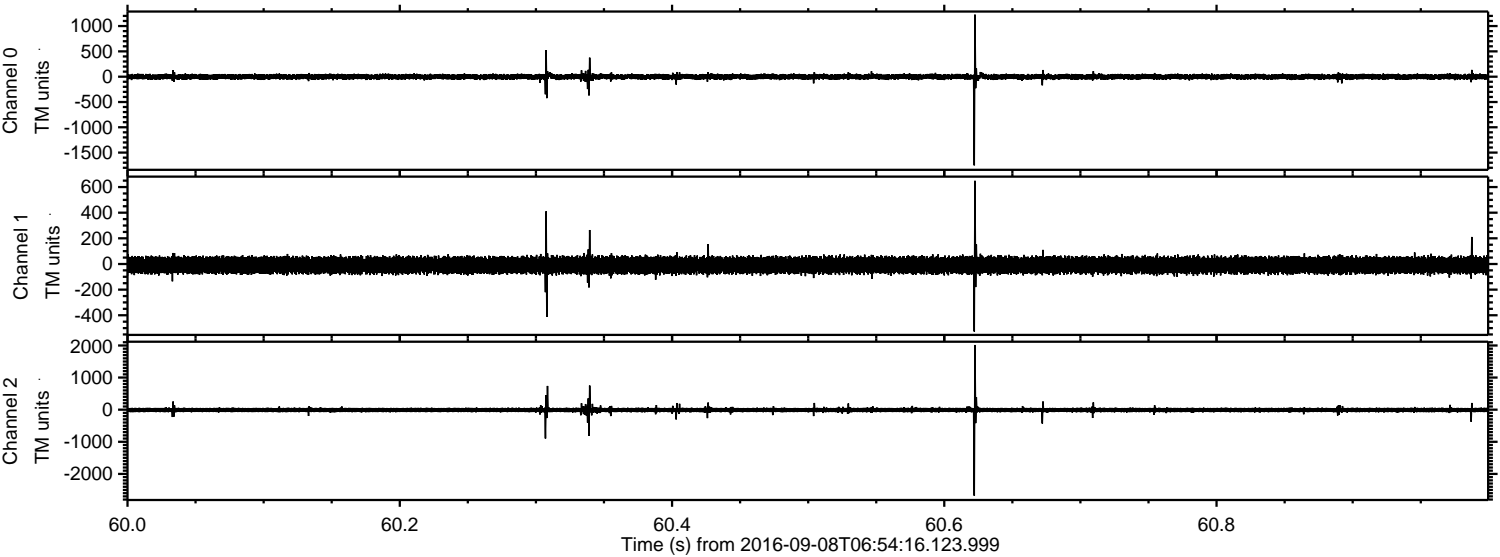
# ELMAVAN 3D WAVEFORMS (Measured data sampled at 50 kHz) 51000 packets of 144 samples from 2016-09-08T06:54:16.123.999.

Processed Thu Sep 8 09:01:55 2016 by ELM ver.2012-10-06 from 001\_\_elm20160908\_065415\_\_dat00.bin





Processed Thu Sep 8 09:02:12 2016 by ELM ver.2012-10-06 from 001\_\_elm20160908\_065415\_\_dat00.bin



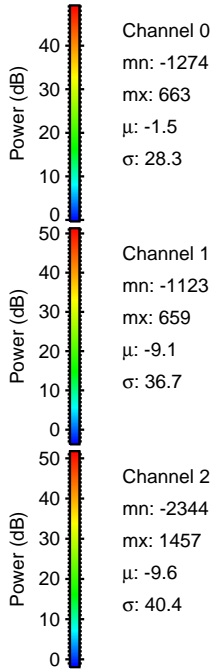
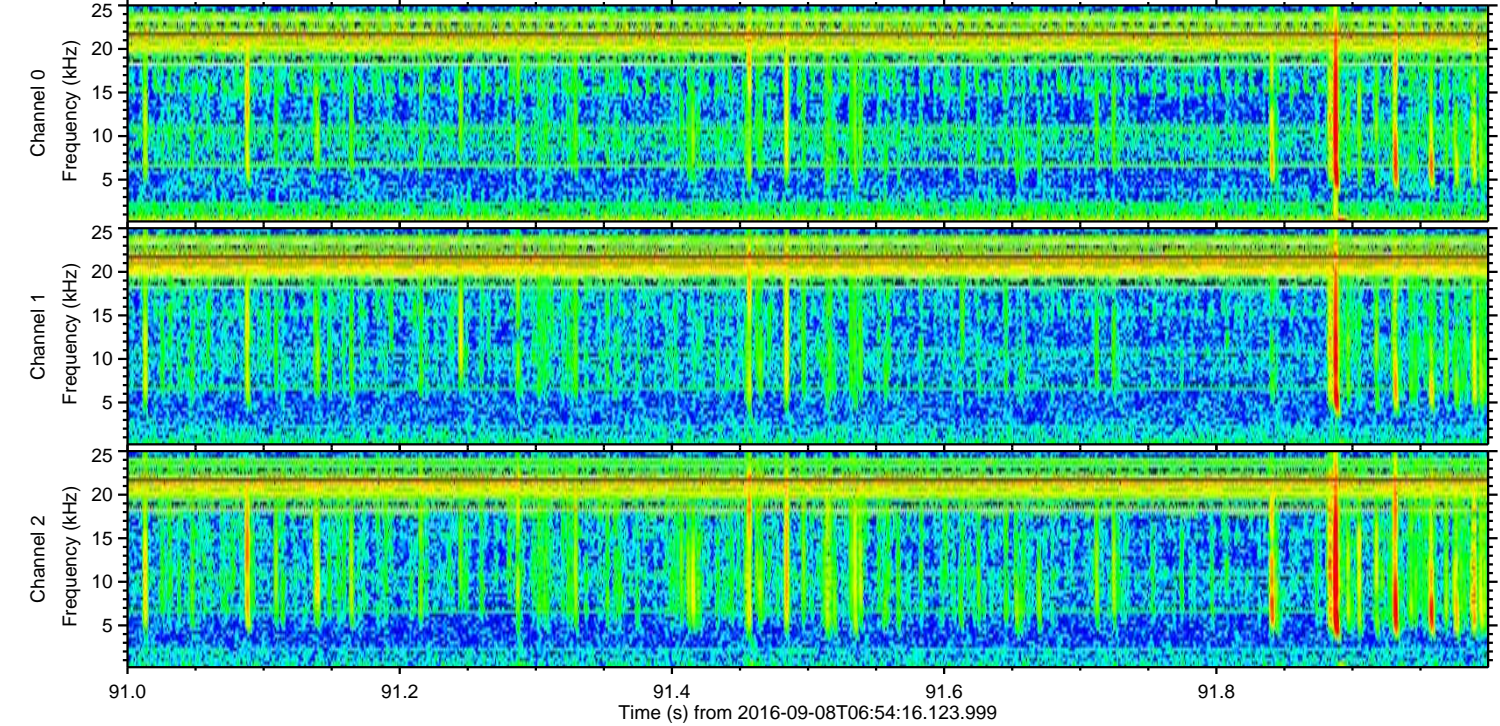
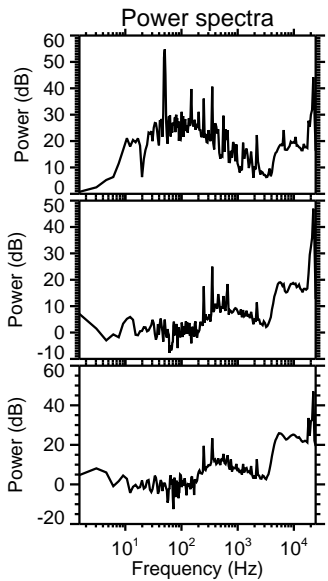
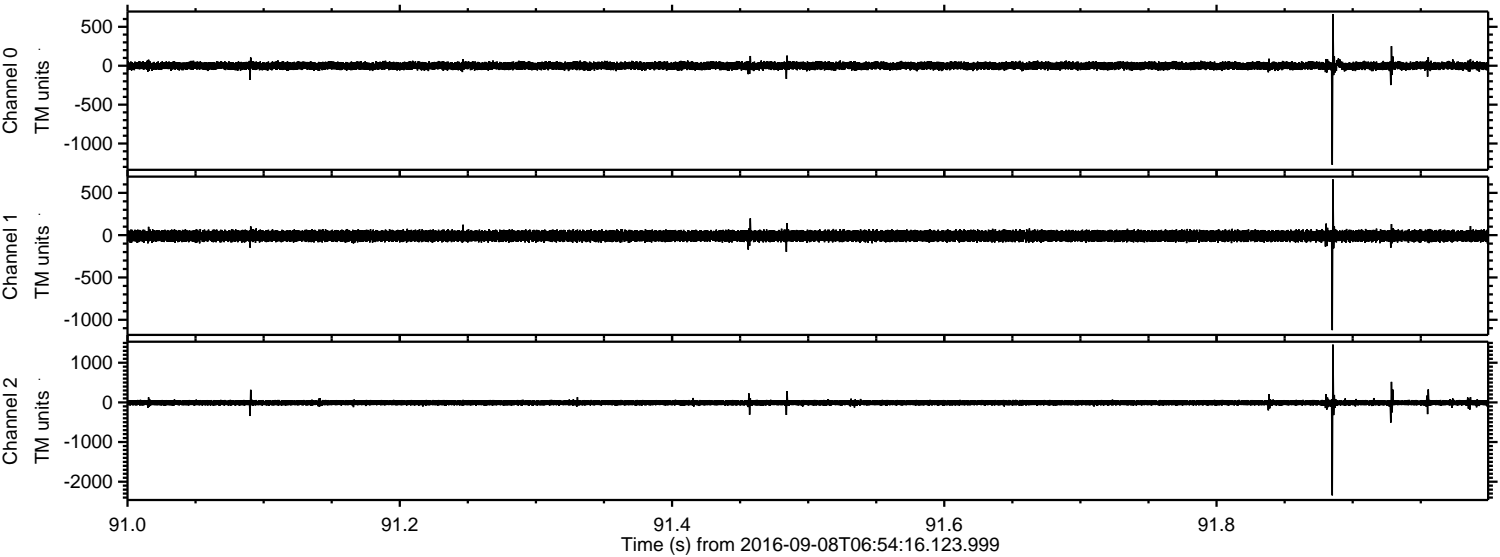
Channel 0  
mn: -1753  
mx: 1226  
 $\mu$ : -1.5  
 $\sigma$ : 29.5

Channel 1  
mn: -527  
mx: 649  
 $\mu$ : -9.2  
 $\sigma$ : 36.1

Channel 2  
mn: -2679  
mx: 2016  
 $\mu$ : -9.6  
 $\sigma$ : 43.4



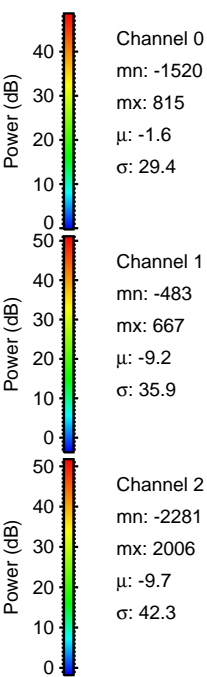
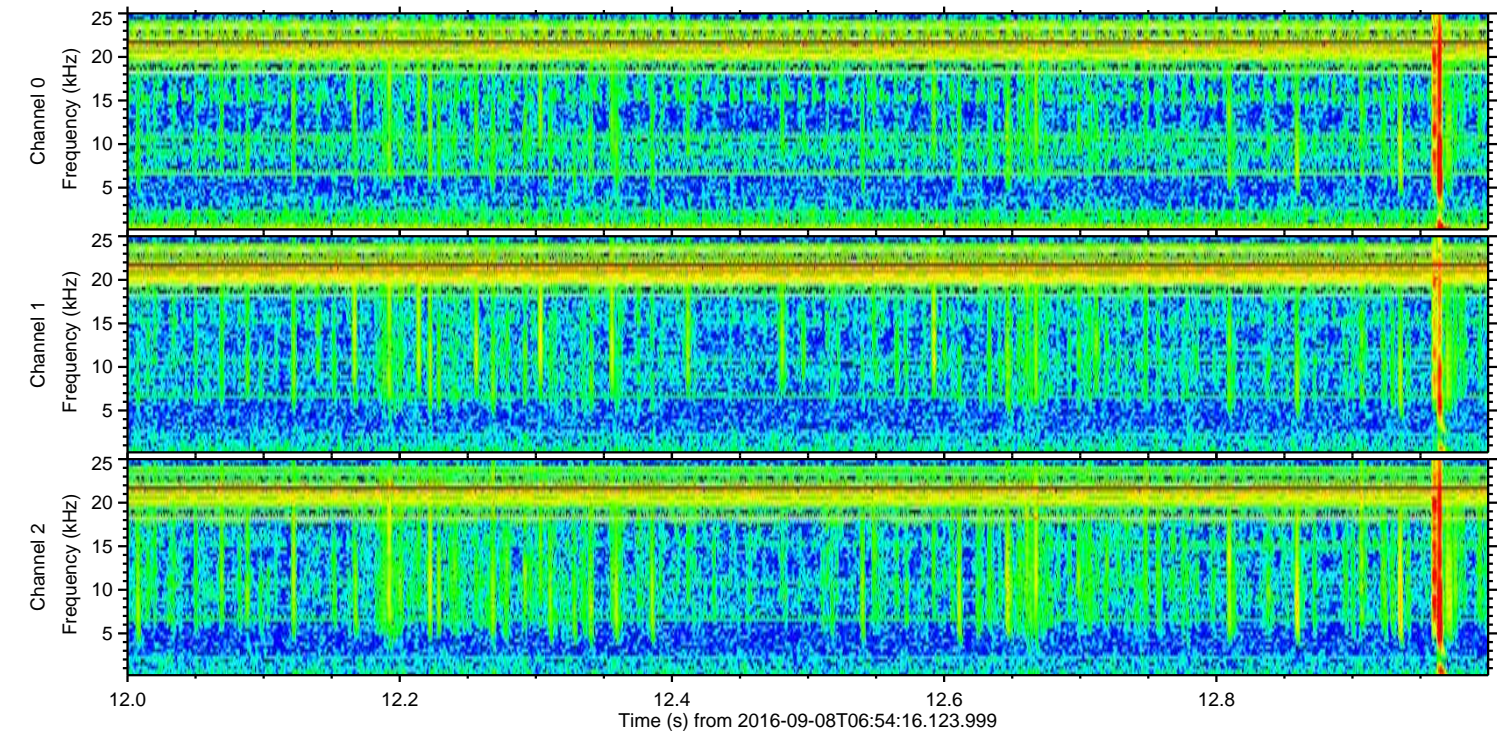
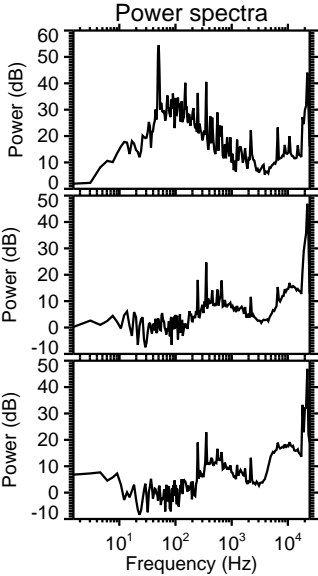
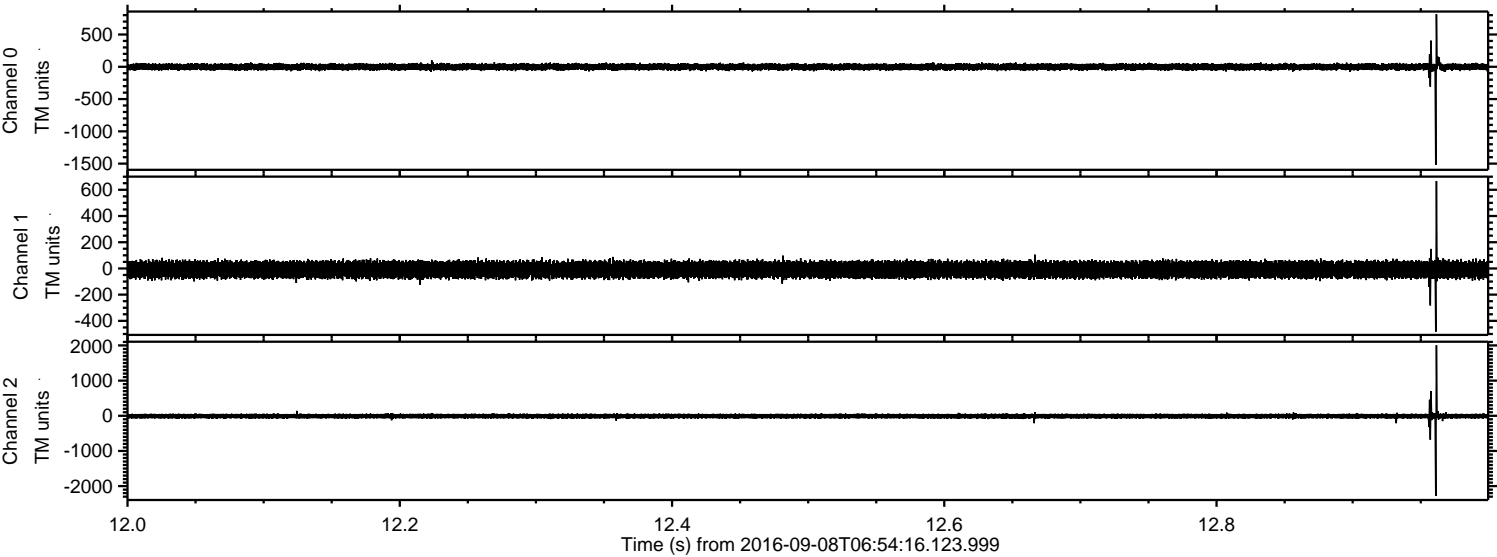
Processed Thu Sep 8 09:02:13 2016 by ELM ver.2012-10-06 from 001\_\_elm20160908\_065415\_\_dat00.bin





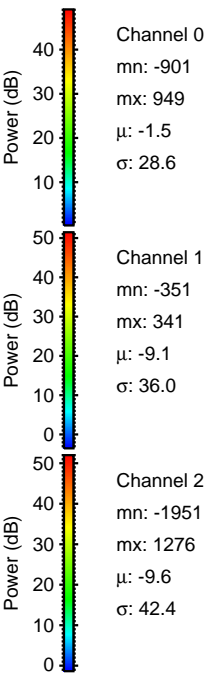
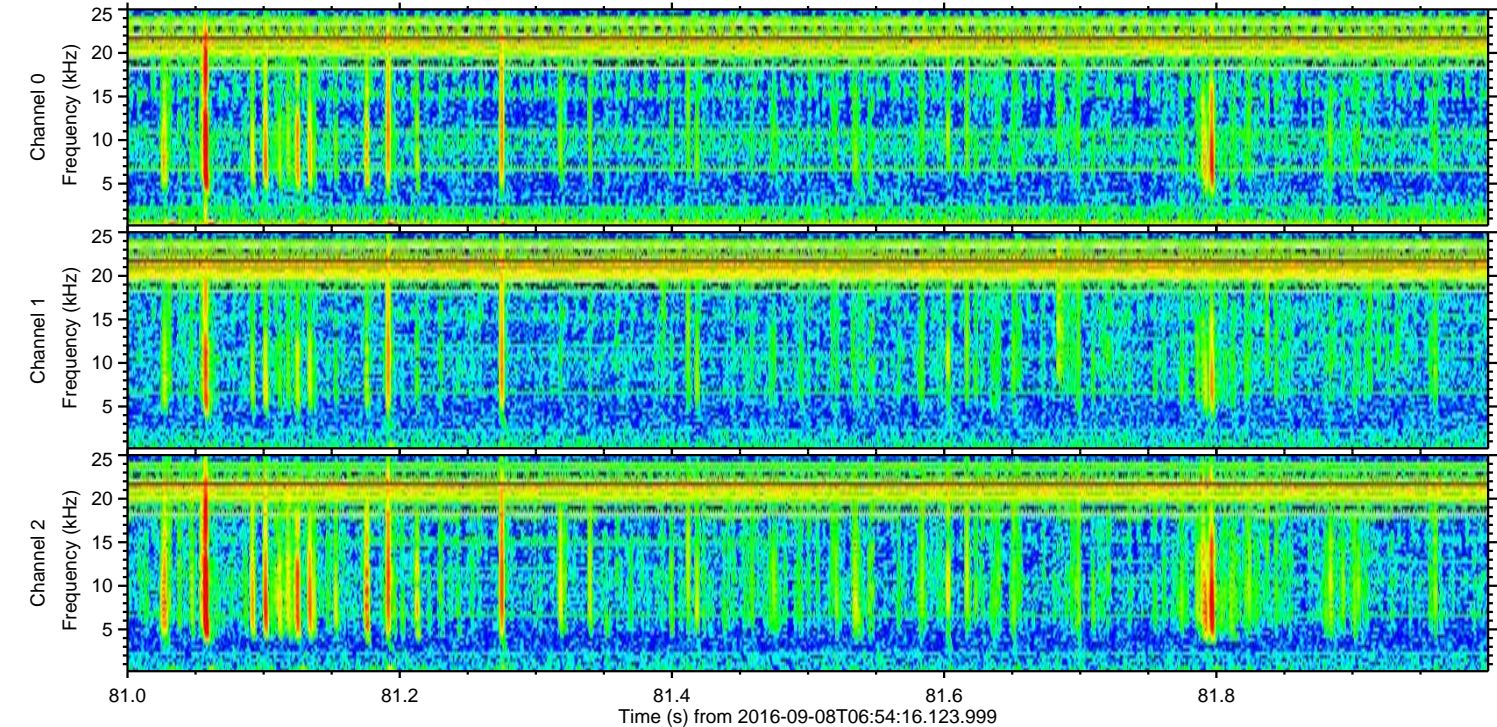
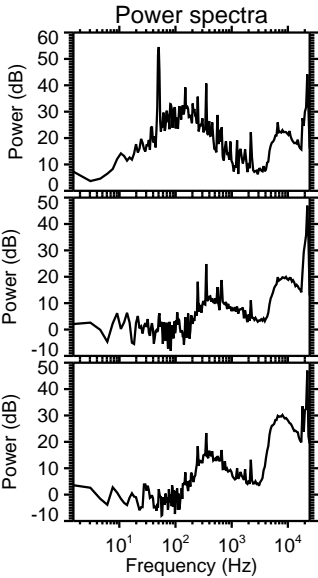
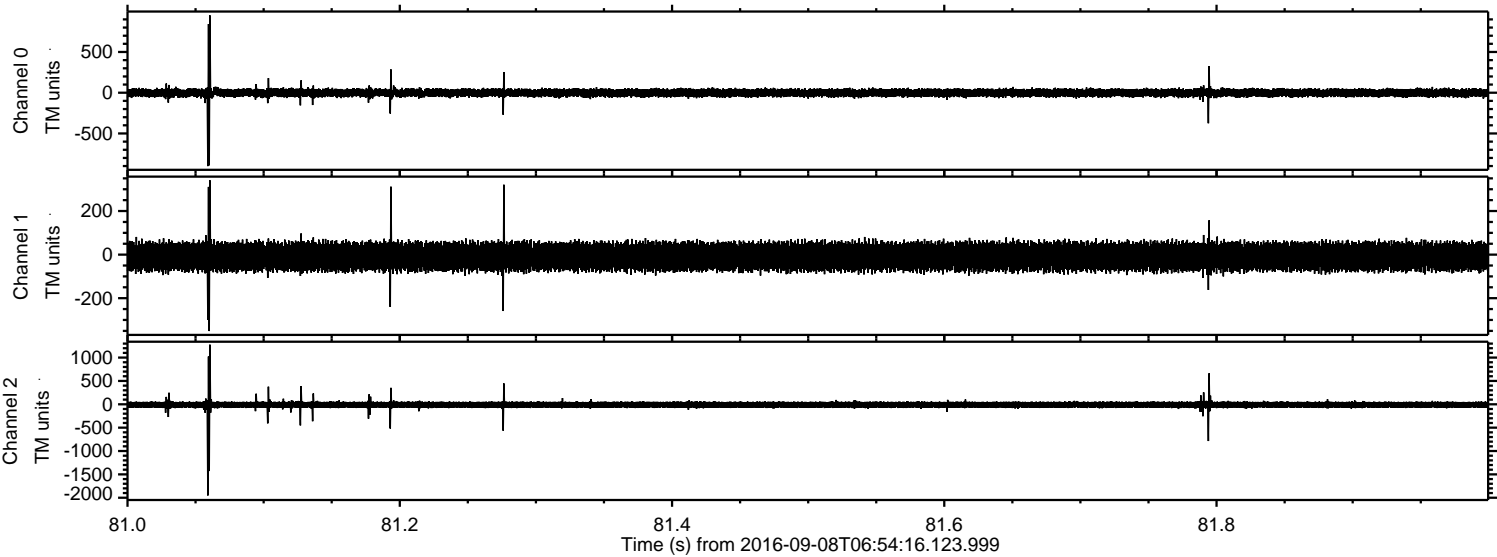
ELMAVAN 3D WAVEFORMS (Measured data sampled at 50 kHz) 51000 packets of 144 samples from 2016-09-08T06:54:16.123.999. Part 13/147

Processed Thu Sep 8 09:02:14 2016 by ELM ver.2012-10-06 from 001\_\_elm20160908\_065415\_\_dat00.bin



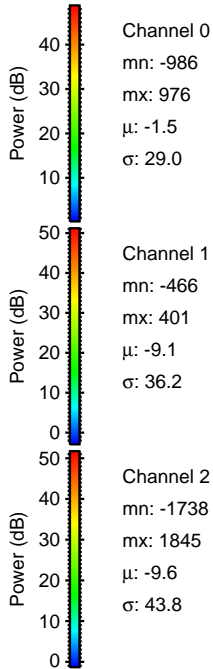
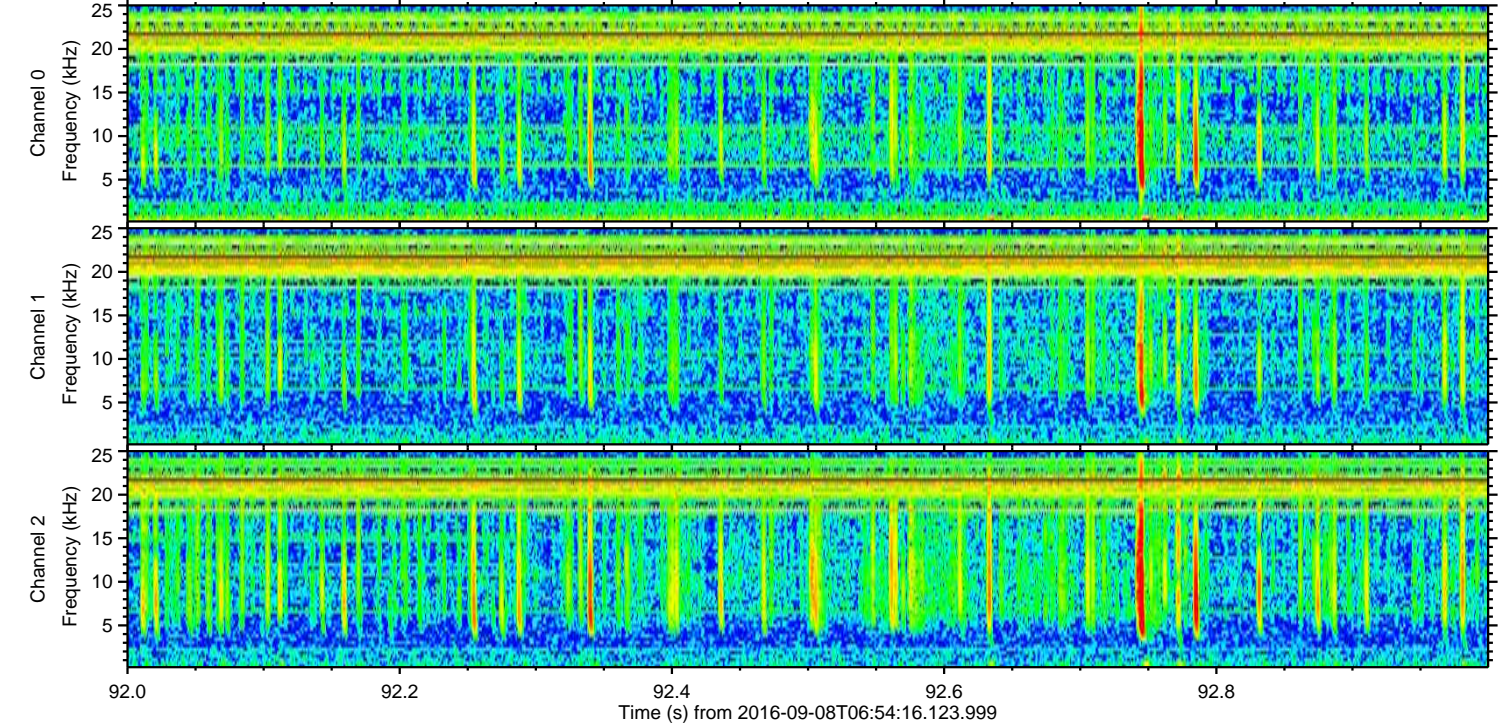
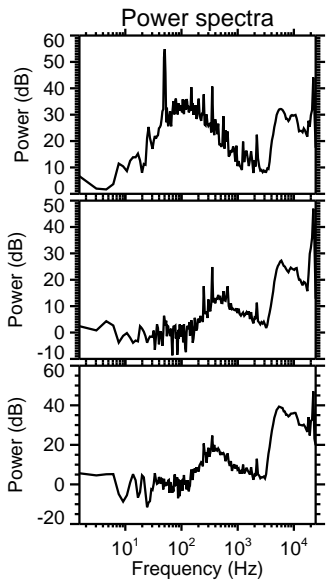
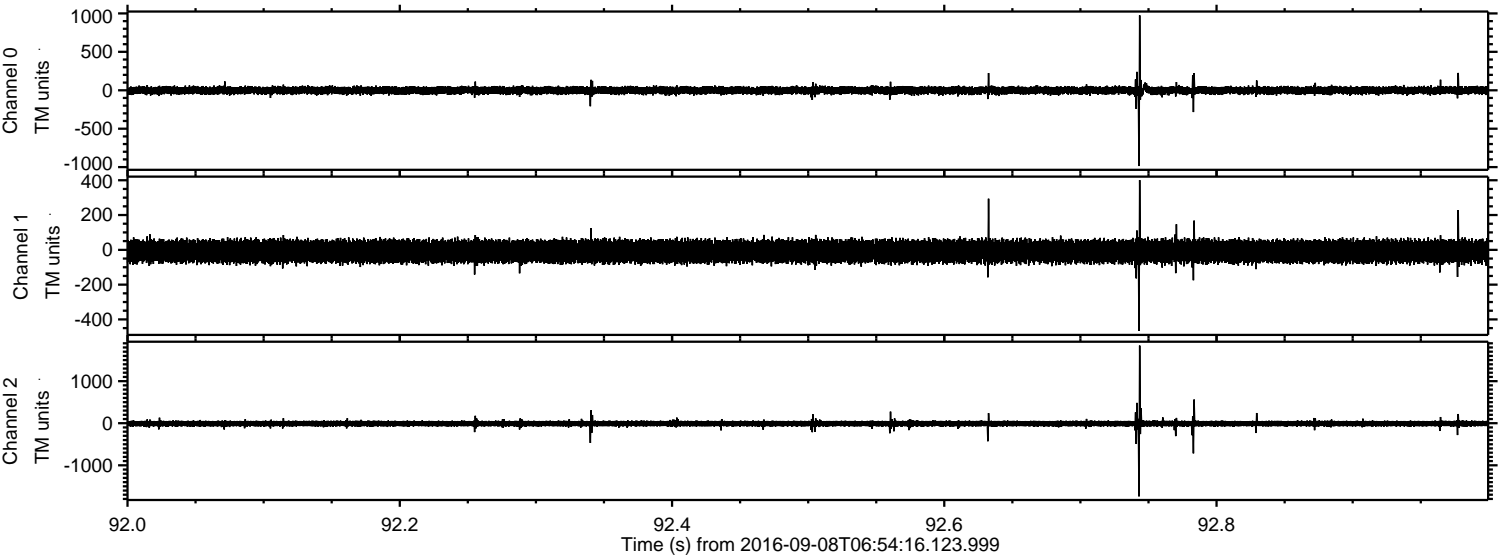


Processed Thu Sep 8 09:02:15 2016 by ELM ver.2012-10-06 from 001\_\_elm20160908\_065415\_\_dat00.bin





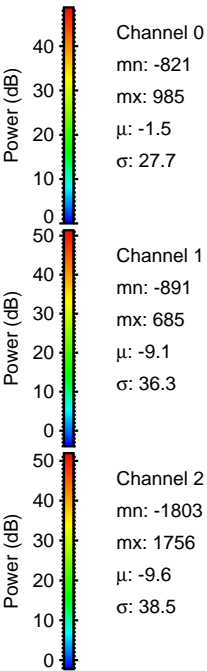
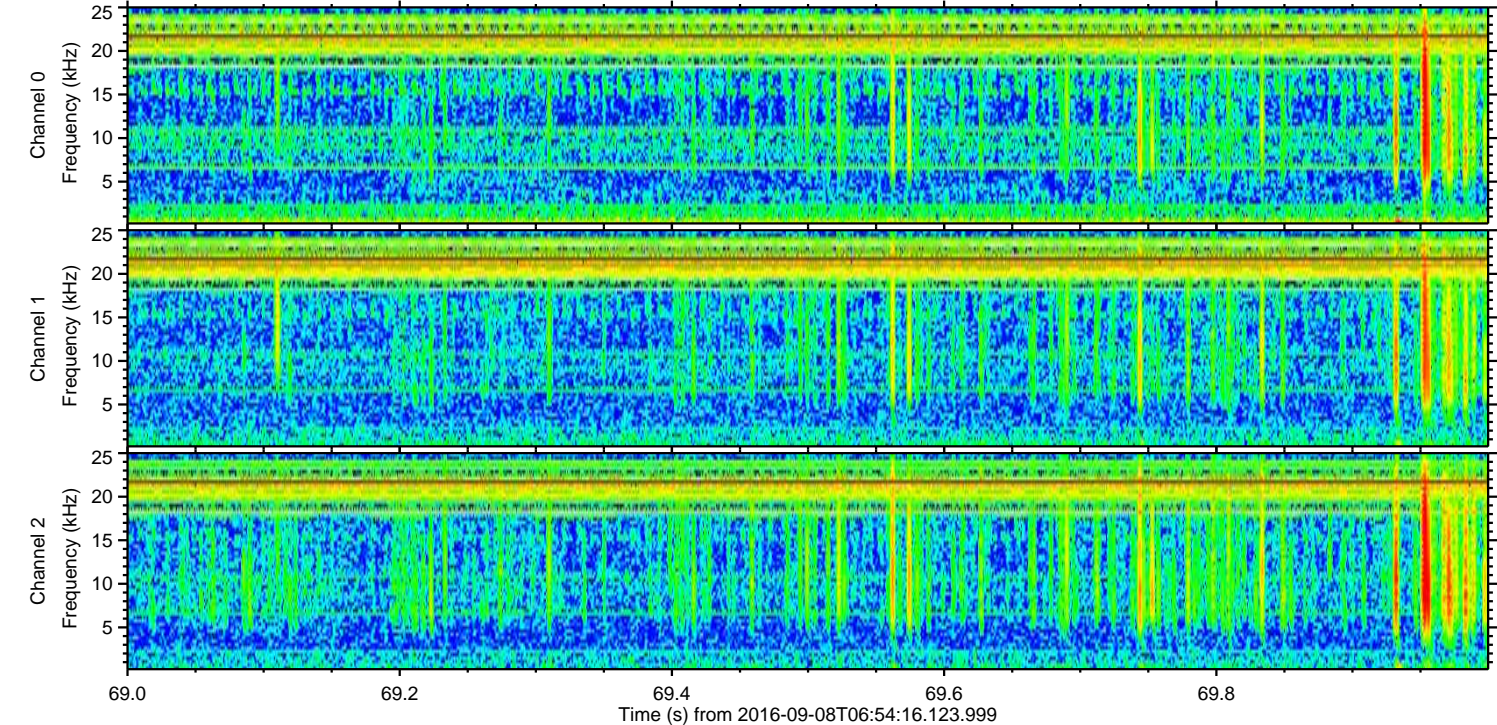
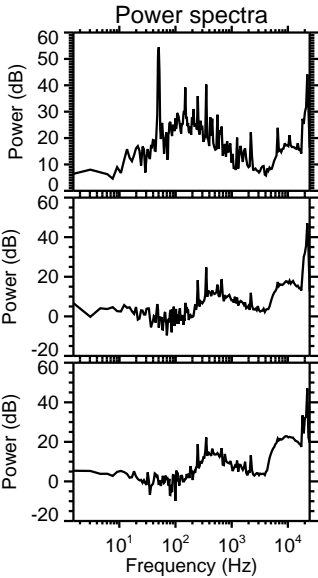
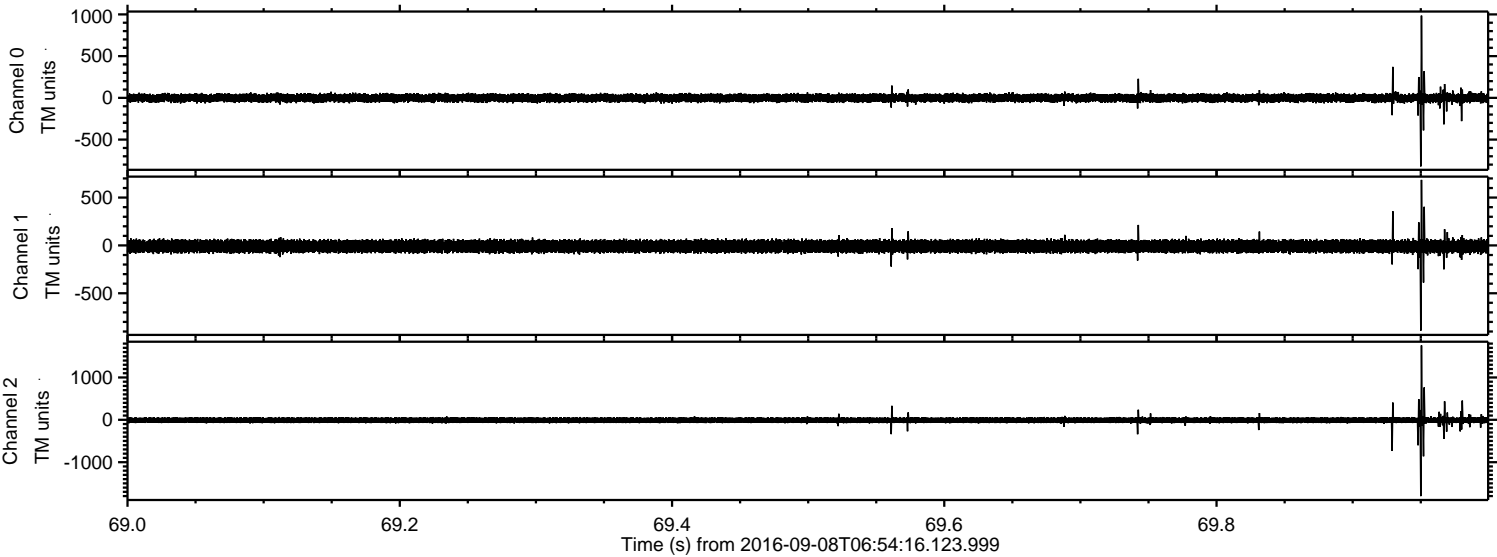
Processed Thu Sep 8 09:02:16 2016 by ELM ver.2012-10-06 from 001\_\_elm20160908\_065415\_\_dat00.bin





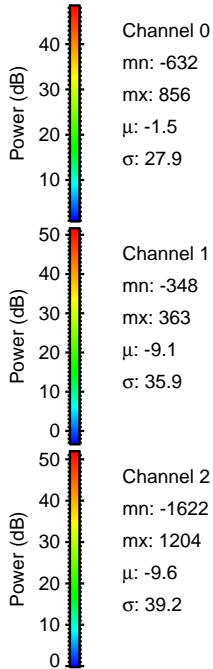
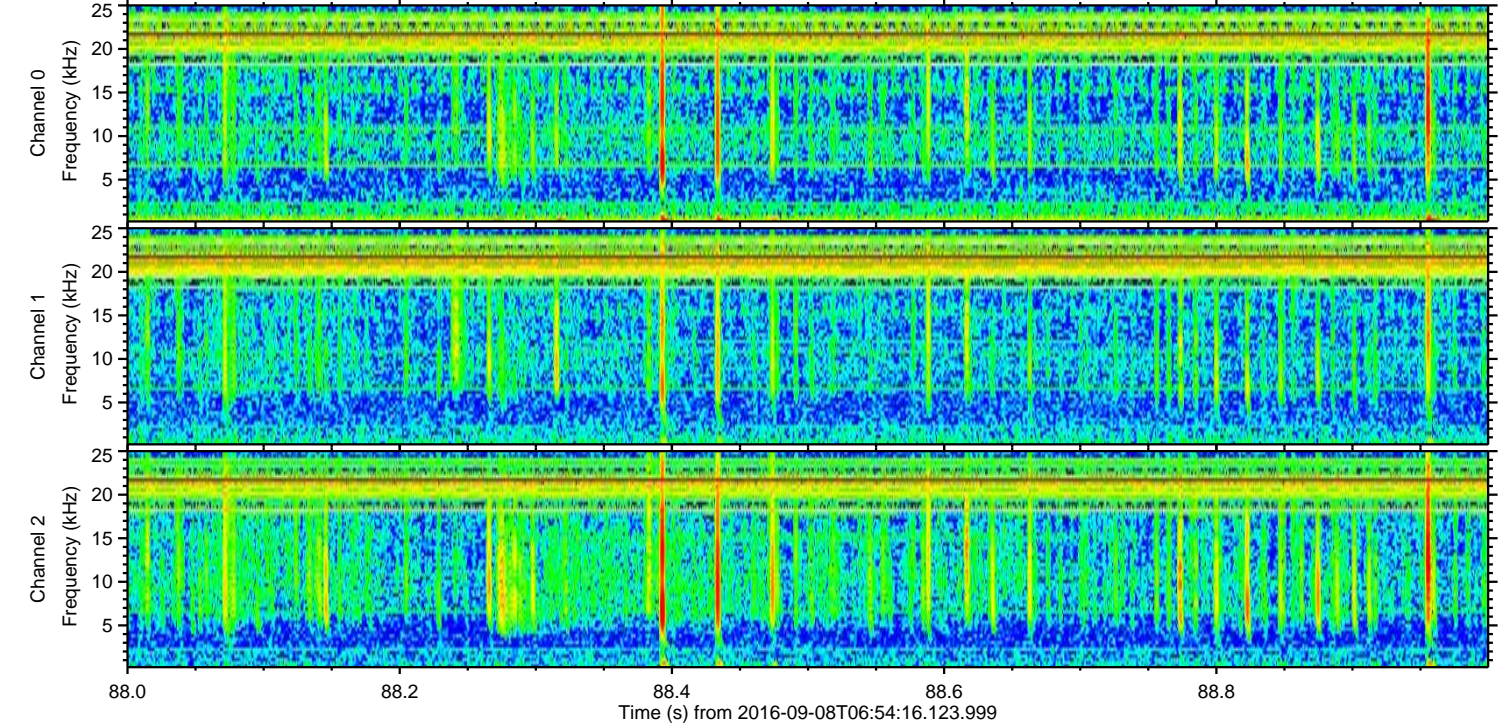
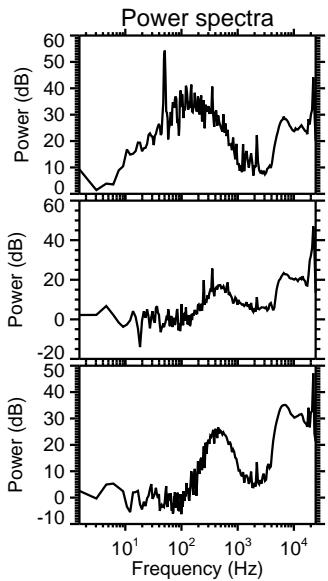
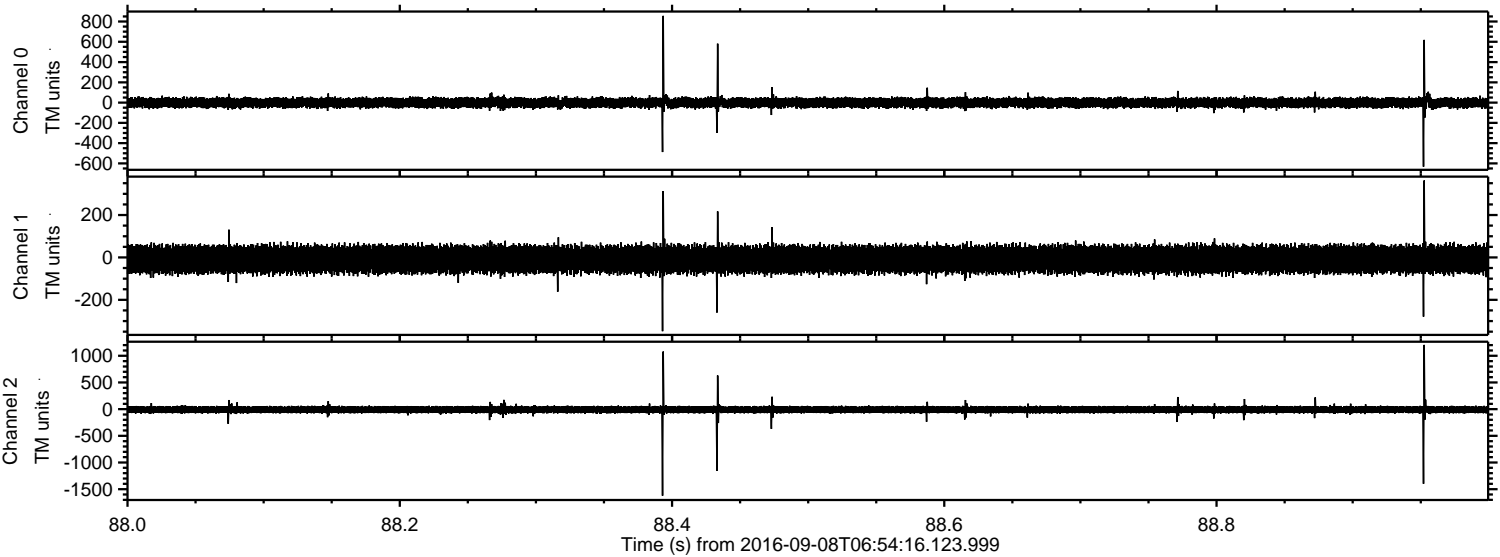
ELMAVAN 3D WAVEFORMS (Measured data sampled at 50 kHz) 51000 packets of 144 samples from 2016-09-08T06:54:16.123.999. Part 70/147

Processed Thu Sep 8 09:02:17 2016 by ELM ver.2012-10-06 from 001\_\_elm20160908\_065415\_\_dat00.bin





Processed Thu Sep 8 09:02:18 2016 by ELM ver.2012-10-06 from 001\_\_elm20160908\_065415\_\_dat00.bin



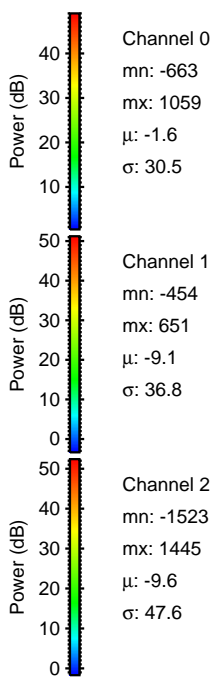
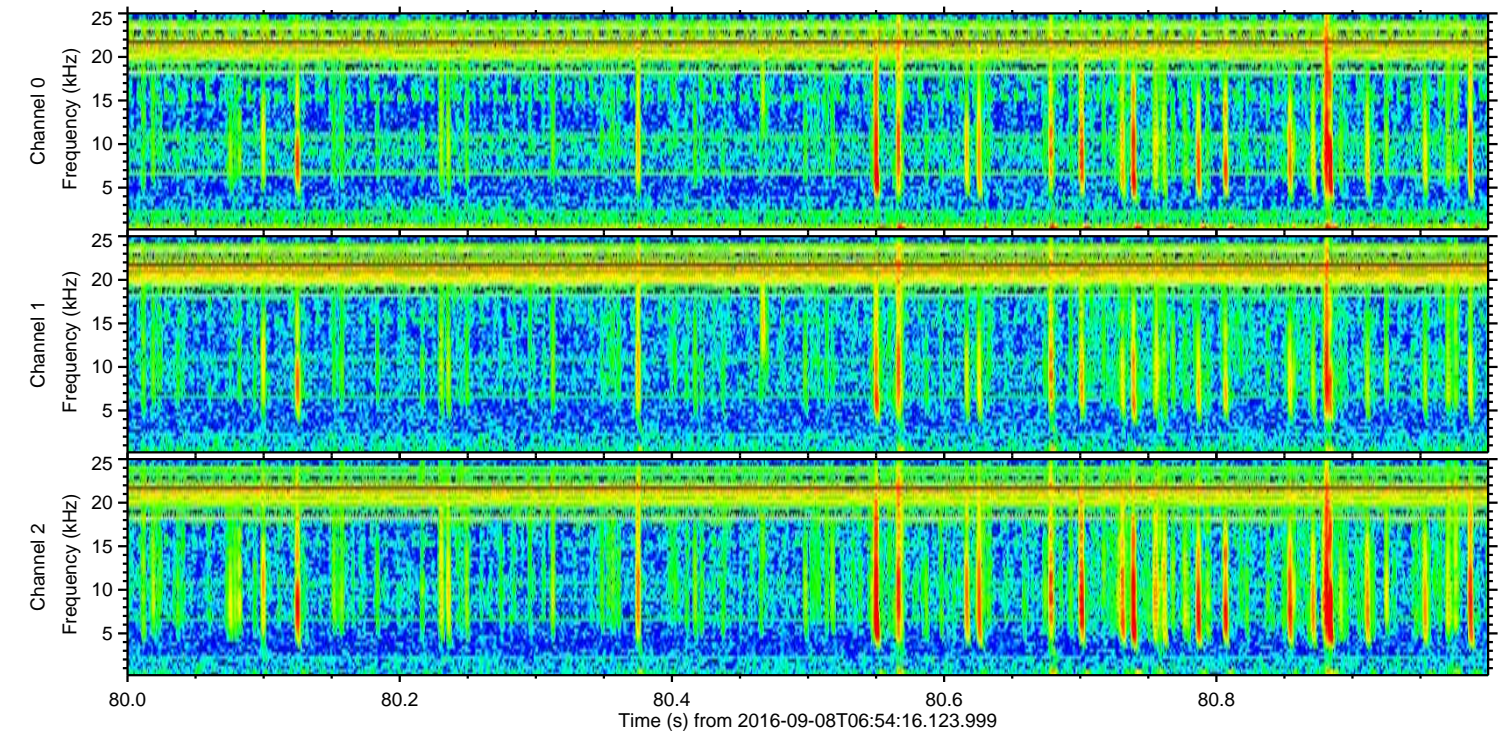
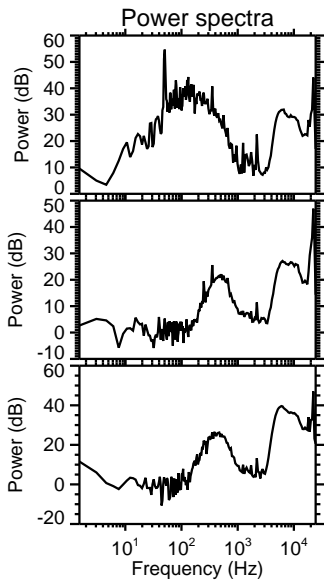
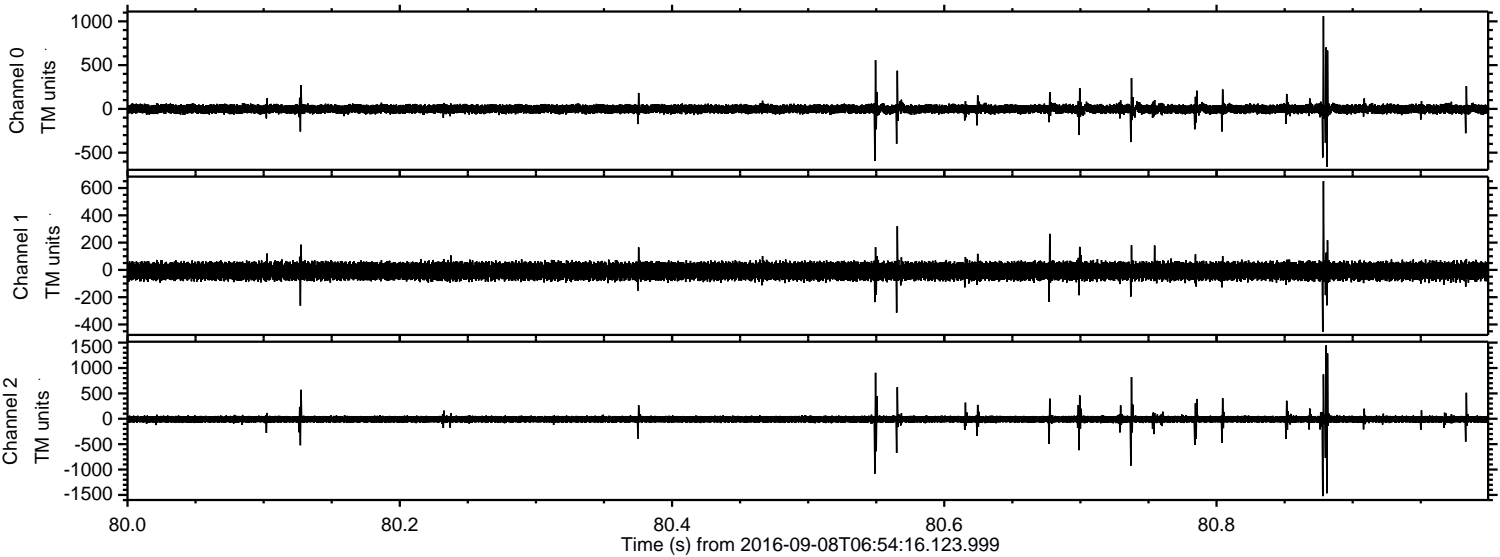
Channel 0  
mn: -632  
mx: 856  
 $\mu$ : -1.5  
 $\sigma$ : 27.9

Channel 1  
mn: -348  
mx: 363  
 $\mu$ : -9.1  
 $\sigma$ : 35.9

Channel 2  
mn: -1622  
mx: 1204  
 $\mu$ : -9.6  
 $\sigma$ : 39.2

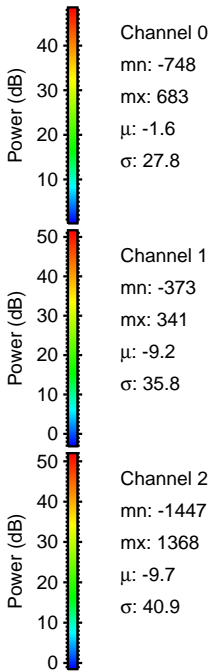
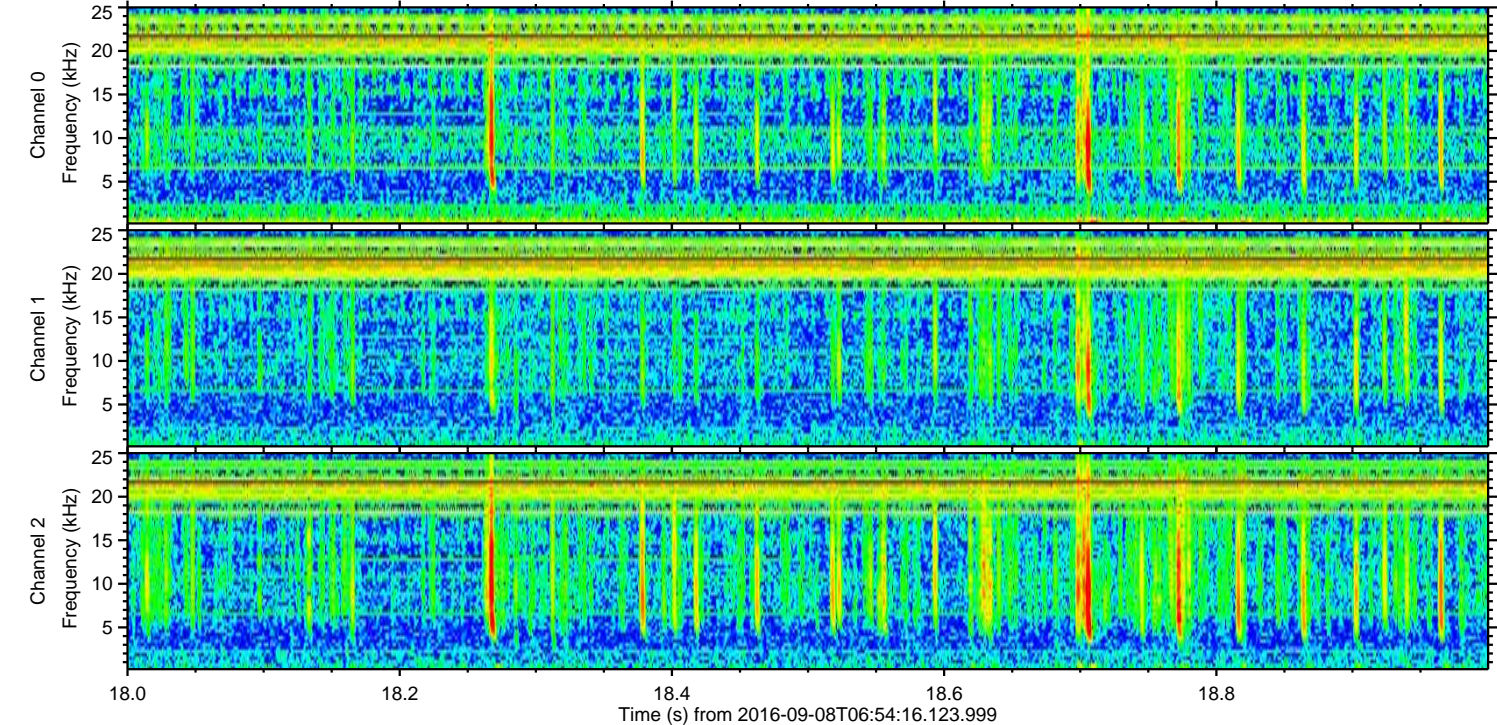
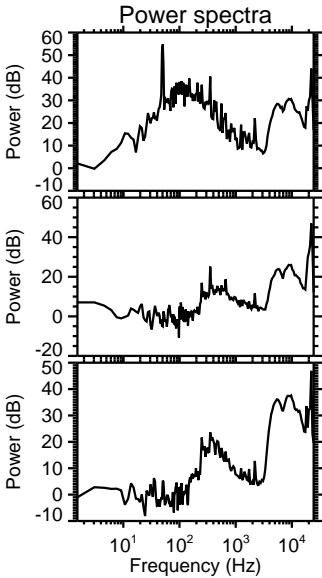
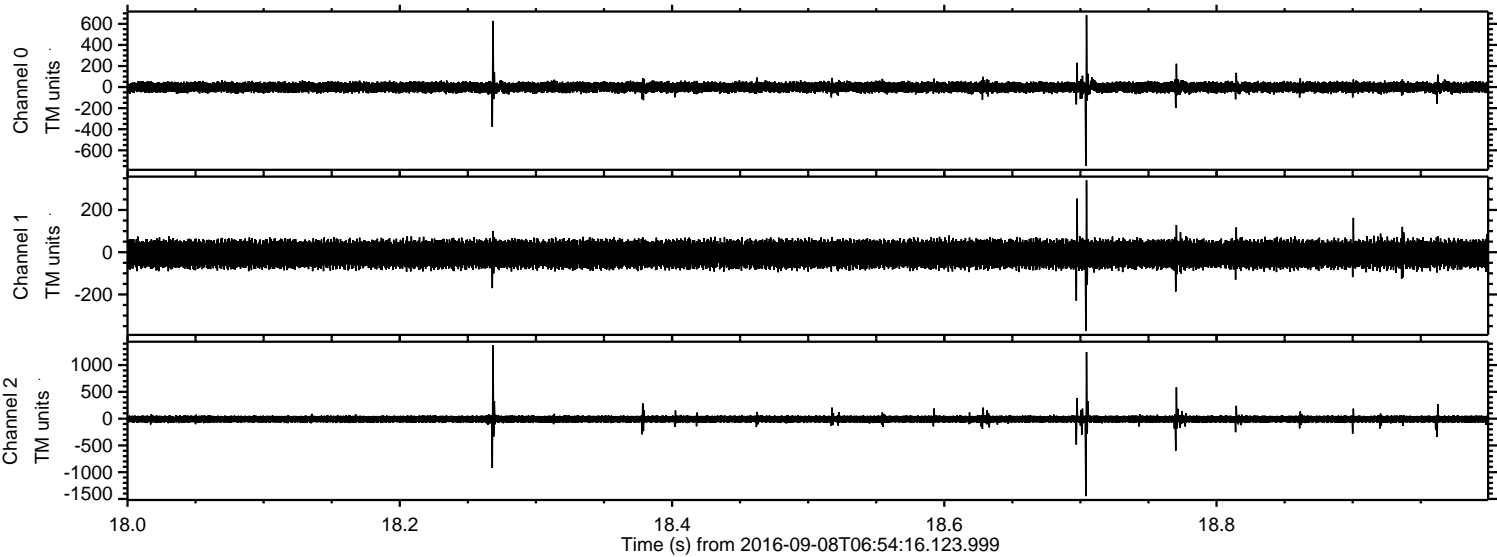


Processed Thu Sep 8 09:02:19 2016 by ELM ver.2012-10-06 from 001\_\_elm20160908\_065415\_\_dat00.bin





Processed Thu Sep 8 09:02:20 2016 by ELM ver.2012-10-06 from 001\_\_elm20160908\_065415\_\_dat00.bin





Processed Thu Sep 8 09:02:21 2016 by ELM ver.2012-10-06 from 001\_\_elm20160908\_065415\_\_dat00.bin

