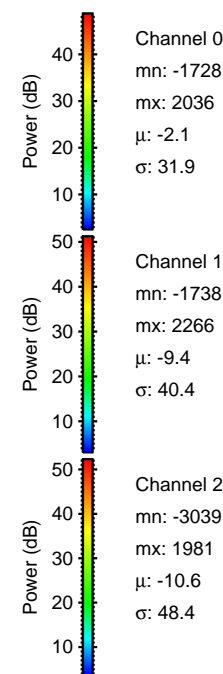
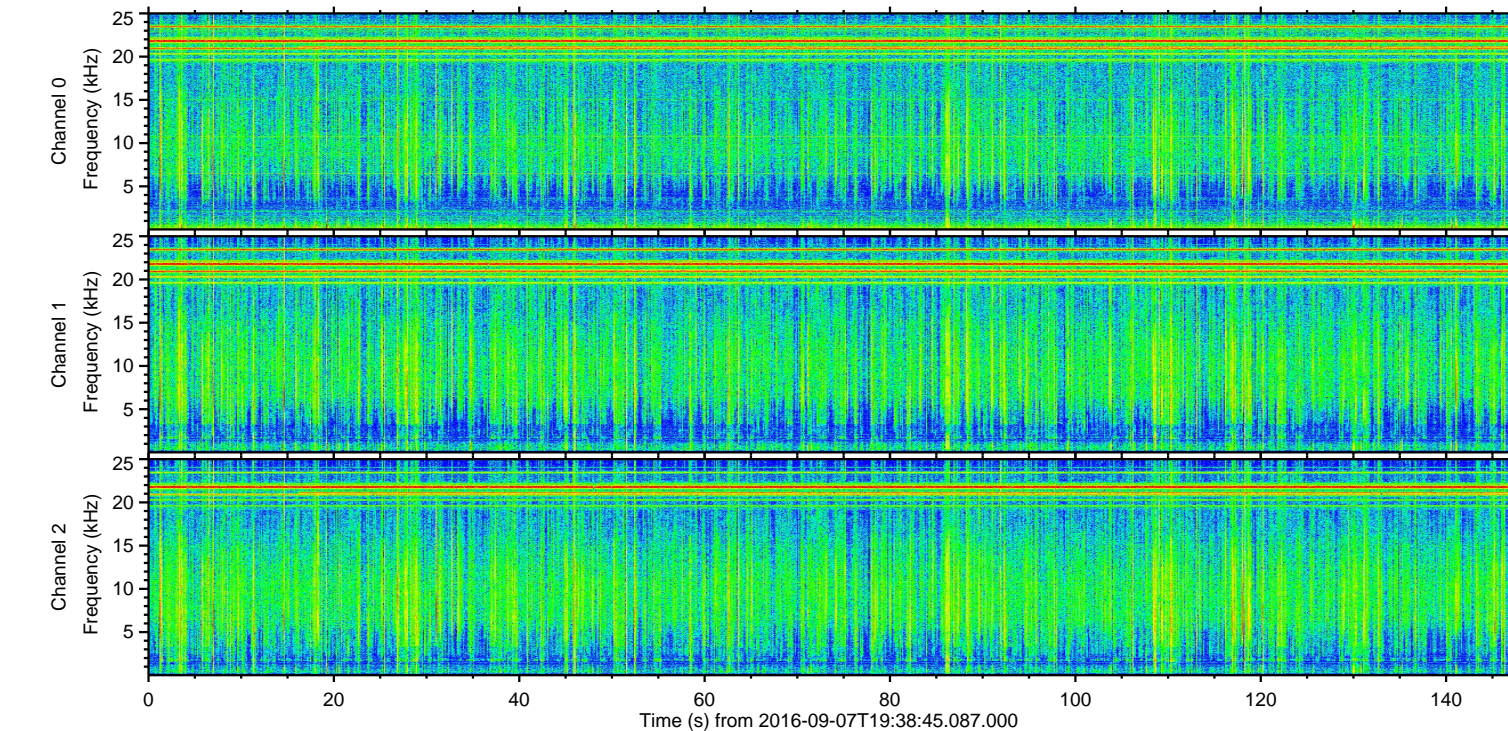
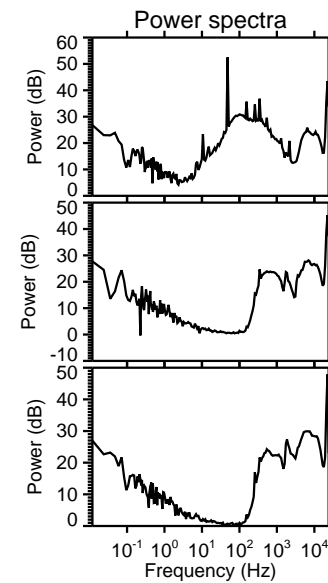
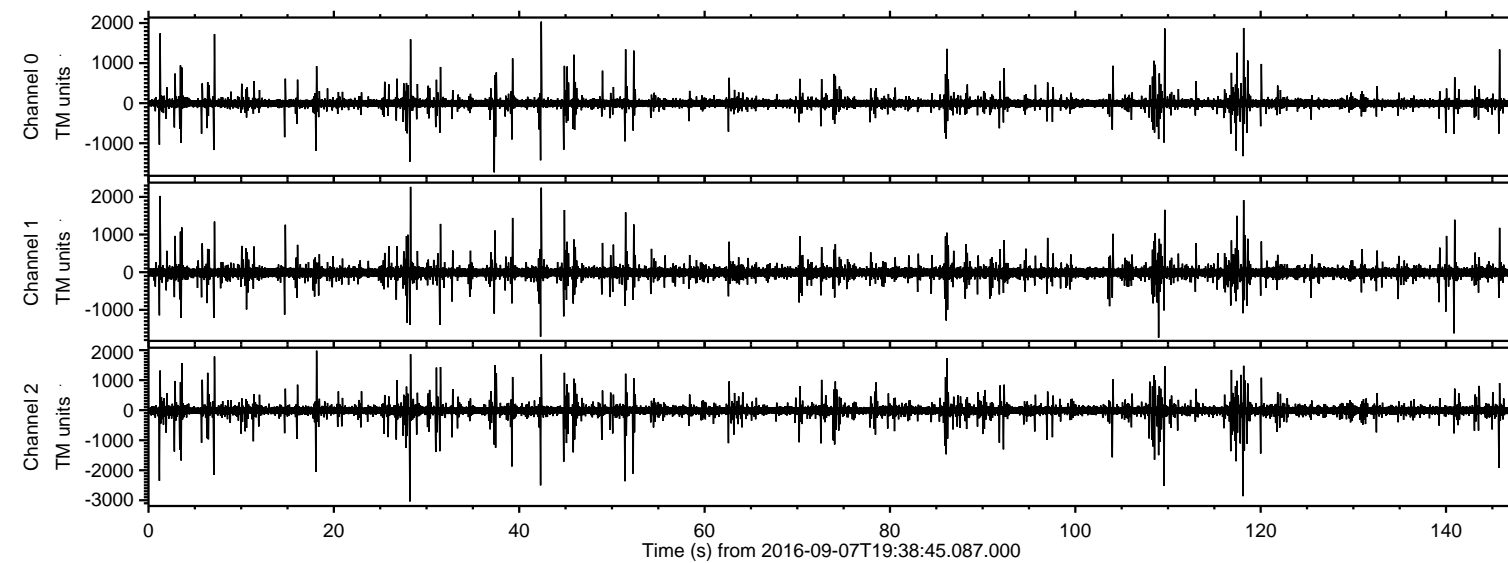
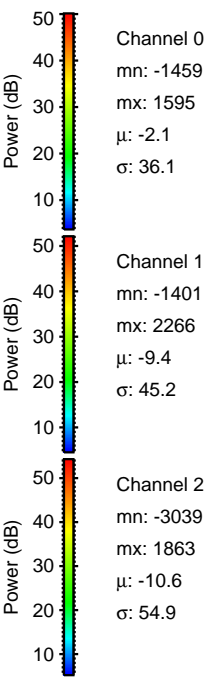
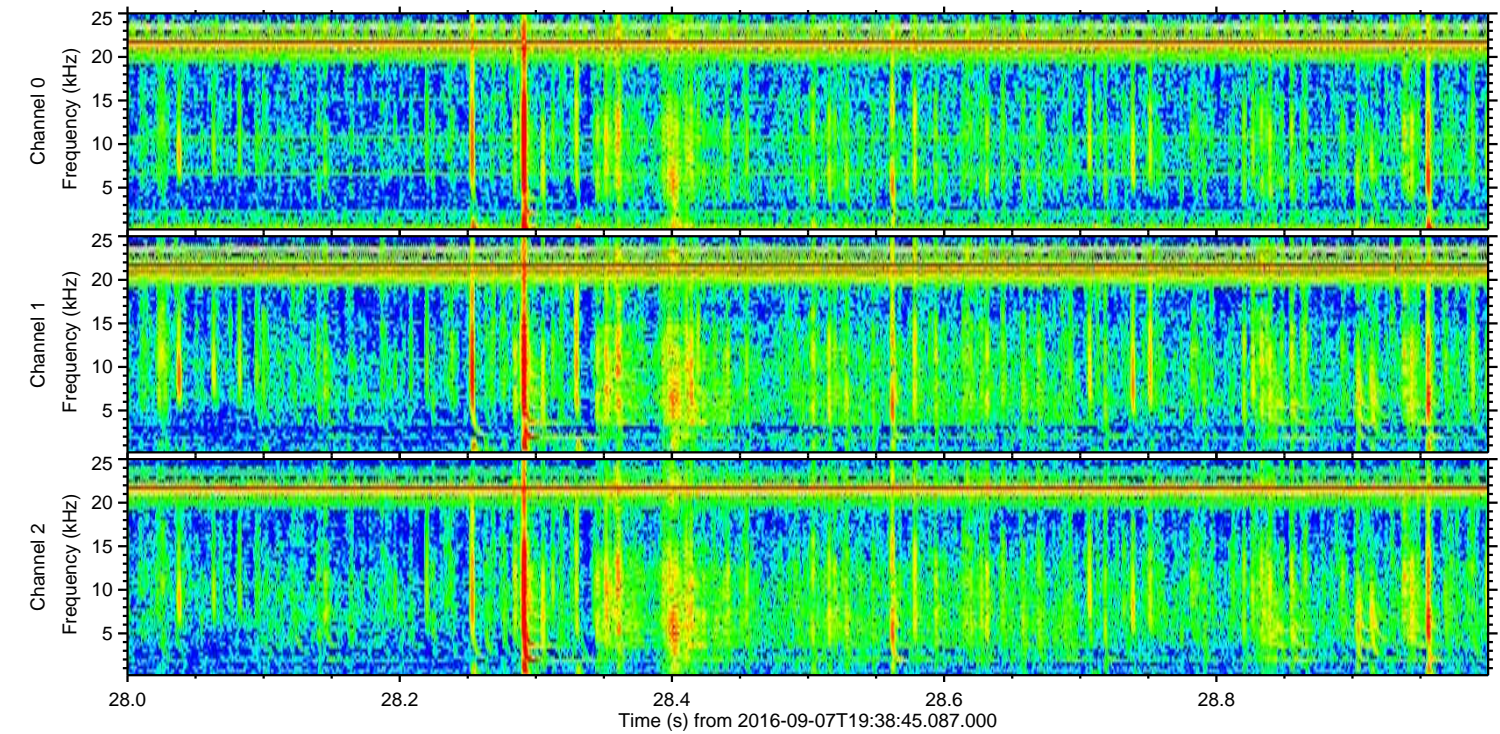
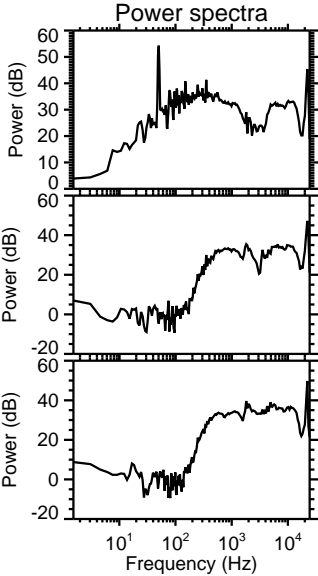
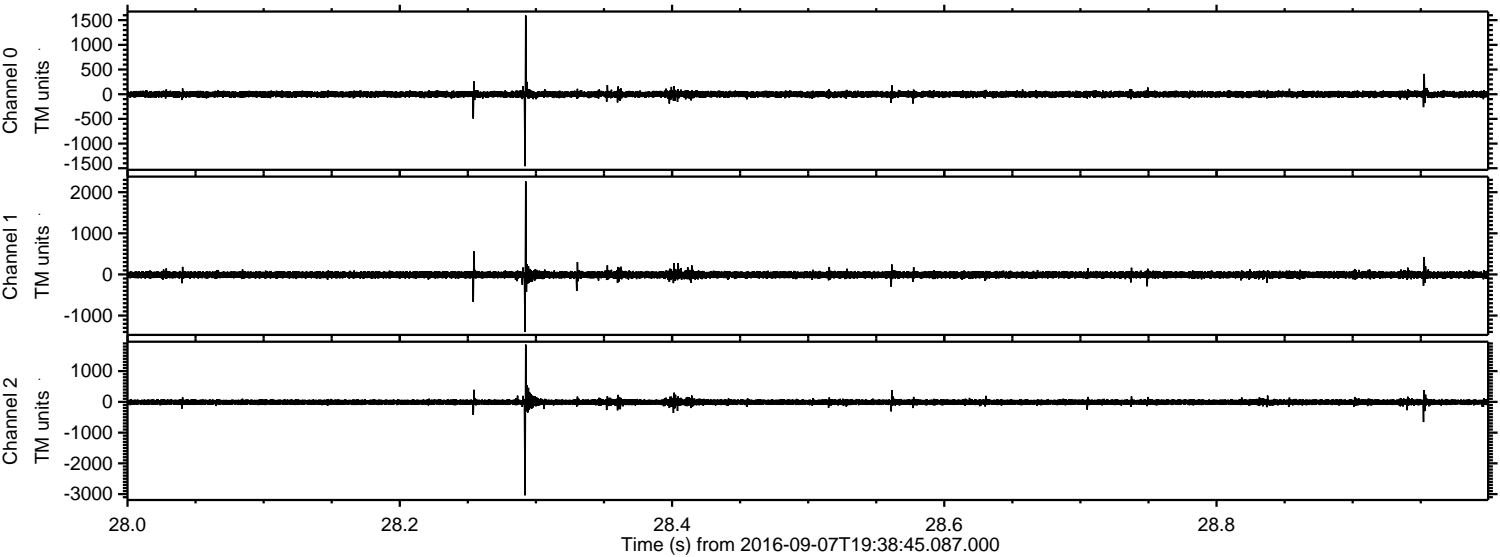


ELMAVAN 3D WAVEFORMS (Measured data sampled at 50 kHz) 51000 packets of 144 samples from 2016-09-07T19:38:45.087.000.

Processed Wed Sep 7 21:46:57 2016 by ELM ver.2012-10-06 from 001__elm20160907_193844__dat00.bin

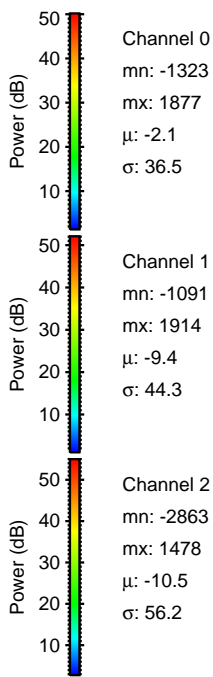
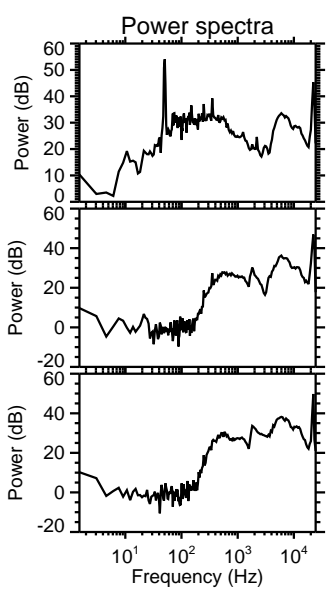
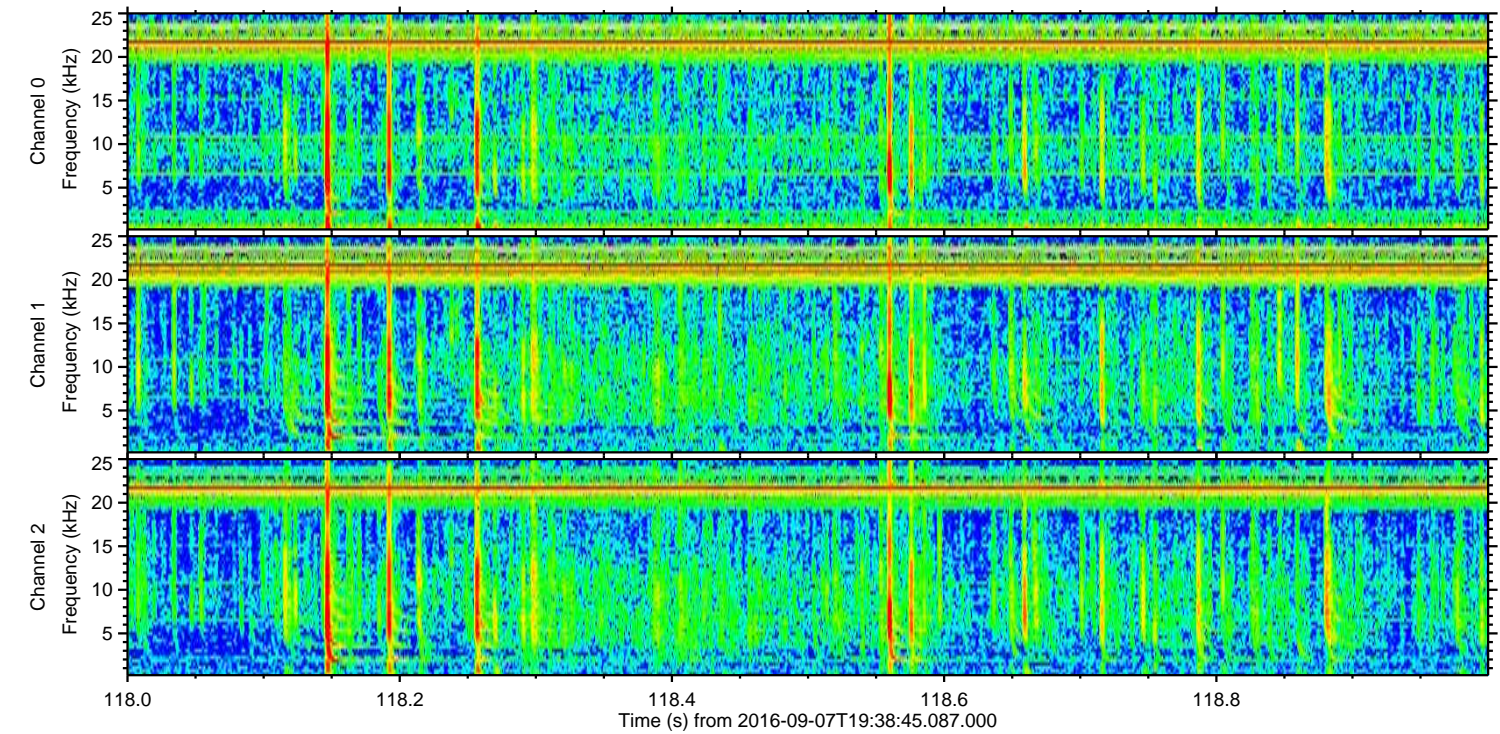
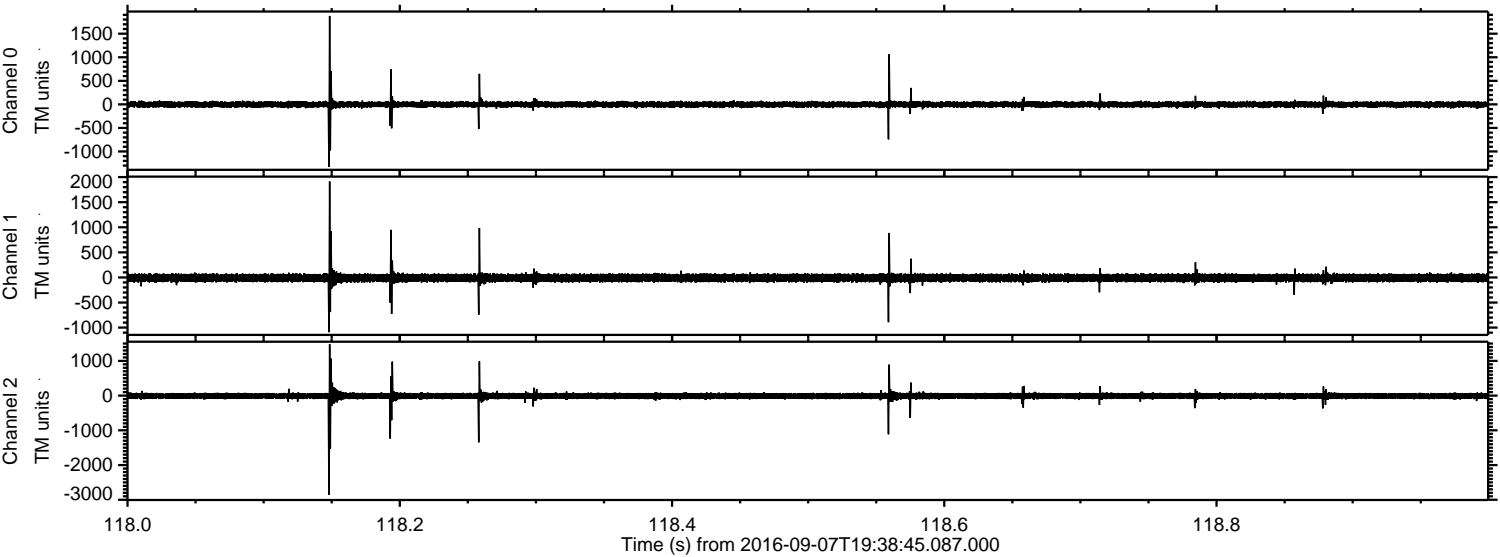


Processed Wed Sep 7 21:47:09 2016 by ELM ver.2012-10-06 from 001__elm20160907_193844__dat00.bin



ELMAVAN 3D WAVEFORMS (Measured data sampled at 50 kHz) 51000 packets of 144 samples from 2016-09-07T19:38:45.087.000. Part 119/147

Processed Wed Sep 7 21:47:10 2016 by ELM ver.2012-10-06 from 001__elm20160907_193844__dat00.bin



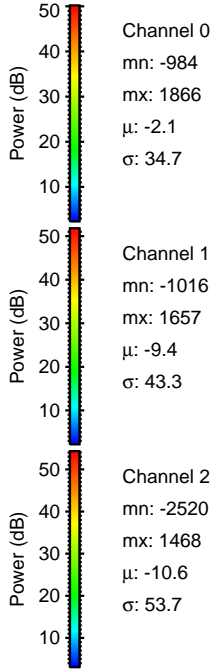
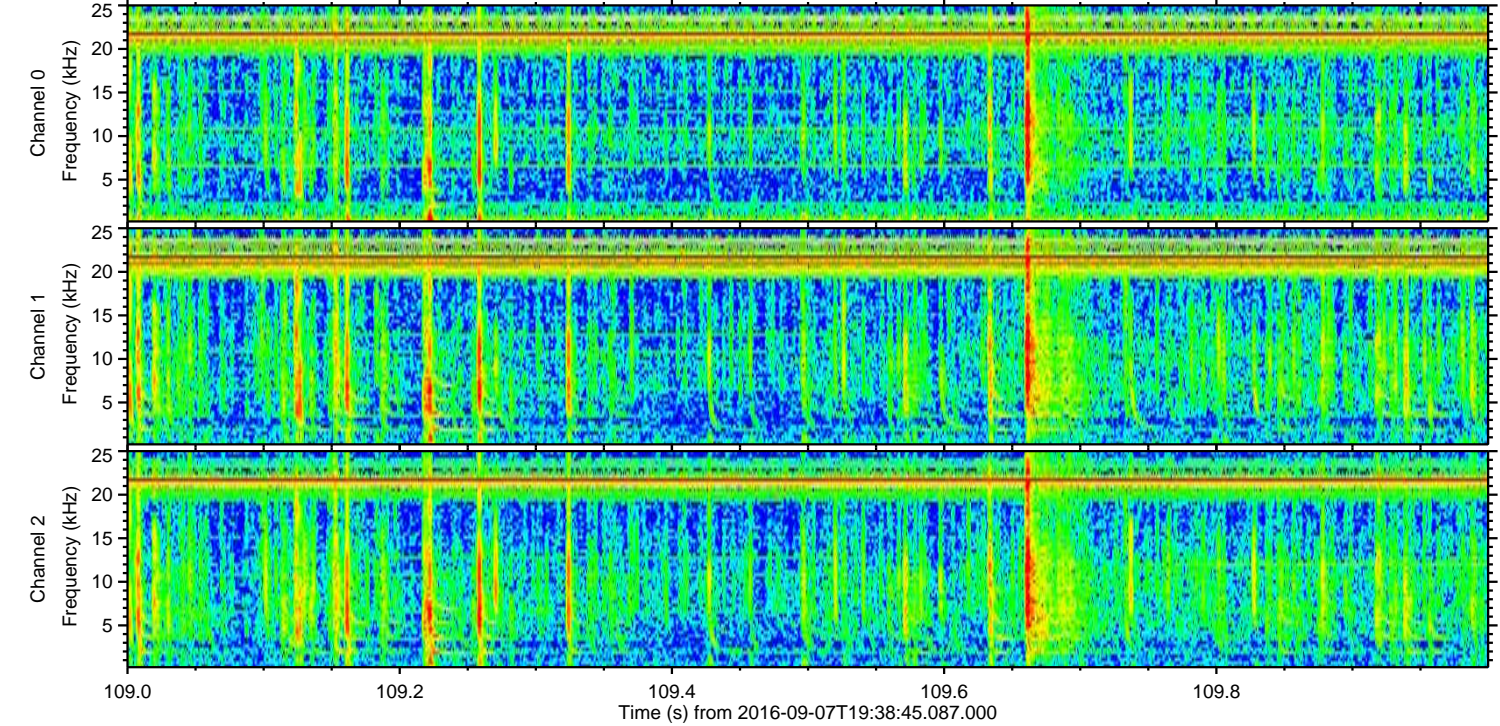
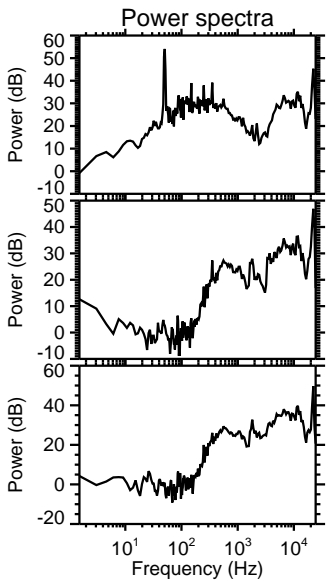
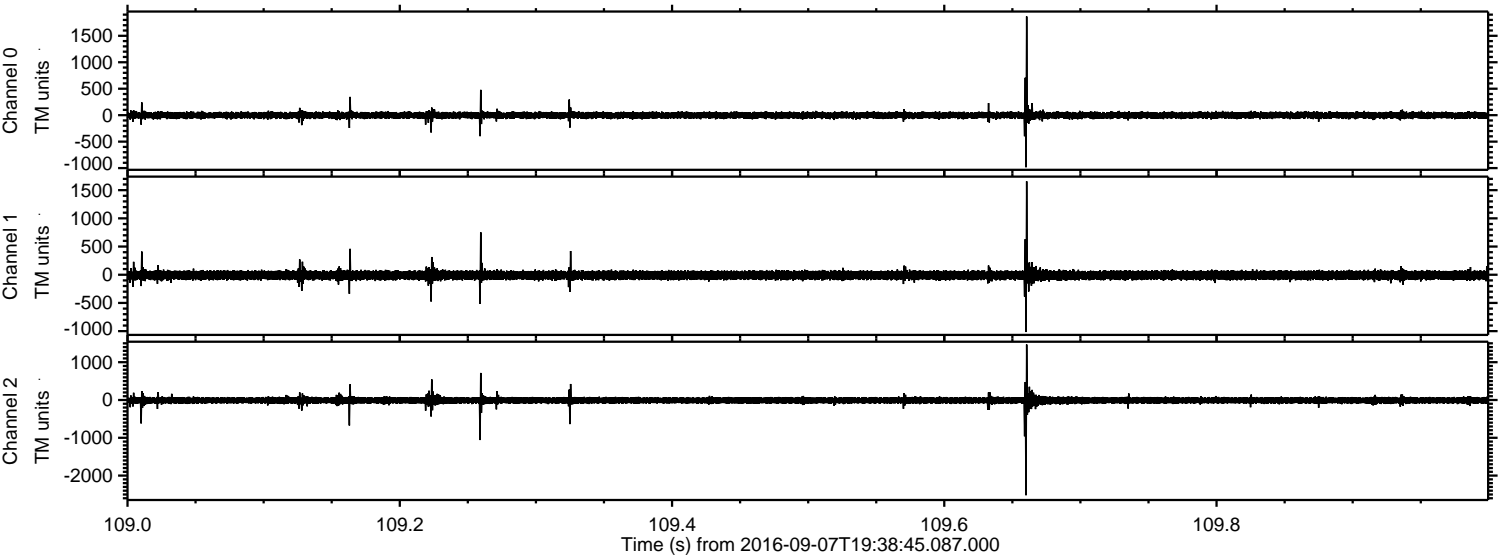
Channel 0
mn: -1323
mx: 1877
 μ : -2.1
 σ : 36.5

Channel 1
mn: -1091
mx: 1914
 μ : -9.4
 σ : 44.3

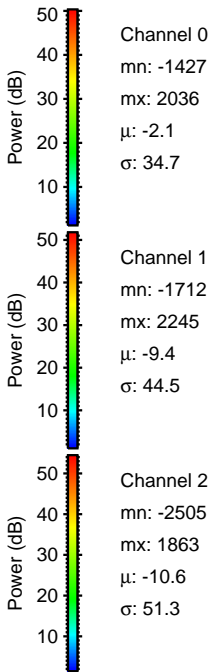
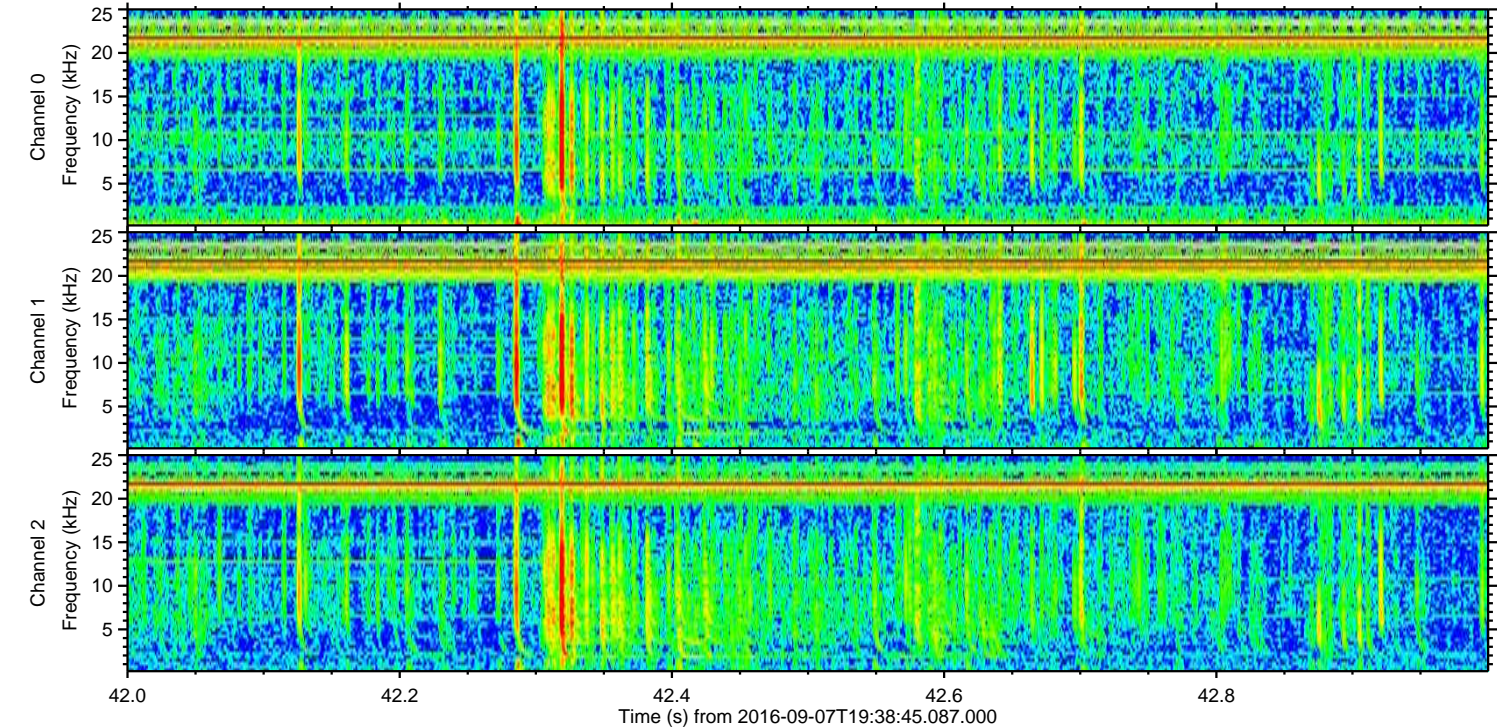
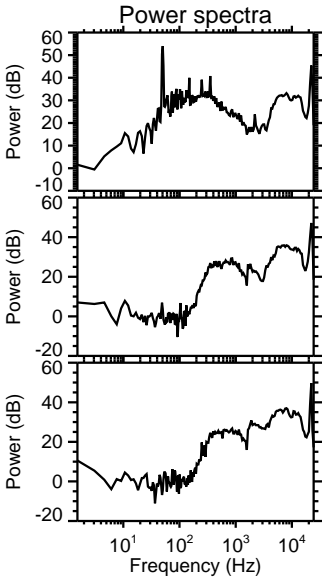
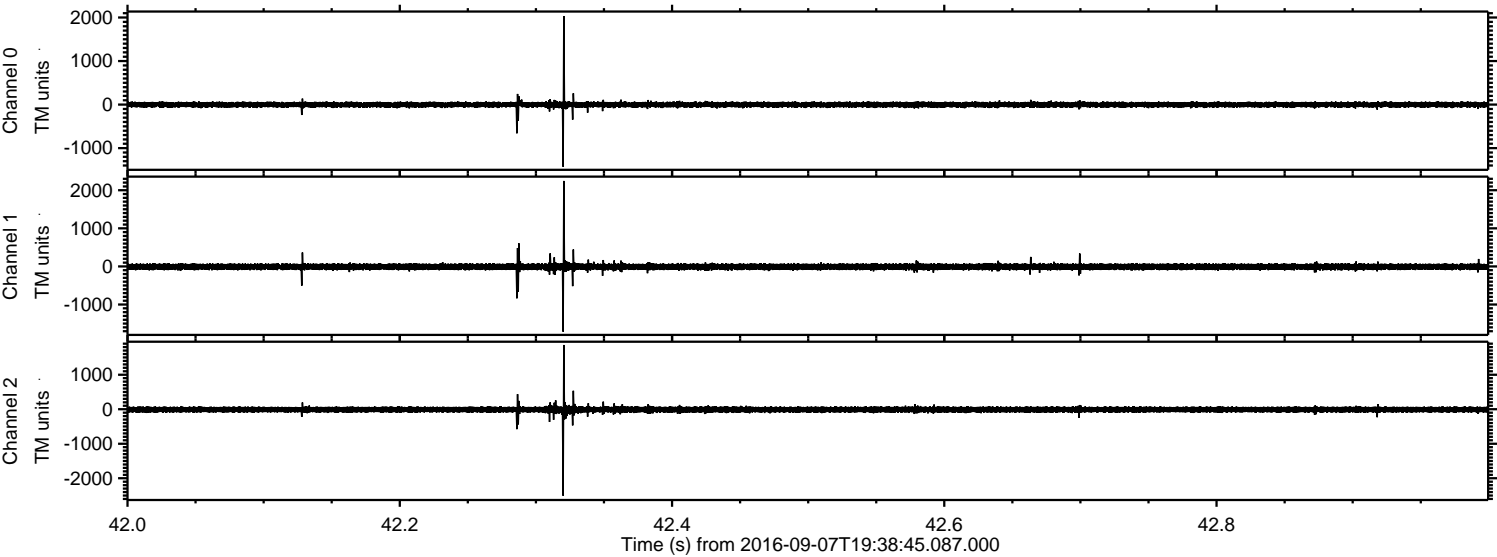
Channel 2
mn: -2863
mx: 1478
 μ : -10.5
 σ : 56.2

ELMAVAN 3D WAVEFORMS (Measured data sampled at 50 kHz) 51000 packets of 144 samples from 2016-09-07T19:38:45.087.000. Part 110/147

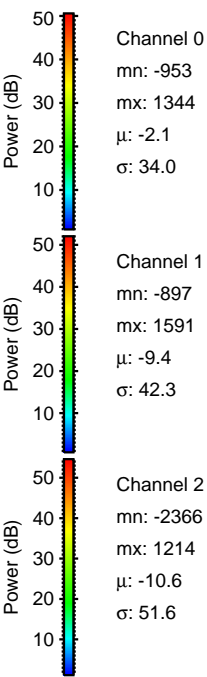
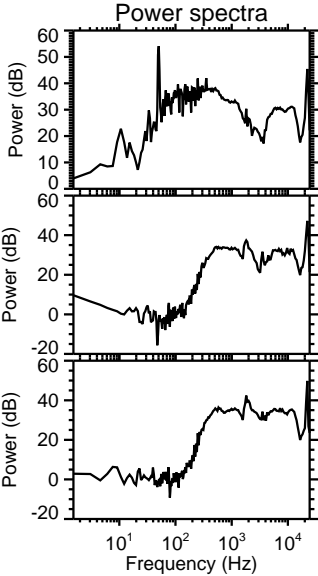
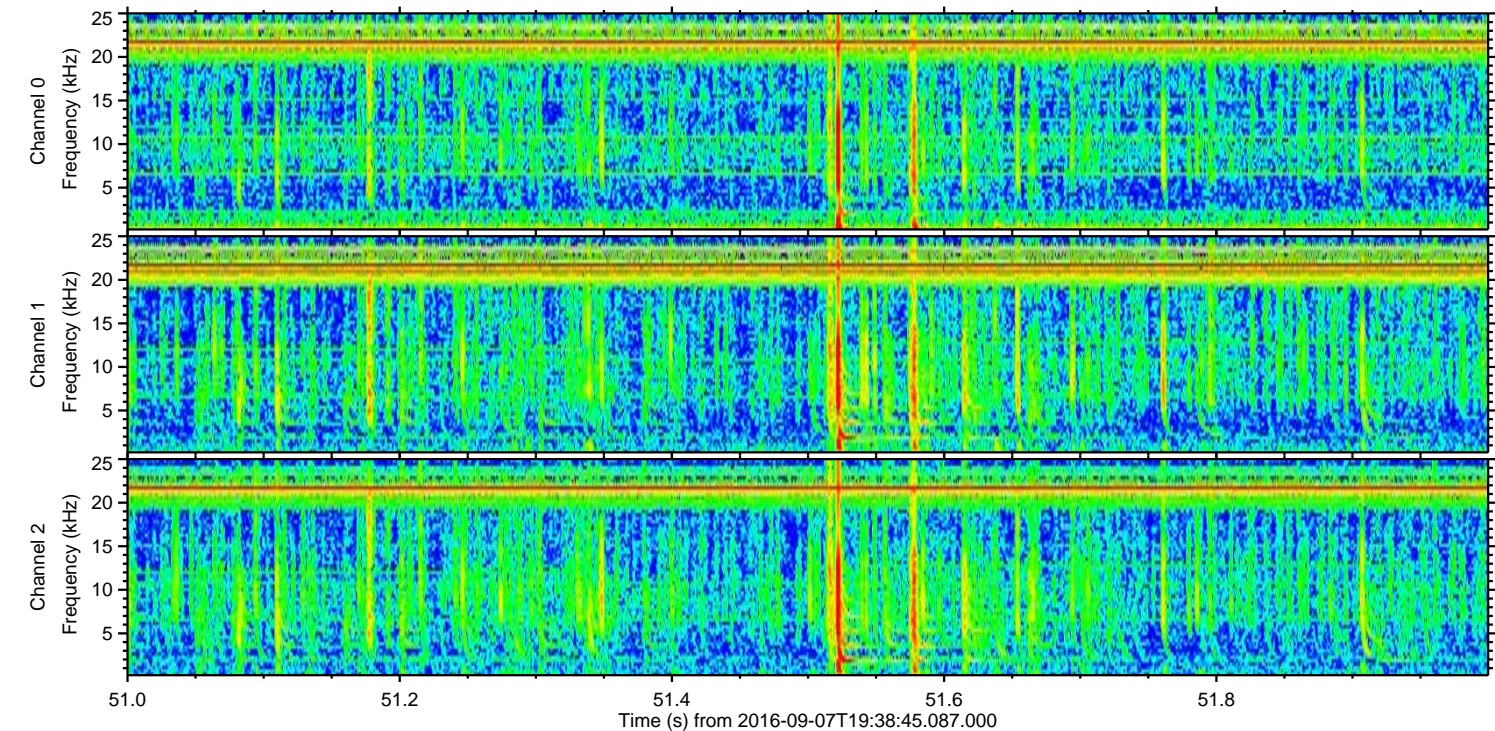
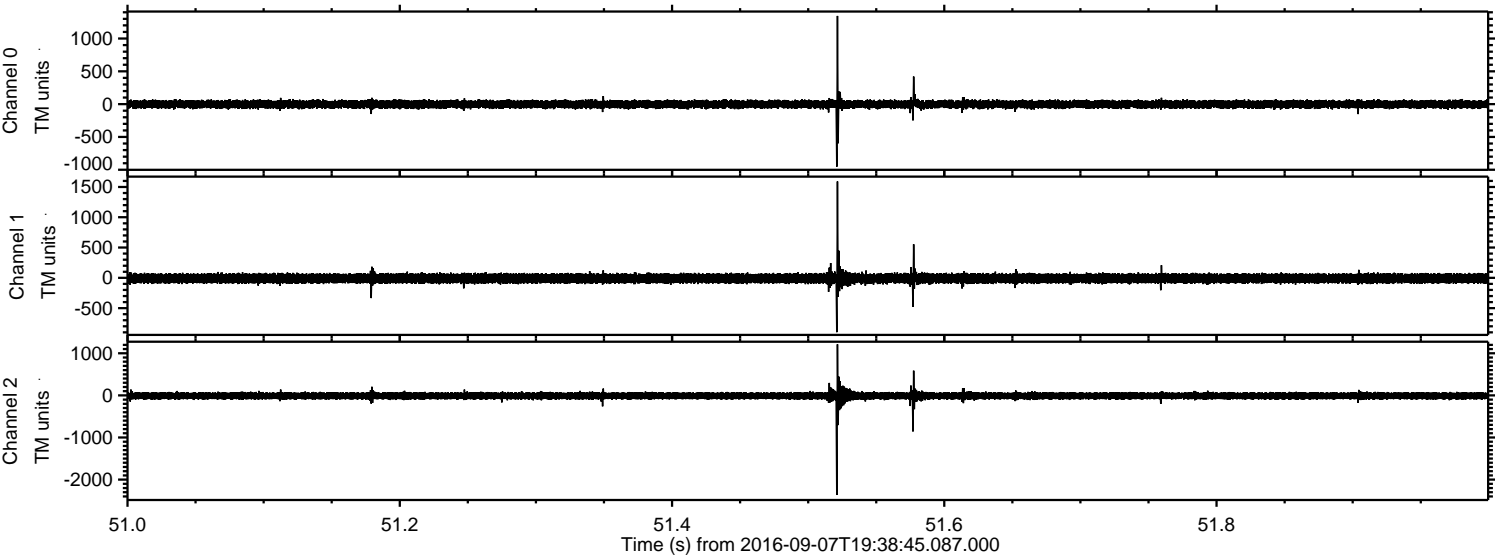
Processed Wed Sep 7 21:47:11 2016 by ELM ver.2012-10-06 from 001__elm20160907_193844__dat00.bin



Processed Wed Sep 7 21:47:11 2016 by ELM ver.2012-10-06 from 001__elm20160907_193844__dat00.bin

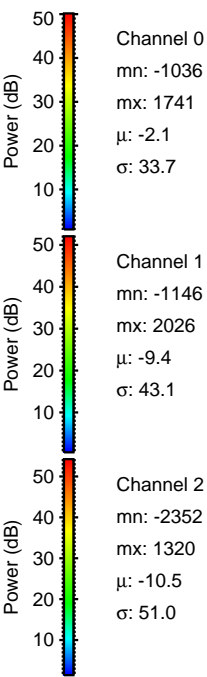
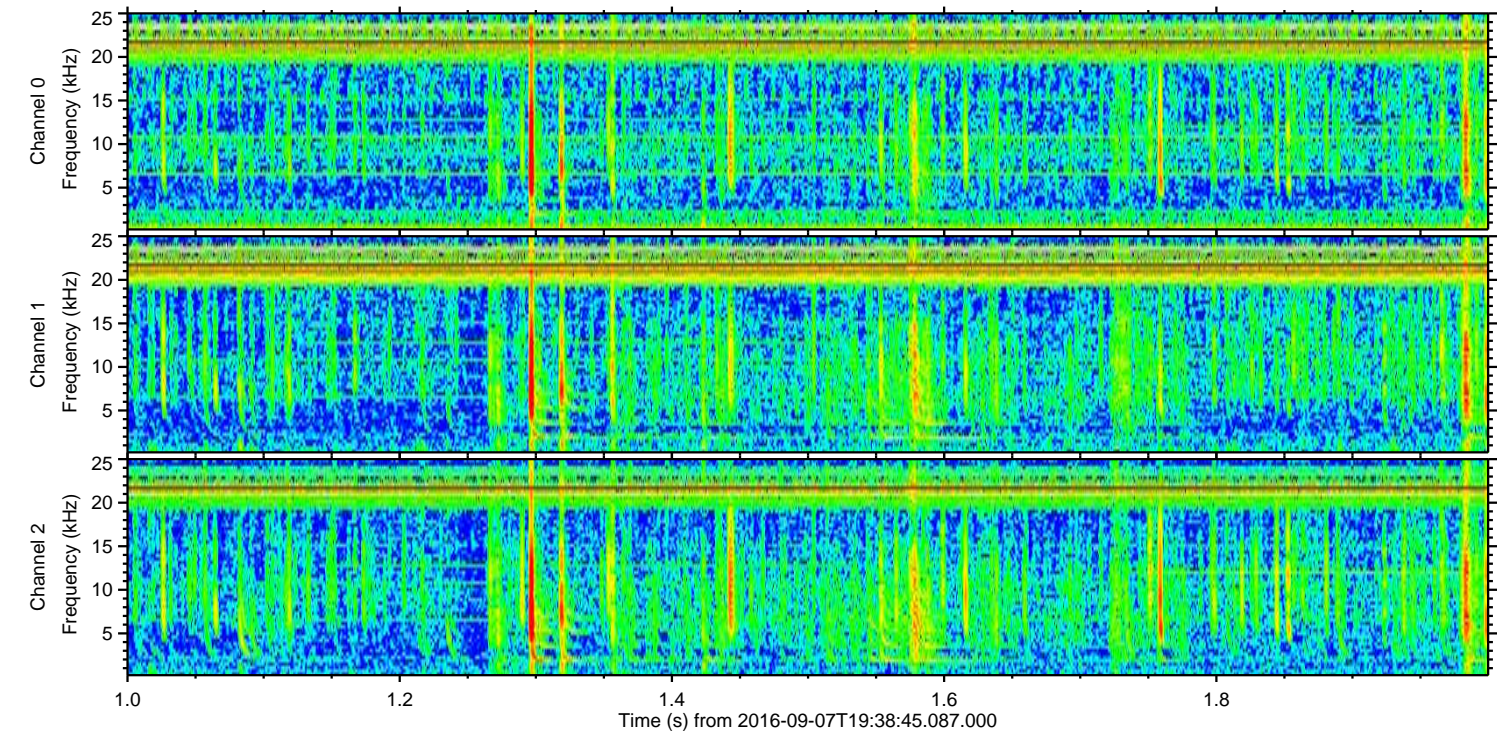
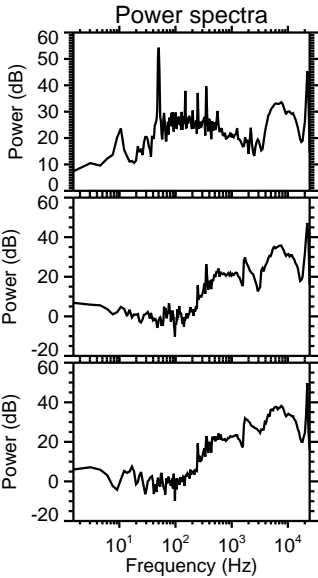
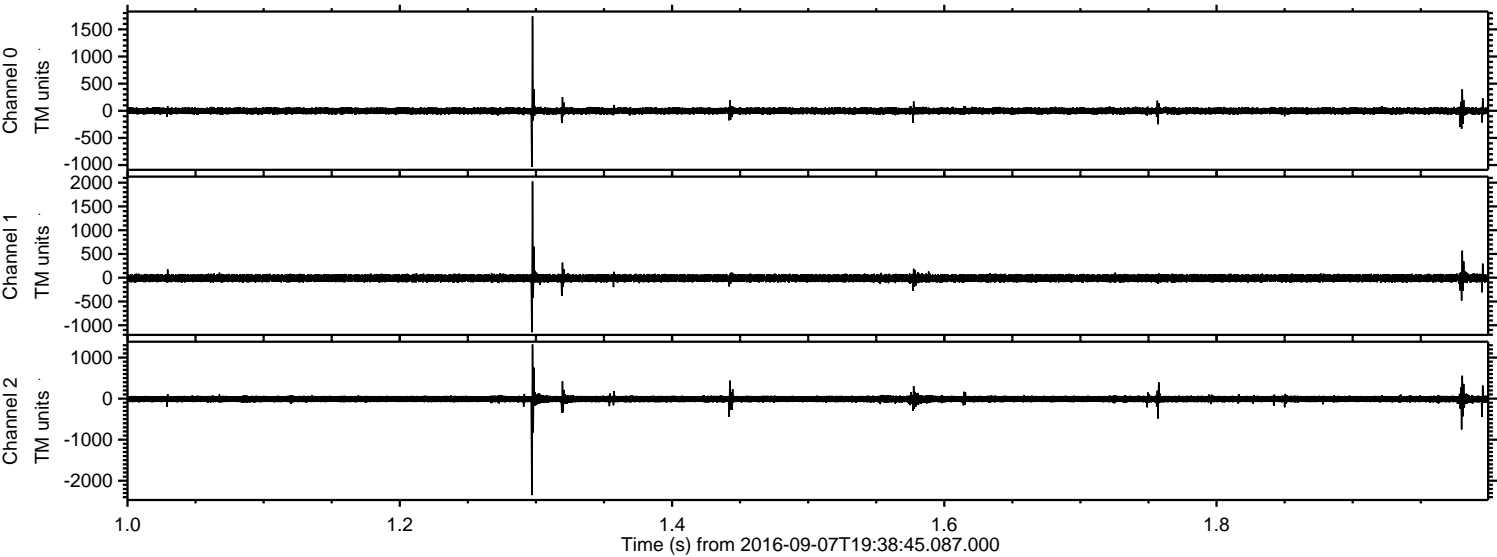


Processed Wed Sep 7 21:47:12 2016 by ELM ver.2012-10-06 from 001__elm20160907_193844__dat00.bin

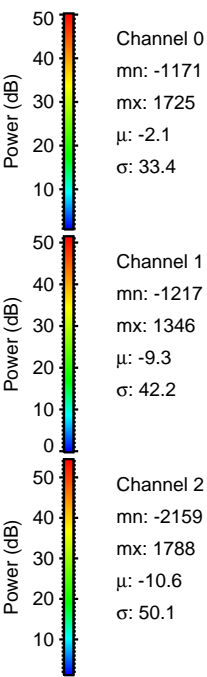
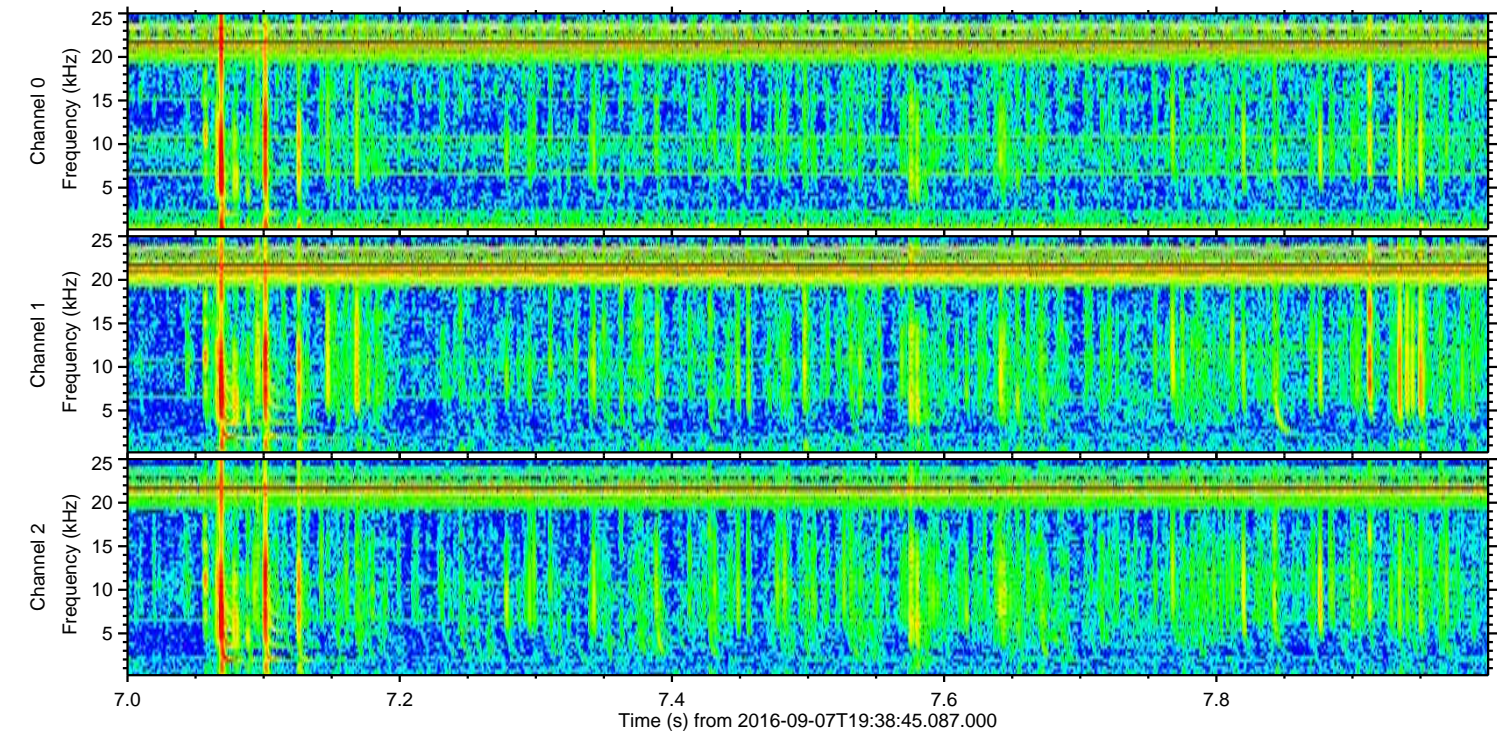
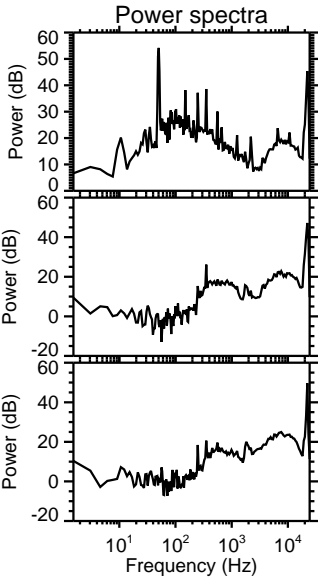
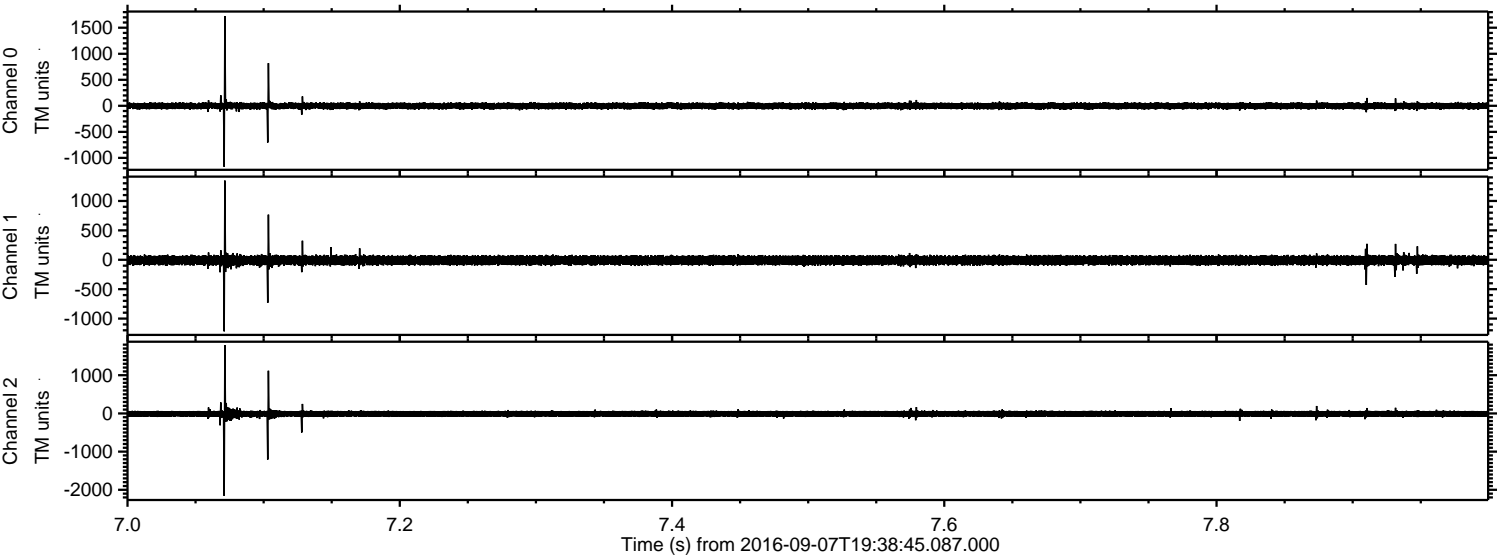


ELMAVAN 3D WAVEFORMS (Measured data sampled at 50 kHz) 51000 packets of 144 samples from 2016-09-07T19:38:45.087.000. Part 2/147

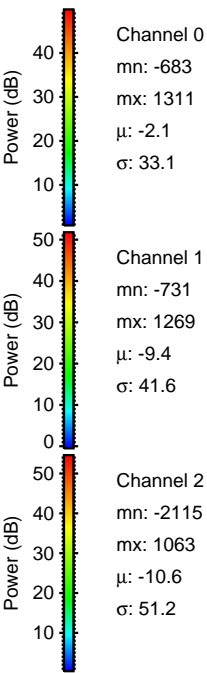
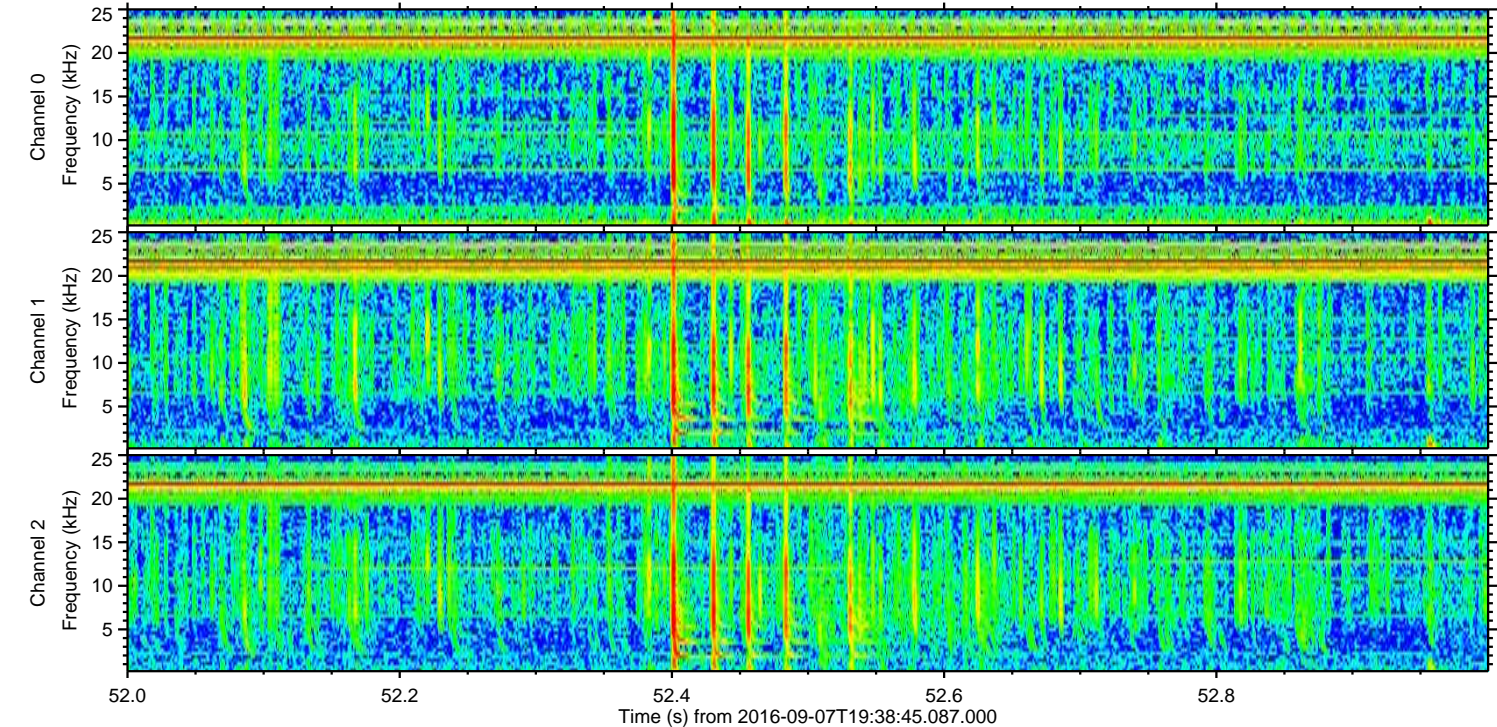
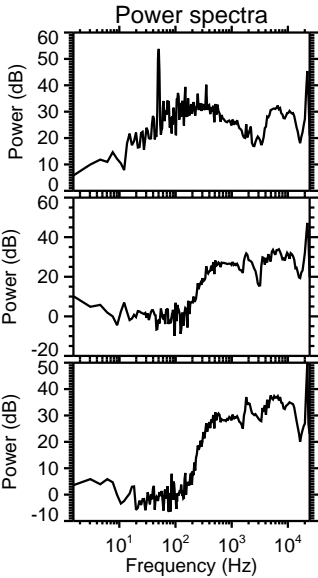
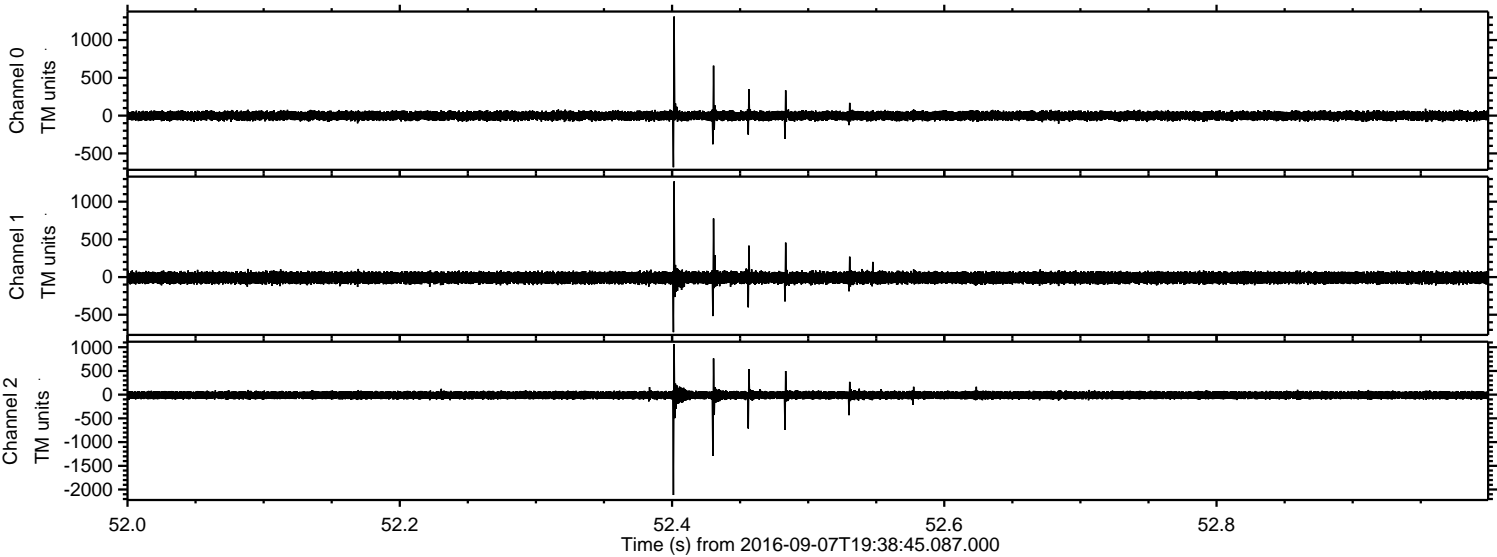
Processed Wed Sep 7 21:47:13 2016 by ELM ver.2012-10-06 from 001__elm20160907_193844__dat00.bin



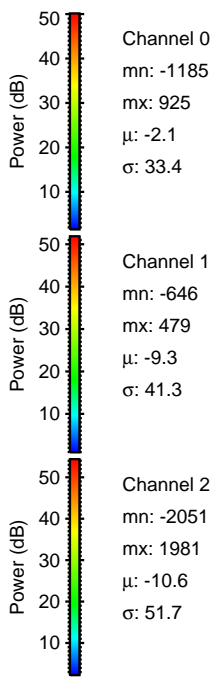
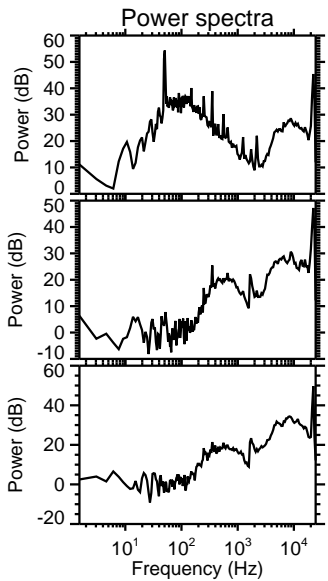
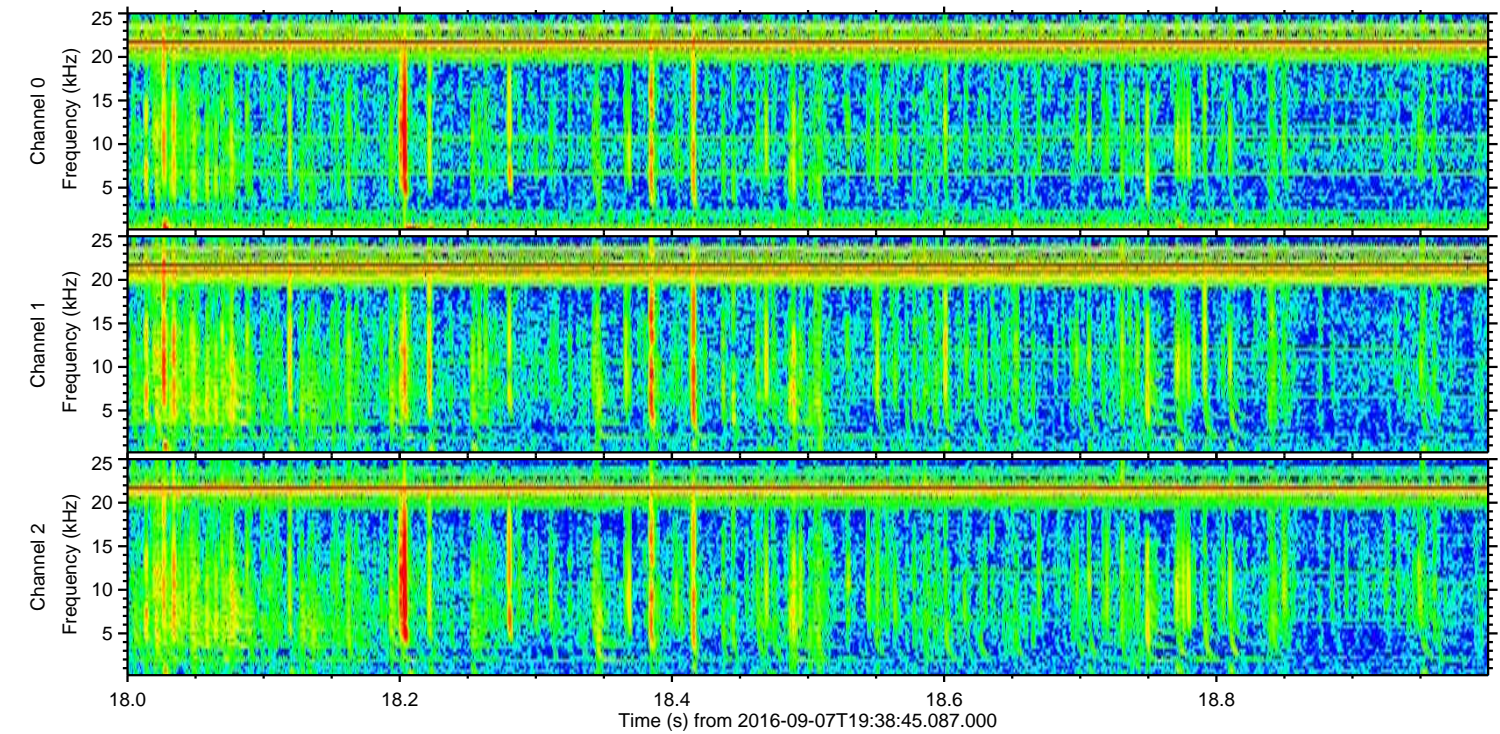
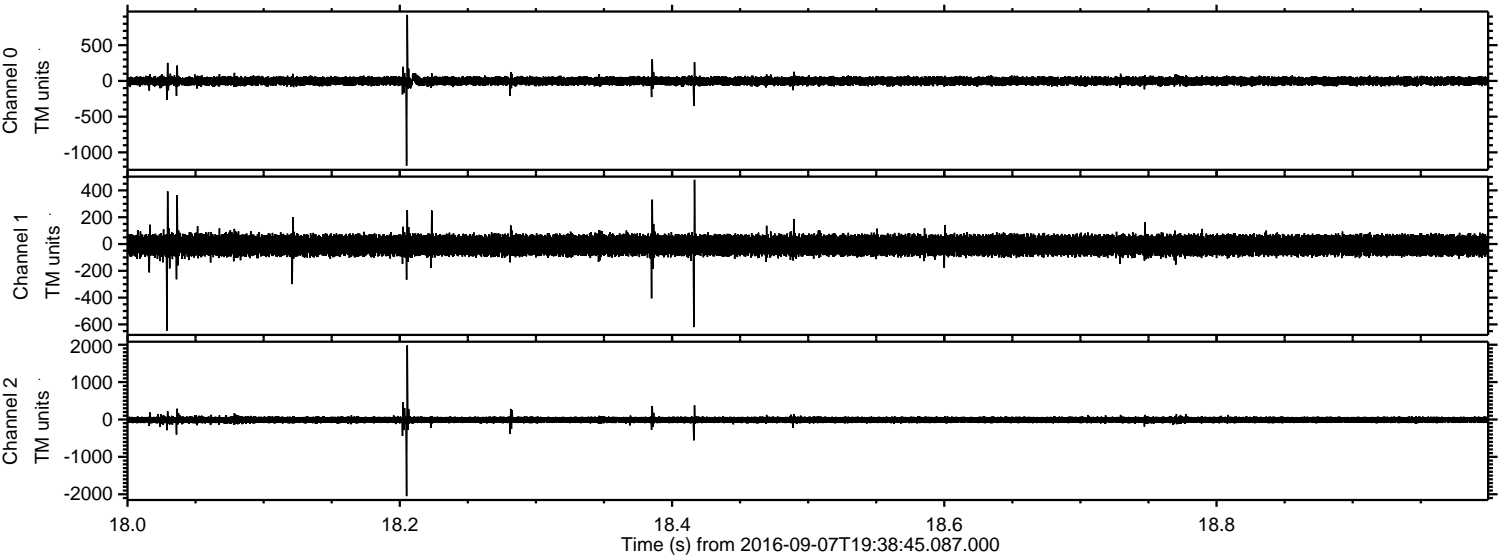
Processed Wed Sep 7 21:47:14 2016 by ELM ver.2012-10-06 from 001__elm20160907_193844__dat00.bin



Processed Wed Sep 7 21:47:15 2016 by ELM ver.2012-10-06 from 001__elm20160907_193844__dat00.bin



Processed Wed Sep 7 21:47:16 2016 by ELM ver.2012-10-06 from 001__elm20160907_193844__dat00.bin



Channel 0
mn: -1185
mx: 925
 μ : -2.1
 σ : 33.4

Channel 1
mn: -646
mx: 479
 μ : -9.3
 σ : 41.3

Channel 2
mn: -2051
mx: 1981
 μ : -10.6
 σ : 51.7

Processed Wed Sep 7 21:47:17 2016 by ELM ver.2012-10-06 from 001__elm20160907_193844__dat00.bin

