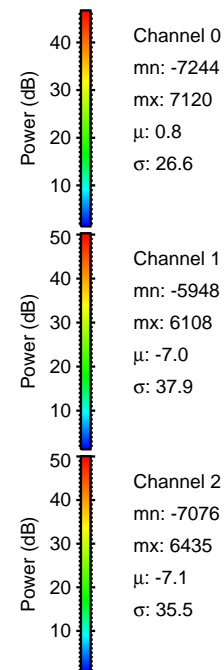
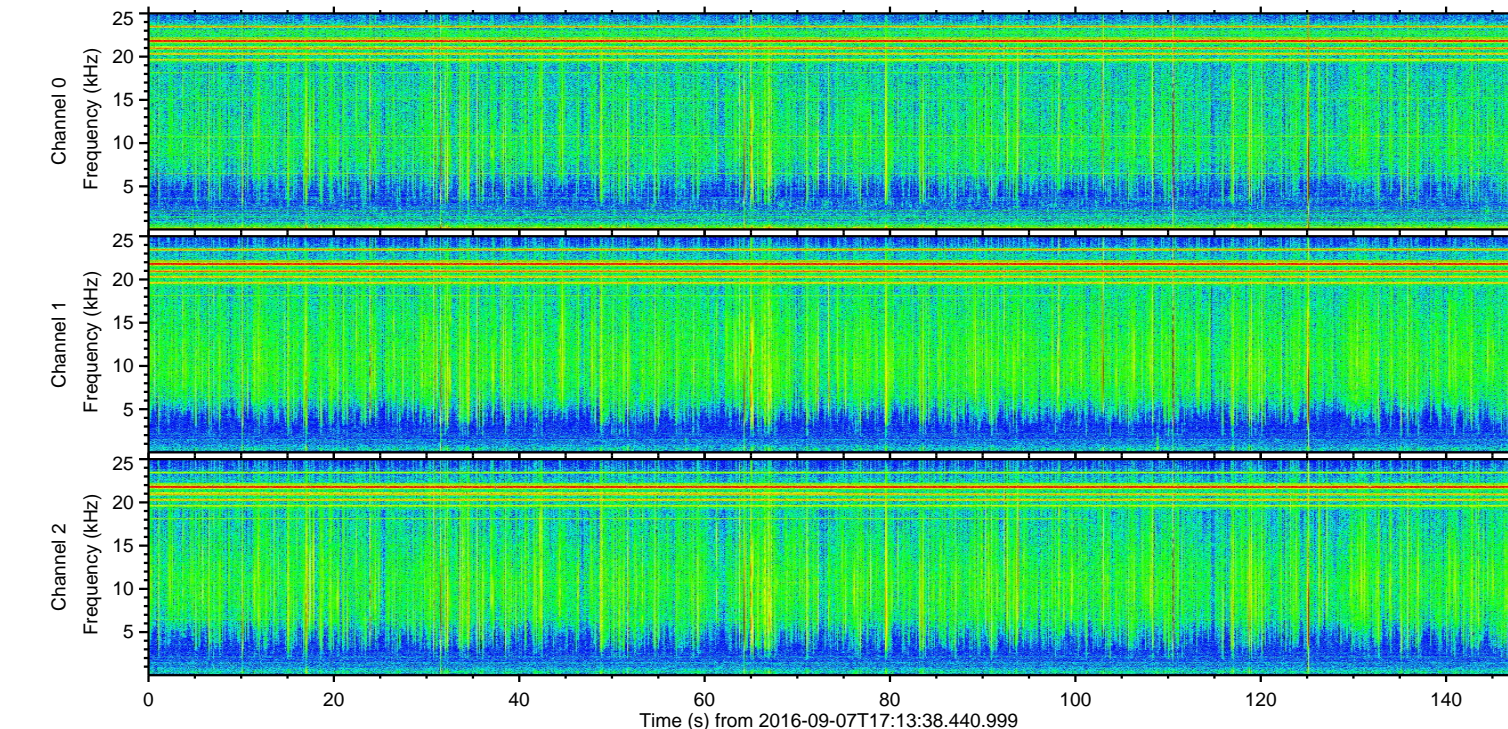
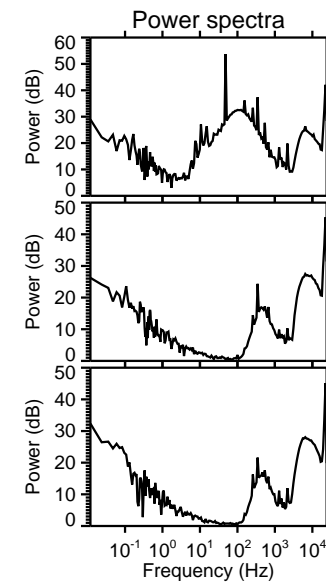
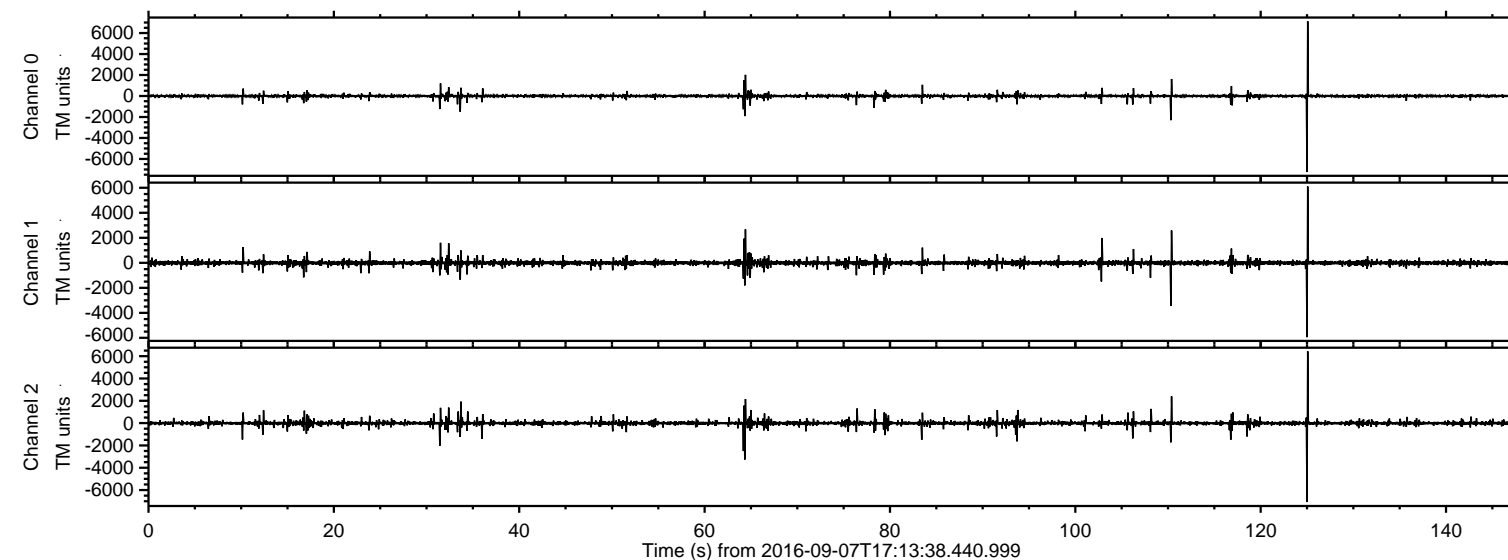


# ELMAVAN 3D WAVEFORMS (Measured data sampled at 50 kHz) 51000 packets of 144 samples from 2016-09-07T17:13:38.440.999.

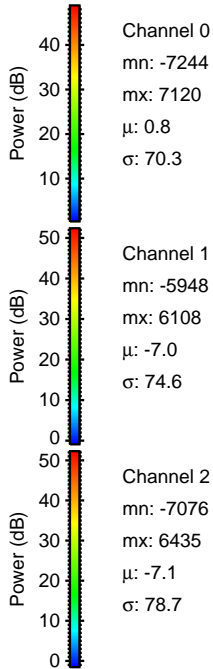
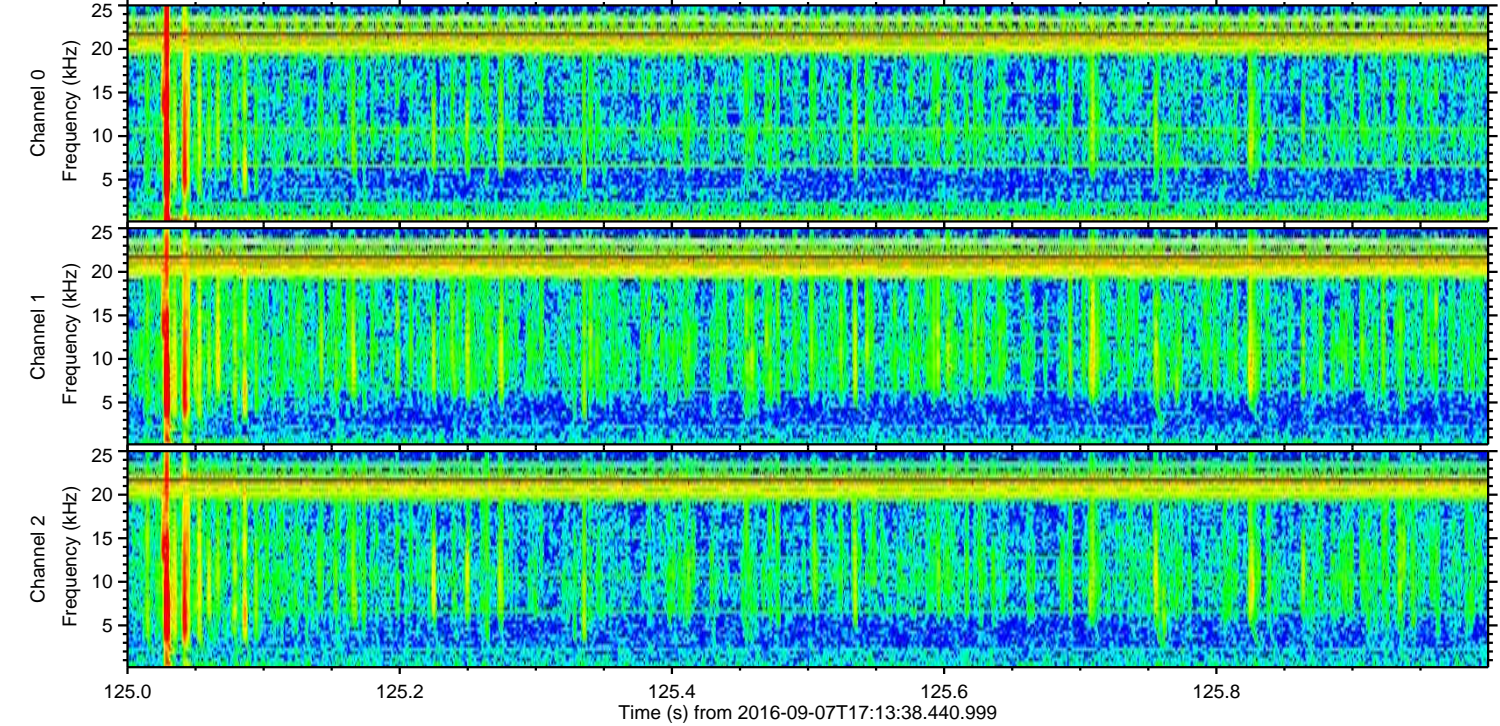
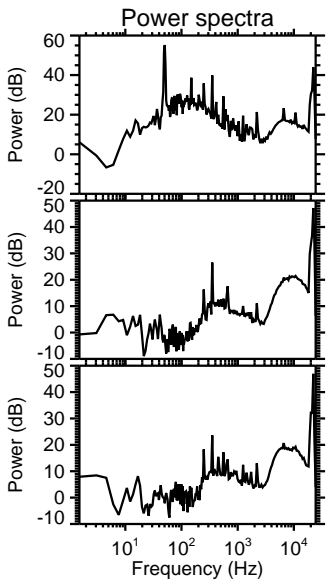
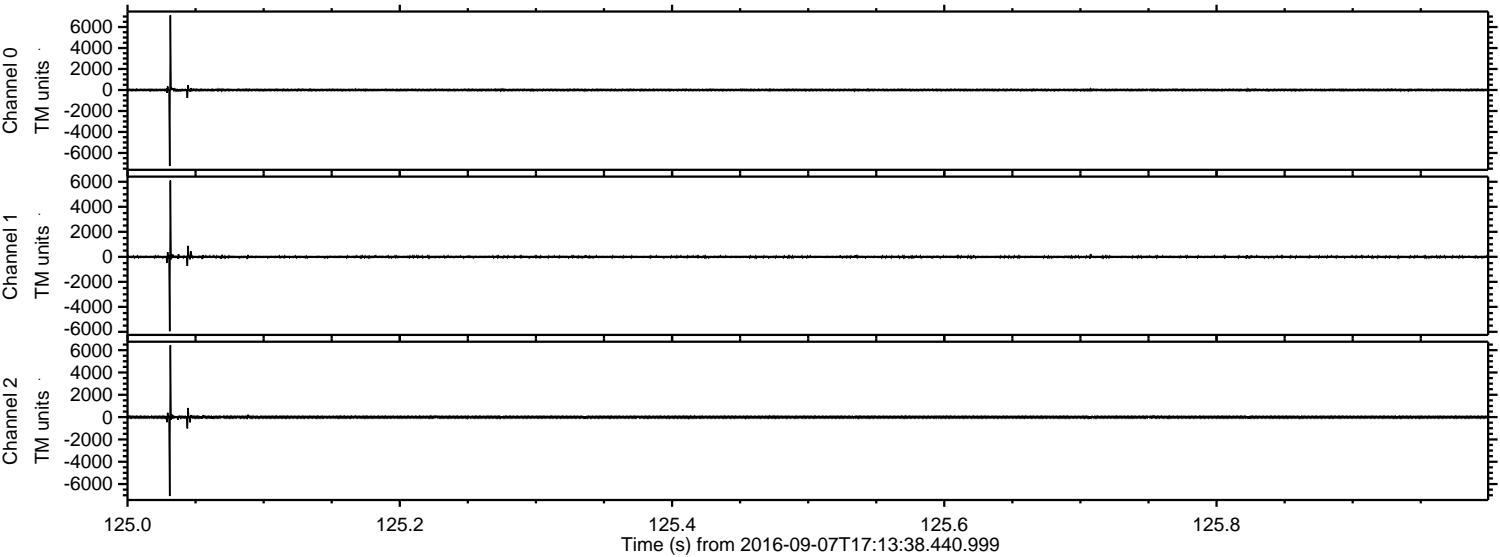
Processed Wed Sep 7 19:21:26 2016 by ELM ver.2012-10-06 from 001\_\_elm20160907\_171337\_\_dat00.bin





ELMAVAN 3D WAVEFORMS (Measured data sampled at 50 kHz) 51000 packets of 144 samples from 2016-09-07T17:13:38.440.999. Part 126/147

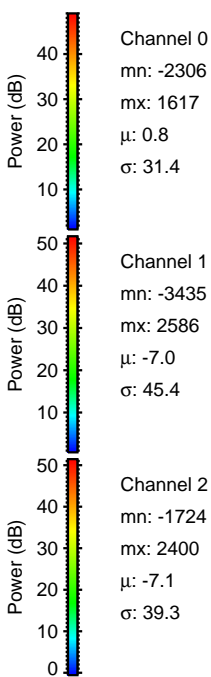
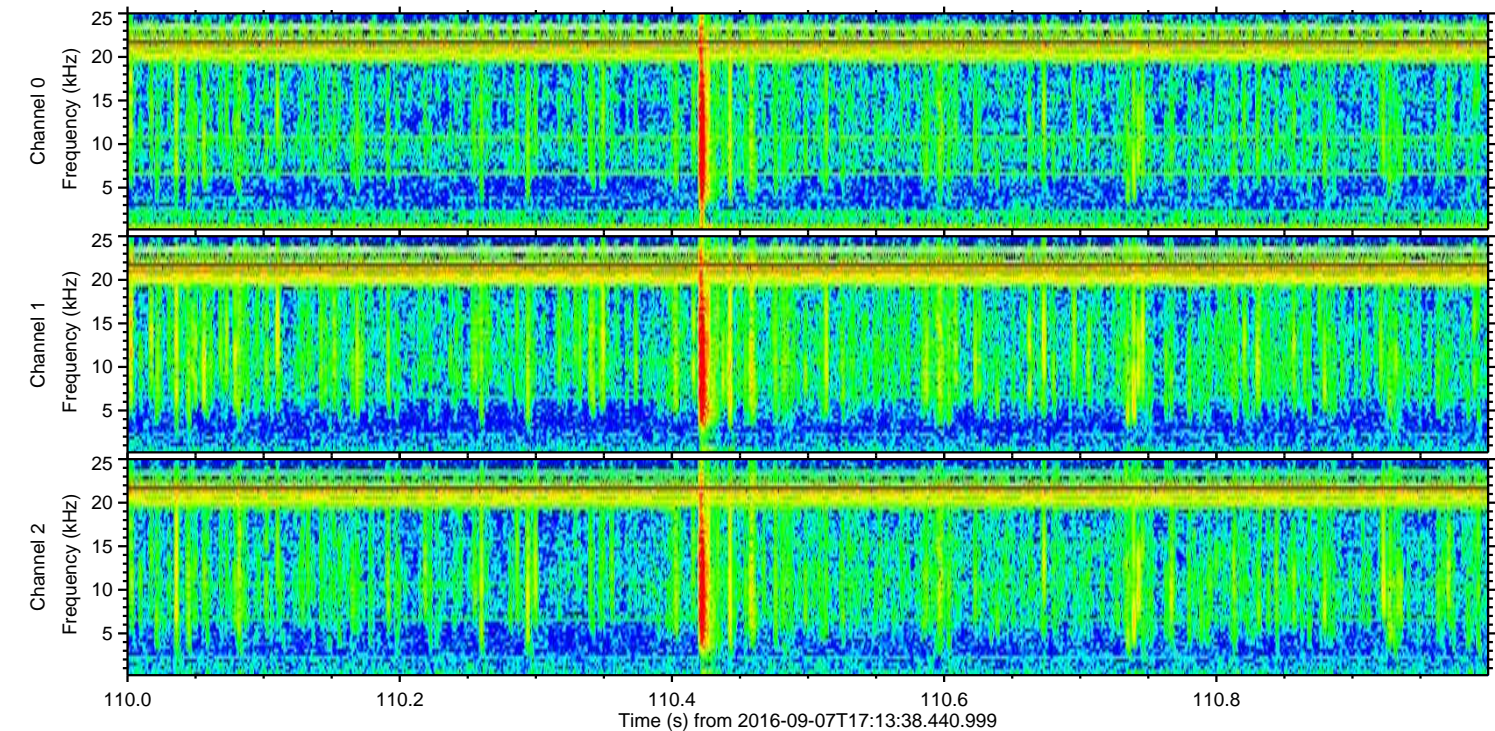
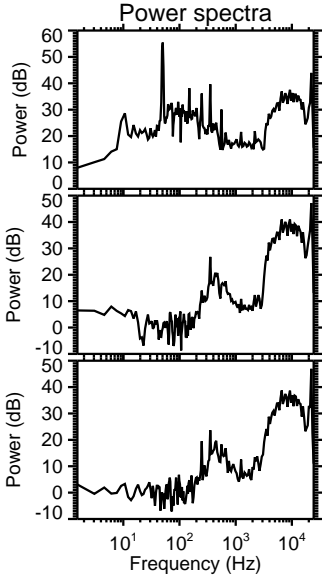
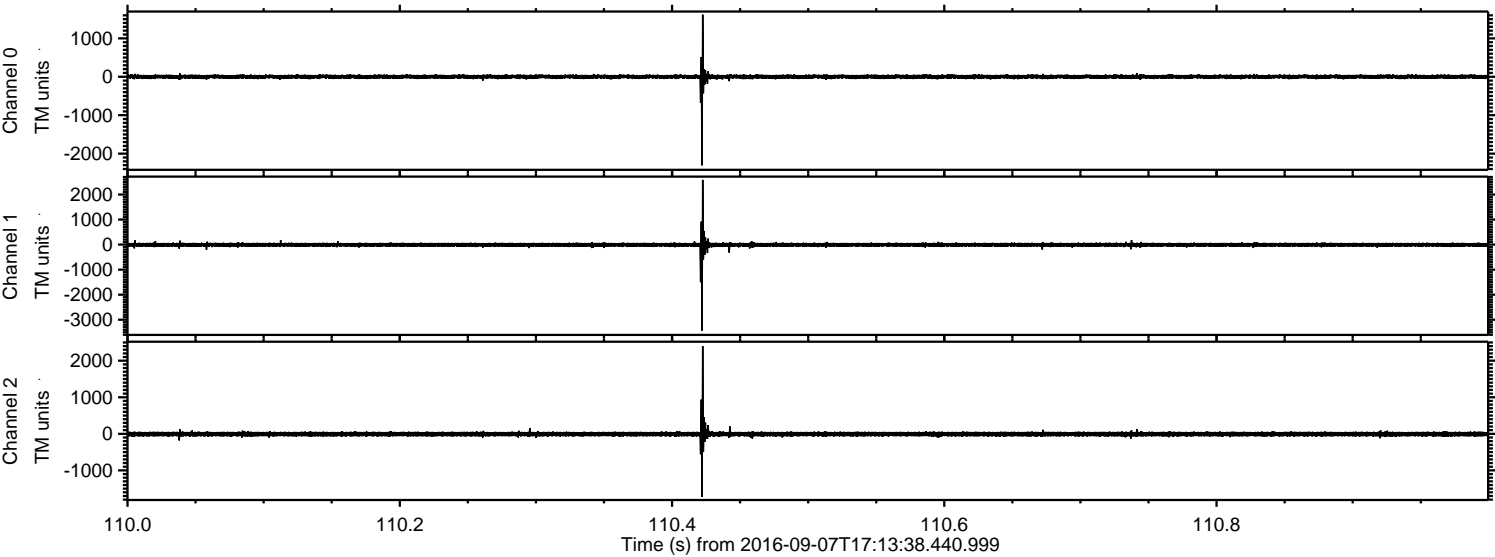
Processed Wed Sep 7 19:21:38 2016 by ELM ver.2012-10-06 from 001\_\_elm20160907\_171337\_\_dat00.bin





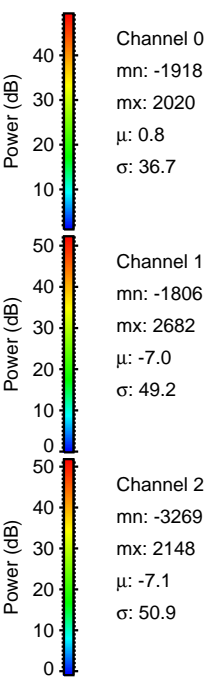
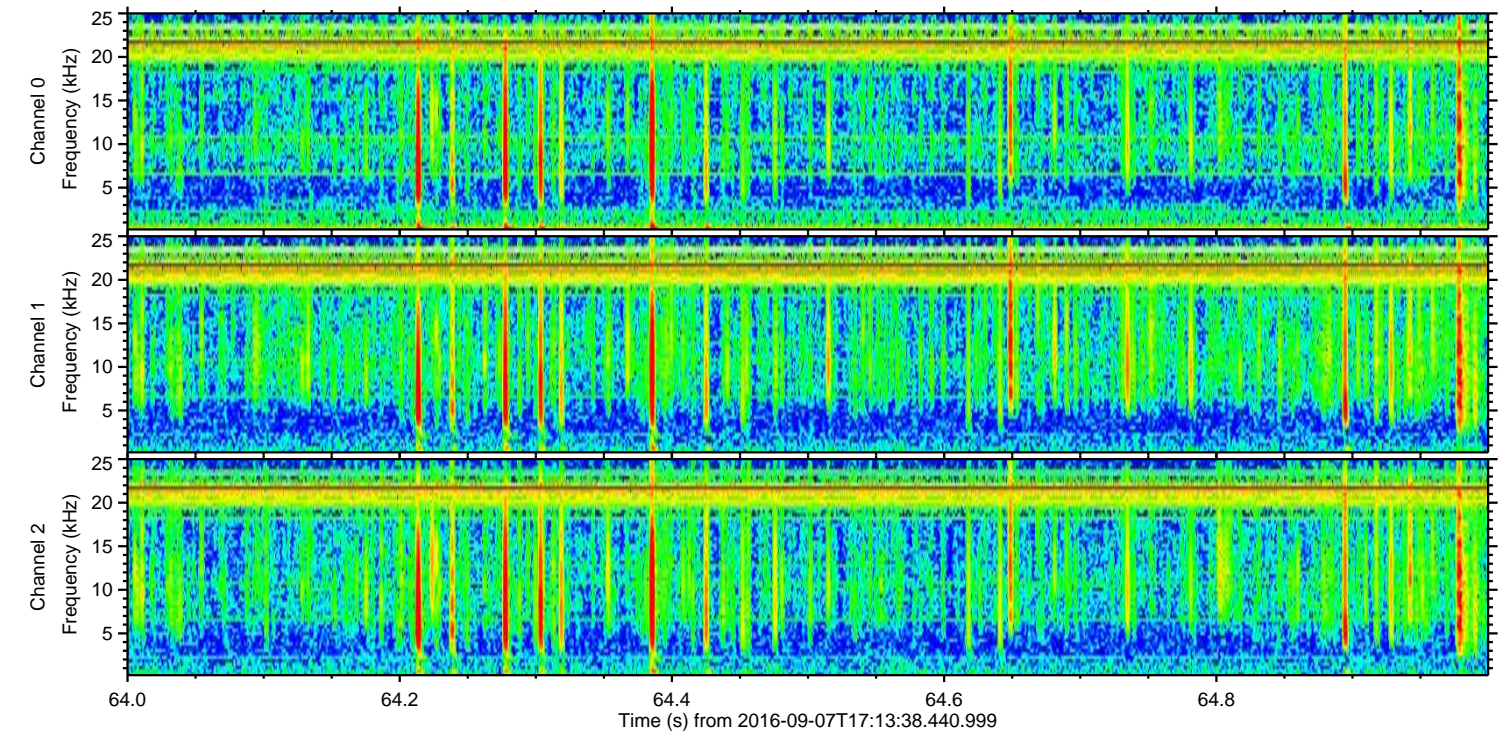
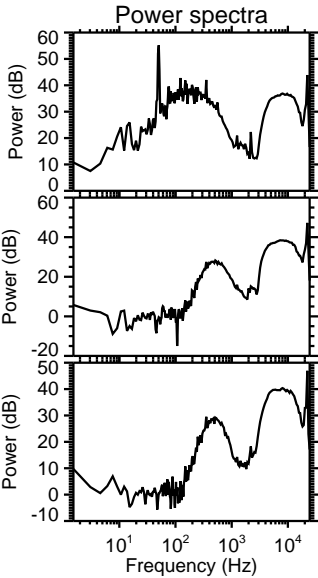
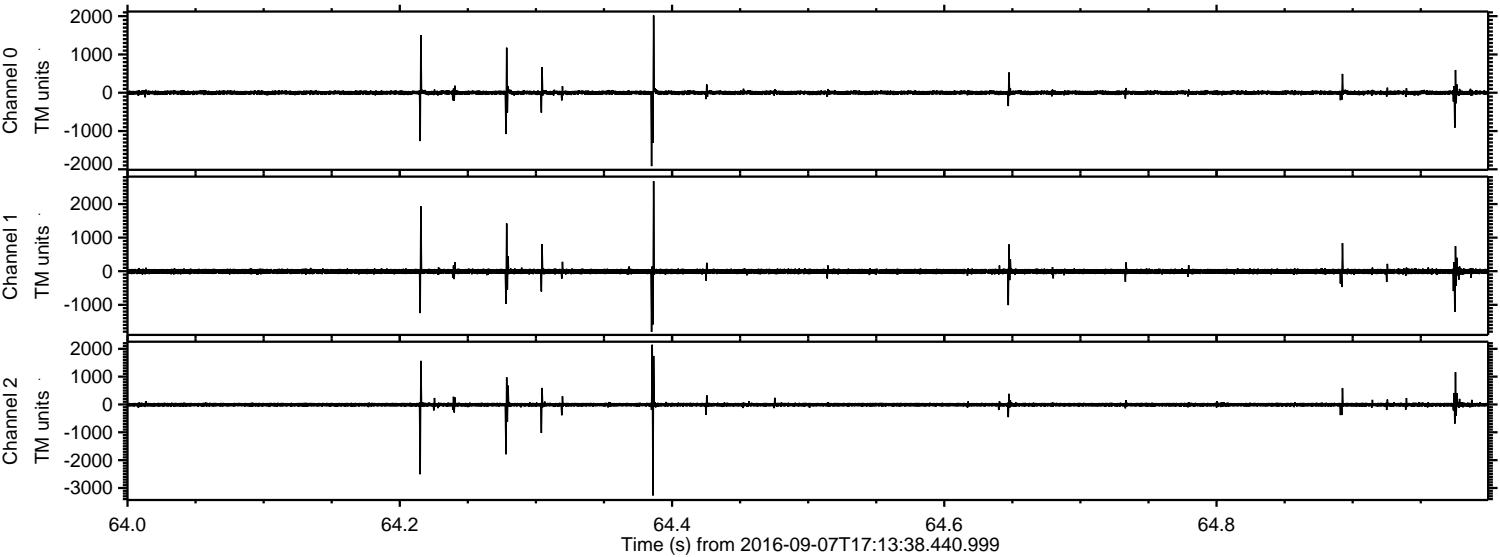
ELMAVAN 3D WAVEFORMS (Measured data sampled at 50 kHz) 51000 packets of 144 samples from 2016-09-07T17:13:38.440.999. Part 111/147

Processed Wed Sep 7 19:21:38 2016 by ELM ver.2012-10-06 from 001\_\_elm20160907\_171337\_\_dat00.bin



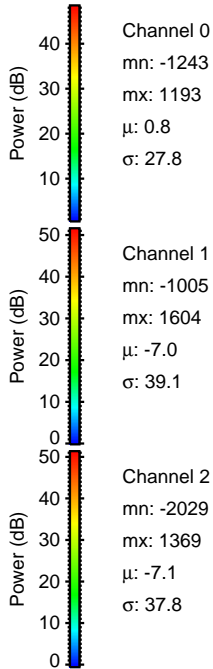
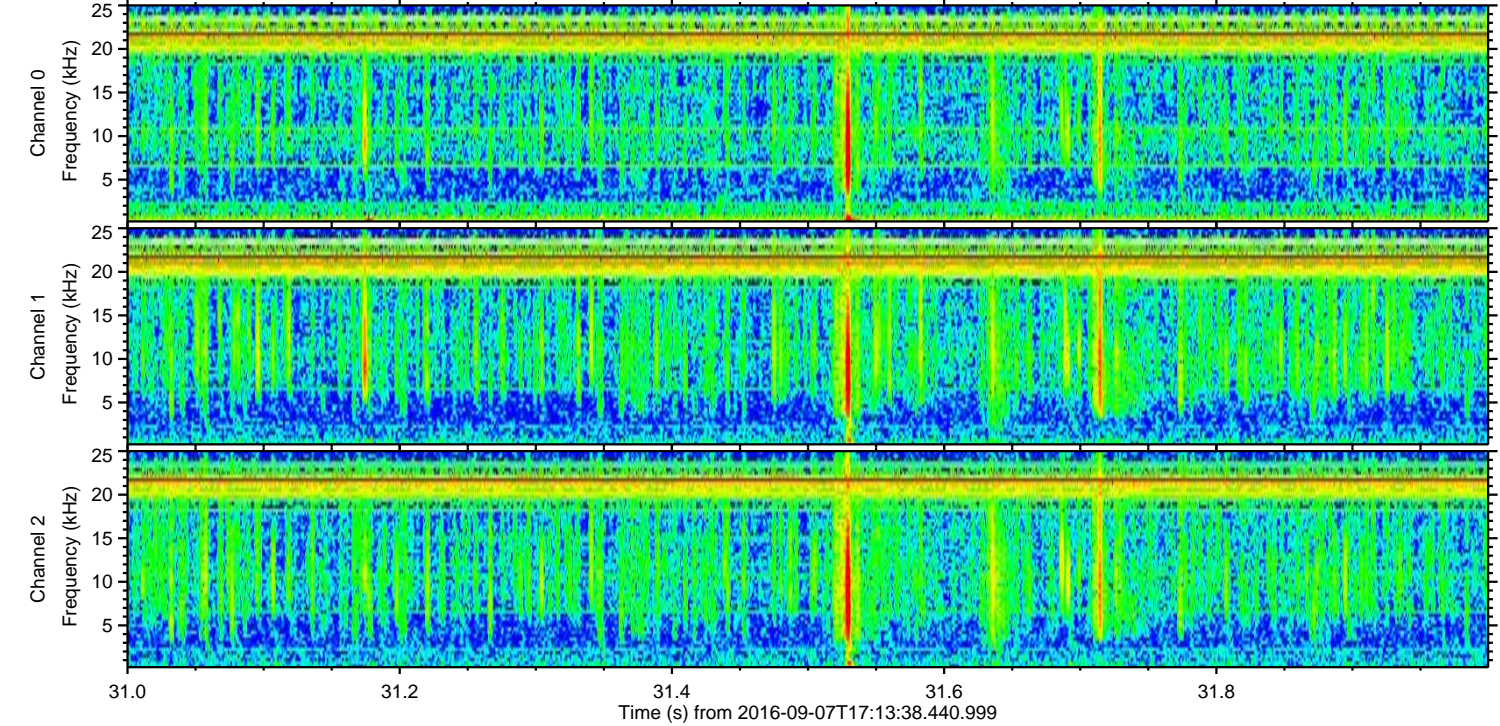
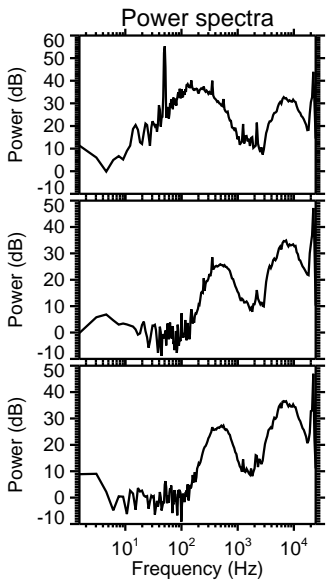
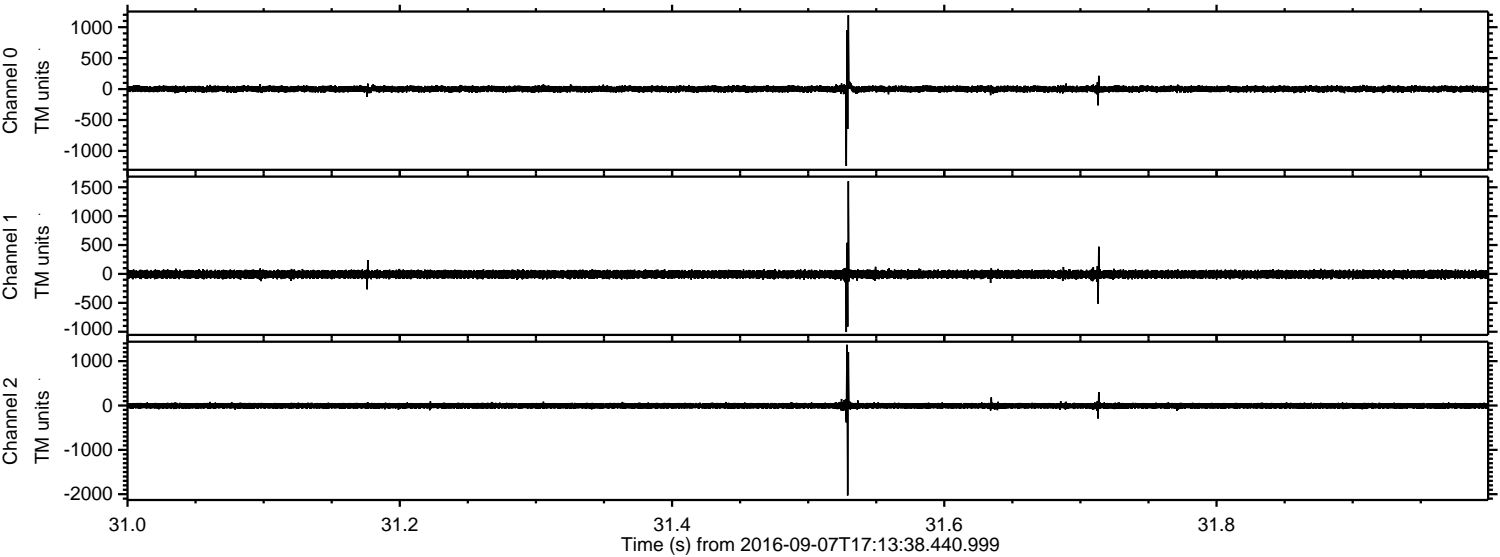


Processed Wed Sep 7 19:21:39 2016 by ELM ver.2012-10-06 from 001\_\_elm20160907\_171337\_\_dat00.bin





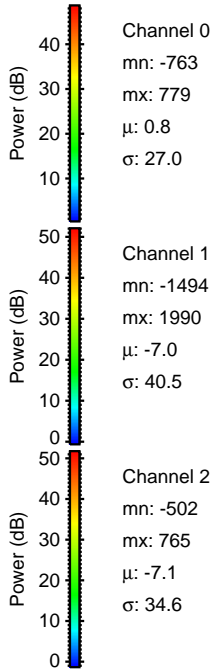
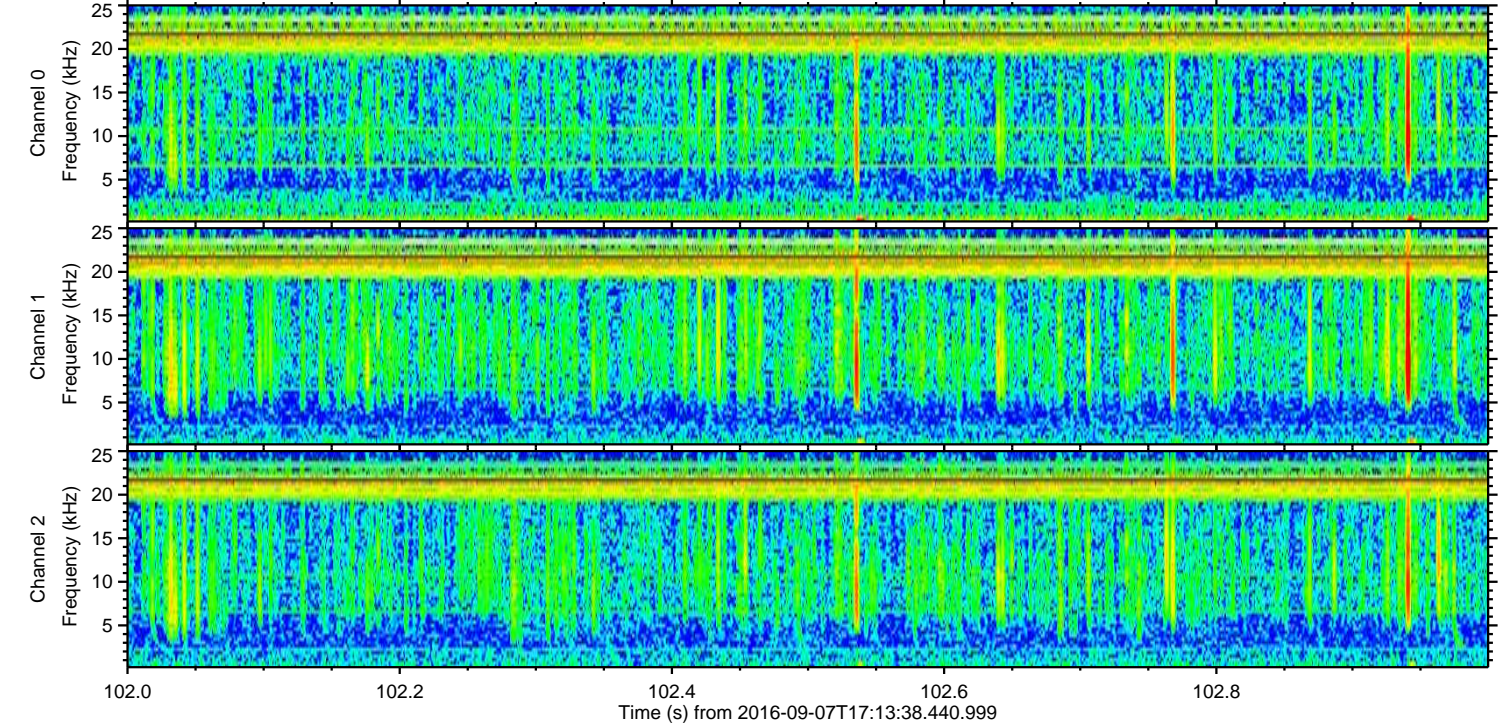
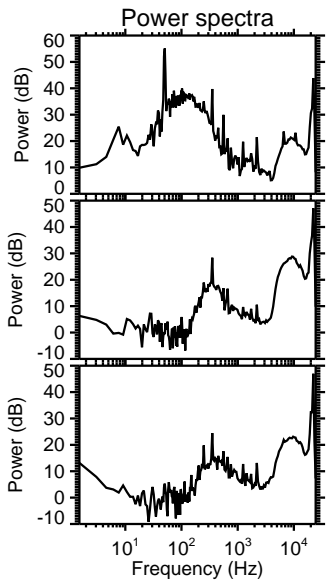
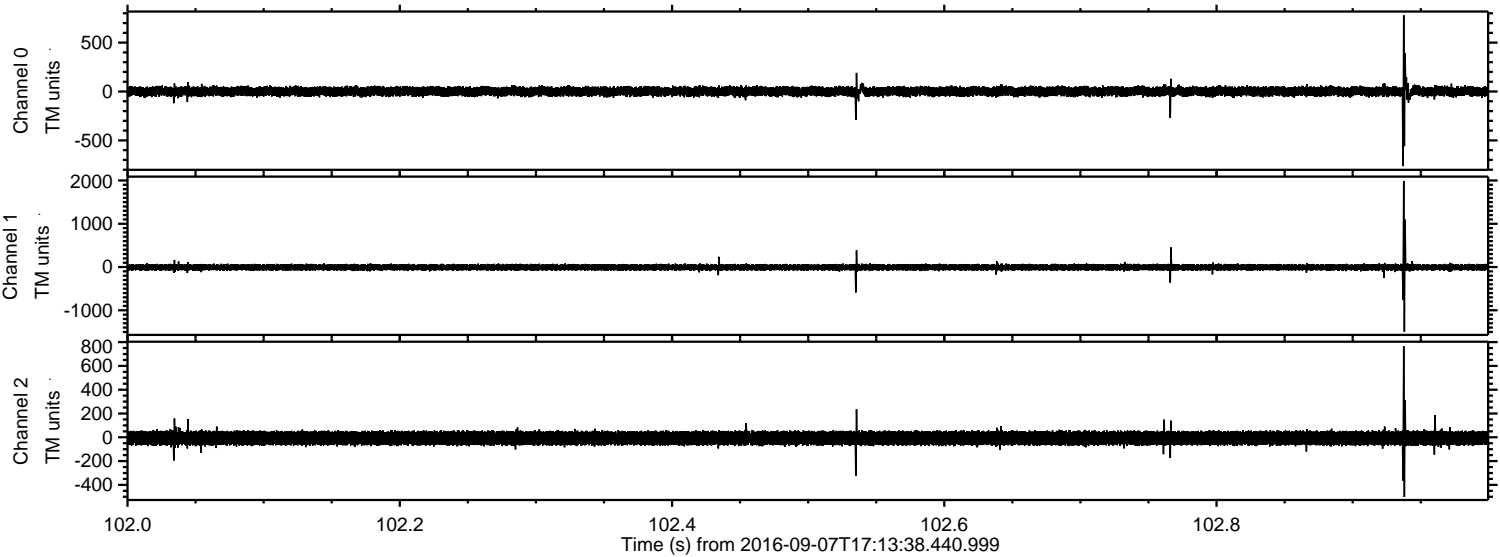
Processed Wed Sep 7 19:21:40 2016 by ELM ver.2012-10-06 from 001\_elm20160907\_171337\_\_dat00.bin





ELMAVAN 3D WAVEFORMS (Measured data sampled at 50 kHz) 51000 packets of 144 samples from 2016-09-07T17:13:38.440.999. Part 103/147

Processed Wed Sep 7 19:21:41 2016 by ELM ver.2012-10-06 from 001\_elm20160907\_171337\_\_dat00.bin



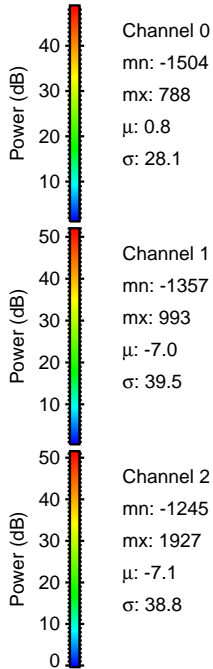
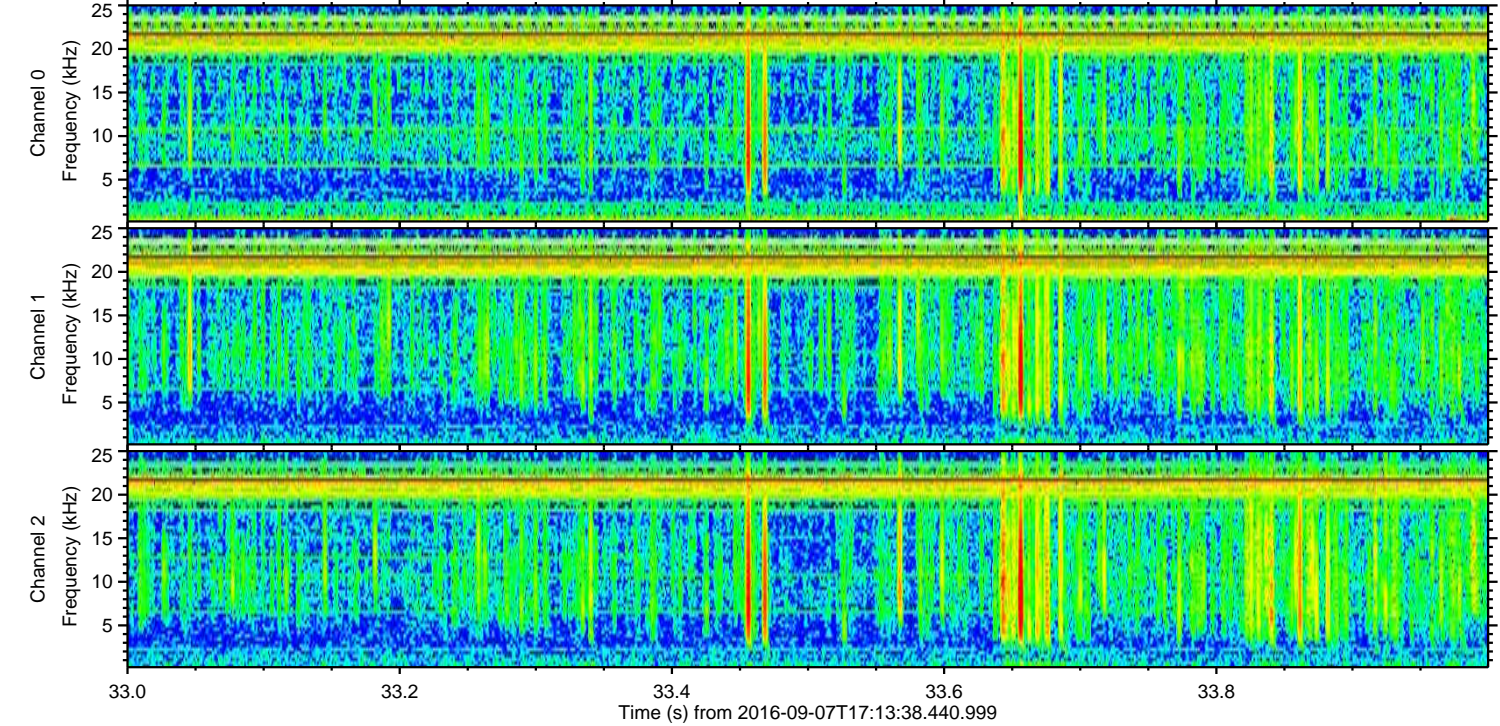
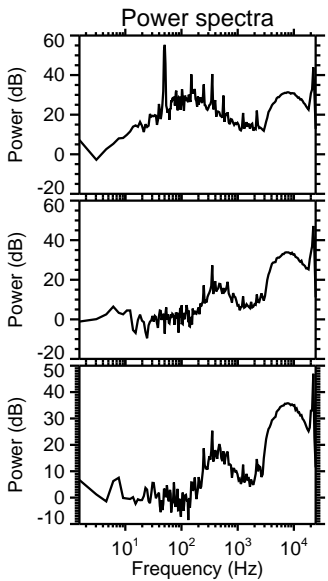
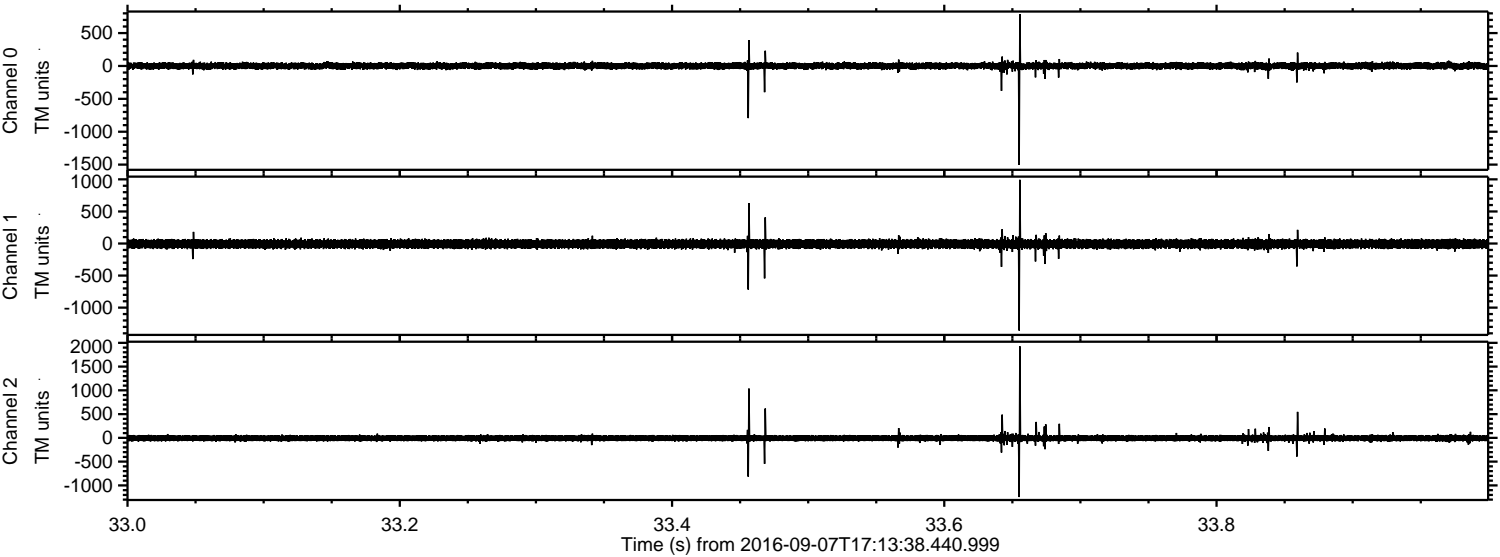
Channel 0  
mn: -763  
mx: 779  
 $\mu$ : 0.8  
 $\sigma$ : 27.0

Channel 1  
mn: -1494  
mx: 1990  
 $\mu$ : -7.0  
 $\sigma$ : 40.5

Channel 2  
mn: -502  
mx: 765  
 $\mu$ : -7.1  
 $\sigma$ : 34.6



Processed Wed Sep 7 19:21:42 2016 by ELM ver.2012-10-06 from 001\_\_elm20160907\_171337\_\_dat00.bin



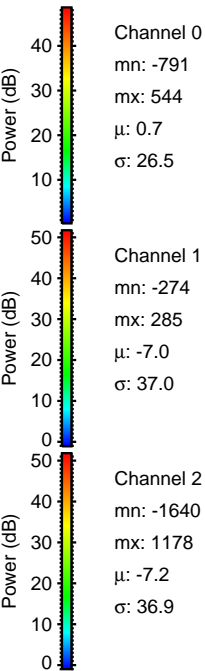
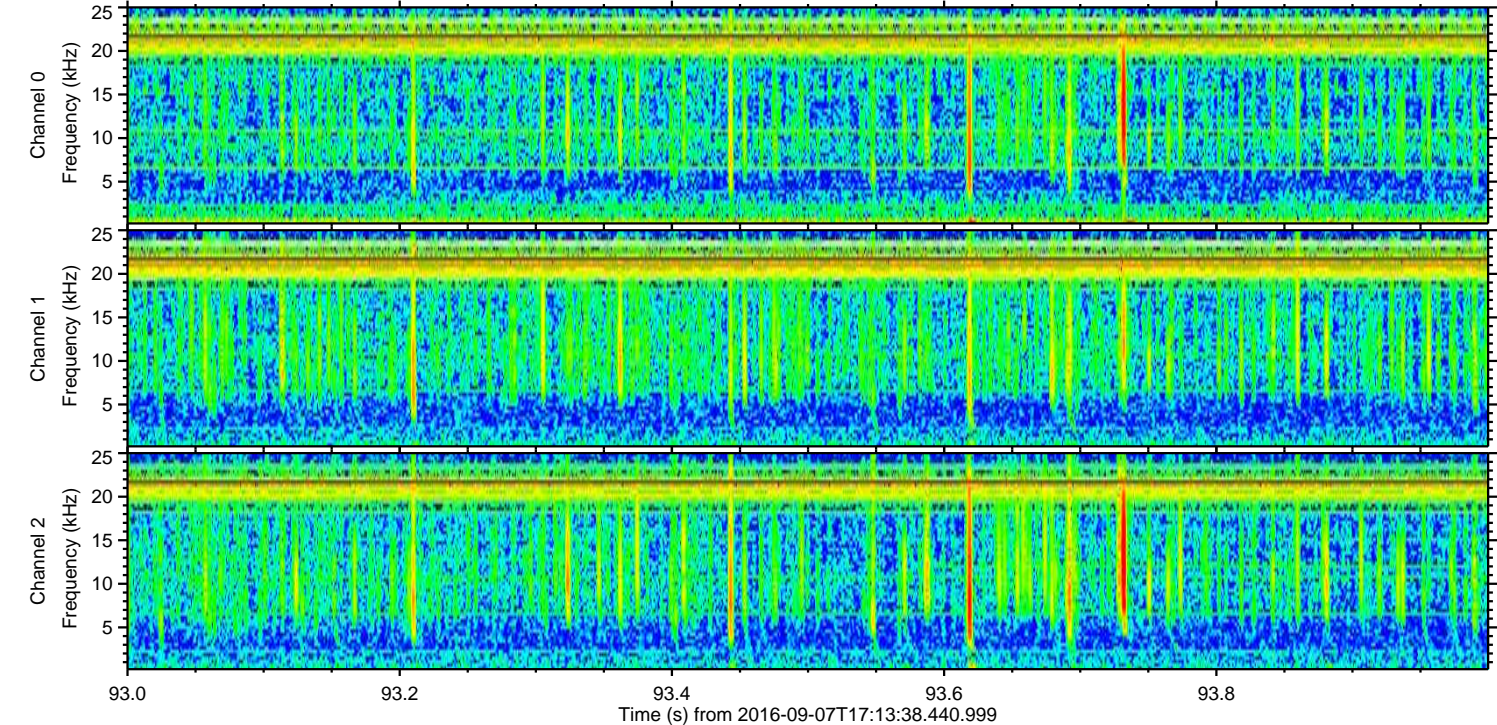
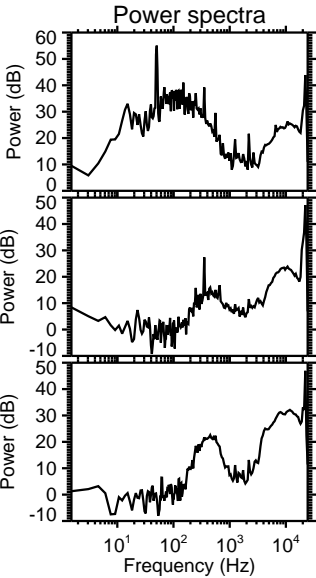
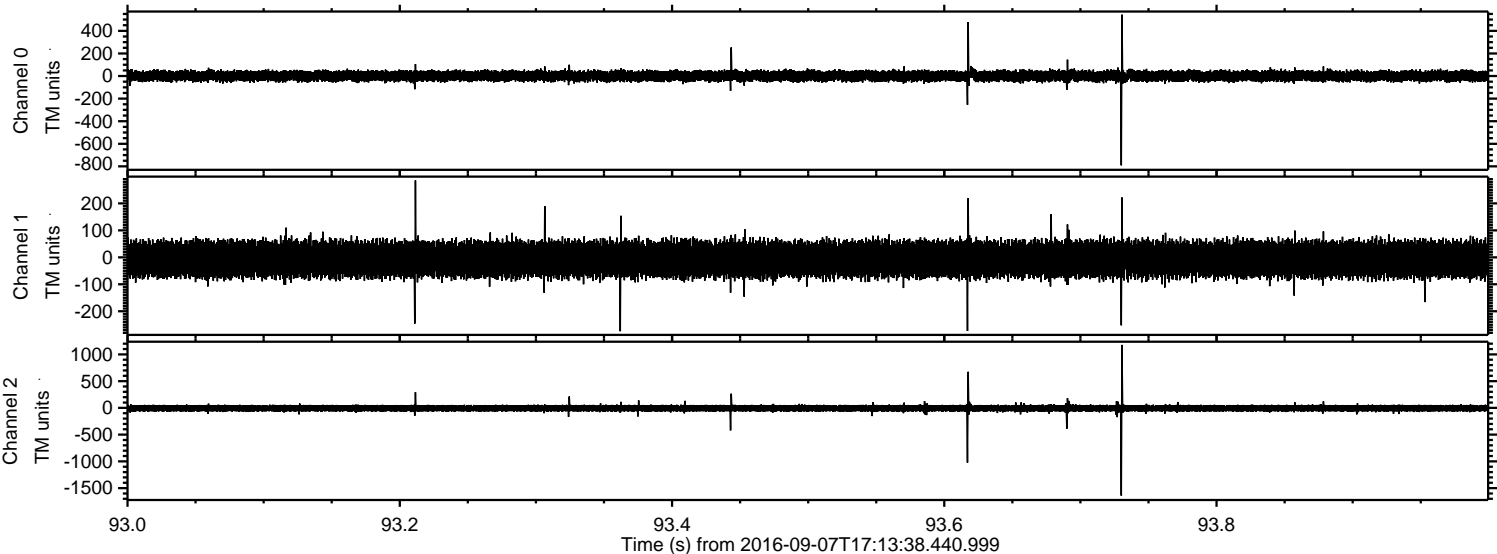
Channel 0  
mn: -1504  
mx: 788  
 $\mu$ : 0.8  
 $\sigma$ : 28.1

Channel 1  
mn: -1357  
mx: 993  
 $\mu$ : -7.0  
 $\sigma$ : 39.5

Channel 2  
mn: -1245  
mx: 1927  
 $\mu$ : -7.1  
 $\sigma$ : 38.8

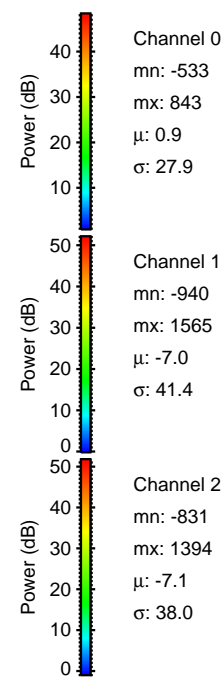
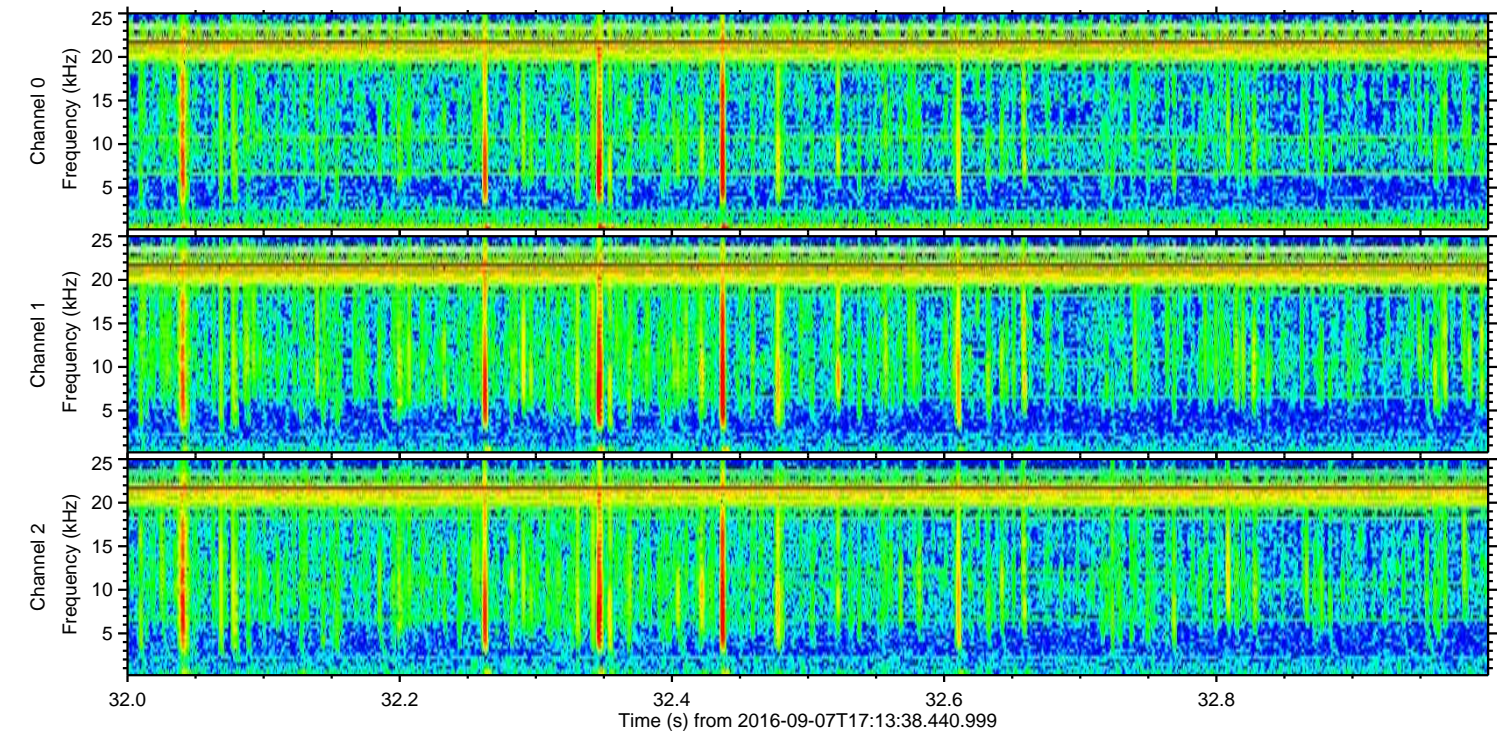
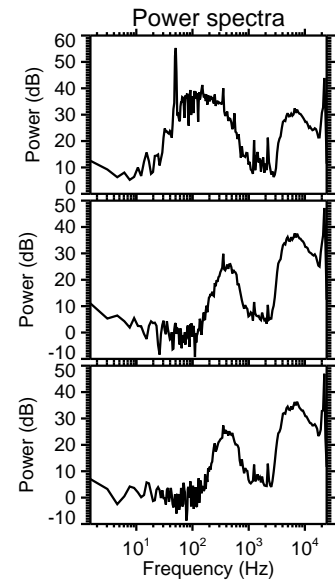
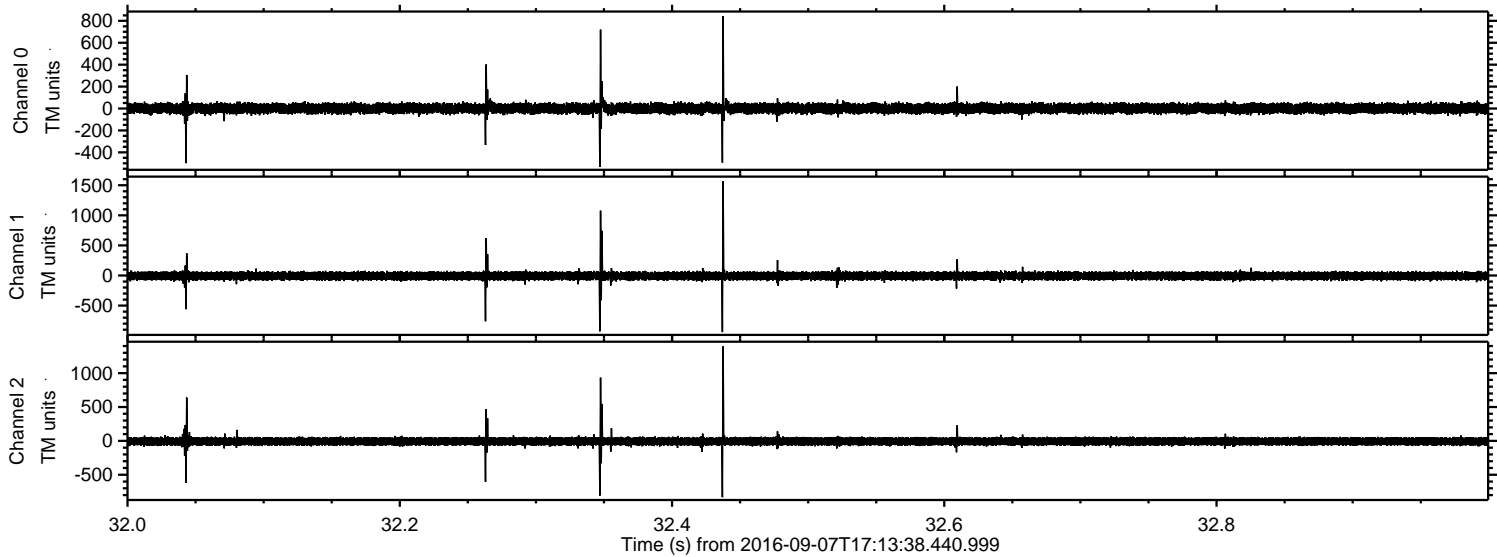


Processed Wed Sep 7 19:21:43 2016 by ELM ver.2012-10-06 from 001\_\_elm20160907\_171337\_\_dat00.bin



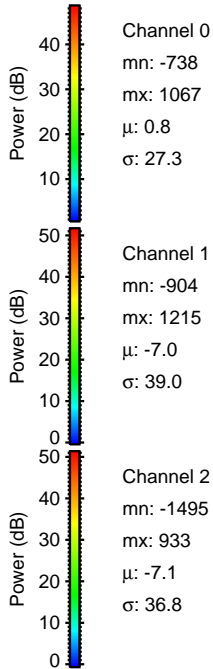
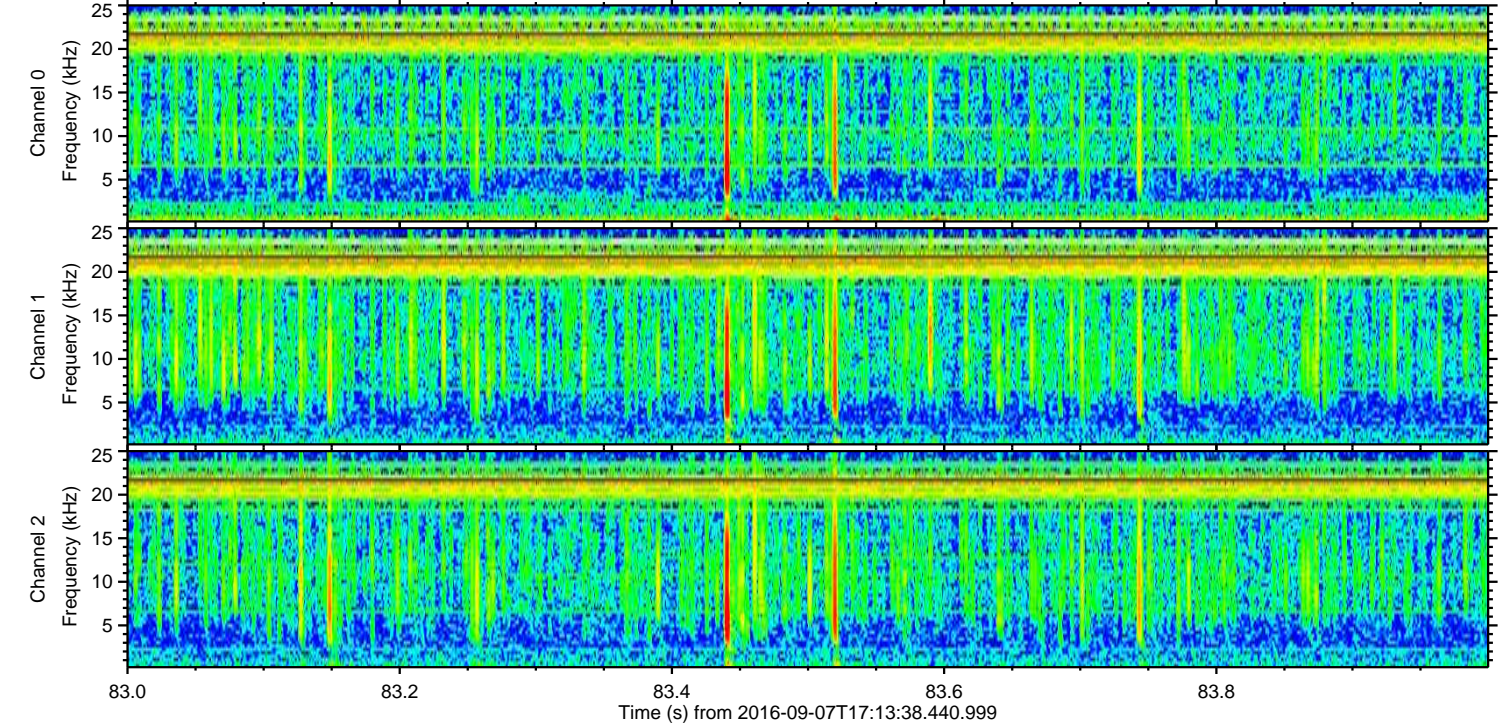
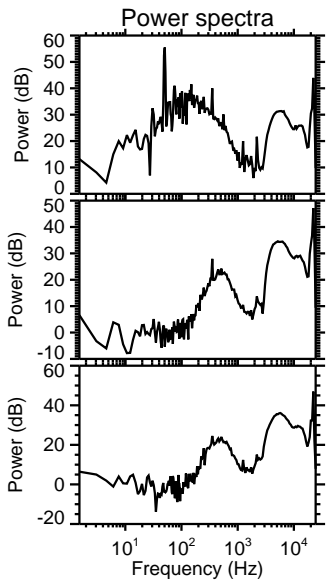
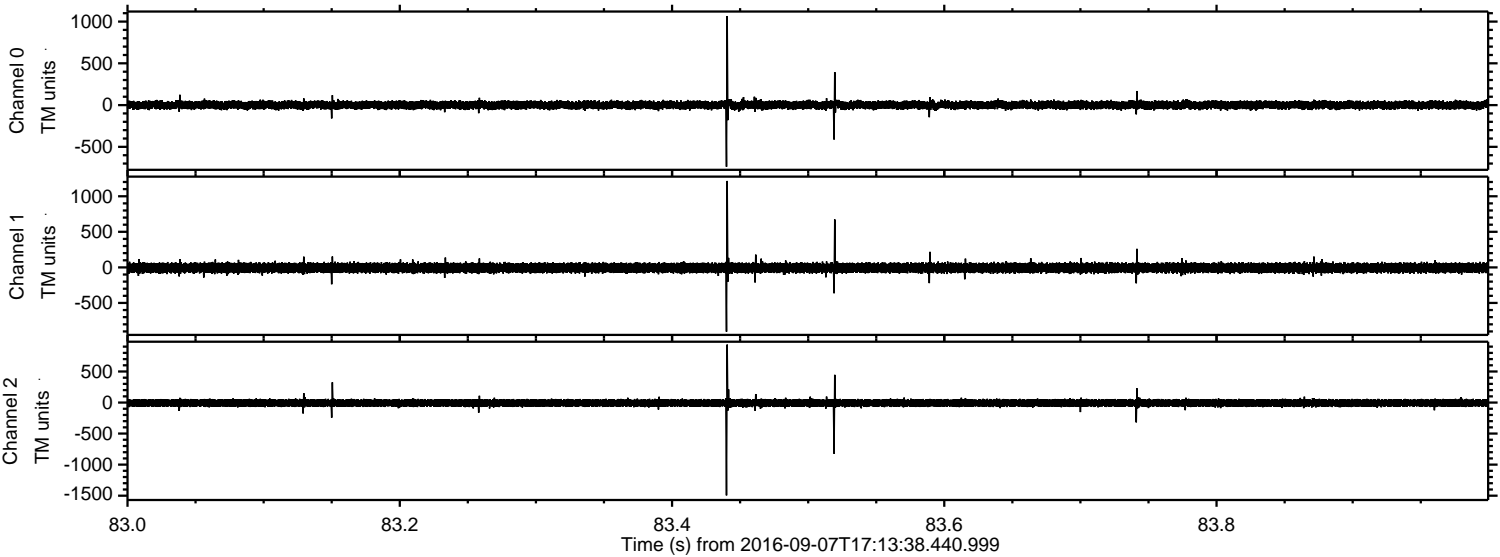


Processed Wed Sep 7 19:21:44 2016 by ELM ver.2012-10-06 from 001\_\_elm20160907\_171337\_\_dat00.bin





Processed Wed Sep 7 19:21:45 2016 by ELM ver.2012-10-06 from 001\_\_elm20160907\_171337\_\_dat00.bin





Processed Wed Sep 7 19:21:46 2016 by ELM ver.2012-10-06 from 001\_\_elm20160907\_171337\_\_dat00.bin

