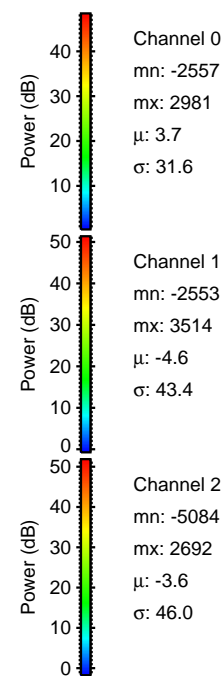
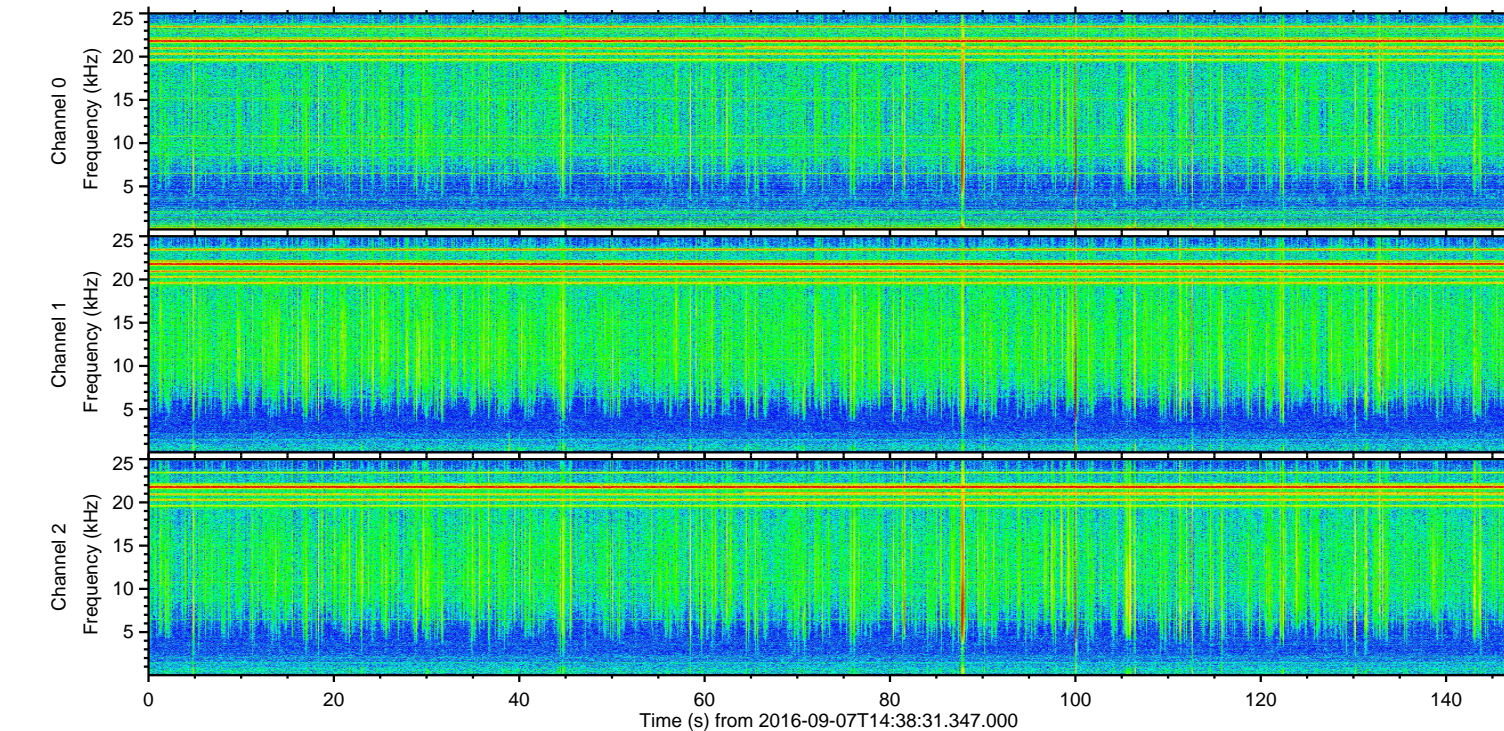
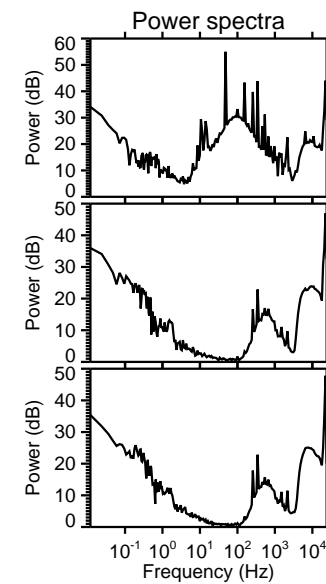
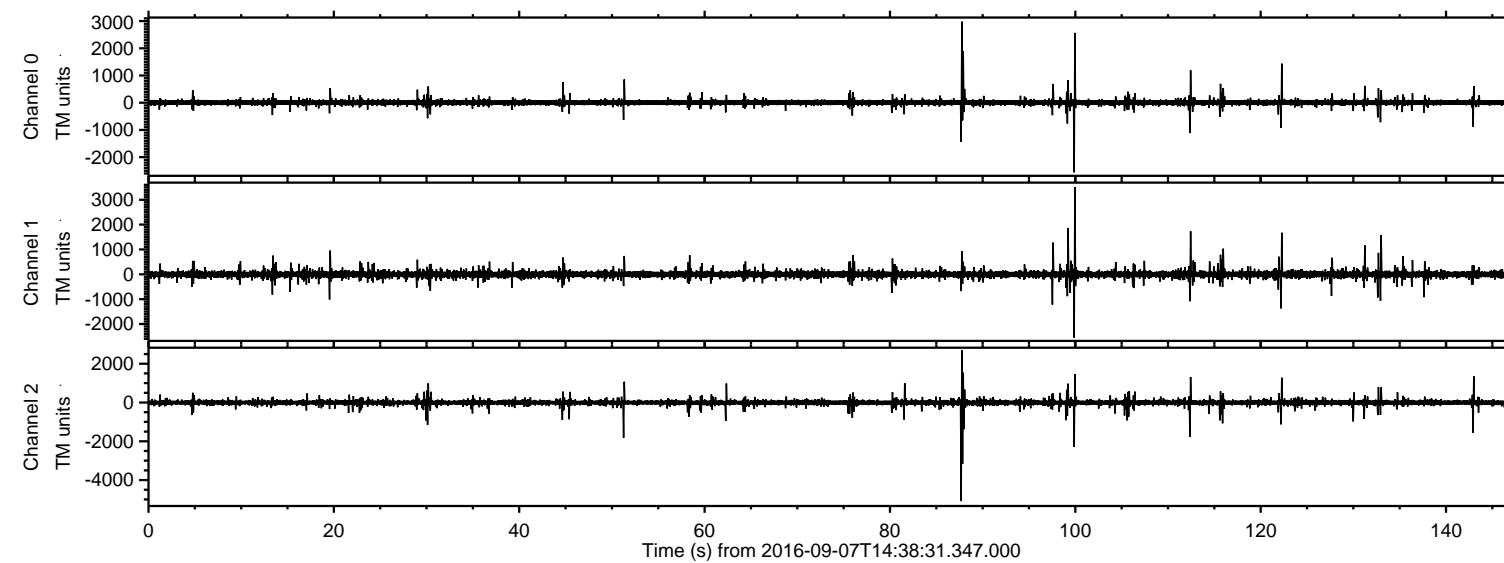
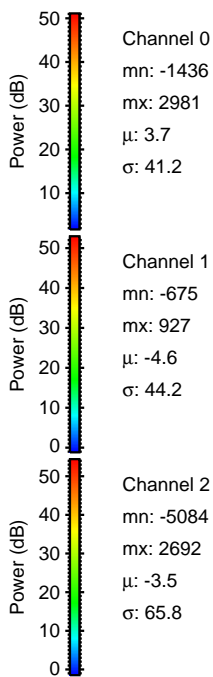
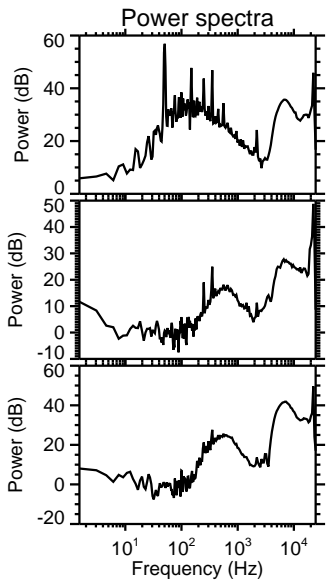
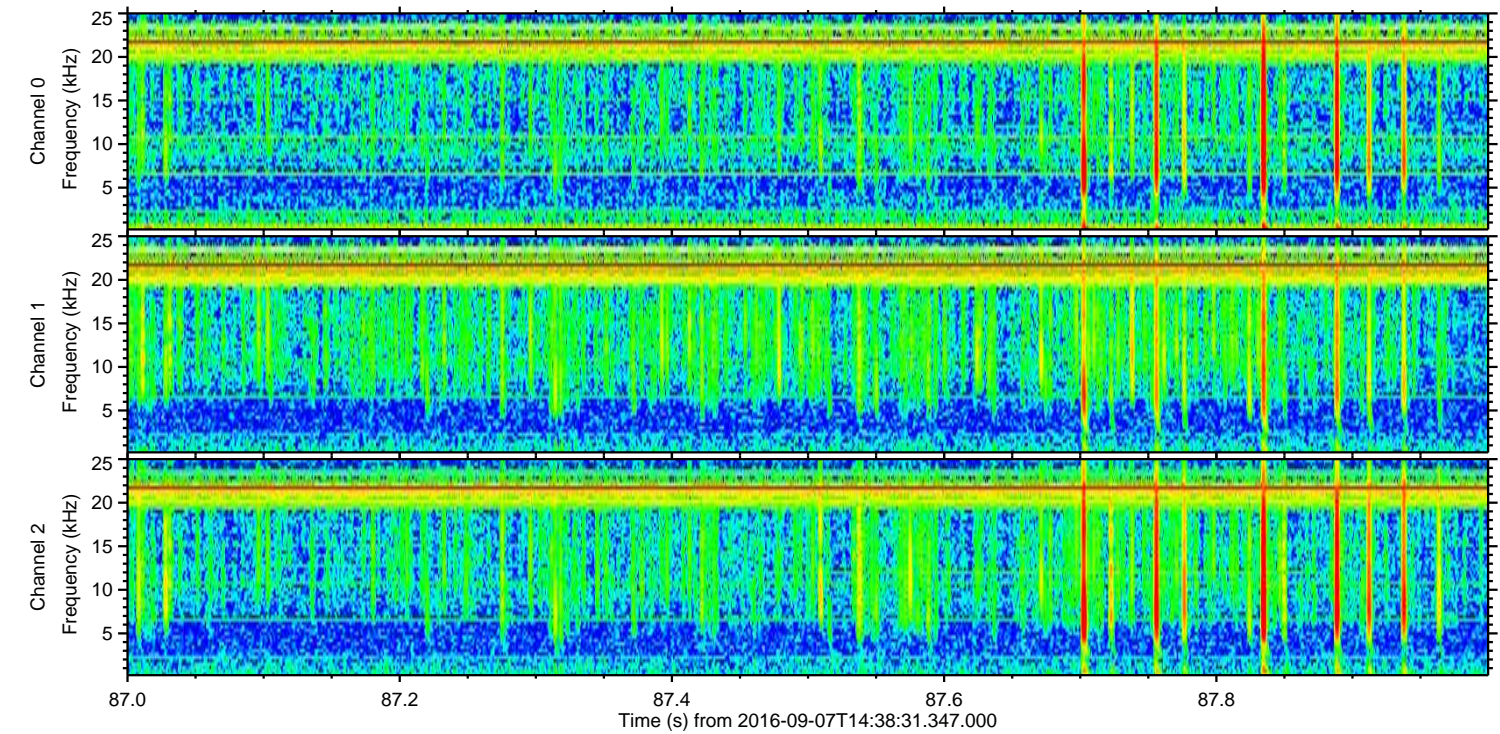
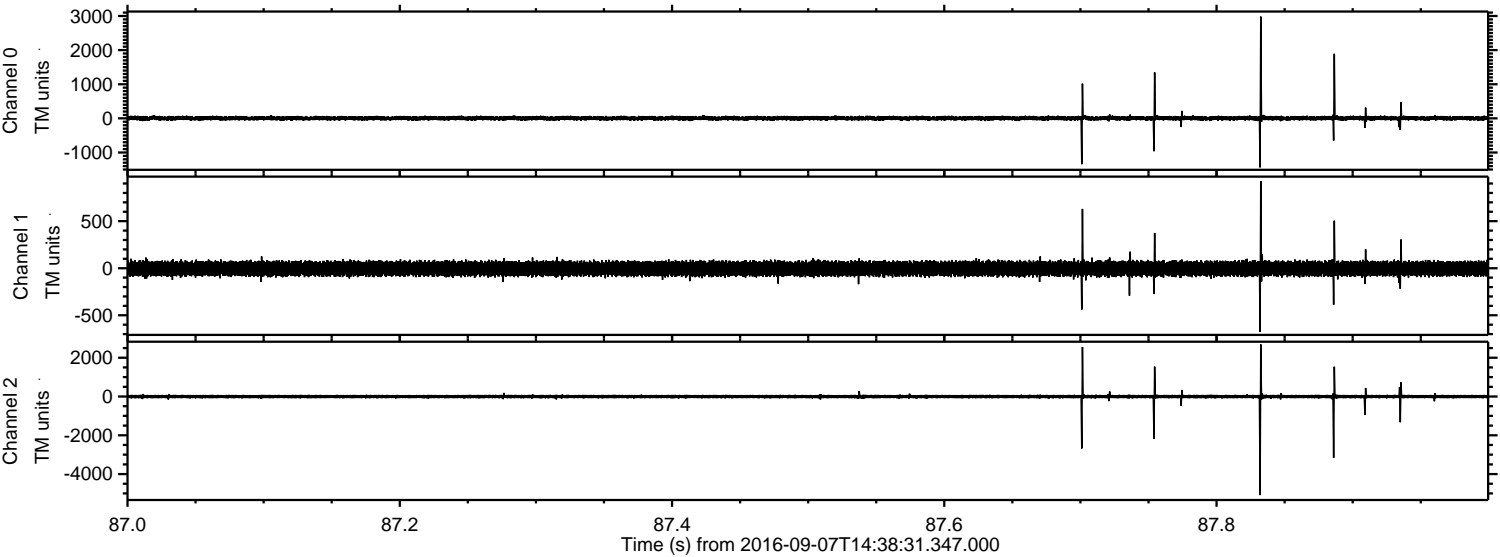


ELMAVAN 3D WAVEFORMS (Measured data sampled at 50 kHz) 51000 packets of 144 samples from 2016-09-07T14:38:31.347.000.

Processed Wed Sep 7 16:46:11 2016 by ELM ver.2012-10-06 from 001__elm20160907_143830__dat00.bin

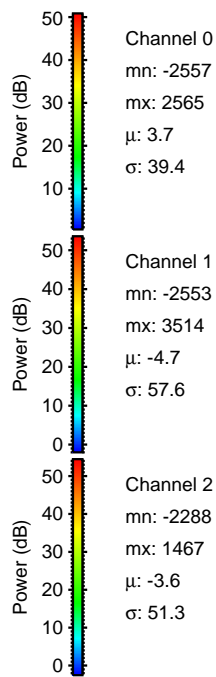
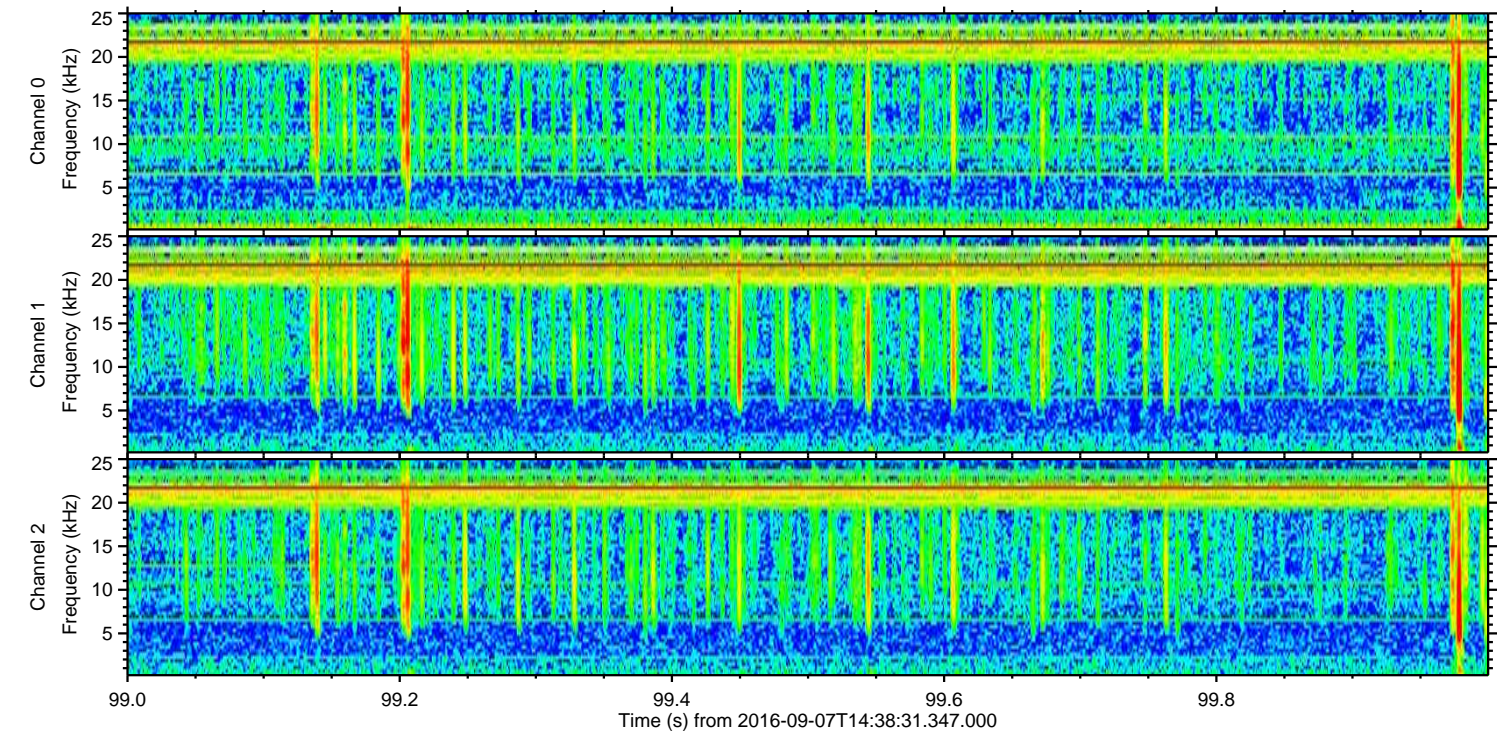
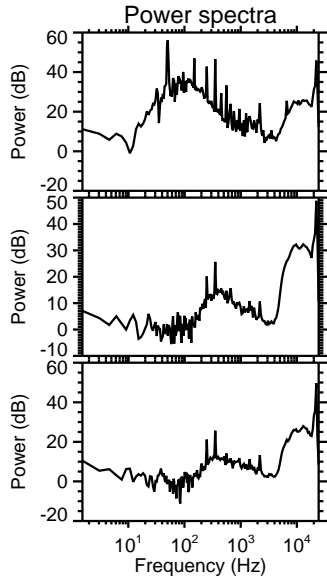
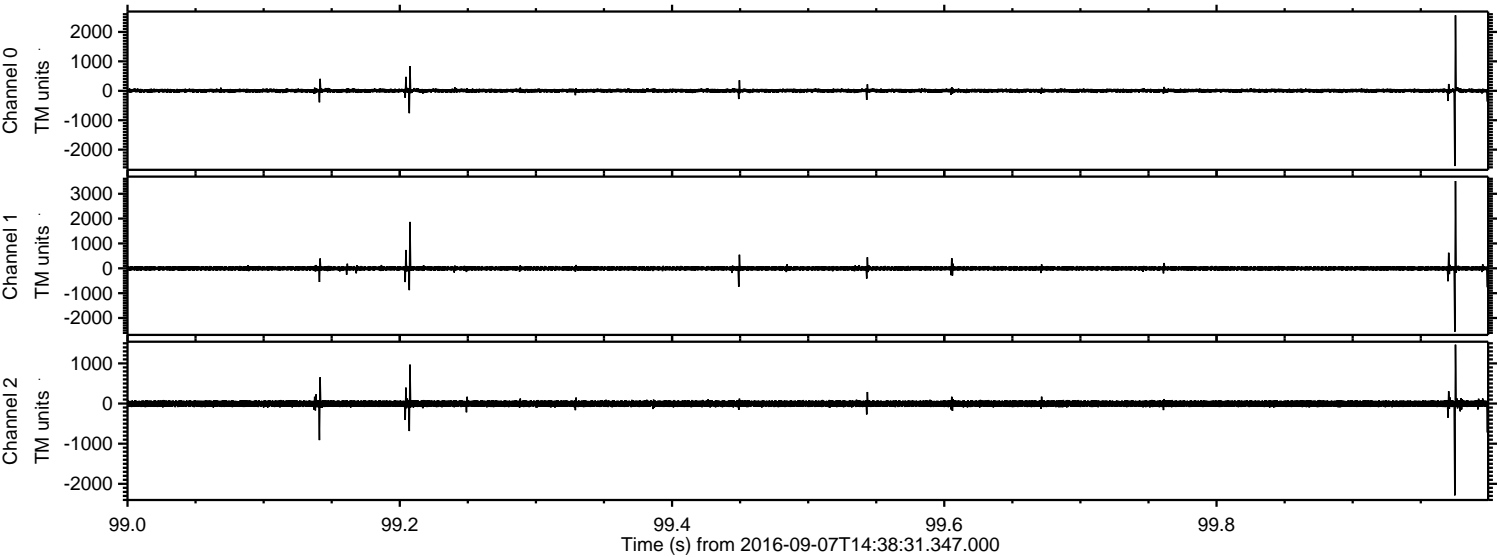


Processed Wed Sep 7 16:46:23 2016 by ELM ver.2012-10-06 from 001__elm20160907_143830__dat00.bin

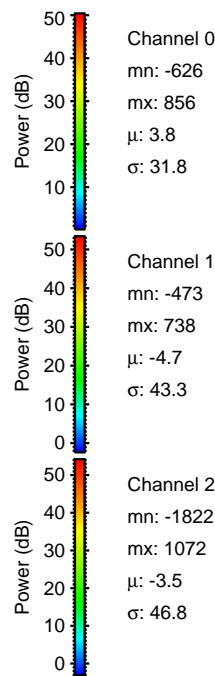
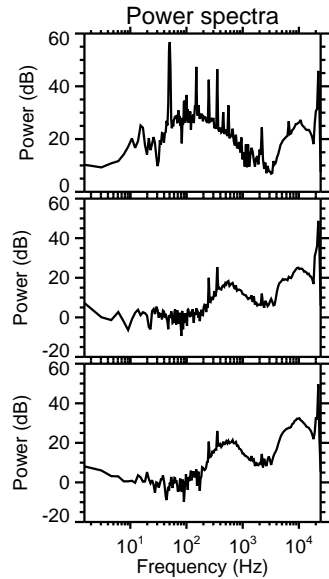
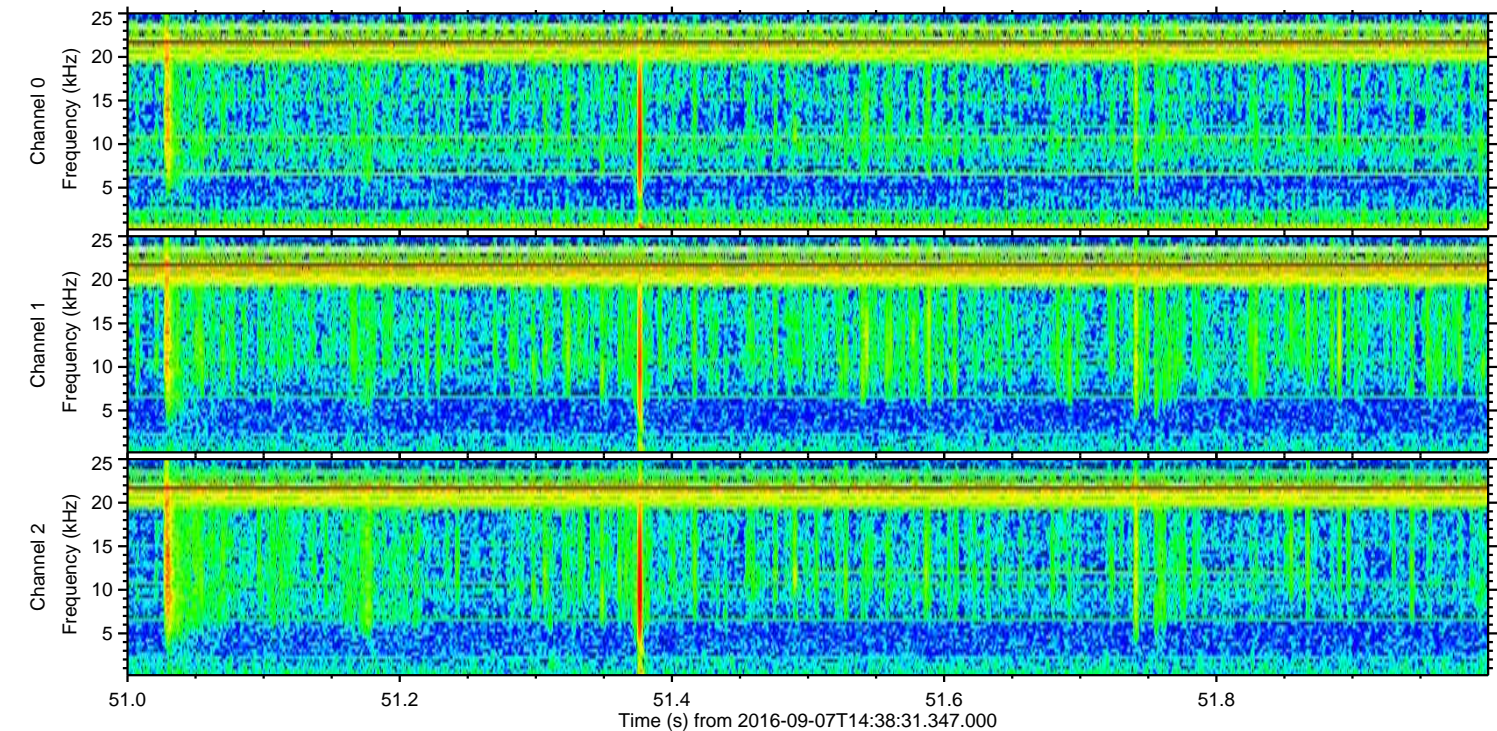
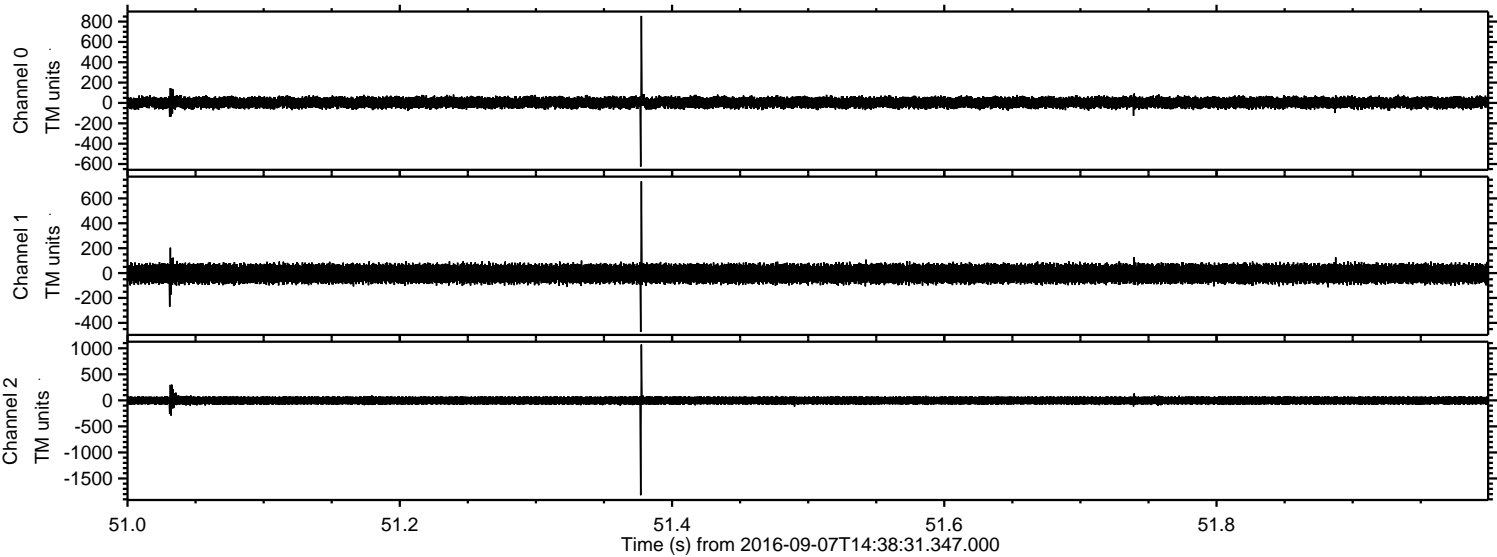


ELMAVAN 3D WAVEFORMS (Measured data sampled at 50 kHz) 51000 packets of 144 samples from 2016-09-07T14:38:31.347.000. Part 100/147

Processed Wed Sep 7 16:46:23 2016 by ELM ver.2012-10-06 from 001__elm20160907_143830__dat00.bin

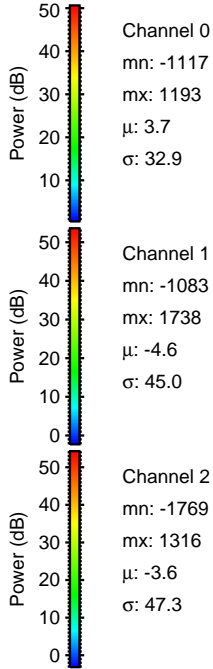
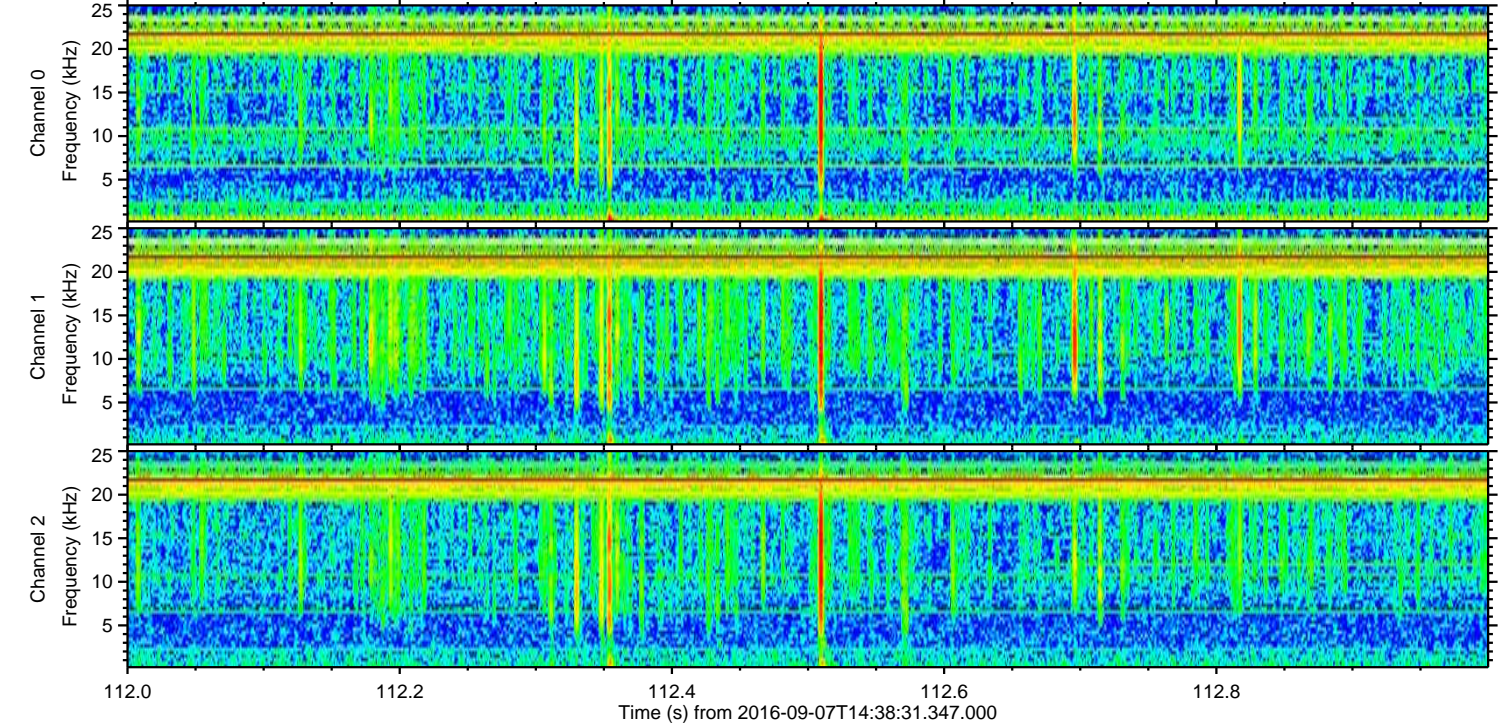
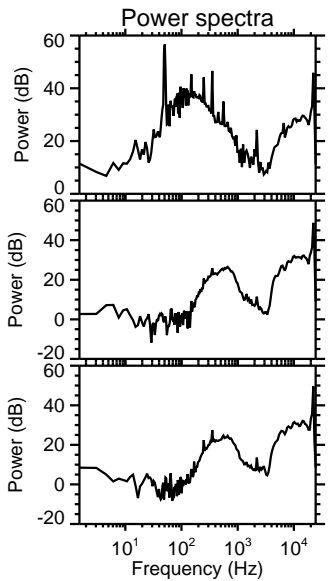
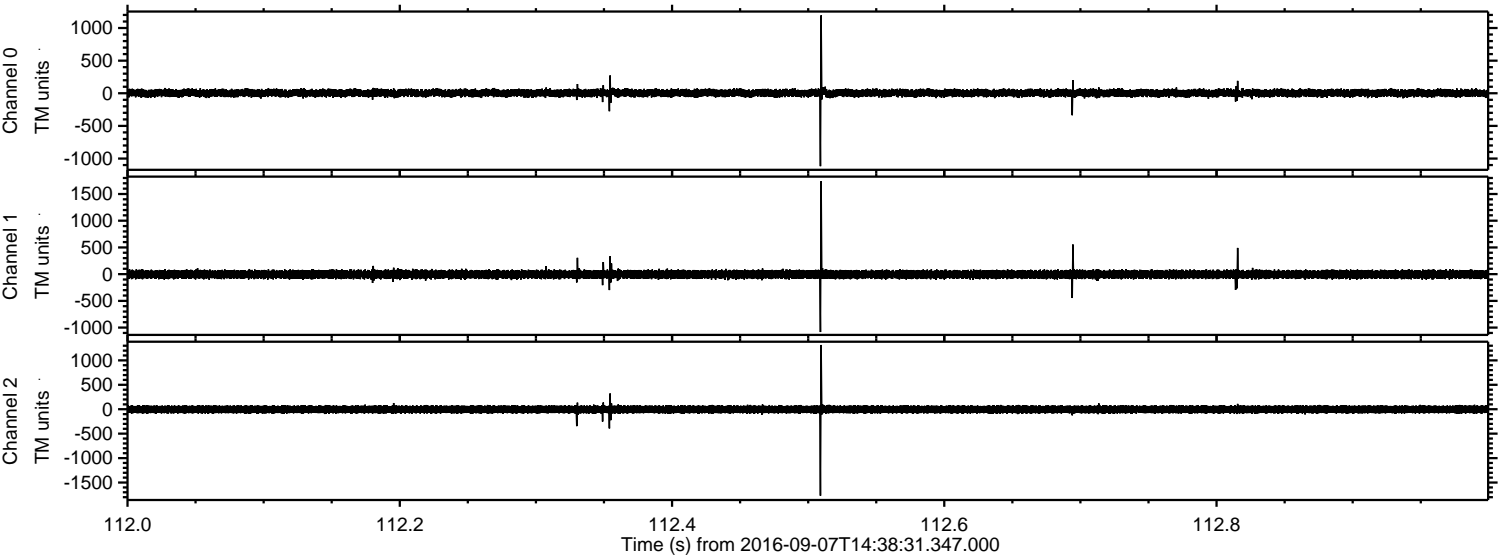


Processed Wed Sep 7 16:46:24 2016 by ELM ver.2012-10-06 from 001__elm20160907_143830__dat00.bin



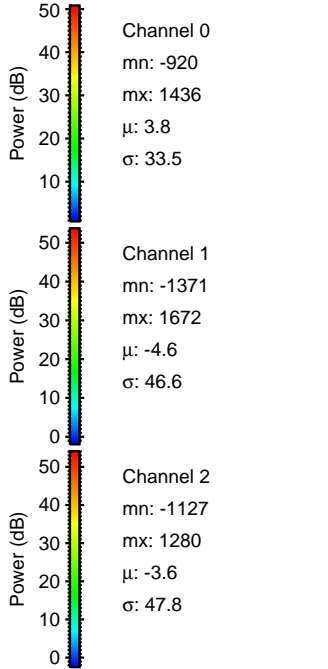
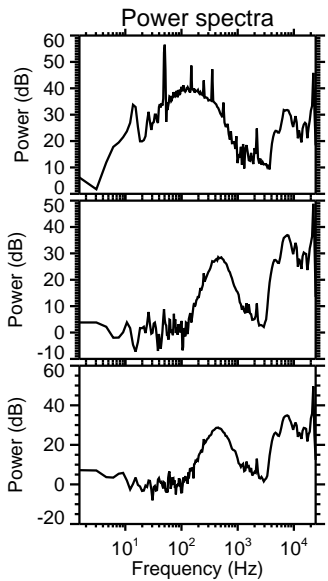
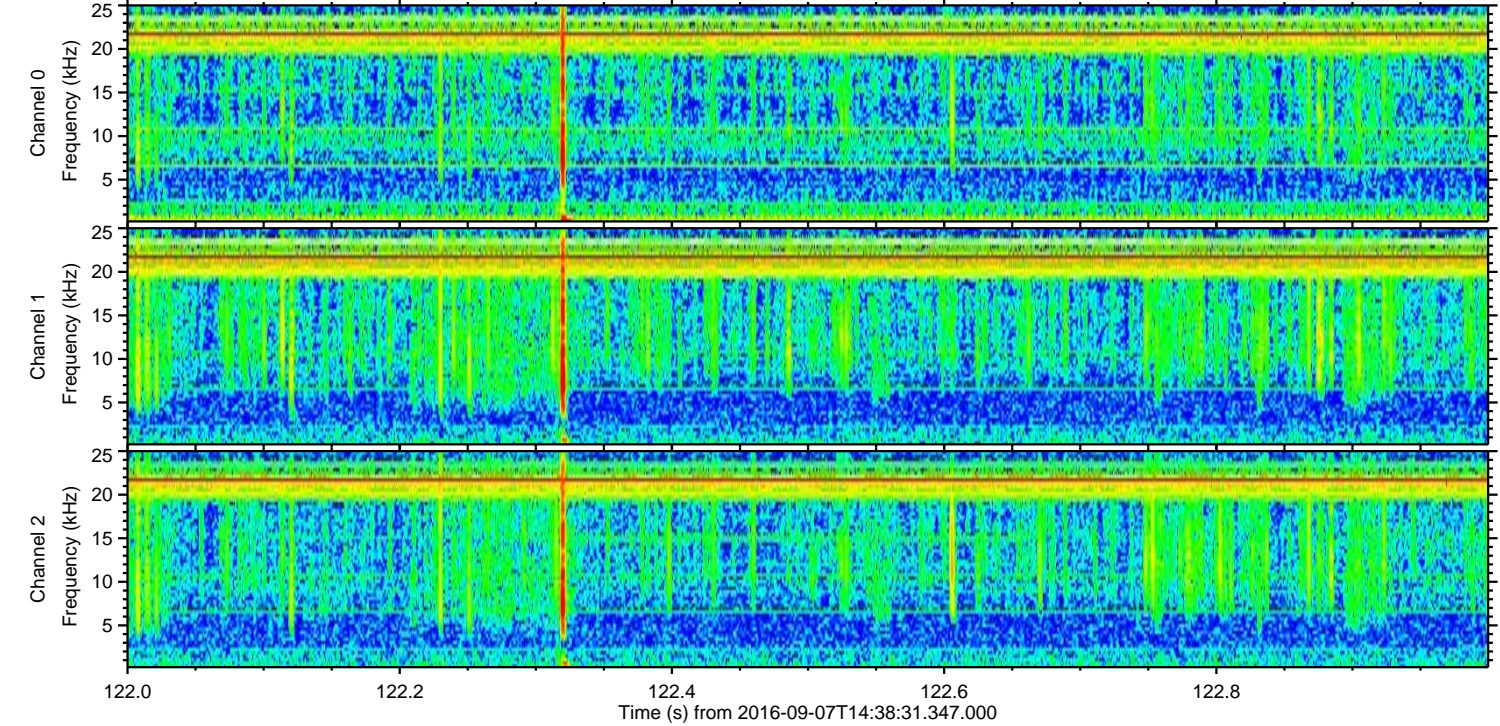
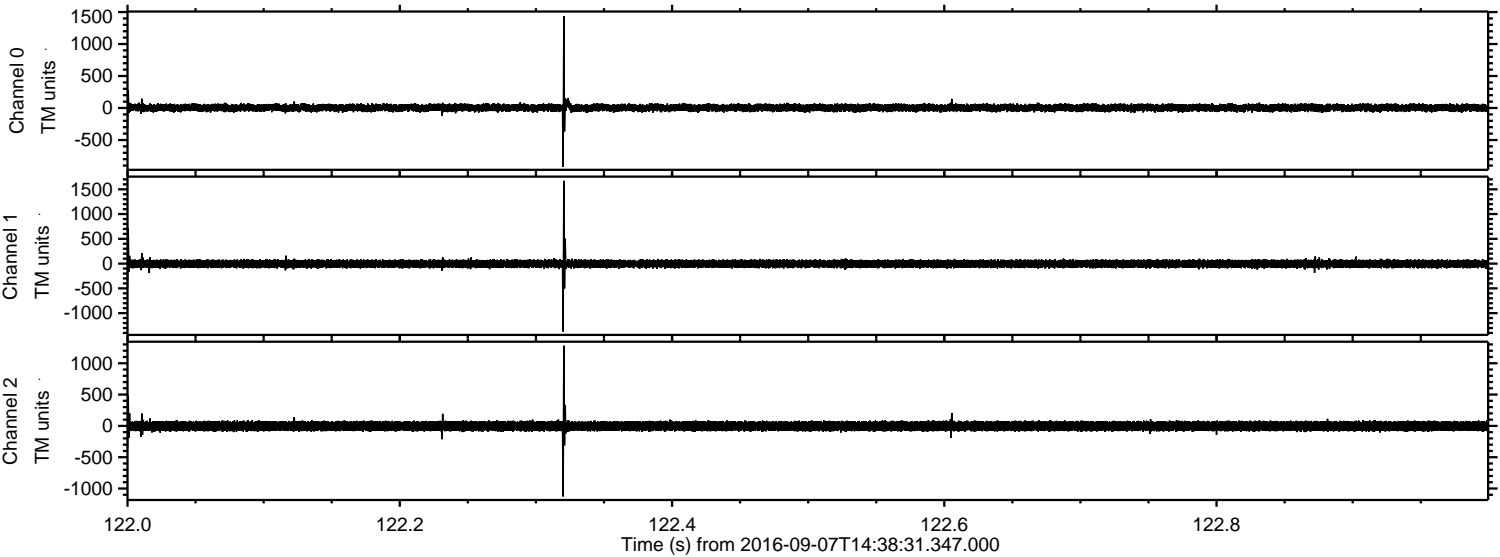
ELMAVAN 3D WAVEFORMS (Measured data sampled at 50 kHz) 51000 packets of 144 samples from 2016-09-07T14:38:31.347.000. Part 113/147

Processed Wed Sep 7 16:46:25 2016 by ELM ver.2012-10-06 from 001__elm20160907_143830__dat00.bin



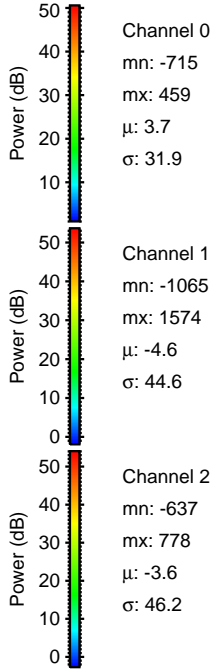
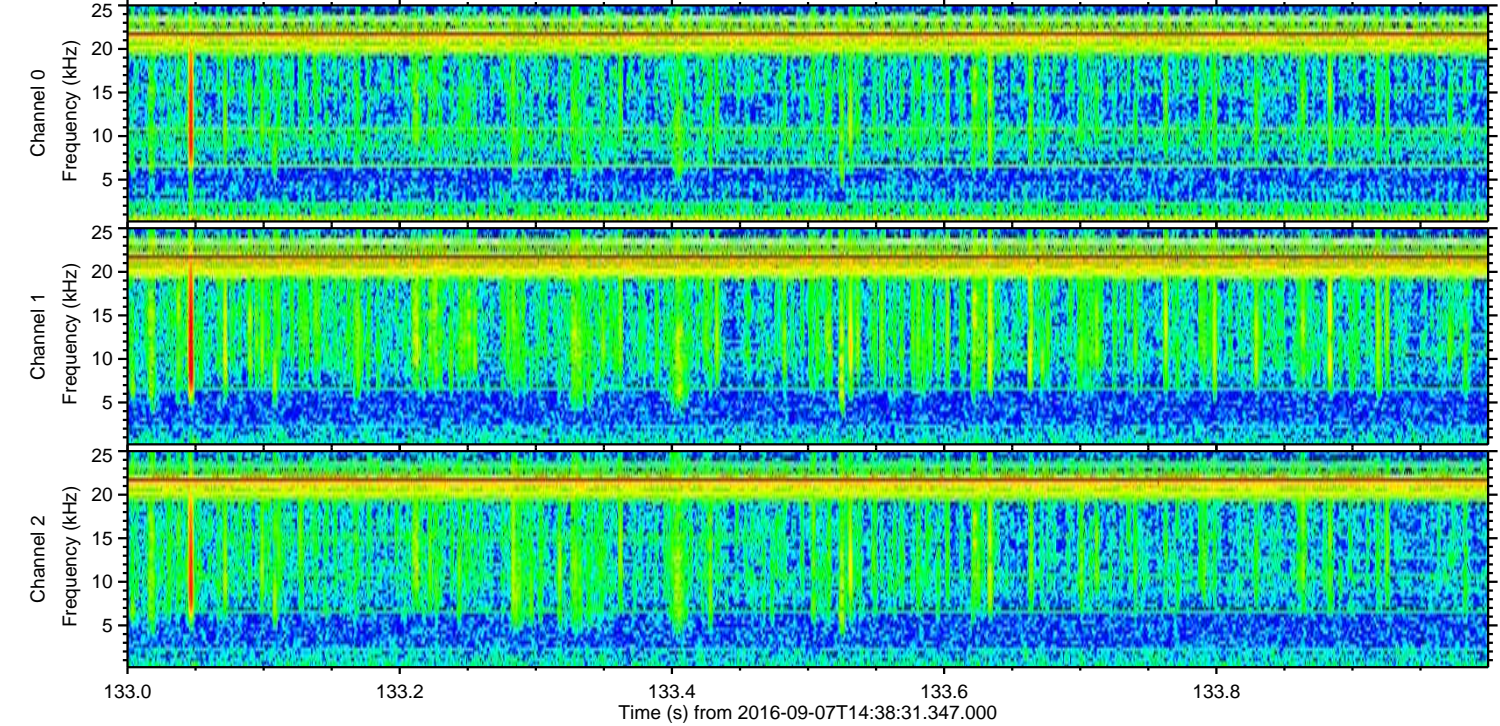
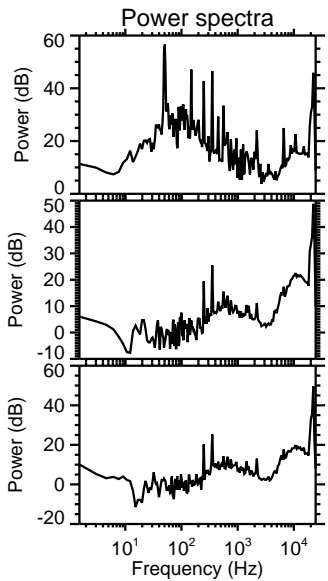
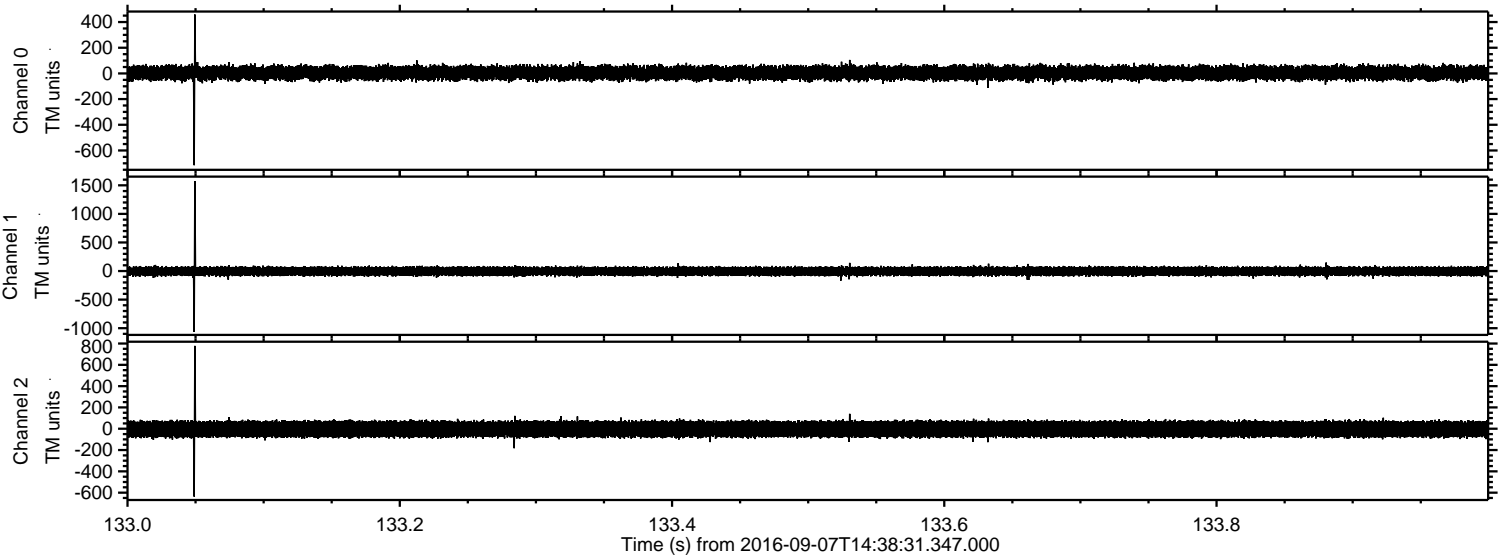
ELMAVAN 3D WAVEFORMS (Measured data sampled at 50 kHz) 51000 packets of 144 samples from 2016-09-07T14:38:31.347.000. Part 123/147

Processed Wed Sep 7 16:46:26 2016 by ELM ver.2012-10-06 from 001__elm20160907_143830__dat00.bin



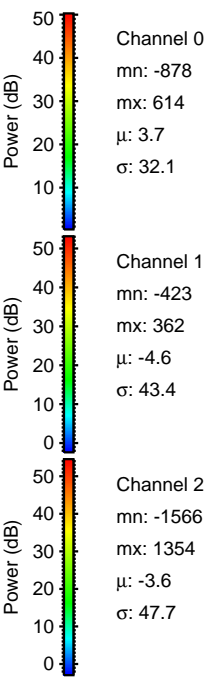
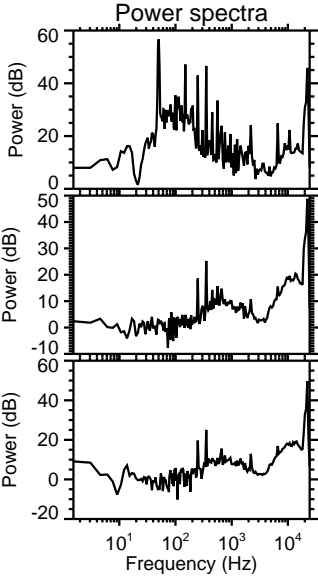
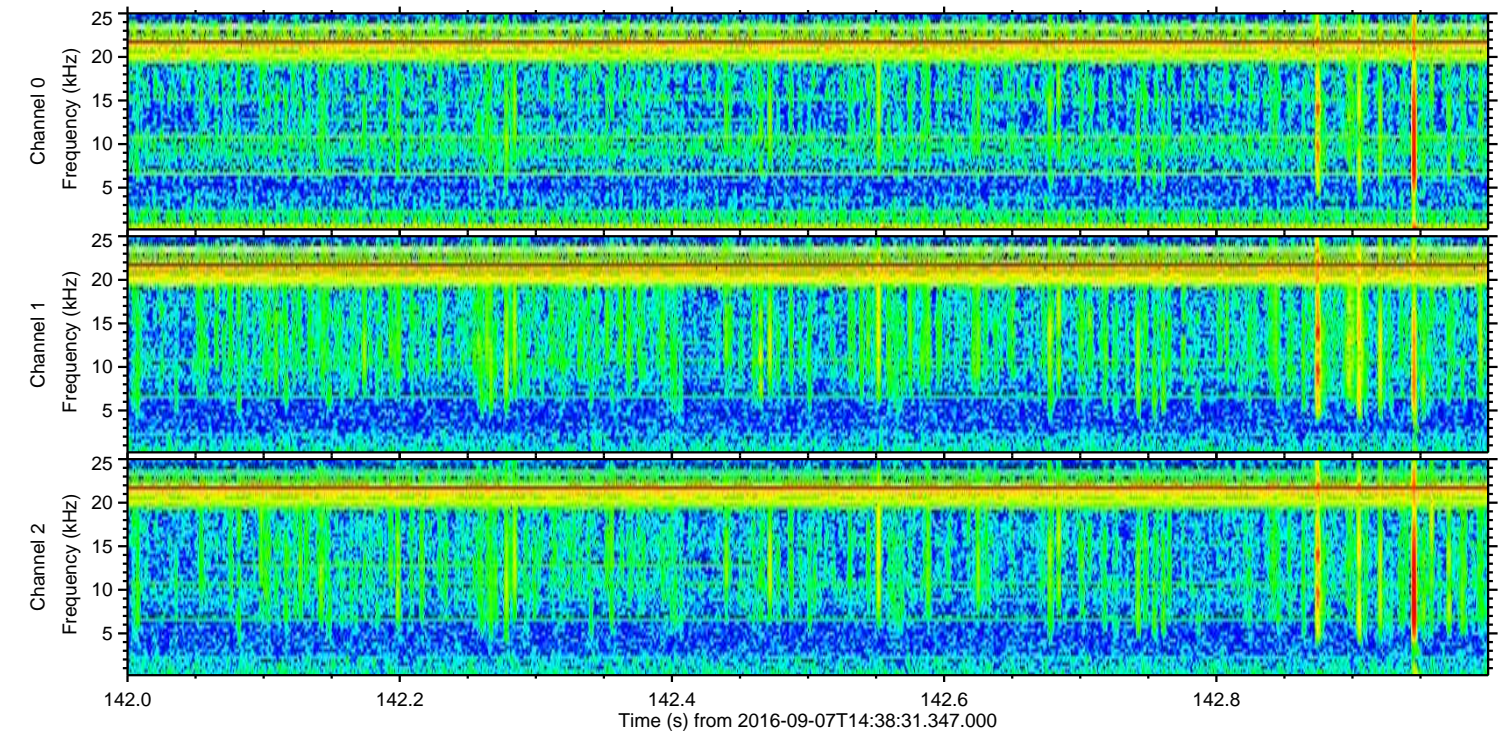
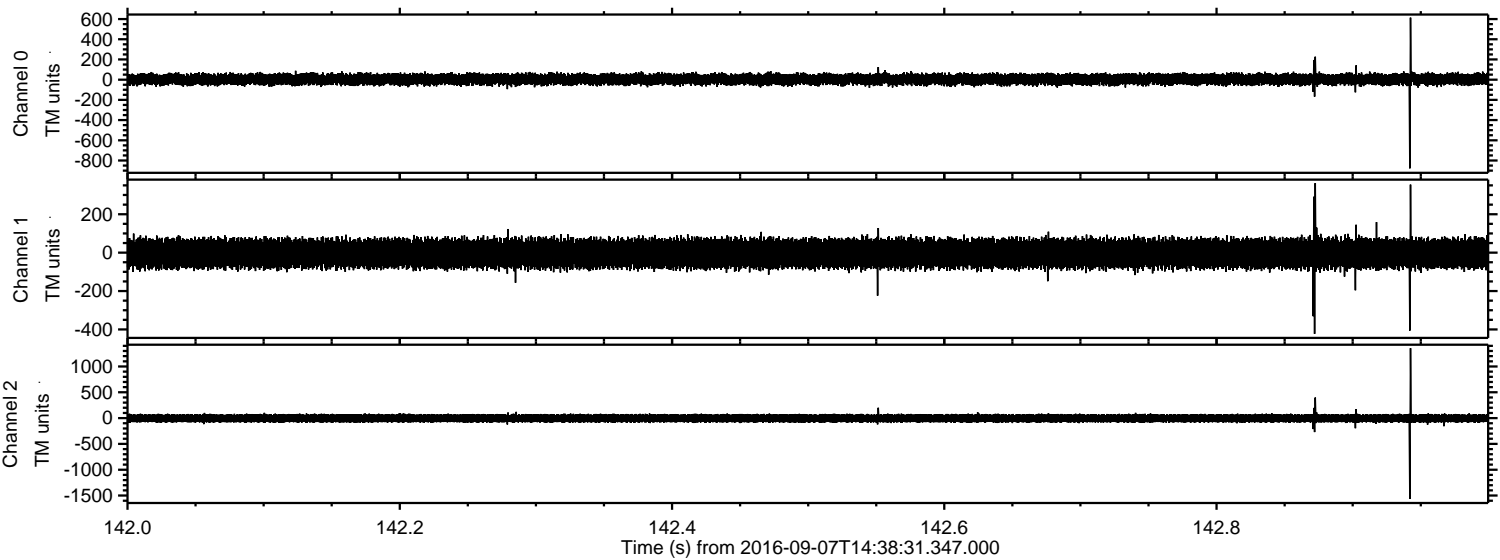
ELMAVAN 3D WAVEFORMS (Measured data sampled at 50 kHz) 51000 packets of 144 samples from 2016-09-07T14:38:31.347.000. Part 134/147

Processed Wed Sep 7 16:46:27 2016 by ELM ver.2012-10-06 from 001__elm20160907_143830__dat00.bin



ELMAVAN 3D WAVEFORMS (Measured data sampled at 50 kHz) 51000 packets of 144 samples from 2016-09-07T14:38:31.347.000. Part 143/147

Processed Wed Sep 7 16:46:28 2016 by ELM ver.2012-10-06 from 001__elm20160907_143830__dat00.bin

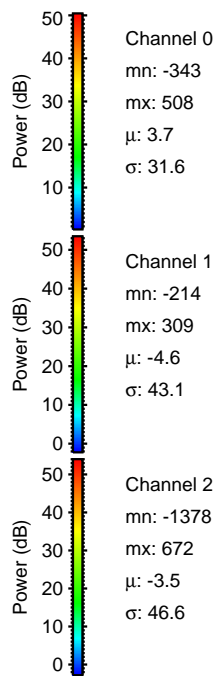
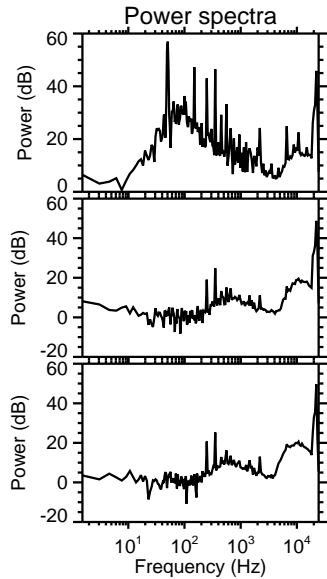
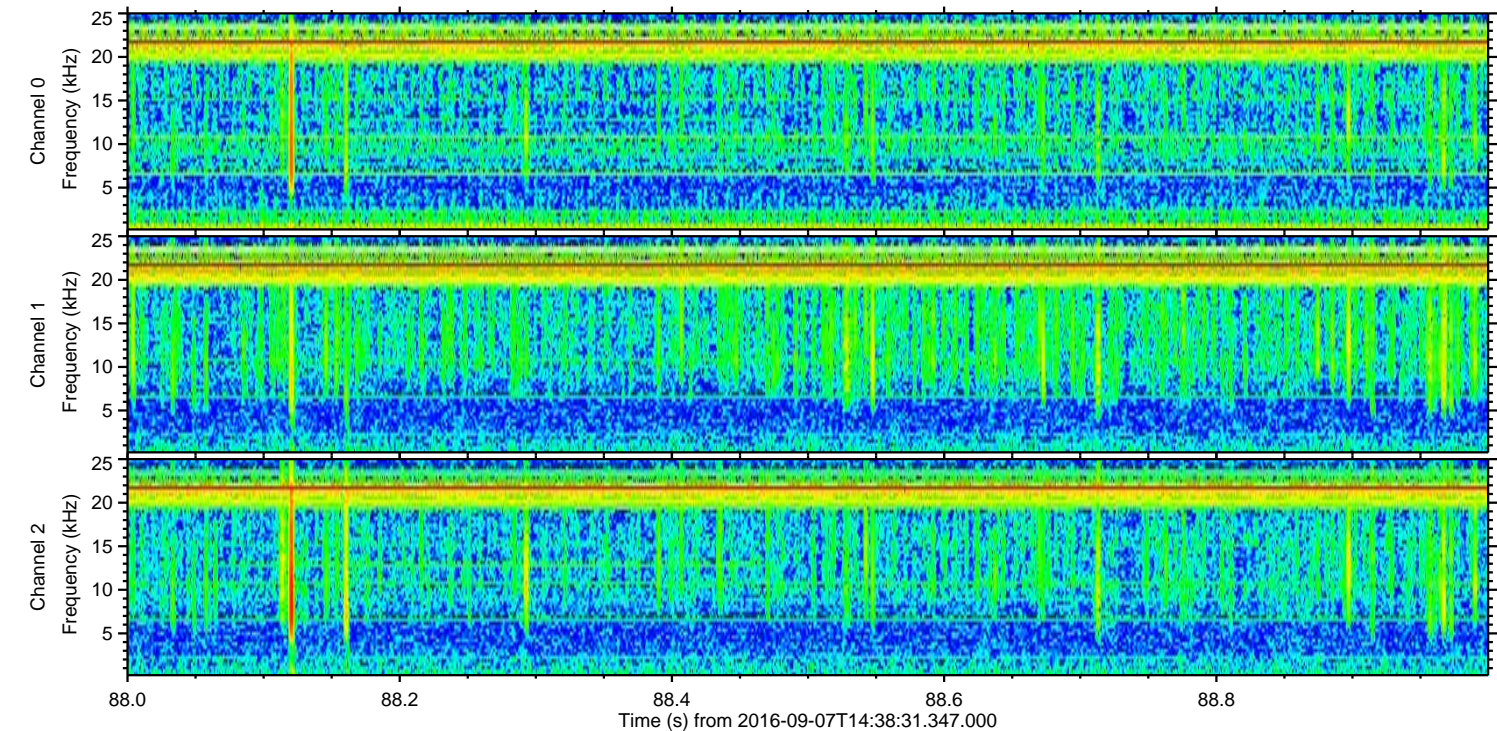
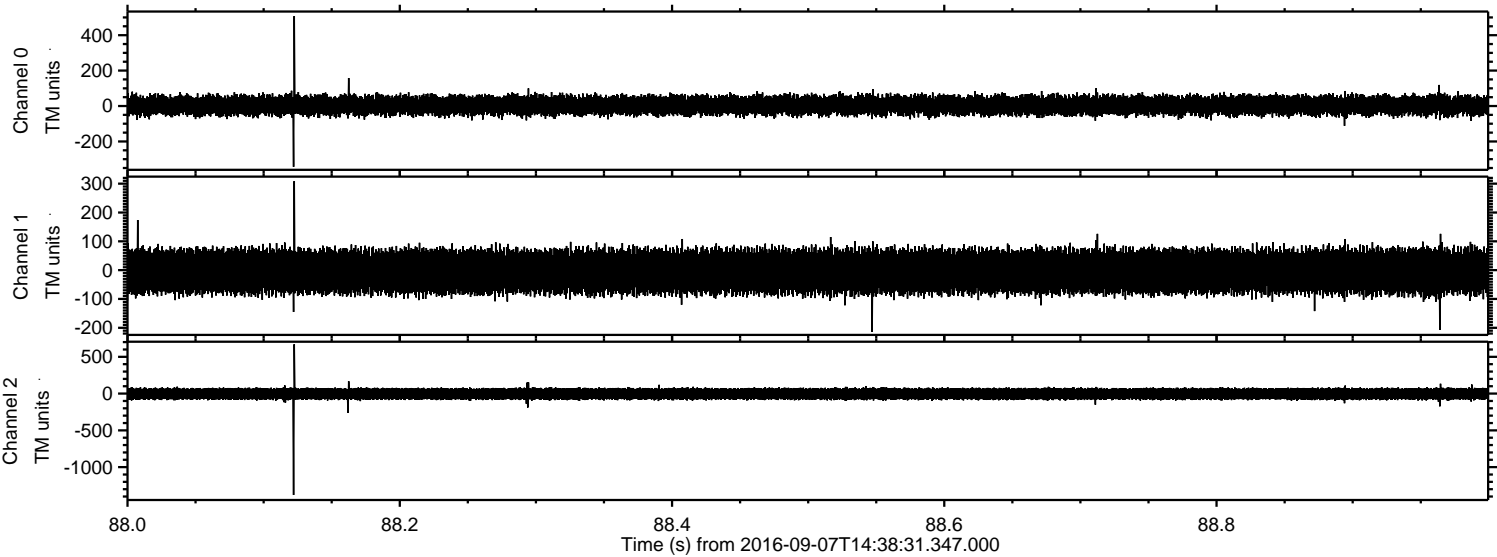


Channel 0
mn: -878
mx: 614
 μ : 3.7
 σ : 32.1

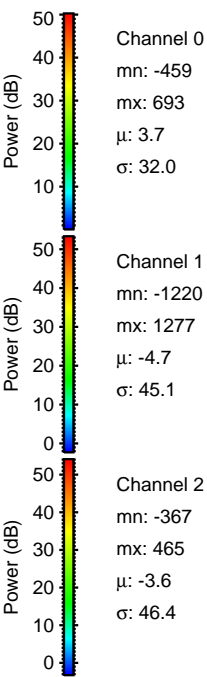
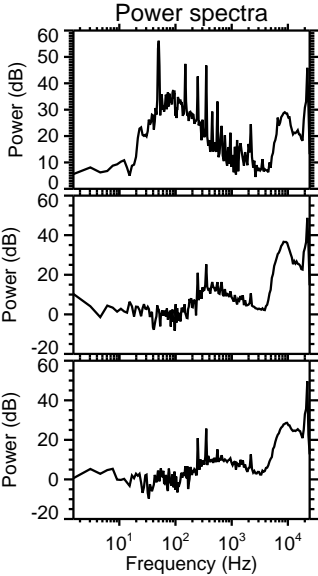
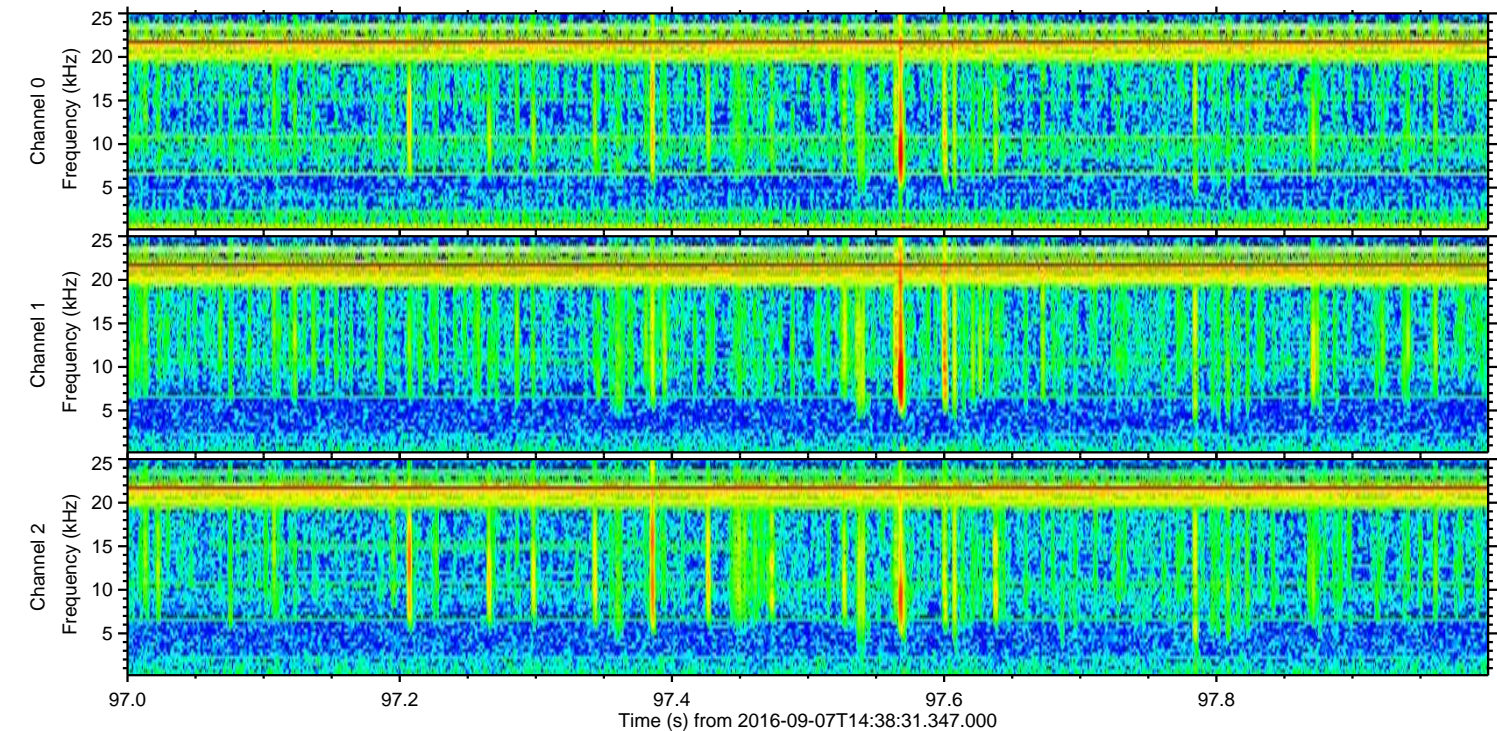
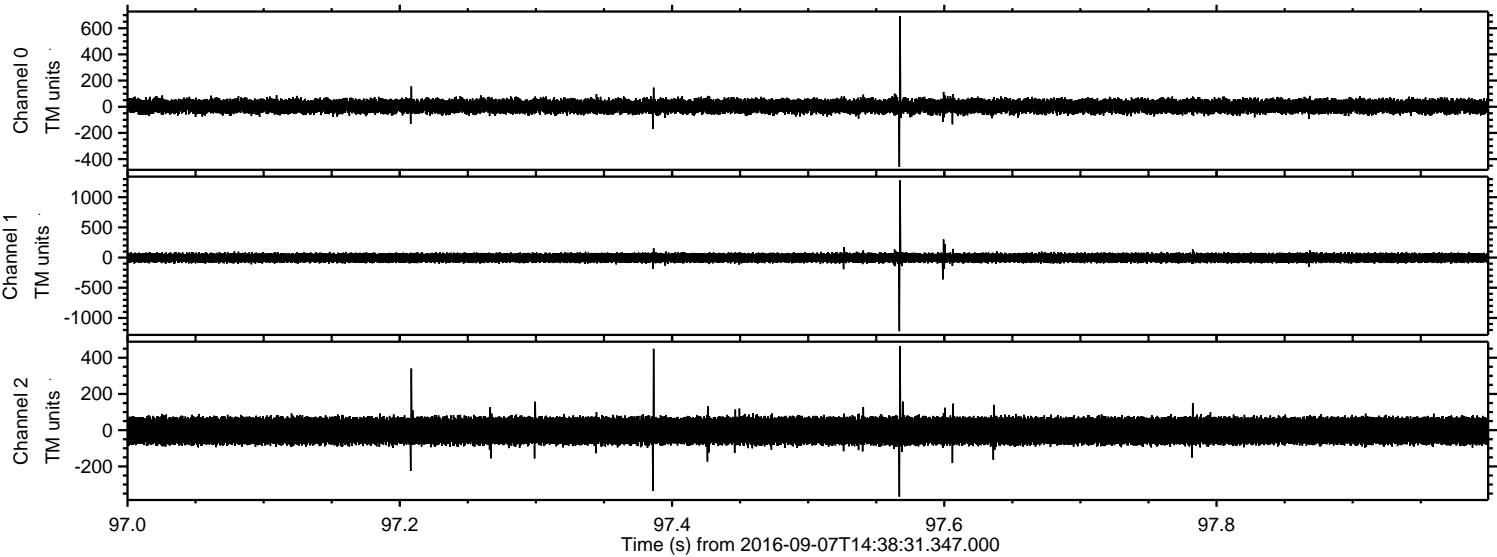
Channel 1
mn: -423
mx: 362
 μ : -4.6
 σ : 43.4

Channel 2
mn: -1566
mx: 1354
 μ : -3.6
 σ : 47.7

Processed Wed Sep 7 16:46:29 2016 by ELM ver.2012-10-06 from 001__elm20160907_143830__dat00.bin



Processed Wed Sep 7 16:46:30 2016 by ELM ver.2012-10-06 from 001__elm20160907_143830__dat00.bin



Processed Wed Sep 7 16:46:31 2016 by ELM ver.2012-10-06 from 001__elm20160907_143830__dat00.bin

