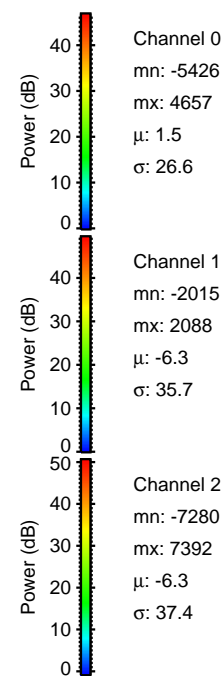
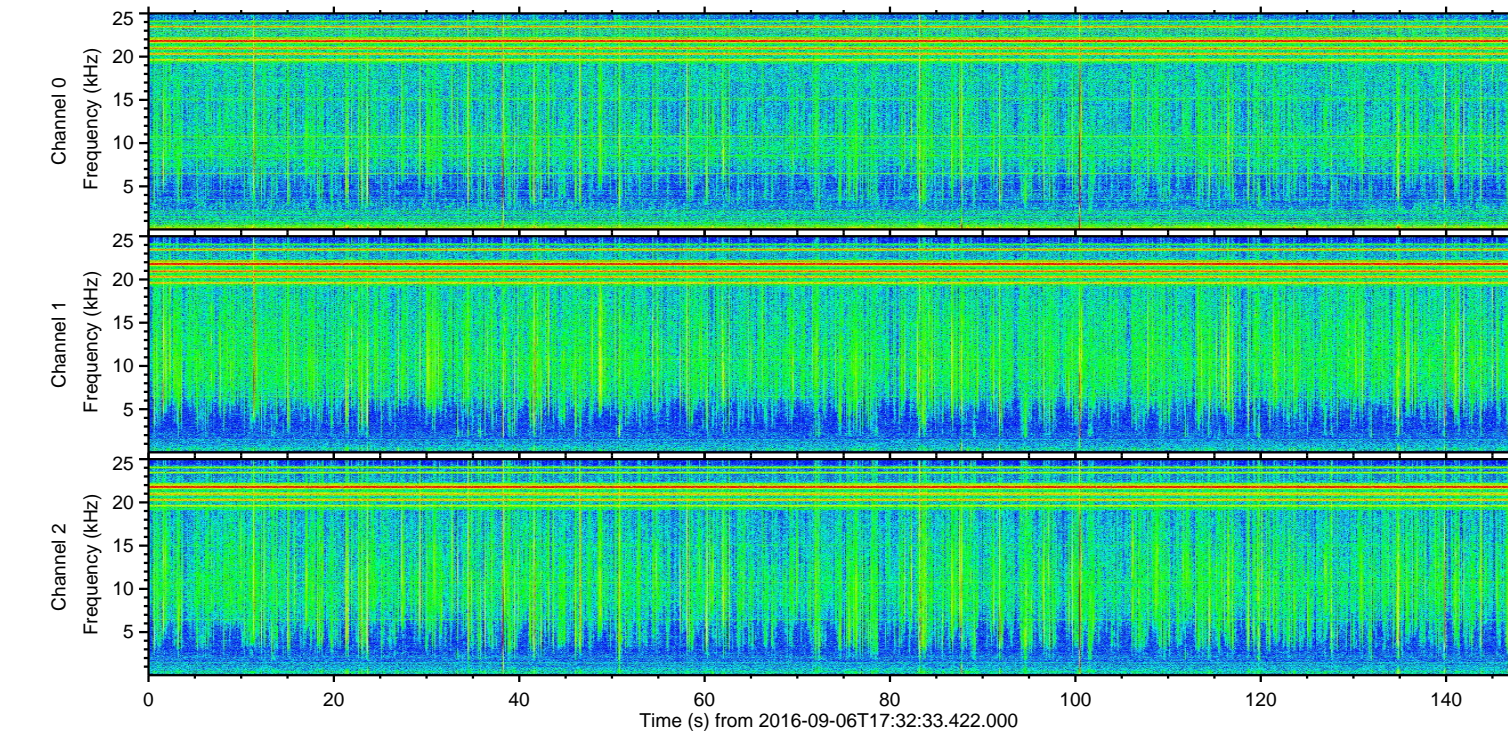
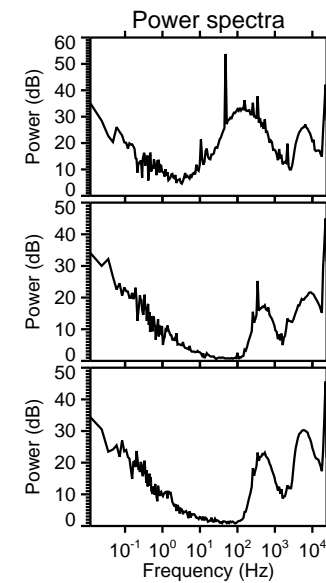
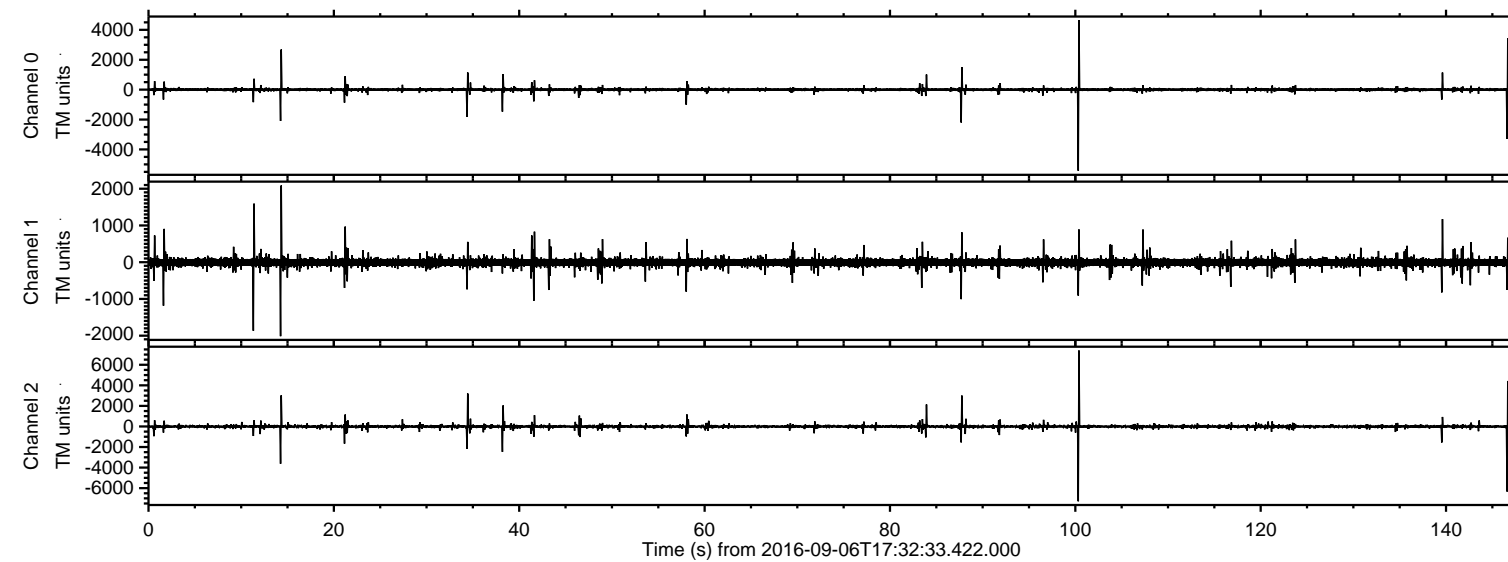


# ELMAVAN 3D WAVEFORMS (Measured data sampled at 50 kHz) 51000 packets of 144 samples from 2016-09-06T17:32:33.422.000.

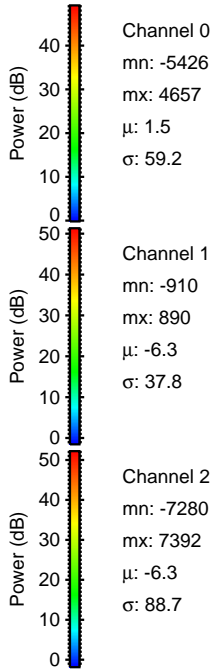
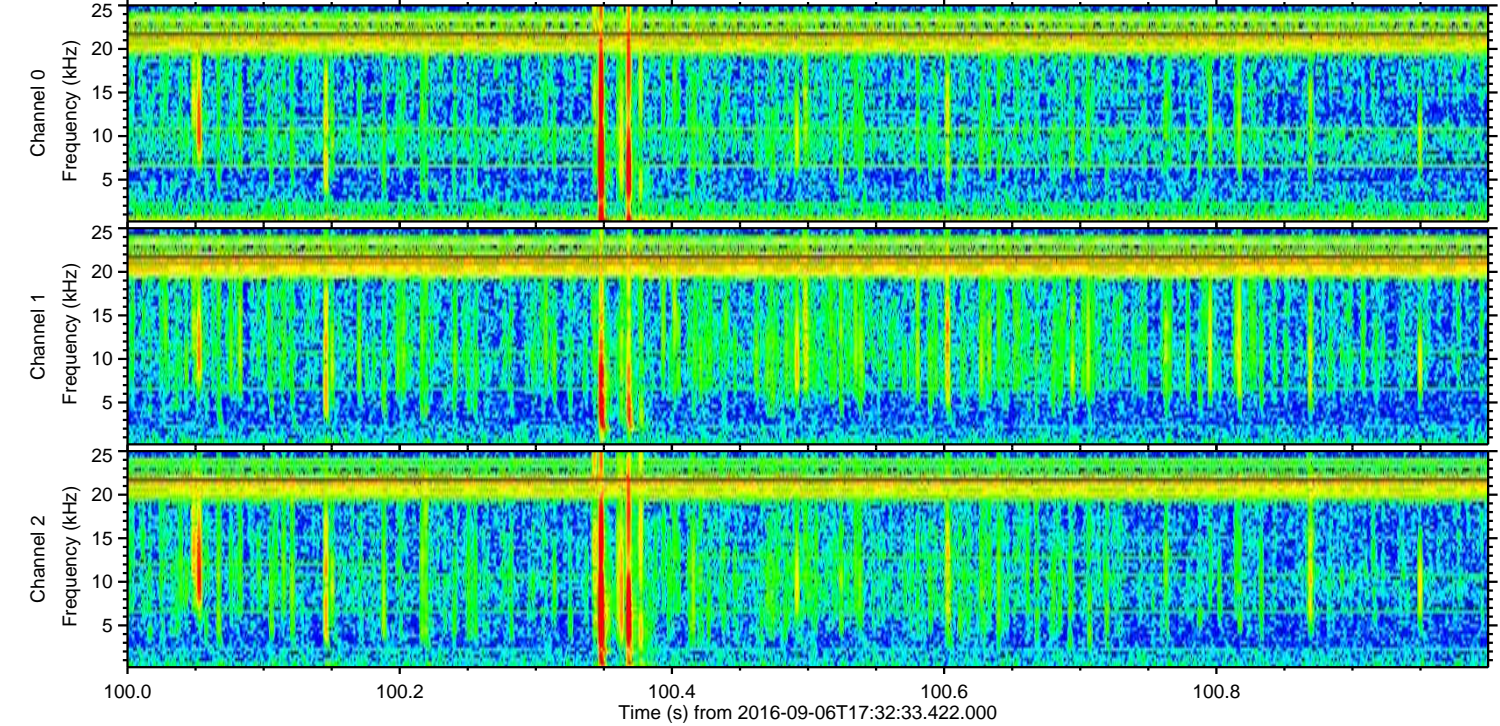
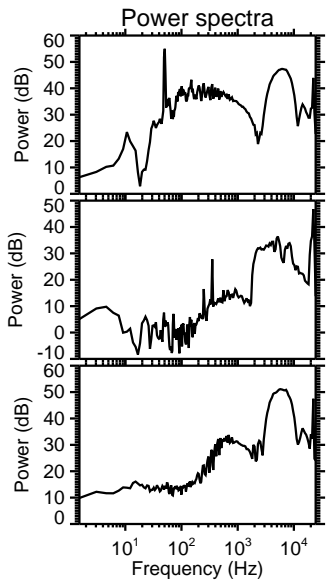
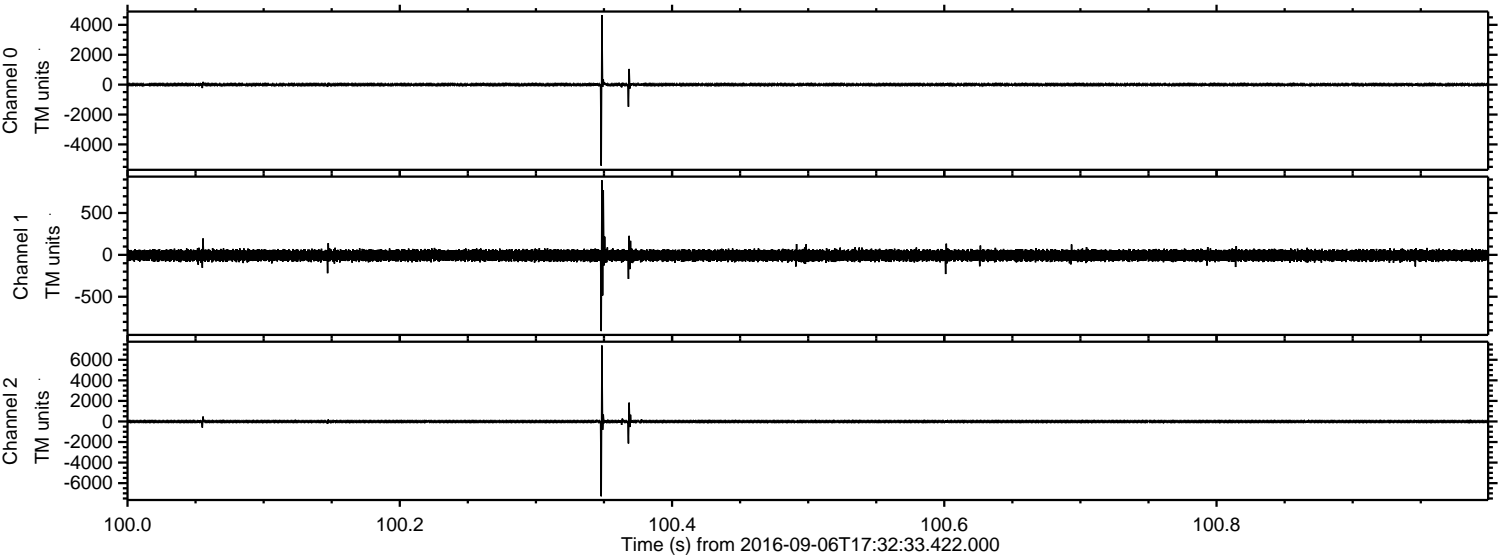
Processed Tue Sep 6 19:40:06 2016 by ELM ver.2012-10-06 from 001\_\_elm20160906\_173232\_\_dat00.bin





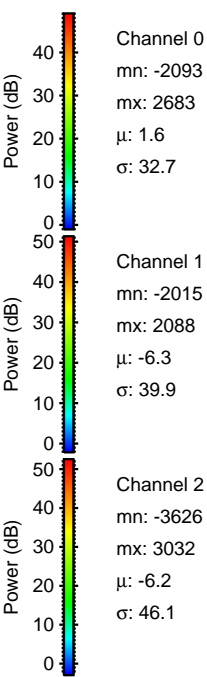
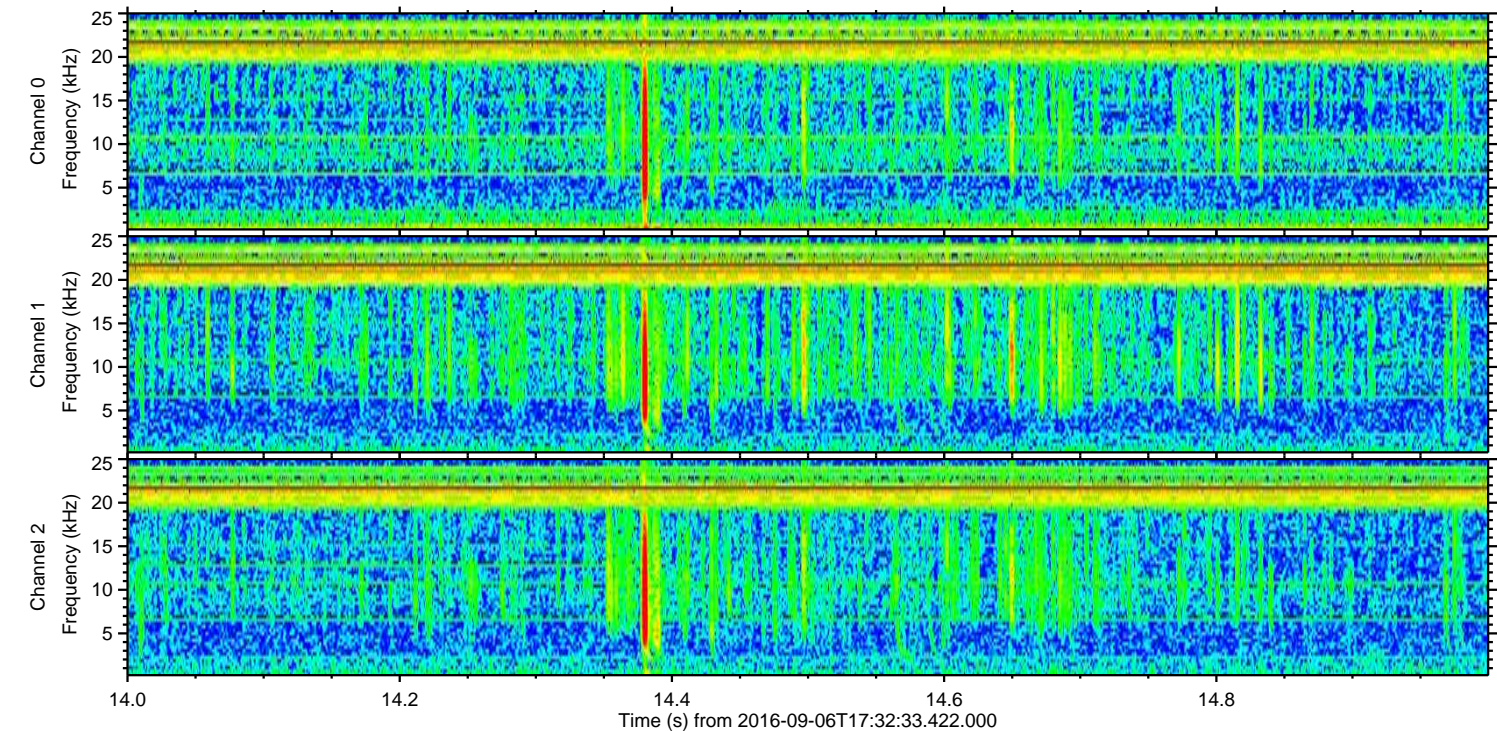
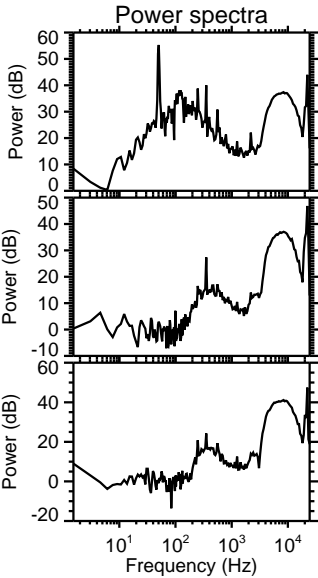
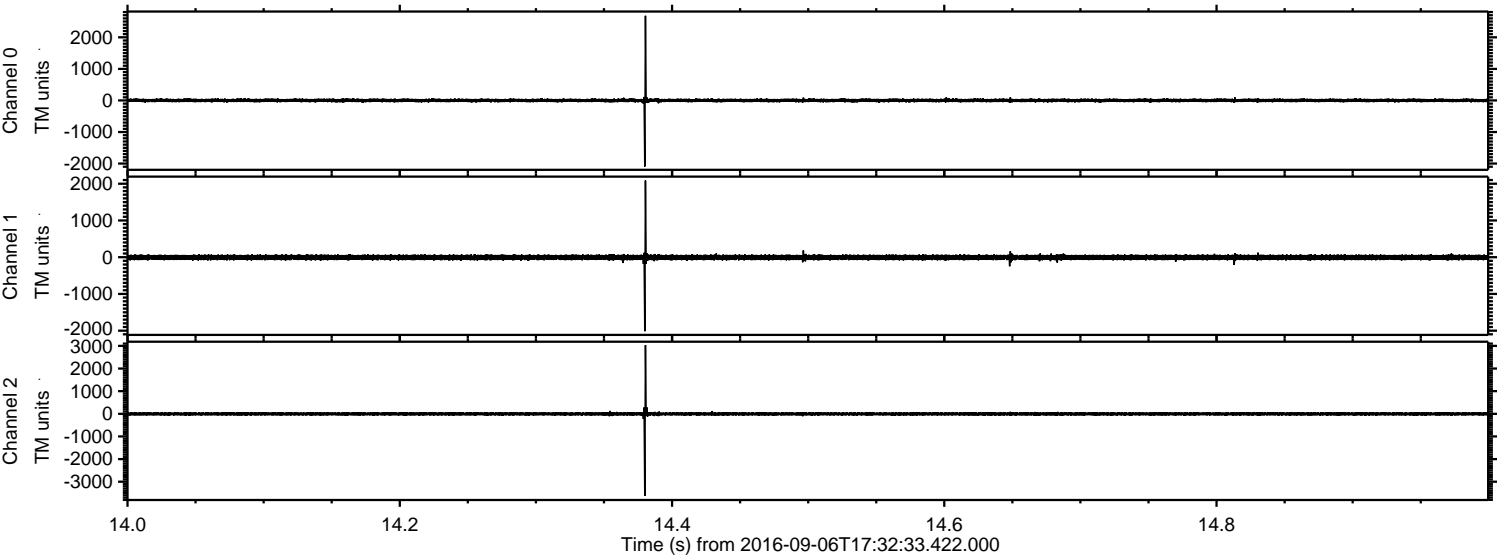
ELMAVAN 3D WAVEFORMS (Measured data sampled at 50 kHz) 51000 packets of 144 samples from 2016-09-06T17:32:33.422.000. Part 101/147

Processed Tue Sep 6 19:40:18 2016 by ELM ver.2012-10-06 from 001\_\_elm20160906\_173232\_\_dat00.bin



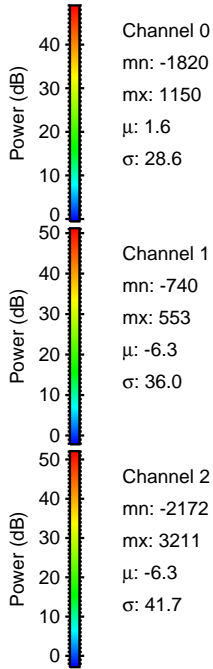
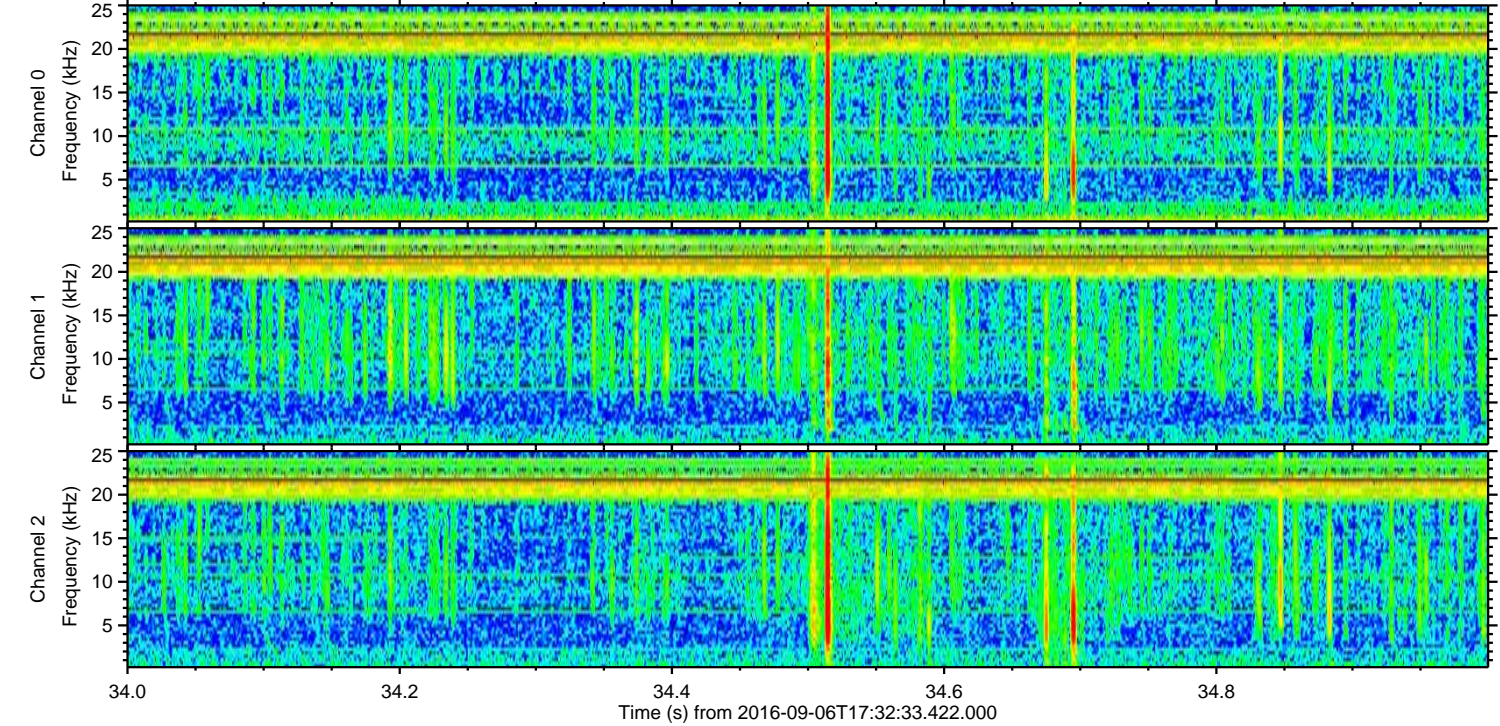
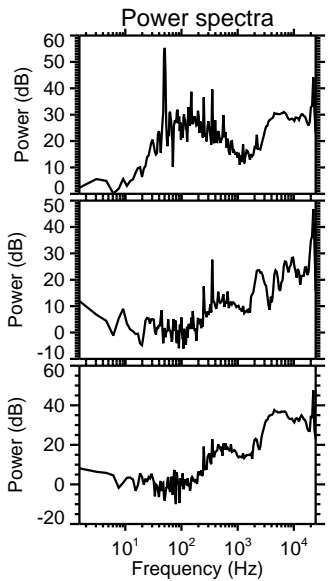
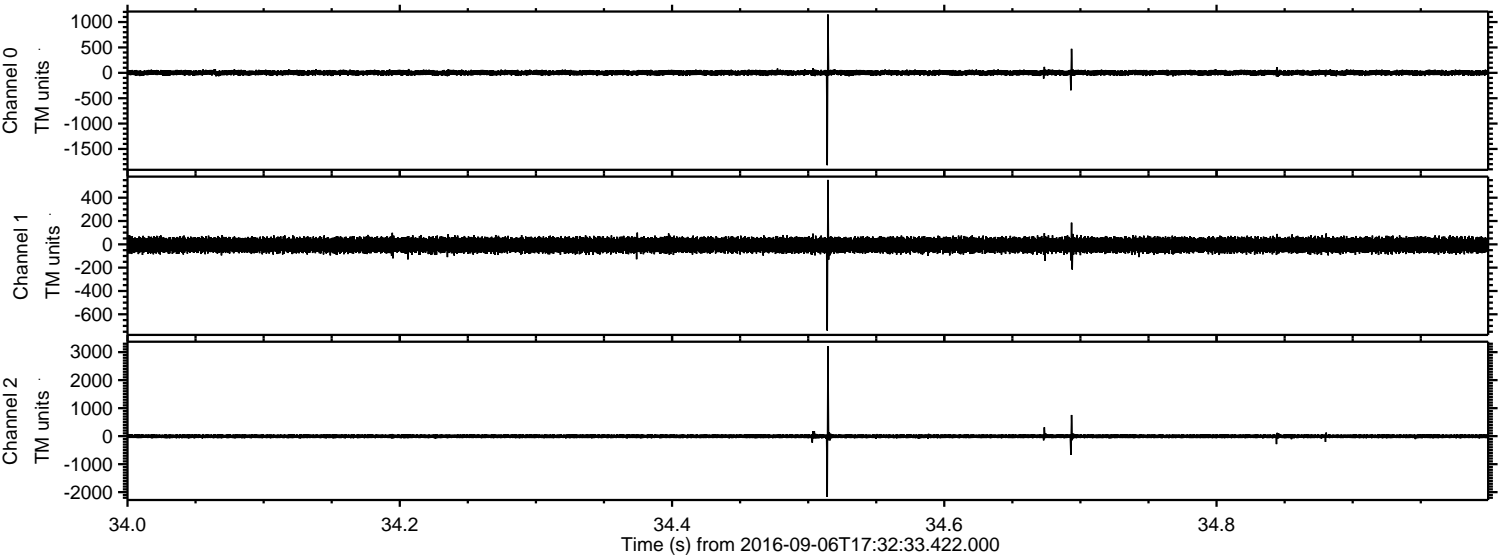


Processed Tue Sep 6 19:40:19 2016 by ELM ver.2012-10-06 from 001\_\_elm20160906\_173232\_\_dat00.bin



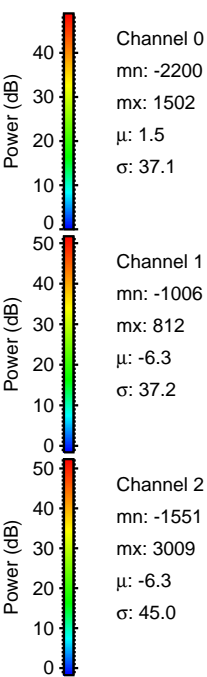
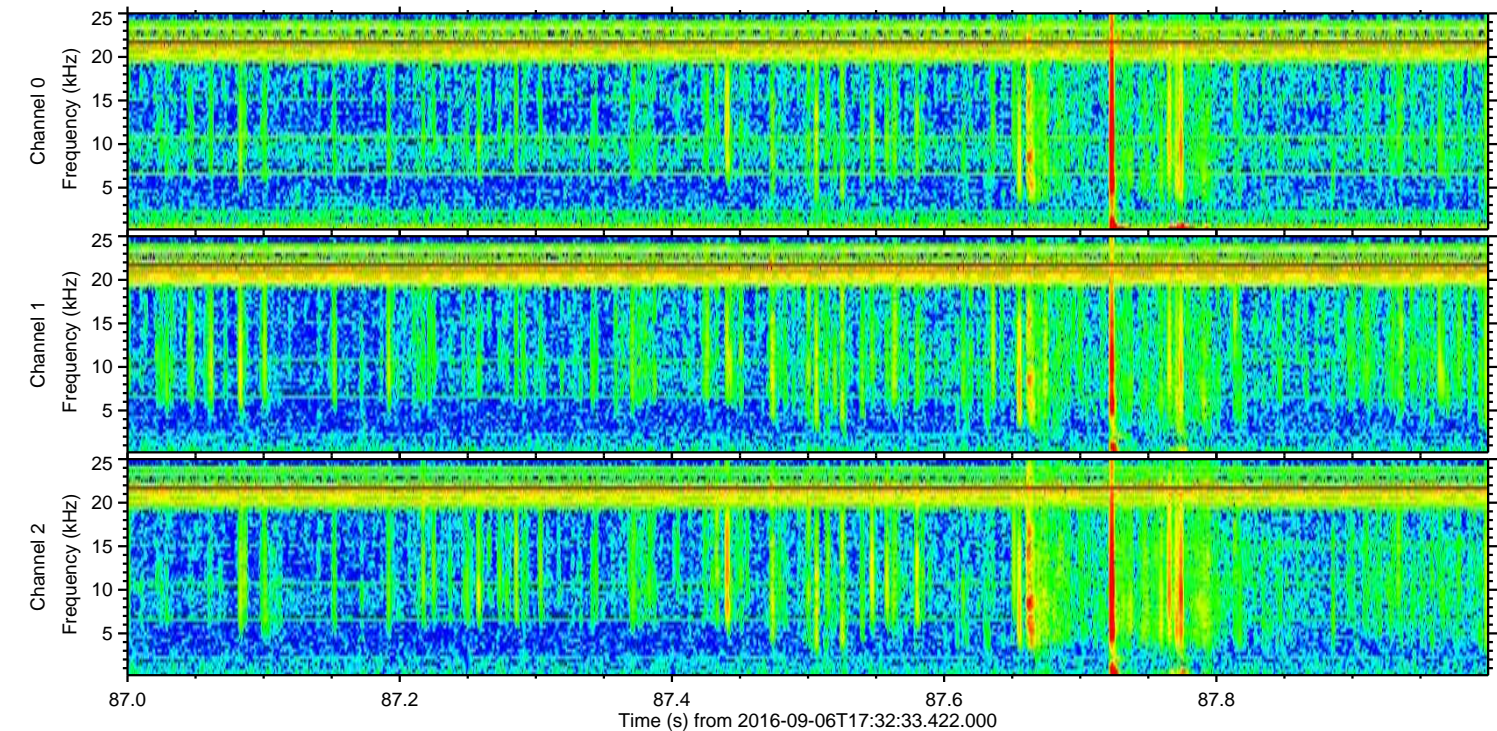
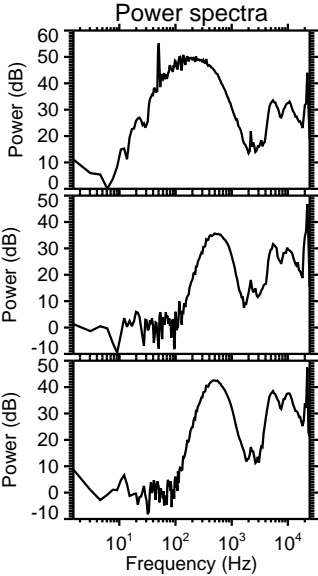
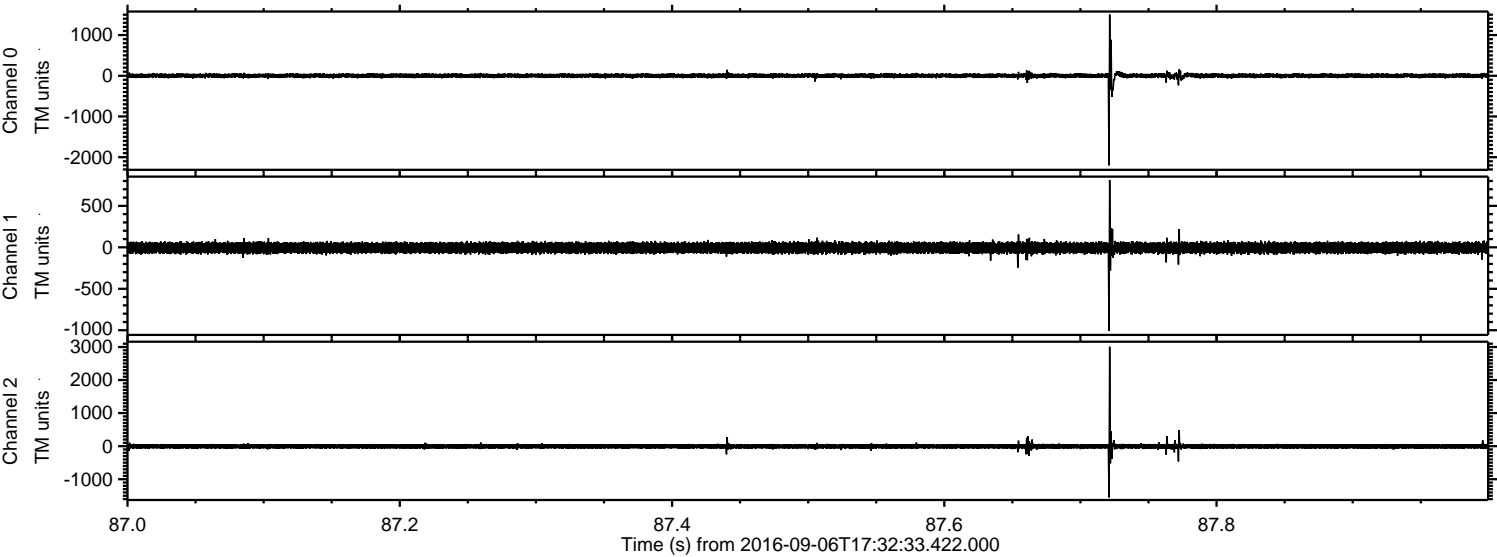


Processed Tue Sep 6 19:40:20 2016 by ELM ver.2012-10-06 from 001\_\_elm20160906\_173232\_\_dat00.bin



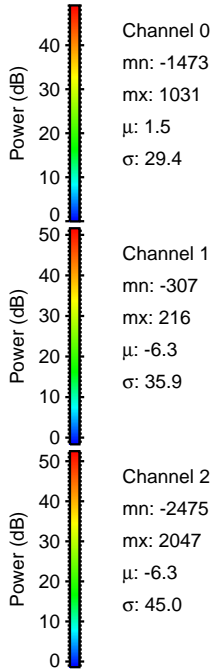
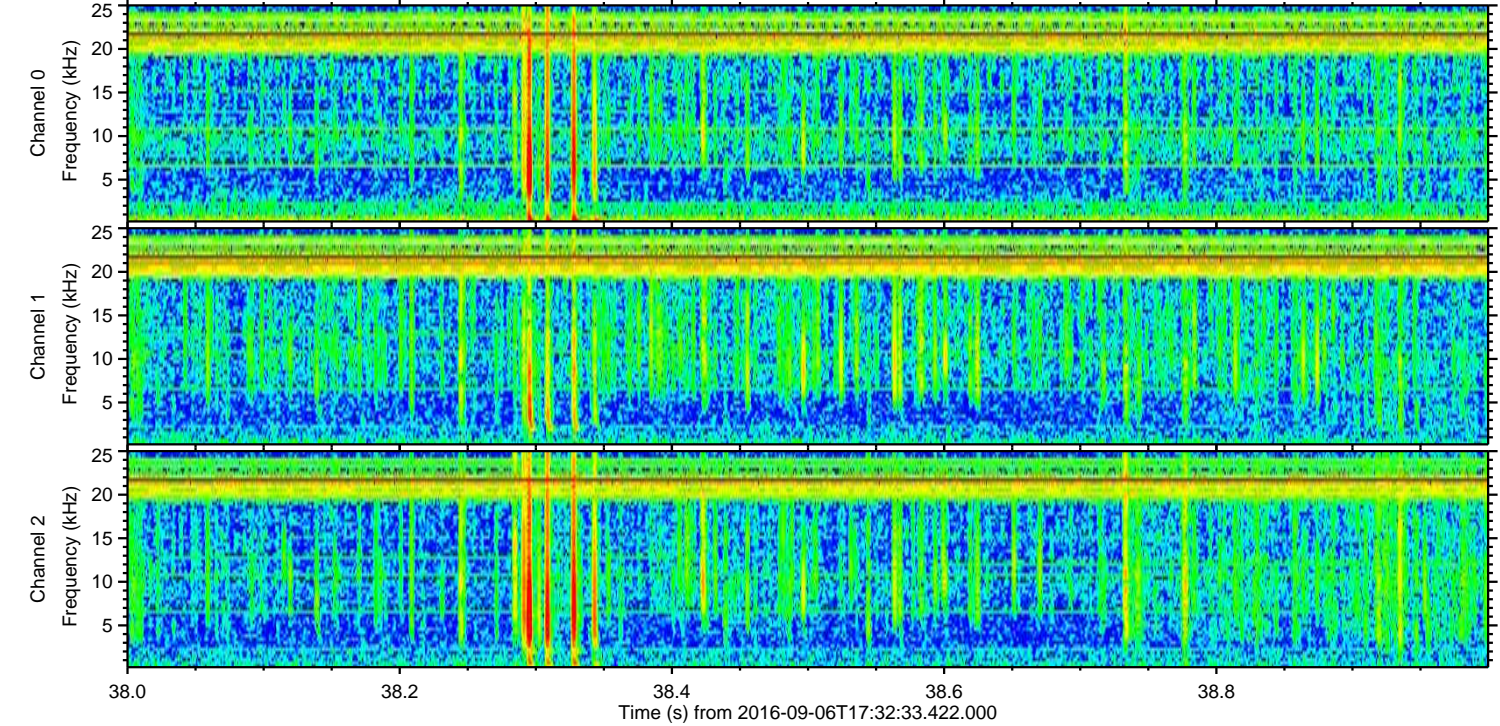
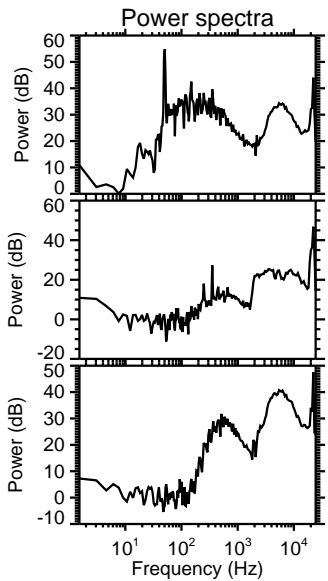
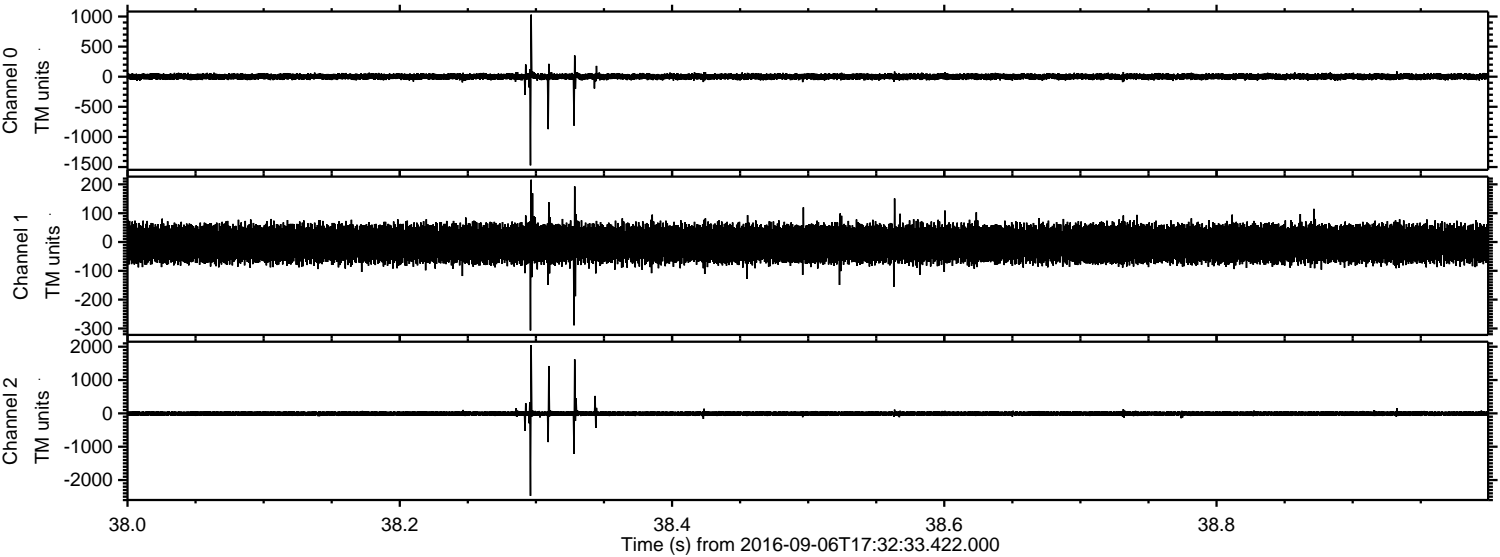


Processed Tue Sep 6 19:40:21 2016 by ELM ver.2012-10-06 from 001\_\_elm20160906\_173232\_\_dat00.bin



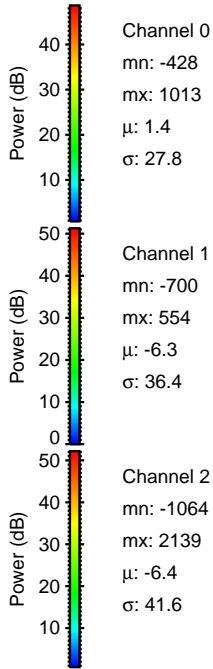
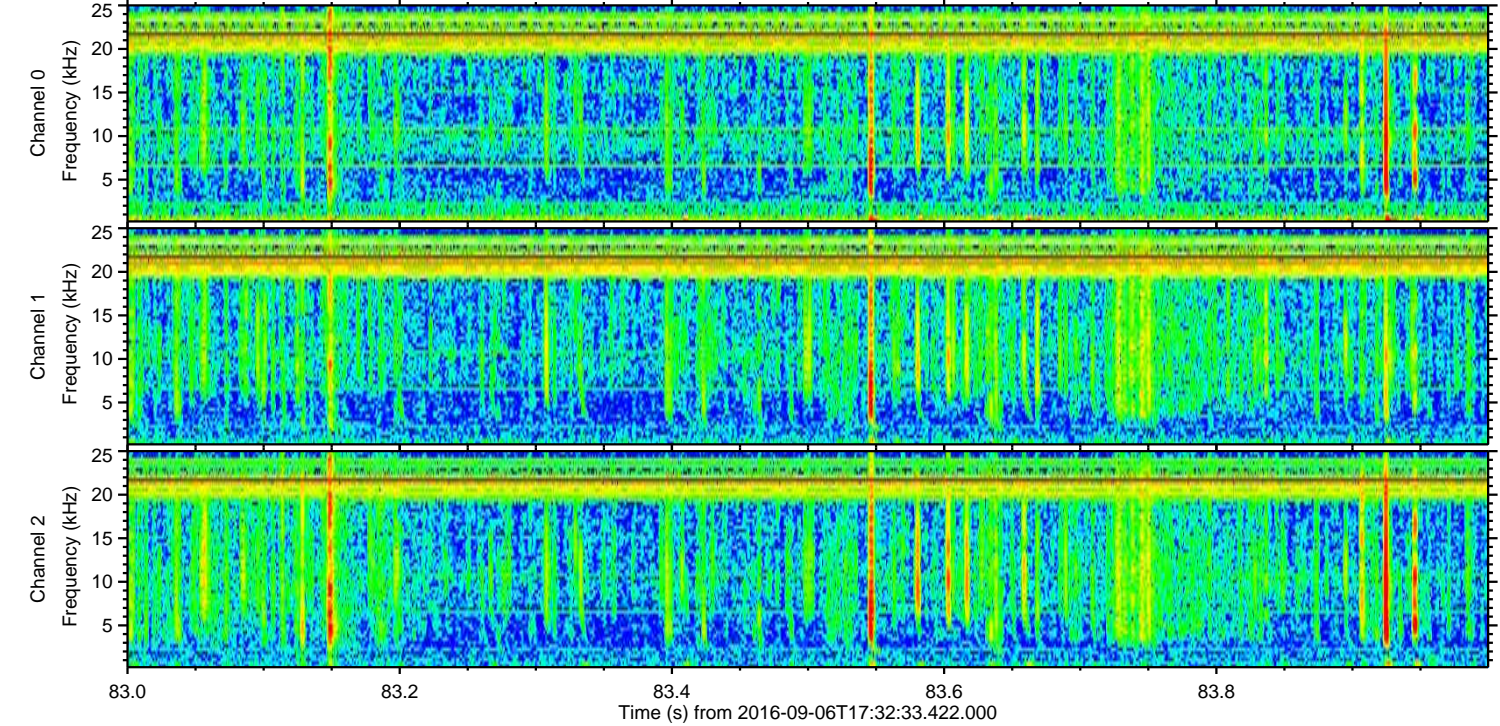
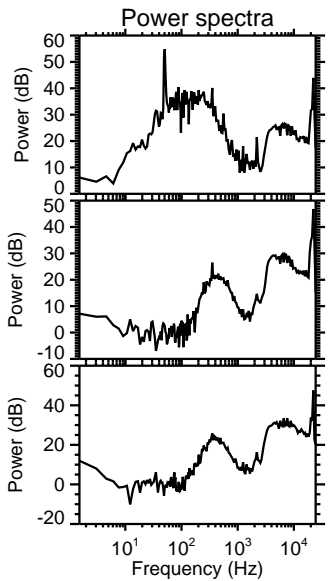
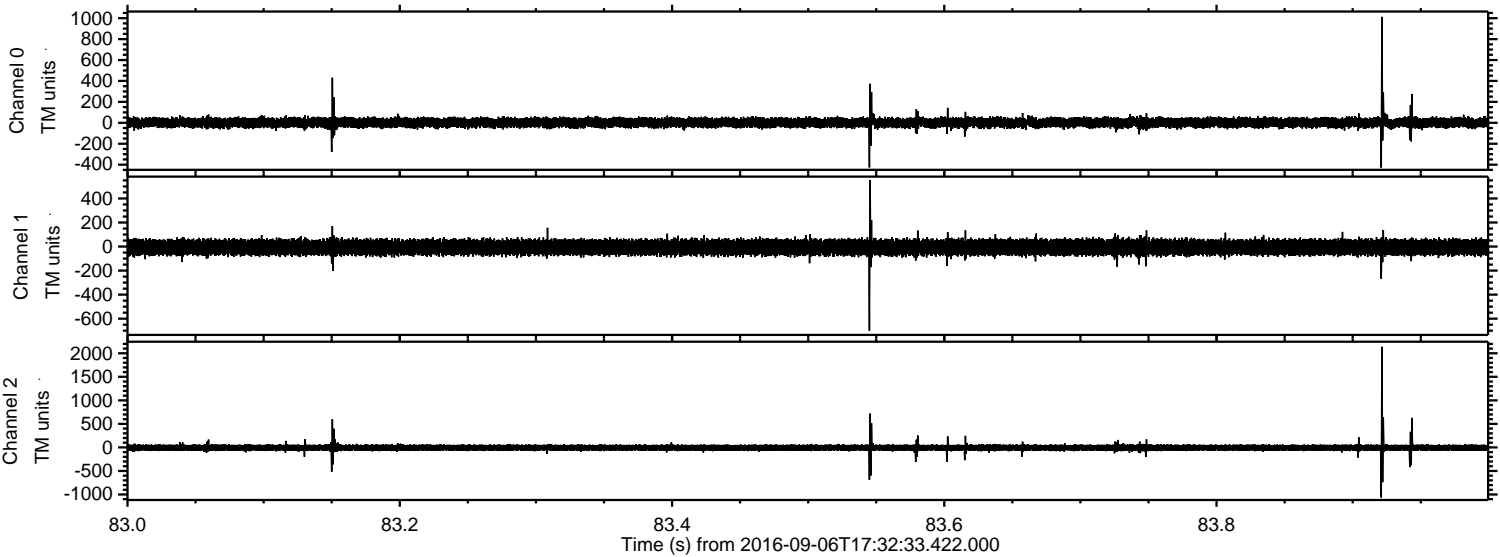


Processed Tue Sep 6 19:40:22 2016 by ELM ver.2012-10-06 from 001\_\_elm20160906\_173232\_\_dat00.bin



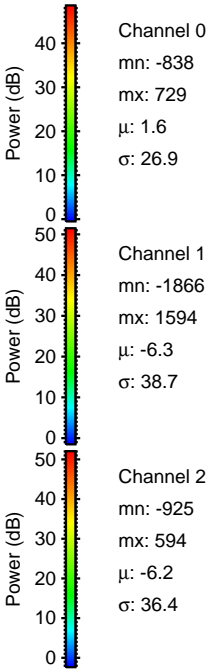
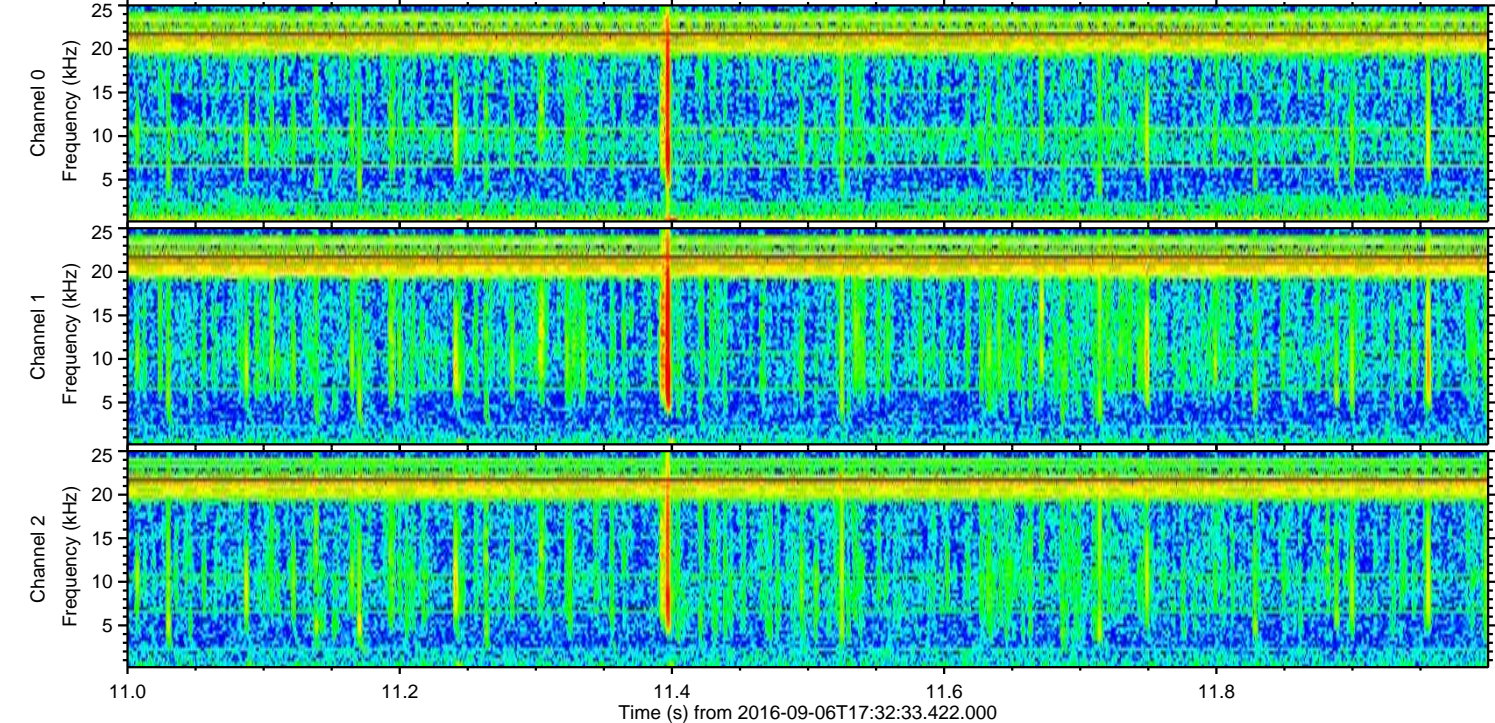
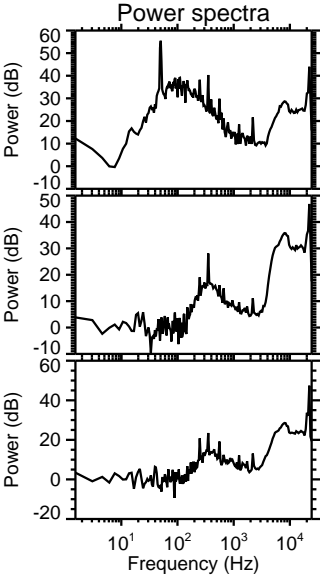
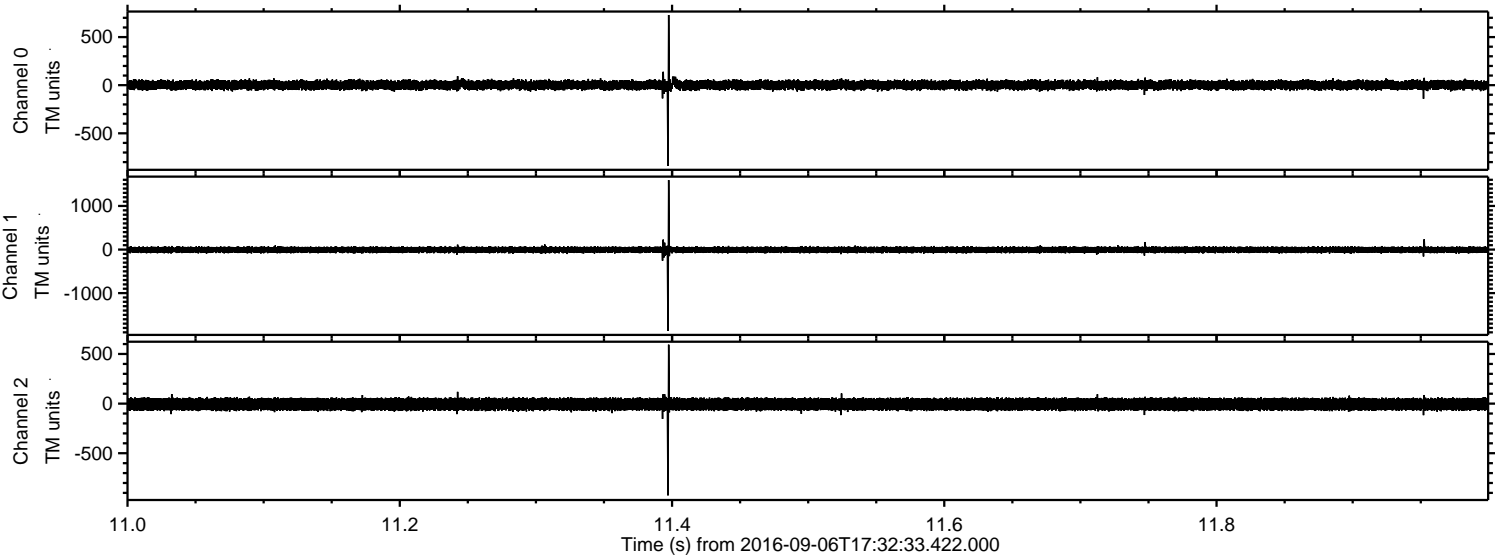


Processed Tue Sep 6 19:40:23 2016 by ELM ver.2012-10-06 from 001\_\_elm20160906\_173232\_\_dat00.bin



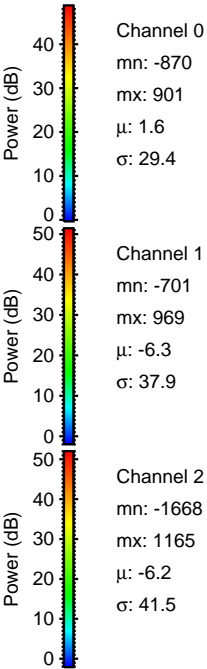
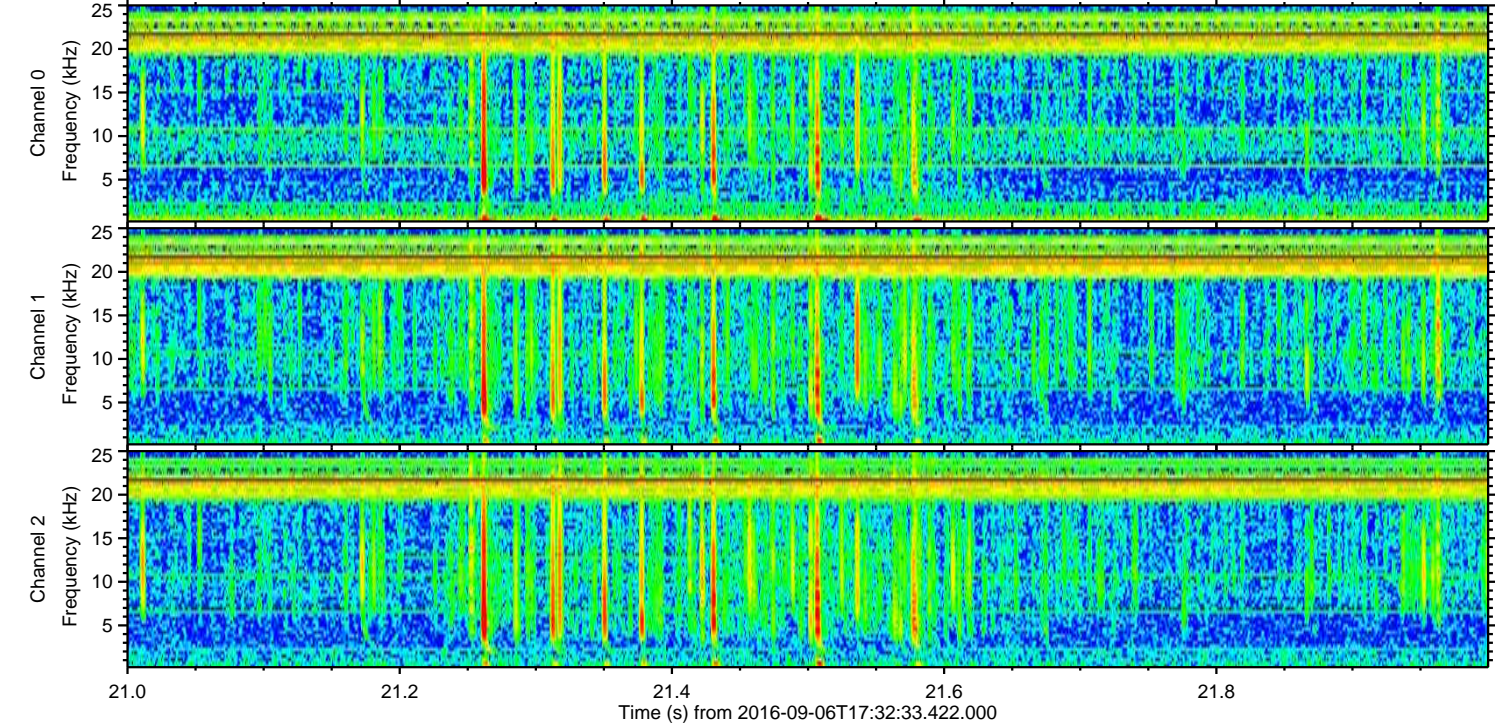
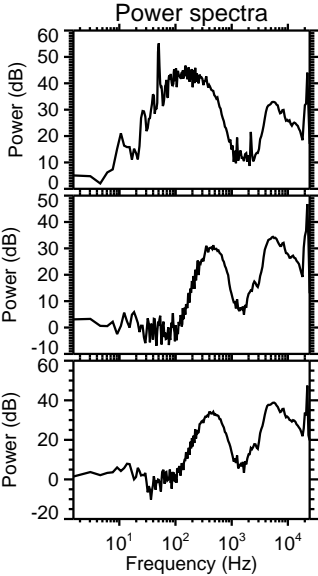
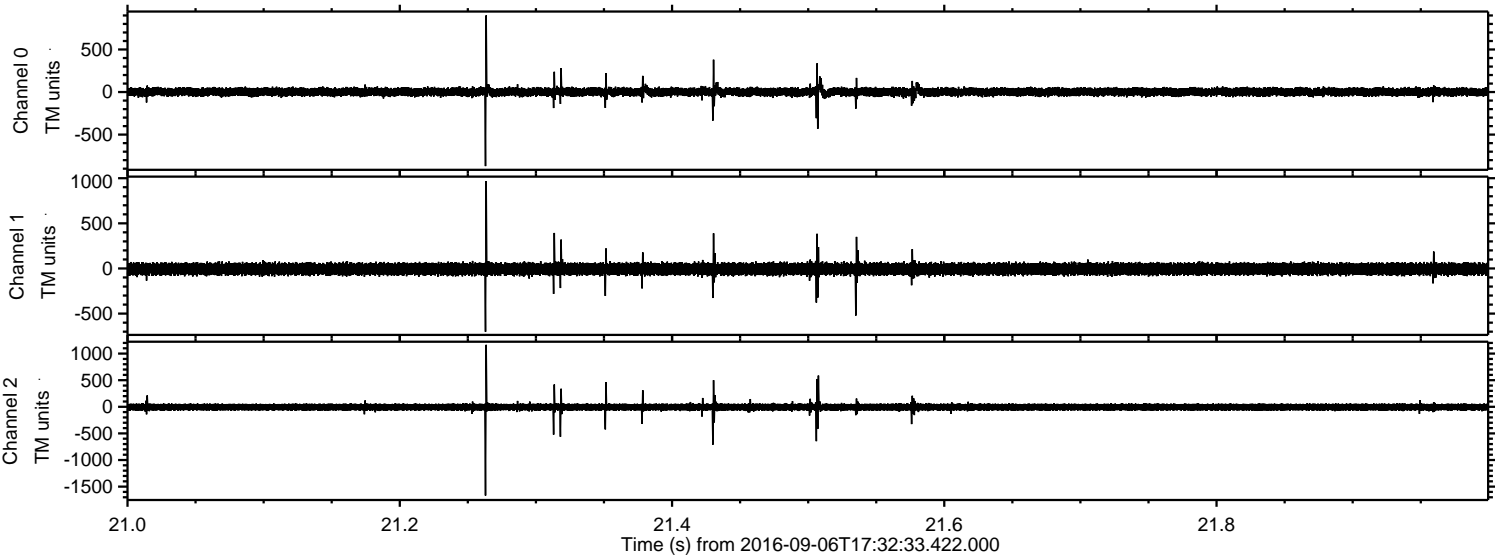


Processed Tue Sep 6 19:40:23 2016 by ELM ver.2012-10-06 from 001\_\_elm20160906\_173232\_\_dat00.bin





Processed Tue Sep 6 19:40:24 2016 by ELM ver.2012-10-06 from 001\_\_elm20160906\_173232\_\_dat00.bin





ELMAVAN 3D WAVEFORMS (Measured data sampled at 50 kHz) 51000 packets of 144 samples from 2016-09-06T17:32:33.422.000. Part 140/147

Processed Tue Sep 6 19:40:25 2016 by ELM ver.2012-10-06 from 001\_\_elm20160906\_173232\_\_dat00.bin

