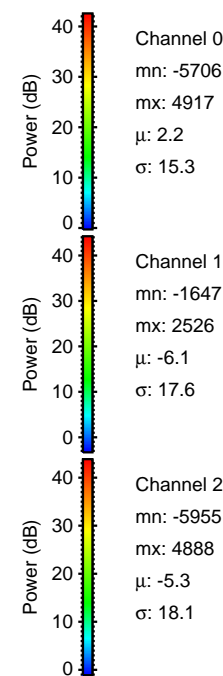
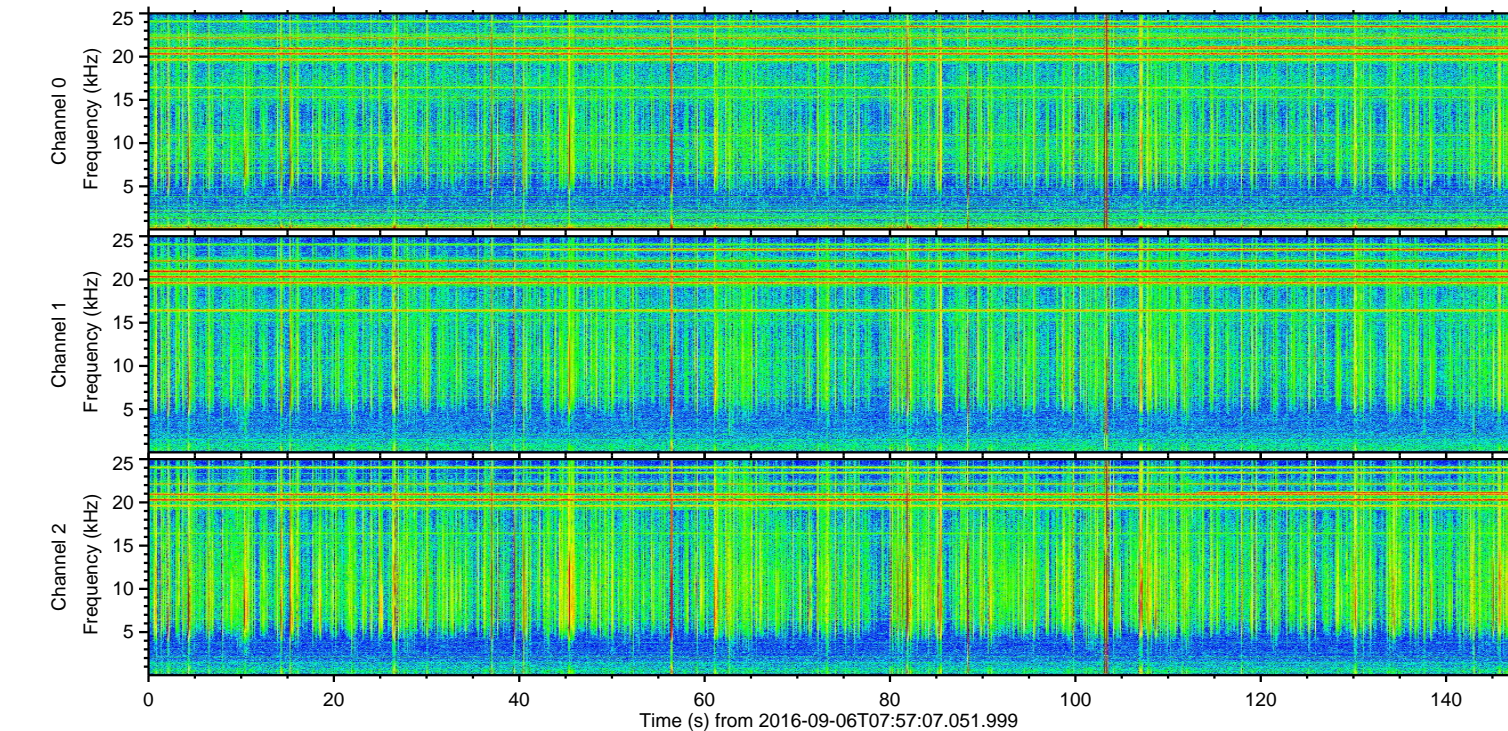
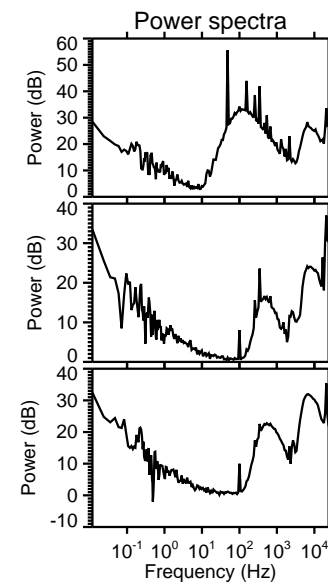
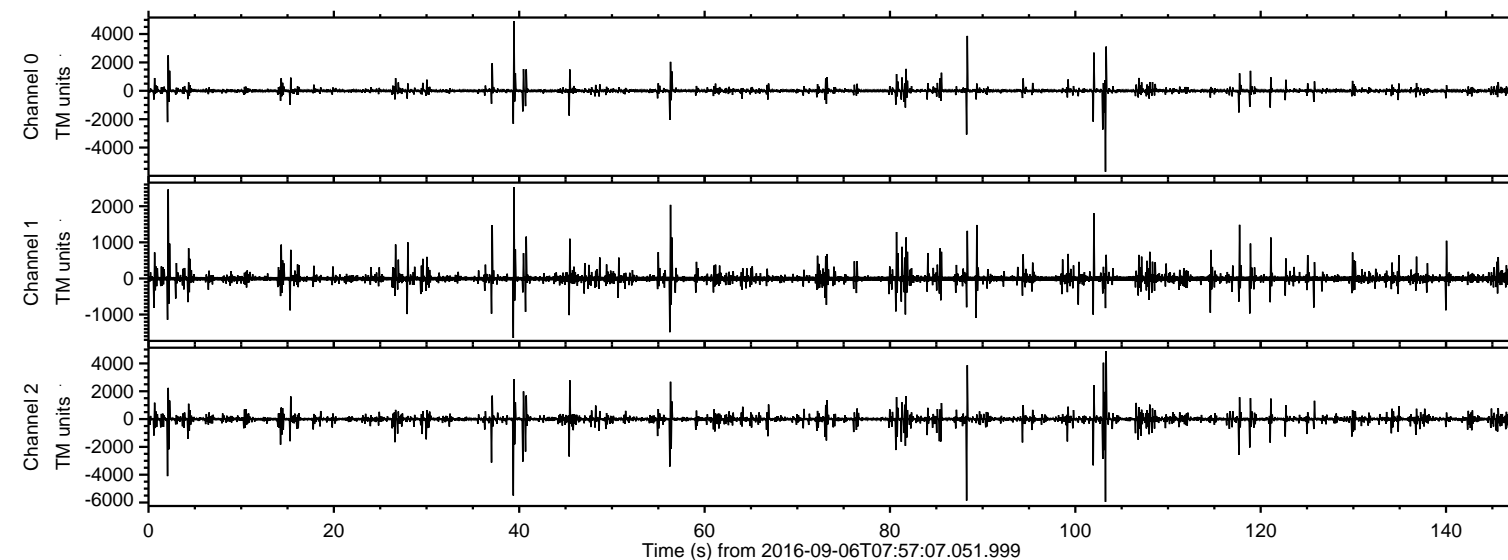
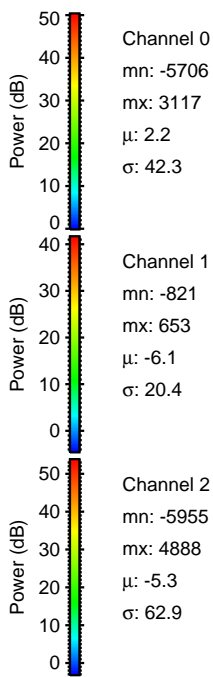
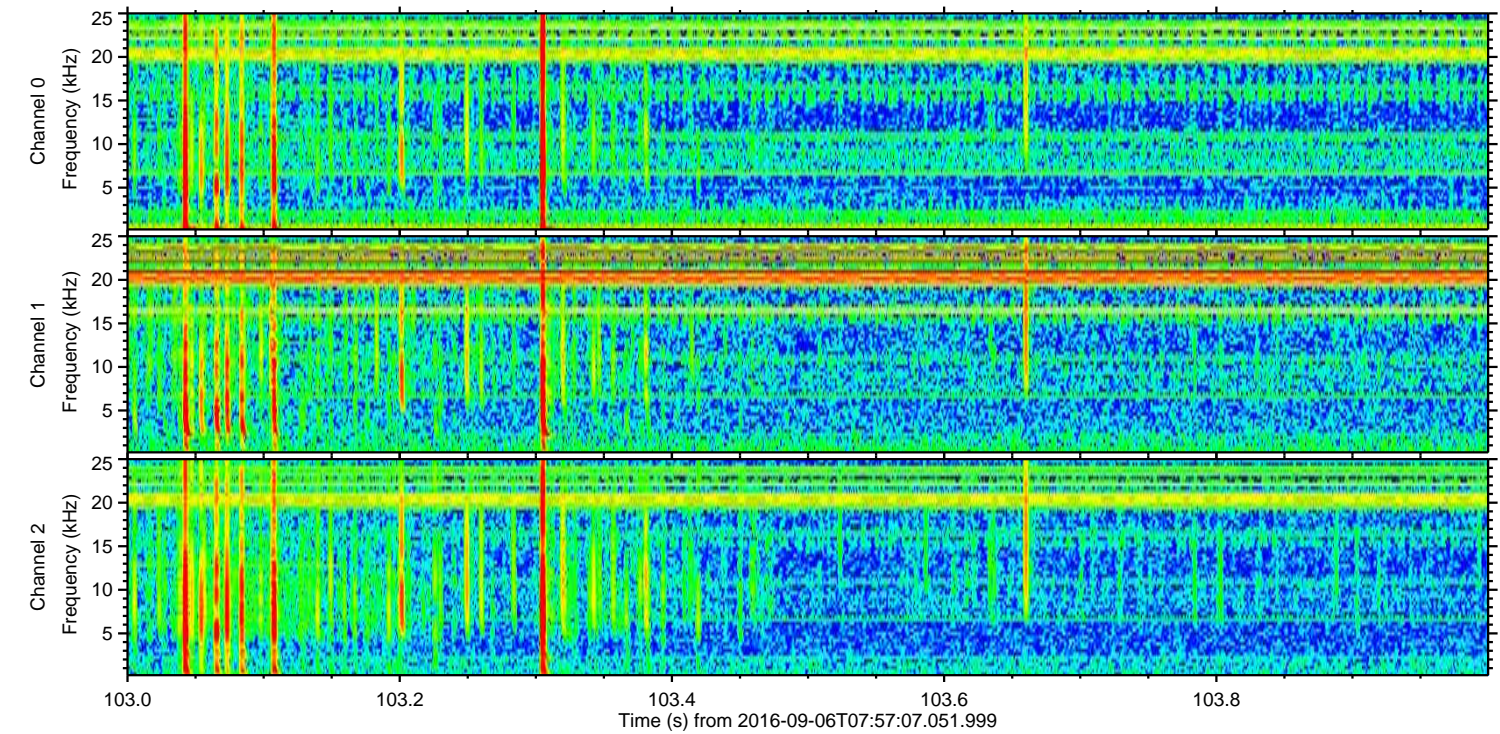
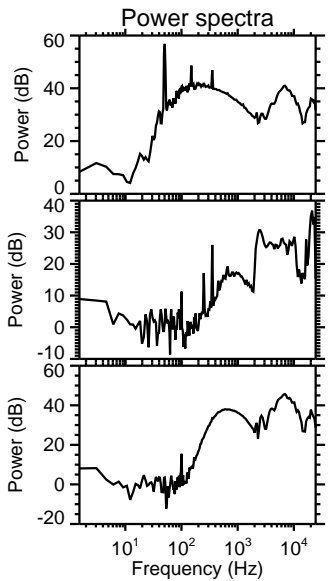
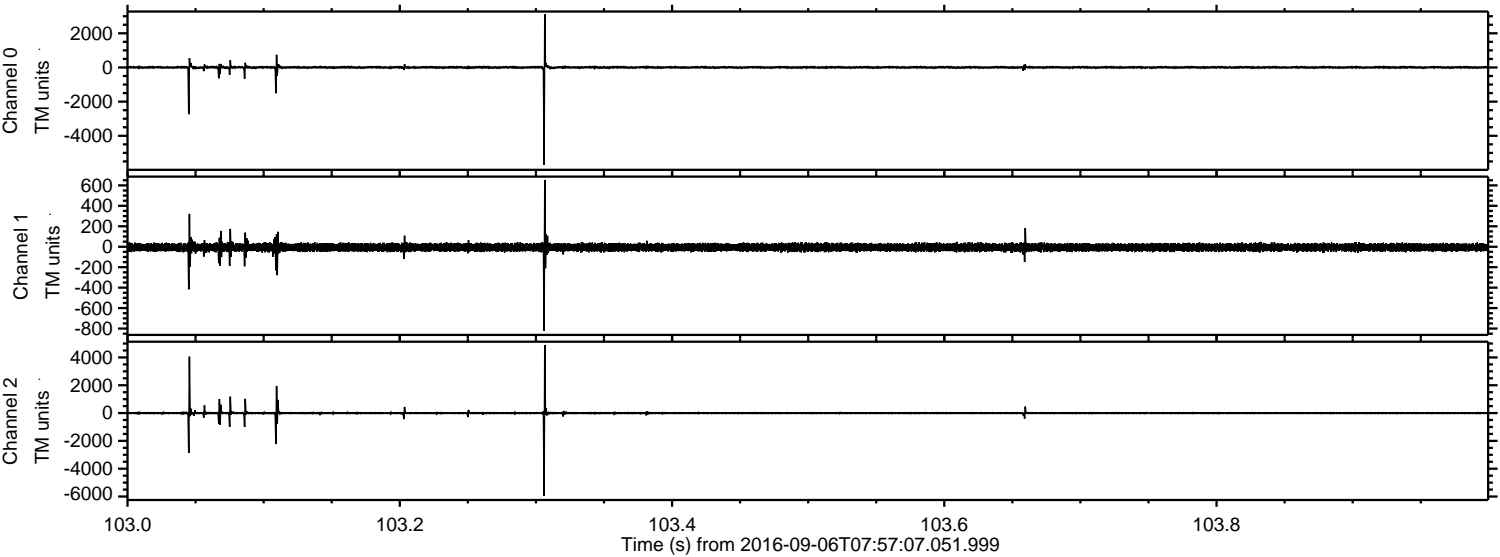


ELMAVAN 3D WAVEFORMS (Measured data sampled at 50 kHz) 51000 packets of 144 samples from 2016-09-06T07:57:07.051.999.

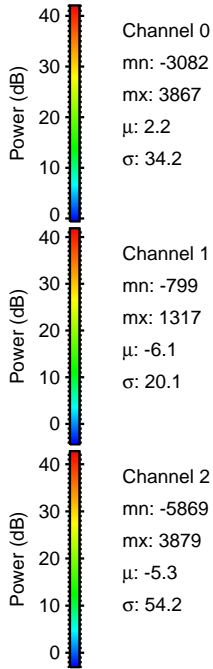
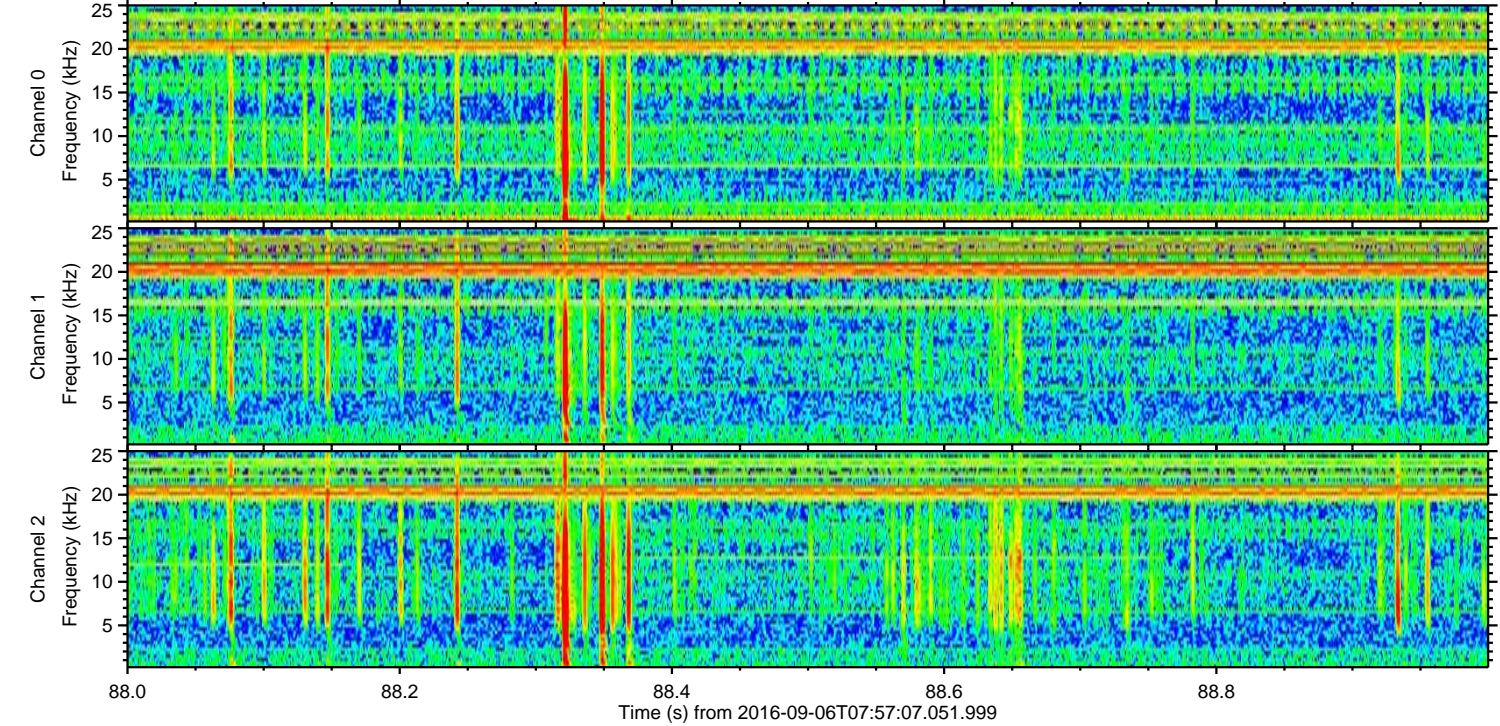
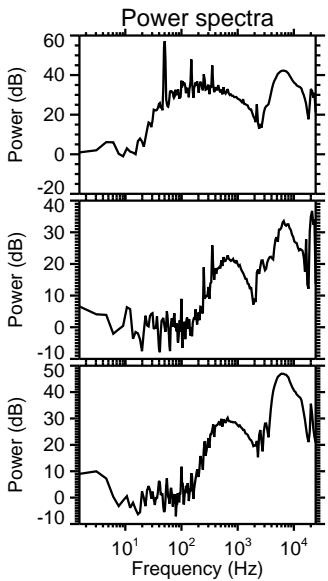
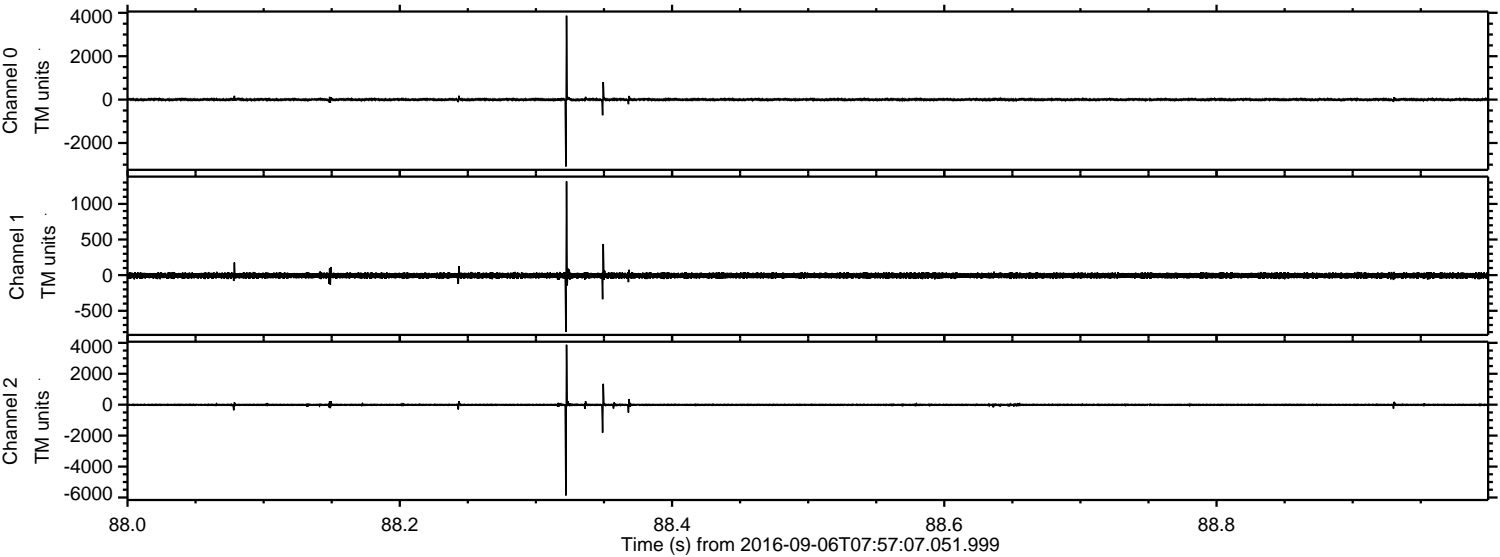
Processed Tue Sep 6 10:05:10 2016 by ELM ver.2012-10-06 from 001__elm20160906_075706__dat00.bin



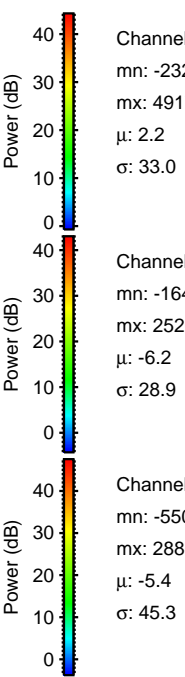
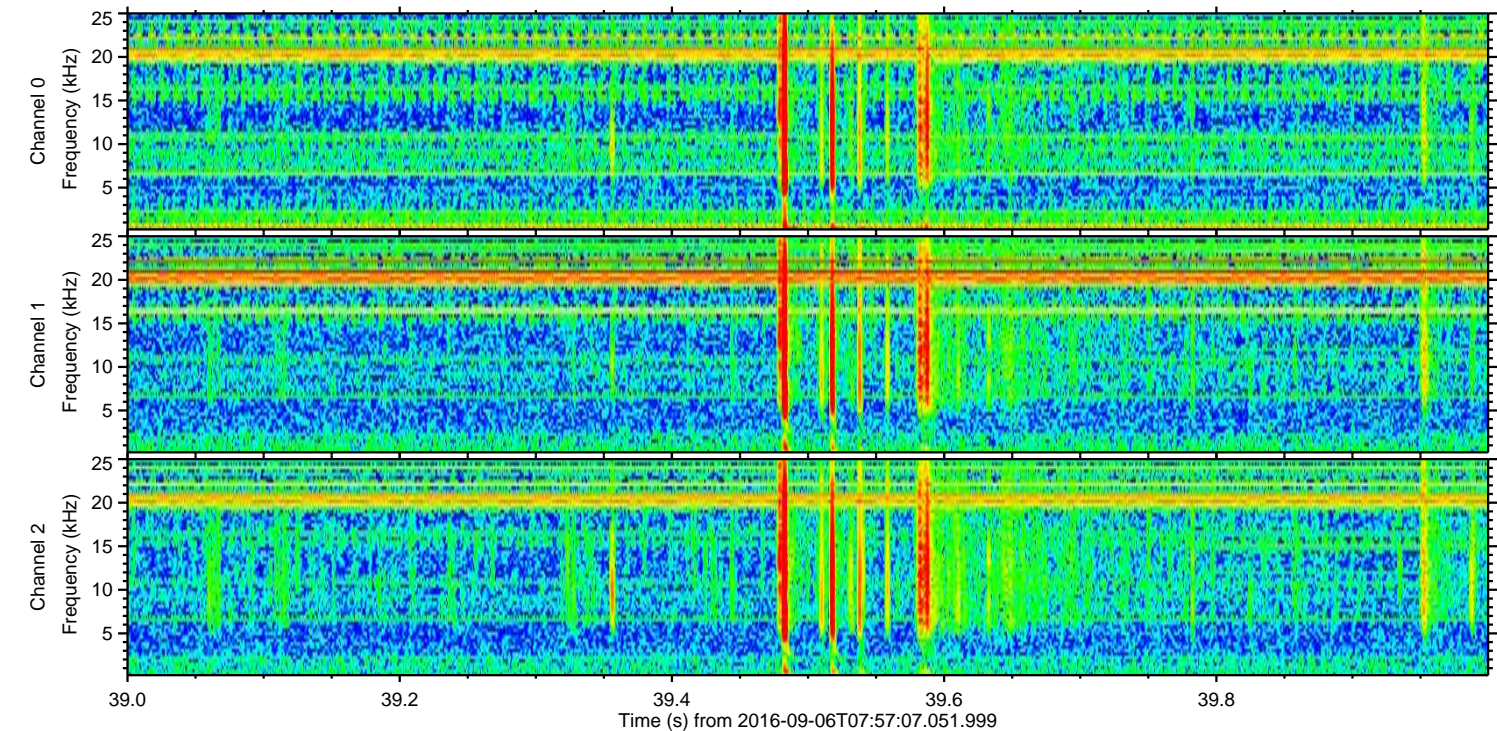
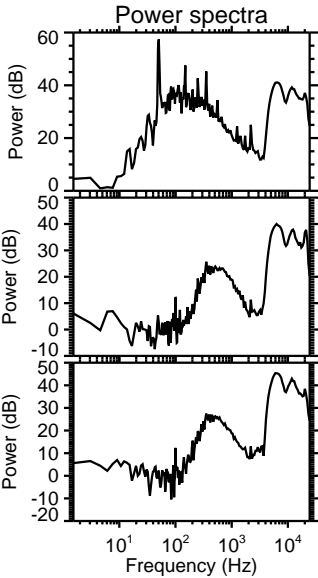
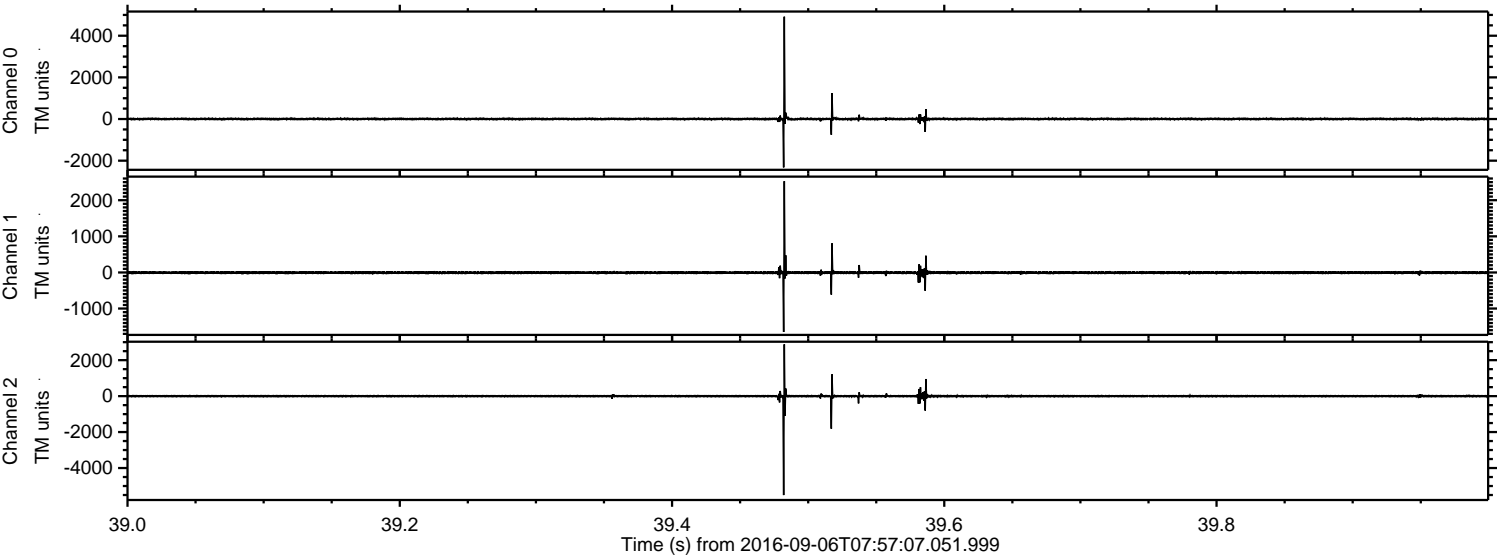
Processed Tue Sep 6 10:05:21 2016 by ELM ver.2012-10-06 from 001__elm20160906_075706__dat00.bin



Processed Tue Sep 6 10:05:22 2016 by ELM ver.2012-10-06 from 001__elm20160906_075706__dat00.bin

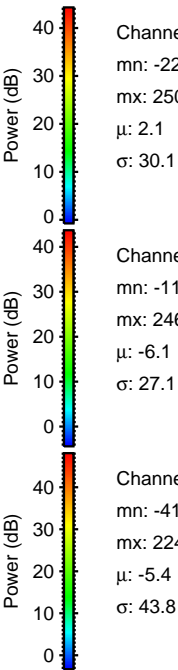
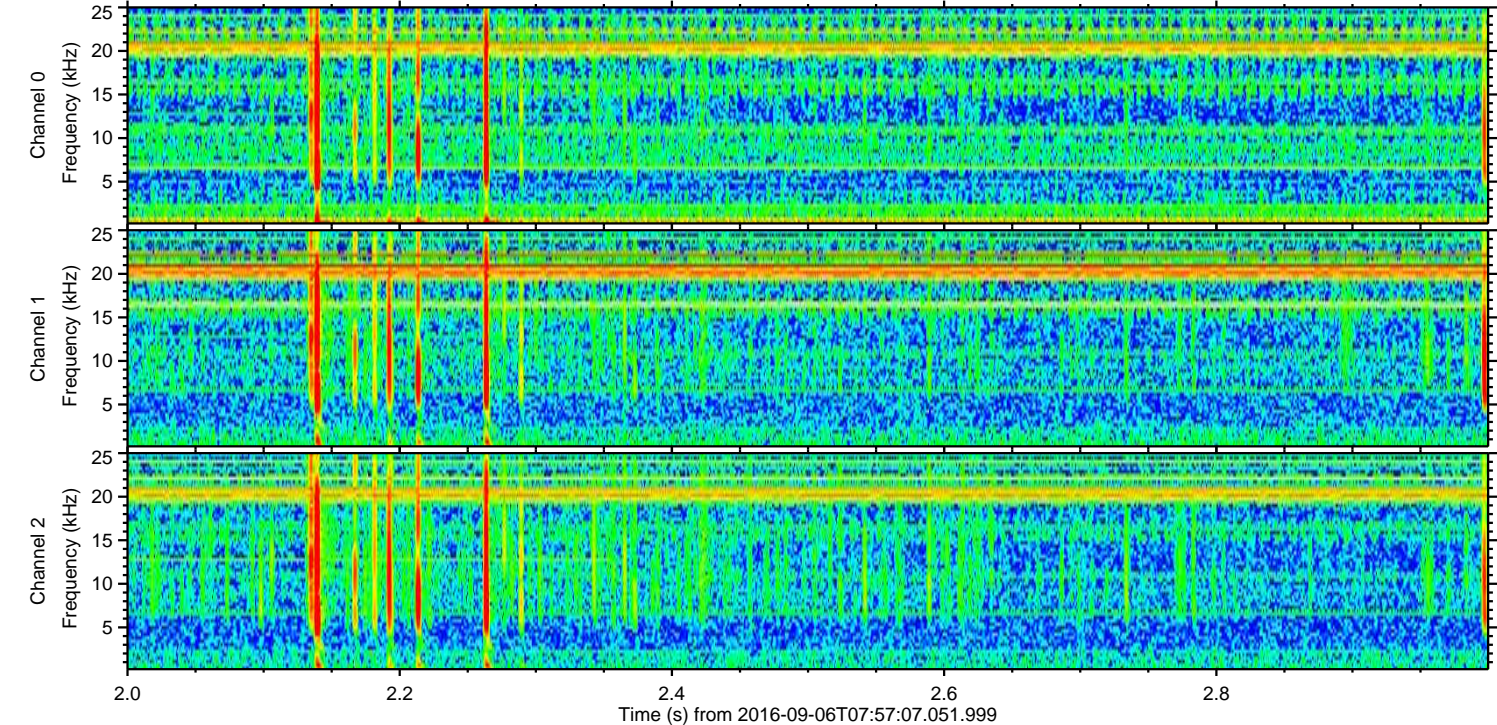
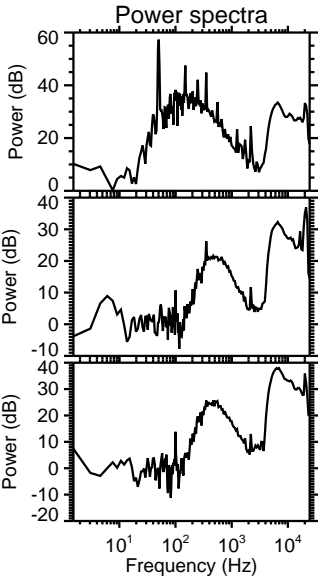
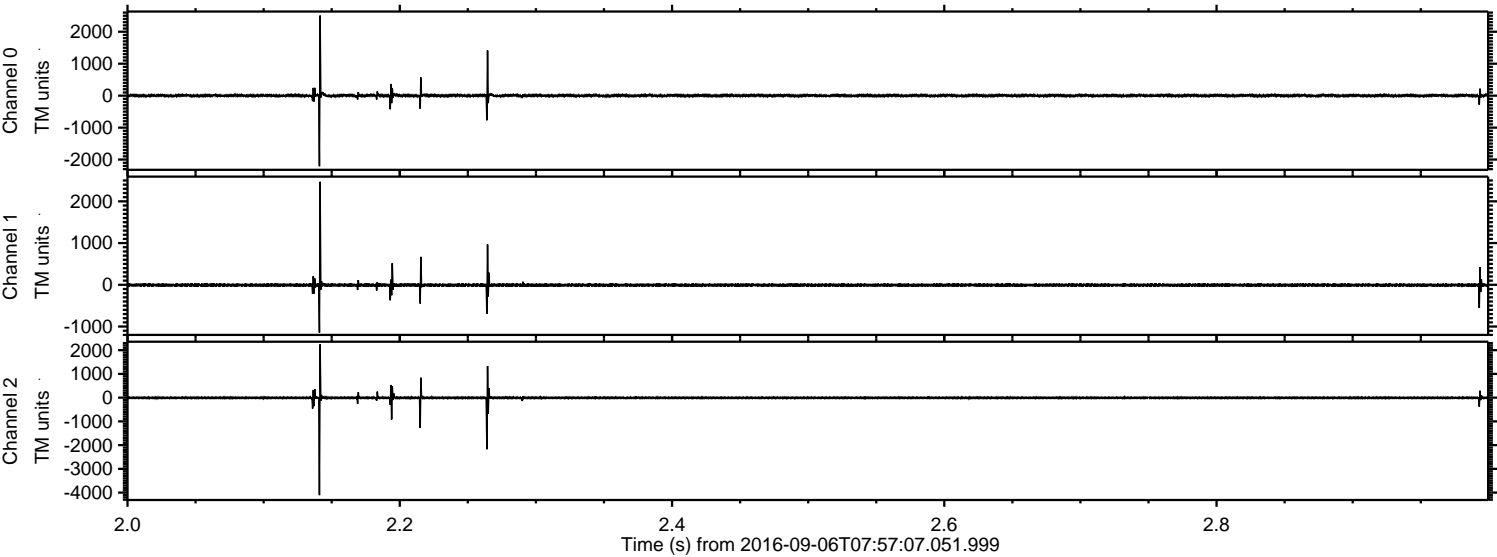


Processed Tue Sep 6 10:05:23 2016 by ELM ver.2012-10-06 from 001__elm20160906_075706__dat00.bin

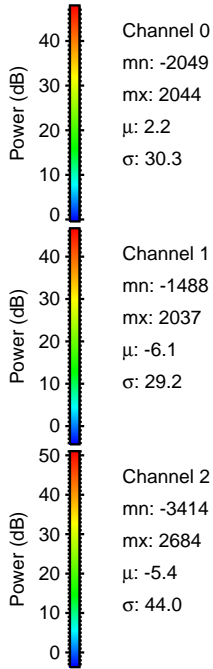
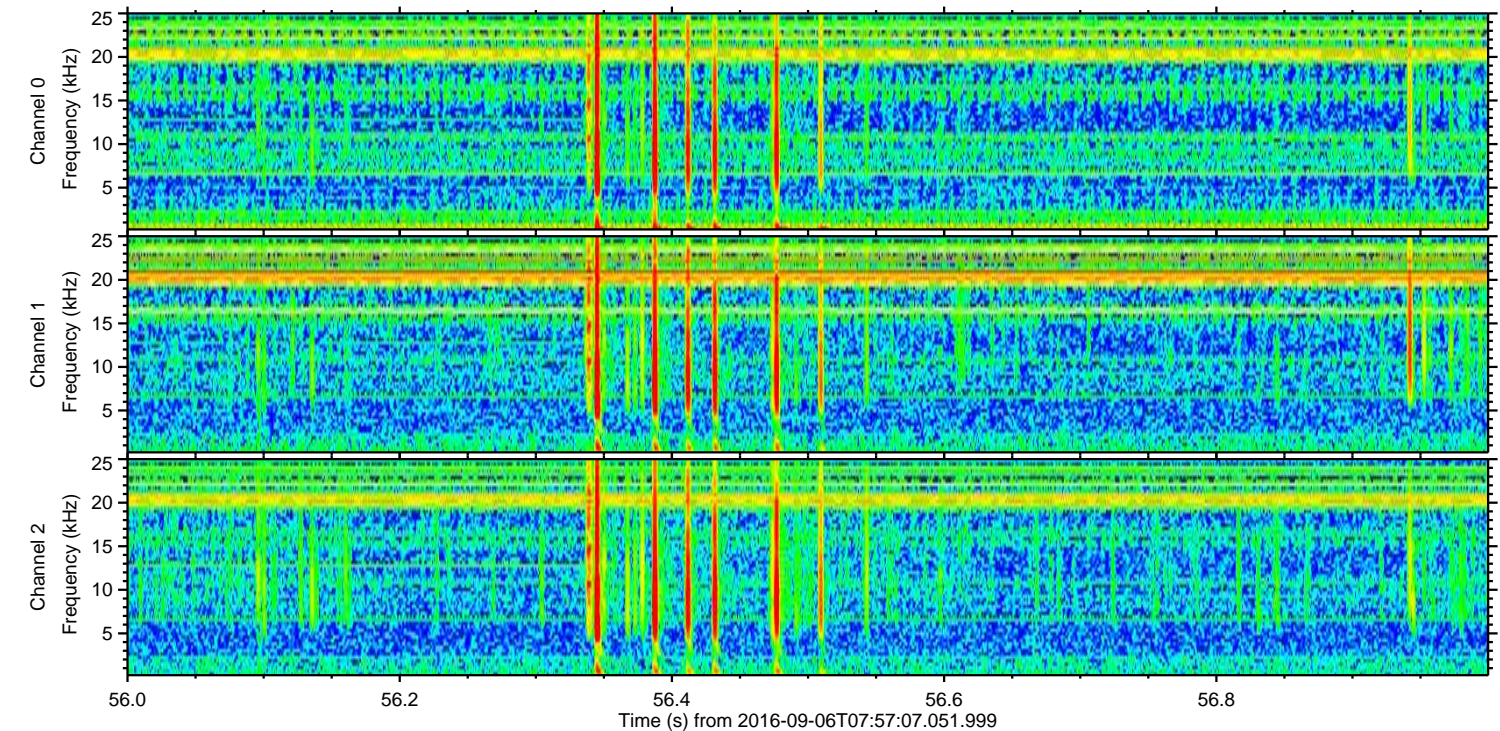
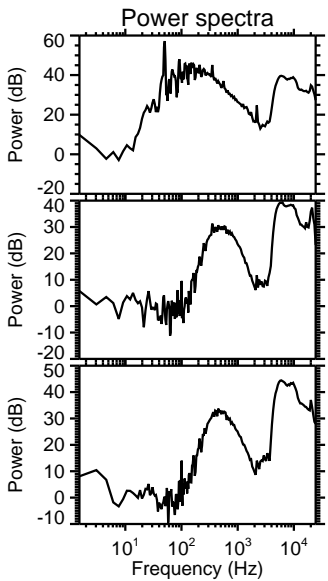
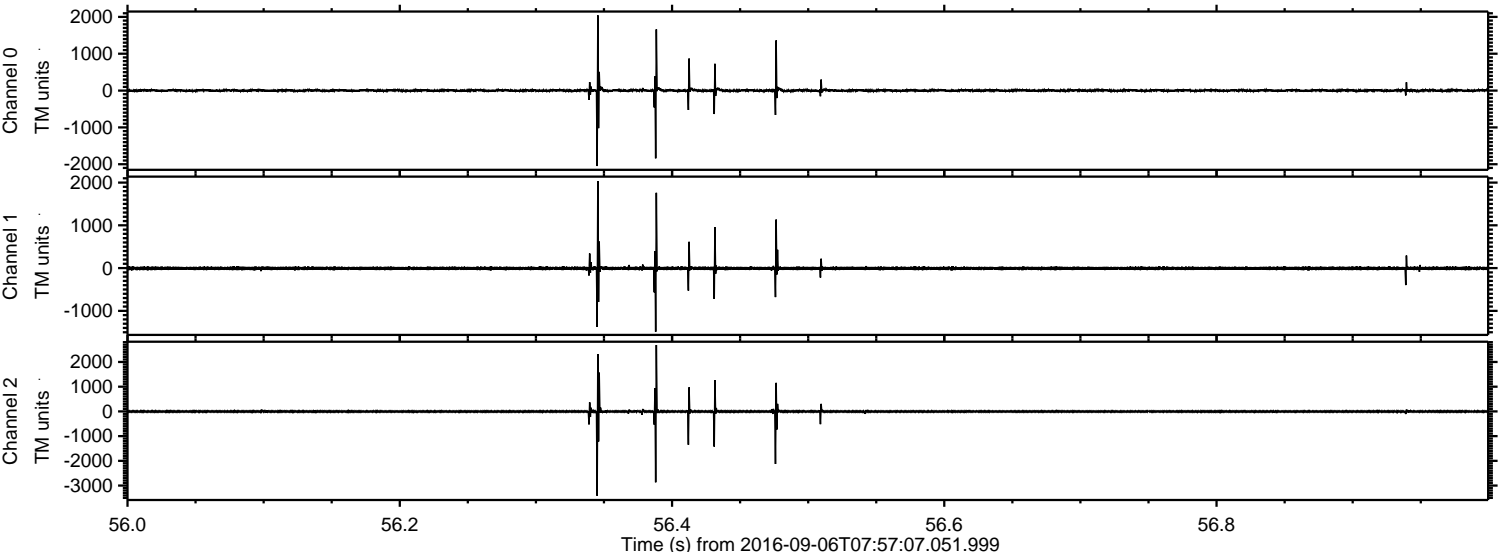


ELMAVAN 3D WAVEFORMS (Measured data sampled at 50 kHz) 51000 packets of 144 samples from 2016-09-06T07:57:07.051.999. Part 3/147

Processed Tue Sep 6 10:05:24 2016 by ELM ver.2012-10-06 from 001__elm20160906_075706__dat00.bin

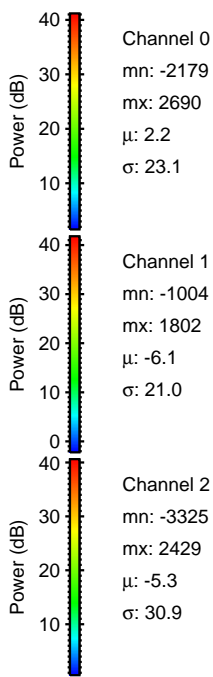
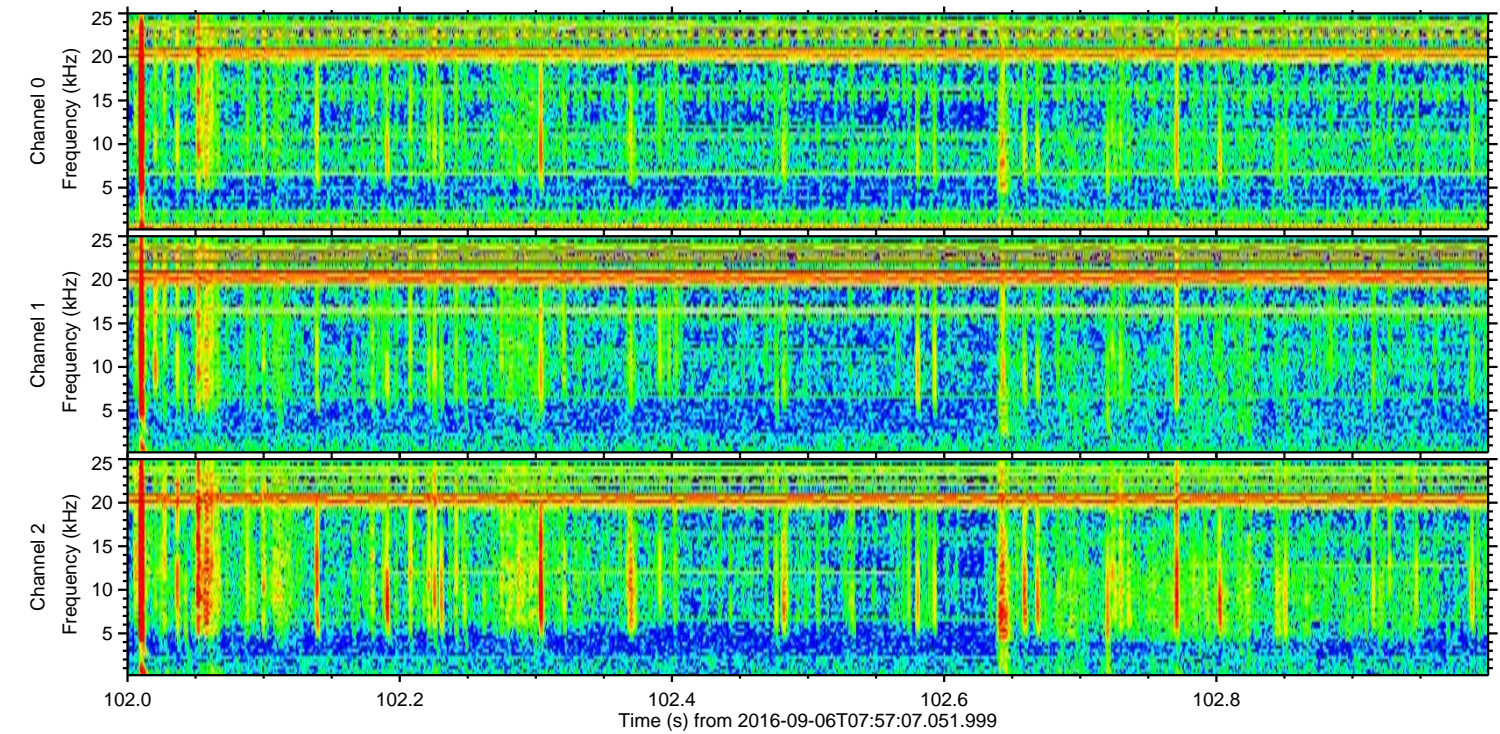
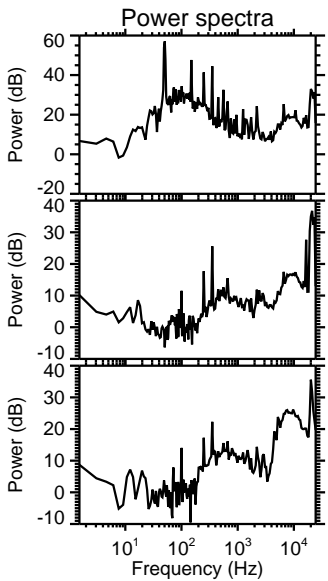
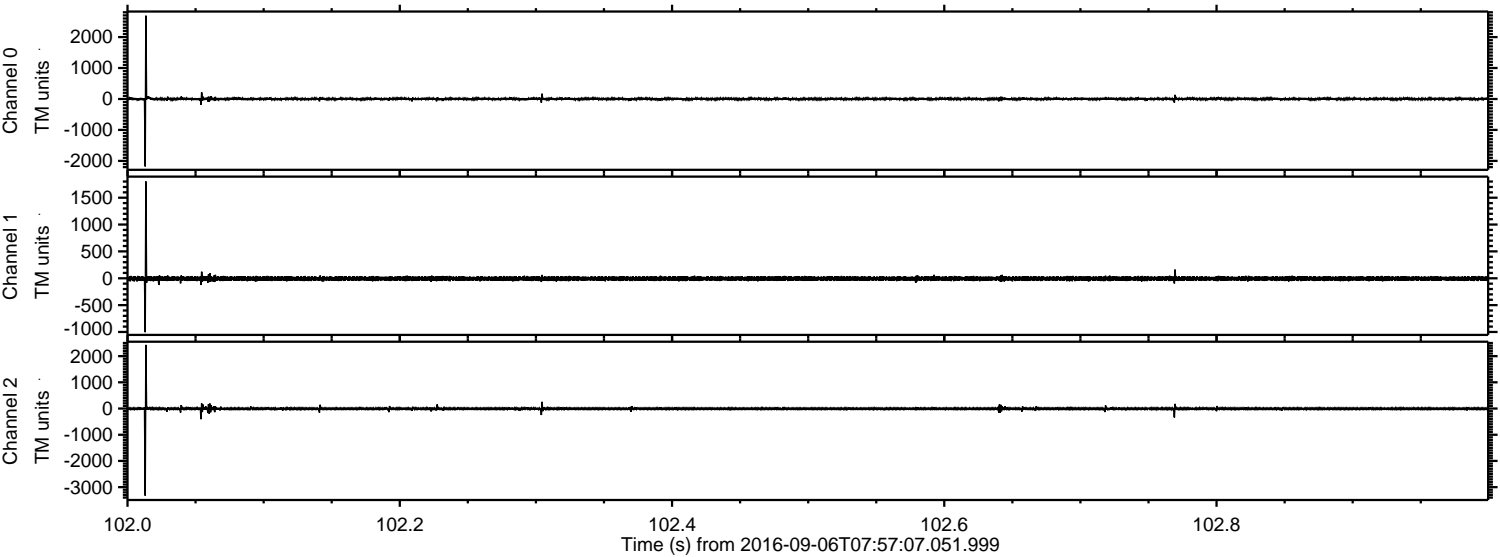


Processed Tue Sep 6 10:05:25 2016 by ELM ver.2012-10-06 from 001__elm20160906_075706__dat00.bin

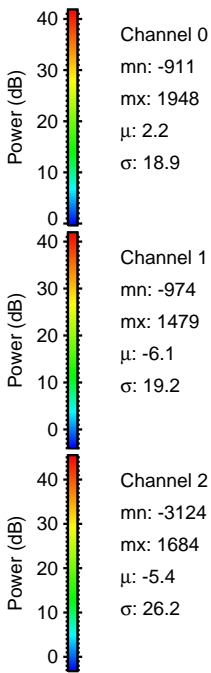
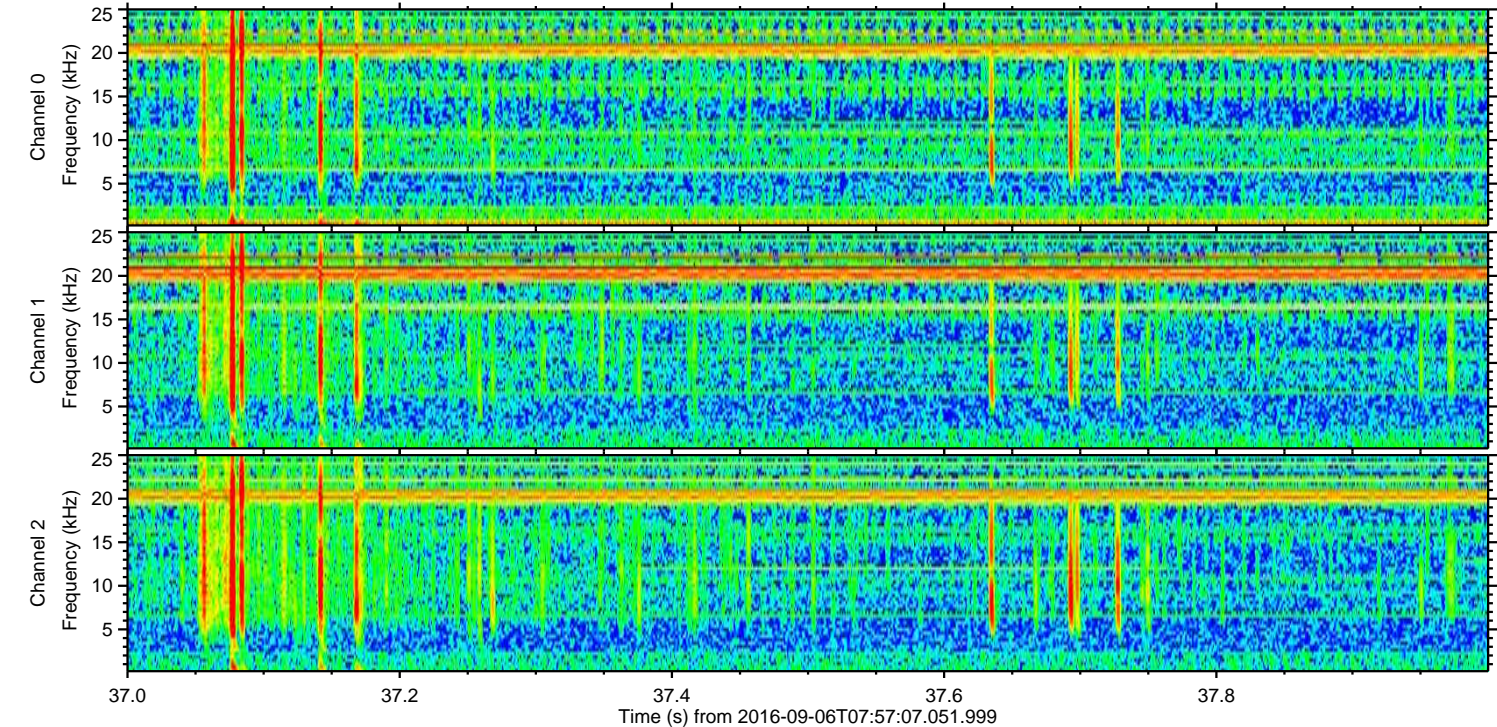
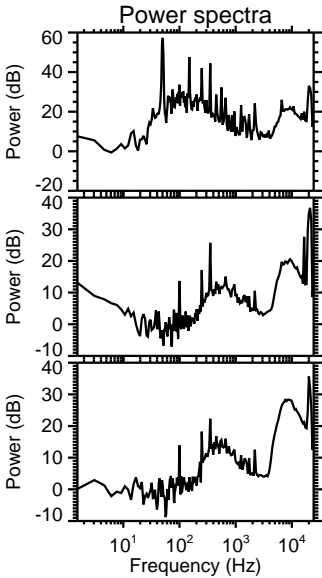
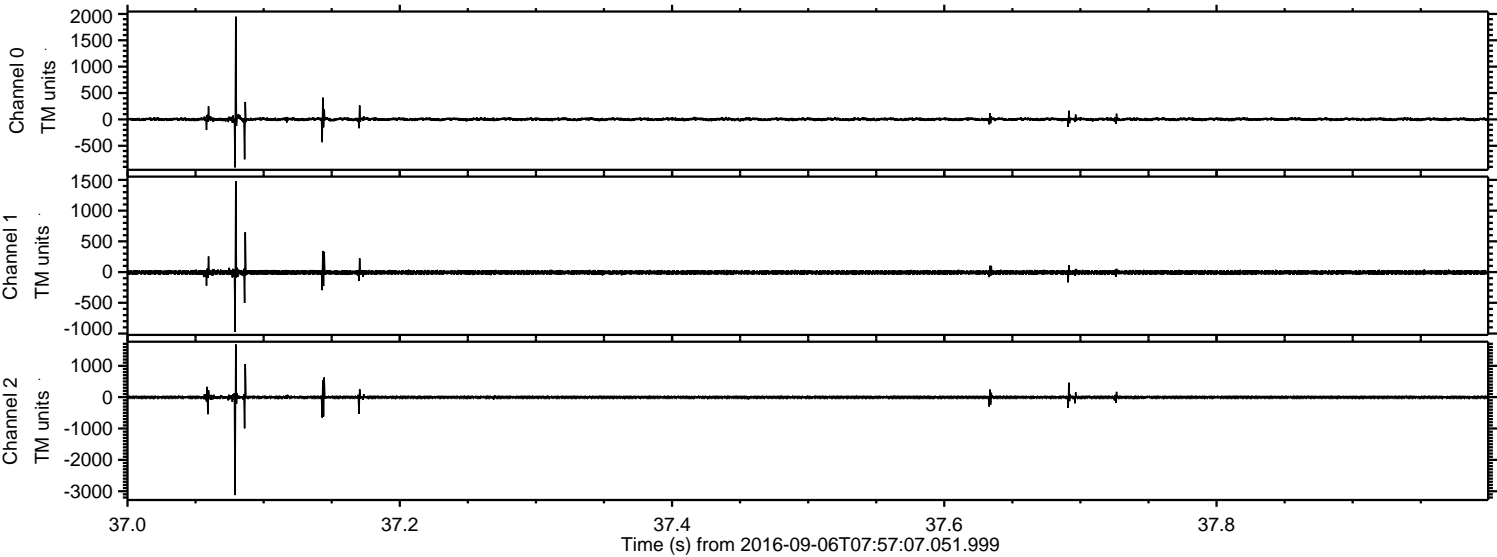


ELMAVAN 3D WAVEFORMS (Measured data sampled at 50 kHz) 51000 packets of 144 samples from 2016-09-06T07:57:07.051.999. Part 103/147

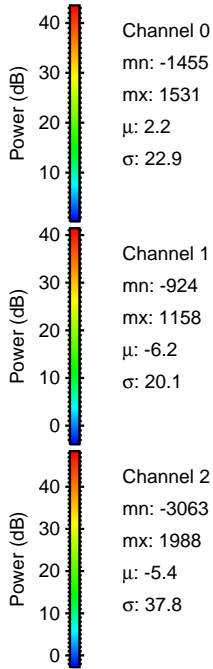
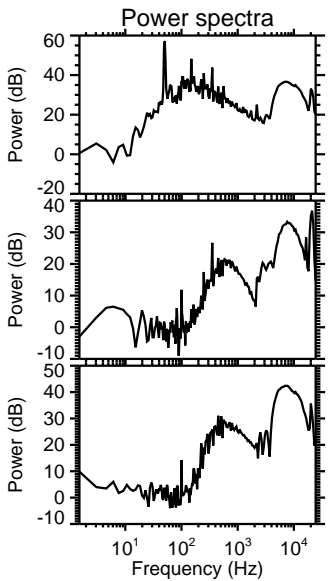
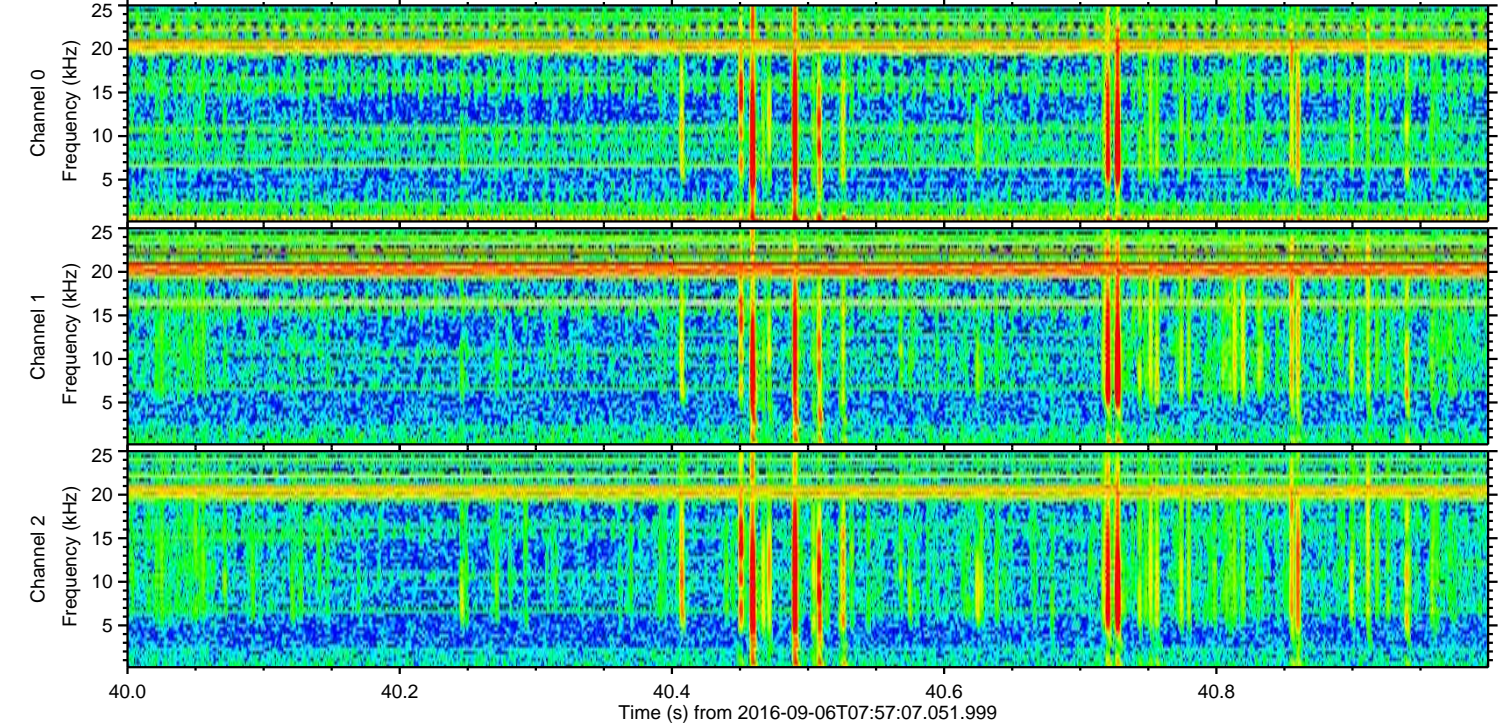
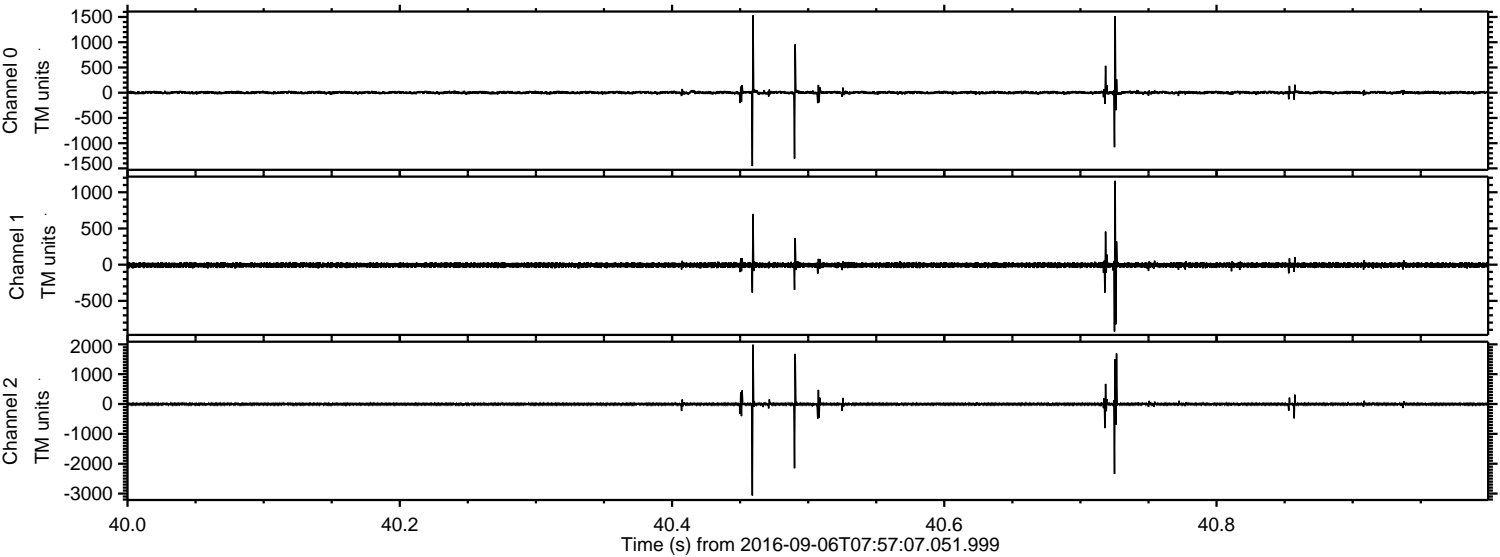
Processed Tue Sep 6 10:05:26 2016 by ELM ver.2012-10-06 from 001__elm20160906_075706__dat00.bin



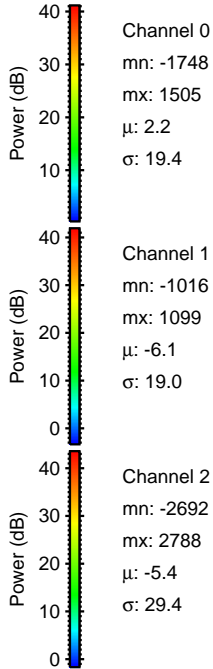
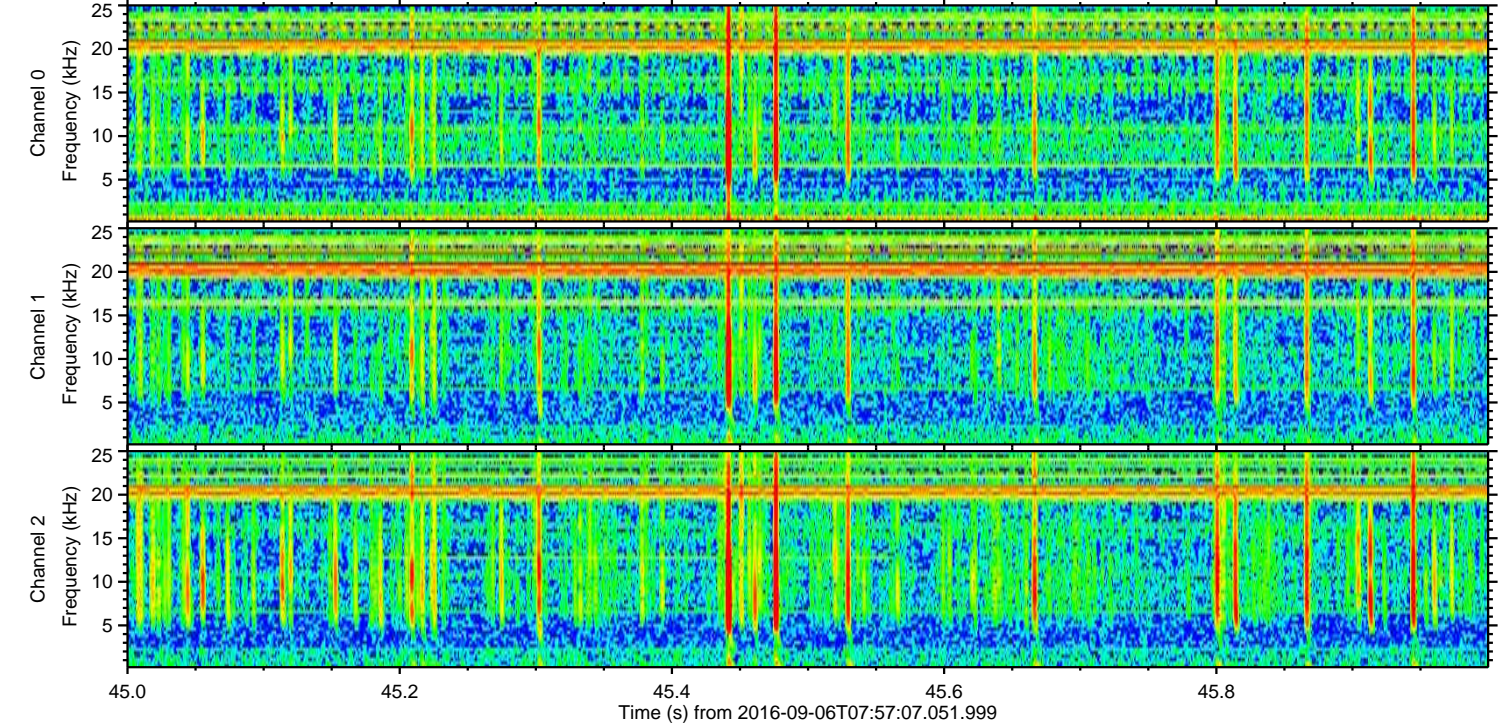
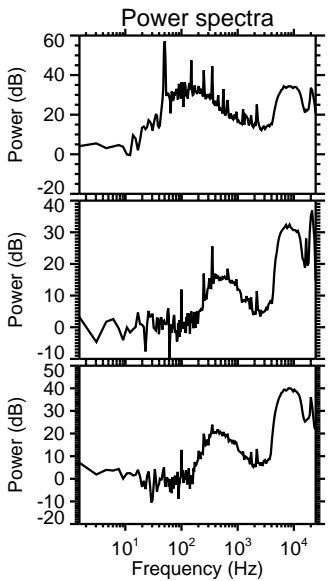
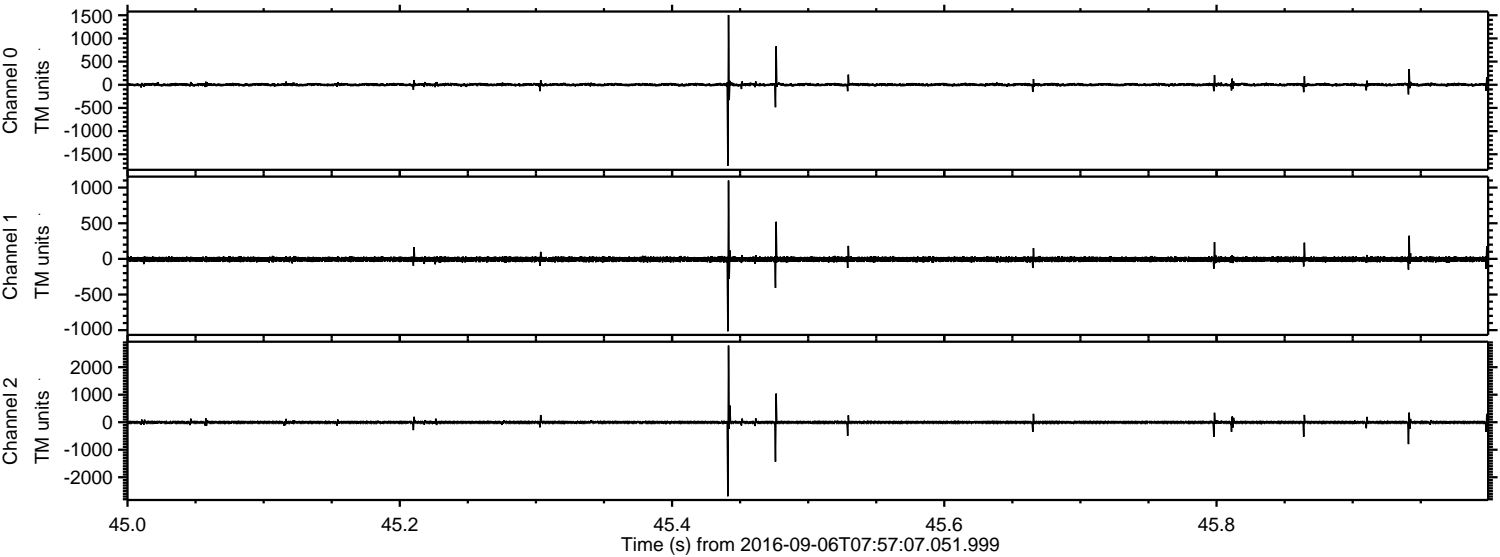
Processed Tue Sep 6 10:05:27 2016 by ELM ver.2012-10-06 from 001__elm20160906_075706__dat00.bin



Processed Tue Sep 6 10:05:28 2016 by ELM ver.2012-10-06 from 001__elm20160906_075706__dat00.bin



Processed Tue Sep 6 10:05:29 2016 by ELM ver.2012-10-06 from 001__elm20160906_075706__dat00.bin



Channel 0
mn: -1748
mx: 1505
 μ : 2.2
 σ : 19.4

Channel 1
mn: -1016
mx: 1099
 μ : -6.1
 σ : 19.0

Channel 2
mn: -2692
mx: 2788
 μ : -5.4
 σ : 29.4

Processed Tue Sep 6 10:05:30 2016 by ELM ver.2012-10-06 from 001__elm20160906_075706__dat00.bin

