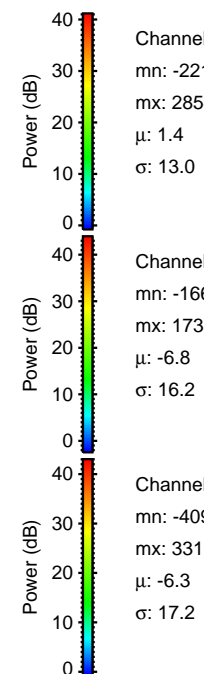
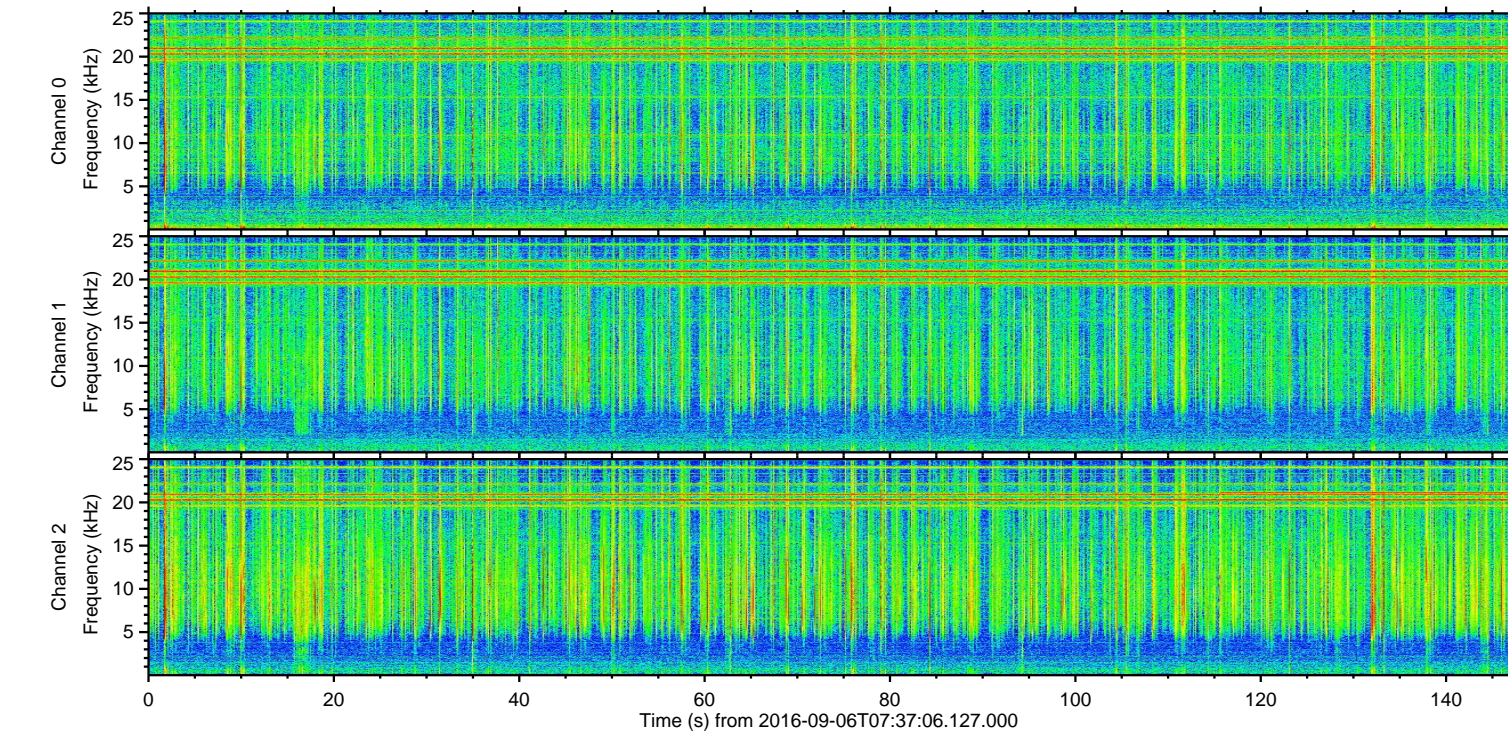
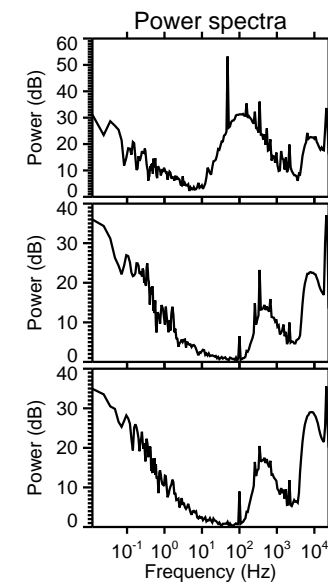
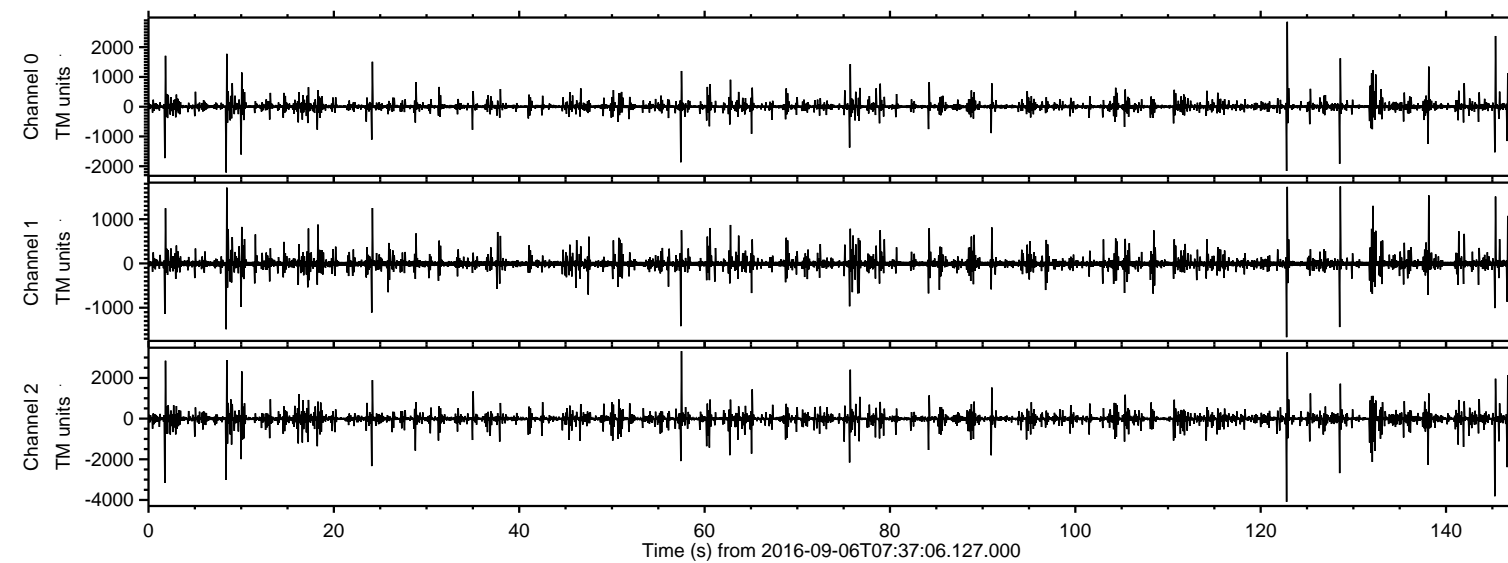


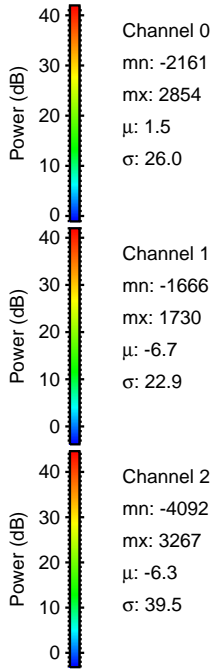
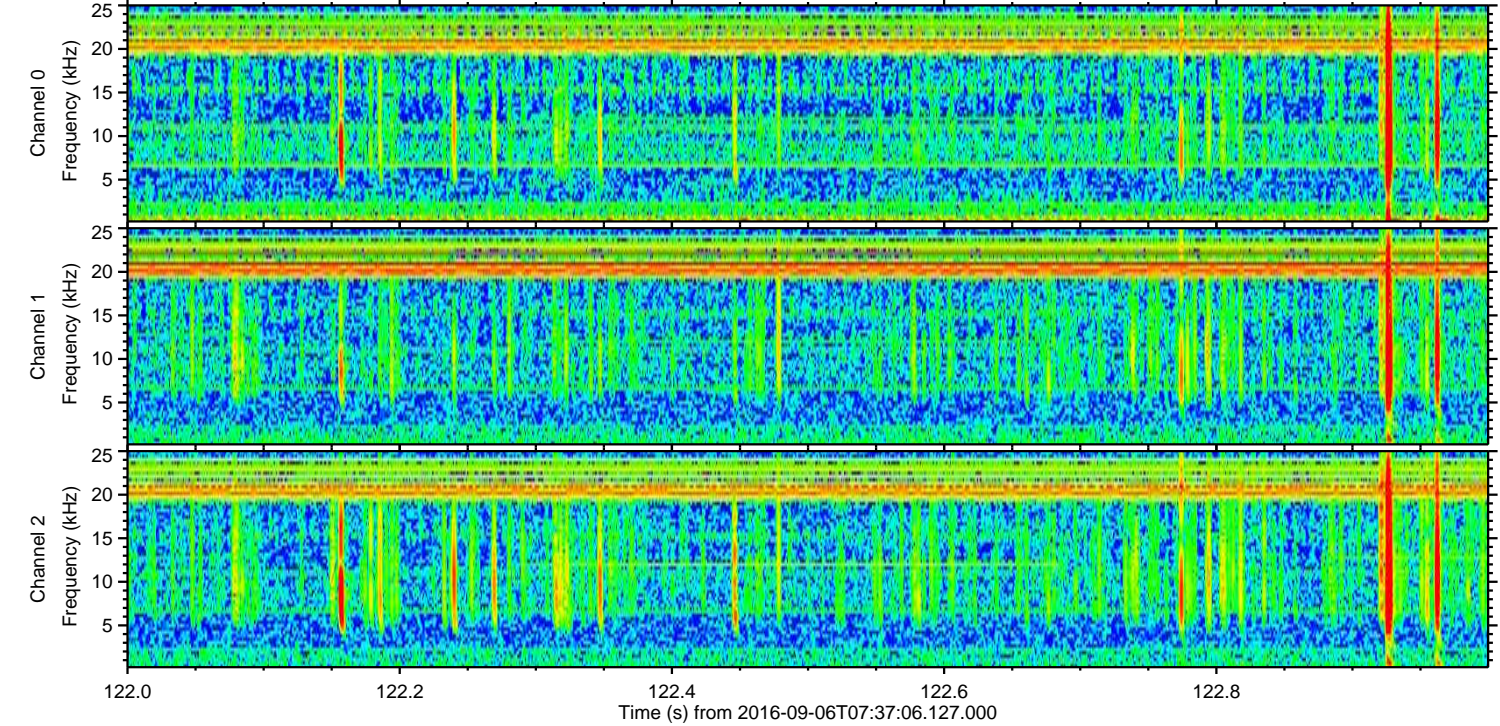
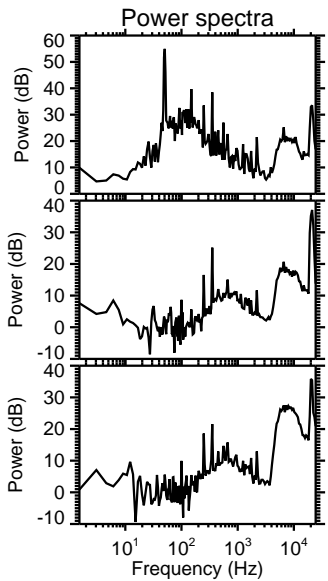
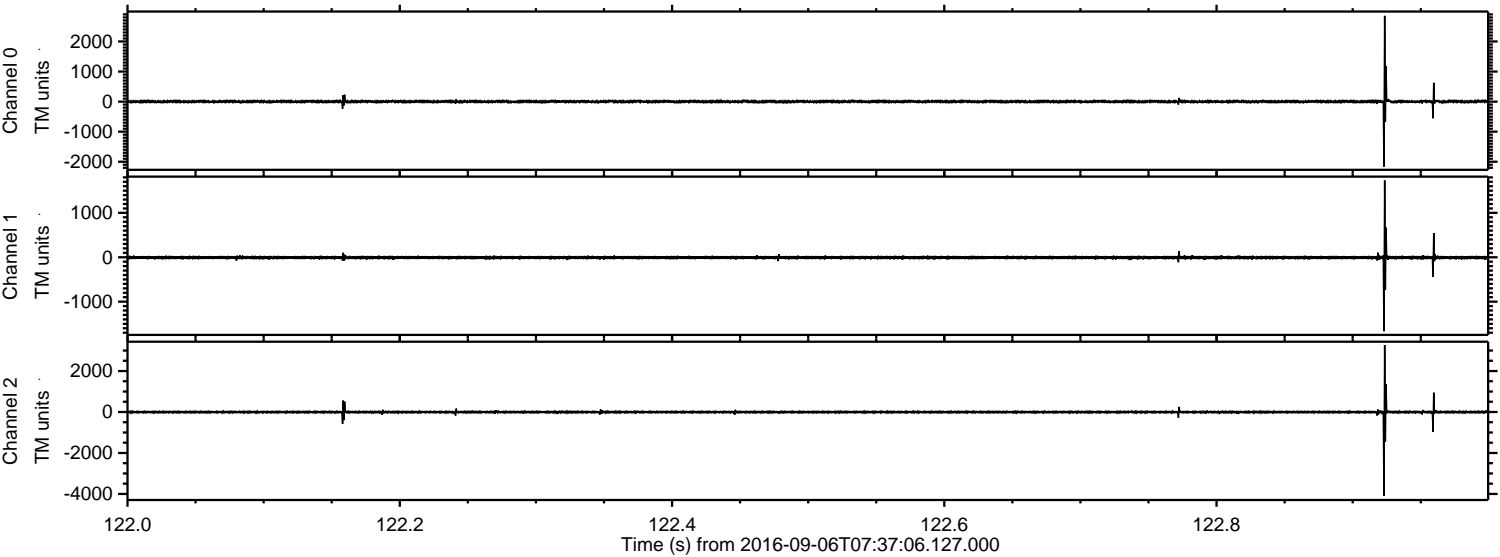
ELMAVAN 3D WAVEFORMS (Measured data sampled at 50 kHz) 51000 packets of 144 samples from 2016-09-06T07:37:06.127.000.

Processed Tue Sep 6 09:45:21 2016 by ELM ver.2012-10-06 from 001__elm20160906_073705__dat00.bin



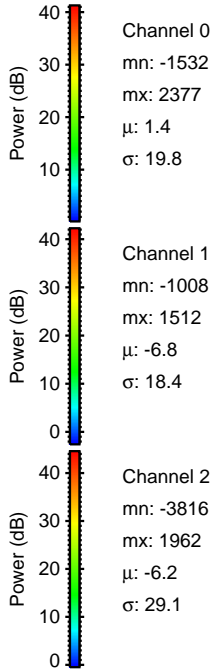
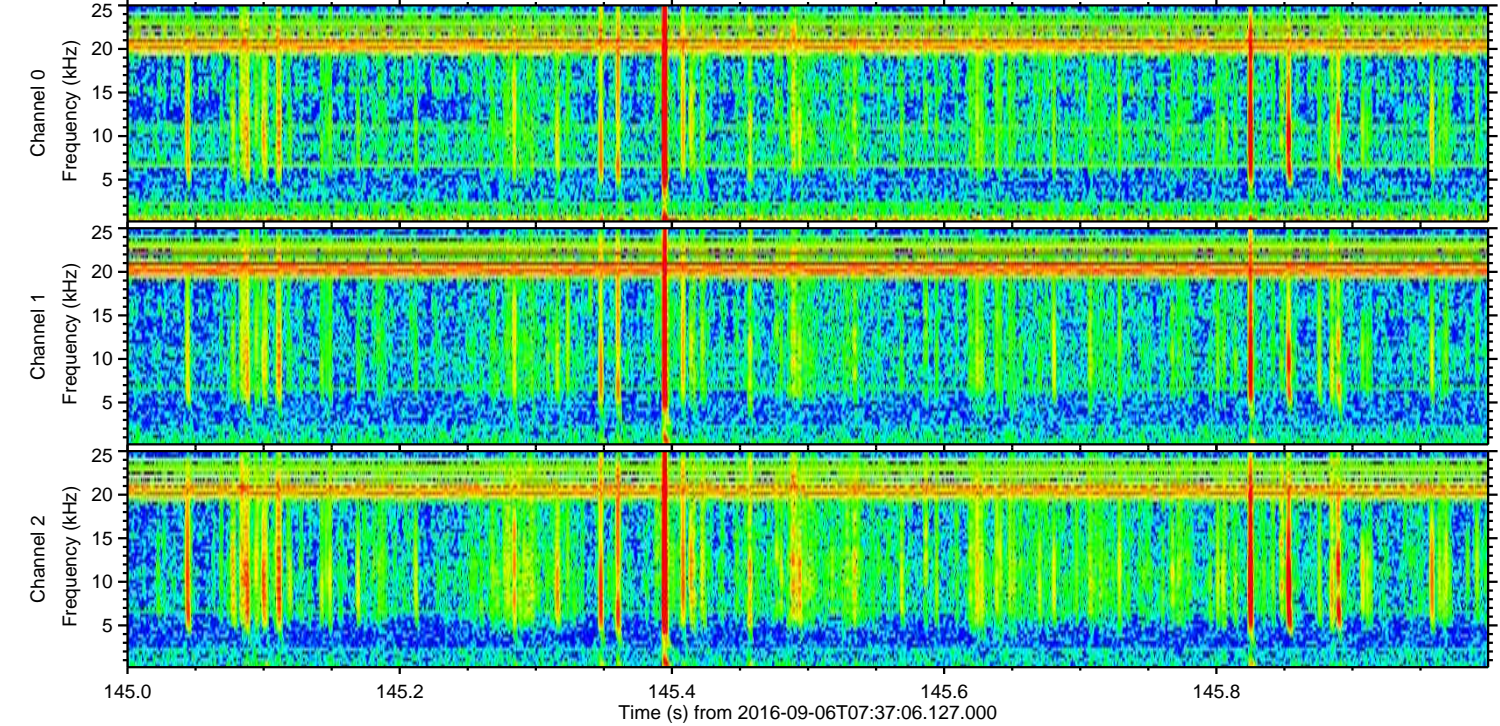
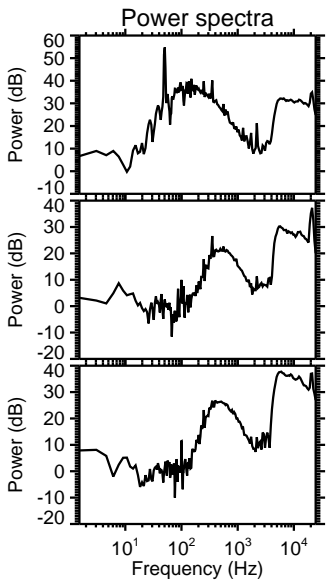
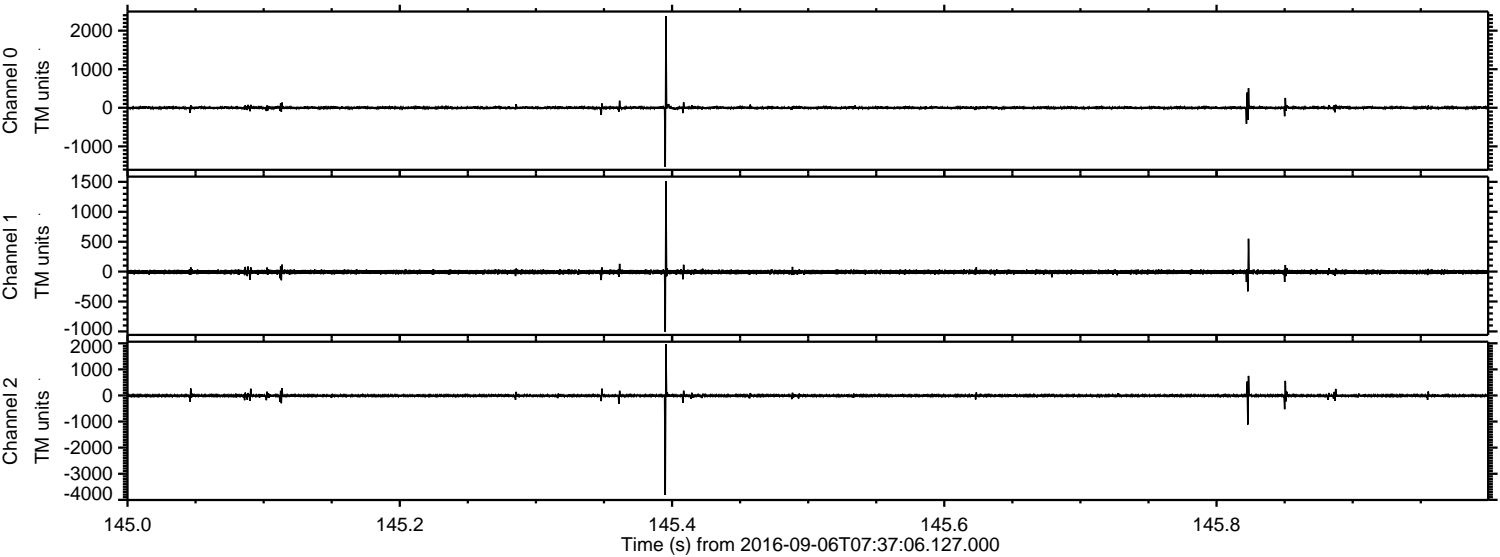
ELMAVAN 3D WAVEFORMS (Measured data sampled at 50 kHz) 51000 packets of 144 samples from 2016-09-06T07:37:06.127.000. Part 123/147

Processed Tue Sep 6 09:45:36 2016 by ELM ver.2012-10-06 from 001__elm20160906_073705__dat00.bin

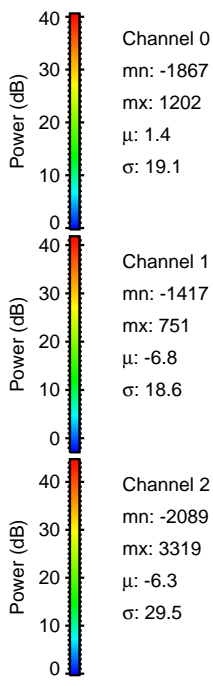
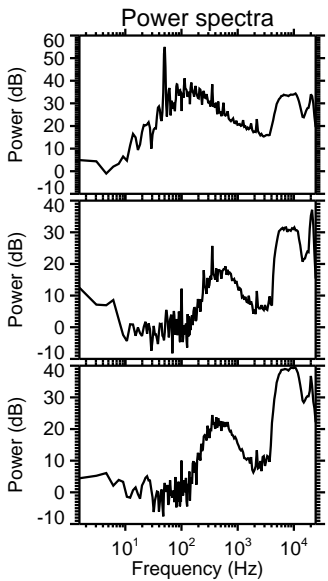
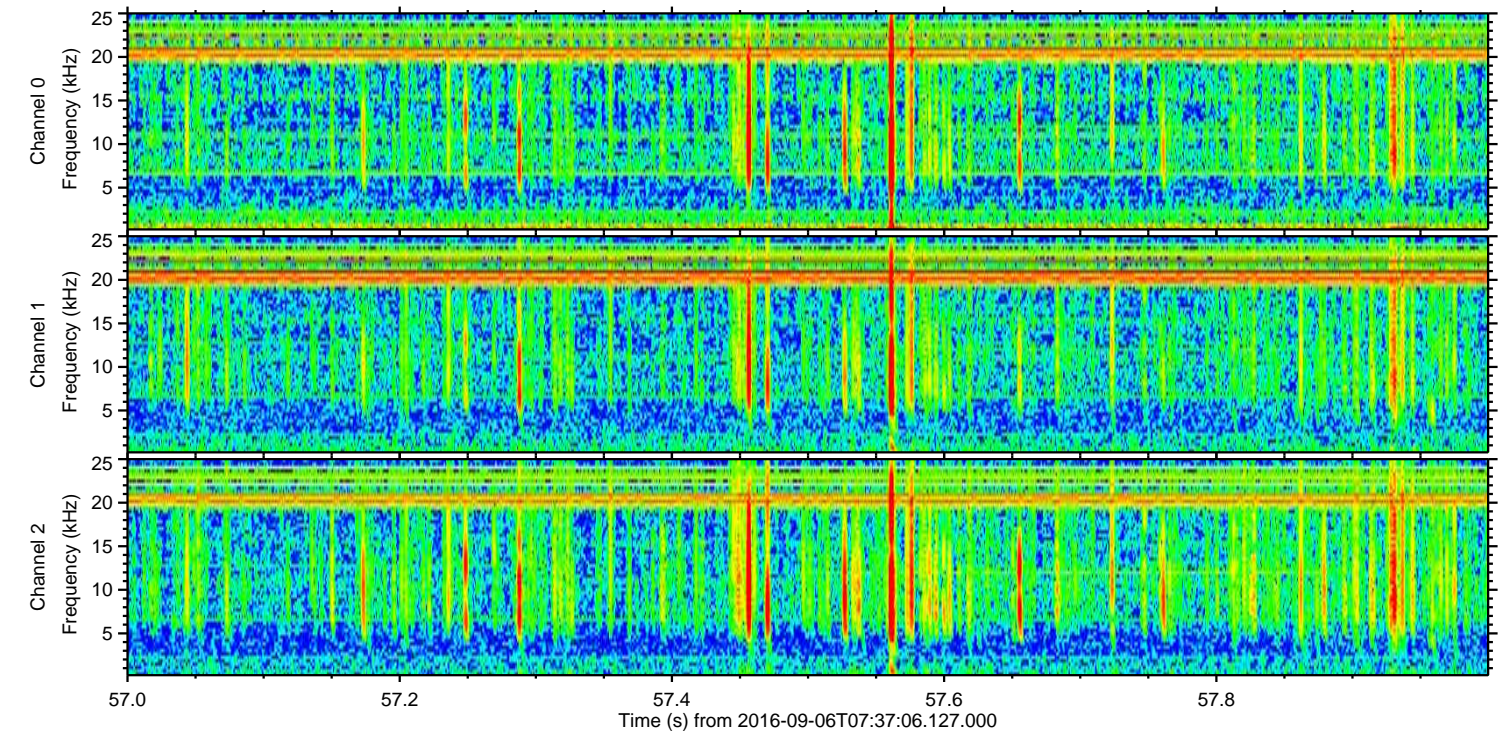
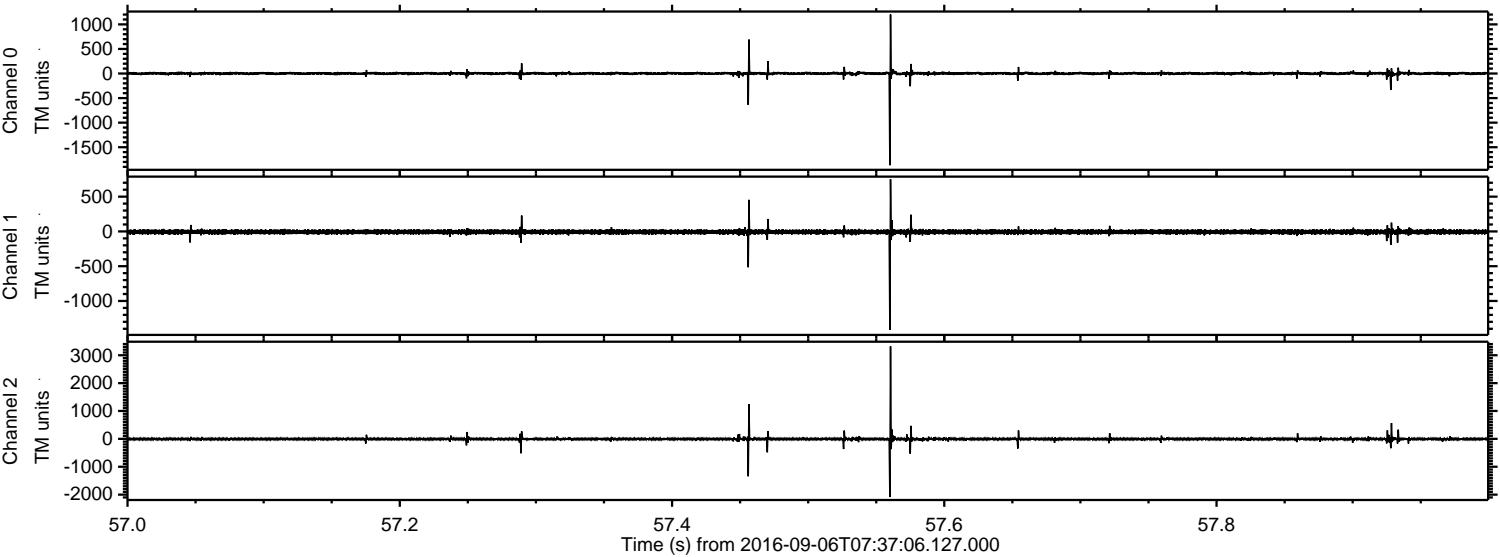


ELMAVAN 3D WAVEFORMS (Measured data sampled at 50 kHz) 51000 packets of 144 samples from 2016-09-06T07:37:06.127.000. Part 146/147

Processed Tue Sep 6 09:45:37 2016 by ELM ver.2012-10-06 from 001__elm20160906_073705__dat00.bin

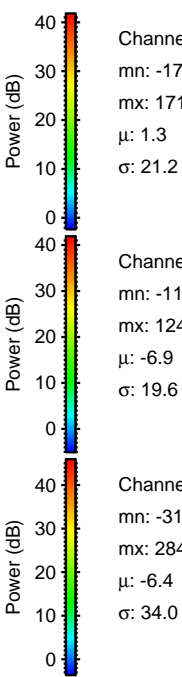
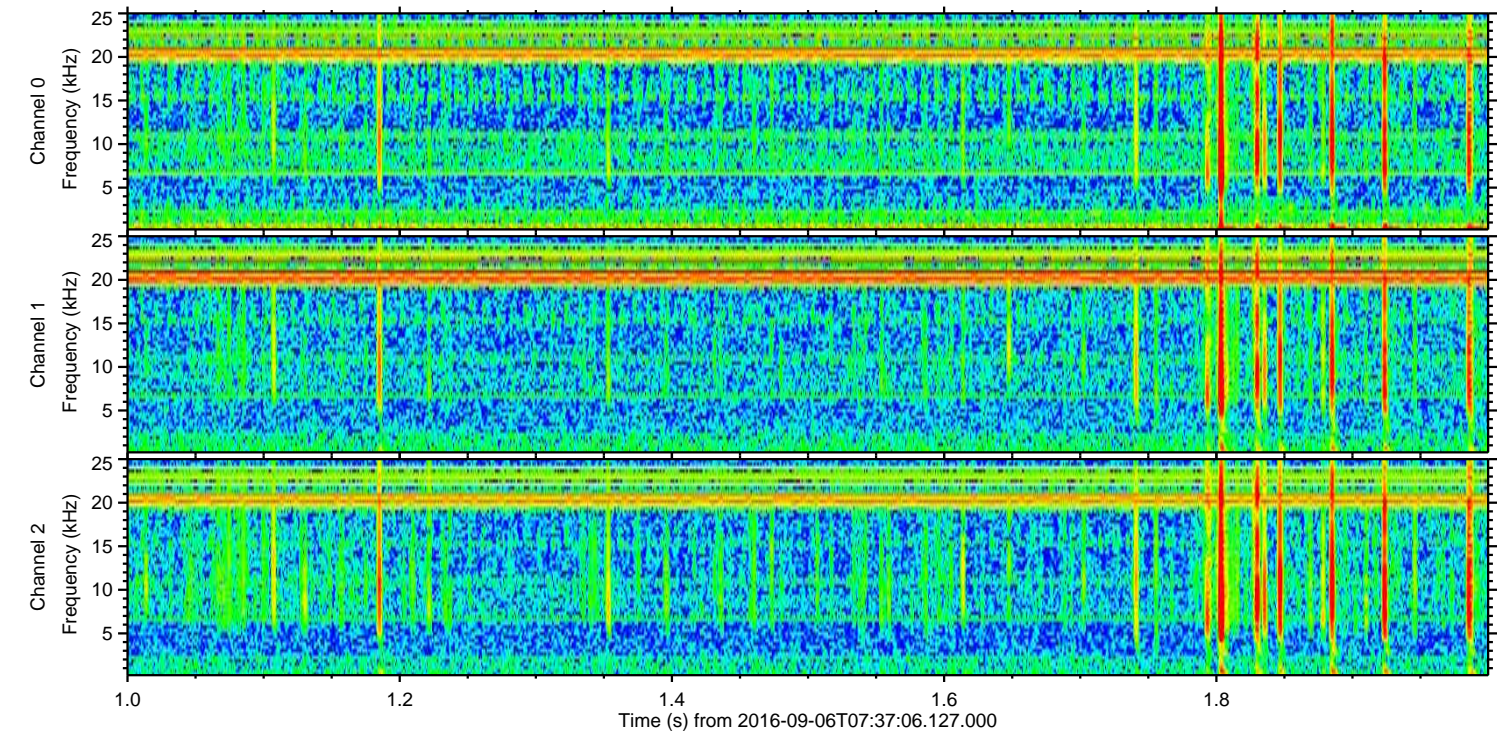
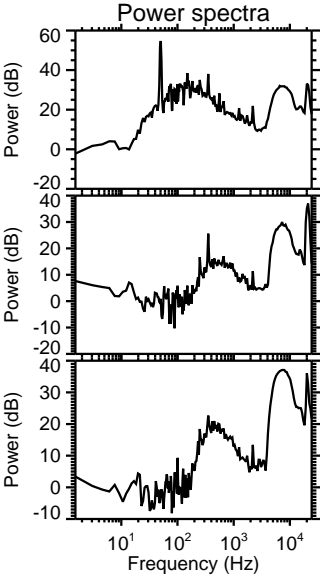
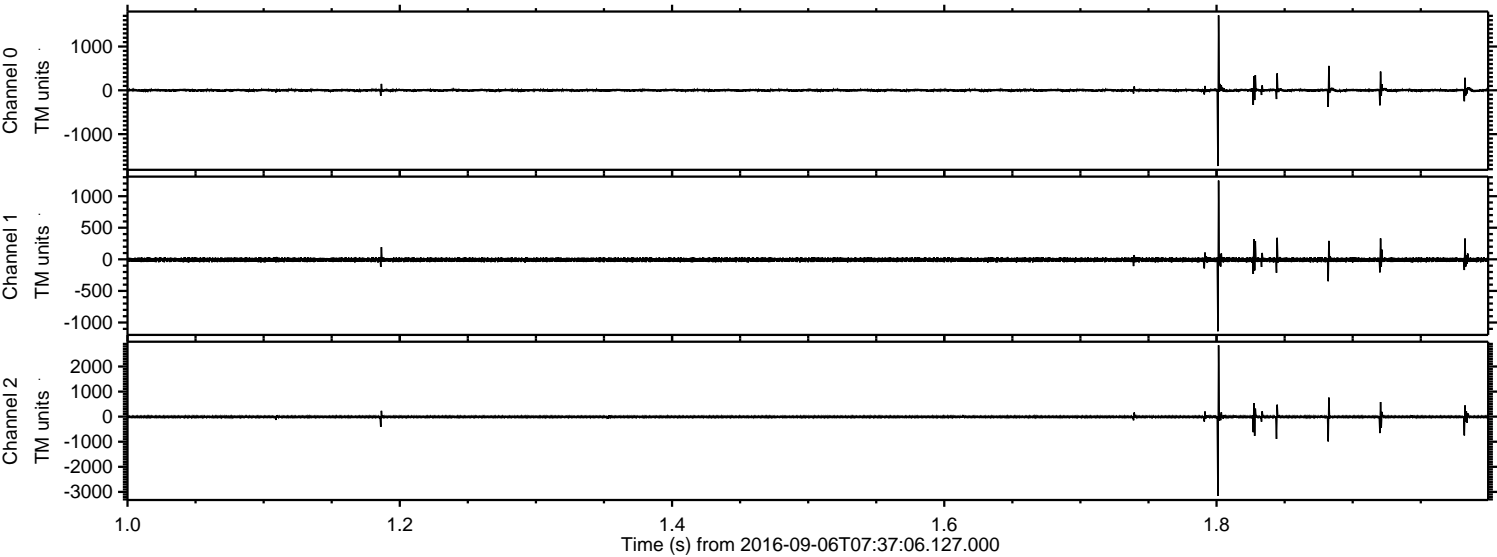


Processed Tue Sep 6 09:45:39 2016 by ELM ver.2012-10-06 from 001__elm20160906_073705__dat00.bin

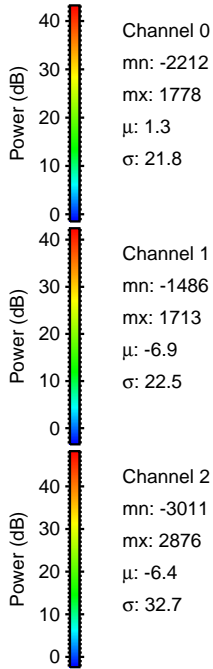
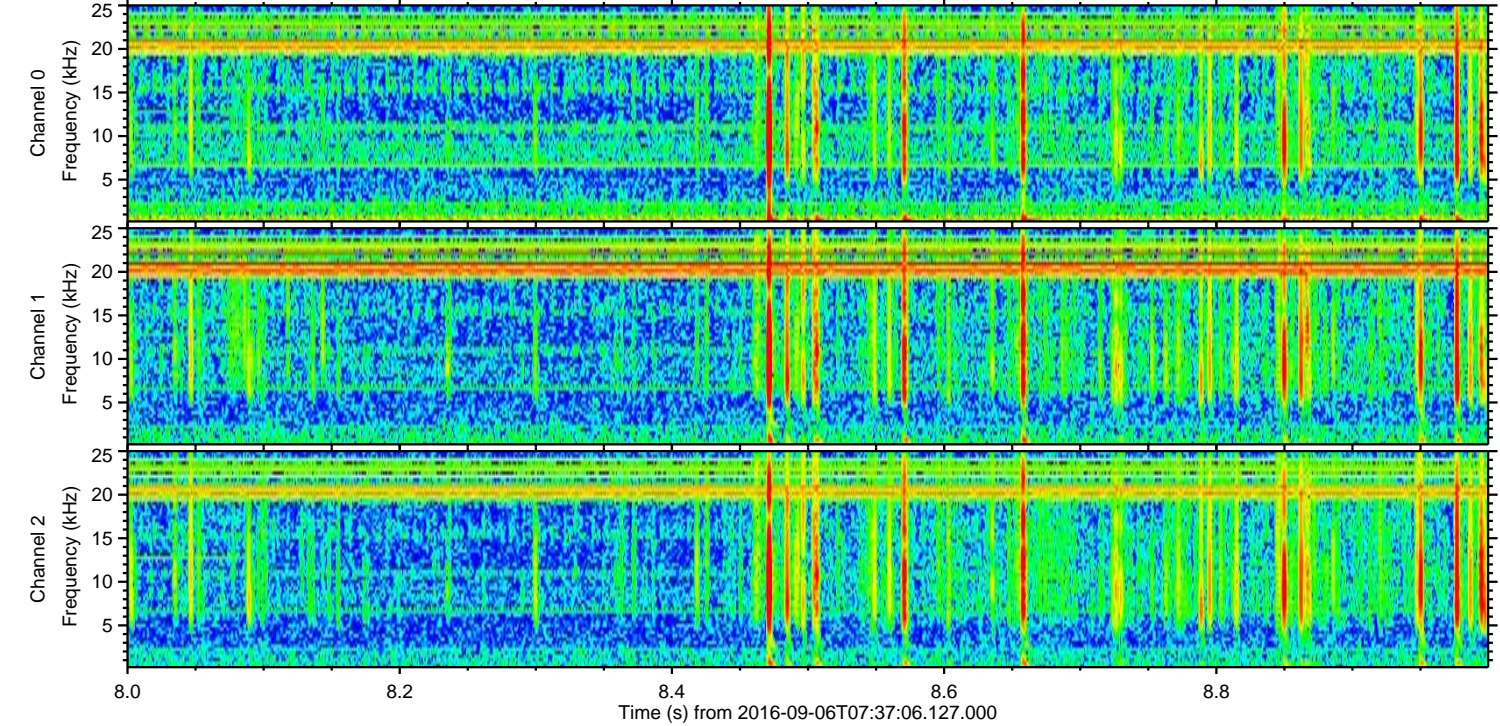
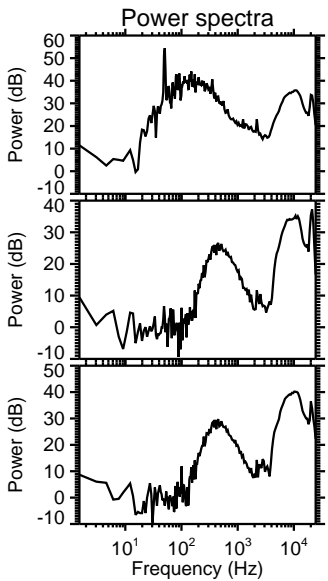
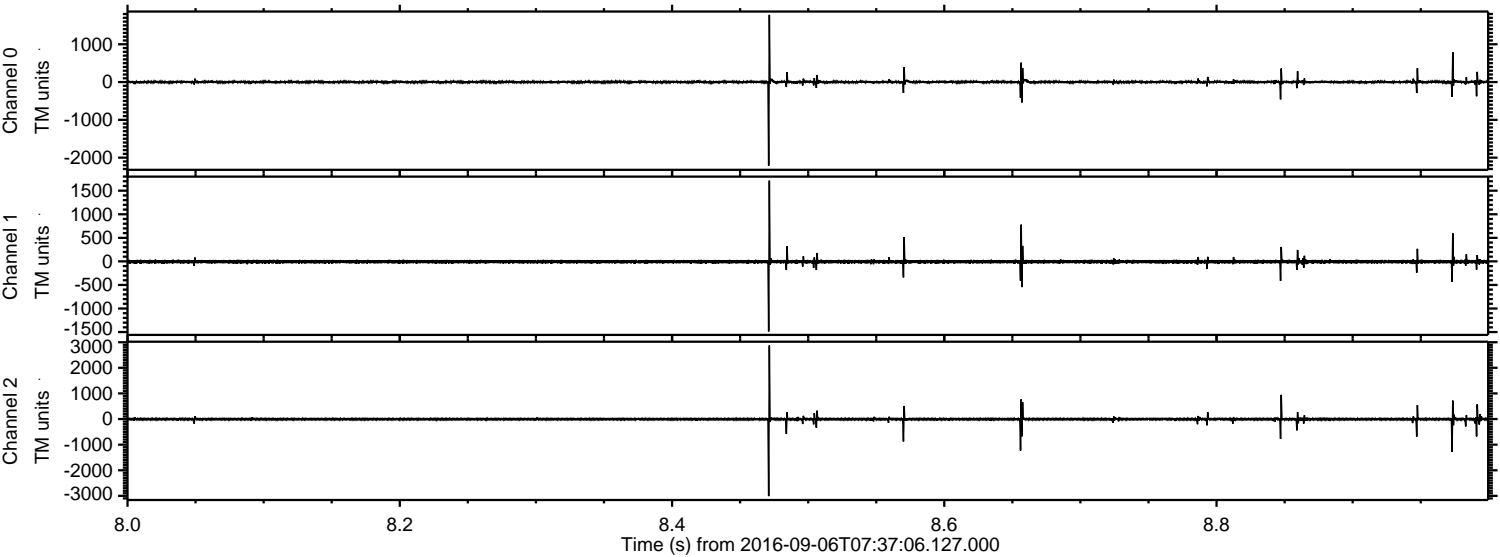


ELMAVAN 3D WAVEFORMS (Measured data sampled at 50 kHz) 51000 packets of 144 samples from 2016-09-06T07:37:06.127.000. Part 2/147

Processed Tue Sep 6 09:45:40 2016 by ELM ver.2012-10-06 from 001__elm20160906_073705__dat00.bin

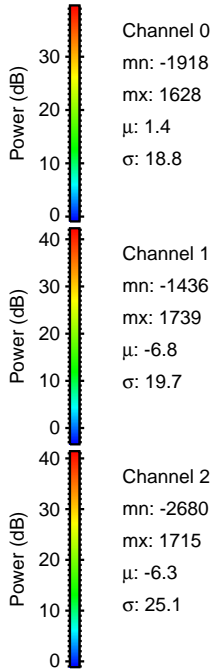
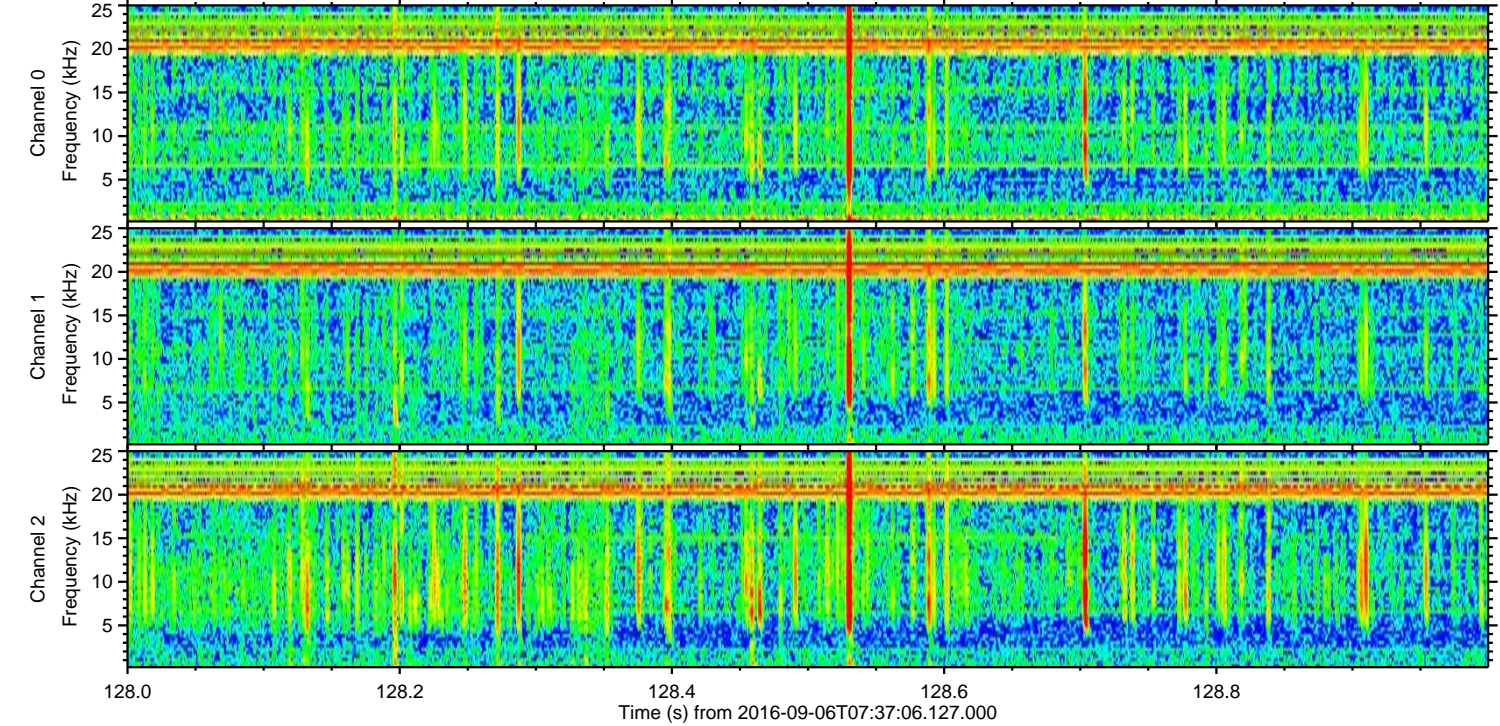
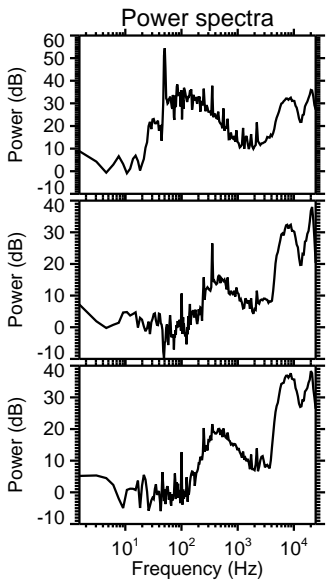
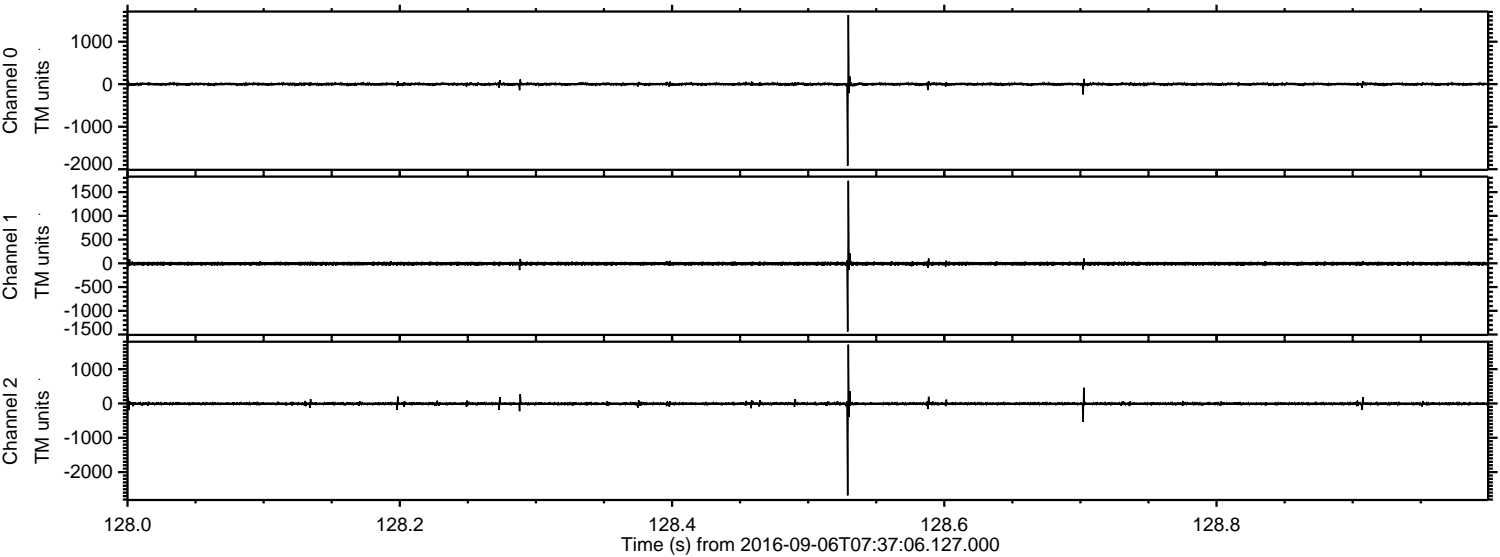


Processed Tue Sep 6 09:45:41 2016 by ELM ver.2012-10-06 from 001__elm20160906_073705__dat00.bin

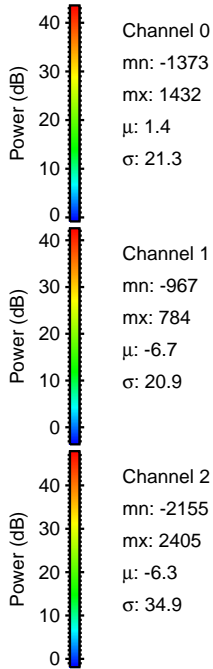
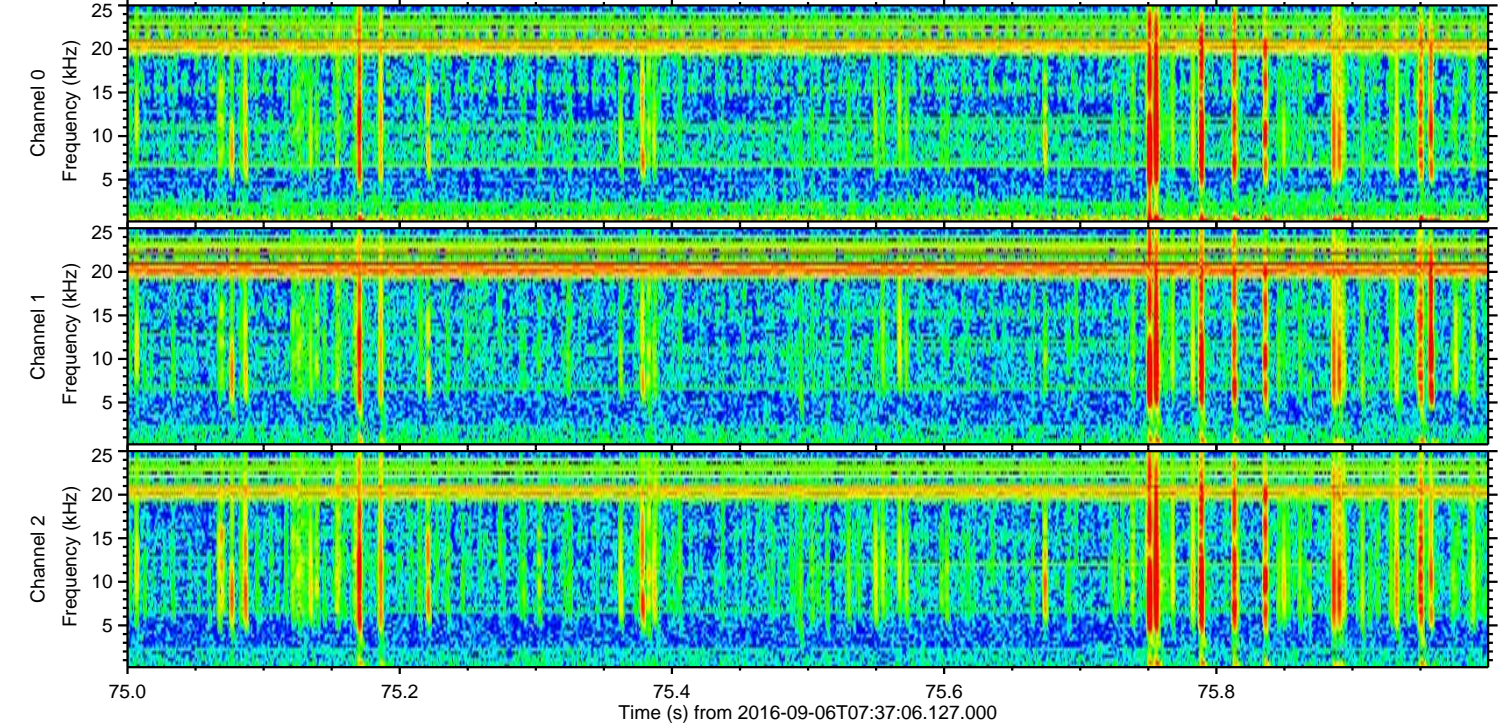
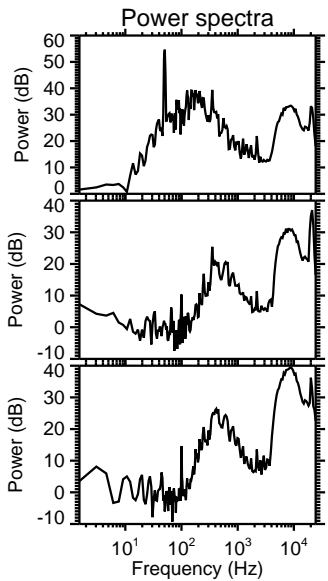
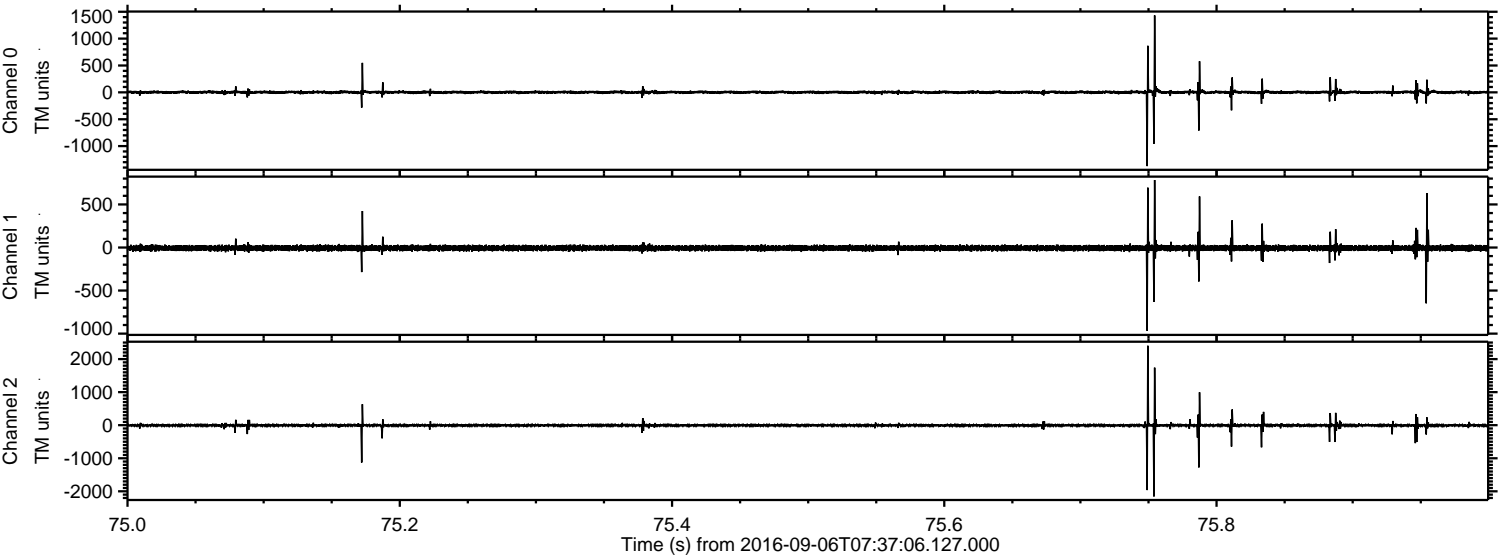


ELMAVAN 3D WAVEFORMS (Measured data sampled at 50 kHz) 51000 packets of 144 samples from 2016-09-06T07:37:06.127.000. Part 129/147

Processed Tue Sep 6 09:45:42 2016 by ELM ver.2012-10-06 from 001__elm20160906_073705__dat00.bin



Processed Tue Sep 6 09:45:43 2016 by ELM ver.2012-10-06 from 001__elm20160906_073705__dat00.bin

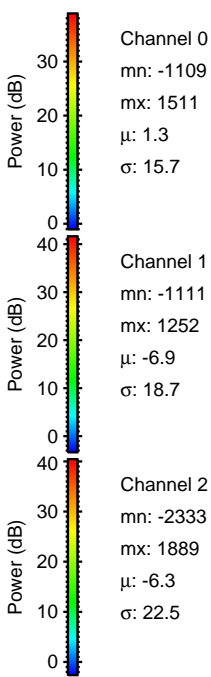
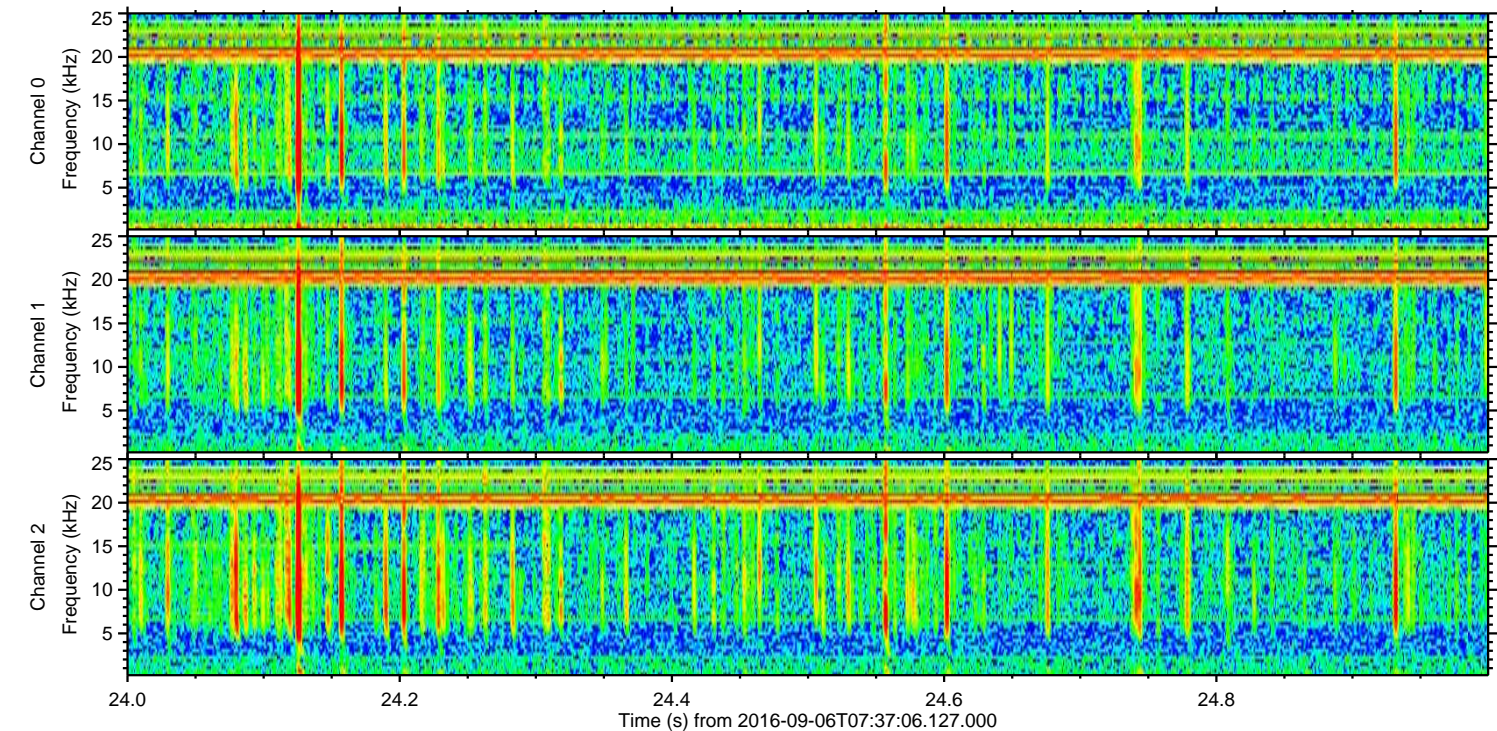
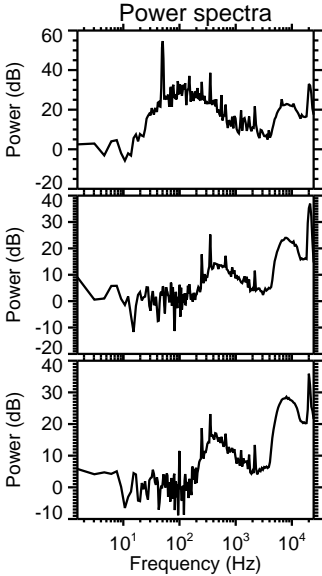
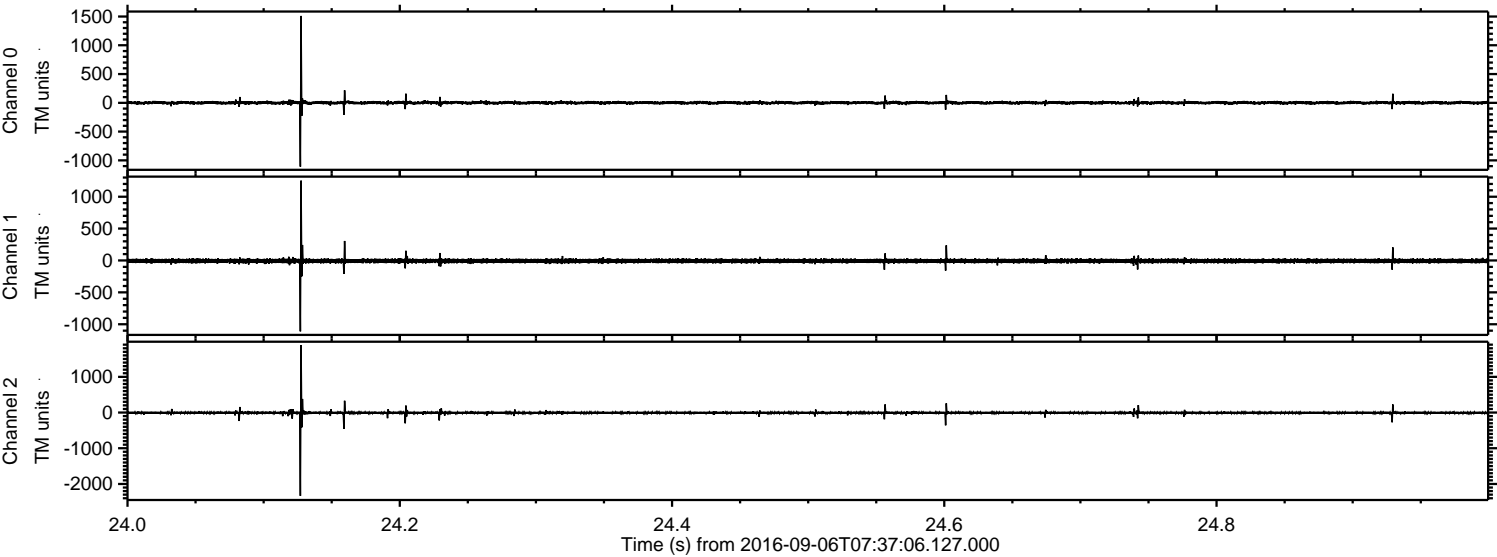


Channel 0
mn: -1373
mx: 1432
 μ : 1.4
 σ : 21.3

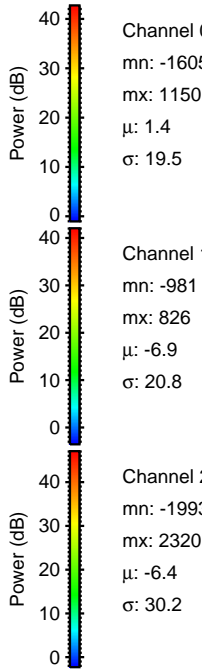
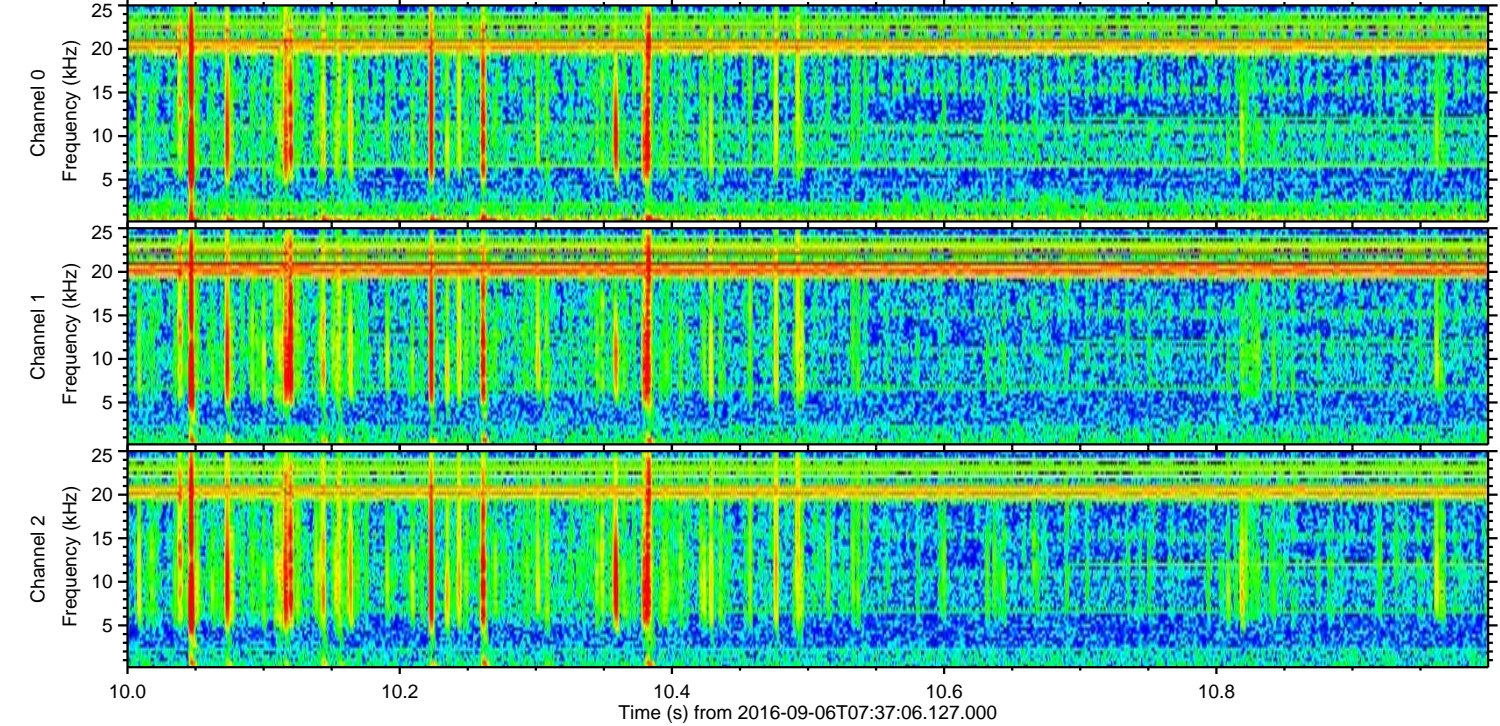
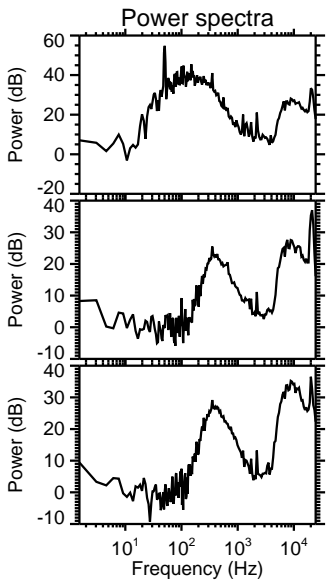
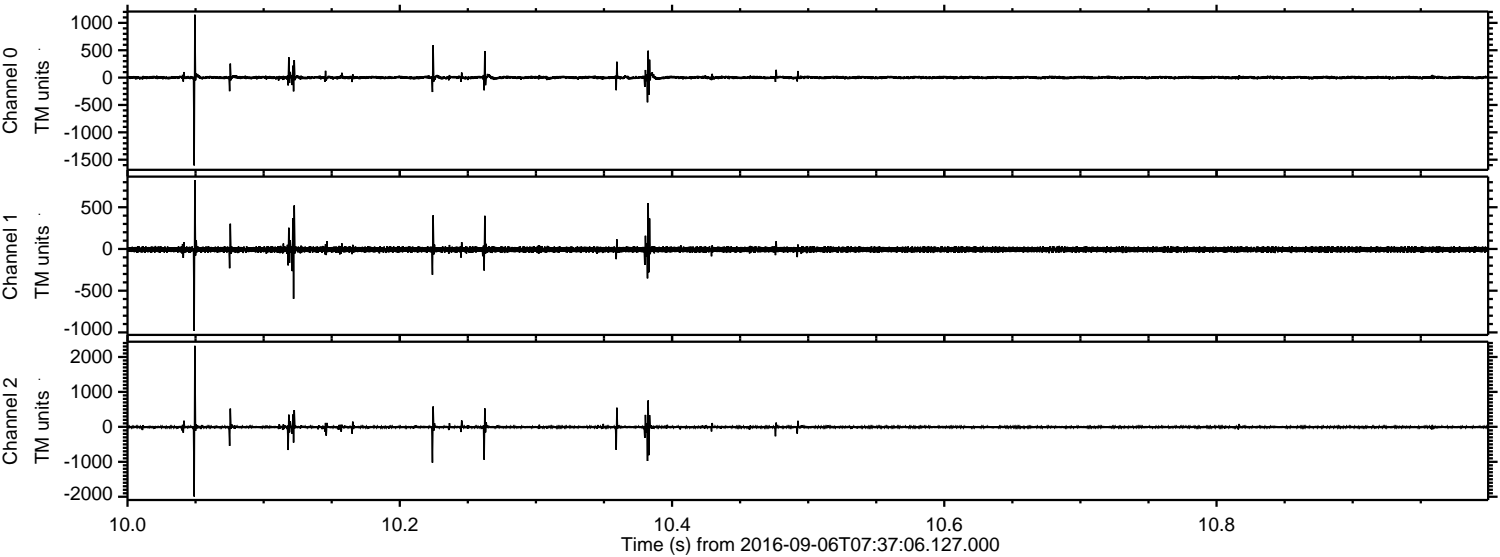
Channel 1
mn: -967
mx: 784
 μ : -6.7
 σ : 20.9

Channel 2
mn: -2155
mx: 2405
 μ : -6.3
 σ : 34.9

Processed Tue Sep 6 09:45:44 2016 by ELM ver.2012-10-06 from 001__elm20160906_073705__dat00.bin



Processed Tue Sep 6 09:45:45 2016 by ELM ver.2012-10-06 from 001__elm20160906_073705__dat00.bin



Processed Tue Sep 6 09:45:46 2016 by ELM ver.2012-10-06 from 001__elm20160906_073705__dat00.bin

