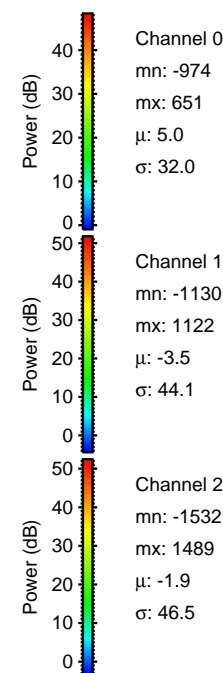
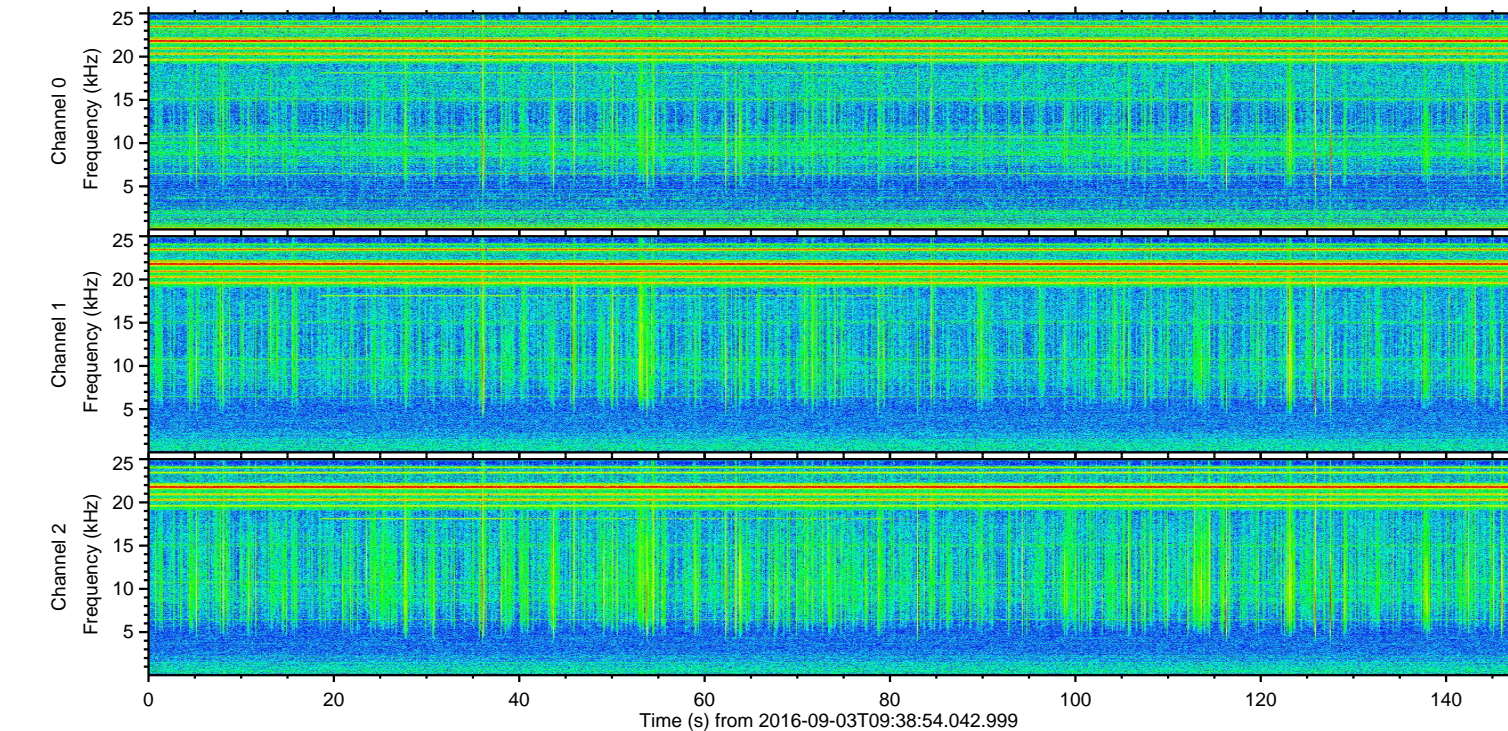
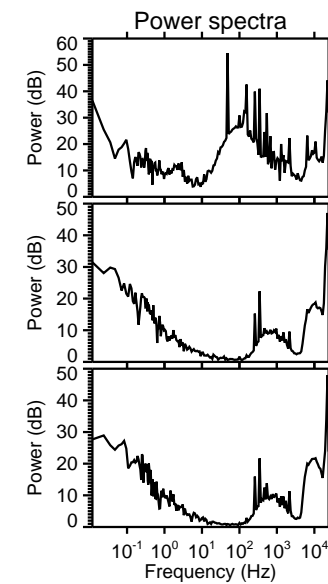
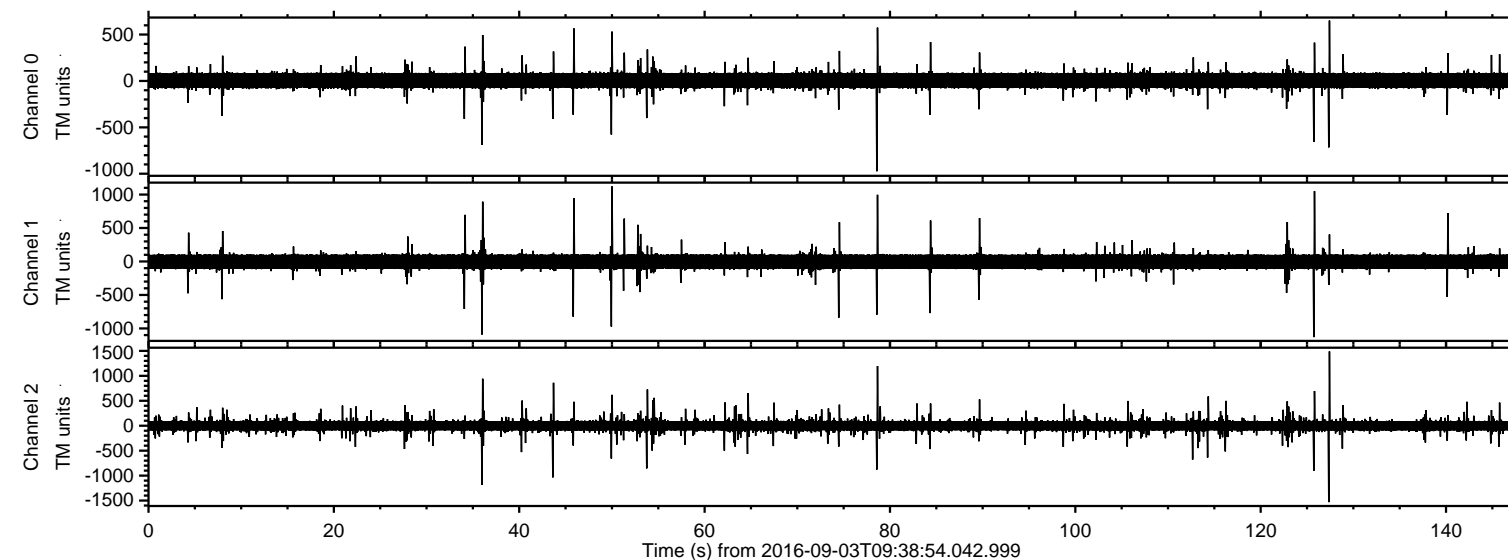


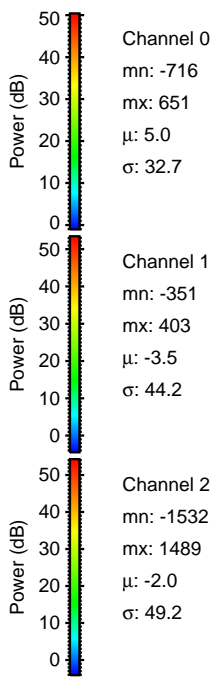
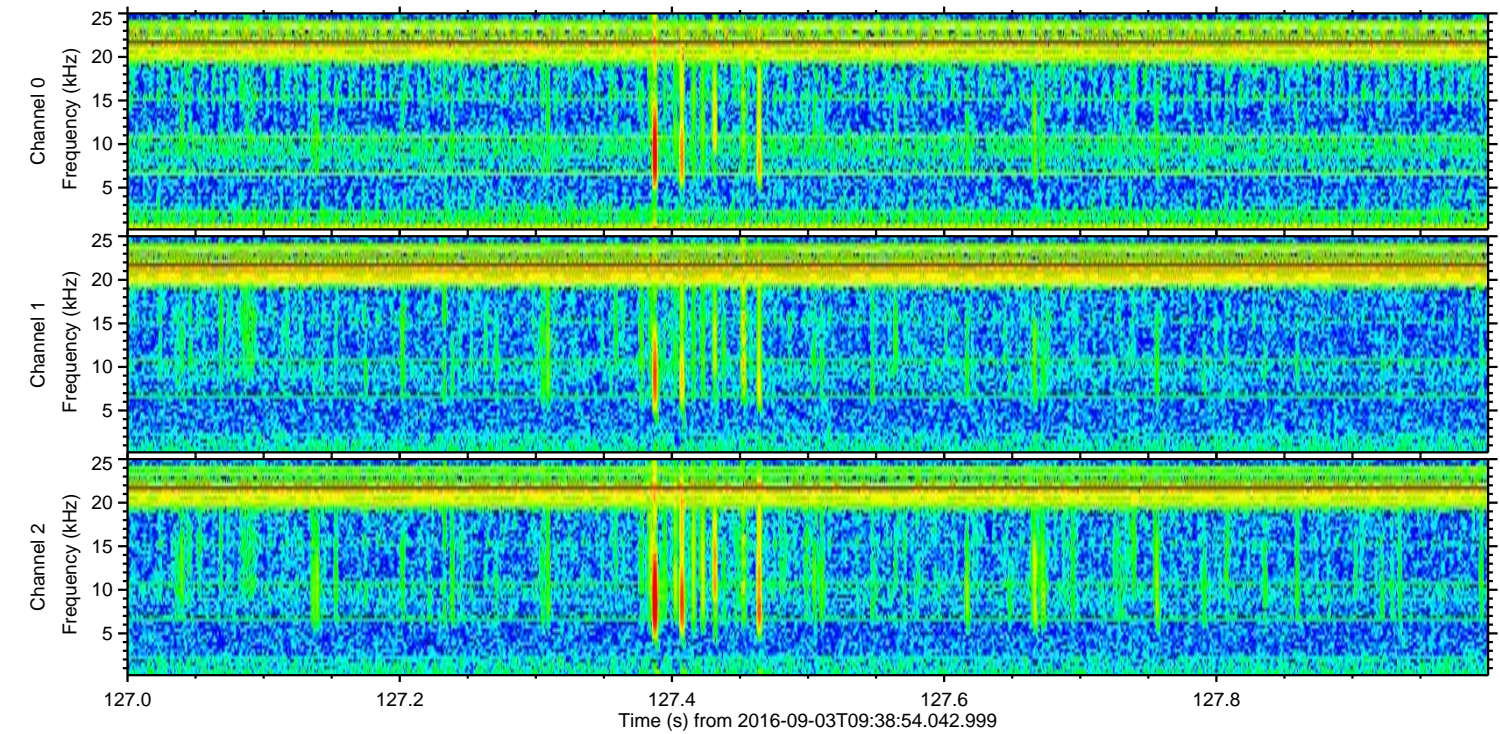
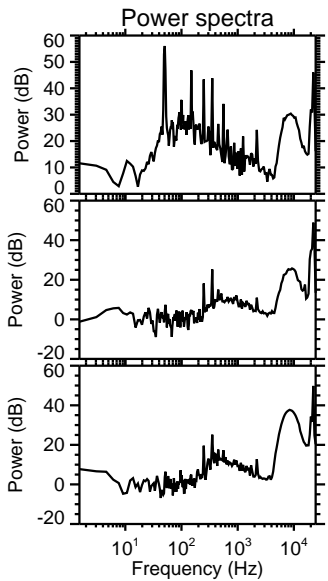
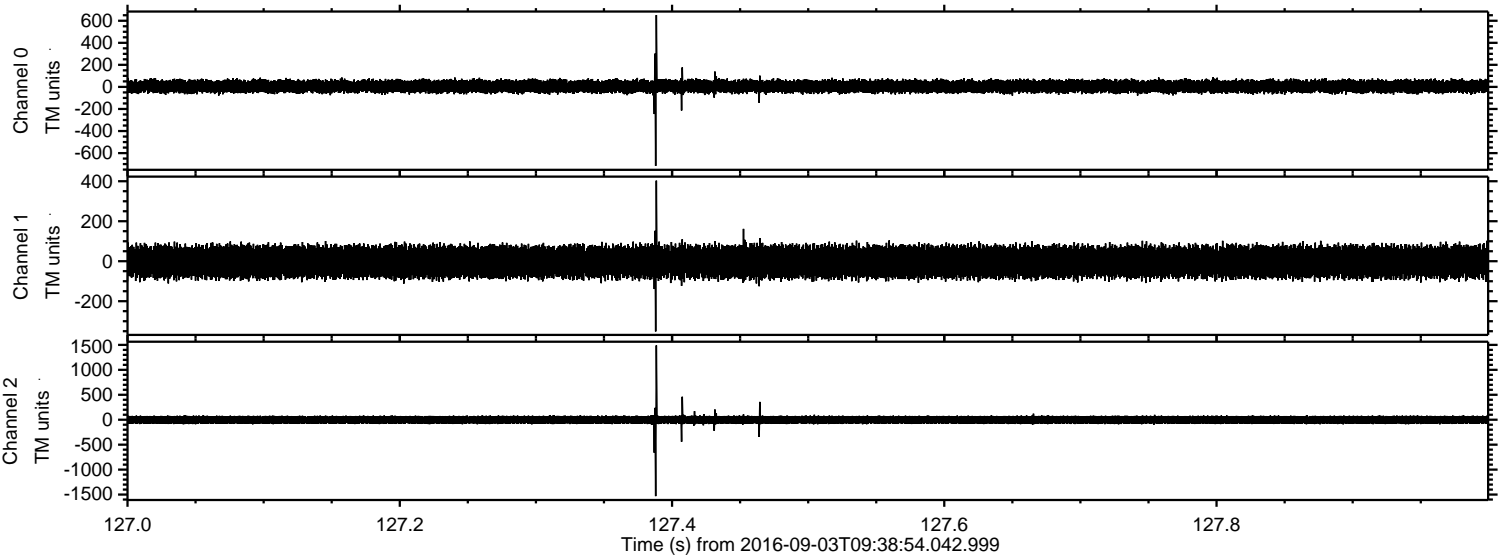
ELMAVAN 3D WAVEFORMS (Measured data sampled at 50 kHz) 51000 packets of 144 samples from 2016-09-03T09:38:54.042.999.

Processed Sat Sep 3 11:46:23 2016 by ELM ver.2012-10-06 from 001__elm20160903_093853__dat00.bin

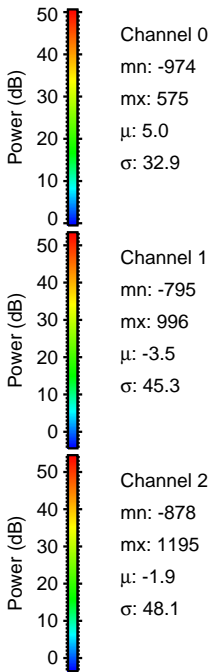
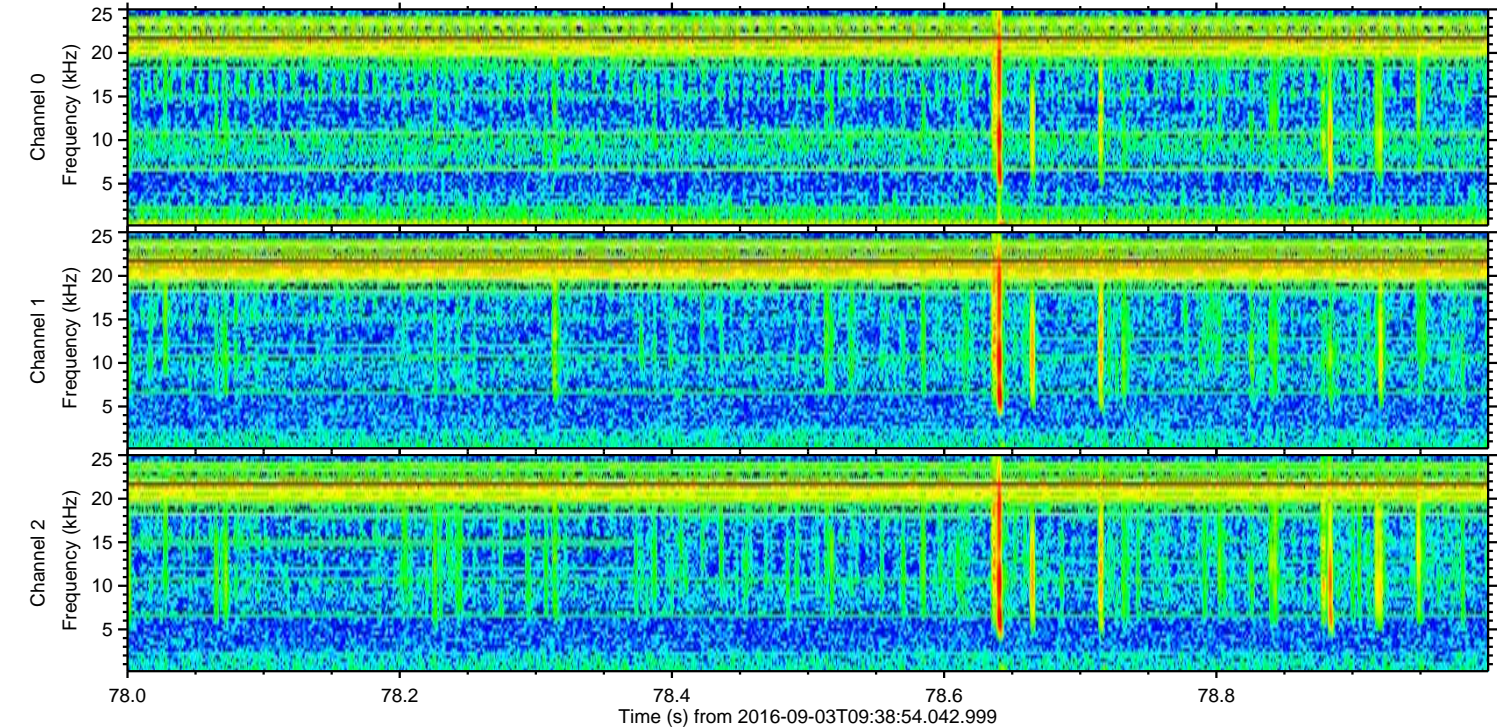
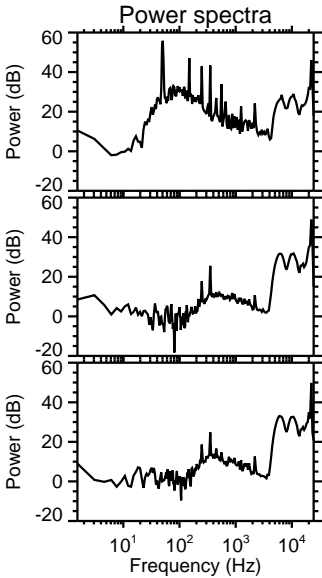
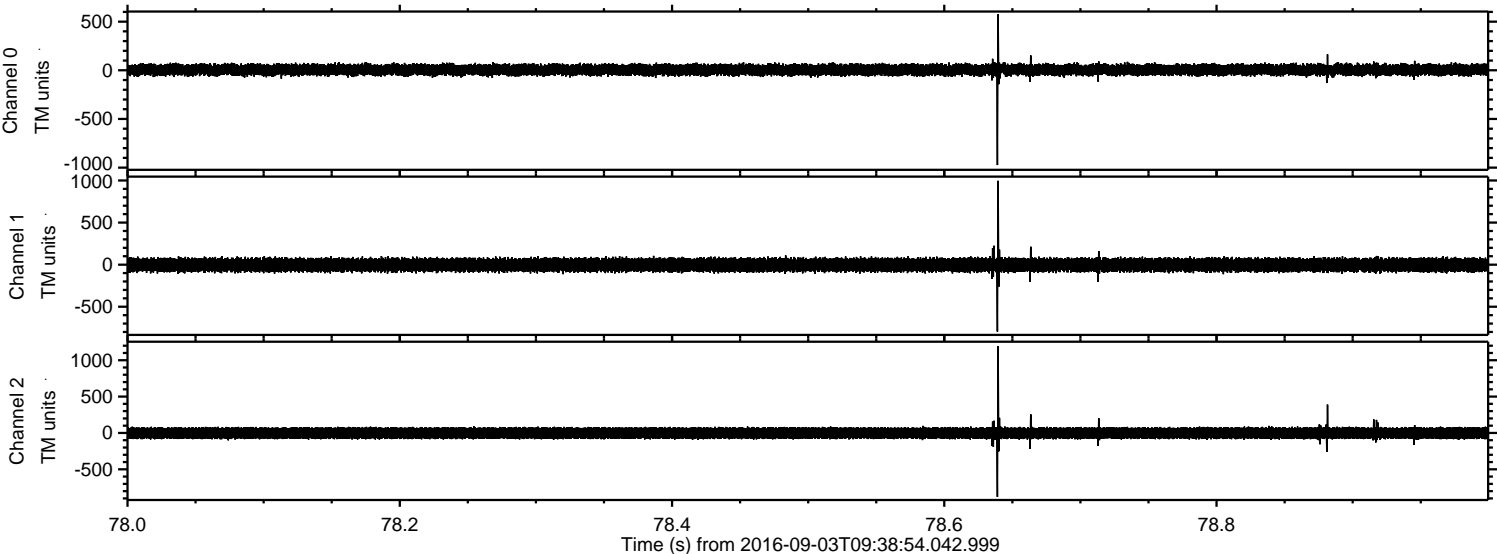


ELMAVAN 3D WAVEFORMS (Measured data sampled at 50 kHz) 51000 packets of 144 samples from 2016-09-03T09:38:54.042.999. Part 128/147

Processed Sat Sep 3 11:46:35 2016 by ELM ver.2012-10-06 from 001__elm20160903_093853__dat00.bin

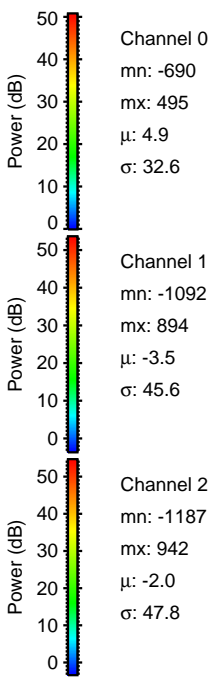
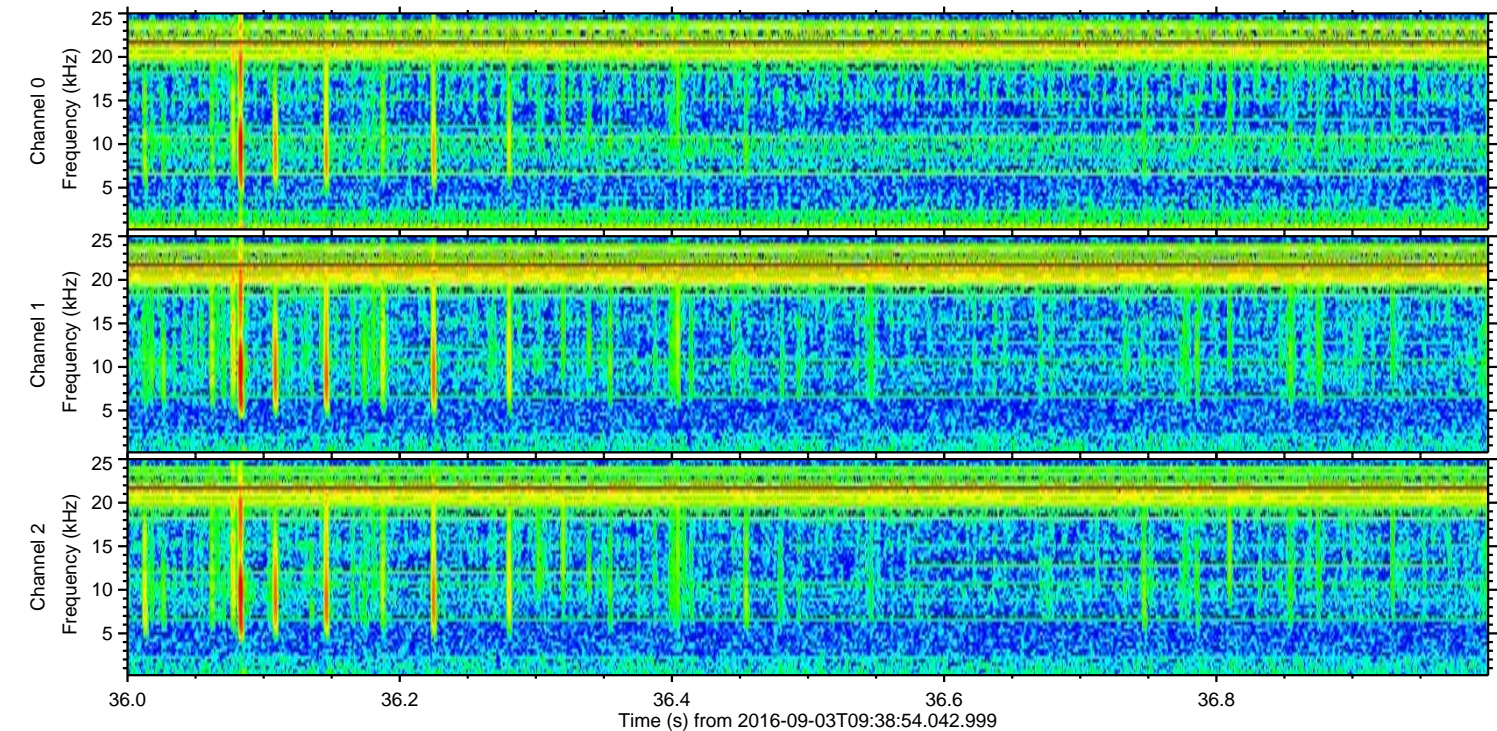
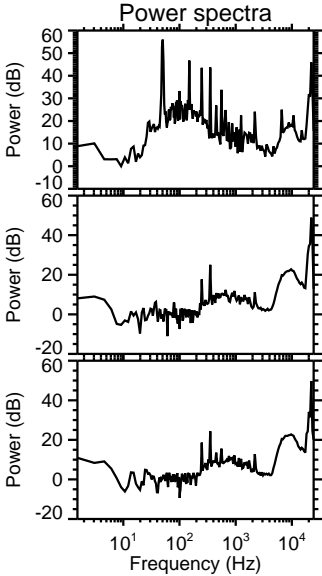
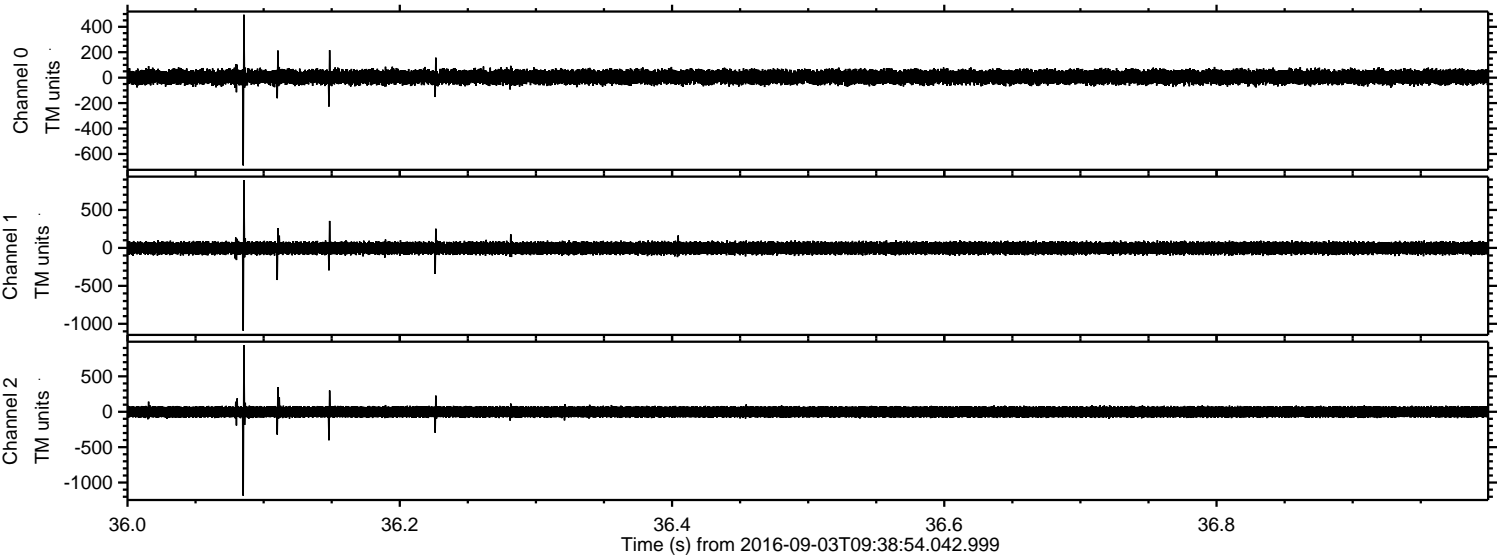


Processed Sat Sep 3 11:46:36 2016 by ELM ver.2012-10-06 from 001__elm20160903_093853__dat00.bin



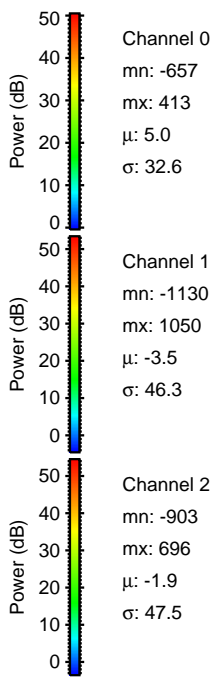
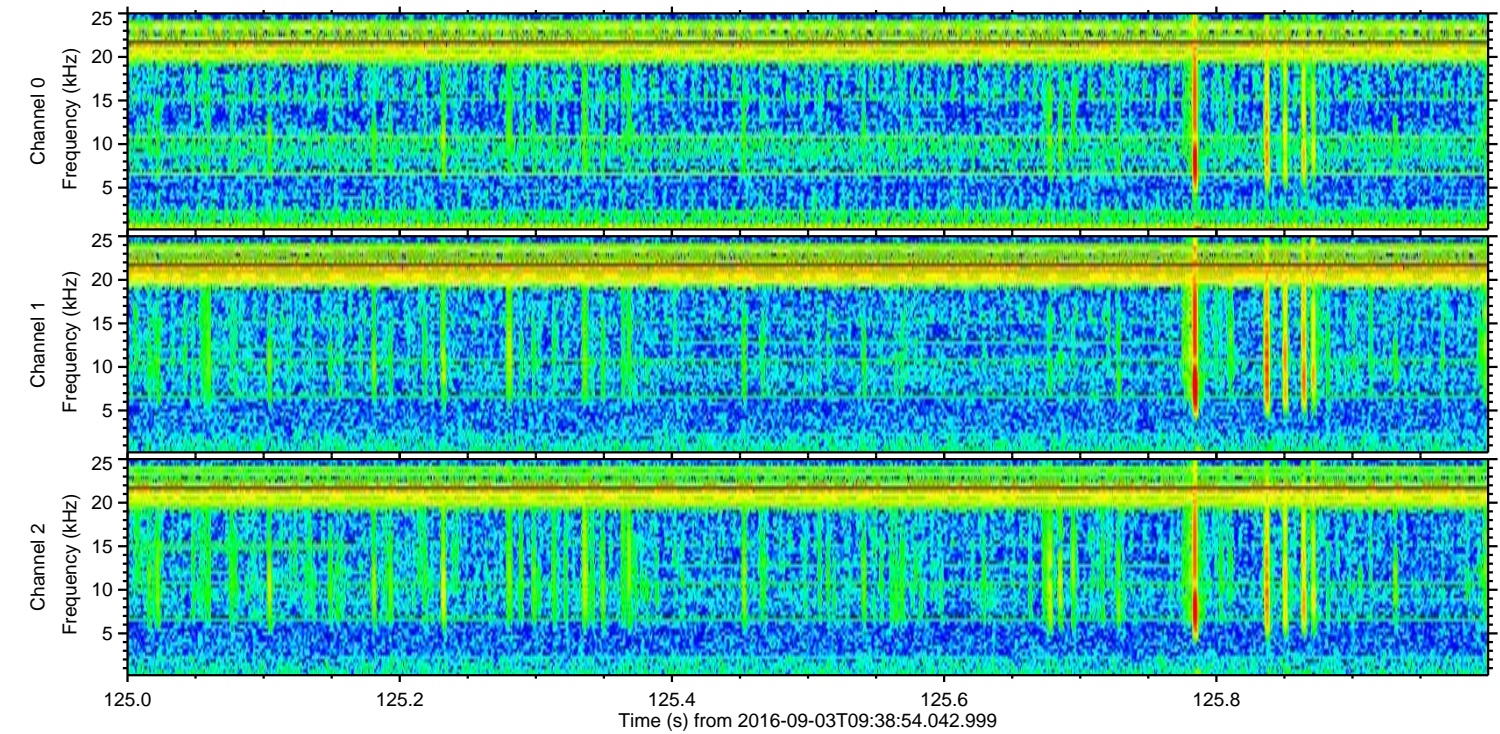
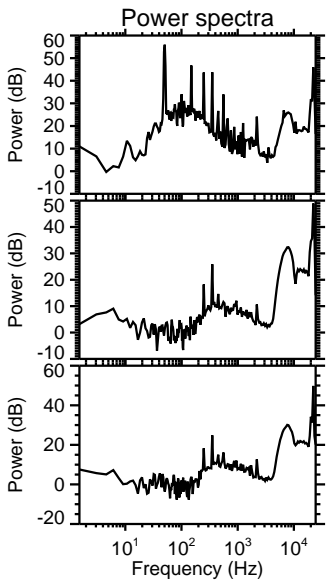
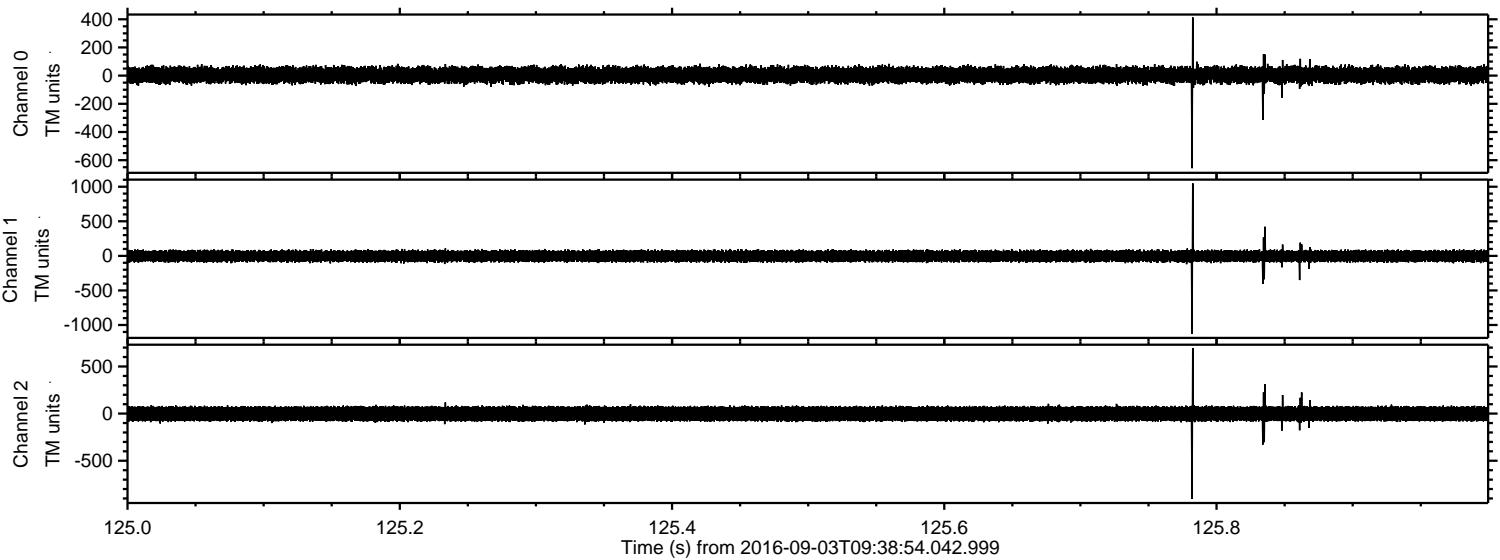
ELMAVAN 3D WAVEFORMS (Measured data sampled at 50 kHz) 51000 packets of 144 samples from 2016-09-03T09:38:54.042.999. Part 37/147

Processed Sat Sep 3 11:46:37 2016 by ELM ver.2012-10-06 from 001__elm20160903_093853__dat00.bin

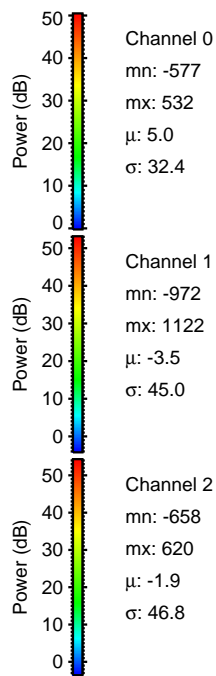
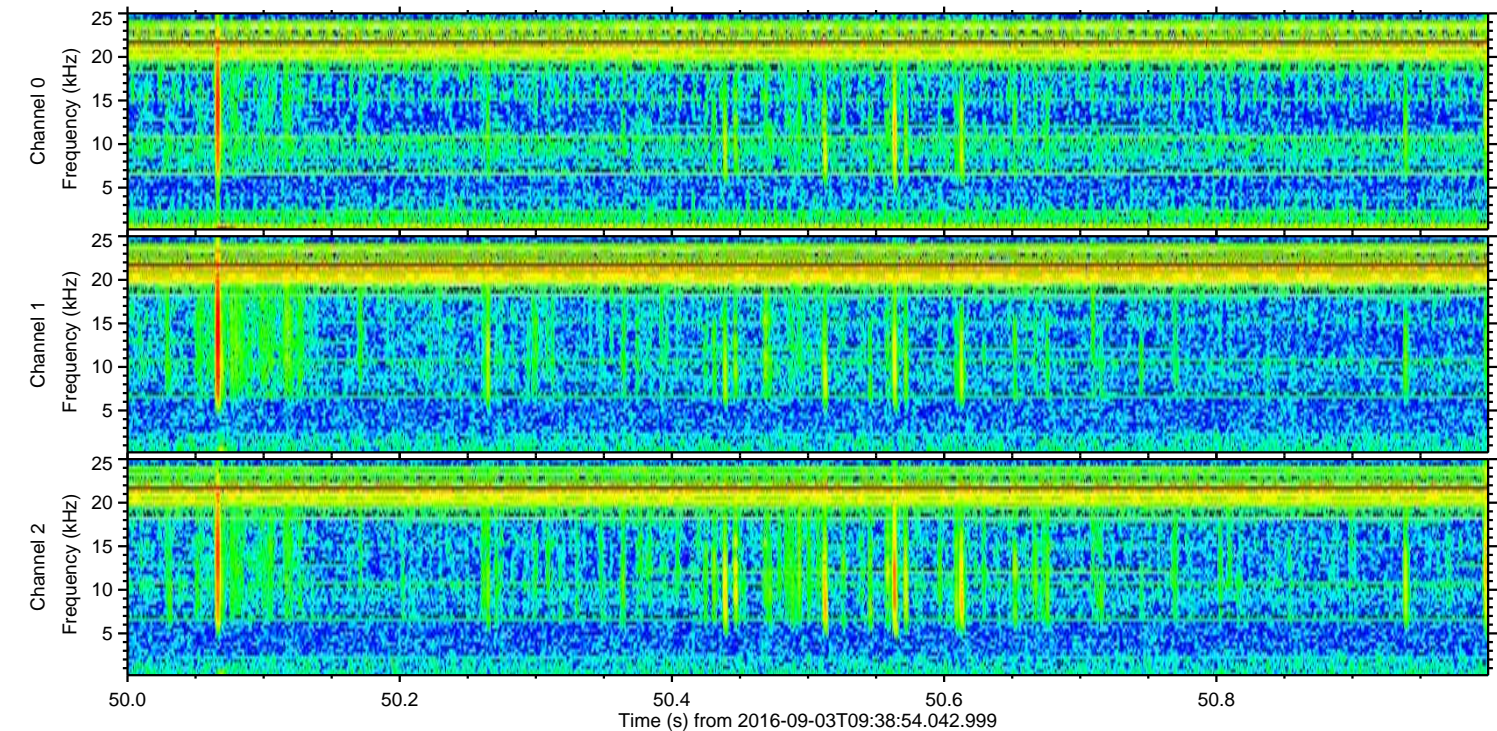
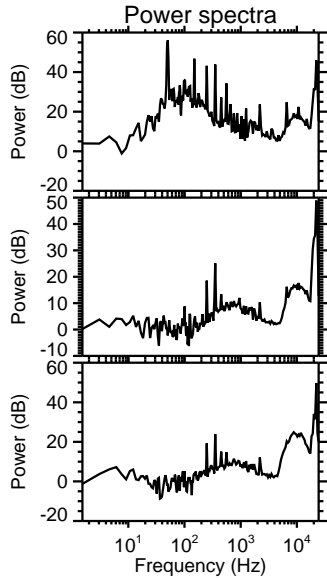
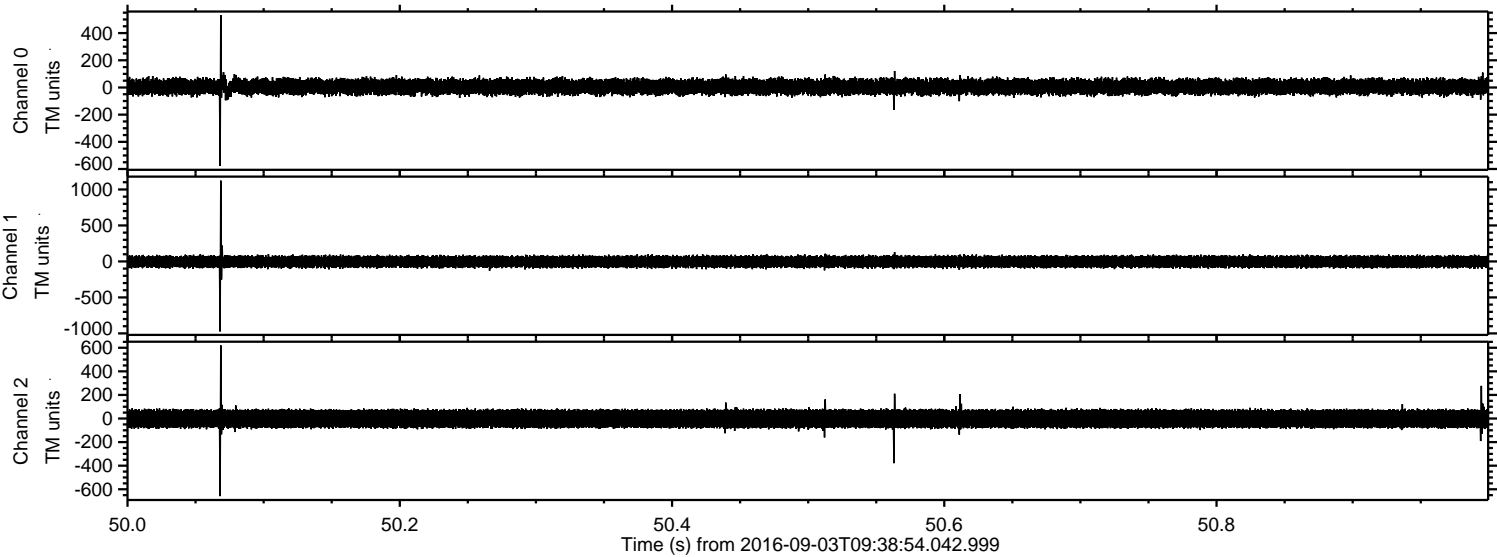


ELMAVAN 3D WAVEFORMS (Measured data sampled at 50 kHz) 51000 packets of 144 samples from 2016-09-03T09:38:54.042.999. Part 126/147

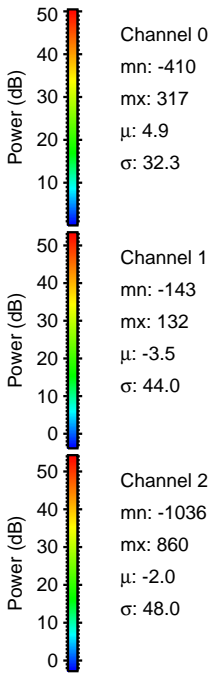
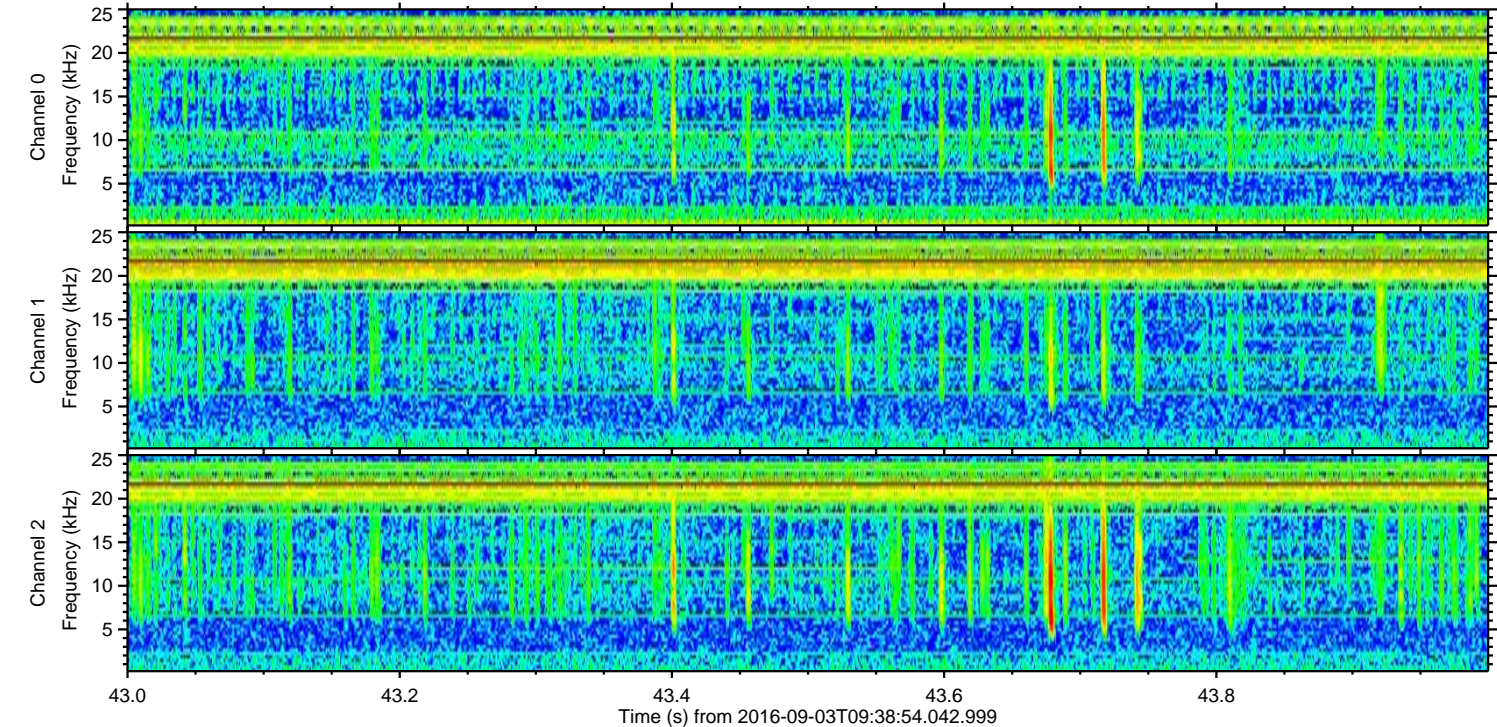
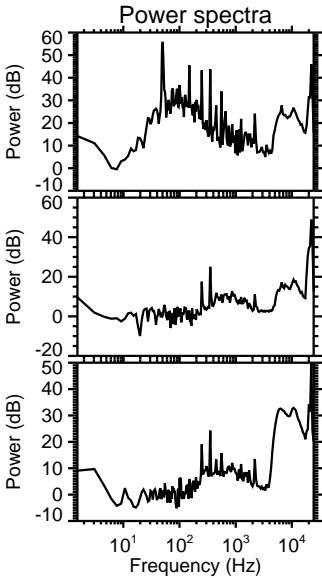
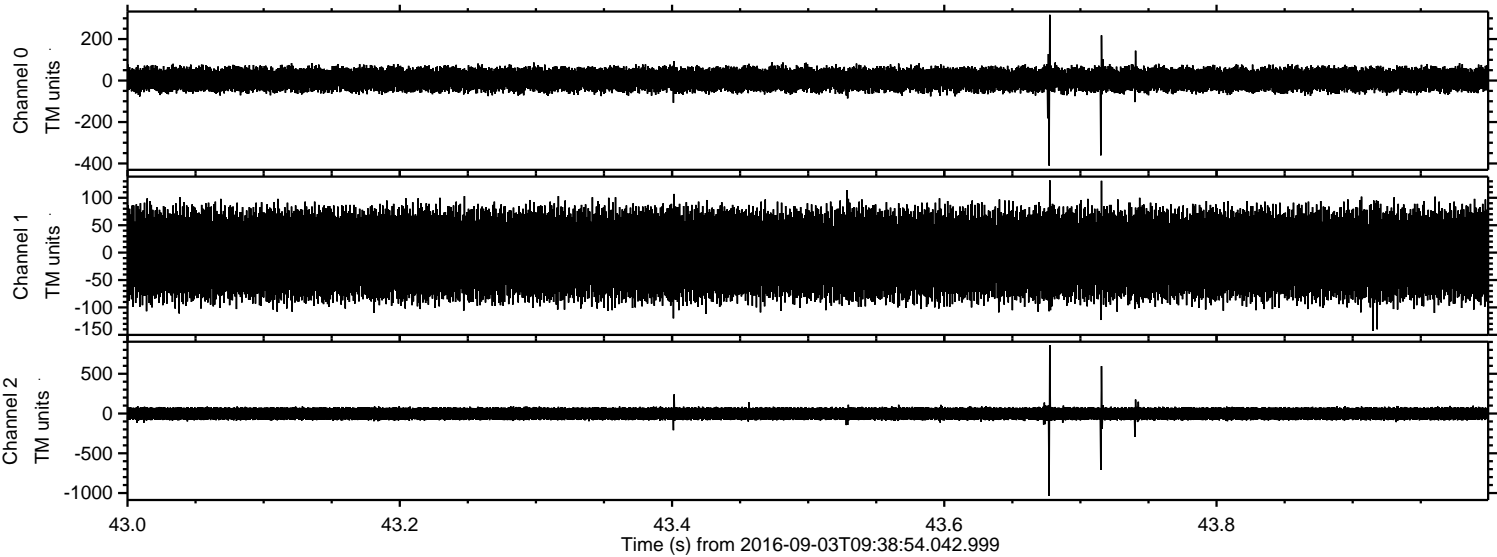
Processed Sat Sep 3 11:46:38 2016 by ELM ver.2012-10-06 from 001__elm20160903_093853__dat00.bin



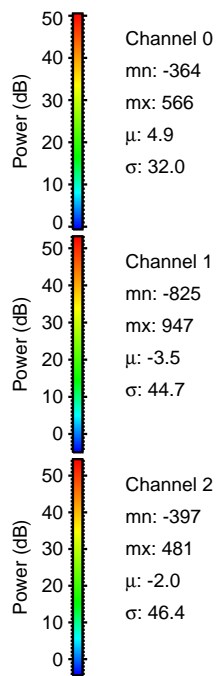
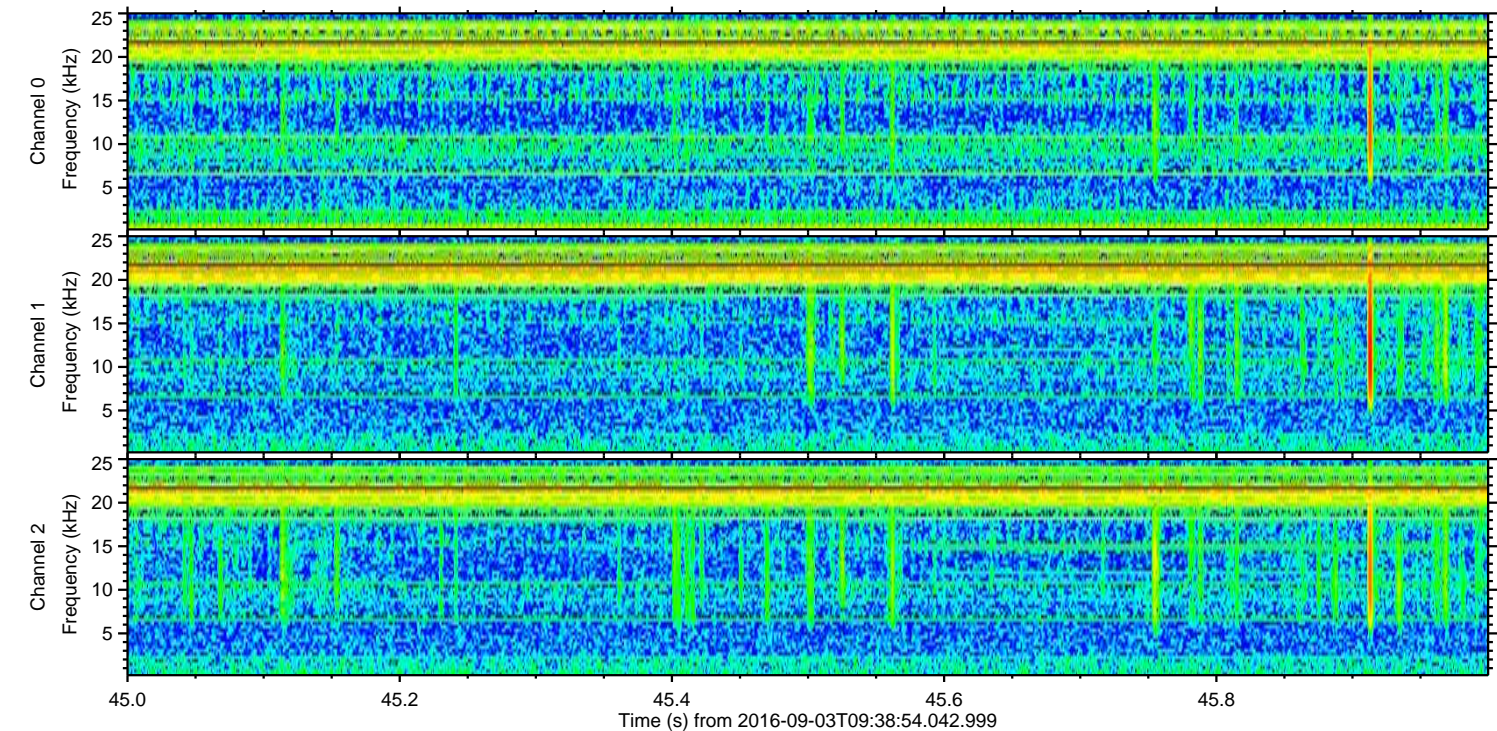
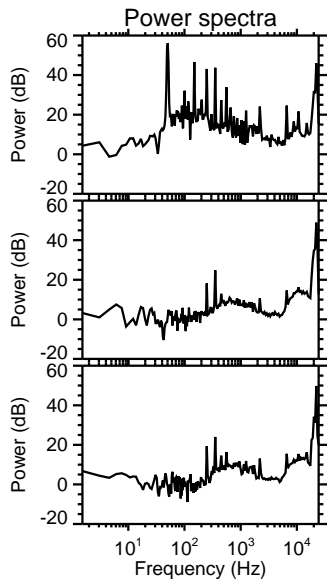
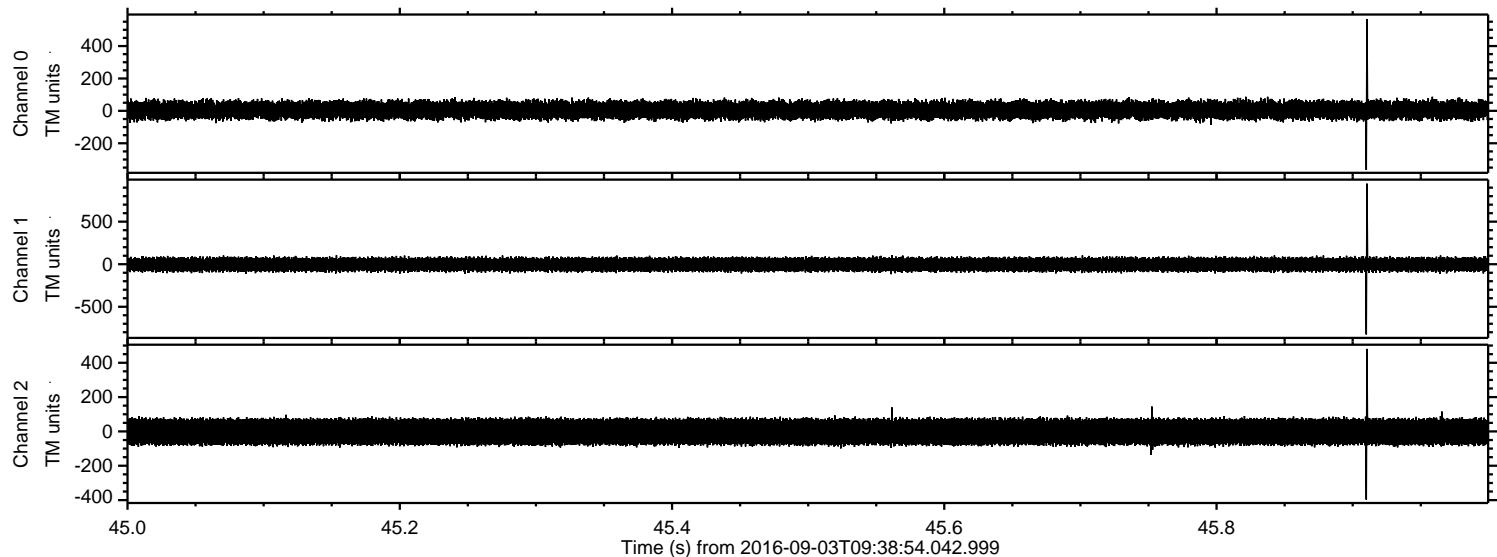
Processed Sat Sep 3 11:46:39 2016 by ELM ver.2012-10-06 from 001__elm20160903_093853__dat00.bin



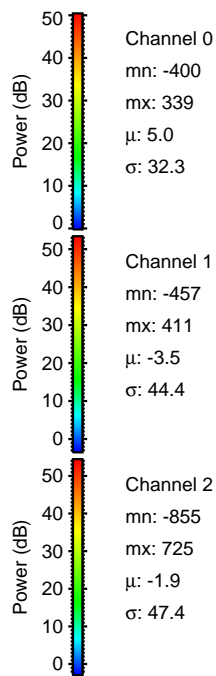
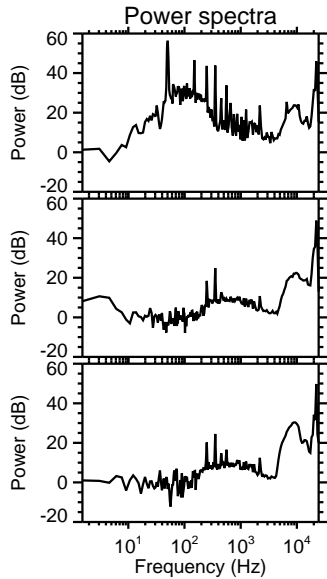
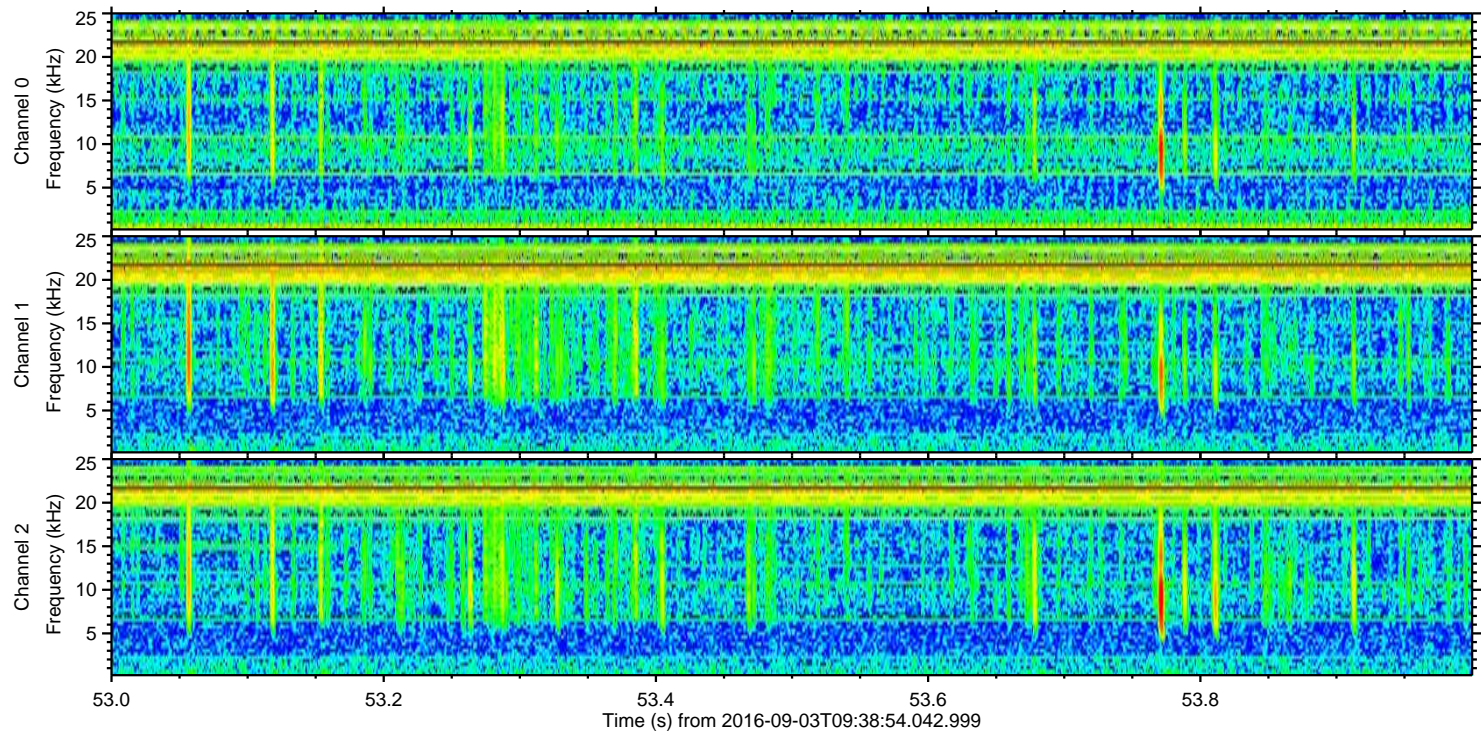
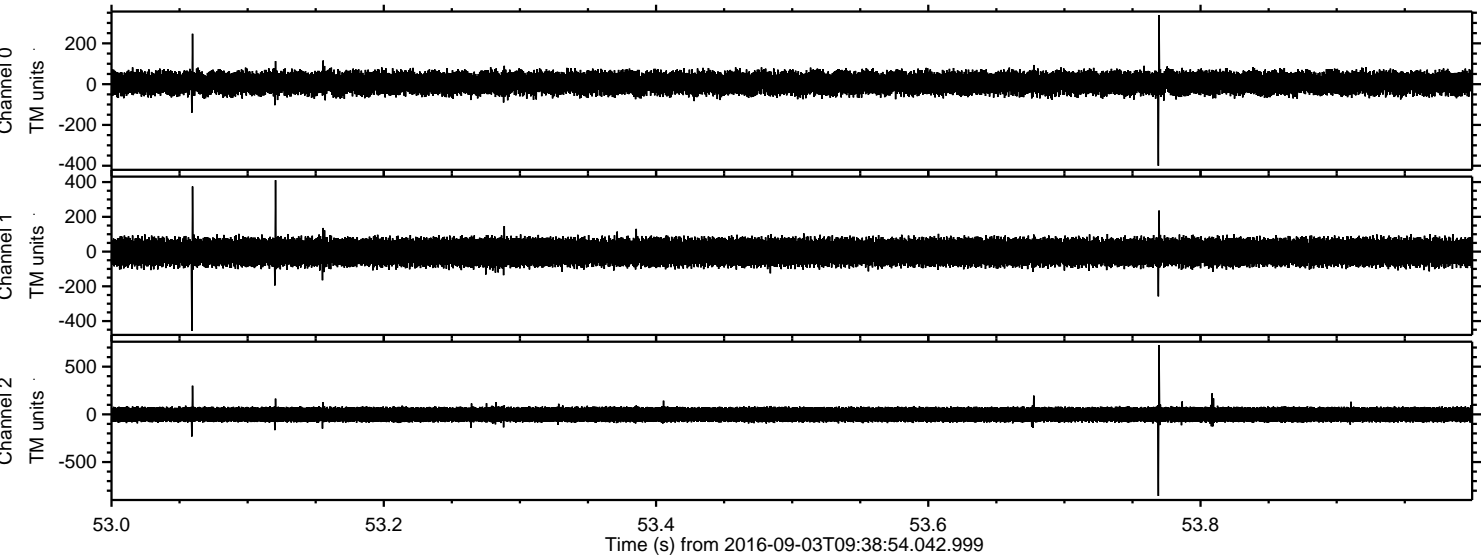
Processed Sat Sep 3 11:46:40 2016 by ELM ver.2012-10-06 from 001__elm20160903_093853__dat00.bin



Processed Sat Sep 3 11:46:40 2016 by ELM ver.2012-10-06 from 001__elm20160903_093853__dat00.bin



Processed Sat Sep 3 11:46:41 2016 by ELM ver.2012-10-06 from 001__elm20160903_093853__dat00.bin

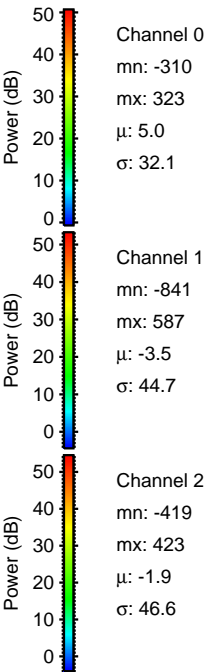
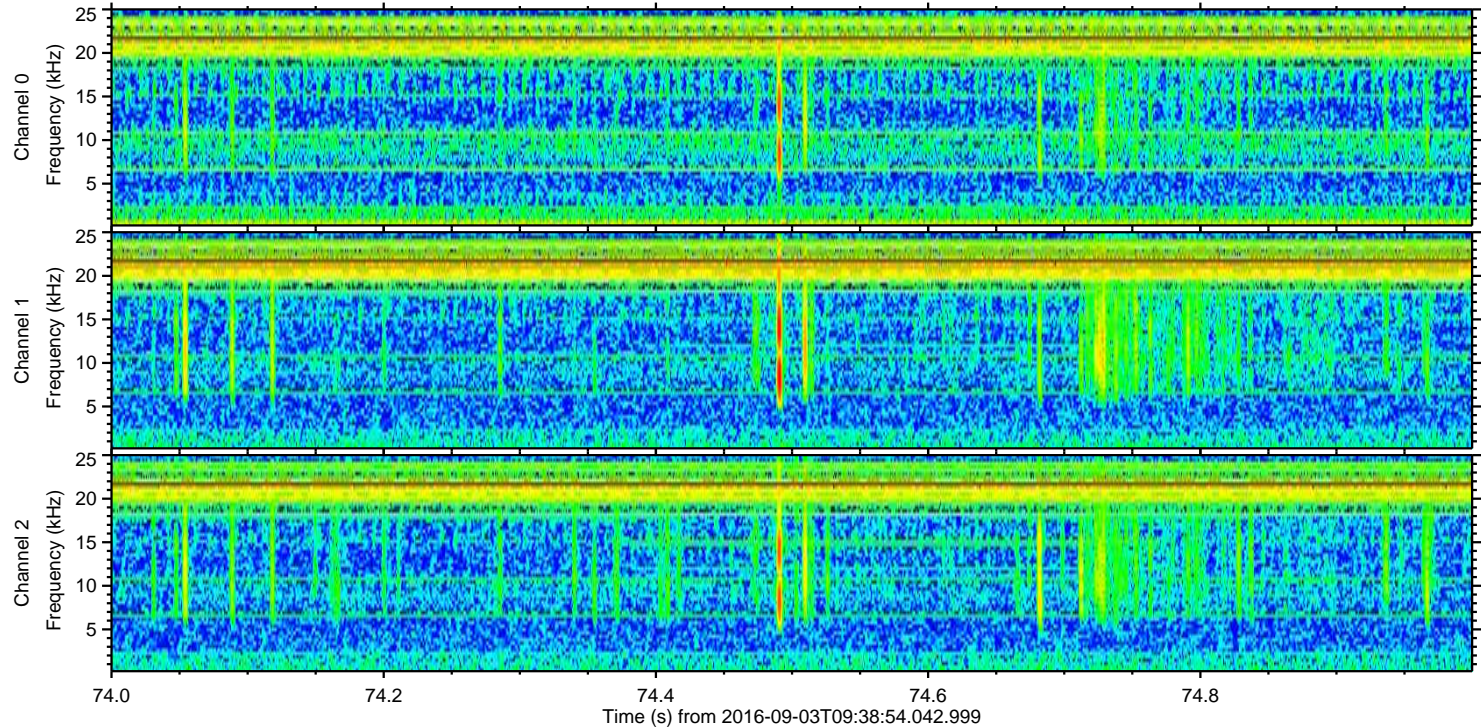
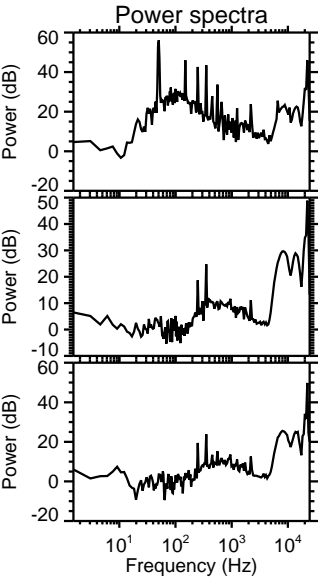
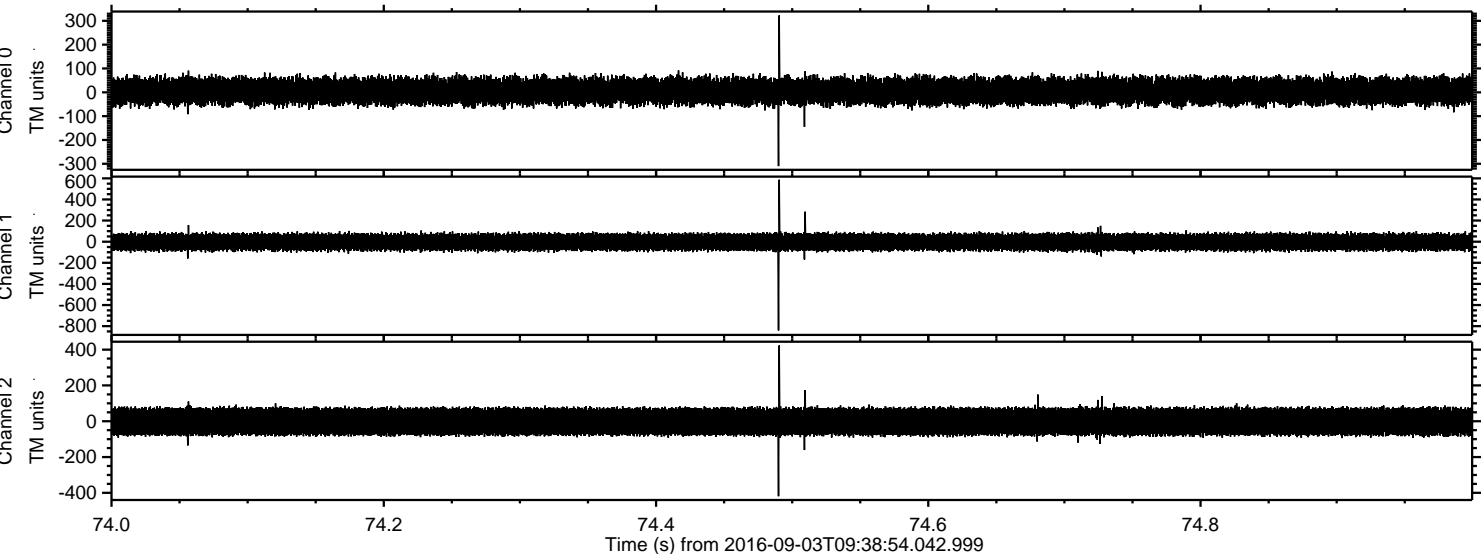


Channel 0
mn: -400
mx: 339
 μ : 5.0
 σ : 32.3

Channel 1
mn: -457
mx: 411
 μ : -3.5
 σ : 44.4

Channel 2
mn: -855
mx: 725
 μ : -1.9
 σ : 47.4

Processed Sat Sep 3 11:46:42 2016 by ELM ver.2012-10-06 from 001__elm20160903_093853__dat00.bin



Processed Sat Sep 3 11:46:43 2016 by ELM ver.2012-10-06 from 001__elm20160903_093853__dat00.bin

