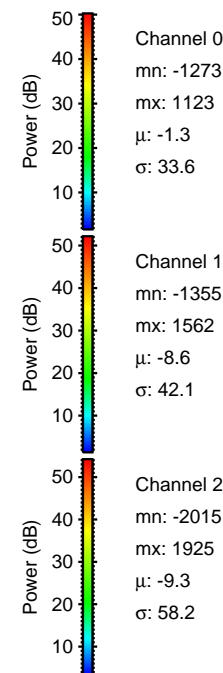
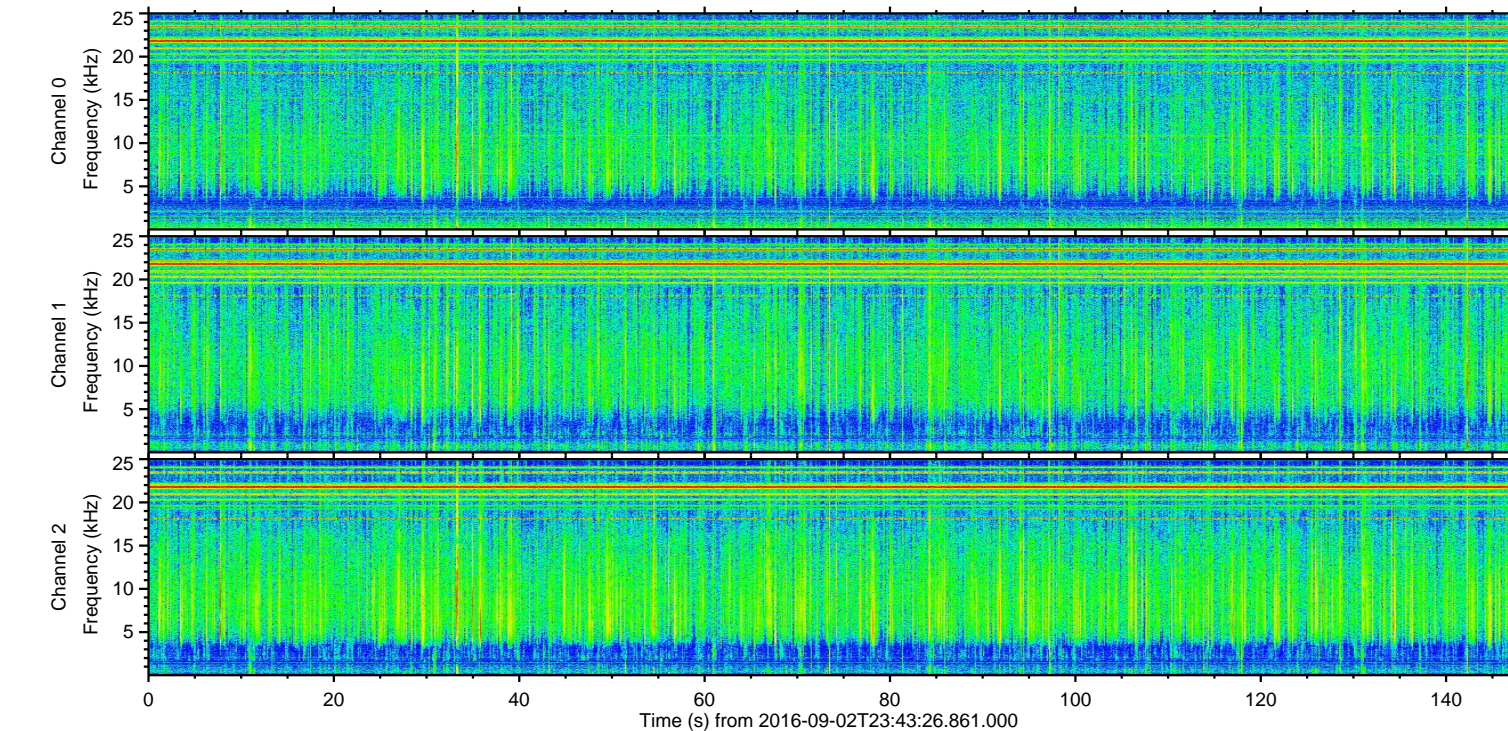
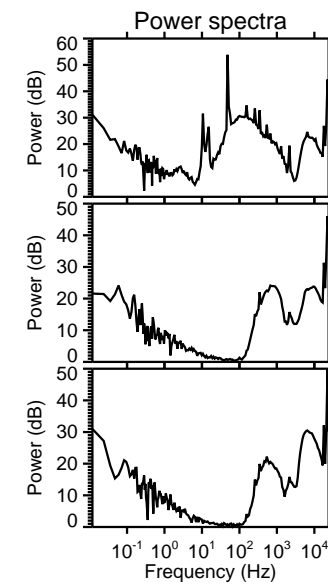
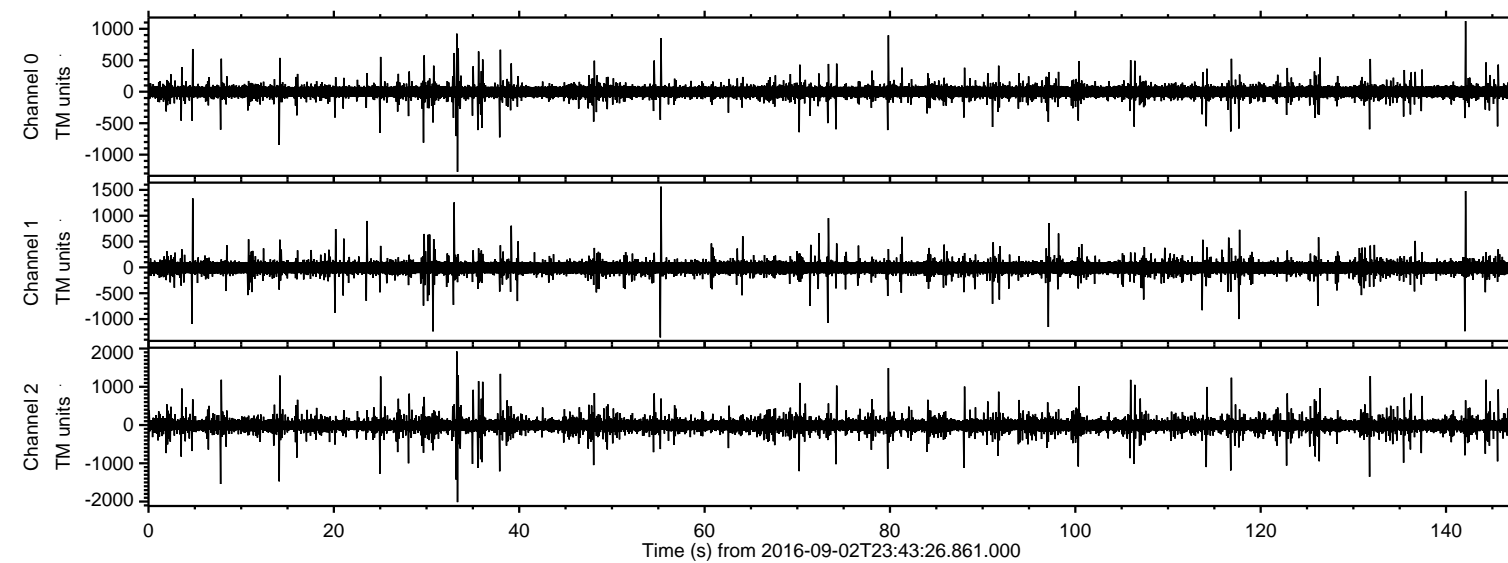
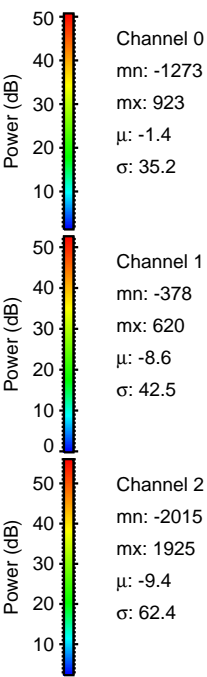
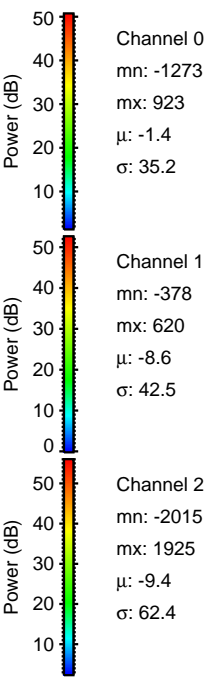
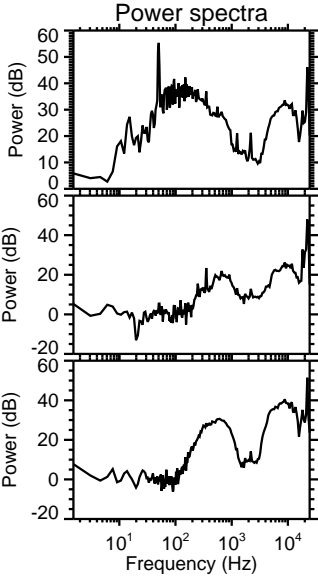
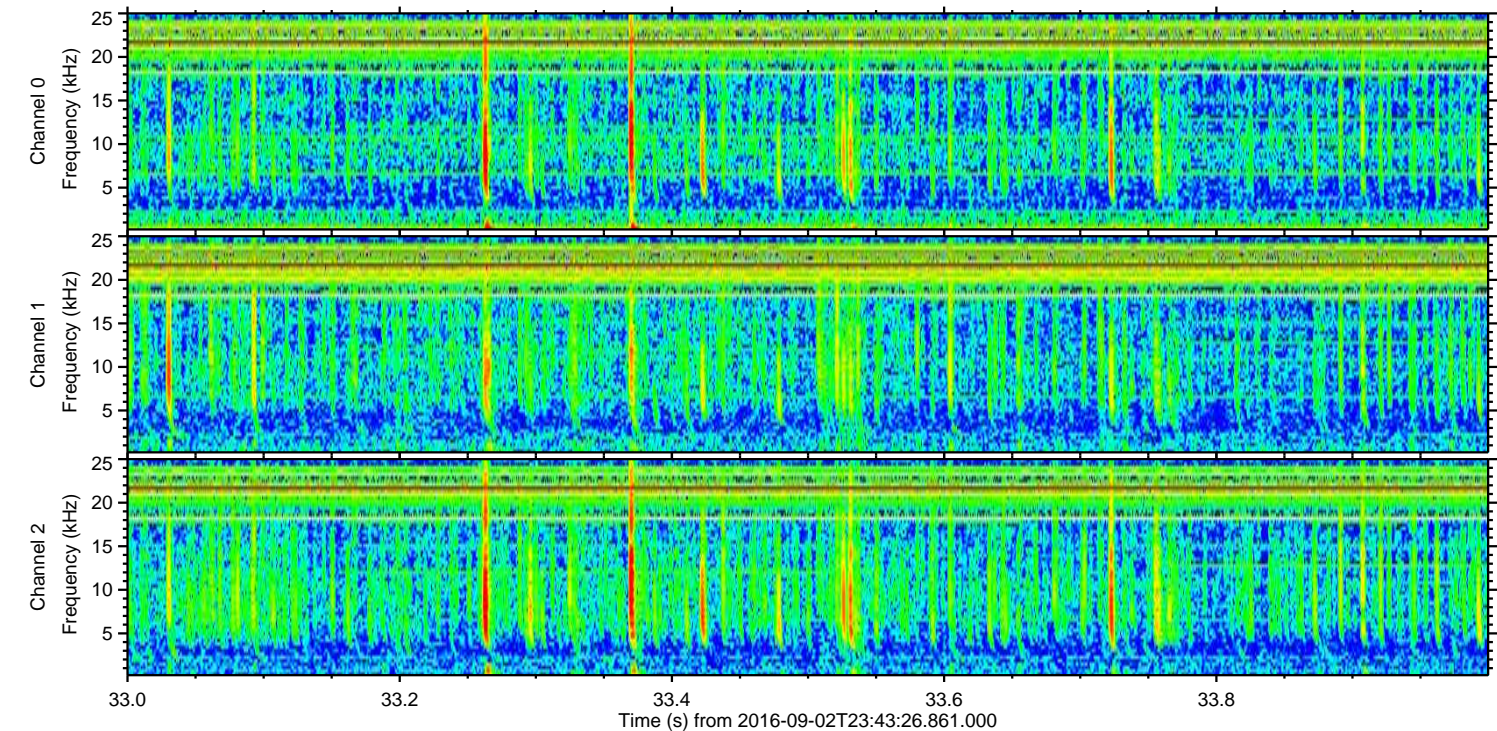
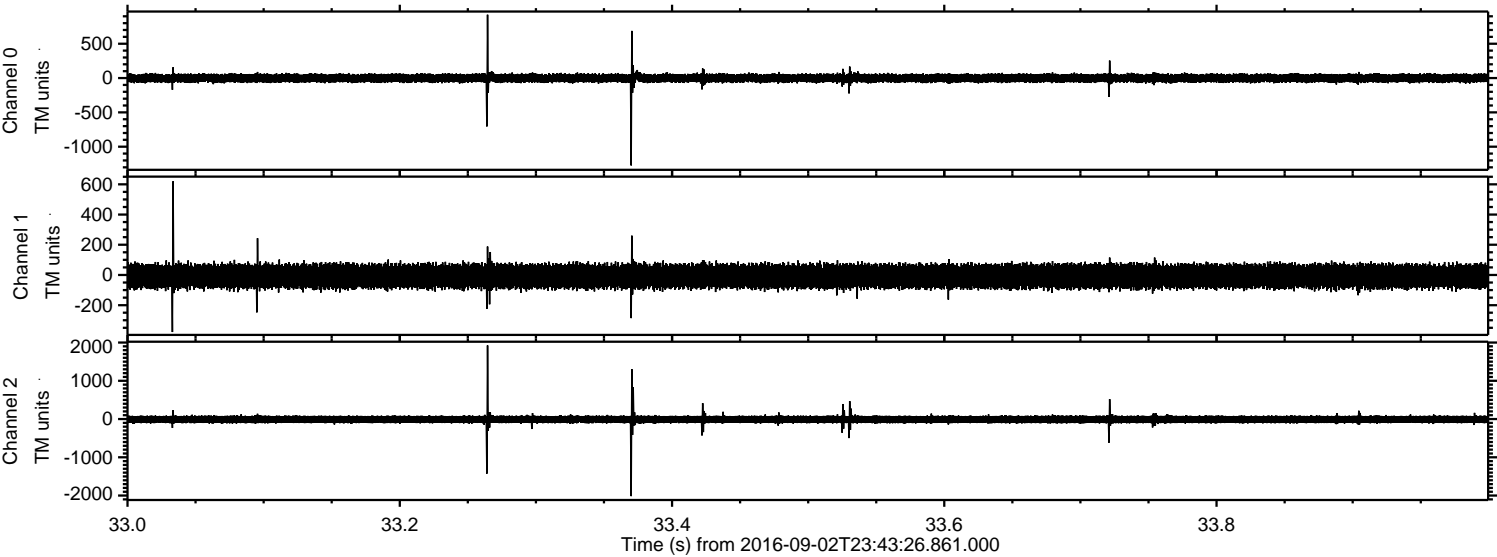


ELMAVAN 3D WAVEFORMS (Measured data sampled at 50 kHz) 51000 packets of 144 samples from 2016-09-02T23:43:26.861.000.

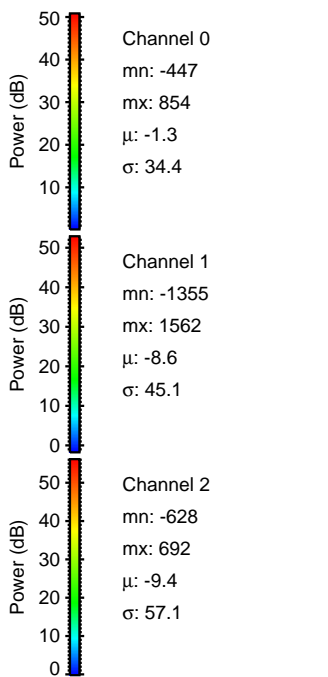
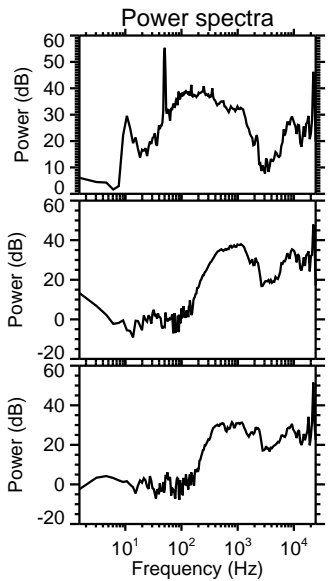
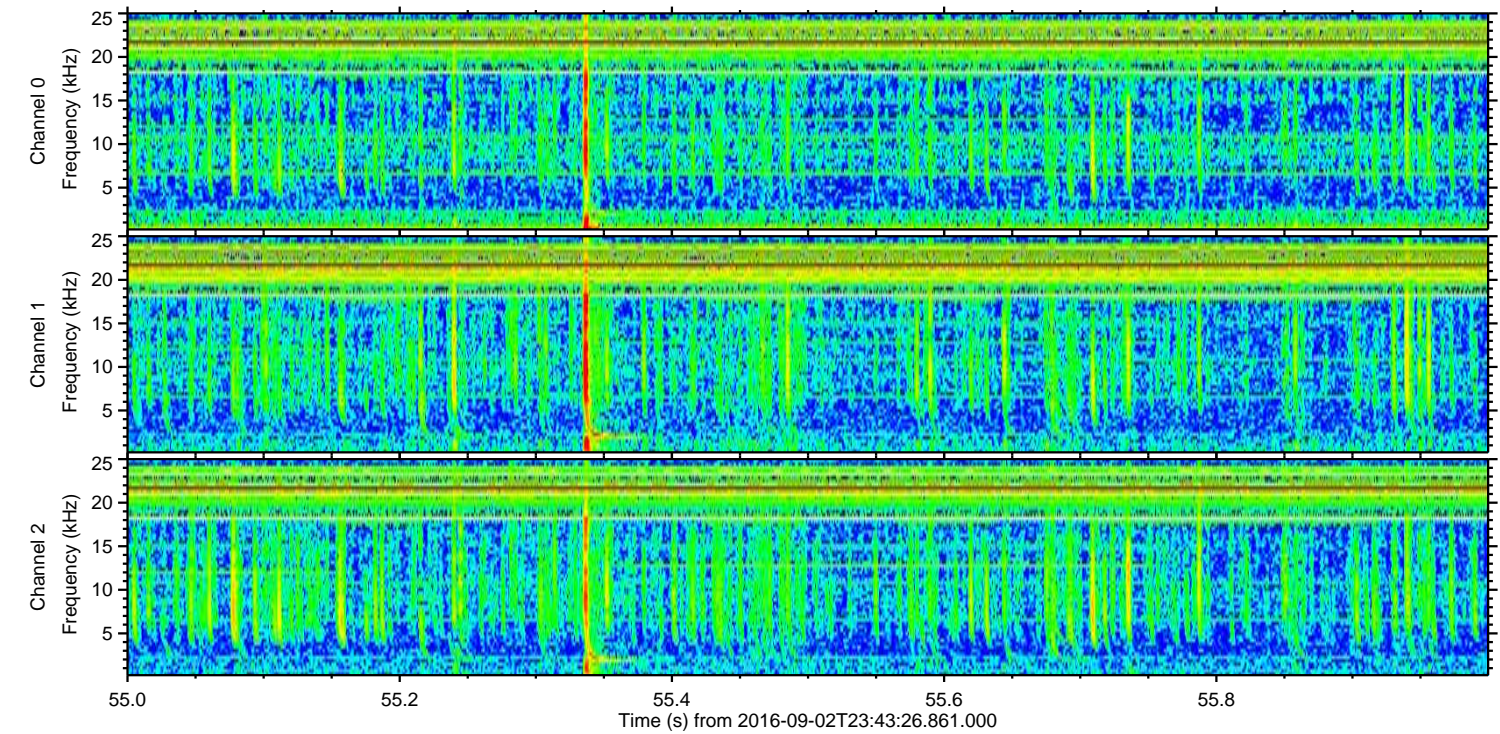
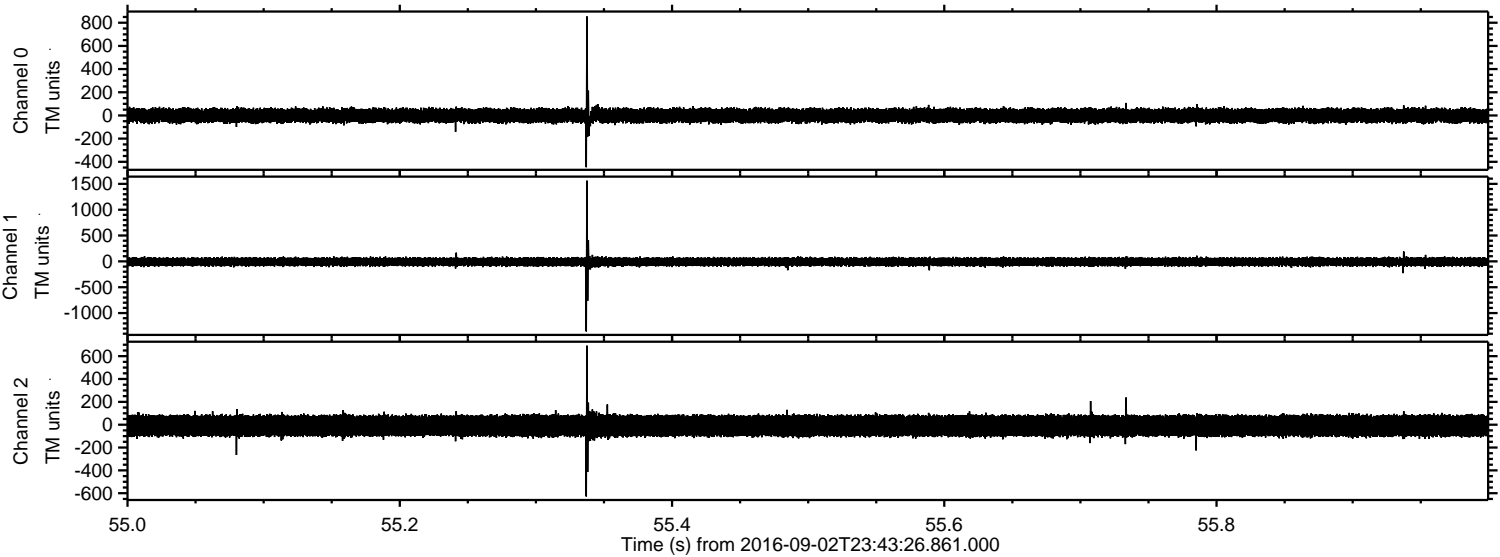
Processed Sat Sep 3 01:50:42 2016 by ELM ver.2012-10-06 from 001__elm20160902_234325__dat00.bin



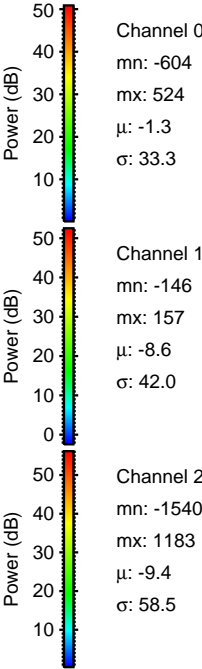
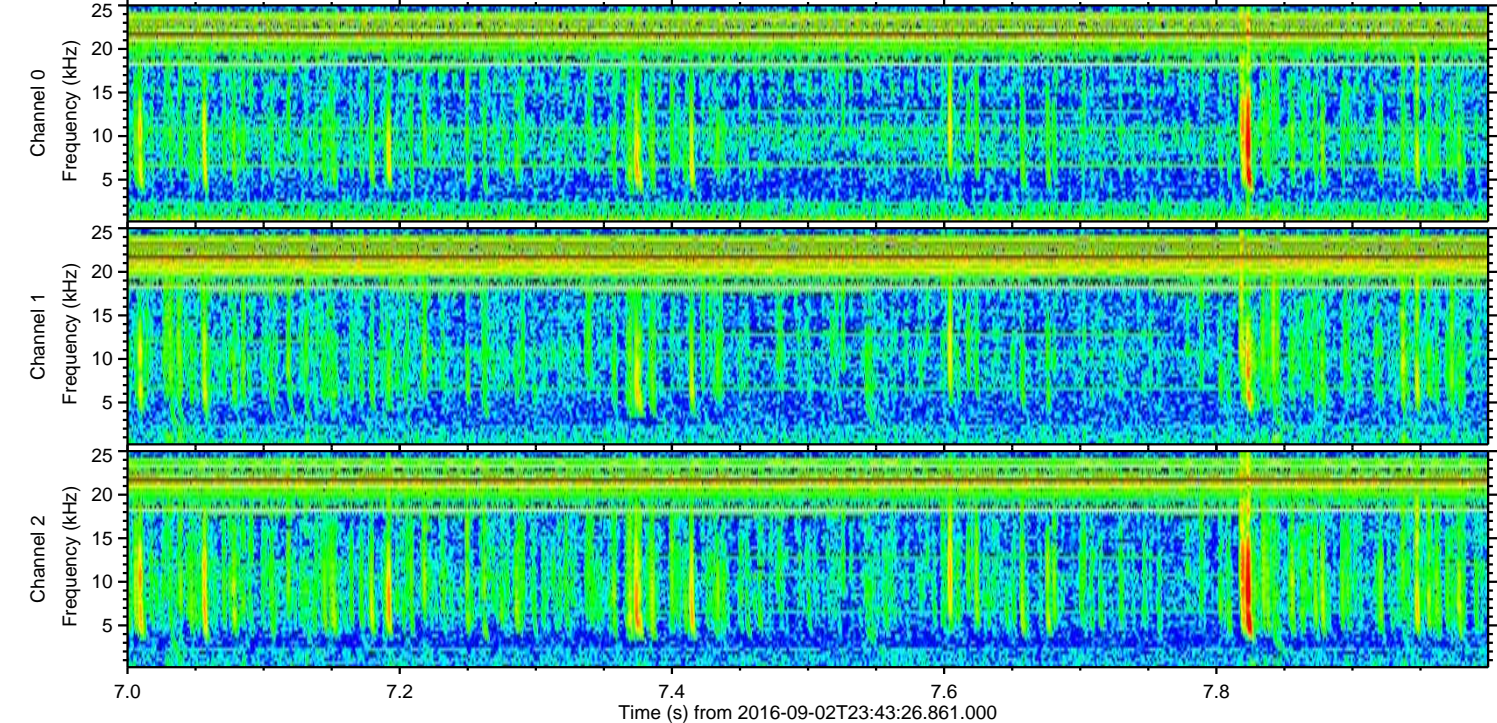
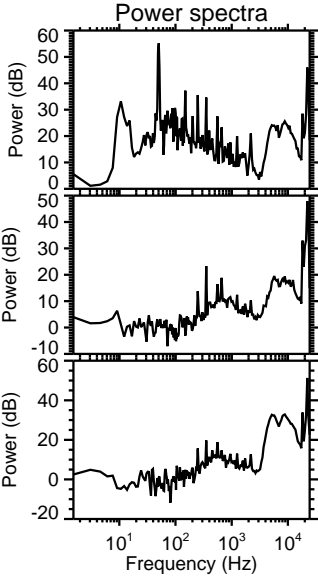
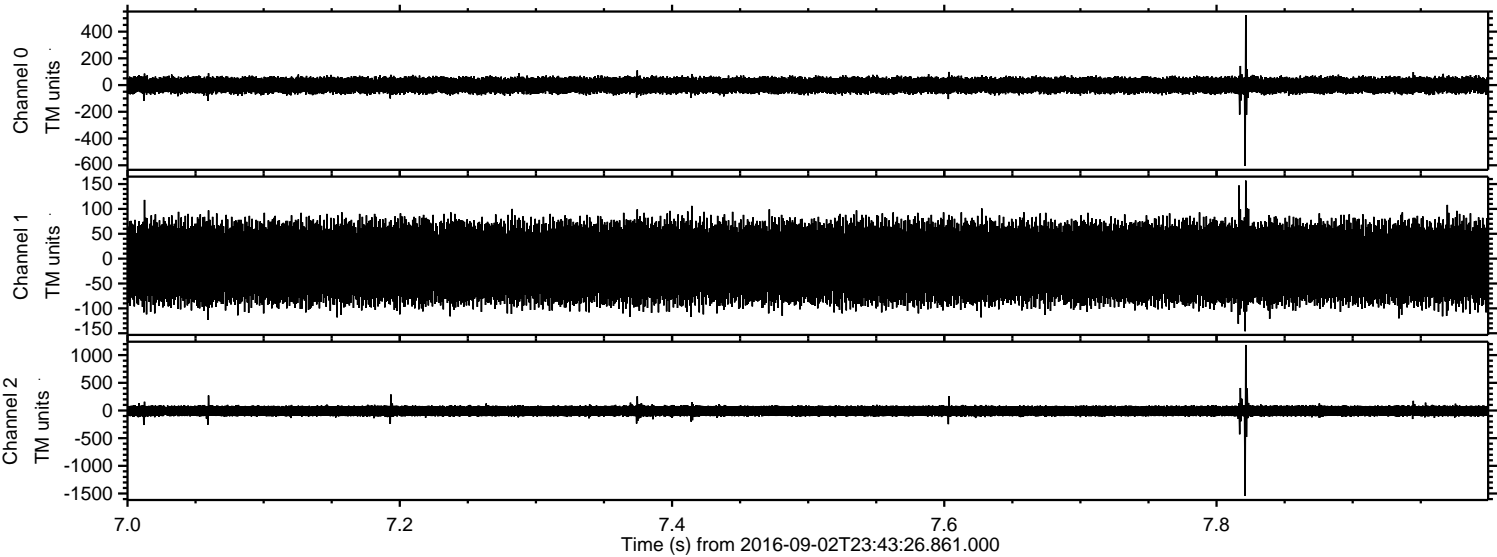
Processed Sat Sep 3 01:50:58 2016 by ELM ver.2012-10-06 from 001__elm20160902_234325__dat00.bin



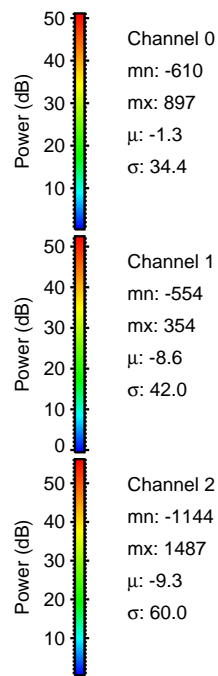
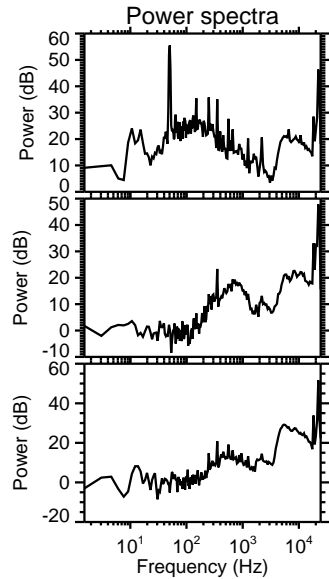
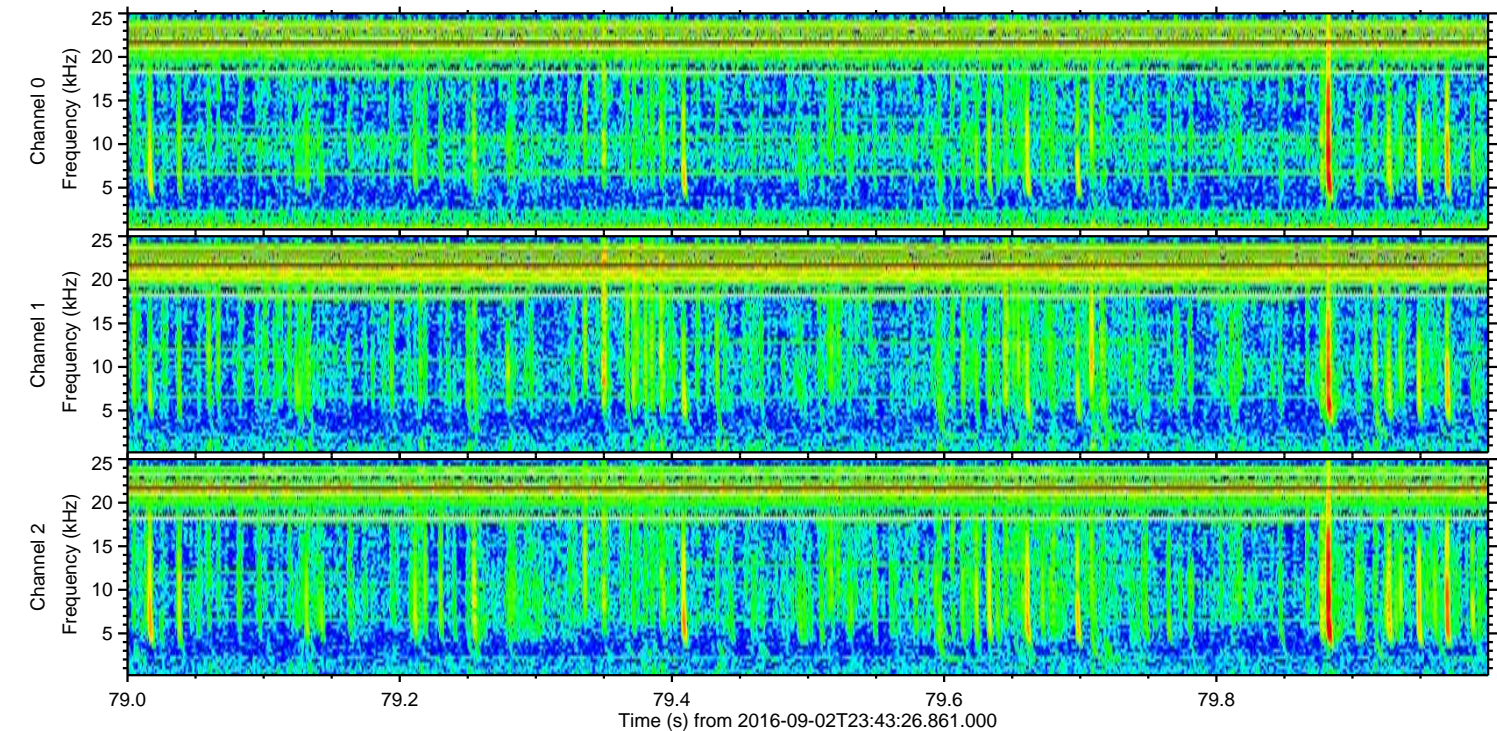
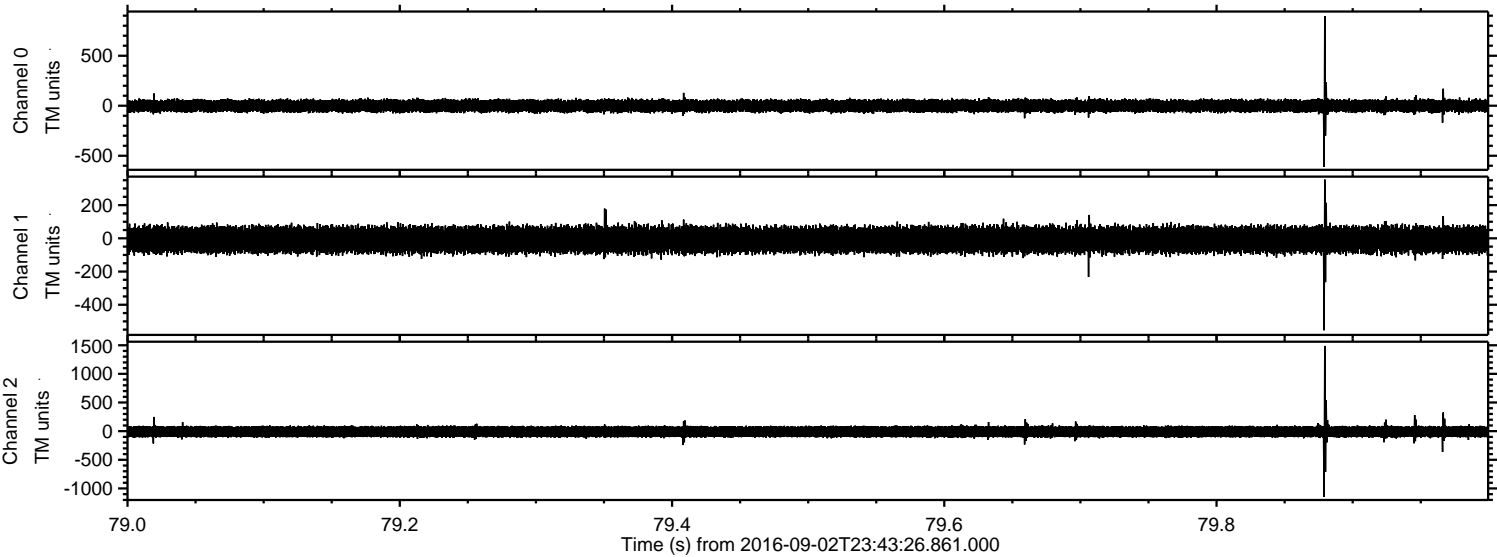
Processed Sat Sep 3 01:50:59 2016 by ELM ver.2012-10-06 from 001__elm20160902_234325__dat00.bin



Processed Sat Sep 3 01:51:00 2016 by ELM ver.2012-10-06 from 001__elm20160902_234325__dat00.bin



Processed Sat Sep 3 01:51:01 2016 by ELM ver.2012-10-06 from 001__elm20160902_234325__dat00.bin



Power spectra

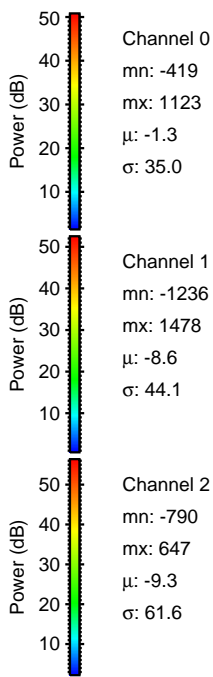
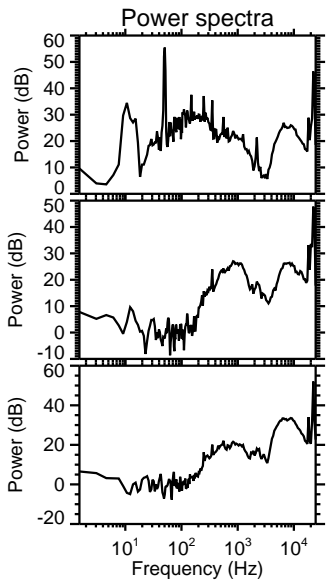
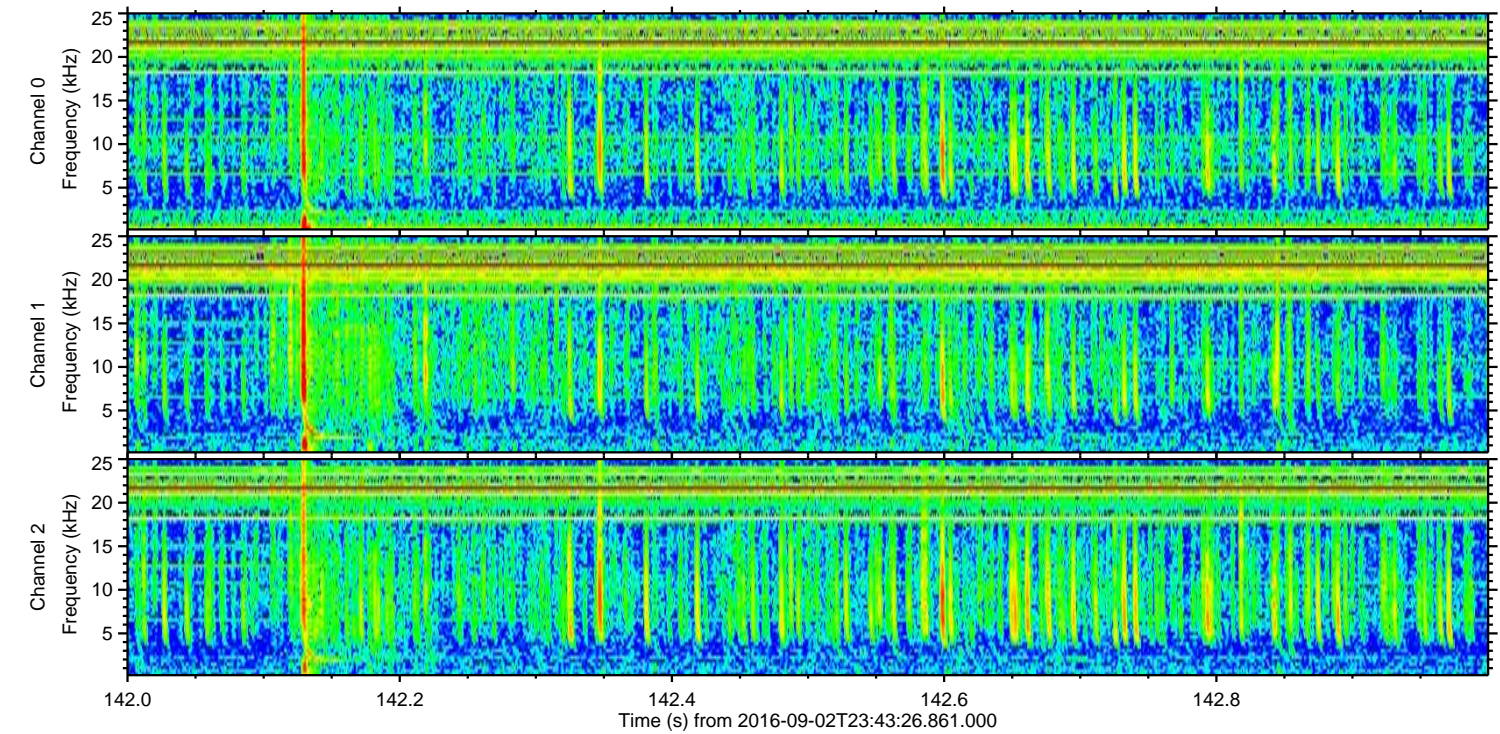
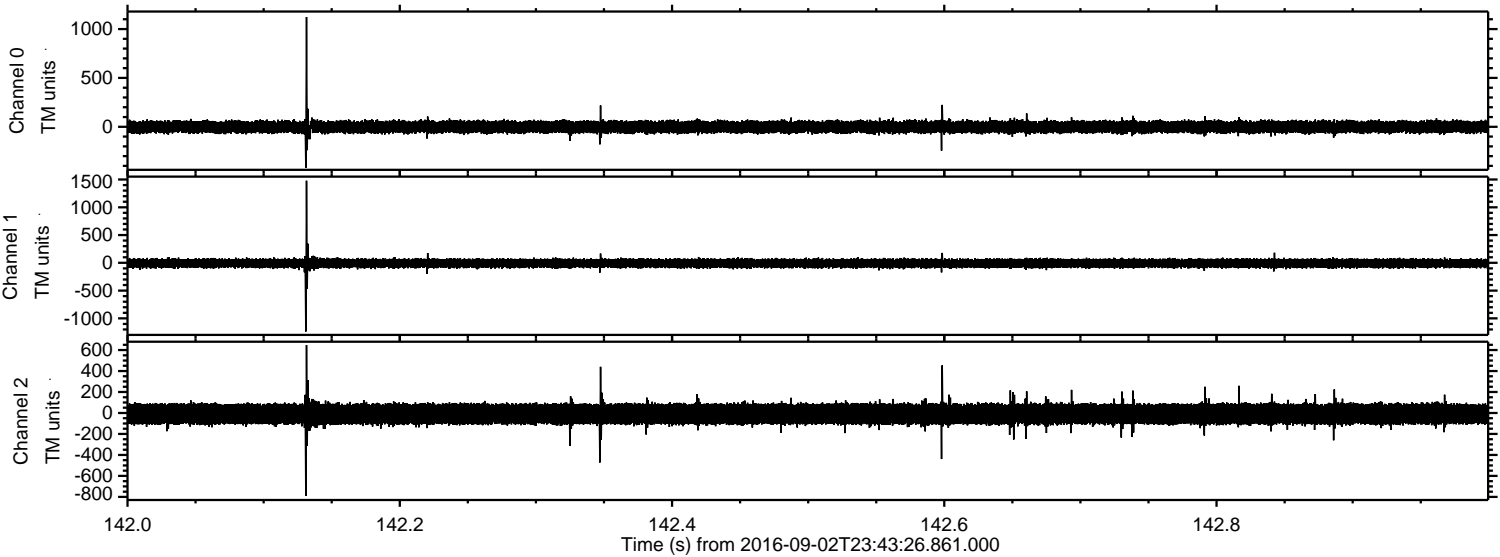
Channel 0
mn: -610
mx: 897
 μ : -1.3
 σ : 34.4

Channel 1
mn: -554
mx: 354
 μ : -8.6
 σ : 42.0

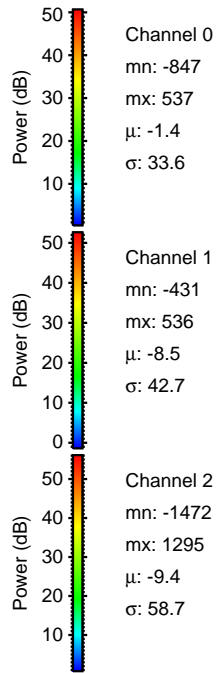
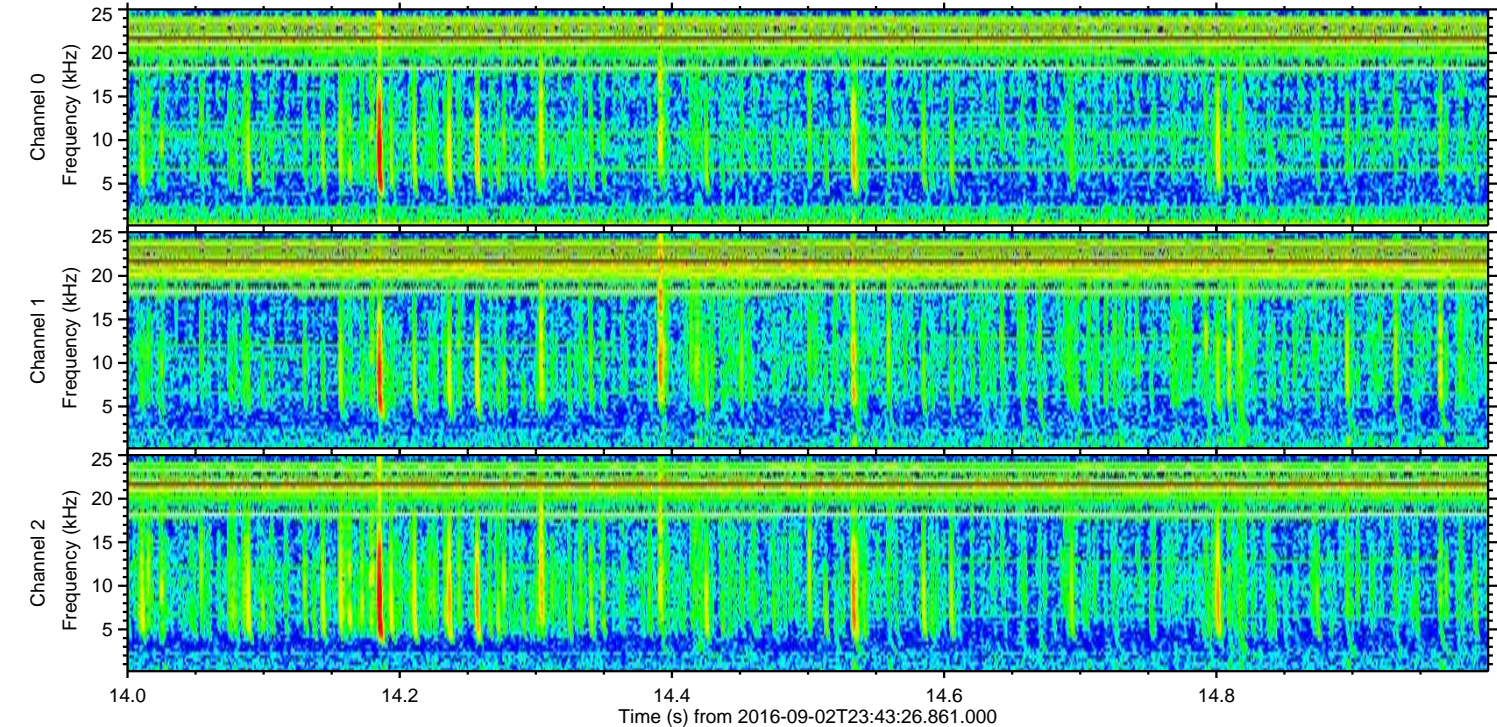
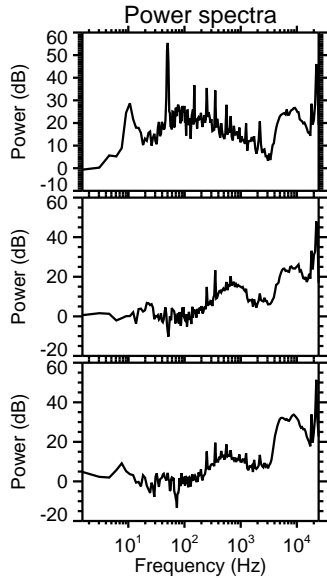
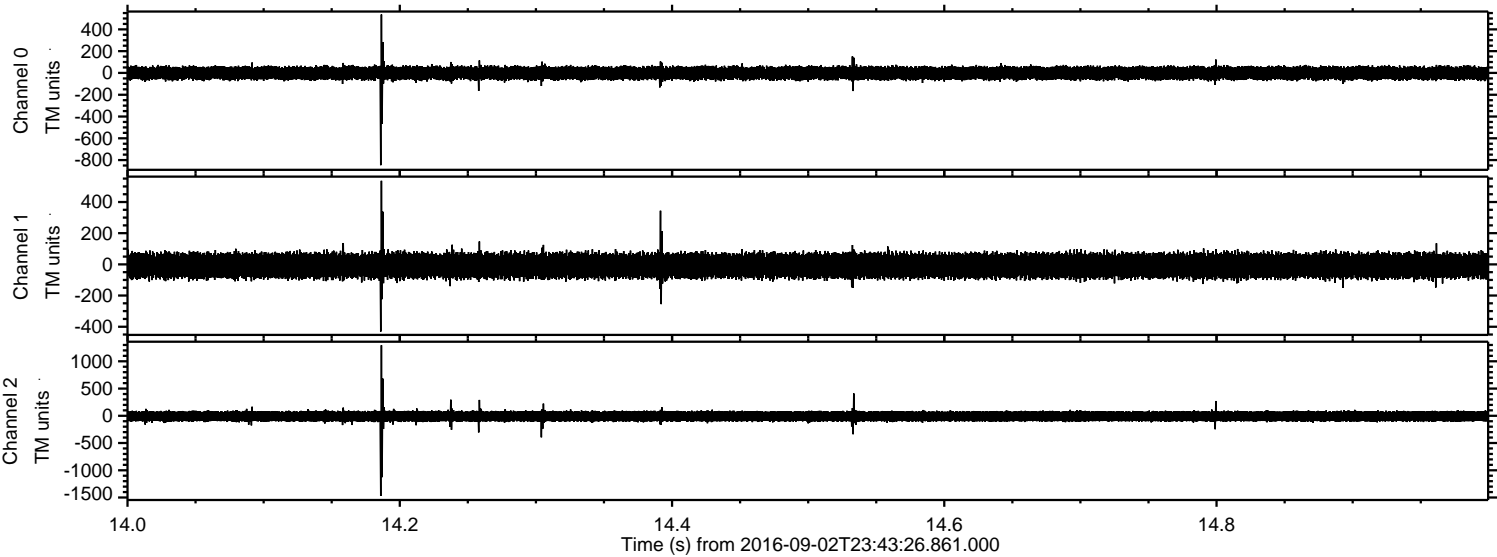
Channel 2
mn: -1144
mx: 1487
 μ : -9.3
 σ : 60.0

ELMAVAN 3D WAVEFORMS (Measured data sampled at 50 kHz) 51000 packets of 144 samples from 2016-09-02T23:43:26.861.000. Part 143/147

Processed Sat Sep 3 01:51:02 2016 by ELM ver.2012-10-06 from 001__elm20160902_234325__dat00.bin

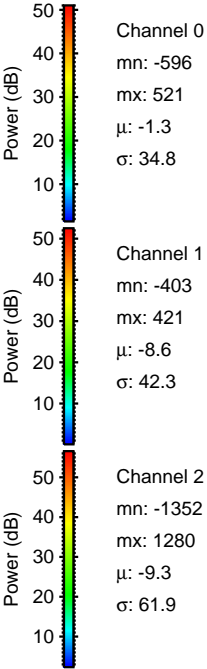
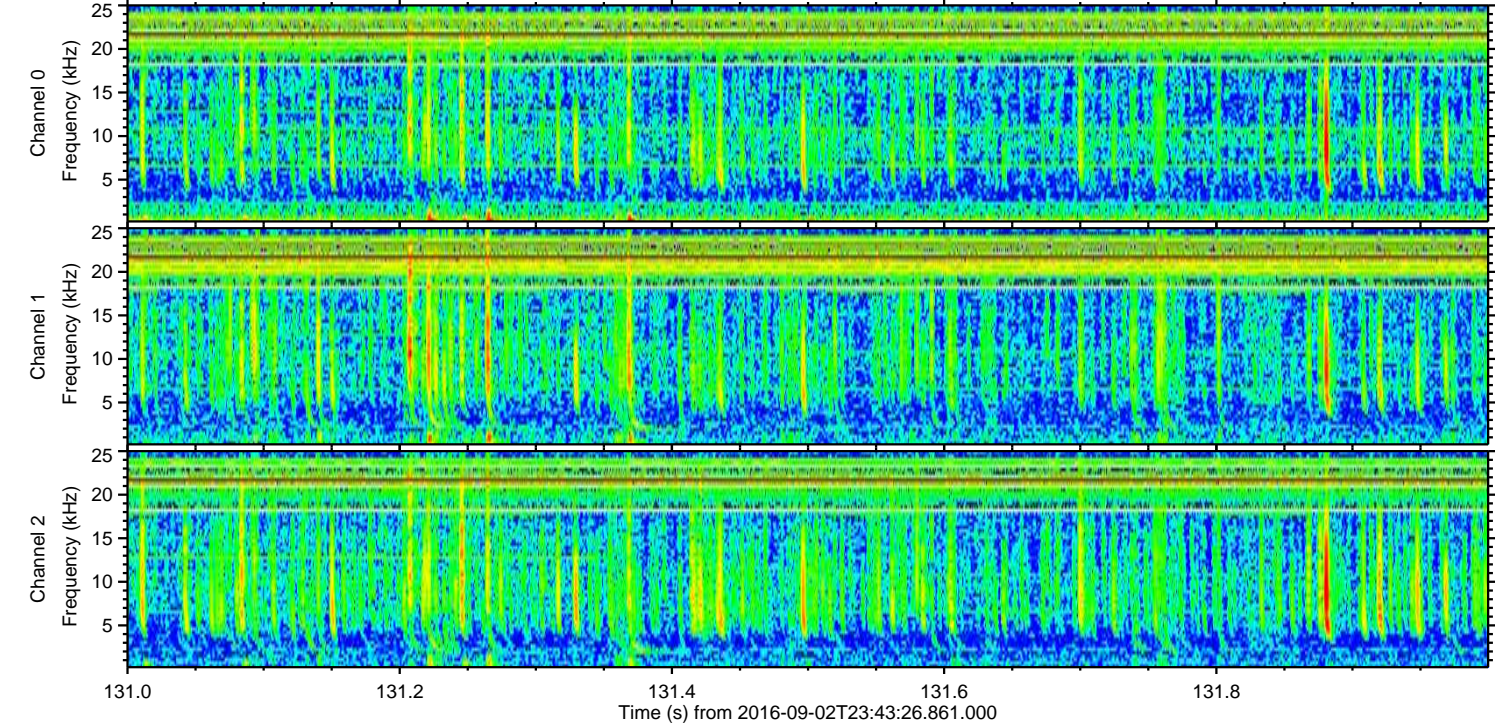
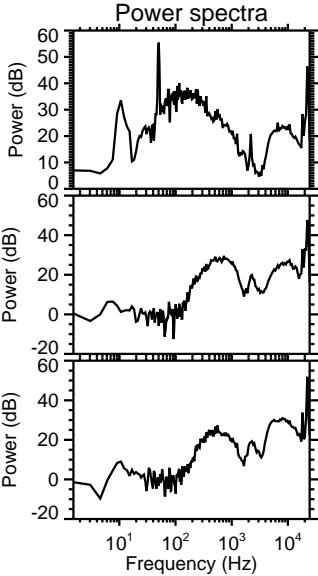
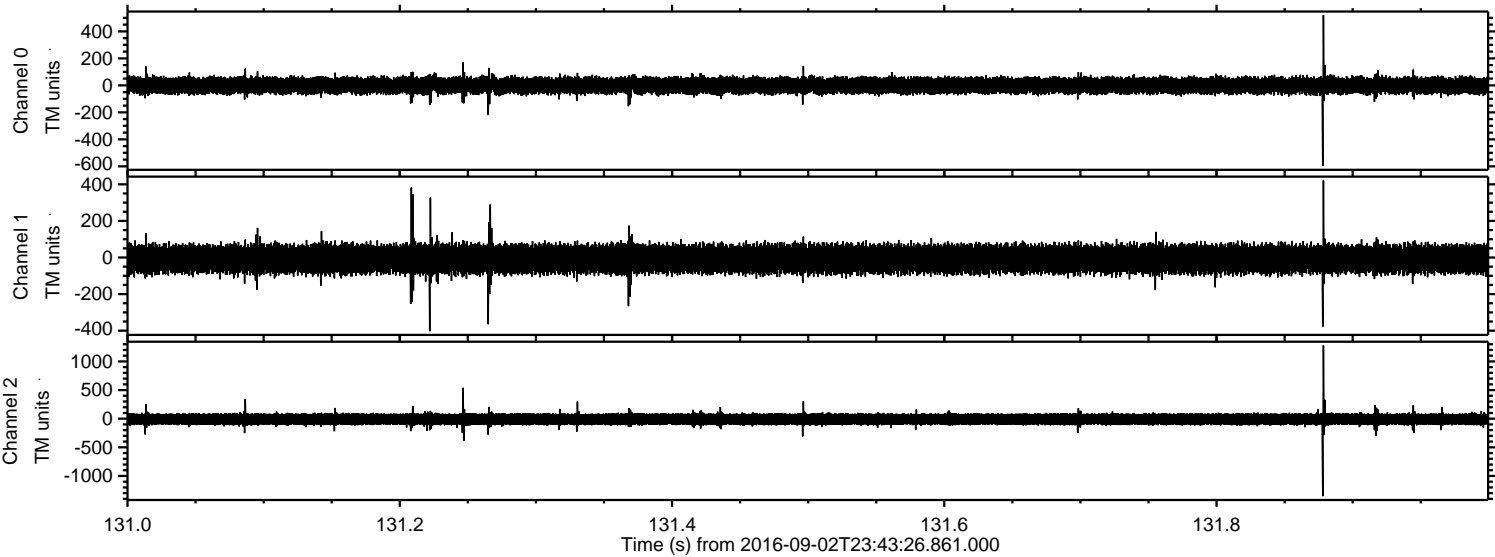


Processed Sat Sep 3 01:51:03 2016 by ELM ver.2012-10-06 from 001__elm20160902_234325__dat00.bin



ELMAVAN 3D WAVEFORMS (Measured data sampled at 50 kHz) 51000 packets of 144 samples from 2016-09-02T23:43:26.861.000. Part 132/147

Processed Sat Sep 3 01:51:04 2016 by ELM ver.2012-10-06 from 001__elm20160902_234325__dat00.bin

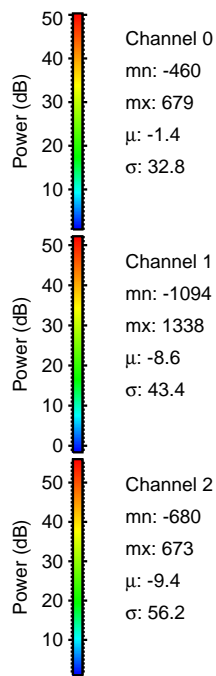
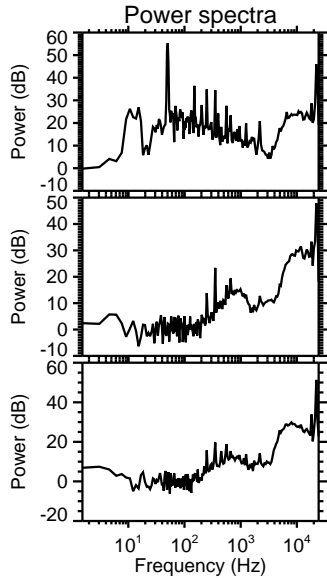
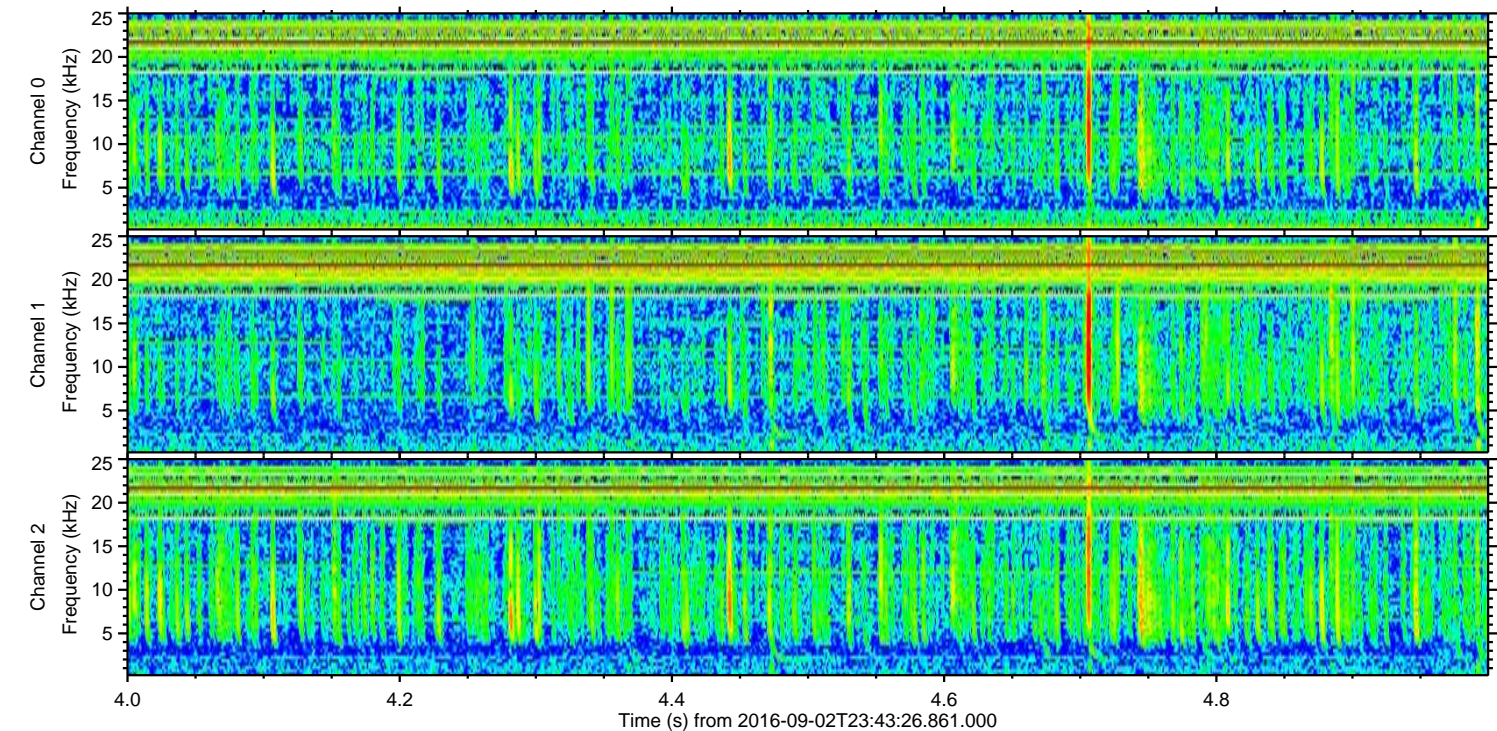
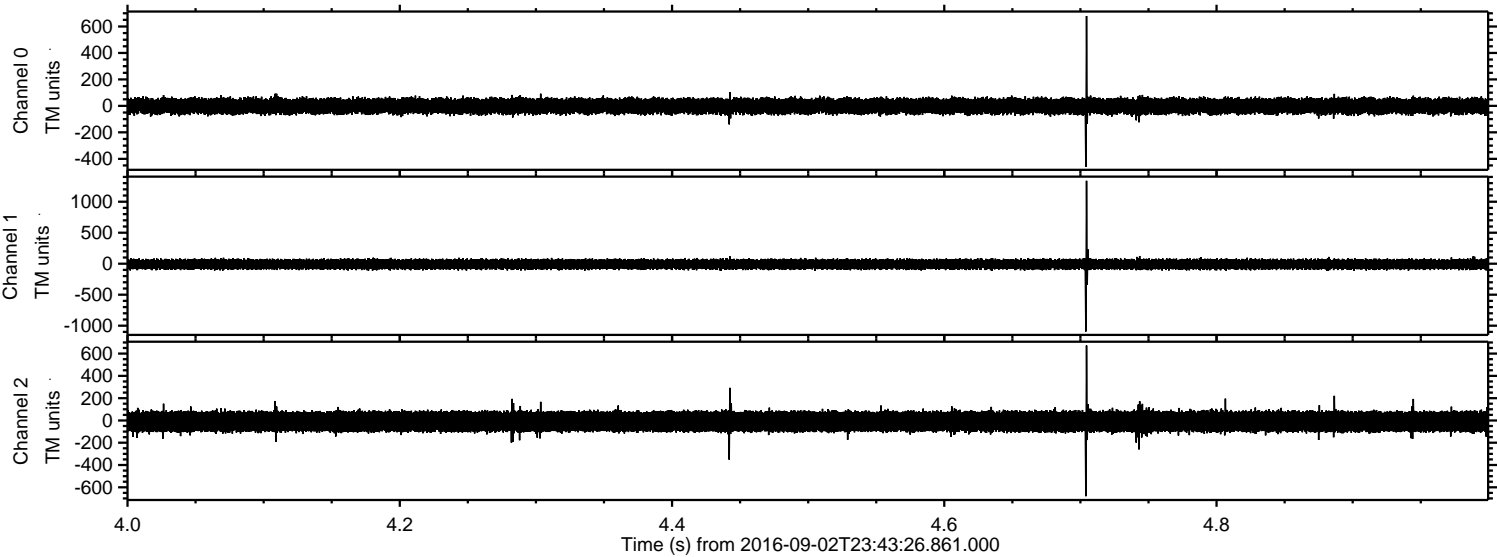


Channel 0
mn: -596
mx: 521
 μ : -1.3
 σ : 34.8

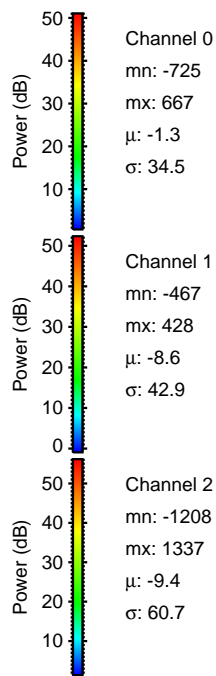
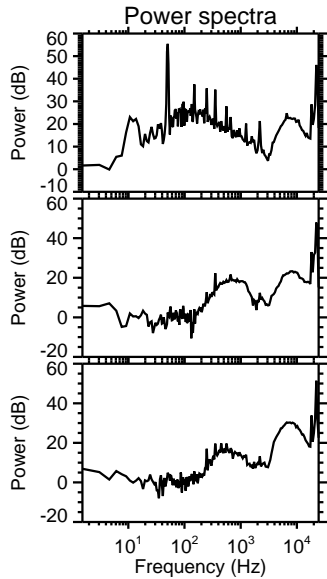
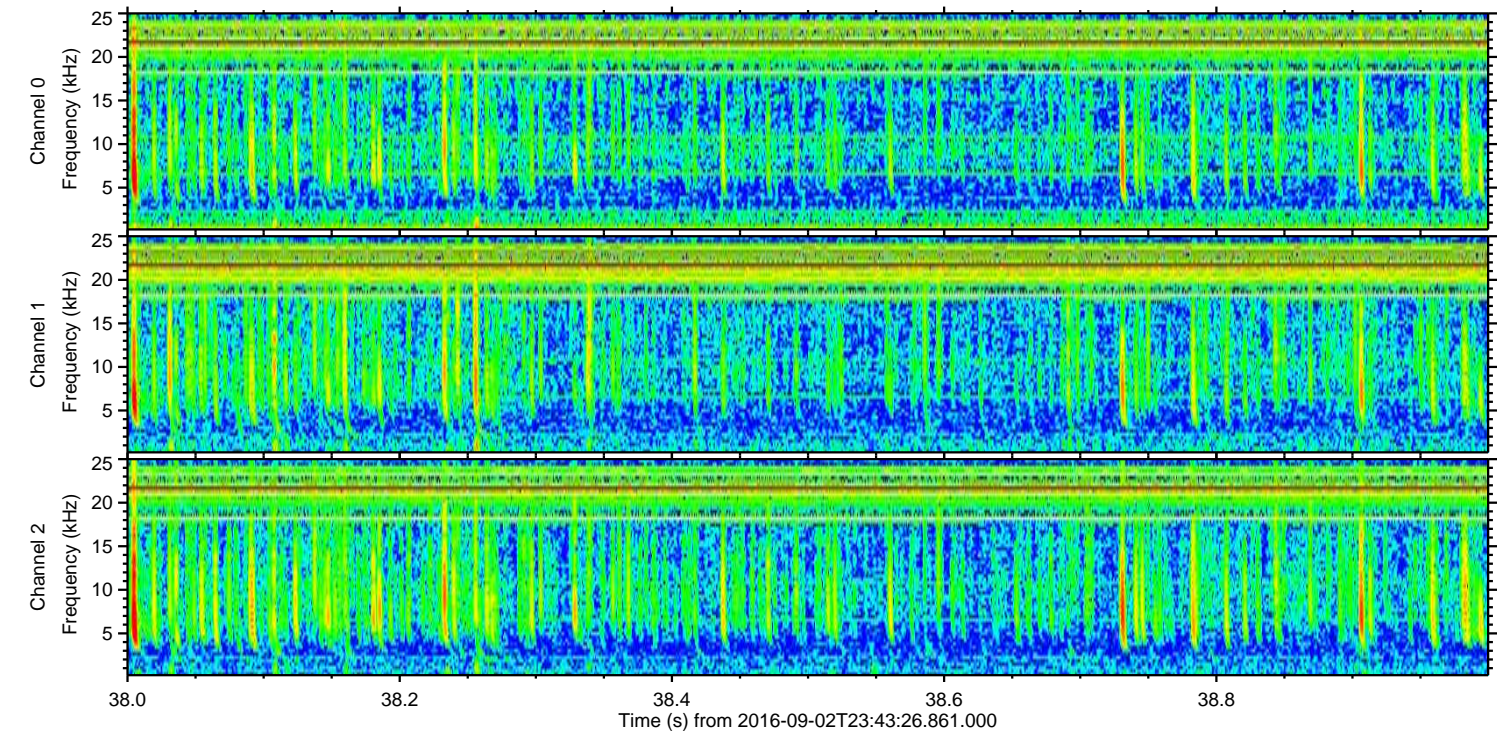
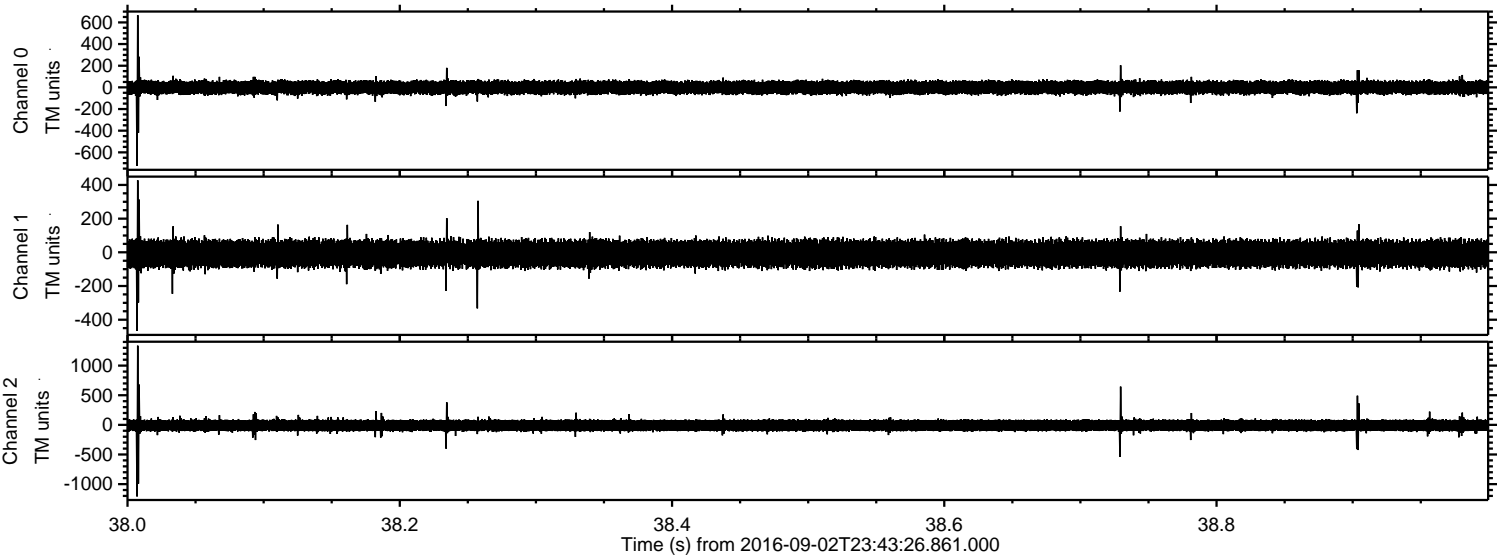
Channel 1
mn: -403
mx: 421
 μ : -8.6
 σ : 42.3

Channel 2
mn: -1352
mx: 1280
 μ : -9.3
 σ : 61.9

Processed Sat Sep 3 01:51:05 2016 by ELM ver.2012-10-06 from 001__elm20160902_234325__dat00.bin



Processed Sat Sep 3 01:51:06 2016 by ELM ver.2012-10-06 from 001__elm20160902_234325__dat00.bin



Channel 0
mn: -725
mx: 667
 μ : -1.3
 σ : 34.5

Channel 1
mn: -467
mx: 428
 μ : -8.6
 σ : 42.9

Channel 2
mn: -1208
mx: 1337
 μ : -9.4
 σ : 60.7

