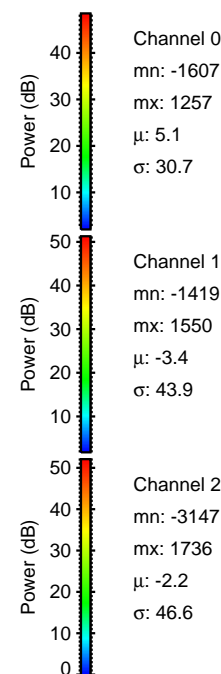
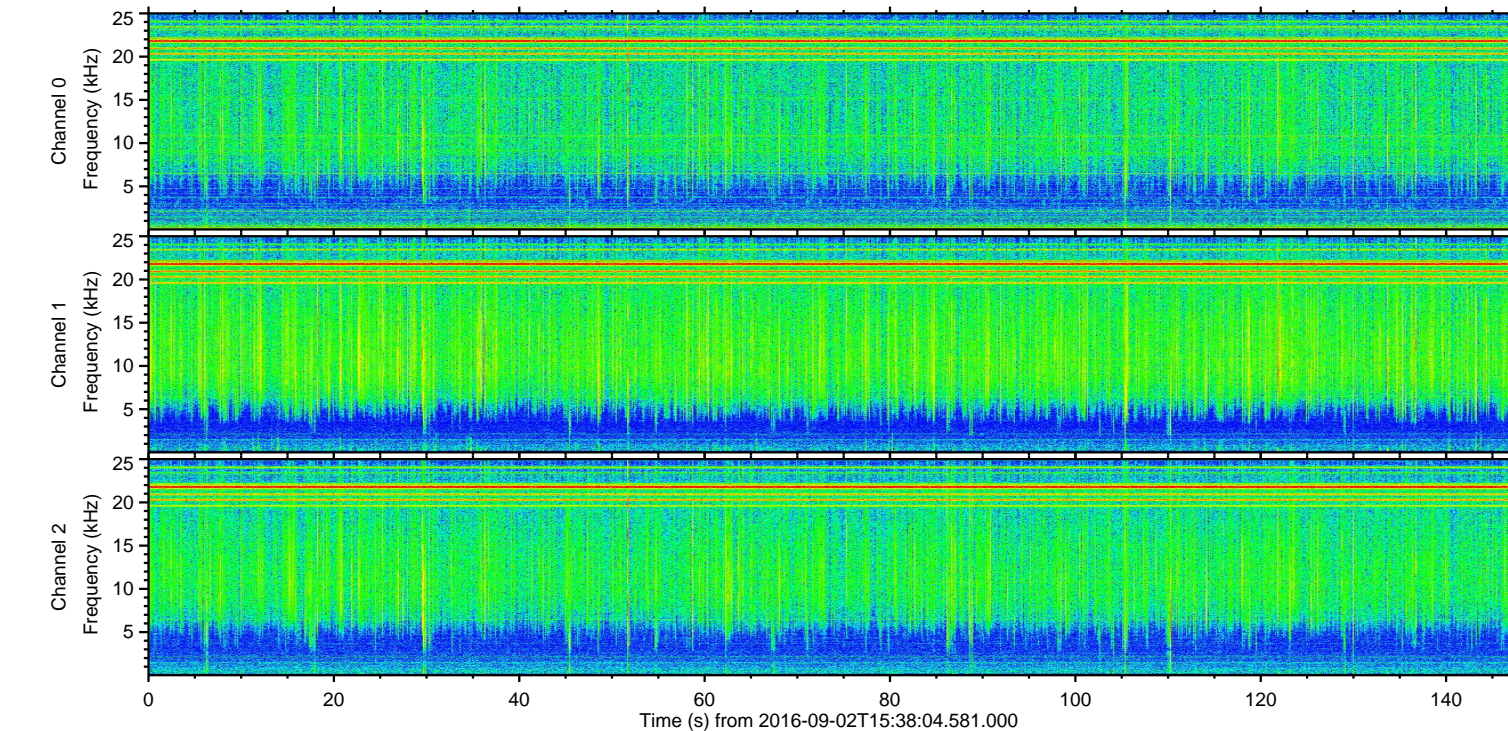
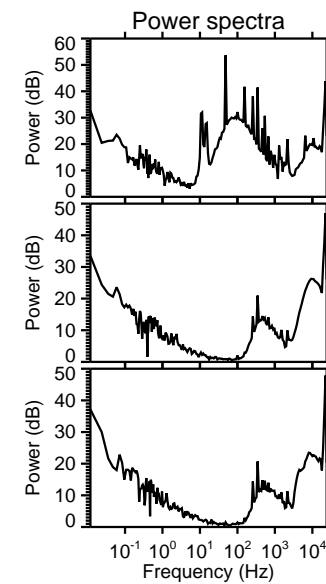
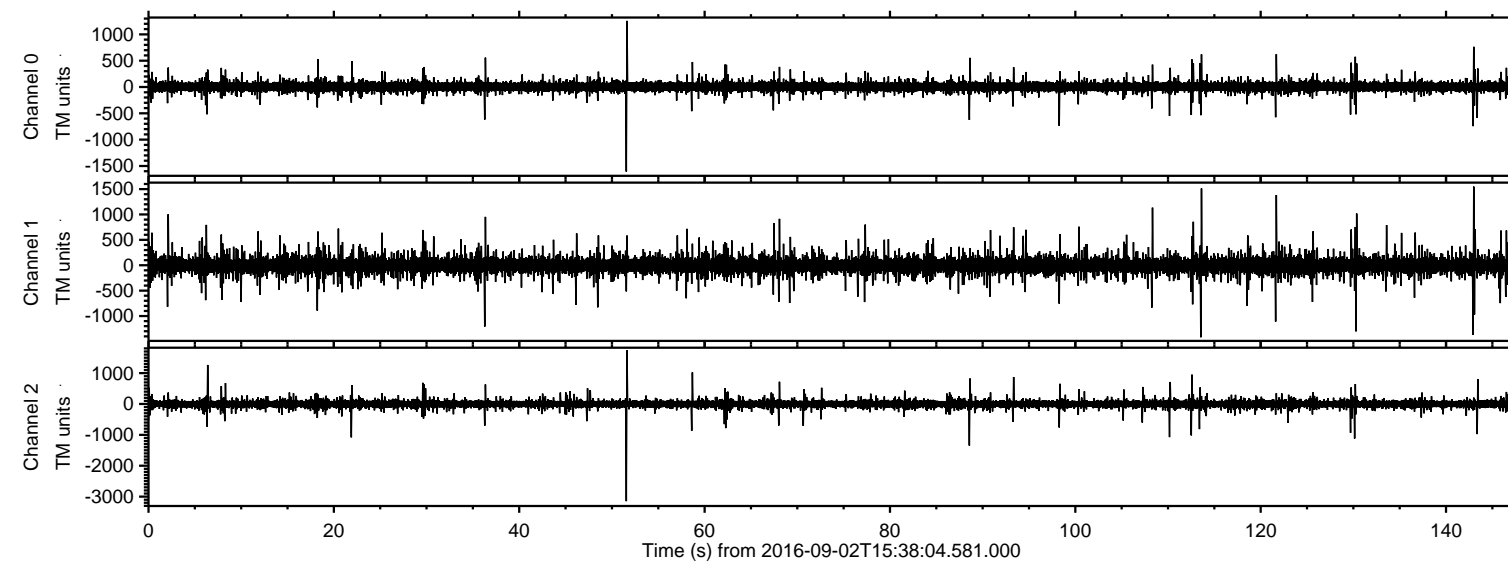
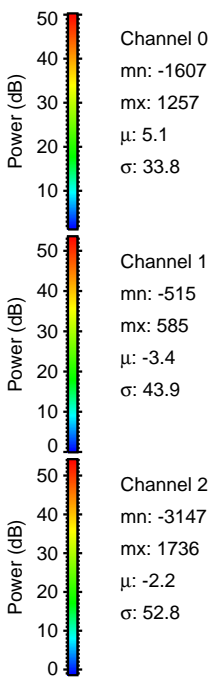
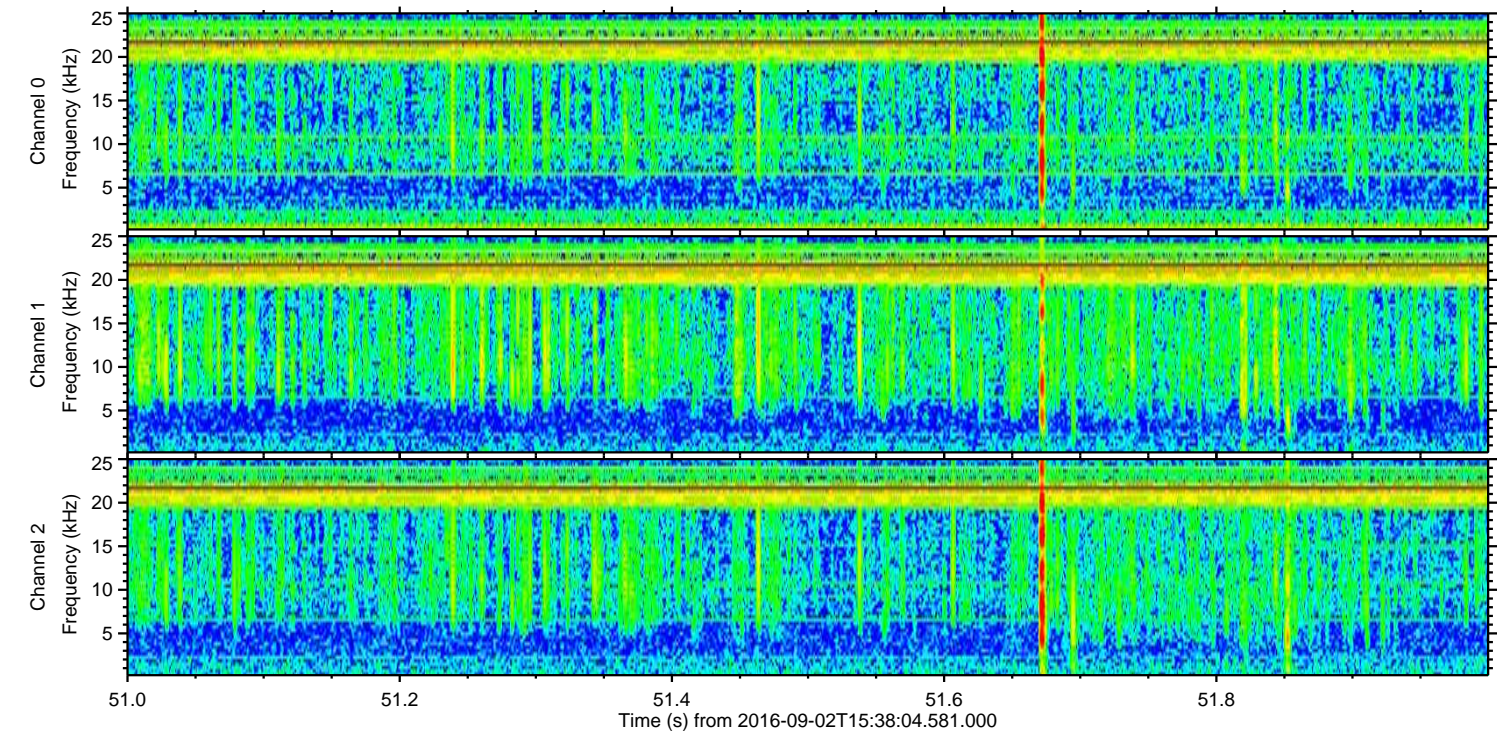
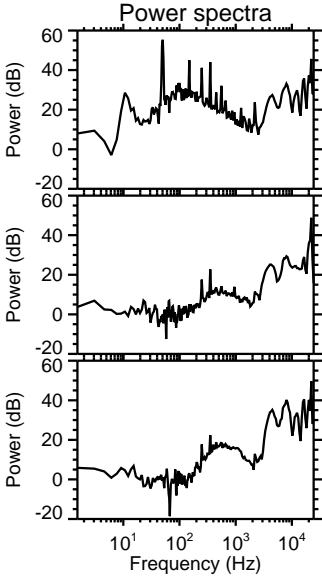
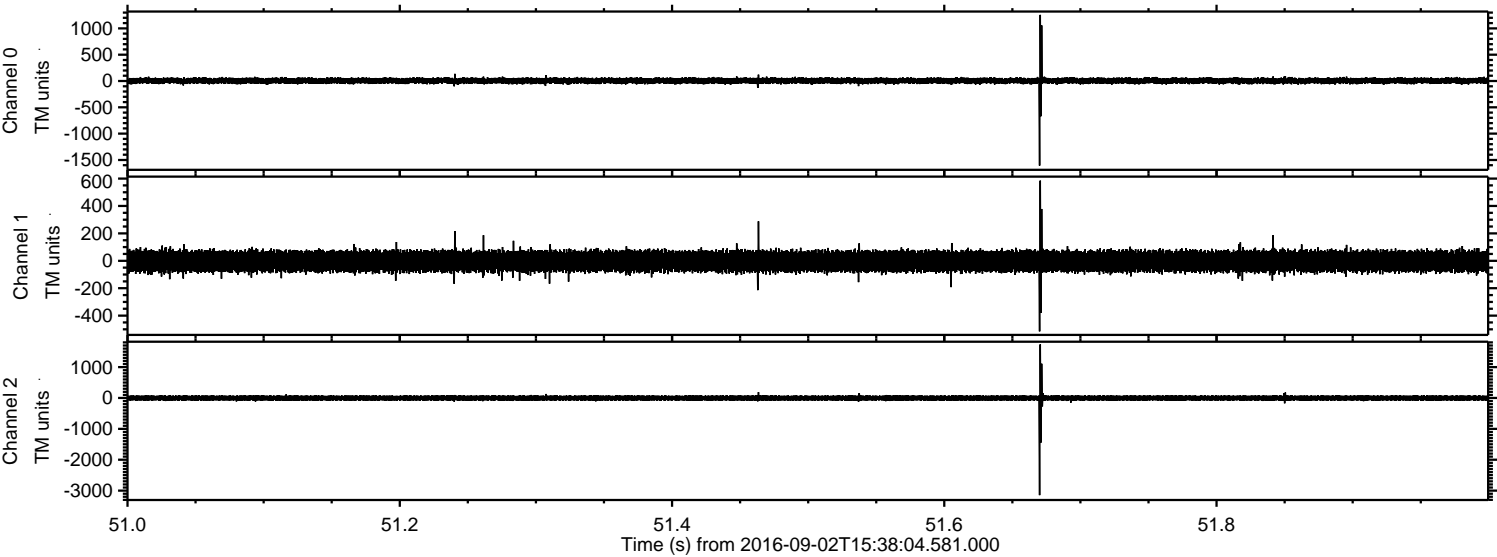


# ELMAVAN 3D WAVEFORMS (Measured data sampled at 50 kHz) 51000 packets of 144 samples from 2016-09-02T15:38:04.581.000.

Processed Fri Sep 2 17:45:57 2016 by ELM ver.2012-10-06 from 001\_\_elm20160902\_153803\_\_dat00.bin

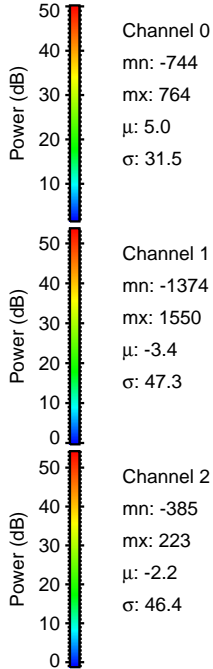
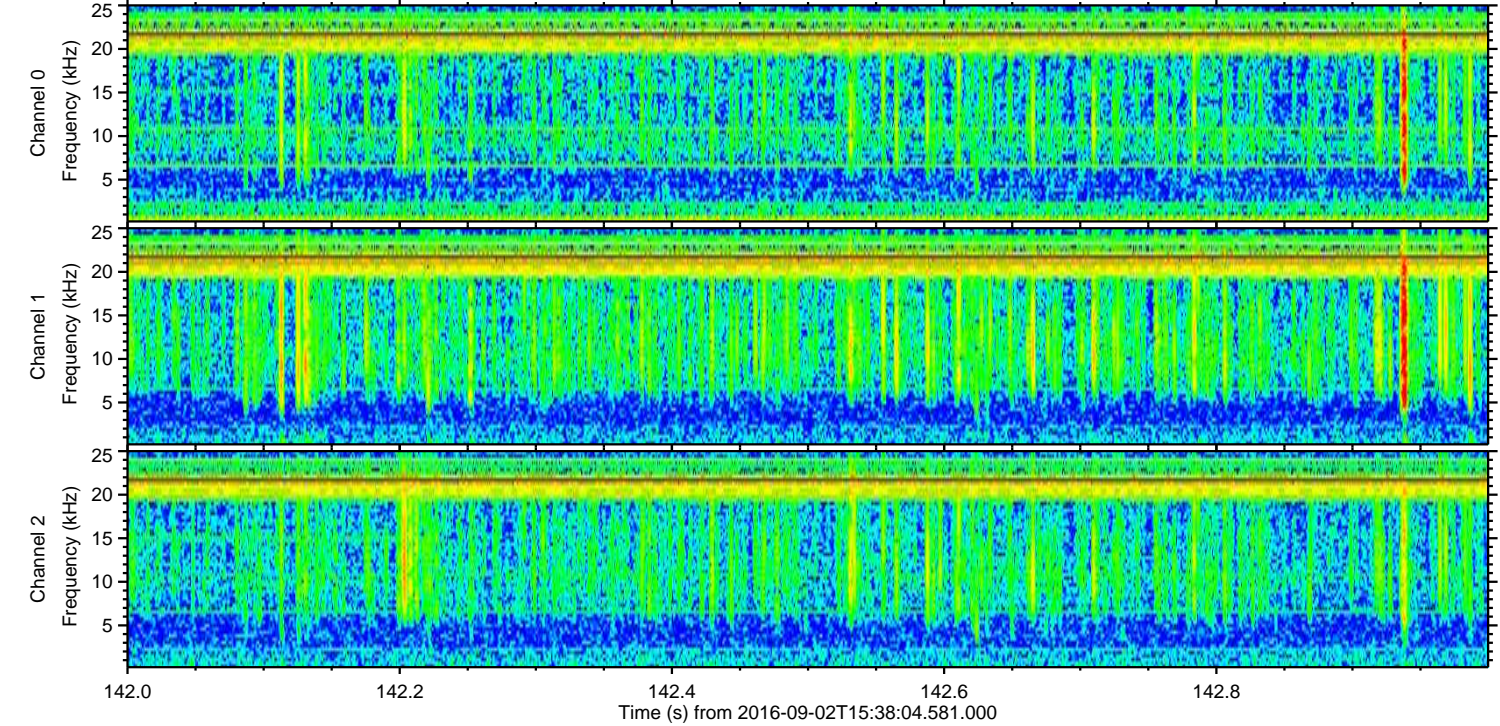
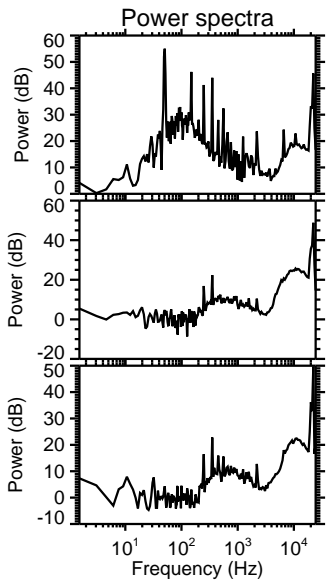
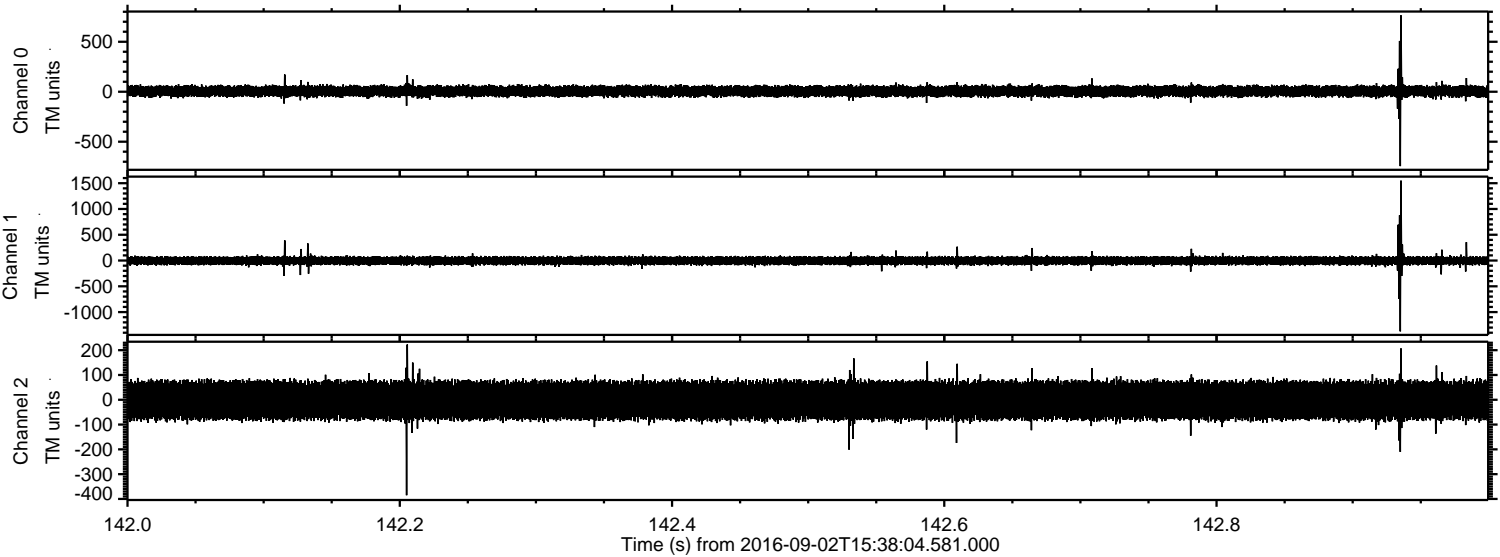


Processed Fri Sep 2 17:46:08 2016 by ELM ver.2012-10-06 from 001\_\_elm20160902\_153803\_\_dat00.bin



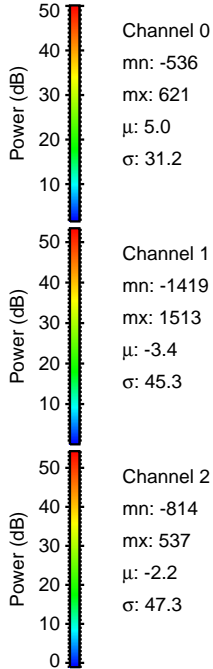
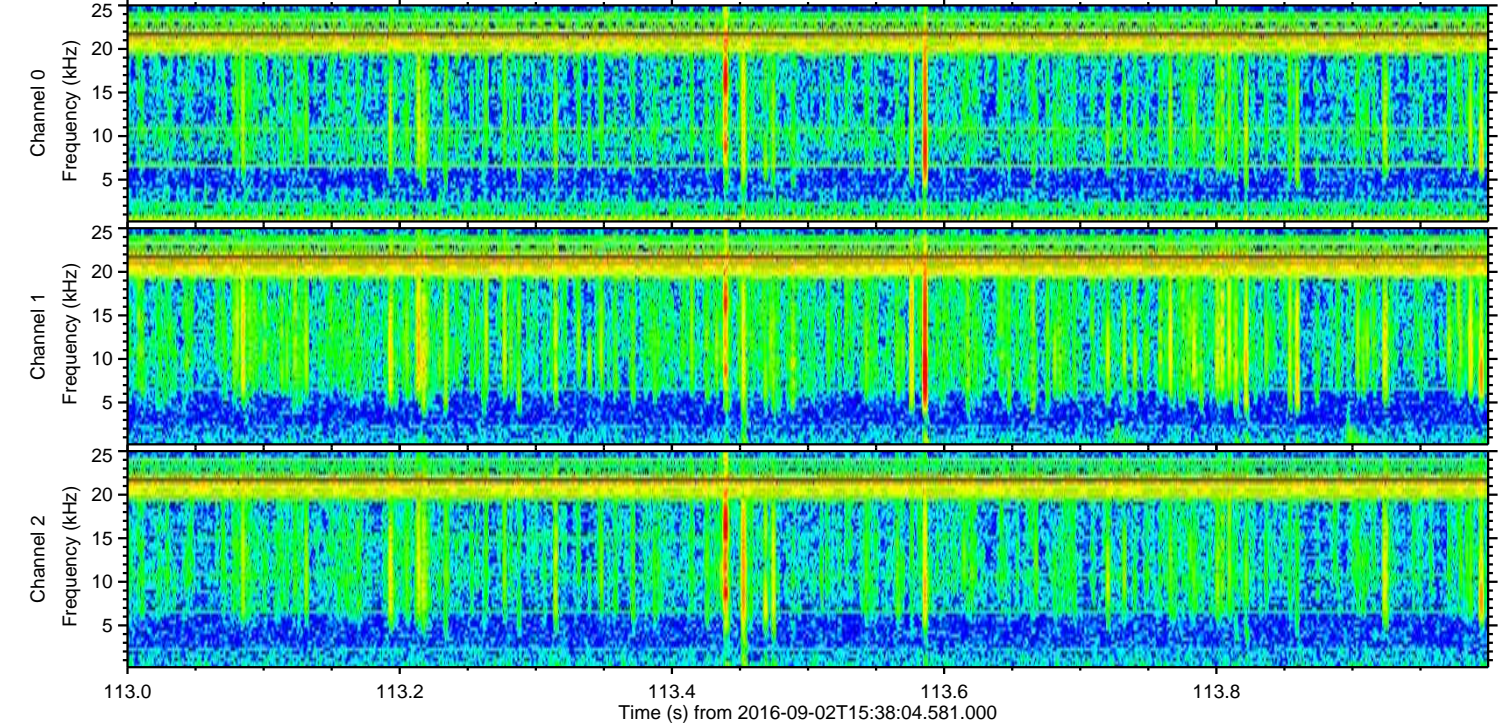
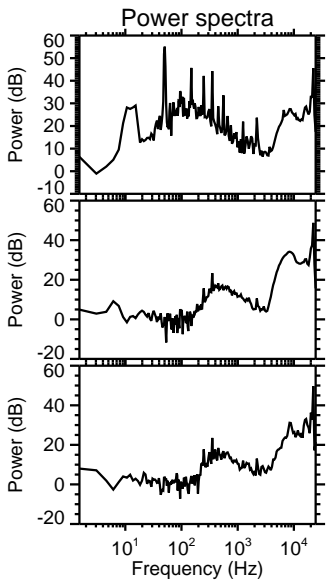
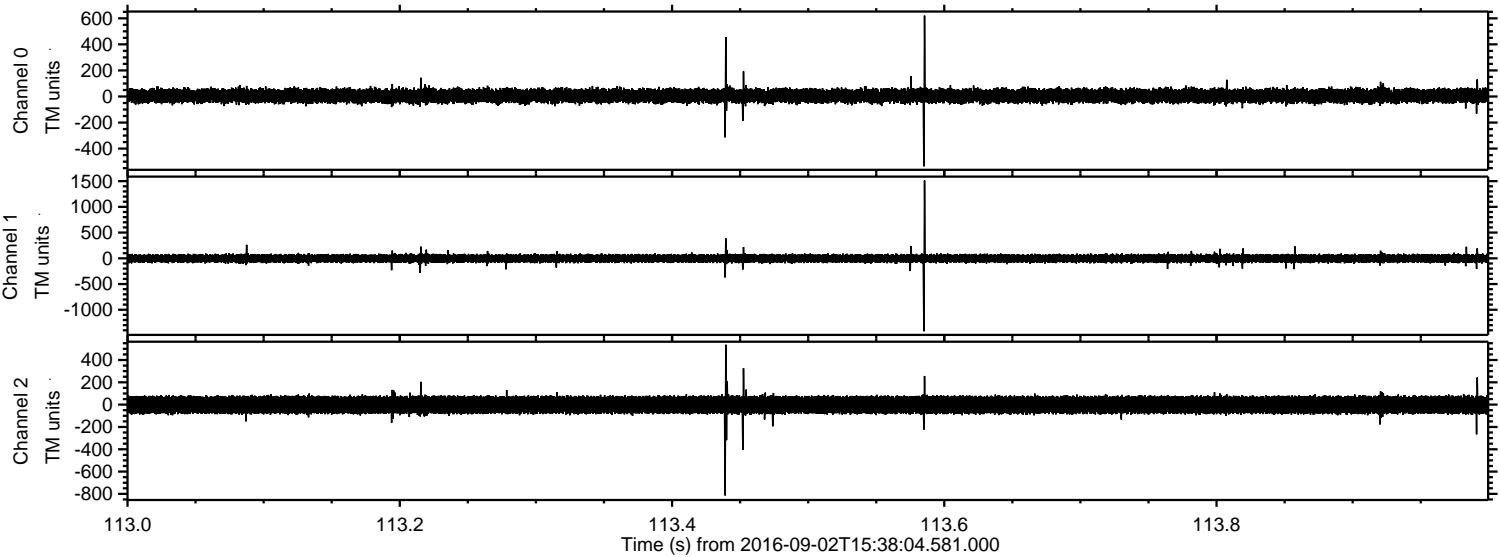
ELMAVAN 3D WAVEFORMS (Measured data sampled at 50 kHz) 51000 packets of 144 samples from 2016-09-02T15:38:04.581.000. Part 143/147

Processed Fri Sep 2 17:46:09 2016 by ELM ver.2012-10-06 from 001\_\_elm20160902\_153803\_\_dat00.bin



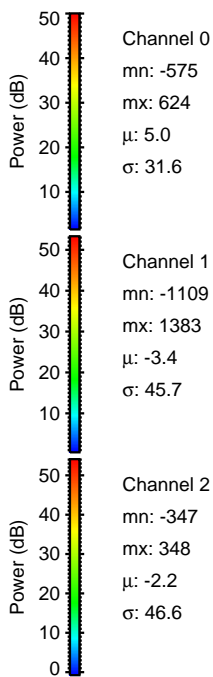
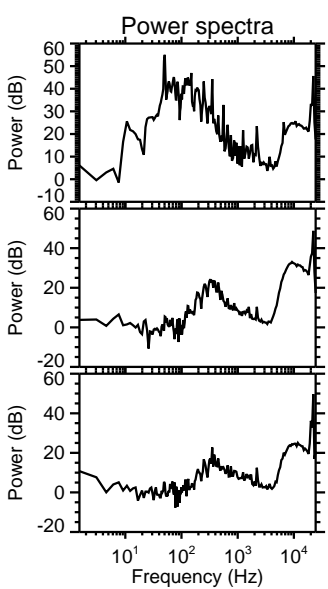
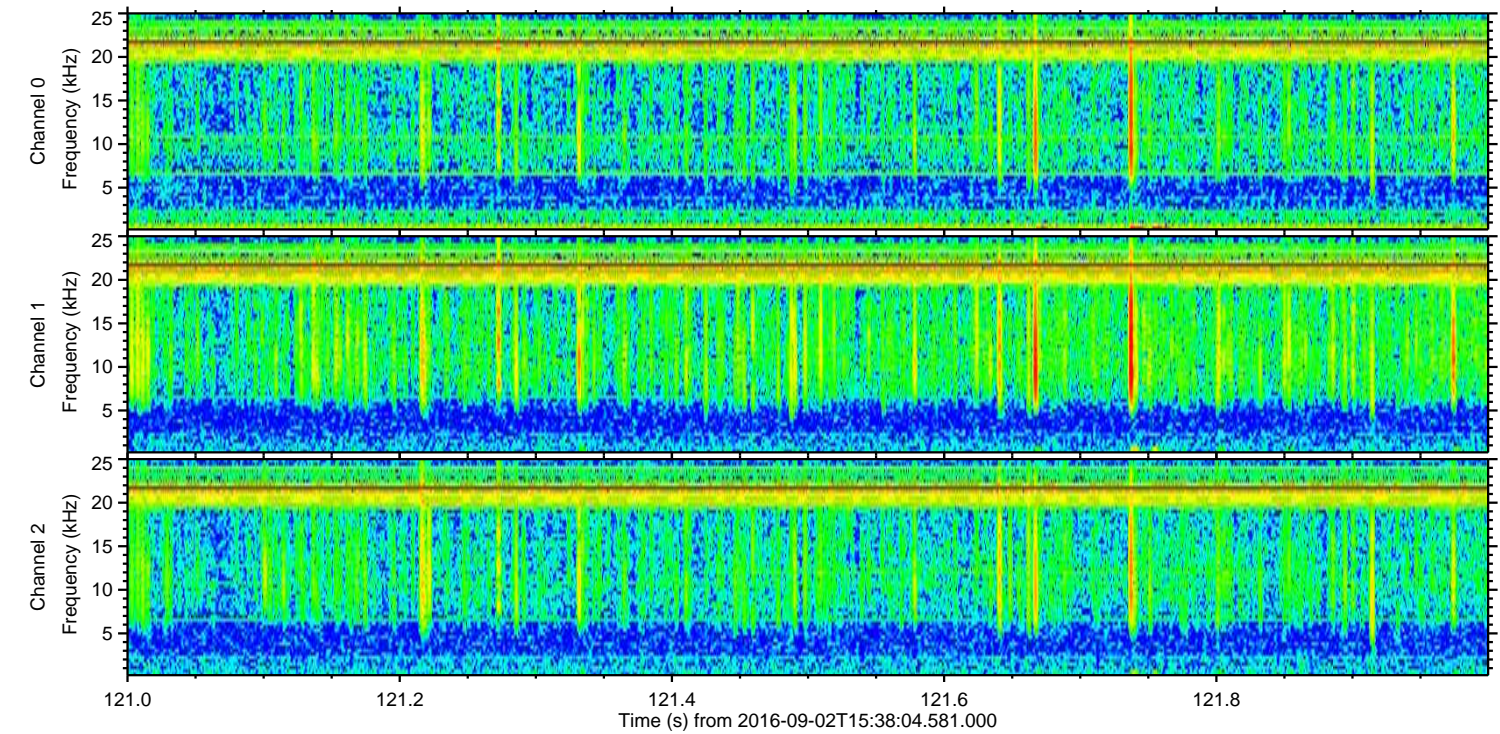
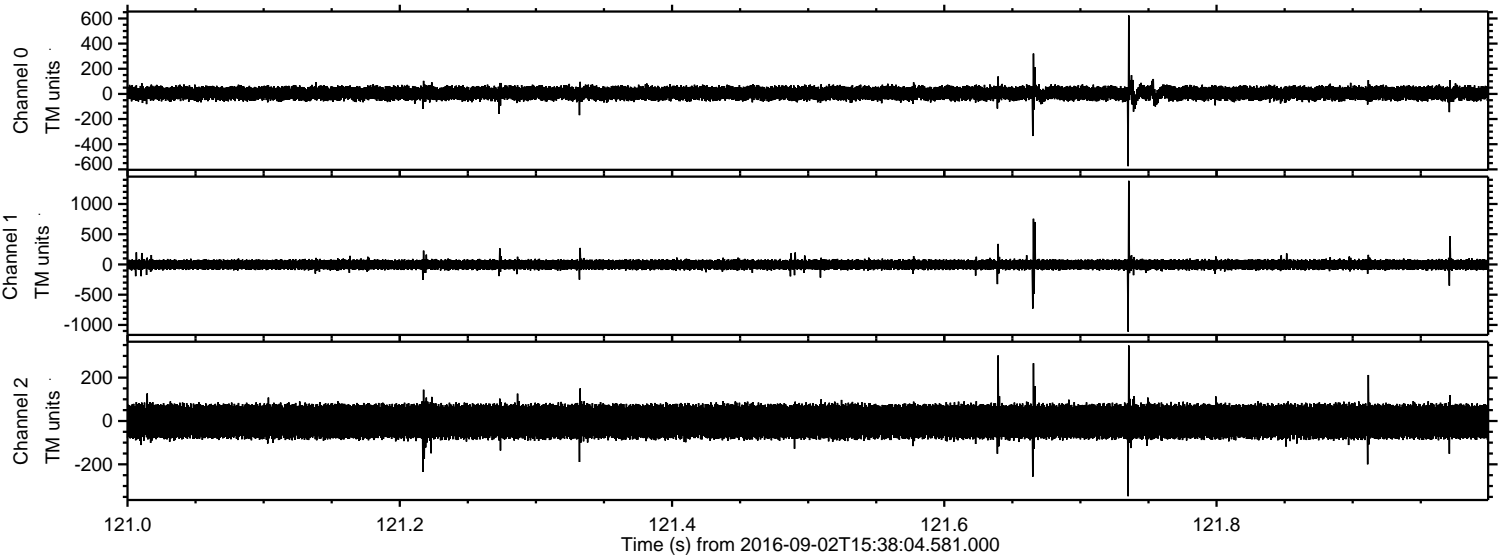
ELMAVAN 3D WAVEFORMS (Measured data sampled at 50 kHz) 51000 packets of 144 samples from 2016-09-02T15:38:04.581.000. Part 114/147

Processed Fri Sep 2 17:46:10 2016 by ELM ver.2012-10-06 from 001\_\_elm20160902\_153803\_\_dat00.bin

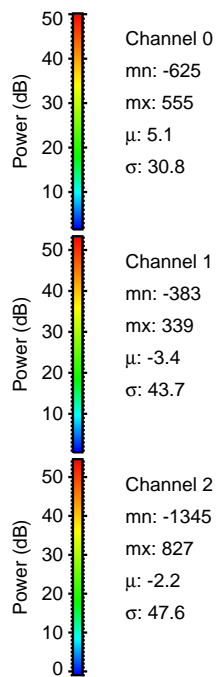
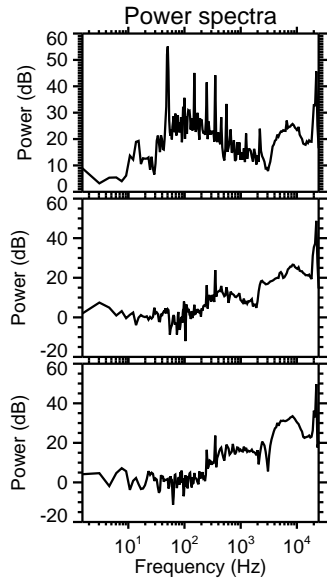
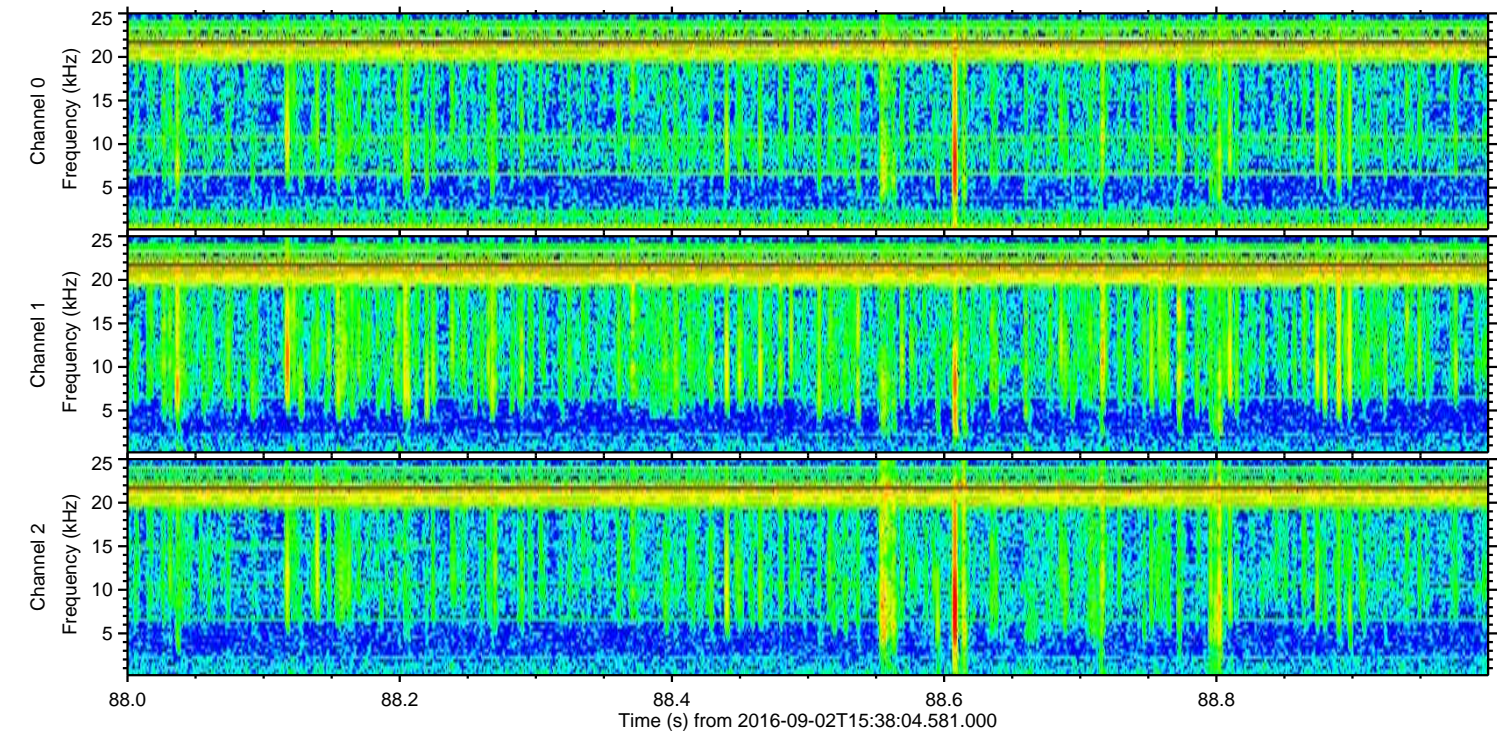
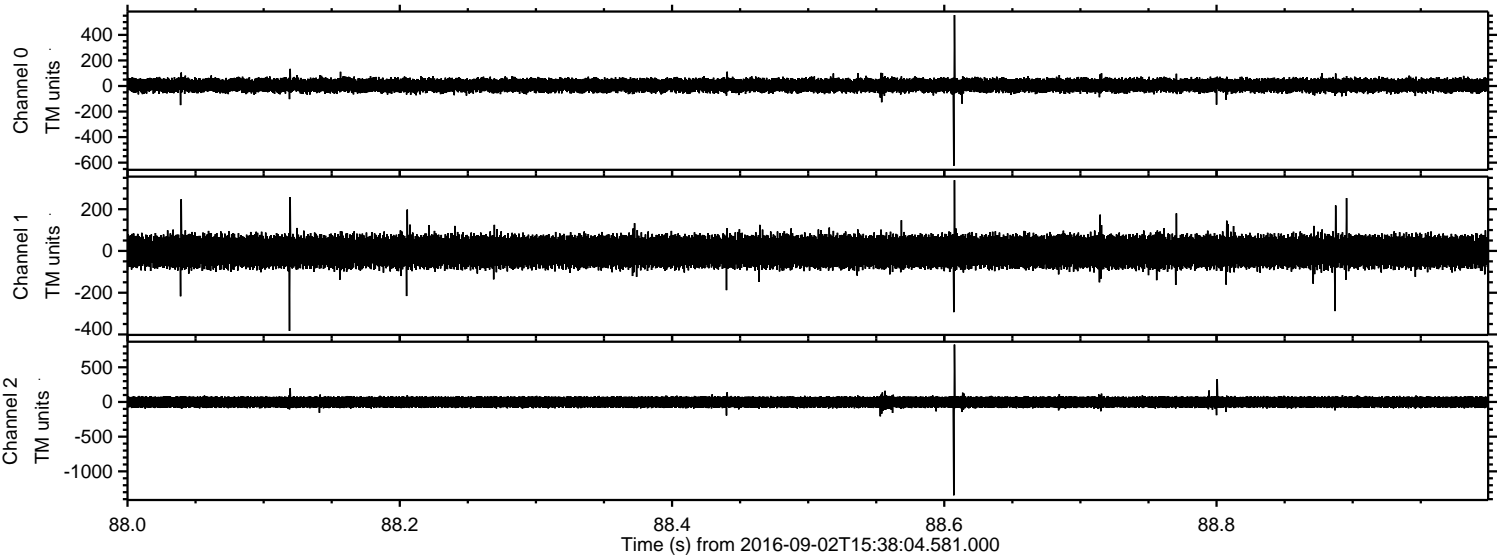


ELMAVAN 3D WAVEFORMS (Measured data sampled at 50 kHz) 51000 packets of 144 samples from 2016-09-02T15:38:04.581.000. Part 122/147

Processed Fri Sep 2 17:46:11 2016 by ELM ver.2012-10-06 from 001\_\_elm20160902\_153803\_\_dat00.bin



Processed Fri Sep 2 17:46:12 2016 by ELM ver.2012-10-06 from 001\_\_elm20160902\_153803\_\_dat00.bin

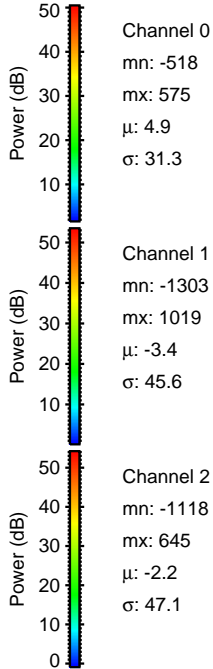
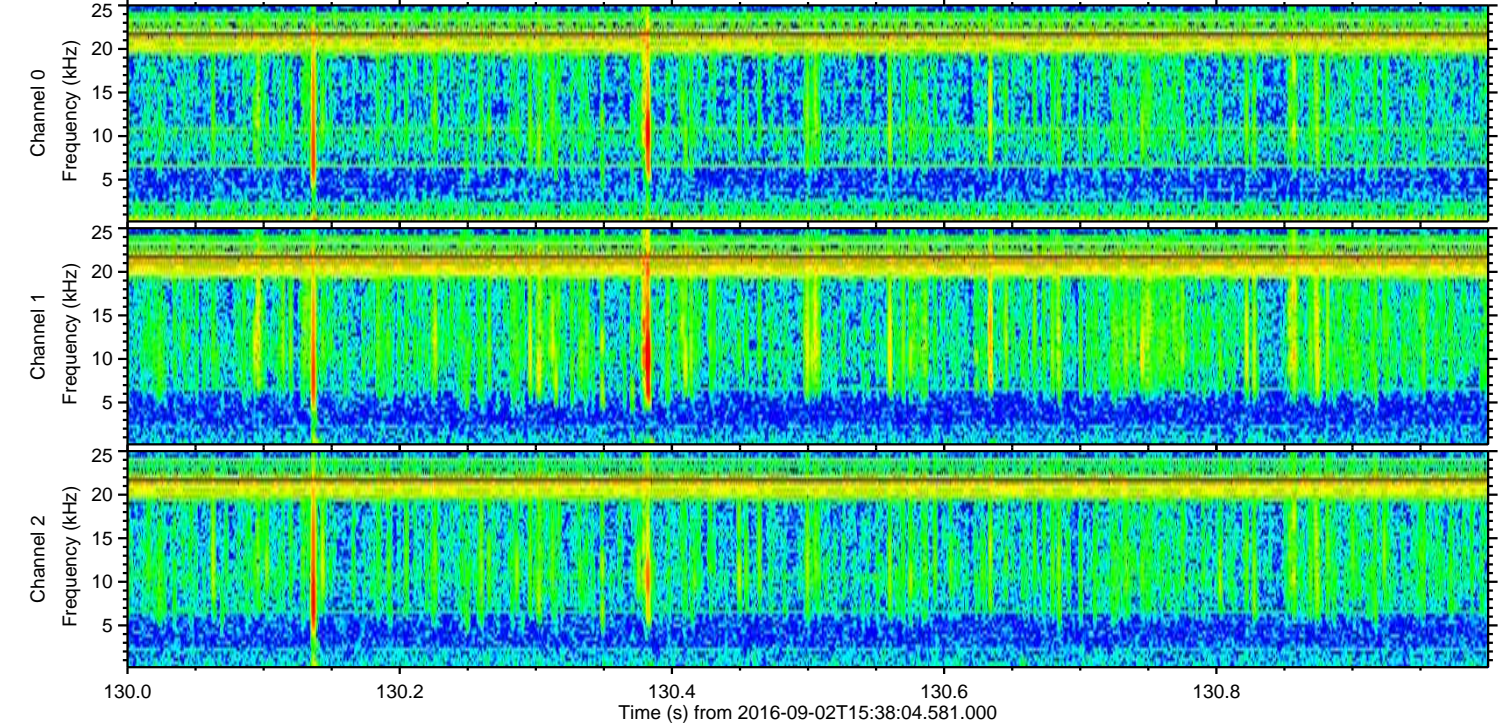
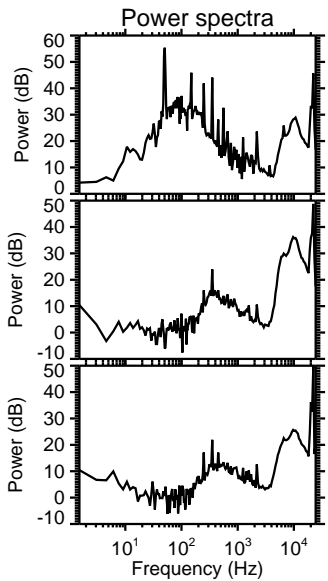
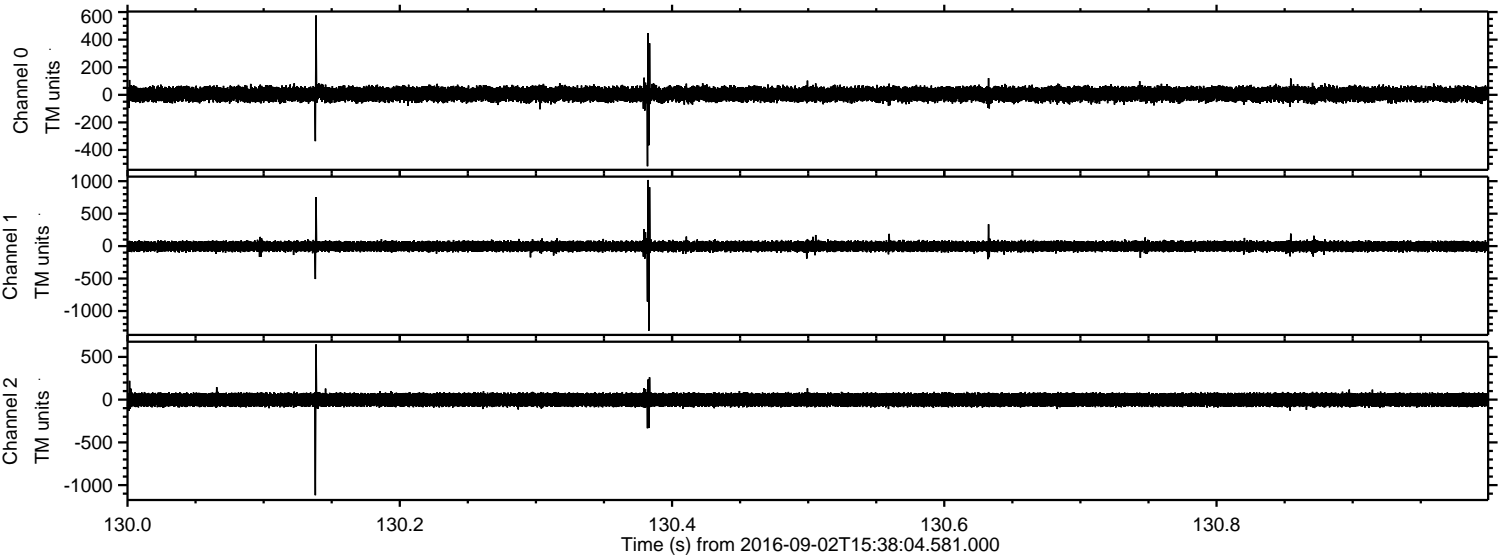


Channel 0  
mn: -625  
mx: 555  
 $\mu$ : 5.1  
 $\sigma$ : 30.8

Channel 1  
mn: -383  
mx: 339  
 $\mu$ : -3.4  
 $\sigma$ : 43.7

Channel 2  
mn: -1345  
mx: 827  
 $\mu$ : -2.2  
 $\sigma$ : 47.6

Processed Fri Sep 2 17:46:13 2016 by ELM ver.2012-10-06 from 001\_\_elm20160902\_153803\_\_dat00.bin

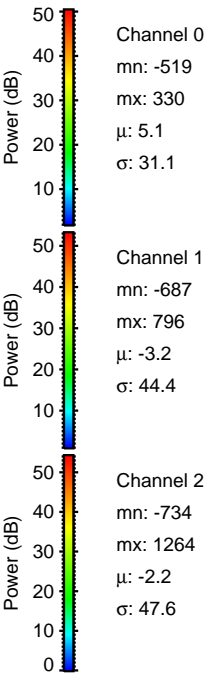
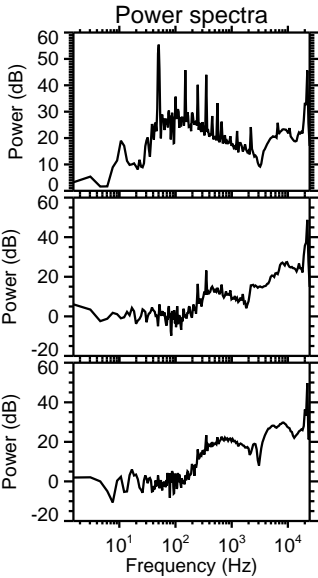
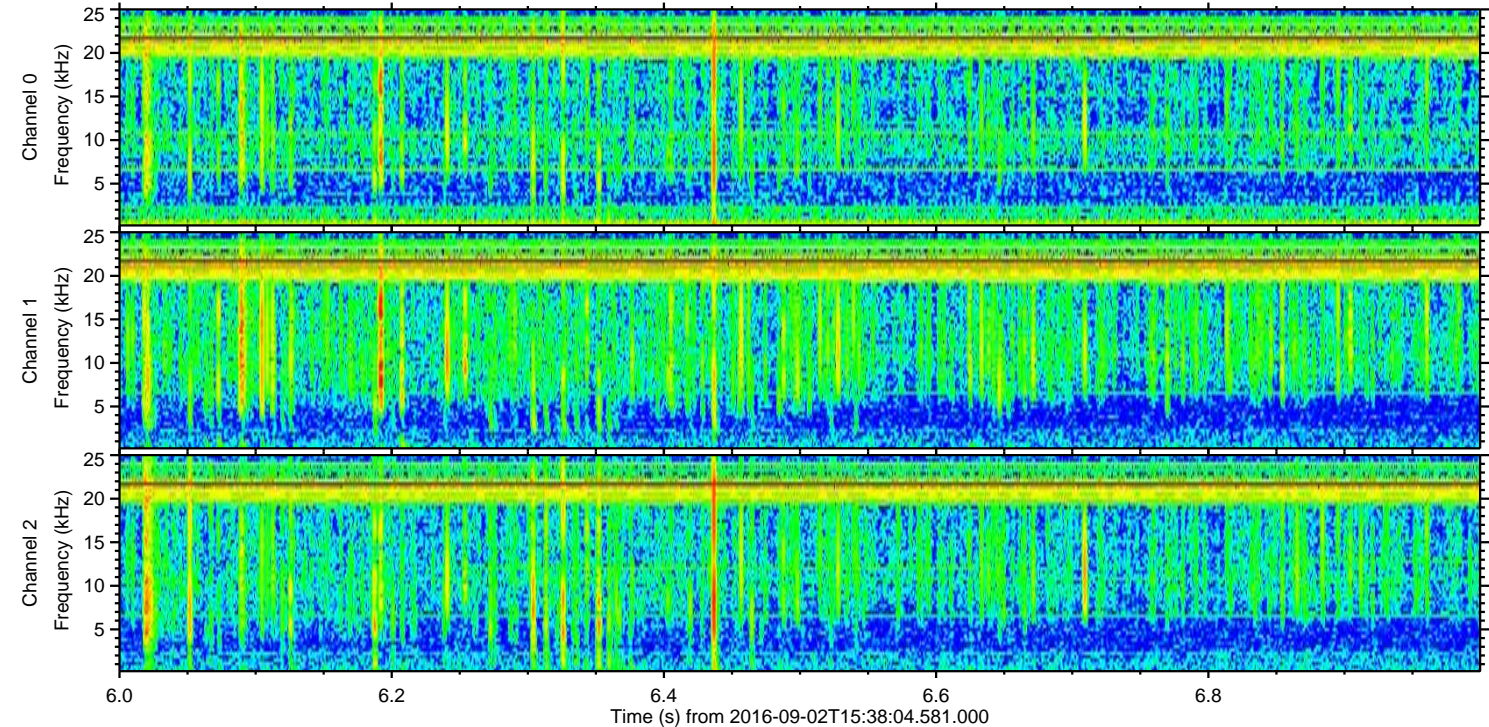
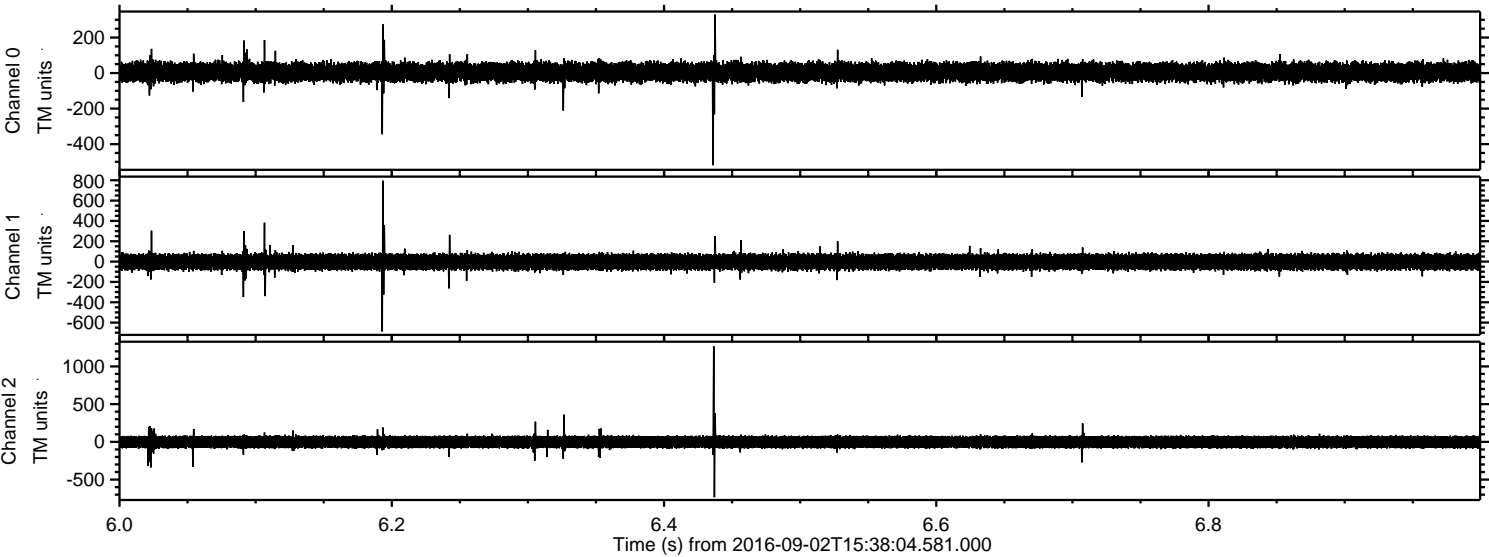


Channel 0  
mn: -518  
mx: 575  
 $\mu$ : 4.9  
 $\sigma$ : 31.3

Channel 1  
mn: -1303  
mx: 1019  
 $\mu$ : -3.4  
 $\sigma$ : 45.6

Channel 2  
mn: -1118  
mx: 645  
 $\mu$ : -2.2  
 $\sigma$ : 47.1

Processed Fri Sep 2 17:46:14 2016 by ELM ver.2012-10-06 from 001\_\_elm20160902\_153803\_\_dat00.bin



Processed Fri Sep 2 17:46:15 2016 by ELM ver.2012-10-06 from 001\_\_elm20160902\_153803\_\_dat00.bin

