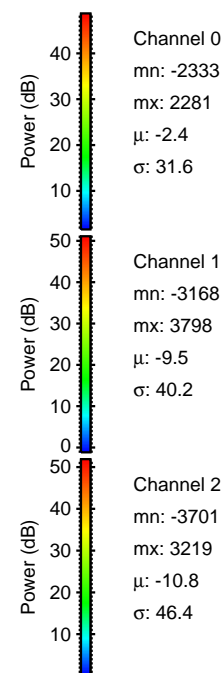
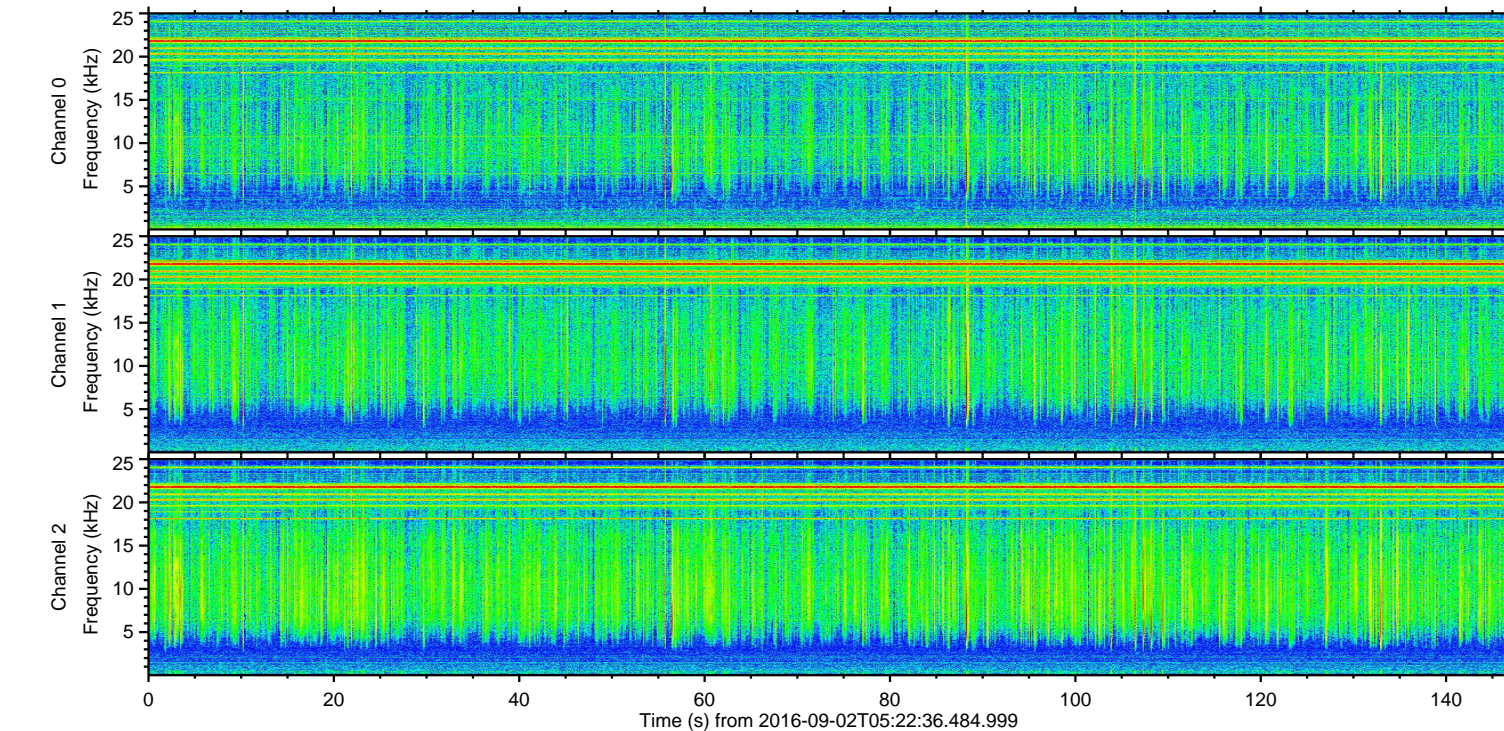
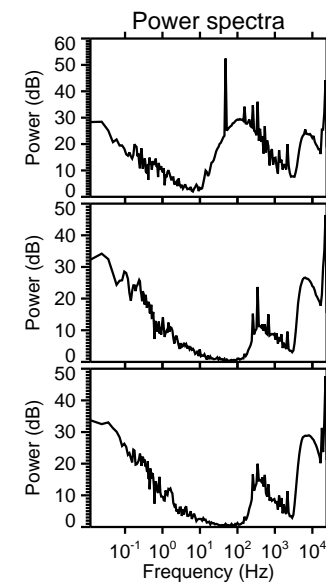
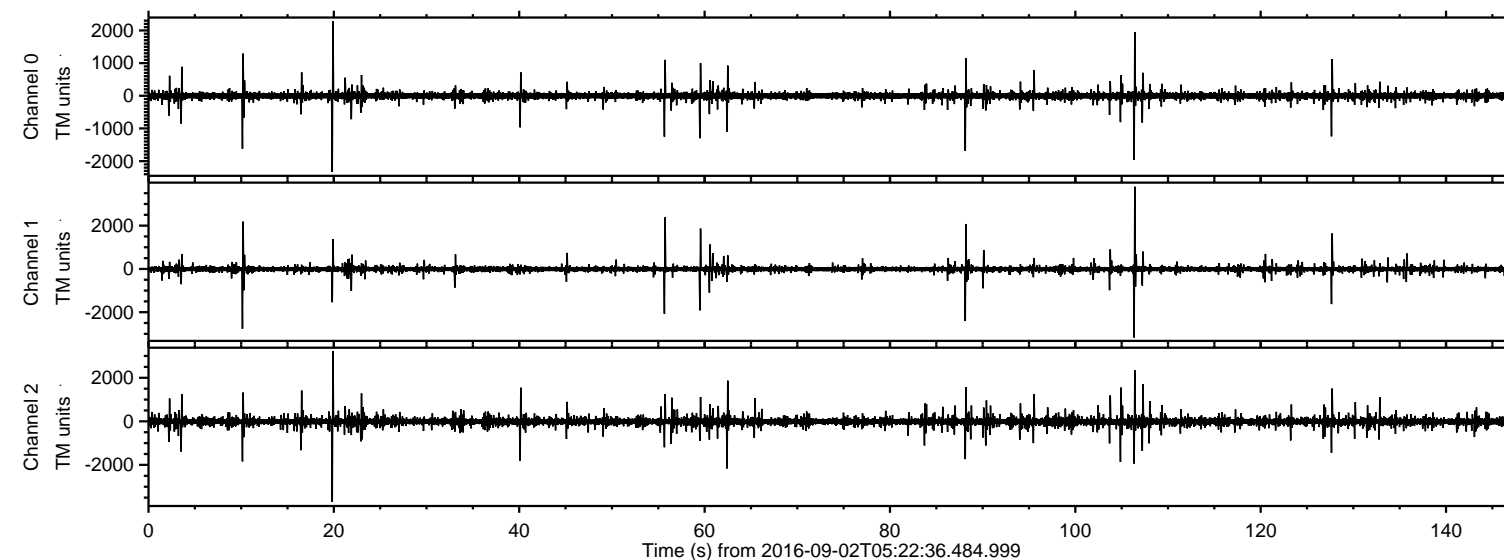


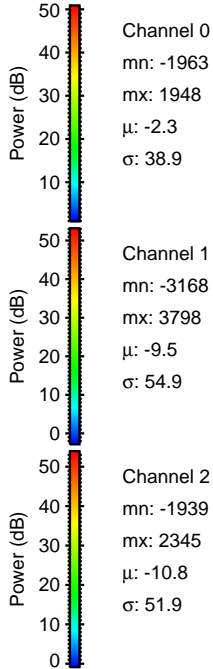
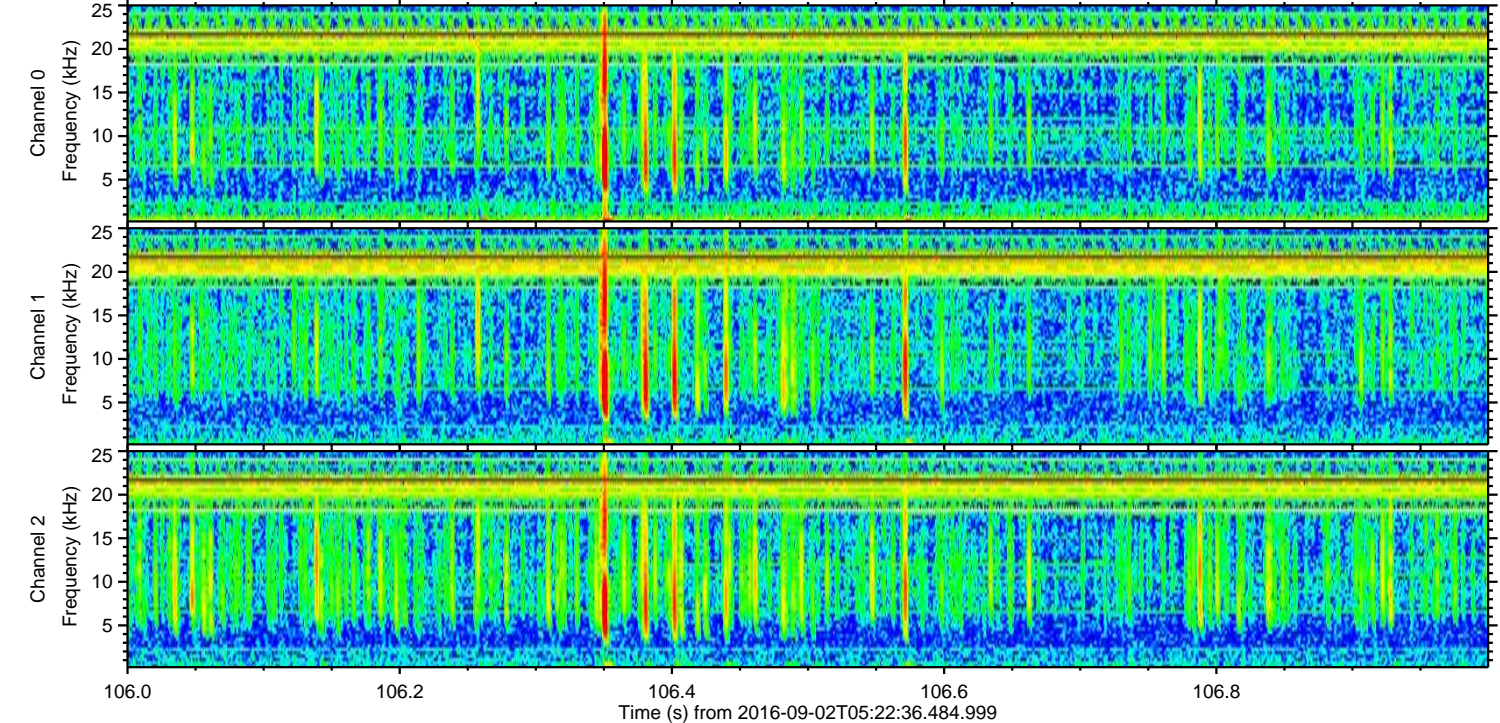
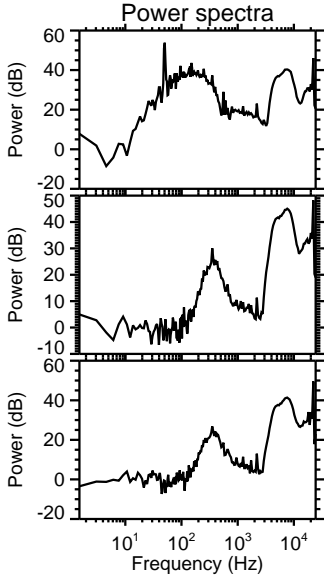
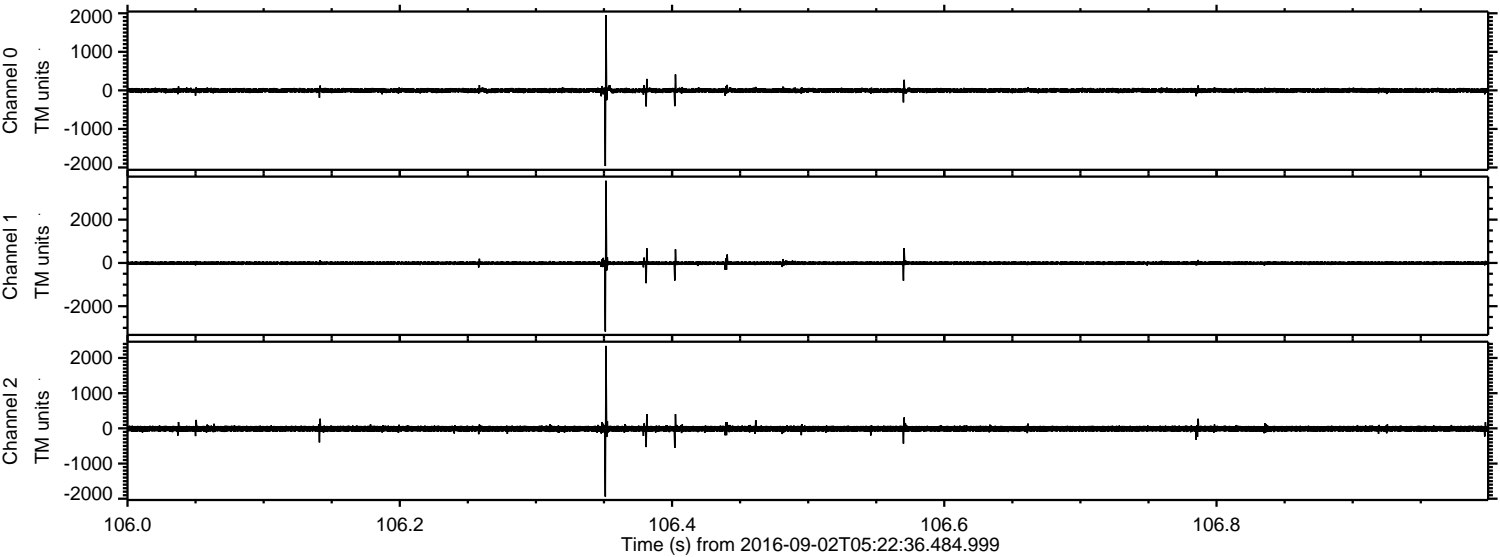
ELMAVAN 3D WAVEFORMS (Measured data sampled at 50 kHz) 51000 packets of 144 samples from 2016-09-02T05:22:36.484.999.

Processed Fri Sep 2 07:30:36 2016 by ELM ver.2012-10-06 from 001__elm20160902_052235__dat00.bin

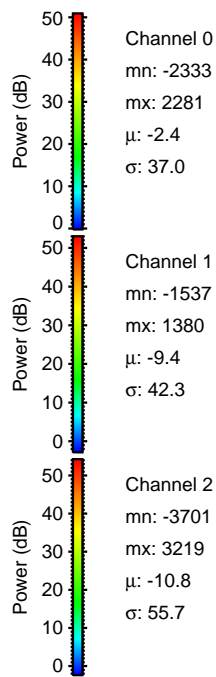
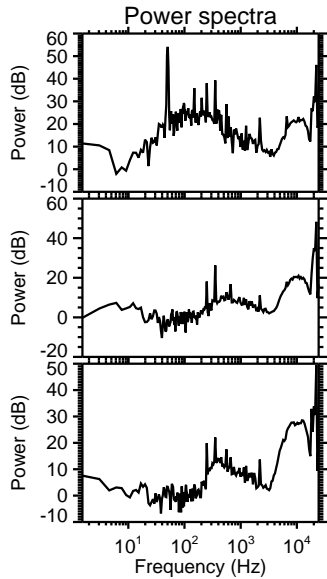
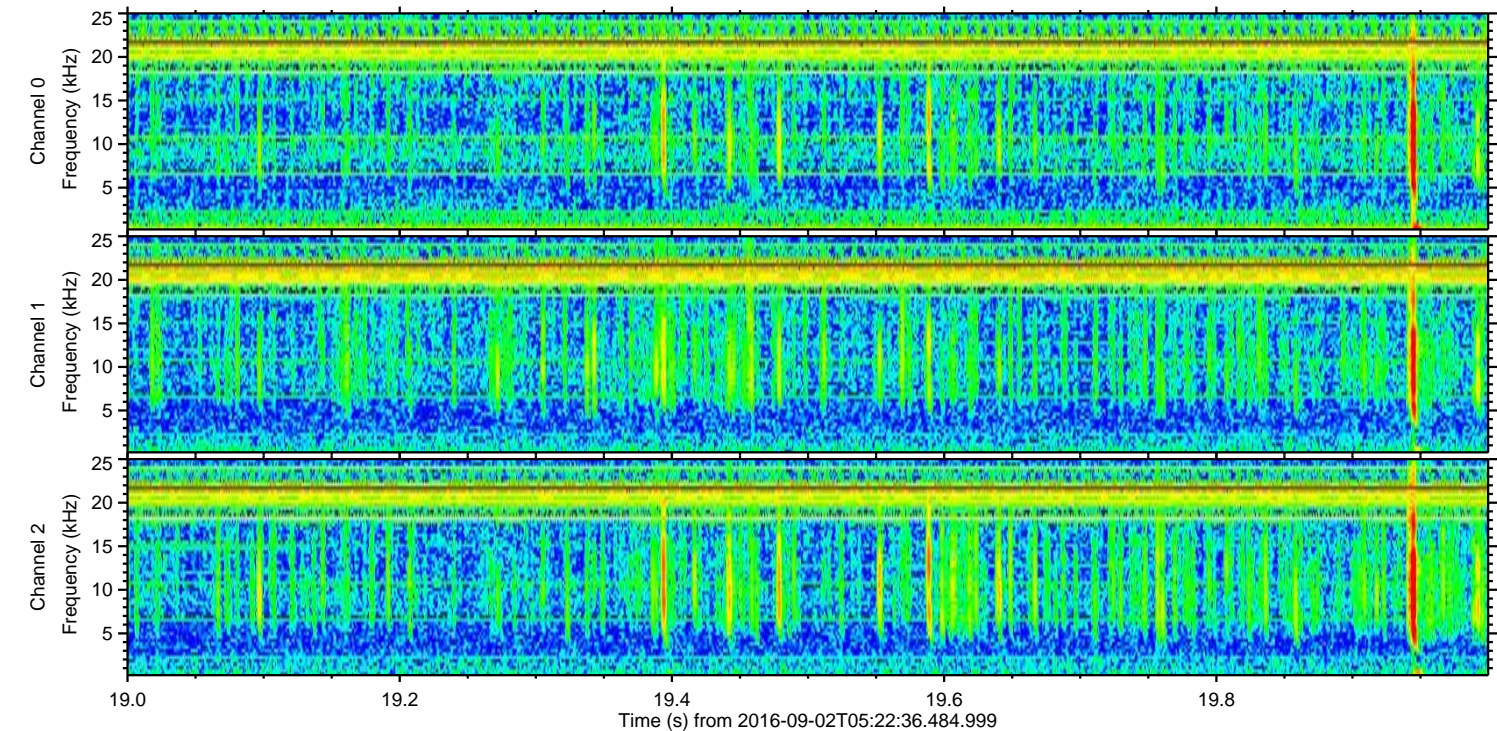
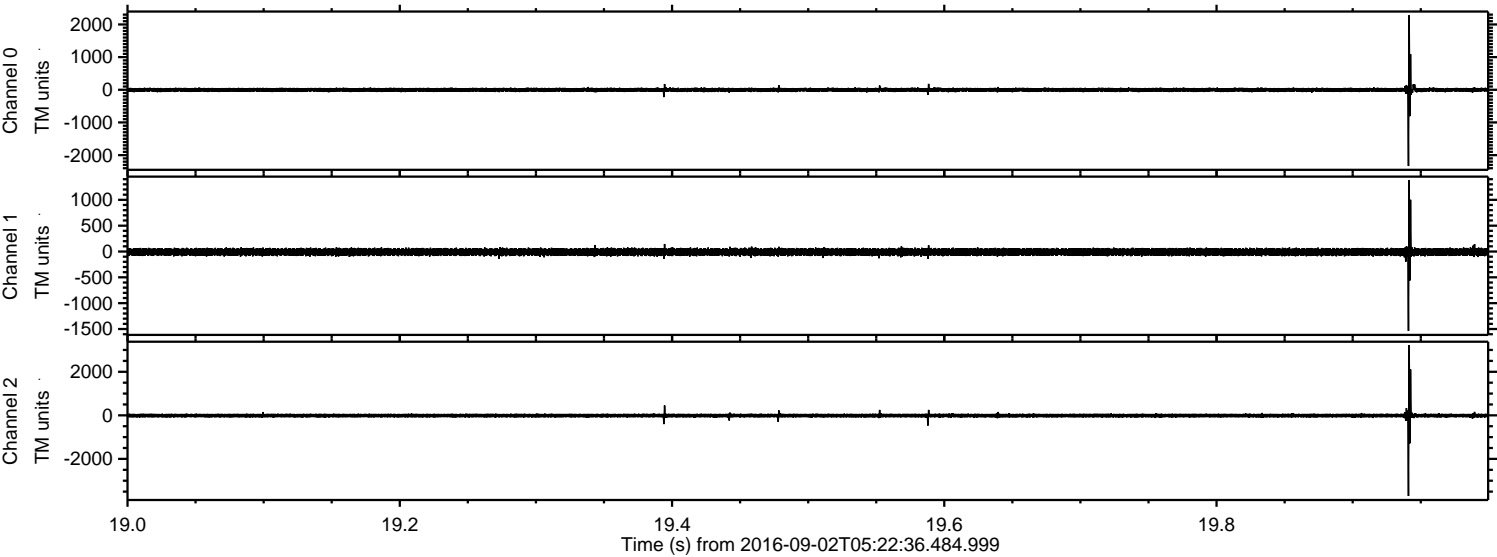


ELMAVAN 3D WAVEFORMS (Measured data sampled at 50 kHz) 51000 packets of 144 samples from 2016-09-02T05:22:36.484.999. Part 107/147

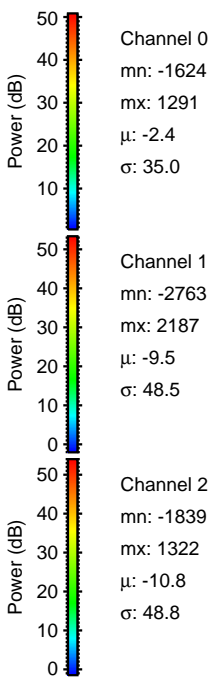
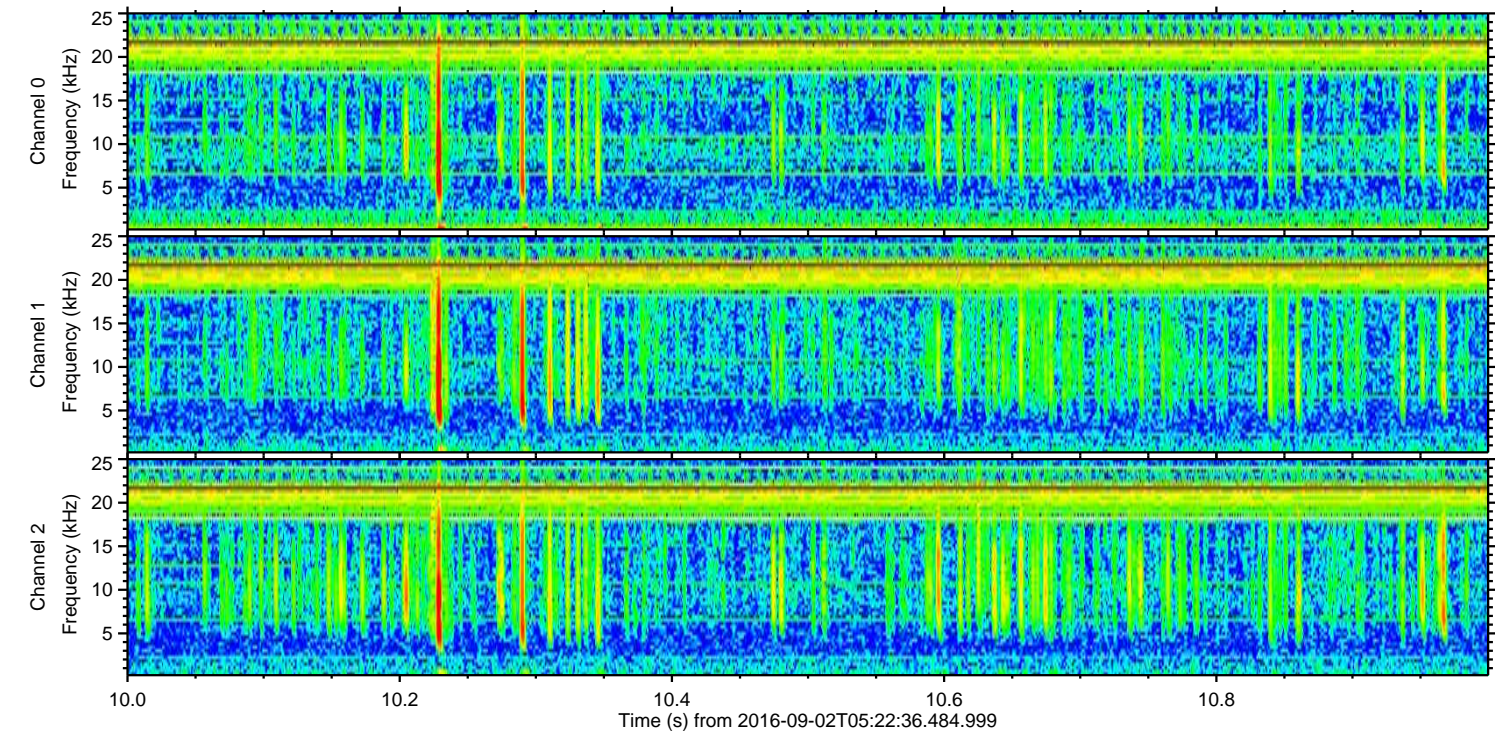
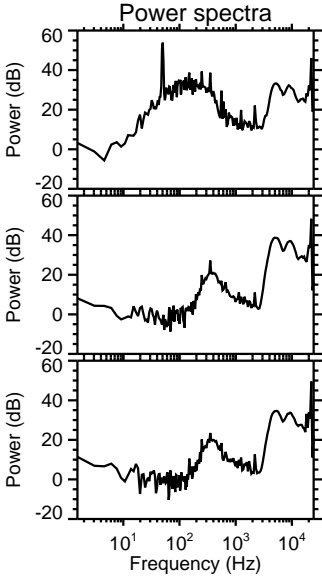
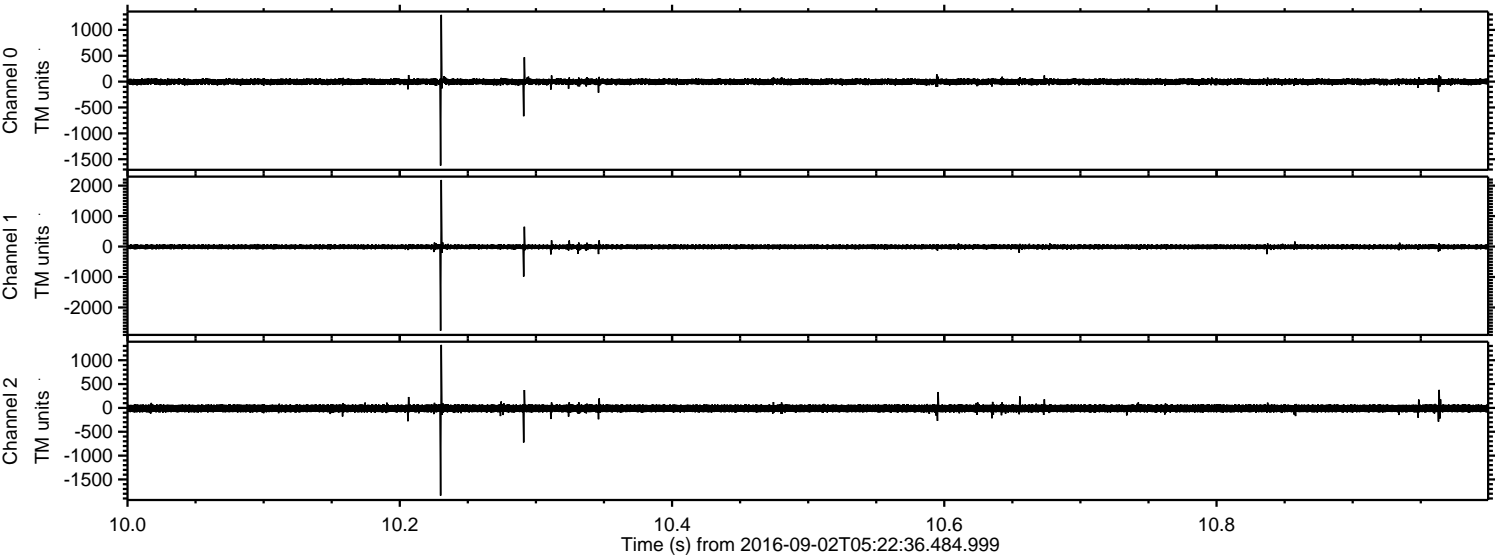
Processed Fri Sep 2 07:30:47 2016 by ELM ver.2012-10-06 from 001__elm20160902_052235__dat00.bin



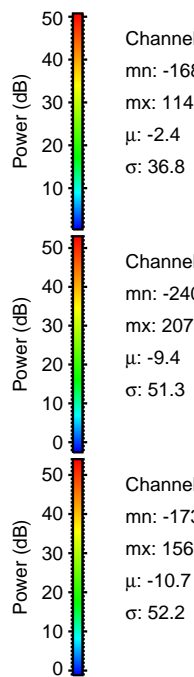
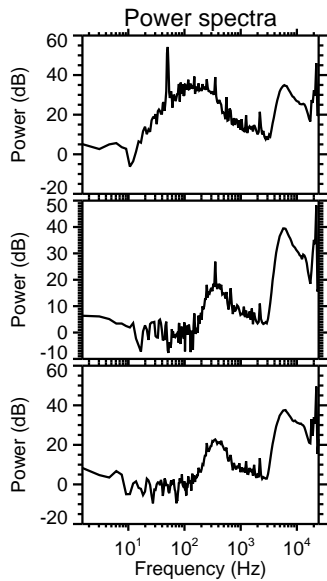
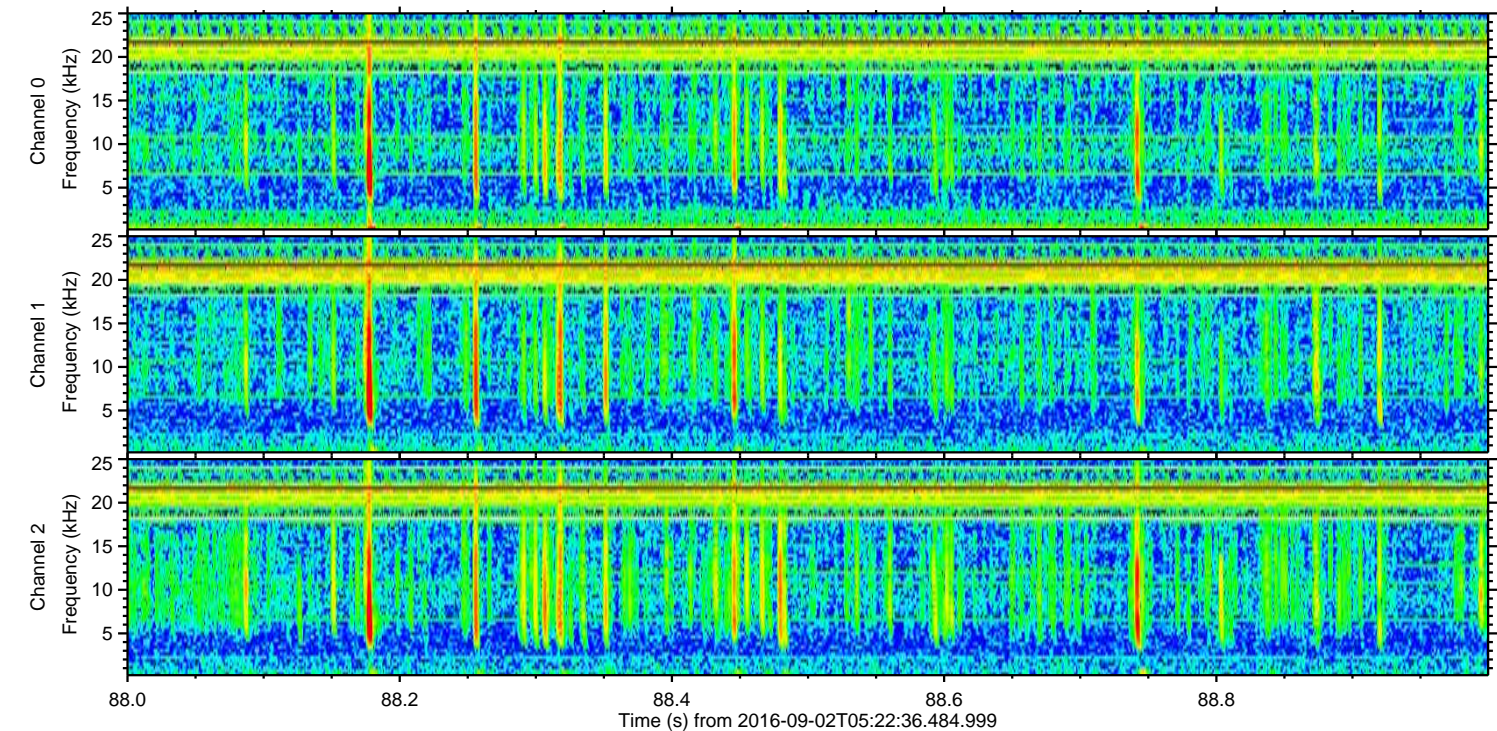
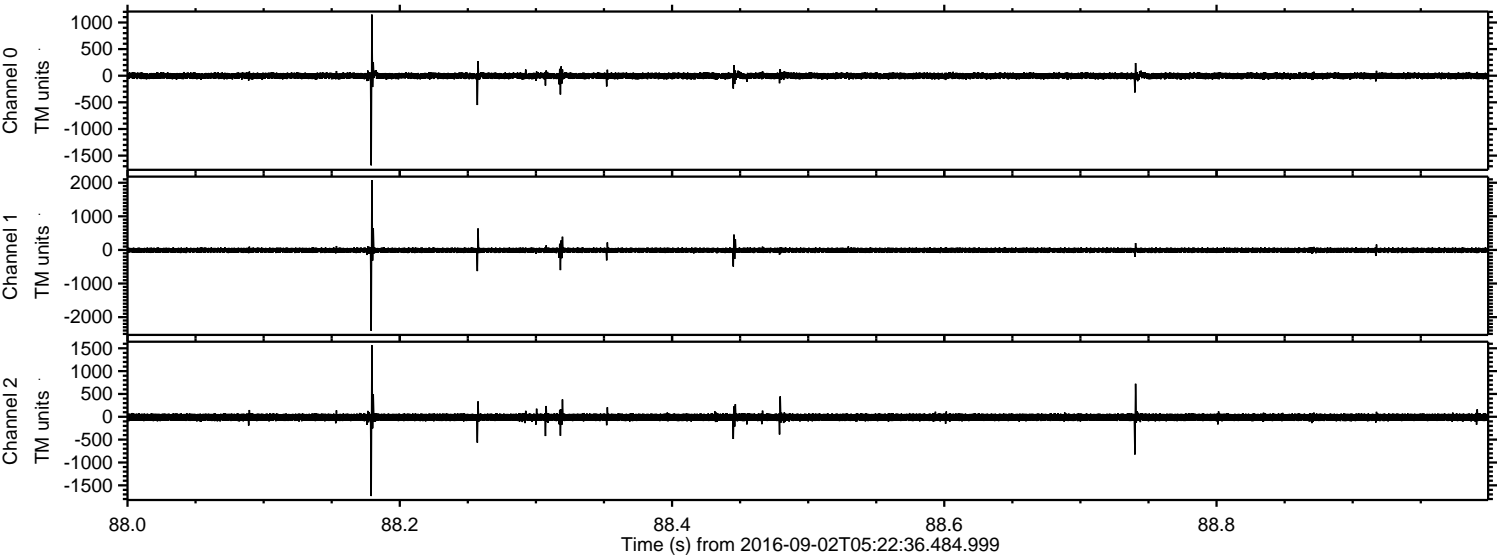
Processed Fri Sep 2 07:30:48 2016 by ELM ver.2012-10-06 from 001__elm20160902_052235__dat00.bin



Processed Fri Sep 2 07:30:49 2016 by ELM ver.2012-10-06 from 001__elm20160902_052235__dat00.bin



Processed Fri Sep 2 07:30:50 2016 by ELM ver.2012-10-06 from 001__elm20160902_052235__dat00.bin

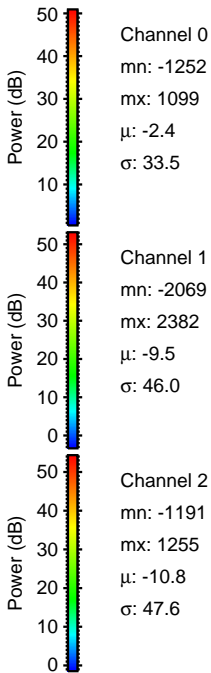
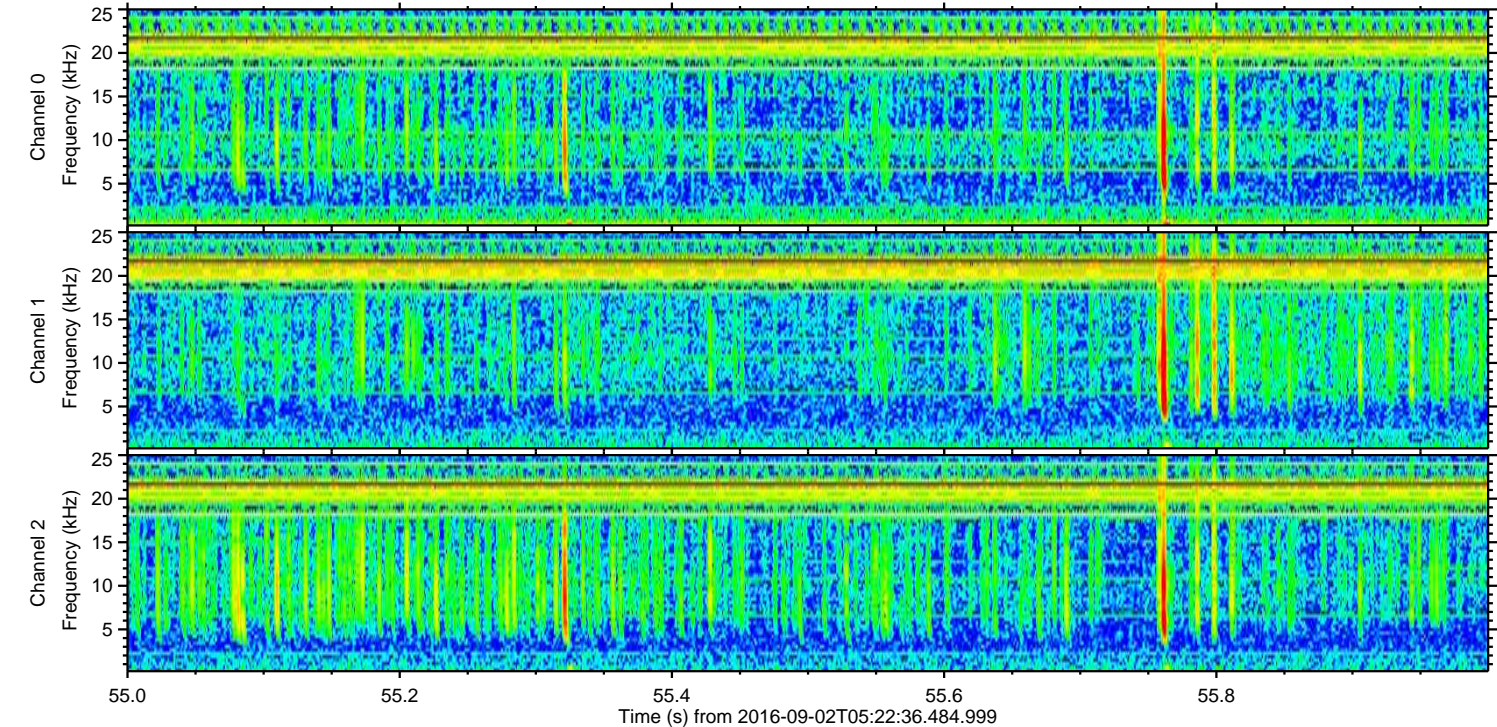
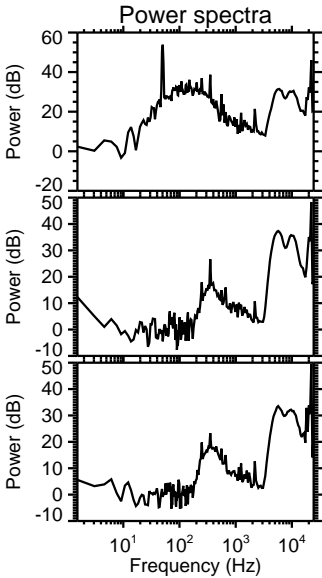
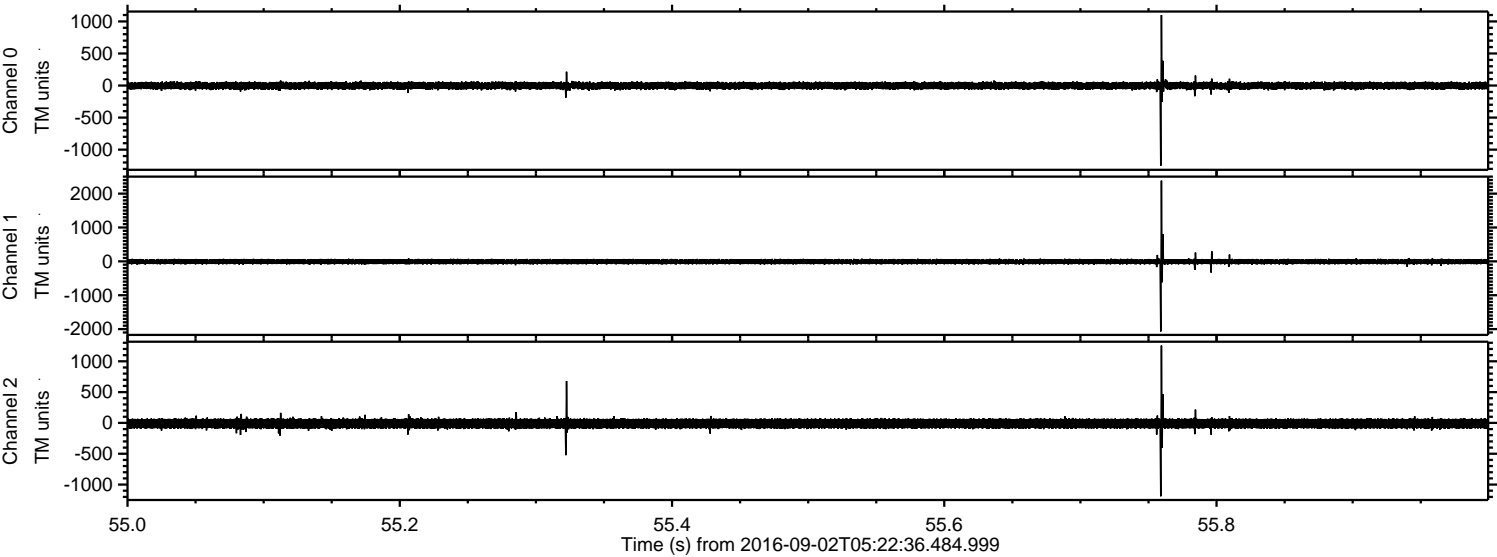


Channel 0
mn: -1683
mx: 1148
 μ : -2.4
 σ : 36.8

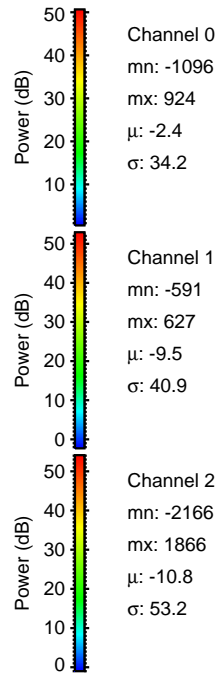
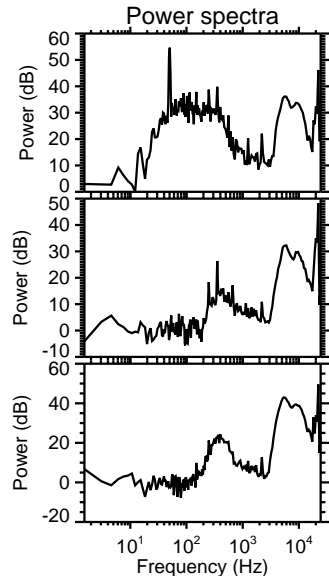
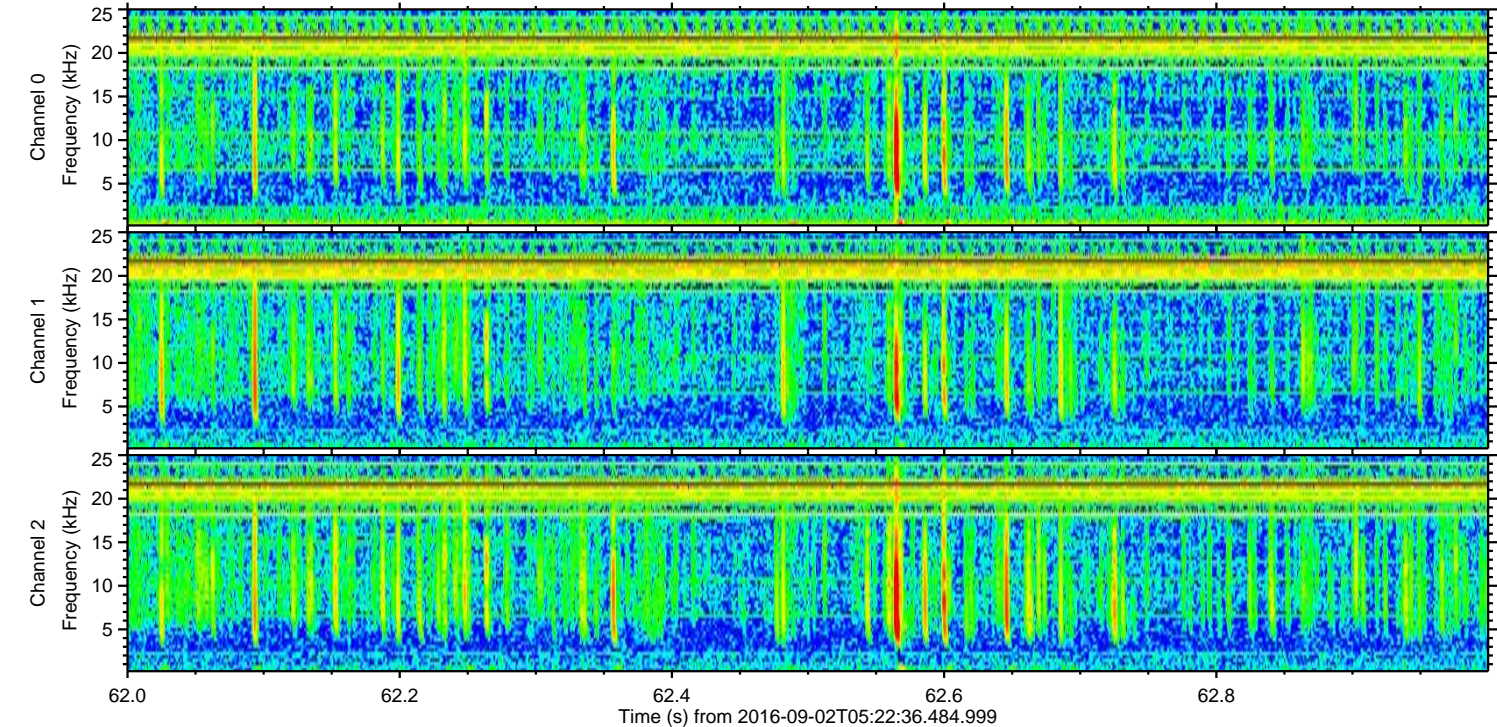
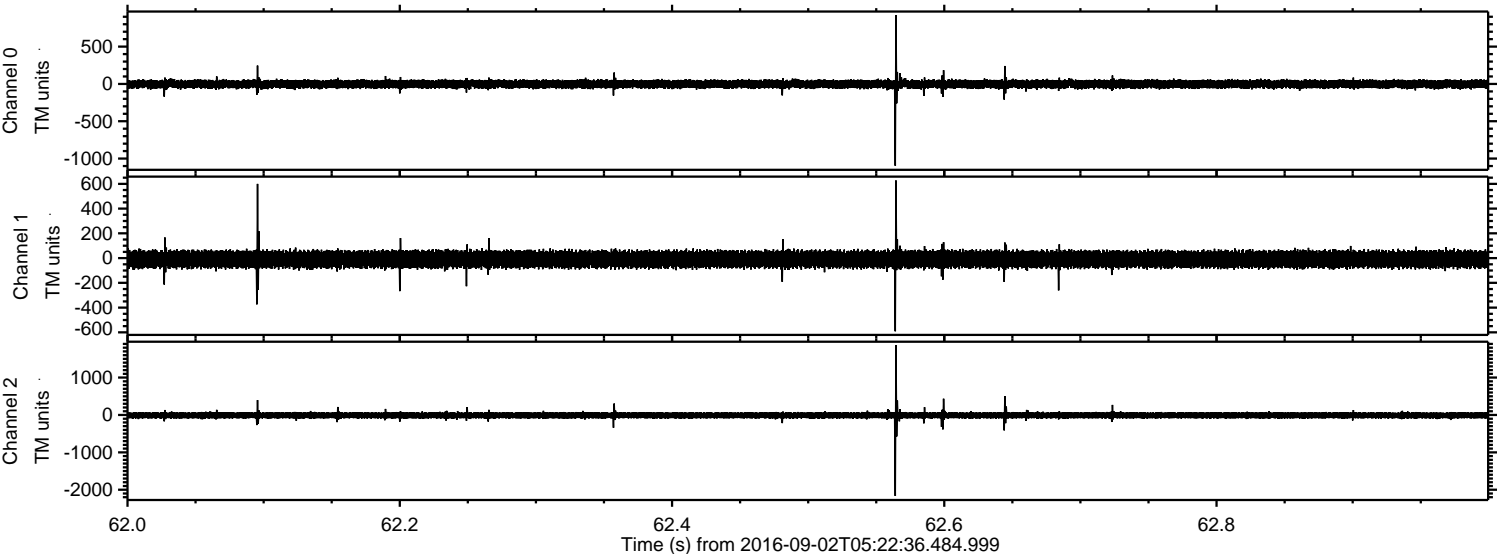
Channel 1
mn: -2409
mx: 2078
 μ : -9.4
 σ : 51.3

Channel 2
mn: -1735
mx: 1566
 μ : -10.7
 σ : 52.2

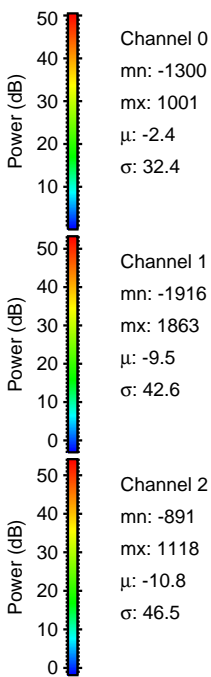
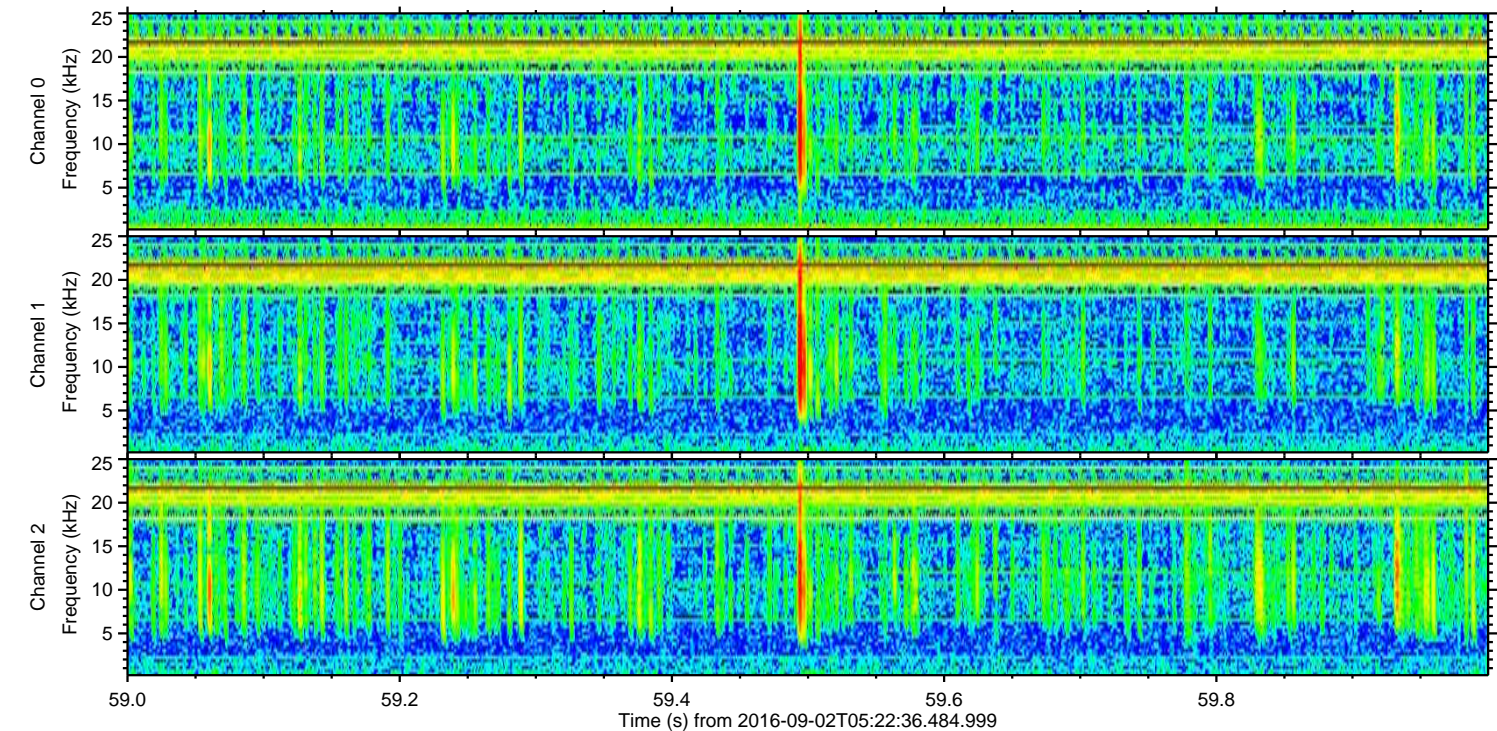
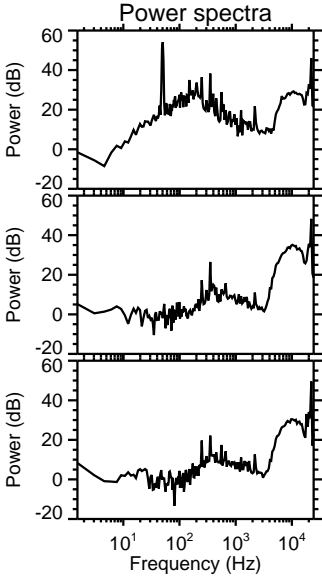
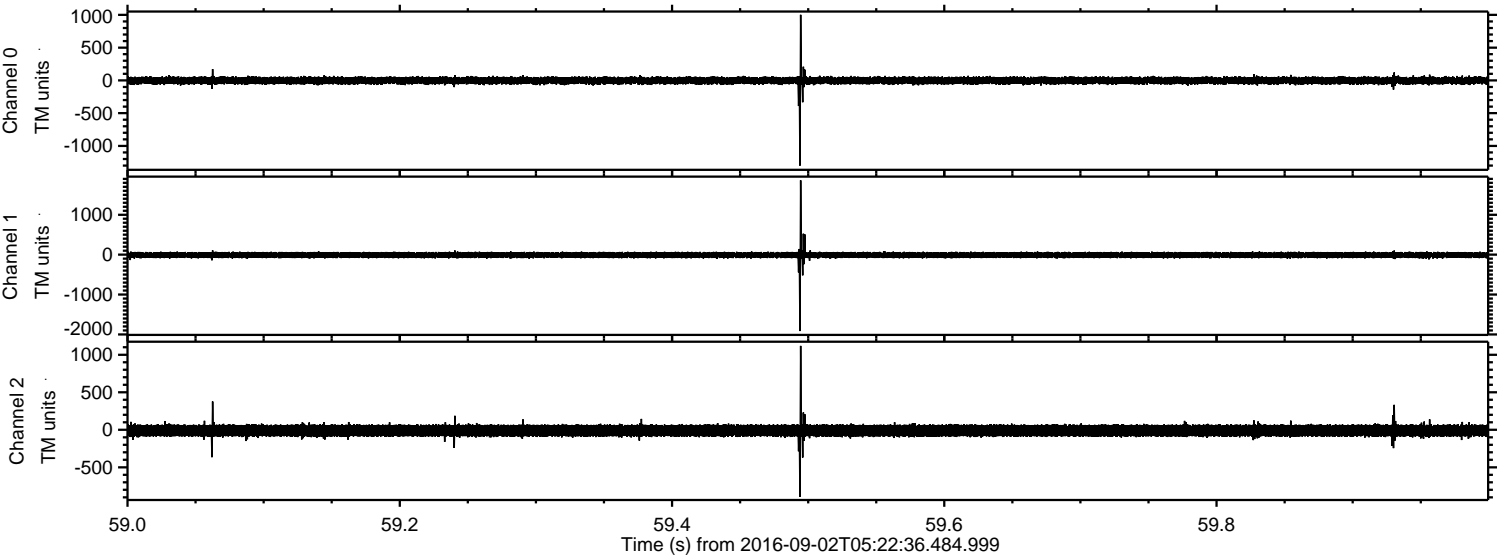
Processed Fri Sep 2 07:30:51 2016 by ELM ver.2012-10-06 from 001__elm20160902_052235__dat00.bin



Processed Fri Sep 2 07:30:52 2016 by ELM ver.2012-10-06 from 001__elm20160902_052235__dat00.bin

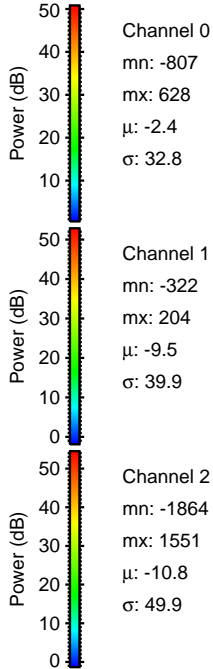
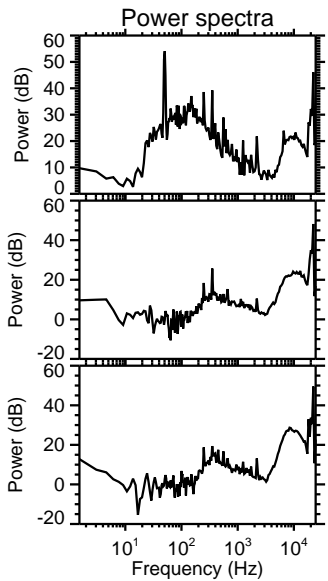
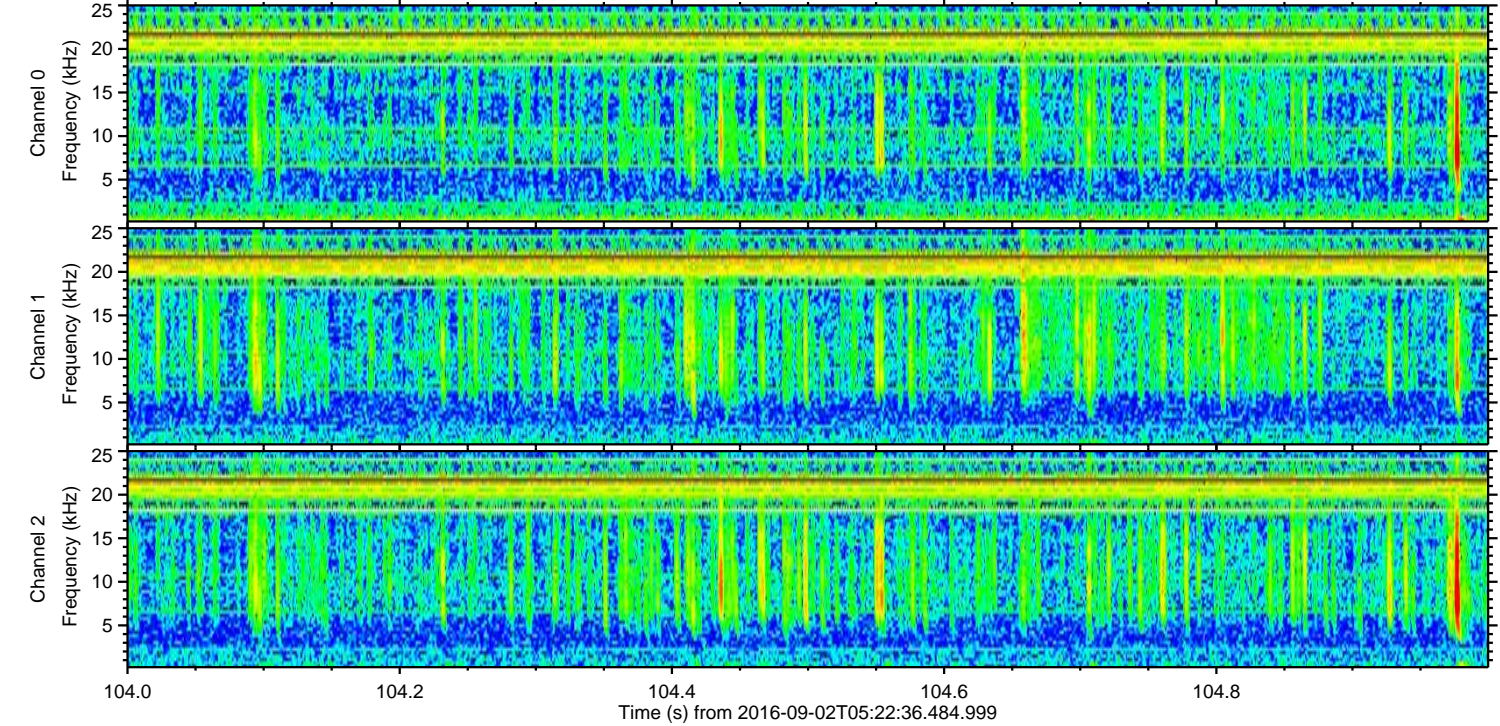
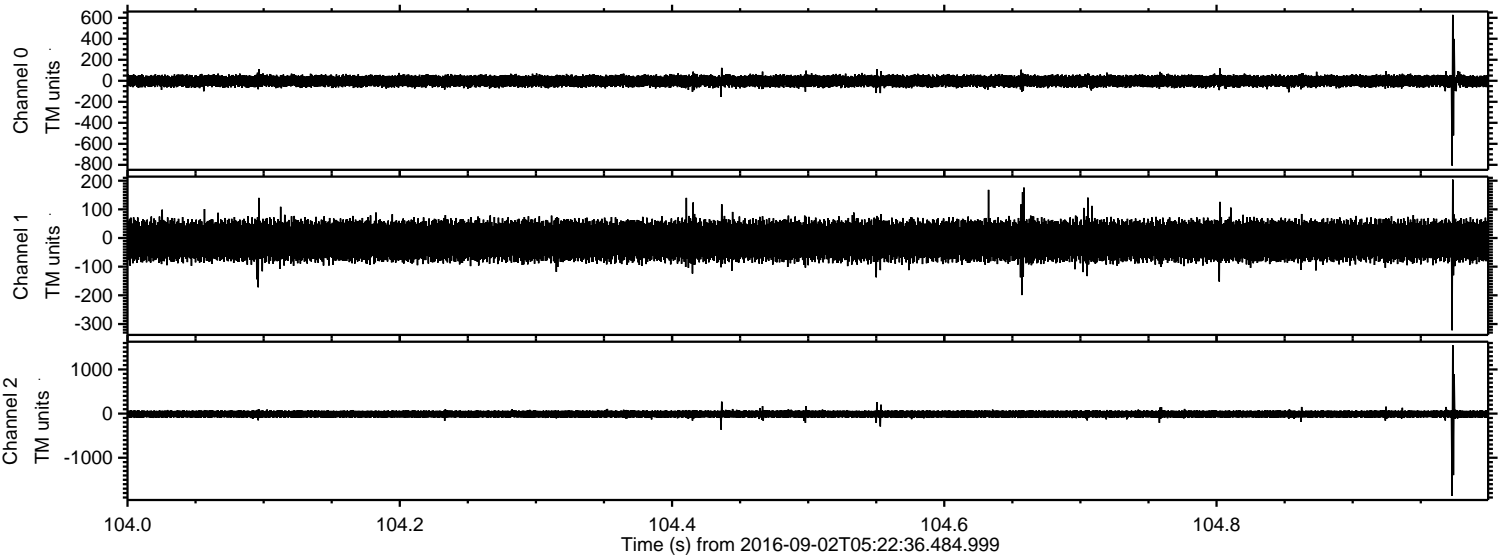


Processed Fri Sep 2 07:30:53 2016 by ELM ver.2012-10-06 from 001__elm20160902_052235__dat00.bin



ELMAVAN 3D WAVEFORMS (Measured data sampled at 50 kHz) 51000 packets of 144 samples from 2016-09-02T05:22:36.484.999. Part 105/147

Processed Fri Sep 2 07:30:54 2016 by ELM ver.2012-10-06 from 001__elm20160902_052235__dat00.bin



Channel 0
mn: -807
mx: 628
 μ : -2.4
 σ : 32.8

Channel 1
mn: -322
mx: 204
 μ : -9.5
 σ : 39.9

Channel 2
mn: -1864
mx: 1551
 μ : -10.8
 σ : 49.9

Processed Fri Sep 2 07:30:55 2016 by ELM ver.2012-10-06 from 001__elm20160902_052235__dat00.bin

