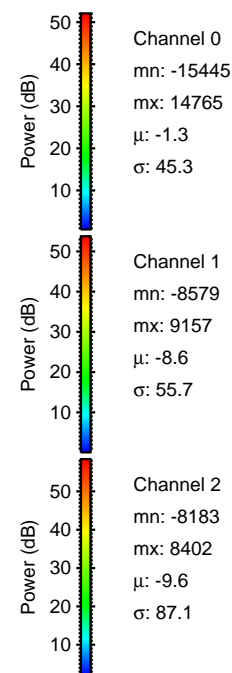
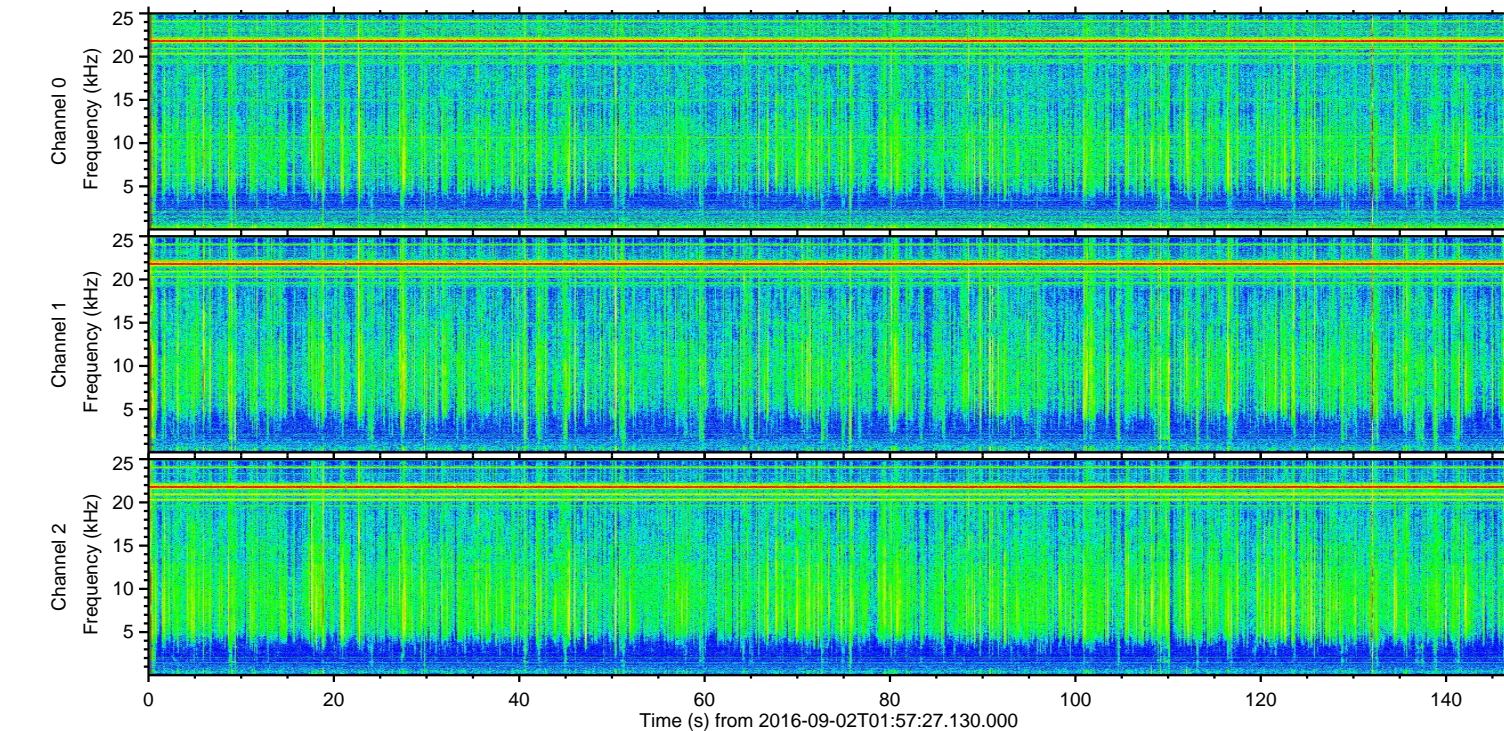
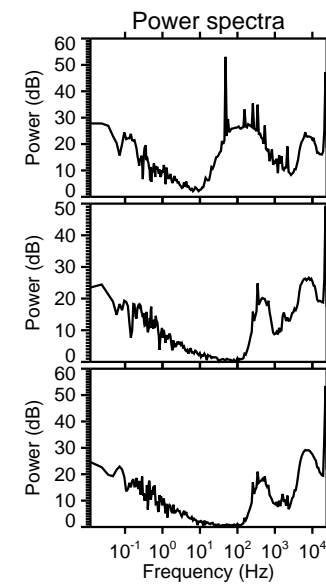
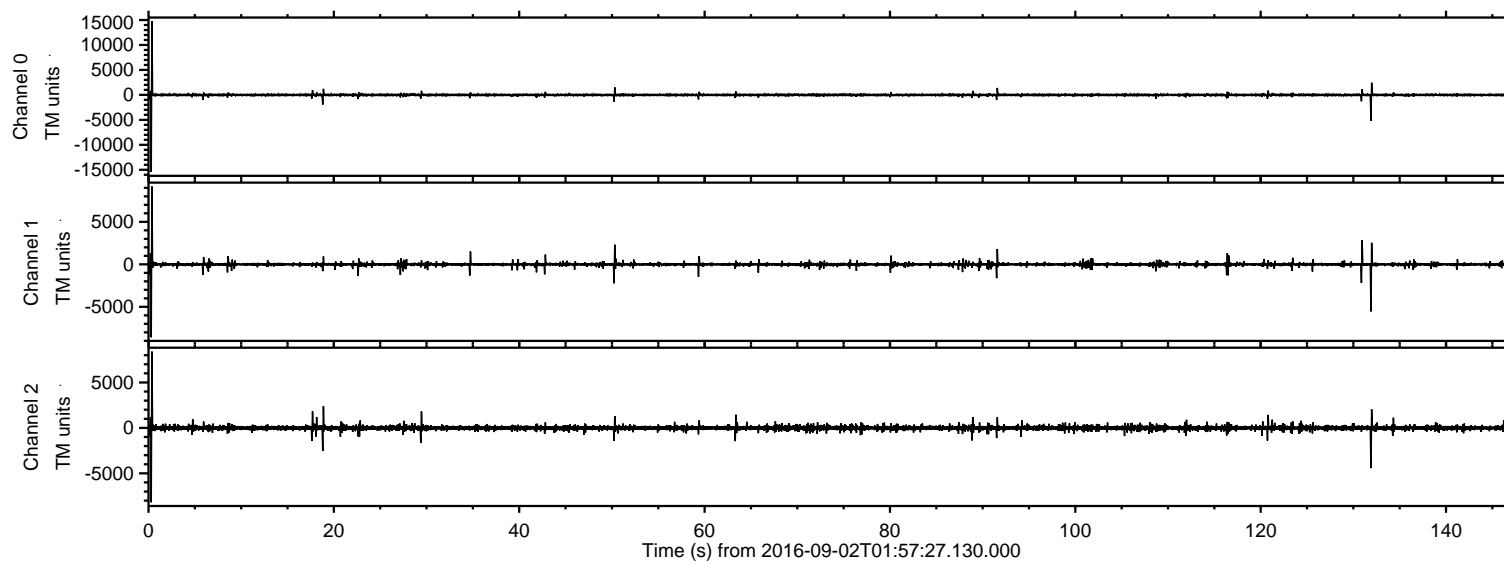


# ELMAVAN 3D WAVEFORMS (Measured data sampled at 50 kHz) 51000 packets of 144 samples from 2016-09-02T01:57:27.130.000.

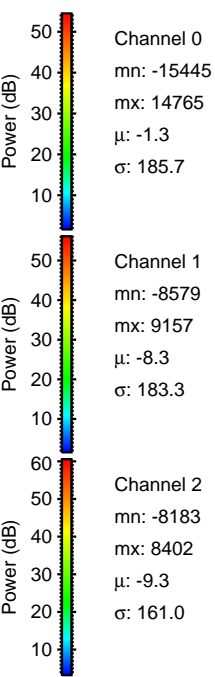
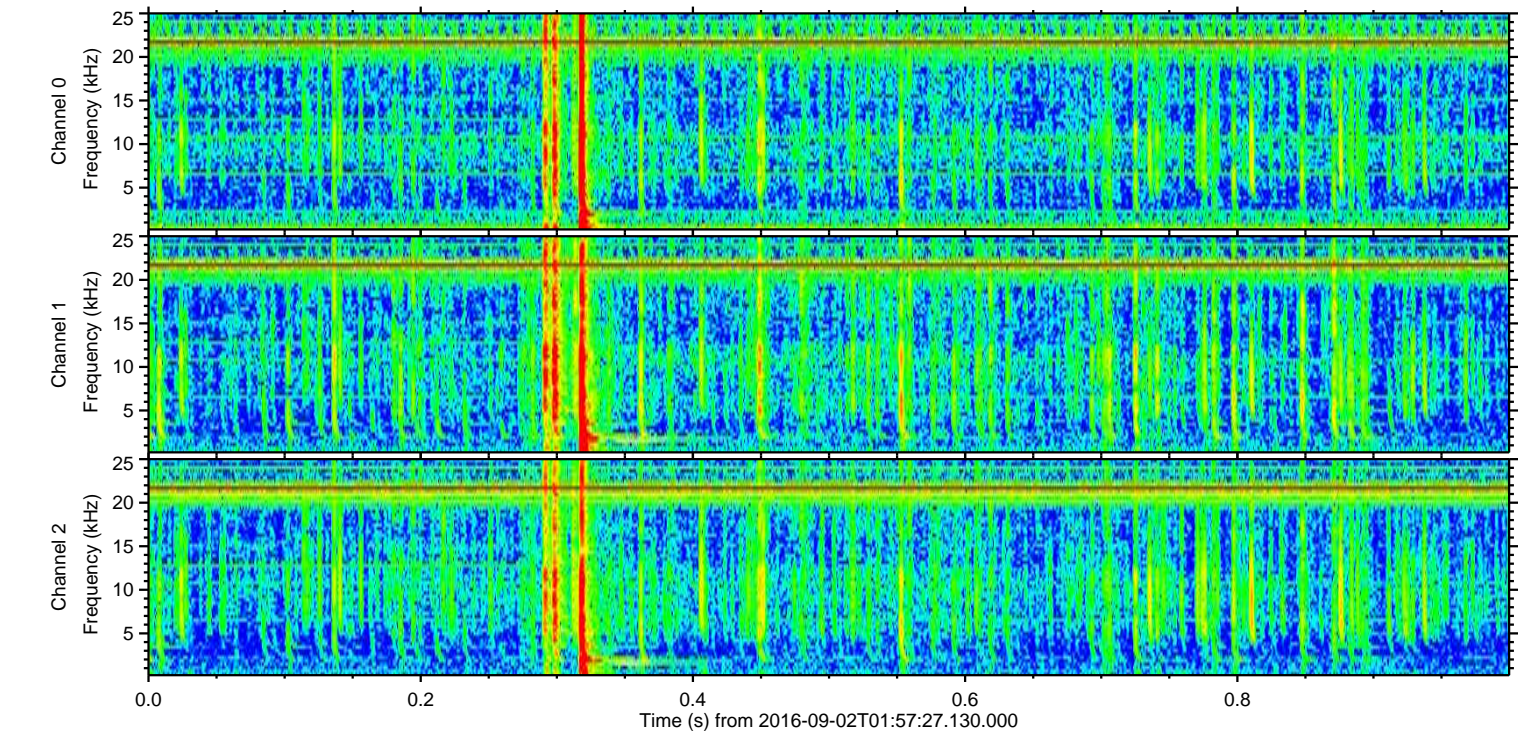
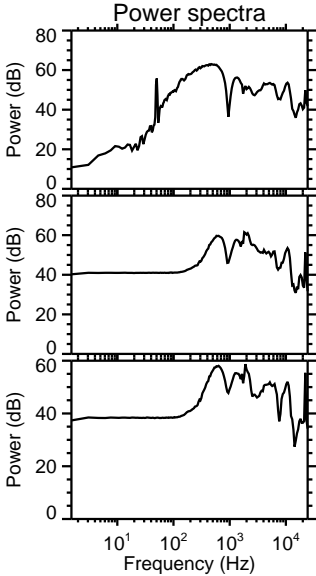
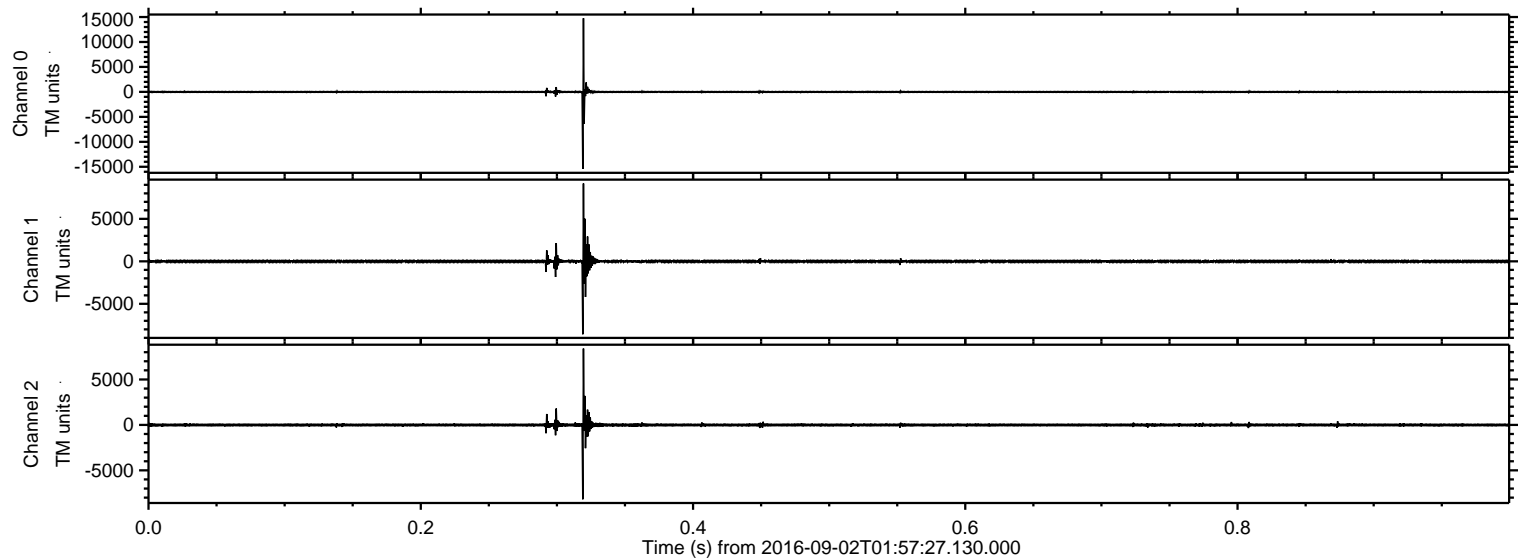
Processed Fri Sep 2 04:05:39 2016 by ELM ver.2012-10-06 from 001\_\_elm20160902\_015726\_\_dat00.bin





ELMAVAN 3D WAVEFORMS (Measured data sampled at 50 kHz) 51000 packets of 144 samples from 2016-09-02T01:57:27.130.000. Part 1/147

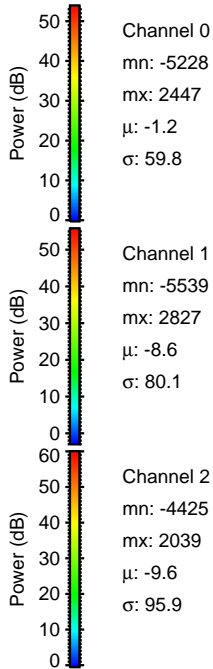
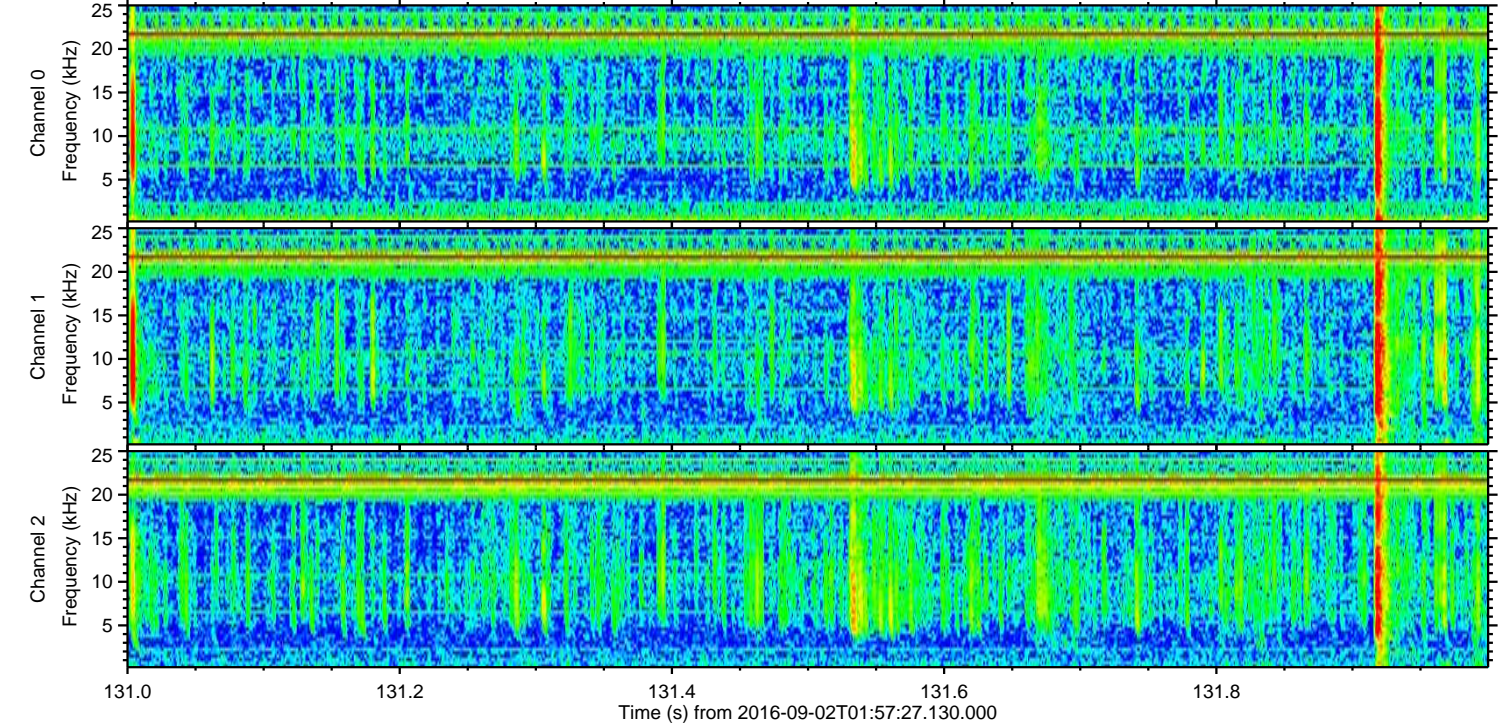
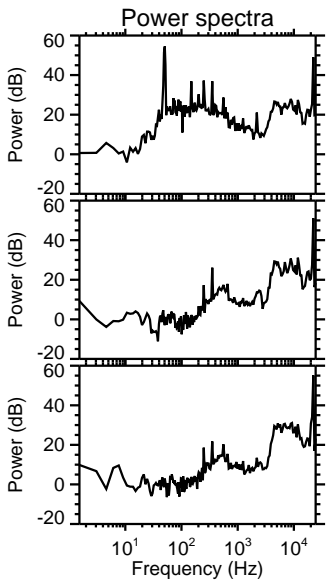
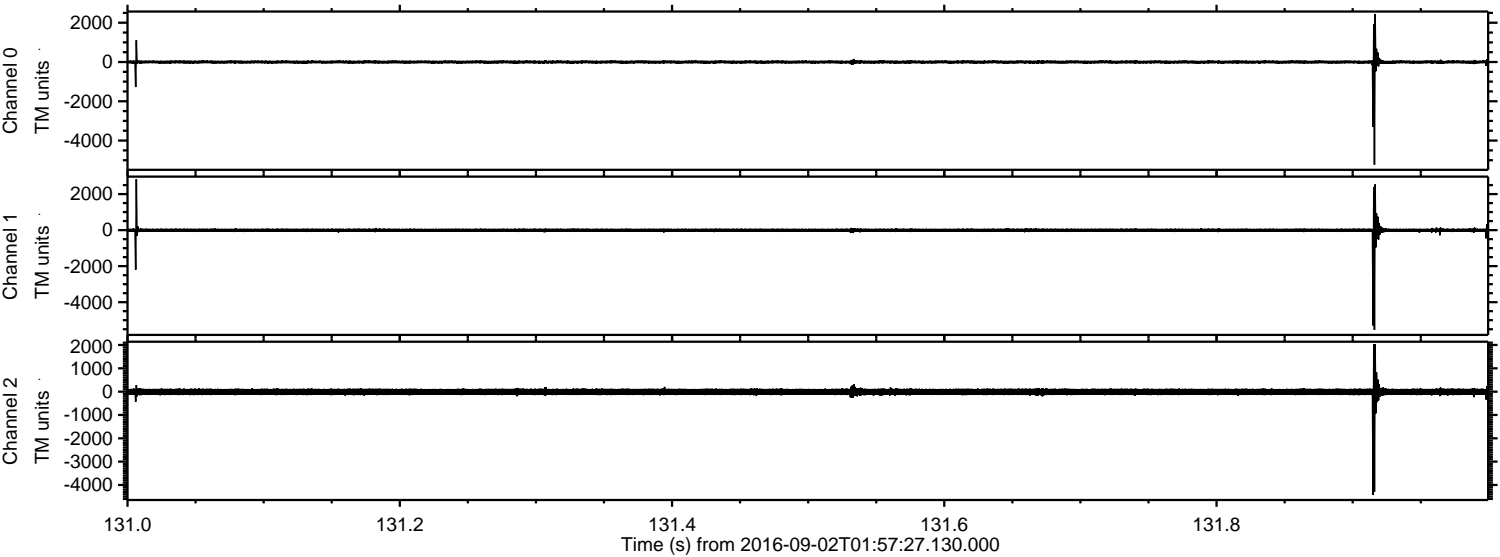
Processed Fri Sep 2 04:05:50 2016 by ELM ver.2012-10-06 from 001\_\_elm20160902\_015726\_\_dat00.bin





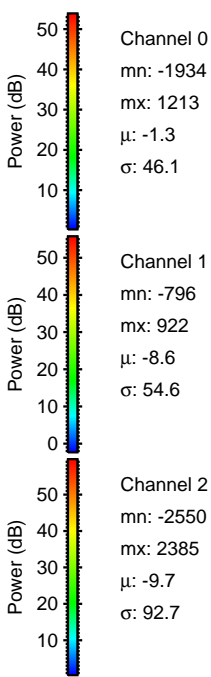
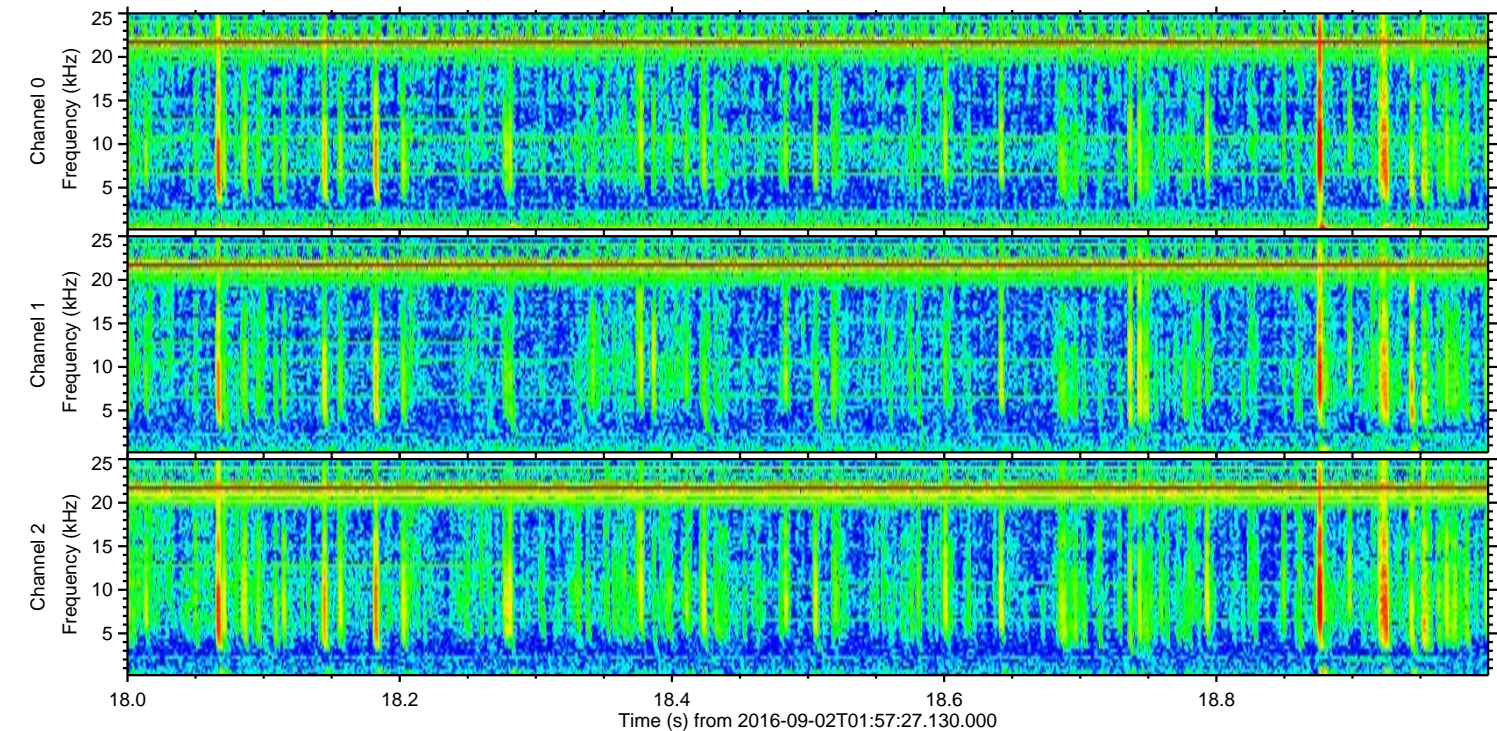
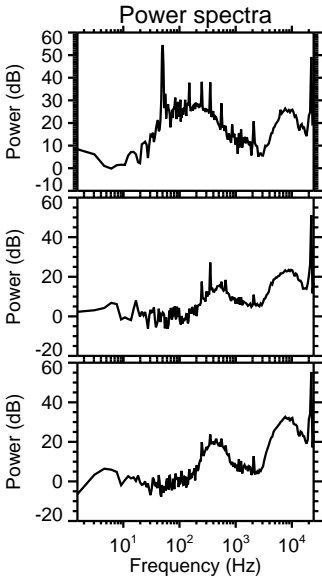
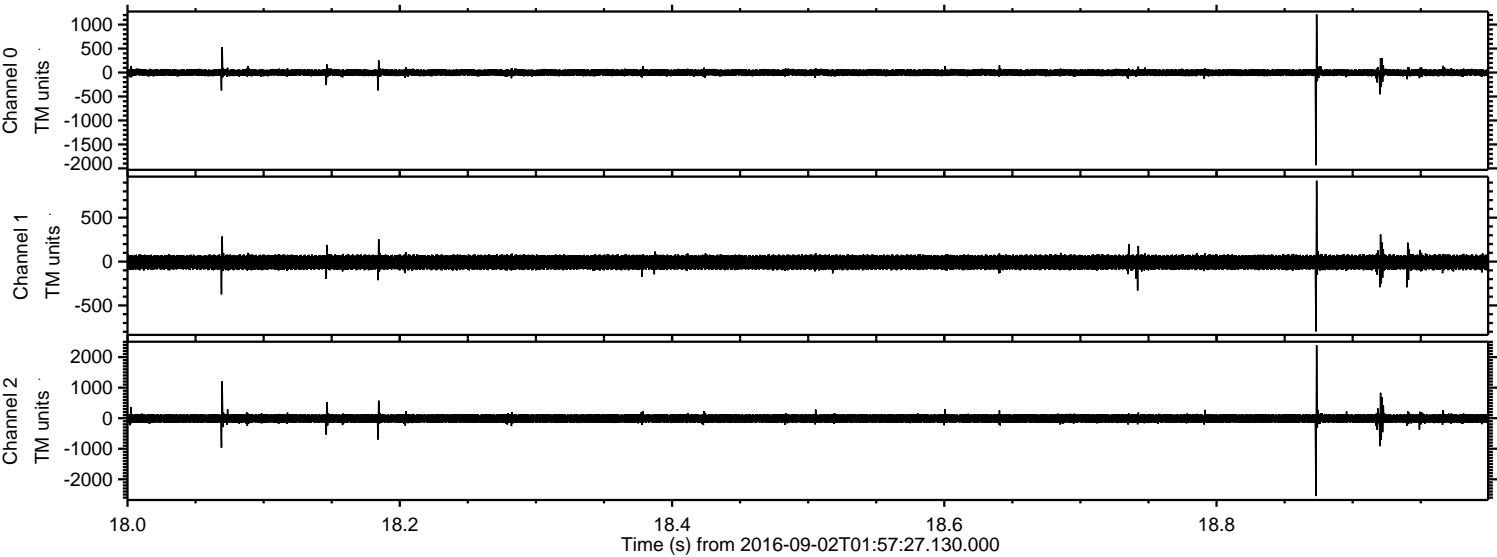
ELMAVAN 3D WAVEFORMS (Measured data sampled at 50 kHz) 51000 packets of 144 samples from 2016-09-02T01:57:27.130.000. Part 132/147

Processed Fri Sep 2 04:05:51 2016 by ELM ver.2012-10-06 from 001\_\_elm20160902\_015726\_\_dat00.bin



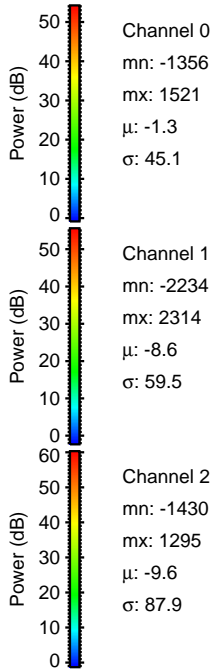
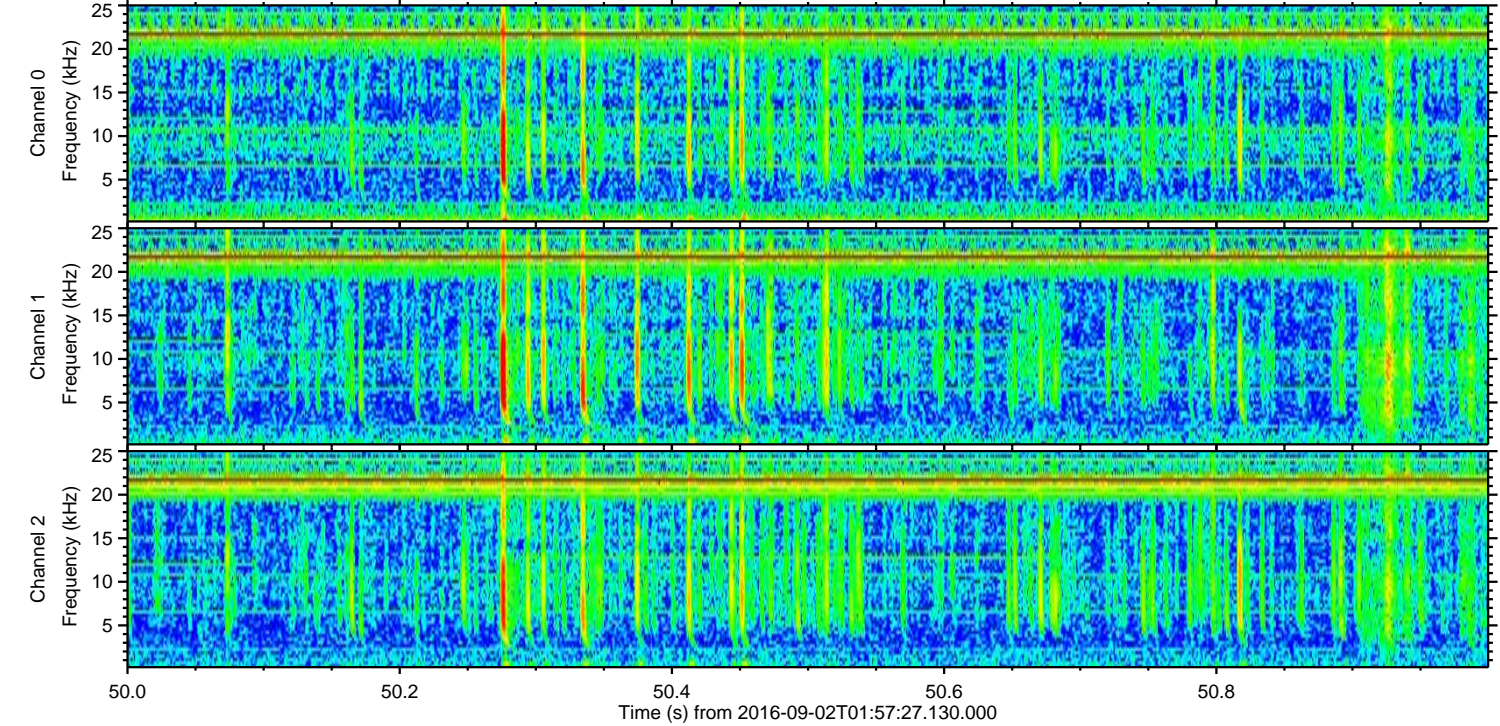
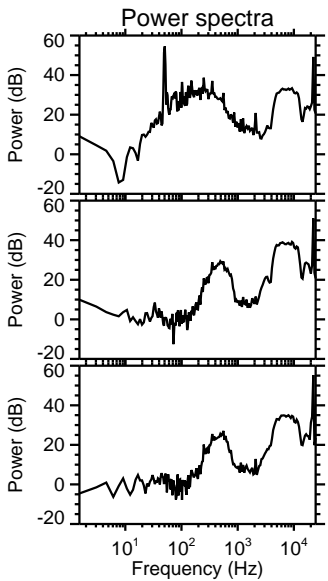
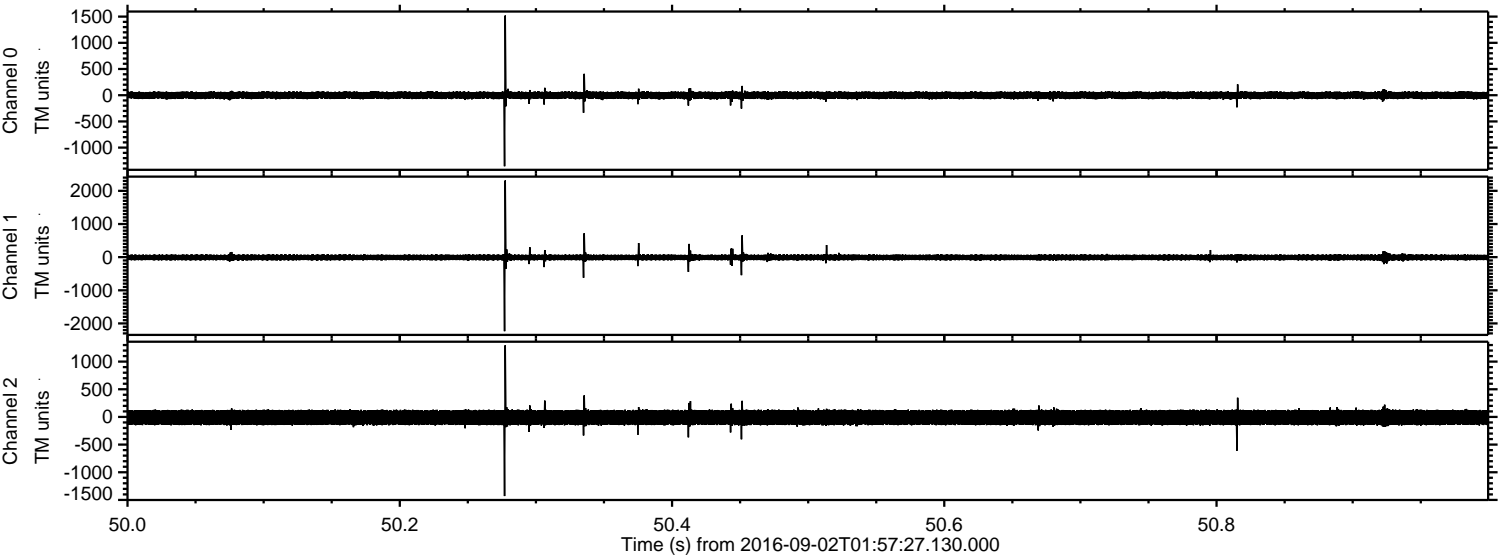


Processed Fri Sep 2 04:05:52 2016 by ELM ver.2012-10-06 from 001\_\_elm20160902\_015726\_\_dat00.bin



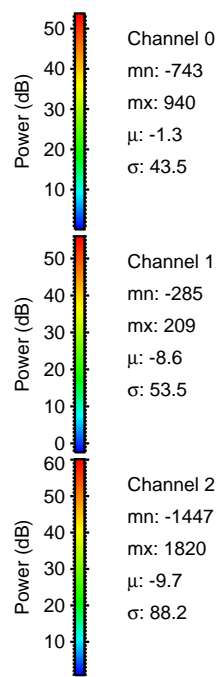
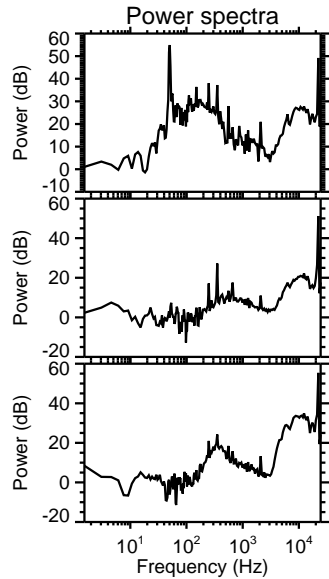
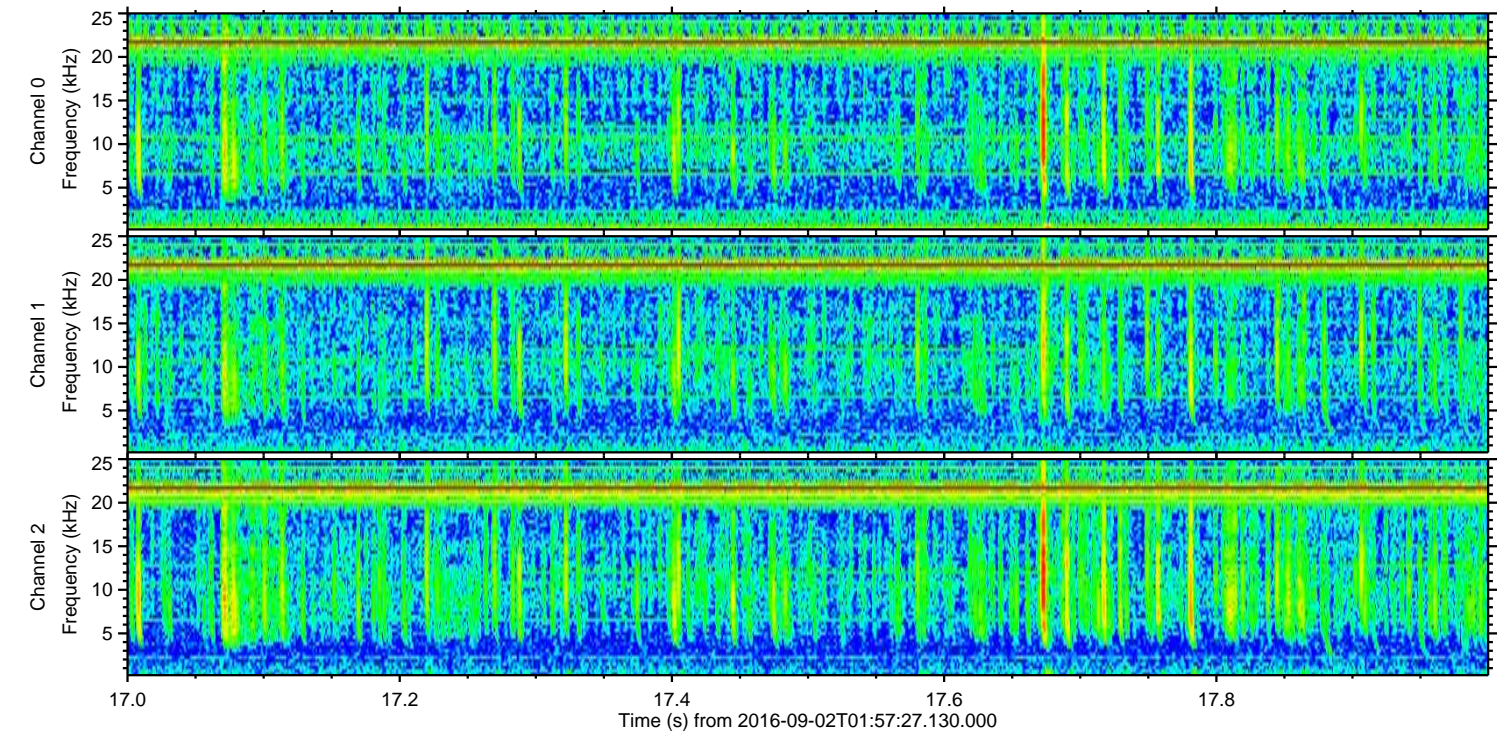
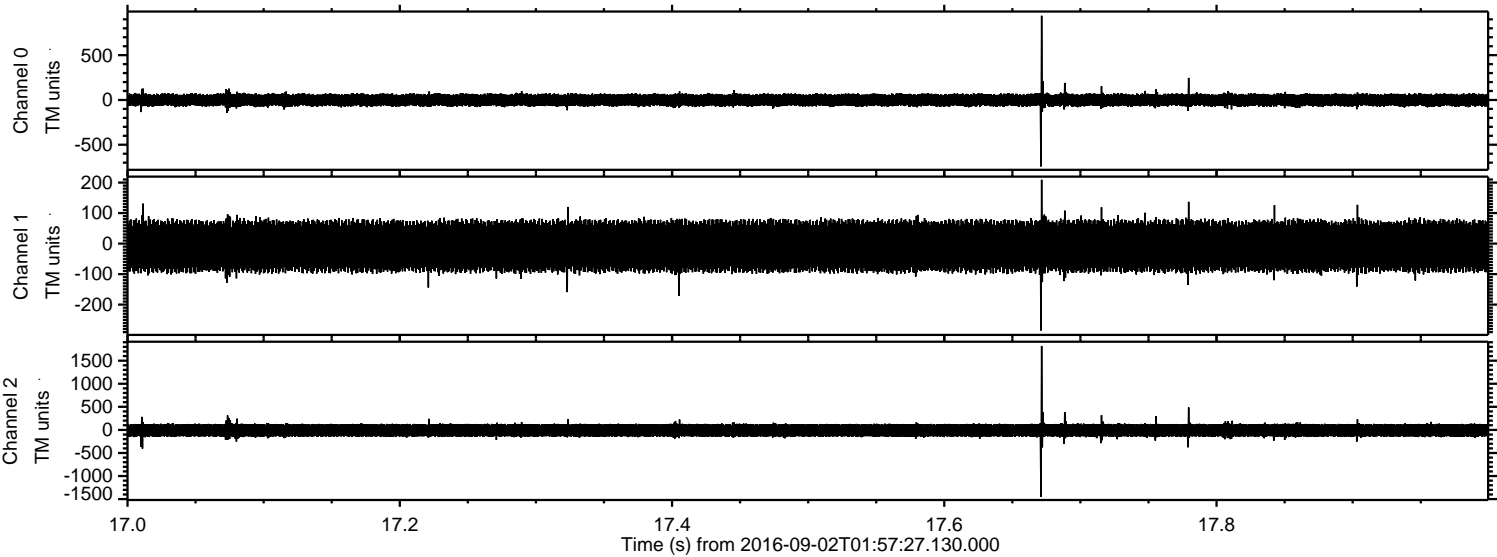


Processed Fri Sep 2 04:05:53 2016 by ELM ver.2012-10-06 from 001\_\_elm20160902\_015726\_\_dat00.bin





Processed Fri Sep 2 04:05:54 2016 by ELM ver.2012-10-06 from 001\_\_elm20160902\_015726\_\_dat00.bin



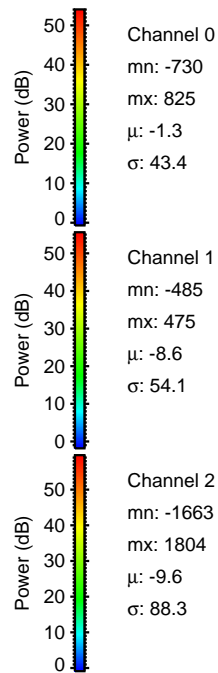
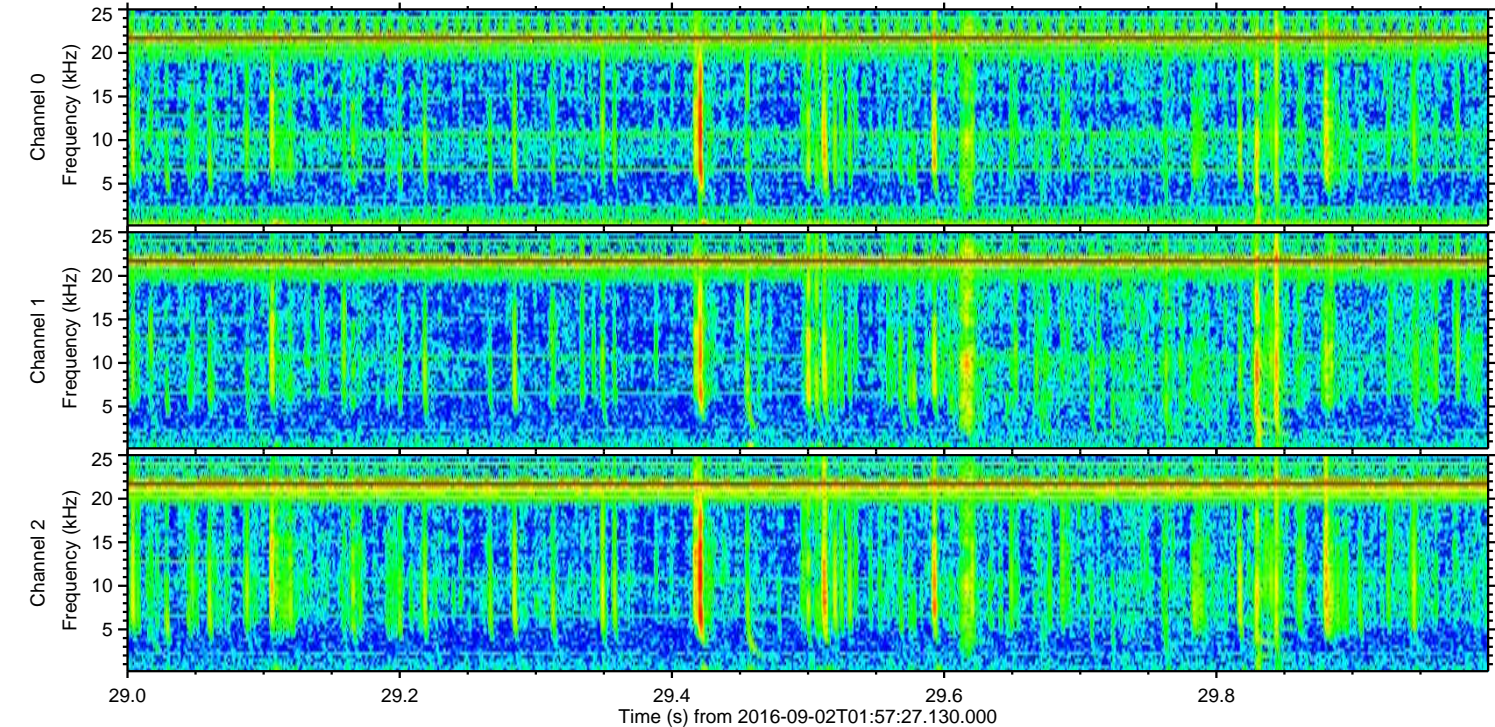
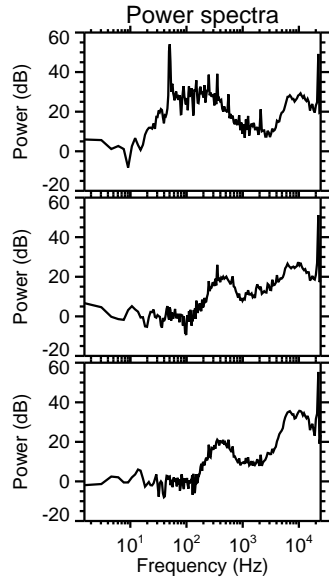
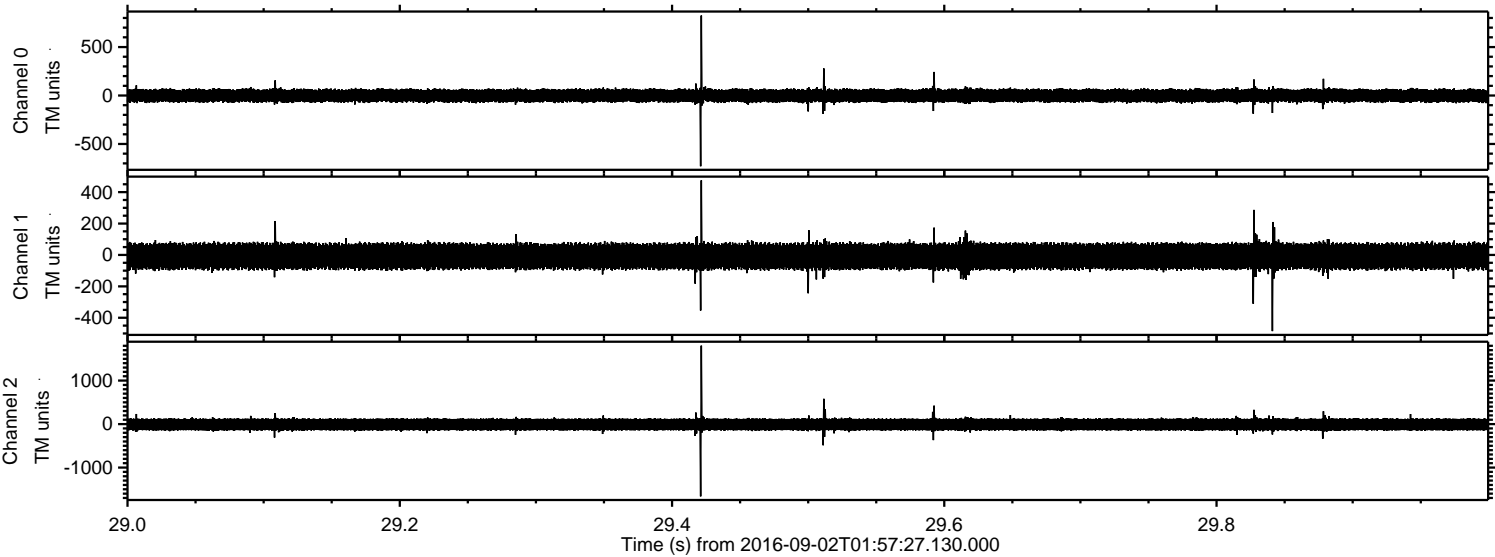
Channel 0  
mn: -743  
mx: 940  
 $\mu$ : -1.3  
 $\sigma$ : 43.5

Channel 1  
mn: -285  
mx: 209  
 $\mu$ : -8.6  
 $\sigma$ : 53.5

Channel 2  
mn: -1447  
mx: 1820  
 $\mu$ : -9.7  
 $\sigma$ : 88.2

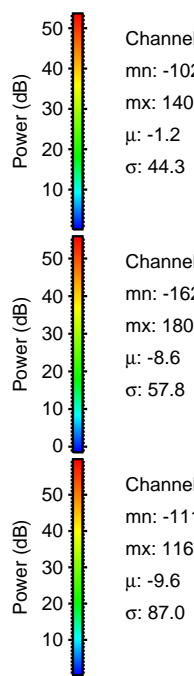
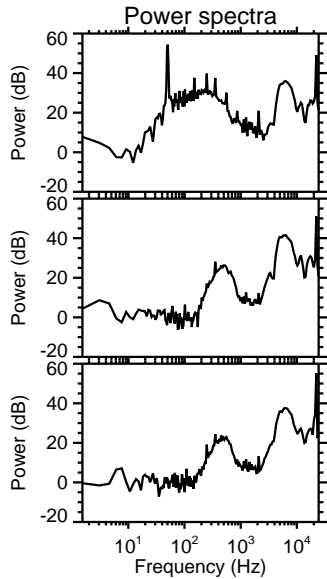
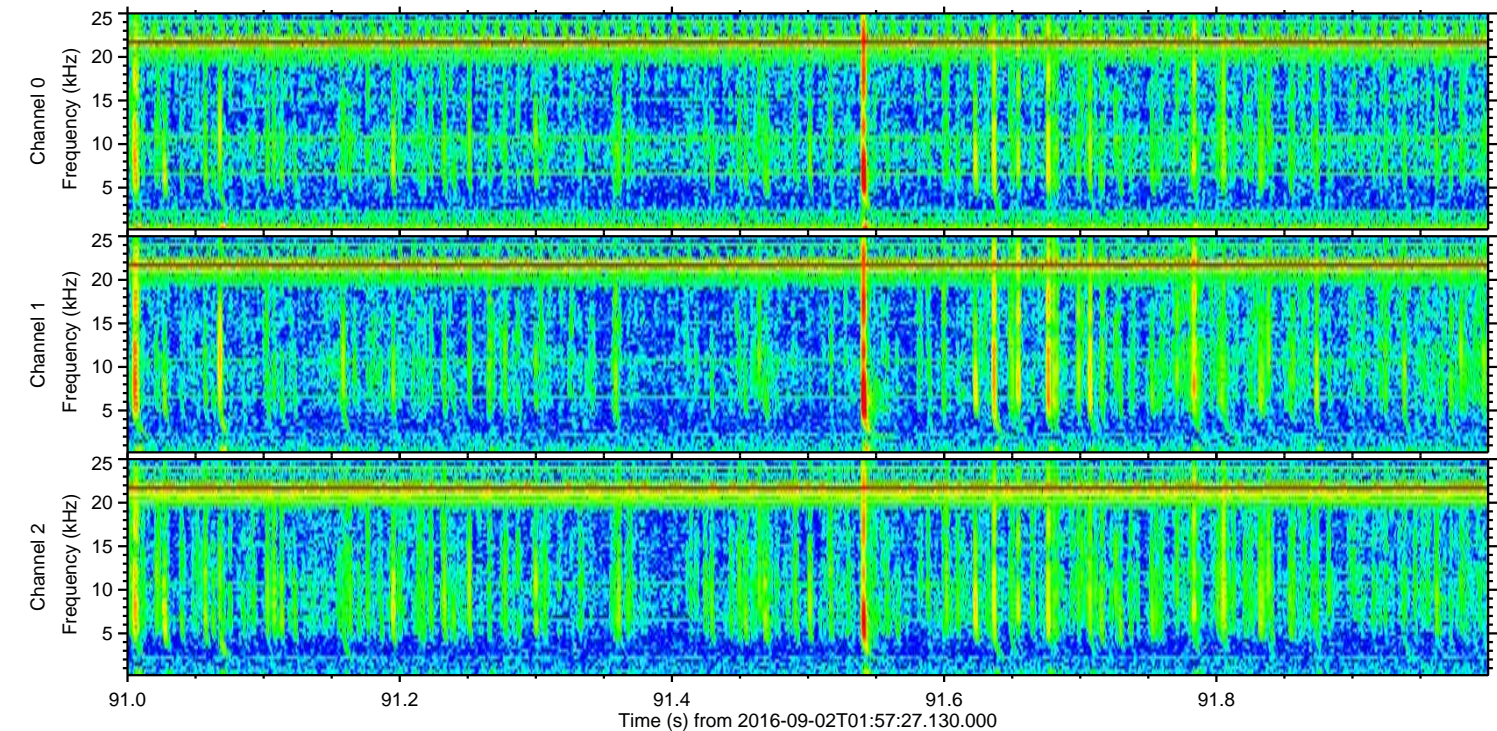
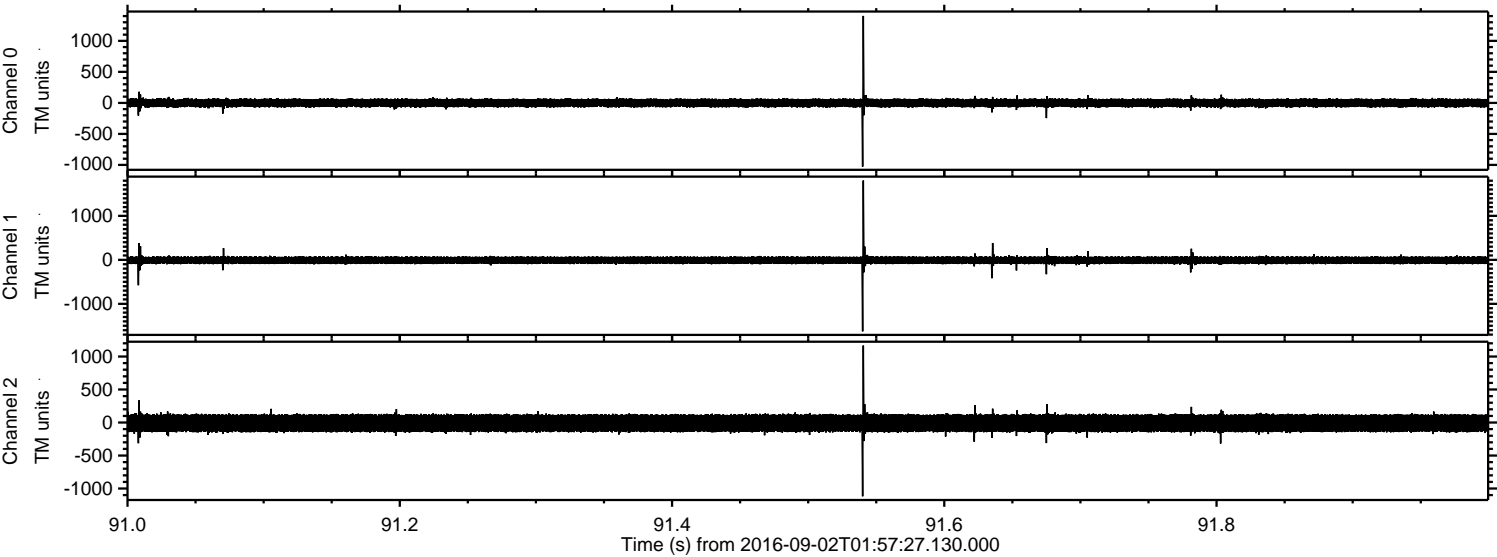


Processed Fri Sep 2 04:05:55 2016 by ELM ver.2012-10-06 from 001\_\_elm20160902\_015726\_\_dat00.bin





Processed Fri Sep 2 04:05:56 2016 by ELM ver.2012-10-06 from 001\_\_elm20160902\_015726\_\_dat00.bin



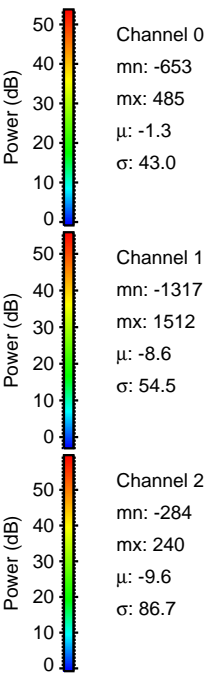
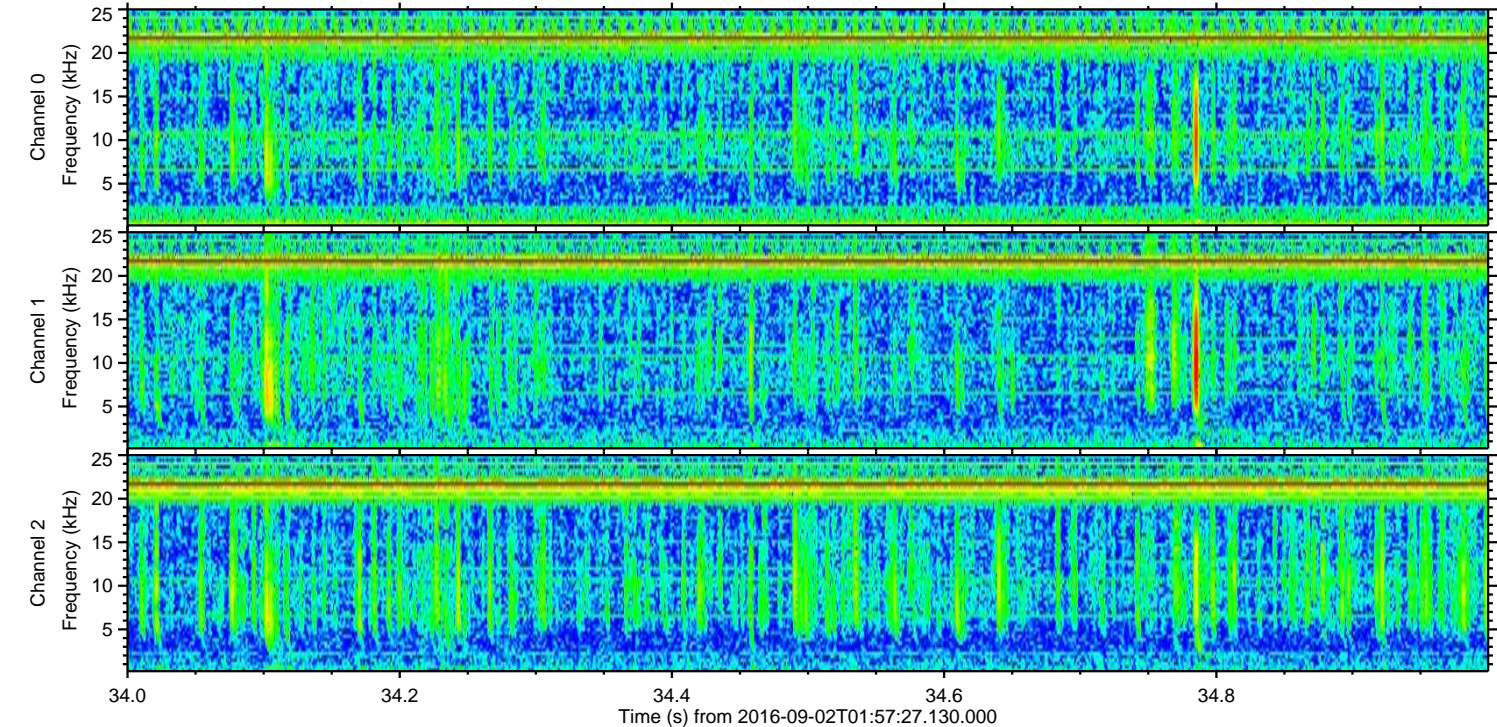
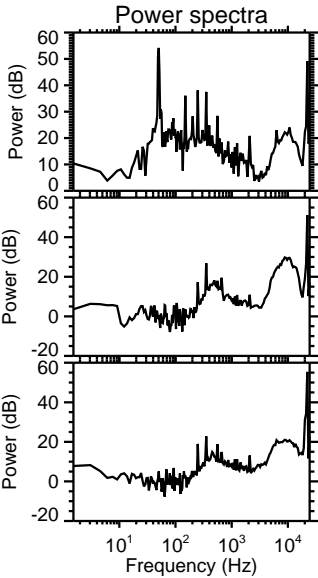
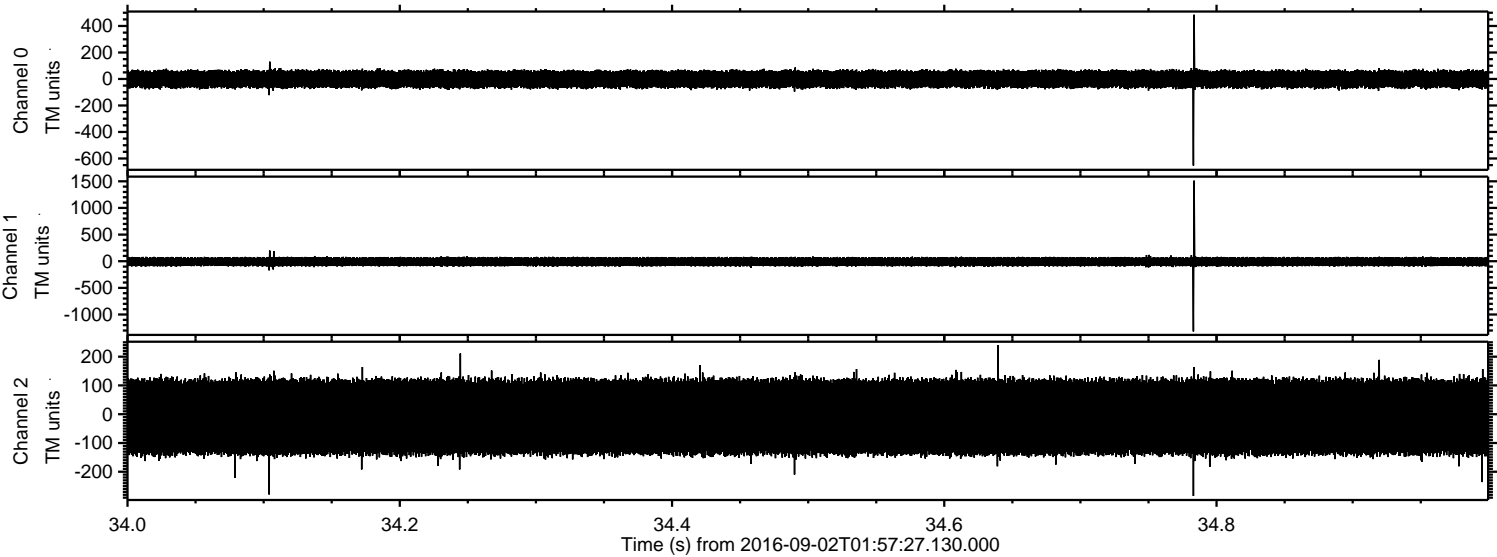
Channel 0  
mn: -1028  
mx: 1403  
 $\mu$ : -1.2  
 $\sigma$ : 44.3

Channel 1  
mn: -1626  
mx: 1803  
 $\mu$ : -8.6  
 $\sigma$ : 57.8

Channel 2  
mn: -1118  
mx: 1166  
 $\mu$ : -9.6  
 $\sigma$ : 87.0



Processed Fri Sep 2 04:05:57 2016 by ELM ver.2012-10-06 from 001\_\_elm20160902\_015726\_\_dat00.bin





Processed Fri Sep 2 04:05:58 2016 by ELM ver.2012-10-06 from 001\_\_elm20160902\_015726\_\_dat00.bin

