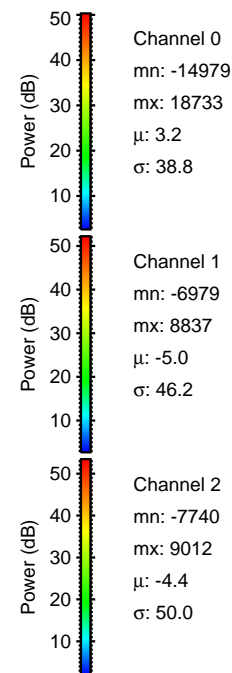
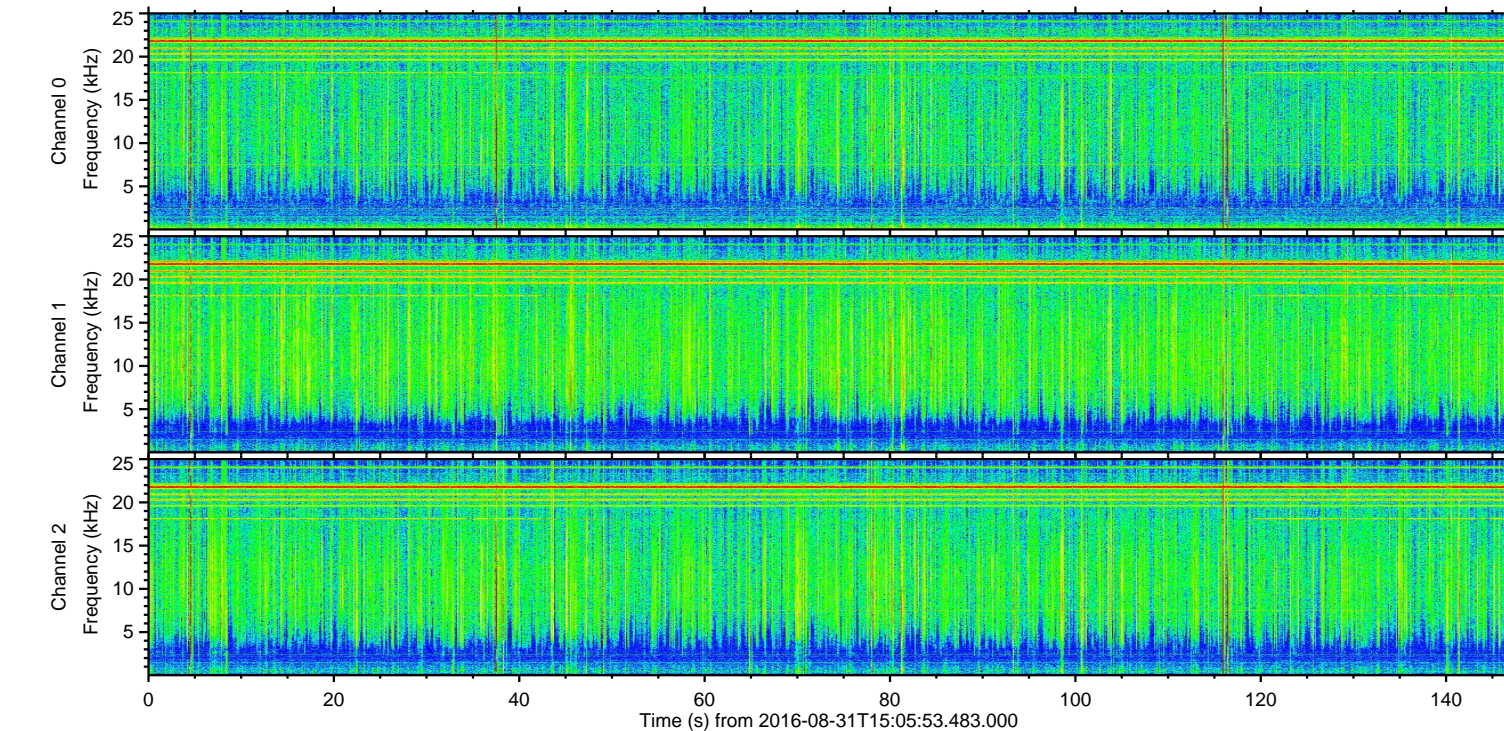
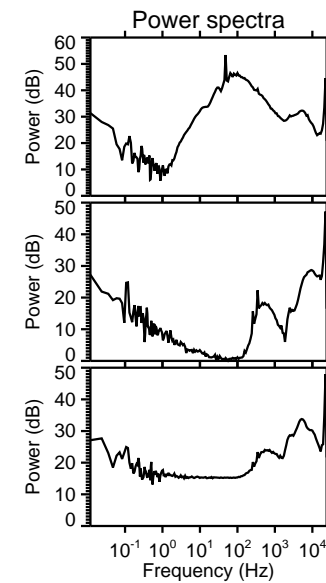
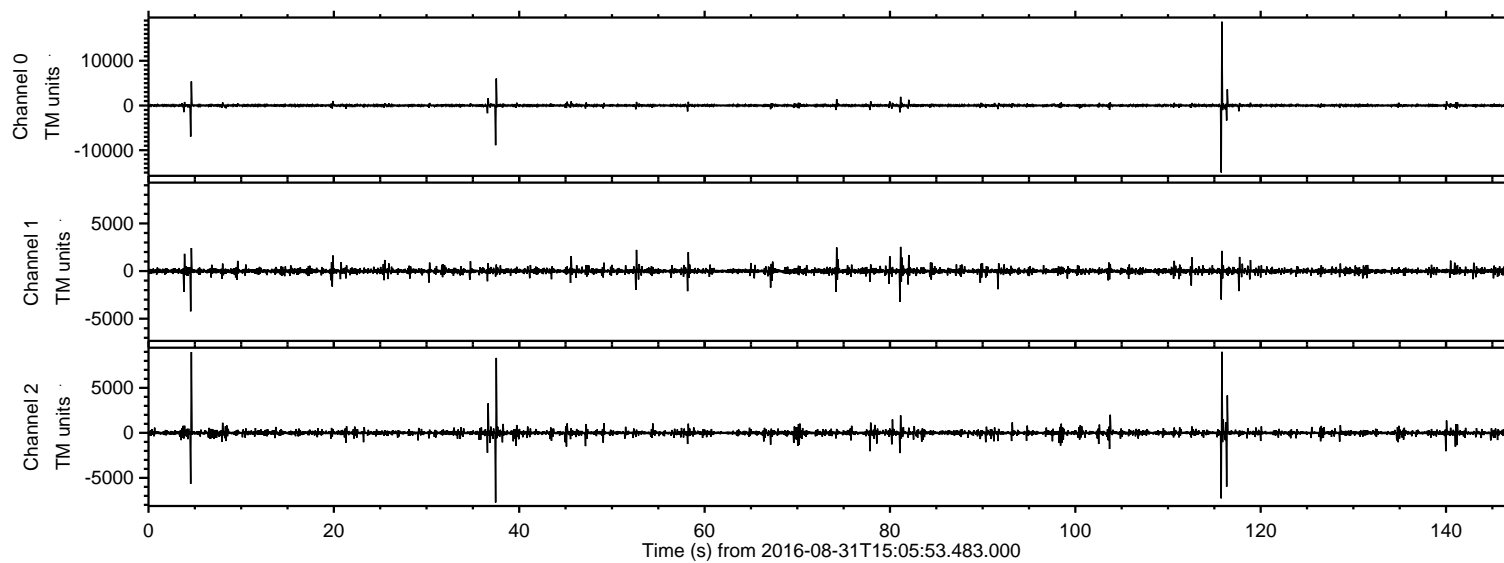


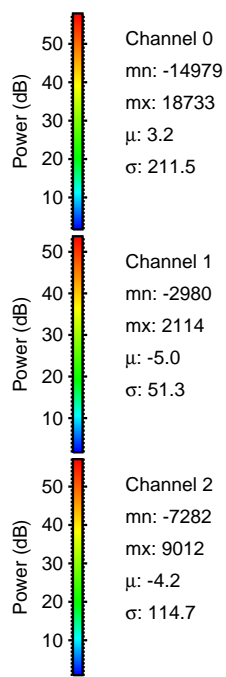
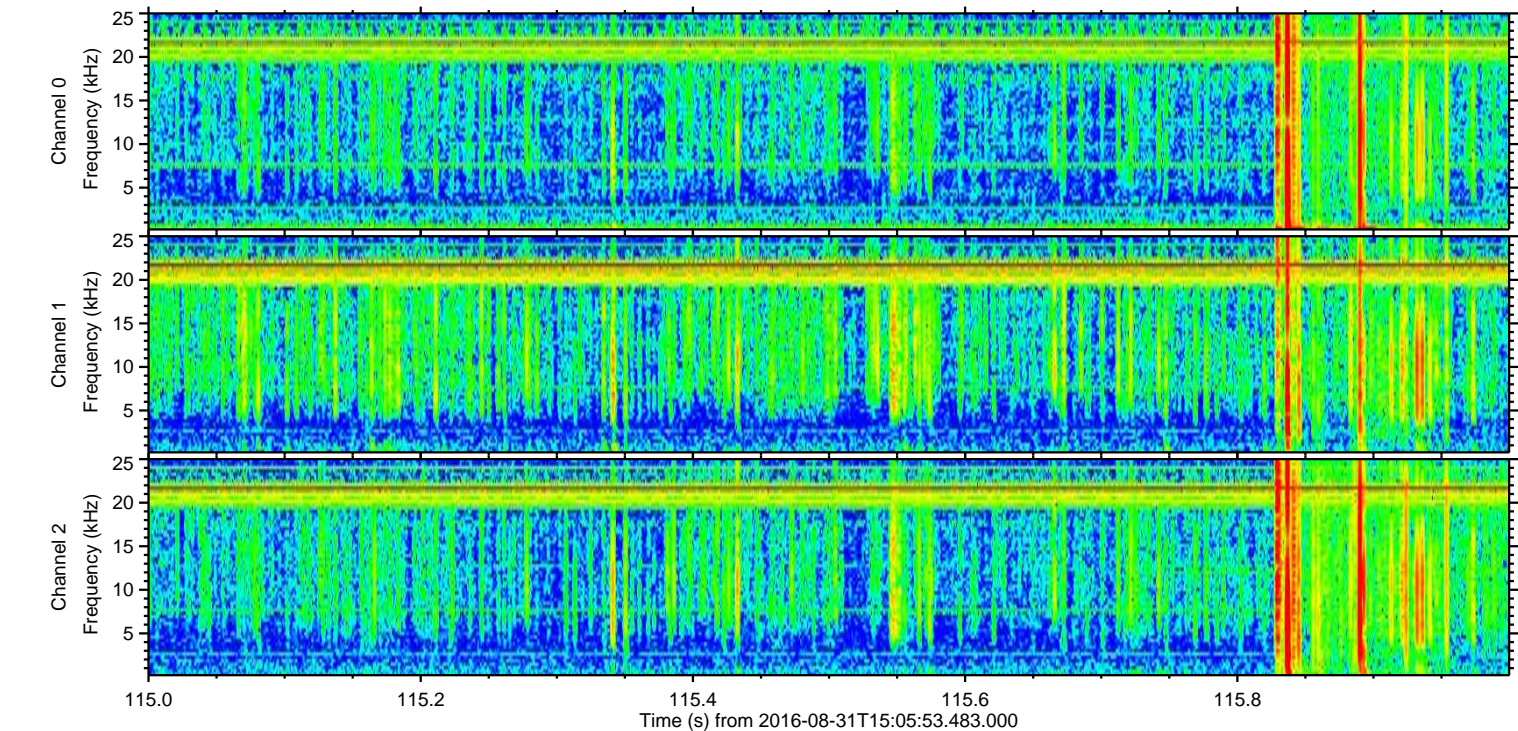
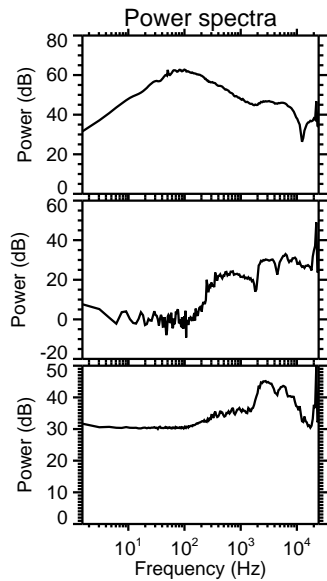
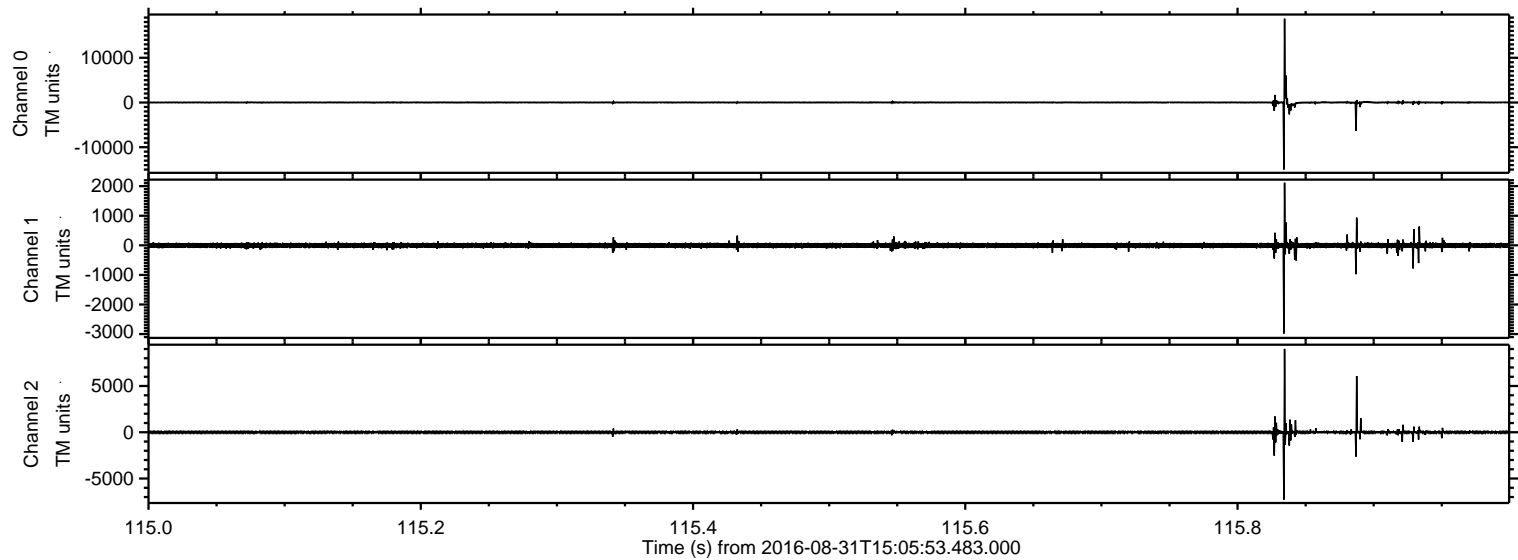
ELMAVAN 3D WAVEFORMS (Measured data sampled at 50 kHz) 51000 packets of 144 samples from 2016-08-31T15:05:53.483.000.

Processed Wed Aug 31 17:13:43 2016 by ELM ver.2012-10-06 from 001__elm20160831_150552__dat00.bin

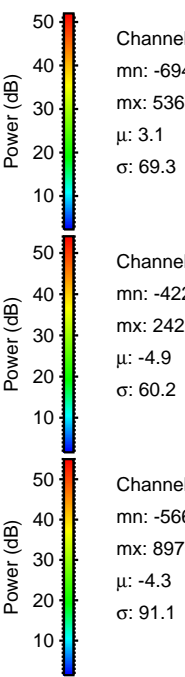
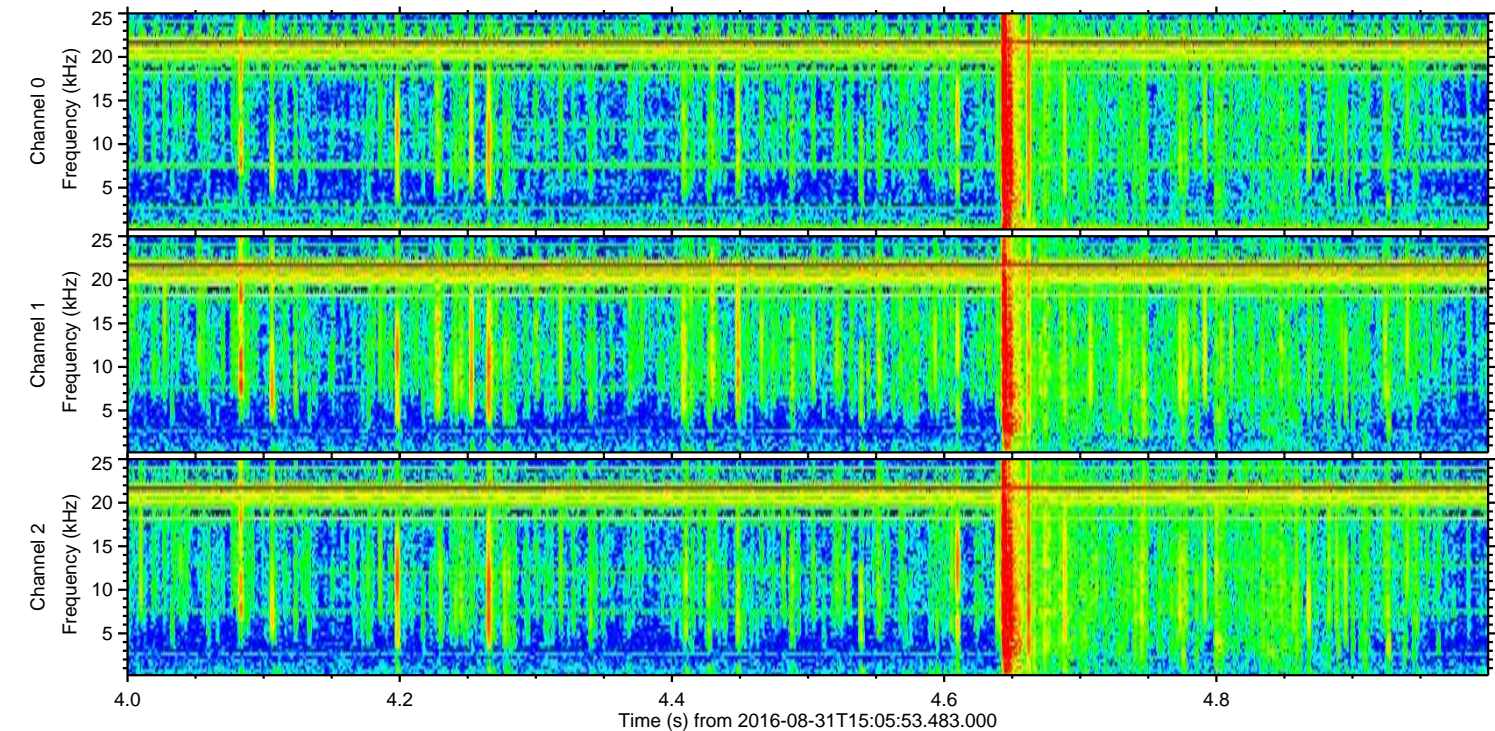
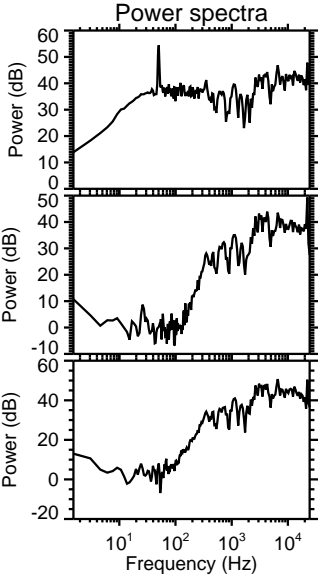
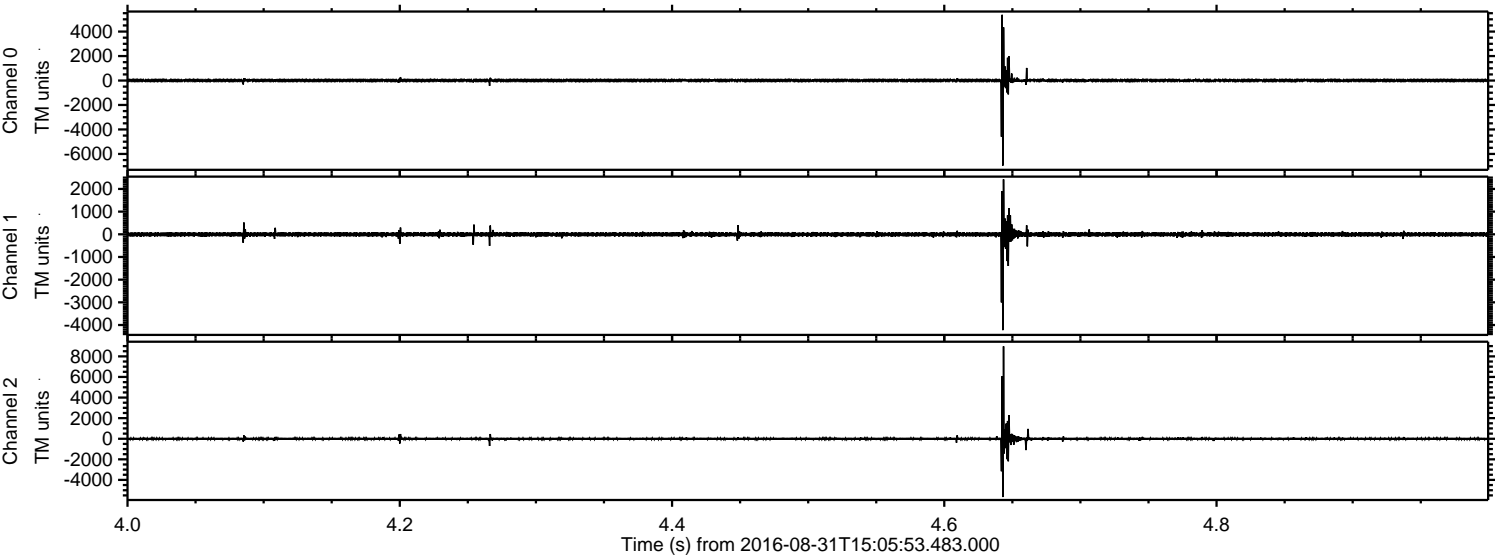


ELMAVAN 3D WAVEFORMS (Measured data sampled at 50 kHz) 51000 packets of 144 samples from 2016-08-31T15:05:53.483.000. Part 116/147

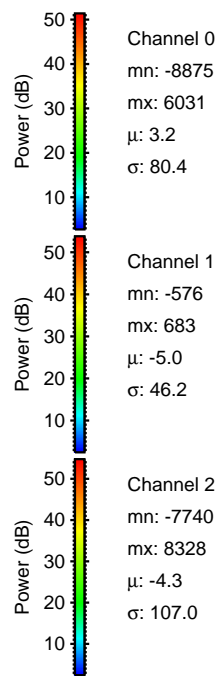
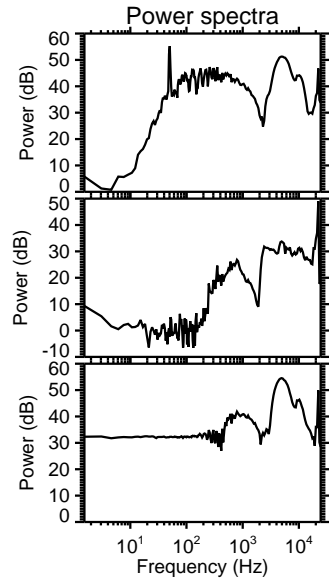
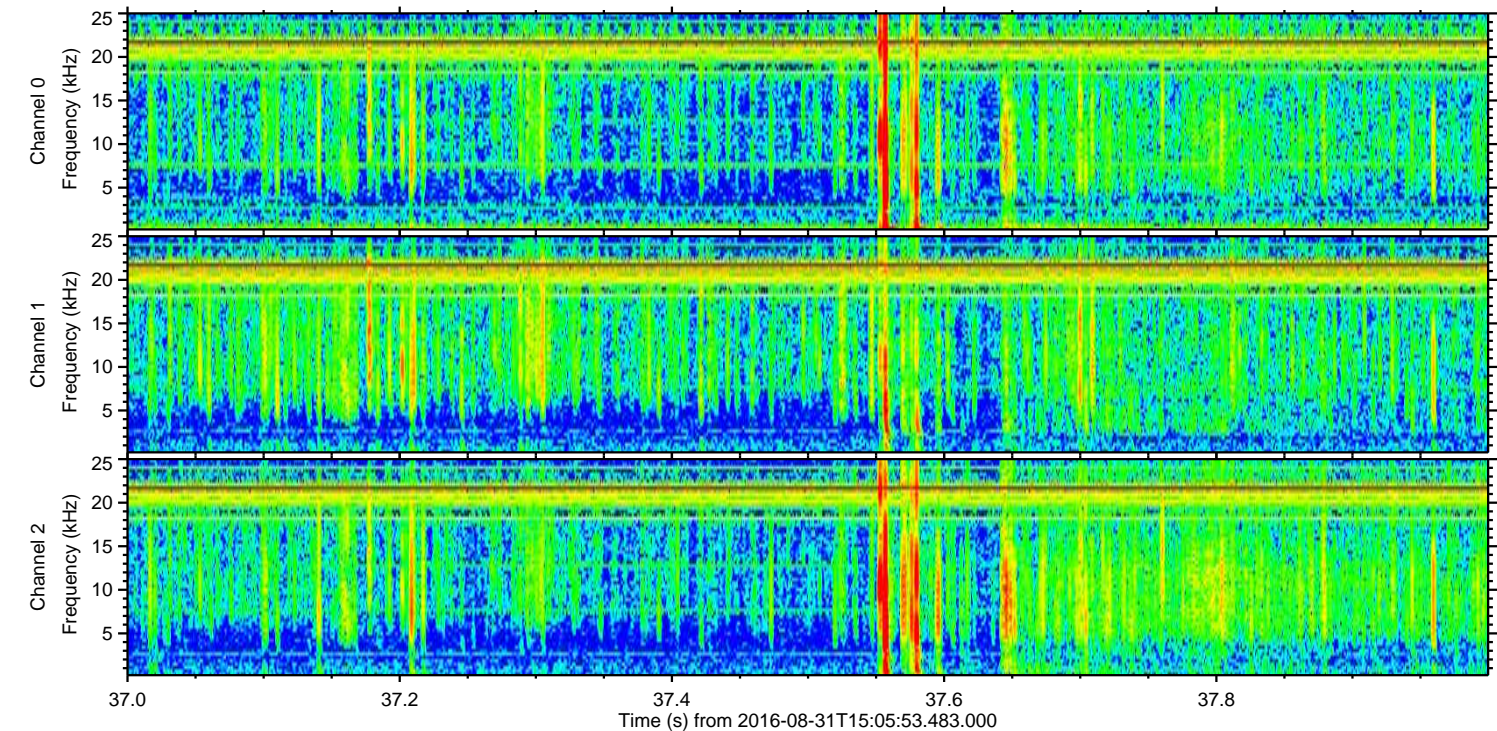
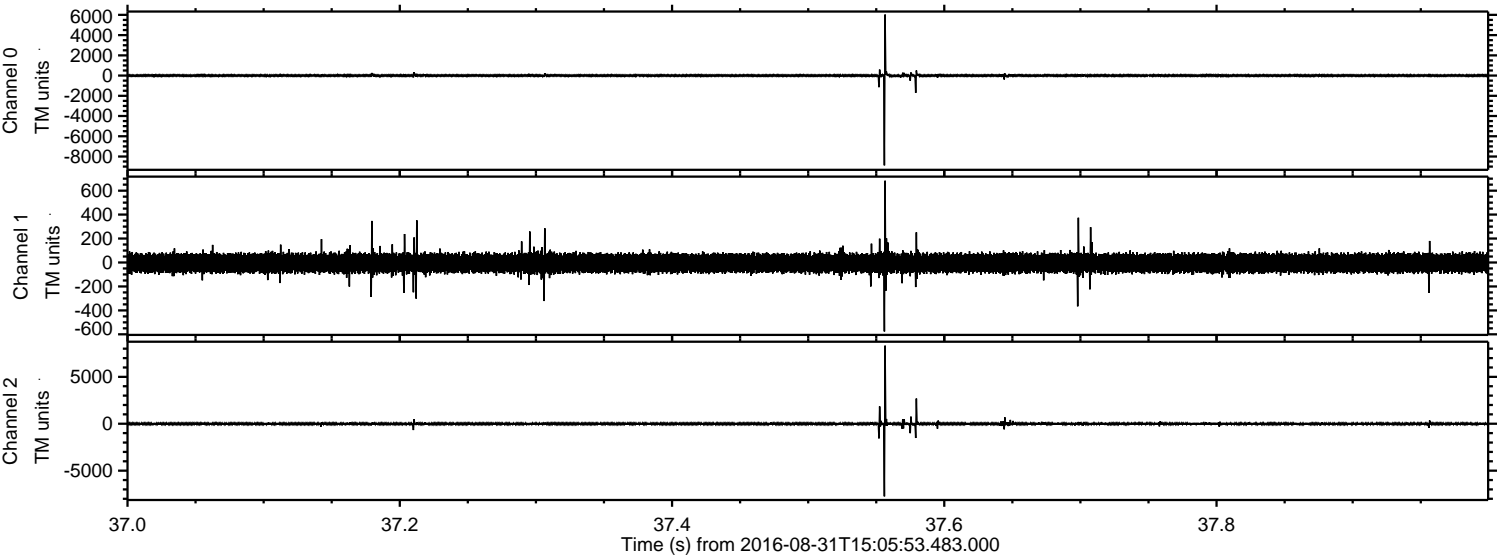
Processed Wed Aug 31 17:13:57 2016 by ELM ver.2012-10-06 from 001__elm20160831_150552__dat00.bin



Processed Wed Aug 31 17:13:58 2016 by ELM ver.2012-10-06 from 001__elm20160831_150552__dat00.bin

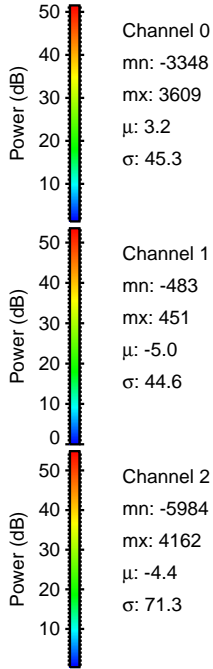
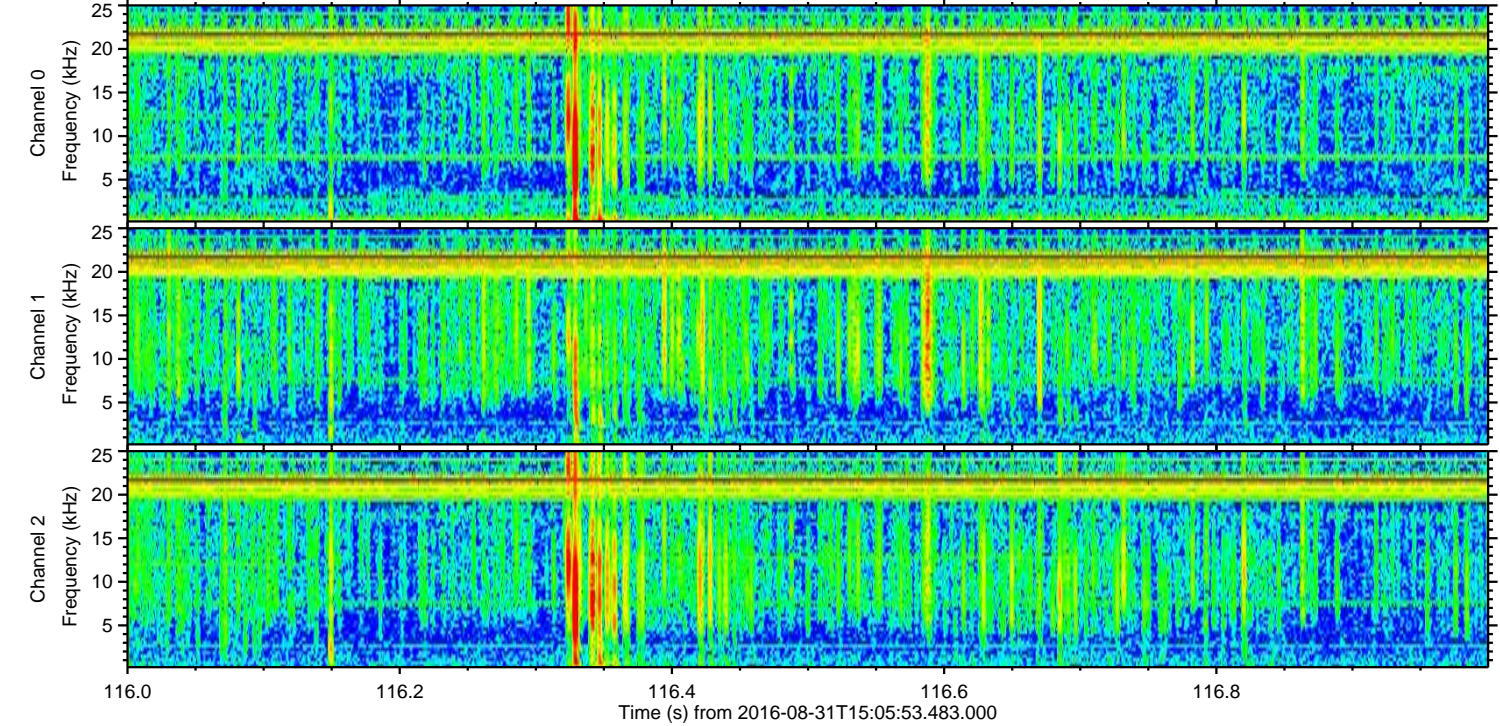
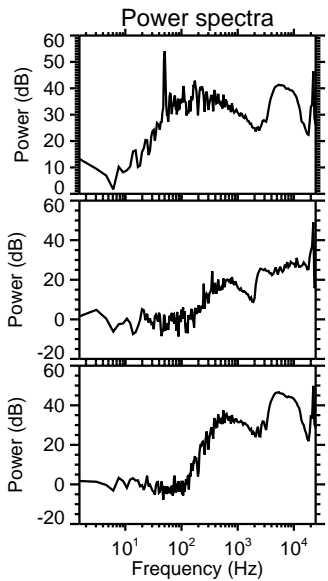
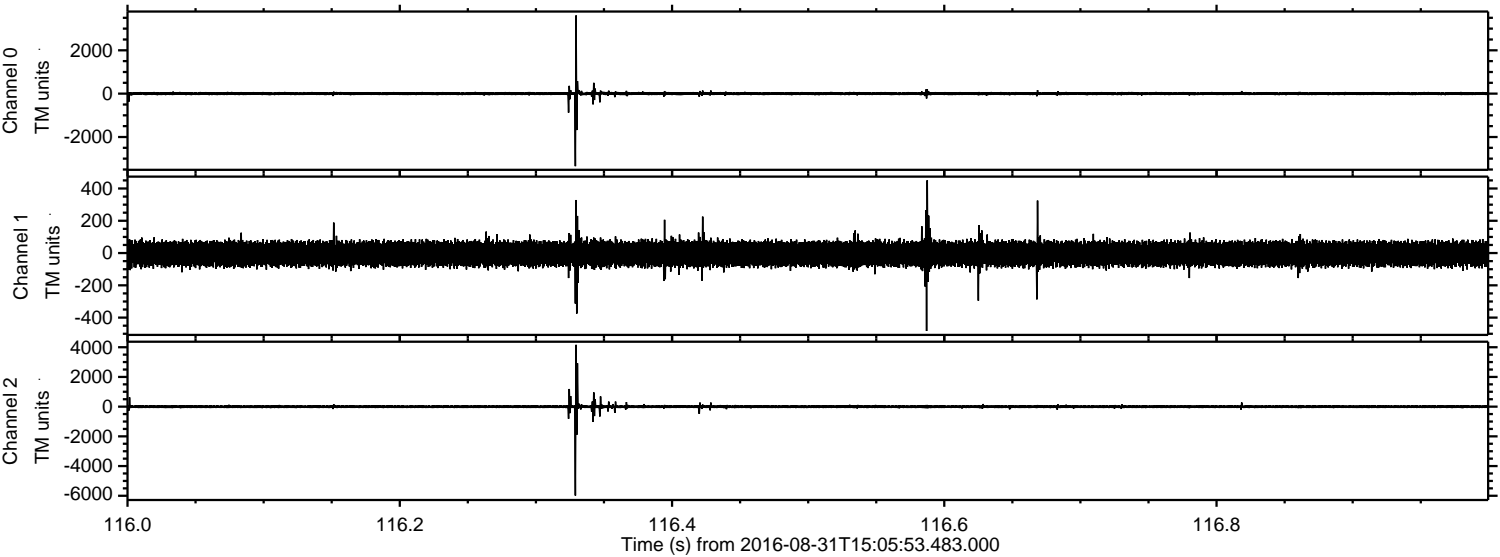


Processed Wed Aug 31 17:13:59 2016 by ELM ver.2012-10-06 from 001__elm20160831_150552__dat00.bin

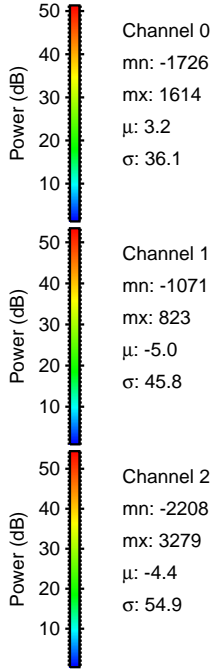
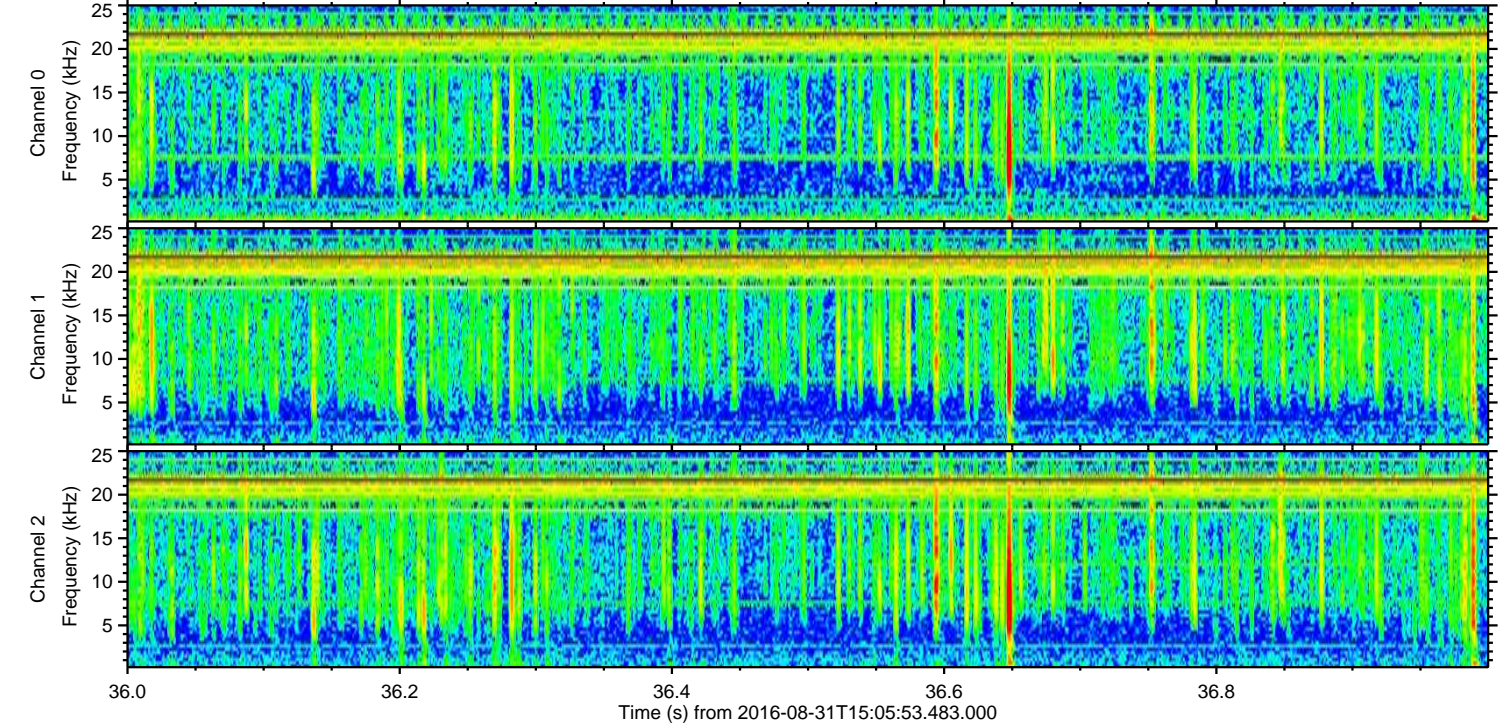
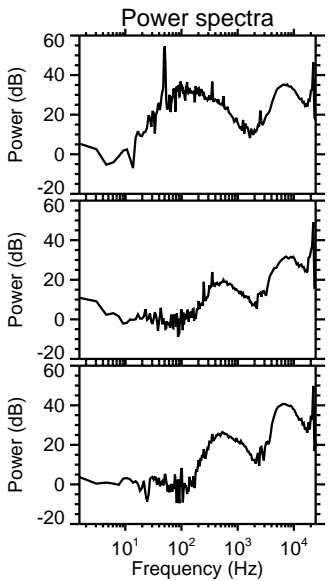
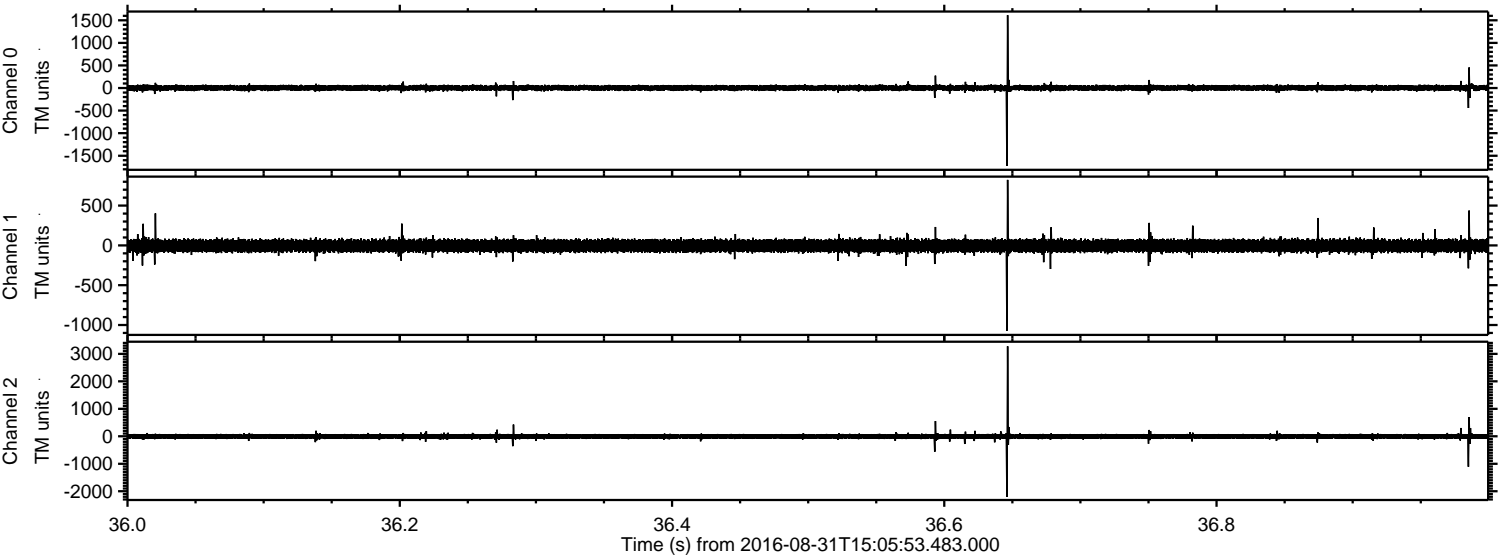


ELMAVAN 3D WAVEFORMS (Measured data sampled at 50 kHz) 51000 packets of 144 samples from 2016-08-31T15:05:53.483.000. Part 117/147

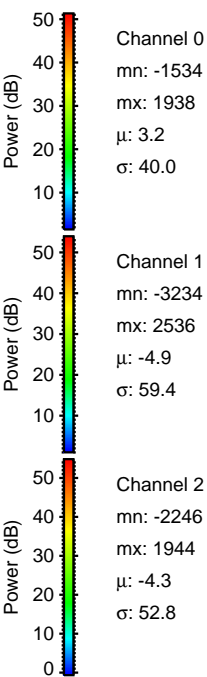
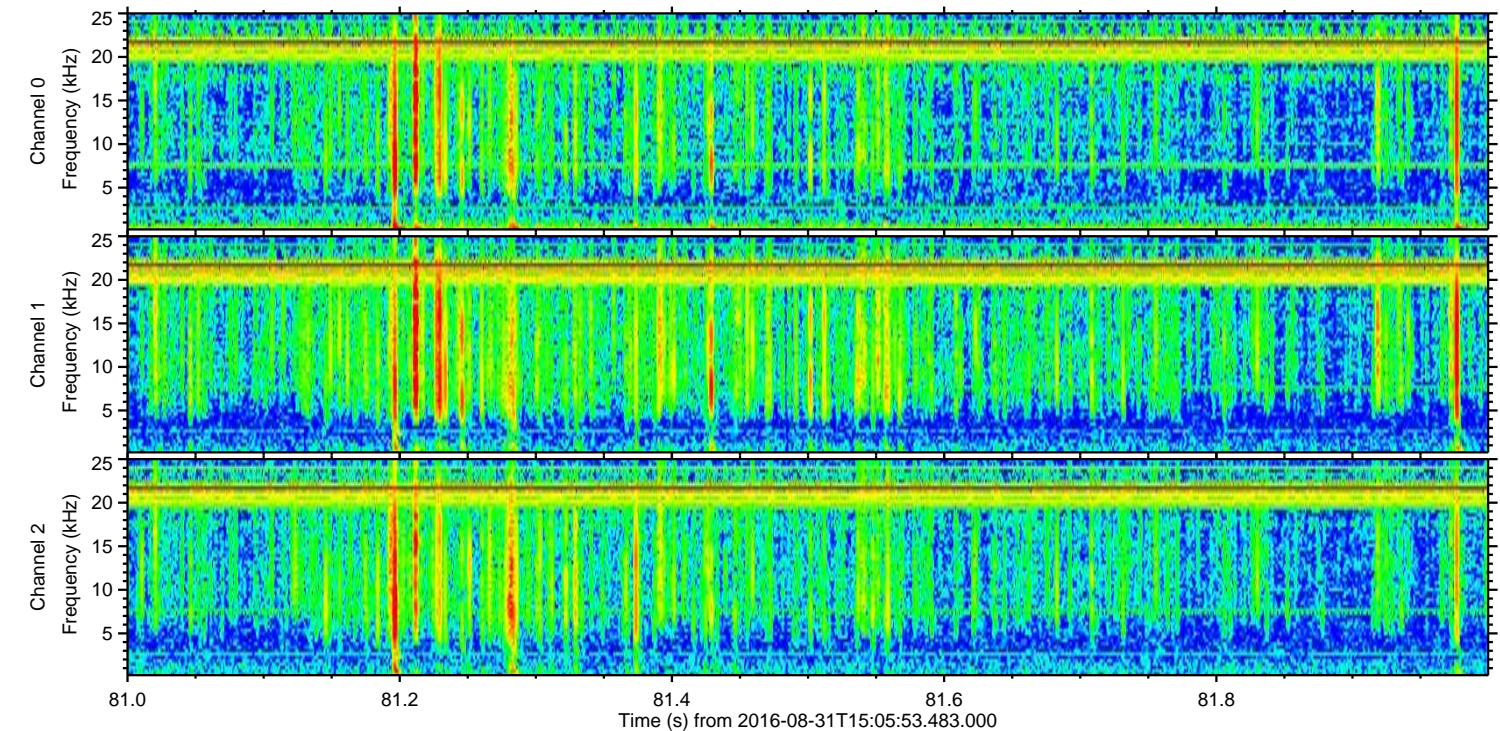
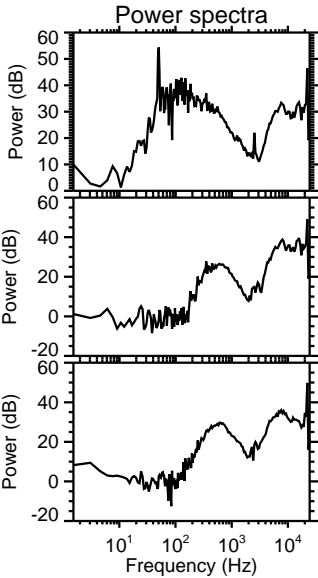
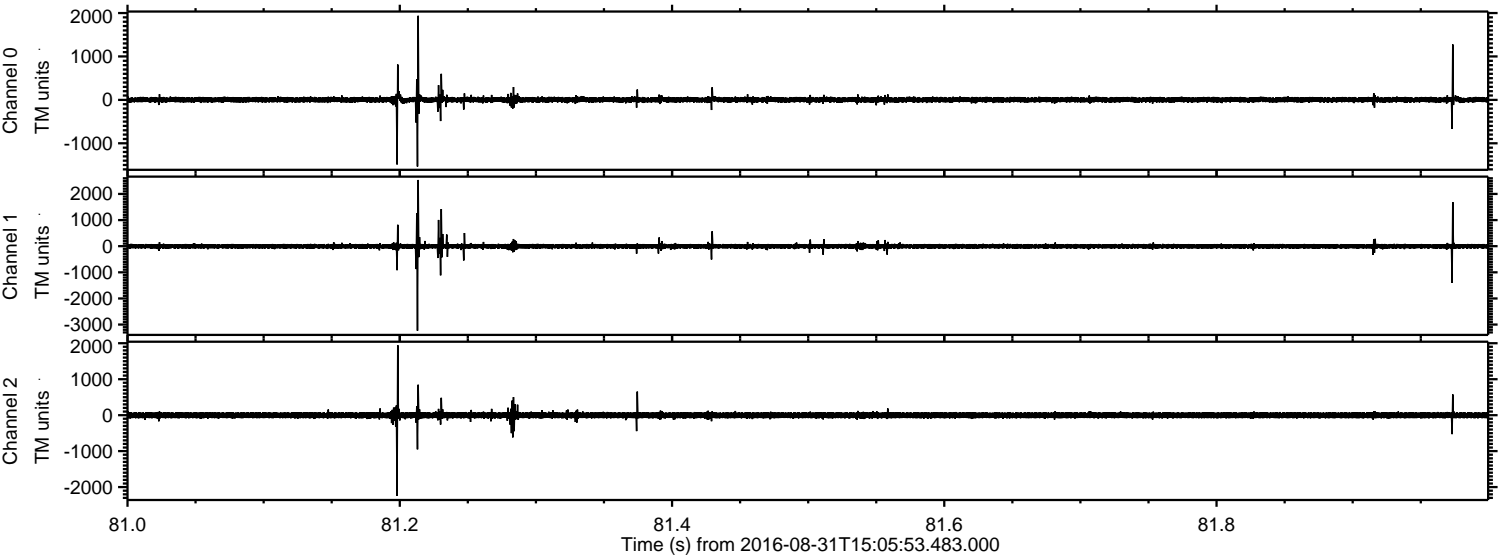
Processed Wed Aug 31 17:14:00 2016 by ELM ver.2012-10-06 from 001__elm20160831_150552__dat00.bin



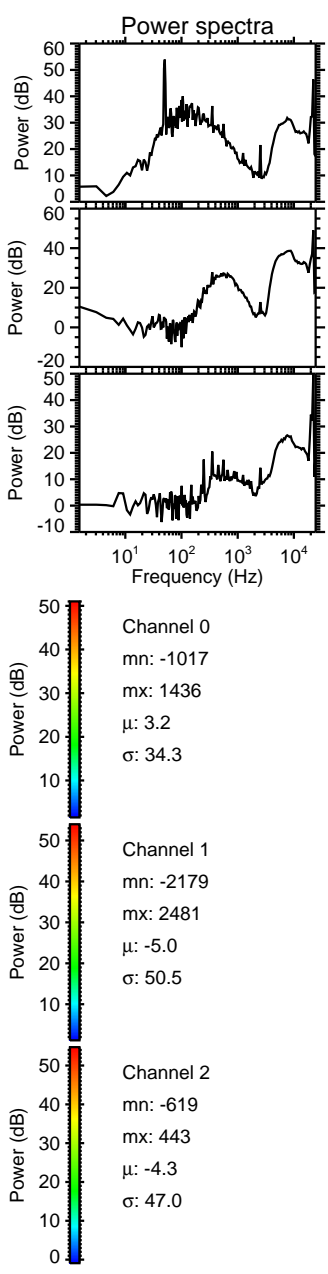
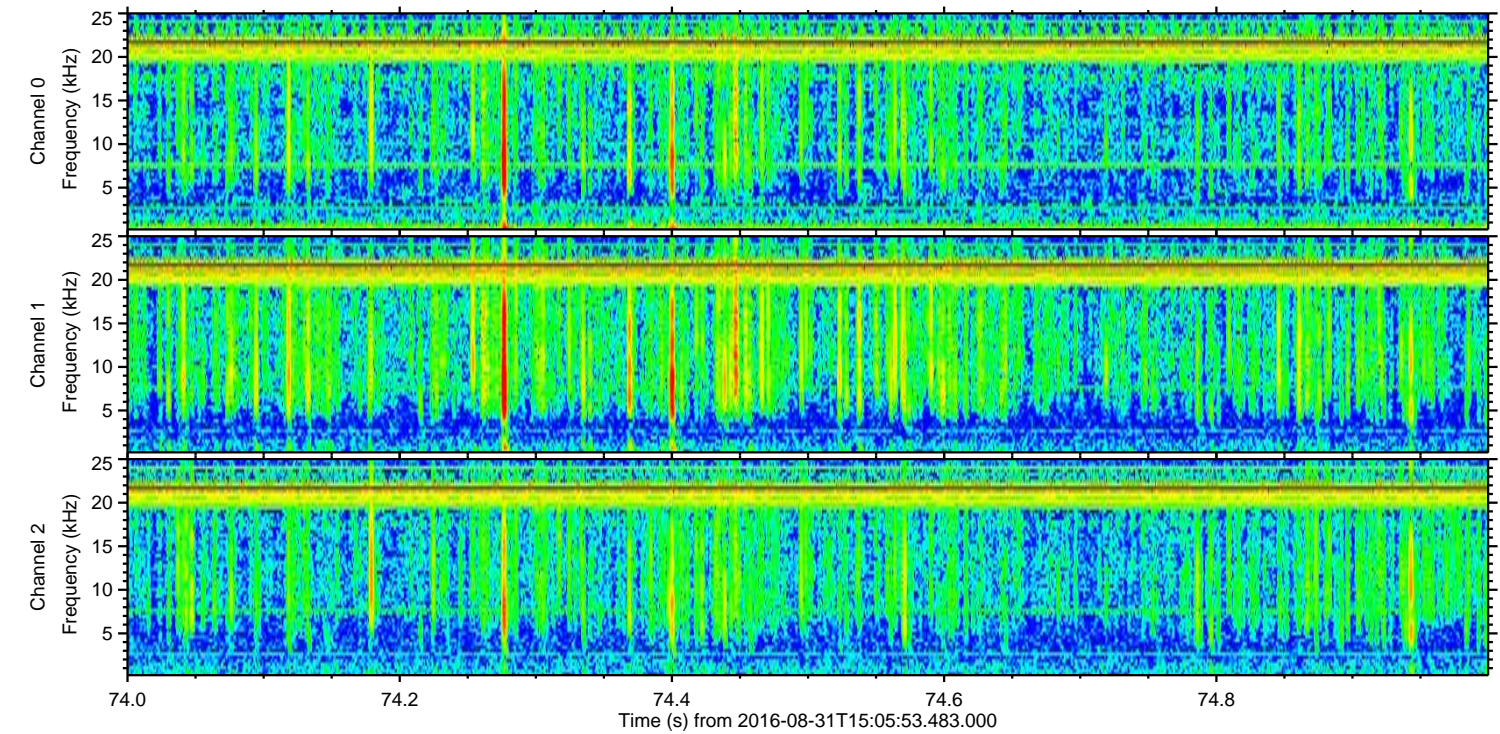
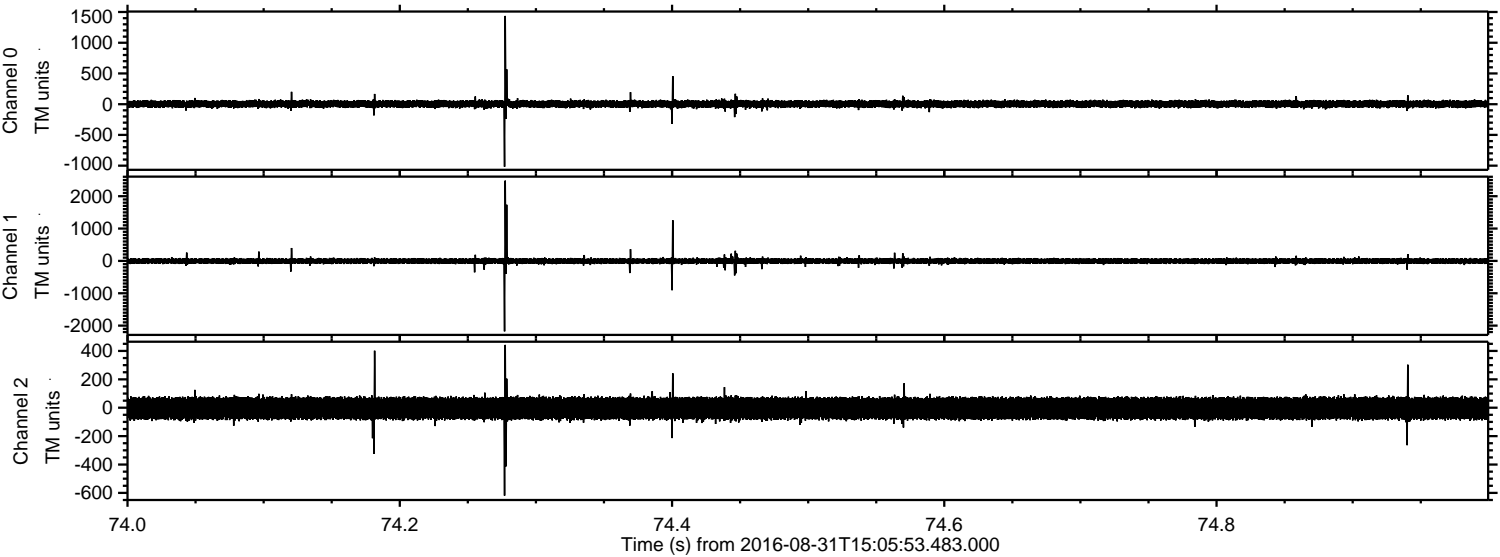
Processed Wed Aug 31 17:14:01 2016 by ELM ver.2012-10-06 from 001__elm20160831_150552__dat00.bin



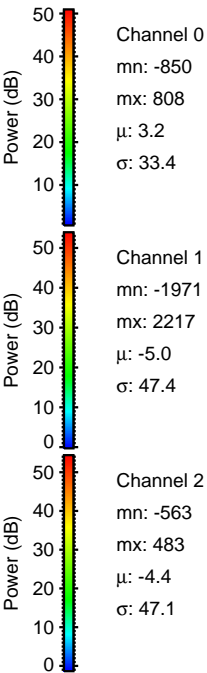
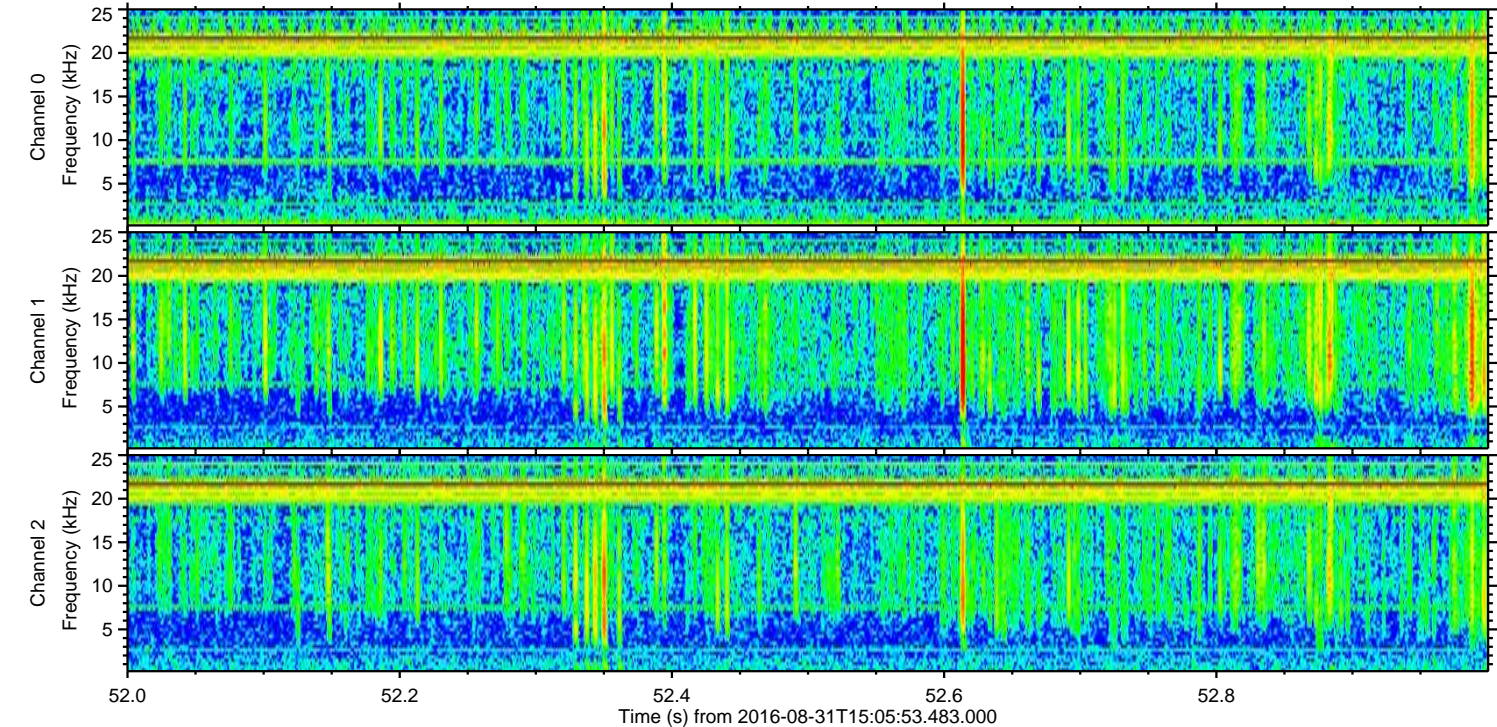
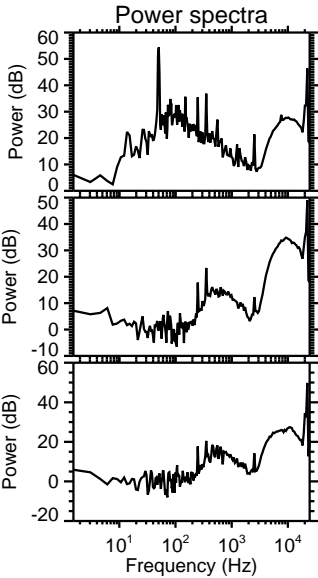
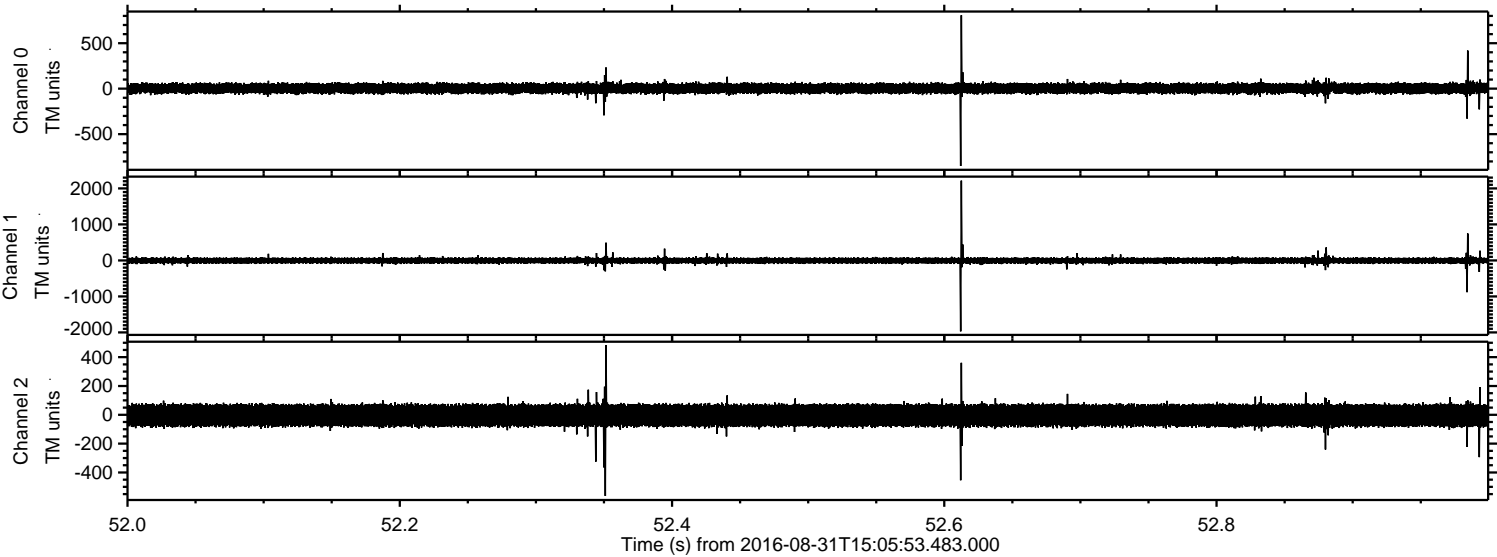
Processed Wed Aug 31 17:14:03 2016 by ELM ver.2012-10-06 from 001__elm20160831_150552__dat00.bin



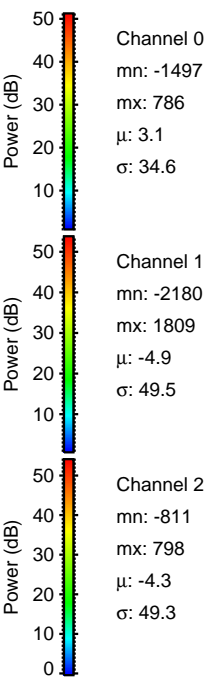
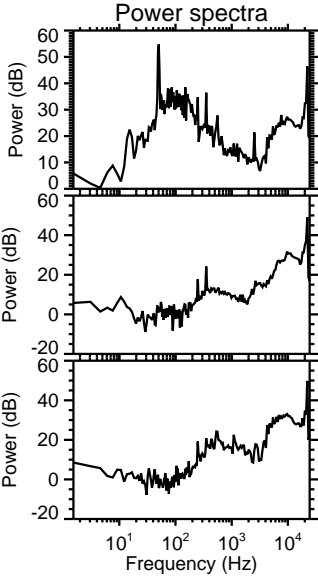
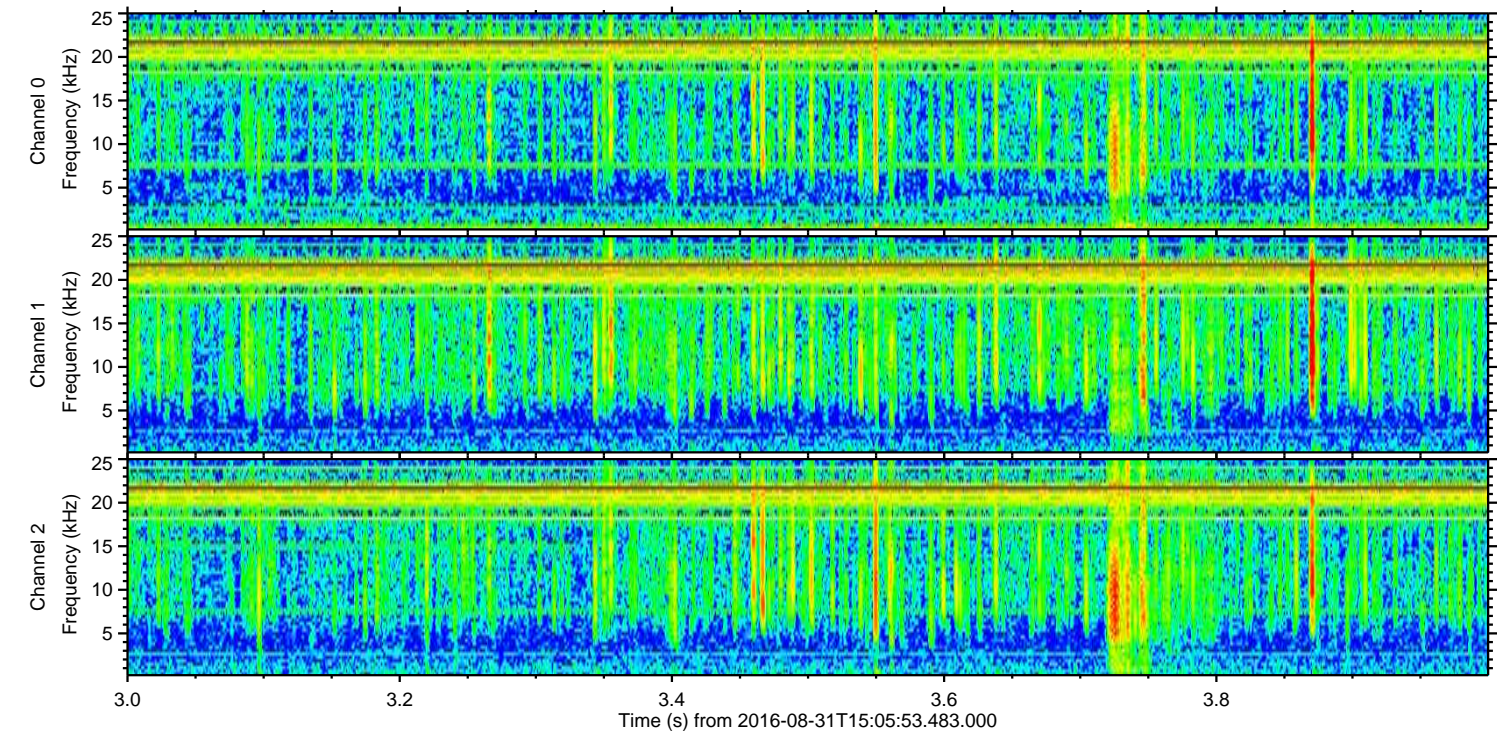
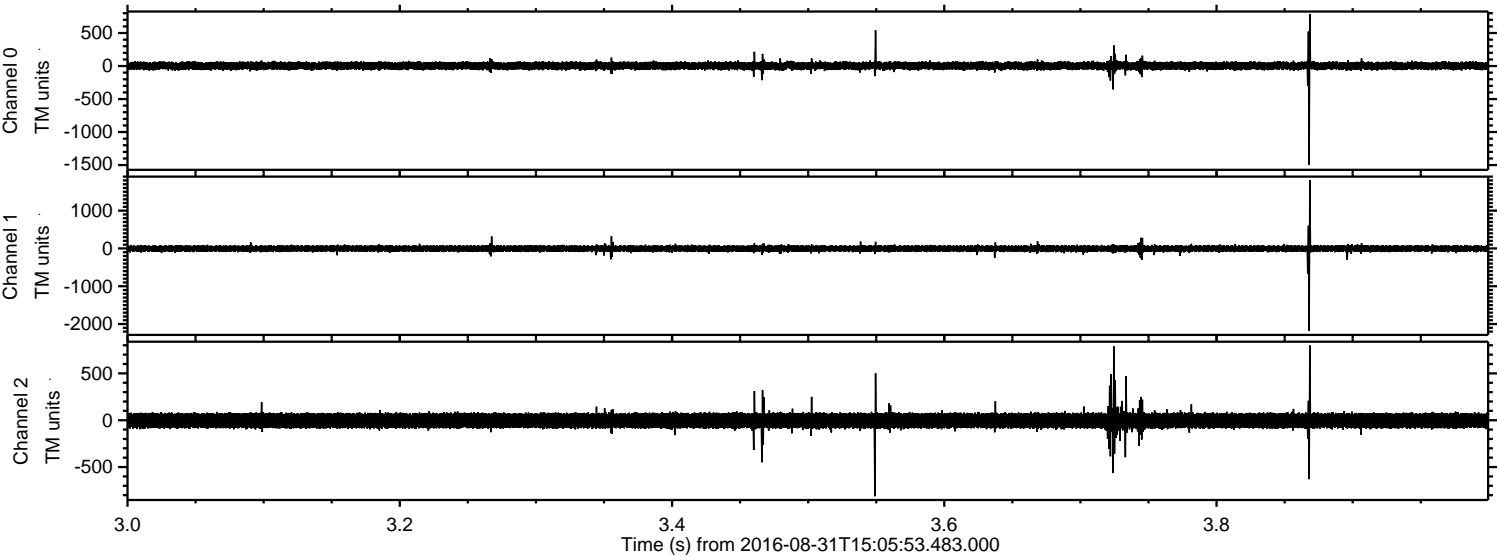
Processed Wed Aug 31 17:14:04 2016 by ELM ver.2012-10-06 from 001__elm20160831_150552__dat00.bin



Processed Wed Aug 31 17:14:05 2016 by ELM ver.2012-10-06 from 001__elm20160831_150552__dat00.bin



Processed Wed Aug 31 17:14:06 2016 by ELM ver.2012-10-06 from 001__elm20160831_150552__dat00.bin



Channel 0
mn: -1497
mx: 786
 μ : 3.1
 σ : 34.6

Channel 1
mn: -2180
mx: 1809
 μ : -4.9
 σ : 49.5

Channel 2
mn: -811
mx: 798
 μ : -4.3
 σ : 49.3

