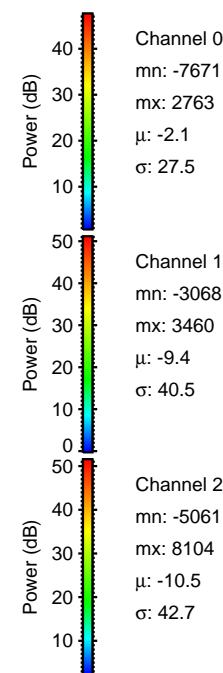
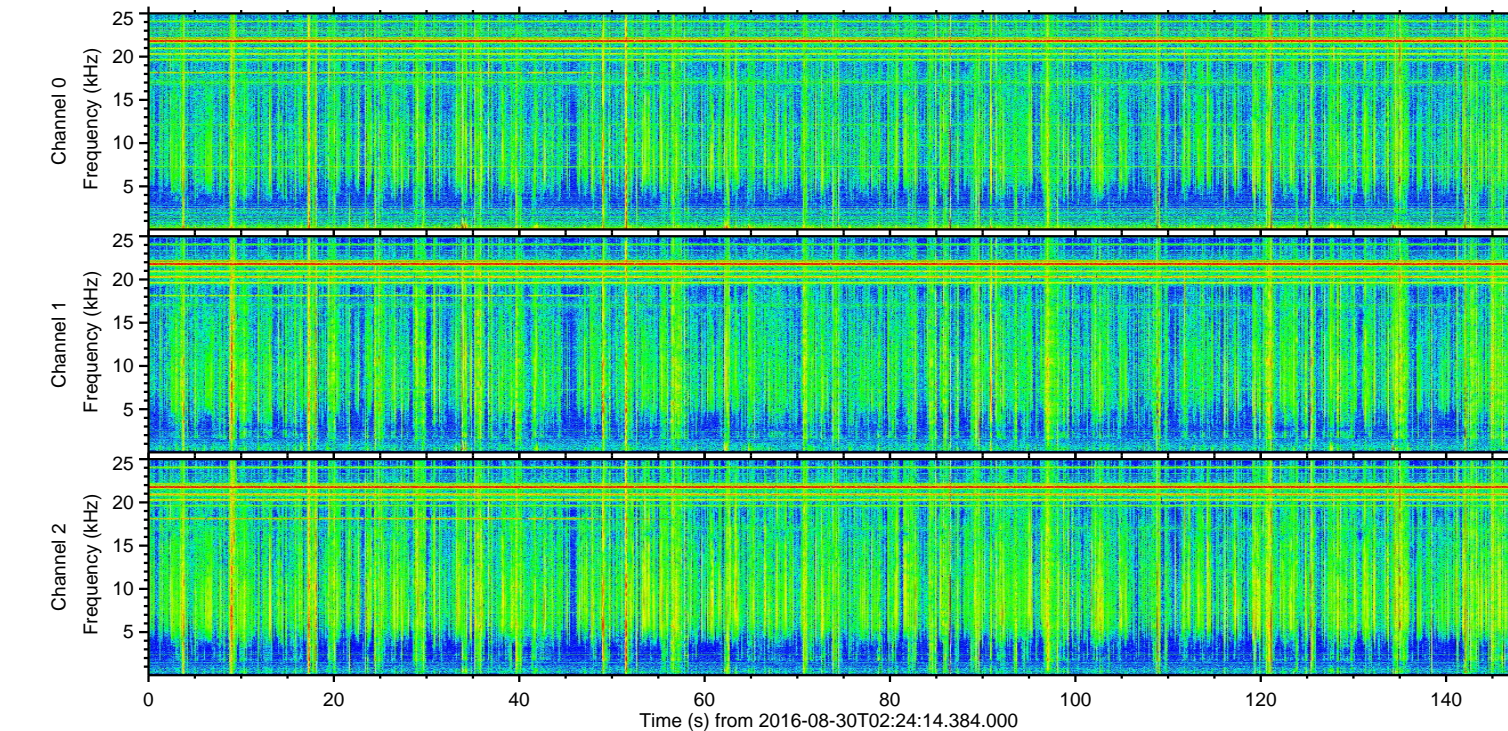
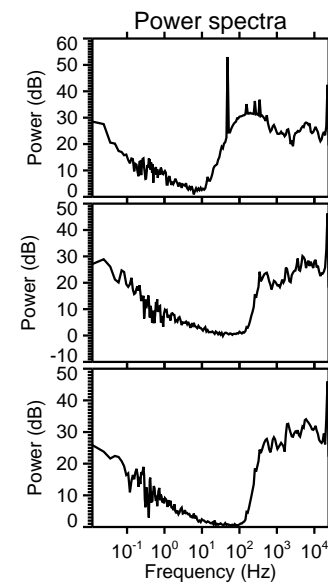
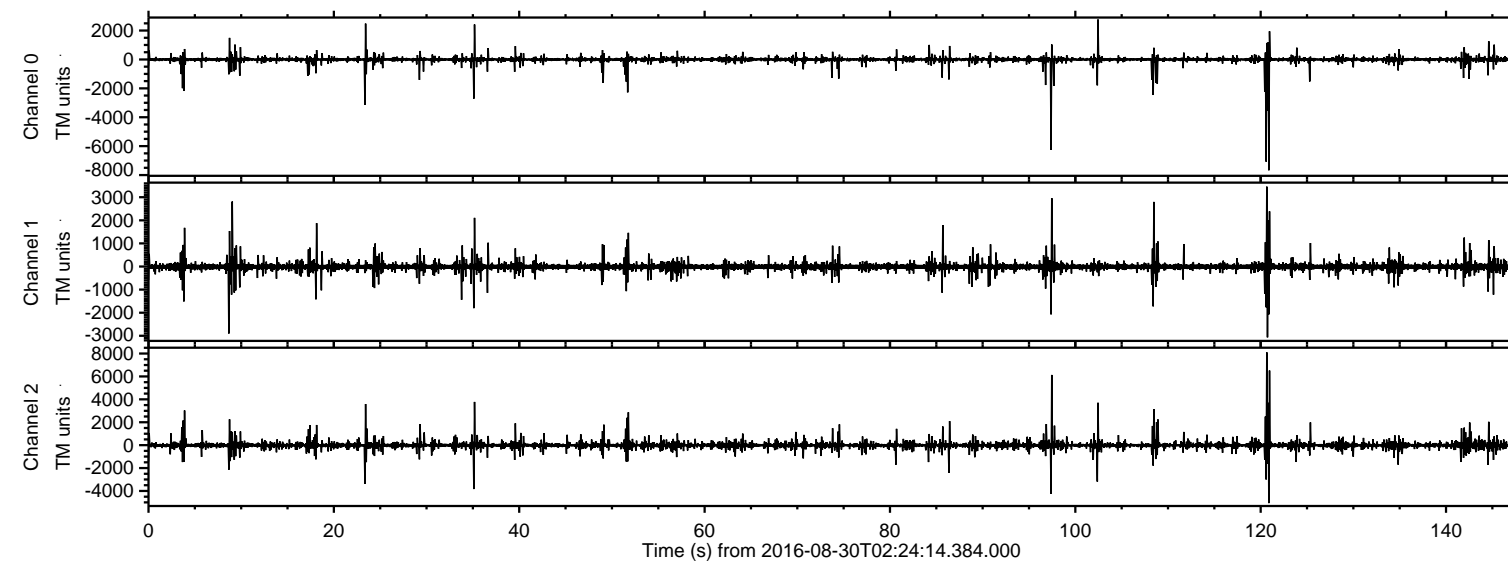


ELMAVAN 3D WAVEFORMS (Measured data sampled at 50 kHz) 51000 packets of 144 samples from 2016-08-30T02:24:14.384.000.

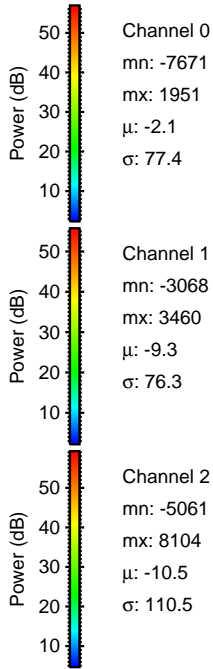
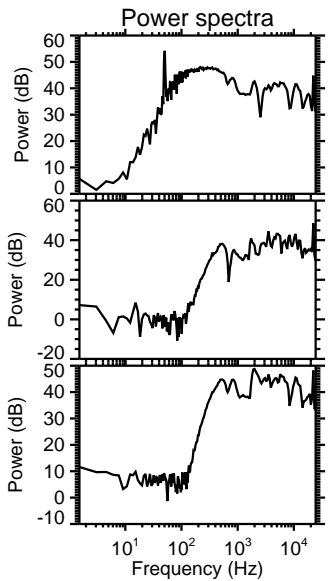
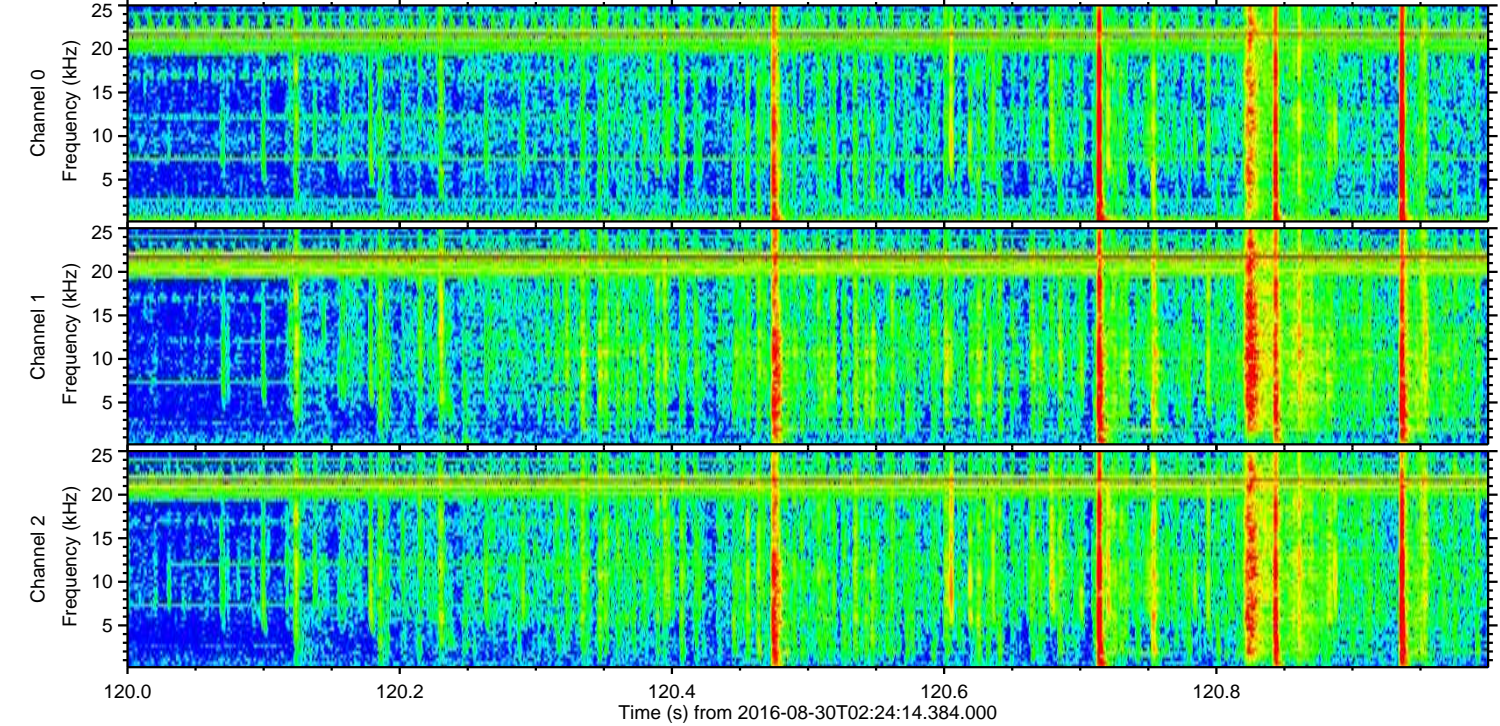
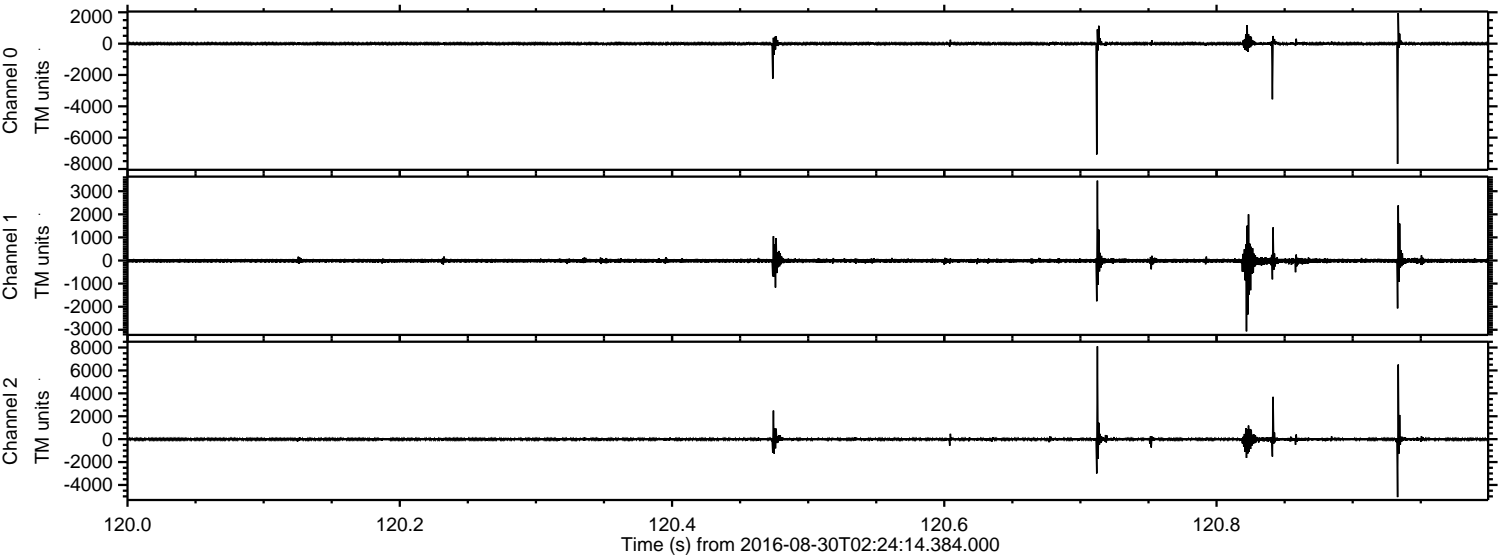
Processed Tue Aug 30 04:32:19 2016 by ELM ver.2012-10-06 from 001\_\_elm20160830\_022413\_\_dat00.bin





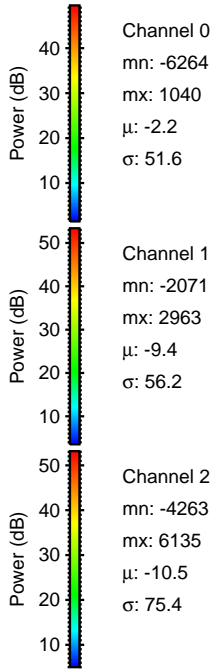
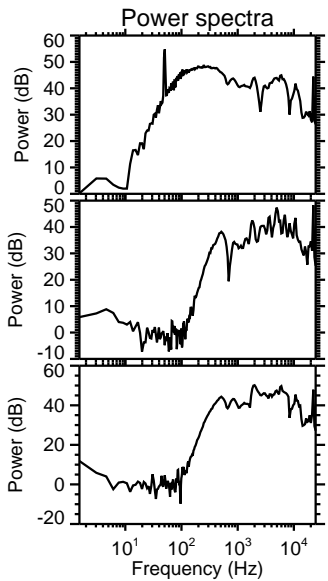
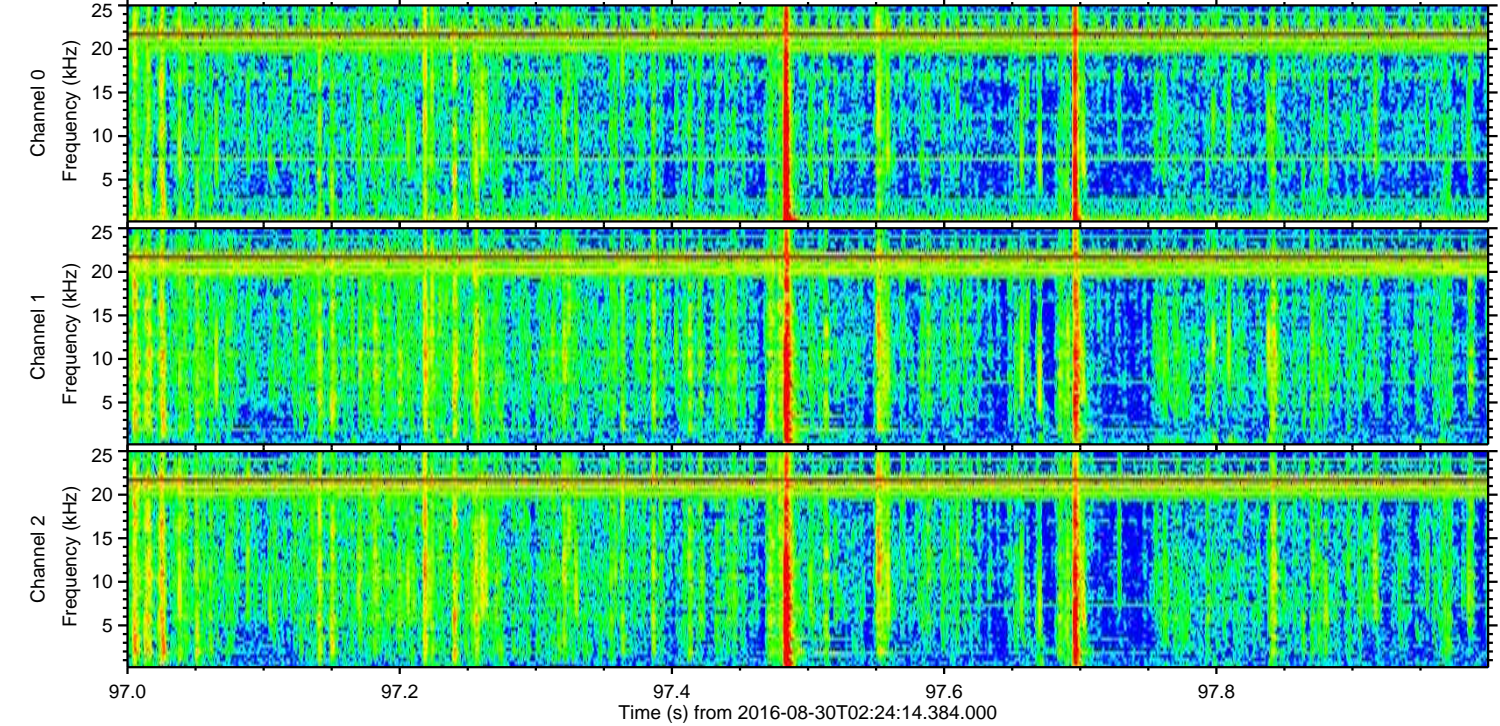
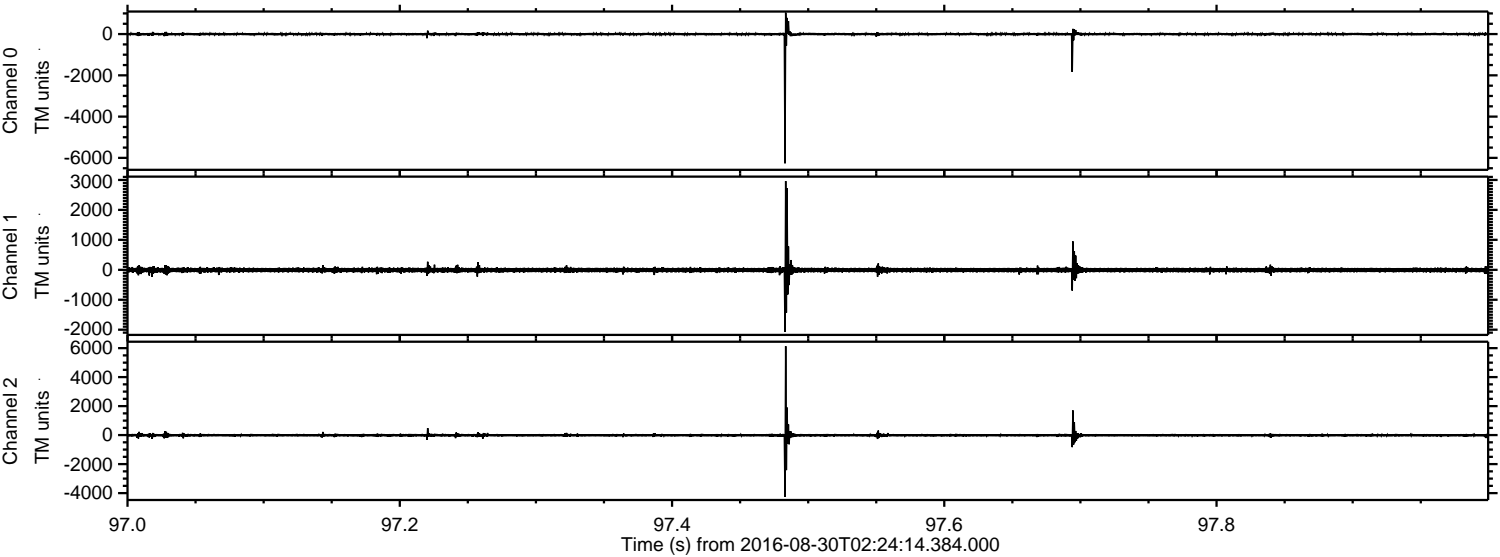
ELMAVAN 3D WAVEFORMS (Measured data sampled at 50 kHz) 51000 packets of 144 samples from 2016-08-30T02:24:14.384.000. Part 121/147

Processed Tue Aug 30 04:32:30 2016 by ELM ver.2012-10-06 from 001\_\_elm20160830\_022413\_\_dat00.bin





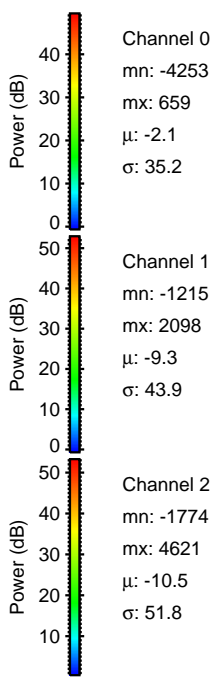
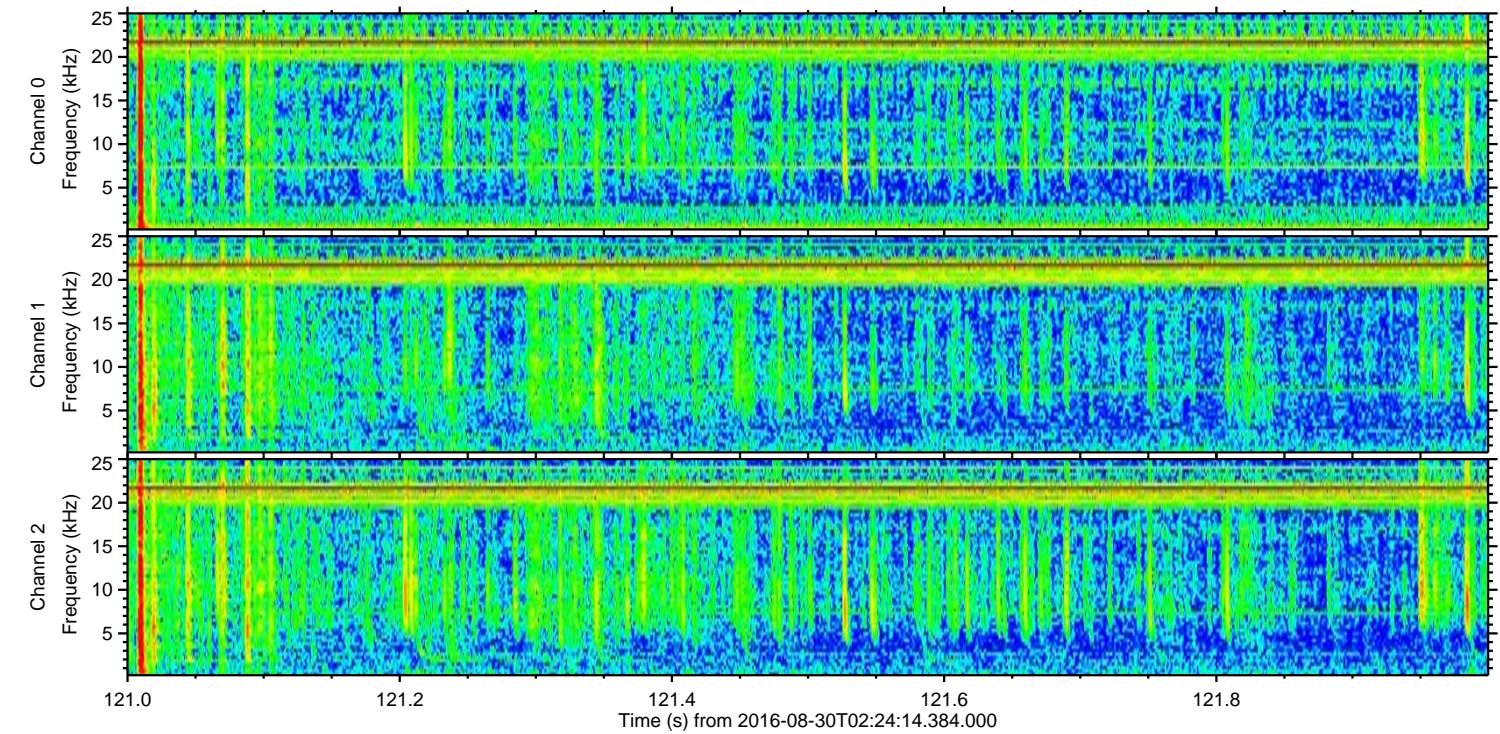
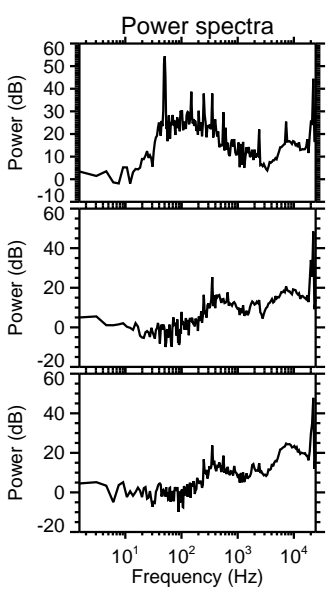
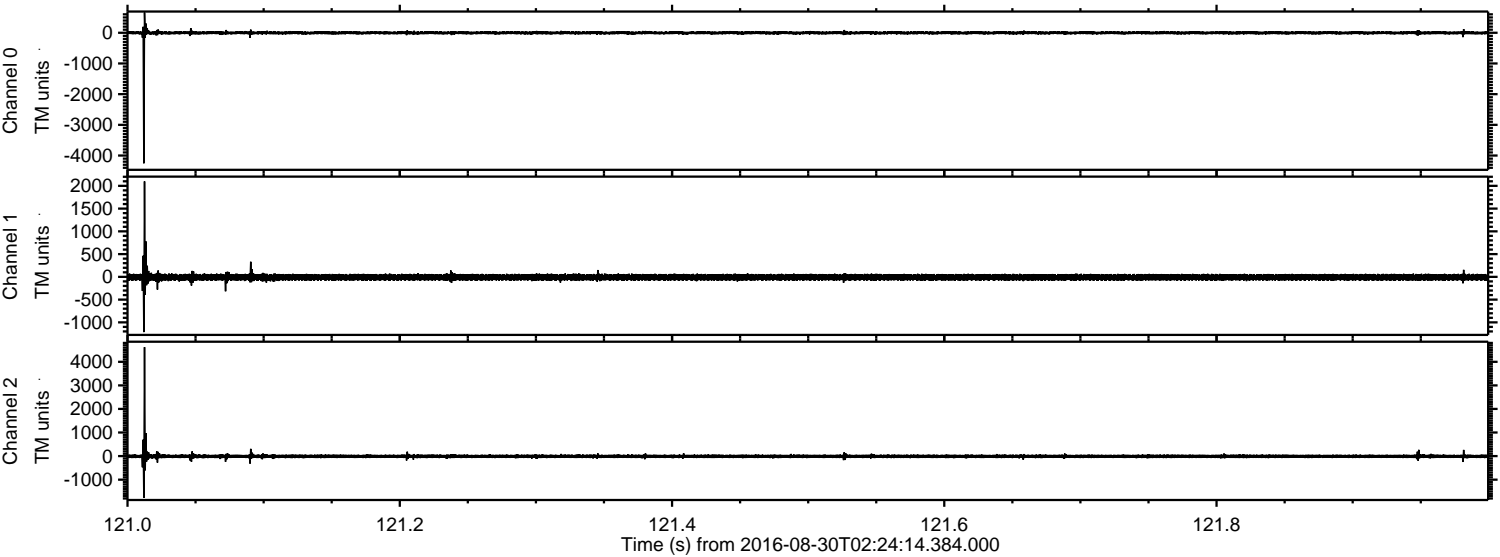
Processed Tue Aug 30 04:32:31 2016 by ELM ver.2012-10-06 from 001\_\_elm20160830\_022413\_\_dat00.bin





ELMAVAN 3D WAVEFORMS (Measured data sampled at 50 kHz) 51000 packets of 144 samples from 2016-08-30T02:24:14.384.000. Part 122/147

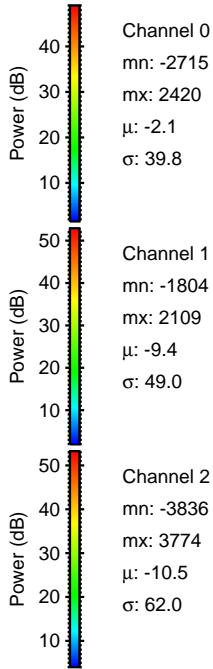
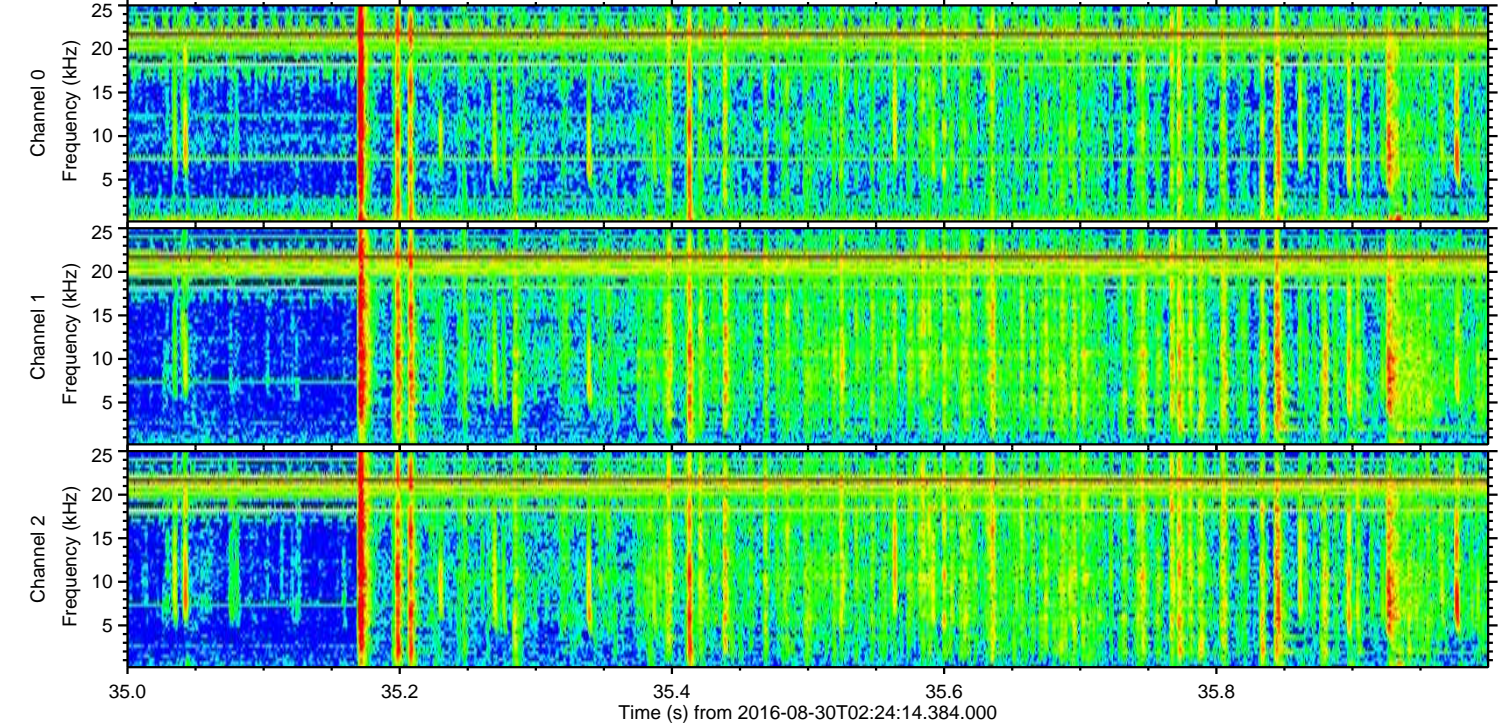
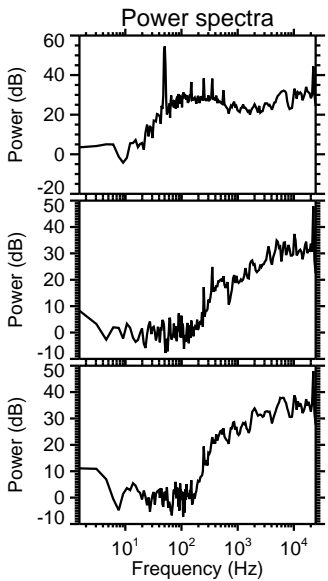
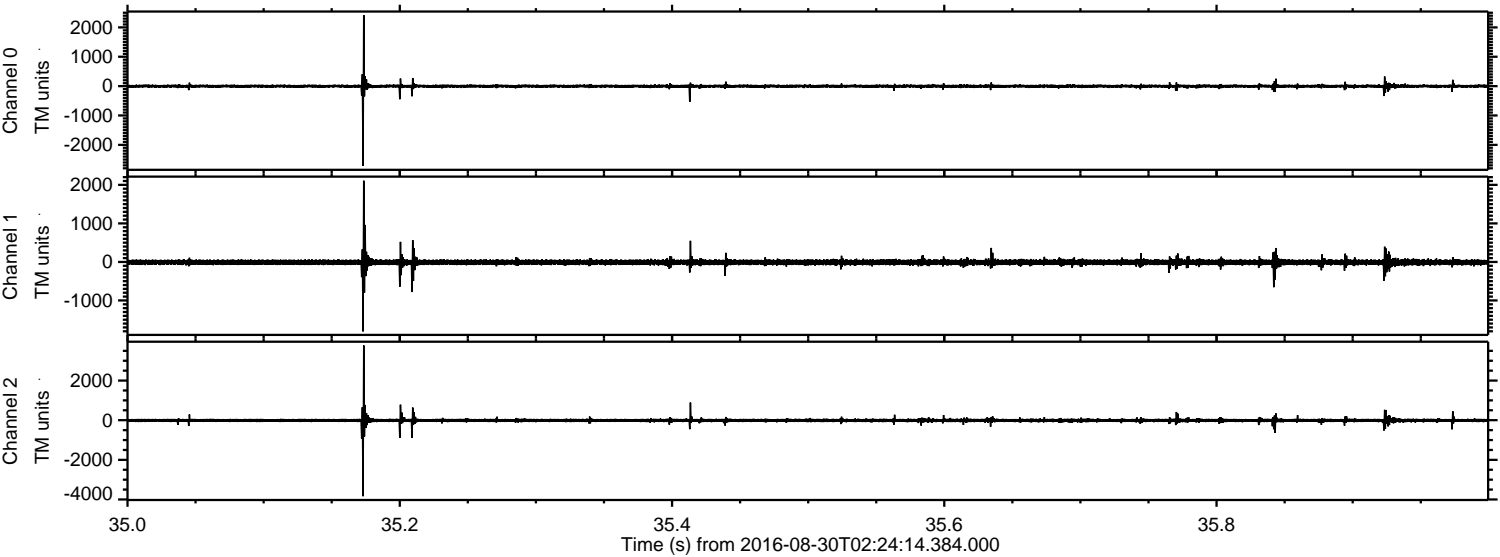
Processed Tue Aug 30 04:32:32 2016 by ELM ver.2012-10-06 from 001\_\_elm20160830\_022413\_\_dat00.bin





ELMAVAN 3D WAVEFORMS (Measured data sampled at 50 kHz) 51000 packets of 144 samples from 2016-08-30T02:24:14.384.000. Part 36/147

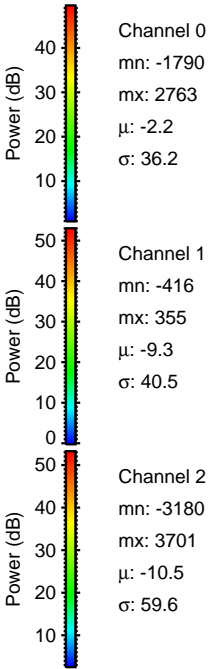
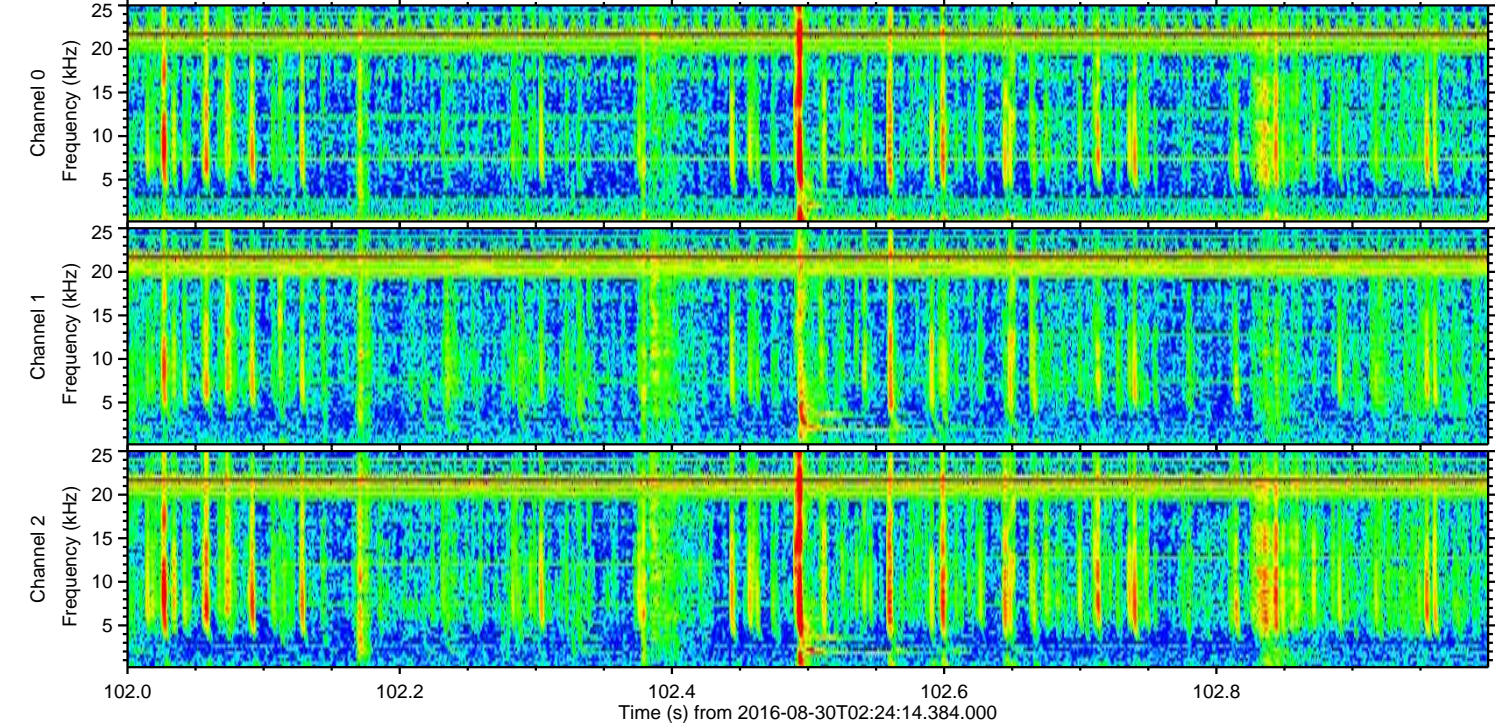
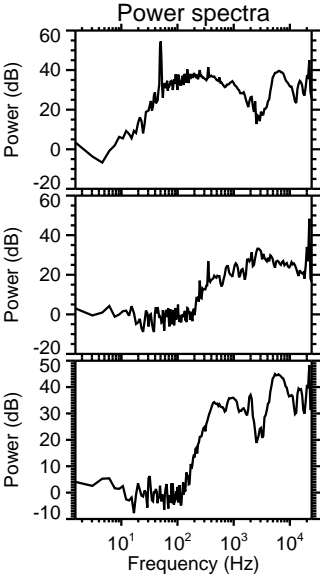
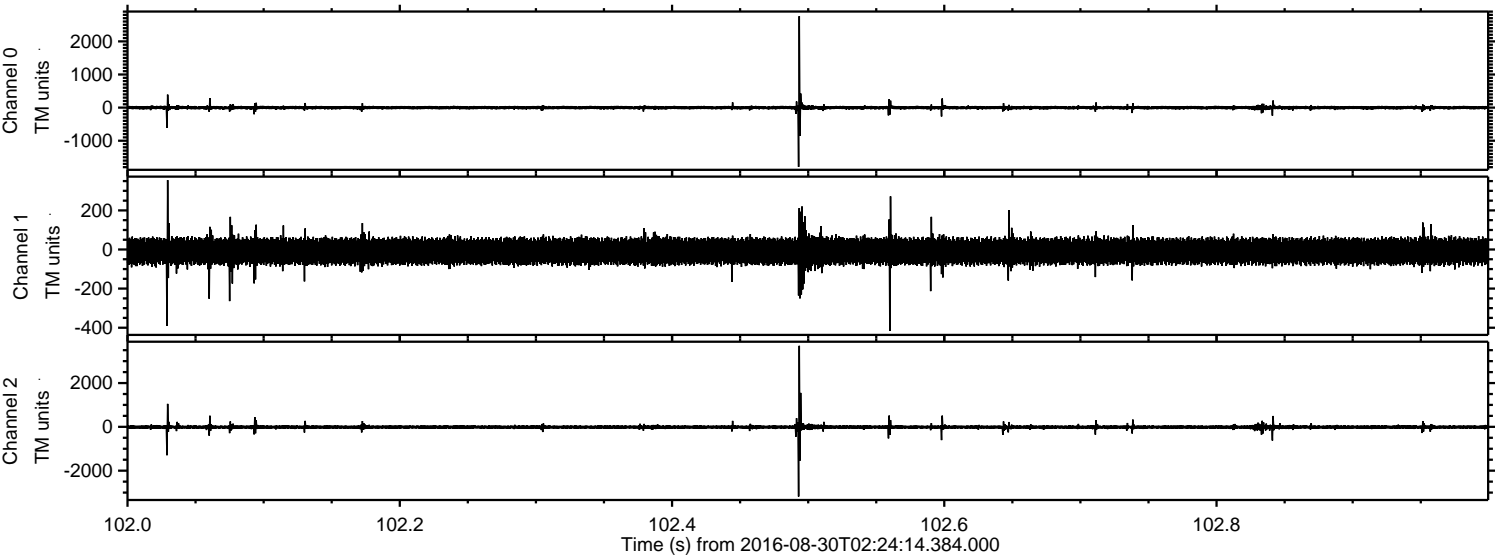
Processed Tue Aug 30 04:32:33 2016 by ELM ver.2012-10-06 from 001\_\_elm20160830\_022413\_\_dat00.bin





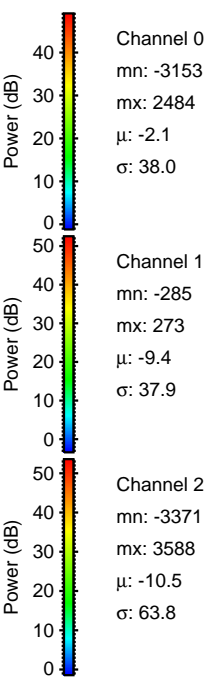
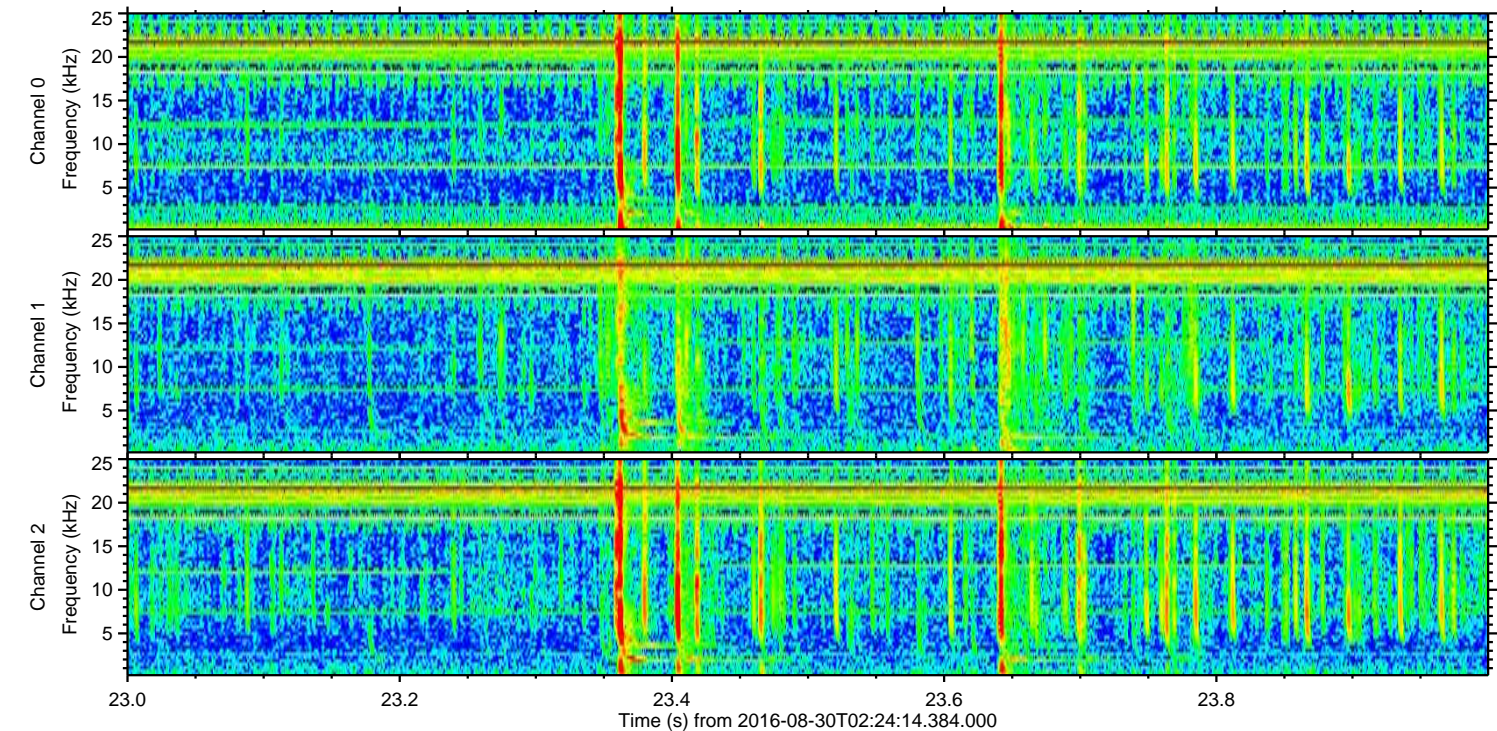
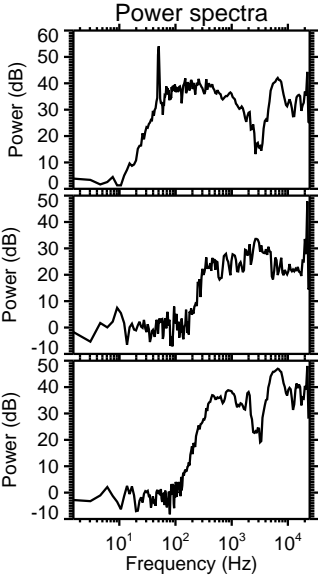
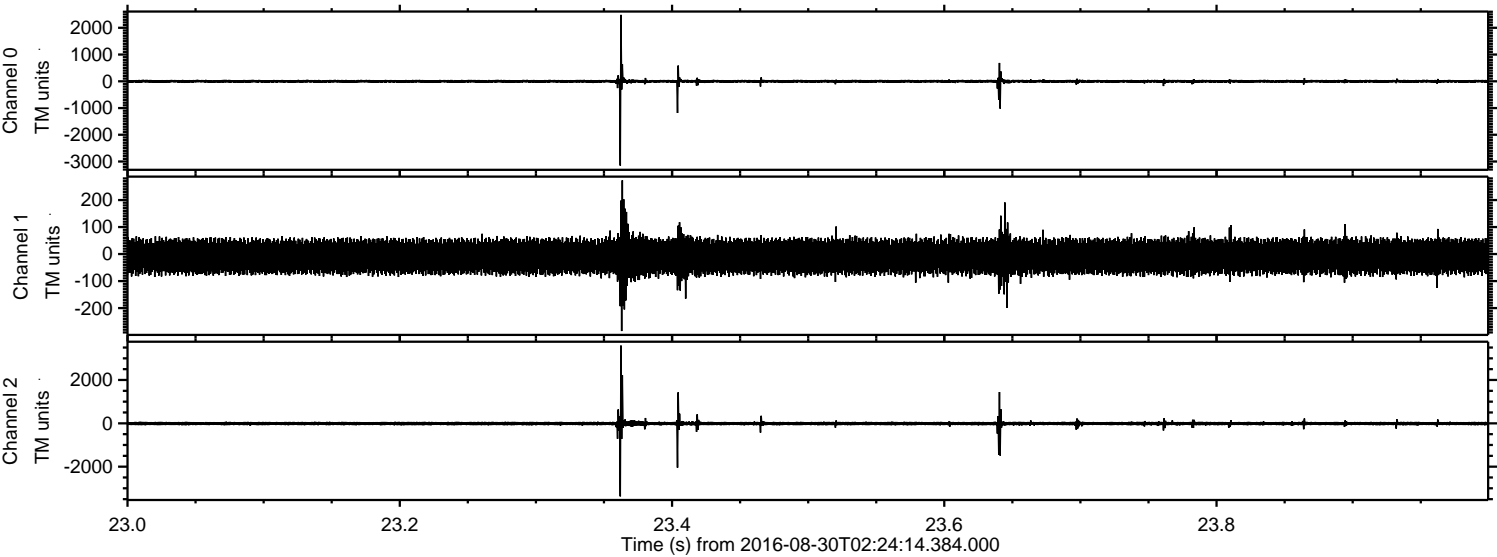
ELMAVAN 3D WAVEFORMS (Measured data sampled at 50 kHz) 51000 packets of 144 samples from 2016-08-30T02:24:14.384.000. Part 103/147

Processed Tue Aug 30 04:32:34 2016 by ELM ver.2012-10-06 from 001\_\_elm20160830\_022413\_\_dat00.bin





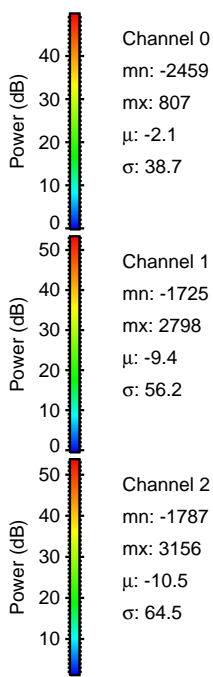
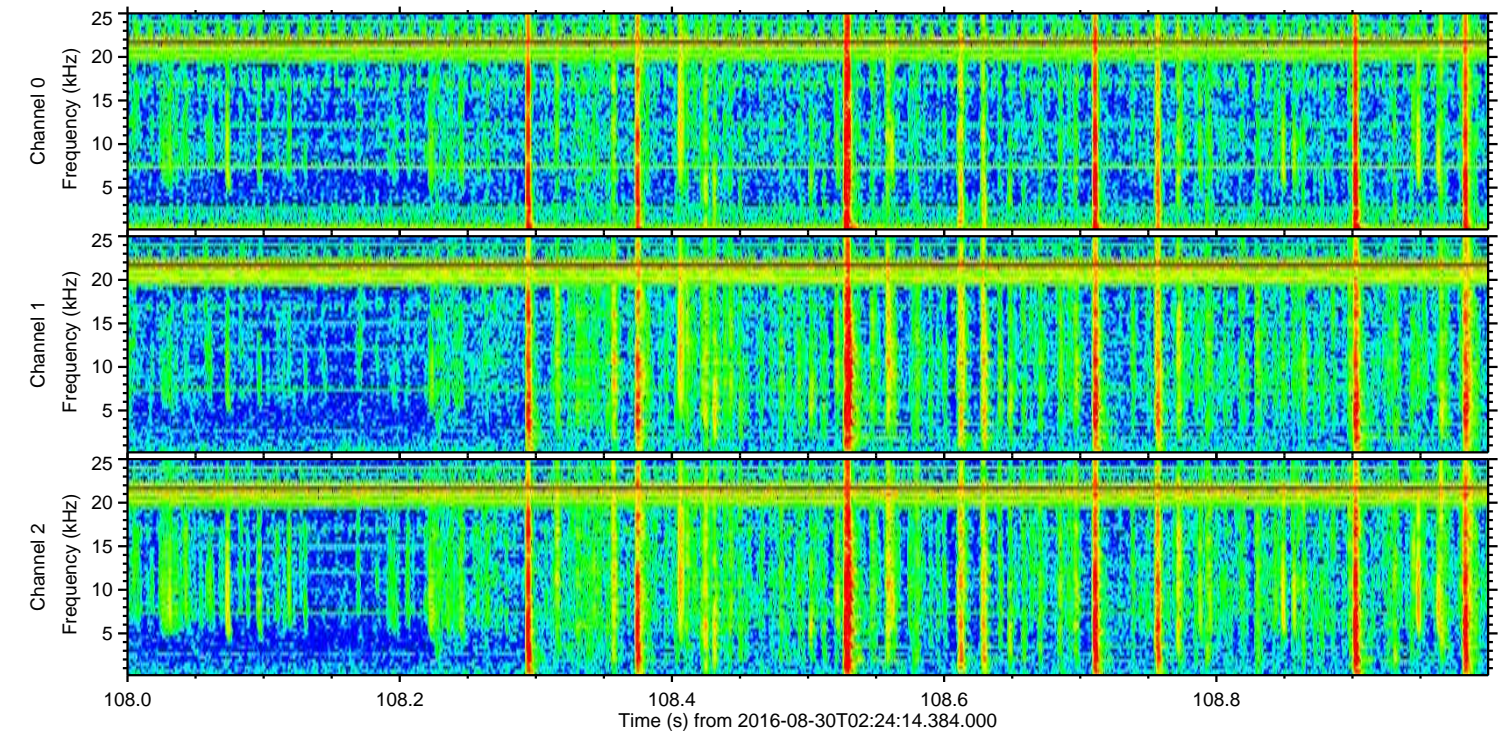
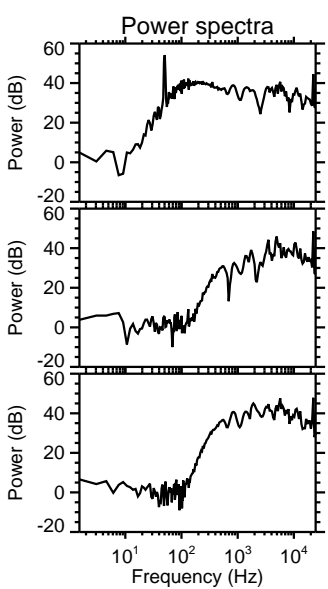
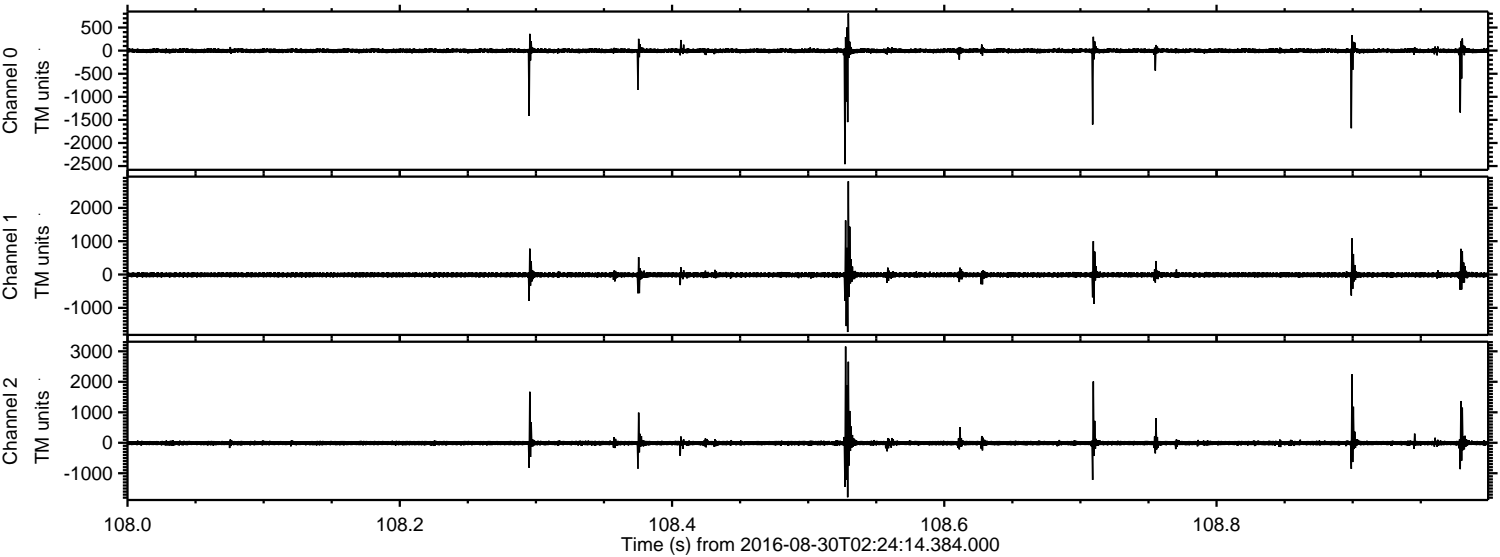
Processed Tue Aug 30 04:32:35 2016 by ELM ver.2012-10-06 from 001\_\_elm20160830\_022413\_\_dat00.bin





ELMAVAN 3D WAVEFORMS (Measured data sampled at 50 kHz) 51000 packets of 144 samples from 2016-08-30T02:24:14.384.000. Part 109/147

Processed Tue Aug 30 04:32:36 2016 by ELM ver.2012-10-06 from 001\_\_elm20160830\_022413\_\_dat00.bin



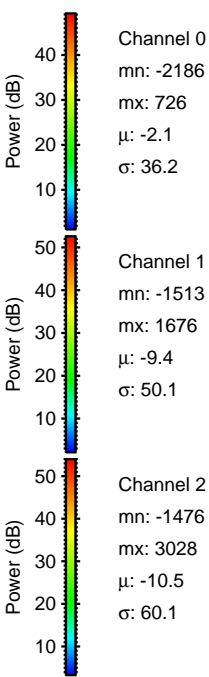
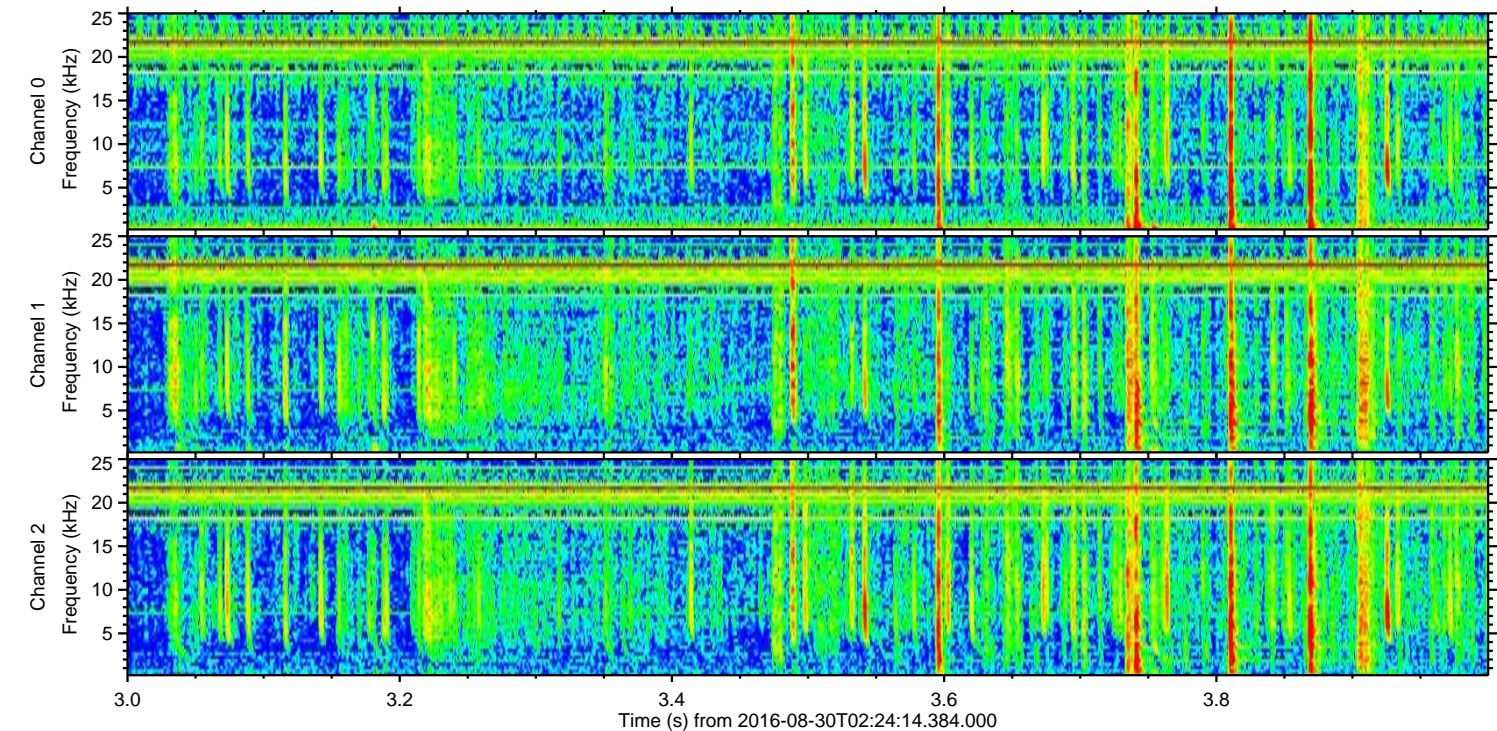
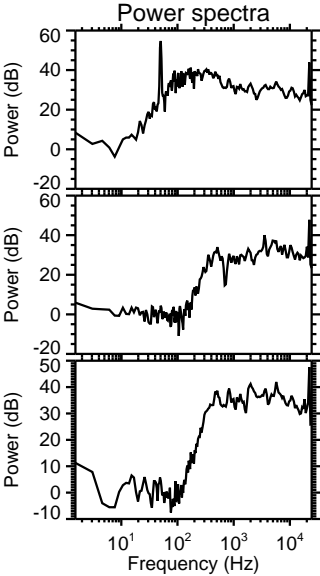
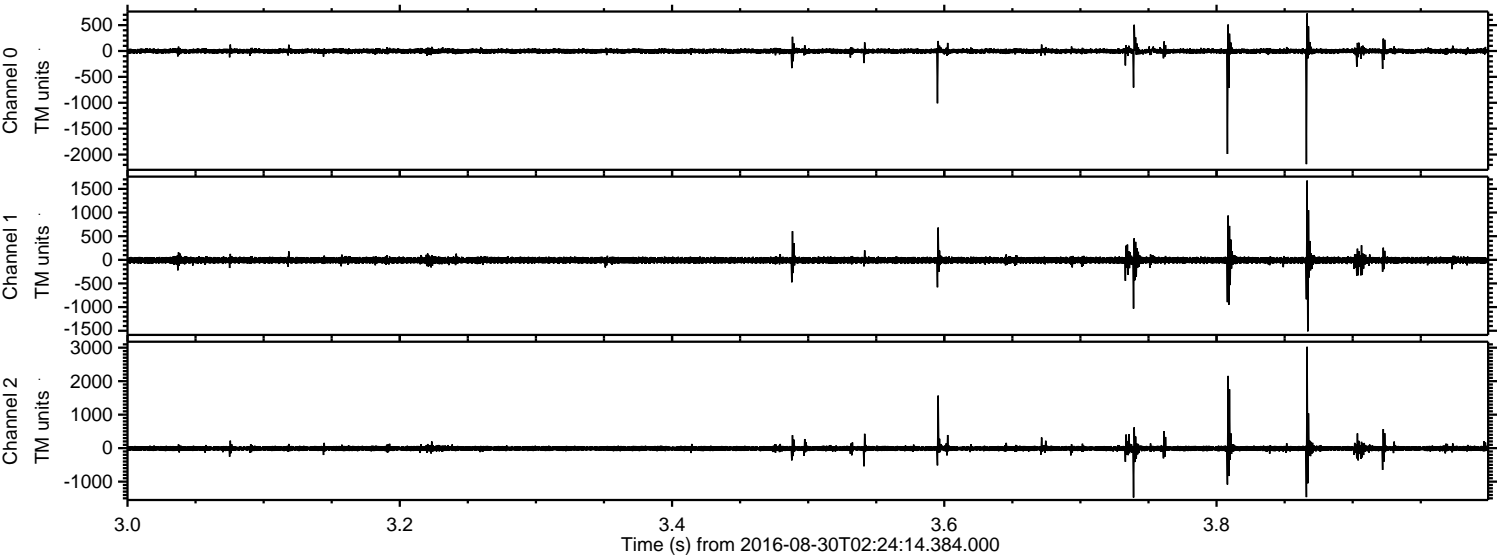
Channel 0  
mn: -2459  
mx: 807  
 $\mu$ : -2.1  
 $\sigma$ : 38.7

Channel 1  
mn: -1725  
mx: 2798  
 $\mu$ : -9.4  
 $\sigma$ : 56.2

Channel 2  
mn: -1787  
mx: 3156  
 $\mu$ : -10.5  
 $\sigma$ : 64.5

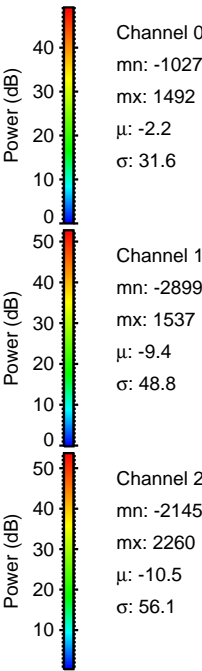
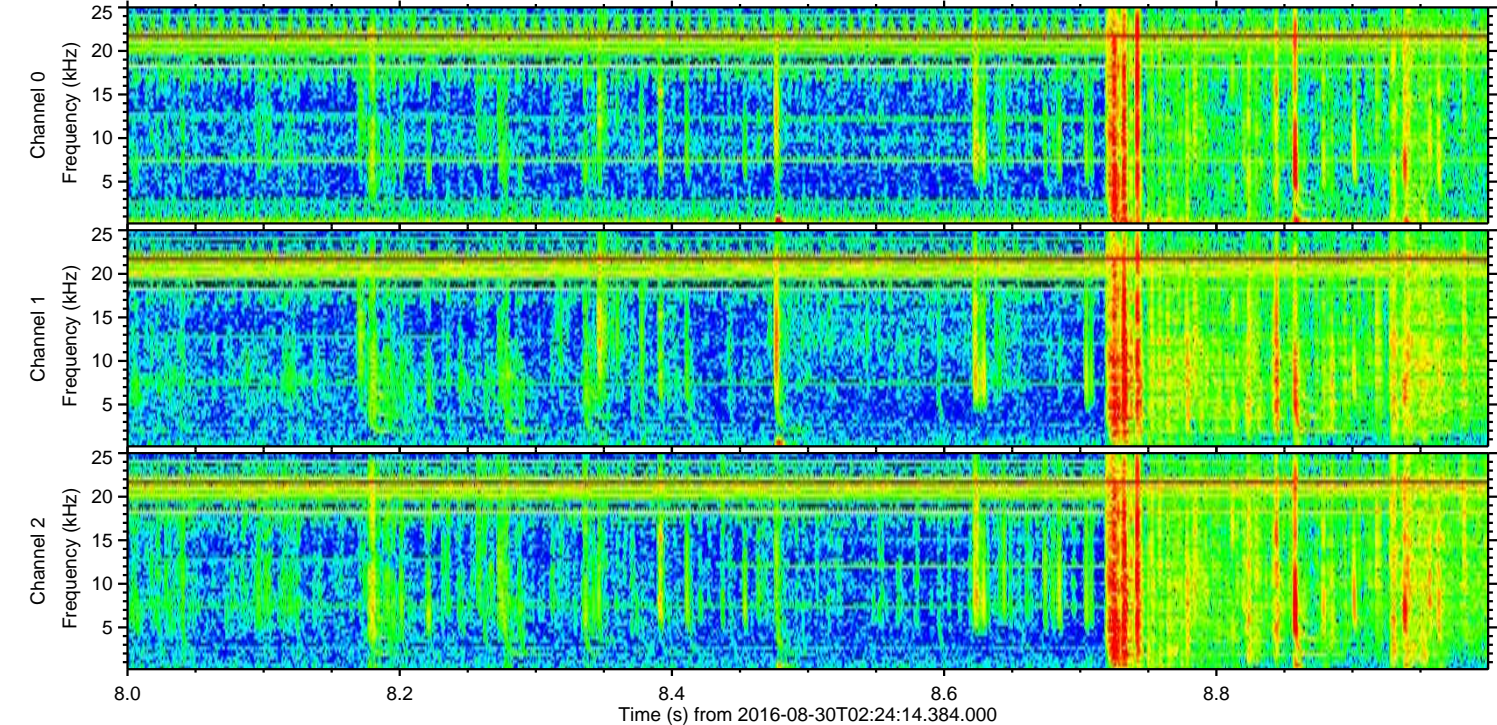
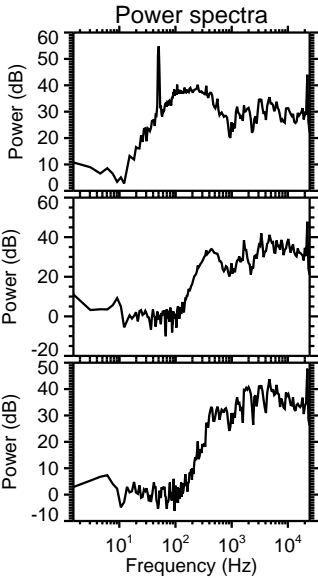
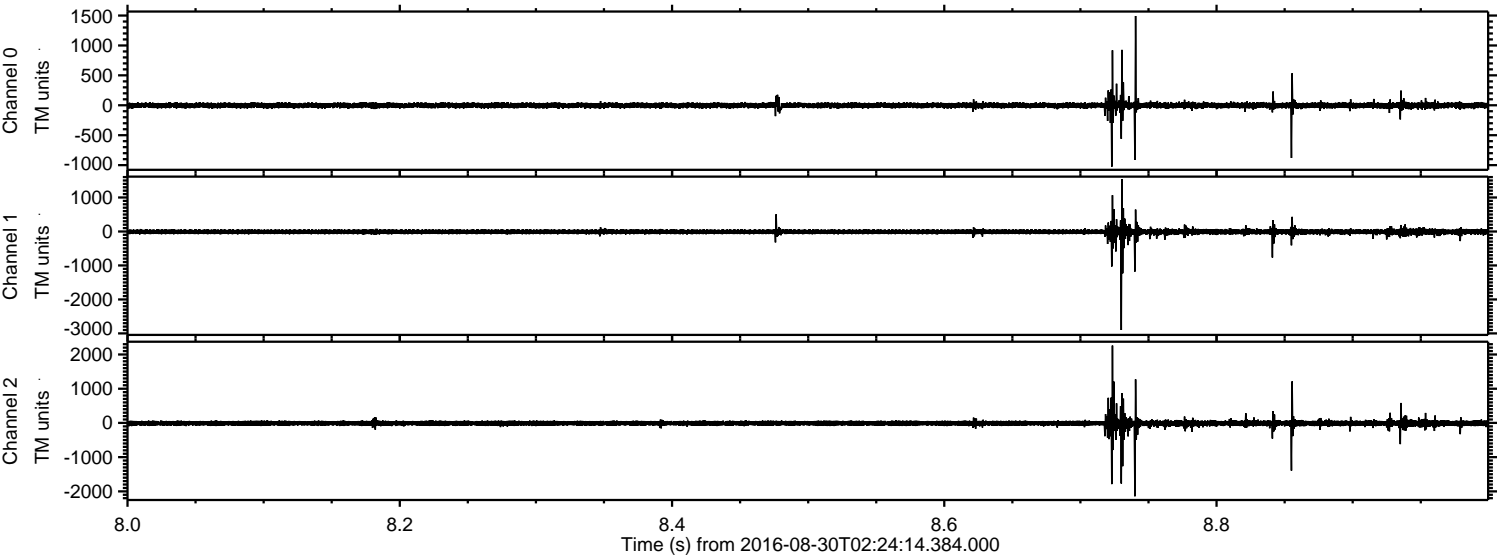


Processed Tue Aug 30 04:32:37 2016 by ELM ver.2012-10-06 from 001\_\_elm20160830\_022413\_\_dat00.bin





Processed Tue Aug 30 04:32:38 2016 by ELM ver.2012-10-06 from 001\_\_elm20160830\_022413\_\_dat00.bin





Processed Tue Aug 30 04:32:38 2016 by ELM ver.2012-10-06 from 001\_\_elm20160830\_022413\_\_dat00.bin

