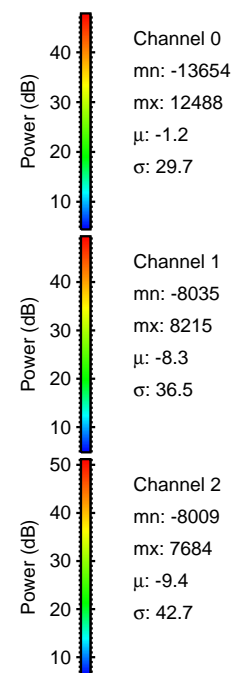
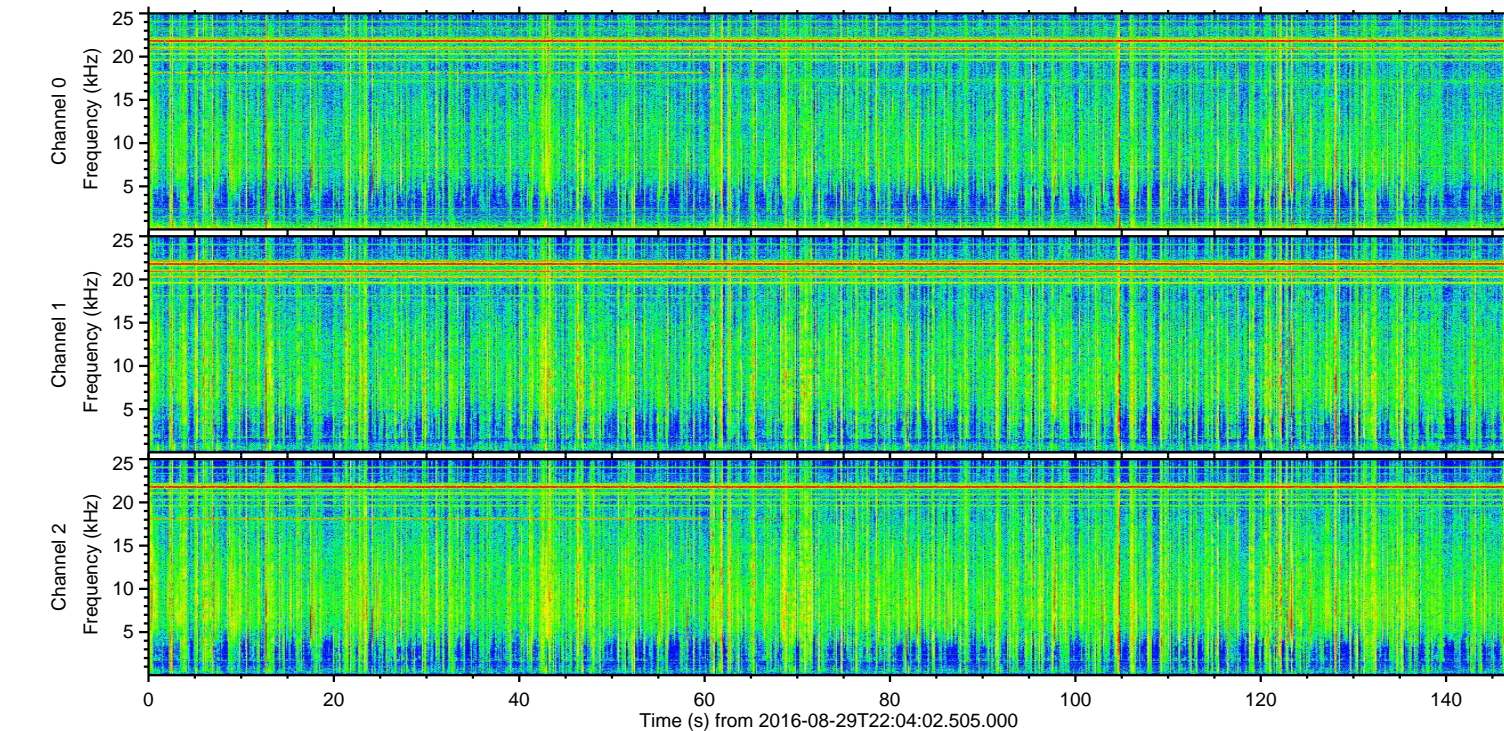
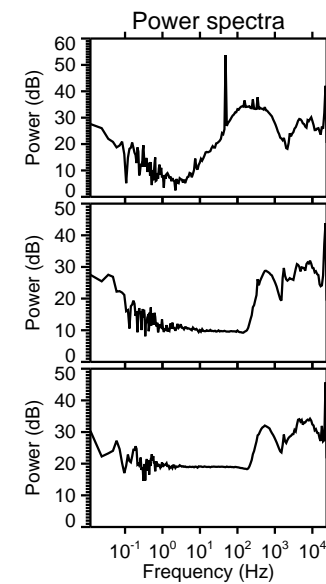
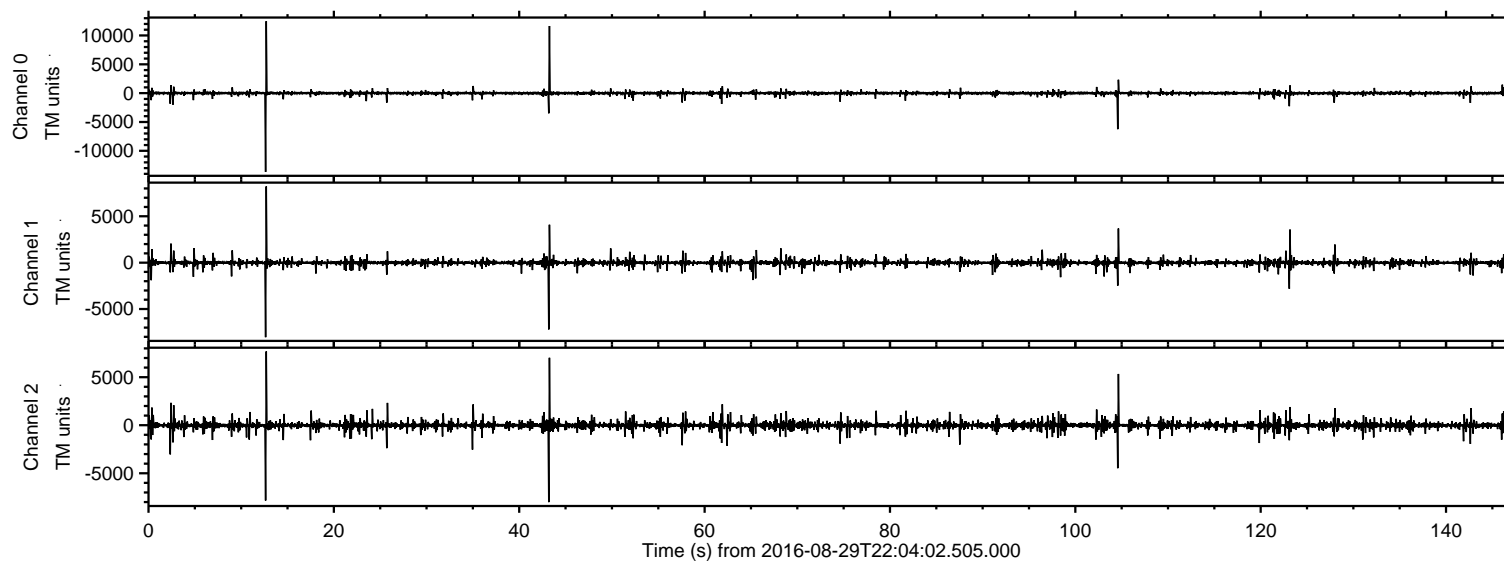


# ELMAVAN 3D WAVEFORMS (Measured data sampled at 50 kHz) 51000 packets of 144 samples from 2016-08-29T22:04:02.505.000.

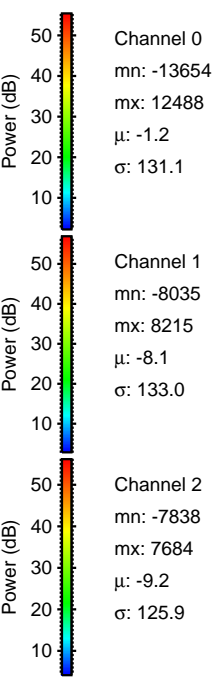
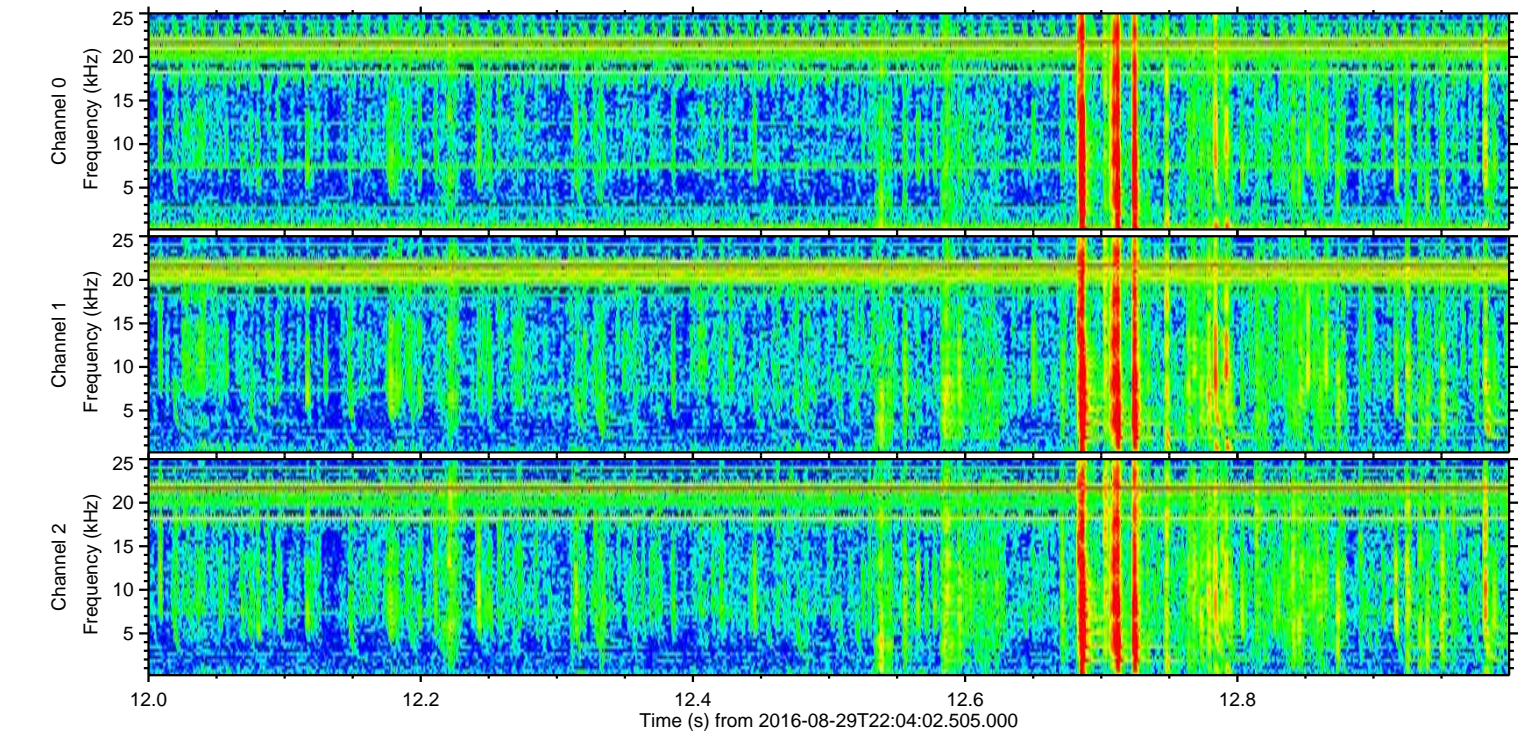
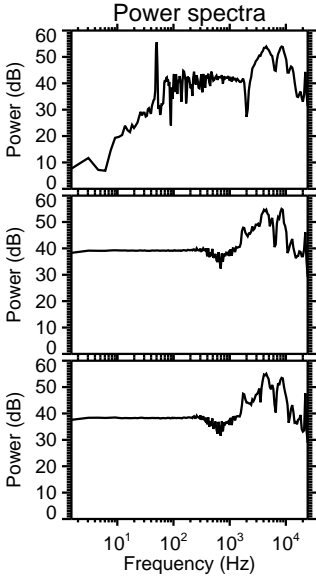
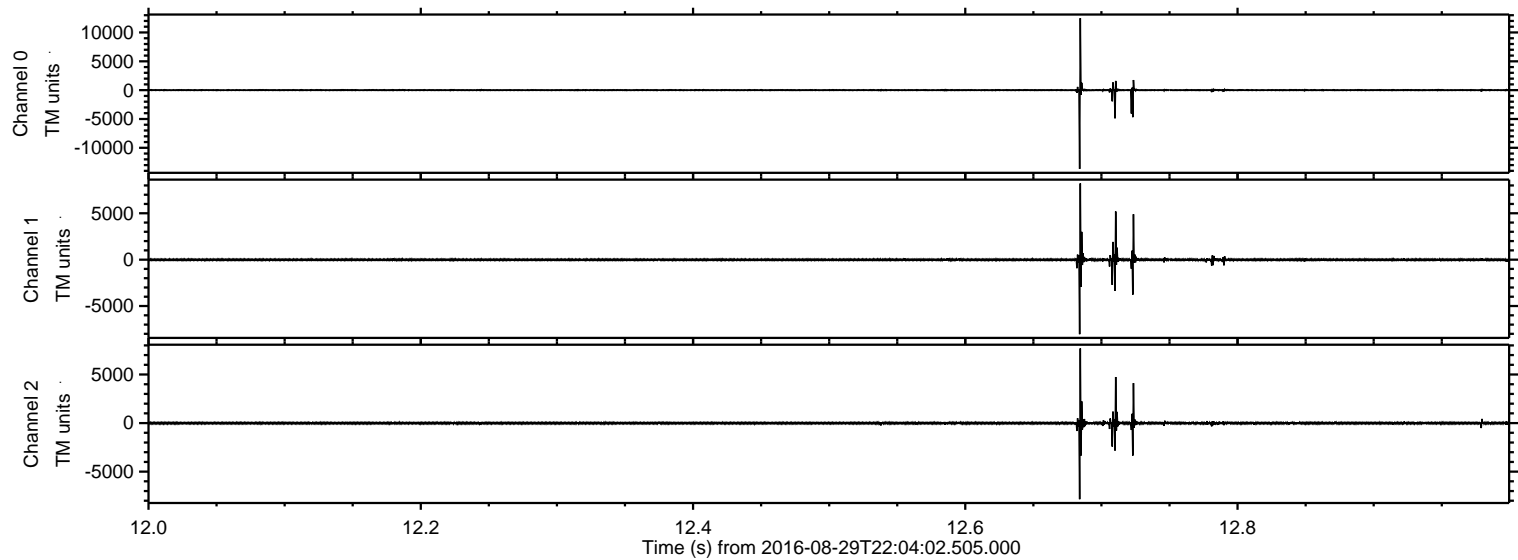
Processed Tue Aug 30 00:11:59 2016 by ELM ver.2012-10-06 from 001\_\_elm20160829\_220401\_\_dat00.bin





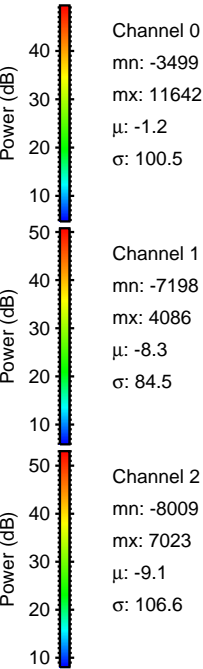
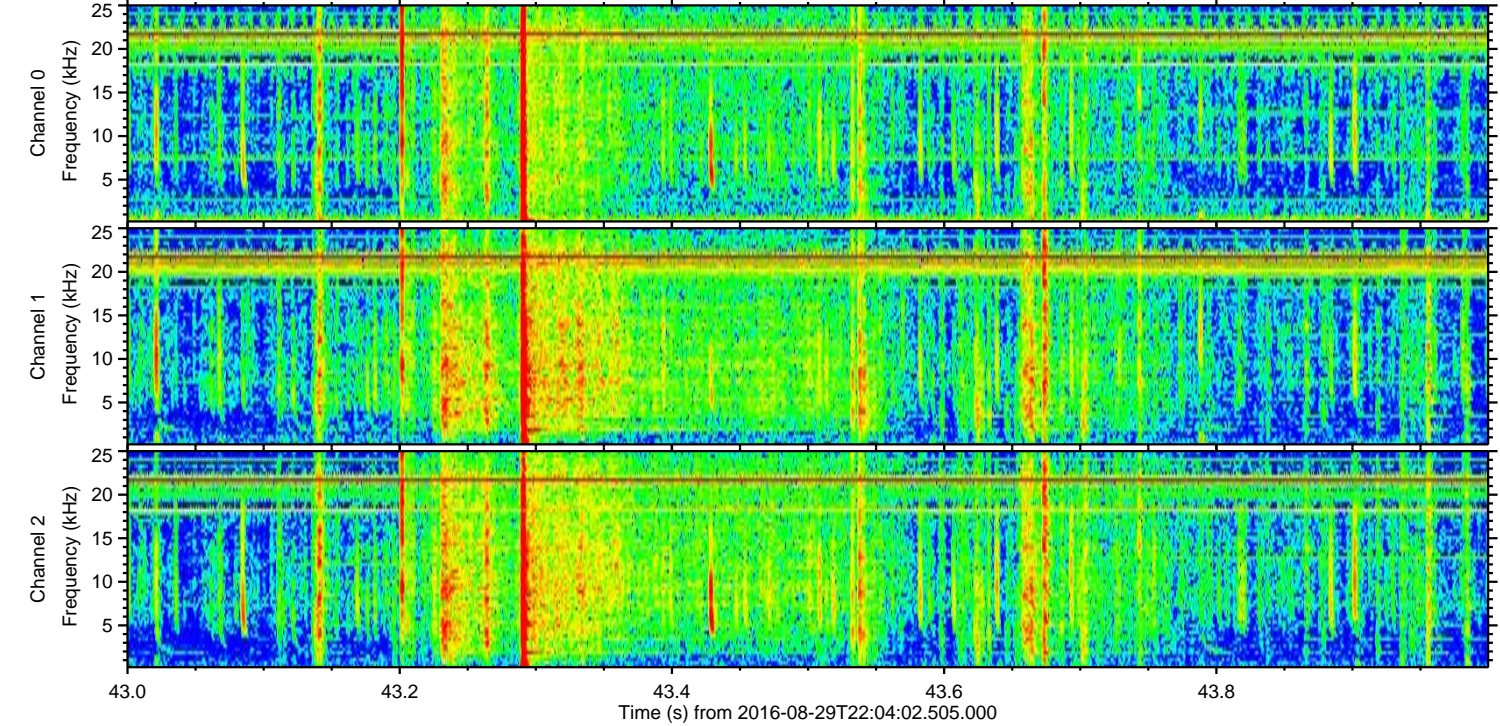
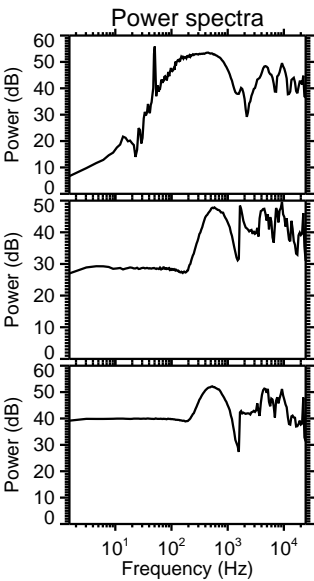
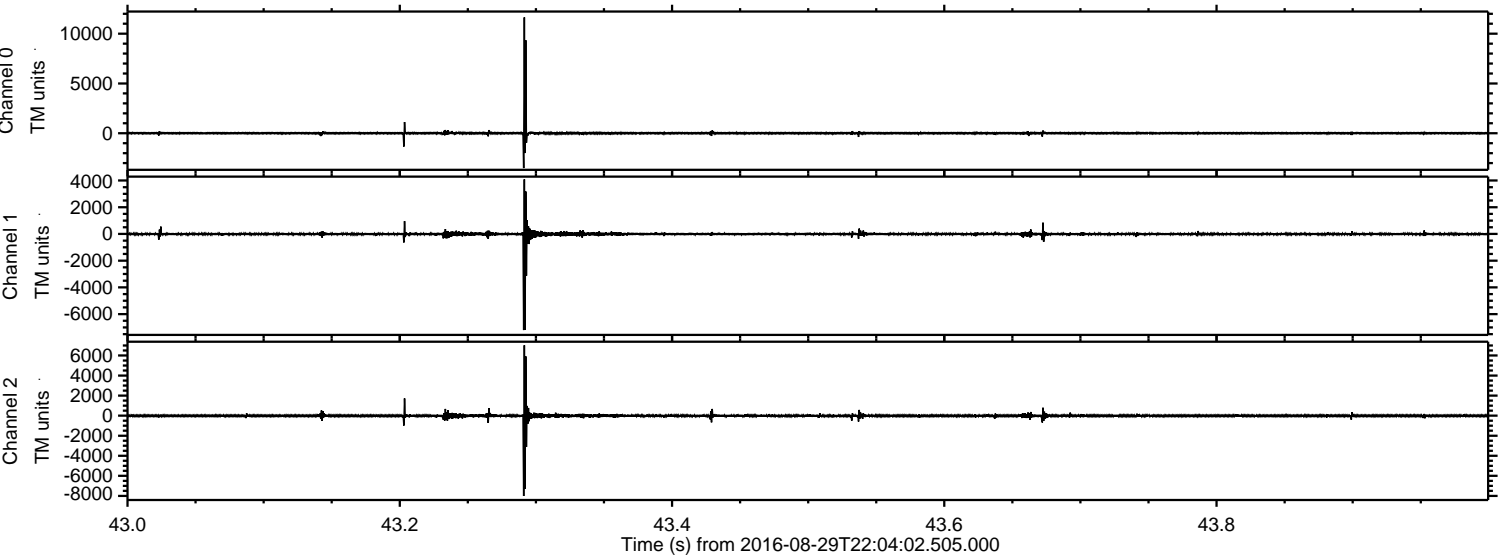
ELMAVAN 3D WAVEFORMS (Measured data sampled at 50 kHz) 51000 packets of 144 samples from 2016-08-29T22:04:02.505.000. Part 13/147

Processed Tue Aug 30 00:12:15 2016 by ELM ver.2012-10-06 from 001\_\_elm20160829\_220401\_\_dat00.bin





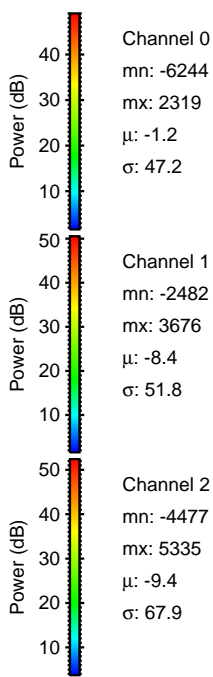
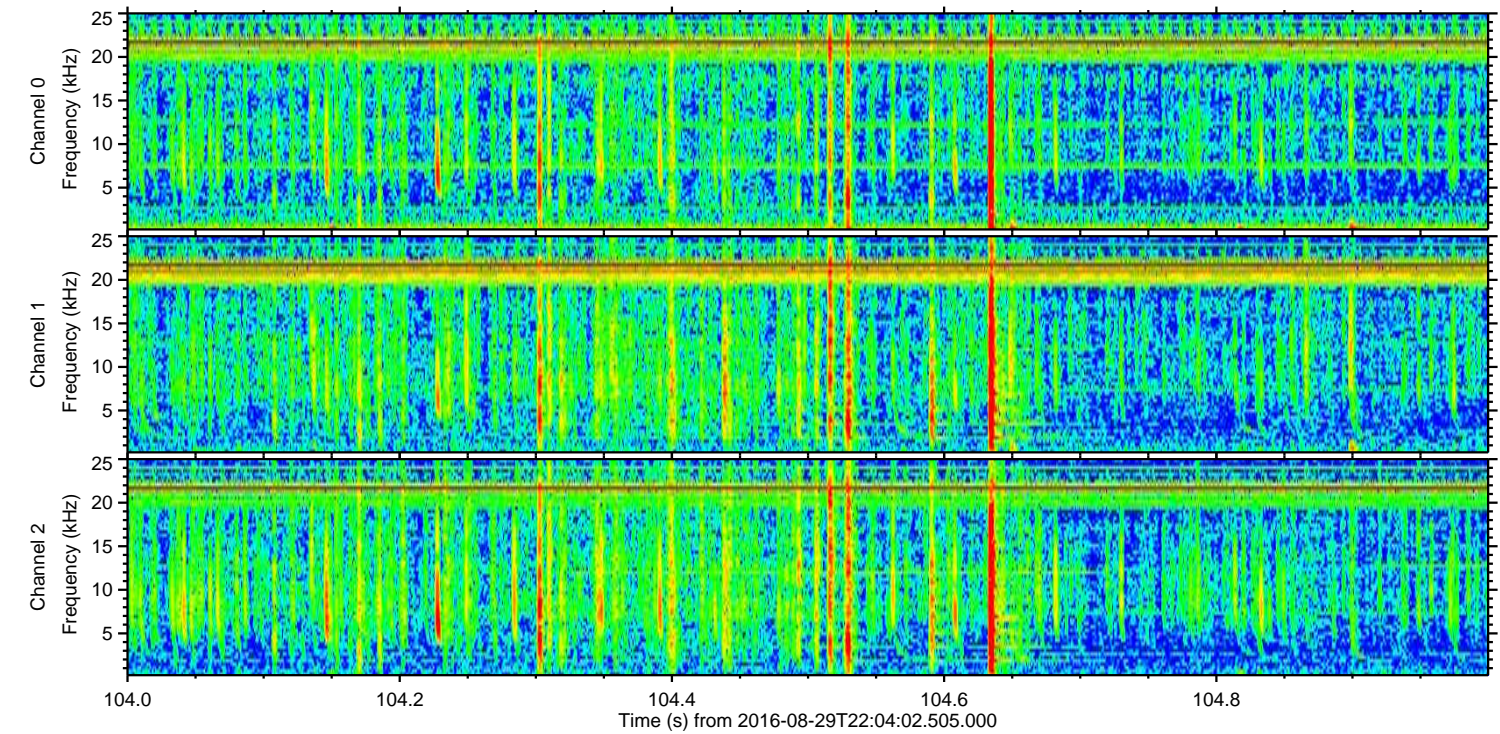
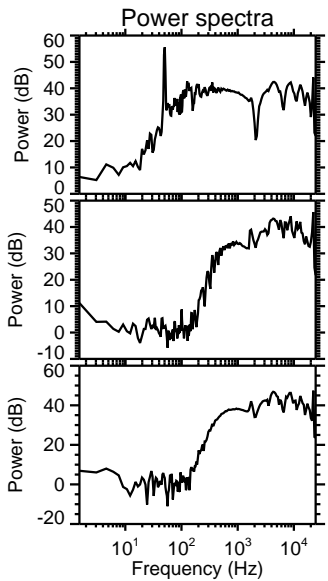
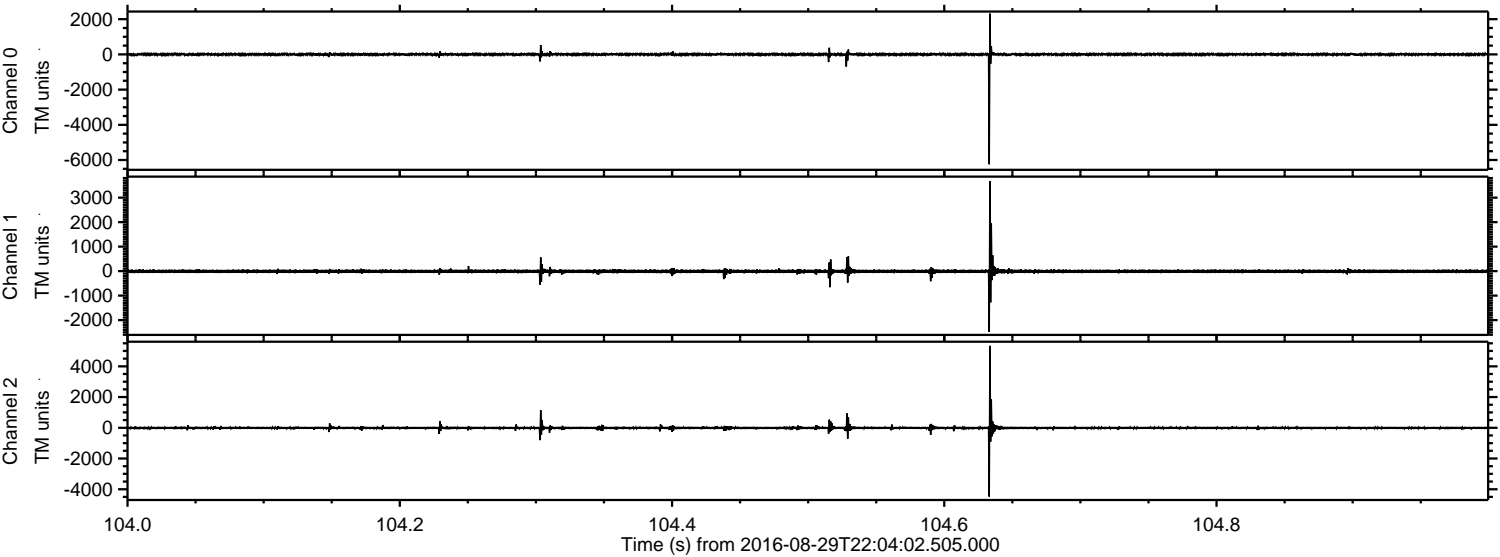
Processed Tue Aug 30 00:12:16 2016 by ELM ver.2012-10-06 from 001\_\_elm20160829\_220401\_\_dat00.bin





ELMAVAN 3D WAVEFORMS (Measured data sampled at 50 kHz) 51000 packets of 144 samples from 2016-08-29T22:04:02.505.000. Part 105/147

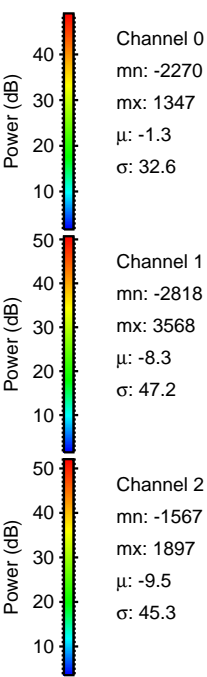
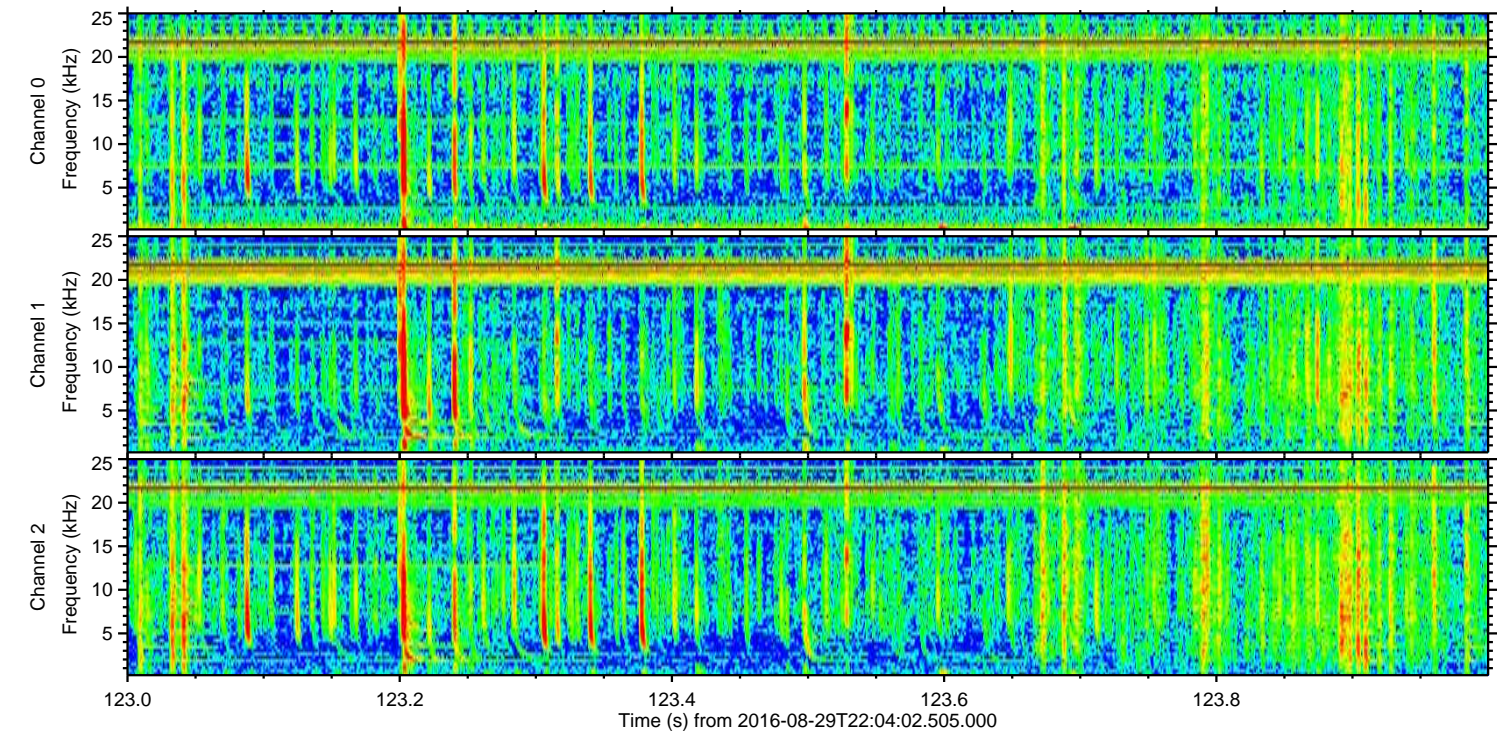
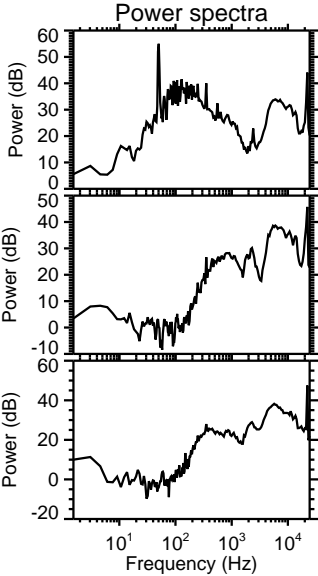
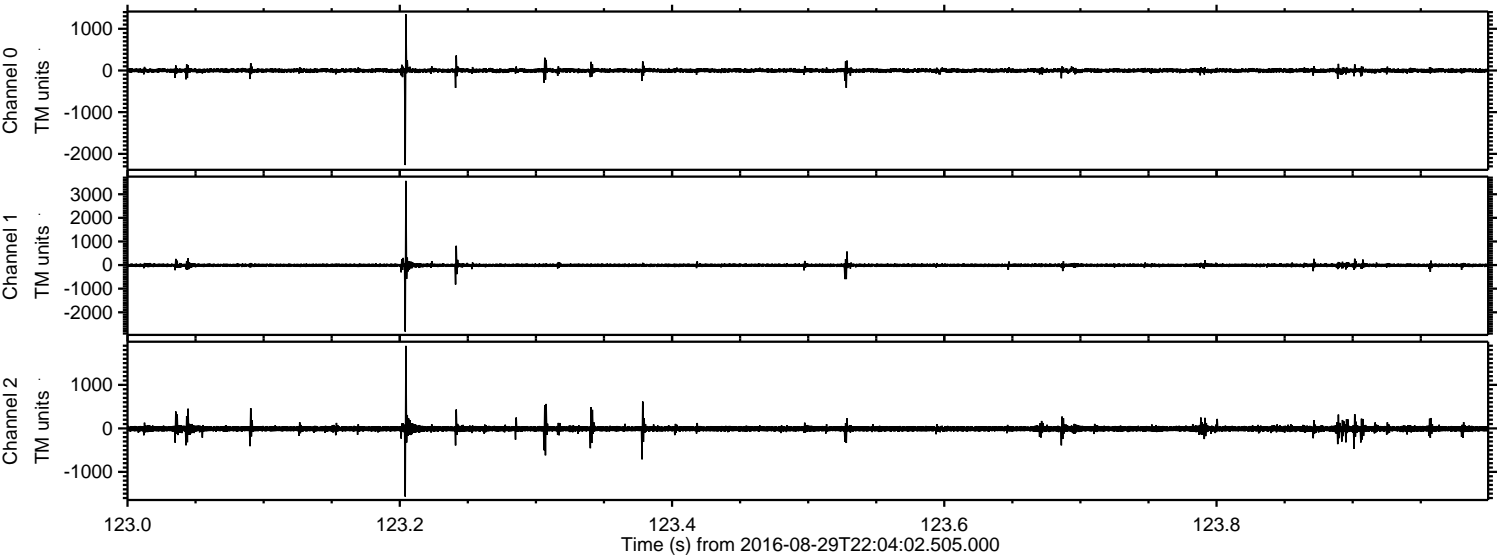
Processed Tue Aug 30 00:12:17 2016 by ELM ver.2012-10-06 from 001\_\_elm20160829\_220401\_\_dat00.bin





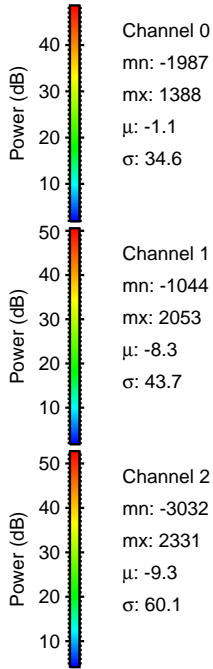
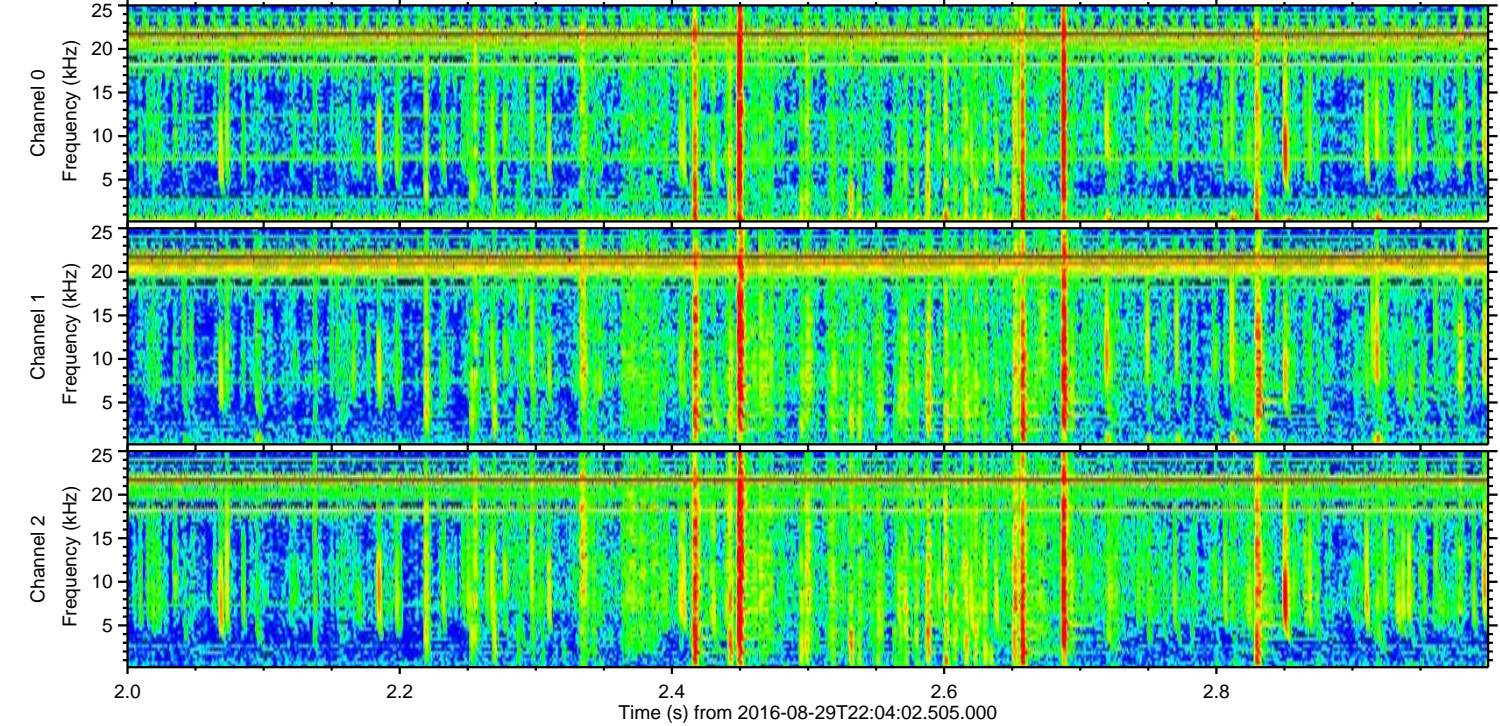
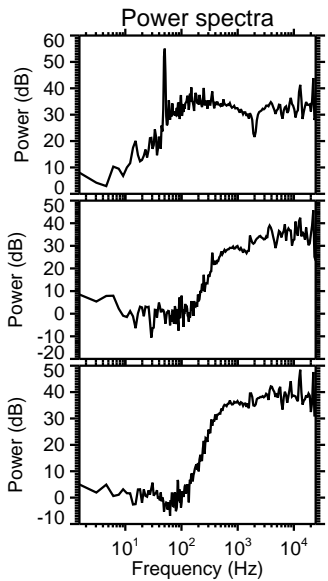
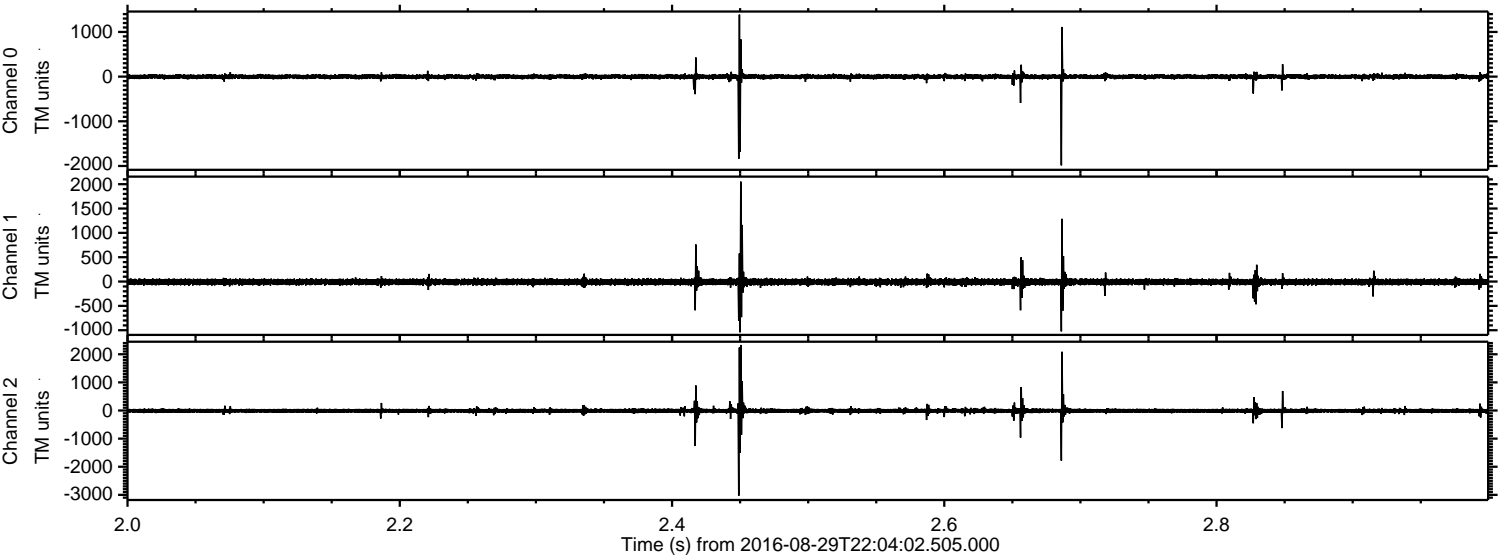
ELMAVAN 3D WAVEFORMS (Measured data sampled at 50 kHz) 51000 packets of 144 samples from 2016-08-29T22:04:02.505.000. Part 124/147

Processed Tue Aug 30 00:12:18 2016 by ELM ver.2012-10-06 from 001\_\_elm20160829\_220401\_\_dat00.bin



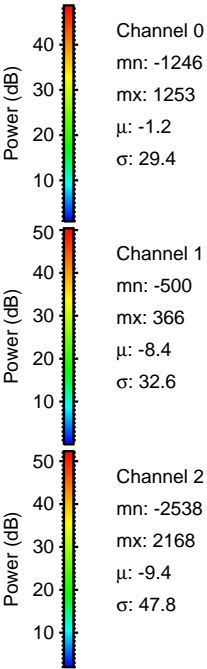
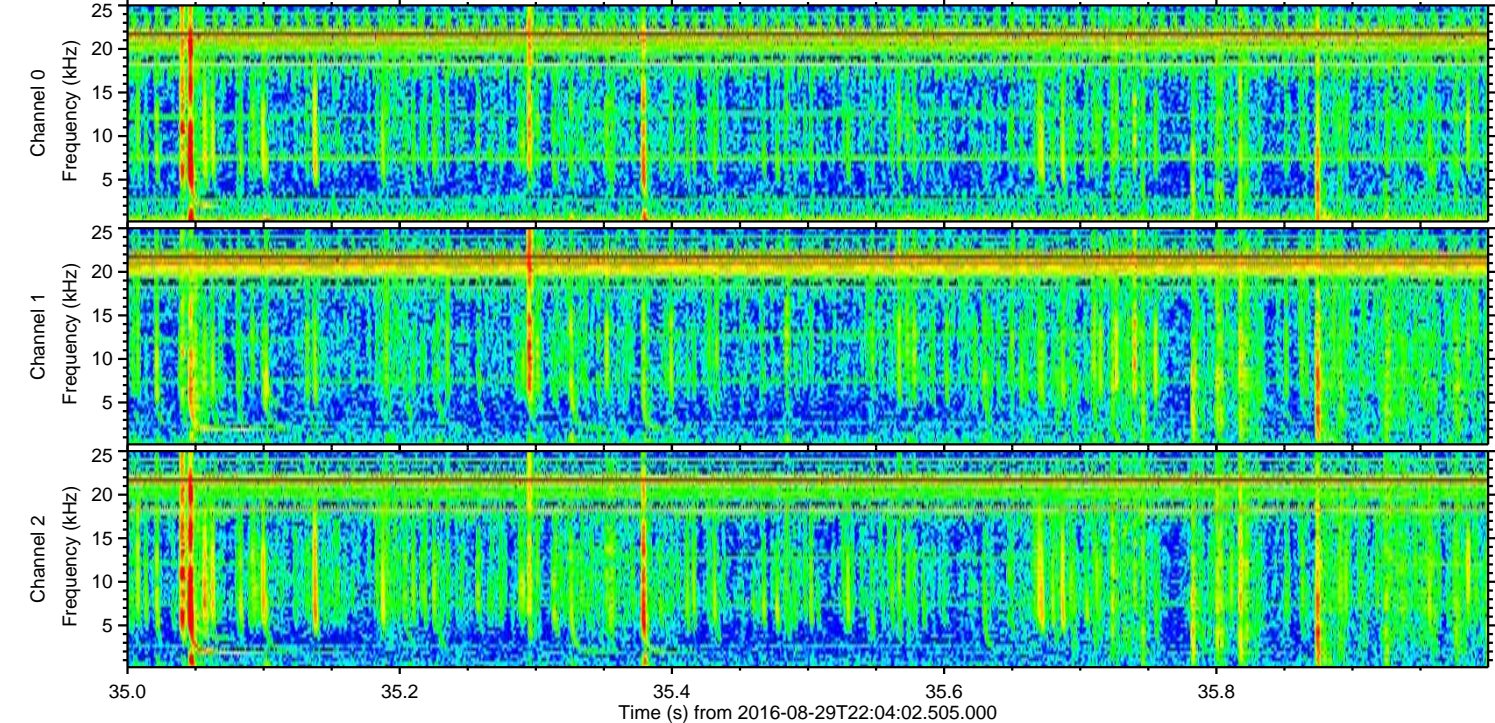
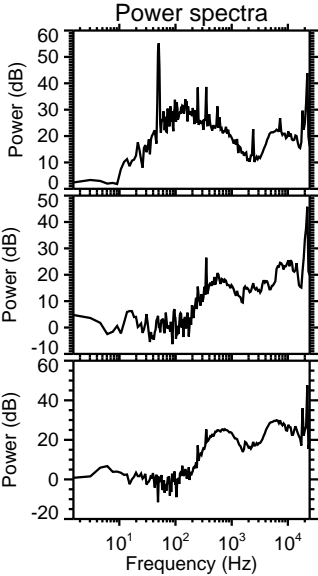
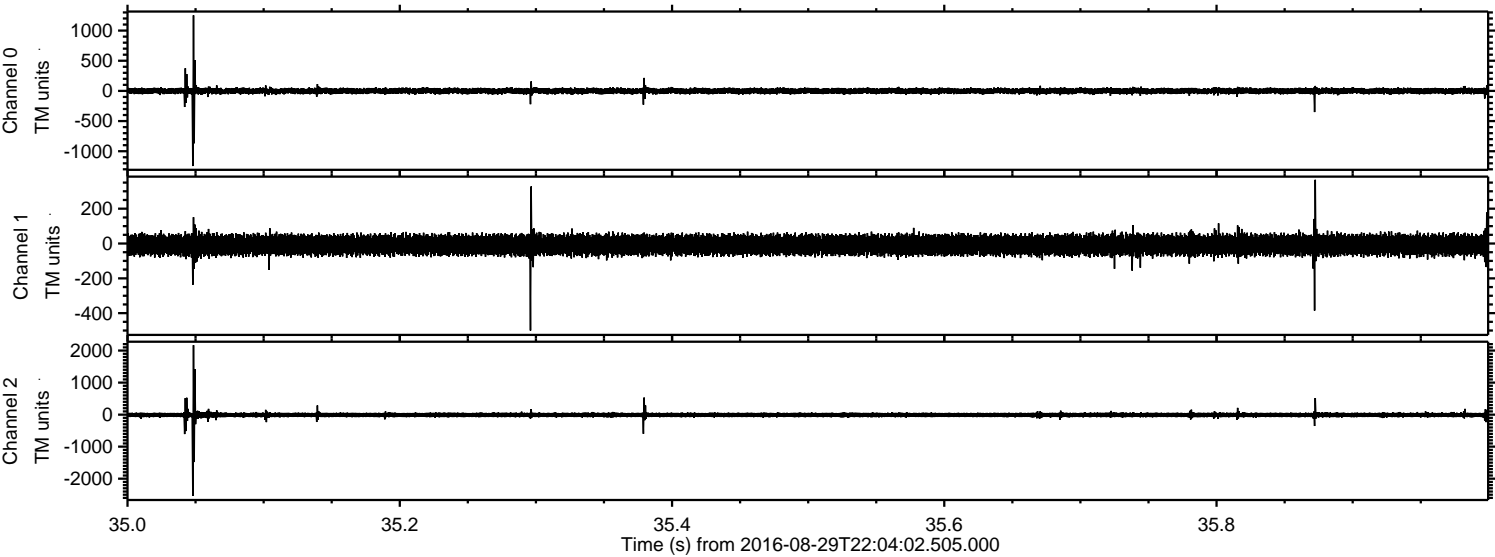


Processed Tue Aug 30 00:12:19 2016 by ELM ver.2012-10-06 from 001\_\_elm20160829\_220401\_\_dat00.bin



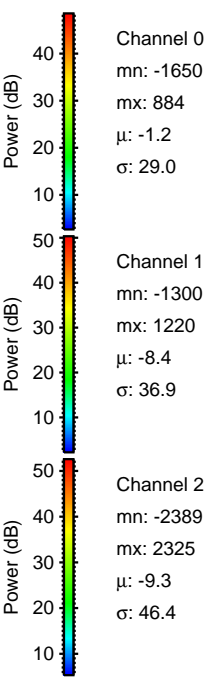
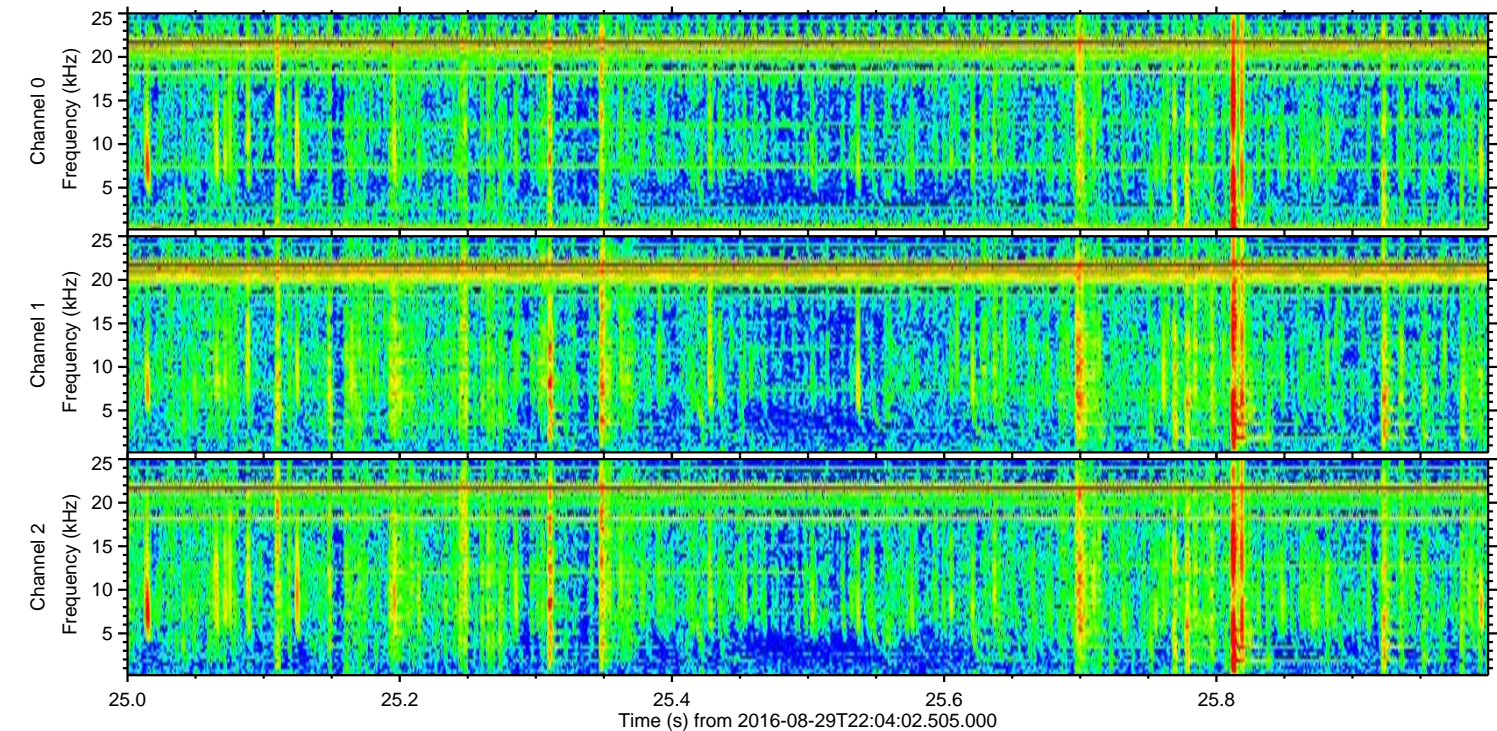
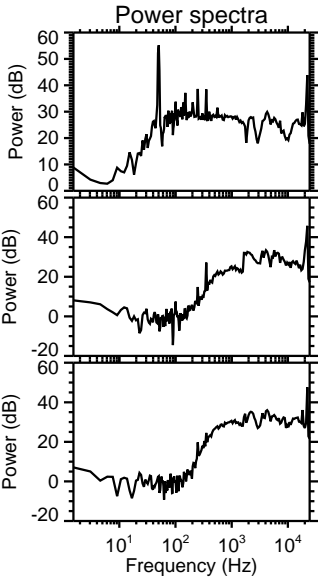
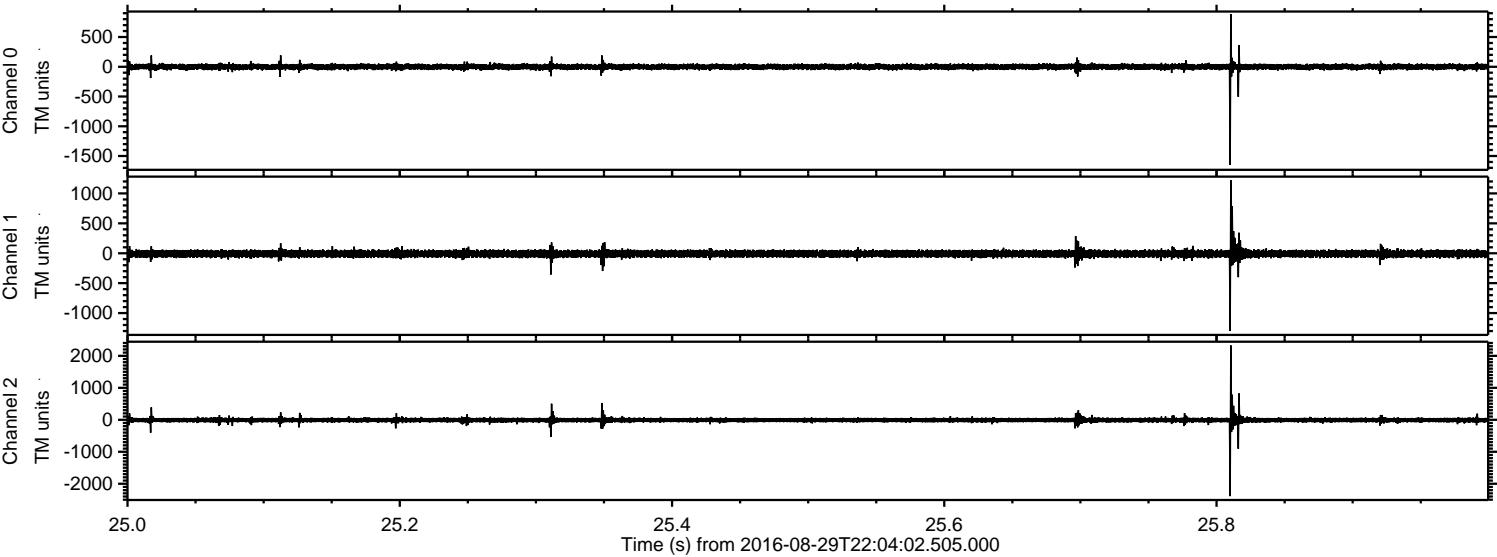


Processed Tue Aug 30 00:12:20 2016 by ELM ver.2012-10-06 from 001\_\_elm20160829\_220401\_\_dat00.bin



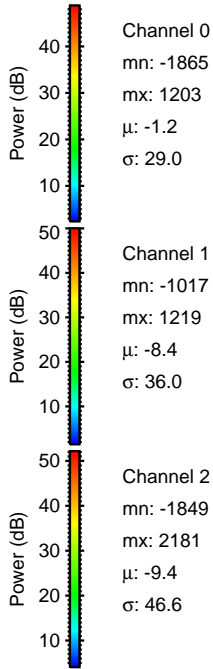
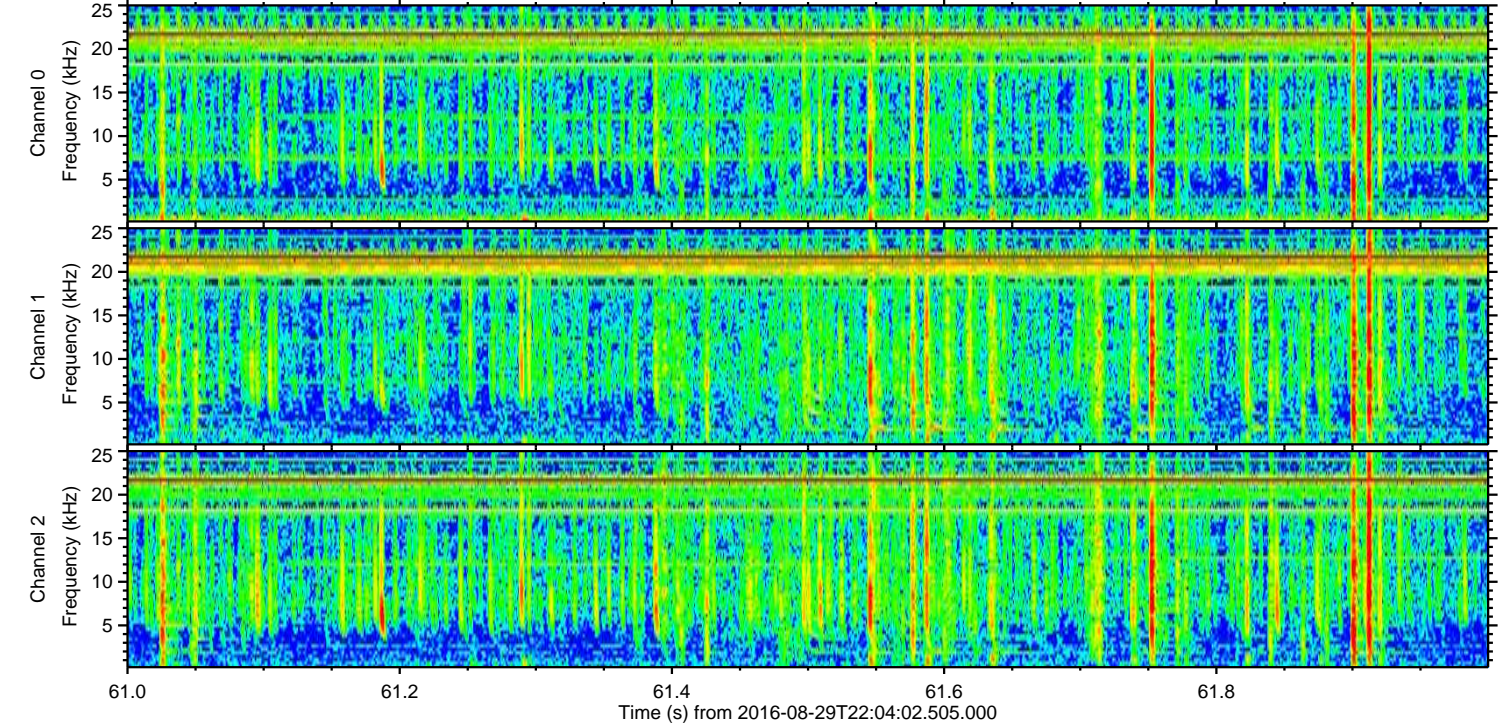
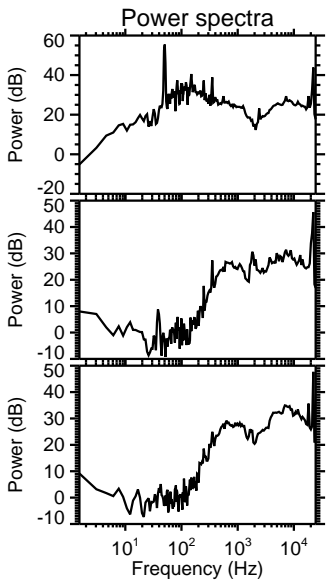
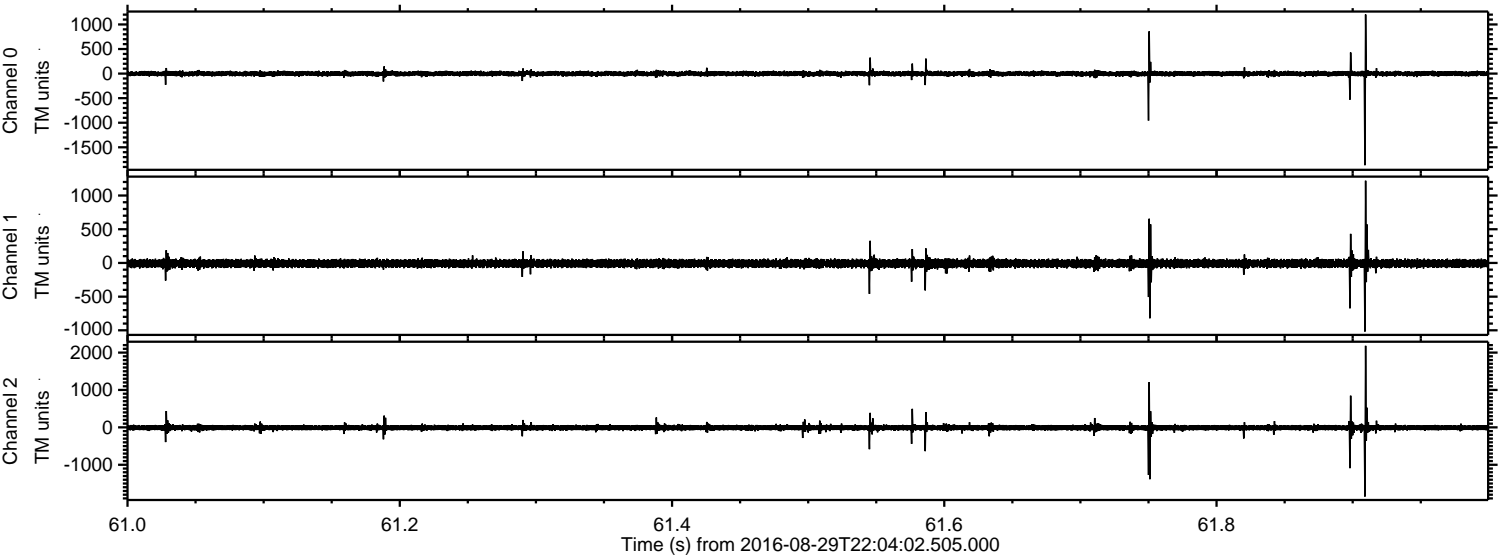


Processed Tue Aug 30 00:12:21 2016 by ELM ver.2012-10-06 from 001\_\_elm20160829\_220401\_\_dat00.bin



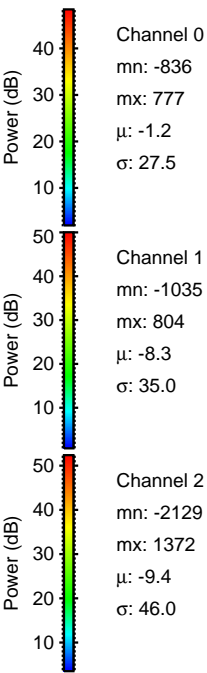
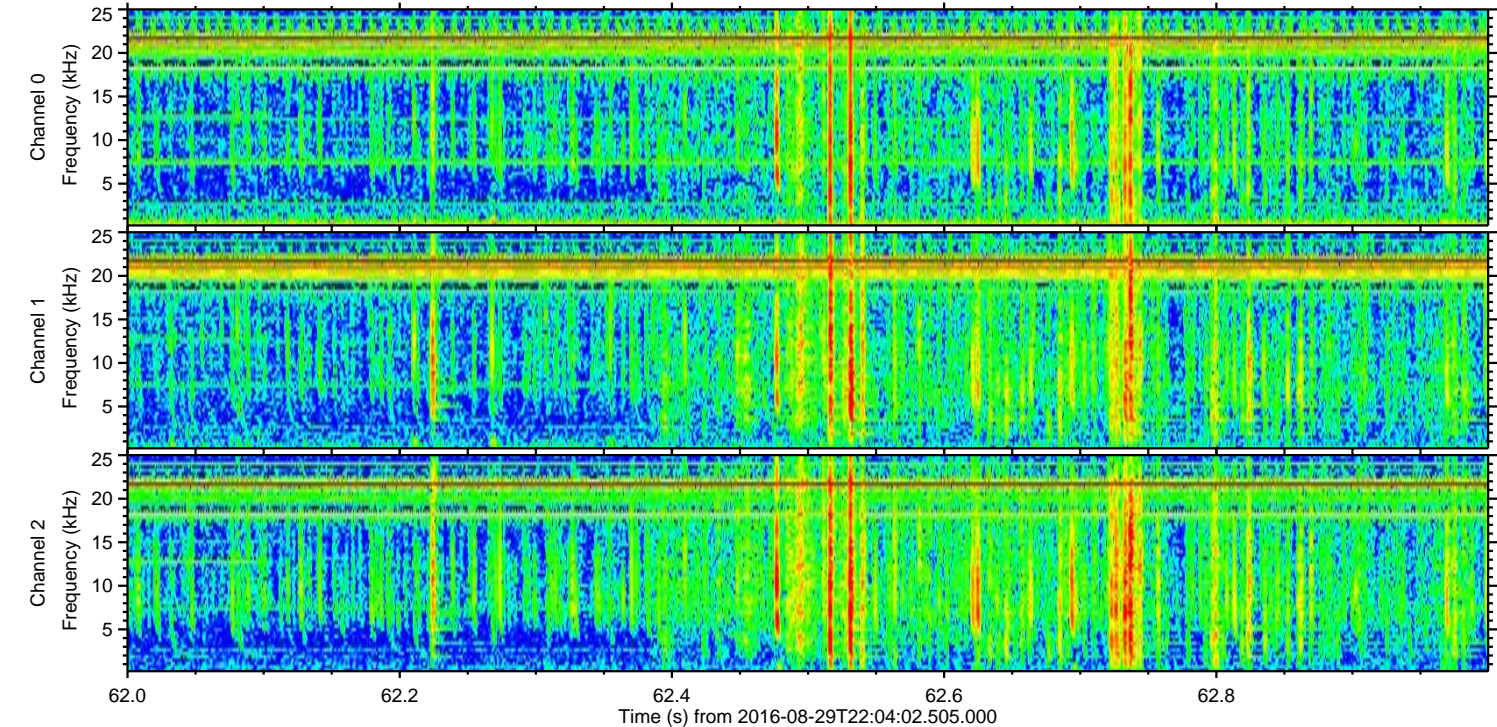
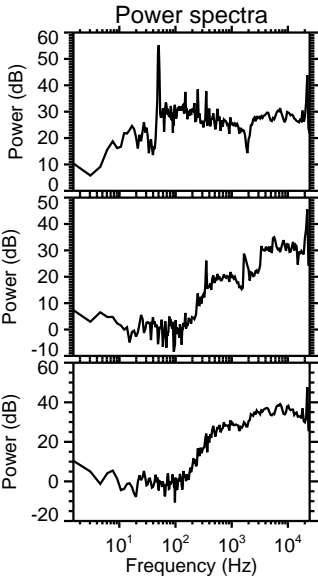
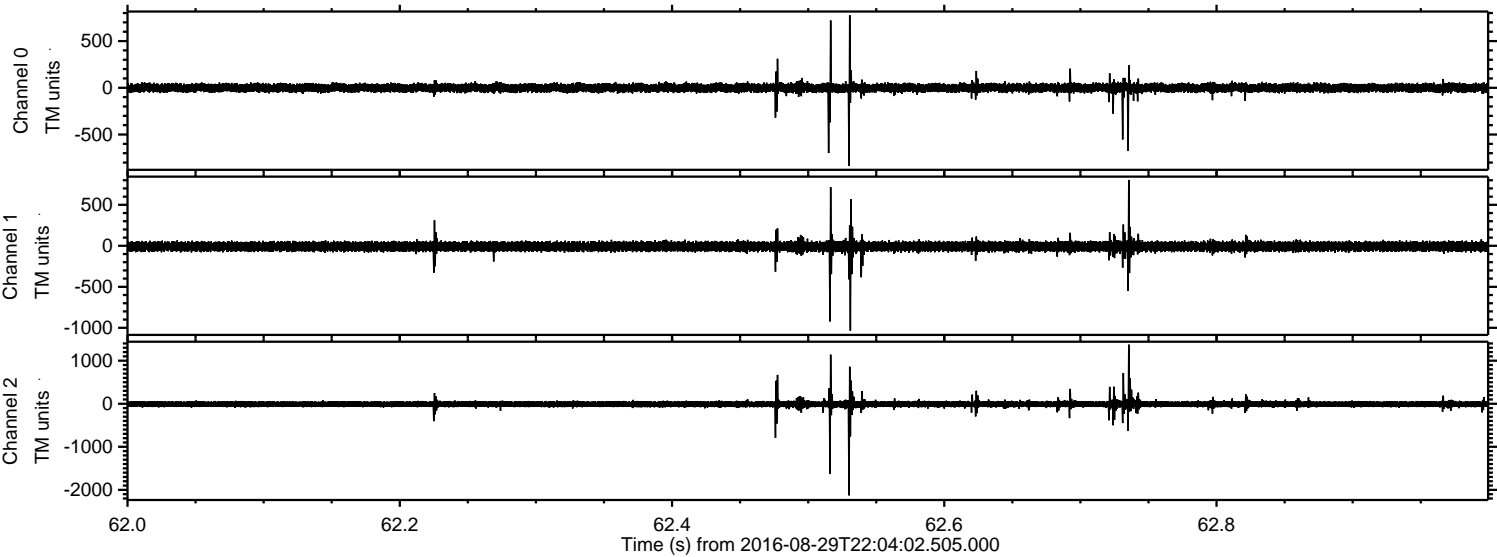


Processed Tue Aug 30 00:12:22 2016 by ELM ver.2012-10-06 from 001\_\_elm20160829\_220401\_\_dat00.bin





Processed Tue Aug 30 00:12:23 2016 by ELM ver.2012-10-06 from 001\_\_elm20160829\_220401\_\_dat00.bin



Channel 0  
mn: -836  
mx: 777  
 $\mu$ : -1.2  
 $\sigma$ : 27.5

Channel 1  
mn: -1035  
mx: 804  
 $\mu$ : -8.3  
 $\sigma$ : 35.0

Channel 2  
mn: -2129  
mx: 1372  
 $\mu$ : -9.4  
 $\sigma$ : 46.0



