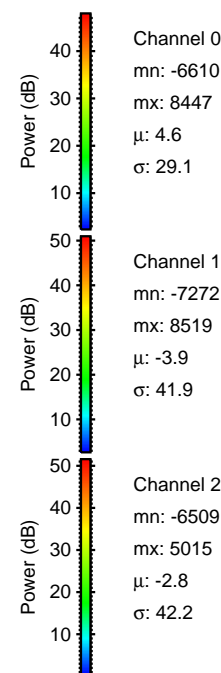
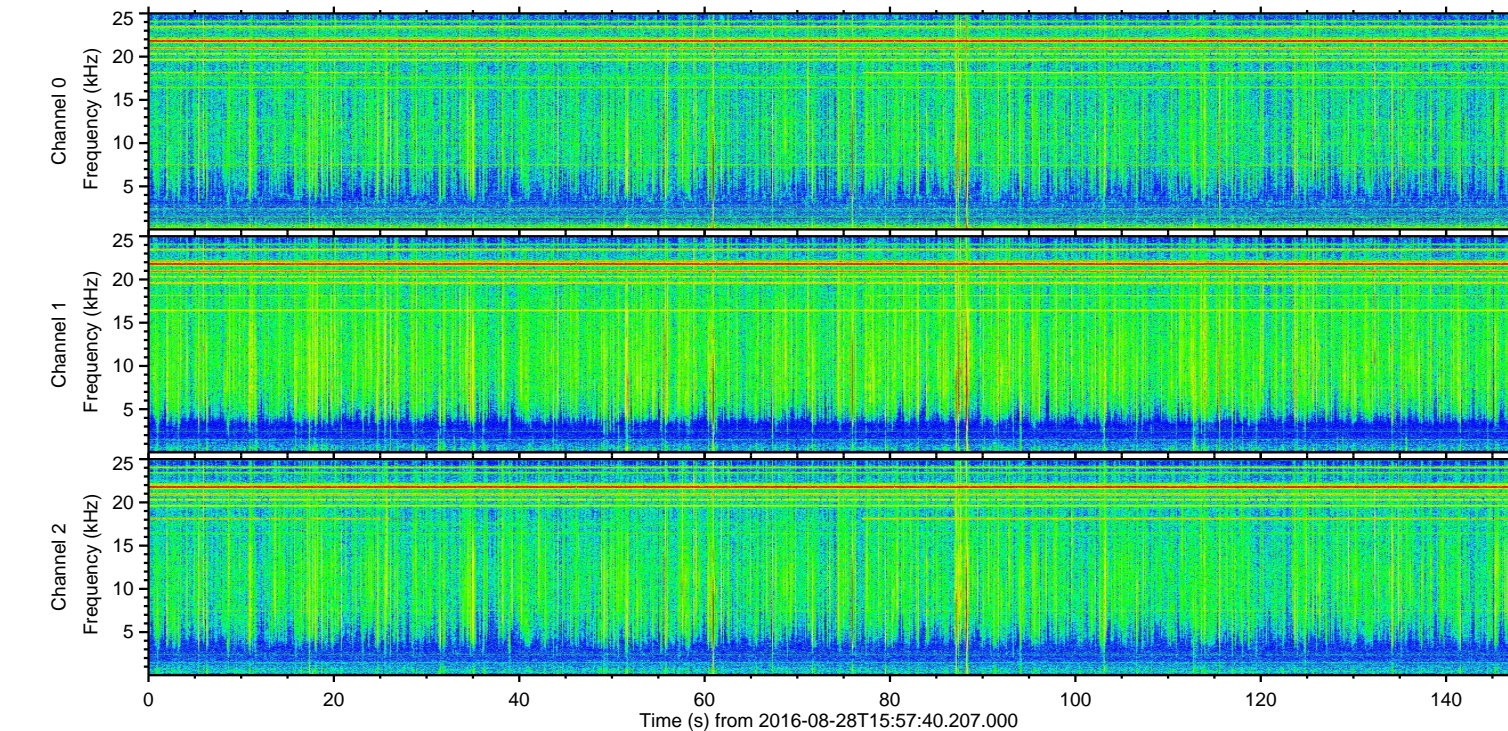
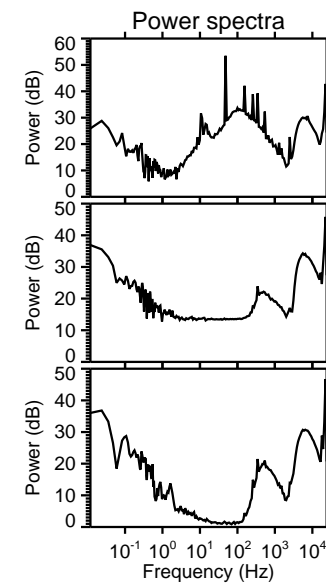
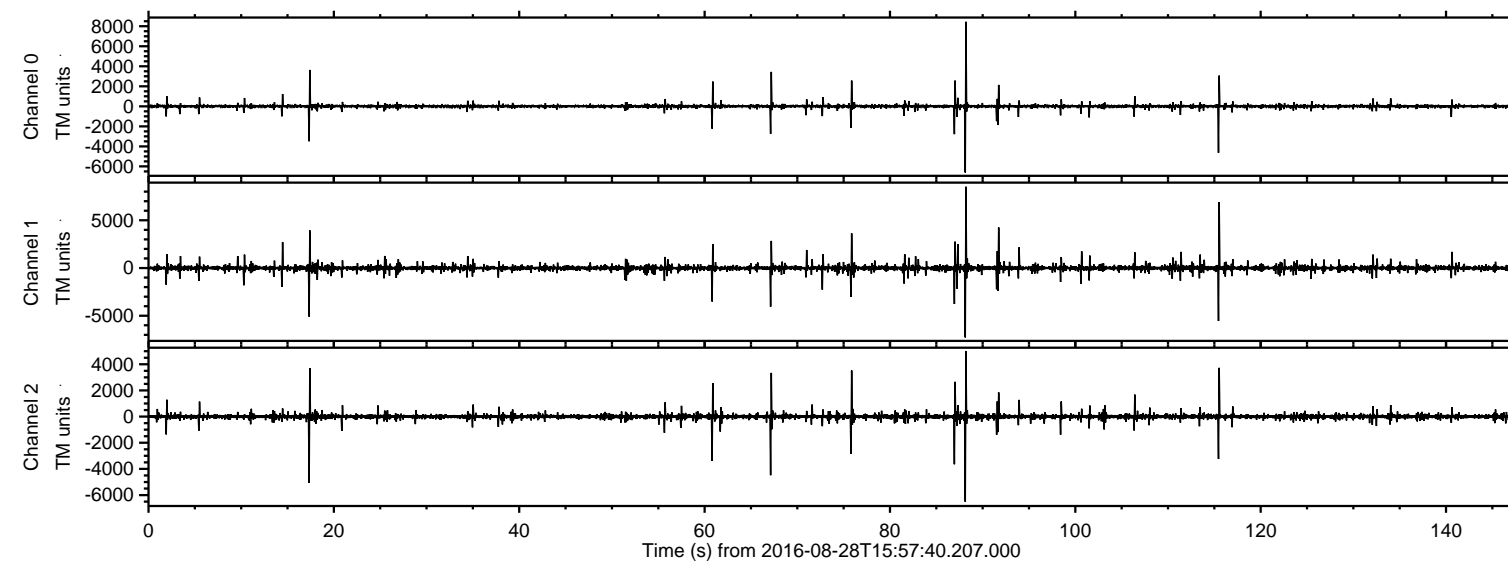
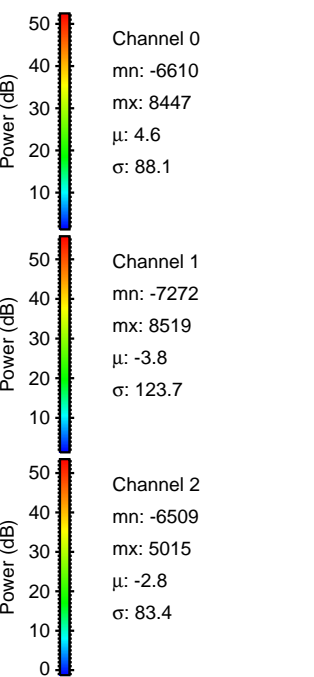
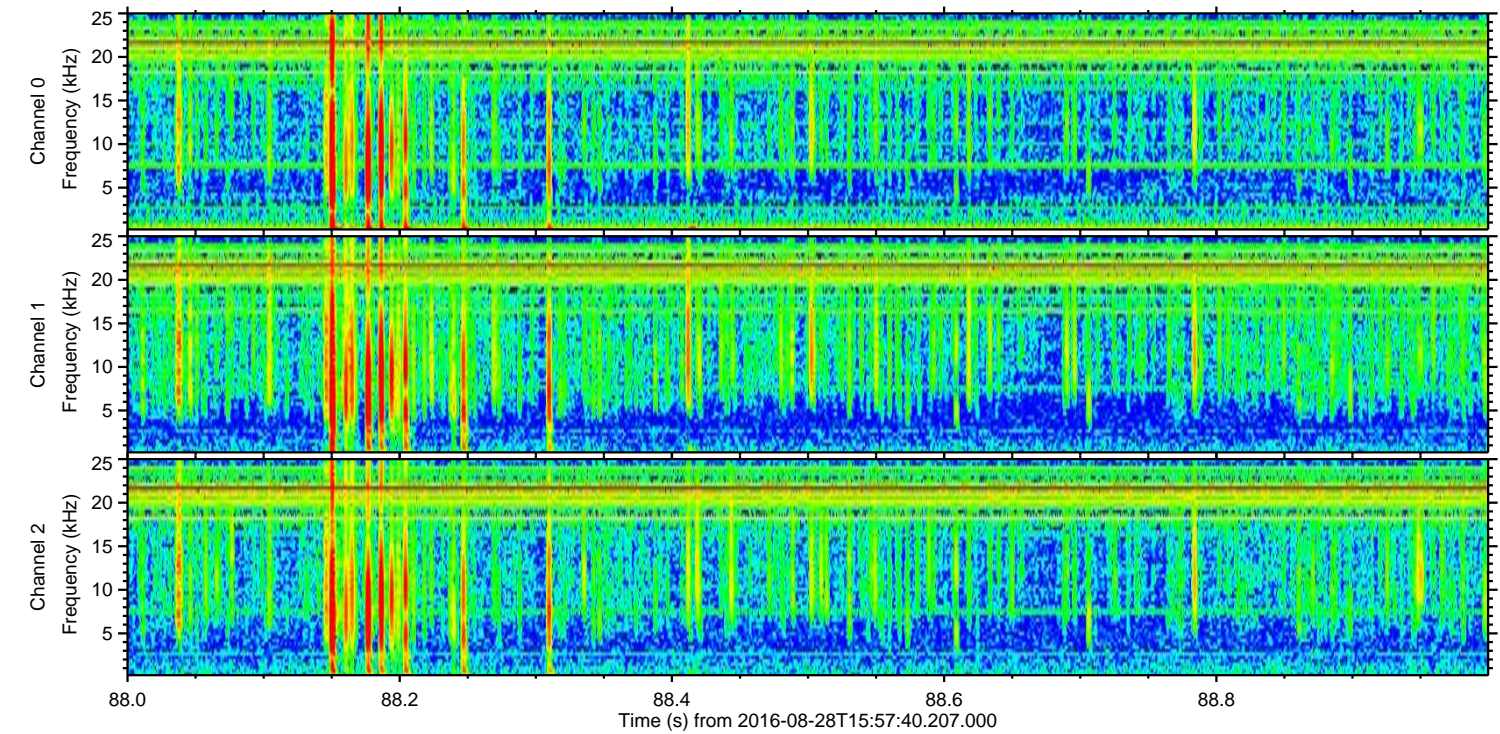
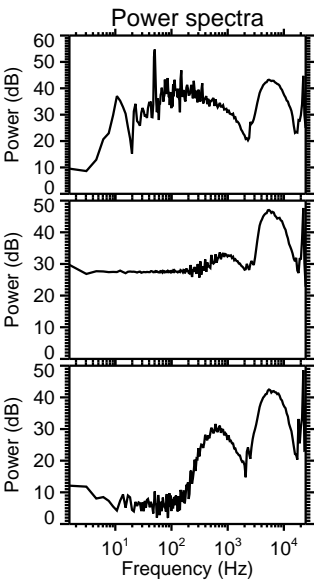
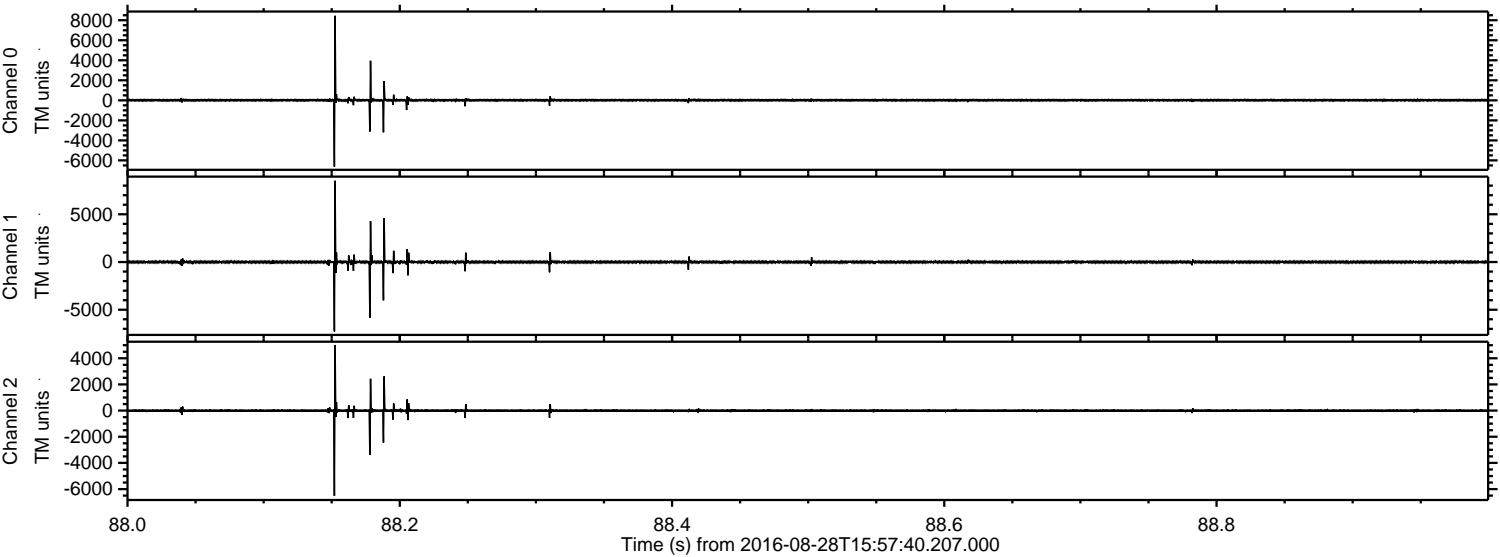


ELMAVAN 3D WAVEFORMS (Measured data sampled at 50 kHz) 51000 packets of 144 samples from 2016-08-28T15:57:40.207.000.

Processed Sun Aug 28 18:05:14 2016 by ELM ver.2012-10-06 from 001__elm20160828_155739__dat00.bin

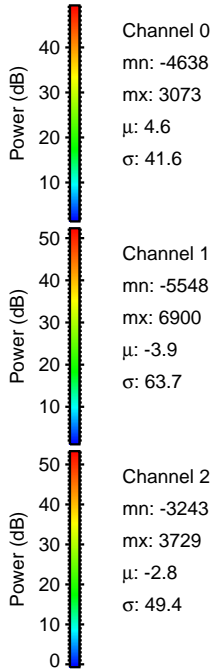
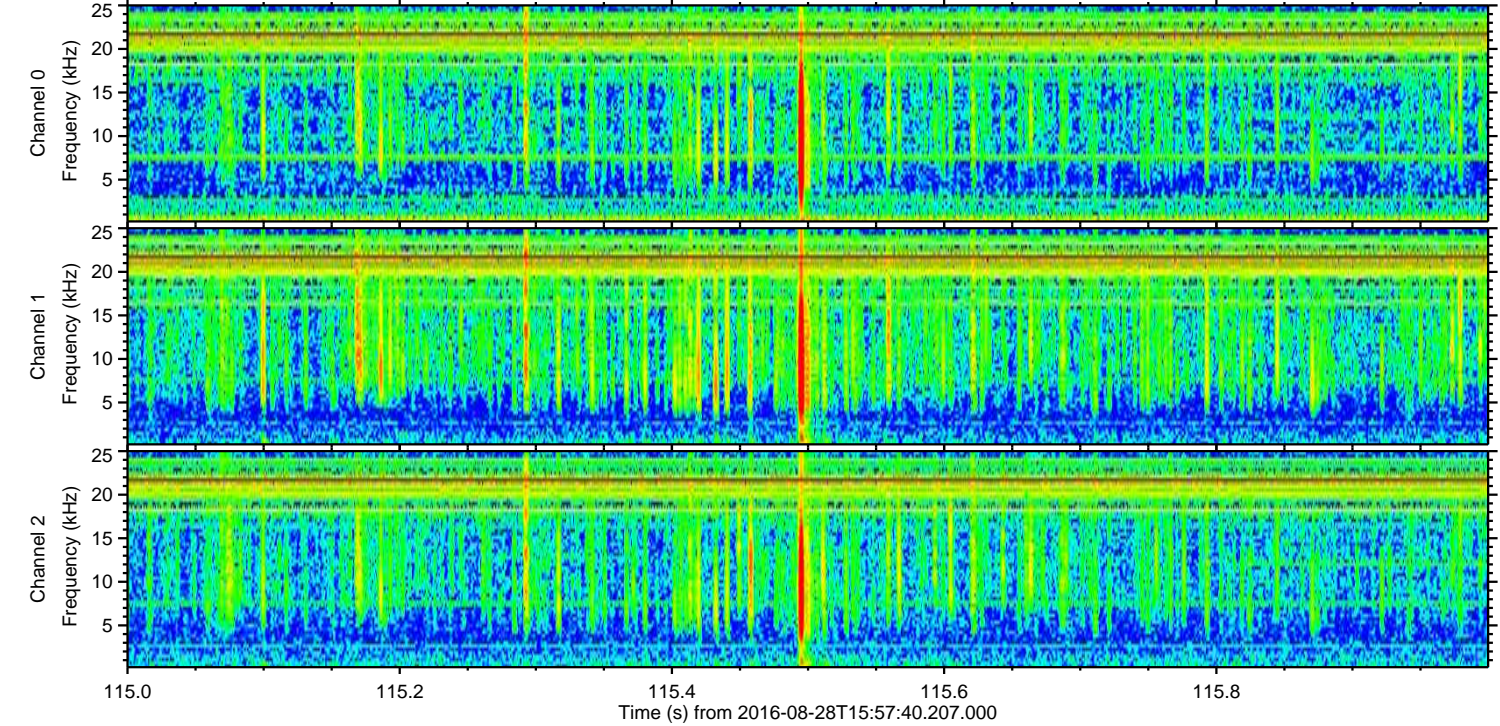
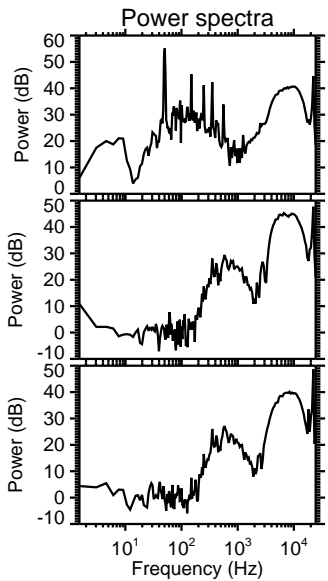
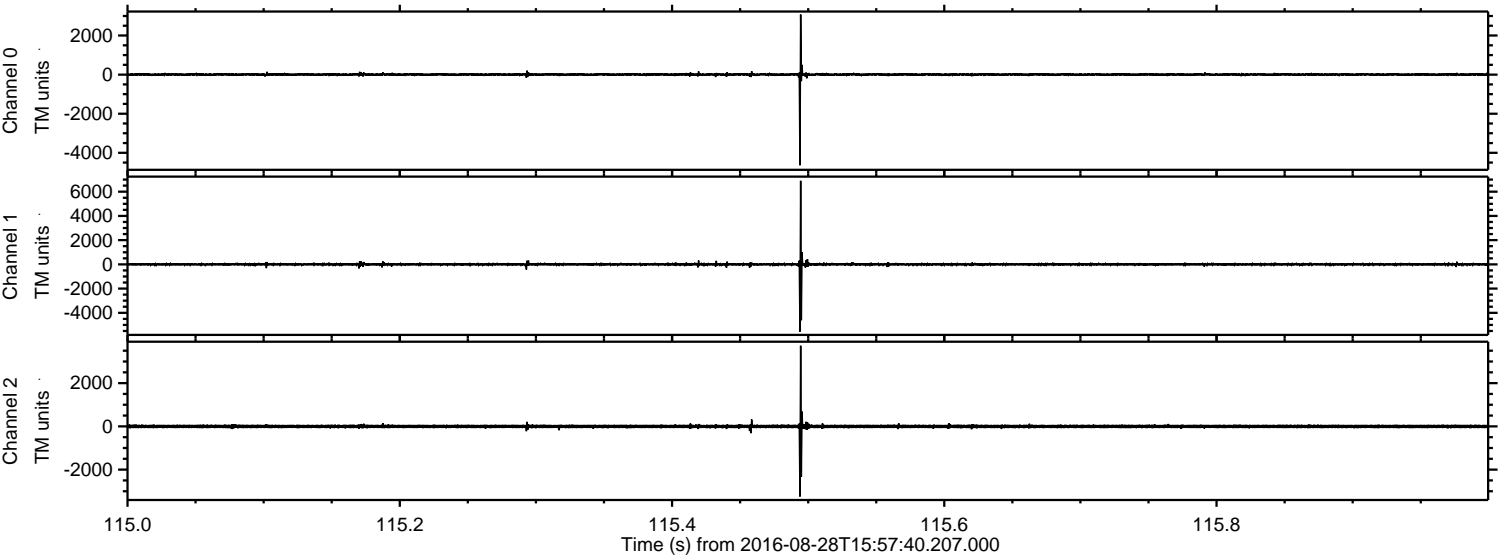


Processed Sun Aug 28 18:05:25 2016 by ELM ver.2012-10-06 from 001__elm20160828_155739__dat00.bin

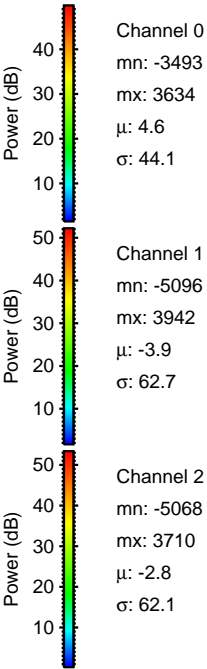
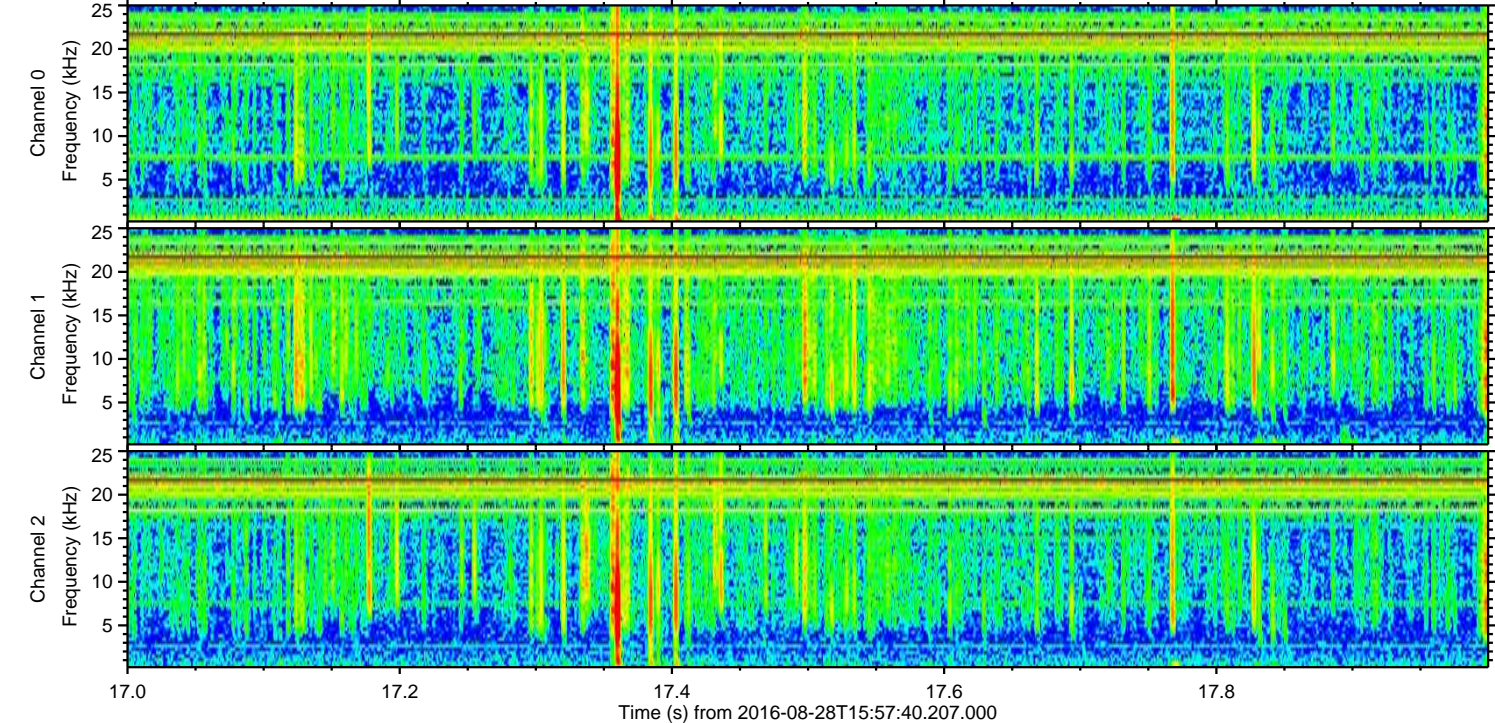
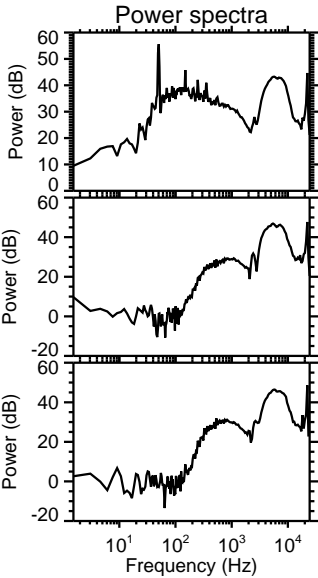
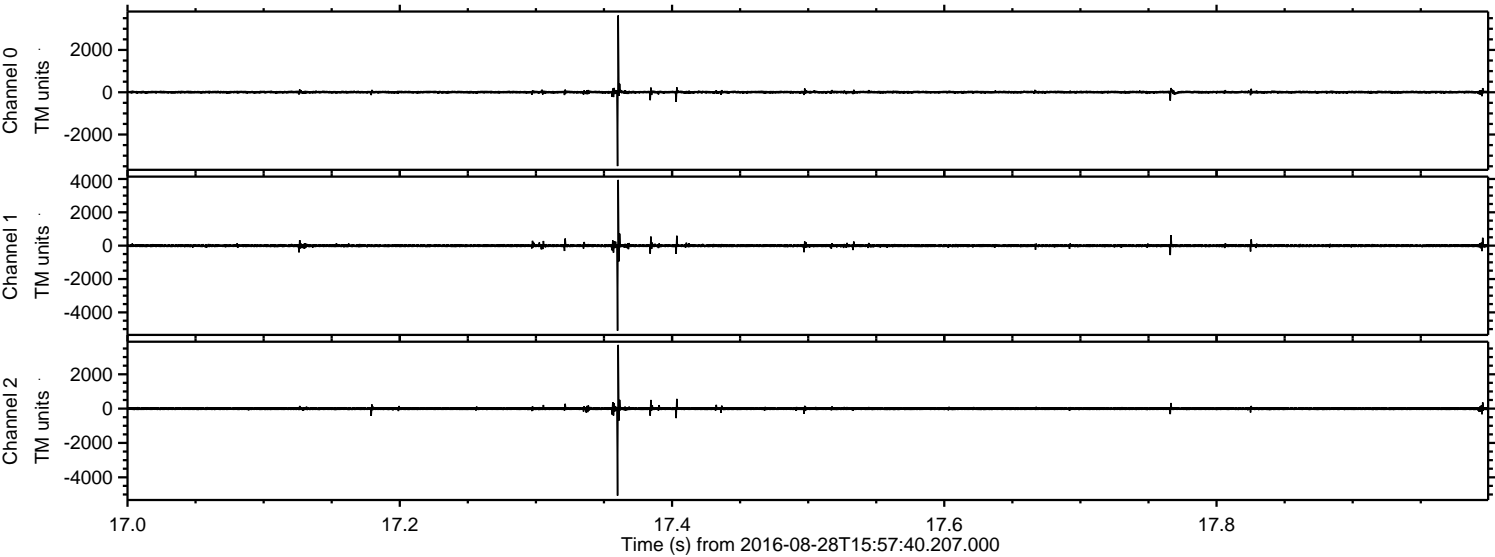


ELMAVAN 3D WAVEFORMS (Measured data sampled at 50 kHz) 51000 packets of 144 samples from 2016-08-28T15:57:40.207.000. Part 116/147

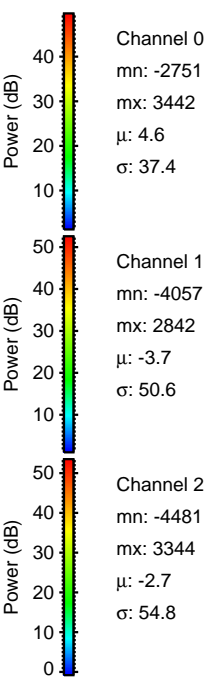
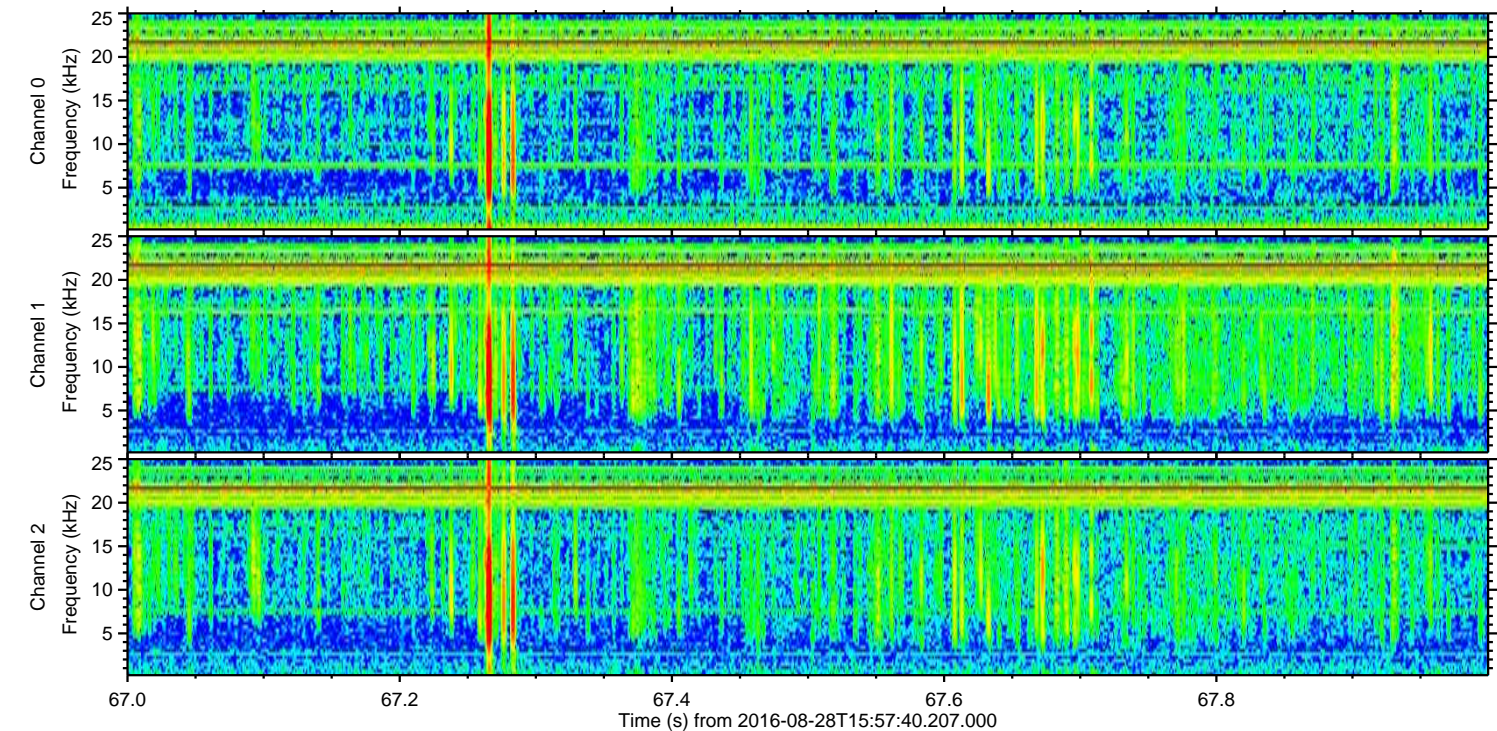
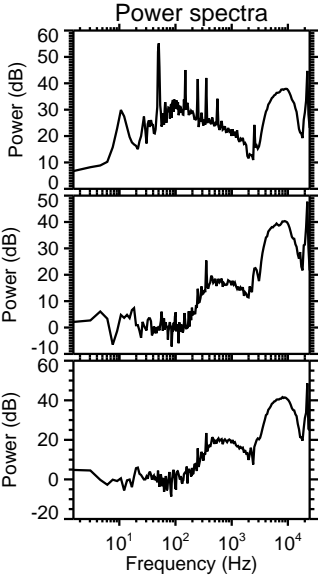
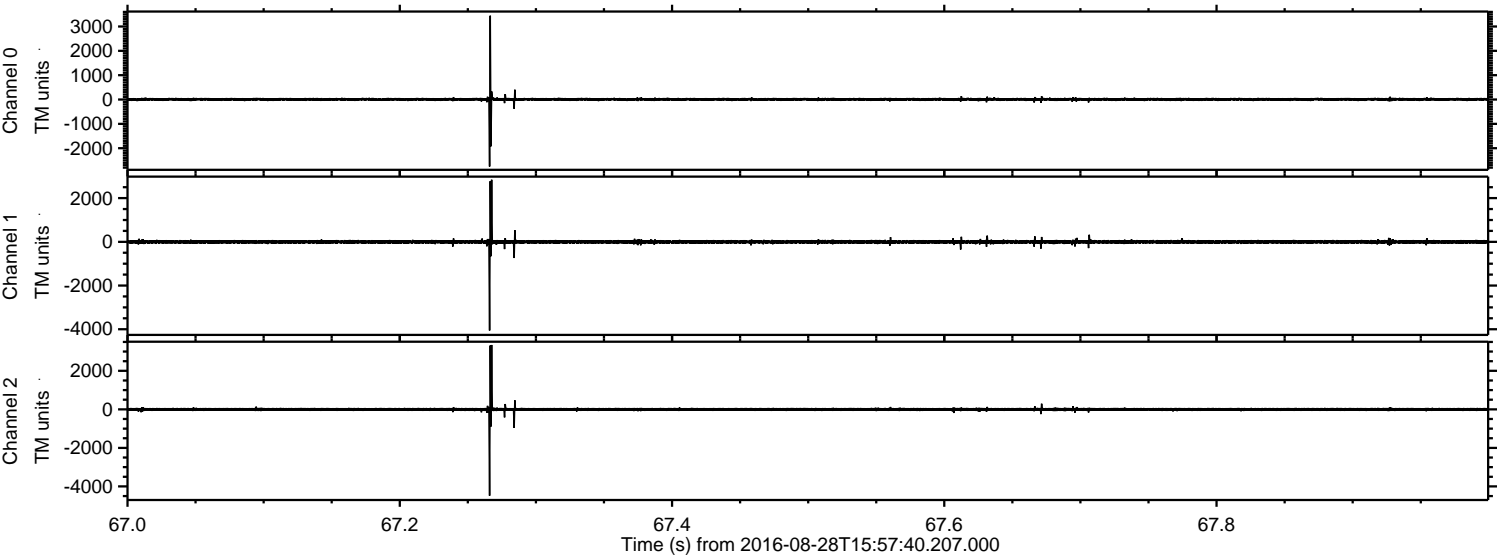
Processed Sun Aug 28 18:05:26 2016 by ELM ver.2012-10-06 from 001__elm20160828_155739__dat00.bin



Processed Sun Aug 28 18:05:27 2016 by ELM ver.2012-10-06 from 001__elm20160828_155739__dat00.bin



Processed Sun Aug 28 18:05:28 2016 by ELM ver.2012-10-06 from 001__elm20160828_155739__dat00.bin

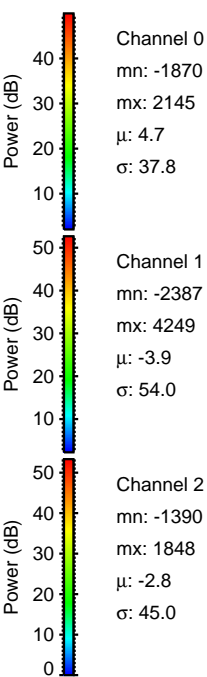
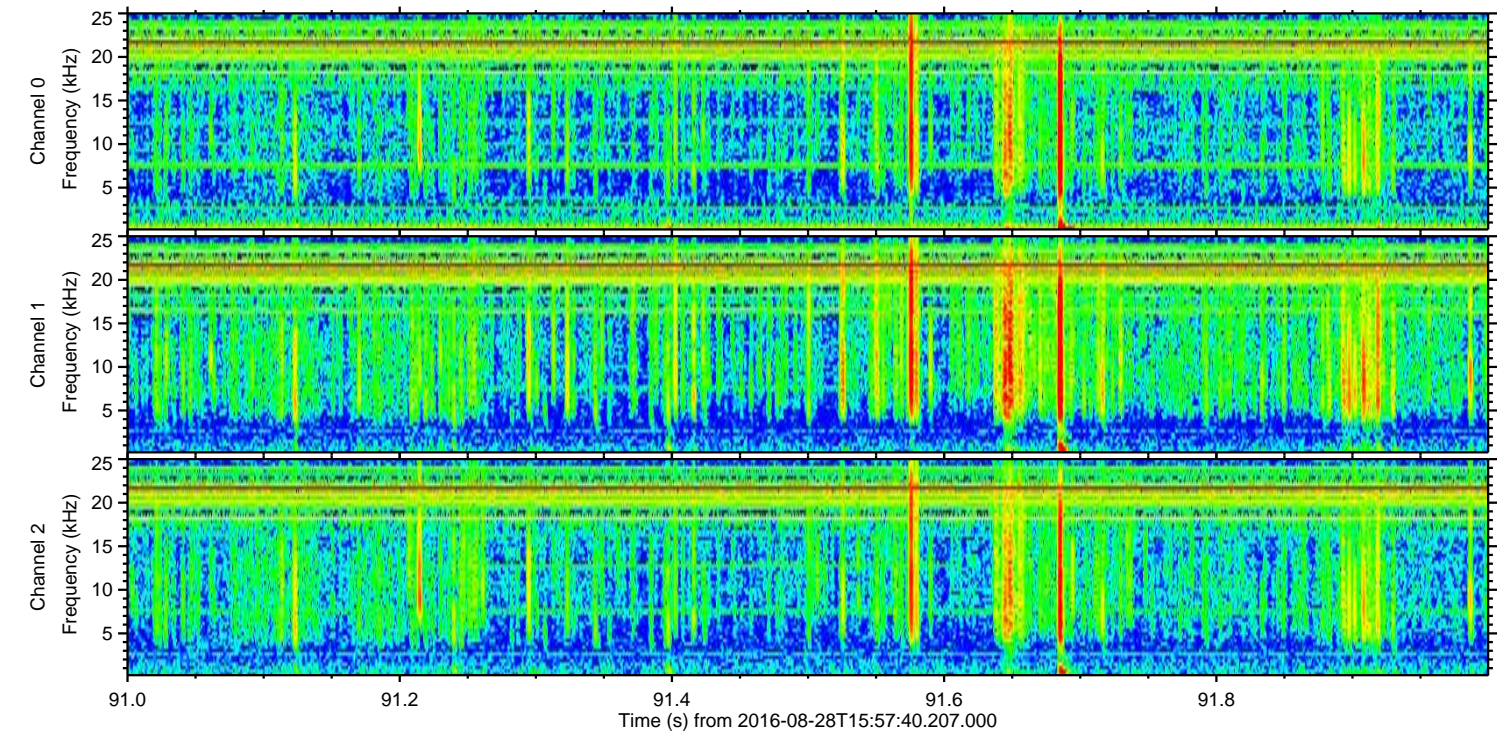
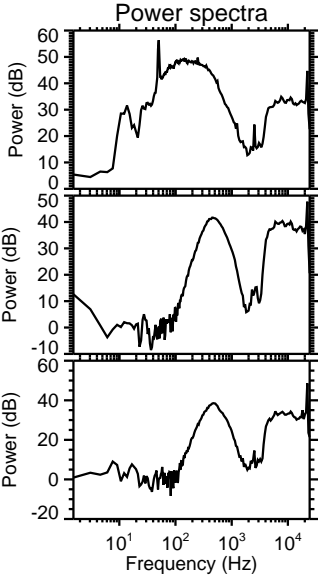
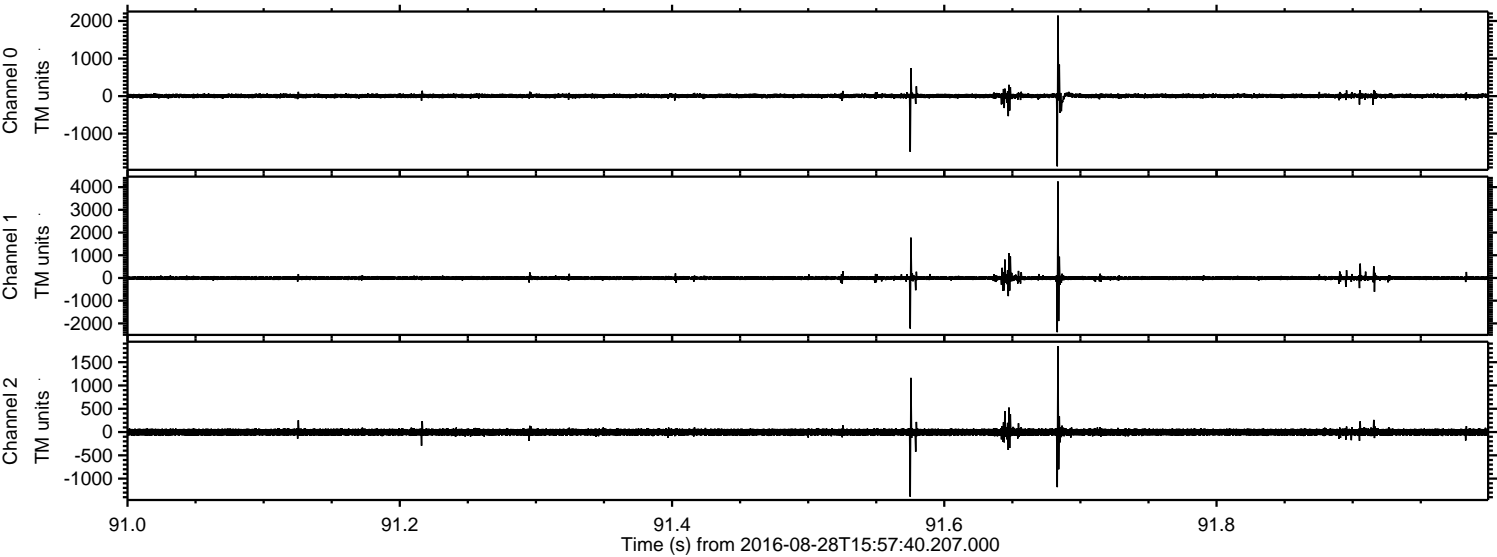


Channel 0
mn: -2751
mx: 3442
 μ : 4.6
 σ : 37.4

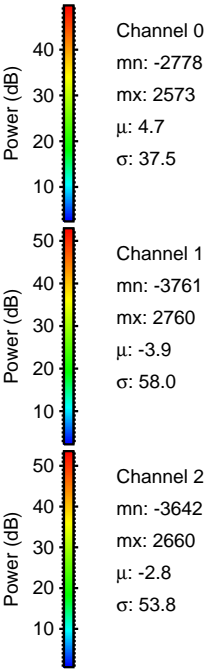
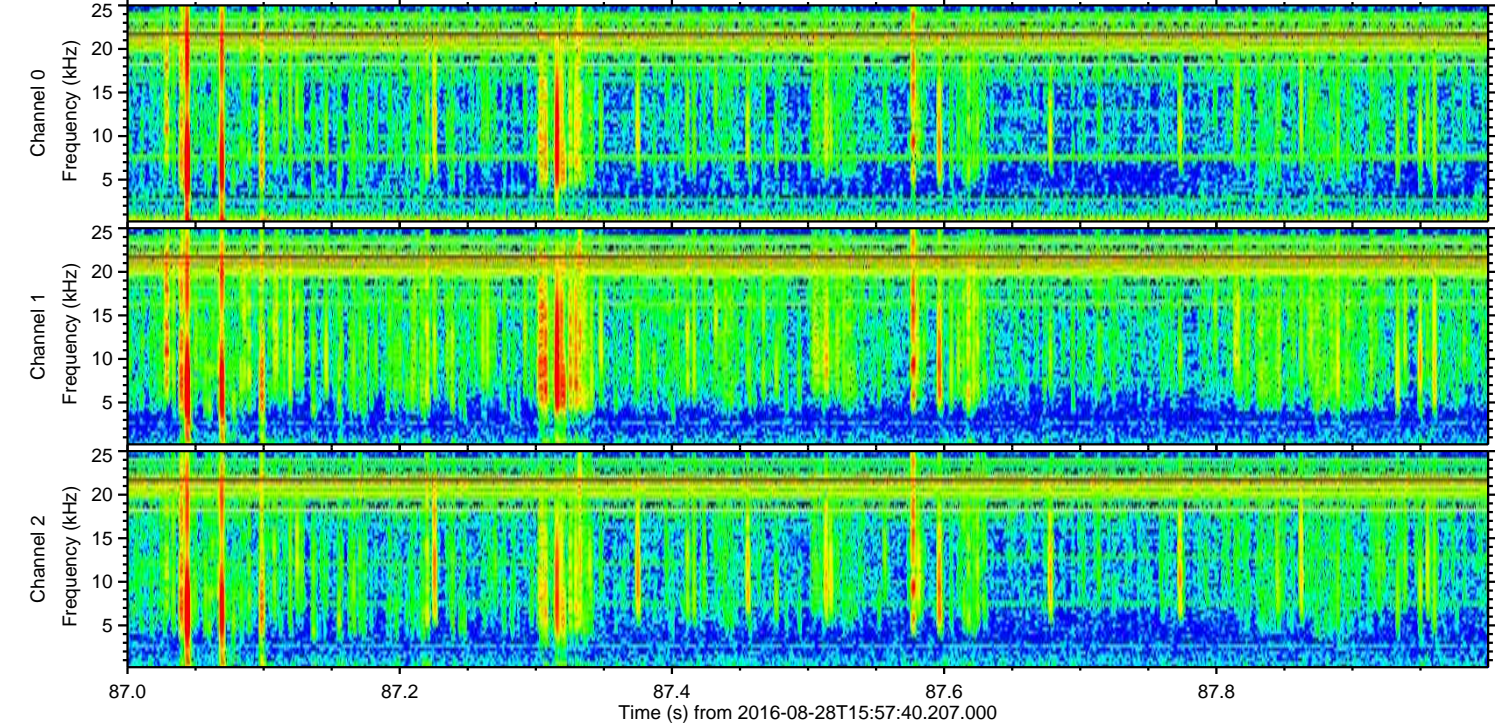
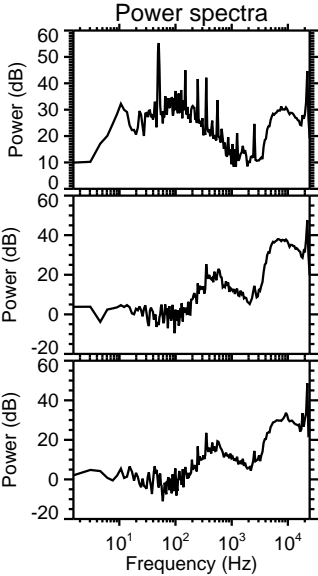
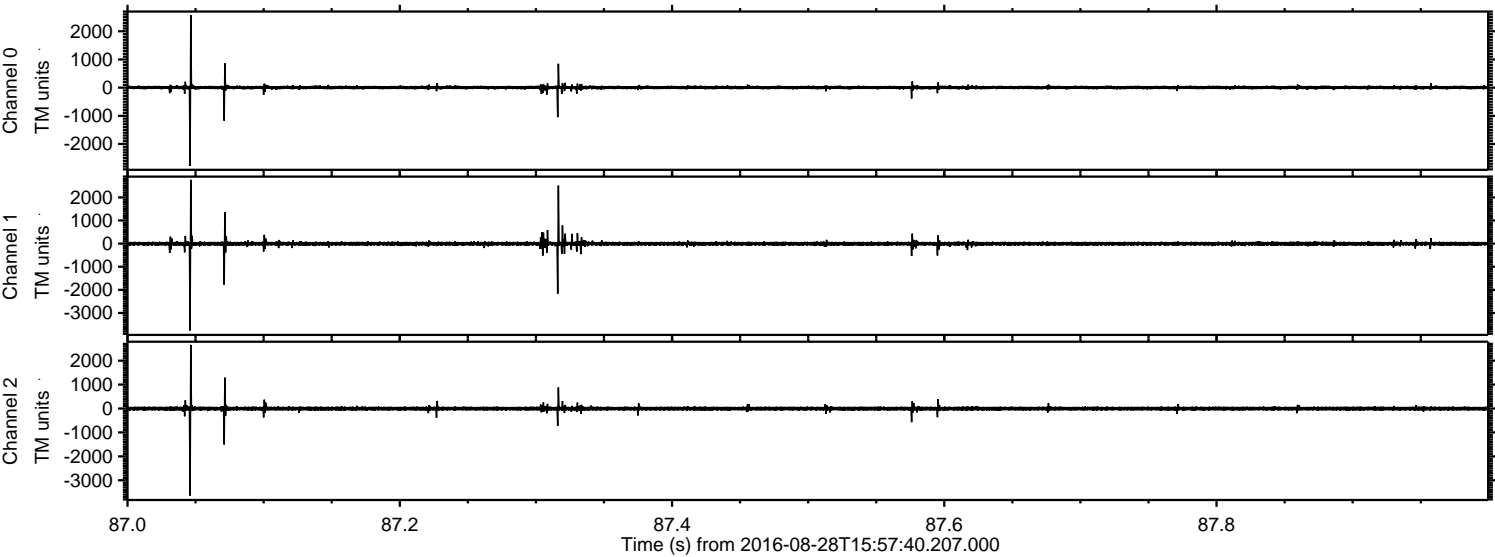
Channel 1
mn: -4057
mx: 2842
 μ : -3.7
 σ : 50.6

Channel 2
mn: -4481
mx: 3344
 μ : -2.7
 σ : 54.8

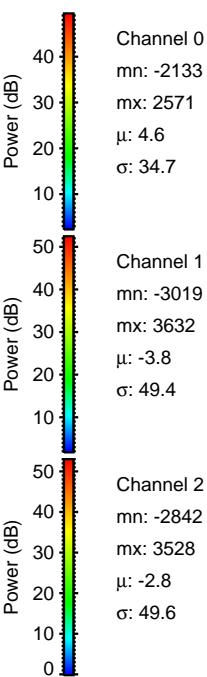
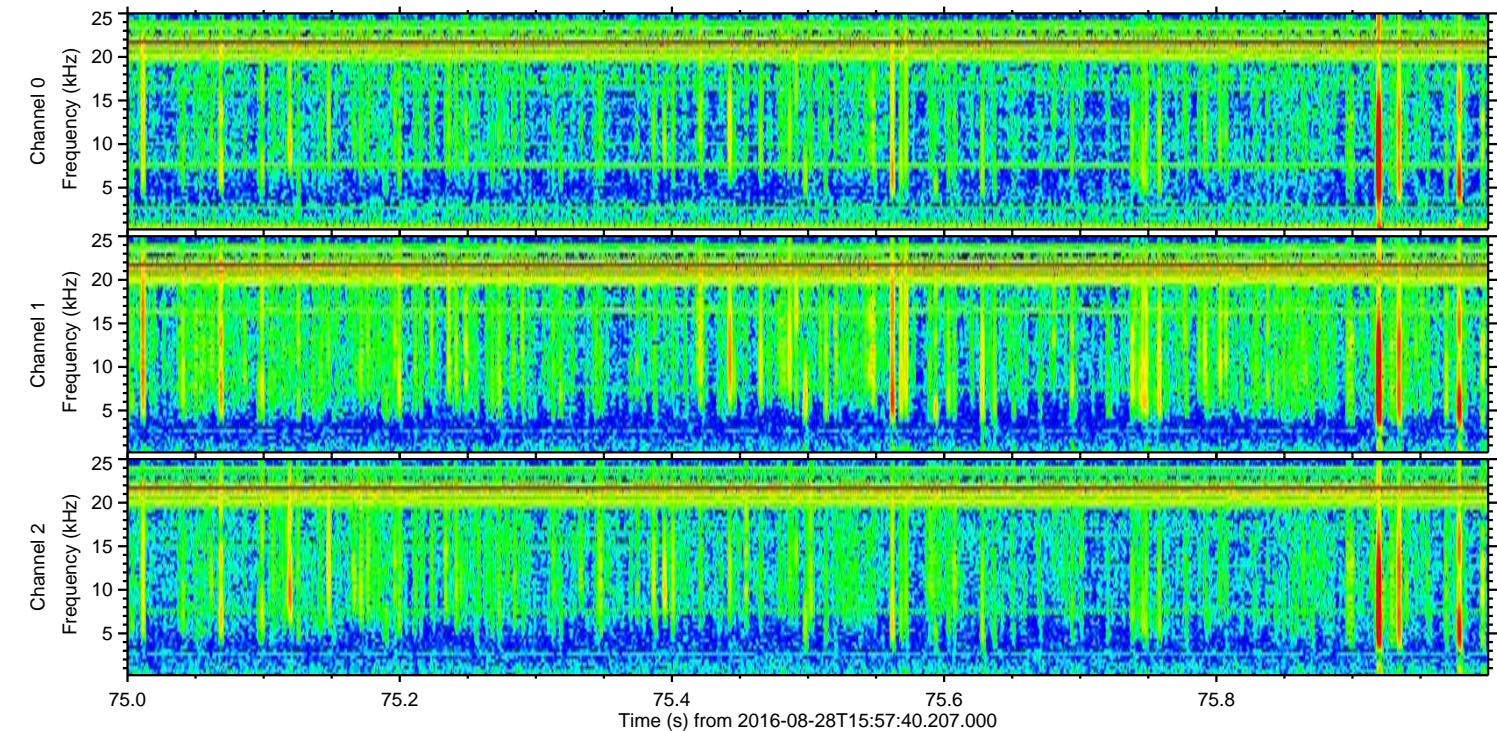
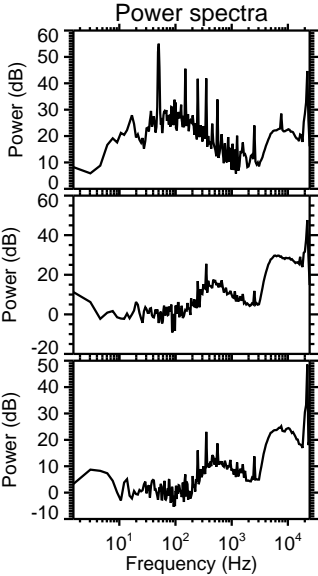
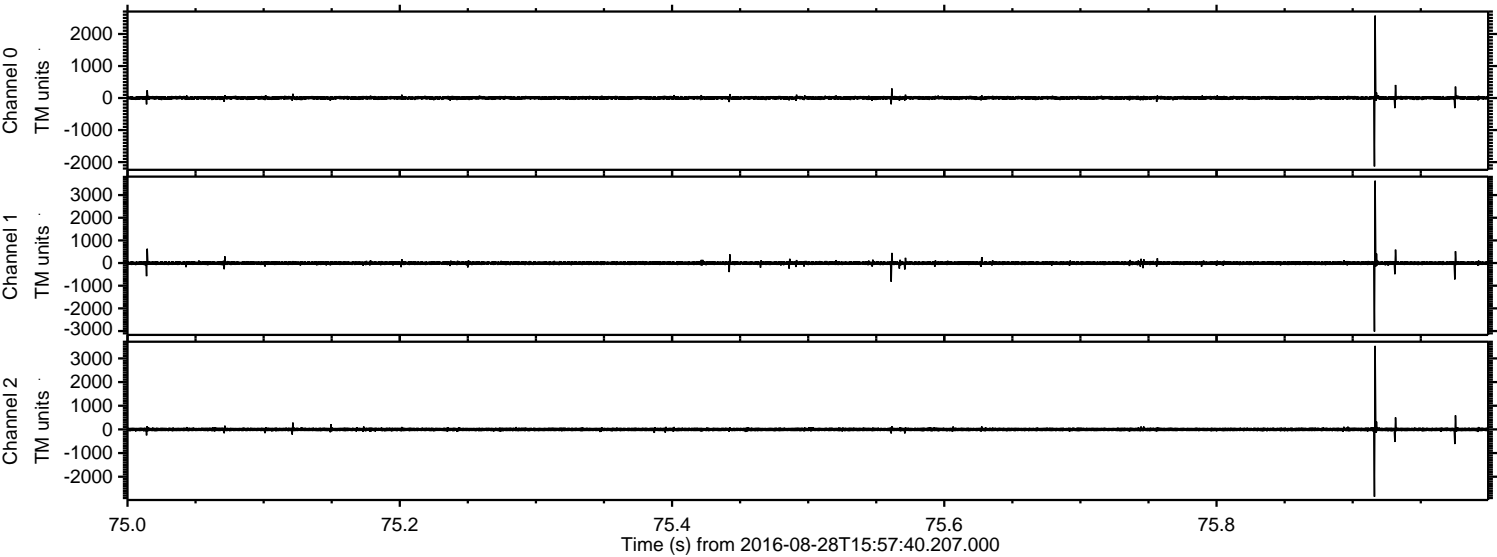
Processed Sun Aug 28 18:05:29 2016 by ELM ver.2012-10-06 from 001__elm20160828_155739__dat00.bin



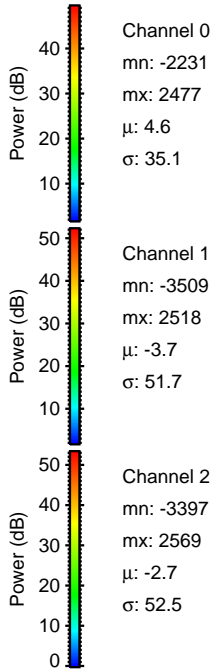
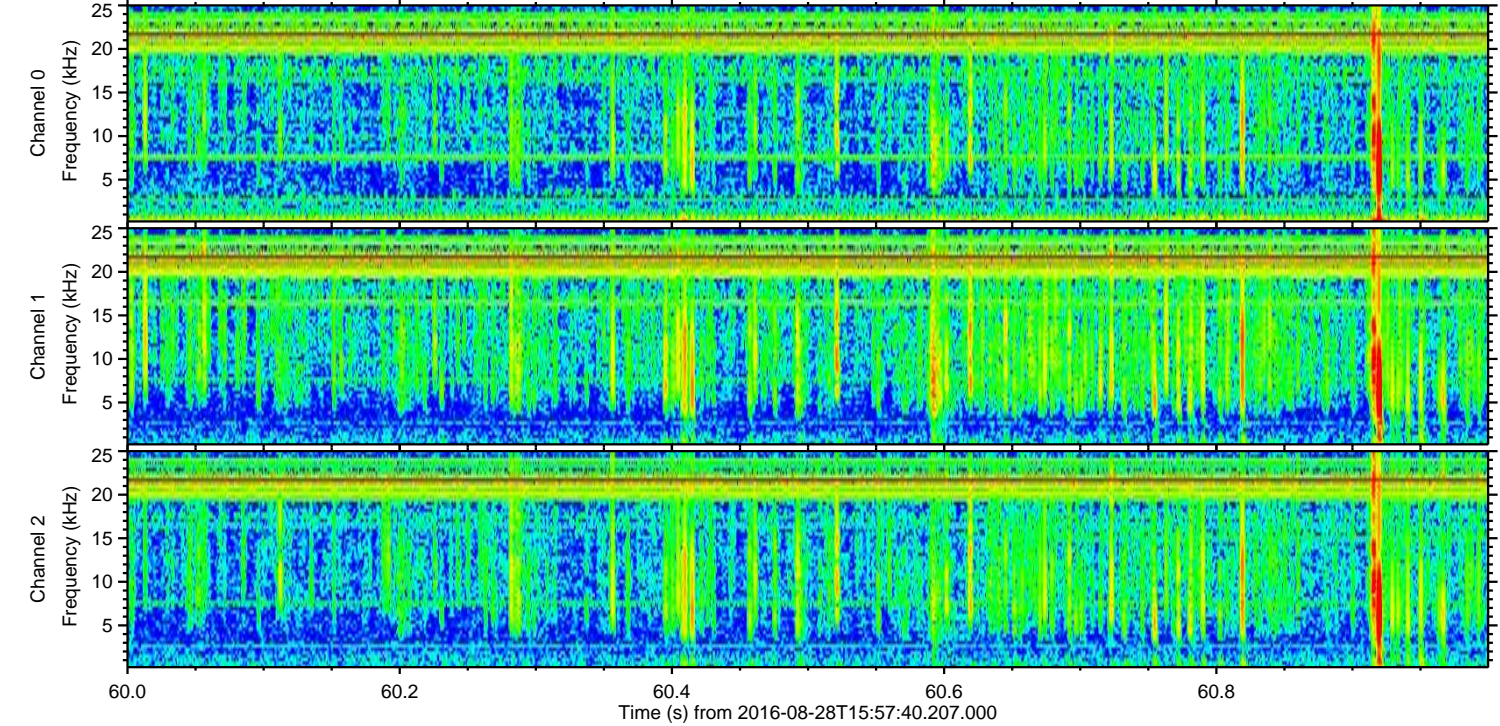
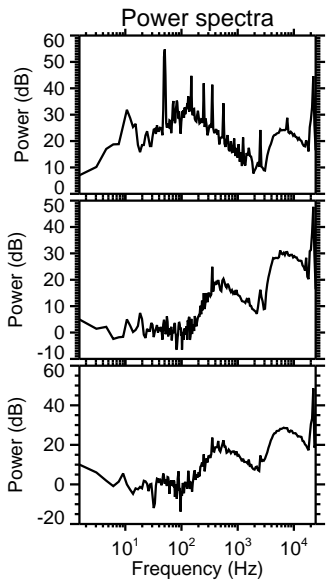
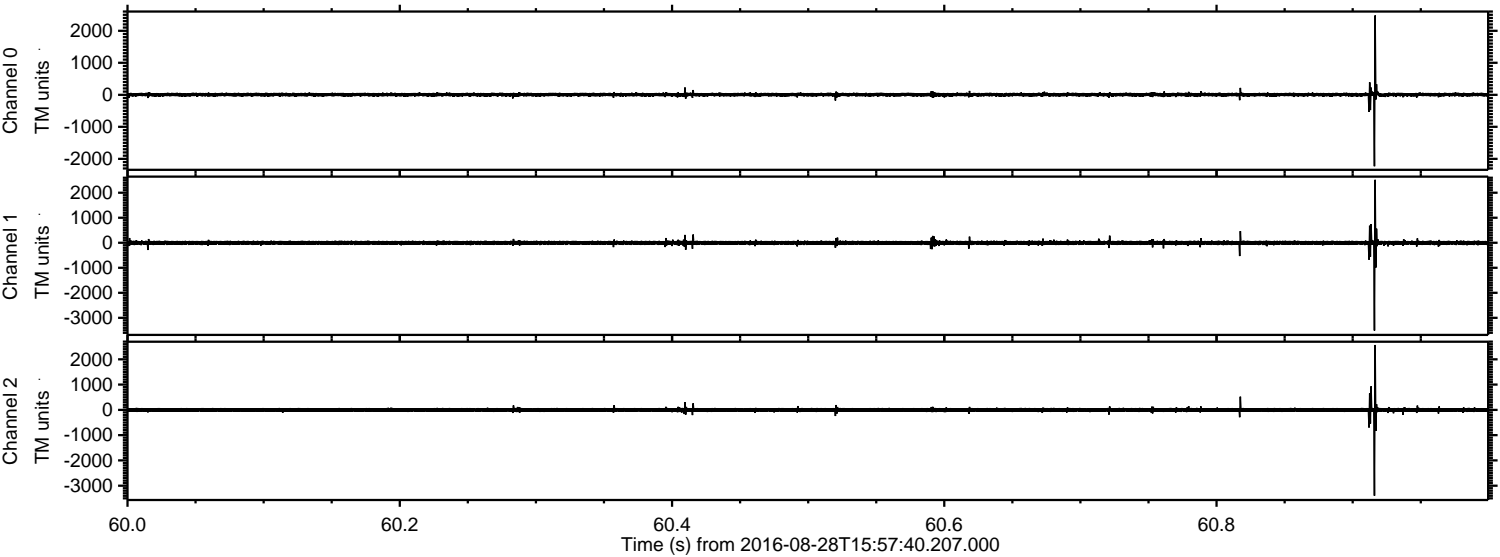
Processed Sun Aug 28 18:05:30 2016 by ELM ver.2012-10-06 from 001__elm20160828_155739__dat00.bin



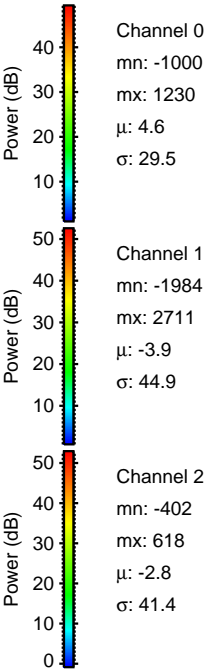
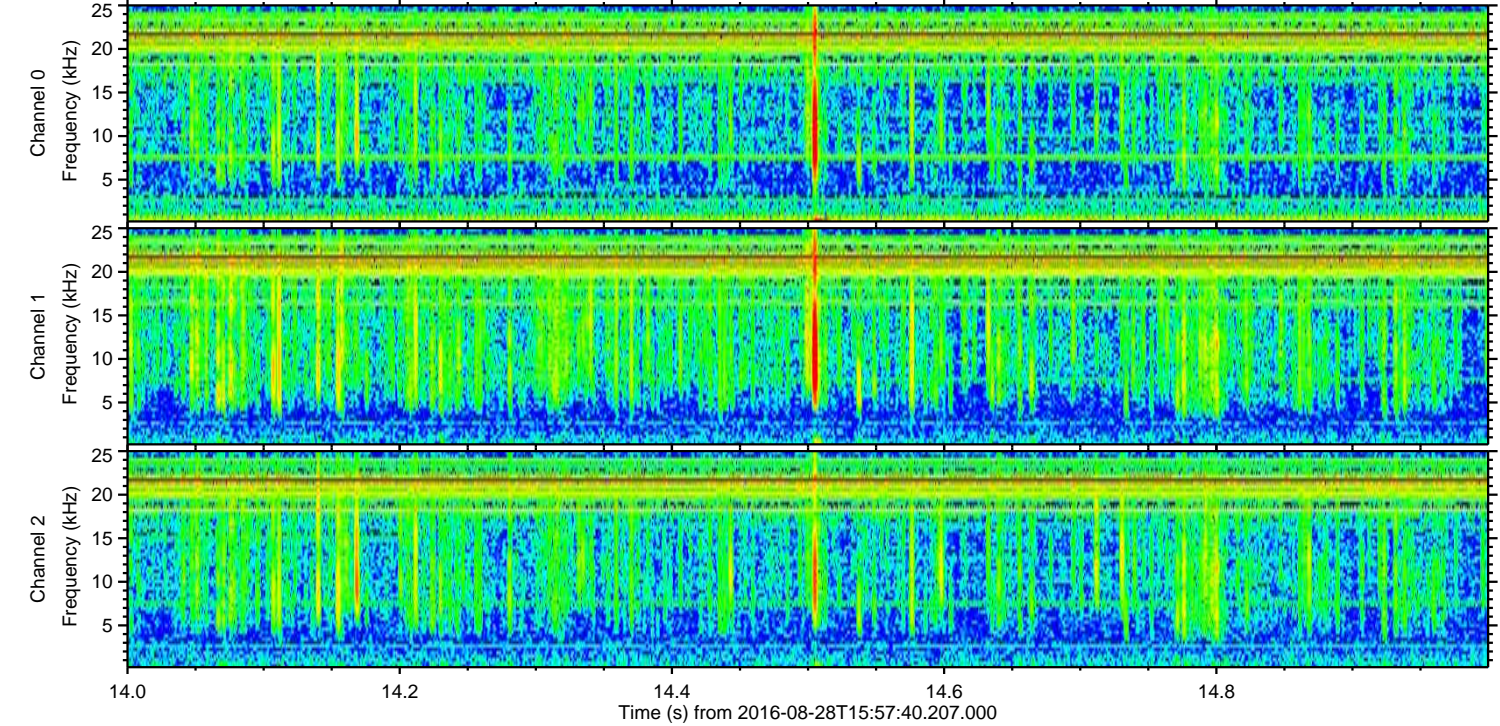
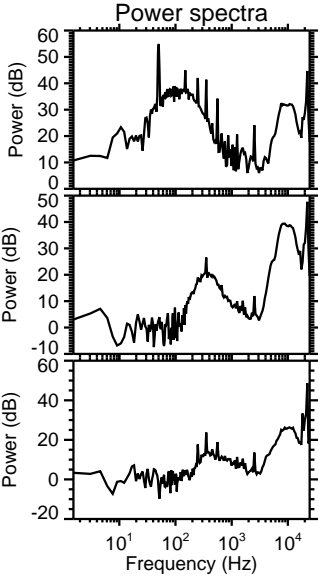
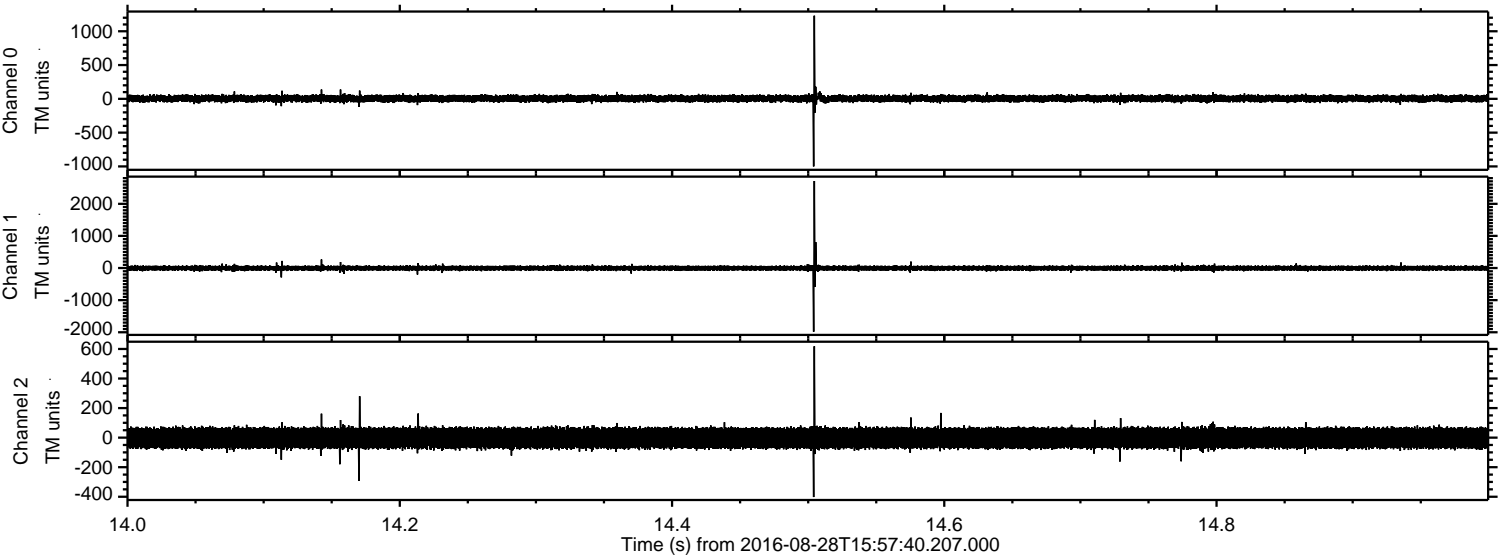
Processed Sun Aug 28 18:05:31 2016 by ELM ver.2012-10-06 from 001__elm20160828_155739__dat00.bin



Processed Sun Aug 28 18:05:32 2016 by ELM ver.2012-10-06 from 001__elm20160828_155739__dat00.bin



Processed Sun Aug 28 18:05:33 2016 by ELM ver.2012-10-06 from 001__elm20160828_155739__dat00.bin



Channel 0
mn: -1000
mx: 1230
 μ : 4.6
 σ : 29.5

Channel 1
mn: -1984
mx: 2711
 μ : -3.9
 σ : 44.9

Channel 2
mn: -402
mx: 618
 μ : -2.8
 σ : 41.4

Processed Sun Aug 28 18:05:34 2016 by ELM ver.2012-10-06 from 001__elm20160828_155739__dat00.bin

