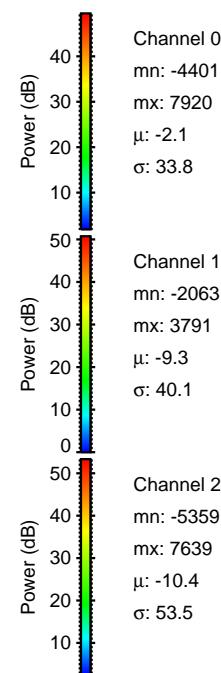
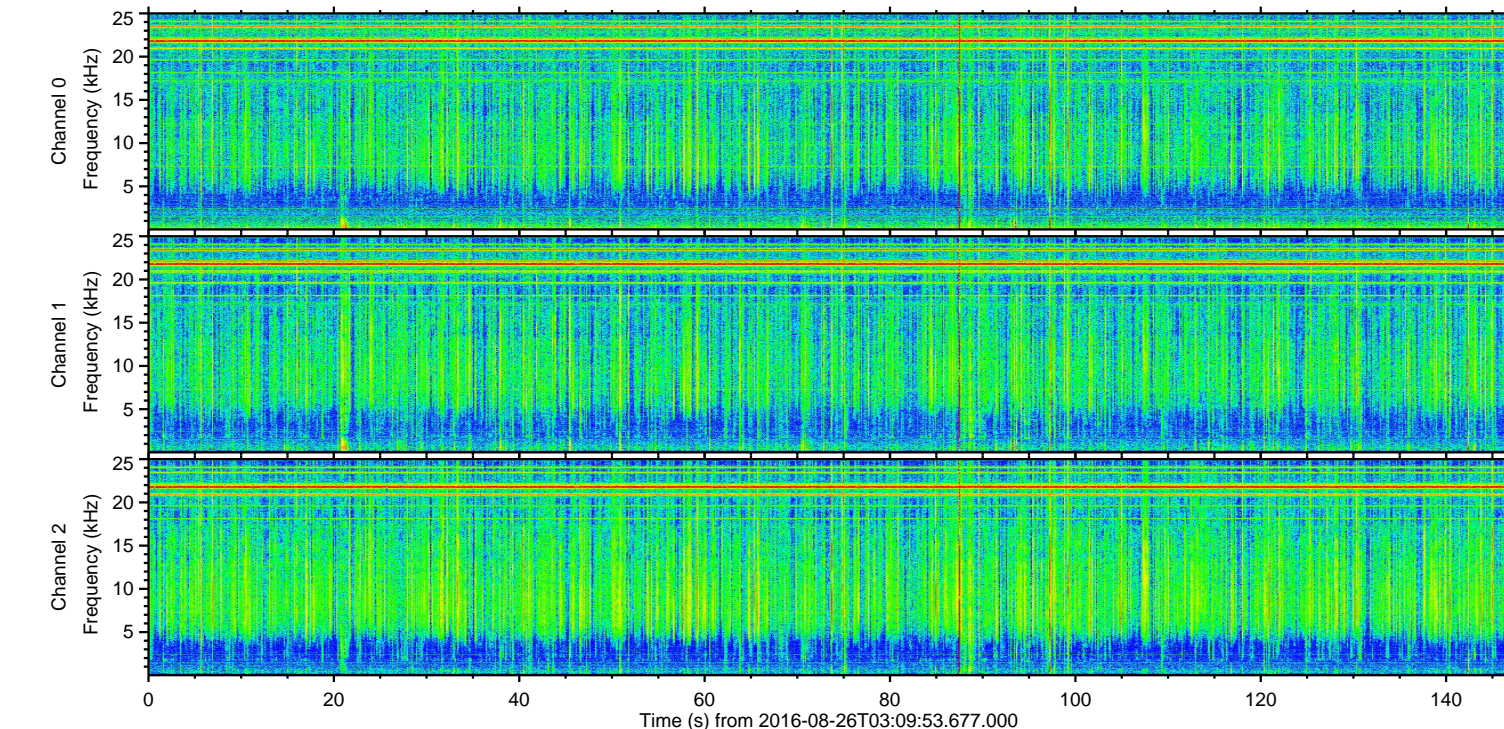
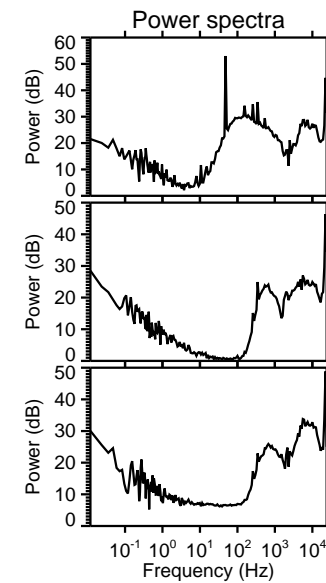
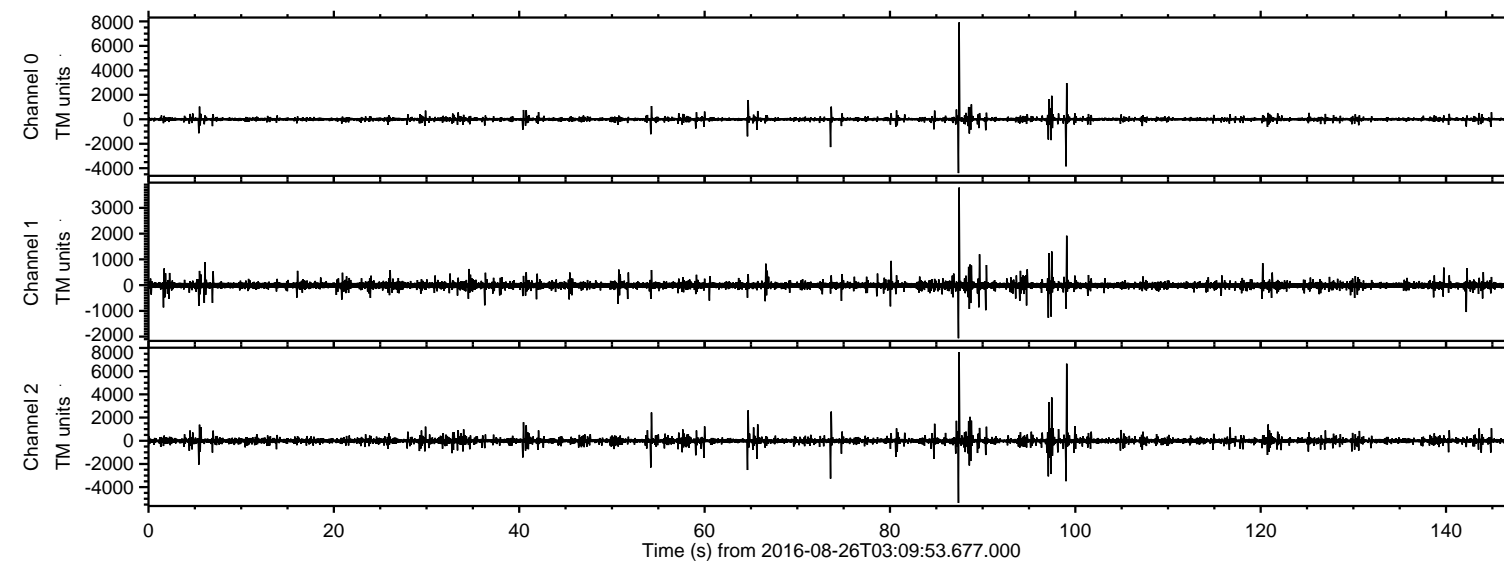
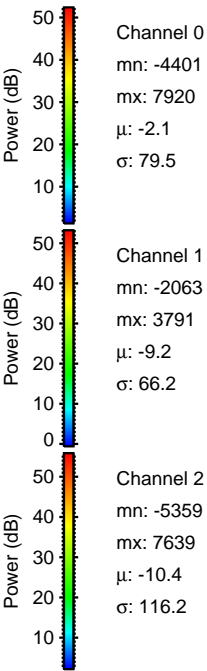
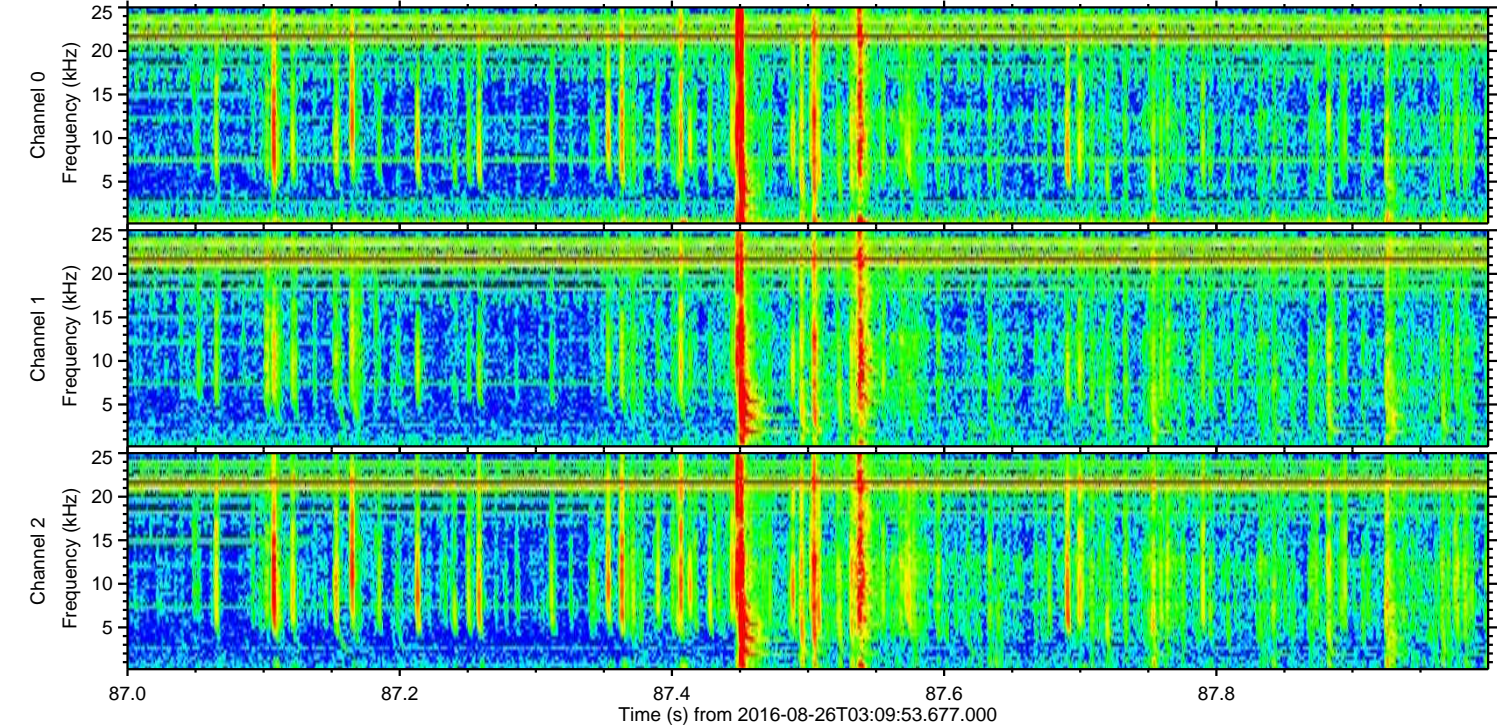
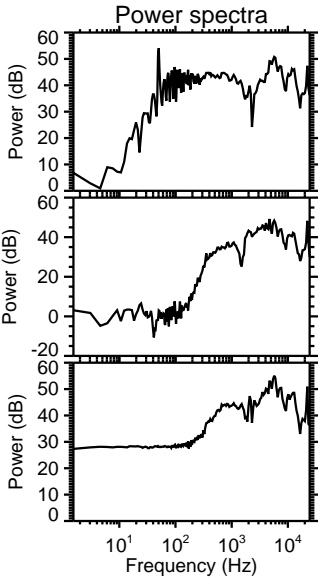
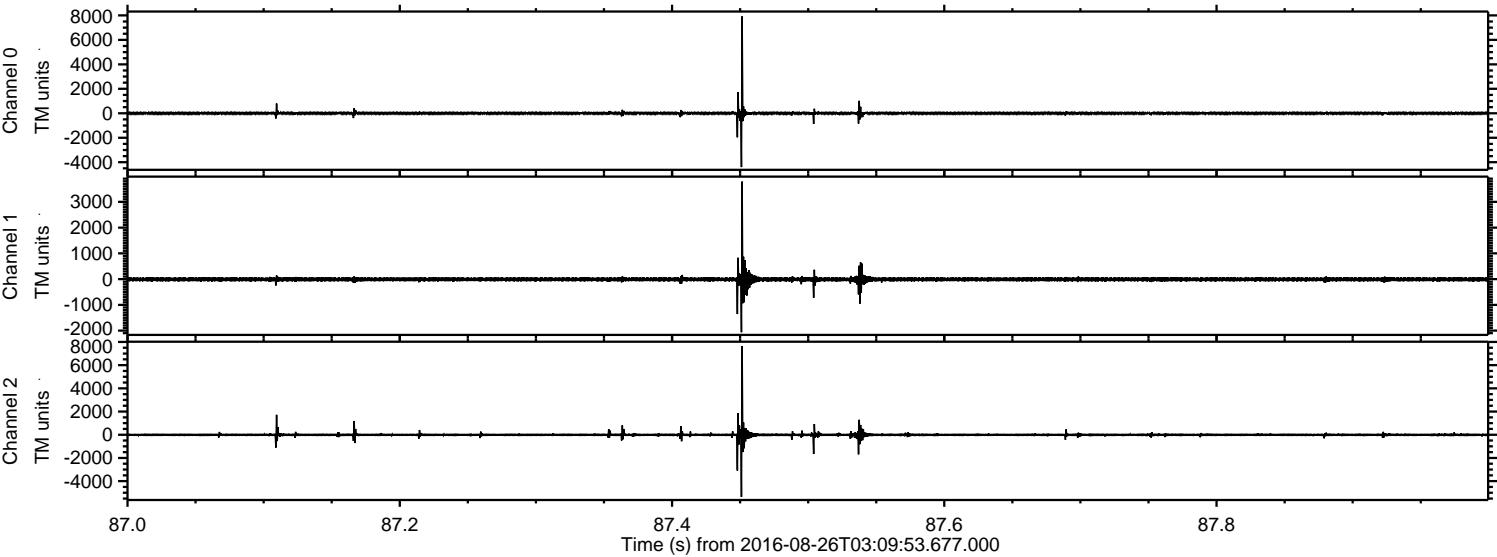


ELMAVAN 3D WAVEFORMS (Measured data sampled at 50 kHz) 51000 packets of 144 samples from 2016-08-26T03:09:53.677.000.

Processed Fri Aug 26 05:17:32 2016 by ELM ver.2012-10-06 from 001__elm20160826_030952__dat00.bin



Processed Fri Aug 26 05:17:43 2016 by ELM ver.2012-10-06 from 001__elm20160826_030952__dat00.bin



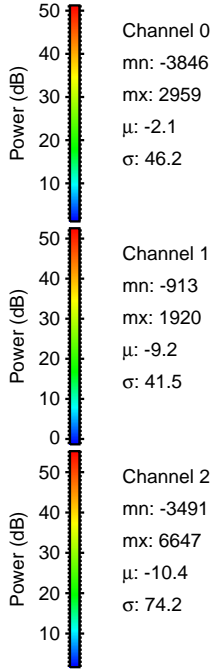
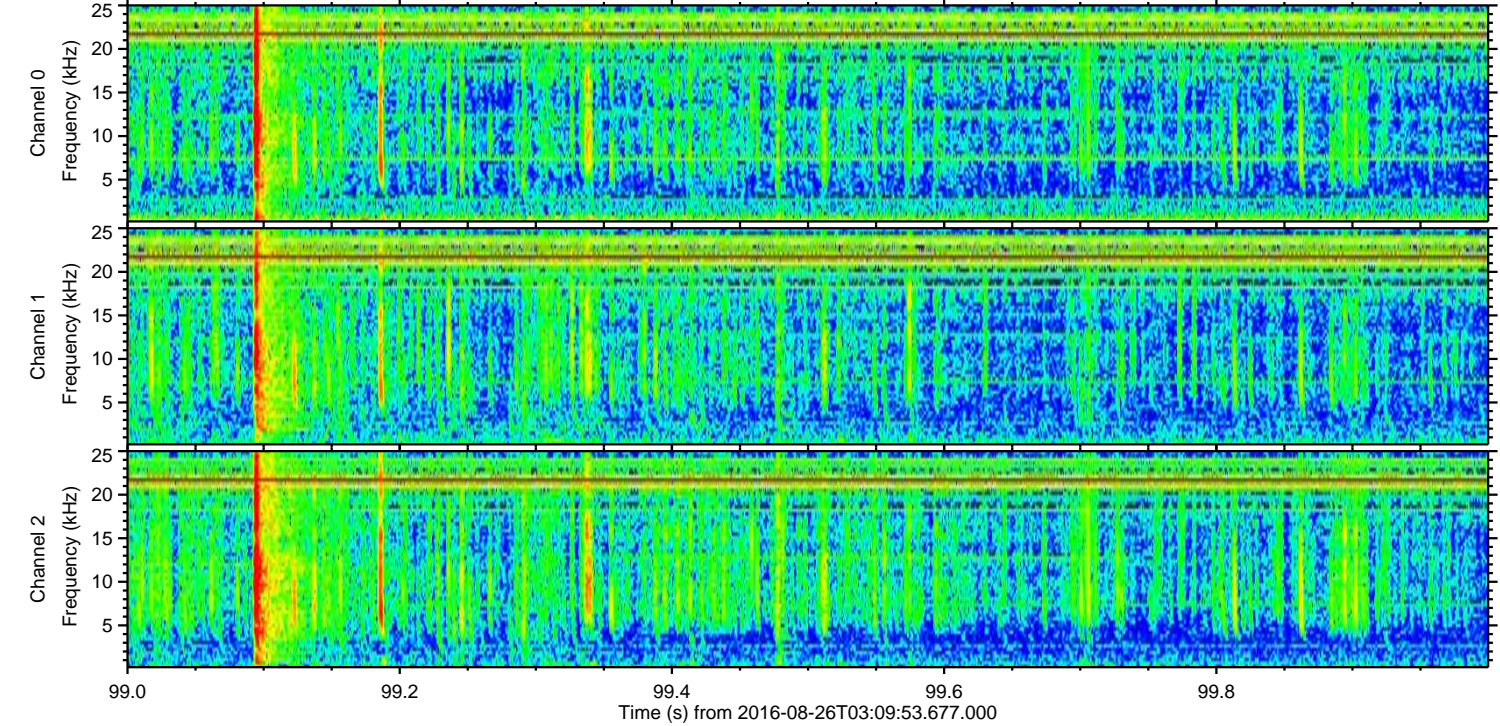
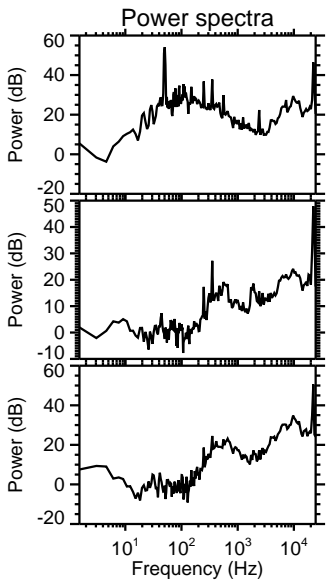
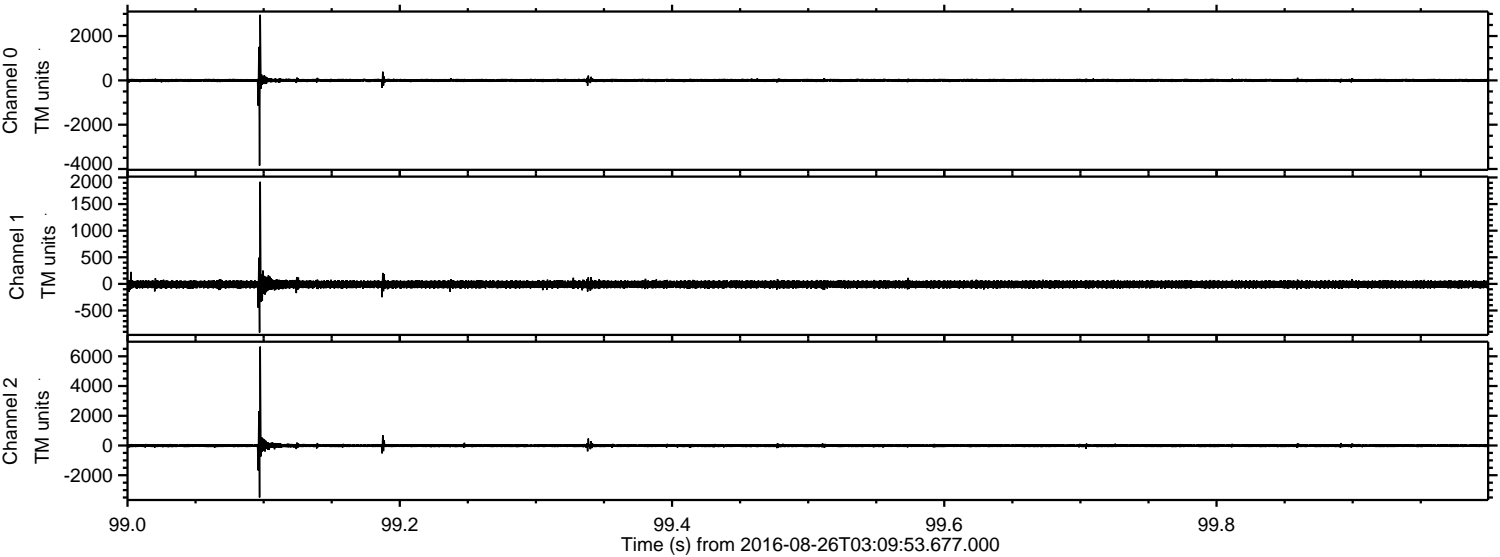
Channel 0
mn: -4401
mx: 7920
 μ : -2.1
 σ : 79.5

Channel 1
mn: -2063
mx: 3791
 μ : -9.2
 σ : 66.2

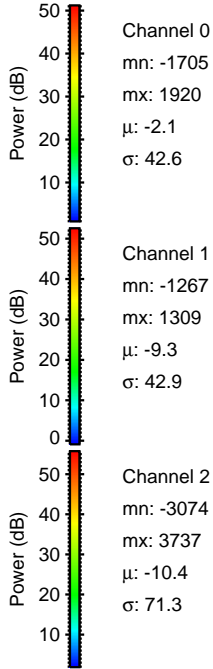
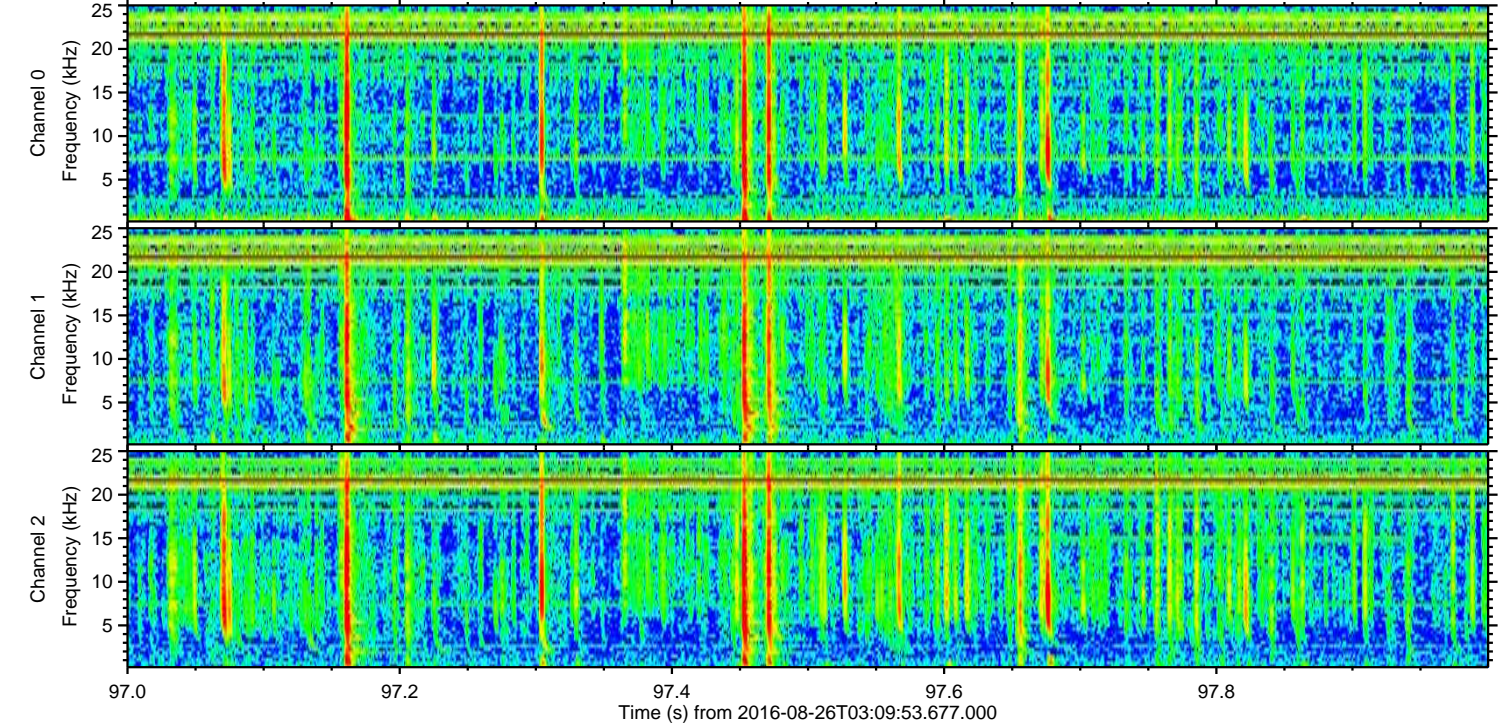
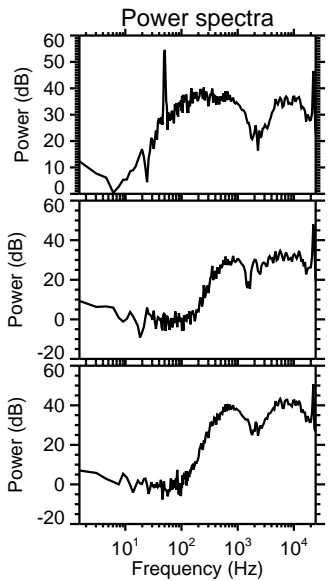
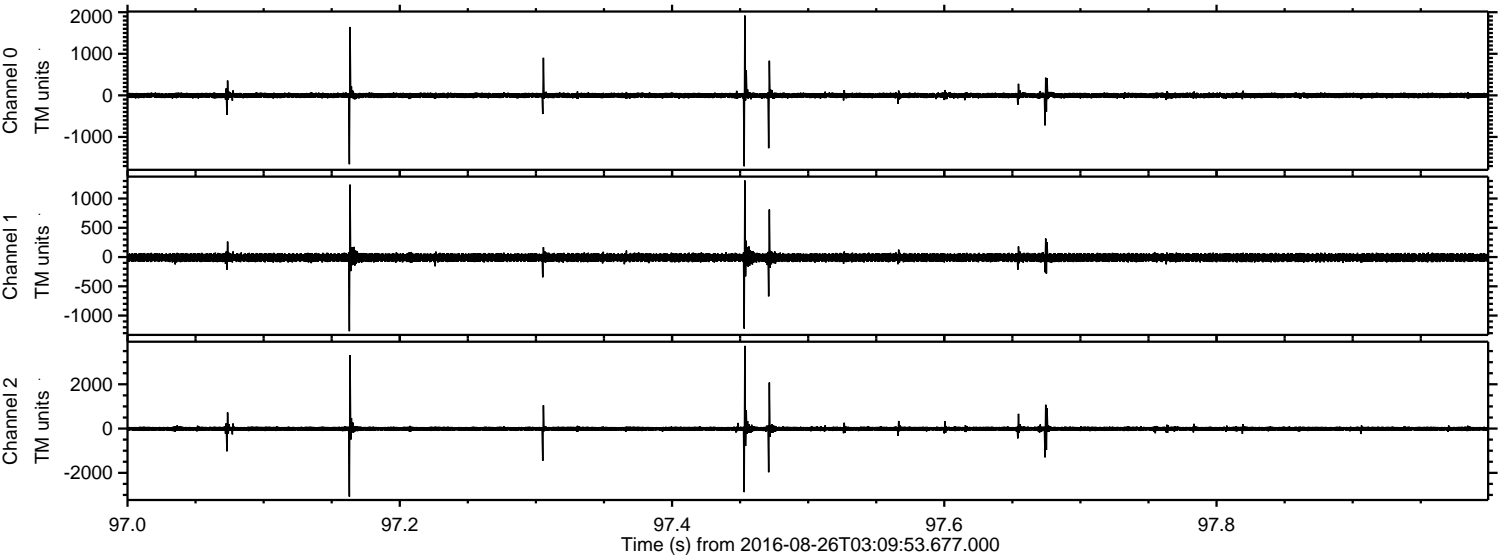
Channel 2
mn: -5359
mx: 7639
 μ : -10.4
 σ : 116.2

ELMAVAN 3D WAVEFORMS (Measured data sampled at 50 kHz) 51000 packets of 144 samples from 2016-08-26T03:09:53.677.000. Part 100/147

Processed Fri Aug 26 05:17:44 2016 by ELM ver.2012-10-06 from 001__elm20160826_030952__dat00.bin

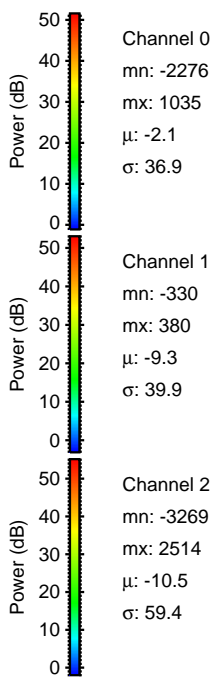
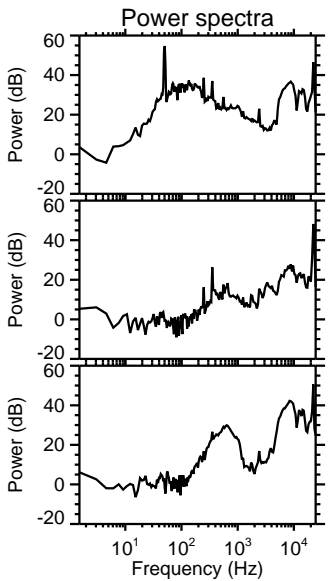
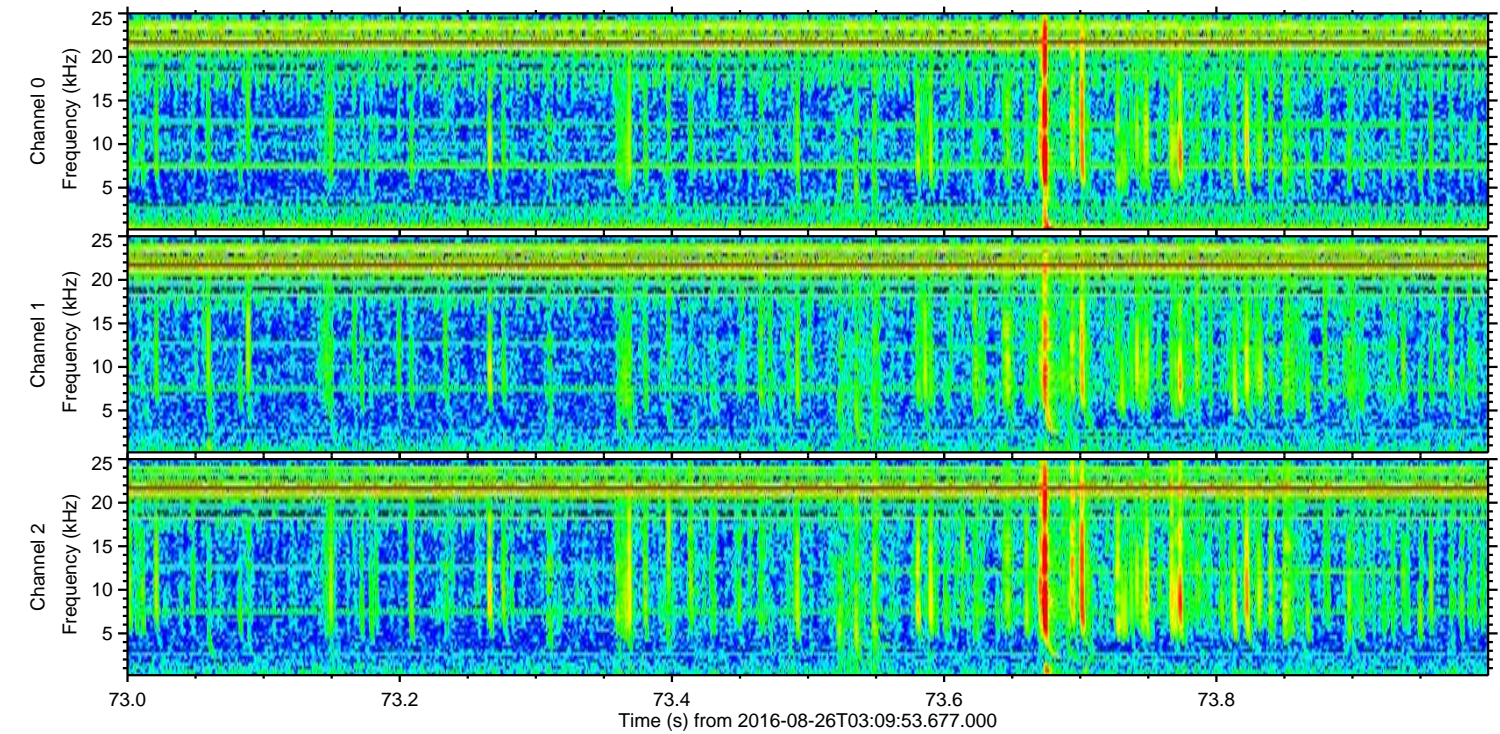
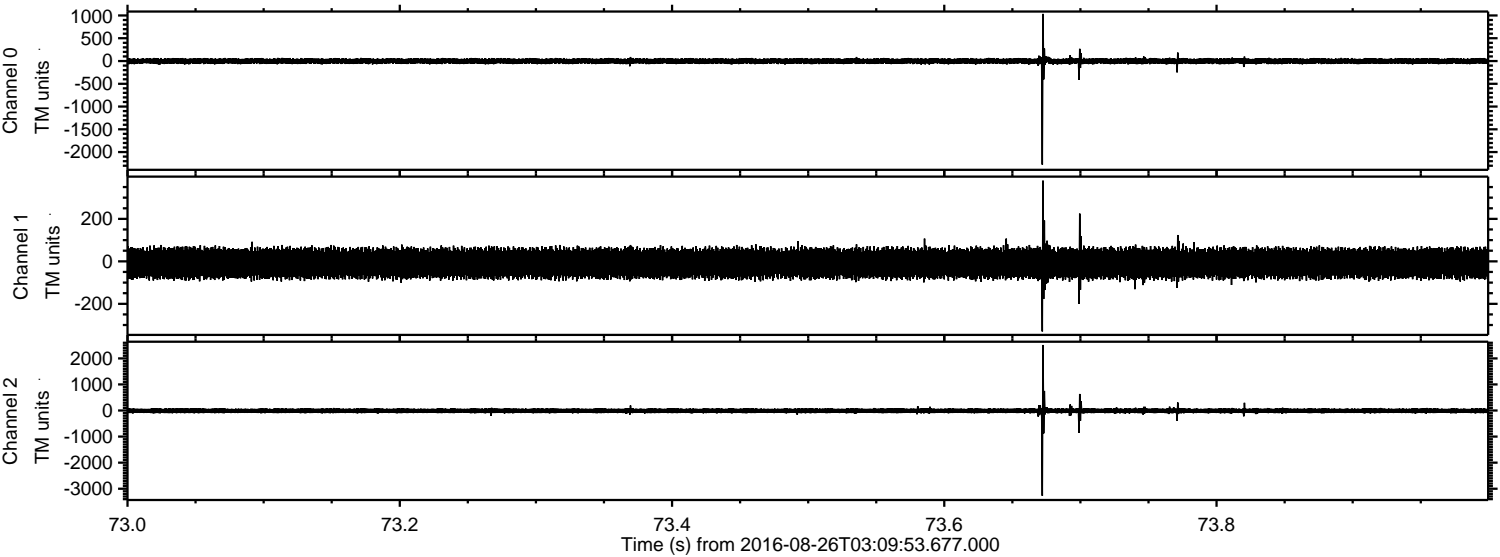


Processed Fri Aug 26 05:17:45 2016 by ELM ver.2012-10-06 from 001__elm20160826_030952__dat00.bin

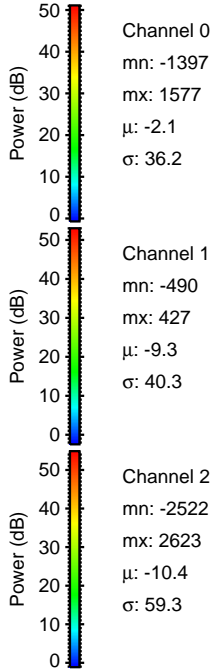
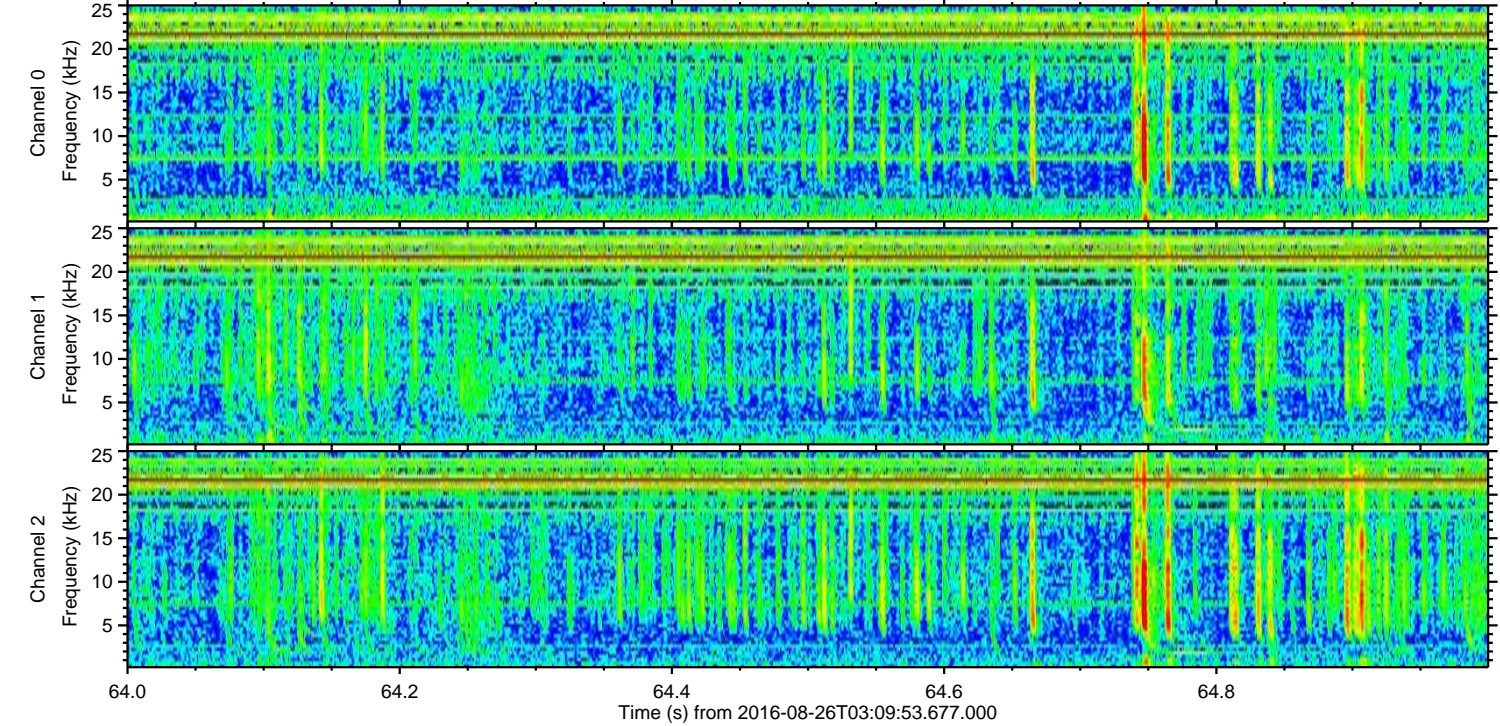
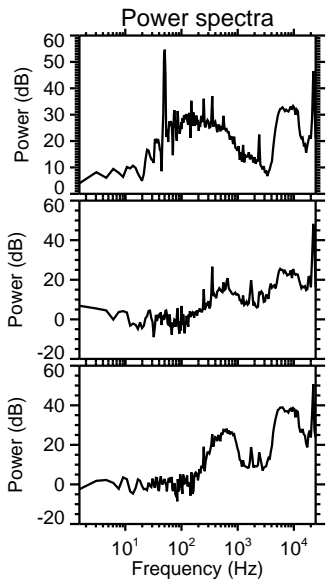
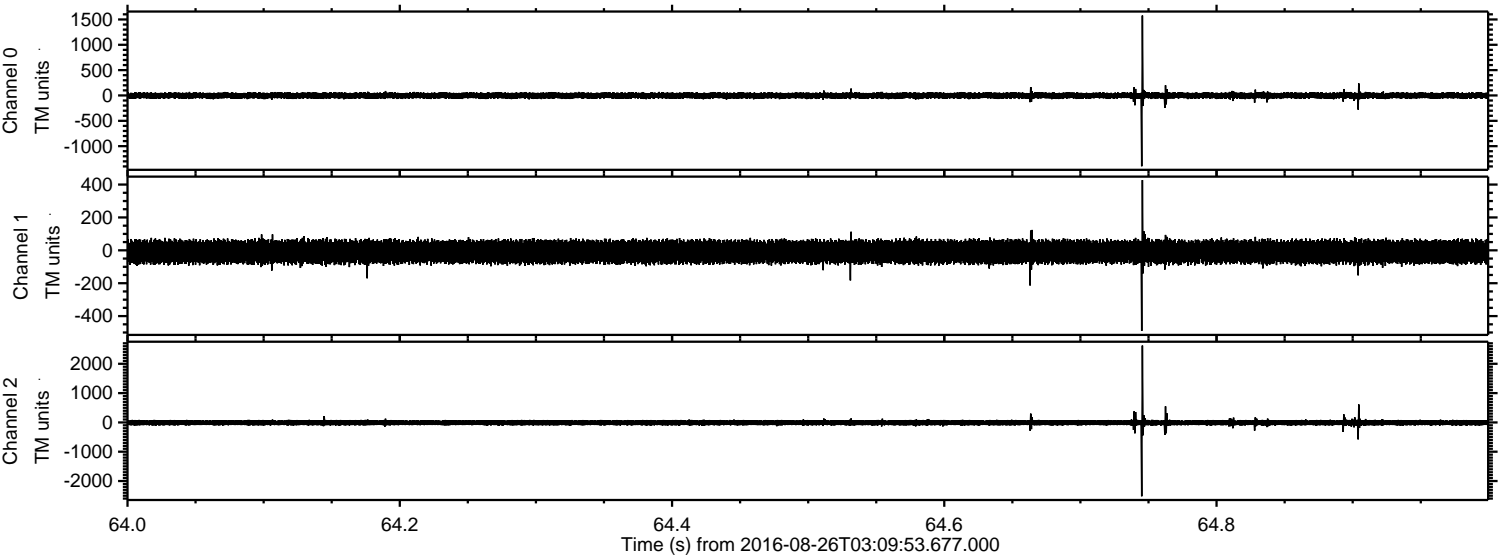


ELMAVAN 3D WAVEFORMS (Measured data sampled at 50 kHz) 51000 packets of 144 samples from 2016-08-26T03:09:53.677.000. Part 74/147

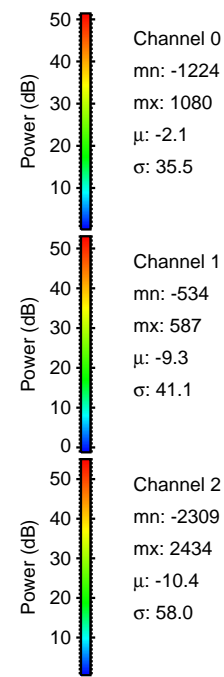
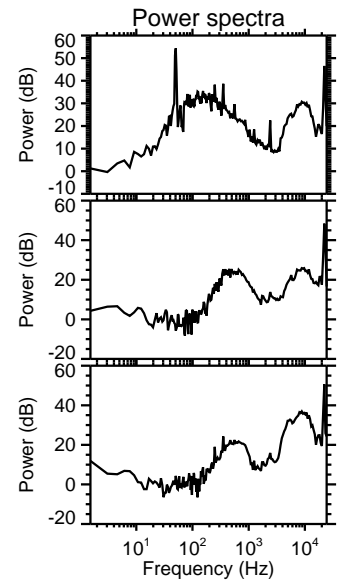
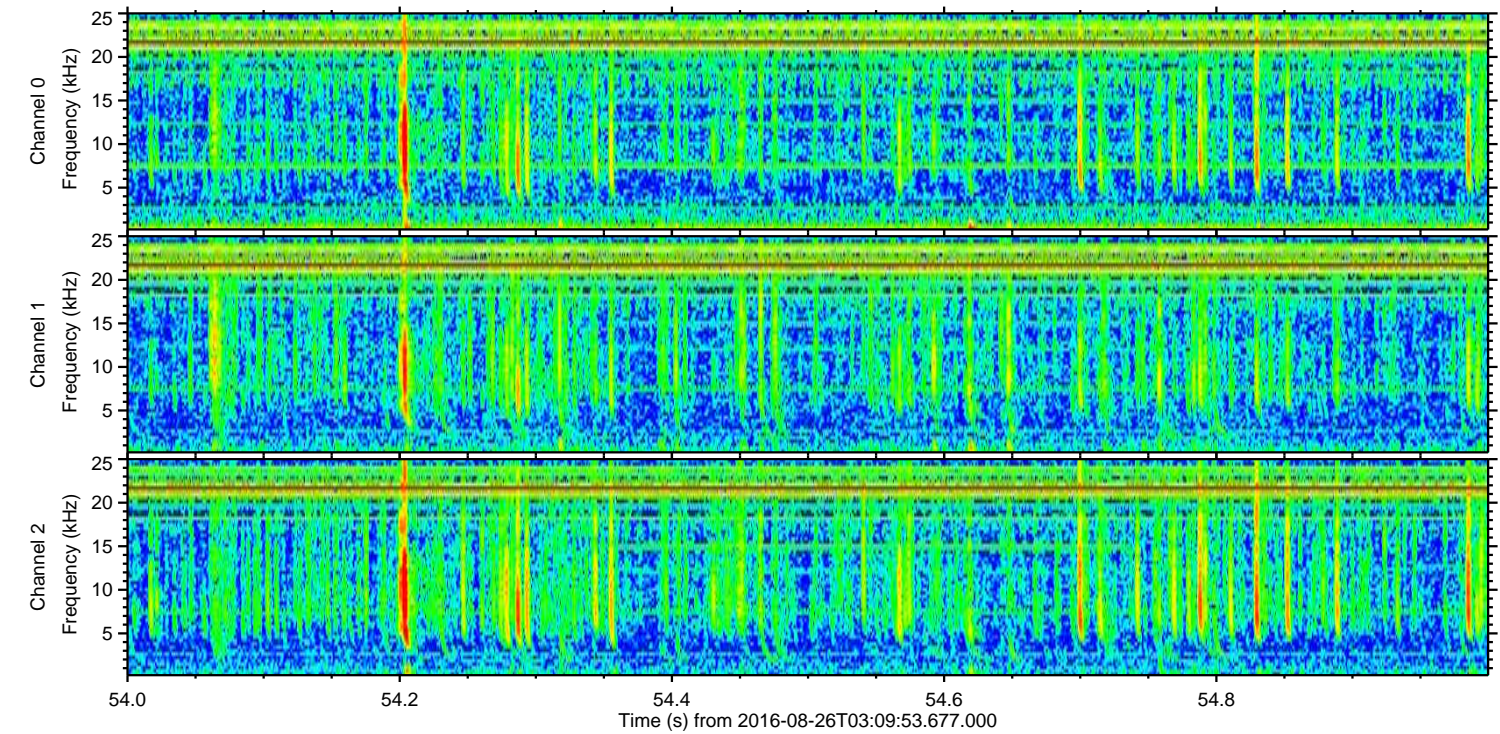
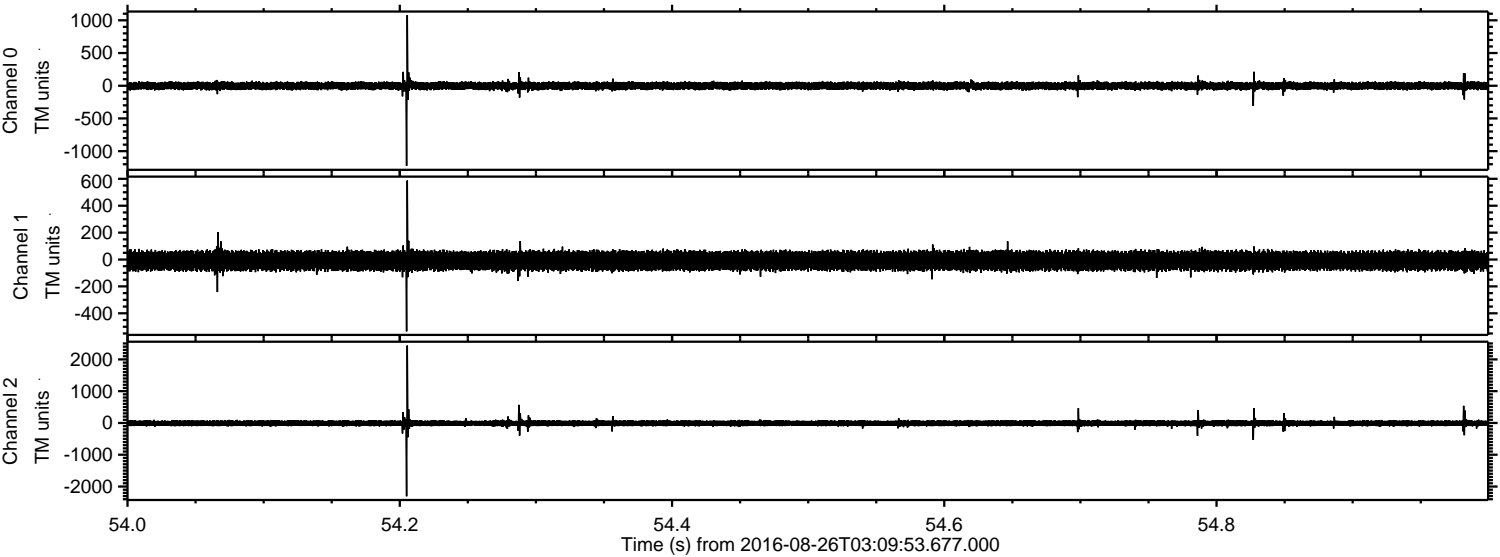
Processed Fri Aug 26 05:17:46 2016 by ELM ver.2012-10-06 from 001__elm20160826_030952__dat00.bin



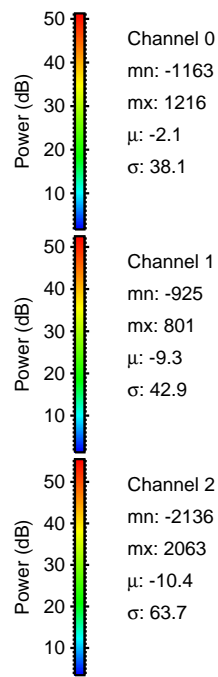
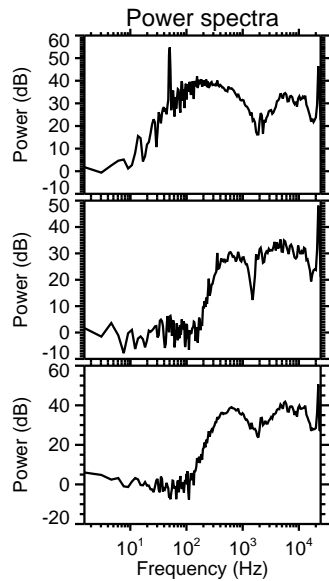
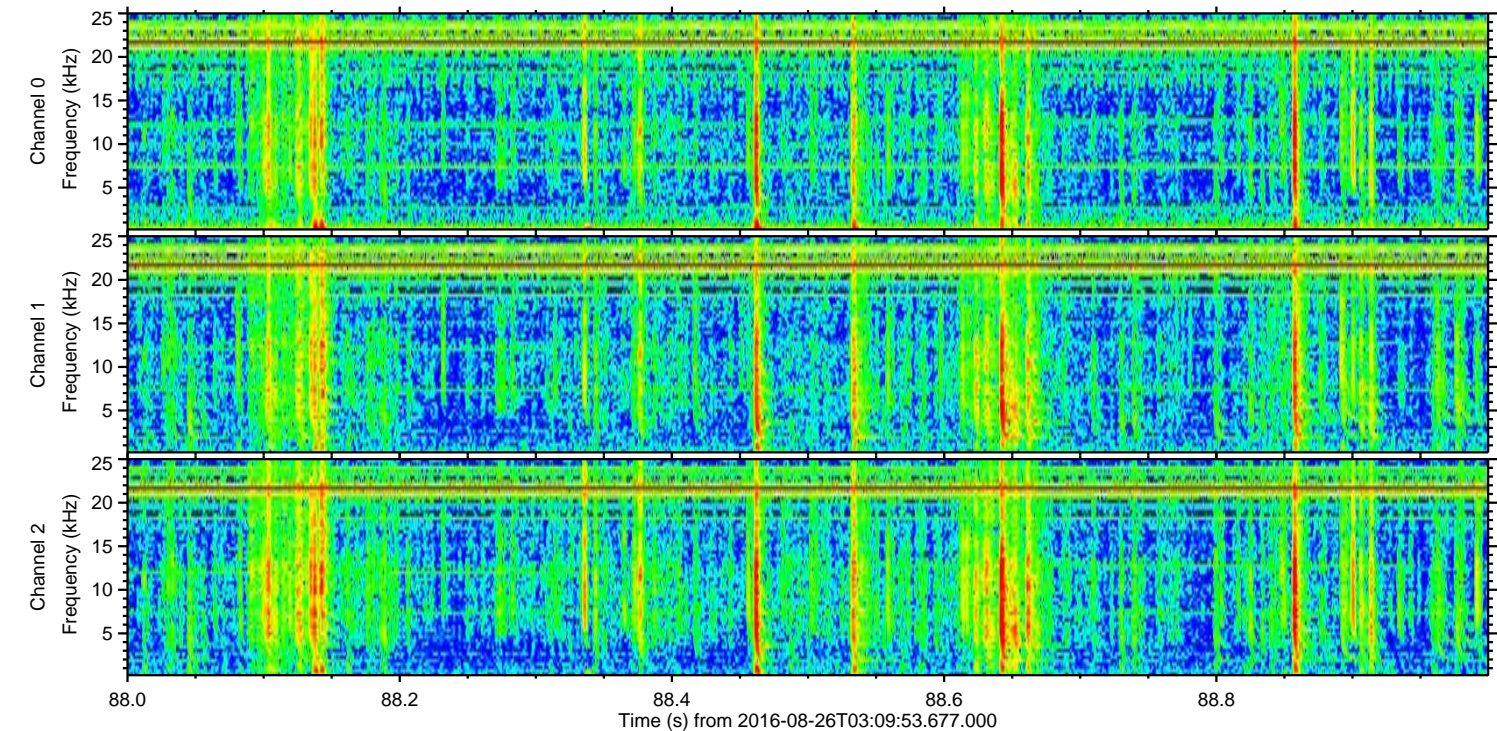
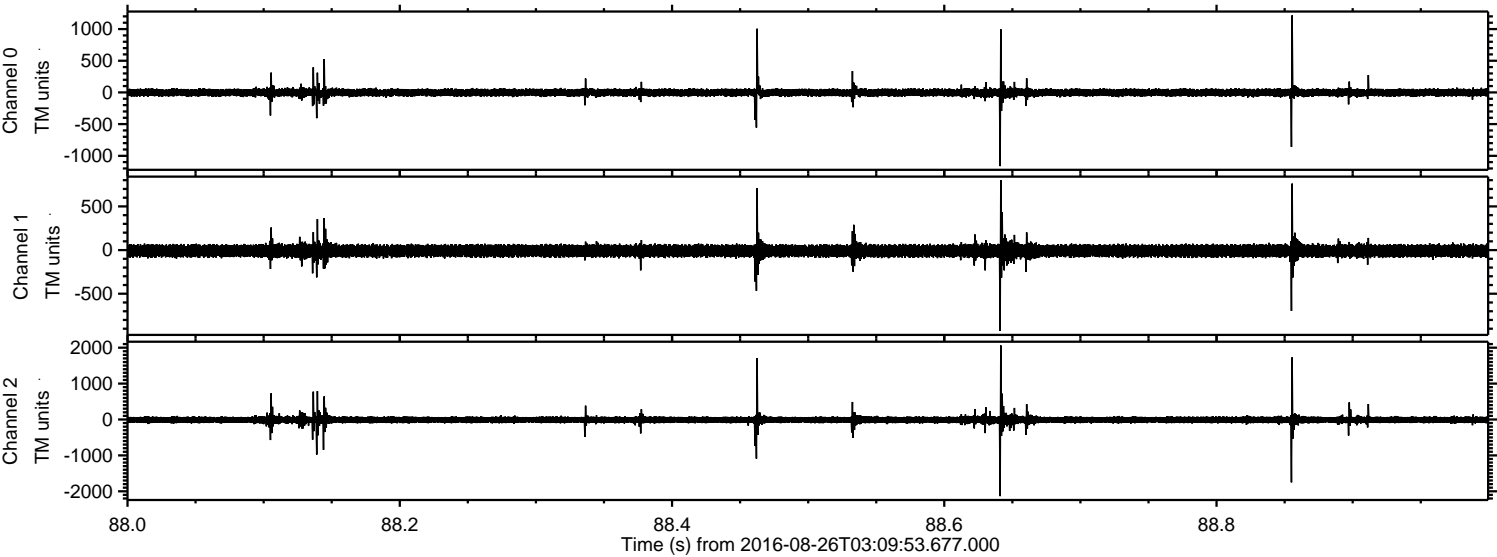
Processed Fri Aug 26 05:17:47 2016 by ELM ver.2012-10-06 from 001__elm20160826_030952__dat00.bin



Processed Fri Aug 26 05:17:48 2016 by ELM ver.2012-10-06 from 001__elm20160826_030952__dat00.bin



Processed Fri Aug 26 05:17:49 2016 by ELM ver.2012-10-06 from 001__elm20160826_030952__dat00.bin

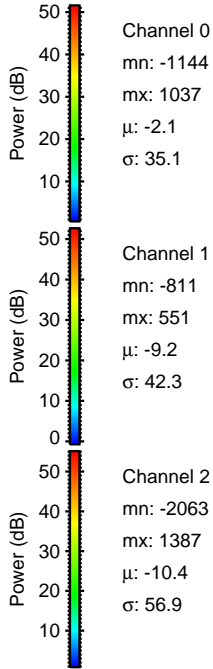
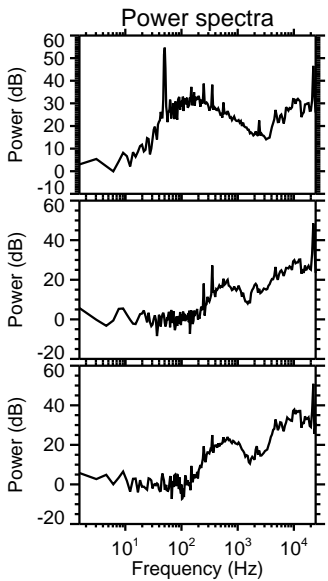
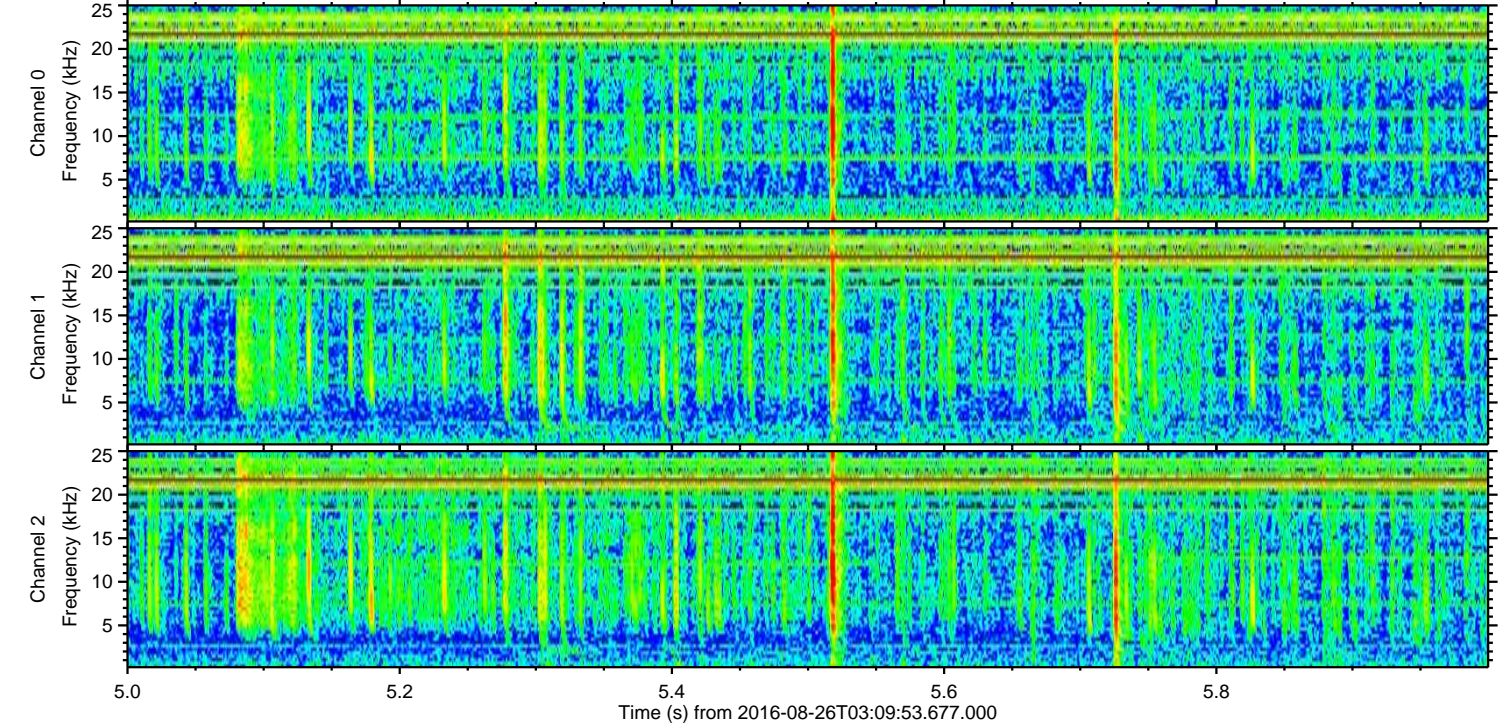
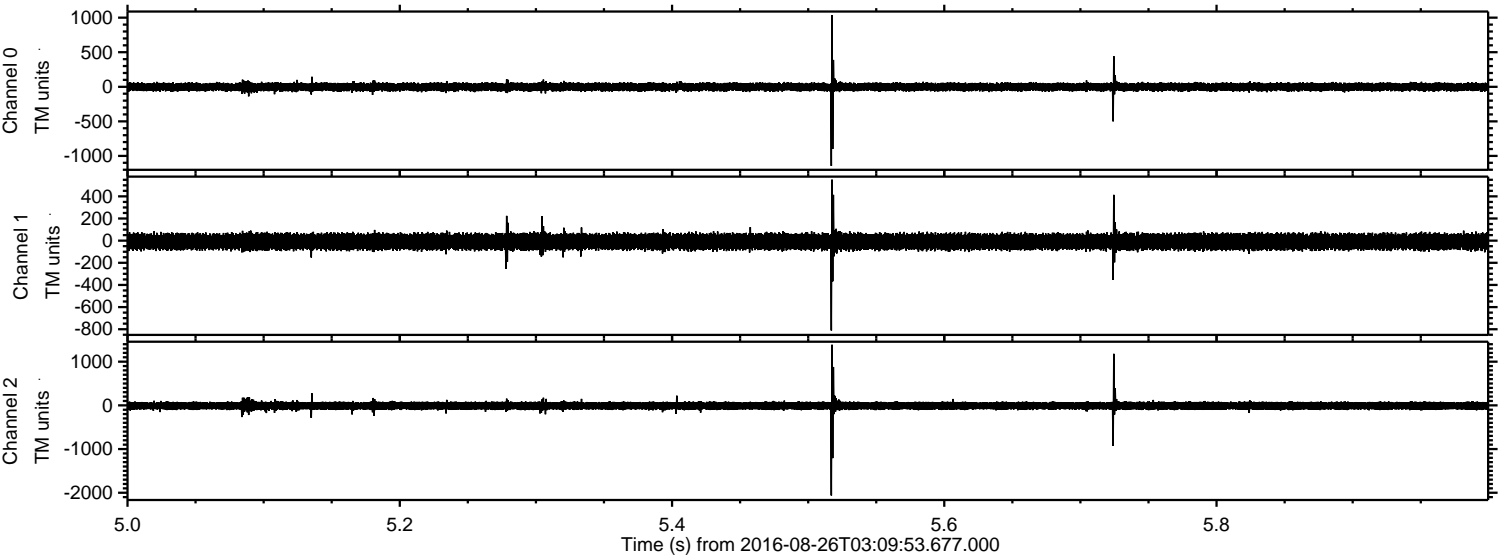


Channel 0
mn: -1163
mx: 1216
 μ : -2.1
 σ : 38.1

Channel 1
mn: -925
mx: 801
 μ : -9.3
 σ : 42.9

Channel 2
mn: -2136
mx: 2063
 μ : -10.4
 σ : 63.7

Processed Fri Aug 26 05:17:50 2016 by ELM ver.2012-10-06 from 001__elm20160826_030952__dat00.bin

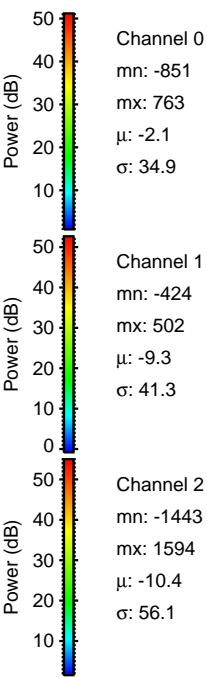
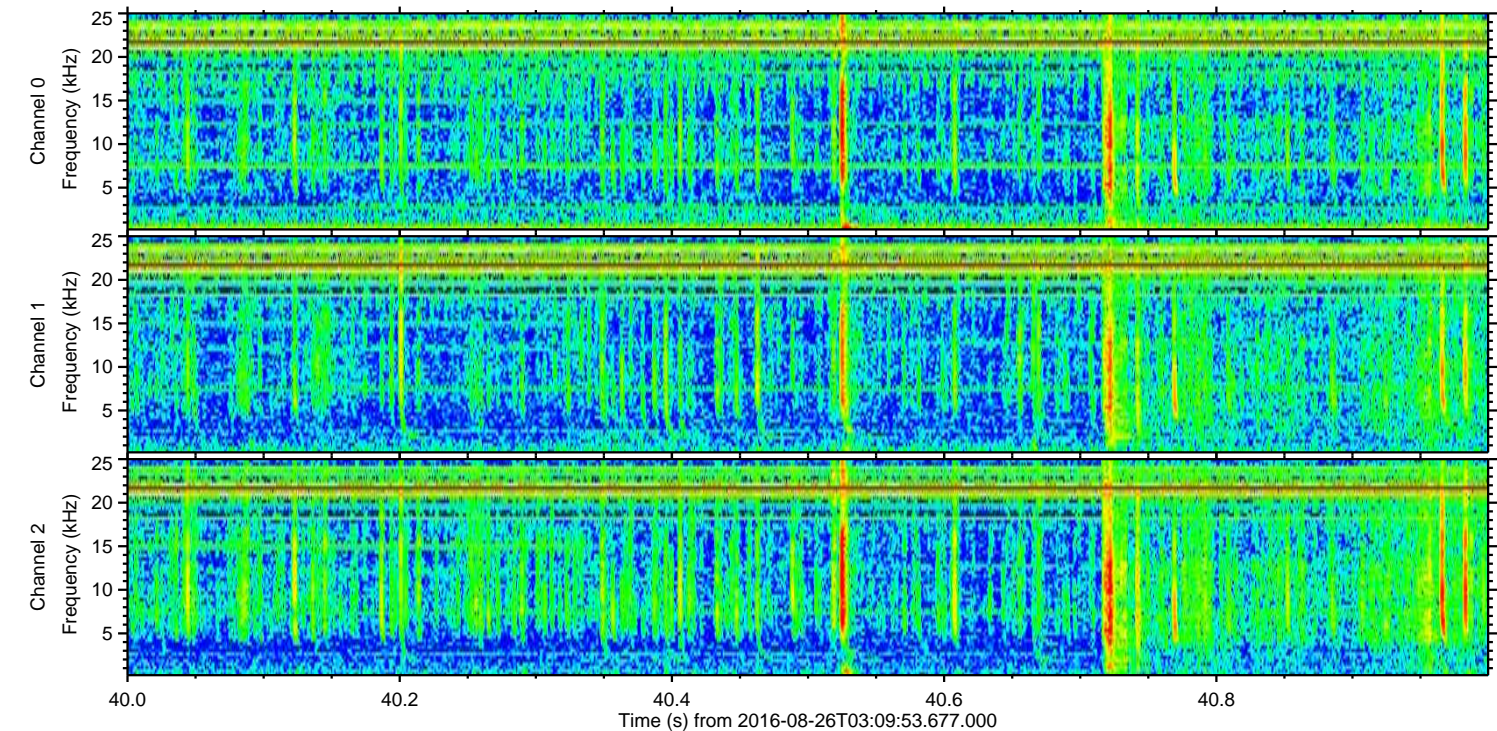
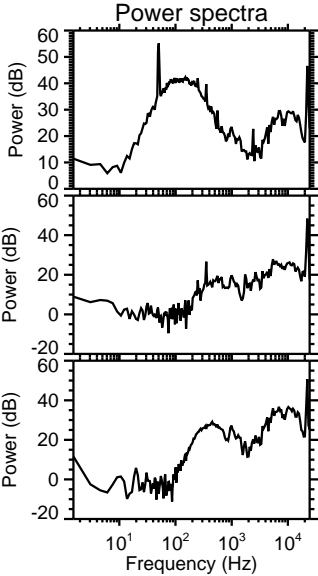
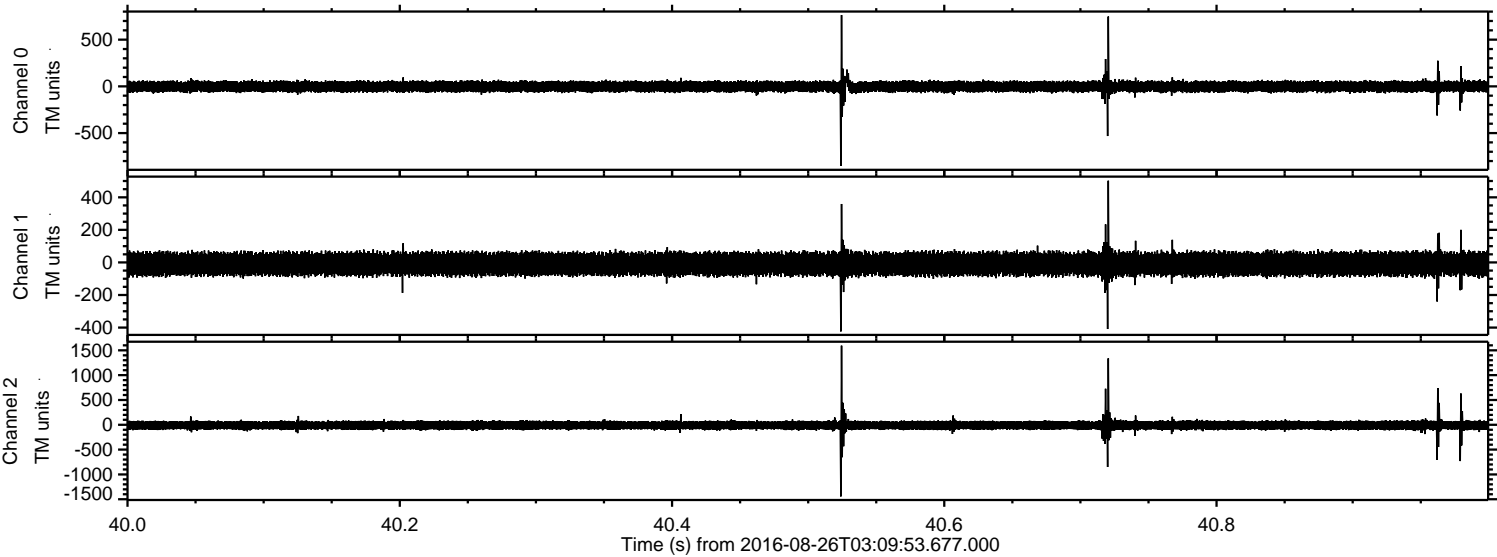


Channel 0
mn: -1144
mx: 1037
 μ : -2.1
 σ : 35.1

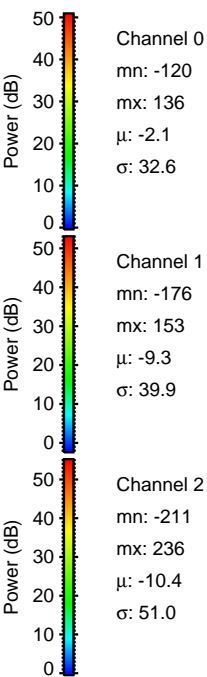
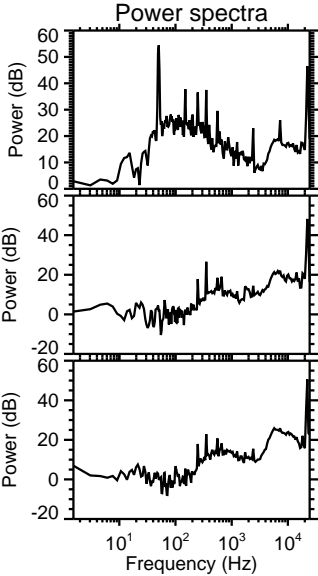
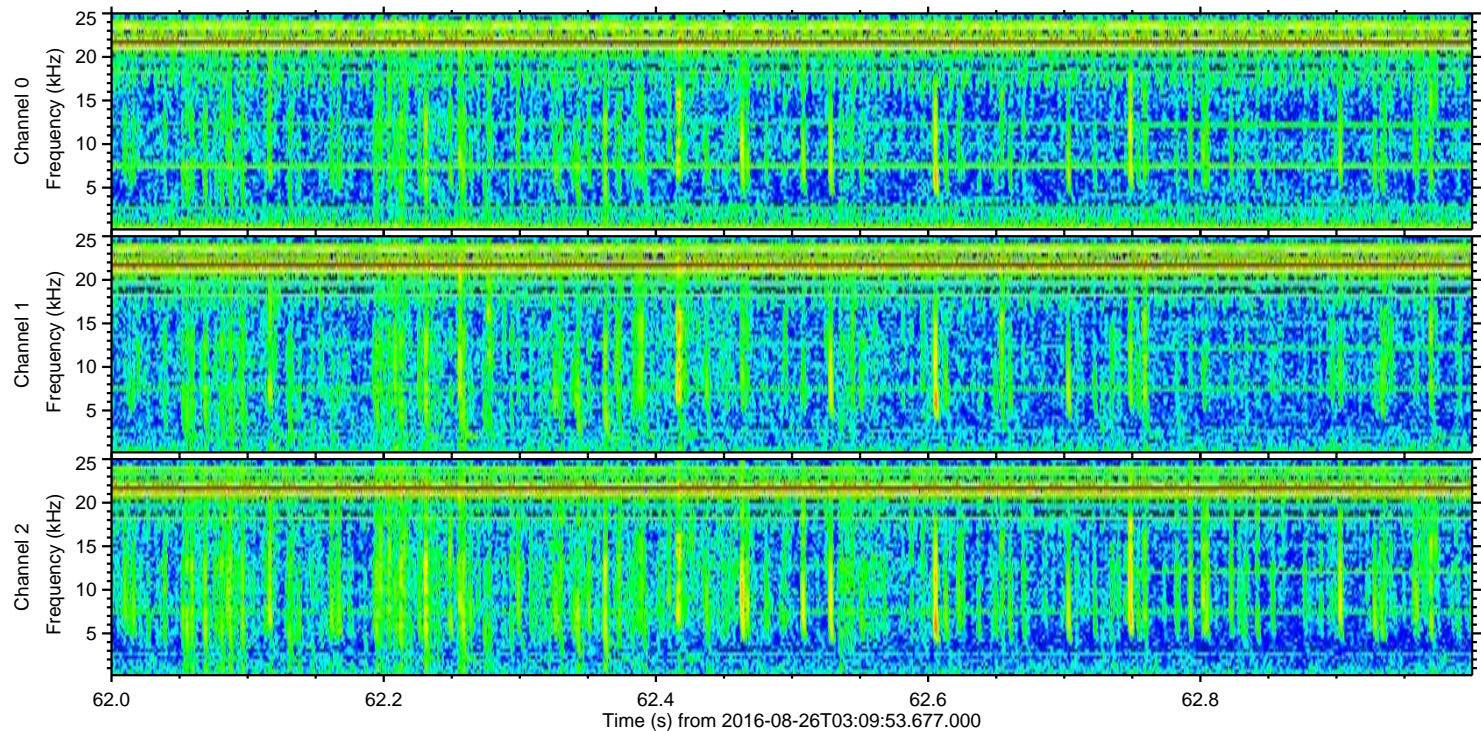
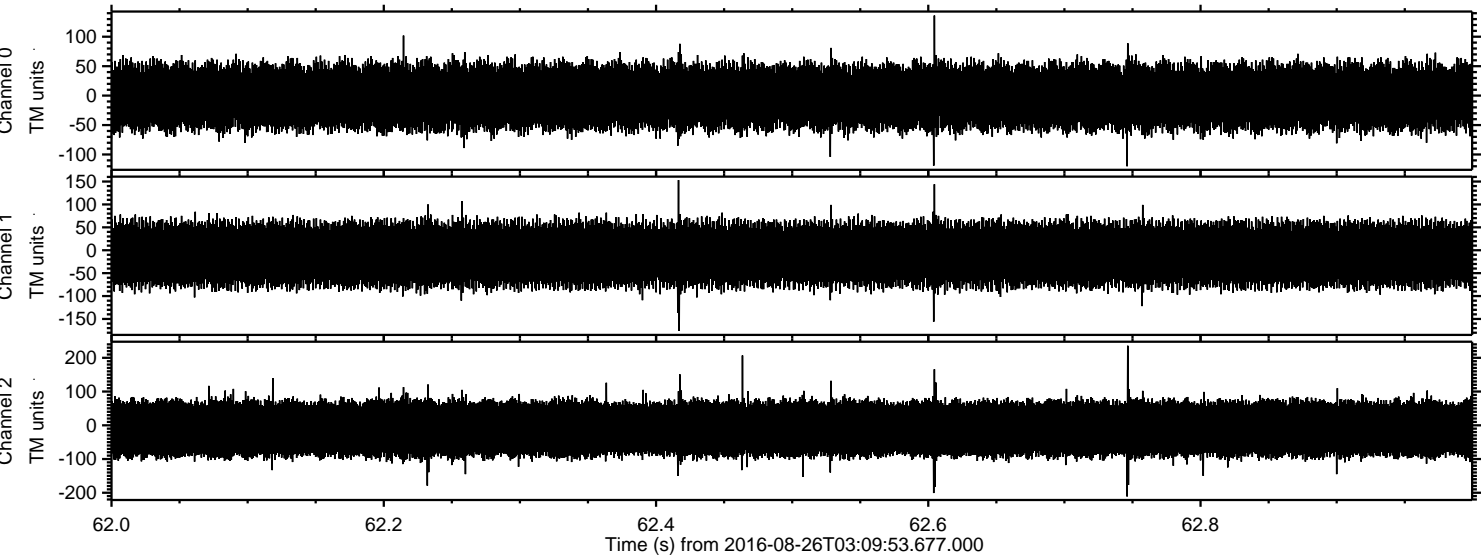
Channel 1
mn: -811
mx: 551
 μ : -9.2
 σ : 42.3

Channel 2
mn: -2063
mx: 1387
 μ : -10.4
 σ : 56.9

Processed Fri Aug 26 05:17:51 2016 by ELM ver.2012-10-06 from 001__elm20160826_030952__dat00.bin



Processed Fri Aug 26 05:17:52 2016 by ELM ver.2012-10-06 from 001__elm20160826_030952__dat00.bin



Channel 0
mn: -120
mx: 136
 μ : -2.1
 σ : 32.6

Channel 1
mn: -176
mx: 153
 μ : -9.3
 σ : 39.9

Channel 2
mn: -211
mx: 236
 μ : -10.4
 σ : 51.0