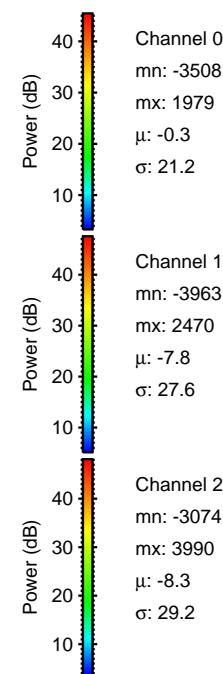
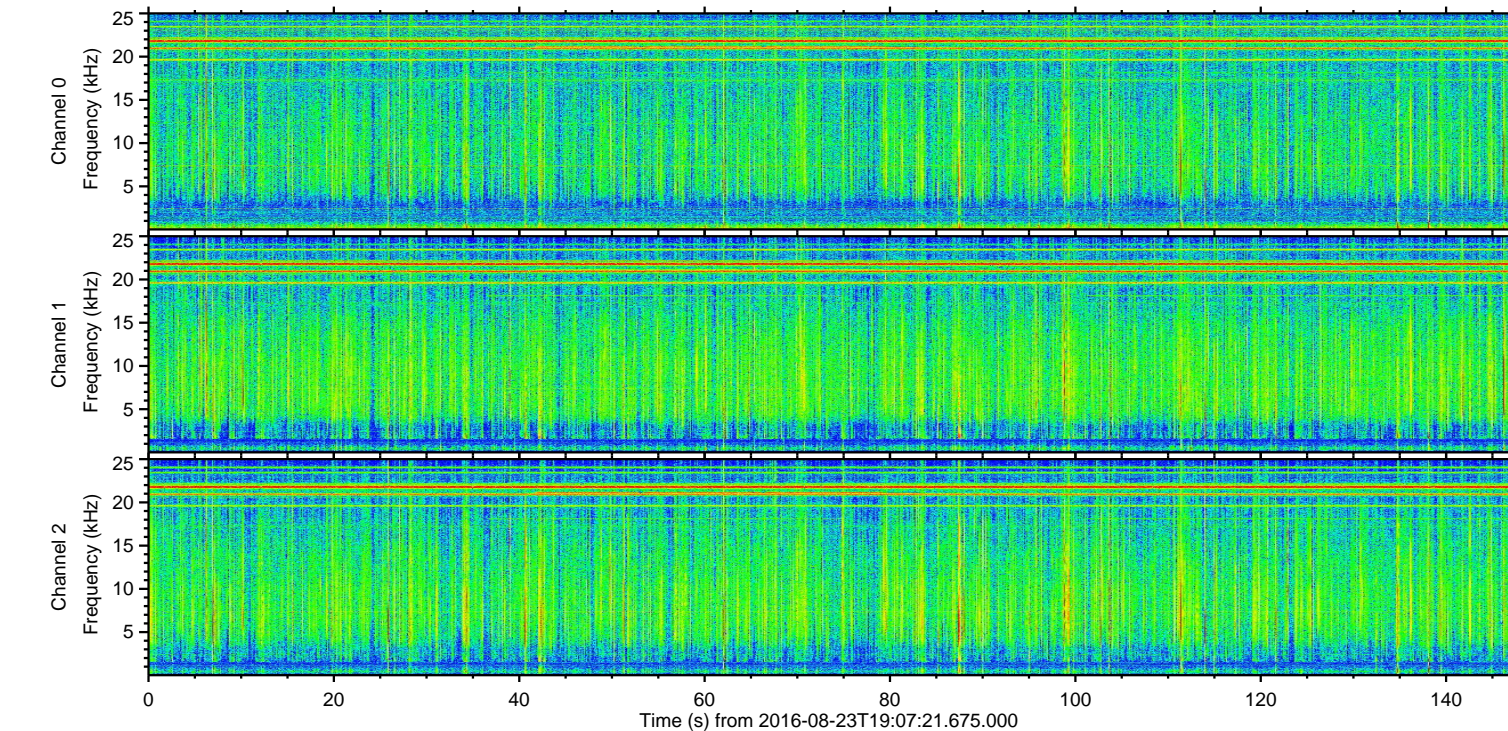
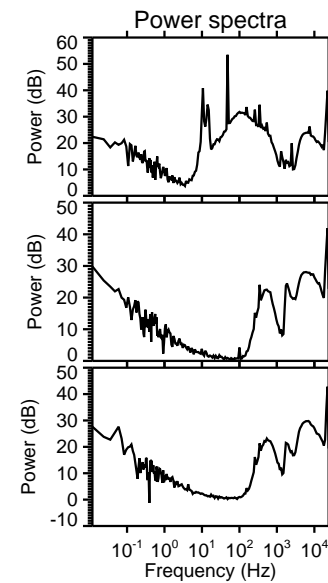
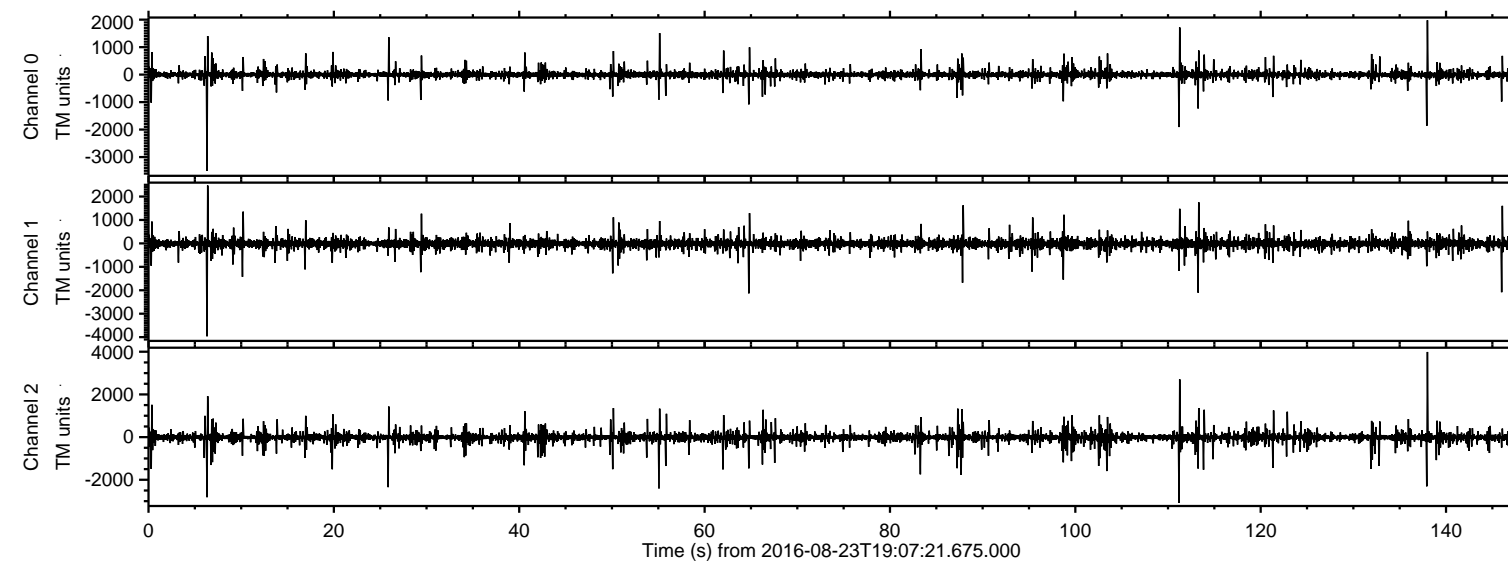


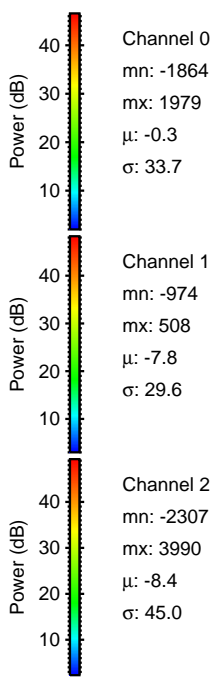
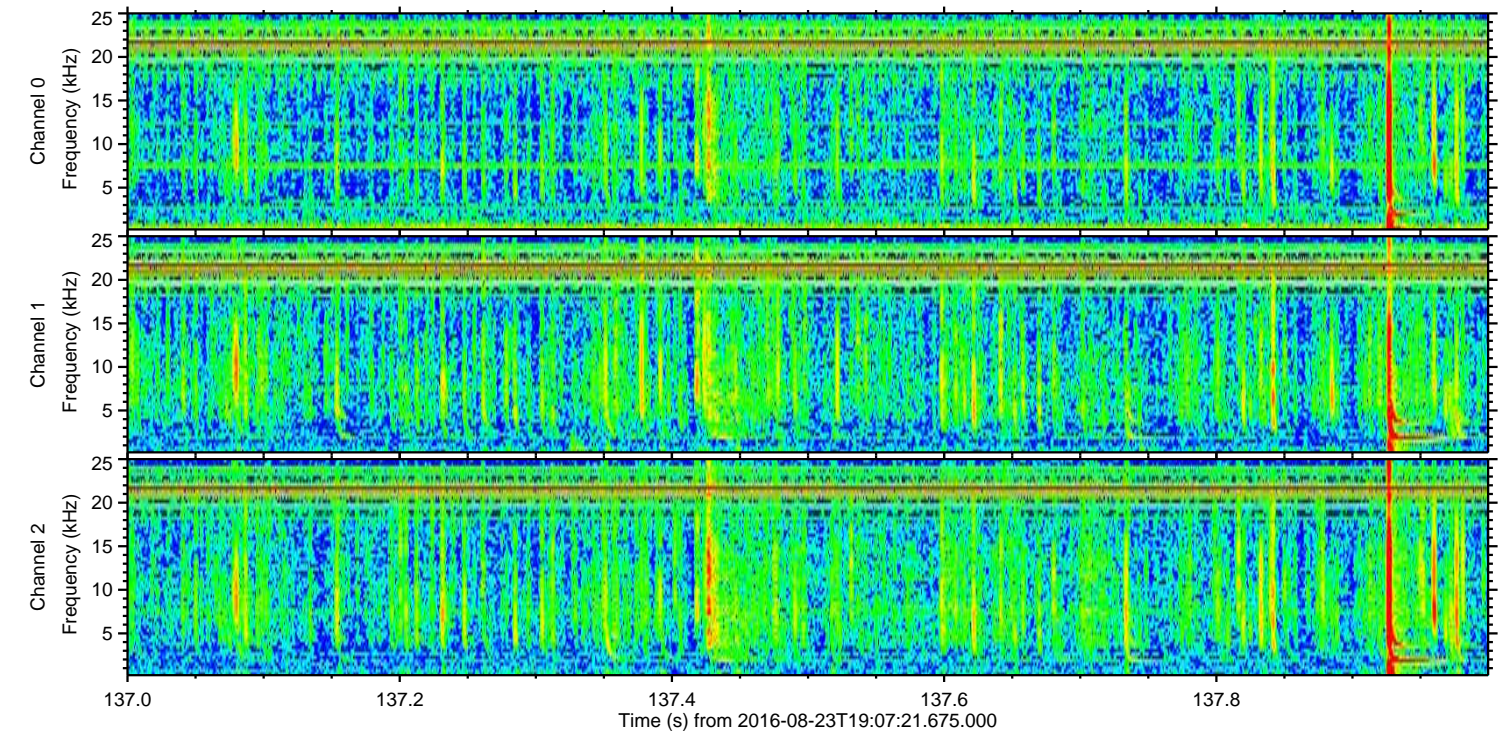
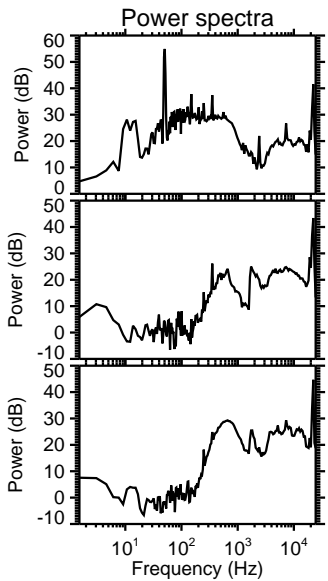
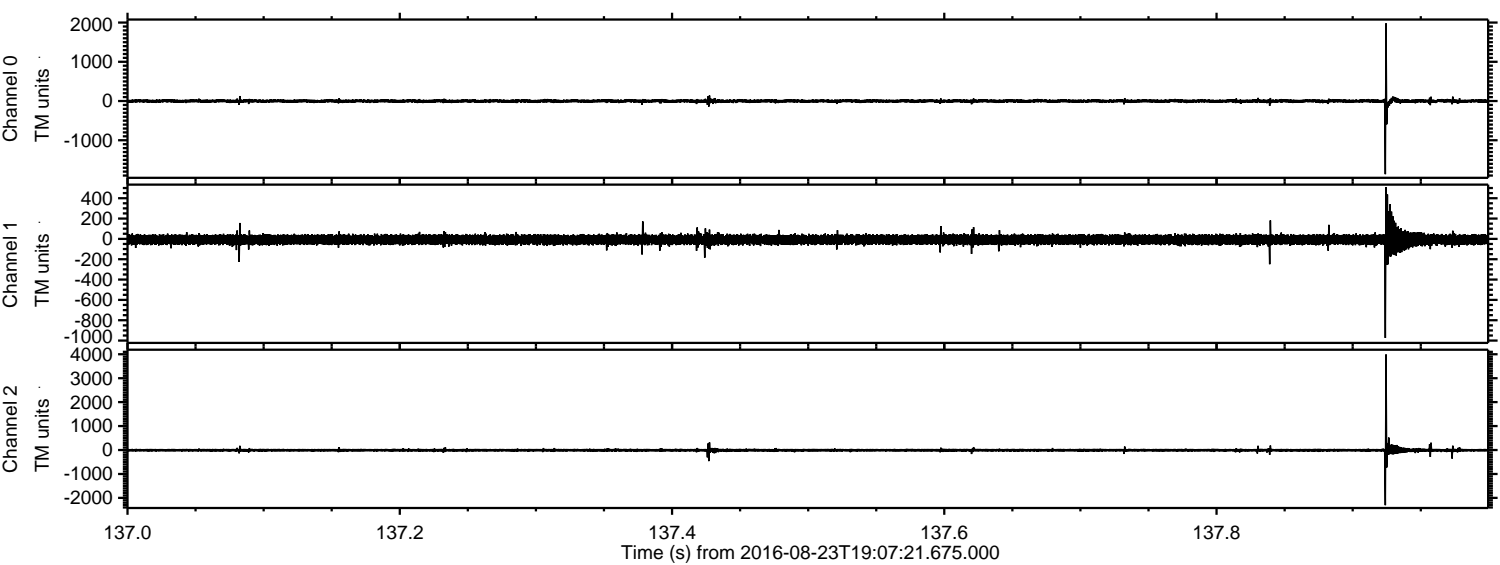
ELMAVAN 3D WAVEFORMS (Measured data sampled at 50 kHz) 51000 packets of 144 samples from 2016-08-23T19:07:21.675.000.

Processed Tue Aug 23 21:14:56 2016 by ELM ver.2012-10-06 from 001__elm20160823_190720__dat00.bin



ELMAVAN 3D WAVEFORMS (Measured data sampled at 50 kHz) 51000 packets of 144 samples from 2016-08-23T19:07:21.675.000. Part 138/147

Processed Tue Aug 23 21:15:08 2016 by ELM ver.2012-10-06 from 001__elm20160823_190720__dat00.bin

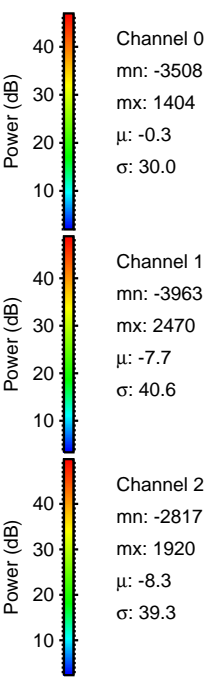
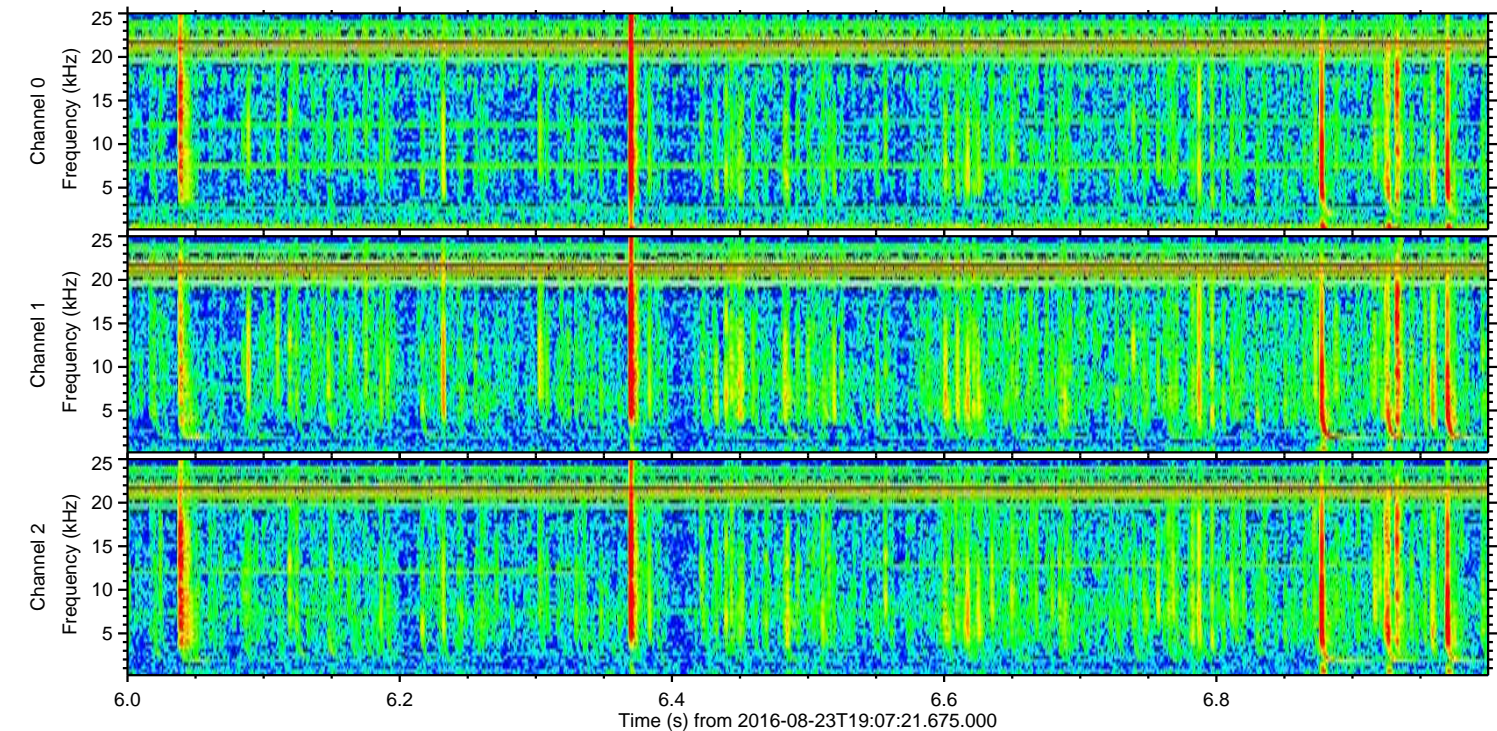
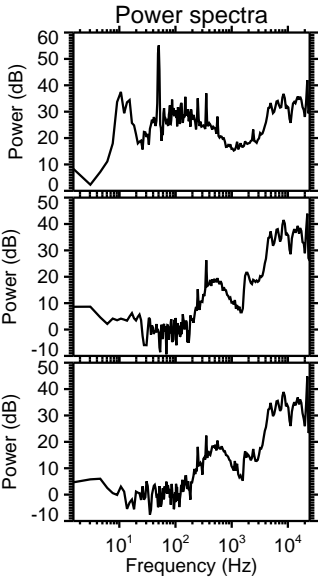
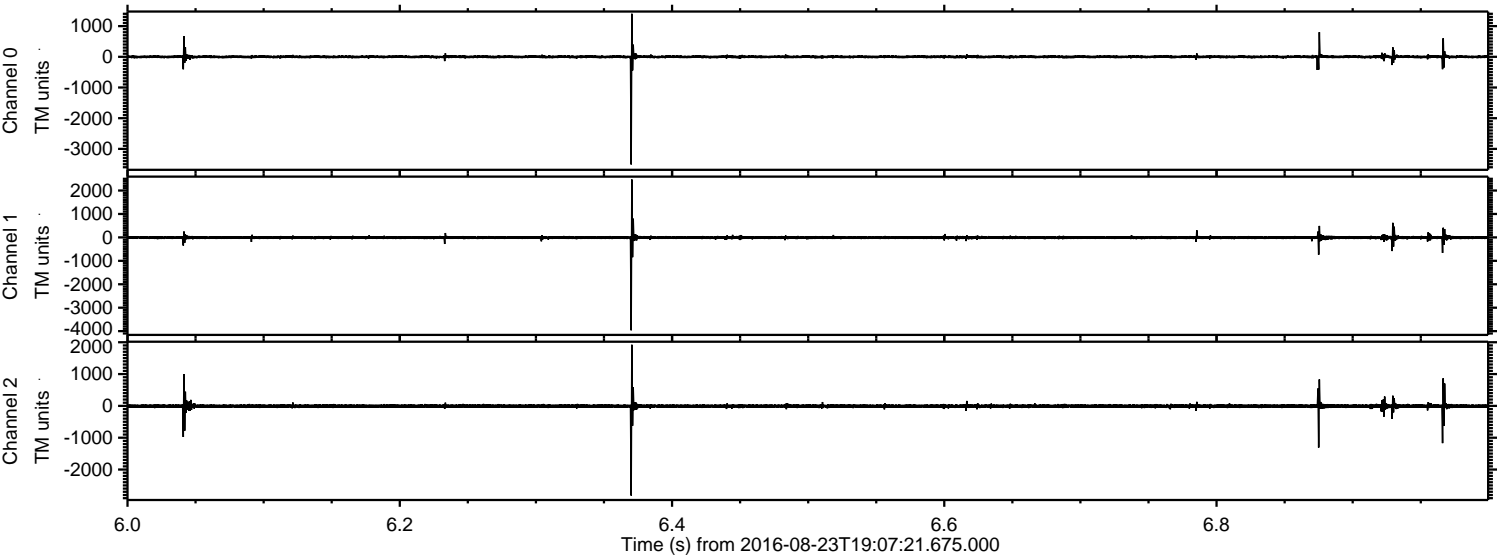


Channel 0
mn: -1864
mx: 1979
 μ : -0.3
 σ : 33.7

Channel 1
mn: -974
mx: 508
 μ : -7.8
 σ : 29.6

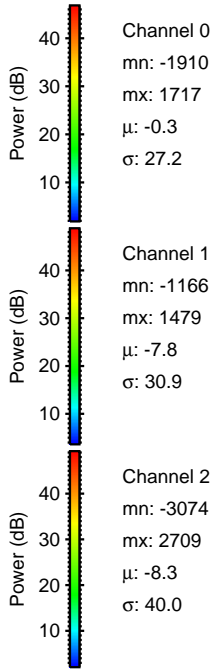
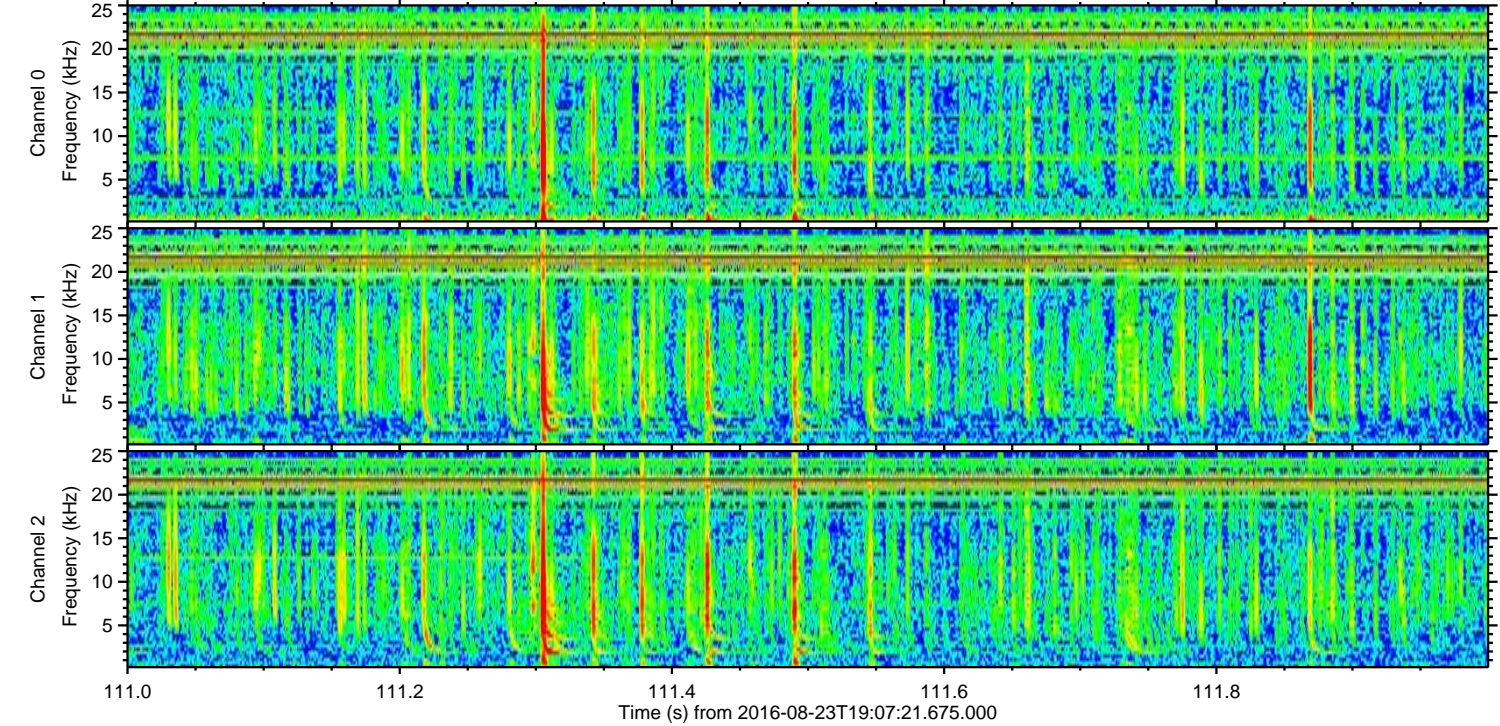
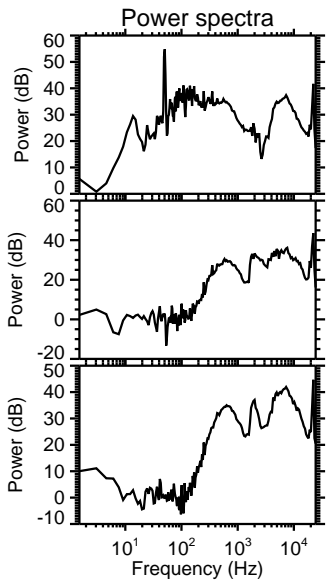
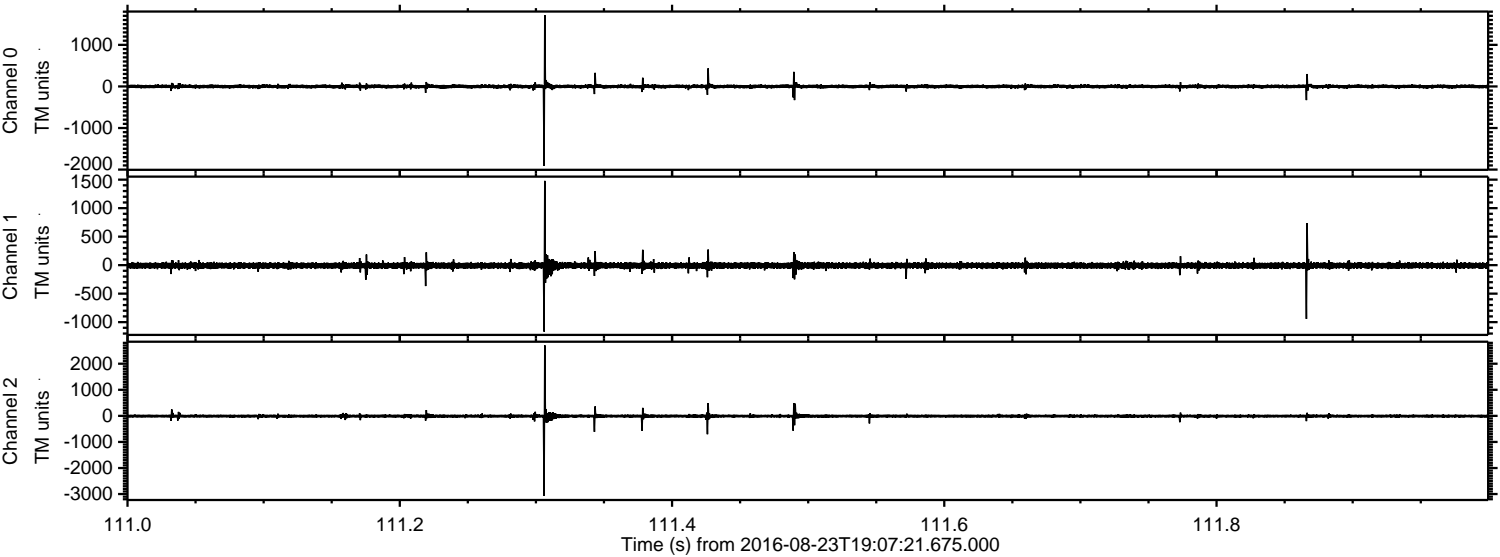
Channel 2
mn: -2307
mx: 3990
 μ : -8.4
 σ : 45.0

Processed Tue Aug 23 21:15:09 2016 by ELM ver.2012-10-06 from 001__elm20160823_190720__dat00.bin

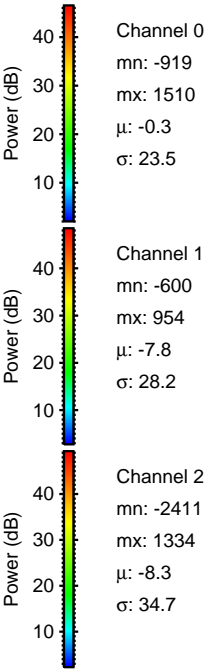
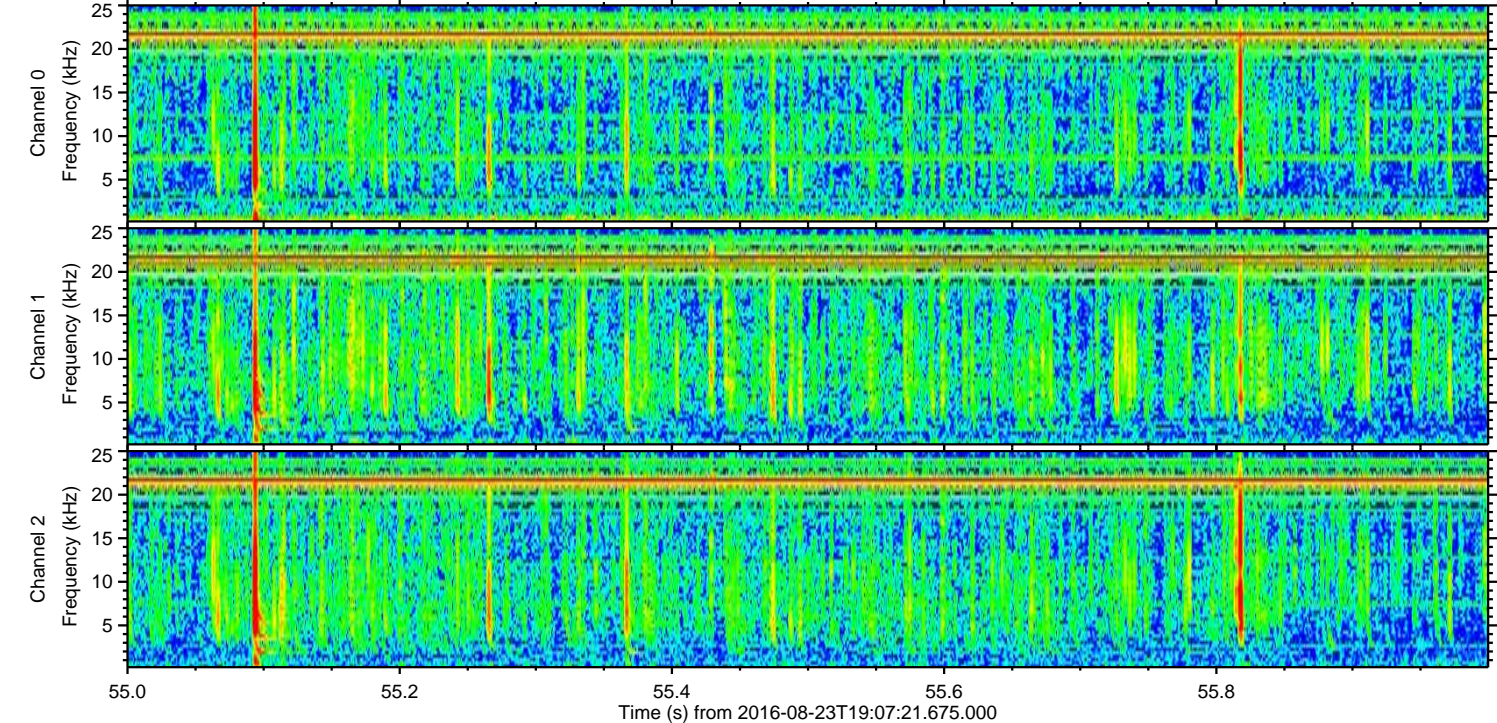
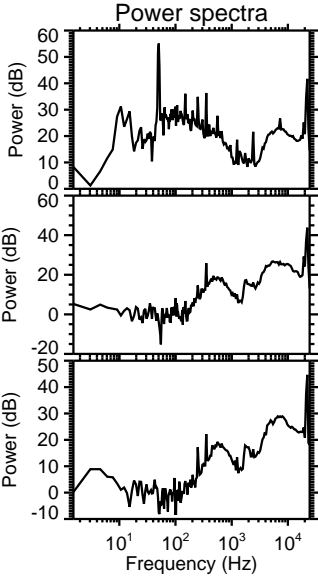
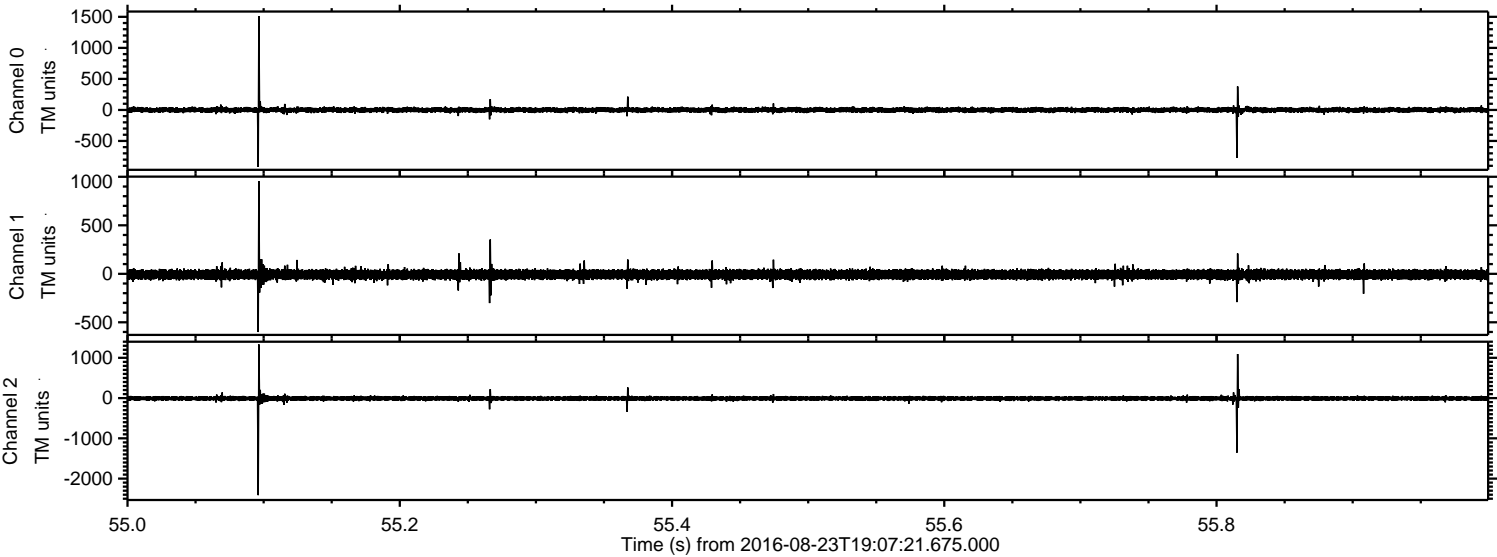


ELMAVAN 3D WAVEFORMS (Measured data sampled at 50 kHz) 51000 packets of 144 samples from 2016-08-23T19:07:21.675.000. Part 112/147

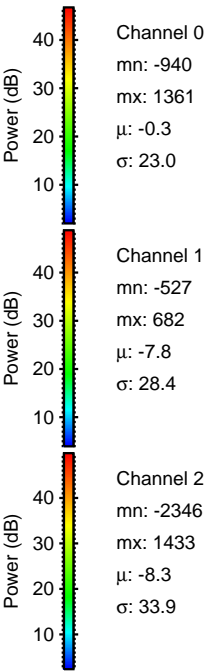
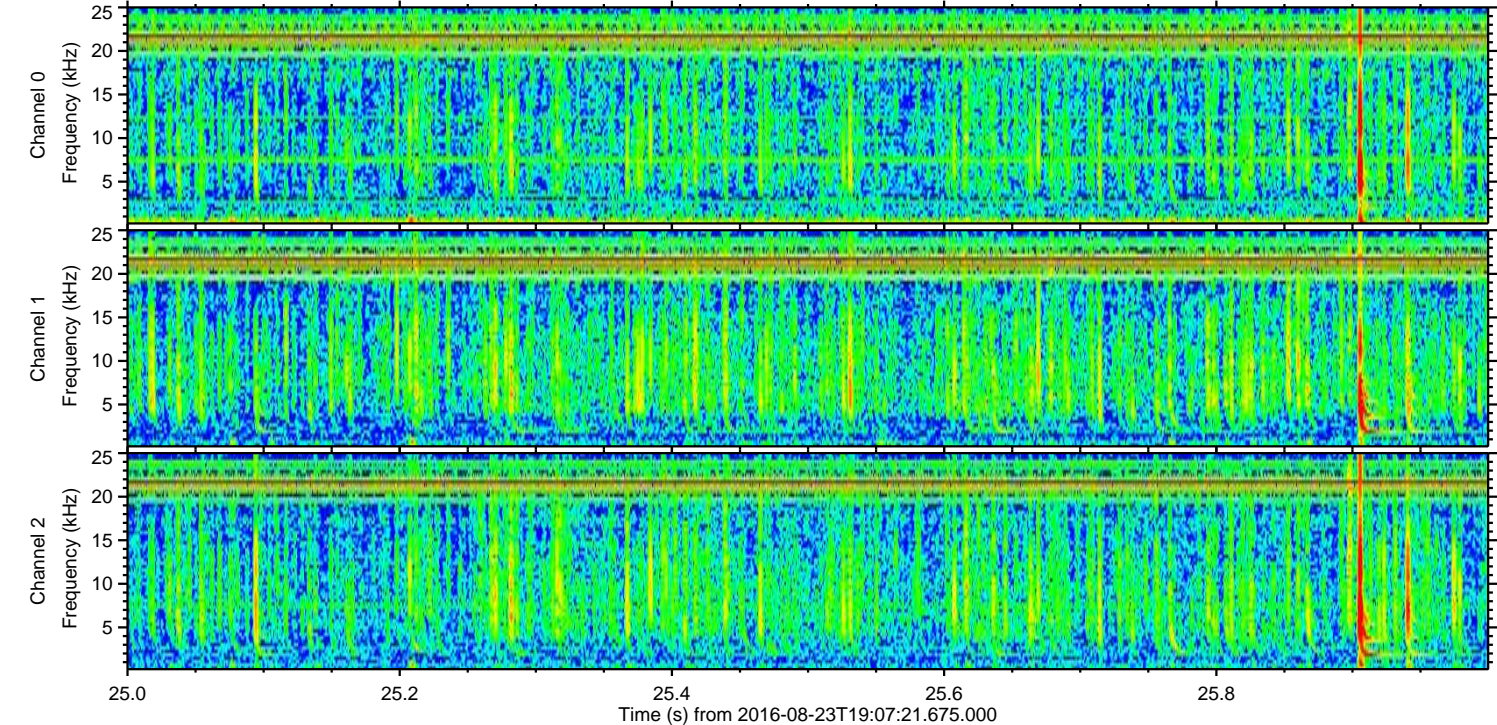
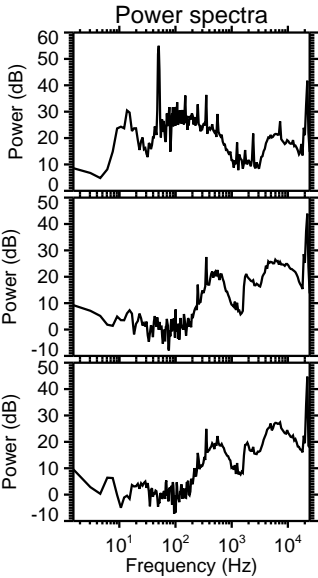
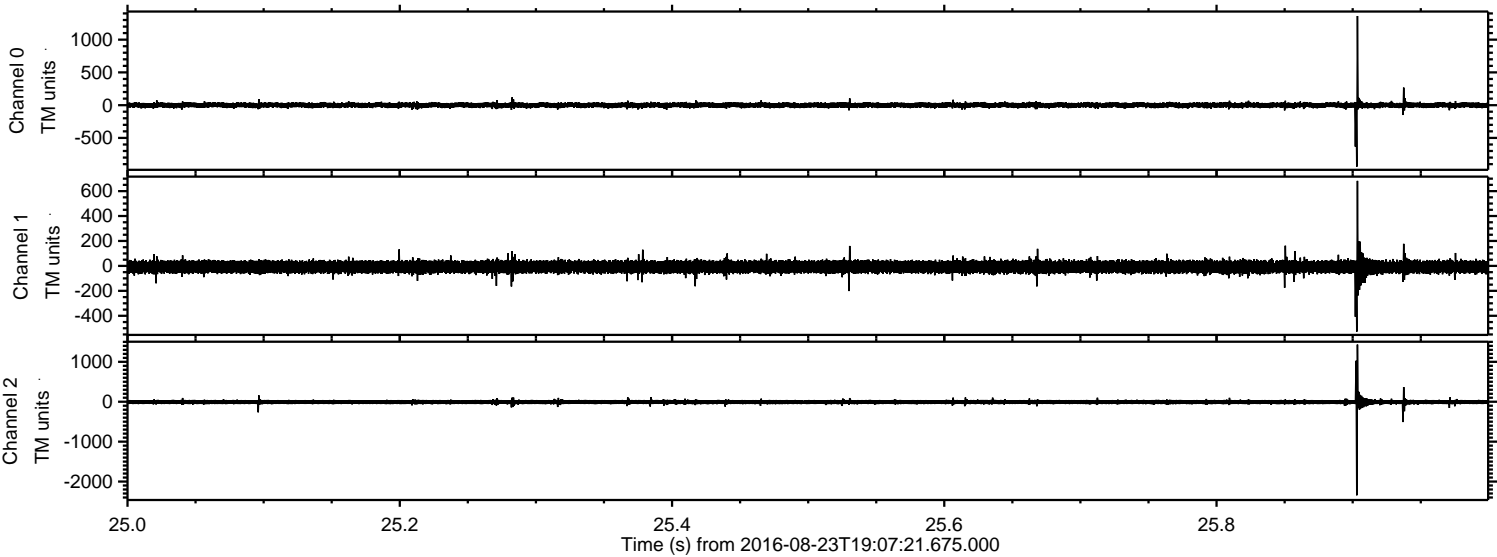
Processed Tue Aug 23 21:15:09 2016 by ELM ver.2012-10-06 from 001__elm20160823_190720__dat00.bin



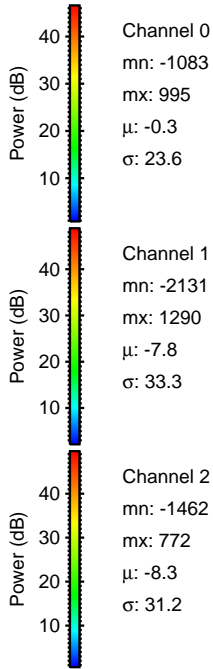
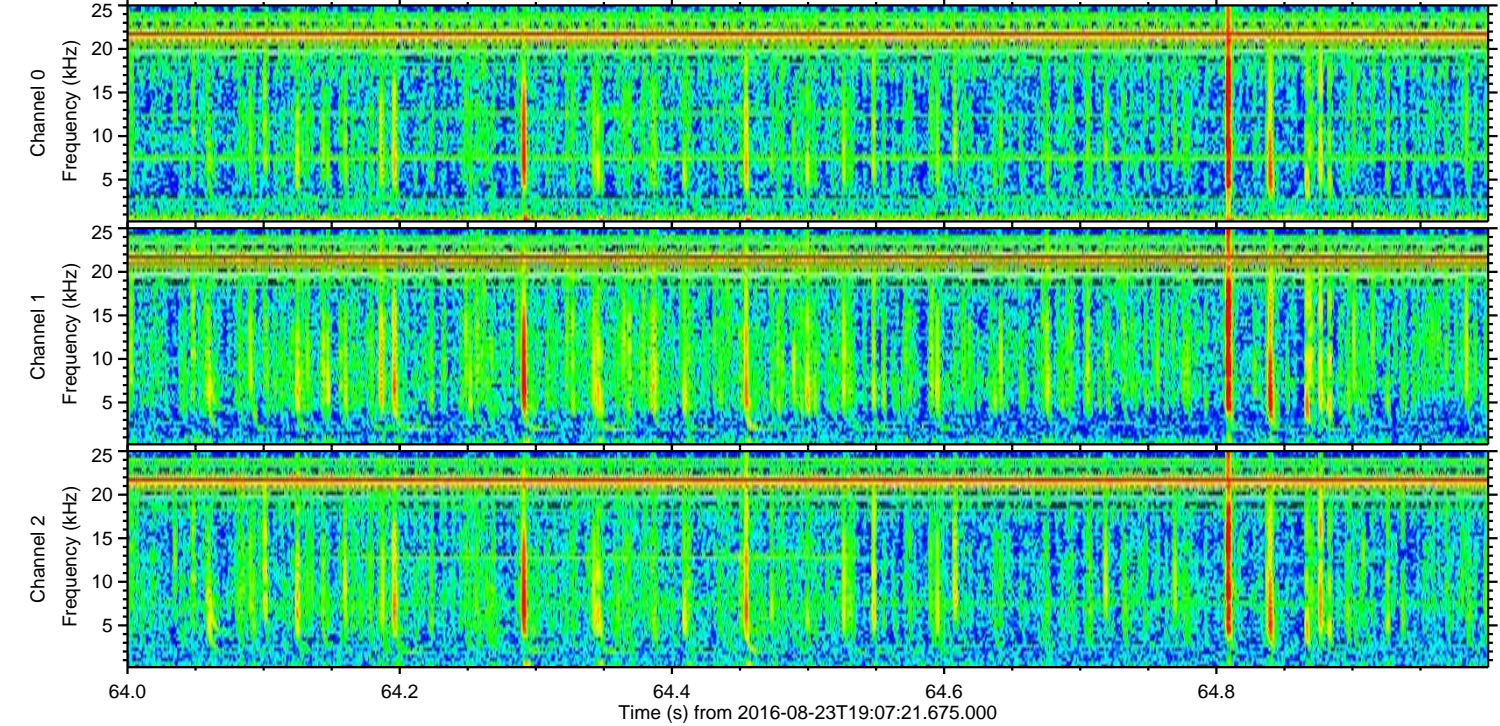
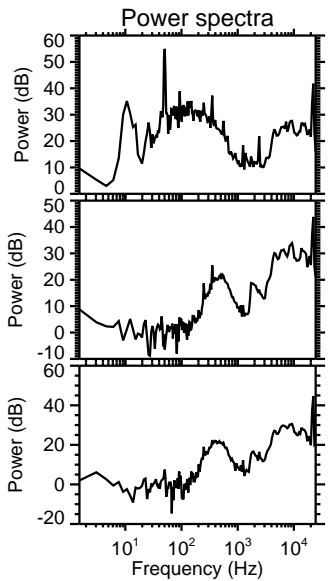
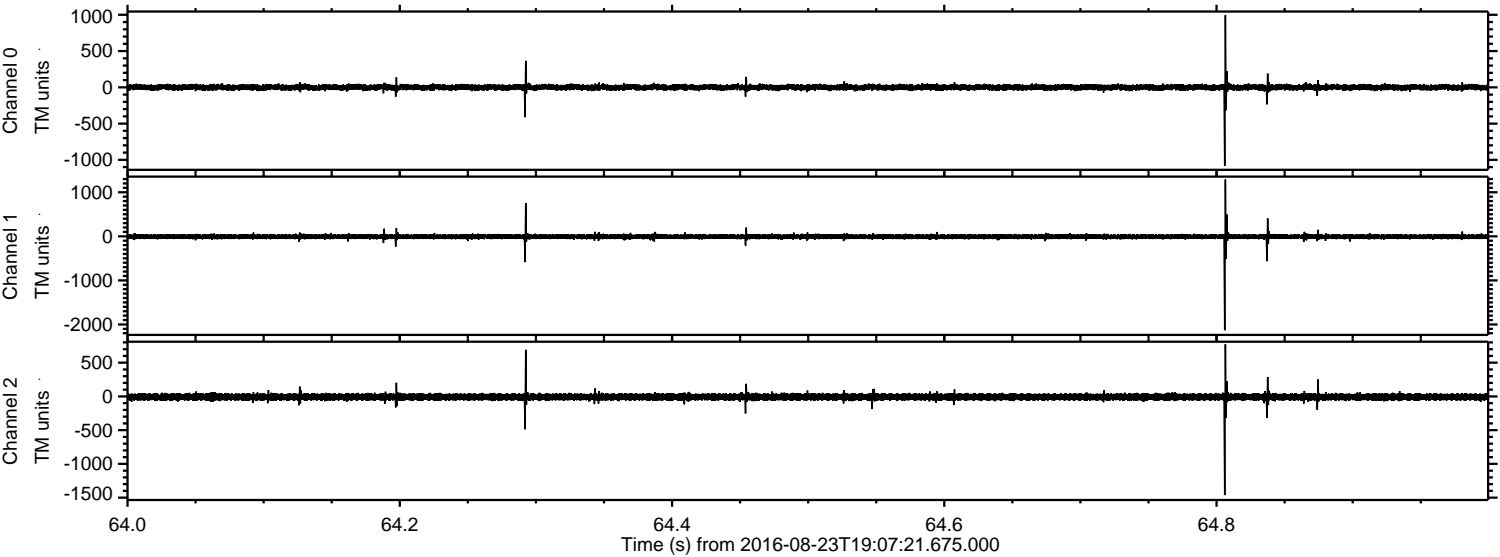
Processed Tue Aug 23 21:15:10 2016 by ELM ver.2012-10-06 from 001__elm20160823_190720__dat00.bin



Processed Tue Aug 23 21:15:11 2016 by ELM ver.2012-10-06 from 001__elm20160823_190720__dat00.bin



Processed Tue Aug 23 21:15:12 2016 by ELM ver.2012-10-06 from 001__elm20160823_190720__dat00.bin



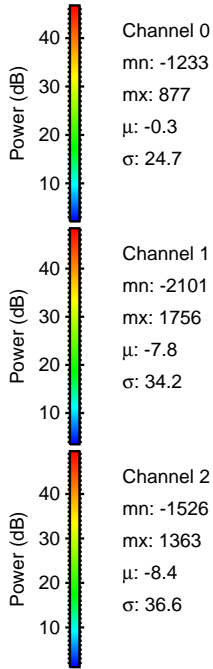
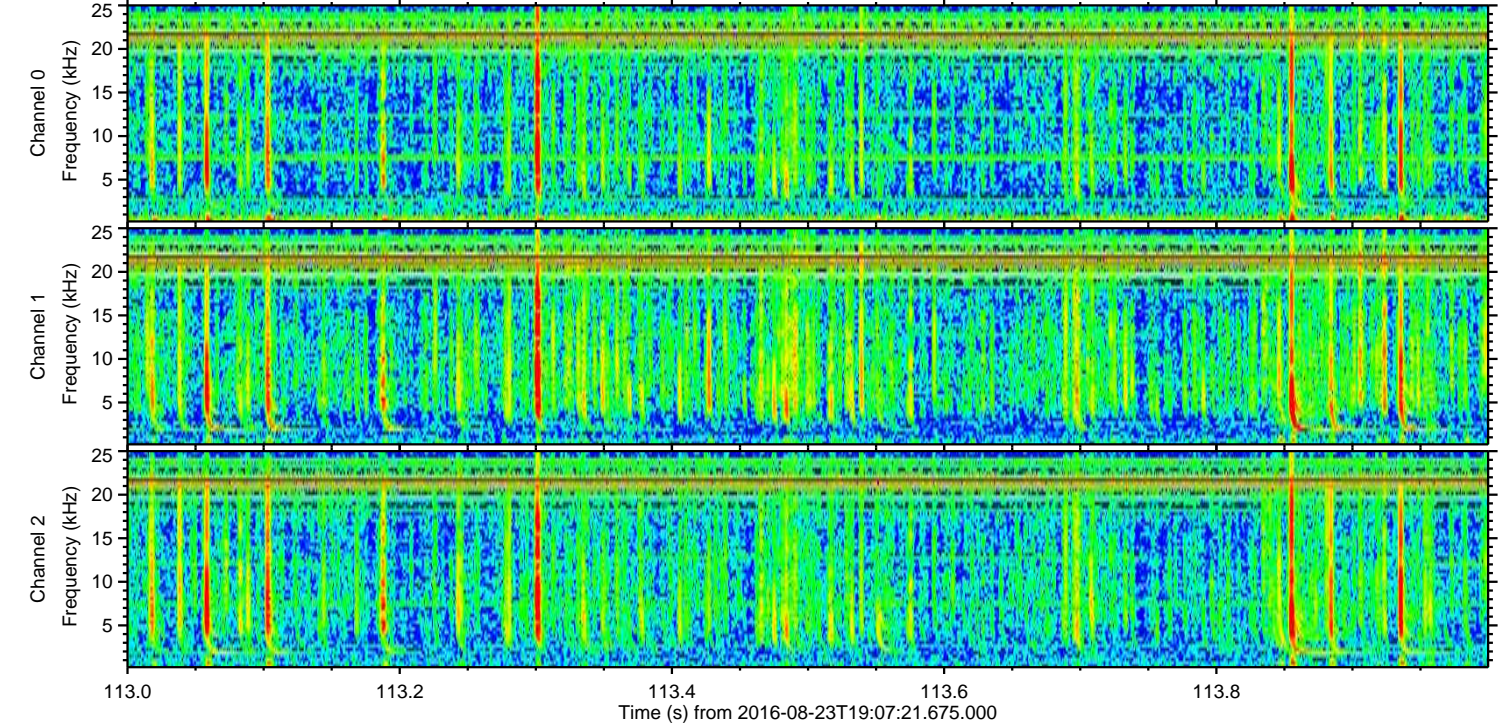
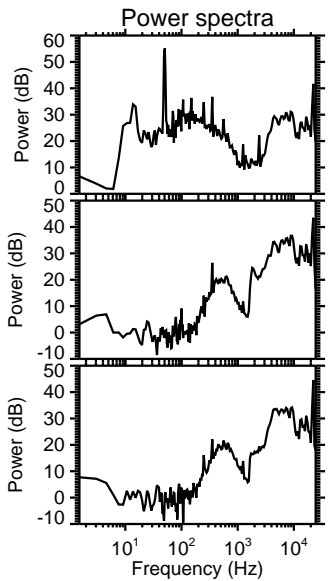
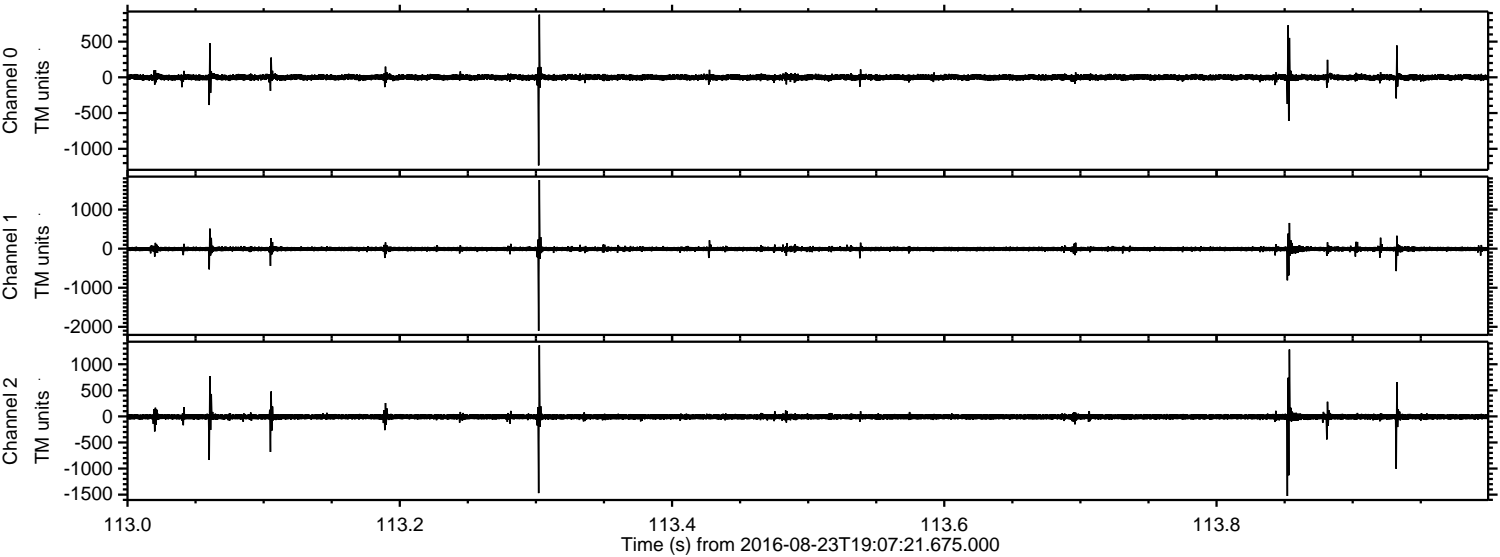
Channel 0
mn: -1083
mx: 995
 μ : -0.3
 σ : 23.6

Channel 1
mn: -2131
mx: 1290
 μ : -7.8
 σ : 33.3

Channel 2
mn: -1462
mx: 772
 μ : -8.3
 σ : 31.2

ELMAVAN 3D WAVEFORMS (Measured data sampled at 50 kHz) 51000 packets of 144 samples from 2016-08-23T19:07:21.675.000. Part 114/147

Processed Tue Aug 23 21:15:13 2016 by ELM ver.2012-10-06 from 001__elm20160823_190720__dat00.bin

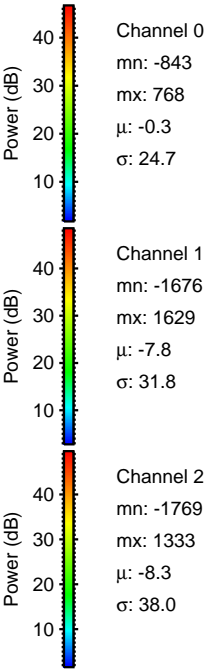
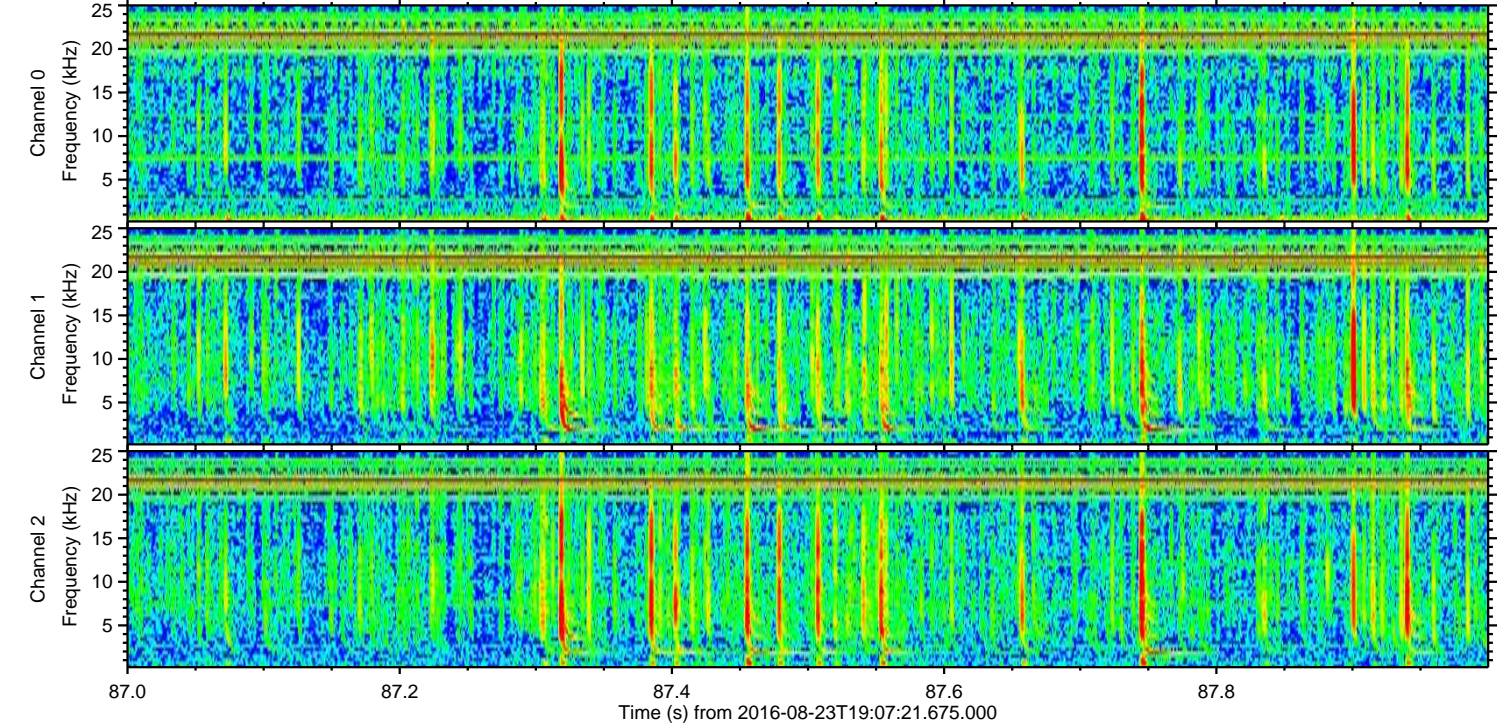
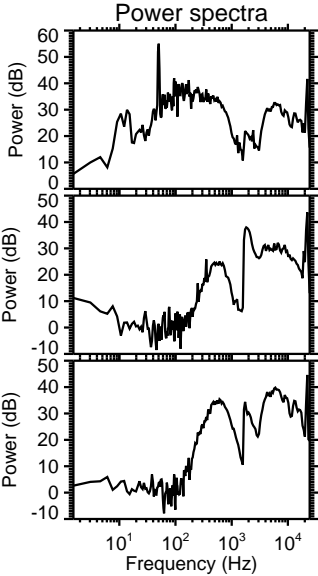
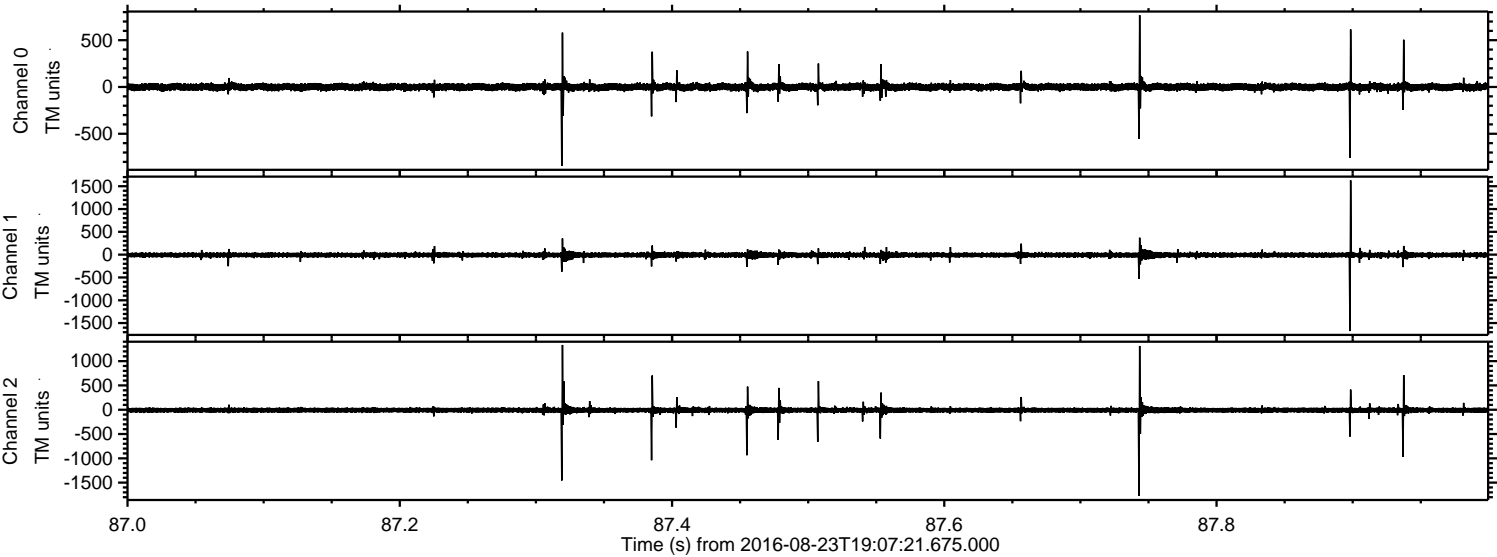


Channel 0
mn: -1233
mx: 877
 μ : -0.3
 σ : 24.7

Channel 1
mn: -2101
mx: 1756
 μ : -7.8
 σ : 34.2

Channel 2
mn: -1526
mx: 1363
 μ : -8.4
 σ : 36.6

Processed Tue Aug 23 21:15:14 2016 by ELM ver.2012-10-06 from 001__elm20160823_190720__dat00.bin

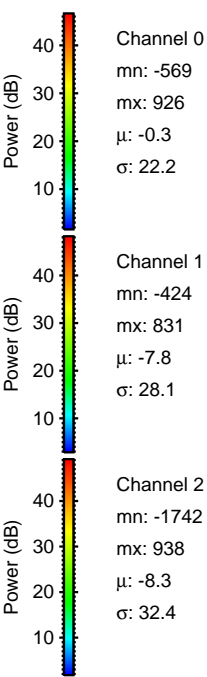
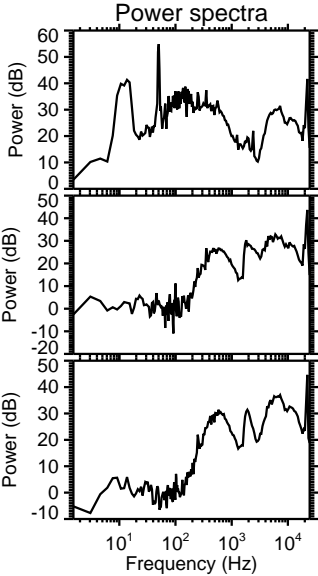
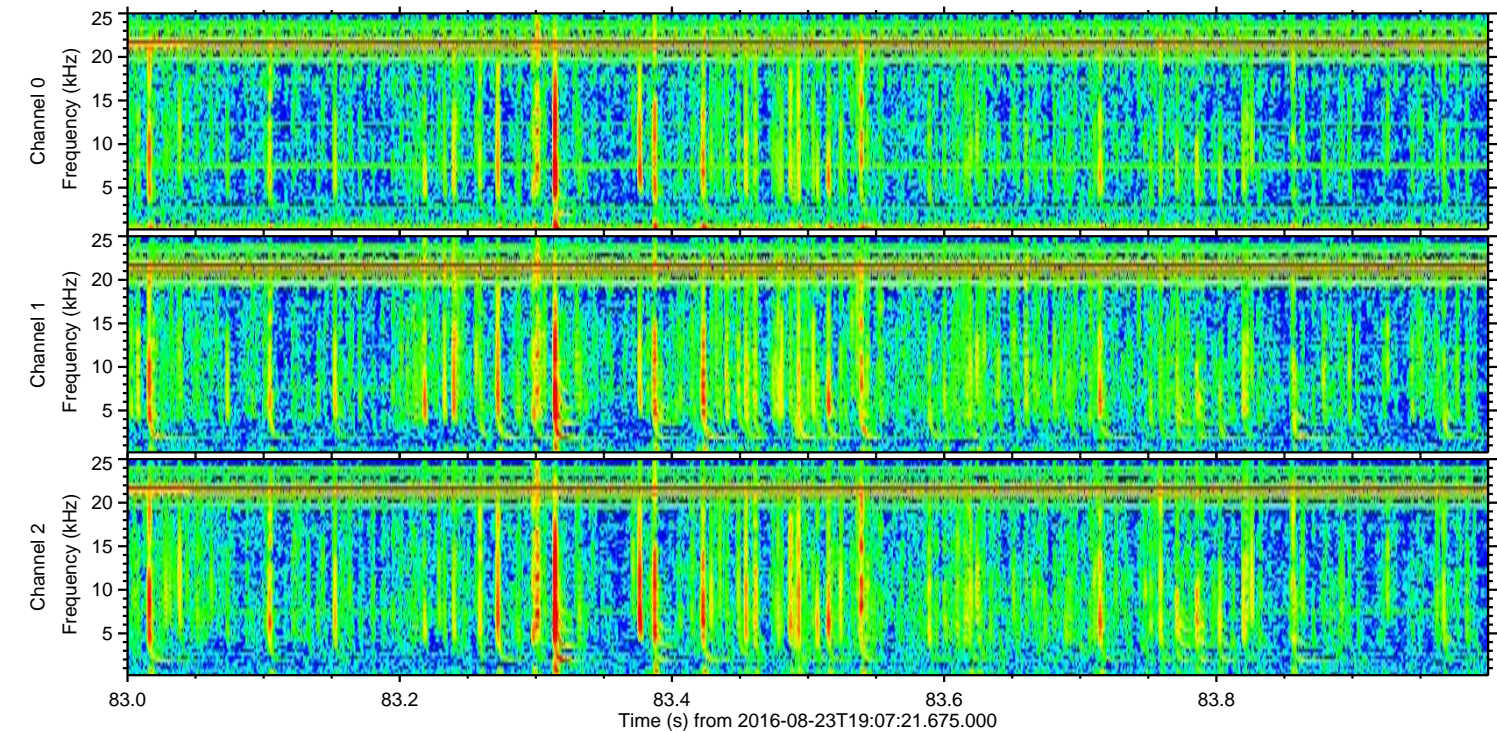
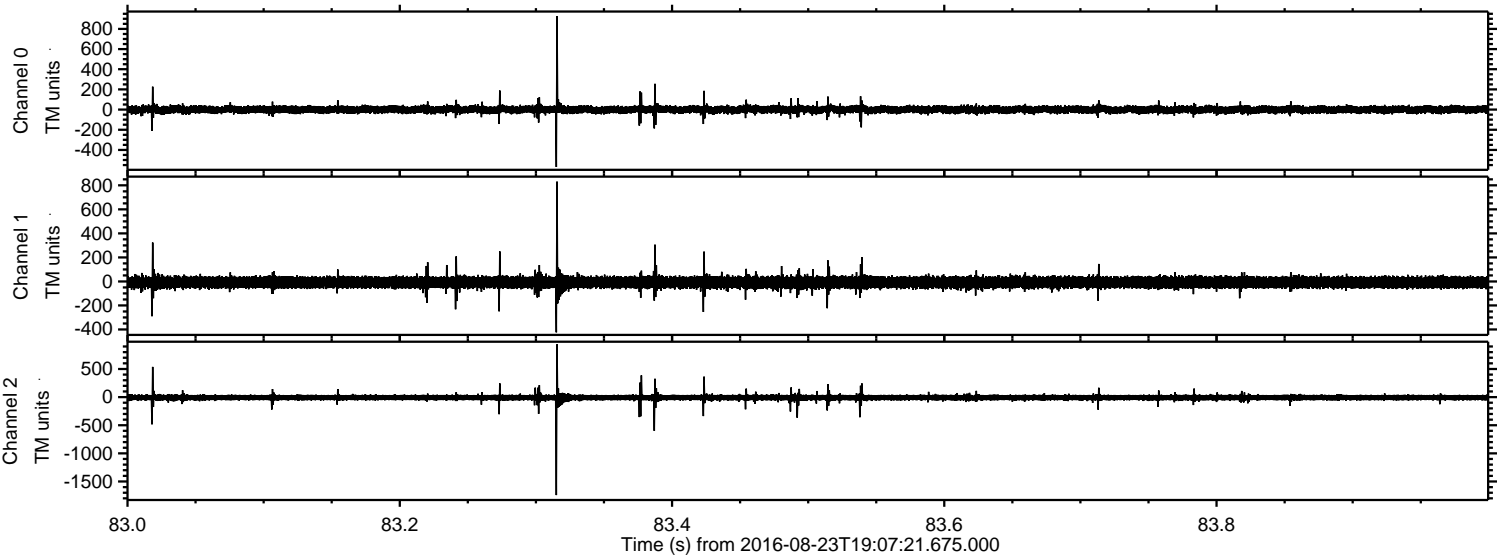


Channel 0
mn: -843
mx: 768
 μ : -0.3
 σ : 24.7

Channel 1
mn: -1676
mx: 1629
 μ : -7.8
 σ : 31.8

Channel 2
mn: -1769
mx: 1333
 μ : -8.3
 σ : 38.0

Processed Tue Aug 23 21:15:15 2016 by ELM ver.2012-10-06 from 001__elm20160823_190720__dat00.bin



Channel 0
mn: -569
mx: 926
 μ : -0.3
 σ : 22.2

Channel 1
mn: -424
mx: 831
 μ : -7.8
 σ : 28.1

Channel 2
mn: -1742
mx: 938
 μ : -8.3
 σ : 32.4

Processed Tue Aug 23 21:15:16 2016 by ELM ver.2012-10-06 from 001__elm20160823_190720__dat00.bin

