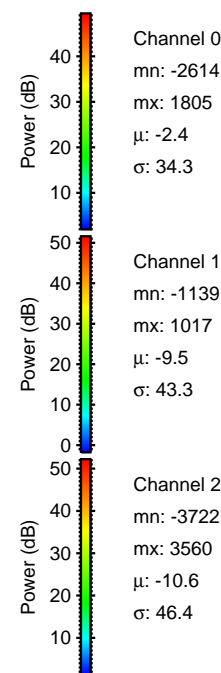
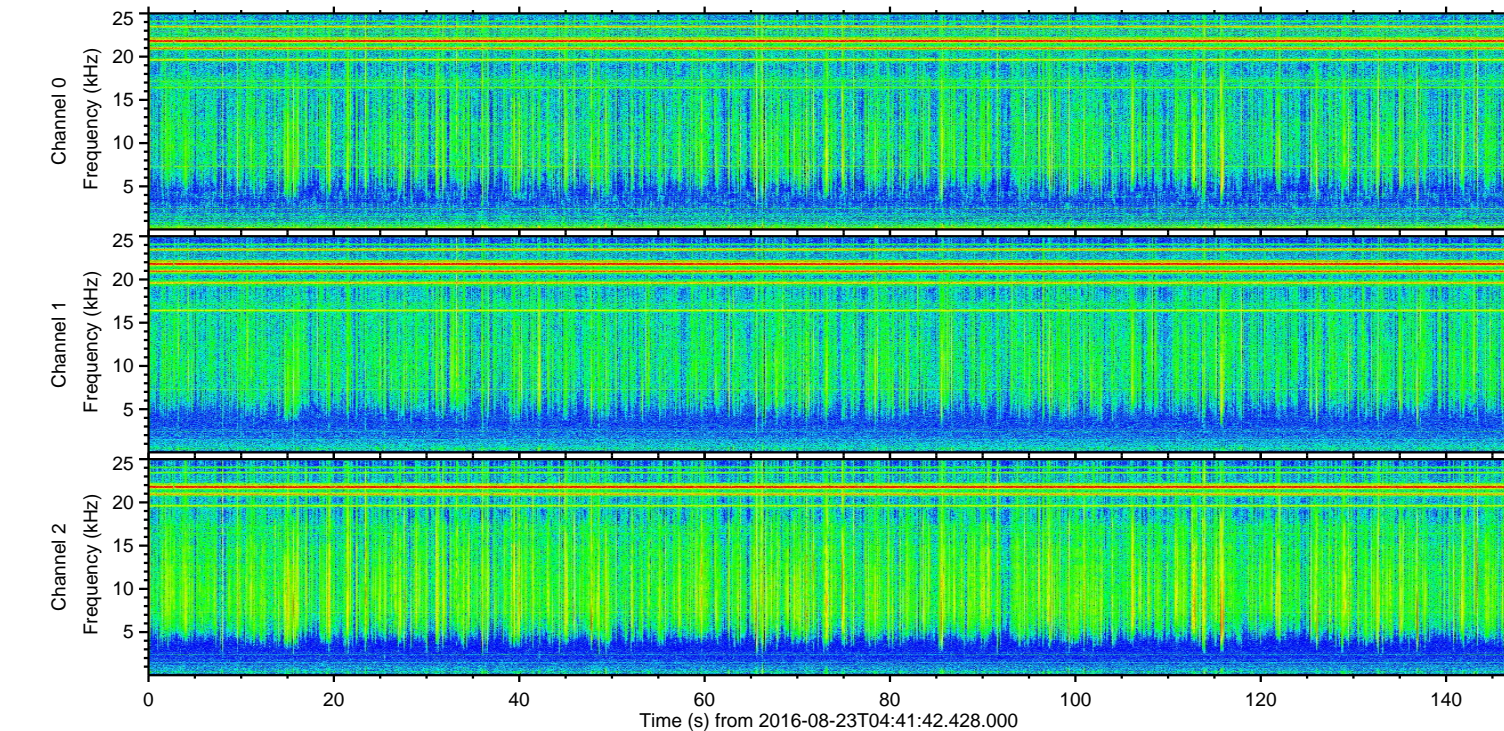
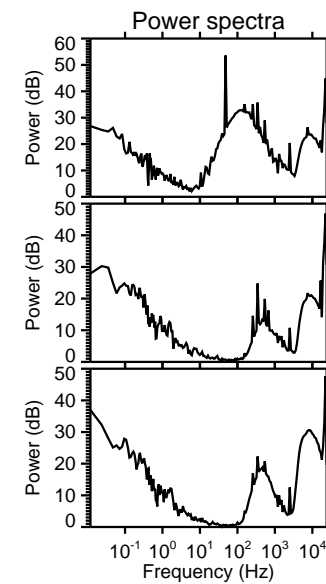
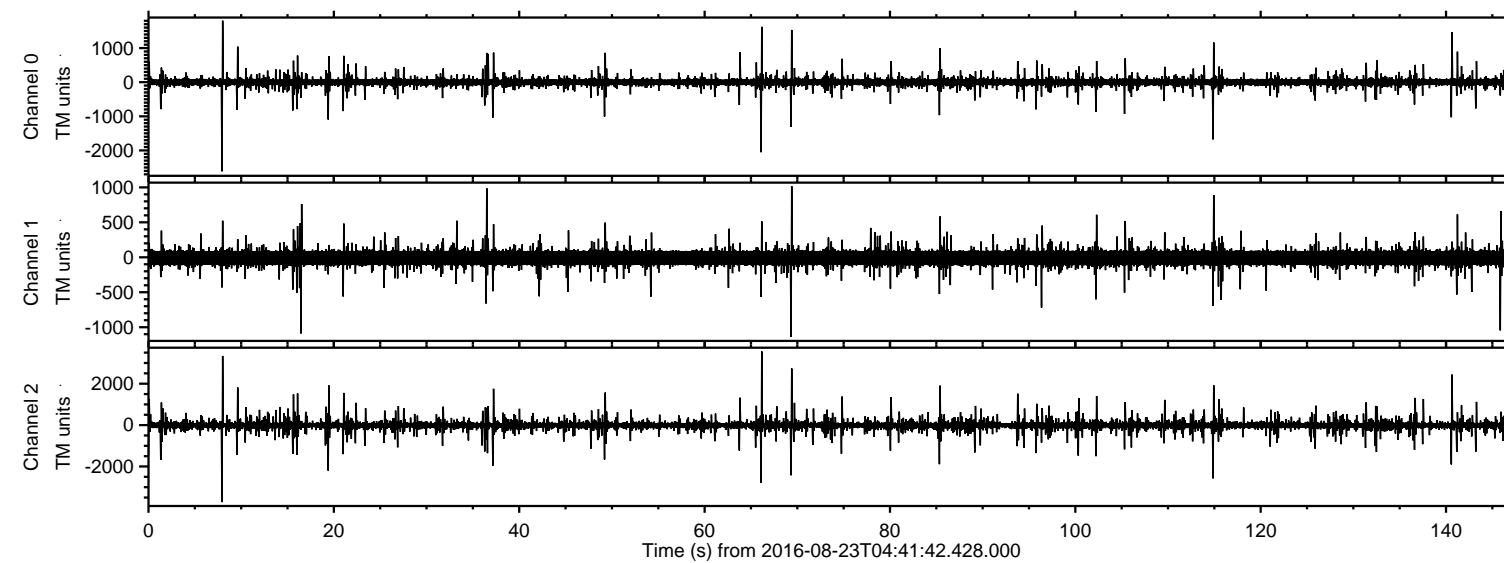


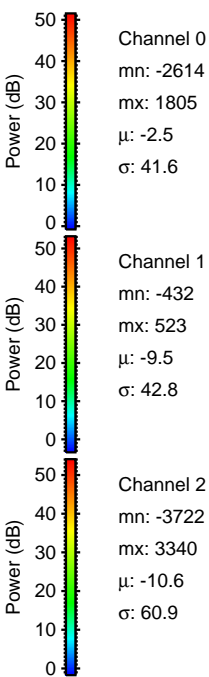
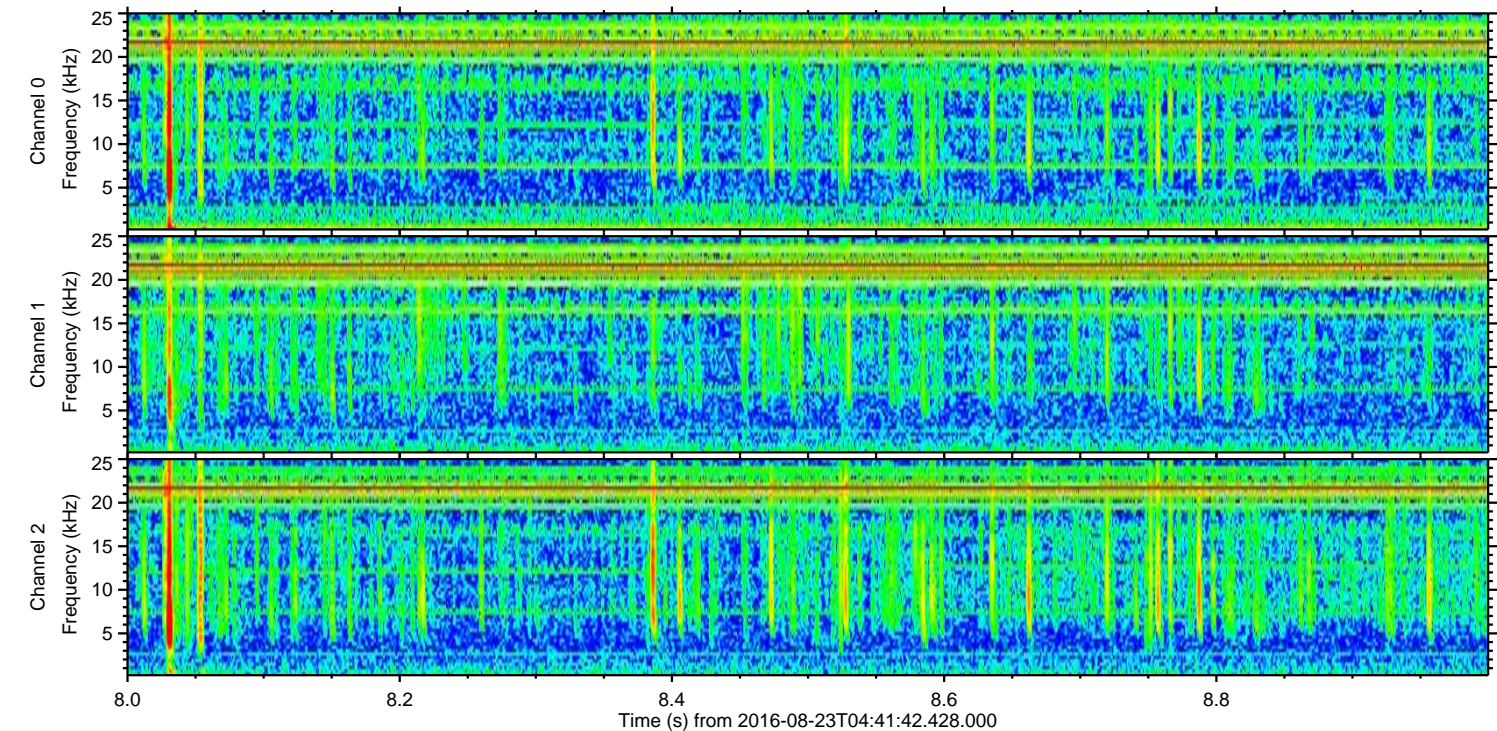
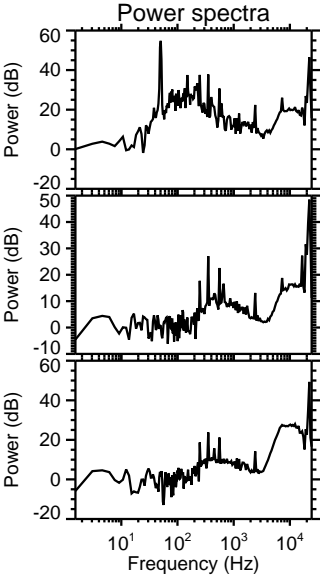
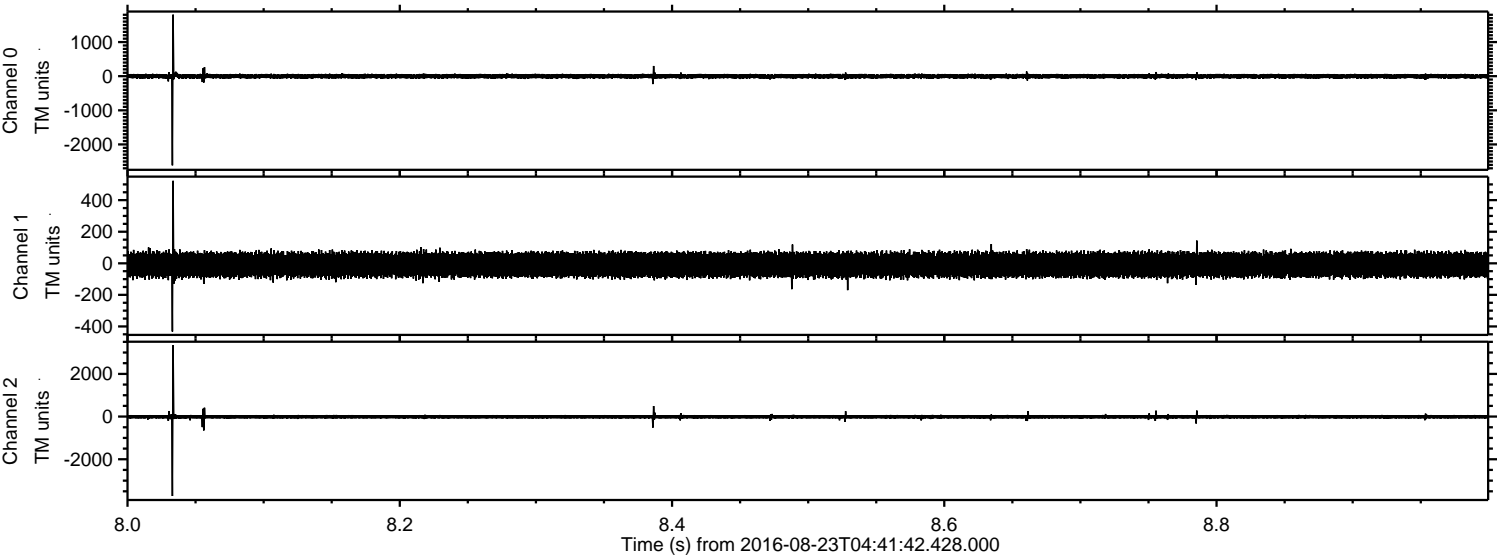
# ELMAVAN 3D WAVEFORMS (Measured data sampled at 50 kHz) 51000 packets of 144 samples from 2016-08-23T04:41:42.428.000.

Processed Tue Aug 23 06:49:27 2016 by ELM ver.2012-10-06 from 001\_\_elm20160823\_044141\_\_dat00.bin



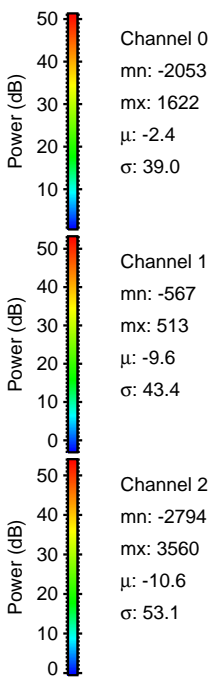
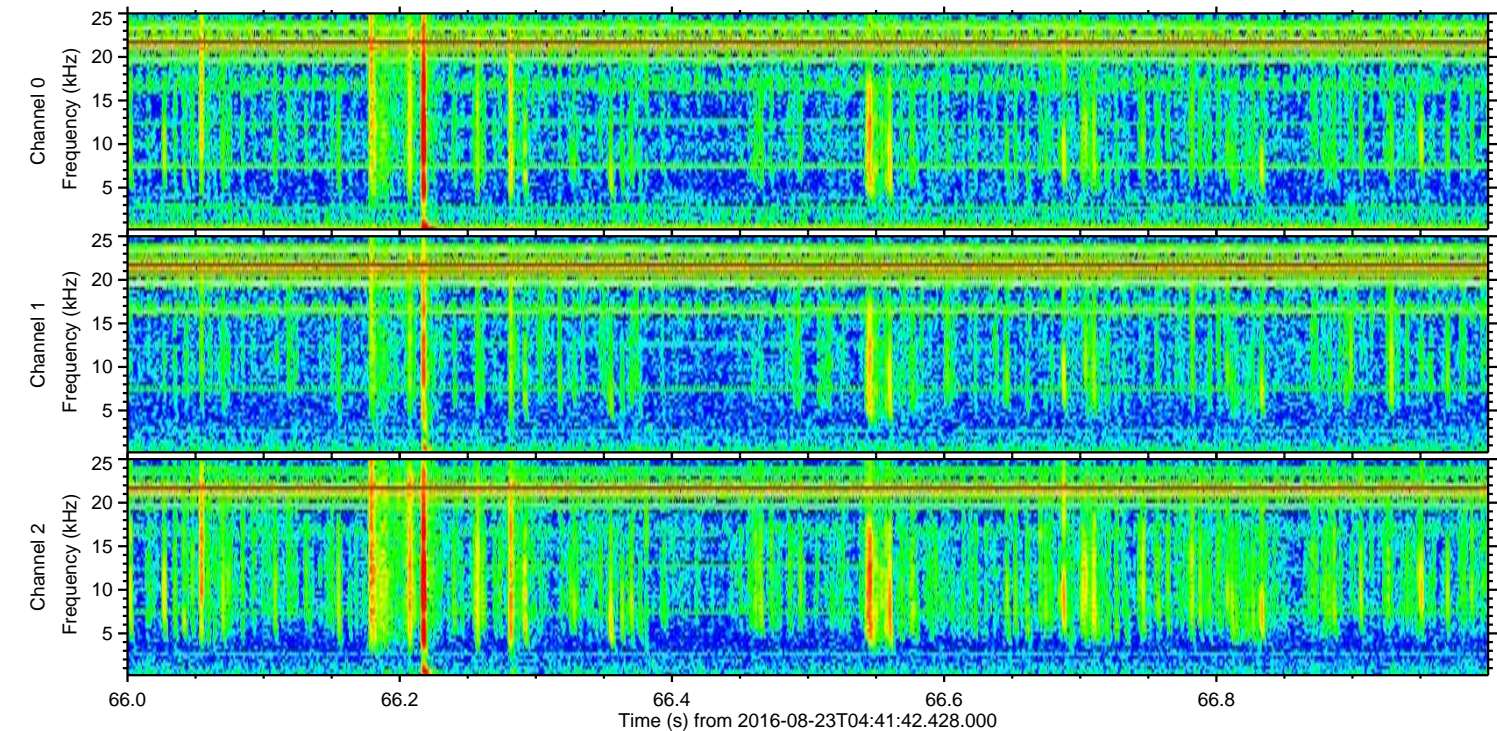
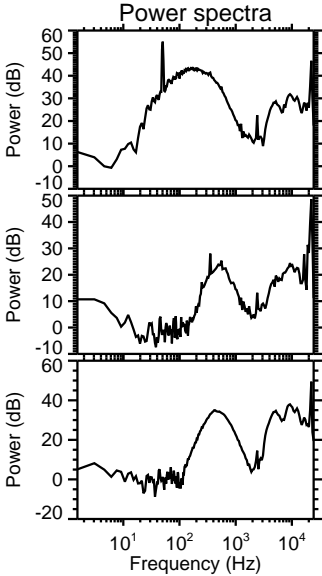
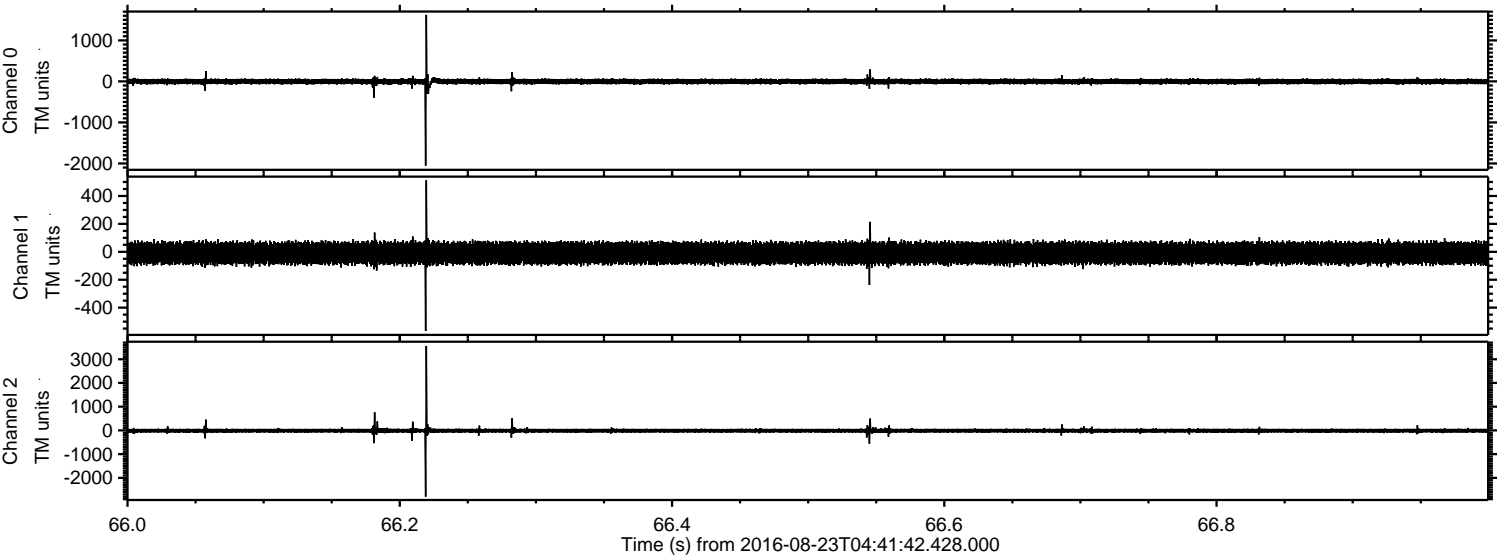


Processed Tue Aug 23 06:49:39 2016 by ELM ver.2012-10-06 from 001\_\_elm20160823\_044141\_\_dat00.bin



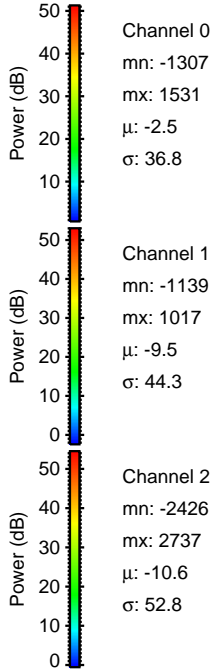
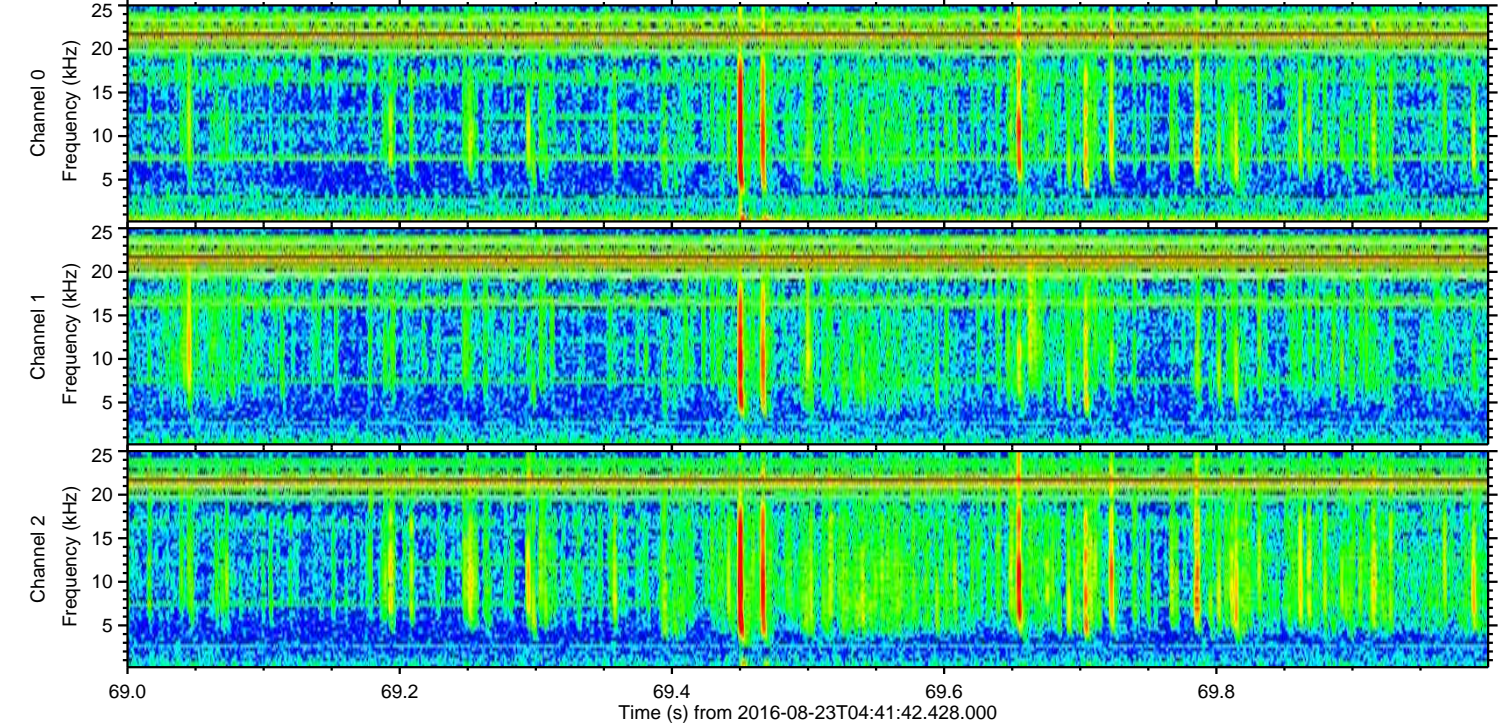
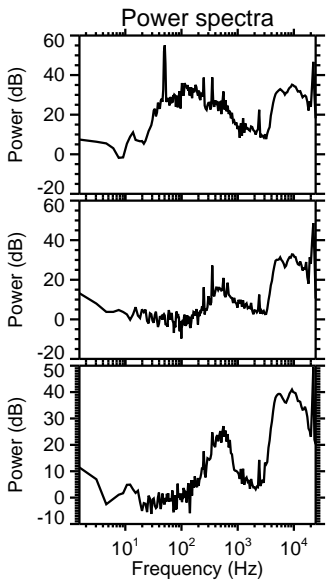
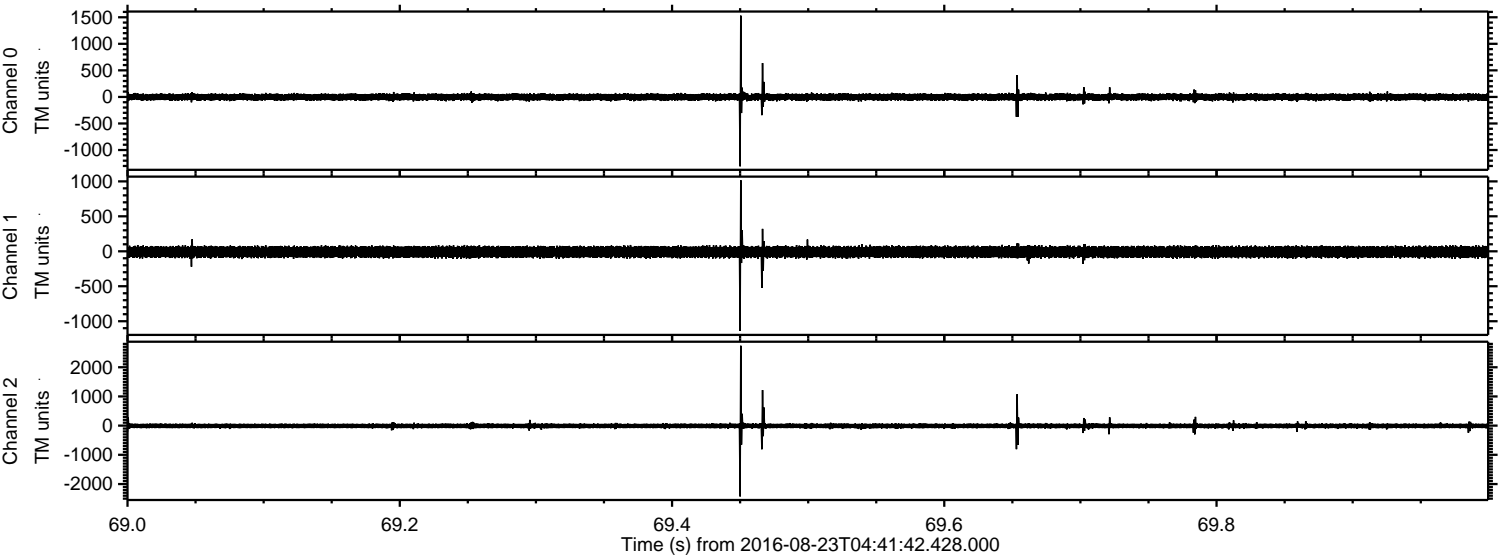


Processed Tue Aug 23 06:49:40 2016 by ELM ver.2012-10-06 from 001\_\_elm20160823\_044141\_\_dat00.bin





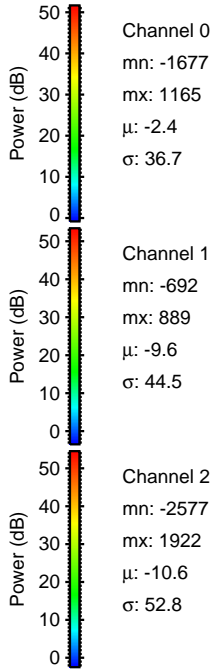
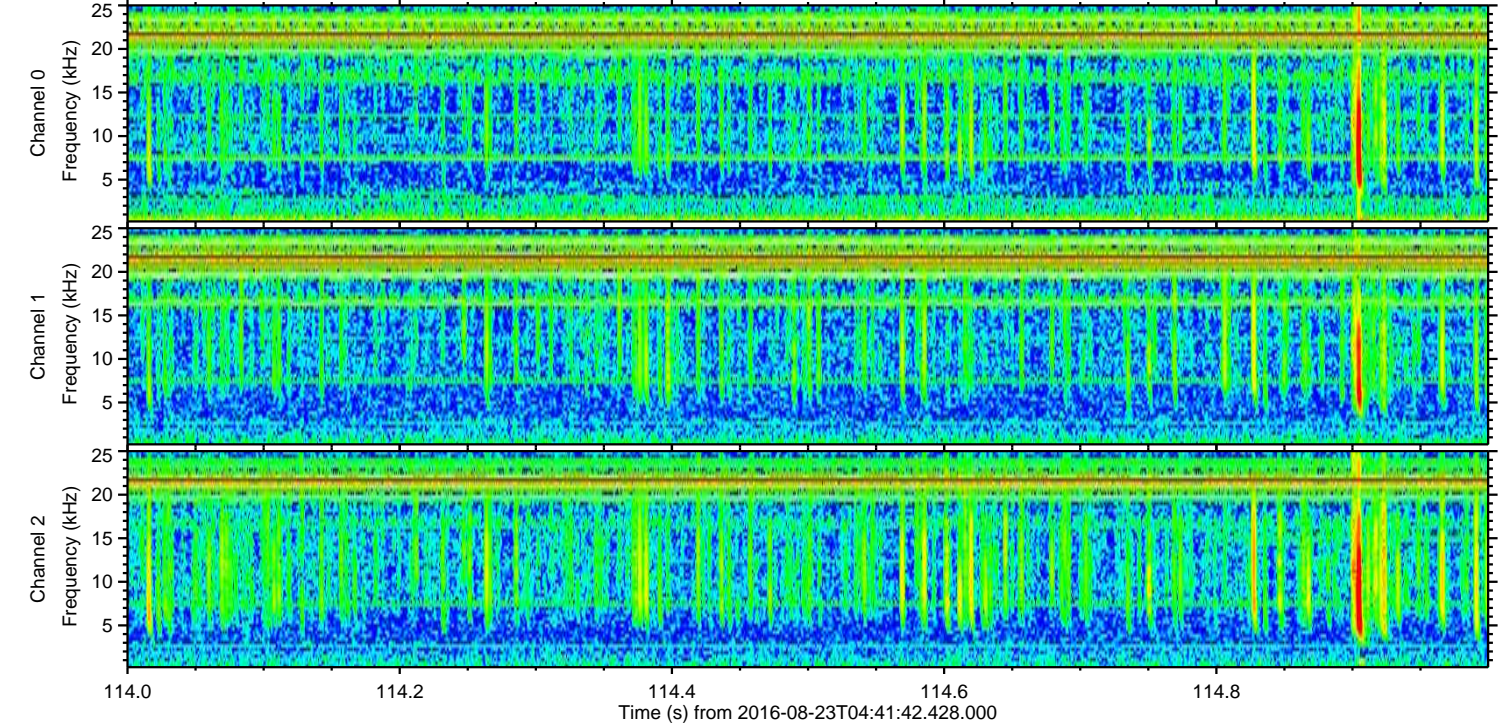
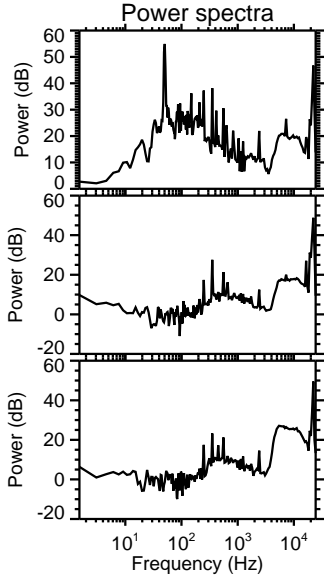
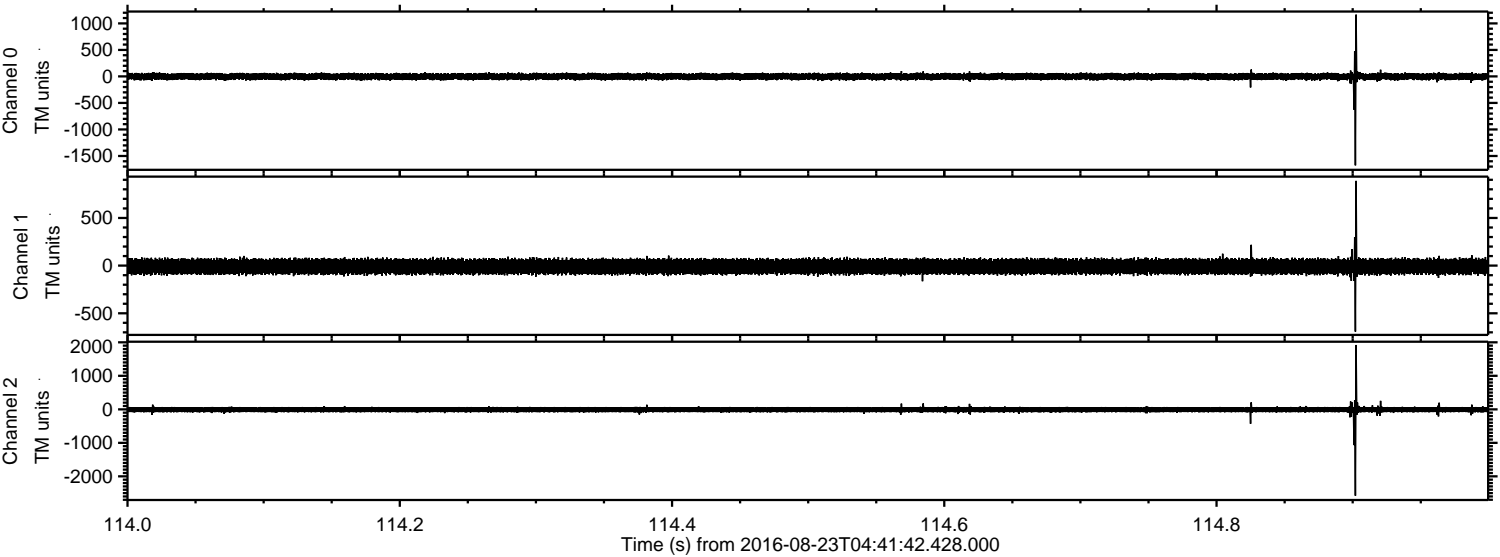
Processed Tue Aug 23 06:49:41 2016 by ELM ver.2012-10-06 from 001\_\_elm20160823\_044141\_\_dat00.bin





ELMAVAN 3D WAVEFORMS (Measured data sampled at 50 kHz) 51000 packets of 144 samples from 2016-08-23T04:41:42.428.000. Part 115/147

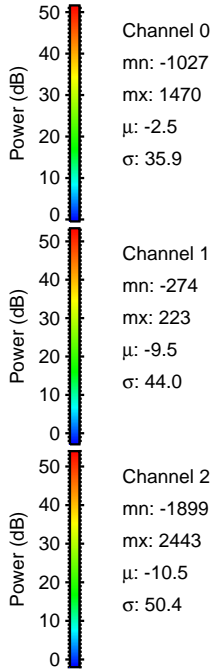
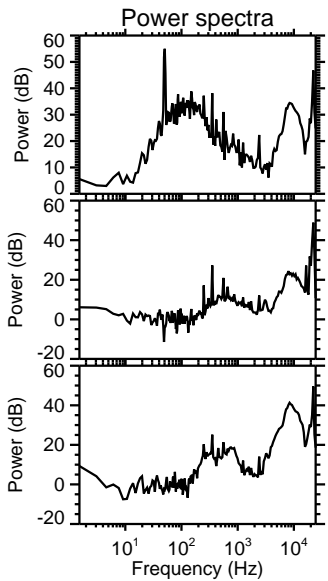
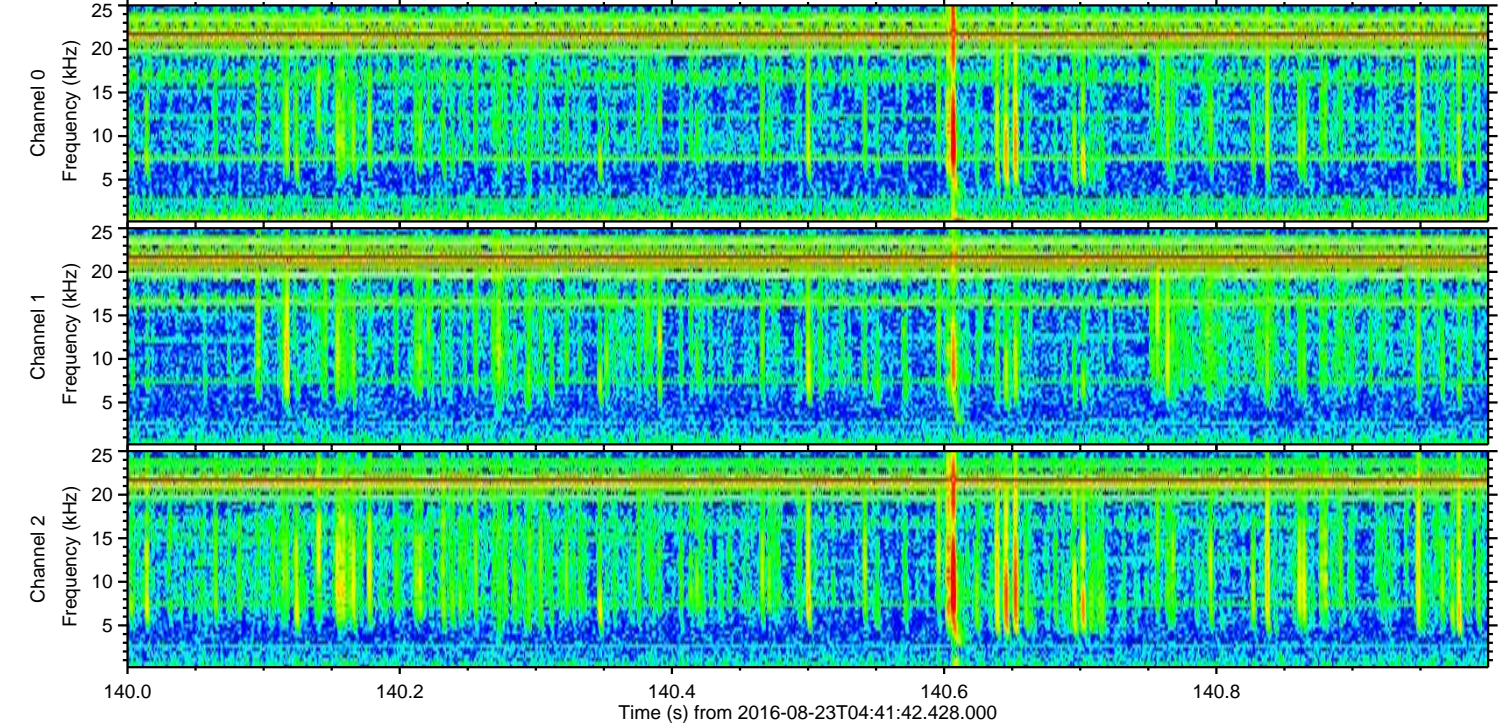
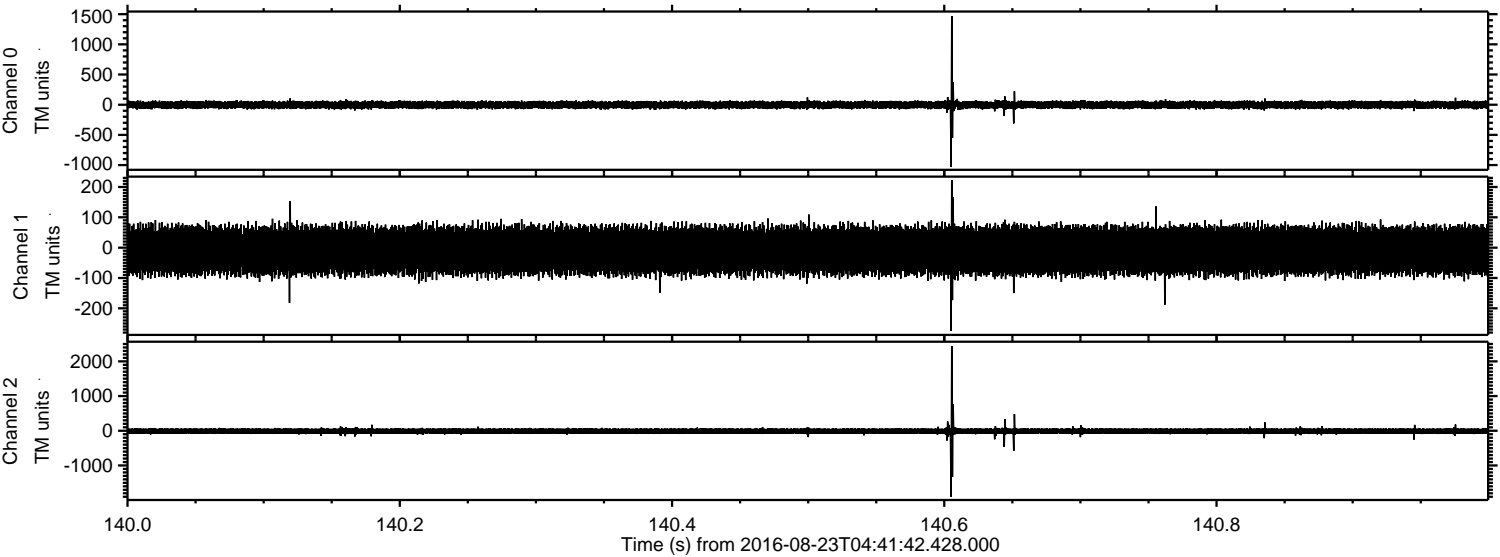
Processed Tue Aug 23 06:49:41 2016 by ELM ver.2012-10-06 from 001\_\_elm20160823\_044141\_\_dat00.bin





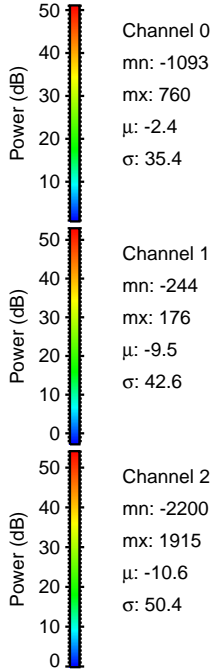
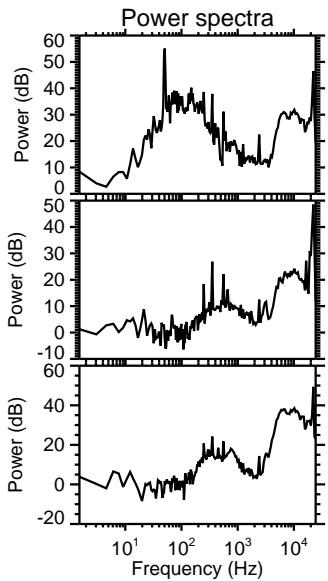
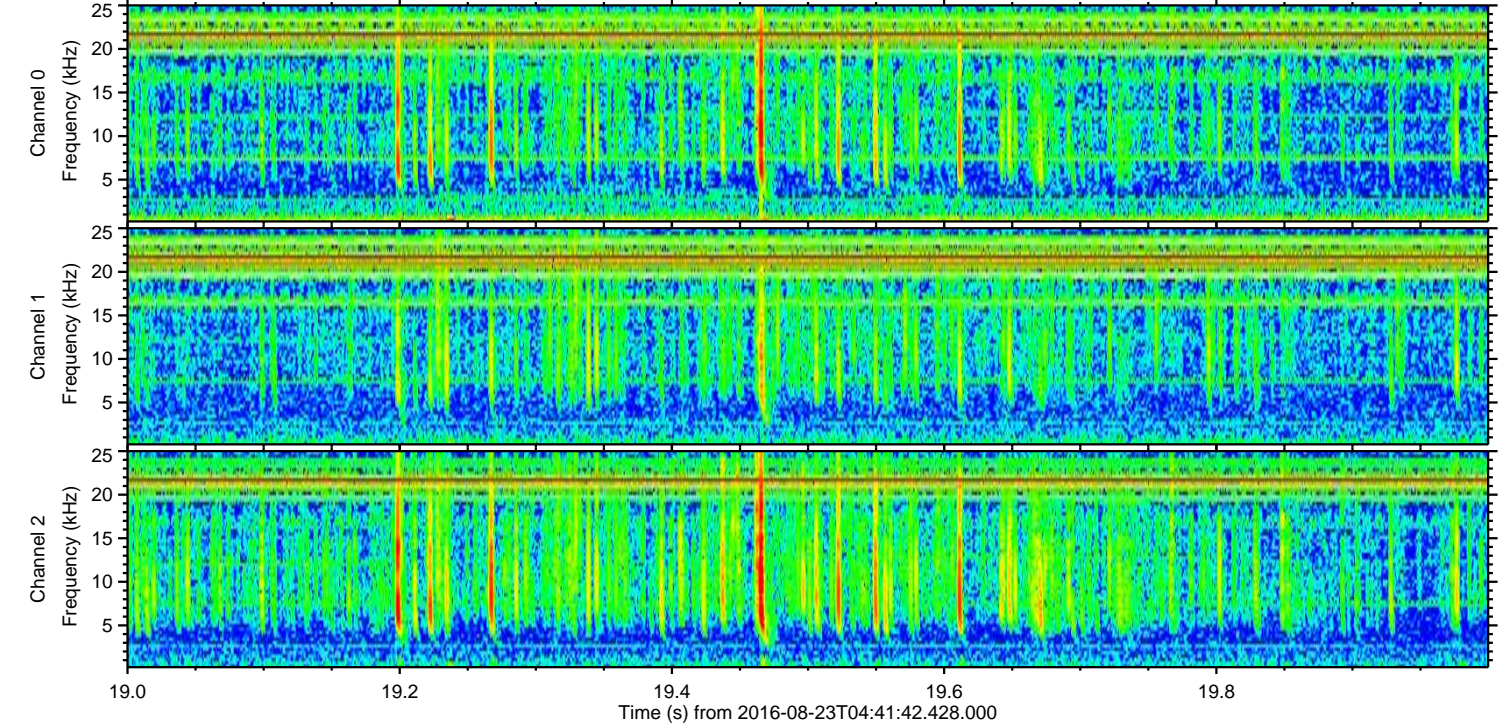
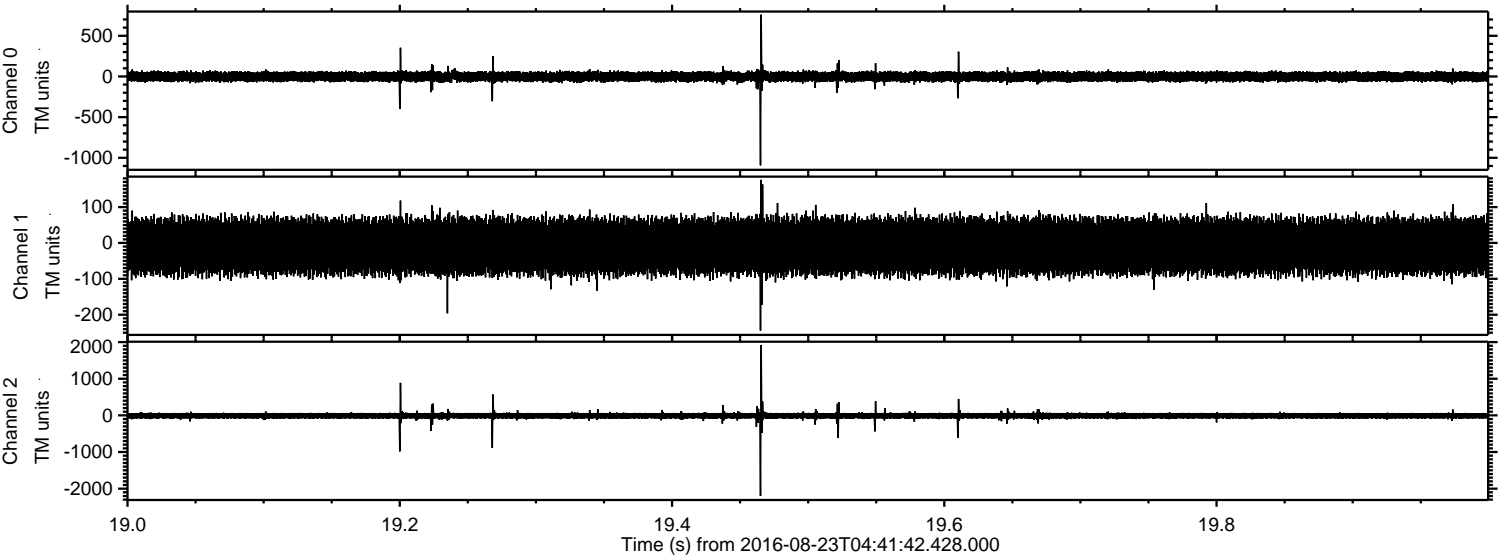
ELMAVAN 3D WAVEFORMS (Measured data sampled at 50 kHz) 51000 packets of 144 samples from 2016-08-23T04:41:42.428.000. Part 141/147

Processed Tue Aug 23 06:49:42 2016 by ELM ver.2012-10-06 from 001\_\_elm20160823\_044141\_\_dat00.bin





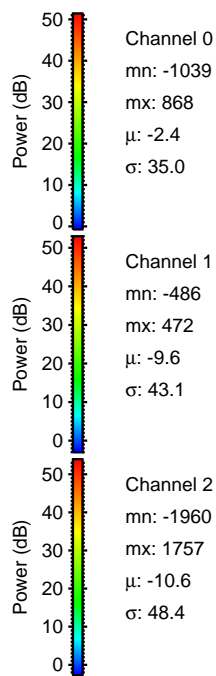
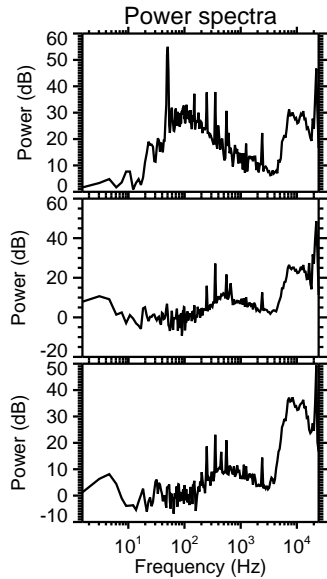
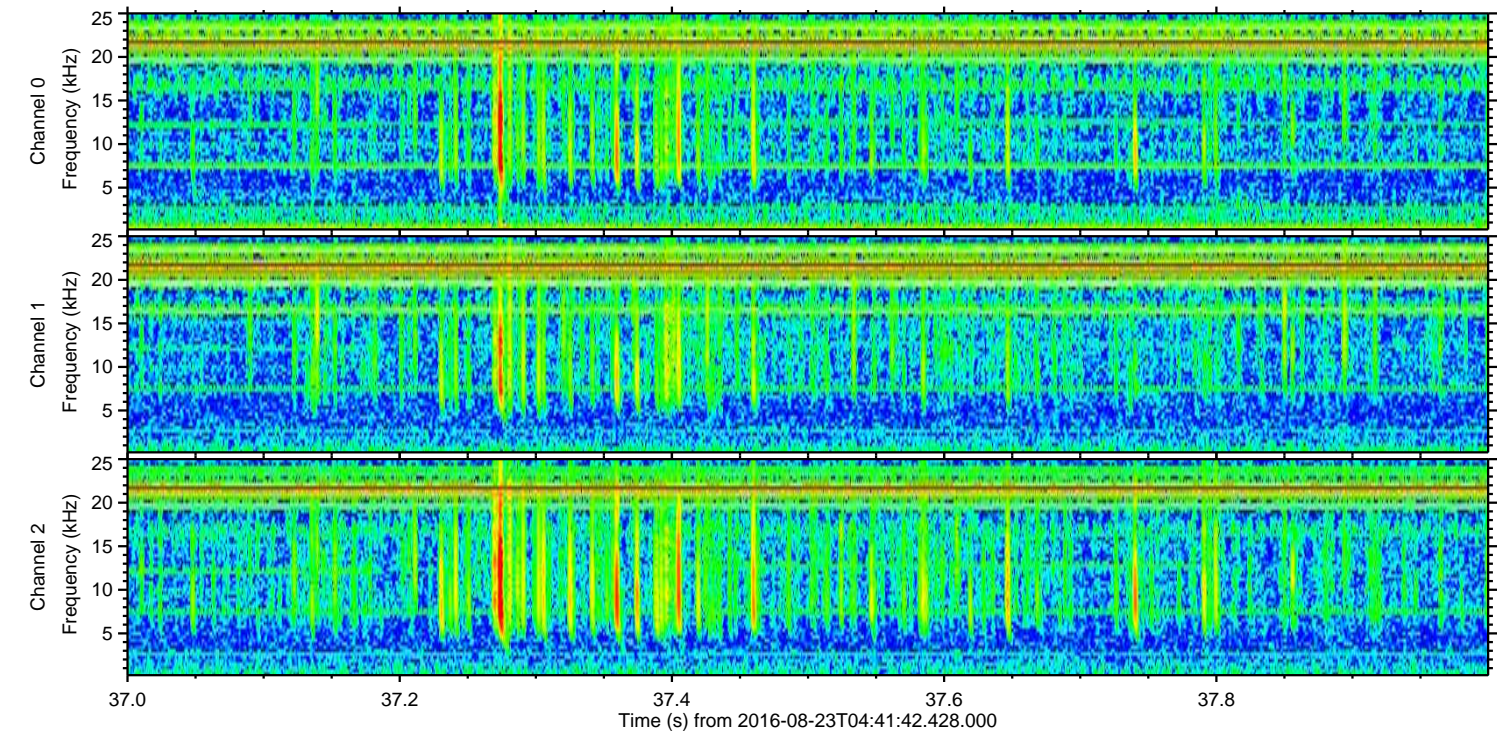
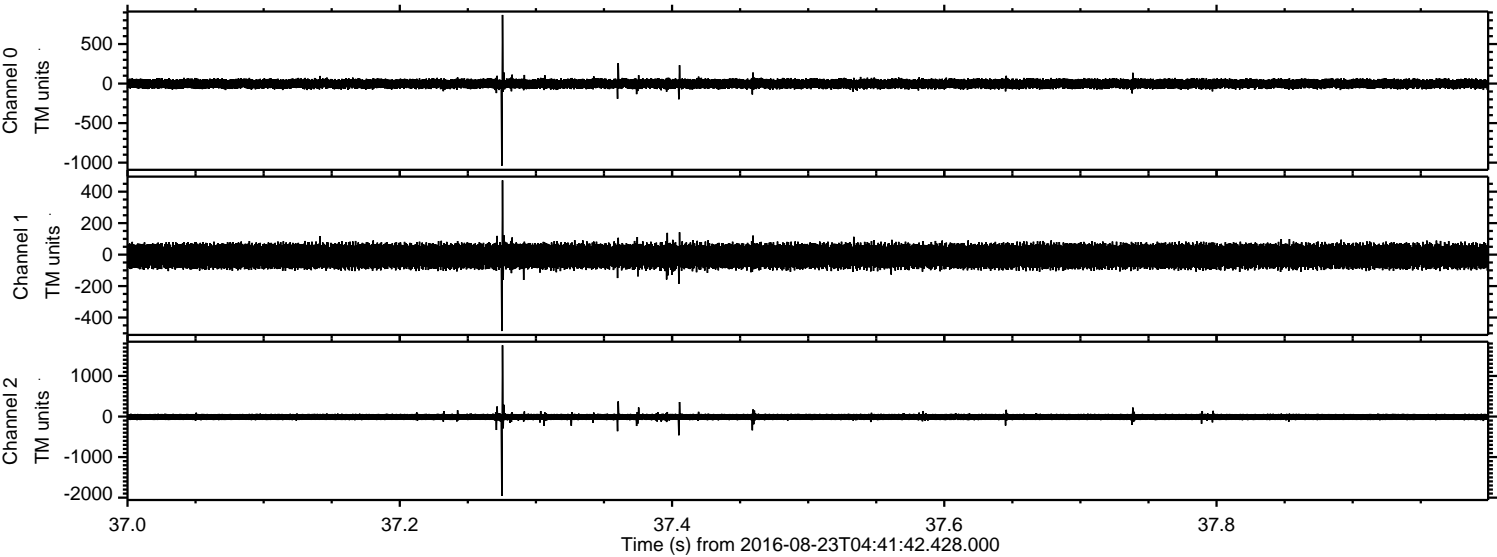
Processed Tue Aug 23 06:49:43 2016 by ELM ver.2012-10-06 from 001\_\_elm20160823\_044141\_\_dat00.bin





ELMAVAN 3D WAVEFORMS (Measured data sampled at 50 kHz) 51000 packets of 144 samples from 2016-08-23T04:41:42.428.000. Part 38/147

Processed Tue Aug 23 06:49:44 2016 by ELM ver.2012-10-06 from 001\_\_elm20160823\_044141\_\_dat00.bin



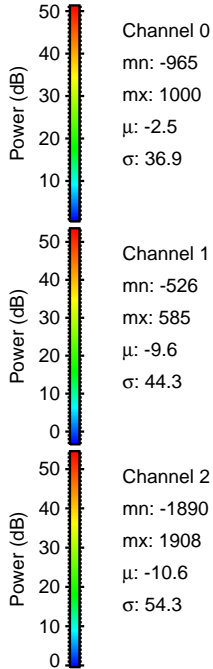
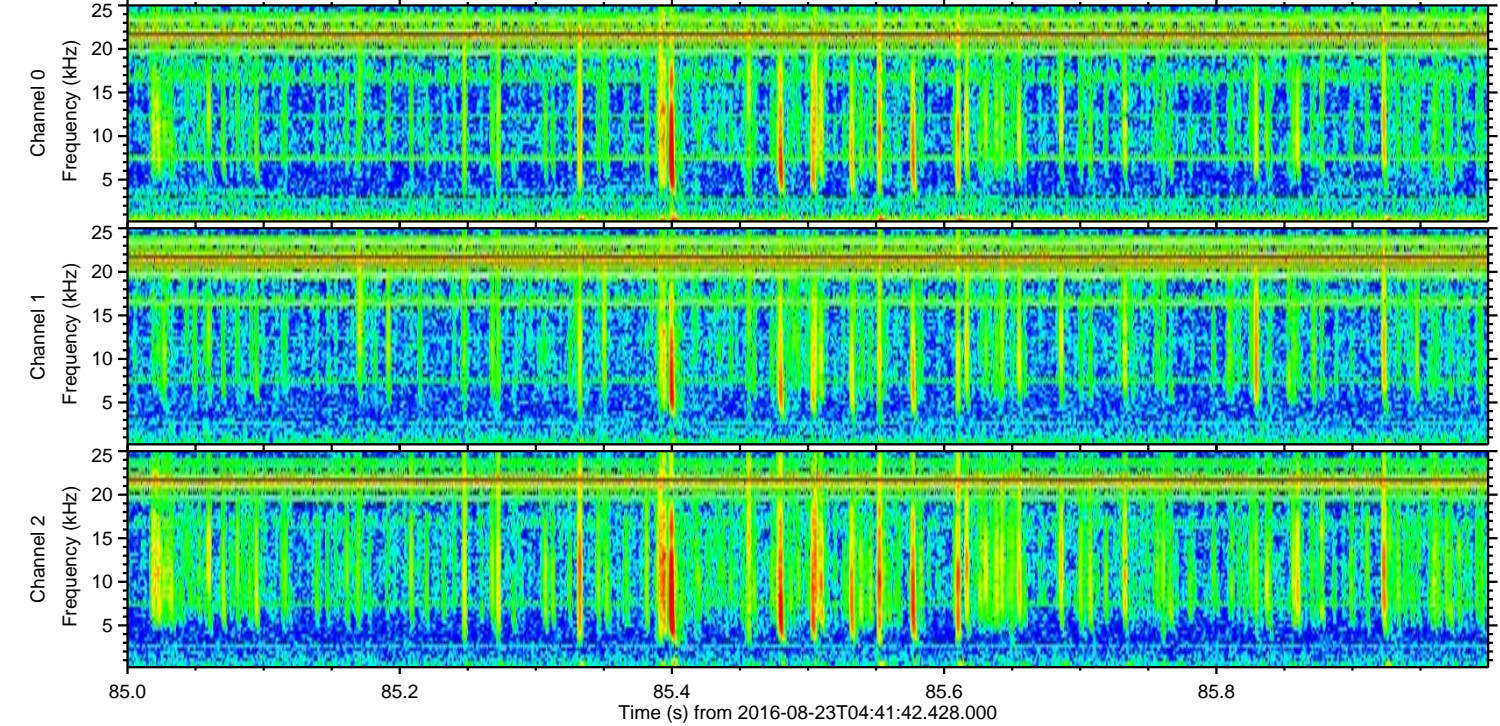
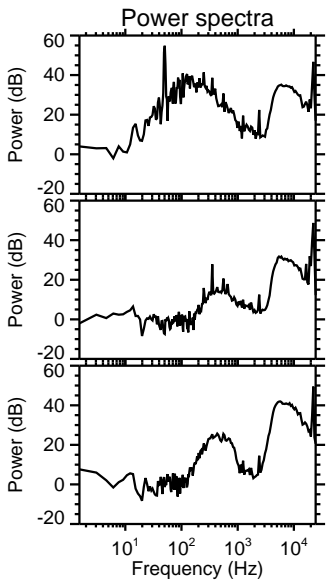
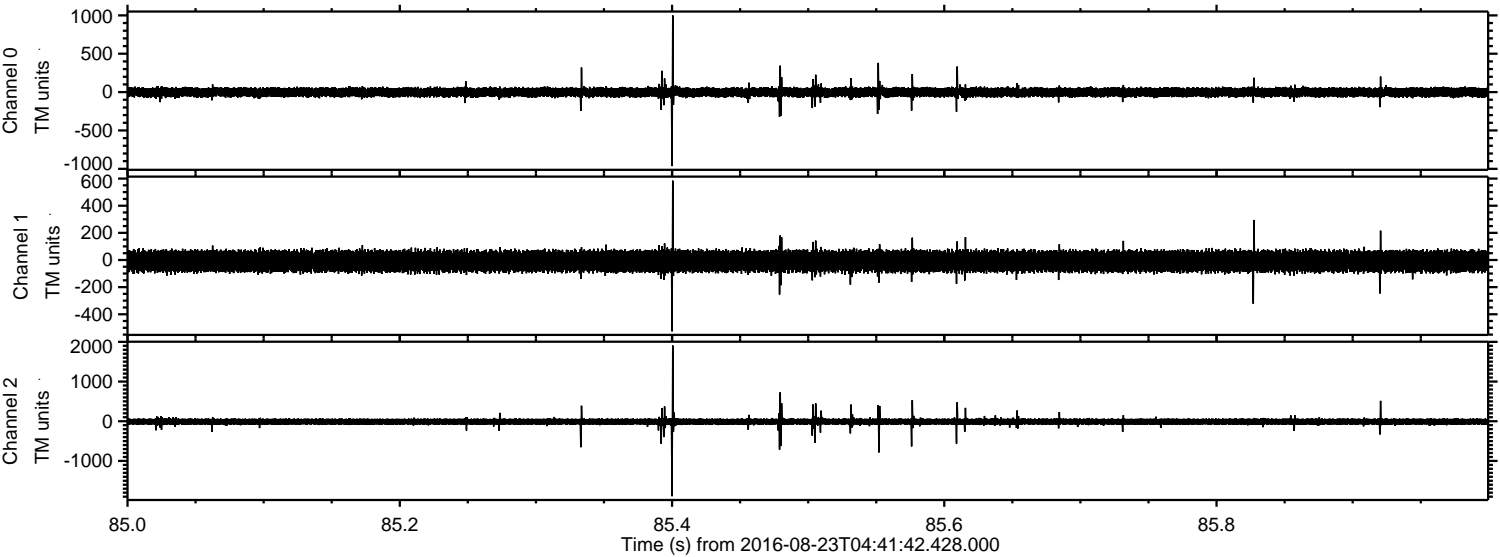
Channel 0  
mn: -1039  
mx: 868  
 $\mu$ : -2.4  
 $\sigma$ : 35.0

Channel 1  
mn: -486  
mx: 472  
 $\mu$ : -9.6  
 $\sigma$ : 43.1

Channel 2  
mn: -1960  
mx: 1757  
 $\mu$ : -10.6  
 $\sigma$ : 48.4

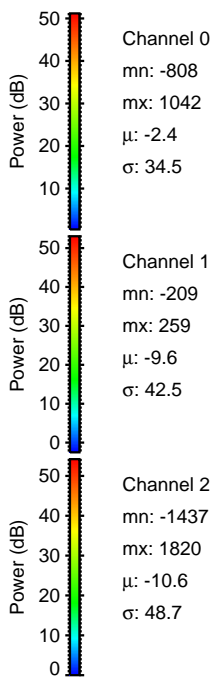
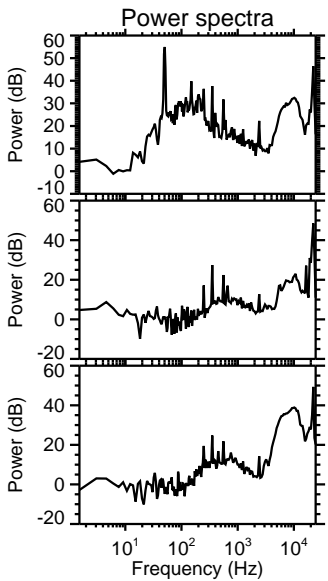
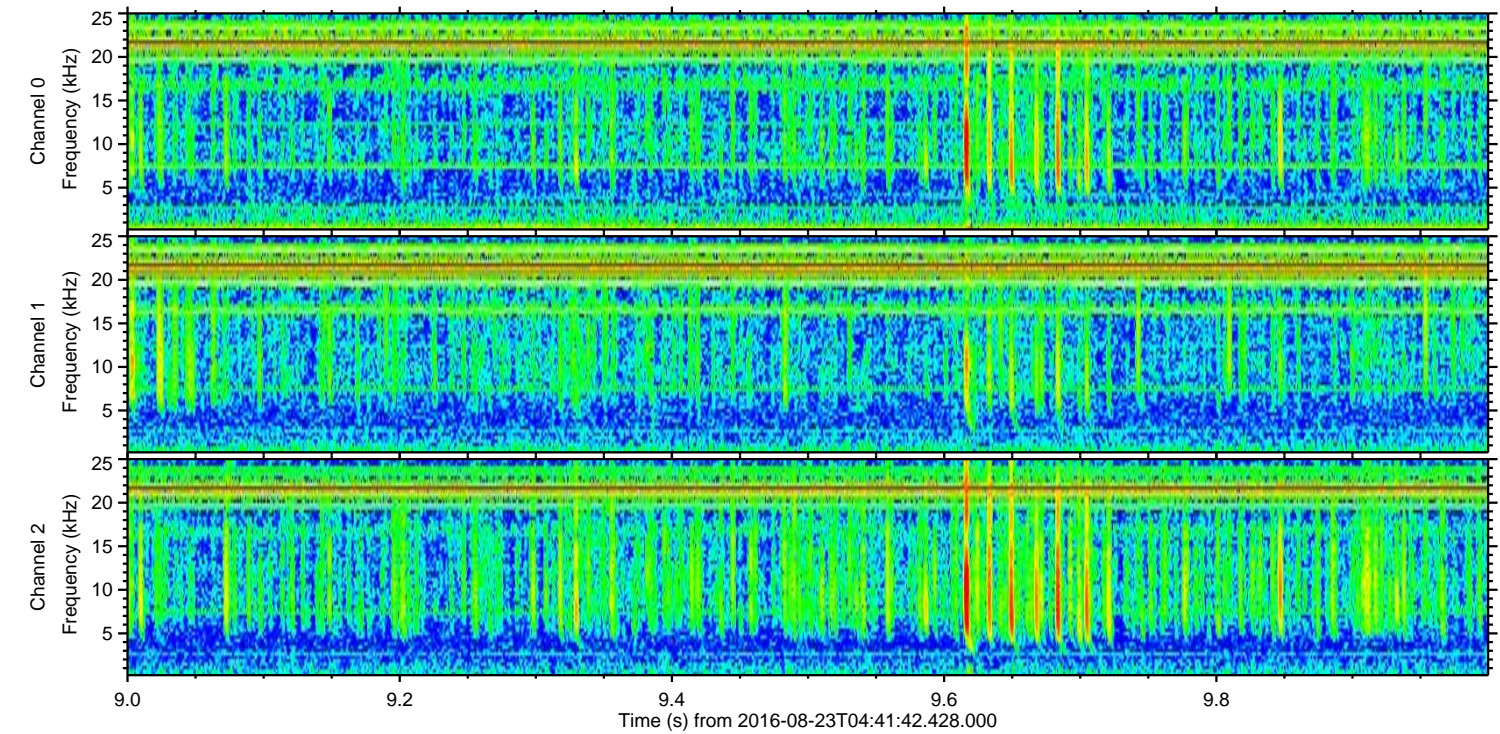
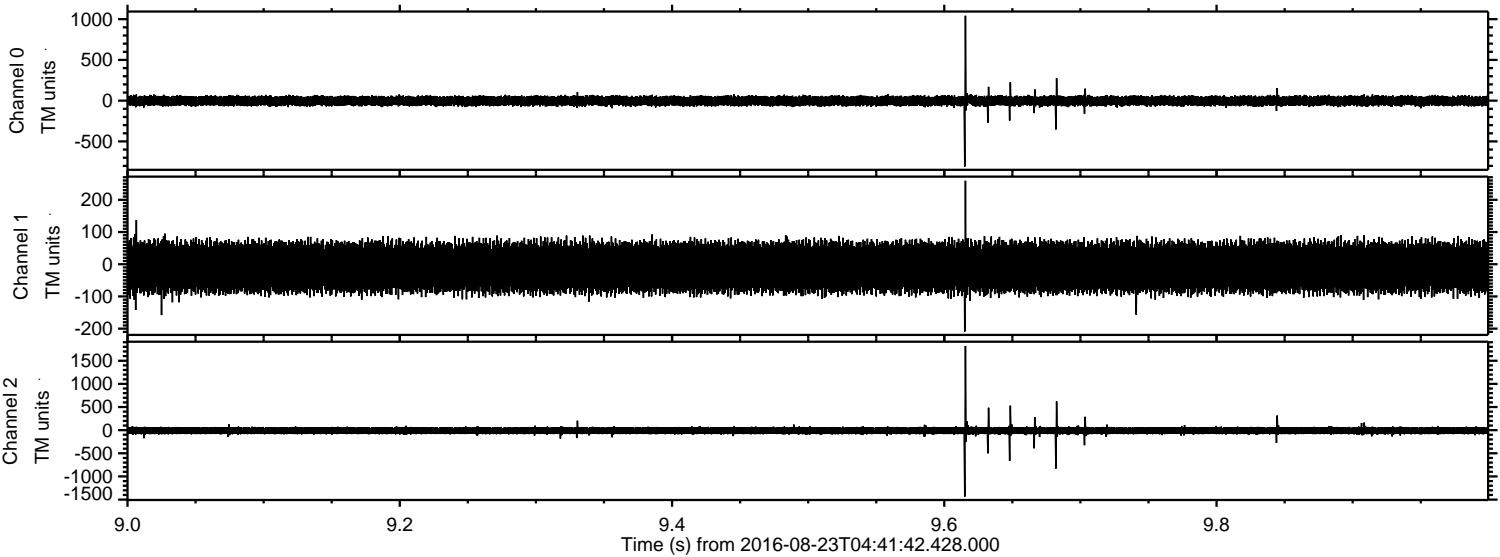


Processed Tue Aug 23 06:49:45 2016 by ELM ver.2012-10-06 from 001\_\_elm20160823\_044141\_\_dat00.bin





Processed Tue Aug 23 06:49:46 2016 by ELM ver.2012-10-06 from 001\_\_elm20160823\_044141\_\_dat00.bin





Processed Tue Aug 23 06:49:47 2016 by ELM ver.2012-10-06 from 001\_\_elm20160823\_044141\_\_dat00.bin

