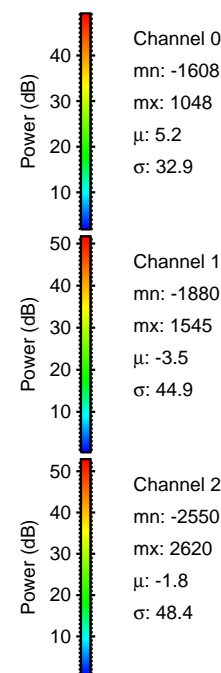
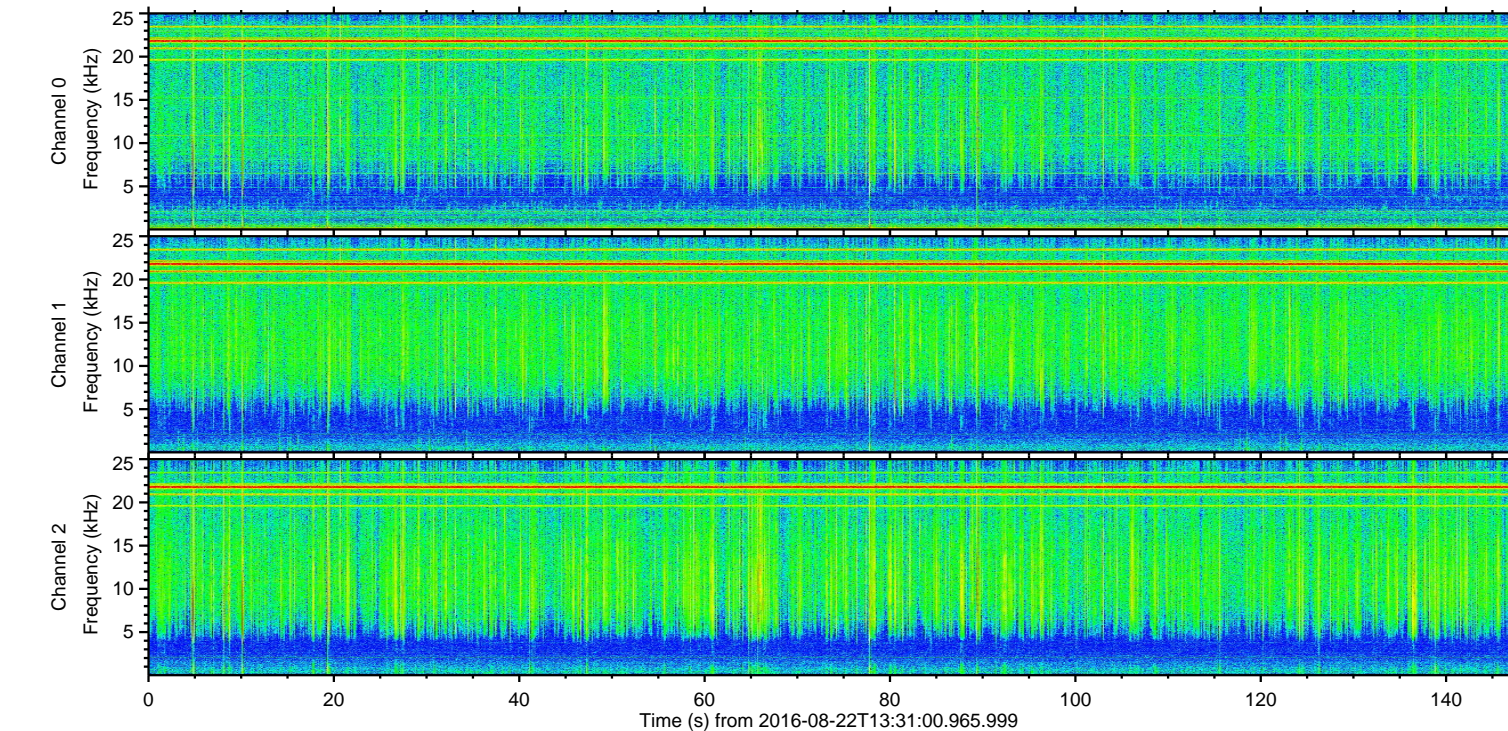
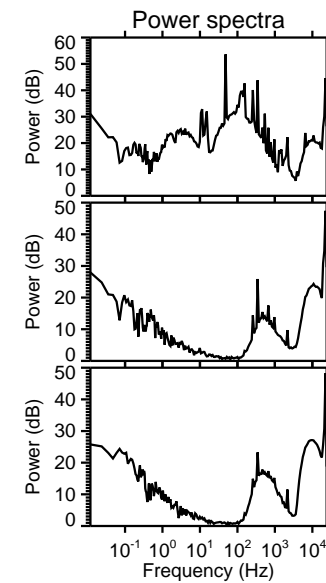
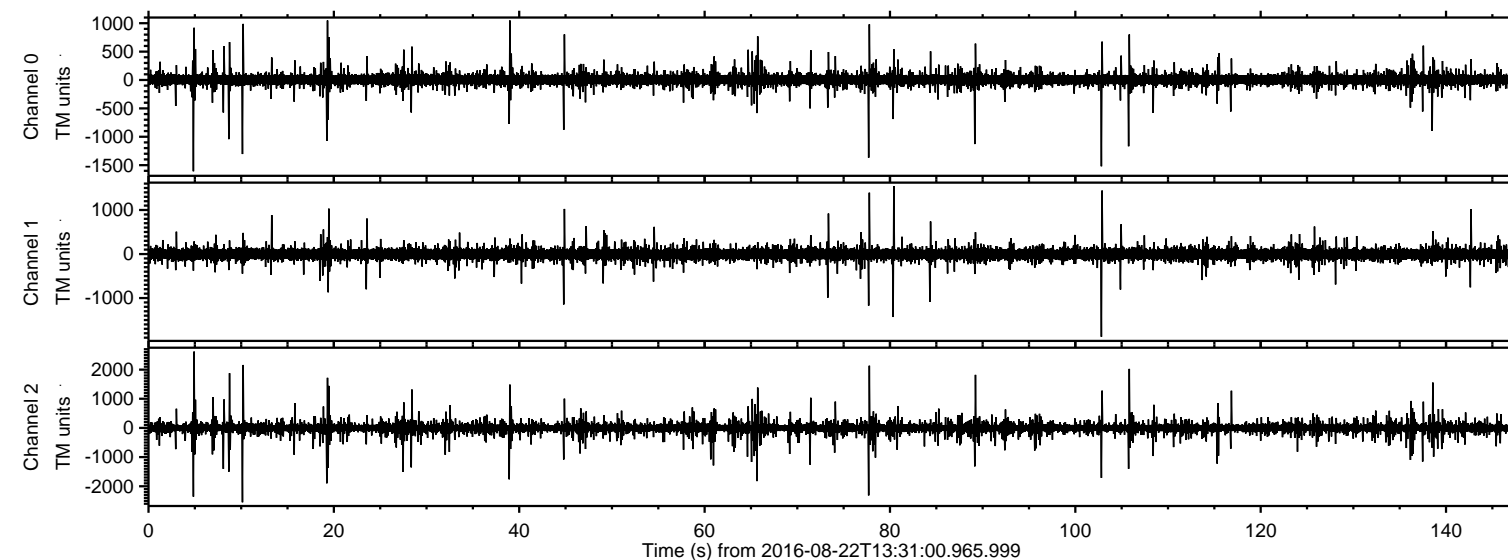


ELMAVAN 3D WAVEFORMS (Measured data sampled at 50 kHz) 51000 packets of 144 samples from 2016-08-22T13:31:00.965.999.

Processed Mon Aug 22 15:39:13 2016 by ELM ver.2012-10-06 from 001__elm20160822_133059__dat00.bin

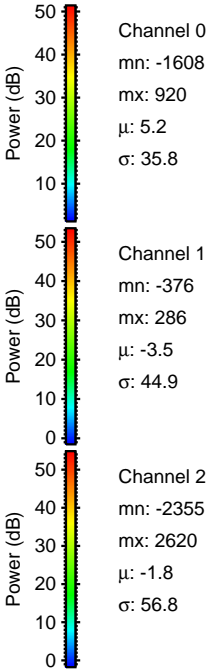
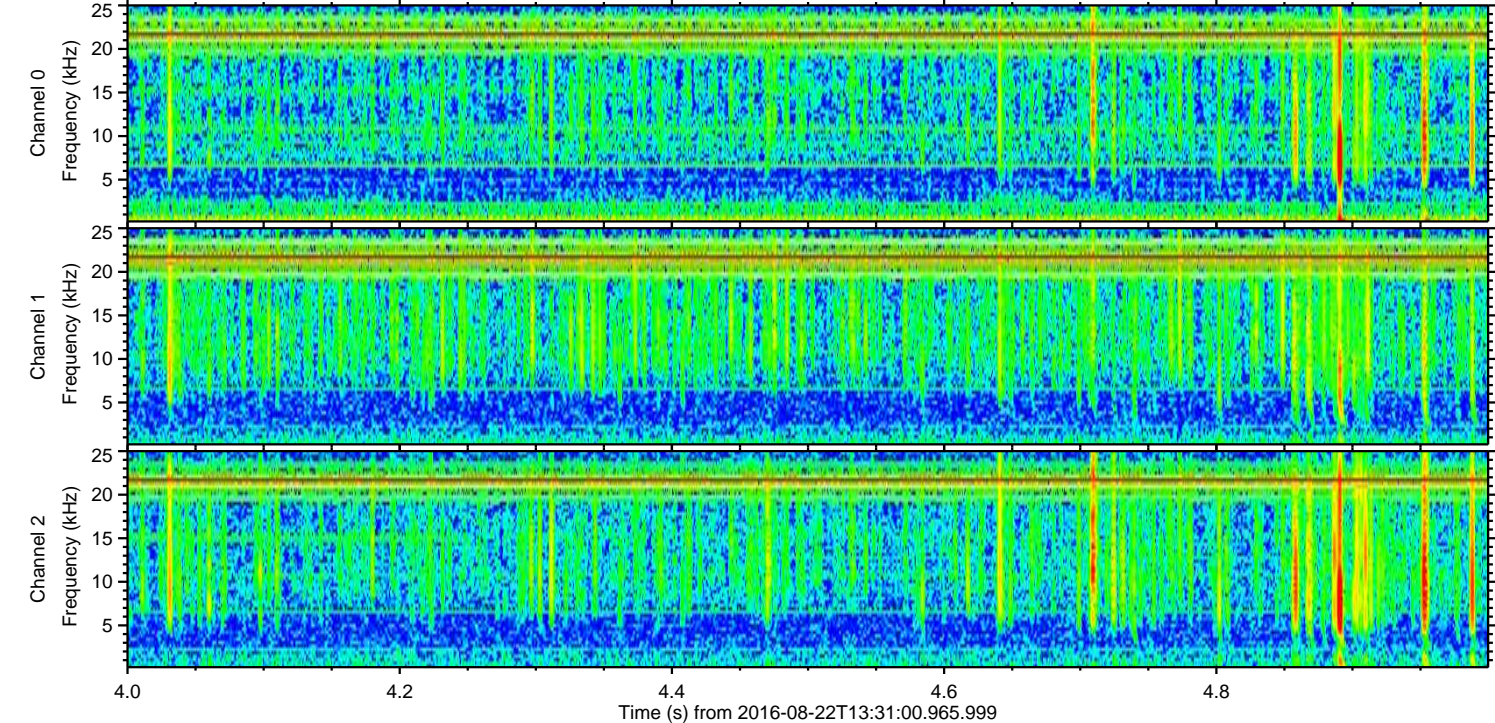
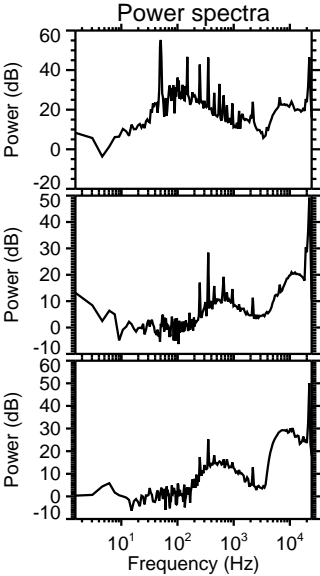
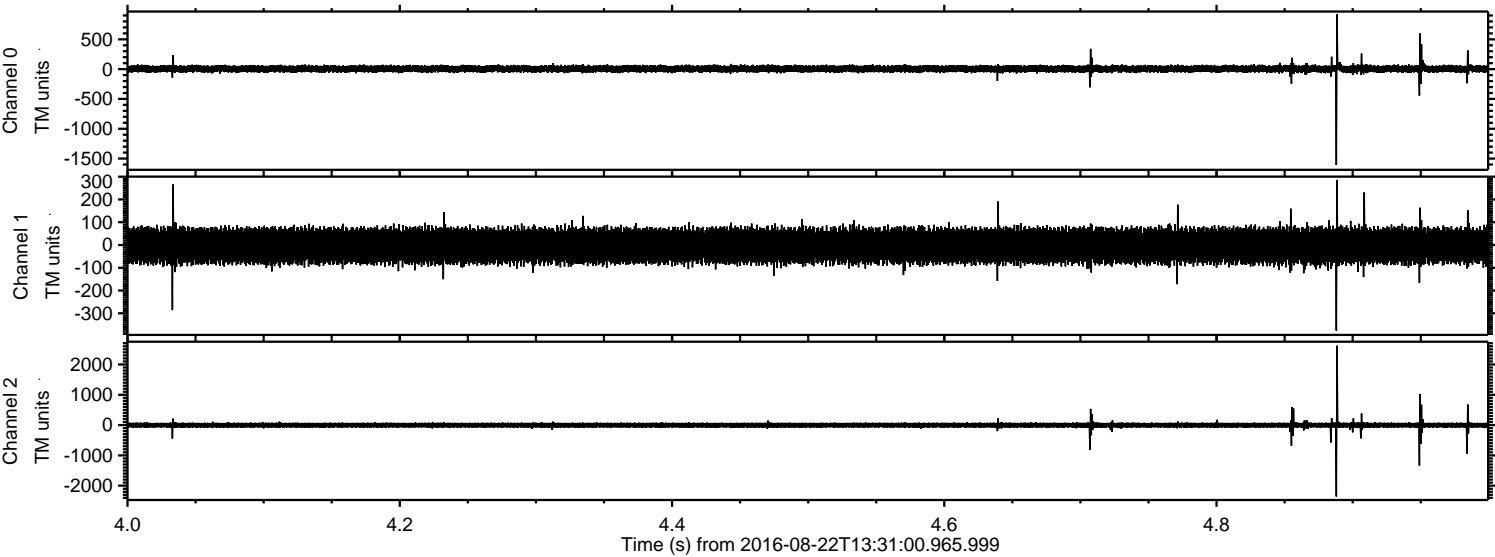


Channel 0
mn: -1608
mx: 1048
 μ : 5.2
 σ : 32.9

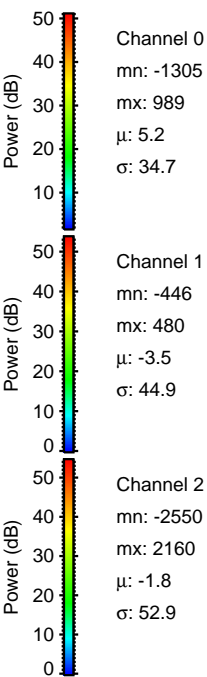
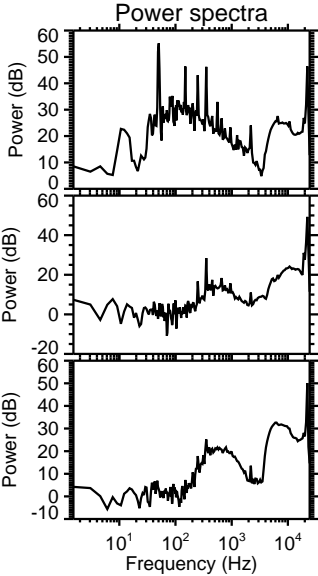
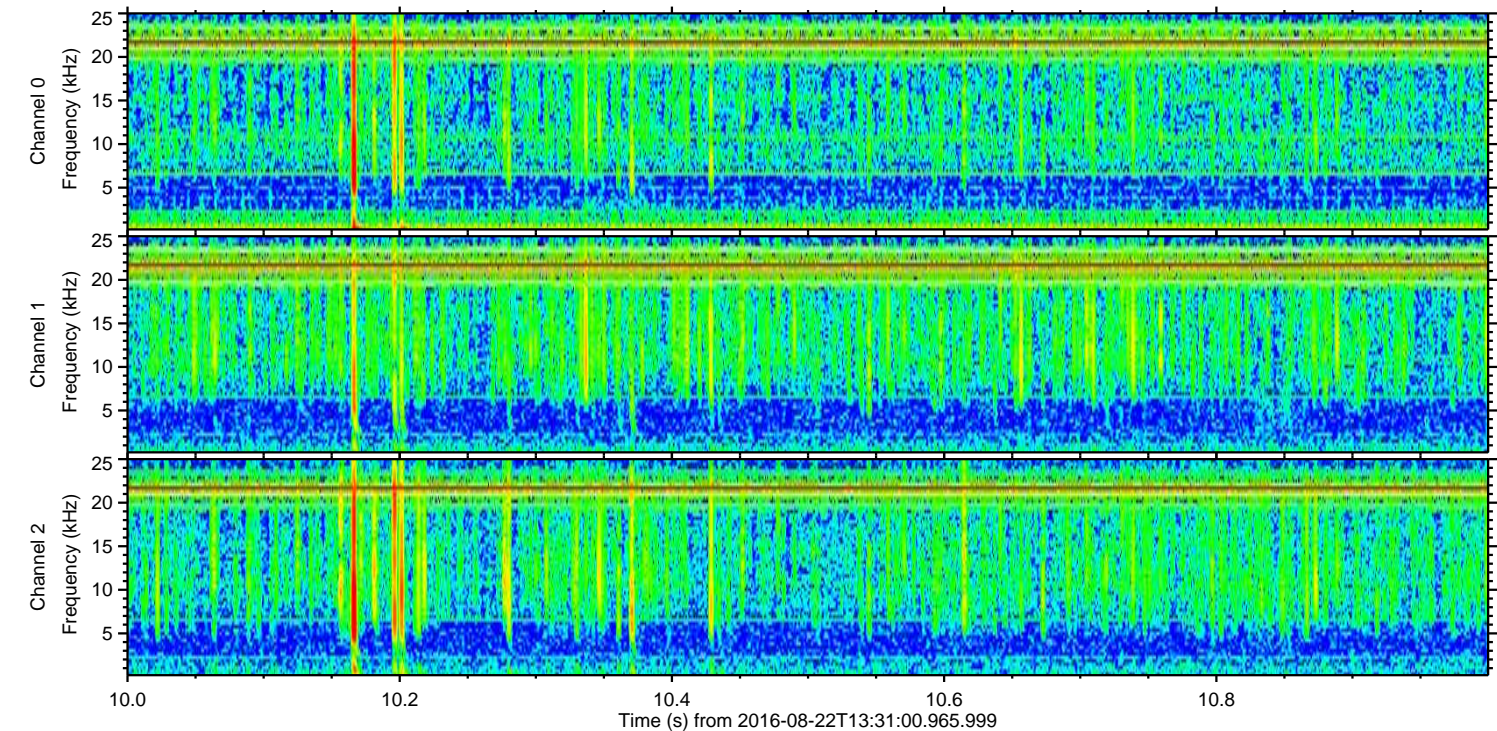
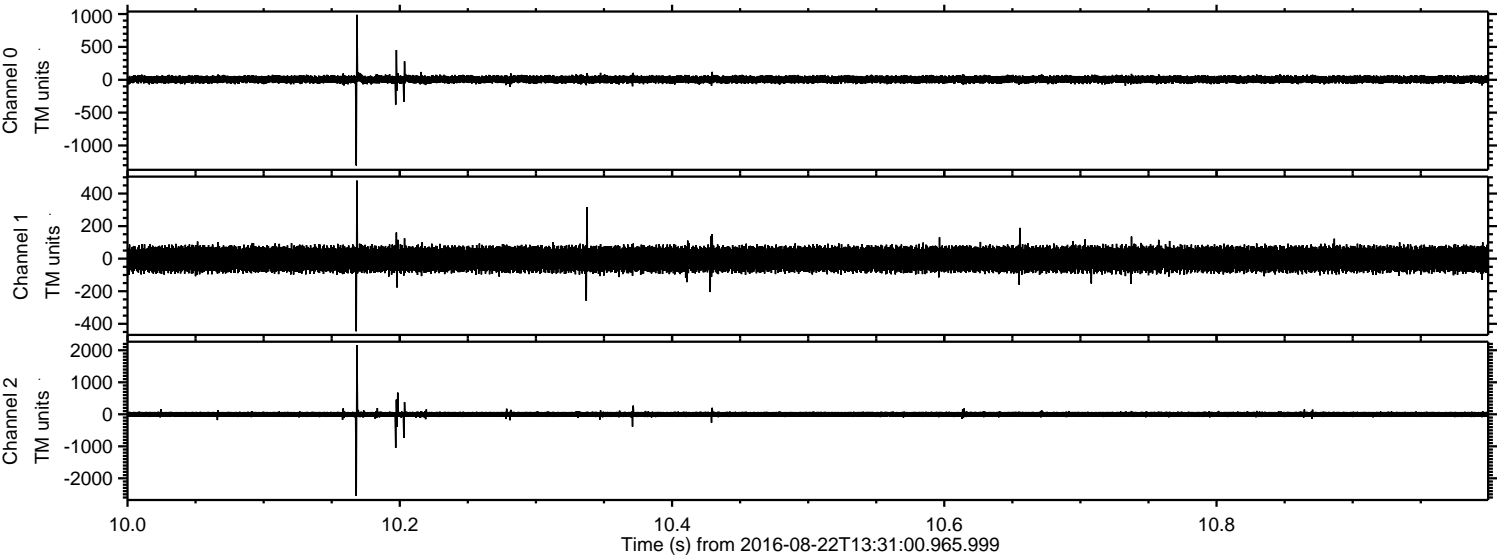
Channel 1
mn: -1880
mx: 1545
 μ : -3.5
 σ : 44.9

Channel 2
mn: -2550
mx: 2620
 μ : -1.8
 σ : 48.4

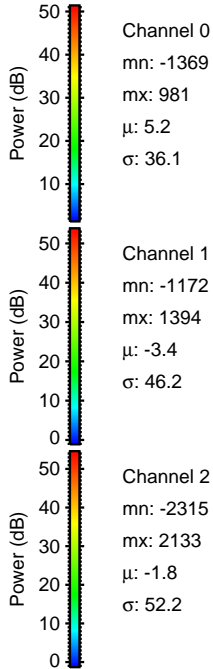
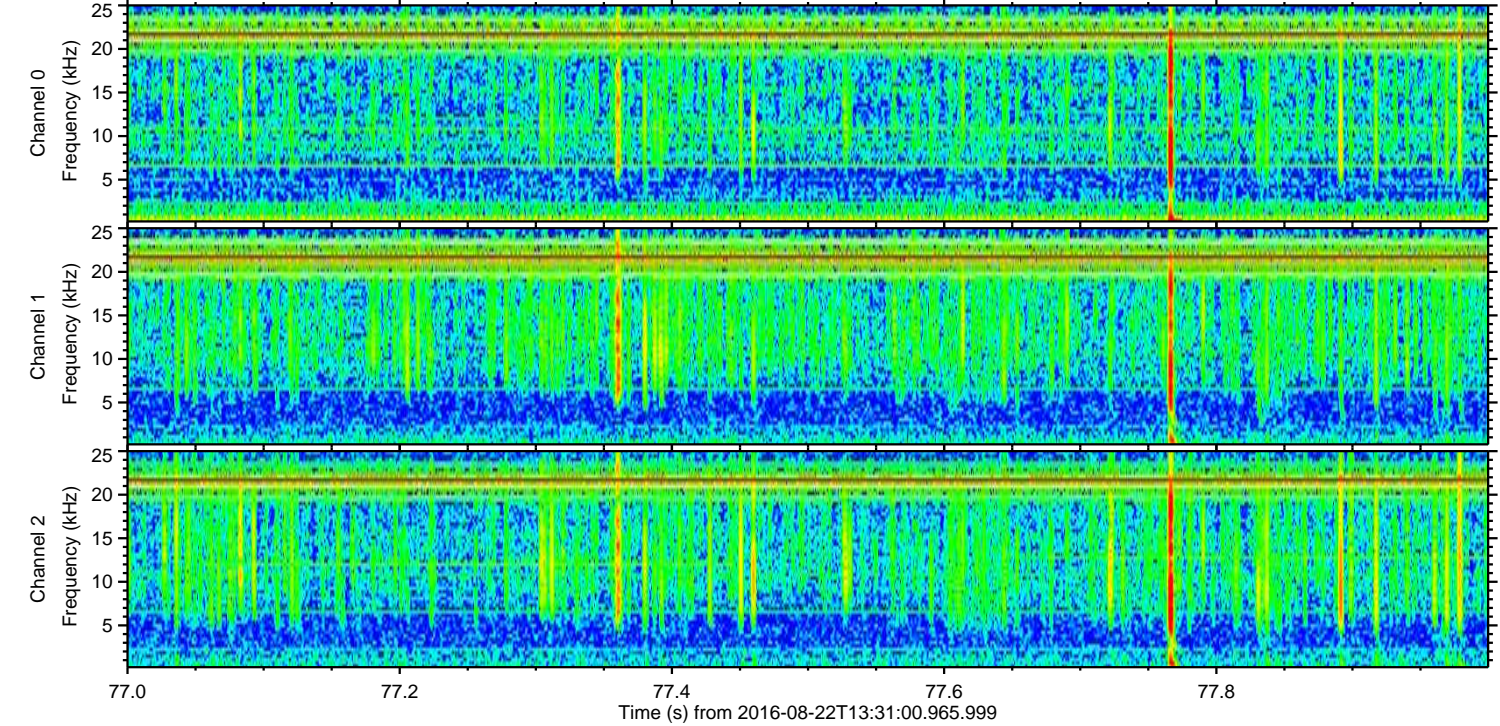
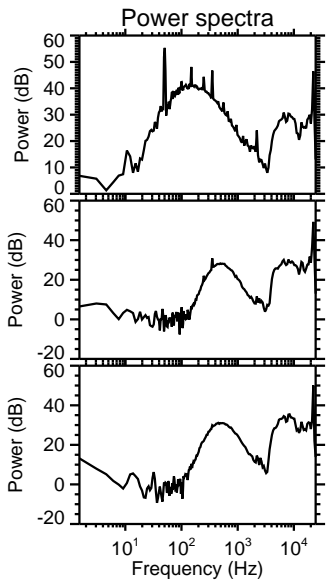
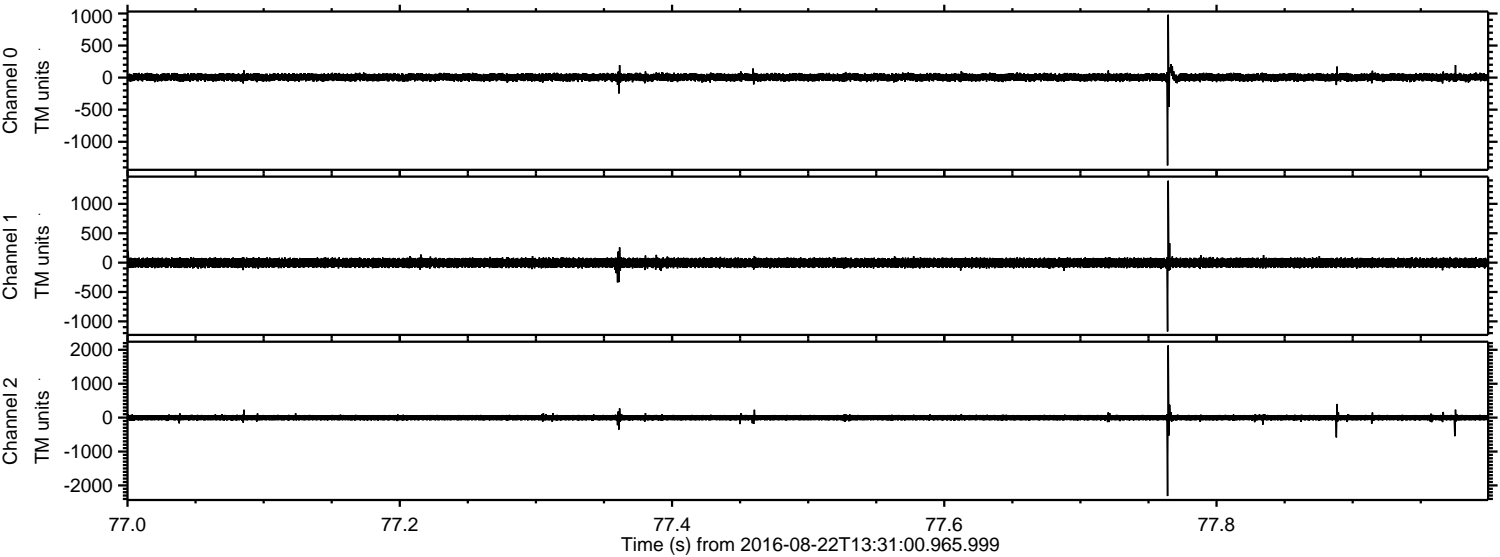
Processed Mon Aug 22 15:39:24 2016 by ELM ver.2012-10-06 from 001__elm20160822_133059__dat00.bin



Processed Mon Aug 22 15:39:25 2016 by ELM ver.2012-10-06 from 001__elm20160822_133059__dat00.bin

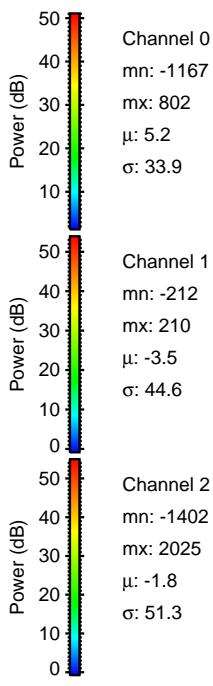
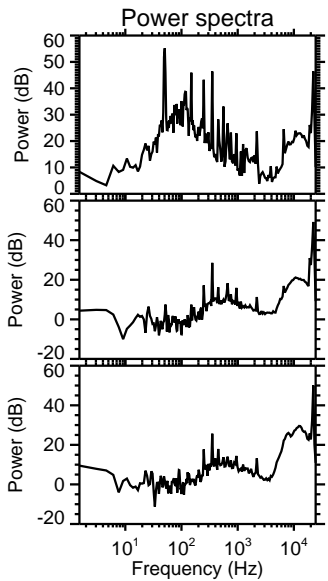
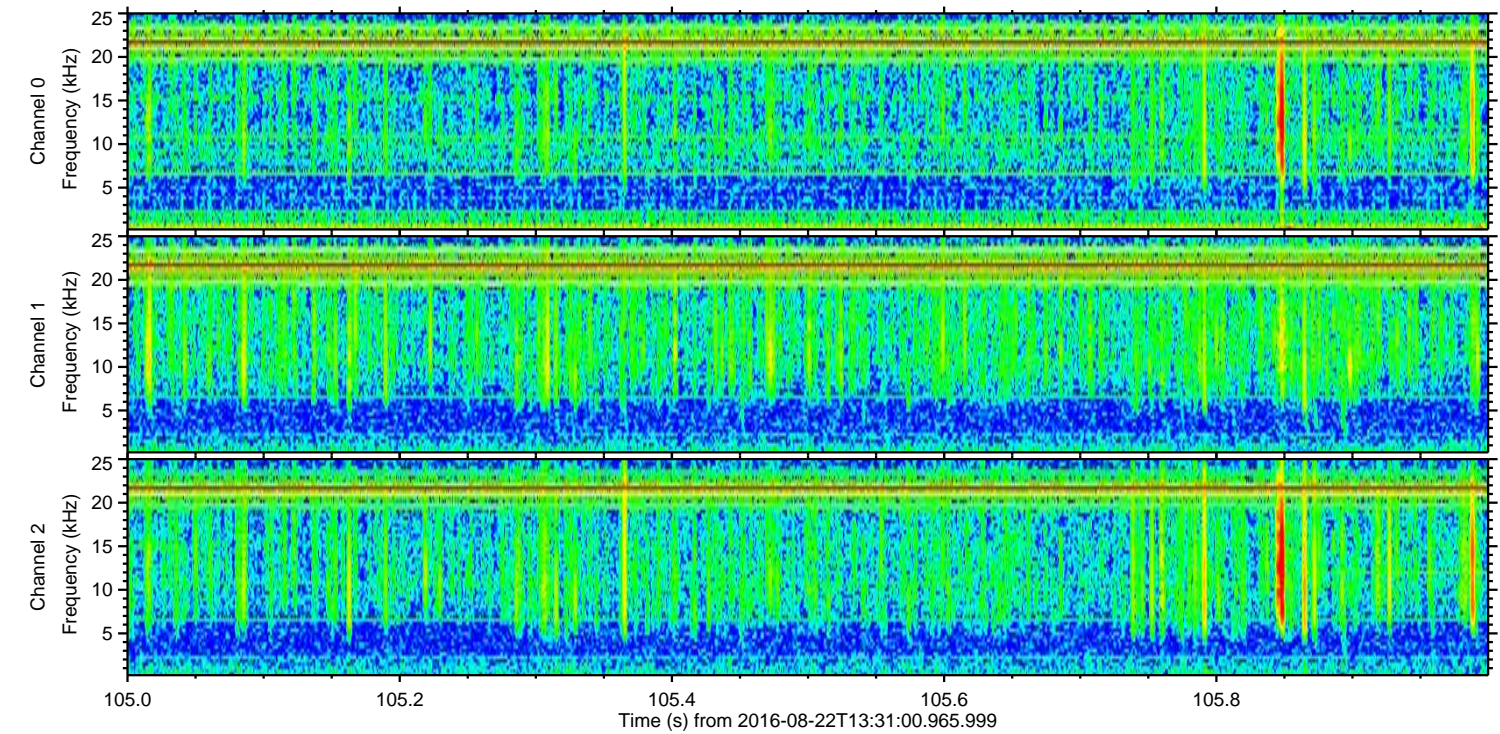
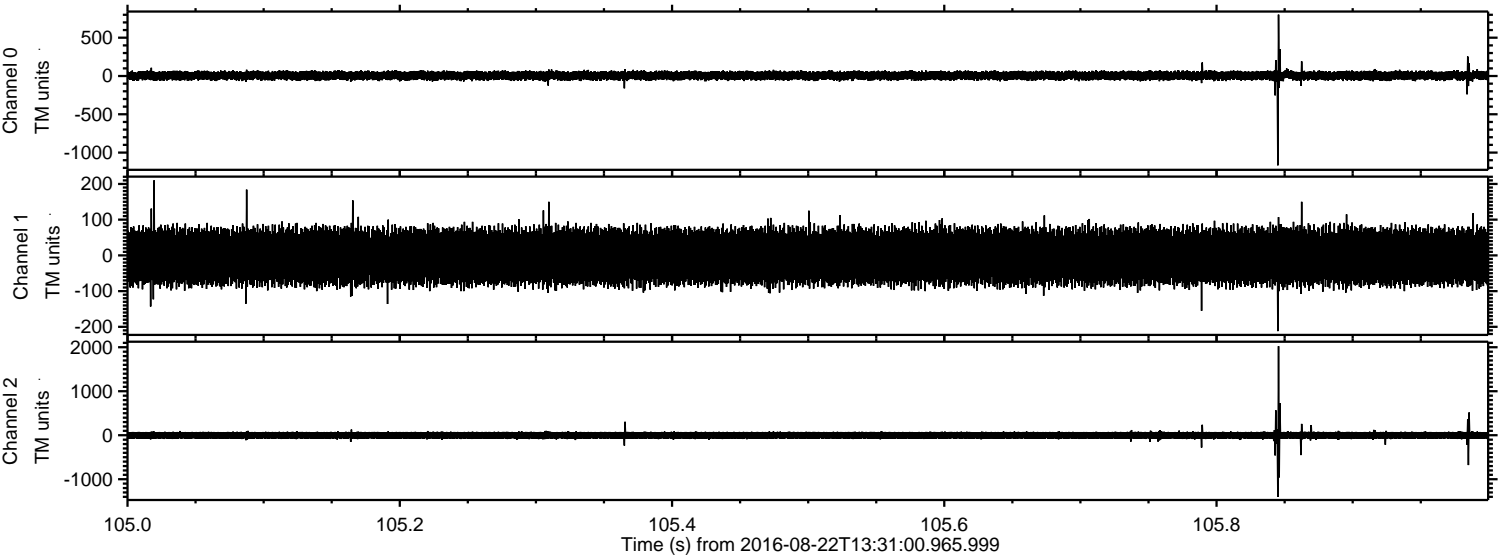


Processed Mon Aug 22 15:39:26 2016 by ELM ver.2012-10-06 from 001__elm20160822_133059__dat00.bin

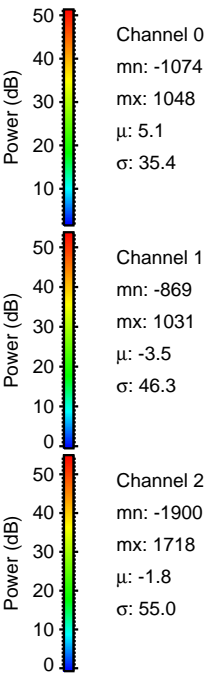
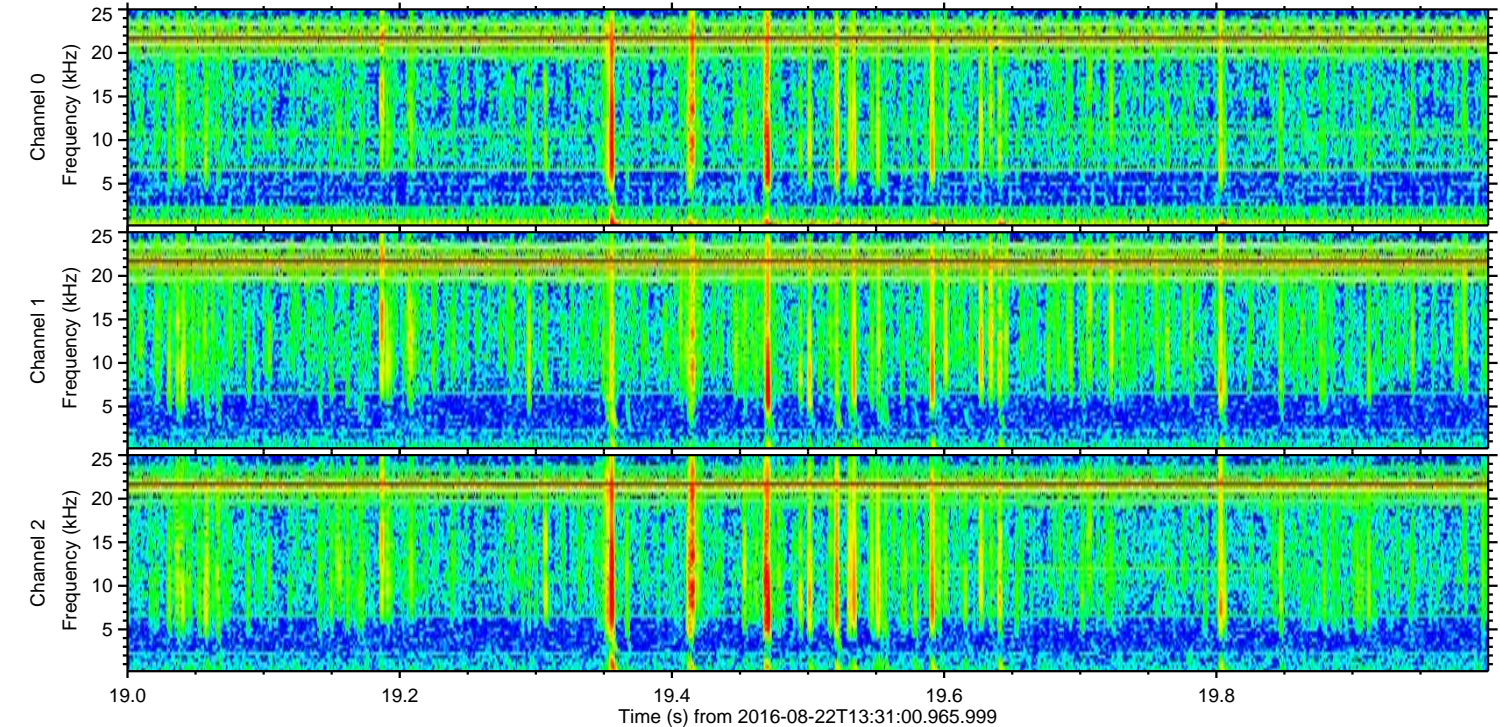
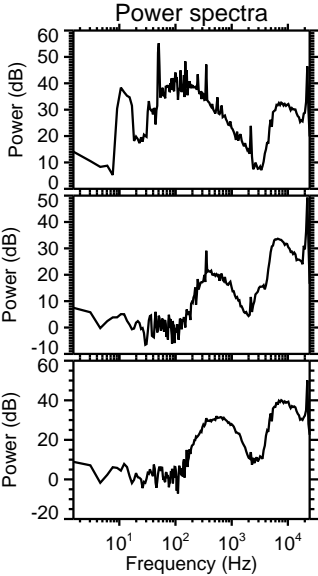
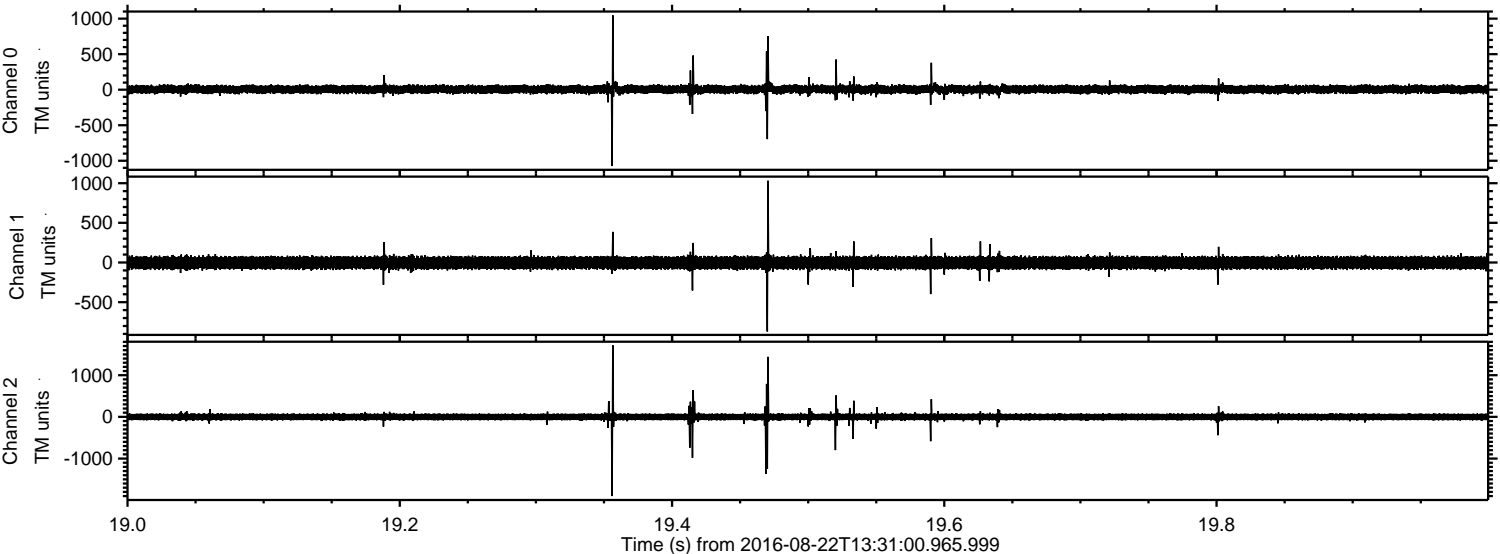


ELMAVAN 3D WAVEFORMS (Measured data sampled at 50 kHz) 51000 packets of 144 samples from 2016-08-22T13:31:00.965.999. Part 106/147

Processed Mon Aug 22 15:39:27 2016 by ELM ver.2012-10-06 from 001__elm20160822_133059__dat00.bin

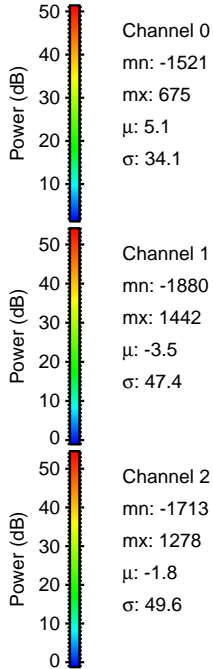
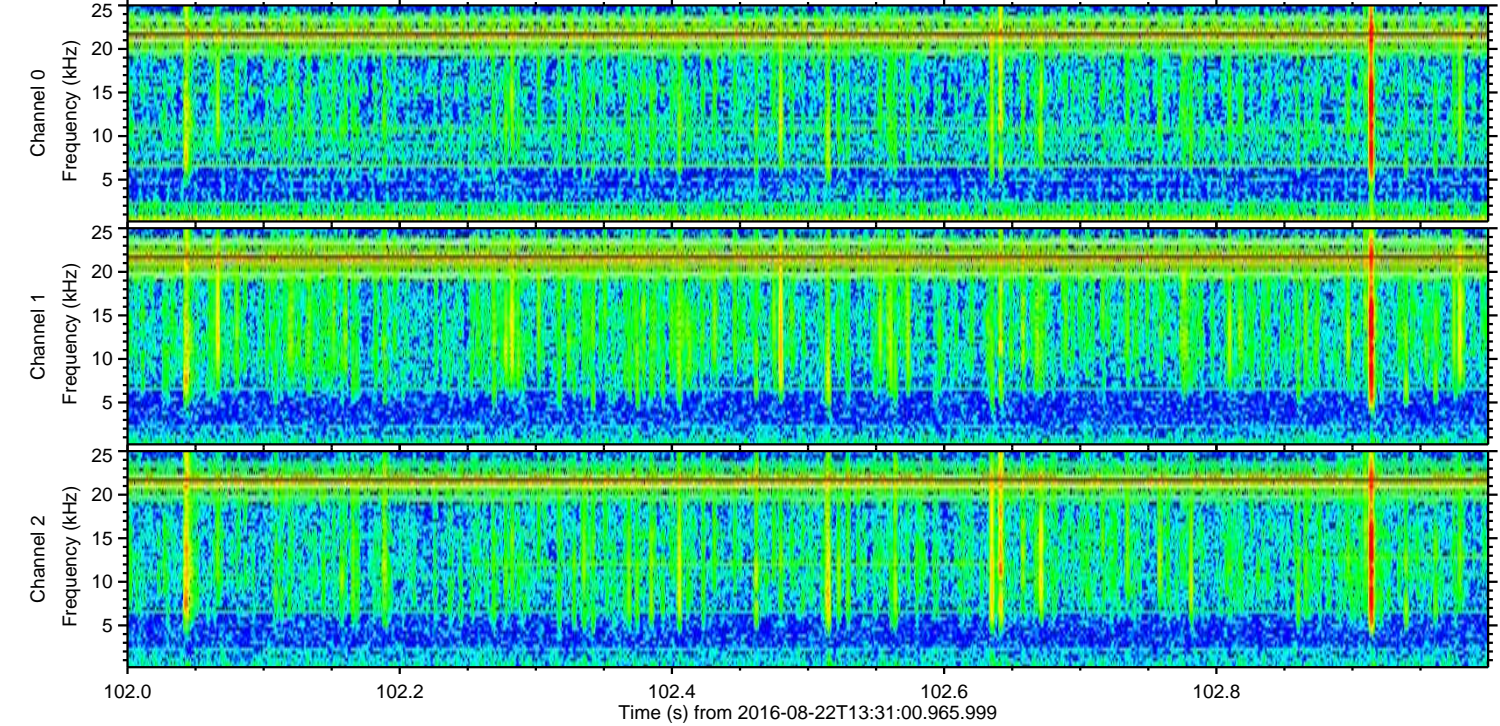
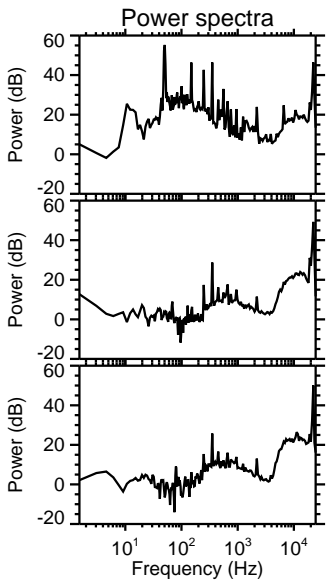
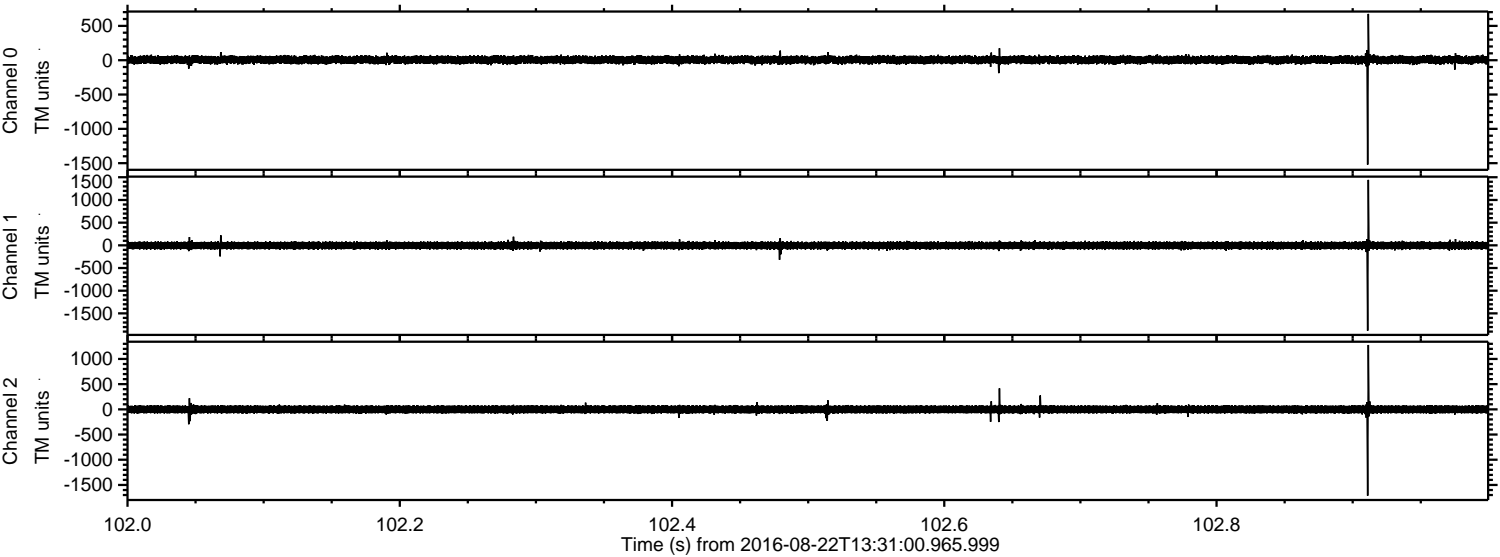


Processed Mon Aug 22 15:39:28 2016 by ELM ver.2012-10-06 from 001__elm20160822_133059__dat00.bin

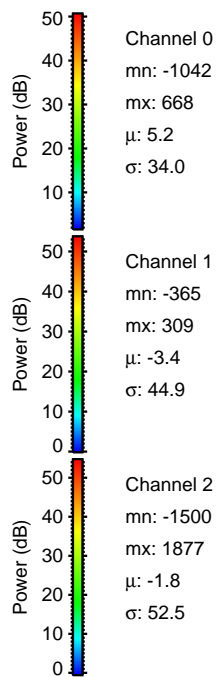
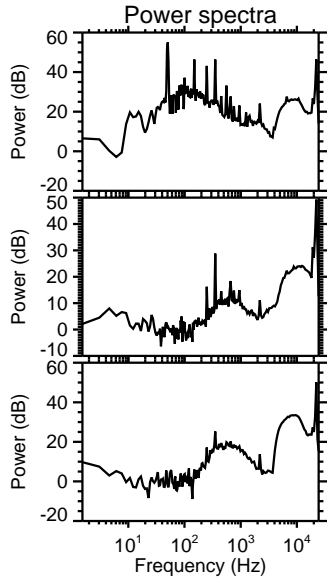
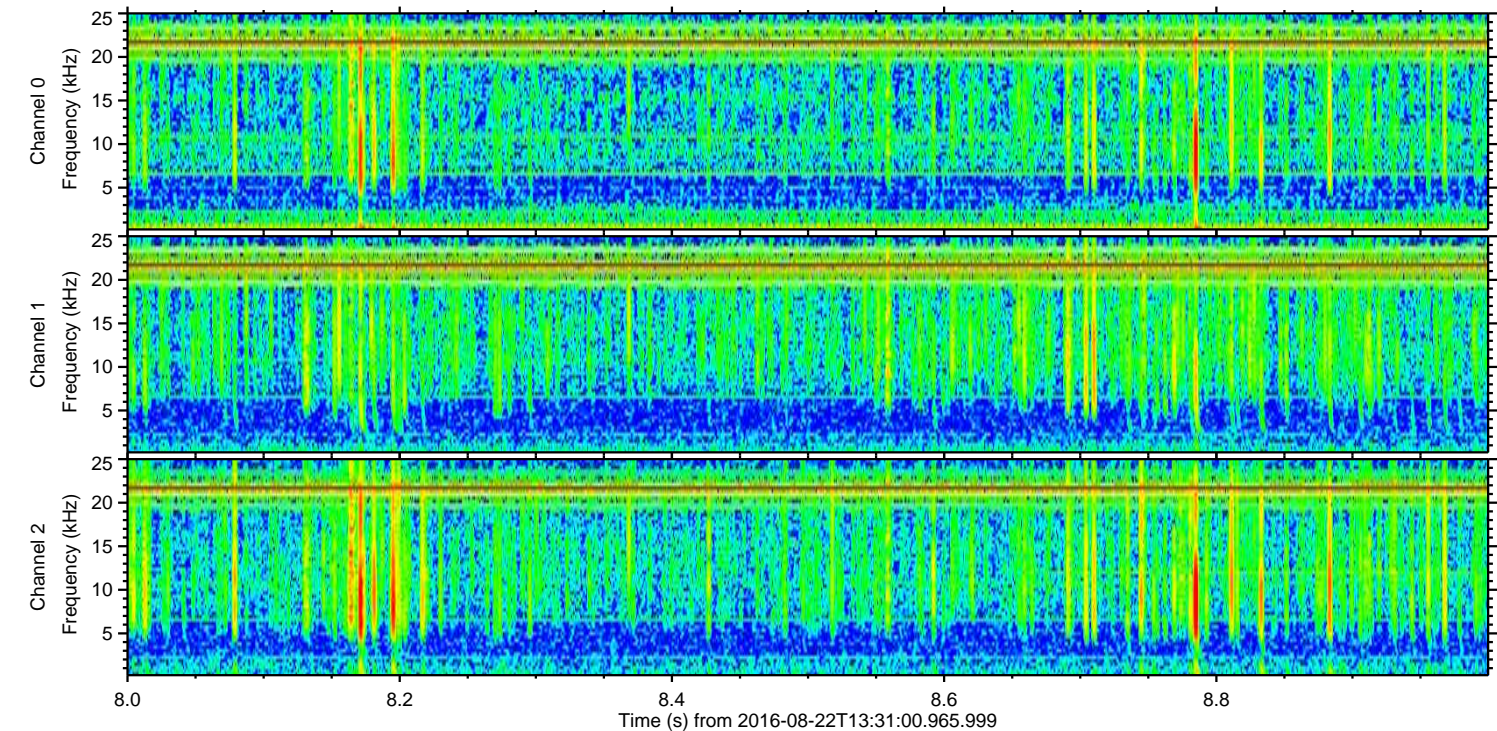
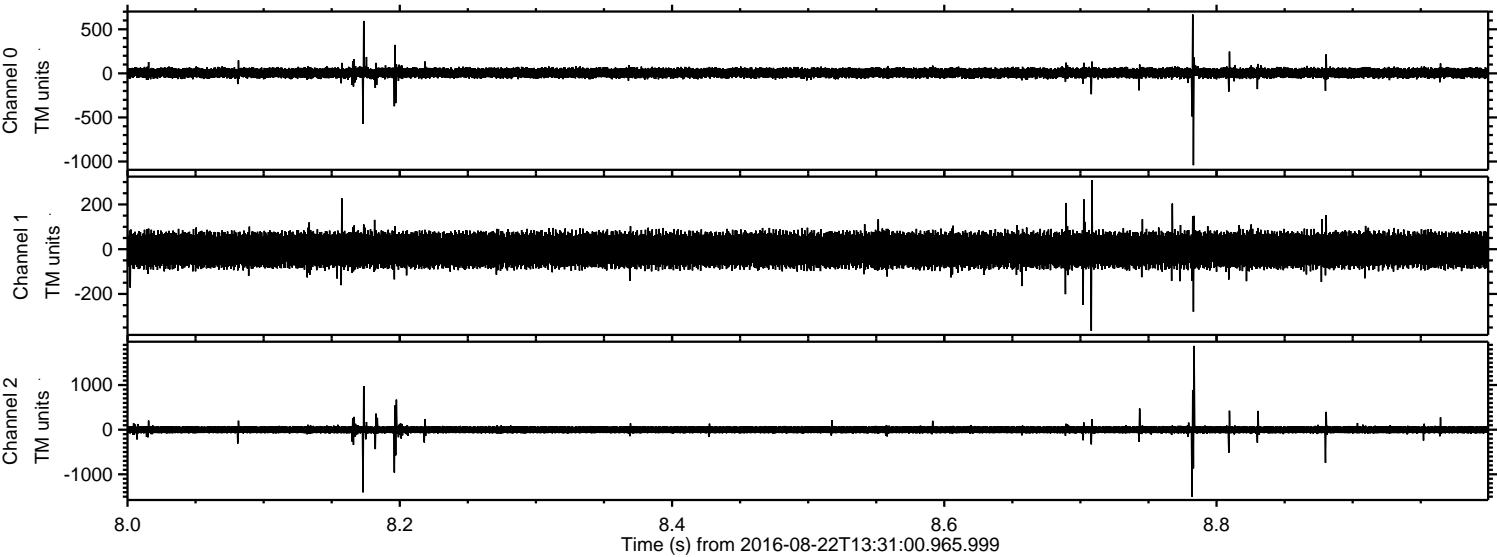


ELMAVAN 3D WAVEFORMS (Measured data sampled at 50 kHz) 51000 packets of 144 samples from 2016-08-22T13:31:00.965.999. Part 103/147

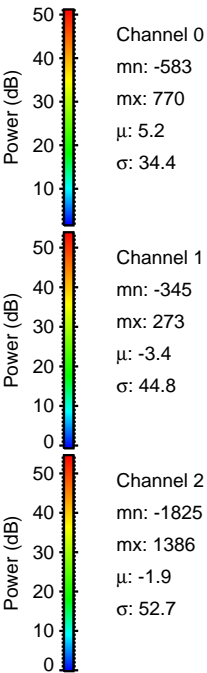
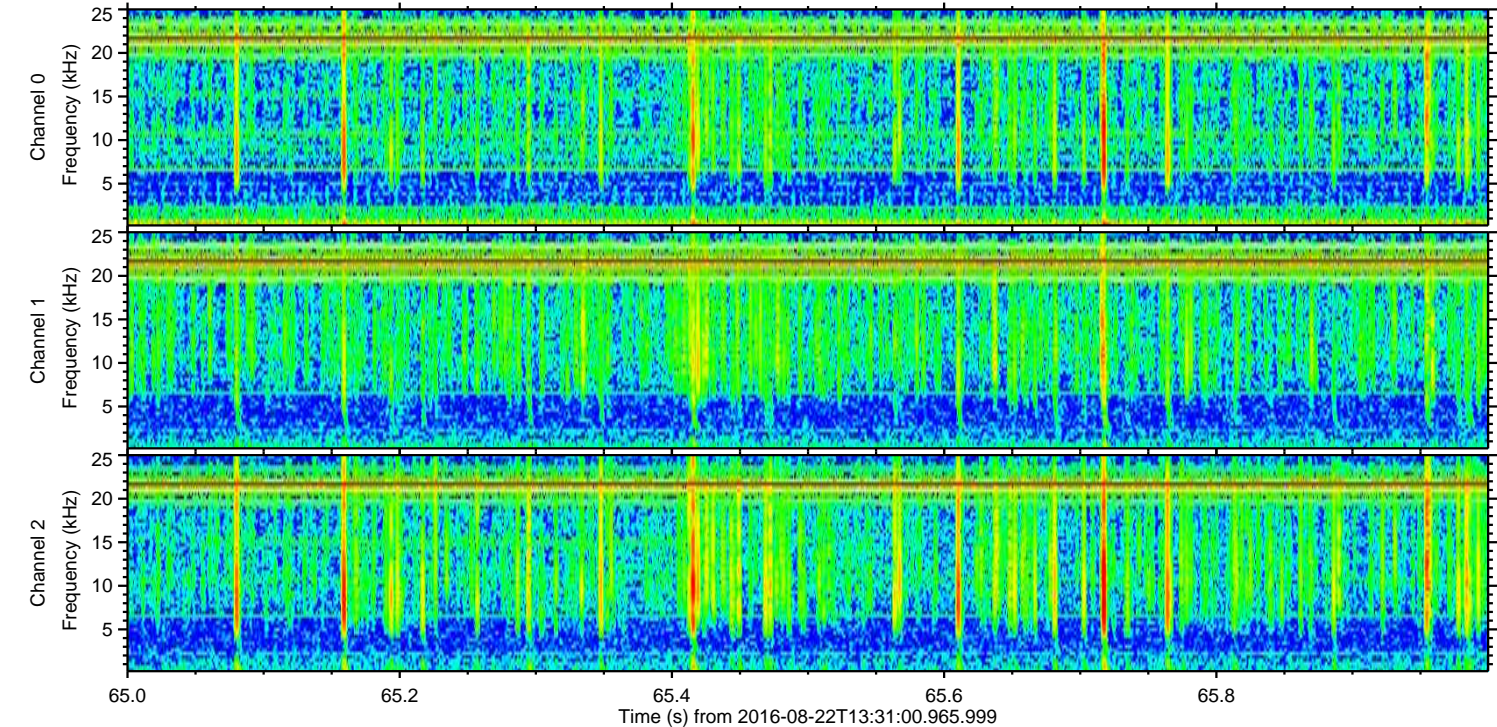
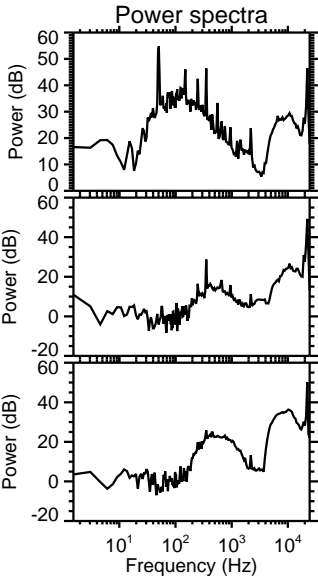
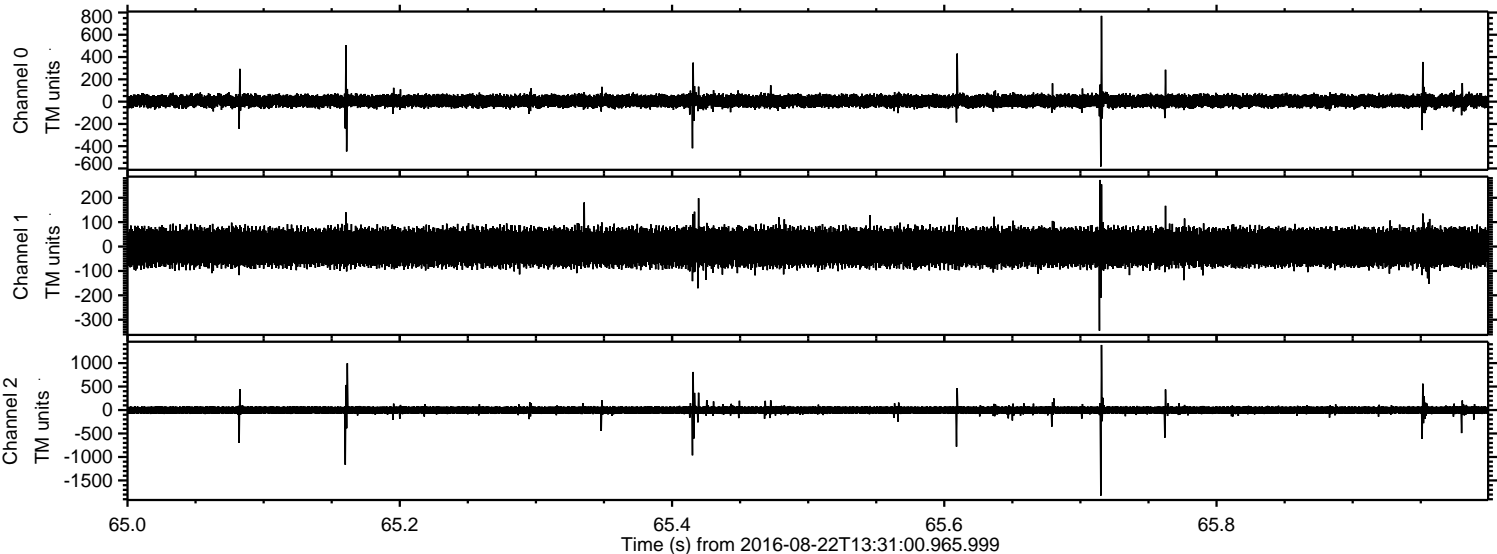
Processed Mon Aug 22 15:39:29 2016 by ELM ver.2012-10-06 from 001__elm20160822_133059__dat00.bin



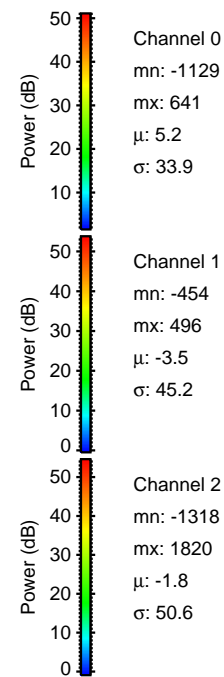
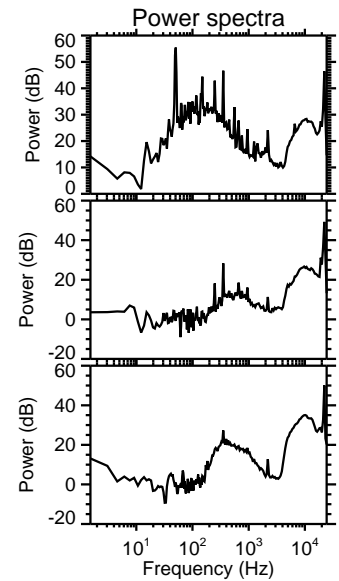
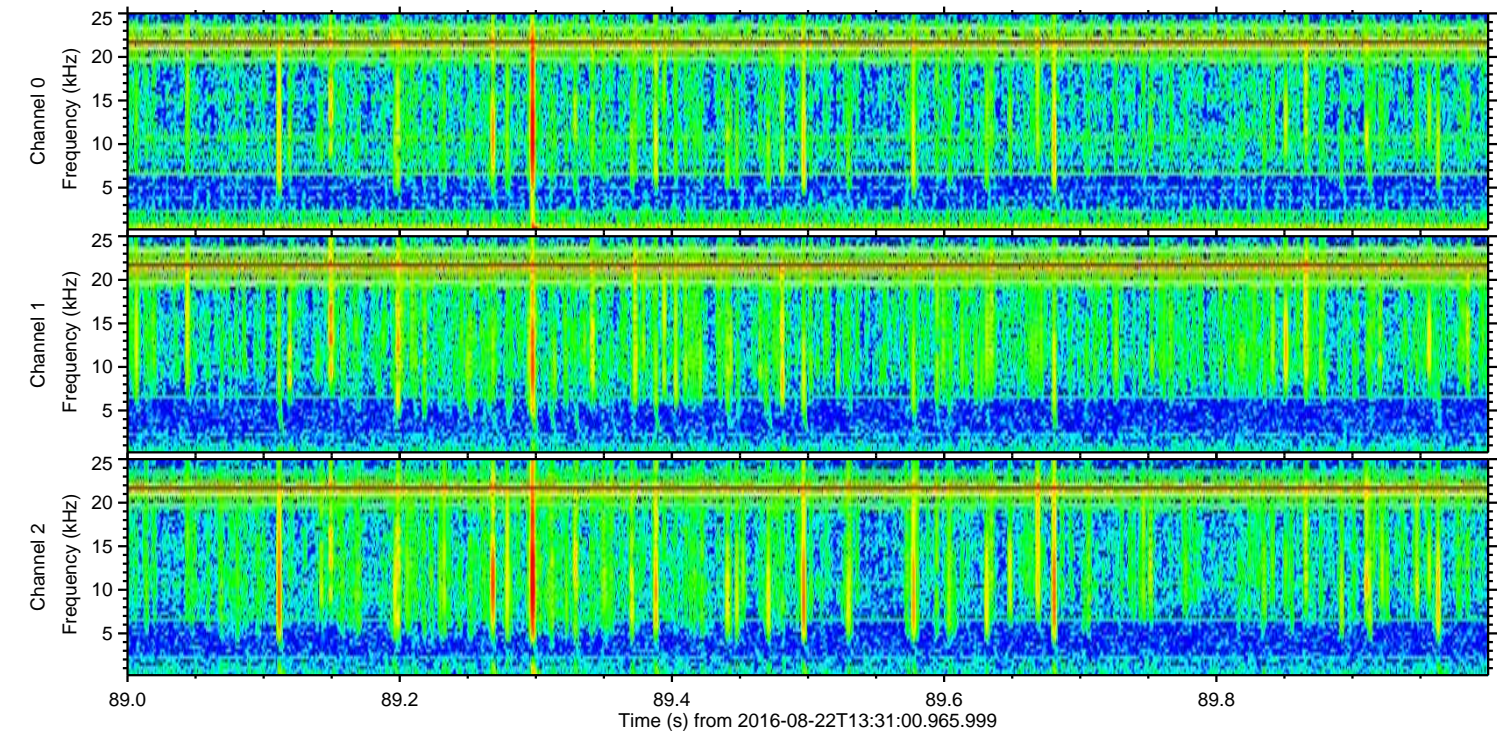
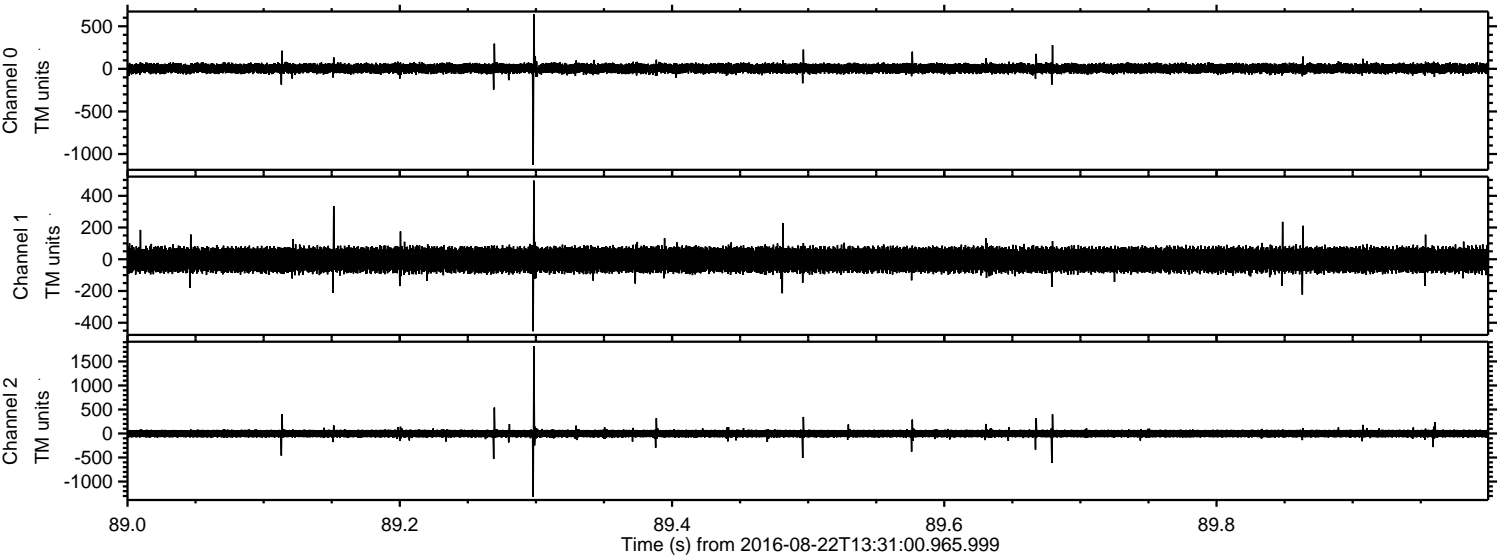
Processed Mon Aug 22 15:39:30 2016 by ELM ver.2012-10-06 from 001__elm20160822_133059__dat00.bin



Processed Mon Aug 22 15:39:31 2016 by ELM ver.2012-10-06 from 001__elm20160822_133059__dat00.bin



Processed Mon Aug 22 15:39:32 2016 by ELM ver.2012-10-06 from 001__elm20160822_133059__dat00.bin



Channel 0
mn: -1129
mx: 641
 μ : 5.2
 σ : 33.9

Channel 1
mn: -454
mx: 496
 μ : -3.5
 σ : 45.2

Channel 2
mn: -1318
mx: 1820
 μ : -1.8
 σ : 50.6

Processed Mon Aug 22 15:39:33 2016 by ELM ver.2012-10-06 from 001__elm20160822_133059__dat00.bin

