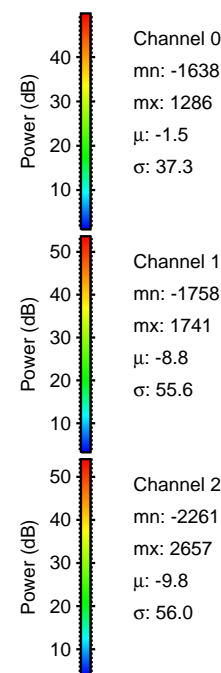
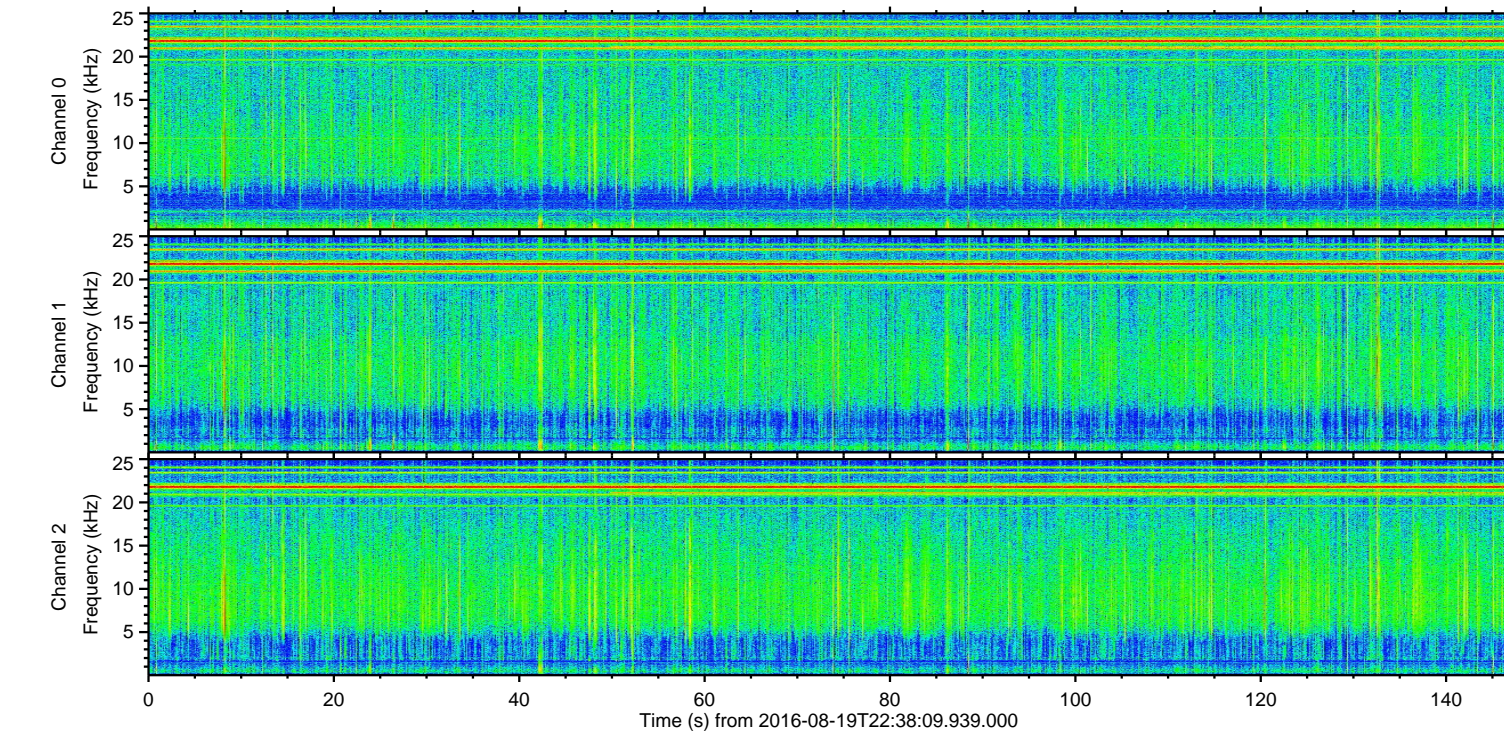
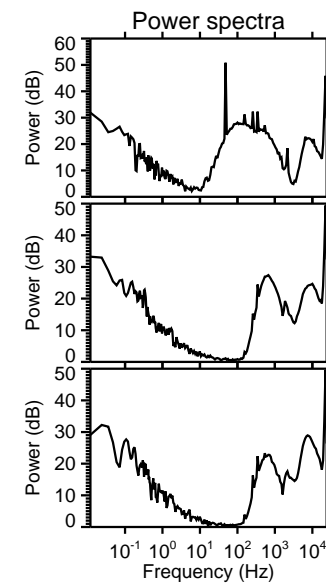
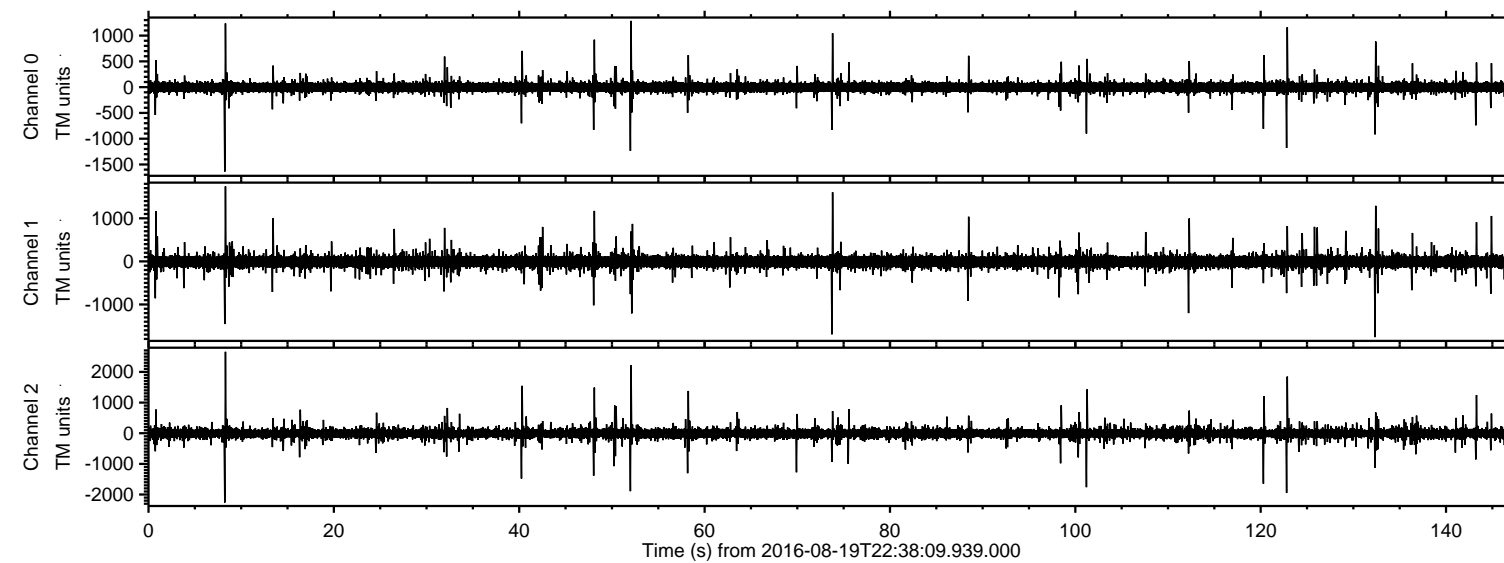


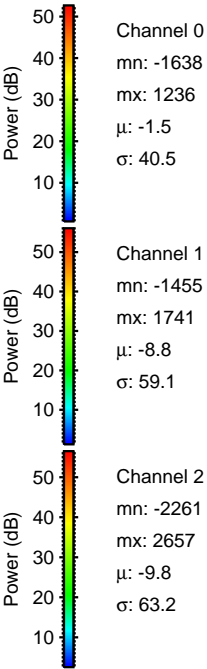
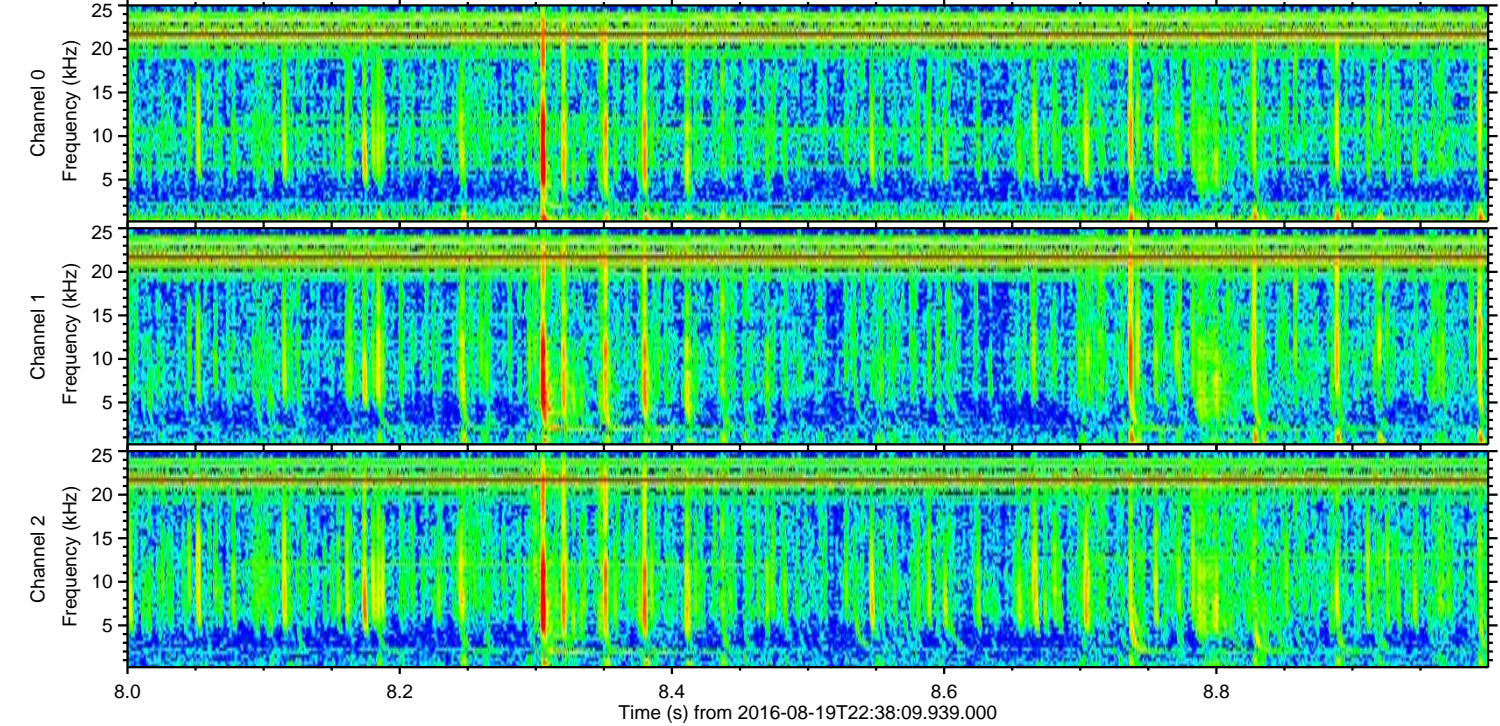
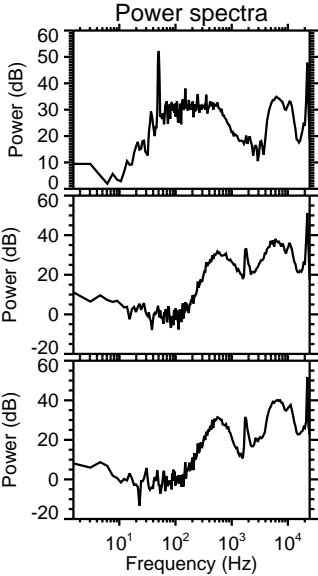
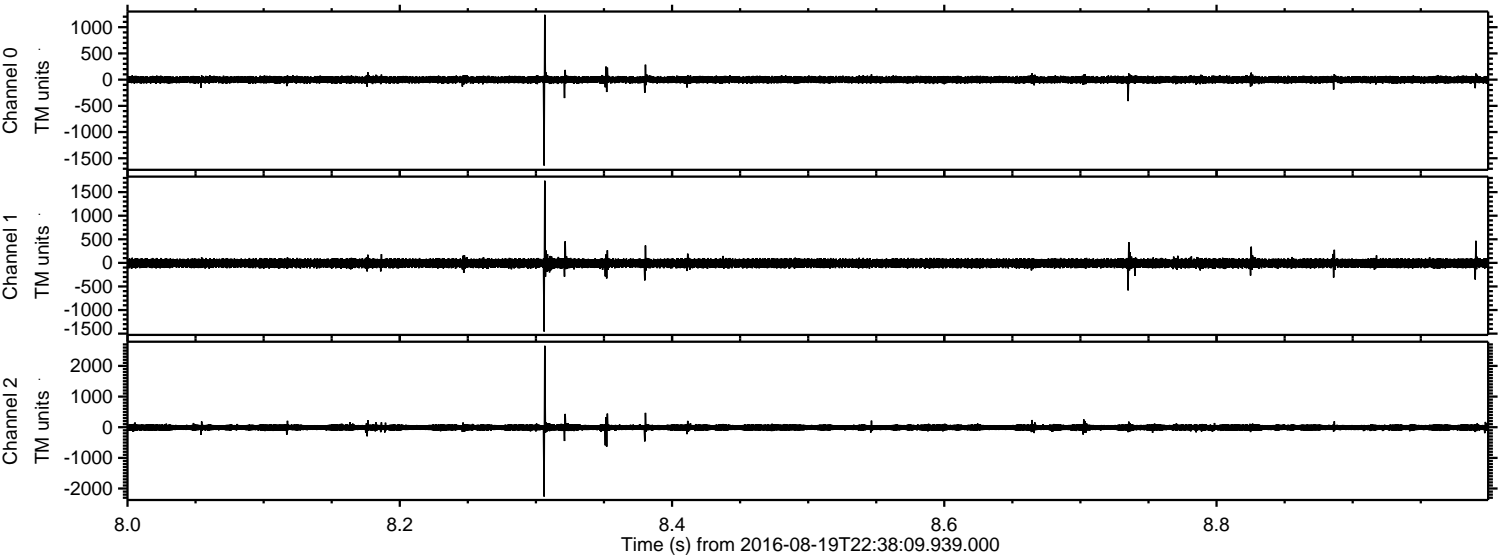
# ELMAVAN 3D WAVEFORMS (Measured data sampled at 50 kHz) 51000 packets of 144 samples from 2016-08-19T22:38:09.939.000.

Processed Sat Aug 20 00:46:12 2016 by ELM ver.2012-10-06 from 001\_\_elm20160819\_223808\_\_dat00.bin



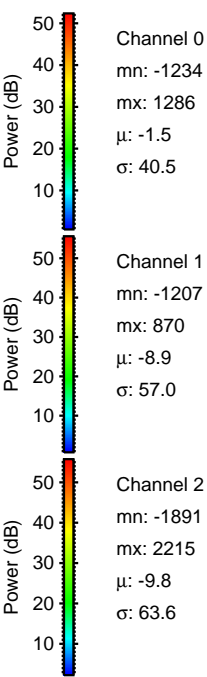
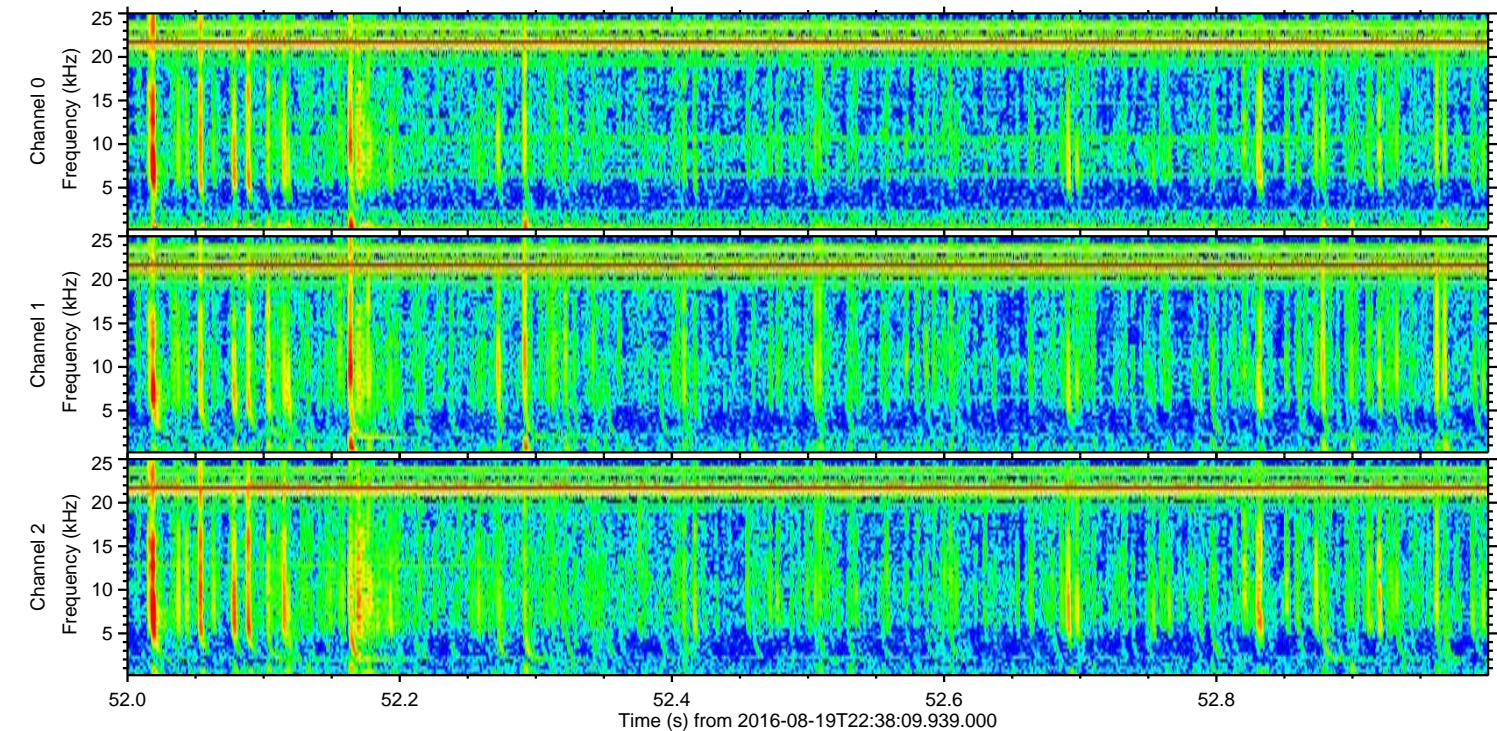
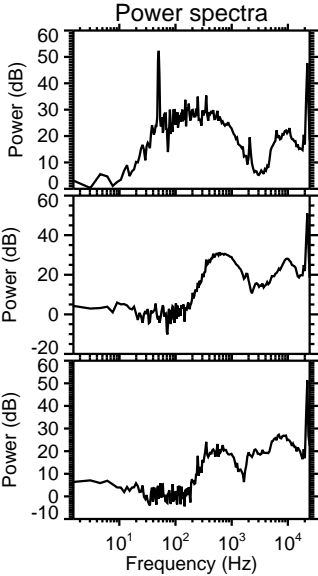
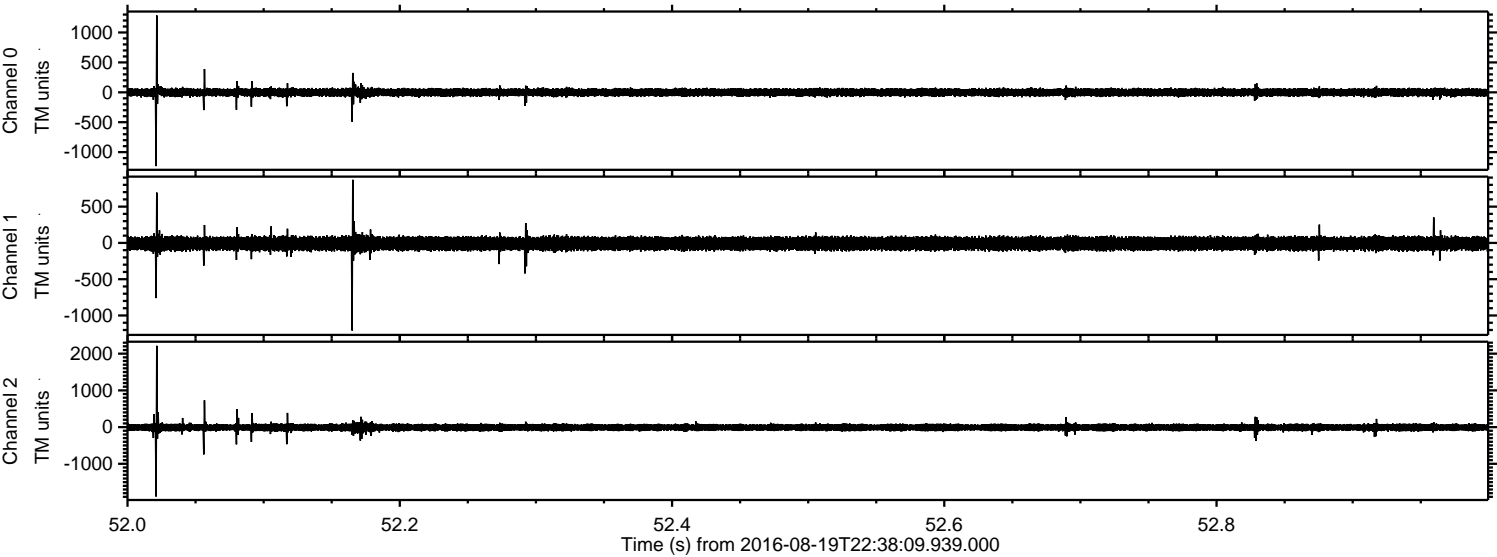


Processed Sat Aug 20 00:46:24 2016 by ELM ver.2012-10-06 from 001\_\_elm20160819\_223808\_\_dat00.bin





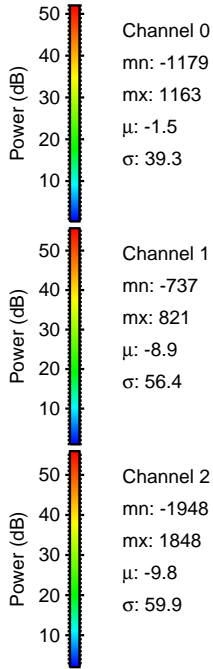
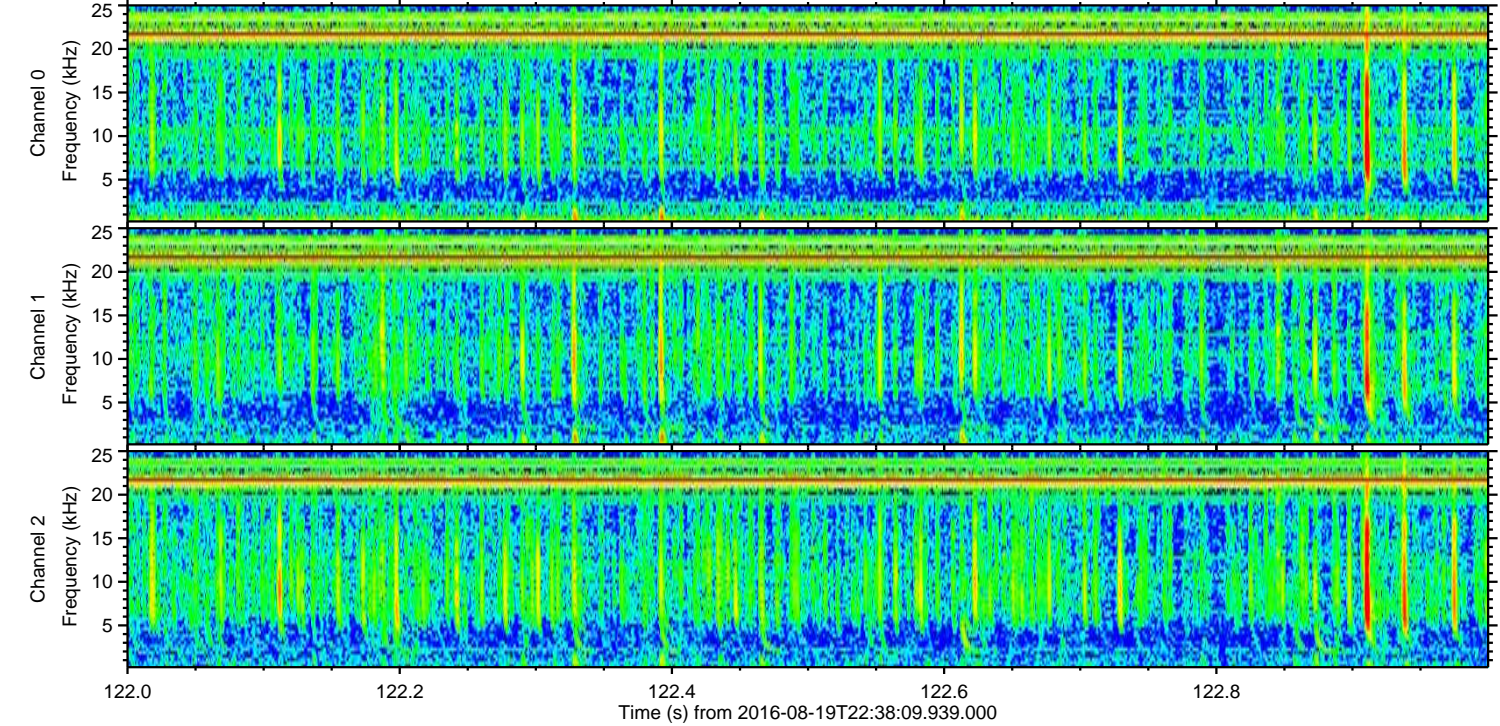
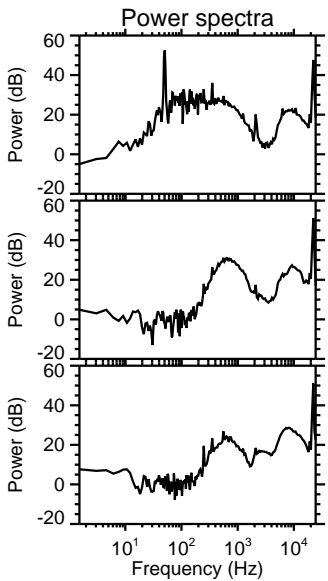
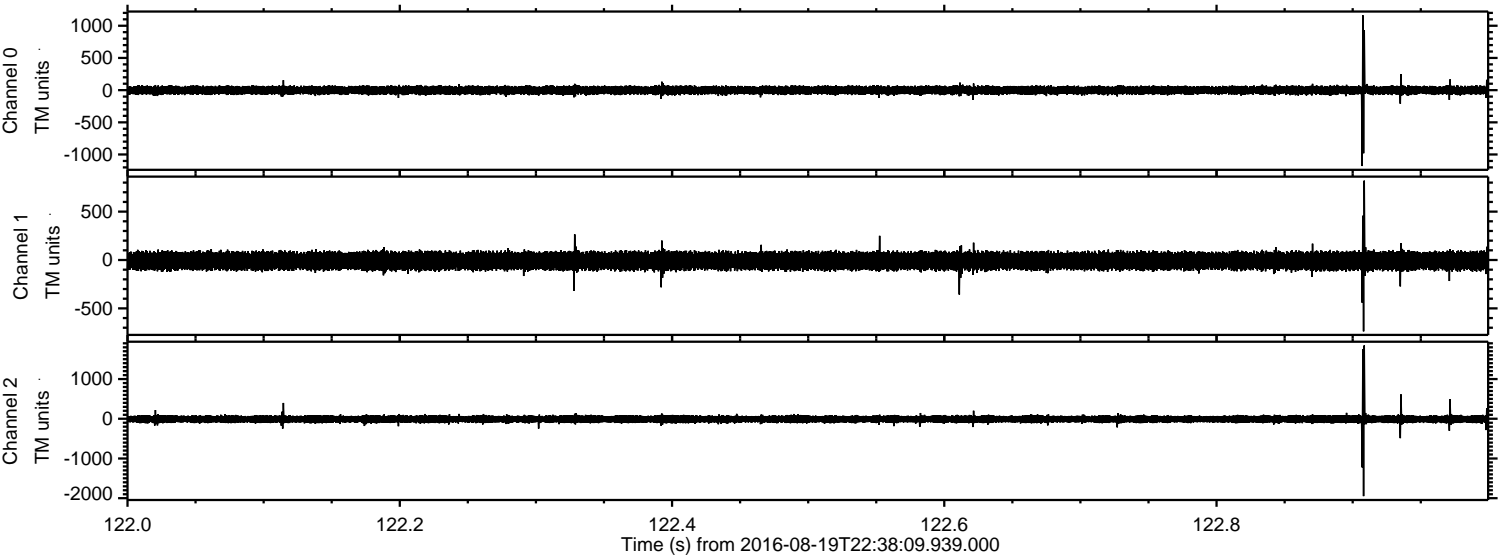
Processed Sat Aug 20 00:46:25 2016 by ELM ver.2012-10-06 from 001\_\_elm20160819\_223808\_\_dat00.bin





ELMAVAN 3D WAVEFORMS (Measured data sampled at 50 kHz) 51000 packets of 144 samples from 2016-08-19T22:38:09.939.000. Part 123/147

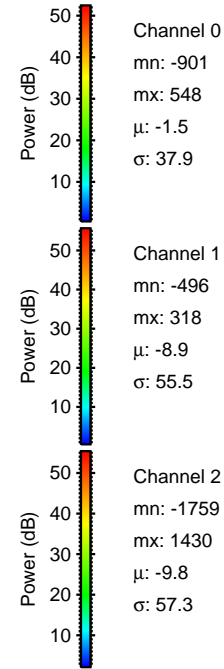
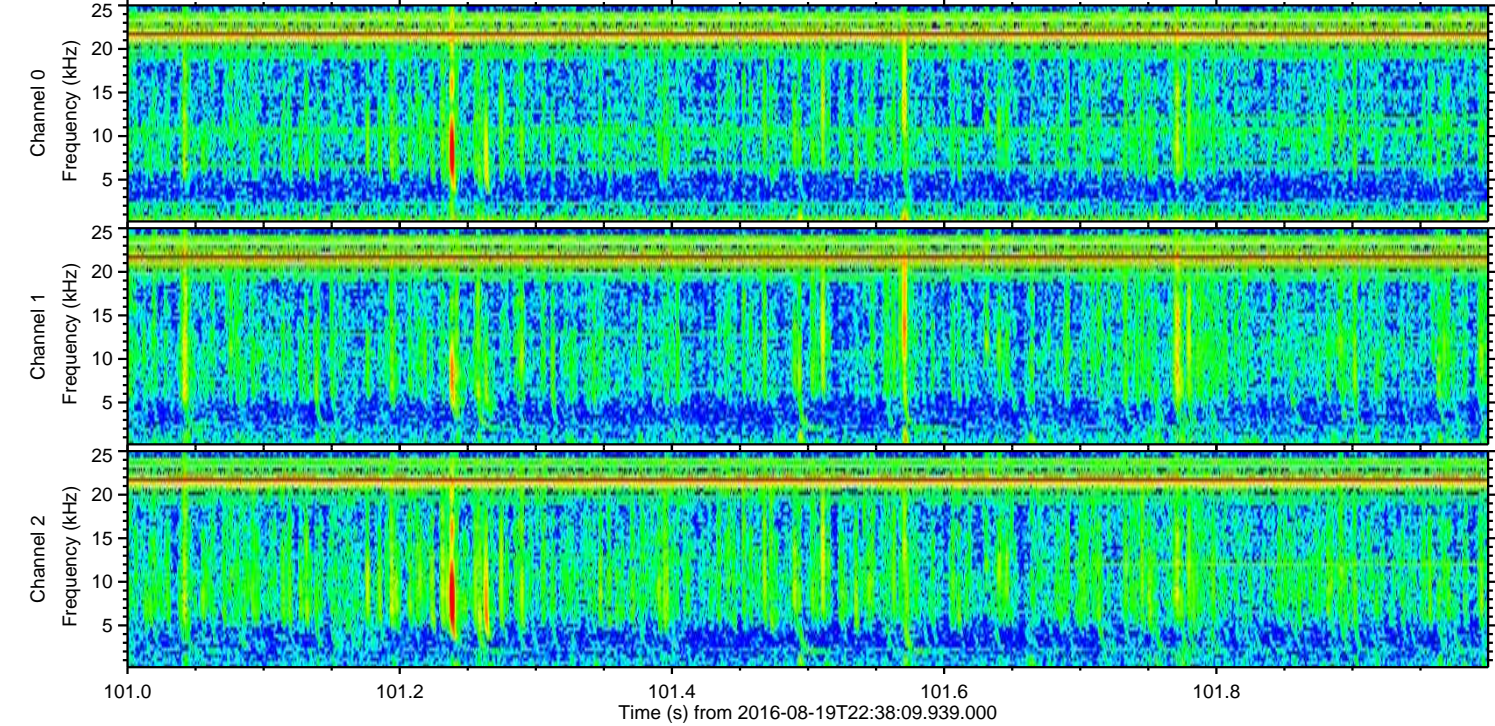
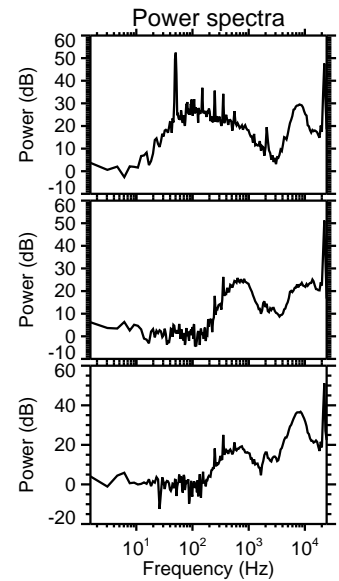
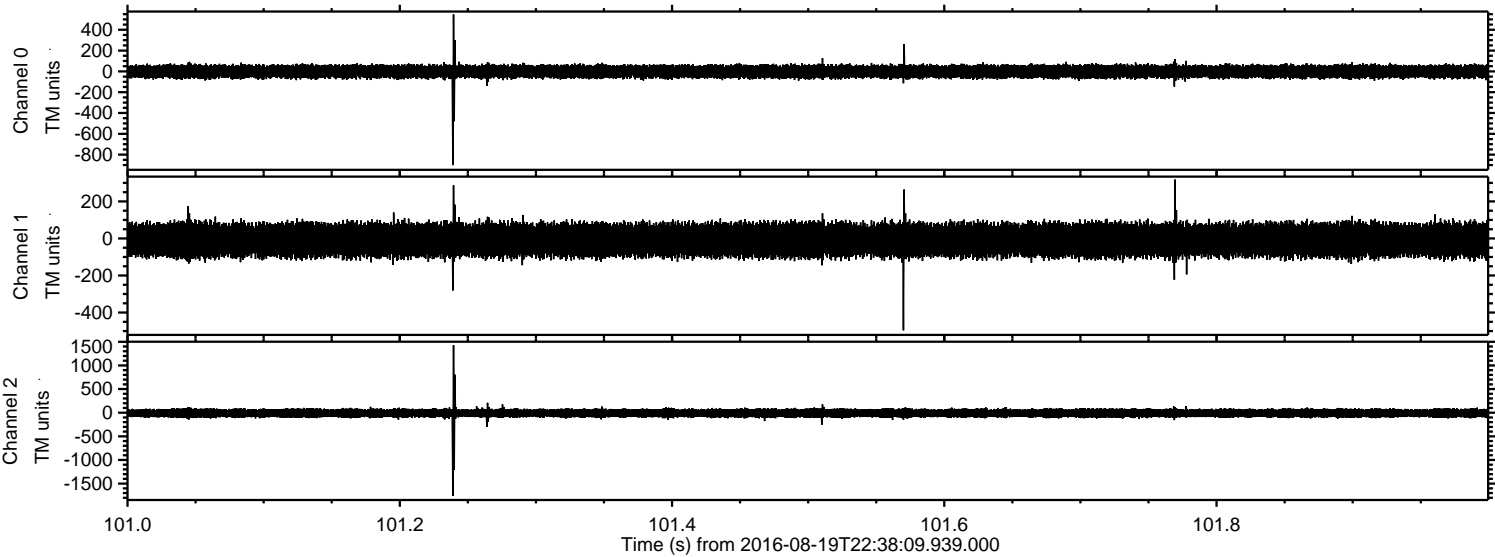
Processed Sat Aug 20 00:46:26 2016 by ELM ver.2012-10-06 from 001\_\_elm20160819\_223808\_\_dat00.bin





ELMAVAN 3D WAVEFORMS (Measured data sampled at 50 kHz) 51000 packets of 144 samples from 2016-08-19T22:38:09.939.000. Part 102/147

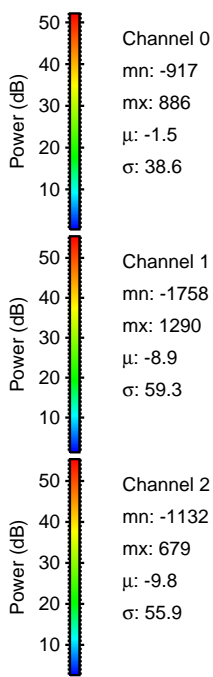
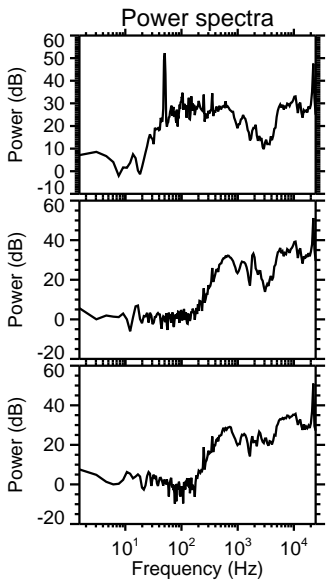
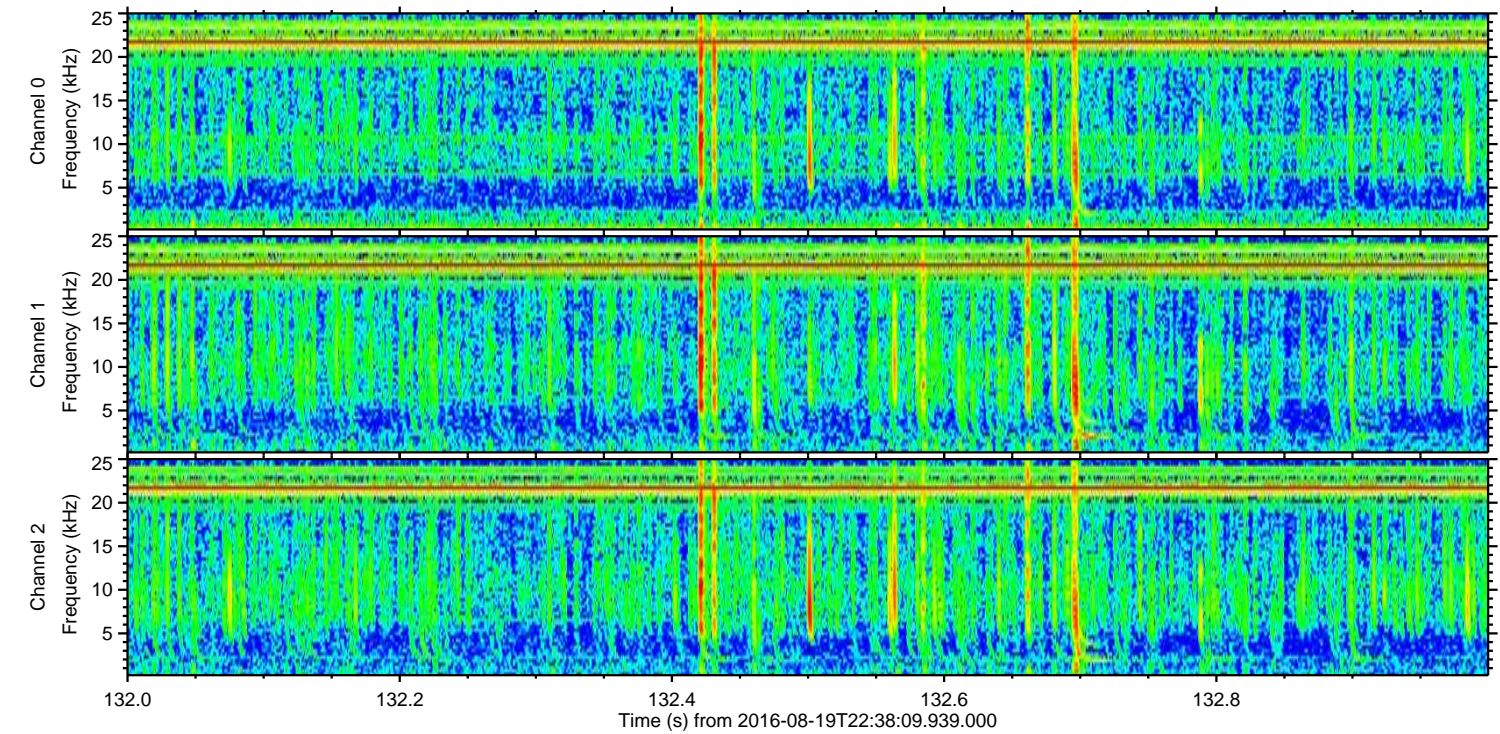
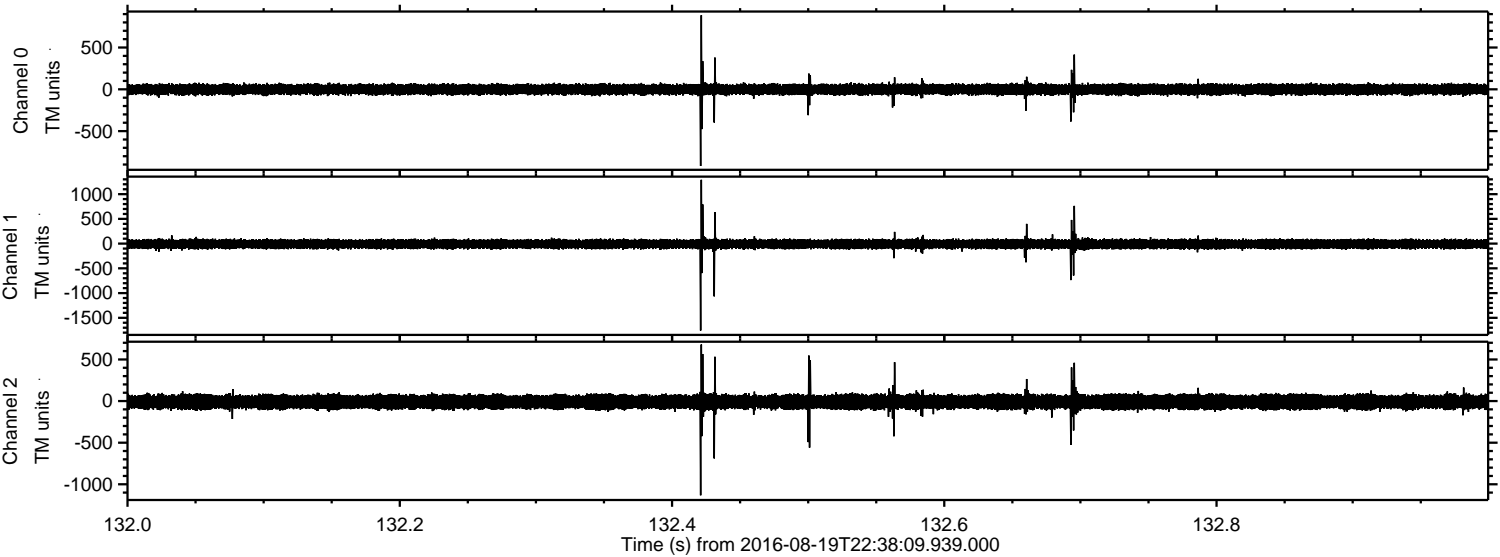
Processed Sat Aug 20 00:46:26 2016 by ELM ver.2012-10-06 from 001\_\_elm20160819\_223808\_\_dat00.bin





ELMAVAN 3D WAVEFORMS (Measured data sampled at 50 kHz) 51000 packets of 144 samples from 2016-08-19T22:38:09.939.000. Part 133/147

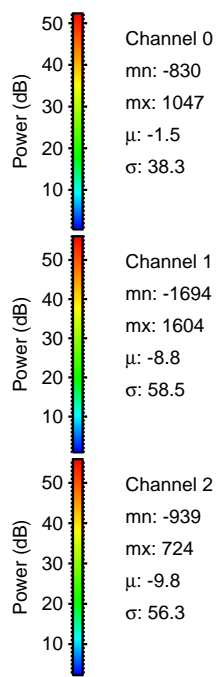
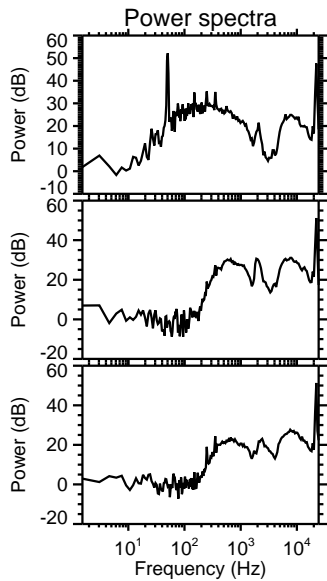
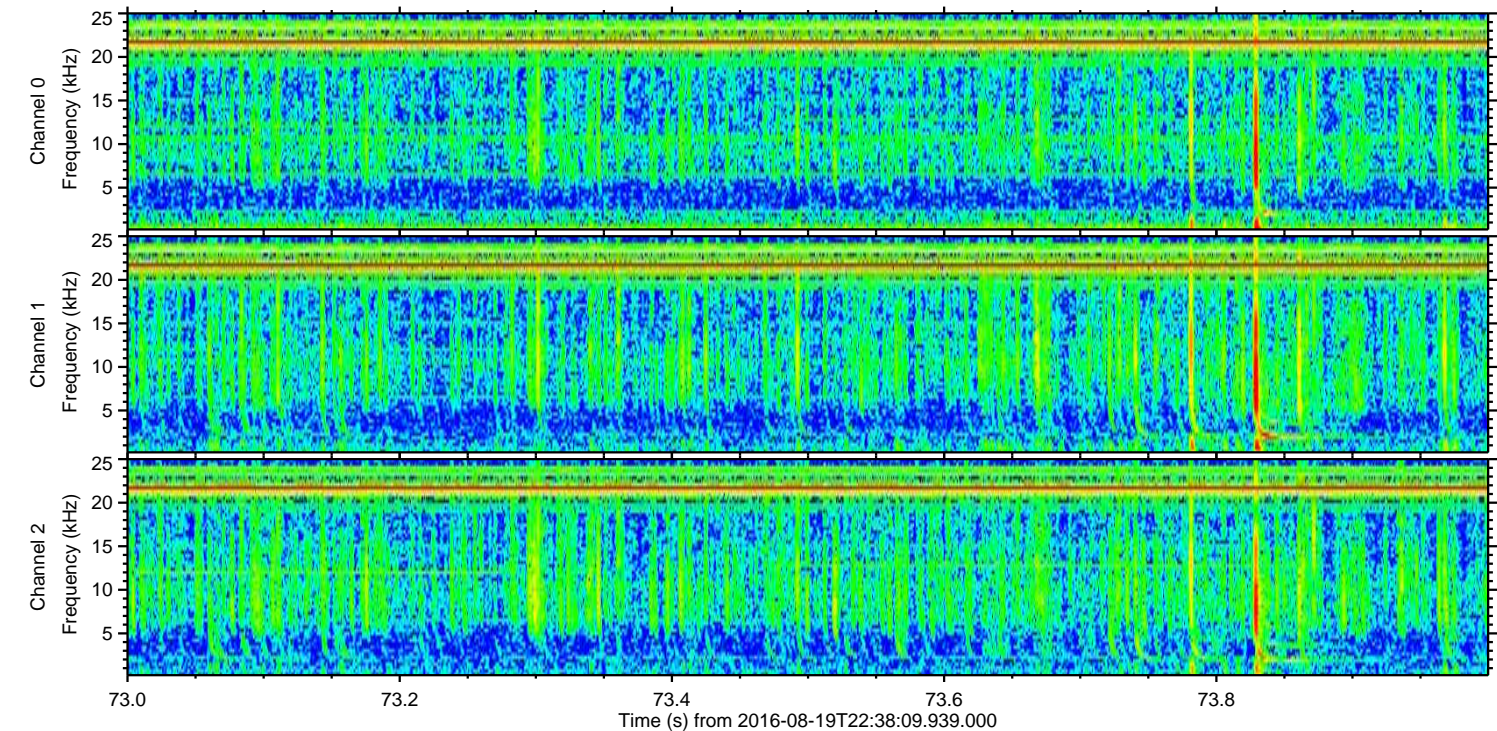
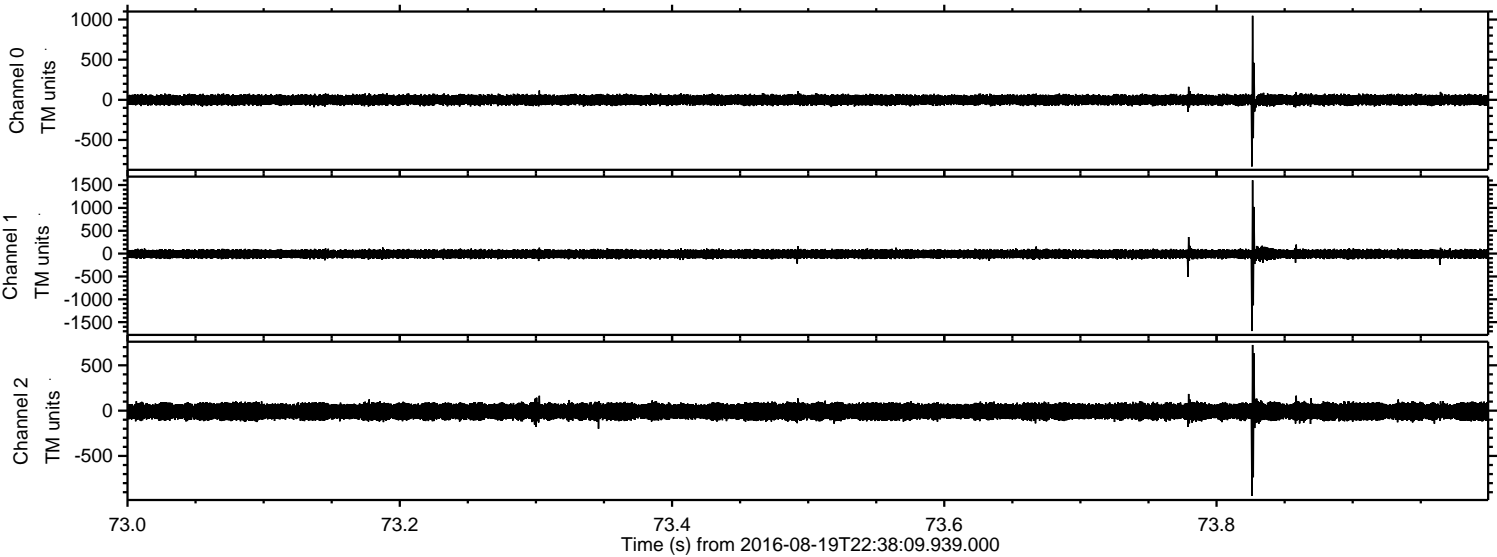
Processed Sat Aug 20 00:46:27 2016 by ELM ver.2012-10-06 from 001\_\_elm20160819\_223808\_\_dat00.bin





ELMAVAN 3D WAVEFORMS (Measured data sampled at 50 kHz) 51000 packets of 144 samples from 2016-08-19T22:38:09.939.000. Part 74/147

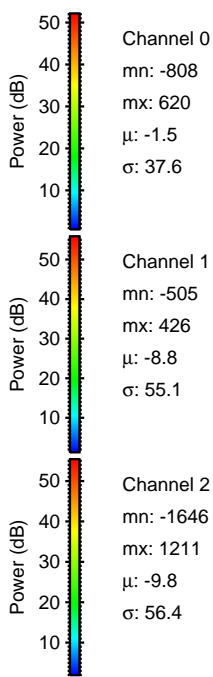
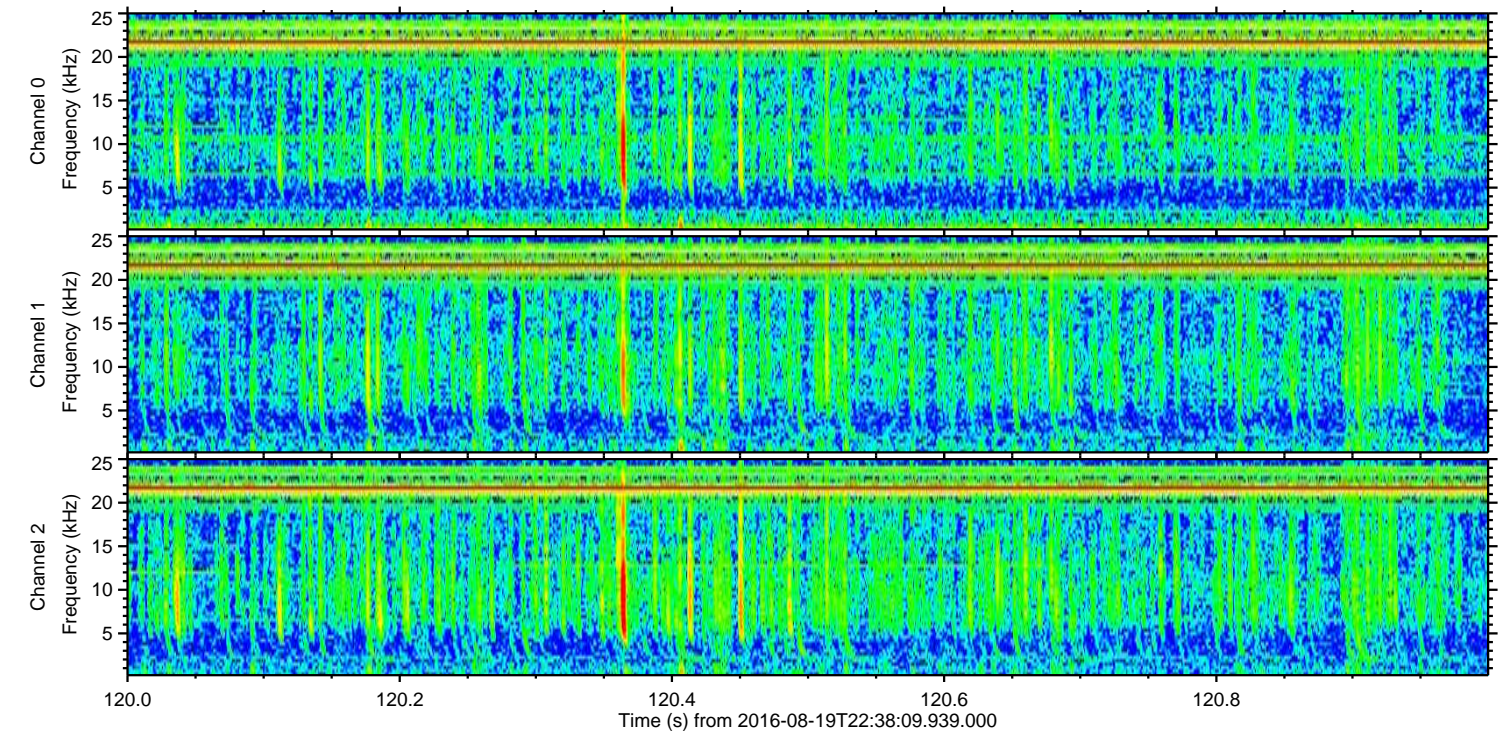
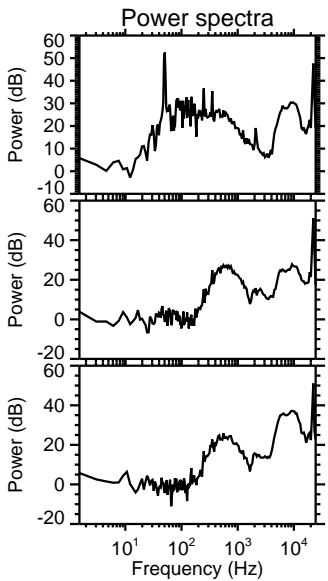
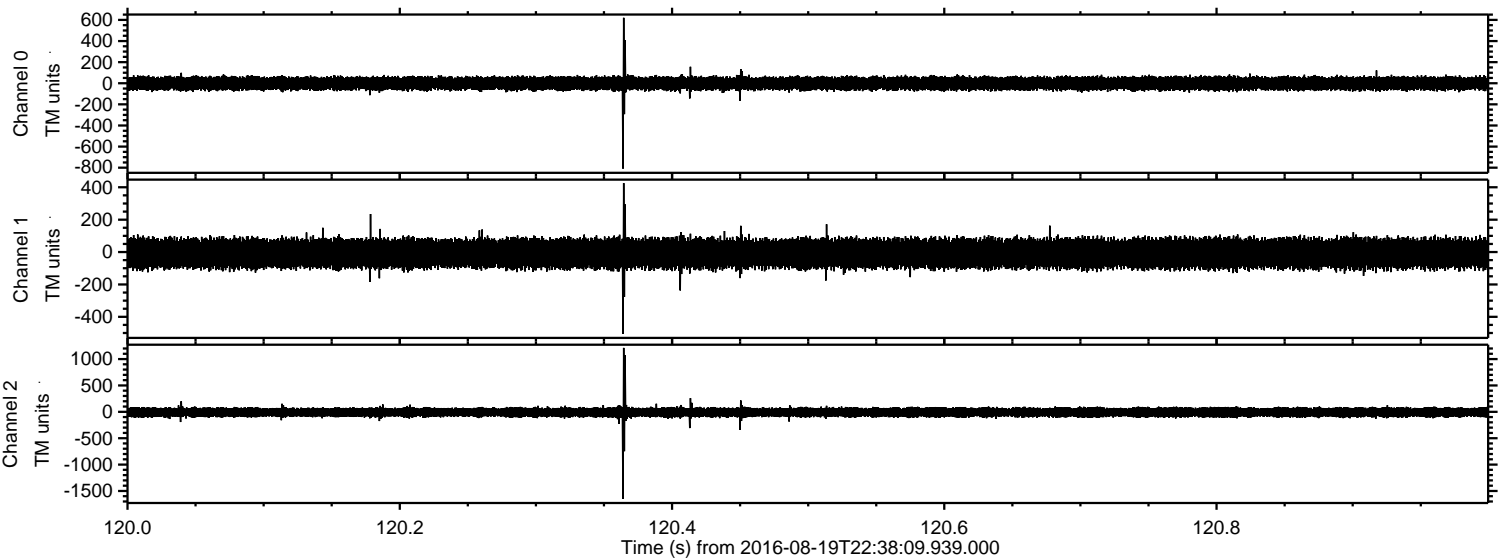
Processed Sat Aug 20 00:46:28 2016 by ELM ver.2012-10-06 from 001\_\_elm20160819\_223808\_\_dat00.bin





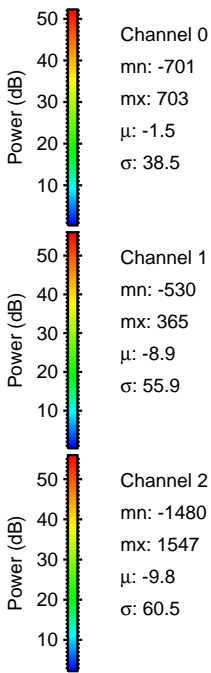
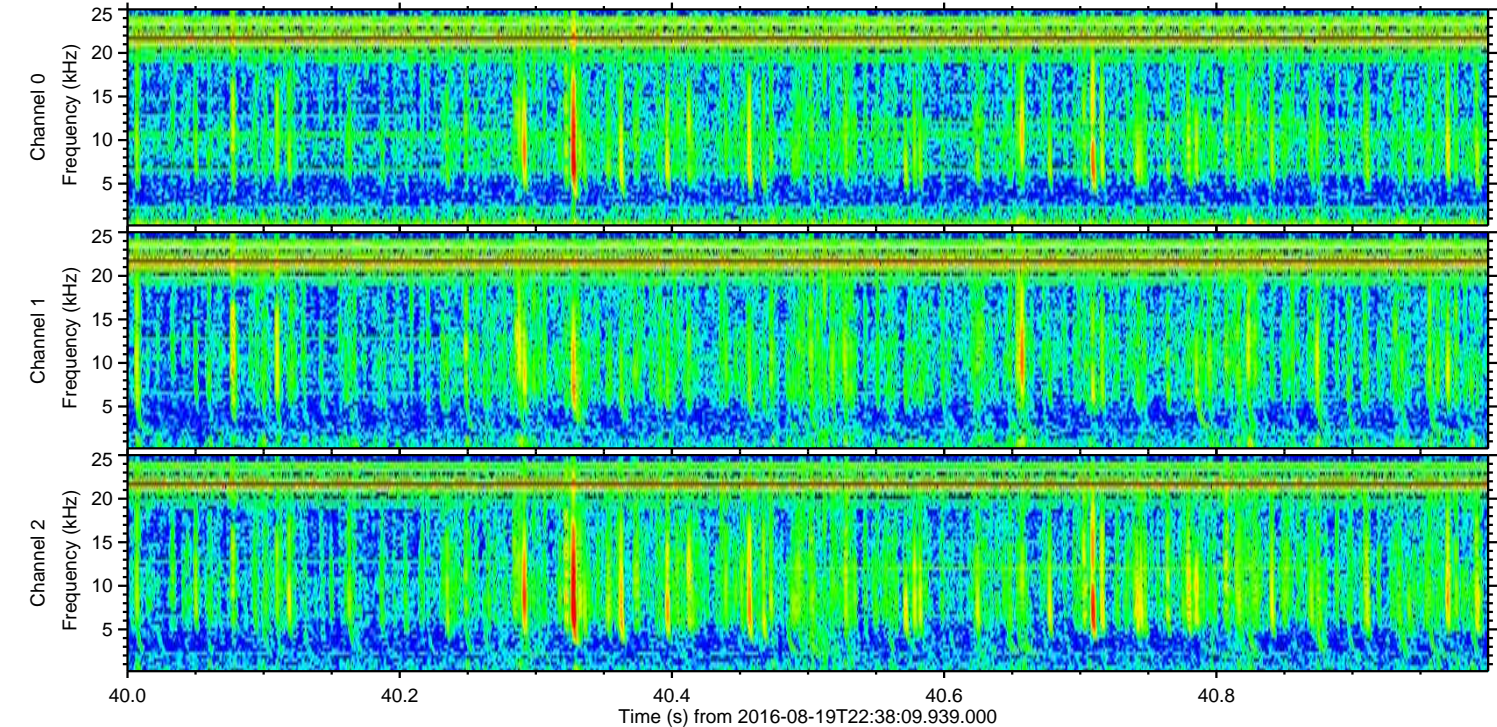
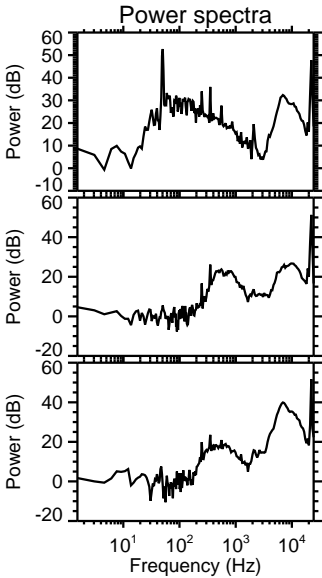
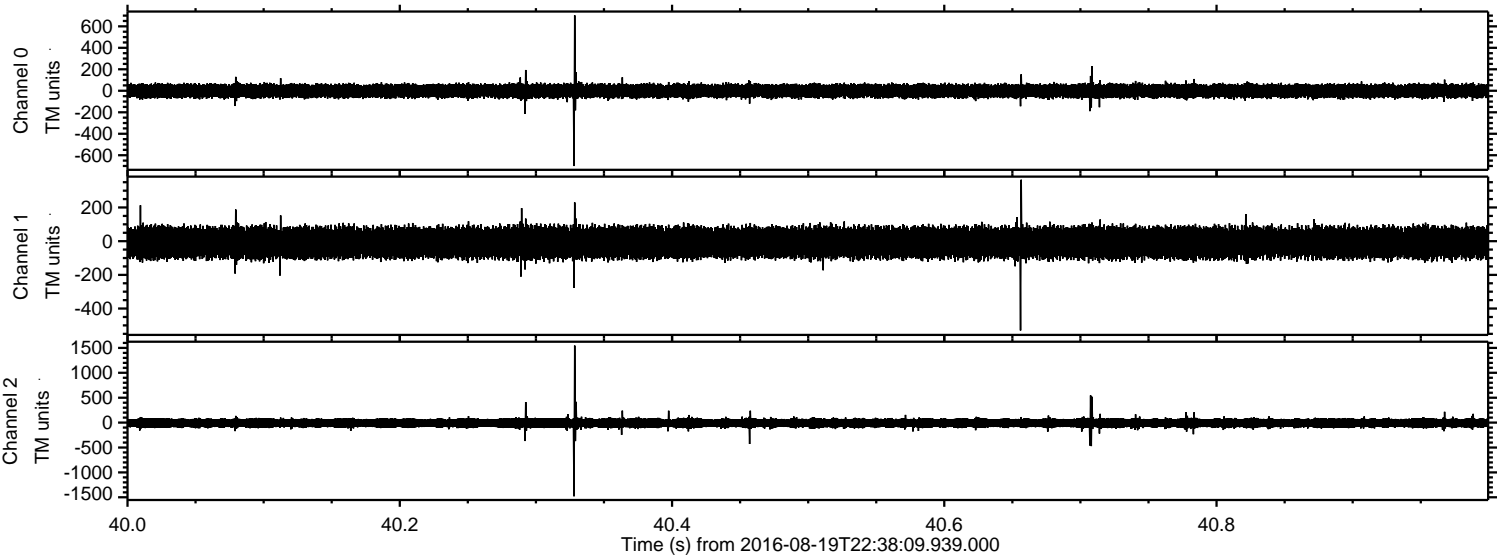
ELMAVAN 3D WAVEFORMS (Measured data sampled at 50 kHz) 51000 packets of 144 samples from 2016-08-19T22:38:09.939.000. Part 121/147

Processed Sat Aug 20 00:46:29 2016 by ELM ver.2012-10-06 from 001\_\_elm20160819\_223808\_\_dat00.bin



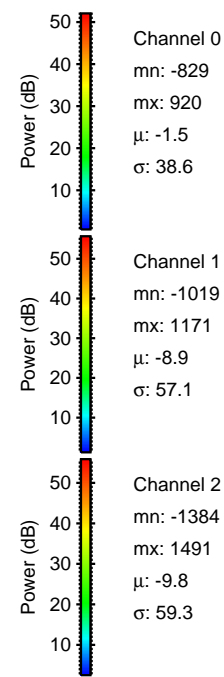
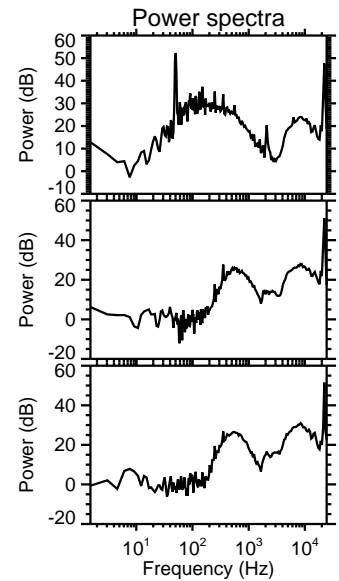
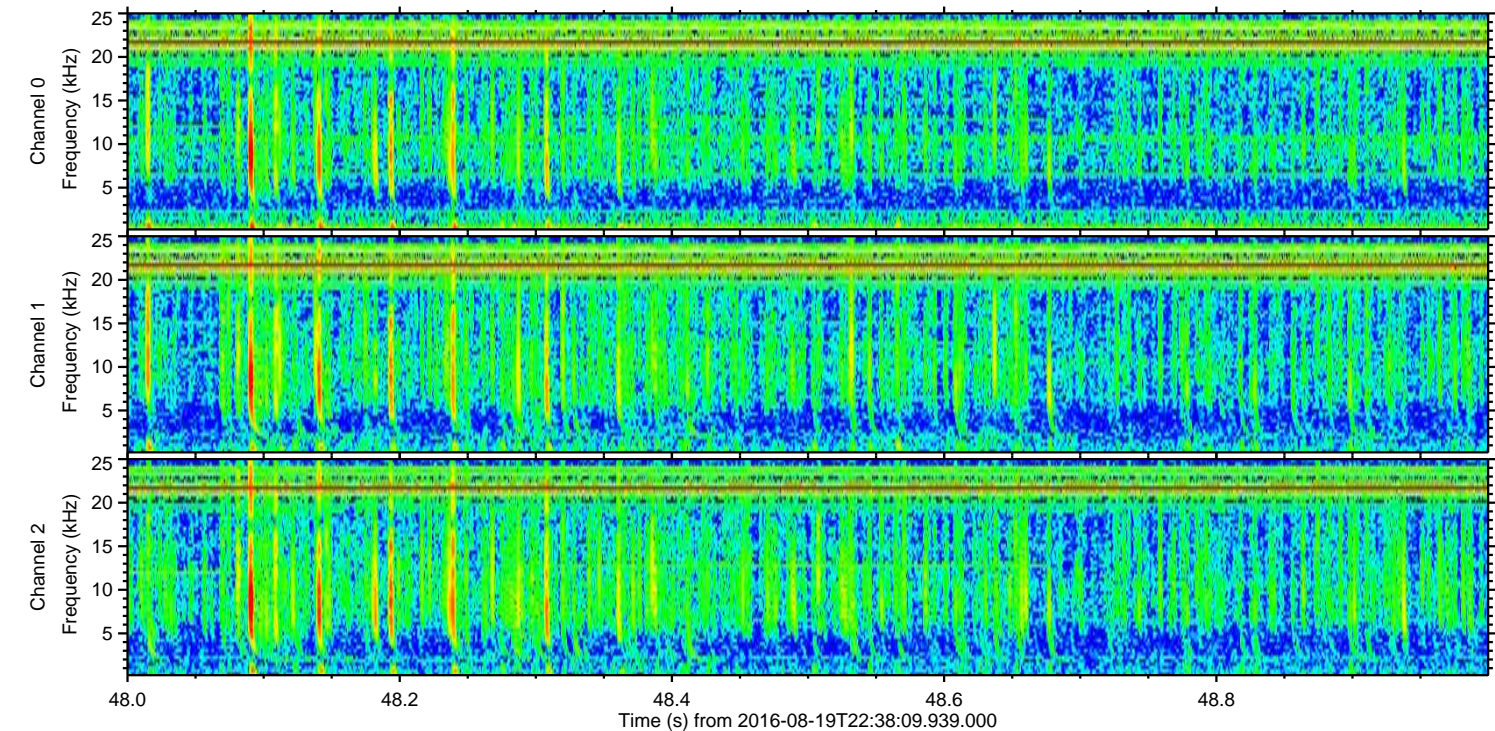
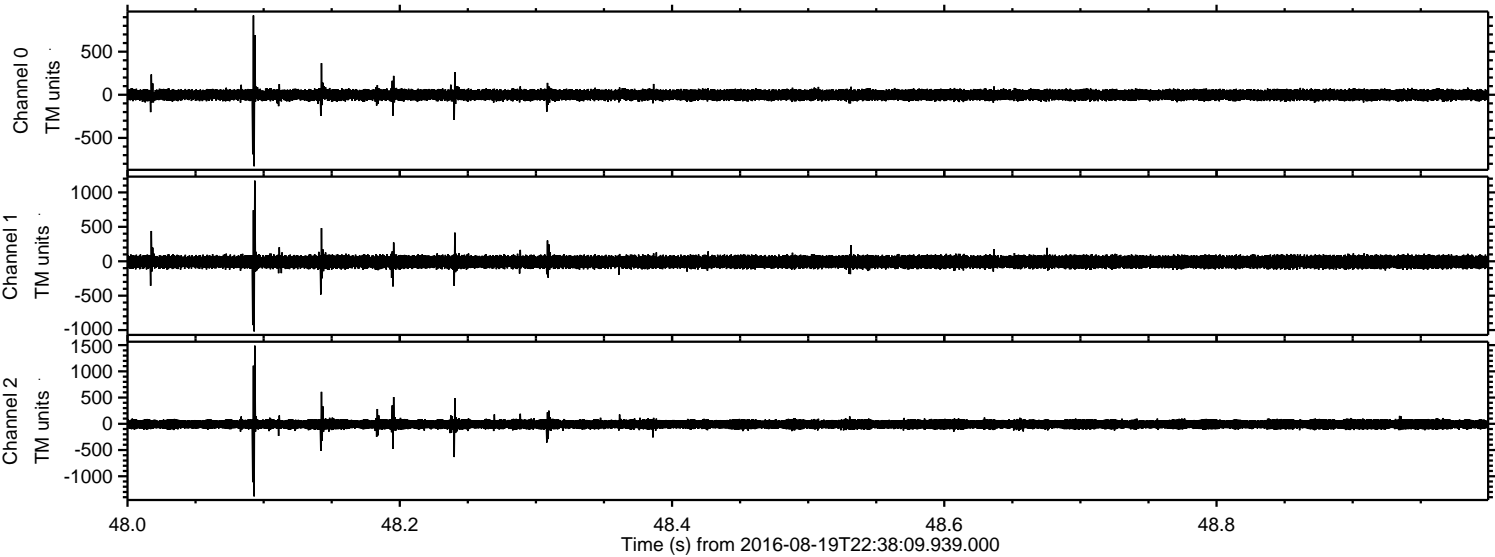


Processed Sat Aug 20 00:46:30 2016 by ELM ver.2012-10-06 from 001\_\_elm20160819\_223808\_\_dat00.bin





Processed Sat Aug 20 00:46:31 2016 by ELM ver.2012-10-06 from 001\_\_elm20160819\_223808\_\_dat00.bin



Channel 0  
mn: -829  
mx: 920  
 $\mu$ : -1.5  
 $\sigma$ : 38.6

Channel 1  
mn: -1019  
mx: 1171  
 $\mu$ : -8.9  
 $\sigma$ : 57.1

Channel 2  
mn: -1384  
mx: 1491  
 $\mu$ : -9.8  
 $\sigma$ : 59.3



Processed Sat Aug 20 00:46:32 2016 by ELM ver.2012-10-06 from 001\_\_elm20160819\_223808\_\_dat00.bin

