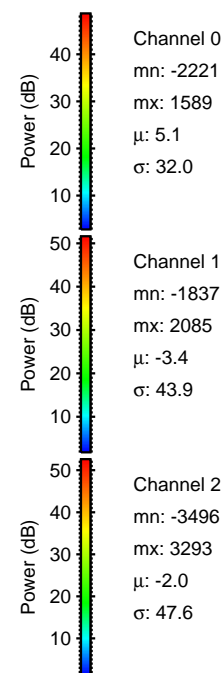
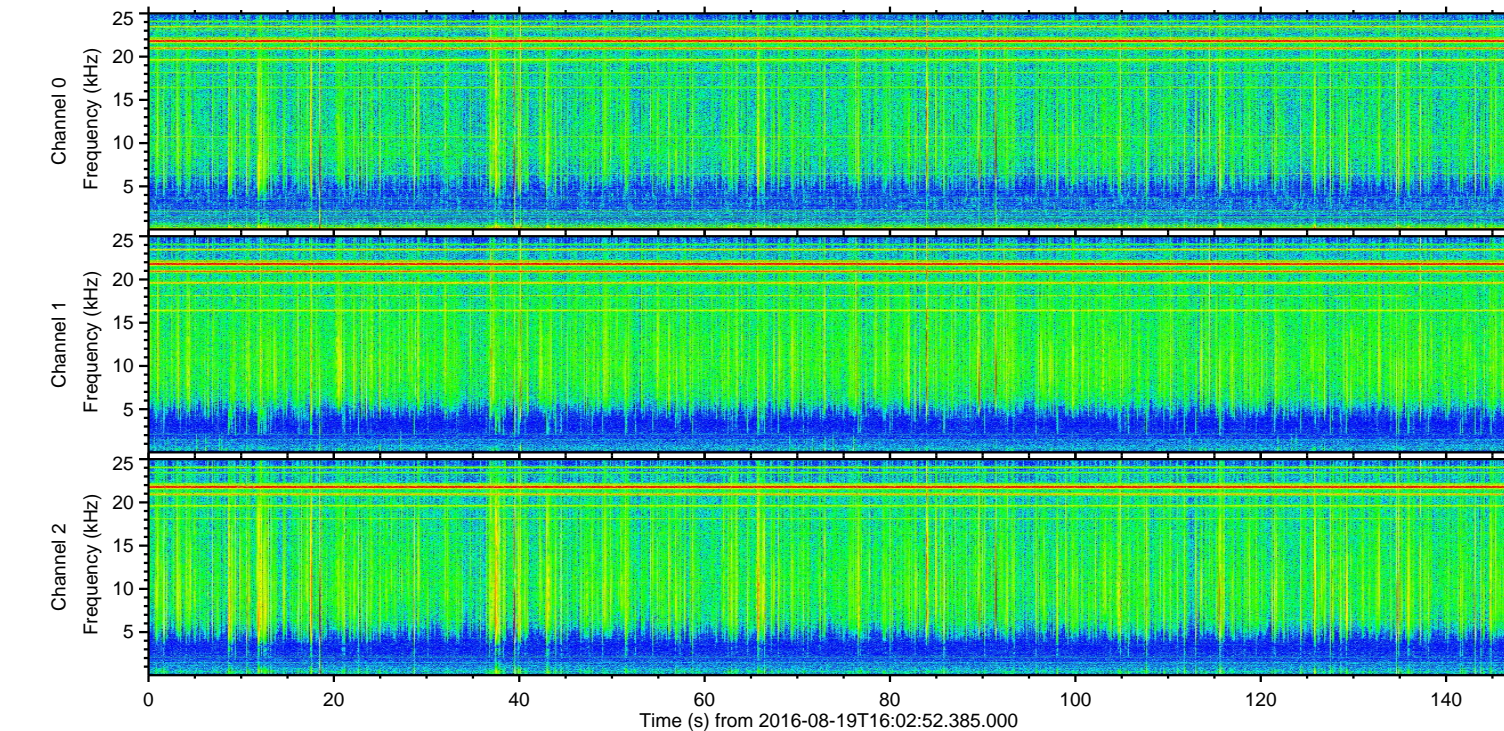
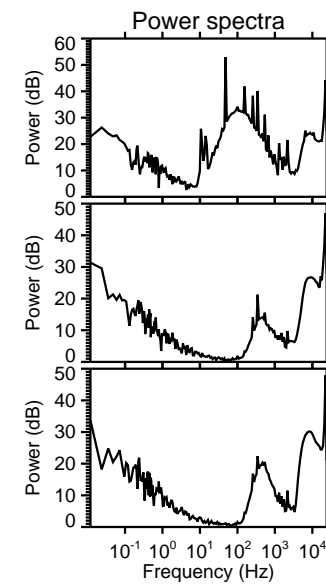
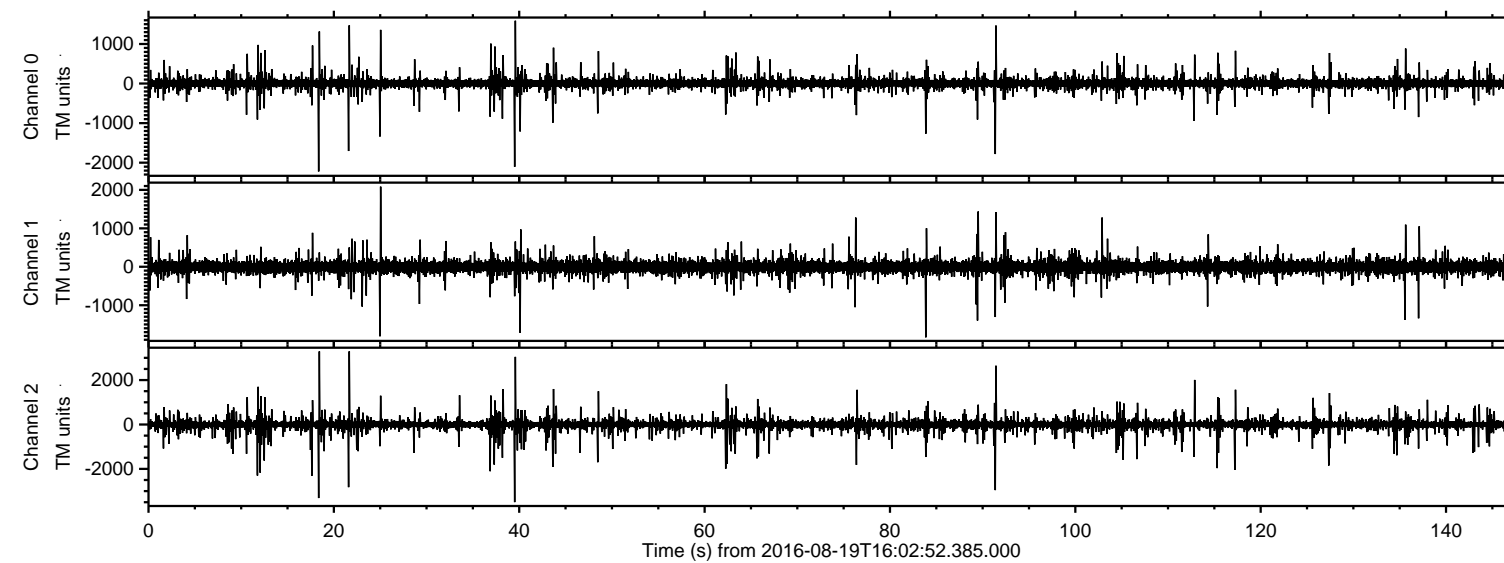
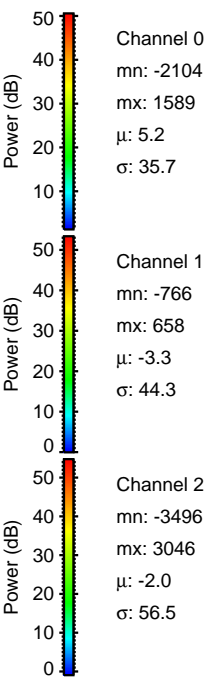
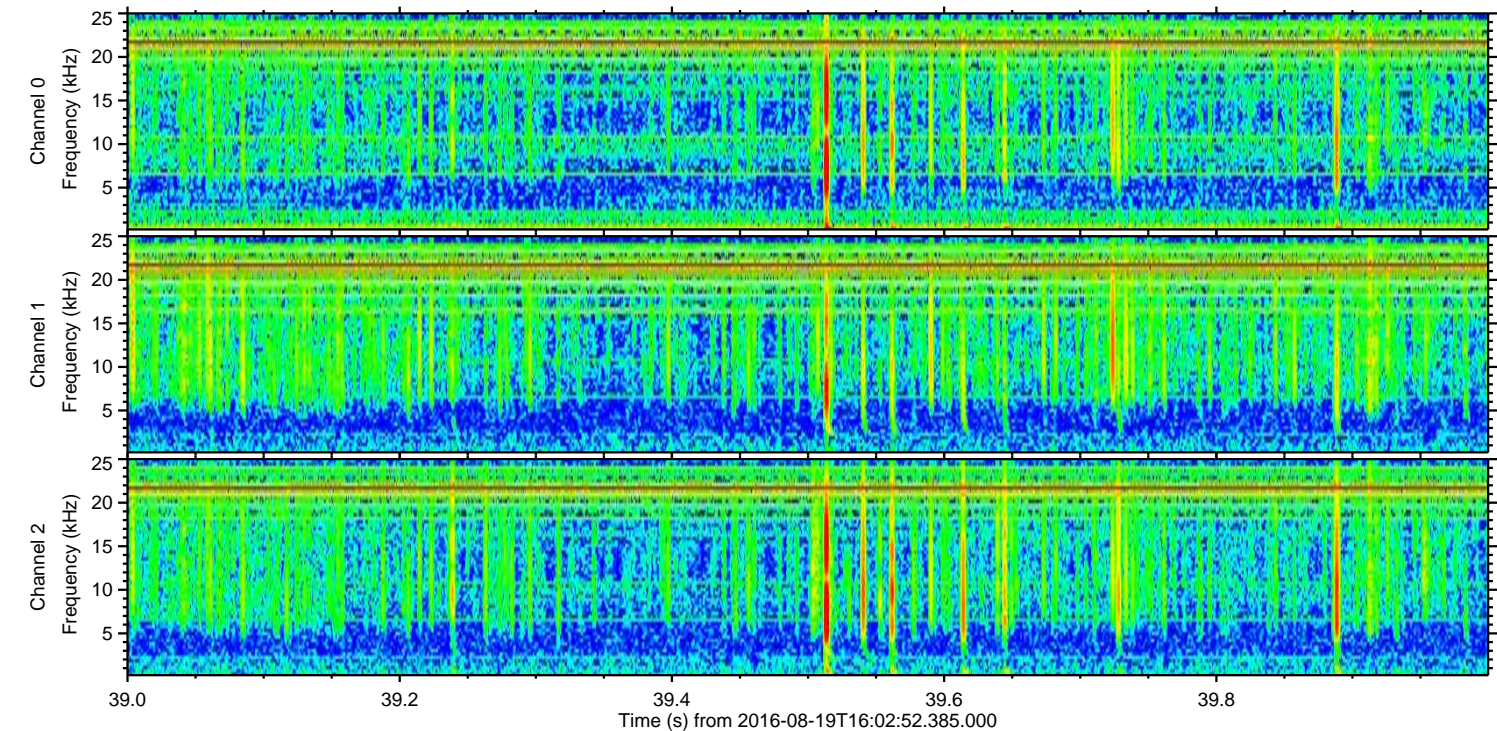
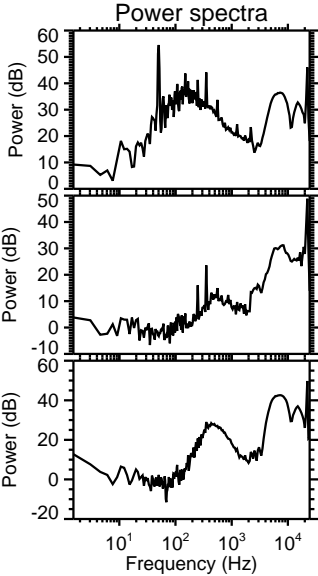
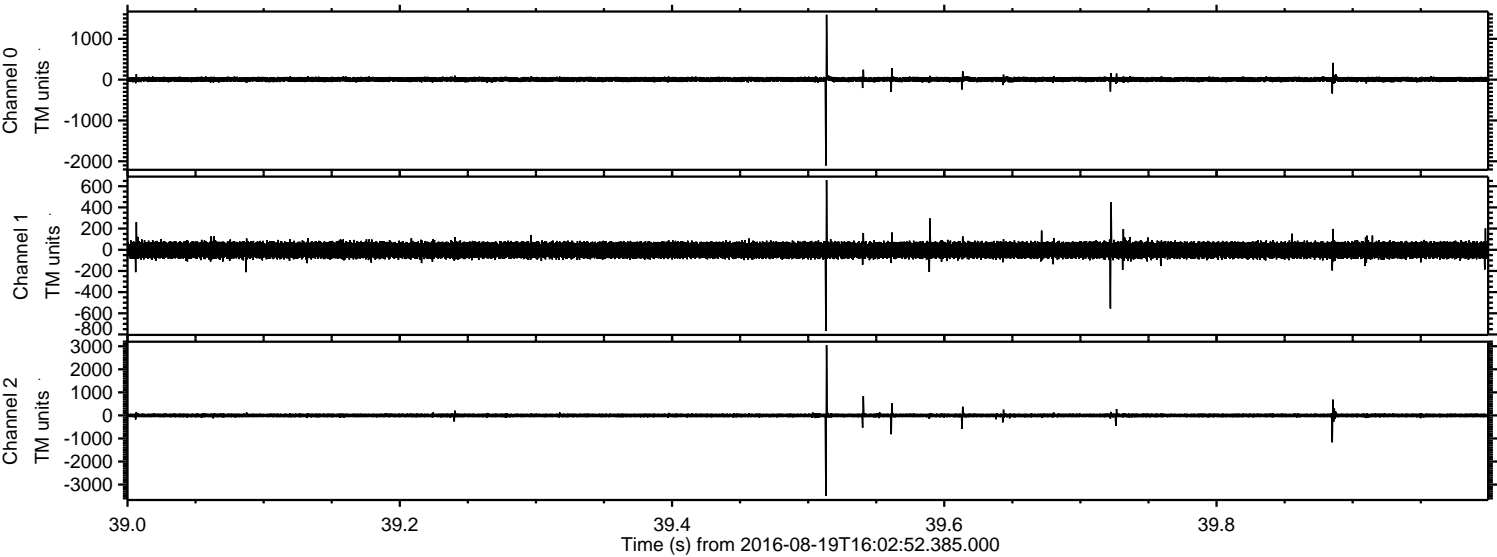


ELMAVAN 3D WAVEFORMS (Measured data sampled at 50 kHz) 51000 packets of 144 samples from 2016-08-19T16:02:52.385.000.

Processed Fri Aug 19 18:10:50 2016 by ELM ver.2012-10-06 from 001__elm20160819_160251__dat00.bin

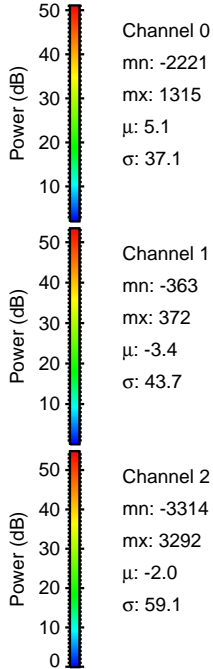
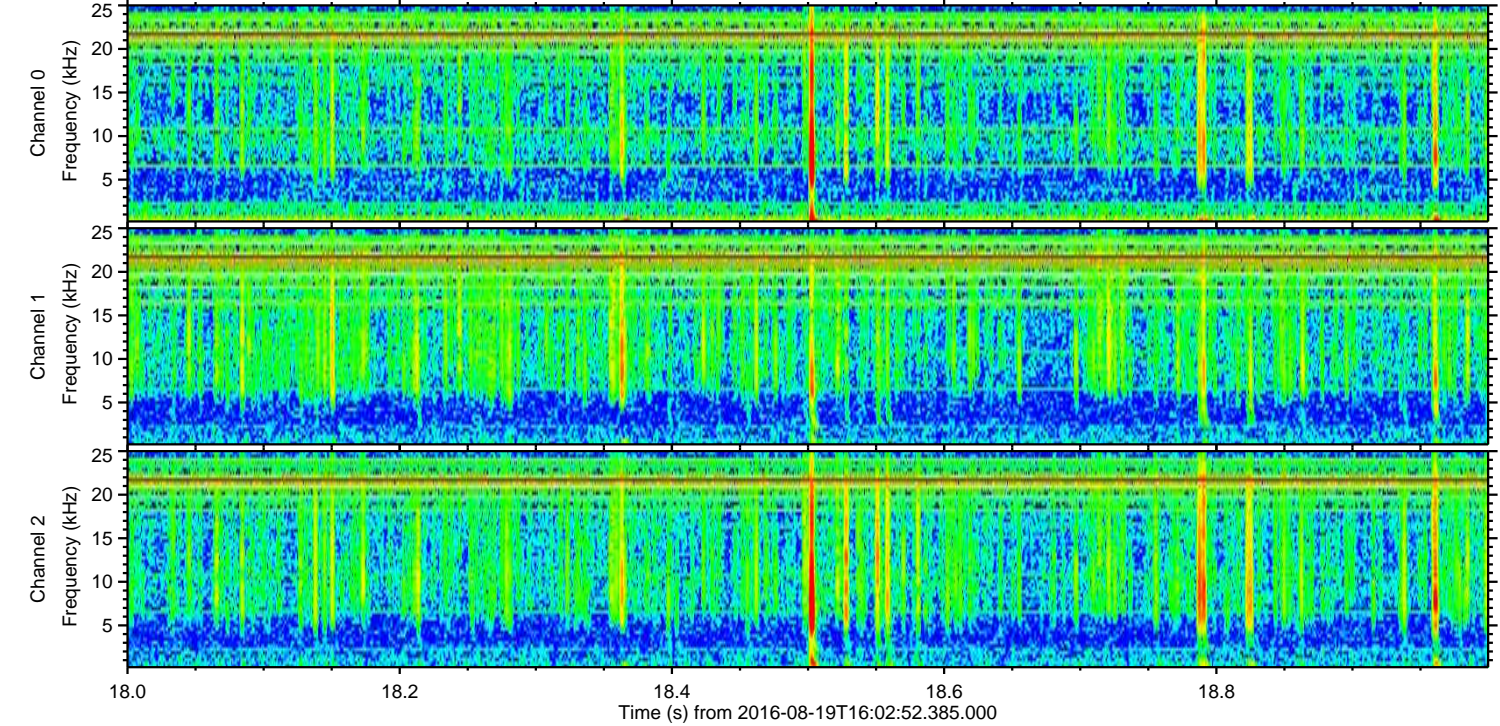
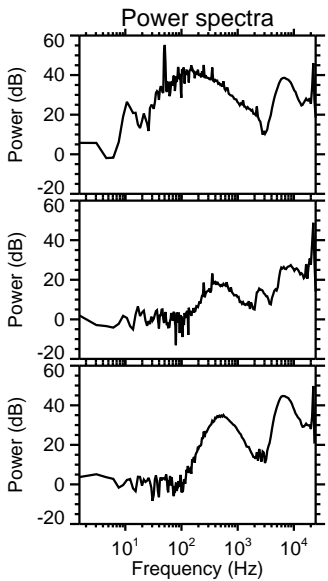
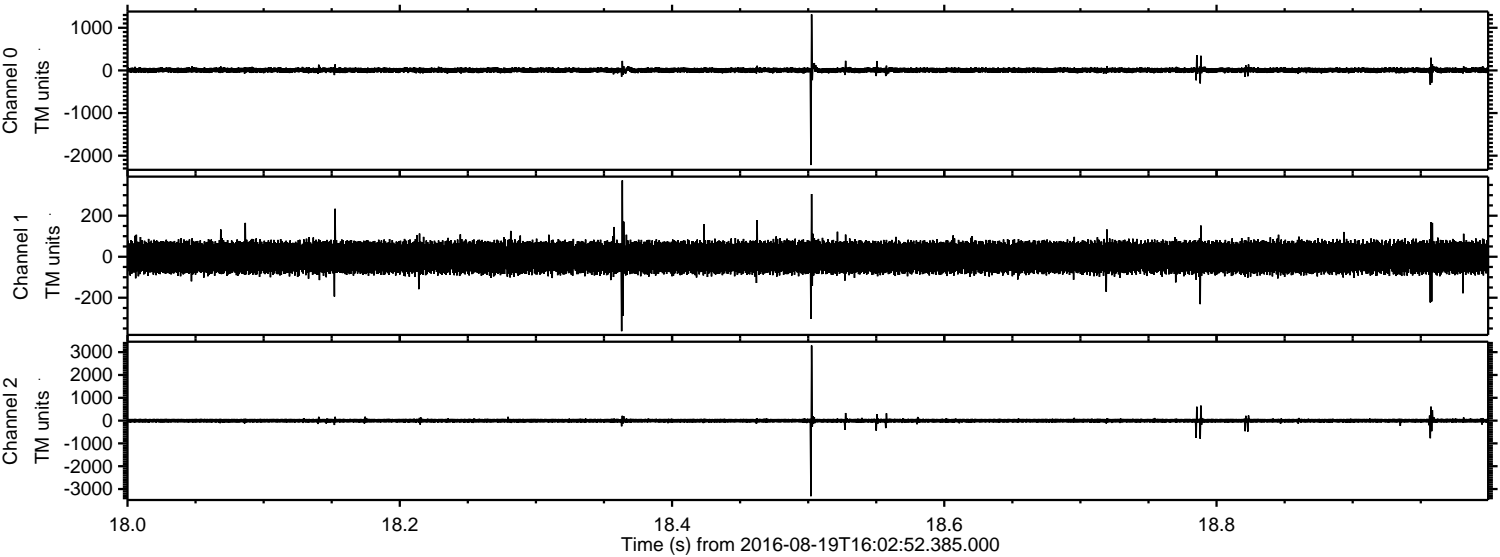


Processed Fri Aug 19 18:11:02 2016 by ELM ver.2012-10-06 from 001__elm20160819_160251__dat00.bin



ELMAVAN 3D WAVEFORMS (Measured data sampled at 50 kHz) 51000 packets of 144 samples from 2016-08-19T16:02:52.385.000. Part 19/147

Processed Fri Aug 19 18:11:03 2016 by ELM ver.2012-10-06 from 001__elm20160819_160251__dat00.bin



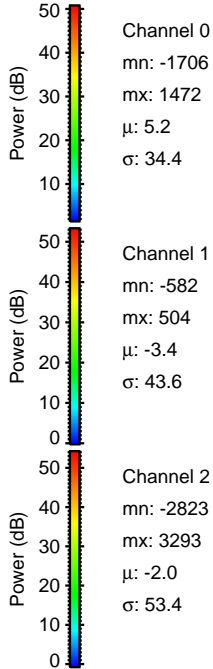
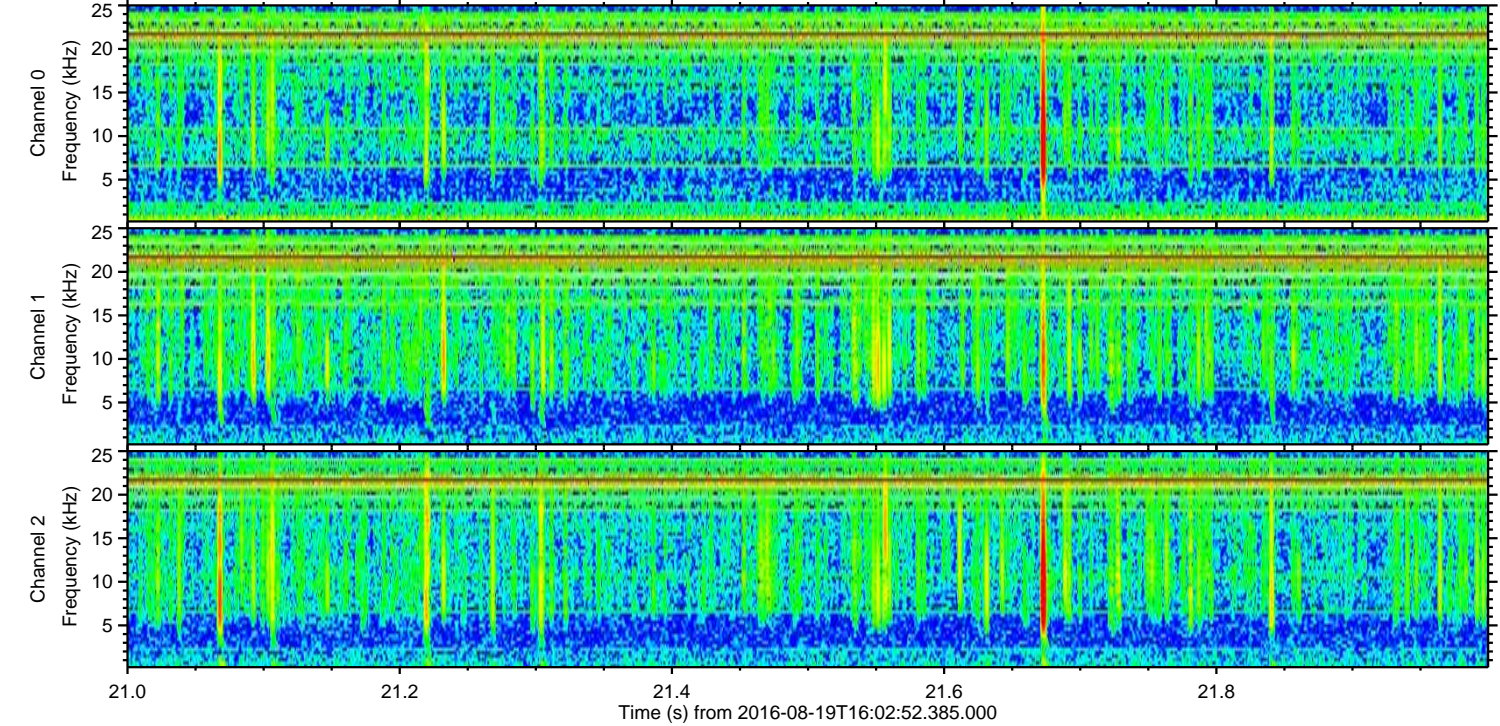
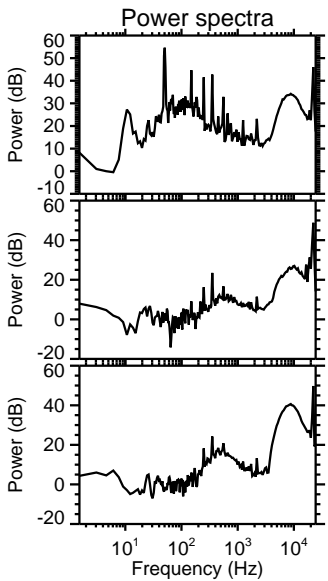
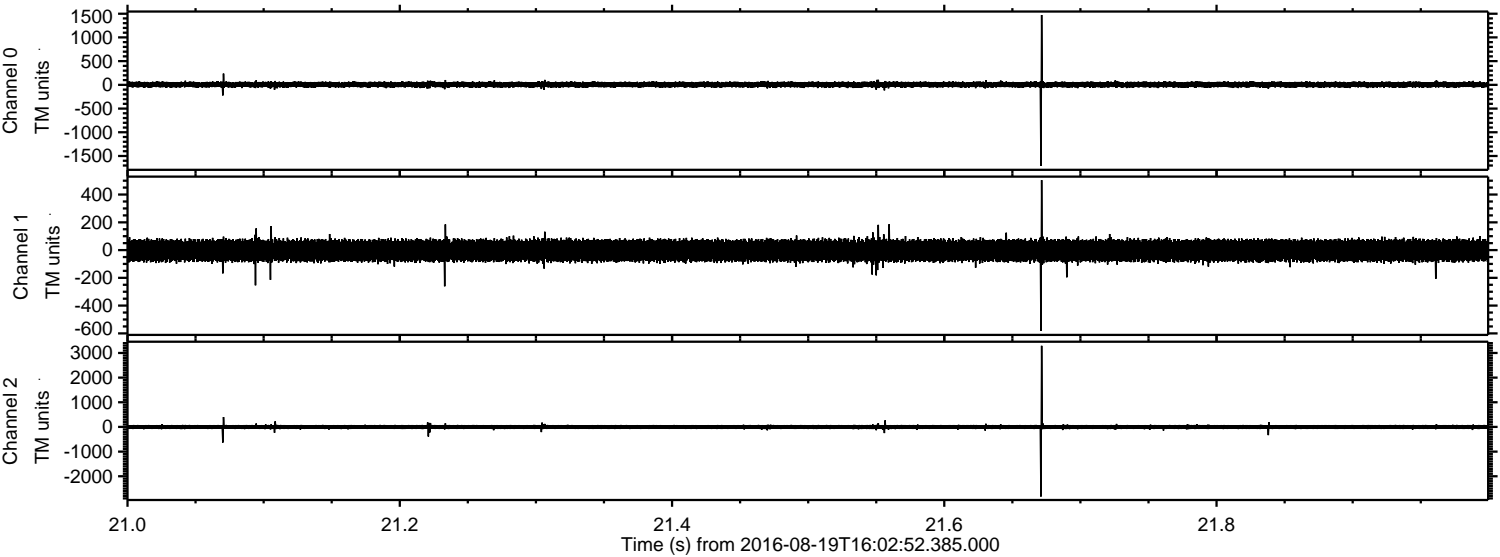
Channel 0
mn: -2221
mx: 1315
 μ : 5.1
 σ : 37.1

Channel 1
mn: -363
mx: 372
 μ : -3.4
 σ : 43.7

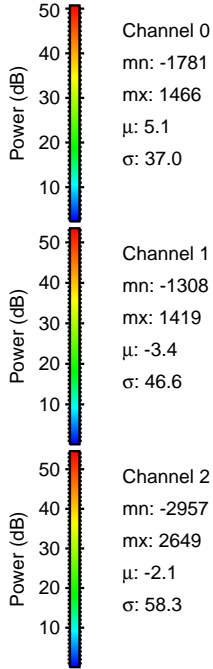
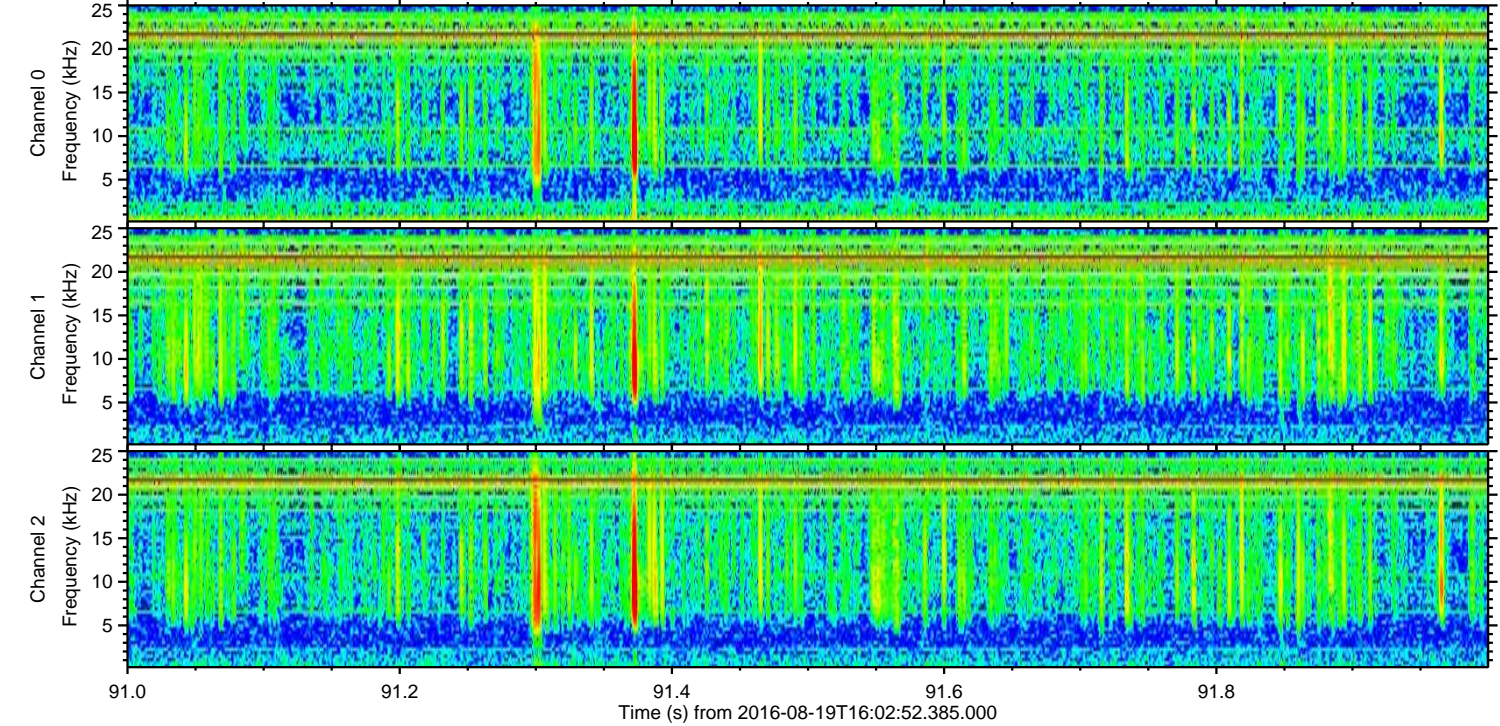
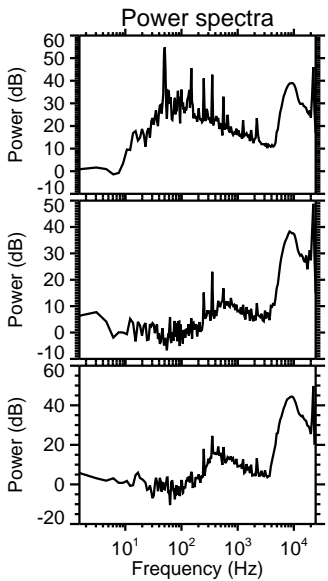
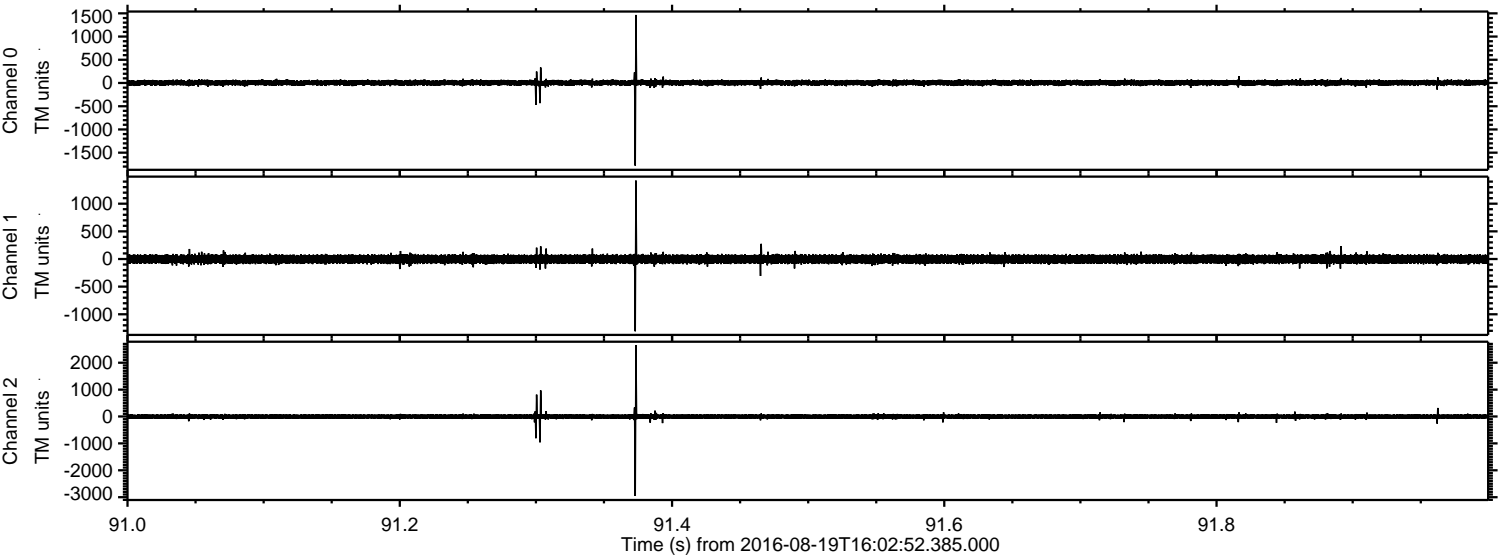
Channel 2
mn: -3314
mx: 3292
 μ : -2.0
 σ : 59.1

ELMAVAN 3D WAVEFORMS (Measured data sampled at 50 kHz) 51000 packets of 144 samples from 2016-08-19T16:02:52.385.000. Part 22/147

Processed Fri Aug 19 18:11:04 2016 by ELM ver.2012-10-06 from 001__elm20160819_160251__dat00.bin

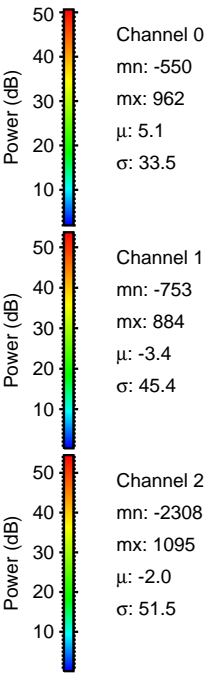
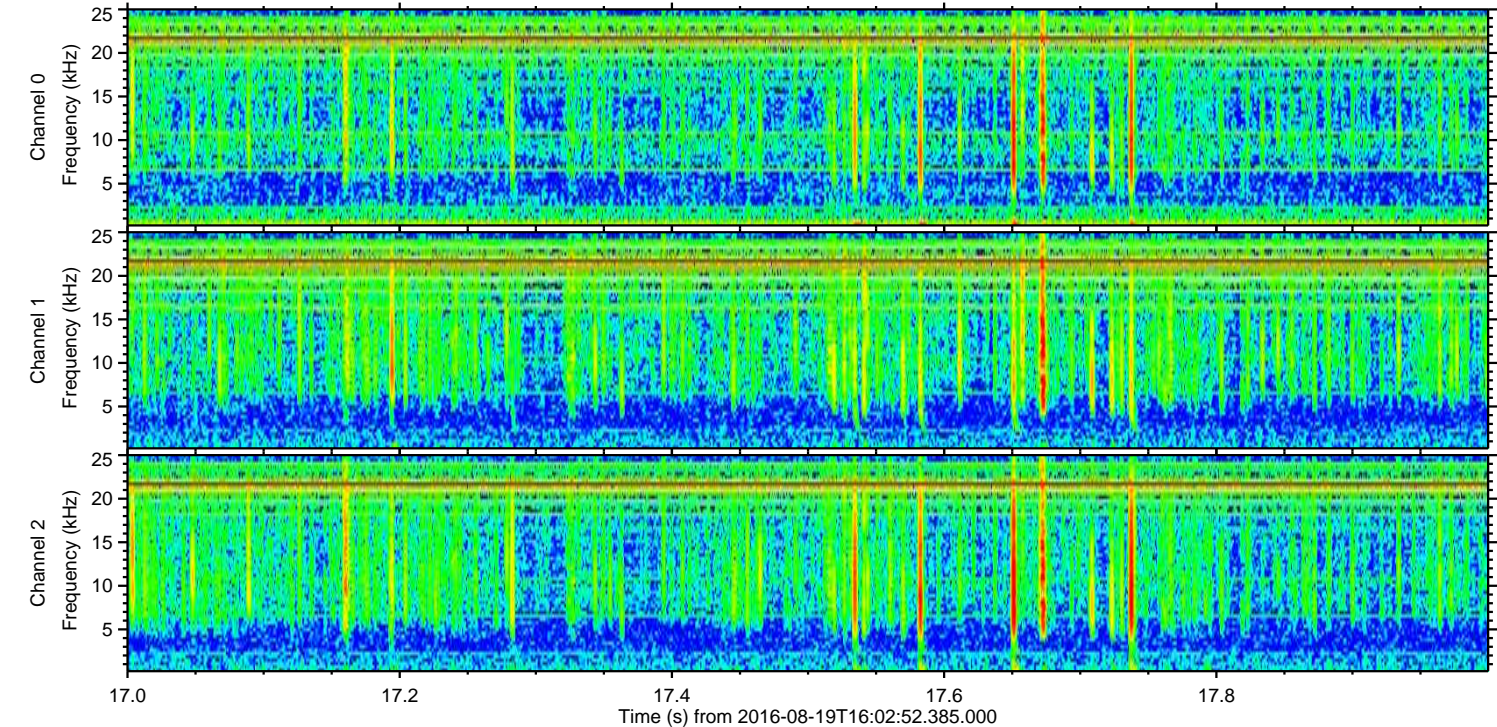
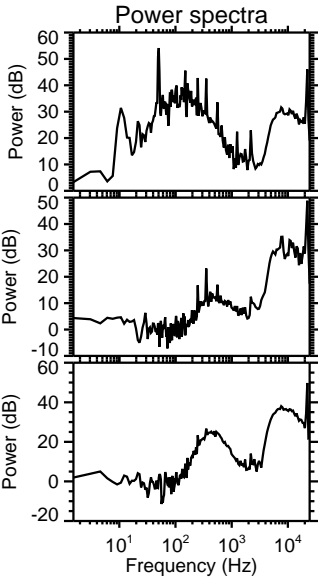
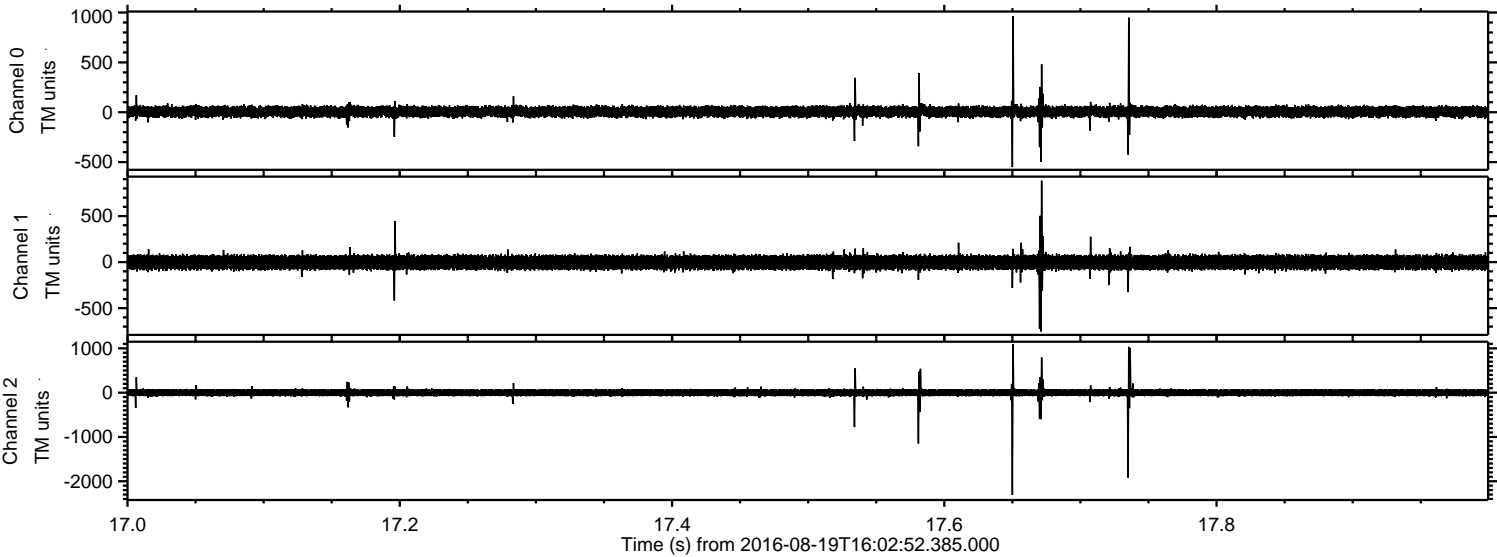


Processed Fri Aug 19 18:11:05 2016 by ELM ver.2012-10-06 from 001__elm20160819_160251__dat00.bin



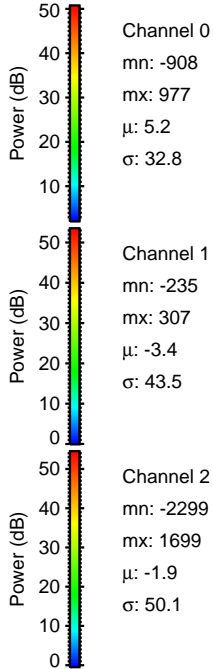
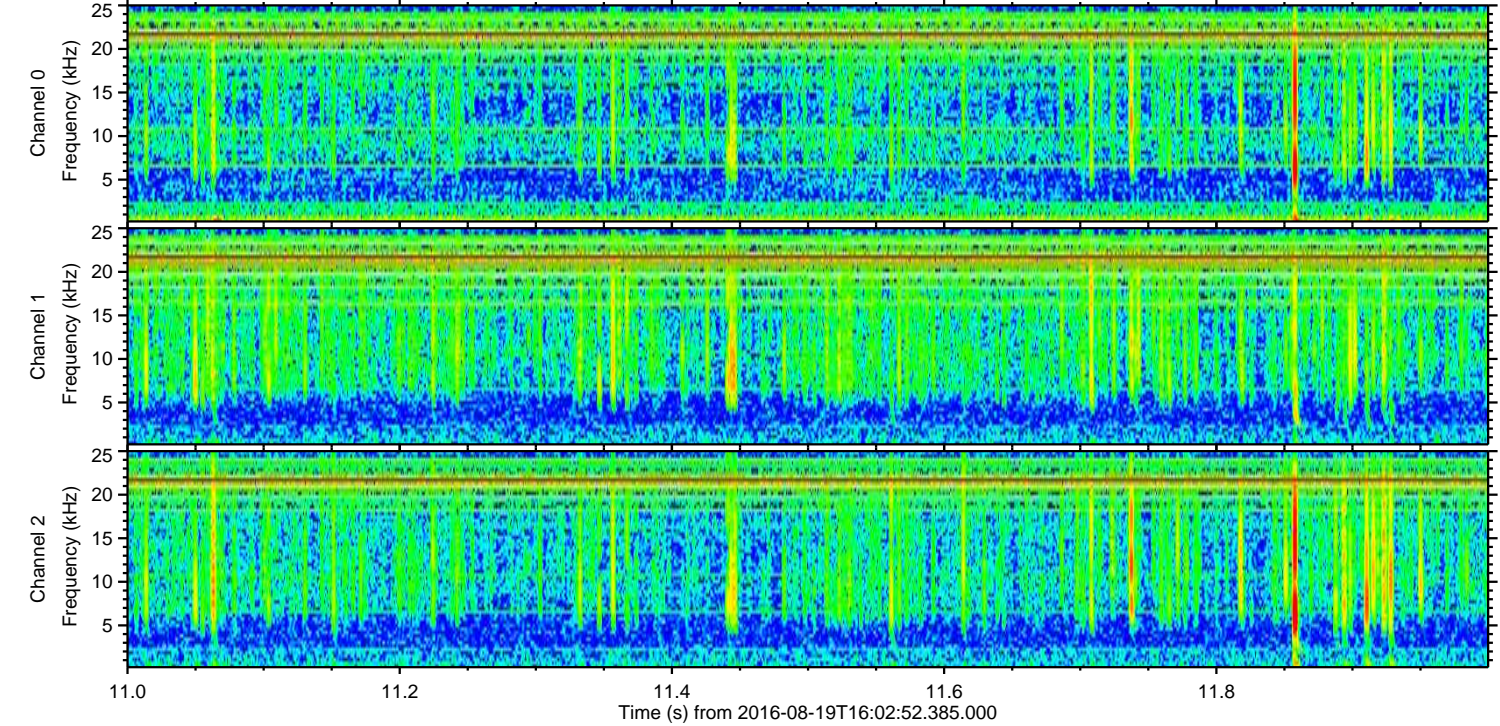
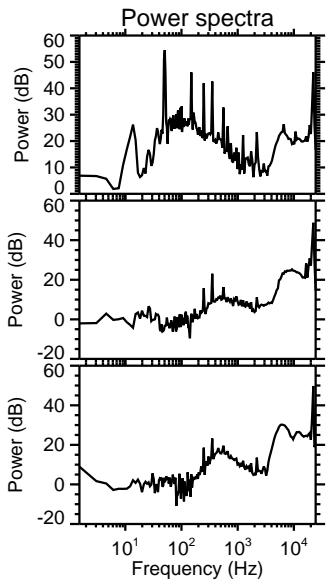
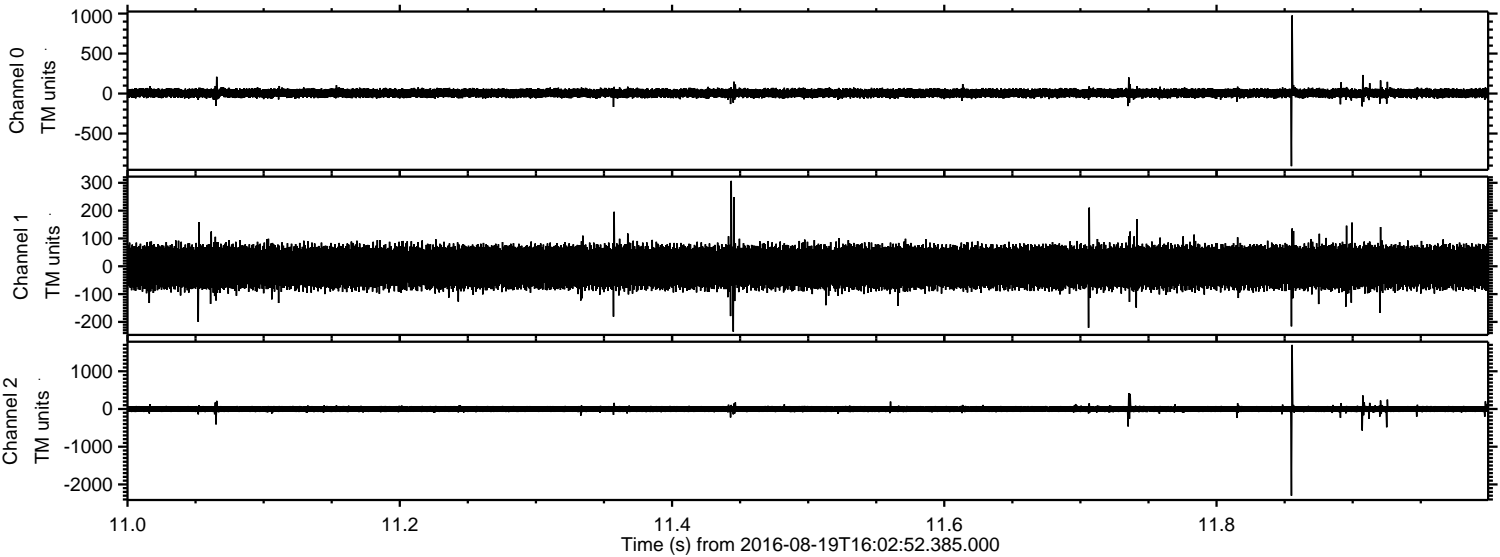
ELMAVAN 3D WAVEFORMS (Measured data sampled at 50 kHz) 51000 packets of 144 samples from 2016-08-19T16:02:52.385.000. Part 18/147

Processed Fri Aug 19 18:11:06 2016 by ELM ver.2012-10-06 from 001__elm20160819_160251__dat00.bin



ELMAVAN 3D WAVEFORMS (Measured data sampled at 50 kHz) 51000 packets of 144 samples from 2016-08-19T16:02:52.385.000. Part 12/147

Processed Fri Aug 19 18:11:07 2016 by ELM ver.2012-10-06 from 001__elm20160819_160251__dat00.bin

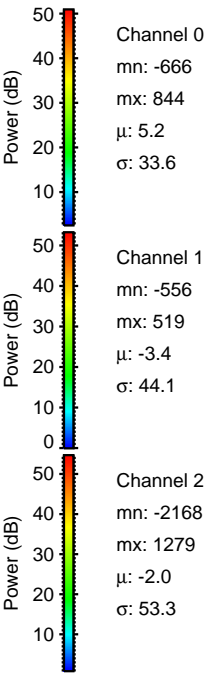
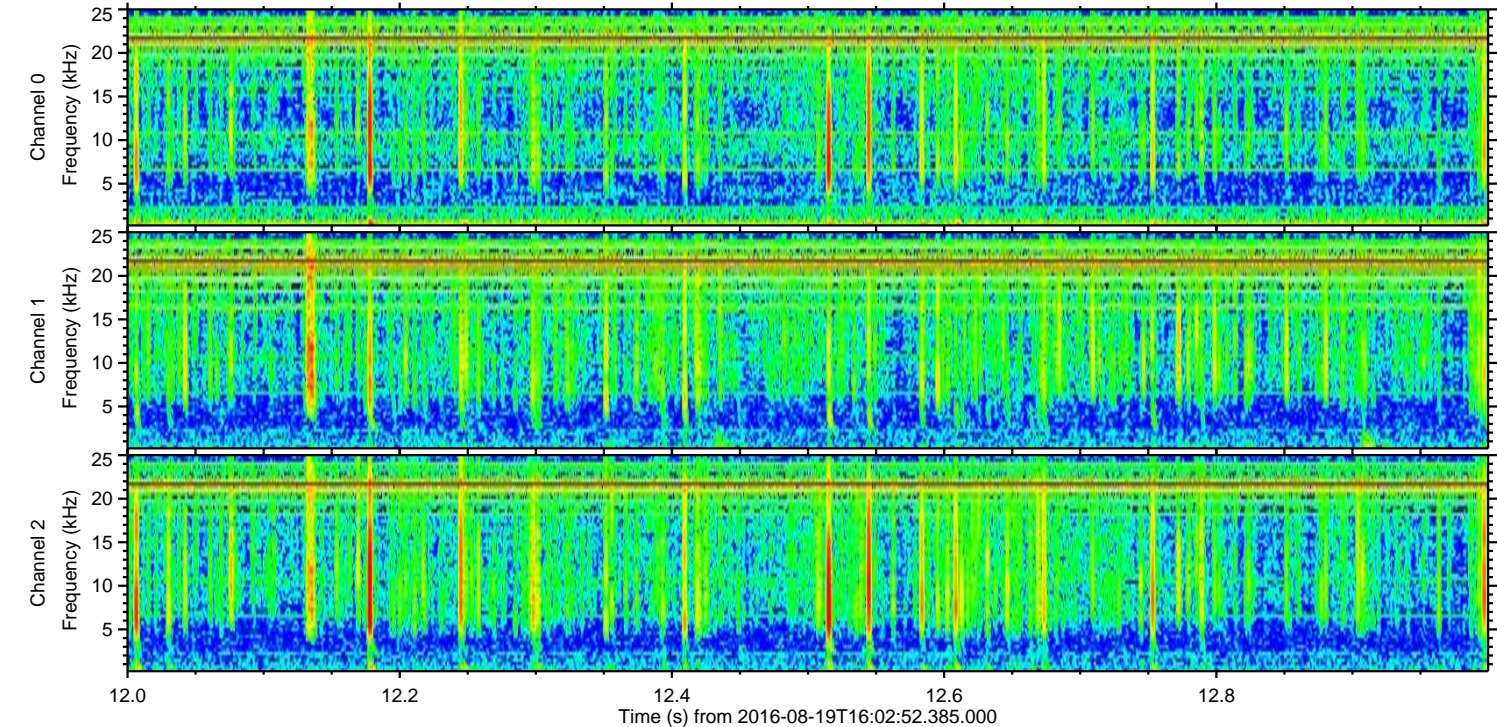
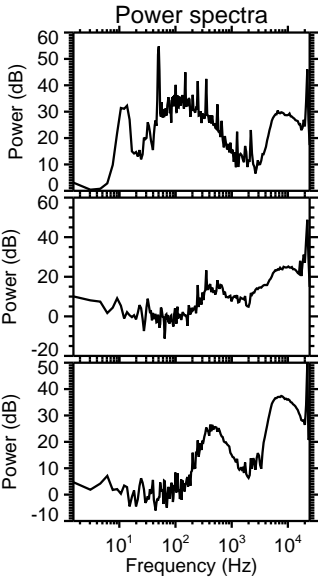
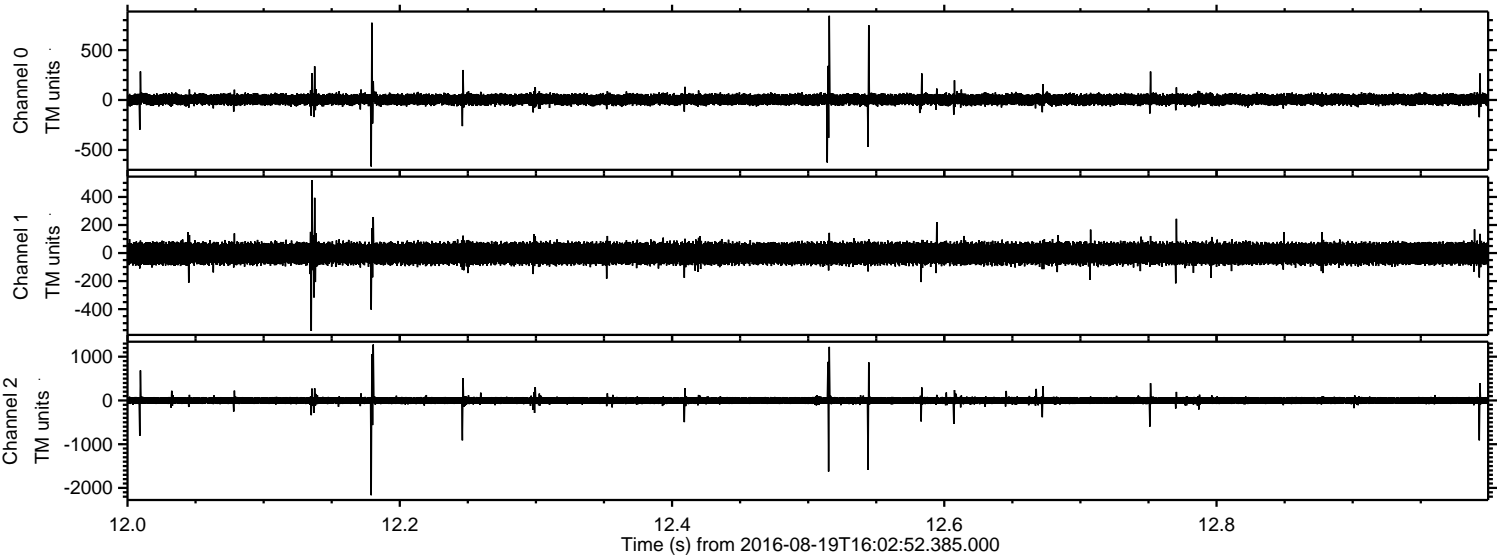


Channel 0
mn: -908
mx: 977
 μ : 5.2
 σ : 32.8

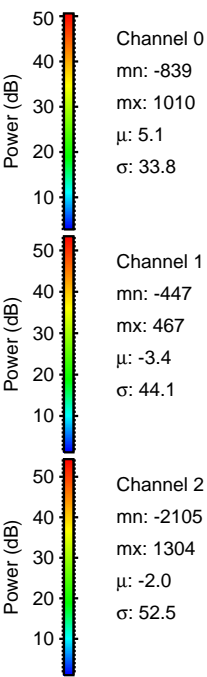
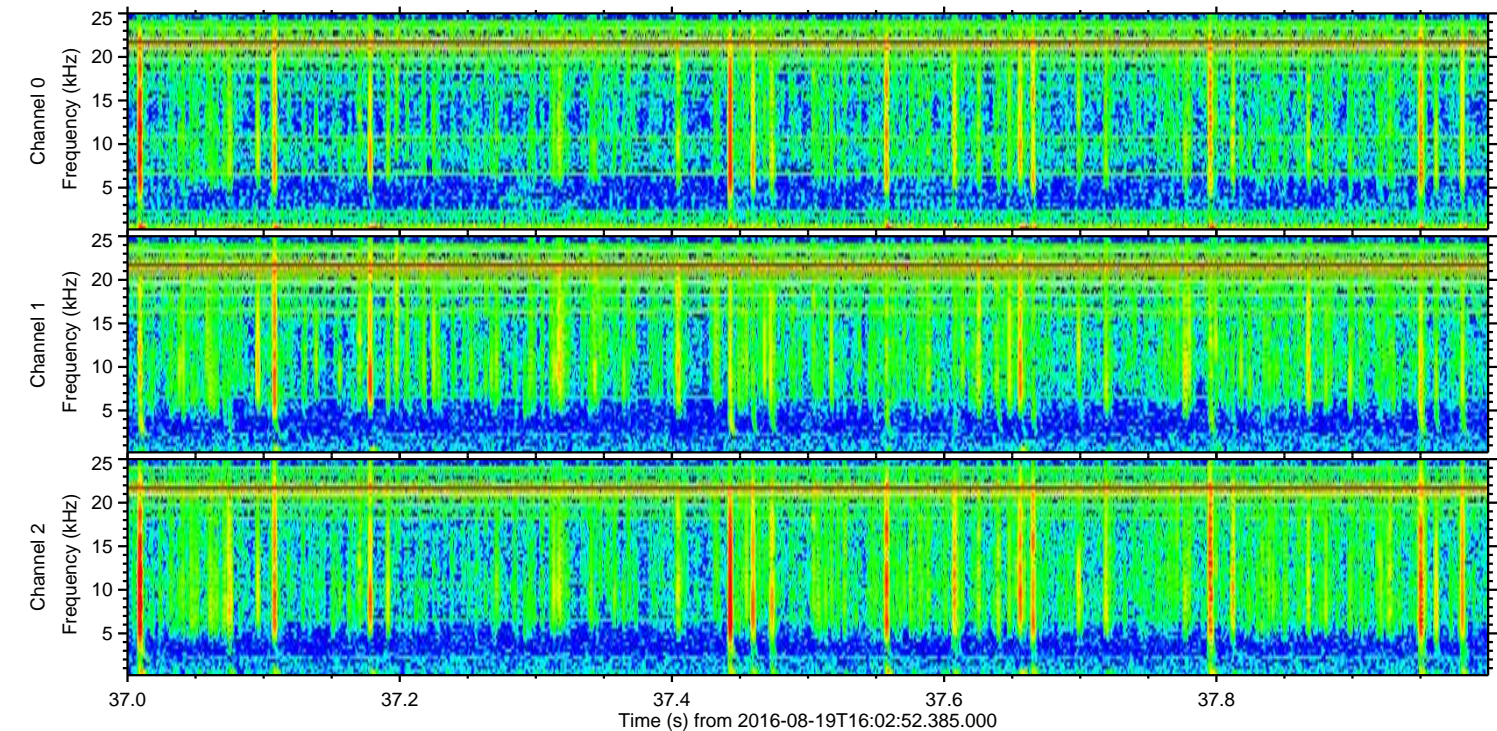
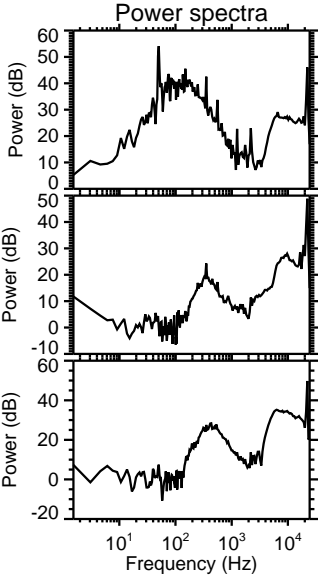
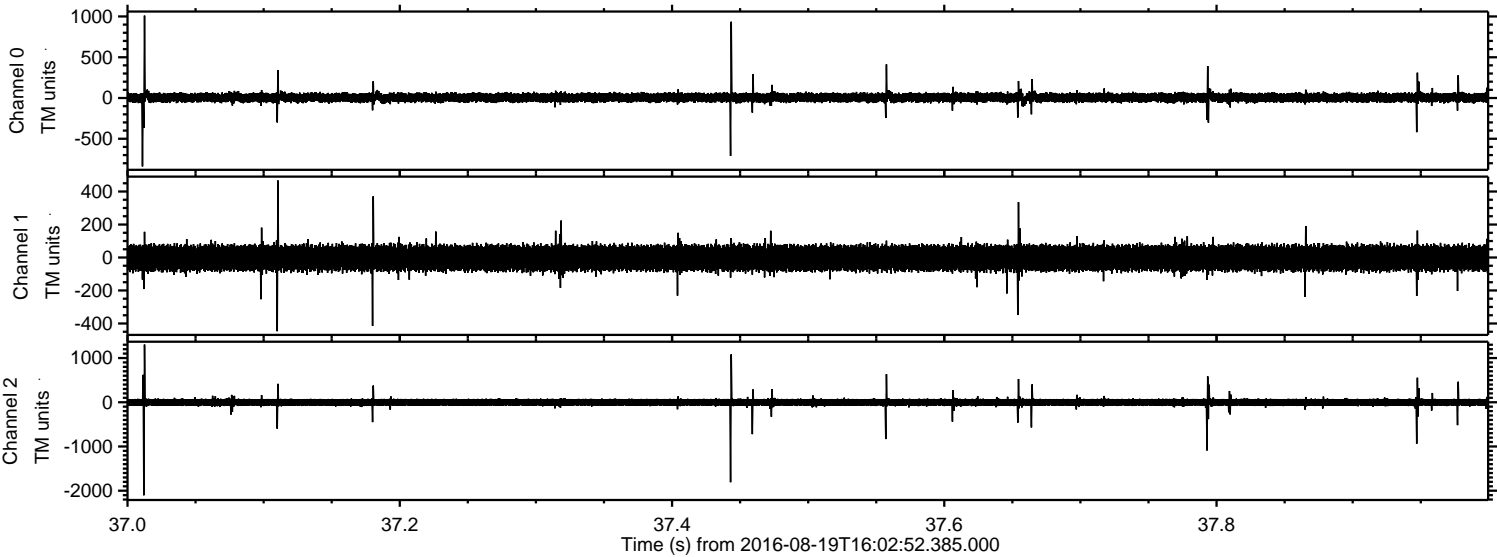
Channel 1
mn: -235
mx: 307
 μ : -3.4
 σ : 43.5

Channel 2
mn: -2299
mx: 1699
 μ : -1.9
 σ : 50.1

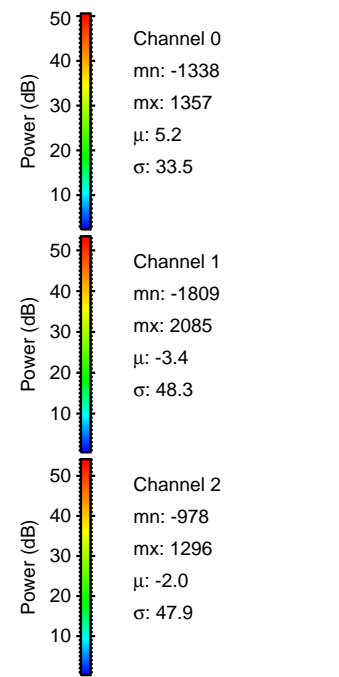
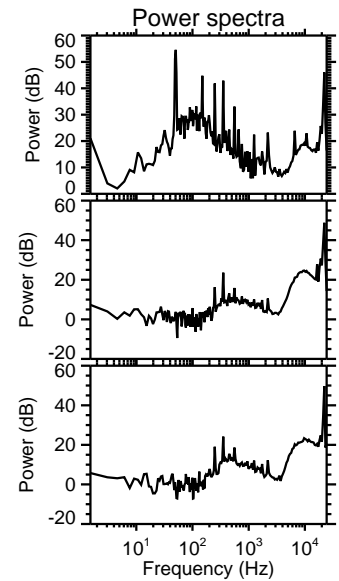
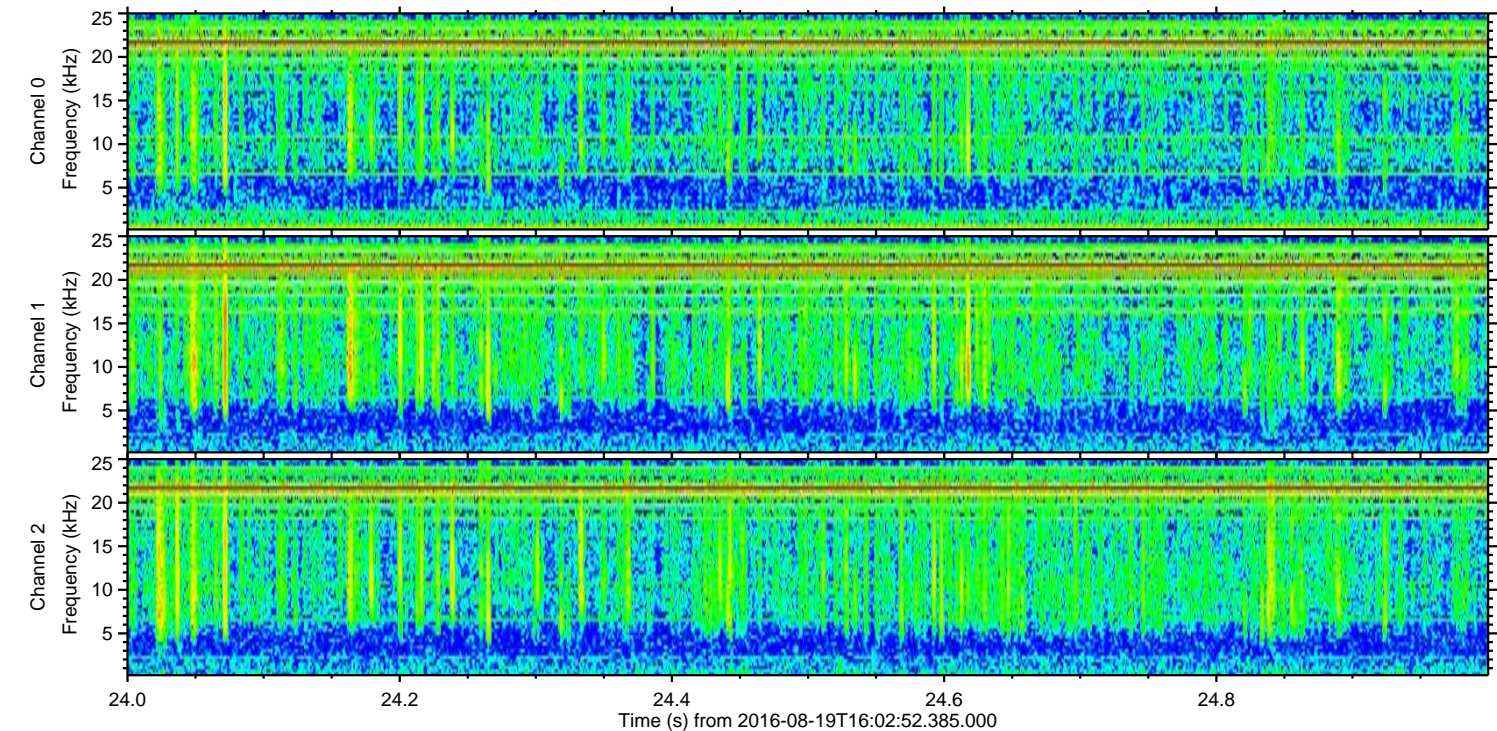
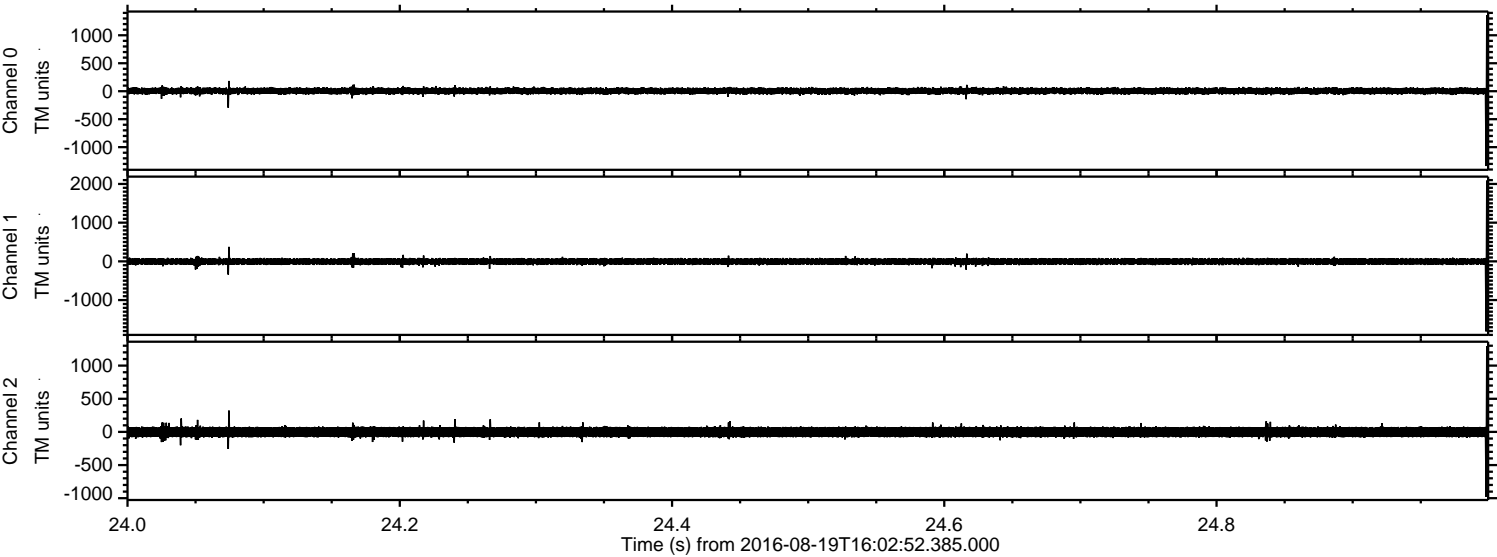
Processed Fri Aug 19 18:11:08 2016 by ELM ver.2012-10-06 from 001__elm20160819_160251__dat00.bin



Processed Fri Aug 19 18:11:08 2016 by ELM ver.2012-10-06 from 001__elm20160819_160251__dat00.bin



Processed Fri Aug 19 18:11:09 2016 by ELM ver.2012-10-06 from 001__elm20160819_160251__dat00.bin



Processed Fri Aug 19 18:11:10 2016 by ELM ver.2012-10-06 from 001__elm20160819_160251__dat00.bin

