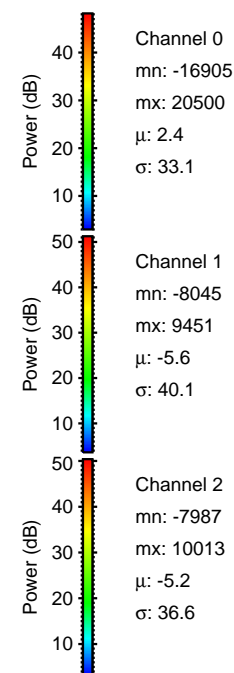
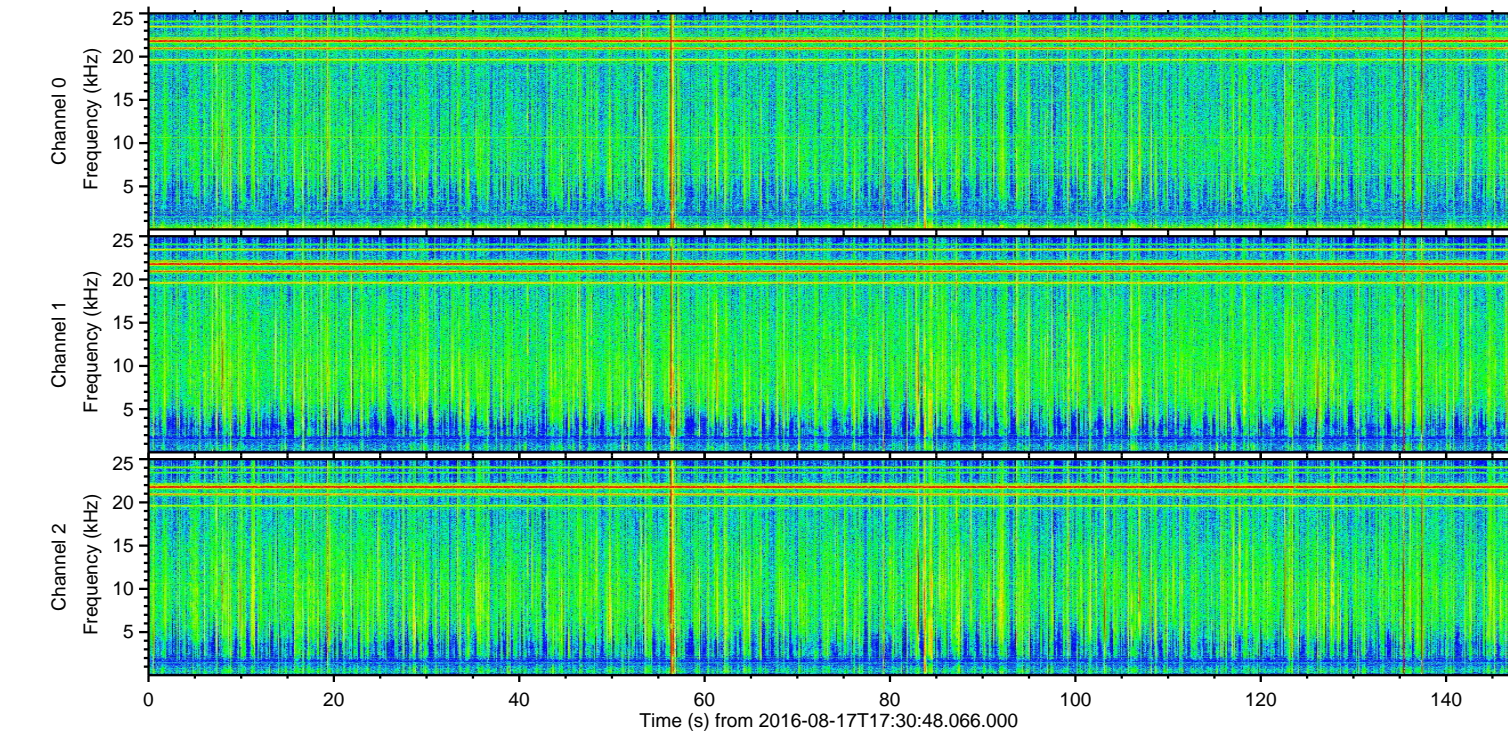
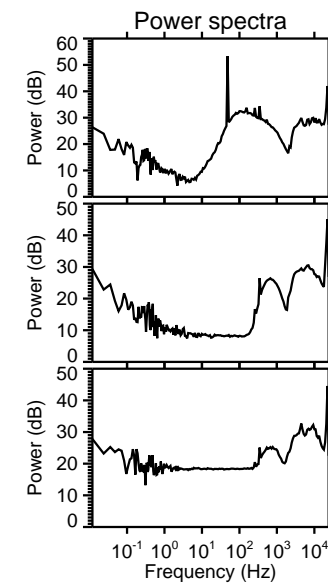
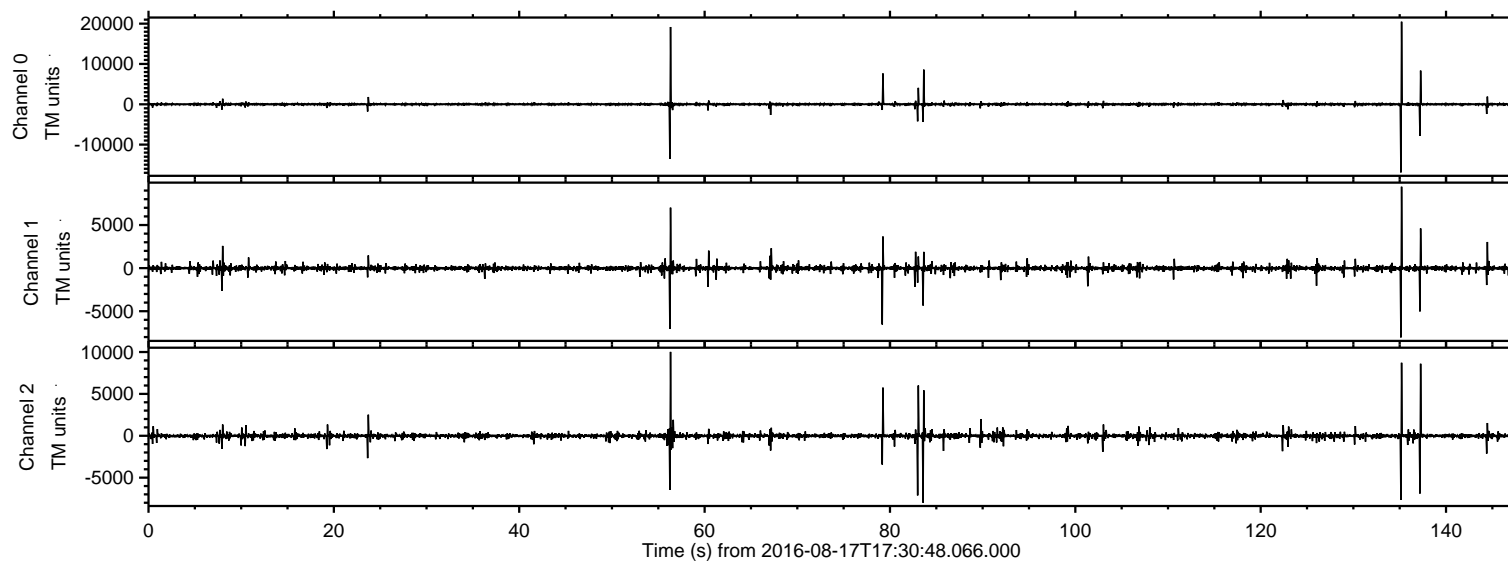


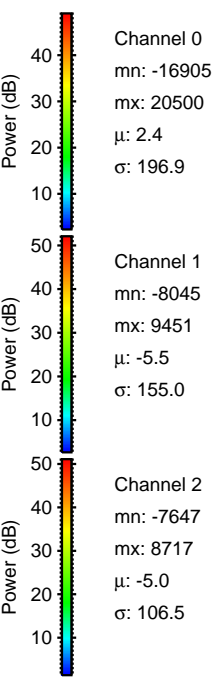
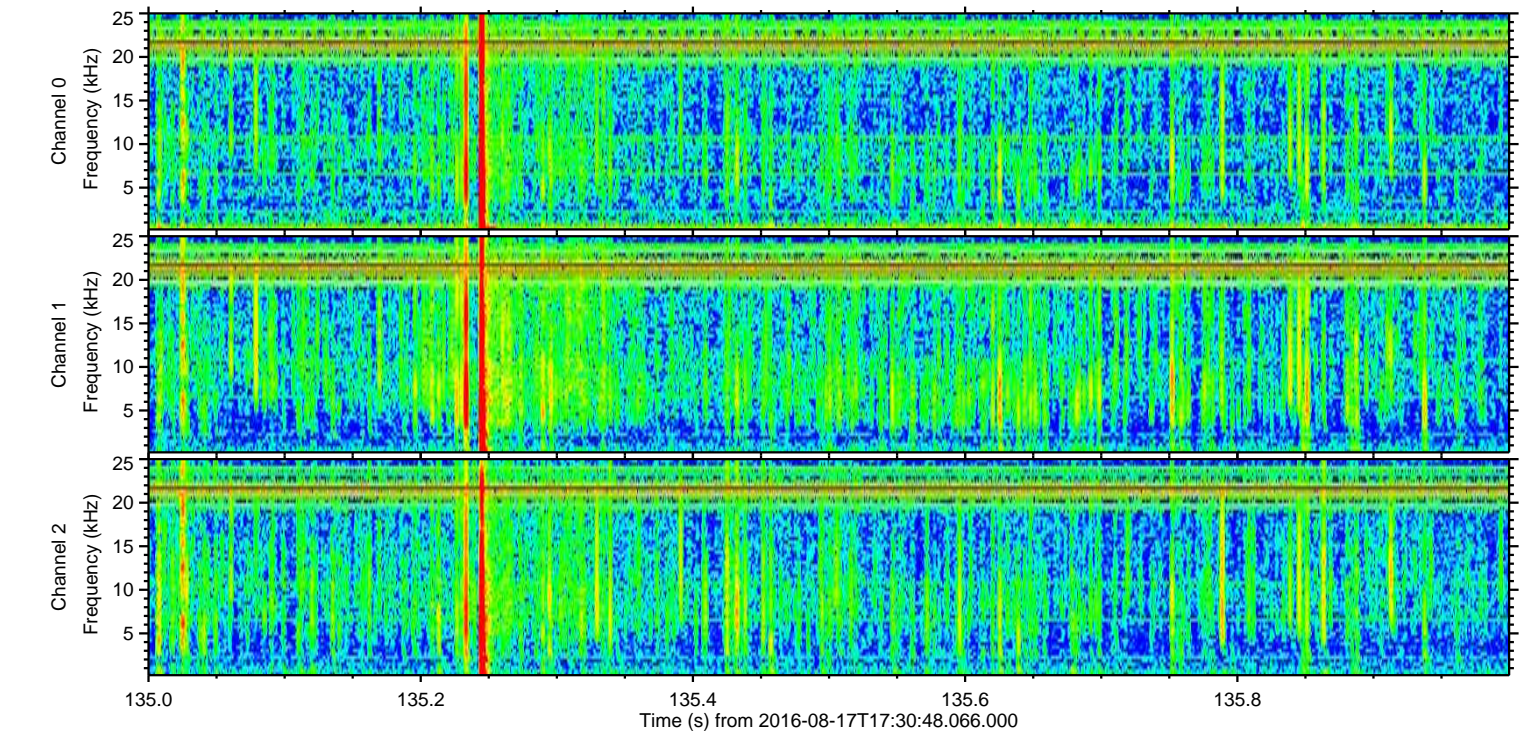
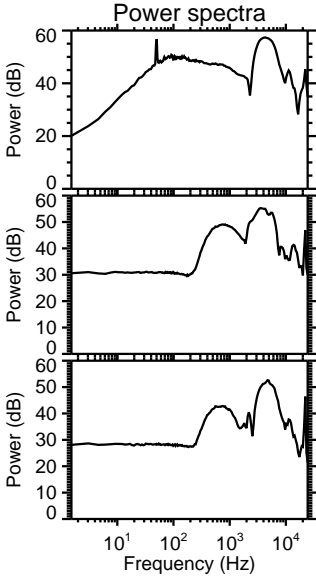
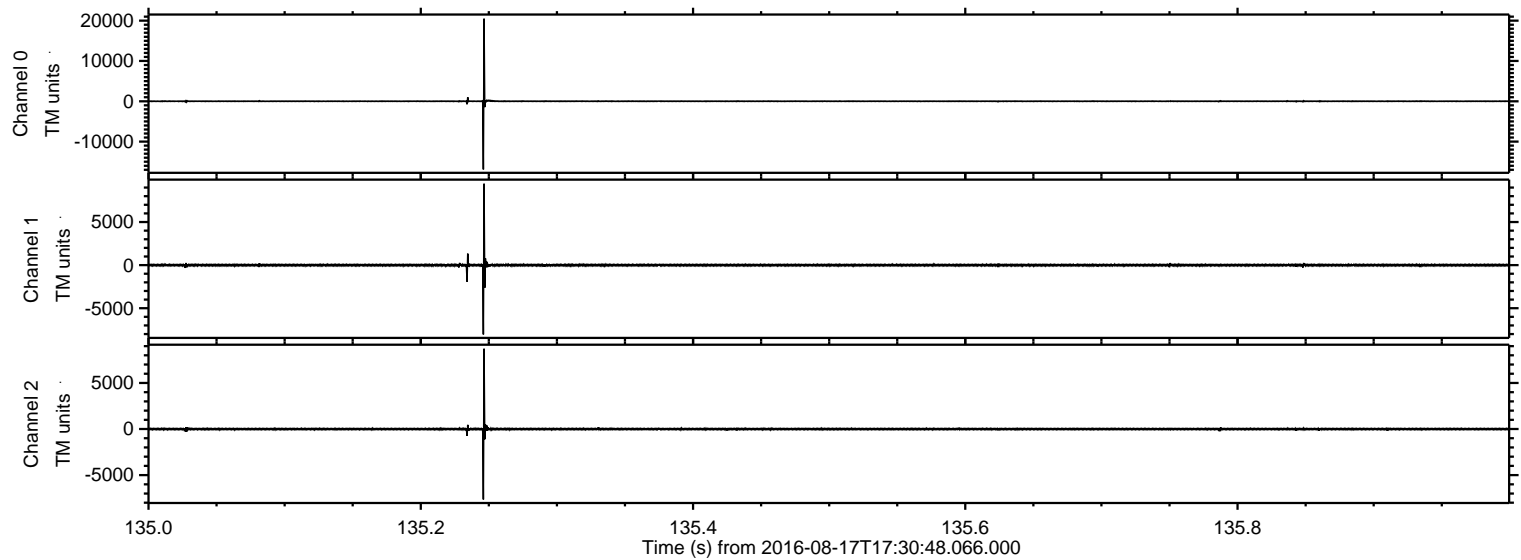
ELMAVAN 3D WAVEFORMS (Measured data sampled at 50 kHz) 51000 packets of 144 samples from 2016-08-17T17:30:48.066.000.

Processed Wed Aug 17 19:38:18 2016 by ELM ver.2012-10-06 from 001__elm20160817_173047__dat00.bin

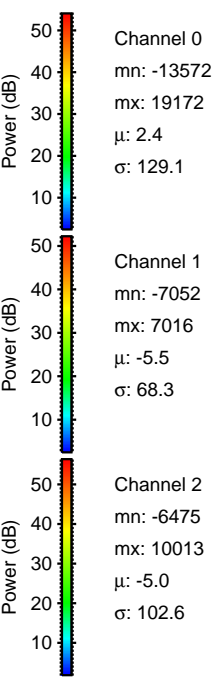
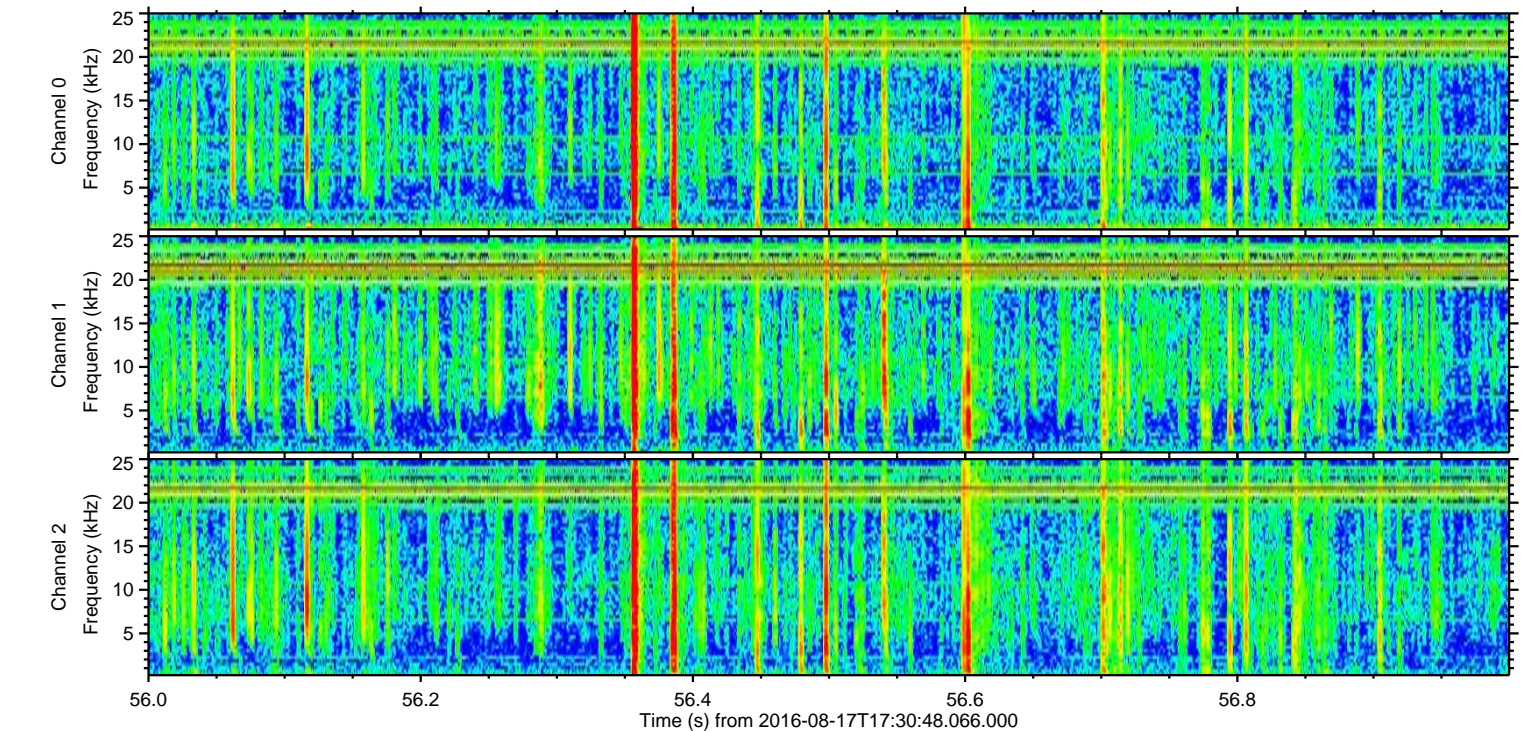
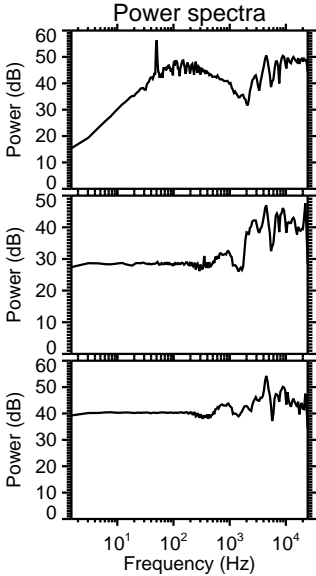
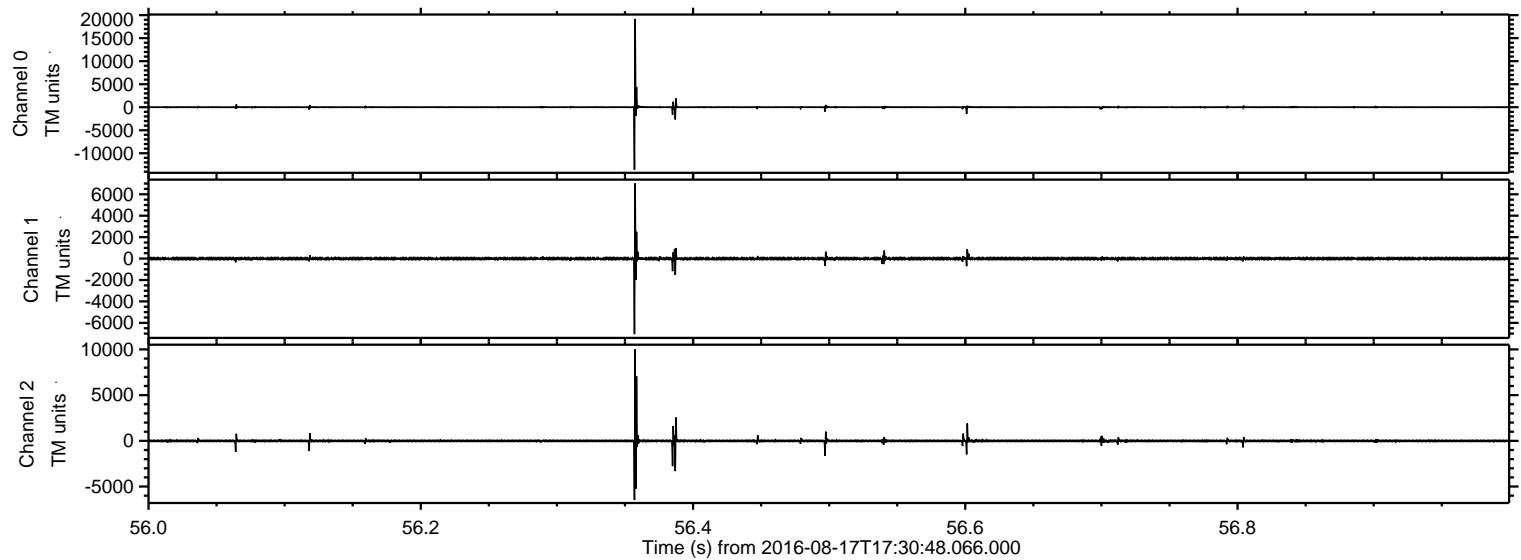


ELMAVAN 3D WAVEFORMS (Measured data sampled at 50 kHz) 51000 packets of 144 samples from 2016-08-17T17:30:48.066.000. Part 136/147

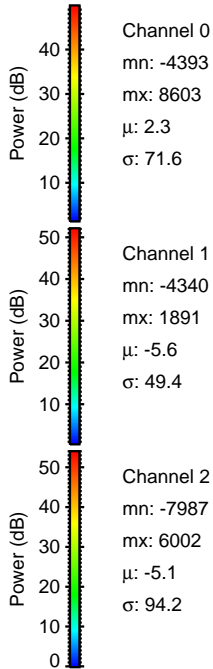
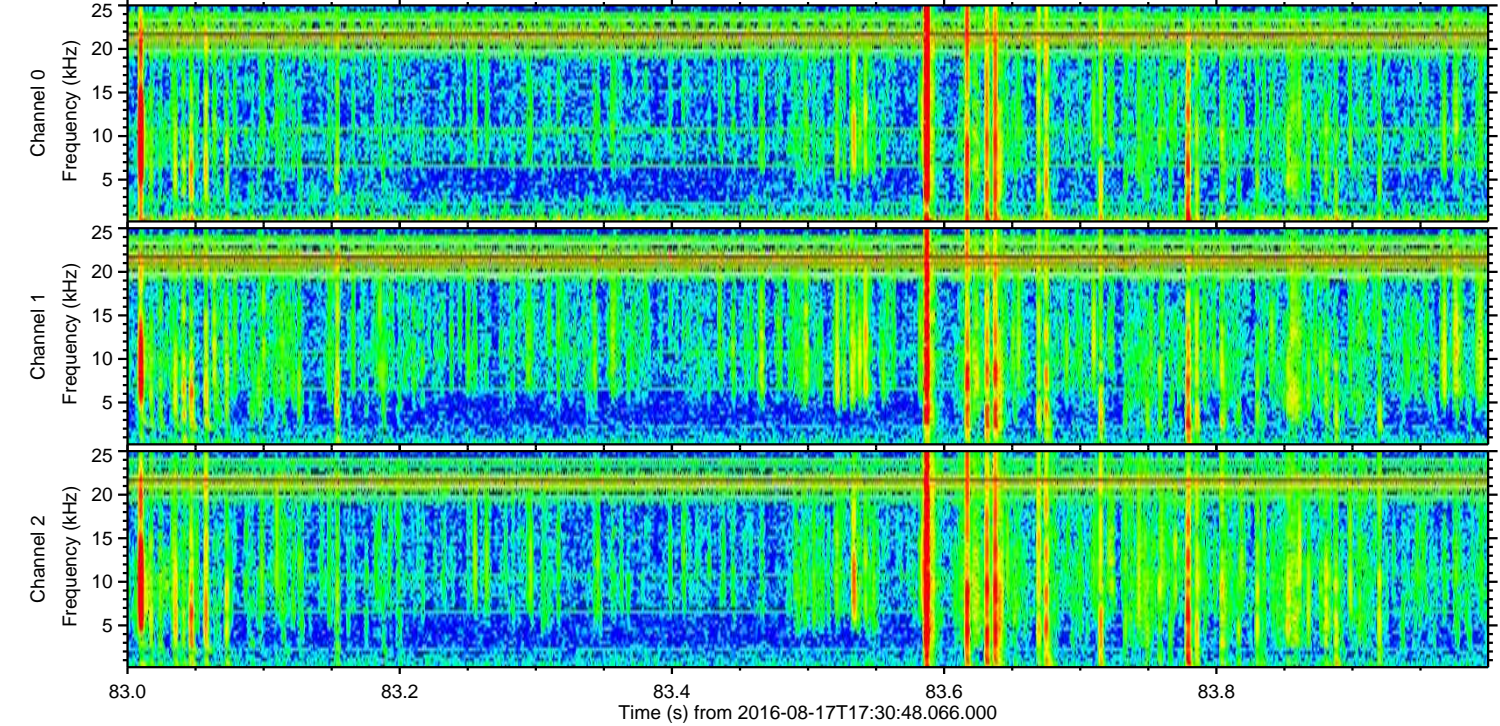
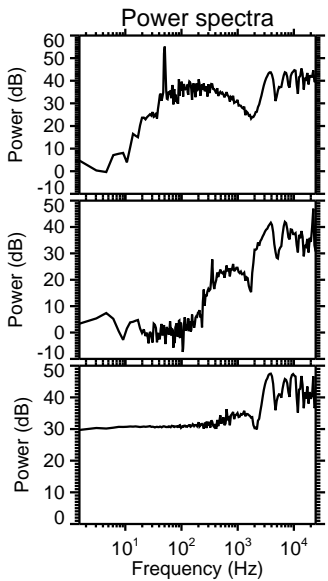
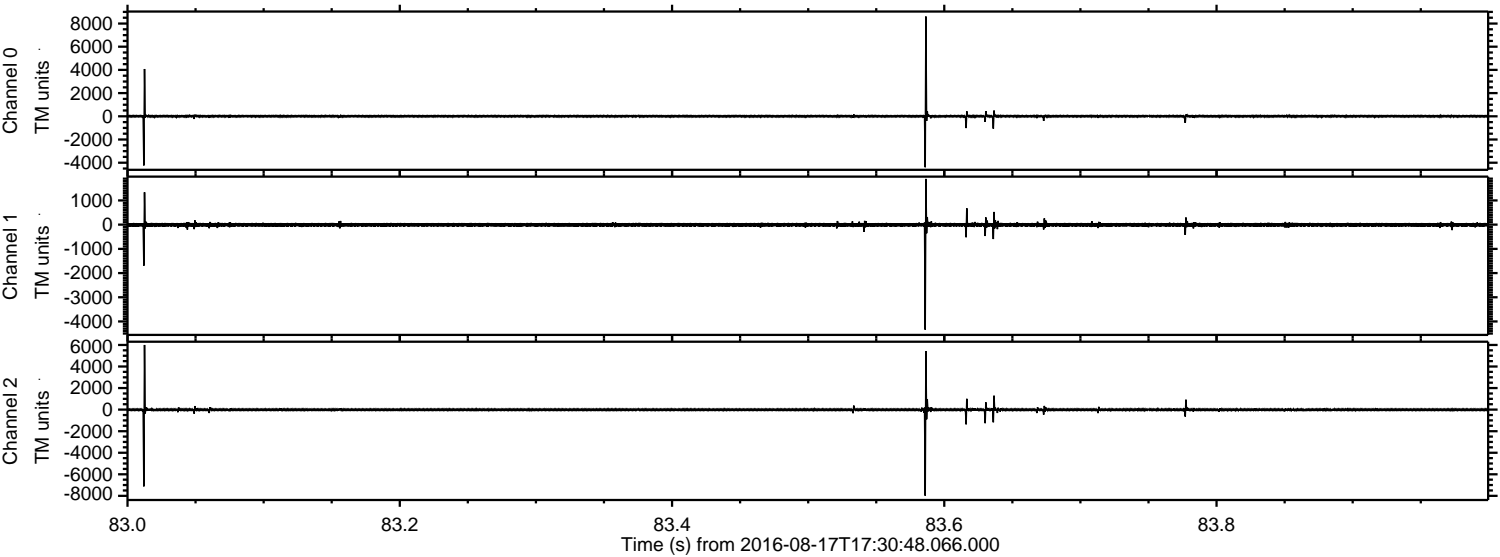
Processed Wed Aug 17 19:38:34 2016 by ELM ver.2012-10-06 from 001__elm20160817_173047__dat00.bin



Processed Wed Aug 17 19:38:35 2016 by ELM ver.2012-10-06 from 001__elm20160817_173047__dat00.bin

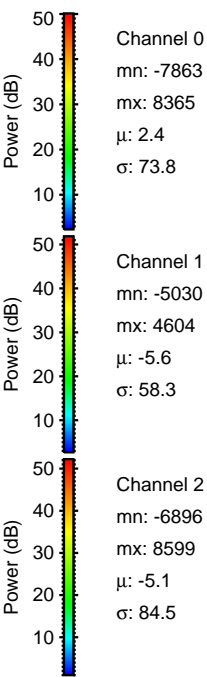
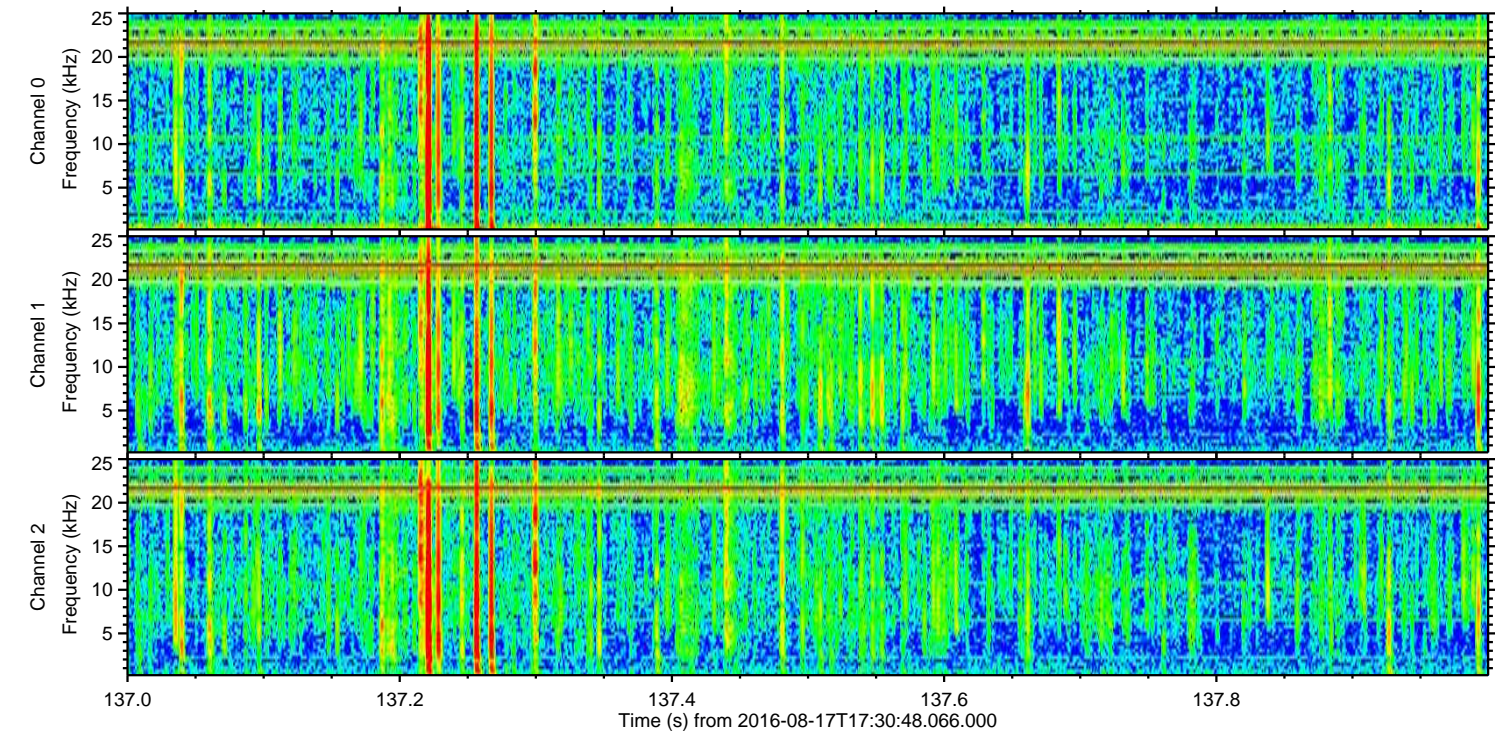
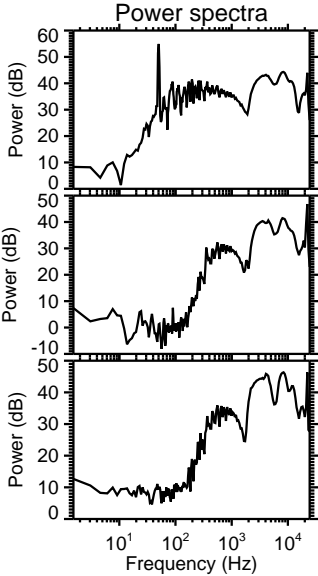
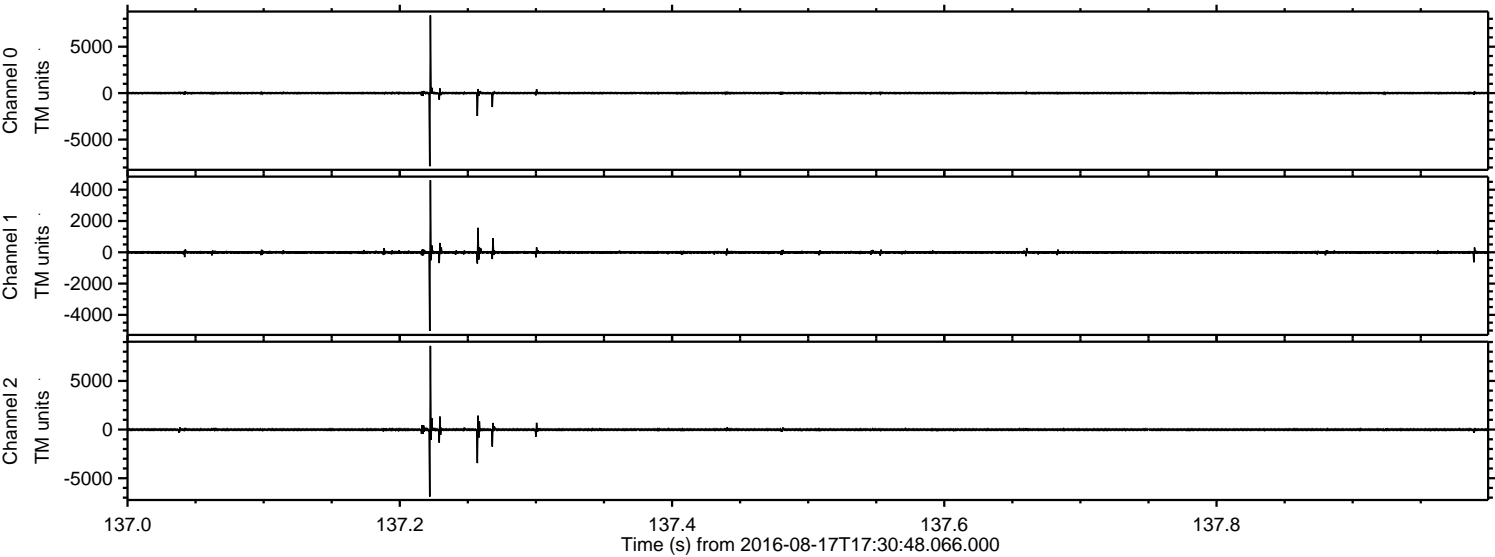


Processed Wed Aug 17 19:38:36 2016 by ELM ver.2012-10-06 from 001__elm20160817_173047__dat00.bin

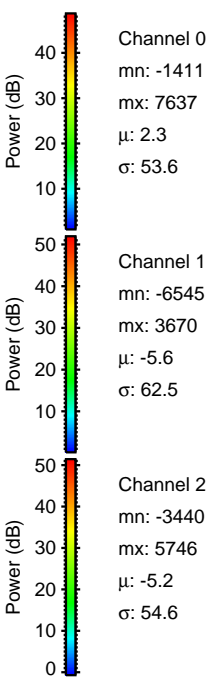
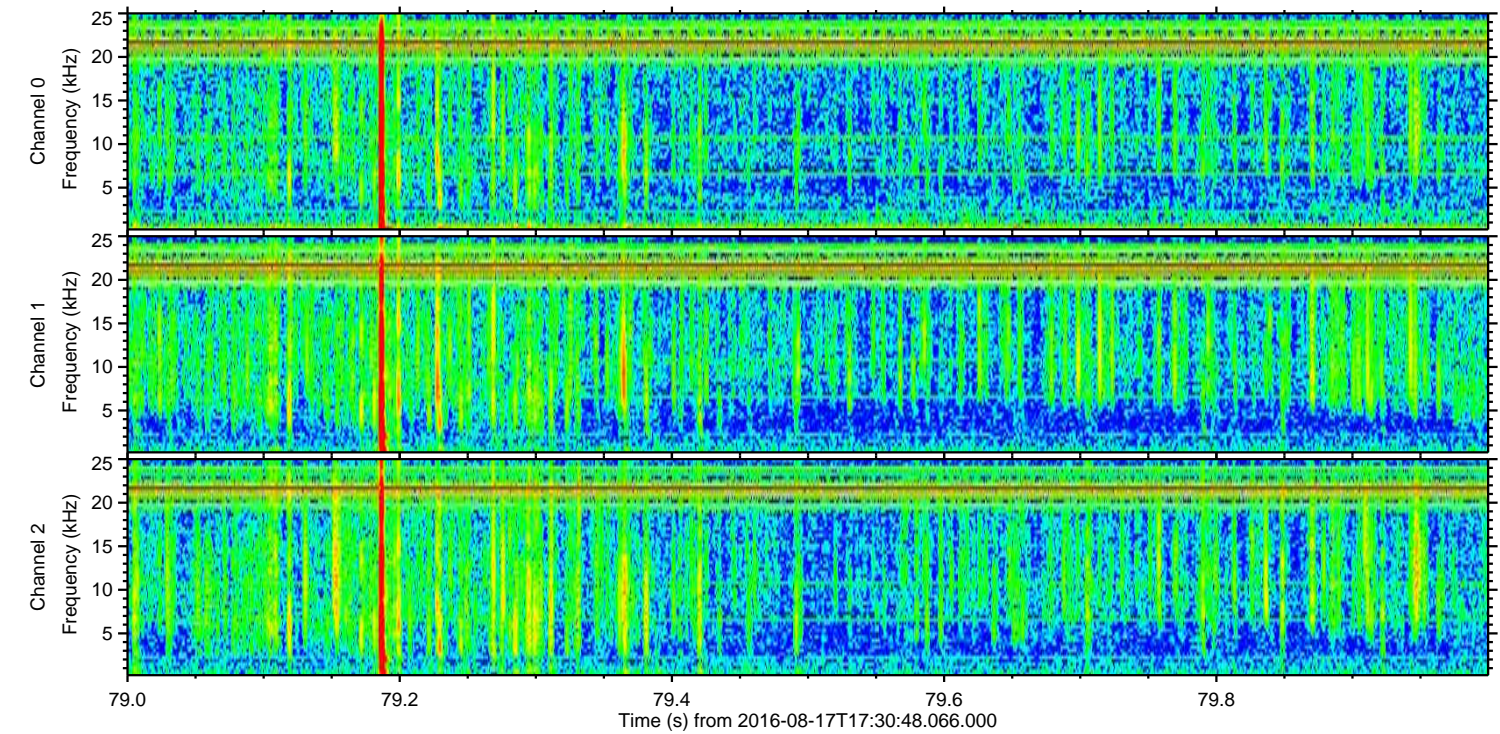
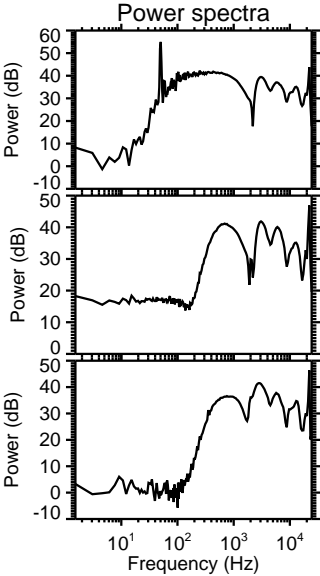
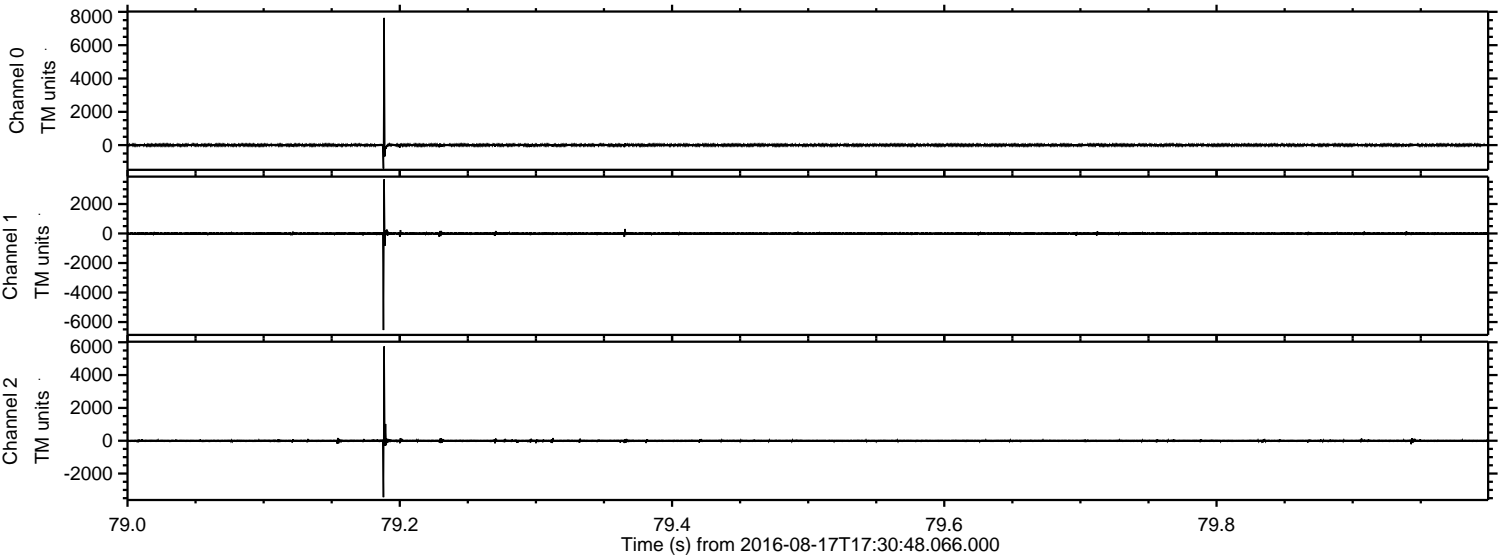


ELMAVAN 3D WAVEFORMS (Measured data sampled at 50 kHz) 51000 packets of 144 samples from 2016-08-17T17:30:48.066.000. Part 138/147

Processed Wed Aug 17 19:38:37 2016 by ELM ver.2012-10-06 from 001__elm20160817_173047__dat00.bin

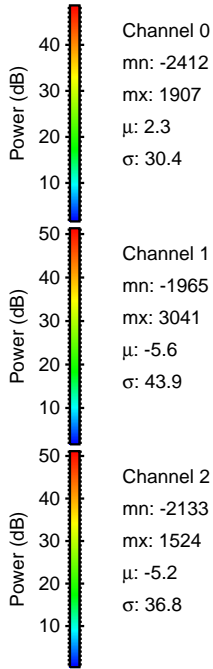
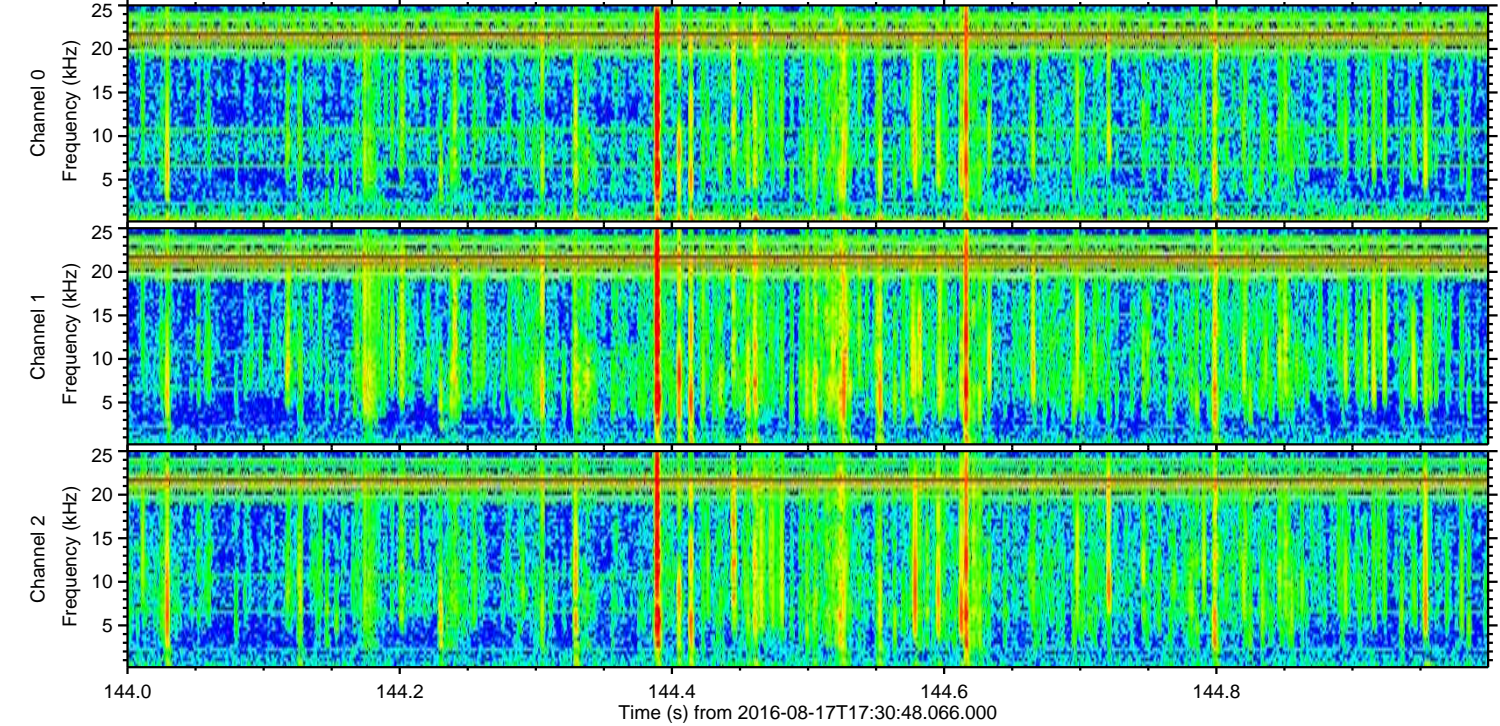
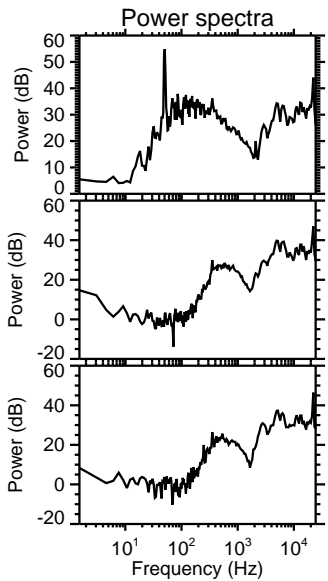
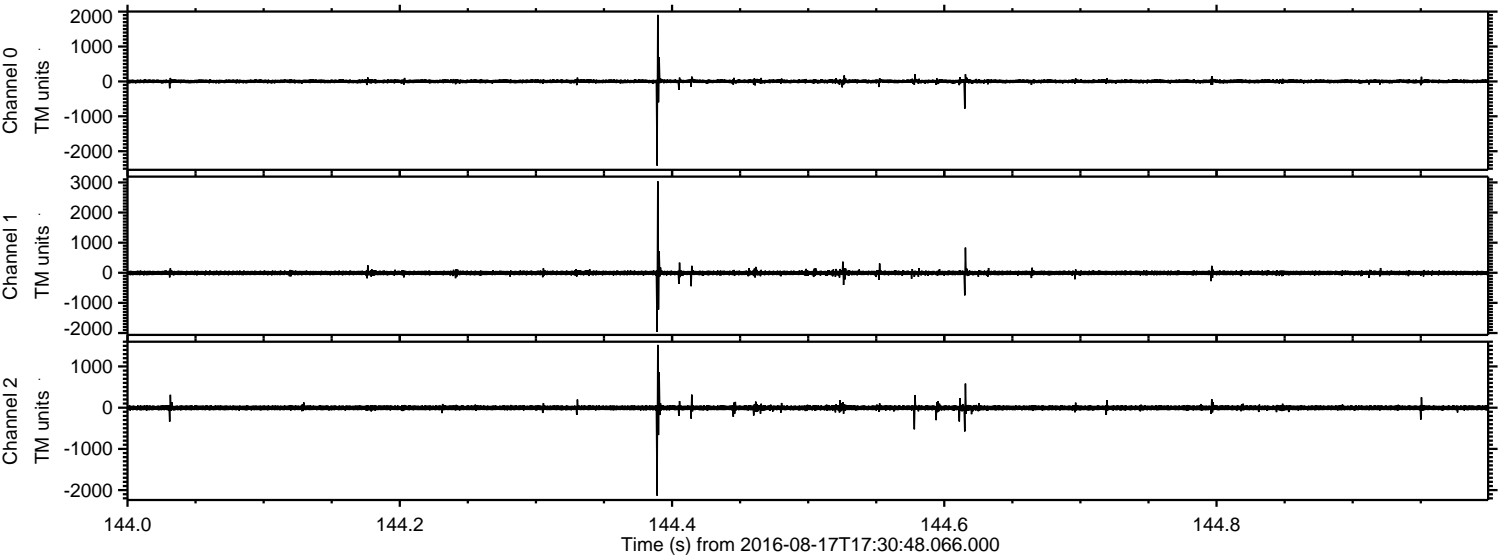


Processed Wed Aug 17 19:38:38 2016 by ELM ver.2012-10-06 from 001__elm20160817_173047__dat00.bin

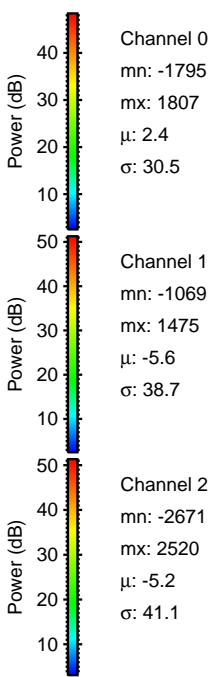
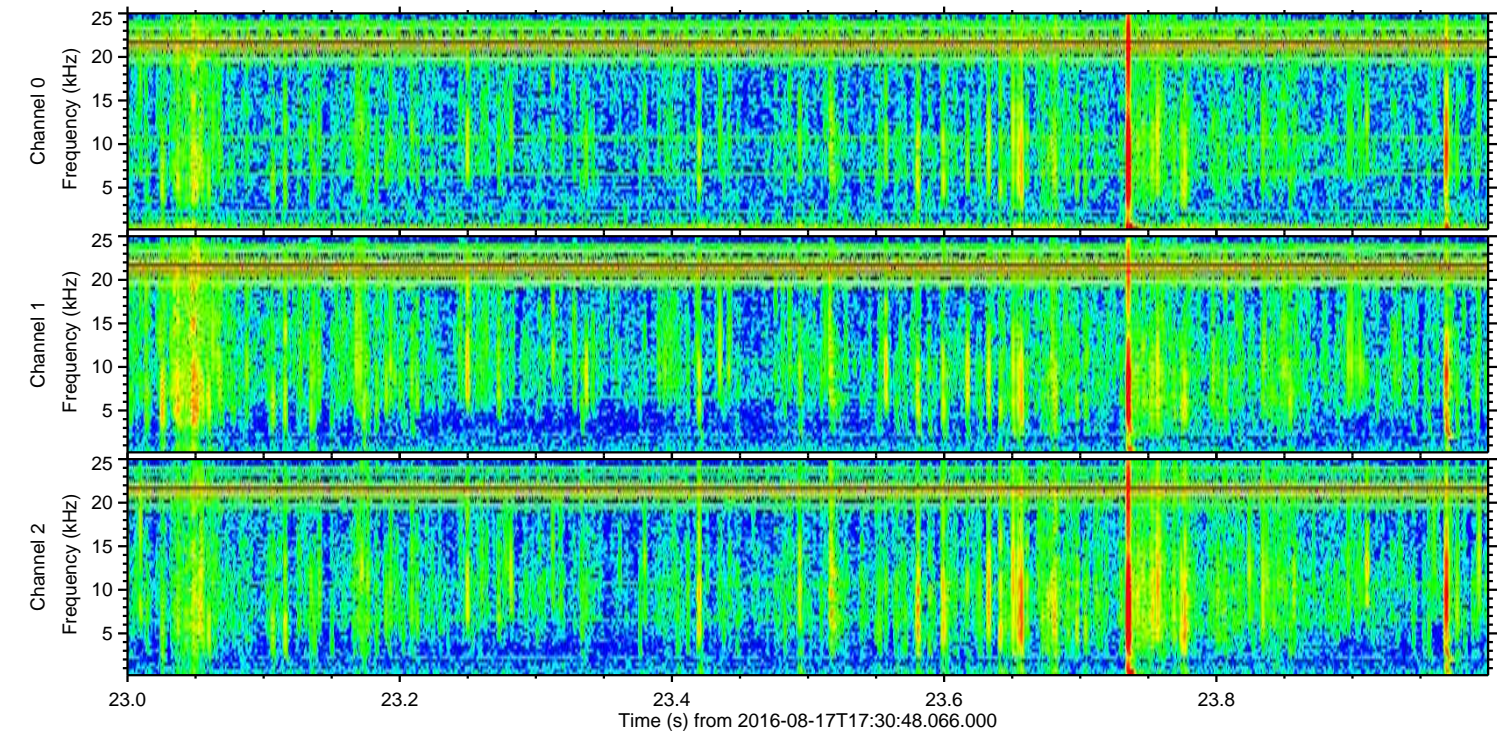
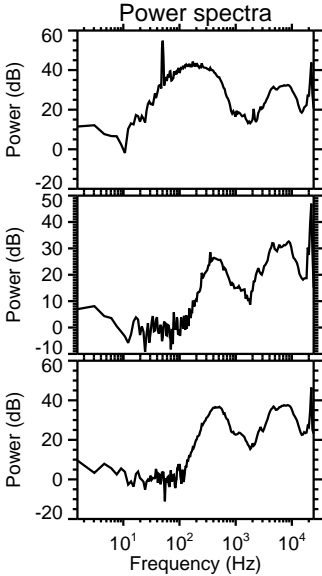
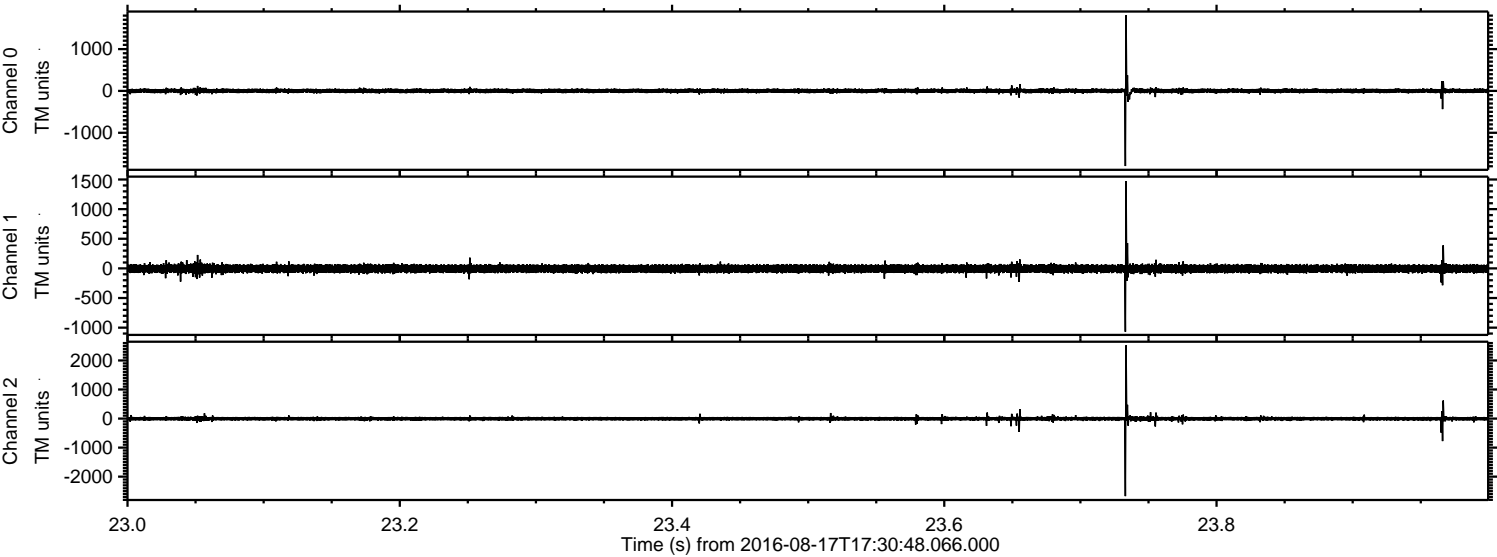


ELMAVAN 3D WAVEFORMS (Measured data sampled at 50 kHz) 51000 packets of 144 samples from 2016-08-17T17:30:48.066.000. Part 145/147

Processed Wed Aug 17 19:38:39 2016 by ELM ver.2012-10-06 from 001__elm20160817_173047__dat00.bin



Processed Wed Aug 17 19:38:40 2016 by ELM ver.2012-10-06 from 001__elm20160817_173047__dat00.bin

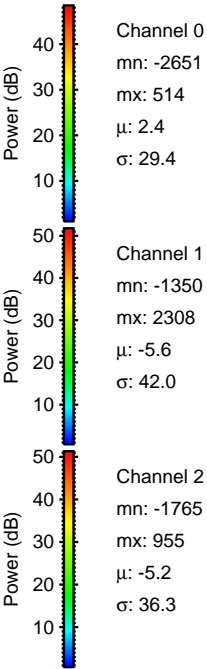
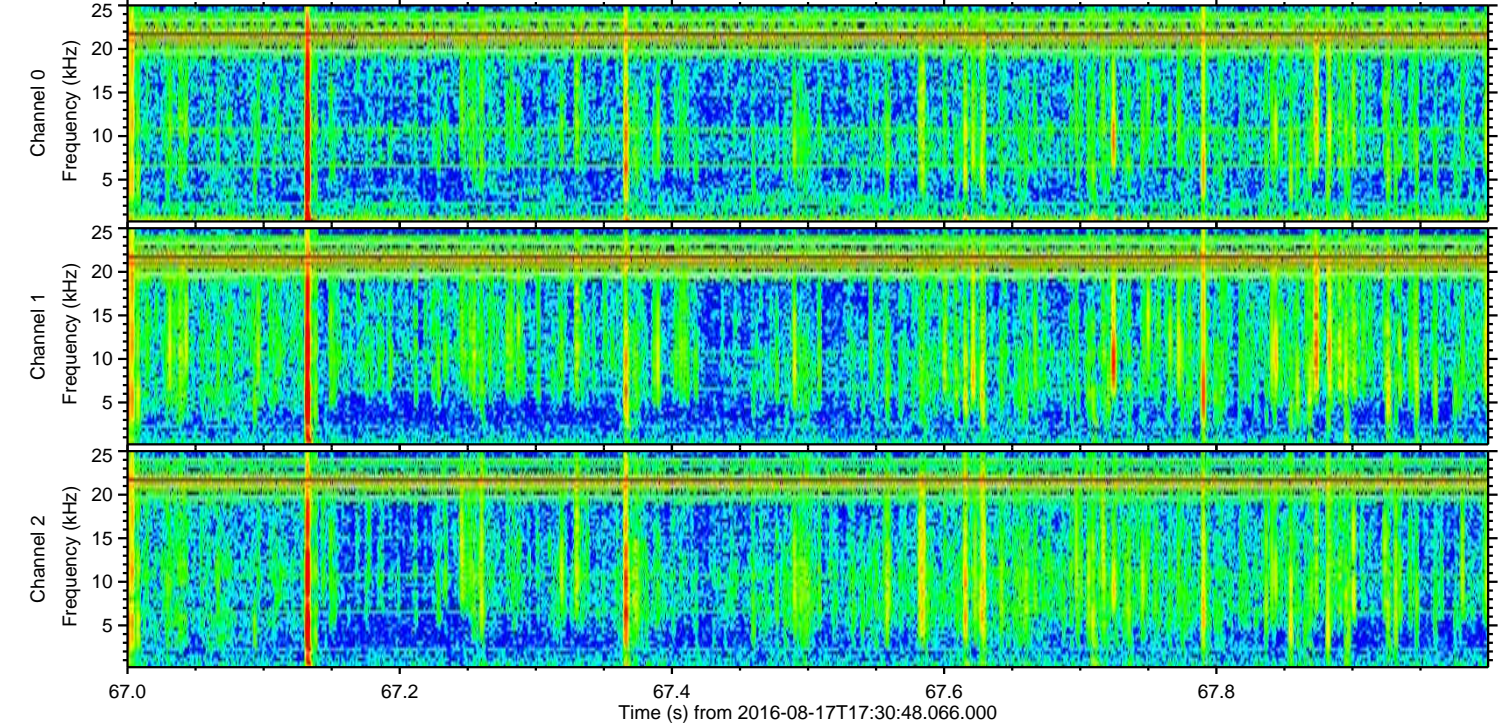
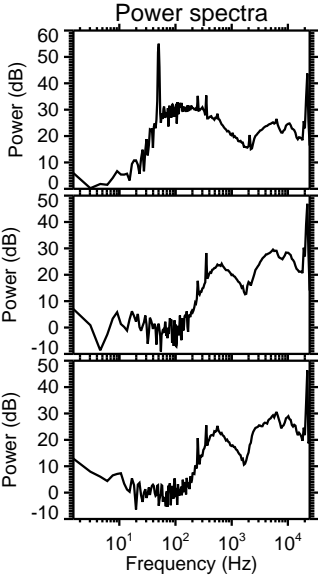
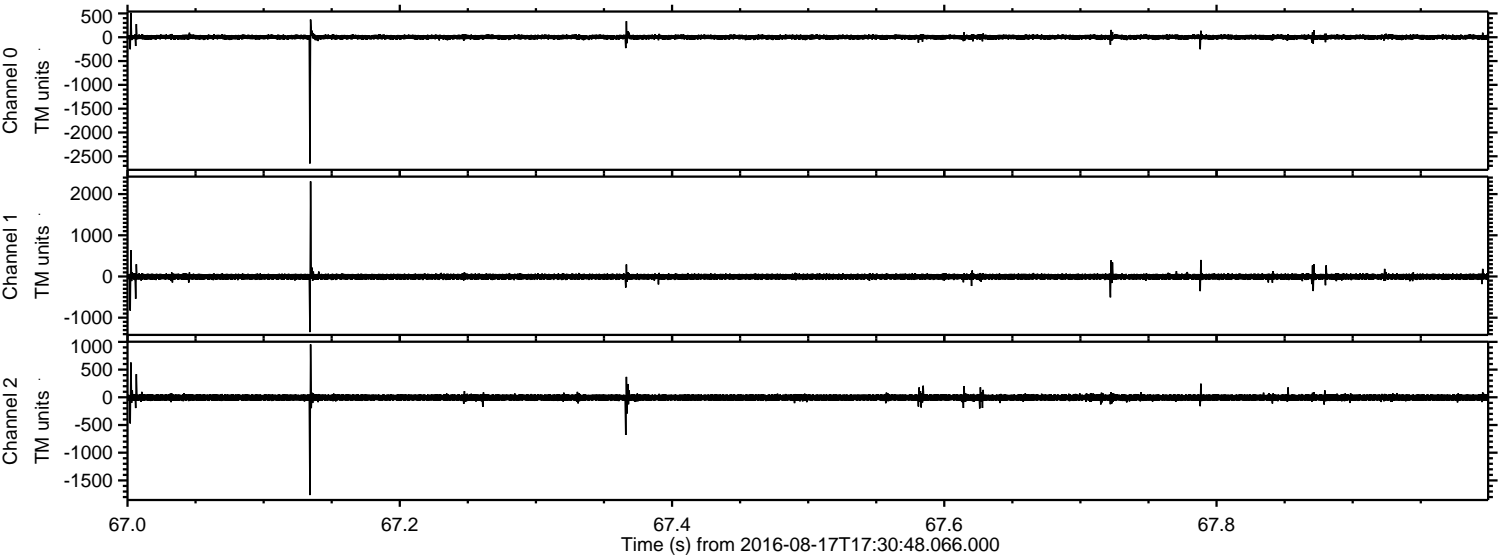


Channel 0
mn: -1795
mx: 1807
 μ : 2.4
 σ : 30.5

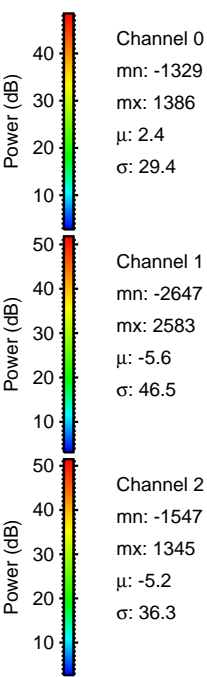
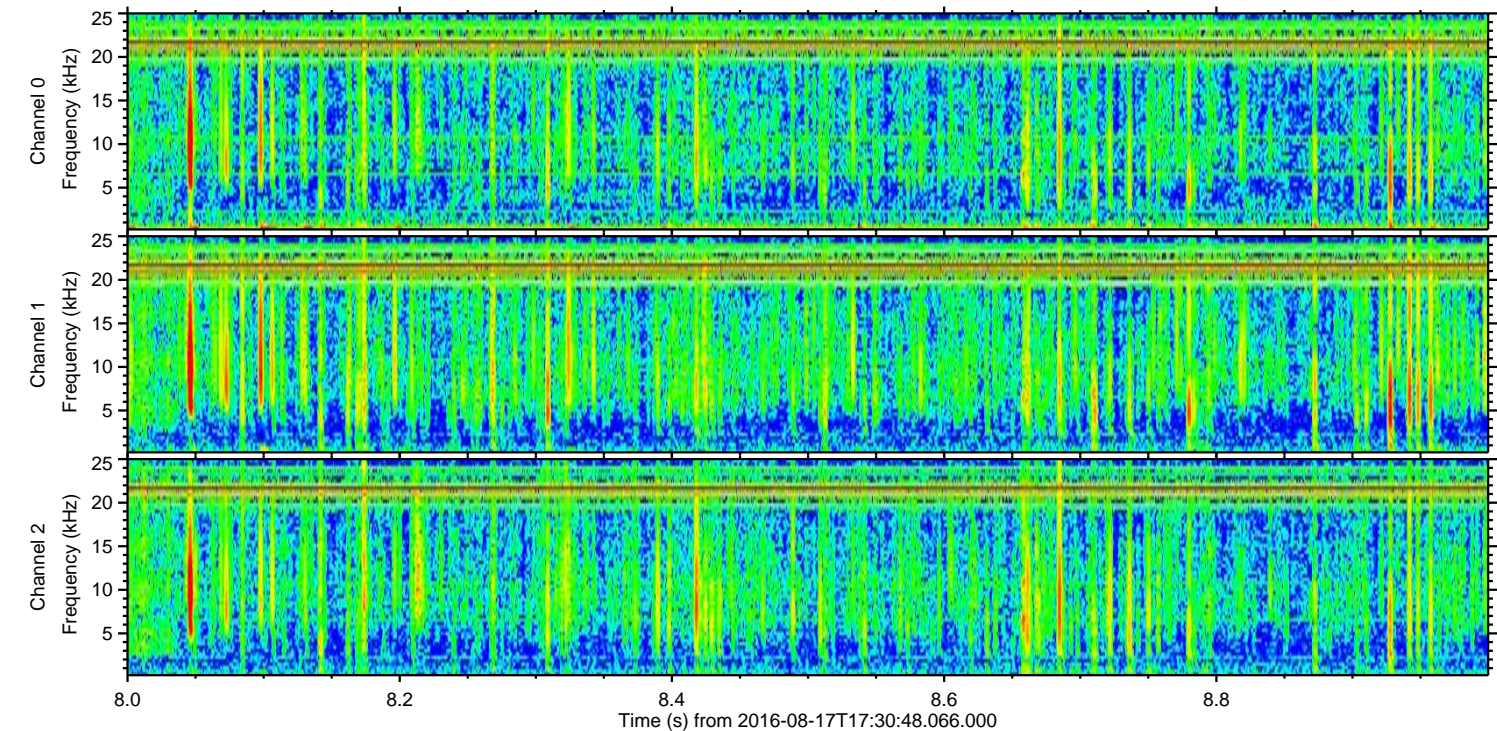
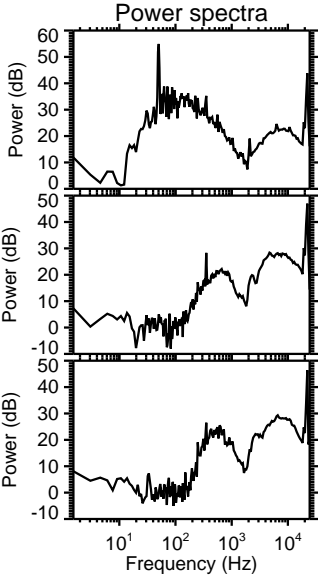
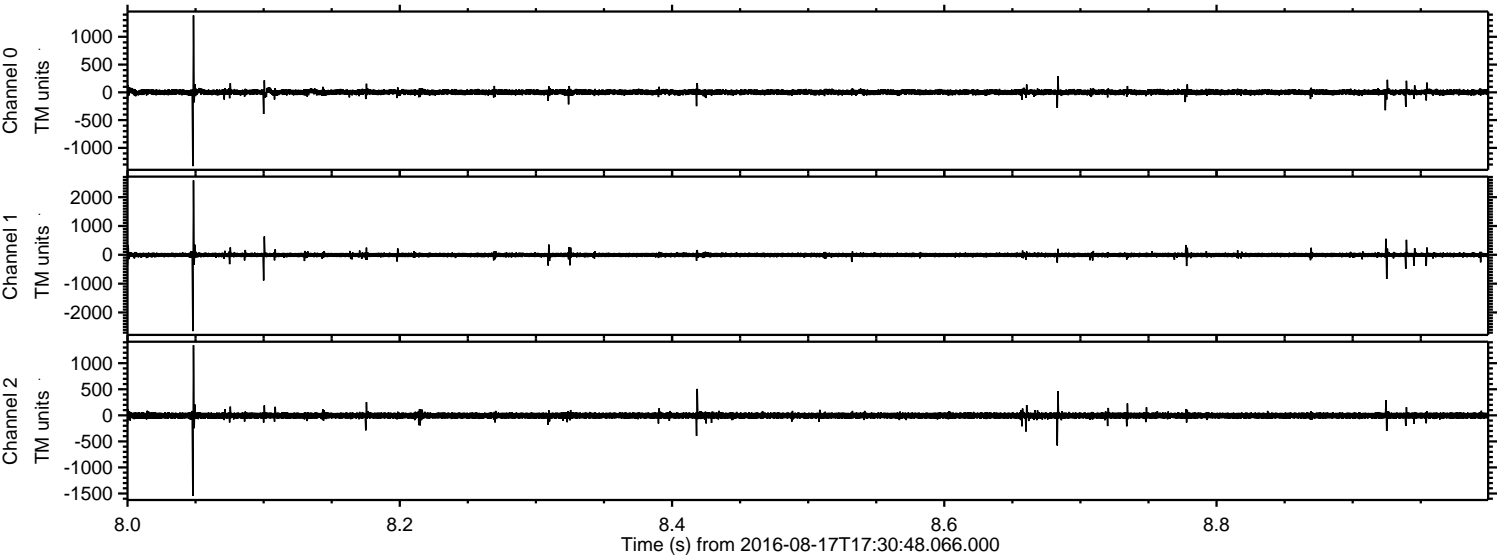
Channel 1
mn: -1069
mx: 1475
 μ : -5.6
 σ : 38.7

Channel 2
mn: -2671
mx: 2520
 μ : -5.2
 σ : 41.1

Processed Wed Aug 17 19:38:41 2016 by ELM ver.2012-10-06 from 001__elm20160817_173047__dat00.bin



Processed Wed Aug 17 19:38:42 2016 by ELM ver.2012-10-06 from 001__elm20160817_173047__dat00.bin



Processed Wed Aug 17 19:38:43 2016 by ELM ver.2012-10-06 from 001__elm20160817_173047__dat00.bin

