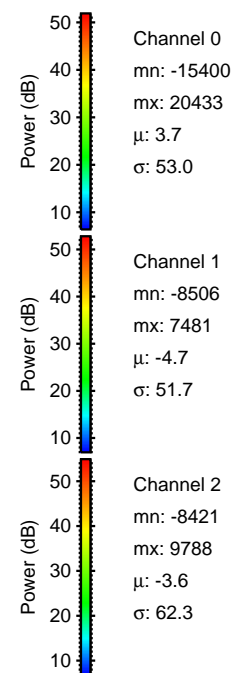
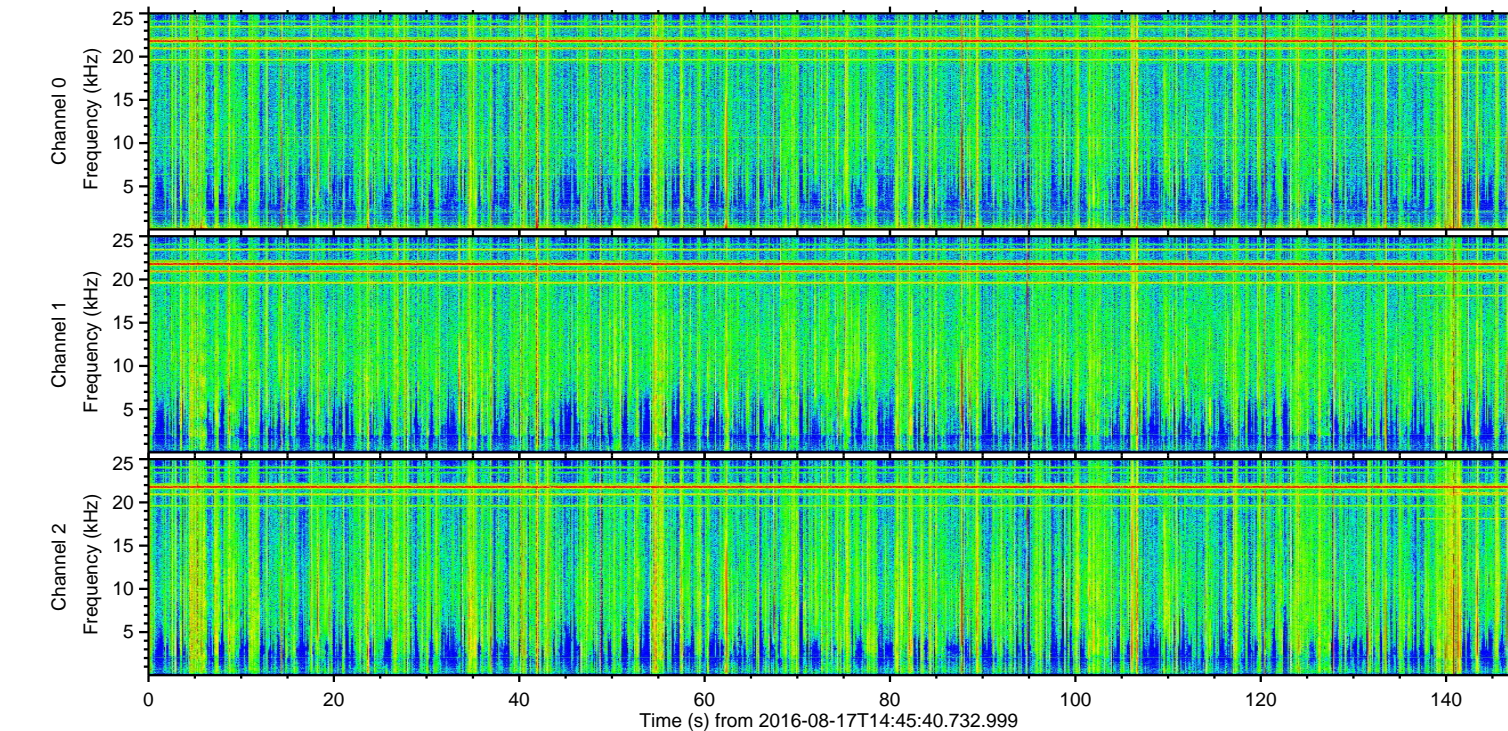
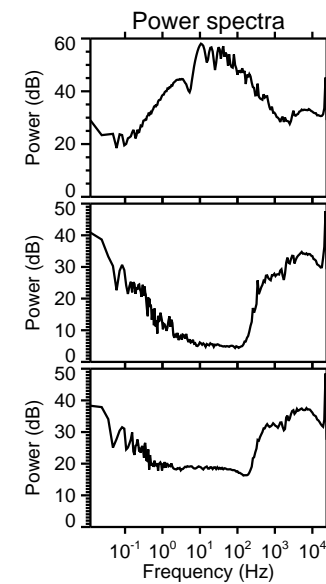
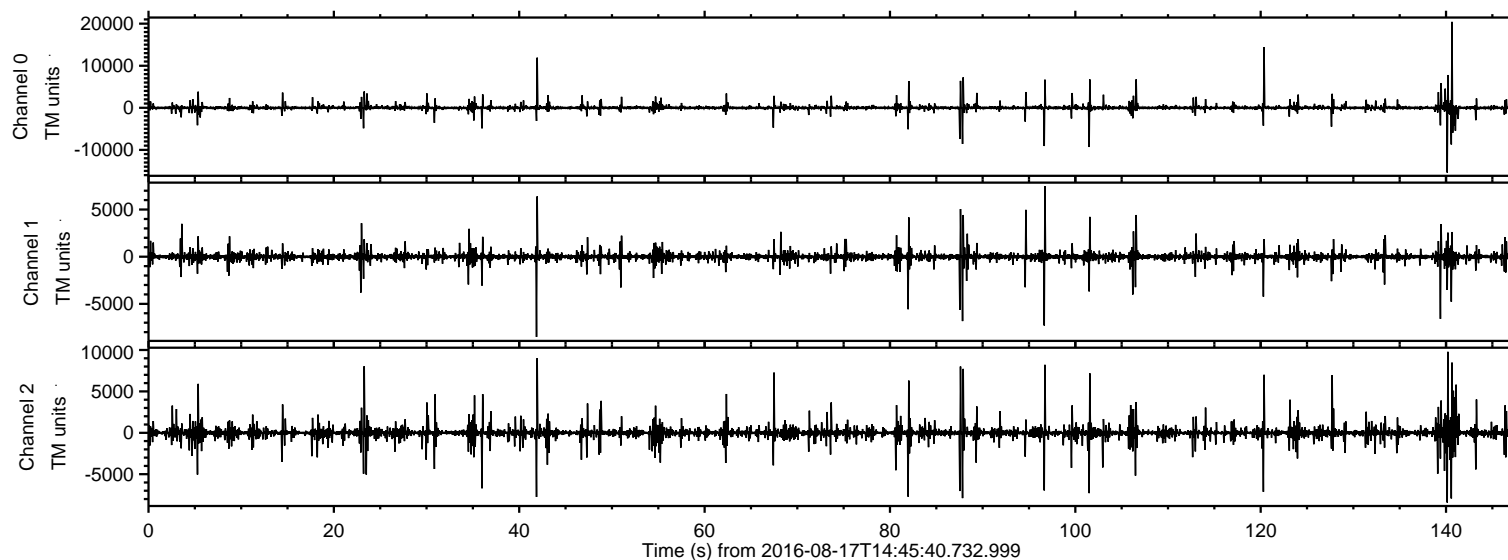


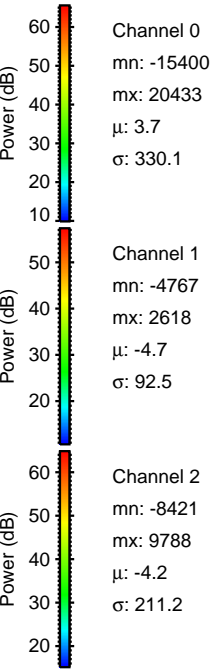
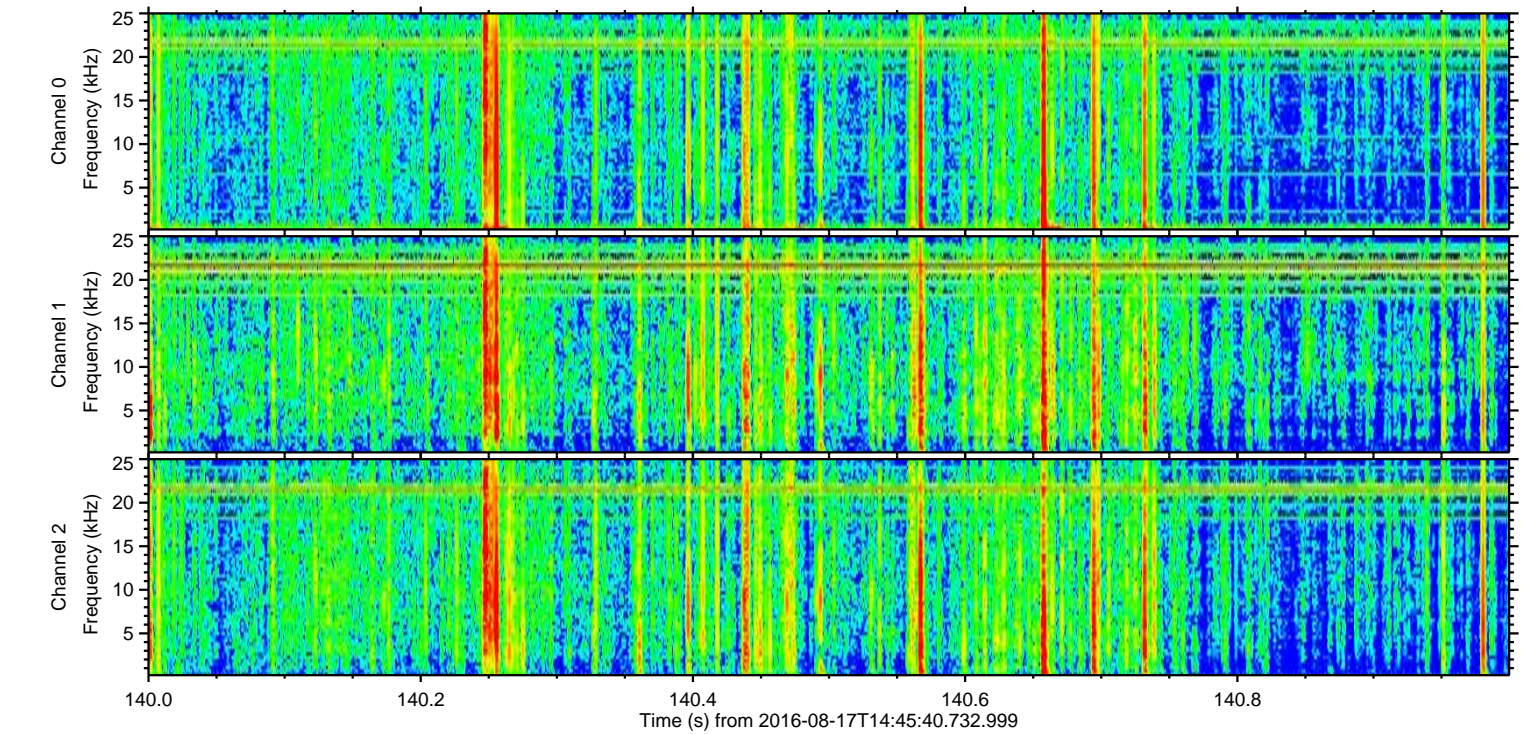
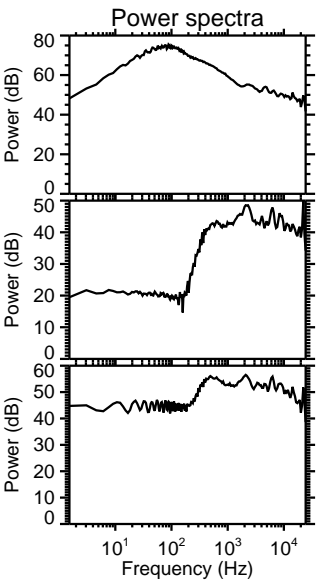
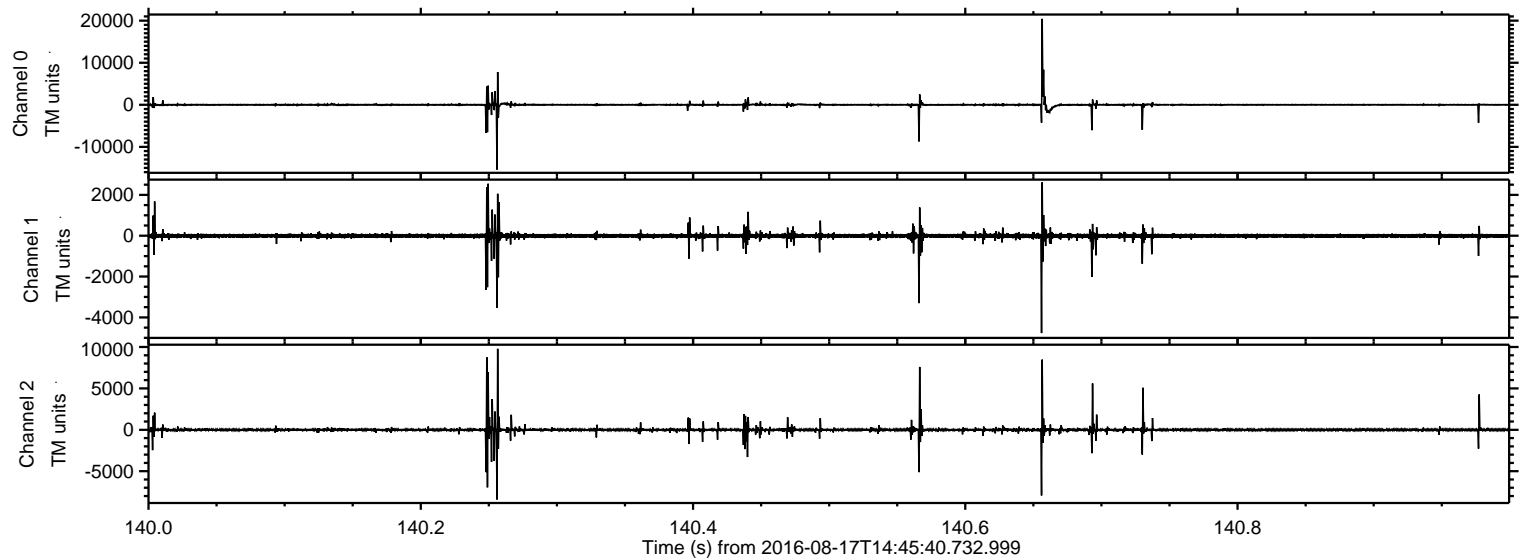
ELMAVAN 3D WAVEFORMS (Measured data sampled at 50 kHz) 51000 packets of 144 samples from 2016-08-17T14:45:40.732.999.

Processed Wed Aug 17 16:53:39 2016 by ELM ver.2012-10-06 from 001__elm20160817_144539__dat00.bin



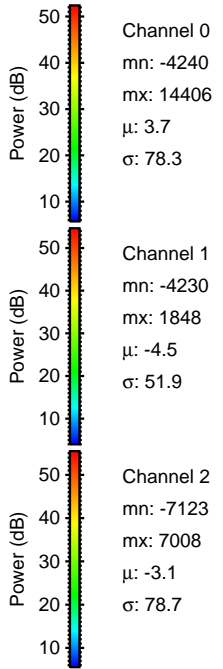
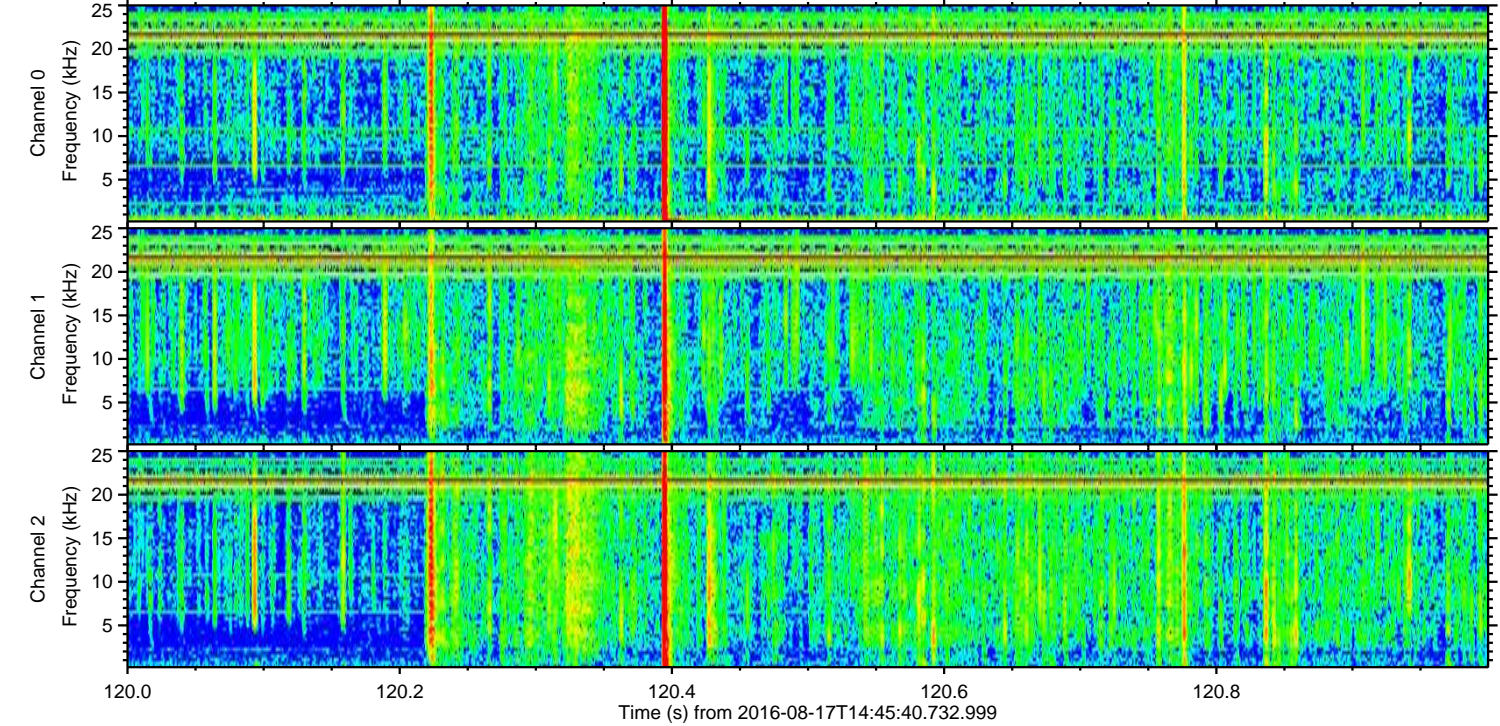
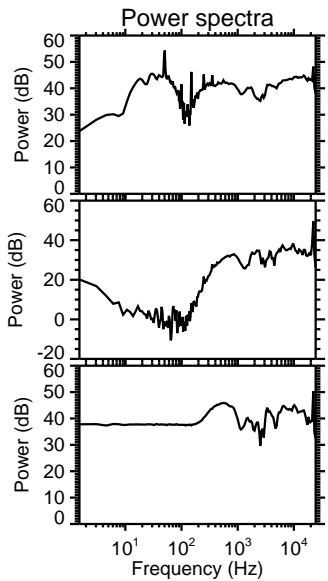
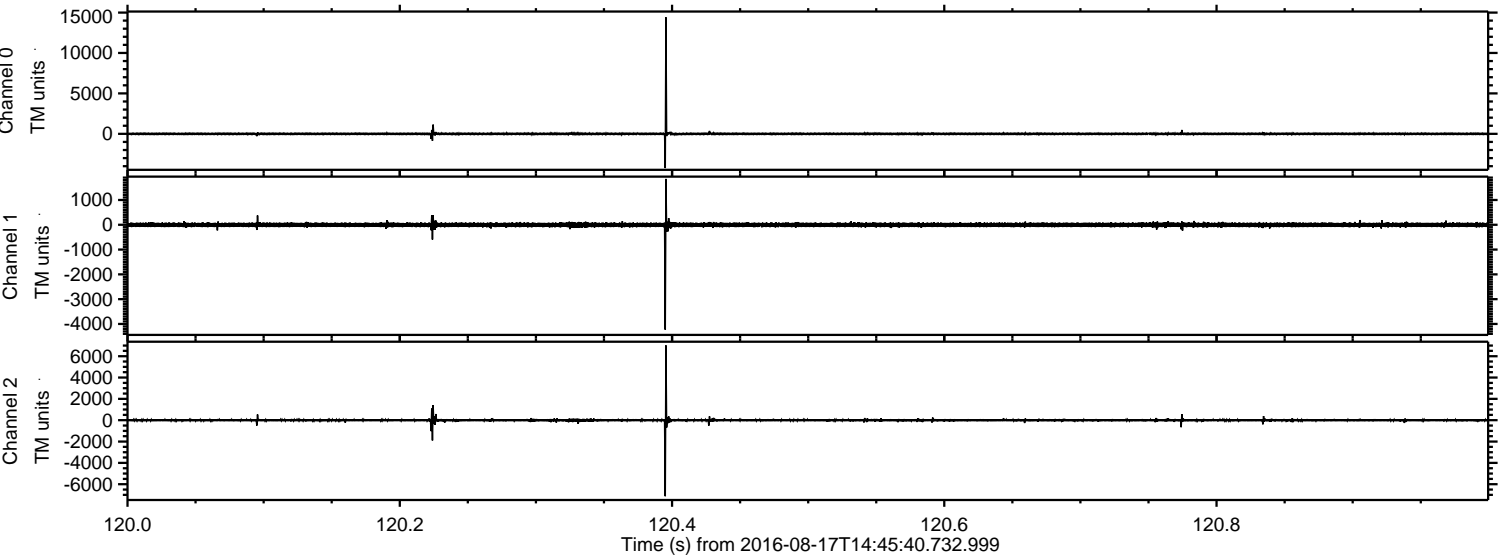
ELMAVAN 3D WAVEFORMS (Measured data sampled at 50 kHz) 51000 packets of 144 samples from 2016-08-17T14:45:40.732.999. Part 141/147

Processed Wed Aug 17 16:54:01 2016 by ELM ver.2012-10-06 from 001__elm20160817_144539__dat00.bin



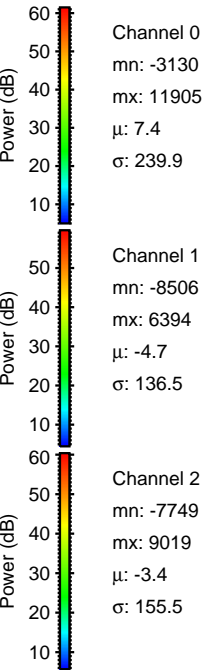
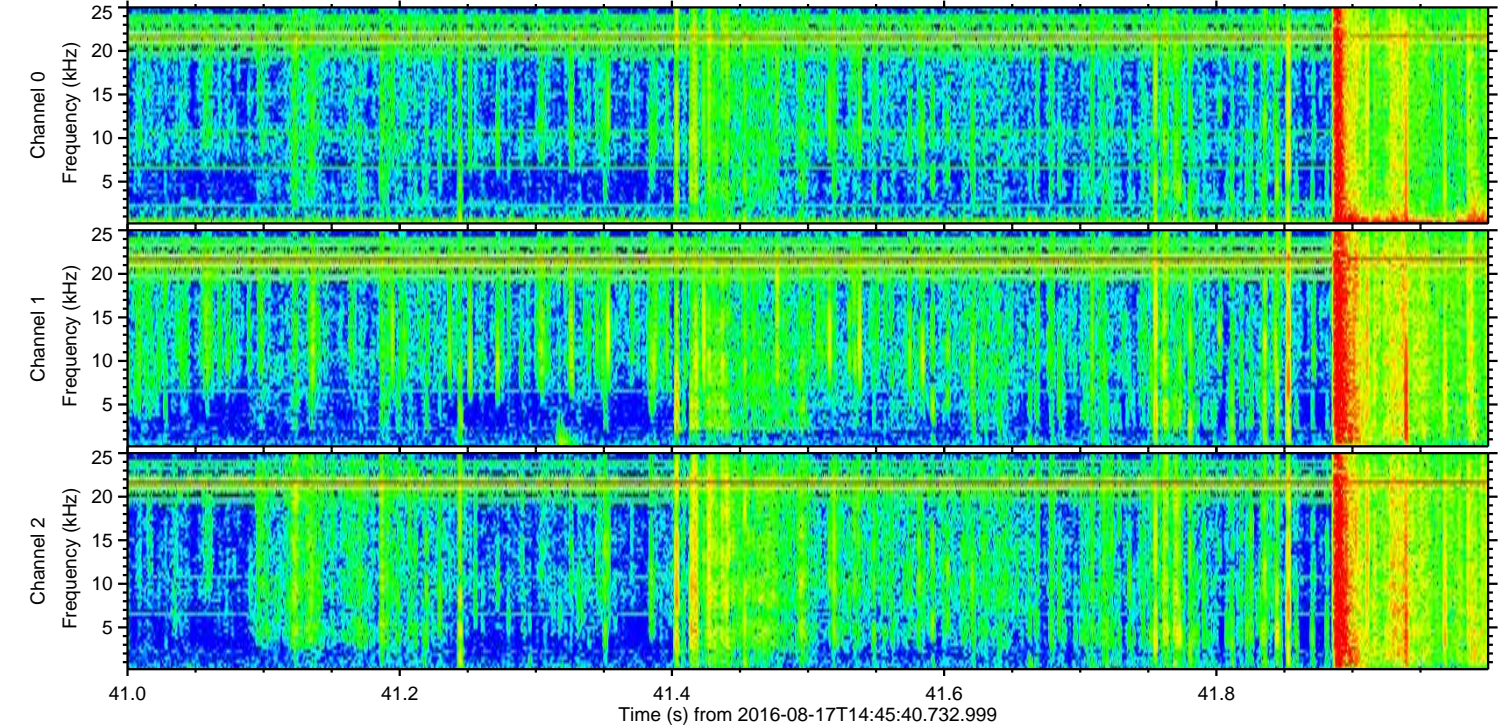
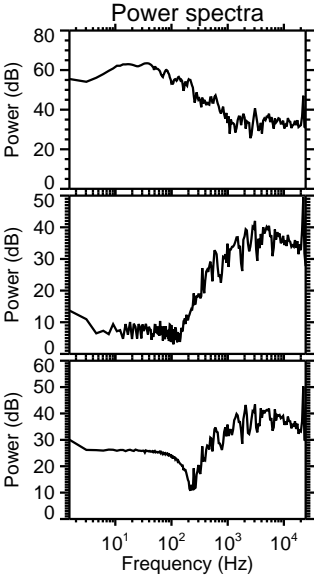
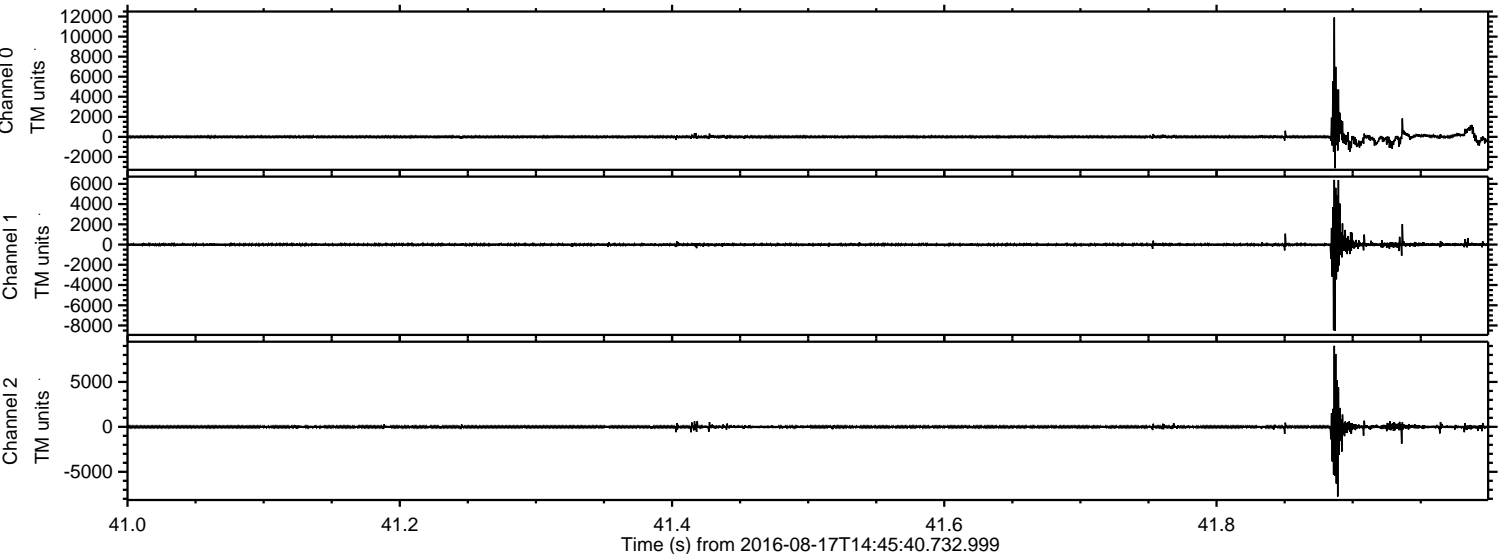
ELMAVAN 3D WAVEFORMS (Measured data sampled at 50 kHz) 51000 packets of 144 samples from 2016-08-17T14:45:40.732.999. Part 121/147

Processed Wed Aug 17 16:54:04 2016 by ELM ver.2012-10-06 from 001__elm20160817_144539__dat00.bin



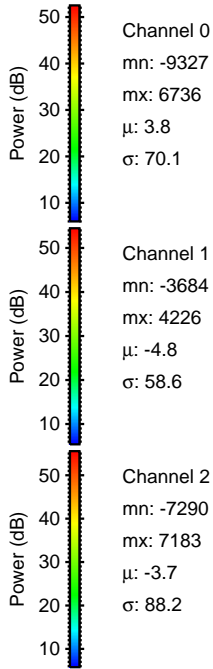
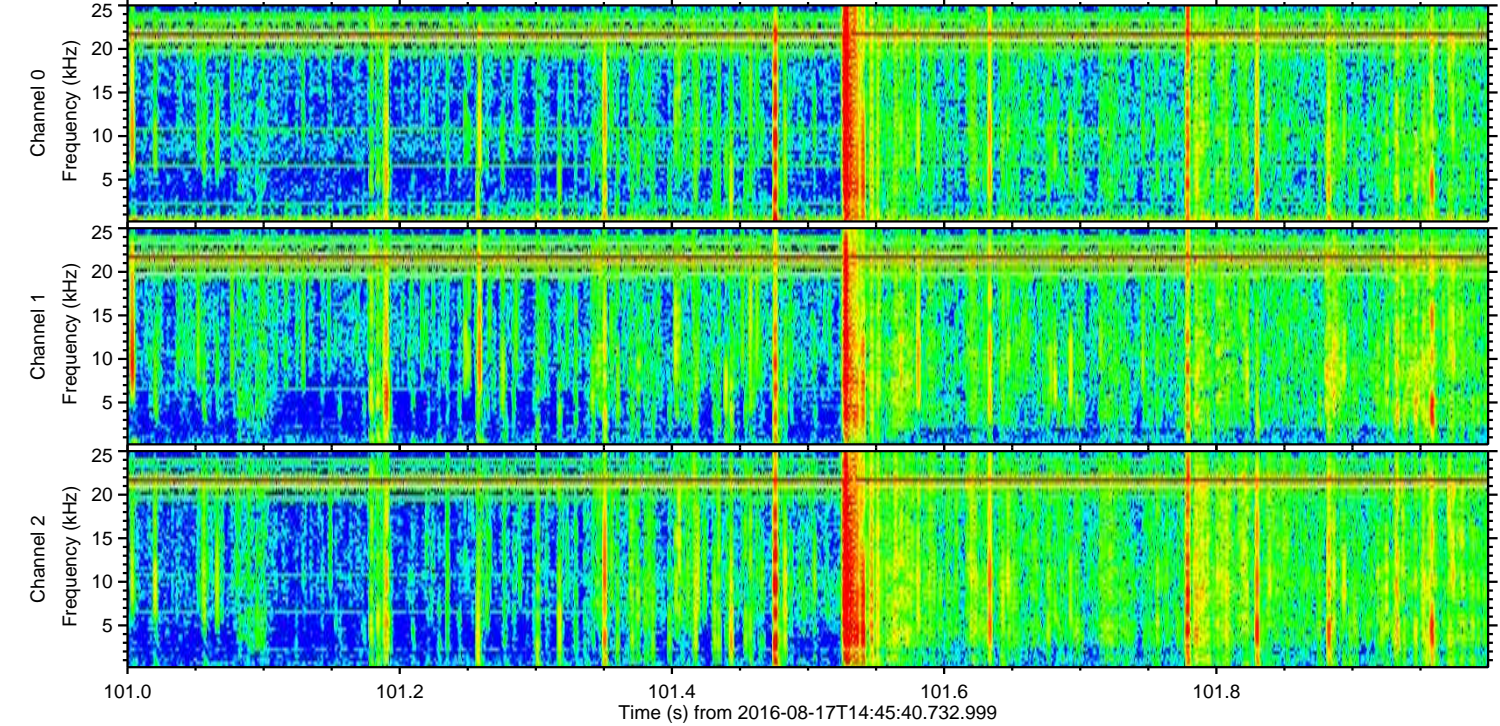
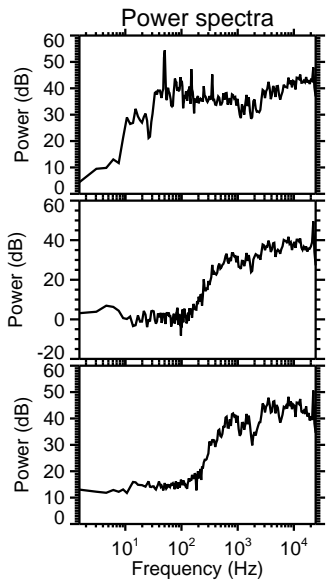
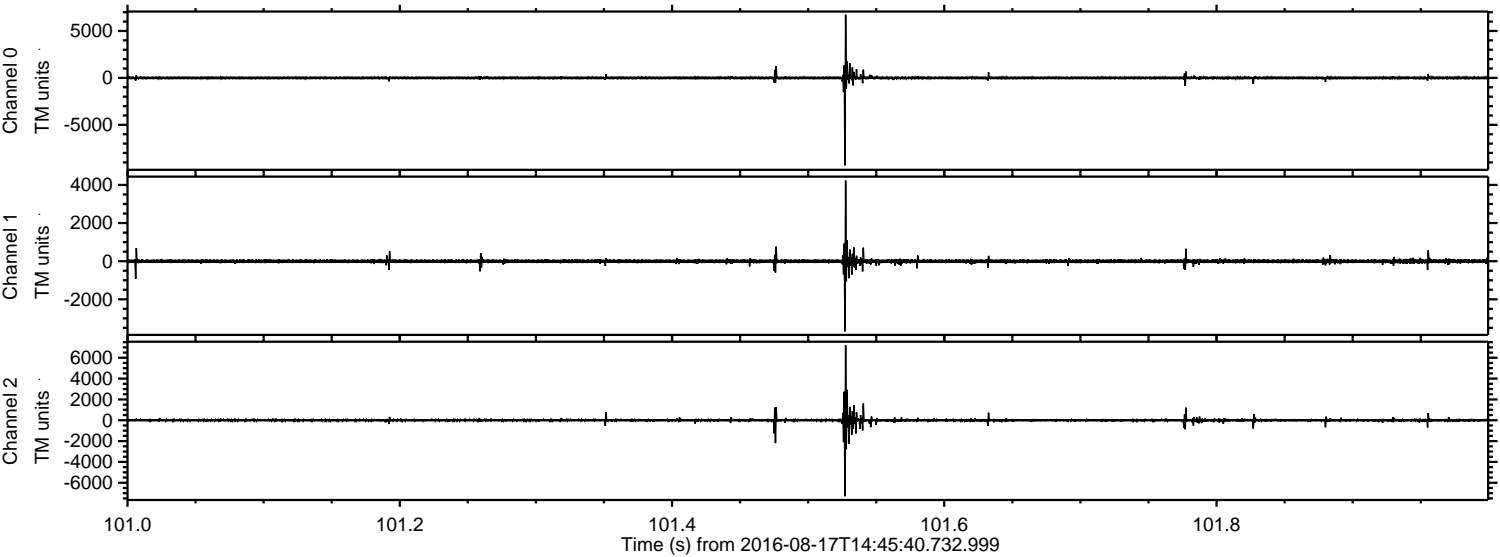
ELMAVAN 3D WAVEFORMS (Measured data sampled at 50 kHz) 51000 packets of 144 samples from 2016-08-17T14:45:40.732.999. Part 42/147

Processed Wed Aug 17 16:54:05 2016 by ELM ver.2012-10-06 from 001__elm20160817_144539__dat00.bin

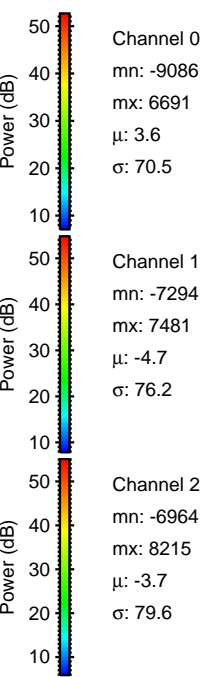
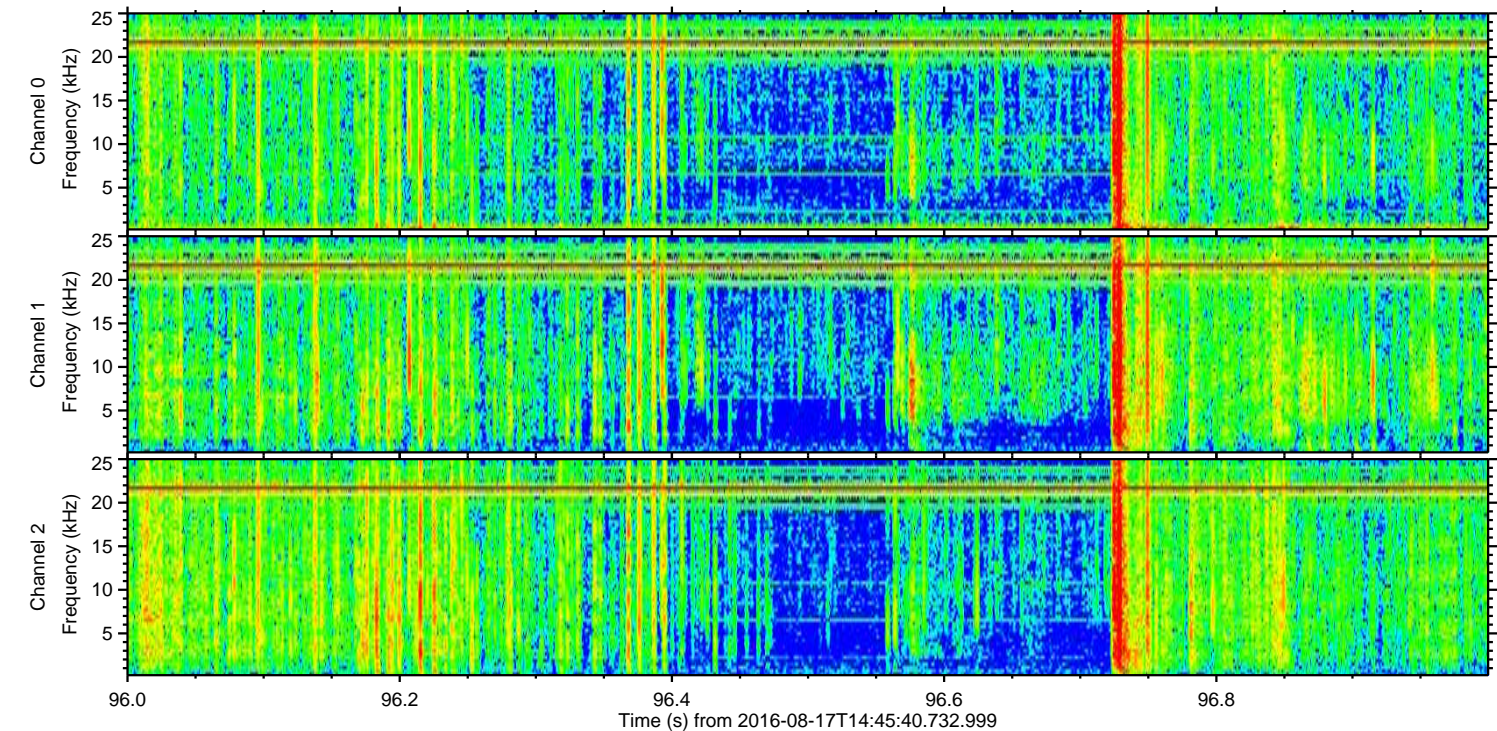
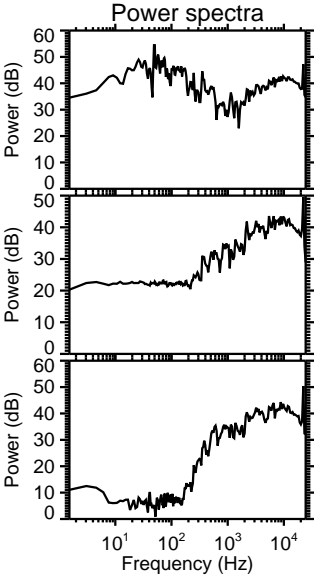
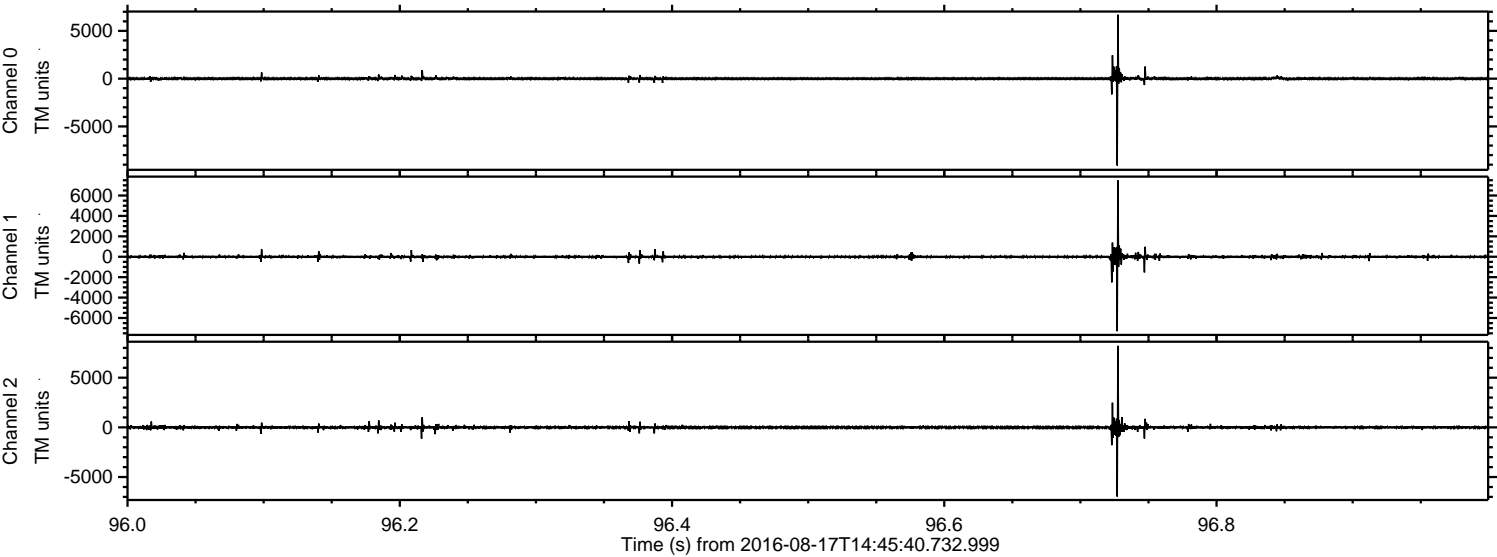


ELMAVAN 3D WAVEFORMS (Measured data sampled at 50 kHz) 51000 packets of 144 samples from 2016-08-17T14:45:40.732.999. Part 102/147

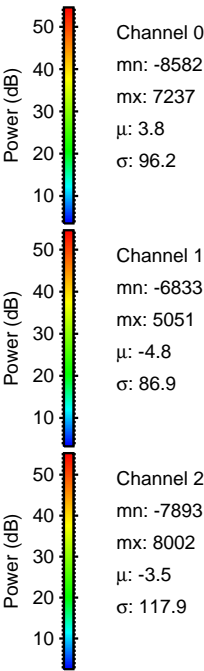
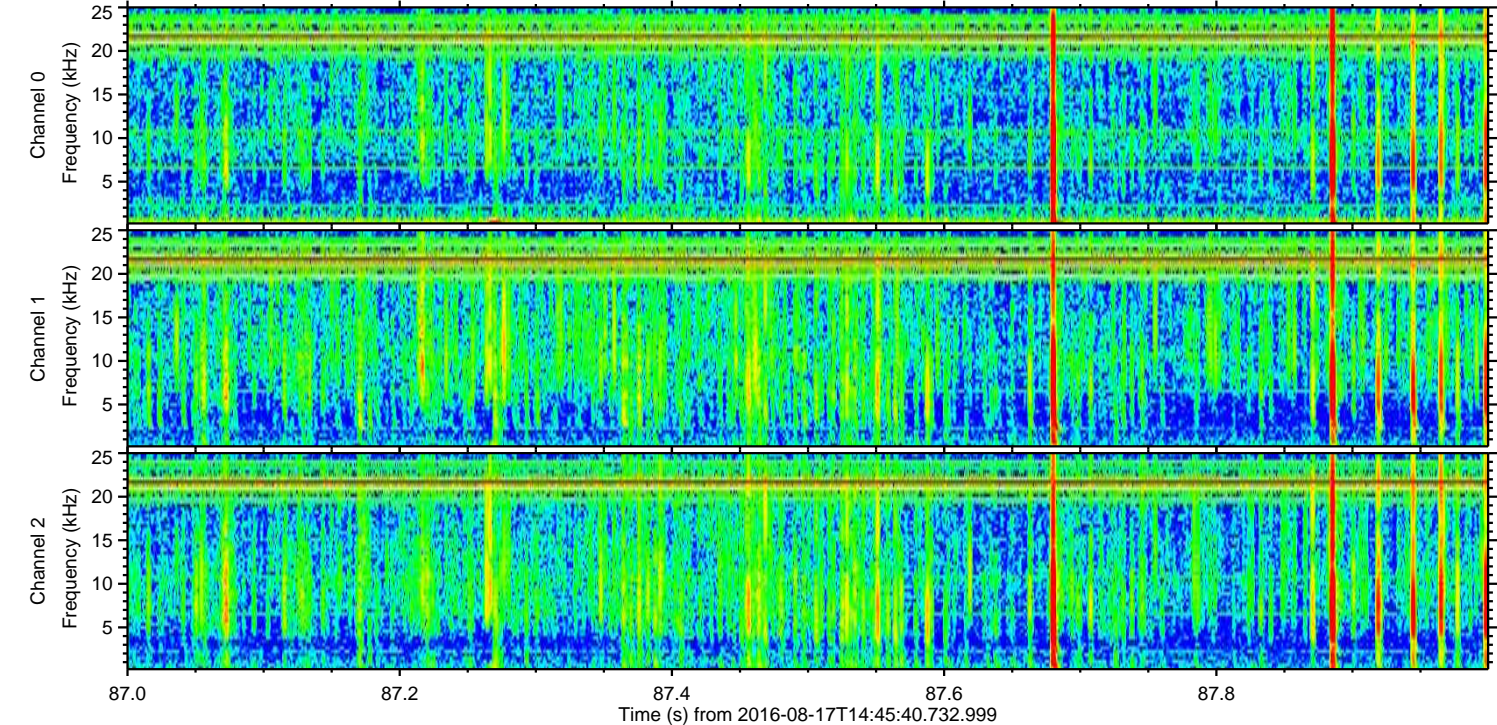
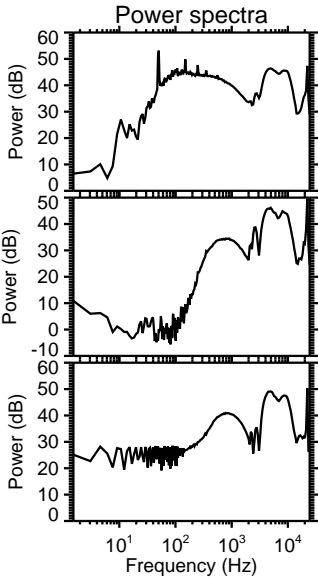
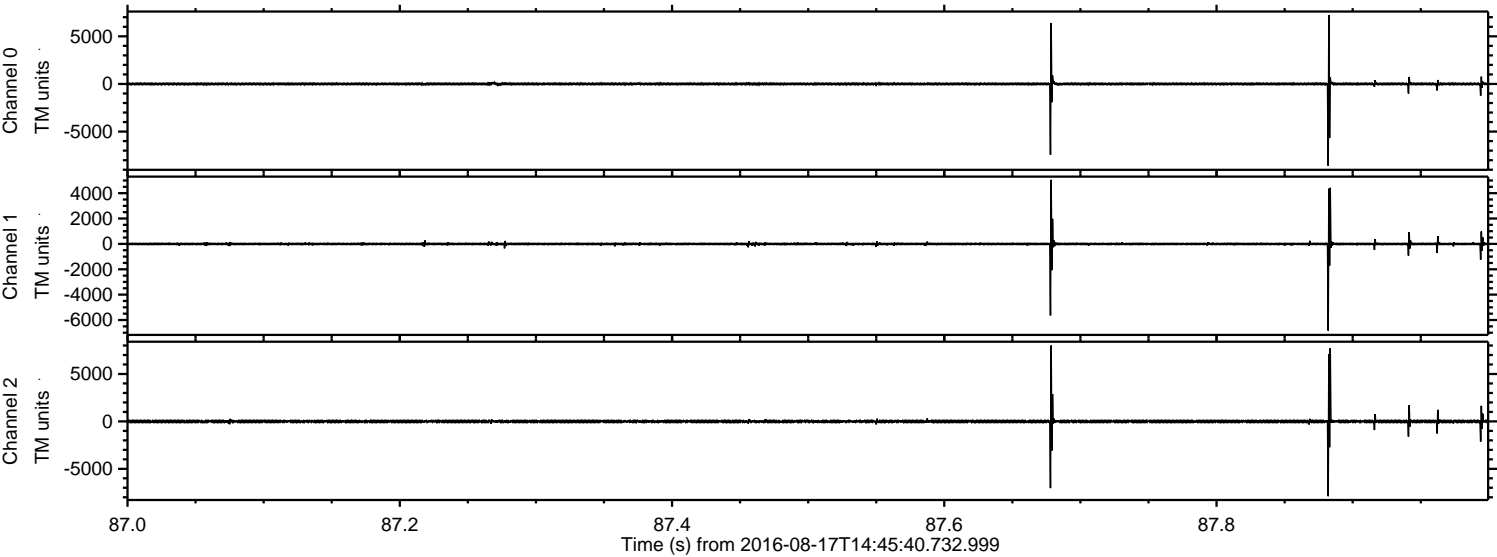
Processed Wed Aug 17 16:54:06 2016 by ELM ver.2012-10-06 from 001__elm20160817_144539__dat00.bin



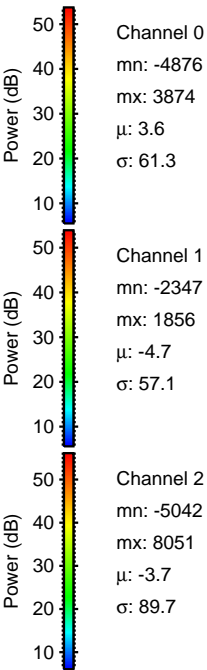
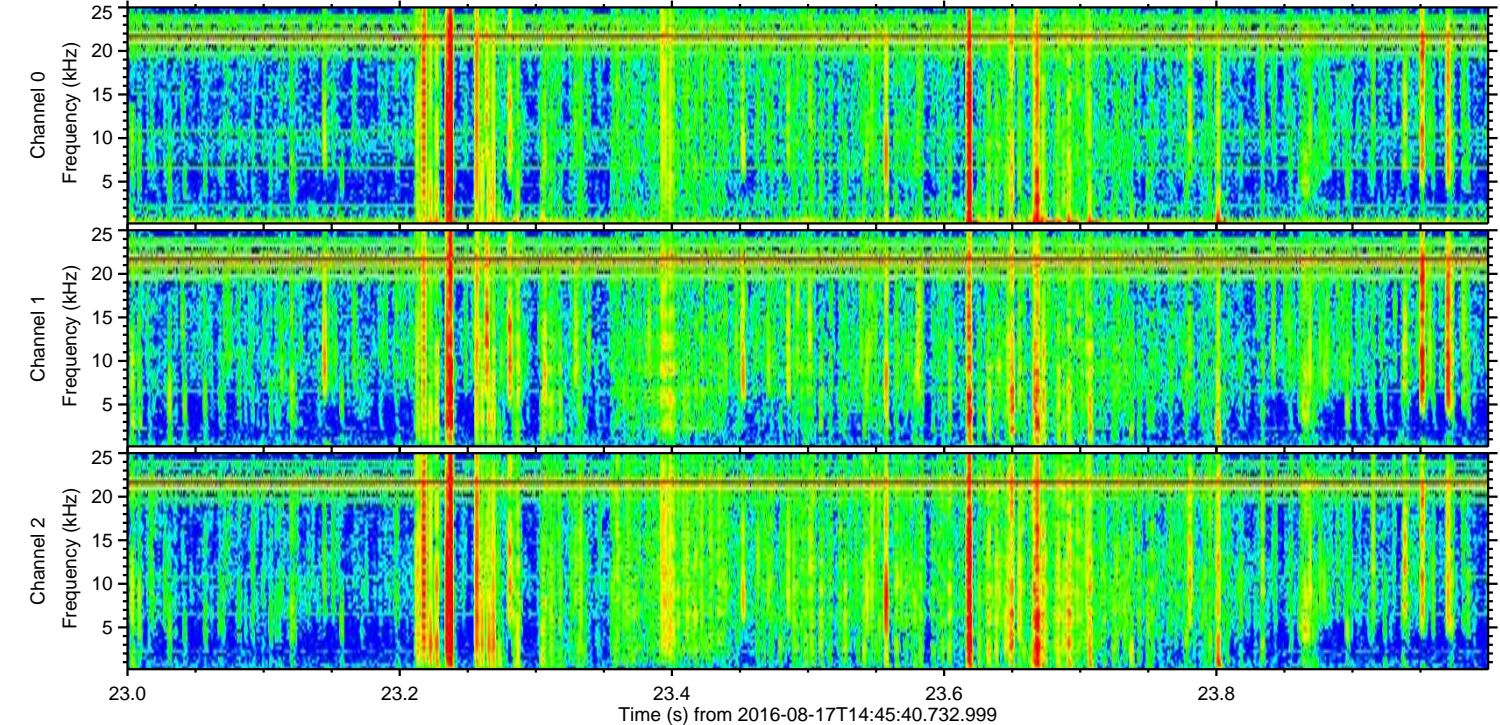
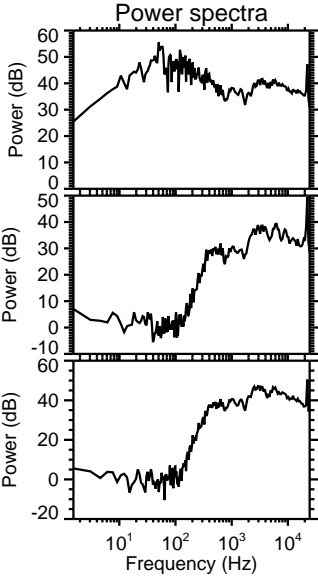
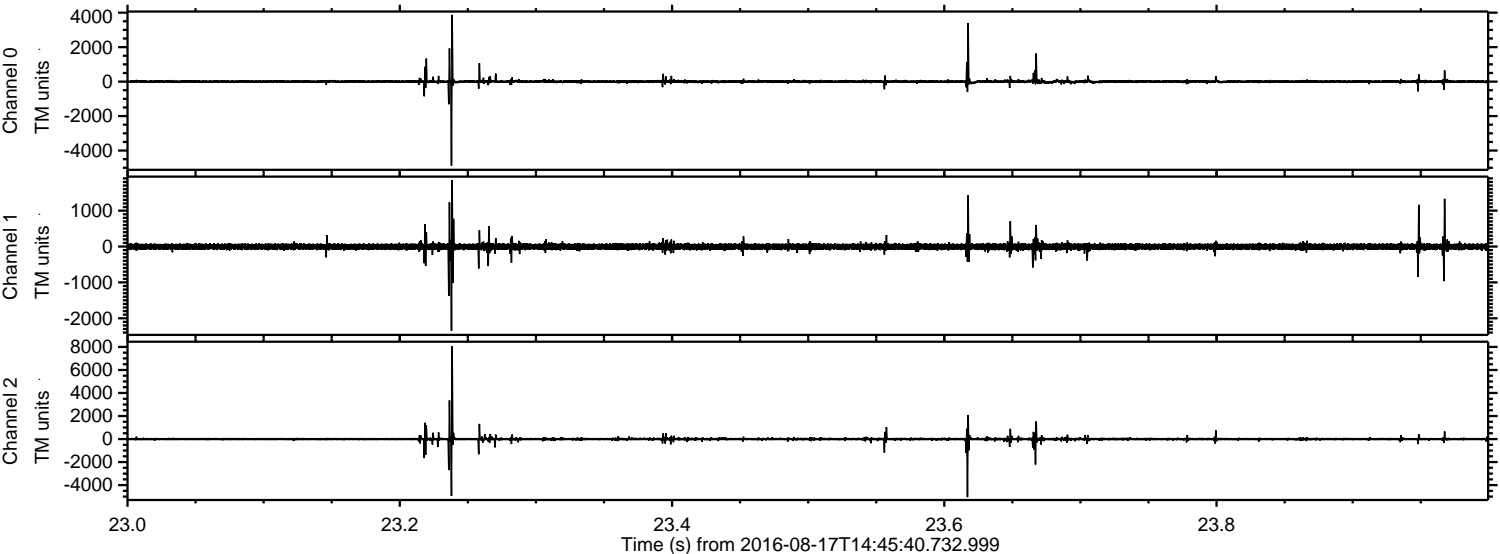
Processed Wed Aug 17 16:54:07 2016 by ELM ver.2012-10-06 from 001__elm20160817_144539__dat00.bin



Processed Wed Aug 17 16:54:08 2016 by ELM ver.2012-10-06 from 001__elm20160817_144539__dat00.bin



Processed Wed Aug 17 16:54:10 2016 by ELM ver.2012-10-06 from 001__elm20160817_144539__dat00.bin

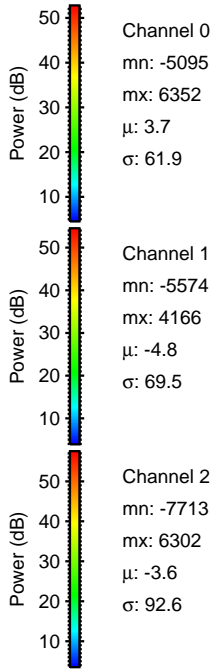
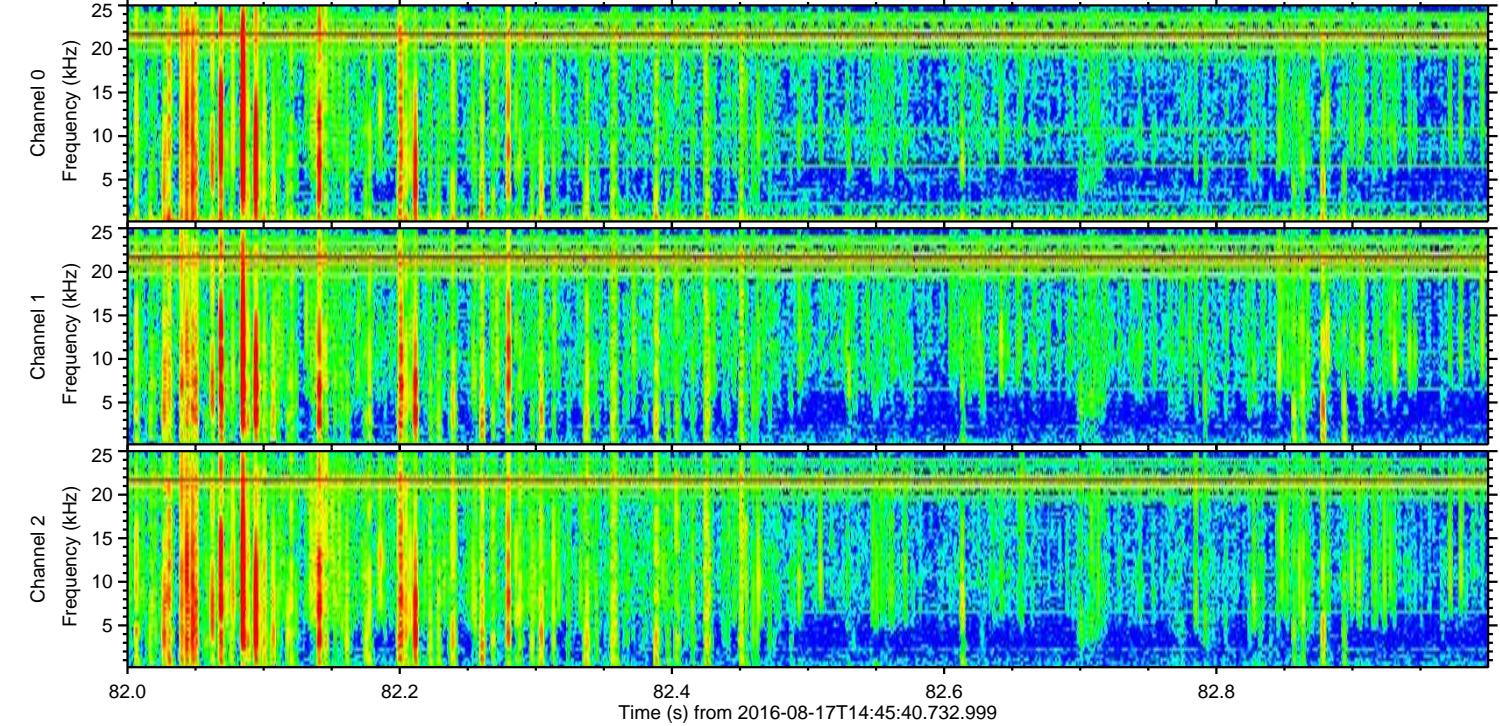
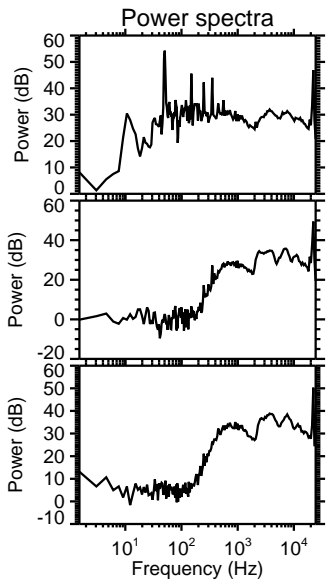
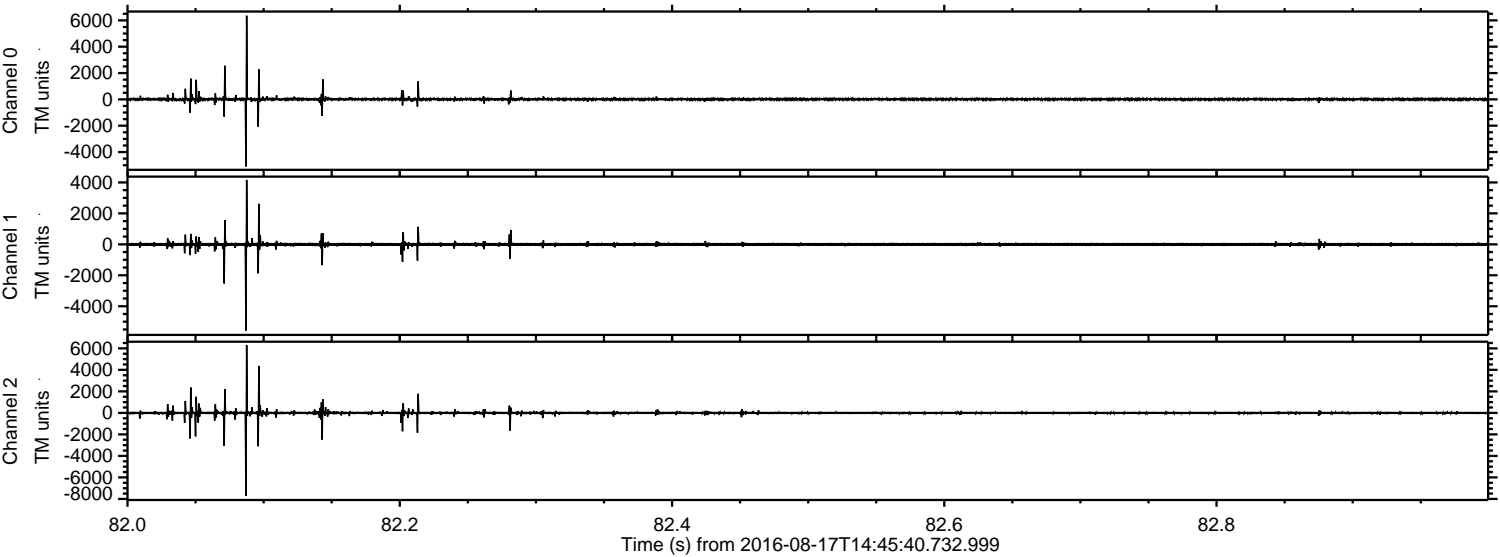


Channel 0
mn: -4876
mx: 3874
 μ : 3.6
 σ : 61.3

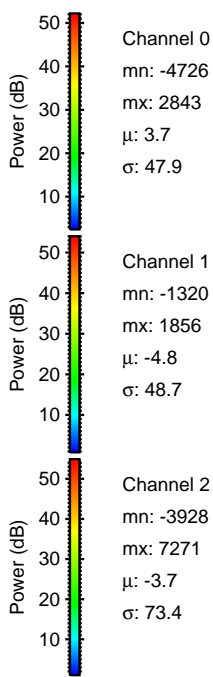
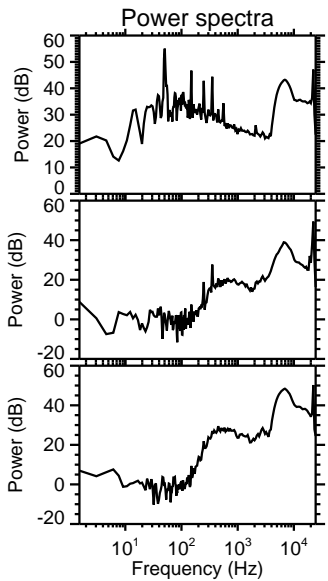
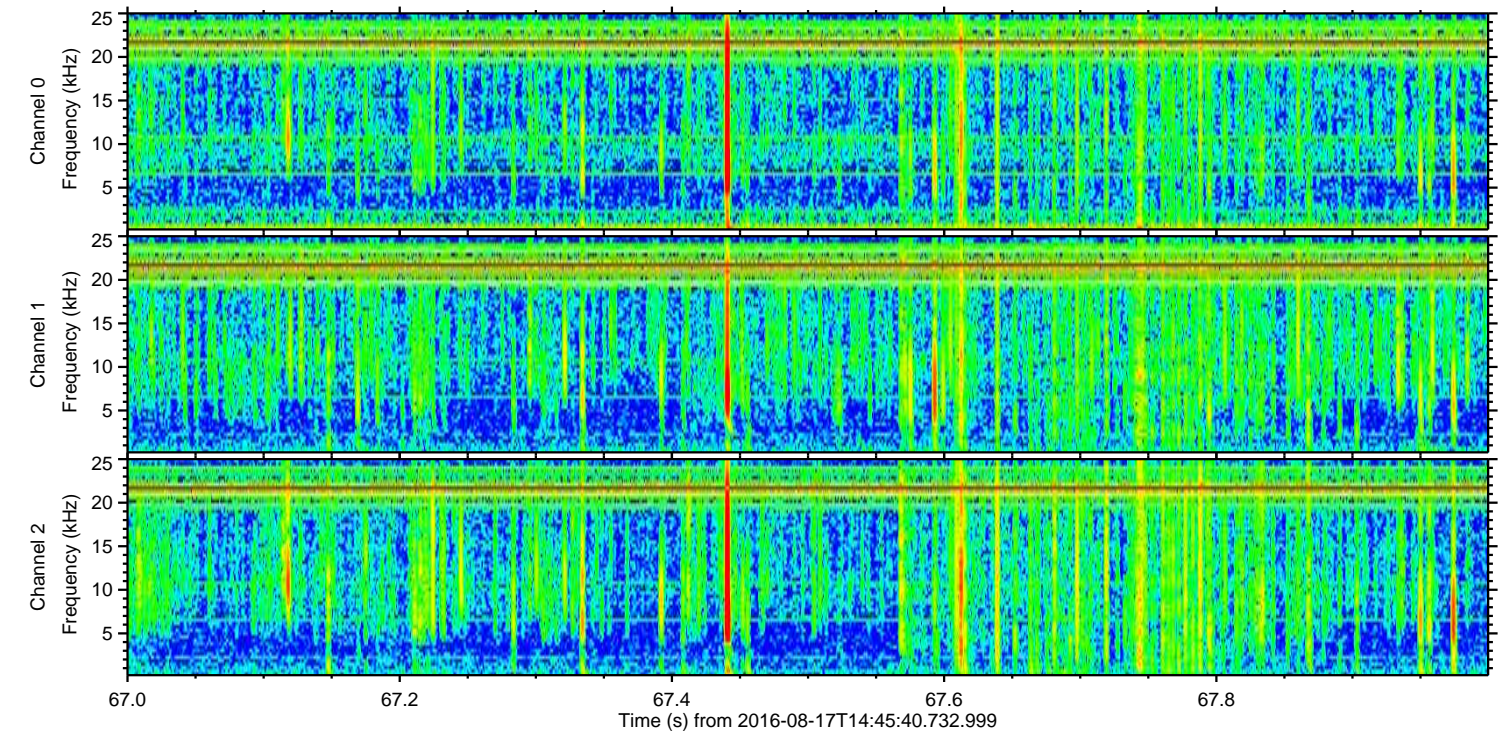
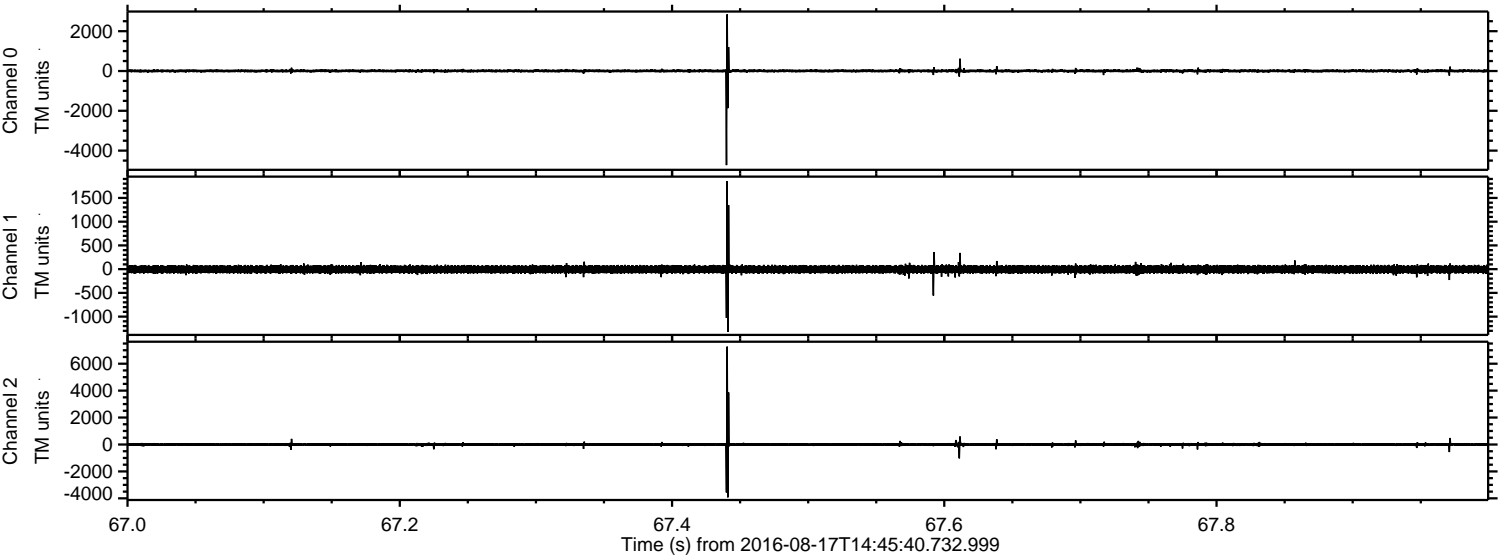
Channel 1
mn: -2347
mx: 1856
 μ : -4.7
 σ : 57.1

Channel 2
mn: -5042
mx: 8051
 μ : -3.7
 σ : 89.7

Processed Wed Aug 17 16:54:11 2016 by ELM ver.2012-10-06 from 001__elm20160817_144539__dat00.bin



Processed Wed Aug 17 16:54:12 2016 by ELM ver.2012-10-06 from 001__elm20160817_144539__dat00.bin



Channel 0
mn: -4726
mx: 2843
 μ : 3.7
 σ : 47.9

Channel 1
mn: -1320
mx: 1856
 μ : -4.8
 σ : 48.7

Channel 2
mn: -3928
mx: 7271
 μ : -3.7
 σ : 73.4

