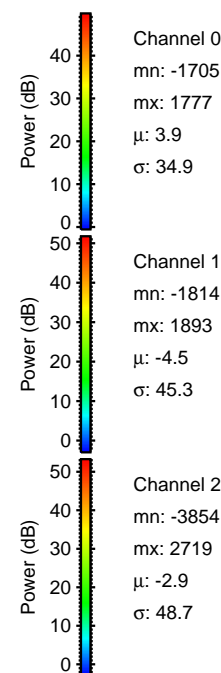
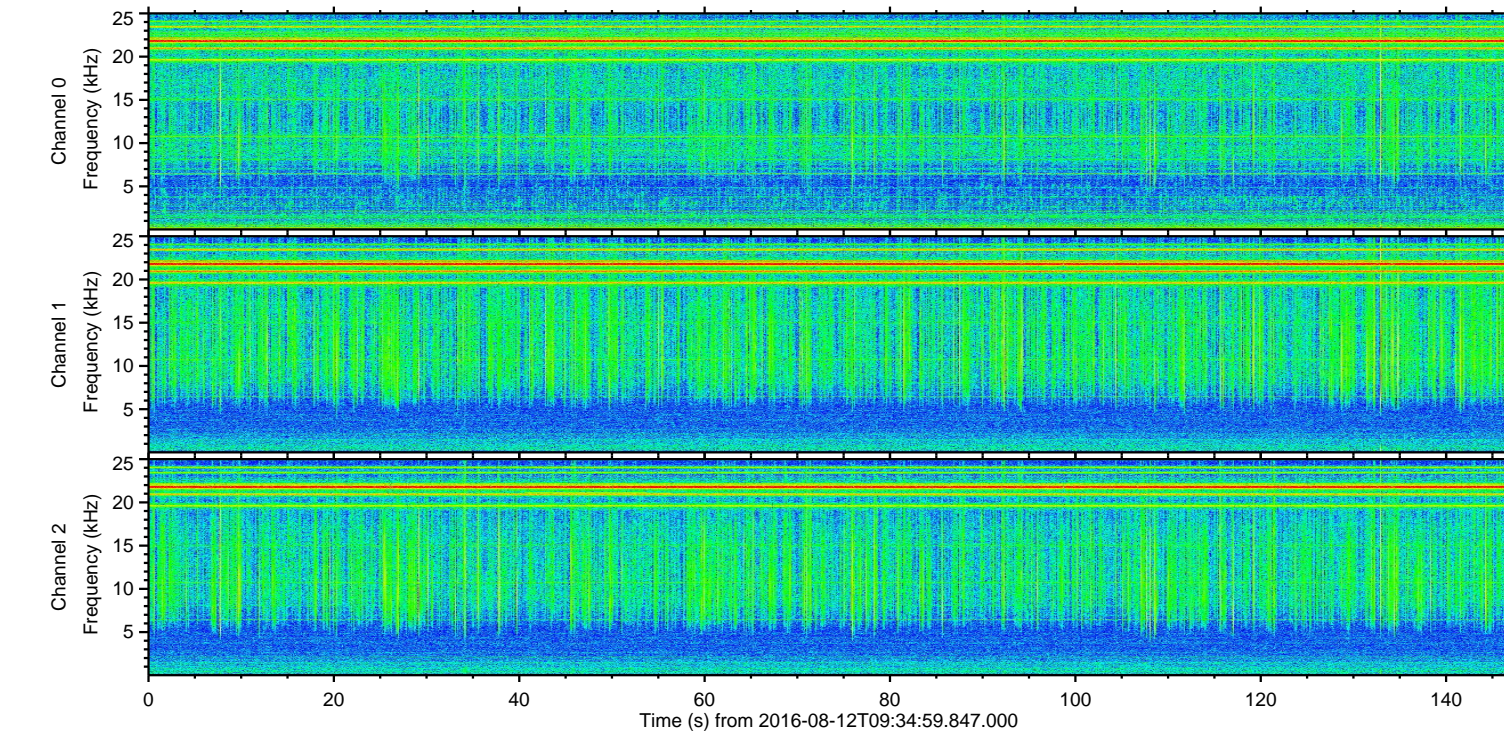
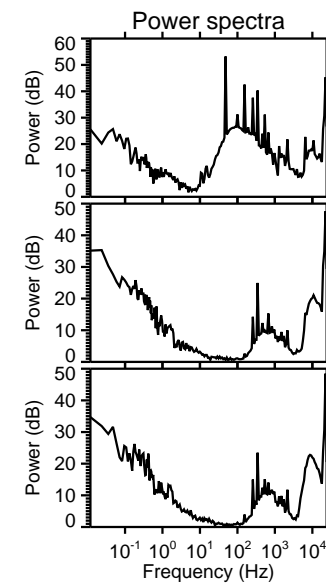
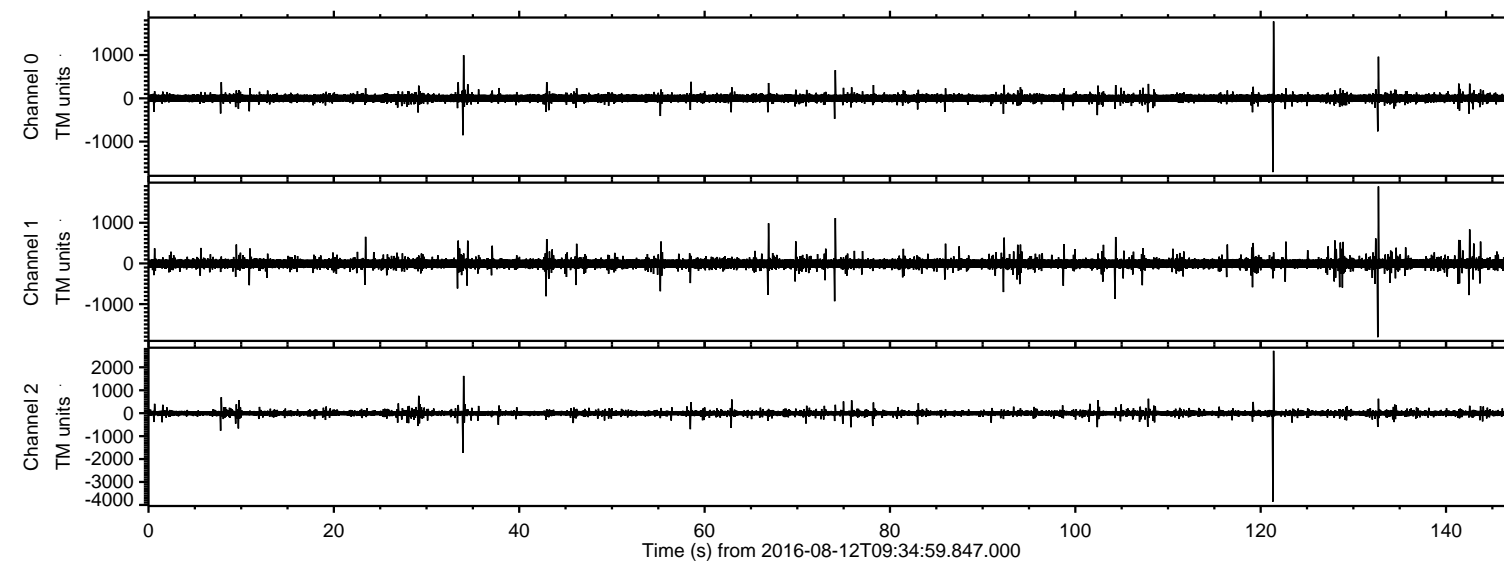


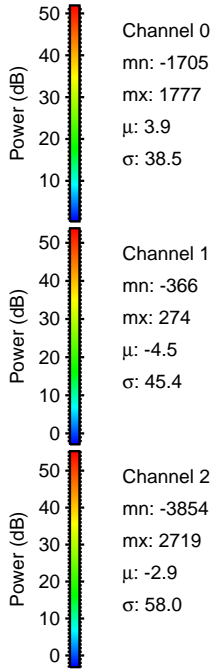
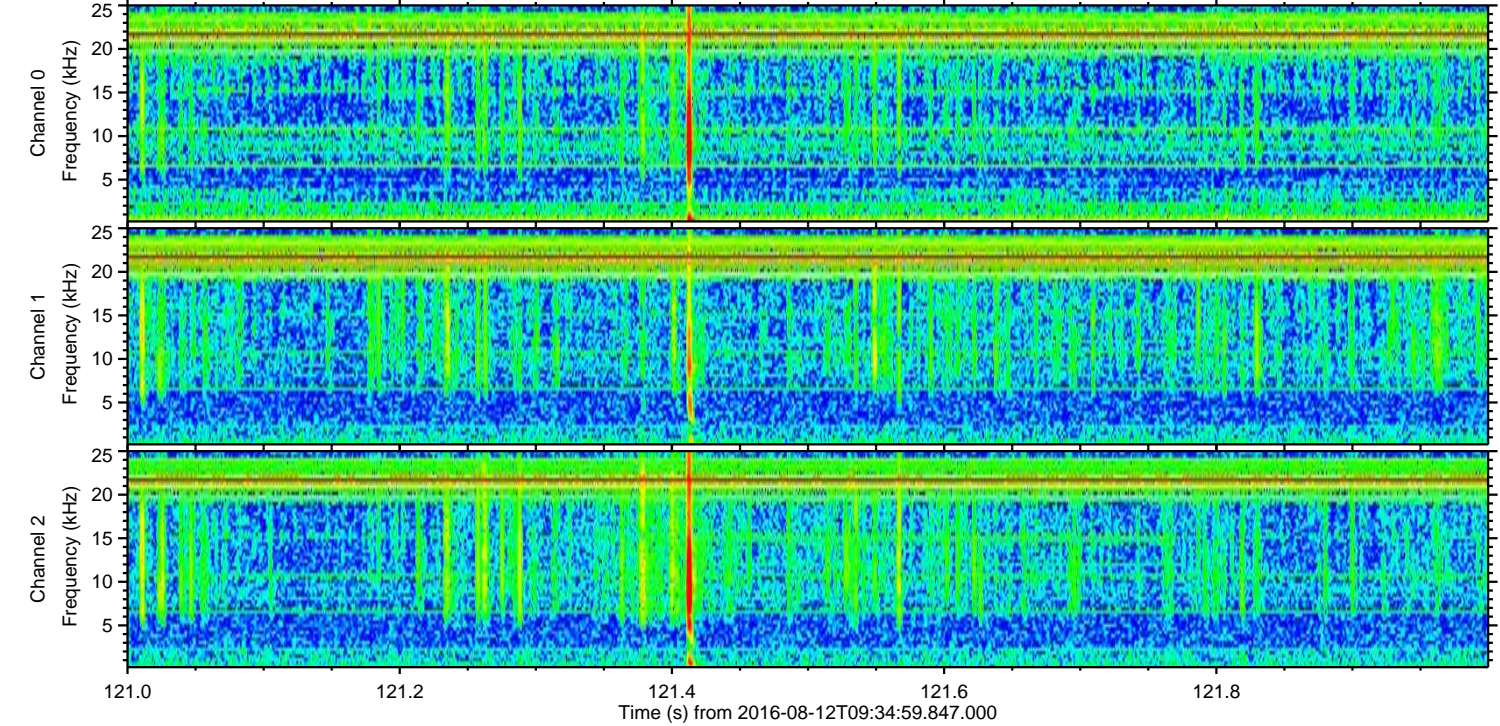
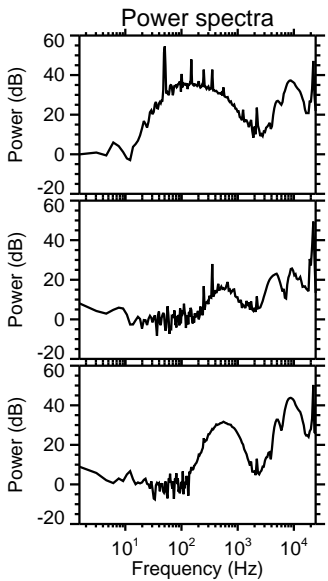
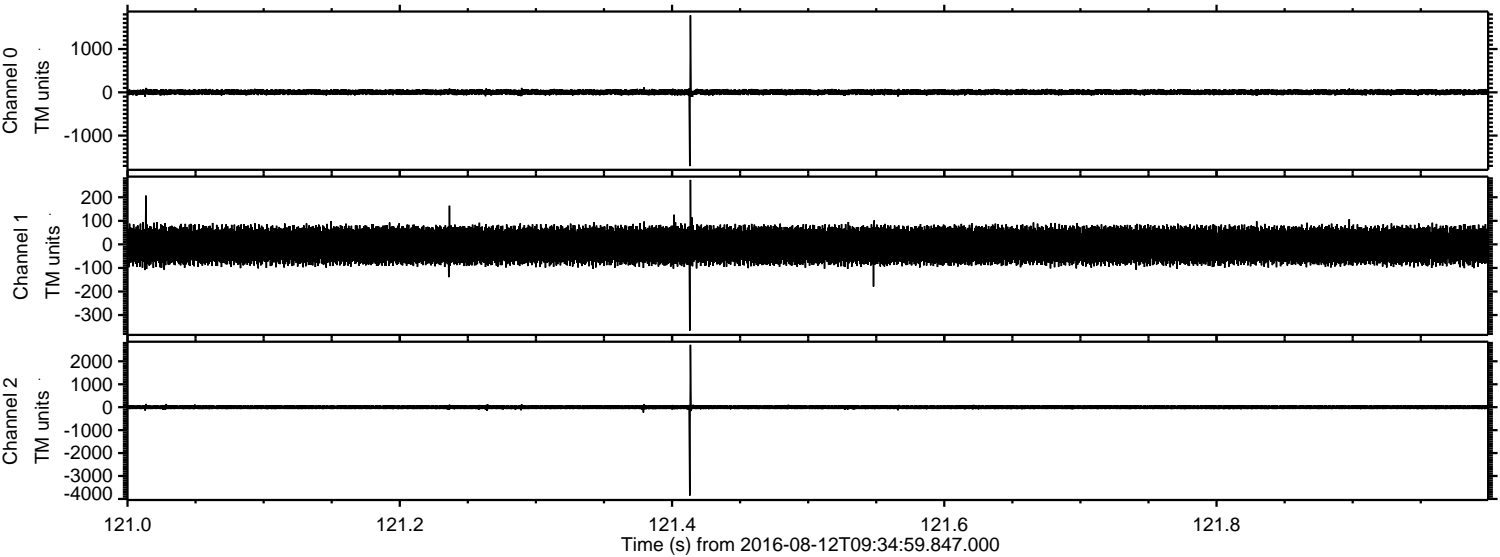
ELMAVAN 3D WAVEFORMS (Measured data sampled at 50 kHz) 51000 packets of 144 samples from 2016-08-12T09:34:59.847.000.

Processed Fri Aug 12 11:42:45 2016 by ELM ver.2012-10-06 from 001__elm20160812_093458__dat00.bin



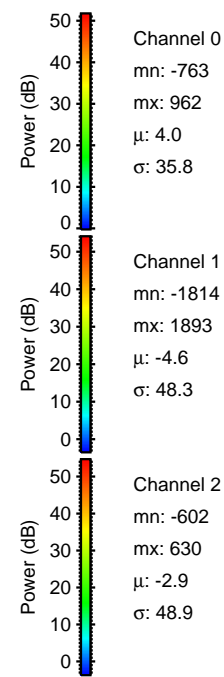
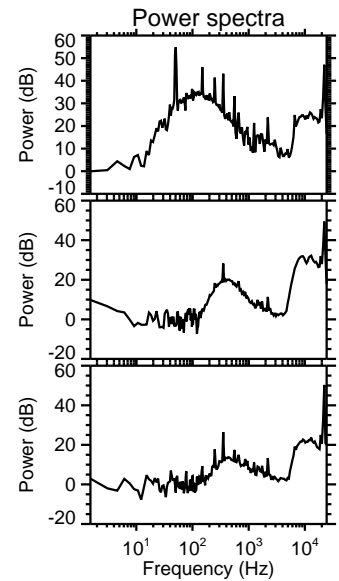
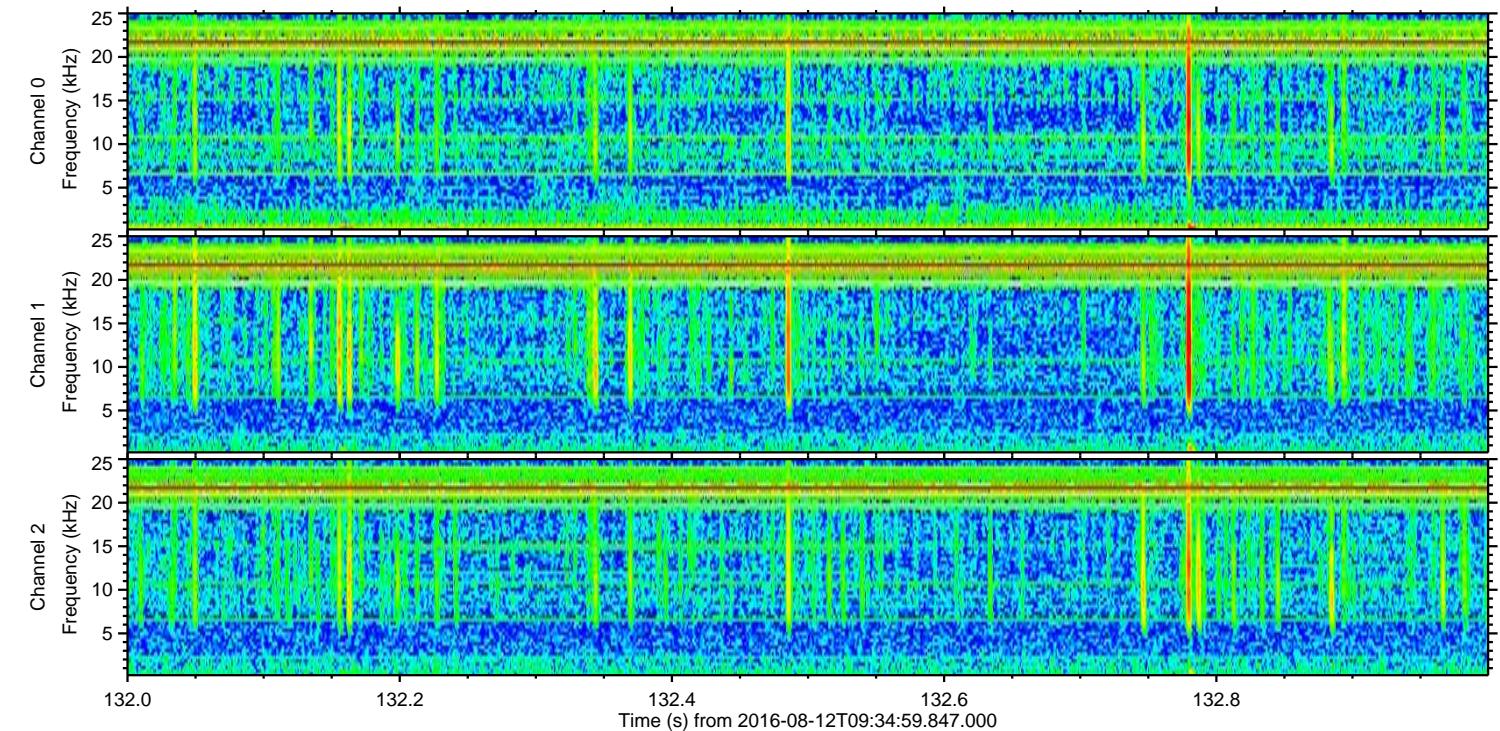
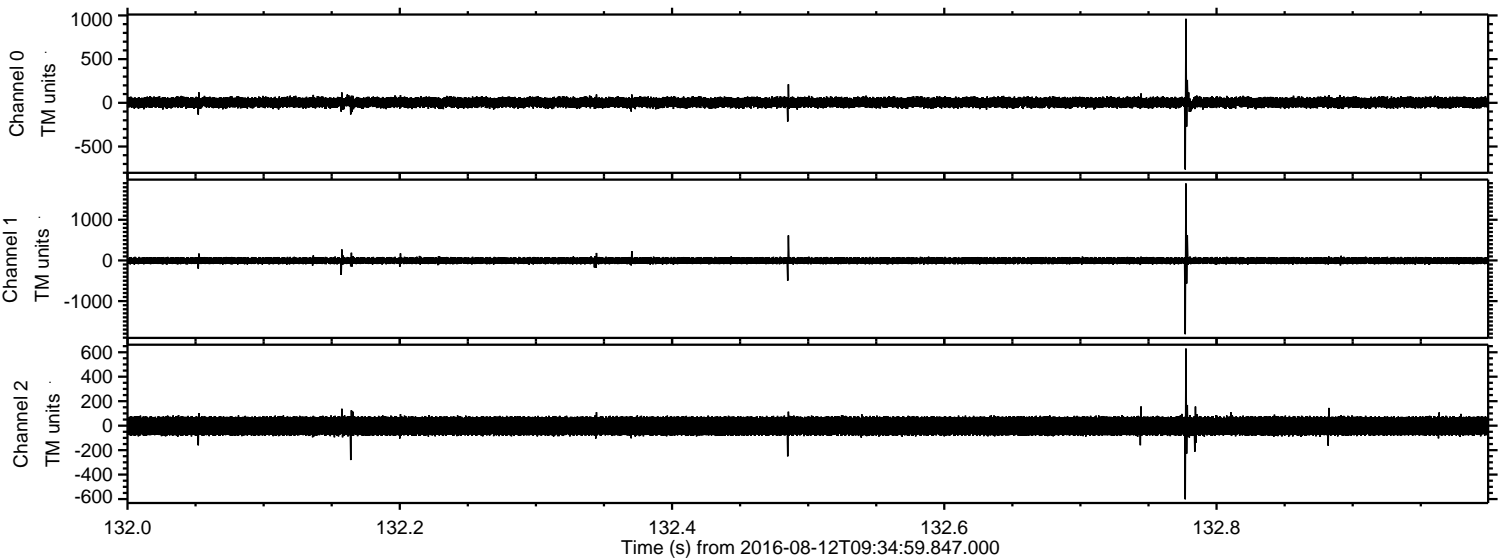
ELMAVAN 3D WAVEFORMS (Measured data sampled at 50 kHz) 51000 packets of 144 samples from 2016-08-12T09:34:59.847.000. Part 122/147

Processed Fri Aug 12 11:42:57 2016 by ELM ver.2012-10-06 from 001__elm20160812_093458__dat00.bin

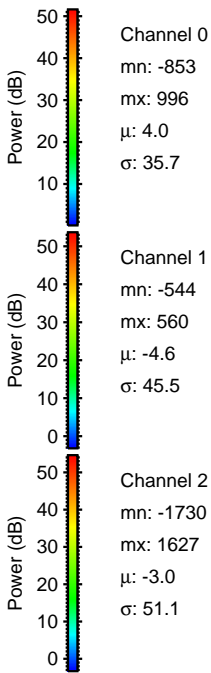
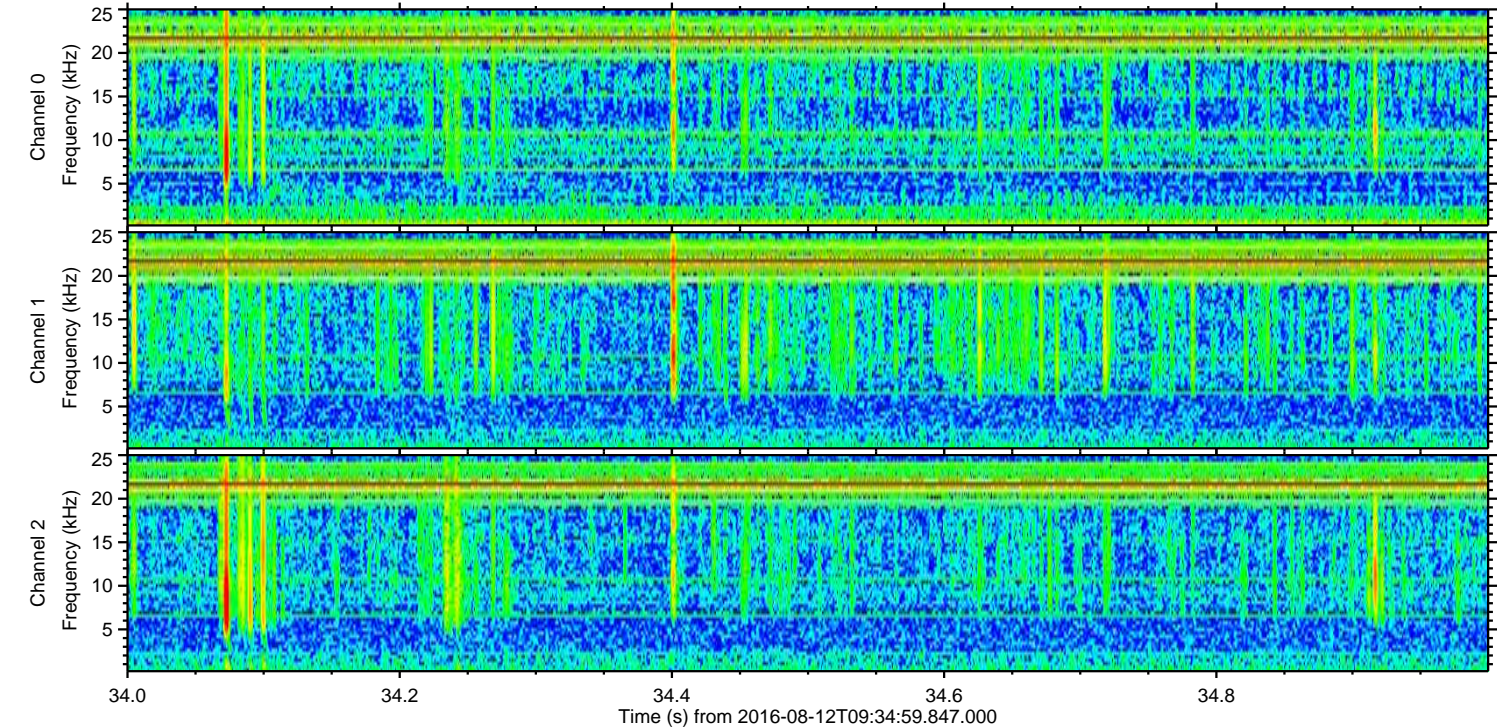
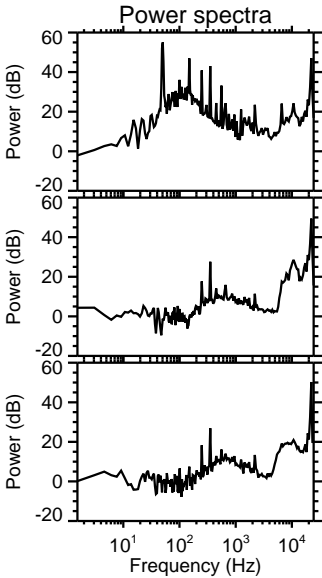
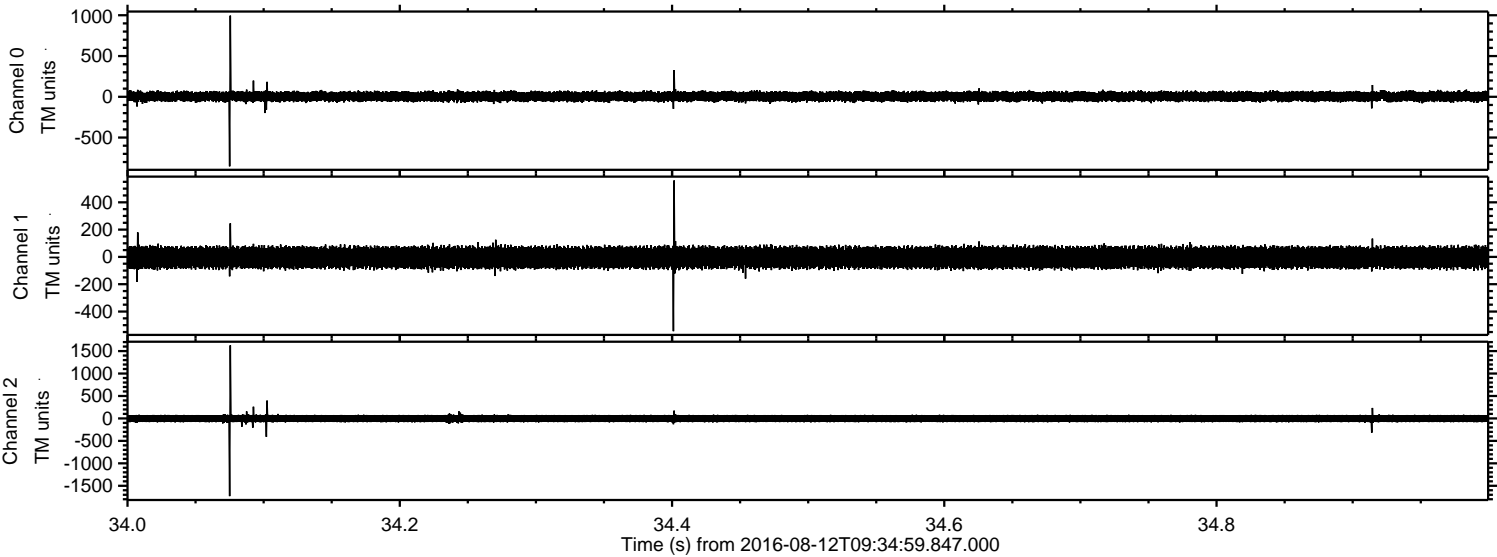


ELMAVAN 3D WAVEFORMS (Measured data sampled at 50 kHz) 51000 packets of 144 samples from 2016-08-12T09:34:59.847.000. Part 133/147

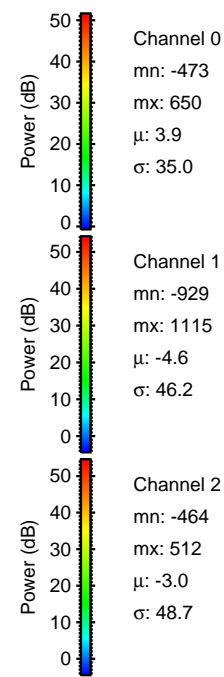
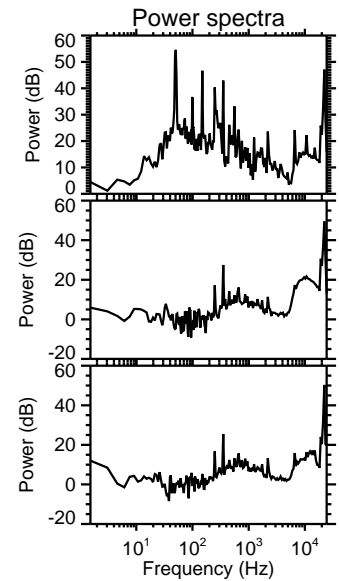
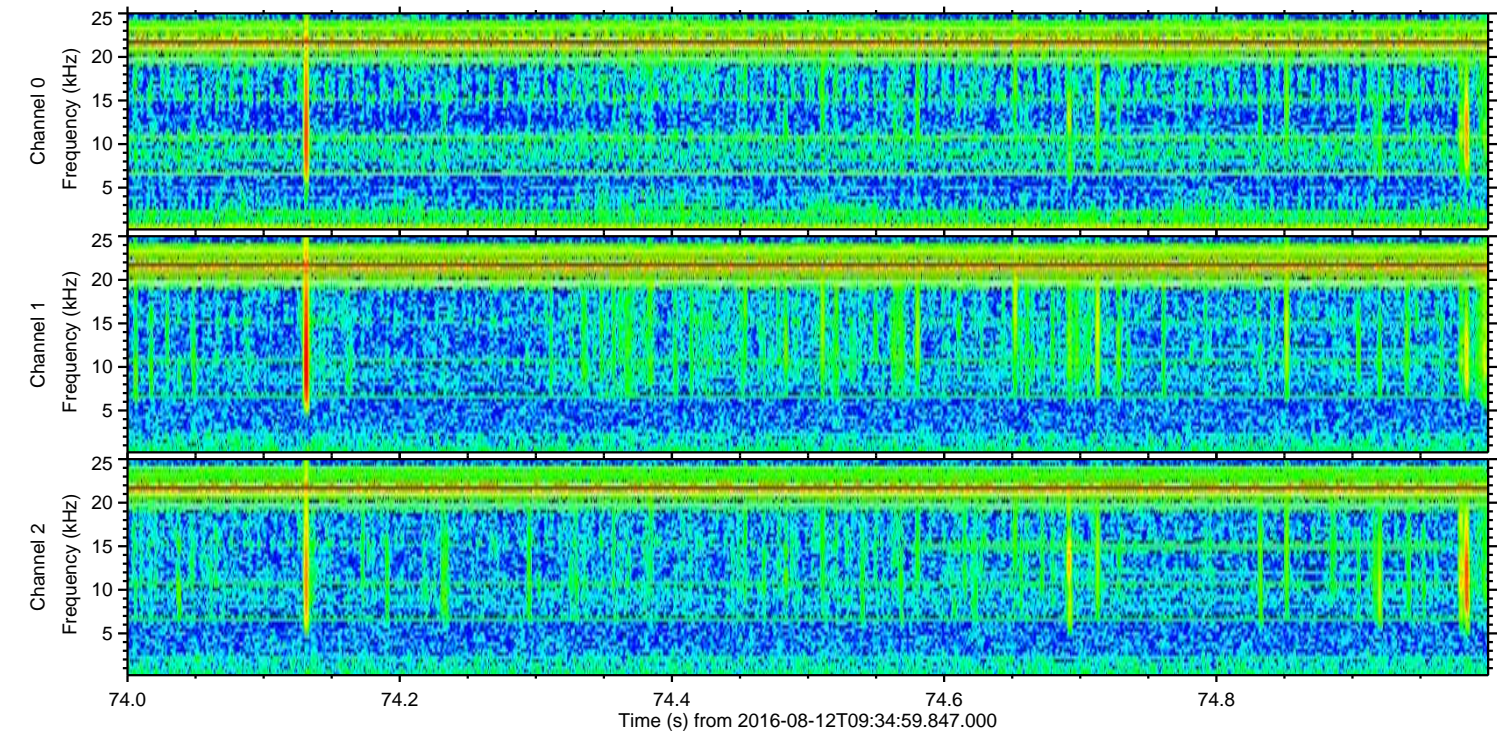
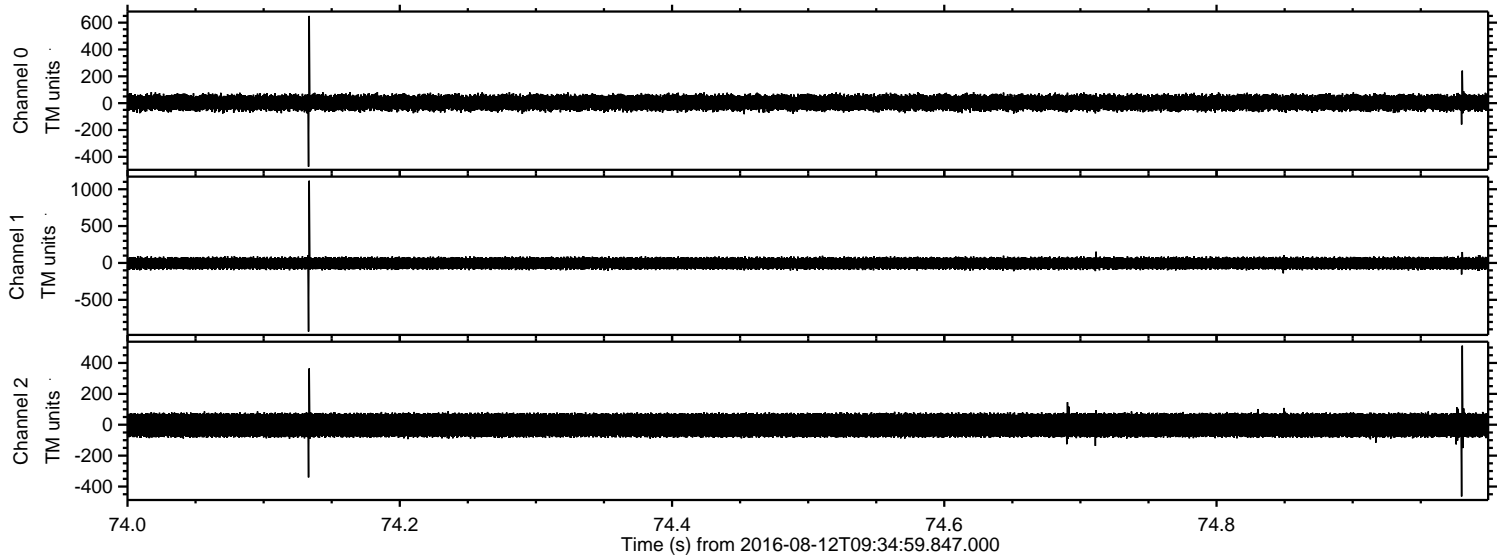
Processed Fri Aug 12 11:42:58 2016 by ELM ver.2012-10-06 from 001__elm20160812_093458__dat00.bin



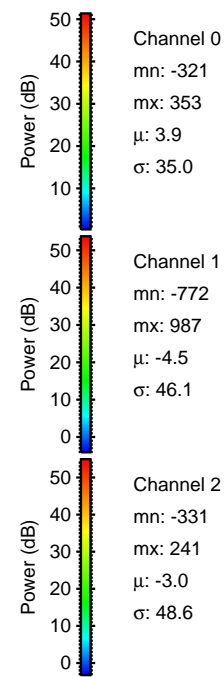
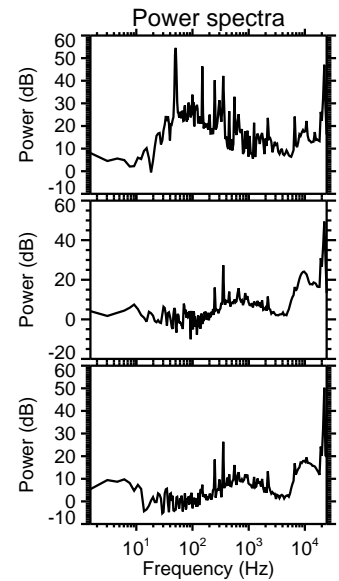
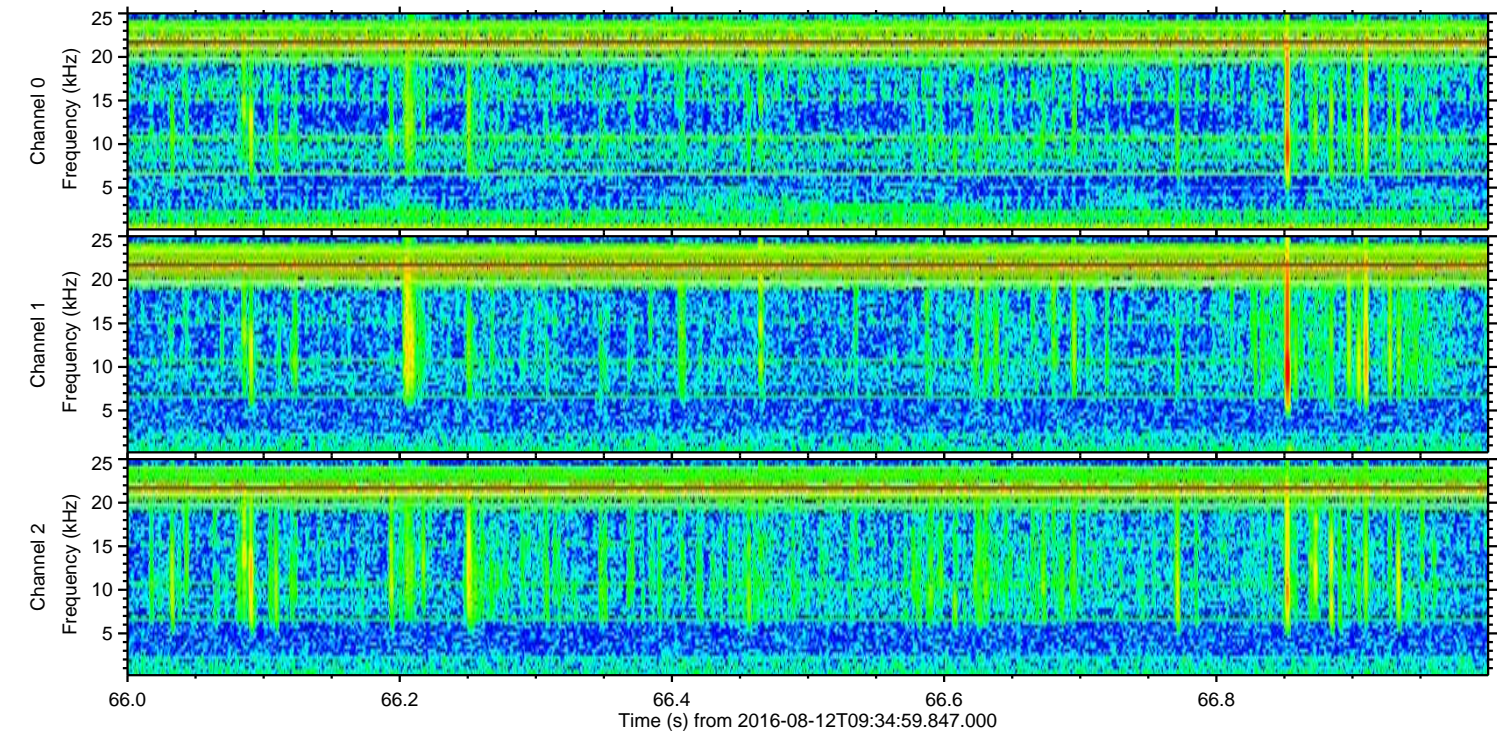
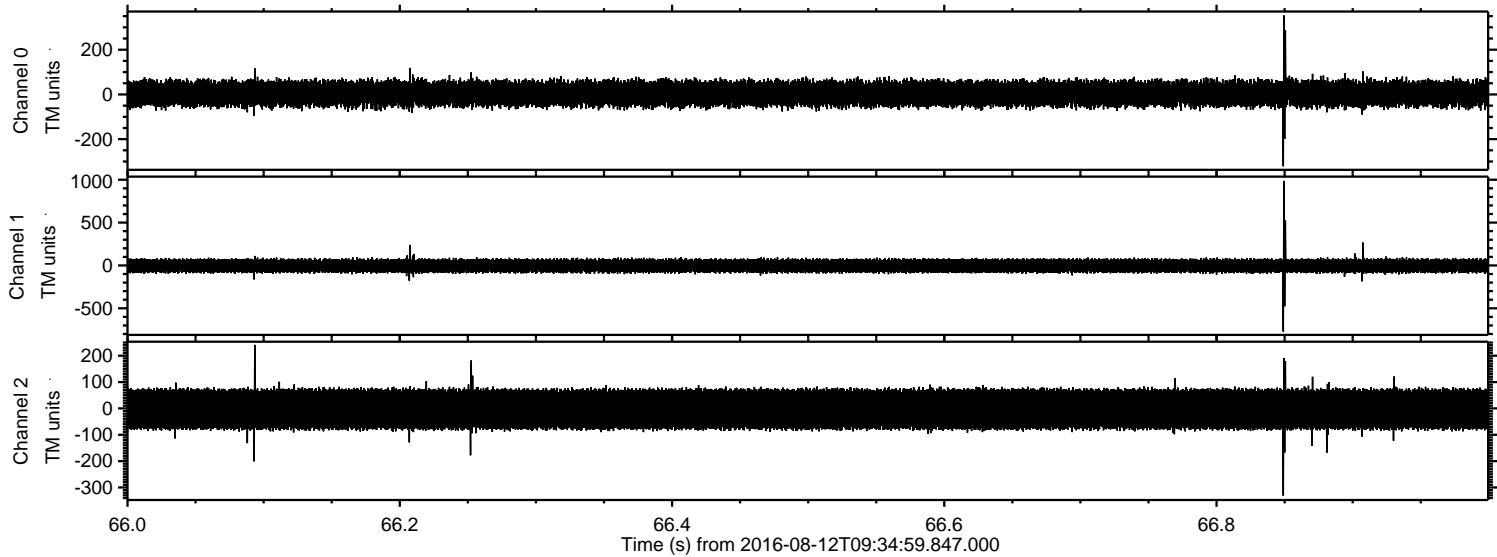
Processed Fri Aug 12 11:42:59 2016 by ELM ver.2012-10-06 from 001__elm20160812_093458__dat00.bin



Processed Fri Aug 12 11:43:00 2016 by ELM ver.2012-10-06 from 001__elm20160812_093458__dat00.bin

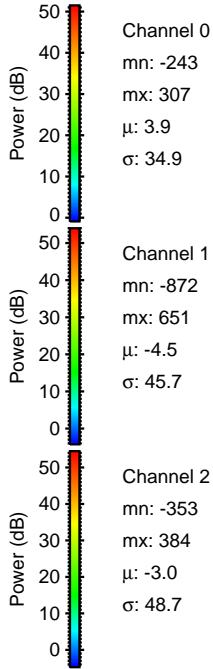
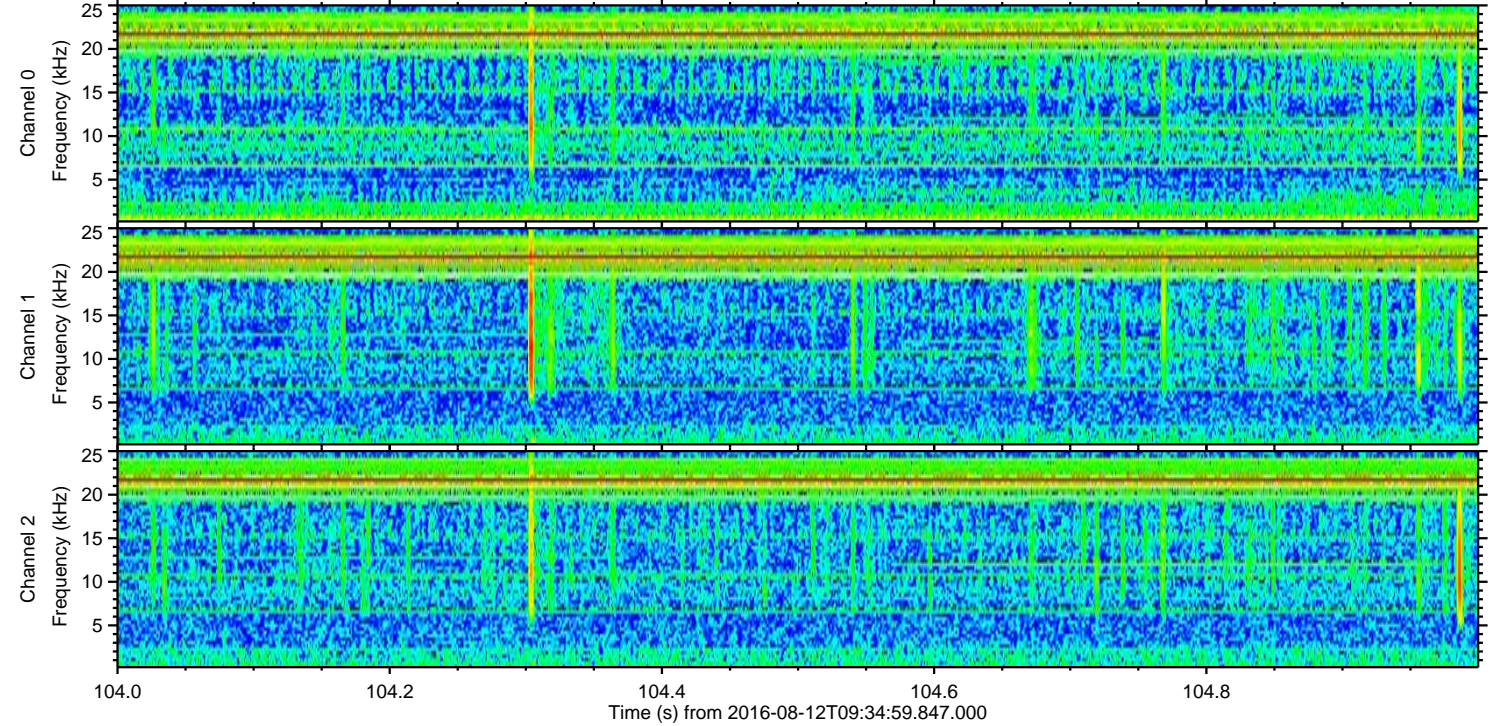
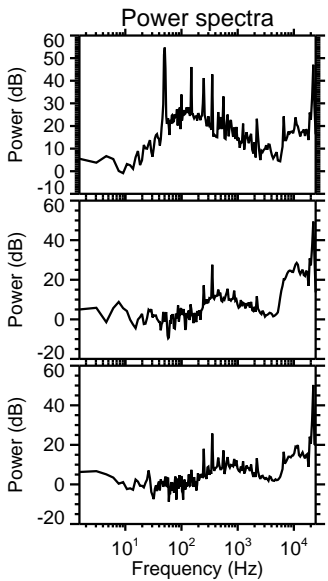
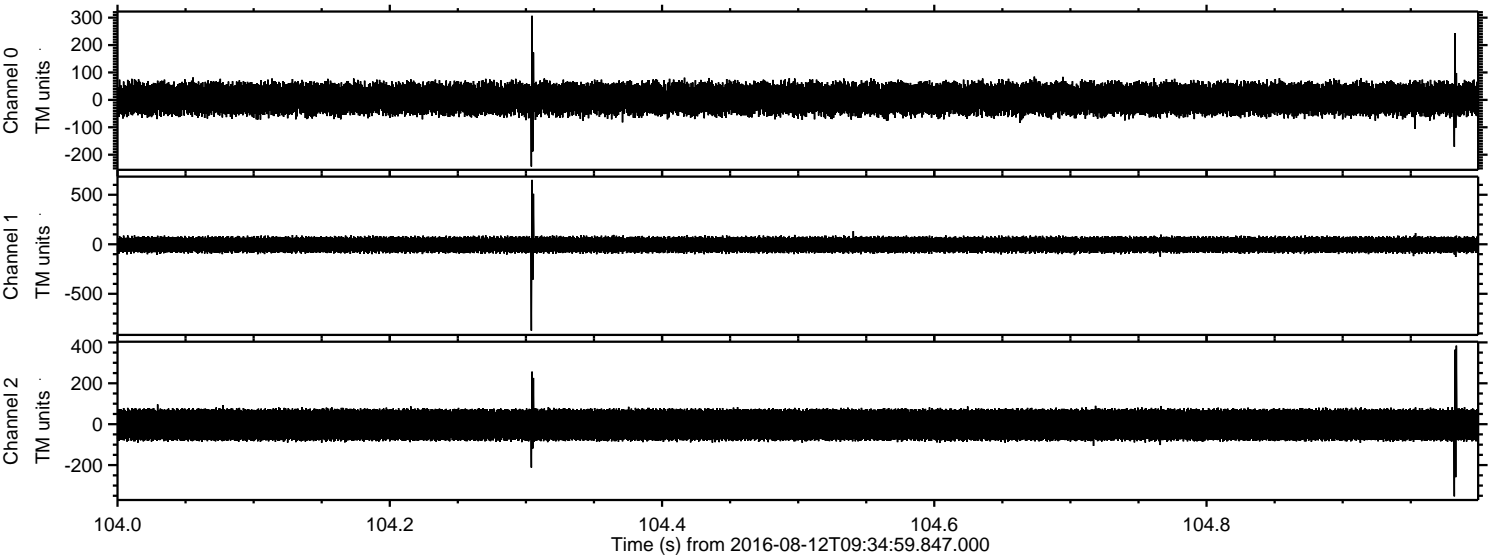


Processed Fri Aug 12 11:43:01 2016 by ELM ver.2012-10-06 from 001__elm20160812_093458__dat00.bin



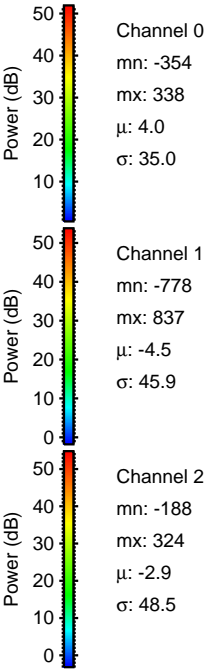
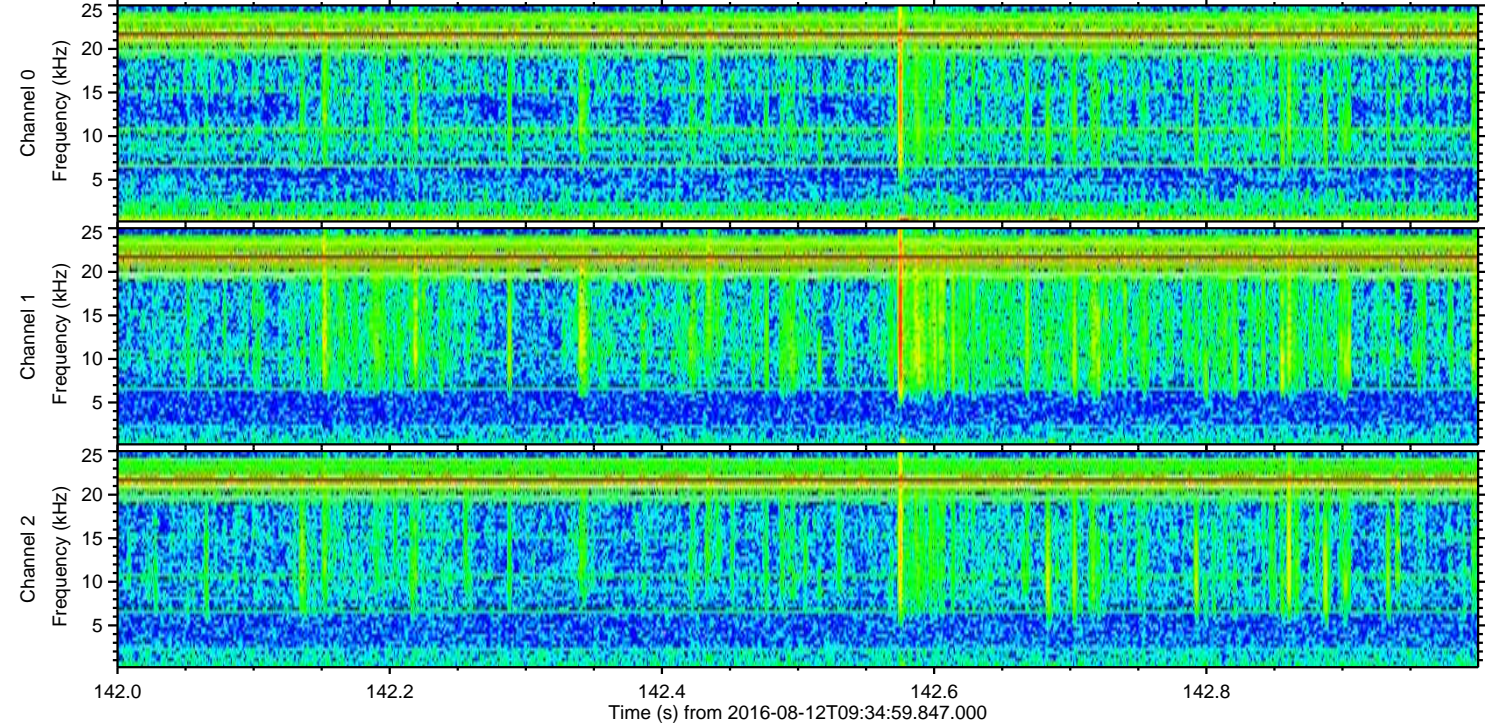
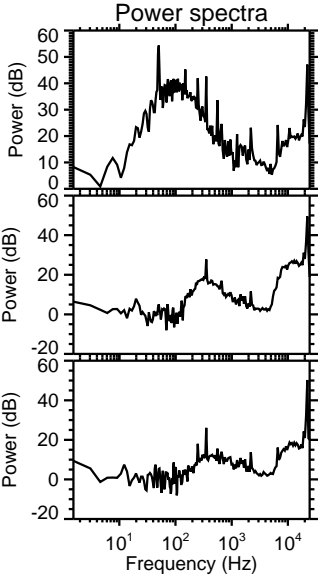
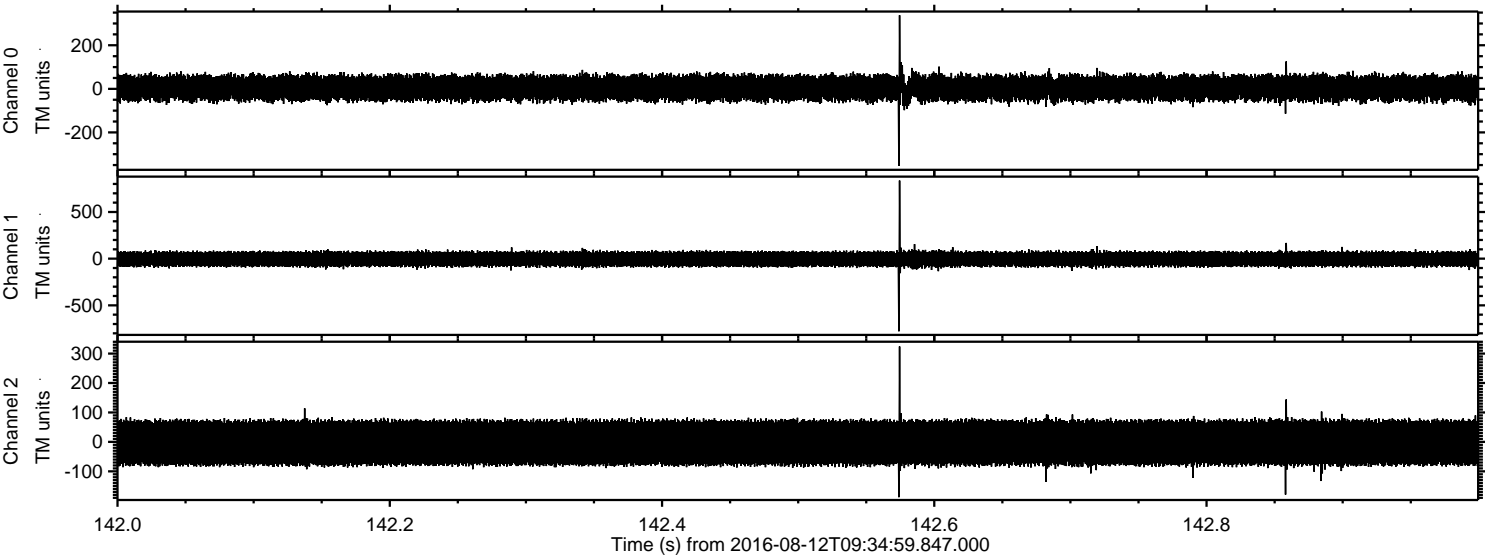
ELMAVAN 3D WAVEFORMS (Measured data sampled at 50 kHz) 51000 packets of 144 samples from 2016-08-12T09:34:59.847.000. Part 105/147

Processed Fri Aug 12 11:43:02 2016 by ELM ver.2012-10-06 from 001__elm20160812_093458__dat00.bin

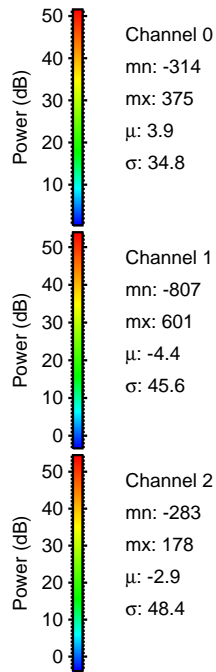
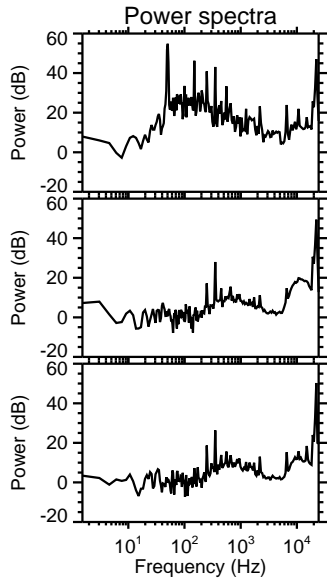
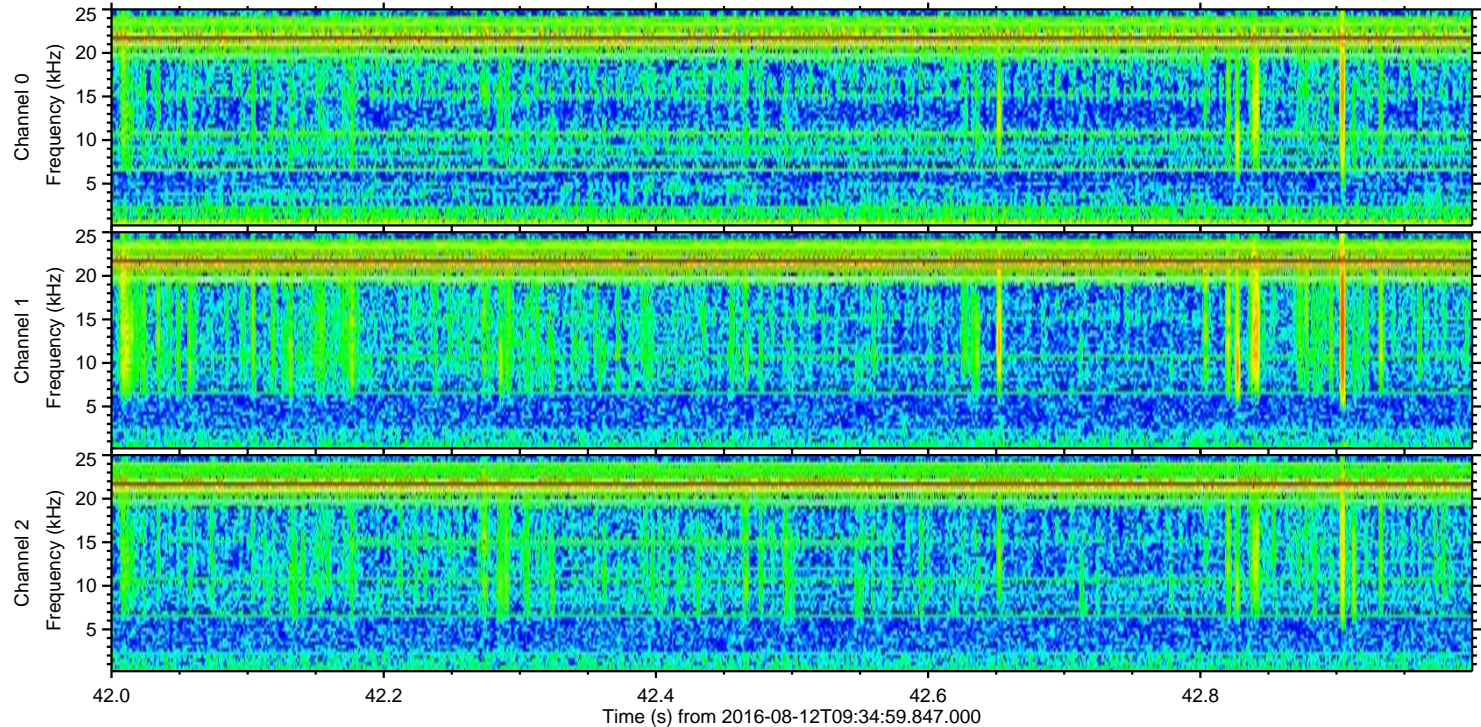
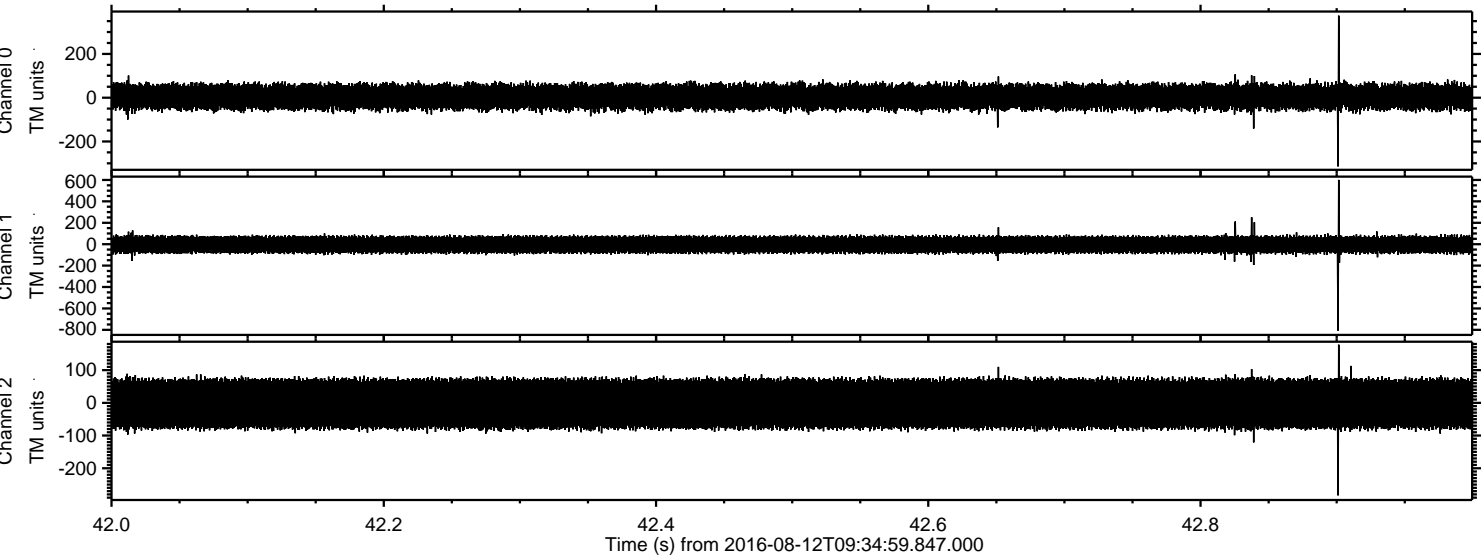


ELMAVAN 3D WAVEFORMS (Measured data sampled at 50 kHz) 51000 packets of 144 samples from 2016-08-12T09:34:59.847.000. Part 143/147

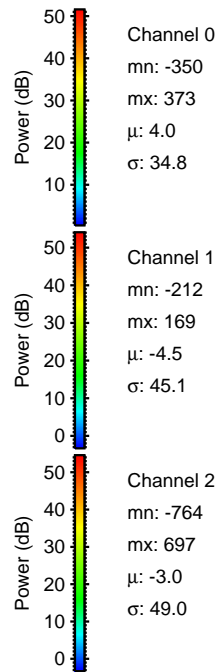
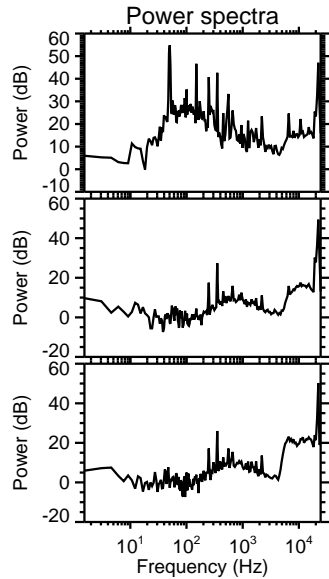
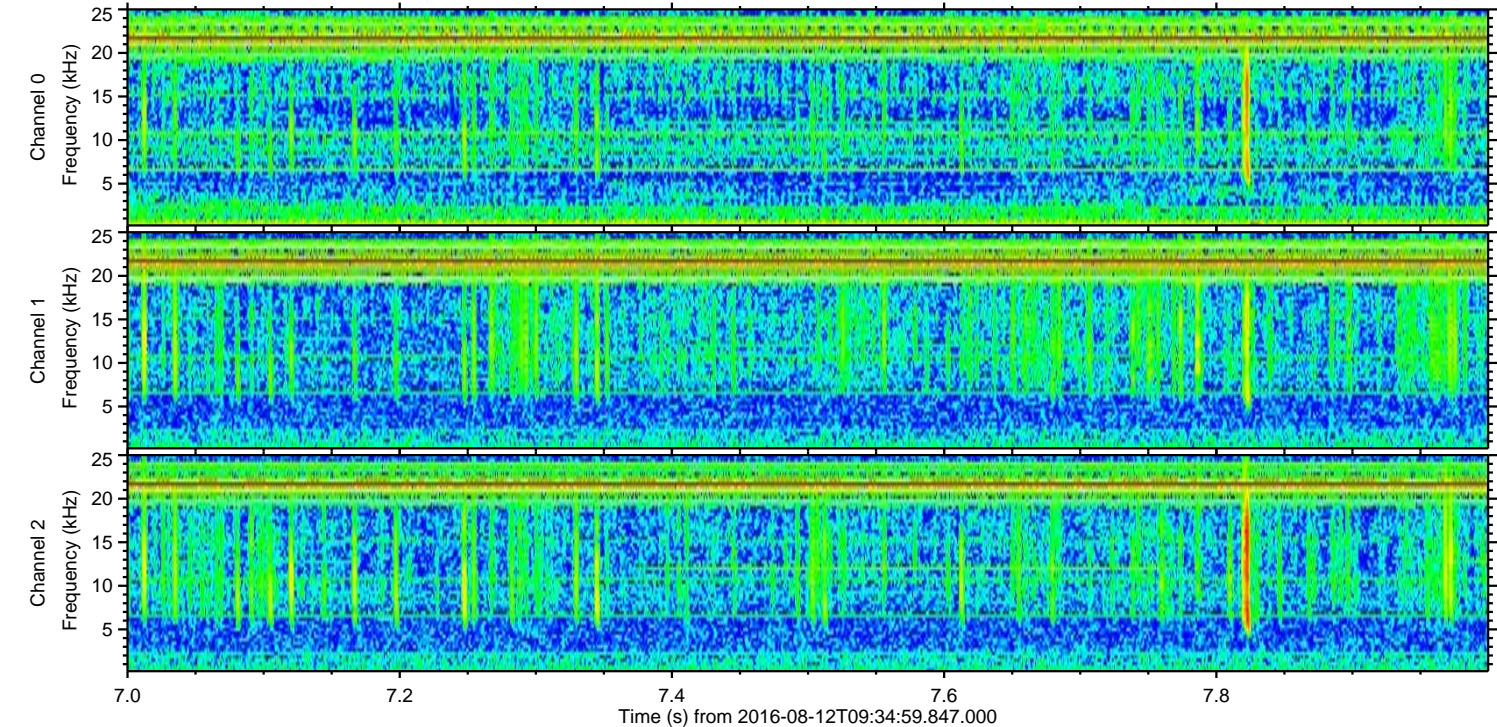
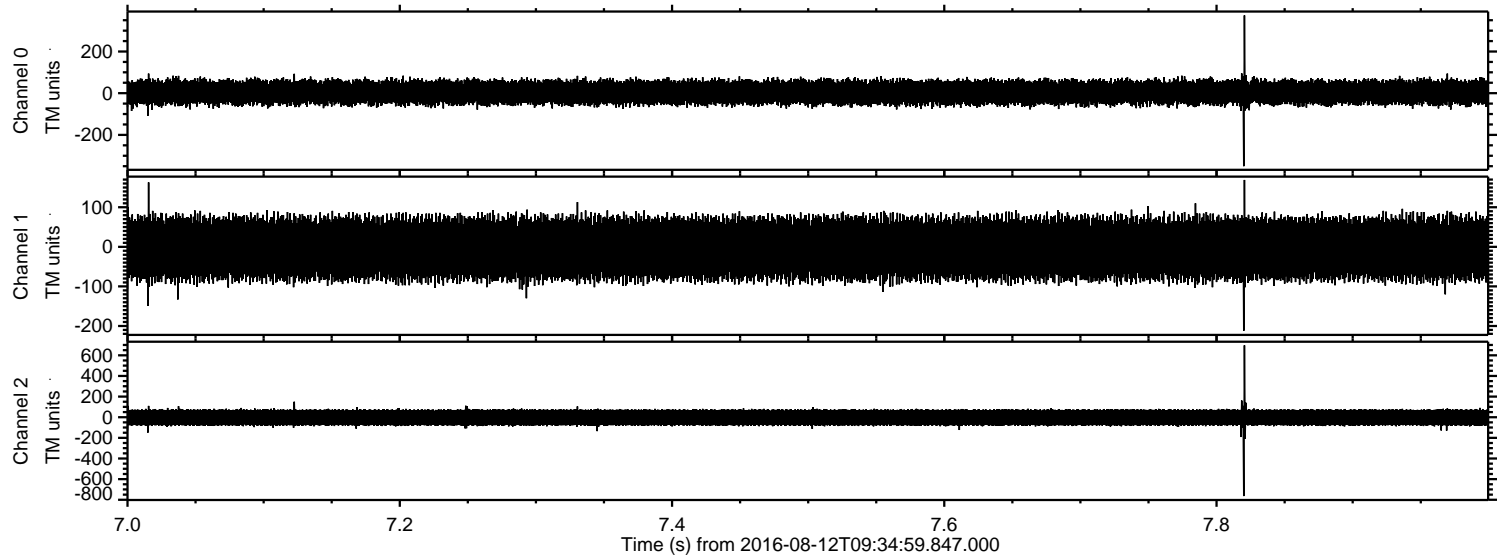
Processed Fri Aug 12 11:43:03 2016 by ELM ver.2012-10-06 from 001__elm20160812_093458__dat00.bin



Processed Fri Aug 12 11:43:04 2016 by ELM ver.2012-10-06 from 001__elm20160812_093458__dat00.bin



Processed Fri Aug 12 11:43:04 2016 by ELM ver.2012-10-06 from 001__elm20160812_093458__dat00.bin



Channel 0
mn: -350
mx: 373
 μ : 4.0
 σ : 34.8

Channel 1
mn: -212
mx: 169
 μ : -4.5
 σ : 45.1

Channel 2
mn: -764
mx: 697
 μ : -3.0
 σ : 49.0

Processed Fri Aug 12 11:43:05 2016 by ELM ver.2012-10-06 from 001__elm20160812_093458__dat00.bin

