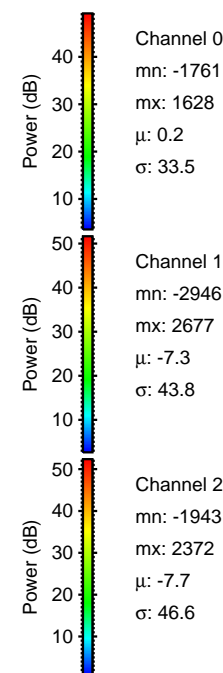
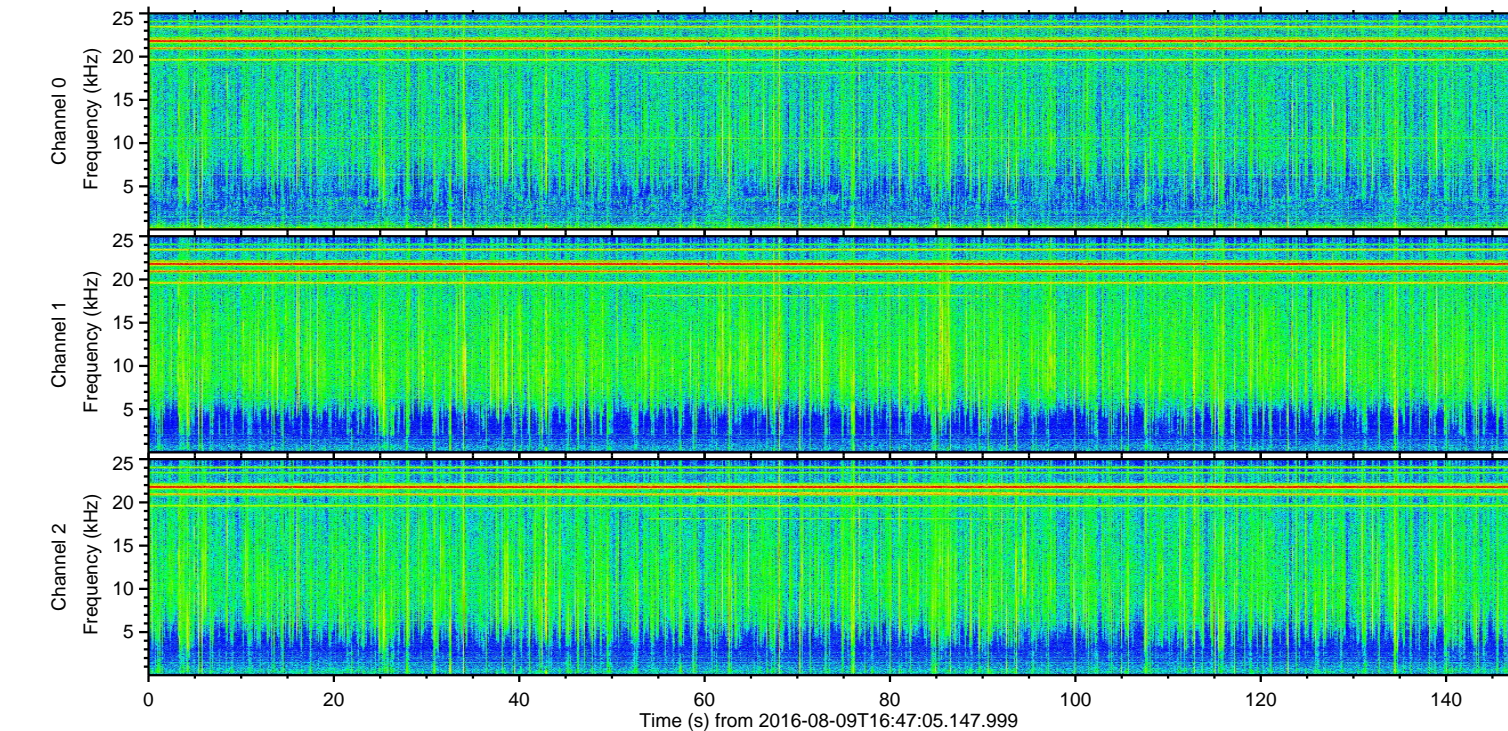
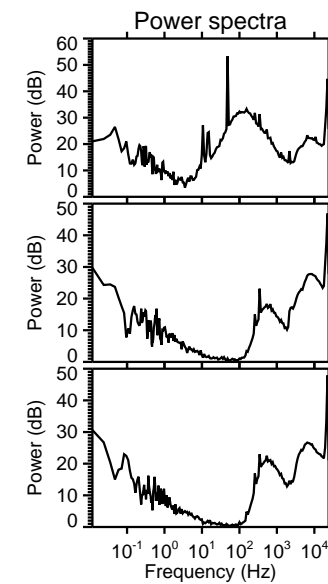
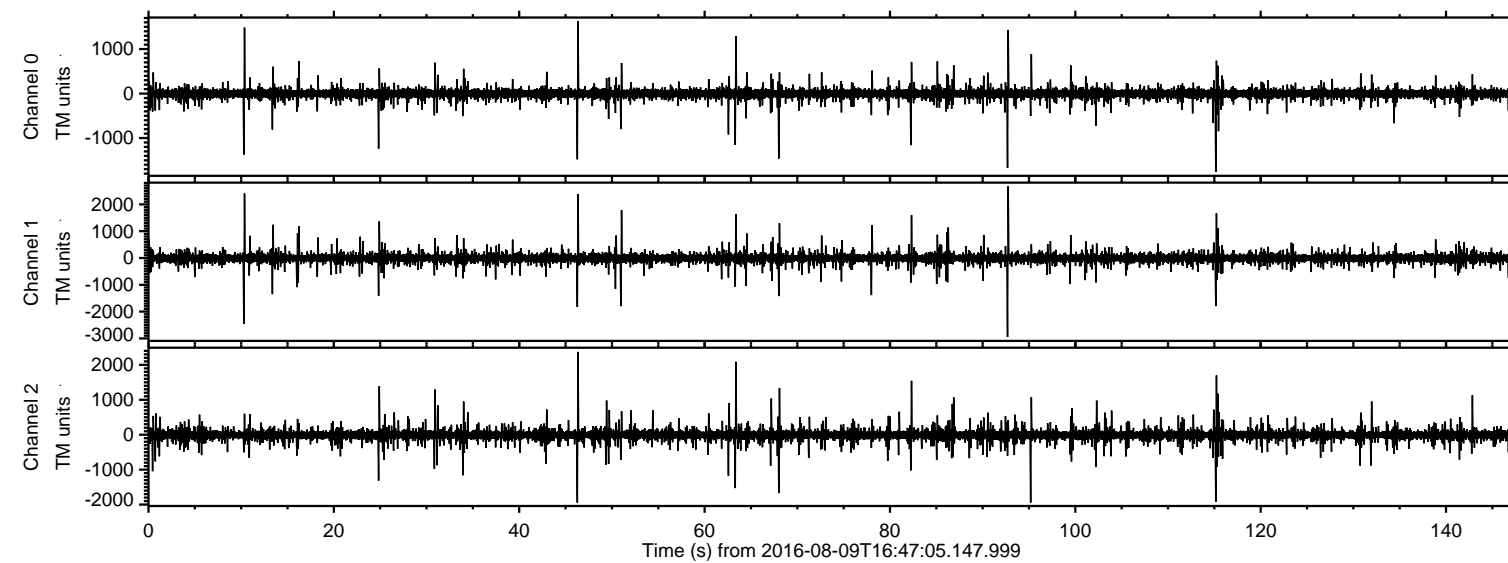
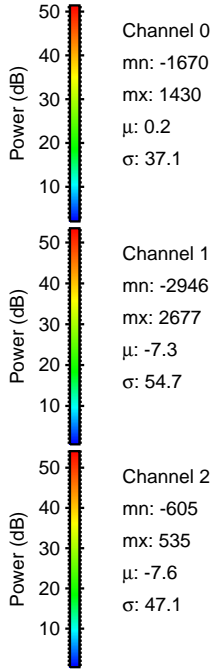
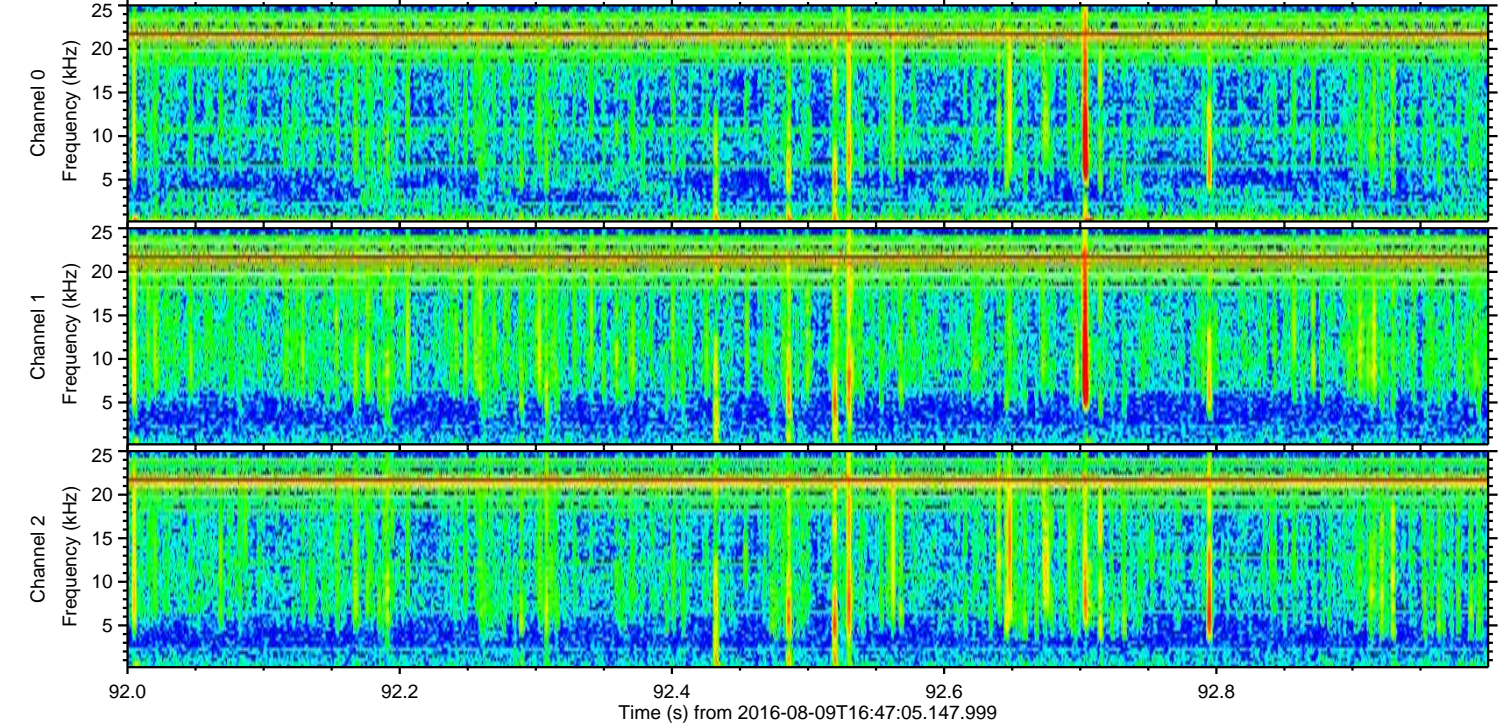
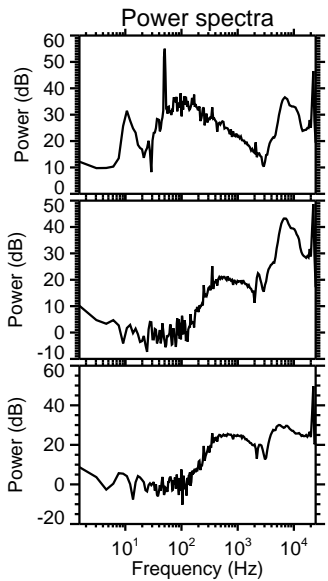
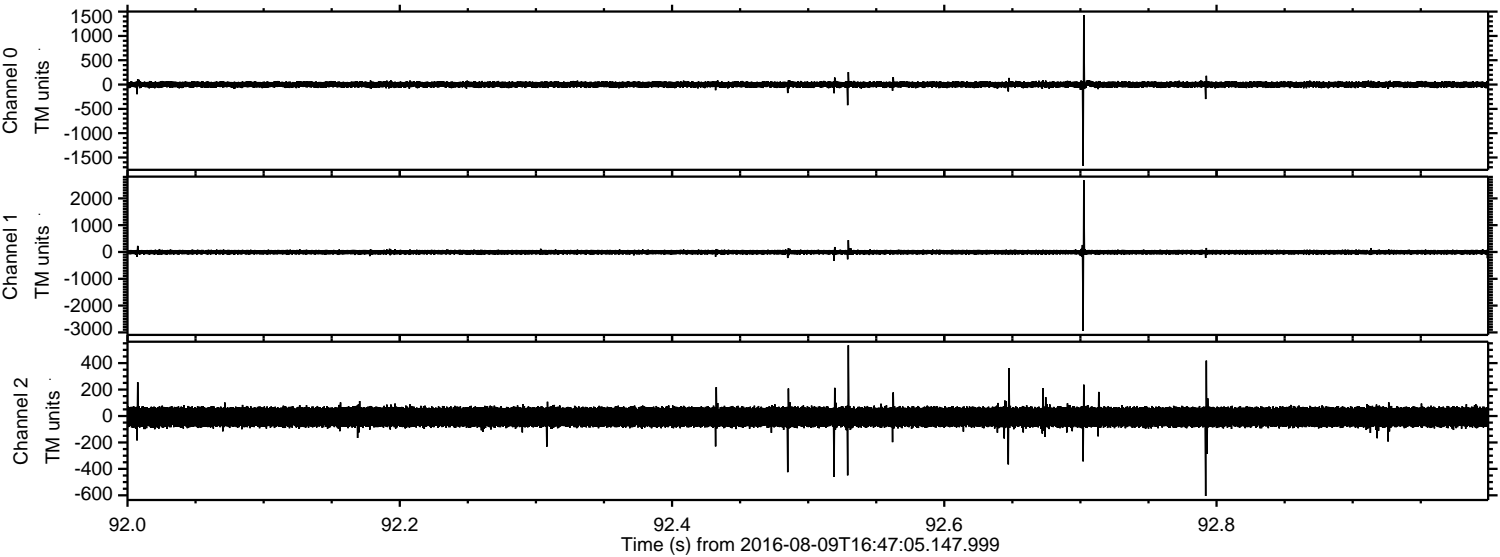


ELMAVAN 3D WAVEFORMS (Measured data sampled at 50 kHz) 51000 packets of 144 samples from 2016-08-09T16:47:05.147.999.

Processed Tue Aug 9 18:55:29 2016 by ELM ver.2012-10-06 from 001__elm20160809_164704__dat00.bin

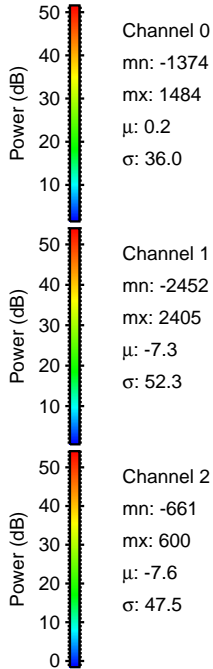
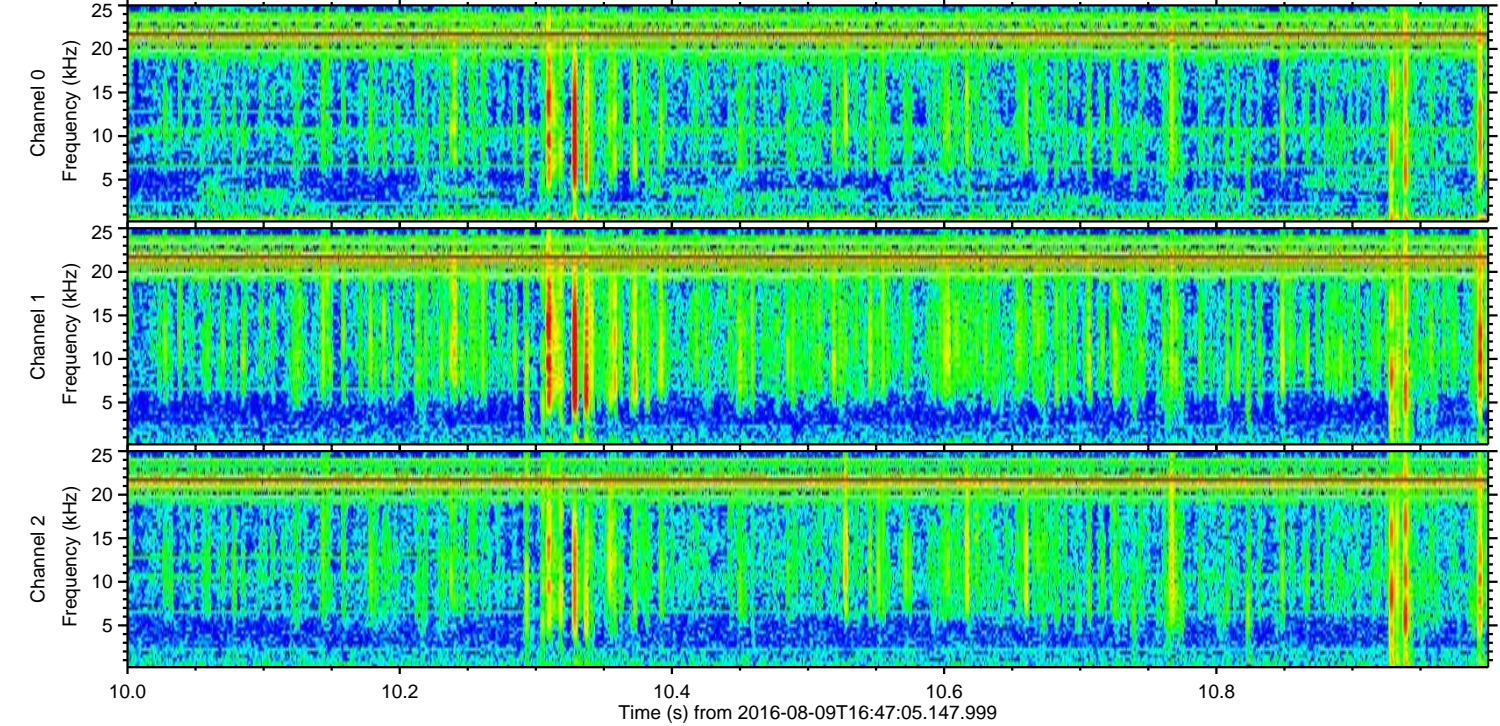
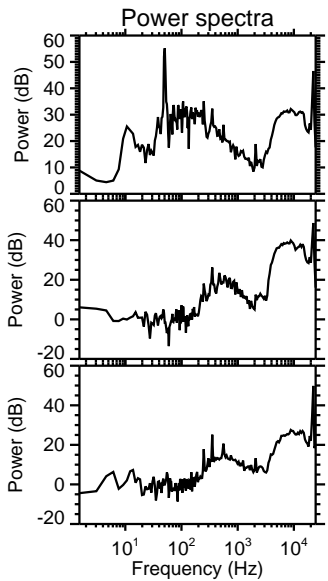
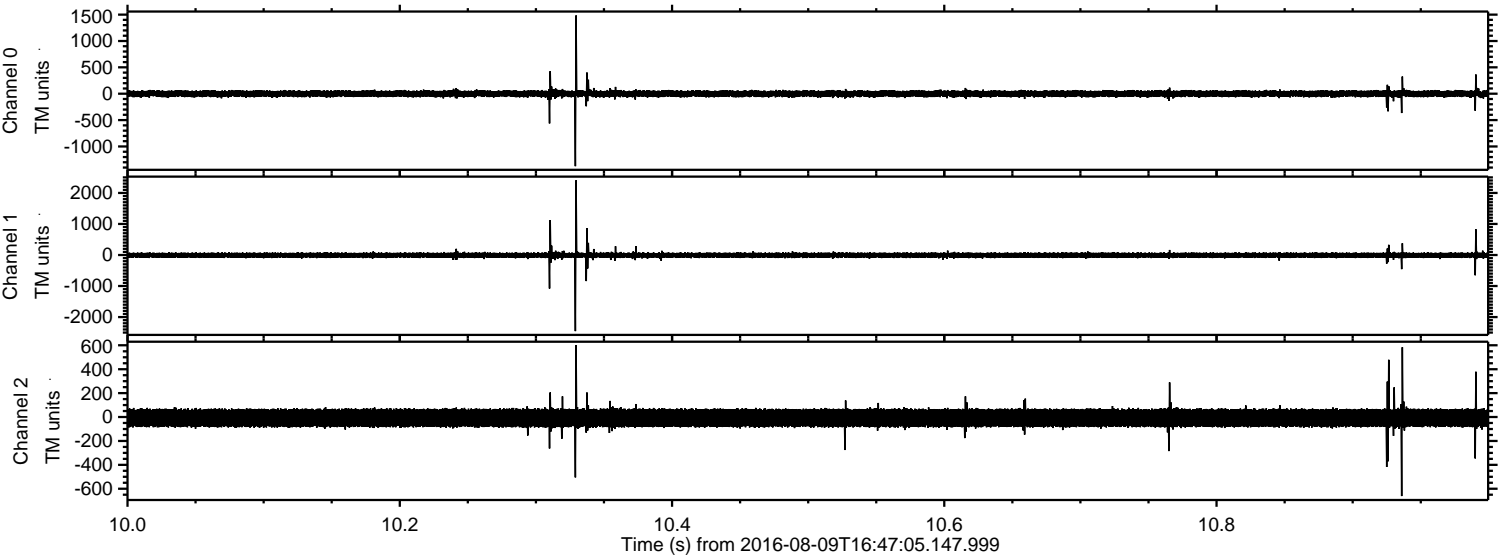


Processed Tue Aug 9 18:55:40 2016 by ELM ver.2012-10-06 from 001__elm20160809_164704__dat00.bin



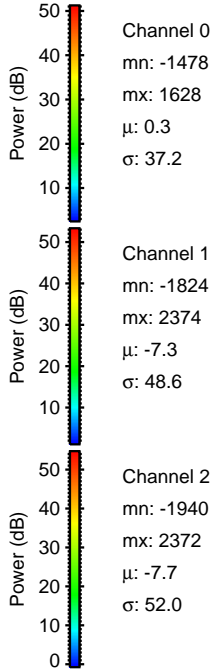
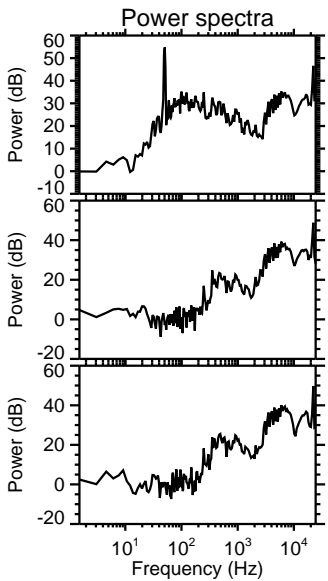
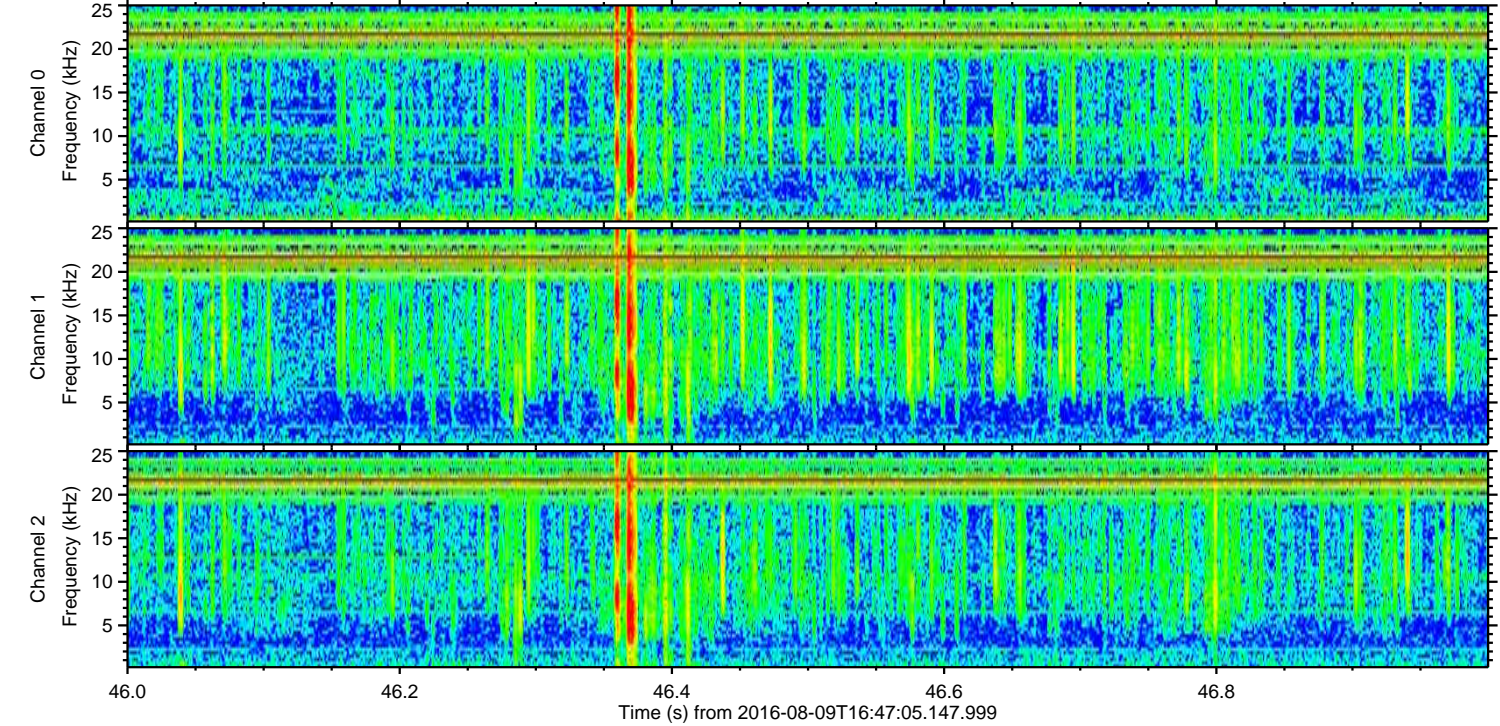
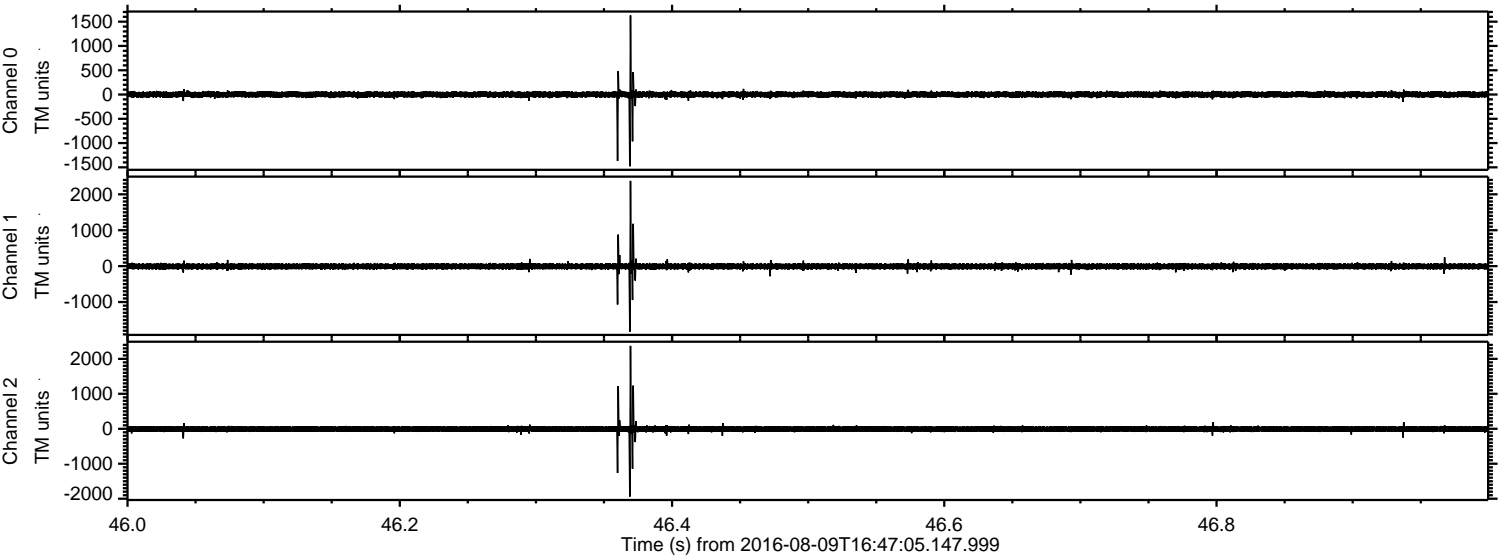
ELMAVAN 3D WAVEFORMS (Measured data sampled at 50 kHz) 51000 packets of 144 samples from 2016-08-09T16:47:05.147.999. Part 11/147

Processed Tue Aug 9 18:55:41 2016 by ELM ver.2012-10-06 from 001__elm20160809_164704__dat00.bin

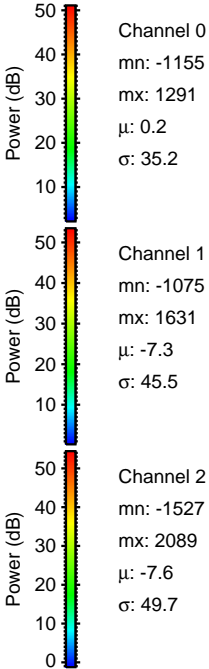
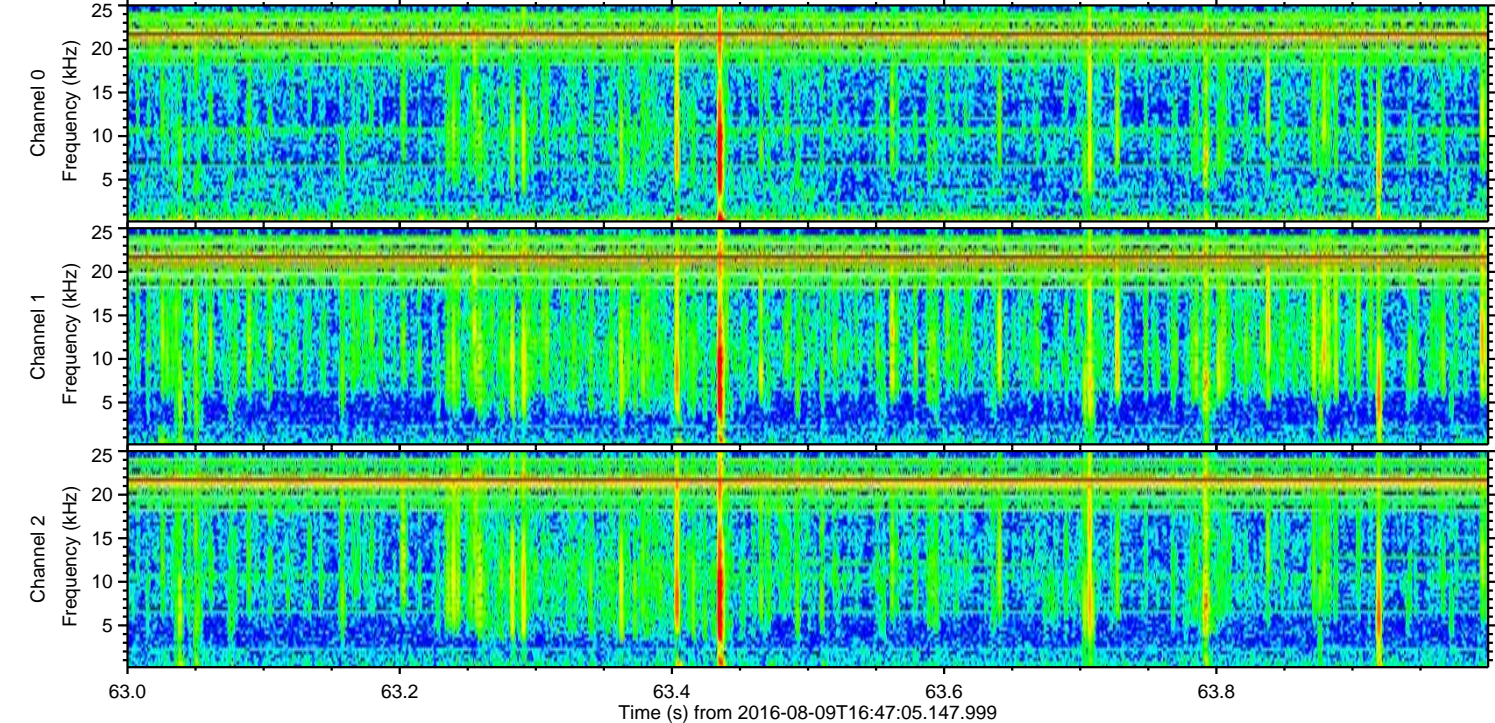
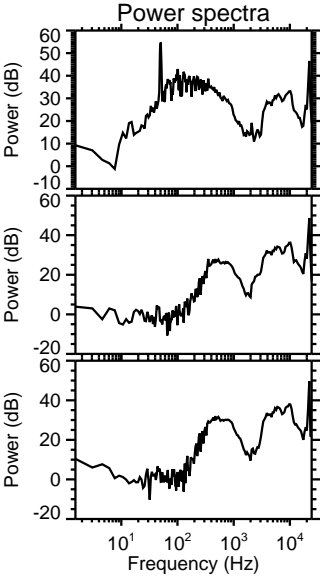
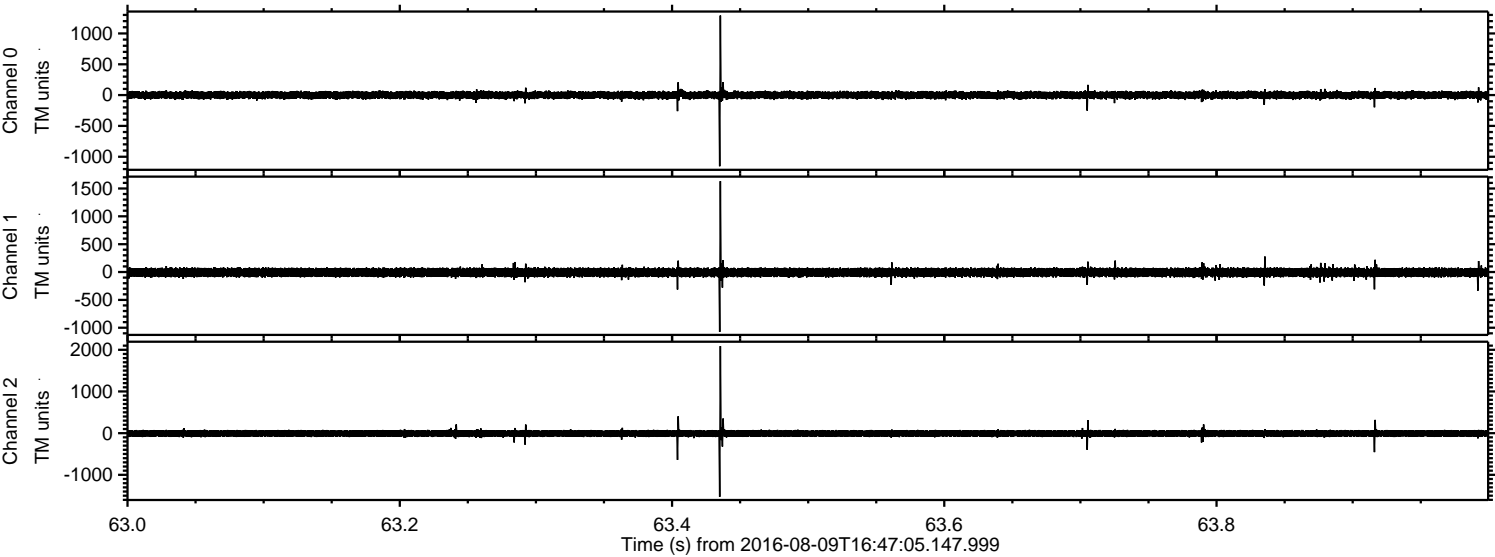


ELMAVAN 3D WAVEFORMS (Measured data sampled at 50 kHz) 51000 packets of 144 samples from 2016-08-09T16:47:05.147.999. Part 47/147

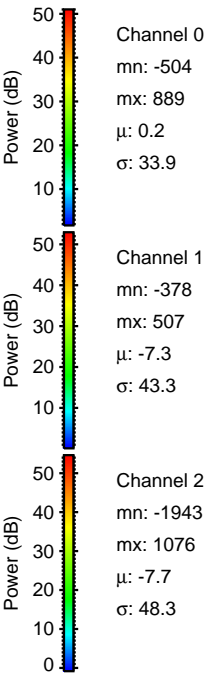
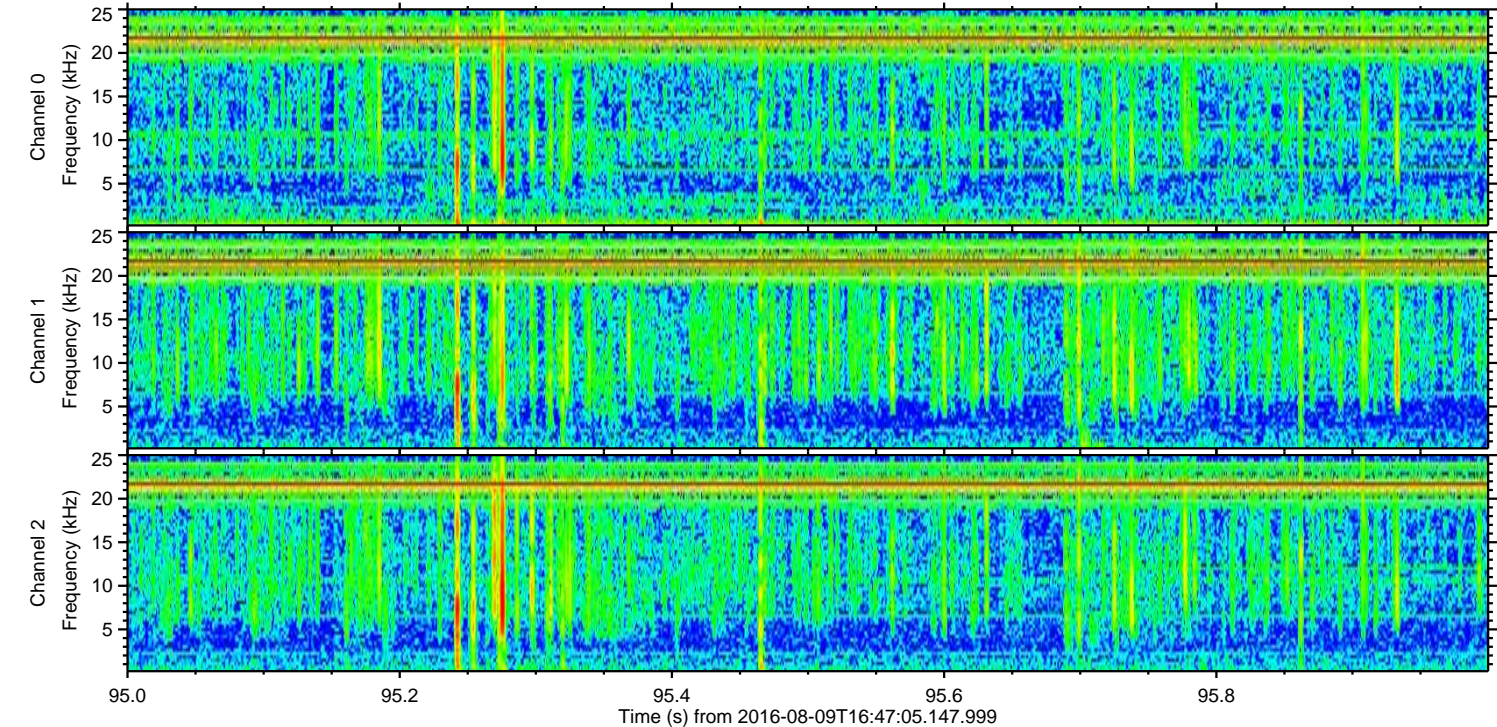
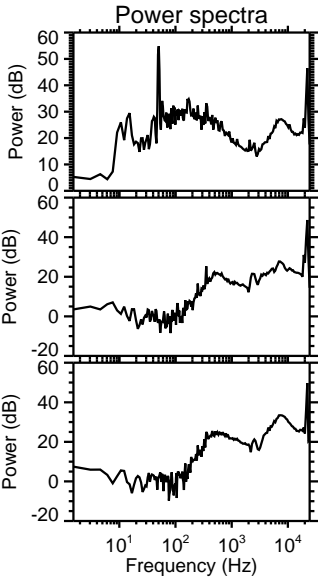
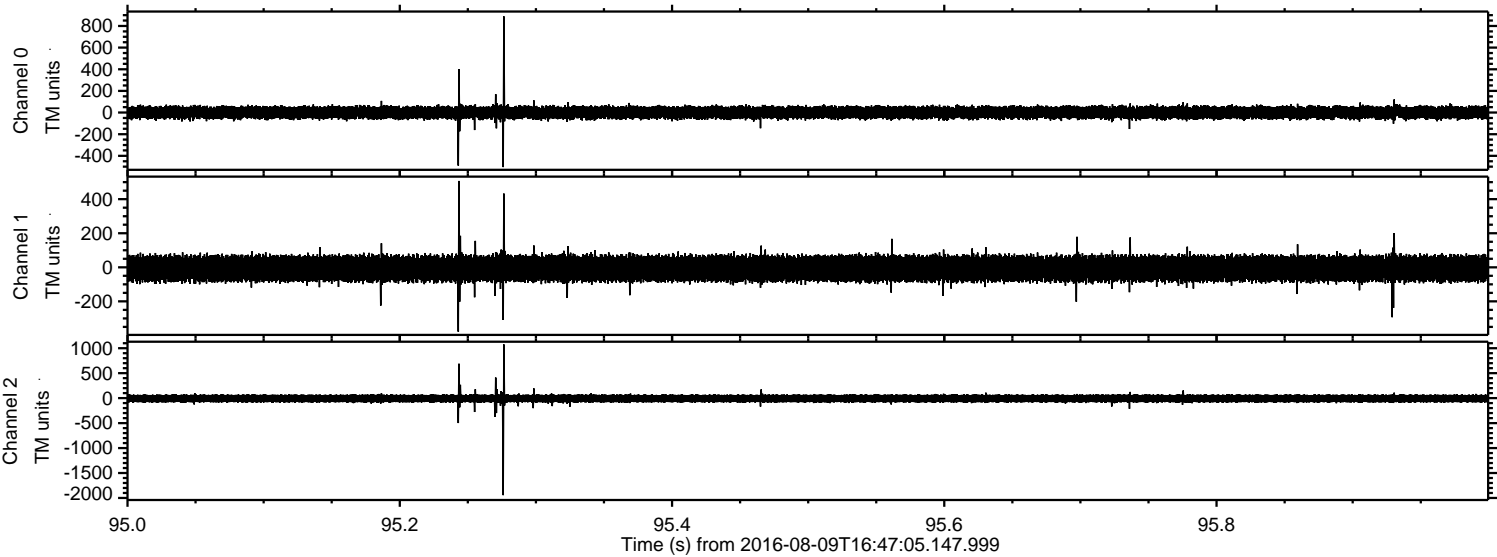
Processed Tue Aug 9 18:55:42 2016 by ELM ver.2012-10-06 from 001__elm20160809_164704__dat00.bin



Processed Tue Aug 9 18:55:43 2016 by ELM ver.2012-10-06 from 001__elm20160809_164704__dat00.bin

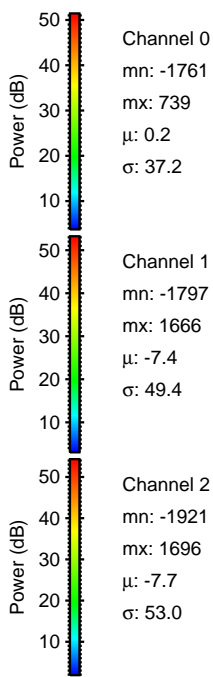
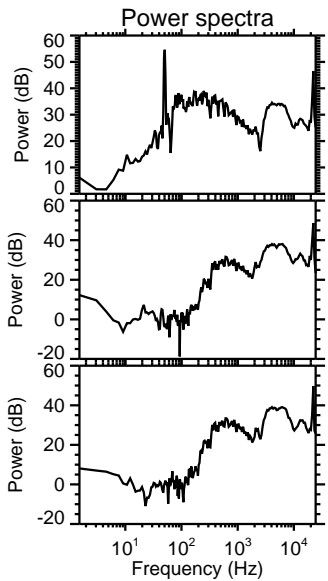
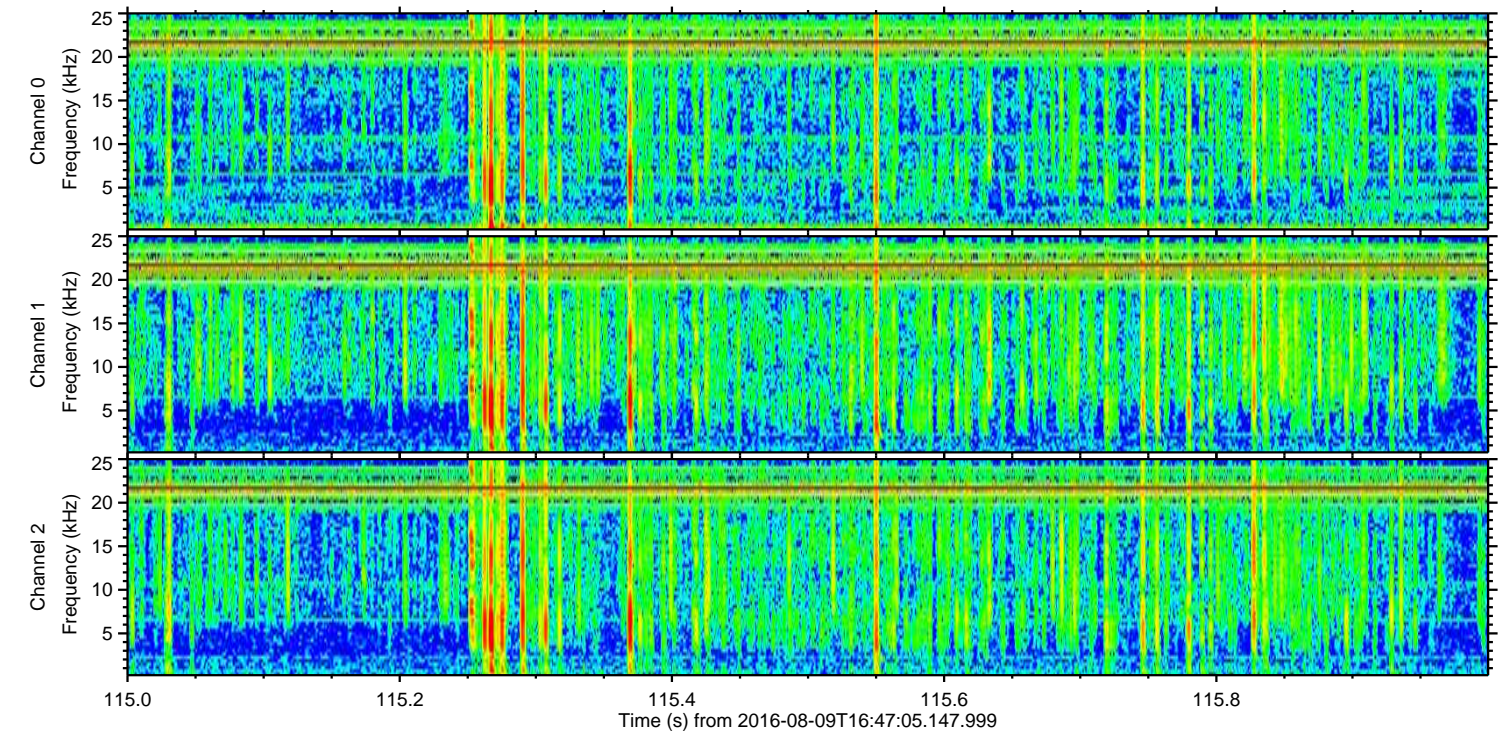
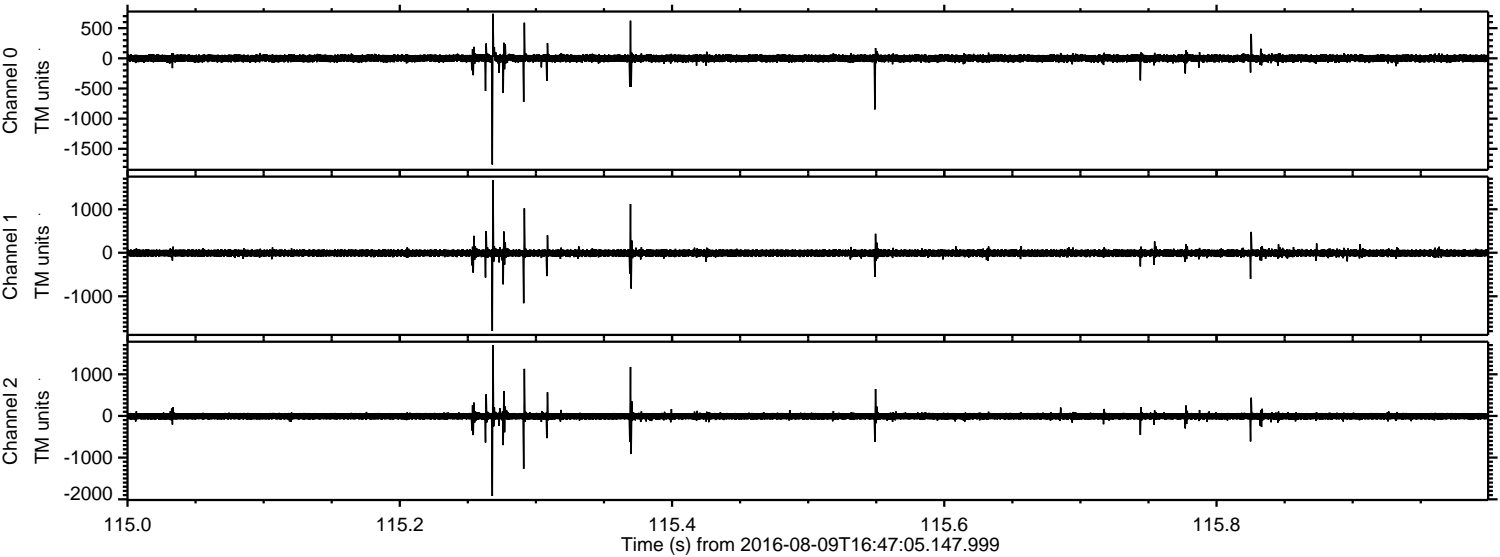


Processed Tue Aug 9 18:55:44 2016 by ELM ver.2012-10-06 from 001__elm20160809_164704__dat00.bin

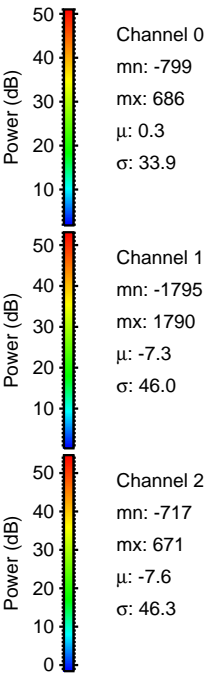
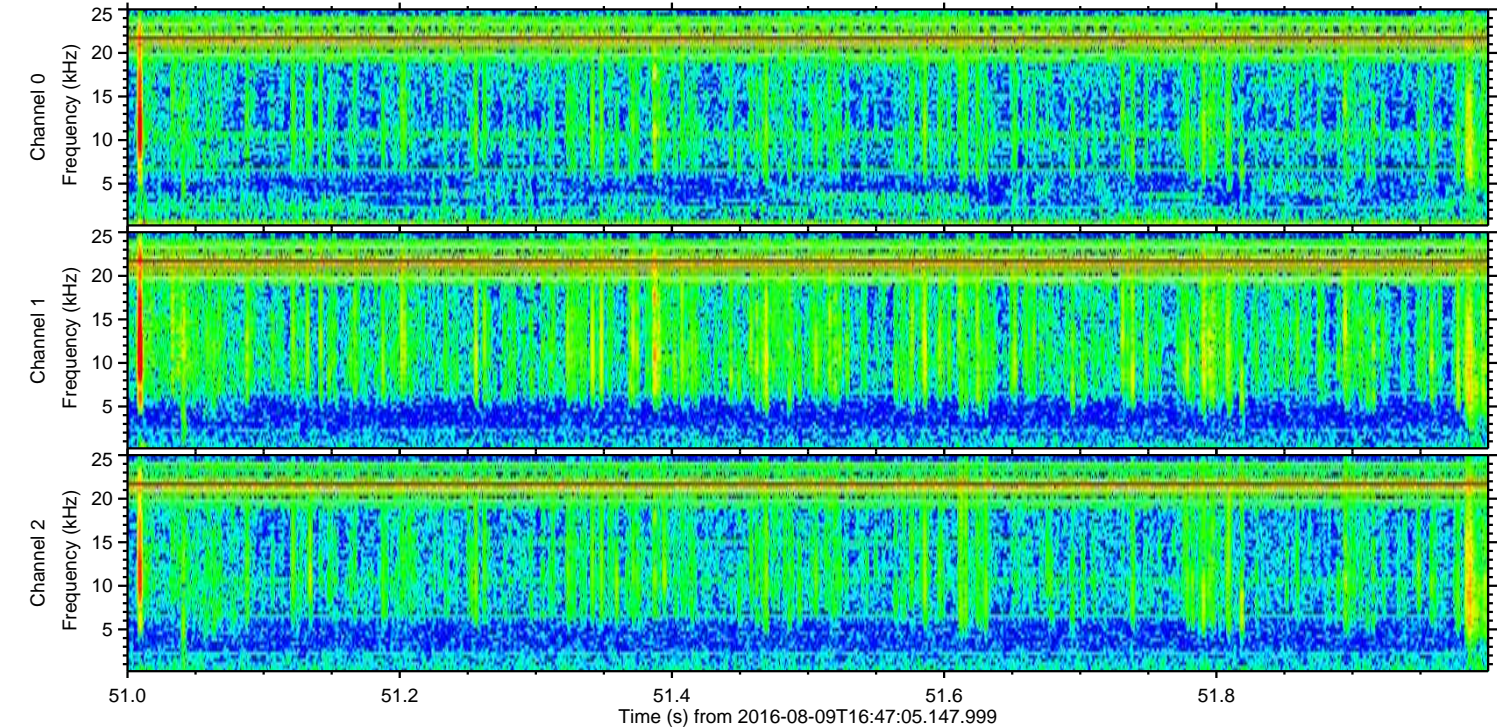
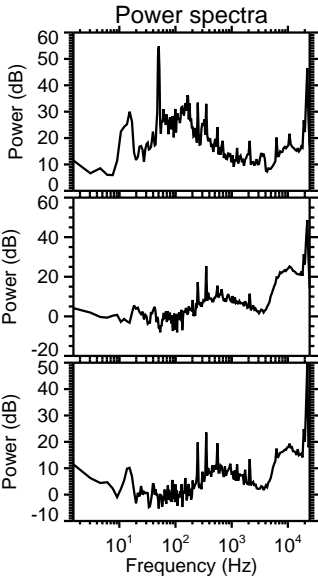
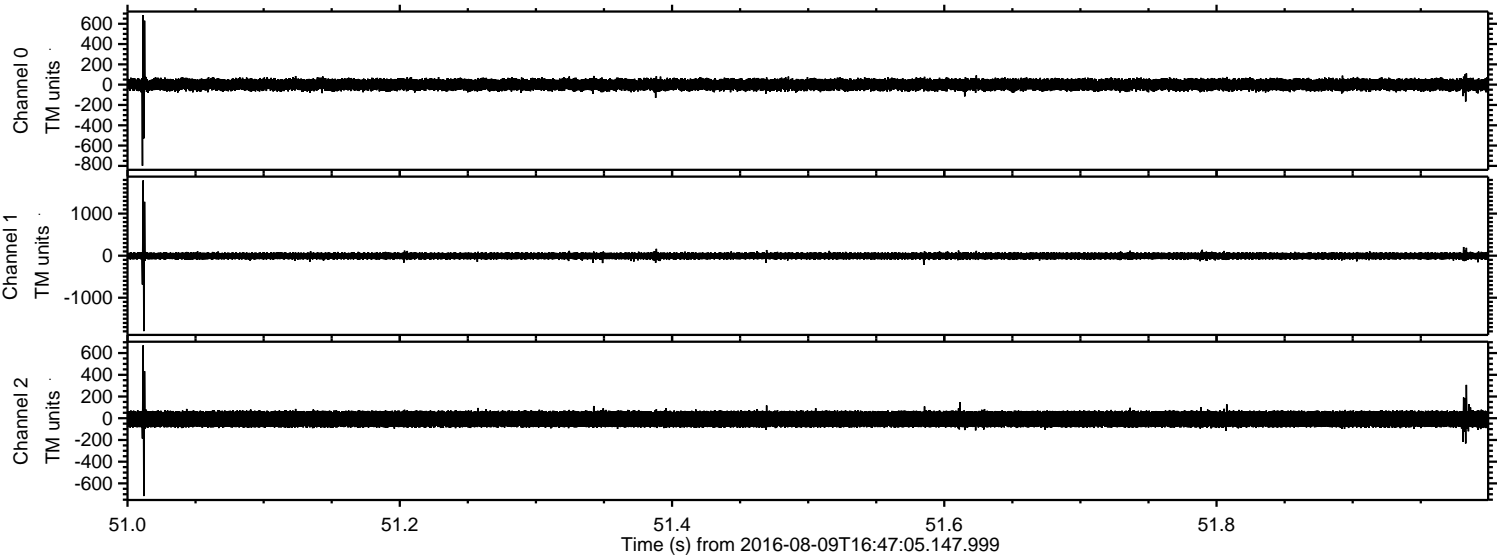


ELMAVAN 3D WAVEFORMS (Measured data sampled at 50 kHz) 51000 packets of 144 samples from 2016-08-09T16:47:05.147.999. Part 116/147

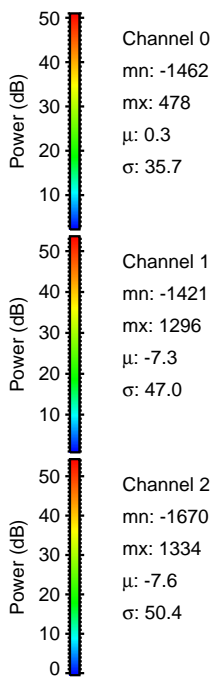
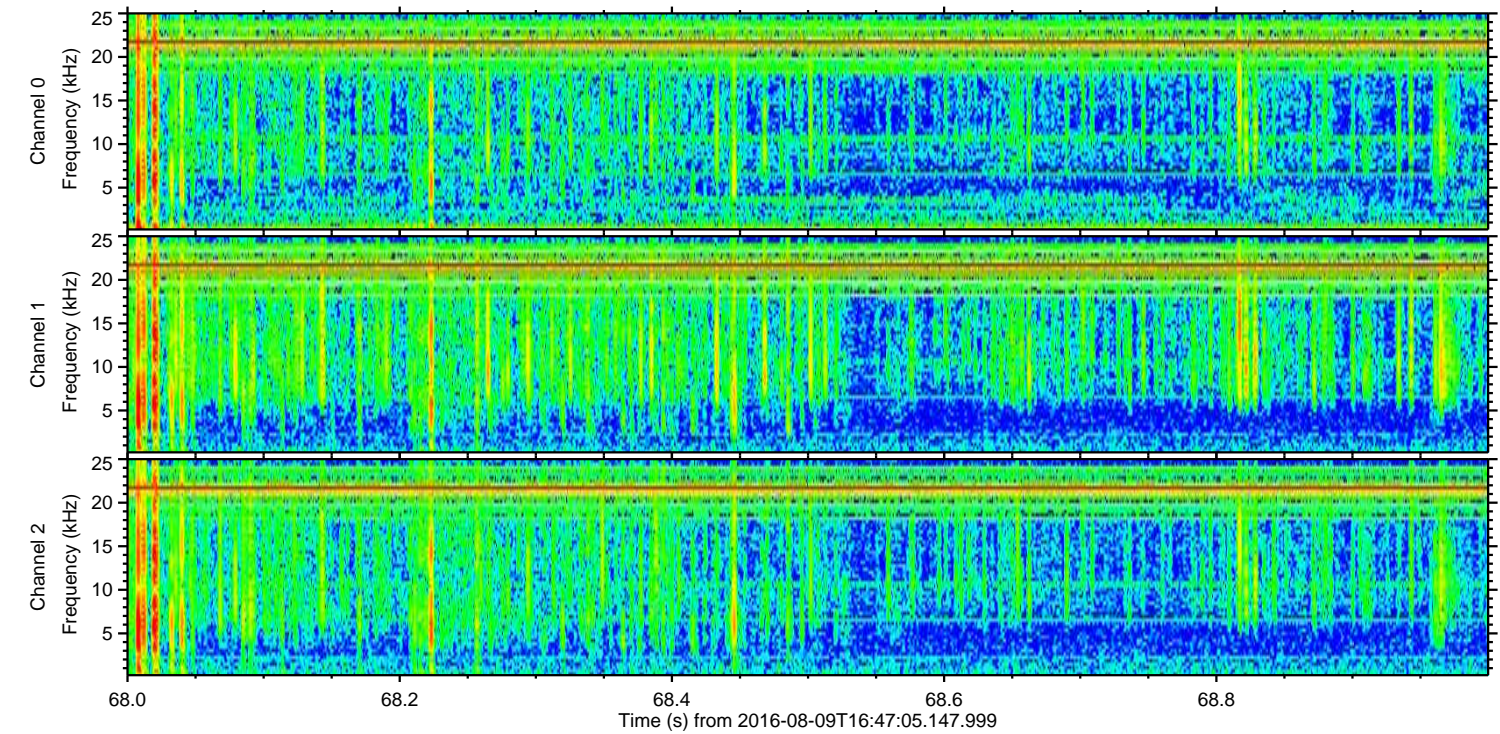
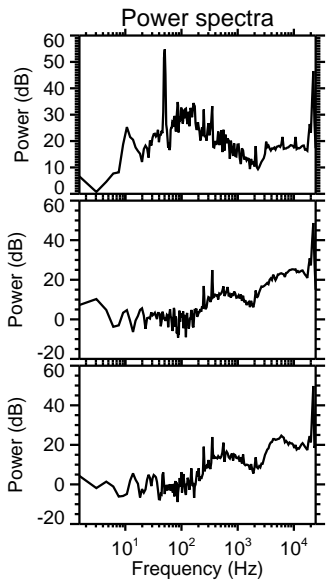
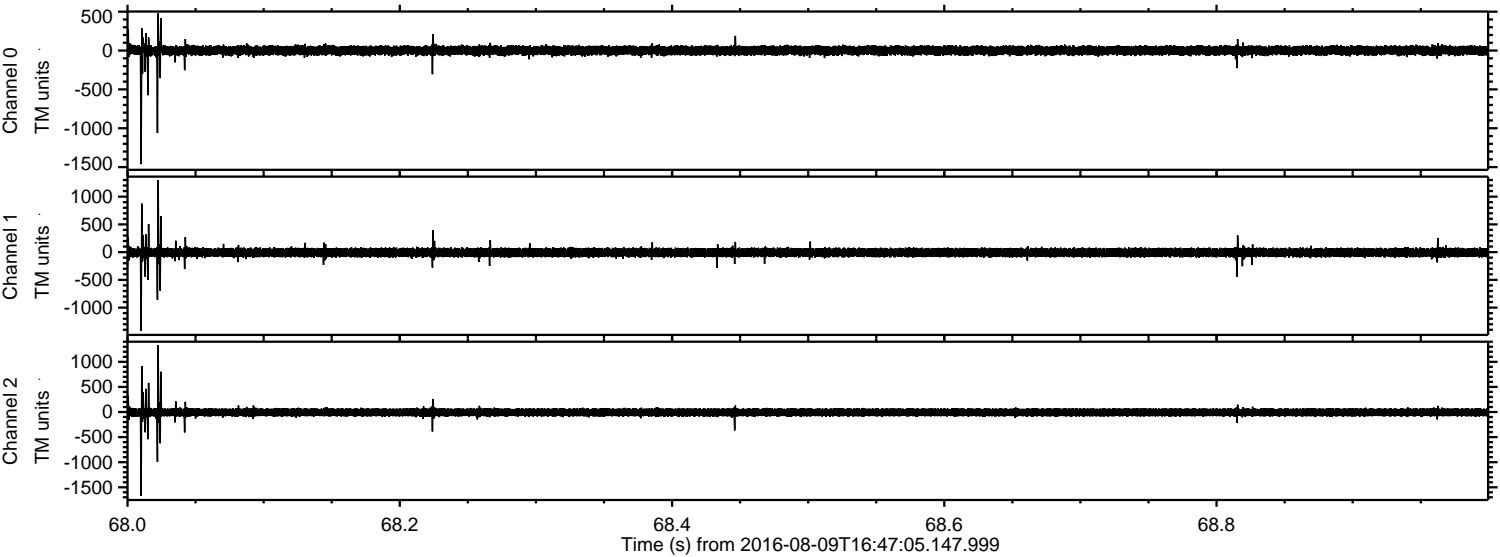
Processed Tue Aug 9 18:55:45 2016 by ELM ver.2012-10-06 from 001__elm20160809_164704__dat00.bin



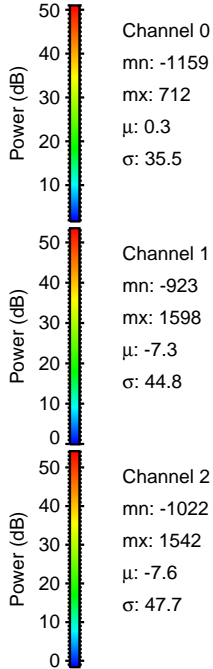
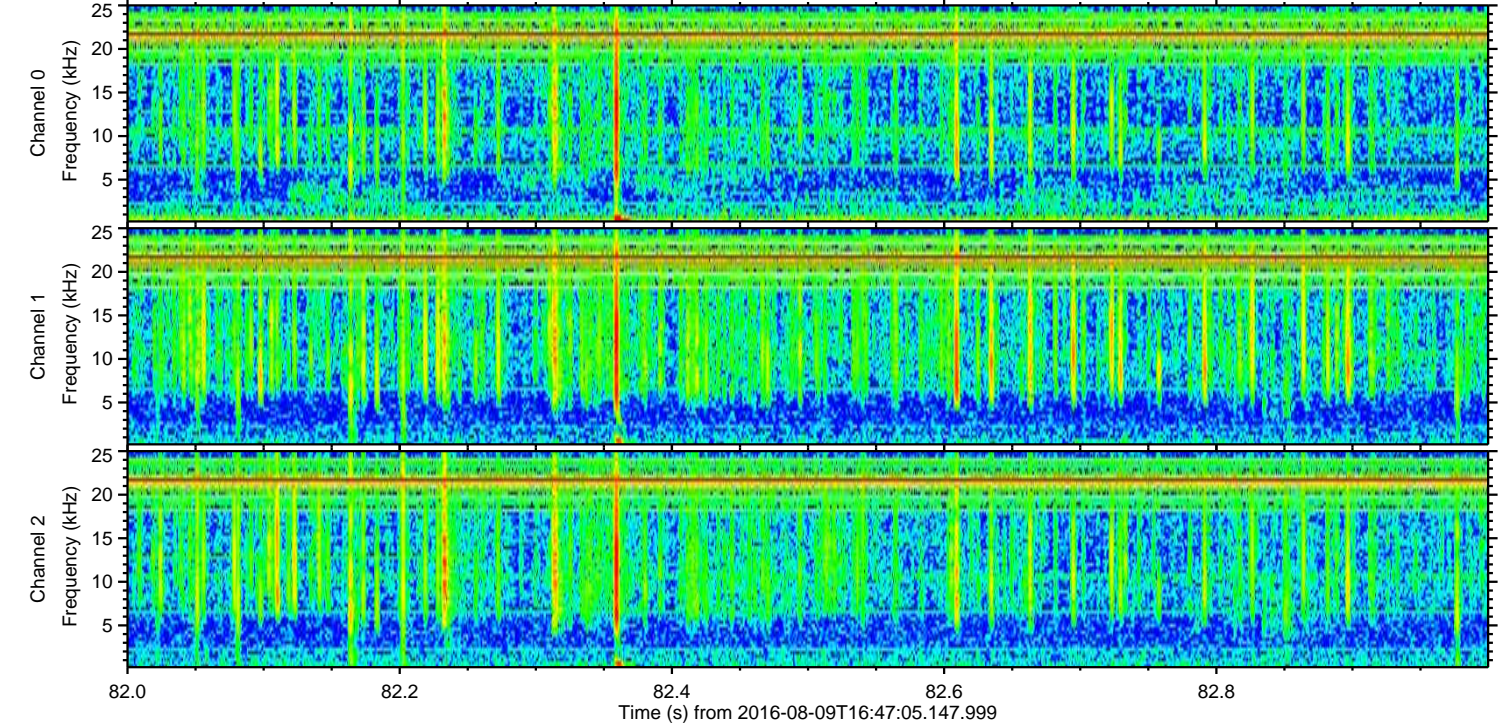
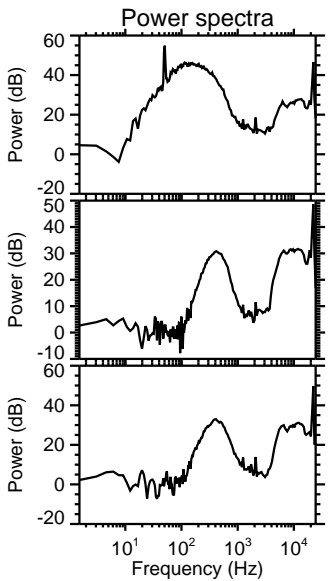
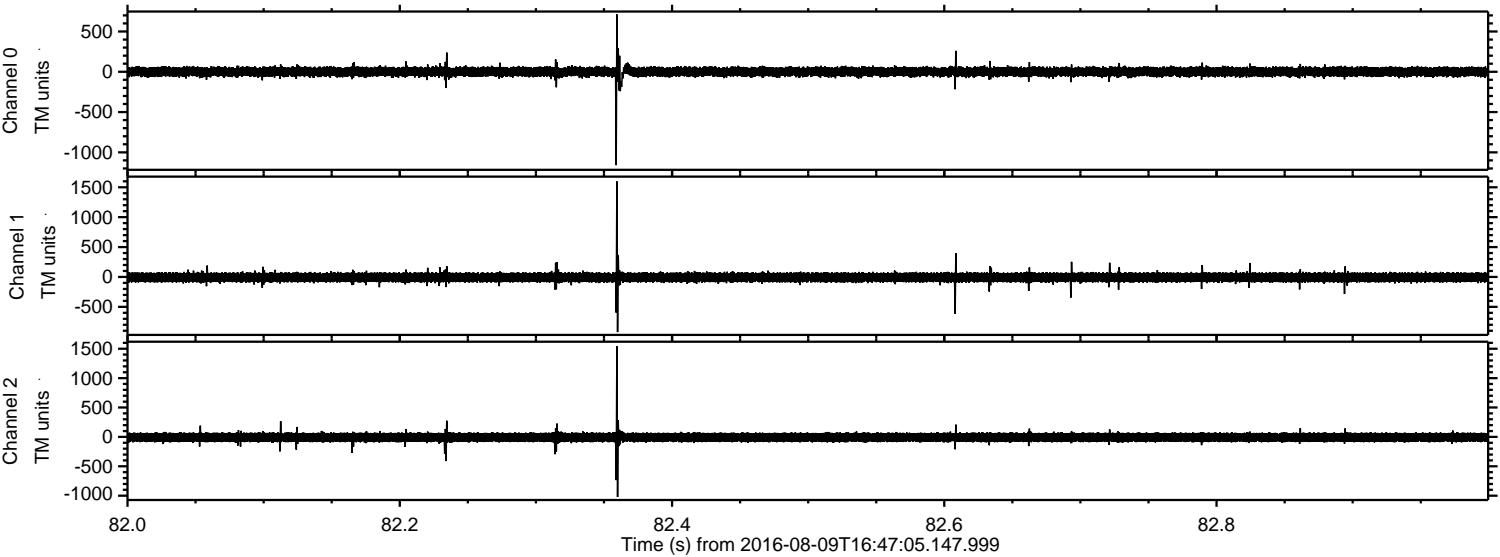
Processed Tue Aug 9 18:55:46 2016 by ELM ver.2012-10-06 from 001__elm20160809_164704__dat00.bin



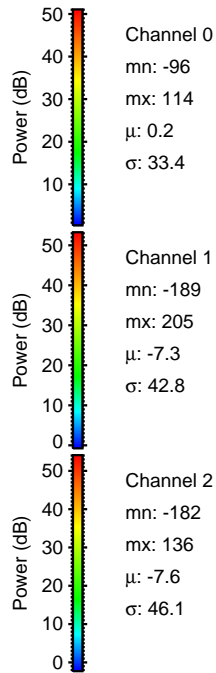
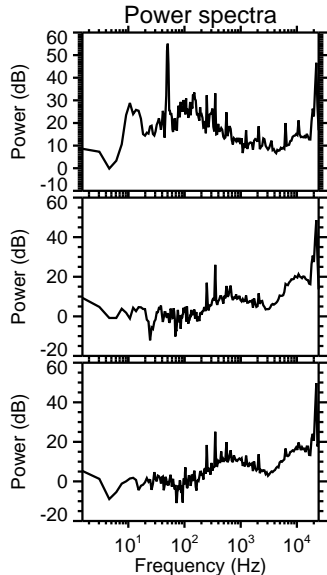
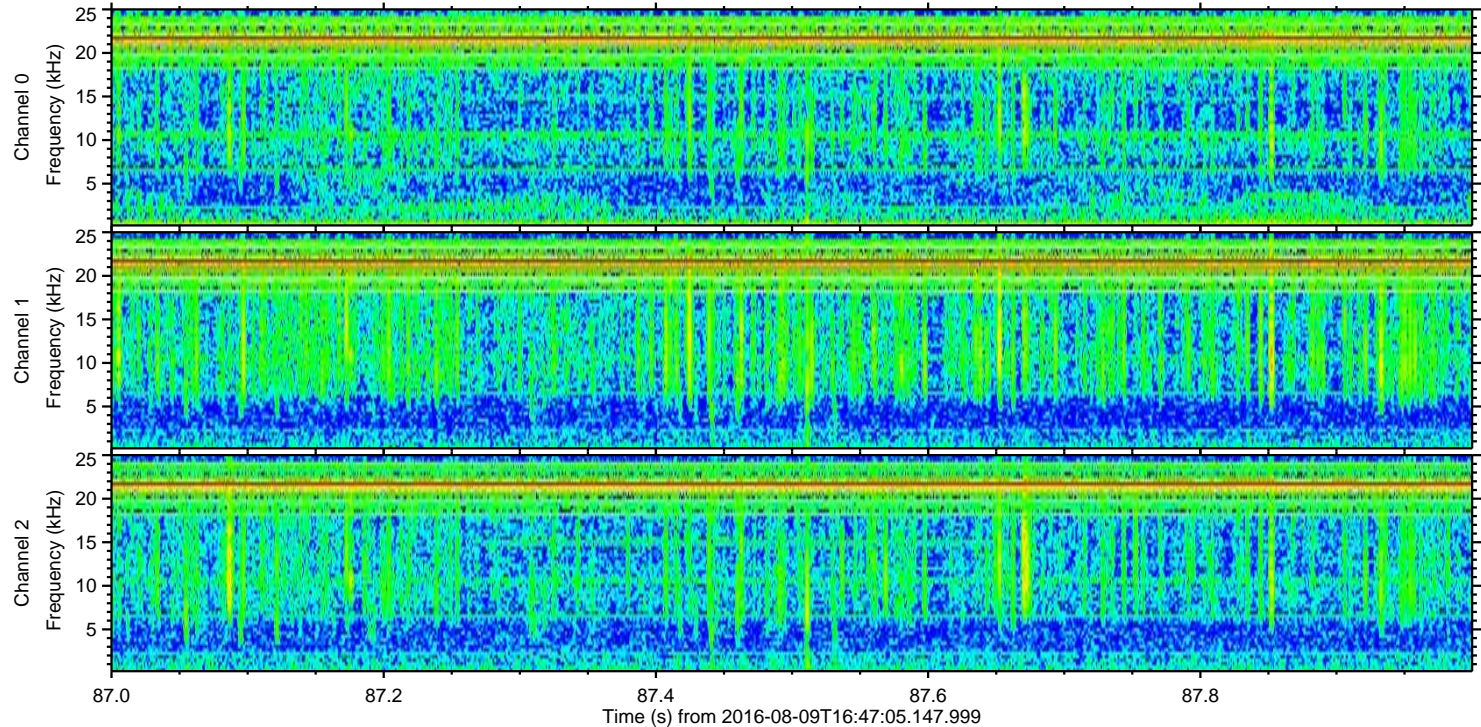
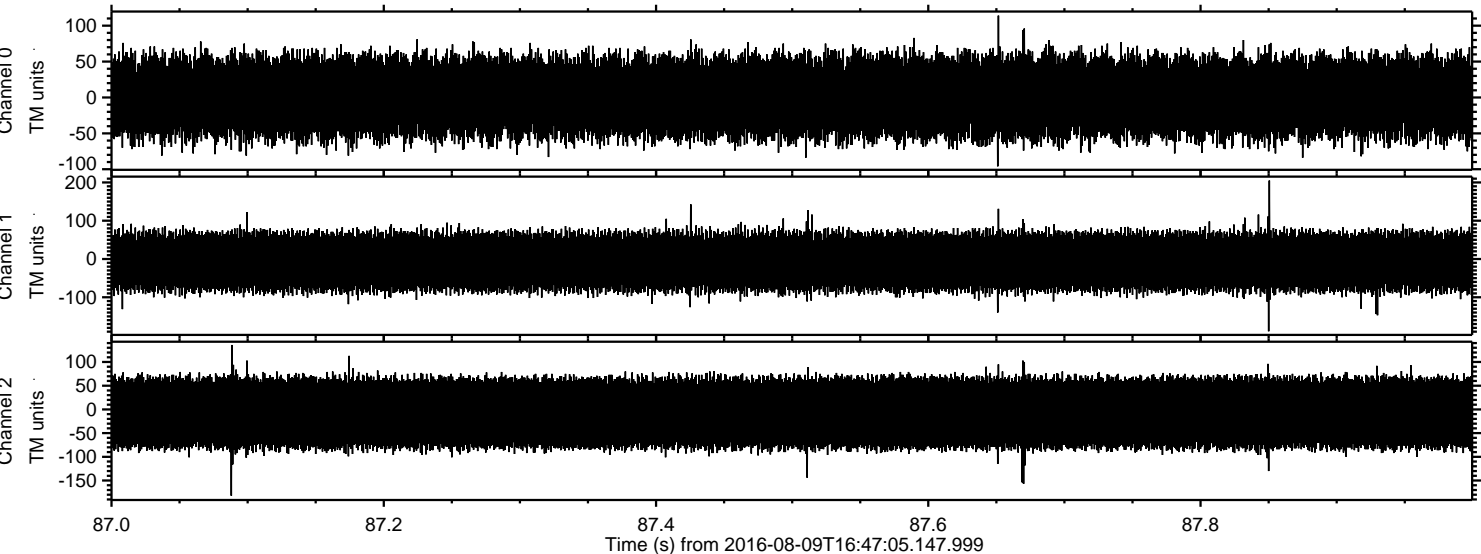
Processed Tue Aug 9 18:55:47 2016 by ELM ver.2012-10-06 from 001__elm20160809_164704__dat00.bin



Processed Tue Aug 9 18:55:48 2016 by ELM ver.2012-10-06 from 001__elm20160809_164704__dat00.bin



Processed Tue Aug 9 18:55:48 2016 by ELM ver.2012-10-06 from 001__elm20160809_164704__dat00.bin



Channel 0
mn: -96
mx: 114
 μ : 0.2
 σ : 33.4

Channel 1
mn: -189
mx: 205
 μ : -7.3
 σ : 42.8

Channel 2
mn: -182
mx: 136
 μ : -7.6
 σ : 46.1