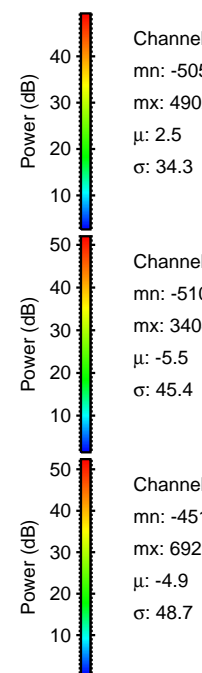
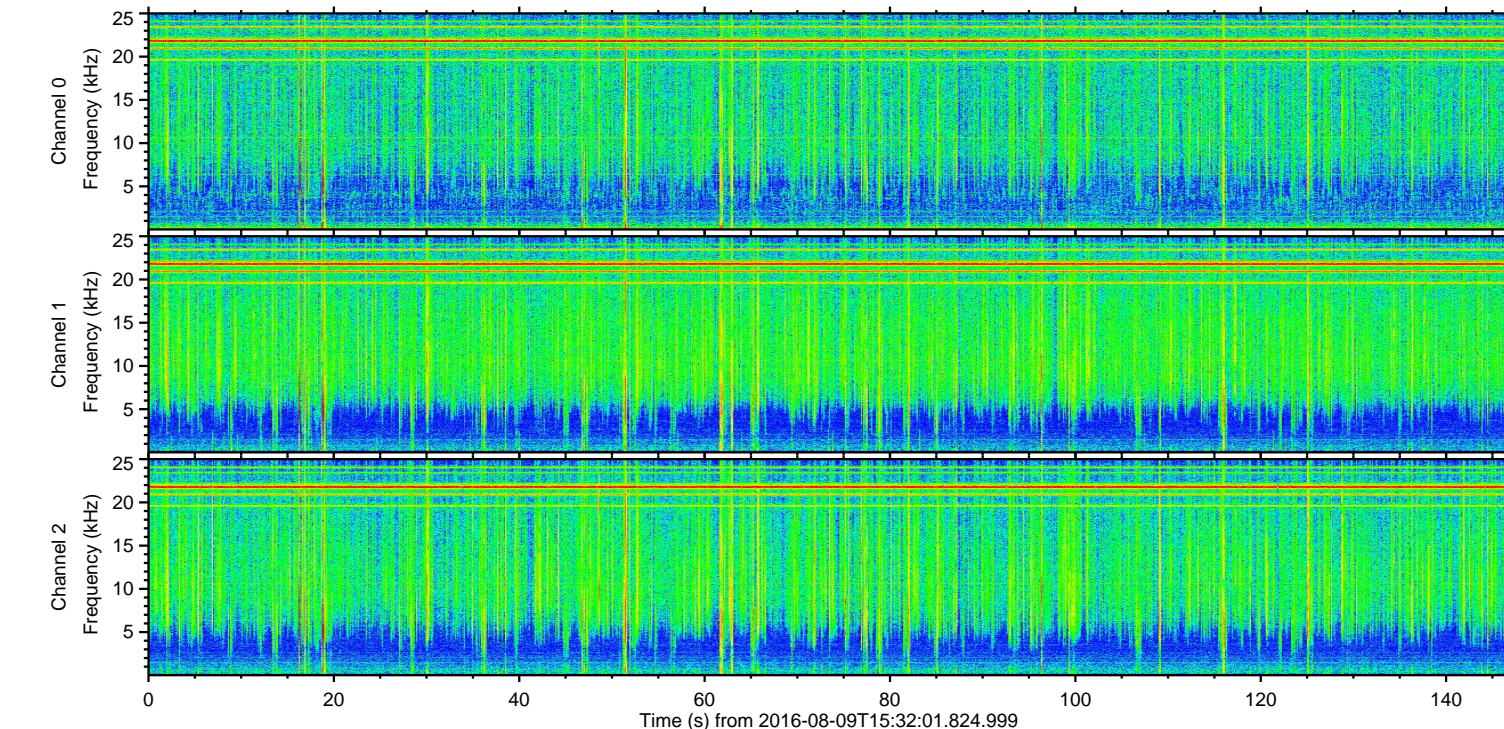
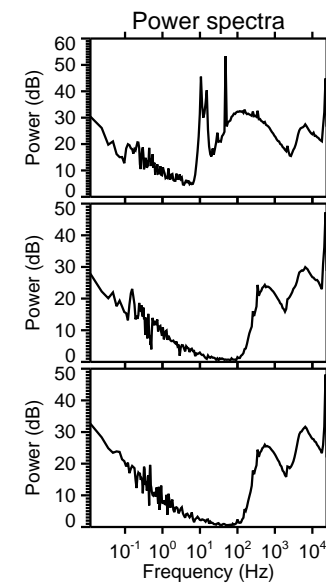
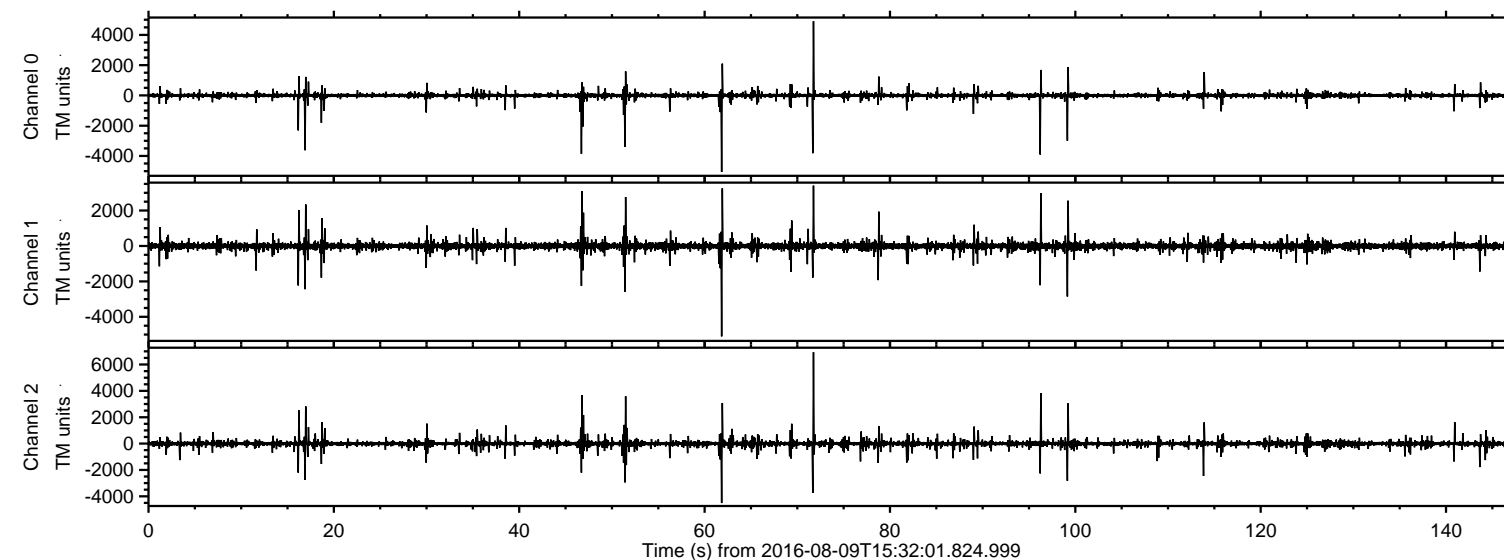
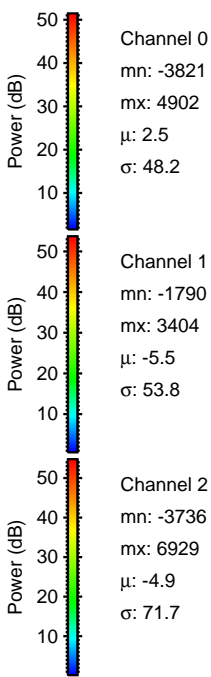
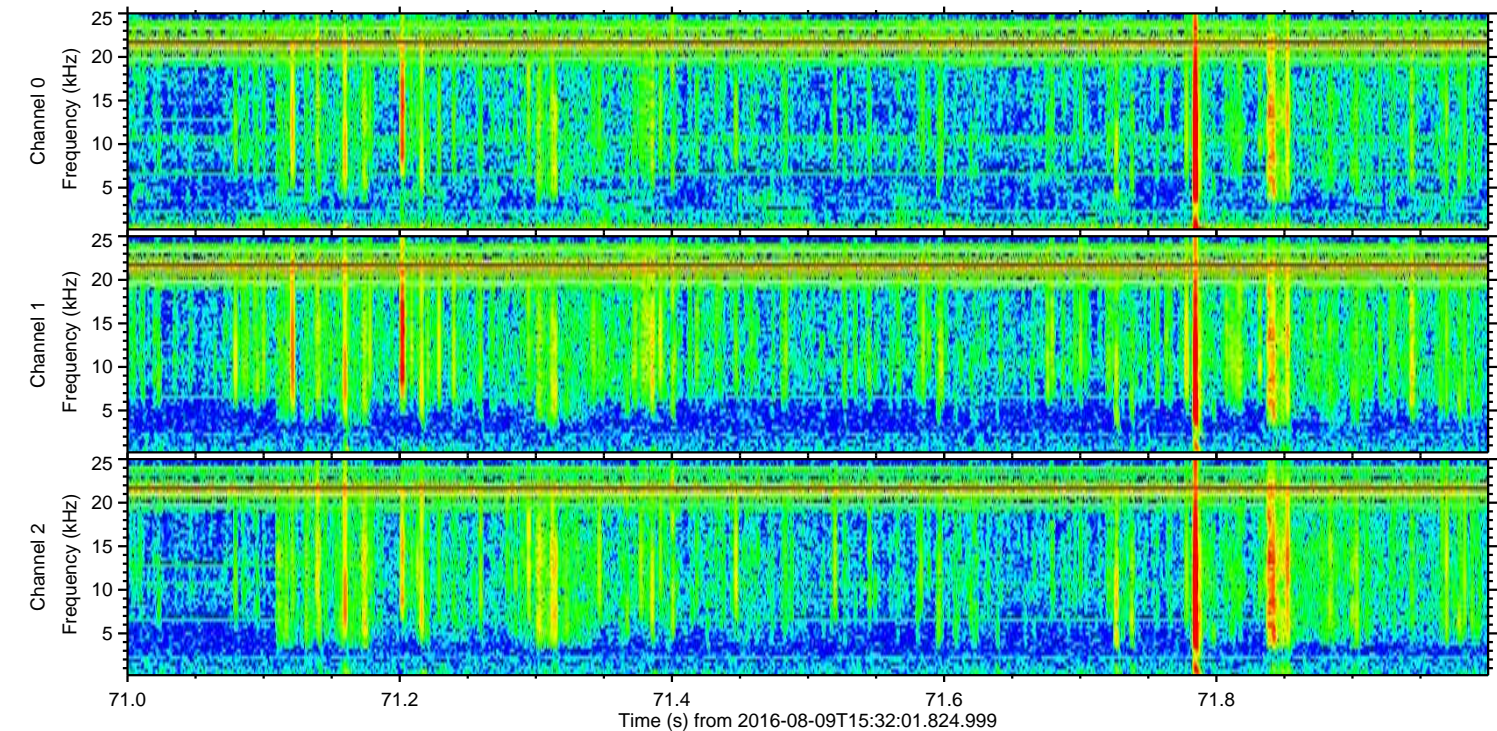
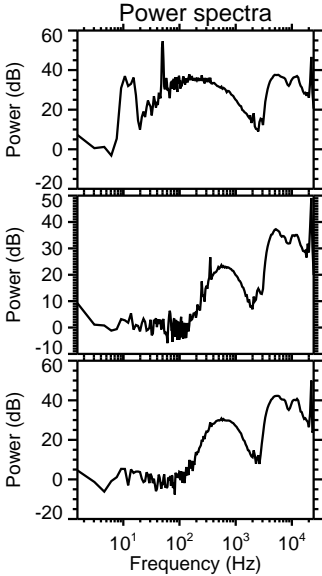
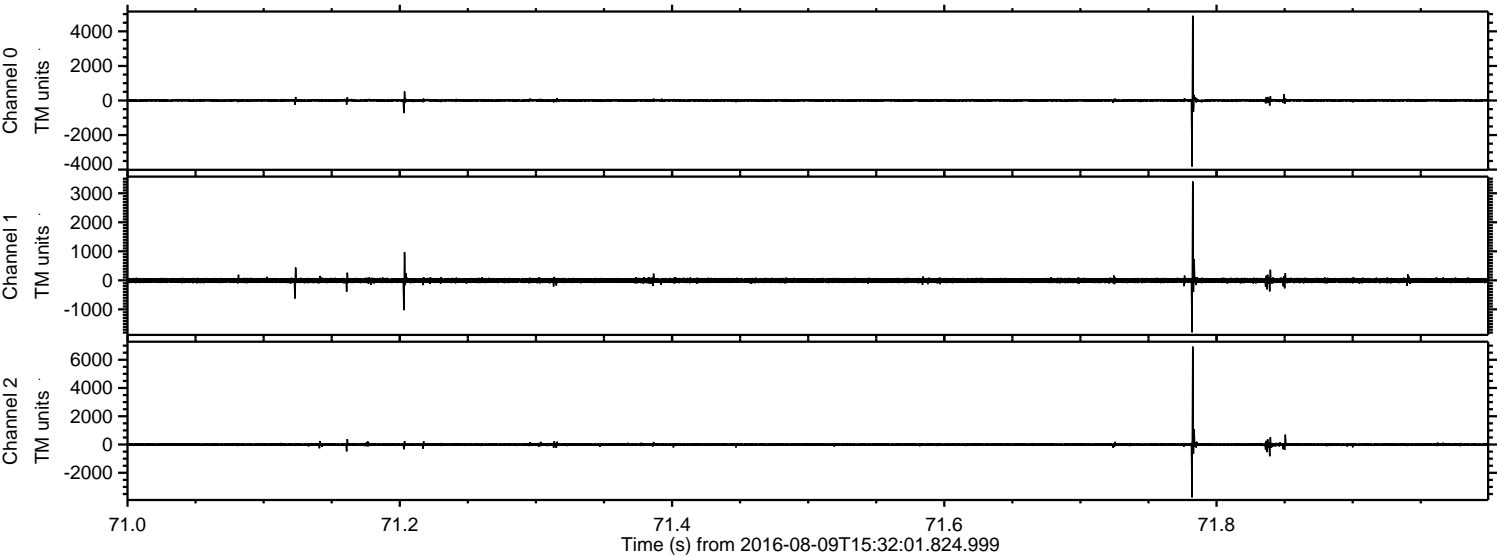


ELMAVAN 3D WAVEFORMS (Measured data sampled at 50 kHz) 51000 packets of 144 samples from 2016-08-09T15:32:01.824.999.

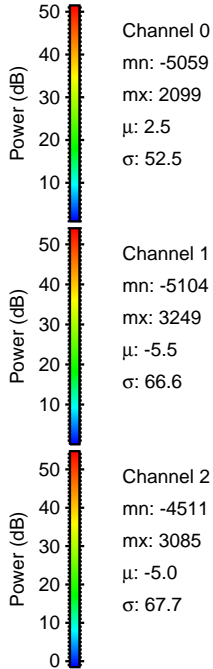
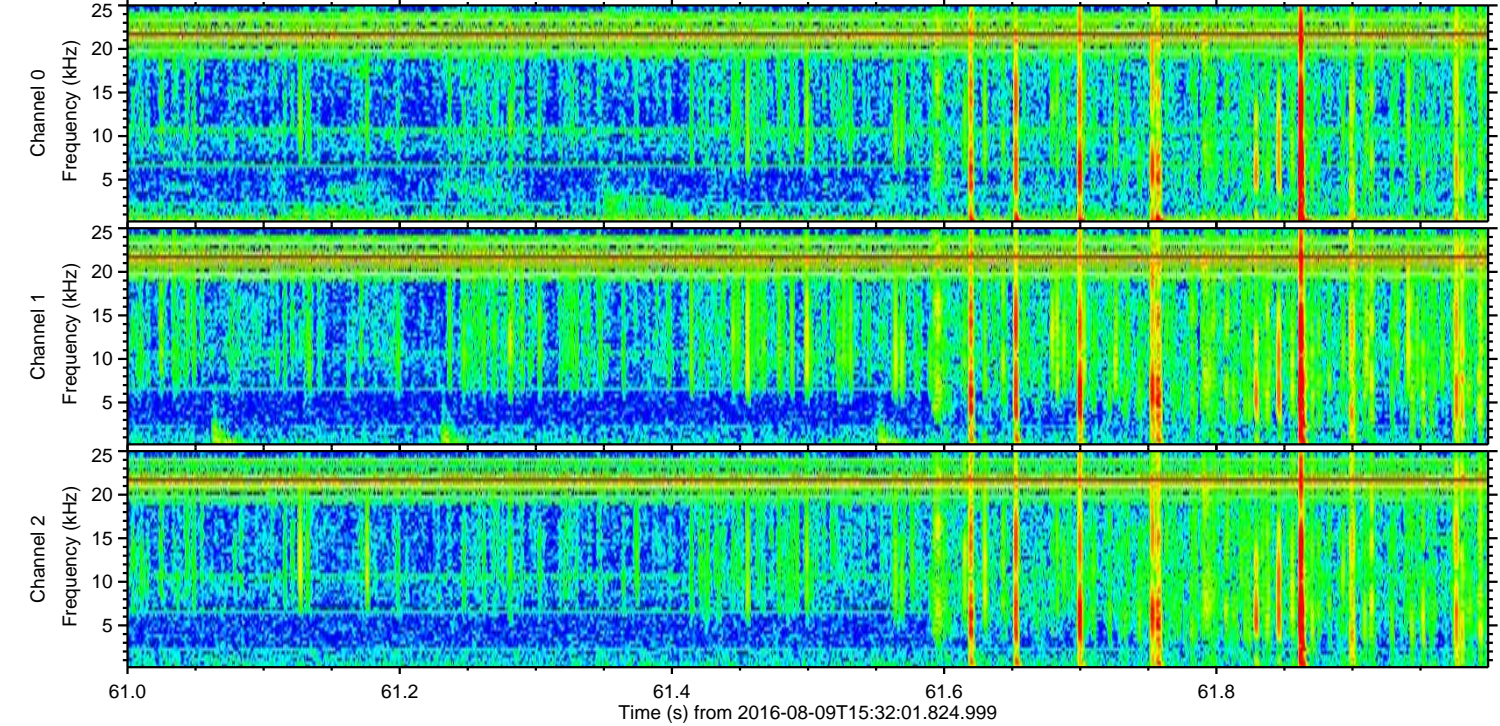
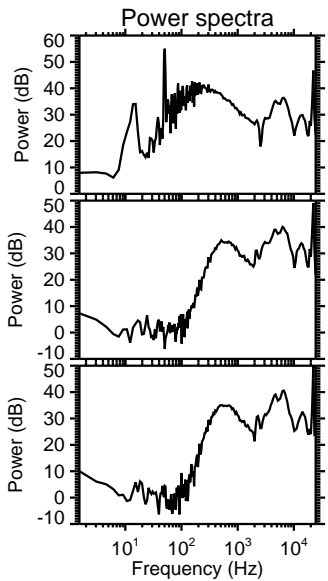
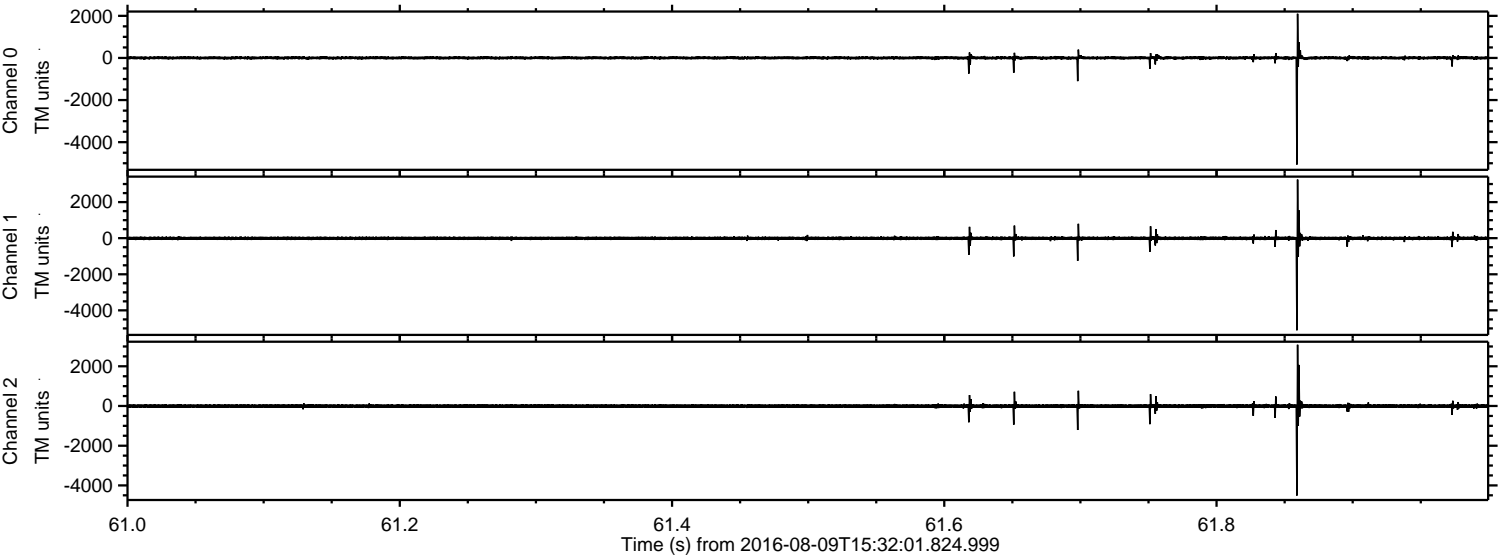
Processed Tue Aug 9 17:39:50 2016 by ELM ver.2012-10-06 from 001__elm20160809_153200__dat00.bin



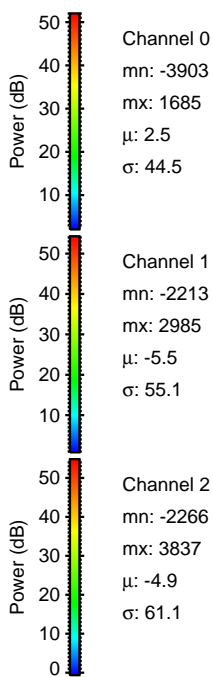
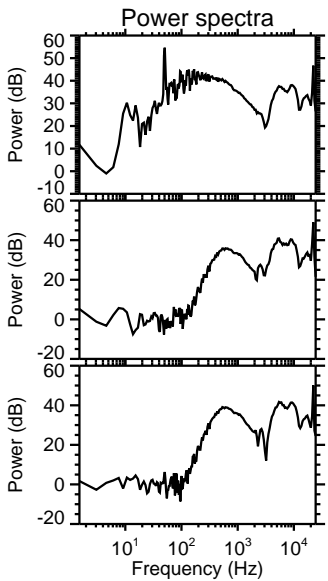
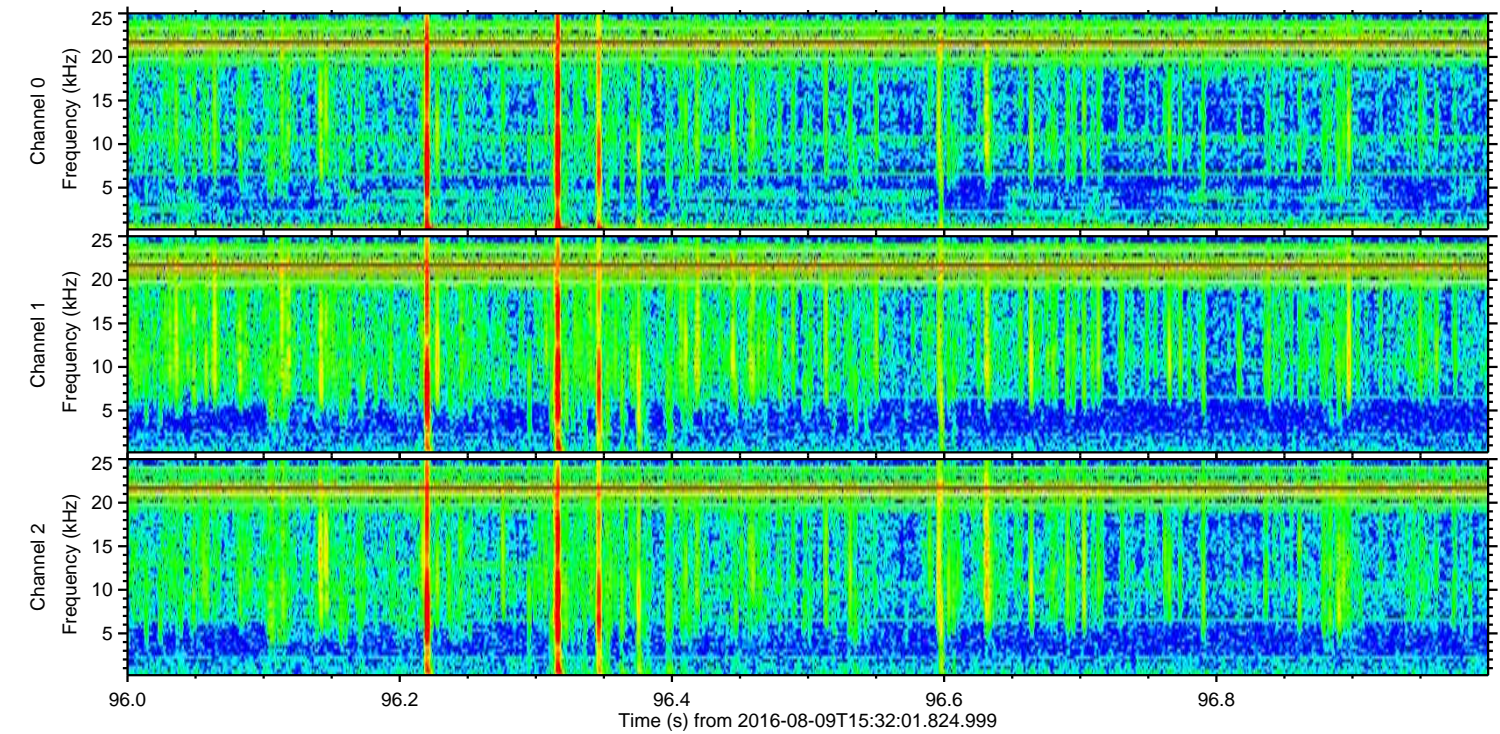
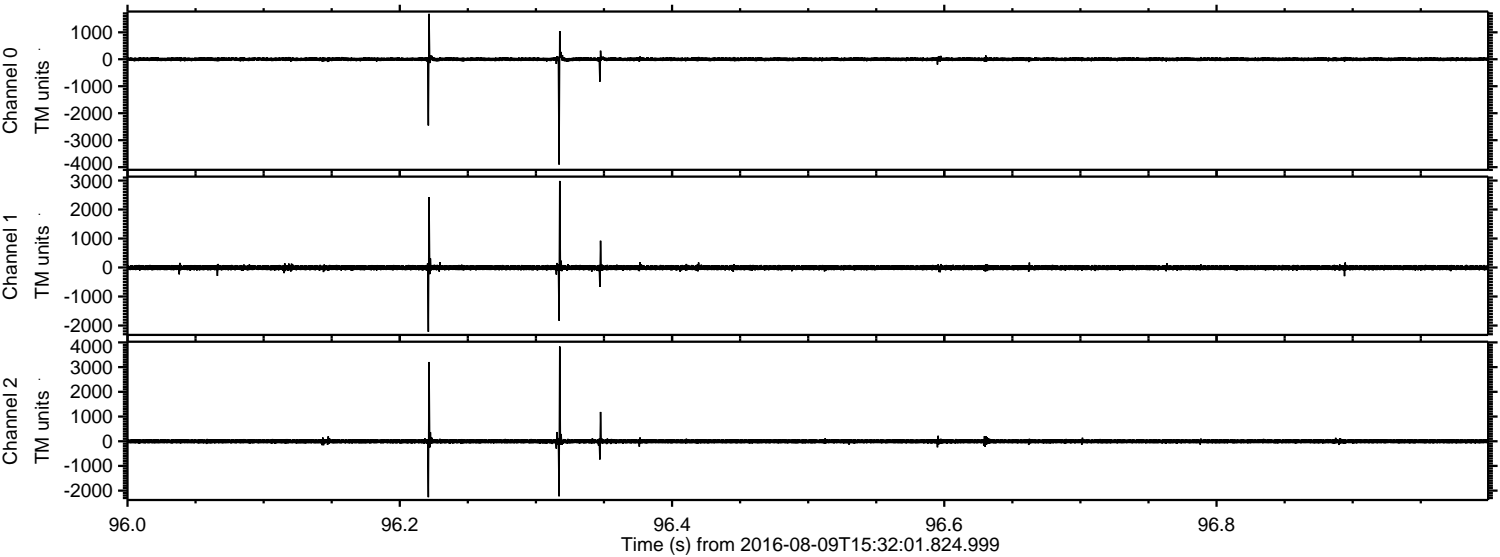
Processed Tue Aug 9 17:40:02 2016 by ELM ver.2012-10-06 from 001__elm20160809_153200__dat00.bin



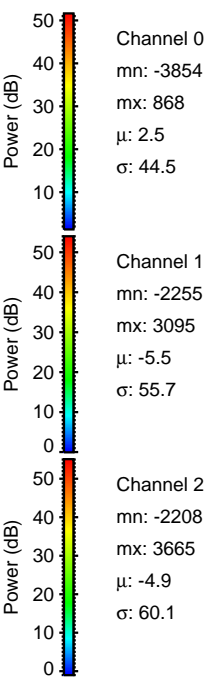
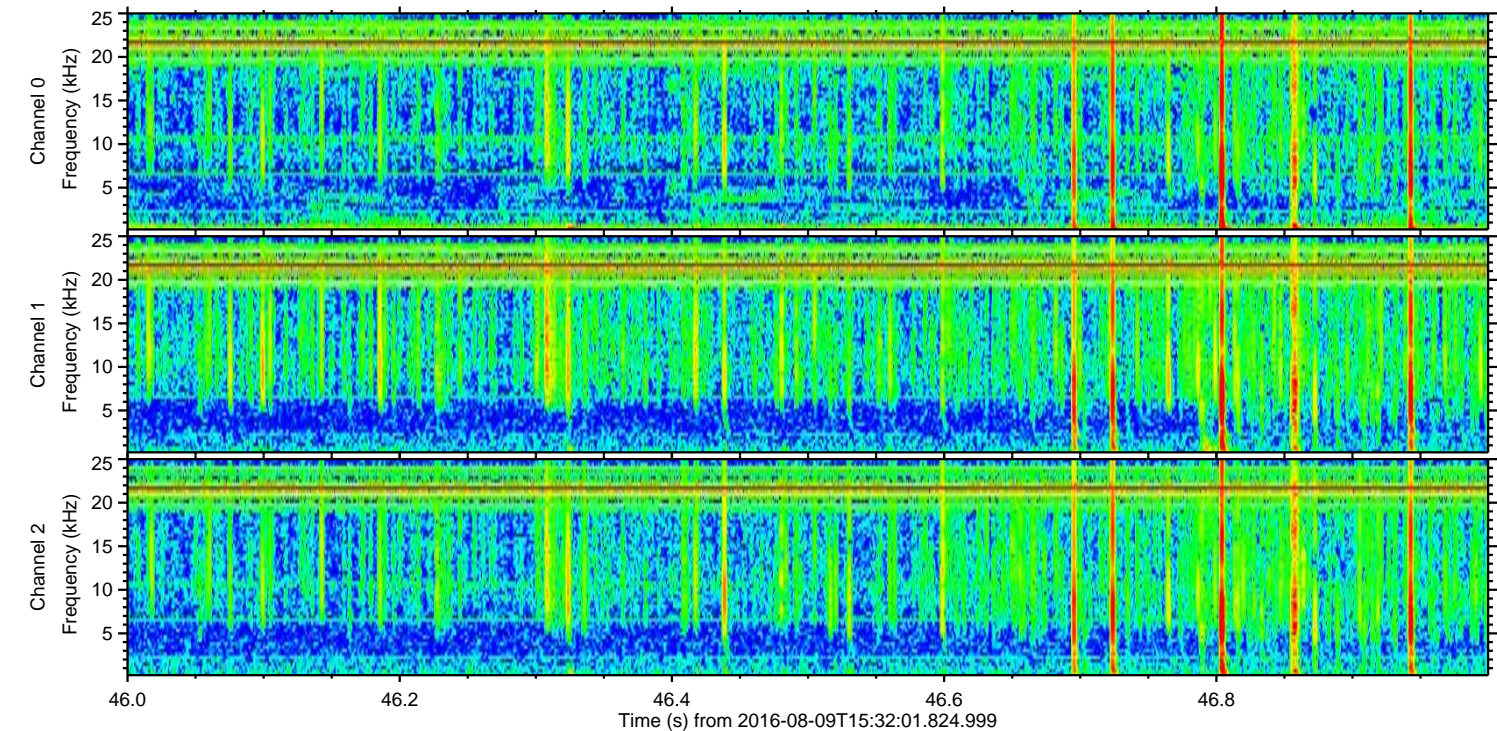
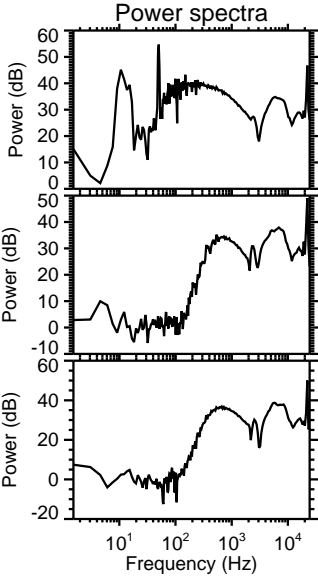
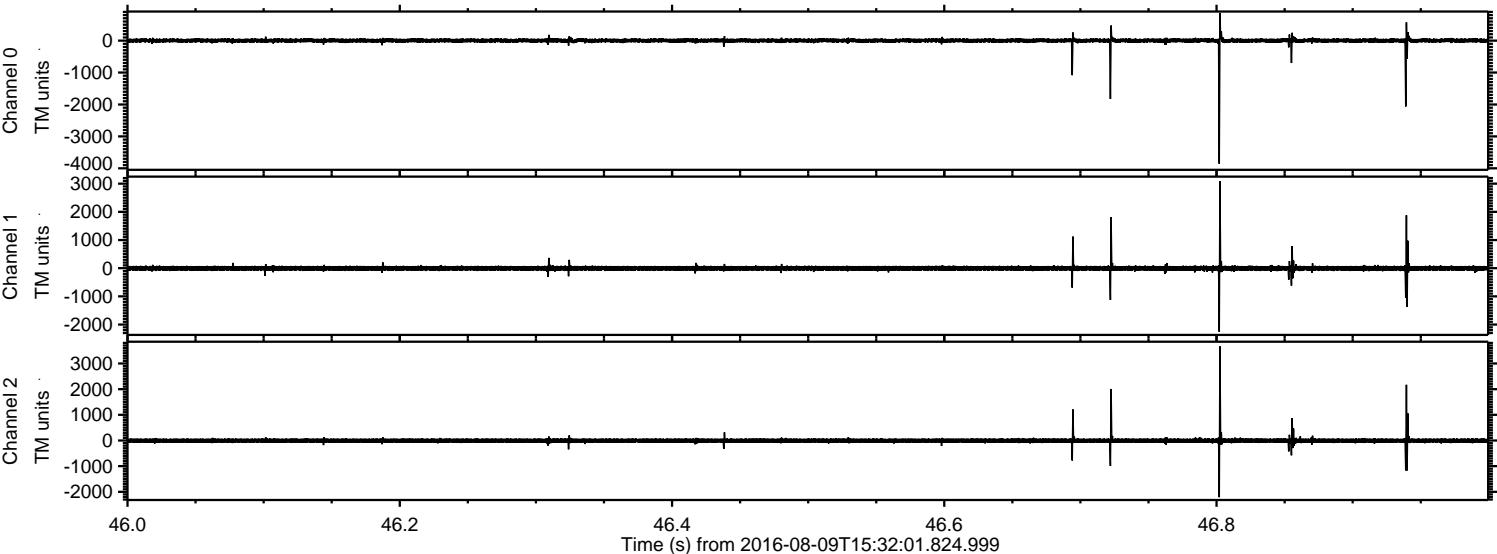
Processed Tue Aug 9 17:40:03 2016 by ELM ver.2012-10-06 from 001__elm20160809_153200__dat00.bin



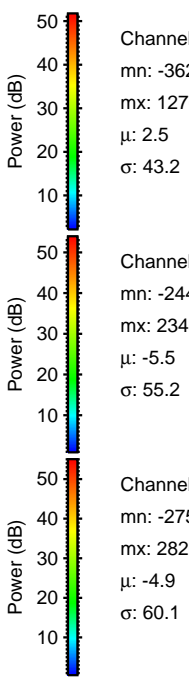
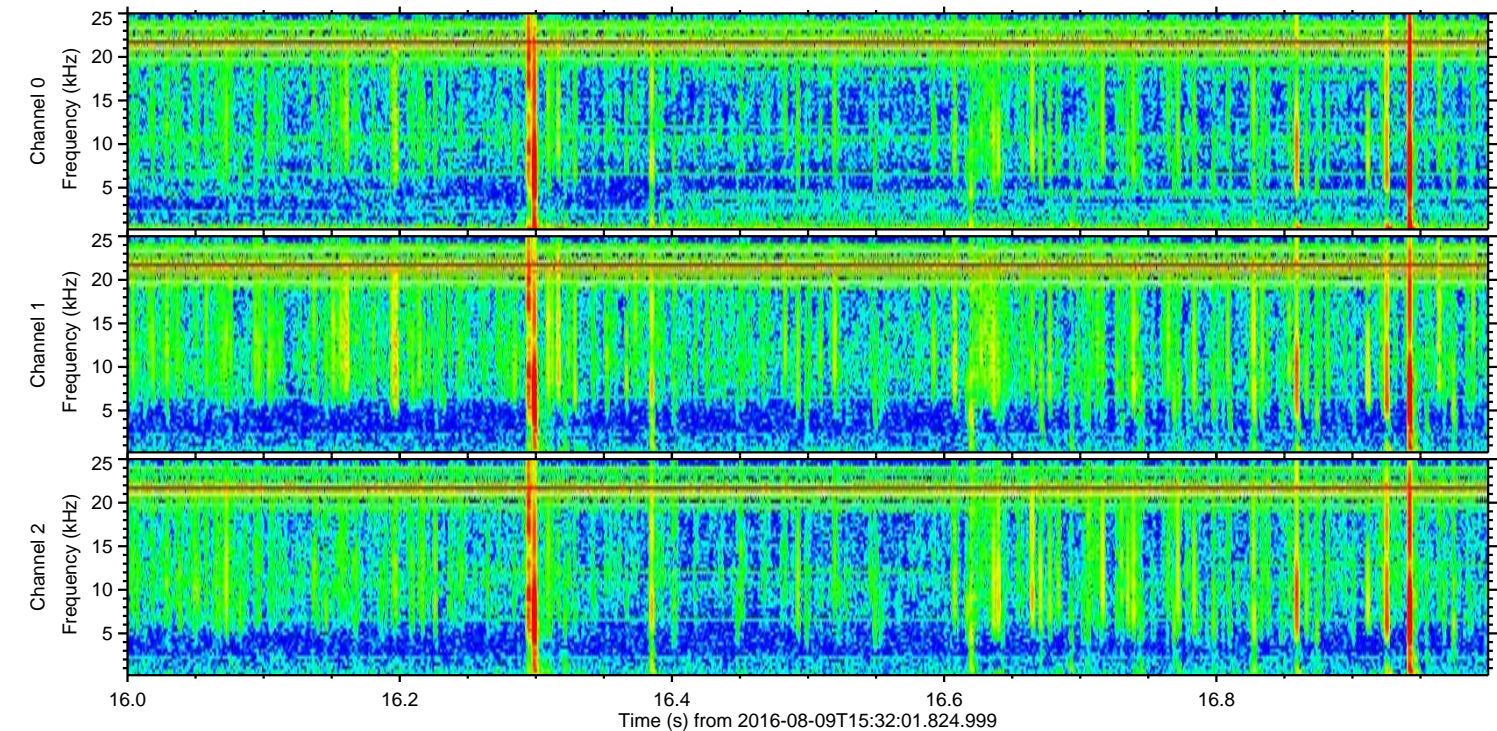
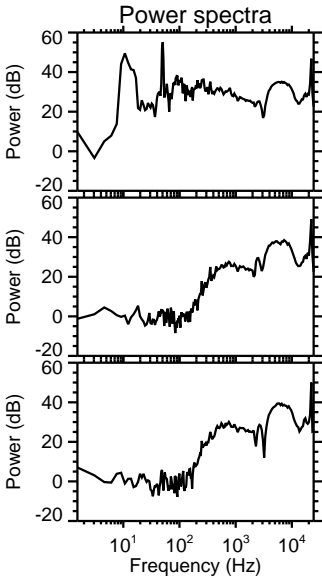
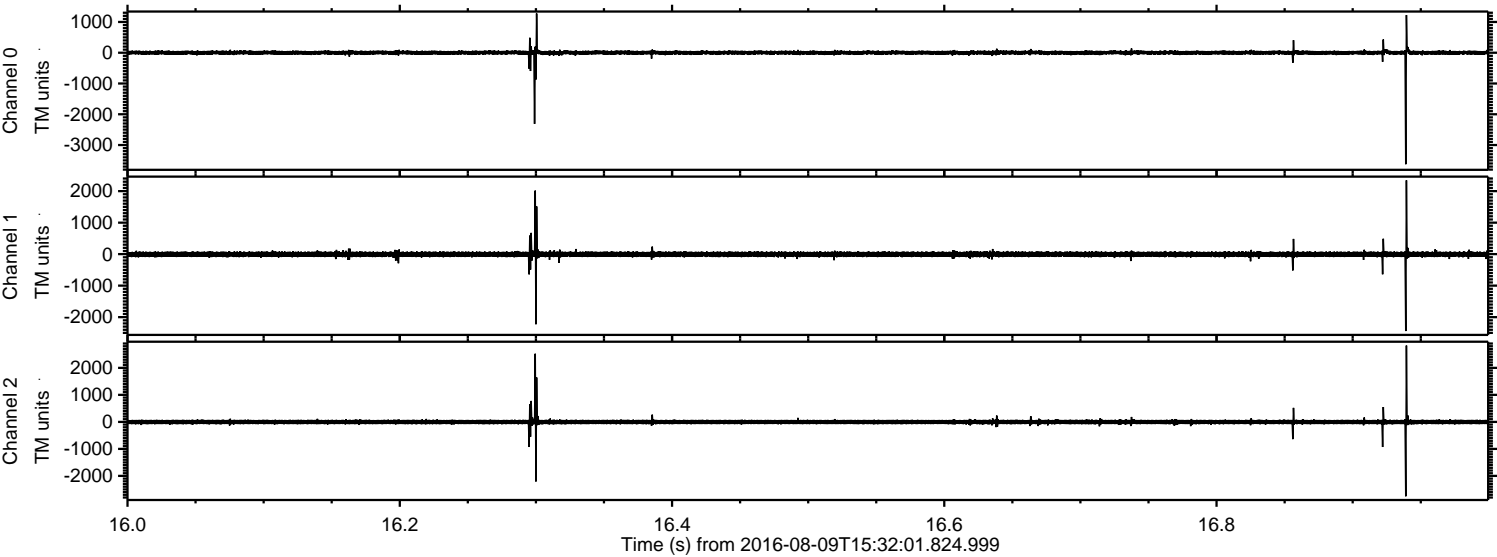
Processed Tue Aug 9 17:40:04 2016 by ELM ver.2012-10-06 from 001__elm20160809_153200__dat00.bin



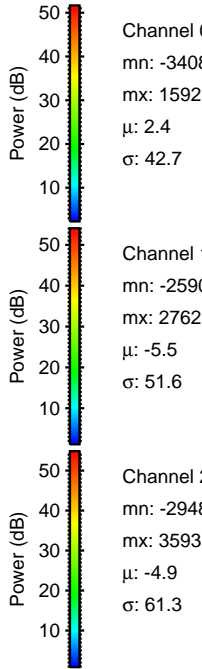
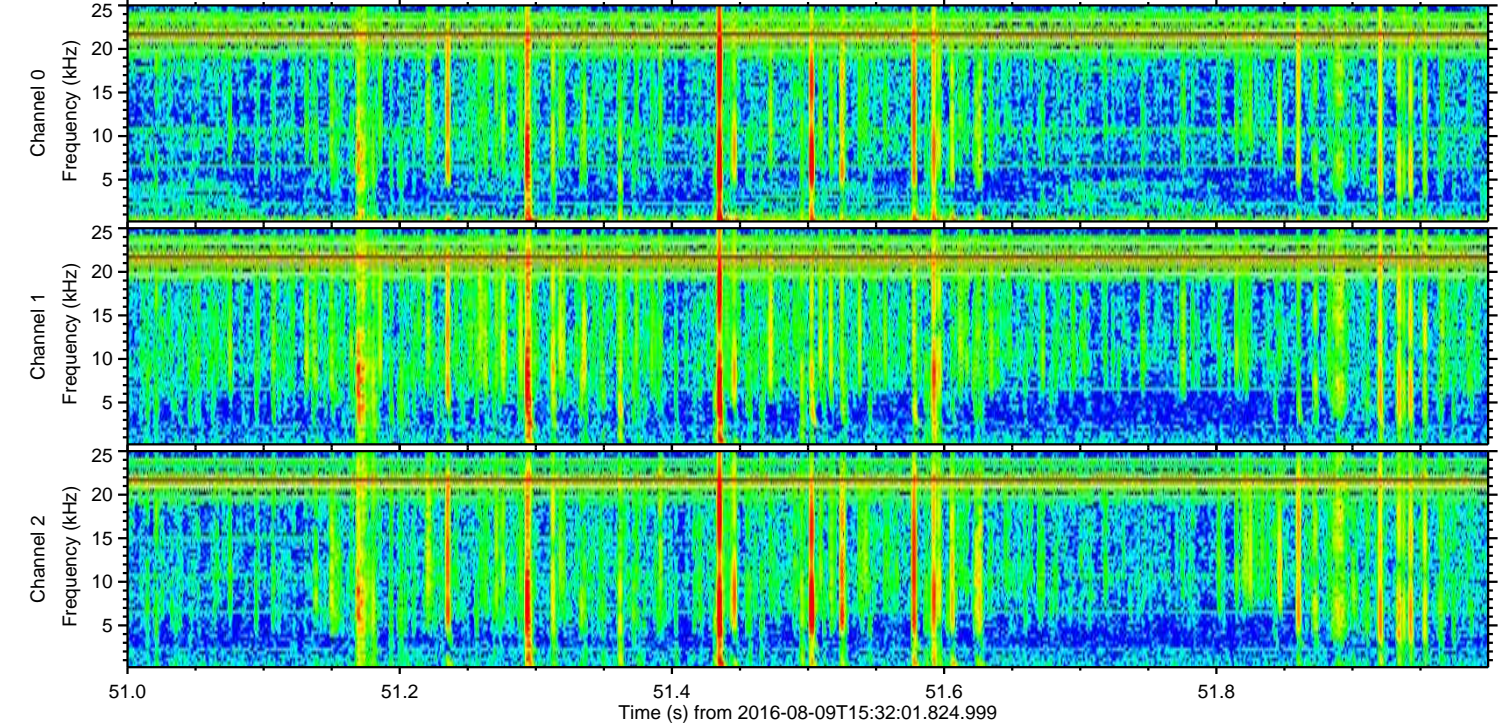
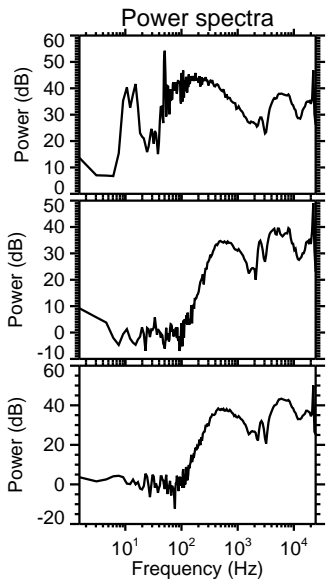
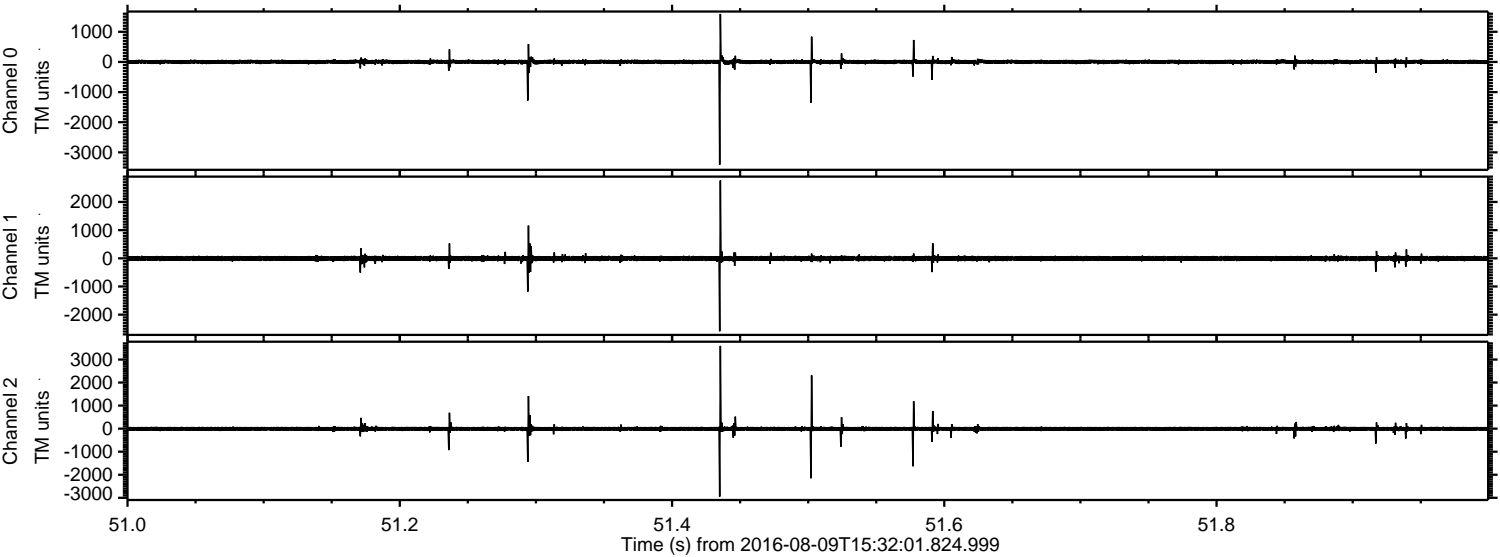
Processed Tue Aug 9 17:40:05 2016 by ELM ver.2012-10-06 from 001__elm20160809_153200__dat00.bin



Processed Tue Aug 9 17:40:06 2016 by ELM ver.2012-10-06 from 001__elm20160809_153200__dat00.bin

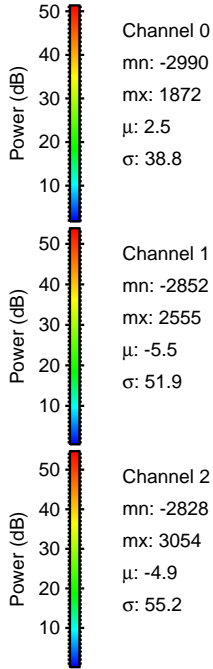
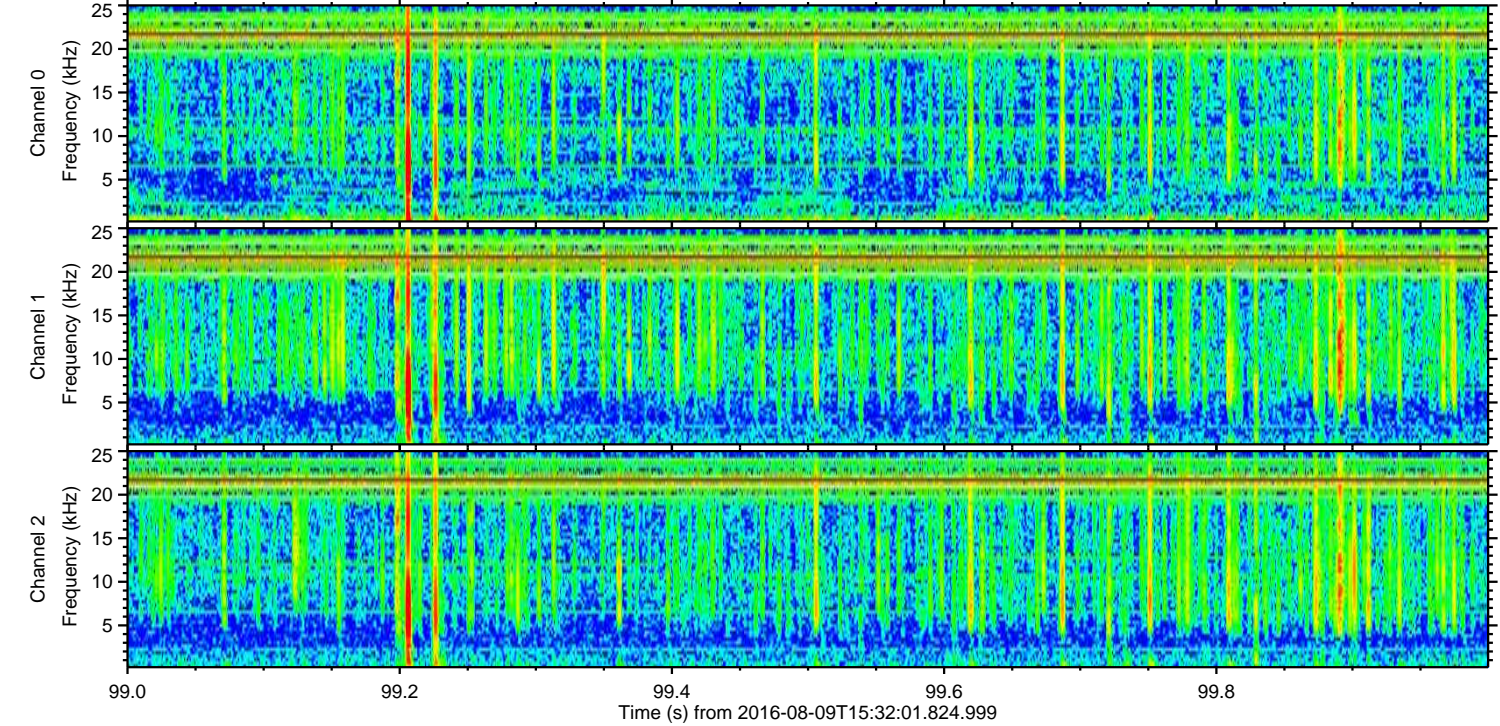
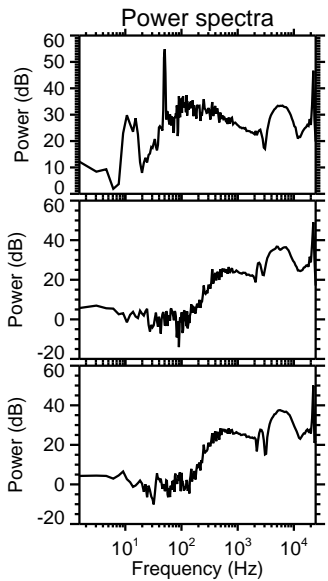
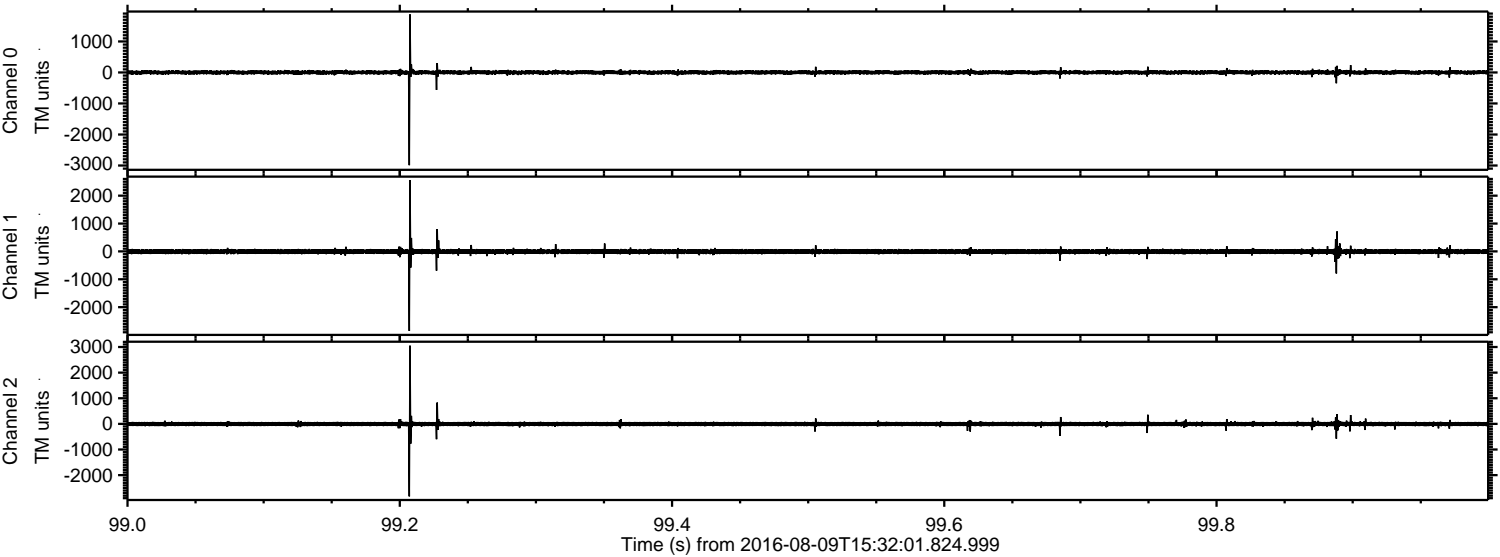


Processed Tue Aug 9 17:40:06 2016 by ELM ver.2012-10-06 from 001__elm20160809_153200__dat00.bin



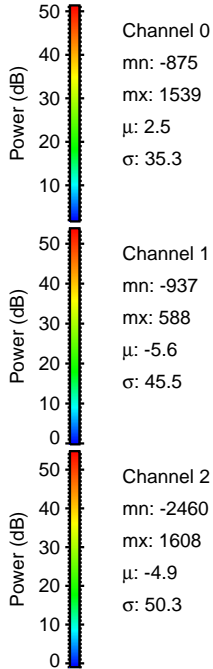
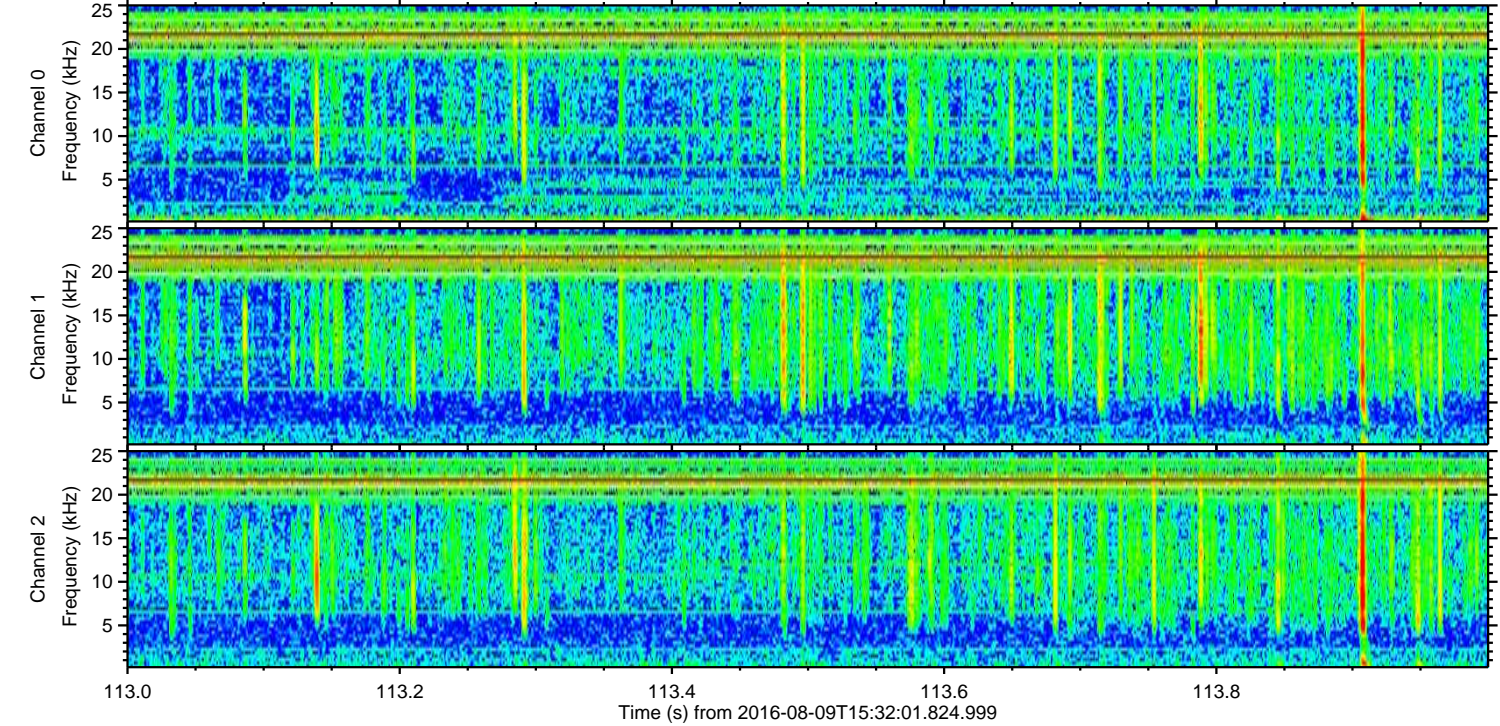
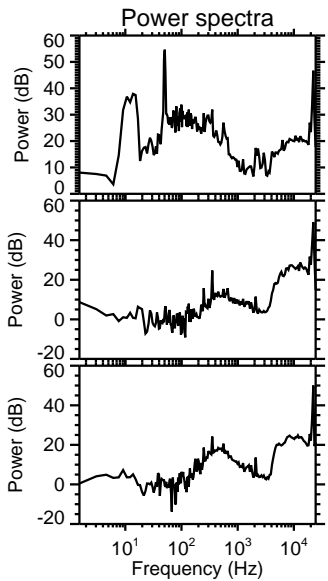
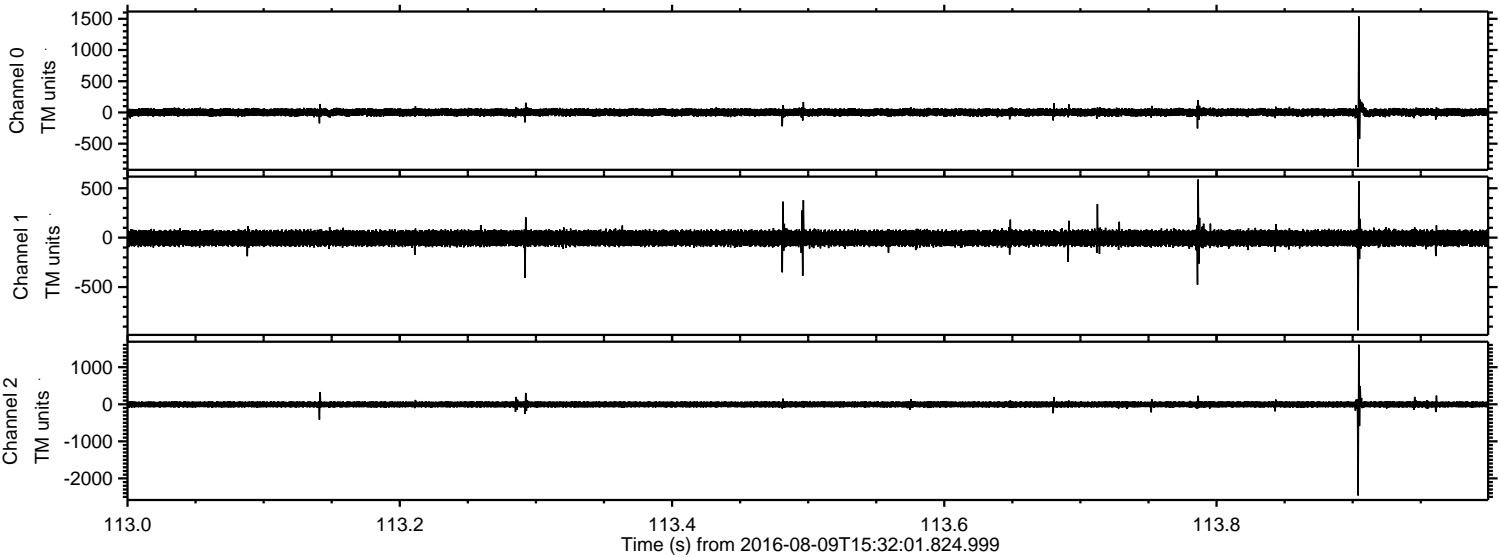
ELMAVAN 3D WAVEFORMS (Measured data sampled at 50 kHz) 51000 packets of 144 samples from 2016-08-09T15:32:01.824.999. Part 100/147

Processed Tue Aug 9 17:40:07 2016 by ELM ver.2012-10-06 from 001__elm20160809_153200__dat00.bin

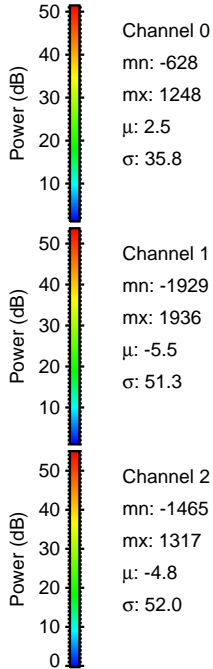
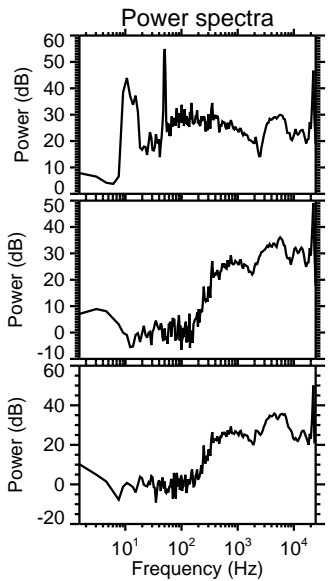
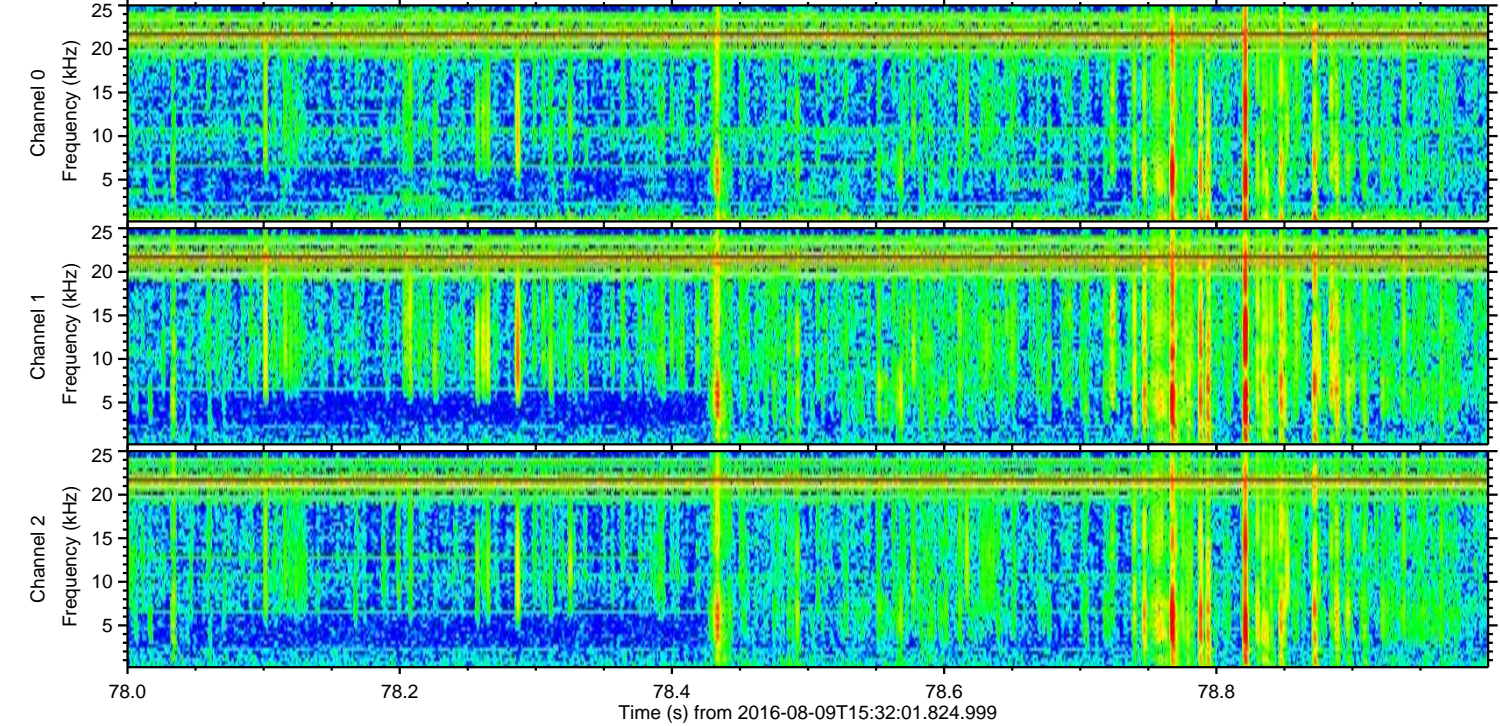
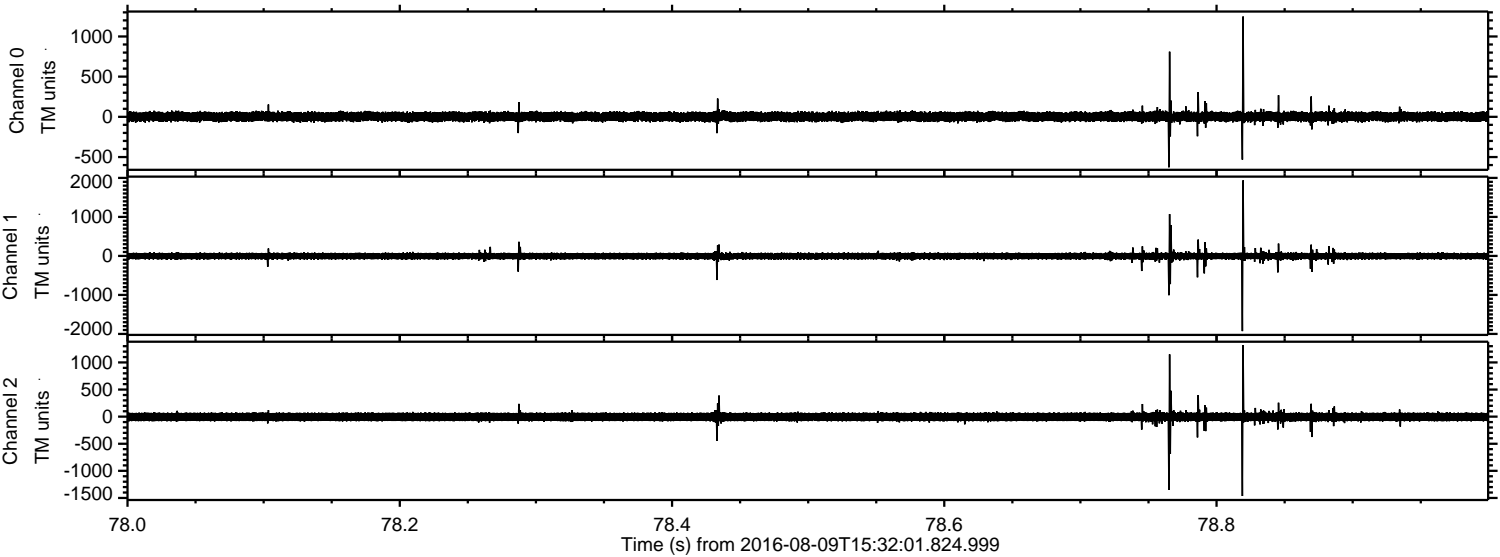


ELMAVAN 3D WAVEFORMS (Measured data sampled at 50 kHz) 51000 packets of 144 samples from 2016-08-09T15:32:01.824.999. Part 114/147

Processed Tue Aug 9 17:40:08 2016 by ELM ver.2012-10-06 from 001__elm20160809_153200__dat00.bin



Processed Tue Aug 9 17:40:09 2016 by ELM ver.2012-10-06 from 001__elm20160809_153200__dat00.bin



Channel 0
mn: -628
mx: 1248
 μ : 2.5
 σ : 35.8

Channel 1
mn: -1929
mx: 1936
 μ : -5.5
 σ : 51.3

Channel 2
mn: -1465
mx: 1317
 μ : -4.8
 σ : 52.0

