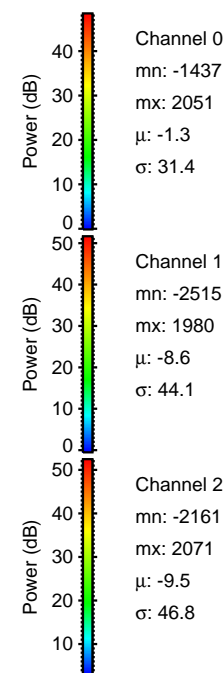
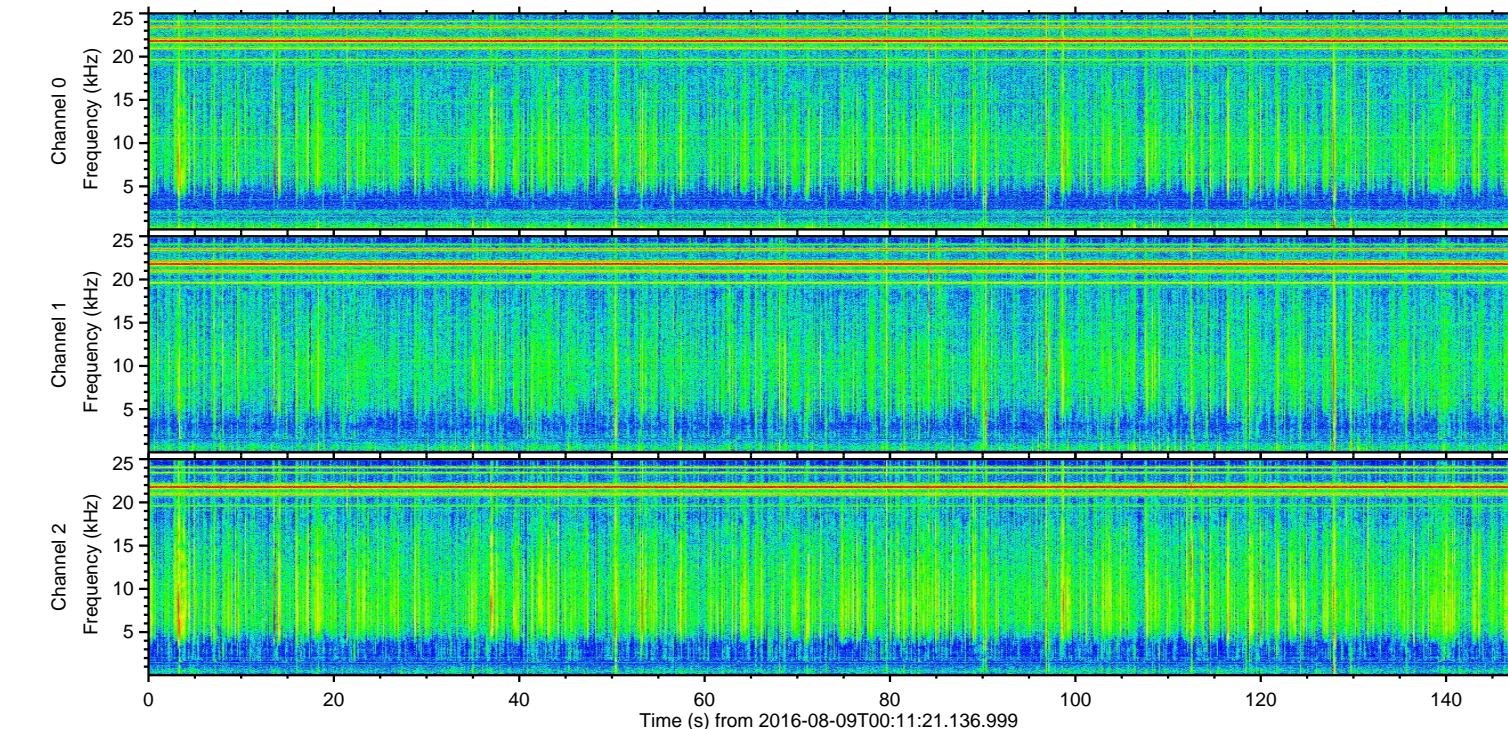
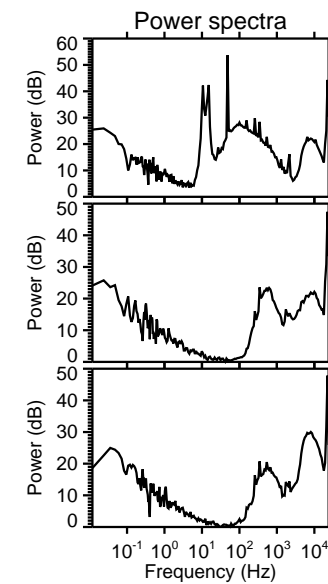
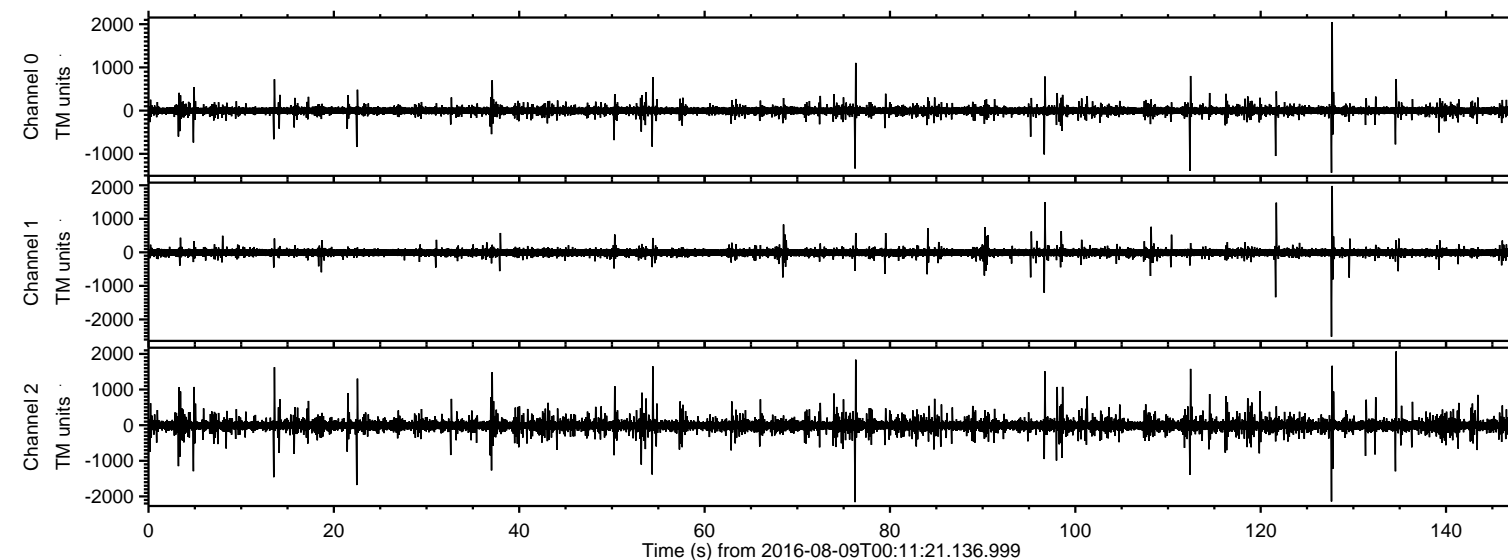


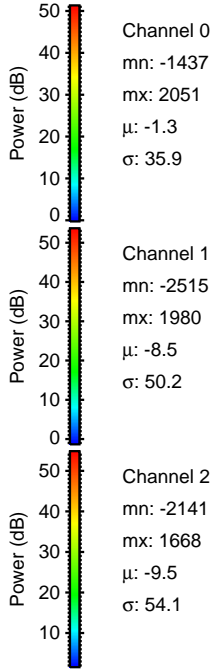
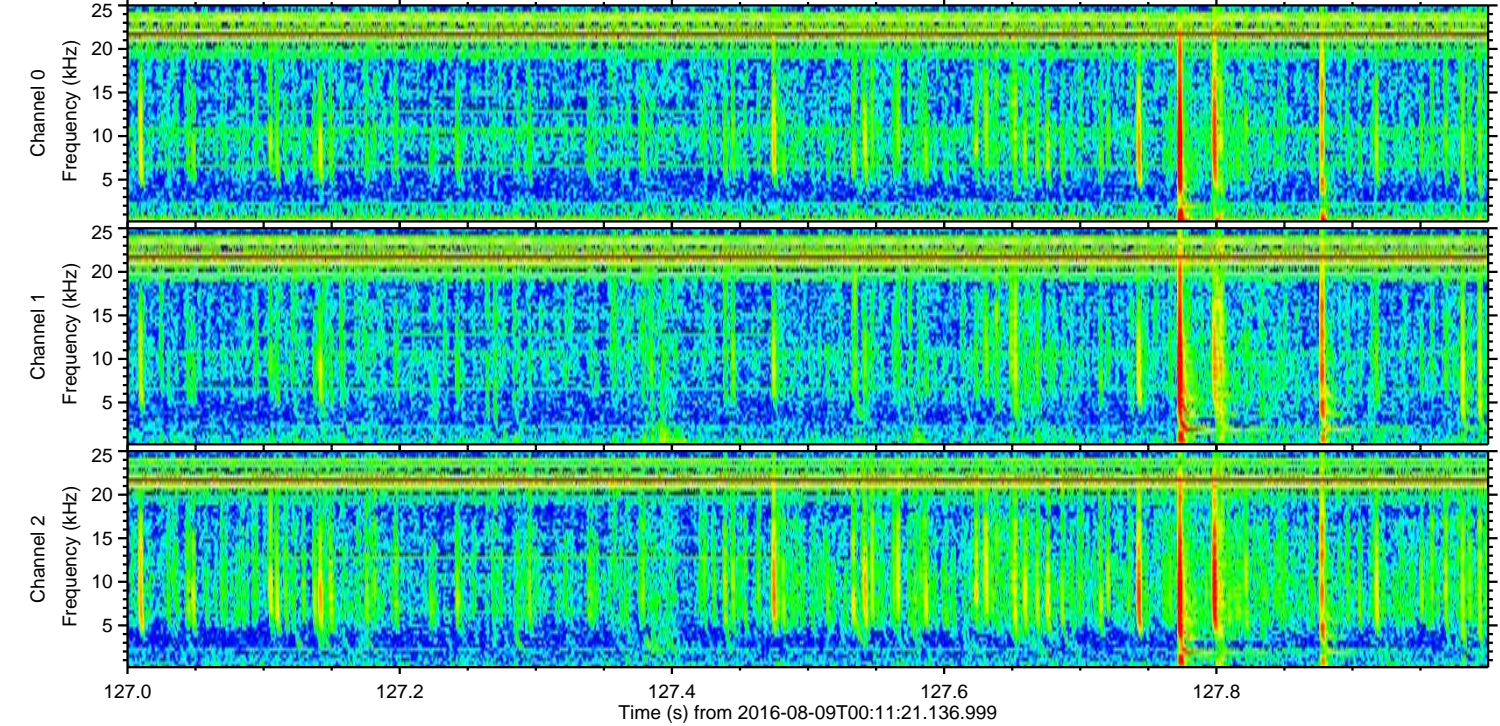
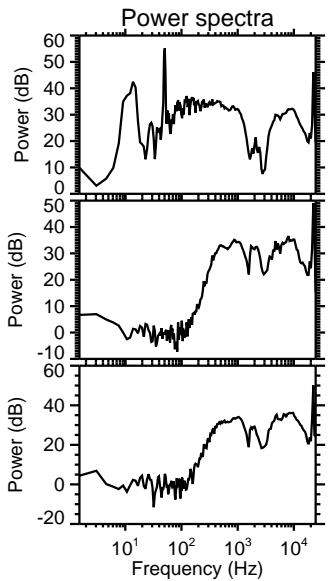
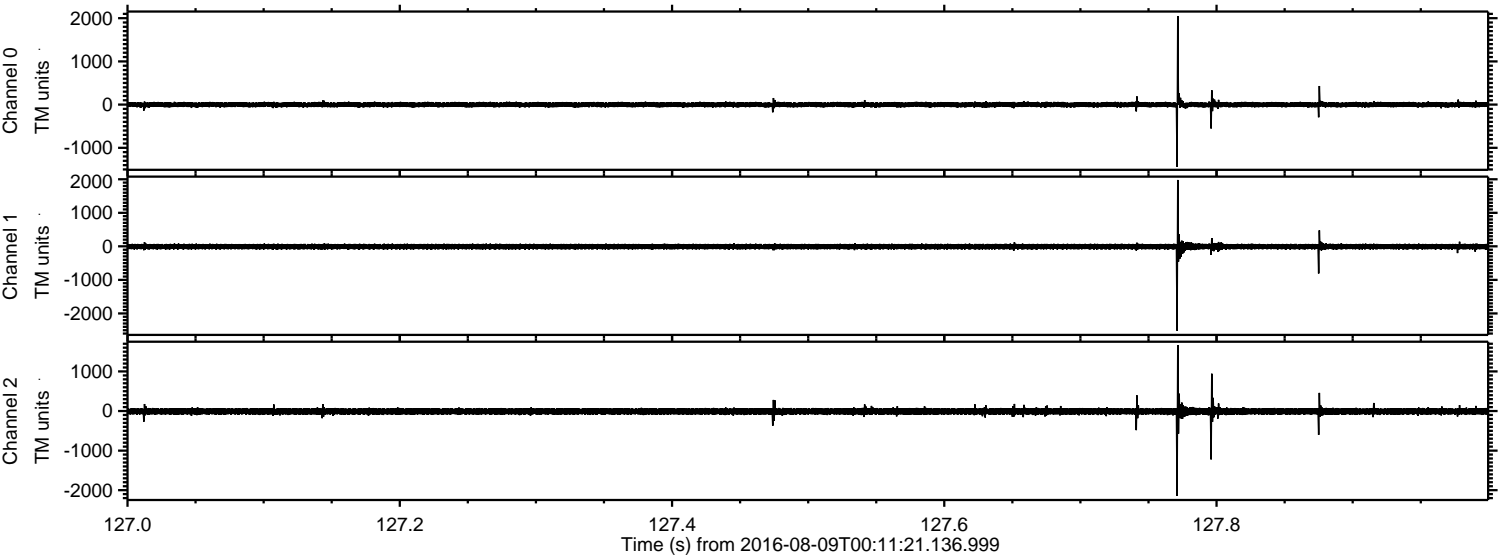
ELMAVAN 3D WAVEFORMS (Measured data sampled at 50 kHz) 51000 packets of 144 samples from 2016-08-09T00:11:21.136.999.

Processed Tue Aug 9 02:19:20 2016 by ELM ver.2012-10-06 from 001__elm20160809_001120__dat00.bin

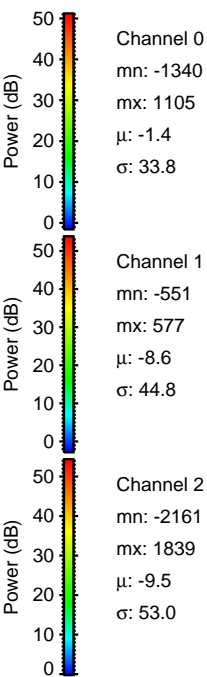
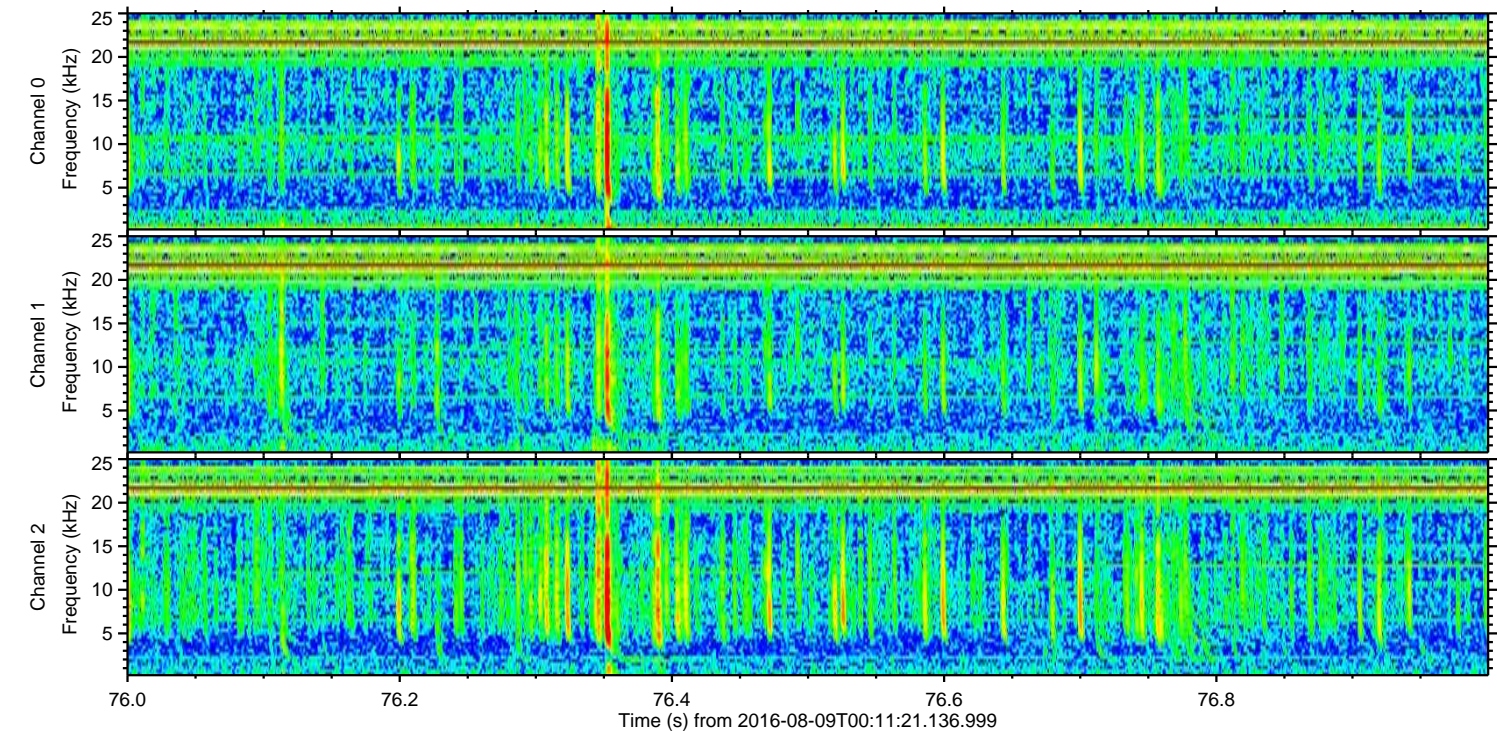
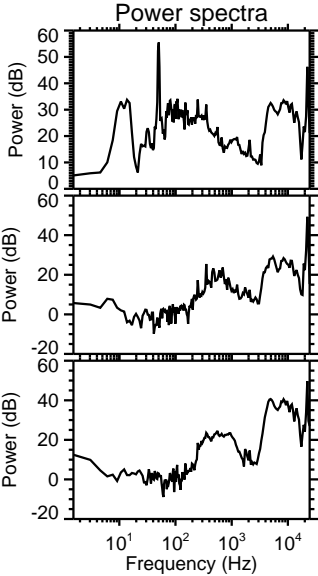
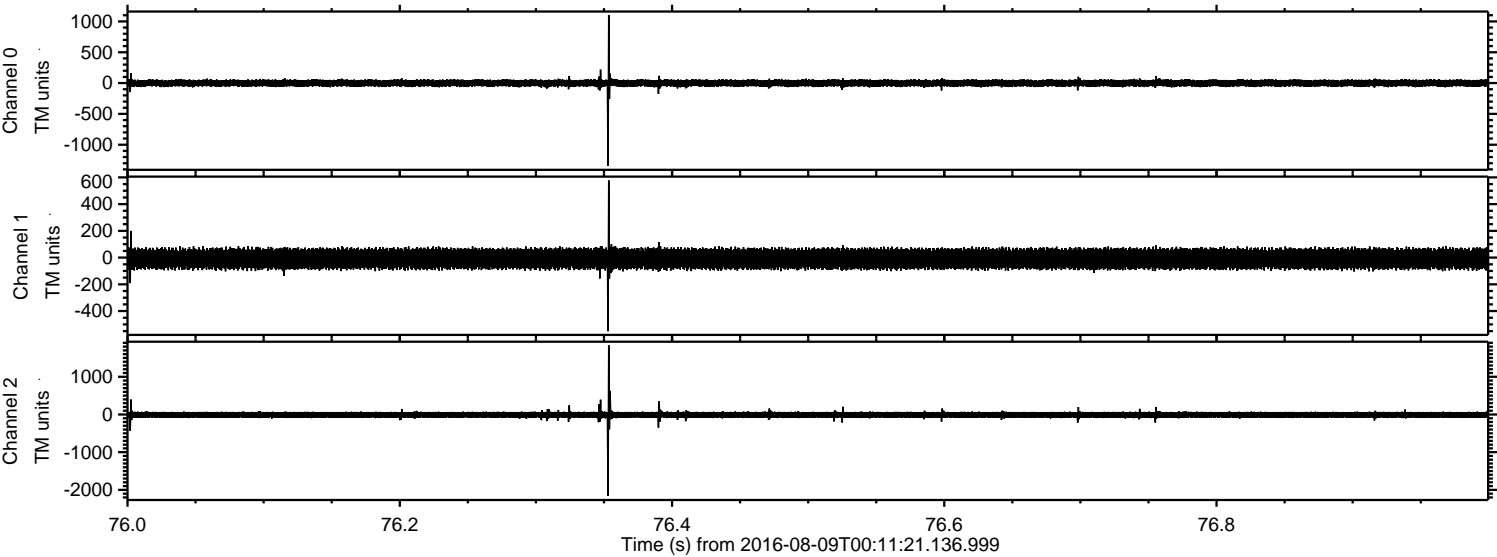


ELMAVAN 3D WAVEFORMS (Measured data sampled at 50 kHz) 51000 packets of 144 samples from 2016-08-09T00:11:21.136.999. Part 128/147

Processed Tue Aug 9 02:19:31 2016 by ELM ver.2012-10-06 from 001__elm20160809_001120__dat00.bin

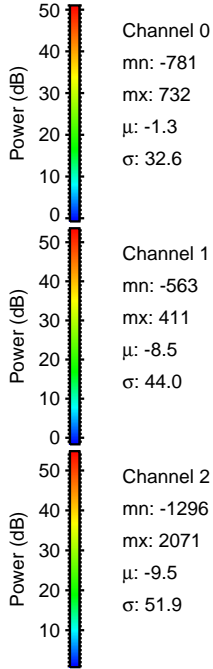
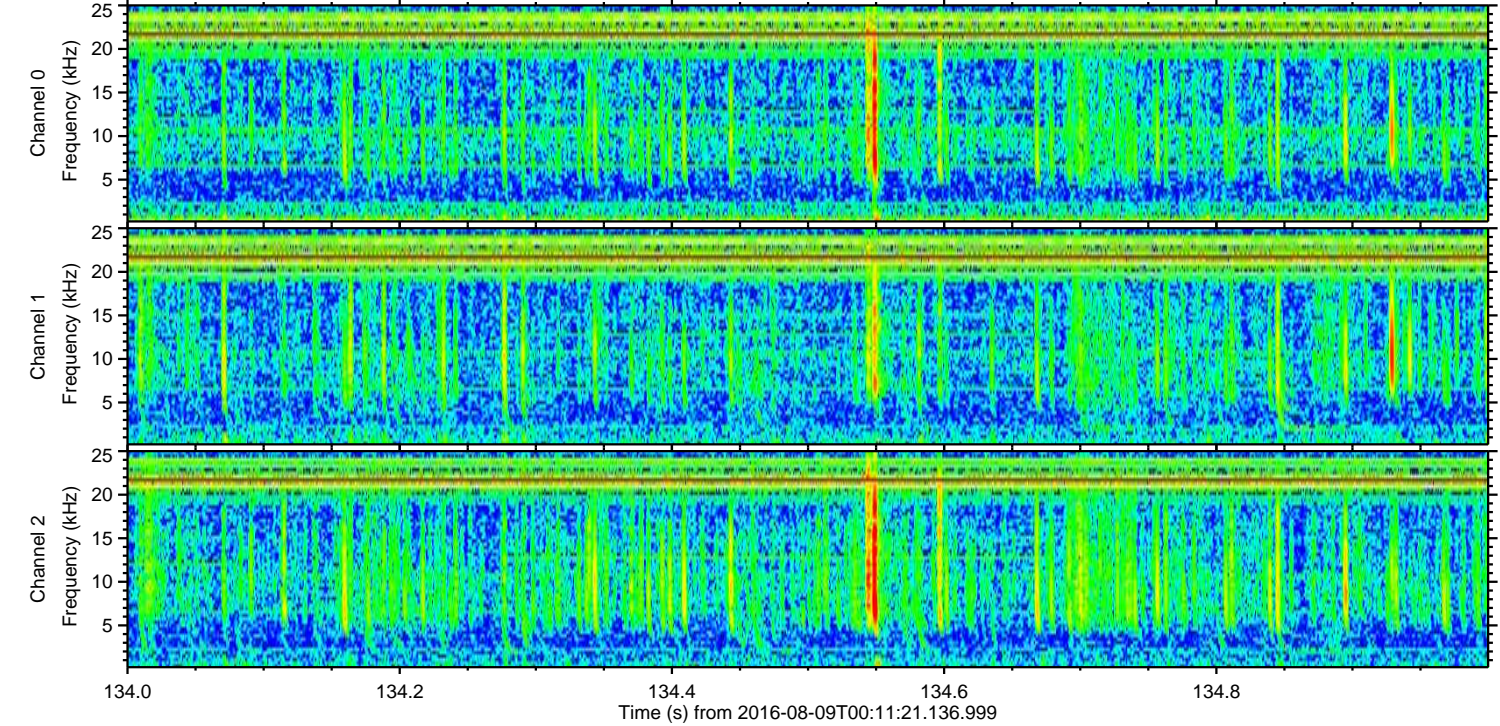
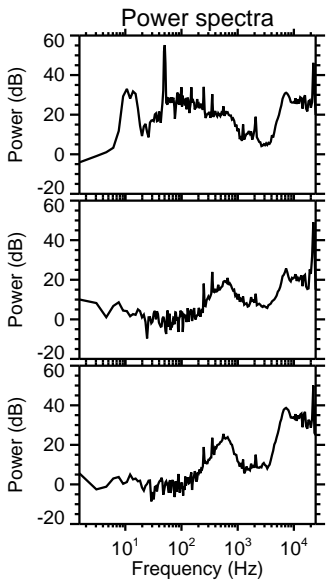
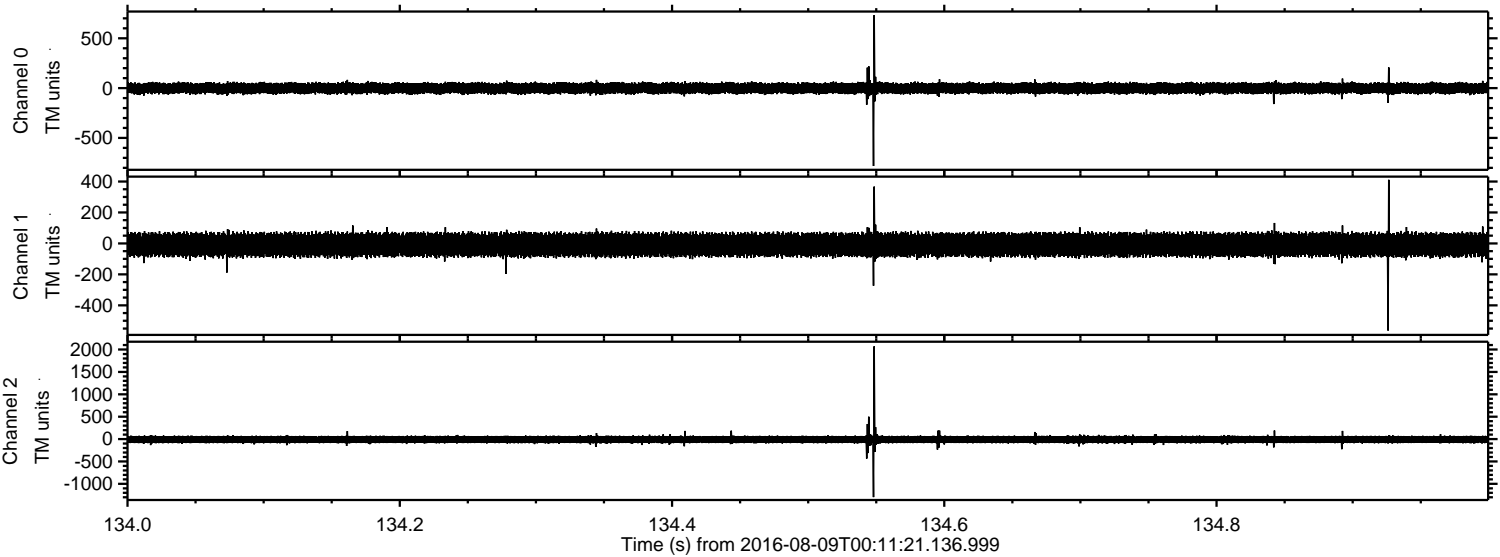


Processed Tue Aug 9 02:19:32 2016 by ELM ver.2012-10-06 from 001__elm20160809_001120__dat00.bin

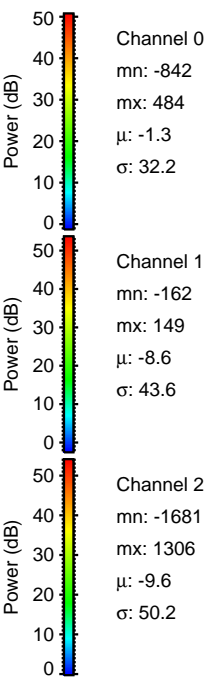
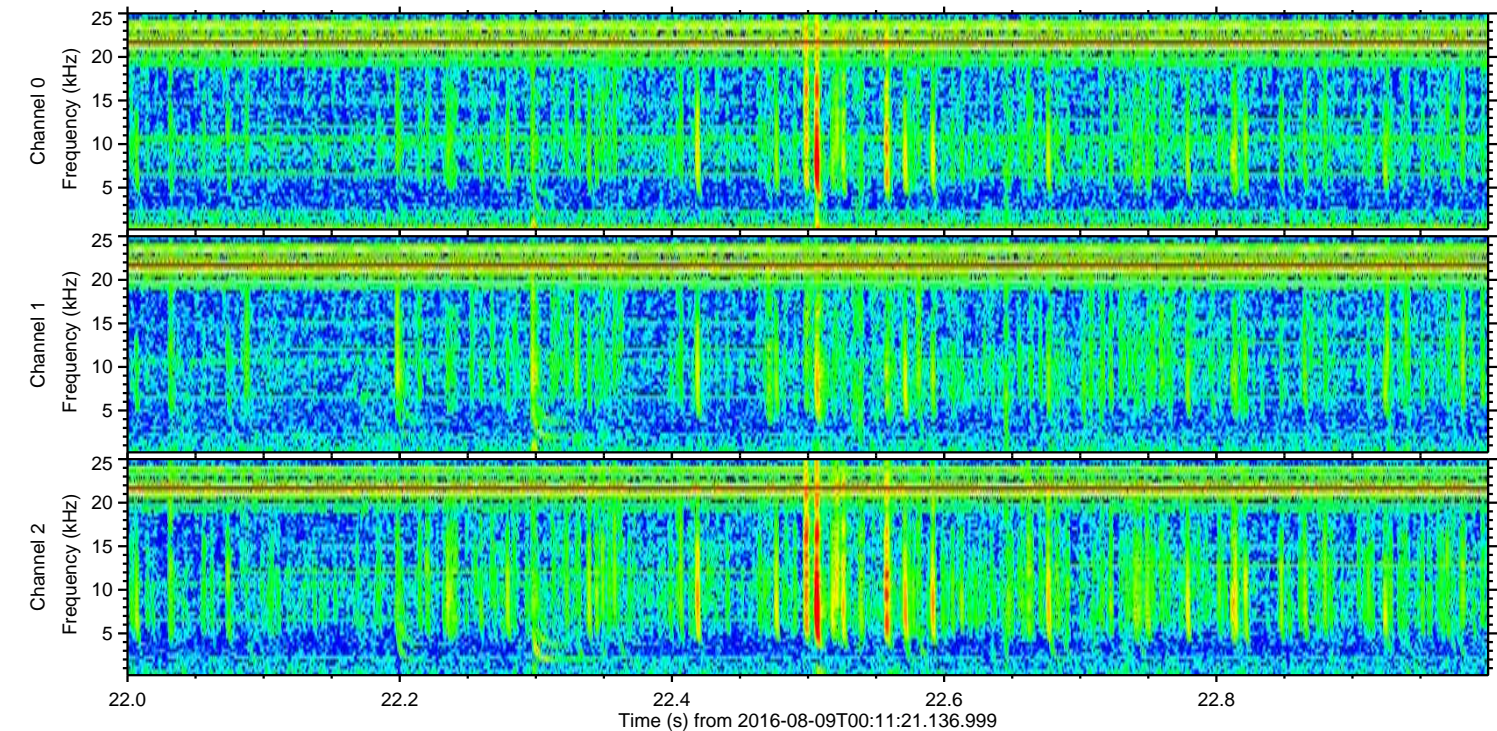
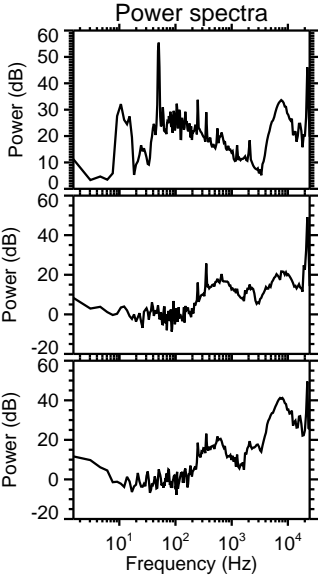
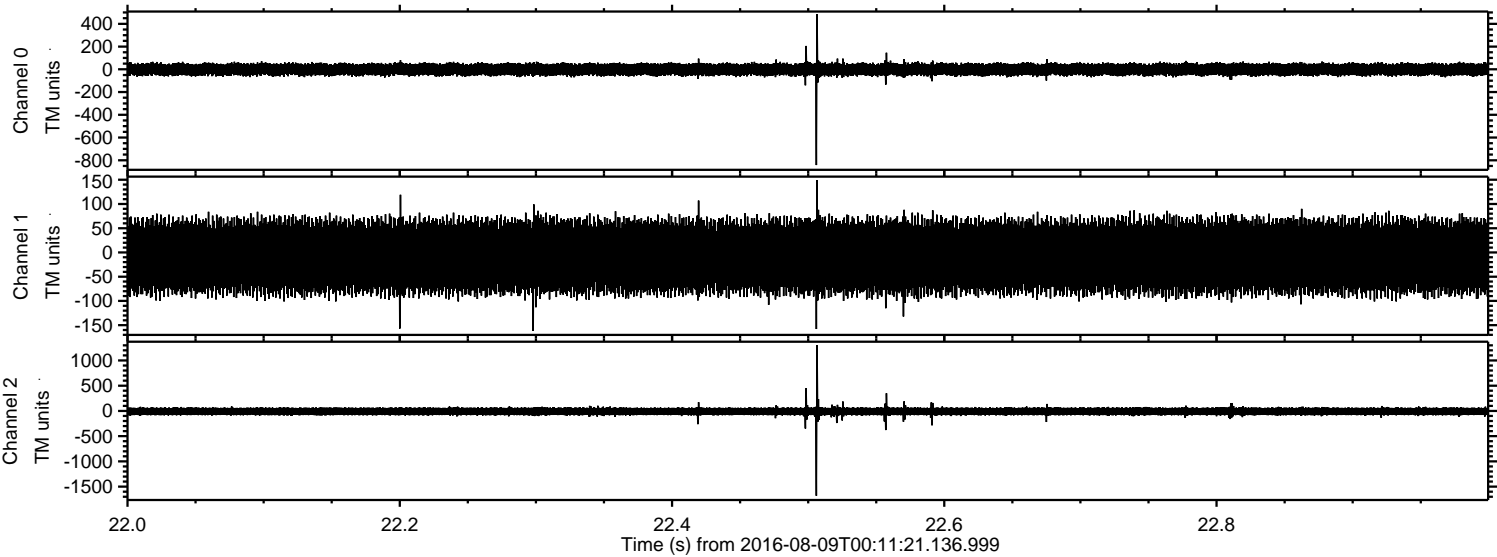


ELMAVAN 3D WAVEFORMS (Measured data sampled at 50 kHz) 51000 packets of 144 samples from 2016-08-09T00:11:21.136.999. Part 135/147

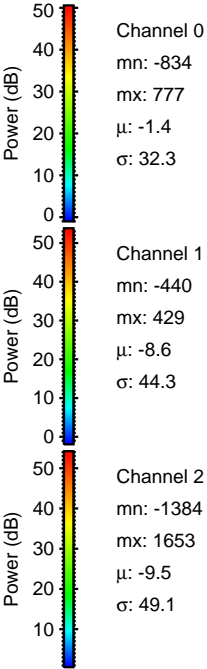
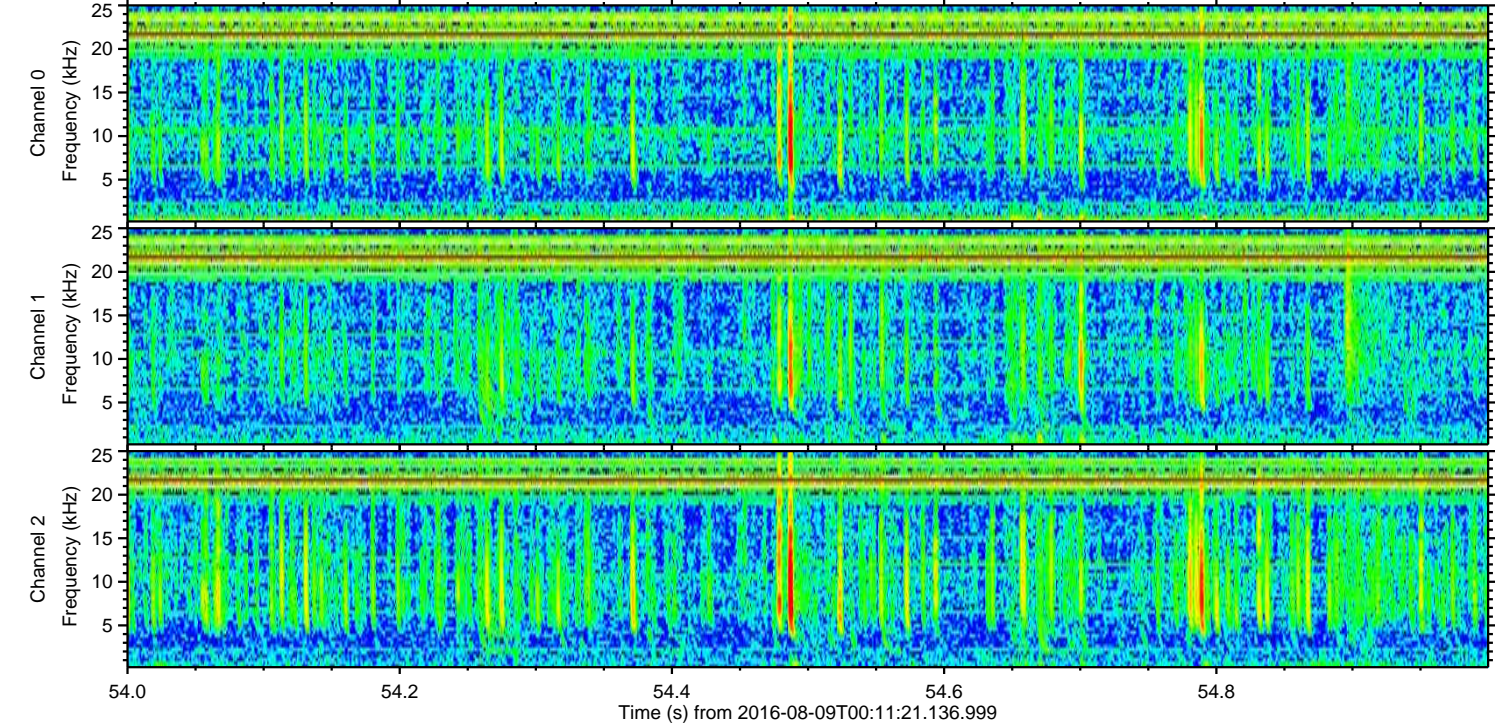
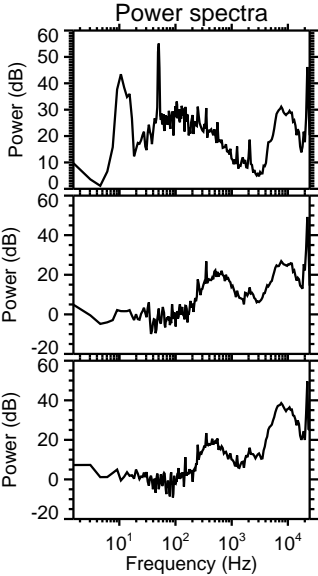
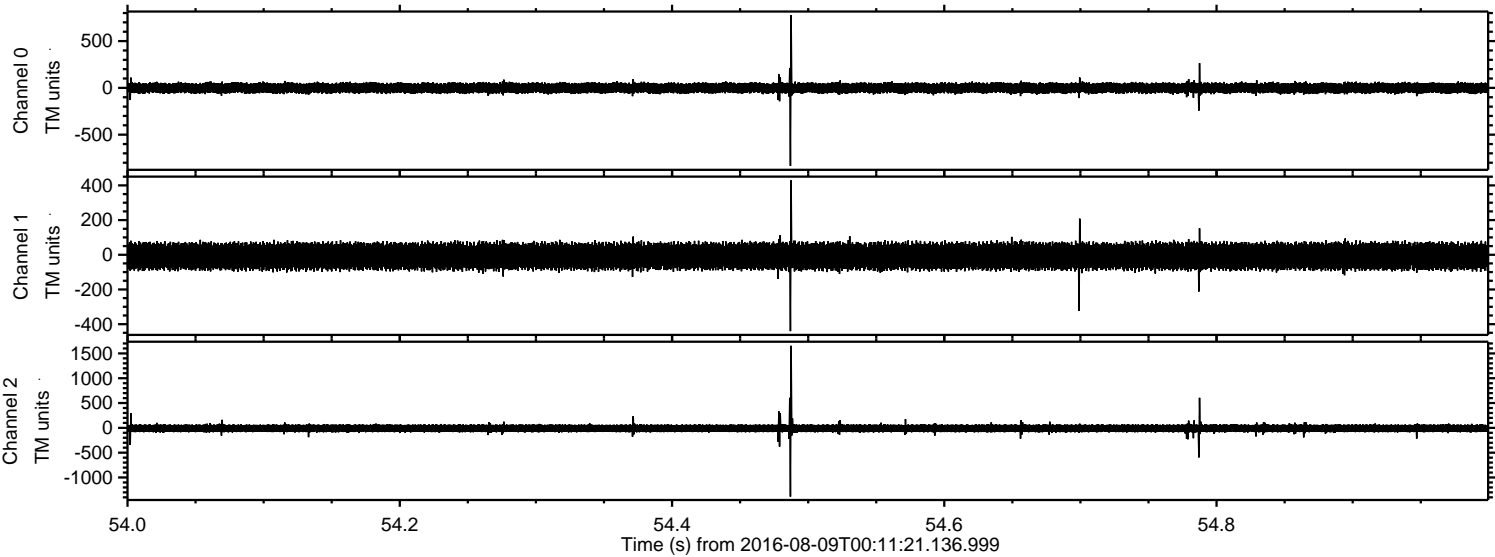
Processed Tue Aug 9 02:19:33 2016 by ELM ver.2012-10-06 from 001__elm20160809_001120__dat00.bin



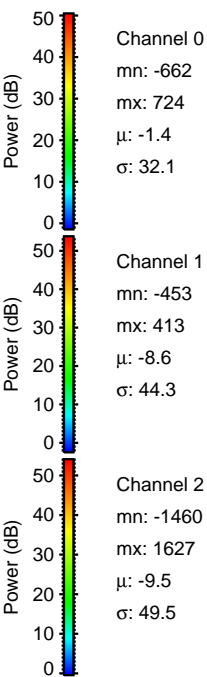
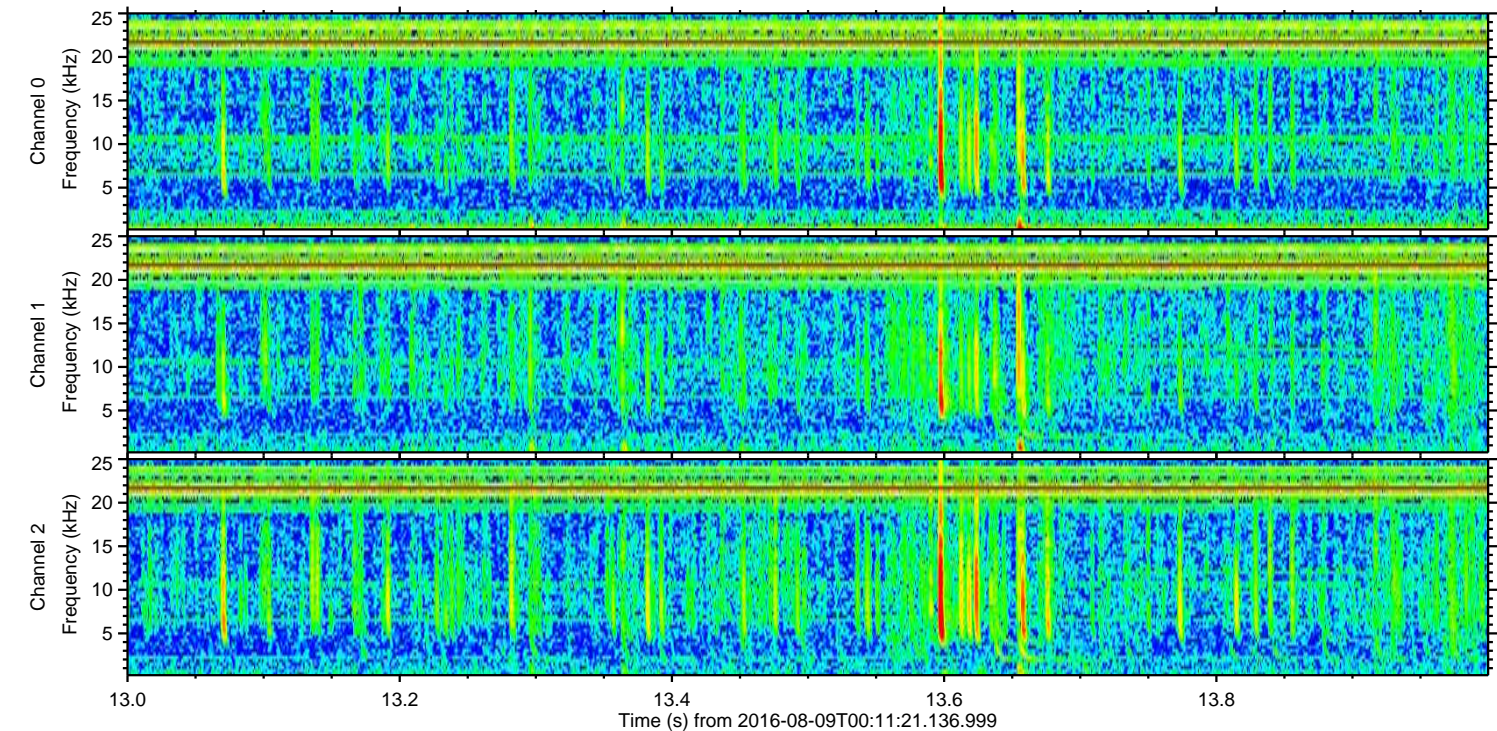
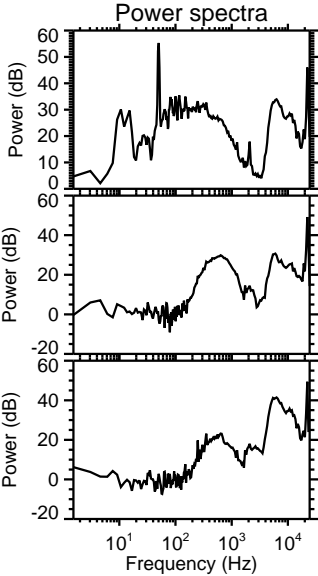
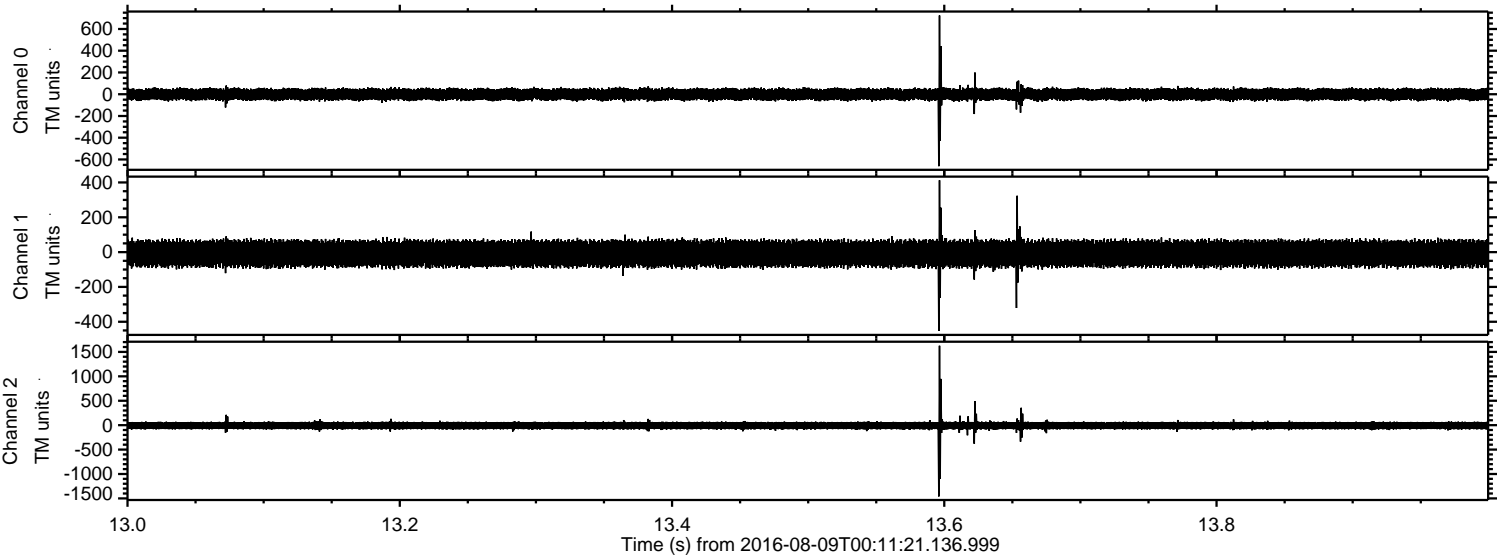
Processed Tue Aug 9 02:19:34 2016 by ELM ver.2012-10-06 from 001__elm20160809_001120__dat00.bin



Processed Tue Aug 9 02:19:35 2016 by ELM ver.2012-10-06 from 001__elm20160809_001120__dat00.bin

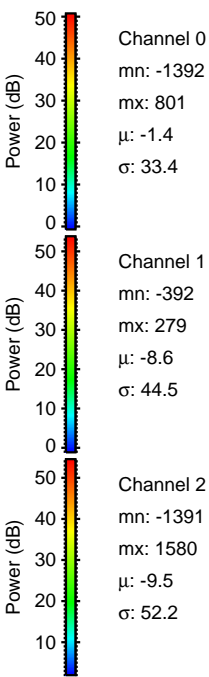
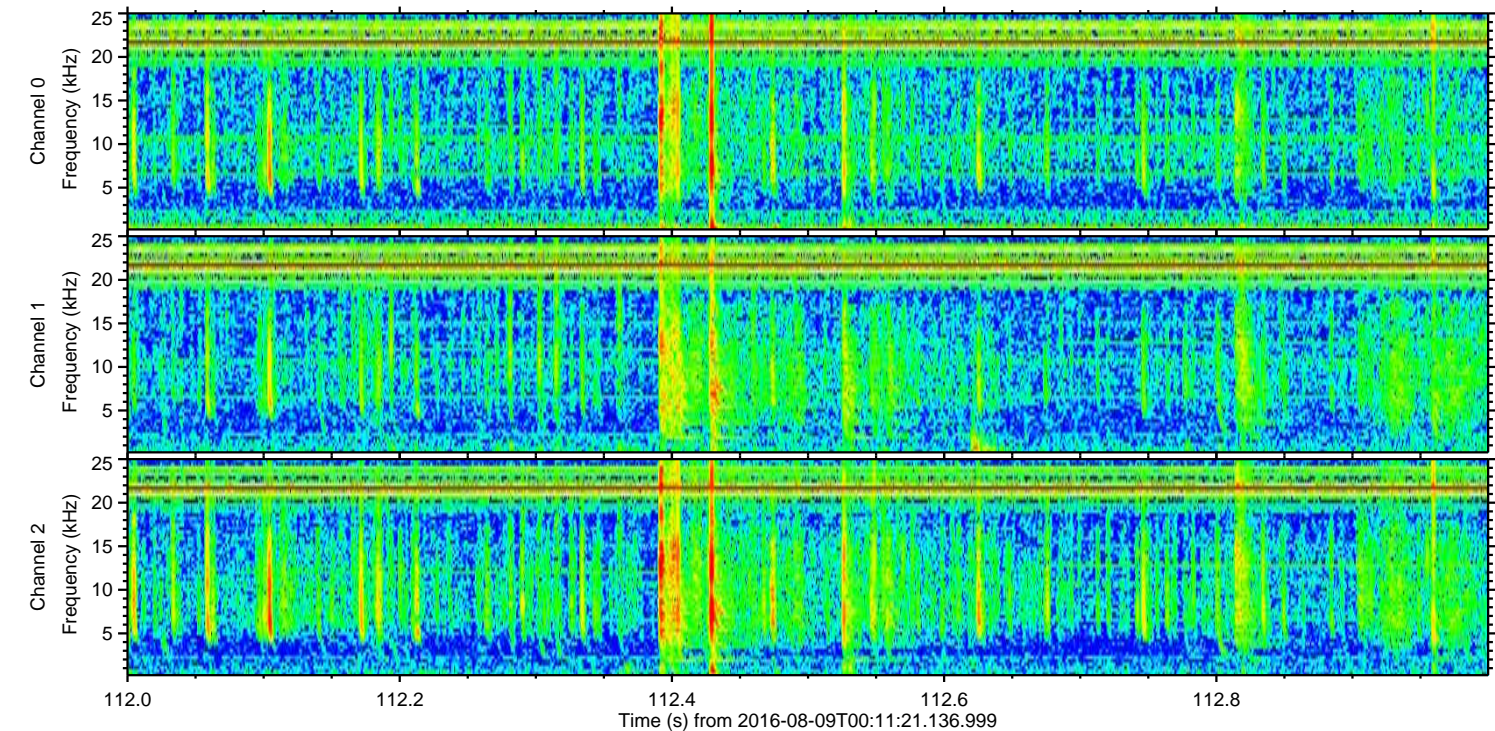
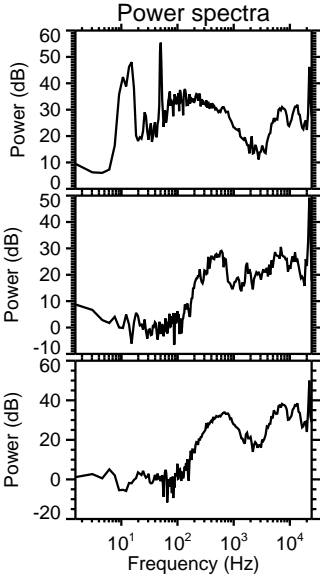
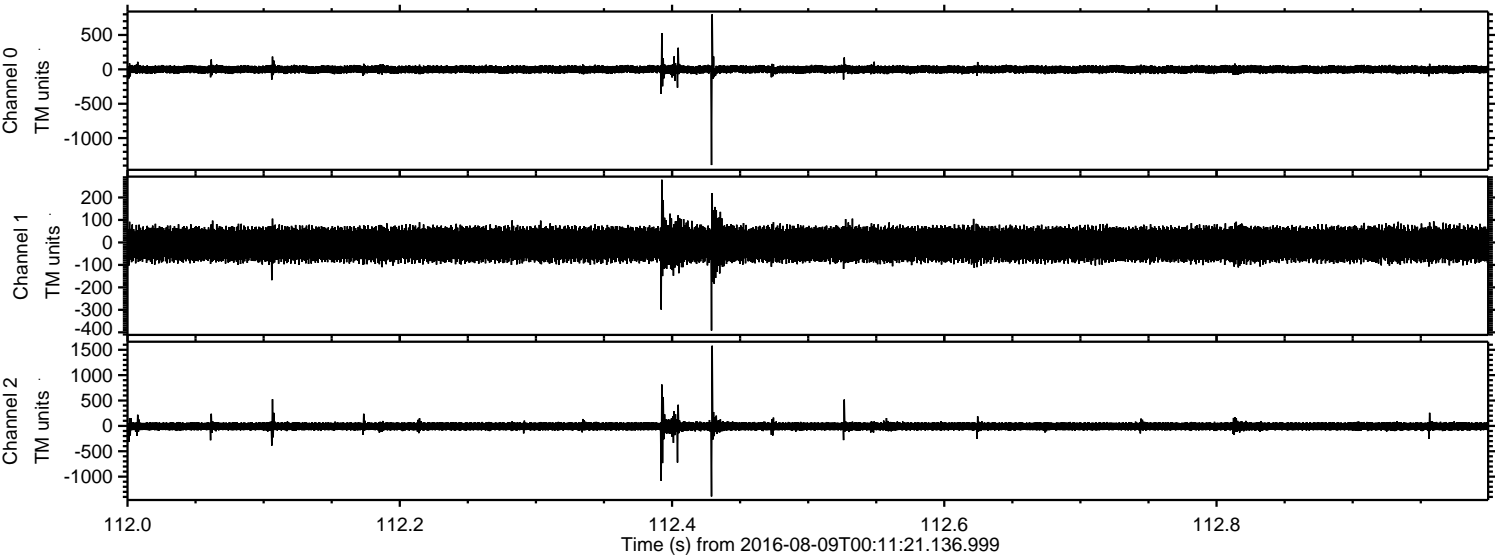


Processed Tue Aug 9 02:19:36 2016 by ELM ver.2012-10-06 from 001__elm20160809_001120__dat00.bin



ELMAVAN 3D WAVEFORMS (Measured data sampled at 50 kHz) 51000 packets of 144 samples from 2016-08-09T00:11:21.136.999. Part 113/147

Processed Tue Aug 9 02:19:37 2016 by ELM ver.2012-10-06 from 001__elm20160809_001120__dat00.bin

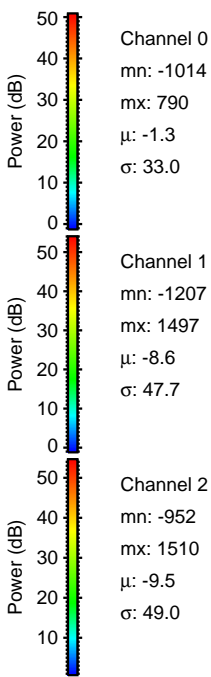
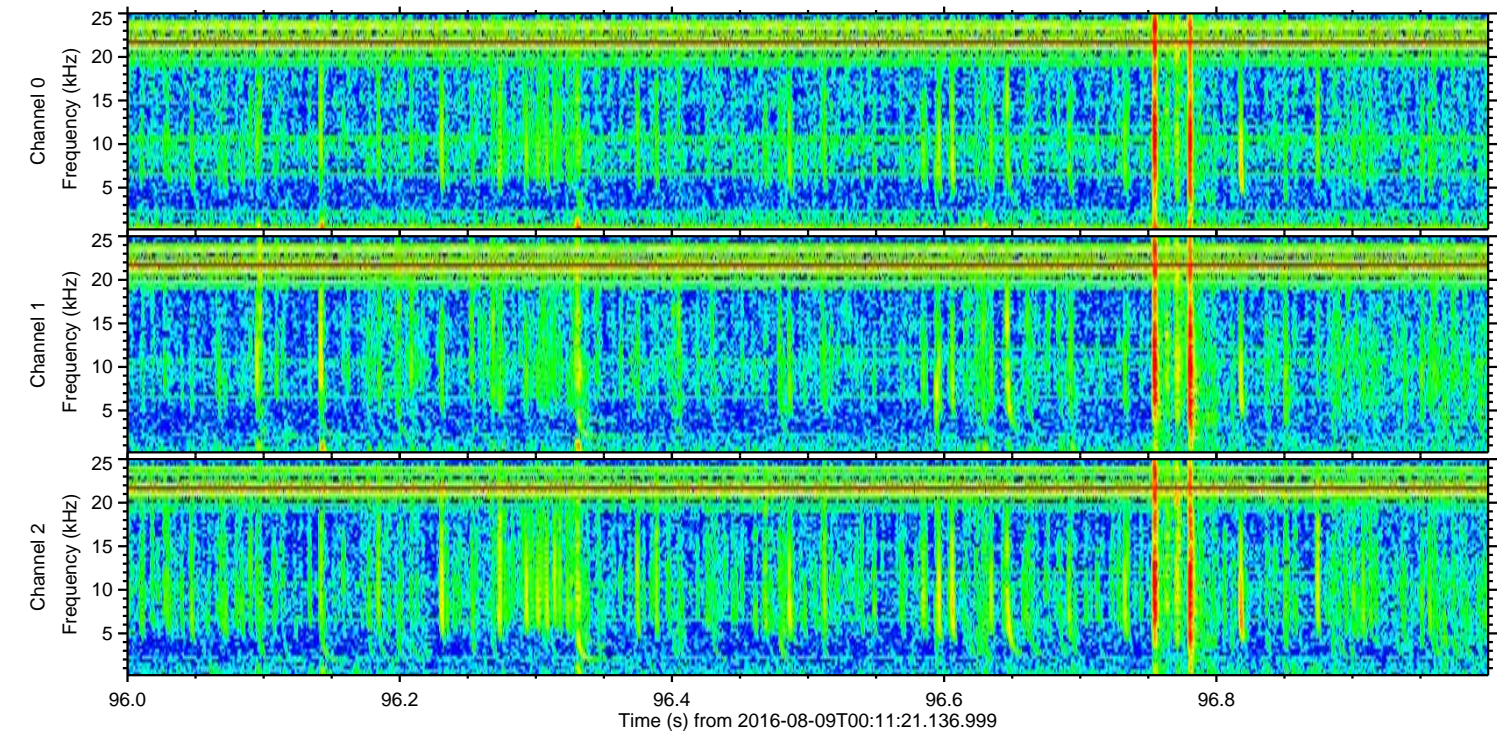
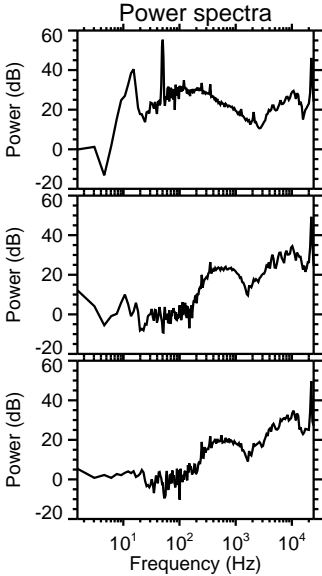
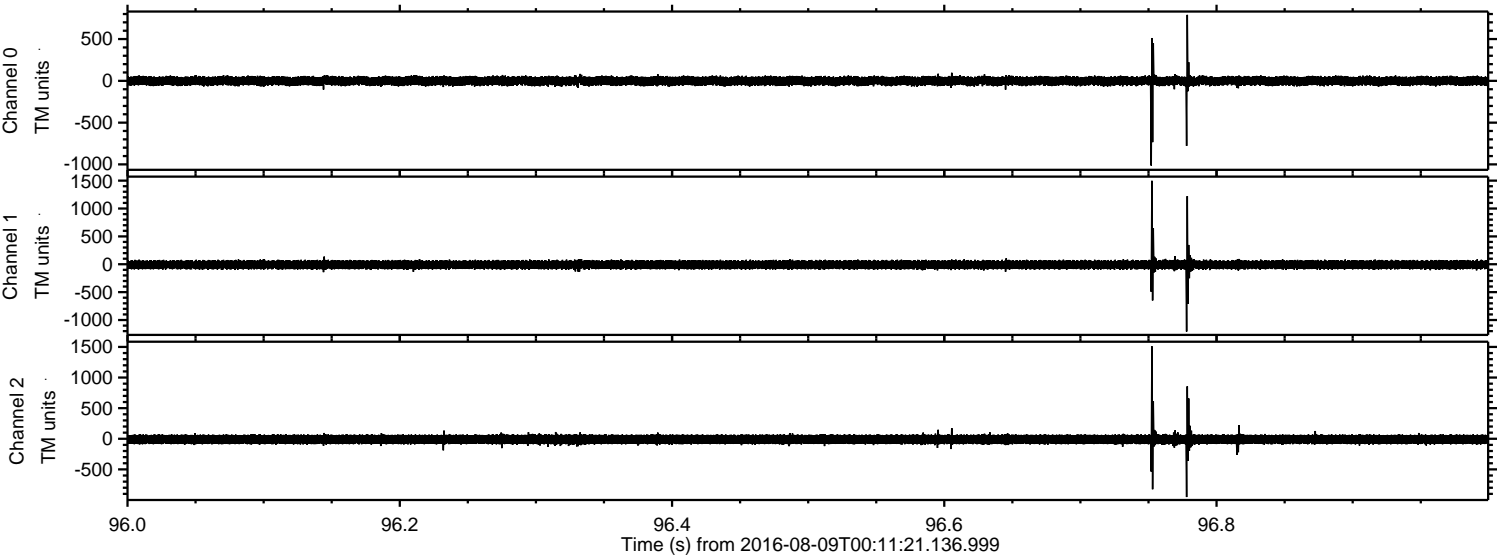


Channel 0
mn: -1392
mx: 801
 μ : -1.4
 σ : 33.4

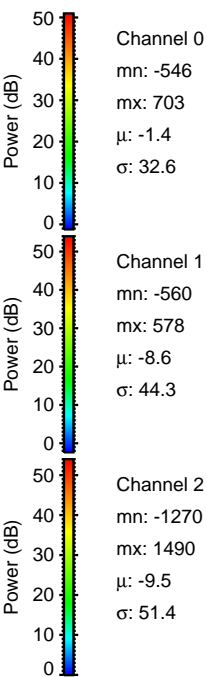
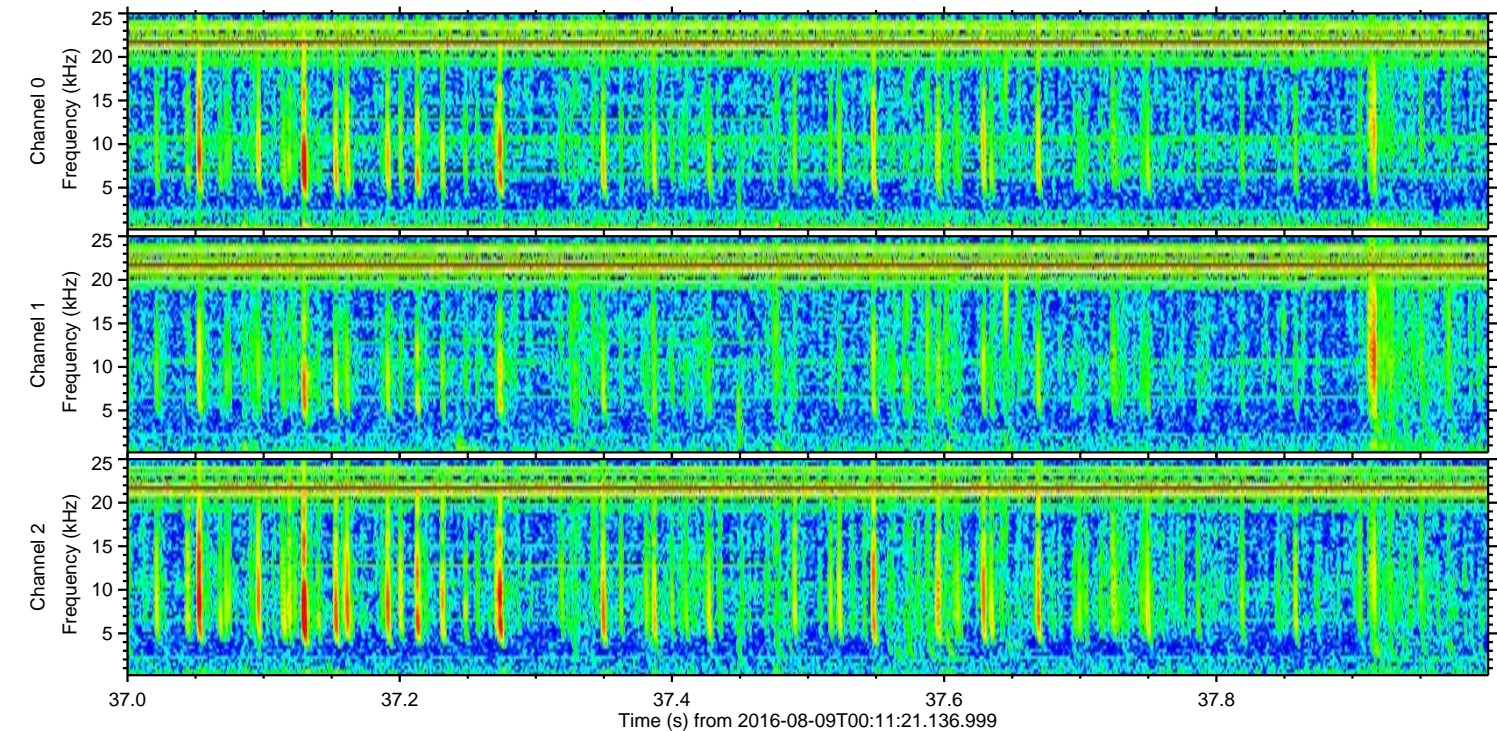
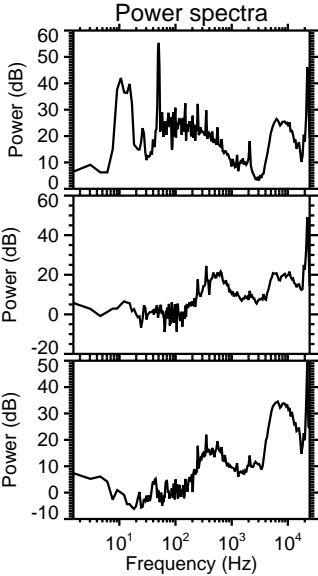
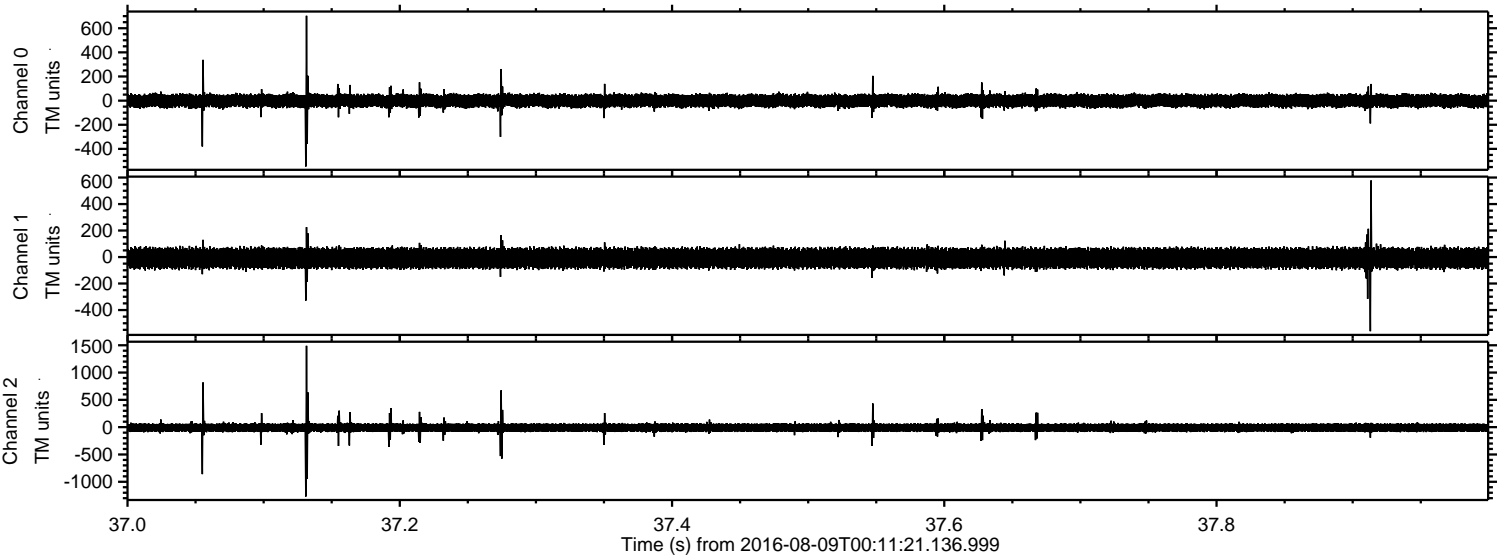
Channel 1
mn: -392
mx: 279
 μ : -8.6
 σ : 44.5

Channel 2
mn: -1391
mx: 1580
 μ : -9.5
 σ : 52.2

Processed Tue Aug 9 02:19:38 2016 by ELM ver.2012-10-06 from 001__elm20160809_001120__dat00.bin



Processed Tue Aug 9 02:19:39 2016 by ELM ver.2012-10-06 from 001__elm20160809_001120__dat00.bin



Processed Tue Aug 9 02:19:40 2016 by ELM ver.2012-10-06 from 001__elm20160809_001120__dat00.bin

