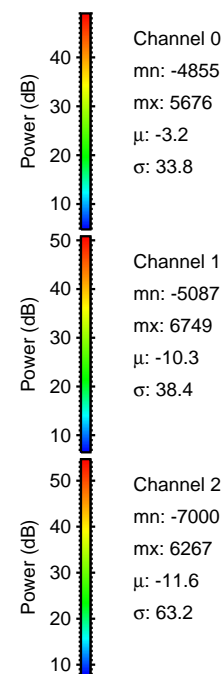
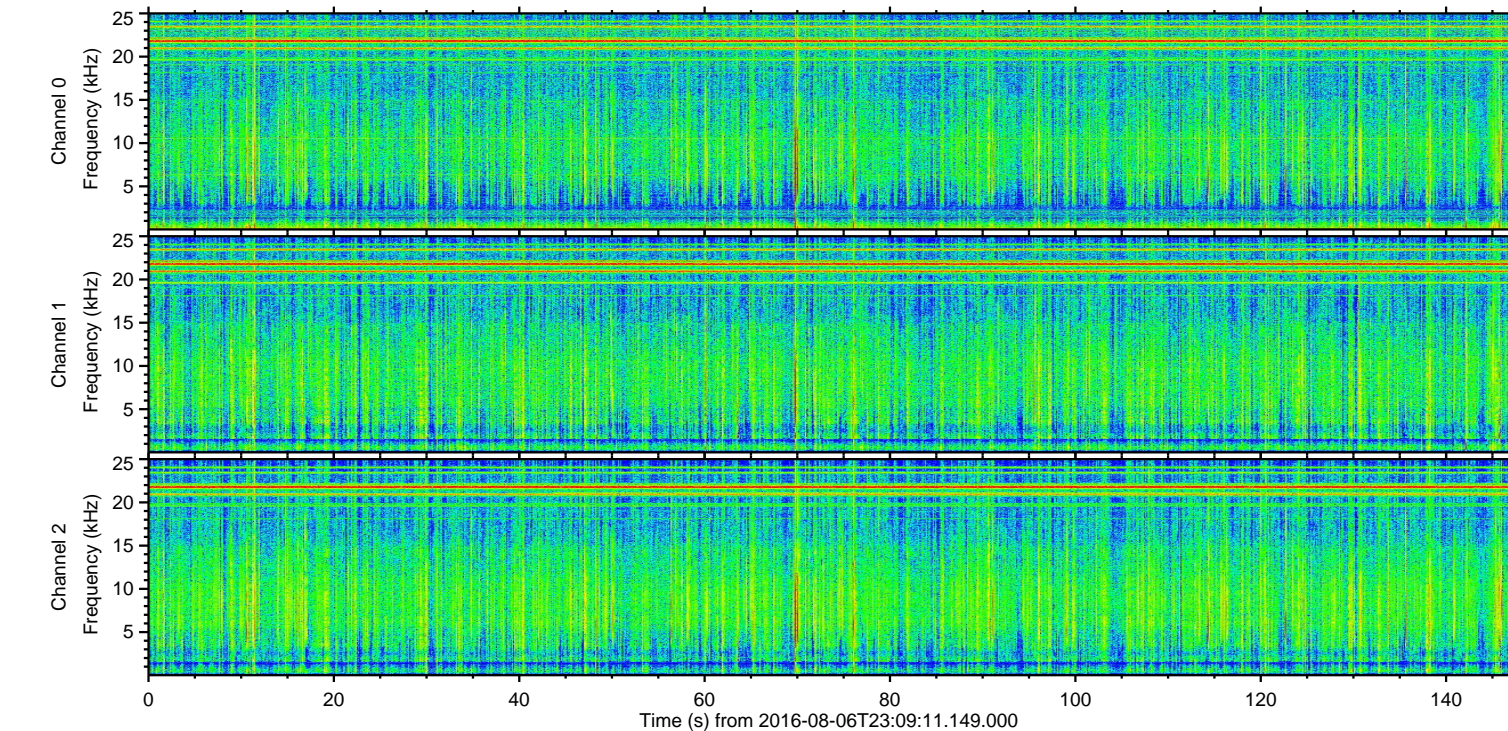
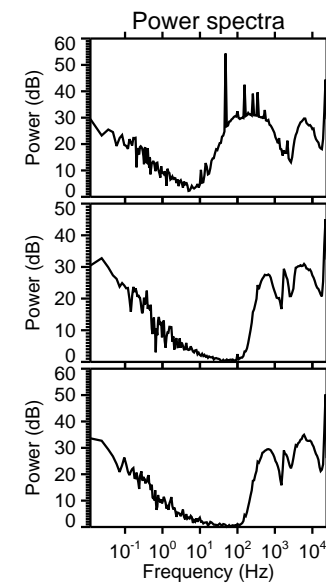
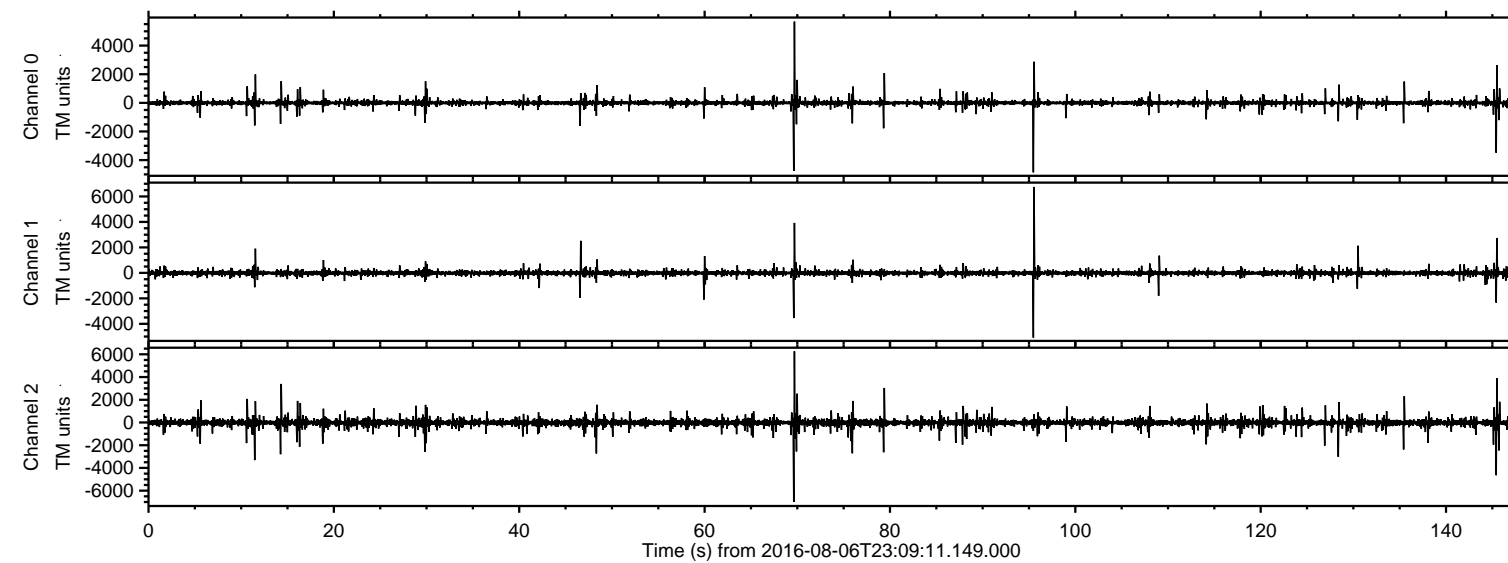
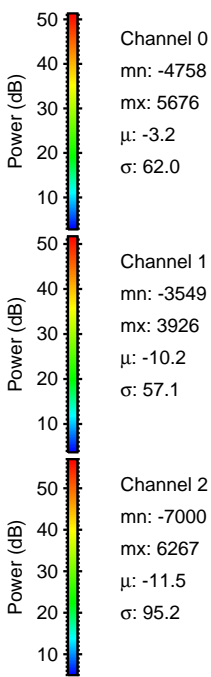
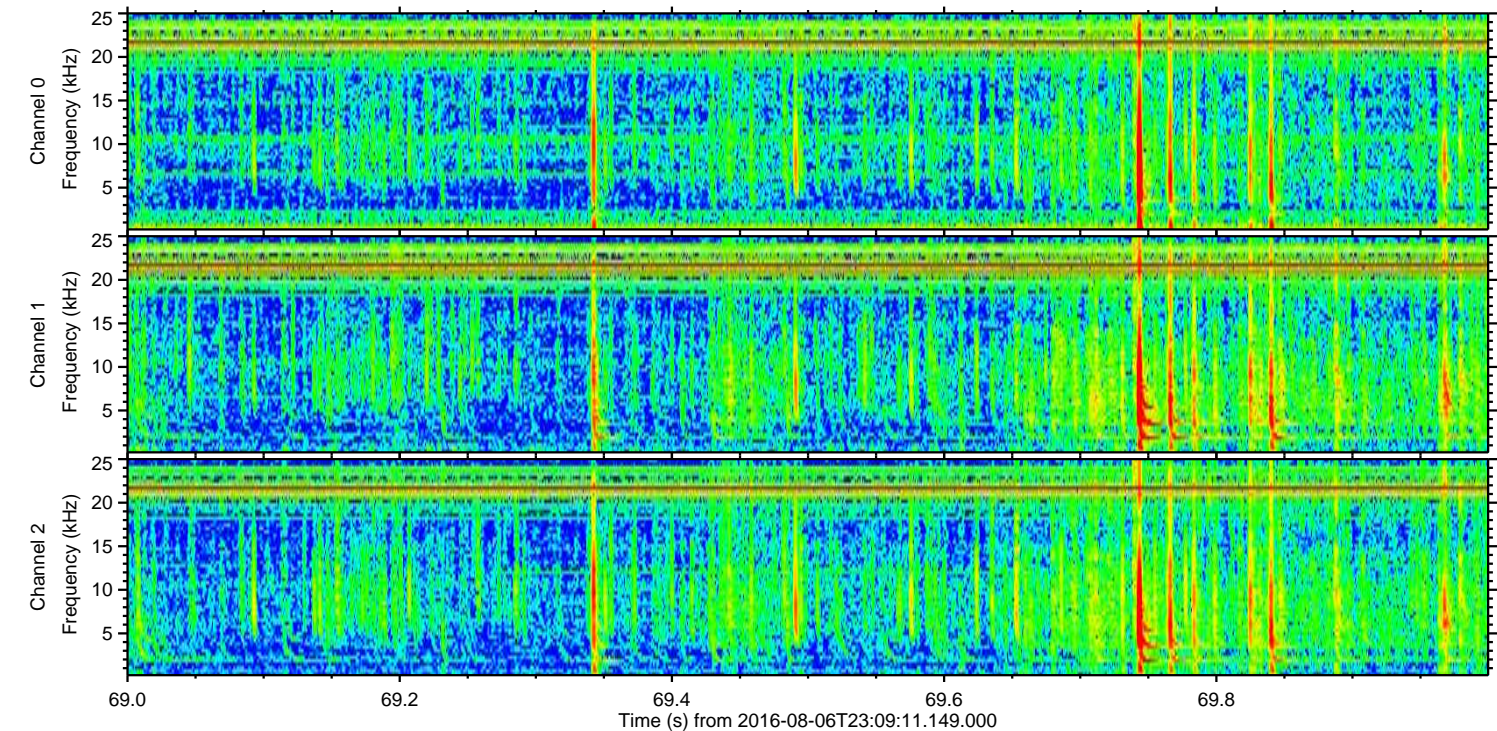
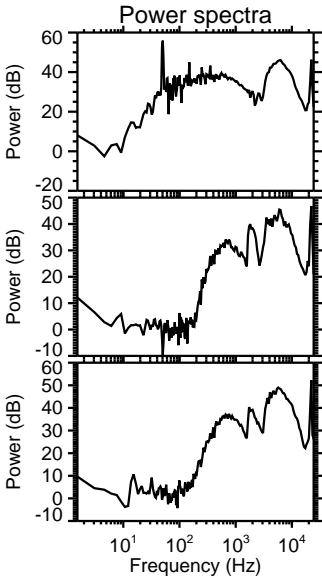
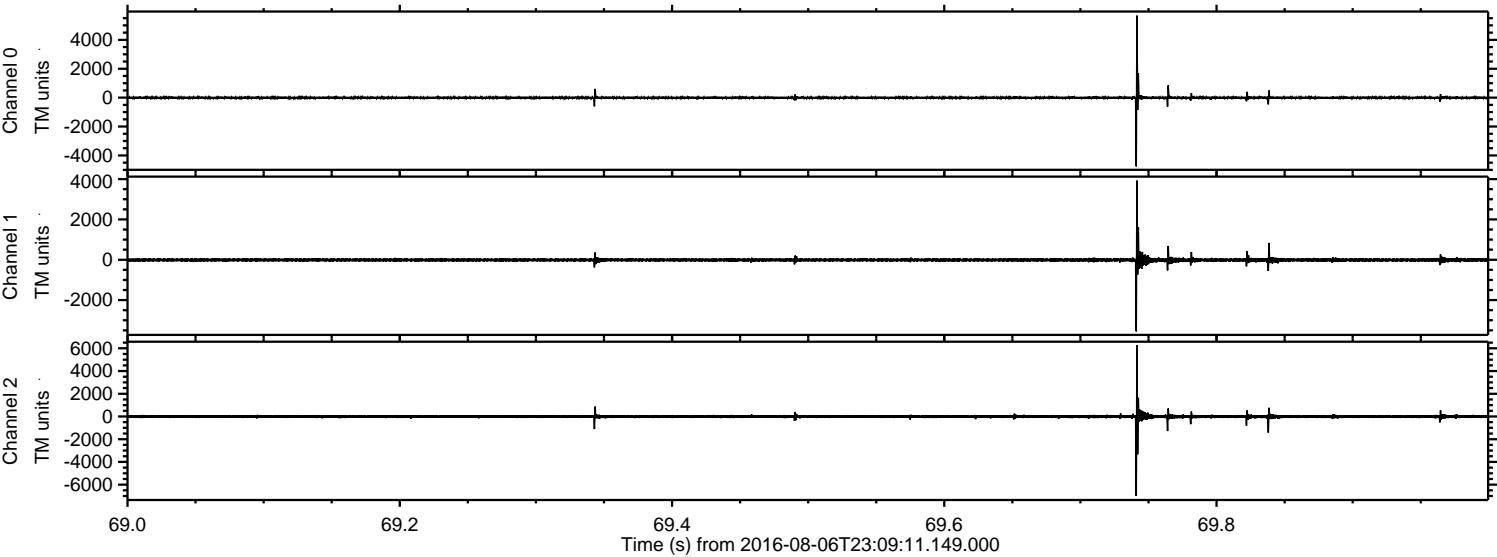


ELMAVAN 3D WAVEFORMS (Measured data sampled at 50 kHz) 51000 packets of 144 samples from 2016-08-06T23:09:11.149.000.

Processed Sun Aug 7 01:16:58 2016 by ELM ver.2012-10-06 from 001__elm20160806_230910__dat00.bin

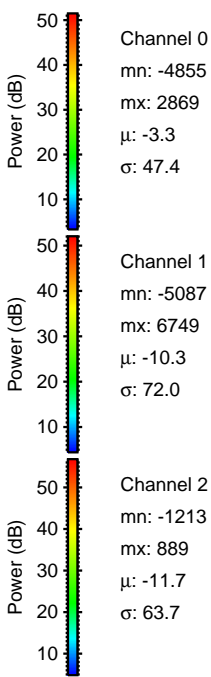
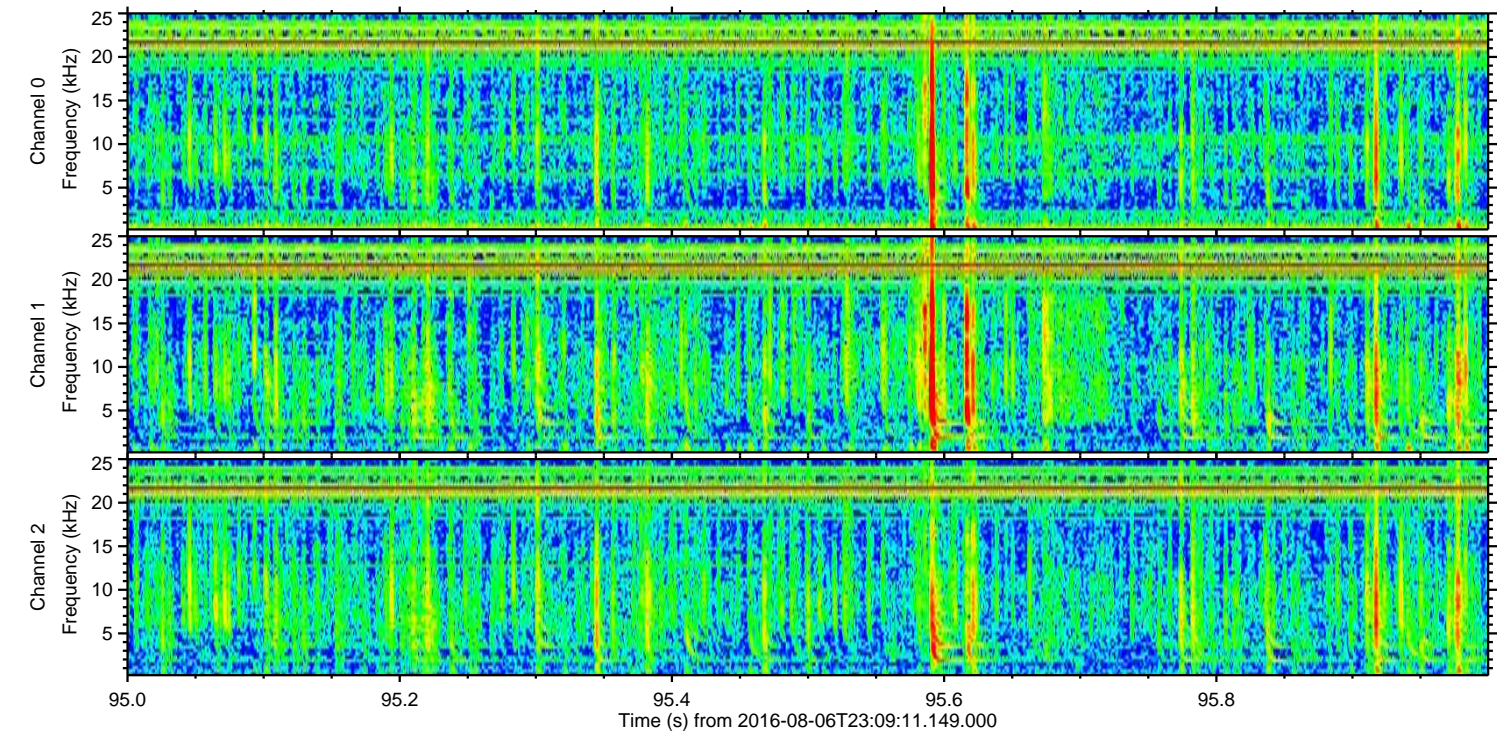
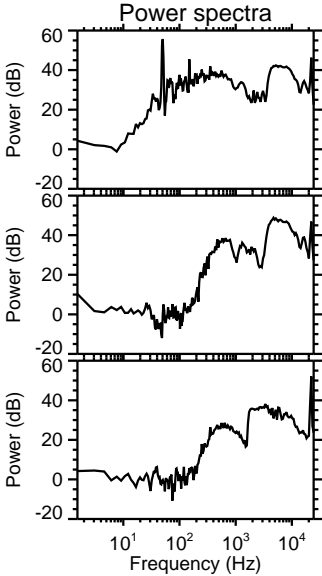
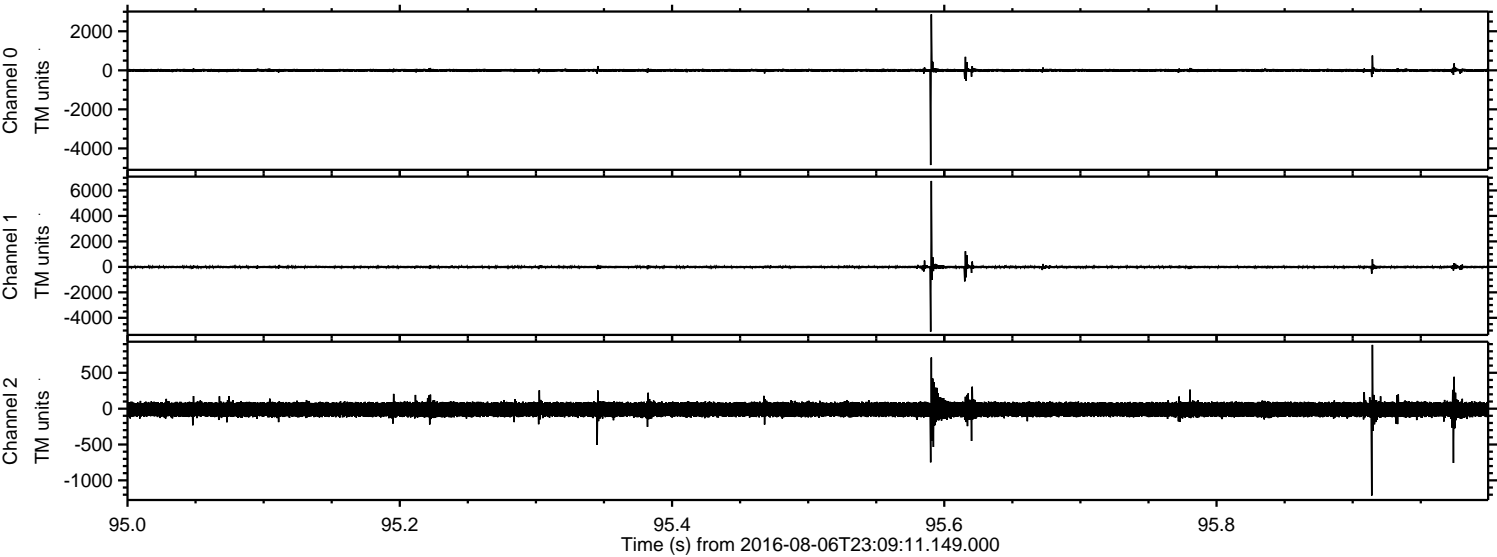


Processed Sun Aug 7 01:17:09 2016 by ELM ver.2012-10-06 from 001__elm20160806_230910__dat00.bin



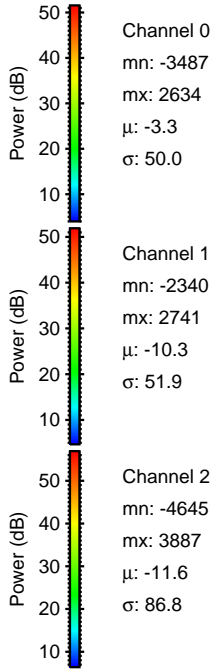
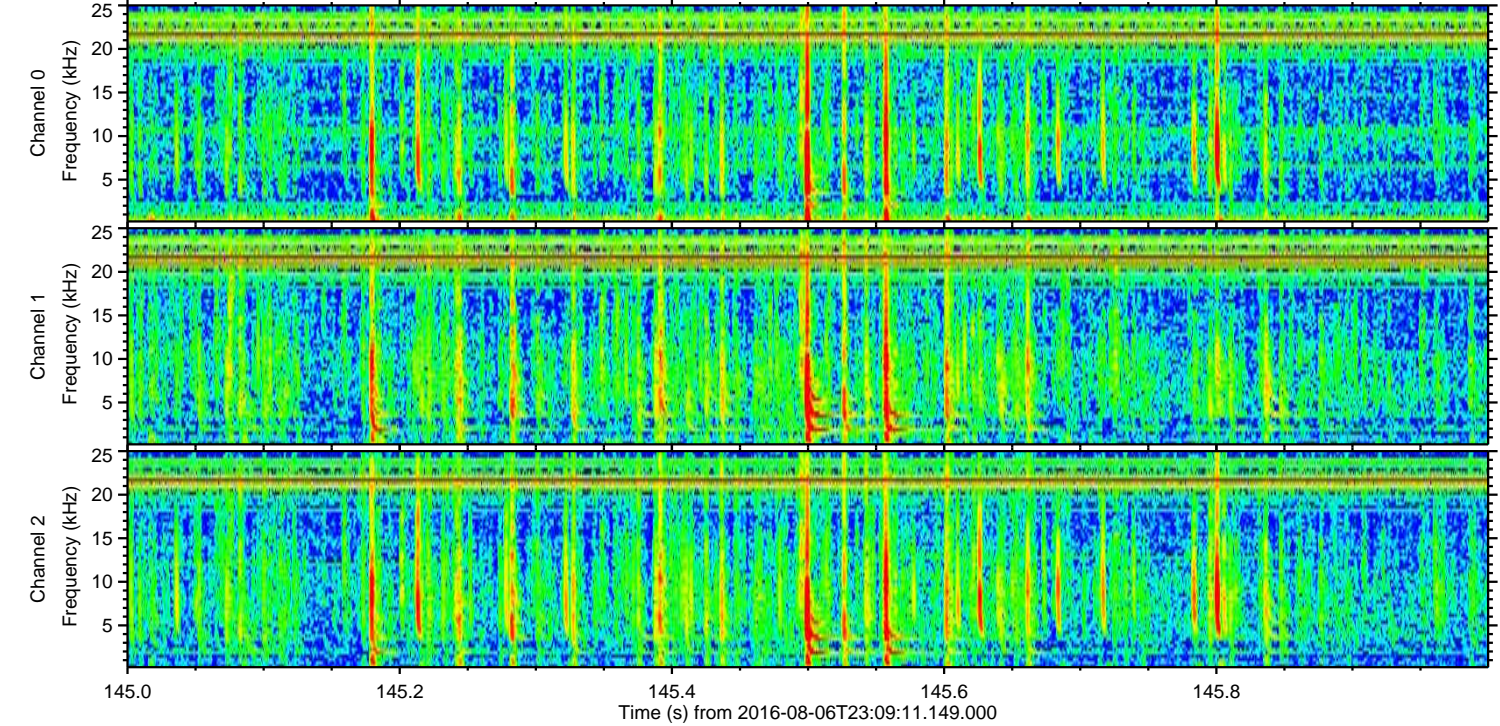
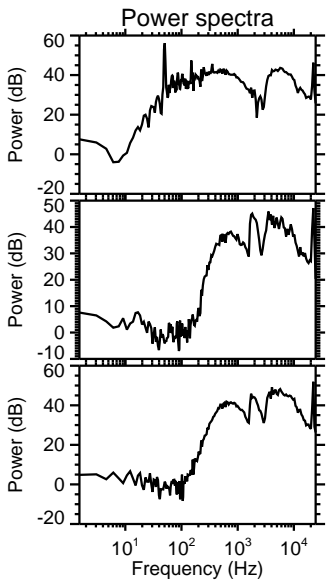
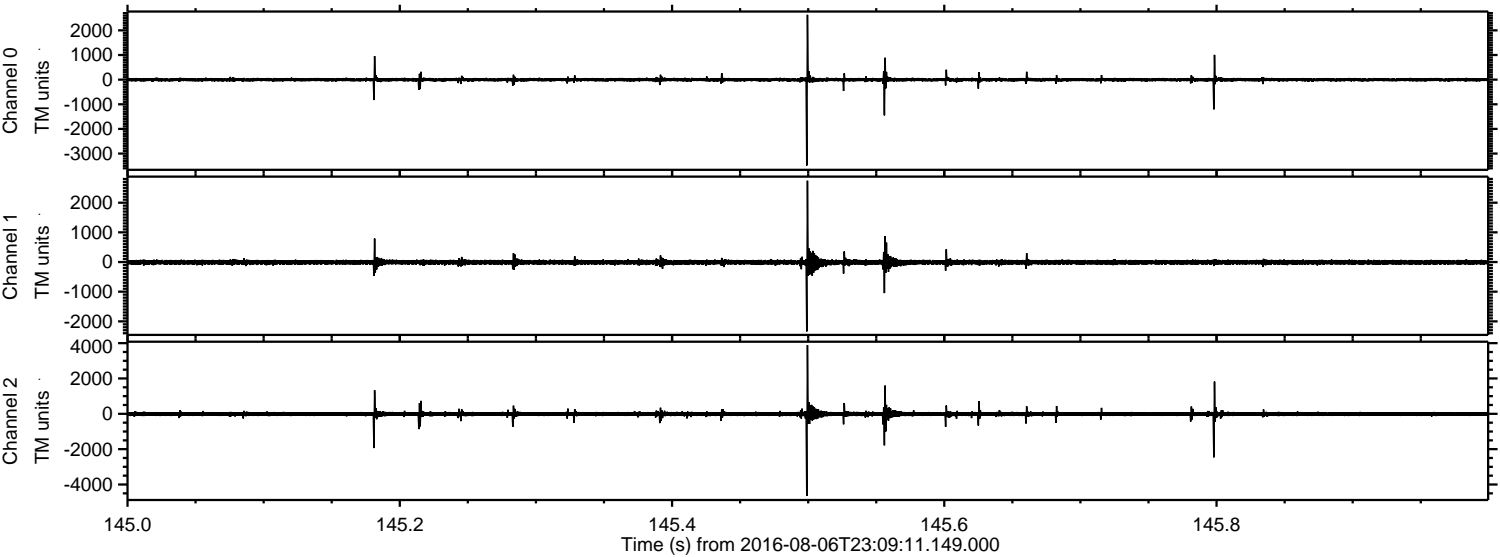
ELMAVAN 3D WAVEFORMS (Measured data sampled at 50 kHz) 51000 packets of 144 samples from 2016-08-06T23:09:11.149.000. Part 96/147

Processed Sun Aug 7 01:17:10 2016 by ELM ver.2012-10-06 from 001__elm20160806_230910__dat00.bin



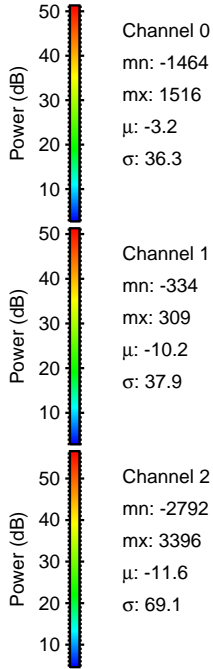
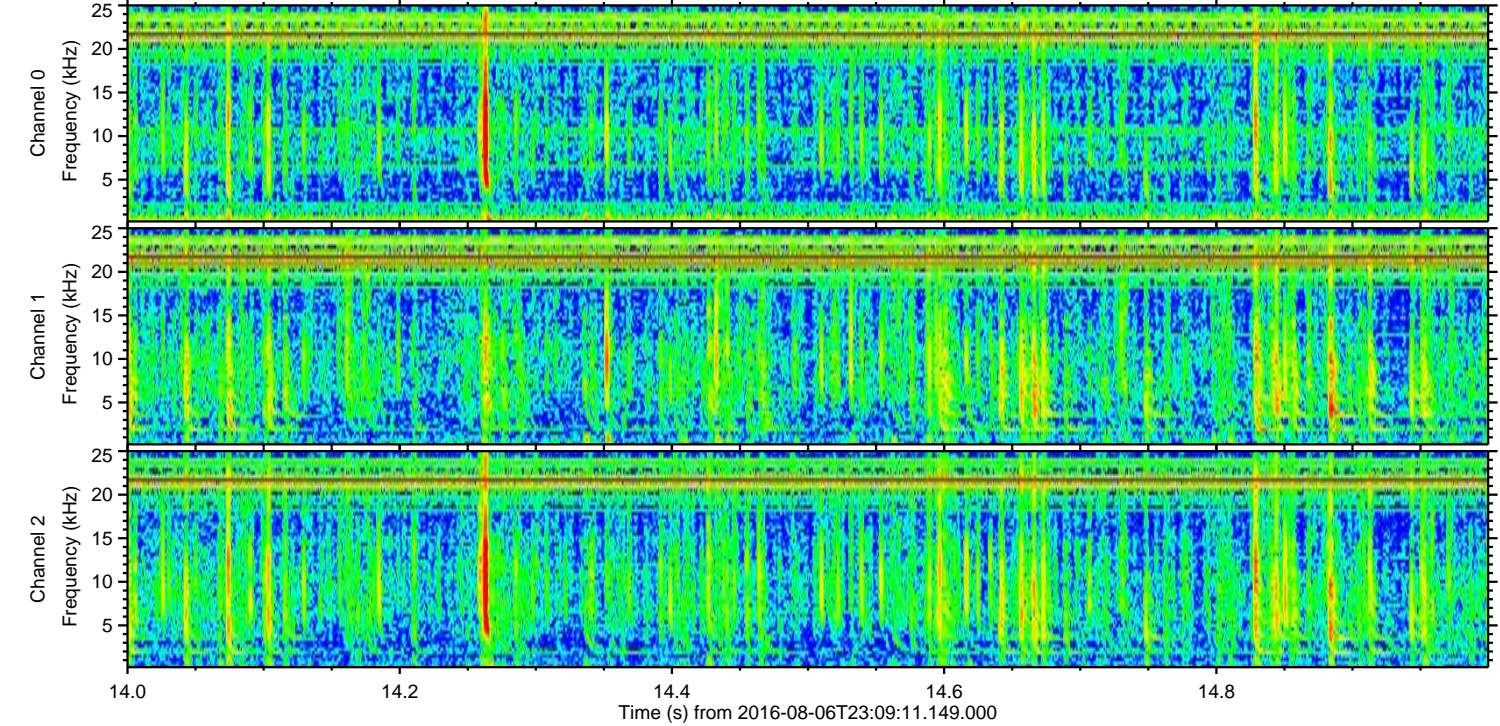
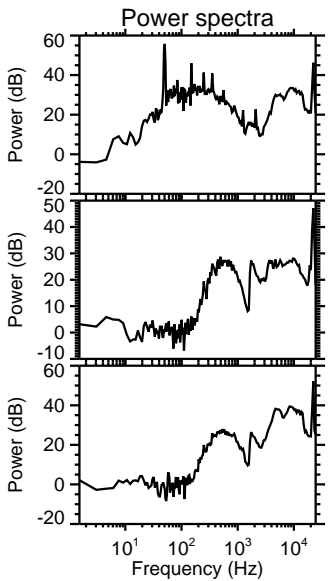
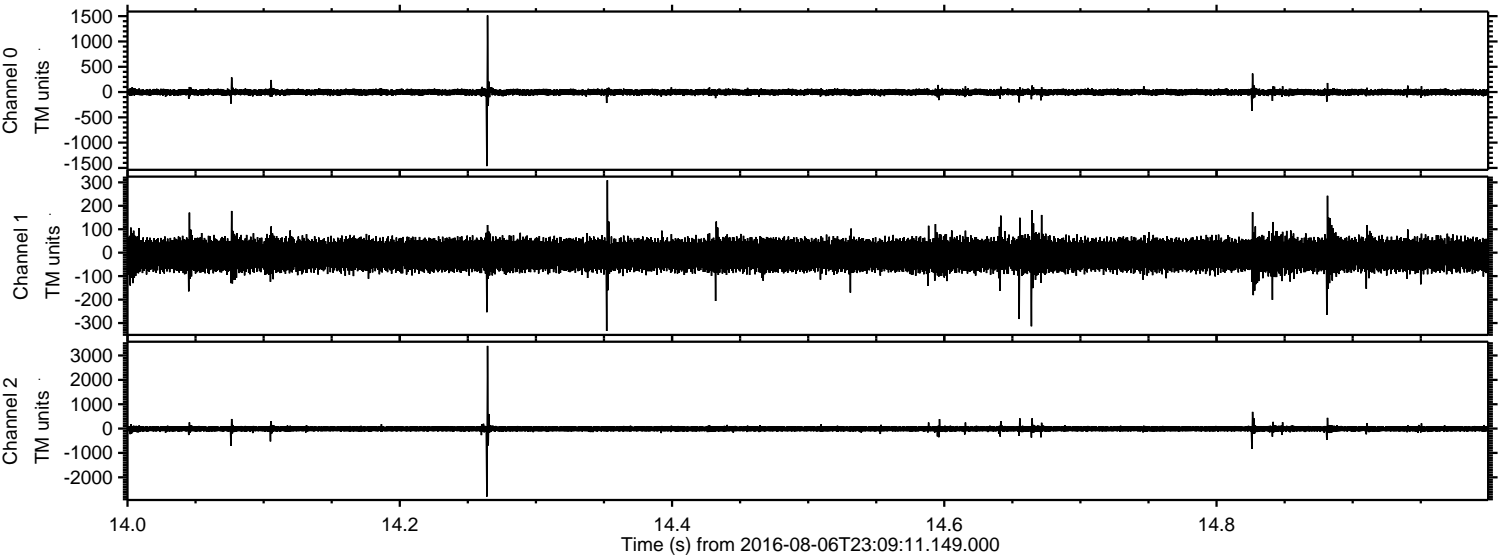
ELMAVAN 3D WAVEFORMS (Measured data sampled at 50 kHz) 51000 packets of 144 samples from 2016-08-06T23:09:11.149.000. Part 146/147

Processed Sun Aug 7 01:17:11 2016 by ELM ver.2012-10-06 from 001__elm20160806_230910__dat00.bin



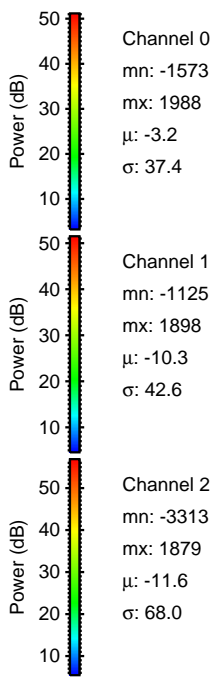
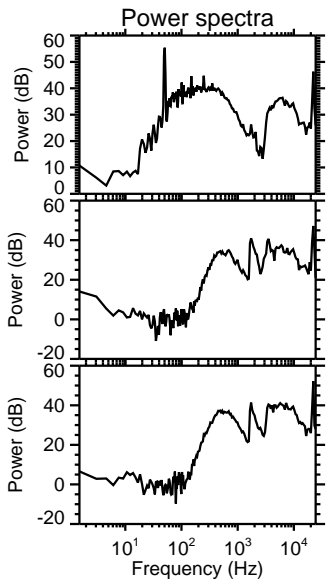
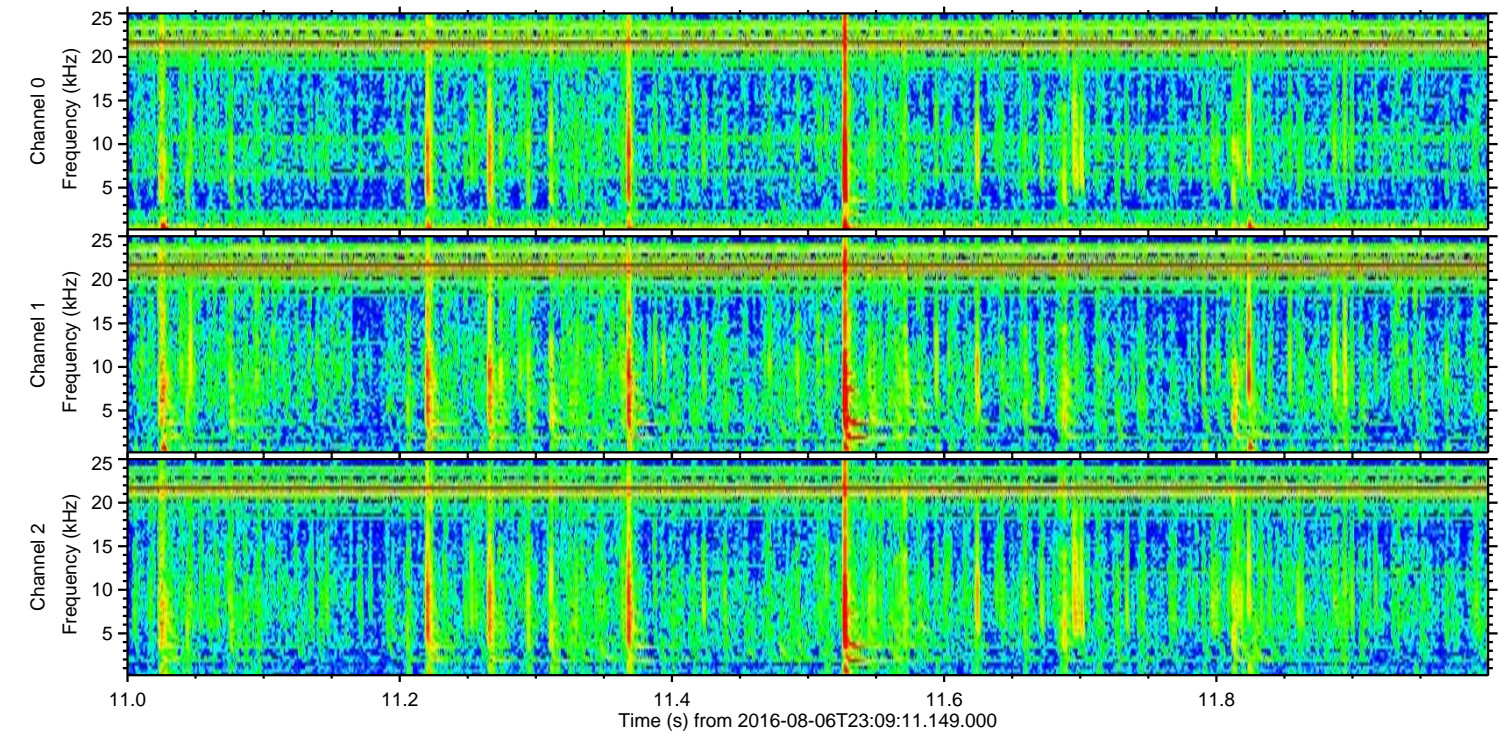
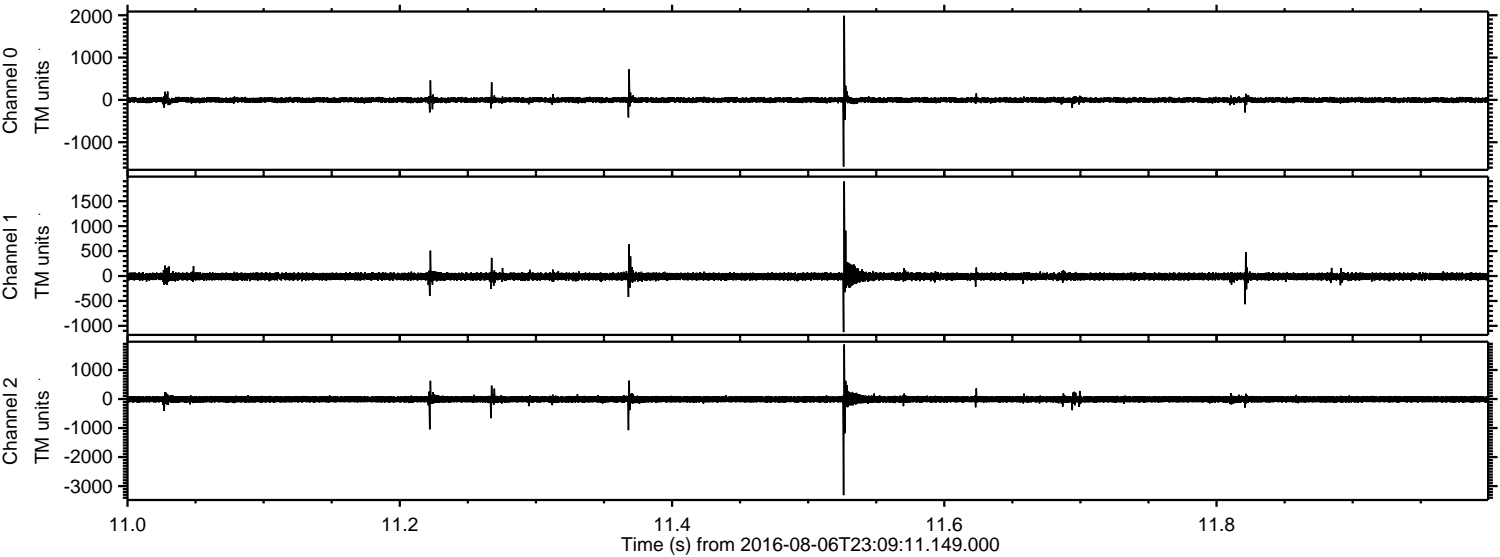
ELMAVAN 3D WAVEFORMS (Measured data sampled at 50 kHz) 51000 packets of 144 samples from 2016-08-06T23:09:11.149.000. Part 15/147

Processed Sun Aug 7 01:17:12 2016 by ELM ver.2012-10-06 from 001__elm20160806_230910__dat00.bin

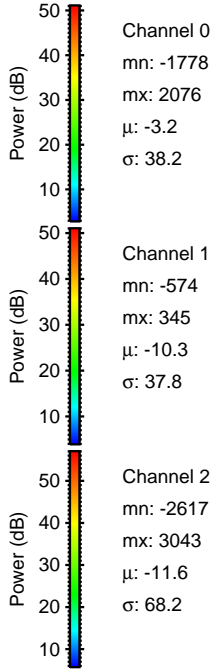
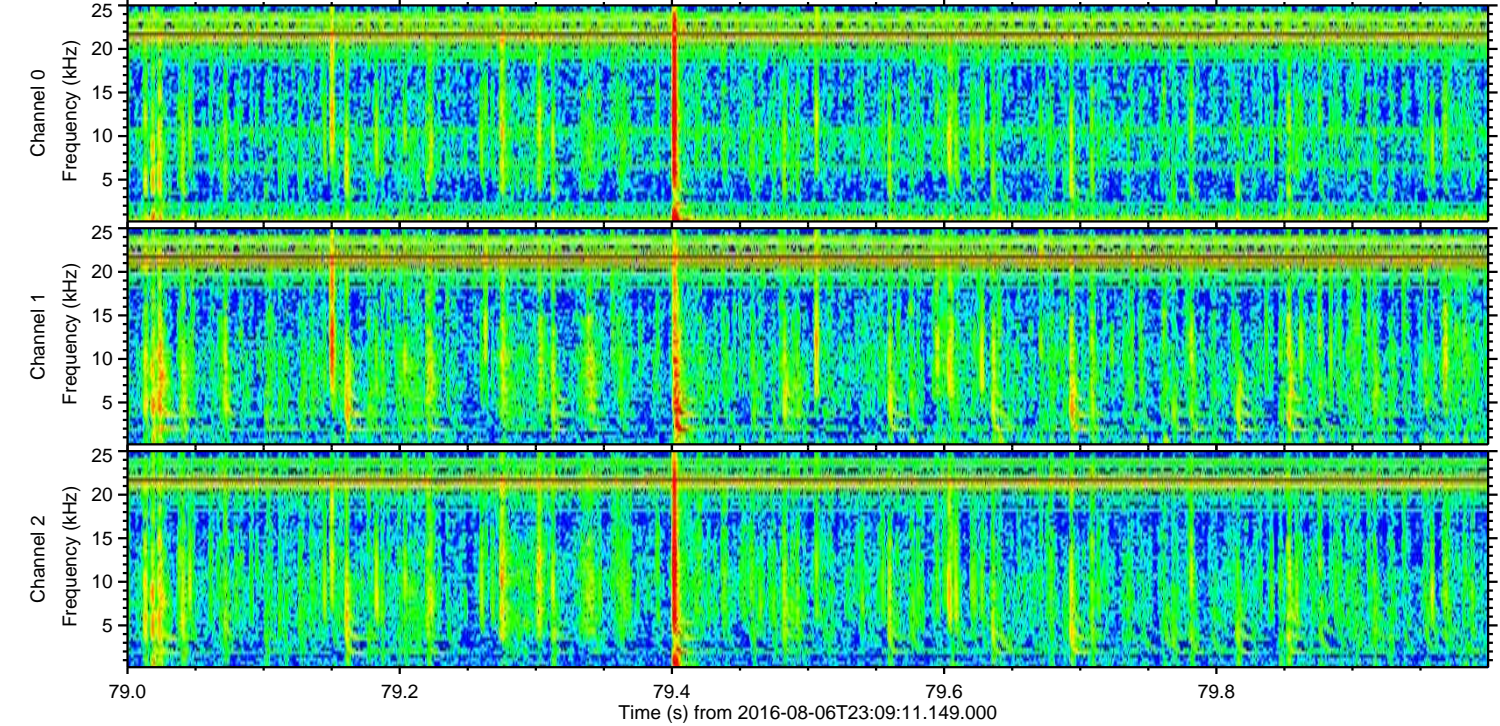
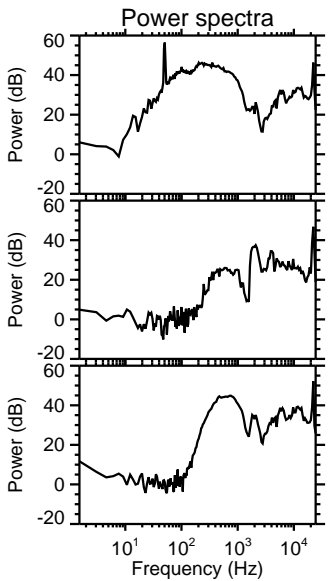
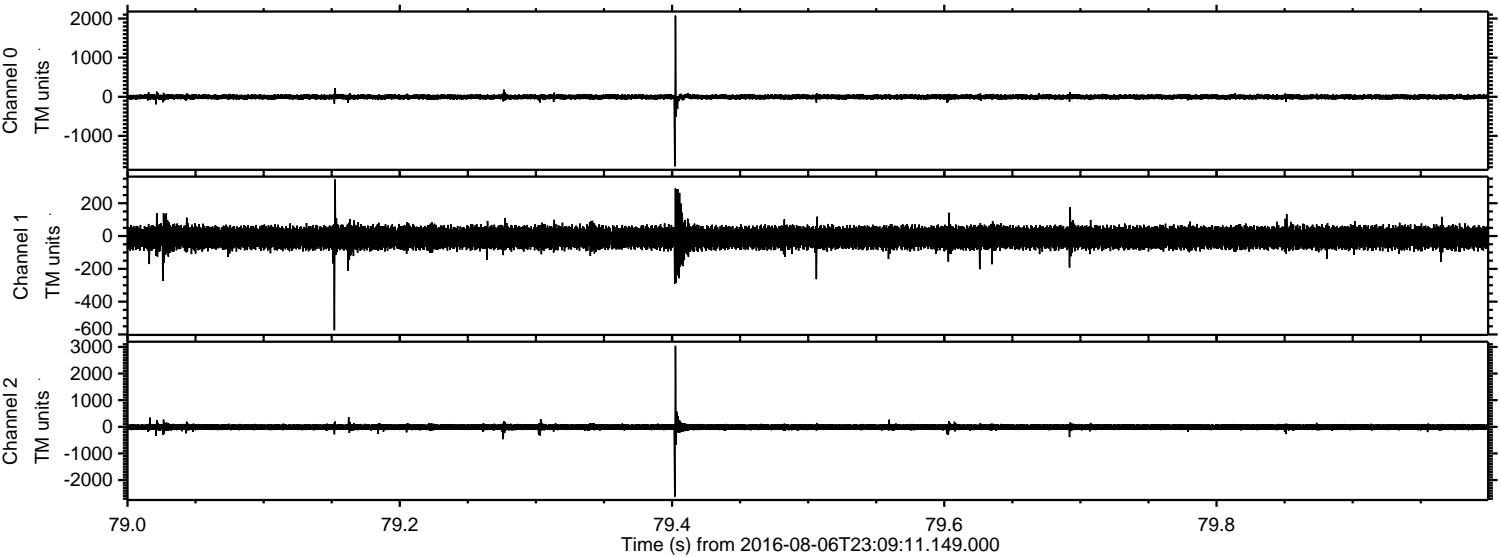


ELMAVAN 3D WAVEFORMS (Measured data sampled at 50 kHz) 51000 packets of 144 samples from 2016-08-06T23:09:11.149.000. Part 12/147

Processed Sun Aug 7 01:17:13 2016 by ELM ver.2012-10-06 from 001__elm20160806_230910__dat00.bin

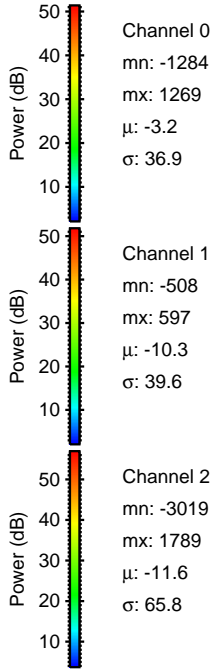
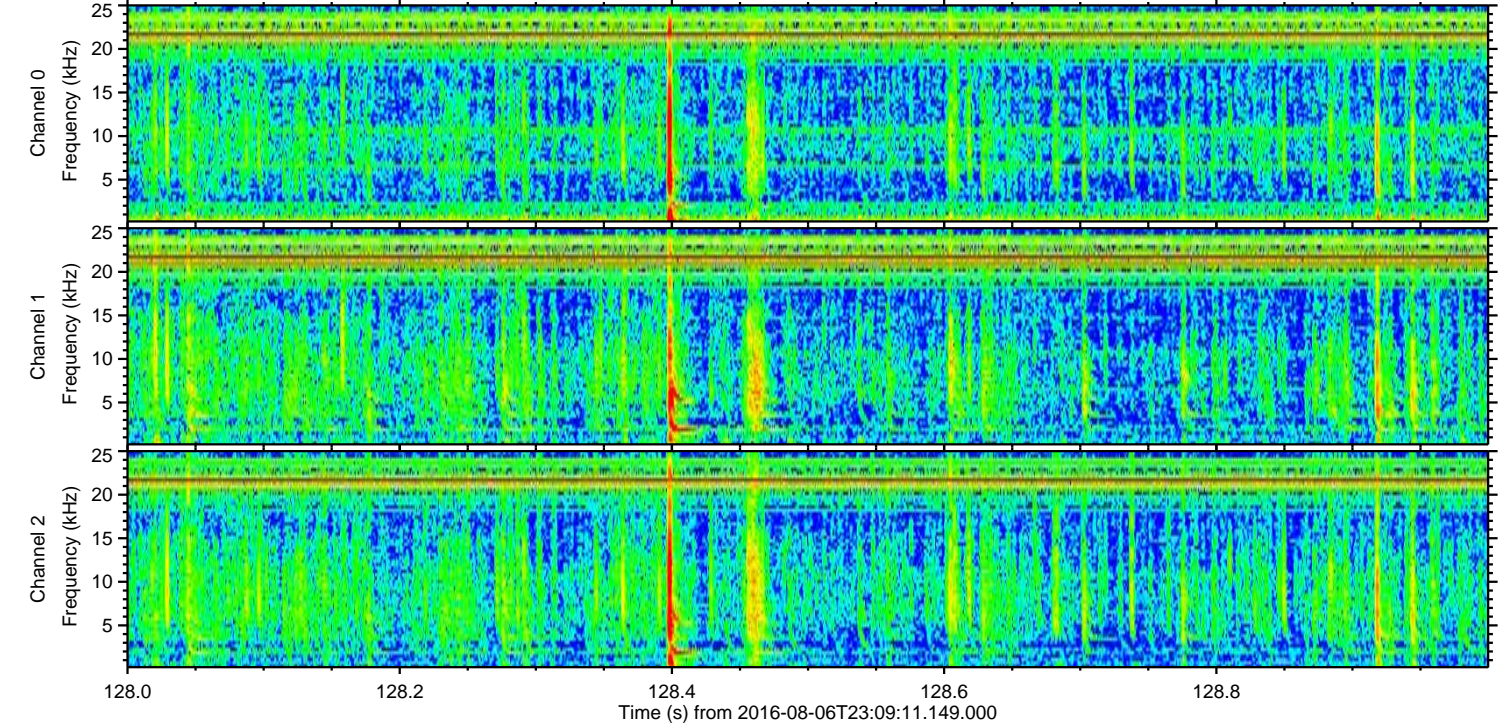
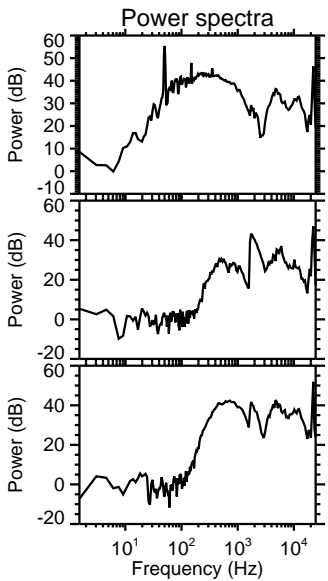
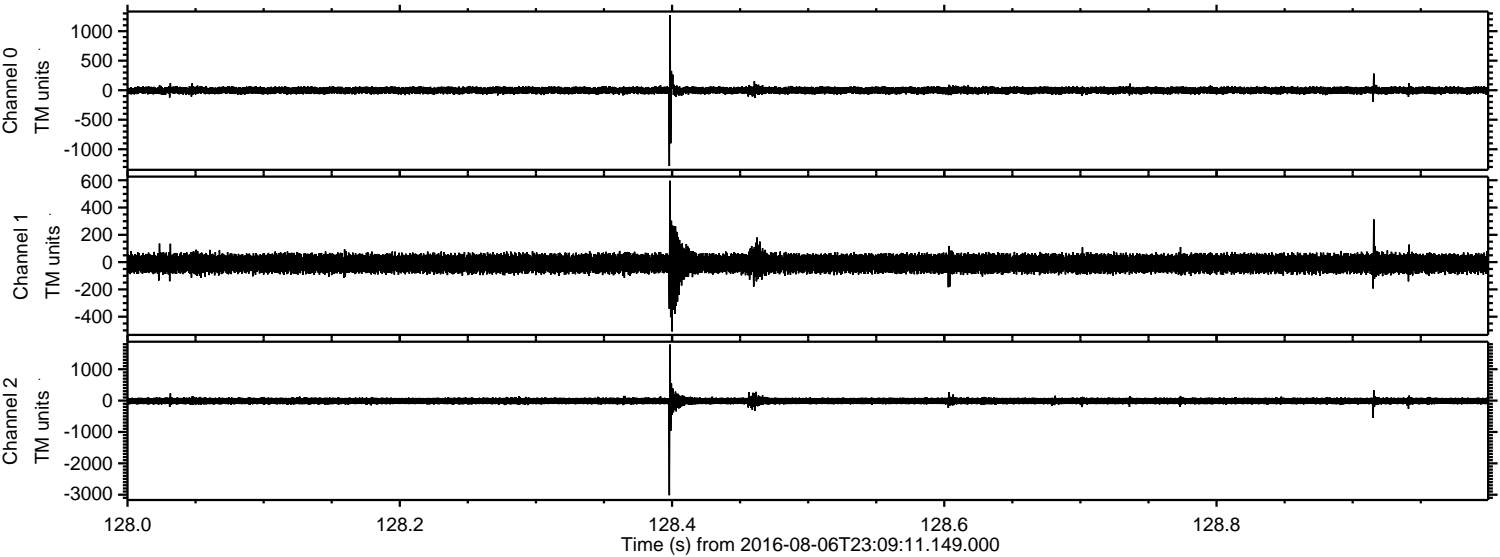


Processed Sun Aug 7 01:17:14 2016 by ELM ver.2012-10-06 from 001__elm20160806_230910__dat00.bin

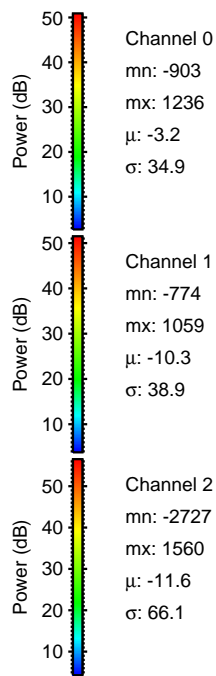
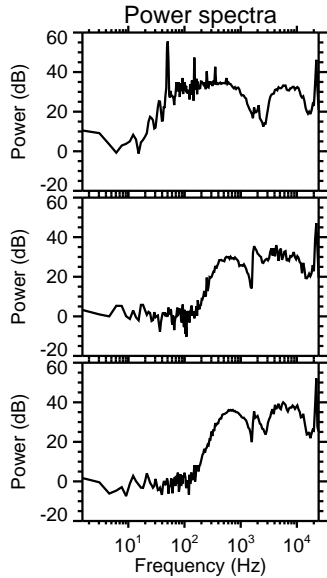
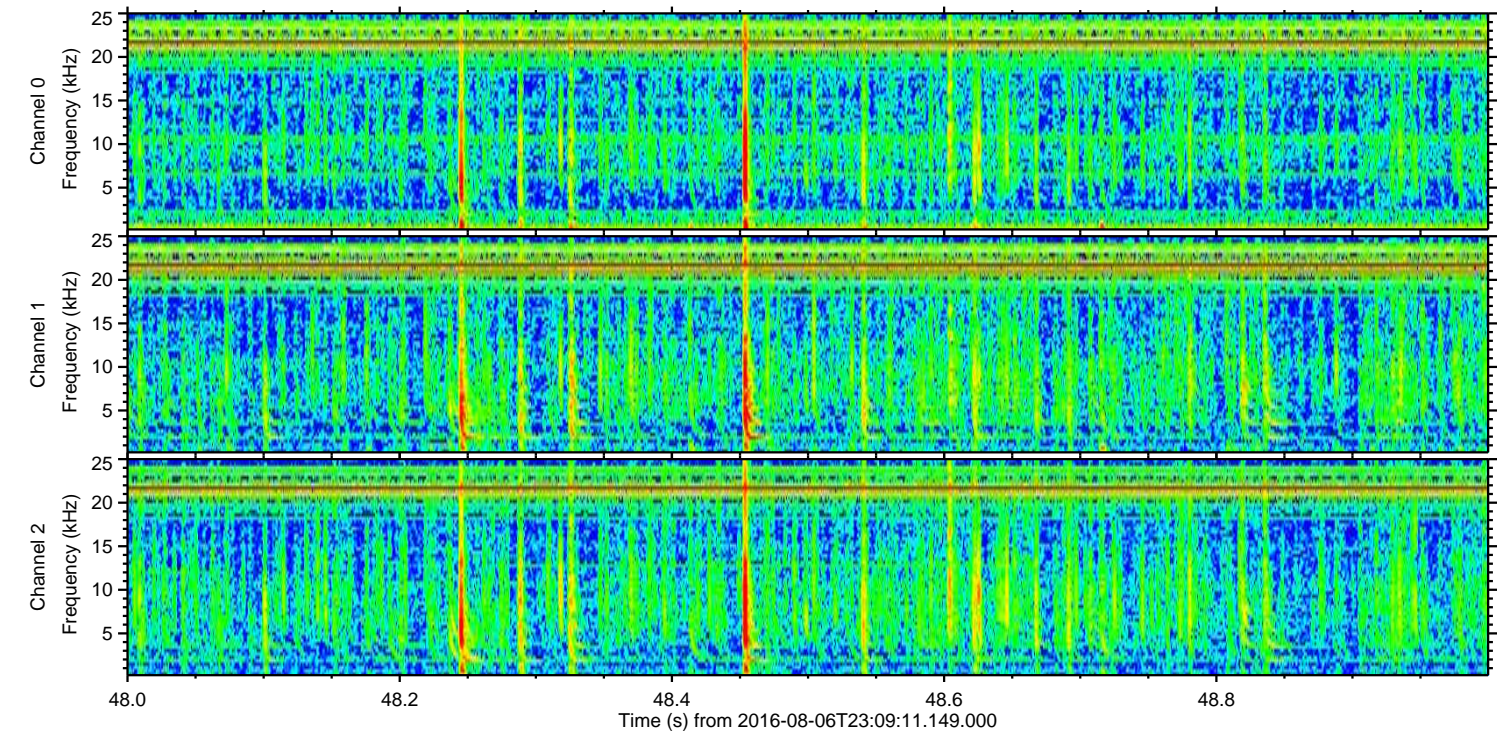
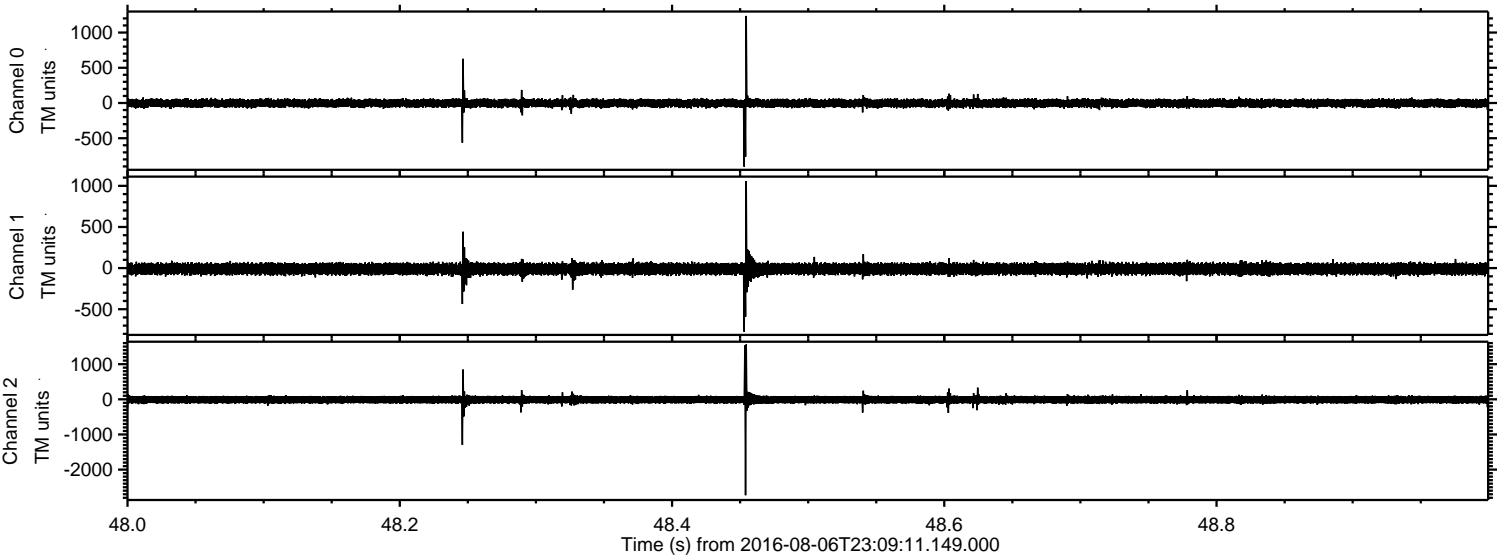


ELMAVAN 3D WAVEFORMS (Measured data sampled at 50 kHz) 51000 packets of 144 samples from 2016-08-06T23:09:11.149.000. Part 129/147

Processed Sun Aug 7 01:17:15 2016 by ELM ver.2012-10-06 from 001__elm20160806_230910__dat00.bin



Processed Sun Aug 7 01:17:16 2016 by ELM ver.2012-10-06 from 001__elm20160806_230910__dat00.bin

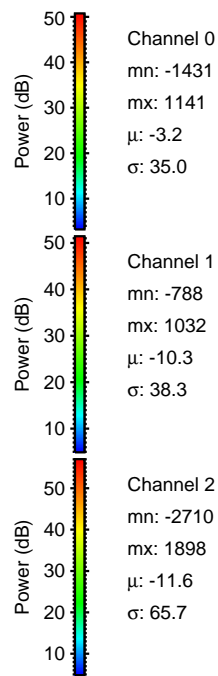
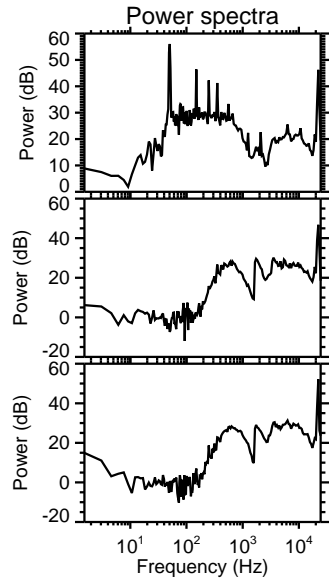
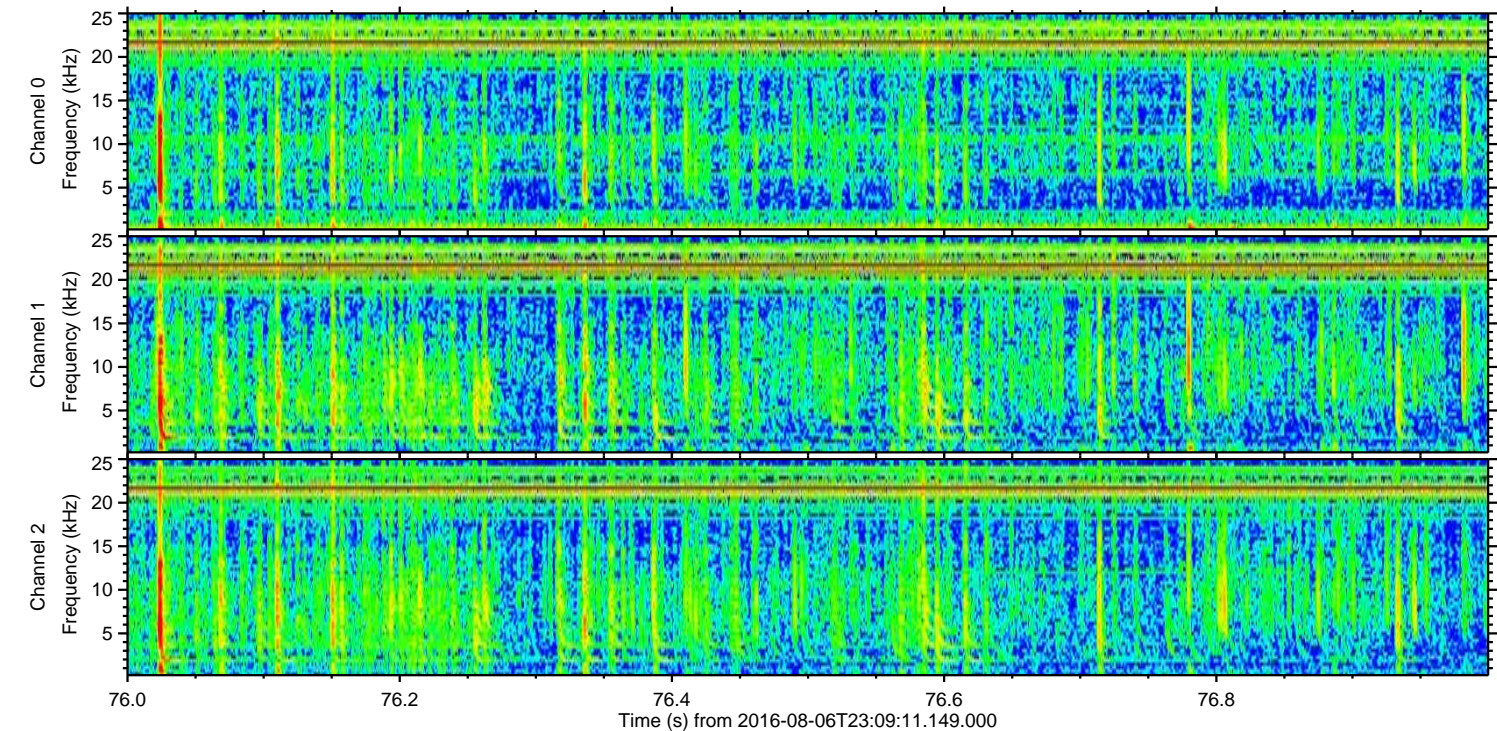
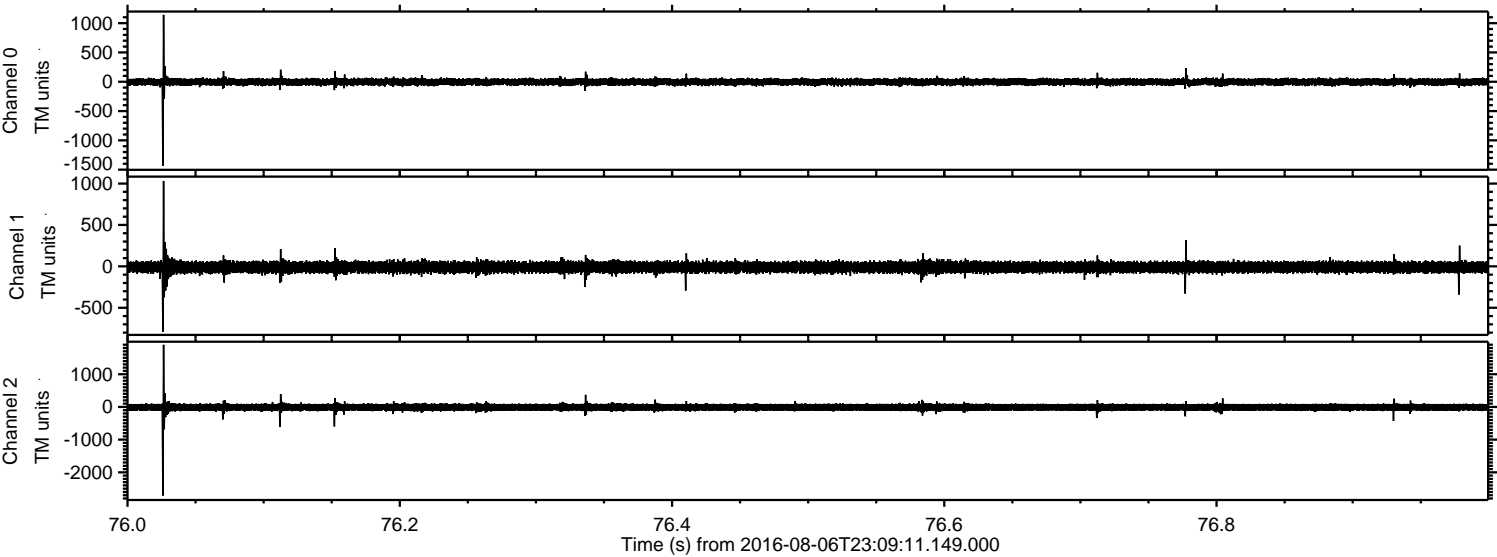


Channel 0
mn: -903
mx: 1236
 μ : -3.2
 σ : 34.9

Channel 1
mn: -774
mx: 1059
 μ : -10.3
 σ : 38.9

Channel 2
mn: -2727
mx: 1560
 μ : -11.6
 σ : 66.1

Processed Sun Aug 7 01:17:16 2016 by ELM ver.2012-10-06 from 001__elm20160806_230910__dat00.bin



Processed Sun Aug 7 01:17:17 2016 by ELM ver.2012-10-06 from 001__elm20160806_230910__dat00.bin

