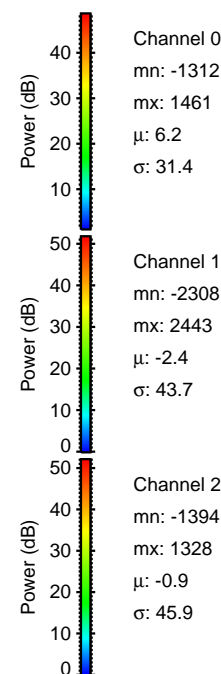
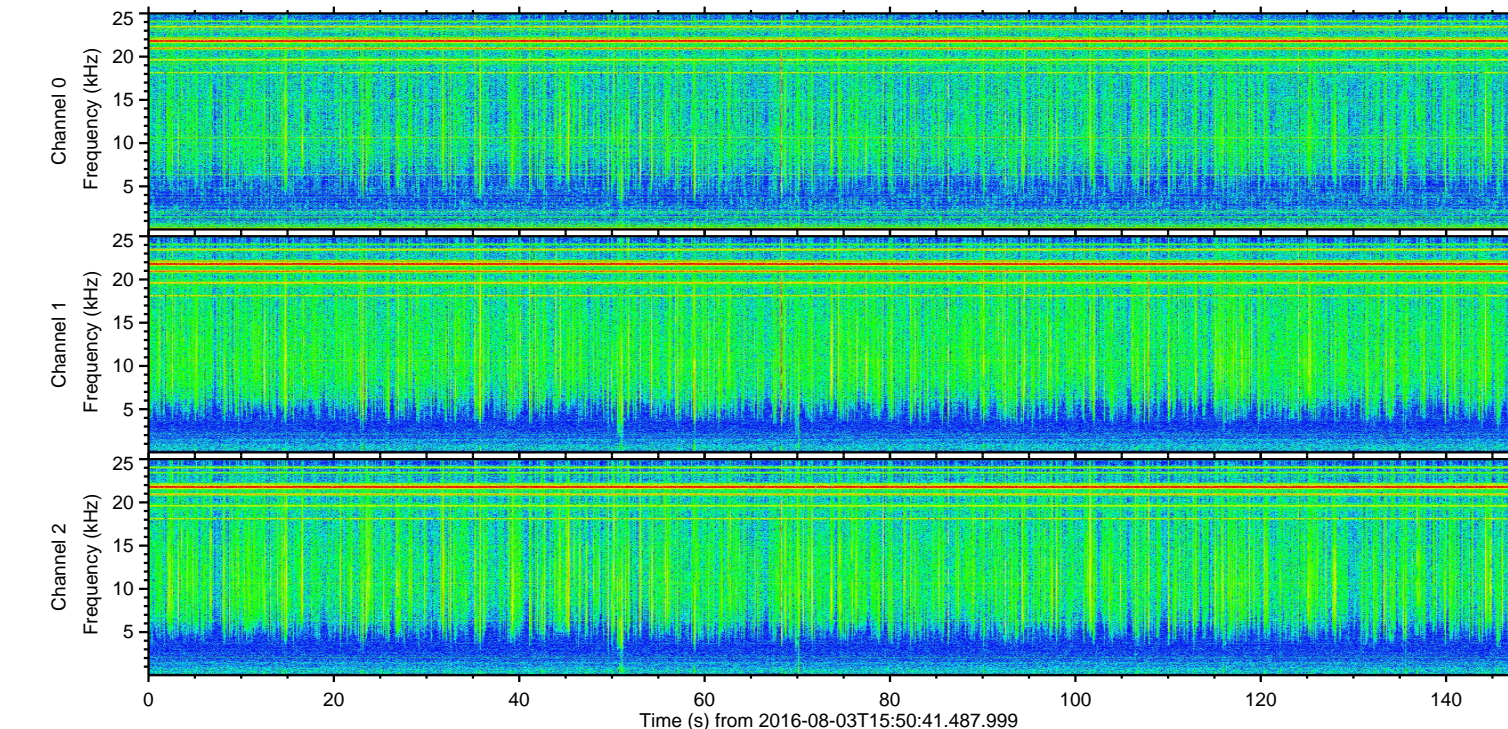
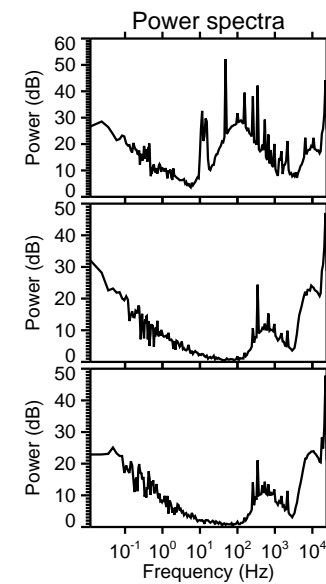
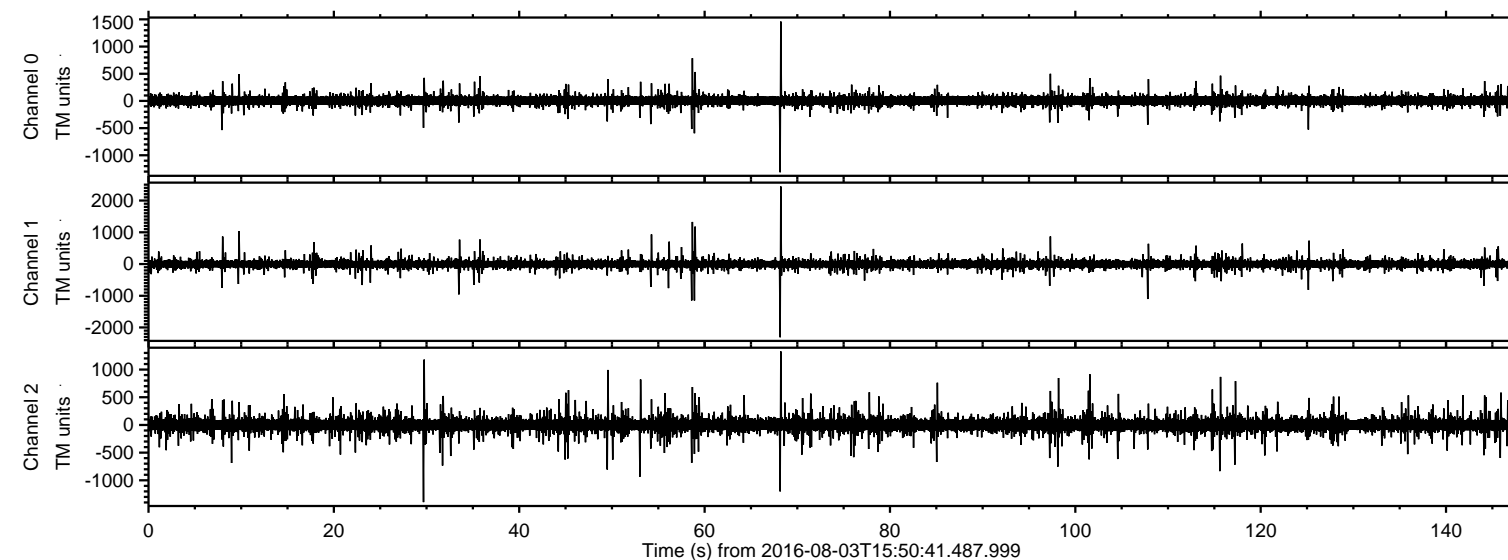
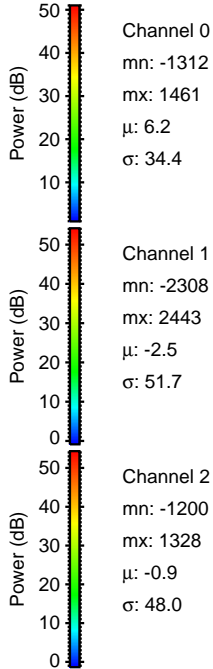
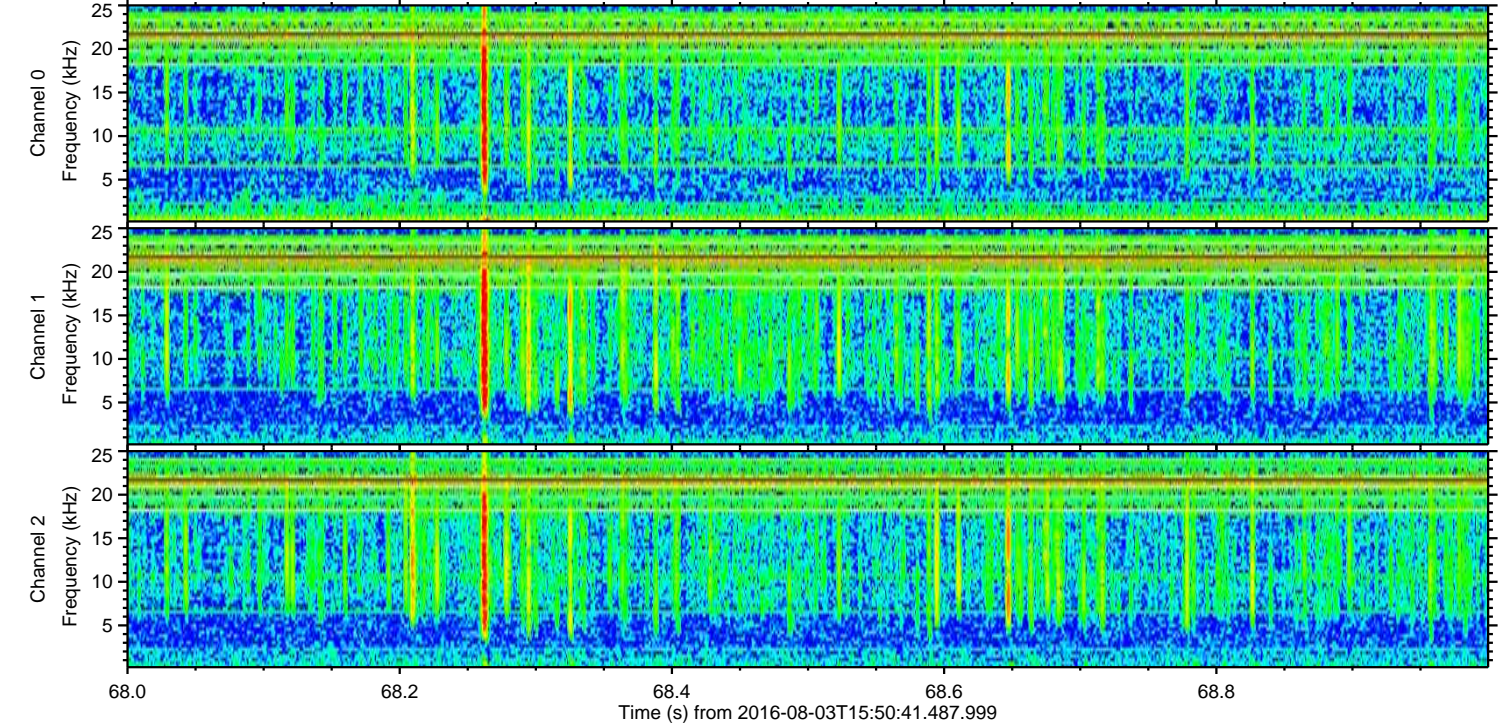
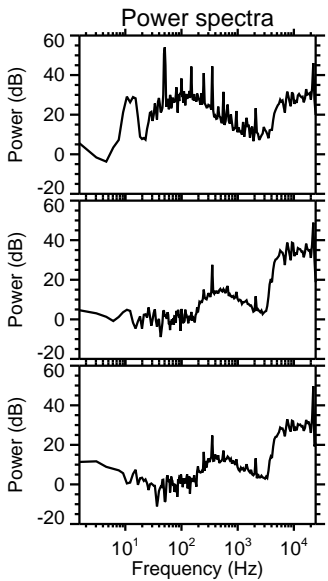
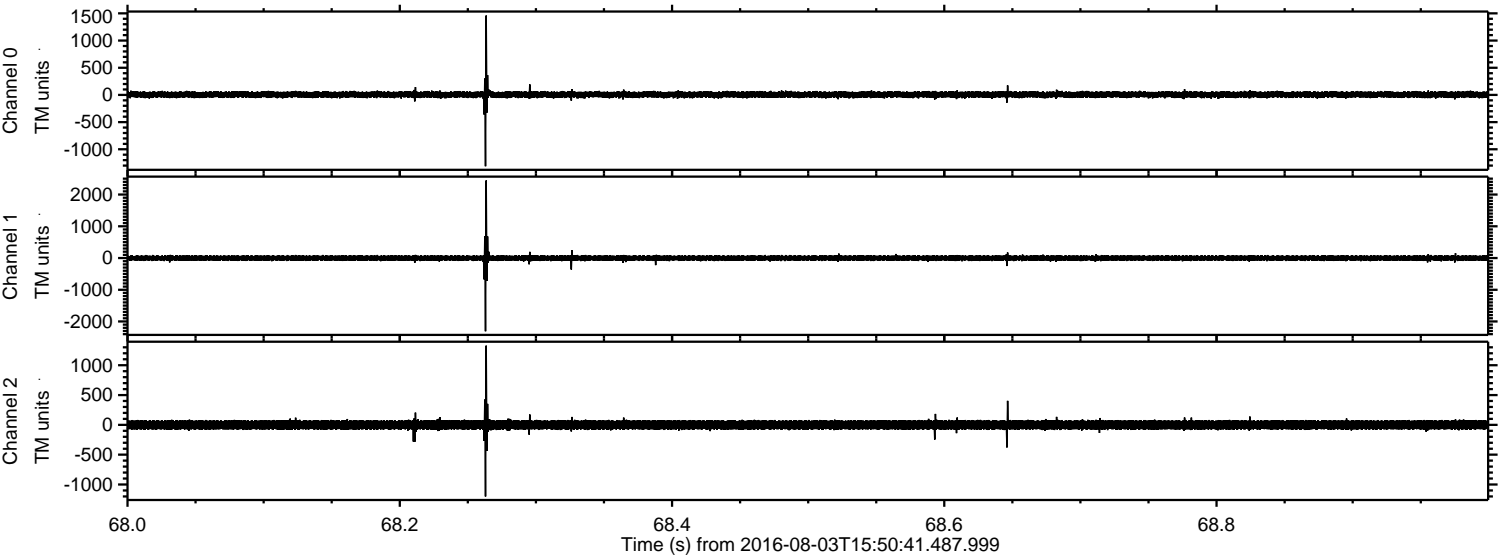


ELMAVAN 3D WAVEFORMS (Measured data sampled at 50 kHz) 51000 packets of 144 samples from 2016-08-03T15:50:41.487.999.

Processed Wed Aug 3 17:59:11 2016 by ELM ver.2012-10-06 from 001__elm20160803_155040__dat00.bin

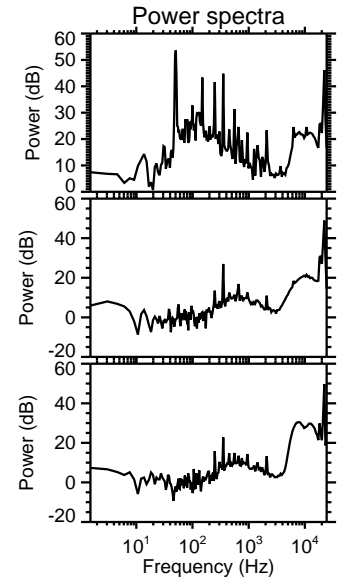
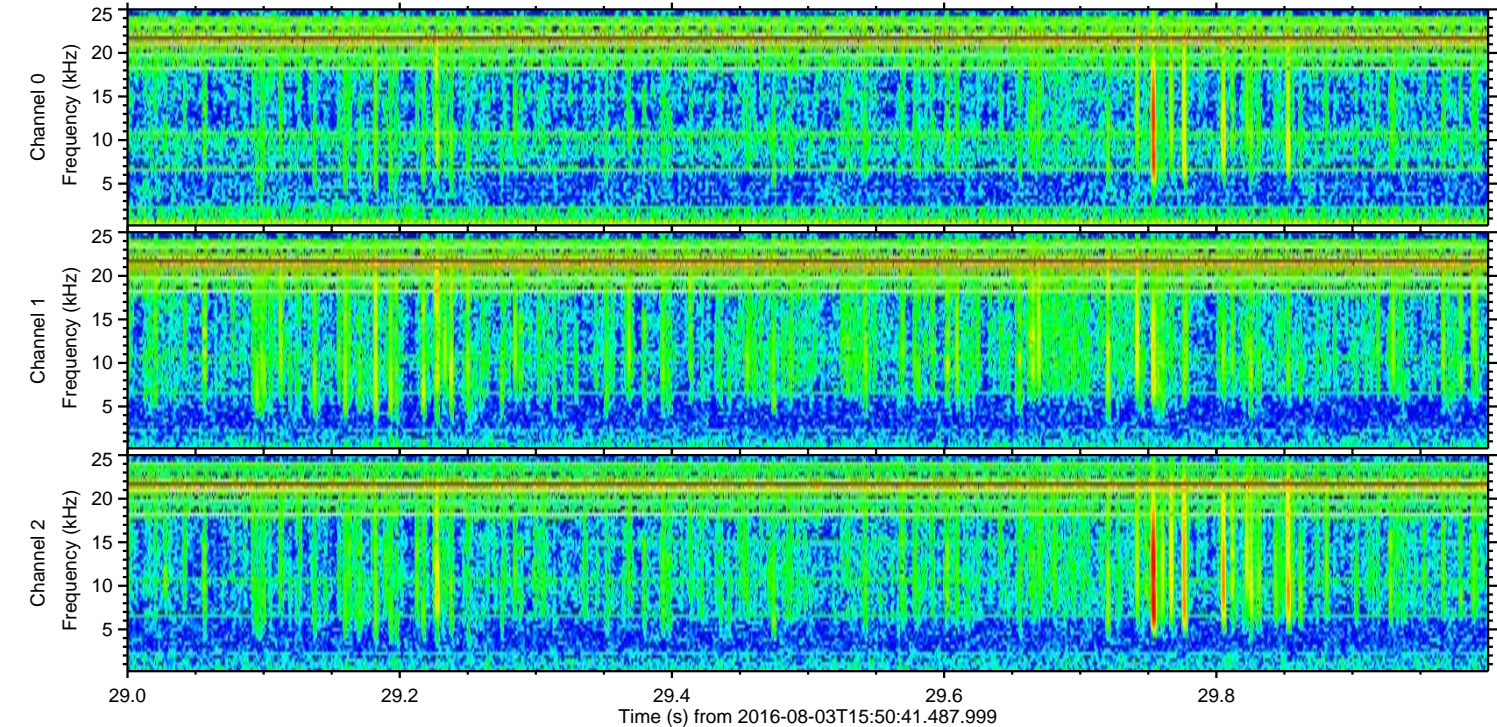
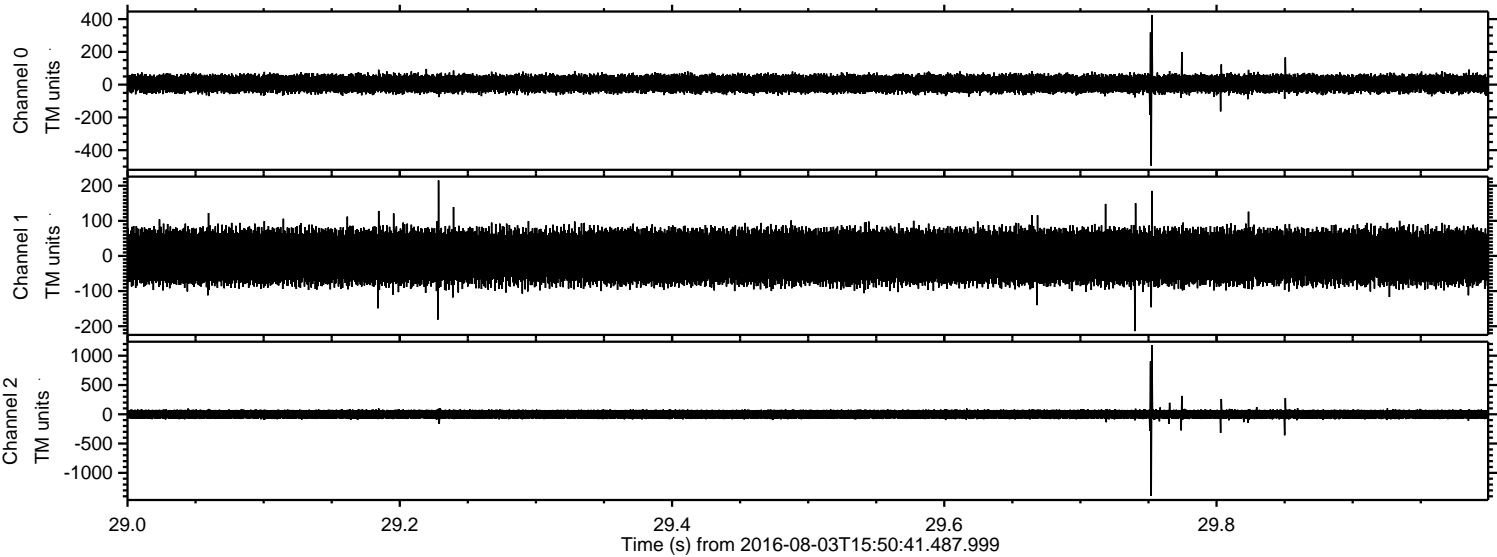


Processed Wed Aug 3 17:59:22 2016 by ELM ver.2012-10-06 from 001__elm20160803_155040__dat00.bin



ELMAVAN 3D WAVEFORMS (Measured data sampled at 50 kHz) 51000 packets of 144 samples from 2016-08-03T15:50:41.487.999. Part 30/147

Processed Wed Aug 3 17:59:23 2016 by ELM ver.2012-10-06 from 001__elm20160803_155040__dat00.bin

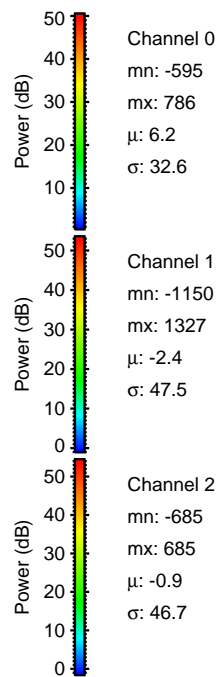
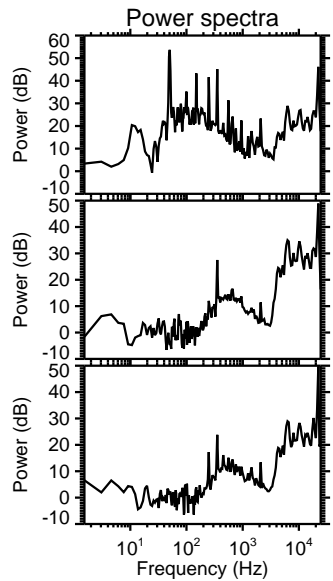
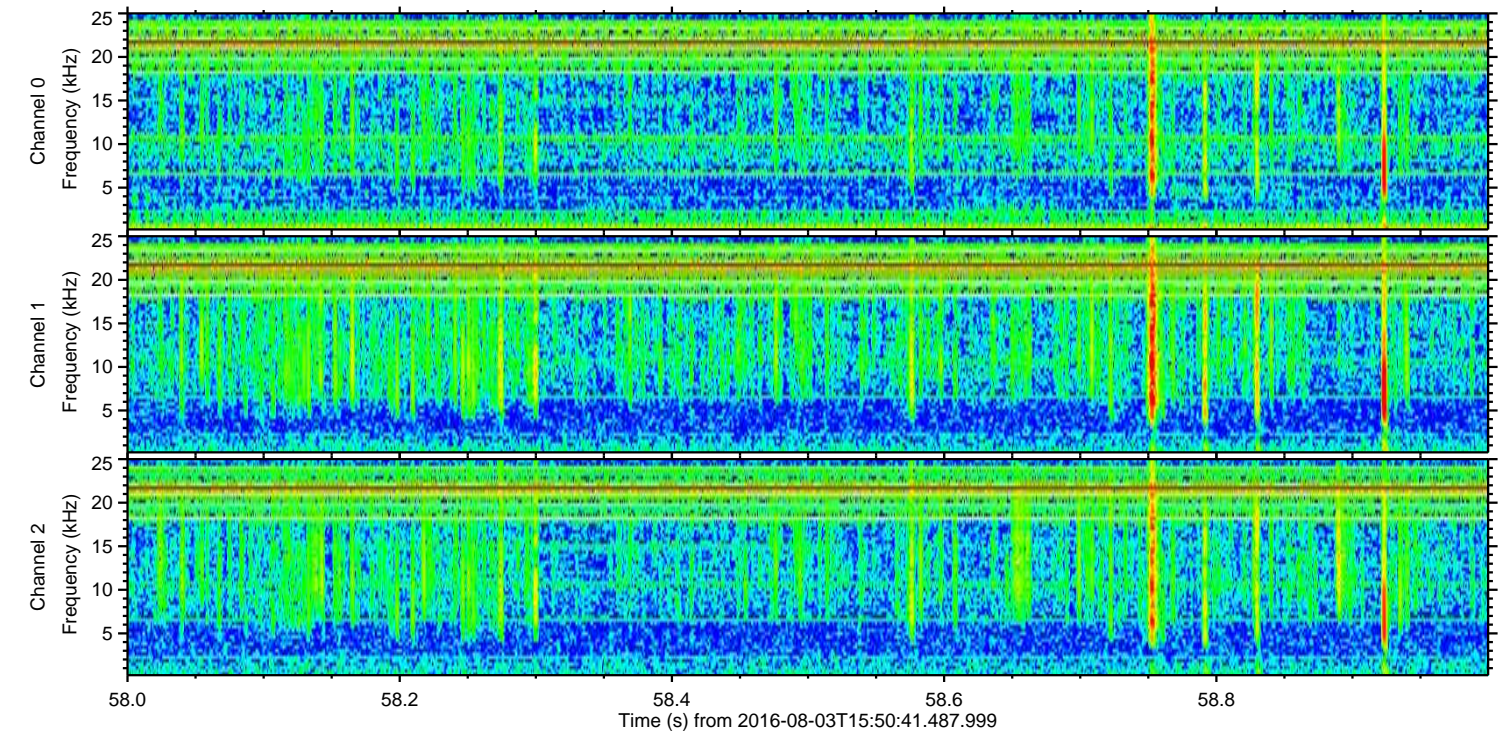
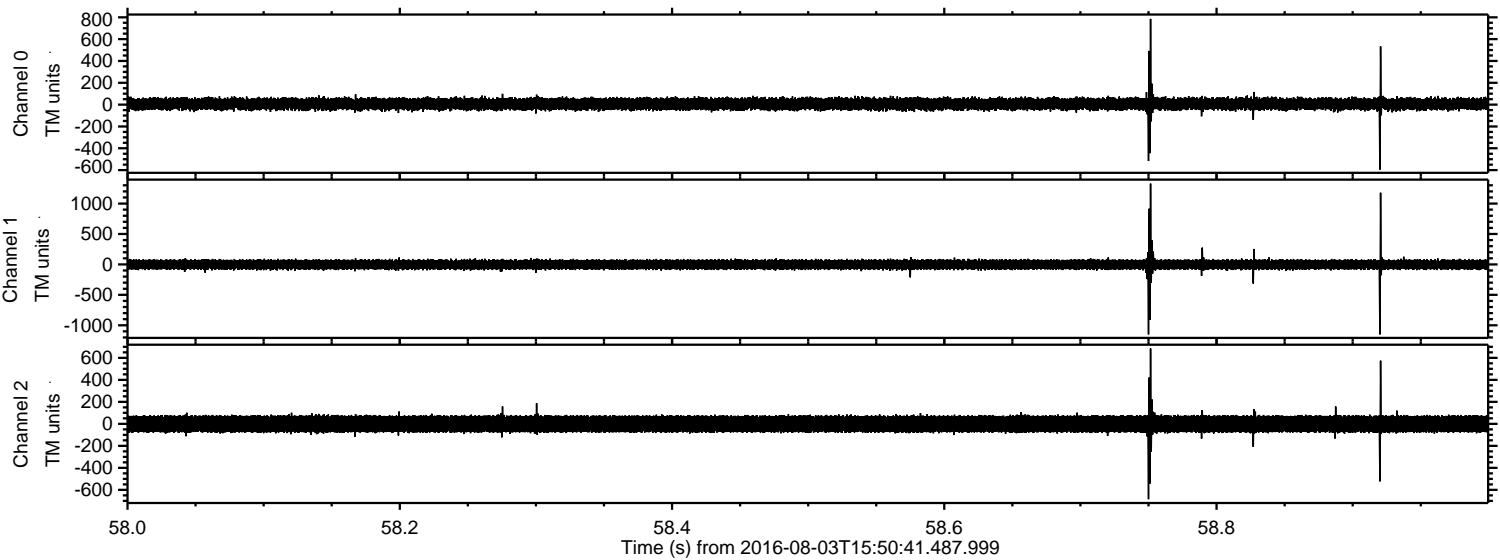


Channel 0
mn: -495
mx: 425
 μ : 6.2
 σ : 31.8

Channel 1
mn: -214
mx: 215
 μ : -2.4
 σ : 43.6

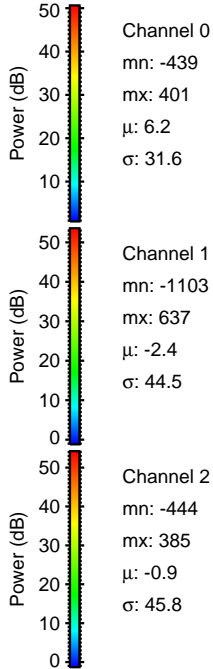
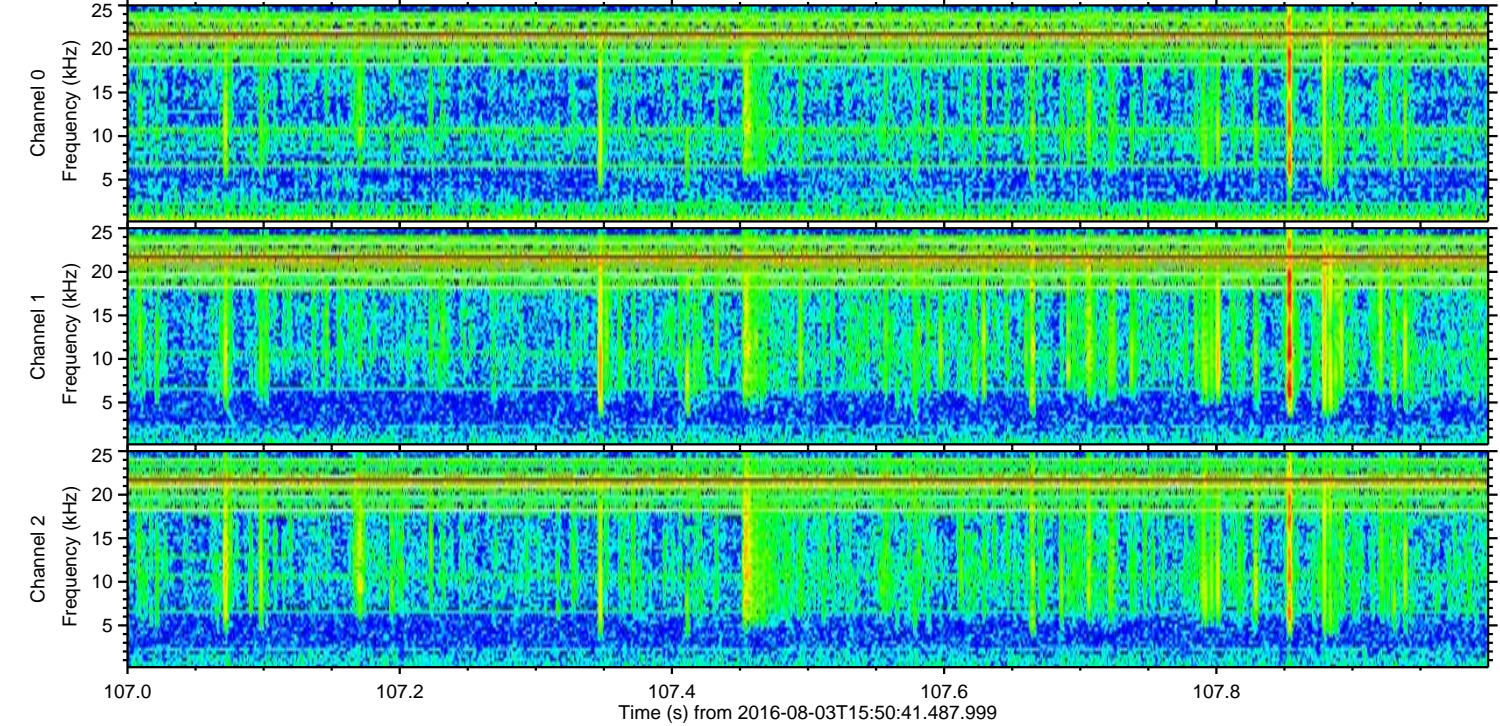
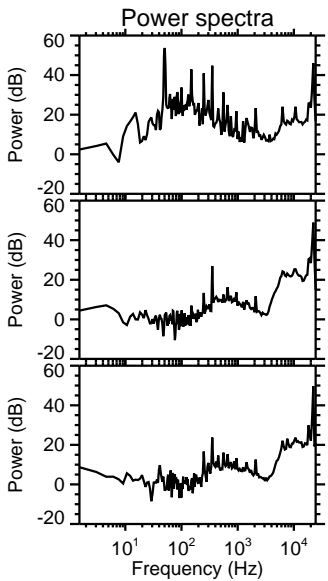
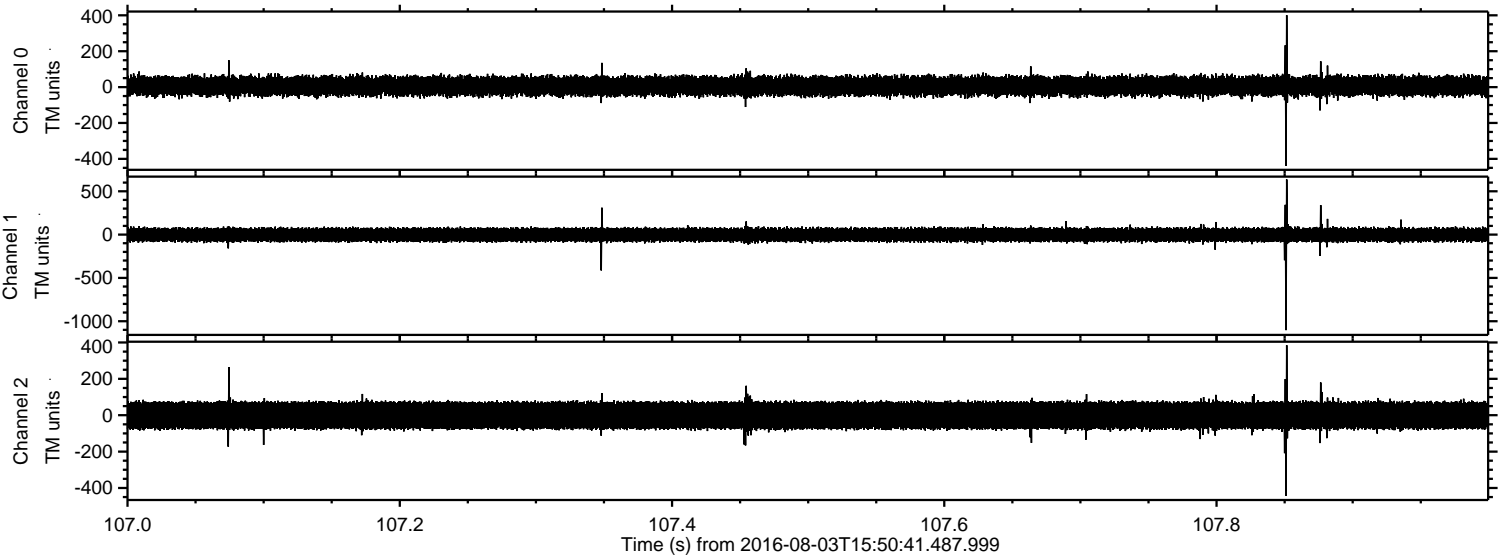
Channel 2
mn: -1394
mx: 1180
 μ : -1.0
 σ : 47.3

Processed Wed Aug 3 17:59:24 2016 by ELM ver.2012-10-06 from 001__elm20160803_155040__dat00.bin



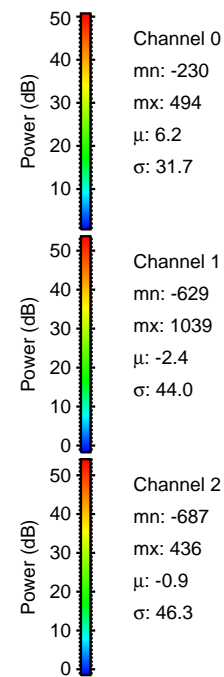
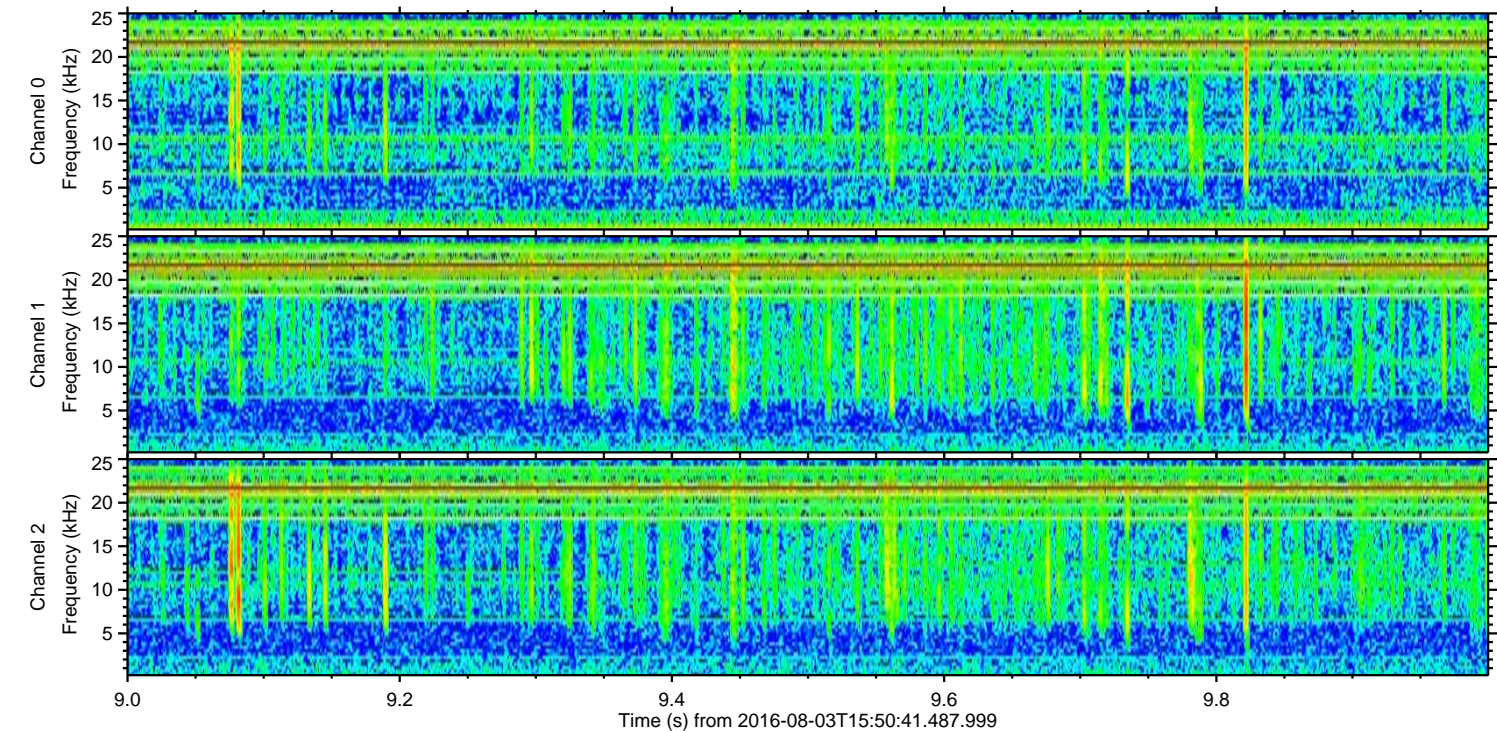
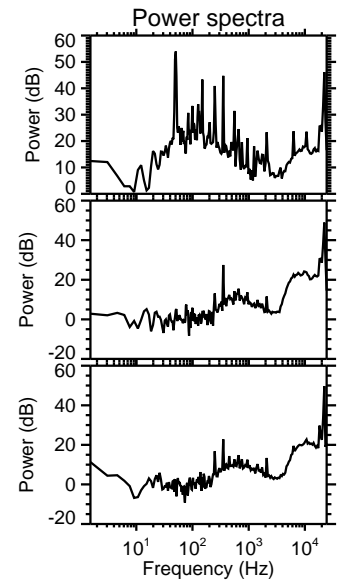
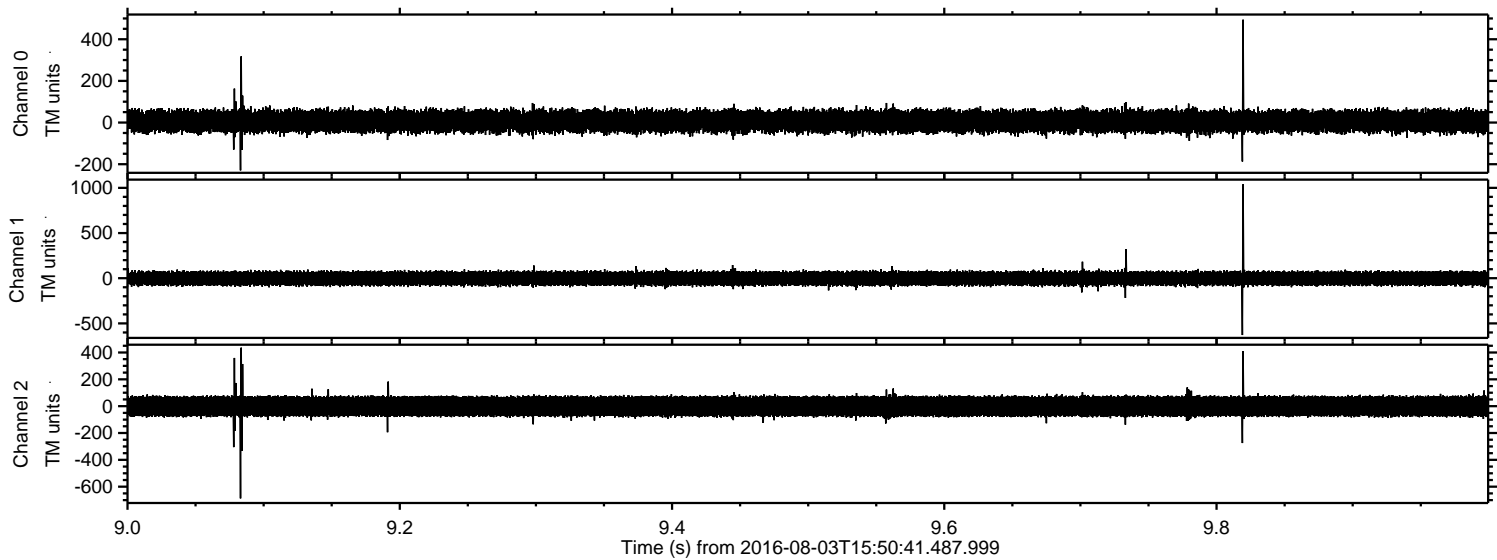
ELMAVAN 3D WAVEFORMS (Measured data sampled at 50 kHz) 51000 packets of 144 samples from 2016-08-03T15:50:41.487.999. Part 108/147

Processed Wed Aug 3 17:59:25 2016 by ELM ver.2012-10-06 from 001__elm20160803_155040__dat00.bin



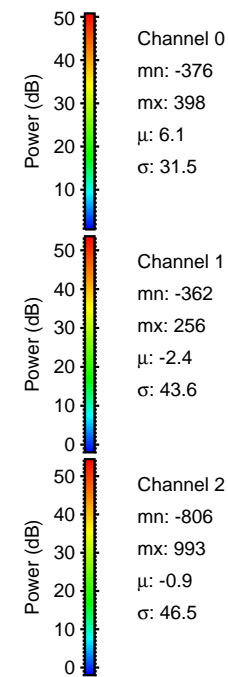
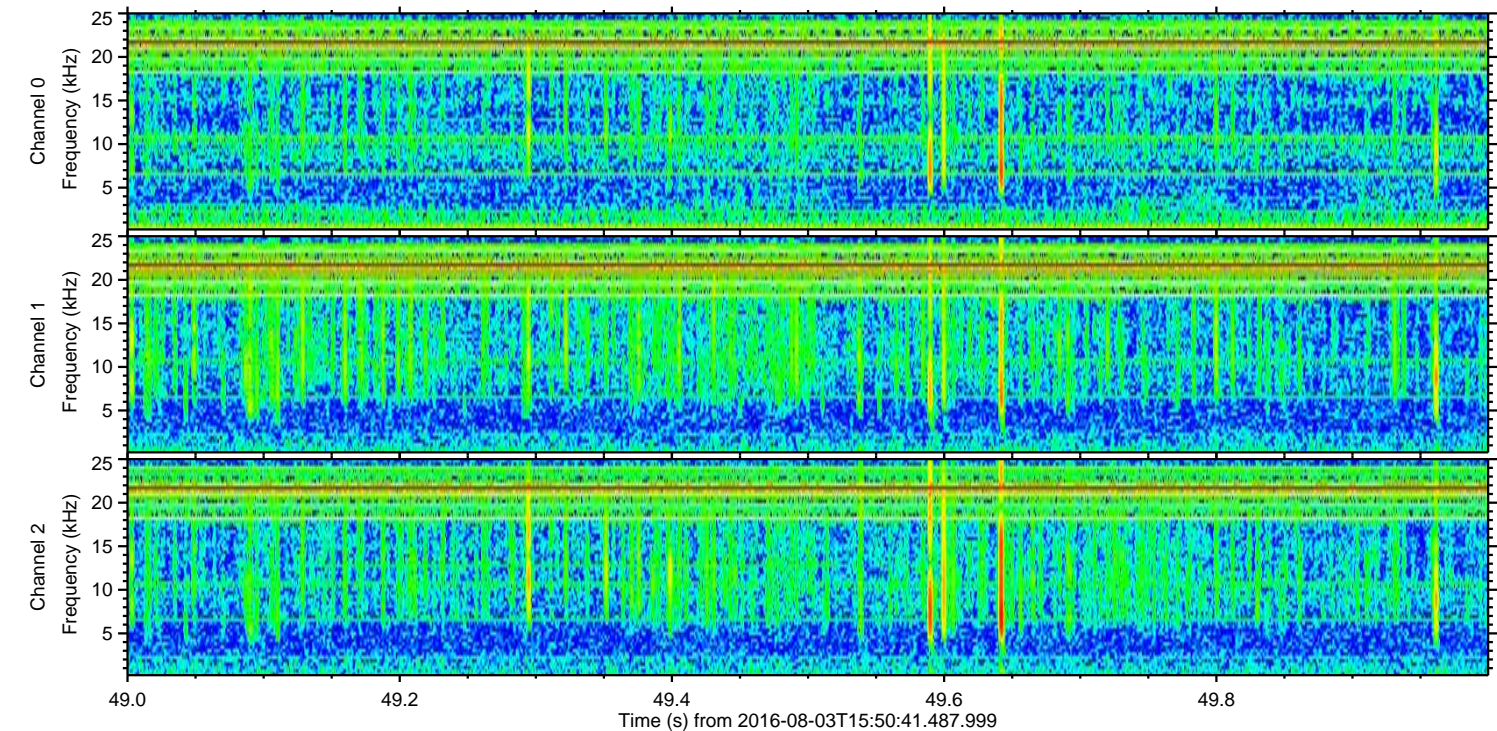
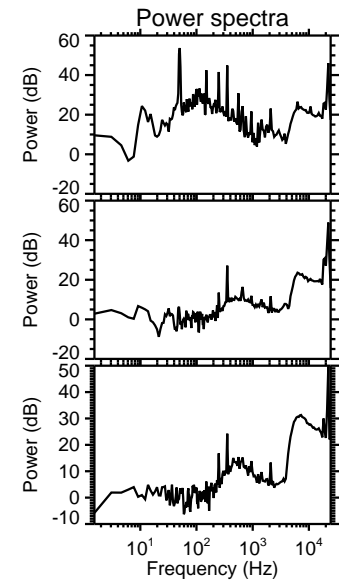
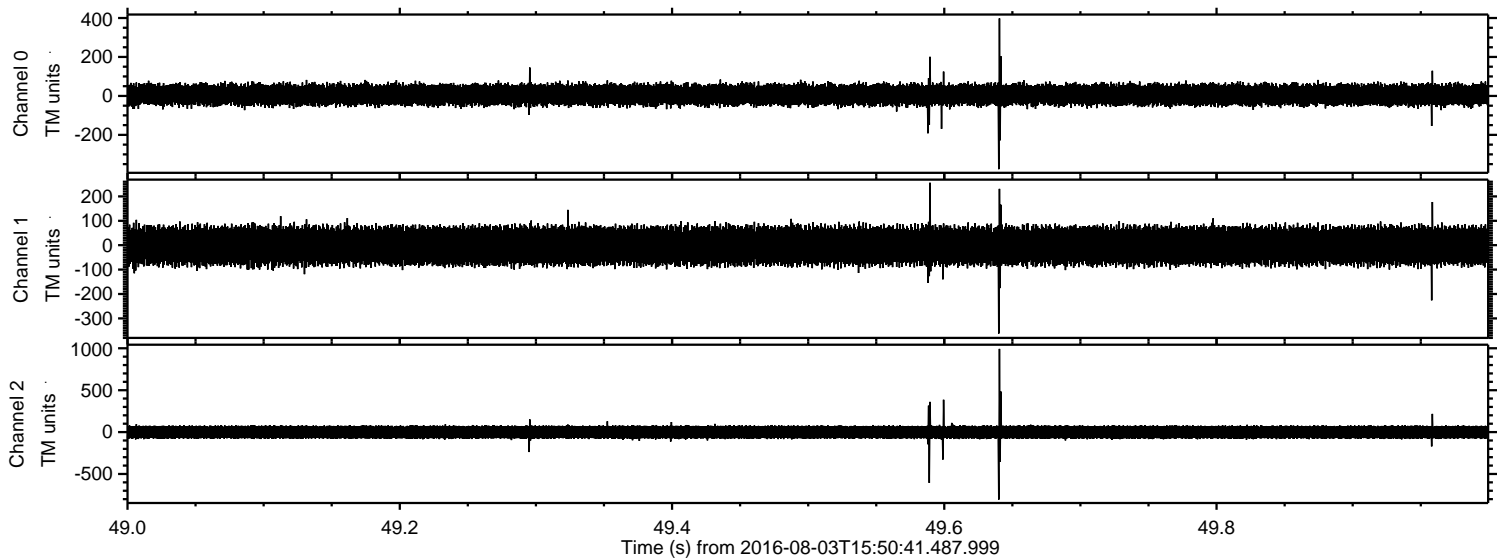
ELMAVAN 3D WAVEFORMS (Measured data sampled at 50 kHz) 51000 packets of 144 samples from 2016-08-03T15:50:41.487.999. Part 10/147

Processed Wed Aug 3 17:59:26 2016 by ELM ver.2012-10-06 from 001__elm20160803_155040__dat00.bin

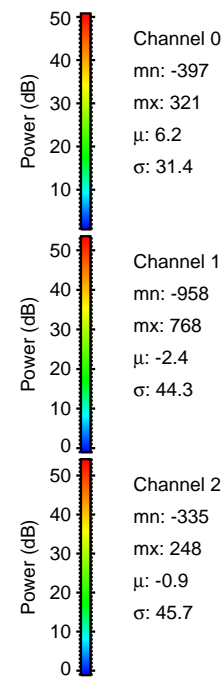
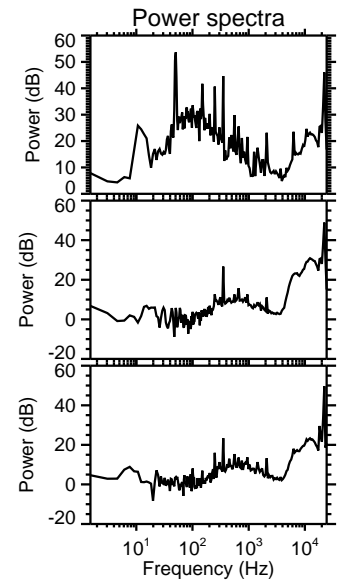
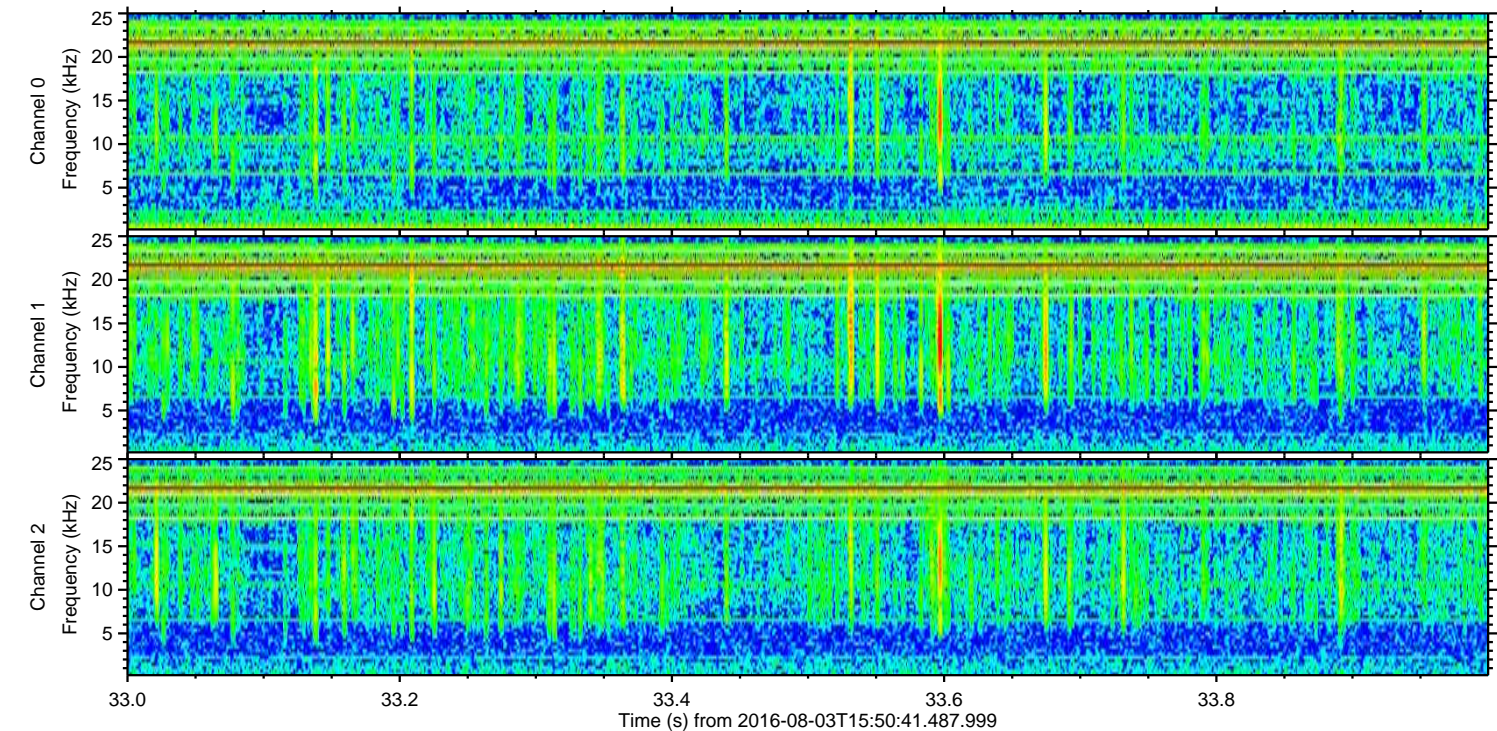
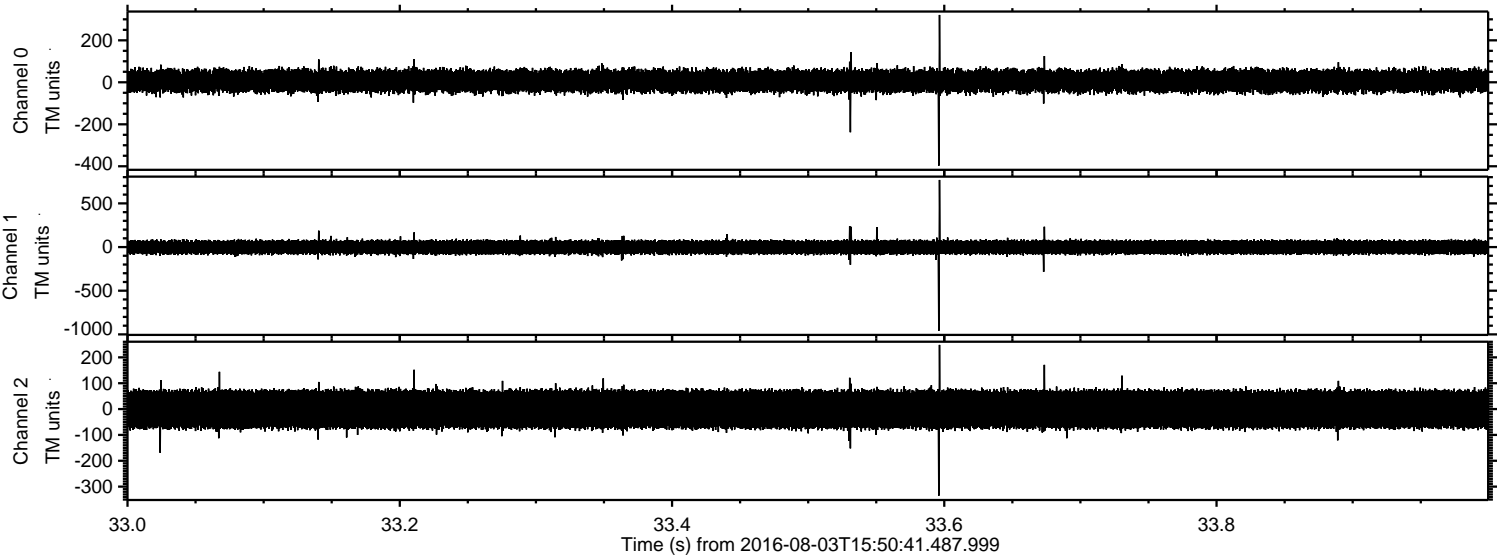


ELMAVAN 3D WAVEFORMS (Measured data sampled at 50 kHz) 51000 packets of 144 samples from 2016-08-03T15:50:41.487.999. Part 50/147

Processed Wed Aug 3 17:59:27 2016 by ELM ver.2012-10-06 from 001__elm20160803_155040__dat00.bin



Processed Wed Aug 3 17:59:28 2016 by ELM ver.2012-10-06 from 001_elm20160803_155040__dat00.bin

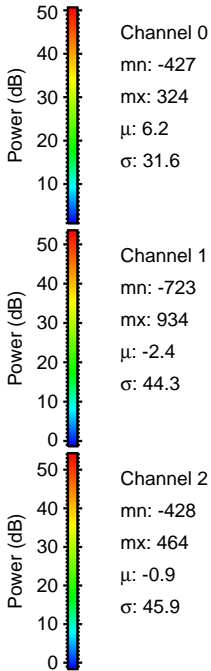
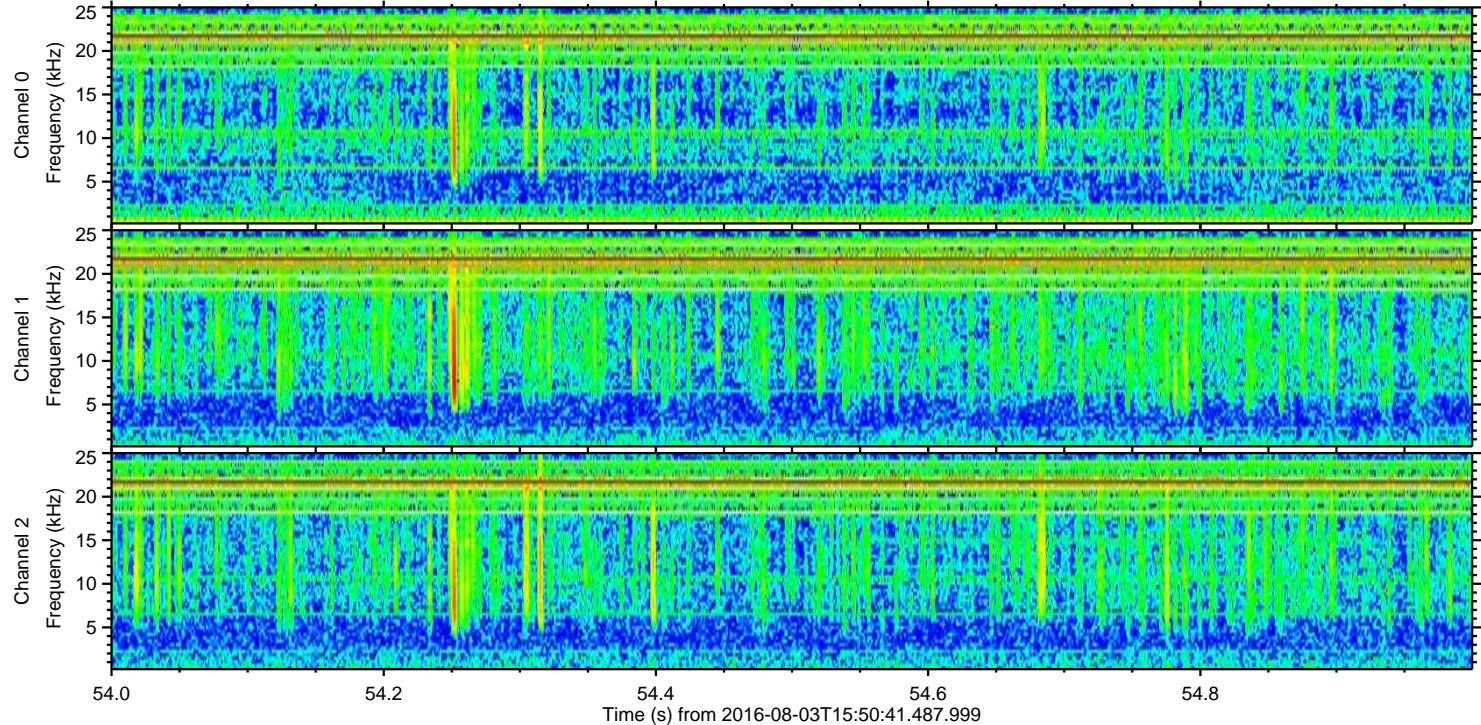
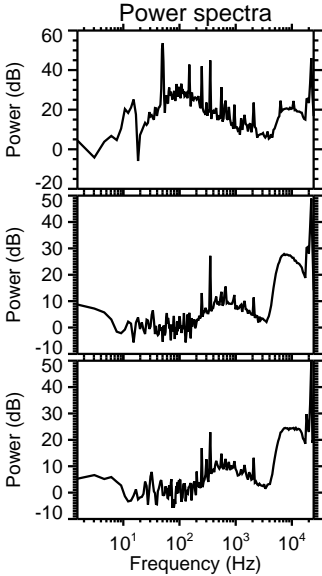
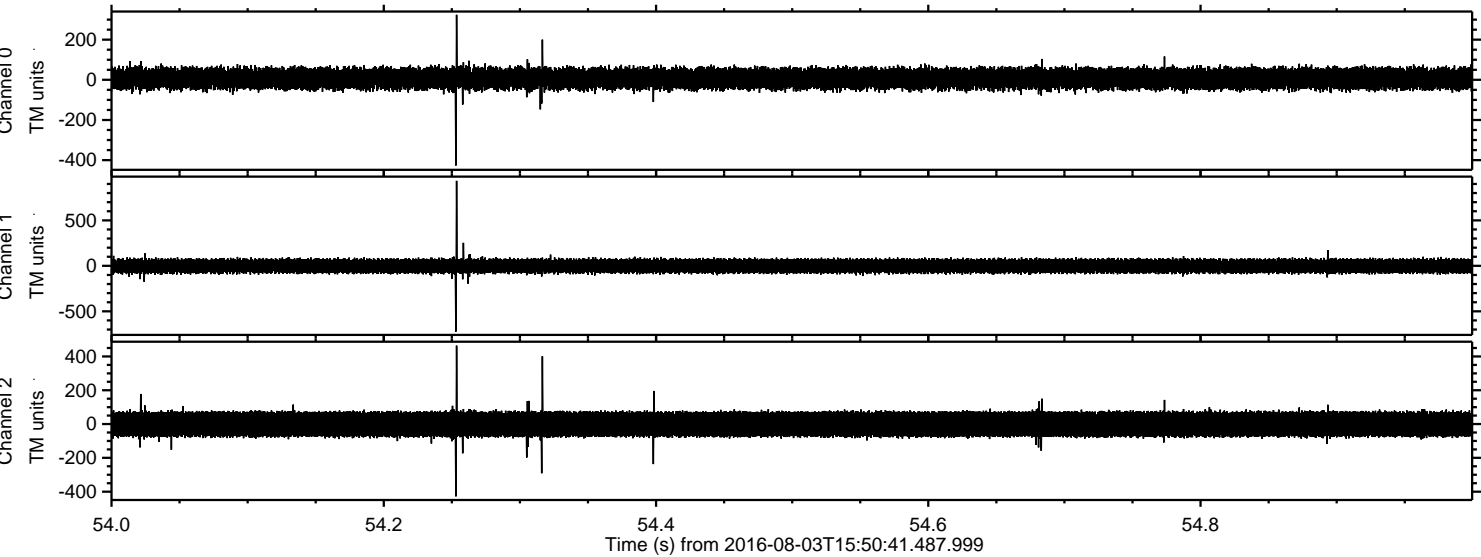


Channel 0
mn: -397
mx: 321
 μ : 6.2
 σ : 31.4

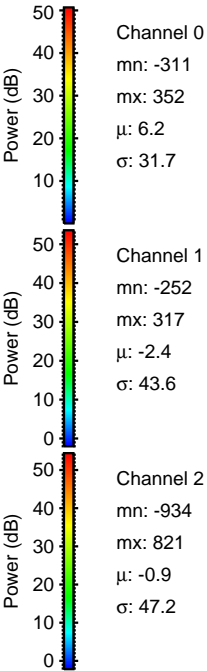
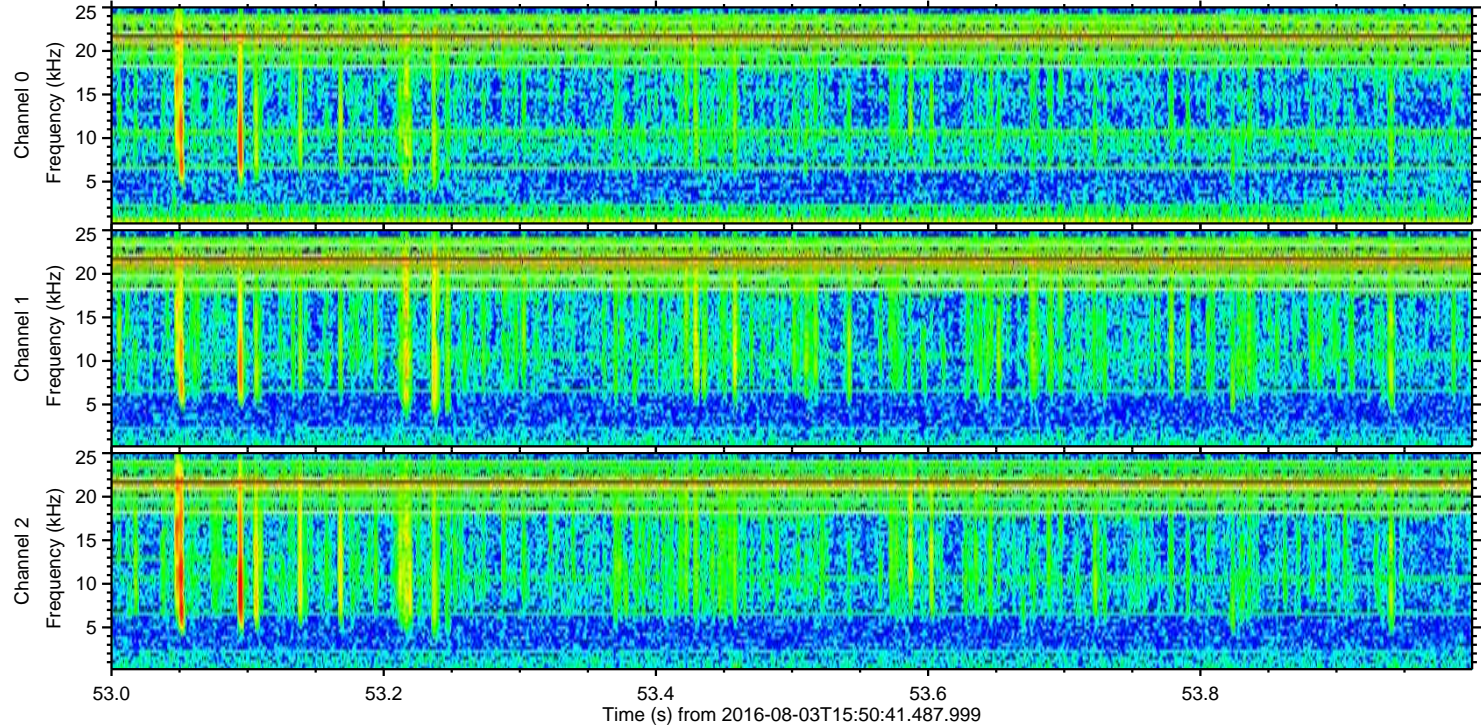
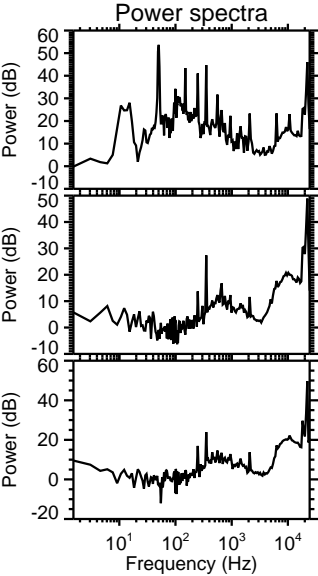
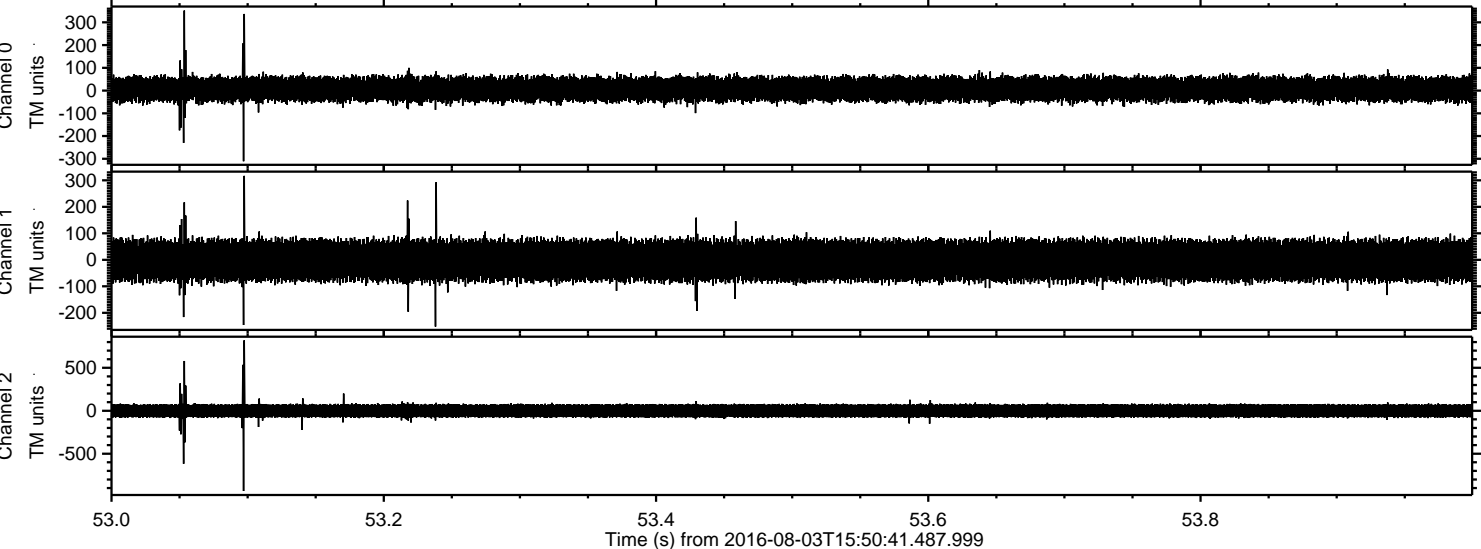
Channel 1
mn: -958
mx: 768
 μ : -2.4
 σ : 44.3

Channel 2
mn: -335
mx: 248
 μ : -0.9
 σ : 45.7

Processed Wed Aug 3 17:59:29 2016 by ELM ver.2012-10-06 from 001__elm20160803_155040__dat00.bin



Processed Wed Aug 3 17:59:29 2016 by ELM ver.2012-10-06 from 001__elm20160803_155040__dat00.bin



Processed Wed Aug 3 17:59:30 2016 by ELM ver.2012-10-06 from 001__elm20160803_155040__dat00.bin

