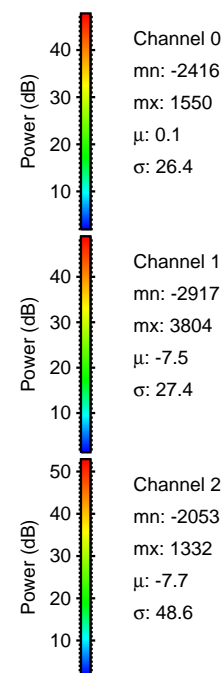
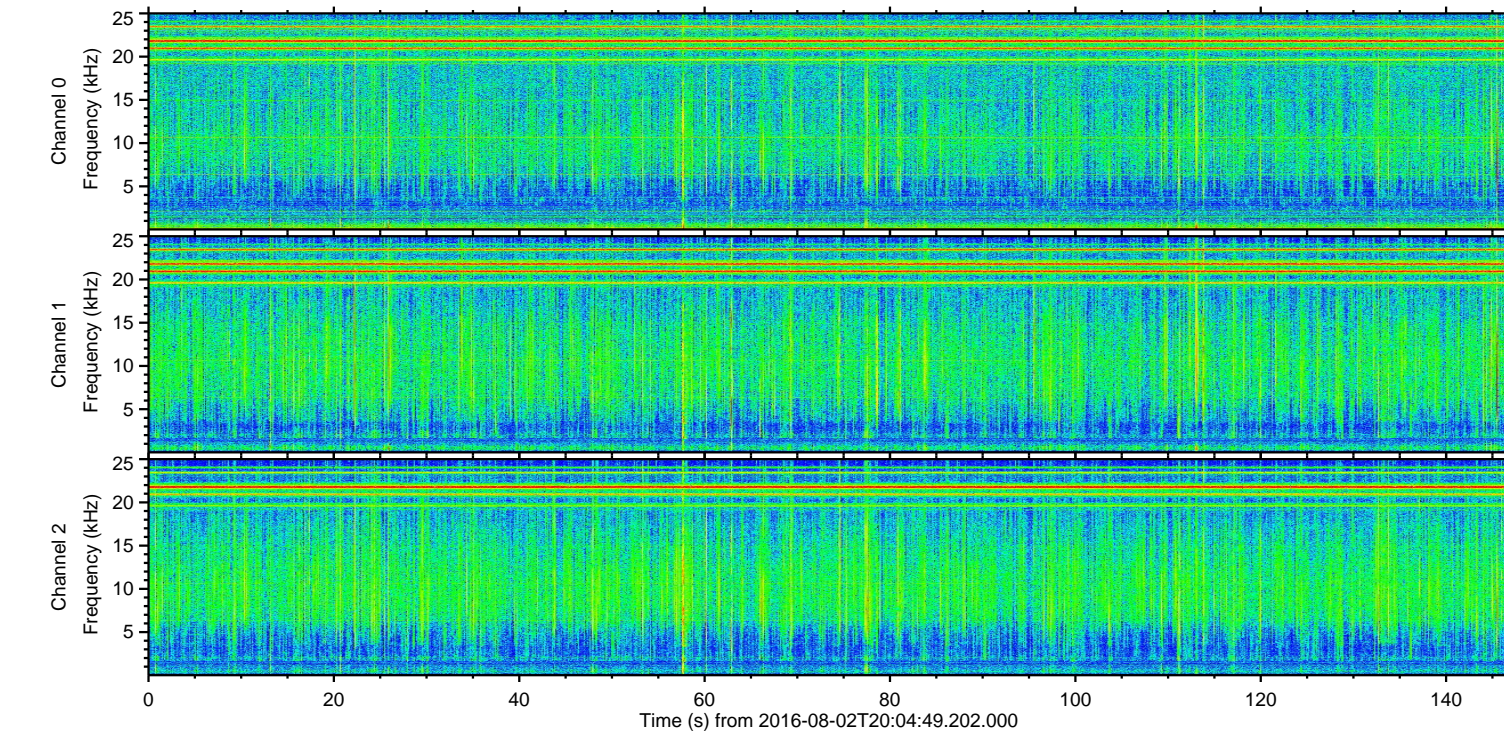
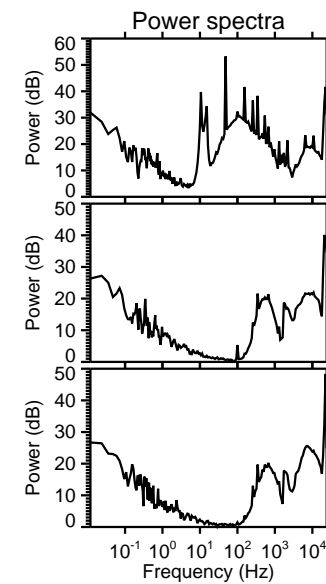
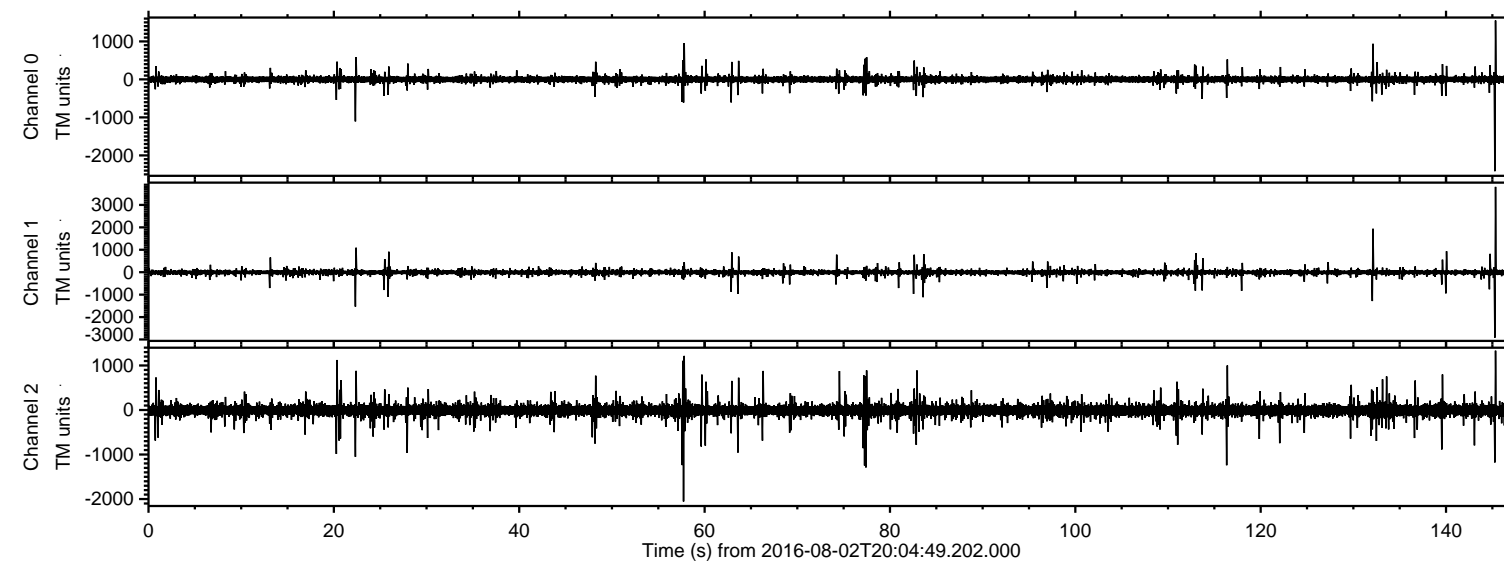


# ELMAVAN 3D WAVEFORMS (Measured data sampled at 50 kHz) 51000 packets of 144 samples from 2016-08-02T20:04:49.202.000.

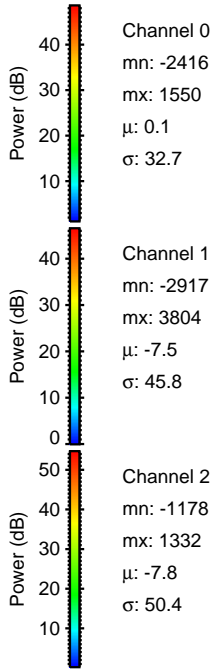
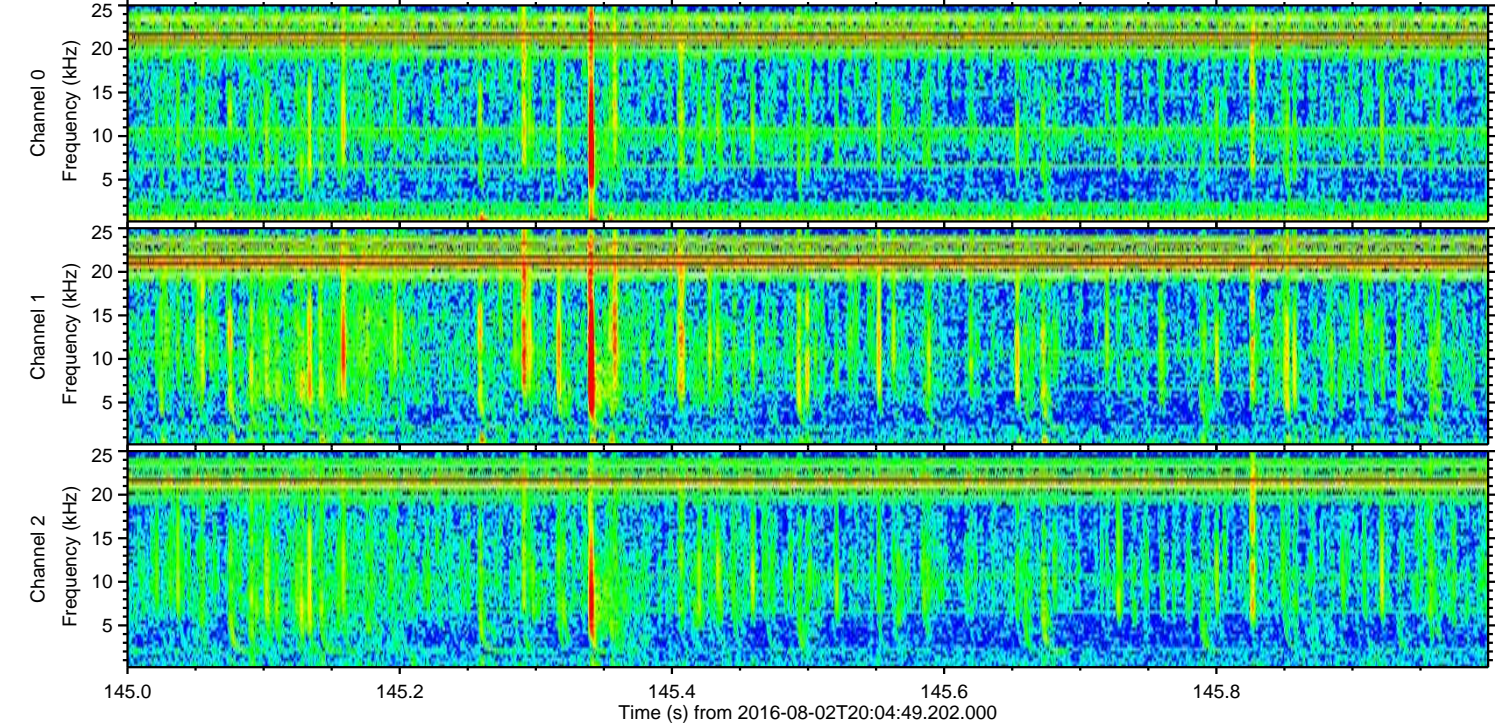
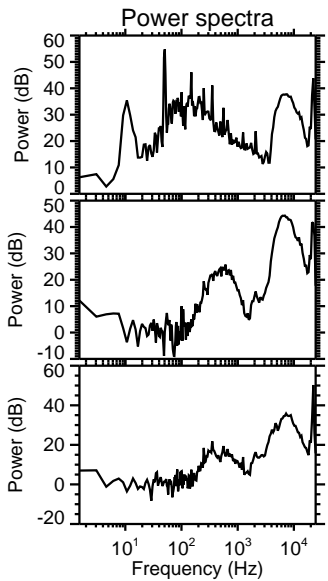
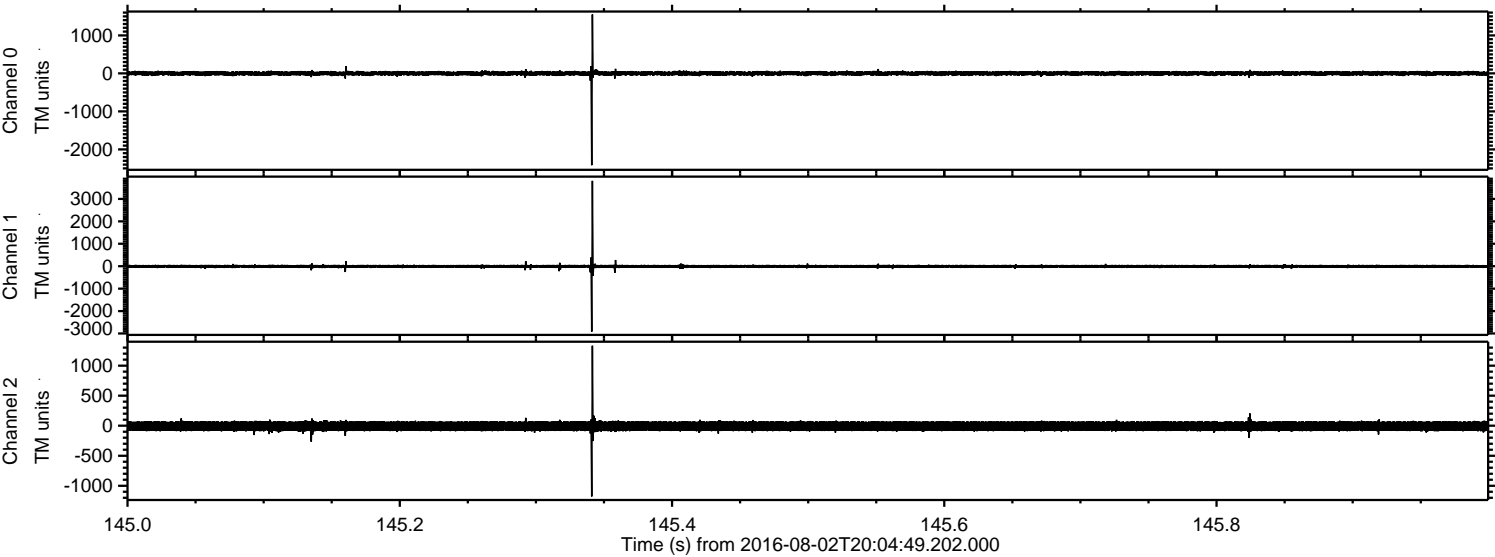
Processed Tue Aug 2 22:12:17 2016 by ELM ver.2012-10-06 from 001\_\_elm20160802\_200448\_\_dat00.bin





ELMAVAN 3D WAVEFORMS (Measured data sampled at 50 kHz) 51000 packets of 144 samples from 2016-08-02T20:04:49.202.000. Part 146/147

Processed Tue Aug 2 22:12:29 2016 by ELM ver.2012-10-06 from 001\_\_elm20160802\_200448\_\_dat00.bin



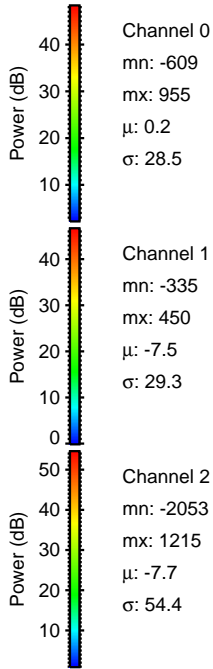
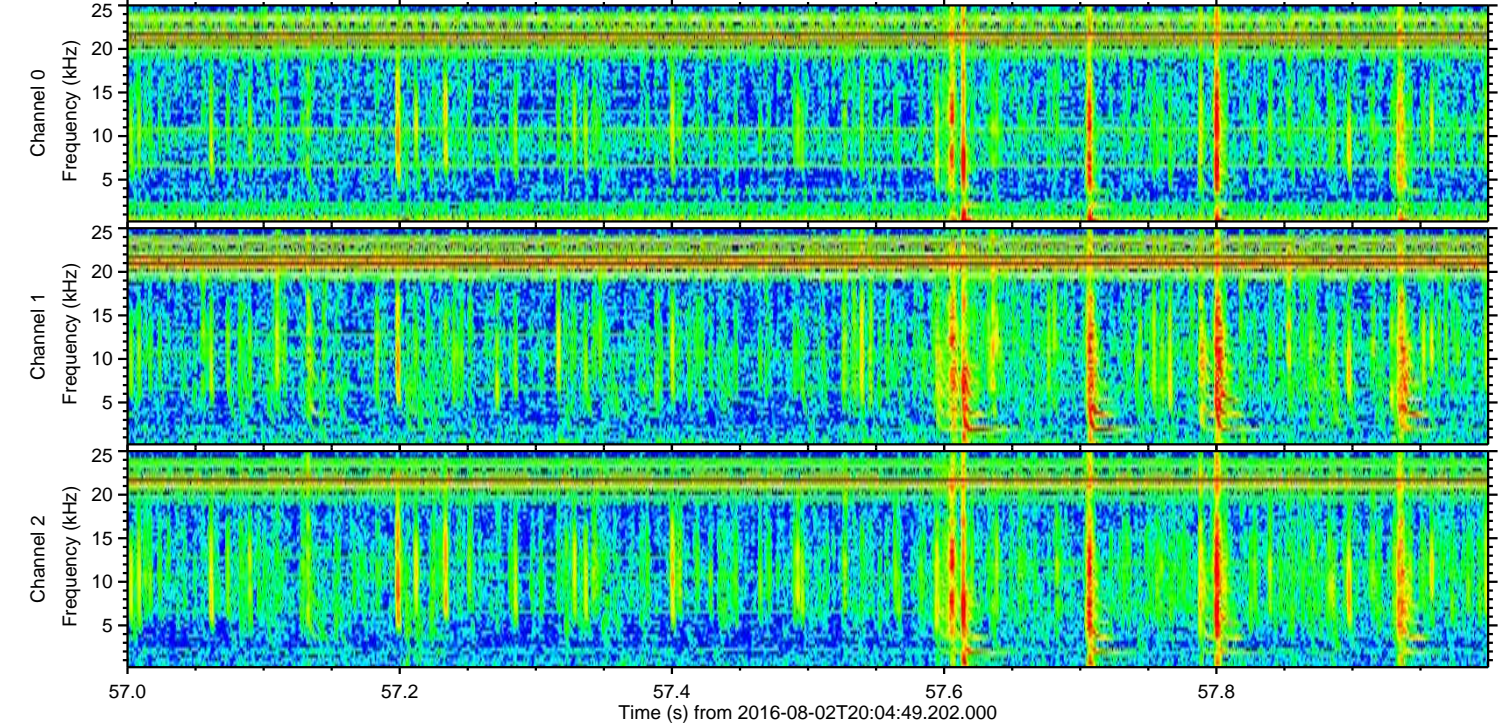
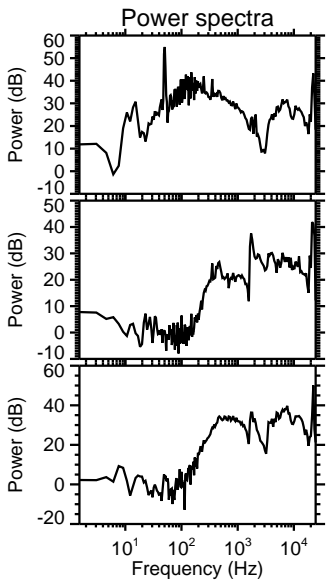
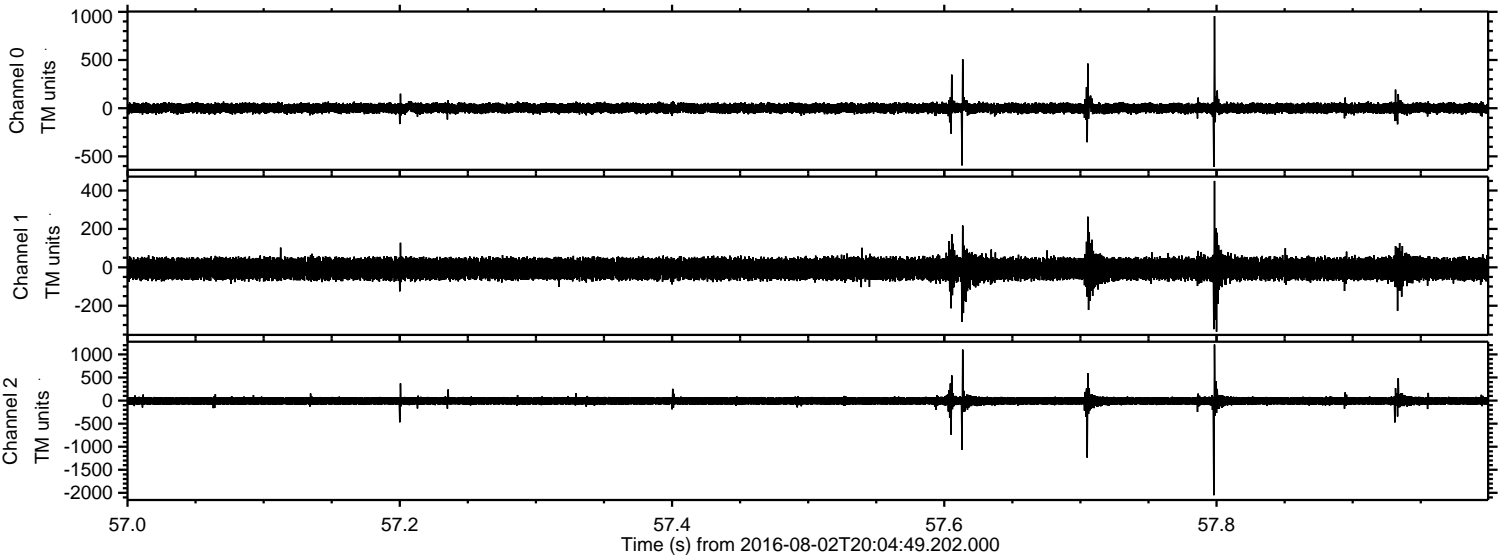
Channel 0  
mn: -2416  
mx: 1550  
 $\mu$ : 0.1  
 $\sigma$ : 32.7

Channel 1  
mn: -2917  
mx: 3804  
 $\mu$ : -7.5  
 $\sigma$ : 45.8

Channel 2  
mn: -1178  
mx: 1332  
 $\mu$ : -7.8  
 $\sigma$ : 50.4



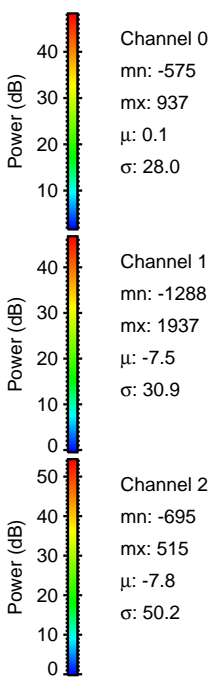
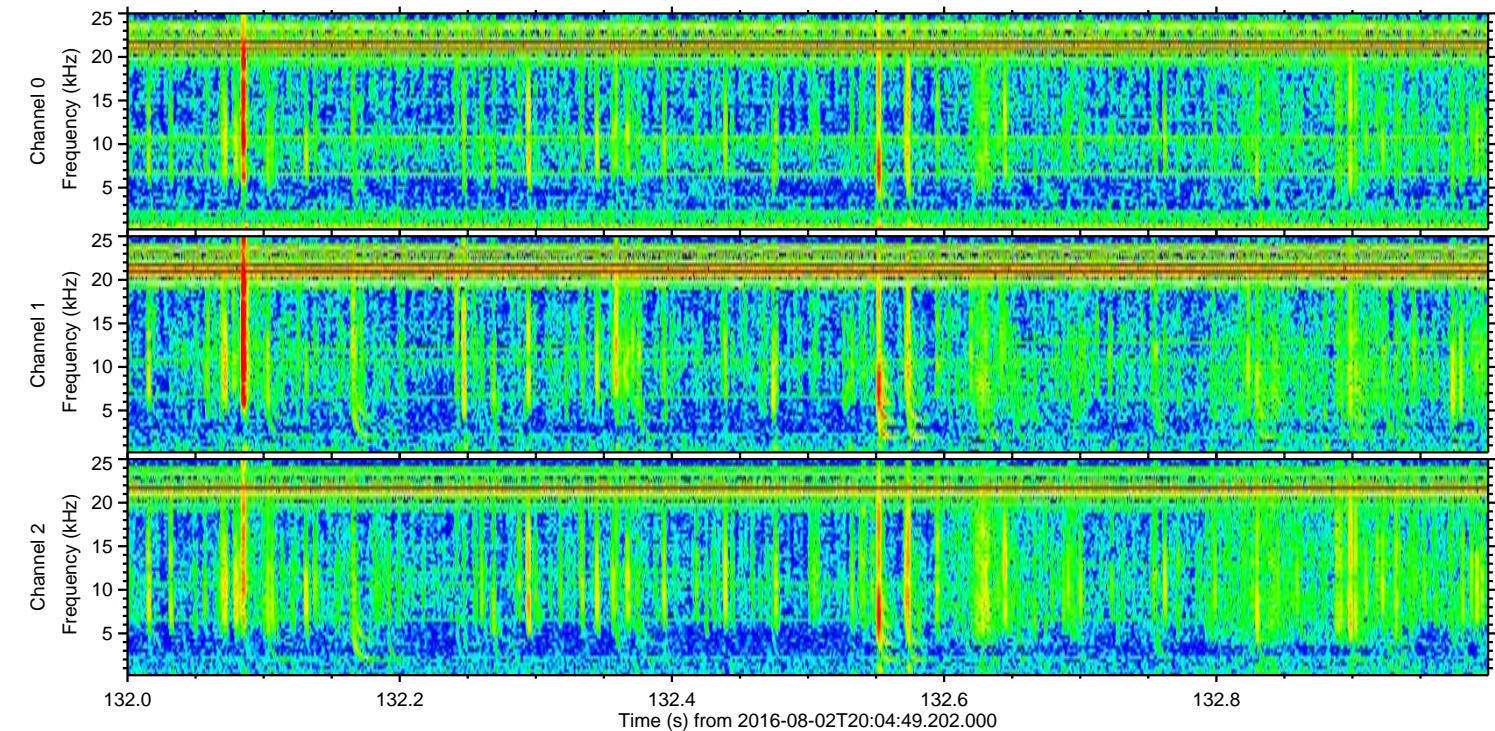
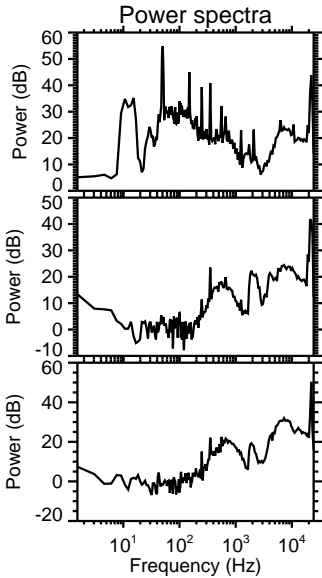
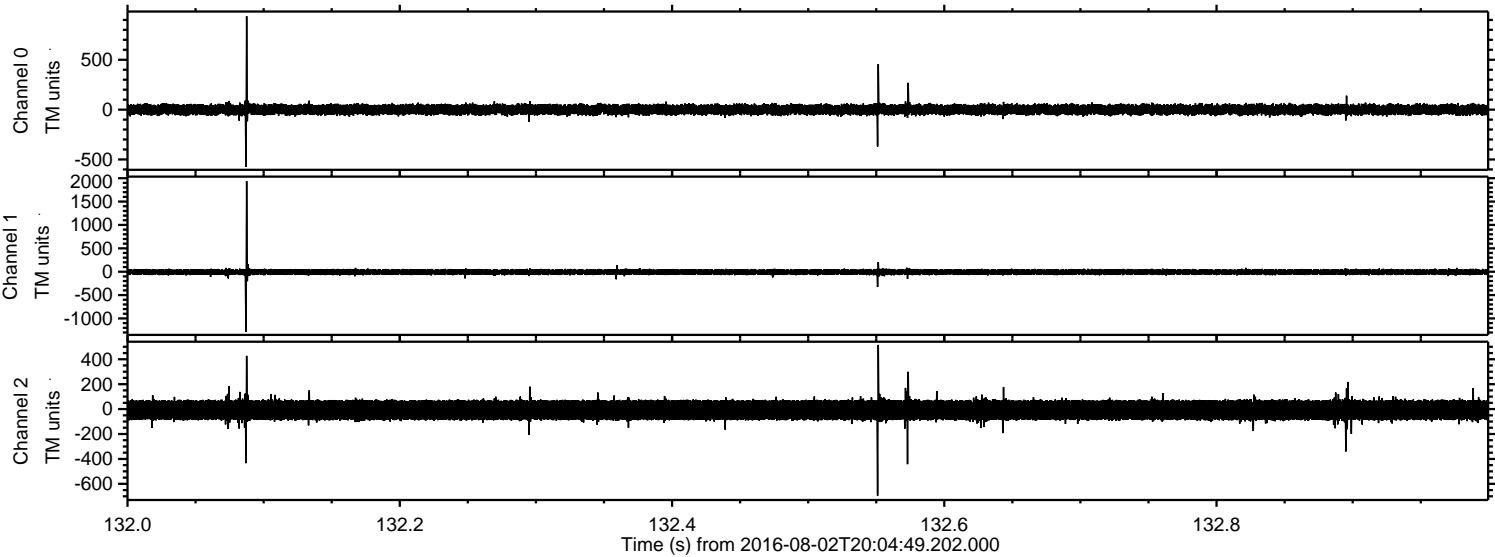
Processed Tue Aug 2 22:12:30 2016 by ELM ver.2012-10-06 from 001\_\_elm20160802\_200448\_\_dat00.bin





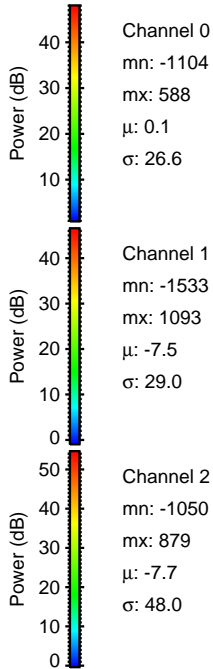
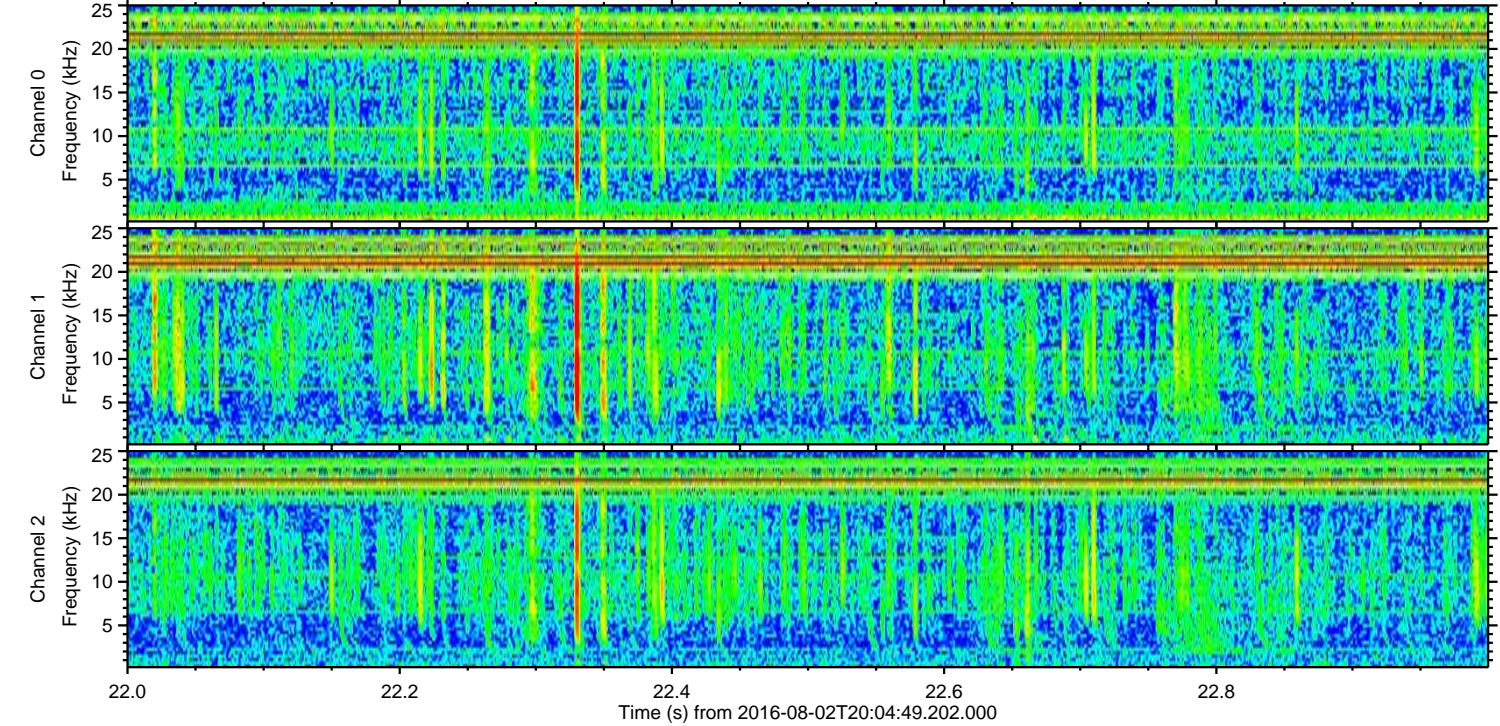
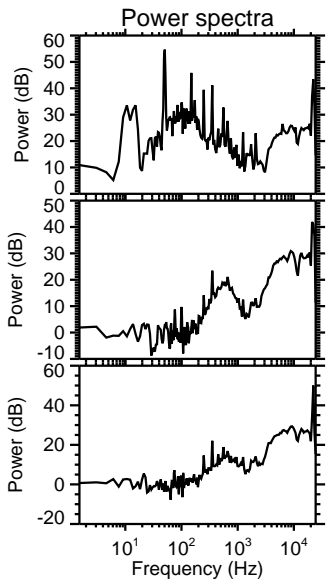
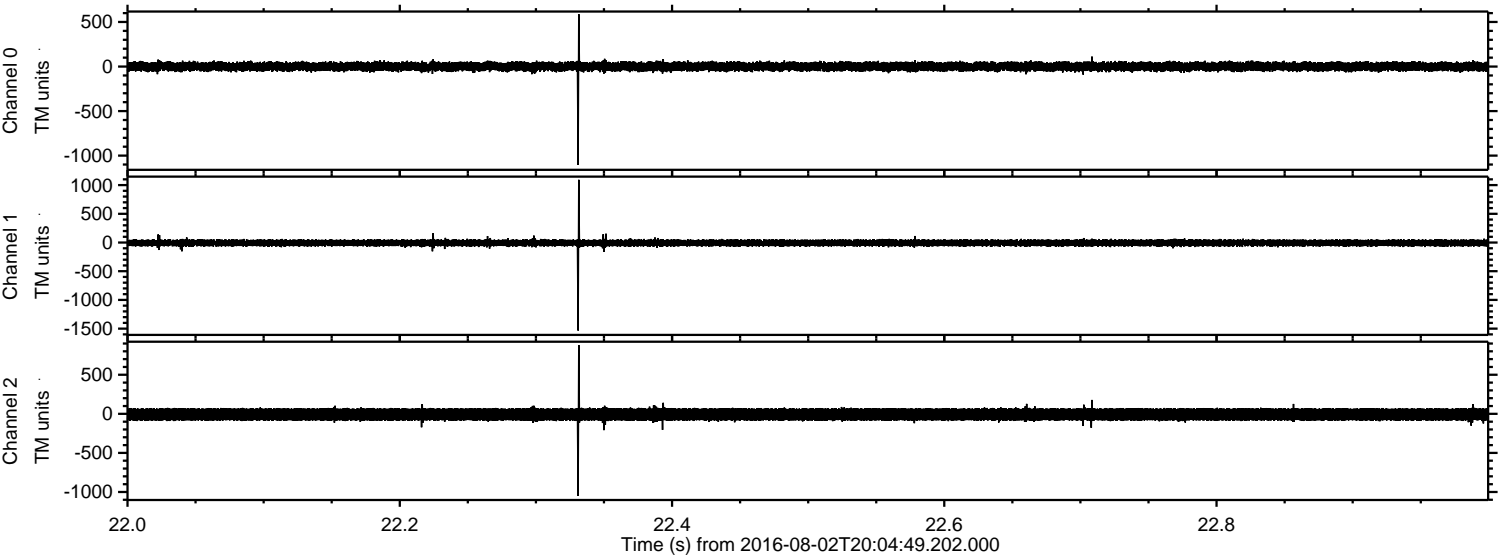
ELMAVAN 3D WAVEFORMS (Measured data sampled at 50 kHz) 51000 packets of 144 samples from 2016-08-02T20:04:49.202.000. Part 133/147

Processed Tue Aug 2 22:12:31 2016 by ELM ver.2012-10-06 from 001\_\_elm20160802\_200448\_\_dat00.bin



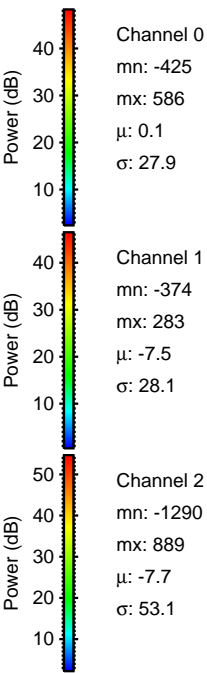
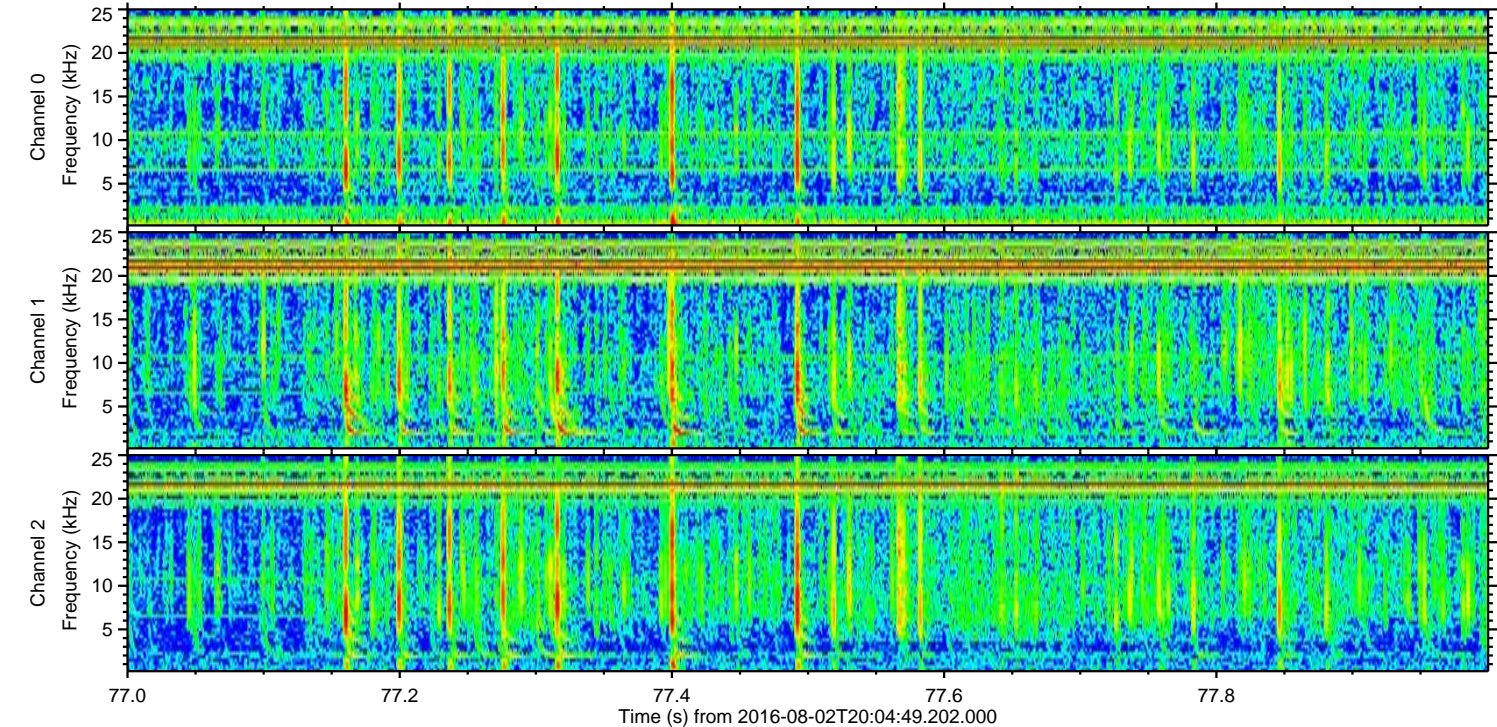
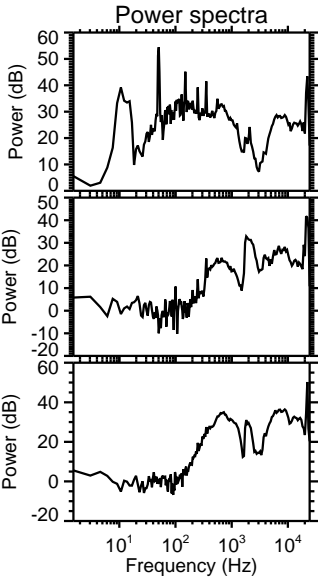
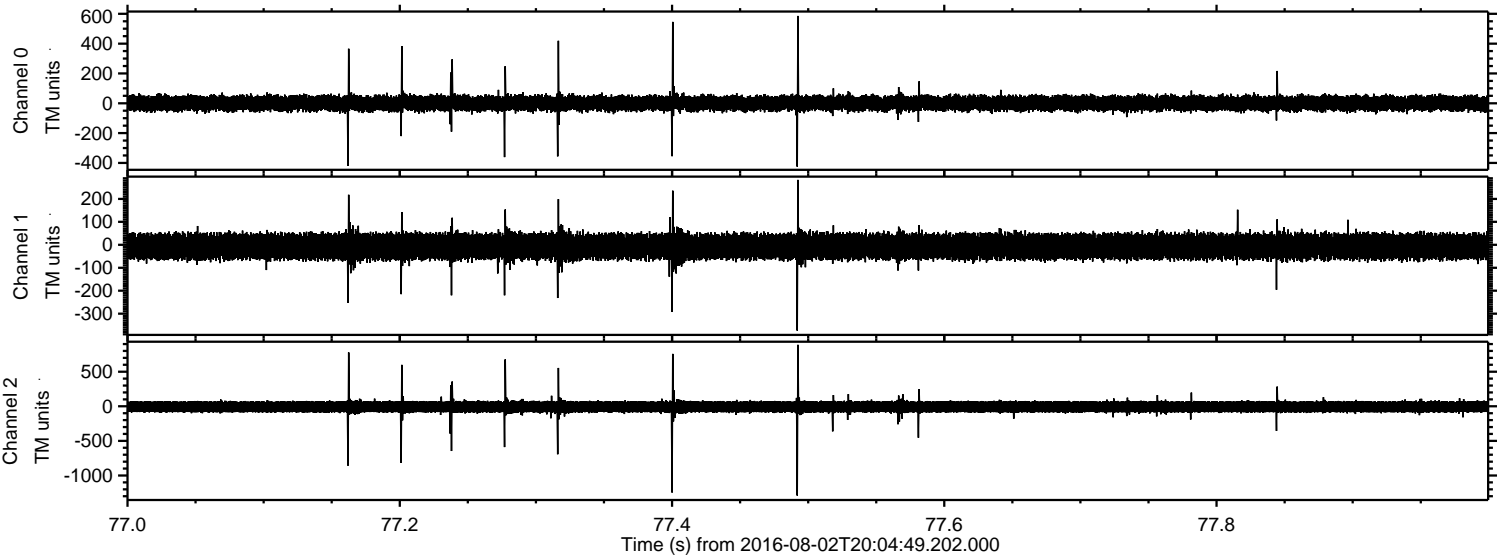


Processed Tue Aug 2 22:12:31 2016 by ELM ver.2012-10-06 from 001\_\_elm20160802\_200448\_\_dat00.bin





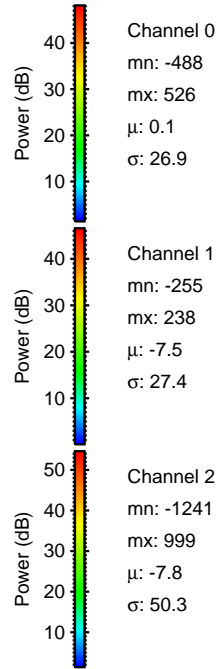
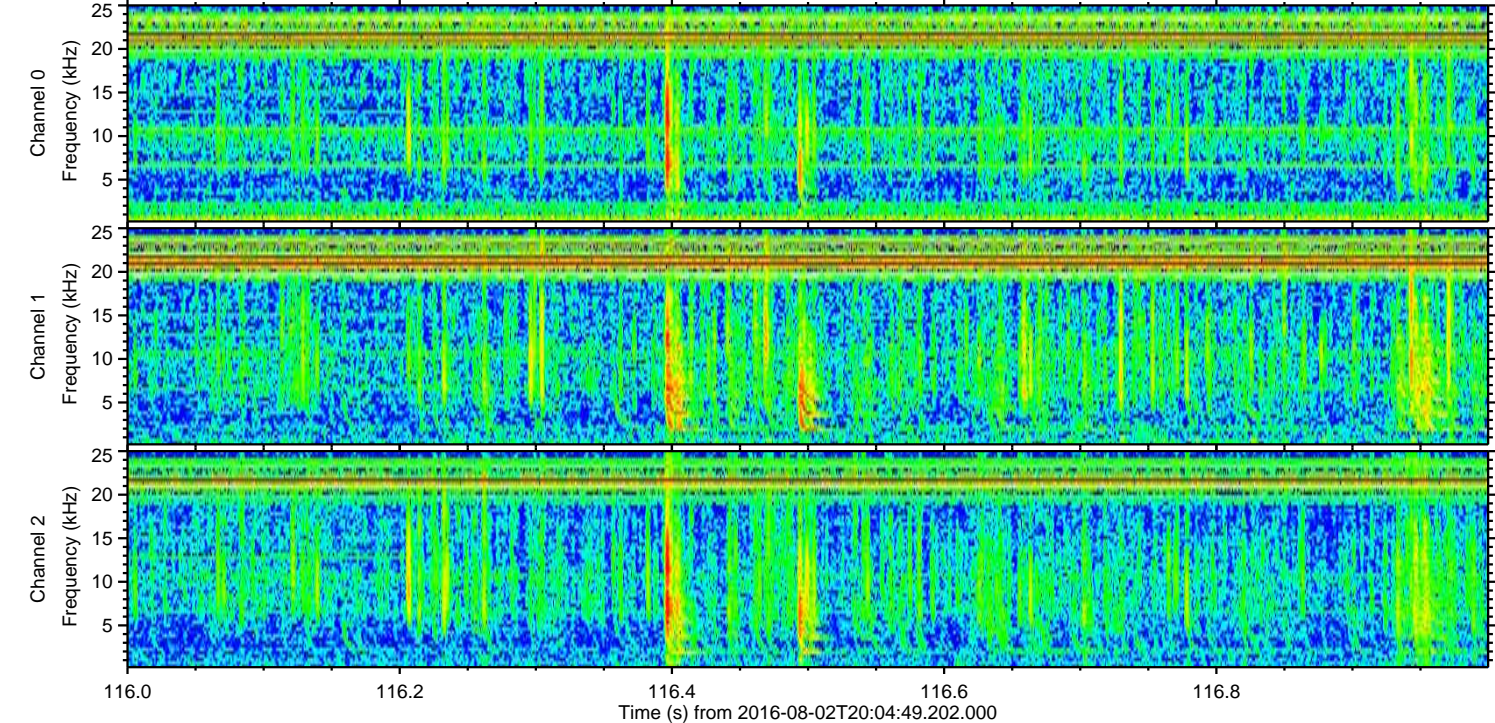
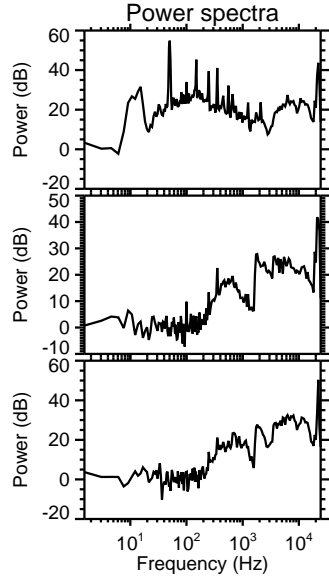
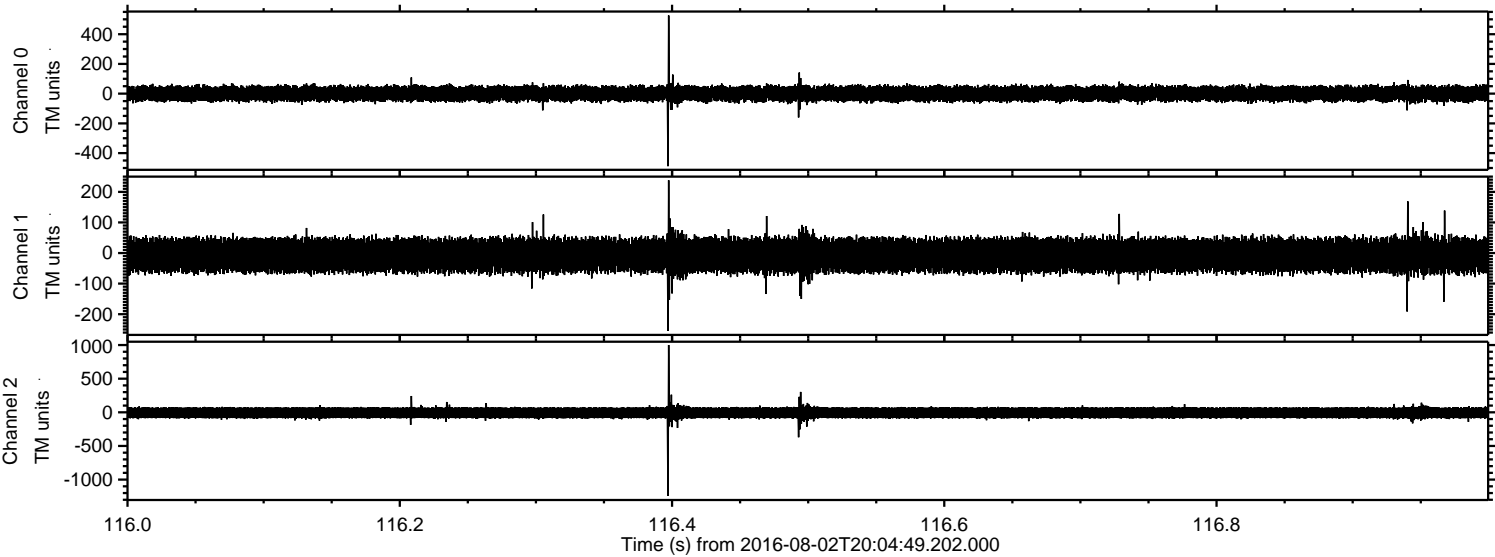
Processed Tue Aug 2 22:12:32 2016 by ELM ver.2012-10-06 from 001\_\_elm20160802\_200448\_\_dat00.bin





ELMAVAN 3D WAVEFORMS (Measured data sampled at 50 kHz) 51000 packets of 144 samples from 2016-08-02T20:04:49.202.000. Part 117/147

Processed Tue Aug 2 22:12:33 2016 by ELM ver.2012-10-06 from 001\_\_elm20160802\_200448\_\_dat00.bin



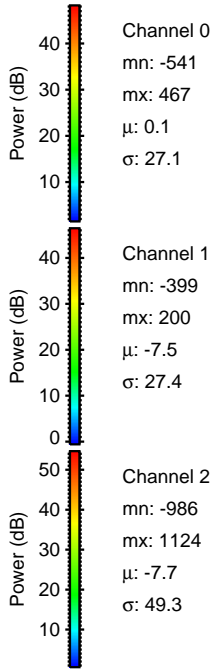
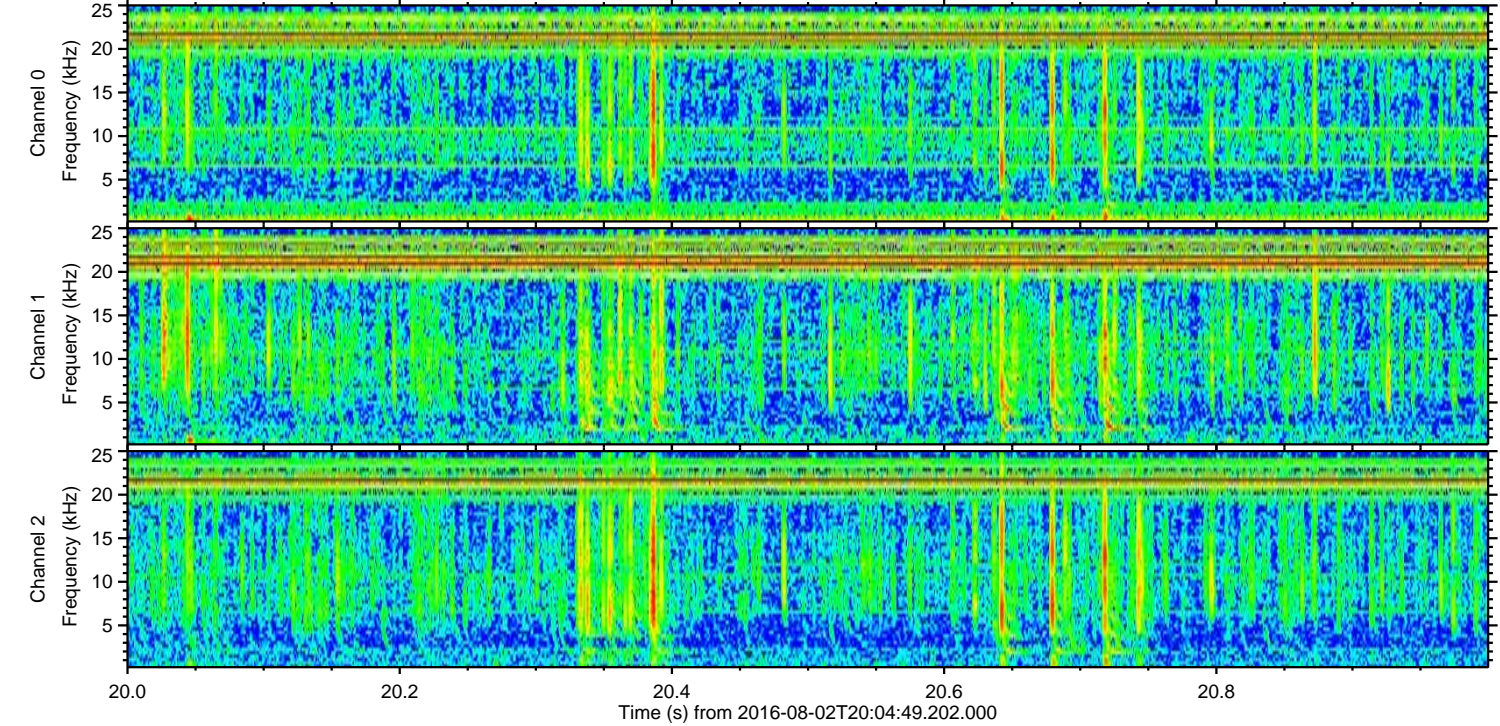
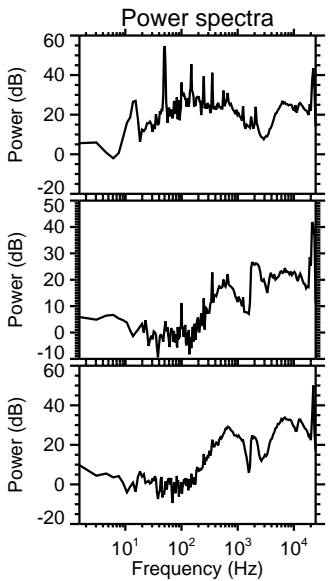
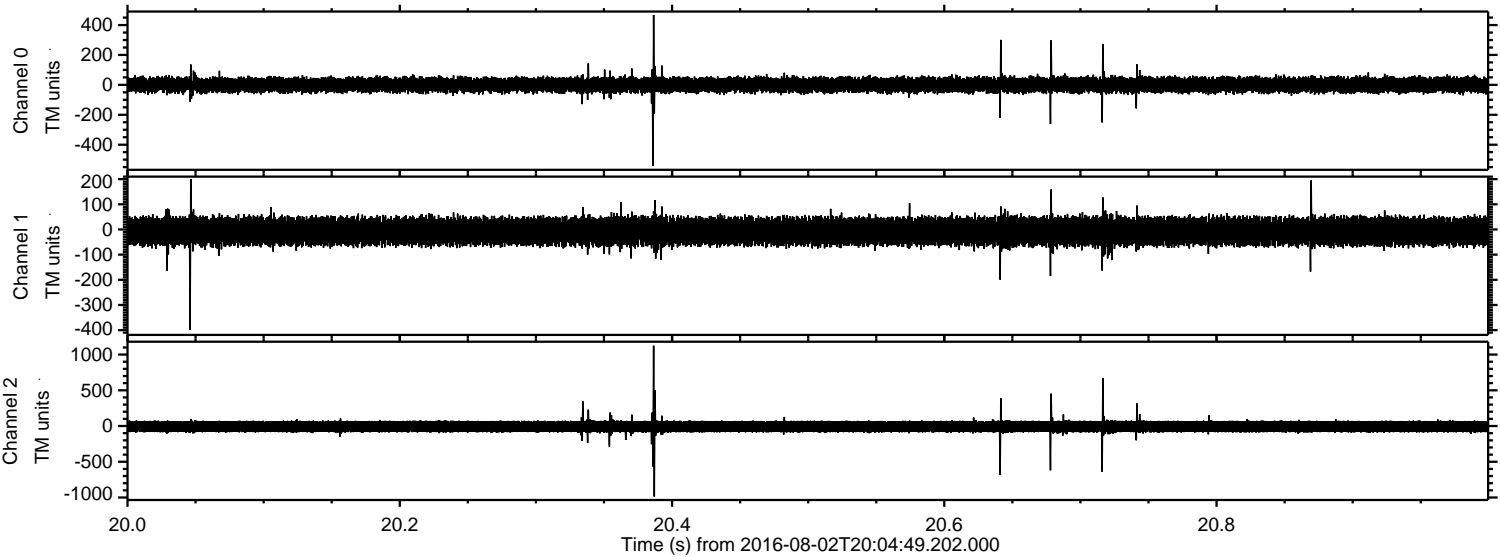
Channel 0  
mn: -488  
mx: 526  
 $\mu$ : 0.1  
 $\sigma$ : 26.9

Channel 1  
mn: -255  
mx: 238  
 $\mu$ : -7.5  
 $\sigma$ : 27.4

Channel 2  
mn: -1241  
mx: 999  
 $\mu$ : -7.8  
 $\sigma$ : 50.3

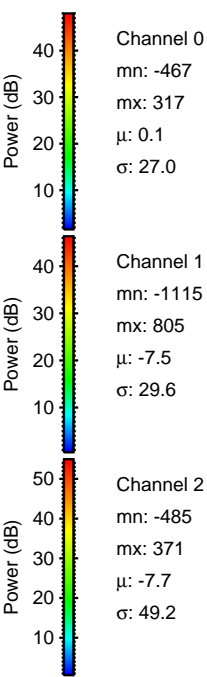
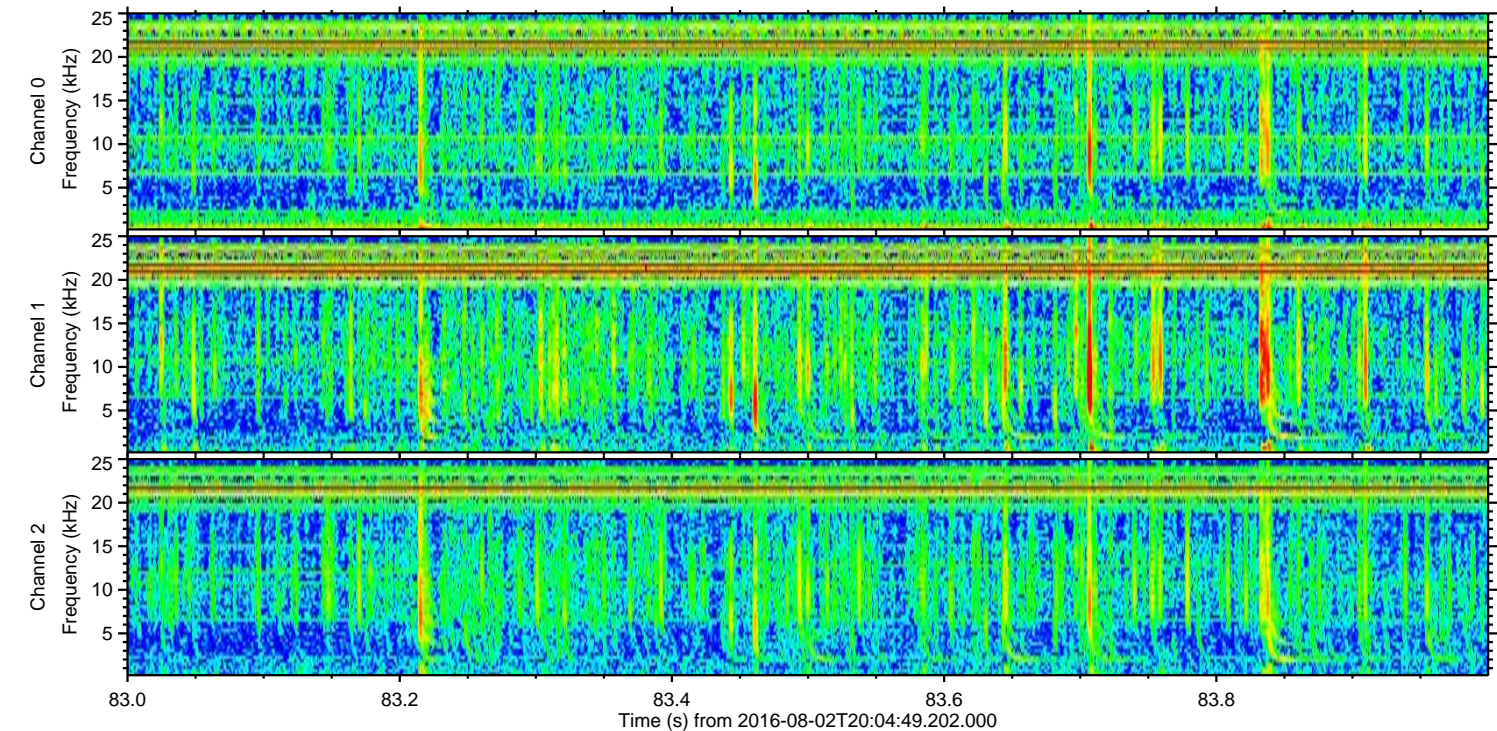
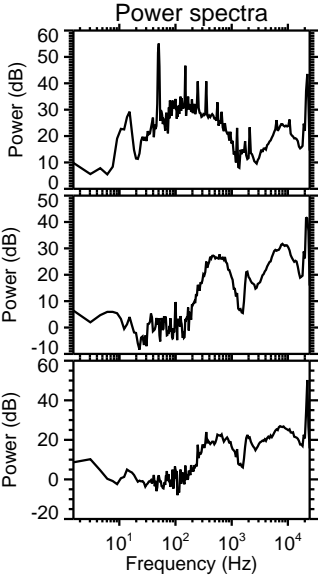
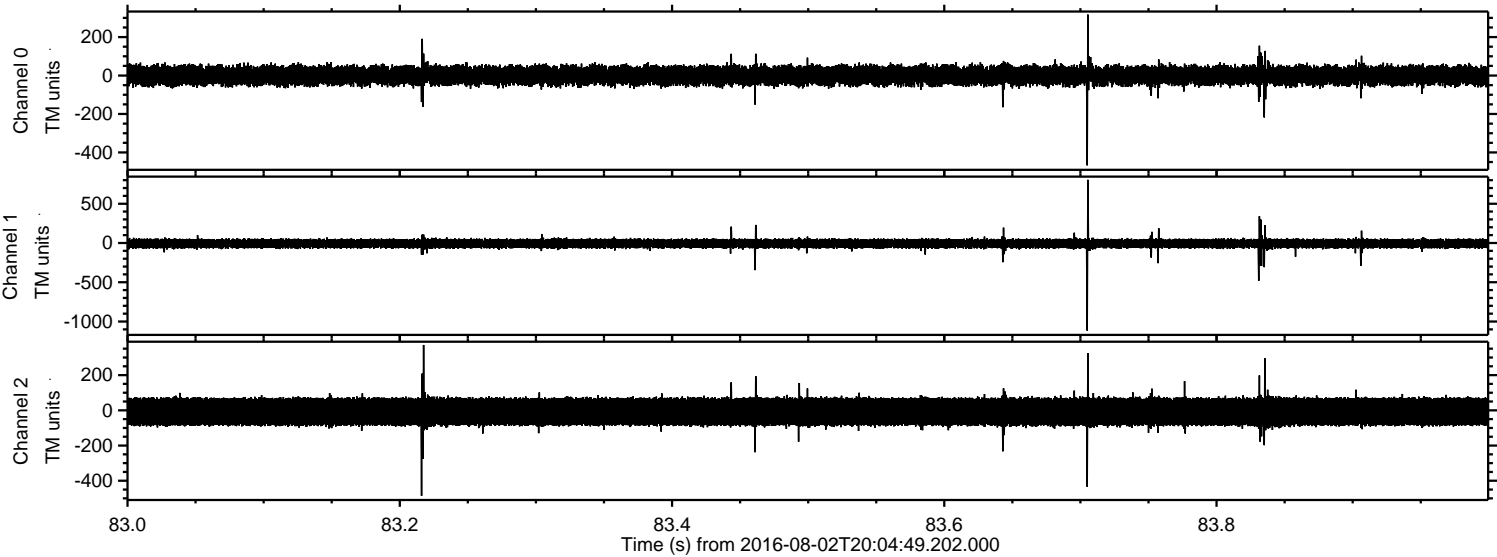


Processed Tue Aug 2 22:12:34 2016 by ELM ver.2012-10-06 from 001\_\_elm20160802\_200448\_\_dat00.bin



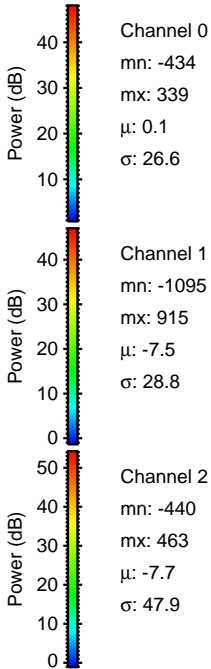
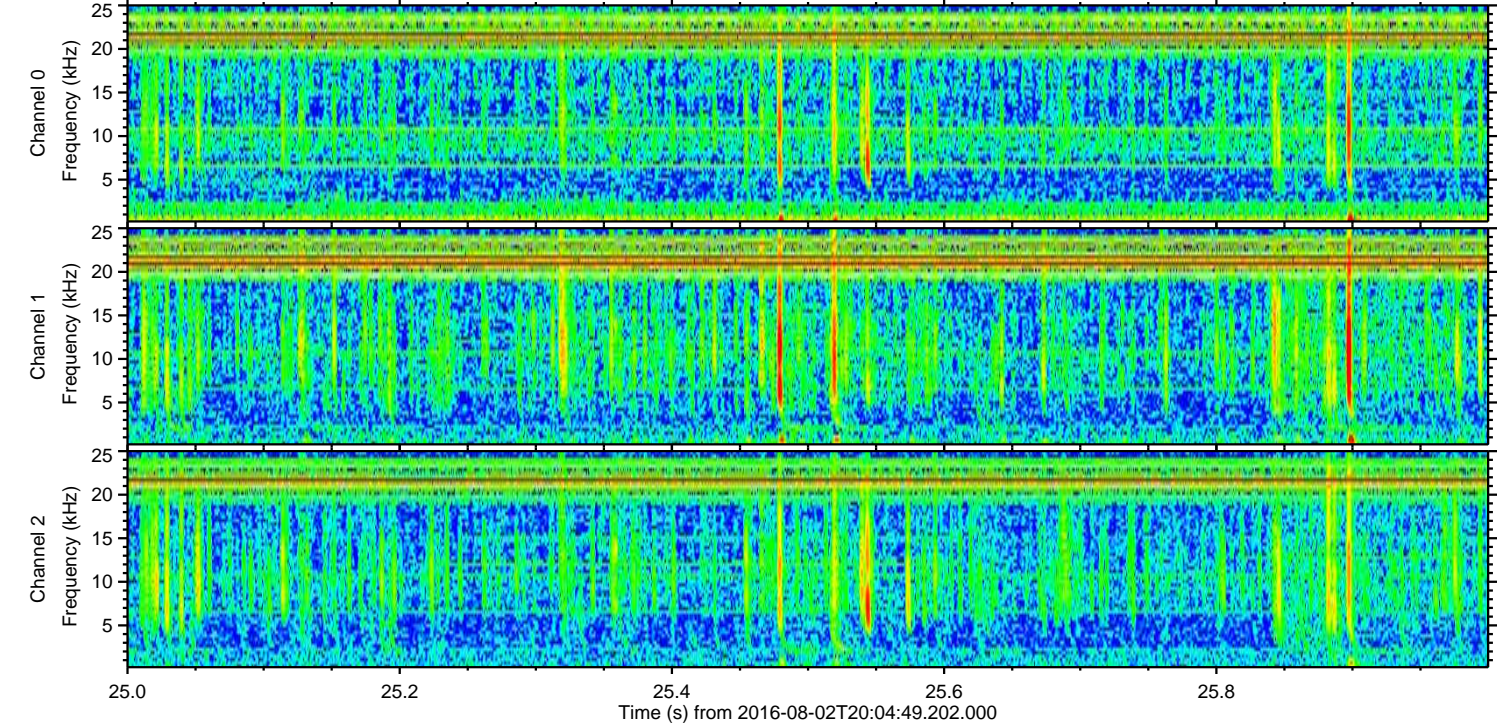
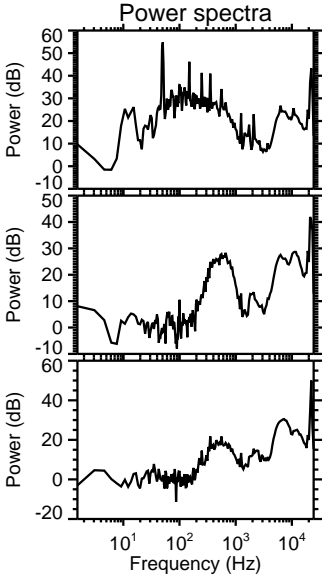
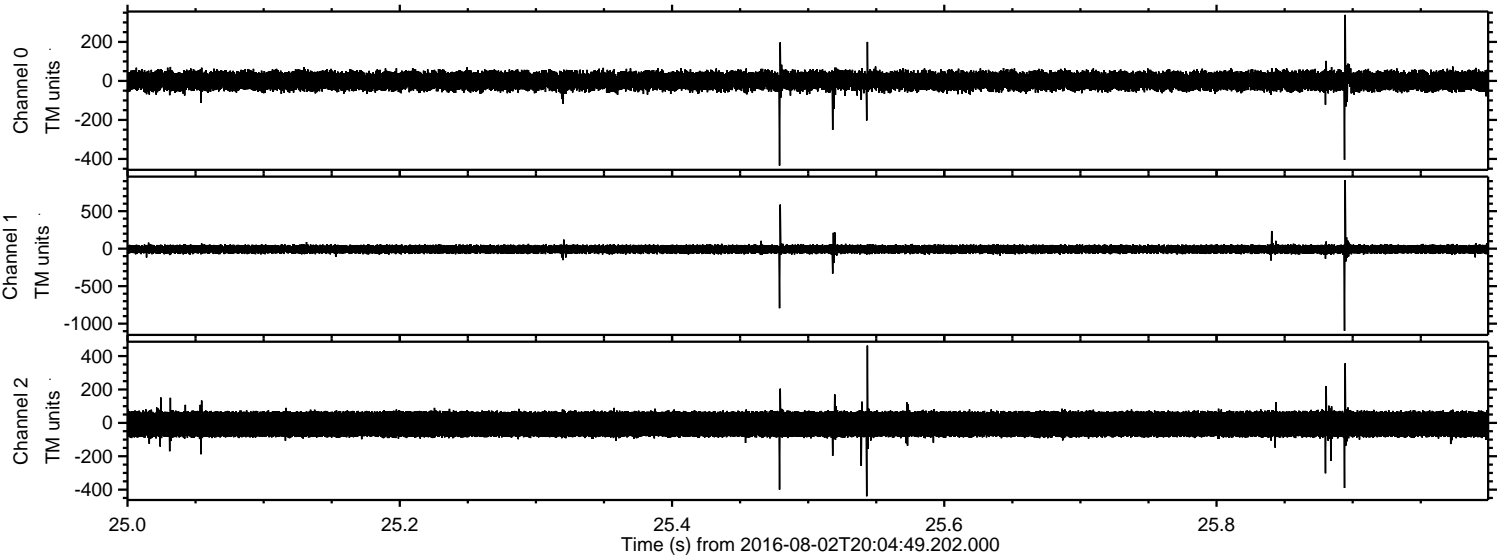


Processed Tue Aug 2 22:12:35 2016 by ELM ver.2012-10-06 from 001\_\_elm20160802\_200448\_\_dat00.bin





Processed Tue Aug 2 22:12:36 2016 by ELM ver.2012-10-06 from 001\_\_elm20160802\_200448\_\_dat00.bin





Processed Tue Aug 2 22:12:37 2016 by ELM ver.2012-10-06 from 001\_\_elm20160802\_200448\_\_dat00.bin

