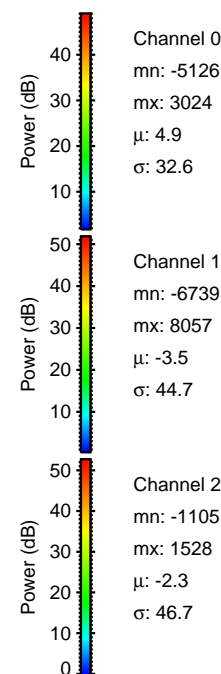
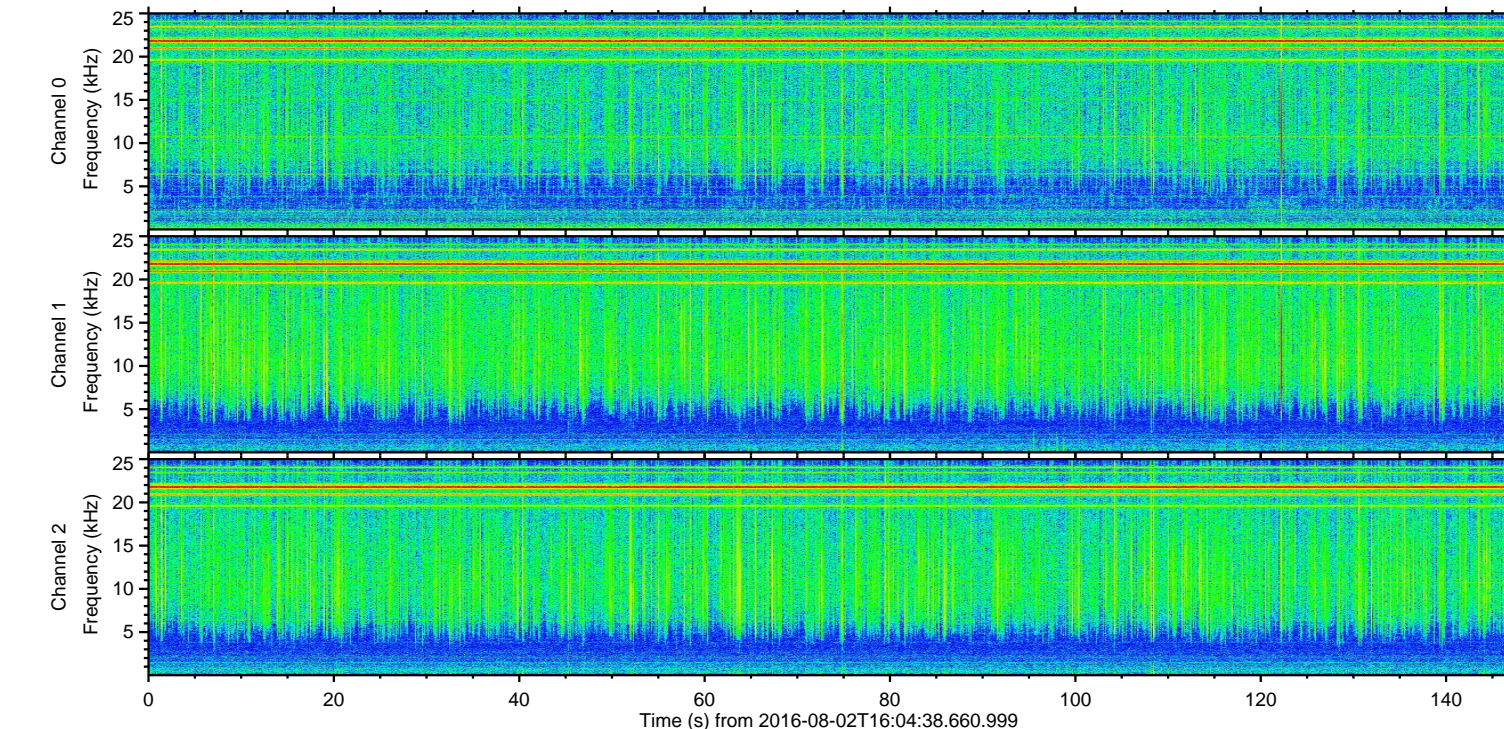
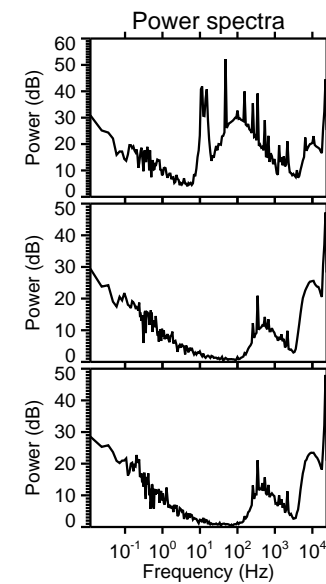
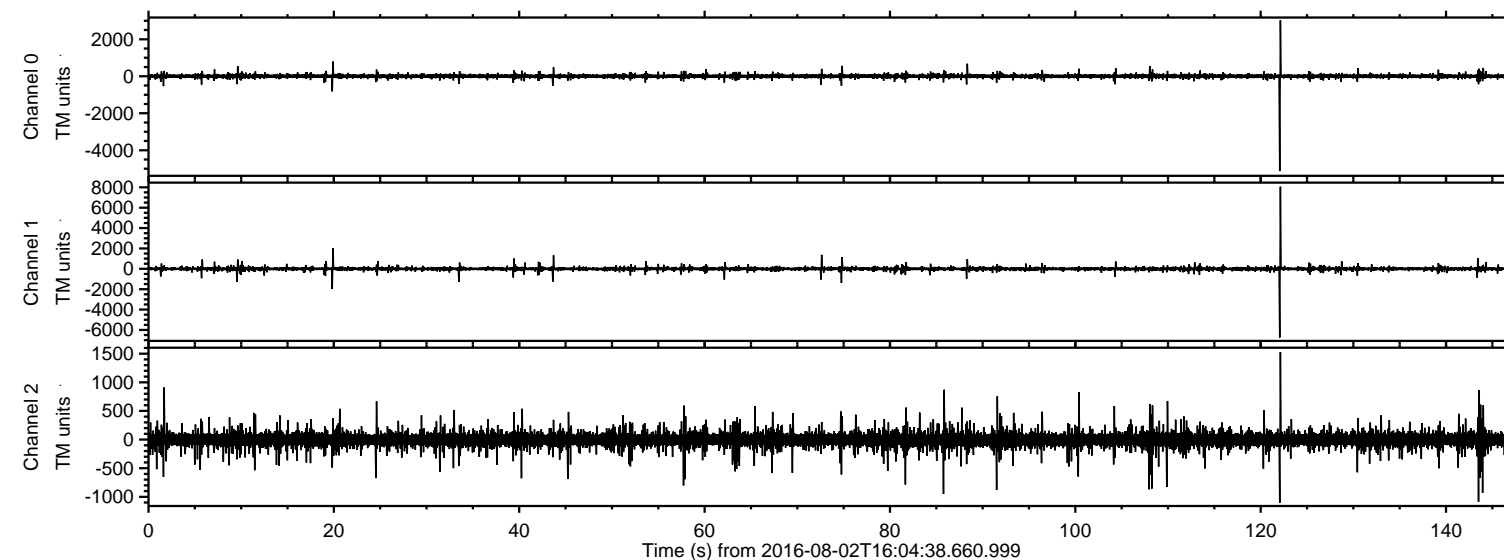


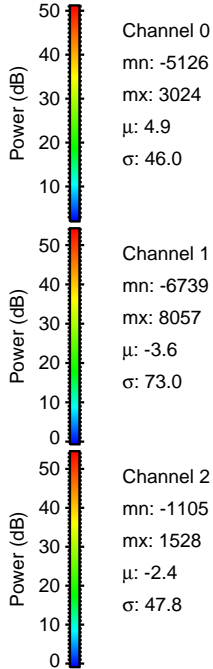
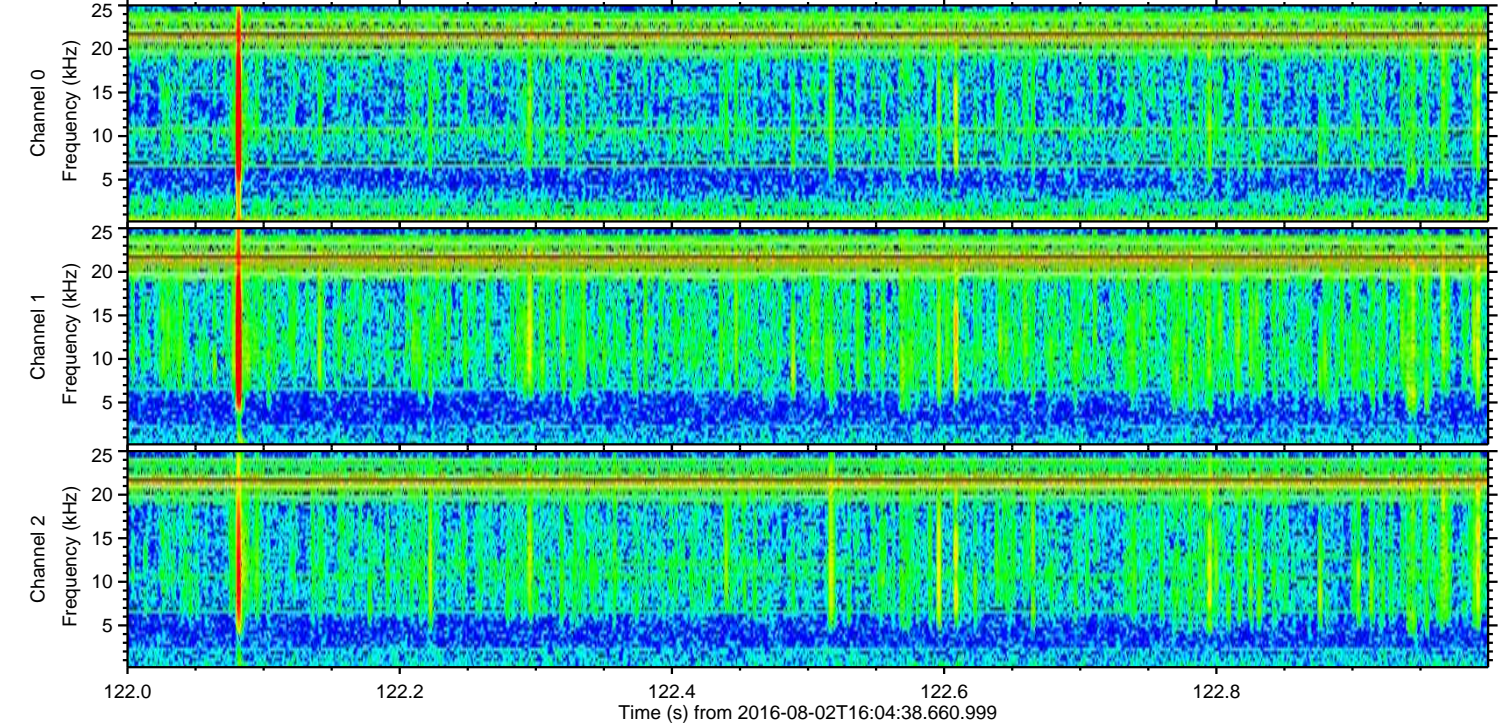
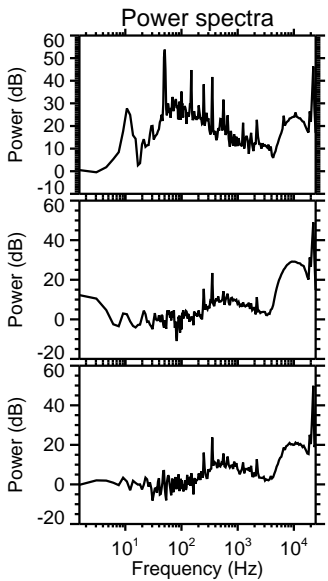
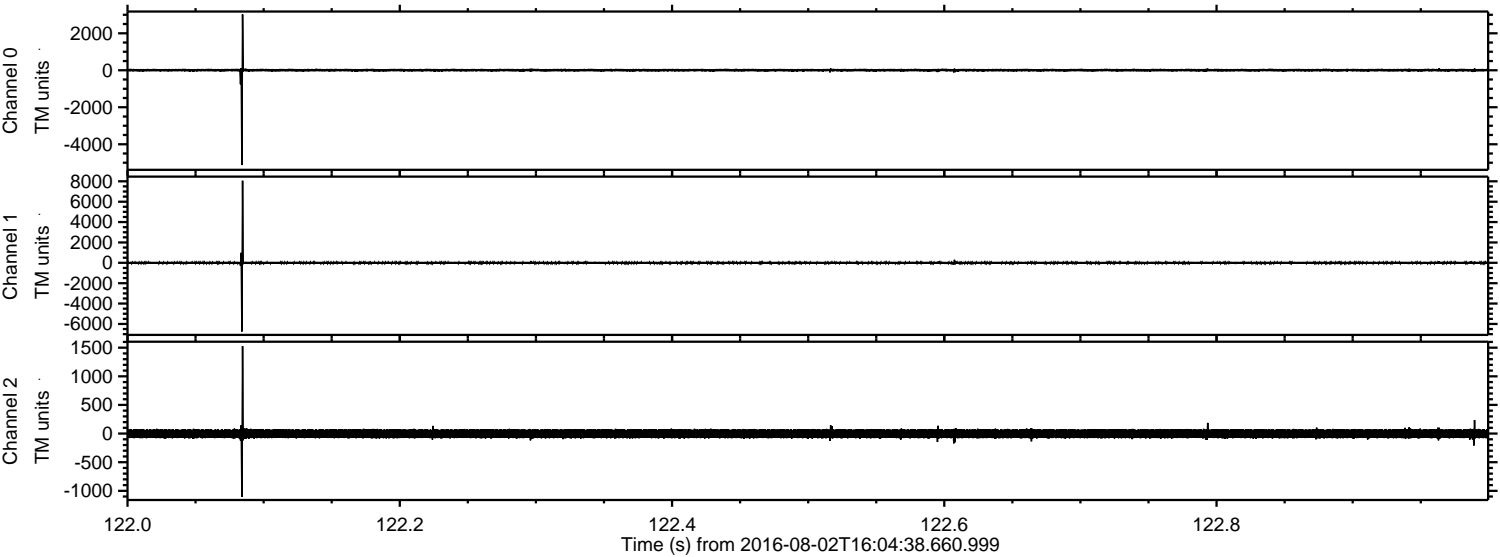
ELMAVAN 3D WAVEFORMS (Measured data sampled at 50 kHz) 51000 packets of 144 samples from 2016-08-02T16:04:38.660.999.

Processed Tue Aug 2 18:12:29 2016 by ELM ver.2012-10-06 from 001__elm20160802_160437__dat00.bin

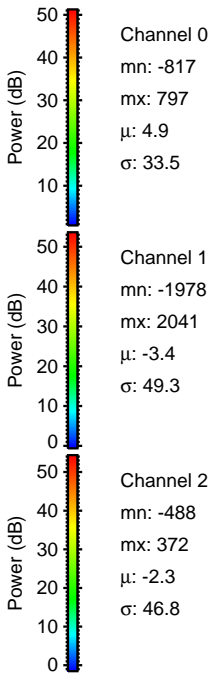
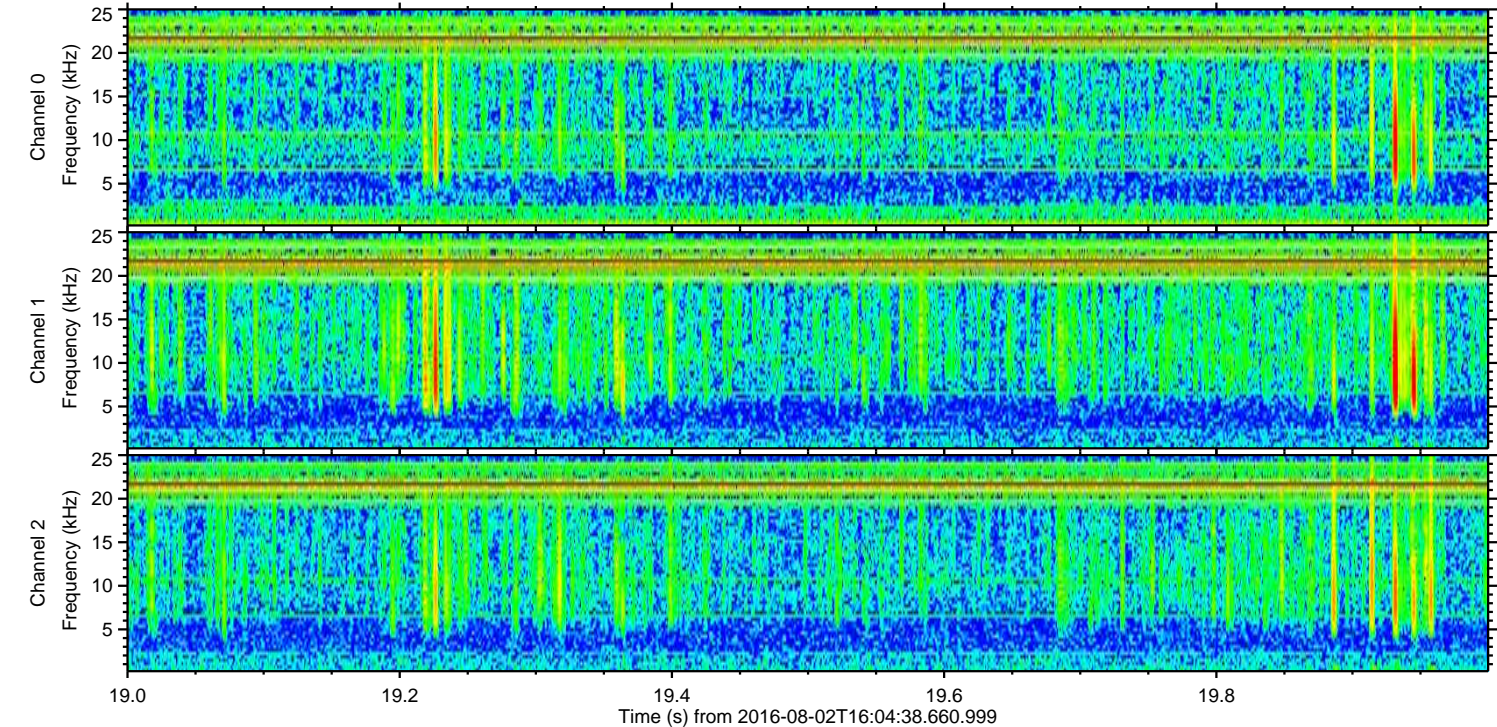
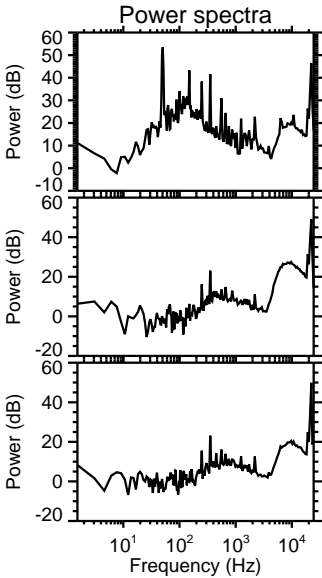
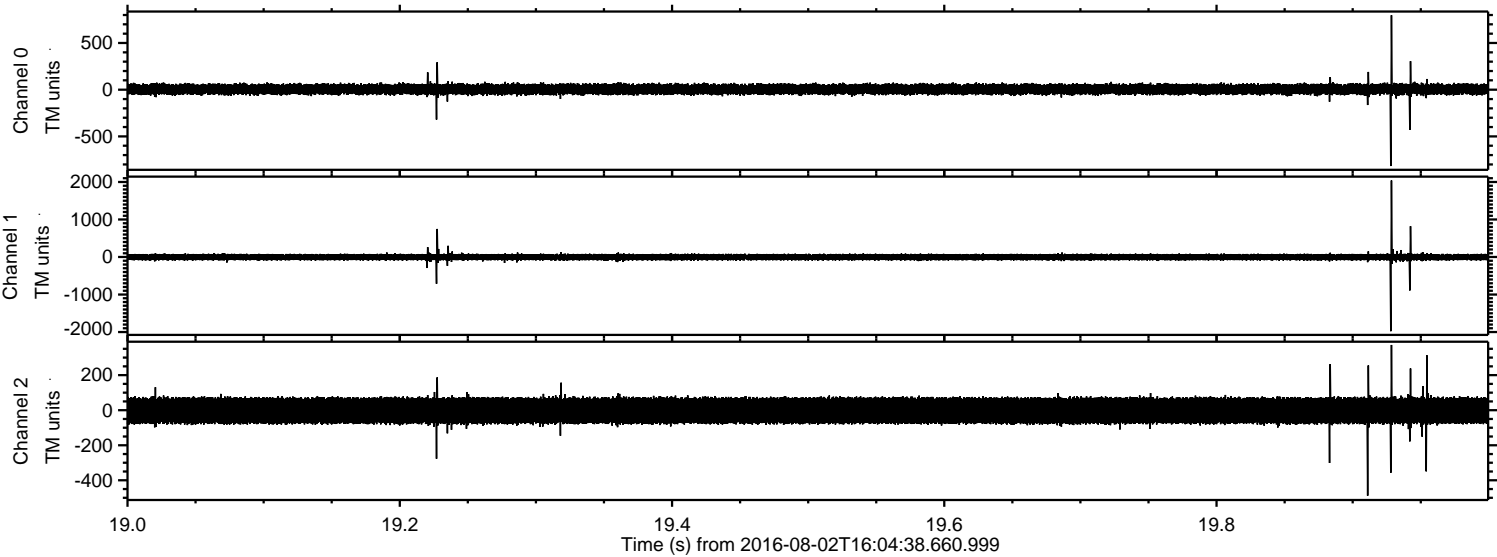


ELMAVAN 3D WAVEFORMS (Measured data sampled at 50 kHz) 51000 packets of 144 samples from 2016-08-02T16:04:38.660.999. Part 123/147

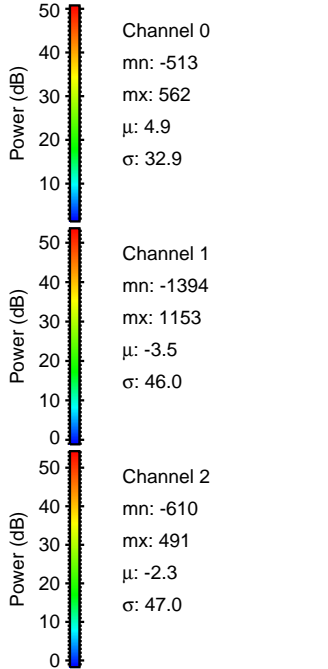
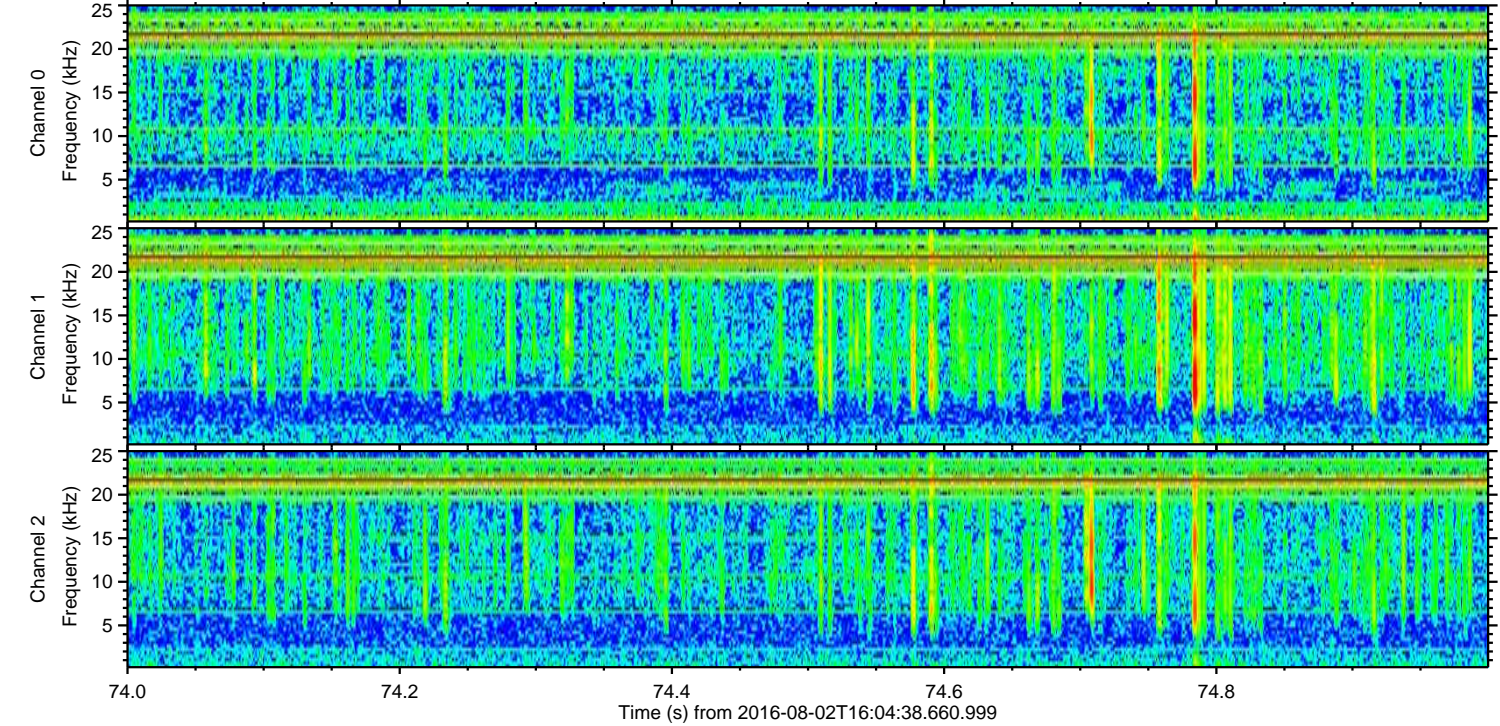
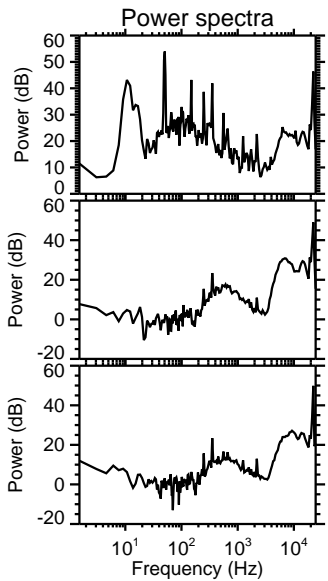
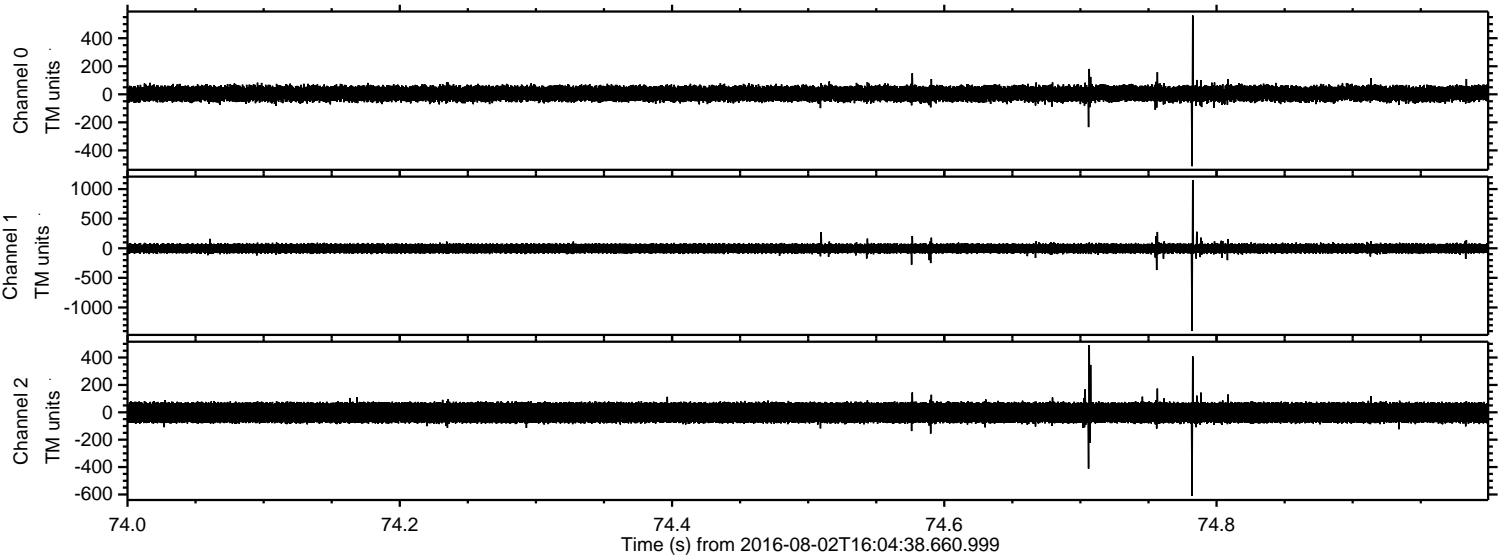
Processed Tue Aug 2 18:12:41 2016 by ELM ver.2012-10-06 from 001__elm20160802_160437__dat00.bin



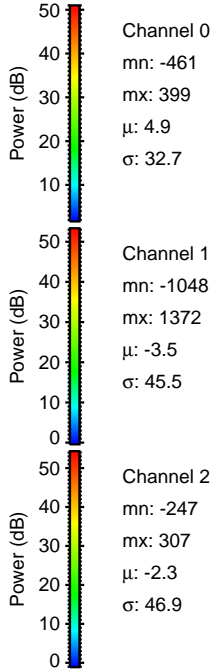
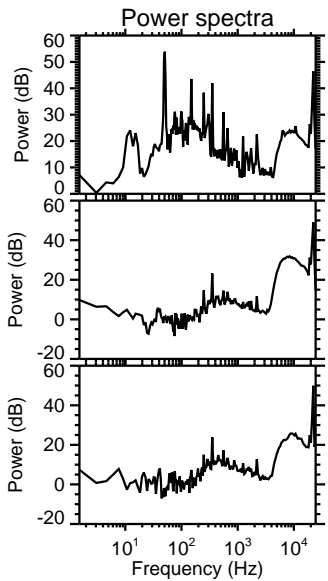
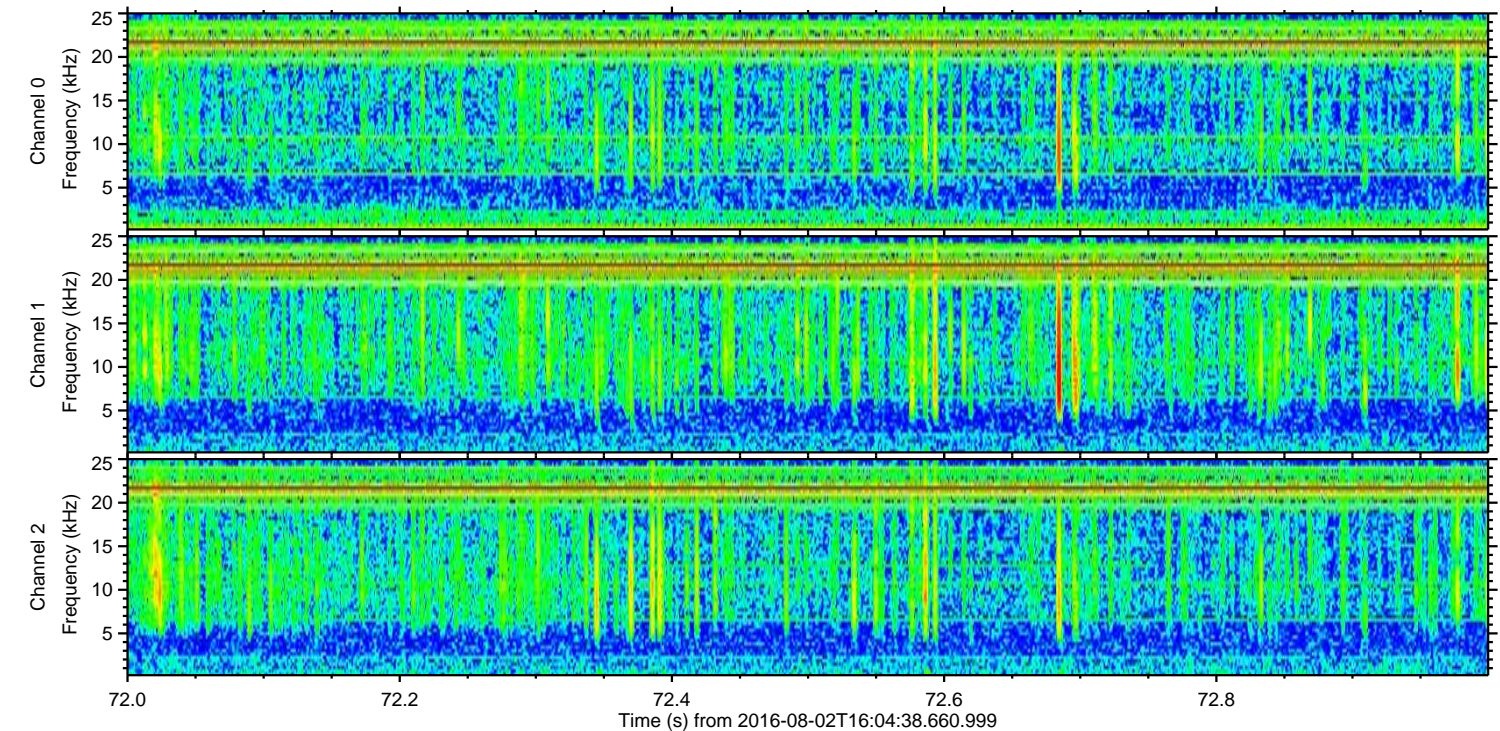
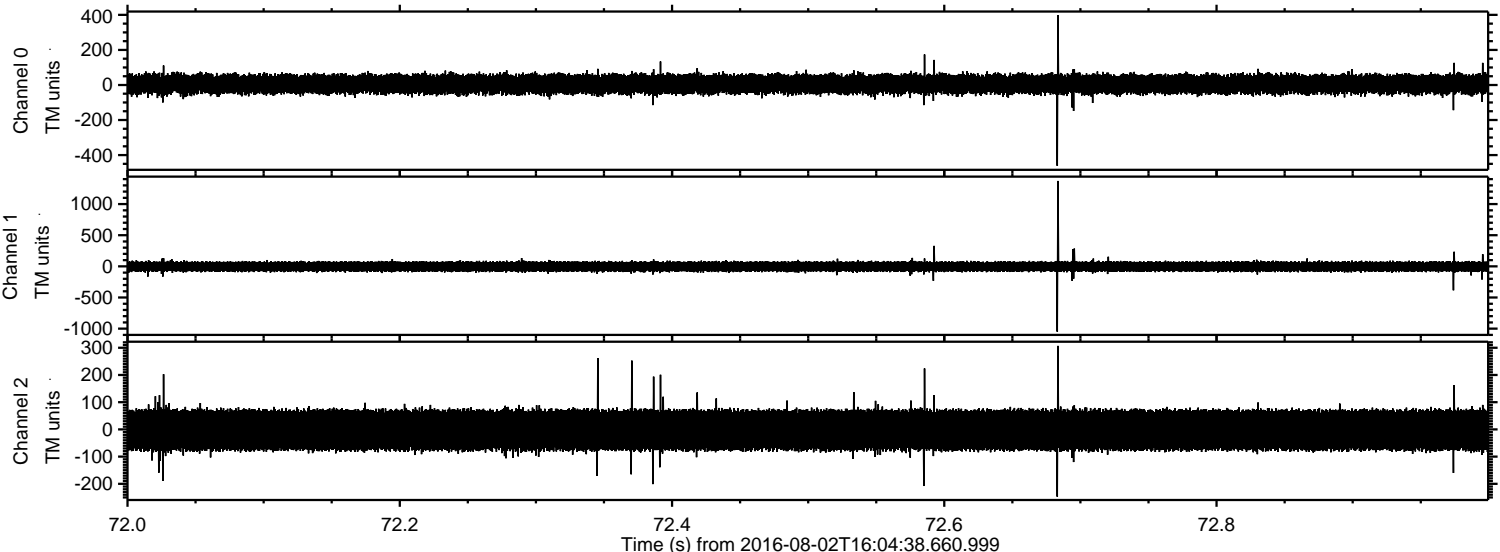
Processed Tue Aug 2 18:12:42 2016 by ELM ver.2012-10-06 from 001__elm20160802_160437__dat00.bin



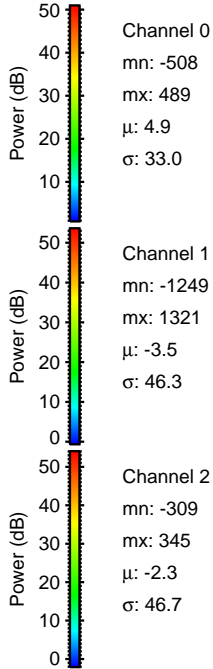
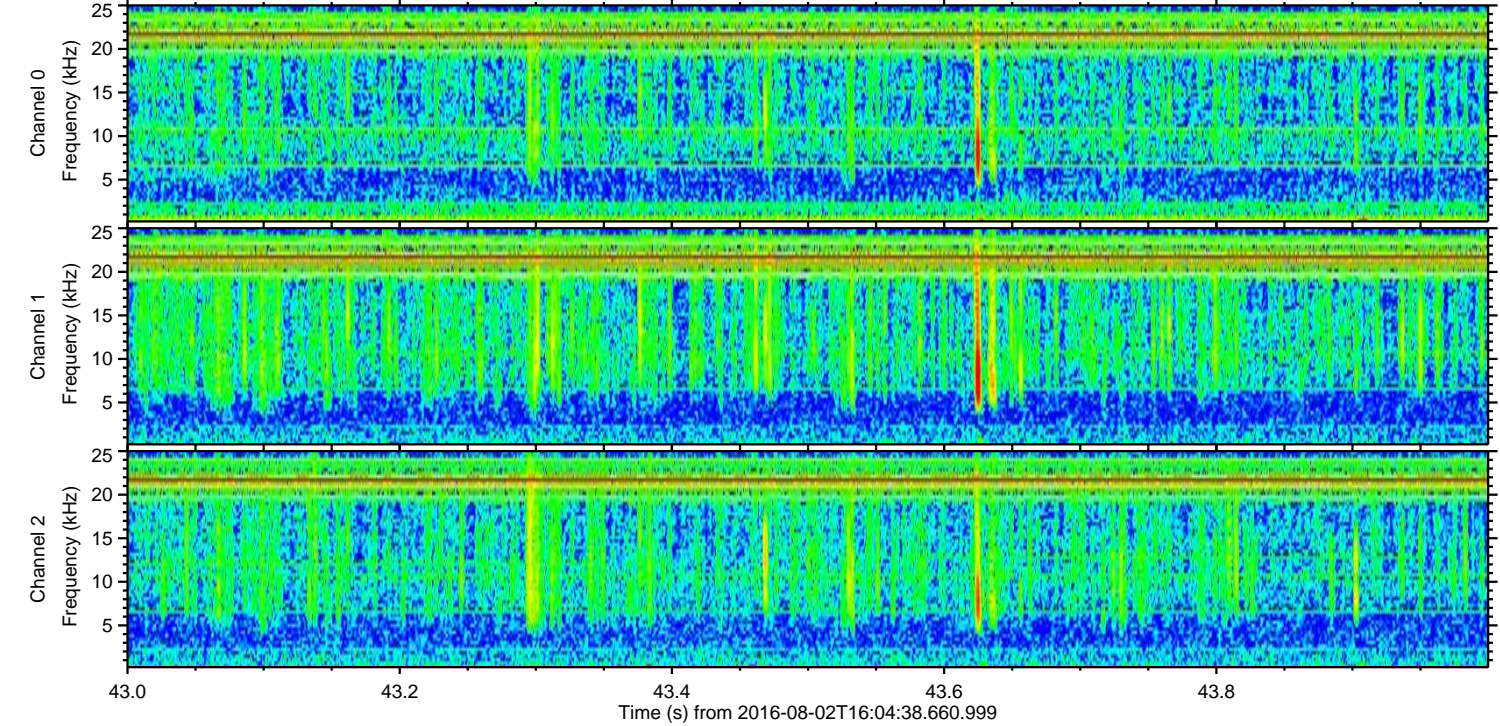
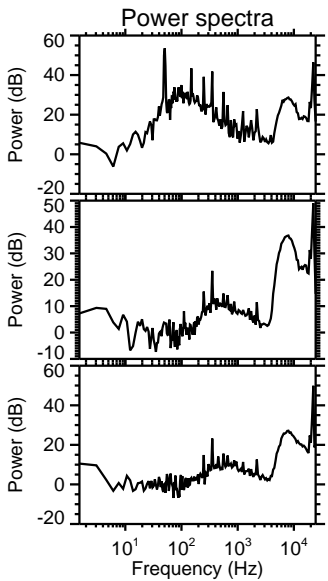
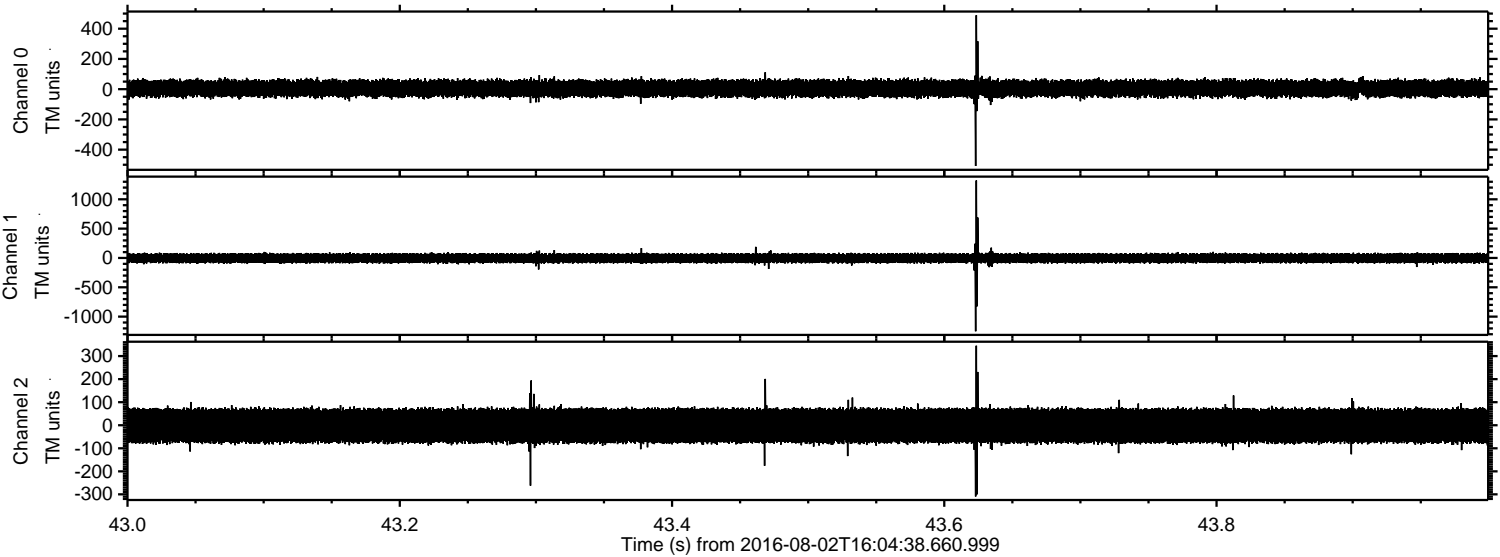
Processed Tue Aug 2 18:12:43 2016 by ELM ver.2012-10-06 from 001__elm20160802_160437__dat00.bin



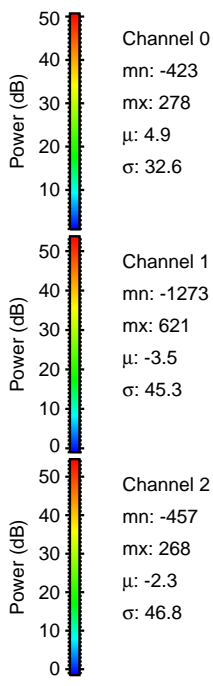
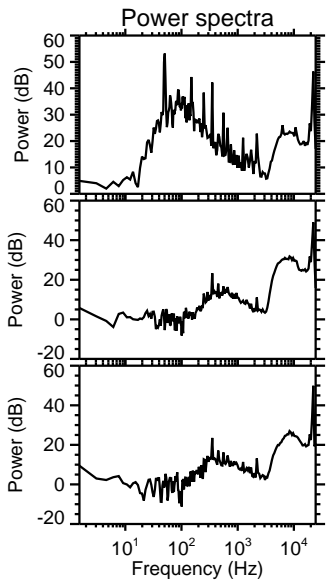
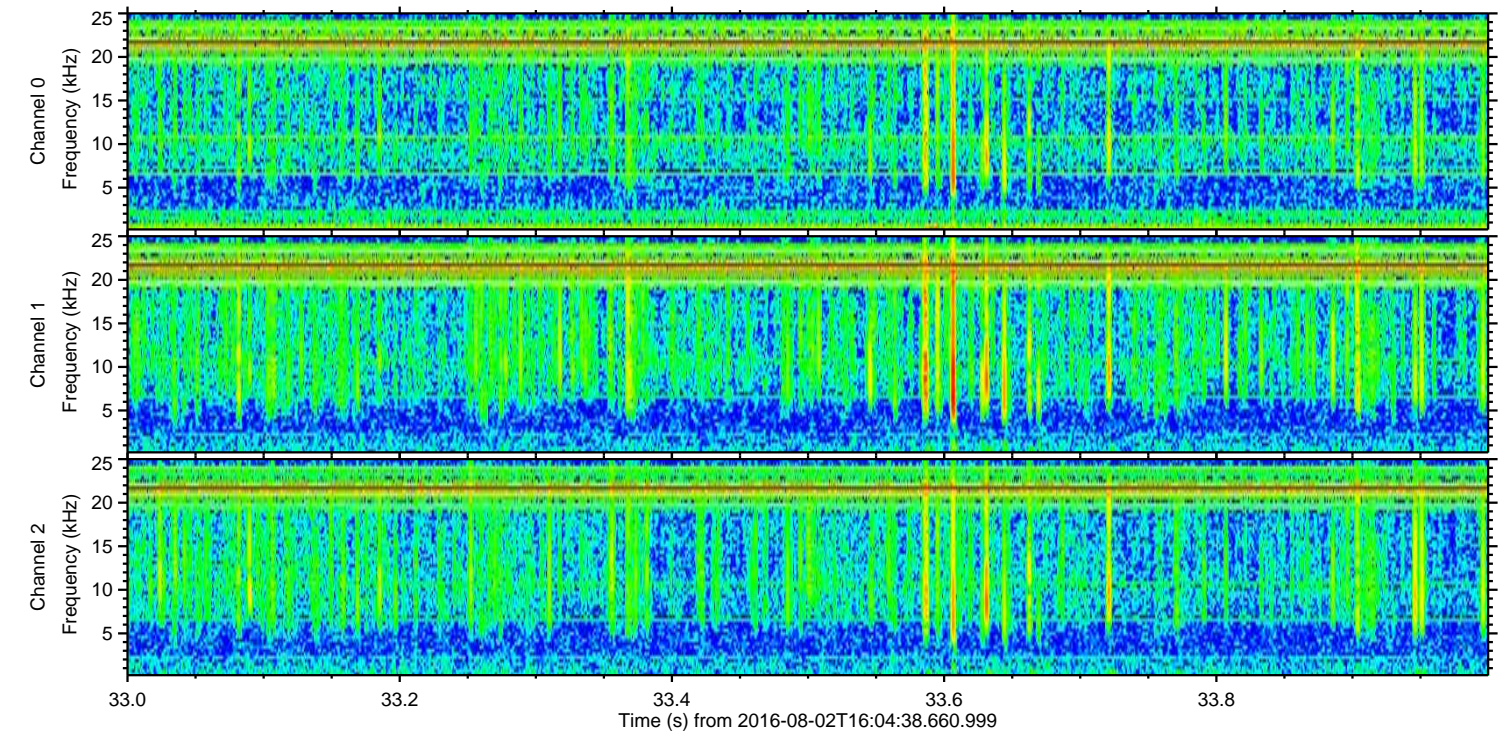
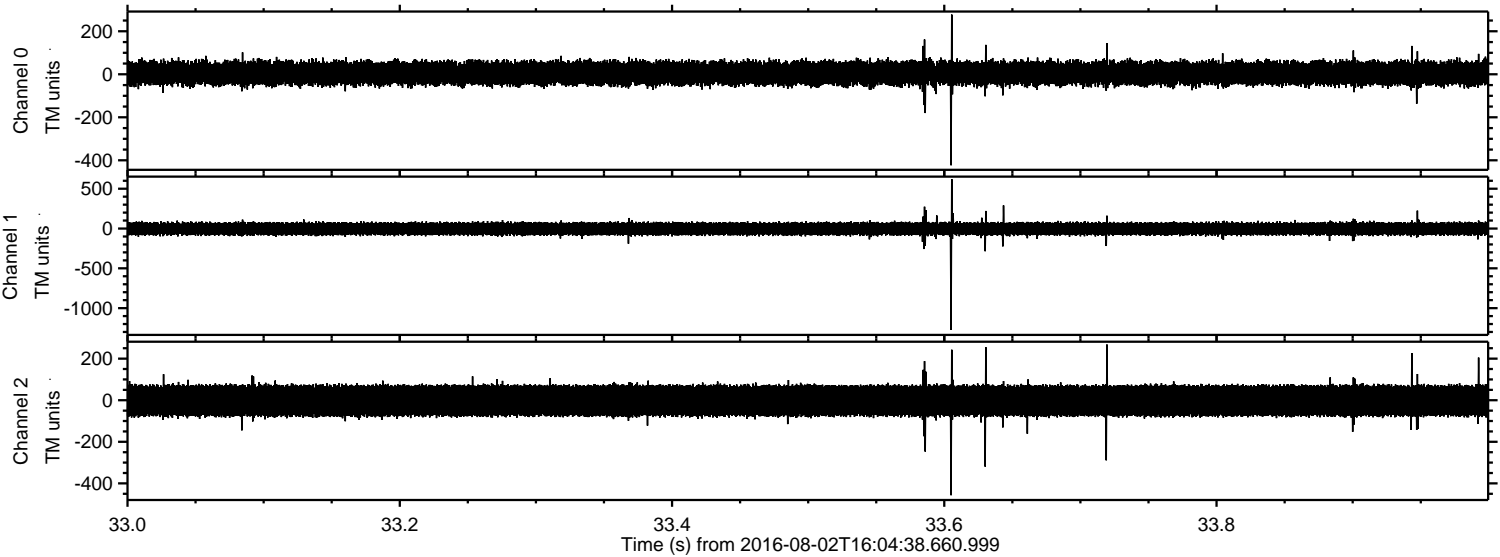
Processed Tue Aug 2 18:12:43 2016 by ELM ver.2012-10-06 from 001__elm20160802_160437__dat00.bin



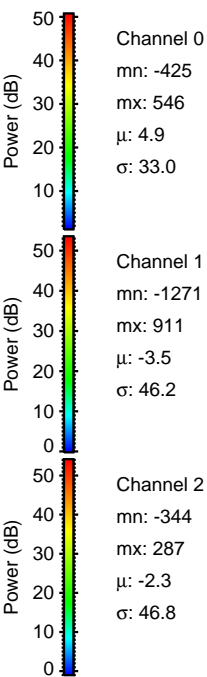
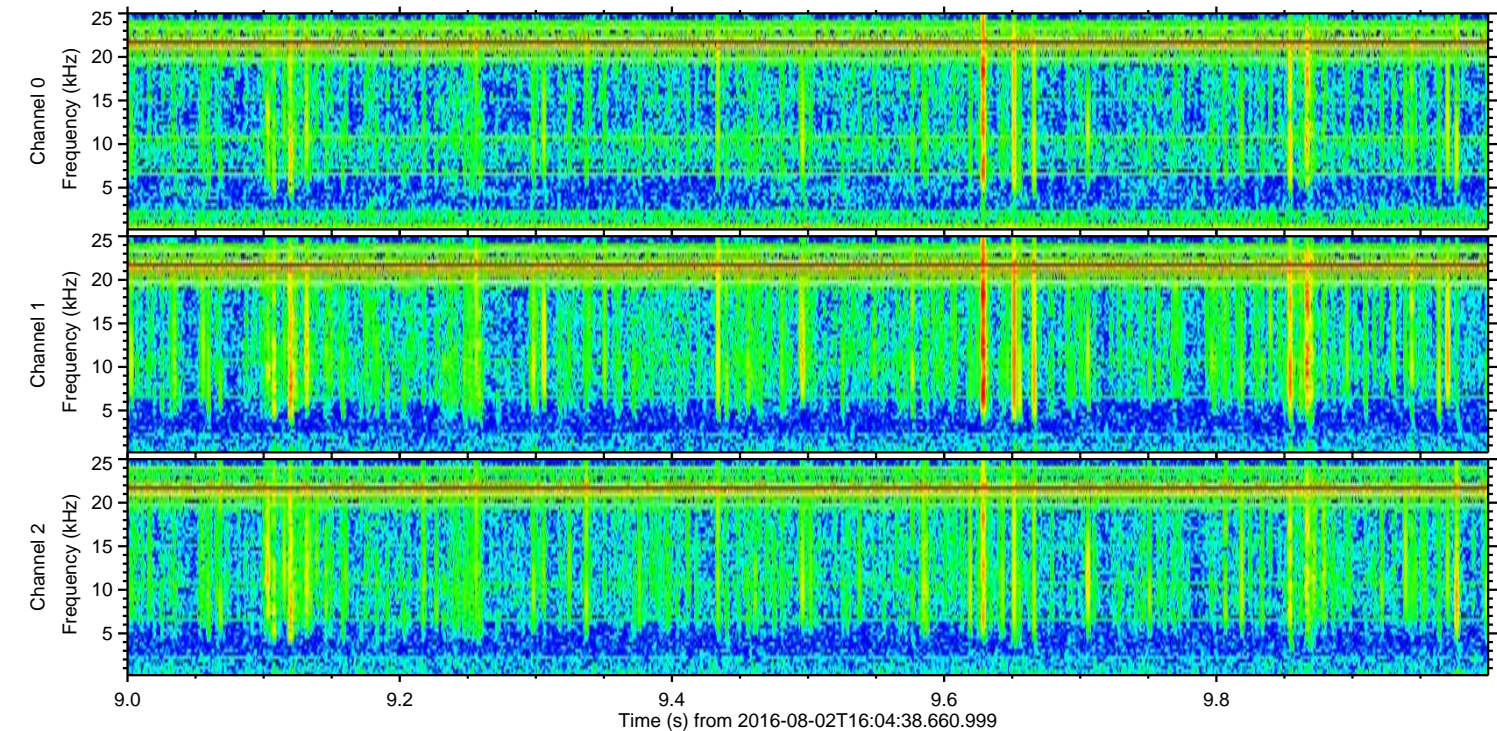
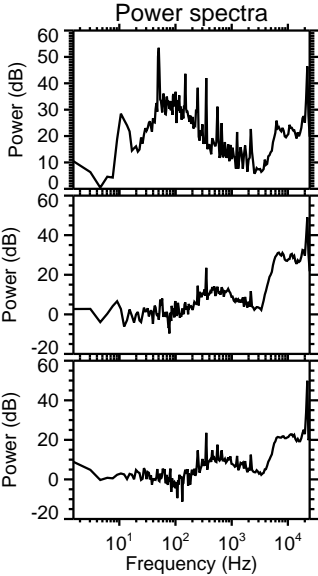
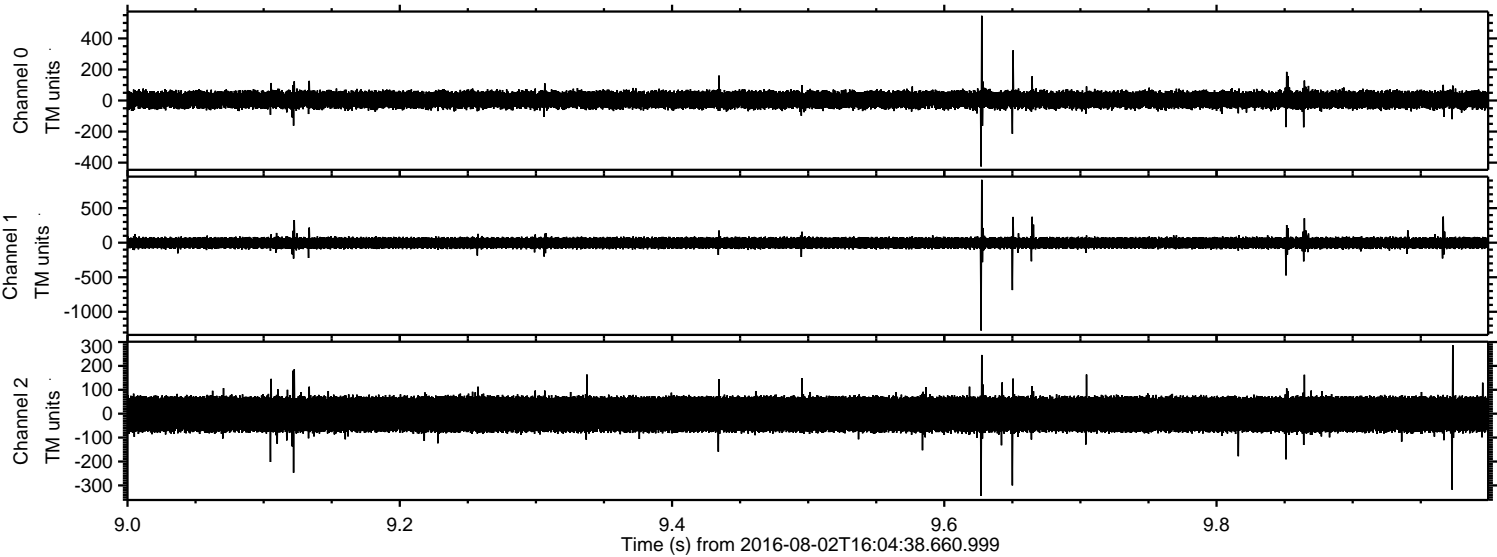
Processed Tue Aug 2 18:12:44 2016 by ELM ver.2012-10-06 from 001__elm20160802_160437__dat00.bin



Processed Tue Aug 2 18:12:45 2016 by ELM ver.2012-10-06 from 001__elm20160802_160437__dat00.bin

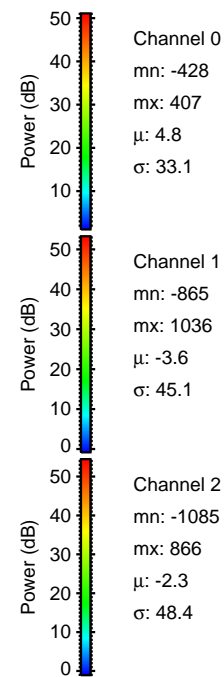
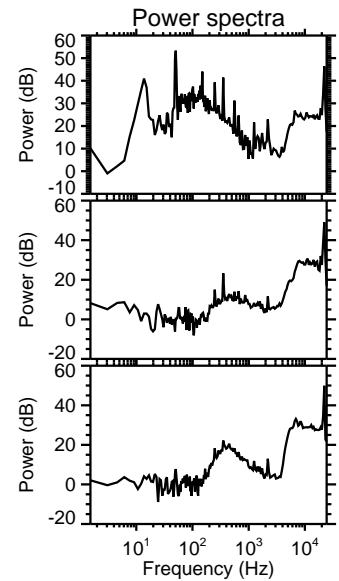
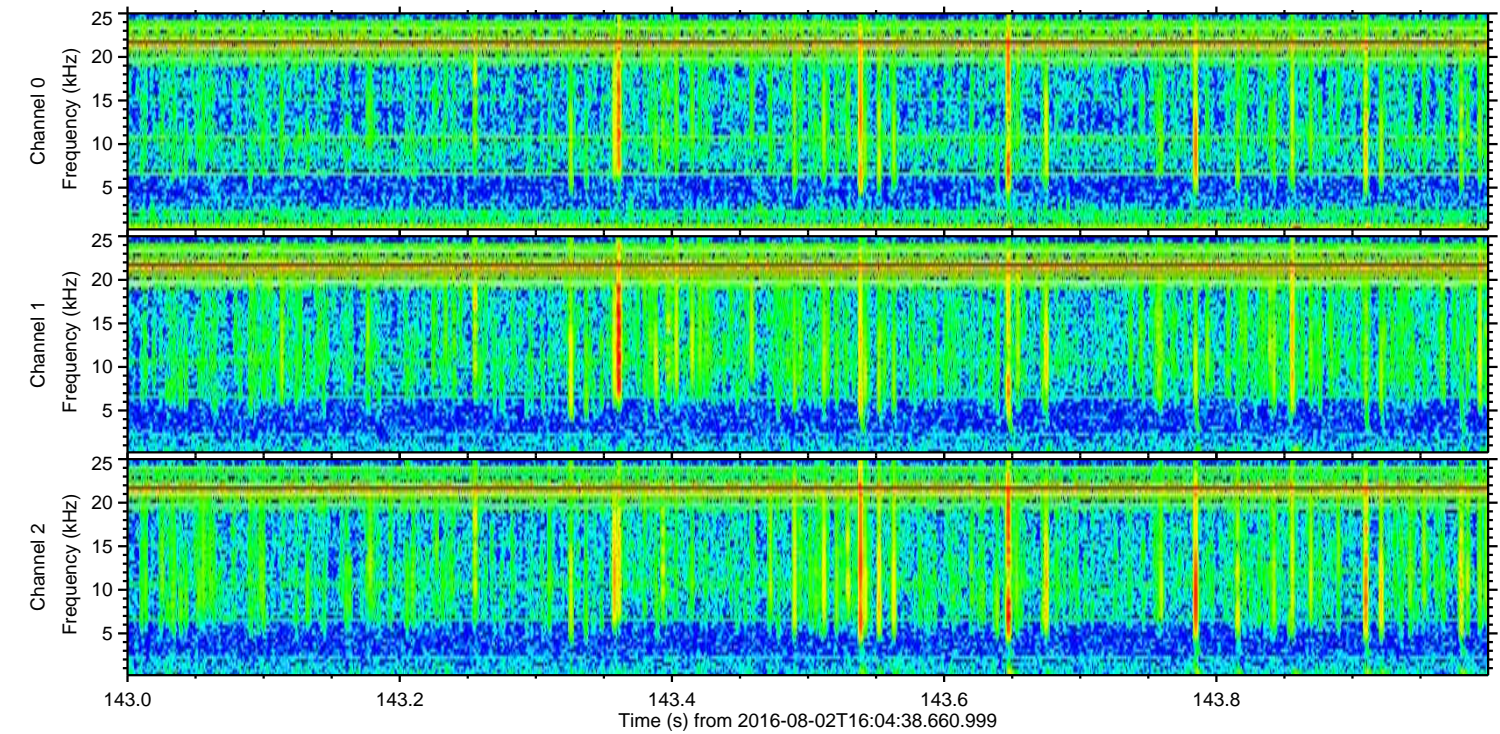
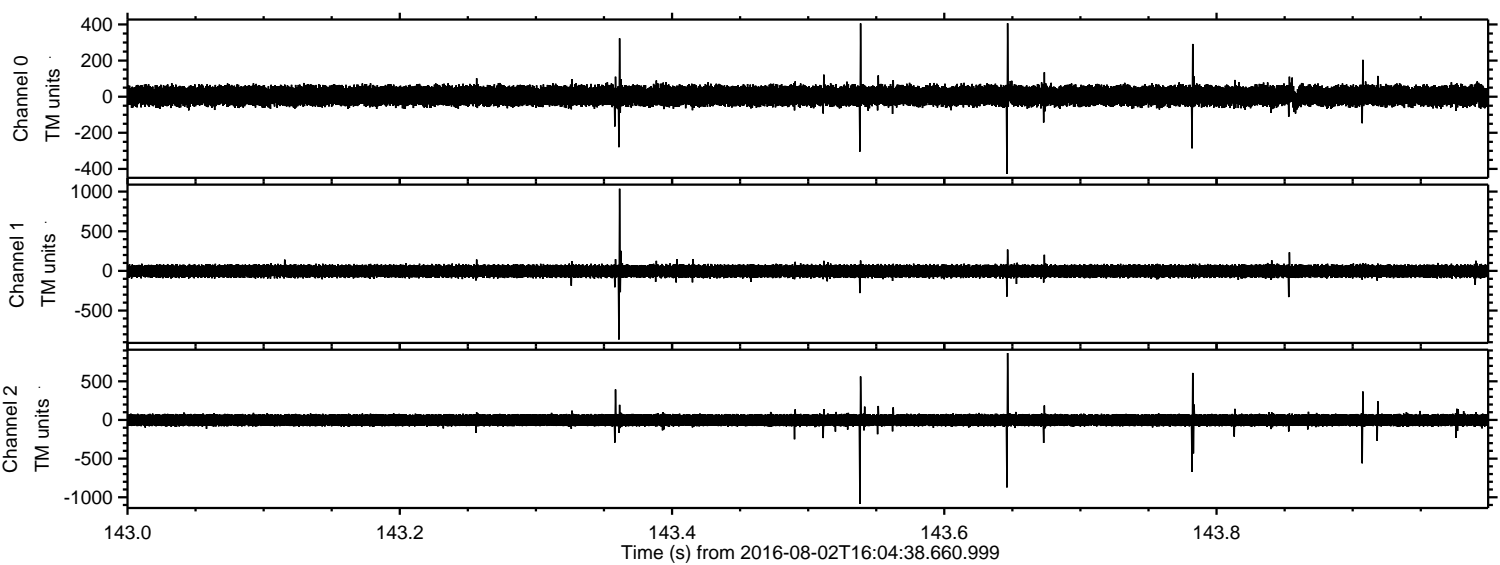


Processed Tue Aug 2 18:12:46 2016 by ELM ver.2012-10-06 from 001__elm20160802_160437__dat00.bin

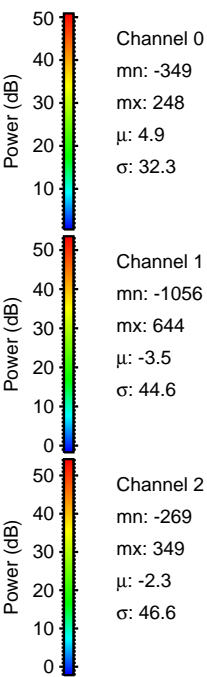
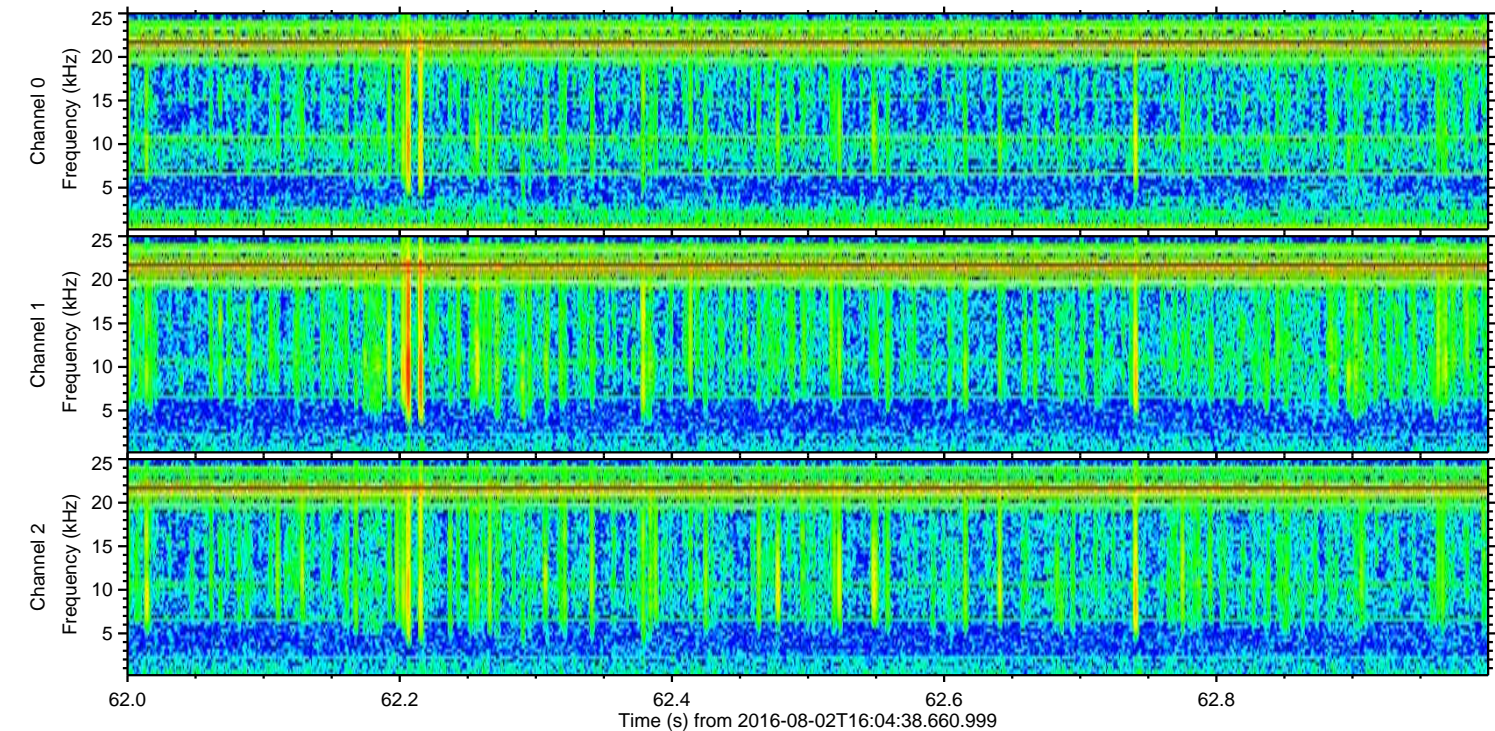
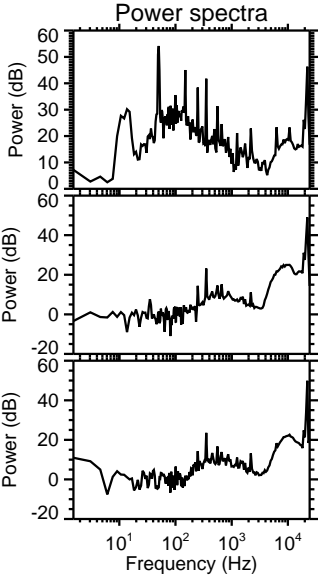
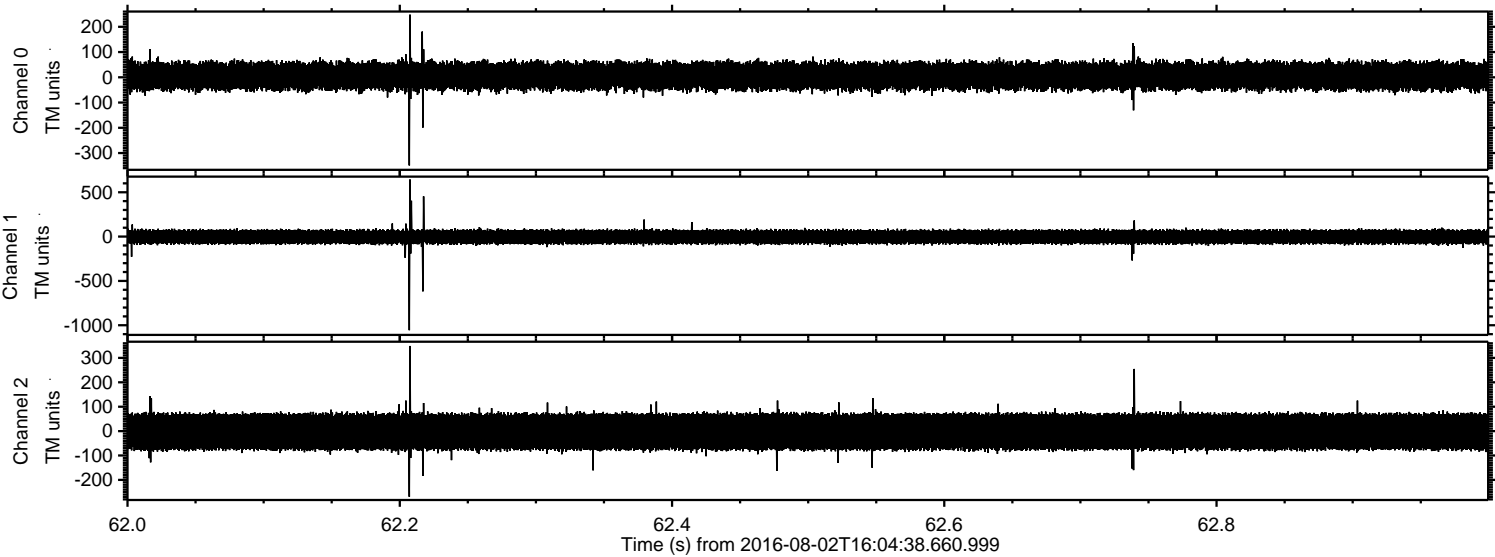


ELMAVAN 3D WAVEFORMS (Measured data sampled at 50 kHz) 51000 packets of 144 samples from 2016-08-02T16:04:38.660.999. Part 144/147

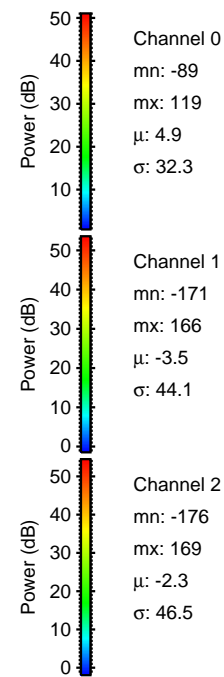
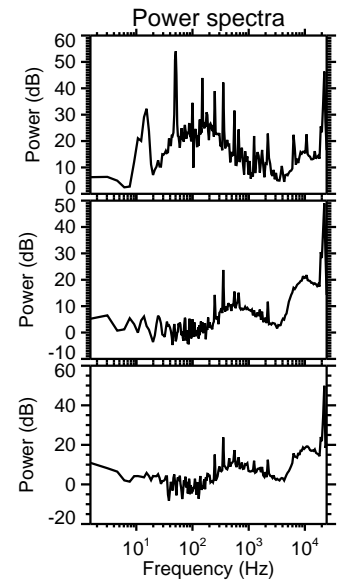
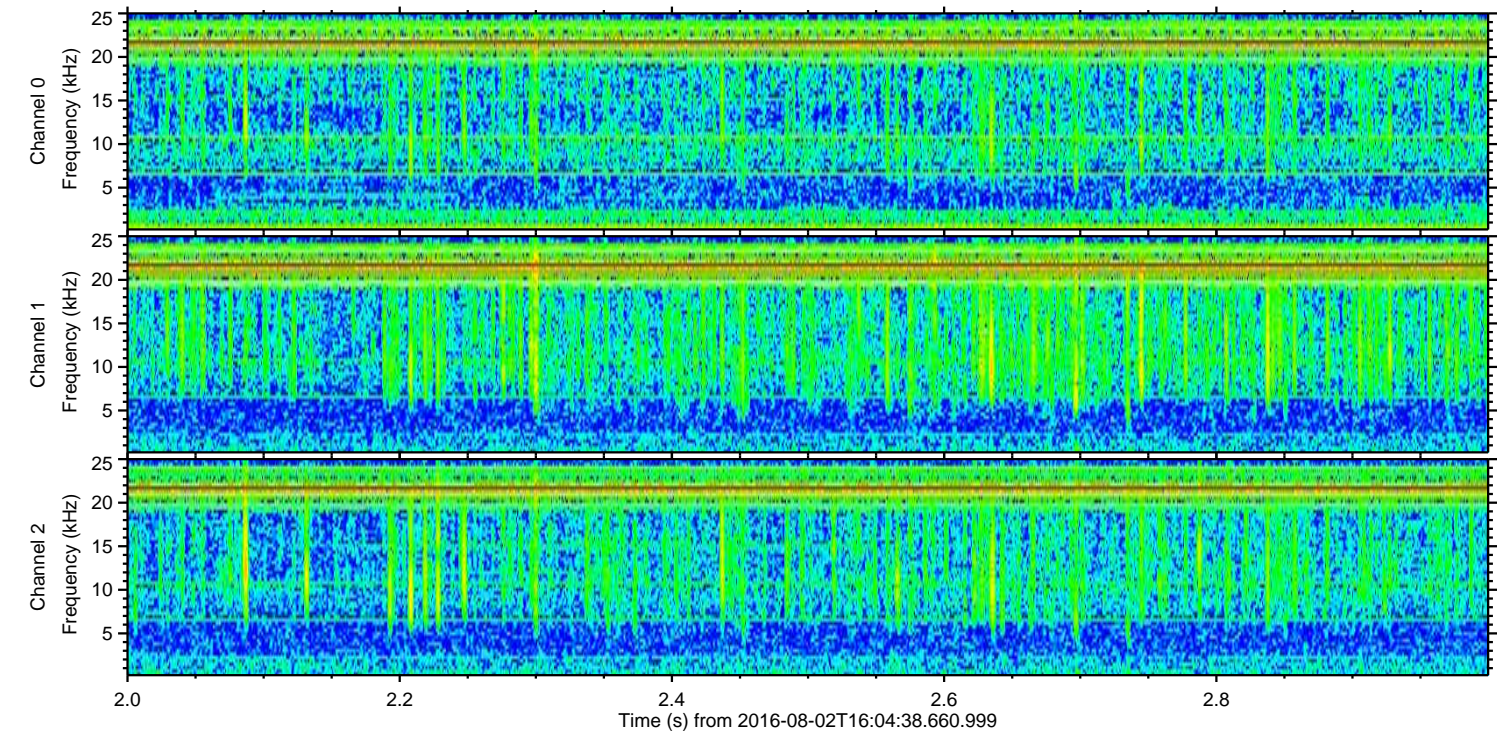
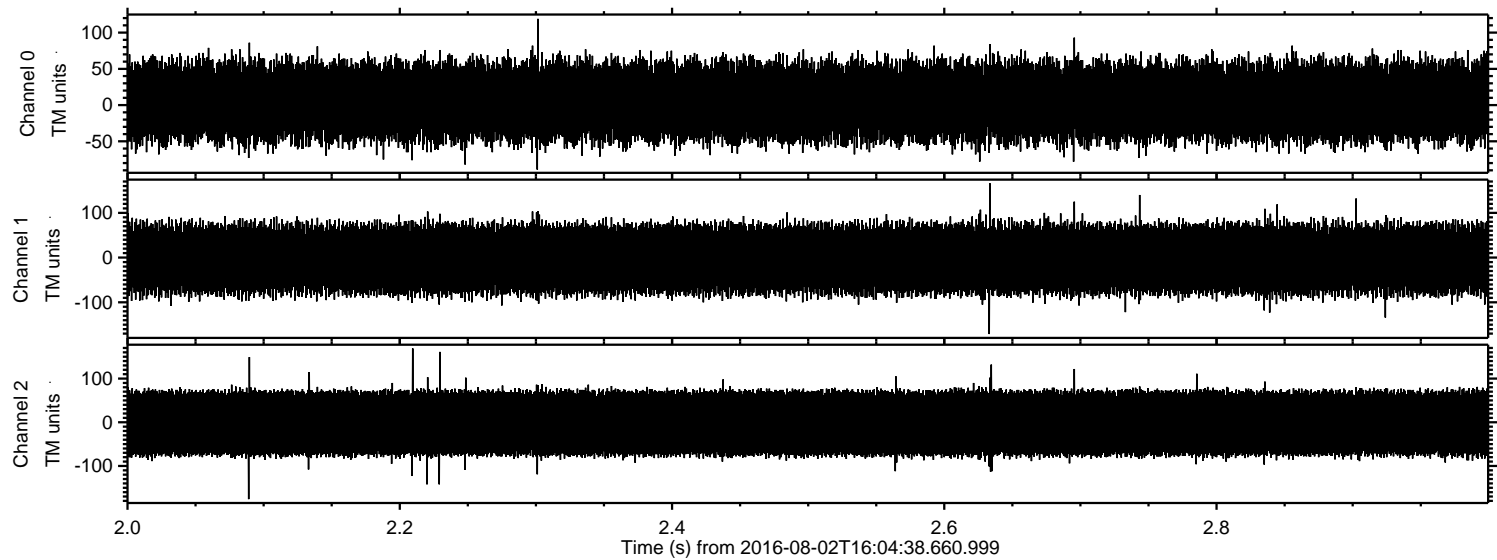
Processed Tue Aug 2 18:12:47 2016 by ELM ver.2012-10-06 from 001__elm20160802_160437__dat00.bin



Processed Tue Aug 2 18:12:48 2016 by ELM ver.2012-10-06 from 001__elm20160802_160437__dat00.bin



Processed Tue Aug 2 18:12:49 2016 by ELM ver.2012-10-06 from 001__elm20160802_160437__dat00.bin



Channel 0
mn: -89
mx: 119
 μ : 4.9
 σ : 32.3

Channel 1
mn: -171
mx: 166
 μ : -3.5
 σ : 44.1

Channel 2
mn: -176
mx: 169
 μ : -2.3
 σ : 46.5