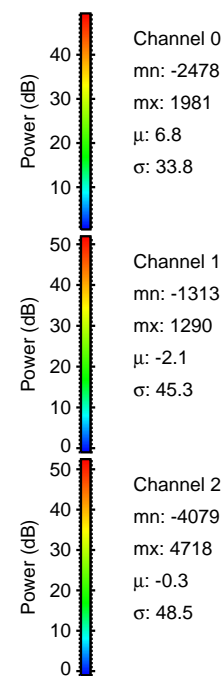
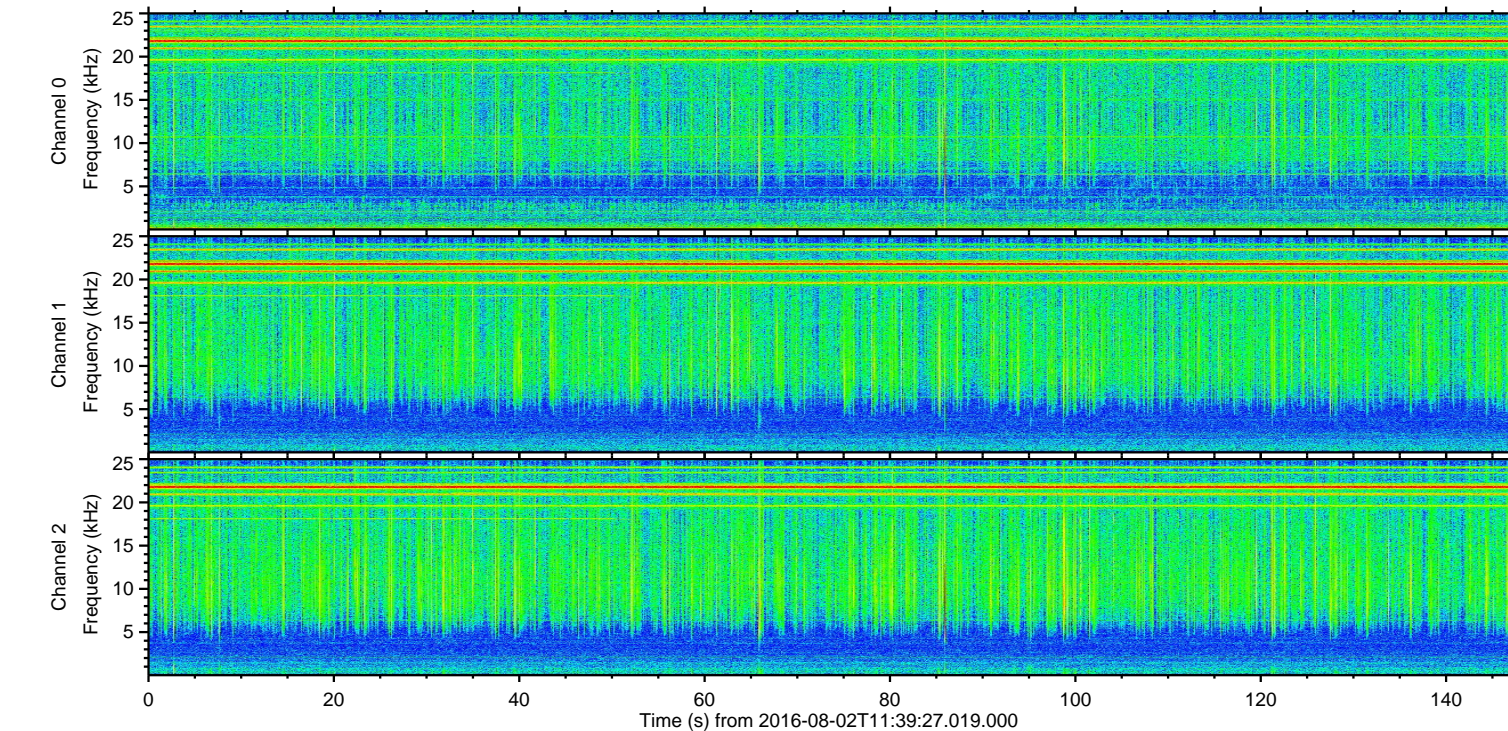
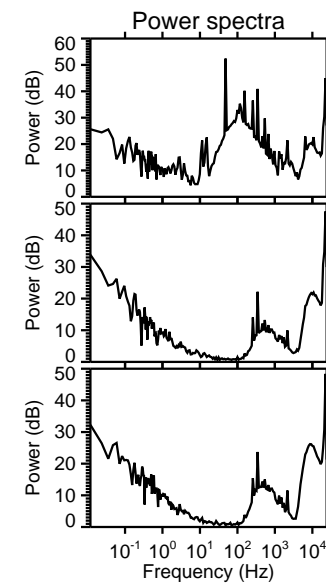
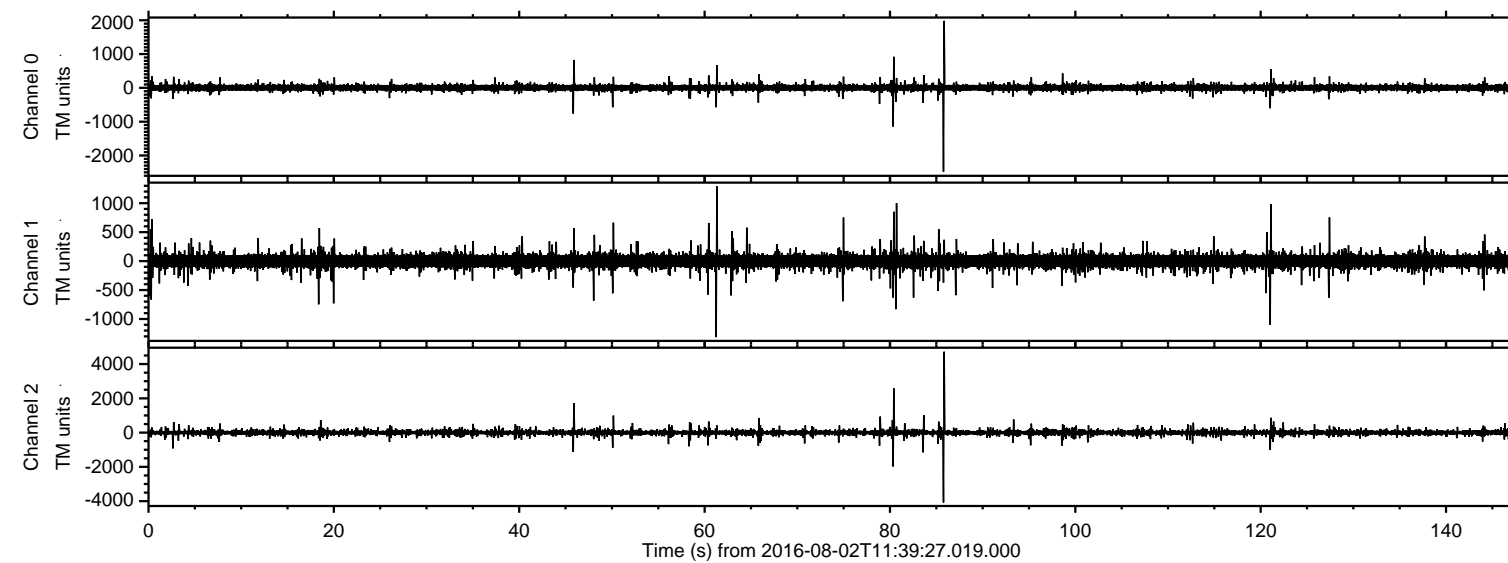


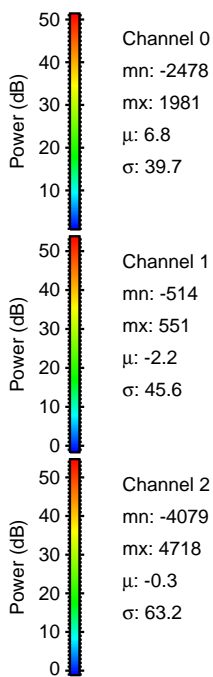
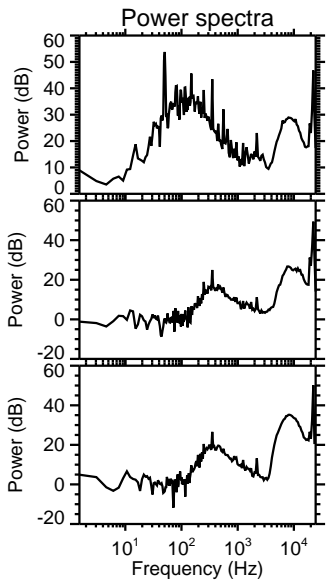
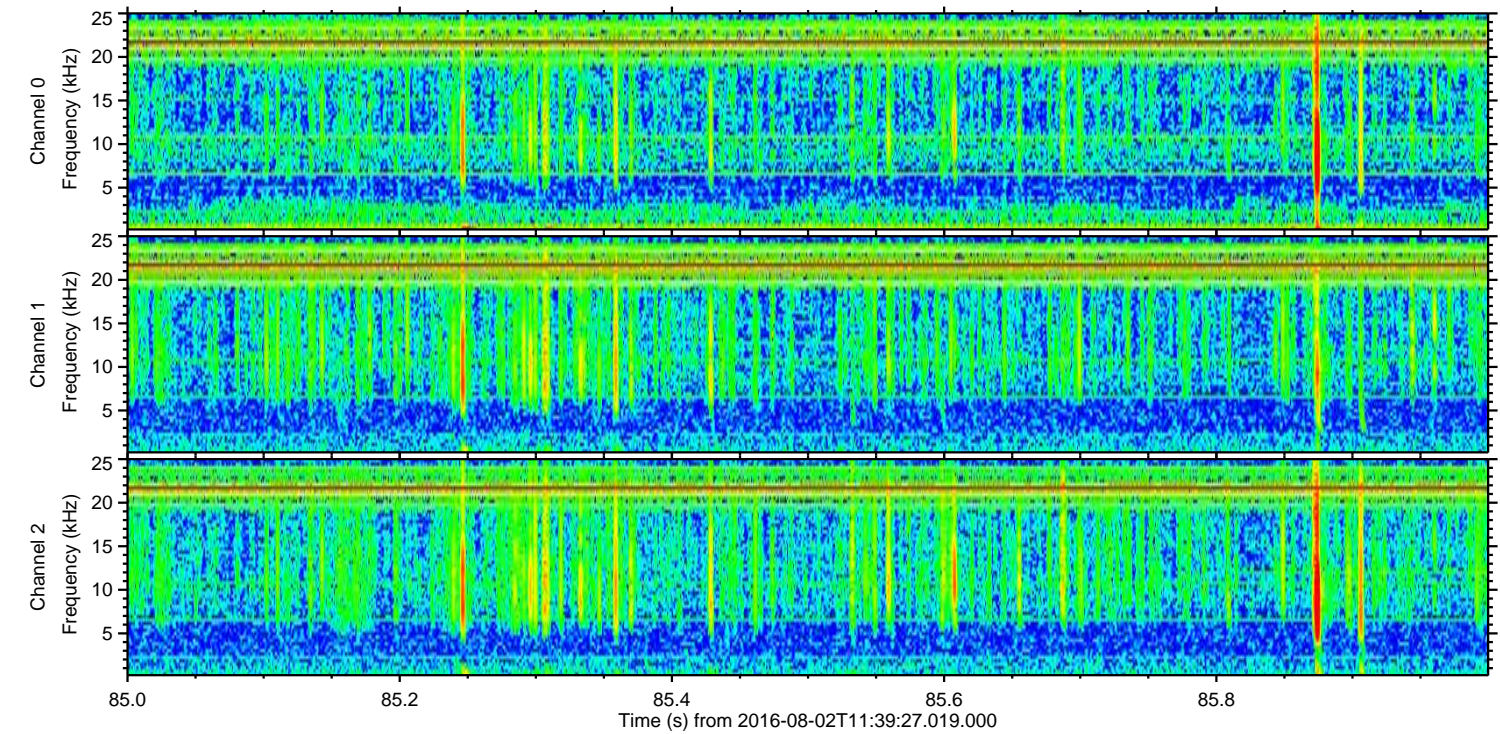
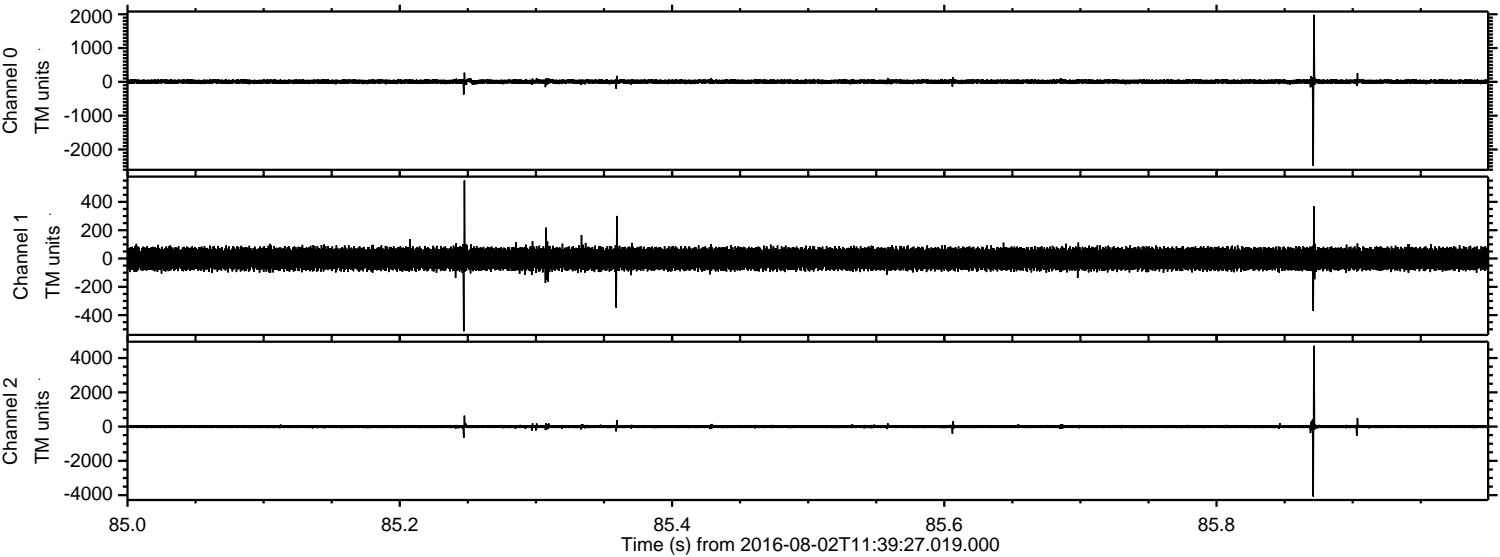
# ELMAVAN 3D WAVEFORMS (Measured data sampled at 50 kHz) 51000 packets of 144 samples from 2016-08-02T11:39:27.019.000.

Processed Tue Aug 2 13:46:50 2016 by ELM ver.2012-10-06 from 001\_\_elm20160802\_113926\_\_dat00.bin





Processed Tue Aug 2 13:47:01 2016 by ELM ver.2012-10-06 from 001\_\_elm20160802\_113926\_\_dat00.bin



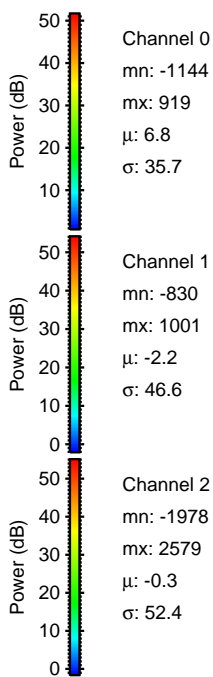
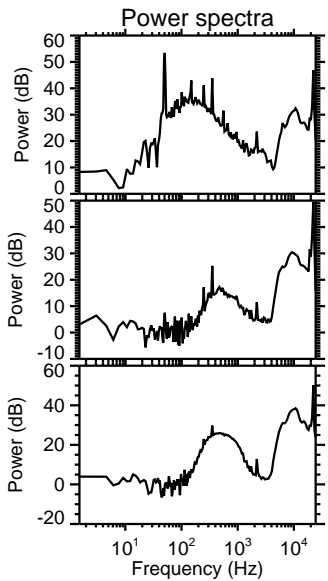
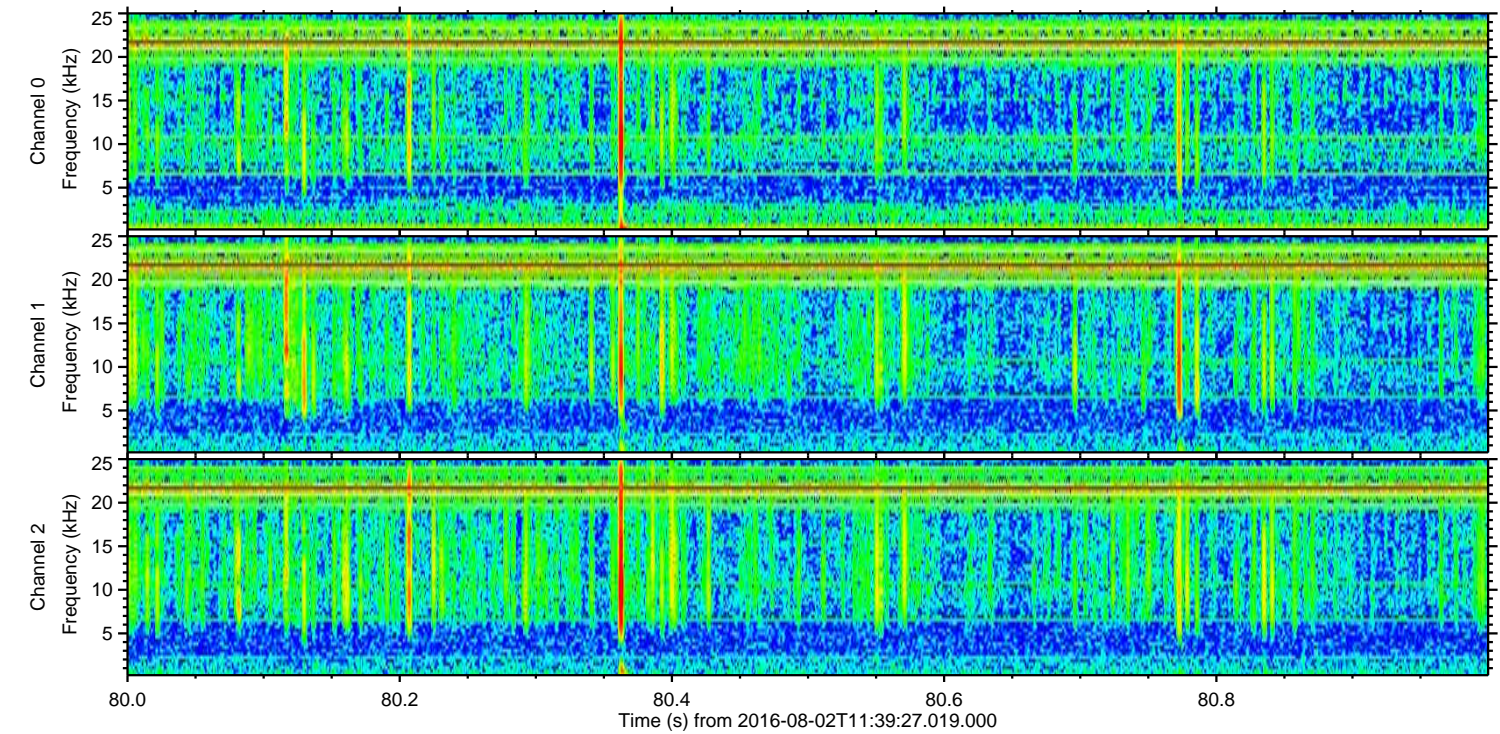
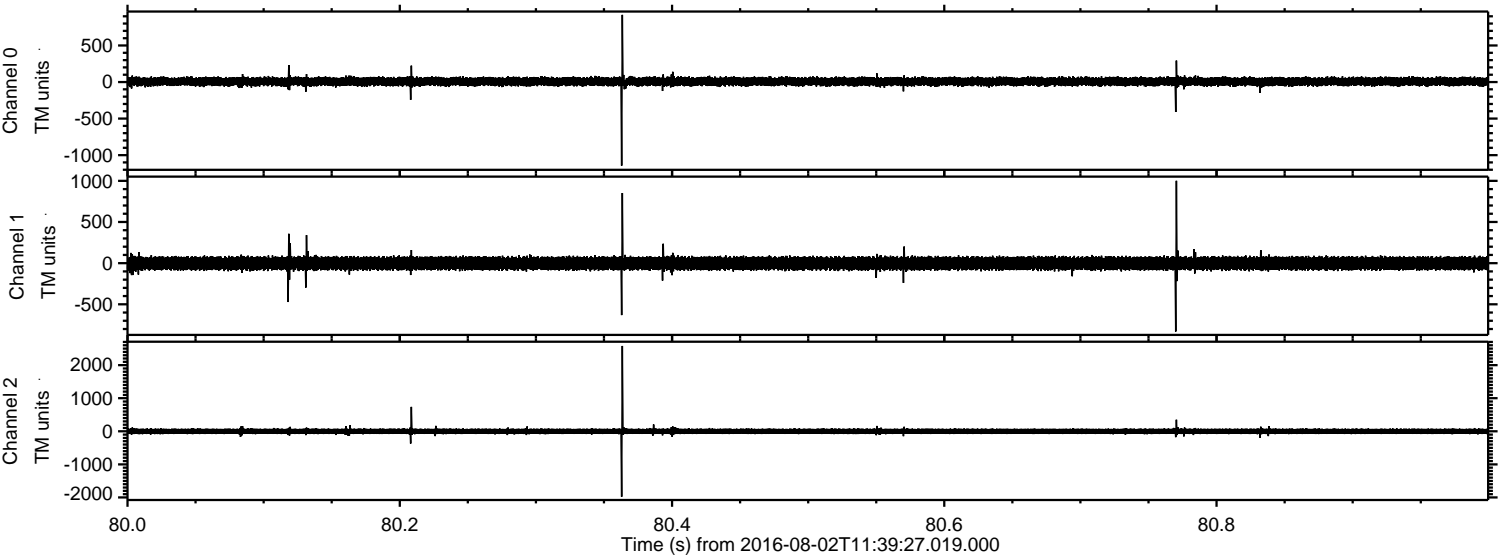
Channel 0  
mn: -2478  
mx: 1981  
 $\mu$ : 6.8  
 $\sigma$ : 39.7

Channel 1  
mn: -514  
mx: 551  
 $\mu$ : -2.2  
 $\sigma$ : 45.6

Channel 2  
mn: -4079  
mx: 4718  
 $\mu$ : -0.3  
 $\sigma$ : 63.2



Processed Tue Aug 2 13:47:02 2016 by ELM ver.2012-10-06 from 001\_\_elm20160802\_113926\_\_dat00.bin



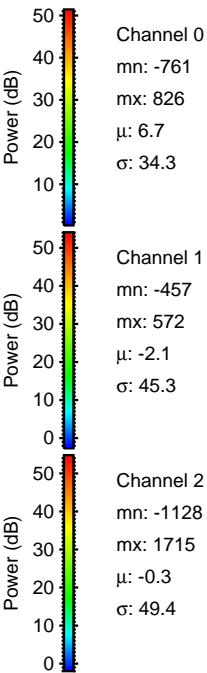
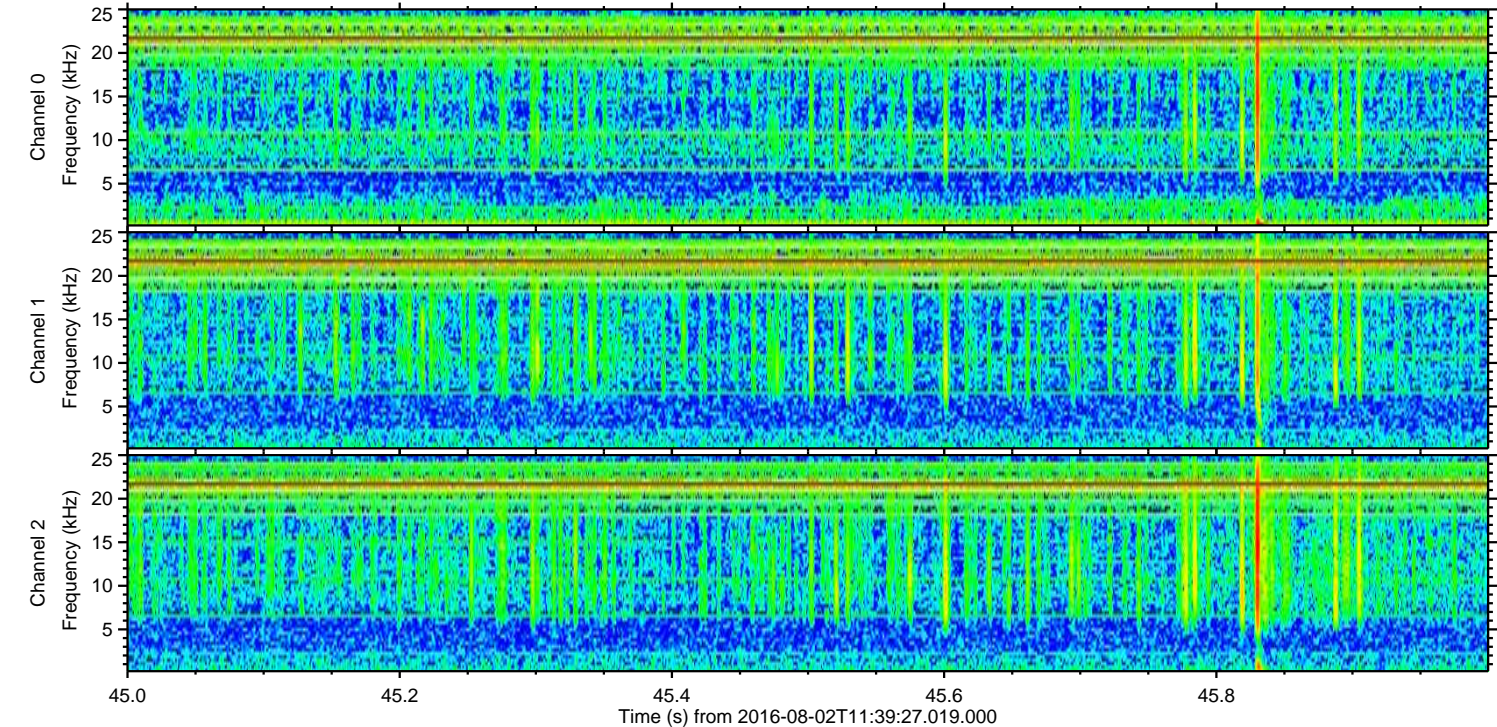
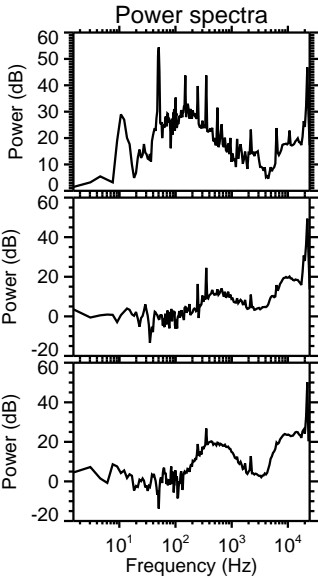
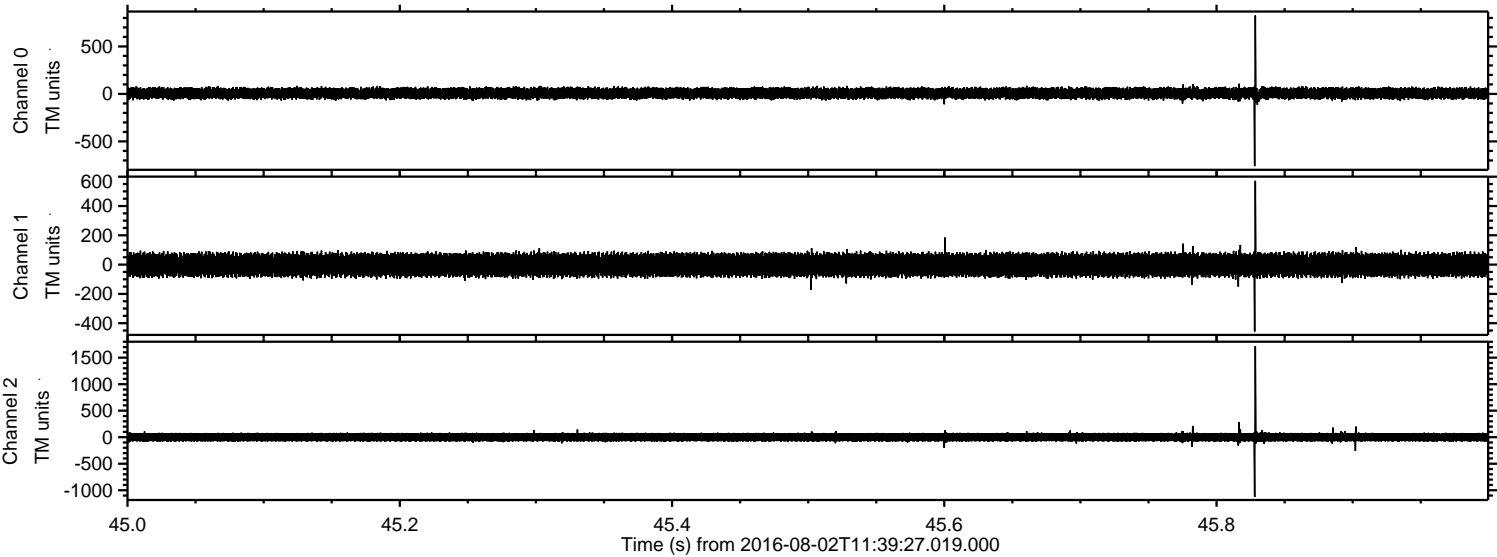
Channel 0  
mn: -1144  
mx: 919  
 $\mu$ : 6.8  
 $\sigma$ : 35.7

Channel 1  
mn: -830  
mx: 1001  
 $\mu$ : -2.2  
 $\sigma$ : 46.6

Channel 2  
mn: -1978  
mx: 2579  
 $\mu$ : -0.3  
 $\sigma$ : 52.4

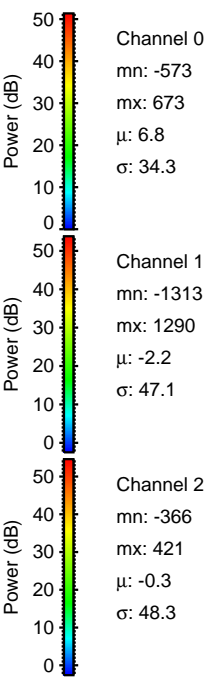
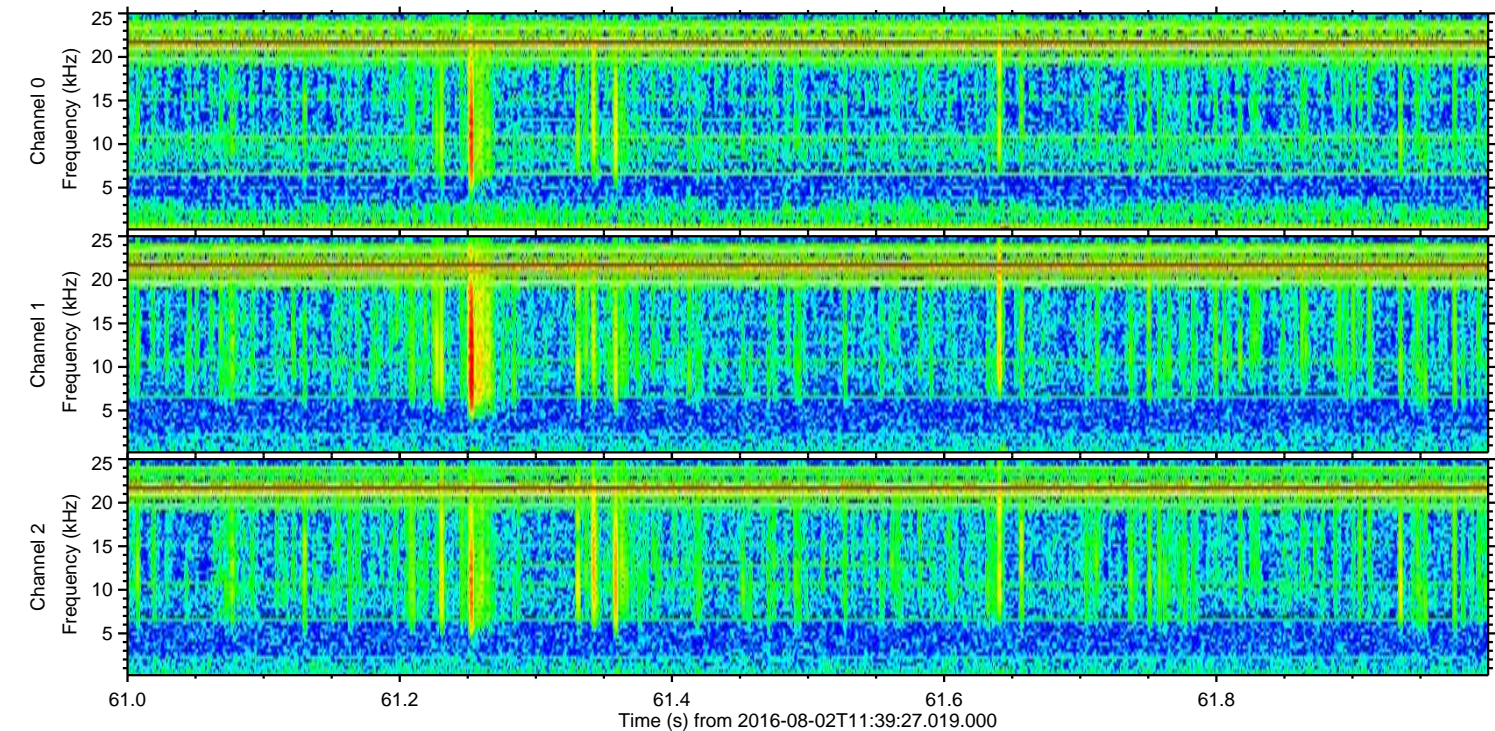
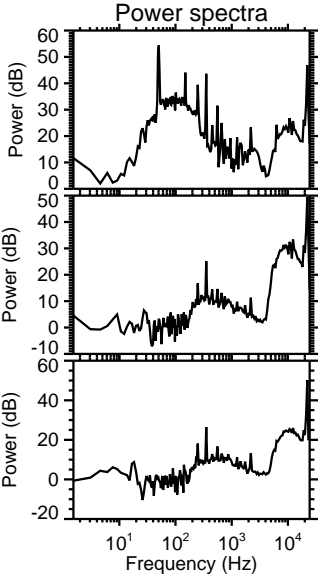
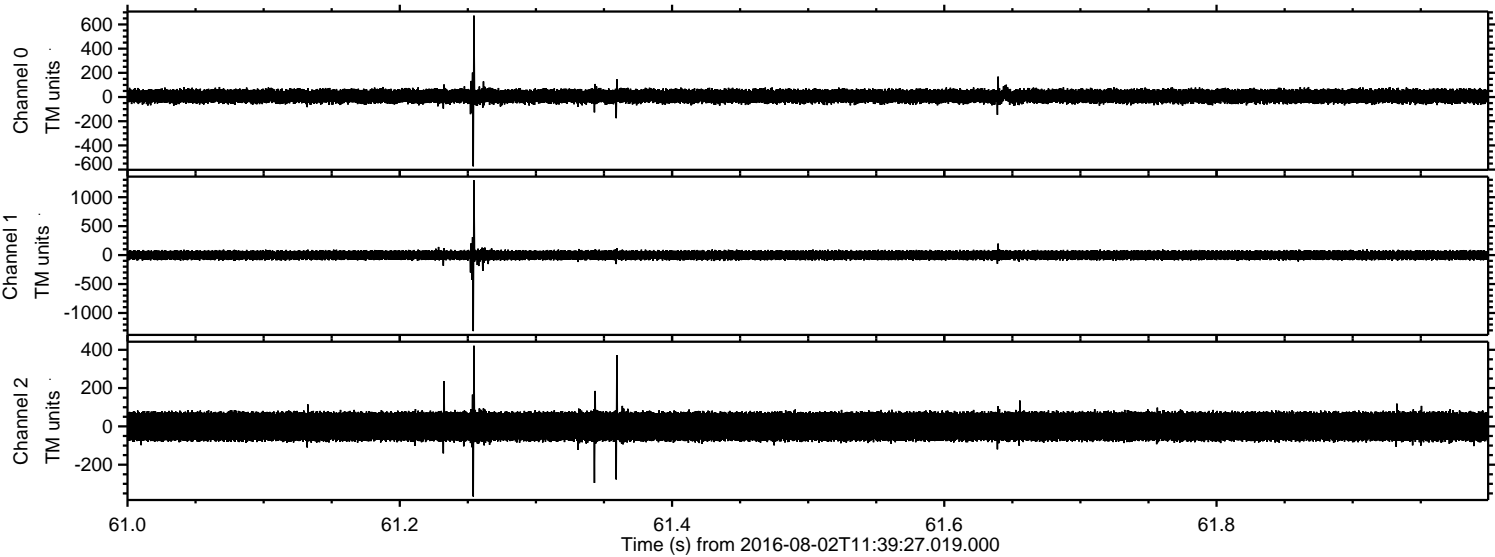


Processed Tue Aug 2 13:47:03 2016 by ELM ver.2012-10-06 from 001\_\_elm20160802\_113926\_\_dat00.bin



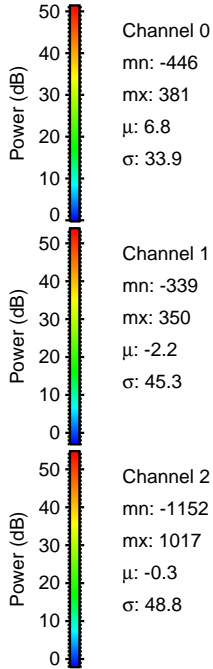
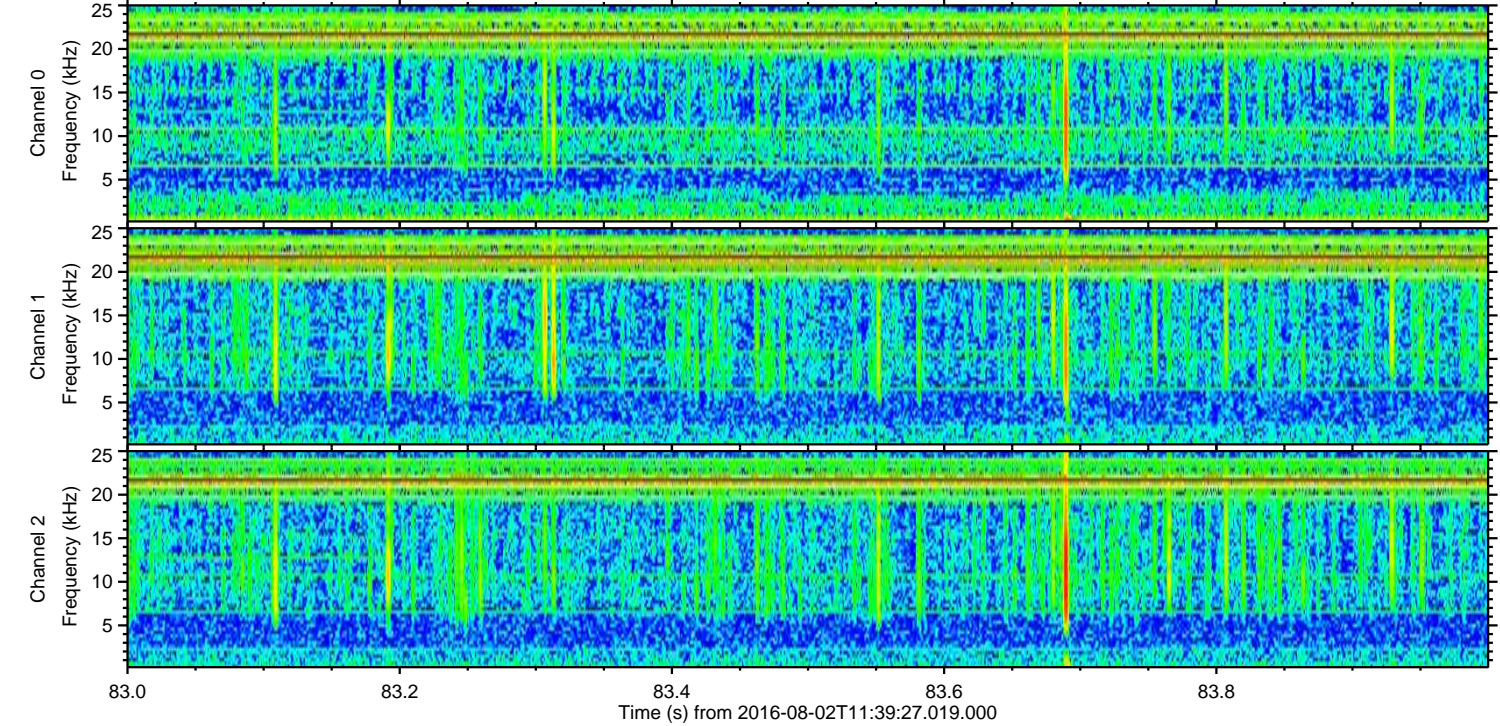
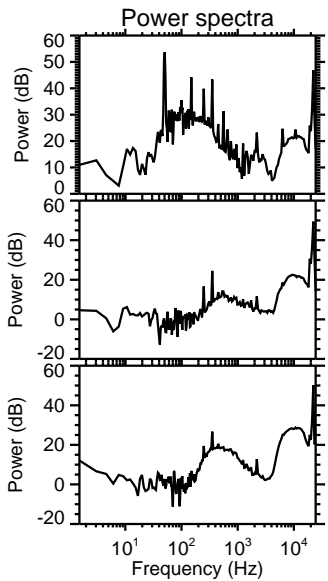
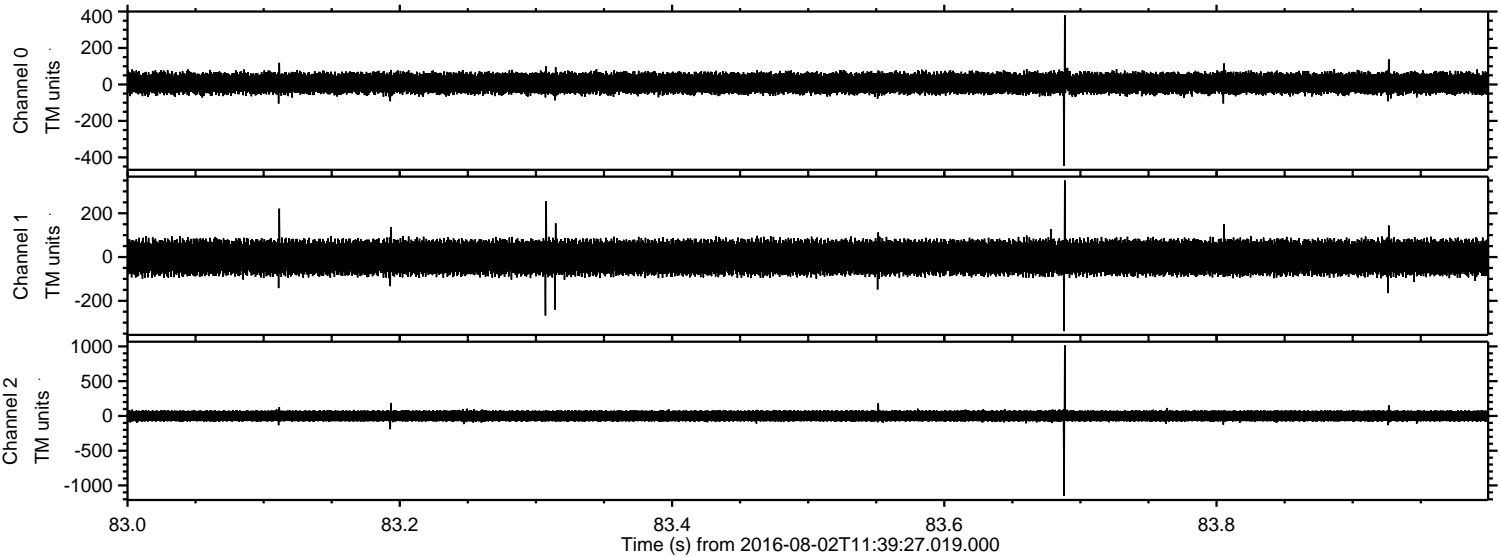


Processed Tue Aug 2 13:47:04 2016 by ELM ver.2012-10-06 from 001\_\_elm20160802\_113926\_\_dat00.bin





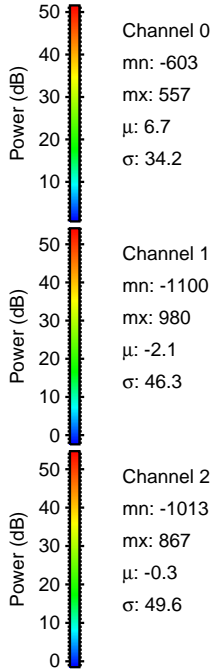
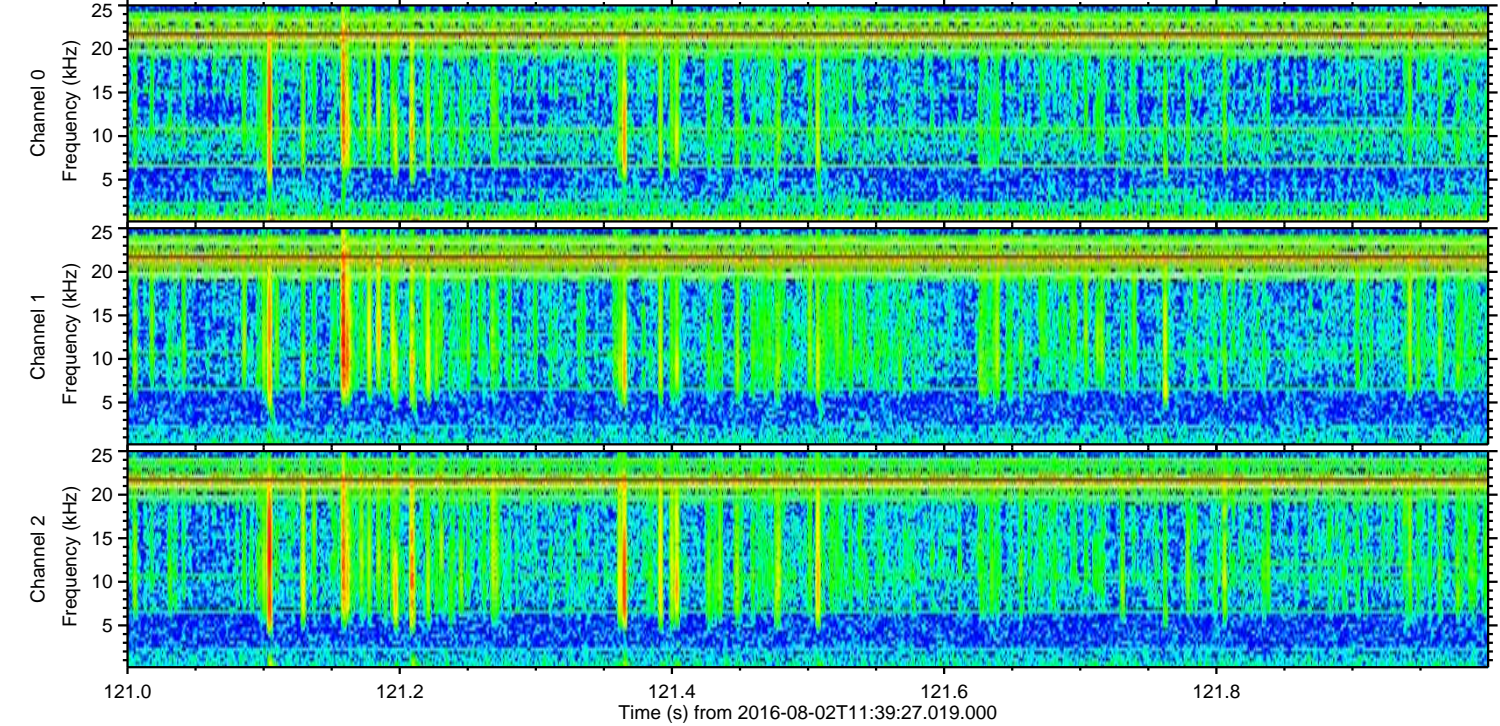
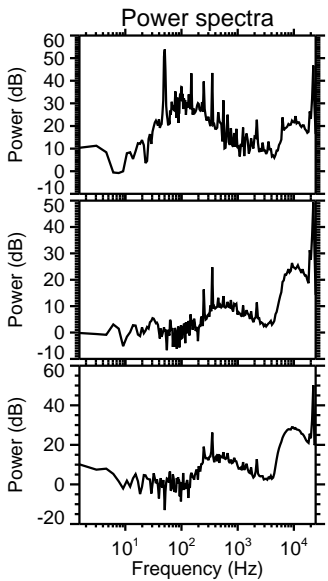
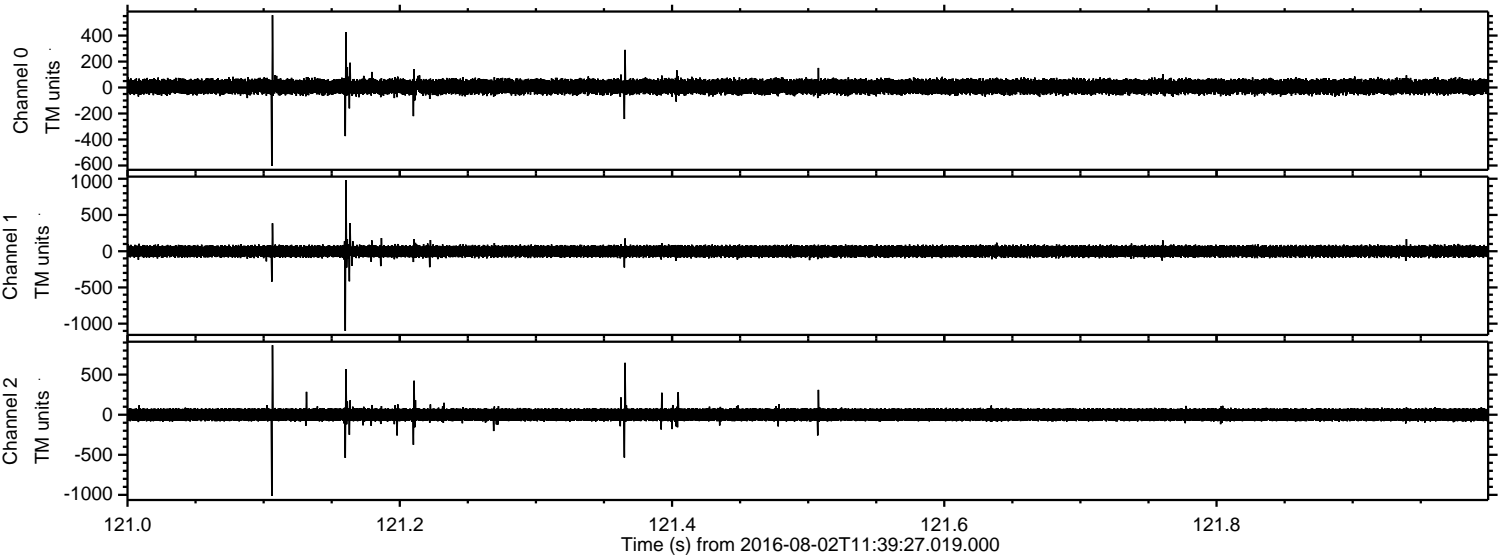
Processed Tue Aug 2 13:47:05 2016 by ELM ver.2012-10-06 from 001\_\_elm20160802\_113926\_\_dat00.bin





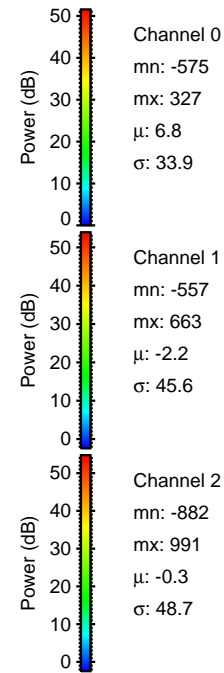
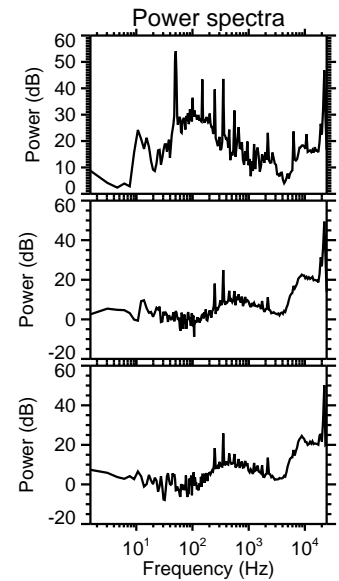
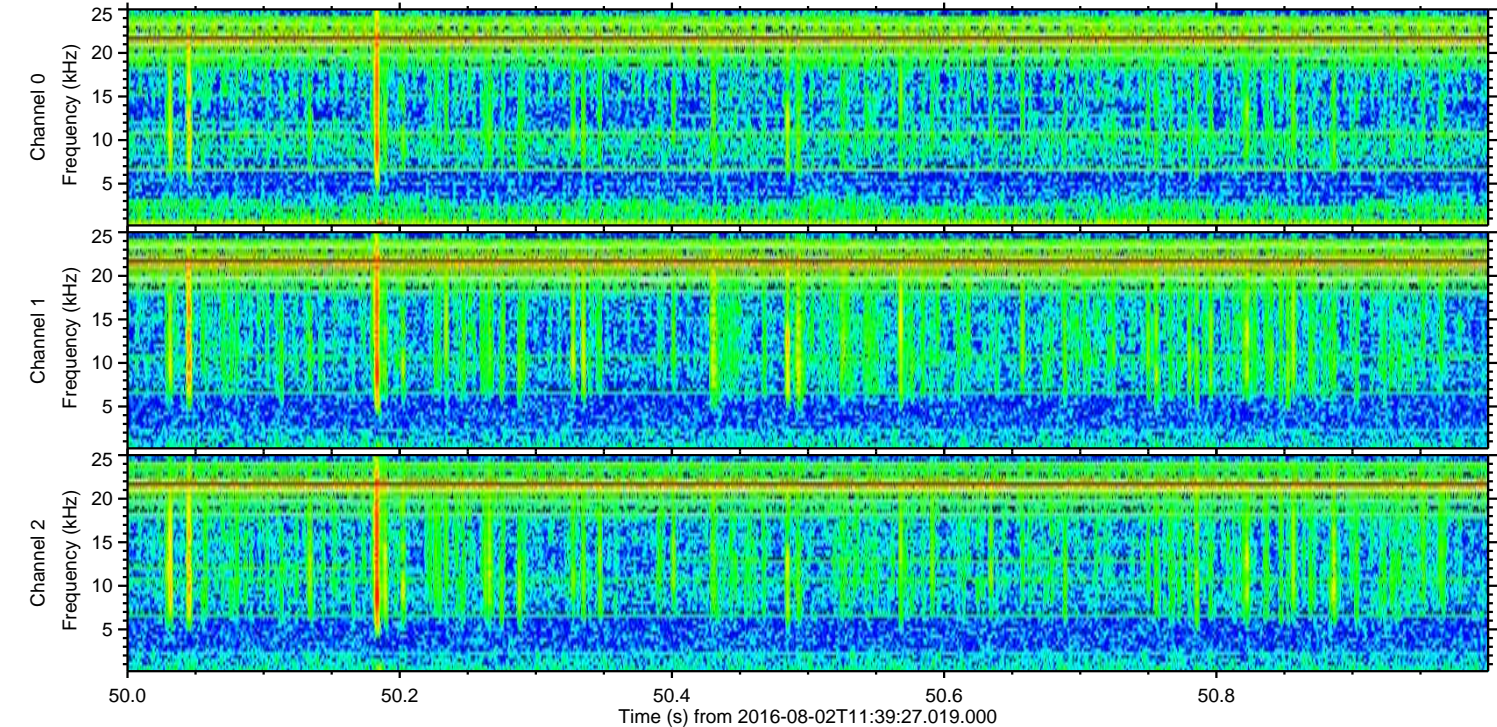
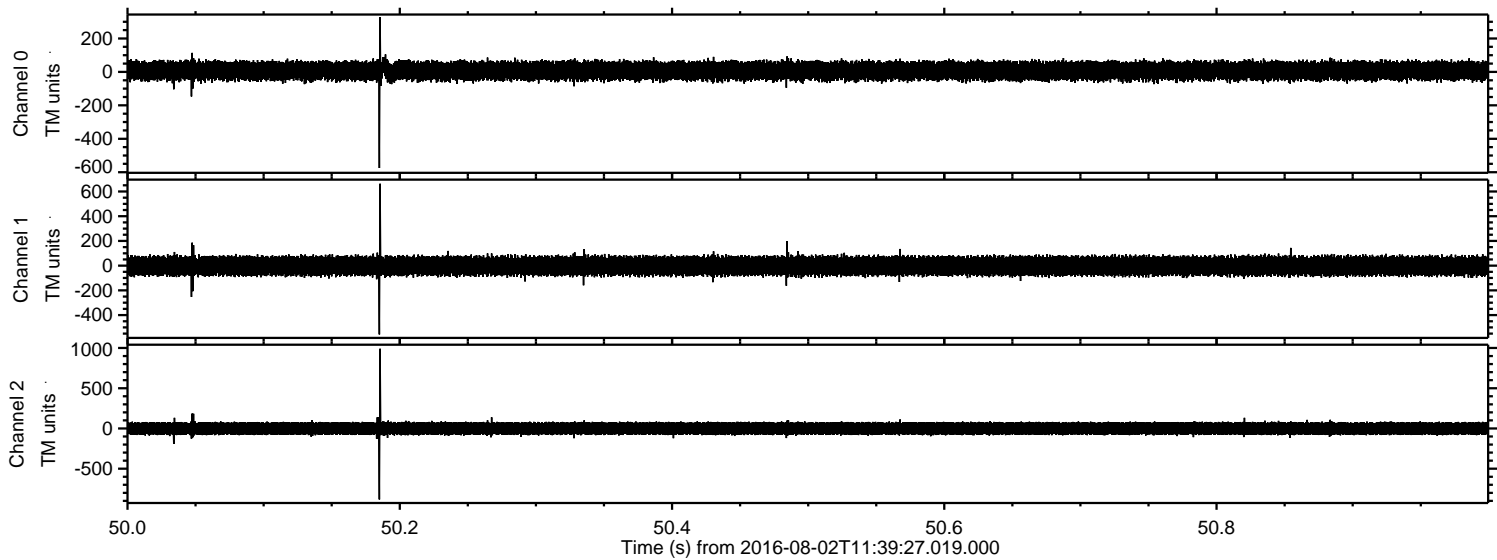
ELMAVAN 3D WAVEFORMS (Measured data sampled at 50 kHz) 51000 packets of 144 samples from 2016-08-02T11:39:27.019.000. Part 122/147

Processed Tue Aug 2 13:47:06 2016 by ELM ver.2012-10-06 from 001\_\_elm20160802\_113926\_\_dat00.bin



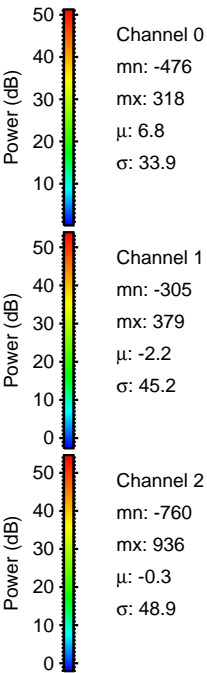
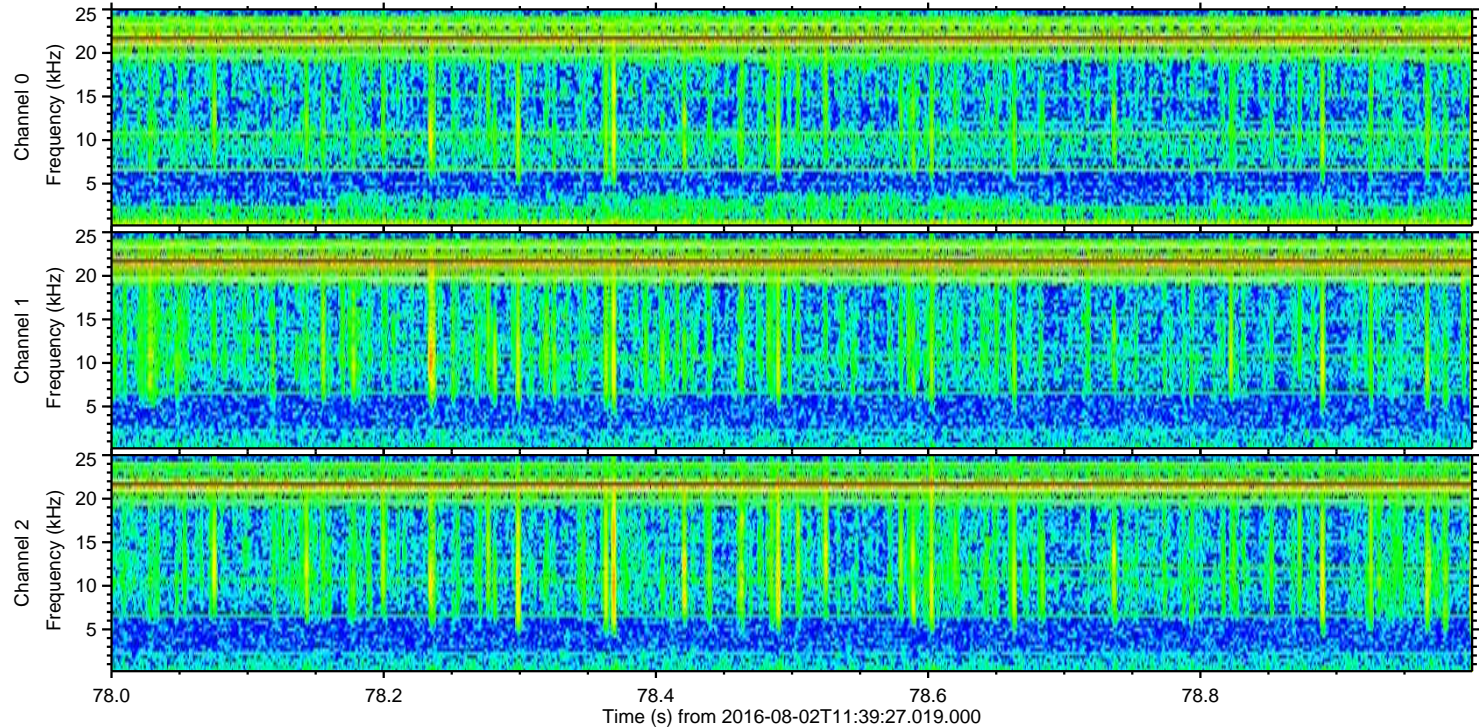
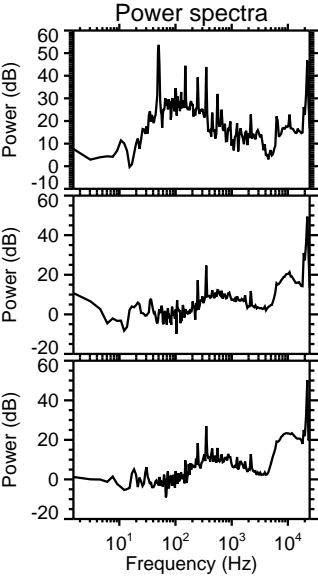
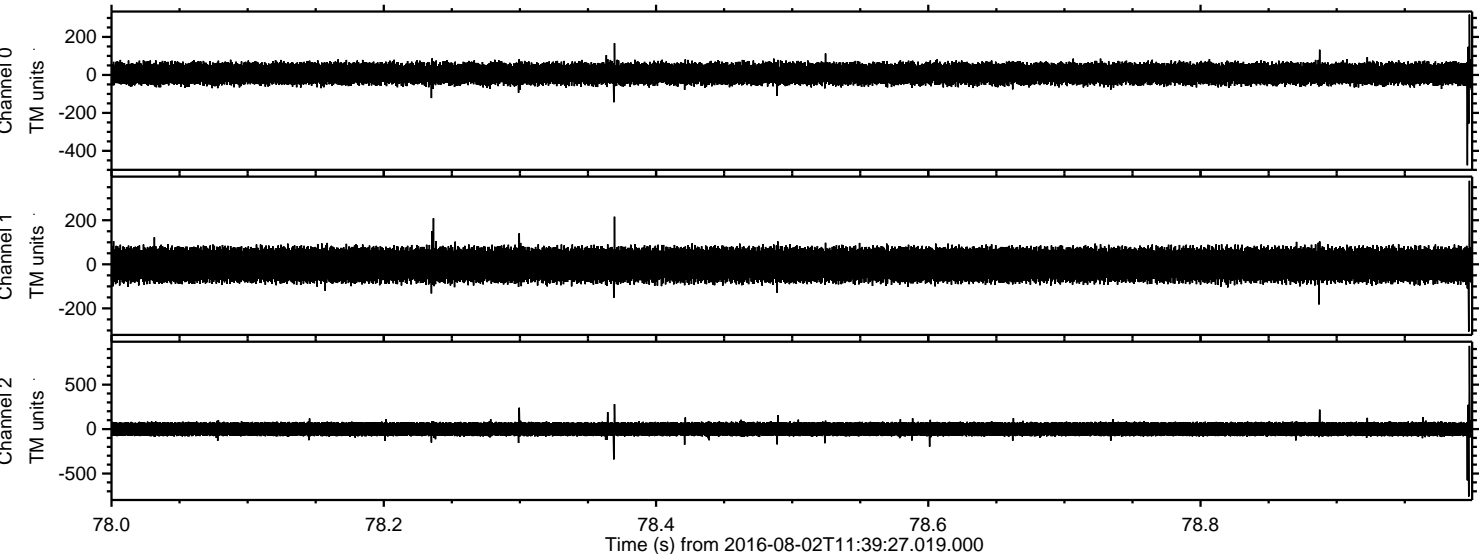


Processed Tue Aug 2 13:47:07 2016 by ELM ver.2012-10-06 from 001\_\_elm20160802\_113926\_\_dat00.bin



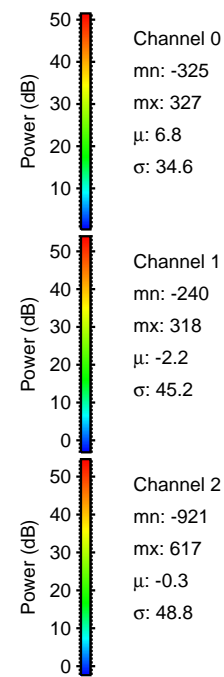
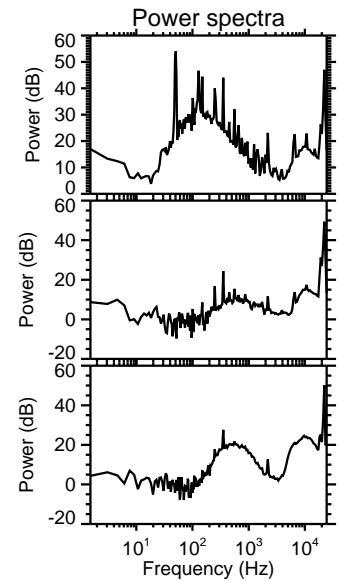
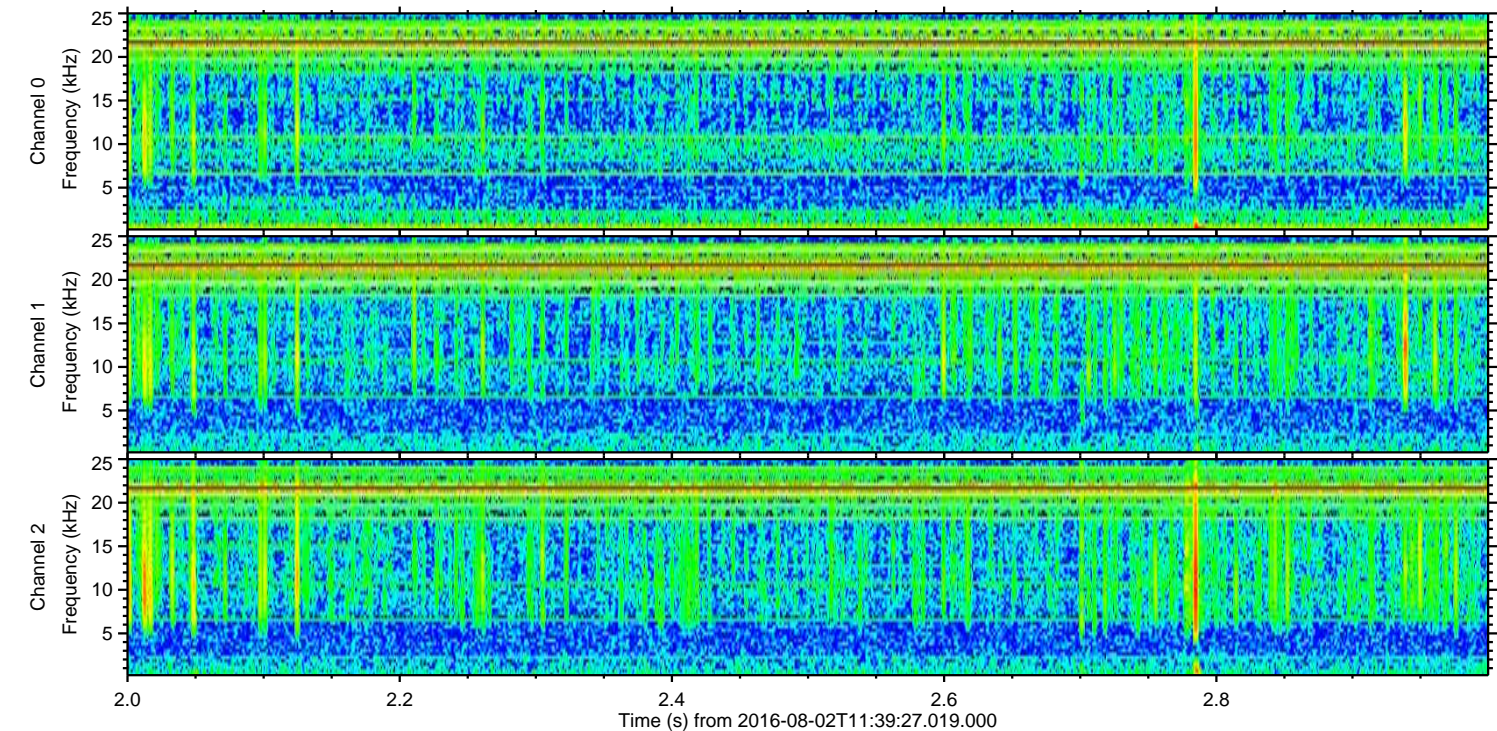
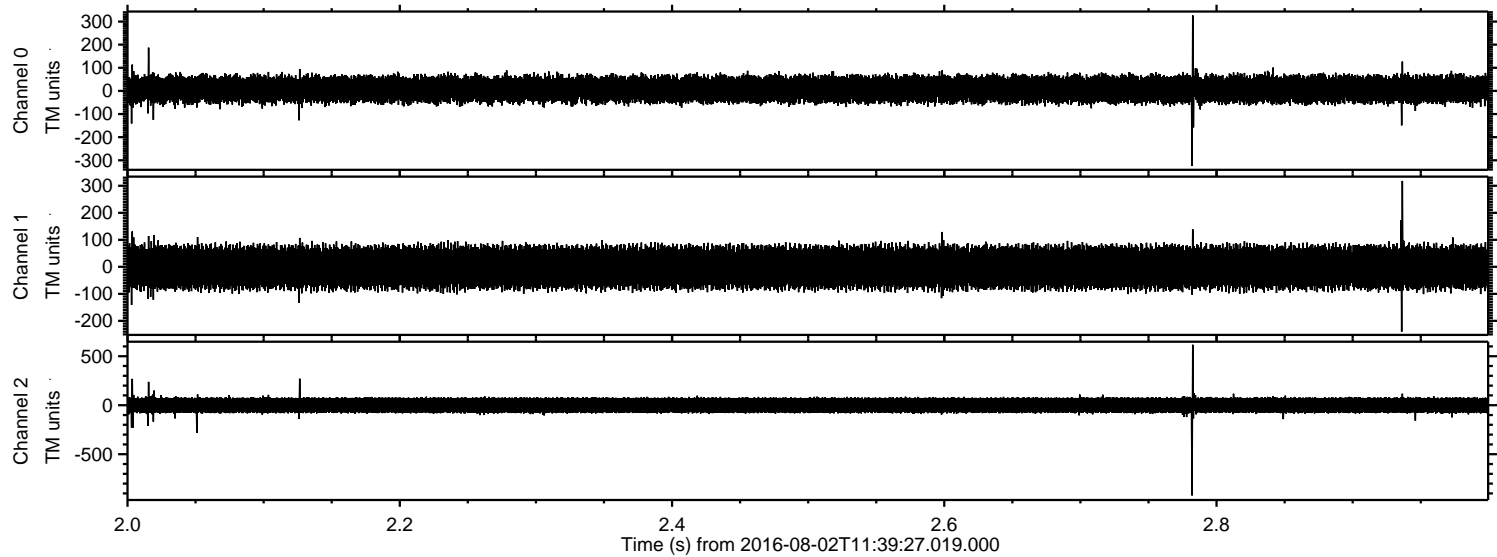


Processed Tue Aug 2 13:47:08 2016 by ELM ver.2012-10-06 from 001\_\_elm20160802\_113926\_\_dat00.bin





Processed Tue Aug 2 13:47:09 2016 by ELM ver.2012-10-06 from 001\_\_elm20160802\_113926\_\_dat00.bin





Processed Tue Aug 2 13:47:09 2016 by ELM ver.2012-10-06 from 001\_\_elm20160802\_113926\_\_dat00.bin

