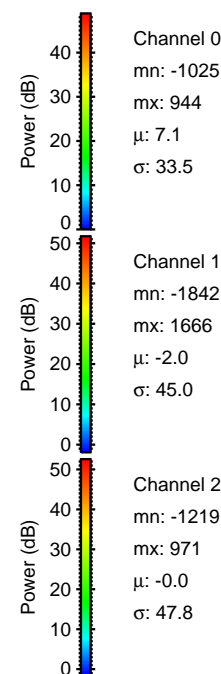
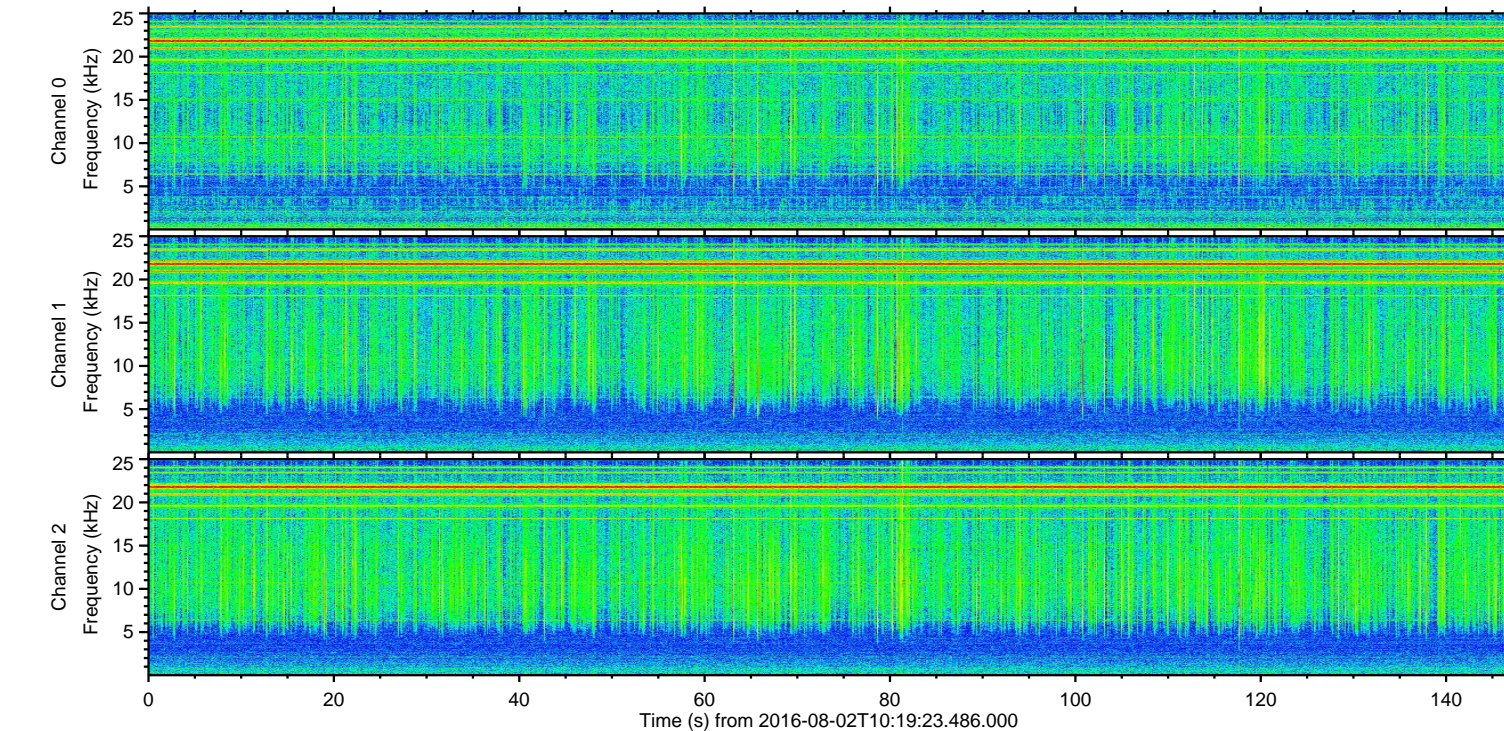
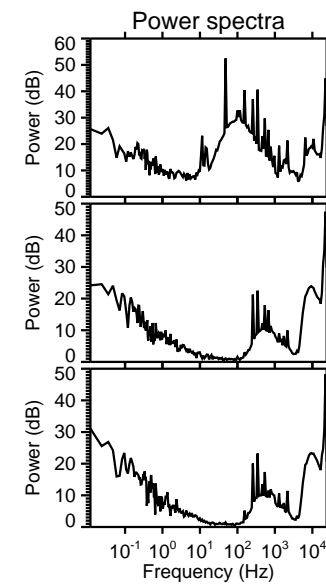
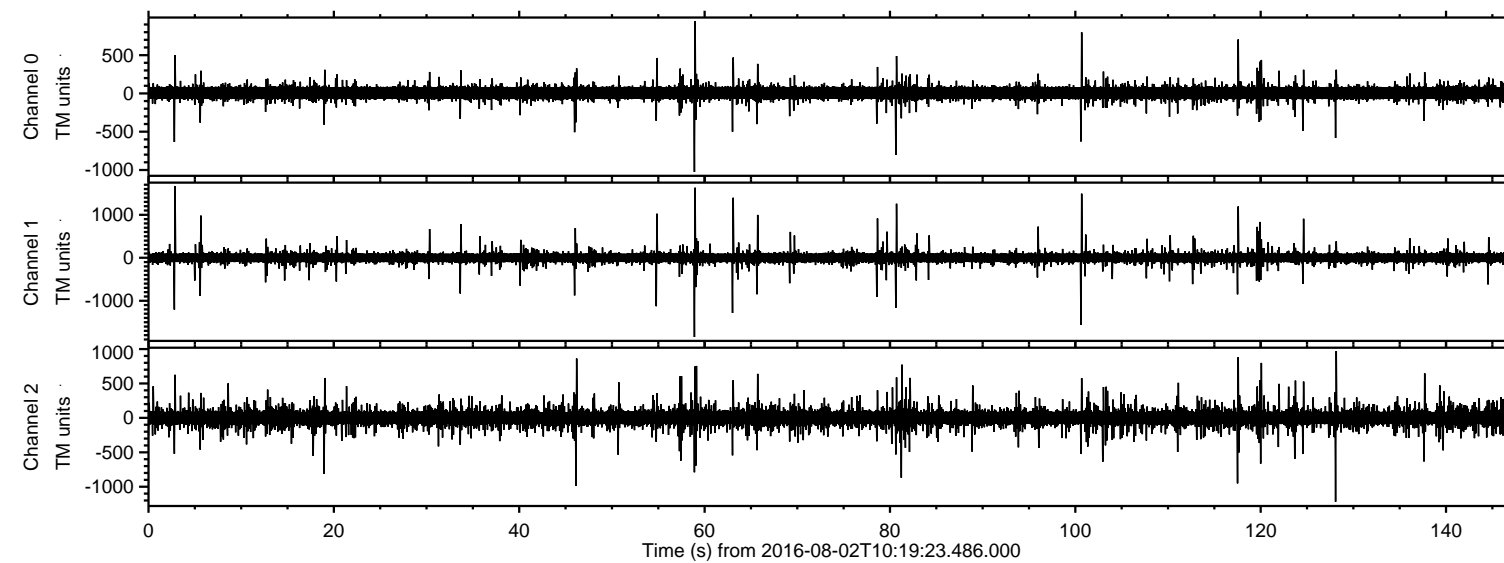
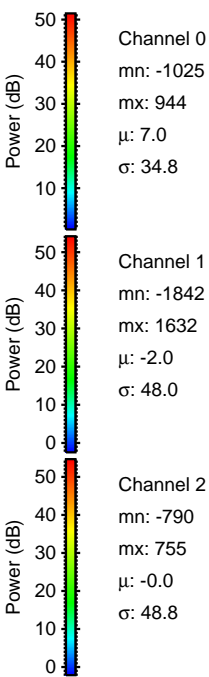
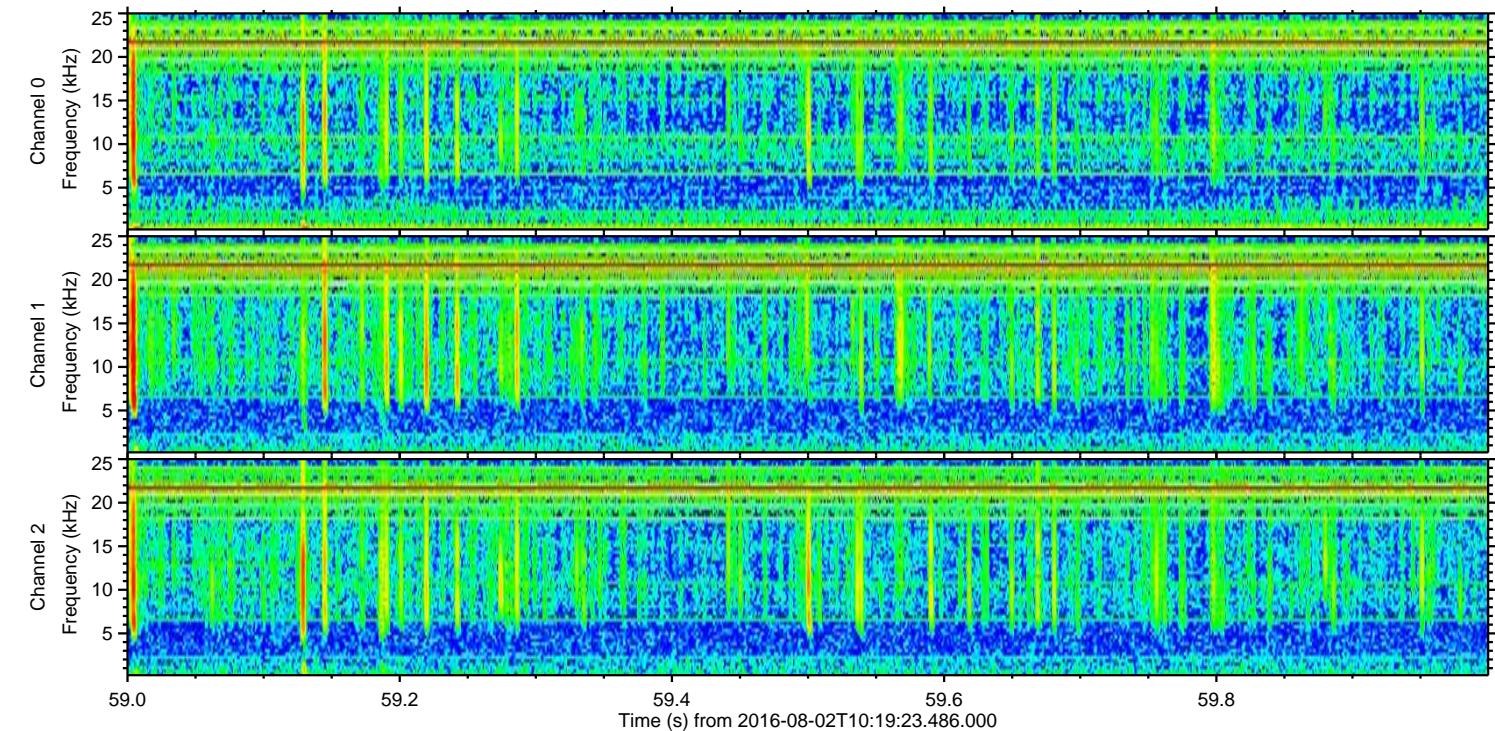
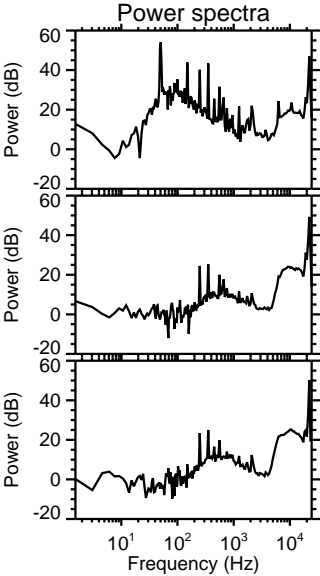
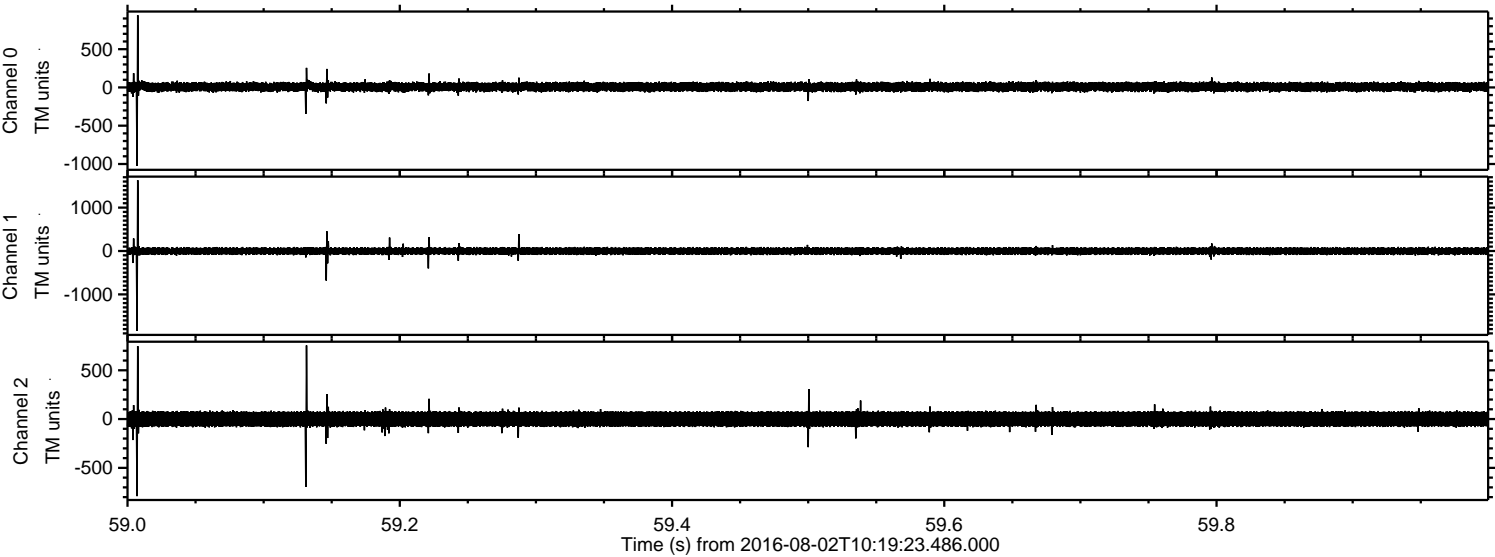


ELMAVAN 3D WAVEFORMS (Measured data sampled at 50 kHz) 51000 packets of 144 samples from 2016-08-02T10:19:23.486.000.

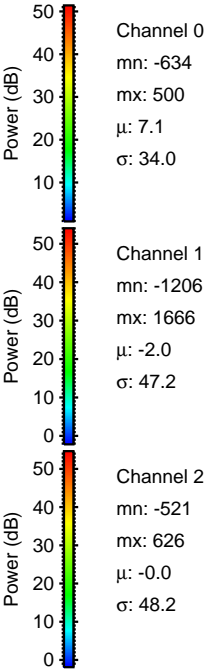
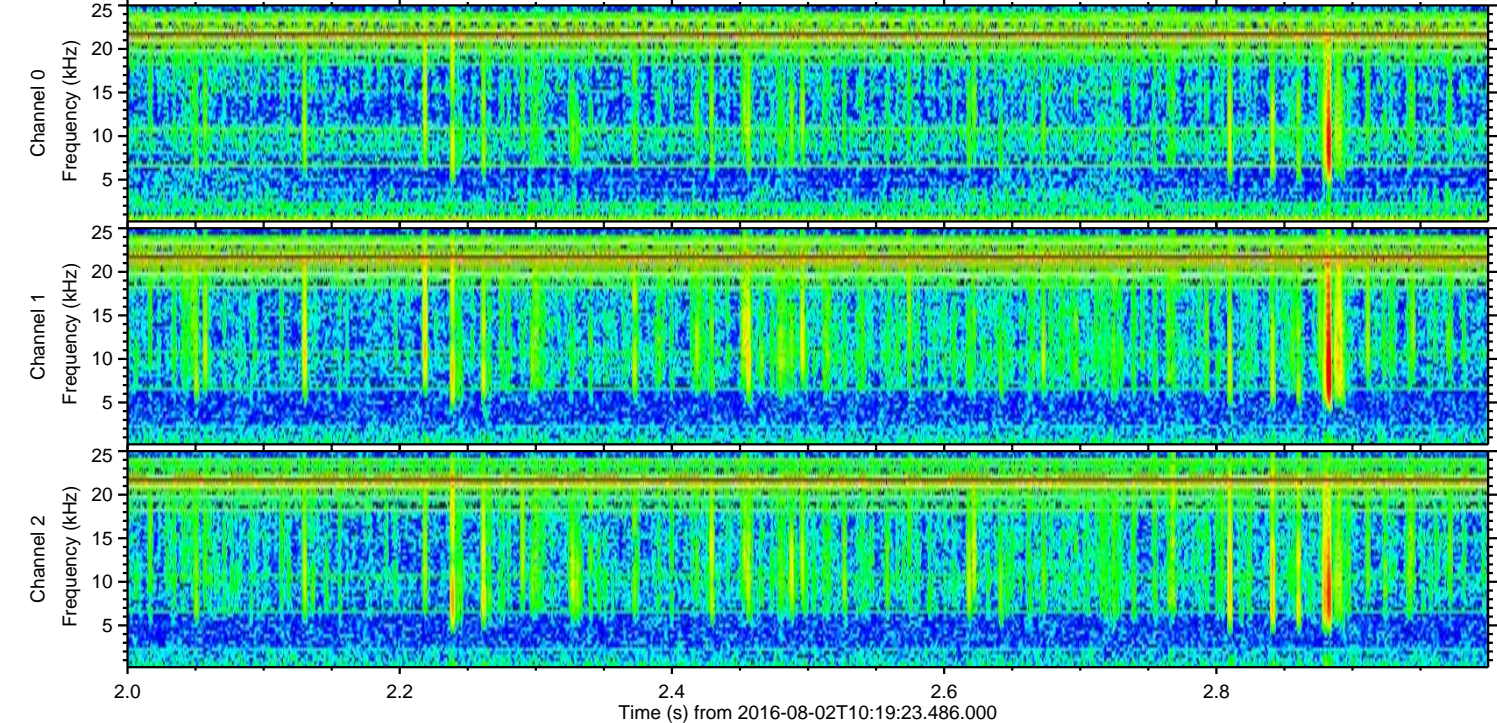
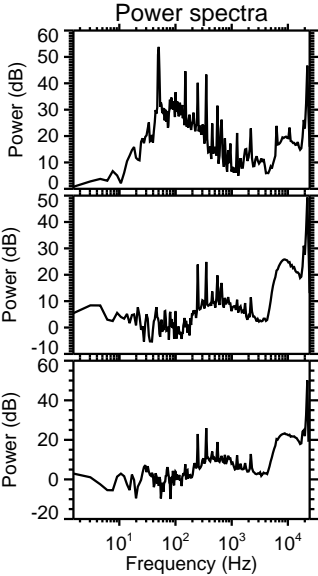
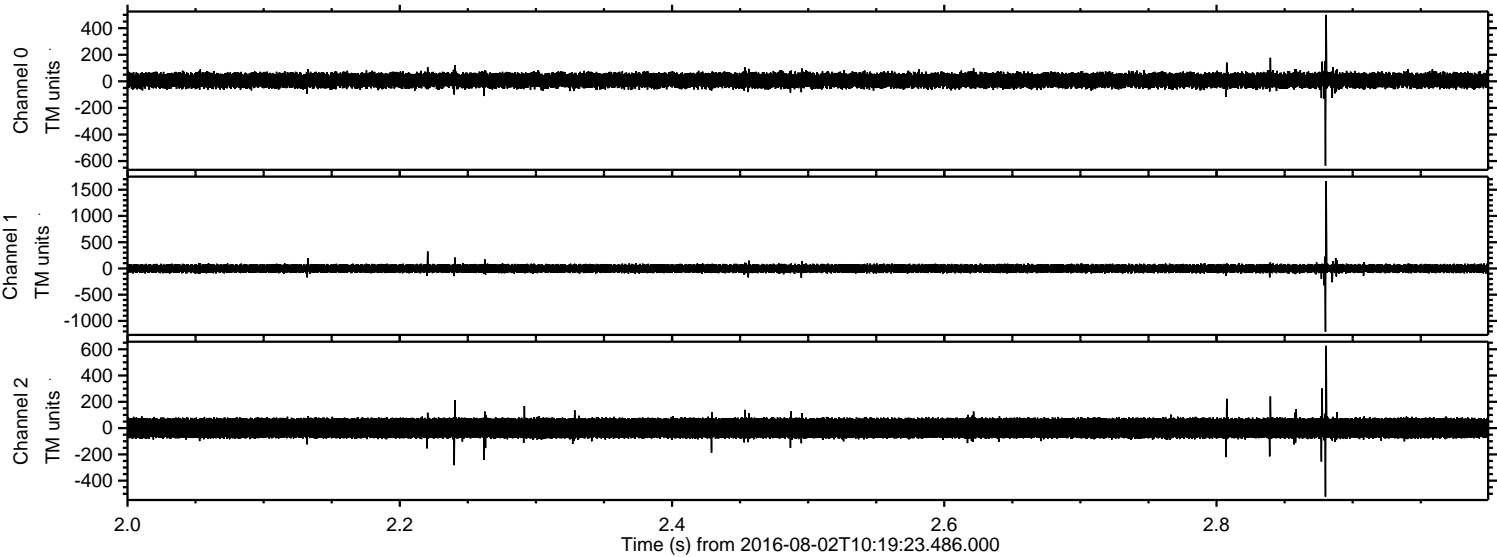
Processed Tue Aug 2 12:27:40 2016 by ELM ver.2012-10-06 from 001__elm20160802_101922__dat00.bin



Processed Tue Aug 2 12:27:52 2016 by ELM ver.2012-10-06 from 001__elm20160802_101922__dat00.bin

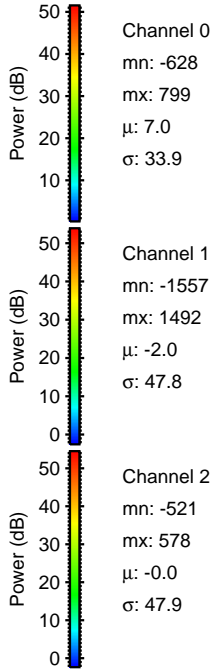
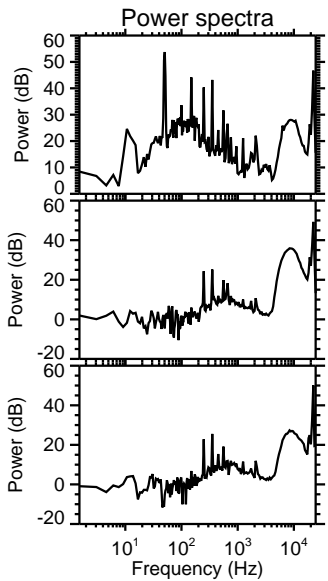
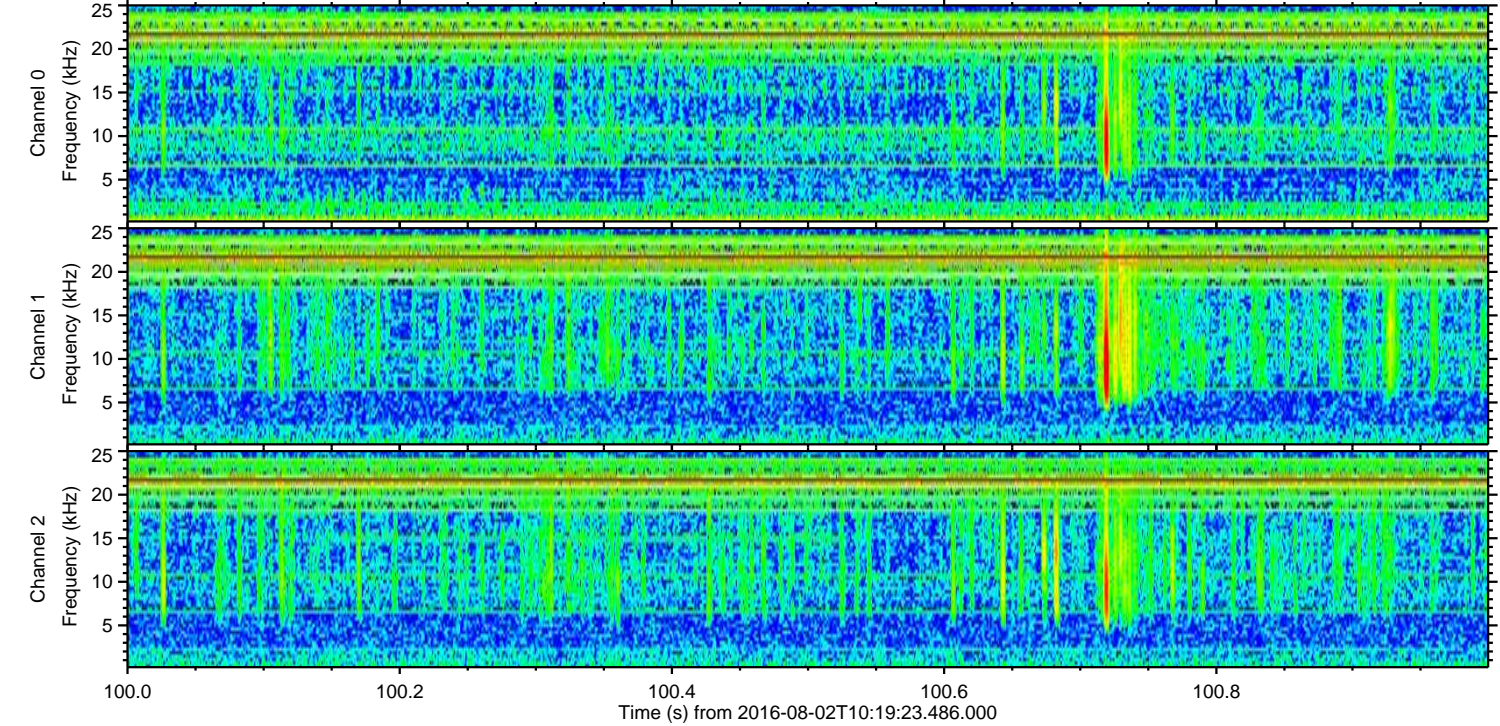
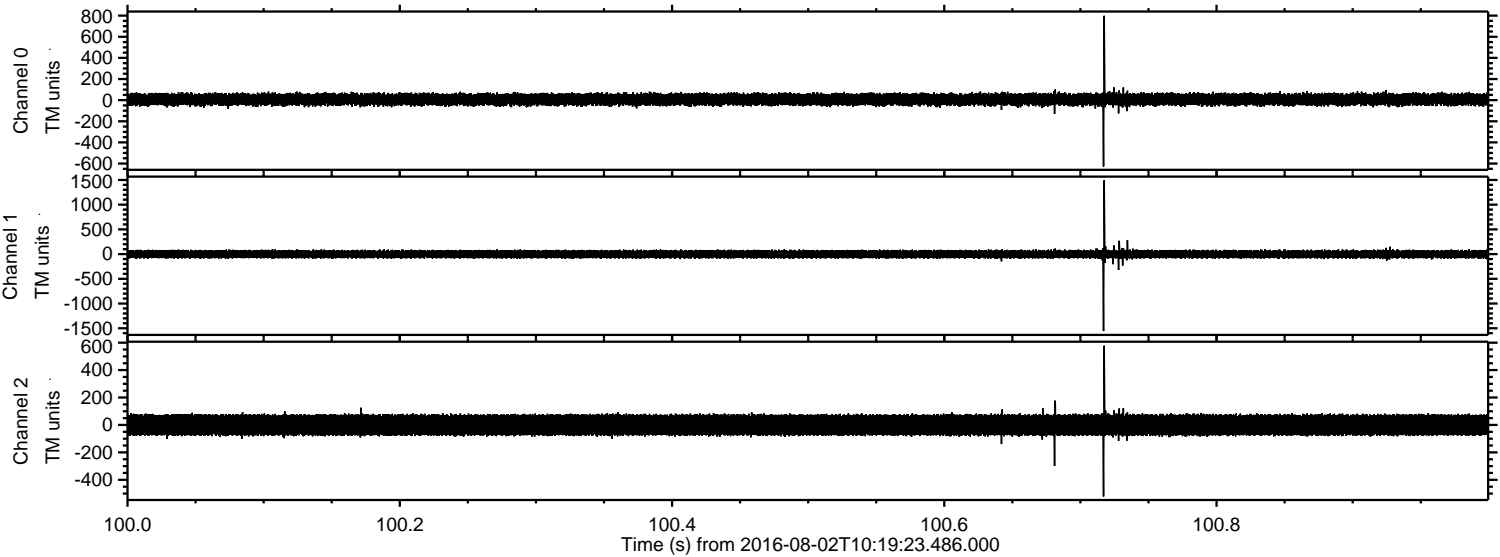


Processed Tue Aug 2 12:27:53 2016 by ELM ver.2012-10-06 from 001__elm20160802_101922__dat00.bin



ELMAVAN 3D WAVEFORMS (Measured data sampled at 50 kHz) 51000 packets of 144 samples from 2016-08-02T10:19:23.486.000. Part 101/147

Processed Tue Aug 2 12:27:54 2016 by ELM ver.2012-10-06 from 001__elm20160802_101922__dat00.bin

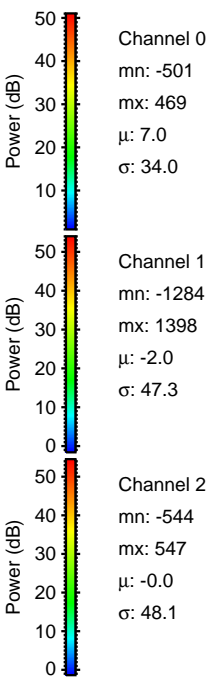
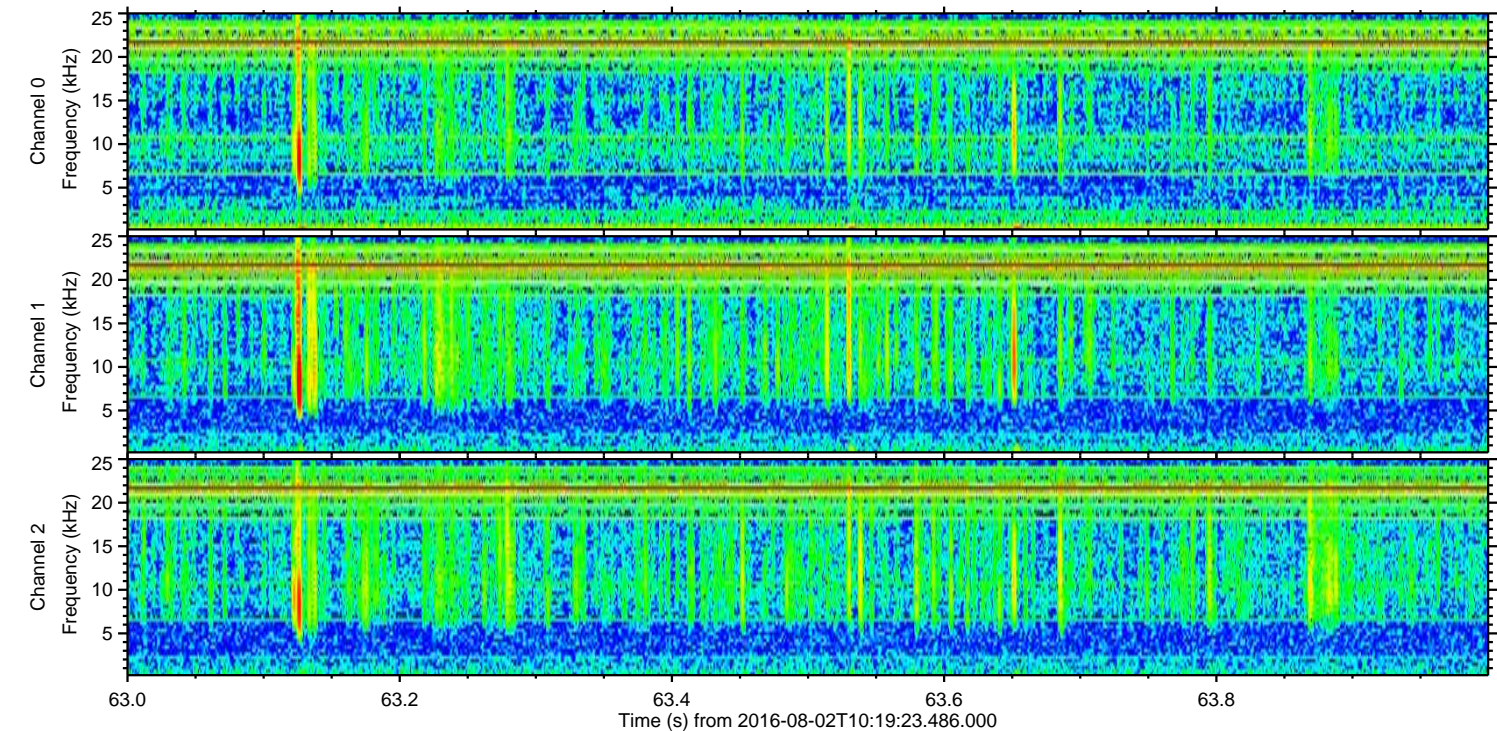
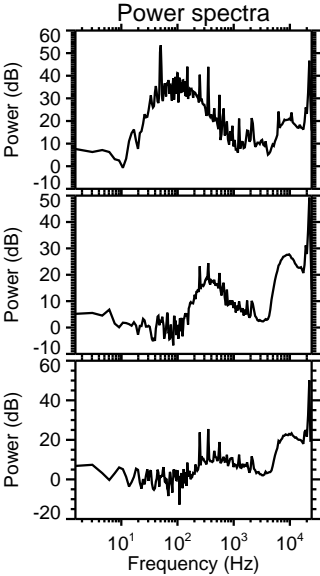
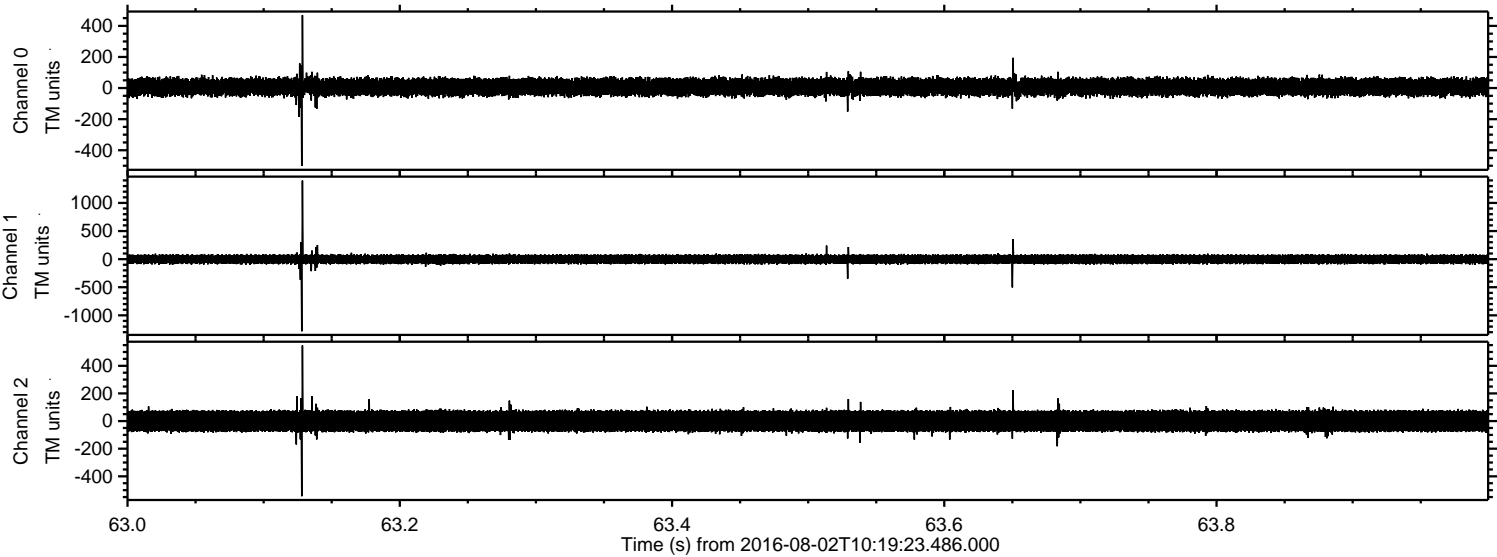


Channel 0
mn: -628
mx: 799
 μ : 7.0
 σ : 33.9

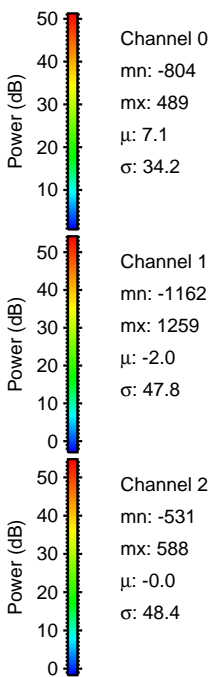
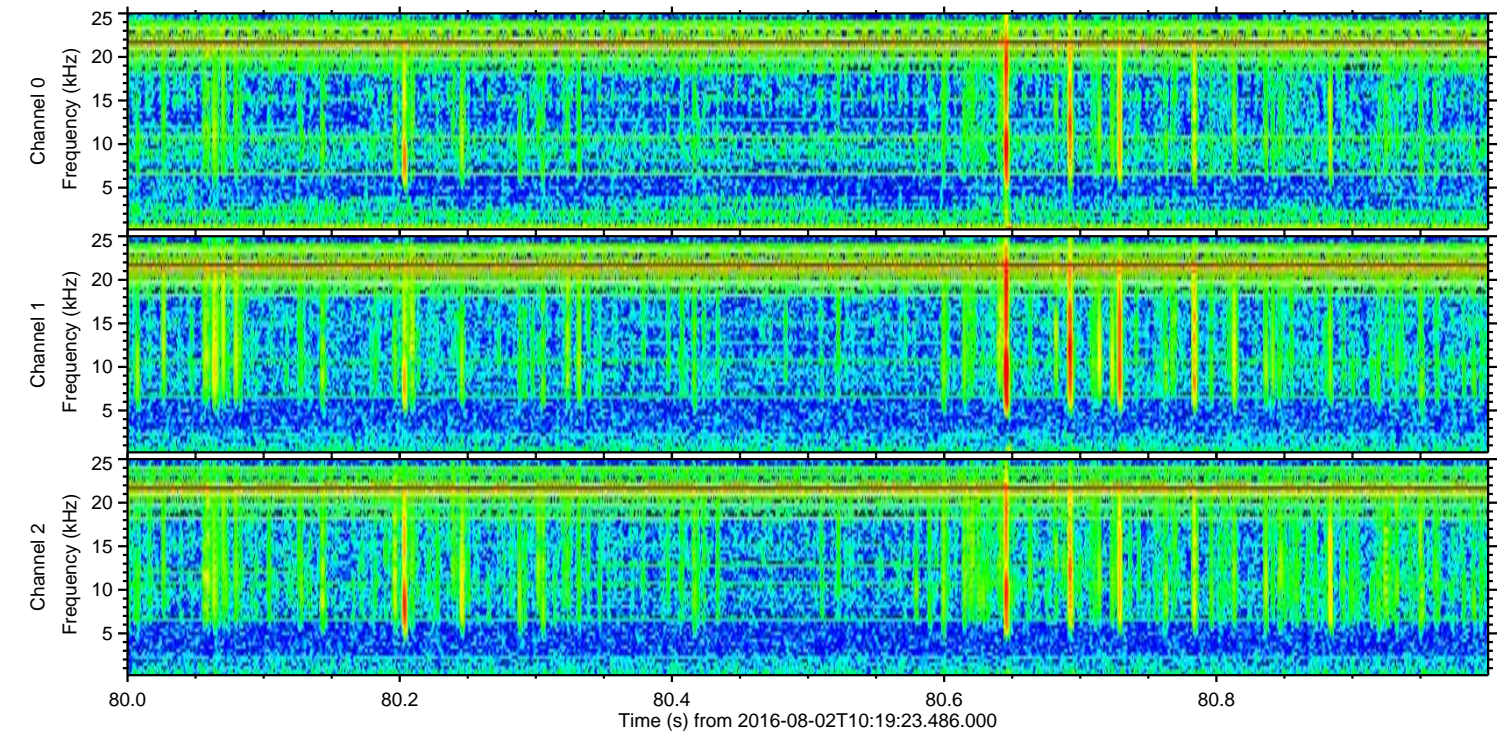
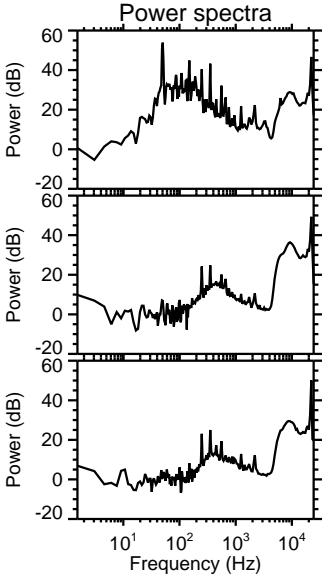
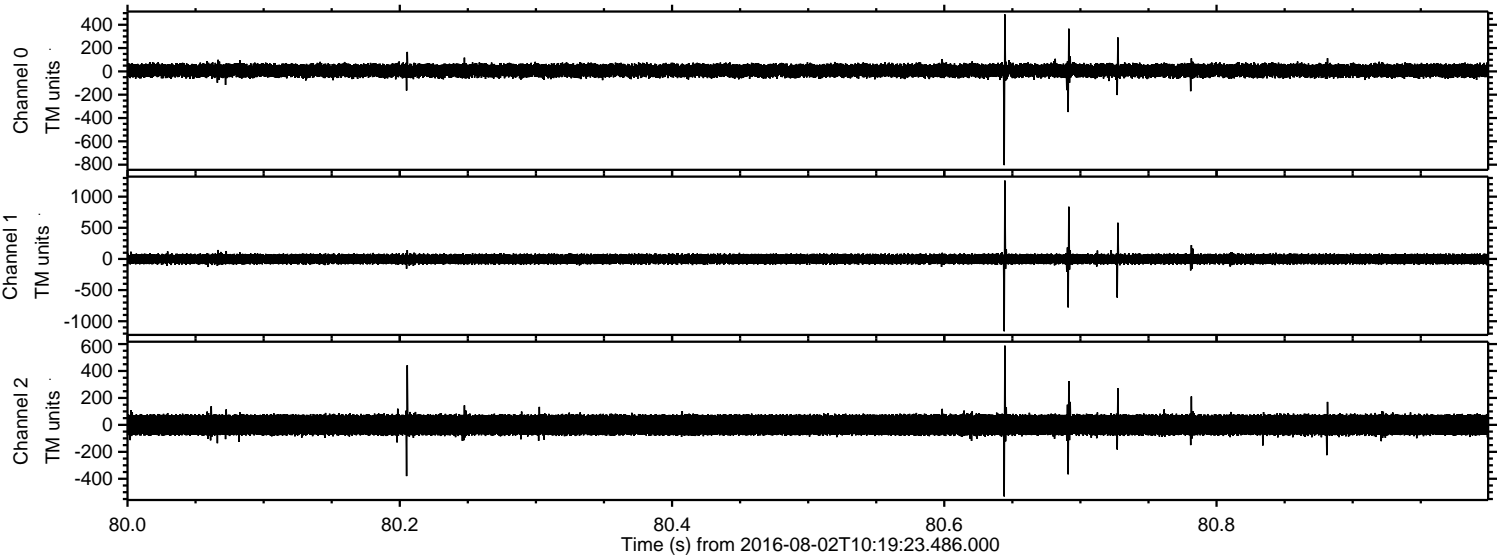
Channel 1
mn: -1557
mx: 1492
 μ : -2.0
 σ : 47.8

Channel 2
mn: -521
mx: 578
 μ : -0.0
 σ : 47.9

Processed Tue Aug 2 12:27:55 2016 by ELM ver.2012-10-06 from 001__elm20160802_101922__dat00.bin

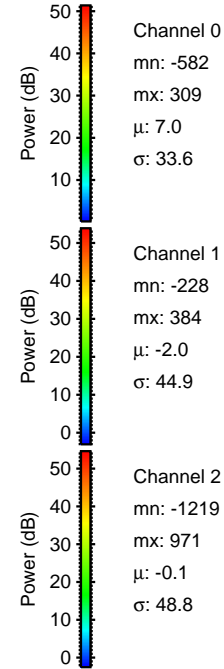
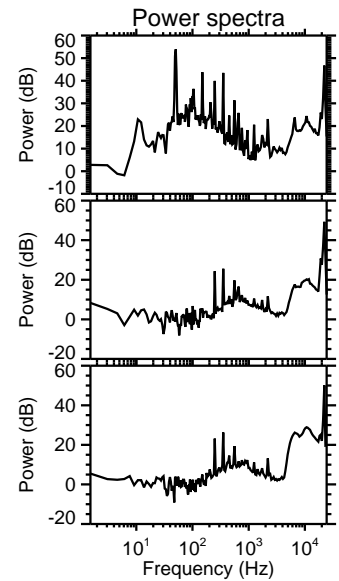
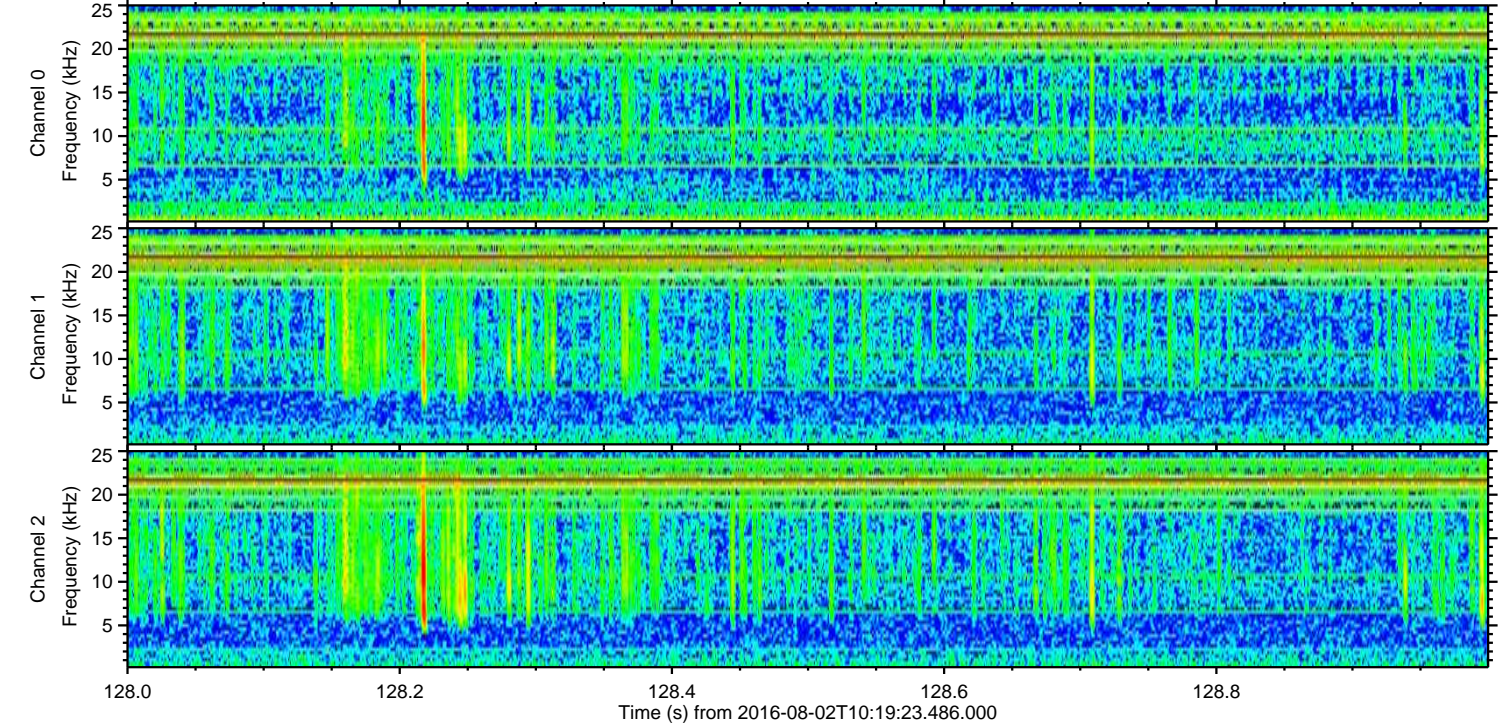
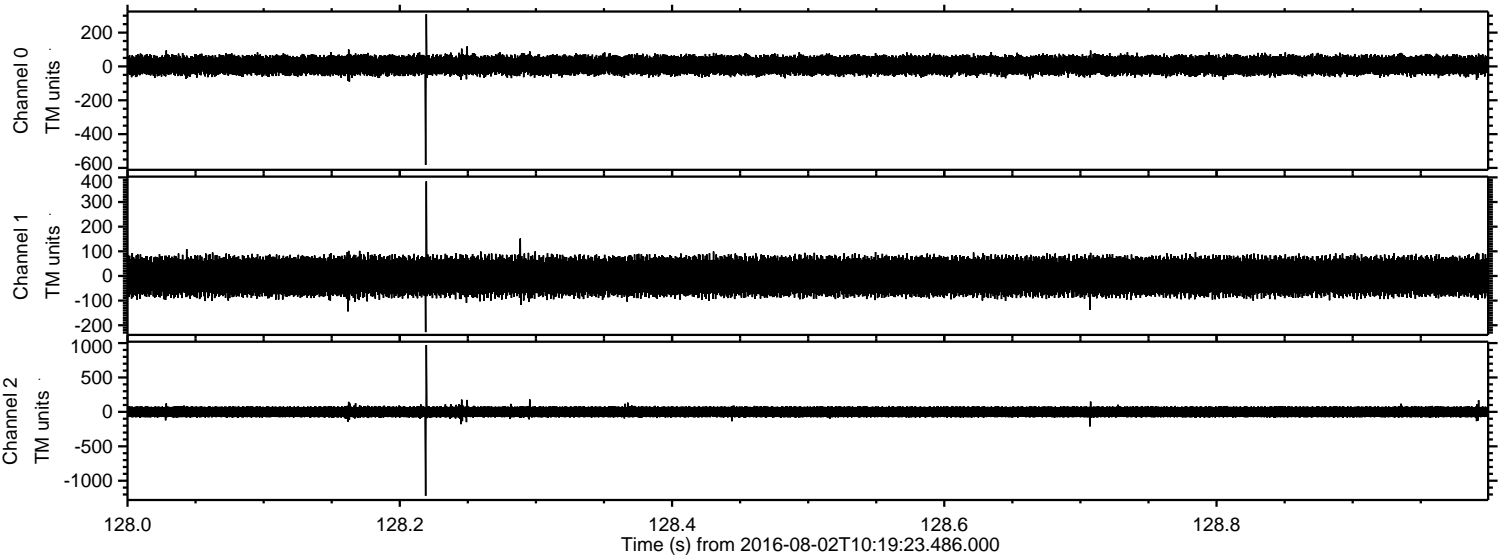


Processed Tue Aug 2 12:27:55 2016 by ELM ver.2012-10-06 from 001__elm20160802_101922__dat00.bin



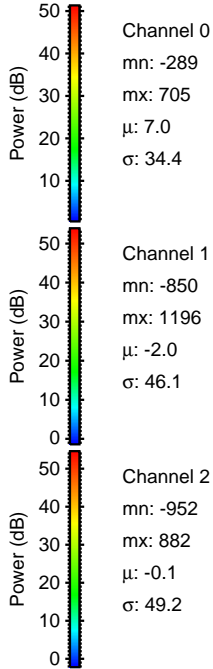
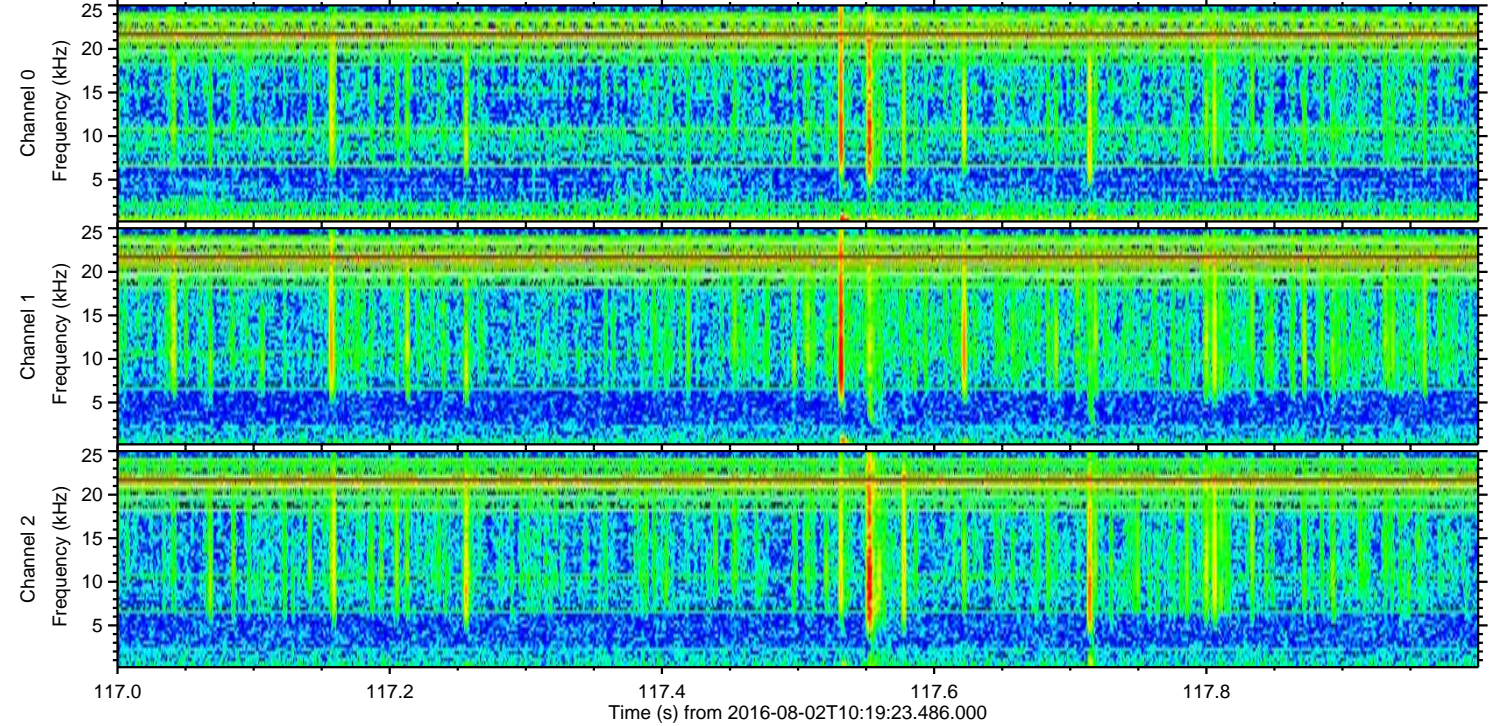
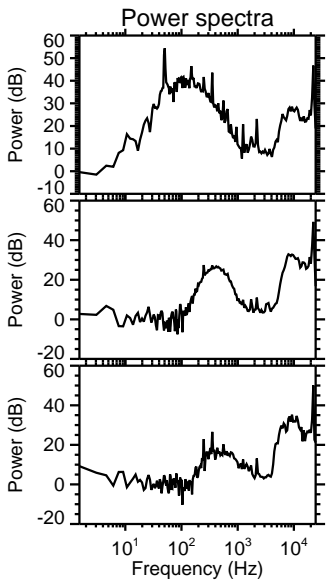
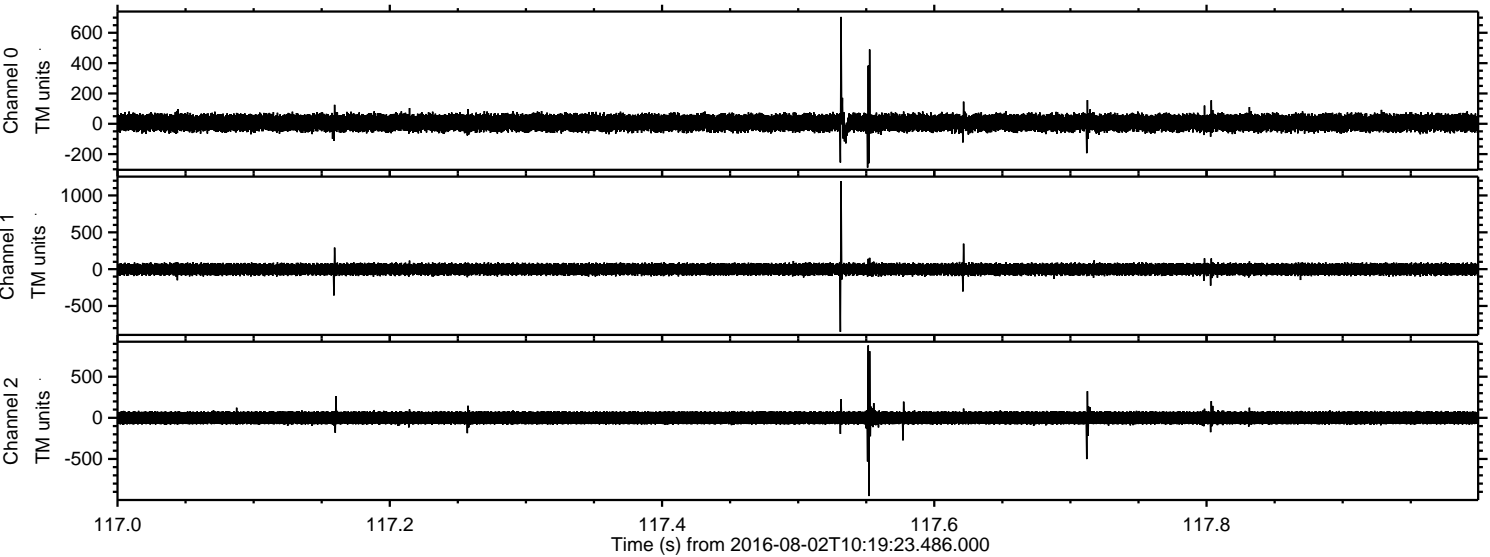
ELMAVAN 3D WAVEFORMS (Measured data sampled at 50 kHz) 51000 packets of 144 samples from 2016-08-02T10:19:23.486.000. Part 129/147

Processed Tue Aug 2 12:27:56 2016 by ELM ver.2012-10-06 from 001__elm20160802_101922__dat00.bin

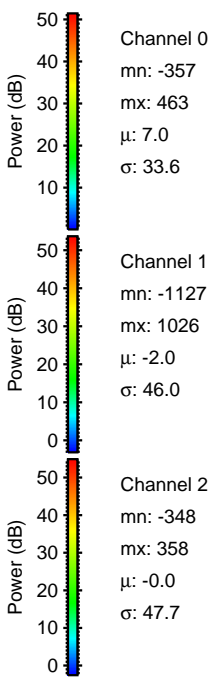
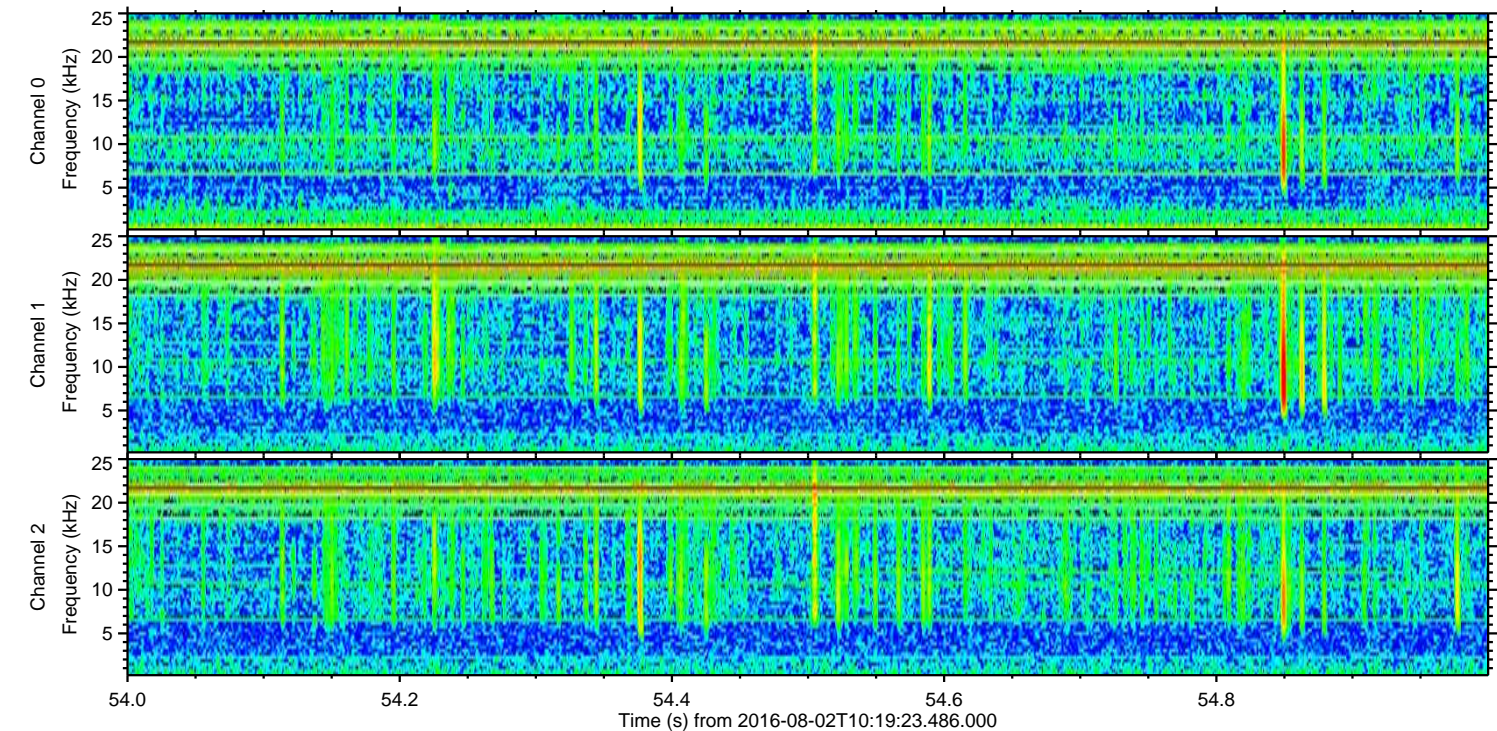
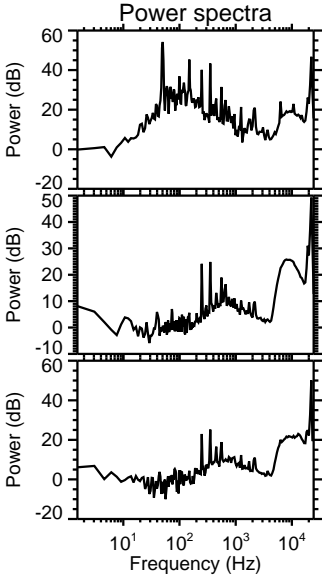
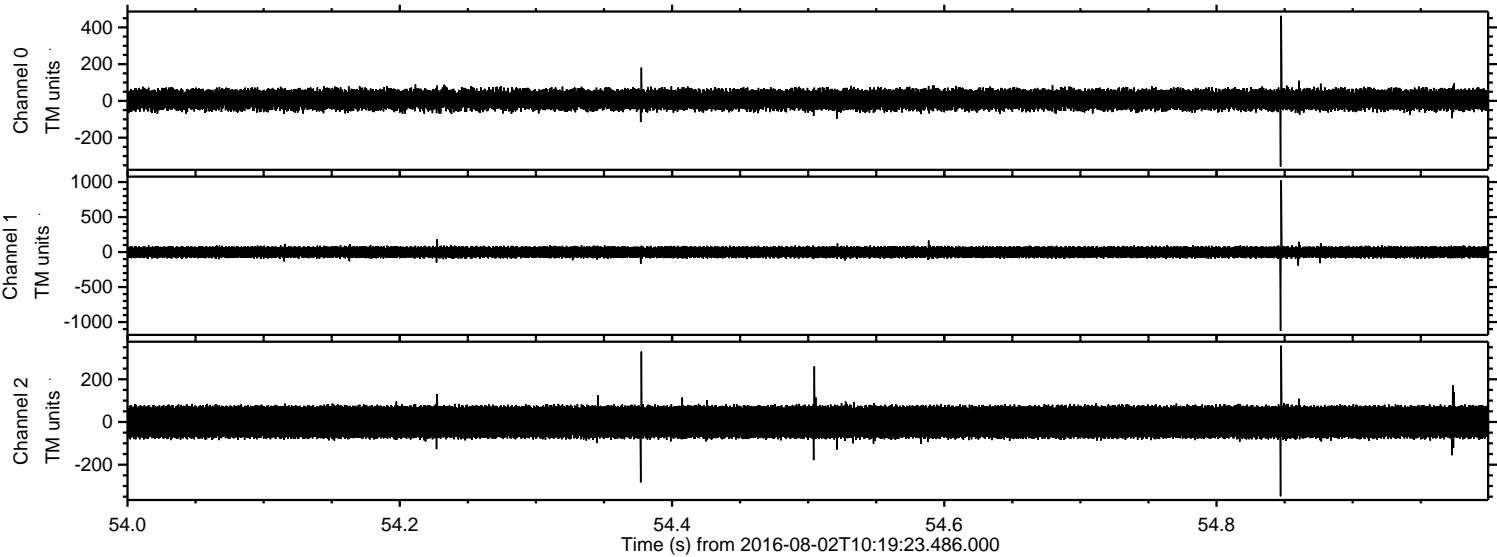


ELMAVAN 3D WAVEFORMS (Measured data sampled at 50 kHz) 51000 packets of 144 samples from 2016-08-02T10:19:23.486.000. Part 118/147

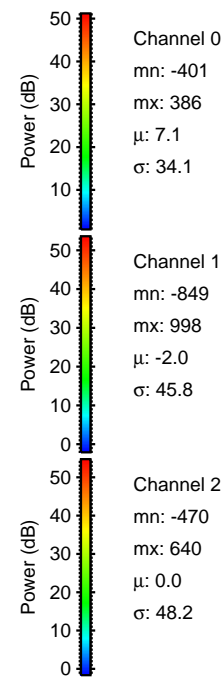
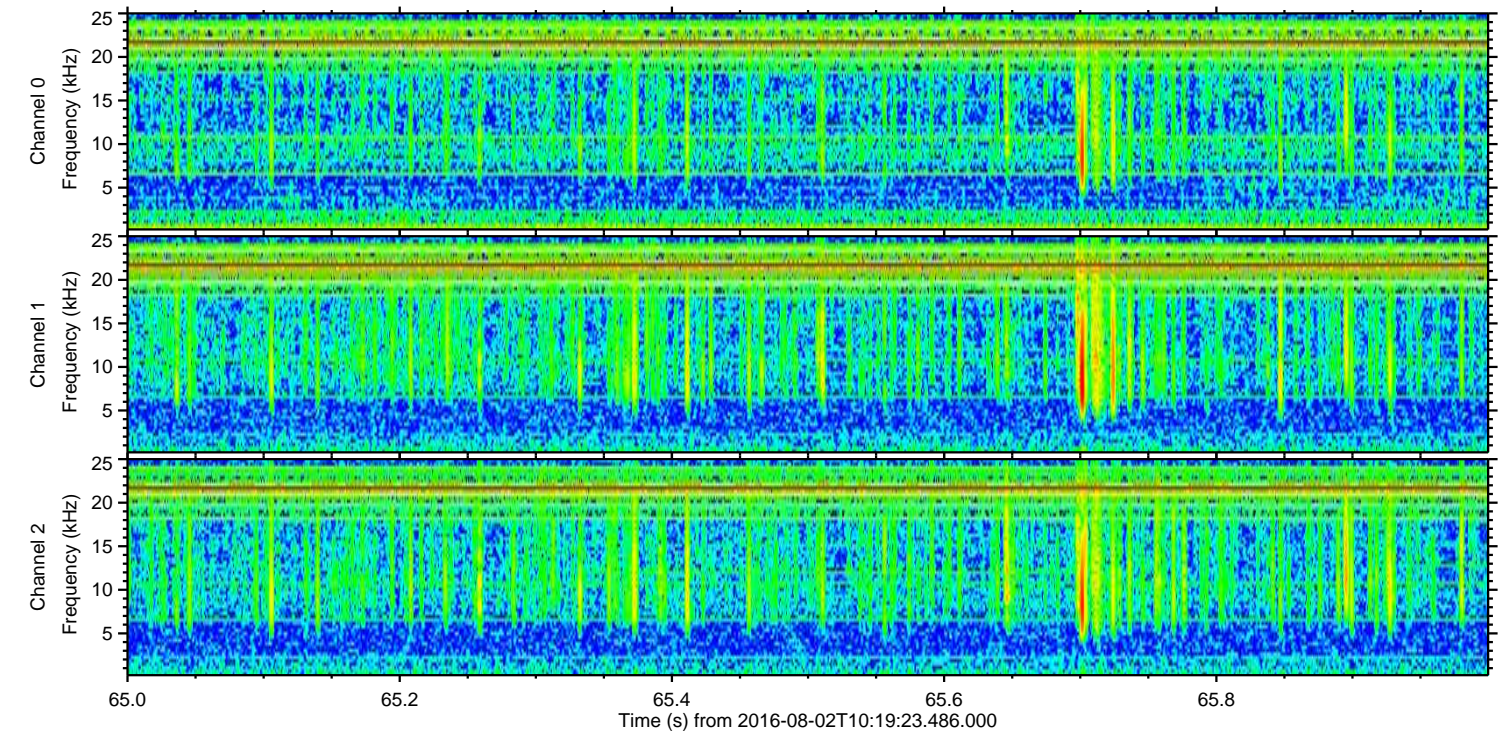
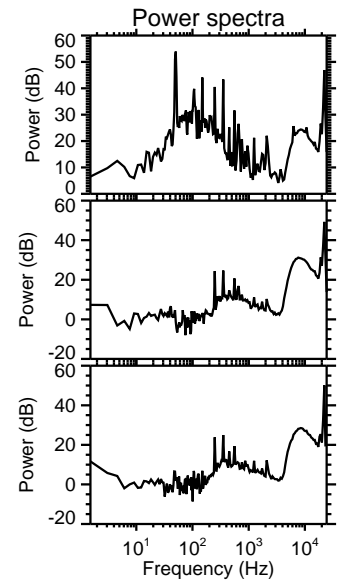
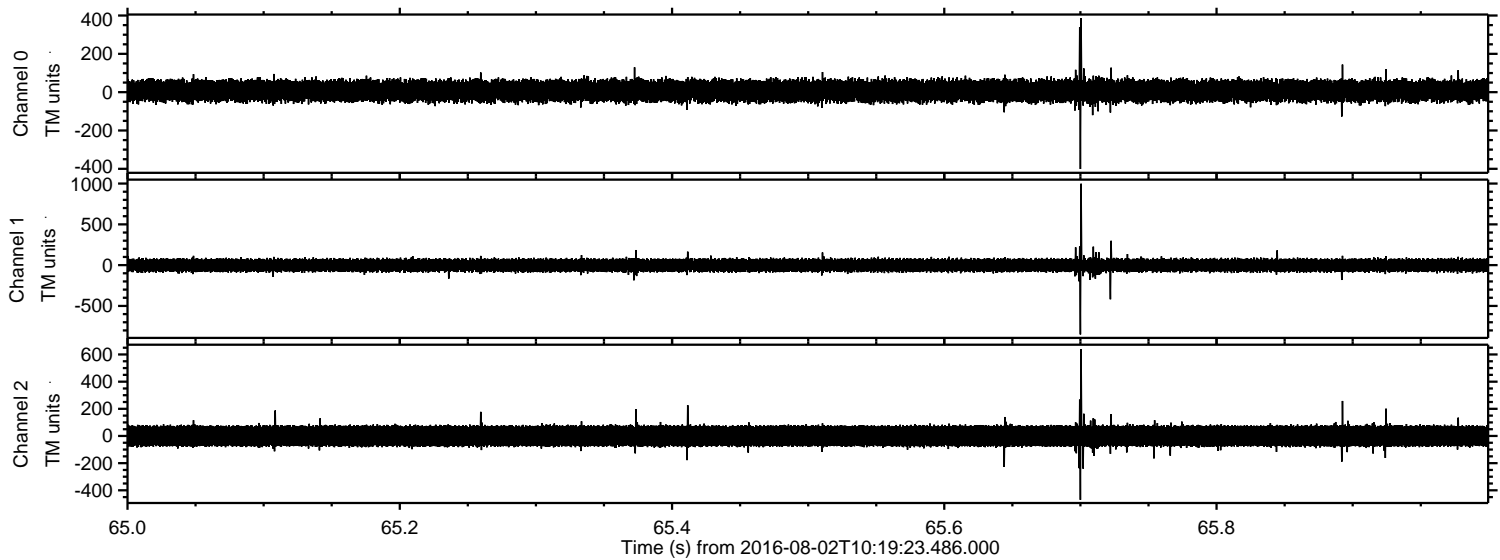
Processed Tue Aug 2 12:27:57 2016 by ELM ver.2012-10-06 from 001__elm20160802_101922__dat00.bin



Processed Tue Aug 2 12:27:58 2016 by ELM ver.2012-10-06 from 001__elm20160802_101922__dat00.bin



Processed Tue Aug 2 12:27:59 2016 by ELM ver.2012-10-06 from 001__elm20160802_101922__dat00.bin



Processed Tue Aug 2 12:28:00 2016 by ELM ver.2012-10-06 from 001__elm20160802_101922__dat00.bin

